

Poor glyceimic control and associated factors among diabetic patients in Ethiopia; A Systemic review and meta-analysis

Berhane Fseha Teklehaimanot^{1*}, Abadi kidanemariam Berhe², Gebrehiwot Gebremariam Welearegawi³

¹*Lecturer in Epidemiology & Biostatistics, Department of public health, College of Medicine and Health Sciences, Adigrat University, Tigray, Ethiopia; E-mail: berhanefish@gmail.com*

²*Assistant professor in Department of Nursing, College of Medicine and Health Sciences, Adigrat University, Tigray, Ethiopia; E-mail: abadik021@gmail.com*

³*Lecturer in reproductive health, Department of Public Health, College of Medicine and Health Sciences, Adigrat University, Tigray, Ethiopia; E-mail: gebrihet@gmail.com*

*Correspondence author

Abstract

Introduction

The major global public health problems now days are diabetes especially the burden is high in low income countries including Ethiopia due to the limited resource for screening and early diagnosis of the diabetes. To prevent diabetic complications including organ damage and micro vascular complications blood glucose level should be maintained at an optimum level. However there was no pooled national picture on poor glycemic control and its associated factors.

Methods

Different data base searching engine including PubMed, Google scholar, the Cochrane library, MEDLINE,, HINARY and African journal online (AJOL) were used. The Joanna Briggs Critical Appraisal Tools and Newcastle Ottawa scale for assessing the quality of cross sectional studies were used for quality assessment. The meta-analysis was conducted using STATA 14 software. I^2 statistic and egger weighted regression were used to assess heterogeneity and publication bias.

Results

A total of 134 studies were identified from different database searching engines and other sources. After removing for duplication, absence of abstract and review of the full text 12 studies were including in the meta-analysis. The pooled prevalence of poor glycemic control among diabetic patients in Ethiopia is 64.72% with 95% confidence interval 63.16-66.28%. The sub group analysis of poor glycemic control among diabetic patients in different region of the country shows consistent and high prevalence of poor glycemic control ranging from 62.5% in Tigray region to 65.6% in Oromia region of the country. Residence, dyslipidemia and diet adherence were significantly association with poor glycemic control among diabetic patients in Ethiopia.

Conclusion

The prevalence of poor glycemic control among diabetic patients was high in Ethiopia and consistent across different regions of the country. The most important factors associated with poor glycemic factor among diabetic patients were being rural residence, having dyslipidemia and not adhering to dietary plan.

Keywords: Poor glycemic control, diabetes, Fasting blood glucose, glycated hemoglobin, Ethiopia.

Introduction

Diabetes is chronic disease occurred due to increased blood glucose level because of the body cannot produce at all or secretes in sufficient insulin hormone or not use it effectively. Hence, the nonexistence of insulin or the cell is not sensitive to use insulin leads to increased blood glucose level which is the hallmark of diabetes(1). Globally 425 million adult population have diabetes and an estimated of 15.5 Millions of them are living in Africa and it is projected that by 2040 about 34.2 million are expected to be diabetic(2). One of the major global public health problems now days are diabetes especially the burden is high in low income countries including Ethiopia due to the limited resource for screening and early diagnosis of the diabetes (3).

To prevent diabetic complications including organ damage and micro vascular complications the blood glucose level should be maintained at an optimum level because poor glycemic control leads to diabetic keto acidosis, cognitive impairment, immune dysfunction and hospital admissions due to May complications. The magnitude of poor glycemic control is high throughout the world and specifically in Ethiopia greater than 50% of the diabetic patients does not had optimum blood glucose level(4–7).

Several primary Studies have been conducted in Ethiopia on the magnitude of poor glycemic control and their associated factors among diabetic patients. However the result of these studies were not consistent on the prevalence of poor glycemic control and even the factors that have significant association with poor glycemic control among diabetic patients varies across the studies. Moreover, there is no a study that shows the national pooled prevalence of poor glycemic control and contributing factors as well. . Therefore, this systemic review and meta-analysis on poor glycemic control and associated factors in Ethiopia are filling these gap and will generating new attention on the significant contributing factors to maintain the optimum blood glucose level among diabetic patients in Ethiopia.

Methods

Study design and search strategy

A systematic review and meta-analysis on the poor glycemic control and associated factors among diabetic patients in Ethiopia has been conducted. Different data base searching engine including PubMed, Google scholar, the Cochrane library, MEDLINE, HINARI and African journal online (AJOL) were used. Besides, grey literature and the reference list of former studies were also searched for extra articles. The Boolean operators was used to search the articles by using the following key and medical subject hedging terms separately and in combination “glycemic control” “glycemic control”, “blood glucose control”, “fasting blood glucose”, “glycated hemoglobin” , prevalence, magnitude, “associated factor”, predictors, Ethiopia. Language was limited to be only English. From May 2019 up to July 2019 was the period used to search the studies.

Study selection and eligibility criteria

Study selection

Selection of articles for the systemic review and meta-analysis were if the study conducted in Ethiopia and studies reporting poor glycemic control and/or the associated factors. Two independent researchers assessed the abstract and full text of all articles after preliminary screening of the studies for their title. A third researcher has been resolved the disagreement between the two researchers. A total of 134 studies were found from database searching and grey literatures (figure 1).

Eligibility criteria

Inclusion

- ✓ All articles published until the end of July 2019
- ✓ Only researches measured the poor glycemic level and/or associated factors among diabetic patients published and grey literatures were included
- ✓ Fasting blood glucose, oral glucose tolerance test and hemoglobin a one c(Ha1c) measurement for poor glycemic control according to the standard cut off point were included
- ✓ For duplicated articles the most recent were used
- ✓ Only English language published articles were used

Exclusion

- ✓ Studies used random blood glucose level to determine poor glycemic control were excluded
- ✓ Poor glycemic level that do not adhere to the standard world health organization definition and international diabetic federation were excluded.
- ✓ Article that are rated as low quality assessment was rejected.
- ✓ Studies that have response rate of <80% were excluded

Data extraction

Data extraction form has been developed by two researcher in excel spread sheet format and appraised by the third author. The data abstraction includes author, year of study, year of publication, study area(region of the country), study design, study setting(hospital/community based), sampling technique, sample size, response rate, outcome measured by(fasting blood glucose/ HbA1c), prevalence of poor glycemic control, age, gender, residence(urban/rural), monthly income, educational status, occupation, regular follow up, serum lipid level, presence of comorbidity, duration of disease, physical exercise, medication adherence, diet adherence, type of diabetes(type 1/type 2), medication(insulin, oral and combined), and body mass index (BMI) of the study participant were extracted. In addition to the total prevalence of poor glycemic control and sub categories by region of the country and outcome measured by fasting blood glucose or hemoglobin HbA1c has been extracted.

Operational definition of outcome measures

Poor glycemic control is the level of blood glucose rages out of the normal value that is Fasting blood glucose measurement greater than 130mg/dl and less than 70 mg/dl and glycated hemoglobin(Ha1c \geq 7%).

Study quality and critical appraisal

Quality of the studies was assessed by the Joanna Briggs Critical Appraisal Tools and Newcastle Ottawa scale for assessing the quality of cross sectional studies in meta-analysis(8). Parameter for quality assessment contains sampling procedure, representativeness in terms of their sample size, response rate, and blood glucose measured by standard measurement tool.

Heterogeneity and publication bias

Cochranes Q test which shows the presence of heterogeneity among studies and I² statistic were used to test heterogeneity. The estimate of variation in effect estimate that is due to heterogeneity rather than sampling error or chance differences was evaluated by I² statistic. Hence, the presence of heterogeneity was checked by Cochranes Q test (p<0.10 indicates statistically significant heterogeneity as cut off point) and the value of I² test 25%, 50%, 75% indicates low, medium and high heterogeneity among studies.

To assess for publication bias egger weighted regression and Begg rank correlation test (p< 0.05 were considered as statistical significant publication bias) method used.

Statistical analysis

The data entry was conducted on Microsoft excel spread sheet for windows 2010 and exported to STATA version 14 statistical software for analysis. Descriptive summary of the original studies were conducted and presented in forest plot, tables and texts. Fixed effect model was used to compute the pooled prevalence with 95% confidence interval of poor glycemic control since there was no heterogeneity among the articles and random an fixed effect model was computed to identify the factors that had significant association with poor glycemic control among diabetic patients in Ethiopia.

Subgroup analysis

Subgroup analysis were conducted by region of the country, outcome measured by fasting blood glucose/ or hemoglobin a1c and pooled prevalence of the factors was displayed by forest plot with the effect size and 95% confidence intervals.

Result

Identified studies

A total of 134 studies were identified from different database searching engines PubMed, Google scholar, the Cochrane library, MEDLINE, HINARI, and African journal online (AJOL). After removing for duplication, absence of abstract and review of the full text does not have the poor glycemic control measurement only 13 studies were eligible to include for meta-analysis. We exclude one article based on the quality assessment result. Finally 12 articles have been included in the meta-analysis. Figure 1

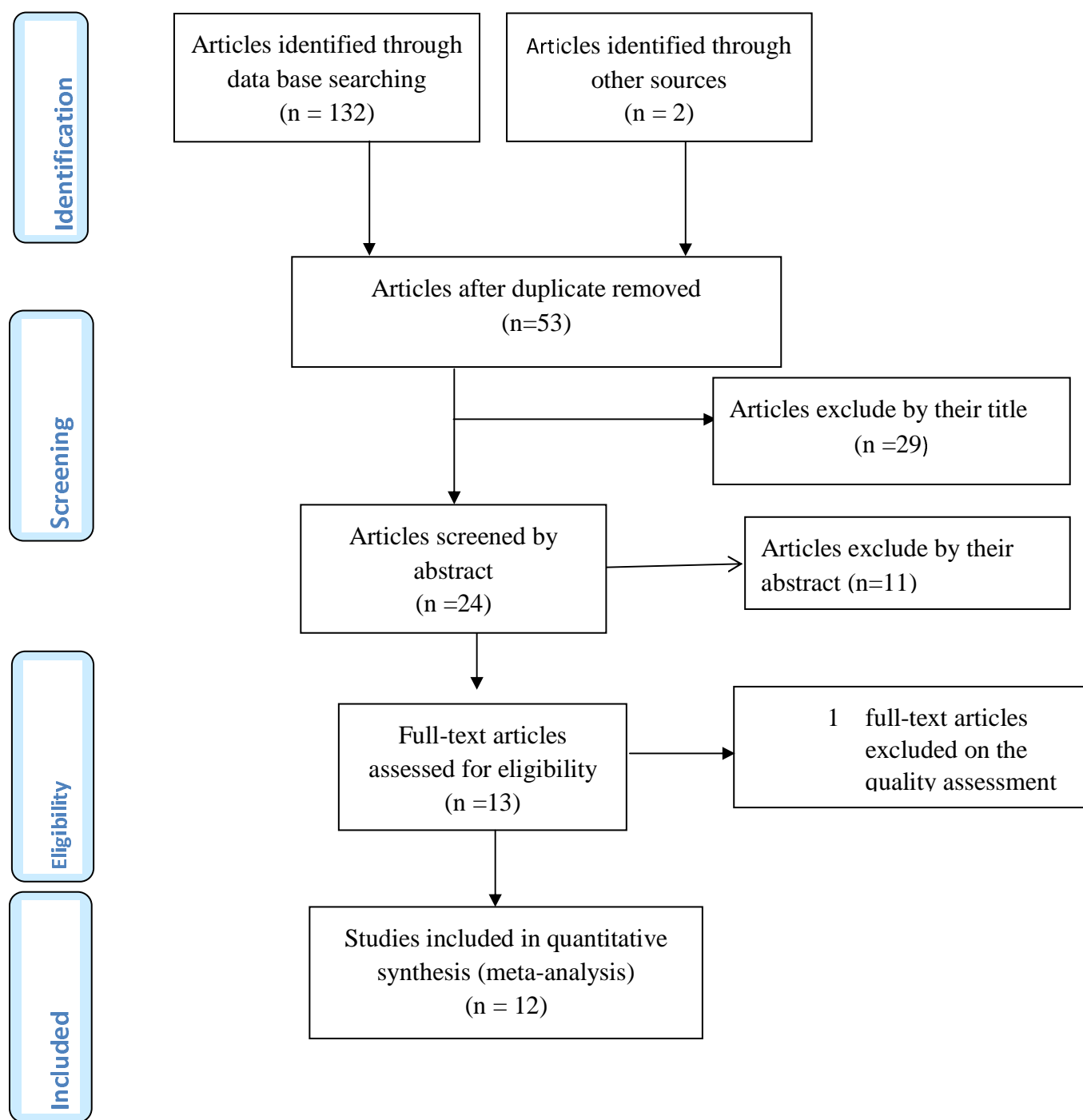


Figure 1. Flow chart diagram showing the selection of articles for systemic review and meta-analysis of poor glycemic control and associated factors among diabetic patients in Ethiopia 2019.

Study characteristics

In the meta-analysis total of 12 studies were included. Majority 5(41.67%) of the study were from Amhara region of the country, three (25%) from Oromia, two (16.67%) from Tigray and two (16.67%) from Addis Ababa the capital city of Ethiopia. All of the studies were cross sectional in study design and the largest sample size was in Addis Ababa which was 423 and the smallest sample size was in Amhara region (Table 1).

Table 1: Distribution of selected studies for the systemic review and meta-analysis of poor glycemic control and associated factors among diabetic patients in Ethiopia, 2019

S. No	Author(publication year)	Region	Study design	Study setting	Sample size	Resposerate(%)	Blood glucose measured by	Poor glycemic control(%)
1	Abebe, S. et al (2015)	Amhara	cross sectional	hospital	407	100	HbA1c	64.7
2	Ayele, A. &Tegegn, H.(2019)	Amhara	cross sectional	hospital	278	98.9	FBG	57.1
3	Cheneke, W. et. Al (2016)	Oromia	cross sectional	hospital	148	100	HA1C	59.5
4	Demoz, G. et.al (2019)	Addis ababa	cross sectional	hospital	423	84.4	FBG	68.3
5	Fasil et al (2018)	Amhara	cross sectional	hospital	367	100	FBG	60.5
6	Fiseha, T et.al (2018)	Amhara	cross sectional	hospital	384	100	FBG	70.8
7	Fseha, B. (2017)	Tigray	cross sectional	hospital	200	100	FBG	63.5
8	Gebre-Yohannes, A. &Rahlenbeck, S. I. (1997)	Amhara	cross sectional	hospital	102	100	HA1C	77
9	Kassahun, T. et.al (2016)	Oromia	cross sectional	hospital	325	95	FBG	70.9
10	Mideksa et.al (2018)	Tigray	comparative cross sectional	hospital	336	100	HA1C	61.9
11	Shimels, T. et.al (2018)	Addis ababa	cross sectional	hospital	414	87.2	FBG	60.3
12	Yigazu, D. &Desse, T. (2017)	Oromia	cross sectional	hospital	74	100	FBG	59.2

Table 2: Distribution of factors associated with poor glycemic control in the selected studies in Ethiopia, 2019

S. No	Author(publication year)	Number of Poor glycemic control														
		age			Sex		Residence		Income		Occupation		Educational status		comorbidity	
		Age >65	Age 25-65	Age <25	male	female	Urban	Rural	poor	rich	empl oyed	unemp loyed	Formal education	No formal education	Yes	no
1	Abebe, S. et al (2015)	32	195	25	125	128	215	38	167	52					98	155
2	Ayele, A. &Tegegn, H.(2019)	24	133		83	74	99	58	90	38		33	47	100		
	Cheneke, W. et. Al (2016)				50	38							57	31		
4	Demoz, G. et.al (2019)	96	148		74	170	206	38			135	109	171	33	195	49
5	Fasil et al (2018)	30	162	30	106	116	157	65			139	83	138	99		
6	Fiseha, T et.al (2018)						181	91			145	126	150	121		
7	Fseha, B. (2017)	5	119	2	83	43	88	38	65	24			82	45	44	82
8	Kassahun, T. et.al (2016)										172	47	138	81		
9	Mideksa et.al (2018)	34	142	32			189	19	163	39						
10	Shimels, T. et.al (2018)	45	174		119	100									118	101
11	Yigazu, D. &Desse, T. (2017)				49	54				52			51	50		

Pooled prevalence of poor glycemic control among diabetic patients

The pooled prevalence of poor glycemic control among diabetic patients in Ethiopia is 64.72% with 95% confidence interval 63.16-66.28. Heterogeneity test was checked in this analysis and it was $I^2=73.8\%$ indicating of no heterogeneity. Egger's test was used to test for publication bias and $t\text{-test} = -48$, $p\text{-value} = 0.638$, hence we declare that there were no publication bias in this analysis. Figure 2

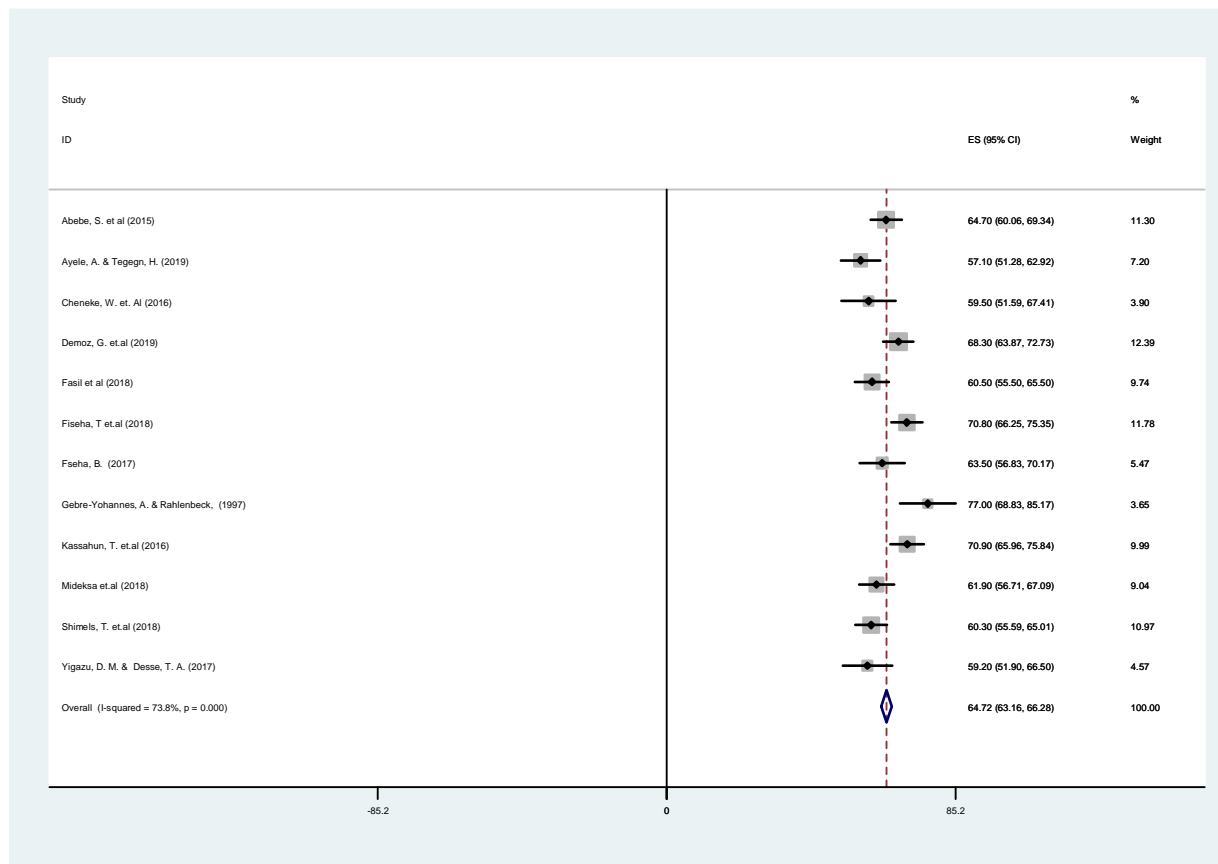


Figure 2: forest plot of the 12 studies assessed for the pooled prevalence of poor glycemic control among diabetic patients in Ethiopia, 2019.

Sensitivity test

Sensitivity test has been conducted in the quantitative meta-analysis of poor glyceimic control among diabetic patients in Ethiopia for the selected studies and all of the articles were with in the 95% confidence interval. Figure 3.

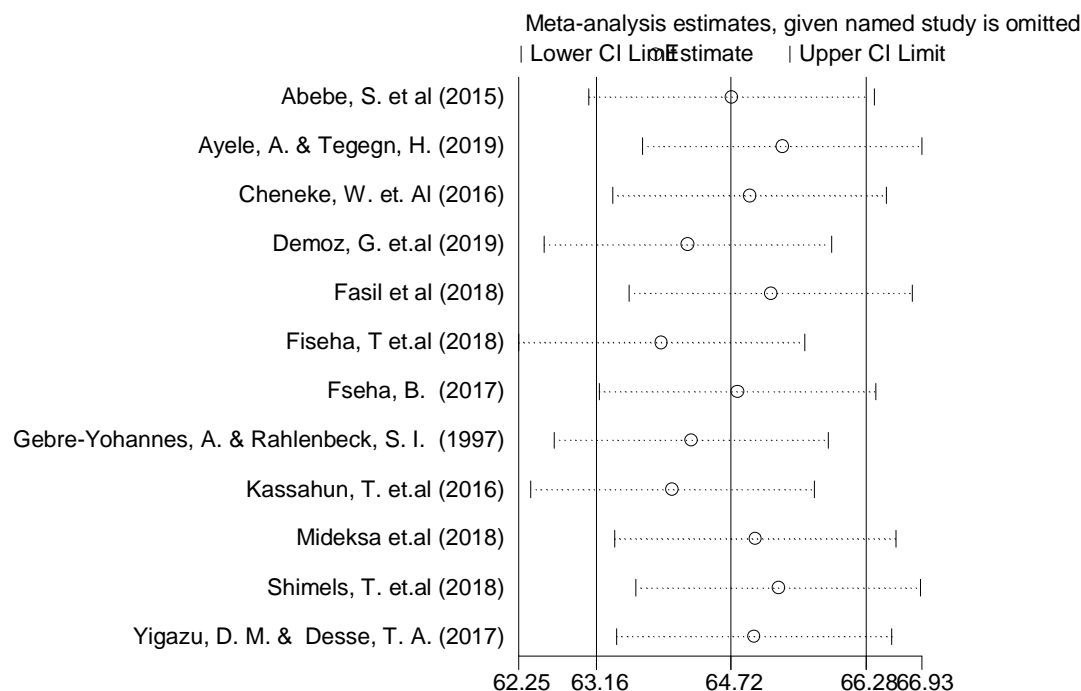


Figure 3: meta-analysis estimates of sensitivity test for the selected studies on poor glyceimic control among diabetic patients in Ethiopia, 2019.

Subgroup analysis of poor glyceimic control by region of the country

The sub group analysis of poor glyceimic control among diabetic patients in different region of the country shows consistent and high prevalence of poor glyceimic control ranging from 62.5% in Tigray region to 65.6% in Oromia region of the country. In Amhara region five studies have been included in the meta-analysis and the overall prevalence of poor glyceimic control among diabetic patients was 65.18%. (Figure 4).

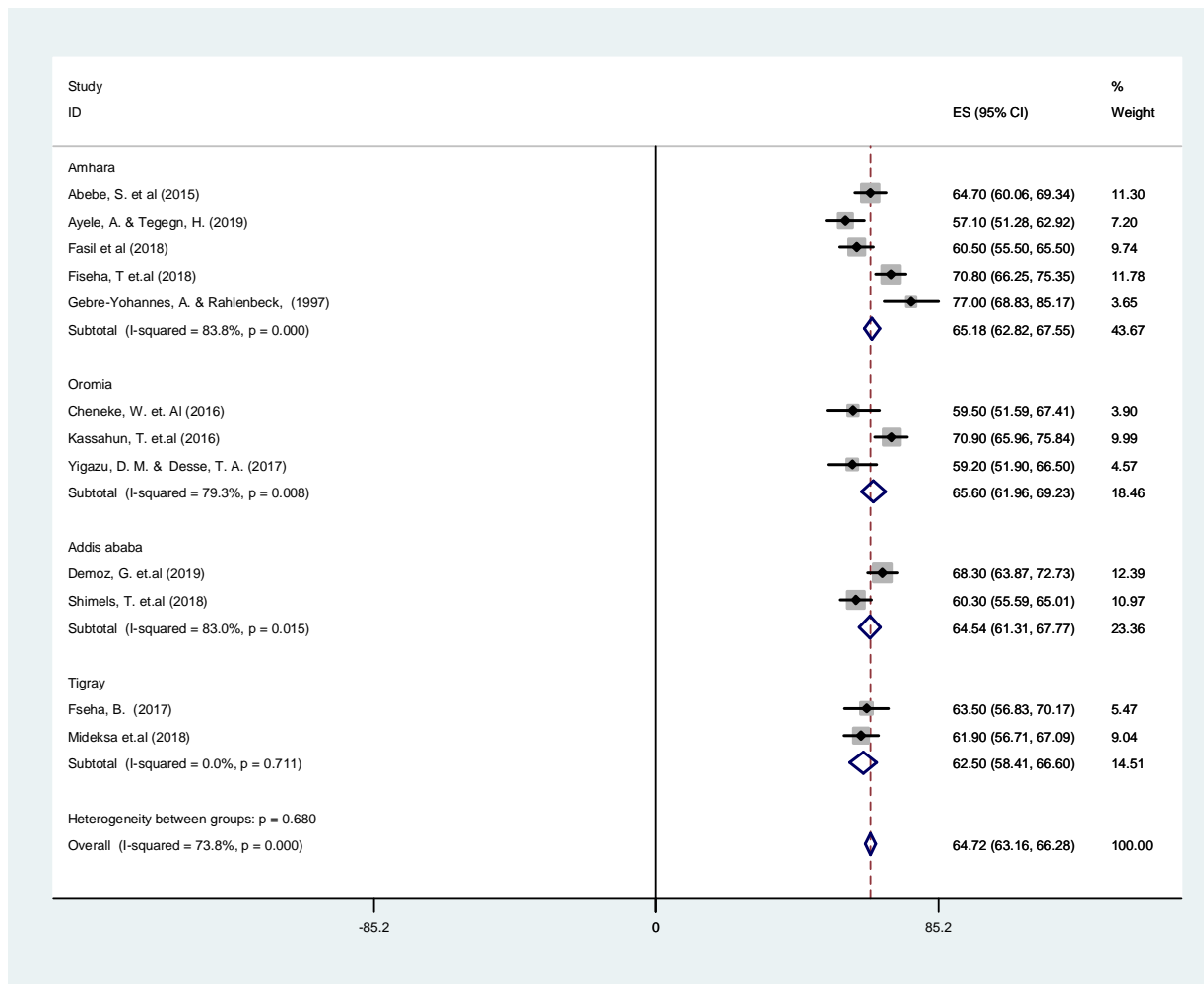


Figure 4: forest plot showing sub group analysis by region of the country of the poor glycaemic control in Ethiopia, 2019

Subgroup analysis of poor glycaemic control by method of measuring blood glucose level

The subgroup analysis of poor glycaemic control among diabetic patients by the fasting blood glucose (FBG) and by glycated hemoglobin (HbA1c) shows that there was no difference in the result of poor glycaemic control. Eight studies have been included in quantitative meta-analysis of the systematic review measured by fasting blood glucose and the overall poor glycaemic control measured by FBG was 64.74%. Studies measured the poor glycaemic control in the review were four and the overall poor glycaemic control was 64.68%. Figure 5

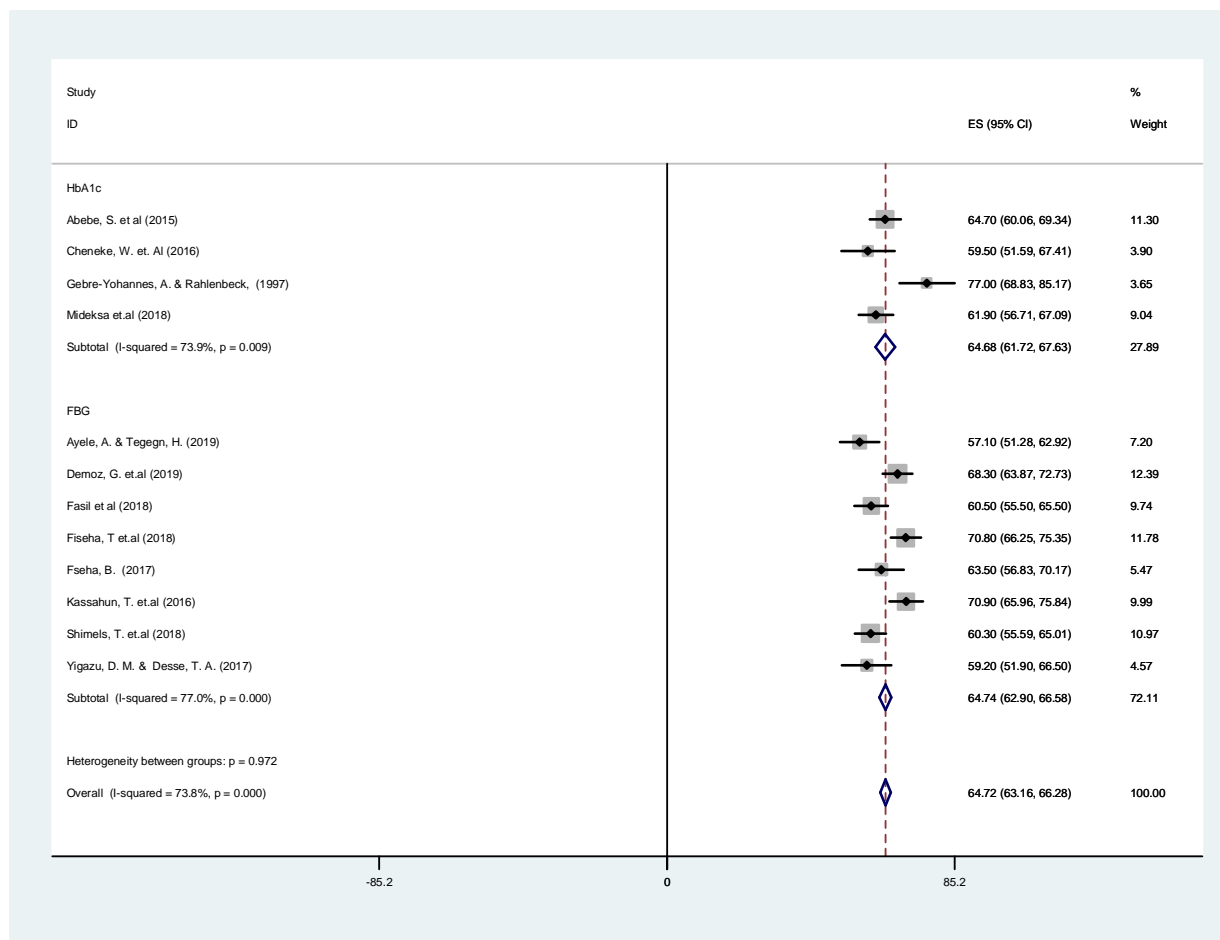


Figure 5: forest plot showing sub group analysis by method of measuring blood glucose level of the poor glyceemicin Ethiopia, 2019

Factors associated with poor glyceemic control among diabetic patients

To identify factors that have significant association with poor glyceemic control among diabetic patients we had conducted the quantitative meta-analysis of with random and fixed effect model based on the heterogeneity of the studies and random effect model is the more conservative method. There were a total of 14 factors investigated for poor glyceemic control, among those only residence, dyslipidemia and diet adherence were significantly associated with poor glyceemic control among diabetic patients in Ethiopia after conducting meta-analysis.

Residence

In the quantitative meta-analysis total of seven studies have been including to identify residence (rural/urban) as a significant factor associated with poor glycemic control. Fixed effect model was used because there was no heterogeneity ($I^2=0.0\%$, $p=0.43$). Being rural residence was 1.74 times more likely to have poor glycemic control among diabetic patients as compared to urban residences. Figure 6

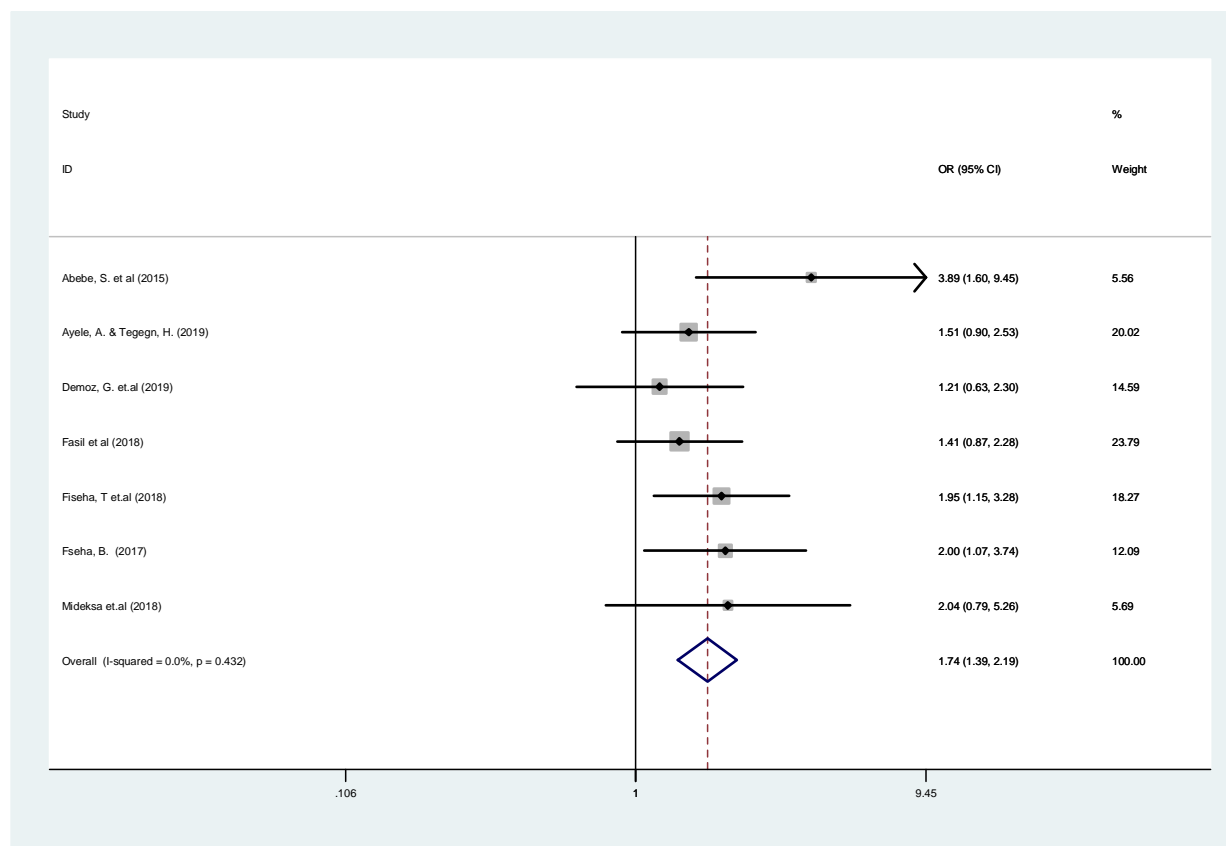


Figure 6: Forest plot showing the pooled significance of residence (rural/urban) with poor glycemic control among diabetic patients in Ethiopia, 2019.

Dyslipidemia

In the quantitative meta-analysis total of four studies have been including to identify dyslipidemia (normal lipid level/abnormal lipid level) as a significant factor associated with poor glycemic control. Random effect model was used because there was heterogeneity ($I^2=84.3\%$,

$p < 0.001$). Being dyslipidemia was 4.69 times more likely to have poor glycemic control among diabetic patients as compared to patients that had normal level of blood lipids. Figure 7

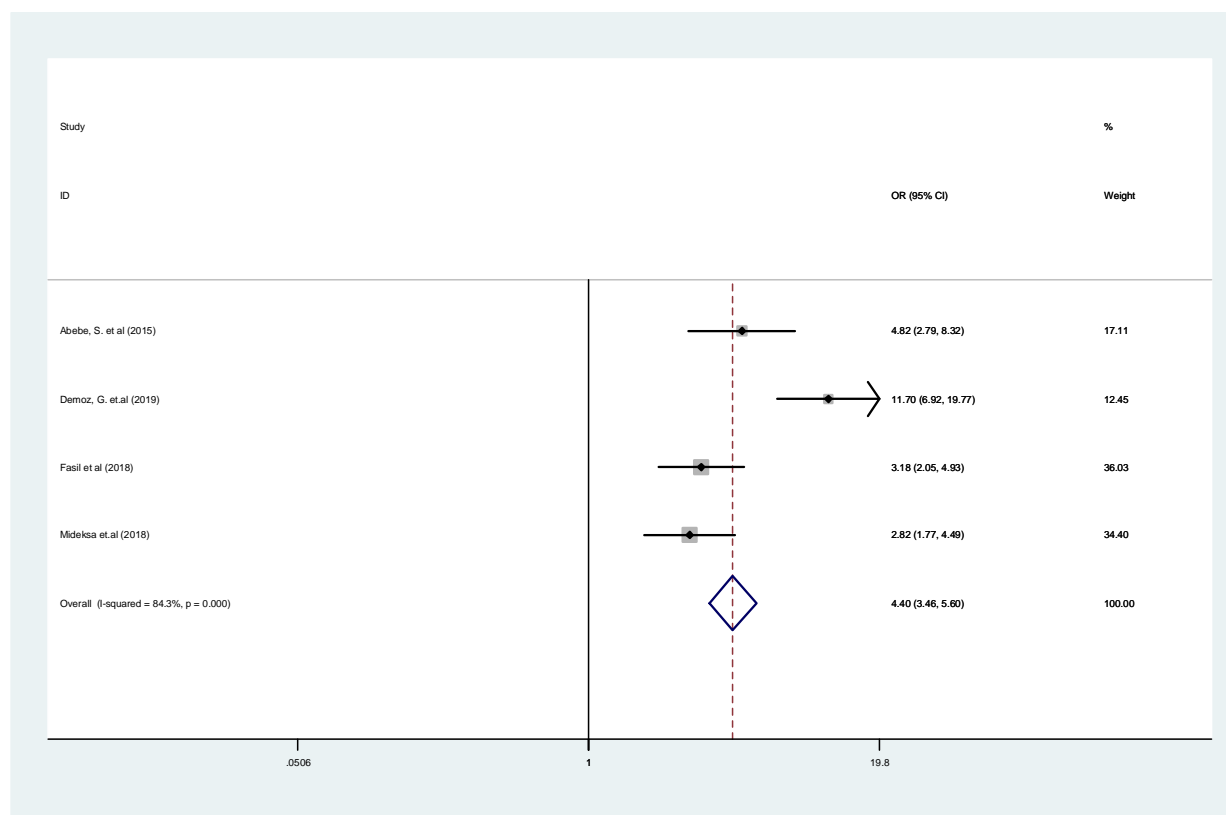


Figure 7: Forest plot showing the pooled significance of dyslipidemia (abnormal/normal) with poor glycemic control among diabetic patients in Ethiopia, 2019

Diet adherence

In the quantitative meta-analysis total of three studies have been including to identify dietary plan adherence as a significant factor associated with poor glycemic control. Random effect model was used because there was heterogeneity ($I^2 = 90\%$, $p < 0.001$). Being not adhered to the dietary plan was 5.45 times more likely to have poor glycemic control among diabetic patients as compared to patients that adhere to the dietary plan. Figure 8

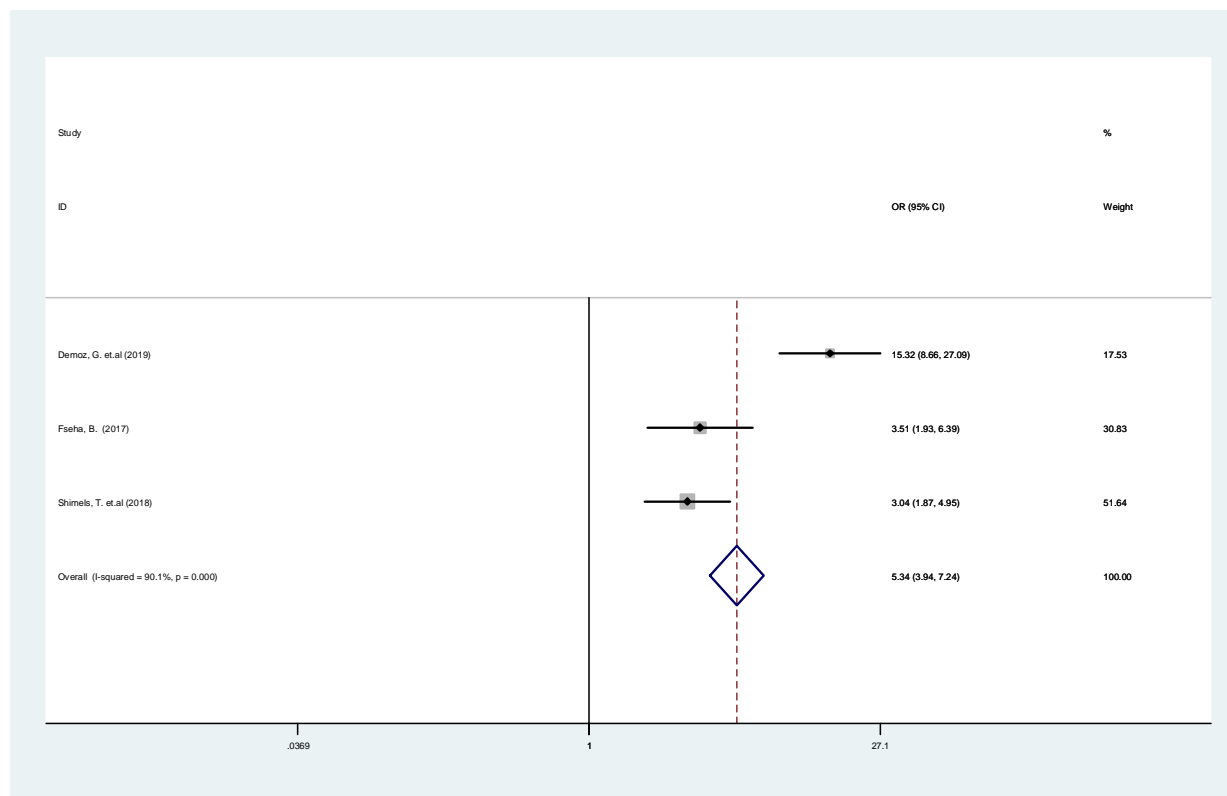


Figure 8: Forest plot showing the pooled significance of dietary plan adherence with poor glycemic control among diabetic patients in Ethiopia, 2019.

Discussion

Poor glycemic control among diabetic patients is the major cause of macro vascular and micro vascular complication and lead to hospital admissions.

In the current systemic review and meta-analysis a total of twelve studies have been used to summarize the pooled prevalence of poor glycemic control and their associated factors among diabetic patients in Ethiopia. The overall pooled prevalence of poor glycemic among diabetic patients was 64.72% and being rural residence, dyslipidemia, and not adhering to dietary plan were factors that had significant association with poor glycemic control.

The result of poor glycemic control in the current study 64.72% with 95% CI (63.16 – 66.28) is consistent with study conducted in Jordan 65.1%, (9), India 63% (10),. However the current

finding is higher than a study conducted in china 50.3%(12), Zimbabwe 58.2% (13), Israel 58.4%(14). This discrepancy might be due to the study population characteristics, study design and the kind of medication they were given. Besides, the pooled prevalence of poor glycemic control among diabetic patients is lower than a study conducted in Bangladeshi 82% (19), Manipal/India 78.2%(20), 78.6% , Kenya 91.8%(21), Saudi Arabia 74.9%(22). This variation could be due to the measurement tool used for the outcome determination.

In the Meta analysis to identify significant factors associated with poor glycemic control among diabetic patient's twelve studies has been included. Being rural residence was 1.74 times more likely to have poor glycemic control as compared to urban residence(OR=1.72, 95%CI 1.39,2.19), this result is in line with a study conducted in Bangladesh(19),. This could be explained by peoples living in rural residence might have lower awareness, and also may not have sufficient access to health facility for professional support to maintain their glycemic control as compared to urban residences(25).

In addition being dyslipidemia was 4.69 times more likely to have poor glycemic control as compared to the patients having normal lipid level (OR=4.69, 95%CI 2.51,8.71) this result is in line with a study conducted by Kakade A. et al 2018 in Mumbai/India(21), systemic review by mohammad J. et al 2018 in Arabian gulf countries(26),. This could be due to the fact that continuous entry of fatty acids in to the β -cells of the pancreas creates β -cell lipotoxicity and this causes pancreases β -cell failure follow on poor glycemic control(27–29).

Similarly finding of this study revealed being no adherent to the dietary plan was 5.45 more likely to have poor glycemic control as compared to patients that adhere to their dietary plan (OR=5.45, 95%CI 1.99,14.92) this result is in line with a study conducted by Kakade A. et al 2018 in Mumbai/India(21), systemic review by Mohammad J. et al 2018 in Arabian gulf countries(26), and Khattab M. et al. 2010 in Jordan(9). This could be due to the fact that diet is the most important treatment that can modify many aspects of the body physiology including the pathophysiology of pancreas that secretes the hormone insulin(5).

Conclusion

The prevalence of poor glyceimic control among diabetic patients was high in Ethiopia and consistent across different regions of the country. The most important factors associated with poor glyceimic factor among diabetic patients were being rural residence, having dyslipidemia and not adhering to dietary plan.

Abbreviations

FBG: Fasting blood glucose, HbA1c: Glycated hemoglobin, BMI: Body Mass Index.

Declarations

Ethics approval and consent to participate

N/A

Consent for publication

Not applicable

Availability of data and material

The datasets used and/or analyzed during the current study are available from the corresponding author on reasonable request.

Competing interests

The authors declare) that they have no competing interests

Funding

There was no any fund for the current study

Authors contributions

BFT participated in the preparation of the design of the study, data analysis, write up and preparing daft of the manuscript and critically reviewing. Similarly AKB and GGW, participated in the design of the study, data analysis and presentation, reviewing of the manuscript. All authors read, accepted and approved the final manuscript

Acknowledgement

References

1. Aynalem SB, Zeleke AJ. Prevalence of Diabetes Mellitus and Its Risk Factors among Individuals Aged 15 Years and Above in Mizan-Aman Town, Southwest Ethiopia, 2016: A Cross Sectional Study. *Int J Endocrinol*. 2018;2018:9317987.
2. international diabetic federation. *IDF Diabetes atlas*. 2017;8th editio.
3. Lipsky BA, Apelqvist J, Bakker K, Netten JJ Van, Schaper NC. The challenge of diabetes in sub-Saharan Africa. 2015;8587(15):675–7.
4. Cheneke W, Suleman S, Yemane T, Abebe G. Assessment of glyceimic control using glycated hemoglobin among diabetic patients in Jimma University specialized hospital, Ethiopia. *BMC Res Notes*. 2016 Feb;9:96.
5. Hospital S, Tigray N, Fseha B. *Journal of Diabetes & Metabolism Glycemic Control and it ' s Associated Factors in Type 2 Diabetic Patients*. 2017;8(3).
6. Mideksa S, Ambachew S, Biadgo B, Baynes HW. Glycemic control and its associated factors among diabetes mellitus patients at Ayder comprehensive specialized hospital, Mekelle-Ethiopia. *Adipocyte [Internet]*. 2018 Jul 3;7(3):197–203. Available from: <https://doi.org/10.1080/21623945.2018.1467716>
7. Kassahun T, Eshetie T, Gesesew H. Factors associated with glyceimic control among adult patients with type 2 diabetes mellitus: a cross-sectional survey in Ethiopia. *BMC Res Notes*. 2016 Feb;9:78.
8. Modesti PA. PA Modesti et al. Panethnic differences in blood pressure in europe: a systematic review and meta-analysis. *S1 Text*. :1–2.
9. Khattab M, Khader YS, Al-Khawaldeh A, Ajlouni K. Factors associated with poor glyceimic control among patients with type 2 diabetes. *J Diabetes Complications*. 2010;24(2):84–9.
10. De P, Banu S, Muthukumar D. Predictors of poor glyceimic control in type 2 diabetic patients in South Indian population. *Int J Res Med Sci Vol 6, No 2 Febr 2018 [Internet]*. 2018; Available from: <https://www.msjonline.org/index.php/ijrms/article/view/4211/3681>

11. Abebe S, Berhane Y, Worku A, Alemu S, Gedlu N. Level of sustained Glycemic control and associated factors among patients with diabetes mellitus in Ethiopia: A hospital-based cross-sectional study. *Diabetes, Metab Syndr Obes Targets Ther*. 2015 Jan 25;8:65–71.
12. Li J, Chattopadhyay K, Xu M, Chen Y, Hu F, Chu J, et al. Glycaemic control in type 2 diabetes patients and its predictors: a retrospective database study at a tertiary care diabetes centre in Ningbo, China. *BMJ Open [Internet]*. 2018 Mar 1;8(3):e019697. Available from: <http://bmjopen.bmj.com/content/8/3/e019697.abstract>
13. Chirombe M, Ngara B, Chibvongodze R, Charuka V. Glucose Control in Diabetic Patients Attending Parirenyatwa Group of Hospitals in Zimbabwe. 2018;12–9.
14. Shani M, Taylor TR, Vinker S, Lustman A, Erez R, Elhayany A, et al. Characteristics of Diabetics with Poor Glycemic Control Who Achieve Good Control. *J Am Board Fam Med [Internet]*. 2008 Nov 1;21(6):490 LP-496. Available from: <http://www.jabfm.org/content/21/6/490.abstract>
15. Ayele AA, Tegegn HG, Ayele TA, Ayalew MB. Medication regimen complexity and its impact on medication adherence and glycemic control among patients with type 2 diabetes mellitus in an Ethiopian general hospital. *BMJ open diabetes Res care*. 2019;7(1):e000685.
16. Fasil A, Biadgo B, Abebe M. Glycemic control and diabetes complications among diabetes mellitus patients attending at University of Gondar Hospital, Northwest Ethiopia. *Diabetes Metab Syndr Obes [Internet]*. 2018 Dec 21;12:75–83. Available from: <https://www.ncbi.nlm.nih.gov/pubmed/30613158>
17. Yigazu DM, Desse TA. Glycemic control and associated factors among type 2 diabetic patients at Shanan Gibe Hospital, Southwest Ethiopia. *BMC Res Notes*. 2017 Nov;10(1):597.
18. Shimels T, Abebaw M, Bilal AI, Tesfaye T. Treatment Pattern and Factors Associated with Blood Pressure and Fasting Plasma Glucose Control among Patients with Type 2 Diabetes Mellitus in Police Referral Hospital in Ethiopia. *Ethiop J Health Sci*. 2018 Jul;28(4):461–72.

19. Afroz A, Ali L, Karim MN, Alramadan MJ, Alam K, Magliano DJ, et al. Glycaemic Control for People with Type 2 Diabetes Mellitus in Bangladesh - An urgent need for optimization of management plan. *Sci Rep* [Internet]. 2019;9(1):10248. Available from: <https://doi.org/10.1038/s41598-019-46766-9>
20. Haghghatpanah M, Nejad ASM, Haghghatpanah M, Thunga G, Mallayasamy S. Factors that Correlate with Poor Glycemic Control in Type 2 Diabetes Mellitus Patients with Complications. *Osong public Heal Res Perspect* [Internet]. 2018 Aug;9(4):167–74. Available from: <https://www.ncbi.nlm.nih.gov/pubmed/30159222>
21. Kakade AA, Mohanty IR, Rai S. Assessment of factors associated with poor glycaemic control among patients with Type II Diabetes mellitus. 2018;4(3):1–6.
22. Alzaheb RA, Altemani AH. The prevalence and determinants of poor glycaemic control among adults with type 2 diabetes mellitus in Saudi Arabia. *Diabetes Metab Syndr Obes* [Internet]. 2018 Jan 31;11:15–21. Available from: <https://www.ncbi.nlm.nih.gov/pubmed/29430192>
23. Demoz GT, Gebremariam A, Yifter H, Alebachew M, Niriayo YL, Gebreslassie G, et al. Predictors of poor glycaemic control among patients with type 2 diabetes on follow-up care at a tertiary healthcare setting in Ethiopia. *BMC Res Notes*. 2019 Apr;12(1):207.
24. Fiseha T, Alemayehu E, Kassahun W, Adamu A, Gebreweld A. Factors associated with glycaemic control among diabetic adult out-patients in Northeast Ethiopia. *BMC Res Notes*. 2018 May;11(1):316.
25. Supiyev A, Kossumov A, Kassenova A, Nurgozhin T. Diabetes prevalence, awareness and treatment and their correlates in older persons in urban and rural population in the Astana region, Kazakhstan. *Diabetes Res Clin Pract* [Internet]. 2015;112:6–12. Available from: <http://dx.doi.org/10.1016/j.diabres.2015.11.011>
26. Alramadan MJ, Afroz A, Hussain SM, Batais MA, Almigbal TH, Al-humrani HA, et al. Review Article Patient-Related Determinants of Glycaemic Control in People with Type 2 Diabetes in the Gulf Cooperation Council Countries: A Systematic Review. 2018;2018.

27. Straub LG, Efthymiou V, Grandl G, Balaz M, Challa TD, Truscello L, et al. Antioxidants protect against diabetes by improving glucose homeostasis in mouse models of inducible insulin resistance and obesity. *Diabetologia* [Internet]. 2019; Available from: <https://doi.org/10.1007/s00125-019-4937-7>
28. Kitessa SM, Abeywardena MY. Lipid-Induced Insulin Resistance in Skeletal Muscle: The Chase for the Culprit Goes from Total Intramuscular Fat to Lipid Intermediates, and Finally to Species of Lipid Intermediates. *Nutrients* [Internet]. 2016 Jul 29;8(8):466. Available from: <https://www.ncbi.nlm.nih.gov/pubmed/27483311>
29. Acosta-Montaña P, García-González V. Effects of Dietary Fatty Acids in Pancreatic Beta Cell Metabolism, Implications in Homeostasis. *Nutrients* [Internet]. 2018 Mar 22;10(4):393. Available from: <https://www.ncbi.nlm.nih.gov/pubmed/29565831>