

Post-discharge Acute Care and Outcomes in the Era of Readmission Reduction

Rohan Khera, MD¹; Yongfei Wang, MS^{2,3}; Susannah M. Bernheim, MD, MHS,^{2,4}

Zhenqiu Lin, PhD^{2,3}; Harlan M. Krumholz, MD, SM^{2,3,5}

¹Division of Cardiology, University of Texas Southwestern Medical Center, Dallas, TX

²Center for Outcomes Research and Evaluation, Yale-New Haven Hospital, New Haven, CT

³Section of Cardiovascular Medicine, Department of Internal Medicine, Yale School of Medicine, New Haven, CT

⁴Section of General Medicine, Department of Internal Medicine, Yale School of Medicine, New Haven, CT

⁵Department of Health Policy and Management, Yale School of Public Health, New Haven, CT

Corresponding Author

Rohan Khera, MD

5323 Harry Hines Blvd, Suite E5.730D, Dallas, Texas, 75219; 214-645-7521

rohankhera@outlook.com; @rohan_khera

Word Count: 3161

ABSTRACT

Background: With incentives to reduce readmission rates, there are concerns that patients who need hospitalization after a recent hospital discharge may be denied access, which would increase their risk of mortality.

Objective: We determined whether patients with hospitalizations for conditions covered by national readmission programs who received care in emergency department (ED) or observation units but were not hospitalized within 30 days had an increased risk of death. We also evaluated temporal trends in post-discharge acute care utilization in inpatient units, emergency department (ED) and observation units for these patients.

Design, Setting, and Participants: In this observational study, national Medicare claims data for 2008-2016, we identified patients ≥ 65 years hospitalized with heart failure (HF), acute myocardial infarction (AMI), or pneumonia, conditions included in the HRRP.

Main Outcomes and Measures: Post-discharge 30-day mortality according to patients' 30-day acute care utilization. Acute care utilization in inpatient and observation units, and the ED during the 30-day and 31-90-day post-discharge period.

Results: There were 3,772,924 hospitalizations for HF, 1,570,113 for AMI, and 3,131,162 for pneumonia. The overall post-discharge 30-day mortality was 8.7% for HF, 7.3% for AMI, and 8.4% for pneumonia. Post-discharge mortality increased annually by 0.16% (95% CI, 0.11%, 0.22%) for HF, decreased by 0.15% (95% CI, -0.18%, -0.12%) for AMI, and did not significantly change for pneumonia. Specifically, mortality only increased for HF patients who did not utilize any post-discharge acute care, increasing at a rate of 0.16% per year (95% CI, 0.11%, 0.22%), accounting for 99% of the increase

in post-discharge mortality in heart failure. Concurrent with a reduction in 30-day readmission rates, 30-day observation stays and visits to the ED increased across all 3 conditions during and beyond the post-discharge 30-day period. There was no significant change in overall 30-day post-acute care utilization (P-trend >0.05 for all).

Conclusions and Relevance: The only condition with an increasing mortality through the study period was HF; the increase preceded the policy and was not present among those received ED or observation unit care without hospitalization. Overall, during this period, there was not a significant change in the overall 30-day post-discharge acute care utilization.

BACKGROUND

The announcement and implementation of the United States Hospital Readmissions Reduction Program (HRRP) were associated with a reduction in readmissions within 30 days of discharge for heart failure, acute myocardial infarction (AMI), and pneumonia,¹⁻⁴ as demonstrated by a decrease in the overall national rate of readmissions. There are concerns that pressures to reduce readmissions have led to the evolution of care patterns that may have adverse consequences through reducing access to care in appropriate settings.⁵⁻⁷ Therefore, it is essential to determine whether patients who are seen in acute care settings, but not hospitalized, experienced an increased risk of mortality.

There is also a question about the association of the HRRP with the overall use of acute services in the 30-day window. The reduction in readmissions could have occurred in the setting of changes that improved the recovery of patients and reduced the occurrence of clinical events requiring acute care in the early post-discharge period. Alternatively, the decrease in readmissions might not have reduced the need for acute care but instead influenced clinicians to direct patients to the emergency department (ED) or observation units instead of pursuing hospital admission. The care of patients in the ED and observation units is appropriate only if they can be treated adequately in these settings without pursuing admission. An assessment of how outcomes of patients in these care settings has evolved is essential to address concerns regarding the appropriateness of changes in patterns of acute care in the post-discharge period during the application of incentives to reduce readmission.

Accordingly, we determined if the patients who sought acute care in the 30 days after discharge for heart failure, AMI, and pneumonia, the conditions the US Congress included in the HRRP^{3,8,9}, but did not undergo hospitalization, had an increased risk of mortality. In particular, we investigated if people who had a post-discharge emergency department visit that did not lead to a hospitalization had an increase in mortality, addressing whether the incentive programs reduced access to the hospital and caused harm. We examined the characteristics of patients, and the change over time, by their type of acute care in the 30 days after hospitalization.

We also evaluated the temporal trends in the utilization of post-discharge acute care, including readmissions, observation stays and ED visits. We determined if declines in readmissions were associated with increases in other types of acute care. We tested if there were differences over time in 30-day need for acute care. We also evaluated the period from day 31 through day 90 to determine if there was a difference after the evaluation period of HRRP, to see if any practice change was limited to the period covered by the incentives.

METHODS

Data Source

We used the Medicare Standard Analytic File for the years 2008–2016. The study period spanned the announcement and subsequent implementation of the HRRP in 2010 and 2012, respectively.⁸ For each year, we included data for all fee-for-service Medicare beneficiary 65 years of age and older who were hospitalized with a principal discharge diagnosis of heart failure, AMI, or pneumonia. To align the study cohort with

the population of patients under the purview of the HRRP, we excluded individuals who were discharged against medical advice, died during hospitalization, and did not have at least 30-day follow-up after discharge. The cohort was consistent with the specifications of the 30-day readmission metric of the Centers for Medicare & Medicaid Services.⁹⁻¹³

Post-discharge Acute Care Utilization and Mortality

We used revenue center codes specific to claims submitted from observation stays and ED visits to identify these care settings. These included revenue center codes of 0762 and/or Healthcare Common Procedure Coding System code of G0378 for observation stays and revenue center codes of 0450, 0451, 0452, 0459, or 0981 for ED visits based on hospital outpatient claims data. These have been used in a National Quality Forum-endorsed outcome measure focused on post-discharge acute care.¹⁴ We used the Medicare denominator files to identify patients who died from any cause and determined the temporal relationship of their date of death to the day of hospital discharge.¹⁵ We defined 30-day post-discharge mortality as the proportion of individuals discharged alive after hospital discharge who died within 30-days of discharge.

Post-discharge Care-based Patient Groups

We examined post-discharge mortality in 4 mutually exclusive patient groups that were defined based on the clinical setting of post-discharge care availed by patients in the post-discharge period. These included patients that (1) were readmitted to the hospital within 30 days of discharge for any cause, (2) were not readmitted but had an observation stay in the 30-day post-discharge period for any cause, (3) were neither

readmitted nor had an observation stay, but visited the ED for any reason, and (4) had no post-discharge 30-day acute care either as a hospitalization, observation stay, or ED visit.

Statistical Analysis

First, we first evaluated calendar-year rates of post-discharge care within the 30-day post-discharge period as readmissions, observation stays, and ED visits between 2008 and 2016 for each of the 3 HRRP conditions. Next, for each of the 3 HRRP conditions, we evaluated the average annual change in rates of care utilization across different care settings, based on ordinary least squares regression of rates of post-discharge care use—rates of readmissions, observation stays, ED visits, or care in either of 3 acute care settings—against calendar years. We used the non-parametric runs test to evaluate and confirm the linearity of calendar-year trends, which evaluates the randomness of distribution of data points around the best fit line. To better understand whether changes in patterns of care in a given post-acute care setting had progressed differently during the 30 days after discharge, we qualitatively evaluated care trends in these settings during post-discharge days 0-30 and 31-90 and whether there was an interaction between calendar year (2008-2016) and post-discharge period (day 0-30 versus 31-90) in analysis of covariance.

Next, we evaluated calendar-year trends in post-discharge 30-day mortality across the 4 patient groups, based on whether patients were readmitted, had an observation stay only, had an ED visit only, or had no care in any of these settings. We noted that these trends were linear over the course of the study period using the runs

test, as above. We used an interaction term for post-discharge care group and calendar year in an analysis of covariance model to evaluate whether calendar-year trends in mortality were significantly different across the patient groups. We evaluated average annual changes in mortality rates across care settings, reported as the coefficient of change of the respective outcome in an ordinary least square regression with calendar year as a continuous independent variable.

To evaluate the contribution of changes in mortality across individual care settings to the overall changes in mortality in the post-discharge 30-day period, we calculated the proportion of annual change in overall mortality rates that occurred across the 3 settings. Given potential changes in coding of risk adjustment over time,¹⁶ we present unadjusted rates of acute care use and patient outcomes over time.

However, to evaluate whether systematic differences in patient characteristics were driving differences in outcomes, we evaluated differences in comorbidities and in-hospital events such as operative procedures and complications, as well as discharge disposition across these groups. We specifically evaluated whether comorbidities that are markers of debility, such as dementia, delirium, and encephalopathy, pressure ulceration, and protein calorie malnutrition, varied across groups. The comorbidities were ascertained from all claims across inpatient and outpatient care settings in the 1-year preceding the index hospitalization. The issues in the expansion of inpatient codes during this study period are mitigated with the use of comprehensive inpatient and outpatient codes. Finally, we assessed for markers for end-of-life care at discharge, including consultations for palliative care and discharge to hospice facilities.

All other analyses were performed using SAS, version 9.4 (Cary, NC), and Stata 14 (College Station, TX). The level of significance was set at 0.05. The study was reviewed by the Yale University Institutional Review Board and deemed exempt from informed consent due to the deidentified data.

RESULTS

There were 3,772,924 hospitalizations for heart failure, 1,570,113 for AMI, and 3,131,162 for pneumonia during the study period. Of these, 22.5% patients with heart failure, 17.5% with AMI, and 17.2% with pneumonia were readmitted within 30 days of discharge. The overall rate of observation stays and ED visits were 1.7% and 6.4% for heart failure, 2.6% and 6.8% for AMI, and 1.4% and 6.3% for pneumonia, respectively. Cumulatively, a third of all hospitalizations—30.7% for heart failure, 26.9% for AMI, and 24.8% for pneumonia—received post-discharge care in any acute-care setting.

Trends in Post-discharge Acute Care

The 30-day observed readmission rates decreased for all 3 conditions, from 23.5% to 21.7% for heart failure, 19.0% to 15.9% for AMI, and 17.6% to 16.4% for pneumonia (eFigure 1). On average, readmission rates decreased by 0.29% (95% CI, -0.41%, -0.17%) per year for heart failure, 0.46% (-0.57%, -0.35%) per year for AMI, and 0.22% (-0.31%, -0.13%) per year for pneumonia (Figure 1).

There was an increase in post-discharge 30-day observation stays and ED visits across the 3 conditions, with an average annual increase in absolute rates of observation stays of 0.15% (0.13%, 0.17%) for heart failure, 0.25% (0.21%, 0.28%) for

AMI, and 0.13% (0.12%, 0.14%) for pneumonia among those not readmitted ($P < 0.0001$ for all). Similarly, there was a smaller but significant increase in rates of post-discharge 30-day ED visits for all 3 conditions, with an average annual increase of 0.08% (0.06%, 0.10%) for heart failure, 0.14% (0.10%, 0.18%) for AMI, and 0.12% (0.10%, 0.15%) for pneumonia ($P < .001$ for all) (Figure 2). While the combination of the increase in ED and observation stays is less than the decrease in readmission, the change was not significant.

The increase in post-discharge observation stays and ED visits was also observed during days 31-90 post-discharge (Figure 2), with no significant differences in increase in rates between the post-discharge period (day 0-30 vs 31-90) and calendar years for heart failure ($P = 0.79$) or pneumonia ($P = 0.87$). For AMI, the post-discharge observation stays increased in both periods, but at a higher rate during days 0-30 than days 31-90 (P for interaction = 0.003). Similarly, ED visits increased during the first 30 days post-discharge as well as in the 31-90-day period, with a larger relative increase in the early post-discharge period across all 3 conditions (P -interaction < 0.05 for all).

Mortality Across Post-Discharge Care Groups

The overall post-discharge 30-day mortality was 8.7% for heart failure, 7.3% for AMI, and 8.4% for pneumonia. Post-discharge 30-day mortality was higher in those with readmissions (13.2% in heart failure, 12.7% for AMI, and 15.3% for pneumonia), compared with patients with observation stays (4.5% in heart failure, 2.7% for AMI, and 4.6% for pneumonia), or ED visits (9.7% in heart failure, 8.8% for AMI, and 7.8% for

pneumonia), or no post-discharge acute care (7.2% in heart failure, 6.0% for AMI, and 6.9% for pneumonia).

Cumulatively, a third of post-discharge deaths occurred in individuals who were readmitted within the 30-day period (Figure 4). Among those not readmitted, most deaths within the post-discharge 30-day period occurred in individuals who had neither observation stays nor ED visits, which represented more than 60% of the overall post-discharge 30-day mortality across the conditions. Those who were not readmitted but who received care in observation units or the ED represented less than 10% of all deaths in the post-discharge period (eFigure 2).

Over the study period, post-discharge mortality increased from 7.9% to 9.1% for heart failure, decreased from 7.8% to 6.6% for AMI, and remained unchanged for pneumonia (Figure 3). The increase in post-discharge mortality for heart failure began before the announcement of the HRRP. The average absolute post-discharge 30-day mortality increased by 0.16% (95% CI, 0.11% to 0.22%) per year for heart failure and decreased by -0.15% (-0.18%, -0.12%) per year for AMI (Figure 4). Of the overall increase in mortality in heart failure, 98.7% was accounted for by an increase in mortality among individuals who were neither readmitted nor received care in an observation unit or an ED (Figure 4), with minimal changes in mortality among those who received care in either of these settings. The rate of increase in mortality in the group without any acute care in either inpatient units, observation wards, or the ED was 0.16% per year (95% CI, 0.11% to 0.22%), almost entirely explaining the increase in post-discharge mortality in heart failure. In contrast, nearly half of the decrease in post-discharge mortality in AMI was observed among those that were readmitted (47.3% of

the decrease), and nearly half among those who were neither readmitted nor received care in observation units or the ED. For pneumonia, the overall mortality rates did not change without discordant trends across care settings. Therefore, across all 3 conditions, changes in overall post-discharge mortality did not occur among patients who received care in the observation units or ED in the 30-day post-discharge period.

Characteristics of Patients by Post-discharge Care Setting and Outcomes

There were differences in markers of frailty and advanced health care needs between groups based on whether they survived to post-discharge day 30 or died after seeking post-discharge care in various settings (Tables 1-3). Across all conditions, those who died had a higher prevalence of markers of debility including dementia, functional disability, delirium, chronic skin ulceration, and protein calorie malnutrition. Among the deceased, the prevalence rates of these conditions were substantially higher in the group of patients who died without having used any post-discharge acute care (Tables 1-3). Those that died also had a higher rate of markers of advanced disease such as cardiorespiratory failure, metastatic cancer, and acute leukemia; however, these markers did not differ between groups based on their post-discharge care use. Further, the group of patients without post-discharge acute care use had much higher rates of palliative care consultations and discharge to hospice. In the group of patients who died without using post-discharge acute care, 19.4% with heart failure, 21.0% with AMI, and 17.0% with pneumonia had a palliative care consultation before discharge. Notably, in this group, 45.3% of patients with heart failure, 49.1% of patients with AMI,

and 42.0% of patients with pneumonia were discharged to hospice after the index hospitalization.

There were also disease-specific temporal trends in hospice discharges. Across all patients, 3.6% with heart failure, 3.2% with AMI, and 3.2% with pneumonia were discharged to hospice, with an increase in hospice discharges in heart failure and pneumonia but not in AMI (Figure 5).

DISCUSSION

Between 2008 and 2016, while the national readmission rate decreased significantly across all 3 conditions included in the HRRP, the use of the ED and observation units significantly increased. Although the readmission rate decline was greater than the rise in the other acute care settings, the overall post-discharge acute care change, representing the aggregate of readmission, observation stays and ED visits, did not significantly change. Patients receiving post-discharge care in the ED and observation units who were not readmitted had lower mortality than those who were readmitted. A majority of deaths in the 30-day post-discharge period occurred in patients who did not seek any post-discharge acute care, with fewer than 10% occurring in those with post-discharge care in observation units and the ED. During this period, which spanned before the HRRP through the announcement and implementation, only patients with heart failure had a significant increase in post-discharge mortality, which began before the HRRP announcement. The increase, however, was almost exclusively observed among those without post-discharge acute care and was not a result of deaths among those with ED or observation stays who were not admitted.

Observation stays and ED visits have increasingly been used in the post-discharge period.¹ We find that the rise in the care in these settings counterbalances all improvements in readmissions during this period, suggesting a pattern transition of how patients receive post-discharge acute care. The MedPAC, a non-partisan organization that does analyses for the US Congress, evaluated the HRRP and similarly found reductions in readmissions with increases in ED and observation visits.¹⁷ Notably, we found an increase in these care settings that was not restricted to the 30-day measure reporting period, and increased at a similar rate during days 31-90 post-discharge. The MedPAC, in addition, also found that observation stays and ED visits occurred among conditions that were not targeted in the HRRP.¹⁷ Therefore, it is unclear whether the changing patterns of post-discharge acute care was part of a strategy to reduce readmission or whether they are related to other concurrent policy changes such as the wider implementation of criteria for inpatient hospitalizations that discouraged short hospital stays as inpatient hospitalizations.^{3,18,19} Nevertheless, the overall rise in alternative post-discharge acute care in the 30-day period requires an assessment of whether patients experience improved with this transition, and if there are avenues to further improve their post-discharge care recovery.

We found that patients that received care solely in observation units and ED had lower rates of mortality than those who were hospitalized, indicating that these settings were likely utilized for lower risk patients. Thus, the result does not support the concern that high-risk patients are denied access to the higher-level services they need.^{5,6} The changes in mortality—especially for patients with heart failure, who have experienced

rising post-discharge mortality—largely occurred among individuals who had had no post-discharge acute-care utilization.

What remains unclear is whether these changes in post-discharge mortality, which is exclusively observed for patients with heart failure, represent a failure of appreciating that these individuals needed acute care or a group with expected deaths in the setting of comfort-centered, end-of-life care. We noted that this group of patients that had high rates of palliative care utilization and discharge to hospice facilities. However, these observations do not completely explain the elevated mortality risk in patients who do not utilize post-discharge acute care. Moreover, while suggested in a previous study,⁵ patients with pneumonia have not had a consistent rise in post-discharge mortality in our more contemporary assessment.

Our study has some limitations. We are unable to identify patterns of acute care during the index hospitalization that would be associated with a higher rate of post-discharge acute care in observation units and EDs, and whether these visits represented avenues for planned post-discharge follow-up care. Moreover, the proportion of these care encounters that were preventable remains poorly understood. Finally, we were unable to elucidate the cause of death among individuals who did not seek post-acute care but died after a hospitalization due to our use of deidentified data. An investigation into these deaths remains an important unaddressed question.

CONCLUSION

Among patients hospitalized with conditions targeted in the HRRP, a recent decrease in readmissions is balanced by an increase in post-discharge 30-day observation stays

and ED visits, such that the overall post-discharge acute utilization has remained unchanged. However, there is no evidence for harm related to increasing care in alternative acute care settings, and patients who received care in observation units or EDs, and were not readmitted, had low rates of post-discharge 30-day mortality.

ACKNOWLEDGMENT

Funding: Dr. Khera is supported by the National Center for Advancing Translational Sciences (UL1TR001105) of the National Institutes of Health. The funder had no role in the design and conduct of the study; collection, management, analysis, and interpretation of the data; preparation, review, or approval of the manuscript; and decision to submit the manuscript for publication.

Disclosures: Dr. Krumholz is a recipient of a research grant, through Yale, from Medtronic and Johnson & Johnson (Janssen) to develop methods of clinical trial data sharing; was a recipient of a research grant, through Yale, from Medtronic and the Food and Drug Administration to develop methods for post-market surveillance of medical devices; was a recipient of a research agreement, through Yale, from the Shenzhen Center for Health Information for work to advance intelligent disease prevention and health promotion, and collaborates with the National Center for Cardiovascular Diseases in Beijing; received payment from the Arnold & Porter Law Firm for work related to the Sanofi clopidogrel litigation and from the Ben C. Martin Law Firm for work related to the Cook IVC filter litigation; chairs a cardiac scientific advisory board for UnitedHealth; is a participant/participant representative of the IBM Watson Health Life Sciences Board; is a member of the Advisory Board for Element Science, the Physician Advisory Board for Aetna, and the Advisory Board for Facebook; and is the founder of Hugo, a personal health information platform. Drs. Krumholz, Bernheim, and Lin, and Mr. Wang work under contract with the Centers for Medicare & Medicaid Services to

develop and maintain performance measures that are publicly reported. The other authors report no potential conflicts of interest.

The study was conceived and conducted by the authors, and the Centers for Medicare & Medicaid Services played no role in its design and conduct; collection, management, analysis, and interpretation of the data; and preparation, review, or approval of the manuscript.

Data Sharing: The data are proprietary to the Centers for Medicare and Medicaid Services and can be obtained from them directly. The statistical code is available from the corresponding author.

REFERENCES

1. Zuckerman RB, Sheingold SH, Orav EJ, Ruhter J, Epstein AM. Readmissions, observation, and the Hospital Readmissions Reduction Program. *N Engl J Med*. 2016; 374:1543-1551.
2. Wasfy JH, Zigler CM, Choirat C, et al. Readmission Rates After Passage of the Hospital Readmissions Reduction Program: A Pre-Post Analysis. *Ann Intern Med*. 2017; 166:324-331.
3. Khera R, Krumholz HM. Effects of the Hospital Readmissions Reduction Program. *Circ Cardiovasc Qual Outcomes*. 2018; 11:e005083.
4. Desai NR, Ross JS, Kwon JY, et al. Association between hospital penalty status under the hospital readmission reduction program and readmission rates for target and nontarget conditions. *JAMA*. 2016; 316:2647-2656.
5. Wadhera RK, Joynt Maddox KE, Wasfy JH, et al. Association of the Hospital Readmissions Reduction Program with mortality among medicare beneficiaries hospitalized for heart failure, acute myocardial infarction, and pneumonia. *JAMA*. 2018; 320:2542-2552.
6. Fonarow GC. Unintended harm associated with the Hospital Readmissions Reduction Program. *JAMA*. 2018; 320:2539-2541.
7. Wadhera RK, Yeh RW, Joynt Maddox KE. The Hospital Readmissions Reduction Program - Time for a Reboot. *N Engl J Med*. 2019.
8. McIlvennan CK, Eapen ZJ, Allen LA. Hospital Readmissions Reduction Program. *Circulation*. 2015; 131:1796-1803.

9. Khera R, Dharmarajan K, Wang Y, et al. Association of the hospital readmissions reduction program with mortality during and after hospitalization for acute myocardial infarction, heart failure, and pneumonia. *JAMA Network Open*. 2018; 1:e182777.
10. Centers for Medicare and Medicaid Services. Outcome Measures. Baltimore, MD. 2017. Accessed February 5, 2018 at <https://www.cms.gov/Medicare/Quality-Initiatives-Patient-Assessment-Instruments/HospitalQualityInits/OutcomeMeasures.html>.
11. Krumholz HM, Lin Z, Drye EE, et al. An administrative claims measure suitable for profiling hospital performance based on 30-day all-cause readmission rates among patients with acute myocardial infarction. *Circ Cardiovasc Qual Outcomes*. 2011; 4:243-252.
12. Keenan PS, Normand SL, Lin Z, et al. An administrative claims measure suitable for profiling hospital performance on the basis of 30-day all-cause readmission rates among patients with heart failure. *Circ Cardiovasc Qual Outcomes*. 2008; 1:29-37.
13. Lindenauer PK, Normand SL, Drye EE, et al. Development, validation, and results of a measure of 30-day readmission following hospitalization for pneumonia. *J Hosp Med*. 2011; 6:142-150.
14. Centers for Medicare and Medicaid Services. Measure methodology. AMI, HF Excess Days in Acute Care. Available at: <https://www.cms.gov/Medicare/Quality-Initiatives-Patient-Assessment-Instruments/HospitalQualityInits/Downloads/AMI-HF-Excess-Days-in-Acute-Care.zip>. Accessed January 4, 2019.

15. Krumholz HM, Normand ST, Wang Y. Twenty-Year Trends in Outcomes for Older Adults With Acute Myocardial Infarction in the United States. *JAMA Netw Open*. 2019; 2:e191938.
16. Ody C, Msall L, Dafny LS, Grabowski DC, Cutler DM. Decreases in readmissions credited to Medicare's program to reduce hospital readmissions have been overstated. *Health Aff (Millwood)*. 2019; 38:36-43.
17. Medicare Payment Advisory Commission. Mandated report: The effects of the Hospital Readmissions Reduction Program. 2018. Available at: http://www.medpac.gov/docs/default-source/reports/jun18_ch1_medpacreport_sec.pdf?sfvrsn=0. Accessed August 22, 2018.
18. Harrison JP, Barksdale RM. The impact of RAC audits on US hospitals. *J Health Care Finance*. 2013; 39:1-14.
19. Dharmarajan K, Qin L, Bierlein M, et al. Outcomes after observation stays among older adult Medicare beneficiaries in the USA: retrospective cohort study. *BMJ*. 2017; 357:j2616.

FIGURE LEGENDS

Figure 1: Average annual absolute percentage change in post-discharge care use.

Coefficient for annual change derived from ordinary least squares regression.

Readmissions, observation stays, and emergency department (ED) visits are mutually exclusive, presented in order of hierarchy.

Figure 2: Calendar-year trends in post-acute utilization during post-discharge days 0-30 and 31-90.

ED: emergency department, OBS: observation stay, RA: readmission

Figure 3: Deaths in the 30-day post-discharge period by post-discharge care use, 2008-2016.

Points represent proportion of patients discharged alive who died in the post-discharge 30-day period, based on post-discharge acute care utilization (Abbreviations: ED: emergency department, OBS: observation stay).

Figure 4: Average annual absolute percentage change in 30-day post-discharge mortality by post-discharge care use.

Coefficient for annual change derived from ordinary least squares regression.

Readmissions, observation stays (OBS), and emergency department (ED) visits are mutually exclusive, presented in order of hierarchy.

Figure 5: Trends in discharge to hospice.

Discharge to hospice by calendar years across patient groups based on their post-discharge care utilization.

ED: emergency department, OBS: observation stay

Figure 1: Average annual absolute percentage change in post-discharge care use. Coefficient for annual change derived from ordinary least squares regression. Readmissions, observation stays, and emergency department (ED) visits are mutually exclusive, presented in order of hierarchy.

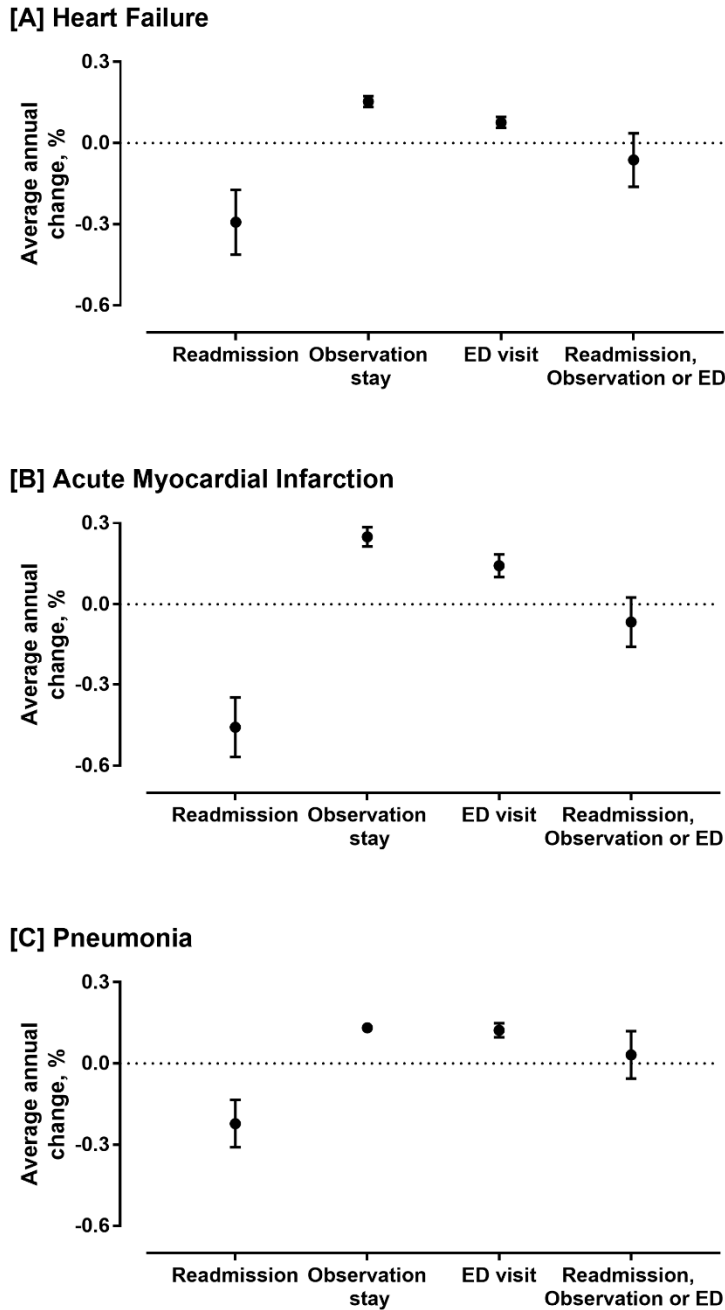


Figure 2: Calendar-year trends in post-acute utilization during post-discharge days 0-30 and 31-90.

ED: emergency department, OBS: observation stay, RA: readmission

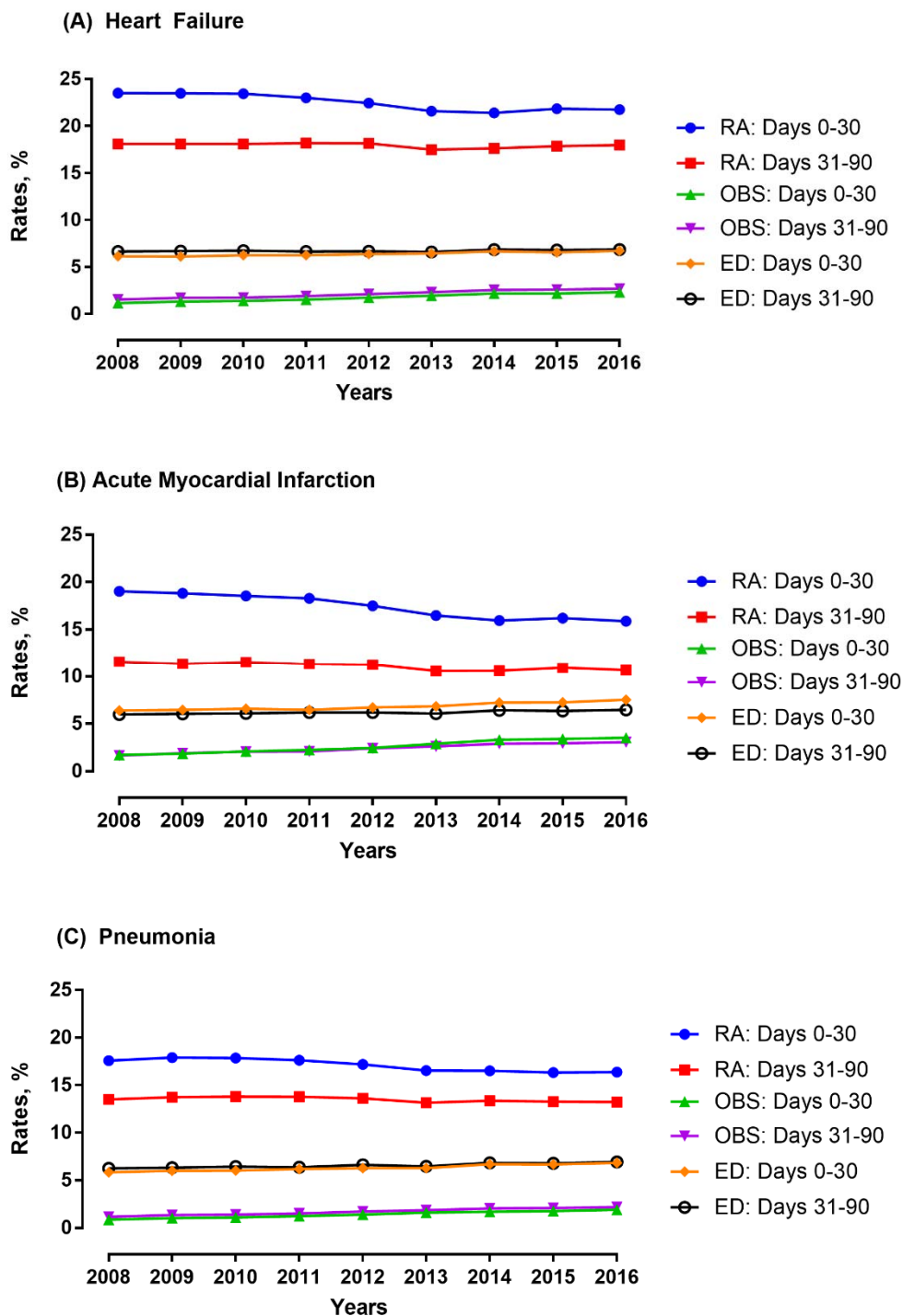


Figure 3: Deaths in the 30-day post-discharge period by post-discharge care use, 2008-2016. Points represent proportion of patients discharged alive who died in the post-discharge 30-day period, based on post-discharge acute care utilization (Abbreviations: ED: emergency department, OBS: observation stay).

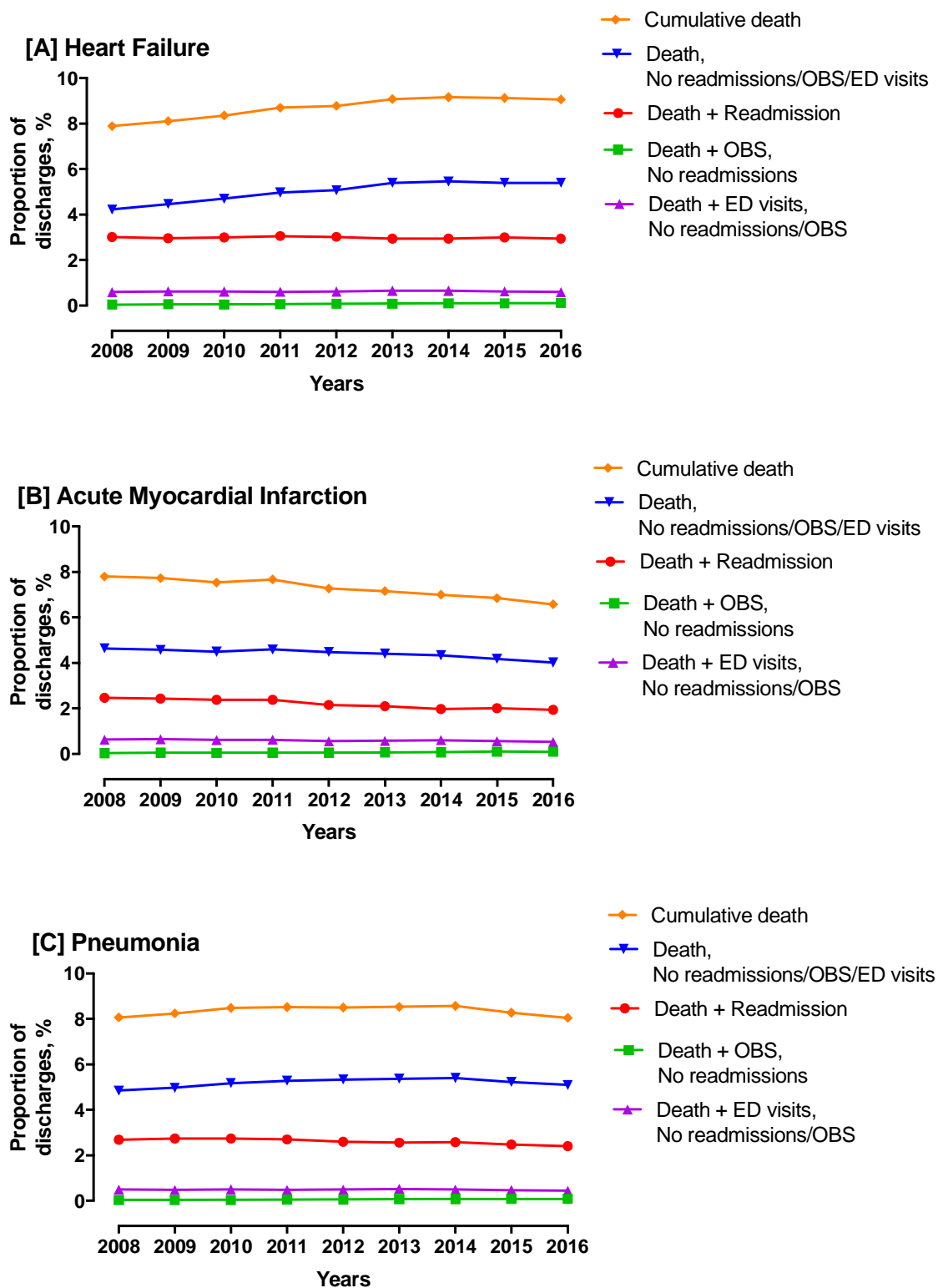


Figure 4: Average annual absolute percentage change in 30-day post-discharge mortality by post-discharge care use.

Coefficient for annual change derived from ordinary least squares regression. Readmissions, observation stays (OBS), and emergency department (ED) visits are mutually exclusive, presented in order of hierarchy.

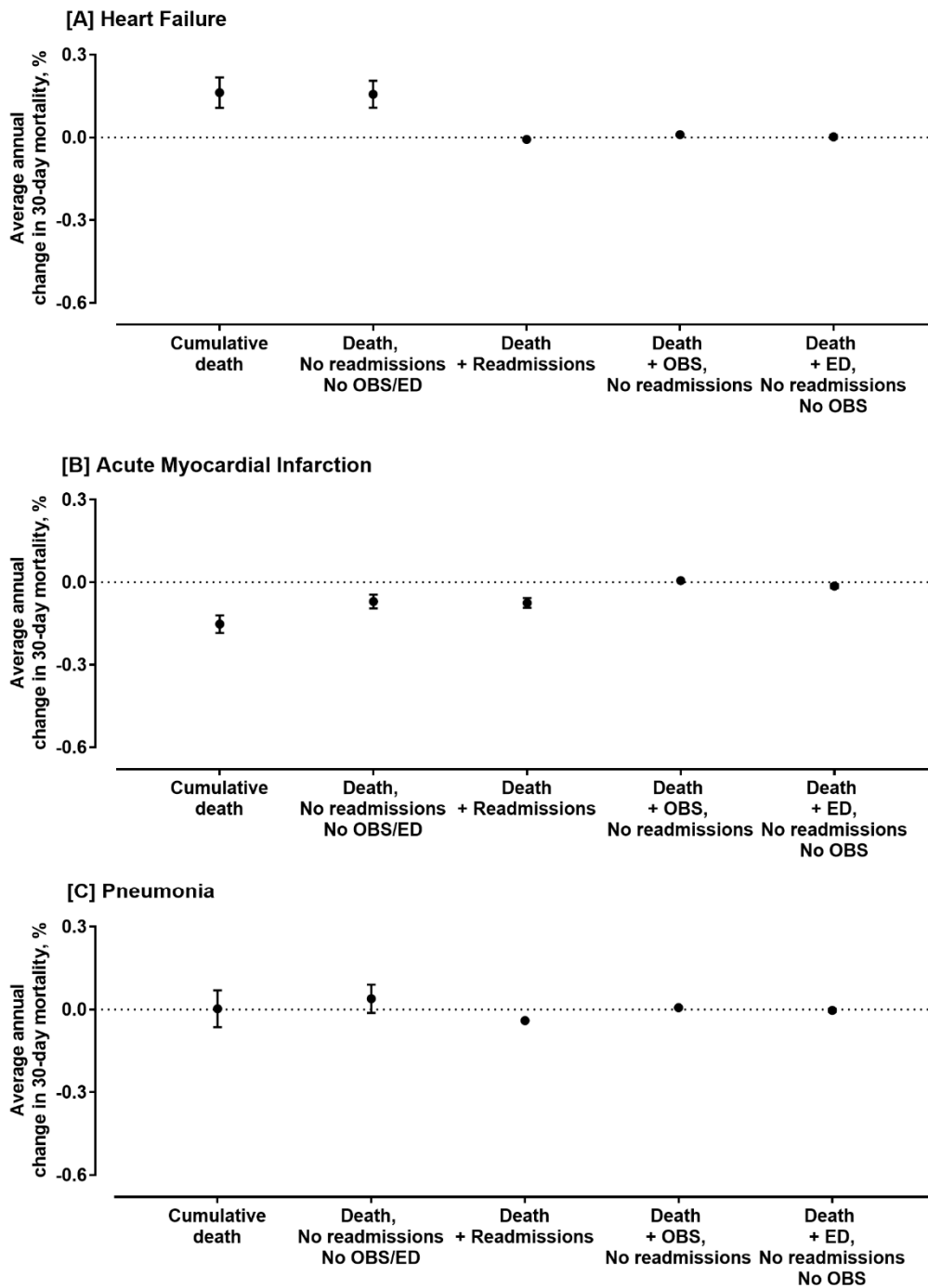


Figure 5: Trends in discharge to hospice.

Discharge to hospice by calendar years across patient groups based on their post-discharge care utilization (Abbreviations: ED: emergency department, OBS: observation stay)

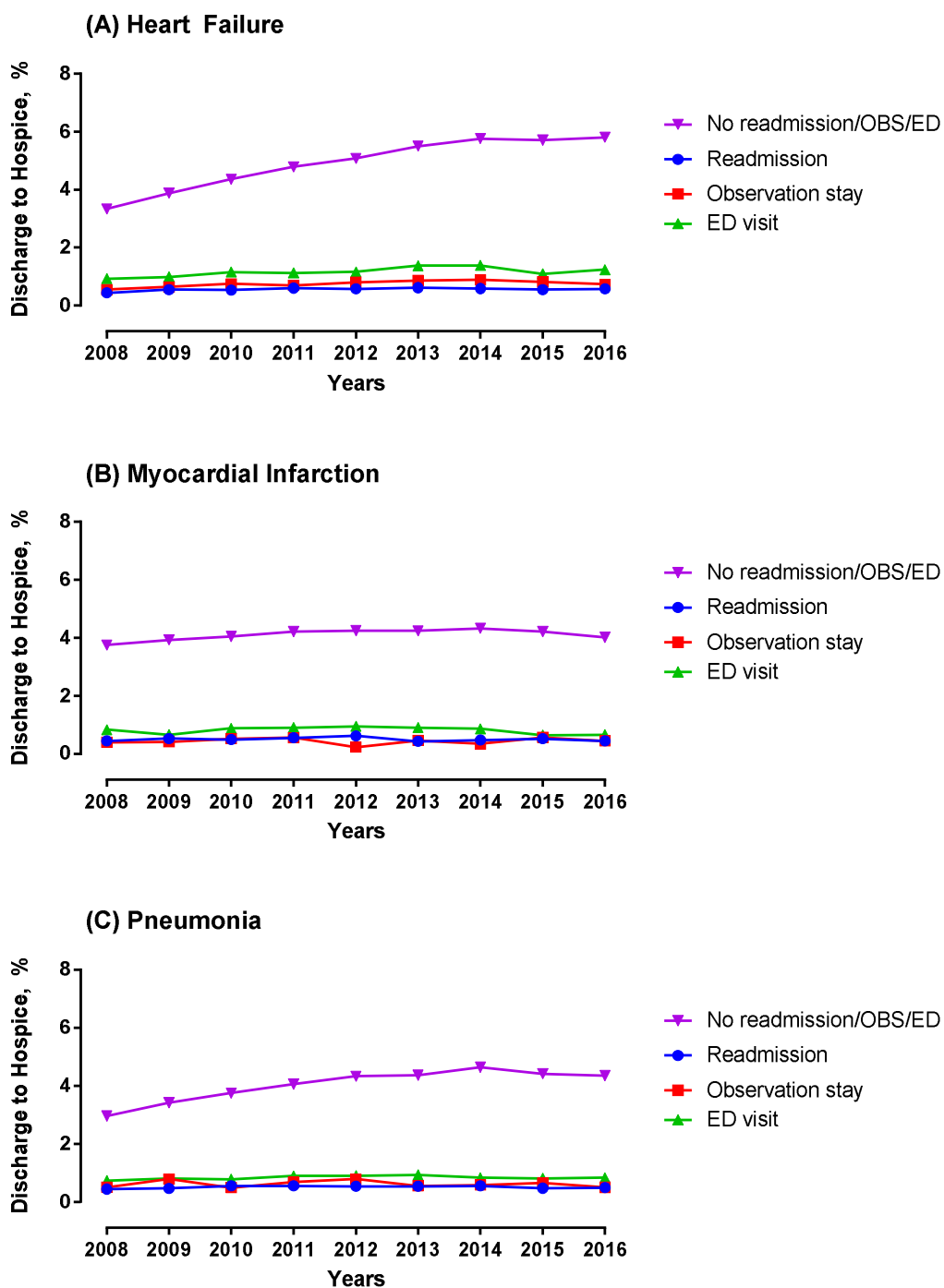


Table 1: Characteristics of patients with heart failure based on survival and post-discharge acute care use.

Numbers represent proportion of patients discharged alive with heart failure who either survived to post-discharge day 30 or died during this period. The characteristics of the latter group are presented among groups based on their post-discharge acute-care use.

	Alive at Day 30	Deceased at Day 30				
		Overall	Readmission	Observation stay	ED visit	No readmission/observation/ED
Number of patients	3,445,780	327,144	112,673	2972	23,378	188,121
Demographics						
Age, mean (SD), years	80.5 (8.2)	83.9 (8.1)	82.6 (8)	84 (8.1)	82.3 (8.4)	84.8 (7.9)
Male sex	46.1	48.0	48.9	49.6	52.1	46.8
Health conditions						
Cardio-respiratory failure and shock (CC 79)	26.9	34.6	35.8	35.5	35.4	33.7
Dementia (CC 49. 50)	22.0	35.2	29.9	35.3	33.1	38.6
Hemiplegia, paralysis, functional disability (CC 67 to 69, 100 to 102, 177, 178)	7.7	9.6	9.5	9.1	9.9	9.7
Delirium and encephalopathy (CC 48)	2.6	7.8	5.3	5.4	5.8	9.5
Metastatic cancer and acute leukemia (CC 7)	2.0	4.7	4.4	4.8	3.6	4.9
Chronic skin ulcer (CC 148, 149)	13.6	21.1	20.5	18.2	20.6	21.5
Protein-calorie malnutrition (CC 21)	8.3	18.6	16.4	16.5	16.7	20.3
Care patterns						
Intensive care unit use	47.7	52.1	50.8	47.2	51.4	53.0
Palliative care consultation	1.0	12.1	2.0	4.9	3.6	19.4
Major operative procedures	5.1	3.2	4.0	3.2	4.1	2.7
Discharge disposition						
Skilled nursing facility	19.4	32.2	40.3	36.8	40.6	26.1
Hospice	1.4	26.9	1.4	6.1	5.0	45.3

Home health care	23.9	13.9	22.6	23.4	20.5	7.7
Long-term acute-care facility	0.7	2.0	1.1	0.3	1.0	2.8

ED: emergency department, SD: standard deviation

Table 2: Characteristics of patients with acute myocardial infarction based on survival and post-discharge acute-care use.

Numbers represent proportion of patients discharged alive with myocardial infarction who either survived to post-discharge day 30 or died during this period. The characteristics of the latter group are presented among groups based on their post-discharge acute care use.

	Alive at day 30	Deceased at Day 30				
		Overall	Readmission	Observation stay	ED visit	No readmission/observation/ED
Number of patients	1,455,442	114,671	34,772	1094	9372	69,433
Demographics						
Age, mean (SD), years	78.2 (8.1)	83.8 (8.3)	82.5 (8.2)	84.1 (8.4)	81.5 (8.5)	84.7 (8.2)
Male sex	52.6	47.8	50.2	50.8	53.3	45.7
Health conditions						
Cardio-respiratory failure and shock (CC 79)	14.5	29.7	24.0	18.6	22.5	33.7
Dementia (CC 49, 50)	17.2	38.7	30.9	36.2	32.4	43.5
Hemiplegia, paralysis, functional disability (CC 67 to 69, 100 to 102, 177, 178)	5.7	10.0	9.6	8.6	9.9	10.2
Delirium and encephalopathy (CC 48)	3.6	9.6	7.1	7.9	6.3	11.3
Metastatic cancer and acute leukemia (CC 7)	1.8	5.9	5.2	5.8	4.2	6.5
Chronic skin ulcer (CC 148, 149)	7.2	14.5	14.3	13.7	14.3	14.7
Protein-calorie malnutrition (CC 21)	5.1	15.4	13.1	13.8	12.4	17.0
Care patterns						
Intensive care unit use	73.2	69.4	71.7	62.7	72.3	68.0
Palliative care consultation	0.8	13.7	2.1	6.1	3.5	21.0
Major operative procedures	50.8	18.2	23.8	17.6	27.0	14.3
Discharge disposition						
Skilled nursing facility	16.6	30.7	41.0	33.7	38.4	24.4

Hospice	1.0	30.5	1.5	5.6	3.7	49.1
Home health care	16.2	10.4	18.2	20.7	16.4	5.5
Long-term acute-care facility	0.8	2.8	1.9	0.7	1.2	3.6

ED: emergency department, SD: standard deviation

Table 3: Characteristics of patients with pneumonia based on survival and post-discharge acute-care use.

Numbers represent proportion of patients discharged alive with pneumonia who either survived to post-discharge day 30 or died during this period. The characteristics of the latter group are presented among groups based on their post-discharge acute-care use.

	Alive at day 30	Deceased at day 30				
		Overall	Readmission	Observation stay	ED visit	No readmission/observation/ED
Number of patients	2,869,238	261,924	82,174	1980	15,412	162,358
Demographics						
Age, mean (SD), years	80 (8.3)	82.9 (8.4)	81.6 (8.3)	82.9 (8.6)	82.1 (8.4)	83.6 (8.4)
Male sex	46.0	50.1	52.5	50.8	52.7	48.7
Health conditions						
Cardio-respiratory failure and shock (CC 79)	21.1	30.0	32.0	29.5	31.4	28.8
Dementia (CC 49, 50)	28.3	45.6	37.7	44.0	45.3	49.7
Hemiplegia, paralysis, functional disability (CC 67 to 69, 100 to 102, 177, 178)	7.9	11.6	11.1	11.0	12.7	11.7
Delirium and encephalopathy (CC 48)	5.2	10.2	7.8	9.9	8.8	11.6
Metastatic cancer and acute leukemia (CC 7)	2.1	10.6	8.3	12.4	7.7	12.0
Chronic skin ulcer (CC 148, 149)	10.4	17.8	17.0	17.1	18.5	18.2
Protein-calorie malnutrition (CC 21)	10.8	26.2	22.9	25.6	24.6	28.1
Care patterns						
Intensive care unit use	27.5	37.2	35.9	31.7	34.7	38.1
Palliative care consultation	0.7	11.3	1.7	4.3	3.2	17.0
Major operative procedures	1.8	2.7	3.0	2.3	3.0	2.6
Discharge disposition						
Skilled nursing facility	23.0	34.7	44.7	43.8	49.3	28.1

Hospice	1.0	26.7	1.2	4.4	4.3	42.0
Home health care	17.6	9.9	17.7	18.2	14.7	5.4
Long-term acute-care facility	1.1	3.3	1.6	0.6	1.7	4.4

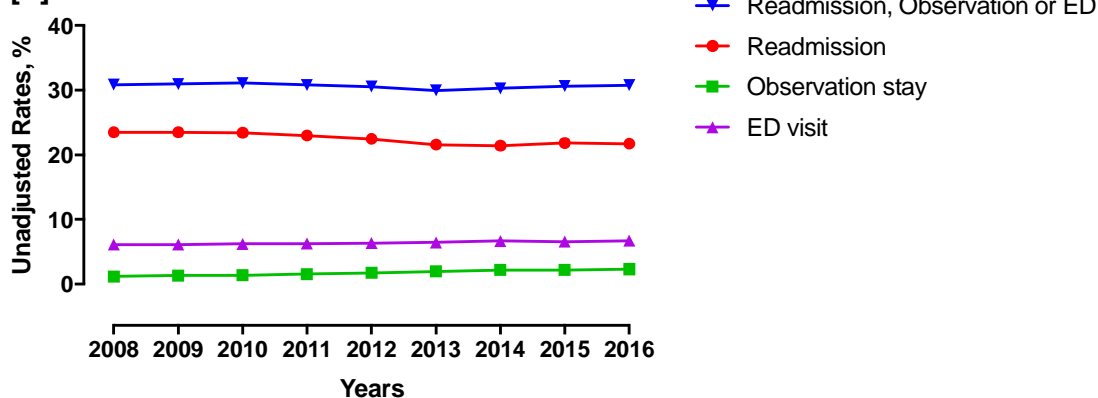
ED: emergency department, SD: standard deviation

SUPPLEMENTARY FIGURES

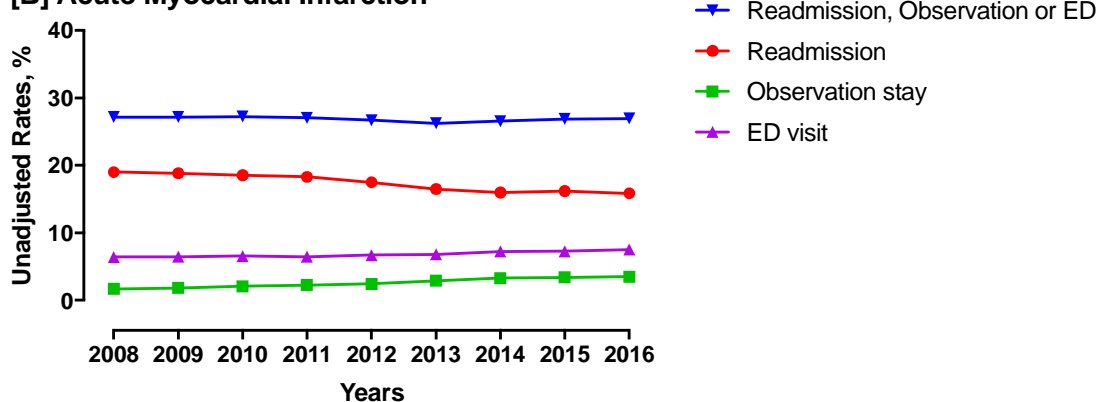
eFigure 1: Trends in post-discharge care use, 2008-2016.

Readmissions, observation stays, and emergency department (ED) visits are mutually exclusive, presented in order of hierarchy.

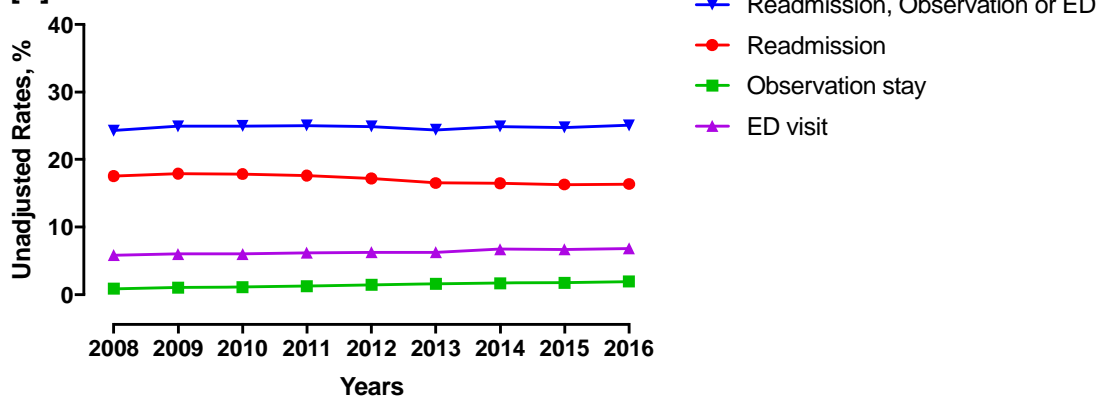
[A] Heart Failure



[B] Acute Myocardial Infarction



[C] Pneumonia



eFigure 2: Proportion of Post-discharge 30-day Mortality, By Post-discharge Care Utilization.
AMI – acute myocardial infarction, ED – emergency department, OBS – observation stay

