

1

2 Forecasting the impact of population 3 ageing on tuberculosis incidence

4

5 **Authors**

6 Chu-Chang Ku^{1*} and Peter J Dodd¹

7

8

9 1. School of Health and Related Research, University of Sheffield, Sheffield, United
10 Kingdom

11

12

13

14 **Corresponding author:**

15 * Email: cku1@sheffield.ac.uk(CCK)

16

17 These authors contributed equally to this work.

18 Abstract

19 **Background:** Tuberculosis (TB) disease reactivates from distant latent infection or recent
20 (re)infection. Progression risks increase with age. Across the World Health Organisation
21 Western Pacific region, many populations are ageing and have the highest per capita TB
22 incidence rates in older age groups. However, methods for analysing age-specific TB
23 incidence and forecasting epidemic trends while accounting for demographic change remain
24 limited.

25

26 **Methods:** We applied the Lee-Carter models, which were originally developed for mortality
27 modelling, to model the temporal trends in age-specific TB incidence data from 2005 to 2018
28 in Taiwan. Females and males were modelled separately. We combined our demographic
29 forecasts, and age-specific TB incidence forecasts to project TB incidence until 2035. We
30 compared TB incidence projections with demography fixed in 2018 to projections accounting
31 for demographic change.

32

33 **Results:** Our models quantified increasing incidence rates with age and declining temporal
34 trends. By 2035, the forecast suggests that the TB incidence rate in Taiwan will decrease by
35 54% (95% Prediction Interval (PI): 45%-59%) compared to 2015, while most age-specific
36 incidence rates will reduce by more than 60%. In 2035, adults aged 65 and above will make
37 up 78% of incident TB cases. Forecast TB incidence in 2035 accounting for demographic
38 change will be 39% (95% PI: 36%-42%) higher than without population ageing.

39

40 **Conclusions:** Age-specific incidence forecasts coupled with demographic forecasts can
41 inform the impact of population ageing on TB epidemics. The TB control programme in
42 Taiwan should develop plans specific to older age groups and their care needs.

43

44 Keywords:

45 infectious disease epidemiology; statistical modelling; time-series analysis; demographic
46 transition; disease burden
47

48 Introduction

49 In 2018, tuberculosis (TB) was still the top infectious killer in the world [1]. The End TB
50 strategy aims at a 90% reduction in TB incidence rate by 2035 compared with 2015, but the
51 current global rate of decline of around 2% per year is not on track to achieve this [2]. Latent
52 TB infection risk accumulates over lifetimes while TB transmission is ongoing. The
53 prevalence of latent TB infection is highest in older age groups [3], who not only have had
54 the longest exposure, but were often exposed to higher TB transmission rates in the past.
55 ageing, with associated higher rates of progression [4], thus acts as a demographic driver
56 towards higher per capita TB incidence [5]. In the Western Pacific region, many countries
57 have their highest per capita TB incidence rates among older age groups [1]. Among
58 Western Pacific region countries, China, Hong Kong (China), Japan, Korean, Singapore, and
59 Taiwan are facing both high TB burden and population ageing[6,7].

60
61 The age profile of future TB incidence is critical for forecasting public health needs and
62 rational policy design [8]. First, older populations will have higher TB (and background)
63 mortality rates [9,10], which implies added difficulty in meeting treatment success targets.
64 Secondly, older adults have more comorbidities and more complex health care needs, which
65 may lead to a longer care-seeking process and higher healthcare expenditure per case. For
66 instance, patients with chronic lung diseases may have signs or symptoms overlapping with
67 TB, making correctly diagnosing their TB slower and more costly [11]. Thirdly, the proportion
68 of TB cases in older age groups should inform policy making, for example suggesting
69 integrating TB care entry points into long-term care programmes, or through clinician training

70 highlighting older people as a TB risk group with their own diagnostic and management
71 challenges [11].
72
73 Quantitatively forecasting the TB incidence age profile needs combined models forecasting
74 demographic change and statistical forecasts of age-specific TB incidence. However, a time
75 series analysis producing age-specific forecasts of the TB incidence has not been published
76 to our knowledge. Use of autoregressive integrated moving average models, often including
77 the seasonality of TB incidence is more common [12], and comoving time series analysis
78 has been applied [13] without age-specific information. Age-specific TB incidence modelling,
79 including the use of age-period-cohort models, has been undertaken but without producing
80 epidemic forecasts (e.g. Iqbal et al. [14] and Wu et al. [15]). Mechanistic mathematical
81 modelling, with age structure, also has the potential to generate forecasts [5,16–18].
82 However, age-specific forecasting and the impact of demographic change have yet to be
83 analyzed.
84
85 In many settings, the demographic transition and population ageing are outpacing declines
86 in TB incidence, so methods to understand and forecast the impact of changing demography
87 on TB epidemics are needed. We, therefore, developed a statistical method capturing age-
88 specific incidence trends and forecasting future epidemics while accounting for demographic
89 change.

90

91 **Materials and Methods**

92 **Setting and data sources**

93 TB incidence in Taiwan has steadily declined from 64 confirmed TB cases per 100,000 in
94 2007 to 41 per 100,000 in 2017. Since 2005, the proportion of TB cases in Taiwan over 65

95 years of age has been over 50% and increasing. Between 2007 and 2017, the average age
96 in Taiwan increased from 36 to 40, and the proportions of adults above 65 rose from 10% to
97 14% [7].

98

99 Notification data of culture-confirmed TB cases, excluding foreigners, were obtained from the
100 Taiwan Center for Disease Control surveillance system. Counts were reported by age group,
101 sex, month, and county. Ages were reported as (0-4, 5-9, ..., 65-69, 70+) years. The
102 demographic data were obtained from the Department of Statistics, the Ministry of the
103 Interior, Taiwan. These data included the mid-year population estimators, deaths, migration
104 in single-year ages, and fertility in five-year age groups (15-19, ..., 45-49). We used data in
105 2005-2018 as a training set. The demographic data from 2005 to 2017 were collected for the
106 population demographic modelling (a shorter period because of the release schedule). All
107 the training data in this article were published by the Taiwan officials and free access on the
108 internet; the usage is licensed by the Open Government Data License:
109 [<https://data.gov.tw/license>].

110

111 Importantly, we assumed no case detection gaps existed during the time frame covered by
112 this article. We, therefore, regard “TB notification” and “TB incidence” as synonymous with
113 the number culture-confirmed tuberculosis cases notified during a specific period.

114

115 Age-specific incidence modelling and forecasting

116 We considered annual incidence rates by age and sex. The incidence rates by age groups
117 and sex were calculated as the yearly notification counts divided by corresponding mid-year
118 population estimates. Females and males were analysed separately with the same
119 parameterisation. We modelled the incidence rates using Lee-Carter Models (LCMs) [19]
120 formulated with age and time-varying terms. The LCMs were initially designed for mortality

121 rate modelling, where they now predominate. Estimation, forecasting, bootstrapping
122 methods for LCMs are well-developed.

123

124 We performed a likelihood-based LCM estimation, and also the comparable Poisson
125 regression [20]:

$$126 \quad \log \left(E(\textit{incident cases}_{age,year}) \right) = \alpha_{age} + \beta_{age} \kappa_{year} + \log(\textit{population}_{age,year})$$

127 , where $E(\cdot)$ is expectation function, $year \in \{2005, \dots, 2018\}$ is the calendar year,

128 α_{age} is age effect term, κ_{year} is period effect term, and β_{age} is coefficients adjusting

129 period effects for different age groups, and $age \in \{0 - 4, 5 - 9, \dots, 70+\}$ represents

130 the age categories. To maintain identifiability, we imposed the constraints

131 $\sum_{year} \kappa_{year} = 0$ and $\sum_{age} \beta_{age} = 1$. Two nested Poisson models, one using an age-

132 profile and a discrete period effect, i.e. $\alpha_{age} + \kappa_{year}$, and another using an age-profile

133 and a linear effect, i.e. $\alpha_{age} + year \times \kappa$, were used as comparators. Akaike

134 information criterion (AIC), Bayesian information criterion (BIC), and log-likelihood

135 were considered as goodness of fit metrics.

136

137 For forecasting, inspired by the Lee-Carter demographic forecasting, we used

138 Autoregressive Integrated Moving Average models with drift [21], constructed from the LCM

139 period effects. In forecasting, the death and birth processes applied semiparametric

140 bootstrap sampling [22].

141

142 Population modelling and forecasting

143 We constructed a synthetic population with birth, death and migration processes. The

144 demographic methods adapted from those used in the Taiwan National Development

145 Council's population projection report [7]. The demography was modelled by single age (0-

146 100 years old) and sex. Mortality forecasting used the Lee-Carter model [19] below 84 years
147 of age and the Coale-Kisker method [23] for above 85. The birth forecasting used the fertility
148 rates of women in childbearing ages, from 15 to 49, with a modified LCM [24]. For
149 consistency with incidence forecasting, semiparametric bootstrap sampling was used for
150 deaths and births [22]. The Migration process was modelled by linear regression with age
151 effects and a linear trend; the forecasting applied residual bootstrap sampling with the age-
152 specific parameters seen in 2017. The forecasts were used for the next step by aggregating
153 to the age groups as that of the incidence data.

154

155 Forecasting overall TB incidence

156 The TB incidence model and the demographic model were built independently. Forecasts of
157 age-specific TB incidence were weighted by forecasted population demography to obtain
158 forecasts of per capita TB incidence for the whole population. TB incidence was calculated
159 as per 100,000 rates by given strata. TB incidence rate reductions were calculated with
160 respect to the incidence in 2015 and presented as percentages. For simplicity, some results
161 were presented with age groups of 0-14, 15-34, 35-64, and above 65. In forecasting, the
162 95% prediction intervals and mean values were computed from 10,000 bootstrap samples.
163 Uncertainty was propagated from every submodel. To compare with the global reduction
164 target of the End TB strategy [2], we forecasted the incidence until 2035. The milestones of
165 2020, 2030 and 2035 of the End TB strategy of percentage reductions in per capita TB
166 incidence from 2015 were used as intermediate outcomes.

167

168 Incidence attributable to demographic change

169 We performed a scenario analysis to clarify the potential impact of demographic change.
170 While forecasting the age-specific TB incidence to 2035, we kept the population size and

171 age structure fixed as it was in 2018. This TB incidence was compared against values
172 including projected changes in population structure by computing the fraction of total TB
173 incidence attributable to demographic change in each year as $(I_{1,year} - I_{0,year})/I_{1,year}$,
174 where $I_{1,year}$ and $I_{0,year}$ are the incident cases with and without demographic change
175 respectively and is the calendar year. This corresponds to the definition of population
176 attributable fraction [25].

177

178 All the analyzes were performed using R 3.5 [26] and analyzed/visualized by R package
179 StMoMo, TSA, ggplot2 [27–29]. All analysis code is available at
180 [<https://github.com/TimeWz667/AgeingTB>].

181

182 Results

183 Incidence modelling

184 Fig 1 shows the estimators of the Lee-Carter models of the incidence data. The age effect
185 estimators (α_{age}) suggested the baseline incidence rates increase with age. In both
186 sexes, the higher levels in age groups older than fifteen years correspond to higher
187 TB incidence rates. The point estimators of age-period adjustments (β_{age}) showed
188 no specific trend. However, there are large uncertainties for all estimates pertaining
189 to under 15-year age groups, excepting the reference group aged 0-4. The period
190 effect estimators (κ_{year}) had nearly constant trends with calendar years. Fig 1 also
191 demonstrates the forecasting of period effects with 95% prediction intervals: prediction
192 intervals of both sexes grew at a constant rate with calendar time. Table 1 shows the
193 goodness of fit of the LCMs, the nested age-period Poisson models, and age-trend Poisson

194 models. In AIC, BIC and log-likelihood on the training data, the LCM result is preferred over
195 the other two although it cost a higher degree of freedom. See S1 Appendix for the details of
196 the goodness of fit, and residuals plots.

197

198

199 **Table 1. Summary of model comparison**

	Age-Trend	Age-Period	Lee-Carter Model
Model family	Poisson Regression		
Period effect	Linear	Discrete	
No. observations	420		
No. parameters	32	56	84
Log(Likelihood)	-1855	-1819	-1682
AIC	3773	3751	3531
BIC	3902	3977	3871

200 AIC: Akaike information criterion, BIC: Bayesian information criterion

201

202 Population forecasting

203 Fig 2 shows the demographic change from 2005 to 2035. In Fig 2A, the population will reach
204 a maximum of 23.6 million in 2023, and will start shrinking to 23.2 million in 2035. The
205 proportion of the population aged over 65 is increasing across the period and will reach 27%
206 in 2035. The proportion of the population aged under 15 is declining to around 11%. Fig 2B
207 compares the age structure of the Taiwanese population in 2018 and 2035, highlighting the
208 population ageing.

209

210 Incidence forecasting and age structure

211 Fig 3 demonstrates the trends of the population TB incidence rate and TB incidence rates by
212 age-group (<15, 15-34, 35-64, >65). The forecast in Fig 3A suggests that the TB incidence in
213 2035 will be 22 (95% Prediction Interval (PI): 19-25) per 100 000. The overall incidence
214 reduction will reach 54% (95% PI: 45%-59%) in 2035, which is 37% short of the 90%
215 reduction in the End TB Strategy. Fig 3B shows the age-specific incidence rates will have
216 60% to 80% reductions from 2015 to 2035 apart from the 5-9 group. The rate reductions in
217 most age groups will be higher than the forecast reduction of 44% in the whole population.
218 Fig 3C decomposes the overall incidence rates by age groups. The TB incidence rates from
219 age groups below 65 will be gradually decreasing whereas the above 65 will nearly stay
220 constant from 2018 to 2035. Fig 3D shows the proportion of TB incidence in each age group.
221 The proportion among adults aged over 65 years will reach 68% (95% PI: 67%-69%) and
222 79% (95% PI: 78%-81%) in 2025 and 2035, respectively. In 2035, more than 97% of incident
223 cases will occur among those aged 35 years or older.

224

225 Impact of demography on TB incidence

226 Fig 4 shows the forecast incidence rates with and without demographic change. In the
227 scenario without demographic change, the forecast suggests that the incidence in 2035 will
228 be around 13 per 100,000 compared to 23 with demographic change and the 90% reduction
229 target of 4.5 per 100,000. The 95% prediction intervals for forecasts with demographic
230 change continuously expand year by year, whereas without demographic change they
231 converge to a constant width within five years. Table 2 shows the impact of demographic
232 change. Up to 2020, TB incidence rates will have 23% and 27% reductions with and without
233 demographic change respectively. Considering demographic change, the incidence rates
234 are projected to reduce by 54% (95% PI: 45%-59%) from 2015 to 2035; without

235 demographic change, the reduction will be 72% (95% PI: 67%-76%). In both scenarios, the
 236 trends of incidence rates showed diminishing reductions to the time scale. In 2035, the
 237 forecasts suggested that 39% (95% PI: 36%-42%) of incident TB cases can be attributed to
 238 demographic change.

239

240 **Table 2. Summary of reductions in TB incidence reductions with and without**
 241 **demographic change**

Year	Percentage reduction in per capita TB incidence from 2015:		Percentage of total TB incidence attributable to demographic change
	with demographic change	without demographic change after 2018	
2020	23.1% (18.2%, 27.2%)	26.6% (22.2%, 30.8%)	4.6% (1.6%, 7.5%)
2025	35.2% (27.2%, 40.7%)	47.0% (41.0%, 52.2%)	18.3% (15.5%, 21.2%)
2030	45.0% (35.9%, 50.5%)	61.6% (56.0%, 66.4%)	30.0% (27.3%, 33.0%)
2035	53.7% (44.5%, 58.9%)	72.1% (67.1%, 76.1%)	38.8% (36.1%, 41.7%)

242

243 Discussion

244

245 A substantial proportion of tuberculosis (TB) incidence in Taiwan is among people aged over
 246 65 years. Social and economic development typically bring reductions in TB incidence but
 247 also reduced birth and death rates and population ageing. This study provides a novel
 248 investigation into the potential impact on TB incidence from population ageing using
 249 statistical modelling and forecasting. Current trends of TB incidence declines and
 250 demographic change suggest TB incidence rates in Taiwan will decrease to 25 per 100,000
 251 by 2035. This represents a 45% reduction since 2015, missing the End TB goal of 90%
 252 reductions in TB incidence rates. We have shown that higher age-specific incidence rates in

253 older age groups can mean that population ageing acts against reductions in TB rates, with
254 TB incidence in 2035 projected to be 39% higher than without demographic change.

255

256 Previous studies have employed statistical methods either to forecast TB incidence,
257 [12,13,30,31] or to analyze patterns by age using age-period-cohort models, [14,15] but we
258 are the first study to statistically forecast age-specific TB incidence. Some transmission
259 modelling studies [16,18] have explored issues related to age-structure, but without
260 forecasts or formal assessment of fit. We made novel use of Lee-Carter models (LCMs),
261 [19,21] which employ an elegant low-dimensional decomposition of age-specific rates to
262 model trends and overall shape. LCMs were originally introduced for mortality rate modelling
263 and are now the dominant approach, but have been applied elsewhere. Within demography,
264 Hyndman [24] and Rueda-Sabater and Alvarez-Esteban [32] used LCMs to forecast the
265 fertility rates, and Cowen [33] fitted LCMs to abortion rates. Kainz et al. [34] modelled
266 chronic kidney disease prevalence as rate data, and Yue et al. [35] modelled cancer
267 incidence and mortality. However, we are the first to apply LCMs to TB, finding they fitted
268 better than Poisson Age-Period models. Our approach offers a generalizable and easily-
269 implemented method for forecasting age-specific TB incidence and the impact of
270 demographic change on total TB incidence.

271

272 For Taiwan and many other high-income settings, TB notifications are thought to parallel TB
273 incidence with only a small gap. In settings where this gap is larger and changing over time,
274 interpretation of TB notification data is more problematic and notifications may not be a good
275 proxy for incidence. Taiwan does not have United Nations Population Division demographic
276 forecasts, hence our bespoke demographic modelling. For most nations, these forecasts
277 could be used 'off the shelf'. We have presented results on percentage reductions in both
278 per capita TB incidence rates and in total TB incidence (e.g. Table 2), which are similar
279 because of Taiwan's small projected population change over the period considered; this may
280 not be true in all settings.

281

282 The decline in TB incidence in Taiwan probably has multiple contributory causes, including
283 improvements in TB control, socio-economic development, and the reductions in the
284 prevalence of latent TB as a result of declining transmission. For an infectious disease like
285 TB, reduced transmission can amplify and sustain over time changes in underlying causative
286 factors, complicating their analysis. The low TB rates in children aged under fifteen may
287 reflect low exposure to TB in this group or potentially lower rates of case detection. Our
288 assessment of the impact of population ageing on TB incidence and case-mix has particular
289 current relevance to many WHO Western Pacific region countries [1] and will be relevant to
290 many more countries and regions in the future. Our analysis could provide a template for
291 analysts who wish to explore issues related to future TB incidence and demography where
292 age-specific data are available.

293

294 Our analysis accounted for cohort propagation of latent tuberculosis infection (LTBI) in a
295 phenomenological way. LTBI represents accumulated lifetime risk of infection by exposure to
296 active tuberculosis disease. Older individuals in most settings have higher LTBI prevalence
297 due both to longer cumulative exposure and (in declining epidemics) exposure to a higher
298 mean infection rate over their lifetime. The ageing through of these LTBI positive cohorts
299 thus generates a secular time trend in reactivation disease rates at a particular age. Our
300 approach does not explicitly model LTBI prevalence, because this would introduce additional
301 parameters and, without LTBI data, identifiability issues. However, LTBI cohort effects are
302 accounted for in our current approach indirectly by modelling the secular trends in age-
303 specific incidence rates.

304

305 Extending the model by adding exogenous variables is possible. Our analysis did not
306 address the impact of other variables for simplicity and clarity. Important predictors could
307 include socioeconomic status and comorbidities such as diabetes mellitus. [36] However,

308 projections would require additional time-series analysis to forecast these explanatory
309 variables.

310

311 Older age as a risk factor for TB disease has perhaps been under-explored since age is not
312 a modifiable risk factor, and since in most current high-burden settings populations and the
313 typical age of TB cases are fairly young. Our result that population ageing will act to slow
314 declines in TB incidence does not seem to have been previously noted. However, the
315 importance of older age groups to TB control is already evident in many Asian populations,
316 [16] and this will be an increasingly widespread facet of global TB control if reductions in
317 incidence continue and accelerate in the future. Older populations will also have their own
318 particular challenges in terms of access, diagnosis and comorbidities complicating their care.
319 Public health planning to develop adapted strategies for care and control to meet these
320 changing population needs is essential.

321

322 In summary, the Lee-Carter model provides a tool to project age-specific tuberculosis
323 incidence and hence forecast overall TB incidence while accounting for demographic
324 change. In Taiwan, population ageing may slow the decline of TB incidence by 39% over the
325 period 2015 - 2035. TB care and control programmes will increasingly need to address the
326 needs of older adults, who will comprise a growing majority of the TB epidemic.

327 References

328

329 1. World Health Organization. Global tuberculosis report 2018. World Health Organization;
330 2018;

331 2. World Health Organization. Global strategy and targets for tuberculosis prevention, care
332 and control after 2015. Geneva: World Health Organization. 2014;

333 3. Houben RMGJ, Dodd PJ. The Global Burden of Latent Tuberculosis Infection: A Re-
334 estimation Using Mathematical Modelling. PLoS Med. 2016;13: e1002152.

335 4. Schaaf HS, Collins A, Bekker A, Davies PDO. Tuberculosis at extremes of age.
336 Respirology. 2010;15: 747–763.

337 5. Vynnycky E, Borgdorff MW, Leung CC, Tam CM, Fine PEM. Limited impact of
338 tuberculosis control in Hong Kong: attributable to high risks of reactivation disease.
339 Epidemiol Infect. 2008;136: 943–952.

340 6. United Nations Publications. World Population Ageing, 2015. UN; 2017.

341 7. National Development Council, Taiwan. Population Projections for the R.O.C. (Taiwan):
342 2018-2065. National Development Council, Taiwan; 2018.

343 8. Dye C, Williams BG. The population dynamics and control of tuberculosis. Science.
344 2010;328: 856–861.

345 9. Pratt RH, Winston CA, Steve Kammerer J, Armstrong LR. Tuberculosis in Older Adults
346 in the United States, 1993-2008 [Internet]. Journal of the American Geriatrics Society.
347 2011. pp. 851–857. doi:10.1111/j.1532-5415.2011.03369.x

348 10. Hagiya H, Koyama T, Zamami Y, Minato Y, Tatebe Y, Mikami N, et al. Trends in

- 349 incidence and mortality of tuberculosis in Japan: a population-based study, 1997-2016.
350 *Epidemiol Infect.* 2018; 1–10.
- 351 11. Negin J, Abimbola S, Marais BJ. Tuberculosis among older adults – time to take notice
352 [Internet]. *International Journal of Infectious Diseases.* 2015. pp. 135–137.
353 doi:10.1016/j.ijid.2014.11.018
- 354 12. Bras AL, Gomes D, Filipe PA, de Sousa B, Nunes C. Trends, seasonality and forecasts
355 of pulmonary tuberculosis in Portugal. *Int J Tuberc Lung Dis.* 2014;18: 1202–1210.
- 356 13. van Aart C, Boshuizen H, Dekkers A, Altes HK. Time Lag Between Immigration and
357 Tuberculosis Rates in Immigrants in the Netherlands: A Time-Series Analysis.
358 *International Journal of Tuberculosis and Lung Disease.* 2017;21: 486–492.
- 359 14. Iqbal SA, Winston CA, Bardenheier BH, Armstrong LR, Navin TR. Age-Period-Cohort
360 Analyses of Tuberculosis Incidence Rates by Nativity, United States, 1996-2016. *Am J*
361 *Public Health.* 2018;108: S315–S320.
- 362 15. Wu P, Cowling BJ, Schooling CM, Wong IOL, Johnston JM, Leung C-C, et al. Age-
363 period-cohort analysis of tuberculosis notifications in Hong Kong from 1961 to 2005.
364 *Thorax.* 2008;63: 312–316.
- 365 16. Harris RC, Sumner T, Knight GM, Evans T, Cardenas V, Chen C, et al. Age-targeted
366 tuberculosis vaccination in China and implications for vaccine development: a modelling
367 study. *Lancet Glob Health.* Elsevier; 2019;7: e209–e218.
- 368 17. Brooks-Pollock E, Cohen T, Murray M. The impact of realistic age structure in simple
369 models of tuberculosis transmission. *PLoS One.* 2010;5: e8479.
- 370 18. Arregui S, Iglesias MJ, Samper S, Marinova D, Martin C, Sanz J, et al. Data-driven
371 model for the assessment of *Mycobacterium tuberculosis* transmission in evolving
372 demographic structures. *Proc Natl Acad Sci U S A.* 2018;115: E3238–E3245.

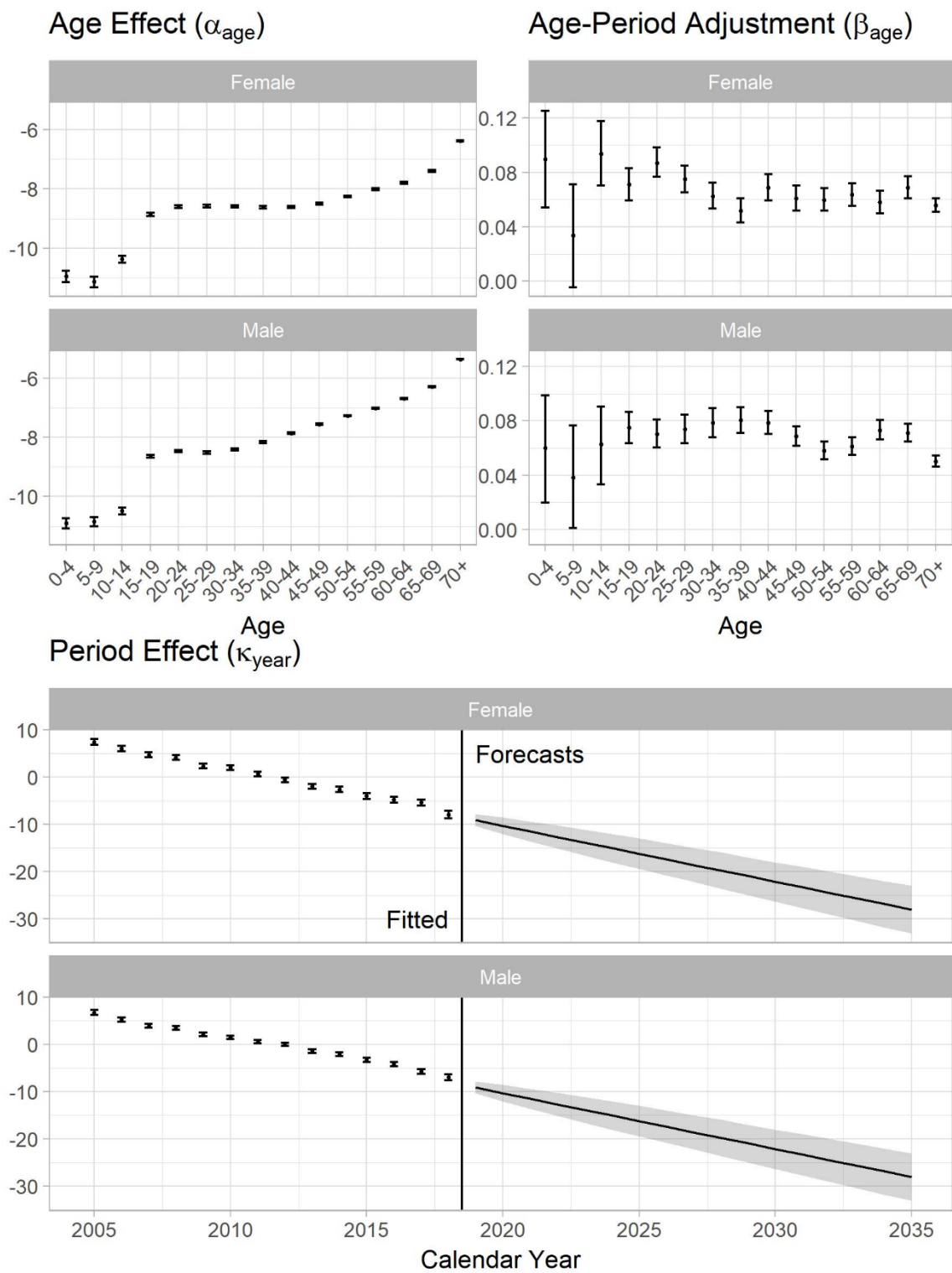
- 373 19. Lee RD, Carter LR. Modeling and Forecasting U. S. Mortality. J Am Stat Assoc.
374 [American Statistical Association, Taylor & Francis, Ltd.]; 1992;87: 659–671.
- 375 20. Brouhns N, Denuit M, Vermunt JK. A Poisson log-bilinear regression approach to the
376 construction of projected lifetables [Internet]. Insurance: Mathematics and Economics.
377 2002. pp. 373–393. doi:10.1016/s0167-6687(02)00185-3
- 378 21. Lee R. The Lee-Carter Method for Forecasting Mortality, with Various Extensions and
379 Applications. N Am Actuar J. Routledge; 2000;4: 80–91.
- 380 22. Renshaw AE, Haberman S. On simulation-based approaches to risk measurement in
381 mortality with specific reference to Poisson Lee–Carter modelling [Internet]. Insurance:
382 Mathematics and Economics. 2008. pp. 797–816.
383 doi:10.1016/j.insmatheco.2007.08.009
- 384 23. Coale AJ, Kisker EE. Defects in data on old-age mortality in the United States: new
385 procedures for calculating mortality schedules and life tables at the highest ages. Coale
386 Kisker 1990 Asian and Pacific Population Forum. Honolulu Hawaii Coale Ansley J. 1990
387 Spring.; 1990;
- 388 24. Hyndman RJ, Booth H. Stochastic population forecasts using functional data models for
389 mortality, fertility and migration. Int J Forecast. 2008;24: 323–342.
- 390 25. Steenland K, Armstrong B. An overview of methods for calculating the burden of
391 disease due to specific risk factors. Epidemiology. JSTOR; 2006;17: 512–519.
- 392 26. R Core Team. R: A Language and Environment for Statistical Computing [Internet].
393 Vienna, Austria: R Foundation for Statistical Computing; 2018. Available: [https://www.R-](https://www.R-project.org/)
394 [project.org/](https://www.R-project.org/)
- 395 27. Wickham H. ggplot2: Elegant Graphics for Data Analysis [Internet]. Springer-Verlag
396 New York; 2016. Available: <http://ggplot2.org>

- 397 28. Andres V, Millossovich P, Vladimir K. StMoMo: Stochastic Mortality Modeling in R. J
398 Stat Softw. arts.units.it; 2018;84: 1–38.
- 399 29. Chan K-S, Ripley B. TSA: Time Series Analysis [Internet]. 2018. Available:
400 <https://CRAN.R-project.org/package=TSA>
- 401 30. Onozaki I, Law I, Sismanidis C, Zignol M, Glaziou P, Floyd K. National tuberculosis
402 prevalence surveys in Asia, 1990-2012: an overview of results and lessons learned.
403 Trop Med Int Health. 2015;20: 1128–1145.
- 404 31. Suarez PG, Watt CJ, Alarcon E, Portocarrero J, Zavala D, Canales R, et al. The
405 Dynamics of Tuberculosis in Response to 10 Years of Intensive Control Effort in Peru. J
406 Infect Dis. 2001;184: 473–478.
- 407 32. Rueda-Sabater C, Alvarez-Esteban PC. The analysis of age-specific fertility patterns via
408 logistic models. J Appl Stat. Taylor & Francis; 2008;35: 1053–1070.
- 409 33. Cowan SK. Cohort Abortion Measures for the United States. Popul Dev Rev. 2013;39:
410 289–307.
- 411 34. Kainz A, Hronsky M, Stel VS, Jager KJ, Geroldinger A, Dunkler D, et al. Prediction of
412 prevalence of chronic kidney disease in diabetic patients in countries of the European
413 Union up to 2025. Nephrol Dial Transplant. 2015;30 Suppl 4: iv113–8.
- 414 35. Yue JC, Wang H-C, Leong Y-Y, Su W-P. Using Taiwan National Health Insurance
415 Database to model cancer incidence and mortality rates. Insur Math Econ. 2018;78:
416 316–324.
- 417 36. Marais BJ, Lönnroth K, Lawn SD, Migliori GB, Mwaba P, Glaziou P, et al. Tuberculosis
418 comorbidity with communicable and non-communicable diseases: integrating health
419 services and control efforts. Lancet Infect Dis. 2013;13: 436–448.

420

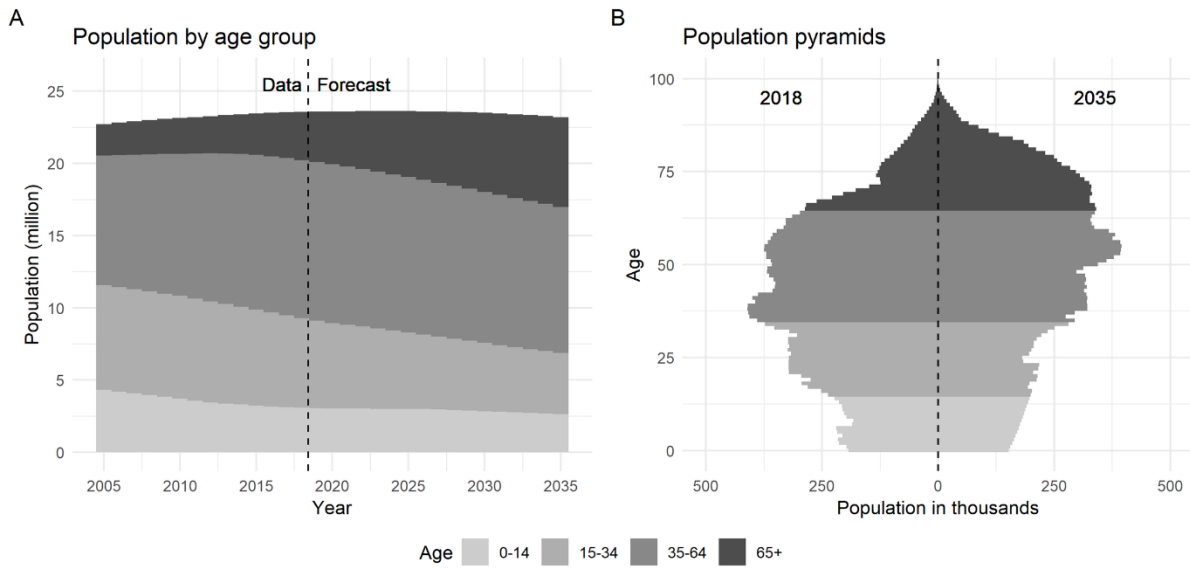
421 **Figures**

422 **Fig 1. Lee-Carter model fitting and forecasting of the TB incidence.** (Data: 2005-2018,
 423 Forecasting: 2019-2035). 95% confidence intervals of estimators and prediction intervals of
 424 forecasts were calculated through bootstrapping with 10 000 sample size.



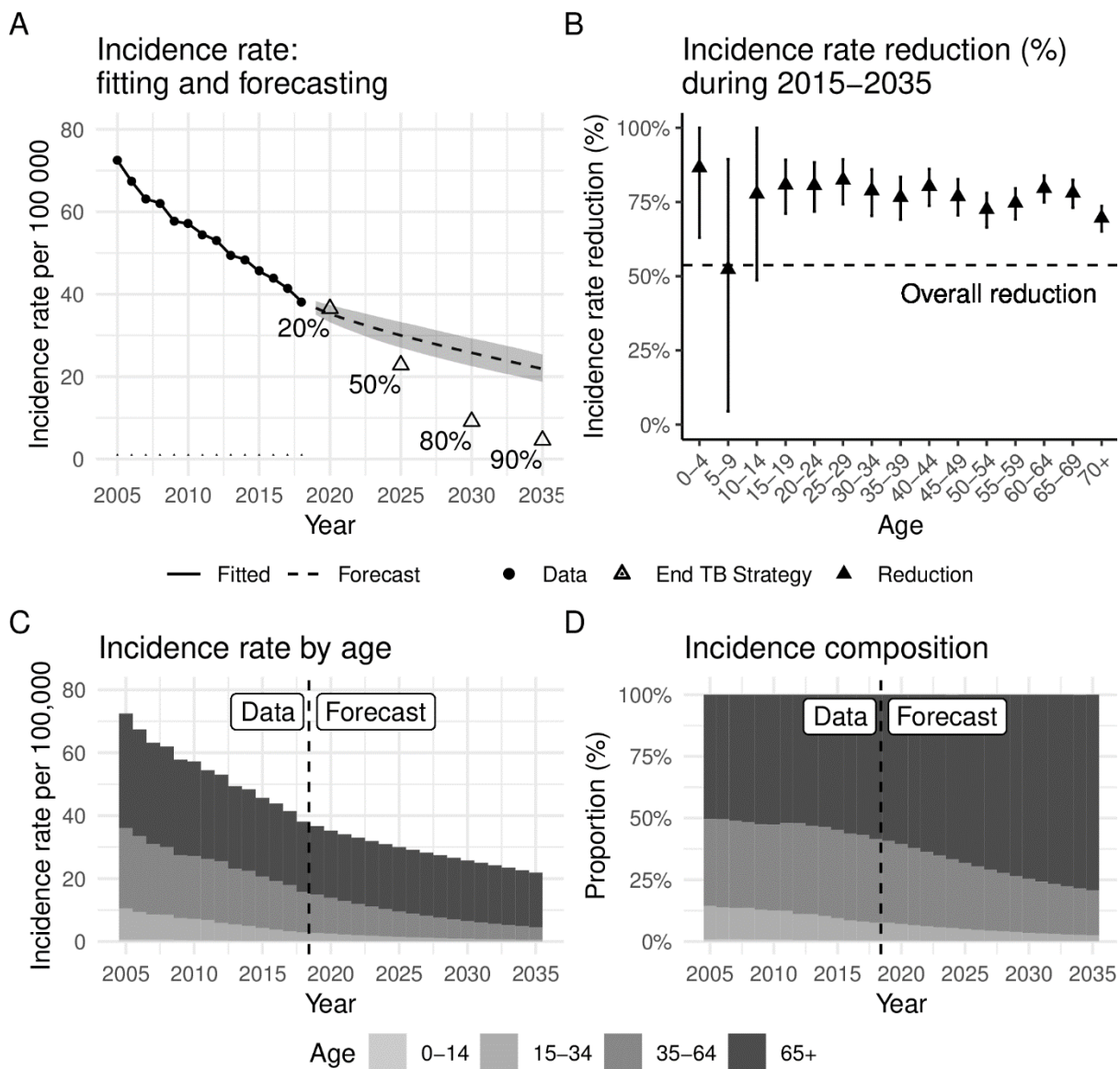
425

426 **Fig 2. Demographic change.** Data: 2005-2017, Forecasting: 2018-2035



427

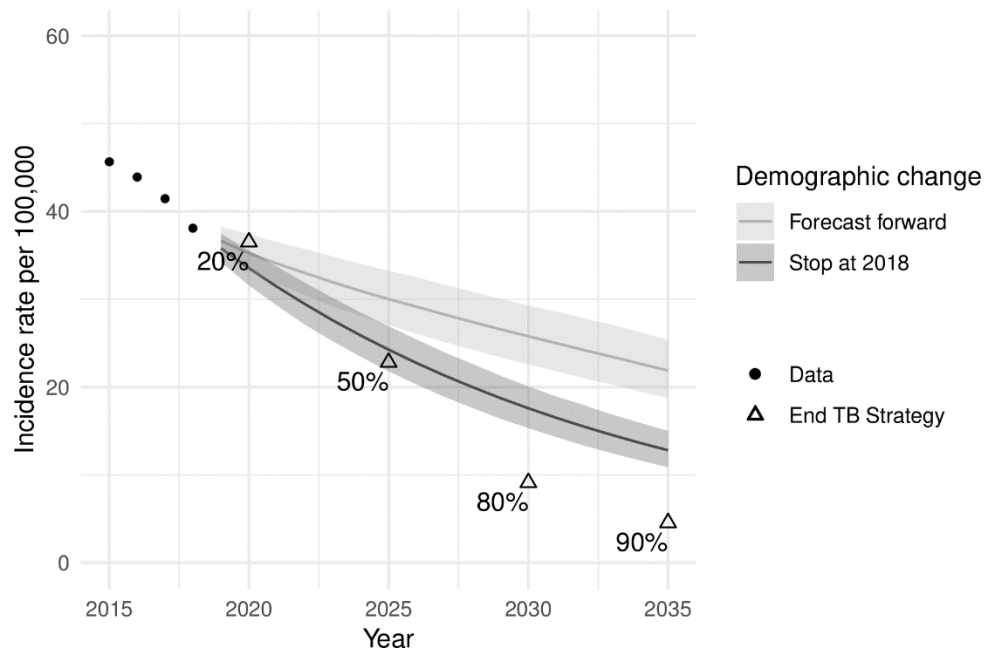
428 **Fig 3. TB incidence rate forecasting.** (A) Overall incidence rate per 100 000. In the
 429 forecasting, dashed line features the mean values and the shaded area is 95% prediction
 430 interval. (B) Incidence rate reductions by five-year age groups during 2015-2035 with 95%
 431 prediction interval. (C) Incidence rates attributed to age groups. (D) Proportions of age
 432 groups in Incidence cases.



433

434

435 **Fig 4. TB incidence with and without demographic change.** ribbons show 95% prediction
436 intervals.



437

438

439 Supporting information

440 **S1 Appendix. Residual analysis and the goodness of fit.**