

Proximal and distal factors predicting timely initiation of breast feeding in Ethiopia: a systematic review and meta-analysis

Tesfa Dejenie Habtewold^{1,2*}, Shimels Hussien Mohammed³, Aklilu Endalamaw⁴, Henok Mulugeta⁵, Getenet Dessie⁶, Derbew Fikadu Berhe⁷, Mulugeta Molla Birhanu⁸, Md. Atiqul Islam⁹, Andreas A. Teferra¹⁰, Nigus Gebremedhin Asefa², Sisay Mulugeta Alemu¹¹

¹Department of Nursing, College of Medicine and Health Science, Debre Berhan University, Debre Berhan, Ethiopia

²Department of Epidemiology, University Medical Centre Groningen, University of Groningen, Groningen, The Netherlands

³Department of Community Nutrition, School of Nutritional Sciences and Dietetics, Tehran University of Medical Sciences-International Campus (TUMS-IC), Tehran, the Islamic Republic of Iran

⁴Department of Pediatrics and Child Health Nursing, School of Nursing, College of Medicine and Health Sciences, University of Gondar, Gondar, Ethiopia.

⁵Department of Nursing, College of Health Science, Debre Markos University, Debre Markos, Ethiopia

⁶Department of Nursing, School of Health Science, College of Medicine and Health Science, Bahir Dar University, Bahir Dar, Ethiopia

⁷School of Pharmacy, College of Health Science, Mekelle University, Mekelle, Ethiopia

⁸School of Clinical Sciences, Department of Medicine, Epidemiology and Prevention Division, Monash University, Melbourne, Australia

⁹Department of Statistics, Shahjalal University of Science and Technology, Sylhet, Bangladesh

¹⁰Division of Epidemiology, College of Public Health, The Ohio State University, Columbus, OH, USA

¹¹Department of Public Health, University Medical Centre Groningen, University of Groningen, Groningen, The Netherlands

* =Corresponding author

Tesfa Dejenie Habtewold

Email: tesfadej2003@gmail.com

Abstract

Background: In Ethiopia, the current coverage of timely initiation of breast feeding (TIBF) has fallen short of the national Health Sector Transformation Plan 2016-2020, National Nutrition Program 2016–2020 and WHO global target. This calls for the need to assess relevant proximal and distal factors that affect the rate of TIBF in Ethiopia.

Objective: The aim of this meta-analysis was to investigate the association between TIBF and educational status, household income, marital status, media exposure, and parity in Ethiopia.

Methods: Databases used were PubMed, EMBASE, Web of Science, SCOPUS, CINAHL and WHO Global health library, and key terms were searched using interactive searching syntax. It was also supplemented by manual searching. Observational studies published between September 2000 and March 2019 were included. The methodological quality of studies was examined using the Newcastle-Ottawa Scale (NOS) for cross-sectional studies. Data were extracted using the Joanna Briggs Institute (JBI) data extraction tool. To obtain the pooled odds ratio (OR), extracted data were fitted in a random-effects meta-analysis model. Statistical heterogeneity was quantified using Cochran's Q test, τ^2 , and I^2 statistics. Additional analysis conducted includes Jackknife sensitivity analysis, cumulative meta-analysis, and meta-regression analysis.

Results: Out of 553 studies retrieved, 25 studies fulfilled our inclusion criteria. Almost all studies were conducted on mothers with newborn less than 23 months. Maternal educational status (OR = 1.82; $p < 0.001$; 95% CI = 1.35 - 2.45; $I^2 = 84.96\%$), paternal educational status (OR = 2.72; $p = 0.001$, 95% CI = 1.49 - 4.97 $I^2 = 62.50\%$), income (OR = 1.16; $p = 0.002$; 95% CI = 1.05 - 1.27; $I^2 = 0.00\%$), marital status (OR = 1.39; $p = 0.001$; 95% CI = 1.14 - 1.69; $I^2 = 9.17\%$) and parity (OR = 1.39; $p = 0.01$; 95% CI = 1.07 - 1.81; $I^2 = 74.43\%$) were found to be significantly associated with TIBF. We also observed a direct dose-response relationship of TIBF with educational status and income.

Conclusions: Proximal and distal factors significantly predicting TIBF practice in Ethiopia, which needs integrated intervention by health professionals and healthcare policymakers. Health education, counselling and peer education targeting parents at antenatal and postnatal periods are needed. It is also relevant to improve the economic power of women and promote gender equality.

Background

Timely initiation of breast feeding (TIBF) is defined as putting the newborn to the breast within the first-hour birth.(1, 2) Based on the recent UNICEF and World Health Organization (WHO) global report, approximately 78 million newborns are not breastfed within the first hour after birth; majority are born in low- and middle-income countries (LMICs).(3) Breast feeding with timely initiation and optimal duration is a core component of primary healthcare that boosts newborn later life health (e.g. cognitive function)(4), reduce infection, and prevent up to 60% infant and child morbidity and mortality related to malnutrition.(5-11) Recent estimates suggest that optimal breast feeding could prevent approximately 12% deaths per year in under-five children, which represents around 800,000 lives in LMICs.(12) Likewise, TIBF has been shown to reduce neonatal mortality by 22%.(7) Breast feeding also prevents acute and chronic maternal diseases.(13, 14) Optimal breast feeding has also economic and environmental advantages.(13)

Suboptimal breast feeding including delayed initiation increases risk of newborn morbidity and mortality up to fivefold.(5, 15-17) The 2010 Global Burden of Disease study reveals that suboptimal breast feeding is one of the three leading causes of disease in Sub-Saharan African (SSA) countries.(18) Approximately 25 to 50% of infant deaths in developing countries occur due to poor breast feeding practice.(16, 19) In terms of the global absolute number of under-five child deaths, Ethiopia ranked sixth with about 472,000 deaths per year. The age distribution of under-five deaths varies from 29% in the first 30 days of life to 42% in the fourth year.(20) Neonatal mortality rate is still high in Ethiopia, which accounts for 42% of under-five deaths.(21, 22) Based on our previous meta-analysis of 13 observational studies conducted in Ethiopia, the prevalence of neonatal mortality is 16.3%.(23)

To date, only 22 countries achieved WHO target of 70% coverage in TIBF.(24) Although LMICs have strong breast feeding traditions compared to developed countries, adherence to WHO recommendations of TIBF is poor with considerable difference between nations. A report from 76 countries on the rates and trends of TIBF over the past decade shows that TIBF rates varied widely across regions from 32% in East Asia and the Pacific to 65% in Eastern and Southern Africa.(25) A demographic and health survey conducted in 57 LMICs involving nearly 200,000 newborn shows that 39% of newborn (with regional range

from 31 to 60%) breastfed within one hour of birth.(26) Likewise, a report of demographic and health surveys conducted since 2010 in 32 SSA countries show that the prevalence of TIBF is 50.5%.(27) A systematic review of studies conducted between 1999 and 2013 in Asia, Africa, and South America reveal the prevalence of TIBF ranges from 11.4% in a province of Saudi Arabia to 83.3% in Sri Lanka.(28) In Ethiopia, breast feeding is a common practice with 96% of mothers breastfeed at least once during their lifetime.(29) According to our previous meta-analysis of 45 observational studies, the prevalence of TIBF in Ethiopia is 66.5%.(30)

Numerous country-specific or global factors influence mothers' decision and ability to initiate breast feeding within one hour of birth. The accumulated body of evidence from regional and global studies consistently shows that TIBF has been associated with numerous factors including educational status, household income, marital status, media exposure and parity.(31-39) In our previous systematic review of 70 observational studies, we identified 18 predictors categorized into four groups: proximal (maternal occupational status, maternal knowledge on TIBF, and breast feeding guidance and counselling), proximal-intermediate (place of delivery, mode of delivery, birth attendant and sex of newborn), distal-intermediate (antenatal care, postnatal care, prelacteal feeding, and colostrum feeding) and distal (paternal educational status, household income, marital status, media exposure, family size, breast feeding experience, place of residence, birth order, parity, and iron-folate supplementation).(30) In the follow-up meta-analyses(30, 40, 41), we confirmed that breast feeding guidance and counselling, mode of delivery, place of delivery, antenatal care visit and colostrum discarding significantly associated with TIBF practice, whereas maternal occupational status, maternal or caregiver's age and sex of newborn not significantly associated with TIBF.

Given the multidimensional benefits of breast feeding for the newborn, mother and community, global initiatives have been made to improve the national and international breast feeding practice. Some of these initiatives are the International Code of Marketing of Breast-milk Substitutes (aka the Code), Innocenti Declaration, Baby Friendly Hospital Initiative (BFHI) (i.e. Ten Steps to Successful Breast feeding), Millennium Development Goals, Global Nutrition Targets 2025 and Sustainable Development Goals.(31, 42) The Ethiopian government has endorsed and implemented these aforementioned policies and programs to reduce infant and child mortality and morbidity related to poor breast feeding

in the country. Since 2004, the Ethiopian Federal Ministry of Health has developed infant and young child feeding guidelines and provided breast feeding promotions.(43) A national nutrition strategy and program (NNP) has also been developed and implemented in a multi-sectoral approach. To improve the nutritional status of mothers and children, the Health Sector Development Plan (HSDP)-IV has integrated nutrition into the health extension program.(44)

Consequently, the rate of malnutrition, stunting, underweight and under-five mortality have declined in Ethiopia.(45) Despite the heartening reduction of under-five morbidity and mortality, the rate of TIBF has fallen short of the national Health Sector Transformation Plan 2016-2020(44), National Nutrition Program 2016–2020(46) and WHO global target.(24) This calls for the need to investigate the pooled effect of various proximal and distal factors predicting TIBF. Therefore, the aim of this meta-analysis was to investigate the association between TIBF and maternal educational status, paternal educational status, household income, marital status, media exposure, and parity in Ethiopia. We hypothesized high educational status, high household income, being married, exposed to media and multiparity significantly increase the odds of TIBF.

Methods

Measurements

The outcome measurement was timely initiation of breast feeding (TIBF), which is the proportion of children born in the last two years who were breastfed within the first hour of delivery.(47) Maternal educational status, paternal educational status, household income, marital status, media exposure, and parity were selected predicting factors. The selection of these factors was guided by our previous systematic review findings.(30) Educational status represents the highest schooling grade achieved as per the Ethiopian educational system and categorized as 'uneducated' (including those who are able to read and write without formal schooling), 'primary' (grades 1 to 8) and 'secondary and above' (grades 9 or above). Household income was categorized as 'high', 'medium' and 'low'. Because of substantial inconsistency in the reported household income, we used a harmonized qualitative way of classification of income for all included studies that reported at least three categories of household income or wealth index based on authors educational judgment. Marital status was categorized as 'currently married' and 'others' (i.e. single, divorced, widowed). Media exposure represents exposure to or ownership of any print media (newspaper, leaflet, brochure) and broadcasting (radio and television) and categorized as 'yes' and 'no'. This does not include Facebook, email, YouTube, or WhatsApp as most mothers do not have access to internet. If studies reported accessibility or exposure to more than one media tools, we extracted data on radio (as 'yes') followed by television and print media. Parity refers to the total number of births after 28 weeks and was categorized as 'primipara' if the mothers have only one birth and 'multipara' if the mothers have at least two births.

Search for literature

Databases searched were PubMed, EMBASE, Web of Science, SCOPUS, CINAHL and WHO Global health library. The interactive searching syntax was developed for all databases in consultation with librarian, experts on literature searching (Supplementary file 1). We further manually searched the table of contents of Ethiopian Journal of Health Development, Ethiopian Journal of Health Sciences, Ethiopian Journal of Reproductive Health, International Breast feeding Journal, BMC Pregnancy and Childbirth, BMC Public

Health, BMC Paediatrics, Nutrition Journal and Italian Journal of Paediatrics. We also searched cross-references and grey literature on Addis Ababa University institutional research collection repository database. The last search was done in March 2019.

Inclusion and exclusion criteria

The studies were included when they met the following inclusion criteria: (1) observational studies, such as cross-sectional, case-control and cohort studies; (2) studies conducted in Ethiopia; (3) studies reported on the association between TIBF (i.e. operationalized based on the WHO definition) and maternal and paternal educational status, household income (at least three categories must be reported), marital status, media exposure (not exposed or no access to media category must be reported) and parity; (4) studies published from September 2000 (i.e. the time when last revision of the global breast feeding recommendations occurred) to March 2019. Program evaluation reports, systematic reviews and meta-analyses, qualitative studies and studies on mothers with medical conditions including HIV/AIDS and pre-term or ill health newborn were excluded.

Screening and selection of studies

Initially, all identified studies were exported into RefWorks citation manager version 4.6 for Windows. Afterward, duplicate studies were deleted from further screening. Next, a pair of reviewers independently screened the abstracts and titles using Microsoft Excel spreadsheet for relevance, their compliance with our measurements of interest and against our inclusion criteria. Based on Cohen's Kappa inter-rater reliability test, the agreement between the two reviewers was 0.76 indicating substantial agreement between the two reviewers. Disagreements on the inclusion of titles or abstracts were solved through discussion and consensus. After removing irrelevant studies, full text of selected abstracts were downloaded and reviewed for further eligibility. PRISMA flow diagram was also used to illustrate the screening and selection processes of studies.(48) Finally, two independent reviewers (TD and SM) extracted the following information from each included studies using Joanna Briggs Institute (JBI) data extraction tool(49): author name, publication year, residence, study design, study population, number of participants, source of funding, and observed data. If funding source was not explicitly mentioned, we reported as 'not mentioned', whereas 'no funding' category was used if the author explicitly mentioned

there is no funding or funding not applicable. If funding was not given directly but through other donors, the original donor was mentioned. Newcastle-Ottawa Scale (NOS) for cross-sectional studies was used to examine the quality of studies and the potential risk of bias.(50) The scoring system, selection of cut-off value and interpretation used in this meta-analysis were published in our protocol.(51) Furthermore, we reported the results in compliance with the recommendation of Preferred Reporting Items for Systematic review and Meta-analysis (PRISMA) statement (Supplementary file 2).(48)

Statistical analysis

To obtain the pooled odds ratio (OR), extracted data were fitted in a random-effects meta-analysis model. In addition, a cumulative meta-analysis was done to illustrate the trend of evidence regarding the effect of predictors on TIBF and interpreted as stable, steadily increased/decreased, slightly increased/decreased or dramatically increased/decreased. Publication bias was assessed by subjective evaluation of the funnel plot, and then, we performed Egger's regression statistical test to objectively confirm the presence of significant publication bias at $p\text{-value} \leq 0.01$.(52) We used Cochran's Q test to test heterogeneity, τ^2 to estimate the amount of total/residual between-study variance, and I^2 statistics to measure the proportion of total variation between study due to heterogeneity.(53) Clinical and methodology heterogeneity were also carefully evaluated. Factors attributed to between-study heterogeneity were investigated using mixed-effects meta-regression analysis using region, residence, sample size and publication year as covariates.(54) The residual amount of heterogeneity was subtracted from the proportion of heterogeneity and divided by the total amount of heterogeneity to obtain the total amount of heterogeneity (R^2) explained by covariates. Omnibus test of moderators was applied to assess the moderation effect of these covariates. Meta-regression analysis was done only when heterogeneity threshold (I^2) was $\geq 80\%$. Jackknife sensitivity analysis was done to examine the influence of outlier studies on the pooled OR estimate, a significance level of estimate and between-study heterogeneity.(55) The study was excluded when the pooled OR estimate increased or decreased by one and changes the significance level after lifting out that study from the meta-analysis. Because of the small number of studies available for some variables, the change in heterogeneity threshold was not considered as a primary

criterion to detect and excluded the outlier study. The data were analyzed using “metafor” packages in R software version 3.2.1 for Windows.(54)

Review protocol

This systematic review and meta-analysis was conducted based on the registered (CRD42017056768) and published protocol.(51) Based on the authors’ decision, the following changes were made to the published protocol.(51) Joanna Briggs Institute (JBI) tool(49) was used to extract the relevant data. Furthermore, cumulative meta-analysis and mixed-effects meta-regression analysis were done to reveal the trends of evidence and identify possible sources of between-study heterogeneity respectively.

Results

Search results

In total, 483 studies through electronic databases and 70 studies through manual searching were retrieved for further screening. Following a rigorous screening, 28 studies were selected for full text review. Three studies were excluded after the full text review: one study(56) reported only the prevalence of TIBF, and the other two studies(20, 57) did not report the selected factors of our interest. A total of 25 studies were included in this meta-analysis, which most of them conducted on mothers with newborn less than 23 months. All studies had good methodological quality (NOS score ≥ 7). One study reported more than one predicting factors. The screening and selection process are illustrated below using the PRISMA flow diagram (Figure 1). The detailed characteristics of studies that reported each variable is presented in Table 1.

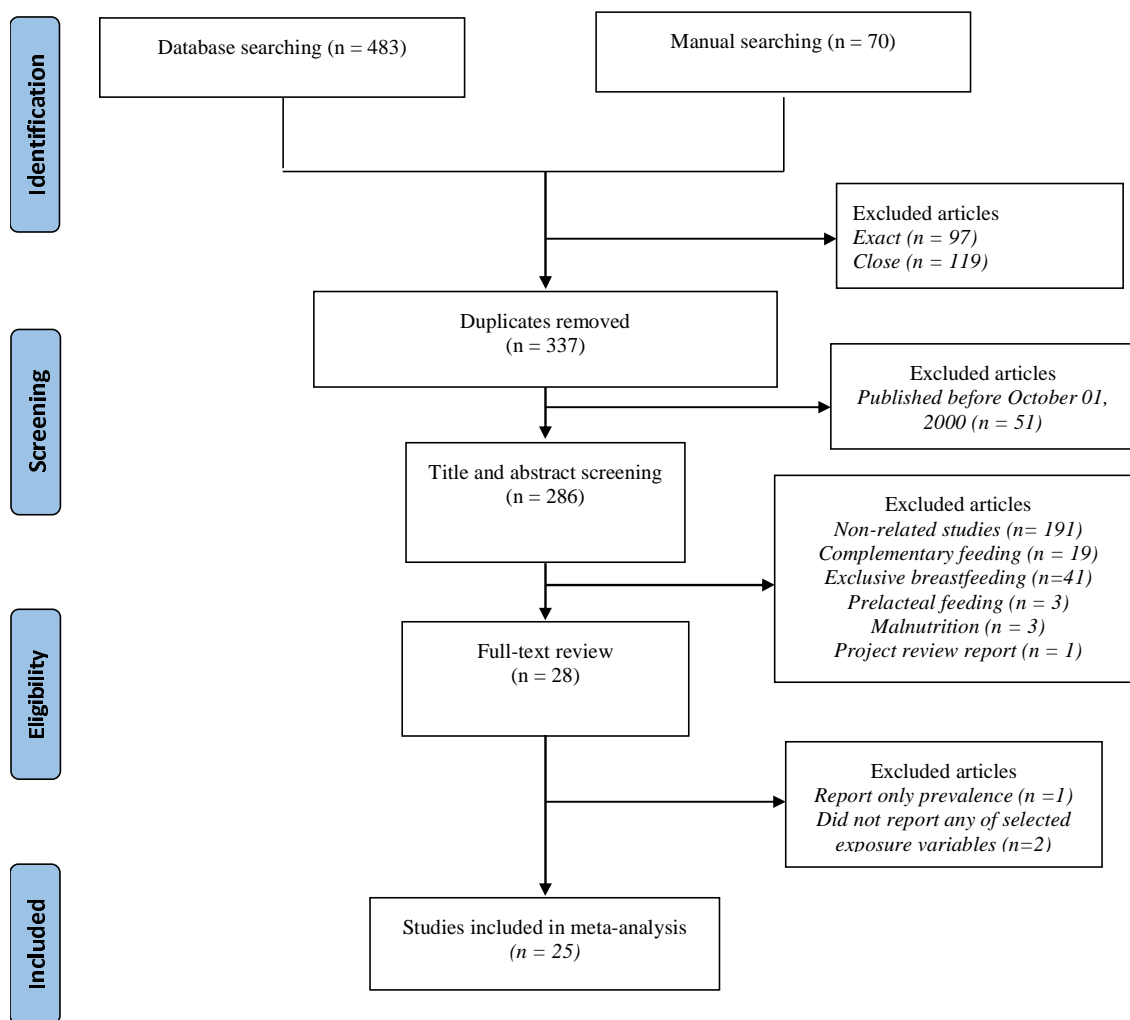


Figure 1. PRISMA flow diagram showing the schematics of literature screening and selection.

Table 1: Detailed characteristics of studies that reported each variable of interest.

Study	Region	Study design	Study population	Sample size/ Participated	Funding source	Predicting factors	TIBF		
							Within 1 hour	After 1 hour	Total
a. Maternal educational status									
Adugna et.al 2014(58)	SNNPR, Arba Minch Zuria	Cross-sectional study	Women who had children under two years	384/383	Arba Minch University	Uneducated	172	66	238
						Primary	130	18	148
						Secondary or above	147	15	162
						Total	449	99	548
Gultie et.al 2016(59)	Amhara, Debre Berhan town	Cross-sectional study	Mothers having children aged less than 23 months old	548/548	Not mentioned	Uneducated	172	66	238
						Primary	130	18	148
						Secondary or above	147	15	162
						Total	449	99	548
Derso et.al 2017(60)*	Amhara, Dabat district	Cross-sectional study	Mothers with children under five years of age	6,761/6,761	PEPFAR-CDC	Uneducated	1767	2607	4374
						Primary	663	875	1538
						Secondary or above	539	310	849
						Total	2969	3792	6761
John et al 2019(61)*	National	Cross-sectional	Mothers with children less than 24 months of age	5,546/5,546	No funding	Uneducated	1851	636	2487
						Primary	955	318	1273
						Secondary or above	258	103	361
						Total	3064	1057	4121
Ekubay et al 2018(62)	Addis Ababa Town	Cross-sectional study	mothers with infants younger than or equal to six months of age	597/583	Addis Ababa University	Uneducated	38	28	66
						Primary	73	66	139
						Secondary or above	218	141	359
						Total	329	235	564
Alemayehu et.al. 2014(63)	Tigray, Axum town	Cross-sectional study	Mothers who had children aged 6 to 12 months	418/418	Mekelle University	Uneducated	27	21	48
						Primary	128	89	217
						Secondary or above	92	64	156
						Total	247	174	421
Berhe et.al. 2013(64)	Tigray, Mekelle	Cross-sectional	Mothers of children aged 0	361/361	Addis Ababa	Uneducated	85	30	115

	town	study	to 24 months		University	Primary	64	22	86
						Secondary or above	129	27	156
						Total	278	79	357
Beyene et.al. 2017(65)	SNNPR, Dale Woreda	Cross-sectional study	Mothers of children under 24 months	634/ 634	Addis Ababa University	Uneducated	129	14	143
						Primary	388	87	475
						Secondary or above	-	-	-
						Total	517	101	618
Lakew et.al. 2015(66)*	National	Cross-sectional study	Mothers who had children less than 5 years	11,654/11,553	Not mentioned	Uneducated	4244	3779	8023
						Primary	1677	1434	3111
						Secondary or above	259	160	419
						Total	6180	5373	11553
Liben et.al. 2016(67)	Afar, Dubti town	Cross-sectional study	Mothers of infants aged less than 6 months	346/333	Samara University	Uneducated	35	87	122
						Primary	116	143	259
						Secondary or above	-	-	-
						Total	151	230	381
Setegn et.al. 2011(68)	Oromia, Goba district	Cross-sectional study	Mothers with children less than 12 months	668/ 608	Jimma University	Uneducated	111	122	233
						Primary	148	123	271
						Secondary or above	61	34	95
						Total	320	279	599
Mekonen et.al. 2018(69)	Amhara, South Gondar	Cross-sectional study	Mothers of infants under 12 months	845/823	Not mentioned	Uneducated	149	185	334
						Primary	252	237	489
						Secondary or above	-	-	-
						Total	401	422	823
Tamiru et.al 2012(70)	Oromia, Jimma Arjo Woreda	Cross-sectional study	Mothers of index children aged 0 to 6 months	384/ 382	Not mentioned	Uneducated	191	122	313
						Primary	22	18	40
						Secondary or above	-	-	-
						Total	213	140	353
Tamiru et.al 2015(71)	SNNPR, Arba Minch Zuria Woreda	Cross-sectional study	Mothers of infants aged two years and younger	384/384	Arba Minch University	Uneducated	172	142	314
						Primary	32	18	50
						Secondary or above	16	4	20
						Total	220	164	384

Deregh et al 2012(72)	Addis Ababa	Cross-sectional study	Mothers of babies admitted to the Neonatal Intensive Care Unit	429/429	Not mentioned	Uneducated	7	37	44
						Primary	18	78	96
						Secondary or above	34	166	200
						Total	59	281	340
Woldemichael et.al 2016(73)	Oromia, Tiyo Woreda	Cross-sectional study	Mothers who have children less than one-year age	386/373	Addis Ababa University	Uneducated	63	57	120
						Primary	133	53	186
						Secondary or above	55	12	67
						Total	251	122	373
Tamir 2010(74)	Amhara, Bahir Dar city	Cross-sectional study	Mothers having children 0- 23 months of age	856/825	Addis Ababa University	Uneducated	79	35	114
						Primary	132	49	181
						Secondary or above	419	71	490
						Total	630	155	785
b. Paternal educational status									
John et al 2019(61)*	National	Cross-sectional study	Mothers with children less than 24 months of age	5,546/5,546	No funding	Uneducated	1285	470	1755
						Primary	1221	356	1577
						Secondary or above	416	152	568
						Total	2922	978	3900
Tamiru et.al 2015(71)	SNNPR, Arba Minch Zuria Woreda	Cross-sectional study	Mothers of infants aged two years and younger	384/384	Arba Minch University	Uneducated	172	142	314
						Primary	32	18	50
						Secondary or above	16	4	20
						Total	220	164	384
Tariku et al 2017(75)	Amhara, Dabat District	Cross-sectional study *	Mothers with children aged less than 59 months	5,227/5,227	University of Gondar	Uneducated	286	268	554
						Primary	57	86	143
						Secondary or above	95	30	125
						Total	438	384	822
Woldemichael et.al 2016(73)	Oromia, Tiyo Woreda	Cross-sectional study	Mothers who have children less than one-year age	386/373	Addis Ababa University	Uneducated	33	39	72
						Primary	120	56	176
						Secondary or above	98	27	125
						Total	251	122	373
c. Household income									
Regassa, 2014(76)	SNNPR, Sidama	Cross-sectional	Mothers with infants aged	1100/1094	Norwegian	Low	670	166	836

	zone	study	between 0 and 6 months old		Government (HU-NORAD)	Medium	185	47	232
						High	22	5	27
						Total	877	218	1095
Tariku et al 2017(75)	Amhara, Dabat District	Cross-sectional study *	Mothers with children aged less than 59 months	5,227/ 5,227	University of Gondar	Low	103	204	307
						Medium	172	97	269
						High	163	83	246
						Total	438	384	822
Ekubay et al 2018(62)	Addis Ababa Town	Cross-sectional study	Mothers with infants younger than or equal to six months of age	597/583	Addis Ababa University	Low	38	22	60
						Medium	241	185	426
						High	50	28	78
						Total	329	235	564
Lakew et.al. 2015(66)*	National	Cross-sectional study	Mothers who had children less than 5 years	11,654/11,553	Not mentioned	Low	2727	2498	5225
						Medium	1254	1125	2379
						High	2212	1736	3948
						Total	6193	5359	11552
John et al 2019(61)*	National	Cross-sectional study	Mothers with children less than 24 months of age	5,546/5,546	No funding	Low	1399	467	1866
						Medium	648	219	867
						High	1017	371	1388
						Total	3064	1057	4121
Berhe et.al 2013(64)	Tigray, Mekelle town	Cross-sectional study	Mothers of children aged 0 to 24 months	361/361	Addis Ababa University	Low	43	10	53
						Medium	90	22	112
						High	128	33	161
						Total	261	65	326
Seid 2014(77)	Amhara, Bahir Dar City	Cross-sectional study	Mothers who delivered 12 months before the study began	819/ 819	University of Gondar	Low	376	44	420
						Medium	167	33	200
						High	166	29	195
						Total	709	106	815
Tilahun et al 2016(78)	Amhara, Debre Berhan town	Cross-sectional study	mothers who had children less than six months of age	416/ 409	University of Gondar	Low	77	59	136
						Medium	113	71	184
						High	66	23	89
						Total	256	153	409

d. Marital status									
Tamiru et.al 2012(70)	Oromia, Jimma Arjo Woreda	Cross-sectional study	Mothers of index children aged 0 to 6 months	384/ 382	Not mentioned	Married	231	137	368
						Other	4	3	7
						Total	235	140	375
Beyene et.al 2017(65)	SNNPR, Dale Woreda	Cross-sectional study	Mothers of children under 24 months	634/ 634	Addis Ababa University	Married	502	15	517
						Other	96	5	101
						Total	598	20	618
Woldemichael et.al. 2016(73)	Oromia, Tiyo Woreda	Cross-sectional study	Mothers who have children less than one-year age	386/373	Addis Ababa University	Married	244	117	361
						Other	7	5	12
						Total	251	122	373
Berhe et.al 2013(64)	Tigray, Mekelle town	Cross-sectional study	Mothers of children aged 0 to 24 months	361/361	Addis Ababa University	Married	256	71	327
						Other	22	8	30
						Total	278	79	357
Derse et.al 2017(60)*	Amhara, Dabat district	Cross-sectional study	Mothers with children under five years of age	6,761/ 6,761	PEPFAR-CDC	Married	2524	3359	5883
						Other	445	433	878
						Total	2969	3792	6761
John et al 2019(61)*	National	Cross-sectional study	Mothers with children less than 24 months of age	5,546/5,546	No funding	Married	2898	981	3879
						Other	166	76	242
						Total	3064	1057	4121
Liben et.al 2016(67)	Afar, Dubti town	Cross-sectional study	Mothers of infants aged less than 6 months	346/333	Samara University	Married	124	158	282
						Other	27	72	99
						Total	151	230	381
Setegn et.al 2011(68)	Oromia, Goba district	Cross sectional study	Mothers with children (< 12 months	668/ 608	Jimma University	Married	300	270	570
						Other	14	15	29
						Total	314	285	599
Tewabe 2016(79)	Amhara, Motta town	Cross-sectional study	Mothers with infant less than six-month-old	423/405	Addis Ababa University	Married	280	67	347
						Other	38	19	57
						Total	318	86	404
Ekubay et al 2018(62)	Addis Ababa Town	Cross-sectional study	mothers with infants ≤six months of age	597/583	Addis Ababa University	Married	295	213	508
						Other	34	22	56
						Total	329	235	564

Mekonen et.al. 2018(69)	Amhara, South Gondar	Cross-sectional study	Mothers of infants under 12 months	845/823	Not mentioned	Married	373	392	765
						Other	28	30	58
						Total	401	422	823
Deregh et al 2012(72)	Addis Ababa	Cross-sectional study	Mothers of babies admitted to the Neonatal Intensive Care Unit	429/429	Not mentioned	Married	57	265	322
						Other	2	16	18
						Total	59	281	340
e. Media exposure									
Adugna et.al 2014(58)	SNNPR, Arba Minch Zuria	Cross-sectional study	Women who had children under two years	384/383	Arba Minch University	Yes	106	78	184
						No	113	86	199
						Total	219	164	383
Tamiru et.al 2012(70)	Oromia, Jimma Arjo Woreda	Cross-sectional study	Mothers of index children aged 0 to 6 months	384/ 382	Not mentioned	Yes	110	67	177
						No	125	73	198
						Total	235	140	375
Tamiru et.al 2015(71)	SNNPR, Arba Minch Zuria Woreda	Cross-sectional study	Mothers of infants aged two years and younger	384/384	Arba Minch University	Yes	106	78	184
						No	113	86	199
						Total	219	164	383
Bimerew et al 2016(80)	Amhara, Dembecha Zuria Woreda	Cross-sectional study	Mothers who had at least one child less than 2 years of age	739/739	No funding	Yes	349	104	453
						No	191	95	286
						Total	540	199	739
Hailemariam et al 2015(81)	Oromia, East Wollega zone	Cross-sectional study	Mothers who had children less than 24 months	594/593	Wollega University	Yes	277	41	318
						No	196	55	251
						Total	473	96	569
Hoche et al 2018(82)	SNNPR, Hula District	Cross-sectional study	Mothers who had infants aged 6 to 12 months	634/ 634	No funding	Yes	261	277	538
						No	60	36	96
						Total	321	313	634
John et al 2019(61)*	National	Cross-sectional	Mothers with children less than 24 months of age	5,546/5,546	No funding	Yes	833	288	1121
						No	2231	769	3000
						Total	3064	1057	4121
Lakew et.al. 2015(66)*	National	Cross-sectional study	Mothers who had children less than 5 years	11,654/11,553	Not mentioned	Yes	3657	3115	6772
						No	2510	2244	4754
						Total	6167	5359	11526

Beyene et.al 2017(65)	SNNPR, Dale Woreda	Cross-sectional study	Mothers of children under 24 months	634/ 634	Addis Ababa University	Yes	304	80	384
						No	213	21	234
						Total	517	101	618
Ekubay et al 2018(62)	Addis Ababa Town	Cross-sectional study	mothers with infants ≤ six months of age	597/583	Addis Ababa University	Yes	250	183	433
						No	79	52	131
						Total	329	235	564
Mekonen et.al. 2018(69)	Amhara, South Gondar	Cross-sectional study	Mothers of infants under 12 months	845/823	Not mentioned	Yes	312	259	571
						No	89	163	252
						Total	401	422	823
f. Parity									
Beyene et.al 2017(65)	SNNPR, Dale Woreda	Cross-sectional study	Mothers of children under 24 months	634/ 634	Addis Ababa University	Primiparous	176	57	233
						Multiparous	341	44	385
						Total	517	101	618
Liben et.al 2016(67)	Afar, Dubti town	Cross-sectional study	Mothers of infants aged less than 6 months	346/333	Samara University	Primiparous	29	65	94
						Multiparous	122	165	287
						Total	151	230	381
Ekubay et al 2018(62)	Addis Ababa Town	Cross-sectional study	mothers with infants ≤ six months of age	597/583	Addis Ababa University	Primiparous	199	160	359
						Multiparous	130	75	205
						Total	329	235	564
Setegn et.al 2011(68)	Oromia, Goba district	Cross sectional study	Mothers with children (< 12 months	668/ 608	Jimma University	Primiparous	83	63	146
						Multiparous	226	223	449
						Total	309	286	595
Mekonen et.al. 2018(69)	Amhara, South Gondar	Cross-sectional study	Mothers of infants Under 12 months	845/823	Not mentioned	Primiparous	163	233	396
						Multiparous	238	189	427
						Total	401	422	823
Woldemichael et.al 2016(73)	Oromia, Tiyo Woreda	Cross-sectional study	Mothers who have children less than one-year age	386/373	Addis Ababa University	Primiparous	88	43	131
						Multiparous	163	79	242
						Total	251	122	373
Hoche et al 2018(82)	SNNPR, Hula District	Cross-sectional study	Mothers who had infants aged 6 to 12 months	634/ 634	No funding	Primiparous	183	228	411
						Multiparous	138	85	223
						Total	321	313	634

Gultie et.al 2016(59)	Amhara, Debre Berhan town	Cross-sectional study	Mothers having children Aged less than 23 months old	548/548	Not mentioned	Primiparous	158	34	192
						Multiparous	286	70	356
						Total	444	104	548
Deregh et al 2012(72)	Addis Ababa	Cross-sectional study	Mothers of babies admitted to the Neonatal Intensive Care Unit	429/429	Not mentioned	Primiparous	29	155	184
						Multiparous	30	126	156
						Total	59	281	340

**= Used Ethiopian Demographic Health Survey (EDHS) data; PEPFAR = The President's Emergency Plan for AIDS Relief; CDC = the Centers for Disease Control and Prevention (CDC); NORAD = Norwegian Agency for Development Cooperation; SNNPR = Southern Nations, Nationalities, and Peoples' Region*

Predicting factors

Maternal educational status

Seventeen studies(58-74) involving 31,066 mothers reported the association between maternal educational status and TIBF (Table 1a). Of which, four studies were conducted in Amhara region, three in Oromia region, three studies in Southern Nations, Nationalities and Peoples Region (SNNPR), and five studies in other regions (Addis Ababa, Afar, and Tigray). Two studies used nationally representative data. The odds of TIBF among mothers who attained primary education was 23% significantly higher than uneducated mothers (OR = 1.23; $p = 0.02$; 95% CI = 1.04 - 1.47; $I^2 = 80.89\%$) (Figure 1). The result of meta-regression analysis showed that region, residence, sample size and publication year were not the source of between-study heterogeneity. The odds of TIBF among mothers with secondary education or above was 82% significantly higher than uneducated mothers (OR = 1.82; $p < 0.001$; 95% CI = 1.35 - 2.45; $I^2 = 84.96\%$) (Supplementary Figure S1). The meta-regression analysis showed that 78.68% of the between-study heterogeneity explained by variation in region and publication year. Region had significant moderation effect (QM= 22.72, df = 6, $p < 0.01$). Additionally, the odds of TIBF among mothers with secondary education or above was 43% significantly higher than mothers who attained primary education (OR = 1.43; $p = 0.002$; 95% CI = 1.15 - 1.79, $I^2 = 73.03\%$) (Supplementary Figure S2). In all three comparisons, there was no significant publication bias (Supplementary Figures S3, S4, S5) and the evidence on the effect of maternal educational status on TIBF did not markedly change over time (Supplementary Figures S6, S7, S8). Overall, we observed a direct dose-response relationship between maternal educational status and TIBF.

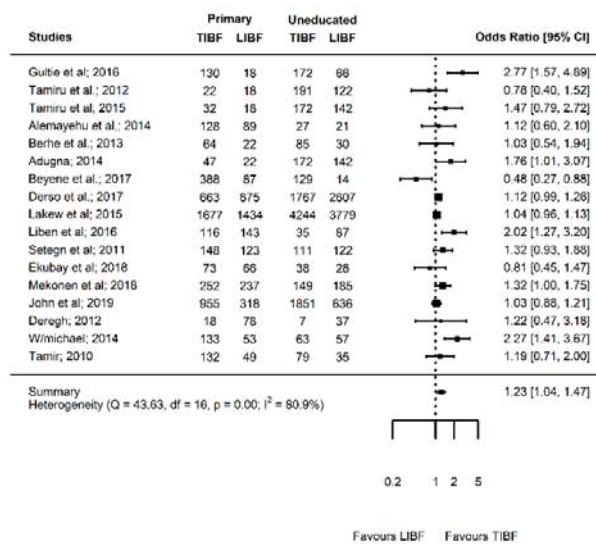


Figure 1: Forest plot showing the results of 17 studies examining the association between maternal educational status (primary education versus uneducated) and timely initiation of breast feeding.

Paternal educational status

Four studies(61, 71, 73, 75) with 11,491 mothers reported the association between paternal educational status and TIBF (Table 1b). These studies were conducted in Amhara, Oromia, and SNNPR. One study used nationally representative data. The odds of TIBF in mothers who had a spouse with primary education was 17% higher than mothers who had an uneducated spouse, although the difference was not statistically significant (OR = 1.17; p = 0.56; 95% CI = 0.69 - 2.01, I² = 89%) (Supplementary Figure S9). The meta-regression analysis revealed that 12.68% of between-study heterogeneity due to the difference in residence and publication year of studies, however, moderation effect was not observed. Mothers who had a spouse with secondary education or above were 2.72 times significantly higher chance of TIBF compared with mothers who had an uneducated spouse (OR = 2.72; p = 0.001, 95%CI = 1.49 - 4.97 I² = 62.50%) (Figure 2). This result was obtained after removing one outlier study(61) using Jackknife analysis. Moreover, the odds of TIBF in mothers who had a spouse with secondary education or above was 66% higher than mothers who had had a spouse with primary education although this difference was not statistically significant (OR = 1.66; p = 0.21; 95% CI = 0.75 - 3.66, I² = 90.44%) (Supplementary Figure S10). The meta-regression analysis revealed that 12.68% of between-study heterogeneity can be

explained by the difference in the residence but had no moderation effect. In all comparisons, there was no significant publication bias (Supplementary Figures S11, S12, S13). The evidence on the effect of paternal educational status on TIBF was mixed with dramatic decrement (Supplementary Figures S14 and S15) and stability (Supplementary Figure S16) over time. Similar to maternal educational status, there was a clear indication of the dose-response relationship between paternal educational status and TIBF, although the association was not consistent at different grade level.

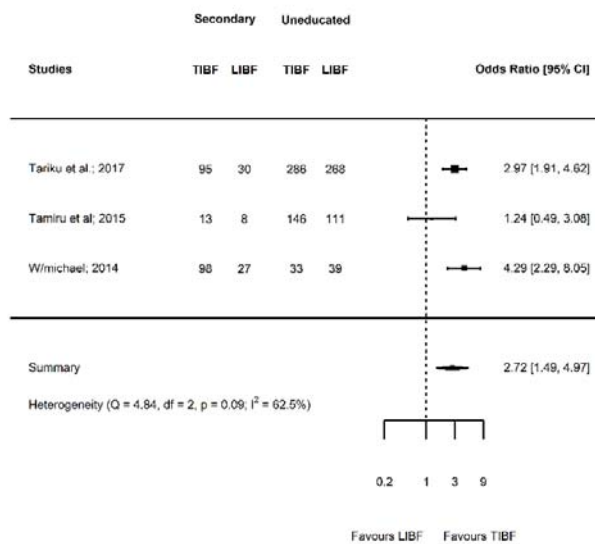


Figure 2: Forest plot showing the results of four studies examining the association between paternal educational status (Secondary or above versus uneducated) and timely initiation of breast feeding.

Household income

Eight studies(61, 62, 64, 66, 75-78) including 21,265 mothers reported the association between income and TIBF (Table 1c). Three studies conducted in Amhara region and the remaining three studies were from Addis Ababa, Tigray, and SNNPR. Two studies used nationally representative data. The odds of TIBF among mothers who had medium income was 10% higher than mothers who had low income (OR = 1.10; p = 0.64; 95% CI = 0.75 - 1.60; I² = 92.44%) (Supplementary Figure S17). The meta-regression analysis showed that the heterogeneity fully accounted for variation in region and residence, and these factors had a moderation effect as well (QM= 50.72, df = 5, p < 0.001). The odds of TIBF among mothers who had high income was 28% higher than mothers who had low income (OR =

1.28; $p = 0.25$; 95% CI = 0.84 - 1.96; $I^2 = 93.87\%$) (Supplementary Figure S18). The meta-regression analysis showed that 91.50% of the heterogeneity accounted for the variation in the region, residence, and sample size. These factors had also moderation effect (QM= 32.24, $df = 6$, $p < 0.01$). The odds of TIBF among mothers who had high income was 16% significantly higher than mothers who had medium income (OR = 1.16; $p = 0.002$; 95% CI = 1.05 - 1.27; $I^2 = 0.00\%$) (Figure 3). This was the estimate after excluding one outlier study(61) using Jackknife sensitivity analysis. There was no significant publication bias in all comparisons (Supplementary Figures S19, S20, S21). The evidence on the effect of income on TIBF was slightly increased over time (Supplementary Figures S22, S23, S24). Overall, there was a reverse dose-response relationship between income and TIBF, although the association was not consistently significant.

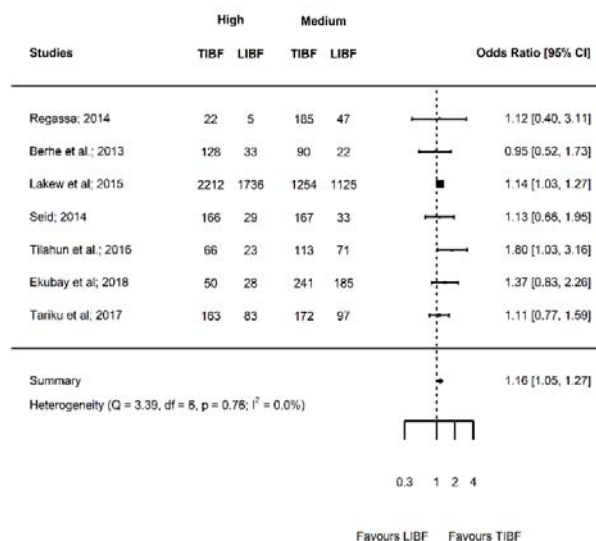


Figure 3: Forest plot showing the results of eight studies examining the association between household income (high versus medium) and timely initiation of breast feeding.

Marital status

Twelve studies(60-62, 64, 65, 67-70, 72, 73, 79) involving 17,259 mothers reported the association between marital status and TIBF (Table 1d). Three studies were conducted in Amhara region, three in Oromia region and the rest were conducted in Addis Ababa, Afar, and Tigray while one study was nationally conducted. One outlier study(60) was excluded after Jackknife sensitivity analysis. The odds of TIBF among married mothers was 39% significantly higher than unmarried mothers (OR = 1.39; $p = 0.001$; 95% CI = 1.14 - 1.69; $I^2 =$

9.17%) (Figure 4). There was no significant publication bias (Supplementary Figure S25). The evidence on the effect of marital status on TIBF was slightly increased over time (Supplementary Figure S26).

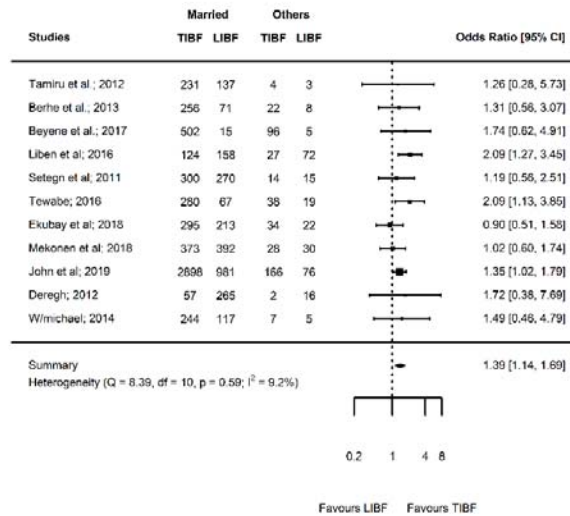


Figure 4: Forest plot showing the results of 11 studies examining the association between marital status (married versus others) and timely initiation of breast feeding.

Media exposure

Eleven studies (58, 61, 62, 65, 66, 69-71, 80-82) with 22,315 mothers reported the association between media exposure and TIBF (Table 1e). Four studies were conducted in SNNPR, two studies in Amhara region, two studies in Oromia region and one study in Addis Ababa. Two studies used nationally representative data. The odds of TIBF among mothers who were exposed to media was 5% higher than mothers who were not exposed media, although the difference was not statistically significant (OR = 1.05; p = 0.74; 95% CI = 0.79 - 1.40; I² = 92.15%) (Figure 5). There was no significant publication bias (Supplementary Figure S27).

The evidence on the effect of media exposure on TIBF over time was stable (Supplementary Figure S28). The meta-regression analysis result showed that 62.61% of the between-study heterogeneity accounted for the variation in region and publication year, however, none of these factors had moderation effect (QM= 16.44, df = 5, p = 0.05).

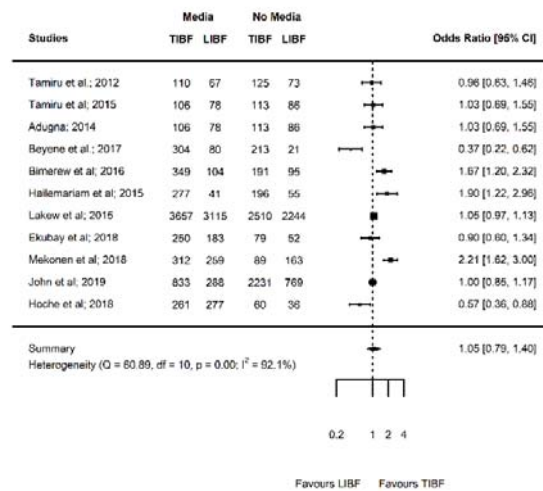


Figure 5: Forest plot showing the results of 11 studies examining the association between media exposure (yes versus no) and timely initiation of breast feeding.

Parity

Nine studies(59, 62, 65, 67-69, 72, 73, 82) with 4,993 mothers reported the association between parity and TIBF (Table 1f). Of these, two studies were conducted in Addis Ababa, two in Amhara, two in Oromia, two in SNNPR and one in Afar region. The odds of TIBF among multiparous mothers was 39% significantly higher than primiparous mothers (OR = 1.39; p = 0.01; 95% CI = 1.07 - 1.81; I² = 74.43%) (Figure 6). There was no significant publication bias (Supplementary Figure S29). The evidence on the effect of parity on TIBF was steadily increased over time (Supplementary Figure S30).

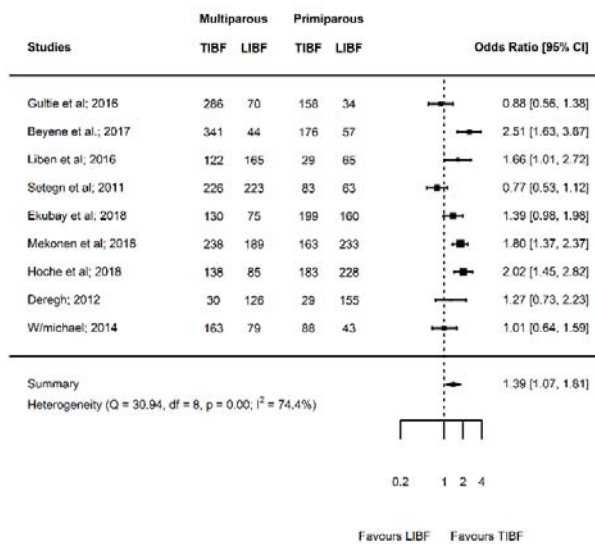


Figure 5: Forest plot showing the results of nine studies examining the association between parity (multiparous versus primiparous) and timely initiation of breast feeding.

Discussion

This meta-analysis unraveled the association between timely initiation of breast feeding (TIBF) and maternal educational status, paternal educational status, household income, marital status, media exposure, and parity. The key findings were TIBF significantly associated with maternal educational status, paternal educational status, household income, marital status, and parity. We further observed a clear dose-response relationship of TIBF with educational status and household income.

In this study, the odds of TIBF among mothers with primary education was significantly higher than uneducated mothers. The association was even stronger when we compare mothers with secondary education or above with uneducated mothers and mothers who attained primary education, which clearly shows a direct dose-relationship. We observed a similar association between paternal educational status and TIBF. This finding was in line with our hypothesis and studies in India, Nepal, and Timor-Leste.(83, 84) It is likely that education plays an important role in changing the beliefs and attitudes of mothers toward breast feeding, increasing confidence, increase spousal support, maximize ANC follow-up, increase maternal decision making and a higher likelihood of delivering at health institution. In addition, highly educated mothers and fathers could have high expectation, pose questions and request to be properly counselled. On the other hand, other studies(31, 32, 85) reported the absence of a significant association between education status and TIBF. Another study(86) revealed that high educational status found to be associated with delayed initiation of breast feeding. This inconsistency might be attributed to the difference in the study population, sample size and socioeconomic status. The pooled results of our meta-analysis and others (India, Nepal, and Timor-Leste) are based on nationally available studies or data.(83, 84) In addition, delayed initiation of breast feeding in highly educated mothers may be due to the use of private maternities and the larger rate of caesarean section.(87)

In agreement with previous studies(31, 87), we also showed mothers who had high income are likely to practice TIBF compared with mothers with low income. This might be due to wealthier mothers are more likely to follow the recommended level of antenatal care visits, deliver at health institution and receive adequate postnatal care which can help them to timely initiate breast feeding, whereas poor mothers are deprived of those economic advantages.(88-90) In our previous meta-analyses(30, 40, 41), we affirmed that antenatal

care, health institution delivery, and postnatal care significantly associated with optimal breast feeding. In contrast, evidence from Timor-Leste demographic and health survey showed that income was not associated with TIBF.(85)

Moreover, our meta-analysis also showed that currently married mothers timely initiate breast feeding compared with currently unmarried (i.e. single, widowed, divorced) mothers. This finding was supported by previous longitudinal family-based study.(91) This may result from several reasons. Married mothers could have higher incomes and educational levels(92), as we showed socioeconomic advantage increased likelihood of TIBF. In addition, previous study has shown that married mothers are more satisfied, committed to spousal relationships, get shared spousal support and reported less conflict, and therefore, married mothers can have high emotional responsibility to keep the health of the newborn and more likely to engage in positive parenting behaviours.(93) In contrast, a systematic review by Esteves and colleagues reported the absence of association between marital status and initiation of breast feeding in 10 out of 12 studies.(87) This discrepancy might be due to difference in cultural significance of marriage, as a result, the rate of marriage is low or high.

In this study, we further found a significant positive association between multiparity and TIBF. This finding supported our hypothesis and is similar to the evidence in Middle East countries.(32) This may be due to the knowledge advantage that experience give to multiparous women compared with the inexperienced primiparous women. There is evidence that multiparity is associated with better breastfeeding related knowledge.(94) In addition, the increased knowledge and experience may change maternal attitude and behaviour towards breast feeding. On the contrary, a systematic review reported the absence of association between parity and initiation of breast feeding.(87)

In this meta-analysis, we depicted the relevant effect of maternal and paternal education, income, marital status, and parity on breast feeding initiation. Therefore, health professionals should give special emphasis on uneducated or less educated parents with alternative supportive and educational interventions, such as prenatal education, counseling, and peer education.(83) School education is also required for young girls to increase breast feeding awareness and to prepare for motherhood.(83) Maternal education plays an important role in infant feeding behavioral change and to maintain the mother and

newborn health. Even though there has been huge improvements in women's education in Ethiopia, it has long been neglected and remains much lower than men. In addition, interventions targeting fathers at antenatal and postnatal periods may increase breast feeding practices, and should be incorporated in breast feeding programs.(95) Improving the economic power of women would also increase TIBF practice. Furthermore, health professionals should give attention to single and primiparous mothers before, during and after birth. The training of health community agents and structural changes in health services might be relevant to increase TIBF practice.(87)

This meta-analysis showed the strength of association and provided national evidence as previous national, regional, or international studies lacked to report the pooled effect of various relevant factors affecting TIBF. Thus, future researchers in low- and middle-income countries can focus on meta-analysis instead of narrative review. To minimize the possibility of missing relevant studies, we have used a combination of electronic databases search and manual search of cross-references, grey literature, and table of contents of relevant journals. Furthermore, this meta-analysis was conducted based on a published protocol to minimize methodological biases.

We admitted that this meta-analysis has also limitations, which should be taken into account during the translation of results. All the studies included in this meta-analysis were cross-sectional study, which hinders inference on a cause-effect relationship. The risk of measurement error and recall bias should also be acknowledged. Interestingly, almost all included studies were conducted in mothers with a newborn less than 23 months. In relation to this, the maternal recall is found to be a valid and reliable estimate of breast feeding initiation and duration when the data is collected within three years of breast feeding history.(96) Social desirability bias could also be evident given that self-reported breast feeding experience, educational status and income was used. In addition, the household income classifications are not standardized and did not account for indices such as inflation, which changes over time. Another problem was the confounding effect that cannot be excluded given that the reported effect size in this meta-analysis was not adjusted to covariates, such as breast feeding counseling during ANC and PNC follow-up. Studies were lacking in some regions for some variables, which may limit generalizability of our findings. Despite this fact, at least one study used nationally representative data per each variable. In

addition, only four studies investigated the association between paternal educational status and TIBF, which may limit the statistical power of our meta-analysis. This meta-analysis only covers studies in Ethiopia; therefore, a comparative meta-analysis from other LMCs and developed countries is required. Moreover, statistical heterogeneity was observed in some of the analysis. Even though residual heterogeneity is still evident, we managed this problem by conducting meta-regression analysis and by removing outlier studies using the Jackknife method. In addition, clinical heterogeneity was minimized by including only studies conducted on healthy mothers and newborns. Methodological heterogeneity was minimized by including studies that reported TIBF based on WHO definition, selected study subjects using a random sampling method, and similar study design and data collection methods. The dose-response relationship of multiparity and TIBF was not investigated due to the huge difference between included studies in the categorization of multiparity. A further limitation of this study was that maternal and paternal education represents the formal education gained through schooling and it may not reflect the health literacy of the mothers and fathers. Finally, the results cannot be extrapolated to mothers and newborns with HIV/AIDS or other medical illness.

Measuring breast feeding is challenging, and the use of standardized questions may be interpreted differently according to sociocultural contexts and differing probing techniques by interviewers.(97) In developing countries, breast feeding coverage is relatively good but we noted studies focused only on factors affecting breast feeding. To bridge this gap, future studies in Ethiopia should focus on investigating the effect of breast feeding on maternal and newborn health outcomes, such as cardiometabolic diseases, neuropsychological diseases, and psychiatric disorders. All included studies in the current review performed the traditional bivariate and multiple logistic regression. As a result, studies on associated factors should deeply consider the interconnection between predictors and apply detailed statistical analysis methods, such as mediation and moderation analysis. For example, it is suggested that geographical, socioeconomic, individual, and health-specific levels factors lower TIBF practice by influencing prelacteal feeding and discarding colostrum, accessibility of information and media, perception, support and milk sufficiency, and involvement of mothers in decision making.(34) Moreover, future research should examine the possible causations between predicting factors and TIBF

practices in Ethiopia by implementing longitudinal research designs and large cohort-based studies, which can therefore, produce more accurate and insightful results. Overall, we observed a substantial inconsistency regarding predicting factors across nations; therefore, context-specific meta-analysis is required to strengthen inferences.

To concluded, proximal and distal factors significantly predicting TIBF practice in Ethiopia, which needs integrated intervention by health professionals and healthcare policymakers. Health education, counselling and peer education targeting parents at antenatal and postnatal periods are needed. It is also relevant to improve the economic power of women and promote gender equality.

Acknowledgment

We would like to Sjoukje van der Werf (librarian at the University Medical Center Groningen, the Netherlands) for her expert advice on search strategies and Balewgizie Sileshi (University of Groningen, the Netherlands) for his help to screen titles and abstracts.

Data sharing statement

All data generated or analysed in this study are included in the article and its supplementary files.

Contributors

TD conceived and designed the study, analyzed the data and interpreted the results. TD and SM extracted the data and wrote the first draft of the manuscript. All authors involved in writing, revising and providing intellectual comments, and approved the final manuscript.

Funding

This research received no specific grant from any funding agency in the public, commercial or not-for-profit sectors.

Competing interests

None declared.

1. . Breastfeeding: nutrition. http://www.unicef.org/nutrition/index_24824.html. August/05 2016
2. WHO Secretariat. Early Initiation of Breastfeeding: the Key to Survival and Beyond 2010
3. UNICEF W. Capture the Moment – Early initiation of breastfeeding: The best start for every newborn. 2018
4. Bernard JY, Armand M, Garcia C, *et al*. The association between linoleic acid levels in colostrum and child cognition at 2 and 3 y in the EDEN cohort. *Pediatr Res* 2015;77(6):829
5. Khan J, Vesel L, Bahl R, Martines JC. Timing of breastfeeding initiation and exclusivity of breastfeeding during the first month of life: effects on neonatal mortality and morbidity—a systematic review and meta-analysis. *Matern Child Health J* 2015;19(3):468-479
6. Mullany LC, Katz J, Li YM, *et al*. Breast-feeding patterns, time to initiation, and mortality risk among newborns in southern Nepal. *J Nutr* 2008;138(3):599-603
7. Edmond KM, Zandoh C, Quigley MA, Amenga-Etego S, Owusu-Agyei S, Kirkwood BR. Delayed breastfeeding initiation increases risk of neonatal mortality. *Pediatrics* 2006;117(3):e380-e386
8. Reading R. Effect of breastfeeding on infant and child mortality due to infectious diseases in less developed countries: a pooled analysis. *Ambulatory Child Health* 2000;6(2):133-134
9. Boccolini CS, de Carvalho ML, de Oliveira MIC, Pérez-Escamilla R. Breastfeeding during the first hour of life and neonatal mortality. *Jornal de Pediatria* 2013;89(2):131-136
10. Boucher O, Julvez J, Guxens M, *et al*. Association between breastfeeding duration and cognitive development, autistic traits and ADHD symptoms: a multicenter study in Spain. *Pediatr Res* 2017;81(3):434
11. Rodriguez-Lopez M, Osorio L, Acosta-Rojas R, *et al*. Influence of breastfeeding and postnatal nutrition on cardiovascular remodeling induced by fetal growth restriction. *Pediatr Res* 2016;79(1-1):100
12. Black RE, Victora CG, Walker SP, *et al*. Maternal and child undernutrition and overweight in low-income and middle-income countries. *The Lancet* 2013;382(9890):427-451
13. Rollins NC, Bhandari N, Hajeebhoy N, *et al*. Why invest, and what it will take to improve breastfeeding practices?. *The Lancet* 2016;387(10017):491-504
14. Clark SG, Bungum TJ. The benefits of breastfeeding: An introduction for health educators. *California Journal of Health Promotion* 2003;1(3):158
15. Elizabeth KE. Feeding of Young infants and Children in Exceptionally Difficult Circumstances (like, HIV and humanitarian emergencies): Solution Exchange for MCH Community Newsletter, Breastfeeding Month Special. 2008
16. World Health Organization. . Exclusive breastfeeding for six months best for babies everywhere. 2011 2012
17. Ogbo FA, Page A, Idoko J, Claudio F, Agho KE. Diarrhoea and Suboptimal Feeding Practices in Nigeria: Evidence from the National Household Surveys. *Paediatr Perinat Epidemiol* 2016

18. Lim SS, Vos T, Flaxman AD, *et al.* A comparative risk assessment of burden of disease and injury attributable to 67 risk factors and risk factor clusters in 21 regions, 1990–2010: a systematic analysis for the Global Burden of Disease Study 2010. *The Lancet* 2012;380(9859):2224-2260
19. Begum K, Dewey KG. Impact of early initiation of exclusive breastfeeding on newborn deaths. 2010
20. Ayalew T, Tewabe T, Ayalew Y. Timely initiation of breastfeeding among first time mothers in Bahir Dar city, North West, Ethiopia, 2016. *Pediatr Res* 2019:1
21. Mekonnen Y, Tensou B, Telake DS, Degefe T, Bekele A. Neonatal mortality in Ethiopia: trends and determinants. *BMC Public Health* 2013;13(1):1
22. CSA I. Ethiopia demographic and health survey 2011. Addis Ababa, Ethiopia and Calverton, Maryland, USA: Central Statistical Agency and ICF International 2012
23. Aynalem YA, Habtewold TD, Shibabaw W, Yirga T, Dargie A. The magnitude of neonatal mortality and its predictors in Ethiopia: a systematic review and meta-analysis. *bioRxiv* 2019:626879
24. World Health Organization. Babies and mothers worldwide failed by lack of investment in breastfeeding. *Saudi Med J* 2017;38(9):974-975
25. Friedrich M. Early Initiation of Breastfeeding. *JAMA* 2018;320(11):1097-1097
26. Oakley L, Benova L, Macleod D, Lynch CA, Campbell OM. Early breastfeeding practices: Descriptive analysis of recent Demographic and Health Surveys. *Maternal & child nutrition* 2018;14(2):e12535
27. Gebremedhin S. Core and optional infant and young child feeding indicators in Sub-Saharan Africa: a cross-sectional study. *BMJ open* 2019;9(2):bmjopen-2018-023238
28. Esteves TMB, Daumas RP, Oliveira, Maria Inês Couto de, Andrade, Carlos Augusto de Ferreira de, Leite IC. Factors associated to breastfeeding in the first hour of life: systematic review. *Rev Saude Publica* 2014;48(4):697-708
29. Macro O. Central Statistical Agency: Ethiopia Demographic and Health Survey 2005. ORC Macro, Calverton, Maryland, USA 2006
30. Habtewold T, Mohammed S, Endalamaw A, *et al.* Breast and complementary feeding in Ethiopia: new national evidence from systematic review and meta-analyses of studies in the past 10 years. *Eur J Nutr* 2018
31. Ogbo FA, Eastwood J, Page A, *et al.* The impact of sociodemographic and health-service factors on breast-feeding in sub-Saharan African countries with high diarrhoea mortality. *Public Health Nutr* 2017;20(17):3109-3119
32. Alzaheb RA. A Review of the Factors Associated With the Timely Initiation of Breastfeeding and Exclusive Breastfeeding in the Middle East. *Clinical Medicine Insights: Pediatrics* 2017;11:1179556517748912
33. Benedict RK, Craig HC, Torlesse H, Stoltzfus RJ. Trends and predictors of optimal breastfeeding among children 0–23 months, South Asia: Analysis of national survey data. *Maternal & child nutrition* 2018;14:e12698

34. Sharma IK, Byrne A. Early initiation of breastfeeding: a systematic literature review of factors and barriers in South Asia. *International breastfeeding journal* 2016;11(1):17
35. Dhandapany G, Bethou A, Arunagirinathan A, Ananthakrishnan S. Antenatal counseling on breastfeeding—is it adequate? A descriptive study from Pondicherry, India. *International Breastfeeding Journal* 2008;3(1):1
36. Tarrant RC, Kearney JM. Session 1: Public health nutrition Breast-feeding practices in Ireland. *Proc Nutr Soc* 2008;67(04):371-380
37. Morhason-Bello IO, Adedokun BO, Ojengbede OA. Social support during childbirth as a catalyst for early breastfeeding initiation for first-time Nigerian mothers. *International breastfeeding journal* 2009;4(1):1
38. Flacking R, Nyqvist KH, Ewald U. Effects of socioeconomic status on breastfeeding duration in mothers of preterm and term infants. *Eur J Public Health* 2007;17(6):579-584
39. Dearden K, Altaye M, Maza Id, *et al*. Determinants of optimal breast-feeding in peri-urban Guatemala City, Guatemala. *Revista Panamericana de Salud Pública* 2002;12(3):185-192
40. Habtewold TD, Sharew NT, Alemu SM. Effect of gender of new-born, antenatal care and postnatal care on breastfeeding practices in Ethiopia: Evidence from systematic review and meta-analysis of national studies. *bioRxiv* 2018:405605
41. Alemu SM, Alemu YM, Habtewold TD. Association of age and colostrum discarding with breast-feeding practice in Ethiopia: systematic review and meta-analyses. *Public Health Nutr* 2019:1-20
42. Gomez-Pomar E, Blubaugh R. The Baby Friendly Hospital Initiative and the ten steps for successful breastfeeding. a critical review of the literature. *Journal of Perinatology* 2018:1
43. Ethiopia Federal Ministry of Health. Ethiopian National strategy for Infant and Young Child Feeding (IYCF) 2004
44. Federal Democratic Republic of Ethiopia Ministry of Health. HSTP Health Sector Transformation Plan 2015/16-2019/20 (2008-2012 EFY) 2015
45. Assefa T, Samuel A, Argaw A, *et al*. Assessment of status of infant and young child feeding (IYCF) practice, policy and programs: Achievements and Gaps, in Ethiopia. *European Journal of Nutrition & Food Safety* 2015:1085-1086
46. Federal Democratic Republic of Ethiopia. National Nutrition Program 2016-2020 2016
47. World Health Organization. Indicators for assessing infant and young child feeding practices: part 1: definitions: conclusions of a consensus meeting held 6-8 November 2007 in Washington DC, USA 2008
48. Moher D, Liberati A, Tetzlaff J, Altman DG, Prisma Group. Preferred reporting items for systematic reviews and meta-analyses: the PRISMA statement. *PLoS med* 2009;6(7):e1000097
49. Munn Z, Tufanaru C, Aromataris E. JBI's systematic reviews: data extraction and synthesis. *Am J Nurs* 2014;114(7):49-54
50. Peterson J, Welch V, Losos M, Tugwell P. . The Newcastle-Ottawa scale (NOS) for assessing the quality of nonrandomised studies in meta-analyses 2011

51. Habtewold TD, Islam MA, Sharew NT, Mohammed SH, Birhanu MM, Tegegne BS. Systematic review and meta-analysis of infant and young child feeding Practices (ENAT-P) in Ethiopia: protocol. *BMJ Open* 2017;7(8):e017437-2017-017437
52. Egger M, Davey Smith G, Schneider M, Minder C. Bias in meta-analysis detected by a simple, graphical test. *BMJ* 1997;315(7109):629-634
53. Higgins J, Thompson SG. Quantifying heterogeneity in a meta-analysis. *Stat Med* 2002;21(11):1539-1558
54. Viechtbauer W. Conducting meta-analyses in R with the metafor package. *Journal of statistical software* 2010;36(3)
55. Tsumoto S, Hirano S. Formal Analysis of Leave-One-Out Methods Based on Incremental Sampling Scheme 2014;2:371-378
56. Demilew YM, Tafere TE, Abitew DB. Infant and young child feeding practice among mothers with 0-24 months old children in Slum areas of Bahir Dar City, Ethiopia. *Int Breastfeed J* 2017;12:26-017-0117-x. eCollection 2017
57. Belachew A. Timely initiation of breastfeeding and associated factors among mothers of infants age 0–6 months old in Bahir Dar City, Northwest, Ethiopia, 2017: a community based cross-sectional study. *International breastfeeding journal* 2019;14(1):5
58. Adugna DT. Women's perception and risk factors for delayed initiation of breastfeeding in Arba Minch Zuria, Southern Ethiopia. *Int Breastfeed J* 2014;9:8-4358-9-8. eCollection 2014
59. Gultie T, Sebsibie G. Determinants of suboptimal breastfeeding practice in Debre Berhan town, Ethiopia: a cross sectional study. *Int Breastfeed J* 2016;11:5-016-0063-z. eCollection 2016
60. Derso T, Biks GA, Tariku A, *et al.* Correlates of early neonatal feeding practice in Dabat HDSS site, northwest Ethiopia. *Int Breastfeed J* 2017;12:25-017-0116-y. eCollection 2017
61. John JR, Mistry SK, Kebede G, Manohar N, Arora A. Determinants of early initiation of breastfeeding in Ethiopia: a population-based study using the 2016 demographic and health survey data. *BMC pregnancy and childbirth* 2019;19(1):69
62. Ekubay M, Berhe A, Yisma E. Initiation of breastfeeding within one hour of birth among mothers with infants younger than or equal to 6 months of age attending public health institutions in Addis Ababa, Ethiopia. *International breastfeeding journal* 2018;13(1):4
63. Alemayehu M, Abreha K, Yebyo H, Zemichael K, Gebremichael H. Factors associated with timely initiation and exclusive breast feeding among mothers of Axum town, Northern Ethiopia. *Sci J Public Health* 2014;2(5):394-401
64. Berhe H, Mekonnen B, Bayray A, Berhe H. Determinants of Breast feeding Practices Among Mothers Attending Public Health Facilities, Mekelle, Northern Ethiopia; A Cross Sectional Study. *International Journal of Pharmaceutical Sciences and Research* 2013;4(2):650
65. Beyene MG, Geda NR, Habtewold TD, Assen ZM. Early initiation of breastfeeding among mothers of children under the age of 24 months in Southern Ethiopia. *Int Breastfeed J* 2017;12:1-016-0096-3. eCollection 2016

66. Lakew Y, Tabar L, Haile D. Socio-medical determinants of timely breastfeeding initiation in Ethiopia: Evidence from the 2011 nation wide Demographic and Health Survey. *Int Breastfeed J* 2015;10:24-015-0050-9. eCollection 2015
67. Liben ML, Yesuf EM. Determinants of early initiation of breastfeeding in Amibara district, Northeastern Ethiopia: a community based cross-sectional study. *Int Breastfeed J* 2016;11:7-016-0067-8. eCollection 2016
68. Setegn T, Gerbaba M, Belachew T. Determinants of timely initiation of breastfeeding among mothers in Goba Woreda, South East Ethiopia: a cross sectional study. *BMC Public Health* 2011;11:217-2458-11-217
69. Mekonen L, Seifu W, Shiferaw Z. Timely initiation of breastfeeding and associated factors among mothers of infants under 12 months in South Gondar zone, Amhara regional state, Ethiopia; 2013. *International breastfeeding journal* 2018;13(1):17
70. Tamiru D, Belachew T, Loha E, Mohammed S. Sub-optimal breastfeeding of infants during the first six months and associated factors in rural communities of Jimma Arjo Woreda, Southwest Ethiopia. *BMC Public Health* 2012;12:363-2458-12-363
71. Tamiru D, Tamrat M. Constraints to the optimal breastfeeding practices of breastfeeding mothers in the rural communities of Arba Minch Zuria Woreda, Ethiopia: A community-based, cross-sectional study. *S Afr J Clin Nutr* 2015;28(3):134-139
72. Deregh. Breastfeeding practices among mothers of babies admitted to NICU, TAH, Addis Ababa, and factors influencing practice 2012
73. Woldemichael B, Kibie Y. Timely Initiation of Breastfeeding and Its Associated Factors among Mothers in Tiyo Woreda, Arsi Zone, Ethiopia: A Community-Based Cross Sectional Study. *Clinics Mother Child Health* 2016;13(221):2
74. Tamir. Assessment of optimal breastfeeding among working and stay-at-home mothers in Bahir Dar town Amhara regional state, north west of Ethiopia 2010
75. Tariku A, Biks GA, Wassie MM, Worku AG, Yenit MK. Only half of the mothers practiced early initiation of breastfeeding in Northwest Ethiopia, 2015. *BMC research notes* 2017;10(1):501
76. Regassa N. Infant and child feeding practices among farming communities in Southern Ethiopia. *Kontakt* 2014;16(4):e215-e222
77. Musa Seid A. Vaginal Delivery and Maternal Knowledge on Correct Breastfeeding Initiation Time as Predictors of Early Breastfeeding Initiation: Lesson from a Community-Based Cross-Sectional Study. *ISRN Epidemiology* 2014;2014
78. Tilahun G, Degu G, Azale T, Tigabu A. Prevalence and associated factors of timely initiation of breastfeeding among mothers at Debre Berhan town, Ethiopia: a cross-sectional study. *Int Breastfeed J* 2016;11:27
79. Tewabe T. Timely initiation of breastfeeding and associated factors among mothers in Motta town, East Gojjam zone, Amhara regional state, Ethiopia, 2015: a cross-sectional study. *BMC Pregnancy Childbirth* 2016;16(1):314

80. Bimerew A, Teshome M, Kassa GM. Prevalence of timely breastfeeding initiation and associated factors in Dembecha district, North West Ethiopia: a cross-sectional study. *Int Breastfeed J* 2016;11:28
81. Hailemariam TW, Adeba E, Sufa A. Predictors of early breastfeeding initiation among mothers of children under 24 months of age in rural part of West Ethiopia. *BMC Public Health* 2015;15:1076-015-2420-z
82. Hoche S, Meshesha B, Wakgari N. Sub-optimal breastfeeding and its associated factors in rural communities of Hula District, southern Ethiopia: a cross-sectional study. *Ethiopian journal of health sciences* 2018;28(1):49-62
83. Acharya P, Khanal V. The effect of mother's educational status on early initiation of breastfeeding: further analysis of three consecutive Nepal Demographic and Health Surveys. *BMC Public Health* 2015;15(1):1069
84. Patel A, Banerjee A, Kaletwad A. Factors associated with prelacteal feeding and timely initiation of breastfeeding in hospital-delivered infants in India. *Journal of Human Lactation* 2013;29(4):572-578
85. Senarath U, Dibley M, Agho K. Breastfeeding practices and associated factors among children under 24 months of age in Timor-Leste. *Eur J Clin Nutr* 2007;61(3):387
86. Silveira RBd, Albernaz E, Zuccheto LM. Fatores associados ao início da amamentação em uma cidade do sul do Brasil. *Rev.bras.saúde mater.infant* 2008;8(1):35-43
87. Esteves TMB, Daumas RP, Oliveira, Maria Inês Couto de, Andrade, Carlos Augusto de Ferreira de, Leite IC. Factors associated to breastfeeding in the first hour of life: systematic review. *Rev Saude Publica* 2014;48:697-708
88. Karkee R, Lee AH, Khanal V. Need factors for utilisation of institutional delivery services in Nepal: an analysis from Nepal Demographic and Health Survey, 2011. *BMJ Open* 2014;4(3):e004372-2013-004372
89. Joshi C, Torvaldsen S, Hodgson R, Hayen A. Factors associated with the use and quality of antenatal care in Nepal: a population-based study using the demographic and health survey data. *BMC pregnancy and childbirth* 2014;14(1):94
90. Nawal D, Goli S. Birth preparedness and its effect on place of delivery and post-natal check-ups in Nepal. *PloS one* 2013;8(5):e60957
91. Gibson-Davis CM, Brooks-Gunn J. The association of couples' relationship status and quality with breastfeeding initiation. *Journal of Marriage and Family* 2007;69(5):1107-1117
92. Li R, Darling N, Maurice E, Barker L, Grummer-Strawn LM. Breastfeeding rates in the United States by characteristics of the child, mother, or family: the 2002 National Immunization Survey. *Pediatrics* 2005;115(1):e31-7
93. Seltzer JA. Families formed outside of marriage. *Journal of marriage and family* 2000;62(4):1247-1268
94. Mallik S, Dasgupta U, Naskar S, Sengupta D, Choudhury K, Bhattacharya S. Knowledge of breast feeding and timely initiation of it amongst post natal mothers: An experience from a baby friendly

teaching hospital of a metropolitan city. IOSR Journal of Dental and Medical Sciences 2013;4(1):25-30

95. Bich TH, Long TK, Hoa DP. Community-based father education intervention on breastfeeding practice—Results of a quasi-experimental study. *Maternal & child nutrition* 2019;15:e12705

96. Li R, Scanlon KS, Serdula MK. The validity and reliability of maternal recall of breastfeeding practice. *Nutr Rev* 2005;63(4):103-110

97. Salasibew MM, Filteau S, Marchant T. A qualitative study exploring newborn care behaviours after home births in rural Ethiopia: implications for adoption of essential interventions for saving newborn lives. *BMC Pregnancy Childbirth* 2014;14:412-014-0412-0