

1 **Differential expression of plasma proteins in pregnant women exposed to *Plasmodium falciparum***
2 **malaria**

3
4 Bernard N. Kanoi^{1*}, Harrison Waweru¹, Francis M. Kobia¹, Joseph Mukala², Peter Kirira³, Dominic
5 Mogere², Radiosa Gallini⁴, Mikael Åberg⁵, Manu Vatish⁶, Jesse Gitaka^{1*#}, Masood Kamali-
6 Moghaddam^{4*#}

7
8 ¹*Centre for Malaria Elimination, Institute of Tropical Medicine, Mount Kenya University, Thika, Kenya*

9 ²*School of Public Health, Thika, Kenya*

10 ³*School of Pure and Applied Sciences, Mount Kenya University, Thika, Kenya*

11 ⁴*Department of Immunology, Genetics & Pathology, Science for Life Laboratory, Uppsala University,*
12 *Uppsala, Sweden*

13 ⁵*Unit of Affinity Proteomics Uppsala, Science for Life Laboratory, Sweden; Department⁵Department of*
14 *Medical Sciences, Section of Clinical Microbiology, Chemistry and SciLifeLab Affinity Proteomics,*
15 *Uppsala University, Uppsala, Sweden.*

16 ⁶*Nuffield Department of Women's & Reproductive Health, University of Oxford, Oxford, UK*

17

18 # Shared senior authorship

19

20 *** Correspondence:**

21 *Centre for Malaria Elimination, Institute of Tropical Medicine, Mount Kenya University, Thika, Kenya.*
22 *Bernard Kanoi, bkanoi@mku.ac.ke*

23 *Centre for Malaria Elimination, Institute of Tropical Medicine, Mount Kenya University, Thika, Kenya.*
24 *Jesse Gitaka, jgitaka@mku.ac.ke*

25 ⁴*Department of Immunology, Genetics & Pathology, Science for Life Laboratory, Uppsala University,*
26 *Uppsala, Sweden, Masood Kamali-Moghaddam, masood.kamali@igp.uu.se*

27 **Abstract**

28 In sub-Saharan Africa, pregnant women are at greater risk of malaria infection than non-pregnant
29 adult women. The infection may lead to pregnancy-associated malaria (PAM) because of the sequestration
30 of *Plasmodium falciparum*-infected erythrocytes in the placental intervillous space. Although there are
31 several tools for diagnosing malaria infection during pregnancy, including blood smear microscopic
32 examination, rapid diagnostic tests, and PCR, there are no tools for detecting placental infection and, by
33 extension, any dysfunction associated with PAM. Thus, PAM, specifically placental infection, can only be
34 confirmed via postnatal placental histopathology. Therefore, there is an urgent need for specific serum
35 biomarkers of PAM. Here, we used the high throughput proximity extension assay to screen plasma from
36 malaria-exposed pregnant women for differentially expressed proteins that can predict PAM or adverse
37 malaria outcomes. Such biomarkers may also elucidate the pathophysiology of PAM. We observed that the
38 IgG Fc receptor IIb (Uniprot ID P31994) and HO-1 (P09601) are consistently highly expressed in malaria-
39 positive samples compared to samples from malaria-negative pregnant women. On the contrary, NRTN
40 (Q99748) and IL-20 (Q9NYY1) were differentially expressed in the malaria-negative women. IL-20
41 exhibited the highest discriminatory power (AUC = 0.815), indicating a strong association with malaria
42 status. These proteins should be considered for further evaluation as biomarkers of malaria-induced
43 placental dysfunction in pregnant women.

44

45 **Keywords:** Pregnancy-associated malaria, malaria in pregnancy, biomarkers, falciparum malaria,
46 proteomics, proximity extension assay

47 **Introduction**

48 Pregnant women in most tropical areas are at an increased risk of malaria because of the placental
49 sequestration of *Plasmodium falciparum* (*P. falciparum*)-infected red blood cells, which can lead to
50 stillbirth and low birth weight [1]. Despite the availability of numerous diagnostic tools for detecting
51 malaria during pregnancy, there is a lack of a definitive test for determining actual placental infection and
52 dysfunction within the context of pregnancy-associated malaria (PAM) [2]. PAM has several similarities
53 with pre-eclampsia, for which several biomarkers of placental stress and dysfunction have been identified
54 [3,4]. While some of these biomarkers are inflammatory markers that lack specificity, others, such as s-
55 endoglin and sFlt1, which are elevated in peripheral blood during pre-eclampsia, appear more specific to
56 placental dysfunction [5]. The predictive value of such biomarkers should be evaluated in the context of
57 PAM to determine their effectiveness as indicators of PAM-associated placental infection and dysfunction
58 [6]. This is crucial for enhancing the diagnosis of typically sub-microscopic malaria infections and malaria-
59 induced placental dysfunction, thereby facilitating timely intervention in pregnant women. Indeed,
60 comprehension of disease biology and the interaction between the malaria parasite and the human host is
61 crucial for developing diagnostic, prognostic, and uncovering predictive biomarkers for PAM [7].
62 Elucidating the expression patterns of plasma proteins can provide insights into how PAM affects placental,
63 maternal, or fetal wellbeing [6,8].

64
65 The rapid development of proteomics platforms, such as multiplex proximity extension assay
66 (PEA), offers highly effective, high-throughput strategies for studying malaria-associated molecular
67 pathophysiological changes [9]. PEA technology enables simultaneous measurement of a large number of
68 proteins using minute amount of sample [7,10]. Studies using this approach have demonstrated its clinical
69 utility in identifying important biomarkers for various diseases, including cancer, long COVID, ischemic
70 stroke, and early pregnancy bleeding [10–15]. In this study, we used PEA to screen sera from pregnant,
71 malaria-exposed women to identify differentially expressed proteins. Using this strategy, we identified four
72 proteins significantly differentially expressed in samples from malaria-infected pregnant women compared
73 with non-infected pregnant counterparts, suggesting that their alteration is *P. falciparum*-driven. Such
74 proteins can potentially develop into biomarkers of PAM or adverse malaria outcomes.

75 **Material and methods**

76

77 **Study design & population.**

78

79 This study used serum samples collected from women between 12 and 18 weeks of gestation. These
80 women were enrolled in the study during their routine antenatal clinic visits at Webuye County Hospital in
81 Bungoma County, Kenya, a region characterized by high malaria transmission [16]. The study protocol and
82 the use of this well-characterized biobank of samples were approved by the Independent Ethics Research
83 Committee (IERC) of Mount Kenya University (No# MKU/IERC/0543, MKU/IERC/2461). The enrolled
84 cohort consisted of women undergoing routine intermittent preventive malaria treatment in pregnancy
85 (IPTp) with sulfadoxine-pyrimethamine (IPTp-SP) [17]. All study participants gave written informed
86 consent before joining the study. The study protocol complied with the International Conference on
87 Harmonization Good Clinical Practices and the Declaration of Helsinki guidelines [18]. Serum samples
88 were collected 4 weeks after IPTp administration and frozen immediately, and then transported on dry ice
89 to the Centre for Malaria Elimination laboratories at Mount Kenya University and immediately stored in a
90 -80°C deep freezer without cold-chain interruption. Each serum sample was matched with corresponding
91 anonymized demographic and pregnancy outcome data. Data on pregnancy progress and outcomes were
92 collected during the scheduled and unscheduled visits. Malaria diagnosis was performed using both
93 microscopy and a ParaCheck Rapid Diagnostic Kit (Orchid Biomedical Systems, India).

94

95 **Protein abundance measurement by multiplex proximity extension assay**

96 Multiplex PEA technology was used to analyze protein expression in the sera samples using the
97 Olink Inflammation and Cardiovascular II protein panels (Olink™ Proteomics, Uppsala Sweden,
98 <https://olink.com>), loading 1µL sample/panel. These panels were selected since they target inflammatory
99 and vascular pathophysiological proteomic signatures, which were hypothesized to be altered by PAM. In
100 PEA, each target protein is recognized by two antibodies attached to single-stranded DNA oligonucleotide
101 [11]. When a pair of antibodies binds to the same target protein, the conjugated DNA oligonucleotides are
102 brought in proximity and hybridize to each other. Subsequently, the DNA molecules are extended to form
103 a double-stranded DNA as template for quantitative PCR amplification [11]. The results are presented as
104 normalized protein expression (NPX) values, which are arbitrary units on a log₂ scale, where a one-unit
105 increase in NPX corresponds to a two-fold increase in protein concentration. The limit of detection (LOD)
106 for each protein was determined based on three times the standard deviation (SD) above the NPX value of
107 the negative controls in each run. In this study, a total of 183 different proteins were measured, where each

108 panel included 92 proteins involved in diverse biological processes and 4 technical controls. Analyses were
109 performed at the Clinical Biomarker Facility at SciLifeLab, Uppsala University.

110

111 **Data analysis**

112 Data analyses were performed using R software (www.r-project.org). Normalized protein
113 expression (NPX) values were used for analysis because they tend to follow a normal distribution. Samples
114 from malaria infected group and the controls were randomized within the plates to minimize variability
115 between plates. The inter-plate variation was further normalized for each protein in each plate by adding a
116 z-score factor, which was calculated as follows: $\text{factor} = (\text{actual value} - \text{median of all samples}) / \text{standard}$
117 deviation . To compare malaria cases and controls, NPX values were adjusted if a significant effect (adjusted
118 p value < 0.05) for age on protein levels was found by linear regression in both the control and malaria
119 groups.

120 For univariate analysis, the difference in protein levels between the malaria and non-malaria groups
121 was examined using linear regression, using age and gravida as covariates. The dependent variable was
122 NPX, and the independent variables were malaria status. The likelihood ratio test was used to assess the
123 significance of the difference. The statistical significance of the differences between two groups was
124 determined for continuous variables using the Mann–Whitney–Wilcoxon test. For categorical variables, the
125 Chi-square or Fisher's exact test was used. The analysis of variance (ANOVA) test was used to compare
126 more than two groups. The paired Mann–Whitney–Wilcoxon test was used to compare different malaria
127 groups. Spearman's rank rho was used to test the correlation coefficients or collinearity between each
128 protein marker and other continuous variables. The Bonferroni–Dunn post hoc test was used to correct for
129 multiple testing by adjusting the p -values for false discovery rate. A difference was considered significant
130 if the q -value (adjusted p -value) was less than 0.05.

131 Additionally, elastic-net penalized logistic regression (ENLR) was used to identify a combination
132 of analytes that could improve the discrimination between cases and controls. ENLR applies a penalty to
133 the regression coefficients and finds groups of correlated variables. The optimal penalization proportion α
134 was determined using grid search with a 10-fold cross-validation. The optimal tuning parameter λ was
135 determined as the mean value of 100 iterative lambda values that minimized the model's deviance. The
136 regression coefficients were used to assess the contribution of individual proteins to the case-control
137 discrimination. The ENLR model was estimated using the R package `glmnet` [19]. The regression
138 coefficients for the selected proteins were then calculated by rerunning ENLR with only proteins with non-
139 zero coefficients after 10 repetitions. To determine the number of proteins required to predict PAM, ROC

140 curves were generated while adding one more protein at a time and then compared with the first ROC curve.
 141 This process was repeated until none of the ROC curves showed significant improvement.

142 Results

143
 144 **Protein reactivity**
 145 PEA is optimal for quantification of the levels of soluble plasma proteins in small sample volumes.
 146 Here, to identify proteins that might indicate *P. falciparum* infection during pregnancy, we probed the Olink
 147 Target 96 Inflammation and Olink Target 96 Cardiovascular II Panels (**Table S1**) using serum samples
 148 collected from 50 women, who were sampled at three different timepoints during pregnancy (**Table 1**). The
 149 initial sampling was performed at 12–18 weeks of gestation and two more samples were collected one and
 150 two months before delivery. Twelve (12) women (median age: 24 years, range: 20–29 years) had malaria
 151 infection that was detectable using a rapid diagnostic test. The women in the different groups did not differ
 152 significantly in terms of age, gravidity, hemoglobin levels, and gestational age.

153
 154

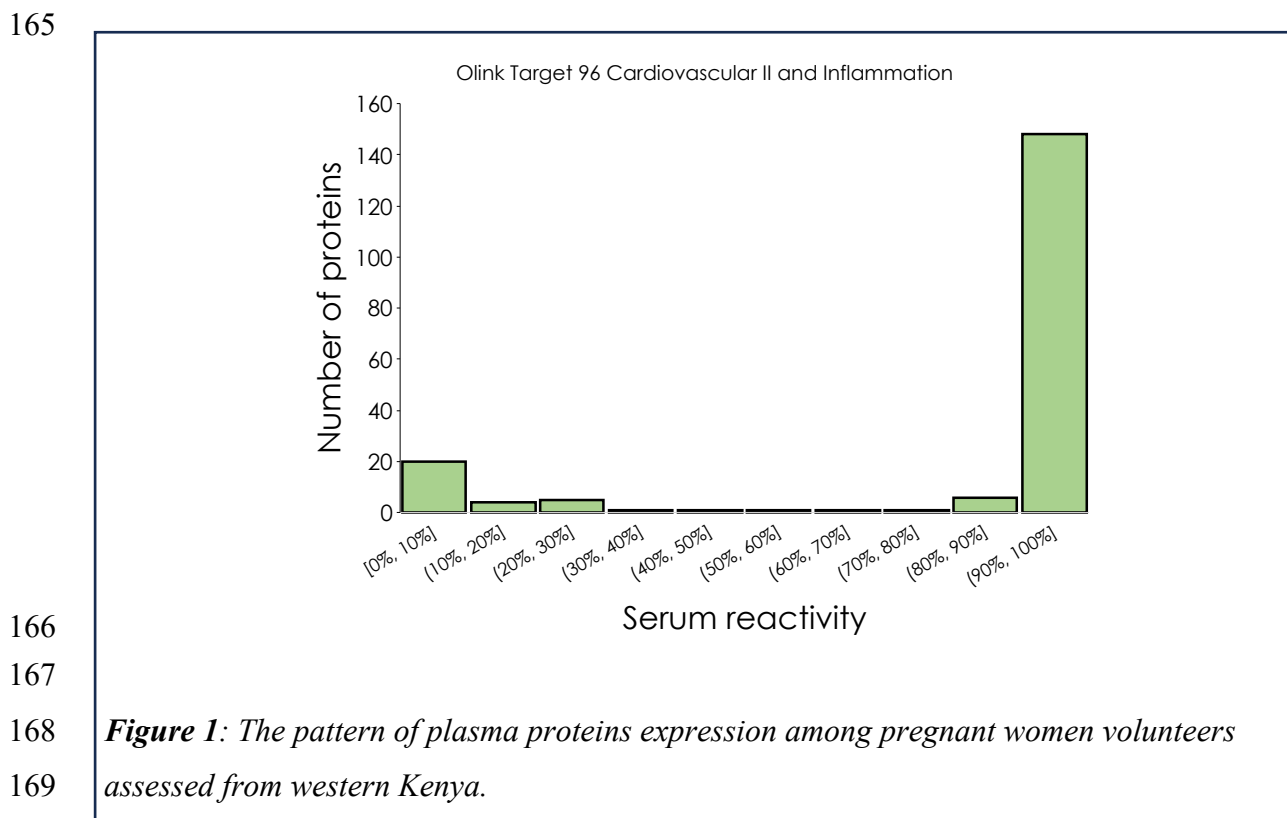
155 **Table 1. Characteristics of the women assessed in this study.**

Characteristics	Malaria (n=12)	No Malaria (n=38)	Overall (n=50)	P value
Age in years at enrollment, mean (mean, range)	24.0 (20.0 - 29.0)	27.3 (19.0 - 42.0)	26.9 (19.0 - 42.0)	0.7775
Gestation in weeks (mean, range) ^a	18.7 (10.0 - 26.0)	14.2 (4.0 - 28.0)	21.8 (4.0 - 28.0)	0.005
Gravida (range)	1.8 (1.0 - 3.0)	2.5 (1.0 - 5.0)	2.3 (1.0 - 5.0)	0.07
Hemoglobin (mean, IQR, g/dL) ^a	11.5 (7.6 - 13.6)	12.8 (9.6 - 15.8)	12.5 (7.6 - 15.8)	0.011
Random sugar Levels (mean, IQR, mmol/L)	5.4 (4.7 - 6.4)	4.9 (4.0 - 6.5)	5.0 (4.0-6.5)	0.10

156
 157 ^a Statistically significant between the groups ($P < 0.05$ Mann-Whitney-Wilcoxon test; followed by
 158 Bonferroni–Dunn post hoc test); [°] malaria was defined as any parasitemia with or without fever;
 159 IQR = interquartile range; All participants were of the same ethnicity.

160 **Protein reactivity and the characteristic of the sampled women**

161 Protein reactivity to the proteomic panels was measured at three different visits per participant.
162 The pattern of expression profiles varied considerably among the volunteers, with most proteins being
163 present at different time points (first, second and third trimester) for most women. However, in about
164 10% of the women, less than 20 proteins were detected (**Figure 1**).



170

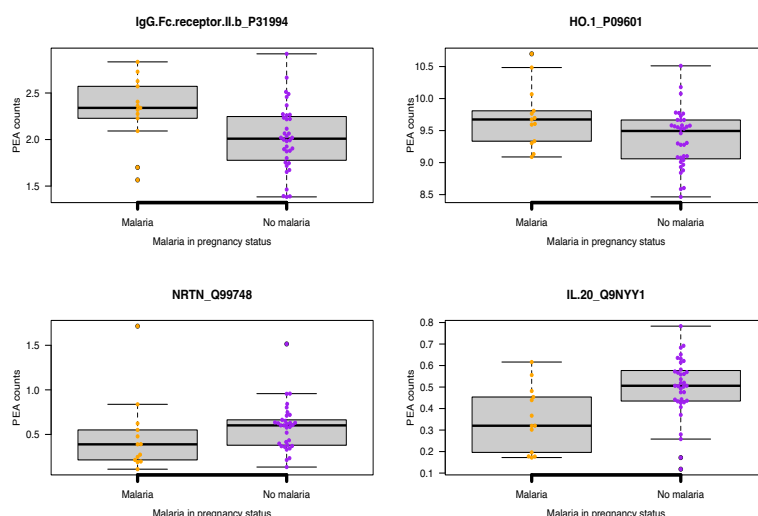
171 To assess if there was any relationship between serum protein levels and participant
172 characteristics, such as age, gravida, and gestational age, we conducted a correlation analysis to each
173 of these parameters against the NPX for each protein. Although there was no correlation between
174 protein levels and participants' age, overall plasma protein levels were higher in samples from
175 primigravida (first-time pregnant) women when compared with multigravida women (who have had 2–
176 5 pregnancies), although the difference did not reach statistical significance (Table S2).

177 We further assessed the relationship between markers of morbidity, including hemoglobin and
178 random blood sugars, and expressed plasma proteins. We observed that 19 proteins were significantly
179 negatively correlated with hemoglobin levels, and 9 proteins with random blood sugar levels
180 (unadjusted $P < 0.05$). However, the correlations did not remain significant after False Discovery Rate
181 (FDR) adjustments. Our findings suggest that these proteins may have a role in malaria infection
182 or that they may be involved in the development and/or progression of pregnancy
183 complications, such as anemia and/or gestational diabetes.

184

185 **Differential protein expression in malaria vs no malaria women**

186 Next, we sought to identify differential protein expression in malaria vs non-malaria women.
187 This analysis showed that 48 proteins were significantly differentially expressed in malaria vs no
188 malaria women, at least in one of the three clinic visits (**Table S2**). Notably, IgG Fc receptor IIb
189 (Uniprot ID: P31994) and HO-1 (P09601) were consistently highly expressed in malaria-positive
190 samples when compared with malaria-negative samples, while NRTN (Q99748) and IL-20 (Q9NYY1)
191 were consistently highly expressed in sera from malaria-negative women (**Figure 2**). This data suggest
192 that malaria infection may downregulate or upregulate various proteins.
193

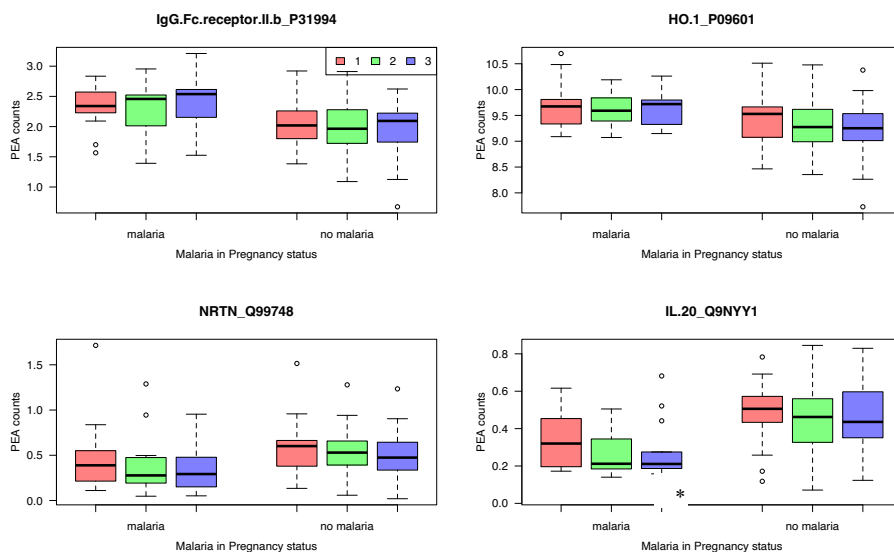


194 **Figure 2:** Differential protein expression in malaria-infected vs non malaria-infected women.
195 The title represent protein Uniprot acronym and ID. Relative PEA counts are derived from
196 NPX/ LOD to allow protein-to-protein comparison.
197
198

199 We therefore sought to assess if the levels of these proteins fluctuated during the antepartum
200 period using samples collected at different pregnancy timepoints. Except for IL-20, whose serum levels
201 reduced during the follow-up period, there was no significant change in the other proteins, suggesting
202 that the initial induction by malaria infection did not alter the levels of these proteins during the follow-
203 up period. The top differentially expressed proteins are presented in **Figure 3**, and the full protein list
204 is presented in Supplementary **Tables S3**.

205

206



207
208 *Figure 3: Kinetics of protein expression in malaria-infected vs non-malaria-infected women at*
209 *three time points during the pregnancy – 1st (red), 2nd (green) and 3rd Visit (blue). * Represent*
210 *statistical difference between hospital visits, (Kruskal Wallis, $P < 0.005$).*

211 212 **Protein levels could distinguish malaria cases vs controls**

213 We also assessed whether a combination of serum proteins could distinguish malaria cases vs
214 controls. This analysis revealed varying predictive performance among the four proteins we examined
215 in relation to malaria status. IL-20 (Q9NYY1) protein exhibited the highest discriminatory power (AUC
216 = 0.815), indicating a strong association with malaria status (**Figure 4**). This suggests that IL-20
217 expression levels serve as a promising biomarker for malaria diagnosis or prognosis. IgG Fc receptor
218 IIb (Uniprot ID: P31994) protein demonstrated moderate discriminatory ability (AUC = 0.717),
219 suggesting a notable but less pronounced association with malaria status compared to IL-20. Similarly,
220 HO-1 (P09601) protein also displayed moderate discriminatory power (AUC = 0.729), indicating some
221 association with malaria status, although not as strong as IL-20. NRTN (Q99748) protein, with the
222 lowest AUC value (AUC = 0.635), showed weaker discriminatory ability compared to the other proteins.
223 Although NRTN expression levels may still have some association with malaria status, the association
224 is less pronounced compared to IL-20, IgG Fc receptor IIb, and HO-1.

225

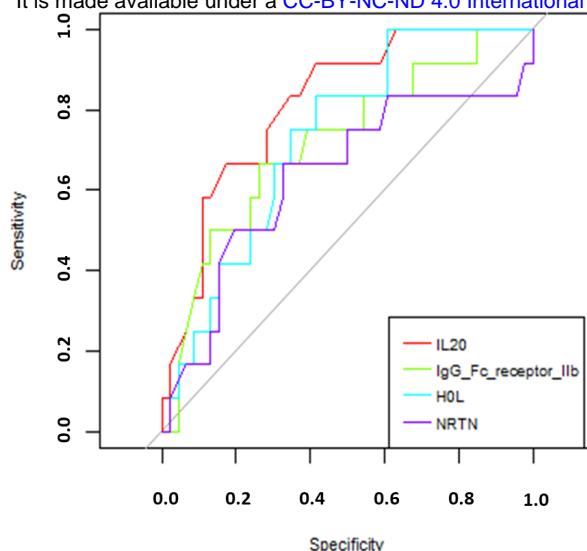


Figure 4: ROC curves for different protein expression levels in malaria- vs non-malaria-infected women. Each protein has been assigned a colour code, as indicated in the legend.

Discussion

Accurate tools for diagnosing malaria during pregnancy are urgently needed to guide effective clinical interventions [20]. In this study, we aimed to identify potential markers of malaria infection by using high-throughput PEA technology. We observed that IgG Fc receptor IIb (Uniprot ID, P31994), HO-1 (P09601), NRTN (Q99748) and IL-20 (Q9NYY1) were differentially expressed in sera from malaria-infected pregnant women vs from non-malaria-infected controls. Moreover, these proteins may also highlight processes that underlie malaria pathophysiology during pregnancy.

IgG Fc receptor IIb (FCGR2B, Uniprot ID, P31994), a low affinity immunoglobulin gamma Fc region receptor, has multiple isoforms in macrophages, lymphocytes, and IgG-transporting placental epithelium [21]. It is the only inhibitory Fc receptor that controls many aspects of immune and inflammatory responses [22]. Variations in the gene encoding this protein, such as loss-of-function polymorphism, have implications for autoimmunity and infection, including severe malaria. FCGR2B is involved in several processes, including Fc receptor-mediated immune complex endocytosis, nervous system development, and immune responses [23]. Other studies have identified FCGR2B as a marker of human metastatic melanoma, where its expression impairs the tumor susceptibility to FcγR-dependent innate effector responses [24]. With the availability of monoclonal antibodies against FCGR2B [25], studies are needed to evaluate its potential as a biomarker of PAM.

251 We also identified HO-1 (heme oxygenase-1) as abundantly expressed in PAM cases. HO-1
252 plays a crucial role in heme degradation and cellular responses to stress [26]. During pregnancy, HO-1
253 maintains a balanced immune response and supports healthy placental development [27]. Evidence
254 from a mouse model [27] indicates that it helps protect against oxidative stress and inflammation, which
255 are often elevated in pregnancy-associated conditions. We hypothesize that in the context of pregnancy-
256 associated malaria, HO-1 may play a role in mitigating the adverse effects of the infection by reducing
257 oxidative stress and inflammation.

258

259 Two other proteins that decreased in PAM cases, Neurturin (NRTN) and Interleukin-20 (IL-
260 20), deserve further evaluation. NRTN has been implicated in supporting healthy placental growth and
261 development. It is also involved in the regulation of blood vessel formation and trophoblast invasion,
262 which are critical for successful pregnancy outcomes [28]. IL-20 plays a critical role in the development
263 and maintenance of the placenta, as well as in the regulation of trophoblast invasion, angiogenesis and
264 vascular remodeling [29]. Thus, IL-20 downregulation during PAM might contribute to poor pregnancy
265 outcomes. Indeed, disruptions in IL-20 signaling have been associated with adverse pregnancy
266 outcomes [30]. In the context of pregnancy-associated malaria, IL-20 may modulate the inflammatory
267 response and placental immune tolerance, potentially impacting the severity and outcomes of the
268 infection. These molecules need further evaluation.

269

270 The choice of two Olink panels, Inflammation and Cardiovascular II, provided a wide repertoire
271 of proteins with a critical role during pregnancy or with diagnostic capability for assessing malaria
272 infection of the placenta. However, the panels could have excluded other potentially important
273 proteomic targets, and future studies should aim to include a more diverse range of proteins. This study
274 involved a relatively small sample size and was based on a single study center. Hence, these
275 observations warrant further validation using larger, multicenter malaria-in-pregnancy cohorts. Because
276 this study is correlative, future studies will also seek to experimentally validate the involvement of the
277 identified factors in malaria during pregnancy and the underlying mechanisms, which may uncover
278 additional diagnostic and therapeutic strategies.

279

280 In conclusion, this study identified four proteins that were differentially regulated between
281 malaria and non-malaria women. Through further investigation, expression of these proteins could
282 potentially be validated for diagnosis of pregnancy-associated malaria.

283 **Acknowledgements**

284 We appreciate the study volunteers from Webuye County Hospital and thank the research teams
285 from Mount Kenya University for their technical assistance in obtaining and processing the field samples.

286

287 **Funding**

288 This work was funded by InDevelops u-landsfond InDevelops u-landsfond grant to MKM and JG,
289 African Academy of Sciences to JG, and the Swedish Research Council under the grant 2020-02258 to
290 MKM. BNK is an EDCTP Fellow under EDCTP2 programme supported by the European Union grant
291 number TMA2020CDF-3203-EndPAMAL. BNK has also received support from Terumo Life Science
292 Foundation. The funders had no role in study design, data collection and analysis, decision to publish, or
293 preparation of the manuscript.

294

295 **Competing interests**

296 The authors declare that the research was conducted in the absence of any commercial or financial
297 relationships that could be construed as a potential conflict of interest.

298

299 **Authors contribution**

300 BNK, MKM, MV and JG conceived and designed experiments. FMK, HW, JM, and RG
301 conducted experiments. BNK, RG, FMK, and HW analyzed the data. BNK, FMK, and JG wrote the
302 manuscript. All authors discussed and edited the manuscript.

303

304 **References**

305 [1] Rogerson SJ, Mwapasa V, Meshnick SR. Malaria in pregnancy: linking immunity and
306 pathogenesis to prevention. *Am J Trop Med Hyg* 2007;77:14–22.

307 [2] Brabin BJ. An analysis of malaria in pregnancy in Africa. *Bull World Health Organ*
308 1983;61:1005–16.

309 [3] Brabin BJ, Johnson PM. Placental malaria and pre-eclampsia through the looking glass
310 backwards? *J Reprod Immunol* 2005;65:1–15.
311 <https://doi.org/https://doi.org/10.1016/j.jri.2004.09.006>.

312 [4] Roberts JM, Lain KY. Recent Insights into the Pathogenesis of Pre-eclampsia. *Placenta*
313 2002;23:359–72. <https://doi.org/https://doi.org/10.1053/plac.2002.0819>.

314 [5] Jena MK, Sharma NR, Petitt M, Maulik D, Nayak NR. Pathogenesis of Preeclampsia and

- 315 Therapeutic Approaches Targeting the Placenta. *Biomolecules* 2020;10.
316 <https://doi.org/10.3390/biom10060953>.
- 317 [6] Gueneuc A, Deloron P, Bertin GI. Usefulness of a biomarker to identify placental
318 dysfunction in the context of malaria. *Malar J* 2017;16:1–7.
319 <https://doi.org/10.1186/s12936-016-1664-0>.
- 320 [7] Acharya P, Garg M, Kumar P, Munjal A, Raja KD. Host-parasite interactions in human
321 malaria: Clinical implications of basic research. *Front Microbiol* 2017;8:1–16.
322 <https://doi.org/10.3389/fmicb.2017.00889>.
- 323 [8] Unger HW, Ome-Kaius M, Wangnapi RA, Umbers AJ, Hanieh S, Suen CSNLW, et al.
324 Sulphadoxine-pyrimethamine plus azithromycin for the prevention of low birthweight in
325 Papua New Guinea: A randomised controlled trial. *BMC Med* 2015;13:1–16.
326 <https://doi.org/10.1186/s12916-014-0258-3>.
- 327 [9] Wik L, Nordberg N, Broberg J, Björkesten J, Assarsson E, Henriksson S, et al. Proximity
328 Extension Assay in Combination with Next-Generation Sequencing for High-throughput
329 Proteome-wide Analysis. *Mol Cell Proteomics* 2021;20:100168.
330 <https://doi.org/10.1016/j.mcpro.2021.100168>.
- 331 [10] Dayon L, Cominetti O, Affolter M. Proteomics of human biological fluids for biomarker
332 discoveries: technical advances and recent applications. *Expert Rev Proteomics*
333 2022;19:131–51. <https://doi.org/10.1080/14789450.2022.2070477>.
- 334 [11] Assarsson E, Lundberg M, Holmquist G, Björkesten J, Thorsen SB, Ekman D, et al.
335 Homogenous 96-plex PEA immunoassay exhibiting high sensitivity, specificity, and
336 excellent scalability. *PLoS One* 2014;9. <https://doi.org/10.1371/journal.pone.0095192>.
- 337 [12] Allan-Blitz L-T, Akbari O, Kojima N, Saavedra E, Chellamuthu P, Denny N, et al. Unique
338 immune and inflammatory cytokine profiles may define long COVID syndrome. *Clin Exp*
339 *Med* 2023;23:2925–30. <https://doi.org/10.1007/s10238-023-01065-6>.
- 340 [13] Angerfors A, Brännmark C, Lagging C, Tai K, Månsby Svedberg R, Andersson B, et al.
341 Proteomic profiling identifies novel inflammation-related plasma proteins associated with
342 ischemic stroke outcome. *J Neuroinflammation* 2023;20:1–11.
343 <https://doi.org/10.1186/s12974-023-02912-9>.
- 344 [14] Davies MPA, Sato T, Ashoor H, Hou L, Liloglou T, Yang R, et al. Plasma protein
345 biomarkers for early prediction of lung cancer. *EBioMedicine* 2023;93:1–11.
346 <https://doi.org/10.1016/j.ebiom.2023.104686>.
- 347 [15] Guterstam YC, Acharya G, Schott K, Björkström NK, Gidlöf S, Ivarsson MA. Immune
348 cell profiling of vaginal blood from patients with early pregnancy bleeding. *Am J Reprod*
349 *Immunol* 2023;90:1–13. <https://doi.org/10.1111/aji.13738>.
- 350 [16] Platt A, Obala AA, MacIntyre C, Otsyula B, Meara WPO. Dynamic malaria hotspots in an
351 open cohort in western Kenya. *Sci Rep* 2018;8:1–11. <https://doi.org/10.1038/s41598-017->

- 352 13801-6.
- 353 [17] Peters PJ, Thigpen MC, Parise ME, Newman RD. Safety and toxicity of
354 sulfadoxine/pyrimethamine: implications for malaria prevention in pregnancy using
355 intermittent preventive treatment. *Drug Saf* 2007;30:481–501.
356 <https://doi.org/10.2165/00002018-200730060-00003>.
- 357 [18] Dixon JRJ. The International Conference on Harmonization Good Clinical Practice
358 guideline. *Qual Assur* 1998;6:65–74. <https://doi.org/10.1080/105294199277860>.
- 359 [19] Fredriksson S, Gullberg M, Jarvius J, Olsson C, Pietras K, Gústafsdóttir SM, et al. Protein
360 detection using proximity-dependent DNA ligation assays. *Nat Biotechnol* 2002;20:473–
361 7. <https://doi.org/10.1038/nbt0502-473>.
- 362 [20] Friedman JH, Hastie T, Tibshirani R. Regularization Paths for Generalized Linear Models
363 via Coordinate Descent. *J Stat Softw* 2010;33:1–22. <https://doi.org/10.18637/jss.v033.i01>.
- 364 [21] Ding XC, Incardona S, Serra-Casas E, Charnaud SC, Slater HC, Domingo GJ, et al.
365 Malaria in pregnancy (MiP) studies assessing the clinical performance of highly sensitive
366 rapid diagnostic tests (HS-RDT) for *Plasmodium falciparum* detection. *Malar J*
367 2023;22:1–15. <https://doi.org/10.1186/s12936-023-04445-1>.
- 368 [22] Stuart SG, Simister NE, Clarkson SB, Kacinski BM, Shapiro M, Mellman I. Human IgG
369 Fc receptor (hFcRII; CD32) exists as multiple isoforms in macrophages, lymphocytes and
370 IgG-transporting placental epithelium. *EMBO J* 1989;8:3657–66.
371 <https://doi.org/10.1002/j.1460-2075.1989.tb08540.x>.
- 372 [23] Smith KGC, Clatworthy MR. Europe PMC Funders Group Fc γ RIIB in autoimmunity
373 and infection : evolutionary and therapeutic implications 2014;10:328–43.
374 <https://doi.org/10.1038/nri2762.Fc>.
- 375 [24] Bournazos S, Woof JM, Hart SP, Dransfield I. Functional and clinical consequences of Fc
376 receptor polymorphic and copy number variants. *Clin Exp Immunol* 2009;157:244–54.
377 <https://doi.org/10.1111/j.1365-2249.2009.03980.x>.
- 378 [25] Cassard L, Cohen-Solal JFG, Fournier EM, Camilleri-Broët S, Spatz A, Chouaïb S, et al.
379 Selective expression of inhibitory Fc γ receptor by metastatic melanoma impairs tumor
380 susceptibility to IgG-dependent cellular response. *Int J Cancer* 2008;123:2832–9.
381 <https://doi.org/10.1002/ijc.23870>.
- 382 [26] Veri MC, Gorlatov S, Li H, Burke S, Johnson S, Stavenhagen J, et al. Monoclonal
383 antibodies capable of discriminating the human inhibitory Fc γ -receptor IIB (CD32B) from
384 the activating Fc γ -receptor IIA (CD32A): Biochemical, biological and functional
385 characterization. *Immunology* 2007;121:392–404. <https://doi.org/10.1111/j.1365-2567.2007.02588.x>.
- 387 [27] Ozen M, Zhao H, Kalish F, Yang Y, Jantzie LL, Wong RJ, et al. Inflammation-induced
388 alterations in maternal-fetal Heme Oxygenase (HO) are associated with sustained innate

- 389 immune cell dysregulation in mouse offspring. PLoS One 2021;16:1–18.
390 <https://doi.org/10.1371/journal.pone.0252642>.
- 391 [28] Schumacher A, Zenclussen AC. Effects of heme oxygenase-1 on innate and adaptive
392 immune responses promoting pregnancy success and allograft tolerance. Front Pharmacol
393 2015;5:1–9. <https://doi.org/10.3389/fphar.2014.00288>.
- 394 [29] Morel L, Domingues O, Zimmer J, Michel T. Revisiting the Role of Neurotrophic Factors
395 in Inflammation. Cells 2020;9. <https://doi.org/10.3390/cells9040865>.
- 396 [30] Menon R, Ismail L, Ismail D, Merialdi M, Lombardi SJ, Fortunato SJ. Human fetal
397 membrane expression of IL-19 and IL-20 and its differential effect on inflammatory
398 cytokine production. J Matern Neonatal Med 2006;19:209–14.
399 <https://doi.org/10.1080/14767050500440986>.

401