

1 **Non-invasive fasciculation assessment of**  
2 **gastrocnemius failed to show diagnostic or**  
3 **prognostic utility in ALS**

4

5 **Authors**

6 Robbie Muir<sup>1\*</sup>, Brendan O'Shea<sup>1\*</sup>, Raquel Iniesta<sup>2</sup>, Urooba Masood<sup>1</sup>, Cristina Cabassi<sup>1</sup>,  
7 Domen Planinc<sup>1</sup>, Emma Hodson-Tole<sup>3</sup>, Emmanuel Drakakis<sup>4</sup>, Martyn Boutelle<sup>4</sup>, Christopher  
8 E Shaw<sup>1,5,6</sup> & James Bashford<sup>1</sup>

9 *\*First authorship is shared.*

10

11 **Affiliations**

12 <sup>1</sup>Department of Basic and Clinical Neuroscience, Maurice Wohl Clinical Neuroscience  
13 Institute, King's College London, London, UK

14 <sup>2</sup>Department of Biostatistics and Health Informatics, King's College London, London, UK

15 <sup>3</sup>Department of Life Sciences, Musculoskeletal Sciences and Sports Medicine Research  
16 Centre, Manchester Metropolitan University, Manchester, UK

17 <sup>4</sup>Department of Bioengineering, Imperial College London, London, UK

18 <sup>5</sup>UK Dementia Research Institute Centre at King's College London, School of Neuroscience,  
19 King's College London, Strand, London, WC2R 2LS, UK

20 <sup>6</sup>Centre for Brain Research, University of Auckland, 85 Park Road, Grafton, Auckland, 1023,  
21 New Zealand

22

23 **Correspondence:** Dr James Bashford, Maurice Wohl Clinical Neuroscience Institute, King's  
24 College London, 5 Cutcombe Road, London, SE5 9RT, UK.

25 E-mail: [james.bashford@kcl.ac.uk](mailto:james.bashford@kcl.ac.uk)

26 Website: <https://kcl.ac.uk/spiqe>

27 Twitter: [@SPiQeneurology](https://twitter.com/SPiQeneurology)

28

29 **Word count:** 3523 (excluding references and figure legends)

30

31

32

### 33 **Highlights**

34

- 35 • Fasciculation parameters from the medial gastrocnemius muscle have poor ability to differentiate ALS
- 36 patients from controls.
- 37 • Fasciculation parameters from the medial gastrocnemius muscle cannot reliably predict the prognosis
- 38 of ALS patients.
- 39 • Future studies should measure more clinically relevant muscles at an earlier stage in the disease course
- 40 over a protracted period.

41

### 42 **Abstract**

43

#### 44 **Objectives**

45

46 Amyotrophic lateral sclerosis (ALS) is a neurodegenerative disorder, affecting both upper and lower motor  
47 neurons. High-density surface electromyography is a non-invasive measure of muscle fasciculations, a  
48 phenomenon prevalent early in the disease. Previous studies highlighted the clinical importance of these  
49 measures from the biceps brachii muscle. Our study aimed to investigate the diagnostic and prognostic value of  
50 the medial gastrocnemius muscle.

51

#### 52 **Methods**

53

54 We performed a retrospective study of 49 ALS and 25 control participants. Means comparisons, logistic  
55 regression, receiver operating characteristic analysis, Kaplan-Meier analysis, and a multilevel Cox model were  
56 used to determine the predictive utility of fasciculation potential (FP) parameters including FP frequency,  
57 median amplitude, and amplitude dispersion.

58

#### 59 **Results**

60

61 FP parameters demonstrated a poor ability to differentiate between ALS and controls, with ROC analysis  
62 producing areas under the curve between 0.58 and 0.63. Furthermore, there was no association between FP  
63 parameters and ALS prognosis in the Cox model.

64

#### 65 **Conclusions**

66

67 FP parameters from the medial gastrocnemius muscle are not useful for the diagnosis or prognosis of ALS  
68 patients.

69

70

71

72 **Significance**

73

74 Our results highlight the poor clinical utility of fasciculation quantification in the medial gastrocnemius muscle.

75 Future studies should focus on recordings from more clinically relevant muscles earlier in the disease.

76

77 **Keywords**

78

79 Amyotrophic lateral sclerosis; medial gastrocnemius muscle; high-density surface electromyography;

80 fasciculation potential; biceps brachii muscle; diagnosis; prognosis.

81

82

83 **List of abbreviations**

84

85 ALS, amyotrophic lateral sclerosis; UMN, upper motor neuron; LMN, lower motor neuron; HDSEMG, high-  
86 density surface electromyography; MU, motor unit; FP, fasciculation potential; EMG, electromyography; BB,  
87 biceps brachii; ROC, receiver operating characteristic; CHAID, chi squared automatic interaction detection; CI,  
88 confidence interval; MG, medial gastrocnemius; ENCALs, European Network to Cure ALS; BFS, benign  
89 fasciculation syndrome; PN, peripheral neuropathy; MMN, multifocal motor neuropathy; ALSFRS-R, revised  
90 amyotrophic lateral sclerosis functional rating scale; SPiQE, surface potential quantification engine, IQR,  
91 interquartile range; ANOVA, analysis of variance.

92

93 **1. Introduction**

94

95 Amyotrophic lateral sclerosis (ALS) is a chronic progressive paralytic disorder, characterised by the  
96 degeneration of both upper motor neurons (UMNs) and lower motor neurons (LMNs) (Brown and Al-Chalabi,  
97 2017). The ultimate consequence of the condition is progressive muscle weakness leading to death, usually from  
98 respiratory failure, with a median survival time of approximately 19 months from diagnosis and 30 months from  
99 symptom onset (Gordon, 2013). However, due to disease heterogeneity and several clinical subtypes, it is  
100 difficult to predict individual patient survival early in the disease (Van Es et al., 2017).

101

102 It is estimated that there are 5000 people living with ALS in the UK at any one time (Opie-Martin et al., 2021),  
103 its prevalence higher in men than in women and its incidence increasing with age (Gordon, 2013). However, the  
104 onset of ALS is often non-specific and mimics several more common, benign conditions (Van Es et al., 2017).  
105 To make a diagnosis, clinicians rely on guidelines such as the Gold Coast criteria (Hannaford et al., 2021),  
106 taking a median of 11.5 months after symptom onset (Paganoni et al., 2014) to reach a diagnosis, a third of  
107 patients' life expectancy (Van Es et al., 2017). As a result, in recent years there has been much interest garnered  
108 towards identifying the pre-symptomatic stage of the disease and stratifying patients with similar life  
109 expectancies. The benefit of such developments would be two-fold. Firstly, by grouping patients into similar  
110 clinical subtypes, it could allow for the earlier identification of ALS patients. In turn, this would enhance their

111 recruitment into clinical trials when more motor neurons remain viable (De Carvalho et al., 2008), and  
112 therapeutic intervention may be more likely to prevent or delay disease progression (Benatar et al., 2019).  
113 Secondly, the prognosis of ALS varies greatly and through the development of a reliable prognostic model,  
114 patients could take greater control of their lives and make better plans for their future.

115

116 There are several avenues for research, including genetic markers, fluid biomarkers, and neurophysiological  
117 techniques (Van Es et al., 2017). In particular, high-density surface electromyography (HDSEMG) provides a  
118 promising option as a non-invasive method of recording fasciculations, capable of revealing LMN involvement  
119 in body regions otherwise regarded as unaffected (De Carvalho et al., 2008). Fasciculations are spontaneous,  
120 involuntary muscle twitches produced by active motor units (MUs), detected as fasciculation potentials (FPs) on  
121 electromyography (EMG) (Drost et al., 2007). They are widespread in ALS and can occur in multiple different  
122 muscles (Liu et al., 2021) but can also occur in ALS-mimicking disorders and healthy individuals, making their  
123 diagnostic utility uncertain (Noto et al., 2018). FPs are frequently the first abnormality recorded by EMG during  
124 neurogenic change in ALS (de Carvalho and Swash, 2013), and their importance in its diagnosis has been  
125 increasingly recognised, forming a key component of the Gold Coast criteria (Hannaford et al., 2021). While  
126 present in healthy individuals and ALS-mimicking disorders, they are shown to have an increased prevalence  
127 and specific morphology in ALS (Bashford et al., 2020c). This may be explained by the underlying  
128 pathophysiology of the disease, where denervated muscle fibres are reinnervated by surrounding, healthy MUs  
129 through the process of chronic partial reinnervation, allowing strength to be maintained early in the disease  
130 course (Bashford et al., 2020c).

131

132 A previous HDSEMG study by our group showed that FP frequency from biceps brachii (BB) is a valuable  
133 predictive marker of ALS, demonstrating an area under a receiver operating characteristic (ROC) analysis curve  
134 of 0.89 (95% confidence interval (CI) 0.81-0.98). Chi squared automatic interaction detection (CHAID)  
135 decision tree analysis also confirmed FP frequency to be the single best diagnostic measure, showing an 85.9%  
136 predictive accuracy (95% CI 75-93.4%) (Tamborska et al., 2020). Prognostically, previous research has shown  
137 that FP frequency increases predominately in the early stage of the disease course (Bashford et al., 2020c,  
138 Tsugawa et al., 2018), and the rate of change of this process is associated with a higher disease burden (Wannop  
139 et al., 2021, Avidan et al., 2021). However, studies have shown that the frequency and amplitude of FPs may  
140 fluctuate as the disease progresses (Bashford et al., 2020c), raising the question to its utility as a diagnostic and  
141 prognostic tool.

142

143 Given the evidence provided by our group for the diagnostic and prognostic utility of FP parameters recorded by  
144 HDSEMG in the BB muscle (Tamborska et al., 2020, Wannop et al., 2021), the aim of this study was to explore  
145 whether these same parameters were equally insightful in the medial gastrocnemius (MG) muscle among 49  
146 ALS patients and 25 control participants.

147

148

149

150

151 **2. Methods**

152

153 **2.1 Study design**

154

155 This study is a retrospective data analysis, using data from three observational studies undertaken at King's  
156 College Hospital, London, UK. Using the clinical parameters of the patients with ALS, a prospective dataset  
157 containing predicted survival length was obtained using the European Network to Cure ALS (ENCALS)  
158 Survival Model (Westeneng et al., 2018).

159

160 **2.2 Ethical approval**

161

162 Ethical approval was obtained from Research Ethics Services in the North of Scotland (ref: 15/NS/0103), East  
163 Midlands (ref: 17/EM/0221), and Yorkshire and the Humber (ref: 19/YH/0164).

164

165 **2.3 Participants**

166

167 Patients attending the motor nerve clinic at KCH between January 2016 and January 2022 were invited to take  
168 part in the studies. These included males and females aged 18-80 who were ambulatory and able to give  
169 informed consent. Patients were recruited into two groups: ALS (n=49), and neurological controls (n=8) (Table  
170 1). Those recruited into the ALS group were deemed eligible if they were diagnosed with possible, probable, or  
171 definite ALS according to the El Escorial criteria within 24 months of symptom onset. Criteria for exclusion  
172 included those with atypical or regionally restricted ALS and those with advanced ALS (wheelchair-bound or  
173 dependent on non-invasive ventilation). Patients with bulbar onset ALS were required to demonstrate objective  
174 involvement in at least one limb.

175

176 Those recruited into the neurological control group were deemed eligible if they were diagnosed with an ALS-  
177 mimicking disorder by a clinician with an expertise in motor neuron disease. The main criterion for exclusion  
178 was diagnostic uncertainty. This group consisted of patients with benign fasciculation syndrome (BFS),  
179 peripheral neuropathy (PN), and multifocal motor neuropathy (MMN). Electronic health records of these  
180 individuals were inspected at a minimum of two years from recruitment, and none had subsequently developed  
181 ALS.

182

183 The healthy control group (n=17) was recruited from Manchester Metropolitan University between May and  
184 September 2019 *via* poster adverts. This group consisted of males and females aged 18-80 who were deemed  
185 eligible if they were ambulatory, able to give informed consent, and had no self-reported history of any  
186 neurological condition.

187

188

189

190

## 191 **2.4 Clinical assessment**

192

193 All patients' demographic information, including site and date of first symptoms, were recorded where possible.

194 All participants within the ALS and neurological control groups underwent baseline neurological examination,  
195 and ALS patients were subsequently classified into the following phenotypes: i) bulbar-onset, ii) cervical-onset,  
196 iii) flail arm, iv) lumbar-onset. The disease severity of all participants was determined using the revised  
197 amyotrophic lateral sclerosis functional rating scale (ALSFRS-R) at the time of assessment.

198

## 199 **2.5 HDSEMG recording**

200

201 Participants underwent either 15- or 30-minute HDSEMG recordings of the BB and MG muscles unilaterally or  
202 bilaterally, depending on the original study protocol. The adhesive HDSEMG sensor (comprised of 64  
203 electrodes, arranged in an 8 x 8 grid, electrode diameter 4.5mm, inter-electrode distance 8.5mm; TMS  
204 International BV, The Netherlands) was applied centrally over the muscle while the patient was asked to relax in  
205 a semi-recumbent position. A reference electrode (3 x 5 cm) was located over the olecranon (when recording  
206 BB) and over the dorsum of the foot (when recording MG). Signal amplification was carried out using the Refa-  
207 64 Recording System (TMS International, BV, Netherlands), and the raw HDSEMG data were stored as a  
208 Polybench file at 2048Hz/channel and processed using the novel surface potential quantification engine (SPiQE)  
209 tool (Bashford et al., 2019).

210

## 211 **2.6 Fasciculation potential parameters**

212

213 Of all the summary parameters derived from the HDSEMG data by SPiQE, we focused on the following three  
214 for the purpose of this study: FP frequency, FP median amplitude, and FP amplitude dispersion. FP frequency is  
215 defined as the number of FPs divided by minutes of analysed recording (FP/min). FP median amplitude is  
216 defined as the median peak-peak voltage of all FPs detected in each recording ( $\mu$ V). Finally, FP amplitude  
217 dispersion is defined as the interquartile range (IQR) of all FP amplitudes detected in each recording ( $\mu$ V).

218

## 219 **2.7 Statistical analysis**

220

221 Participant characteristics were summarised using descriptive statistics for all groups. Where bilateral  
222 recordings were taken, the values from the side on which the maximal values were recorded were included in  
223 the analysis.

224

### 225 **2.7.1 Diagnostic**

226

227 All values were transformed to  $\log_{10}$  to satisfy normality for the statistical tests and the normal distribution,  
228 and homogeneity of variance of the transformed values were investigated using Shapiro-Wilk normality tests,  
229 inspection of Q-Q plots, and Levene's tests. Mean comparisons of the FP parameters between groups was  
230 carried out using Welch's one-way analysis of variance (ANOVA) with the Games-Howell *post hoc* test. To

231 assess the association of FP parameters with the diagnosis of ALS, we dichotomised the outcome by combining  
 232 the neurological and healthy control groups (1= ALS, 0 = not ALS), and performed univariate binary logistic  
 233 regression, followed by ROC analysis for the assessment of diagnostic utility. To further explore the diagnostic  
 234 utility, we carried out a CHAID decision tree classification model with 3-fold internal cross-validation, using  
 235 each of the FP parameters as independent variables. Unless stated otherwise, values were rounded to the nearest  
 236 third decimal for p-values and the nearest second decimal for remaining values. The threshold for statistical  
 237 significance was set to  $p < 0.05$  and all statistical analyses were carried out using IBM SPSS Statistics software  
 238 (version 28, IBM Corp, Armonk, NY, USA).

### 239 2.7.2 Prognostic

240

241 Prognostic analysis was performed using R version 4.1.1 (R Foundation for Statistical Computing, Vienna,  
 242 Austria). There were two datasets used in our analysis.

243

244 Our first analysis used a prospective survival prediction from a cohort of patients using the ENCALS Survival  
 245 Model. This prediction was based on each patient’s disease characteristics at their first assessment. Using the  
 246 same patient cohort in our second analysis, we followed all patients over time and in those patients who died,  
 247 we recorded the observed survival time for each patient. Those who were still alive at the recording cut-off  
 248 point, 22<sup>nd</sup> February 2022, were included as censored in our survival analysis.

249

250 A Kaplan-Meier analysis was used to identify the most statistically significant parameters, which were then  
 251 included in a Cox proportional hazards model. A multilevel Cox model was chosen to evaluate the relationship  
 252 between muscle FP parameters and disease prognosis, while accounting for the presence of bilateral muscle  
 253 recordings. This was performed for both predicted and observed survival times. Both Cox models were then  
 254 evaluated using the `cox.zph()` function, which showed no violations of the proportional hazards assumption.

255

## 256 **3. Results**

257

### 258 **3.1 Participant characteristics**

259

Characteristics	ALS	Neurological controls	Healthy controls
n =	49	8	17
<b>Sex</b>			
Female (%)	11 (22)	1 (12.5)	7 (41)
Male (%)	38 (78)	7 (87.5)	10 (59)
<b>Age at onset (years)</b>			
Median (IQR)	59 (51-64)		
<b>Bulbar onset</b>			
Bulbar (%)	12 (24.5)		
Non-bulbar (%)	37 (75.5)		
<b>Diagnostic delay</b>			

<b>(months)</b>			
Median (IQR)	14 (7-21)		
<b>El Escorial diagnosis</b>		<b>Diagnosis</b>	
Definite (%)	12 (25)	BFS (%)	6 (75)
Probable (%)	35 (71)	MMN (%)	1 (12.5)
Possible (%)	2 (4)	PN (%)	1 (12.5)
<b>ALS phenotype</b>			
Bulbar (%)	12 (24.5)		
Cervical (%)	21 (42.9)		
Flail arm (%)	2 (4)		
Lumbar (%)	14 (28.6)		
<b>C9orf72 repeat expansion</b>			
Positive (%)	2 (4)		
Negative (%)	17 (35)		
Not requested (%)	30 (61)		
<b>Age at HDSEMG (years)</b>			
Median (IQR)	61 (53-66)	40 (37-56)	42 (34-62)
<b>Time from symptom onset to HDSEMG (months)</b>			
Median (IQR)	24 (18-36)	20 (8-34)	
<b>ALSFRS-R score</b>			
Median (IQR)	41 (35-44)		
<b>Time from symptom onset to ALSFRS-R (months)</b>			
Median (IQR)	23 (13-38)		
<b>ALSFRS-R progression rate</b>			
Median (IQR)	0.3 (0.16-0.69)		
<b>Predicted FVC (%)</b>			
Median (IQR)	95 (76-100)		
<b>ENCALS risk group</b>			
Very long (%)	16 (33)		
Long (%)	12 (25)		
Intermediate (%)	11 (22)		
Short (%)	9 (18)		
Very short (%)	1 (2)		
<b>Predicted survival (months)</b>			
Median (IQR)	44 (31-63)		
<b>Observed survival (months)</b>			
Median (IQR)	52 (32-73)*		



261 *Table 1: Participant characteristics. Values rounded to the nearest integer where appropriate. \*Observed survival data was*  
 262 *recorded for 21 patients, with 28 surviving patients censored from the analysis. Abbreviations: ALS, amyotrophic lateral*  
 263 *sclerosis; IQR, interquartile range; BFS, benign fasciculation syndrome; MMN, multifocal motor neuropathy; PN,*  
 264 *peripheral neuropathy; HDSEMG, high-density surface electromyography; ALSFRS-R, amyotrophic lateral sclerosis*  
 265 *functional rating scale revised; FVC, forced vital capacity; ENCALs, The European Network to Cure ALS.*

266

267

268

### 269 3.2 Diagnostic

270

#### 271 3.2.1 Comparison of fasciculation potential parameters from medial gastrocnemius between groups

272

<b>Fasciculation parameter</b>	<b>ALS</b>	<b>Neurological controls</b>	<b>Healthy controls</b>	<b>Statistical significance</b>
<b>n =</b>	49	8	17	
<b>FP frequency (FP/min)</b> Median (IQR)	31 (8.25-92.35)	13.08 (6.54-35.41)	14.65 (8.55-33.8)	Welch's ANOVA $W_{2, 19.21} = 1.71$ $p = 0.207$
<b>FP median amplitude (<math>\mu V</math>)</b> Median (IQR)	23.6 (20.2-41.85)*	26.6 (21-39.83)	28.8 (24.95-34.95)	Welch's ANOVA $W_{2, 19.08} = 0.28$ $p = 0.757$
<b>FP amplitude dispersion (<math>\mu V</math>)</b> Median (IQR)	21 (11.08-31.43) <sup>†</sup>	24.95 (20.5-31.3)	33.5 (22.3-56.5)	Welch's ANOVA $W_{2, 23.82} = 2.00$ $p = 0.157$

273

274 *Table 2: Comparison of fasciculation parameters from medial gastrocnemius between groups. \*FP median amplitude data*  
 275 *missing from 1 participant (n=48). <sup>†</sup>FP amplitude dispersion data missing from 1 participant (n=48). Abbreviations: ALS,*  
 276 *amyotrophic lateral sclerosis; FP, fasciculation potential; min, minute; IQR, interquartile range; ANOVA, analysis of*  
 277 *variance.*

278

279 Welch's ANOVA with Games-Howell *post-hoc* test revealed no statistically significant differences between the  
 280 groups for each of the FP parameters. The results of these analyses are summarised in *Fig. 1* and *Table 2*.

281

#### 282 3.2.2 Association of fasciculation potential parameters with the diagnosis of ALS

283

284 In the univariate binary logistic regression, none of the FP parameters were significantly associated with the  
 285 diagnosis of ALS (FP frequency,  $p = 0.117$ ; FP median amplitude,  $p = 0.910$ ; FP amplitude dispersion,  $p =$   
 286  $0.083$ ).

287

288

### 289 3.2.3 Assessment of diagnostic utility

290

291 We further explored the diagnostic utility of these FP parameters by carrying out a ROC analysis (*Fig. 2*). FP  
292 frequency, FP median amplitude and FP amplitude dispersion displayed areas under the curve (AUCs) of 0.61  
293 (95% CI 0.48-0.74,  $p = 0.134$ ), 0.58 (95% CI 0.44-0.71,  $p = 0.299$ ), and 0.63 (95% CI 0.50-0.76,  $p = 0.073$ )  
294 respectively, each indicative of poor diagnostic instruments. Lastly, we carried out a CHAID decision tree  
295 classification model of ALS, using the FP parameters from the MG alone as independent variables. Due to their  
296 redundancy, none of the MG FP parameters were included as independent variables in the model.

297

298

## 299 3.3 Prognostic

300

### 301 3.3.1 Association of fasciculation potential parameters with the prognosis of ALS

302

303 Median values (with IQR) across the cohort for FP frequency, FP median amplitude, and FP amplitude  
304 dispersion were 38.5 FP/min (10.3-77.6), 24.9  $\mu$ V (21.3-45.2), and 24.3  $\mu$ V (14.8-37.9), respectively. Log-rank  
305 analysis of the Kaplan-Meier curves for our *predicted* survival showed no statistically significant differences for  
306 any of the muscle FP parameters, as seen in *Fig. 3*. However, there was a clear divergence between the  
307 dichotomized values of FP median amplitude, therefore this parameter was chosen for Cox proportional hazards  
308 analysis. FP median amplitude was associated with a hazard ratio of 1.003 (0.97 – 1.03,  $p = 0.83$ ) after  
309 accounting for bilateral recordings in our dataset.

310

311 Similarly, as seen in *Fig. 4*, there were no statistically significant differences in the Kaplan-Meier curves of  
312 fasciculations in the *observed* survival dataset (observed survival data was recorded for 21 patients, with 28  
313 surviving patients censored from the analysis). Similarly, while not significant, there were clear divergences in  
314 dichotomized values for FP frequency and FP median amplitude, thus they were implemented in a Cox model.  
315 FP frequency and FP median amplitude were associated with hazard ratios of 1.00 (0.99-1.01,  $p = 0.96$ ) and  
316 1.00 (0.98-1.03,  $p = 0.97$ ), respectively.

317

## 318 **4. Discussion**

319

320 Fasciculations are a hallmark clinical feature of ALS and are reflective of early neuronal dysfunction. Therefore,  
321 their measurement and interpretation have the potential to elucidate the processes of neurodegeneration in the  
322 early stages of the disease course (Bashford et al., 2019) and expedite diagnosis and prognosis. Despite the  
323 evident potential of HDSEMG as a diagnostic or prognostic tool in ALS, it is currently not validated for use in  
324 the clinic and remains confined to the research setting. ALS diagnosis and prognosis require an integrative  
325 approach, making use of clinical history, physical examination and electrodiagnostic tests (Goutman et al.,  
326 2022). Since fasciculation assessment in MG performed poorly as a diagnostic and prognostic tool in isolation,  
327 we could not justify planned combinatorial analysis with the BB data. However, this study reinforces a  
328 statistical framework for the future inclusion of multiple muscles as part of a clinically relevant body-map

329 assessment. Future work is planned from our group, which will focus on the assessment of muscles known to  
330 become weak early in the disease course, such as first dorsal interosseous, abductor pollicis brevis, and tibialis  
331 anterior.

332

#### 333 **4.1 Poor diagnostic utility of gastrocnemius HDSEMG data**

334

335 Our results show that HDSEMG recording in the MG fails to add any additional diagnostic insight above that  
336 already provided by recordings in the BB (Tamborska et al., 2020). This finding is corroborated by previous  
337 comparisons of gastrocnemius FP parameters between ALS and neurological controls, showing similar spatial  
338 distribution, intensity (the number of FP pairs), amplitude, duration, and number of phases (FP repeats within  
339 10-110 ms) between groups (Van Der Heijden et al., 1994, Kleine et al., 2012, Sleutjes et al., 2016). Fermont  
340 showed that fasciculations occur frequently in the lower leg muscles of healthy people and may be temporarily  
341 increased by physical exercise (Fermont et al., 2010), with the theory being that exercise may induce this  
342 increase *via* metabolic stress. The gastrocnemius has also shown more diurnal variation in FP frequency than the  
343 BB (Bashford et al., 2020a), suggesting values recorded in the gastrocnemius may be more sensitive to the exact  
344 timing of HDSEMG recording than in BB. Furthermore, fasciculations in ALS patients have been shown to  
345 occur more often in proximal than in distal muscles, and markedly more frequently in the upper than in the  
346 lower limbs (Krarup, 2011), further promoting the use of BB or other upper limb muscles in the future  
347 assessment of the utility of HDSEMG in ALS.

348

349 The limited diagnostic utility of the MG HDSEMG recordings may also be explained by the differences in  
350 disease stage between the participants recruited into this study. It has previously been proposed that FP  
351 frequency may increase in the early stages of ALS until muscle weakness occurs, after which it subsequently  
352 declines (Tamborska et al., 2020). This initial increase may be attributed to the progression of axonal membrane  
353 abnormality in the affected neurons (Mills, 2010), whereas the subsequent fall may be attributed to shrinkage of  
354 the MU pool and saturation (or reversal) of the relative hyperexcitability of the surviving MUs (Bashford et al.,  
355 2020c). Considering this, the time point at which each patient undergoes HDSEMG recording may bear an  
356 influence on their FP parameter values, as they may be at different stages of their disease course and exhibiting  
357 varying stages of neuropathophysiology. Furthermore, the fascicle architecture of the two muscles may have an  
358 impact on their relative sampling of MUs. In comparison to the parallel architecture of the BB, the fascicles of  
359 the gastrocnemius have a pennate architecture with spatially localised MU territories (Vieira et al., 2011). So,  
360 the extent to which the position of the electrode grid influences which MUs are within the detection volume may  
361 be greater in the gastrocnemius than in the BB (where the majority of MUs would run beneath the grid).  
362 Furthermore, variability in the data analyses between studies e.g., differences in methods of determining FP  
363 discharge frequency (De Carvalho and Swash, 2016, Noto et al., 2018), may have a significant influence on  
364 studies' results and their subsequent interpretation.

365

366

367

368

## 369 4.2 Poor prognostic utility of gastrocnemius HDSEMG data

370

371 Similarly, our study has shown that muscle FP parameters obtained from the MG muscle are not useful at  
372 prognosticating patients with ALS. This result was mirrored using both predicted survival values from the  
373 ENCALS Survival Model and real-world observed values.

374

375 While our findings are in contradiction with a previous study which focused on BB (Wannop et al., 2021), there  
376 are several plausible explanations. This is the first study aimed solely at the prognostic utility of the MG muscle.  
377 When examined histologically, the gastrocnemius muscle is comprised mainly of fast-twitch muscle fibres in  
378 comparison to the roughly equal ratio of fast twitch to slow twitch found in the BB muscle (Silva Cornachione  
379 et al., 2011, Srinivasan et al., 2007). This nuance is important as ALS is known to preferentially affect fast-  
380 twitch muscle fibres (Atkin et al., 2005). Therefore, as muscle FP parameters are known to fall with disease  
381 progression (Bashford et al., 2020c), one may speculate that the disease may progress rapidly in the  
382 gastrocnemius and may only prove to be a useful measurement much earlier in the disease course. When  
383 examining our patient population, HDSEMG recordings were not performed at the time of symptom onset, with  
384 the interquartile range 19-34 months after symptom onset. Therefore, it is possible to speculate that the clinical  
385 utility of the MG muscle may have been lost long before recordings were taken, and future studies should aim to  
386 obtain recordings as soon as a clinical suspicion of ALS arises.

387

388 Additionally, we chose a different approach for expressing our fasciculation measures than those employed by  
389 Wannop *et al.* (Wannop et al., 2021). Where our study used single-timepoint, 'raw' recordings, Wannop *et al.*  
390 (Wannop et al., 2021) divided these values by months since symptom onset. We decided against implementing  
391 this approach in our study. Firstly, as the ENCALS Survival Model uses time variables to produce a predicted  
392 survival time, we wanted to avoid spurious correlations, whereby longer prognoses were incorrectly associated  
393 with FP parameters (Bashford et al., 2020c). Secondly, there is a weaker relationship between disease  
394 progression and change in fasciculation parameters in the MG muscle in comparison to the BB muscle. In  
395 particular, weak gastrocnemius muscles show little to no loss of FP frequency as the disease progresses  
396 (Bashford et al., 2020c).

397

398 Through investigating the prognostic utility of the MG muscle, we have shown that HDSEMG recordings have  
399 little prognostic utility in the middle-to-late disease course. We have speculated that HDSEMG recordings close  
400 to the time of symptom onset may prove to be the most reliable and we hope that the findings from this study  
401 can support prospective data collection in other, more reliable muscles.

402

## 403 4.3 Future directions of study

404

405 This study has shown that the analysis of fasciculations recorded in the MG following symptom onset does not  
406 show diagnostic or prognostic utility in ALS. However, HDSEMG may provide a wide range of benefits for  
407 ALS patients and their families, as the non-invasive nature of the recording allows for longer recording periods  
408 and greater patient comfort (Mateen et al., 2008, Howard and Murray, 1992, Bashford et al., 2019). It is also

409 capable of achieving greater spatial resolution and muscle area coverage than is possible with needle EMG,  
410 allowing for more precise anatomical mapping of fasciculations (Drost et al., 2007). Due to this greater  
411 coverage, there is also less reliance on the reproduction of needle position in serial recordings, making  
412 HDSEMG more suitable for the collection of longitudinal data (Benatar et al., 2016, Bashford et al., 2020b).  
413 This is essential for capturing the dynamic changes that occur in ALS due to the inexorable decline of motor  
414 neurons (Bashford et al., 2020b). Perhaps the most important benefit of this technique is its ease of application  
415 and potential for use outside of the neurophysiology lab. Its use by non-clinicians in the community could  
416 provide greater relief to patients and their families as well as benefiting medical research by analysing the  
417 disease at a pre-symptomatic stage (Bashford et al., 2020b).

418

419 Therefore, further research into the application of HDSEMG in the diagnosis and prognosis of neuromuscular  
420 disease is required and should focus on the BB or other upper limb muscles at an earlier stage in the disease  
421 course. Due to the presence of fasciculations in both ALS patients and controls, HDSEMG data should be  
422 considered in the context of other clinical factors, such as the distribution of fasciculations, other neurological  
423 symptoms, and a clinical suspicion of ALS (Noto et al., 2018, Mills, 2010, Drost et al., 2007, de Carvalho et al.,  
424 2017, De Carvalho et al., 2008). A combinatorial approach may be most appropriate for this, using tools such as  
425 electrical impedance myography, ultrasound, and magnetic resonance imaging to monitor clinical,  
426 electrophysiological, biochemical, and imaging biomarkers simultaneously.

427

428 Large numbers of patients across the spectrum of ALS phenotypes should also be monitored in longitudinal  
429 studies with post-mortem validation, including prospective multi-centre cohort analyses, to develop reliable and  
430 sensitive biomarkers. The greatest diagnostic challenge appears to be in differentiating between ALS and  
431 neurological controls. So, a greater range of ALS mimics e.g., spinal muscular atrophy, MMN and spinobulbar  
432 muscular atrophy (Kennedy's disease) should be included in neurological control groups.

433

## 434 **5. Conclusion**

435

436 The present study has been successful in producing an analytical framework that may be reproduced for the  
437 diagnostic and prognostic evaluation of HDSEMG in novel muscle groups. While our results in MG were  
438 negative, we believe this study supports the argument for early HDSEMG recordings across a broader range of  
439 clinically relevant muscles in patients with ALS, as it is in these early stages of the disease that fasciculations  
440 may prove to be the most valuable.

441

## 442 **6. Funding**

443

444 JB acknowledges funding from the Medical Research Council and Motor Neurone Disease Association (Lady  
445 Edith Wolfson Clinical Research Training Fellowship; MR/P000983/1), Sattaripour Charitable Foundation, UK  
446 Dementia Research Institute, and the National Institute for Health and Care Research (Academic Clinical  
447 Lectureship program). DP, UM, and CC contributed during their MSc qualifications in Clinical Neuroscience.  
448 R.I.'s input represents independent research supported by the NIHR BioResource Centre Maudsley at South

449 London and Maudsley NHS Foundation Trust (SLaM) & Institute of Psychiatry, Psychology and Neuroscience  
450 (IoPPN), King's College London. RM acknowledges funding from the Faculty of Life Sciences and Medicine,  
451 King's College London.

452

## 453 **7. Competing interests**

454

455 The authors declare no relevant competing interests.

456

## 457 **8. Figure legends**

458

459 *Fig. 1: Comparison of fasciculation potential parameters from medial gastrocnemius between the groups. All values were*  
460 *transformed to log(10). Welch's ANOVA with Games-Howell post-hoc test revealed no statistically significant difference*  
461 *between the means of the groups for each of the fasciculation potential parameters. Abbreviations: FP, fasciculation*  
462 *potential; ALS, amyotrophic lateral sclerosis.*

463

464 *Fig. 2: Assessment of the diagnostic utility of fasciculation potential parameters recorded in the medial gastrocnemius in*  
465 *ALS. ROC analysis, after dichotomising outcomes by combining the neurological and healthy control groups (1= ALS, 0 =*  
466 *not ALS), demonstrated areas under the curve of 0.61, 0.58, and 0.63 for fasciculation frequency, fasciculation amplitude,*  
467 *and fasciculation amplitude dispersion, respectively, each value indicative of a poor diagnostic instrument.*

468

469 *Fig. 3: A Kaplan-Meier analysis using real-world, observed survival times from a retrospective cohort of patients with ALS.*  
470 *It involved the analysis of three FP parameters: frequency, median amplitude, and amplitude dispersion. Dichotomization*  
471 *into high and low groups occurred at the median value.*

472

473 *Fig. 4: A Kaplan-Meier analysis using a prospective, predicted patient survival using the ENCALS Survival Model. It*  
474 *involved the analysis of three FP parameters: frequency, median amplitude, and amplitude dispersion. Dichotomization into*  
475 *high and low groups occurred at the median value.*

476

## 477 **9. References**

478

479 ATKIN, J. D., SCOTT, R. L., WEST, J. M., LOPES, E., QUAH, A. K. J. & CHEEMA, S. S. 2005. Properties of  
480 slow- and fast-twitch muscle fibres in a mouse model of amyotrophic lateral sclerosis. *Neuromuscular*  
481 *Disorders*, 15, 377-388.

482 AVIDAN, R., FAINMESSER, Y., DRORY, V. E., BRIL, V. & ABRAHAM, A. 2021. Fasciculation frequency  
483 at the biceps brachii and brachialis muscles is associated with amyotrophic lateral sclerosis disease  
484 burden and activity. *Muscle & Nerve*, 63, 204-208.

485 BASHFORD, J., MASOOD, U., WICKHAM, A., INIESTA, R., DRAKAKIS, E., BOUTELLE, M., MILLS, K.  
486 & SHAW, C. 2020a. Fasciculations demonstrate daytime consistency in amyotrophic lateral sclerosis.  
487 *Muscle & Nerve*, 61, 745-750.

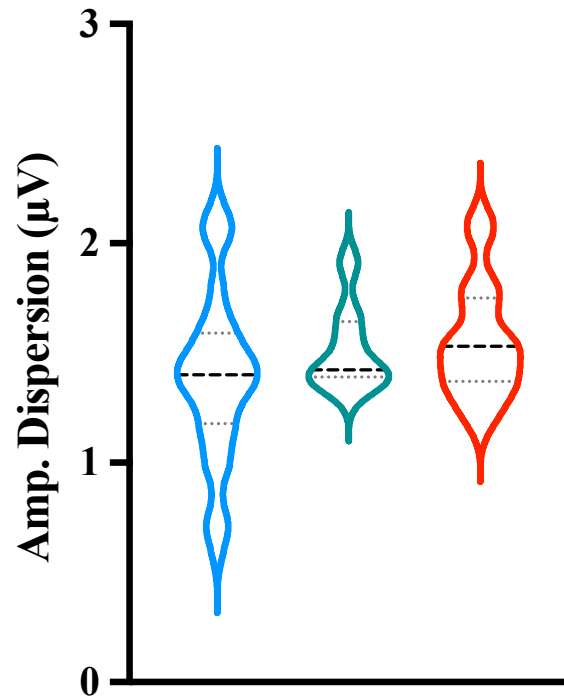
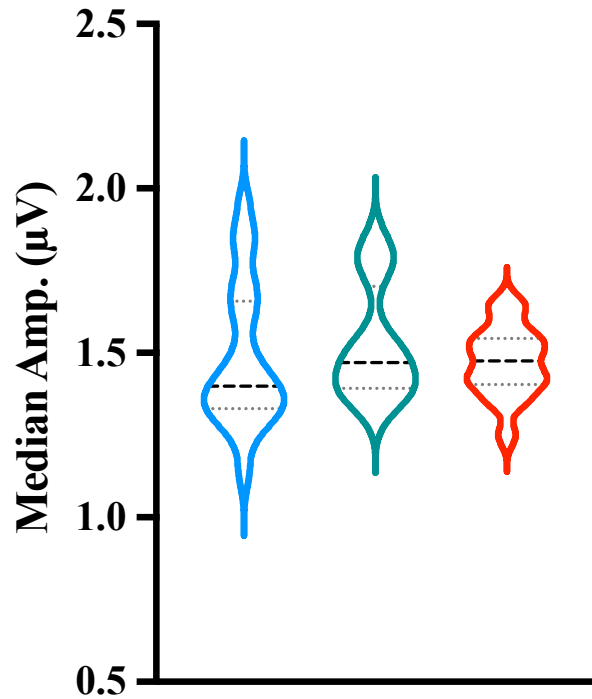
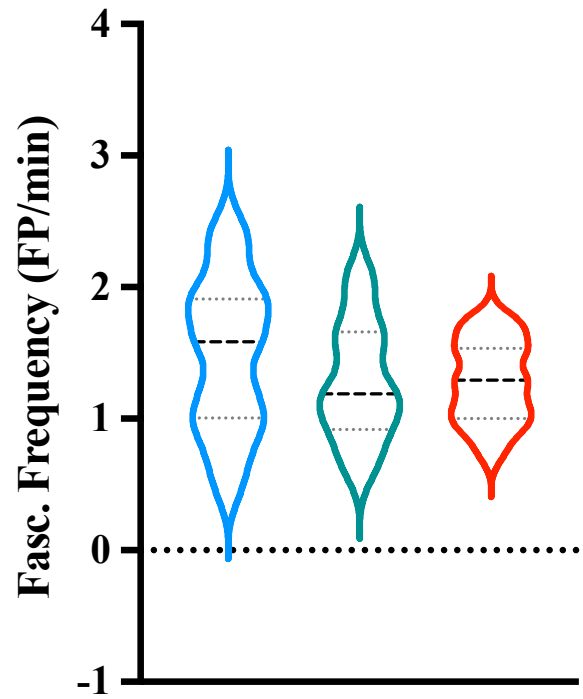
- 488 BASHFORD, J., MILLS, K. & SHAW, C. 2020b. The evolving role of surface electromyography in  
489 amyotrophic lateral sclerosis: A systematic review. *Clin Neurophysiol*, 131, 942-950.
- 490 BASHFORD, J., WICKHAM, A., INIESTA, R., DRAKAKIS, E., BOUTELLE, M., MILLS, K. & SHAW, C.  
491 2019. SPiQE: An automated analytical tool for detecting and characterising fasciculations in  
492 amyotrophic lateral sclerosis. *Clinical Neurophysiology*, 130, 1083-1090.
- 493 BASHFORD, J. A., WICKHAM, A., INIESTA, R., DRAKAKIS, E. M., BOUTELLE, M. G., MILLS, K. R. &  
494 SHAW, C. E. 2020c. The rise and fall of fasciculations in amyotrophic lateral sclerosis. *Brain*  
495 *Communications*, 2.
- 496 BENATAR, M., BOYLAN, K., JEROMIN, A., RUTKOVE, S. B., BERRY, J., ATASSI, N. & BRUIJN, L.  
497 2016. ALS biomarkers for therapy development: State of the field and future directions. *Muscle &*  
498 *Nerve*, 53, 169-182.
- 499 BENATAR, M., TURNER, M. R. & WUU, J. 2019. Defining pre-symptomatic amyotrophic lateral sclerosis.  
500 *Amyotroph Lateral Scler Frontotemporal Degener*, 20, 303-309.
- 501 BROWN, R. H. & AL-CHALABI, A. 2017. Amyotrophic Lateral Sclerosis. *New England Journal of Medicine*,  
502 377, 162-172.
- 503 DE CARVALHO, M., DENGLER, R., EISEN, A., ENGLAND, J. D., KAJI, R., KIMURA, J., MILLS, K.,  
504 MITSUMOTO, H., NODERA, H., SHEFNER, J. & SWASH, M. 2008. Electrodiagnostic criteria for  
505 diagnosis of ALS. *Clinical Neurophysiology*, 119, 497-503.
- 506 DE CARVALHO, M., KIERNAN, M. C. & SWASH, M. 2017. Fasciculation in amyotrophic lateral sclerosis:  
507 origin and pathophysiological relevance. *J Neurol Neurosurg Psychiatry*, 88, 773-779.
- 508 DE CARVALHO, M. & SWASH, M. 2013. Fasciculation potentials and earliest changes in motor unit  
509 physiology in ALS. *J Neurol Neurosurg Psychiatry*, 84, 963-8.
- 510 DE CARVALHO, M. & SWASH, M. 2016. Fasciculation discharge frequency in amyotrophic lateral sclerosis  
511 and related disorders. *Clinical Neurophysiology*, 127, 2257-2262.
- 512 DROST, G., KLEINE, B. U., STEGEMAN, D. F., VAN ENGELEN, B. G. & ZWARTS, M. J. 2007.  
513 Fasciculation potentials in high-density surface EMG. *J Clin Neurophysiol*, 24, 301-7.
- 514 FERMONT, J., ARTS, I. M., OVEREEM, S., KLEINE, B. U., SCHELHAAS, H. J. & ZWARTS, M. J. 2010.  
515 Prevalence and distribution of fasciculations in healthy adults: Effect of age, caffeine consumption and  
516 exercise. *Amyotroph Lateral Scler*, 11, 181-6.
- 517 GORDON, P. H. 2013. Amyotrophic Lateral Sclerosis: An update for 2013 Clinical Features, Pathophysiology,  
518 Management and Therapeutic Trials. *Aging Dis*, 4, 295-310.
- 519 GOUTMAN, S. A., HARDIMAN, O., AL-CHALABI, A., CHIÓ, A., SVELIEFF, M. G., KIERNAN, M. C. &  
520 FELDMAN, E. L. 2022. Recent advances in the diagnosis and prognosis of amyotrophic lateral  
521 sclerosis. *Lancet Neurol*, 21, 480-493.
- 522 HANNAFORD, A., PAVEY, N., VAN DEN BOS, M., GEEVASINGA, N., MENON, P., SHEFNER, J. M.,  
523 KIERNAN, M. C. & VUCIC, S. 2021. Diagnostic Utility of Gold Coast Criteria in Amyotrophic  
524 Lateral Sclerosis. *Ann Neurol*, 89, 979-986.
- 525 HOWARD, R. S. & MURRAY, N. M. 1992. Surface EMG in the recording of fasciculations. *Muscle Nerve*, 15,  
526 1240-5.



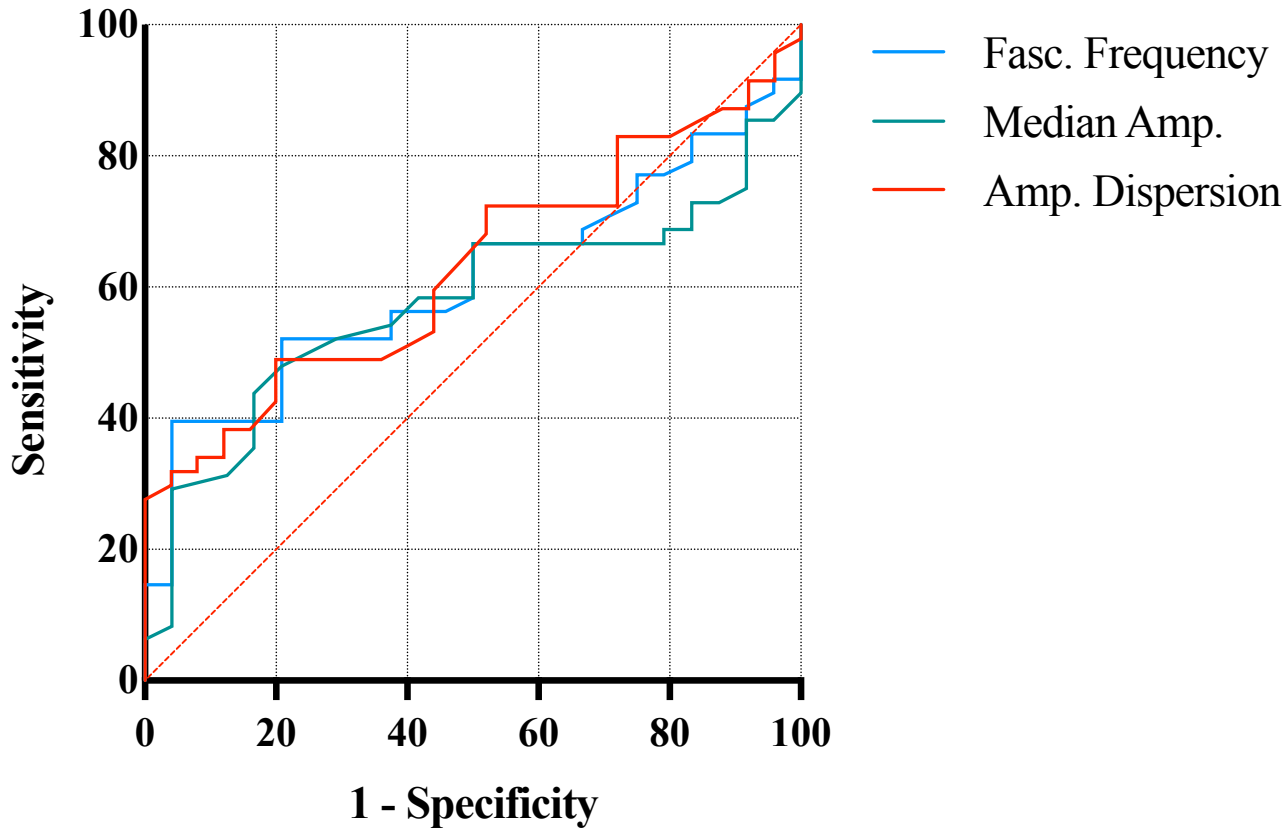
- 527 KLEINE, B. U., BOEKESTEIN, W. A., ARTS, I. M. P., ZWARTS, M. J., JURGEN SCHELHAAS, H. &  
528 STEGEMAN, D. F. 2012. Fasciculations and their F-response revisited: High-density surface EMG in  
529 ALS and benign fasciculations. *Clinical Neurophysiology*, 123, 399-405.
- 530 KRARUP, C. 2011. Lower motor neuron involvement examined by quantitative electromyography in  
531 amyotrophic lateral sclerosis. *Clinical Neurophysiology*, 122, 414-422.
- 532 LIU, J., LI, Y., NIU, J., ZHANG, L., FAN, J., GUAN, Y., CUI, L. & LIU, M. 2021. Fasciculation differences  
533 between ALS and non-ALS patients: an ultrasound study. *BMC Neurology*, 21.
- 534 MATEEN, F. J., SORENSON, E. J. & DAUBE, J. R. 2008. Strength, physical activity, and fasciculations in  
535 patients with ALS. *Amyotrophic Lateral Sclerosis*, 9, 120-121.
- 536 MILLS, K. R. 2010. Characteristics of fasciculations in amyotrophic lateral sclerosis and the benign  
537 fasciculation syndrome. *Brain*, 133, 3458-3469.
- 538 NOTO, Y.-I., SIMON, N. G., SELBY, A., GARG, N., SHIBUYA, K., SHAHRIZAILA, N., HUYNH, W.,  
539 MATAMALA, J. M., DHARMADASA, T., PARK, S. B., VUCIC, S. & KIERNAN, M. C. 2018.  
540 Ectopic impulse generation in peripheral nerve hyperexcitability syndromes and amyotrophic lateral  
541 sclerosis. *Clinical Neurophysiology*, 129, 974-980.
- 542 OPIE-MARTIN, S., OSSHER, L., BREDIN, A., KULKA, A., PEARCE, N., TALBOT, K. & AL-CHALABI,  
543 A. 2021. Motor Neuron Disease Register for England, Wales and Northern Ireland-an analysis of  
544 incidence in England. *Amyotroph Lateral Scler Frontotemporal Degener*, 22, 86-93.
- 545 PAGANONI, S., MACKLIN, E. A., LEE, A., MURPHY, A., CHANG, J., ZIPF, A., CUDKOWICZ, M. &  
546 ATASSI, N. 2014. Diagnostic timelines and delays in diagnosing amyotrophic lateral sclerosis (ALS).  
547 *Amyotrophic Lateral Sclerosis and Frontotemporal Degeneration*, 15, 453-456.
- 548 SILVA CORNACHIONE, A., CAÇÃO OLIVEIRA BENEDINI-ELIAS, P., CRISTINA POLIZELLO, J.,  
549 CÉSAR CARVALHO, L. & CLÁUDIA MATTIELLO-SVERZUT, A. 2011. Characterization of Fiber  
550 Types in Different Muscles of the Hindlimb in Female Weanling and Adult Wistar Rats. *ACTA*  
551 *HISTOCHEMICA ET CYTOCHEMICA*, 44, 43-50.
- 552 SLEUTJES, B. T. H. M., GLIGORIJEVIĆ, I., MONTFOORT, I., VAN DOORN, P. A., VISSER, G. H. &  
553 BLOK, J. H. 2016. Identifying fasciculation potentials in motor neuron disease: A matter of  
554 probability. *Muscle & Nerve*, 53, 227-233.
- 555 SRINIVASAN, R. C., LUNGREN, M. P., LANGENDERFER, J. E. & HUGHES, R. E. 2007. Fiber type  
556 composition and maximum shortening velocity of muscles crossing the human shoulder. *Clinical*  
557 *Anatomy*, 20, 144-149.
- 558 TAMBORSKA, A., BASHFORD, J., WICKHAM, A., INIESTA, R., MASOOD, U., CABASSI, C., PLANINC,  
559 D., HODSON-TOLE, E., DRAKAKIS, E., BOUTELLE, M., MILLS, K. & SHAW, C. 2020. Non-  
560 invasive measurement of fasciculation frequency demonstrates diagnostic accuracy in amyotrophic  
561 lateral sclerosis. *Brain Communications*, 2.
- 562 TSUGAWA, J., DHARMADASA, T., MA, Y., HUYNH, W., VUCIC, S. & KIERNAN, M. C. 2018.  
563 Fasciculation intensity and disease progression in amyotrophic lateral sclerosis. *Clinical*  
564 *Neurophysiology*, 129, 2149-2154.

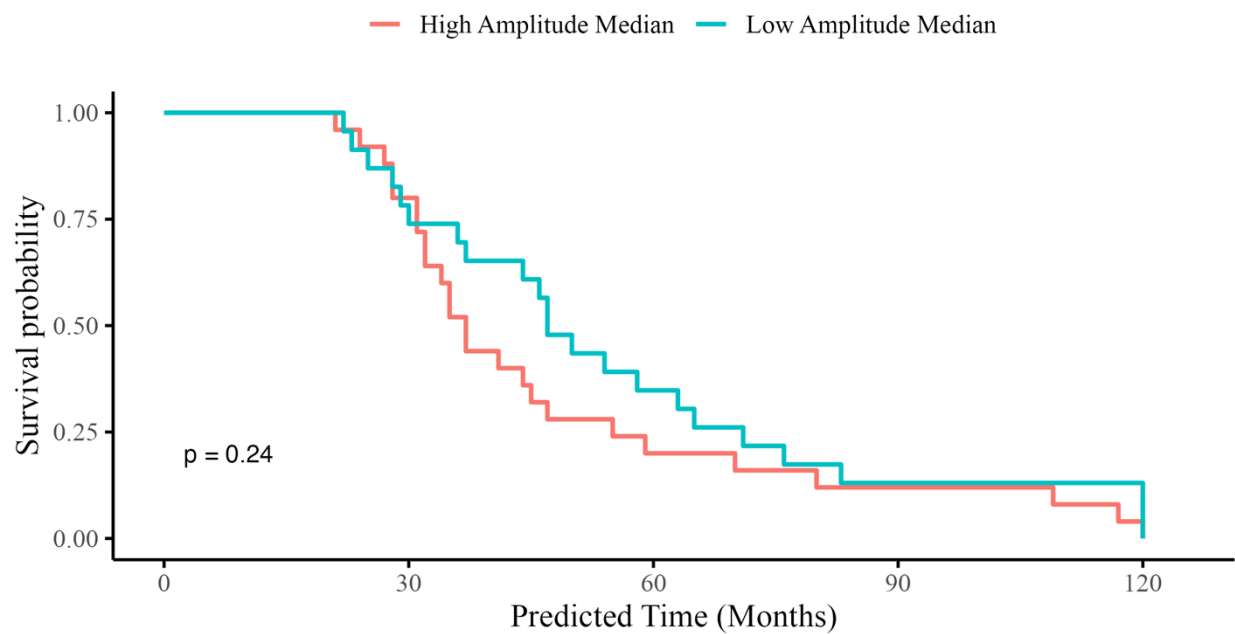
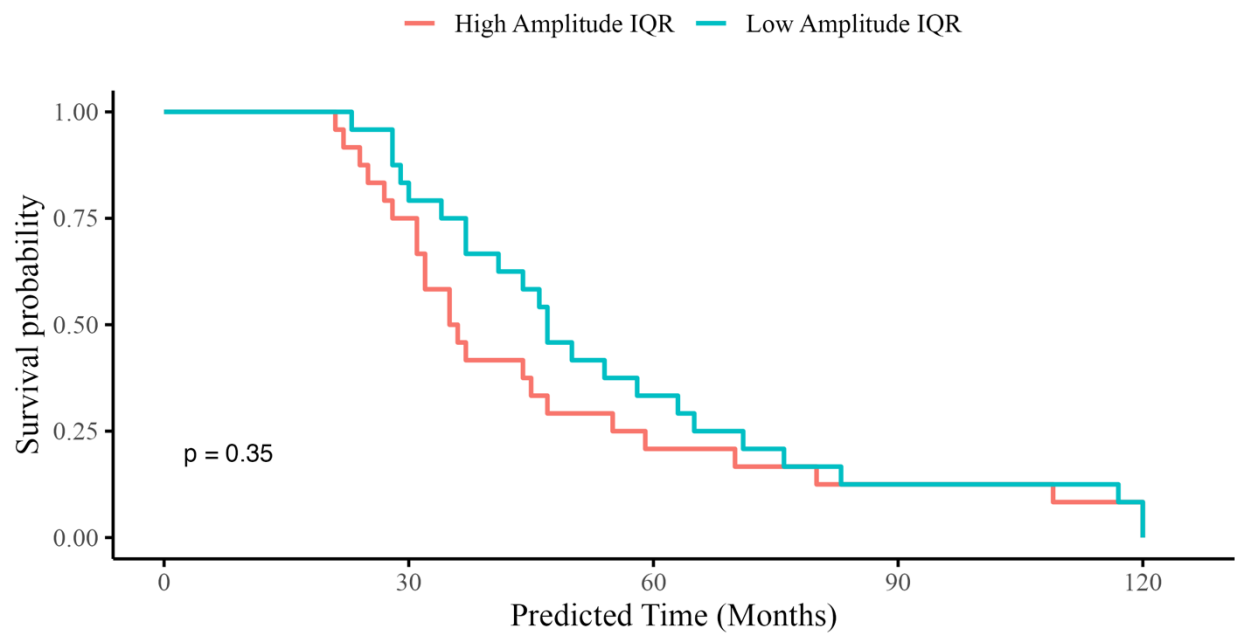
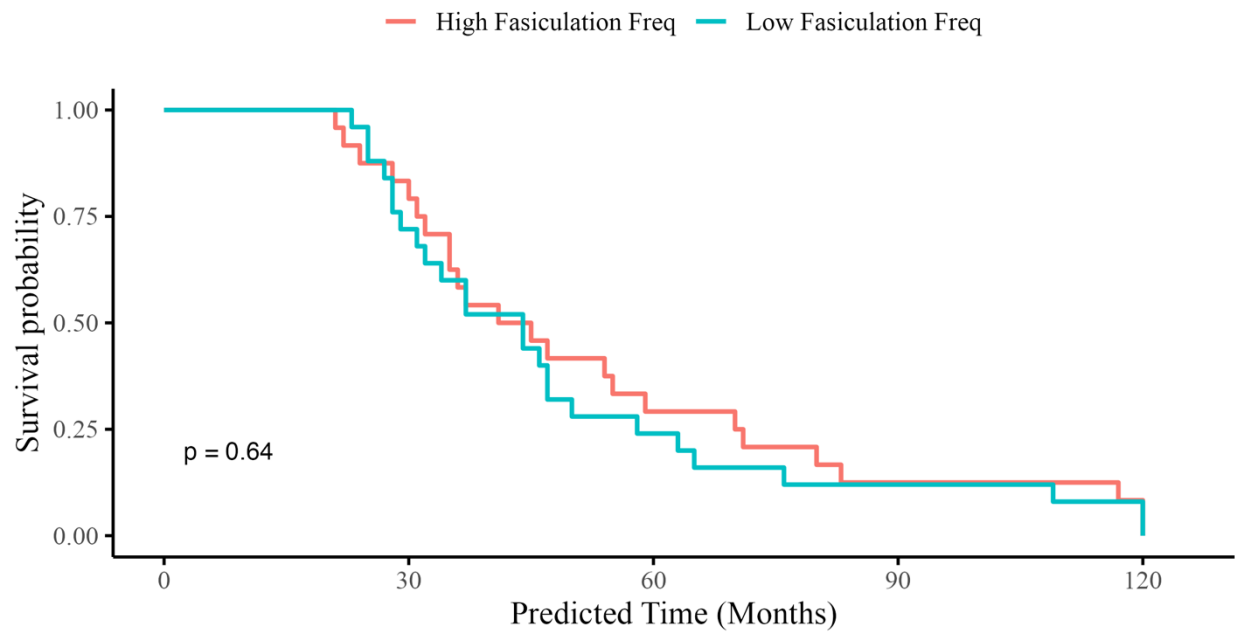


- 565 VAN DER HEIJDEN, A., SPAANS, F. & REULEN, J. 1994. Fasciculation potentials in foot and leg muscles of  
566 healthy young adults. *Electroencephalography and Clinical Neurophysiology/Evoked Potentials*  
567 *Section*, 93, 163-168.
- 568 VAN ES, M. A., HARDIMAN, O., CHIO, A., AL-CHALABI, A., PASTERKAMP, R. J., VELDINK, J. H. &  
569 VAN DEN BERG, L. H. 2017. Amyotrophic lateral sclerosis. *The Lancet*, 390, 2084-2098.
- 570 VIEIRA, T. M. M., LORAM, I. D., MUCELI, S., MERLETTI, R. & FARINA, D. 2011. Postural activation of  
571 the human medial gastrocnemius muscle: are the muscle units spatially localised? *The Journal of*  
572 *Physiology*, 589, 431-443.
- 573 WANNOP, K., BASHFORD, J., WICKHAM, A., INIESTA, R., DRAKAKIS, E., BOUTELLE, M., MILLS, K.  
574 & SHAW, C. 2021. Fasciculation analysis reveals a novel parameter that correlates with predicted  
575 survival in amyotrophic lateral sclerosis. *Muscle & Nerve*, 63, 392-396.
- 576 WESTENENG, H.-J., DEBRAY, T. P. A., VISSER, A. E., VAN EIJK, R. P. A., ROONEY, J. P. K., CALVO,  
577 A., MARTIN, S., MCDERMOTT, C. J., THOMPSON, A. G., PINTO, S., KOBELEVA, X.,  
578 ROSENBOHM, A., STUBENDORFF, B., SOMMER, H., MIDDELKOOP, B. M., DEKKER, A. M.,  
579 VAN VUGT, J. J. F. A., VAN RHEENEN, W., VAJDA, A., HEVERIN, M., KAZOKA, M.,  
580 HOLLINGER, H., GROMICHO, M., KÖRNER, S., RINGER, T. M., RÖDIGER, A., GUNKEL, A.,  
581 SHAW, C. E., BREDENOORD, A. L., VAN ES, M. A., CORCIA, P., COURATIER, P., WEBER, M.,  
582 GROSSKREUTZ, J., LUDOLPH, A. C., PETRI, S., DE CARVALHO, M., VAN DAMME, P.,  
583 TALBOT, K., TURNER, M. R., SHAW, P. J., AL-CHALABI, A., CHIÒ, A., HARDIMAN, O.,  
584 MOONS, K. G. M., VELDINK, J. H. & VAN DEN BERG, L. H. 2018. Prognosis for patients with  
585 amyotrophic lateral sclerosis: development and validation of a personalised prediction model. *The*  
586 *Lancet Neurology*, 17, 423-433.

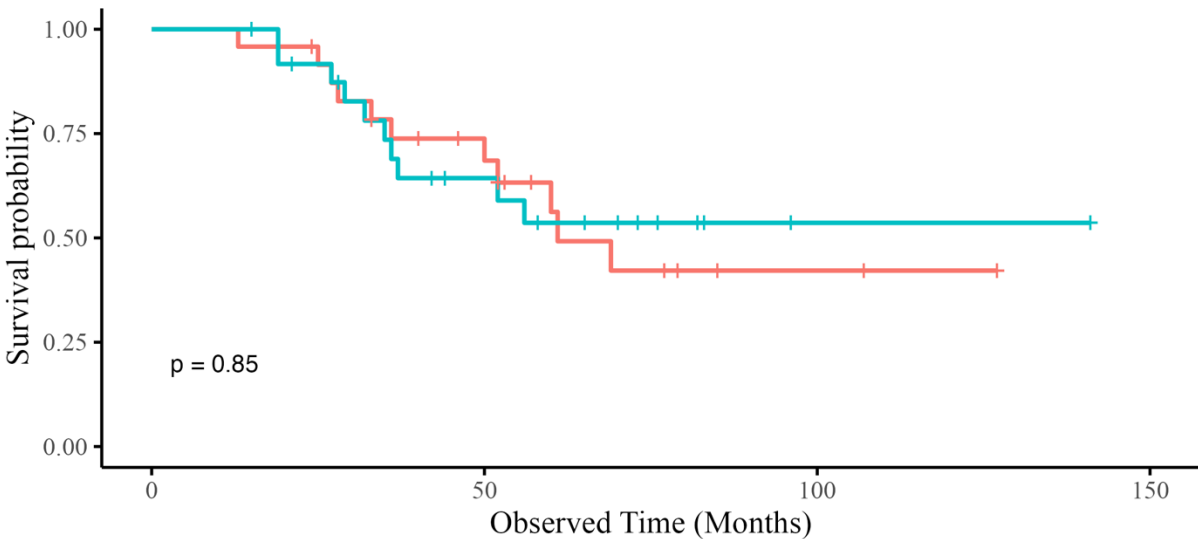


ALS Neuro Control Control

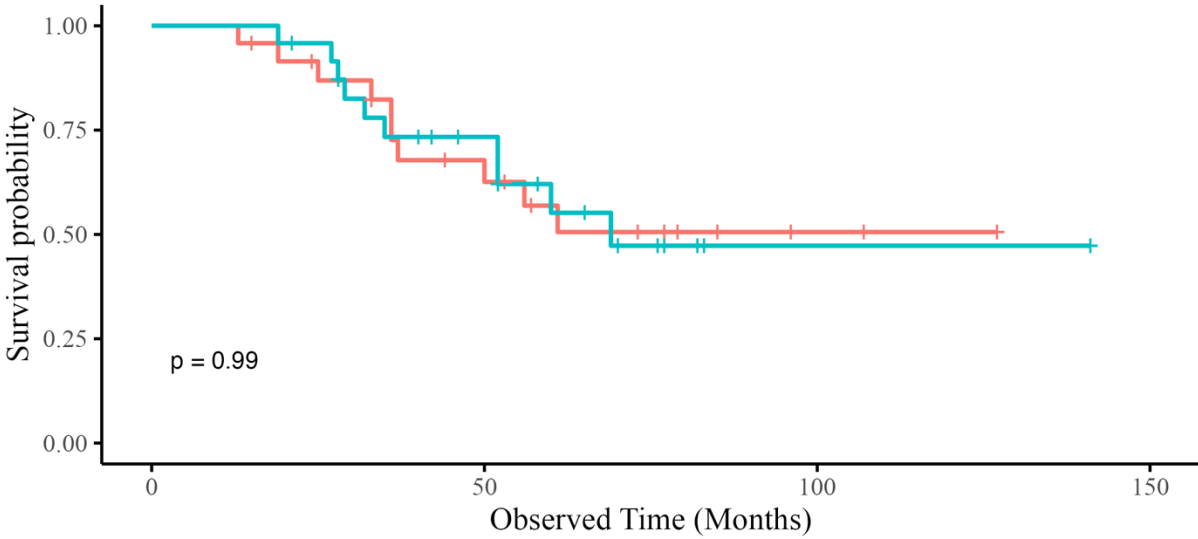




High Fasciculation Freq Low Fasciculation Freq



High Amplitude IQR Low Amplitude IQR



High Amplitude Median Low Amplitude Median

