

1 **Title**

2 The Causal Association between Gut Microbiota and Pancreatic Cancer: A Two-sample
3 Mendelian Randomization Analysis in European and East Asian Populations

4 **Authors**

5 Yinbo Xiao^{1#}, Xiang Li^{2#}, Long Zou¹, Daniel M. Wall², Zhiyong Liang¹

6 ¹Department of Pathology, State Key Laboratory of Complex Severe and Rare Diseases,
7 Molecular Pathology Research Centre, Peking Union Medical College Hospital, Chinese
8 Academy of Medical Sciences and Peking Union Medical College, Beijing, China

9 ²School of Infection and Immunity, College of Medical, Veterinary and Life Sciences, Sir
10 Graeme Davies Building, University of Glasgow, Glasgow G12 8TA, United Kingdom

11 # These authors contributed to the work equally.

12 **Corresponding author:** Zhiyong Liang (e-mail: liangzy@pumch.cn)

13

14 **Financial support:** This study was supported by funding from National Natural Science
15 Foundation of China (No. 82072749).

16 **Author contributions:** Yinbo Xiao and Xiang Li: conception and design of the study and
17 original draft preparation. Long Zou: literature search and original draft preparation. Zhiyong
18 Liang and Daniel M. Wall: revision and approval of the manuscript. All authors approved the
19 final version of the article.

20 **Declaration of conflict of interest:** The authors declare that they have no conflicts of
21 interest.

22 **Ethics statement:** Ethical review and approval were not required for this study because this
23 study was based on public databases.

24 **Abstract**

25 *Background and Aim:* Alterations in the gut microbiota strongly correlate with the onset of
26 pancreatic cancer (PC). However, any causal relationship between gut microbiota alterations
27 and PC risk remains unknown.

28 *Methods:* We comprehensively investigated PC-related microorganisms in European and East
29 Asian populations through the application of Mendelian randomization (MR). The PC
30 genome-wide association study (GWAS) databases for European and East Asian individuals
31 were acquired from the UK and Japanese Biobanks, respectively. Primary analytical
32 methods, including the inverse variance weighted (IVW) method, weighted median,
33 Maximum likelihood method and MR PRESSO, were employed to estimate the potential
34 causal association between gut microbiota and PC. Additionally, we performed sensitivity
35 analysis and reverse MR analysis.

36 *Results:* By IVW method, overall 17 bacterial taxa were identified with potential causal
37 correlations to PC. The PC-associated gut microbiota signatures varied across different
38 populations. Among these, 4 specific taxa exhibited potential causality with PC, with
39 statistical significance in all four MR methods. Specifically, the *Alcaligenaceae* family was
40 identified as protective, while genus *Sutterella*, order *Bacilliales* and genus *Enterohabdus*
41 were associated with increased risk of PC. Among the European population within the UK
42 biobank, the *Alcaligenaceae* family, genus *Sutterella*, and order *Bacillales* were connected to
43 PC, while genus *Enterohabdus* was linked to PC in the Japanese cohort.

44 *Conclusion:* Our study implicates certain members of the gut microbiota in PC onset based
45 on genetics. Further investigations of the gut-pancreas axis may lead to the development of
46 novel microbiome targeted prevention strategies for PC.

47 **Keywords**

48 pancreatic cancer, gut microbiota, Mendelian randomization analysis.

49

50 Introduction

51 Pancreatic cancer (PC), especially pancreatic ductal adenocarcinoma, is one of the most
52 lethal malignancies worldwide [1]. With an estimated 49,830 deaths attributed to PC in
53 2022, it remains the fourth most common cause of cancer-related deaths in the US [2].
54 Moreover, it is predicted to become the second leading cause of cancer-related deaths by
55 2030 in the US [3]. The incidence and mortality rates of PC are continuously increasing year
56 by year, unfortunately with minimal progress in the overall survival rate [4]. Thus, it is urgent
57 to gain a deeper understanding of the biological mechanisms underlying PC carcinogenesis,
58 potentially leading to novel treatment and management strategies for PC to reduce such
59 public health burden.

60 The role of the gut microbiome in PC development, known as the microbiome-pancreas axis,
61 has gained significant attention [5]. Microbiota from the gut can enter the pancreas via the
62 circulatory system or pancreatic duct [6, 7]. Numerous research studies have revealed that
63 gut microbiota alterations are involved in the advent of PC [8-11], even though the
64 underlying molecular mechanisms remain unclear. Moreover, some epidemiological studies
65 have demonstrated that the risk of PC is positively correlated to the abundance of some gut
66 microbiota, such as *Aggregatibacter actinomycetemcomitans*, *Porphyromonas gingivalis* and
67 *Helicobacter Pylori* [10, 12, 13]. These studies indicated that the gut microbiota could serve
68 as biomarkers for PC in clinical practice and be utilized for early detection of PC and
69 prognosis of outcomes. However, a causal role for the gut microbiota in PC has not been
70 established, due to confounding factors and the potential for reverse causality [14-16].

71 Mendelian randomization (MR) is an epidemiological method whereby genetic variants are
72 employed as instrumental variables (IVs) to determine the causal relationship between risk
73 factors and disease outcomes [17, 18]. The use of genetic variants is advantageous as they
74 are randomly distributed during conception, reducing the impacts of confounding factors
75 and eliminating reverse causation bias. Consequently, MR analysis is less susceptible to the
76 influence of environmental and self-adopted confounding factors [19]. In this study, MR
77 offers a valuable approach to estimate the causal link between the gut microbiota and the
78 risk of PC.

79 Using MR analysis, previous studies have identified the causal relationships between the gut
80 microbiome and several cancers, including liver cancer [20], colorectal cancer [21], and lung
81 cancer [22]. However, any causal association between the gut microbiota and PC is still

82 unclear. Furthermore, most MR studies are largely derived from European populations,
83 while there is a limited number of studies employing MR analysis in non-European cohorts.
84 Here, we performed a two-sample MR analysis to evaluate the association between the gut
85 microbiome and PC risk among both European and East Asian populations. Our study can
86 enhance the theoretical basis for the gut-pancreas axis leading to novel insights into the
87 predictors of PC as well as potential treatment targets.

88 **Methods**

89 **Exposure data**

90 Genetic variants related to the gut microbiota composition were acquired from the large-
91 scale genome-wide association study (GWAS) [23]. The gut microbiota was profiled by
92 targeting three variable regions V1–V2, V3–V4 and V4 of the 16S rRNA gene. The meta-
93 analysis encompassed a total of 18,340 participants derived from 24 cohorts originating
94 from several countries including the United States, Canada, Israel, South Korea, Germany,
95 the United Kingdom. Following adjustment for age, gender, technical covariates, and genetic
96 principal components, the quantitative microbiome trait loci analysis yielded a total of 211
97 GWAS summary statistics associated with microbial taxa. These were 9 phyla, 16 classes, 20
98 orders, 35 families (including 3 families with unknown classification), and 131 genera (with
99 12 genera of unknown classification). The summary data is available for download from
100 <https://mibiogen.gcc.rug.nl/>.

101 **Outcome data**

102 The UK Biobank and the Japan Biobank were used to investigate the causal relationship
103 between the microbiome and pancreatic cancer. The cohort data from the UK Biobank of PC
104 involved 589 PC cases and 393372 healthy control. Summary analysis statistics are available
105 from the Lee Lab (<https://www.leelabsg.org/resources>). The summary GWAS data of the
106 Japan Biobank included 442 PC cases and 195745 healthy controls. Data was acquired from
107 the IEU Open GWAS project (<https://gwas.mrcieu.ac.uk/datasets/>).

108 **Assumptions**

109 The schematic representation of the investigation is depicted in **Figure 1**. In this study, the
110 gut microbiota was considered as the exposure, while PC was regarded as the outcome.
111 Three fundamental assumptions were necessary for a proper MR study. First, the genetic
112 variants designated as IVs were strongly related to the exposure. Second, the relationships

113 between genetic variations and outcomes were not influenced by any other confounding
114 variables. Third, it should be noted that the impact of genetic variations on the outcome was
115 only mediated by their influence on the specific exposure under investigation. It meant that
116 no occurrence of horizontal pleiotropy was shown between the genetic variants and the
117 outcome.

118 **Instrumental variable selection**

119 Excluding 15 unknown classifications, a total of 196 taxa at five different levels (phylum,
120 class, order, family, and genera) were conducted as the exposure datasets. Potential IVs were
121 selected by single nucleotide polymorphisms (SNPs) with a less stringent significant
122 association at a threshold of $P < 1.0 \times 10^{-5}$. The approach was employed to augment the
123 pool of SNPs accessible for conducting sensitivity tests, as demonstrated in prior studies [23,
124 24]. Independent SNPs were clumped as IVs based on linkage disequilibrium (LD) $R^2 < 0.01$
125 and clumping distance equal to 10,000 kb. The strengths of the IVs were estimated by F
126 statistics. Specifically, the extent to which the IVs accounted for variance was computed for
127 each exposure. F statistics were calculated with the following equation, $r^2 * (N - 1 - k) / [(1 -$
128 $r^2) * k]$, where r^2 was the variance explained, N was the sample size and k was the number of
129 IVs [25]. To calculate F statistics for independent IVs, k was equal to 1. Finally, independent
130 IVs with F-statistics below 10 were deemed to be weak IVs and therefore were eliminated
131 from the analysis. To identify whether selective IVs were associated with confounders,
132 PhenoScanner was applied to exclude IVs significantly associated ($P < 5 \times 10^{-8}$) with potential
133 confounders (i.e., obesity, smoking, diet, or other diseases).

134 **Mendelian randomization analysis**

135 MR analysis was conducted in R using TwoSampleMR package version 0.5.7 [26]. Selected
136 IVs from different gut microbiota taxa were combined with the PC outcome SNPs dataset. To
137 ensure the effects of SNPs on the exposure corresponding to the same allele as the effects
138 on the outcome, shared SNPs were harmonised across exposure and outcome databases. At
139 least 3 shared SNPs available between exposure and outcome were then selected for further
140 MR analysis. To evaluate causal estimates between the gut microbiota and the risk of PC, MR
141 causality tests were performed using four different approaches: inverse-variance-weighted
142 (IVW) method, weighted median, maximum-likelihood method and MR-PRESSO [27]. In
143 particular, the IV method of estimation was fundamentally a meta-analysis technique which
144 was operated under the assumption that IVs had a causal impact on the outcome solely

145 through the exposure, rather than through any other pathways [28]. The weighted median
146 estimator provided valid estimations of causal effect when no more than 50% of the
147 information was from invalid instruments. MR PRESSO was employed to estimate the
148 pleiotropy, which corrected the estimation by eliminating outliers from the IVW model.
149 Therefore, the presence of a causal relationship was determined when a statistically
150 significant P value ($P < 0.05$) was obtained from any of the four methods used in the MR
151 analysis.

152 **Sensitivity analysis**

153 After MR analysis, sensitivity analysis was performed to evaluate potential heterogeneity
154 and pleiotropy. The Cochran's Q statistics were employed for heterogeneity analysis. When
155 the p -value of Q statistics was less than 0.05, it might be interpreted as evidence of
156 heterogeneity. MR-Egger intercept, as well as MR-PRESSO test, were conducted to monitor
157 the potential horizontal pleiotropy. An insignificant P value ($P > 0.05$) in the MR-Egger
158 intercept test was defined as the absence of pleiotropy. The MR-PRESSO test was also
159 conducted to examine pleiotropic biases and address the pleiotropic effects by eliminating
160 outliers. MR analysis report was not supported by the MR PRESSO outliers-adjusted test
161 ($P > 0.05$) representing substantial pleiotropy. In addition, leave-one-out analysis was
162 performed to determine if the causal estimates were biased by any one single SNP. Leave-
163 one-out analysis was able to identify one SNP driving the signal when all, but one leave-one-
164 out configuration had $P < 0.05$.

165 **Reverse MR analysis**

166 To determine whether PC had any causal impact on the identified significant microbiota, a
167 reverse MR analysis was conducted (PC as the exposure and the identified significant gut
168 microbiota as the outcome), by using SNPs that were strongly associated with PC as IVs ($p <$
169 5×10^{-6}). Causal tests based on the MR framework were then conducted, following the same
170 methodology as described in the section "Mendelian randomization analysis". To eliminate
171 intricate causality possibility, we also excluded any results in which the P -value of reverse
172 MR was less than 0.05.

173 **Results**

174 **Selection of instrumental variables**

175 IVs were sorted by $p < 1 \times 10^{-6}$. After excluding unknown bacterial genera or ones containing
176 less than three IVs, a total of 119 bacterial genera were used as exposure datasets. The F-
177 statistics of IVs were more than 10, suggesting that there was no evidence of weak
178 instrument bias. Details about the selected IVs for 119 genera were shown in

179 **Supplementary Table S1.**

180 **Association of specific members of the gut microbiota with PC**

181 In the MR analysis, 17 bacterial genera were genetically predicted associated with the risk of
182 PC in the IVW method of MR analysis. Specifically, there were 11 genera (class *Bacteroidia*,
183 family *Alcaligenaceae*, family *Veillonellaceae*, genus *Bilophila*, genus *Eggerthella*, genus
184 *LachnospiraceaeUCG004*, genus *LachnospiraceaeUCG010*, genus *Parasutterella*, genus
185 *Sutterella*, order *Bacillales*, and order *Bacteroidales*) in European ancestry from the UK
186 Biobank (**Table 1**), while 6 genera (class *Atinobacteria*, family *Christensenellaceae*, genus
187 *Ruminococcusgnavus* group, genus *Enterohabdus*, genus *Ruminococcus1*, order
188 *Burkholderiales*) were identified in East Asian ancestry from the Japan Biobank (**Table 2**). The
189 scatter plots of IV potential effects on PC versus gut microbiota in the European and East
190 Asian populations were demonstrated in **Supplementary Figure S1 and S2**, respectively. In
191 order to identify the strongest evidence of significant risk factors between any microbial taxa
192 and PC, 17 significant bacterial genera were valued in 4 different MR analysis methods (IVW,
193 weighted median, Maximum likelihood, and MR PRESSO). The most significant risk factors
194 were required to achieve a p -value below 0.05 in all four distinct techniques of MR analysis.
195 Hence, four microbial taxa were identified that fulfilled these requirements, including three
196 taxa (family *Alcaligenaceae*, genus *Sutterella*, and order *Bacillales*) being associated with PC
197 in the UK Biobank cohort, and one taxon (genus *Enterohabdus*) being associated with PC in
198 Japan Biobank cohort (as shown in **Table 1** and **2**). Meanwhile, the IVW, weighted median,
199 Maximum likelihood, and MR PRESSO, all 4 analysis methods produced similar casual
200 estimates for magnitude and direction. In detail, the family *Alcaligenaceae* (OR = 0.5, 95% CI
201 = 0.29-0.86, $p = 0.011$, IVW) had a protective effect on PC in European populations, while
202 genus *Sutterella* (OR = 2.25, 95% CI = 1.27-3.99, $p = 0.005$, IVW) and order *Bacillales* (OR =
203 1.60, 95% CI = 1.18-2.16, $p = 0.002$, IVW) were associated with a higher risk of PC. The
204 findings from the Japanese cohort indicated a heightened likelihood of developing PC

205 correlated with the presence of the genus *Enterohabdu*s (OR = 2.38, 95% CI = 1.40-4.04, $p =$
206 0.001, IVW).

207 **Sensitivity Analyses**

208 The Cochran's Q statistics for all 17 significant risk factors of gut microbiota in PC showed no
209 significant heterogeneity ($p > 0.05$) (**Supplementary Table S2**). Meanwhile, no evidence of
210 horizontal pleiotropy for gut microbiota in PC with $p > 0.05$ was demonstrated by the MR-
211 Egger regression intercept approach (**Supplementary Table S3**). The heterogeneity of 17
212 significant risk factors of PC was also revealed by the MR-PRESSO global test, and the
213 analysis revealed no outliers in the results (**Supplementary Table S4**). Moreover, leave-one-
214 out analysis exhibited no significant difference in causal estimations of all 17 bacterial
215 genera on PC (**Supplementary Figure S3 and S4**). No association between Pancreatic cancer
216 and the following taxonomic groups was observed in the reverse MR analysis of the UK
217 Biobank data: class *Bacyeroidia*, family *Alcaligenaceae*, family *Veillonellaceae*, genus
218 *Bilophila*, genus *Eggerthella*, genus *LachnospiraceaeUCG004*, genus
219 *LachnospiraceaeUCG010*, genus *Parasutterella*, genus *Sutterella*, order *Bacillales*, and order
220 *Bacteroidales* (**Table 3**). As there were few IVs identified from the Japanese Biobank, only 7
221 IVs were selected even when the cut-off p -value was set as 1×10^{-5} . Therefore, we could not
222 perform reserve MR analysis between PC and the gut microbiome in the population from
223 Eastern Asia. Detailed information on the IVs (P value $< 5 \times 10^{-6}$) used in the reverse MR
224 analyses was shown in **Supplementary Table S5**.

225 **Discussion**

226 Our study used MR analysis to offer valuable insights into the potential causal relationship
227 between gut microbiota and PC. IVW estimates suggested that within the European
228 population, class *Bacteroidia*, family *Alcaligenaceae*, genus *Eggerthella*, genus
229 *LachnospiraceaeUCG004*, genus *Parasutterella*, order *Bacteroidales* were related to the
230 reduced risk of PC, while family *Veillonellaceae*, genus *Bilophila*, genus *Lachnospiraceae*
231 *UCG010*, genus *Sutterella*, and order *Bacillales* were positively related to the risk of PC. In
232 the East Asian population, several gut microbiota members were identified to be related to
233 the reduced risk of PC, including family *Christensenellaceae*, genus *Ruminococcusgnavus*
234 *group*, genus *Ruminococcus 1*, and order *Burkholderiales*, while the level of class
235 *Actinobacteria* and genus *Enterorhabdu*s were positively related to the PC. These findings

236 not only contribute to the advancement of our knowledge of microbiota in the development
237 of cancer, but also highlight the importance of ethnicity in the risk of PC.

238 Based on the PC GWAS database from the UK biobank and the Japan biobank, our study
239 indicated that the PC-associated gut microbiome displayed widespread regional differences.
240 Furthermore, a recent meta-analysis conducted on the Finnish biobank data identified a
241 distinct group of bacteria associated with PC. However, these findings varied from the results
242 obtained from biobanks in the UK and Japan. [29, 30]. All this evidence suggested that the
243 PC-related gut microbiota signatures varied across different populations. Previous studies
244 demonstrated strong associations between race (European, African, Asian) and different
245 genera abundances in most cancer types [31]. The incidence of PC is greater in Europe than
246 in East Asia [32]. The disparity may be associated with gut microbiome differences. However,
247 the microbiome profiles among various racial groups in PC, are not well understood. The
248 different abundant bacteria might be attributed to various dietary patterns among
249 individuals from distinct regions. It is noteworthy that the diversity in human gut
250 microbiome composition between ethnic groups manifests as early as three months after
251 birth [33]. Hence, diverse geographic populations should be considered in the microbiota-
252 based disease models [34]. The identification of unique gut microbiota linked to PC in the UK
253 and Japan provide an opportunity to further conduct country-specific studies on the
254 development of PC.

255 The findings generated from our MR analysis were consistent with the previously published
256 results obtained from 16s rRNA sequencing of microbiota in PC patients. The clinical PC
257 faecal microbial profile by 16s rRNA sequencing reported that *Eggerthella* and *Parasutterella*
258 were significantly decreased in PC patients compared with healthy control [35]. Another
259 faecal microbiome signature in PC patients was characterised by a decreased presence of
260 bacterial families commonly in the healthy gut, namely *Ruminococcaceae* and
261 *Lachnospiraceae*; and an increased presence of *Veillonellaceae* [36]. Additionally, a
262 comparison of the relative abundances of each microbial species revealed that *Sutterella*
263 *Wadsworthensis* and *Bilophila* were significantly enriched, while *Bacteroides Rodentium* was
264 significantly decreased in PC as compared with healthy controls [37, 38]. Thus, the two-
265 sample Mendelian randomization study is thought to provide a convincing approach for
266 evaluating the relationships between gut microbiota and PC, as it is compatible with faecal
267 16s sequencing results.

268 According to our findings, a decrease in the abundance of *Lachnospiraceae* and
269 *Ruminococcaceae*, as well as an increase in *Veillonellaceae*, were associated with the PC risk.
270 Strikingly, a similar profile of altered gut microbiota was also exhibited in the patients
271 diagnosed with cirrhosis [39, 40]. In a linkage study in southern England, elevated risks of PC
272 were identified to be related to earlier liver diseases, such as alcoholic cirrhosis, primary
273 biliary cirrhosis and unspecified cirrhosis [41]. Combined with our results, new research will
274 be proposed that a potential role of altered gut flora in cirrhosis patients could contribute to
275 the increased susceptibility to PC. Besides, it is well acknowledged that obesity substantially
276 elevates the risk of PC; however, the underlying mechanisms connecting the two remain
277 poorly understood [42]. The genus *Eggerthella*, as a protective factor for PC, exhibited a
278 significantly lower abundance in obese individuals compared to non-obese ones [43].
279 Conversely, the genus *Sutterella* as a risk factor for PC, exhibited an increase in obese people
280 [44, 45]. Given the similarity of the microbiota profiles between the obese population and
281 PC patients, it is reasonable to assume that the microbiota alteration, such as the metabolic
282 changes linked to the *Eggerthella* and *Sutterella* [46], could mediate the mechanism by
283 which the obesity initiates the development of PC. Taken together, our study can provide
284 novel insights into the relationships between PC, the microbiome and other risk factors,
285 which could enhance our knowledge of PC development.

286 The therapeutic techniques aiming at the cancer-associated microbiome have been
287 conducted in clinical trials. In this context, our study found that *Ruminococcus* and
288 *Lachnospiraceae* were severed as the protective role of PC, suggesting novel and potential
289 treatment targets for gut microbiome-based therapy. Hester et al. [47] demonstrated that
290 the consumption of a substantial quantity of dietary fibre led to the production of a
291 significant level of butyrate production by several bacterial family, such as *Lachnospiraceae*
292 and *Ruminococcaceae*, which had preventive properties against the development of colon
293 cancer. The utilization of probiotics in healthy individuals has been found to inhibit the
294 development of colon carcinoma by increasing the number of *Ruminococcus* species and
295 *Clostridiales* bacteria [48, 49]. Therefore, the use of probiotics containing *Ruminococcus*
296 could have promise as a novel therapeutic approach for mitigating the onset of PC. On the
297 other hand, based on our findings, other PC-associated microbiota are worthy of further
298 investigation, making this a promising direction for targeted gut microbiome-based therapy
299 for PC.

300 Our study has several limitations. First, our research included a total of 119 microbial taxa;
301 however, we did not investigate potential causal associations at the species level. Second,
302 MR analysis is a computer-based correlation analysis between gut microbiota and PC,
303 without explaining the underlying process. It would be advantageous to validate the
304 outcomes via functional experiments. Third, the present study included people of European
305 and East Asian descent, perhaps restricting the generalizability of the findings to other
306 populations.

307 In conclusion, this study identified several candidate bacteria that have potential association
308 with PC. Variations in the PC-associated gut microbiota signatures are evidenced with
309 geographical location, which may explain the disparity of PC incidence across nations. The
310 identification of PC-associated gut microbiota provides the foundation for the exploration of
311 novel microbiota-targeted therapy for PC. Further studies are needed to better characterise
312 the potential role of these gut microbiota in the pathogenic mechanisms of PC.

313 Reference

- 314 1. Siegel, R.L., K.D. Miller, and A. Jemal, *Cancer statistics, 2020*. CA Cancer J Clin, 2020.
315 **70**(1): p. 7-30.
- 316 2. Siegel, R.L., K.D. Miller, H.E. Fuchs, and A. Jemal, *Cancer statistics, 2022*. CA Cancer J
317 Clin, 2022. **72**(1): p. 7-33.
- 318 3. Huang, B.Z., L. Liu, J. Zhang, U.S.C.P.R. Team, S.J. Pandol, S.R. Grossman, and V.W.
319 Setiawan, *Rising Incidence and Racial Disparities of Early-Onset Pancreatic Cancer in
320 the United States, 1995-2018*. Gastroenterology, 2022. **163**(1): p. 310-312 e1.
- 321 4. Khalaf, N., H.B. El-Serag, H.R. Abrams, and A.P. Thrift, *Burden of Pancreatic Cancer:
322 From Epidemiology to Practice*. Clin Gastroenterol Hepatol, 2021. **19**(5): p. 876-884.
- 323 5. Thomas, R.M. and C. Jobin, *Microbiota in pancreatic health and disease: the next
324 frontier in microbiome research*. Nat Rev Gastroenterol Hepatol, 2020. **17**(1): p. 53-
325 64.
- 326 6. Fritz, S., T. Hackert, W. Hartwig, F. Rossmannith, O. Strobel, L. Schneider, K. Will-
327 Schweiger, M. Kommerell, M.W. Buchler, and J. Werner, *Bacterial translocation and
328 infected pancreatic necrosis in acute necrotizing pancreatitis derives from small
329 bowel rather than from colon*. Am J Surg, 2010. **200**(1): p. 111-7.
- 330 7. Pushalkar, S., M. Hundeyin, D. Daley, C.P. Zambirinis, E. Kurz, A. Mishra, N. Mohan, B.
331 Aykut, M. Usyk, L.E. Torres, G. Werba, K. Zhang, Y. Guo, Q. Li, N. Akkad, S. Lall, B.
332 Wadowski, J. Gutierrez, J.A. Kochen Rossi, J.W. Herzog, B. Diskin, A. Torres-
333 Hernandez, J. Leinwand, W. Wang, P.S. Taunk, S. Savadkar, M. Janal, A. Saxena, X. Li,
334 D. Cohen, R.B. Sartor, D. Saxena, and G. Miller, *The Pancreatic Cancer Microbiome
335 Promotes Oncogenesis by Induction of Innate and Adaptive Immune Suppression*.
336 Cancer Discov, 2018. **8**(4): p. 403-416.
- 337 8. Aykut, B., S. Pushalkar, R. Chen, Q. Li, R. Abengozar, J.I. Kim, S.A. Shadaloey, D. Wu, P.
338 Preiss, N. Verma, Y. Guo, A. Saxena, M. Vardhan, B. Diskin, W. Wang, J. Leinwand, E.

- 339 Kurz, J.A. Kochen Rossi, M. Hundeyin, C. Zambrinis, X. Li, D. Saxena, and G. Miller, *The*
340 *fungal mycobiome promotes pancreatic oncogenesis via activation of MBL*. *Nature*,
341 2019. **574**(7777): p. 264-267.
- 342 9. Wei, M.Y., S. Shi, C. Liang, Q.C. Meng, J. Hua, Y.Y. Zhang, J. Liu, B. Zhang, J. Xu, and X.J.
343 Yu, *The microbiota and microbiome in pancreatic cancer: more influential than*
344 *expected*. *Mol Cancer*, 2019. **18**(1): p. 97.
- 345 10. Fan, X., A.V. Alekseyenko, J. Wu, B.A. Peters, E.J. Jacobs, S.M. Gapstur, M.P. Purdue,
346 C.C. Abnet, R. Stolzenberg-Solomon, G. Miller, J. Ravel, R.B. Hayes, and J. Ahn, *Human*
347 *oral microbiome and prospective risk for pancreatic cancer: a population-based*
348 *nested case-control study*. *Gut*, 2018. **67**(1): p. 120-127.
- 349 11. Sethi, V., S. Kurtom, M. Tarique, S. Lavania, Z. Malchiodi, L. Hellmund, L. Zhang, U.
350 Sharma, B. Giri, B. Garg, A. Ferrantella, S.M. Vickers, S. Banerjee, R. Dawra, S. Roy, S.
351 Ramakrishnan, A. Saluja, and V. Dudeja, *Gut Microbiota Promotes Tumor Growth in*
352 *Mice by Modulating Immune Response*. *Gastroenterology*, 2018. **155**(1): p. 33-37 e6.
- 353 12. Lee, A.A., Q.L. Wang, J. Kim, A. Babic, X. Zhang, K. Perez, K. Ng, J. Nowak, N. Rifai,
354 H.D. Sesso, J.E. Buring, G.L. Anderson, J. Wactawski-Wende, R. Wallace, J.E. Manson,
355 E.L. Giovannucci, M.J. Stampfer, P. Kraft, C.S. Fuchs, C. Yuan, and B.M. Wolpin,
356 *Helicobacter pylori Seropositivity, ABO Blood Type, and Pancreatic Cancer Risk From 5*
357 *Prospective Cohorts*. *Clin Transl Gastroenterol*, 2023. **14**(5): p. e00573.
- 358 13. Yuan, M., Y. Xu, and Z. Guo, *Association of oral microbiome and pancreatic cancer: a*
359 *systematic review and meta-analysis*. *Therap Adv Gastroenterol*, 2022. **15**: p.
360 17562848221123980.
- 361 14. Fewell, Z., G. Davey Smith, and J.A. Sterne, *The impact of residual and unmeasured*
362 *confounding in epidemiologic studies: a simulation study*. *Am J Epidemiol*, 2007.
363 **166**(6): p. 646-55.
- 364 15. Smith, G.D. and A.N. Phillips, *Confounding in epidemiological studies: why*
365 *"independent" effects may not be all they seem*. *BMJ*, 1992. **305**(6856): p. 757-9.
- 366 16. Phillips, A.N. and G.D. Smith, *How independent are "independent" effects? Relative*
367 *risk estimation when correlated exposures are measured imprecisely*. *J Clin*
368 *Epidemiol*, 1991. **44**(11): p. 1223-31.
- 369 17. Richmond, R.C. and G. Davey Smith, *Mendelian Randomization: Concepts and Scope*.
370 *Cold Spring Harb Perspect Med*, 2022. **12**(1).
- 371 18. Yarmolinsky, J., K.H. Wade, R.C. Richmond, R.J. Langdon, C.J. Bull, K.M. Tilling, C.L.
372 Relton, S.J. Lewis, G. Davey Smith, and R.M. Martin, *Causal Inference in Cancer*
373 *Epidemiology: What Is the Role of Mendelian Randomization?* *Cancer Epidemiol*
374 *Biomarkers Prev*, 2018. **27**(9): p. 995-1010.
- 375 19. Burgess, S. and S.G. Thompson, *Multivariable Mendelian randomization: the use of*
376 *pleiotropic genetic variants to estimate causal effects*. *Am J Epidemiol*, 2015. **181**(4):
377 p. 251-60.
- 378 20. Ma, J., J. Li, C. Jin, J. Yang, C. Zheng, K. Chen, Y. Xie, Y. Yang, Z. Bo, J. Wang, Q. Su, J.
379 Wang, G. Chen, and Y. Wang, *Association of gut microbiome and primary liver cancer:*
380 *A two-sample Mendelian randomization and case-control study*. *Liver Int*, 2023.
381 **43**(1): p. 221-233.
- 382 21. Ni, J.J., X.S. Li, H. Zhang, Q. Xu, X.T. Wei, G.J. Feng, M. Zhao, Z.J. Zhang, L. Zhang, G.H.
383 Shen, and B. Li, *Mendelian randomization study of causal link from gut microbiota to*
384 *colorectal cancer*. *BMC Cancer*, 2022. **22**(1): p. 1371.

- 385 22. Zhou, H., J. Liu, J. Shen, W. Fang, and L. Zhang, *Gut Microbiota and Lung Cancer: A*
386 *Mendelian Randomization Study*. JTO Clin Res Rep, 2020. **1**(3): p. 100042.
- 387 23. Kurilshikov, A., C. Medina-Gomez, R. Bacigalupe, D. Radjabzadeh, J. Wang, A.
388 Demirkan, C.I. Le Roy, J.A. Raygoza Garay, C.T. Finnicum, X. Liu, D.V. Zhernakova, M.J.
389 Bonder, T.H. Hansen, F. Frost, M.C. Ruhlmann, W. Turpin, J.Y. Moon, H.N. Kim, K. Lull,
390 E. Barkan, S.A. Shah, M. Fornage, J. Szopinska-Tokov, Z.D. Wallen, D. Borisevich, L.
391 Agreus, A. Andreasson, C. Bang, L. Bedrani, J.T. Bell, H. Bisgaard, M. Boehnke, D.I.
392 Boomsma, R.D. Burk, A. Claringbould, K. Croitoru, G.E. Davies, C.M. van Duijn, L.
393 Duijts, G. Falony, J. Fu, A. van der Graaf, T. Hansen, G. Homuth, D.A. Hughes, R.G.
394 Ijzerman, M.A. Jackson, V.W.V. Jaddoe, M. Joossens, T. Jorgensen, D. Keszthelyi, R.
395 Knight, M. Laakso, M. Laudes, L.J. Launer, W. Lieb, A.J. Lusic, A.A.M. Masclee, H.A.
396 Moll, Z. Mujagic, Q. Qibin, D. Rothschild, H. Shin, S.J. Sorensen, C.J. Steves, J. Thorsen,
397 N.J. Timpson, R.Y. Tito, S. Vieira-Silva, U. Volker, H. Volzke, U. Vosa, K.H. Wade, S.
398 Walter, K. Watanabe, S. Weiss, F.U. Weiss, O. Weissbrod, H.J. Westra, G. Willemsen,
399 H. Payami, D. Jonkers, A. Arias Vasquez, E.J.C. de Geus, K.A. Meyer, J. Stokholm, E.
400 Segal, E. Org, C. Wijmenga, H.L. Kim, R.C. Kaplan, T.D. Spector, A.G. Uitterlinden, F.
401 Rivadeneira, A. Franke, M.M. Lerch, L. Franke, S. Sanna, M. D'Amato, O. Pedersen,
402 A.D. Paterson, R. Kraaij, J. Raes and A. Zhernakova, *Large-scale association analyses*
403 *identify host factors influencing human gut microbiome composition*. Nat Genet,
404 2021. **53**(2): p. 156-165.
- 405 24. Sanna, S., N.R. van Zuydam, A. Mahajan, A. Kurilshikov, A. Vich Vila, U. Vosa, Z.
406 Mujagic, A.A.M. Masclee, D. Jonkers, M. Oosting, L.A.B. Joosten, M.G. Netea, L.
407 Franke, A. Zhernakova, J. Fu, C. Wijmenga, and M.I. McCarthy, *Causal relationships*
408 *among the gut microbiome, short-chain fatty acids and metabolic diseases*. Nat
409 Genet, 2019. **51**(4): p. 600-605.
- 410 25. Burgess, S., A. Butterworth, and S.G. Thompson, *Mendelian randomization analysis*
411 *with multiple genetic variants using summarized data*. Genet Epidemiol, 2013. **37**(7):
412 p. 658-65.
- 413 26. Hemani, G., J. Zheng, B. Elsworth, K.H. Wade, V. Haberland, D. Baird, C. Laurin, S.
414 Burgess, J. Bowden, R. Langdon, V.Y. Tan, J. Yarmolinsky, H.A. Shihab, N.J. Timpson,
415 D.M. Evans, C. Relton, R.M. Martin, G. Davey Smith, T.R. Gaunt, and P.C. Haycock, *The*
416 *MR-Base platform supports systematic causal inference across the human phenome*.
417 Elife, 2018. **7**.
- 418 27. Verbanck, M., C.Y. Chen, B. Neale, and R. Do, *Detection of widespread horizontal*
419 *pleiotropy in causal relationships inferred from Mendelian randomization between*
420 *complex traits and diseases*. Nat Genet, 2018. **50**(5): p. 693-698.
- 421 28. Bowden, J., M.F. Del Greco, C. Minelli, G. Davey Smith, N. Sheehan, and J. Thompson,
422 *A framework for the investigation of pleiotropy in two-sample summary data*
423 *Mendelian randomization*. Stat Med, 2017. **36**(11): p. 1783-1802.
- 424 29. Jiang, Z., Y. Mou, H. Wang, L. Li, T. Jin, H. Wang, M. Liu, and W. Jin, *Causal effect*
425 *between gut microbiota and pancreatic cancer: a two-sample Mendelian*
426 *randomization study*. BMC Cancer, 2023. **23**(1): p. 1091.
- 427 30. Zhu, S.J. and Z. Ding, *Association between gut microbiota and seven gastrointestinal*
428 *diseases: A Mendelian randomized study*. J Gene Med, 2023: p. e3623.
- 429 31. Luo, M., Y. Liu, L.C. Hermida, E.M. Gertz, Z. Zhang, Q. Li, L. Diao, E. Ruppin, and L.
430 Han, *Race is a key determinant of the human intratumor microbiome*. Cancer Cell,
431 2022. **40**(9): p. 901-902.

- 432 32. Collaborators, G.B.D.P.C., *The global, regional, and national burden of pancreatic*
433 *cancer and its attributable risk factors in 195 countries and territories, 1990-2017: a*
434 *systematic analysis for the Global Burden of Disease Study 2017*. Lancet
435 Gastroenterol Hepatol, 2019. **4**(12): p. 934-947.
- 436 33. Mallott, E.K., A.R. Sitarik, L.D. Leve, C. Cioffi, C.A. Camargo, Jr., K. Hasegawa, and S.R.
437 Bordenstein, *Human microbiome variation associated with race and ethnicity*
438 *emerges as early as 3 months of age*. PLoS Biol, 2023. **21**(8): p. e3002230.
- 439 34. He, Y., W. Wu, H.M. Zheng, P. Li, D. McDonald, H.F. Sheng, M.X. Chen, Z.H. Chen, G.Y.
440 Ji, Z.D. Zheng, P. Mujagond, X.J. Chen, Z.H. Rong, P. Chen, L.Y. Lyu, X. Wang, C.B. Wu,
441 N. Yu, Y.J. Xu, J. Yin, J. Raes, R. Knight, W.J. Ma, and H.W. Zhou, *Regional variation*
442 *limits applications of healthy gut microbiome reference ranges and disease models*.
443 Nat Med, 2018. **24**(10): p. 1532-1535.
- 444 35. Ren, Z., J. Jiang, H. Xie, A. Li, H. Lu, S. Xu, L. Zhou, H. Zhang, G. Cui, X. Chen, Y. Liu, L.
445 Wu, N. Qin, R. Sun, W. Wang, L. Li, W. Wang, and S. Zheng, *Gut microbial profile*
446 *analysis by MiSeq sequencing of pancreatic carcinoma patients in China*. Oncotarget,
447 2017. **8**(56): p. 95176-95191.
- 448 36. Half, E., N. Keren, L. Reshef, T. Dorfman, I. Lachter, Y. Kluger, N. Reshef, H. Knobler, Y.
449 Maor, A. Stein, F.M. Konikoff, and U. Gophna, *Fecal microbiome signatures of*
450 *pancreatic cancer patients*. Sci Rep, 2019. **9**(1): p. 16801.
- 451 37. Nagata, N., S. Nishijima, Y. Kojima, Y. Hisada, K. Imbe, T. Miyoshi-Akiyama, W. Suda,
452 M. Kimura, R. Aoki, K. Sekine, M. Ohsugi, K. Miki, T. Osawa, K. Ueki, S. Oka, M.
453 Mizokami, E. Kartal, T.S.B. Schmidt, E. Molina-Montes, L. Estudillo, N. Malats, J.
454 Trebicka, S. Kersting, M. Langheinrich, P. Bork, N. Uemura, T. Itoi, and T. Kawai,
455 *Metagenomic Identification of Microbial Signatures Predicting Pancreatic Cancer*
456 *From a Multinational Study*. Gastroenterology, 2022. **163**(1): p. 222-238.
- 457 38. Matsukawa, H., N. Iida, K. Kitamura, T. Terashima, J. Seishima, I. Makino, T. Kannon, K.
458 Hosomichi, T. Yamashita, Y. Sakai, M. Honda, T. Yamashita, E. Mizukoshi, and S.
459 Kaneko, *Dysbiotic gut microbiota in pancreatic cancer patients form correlation*
460 *networks with the oral microbiota and prognostic factors*. Am J Cancer Res, 2021.
461 **11**(6): p. 3163-3175.
- 462 39. Chen, Y., F. Yang, H. Lu, B. Wang, Y. Chen, D. Lei, Y. Wang, B. Zhu, and L. Li,
463 *Characterization of fecal microbial communities in patients with liver cirrhosis*.
464 Hepatology, 2011. **54**(2): p. 562-72.
- 465 40. Bajaj, J.S., P.B. Hylemon, J.M. Ridlon, D.M. Heuman, K. Daita, M.B. White, P.
466 Monteith, N.A. Noble, M. Sikaroodi, and P.M. Gillevet, *Colonic mucosal microbiome*
467 *differs from stool microbiome in cirrhosis and hepatic encephalopathy and is linked to*
468 *cognition and inflammation*. Am J Physiol Gastrointest Liver Physiol, 2012. **303**(6): p.
469 G675-85.
- 470 41. Goldacre, M.J., C.J. Wotton, D. Yeates, V. Seagroatt, and J. Collier, *Liver cirrhosis, other*
471 *liver diseases, pancreatitis and subsequent cancer: record linkage study*. Eur J
472 Gastroenterol Hepatol, 2008. **20**(5): p. 384-92.
- 473 42. Li, Z., L. Jin, L. Xia, X. Li, Y. Guan, and H. He, *Body mass index, C-reactive protein, and*
474 *pancreatic cancer: A Mendelian randomization analysis to investigate causal*
475 *pathways*. Front Oncol, 2023. **13**: p. 1042567.
- 476 43. Verdam, F.J., S. Fuentes, C. de Jonge, E.G. Zoetendal, R. Erbil, J.W. Greve, W.A.
477 Buurman, W.M. de Vos, and S.S. Rensen, *Human intestinal microbiota composition is*

478 *associated with local and systemic inflammation in obesity.* Obesity (Silver Spring),
479 2013. **21**(12): p. E607-15.

480 44. Oduaran, O.H., F.B. Tamburini, V. Sahibdeen, R. Brewster, F.X. Gomez-Olive, K. Kahn,
481 S.A. Norris, S.M. Tollman, R. Twine, A.N. Wade, R.G. Wagner, Z. Lombard, A.S. Bhatt,
482 and S. Hazelhurst, *Gut microbiome profiling of a rural and urban South African cohort*
483 *reveals biomarkers of a population in lifestyle transition.* BMC Microbiol, 2020. **20**(1):
484 p. 330.

485 45. Gao, X., M. Zhang, J. Xue, J. Huang, R. Zhuang, X. Zhou, H. Zhang, Q. Fu, and Y. Hao,
486 *Body Mass Index Differences in the Gut Microbiota Are Gender Specific.* Front
487 Microbiol, 2018. **9**: p. 1250.

488 46. de Wit, D.F., N.M.J. Hanssen, K. Wortelboer, H. Herrema, E. Rampanelli, and M.
489 Nieuwdorp, *Evidence for the contribution of the gut microbiome to obesity and its*
490 *reversal.* Sci Transl Med, 2023. **15**(723): p. eadg2773.

491 47. Hester, C.M., V.R. Jala, M.G. Langille, S. Umar, K.A. Greiner, and B. Haribabu, *Fecal*
492 *microbes, short chain fatty acids, and colorectal cancer across racial/ethnic groups.*
493 World J Gastroenterol, 2015. **21**(9): p. 2759-69.

494 48. Walia, S., R. Kamal, S.S. Kanwar, and D.K. Dhawan, *Cyclooxygenase as a target in*
495 *chemoprevention by probiotics during 1,2-dimethylhydrazine induced colon*
496 *carcinogenesis in rats.* Nutr Cancer, 2015. **67**(4): p. 603-11.

497 49. Zhang, X., Y. Zhao, J. Xu, Z. Xue, M. Zhang, X. Pang, X. Zhang, and L. Zhao, *Modulation*
498 *of gut microbiota by berberine and metformin during the treatment of high-fat diet-*
499 *induced obesity in rats.* Sci Rep, 2015. **5**: p. 14405.

500

501

502

503

504

505

506

507

508

509

510

511

512

513

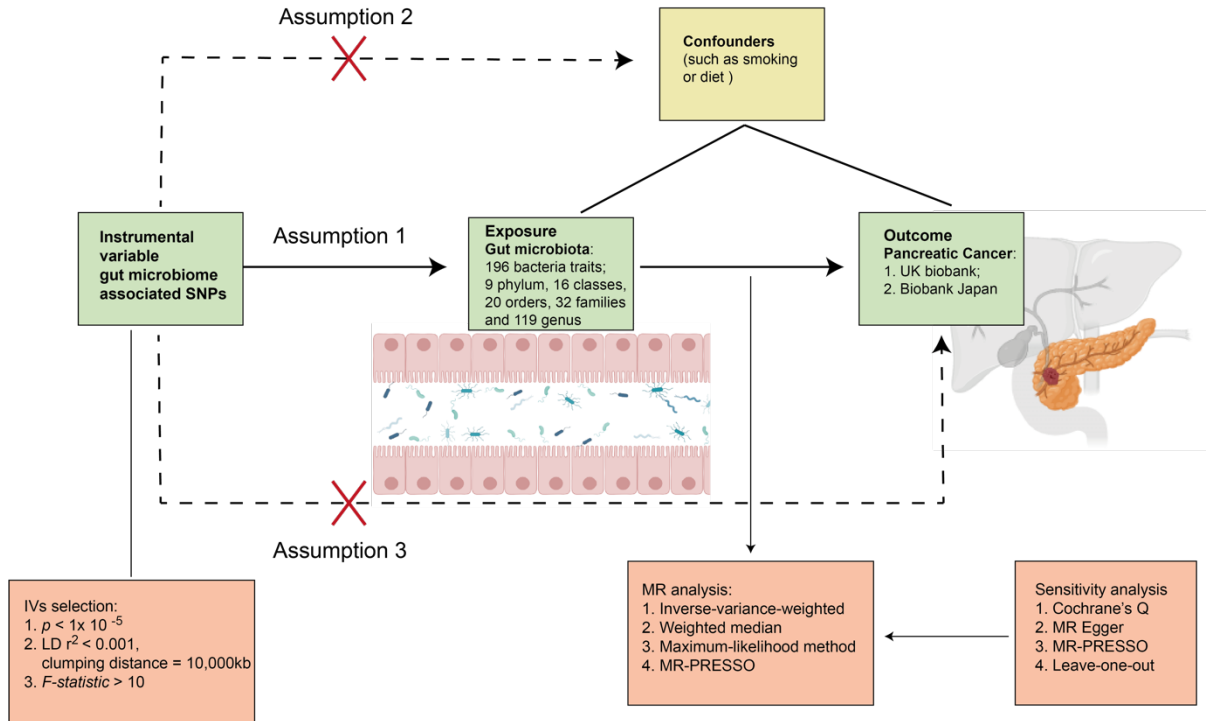
514

515

516

517 **Figure 1**
 518 The study design and the overall workflow.
 519

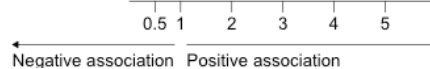
Assumption 1: the genetic variant is directly associated with the exposure;
 Assumption 2: the genetic variant is not related to factors known to obscure the connection between the exposure and the effect;
 Assumption 3: the genetic variant has no effect other than through the exposure.



520
 521
 522
 523
 524
 525
 526
 527
 528
 529
 530
 531
 532
 533
 534
 535
 536
 537
 538
 539
 540
 541
 542
 543
 544

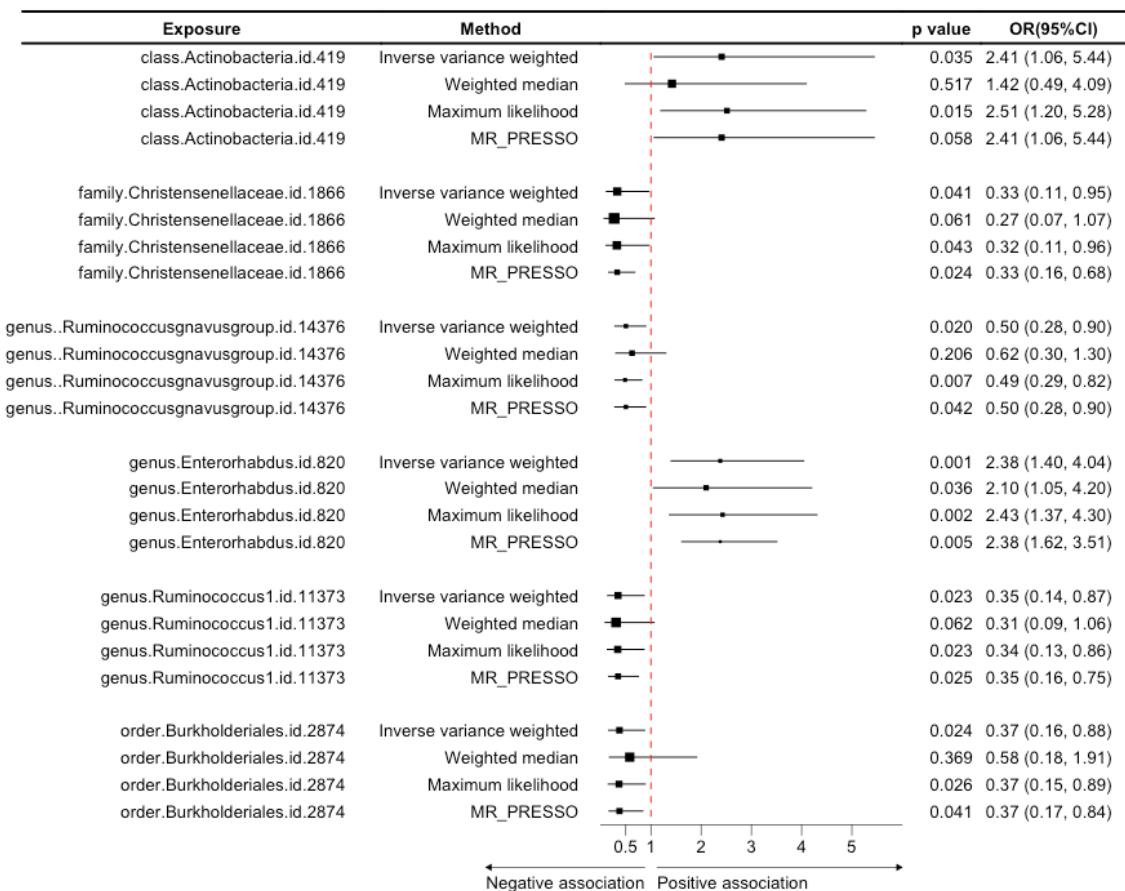
545 **Table 1**
 546 Causal associations of the gut microbiota with pancreatic cancer risk in the European
 547 population.
 548

Exposure	Method	p value	OR(95%CI)
class.Bacteroidia.id.912	Inverse variance weighted	0.040	0.52 (0.28, 0.97)
class.Bacteroidia.id.912	Weighted median	0.213	0.61 (0.28, 1.33)
class.Bacteroidia.id.912	Maximum likelihood	0.031	0.53 (0.30, 0.95)
class.Bacteroidia.id.913	MR-PRESSO	0.059	0.52 (0.28, 0.97)
family.Alcaligenaceae.id.2875	Inverse variance weighted	0.011	0.50 (0.29, 0.86)
family.Alcaligenaceae.id.2875	Weighted median	0.026	0.43 (0.20, 0.90)
family.Alcaligenaceae.id.2875	Maximum likelihood	0.016	0.51 (0.29, 0.88)
family.Alcaligenaceae.id.2876	MR-PRESSO	0.020	0.50 (0.30, 0.85)
family.Veillonellaceae.id.2172	Inverse variance weighted	0.016	1.69 (1.10, 2.59)
family.Veillonellaceae.id.2172	Weighted median	0.059	1.80 (0.98, 3.30)
family.Veillonellaceae.id.2172	Maximum likelihood	0.016	1.72 (1.11, 2.66)
family.Veillonellaceae.id.2173	MR-PRESSO	0.026	1.69 (1.10, 2.59)
genus.Bilophila.id.3170	Inverse variance weighted	0.049	1.68 (1.00, 2.82)
genus.Bilophila.id.3170	Weighted median	0.502	1.27 (0.63, 2.59)
genus.Bilophila.id.3170	Maximum likelihood	0.044	1.72 (1.01, 2.91)
genus.Bilophila.id.3171	MR-PRESSO	0.069	1.68 (1.00, 2.82)
genus.Eggerthella.id.819	Inverse variance weighted	0.046	0.66 (0.44, 0.99)
genus.Eggerthella.id.819	Weighted median	0.026	0.55 (0.32, 0.93)
genus.Eggerthella.id.819	Maximum likelihood	0.043	0.67 (0.45, 0.99)
genus.Eggerthella.id.820	MR-PRESSO	0.074	0.66 (0.44, 0.99)
genus.LachnospiraceaeUCG004.id.11324	Inverse variance weighted	0.035	0.54 (0.31, 0.96)
genus.LachnospiraceaeUCG004.id.11324	Weighted median	0.152	0.57 (0.26, 1.23)
genus.LachnospiraceaeUCG004.id.11324	Maximum likelihood	0.037	0.54 (0.30, 0.96)
genus.LachnospiraceaeUCG004.id.11325	MR-PRESSO	0.016	0.54 (0.35, 0.83)
genus.LachnospiraceaeUCG010.id.11330	Inverse variance weighted	0.037	1.77 (1.03, 3.02)
genus.LachnospiraceaeUCG010.id.11330	Weighted median	0.118	1.77 (0.86, 3.63)
genus.LachnospiraceaeUCG010.id.11330	Maximum likelihood	0.036	1.79 (1.04, 3.10)
genus.LachnospiraceaeUCG010.id.11331	MR-PRESSO	0.045	1.77 (1.08, 2.90)
genus.Parasutterella.id.2892	Inverse variance weighted	0.035	0.64 (0.42, 0.97)
genus.Parasutterella.id.2892	Weighted median	0.079	0.59 (0.32, 1.06)
genus.Parasutterella.id.2892	Maximum likelihood	0.040	0.64 (0.42, 0.98)
genus.Parasutterella.id.2893	MR-PRESSO	0.030	0.64 (0.44, 0.92)
genus.Sutterella.id.2896	Inverse variance weighted	0.005	2.25 (1.27, 3.99)
genus.Sutterella.id.2896	Weighted median	0.020	2.51 (1.16, 5.43)
genus.Sutterella.id.2896	Maximum likelihood	0.005	2.33 (1.29, 4.21)
genus.Sutterella.id.2897	MR-PRESSO	0.010	2.25 (1.34, 3.78)
order.Bacillales.id.1674	Inverse variance weighted	0.002	1.60 (1.18, 2.16)
order.Bacillales.id.1674	Weighted median	0.041	1.53 (1.02, 2.30)
order.Bacillales.id.1674	Maximum likelihood	0.003	1.61 (1.17, 2.20)
order.Bacillales.id.1675	MR-PRESSO	0.006	1.60 (1.23, 2.08)
order.Bacteroidales.id.913	Inverse variance weighted	0.040	0.52 (0.28, 0.97)
order.Bacteroidales.id.913	Weighted median	0.234	0.61 (0.27, 1.38)
order.Bacteroidales.id.913	Maximum likelihood	0.031	0.53 (0.30, 0.95)
order.Bacteroidales.id.914	MR-PRESSO	0.059	0.52 (0.28, 0.97)



549
 550
 551
 552

553 **Table 2**
 554 Causal associations of the gut microbiota with pancreatic cancer risk in the East Asian
 555 population.
 556

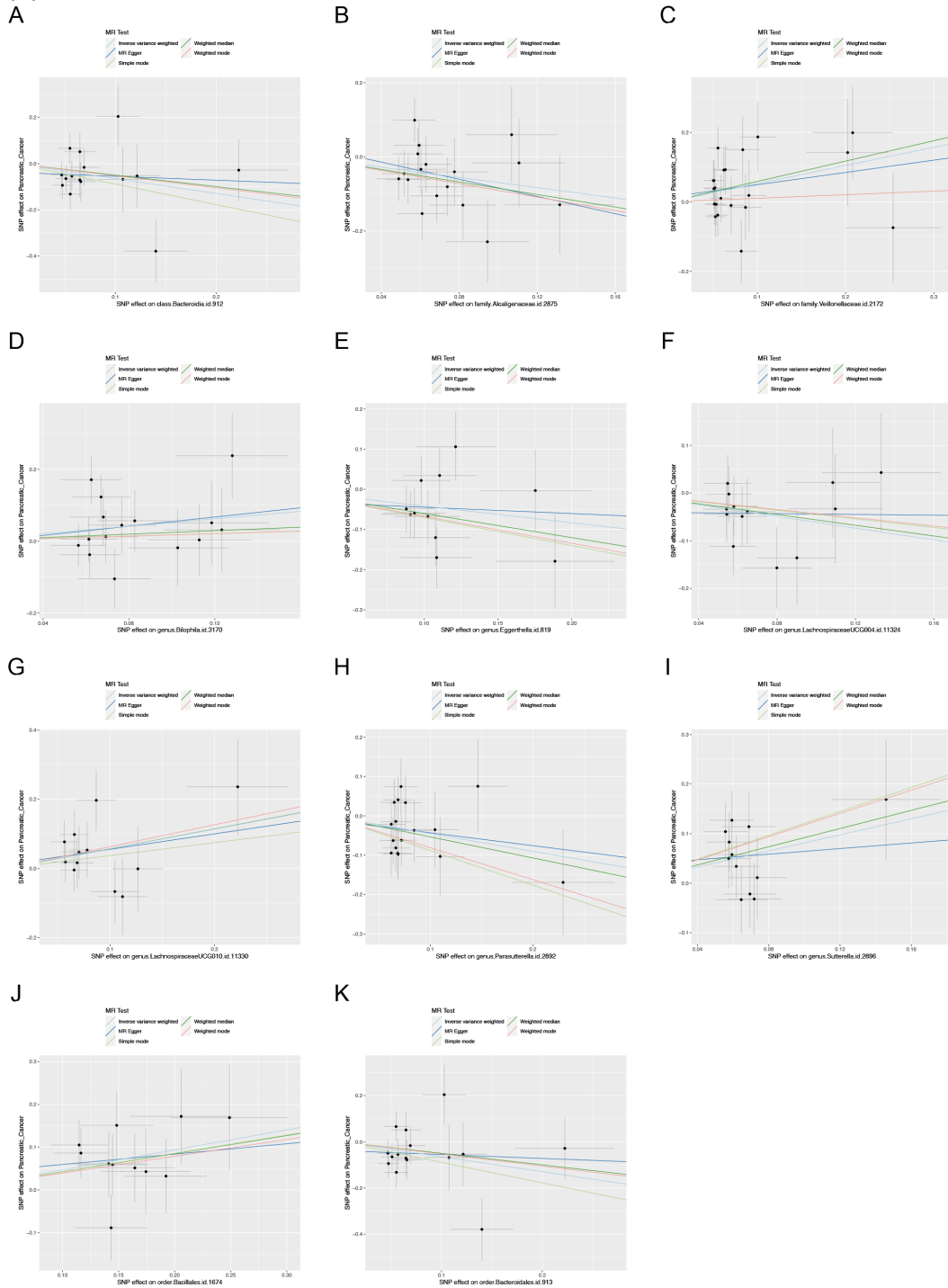


557
 558
 559
 560
 561
 562
 563
 564
 565
 566
 567
 568
 569
 570
 571
 572
 573
 574
 575
 576

577 **Supplementary Figure 1**

578 Scatter plot of the association between gut microbiota and pancreatic cancer based on UK
579 biobank database.

580 (A) class *Bacteroidia*; (B) family *Alcaligenaceae*; (C) family *Veillonellaceae*; (D) genus
581 *Bilophila*; (E) genus *Eggerthella*; (F) genus *LachnospiraceaeUCG004*; (G) genus
582 *LachnospiraceaeUCG010*; (H) genus *Parasutterella*; (I) genus *Sutterella*; (J) order *Bacillales*;
583 (K) order *Bacteroidales*



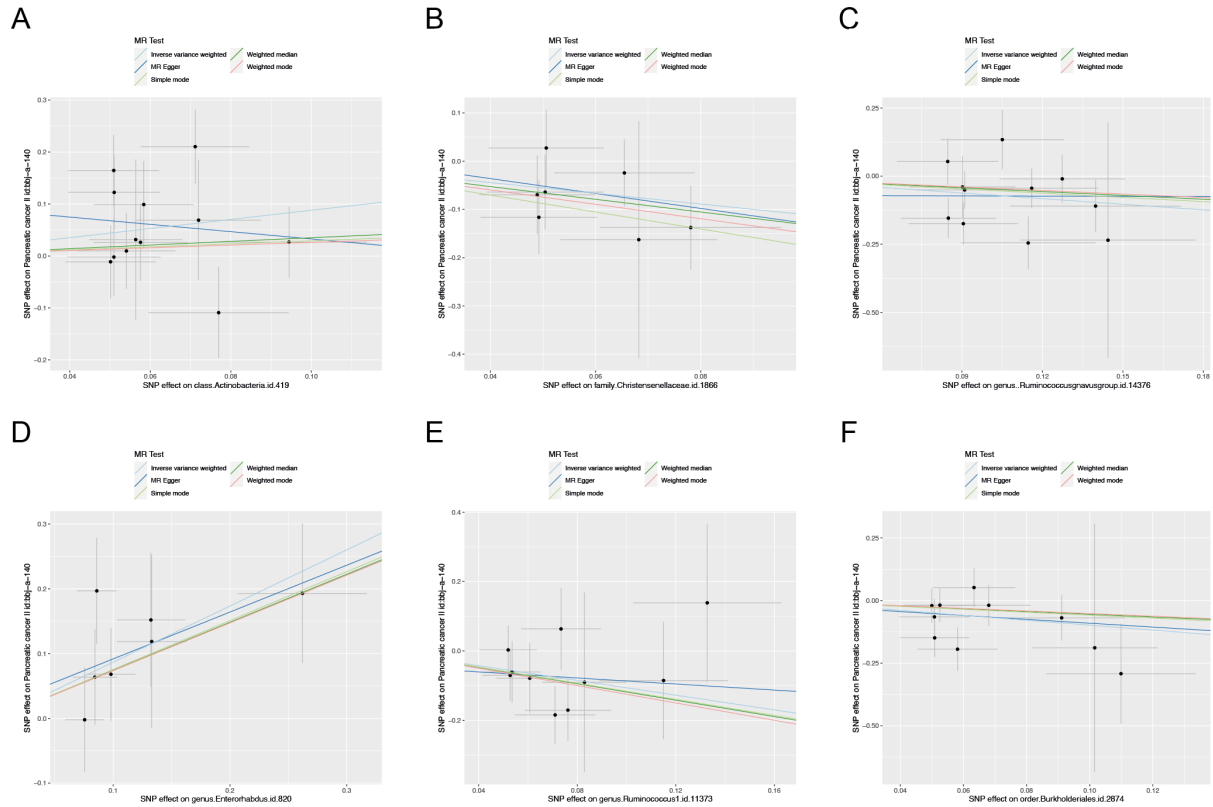
584
585
586
587
588

589

590 **Supplementary Figure 2**

591 Scatter plot of the association between gut microbiota and pancreatic cancer based on
592 Japan biobank database.

593 (A) class *Actinobacteria*; (B) family *Christensenellaceae*; (C) genus
594 *Ruminococcusgnavusgroup*; (D) genus *Enterorhabdus*; (E) genus *Ruminococcus1*; (F) order
595 *Burkholderiales*



596

597

598

599

600

601

602

603

604

605

606

607

608

609

610

611

612

613

614

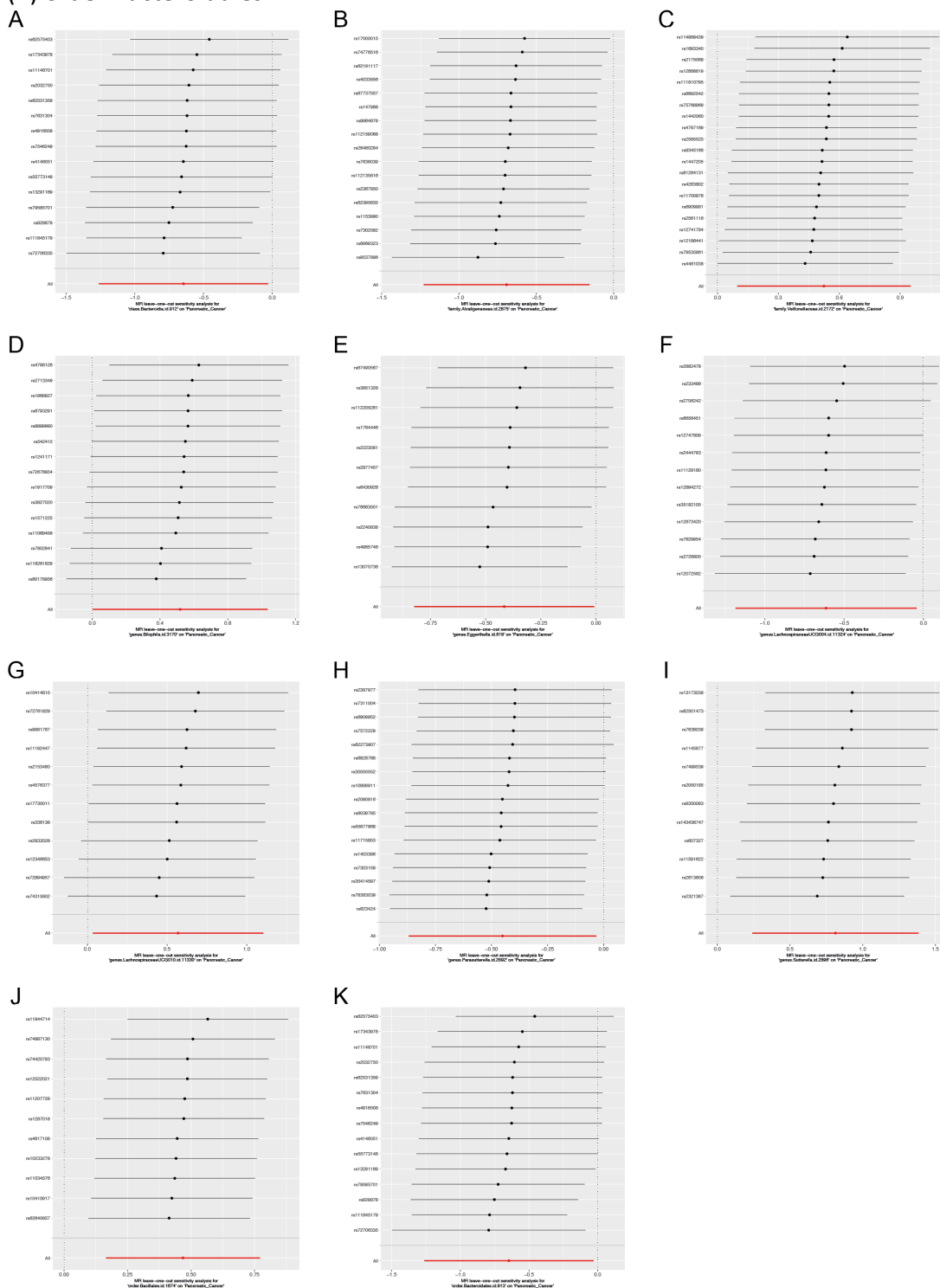
615

616

617 **Supplementary Figure 3**

618 Leave-one-out sensitivity analysis for the association between genetically predicted gut
 619 microbiota and pancreatic cancer based on UK biobank database.

620 (A) class *Bacteroidia*; (B) family *Alcaligenaceae*; (C) family *Veillonellaceae*; (D) genus
 621 *Bilophila*; (E) genus *Eggerthella*; (F) genus *LachnospiraceaeUCG004*; (G) genus
 622 *LachnospiraceaeUCG010*; (H) genus *Parasutterella*; (I) genus *Sutterella*; (J) order *Bacillales*;
 623 (K) order *Bacteroidales*

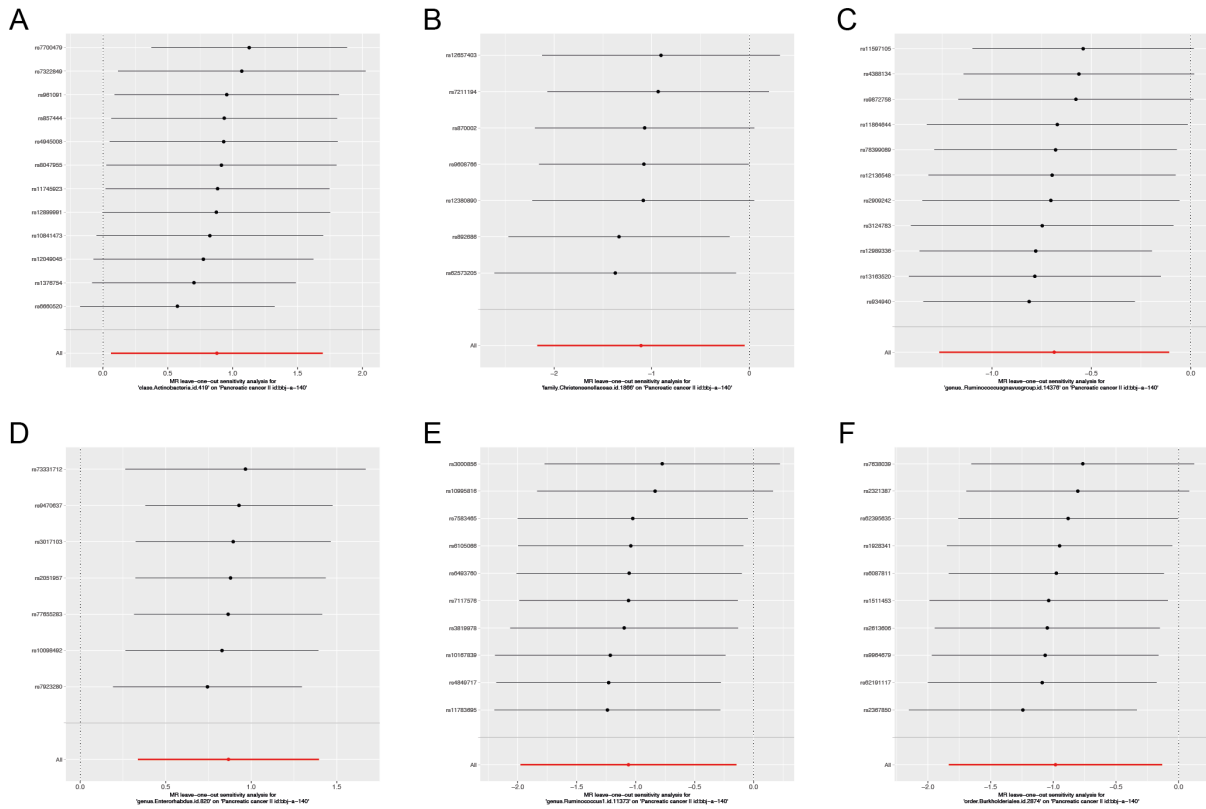


624
 625
 626

627 **Supplementary Figure 4**

628 Leave-one-out sensitivity analysis for the association between genetically predicted gut
 629 microbiota and pancreatic cancer based on Japan biobank database.

630 (A) class *Actinobacteria*; (B) family *Christensenellaceae*; (C) genus
 631 *Ruminococcusgnavus*group; (D) genus *Enterorhabdus*; (E) genus *Ruminococcus1*; (F) ordr
 632 *Burkholderiales*



633
 634
 635
 636
 637
 638
 639
 640
 641