

Mortality of adults with chronic noncancer pain: a systematic review and meta-analysis

Webb, Stephanie^{1}; Roberts, Antonia-Olivia¹; Scullion, Lauren¹; Richards, Georgia C.²*

¹Oxford Medical School, Medical Sciences Divisional Office, University of Oxford, Oxford, OX3 9DU, UK.

²Centre for Evidence-Based Medicine, Nuffield Department of Primary Health Care Sciences, University of Oxford, Radcliffe Observatory Quarter, Woodstock Road, Oxford, OX2 6GG, UK.

*Corresponding author: stephwebb91@gmail.com; Pembroke College, St Aldate's, Oxford, OX11DW

Word count: 4,054

Pages of text: 13

Figures: 3

Tables: 1

Supplemental figures: 6

Supplemental tables: 5

Abstract

It is recognised that chronic pain is one of the leading causes of disabilities worldwide. However, statistics on mortality and causes of death in people with chronic noncancer pain (CNCP) have been difficult to determine. This systematic review aimed to determine the mortality rate in people with all types of CNCP and the associated causes and risk factors of death. MEDLINE (Ovid) and EMBASE (Ovid) were searched on 23 March 2023 to identify epidemiological studies reporting mortality in people with CNCP. Nineteen observational studies were included. There were 28,740 deaths (7%) reported in a population of 438,593 people with CNCP (n=16 studies), giving a mortality rate of 6,553 deaths per 100,000 people. An exploratory meta-analysis found that the relationship between mortality and CNCP was statistically significant (mortality risk ratio: 1.47; 95% CI: 1.22-1.77; n=11 studies) when comparing people with CNCP to those without pain. People with CNCP were more likely to die from cardiovascular disease whereas those without pain were more likely to die from malignancy, respiratory and gastrointestinal diseases. Smoking, lower physical activity levels, and opioid use were risk factors for death in people with CNCP. This systematic review found that people with CNCP have a higher risk of mortality than people without chronic pain. To reduce mortality rates in people with CNCP, cardiovascular diseases and risk factors for death should be considered when managing people with CNCP.

1 Introduction

Chronic pain and pain-related diseases are the main cause of years lived with disability (YLD) and disease burden globally [15,16]. In the United States (US), the Centre for Disease Control (CDC) estimated that one in five adults live with chronic pain [8]. In the United Kingdom (UK), a systematic review of observational studies estimated that one in two to one in three adults live with chronic pain [14]. After onset, chronic pain persists [27], which negatively impacts the person's quality of life [10] and the healthcare systems in which they live [26]. Despite the widespread impact of chronic pain, data on the mortality of these individuals is often poorly reported and unexplored.

The World Health Organisation (WHO) updated the International Classification of Diseases (ICD) in 2019 (i.e. ICD-11) to capture chronic pain subtypes [47] including widespread, localised, primary, secondary, and cancer pain [47]. Despite the new ICD codes, public health authorities are yet to routinely capture and monitor mortality statistics in people with chronic pain. For example, the National Health Service (NHS) in England will not mandate the use of ICD-11 codes until April 2026 [28]. While these statistics are difficult to obtain, the number of deaths in people with chronic pain have increased due to the ubiquitous use of opioids [42]. In contrast, statistics on people with cancer are well documented. In 2018, 149.2 people in every 100,000 died of cancer in the US, [5] while in England and Wales, 266 people died per 100,000 [33] In people with cancer, pain is reported in 38% to 56% of cases [3,4].

A systematic review of ten observational studies of people with all types of pain was published in 2014 [38]. This review found a modest but non-significant increase in mortality in people with chronic pain (mortality rate ratio: 1.14; 95% CI 0.95–1.37) [38]. However, this review included people with cancer pain and did not explicitly focus on chronic pain. In 2017, a systematic review of all-cause mortality in people with chronic widespread pain was published which included cancer-related mortalities [21]. This review found a pooled estimate of all-cause mortality in people with chronic widespread pain to be 57% (1.57) but had significant heterogeneity. There were two registered systematic reviews investigating mortality in people with spinal pain [32] and back pain [35]. However, no review has focused on mortality in people with chronic non-cancer pain (CNCP) and the associated risk factors. Therefore, this systematic

review aimed to determine the mortality rate and associated risk factors in people with all types of CNCP excluding cancer-related pain.

2 Methods

The protocol for this systematic review was preregistered on an open repository (<https://doi.org/10.17605/OSF.IO/7E48V>) [45].

2.1 *Searches*

MEDLINE (Ovid) and EMBASE (Ovid) were searched on 23 March 2023 using keywords relating to “chronic pain”, “chronic noncancer pain”, “death”, and “mortality”. The search strategy is in Supplement Table S1 and S2.

2.2 *Screening*

Two researchers (SW (all studies) and AR or LS as second reviewers) independently screened articles for their eligibility, blinded to each other’s decisions. A third reviewer (GCR) was consulted if there were discrepancies in the two screening stages: title and abstracts and full-text screening. Rayyan software was used to complete the screening.

Studies were included if they involved (1) all humans of all ages who were clinically diagnosed with CNCP, which was defined as pain for 12 or more weeks (i.e., three or more months) or coded using ICD-11 [42]; (2) data on death; (3) were observational studies, including cohort, case-control, and cross-sectional studies; (4) cancer as a cause of mortality associated with pre-existing CNCP; and (5) were published in the English language.

Studies were excluded if they involved animals or non-human participants; involved people with acute pain (i.e., pain for less than 12 weeks) or cancer pain; and were clinical trials, case reports, test-tube experiments, commentaries, editorials, letters, or systematic reviews.

2.3 *Data Extraction*

Data were extracted into a pre-defined data extraction template using Google Sheets by one researcher (SW) and cross-checked by a second reviewer (GCR). The following variables were extracted: Study ID (Surname of first author, year of publication), title, journal, aims, population characteristics (including the number of

participants, age, gender or sex, location, ethnicity, and pain phenotype), methods (including when the study was conducted, study design and statistical analyses used, follow up time), results (including the number of deaths, all-cause mortality, cause-specific mortality, causes of death and risk factors associated with deaths if reported).

2.4 Quality Assessment

The quality of studies was critically appraised by one researcher (SW) using the National Institute of Health (NIH), National Heart, Lung, and Blood Institute (NHLBI) Quality Assessment Tool for Observational Cohort and Cross-Sectional Studies [29]. This tool was selected as it accounted for both cohort and cross-sectional studies simultaneously. There were 14 domains evaluated by this tool to assess the quality of the research question: the reporting of the study population, participation rate, selection of participants, sample size, appropriateness of statistical analyses, timeframe for associations, levels of exposures, ascertainment of the exposure, appropriateness of outcome measures, outcome blinding of assessors, loss to follow-up, and adjustment for confounding. For the 14 criteria assessed, a score of “fair” was assigned if the authors did not adequately justify their sample sizes or did not report whether participants were lost to follow-up and did not control for confounding variables, studies that adequately met these criteria were rated as “Good”.

2.5 Data analysis

One researcher (SW) descriptively analysed the extracted data using percentages for categorical variables and median and interquartile ranges (IQR) for continuous variables. The risk ratios for mortality reported in studies were given as ranges for each type of ratio. The total number of participants with chronic pain was summed across all studies, as well as the number of deaths reported to calculate the mortality rate. The total number of deaths by specific cause were summed across studies, as were those that included a comparator no pain group. For the deaths by cause, the percentage of deaths by cause was calculated by dividing by the total deaths and presented graphically.

Studies that had a chronic pain and a no pain group (or control group) were included in the exploratory meta-analysis using the Mantel-Haenszel method with a random effects model to determine the overall risk ratio for mortality using RevMan [41]. Sensitivity analyses were conducted to assess heterogeneity by grouping studies

by sample size, data source, pain definition, country of origin, decade of publication and decade of study commencement. Factors associated with mortality and their method of determination were narratively combined and reported as frequencies.

2.6 Software and data sharing

Several different software packages were used to conduct this review, including Mendeley to remove duplicates, Rayyan to screen studies for eligibility, Google Sheets to extract data and for descriptive analyses, and RevMan [41] to conduct the exploratory meta-analysis. The study protocol, data and study materials are all available on an open repository [45] (https://osf.io/cp3fx/?view_only=09efe9b9b60e4d81950f248cb08f6867).

3 Results

Nineteen studies [1,2,7,9,11,12,18,19,21–25,30,36,37,43,44,46] met the eligibility criteria and were included in this systematic review (Figure 1). During full-text screening, 73 studies were excluded as they: did not meet the definition for chronic pain (n=39), were the wrong publication type (n=12), had the wrong outcome (n=10), included data on malignant pain (n=5), were the wrong study design (n=8), and one study was published in Spanish.

The 19 included studies were all prospective cohort studies and enrolled a combined total of 443,239 participants with CNCP. These participants were not evenly distributed across the 19 studies, with a median of 2,168 participants per study (range: 249-187,269) (Table 1). The majority of participants were recruited from the UK Biobank [7,21,22], followed by surveys [1,2,11,12,18,19,23,25,30,36,37,44], in-patient clinics [9,24,43], and other databanks [46]. Most studies were conducted in the United Kingdom (37%; n=7), followed by Denmark (21%; n=4) and the United States (US; 21%; n=4), Norway (11%; n=2) and Sweden (11%; n=2). Most participants were female (mean 64%; 95% CI: 57-71%).

To define chronic pain, six studies stated that chronic pain was pain ≥ 3 months duration [2,7,21,22,30,37], seven studies used the American College of Rheumatology (ACR) criteria [1,9,19,23,25,44,46], four defined chronic pain as pain that persisted for ≥ 6 months [11,24,36,43], and two referred to the International study for the Association of Pain (IASP) definition [12,18]. The types of CNCP also varied, with five studies reporting both localised and widespread pain [1,2,21,22,30], five studies

reported widespread pain [9,23,25,44,46] three specifically referred to fibromyalgia [9,23,46] one study focussed on chronic musculoskeletal pain [7], and nine studies did not specify CNCP subgroups [11,12,18,19,22,24,36,37,43].

3.1 Mortality in people with chronic pain

Of the 19 included studies, 16 (84%) reported raw data on the number of deaths, where 438,593 participants had CNCP of which 28,740 deaths were reported, equating to a mortality rate of 6.6 deaths per 100 people with CNCP (Table 1).

Seventeen (90%) studies reported various ratios, with nine (53%) studies reporting hazard ratios (HR) [2,7,11,12,19,30,36,44], five (29%) studies reporting mortality risk ratios (MRRs) [1,21–23,25] three (18%) studies reported standardised mortality ratios (SMR) [9,43,46], and one study reported the adjusted odds ratio (AOR) [37]. These ratios were adjusted for various population characteristics (Table 1). For any type of CNCP, the ranges of the reported ratios were HR: 0.93–2.1; MRR: 0.84–1.47; and SMR: 0.9–6.2. Two studies did not report any ratios for mortality [18,24] Inoue *et al.* reported the effect of opioids on mortality in people with chronic pain using odds ratios (OR) [18], and Maruta *et al.* reported on causes of death [24].

Eleven studies [1,2,7,11,18,19,21–23,25,30] included a reference or control group that reported no pain (Table S3 in supplement). In this cohort of 11 studies, there were 419,088 participants with CNCP of which 26,931 deaths were reported, equating to a mortality rate of 6.4 deaths per 100 people. There were 786,626 participants without CNCP of which 35,033 deaths were reported, totalling 4.5 deaths per 100 people. Those with CNCP had a 30% greater mortality rate than those with no CNCP.

3.2 Exploratory meta-analysis

To further explore the differences in mortality between participants with and without CNCP, a meta-analysis was conducted using data from the eleven studies with comparison groups. This meta-analysis found a statistically significant risk ratio of 1.47 (95% CI: 1.22 - 1.77) (Figure 2). However, there was a high degree of heterogeneity ($I^2 = 99\%$). To examine the drivers of the heterogeneity several sensitivity analyses were conducted, including grouping studies by sample size, the source of data, study start date, study publication date, definition of pain and country of origin. However, the heterogeneity persisted (see Supplement Figures S6-S11).

3.3 Causes of death and risk factors

Of the 19 included studies, 10 studies (53%) [1,2,7,9,12,23–25,30,43,46] reported the number of deaths by specific cause in the CNCP population, totalling 15,108 deaths. Of these causes of death, people with CNCP died most often from malignancy (n=8511); cardiovascular diseases (CVD) (n= 4679); nervous system diseases (n= 764); and mental health disorders (n= 317) (Table S4, Supplement).

Of the 10 studies that reported specific causes of death, three (16%) reported [1,7,30] causes of death in a non-pain comparator group, totalling 11,004 deaths. The main causes of death for the non-pain population were malignancy (n= 6,533), CVD (n= 2,274), respiratory disease (n = 720) and nervous system disease (n = 649). Comparing the causes of death in the CNCP and non-pain groups (Figure 3), death from malignancy was similar across these populations. Deaths from CVD and suicides were higher in the CNCP population, whereas deaths from respiratory and gastrointestinal diseases were relatively more common in the non-pain group.

In total, 12 studies (63%) [1,7,11,12,18,19,21,22,30,36,44,46] reported risk factors for mortality in people with CNCP. Of these studies, six used covariate analysis (31%) to assess the effect on risk ratios [1,12,21,22,44,46], finding a decrease in risk ratios when controlling for these variables. Five studies (26%) assessed risk factors directly by collecting data on these variables [11,19,22,30,36], and two studies (10%) assessed risk factors through mediator analysis [7,18].

The risk factors for mortality in those with CNCP were reported in studies as follows: smoking (n = 5; 26%)[1,7,19,21,22]; lower physical activity levels (n = 4; 21%) [1,19,21,22]; opioid use (n = 4; 21%) [7,11,18,22]; high body mass index and/or obesity (n = 3; 16%) [1,19,22]; alcohol consumption (n = 3; 16%) [7,19,22]; a higher number of pain sites or pain intensity (n = 3; 16%) [7,22,30]; having a long-term illness (n = 2; 10%) [12,19]; low income/higher deprivation (n = 2; 10%) [19,22]; socioeconomic factor (n = 2; 10%) [44,46]; housing status (n = 1; 5%) [12]; unemployment (n = 1; 5%) [12]; disability (n = 1; 5%) [12]; anxiety (n = 1; 5%) [30]; and educational attainment level (n = 1; 5%) [44].

3.4 Quality Assessment

Fourteen (74%) studies were rated “good” [1,7,11,12,18,19,21–23,25,30,37,44,46] and five [2,9,24,36,43] (26%) were rated “fair” (Table 1; Supplement Table S5). Of the

studies rated fair one study did not provide a sample size justification or an effect estimate [24], two studies had a loss to follow-up of greater than 20% [2,36], and three studies did not control for confounding variables [9,24,43]. Two studies anonymised the data before analysis [9,43]. None of the included studies assessed the sample population's chronic pain status more than once. Seven of the included studies assessed chronic pain using scales [1,2,7,19,22,23,30]. Nine studies reported loss to follow-up [1,9,12,18,24,25,30,43,46].

4 Discussion

People with CNCP had a 30% greater mortality rate than those without pain. For every 100 people with CNCP, between six and seven died in the included studies, while between four and five people died without chronic pain. Those with CNCP were more likely to die from cardiovascular disease (CVD) whereas those without pain were more likely to die from malignancy, respiratory, and gastrointestinal diseases. Smoking, lower physical activity levels, and opioid use were risk factors for death in people with CNCP.

4.1 *Comparison to previous literature*

In contrast to other systematic reviews that focused on chronic pain [38] or specifically widespread chronic pain [21], this review identified 19 studies and is generalisable to all types of CNCP, excluding pain related to malignancy.

Smith *et al.* [38] found a modest but non-significant increase in the risk of mortality in people with chronic pain from ten included studies. They conducted meta-analyses of seven included studies that resulted in a non-significant MRR of 1.14 (95% CI 0.95–1.37; $I^2=79\%$). Macfarlane *et al.* [21] found a significant excess risk of mortality in people with chronic widespread pain with an overall MRR of 1.57 (95% CI 1.06-2.33; $I^2=98\%$; n=6 studies). We similarly found a significant risk ratio of 1.47 (95% CI 1.22-1.77; $I^2=99\%$; n=11 studies) in our exploratory meta-analysis of mortality in people with CNCP.

Macfarlane *et al.* [21] conducted a meta-analysis by cause of death and found that three out of five included studies showed excess mortality for CVD in people with widespread chronic pain in comparison to people with no pain. This result is concordant with our finding that CVD is a more common cause of death in those with CNCP. They also reported increased mortality rates for malignancy and respiratory

disease death in people with chronic widespread pain. This result contrasts our finding that malignancy death rates are comparable between groups and respiratory disease deaths are higher in those with no pain. Meanwhile, Smith *et al.* [38] reported modest increases in the risk of mortality from CVD, respiratory disease and malignancy for people with chronic pain, but these values were non-significant. Although these meta-analyses report by cause of death they do not give the number of raw deaths, and report only studies that used MRR as an outcome measure.

There is evidence to support the link between CNCP and CVD [13,25,31,34,40]. A systematic review and meta-analysis found that people with chronic pain had an increased risk of CVD-related mortality, which found a link between pain intensity and CVD risk [13]. A second meta-analysis confirmed a similar relationship between musculoskeletal pain and CVD [31]. A cohort study using the UK Biobank found a statistically significant increased risk of CVD in patients with chronic pain when controlling for lifestyle factors [34]. Moreover, a cohort study found that those living with fibromyalgia have an increased risk of coronary heart disease [40].

The relationship between CNCP and CVD may be explained by the social and lifestyle factors (e.g. smoking and physical inactivity) that this review found were commonly reported as risk factors for increased mortality in people with CNCP. These risk factors have similarly been reported in a narrative review of lifestyle factors in people with chronic pain [26]. However, whether these lifestyle factors precede the chronic pain diagnoses or are a consequence of chronic pain is unknown. Therefore, prospective cohort studies should assess chronic pain status, lifestyle factors, and health behaviours at multiple time points alongside mortality and specific causes of death to evaluate this association.

The finding that respiratory disease is a more common cause of death for those without pain and that malignancy is similar between the CNCP and non-pain groups, is noteworthy, as diseases such as COPD are commonly comorbid with CVD [6] and malignancies [20]. Determining why these differences exist is important to explore for developing management regimens for patients living with CNCP.

This review found that the use of opioids in people with CNCP was a risk factor for mortality. The association between opioids and mortality in comparison to other pain management strategies in chronic pain patients has been assessed in other

systematic reviews [39,42]. These reviews found that opioid substitution or alternative treatments reduced mortality in chronic pain populations. Further research into this subpopulation of chronic pain patients prescribed long-term and potentially high-dose opioids is required to understand the harms over time.

4.2 Strengths and limitations

This systematic review is the first to synthesise studies that exclusively focus on all types of CNCP, so the findings are generalisable to people who experience various chronic pain conditions, excluding malignant pain. However, the findings may not be generalisable to people with CNCP outside of Europe and North America as there were no studies published in these regions. Due to the growing global burden of chronic pain, future research should assess the mortality rates of those with CNCP in South America, Africa, and Asia to determine the global mortality rate. Although the included studies were observational, none were rated as 'poor' in the quality assessment, and all had a prospective design.

Across the studies, there were variations in the acquisition of data and recruitment of participants, follow-up, and the definitions and types of chronic pain. Three studies used data from the UK biobank which may mean that some participants are duplicated in our synthesis. To explore the impact of these variations, six subgroup analyses were conducted in the exploratory meta-analyses, including sample size, data source, pain definition, study location, study start date, and publication date. However, the subgroup analyses did not reveal a variable that contributed to the heterogeneity observed. There may be other factors that contributed to the variation, such as the recording of the causes of deaths and reporting bias within individual studies. Finally, some studies did not report raw data on the number of deaths and the age at the time of death, limiting the ability to calculate the impact of chronic pain on life expectancy. Therefore, standardised outcome measures for investigating mortality in chronic pain are needed for observational studies to improve evidence synthesis.

4.3 Implications for practice, policy, and future research

To improve the evidence base and ability for evidence synthesis, primary research on mortality in people with chronic pain should report the following variables: mean age at diagnosis and death, causes of death and definitions of pain using ICD-11 codes, pre-existing health conditions, and lifestyle and social factors. This information would

help determine the causation and directionality of the risk factors reported in this systematic review. Sharing raw anonymised data, as provided by 84% of included studies, would enhance the ability to synthesise the evidence. Research should be undertaken to determine the most appropriate metric for mortality rates, such as MRR, to standardise the reporting of primary outcomes.

The risk factors for death identified in our review including smoking, low physical activity, and opioid use should be addressed when managing people with chronic pain. Our findings that people with chronic pain have a 30% increased risk of death compared to those without pain is an important outcome to discuss with patients. A study into patient and physician goals of pain management showed that each party has different priorities for treatment [17]. Patients want to focus on pain reduction, while clinicians want to improve function and reduce analgesic prescriptions. Managing differing expectations and ensuring patients are aware of the increased risks of mortality and medications such as opioids is important for improving health outcomes and shared decision-making. However, it is unclear whether people with chronic pain would want to be informed regarding this increased risk of death.

The growing burden of chronic pain may also be contributing to the increase in excess mortality, which has significant policy implications. Our findings illustrate the importance of reporting chronic pain as a contributory factor to death. As the new ICD-11 codes are phased in, doctors and healthcare professionals should be trained in how to accurately document the new codes to improve data validity.

5 Conclusions

People with chronic pain have a higher risk of mortality than the general population, which is likely driven by the burden of the condition, opioid use, and lifestyle and social factors such as smoking and low physical activity. Primary outcomes should be standardized, and raw data should be shared to facilitate evidence synthesis. Collaboration between patients, clinicians, and policymakers is needed to optimise interventions such as smoking cessation, physical activity programmes, and alternative therapies to opioids to reduce mortality in people with CNCP.

6 Acknowledgements

SW designed the search strategy, performed searches, and screened all articles at all stages. SW extracted and analysed all data, performed the quality assessment, and co-authored this systematic review with GCR. GCR designed the project with SW, checked data extraction, and co-authored the manuscript. AR and LS performed the second screening for both the title/abstract and full-text stages.

7 Conflict of Interest

SW received funding from the Wellcome Trust to study for a Doctor of Philosophy (PhD) from 2017-2022, this systematic review was submitted by SW to satisfy in part the coursework requirements for the graduate-entry medicine course at the University of Oxford in the academic year 2022/2023, has not been previously published, and is now eligible for submission external from the university. GCR is the Director of a limited company that is independently contracted to work as an Epidemiologist and teach at the University of Oxford. GCR received scholarships from NIHR SPCR, the Naji Foundation, and the Rotary Foundation between 2017-2021 to study for a Doctor of Philosophy (DPhil/PhD). AOR and LS have no conflicts of interest. No funding has been obtained to conduct this review.

8 References

- [1] Andersson HI. Increased mortality among individuals with chronic widespread pain relates to lifestyle factors: a prospective population-based study. *Disabil Rehabil* 2009;31:1980–1987.
- [2] Andorsen OF, Ahmed LA, Emaus N, Klouman E. Musculoskeletal Complaints (Pain and/or Stiffness) and Their Impact on Mortality in the General Population. The Tromsø Study. *PLoS ONE* 2016;11:e0164341.
- [3] Breivik H, Cherny N, Collett B, de Conno F, Filbet M, Foubert AJ, Cohen R, Dow L. Cancer-related pain: a pan-European survey of prevalence, treatment, and patient attitudes. *Ann Oncol* 2009;20:1420–1433.
- [4] Broemer L, Hinz A, Koch U, Mehnert-Theuerkauf A. Prevalence and severity of pain in cancer patients in germany. *Front Pain Res (Lausanne)* 2021;2:703165.

- [5] Centre for Disease Control and Prevention. United States Cancer Statistics Data Visualisation. 2023. Available: <https://gis.cdc.gov/Cancer/USCS/#/Trends/>. Accessed 28 Jul 2023.
- [6] Chen H, Luo X, Du Y, He C, Lu Y, Shi Z, Zhou J. Association between chronic obstructive pulmonary disease and cardiovascular disease in adults aged 40 years and above: data from NHANES 2013-2018. *BMC Pulm Med* 2023;23:318.
- [7] Chen L, Ferreira ML, Nassar N, Preen DB, Hopper JL, Li S, Bui M, Beckenkamp PR, Shi B, Arden NK, Ferreira PH. Association of chronic musculoskeletal pain with mortality among UK adults: A population-based cohort study with mediation analysis. *EClinicalMedicine* 2021;42:101202.
- [8] Dahlhamer J, Lucas J, Zelaya C, Nahin R, Mackey S, DeBar L, Kerns R, Von Korff M, Porter L, Helmick C. Prevalence of Chronic Pain and High-Impact Chronic Pain Among Adults - United States, 2016. *MMWR Morb Mortal Wkly Rep* 2018;67:1001–1006.
- [9] Dreyer L, Kendall S, Danneskiold-Samsøe B, Bartels EM, Bliddal H. Mortality in a cohort of Danish patients with fibromyalgia: increased frequency of suicide. *Arthritis Rheum* 2010;62:3101–3108.
- [10] Dueñas M, Ojeda B, Salazar A, Mico JA, Failde I. A review of chronic pain impact on patients, their social environment and the health care system. *J Pain Res* 2016;9:457–467.
- [11] Ekholm O, Kurita GP, Hjsted J, Juel K, Sjgren P. Chronic pain, opioid prescriptions, and mortality in Denmark: A population-based cohort study. *Pain* 2014;155:2486–2490.
- [12] Elliott AM, Burton CD, Hannaford PC. Resilience does matter: evidence from a 10-year cohort record linkage study. *BMJ Open* 2014;4:e003917.
- [13] Fayaz A, Ayis S, Panesar SS, Langford RM, Donaldson LJ. Assessing the relationship between chronic pain and cardiovascular disease: A systematic review and meta-analysis. *Scand J Pain* 2016;13:76–90.
- [14] Fayaz A, Croft P, Langford RM, Donaldson LJ, Jones GT. Prevalence of chronic pain in the UK: a systematic review and meta-analysis of population studies. *BMJ Open* 2016;6:e010364.
- [15] GBD 2019 Diseases and Injuries Collaborators. Global burden of 369 diseases and injuries in 204 countries and territories, 1990-2019: a systematic analysis for the Global Burden of Disease Study 2019. *Lancet* 2020;396:1204–1222.
- [16] GBD 2021 Low Back Pain Collaborators. Global, regional, and national burden of low back pain, 1990-2020, its attributable risk factors, and projections to 2050: a systematic analysis of the Global Burden of Disease Study 2021. *Lancet Rheumatol* 2023;5:e316–e329.

- [17] Henry SG, Bell RA, Fenton JJ, Kravitz RL. Goals of chronic pain management: do patients and primary care physicians agree and does it matter? *Clin J Pain* 2017;33:955–961.
- [18] Inoue K, Ritz B, Arah OA. Causal Effect of Chronic Pain on Mortality Through Opioid Prescriptions: Application of the Front-Door Formula. *Epidemiology* 2022;33:572–580.
- [19] Kim Y, Umeda M. Chronic Pain, Physical Activity, and All-Cause Mortality in the US Adults: The NHANES 1999-2004 Follow-Up Study. *Am J Health Promot* 2019;33:1182–1186.
- [20] Li Q, Liu F, Tang Y, Lee S, Lang C, Bai L, Xia Y. The Distribution of Cardiovascular-Related Comorbidities in Different Adult-Onset Cancers and Related Risk Factors: Analysis of 10 Year Retrospective Data. *Front Cardiovasc Med* 2021;8:695454.
- [21] Macfarlane GJ, Barnish MS, Jones GT. Persons with chronic widespread pain experience excess mortality: longitudinal results from UK Biobank and meta-analysis. *Ann Rheum Dis* 2017;76:1815–1822.
- [22] Macfarlane GJ, Beasley M, Jones GT, Stannard C. The epidemiology of regular opioid use and its association with mortality: Prospective cohort study of 466 486 UK biobank participants. *EClinicalMedicine* 2020;21:100321.
- [23] Macfarlane GJ, McBeth J, Silman AJ. Widespread body pain and mortality: prospective population based study. *BMJ* 2001;323:662–665.
- [24] Maruta T, Malinchoc M, Offord KP, Colligan RC. Status of patients with chronic pain 13 years after treatment in a pain management center. *Pain* 1998;74:199–204.
- [25] McBeth J, Symmons DP, Silman AJ, Allison T, Webb R, Brammah T, Macfarlane GJ. Musculoskeletal pain is associated with a long-term increased risk of cancer and cardiovascular-related mortality. *Rheumatology (Oxford)* 2009;48:74–77.
- [26] Mills SEE, Nicolson KP, Smith BH. Chronic pain: a review of its epidemiology and associated factors in population-based studies. *Br J Anaesth* 2019;123:e273–e283.
- [27] Nahin RL, Feinberg T, Kapos FP, Terman GW. Estimated Rates of Incident and Persistent Chronic Pain Among US Adults, 2019-2020. *JAMA Netw Open* 2023;6:e2313563.
- [28] NHS Digital. For information: Preparations for the implementation of ICD-11. 2023. Available: <https://digital.nhs.uk/about-nhs-digital/essential-information-and-alerts-for-stakeholders/essential-information-for-technology-suppliers/preparations-for-the-implementation-of-icd->

- [39] Sordo L, Barrio G, Bravo MJ, Indave BI, Degenhardt L, Wiessing L, Ferri M, Pastor-Barriuso R. Mortality risk during and after opioid substitution treatment: systematic review and meta-analysis of cohort studies. *BMJ* 2017;357:j1550.
- [40] Su C-H, Chen J-H, Lan J-L, Wang Y-C, Tseng C-H, Hsu C-Y, Huang L. Increased Risk of Coronary Heart Disease in Patients with Primary Fibromyalgia and Those with Concomitant Comorbidity-A Taiwanese Population-Based Cohort Study. *PLoS ONE* 2015;10:e0137137.
- [41] The Cochrane Collaboration. Review Manager Web (RevMan Web). . 2020 p. Available: [http://The Cochrane Collaboration](http://TheCochraneCollaboration). Accessed 11 May 2023.
- [42] Tölle T, Fitzcharles M-A, Häuser W. Is opioid therapy for chronic non-cancer pain associated with a greater risk of all-cause mortality compared to non-opioid analgesics? A systematic review of propensity score matched observational studies. *Eur J Pain* 2021;25:1195–1208.
- [43] Vaegter HB, Støten M, Silseth SL, Erlangsen A, Handberg G, Sondergaard S, Stenager E. Cause-specific mortality of patients with severe chronic pain referred to a multidisciplinary pain clinic: a cohort register-linkage study. *Scand J Pain* 2019;19:93–99.
- [44] Wang M, Ropponen A, Narusyte J, Helgadóttir B, Bergström G, Blom V, Svedberg P. Adverse outcomes of chronic widespread pain and common mental disorders in individuals with sickness absence - a prospective study of Swedish twins. *BMC Public Health* 2020;20:1301.
- [45] Webb S, Roberts A-O, Scullion LK, Richards GC. Mortality in adults with chronic non-cancer pain: a systematic review of observational studies. *Open Science Framework* 2023. Available: <https://doi.org/10.17605/OSF.IO/7E48V>. Accessed 4 Apr 2023.
- [46] Wolfe F, Hassett AL, Walitt BT, Michaud KD. Mortality in fibromyalgia: An 8,186 patient study over 35 years. *Arthritis and Rheumatism* 2010;62:651–651.
- [47] World Health Organization. ICD-11: International classification of diseases (11th revision). . 2019 p. Available: <https://icd.who.int/>. Accessed 4 Apr 2023.

9 Figures

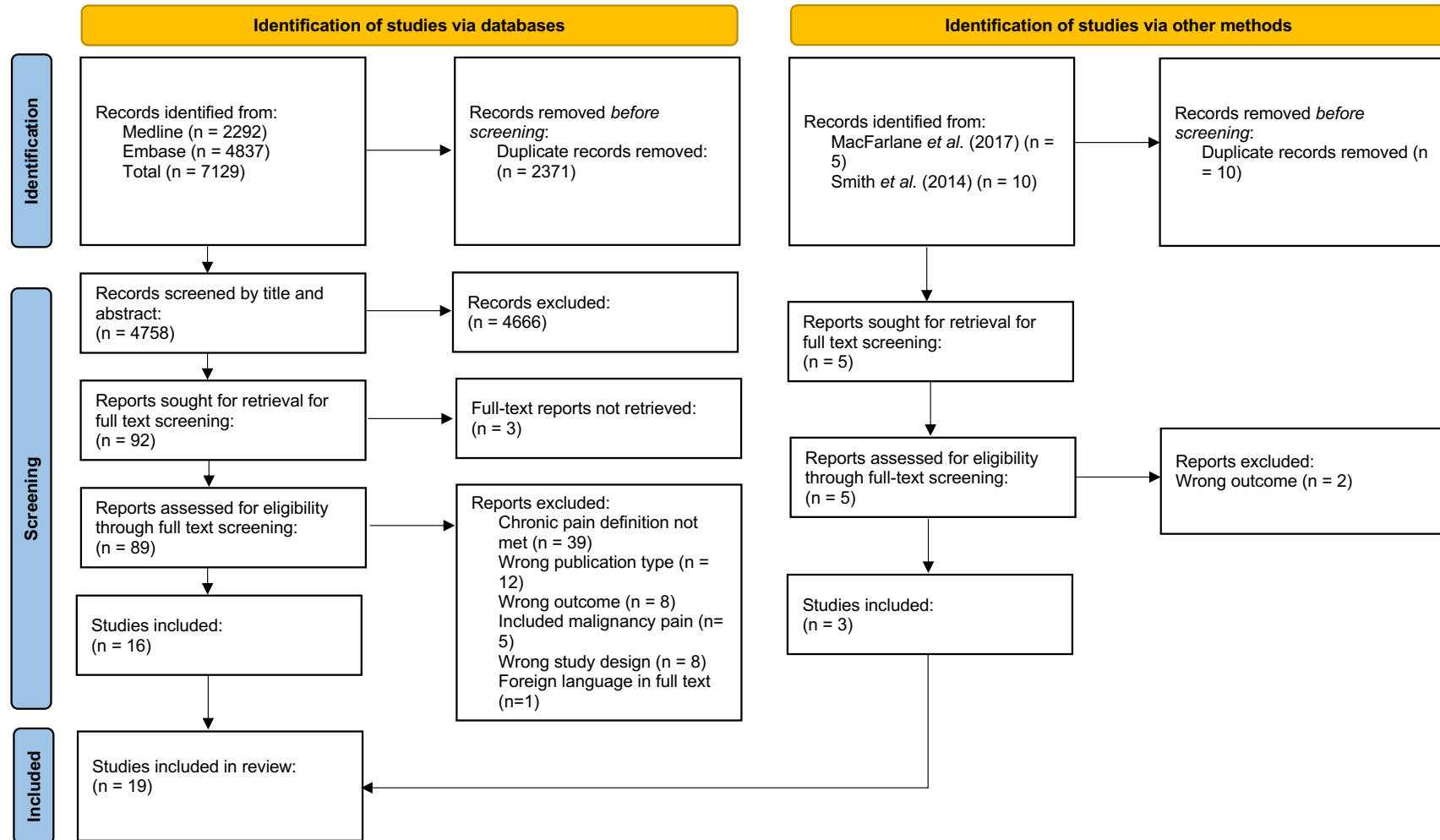


Figure 1: PRISMA flow diagram of the screening of studies for eligibility in this review.

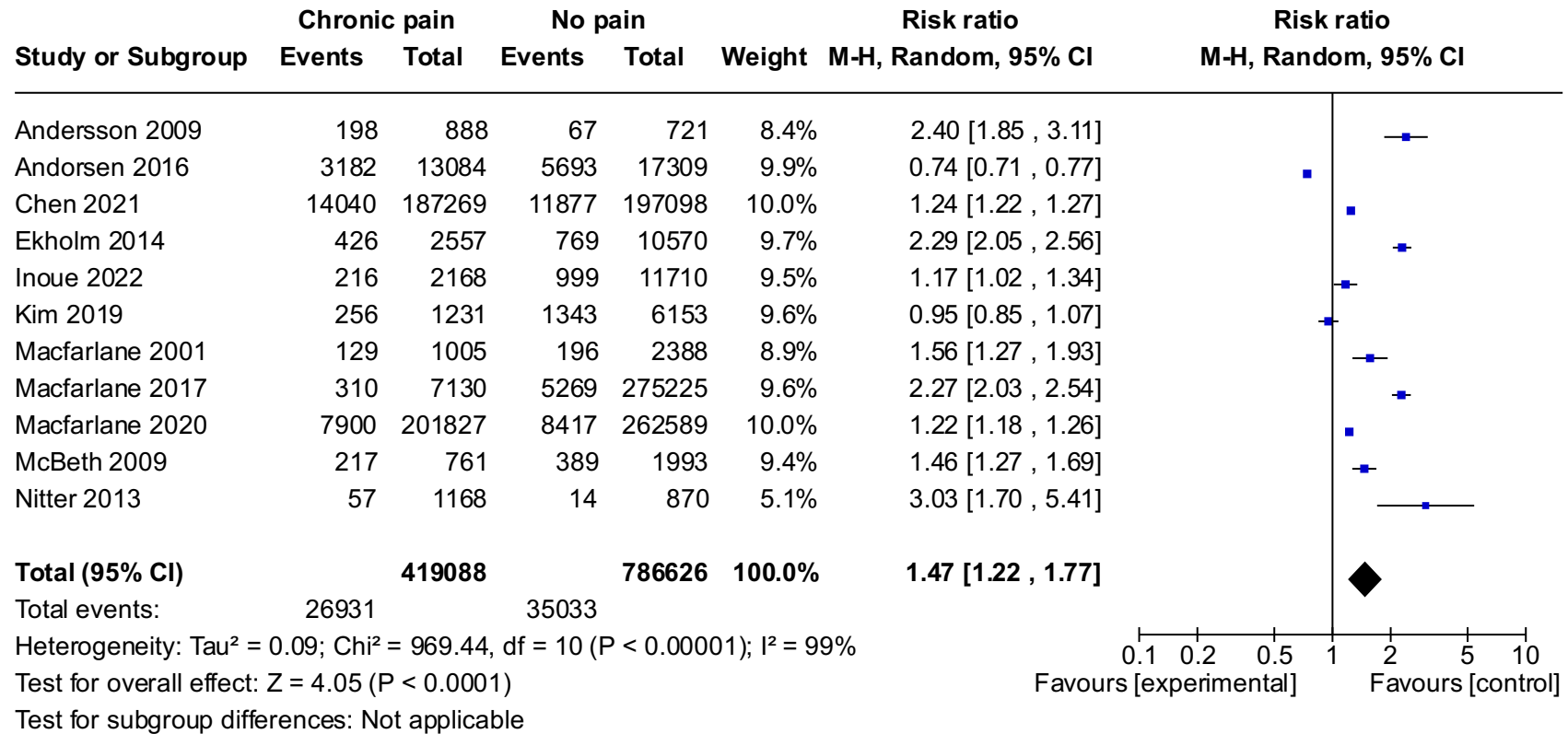


Figure 2: Exploratory meta-analysis of the 11 studies that included deaths for those with and without chronic noncancer pain. Events; number of deaths reported in study. Total; number of participants included in studies.

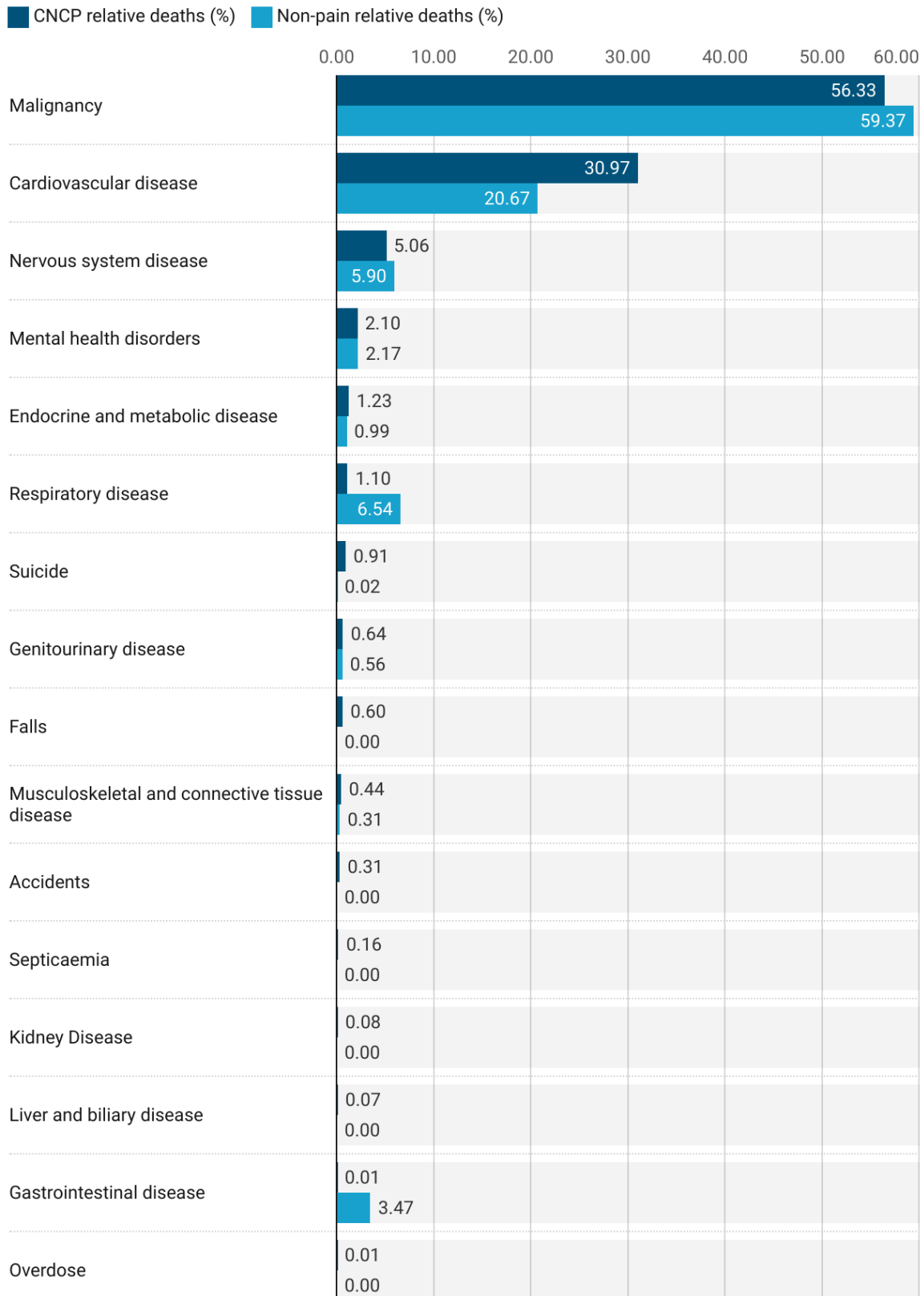


Figure 3: Frequency of deaths by cause relative to total number of deaths reported for the chronic noncancer pain (CNCP) and non-pain groups. For CNCP there were 15,108 deaths reported by cause and for non-pain there were 11,004 deaths reported by cause. The deaths are described as a percentage of these reported deaths.

10 Tables

Table 1: Summary of study characteristics from the 19 included studies on mortality in participants with chronic non-cancer pain, including reported risk mortality ratios and the quality assessments of the studies using the National Institute of Health (NIH), National Heart, Lung, and Blood Institute (NHLBI) Quality Assessment Tool for Observational Cohort and Cross-Sectional Studies.

Study ID, Country	Population	Number of deceased (%)	Reported risk factors	Adjusted all-cause mortality ratios (95% CI)	Quality assessment ratings
Andersson (2009) Sweden	Participants = 888 Age = 25-74 years Sex = 50.8% female Datatype = questionnaire Chronic pain defined as persistent or regular pain for more than three months per ACR criteria. Reported on chronic pain and chronic widespread pain.	189 (21%)	Social factors; cardiovascular disease.	MRR Regional pain =0.84 (0.57–1.24); Chronic widespread pain =1.09 (0.62–1.90) <i>Adjusted for:</i> <i>Sex; age;</i> <i>social factors (living alone, contact with friends, club membership); chronic disease; lifestyle factors: smoking, physical activity, BMI, perception of stress and insomnia.</i>	Good
Andorsen et al. (2016) Norway	Participants = 13,084 Age = 25-97 years Sex = 60.7% female Datatype = Questionnaire; Tromsø study Chronic pain defined as pain in muscles and joints that have lasted continuously for at least three months. Widespread pain is all-over body pain for at least three months during the past year. Reports on localised and widespread pain.	3182 (24%)	Negative health determinants.	Chronic musculoskeletal complaints HR: Female = 0.93 (0.85 - 1.01); Male = 0.93 (0.85 - 1.01) <i>Adjusted for:</i> <i>Sex; age; smoking; mental health complaints; educational level; body mass index; leisure time physical activity; self-reported chronic diseases (cancer, CVD, diabetes, or asthma)</i>	Fair

Chen et al. (2021) United Kingdom	Participants = 187,269 Age = 40-69 years Sex = 55.9% female Datatype = UK Biobank Chronic pain defined as pain that interfered with daily life for more than three months. Reported on chronic musculoskeletal pain.	14040 (8%)	Increased opioid use; smoking status; alcohol consumption; lower physical activity levels; number of pain sites.	HR (95% CI) for one, two, three, four pain sites = 1.09 (1.06 - 1.12); 1.25 (1.21 - 1.30); 1.43 (1.36 - 1.51); 1.46 (1.35 - 1.57). <i>Adjusted for: Age; sex; Townsend deprivation index; ethnicity.</i>	Good
Dreyer et al. (2010) Denmark	Participants = 1,189 Age = >19 years Sex = 95 % female Datatype = Patient records; health register Chronic pain defined according to the American College of Rheumatology (ACR) 1990 criteria for the classification of Fibromyalgia (FM). Pain in all the body for ≥3 months. Reported on widespread pain.	29 (2%)	Increased risk of suicide in patients with FM.	SMR (95% CI) female patients = 0.9 (0.6–1.4)	Fair
Ekholm et al. (2014) Denmark	Participants = 2,557 Age = >16 years Sex = 52.4% female Datatype = Surveys; national register Chronic pain defined as pain for ≥ 6 months. Reported on all types of chronic pain and opioid use.	426 (17%)	Long-term opioid therapy increases the risk of death.	HR (95% CI): Long-term opioid therapy= 1.72 (1.23-2.41); Short-term opioid therapy = 1.22 (0.93-1.59); non-opioid = 1.28(1.10 -1.49). <i>Adjusted for: Age; sex; education; cohabitation status; smoking behaviour; high alcohol intake; BMI; Carlson comorbidity index.</i>	Good
Elliott et al. (2014) Scotland	Participants = 3,739 Age = >25 years Sex = 51.8 % female Datatype = Grampian cohort database; survey	952 (25%)	Vulnerability to chronic pain is defined as: living in council-rented accommodation	Vulnerable to pain group HR (95% CI) = 1.45 (1.01 - 2.11); reference is resilient to pain. <i>Adjusted for:</i>	Good

	Chronic pain as defined by the IASP. Includes all types of chronic pain.		; living with no other adults; being unable to work; and having a long-term limiting illness.	<i>Sex; age; housing; employment status; and long-term limiting illness.</i>	
Inoue et al. (2022) United States	Participants = 2,168 Age = 53.3 ± 17.7 (mean ± SD) years Sex = 57 % female Datatype = Survey; database linkage. Chronic pain defined as pain for at least three months according to the IASP criteria. Reports on all types of chronic pain and opioids.	216 (10%)	Opioid prescriptions were associated with an increased risk of all-cause mortality.	Reported odds ratio for mediator effect of opioids on chronic pain mortality.	Good
Kim and Umeda (2019) United States	Participants = 1,231 Age = > 40 years Sex = 55 % female Datatype = Questionnaire; database linkage. Chronic pain defined by the ACR definition of a pain problem that lasted ≥3 months. Reports on all types of chronic pain.	256 (21%)	Increased mortality risk with Chronic conditions, weight, socioeconomic status, and physical activity level.	HR (95% CI): Localised pain = 1.21 (1.02-1.44); Chronic pain= 1.29 (0.93-1.80) <i>Adjusted for:</i> <i>Age; sex; sociodemographic characteristics (ethnicity, education, marital status, household income, weight status and chronic health conditions including diabetes, heart disease, stroke, and cancer, unhealthy lifestyle behaviours including alcohol consumption and smoking status, and physical activity).</i>	Good
Macfarlane et al. (2001) England	Participants = 1,005 Age = 18-75 years Sex = 66 % female Datatype = Survey; NHS register	129 (13%)	Increased risk of cancer in patients with chronic	MRR (95% CI): Localised pain = 1.21 (1.01 - 1.44) Widespread pain = 1.31 (1.05 - 1.65) <i>Adjusted for:</i>	Good

<p>Macfarlane et al. (2017) United Kingdom</p>	<p>Chronic pain defined according to the American College of Rheumatology (ACR) criteria for Fibromyalgia (FM). Reports on widespread chronic pain.</p> <p>Participants = 7,130 Age = 40 – 69 years Sex = 63.7 % female Datatype = UK Biobank</p>	<p>310 (4%)</p>	<p>widespread pain.</p> <p>Lifestyle factors associated with having pain (poor diet, low levels of physical activity, smoking, high BMI).</p>	<p><i>Study location.</i></p> <p>MRR (95% CI) = 1.47 (1.24 - 1.73)</p> <p><i>Adjusted for: Age; sex; body mass index; physical activity (walking, moderate and vigorous activities, climbing stairs); diet (fruit and vegetable, alcohol consumption); and smoking status.</i></p>	<p>Good</p>
<p>Macfarlane et al. (2020) Great Britain</p>	<p>Chronic pain defined as pain that had lasted at least three months, and chronic widespread pain as 'pain all over the body' lasting ≥ three months. Reports on both localised chronic pain and widespread chronic pain.</p> <p>Participants = 20,1827 Age = 40 – 70 years Sex = 50 % female Datatype = UK Biobank</p>	<p>7900 (4%)</p>	<p>Social and lifestyle factors account for an increased risk of death.</p>	<p>MRR (95% CI) = 0.85 (0.78 - 0.93)</p> <p><i>Adjusted for: Age; gender; physical activity; body mass index; diet; alcohol; mobility; education level; household income; deprivation indices.</i></p>	<p>Good</p>
<p>Maruta et al. (1998) United States</p>	<p>Chronic pain defined as pain lasting for over three months. Reports on all types of chronic pain, number of pain sites, and opioid use.</p> <p>Participants = 249 Age = 15 - 64 years Sex = 65 % female Datatype = Pain management centre assessments; surveys.</p>	<p>22 (9%)</p>	<p>Causes of death include malignancy, central nervous system disease, coronary artery diseases, ruptured aneurysms, motor vehicle accidents,</p>	<p>Not reported</p>	<p>Fair</p>

McBeth et al. (2009) England	Participants = 761 Age = 64.7 ± 15.4 (mean ± SD) years Sex = 59.9 % female Datatype = Questionnaires; Office for National Statistics.	217 (29%)	suicide, collagen disease, pneumonia, pancreatitis, and non-suicidal tricyclic antidepressant overdose. Social factors affect mortality associated with widespread pain.	MRR (95% CI): Localised pain = 1.2 (1.02 – 1.4) Widespread pain = 1.3 (1.1, 1.5) <i>Adjusted for:</i> Age; sex; ethnic group; Townsend score.	Good
Nitter and Forseth (2013) Norway	Participants = 1,168 Age = 20 – 50 years Sex = 100 % female Datatype = Questionnaires.	57 (5%)	Widespread pain is a higher risk than localised pain.	HR (95% CI) Chronic pain = 2.1 (1.1–4.2); Chronic regional pain = 2.0 (1.0–4.0); Chronic widespread pain = 3.3 (1.4–8.0); reference is no pain. <i>Adjusted for:</i> Age; sleep problems; feeling anxious; frightened or nervous and several non-specific health complaints in a multivariate model.	Good
Sjogren et al. (2010) Denmark	Participants = 394 Age = >16 years Sex = 53.3 % female Datatype = Survey; database linkage.	Not reported	The use of strong opioids increases the risk of death.	HR (95% CI): Chronic pain: = 1.21 (1.02-1.44); Chronic pain + strong opioids: = 1.67 (1.03-2.70) <i>Adjusted for:</i>	Fair

	Chronic pain defined as pain for ≥ 6 months duration. Reports on all types of chronic pain.			<i>Sex; the international standard classification of education; marital status; body mass index; smoking behaviour; regular use of antidepressants; regular use of anxiolytic; self-reported circulatory diseases; infectious and parasitic diseases; diabetes; and mental disorders.</i>	
Smith et al. (2003) England	Participants = 3,878 Age = 42 – 81 years Sex = 100 % female Datatype = Survey; Royal college of general practitioners oral contraception study. Chronic pain defined as pain that persists for longer than three months. Reported on any pain and all chronic pain.	not reported	Increased risk of respiratory disease in women.	AOR (95% CI): Widespread pain relative to " any pain" = 1.01 (0.81–1.26); Any pain = 1.10 (0.89–1.36); reference is no pain. <i>Adjusted for:</i> <i>Age; social class; and the number of cigarettes smoked at recruitment.</i>	
Vaegter et al. (2019) Denmark	Participants = 6,142 Age = 16 – 97 years Sex = 64 % female Datatype = Pain clinic data; linkage to registry data. Chronic pain defined as chronic (≥ 6 months) non-malignant pain. Reports on all types of chronic pain.	276 (4%)	Primary causes of death: cancer, respiratory disease, and cardiovascular disease.	SMR (95% CI): Chronic pain = 6.2 (5.5–7.0);	Good
Wang et al. (2020) Sweden	Participants = 374 Age = > 16 years Sex = 64.6 % female Datatype = Survey (Study of Twin Adults - Genes and Environment (STAGE),	Not reported	Socioeconomic factors increase risk.	HR (95% CI): Widespread chronic pain = 1.95 (1.39–2.74) <i>Adjusted for:</i>	Fair Good

conducted 2005–2006); linkage to registry data.

Chronic pain defined by the ACR as pain \geq 3 months and all-over body. Reports on widespread pain.

Sex; age; education; children living at home; type of living area; cohort; self-rated health; pain type; and cancer.

[Wolfe et al. \(2010\)](#)
United States

Participants = 8,186
Age = 64.6 \pm 12.2 (mean \pm SD) years
Sex = 77 % female
Datatype = US National Data Bank for Rheumatic Diseases (NDB).

539 (7%)

Increased risk of suicide in patients with FM.

SMR (95% CI)

Widespread chronic pain= 0.90 (0.61–1.26)

*Adjusted for:
Age; sex.*

Chronic pain defined according to ACR definition of Fibromyalgia. Presence of pain for \geq 3 months. Reports on widespread pain.

Good

Totals

Participants with CNCP : 438,593

Deceased: 28740
(6.6 %)

AOR: adjusted odds ratio; HR: Hazard Ratios = HR, hazard rate ratio = chronic pain hazard rate/control hazard rate; MMR: mortality rate ratio = incidence of mortality in chronic pain group/ incidence of mortality in no pain group; SMRs: standardised mortality ratio = number of observed deaths / number of expected deaths; AOR, Adjusted odds ratio = odds of death on chronic pain group/ odds of event in no pain group; CVD: Cardiovascular disease.

11 Supplemental Figures and Tables

Table S1: Embase 1974 to present search conducted.

Embase 1974 to present	Search terms	No. Hits
1	chronic pain*.ab,ti.	70596
2	chronic pain.sh.	76246
3	chronic non cancer pain*.ab,sh,ti.	1464
4	chronic noncancer pain.ab,ti.	1035
5	(chronic adj3 pain).ab,ti.	117429
6	primary pain*.ab,ti.	524
7	secondary pain*.ab,ti.	191
8	mortality.ab,ti.	1429274
9	mortality.sh.	888959
10	mortalit*.ab,ti.	1440267
11	death*.ab,ti.	1450782
12	death*.sh.	318536
13	fatalit*.ab,ti.	45844
14	fatality.ab,ti.	31229
15	1 or 2 or 3 or 4 or 5 or 6 or 7	137919
16	8 or 9 or 10 or 11 or 12 or 13 or 14	2844757
17	15 and 16	4837

Table S2: Medline 1946 to present search conducted.

Medline (Ovid MEDLINE® Epub Ahead of Print, In-Process & Other Non-Indexed Citations, Ovid MEDLINE® Daily and Ovid MEDLINE®) 1946 to present	Search terms	No. Hits
1	chronic pain*.ab,ti.	46685
2	chronic pain.sh.	21730
3	chronic non cancer pain*.ab,sh,ti.	839
4	chronic noncancer pain.ab,ti.	827
5	(chronic adj3 pain).ab,ti.	78118
6	primary pain*.ab,ti.	334

7	secondary pain*.ab,ti.	131
8	mortality.ab,ti.	949037
9	mortality.sh.	49267
10	mortalit*.ab,ti.	956214
11	death*.ab,ti.	990629
12	death*.sh.	56358
13	fatalit*.ab,ti.	35952
14	fatality.ab,ti.	24375
15	1 or 2 or 3 or 4 or 5 or 6 or 7	82713
16	8 or 9 or 10 or 11 or 12 or 13 or 14	1782831
17	15 and 16	2292

Table S3: Crude death data available from included studies.

Study ID (name of first author and year of publication)	Population with chronic pain (n)	Number of deaths in the population with chronic pain (n)	Population no chronic pain (n)	Number of deaths in the population with no chronic pain (n)
<i>Andersson et al. 2009</i>	888	189	721	67
<i>Andersen et al. 2016</i>	13084	3182	17309	5693
<i>Chen et al. 2021</i>	187269	14040	197098	11877
<i>Dreyer et al. 2010</i>	1189	29	Not reported	Not reported
<i>Ekholm et al. 2014</i>	2557	426	10570	769
<i>Elliott et al. 2014</i>	3739	952	Not reported	Not reported
<i>Inoue et al. 2022</i>	2168	216	11710	999
<i>Kim et al. 2019</i>	1231	256	6153	1343
<i>Macfarlane et al. 2001</i>	1005	129	2388	196
<i>Macfarlane et al. 2017</i>	7130	310	275225	5269
<i>Macfarlane et al. 2020</i>	201827	7900	262589	8417
<i>Maruta et al. 1998</i>	249	22	Not reported	Not reported
<i>McBeth et al. 2009</i>	761	217	1993	389
<i>Nitter et al. 2013</i>	1168	57	870	14
<i>Vaegter et al. 2018</i>	6142	276	Not reported	Not reported
<i>Wolfe et al. 2010</i>	8186	539	Not reported	Not reported

Table S4: Causes of death reported by studies.

Causes of death	Chronic noncancer pain (CNCP)	non pain
<i>Malignancy</i>	8511	6533
<i>Cardiovascular disease</i>	4679	2274
<i>Nervous system disease</i>	764	649
<i>Mental health disorders</i>	317	239
<i>Endocrine and metabolic disease</i>	186	109
<i>Respiratory disease</i>	166	720
<i>Suicide</i>	137	2
<i>Genitourinary disease</i>	97	62
<i>Falls</i>	90	0
<i>Musculoskeletal and connective tissue disease</i>	66	34
<i>Accidents</i>	47	0
<i>Septicaemia</i>	24	0
<i>Kidney Disease</i>	12	0
<i>Liver and biliary disease</i>	10	0
<i>Gastrointestinal disease</i>	1	382
<i>Overdose</i>	1	0
Total	15108	11004

Table S5: Quality assessment of included studies.

**National Institute of Health (NIH), National Heart, Lung, and Blood
Institute (NHLBI) Quality Assessment Tool for Observational
Cohort and Cross-Sectional Studies**

Study ID (First Author, year)	1	2	3	4	5	6	7	8	9	10	11	12	13	14	Rating
Andersson et al. 2009	✓	✓	✓	✓	✓	✓	✓	✓	✓	X	✓	X	✓	✓	Good
Andorsen et al. 2016	✓	✓	✓	✓	✓	✓	✓	✓	✓	X	✓	X	X	✓	Fair
Chen et al. 2021	✓	✓	✓	✓	✓	✓	✓	✓	✓	X	✓	N/A	N/A	✓	Good
Dreyer et al. 2010	✓	✓	✓	✓	✓	✓	✓	X	✓	X	✓	✓	✓	X	Fair
Ekholm et al. 2014	✓	✓	N/A	✓	✓	✓	✓	X	✓	X	✓	X	N/A	✓	Good
Elliott et al. 2013	✓	✓	✓	✓	✓	✓	✓	X	✓	X	✓	X	✓	✓	Good
Inoue et al. 2022	✓	✓	✓	✓	✓	✓	✓	X	✓	X	✓	X	✓	✓	Good
Kim et al. 2019	✓	✓	✓	✓	✓	✓	✓	✓	✓	X	✓	X	N/A	✓	Good
Macfarlane et al. 2001	✓	✓	✓	✓	✓	✓	✓	✓	✓	X	✓	X	N/A	✓	Good
Macfarlane et al. 2017	✓	✓	X	✓	✓	✓	✓	X	✓	X	✓	X	N/A	✓	Good
Macfarlane et al. 2020	✓	✓	✓	✓	✓	✓	✓	✓	✓	X	✓	X	N/A	✓	Good
Maruta et al. 1998	✓	✓	✓	✓	X	✓	✓	X	✓	X	✓	X	✓	X	Fair
McBeth et al. 2009	✓	✓	✓	✓	✓	✓	✓	X	✓	X	✓	X	✓	✓	Good
Nitter et al. 2012	✓	✓	✓	✓	✓	✓	✓	✓	✓	X	✓	X	✓	✓	Good
Sjögren et al. 2010	✓	✓	X	✓	✓	✓	✓	X	✓	X	✓	N/A	X	✓	Fair
Smith et al. 2003	✓	✓	✓	✓	✓	✓	✓	X	✓	X	✓	X	N/A	✓	Good
Vaegter et al. 2018	✓	✓	✓	✓	✓	✓	X	X	✓	X	✓	✓	✓	X	Fair
Wang et al. 2020	✓	✓	N/A	✓	✓	✓	✓	X	✓	N/A	✓	N/A	N/A	✓	Good
Wolfe et al. 2010	✓	✓	✓	✓	✓	✓	✓	X	✓	X	✓	X	✓	✓	Good

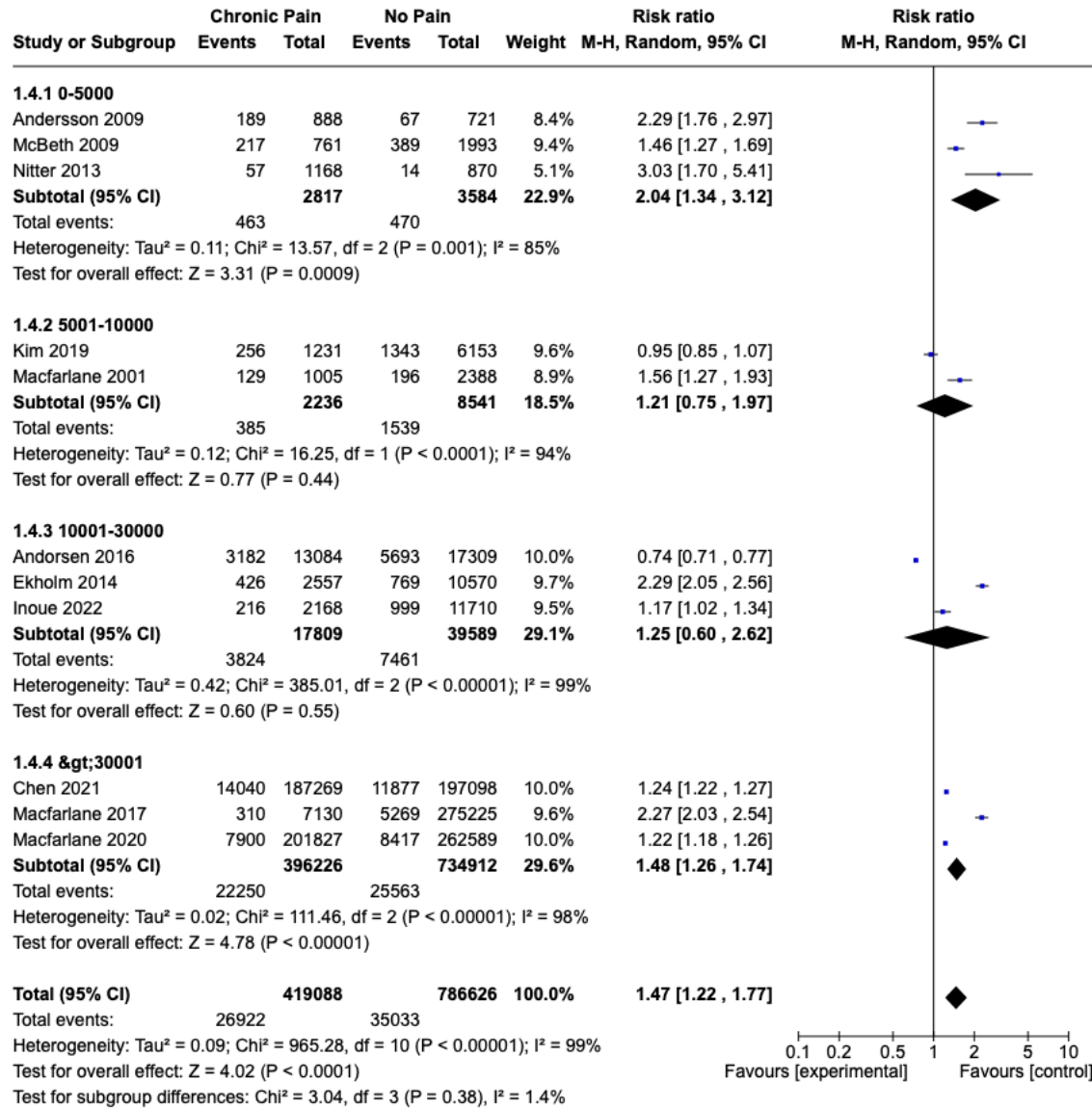


Figure S6: Sensitivity analysis of sample size.

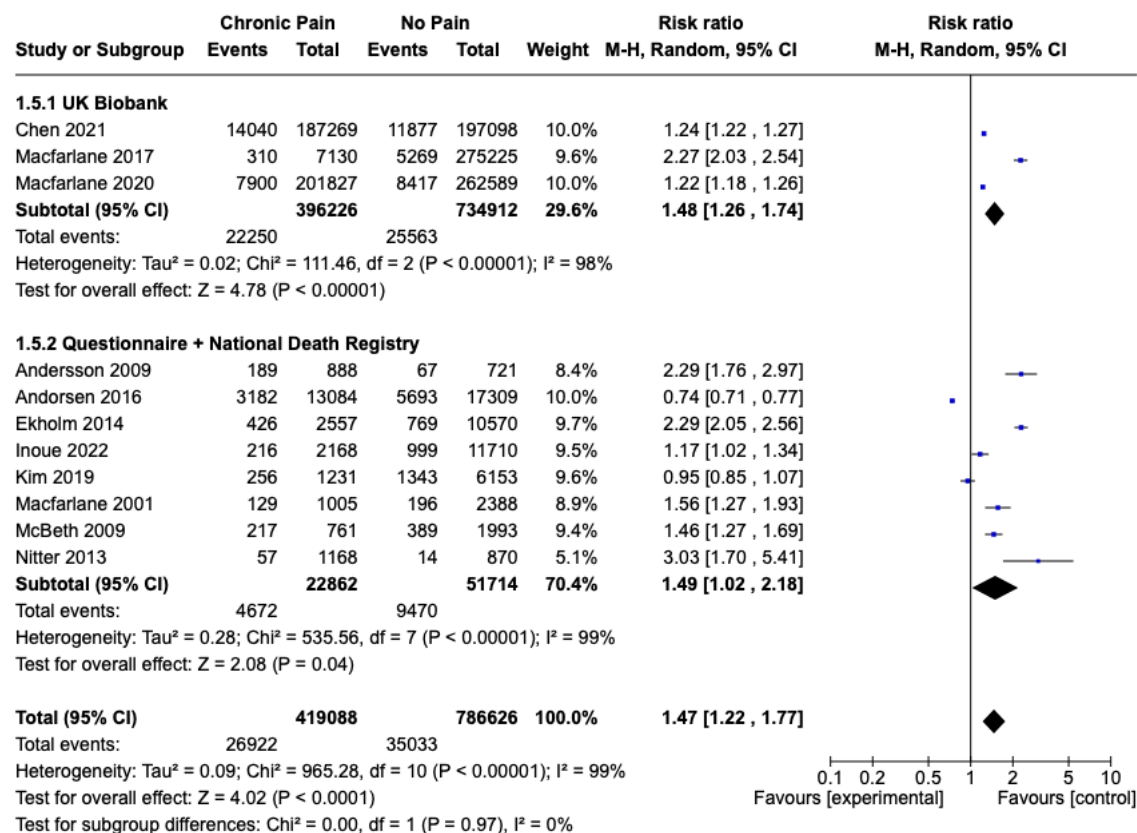


Figure S7: Sensitivity analysis of data sources.

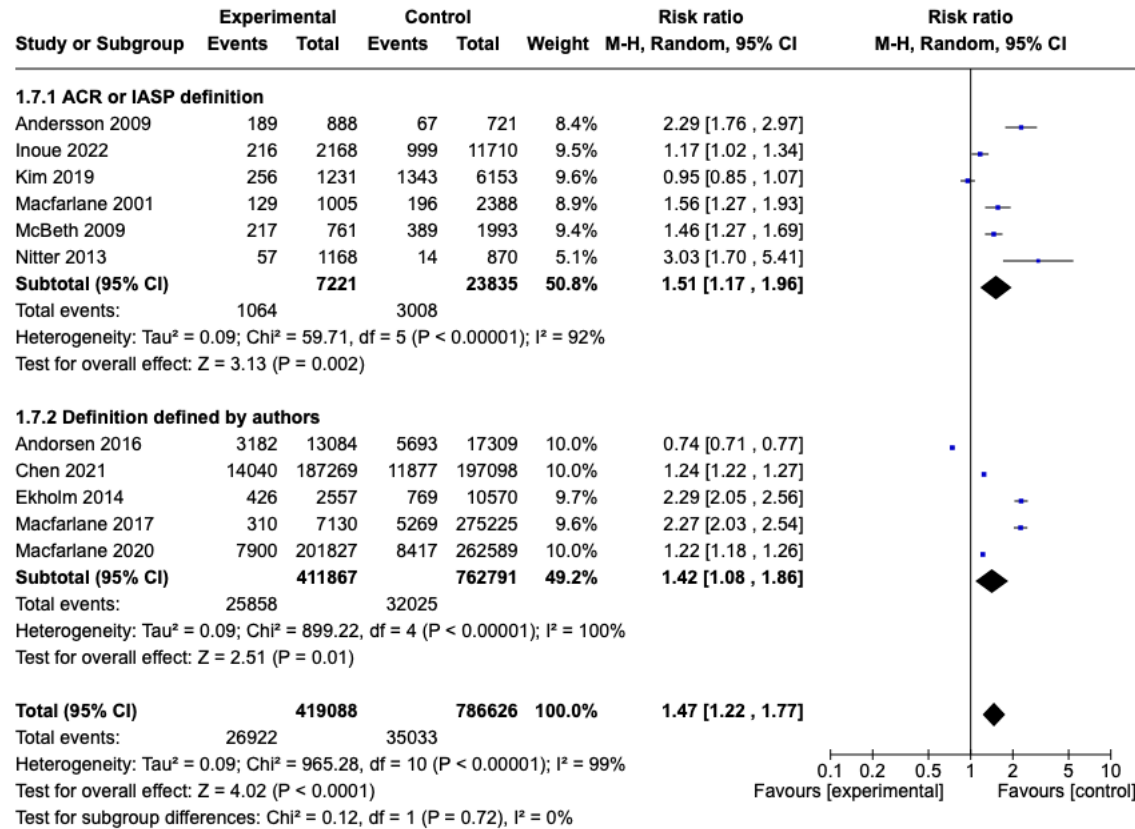


Figure S8: Sensitivity analysis by pain definition.

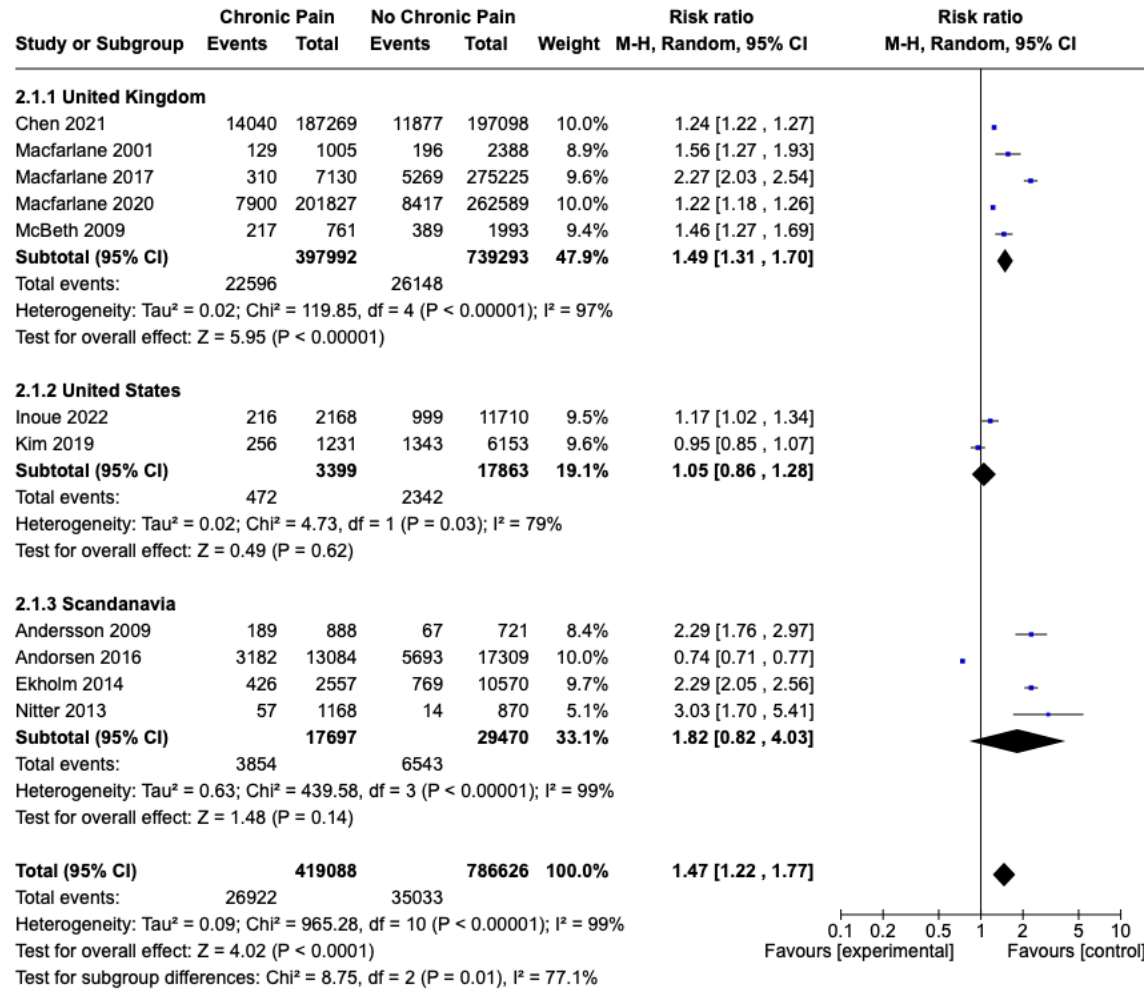


Figure S9: Sensitivity analysis by study location.

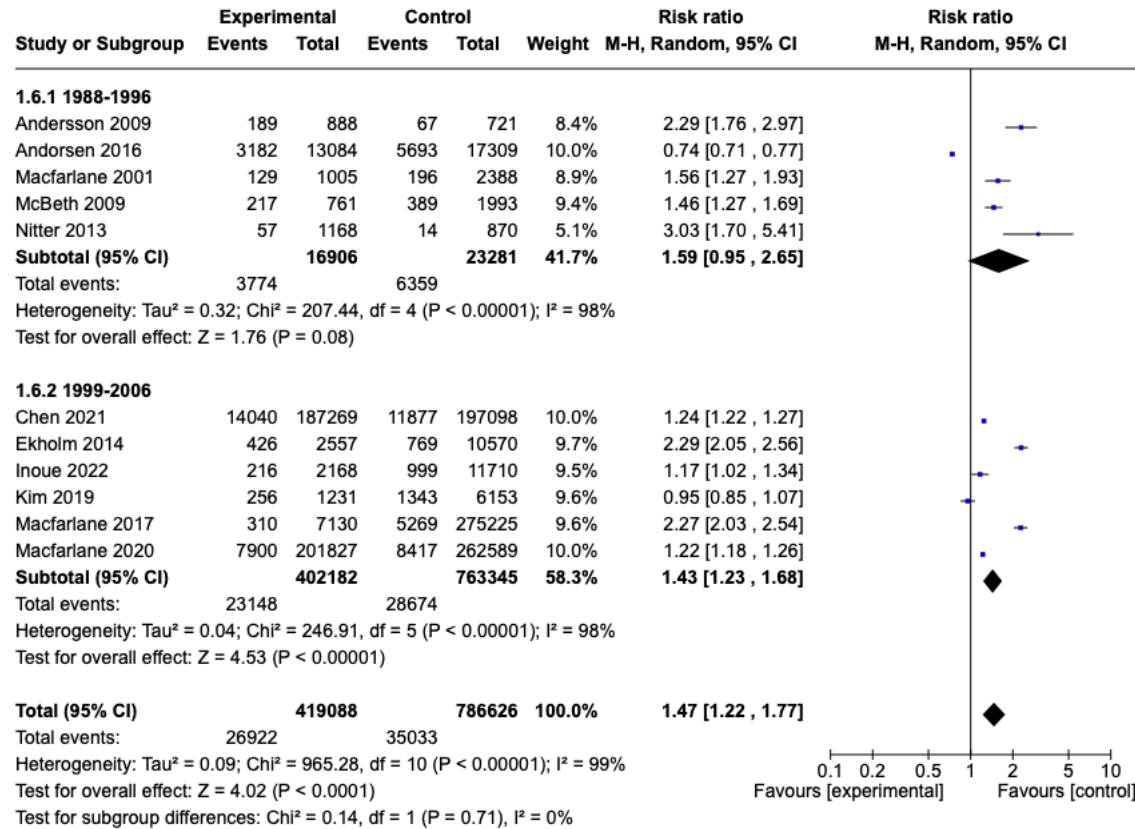


Figure S10: Sensitivity analysis by study start date.

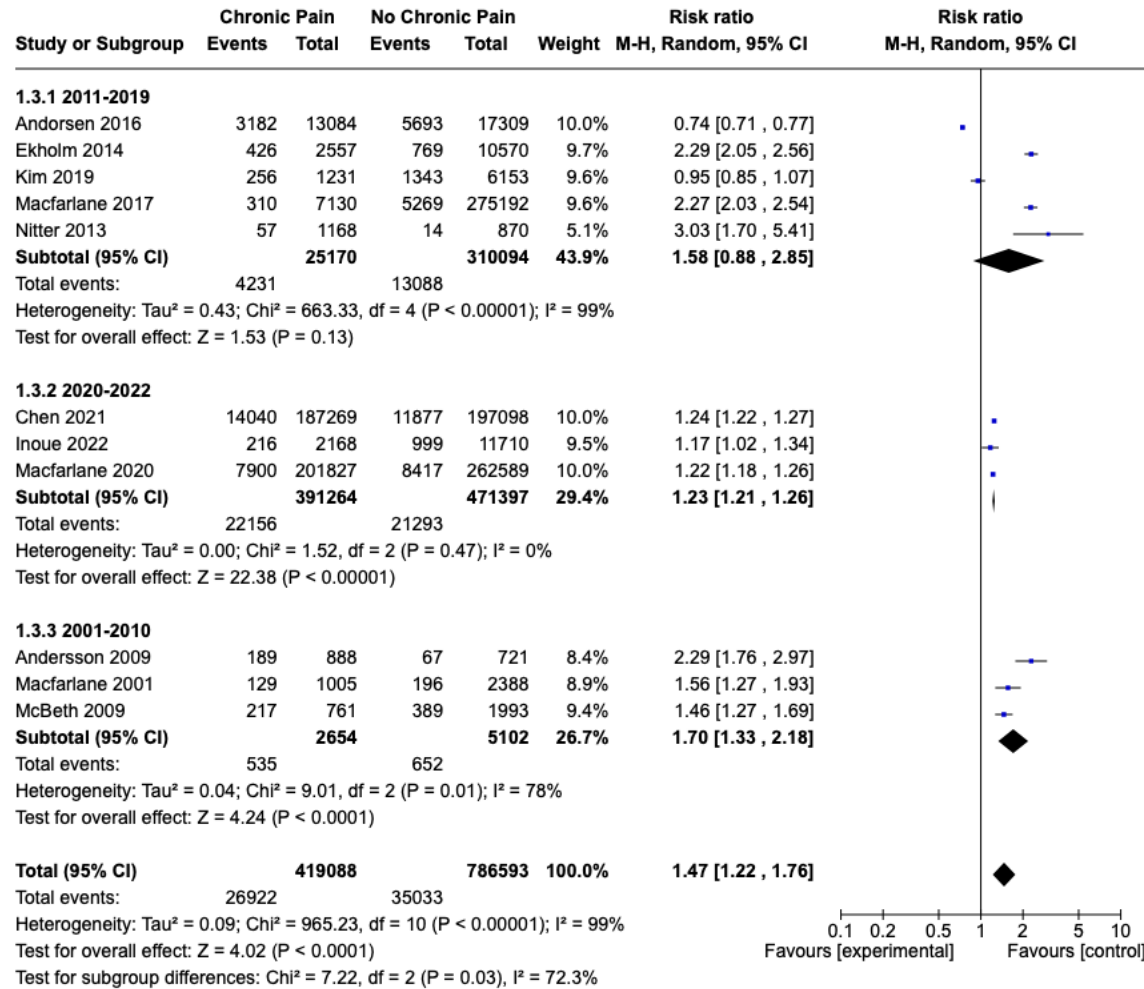


Figure S11: Sensitivity analysis by study publication date.