

# Supplement

Index

- 1. Flow chart of study selection based on the rapid review. .... 1
- Figure 1.** Flow chart of study selection based on the rapid review. .... 2
- 2. Published Systematic Reviews as obtained from PubMed search..... 3
- Table 1.** Published Systematic Reviews as obtained from PubMed search..... 3
- 3. Characteristics of the 75 included studies ..... 9
- Table 2.** Characteristics of the 75 included studies ..... 9
- 4. Results of the risk of bias assessment..... 15
- Table 3.** Results of the risk of bias assessment..... 15
- 5. Meta-analysis by individual factor and outcome ..... 22
- COMORBIDITIES ..... 22
- DEMOGRAPHIC, OCCUPATIONAL OR LIFESTYLE FACTORS ..... 49
- 6. Meta-analysis of Comorbidities and Hospitalisation..... 58
- 7. Meta-analysis of Comorbidities and ICU admission..... 63
- 8. Meta-analysis of Comorbidities and Death..... 65
- 9. Meta-analysis of Epidemiologic Factors and hospitalisation ..... 68
- 10. Meta-analysis of Epidemiologic Factors and ICU admission ..... 70
- 11. Meta-analysis of Epidemiologic Factors and death..... 71
- 12. References..... 72

1. [Flow chart of study selection based on the rapid review.](#)

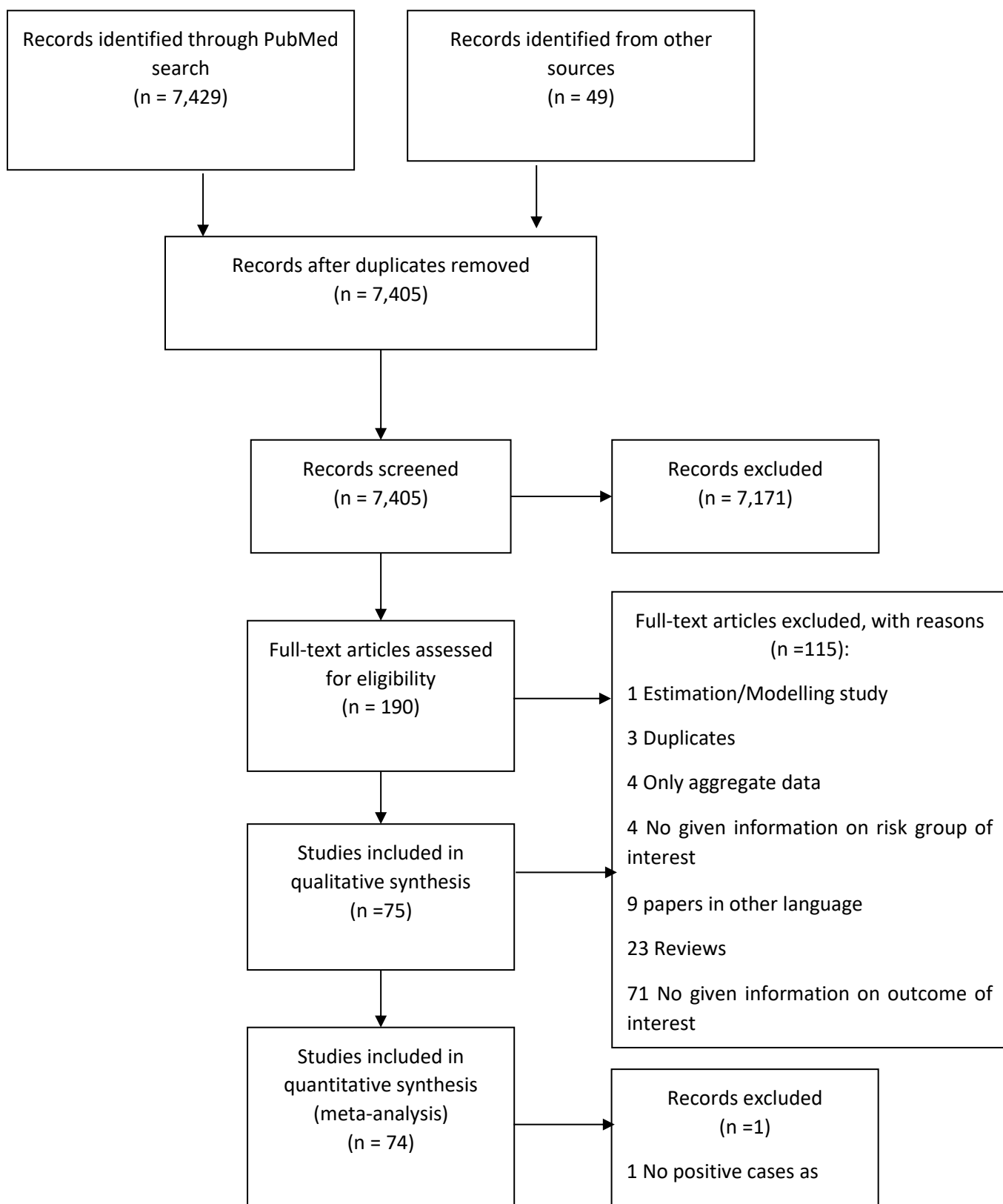


Figure 1. Flow chart of study selection based on the rapid review.

## 2. Published Systematic Reviews as obtained from PubMed search

*Table 1. Published Systematic Reviews as obtained from PubMed search*

First Author	Topic	Date published	Journal	Population	Exposure	Comparison	Outcome	Number of studies included	Value added by our review
<b>Several exposures</b>									
Couper, K. et al (76).	Association between key resuscitation interventions (chest compressions, defibrillation, CPR) and aerosol generation and airborne transmission of infection	Apr 20, 2020	Resuscitation	Rescuers (healthcare worker or lay person) delivery chest compressions &/or defibrillation &/or CPR to a person suffering a cardiac arrest	COVID-19	Chest compressions and/or defibrillation and/or CPR, with or without PPE (personal protective equipment)	Aerosol generation, or transmission of infection.	11	Inclusion of other comorbidities and interaction with age
Hu, Y. et al (77).	Risk factors of COVID-19	Apr 14, 2020	J Clin Virol	Patients diagnosed with COVID-19	Patient characteristics (gender, age,	Comparison of different outcomes	Symptoms, ARDS, ACI (acute cardiac injury), AKI	21	Inclusion of other comorbidities and

					comorbidities, etc.)		(acute kidney injury), shock, incidence of severity and death		interaction with age
Nasiri, M. et al (78).	Better understanding of clinical, laboratory, epidemiologic and mortality findings of COVID-19	Mar 26, 2020	Preprint from medRxiv and bioRxiv	Patients diagnosed with COVID-19 by RT-PCR	Clinical manifestations, comorbidities, laboratory findings and radiologic findings	Comparison of different outcomes & their associated risk factors	Hospitalisation, severe disease, death, ICU admission, mean duration between time of hospitalisation and death	32	Study of different comorbidities and conditions for different outcomes
Xu, L. et al (79).	Risk factors for severe patients with corona virus disease 2019 (COVID-19)	Apr 1, 2020	Preprint from medRxiv and bioRxiv	Patients diagnosed with COVID-19	Elderly age, male, high body mass index, high breathing rate, and underlying diseases	Severe and non-severe patients	Severe disease (defined as 1)Respiratory distress with respiratory frequency 30/min; 2) Pulse Oximeter Oxygen Saturation 93% at rest; 3) Oxygenation index (artery partial	20	Inclusion of deaths and ICU admission as outcomes, calculation of RR based on crude numbers, interaction with age

							pressure of oxygen/inspired oxygen fraction, PaO2/FiO2) 300 mmHg (1 mmHg=0.133 kPa))		
Zhao, Q. et al (80).	The risk of severe Covid-19 in patients with pre-existing chronic obstructive pulmonary disease (COPD) and ongoing smoking history.	Apr 15, 2020	J Med Virol	Patients diagnosed with COVID-19	Pre-existing COPD and ongoing smoking history	Severe and non-severe cases	Severe COVID-19 & death	11	Inclusion of other comorbidities and interaction with age
Zheng, Z. et al (81).	Risk factors for the progression of COVID-19	Apr 23, 2020	J Infect	Patients diagnosed with COVID-19	Sociodemographic (sex, age), behavioural (smoking) and clinical risk factors (comorbidities,	Critical/mortal cases vs non-critical cases	Disease progression: critical case & death	13	No limit on recruited participants, calculation of RR based on crude numbers,

clinical manifestations, laboratory examinations)

interaction with age

**Arterial hypertension**

Zuin, M. et al (82).	Risk of death in COVID-19 infection patients with and without arterial hypertension	Apr 11, 2020	J Infect	Patients diagnosed with COVID-19	Arterial hypertension (HT)	Patients with and without HT	Prevalence of HT, death	3	Inclusion of other comorbidities
----------------------	---	--------------	----------	----------------------------------	----------------------------	------------------------------	-------------------------	---	----------------------------------

**Cardiovascular**

Li, B. et al (83).	Association of cardiovascular metabolic diseases with the development of COVID-19	Mar 11, 2020	Clinical Research in Cardiology	Patients diagnosed with COVID-19	Cardiovascular metabolic diseases	Patients with Cardiovascular metabolic diseases compared to other comorbidities	ICU/severe and non-ICU/severe	6	Inclusion of other comorbidities and interaction with age
Matsushita, K. et al. (84)	Relationship of COVID-19 severity with cardiovascular disease and	Apr 28, 2020	Preprint from medRxiv and bioRxiv	Adult patients (>18 years) diagnosed with COVID-19	Cardiovascular Disease	Different Clinical (hypertension, DM, prior CVD) and sociodemographi	COVID-19 severity (death, ARDS, mechanical	21	Inclusion of other comorbidities and

its traditional risk factors.

c (age, sex & smoking) risk factors

ventilation, ICU admission)

interaction with age

## Stroke

Aggarwal, G. et al (85).	Association between stroke and severity of disease or mortality	Apr 20, 2020	Int J Stroke	COVID-19 patients with Cerebrovascular disease	Stroke (cerebrovascular disease)	Cerebrovascular disease in COVID-19 patients with or without severe disease and in non-survivors versus survivors	Disease severity (Severe disease, death, recovery)	7	Inclusion of other comorbidities and interaction with age
Li, J. W. et al (86).	Severity differences in acute cardiac injury and acute cardiac injury with mortality.	Apr 16, 2020	Prog Cardiovasc Dis	Cardiac Injury Patients	COVID-19	Those admitted to ICU and not admitted, non-survivors and survivors, severe vs non-severe cases	Infection severity on cardiac injury, death	22	Inclusion of other comorbidities and interaction with age
Santoso, A. et al (87).	Association between cardiac injury and mortality, the need for	Apr 19, 2020	Am J Emerg Med	Patients diagnosed with COVID-19	Cardiac injury (highly sensitive cardiac troponin I (hs-cTnI) N99th percentile)	Comparison of the association of cardiac injury with different outcomes	Primary outcome was mortality, and the secondary outcomes were ARDS,	13	Inclusion of other comorbidities and

intensive care unit (ICU) care, acute respiratory distress syndrome (ARDS), and severe coronavirus disease 2019

the need for ICU care, and severe COVID-19.

interaction with age

**Diabetes**

Composite poor outcome, including mortality, severe COVID-19, acute respiratory distress syndrome (ARDS), need for intensive care unit (ICU) care, and disease progression.

Inclusion of other comorbidities and interaction with age

Huang, I. et al (88). Association between DM and poor outcome in patients with COVID-19 pneumonia

Apr 17, 2020

Diabetes Metab Syndr

COVID-19 patients

DM

Patients with and without DM

30



### 3. Characteristics of the 75 included studies

**Table 2.** Characteristics of the 75 included studies

First Author*	Country	Sample size	Underlying data	Study time-frame	Age-range, Median (IQR), or Median (SD) in years
Cai, Q. et al. (1)	China	298	Medical/Clinical records	11 January to 06 February 2020	Median (IQR): 47 (33-61)
Cao, J. et al. (2)	China	102	Medical/Clinical records	03 January to 15 February 2020	Median (IQR): 54 (37-67)
CDC COVID-19 Response Team (3)	USA	7162	Official reported data	12 February to 28 March 2020	all ages
Chen, G. et al. (4)	China	21	Medical/Clinical records	Late December 2019 to 27 January 2020	Median (IQR): 56 (50 – 65)
Chen, Q. et al. (5)	China	145	Medical/Clinical records	01 January to 11 March 2020	Mean (SD): 47.5 (14.6)
Chen, T. et al. (6)	China	799**	Medical/Clinical records	13 January to 28 February 2020	Median (IQR): 62 (44-70)
Cheng, Y. et al. (7)	China	701	Medical/Clinical records	28 January to 11 February 2020	Median (IQR): 63 (50-71)
Deng, G. et al. (8)	China	44672	Official reported data	Up to 11 February 2020	-
Deng, Q. et al. (9)	China	112	Medical/Clinical records	06 January to 20 February 2020	Median (IQR): 65.0 (49.0-70.8)
Du, R. et al. (10)	China	109	Medical/Clinical records	25 December 2019 to 24 February 2020	Mean (SD):70.7 (10.9) Range 43-99
Duanmu, Y. et al. (11)	USA	100	Medical/Clinical records	04 March to 23 March 2020	Median: 45

Fan, J. et al. (12)	China	21	Medical/Clinical records	18 January to 15 March 2020	Mean (SD): 62.5 (12.6)
Feng, Y. et al. (13)	China	476	Medical/Clinical records	01 January to 21 March 2020	Median (IQR): 53 (40-64)
Goyal, P. et al. (14)	USA	393	Medical/Clinical records	03 March to 27 March 2020	Median (IQR): 62.2 (48.6-73.7)
Guan, W. et al. (15)	China	1590	Medical/Clinical records	21 November 2019 to 31 January 2020	Mean (SD): 48.9 (16.3)
Guan, Wei-jie. et al. (16)	China	1099	Medical/Clinical records	11 December 2019 to 31 January 2020	Median (IQR): 47 (35-58)
Guo, T. et al. (17)	China	187	Medical/Clinical records	23 January to 23 February 2020	Mean (SD): 58.50 (14.66)
Huang, C. et al. (18)	China	41	Medical/Clinical records	16 December 2019 to 22 January 2020	Median (IQR): 49 (41–58)
Ji, D. et al. (19)	China	208	Medical/Clinical records	20 January to 18 March 2020	Mean (SD): 44.0 (16.3)
Ji, Dong. et al. (20)	China	202	Medical/Clinical records	20 January to 17 February 2020	Median (IQR): 44.5 (34.8-54.1)
Kalligeros, M. et al.(21)	USA	103	Medical/Clinical records	17 February to 05 April 2020	Median (IQR): 60 (52-70)
Lei, S. et al. (22)	China	34	Medical/Clinical records	01 January to 05 February 2020	Median (IQR): 55 (43-63)
Li, K. et al. (23)	China	83	Medical/Clinical records	January to February 2020	Mean (SD): 45.5 (12.3)
Li, X. et al. (24)	China	548	Medical/Clinical records	26 January to 03 March 2020	Median (IQR): 60 (48-69)
Li, Y. et al. (25)	China	25	Medical/Clinical records	01 January to 03 March 2020	Median: 51 Range: 22-69
Liang, W. et al. (26)	China	1590	Medical/Clinical records	<31 January 2020	-
Liu, Jing. et al. (27)	China	40	Medical/Clinical records	05 January to 24 January 2020	Mean (SD): 48.7 (13.9)

Liu, Jingyuan. et al. (28)	China	61	Medical/Clinical records	13 January to 31 January 2020	Median: 40 Range: 01-86
Liu, W. et al. (29)	China	78	Medical/Clinical records	30 December 2019 to 15 January 2020	Median (Q1,Q3): 38 (33,57)
Liu, Y. et al. (30)	China	109	Medical/Clinical records	02 January to 12 February 2020	Mean (IQR): 55 (43-66) Range 22-94
Ma, J. et al. (31)	China	37	Medical/Clinical records	01 January to 30 March 2020	Median (IQR): 62 (59-70)
Mao, L. et al. (32)	China	214	Medical/Clinical records	16 January to 19 February 2020	Mean (SD): 52.7 (15.5)
McMichael, T. et al. (33)	USA	167	Official reported data	20 January to 18 March 2020	Median: 72 Range: 21-100
Nikpouraghdam, M. et al. (34)	Iran	2964	Medical/Clinical records	19 February to 15 April 2020	Mean (SD): 55.50 (15.15)
Qin, C. et al. (35)	China	452	Medical/Clinical records	10 January to 12 February 2020	Median (IQR): 58 (47-67) Range: 22-95
Ruan, Q. et al. (36)	China	150	Medical/Clinical records	-	-
Shi, S. et al. (37)	China	416	Medical/Clinical records	20 January to 15 February 2020	Median: 64 Range: 21-95
Shi, Y. et al. (38)	China	487	Medical/Clinical records	January to 17 February 2020	Mean (SD): 46 (19)
Simonnet, A. et al. (39)	France	124	Medical/Clinical records	27 February to 06 April 2020	Median (IQR): 60 (51-70)
Sun, S. et al. (40)	China	116	Medical/Clinical records	19 January to 20 February 2020	Median (IQR): 47.0 (37.0–54.5)

Tang, N. et al. (41)	China	183	Medical/Clinical records	01 January to 13 February 2020	Mean (SD): 54.1 (16.2) Range: 14-94
The Novel Coronavirus Pneumonia Emergency Response Epidemiology Team (42)	China	44672	Official reported data	31 December 2019 to 11 February 2020	all ages
Tian, S. et al. (43)	China	262	Medical/Clinical records	20 January to 10 February 2020	Median: 47.5 Range: 1-94
Tomlins, J. et al. (44)	UK	95	Medical/Clinical records	10 March to 06 April 2020	Median (IQR): 75 (59-82)
Wan, S. et al. (45)	China	135	Medical/Clinical records	23 January to 08 February 2020	Median (IQR): 47 (36-55)
Wang, Dawei et al. (46)	China	107	Medical/Clinical records	Up to 10 February 2020	Median (IQR): 51 (36-65)
Wang, D. et al. (47)	China	138	Medical/Clinical records	01 January to 03 February 2020	Median (IQR): 56 (42-68) Range 22-92
Wang, L. et al. (48)	China	339	Medical/Clinical records	01 January to 05 March 2020	Median (IQR): 69 (65-76)
Wang, R. et al. (49)	China	125	Medical/Clinical records	20 January to 18 February 2020	Mean (SD): 38.76 (13.79)
Wang, X. et al. (50)	China	1012	Medical/Clinical records	7 February to 22 February 2020	Median (IQR): 50 (39-58) Range 16-89
Wang, Y. et al. (51)	China	344	Medical/Clinical records	25 January to 25 February 2020	Median (IQR): 64 (52-72)
Wei, X. et al. (52)	China	252	Medical/Clinical records	13 February to 03 March 2020	Mean (SD): 64.8 (13.3)
Wei, YY. et al. (53)	China	167	-	-	Mean (SD): 42.31 (15.29)

Williamson, E. et al. (54)***	England	17425445	Official reported data	01 February to 25 April 2020	-
Wu, C. et al. (55)	China	201	Medical/Clinical records	25 December 2019 to 13 February 2020	Median (IQR): 51 (43-60) Range: 21-83
Xiao, G. et al. (56)	China	287	Medical/Clinical records	05 January to 08 March 2020	Median (IQR): 62 (51-70)
Xie, H. et al. (57)	China	79	Medical/Clinical records	02 February to 23 February 2020	Median: 60 Range: 27-87
Xu, Y. (58)	China	50	Medical/Clinical records	January to February 2020	Mean (SD): 43.9 (16.8) Range: 3-85
Yan, Y. et al. (59)	China	193	Medical/Clinical records	10 January to 24 February 2020	Median (IQR): 64 (49-73)
Yang, X. et al. (60)	China	52	Medical/Clinical records	24 December 2019 to 09 February 2020	Mean (SD): 59.7 (13.3)
Yao, Q. et al. (61)	China	108	Medical/Clinical records	30 January to 11 February 2020	Median (IQR): 52 (37-58)
Yu, X. et al. (62)	China	92	Medical/Clinical records	19 January to 19 March 2020	Mean (SD): 55 (16)
Yuan, M. et al. (63)	China	27	Medical/Clinical records	1 January 2020 to 25 January 2020	Median (IQR): 60 (47-69)
Zhang, G. et al. (64)	China	221	Medical/Clinical records	02 January to 10 February 2020	Median (IQR): 55.0 (39.0-66.5)
Zhang, J. et al. (65)	China	19	Medical/Clinical records	16 January to 20 February 2020	Median: 73
Zhang, Jixiang. et al. (66)	China	663	Medical/Clinical records	11 January to 06 February 2020	Median (IQR): 55.6 (44-69)
Zhang, Jin-jin. et al. (67)	China	140	Medical/Clinical records	16 January to 03 February 2020	Median: 57 Range: 25-87

Zhang, Y. et al. (68)	China	80	Medical/Clinical records	January to February 2020	Median (IQR): 49.5 (37.75-63.5)
Zhao, X. et al. (69)	China	91	Medical/Clinical records	16 January to 10 February 2020	Median: 46
Zheng, Kl. et al. (70)	China	66	Medical/Clinical records	01 January to 29 February 2020	Mean: 47
Zheng, S. et al. (71)	China	96	Medical/Clinical records	19 January to 20 March 2020	Median (IQR): 55 (44.3-64.8)
Zheng, F. et al. (72)	China	161	Medical/Clinical records	17 January to 07 February 2020	Median (IQR): 45 (33.5-57)
Zhou, F. et al. (73)	China	191	Medical/Clinical records	29 December 2019 to 31 January 2020	Median (IQR): 56 (46-67) Range: 18-87
Zhu, Z. et al. (74)	China	127	Medical/Clinical records	23 January to 20 February 2020	Mean (SD): 50.90 (15.26)
Zou, Y. et al. (75)	China	303	Medical/Clinical records	20 January to 24 February 2020	Median: 51

---

\*All the studies were published in 2020

\*\* Analysis based on 274 patients

\*\*\*National primary care electronic health record data linked to in-hospital COVID-19 death data

#### 4. Results of the risk of bias assessment

**Table 3.** Results of the risk of bias assessment

First Author	Bias due to confounding	Bias due to selection of participants and follow-up	Bias due to misclassification of exposure	Bias due to missing data	Bias in measurement of outcome	Bias in selection of the reported
<b>Criteria*</b>	<b>low</b> if stratification/adjustment for age - <b>moderate</b> if age information - <b>high</b> if no age information	<b>low</b> if follow-up well documented for all risk groups up to intended follow-up time - <b>moderate</b> if not well reported for all groups - <b>high</b> if different follow-up time for different groups or follow-up not until endpoint for all groups	<b>low</b> if medical records - <b>moderate</b> if self-reported - <b>high</b> if unclear source	<b>low</b> if outcome data available for all and missing data reported - <b>moderate</b> if some missing data reported but not all - <b>high</b> if participants excluded on large scale for missing data	<b>low</b> if outcome definition reported and well classified, <b>moderate</b> if no report, but clear meaning, <b>high</b> if no report available	<b>low</b> if subgroup reporting seems adequate and not selective, <b>high</b> if selective subgroup reporting

Cai, Q. et al.	moderate	low	low	high	low	low
Cao, J. et al.	moderate	low	low	high	low	low
CDC COVID-19 Response Team	moderate	moderate	low (public health departments)	low	low	low
Chen, G. et al.	moderate	low	low	high	low	low
Chen, Q. et al.	moderate	moderate	low	high	low	low
Chen, T. et al.	low	moderate	low	low	low	low
Cheng, Y. et al.	low	low	low	high	low	low
Deng, G. et al.	moderate	moderate	low	moderate	low	low
Deng, Q. et al.	moderate	low	low	high	low	low
Du, R. et al.	moderate	low	low	high	low	low
Duanmu, Y. et al.	moderate	moderate	low	high	low	low
Fan, J. et al.	moderate	low	low	high	low	low
Feng, Y. et al.	moderate	low	low	high	low	low
Goyal, P. et al.	moderate	low	low	high	low	low
Guan, W. et al. Eur Respir J	low	moderate	low	moderate	moderate	high



Guan, W. et al. N Engl J Med	moderate	low	low	low	low	low
Guo, T. et al.	moderate	moderate	low	high	low	low
Huang, C. et al	moderate	low	low	low	low	low
Ji, D. et al.	moderate	low	low	high	low	low
Ji, Dong. et al.	moderate	low	low	high	low	low
Kalligeros, M. et al.	moderate	low	low	high	low	low
Lei, S. et al.	moderate	low	low	low	low	low
Li, K. et al.	moderate	moderate	low	high	low	low
Li, X. et al.	low	low	low	moderate	low	low
Li, Y. et al	moderate	low	low	low	low	low
Liang, W. et al	low	moderate	low	moderate	moderate	low
Liu, Jing. et al.	moderate	moderate	low	high	high	low
Liu, Jingyuan. et al.	moderate	moderate	low	high	low	low
Liu, W. et al	moderate	low	low	low	low	low
Liu, Y. et al.	moderate	moderate	low	high	low	low

Ma, J. et al.	moderate	moderate	low	high	low	low
Mao, L. et al.	moderate	moderate	low	low	low	low
McMichael, T. et al.	moderate	moderate	low	moderate	moderate	low
Nikpouraghdam, M. et al.	low	moderate	low	low	low	low
Quin, C. et al	low	moderate	low	low	low	low
Ruan, Q. et al.	moderate	moderate	low	high	low	low
Shi, S. et al.	moderate	low	low	high	low	low
Shi, Y. et al	low	low	low	low	low	moderate
Simonnet, A. et al.	moderate	moderate	low	high	low	low
Sun, S. et al	moderate	low	low	high	low	low
Tang, N. et al.	moderate	low	low	high	low	low
The Novel Coronavirus Pneumonia Emergency Response	moderate	moderate	moderate	moderate	low	low

Epidemiology Team						
Tian, S. et al.	moderate	low	low	low	low	low
Tomlins, J. et al.	moderate	low	low	high	low	low
Wan, S. et al	moderate	low	low	low	moderate	low
Wang, D. et al	moderate	low	low	low	low	low
Wang, Dawei et al.	low	moderate	low	high	low	low
Wang, L. et al	moderate (only elderly included)	moderate	low	low	low	low
Wang, R. et al.	moderate	low	low	high	low	low
Wang, X. et al.	moderate	low	low	high	low	low
Wang, Y. et al.	moderate	moderate	low	moderate	low	low
Wei, X. et al.	moderate	moderate	low	high	low	low
Wie, YY. et al.	moderate	moderate	high	high	low	low
Wu, C. et al.	moderate	low	low	moderate	low	low

Xiao, G. et al.	moderate	low	moderate	moderate	low	low
Xie, H. et al.	moderate	moderate	low	high	low	low
Xu, Y.	moderate	moderate	low	high	low	low
Yan, Y. et al.	moderate	low	low	low	low	low
Yang, X. et al.	moderate	low	low	low	low	low
Yao, Q. et al.	moderate	low	low	high	low	low
Yu, X. et al.	moderate	low	low	low	low	low
Yuan, M. et al.	moderate	moderate	low	high	low	low
Zhang, G. et al	moderate	low	low	low	low	low
Zhang, J. et al	low	low	low/moderate	low	low	low
Zhang, J. et al.	moderate	moderate	low	high	low	low
Zhang, Jixiang. et al.	low	low	low	high	low	low
Zhang, Y. et al.	moderate	moderate	low	high	low	low
Zhao, X. et al.	moderate	low	low	high	low	low
Zheng, F. et al.	moderate	moderate	low	high	low	low
Zheng, Kl. et al.	moderate	moderate	low	high	low	low
Zheng, S. et al.	moderate	moderate	low	high	low	low

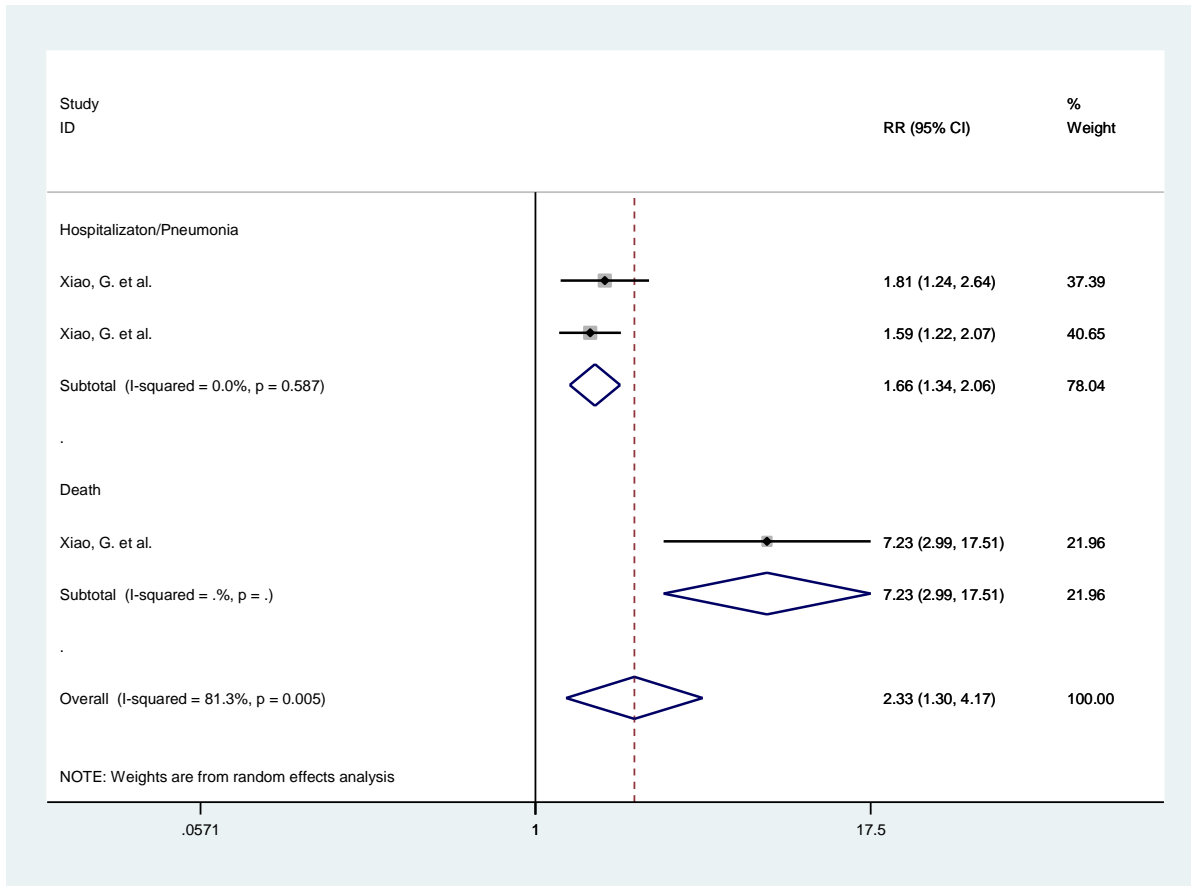
Zhou, F. et al.	low	moderate	low	moderate	low	low
Zhu, Z. et al.	low	moderate	low	high	low	low
Zou, Y. et al	moderate	moderate	low	high	low	low

\*Adapted version of ROBINS-I: a tool for assessing risk of bias in non-randomized studies of interventions.

## 5. Meta-analysis by individual factor and outcome

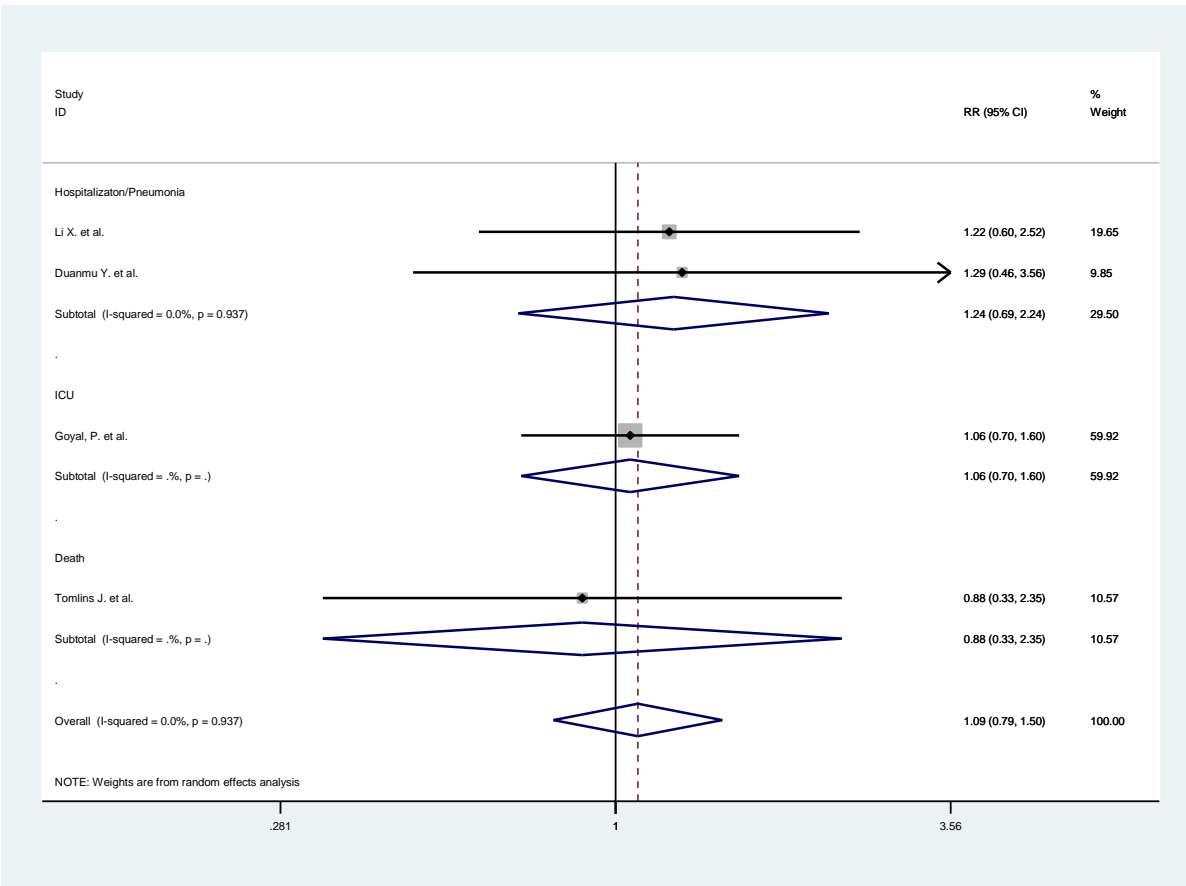
### COMORBIDITIES

#### Acute renal failure



<b>Study</b>	<b>RR</b>		<b>[95% Conf. Interval]</b>
<b>Hospitalisation/Pneumonia</b>			
Xiao, G. et al.	1.808	1.240	2.636
Xiao, G. et al.	1.594	1.225	2.073
Sub-total			
D+L pooled RR	<b>1.661</b>	<b>1.338</b>	<b>2.061</b>
<b>Death</b>			
Xiao, G. et al.	7.231	2.986	17.514
Sub-total			
D+L pooled RR	<b>7.231</b>	<b>2.986</b>	<b>17.514</b>
<b>Overall</b>			
D+L pooled RR	<b>2.329</b>	<b>1.299</b>	<b>4.174</b>

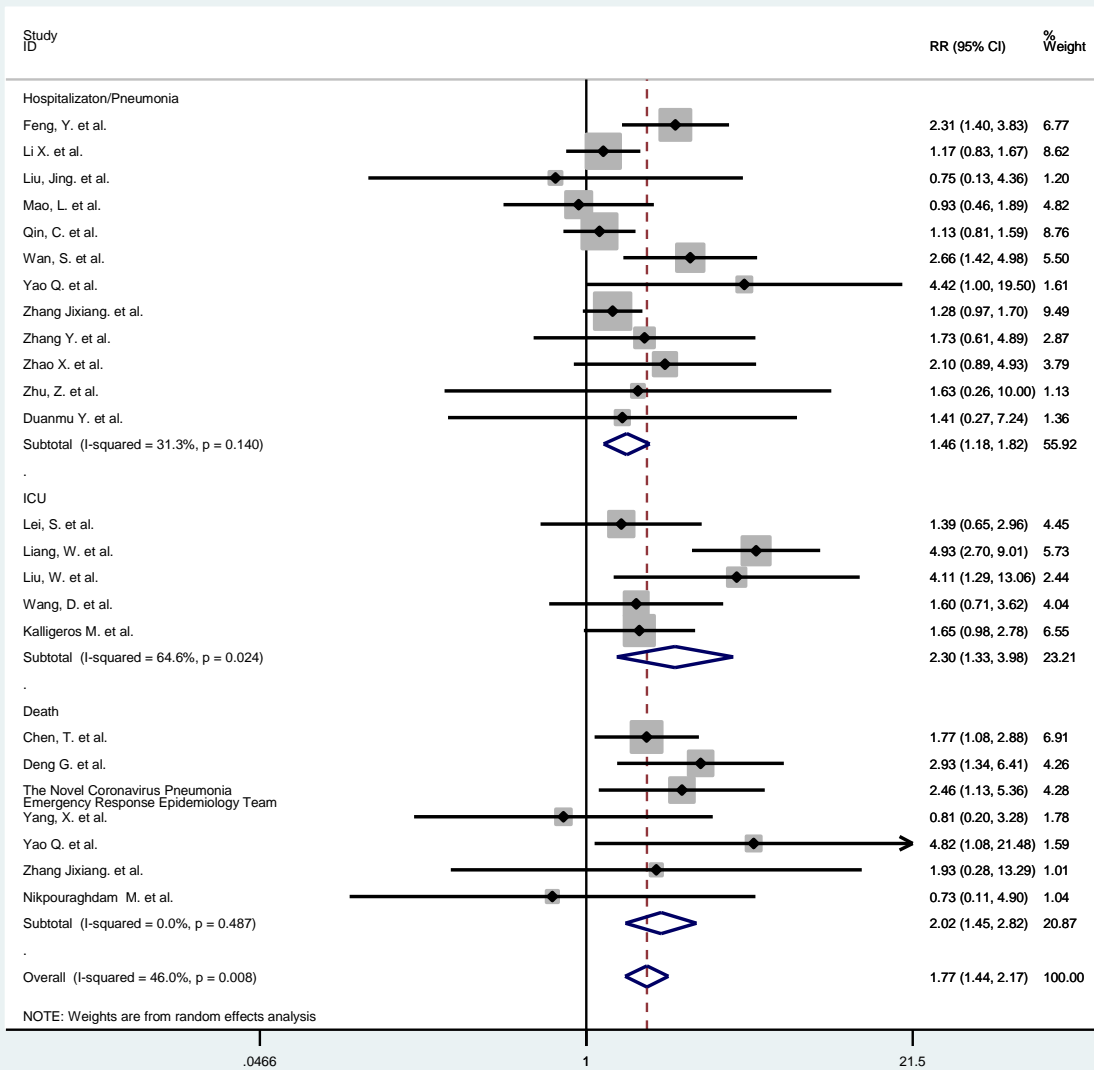
# Asthma





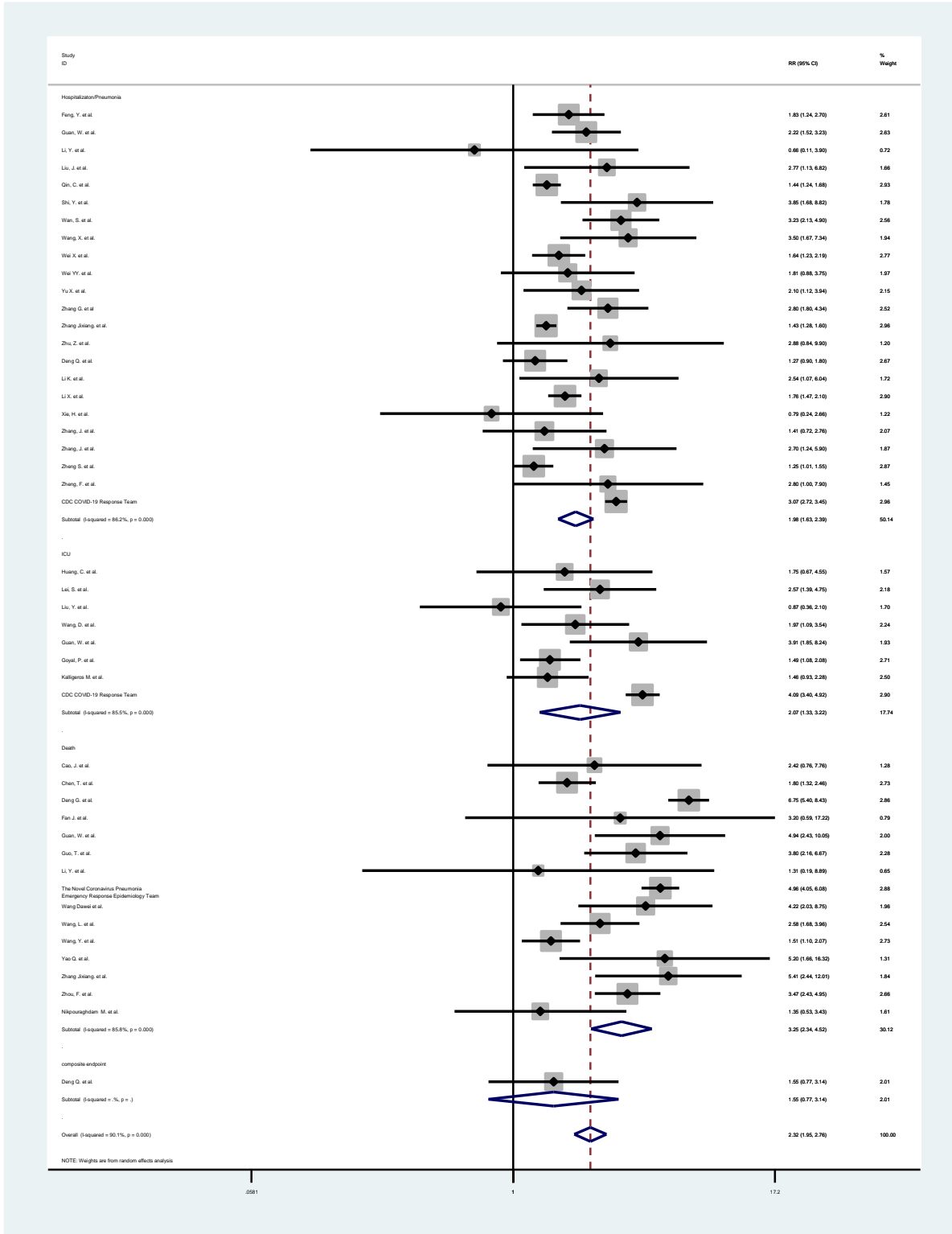
Study	RR		[95% Conf. Interval]
<b>Hospitalisation/Pneumonia</b>			
Li X. et al.	1.225	0.596	2.518
Duanmu Y. et al.	1.286	0.464	3.559
Sub-total			
D+L pooled RR	1.245	0.691	2.242
<b>ICU</b>			
Goyal, P. et al.	1.056	0.699	1.596
Sub-total			
D+L pooled RR	1.056	0.699	1.596
<b>Death</b>			
Tomlins J. et al.	0.881	0.330	2.354
Sub-total			
D+L pooled RR	0.881	0.330	2.354
<b>Overall</b>			
D+L pooled RR	1.088	0.790	1.497

*Cancer*



Study	RR	[95% Conf. Interval]	
<b>Hospitalisation/Pneumonia</b>			
Feng, Y. et al.	2.313	1.399	3.826
Li X. et al.	1.174	0.827	1.665
Liu, Jing. et al.	0.750	0.129	4.356
Mao, L. et al.	0.931	0.459	1.889
Qin, C. et al.	1.134	0.808	1.591
Wan, S. et al.	2.655	1.417	4.977
Yao Q. et al.	4.417	1.001	19.495
Zhang Jixiang. et al	1.281	0.968	1.696
Zhang Y. et al.	1.727	0.610	4.893
Zhao X. et al.	2.095	0.890	4.935
Zhu, Z. et al.	1.627	0.265	9.999
Duanmu Y. et al.	1.406	0.273	7.244
Sub-total			
D+L pooled RR	<b>1.463</b>	<b>1.177</b>	<b>1.819</b>
<b>ICU</b>			
Lei, S. et al.	1.389	0.652	2.959
Liang, W. et al.	4.930	2.697	9.012
Liu, W. et al.	4.111	1.295	13.056
Wang, D. et al.	1.600	0.707	3.619
Kalligeros M. et al.	1.649	0.977	2.782
Sub-total			
D+L pooled RR	<b>2.304</b>	<b>1.333</b>	<b>3.984</b>
<b>Death</b>			
Chen, T. et al.	1.766	1.081	2.884
Deng G. et al.	2.926	1.337	6.406
The Novel Coronaviru	2.457	1.127	5.359
Yang, X. et al.	0.806	0.198	3.279
Yao Q. et al.	4.818	1.081	21.476
Zhang Jixiang. et al	1.932	0.281	13.295
Nikpouraghdam M. et	0.728	0.108	4.896
Sub-total			
D+L pooled RR	<b>2.019</b>	<b>1.445</b>	<b>2.822</b>
<b>Overall</b>			
D+L pooled RR	<b>1.769</b>	<b>1.443</b>	<b>2.167</b>

Cardiovascular disease

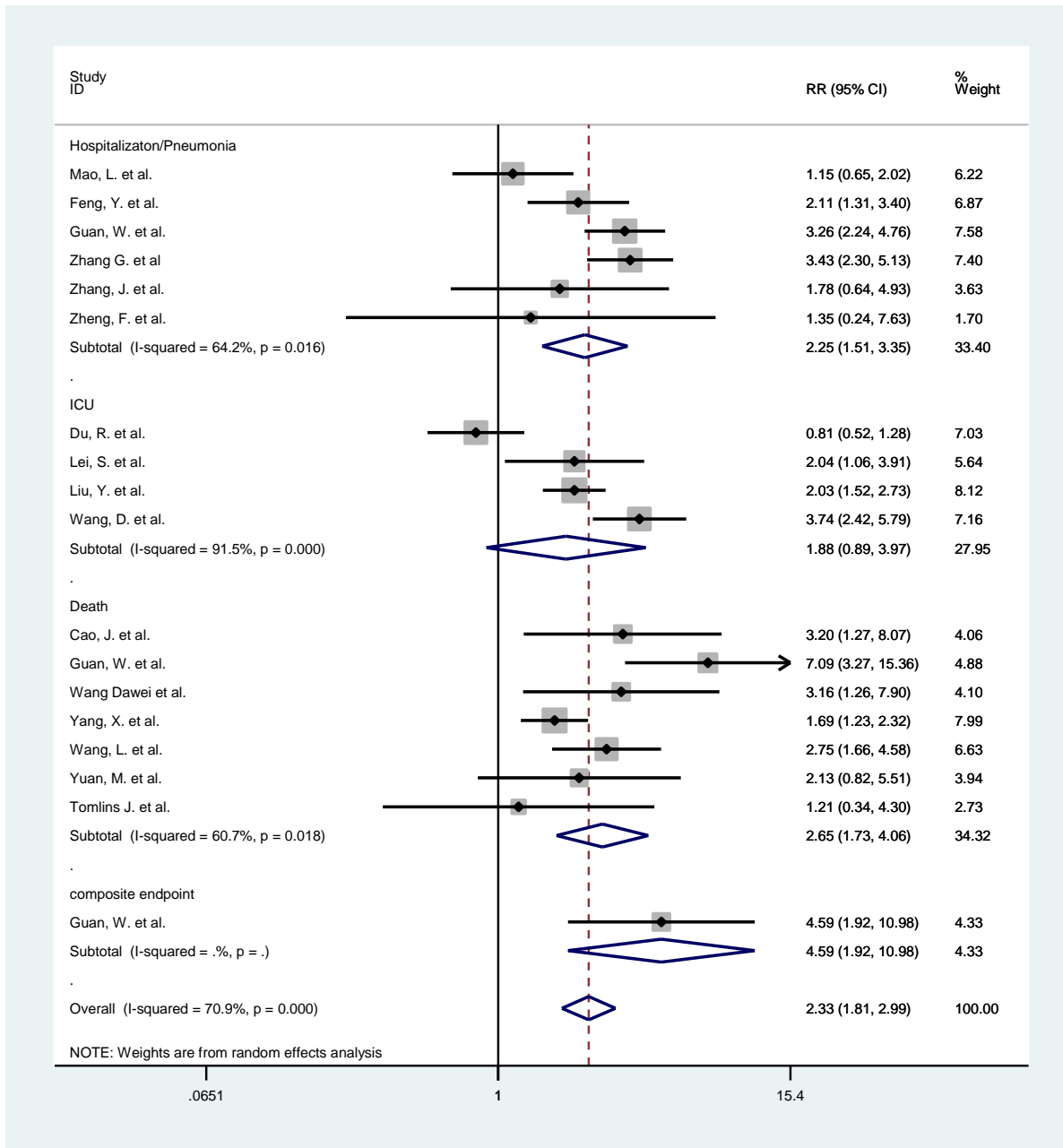


Study	RR	[95% Conf. Interval]
<b>Hospitalisation/Pneumonia</b>		
Feng, Y. et al.	1.831	1.240 - 2.704
Guan, W. et al.	2.218	1.524 - 3.228
Li, Y. et al.	0.656	0.110 - 3.902

Liu, J. et al.	2.773	1.127	6.820
Qin, C. et al.	1.442	1.237	1.680
Shi, Y. et al.	3.846	1.678	8.819
Wan, S. et al.	3.227	2.125	4.900
Wang, X. et al.	3.498	1.668	7.338
Wei X. et al.	1.642	1.229	2.192
Wei YY. et al.	1.813	0.876	3.753
Yu X. et al.	2.100	1.119	3.940
Zhang G. et al	2.800	1.804	4.344
Zhang Jixiang. et al	1.434	1.285	1.600
Zhu, Z. et al.	2.881	0.839	9.897
Deng Q. et al.	1.270	0.896	1.802
Li K. et al.	2.541	1.068	6.043
Li X. et al.	1.756	1.466	2.104
Xie, H. et al.	0.791	0.236	2.656
Zhang, J. et al.	1.407	0.718	2.761
Zhang, J. et al.	2.705	1.239	5.905
Zheng S. et al.	1.250	1.008	1.550
Zheng, F. et al.	2.804	0.995	7.899
CDC COVID-19 Respons	3.065	2.721	3.453
Sub-total			
D+L pooled RR	<b>1.975</b>	<b>1.629</b>	<b>2.394</b>
<b>ICU</b>			
Huang, C. et al.	1.750	0.673	4.554
Lei, S. et al.	2.571	1.393	4.748
Liu, Y. et al.	0.874	0.363	2.104
Wang, D. et al.	1.967	1.094	3.537
Guan, W. et al.	3.905	1.851	8.239
Goyal, P. et al.	1.495	1.076	2.076
Kalligeros M. et al.	1.456	0.931	2.276
CDC COVID-19 Respons	4.090	3.397	4.923
Sub-total			
D+L pooled RR	<b>2.071</b>	<b>1.333</b>	<b>3.215</b>
<b>Death</b>			
Cao, J. et al.	2.425	0.758	7.760
Chen, T. et al.	1.800	1.318	2.459
Deng G. et al.	6.749	5.404	8.429
Fan J. et al.	3.200	0.595	17.224
Guan, W. et al.	4.943	2.430	10.053
Guo, T. et al.	3.798	2.163	6.668
Li, Y. et al.	1.313	0.194	8.888
The Novel Coronaviru	4.958	4.045	6.076
Wang Dawei et al.	4.218	2.033	8.750
Wang, L. et al.	2.575	1.676	3.956
Wang, Y. et al.	1.506	1.097	2.068
Yao Q. et al.	5.200	1.657	16.316
Zhang Jixiang. et al	5.409	2.437	12.007
Zhou, F. et al.	3.468	2.428	4.954
Nikpouraghdam M. et	1.347	0.529	3.425
Sub-total			

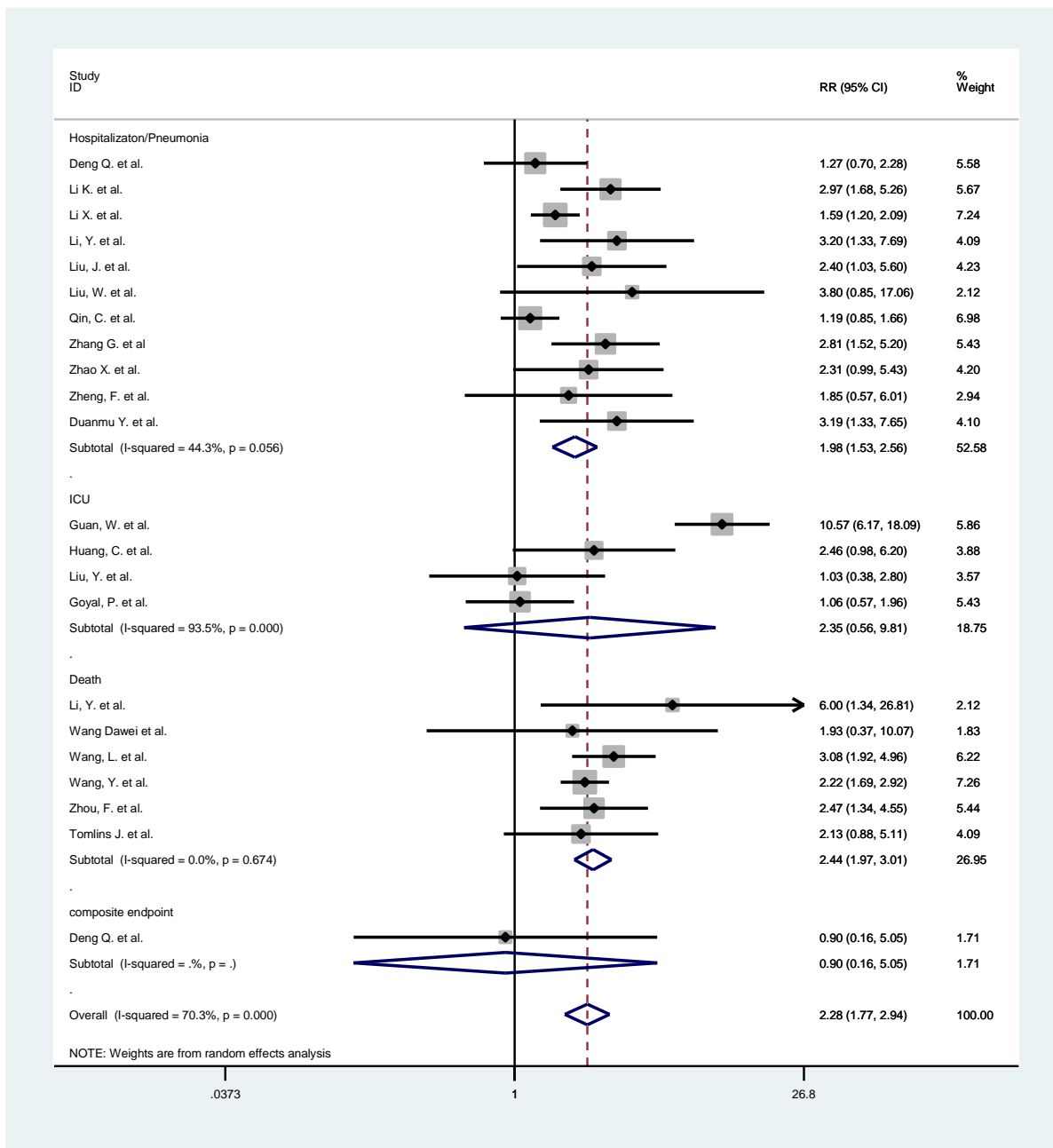
D+L pooled RR	<b>3.250</b>	<b>2.335</b>	<b>4.522</b>
<b>Composite Endpoint</b>			
Deng Q. et al.	1.552	0.766	3.144
Sub-total			
D+L pooled RR	1.552	0.766	3.144
<b>Overall</b>			
D+L pooled RR	<b>2.317</b>	<b>1.947</b>	<b>2.758</b>

Cerebrovascular disease



Study	RR	[95% Conf. Interval]
<b>Hospitalisation/Pneumonia</b>		
Mao, L. et al.	1.147	0.651 2.020
Feng, Y. et al.	2.113	1.314 3.399
Guan, W. et al.	3.264	2.240 4.755

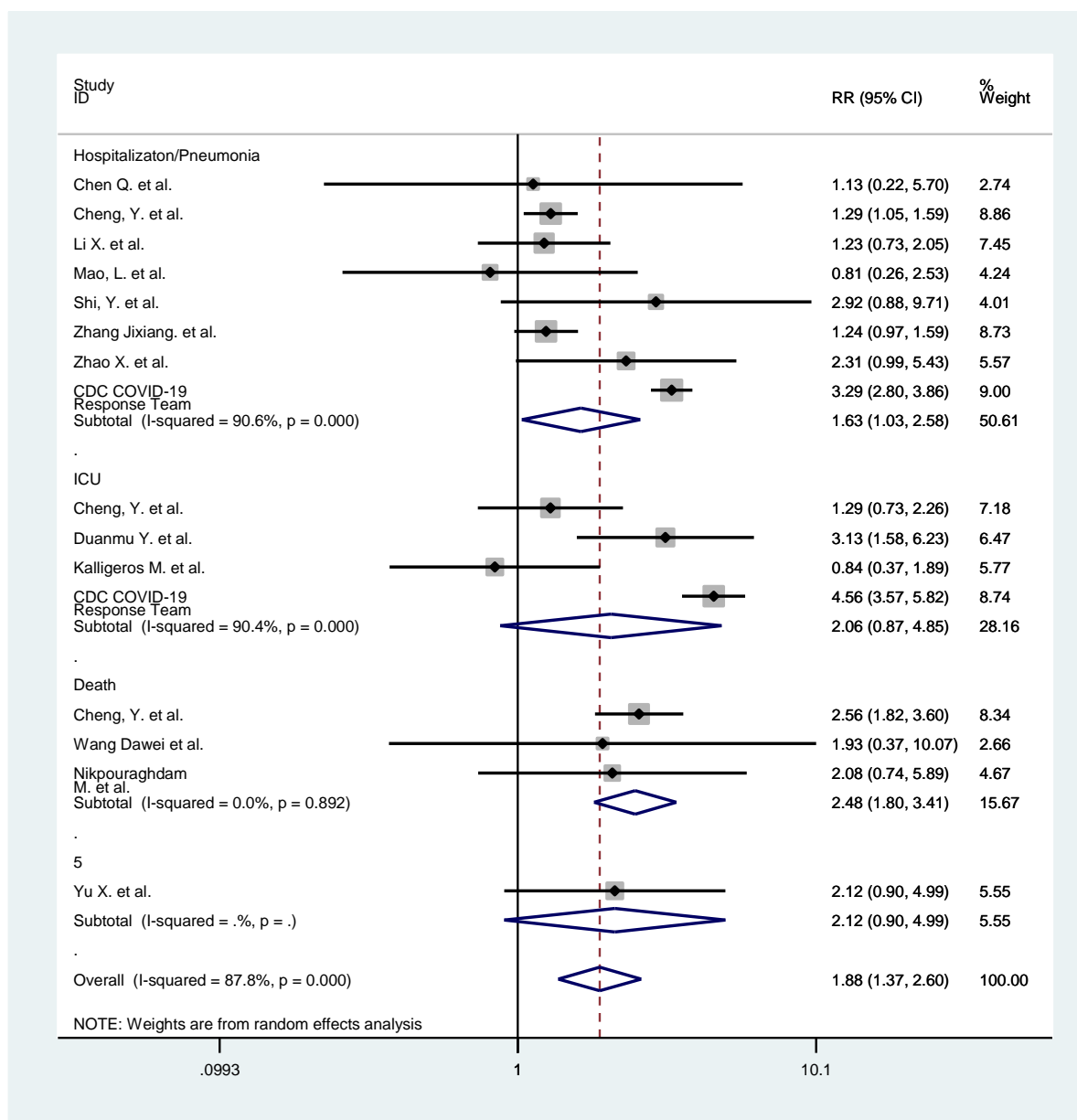
Zhang G. et al	3.433	2.296	5.133
Zhang, J. et al.	1.778	0.641	4.930
Zheng, F. et al.	1.353	0.240	7.626
Sub-total			
D+L pooled RR	<b>2.247</b>	<b>1.509</b>	<b>3.346</b>
<b>ICU</b>			
Du, R. et al.	0.811	0.515	1.276
Lei, S. et al.	2.037	1.062	3.907
Liu, Y. et al.	2.033	1.516	2.727
Wang, D. et al.	3.743	2.420	5.789
Sub-total			
D+L pooled RR	1.884	0.895	3.967
<b>Death</b>			
Cao, J. et al.	3.200	1.268	8.073
Guan, W. et al.	7.091	3.274	15.356
Wang Dawei et al.	3.156	1.261	7.902
Yang, X. et al.	1.691	1.234	2.317
Wang, L. et al.	2.753	1.655	4.580
Yuan, M. et al.	2.132	0.824	5.511
Tomlins J. et al.	1.208	0.340	4.297
Sub-total			
D+L pooled RR	<b>2.647</b>	<b>1.725</b>	<b>4.062</b>
<b>Composite Endpoint</b>			
Guan, W. et al.	4.588	1.917	10.982
Sub-total			
D+L pooled RR	4.588	1.917	10.982
<b>Overall</b>			
D+L pooled RR	<b>2.326</b>	<b>1.812</b>	<b>2.987</b>



Study	RR	[95% Conf. Interval]
<b>Hospitalisation/Pneumonia</b>		
Deng Q. et al.	1.266	0.704 - 2.276
Li K. et al.	2.971	1.679 - 5.258
Li X. et al.	1.586	1.201 - 2.095
Li, Y. et al.	3.200	1.332 - 7.688
Liu, J. et al.	2.400	1.029 - 5.600
Liu, W. et al.	3.800	0.847 - 17.055
Qin, C. et al.	1.191	0.853 - 1.664
Zhang G. et al.	2.810	1.520 - 5.196
Zhao X. et al.	2.314	0.986 - 5.431
Zheng, F. et al.	1.845	0.567 - 6.006
Duanmu Y. et al.	3.191	1.331 - 7.655



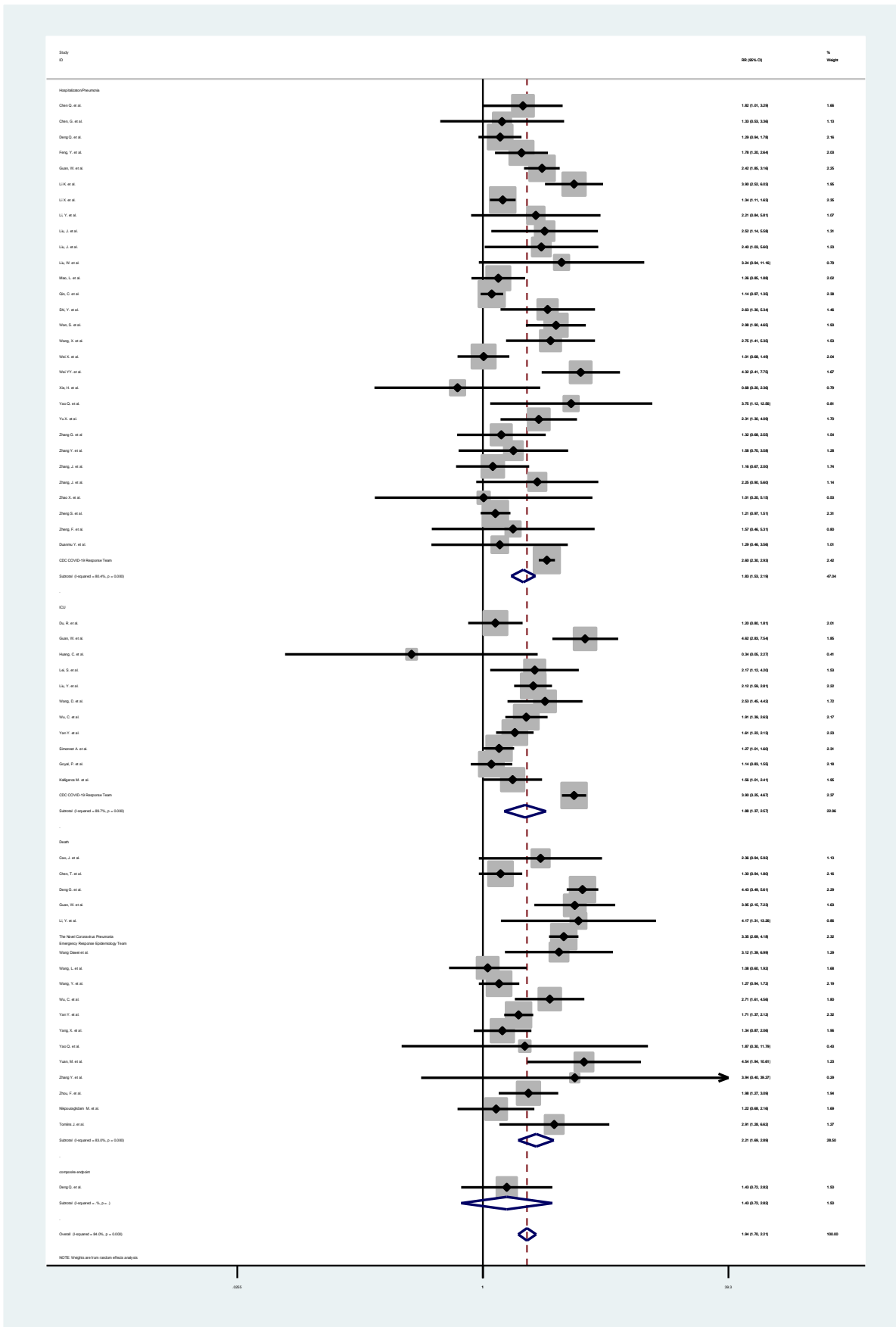
Sub-total			
D+L pooled RR	<b>1.982</b>	<b>1.535</b>	<b>2.559</b>
<b>ICU</b>			
Guan, W. et al.	10.568	6.173	18.094
Huang, C. et al.	2.460	0.976	6.198
Liu, Y. et al.	1.029	0.379	2.797
Goyal, P. et al.	1.061	0.574	1.962
Sub-total			
D+L pooled RR	2.352	0.564	9.810
<b>Death</b>			
Li, Y. et al.	6.000	1.343	26.808
Wang Dawei et al.	1.926	0.368	10.074
Wang, L. et al.	3.085	1.919	4.959
Wang, Y. et al.	2.221	1.687	2.924
Zhou, F. et al.	2.467	1.336	4.555
Tomlins J. et al.	2.125	0.883	5.114
Sub-total			
D+L pooled RR	<b>2.436</b>	<b>1.972</b>	<b>3.009</b>
<b>Composite Endpoint</b>			
Deng Q. et al.	0.900	0.160	5.048
Sub-total			
D+L pooled RR	0.900	0.160	5.048
<b>Overall</b>			
D+L pooled RR	<b>2.279</b>	<b>1.766</b>	<b>2.942</b>



Study	RR	[95% Conf. Interval]
<b>Hospitalisation/Pneumonia</b>		
Chen Q. et al.	1.127	0.223 - 5.696
Cheng, Y. et al.	1.290	1.047 - 1.591
Li X. et al.	1.225	0.733 - 2.047
Mao, L. et al.	0.806	0.257 - 2.529
Shi, Y. et al.	2.918	0.877 - 9.711
Zhang Jixiang. et al	1.245	0.972 - 1.593
Zhao X. et al.	2.314	0.986 - 5.431
CDC COVID-19 Response	3.290	2.801 - 3.865
Sub-total		
D+L pooled RR	<b>1.631</b>	<b>1.030 - 2.581</b>
<b>ICU</b>		
Cheng, Y. et al.	1.287	0.734 - 2.256
Duanmu Y. et al.	3.133	1.577 - 6.225

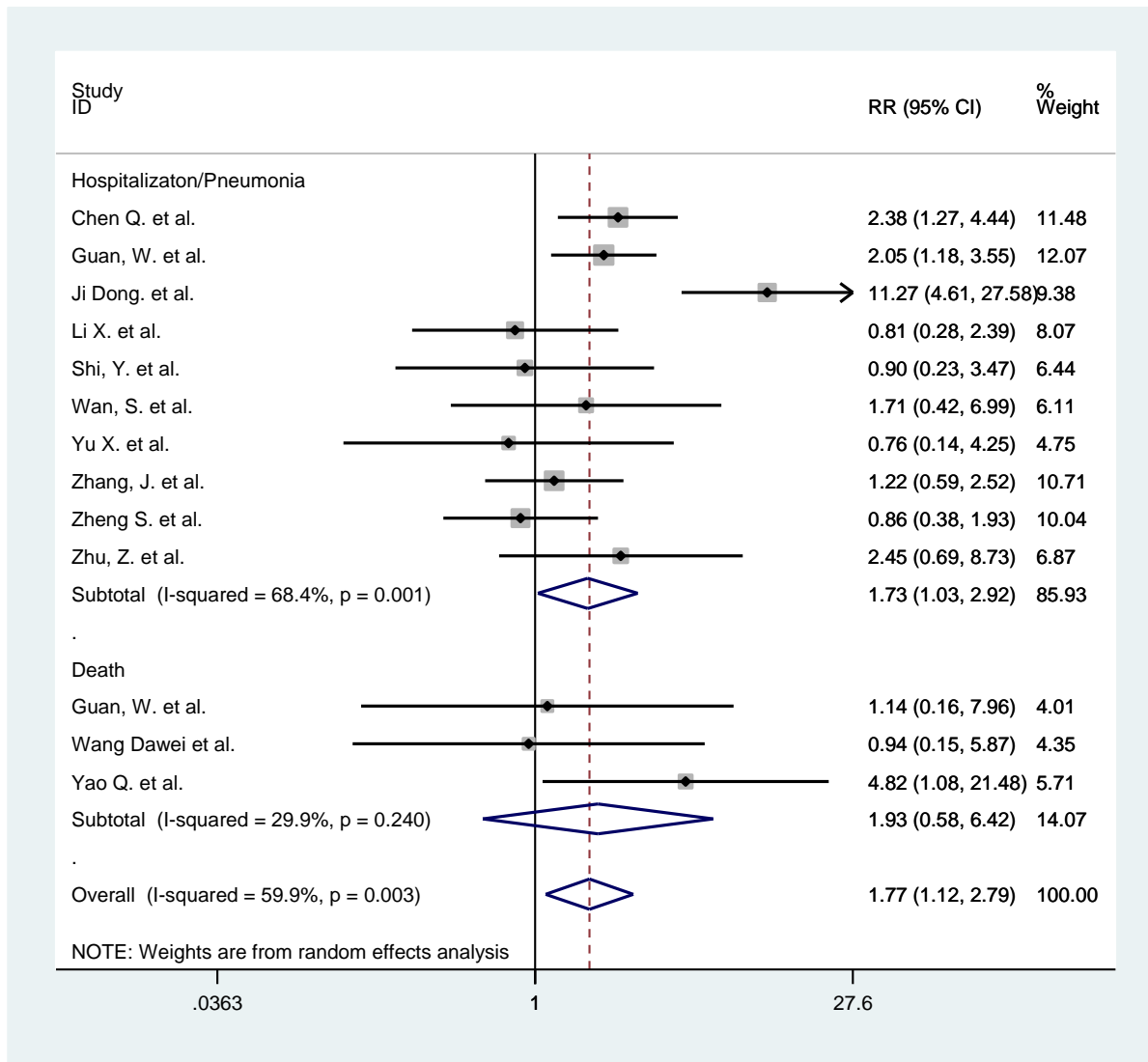
Kalligeros M. et al.	0.836	0.370	1.891
CDC COVID-19 Response	4.556	3.569	5.816
Sub-total			
D+L pooled RR	2.057	0.872	4.851
<b>Death</b>			
Cheng, Y. et al.	2.557	1.816	3.600
Wang Dawei et al.	1.926	0.368	10.074
Nikpouraghdam M. et	2.081	0.735	5.887
Sub-total			
D+L pooled RR	<b>2.481</b>	<b>1.804</b>	<b>3.414</b>
<b>Composite Endpoint</b>			
Yu X. et al.	2.119	0.899	4.992
Sub-total			
D+L pooled RR	2.119	0.899	4.992
<b>Overall</b>			
D+L pooled RR	<b>1.885</b>	<b>1.368</b>	<b>2.596</b>

Diabetes



<b>Hospitalisation/Pneumonia</b>			
Chen Q. et al.	1.819	1.005	3.292
Chen, G. et al.	1.333	0.529	3.359
Deng Q. et al.	1.293	0.937	1.783
Feng, Y. et al.	1.780	1.202	2.638
Guan, W. et al.	2.418	1.851	3.160
Li K. et al.	3.902	2.524	6.032
Li X. et al.	1.343	1.107	1.627
Li, Y. et al.	2.206	0.837	5.812
Liu, J. et al.	2.519	1.136	5.584
Liu, J. et al.	2.400	1.029	5.600
Liu, W. et al.	3.244	0.943	11.162
Mao, L. et al.	1.260	0.845	1.880
Qin, C. et al.	1.143	0.969	1.350
Shi, Y. et al.	2.632	1.298	5.336
Wan, S. et al.	2.976	1.904	4.651
Wang, X. et al.	2.746	1.410	5.346
Wei X. et al.	1.009	0.684	1.488
Wei YY. et al.	4.316	2.405	7.746
Xie, H. et al.	0.683	0.198	2.356
Yao Q. et al.	3.745	1.117	12.562
Yu X. et al.	2.306	1.301	4.085
Zhang G. et al	1.319	0.682	2.551
Zhang Y. et al.	1.578	0.695	3.580
Zhang, J. et al.	1.158	0.670	2.002
Zhang, J. et al.	2.250	0.904	5.603
Zhao X. et al.	1.011	0.199	5.151
Zheng S. et al.	1.207	0.966	1.509
Zheng, F. et al.	1.571	0.465	5.314
Duanmu Y. et al.	1.286	0.464	3.559
CDC COVID-19 Respons	2.598	2.301	2.933
Sub-total			
D+L pooled RR	<b>1.829</b>	<b>1.526</b>	<b>2.192</b>
<b>ICU</b>			
Du, R. et al.	1.203	0.801	1.808
Guan, W. et al.	4.617	2.827	7.540
Huang, C. et al.	0.344	0.052	2.271
Lei, S. et al.	2.167	1.117	4.203
Liu, Y. et al.	2.117	1.593	2.814
Wang, D. et al.	2.531	1.448	4.424
Wu, C. et al.	1.914	1.394	2.629
Yan Y. et al.	1.611	1.220	2.128
Simonnet A. et al.	1.272	1.013	1.597
Goyal, P. et al.	1.137	0.835	1.550
Kalligeros M. et al.	1.562	1.010	2.414
CDC COVID-19 Respons	3.896	3.250	4.671
Sub-total			
D+L pooled RR	<b>1.881</b>	<b>1.375</b>	<b>2.574</b>
<b>Death</b>			
Cao, J. et al.	2.364	0.944	5.921

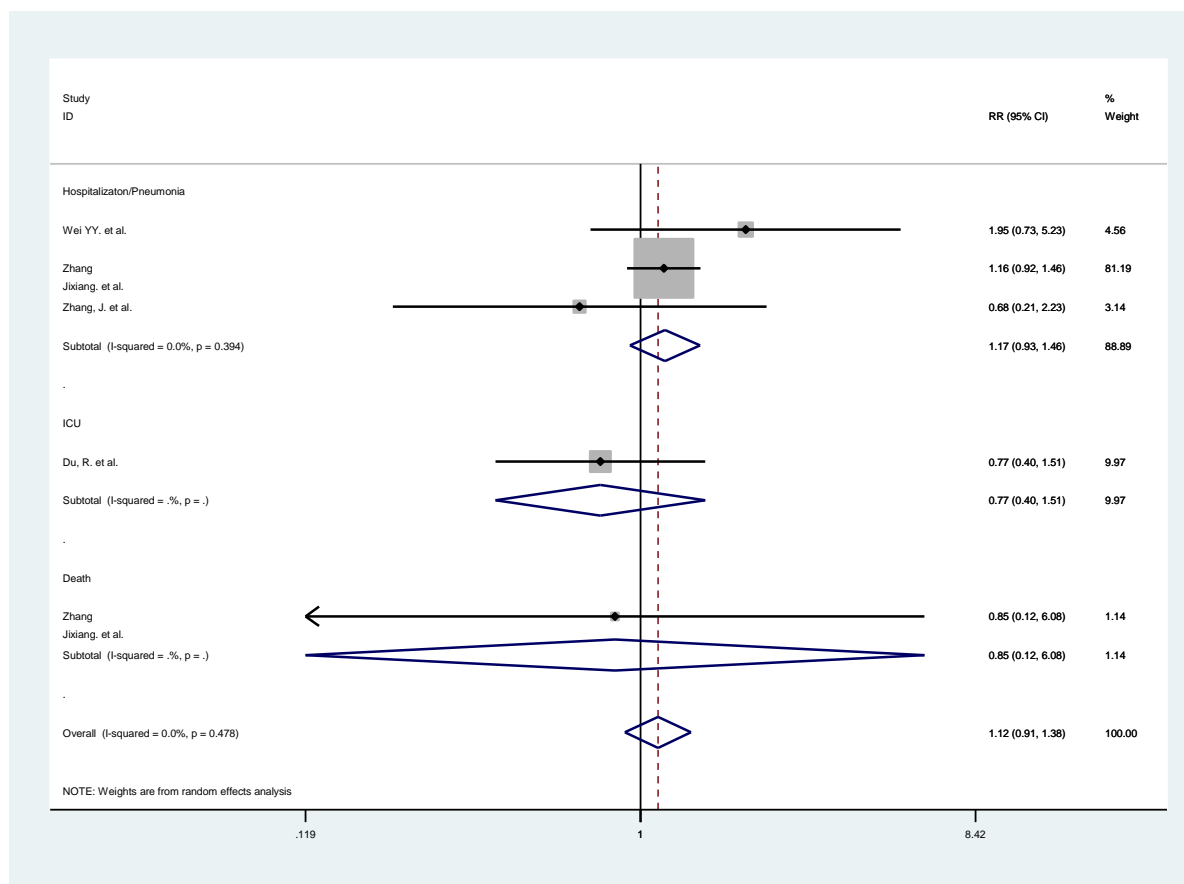
Chen, T. et al.	1.302	0.943	1.800
Deng G. et al.	4.427	3.493	5.610
Guan, W. et al.	3.946	2.153	7.233
Li, Y. et al.	4.167	1.309	13.261
The Novel Coronaviru	3.354	2.691	4.181
Wang Dawei et al.	3.117	1.389	6.995
Wang, L. et al.	1.075	0.602	1.919
Wang, Y. et al.	1.274	0.941	1.725
Wu, C. et al.	2.712	1.614	4.558
Yan Y. et al.	1.707	1.373	2.124
Yang, X. et al.	1.338	0.869	2.060
Yao Q. et al.	1.873	0.297	11.790
Yuan, M. et al.	4.540	1.942	10.614
Zhang Y. et al.	3.944	0.396	39.268
Zhou, F. et al.	1.978	1.267	3.088
Nikpouraghdam M. et	1.217	0.685	2.163
Tomlins J. et al.	2.911	1.281	6.617
Sub-total			
D+L pooled RR	<b>2.213</b>	<b>1.693</b>	<b>2.893</b>
<b>Composite Endpoint</b>			
Deng Q. et al.	1.428	0.722	2.824
Sub-total			
D+L pooled RR	1.428	0.722	2.824
<b>Overall</b>			
D+L pooled RR	<b>1.938</b>	<b>1.697</b>	<b>2.213</b>



Study	RR	[95% Conf. Interval]	
<b>Hospitalisation/Pneumonia</b>			
Chen Q. et al.	2.376	1.271	4.440
Guan, W. et al.	2.049	1.182	3.553
Ji Dong. et al.	11.274	4.609	27.578
Li X. et al.	0.813	0.277	2.388
Shi, Y. et al.	0.899	0.233	3.466
Wan, S. et al.	1.705	0.416	6.990
Yu X. et al.	0.759	0.135	4.251
Zhang, J. et al.	1.222	0.593	2.518
Zheng S. et al.	0.861	0.384	1.931
Zhu, Z. et al.	2.449	0.687	8.725
Sub-total			
D+L pooled RR	<b>1.734</b>	<b>1.029</b>	<b>2.921</b>
<b>Death</b>			
Guan, W. et al.	1.138	0.163	7.956
Wang Dawei et al.	0.935	0.149	5.874

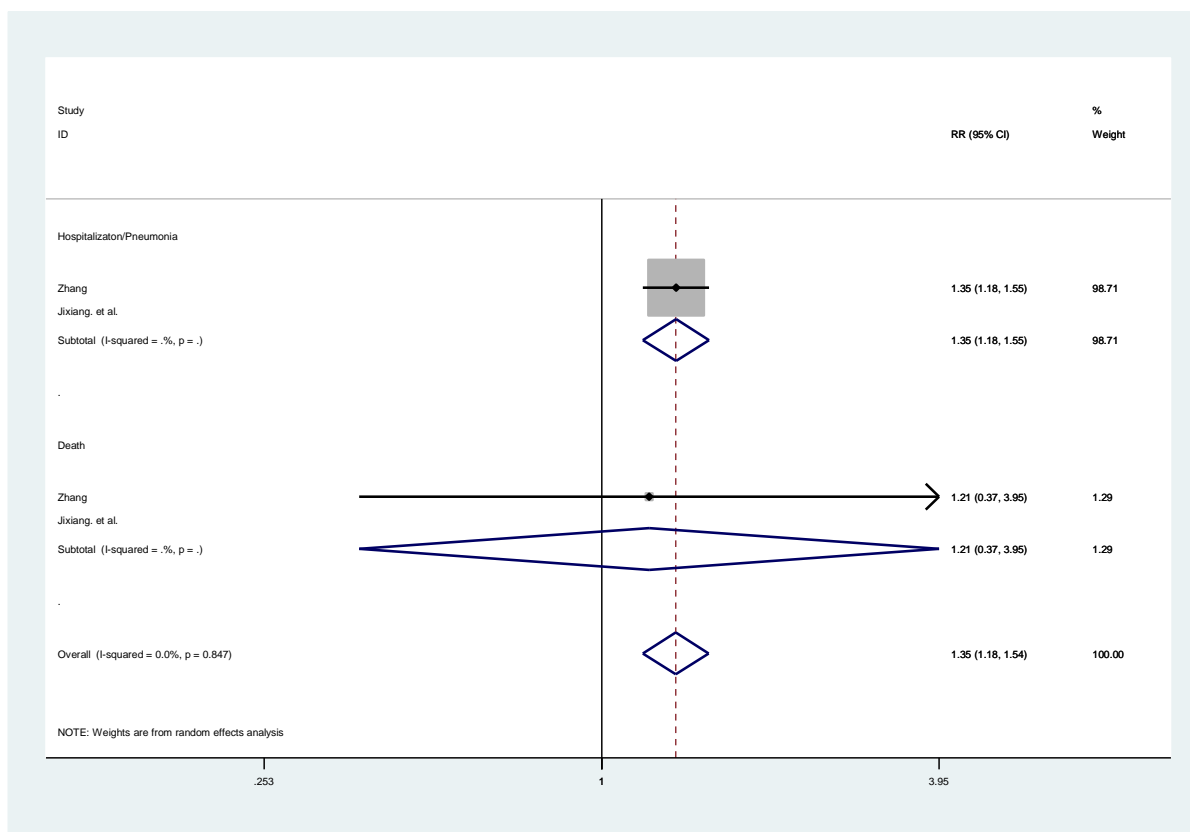
Yao Q. et al.	4.818	1.081	21.476
Sub-total			
D+L pooled RR	1.930	0.580	6.418
<b>Overall</b>			
D+L pooled RR	<b>1.767</b>	<b>1.118</b>	<b>2.791</b>

### Diseases of the digestive system

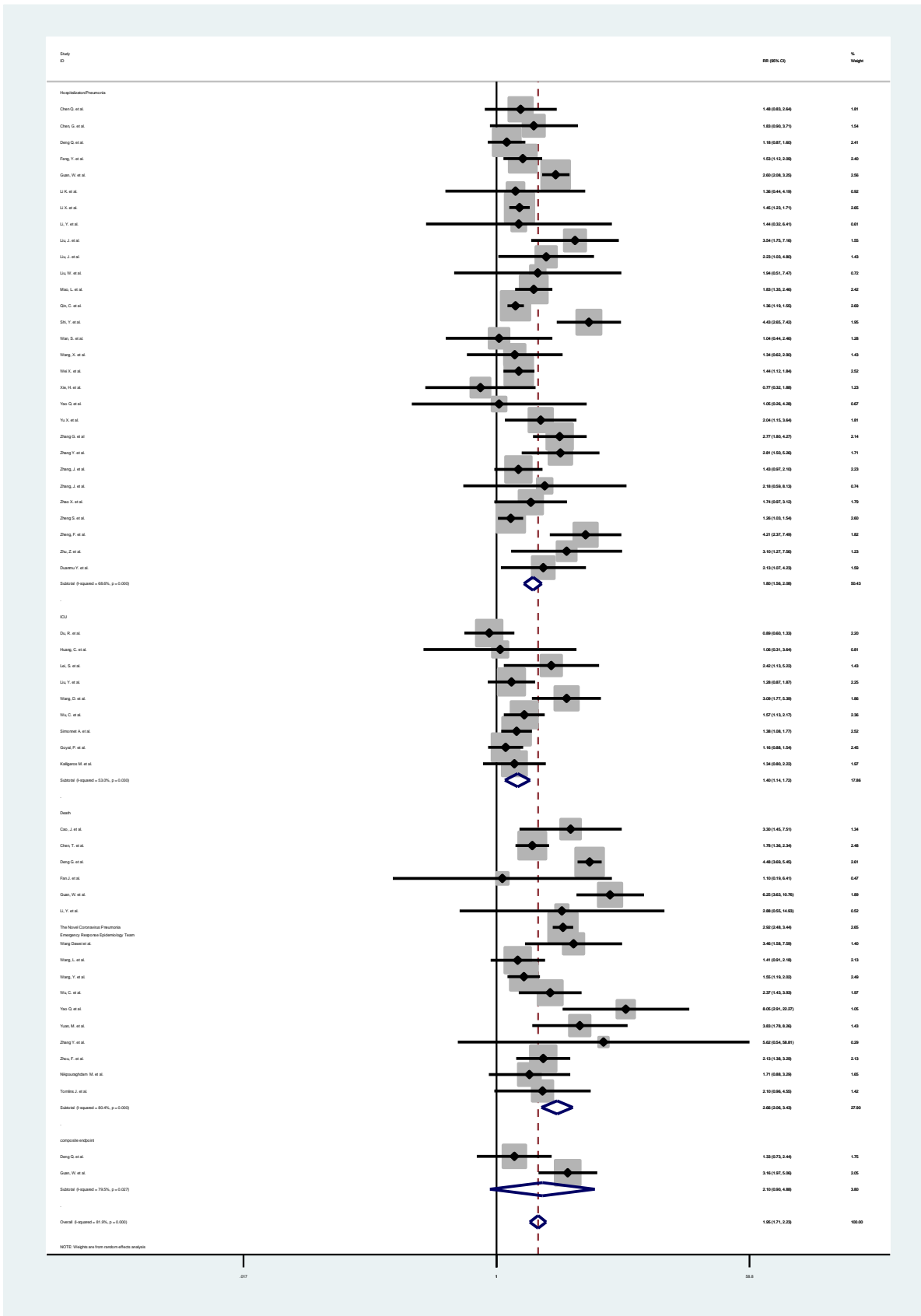


Study	RR	[95% Conf. Interval]
<b>Hospitalisation/Pneumonia</b>		
Wei YY. et al.	1.951 0.728	5.227
Zhang Jixiang. et al	1.159 0.918	1.464
Zhang, J. et al.	0.679 0.207	2.226
Sub-total		
D+L pooled RR	1.168 0.934	1.460
<b>ICU</b>		
Du, R. et al.	0.775 0.398	1.509
Sub-total		
D+L pooled RR	0.775 0.398	1.509
<b>Death</b>		
Zhang Jixiang. et al	0.849 0.119	6.077
Sub-total		
D+L pooled RR	0.849 0.119	6.077
<b>Overall</b>		
D+L pooled RR	1.117 0.905	1.379





Study	RR	[95% Conf. Interval]
<b>Hospitalisation/Pneumonia</b>		
Zhang Jixiang. et al	1.353	1.182 1.548
Sub-total		
D+L pooled RR	<b>1.353</b>	<b>1.182 1.548</b>
<b>Death</b>		
Zhang Jixiang. et al	1.213	0.373 3.946
Sub-total		
D+L pooled RR	1.213	0.373 3.946
<b>Overall</b>		
D+L pooled RR	<b>1.351</b>	<b>1.182 1.545</b>

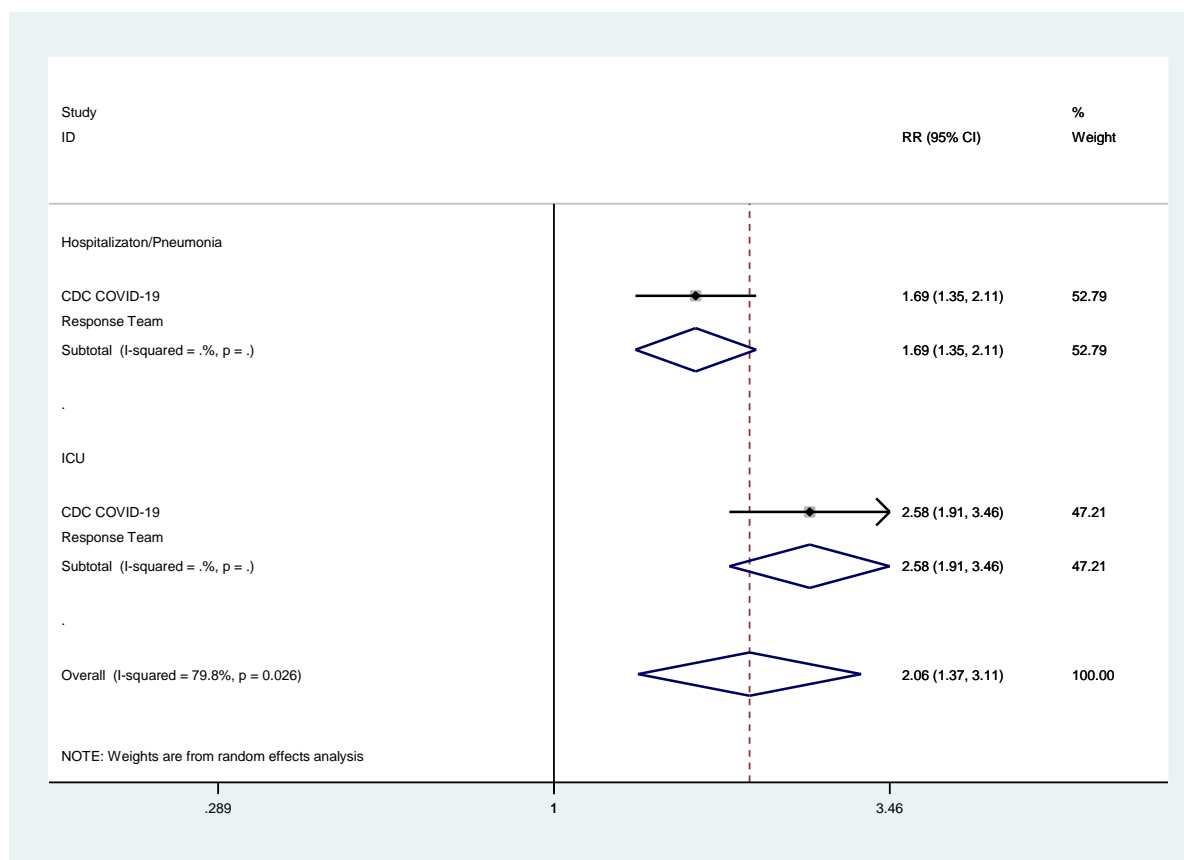


Study RR [95% Conf. Interval]  
Hospitalisation/Pneumonia

Chen Q. et al.	1.480	0.830	2.638
Chen, G. et al.	1.829	0.901	3.711
Deng Q. et al.	1.178	0.870	1.596
Feng, Y. et al.	1.530	1.120	2.089
Guan, W. et al.	2.603	2.084	3.253
Li K. et al.	1.357	0.440	4.187
Li X. et al.	1.450	1.231	1.710
Li, Y. et al.	1.438	0.322	6.408
Liu, J. et al.	3.542	1.752	7.159
Liu, J. et al.	2.227	1.033	4.804
Liu, W. et al.	1.944	0.506	7.473
Mao, L. et al.	1.826	1.354	2.464
Qin, C. et al.	1.362	1.195	1.553
Shi, Y. et al.	4.430	2.645	7.421
Wan, S. et al.	1.043	0.441	2.465
Wang, X. et al.	1.340	0.620	2.896
Wei X. et al.	1.437	1.120	1.842
Xie, H. et al.	0.774	0.319	1.879
Yao Q. et al.	1.045	0.255	4.282
Yu X. et al.	2.043	1.147	3.639
Zhang G. et al	2.773	1.801	4.268
Zhang Y. et al.	2.810	1.502	5.256
Zhang, J. et al.	1.426	0.967	2.102
Zhang, J. et al.	2.182	0.585	8.134
Zhao X. et al.	1.738	0.967	3.124
Zheng S. et al.	1.256	1.027	1.537
Zheng, F. et al.	4.212	2.369	7.490
Zhu, Z. et al.	3.097	1.269	7.559
Duanmu Y. et al.	2.132	1.073	4.233
Sub-total			
D+L pooled RR	<b>1.799</b>	<b>1.557</b>	<b>2.078</b>
<b>ICU</b>			
Du, R. et al.	0.892	0.598	1.332
Huang, C. et al.	1.061	0.309	3.639
Lei, S. et al.	2.423	1.125	5.219
Liu, Y. et al.	1.277	0.872	1.871
Wang, D. et al.	3.093	1.774	5.394
Wu, C. et al.	1.566	1.128	2.175
Simonnet A. et al.	1.384	1.084	1.767
Goyal, P. et al.	1.161	0.875	1.540
Kalligeros M. et al.	1.337	0.805	2.220
Sub-total			
D+L pooled RR	<b>1.404</b>	<b>1.144</b>	<b>1.723</b>
<b>Death</b>			
Cao, J. et al.	3.304	1.452	7.514
Chen, T. et al.	1.781	1.358	2.337
Deng G. et al.	4.482	3.689	5.445
Fan J. et al.	1.100	0.189	6.413
Guan, W. et al.	6.250	3.632	10.755
Li, Y. et al.	2.875	0.554	14.932

The Novel Coronaviru	2.923	2.482	3.443
Wang Dawei et al.	3.462	1.579	7.587
Wang, L. et al.	1.412	0.914	2.183
Wang, Y. et al.	1.552	1.192	2.021
Wu, C. et al.	2.374	1.432	3.933
Yao Q. et al.	8.050	2.910	22.268
Yuan, M. et al.	3.833	1.779	8.262
Zhang Y. et al.	5.619	0.537	58.814
Zhou, F. et al.	2.129	1.377	3.292
Nikpouraghdam M. et	1.705	0.885	3.286
Tomlins J. et al.	2.095	0.964	4.553
Sub-total			
D+L pooled RR	<b>2.659</b>	<b>2.061</b>	<b>3.430</b>
<b>Composite Endpoint</b>			
Deng Q. et al.	1.333	0.729	2.440
Guan, W. et al.	3.159	1.972	5.061
Sub-total			
D+L pooled RR	2.097	0.901	4.879
<b>Overall</b>			
D+L pooled RR	<b>1.952</b>	<b>1.710</b>	<b>2.229</b>

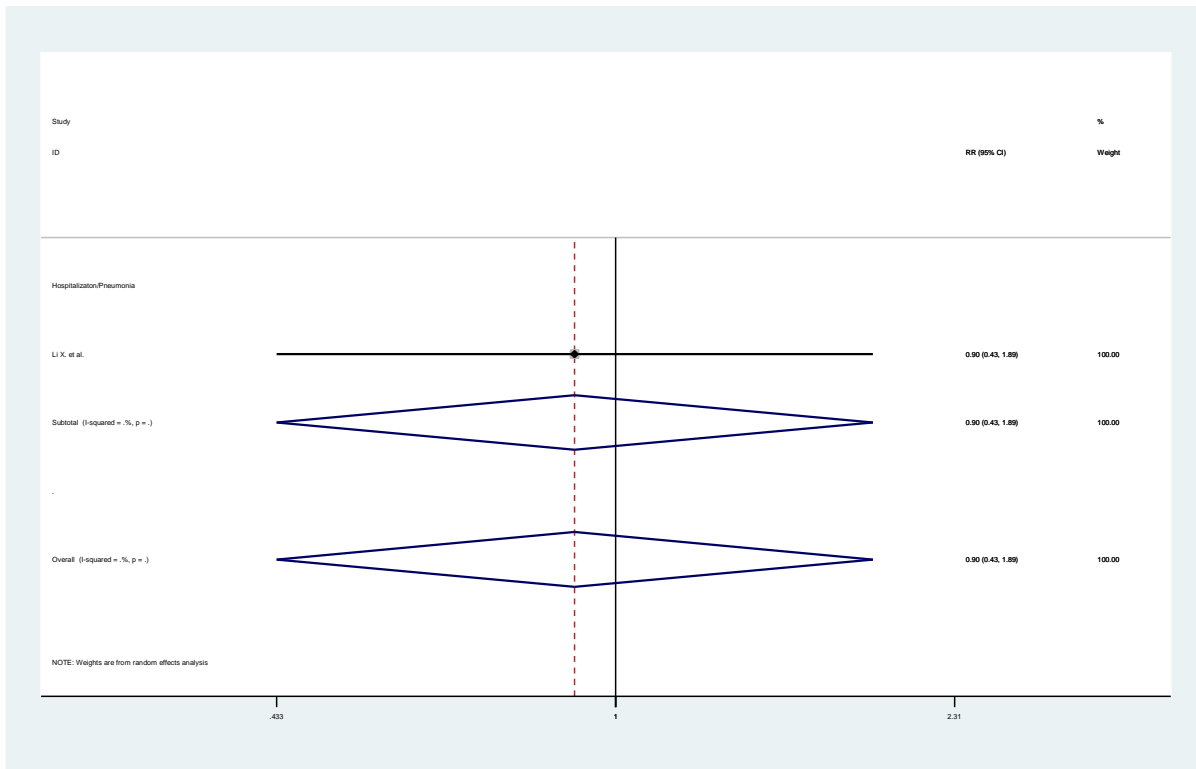
### Immunocompromised condition



Study	RR	[95% Conf. Interval]
<b>Hospitalisation/Pneumonia</b>		
CDC COVID-19 Response	1.690	1.352 2.113
Sub-total		

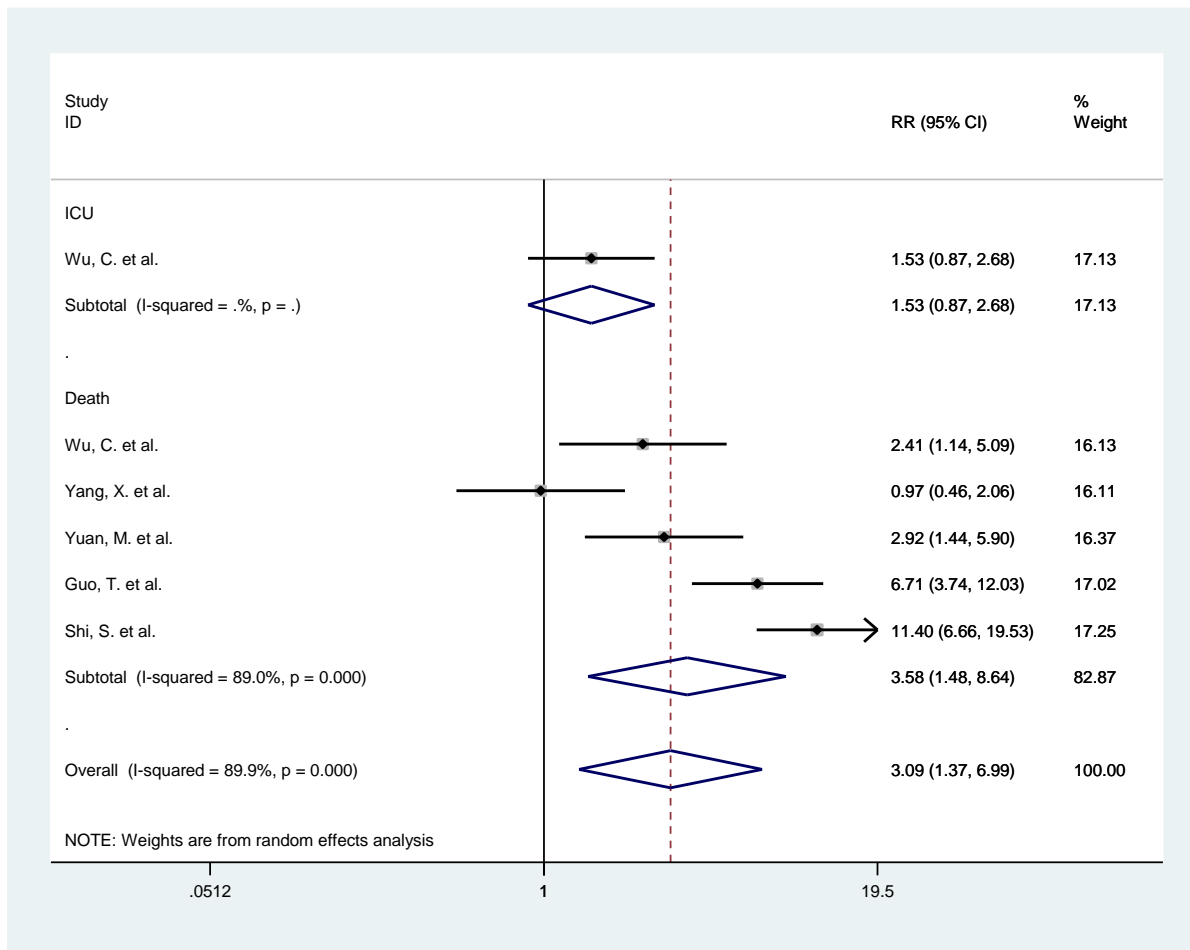
D+L pooled RR	<b>1.690</b>	<b>1.352</b>	<b>2.113</b>
<b>ICU</b>			
CDC COVID-19 Response	2.575	1.915	3.463
<b>Sub-total</b>			
D+L pooled RR	<b>2.575</b>	<b>1.915</b>	<b>3.463</b>
<b>Overall</b>			
D+L pooled RR	<b>2.062</b>	<b>1.365</b>	<b>3.114</b>

Mycobacterial diseases



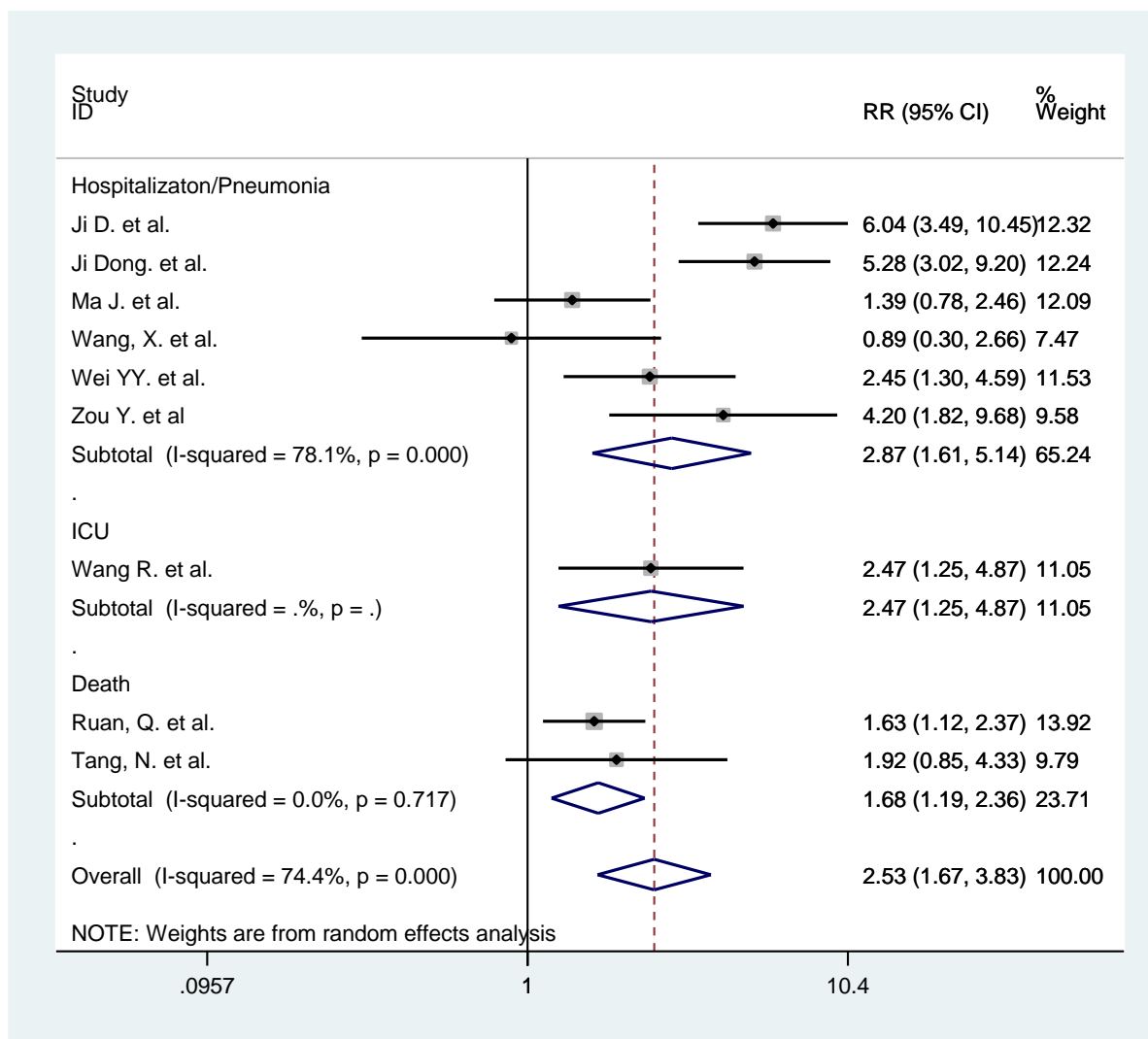
Study	RR	[95% Conf. Interval]
<b>Hospitalisation/Pneumonia</b>		
Li X. et al.	0.904 0.433	1.886
<b>Sub-total</b>		
D+L pooled RR	0.904 0.433	1.886
<b>Overall</b>		
D+L pooled RR	0.904 0.433	1.886

Myocardial infarction



Study	RR	[95% Conf. Interval]
<b>ICU</b>		
Wu, C. et al.	1.527	0.870 2.681
Sub-total		
D+L pooled RR	1.527	0.870 2.681
<b>Death</b>		
Wu, C. et al.	2.412	1.144 5.086
Yang, X. et al.	0.972	0.459 2.059
Yuan, M. et al.	2.917	1.442 5.897
Guo, T. et al.	6.707	3.738 12.033
Shi, S. et al.	11.40	6.661 19.528
	5	
Sub-total		
D+L pooled RR	3.581	1.484 8.640
<b>Overall</b>		
D+L pooled RR	3.093	1.369 6.988

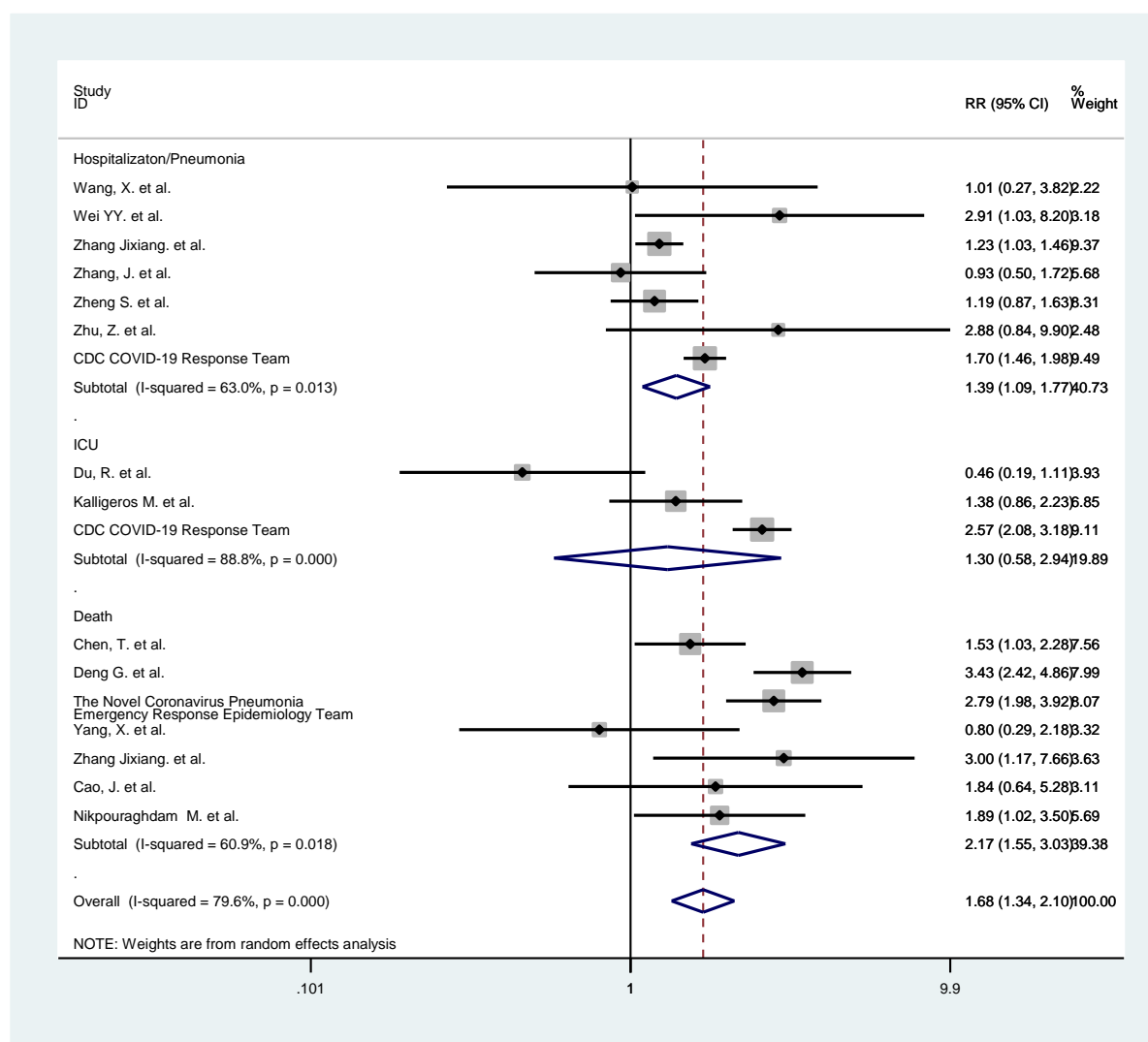
Other diseases or unspecified



Study	RR	[95% Conf. Interval]
<b>Hospitalisation/Pneumonia</b>		
Ji D. et al.	6.037	3.488 - 10.448
Ji Dong. et al.	5.277	3.025 - 9.205
Ma J. et al.	1.389	0.784 - 2.459
Wang, X. et al.	0.890	0.297 - 2.664
Wei YY. et al.	2.446	1.304 - 4.589
Zou Y. et al.	4.197	1.820 - 9.676
Sub-total		
D+L pooled RR	<b>2.875</b>	<b>1.607 - 5.143</b>
<b>ICU</b>		
Wang R. et al.	2.471	1.253 - 4.870
Sub-total		
D+L pooled RR	<b>2.471</b>	<b>1.253 - 4.870</b>
<b>Death</b>		
Ruan, Q. et al.	1.631	1.121 - 2.372
Tang, N. et al.	1.920	0.852 - 4.327
Sub-total		
D+L pooled RR	<b>1.678</b>	<b>1.194 - 2.358</b>

<b>Overall</b>			
D+L pooled RR	<b>2.531</b>	<b>1.673</b>	<b>3.829</b>

Other respiratory diseases



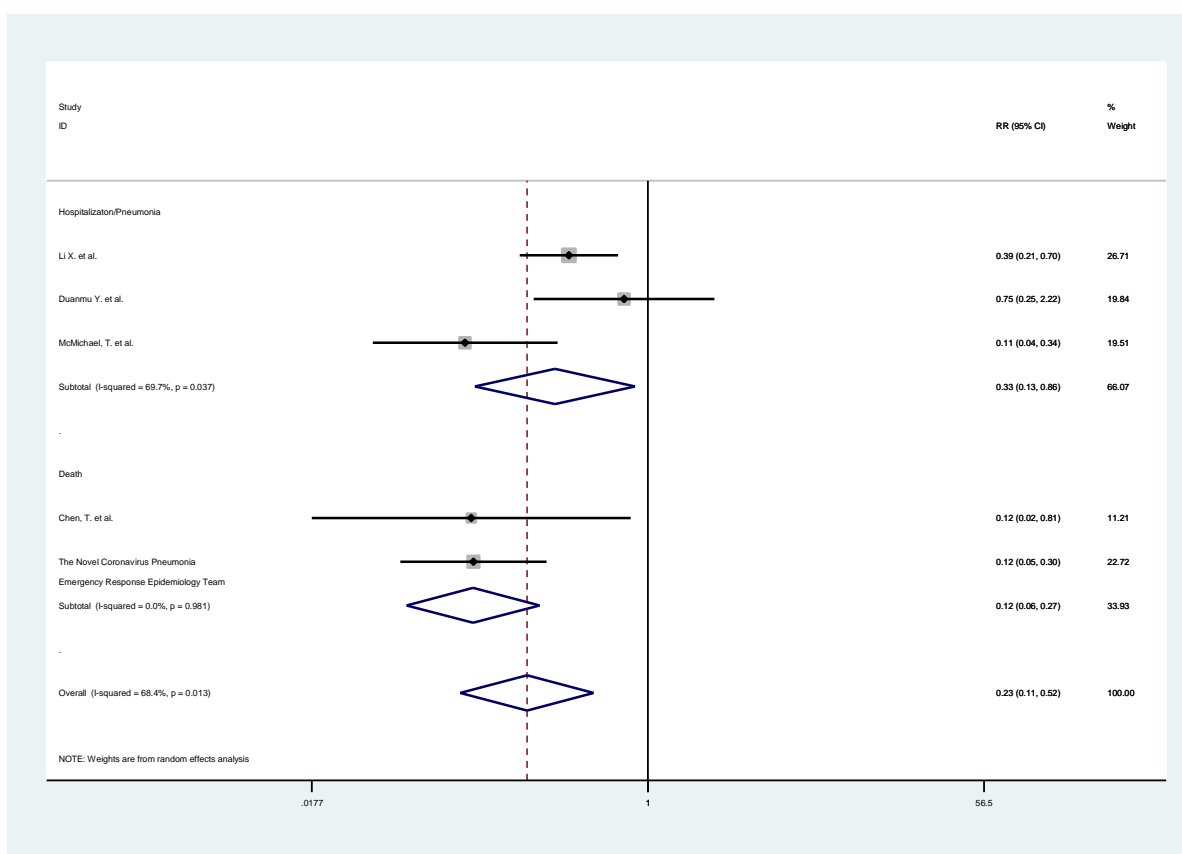
Study	RR	[95% Conf. Interval]
<b>Hospitalisation/Pneumonia</b>		
Wang, X. et al.	1.012	0.268 3.820
Wei YY. et al.	2.911	1.033 8.205
Zhang Jixiang. et al	1.229	1.034 1.461
Zhang, J. et al.	0.930	0.503 1.722
Zheng S. et al.	1.187	0.867 1.625
Zhu, Z. et al.	2.881	0.839 9.897
CDC COVID-19 Response	1.703	1.463 1.983
Sub-total		
D+L pooled RR	<b>1.389</b>	<b>1.091 1.768</b>
<b>ICU</b>		
Du, R. et al.	0.461	0.191 1.110
Kalligeros M. et al.	1.383	0.859 2.228
CDC COVID-19 Respons	2.568	2.077 3.175
Sub-total		



D+L pooled RR	1.304	0.578	2.940
<b>Death</b>			
Chen, T. et al.	1.534	1.030	2.284
Deng G. et al.	3.428	2.415	4.865
The Novel Coronaviru	2.791	1.984	3.925
Yang, X. et al.	0.800	0.293	2.184
Zhang Jixiang. et al	3.000	1.175	7.660
Cao, J. et al.	1.840	0.641	5.279
Nikpouraghdam M. et	1.894	1.024	3.503
Sub-total			
D+L pooled RR	<b>2.166</b>	<b>1.546</b>	<b>3.035</b>
<b>Overall</b>			
D+L pooled RR	<b>1.682</b>	<b>1.343</b>	<b>2.105</b>

## DEMOGRAPHIC, OCCUPATIONAL OR LIFESTYLE FACTORS

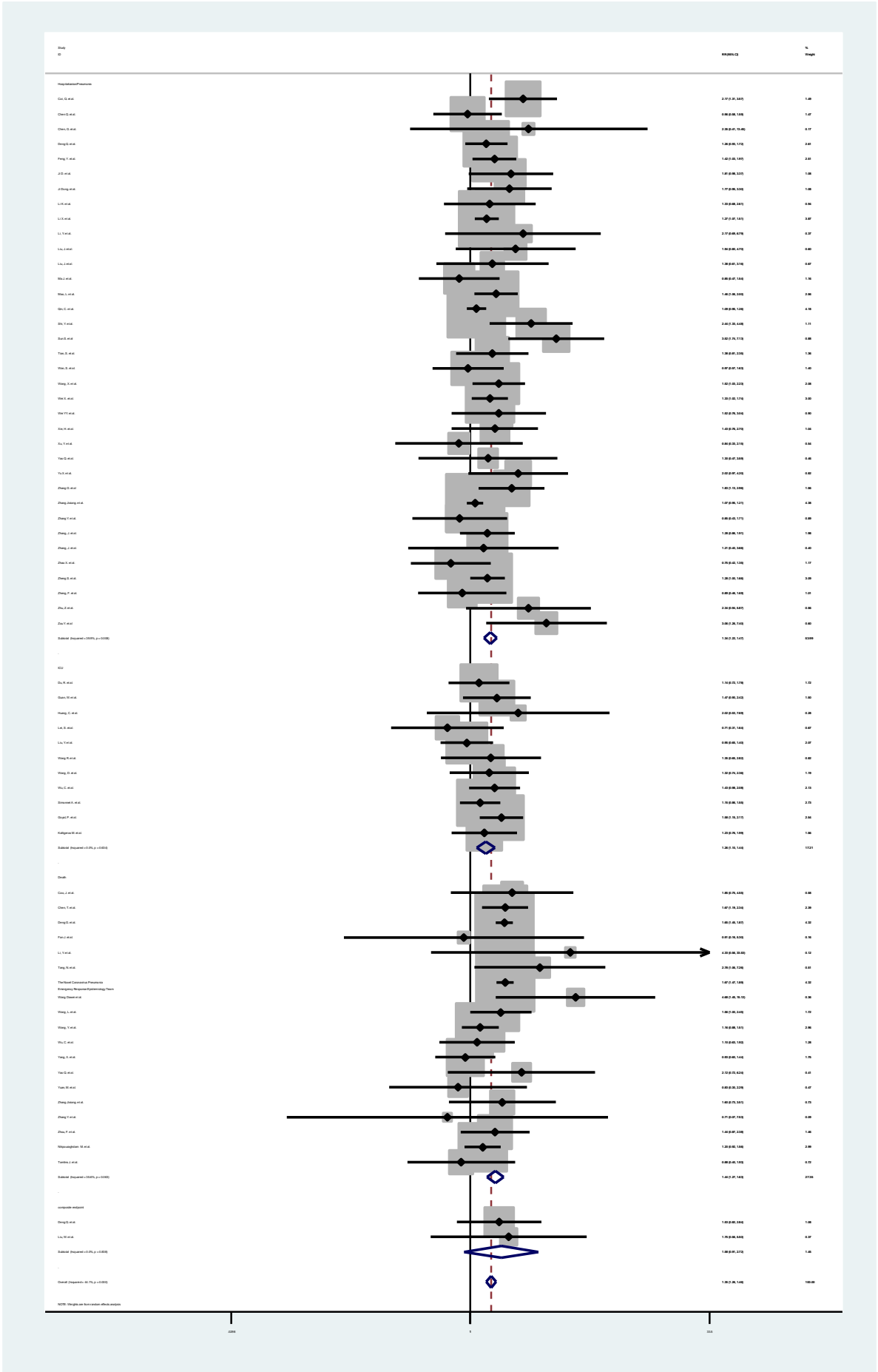
### Healthcare workers



Study	RR	[95% Conf. Interval]
<b>Hospitalisation/Pneumonia</b>		
Li X. et al.	0.388	0.215 0.700
Duanmu Y. et al.	0.750	0.253 2.220
McMichael, T. et al.	0.111	0.037 0.338
Sub-total		
D+L pooled RR	<b>0.327</b>	<b>0.125 0.855</b>
<b>Death</b>		
Chen, T. et al.	0.120	0.018 0.811

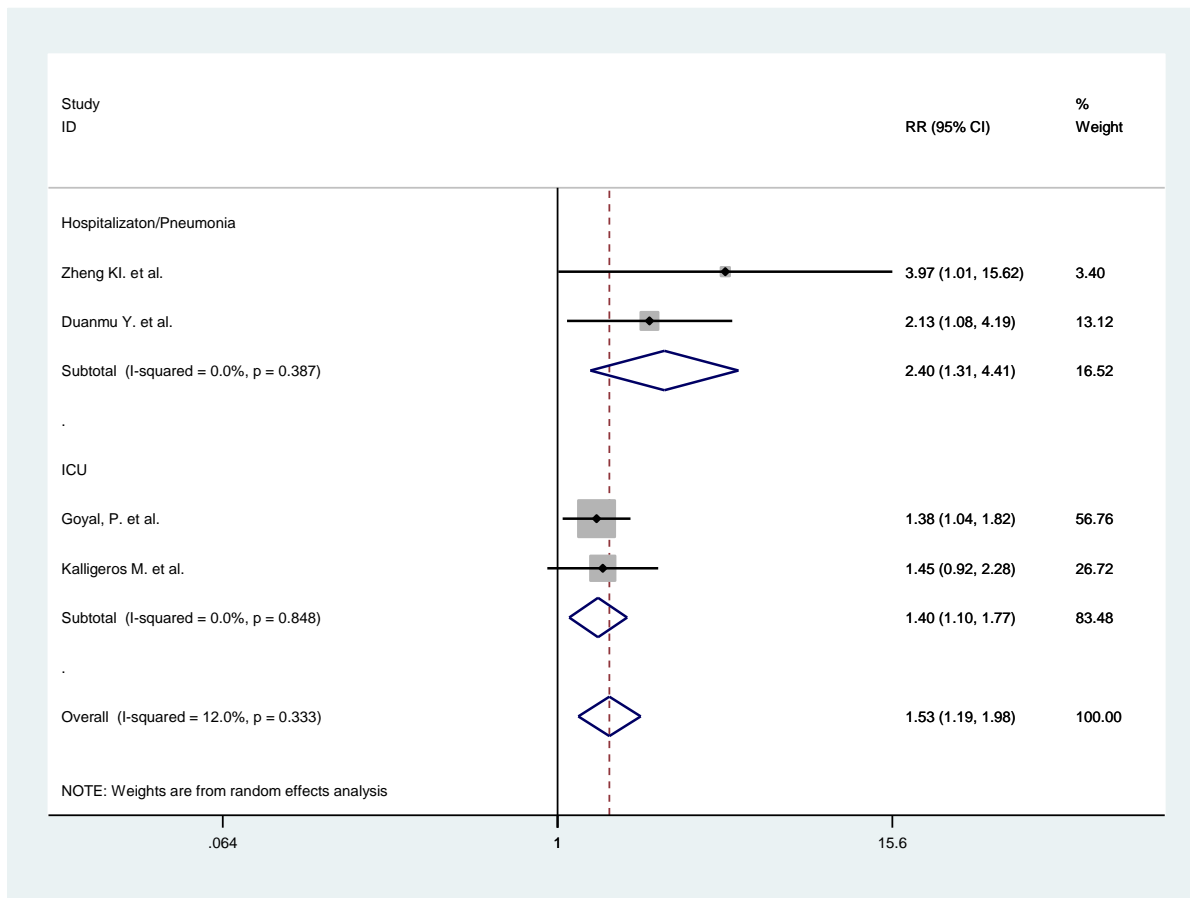
The Novel Coronavirus Team	0.123	0.051	0.296
Sub-total			
D+L pooled RR	<b>0.122</b>	<b>0.055</b>	<b>0.272</b>
<b>Overall</b>			
D+L pooled RR	<b>0.234</b>	<b>0.105</b>	<b>0.521</b>

*Male*



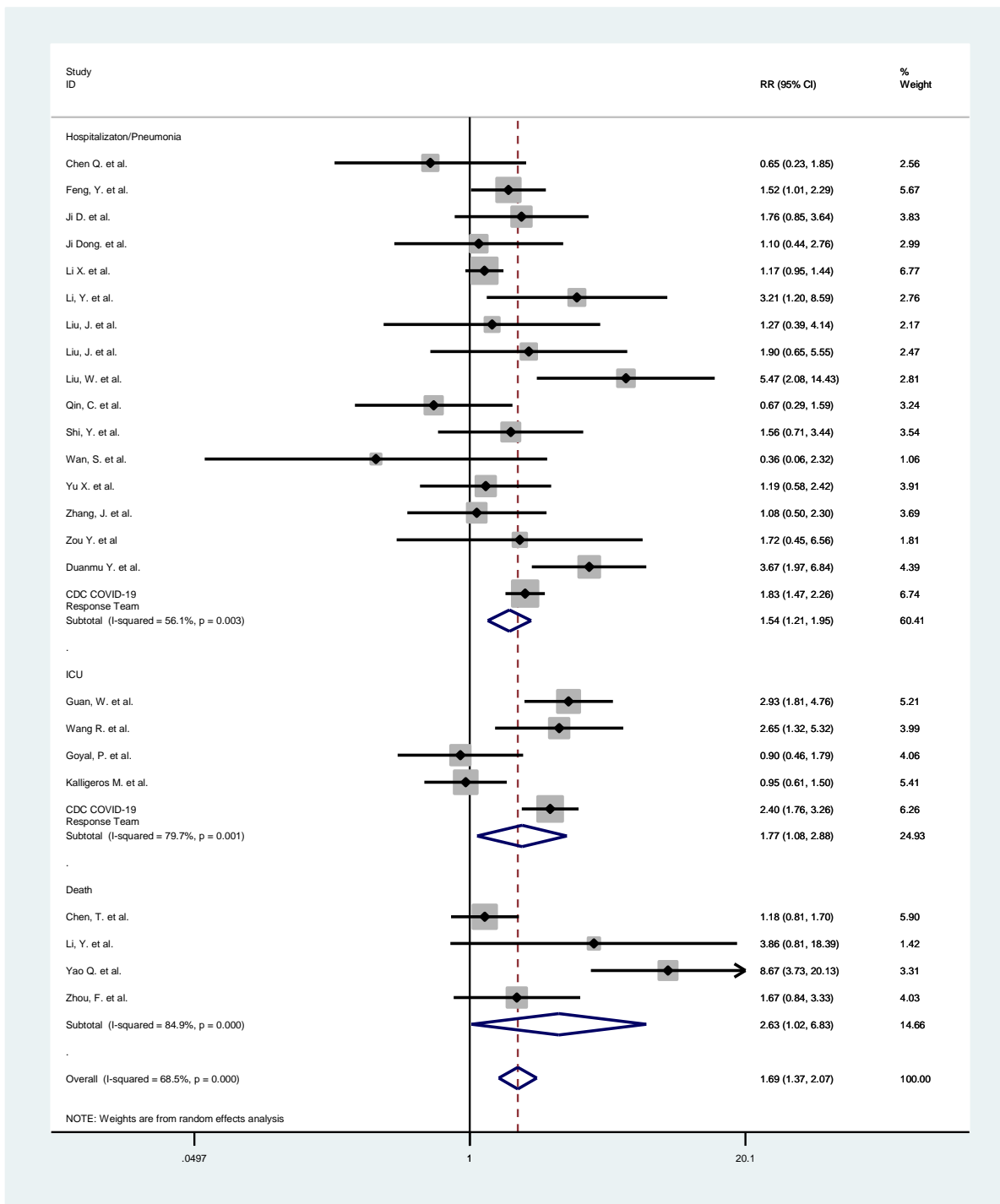
Study	RR	[95% Conf. Interval]	
<b>Hospitalisation/Pneumonia</b>			
Cai, Q. et al.	2.166	1.315	3.568
Chen Q. et al.	0.961	0.581	1.588
Chen, G. et al.	2.353	0.412	13.451
Deng Q. et al.	1.264	0.927	1.724
Feng, Y. et al.	1.425	1.032	1.967
Ji D. et al.	1.815	0.978	3.368
Ji Dong. et al.	1.772	0.953	3.296
Li K. et al.	1.330	0.678	2.609
Li X. et al.	1.272	1.069	1.513
Li, Y. et al.	2.167	0.691	6.791
Liu, J. et al.	1.944	0.804	4.701
Liu, J. et al.	1.382	0.606	3.155
Ma J. et al.	0.850	0.470	1.536
Mao, L. et al.	1.460	1.064	2.003
Qin, C. et al.	1.093	0.948	1.259
Shi, Y. et al.	2.438	1.326	4.481
Sun S. et al	3.524	1.741	7.131
Tian, S. et al.	1.382	0.813	2.348
Wan, S. et al.	0.967	0.575	1.627
Wang, X. et al.	1.519	1.034	2.232
Wei X. et al.	1.333	1.023	1.736
Wei YY. et al.	1.516	0.757	3.036
Xie, H. et al.	1.432	0.760	2.696
Xu, Y. et al.	0.845	0.332	2.151
Yao Q. et al.	1.296	0.467	3.594
Yu X. et al.	2.018	0.968	4.203
Zhang G. et al	1.831	1.131	2.965
Zhang Jixiang. et al	1.071	0.950	1.207
Zhang Y. et al.	0.855	0.426	1.714
Zhang, J. et al.	1.283	0.860	1.914
Zhang, J. et al.	1.212	0.402	3.657
Zhao X. et al.	0.750	0.417	1.349
Zheng S. et al.	1.284	0.996	1.656
Zheng, F. et al.	0.886	0.464	1.693
Zhu, Z. et al.	2.343	0.935	5.869
Zou Y. et al	3.059	1.264	7.405
Sub-total			
D+L pooled RR	<b>1.339</b>	<b>1.216</b>	<b>1.474</b>
<b>ICU</b>			
Du, R. et al.	1.135	0.725	1.778
Guan, W. et al.	1.474	0.898	2.419
Huang, C. et al.	2.017	0.529	7.693
Lei, S. et al.	0.714	0.312	1.635
Liu, Y. et al.	0.949	0.645	1.396
Wang R. et al.	1.352	0.648	2.823
Wang, D. et al.	1.320	0.739	2.358
Wu, C. et al.	1.426	0.979	2.077

Simonnet A. et al.	1.151	0.857	1.547
Goyal, P. et al.	1.577	1.146	2.170
Kalligeros M. et al.	1.228	0.759	1.986
Sub-total			
D+L pooled RR	<b>1.257</b>	<b>1.098</b>	<b>1.437</b>
<b>Death</b>			
Cao, J. et al.	1.849	0.752	4.547
Chen, T. et al.	1.666	1.188	2.338
Deng G. et al.	1.646	1.451	1.867
Fan J. et al.	0.909	0.156	5.300
Li, Y. et al.	4.333	0.560	33.527
Tang, N. et al.	2.776	1.061	7.258
The Novel Coronaviru	1.666	1.468	1.890
Wang Dawei et al.	4.678	1.447	15.122
Wang, L. et al.	1.563	0.999	2.447
Wang, Y. et al.	1.156	0.884	1.513
Wu, C. et al.	1.103	0.634	1.917
Yang, X. et al.	0.927	0.595	1.444
Yao Q. et al.	2.116	0.718	6.238
Yuan, M. et al.	0.833	0.303	2.293
Zhang Jixiang. et al	1.598	0.729	3.506
Zhang Y. et al.	0.712	0.067	7.533
Zhou, F. et al.	1.437	0.867	2.382
Nikpouraghdam M. et	1.197	0.918	1.561
Tomlins J. et al.	0.875	0.397	1.931
Sub-total			
D+L pooled RR	<b>1.443</b>	<b>1.274</b>	<b>1.634</b>
<b>Composite Endpoint</b>			
Deng Q. et al.	1.528	0.821	2.842
Liu, W. et al.	1.750	0.557	5.502
Sub-total			
D+L pooled RR	1.576	0.913	2.719
<b>Overall</b>			
D+L pooled RR	<b>1.354</b>	<b>1.259</b>	<b>1.457</b>



Study	RR	[95% Conf. Interval]
<b>Hospitalisation/Pneumonia</b>		
Zheng KI. et al.	3.967	1.007 15.619
Duanmu Y. et al.	2.127	1.080 4.189
Sub-total		
D+L pooled RR	<b>2.404</b>	<b>1.310 4.413</b>
<b>ICU</b>		
Goyal, P. et al.	1.376	1.042 1.817
Kalligeros M. et al.	1.450	0.921 2.284
Sub-total		
D+L pooled RR	<b>1.396</b>	<b>1.101 1.769</b>
<b>Overall</b>		
D+L pooled RR	<b>1.532</b>	<b>1.187 1.977</b>

Smoking

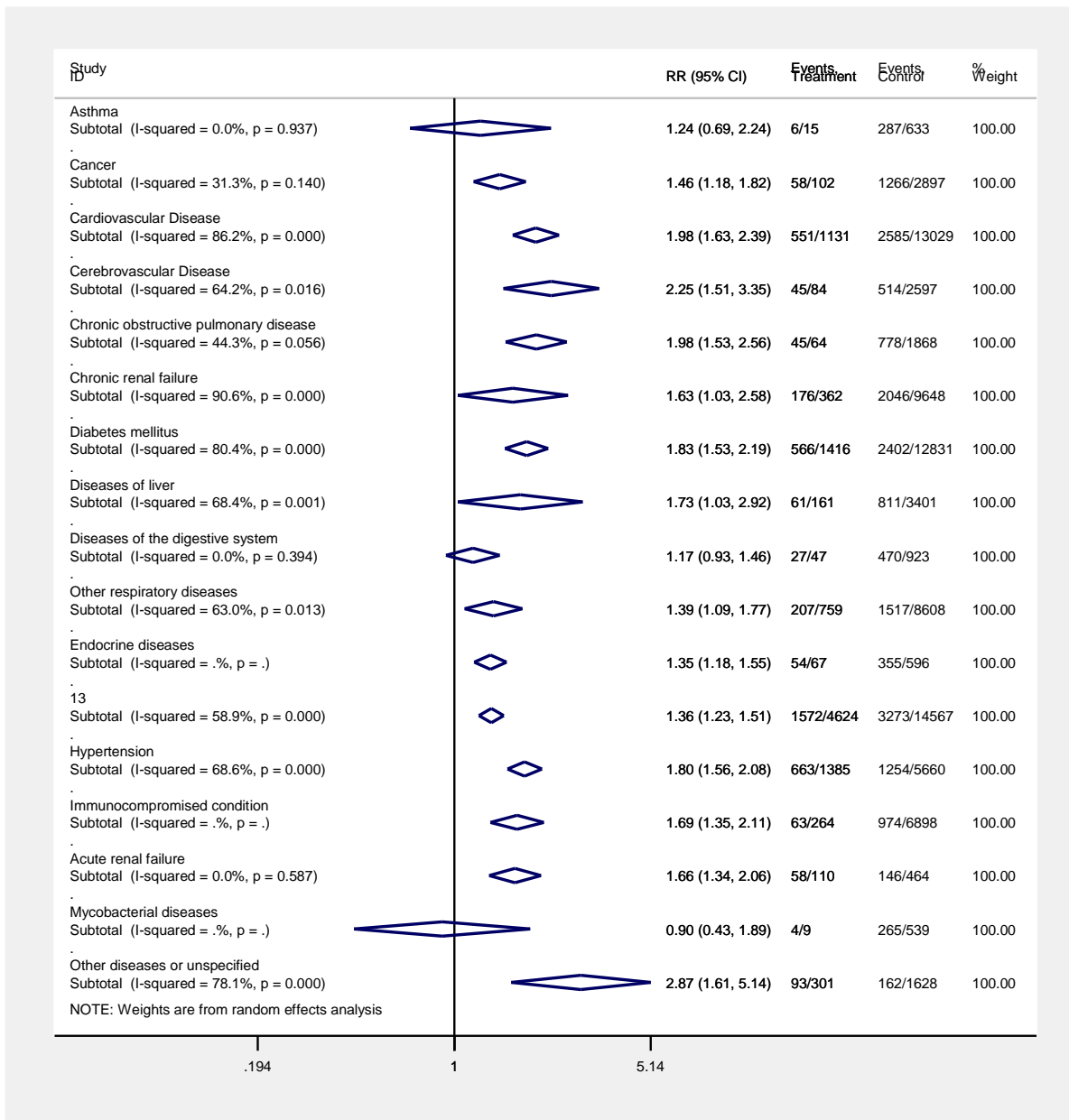


Study	RR	[95% Conf. Interval]
<b>Hospitalisation/Pneumonia</b>		
Chen Q. et al.	0.650	0.229 - 1.847
Feng, Y. et al.	1.523	1.013 - 2.290
Ji D. et al.	1.755	0.847 - 3.637
Ji Dong. et al.	1.101	0.439 - 2.763
Li X. et al.	1.171	0.952 - 1.441
Li, Y. et al.	3.214	1.203 - 8.591
Liu, J. et al.	1.273	0.391 - 4.141



Liu, J. et al.	1.900	0.650	5.550
Liu, W. et al.	5.475	2.077	14.434
Qin, C. et al.	0.674	0.286	1.590
Shi, Y. et al.	1.559	0.707	3.438
Wan, S. et al.	0.359	0.056	2.320
Yu X. et al.	1.188	0.582	2.425
Zhang, J. et al.	1.078	0.505	2.302
Zou Y. et al	1.720	0.451	6.564
Duanmu Y. et al.	3.667	1.967	6.836
CDC COVID-19 Response	1.826	1.474	2.263
Sub-total			
D+L pooled RR	<b>1.537</b>	<b>1.213</b>	<b>1.948</b>
<b>ICU</b>			
Guan, W. et al.	2.934	1.809	4.756
Wang R. et al.	2.649	1.319	5.323
Goyal, P. et al.	0.902	0.455	1.790
Kalligeros M. et al.	0.955	0.609	1.497
CDC COVID-19 Response	2.398	1.762	3.264
Sub-total			
D+L pooled RR	<b>1.765</b>	<b>1.083</b>	<b>2.878</b>
<b>Death</b>			
Chen, T. et al.	1.177	0.813	1.703
Li, Y. et al.	3.857	0.809	18.387
Yao Q. et al.	8.667	3.732	20.128
Zhou, F. et al.	1.670	0.837	3.329
Sub-total			
D+L pooled RR	<b>2.634</b>	<b>1.016</b>	<b>6.826</b>
<b>Overall</b>			
D+L pooled RR	<b>1.685</b>	<b>1.369</b>	<b>2.074</b>

## 6. Meta-analysis of Comorbidities and Hospitalisation



Comorbidity	Study	RR	[95% Conf. Interval]	
Acute renal failure	Xiao, G. et al.	1.8	1.2	2.6
	Xiao, G. et al.	1.6	1.2	2.1
	D+L pooled	1.7	1.3	2.1
Asthma	Li X. et al.	1.2	0.6	2.5
	Duanmu Y. et al.	1.3	0.5	3.6
	D+L pooled	1.2	0.7	2.2
Cancer	Feng, Y. et al.	2.3	1.4	3.8
	Li X. et al.	1.2	0.8	1.7
	Liu, Jing. et al.	0.8	0.1	4.4
	Mao, L. et al.	0.9	0.5	1.9

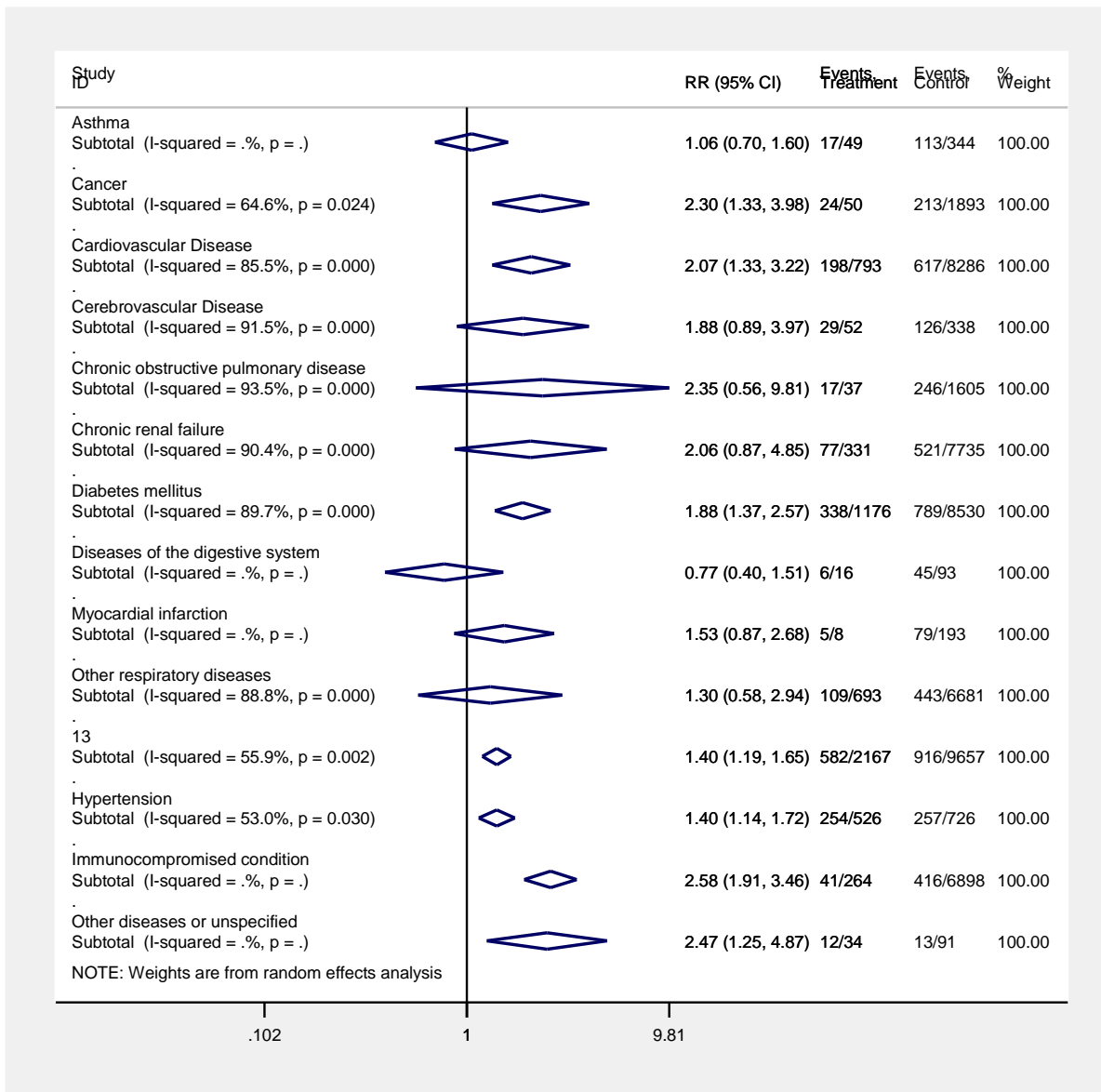
Qin, C. et al.	1.1	0.8	1.6
Wan, S. et al.	2.7	1.4	5.0
Yao Q. et al.	4.4	1.0	19.5
Zhang Jixiang.	1.3	1.0	1.7
Zhang Y. et al.	1.7	0.6	4.9
Zhao X. et al.	2.1	0.9	4.9
Zhu, Z. et al.	1.6	0.3	10.0
Duanmu Y. et al.	1.4	0.3	7.2
D+L pooled	1.5	1.2	1.8
<b>Cardiovascular Disease</b>			
Feng, Y. et al.	1.8	1.2	2.7
Guan, W. et al.	2.2	1.5	3.2
Li, Y. et al.	0.7	0.1	3.9
Liu, J. et al.	2.8	1.1	6.8
Qin, C. et al.	1.4	1.2	1.7
Shi, Y. et al.	3.8	1.7	8.8
Wan, S. et al.	3.2	2.1	4.9
Wang, X. et al.	3.5	1.7	7.3
Wei X. et al.	1.6	1.2	2.2
Wei YY. et al.	1.8	0.9	3.8
Yu X. et al.	2.1	1.1	3.9
Zhang G. et al.	2.8	1.8	4.3
Zhang Jixiang. et al.	1.4	1.3	1.6
Zhu, Z. et al.	2.9	0.8	9.9
Deng Q. et al.	1.3	0.9	1.8
Li K. et al.	2.5	1.1	6.0
Li X. et al.	1.8	1.5	2.1
Xie, H. et al.	0.8	0.2	2.7
Zhang, J. et al.	1.4	0.7	2.8
Zhang, J. et al.	2.7	1.2	5.9
Zheng S. et al.	1.3	1.0	1.6
Zheng, F. et al.	2.8	1.0	7.9
CDC COVID-19 Team	3.1	2.7	3.5
D+L pooled	2.0	1.6	2.4
<b>Cerebrovascular Disease</b>			
Mao, L. et al.	1.1	0.7	2.0
Feng, Y. et al.	2.1	1.3	3.4
Guan, W. et al.	3.3	2.2	4.8
Zhang G. et al.	3.4	2.3	5.1
Zhang, J. et al.	1.8	0.6	4.9
Zheng, F. et al.	1.4	0.2	7.6
D+L pooled	2.2	1.5	3.3
<b>Chronic Obstructive Pulmonary Disease</b>			
Deng Q. et al.	1.3	0.7	2.3
Li K. et al.	3.0	1.7	5.3
Li X. et al.	1.6	1.2	2.1
Li, Y. et al.	3.2	1.3	7.7
Liu, J. et al.	2.4	1.0	5.6
Liu, W. et al.	3.8	0.8	17.1
Qin, C. et al.	1.2	0.9	1.7
Zhang G. et al.	2.8	1.5	5.2

	Zhao X. et al.	2.3	1.0	5.4
	Zheng, F. et al.	1.8	0.6	6.0
	Duanmu Y. et al.	3.2	1.3	7.7
	D+L pooled	2.0	1.5	2.6
<b>Chronic renal failure</b>				
	Chen Q. et al.	1.1	0.2	5.7
	Cheng, Y. et al.	1.3	1.0	1.6
	Li X. et al.	1.2	0.7	2.0
	Mao, L. et al.	0.8	0.3	2.5
	Shi, Y. et al.	2.9	0.9	9.7
	Zhang Jixiang.	1.2	1.0	1.6
	Zhao X. et al.	2.3	1.0	5.4
	CDC COVID-19 Team	3.3	2.8	3.9
	D+L pooled	1.6	1.0	2.6
<b>Diabetes mellitus</b>				
	Chen Q. et al.	1.8	1.0	3.3
	Chen, G. et al.	1.3	0.5	3.4
	Deng Q. et al.	1.3	0.9	1.8
	Feng, Y. et al.	1.8	1.2	2.6
	Guan, W. et al.	2.4	1.9	3.2
	Li K. et al.	3.9	2.5	6.0
	Li X. et al.	1.3	1.1	1.6
	Li, Y. et al.	2.2	0.8	5.8
	Liu, J. et al.	2.5	1.1	5.6
	Liu, J. et al.	2.4	1.0	5.6
	Liu, W. et al.	3.2	0.9	11.2
	Mao, L. et al.	1.3	0.8	1.9
	Qin, C. et al.	1.1	1.0	1.4
	Shi, Y. et al.	2.6	1.3	5.3
	Wan, S. et al.	3.0	1.9	4.7
	Wang, X. et al.	2.7	1.4	5.3
	Wei X. et al.	1.0	0.7	1.5
	Wei YY. et al.	4.3	2.4	7.7
	Xie, H. et al.	0.7	0.2	2.4
	Yao Q. et al.	3.7	1.1	12.6
	Yu X. et al.	2.3	1.3	4.1
	Zhang G. et al	1.3	0.7	2.6
	Zhang Y. et al.	1.6	0.7	3.6
	Zhang, J. et al.	1.2	0.7	2.0
	Zhang, J. et al.	2.3	0.9	5.6
	Zhao X. et al.	1.0	0.2	5.2
	Zheng S. et al.	1.2	1.0	1.5
	Zheng, F. et al.	1.6	0.5	5.3
	Duanmu Y. et al.	1.3	0.5	3.6
	CDC COVID-19 Team	2.6	2.3	2.9
	D+L pooled RR	1.8	1.5	2.2
<b>Diseases of liver</b>				
	Chen Q. et al.	2.4	1.3	4.4
	Guan, W. et al.	2.0	1.2	3.6
	Ji Dong. et al.	11.3	4.6	27.6
	Li X. et al.	0.8	0.3	2.4
	Shi, Y. et al.	0.9	0.2	3.5

	Wan, S. et al.	1.7	0.4	7.0
	Yu X. et al.	0.8	0.1	4.3
	Zhang, J. et al.	1.2	0.6	2.5
	Zheng S. et al.	0.9	0.4	1.9
	Zhu, Z. et al.	2.4	0.7	8.7
	D+L pooled	1.7	1.0	2.9
<b>Diseases of the digestive system</b>				
	Wei YY. et al.	2.0	0.7	5.2
	Zhang Jixiang. et al.	1.2	0.9	1.5
	Zhang, J. et al.	0.7	0.2	2.2
	D+L pooled	1.2	0.9	1.5
<b>Endocrine disease</b>				
	Zhang Jixiang.	1.4	1.2	1.5
	D+L pooled R	1.4	1.2	1.5
<b>Hypertension</b>				
	Chen Q. et al.	1.5	0.8	2.6
	Chen, G. et al.	1.8	0.9	3.7
	Deng Q. et al.	1.2	0.9	1.6
	Feng, Y. et al.	1.5	1.1	2.1
	Guan, W. et al.	2.6	2.1	3.3
	Li K. et al.	1.4	0.4	4.2
	Li X. et al.	1.5	1.2	1.7
	Li, Y. et al.	1.4	0.3	6.4
	Liu, J. et al.	3.5	1.8	7.2
	Liu, J. et al.	2.2	1.0	4.8
	Liu, W. et al.	1.9	0.5	7.5
	Mao, L. et al.	1.8	1.4	2.5
	Qin, C. et al.	1.4	1.2	1.6
	Shi, Y. et al.	4.4	2.6	7.4
	Wan, S. et al.	1.0	0.4	2.5
	Wang, X. et al.	1.3	0.6	2.9
	Wei X. et al.	1.4	1.1	1.8
	Xie, H. et al.	0.8	0.3	1.9
	Yao Q. et al.	1.0	0.3	4.3
	Yu X. et al.	2.0	1.1	3.6
	Zhang G. et al.	2.8	1.8	4.3
	Zhang Y. et al.	2.8	1.5	5.3
	Zhang, J. et al.	1.4	1.0	2.1
	Zhang, J. et al.	2.2	0.6	8.1
	Zhao X. et al.	1.7	1.0	3.1
	Zheng S. et al.	1.3	1.0	1.5
	Zheng, F. et al.	4.2	2.4	7.5
	Zhu, Z. et al.	3.1	1.3	7.6
	Duanmu Y. et al.	2.1	1.1	4.2
	D+L pooled	1.8	1.6	2.1
<b>Immunocompromised condition</b>				
	CDC COVID-19 Team	1.7	1.4	2.1
	D+L pooled	1.7	1.4	2.1
<b>Mycobacterial disease</b>				
	Li X. et al.	0.9	0.4	1.9
	D+L pooled	0.9	0.4	1.9

Other diseases or unspecified disease				
	Ji D. et al.	6.0	3.5	10.4
	Ji Dong. et al.	5.3	3.0	9.2
	Ma J. et al.	1.4	0.8	2.5
	Wang, X. et al.	0.9	0.3	2.7
	Wei YY. et al.	2.4	1.3	4.6
	Zou Y. et al.	4.2	1.8	9.7
	D+L pooled	2.9	1.6	5.1
Other respiratory diseases				
	Wang, X. et al.	1.0	0.3	3.8
	Wei YY. et al.	2.9	1.0	8.2
	Zhang Jixiang.	1.2	1.0	1.5
	Zhang, J. et al.	0.9	0.5	1.7
	Zheng S. et al.	1.2	0.9	1.6
	Zhu, Z. et al.	2.9	0.8	9.9
	CDC COVID-19 Team	1.7	1.5	2.0
	D+L pooled	1.4	1.1	1.8

## 7. Meta-analysis of Comorbidities and ICU admission



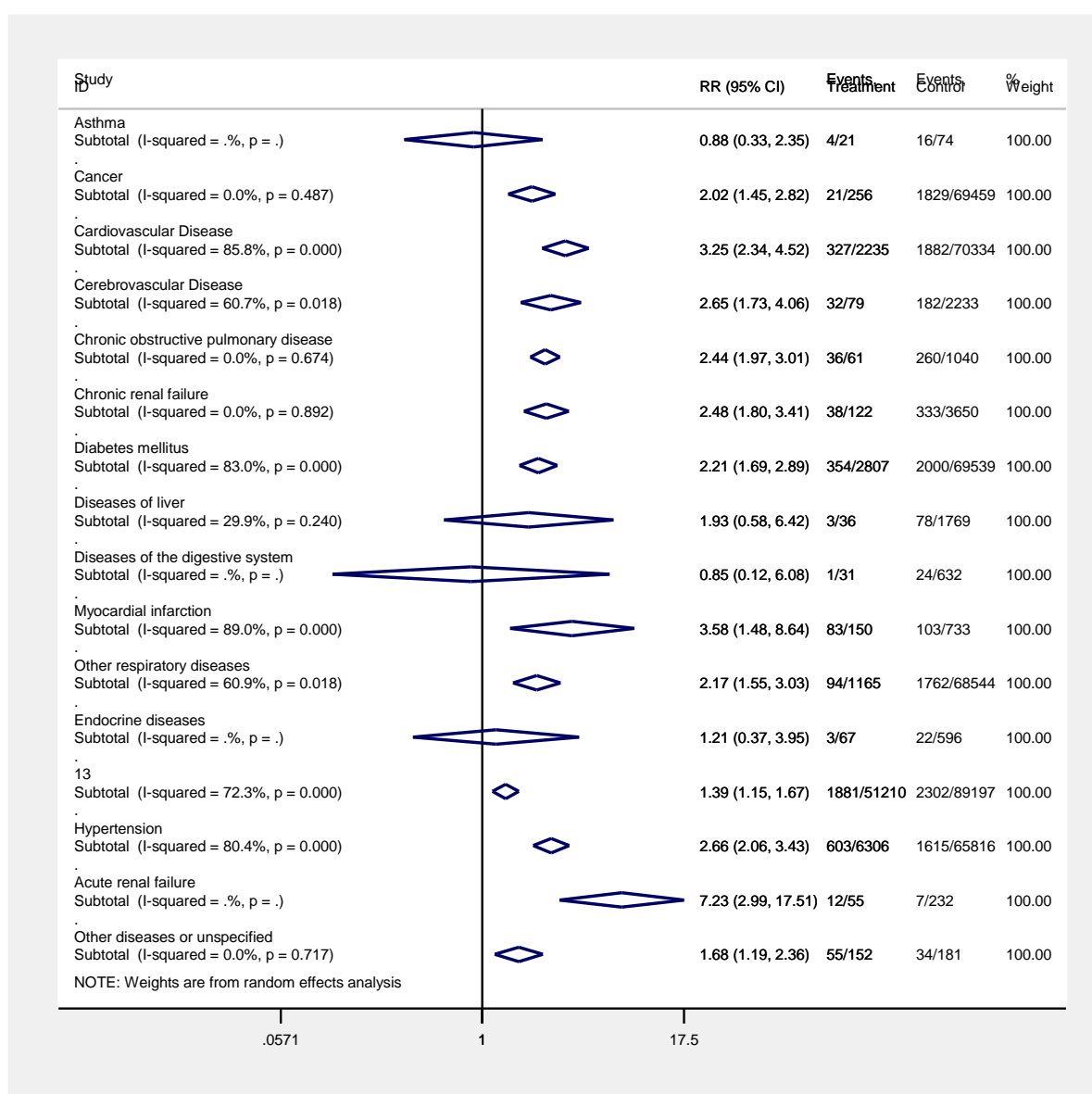
Comorbidity	Study	RR	[95% Conf. Interval]	
Asthma	Goyal, P. et al.	1.1	0.7	1.6
	D+L pooled	1.1	0.7	1.6
Cancer	Lei, S. et al.	1.4	0.7	3.0
	Liang, W. et al.	4.9	2.7	9.0
	Liu, W. et al.	4.1	1.3	13.1
	Wang, D. et al.	1.6	0.7	3.6
	Kalligeros M. et al.	1.6	1.0	2.8
	D+L pooled	2.3	1.3	4.0
Cardiovascular Disease	Huang, C. et al.	1.8	0.7	4.6
	Lei, S. et al.	2.6	1.4	4.7
	Liu, Y. et al.	0.9	0.4	2.1
	Wang, D. et al.	2.0	1.1	3.5

	Guan, W. et al.	3.9	1.9	8.2
	Goyal, P. et al.	1.5	1.1	2.1
	Kalligeros M. et al.	1.5	0.9	2.3
	CDC COVID-19 Team	4.1	3.4	4.9
	D+L pooled	2.1	1.3	3.2
<b>Cerebrovascular Disease</b>				
	Du, R. et al.	0.8	0.5	1.3
	Lei, S. et al.	2.0	1.1	3.9
	Liu, Y. et al.	2.0	1.5	2.7
	Wang, D. et al.	3.7	2.4	5.8
	D+L pooled	1.9	0.9	4.0
<b>Chronic obstructive pulmonary disease</b>				
	Guan, W. et al.	10.6	6.2	18.1
	Huang, C. et al.	2.5	1.0	6.2
	Liu, Y. et al.	1.0	0.4	2.8
	Goyal, P. et al.	1.1	0.6	2.0
	D+L pooled	2.4	0.6	9.8
<b>Chronic renal failure</b>				
	Cheng, Y. et al.	1.3	0.7	2.3
	Duanmu Y. et al.	3.1	1.6	6.2
	Kalligeros M. et al.	0.8	0.4	1.9
	CDC COVID-19 Team	4.6	3.6	5.8
	D+L pooled	2.1	0.9	4.9
<b>Diabetes mellitus</b>				
	Du, R. et al.	1.2	0.8	1.8
	Guan, W. et al.	4.6	2.8	7.5
	Huang, C. et al.	0.3	0.1	2.3
	Lei, S. et al.	2.2	1.1	4.2
	Liu, Y. et al.	2.1	1.6	2.8
	Wang, D. et al.	2.5	1.4	4.4
	Wu, C. et al.	1.9	1.4	2.6
	Yan Y. et al.	1.6	1.2	2.1
	Simonnet A. et al.	1.3	1.0	1.6
	Goyal, P. et al.	1.1	0.8	1.6
	Kalligeros M. et al.	1.6	1.0	2.4
	CDC COVID-19 Team	3.9	3.3	4.7
	D+L pooled	1.9	1.4	2.6
<b>Diseases of the digestive system</b>				
	Du, R. et al.	0.8	0.4	1.5
	D+L pooled	0.8	0.4	1.5
<b>Hypertension</b>				
	Du, R. et al.	0.9	0.6	1.3
	Huang, C. et al.	1.1	0.3	3.6
	Lei, S. et al.	2.4	1.1	5.2
	Liu, Y. et al.	1.3	0.9	1.9
	Wang, D. et al.	3.1	1.8	5.4
	Wu, C. et al.	1.6	1.1	2.2
	Simonnet A. et al.	1.4	1.1	1.8
	Goyal, P. et al.	1.2	0.9	1.5
	Kalligeros M. et al.	1.3	0.8	2.2
	D+L pooled	1.4	1.1	1.7



Immunocompromised condition				
	CDC COVID-19 Team	2.6	1.9	3.5
	D+L pooled	2.6	1.9	3.5
Myocardial infarction				
	Wu, C. et al.	1.5	0.9	2.7
	D+L pooled	1.5	0.9	2.7
Other respiratory disease				
	Du, R. et al.	0.5	0.2	1.1
	Kalligeros M. et al.	1.4	0.9	2.2
	CDC COVID-19 Team	2.6	2.1	3.2
	D+L pooled	1.3	0.6	2.9

## 8. Meta-analysis of Comorbidities and Death



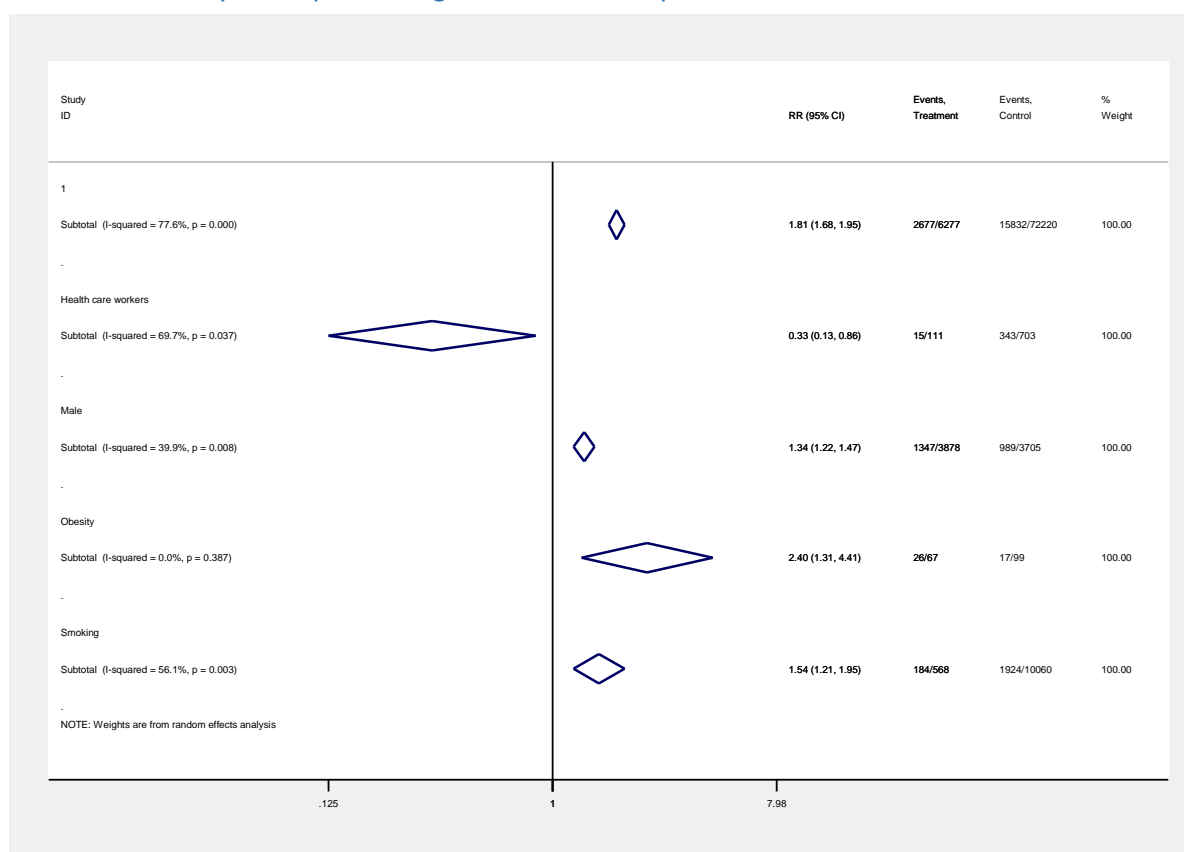
Comorbidity	Study	RR	[95% Conf. Interval]
Acute renal failure			

	Xiao, G. et al.	7.2	3.0	17.5
	D+L pooled	7.2	3.0	17.5
<b>Asthma</b>				
	Tomlins J. et al.	0.9	0.3	2.4
	D+L pooled	0.9	0.3	2.4
<b>Cancer</b>				
	Chen, T. et al.	1.8	1.1	2.9
	Deng G. et al.	2.9	1.3	6.4
	The Novel Coronavirus Team	2.5	1.1	5.4
	Yang, X. et al.	0.8	0.2	3.3
	Yao Q. et al.	4.8	1.1	21.5
	Zhang Jixiang. et al.	1.9	0.3	13.3
	Nikpouraghdam M. et al.	0.7	0.1	4.9
	D+L pooled	2.0	1.4	2.8
<b>Cardiovascular Disease</b>				
	Cao, J. et al.	2.4	0.8	7.8
	Chen, T. et al.	1.8	1.3	2.5
	Deng G. et al.	6.7	5.4	8.4
	Fan J. et al.	3.2	0.6	17.2
	Guan, W. et al.	4.9	2.4	10.1
	Guo, T. et al.	3.8	2.2	6.7
	Li, Y. et al.	1.3	0.2	8.9
	The Novel Coronavirus Team	5.0	4.0	6.1
	Wang Dawei et al.	4.2	2.0	8.8
	Wang, L. et al.	2.6	1.7	4.0
	Wang, Y. et al.	1.5	1.1	2.1
	Yao Q. et al.	5.2	1.7	16.3
	Zhang Jixiang. et al.	5.4	2.4	12.0
	Zhou, F. et al.	3.5	2.4	5.0
	Nikpouraghdam M. et al.	1.3	0.5	3.4
	D+L pooled	3.3	2.3	4.5
<b>Cerebrovascular Disease</b>				
	Cao, J. et al.	3.2	1.3	8.1
	Guan, W. et al.	7.1	3.3	15.4
	Wang Dawei et al.	3.2	1.3	7.9
	Yang, X. et al.	1.7	1.2	2.3
	Wang, L. et al.	2.8	1.7	4.6
	Yuan, M. et al.	2.1	0.8	5.5
	Tomlins J. et al.	1.2	0.3	4.3
	D+L pooled	2.6	1.7	4.1
<b>Chronic obstructive pulmonary disease</b>				
	Li, Y. et al.	6.0	1.3	26.8
	Wang Dawei et al.	1.9	0.4	10.1
	Wang, L. et al.	3.1	1.9	5.0
	Wang, Y. et al.	2.2	1.7	2.9
	Zhou, F. et al.	2.5	1.3	4.6
	Tomlins J. et al.	2.1	0.9	5.1
	D+L pooled	2.4	2.0	3.0
<b>Chronic renal failure</b>				
	Cheng, Y. et al.	2.6	1.8	3.6
	Wang Dawei et al.	1.9	0.4	10.1

	Nikpouraghdam M. et al.	2.1	0.7	5.9
	D+L pooled	2.5	1.8	3.4
<hr/>				
Diabetes mellitus				
	Cao, J. et al.	2.4	0.9	5.9
	Chen, T. et al.	1.3	0.9	1.8
	Deng G. et al.	4.4	3.5	5.6
	Guan, W. et al.	3.9	2.2	7.2
	Li, Y. et al.	4.2	1.3	13.3
	The Novel Coronavirus Team	3.4	2.7	4.2
	Wang Dawei et al.	3.1	1.4	7.0
	Wang, L. et al.	1.1	0.6	1.9
	Wang, Y. et al.	1.3	0.9	1.7
	Wu, C. et al.	2.7	1.6	4.6
	Yan Y. et al.	1.7	1.4	2.1
	Yang, X. et al.	1.3	0.9	2.1
	Yao Q. et al.	1.9	0.3	11.8
	Yuan, M. et al.	4.5	1.9	10.6
	Zhang Y. et al.	3.9	0.4	39.3
	Zhou, F. et al.	2.0	1.3	3.1
	Nikpouraghdam M. et al.	1.2	0.7	2.2
	Tomlins J. et al.	2.9	1.3	6.6
	D+L pooled	2.2	1.7	2.9
<hr/>				
Diseases of liver				
	Guan, W. et al.	1.1	0.2	8.0
	Wang Dawei et al.	0.9	0.1	5.9
	Yao Q. et al.	4.8	1.1	21.5
	D+L pooled	1.9	0.6	6.4
<hr/>				
Diseases of the digestive system				
	Zhang Jixiang. et al.	0.8	0.1	6.1
	D+L pooled	0.8	0.1	6.1
<hr/>				
Endocrine diseases				
	Zhang Jixiang. et al.	1.2	0.4	3.9
	D+L pooled	1.2	0.4	3.9
<hr/>				
Hypertension				
	Cao, J. et al.	3.3	1.5	7.5
	Chen, T. et al.	1.8	1.4	2.3
	Deng G. et al.	4.5	3.7	5.4
	Fan J. et al.	1.1	0.2	6.4
	Guan, W. et al.	6.3	3.6	10.8
	Li, Y. et al.	2.9	0.6	14.9
	The Novel Coronavirus Team	2.9	2.5	3.4
	Wang Dawei et al.	3.5	1.6	7.6
	Wang, L. et al.	1.4	0.9	2.2
	Wang, Y. et al.	1.6	1.2	2.0
	Wu, C. et al.	2.4	1.4	3.9
	Yao Q. et al.	8.1	2.9	22.3
	Yuan, M. et al.	3.8	1.8	8.3
	Zhang Y. et al.	5.6	0.5	58.8
	Zhou, F. et al.	2.1	1.4	3.3
	Nikpouraghdam M. et al.	1.7	0.9	3.3
	Tomlins J. et al.	2.1	1.0	4.6
	D+L pooled	2.7	2.1	3.4

Myocardial infarction				
	Wu, C. et al.	2.4	1.1	5.1
	Yang, X. et al.	1.0	0.5	2.1
	Yuan, M. et al.	2.9	1.4	5.9
	Guo, T. et al.	6.7	3.7	12.0
	Shi, S. et al.	11.4	6.7	19.5
	D+L pooled	3.6	1.5	8.6
Other diseases or unspecified disease				
	Ruan, Q. et al.	1.6	1.1	2.4
	Tang, N. et al.	1.9	0.9	4.3
	D+L pooled	1.7	1.2	2.4
Other respiratory disease				
	Chen, T. et al.	1.5	1.0	2.3
	Deng G. et al.	3.4	2.4	4.9
	The Novel Coronavirus Team	2.8	2.0	3.9
	Yang, X. et al.	0.8	0.3	2.2
	Zhang Jixiang. et al.	3.0	1.2	7.7
	Cao, J. et al.	1.8	0.6	5.3
	Nikpouraghdam M. et al.	1.9	1.0	3.5
	D+L pooled	2.2	1.5	3.0

## 9. Meta-analysis of Epidemiologic Factors and hospitalisation

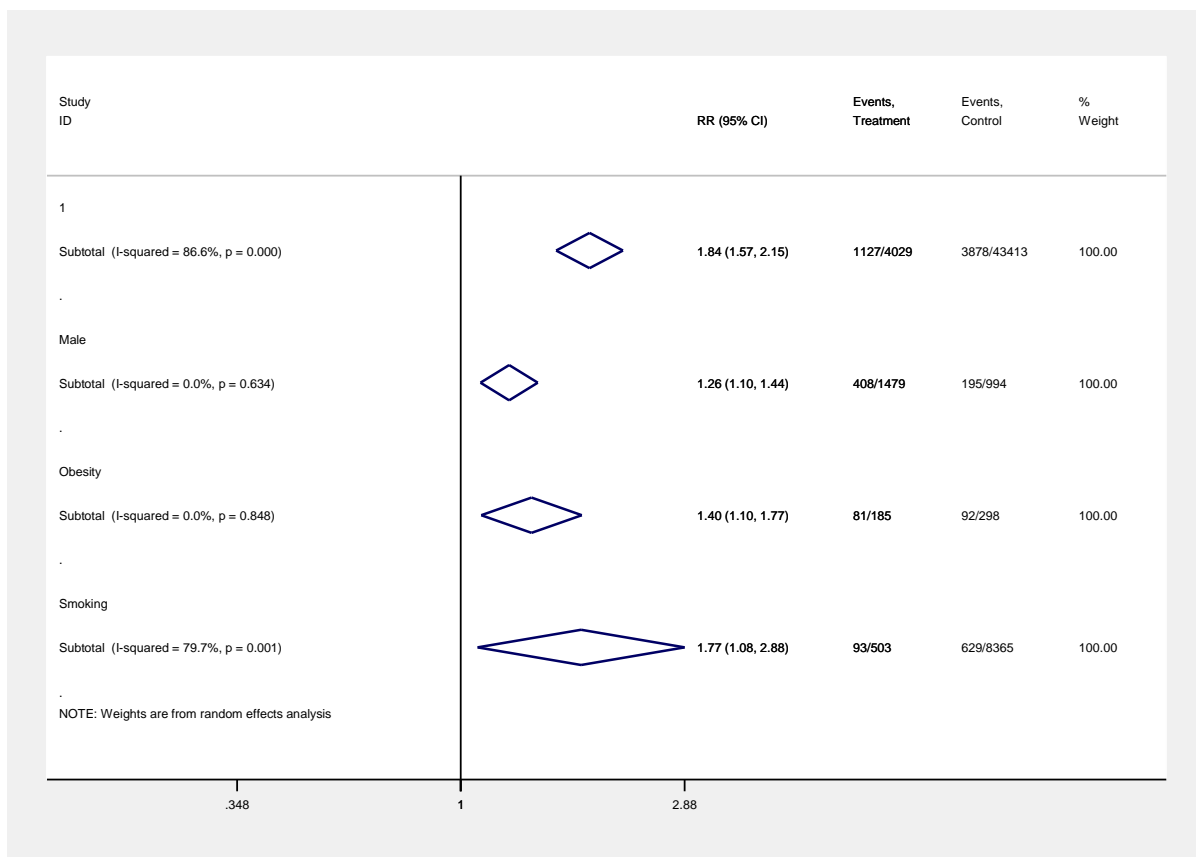


Epidemiologic Factor	Study	RR	[95% Conf. Interval]	
Health care workers	Li X. et al.	0.4	0.2	0.7

	Duanmu Y. et al.	0.8	0.3	2.2
	McMichael, T. et al.	0.1	0.0	0.3
	D+L pooled	0.3	0.1	0.9
<hr/>				
Male				
	Cai, Q. et al.	2.2	1.3	3.6
	Chen Q. et al.	1.0	0.6	1.6
	Chen, G. et al.	2.4	0.4	13.5
	Deng Q. et al.	1.3	0.9	1.7
	Feng, Y. et al.	1.4	1.0	2.0
	Ji D. et al.	1.8	1.0	3.4
	Ji Dong. et al.	1.8	1.0	3.3
	Li K. et al.	1.3	0.7	2.6
	Li X. et al.	1.3	1.1	1.5
	Li, Y. et al.	2.2	0.7	6.8
	Liu, J. et al.	1.9	0.8	4.7
	Liu, J. et al.	1.4	0.6	3.2
	Ma J. et al.	0.9	0.5	1.5
	Mao, L. et al.	1.5	1.1	2.0
	Qin, C. et al.	1.1	0.9	1.3
	Shi, Y. et al.	2.4	1.3	4.5
	Sun S. et al.	3.5	1.7	7.1
	Tian, S. et al.	1.4	0.8	2.3
	Wan, S. et al.	1.0	0.6	1.6
	Wang, X. et al.	1.5	1.0	2.2
	Wei X. et al.	1.3	1.0	1.7
	Wei YY. et al.	1.5	0.8	3.0
	Xie, H. et al.	1.4	0.8	2.7
	Xu, Y. et al.	0.8	0.3	2.2
	Yao Q. et al.	1.3	0.5	3.6
	Yu X. et al.	2.0	1.0	4.2
	Zhang G. et al.	1.8	1.1	3.0
	Zhang Jixiang. et al.	1.1	1.0	1.2
	Zhang Y. et al.	0.9	0.4	1.7
	Zhang, J. et al.	1.3	0.9	1.9
	Zhang, J. et al.	1.2	0.4	3.7
	Zhao X. et al.	0.8	0.4	1.3
	Zheng S. et al.	1.3	1.0	1.7
	Zheng, F. et al.	0.9	0.5	1.7
	Zhu, Z. et al.	2.3	0.9	5.9
	Zou Y. et al.	3.1	1.3	7.4
	D+L pooled	1.3	1.2	1.5
<hr/>				
Obesity				
	Zheng KI. et al.	4.0	1.0	15.6
	Duanmu Y. et al.	2.1	1.1	4.2
	D+L pooled	2.4	1.3	4.4
<hr/>				
Smoking				
	Chen Q. et al.	0.7	0.2	1.8
	Feng, Y. et al.	1.5	1.0	2.3
	Ji D. et al.	1.8	0.8	3.6
	Ji Dong. et al.	1.1	0.4	2.8
	Li X. et al.	1.2	1.0	1.4
	Li, Y. et al.	3.2	1.2	8.6

Liu, J. et al.	1.3	0.4	4.1
Liu, J. et al.	1.9	0.7	5.6
Liu, W. et al.	5.5	2.1	14.4
Qin, C. et al.	0.7	0.3	1.6
Shi, Y. et al.	1.6	0.7	3.4
Wan, S. et al.	0.4	0.1	2.3
Yu X. et al.	1.2	0.6	2.4
Zhang, J. et al.	1.1	0.5	2.3
Zou Y. et al.	1.7	0.5	6.6
Duanmu Y. et al.	3.7	2.0	6.8
CDC COVID-19 Team	1.8	1.5	2.3
D+L pooled	1.5	1.2	1.9

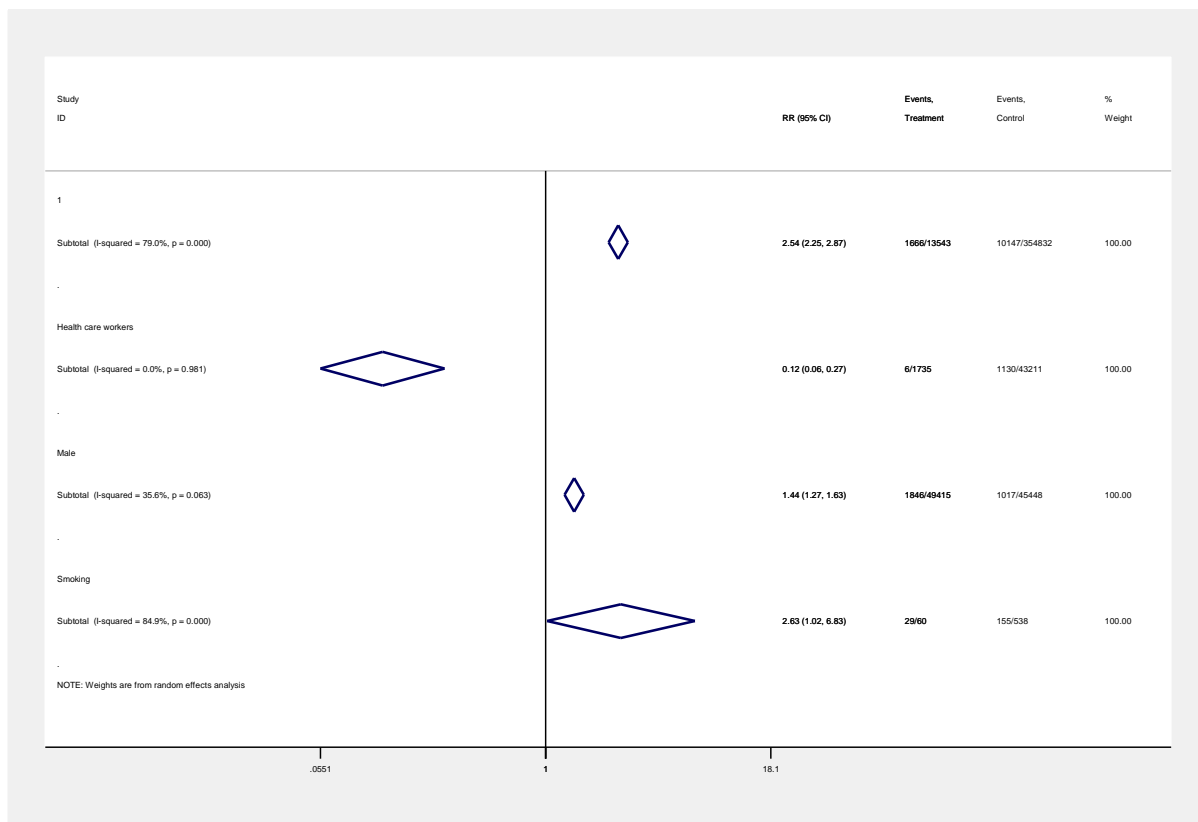
## 10. Meta-analysis of Epidemiologic Factors and ICU admission



Epidemiologic Factor	Study	RR	[95% Conf. Interval]	
Male	Du, R. et al.	1.135	0.725	1.778
	Guan, W. et al.	1.474	0.898	2.419
	Huang, C. et al.	2.017	0.529	7.693
	Lei, S. et al.	0.714	0.312	1.635
	Liu, Y. et al.	0.949	0.645	1.396
	Wang R. et al.	1.352	0.648	2.823
	Wang, D. et al.	1.32	0.739	2.358
	Wu, C. et al.	1.426	0.979	2.077
	Simonnet A. et al.	1.2	0.9	1.5
	Goyal, P. et al.	1.6	1.1	2.2

	Kalligeros M. et al.	1.2	0.8	2.0
	D+L pooled	1.3	1.1	1.4
<b>Obesity</b>				
	Goyal, P. et al.	1.4	1.0	1.8
	Kalligeros M. et al.	1.5	0.9	2.3
	D+L pooled	1.4	1.1	1.8
<b>Smoking</b>				
	Guan, W. et al.	2.9	1.8	4.8
	Wang R. et al.	2.6	1.3	5.3
	Goyal, P. et al.	0.9	0.5	1.8
	Kalligeros M. et al.	1.0	0.6	1.5
	CDC COVID-19 Team	2.4	1.8	3.3
	D+L pooled	1.8	1.1	2.9

## 11. Meta-analysis of Epidemiologic Factors and death



Epidemiologic Factor	Study	RR	[95% Conf. Interval]	
<b>Health care workers</b>				
	Chen, T. et al.	0.1	0.0	0.8
	The Novel Coronavirus Team	0.1	0.1	0.3
	D+L pooled	0.1	0.1	0.3
<b>Male</b>				
	Cao, J. et al.	1.8	0.8	4.5
	Chen, T. et al.	1.7	1.2	2.3
	Deng G. et al.	1.6	1.5	1.9
	Fan J. et al.	0.9	0.2	5.3
	Li, Y. et al.	4.3	0.6	33.5

	Tang, N. et al.	2.8	1.1	7.3
	The Novel Coronavirus Team	1.7	1.5	1.9
	Wang Dawei et al.	4.7	1.4	15.1
	Wang, L. et al.	1.6	1.0	2.4
	Wang, Y. et al.	1.2	0.9	1.5
	Wu, C. et al.	1.1	0.6	1.9
	Yang, X. et al.	0.9	0.6	1.4
	Yao Q. et al.	2.1	0.7	6.2
	Yuan, M. et al.	0.8	0.3	2.3
	Zhang Jixiang. et al.	1.6	0.7	3.5
	Zhang Y. et al.	0.7	0.1	7.5
	Zhou, F. et al.	1.4	0.9	2.4
	Nikpouraghdam M. et al.	1.2	0.9	1.6
	Tomlins J. et al.	0.9	0.4	1.9
	D+L pooled	1.4	1.3	1.6
<hr/>				
Smoking				
	Chen, T. et al.	1.2	0.8	1.7
	Li, Y. et al.	3.9	0.8	18.4
	Yao Q. et al.	8.7	3.7	20.1
	Zhou, F. et al.	1.7	0.8	3.3
	D+L pooled	2.6	1.0	6.8

## 12. References

1. Cai Q, Huang D, Ou P, Yu H, Zhu Z, Xia Z, et al. COVID-19 in a Designated Infectious Diseases Hospital Outside Hubei Province, China. *Allergy* [Internet]. 2020/04/03. 2020;00:1–11. Available from: <https://onlinelibrary.wiley.com/doi/epdf/10.1111/all.14309>
2. Cao J, Tu W, Cheng W, Yu L, Liu Y, Hu X, et al. Clinical Features and Short-term Outcomes of 102 Patients with Corona Virus Disease 2019 in Wuhan, China. *Clin Infect Dis* [Internet]. 2020; Available from: <https://academic.oup.com/cid/advance-article/doi/10.1093/cid/ciaa243/5814897>
3. CDC COVID-19 Response Team. Preliminary Estimates of the Prevalence of Selected Underlying Health Conditions Among Patients with Coronavirus Disease 2019 — United States, February 12–March 28, 2020. *MMWR Morb Mortal Wkly Rep*. 2020;69(13):382–386.
4. Chen G, Zhao J, Ning Q. Clinical and immunological features of severe and moderate coronavirus disease 2019. *J Clin Invest* [Internet]. 2020; Available from: <https://www.jci.org/articles/view/137244/pdf>
5. Chen Q, Zheng Z, Zhang C, Zhang X, Wu H, Wang J, et al. Clinical characteristics of 145 patients with corona virus disease 2019 (COVID-19) in Taizhou, Zhejiang, China. *Infection* [Internet]. 2020/04/29. 2020; Available from: <https://www.ncbi.nlm.nih.gov/pubmed/32342479>
6. Chen T, Wu D, Chen H, Yan W, Yang D, Chen G, et al. Clinical characteristics of 113 deceased patients with coronavirus disease 2019: retrospective study. *BMJ*. 2020;368.
7. Cheng Y, Luo R, Wang K, Zhang M, Wang Z, Dong L, et al. Kidney disease is associated with in-hospital death of patients with COVID-19. *Kidney Int* [Internet]. 2020/04/06. 2020; Available from: [https://www.kidney-international.org/article/S0085-2538\(20\)30255-6/fulltext](https://www.kidney-international.org/article/S0085-2538(20)30255-6/fulltext)
8. Deng G, Yin M, Chen X, Zeng F. Clinical determinants for fatality of 44,672 patients with COVID-19. *Crit Care* [Internet]. 2020/04/30. 2020;24(1):179. Available from: <https://www.ncbi.nlm.nih.gov/pubmed/32345311>
9. Deng Q, Hu B, Zhang Y, Wang H, Zhou X, Hu W, et al. Suspected myocardial injury in patients with COVID-19: Evidence from front-line clinical observation in Wuhan, China. *Int J Cardiol*



- [Internet]. 2020/04/16. 2020; Available from:  
<https://www.ncbi.nlm.nih.gov/pubmed/32291207>
10. Du R, Liu L, Yin W, Wang W, Guan L, Yuan M, et al. Hospitalization and Critical Care of 109 Decedents with COVID-19 Pneumonia in Wuhan, China. *Ann Am Thorac Soc* [Internet]. 2020; Available from: <https://www.atsjournals.org/doi/abs/10.1513/AnnalsATS.202003-225OC>
  11. Duanmu Y, Brown IP, Gibb WR, Singh J, Matheson LW, Blomkalns AL, et al. Characteristics of Emergency Department Patients With COVID-19 at a Single Site in Northern California: Clinical Observations and Public Health Implications. *Acad Emerg Med* [Internet]. 2020/04/29. 2020; Available from: <https://www.ncbi.nlm.nih.gov/pubmed/32344458>
  12. Fan J, Wang H, Ye G, Cao X, Xu X, Tan W, et al. Low-density lipoprotein is a potential predictor of poor prognosis in patients with coronavirus disease 2019. *Metabolism* [Internet]. 2020/04/23. 2020;154243. Available from: <https://www.ncbi.nlm.nih.gov/pubmed/32320740>
  13. Feng Y, Ling Y, Bai T, Xie Y, Huang J, Li J, et al. COVID-19 with Different Severity: A Multi-center Study of Clinical Features. *Am J Respir Crit Care Med* [Internet]. 2020/04/11. 2020; Available from: <https://www.ncbi.nlm.nih.gov/pubmed/32275452>
  14. Goyal P, Choi JJ, Pinheiro LC, Schenck EJ, Chen R, Jabri A, et al. Clinical Characteristics of Covid-19 in New York City. *N Engl J Med* [Internet]. 2020/04/18. 2020; Available from: <https://www.ncbi.nlm.nih.gov/pubmed/32302078>
  15. Guan W, Liang W, Zhao Y, Liang H, Chen Z, Li Y, et al. Comorbidity and its impact on 1590 patients with Covid-19 in China: A Nationwide Analysis. *Eur Respir J* [Internet]. 2020 Mar 26;2000547. Available from: <http://erj.ersjournals.com/lookup/doi/10.1183/13993003.00547-2020>
  16. Guan W, Ni Z, Hu Y, Liang W, Ou C, He J, et al. Clinical Characteristics of Coronavirus Disease 2019 in China. *N Engl J Med* [Internet]. 2020; Available from: <https://www.nejm.org/doi/full/10.1056/NEJMoa2002032>
  17. Guo T, Fan Y, Chen C, Wu X, Zhang L, He T, et al. Cardiovascular Implications of Fatal Outcomes of Patients With Coronavirus Disease 2019 (COVID-19). *JAMA Cardiol* [Internet]. 2020; Available from: <https://www.ncbi.nlm.nih.gov/pmc/articles/PMC7101506/>
  18. Huang C, Wang Y, Li X, Ren L, Zhao J, Hu Y, et al. Clinical features of patients infected with 2019 novel coronavirus in Wuhan, China. *Lancet* [Internet]. 2020;395:497–506. Available from: [https://www.thelancet.com/journals/lancet/article/PIIS0140-6736\(20\)30183-5/fulltext](https://www.thelancet.com/journals/lancet/article/PIIS0140-6736(20)30183-5/fulltext)
  19. Ji D, Zhang D, Xu J, Chen Z, Yang T, Zhao P, et al. Prediction for Progression Risk in Patients with COVID-19 Pneumonia: the CALL Score. *Clin Infect Dis* [Internet]. 2020/04/10. 2020; Available from: <https://www.ncbi.nlm.nih.gov/pubmed/32271369>
  20. Ji D, Qin E, Xu J, Zhang D, Cheng G, Wang Y, et al. Implication of non-alcoholic fatty liver diseases (NAFLD) in patients with COVID-19: a preliminary analysis. *J Hepatol* [Internet]. 2020/04/12. 2020; Available from: <https://www.ncbi.nlm.nih.gov/pubmed/32278005>
  21. Kalligeros M, Shehadeh F, Mylona EK, Benitez G, Beckwith CG, Chan PA, et al. Association of Obesity with Disease Severity among Patients with COVID-19. *Obes (Silver Spring)* [Internet]. 2020/05/01. 2020; Available from: <https://www.ncbi.nlm.nih.gov/pubmed/32352637>
  22. Lei S, Jiang F, Su W, Chen C, Chen J, Mei W, et al. Clinical characteristics and outcomes of patients undergoing surgeries during the incubation period of COVID-19 infection. *EclinicalMedicine* [Internet]. 2020/04/16. 2020;100331. Available from: <https://www.ncbi.nlm.nih.gov/pubmed/32292899>
  23. Li K, Wu J, Wu F, Guo D, Chen L, Fang Z, et al. The Clinical and Chest CT Features Associated with Severe and Critical COVID-19 Pneumonia. *Invest Radiol* [Internet]. 2020/03/03. 2020; Available from: <https://www.ncbi.nlm.nih.gov/pubmed/32118615>
  24. Li X, Xu S, Yu M, Wang K, Tao Y, Zhou Y, et al. Risk factors for severity and mortality in adult COVID-19 inpatients in Wuhan. *J Allergy Clin Immunol* [Internet]. 2020/04/16. 2020; Available from: <https://www.ncbi.nlm.nih.gov/pubmed/32294485>
  25. Li Y, Peng S, Li L, Wang Q, Ping W, Zhang N, et al. Clinical and Transmission Characteristics of Covid-19 - A Retrospective Study of 25 Cases From a Single Thoracic Surgery Department .

- Curr Med Sci [Internet]. 2020; Available from: [https://pubmed.ncbi.nlm.nih.gov/32232652/?from\\_term=covid+19+and+cases&from\\_sort=date&from\\_pos=3](https://pubmed.ncbi.nlm.nih.gov/32232652/?from_term=covid+19+and+cases&from_sort=date&from_pos=3)
26. Liang W, Guan W, Chen R, Wang W, Li J, Xu K, et al. Cancer patients in SARS-CoV-2 infection: a nationwide analysis in China. *Lancet Oncol* [Internet]. 2020/02/19. 2020;21(3):335–7. Available from: <https://www.ncbi.nlm.nih.gov/pubmed/32066541>
  27. Liu J, Li S, Liu J, Liang B, Wang X, Wang H, et al. Longitudinal characteristics of lymphocyte responses and cytokine profiles in the peripheral blood of SARS-CoV-2 infected patients [Internet]. *EBioMedicine*. 2020. Available from: <https://www.medrxiv.org/content/10.1101/2020.02.16.20023671v2>
  28. Liu J, Liu Y, Xiang P, Pu L, Xiong H, Li C, et al. Neutrophil-to-Lymphocyte Ratio Predicts Severe Illness Patients with 2019 Novel Coronavirus in the Early Stage [Internet]. *medRxiv*. 2020. Available from: <https://www.medrxiv.org/content/10.1101/2020.02.10.20021584v1>
  29. Liu W, Tao Z, Wang L, Yuan M, Liu K, Zhou L, et al. Analysis of factors associated with disease outcomes in hospitalized patients with 2019 novel coronavirus disease. *Chin Med J (Engl)*. 2020;
  30. Liu Y, Sun W, Li J, Chen L, Wang Y, Zhang L, et al. Clinical features and progression of acute respiratory distress syndrome in coronavirus disease 2019 [Internet]. *medRxiv*. 2020. Available from: <https://www.medrxiv.org/content/10.1101/2020.02.17.20024166v3>
  31. Ma J, Yin J, Qian Y, Wu Y. Clinical Characteristics and Prognosis in Cancer Patients with COVID-19: a Single Center’s Retrospective Study. *J Infect* [Internet]. 2020/04/17. 2020; Available from: <https://www.ncbi.nlm.nih.gov/pubmed/32298677>
  32. Mao L, Jin H, Wang M, Hu Y, Chen S, He Q, et al. Neurologic Manifestations of Hospitalized Patients With Coronavirus Disease 2019 in Wuhan, China. *JAMA Neurol* [Internet]. 2020/04/11. 2020; Available from: <https://www.ncbi.nlm.nih.gov/pubmed/32275288>
  33. McMichael T, Currie D, Clark S, Pogojans S, Kay M, Schwartz N, et al. Epidemiology of Covid-19 in a Long-Term Care Facility in King County, Washington. *new engl J Med*. 2020;
  34. Nikpouraghdam M, Jalali Farahani A, Alishiri G, Heydari S, Ebrahimnia M, Samadinia H, et al. Epidemiological characteristics of coronavirus disease 2019 (COVID-19) patients in IRAN: A single center study. *J Clin Virol* [Internet]. 2020/05/01. 2020;127:104378. Available from: <https://www.ncbi.nlm.nih.gov/pubmed/32353762>
  35. Qin C, Zhou L, Hu Z, Zhang S, Yang S, Tao Y, et al. Dysregulation of immune response in patients with COVID-19 in Wuhan, China. *Clin Infect Dis*. 2020;
  36. Ruan Q, Yang K, Wang W, Jiang L, Song J. Clinical predictors of mortality due to COVID-19 based on an analysis of data of 150 patients from Wuhan, China. *Intensive Care Med* [Internet]. 2020/03/04. 2020; Available from: <https://www.ncbi.nlm.nih.gov/pubmed/32125452>
  37. Shi S, Qin M, Shen B, Cai Y, Liu T, Yang F, et al. Association of Cardiac Injury With Mortality in Hospitalized Patients With COVID-19 in Wuhan, China. *JAMA Cardiol*. 2020/03/27. 2020;
  38. Shi Y, Yu X, Zhao H, Wang H, Zhao R, Sheng J. Host susceptibility to severe COVID-19 and establishment of a host risk score: findings of 487 cases outside Wuhan. *Crit Care*. 2020;24.
  39. Simonnet A, Chetboun M, Poissy J, Raverdy V, Noulette J, Duhamel A, et al. High prevalence of obesity in severe acute respiratory syndrome coronavirus-2 (SARS-CoV-2) requiring invasive mechanical ventilation. *Obes (Silver Spring)* [Internet]. 2020/04/10. 2020; Available from: <https://www.ncbi.nlm.nih.gov/pubmed/32271993>
  40. Sun S, Cai X, Wang H, He G, Lin Y, Lu B, et al. Abnormalities of peripheral blood system in patients with COVID-19 in Wenzhou, China. *Clin Chim Acta* [Internet]. 2020/04/28. 2020;507:174–80. Available from: <https://www.ncbi.nlm.nih.gov/pubmed/32339487>
  41. Tang N, Li D, Wang X, Sun Z. Abnormal coagulation parameters are associated with poor prognosis in patients with novel coronavirus pneumonia. *J Thromb Haemost* [Internet]. 2020;18:844–847. Available from: <https://onlinelibrary.wiley.com/doi/10.1111/jth.14768>
  42. Novel Coronavirus Pneumonia Emergency Response Epidemiology Team. The epidemiological

- characteristics of an outbreak of 2019 novel coronavirus diseases (COVID-19) - China, 2020. *China CDC Wkly* [Internet]. 2020/02/18. 2020;2. Available from: <https://www.ncbi.nlm.nih.gov/pubmed/32064853>
43. Tian S, Hu N, Lou J, Chen K, Kang X, Xiang Z, et al. Characteristics of COVID-19 infection in Beijing. *J Infect* [Internet]. 2020/03/01. 2020; Available from: <https://www.ncbi.nlm.nih.gov/pubmed/32112886>
  44. Tomlins J, Hamilton F, Gunning S, Sheehy C, Moran E, Macgowan A. Clinical features of 95 sequential hospitalised patients with novel coronavirus 2019 disease (COVID-19), the first UK cohort. *J Infect* [Internet]. 2020/05/01. 2020; Available from: <https://www.ncbi.nlm.nih.gov/pubmed/32353384>
  45. Wan S, Xiang Y, Fang W, Zheng Y, Li B, Hu Y, et al. Clinical features and treatment of COVID-19 patients in northeast Chongqing. *J Med Virol* [Internet]. 2020;1–10. Available from: <https://onlinelibrary.wiley.com/doi/full/10.1002/jmv.25783>
  46. Wang D, Yin Y, Hu C, Liu X, Zhang X, Zhou S, et al. Clinical course and outcome of 107 patients infected with the novel coronavirus, SARS-CoV-2, discharged from two hospitals in Wuhan, China. *Crit Care* [Internet]. 2020/05/02. 2020;24(1):188. Available from: <https://www.ncbi.nlm.nih.gov/pubmed/32354360>
  47. Wang D, Hu B, Hu C, Zhu F, Liu X, Zhang J, et al. Clinical Characteristics of 138 Hospitalized Patients With 2019 Novel Coronavirus–Infected Pneumonia in Wuhan, China. *JAMA* [Internet]. 2020 Mar 17;323(11):1061. Available from: <https://jamanetwork.com/journals/jama/fullarticle/2761044>
  48. Wang L, He W, Yu X, Hu D, Bao M, Liu H, et al. Coronavirus Disease 2019 in elderly patients: characteristics and prognostic factors based on 4-week follow-up. *J Infect* [Internet]. 2020/04/03. 2020; Available from: <https://www.sciencedirect.com/science/article/pii/S0163445320301468>
  49. Wang R, Pan M, Zhang X, Fan X, Han M, Zhao F, et al. Epidemiological and clinical features of 125 Hospitalized Patients with COVID-19 in Fuyang, Anhui, China. *Int J Infect Dis* [Internet]. 2020/04/15. 2020; Available from: <https://www.sciencedirect.com/science/article/pii/S1201971220302034>
  50. Wang X, Fang J, Zhu Y, Chen L, Ding F, Zhou R, et al. Clinical characteristics of non-critically ill patients with novel coronavirus infection (COVID-19) in a Fangcang Hospital. *Clin Microbiol Infect* [Internet]. 2020/04/07. 2020; Available from: [https://www.clinicalmicrobiologyandinfection.com/article/S1198-743X\(20\)30177-4/fulltext](https://www.clinicalmicrobiologyandinfection.com/article/S1198-743X(20)30177-4/fulltext)
  51. Wang Y, Lu X, Chen H, Chen T, Su N, Huang F, et al. Clinical Course and Outcomes of 344 Intensive Care Patients with COVID-19 [Internet]. *American Journal of Respiratory and Critical Care Medicine*. 2020. Available from: <https://www.atsjournals.org/doi/10.1164/rccm.202003-0736LE>
  52. Wei X, Su J, Yang K, Wei J, Wan H, Cao X, et al. Elevations of serum cancer biomarkers correlate with severity of COVID-19. *J Med Virol* [Internet]. 2020/04/30. 2020; Available from: <https://www.ncbi.nlm.nih.gov/pubmed/32347972>
  53. Wei YY, Wang RR, Zhang DW, Tu YH, Chen CS, Ji S, et al. Risk factors for severe COVID-19: evidence from 167 hospitalized patients in Anhui, China. *J Infect* [Internet]. 2020/04/20. 2020; Available from: <https://www.ncbi.nlm.nih.gov/pubmed/32305487>
  54. Williamson E., Walker AJ., Bhaskaran KJ., Bacon S., Bates C., Morton CE., et al. OpenSAFELY: factors associated with COVID-19-related hospital death in the linked electronic health records of 17 million adult NHS patients [Internet]. *Laboratory CSH*, editor. 2020. Available from: <https://www.phc.ox.ac.uk/publications/1103408>
  55. Wu C, Chen X, Cai Y, Xia J, Zhou X, Xu S, et al. Risk Factors Associated With Acute Respiratory Distress Syndrome and Death in Patients With Coronavirus Disease 2019 Pneumonia in Wuhan, China. *JAMA Intern Med*. 2020;
  56. Xiao G, Hu H, Wu F, Sha T, Huang Q, Li H, et al. Acute kidney injury in patients hospitalized with COVID-19 in Wuhan, China: A single-center retrospective observational study [Internet].

- medRxiv. 2020. Available from:  
<https://www.medrxiv.org/content/10.1101/2020.04.06.20055194v1>
57. Xie H, Zhao J, Lian N, Lin S, Xie Q, Zhuo H. Clinical characteristics of Non-ICU hospitalized patients with coronavirus disease 2019 and liver injury : A Retrospective study [Internet]. *Liver International*. 2020. Available from:  
<https://onlinelibrary.wiley.com/doi/abs/10.1111/liv.14449>
  58. Xu Y, Dong J, An W, Lv X, Yin X, Zhang J, et al. Clinical and computed tomographic imaging features of novel coronavirus pneumonia caused by SARS-CoV-2. *J Infect* [Internet]. 2020; Available from: <https://pubmed.ncbi.nlm.nih.gov/32109443/>
  59. Yan Y, Yang Y, Wang F, Ren H, Zhang S, Shi X, et al. Clinical characteristics and outcomes of patients with severe covid-19 with diabetes. *BMJ Open Diab Res Care* [Internet]. 2020;8:e001343. Available from: <https://drc.bmj.com/content/bmjdr/8/1/e001343.full.pdf>
  60. Yang X, Yu Y, Xu J, Shu H, Xia J, Liu H, et al. Clinical course and outcomes of critically ill patients with SARS-CoV-2 pneumonia in Wuhan, China: a single-centered, retrospective, observational study. *Lancet Respir Med* [Internet]. 2020/02/28. 2020; Available from:  
<https://www.ncbi.nlm.nih.gov/pubmed/32105632>
  61. Yao Q, Wang P, Wang X, Qie G, Meng M, Tong X, et al. Retrospective study of risk factors for severe SARS-Cov-2 infections in hospitalized adult patients. *Pol Arch Intern Med* [Internet]. 2020/04/25. 2020; Available from: <https://www.ncbi.nlm.nih.gov/pubmed/32329978>
  62. Yu X, Sun S, Shi Y, Wang H, Zhao R, Sheng J. SARS-CoV-2 viral load in sputum correlates with risk of COVID-19 progression. *Crit Care* [Internet]. 2020/04/25. 2020;24(1):170. Available from: <https://www.ncbi.nlm.nih.gov/pubmed/32326952>
  63. Yuan M, Yin W, Tao Z, Tan W, Hu Y. Association of radiologic findings with mortality of patients infected with 2019 novel coronavirus in Wuhan, China. *PLoS One*. 2020;15:1–10.
  64. Zhang G, Hu C, Luo L, Fang F, Chen Y, Li J, et al. Clinical features and short-term outcomes of 221 patients with COVID-19 in Wuhan, China. *J Clin Virol* [Internet]. 2020/04/21. 2020;127:104364. Available from: <https://www.ncbi.nlm.nih.gov/pubmed/32311650>
  65. Zhang J, Liu P, Wang M, Wang J, Chen J, Yuan W, et al. The clinical data from 19 critically ill patients with coronavirus disease 2019: a single-centered, retrospective, observational study. *Z Gesundh Wiss* [Internet]. 2020/04/23. 2020;1–4. Available from:  
<https://www.ncbi.nlm.nih.gov/pubmed/32318325>
  66. Zhang J, Wang X, Jia X, Li J, Hu K, Chen G, et al. Risk factors for disease severity, unimprovement, and mortality of COVID-19 patients in Wuhan, China. *Clin Microbiol Infect* [Internet]. 2020/04/19. 2020; Available from:  
<https://www.ncbi.nlm.nih.gov/pubmed/32304745>
  67. Zhang J, Dong X, Cao Y, Yuan Y, Yang Y, Yan Y, et al. Clinical characteristics of 140 patients infected with SARS-CoV-2 in Wuhan, China. *Allergy* [Internet]. 2020 Feb 27;00:all.14238. Available from: <https://onlinelibrary.wiley.com/doi/abs/10.1111/all.14238>
  68. Zhang Y, Qin L, Zhao Y, Zhang P, Xu B, Li K, et al. Interferon-induced transmembrane protein-3 genetic variant rs12252-C is associated with disease severity in COVID-19. *J Infect Dis* [Internet]. 2020/04/30. 2020; Available from:  
<https://www.ncbi.nlm.nih.gov/pubmed/32348495>
  69. Zhao XY, Xu XX, Yin HS, Hu QM, Xiong T, Tang YY, et al. Clinical characteristics of patients with 2019 coronavirus disease in a non-Wuhan area of Hubei Province, China: a retrospective study. *BMC Infect Dis* [Internet]. 2020/04/30. 2020;20(1):311. Available from:  
<https://www.ncbi.nlm.nih.gov/pubmed/32345226>
  70. Zheng KI, Gao F, Wang XB, Sun QF, Pan KH, Wang TY, et al. Obesity as a risk factor for greater severity of COVID-19 in patients with metabolic associated fatty liver disease. *Metabolism* [Internet]. 2020/04/23. 2020;154244. Available from:  
<https://www.ncbi.nlm.nih.gov/pubmed/32320741>
  71. Zheng S, Fan J, Yu F, Feng B, Lou B, Zou Q, et al. Viral load dynamics and disease severity in patients infected with SARS-CoV-2 in Zhejiang province, China, January-March 2020:

- retrospective cohort study. *BMJ* [Internet]. 2020/04/23. 2020;369:m1443. Available from: <https://www.ncbi.nlm.nih.gov/pubmed/32317267>
72. Zheng F, Tang W, Li H, Huang YX, Xie YL, Zhou ZG. Clinical characteristics of 161 cases of corona virus disease 2019 (COVID-19) in Changsha. *Eur Rev Med Pharmacol Sci* [Internet]. 2020/04/10. 2020;24(6):3404–10. Available from: <https://www.ncbi.nlm.nih.gov/pubmed/32271459>
  73. Zhou F, Yu T, Du R, Fan G, Liu Y, Liu Z, et al. Clinical course and risk factors for mortality of adult inpatients with COVID-19 in Wuhan, China: a retrospective cohort study. *Lancet* [Internet]. 2020; Available from: [https://www.thelancet.com/pdfs/journals/lancet/PIIS0140-6736\(20\)30566-3.pdf](https://www.thelancet.com/pdfs/journals/lancet/PIIS0140-6736(20)30566-3.pdf)
  74. Zhu Z, Cai T, Fan L, Lou K, Hua X, Huang Z, et al. Clinical value of immune-inflammatory parameters to assess the severity of coronavirus disease 2019. *Int J Infect Dis* [Internet]. 2020/04/26. 2020; Available from: <https://www.ncbi.nlm.nih.gov/pubmed/32334118>
  75. Zou Y, Guo H, Zhang Y, Zhang Z, Liu Y, Wang J, et al. Analysis of coagulation parameters in patients with COVID-19 in Shanghai, China. *Biosci Trends* [Internet]. 2020/05/01. 2020; Available from: <https://www.ncbi.nlm.nih.gov/pubmed/32350161>
  76. Couper K, Taylor-Phillips S, Grove A, Freeman K, Osokogu O, Court R, et al. COVID-19 in cardiac arrest and infection risk to rescuers: a systematic review. *Resuscitation* [Internet]. 2020/04/24. 2020; Available from: <https://www.ncbi.nlm.nih.gov/pubmed/32325096>
  77. Hu Y, Sun J, Dai Z, Deng H, Li X, Huang Q, et al. Prevalence and severity of corona virus disease 2019 (COVID-19): A systematic review and meta-analysis. *J Clin Virol* [Internet]. 2020/04/22. 2020;127:104371. Available from: <https://www.ncbi.nlm.nih.gov/pubmed/32315817>
  78. Nasiri M, Haddadi S, Tahvildari A, al. et. COVID-19 clinical characteristics, and sex-specific risk of mortality: Systematic Review and Meta-analysis [Internet]. *medRxiv*, editor. 2020. Available from: <https://www.medrxiv.org/content/10.1101/2020.03.24.20042903v1.full.pdf>
  79. Xu L, Mao Y, Chen G. Risk factors for severe corona virus disease 2019 (COVID-19) patients : a systematic review and meta analysis [Internet]. *medRxiv*, editor. 2020. Available from: <https://www.medrxiv.org/content/10.1101/2020.03.30.20047415v1.full.pdf>
  80. Zhao Q, Meng M, Kumar R, Wu Y, Huang J, Lian N, et al. The impact of COPD and smoking history on the severity of Covid-19: A systemic review and meta-analysis. *J Med Virol* [Internet]. 2020/04/16. 2020; Available from: <https://www.ncbi.nlm.nih.gov/pubmed/32293753>
  81. Zheng Z, Peng F, Xu B, Zhao J, Liu H, Peng J, et al. Risk factors of critical & mortal COVID-19 cases: A systematic literature review and meta-analysis. *J Infect* [Internet]. 2020; Available from: <https://www.ncbi.nlm.nih.gov/pmc/articles/PMC7177098/>
  82. Zuin M, Rigatelli G, Zuliani G, Rigatelli A, Mazza A, Roncon L. Arterial hypertension and risk of death in patients with COVID-19 infection: systematic review and meta-analysis. *J Infect* [Internet]. 2020/04/14. 2020; Available from: <https://www.ncbi.nlm.nih.gov/pubmed/32283158>
  83. Li B, Yang J, Zhao F, Zhi L, Wang X, Liu L, et al. Prevalence and impact of cardiovascular metabolic diseases on COVID-19 in China. *Clin Res Cardiol* [Internet]. 2020/03/13. 2020; Available from: <https://www.ncbi.nlm.nih.gov/pubmed/32161990>
  84. Matsushita K, Ding N, Kou M, Hu X, Chen M, Gao Y, et al. The relationship of COVID-19 severity with cardiovascular disease and its traditional risk factors: A systematic review and meta-analysis [Internet]. *medRxiv*, editor. 2020. Available from: <https://www.medrxiv.org/content/10.1101/2020.04.05.20054155v1>
  85. Aggarwal G, Lippi G, Michael Henry B. Cerebrovascular disease is associated with an increased disease severity in patients with Coronavirus Disease 2019 (COVID-19): A pooled analysis of published literature. *Int J Stroke* [Internet]. 2020/04/21. 2020;1747493020921664. Available from: <https://www.ncbi.nlm.nih.gov/pubmed/32310015>
  86. Li JW, Han TW, Woodward M, Anderson CS, Zhou H, Chen YD, et al. The impact of 2019 novel coronavirus on heart injury: A systemic review and Meta-analysis. *Prog Cardiovasc Dis*

- [Internet]. 2020/04/20. 2020; Available from:  
<https://www.ncbi.nlm.nih.gov/pubmed/32305557>
87. Santoso A, Pranata R, Wibowo A, Al-Farabi MJ, Huang I, Antariksa B. Cardiac injury is associated with mortality and critically ill pneumonia in COVID-19: A meta-analysis. *Am J Emerg Med* [Internet]. 2020/04/26. 2020; Available from:  
<https://www.ncbi.nlm.nih.gov/pubmed/32331955>
88. Huang I, Lim M, Pranata R. Diabetes mellitus is associated with increased mortality and severity of disease in COVID-19 pneumonia - A systematic review, meta-analysis, and meta-regression. *Diabetes Metab Syndr* [Internet]. 2020;14(4):395–403. Available from:  
<https://www.ncbi.nlm.nih.gov/pubmed/32334395>