

## Supplementary appendix

### Covid-19 serology in nephrology health care workers

\*Thomas Reiter, MD,<sup>1</sup>, \*Sahra Pajenda, MD,<sup>1</sup>, Ludwig Wagner, MD,<sup>1</sup>,  
Martina Gaggl, MD,<sup>1</sup>, Johanna Atamaniuk, MD,<sup>2</sup>, Barbara Holzer, PhD,<sup>3</sup>,  
Irene Zimpernik, DVM, PhD,<sup>3</sup>, Daniela Gerges, MD,<sup>1</sup>, Katharina Mayer, MD,<sup>1</sup>,  
Christof Aigner, MD,<sup>1</sup>, Robert Strauß, MD,<sup>4</sup>, Sonja Jansen-Skoupy, MD,<sup>2</sup>,  
Manuela Födinger, MD,<sup>2,5</sup>, Gere Sunder-Plassmann, MD,<sup>1</sup>, Alice Schmidt, MD,<sup>1</sup>

<sup>1</sup> Division of Nephrology and Dialysis, Department of Medicine III,  
Medical University of Vienna, Austria

<sup>2</sup> Institute of Laboratory Diagnostics, Clinic Favoriten,  
Vienna Health Care Group, Vienna, Austria

<sup>3</sup> Austrian Agency for Health and Food Safety Ltd., Vienna, Austria

<sup>4</sup> Department of Laboratory Medicine, Division of Clinical Virology,  
Medical University of Vienna, Austria

<sup>5</sup> Medical School, Sigmund Freud Private University, Vienna, Austria

\* Both authors contributed equally to this work.

Corresponding author:  
Gere Sunder-Plassmann, MD  
Division of Nephrology and Dialysis  
Department of Medicine III  
Medical University of Vienna, Austria  
Währinger Gürtel 18-20  
1090 Vienna, Austria

phone: +43-1-40400-42170  
fax: +43-1-40400-43470  
mail: [gere.sunder-plassmann@meduniwien.ac.at](mailto:gere.sunder-plassmann@meduniwien.ac.at)

## **Abstract**

**Background:** Chronic kidney disease patients show a high mortality in case of a SARS-CoV-2 infection. Thus, to be informed on Nephrology personnel's sero-status might be crucial for patient protection. However, limited information exists about the presence of SARS-CoV-2 antibodies in asymptomatic individuals.

**Methods:** We examined the seroprevalence of SARS-CoV-2 IgG and IgM antibodies among health care workers of a tertiary care kidney center during the peak phase of the Covid-19 crisis in Austria using an orthogonal test strategy and a total of 12 commercial nucleocapsid protein or spike glycoprotein based assays as well as Western blotting and a neutralization assay.

**Results:** At baseline 60 of 235 study participants (25.5%, 95% CI: 20.4-31.5) were judged to be borderline positive or positive for IgM or IgG using a high sensitivity/low specificity threshold in one test system. Follow-up analysis after about two weeks revealed IgG positivity in 12 (5.1%, 95% CI: 2.9-8.8) and IgM positivity in six (2.6%, 95% CI: 1.1-5.6) in at least one assay. 2.1% (95% CI: 0.8-5.0) of health care workers showed IgG nucleocapsid antibodies in at least two assays. By contrast, positive controls with proven Covid-19 showed antibody positivity among almost all test systems. Moreover, serum samples obtained from health care workers did not show SARS-CoV-2 neutralizing capacity, in contrast to positive controls.

**Conclusions:** Using a broad spectrum of antibody tests the present study revealed inconsistent results for SARS-CoV-2 seroprevalence among asymptomatic individuals, while this was not the case among Covid-19 patients.

**Trial registration number:** CONEC, ClinicalTrials.gov number NCT04347694

## Table of contents

<b>Supplementary methods</b>	<b>3</b>
<b>Supplementary results</b>	<b>6</b>
<b>Case vignettes. SARS-CoV-2 RT-PCR positive Covid-19 patients.</b>	<b>8</b>

## Supplementary Figures and Tables

<b>Figure S1.</b> Points of care at the Division of Nephrology and Dialysis, Department of Medicine III, Medical University of Vienna, Austria.	9
<b>Figure S2.</b> Disposition of participants.	10
<b>Figure S3.</b> Nucleocapsid protein immunoblotting for presence of SARS-CoV-2 IgG antibodies in serum.	11
<b>Figure S4.</b> Spike glycoprotein immunoblotting for presence of SARS-CoV-2 IgG antibodies in serum.	12
<b>Figure S5.</b> Number of SARS-CoV-2 antibody positive subjects at follow-up by profession.	13
<b>Figure S6.</b> Number of Covid-19 cases in Austria.	14
<b>Figure S7.</b> Containment measures, mandated by the federal government of Austria.	15
<b>Figure S8.</b> Containment measures in Vienna and at the Medical University of Vienna.	16
<b>Table S1.</b> Details of commercial laboratory tests used for follow-up confirmation of all 60 participants who tested borderline positive or positive for SARS-CoV-2 antibodies at baseline.	17
<b>Table S2.</b> Detailed IgM and IgA antibody test results at baseline and follow-up of all 18 subjects with a positive antibody test at follow-up, and of five Covid-19 patients.	18
<b>Table S3.</b> Detailed IgG antibody and total antibody test results at baseline and at follow-up of 18 subjects with a positive antibody test at follow-up, and of five Covid-19 patients.	19

## Supplementary methods

### Commercial SARS-CoV-2 antibody tests

We used the following enzyme-linked immunosorbent assays (ELISA), chemiluminescence immunoassay (CLIA), and electrochemiluminescence immunoassay (ECLIA), for all follow-up analyses: SARS-CoV-2 nucleocapsid protein (NP) ELISA, IgG class antibodies (ImmunoDiagnostics, Hongkong); SARS-CoV-2 nucleocapsid protein (NP) ELISA, IgM class antibodies (ImmunoDiagnostics, Hongkong); EDI Novel Coronavirus COVID-19 IgG ELISA kit (Epitope Diagnostics Inc., San Diego, CA); EDI Novel Coronavirus COVID-19 IgM ELISA kit (Epitope Diagnostics Inc., San Diego, CA); Anti-SARS-CoV-2-ELISA IgG (Euroimmun Medizinische Labordiagnostika AG, Lübeck, Germany); Anti-SARS-CoV-2-ELISA IgA (Euroimmun Medizinische Labordiagnostika AG, Lübeck, Germany); Wantai SARS-CoV-2 total antibody ELISA (Beijing Wantai Biological Pharmacy Enterprise Co., Ltd., Beijing, China); Wantai SARS-CoV-2 IgM ELISA (Beijing Wantai Biological Pharmacy Enterprise Co., Ltd., Beijing, China); Liaison SARS-CoV-2 S1/S2 IgG CLIA (DiaSorin S.p.A, Saluggia, Italy); Elecsys Anti-SARS-CoV-2 ECLIA (Roche Diagnostics Deutschland G.m.b.H, Mannheim, Germany). Technical details of these tests are indicated in **Supplementary Table S1**.

In subjects with IgG antibodies at follow-up and for Covid-19 control samples we also used two additional ELISAs: COVID-19 ELISA IgG testkit (Vircell, Granada, Spain; nucleocapsid protein and spike glycoprotein antigen) and the ID Screen<sup>®</sup> SARS-CoV-2-N IgG Indirect ELISA (IDvet, Grabels, France; nucleocapsid protein antigen).

### Western blotting

One µg of the SARS-CoV-2 virus nuclear capsid protein purchased from Prospec-Tany Technogene Ltd. (Ness-Ziona, Israel) or of the SARS-CoV-2 spike glycoprotein (a kind gift of F. Krammer and R. Grabherr) was loaded onto a flat comb SDS-PAGE gel (BioRad Hercules, CA) and run under reducing conditions using tris-glycine-SDS buffer. The gel was blotted by semi-dry blotting on nitrocellulose. After blocking the filter with Roche blocking buffer (Merck KGaA, Darmstadt, Germany) at room temperature for 30 minutes, the filter was put into the MilliBlot-MP membrane processor (Merck KGaA, Darmstadt, Germany) and 230µl of patient serum diluted 1:100 was applied to each lane. Incubation was performed at room temperature (2.5 h) with continuous shaking. After two short washes with TPBS through the injection port of the MilliBlot device, the filter was removed into an incubation tray and

washed further with TPBS (2x10 min). To detect the binding of SARS-CoV-2 nuclear capsid protein-specific IgG antibodies, the filter was incubated with HRP-conjugated anti-human IgG immunoglobulin (1:4000 in PBS) for 60 min at room temperature. After two washing steps of 10 min each with TPBS, the signal was developed with Roche chemiluminescent reagent (Merck KGaA, Darmstadt, Germany) and recorded with the Fusion FX Vilber Lourmat (Vilber, Eberhardzell, Germany). Images were further processed with Adobe Photoshop version 6 (Adobe, San Jose, CA).

### **SARS-CoV-2 neutralization assay**

The virus used for the serum neutralization assay was passaged and expanded twice before titration by TCID<sub>50</sub> on Vero 76 clone E6 cells (CCLV-RIE929, Friedrich-Loeffler-Institute, Riems, Germany) after its initial isolation from a clinical sample (nasopharyngeal swab, sampled in mid-March 2020 from a 25-year old male patient in Lower Austria; the isolate was submitted for next generation sequencing, full length sequence pending). The neutralization assay was set up in flat-bottom 96-well tissue culture plates. Human sera were heat-treated for 30 min at 56°C and 1 in 10 diluted in serum-free HEPES medium (Cell culture service, AGES, Mödling, Austria) as starting point for the assay. The two-fold serially diluted sera were incubated with an equal volume of 50 µl SARS-CoV-2 at a minimum of 2000 TCID<sub>50</sub>/ml for 90 min at 37°C. Afterwards, 25,000 Vero 76 clone E6 cells were added to each well to the serum/virus mixture in a volume of 100 µl in Eagle's minimum essential medium supplemented with 10% FBS and incubated for 4 days at 37°C, 5% CO<sub>2</sub> in a humidified incubator. The cytopathic effect (CPE) in every well was scored under an inverted optical microscope and the reciprocal of the highest serum dilution that protected more than 50% of cells from CPE was taken as the neutralizing titer.

### **Detection of SARS-CoV-2**

We used the Roche Cobas® SARS-CoV-2 PCR test on the Roche® Cobas 6800 platform (Roche Diagnostics Deutschland GmbH, Mannheim, Germany) for the detection of SARS-CoV-2 RNA in nasopharyngeal or oropharyngeal swab specimens. Tests were done individually or as pool-tests (up to ten samples per analysis).

### **Definition of SARS-CoV-2 contact category 1 and category 2 individuals**

A category 1 person is defined as an individual who has high risk of exposure to SARS-CoV-2 (such as living with a Covid-19 patient, direct contact to a Covid-19 patient), whereas

category 2 person refers to an individual who has a low risk of exposure to SARS-CoV-2 (such as being in a room with a Covid-19 positive patient for a certain amount of time within a specific distance).

## Supplementary results

### Commercial antibody tests

#### **SARS-CoV-2 antibodies – follow-up negatives**

At follow-up, 28 of 60 initially borderline positive or positive participants tested negative with all ten commercial laboratory tests and Western blots for nucleocapsid protein and spike glycoprotein. Of the 28 negatives at follow-up, results at baseline using the Immunodiagnosics ELISAs, were as follows: four tested borderline positive and 20 positive for IgM, two borderline positive for IgG, one combined borderline positive for IgM and IgG, and 1 combined borderline positive for IgM and positive for IgG, **Figure 1**.

#### **SARS-CoV-2 antibodies – follow-up borderline positives**

Fourteen participants showed borderline positive results in one or two of the ten commercial tests and were negative by anti SARS-CoV-2 nucleocapsid protein and spike glycoprotein IgG Western blots at follow-up: seven IgM, ImmunoDiagnosics; five IgA, Euroimmun; one IgG, Liaison; one IgM, ImmunoDiagnosics and IgA, Euroimmun. With regard to the Immunodiagnosics ELISA results at baseline, out of 10 participants who were borderline positive for IgM at baseline, five remained borderline positive and five were negative for IgM at follow-up. Three of four IgM positive individuals at baseline were borderline positive for IgM at follow-up and one was negative at follow-up.

#### **SARS-CoV-2 antibodies - follow-up positives**

Among 18 antibody positive subjects, as compared to the baseline results of the ImmunoDiagnosics ELISAs, four out of eight initially IgM positive subjects remained positive, three were borderline positive, and one was negative at follow up. Four IgM borderline positive individuals were also negative at follow-up. The six others comprised three IgG borderline and three IgG positive subjects who showed mixed results by the ImmunoDiagnosics ELISAs at follow-up (**Figure 2** and **Supplementary Table S2** and **S3**). None of these individuals showed a relevant increase in IgM or IgG antibodies by ImmunoDiagnosics ELISAs at follow-up.

Among these 18 individuals, 10 were tested negative by the anti SARS-CoV-2 nucleocapsid protein IgG Western blot (four showed IgM by ImmunoDiagnosics, one IgM by Wantai, one IgA by Euroimmun, three IgG (one Epitope Diagnostics, two Liaison), and one total antibody

by Roche). Among eight subjects tested positive by nucleocapsid protein Western blot (**Supplementary Figure S3**), two showed no other positive result (one had borderline positive IgM by ImmunoDiagnostics); two were positive for IgG by Epitope Diagnostics (one of them borderline positive for IgM by ImmunoDiagnostics); one showed IgM by ImmunoDiagnostics and by Wantai and was borderline positive for IgG by ImmunoDiagnostics; three had IgG by ImmunoDiagnostics (one of them had also IgA by Euroimmun and another one was borderline positive for IgG by Epitope Diagnostics). Of note, none of these 18 persons judged to be positive in one of the commercial tests or IgG nucleocapsid protein Western blot had IgG by Euroimmun, total antibody by Wantai, or spike glycoprotein Western blot (**Supplementary Figure S4**), or a clear positive total antibody result by Roche.

Among 12 IgG positive individuals four had a negative nucleocapsid protein Western blot, but two of them tested positive for anti-nucleocapsid protein IgG (Epitope Diagnostics) or total antibody (Roche) and two for anti-spike glycoprotein IgG (Liaison). Seven nucleocapsid protein Western blot positive individuals had anti-nucleocapsid IgG (two borderline positive by ImmunoDiagnostics, three positive by ImmunoDiagnostics (one of them borderline positive for IgG by Epitope Diagnostics), two were positive for IgG by Epitope Diagnostics). One participant tested positive only by nucleocapsid protein Western blot.

#### **SARS-CoV-2 antibodies – Covid-19 positive controls**

All five patients tested positive for anti-nucleocapsid protein IgG by Western blot and two of them positive for anti-spike glycoprotein IgG by Western blot. One showed total antibody by Roche and was borderline positive for IgG by ImmunoDiagnostics, two tested positive with all commercial tests, one tested positive for all commercial tests except IgM by ImmunoDiagnostics and Epitope Diagnostics, and was only borderline positive for IgG by ImmunoDiagnostics, and the last one was positive with all tests except IgM by Epitope Diagnostics and was borderline positive for IgM by ImmunoDiagnostics and borderline positive for IgG by Liaison. All five patients also showed IgG by the Vircell and the IDvet ELISAs (**Figure 2, Supplementary Table S2 and S3**).



### **Case vignettes. SARS-CoV-2 RT-PCR positive Covid-19 patients**

**C1:** A 32-year old male patient was treated with high dose oral steroid due to severe nephrotic syndrome caused by a biopsy-proven minimal change disease in early March 2020. At this time contact tracing of another person who tested positive for SARS-CoV-2 resulted in home isolation of our patient, who also tested positive for SARS-CoV-2 by RT-PCR of a nasopharyngeal swab specimen. He developed only mild gastro-intestinal symptoms typical for Covid-19 and achieved complete remission of his nephrotic syndrome within four weeks. At this point in time, viral RNA was no longer detectable, and he tested positive for SARS-CoV-2 antibodies.

**C2:** A 43-year old male took a skiing holiday in Tyrol at the beginning of March 2020. One week following his return to Vienna he had no signs of upper respiratory tract infection or pneumonia, but joint pain. Subsequently a positive SARS-CoV-2 RT-PCR confirmed very mild Covid-19. In a blood sample taken about five weeks later, he tested positive for SARS-CoV-2 antibodies.

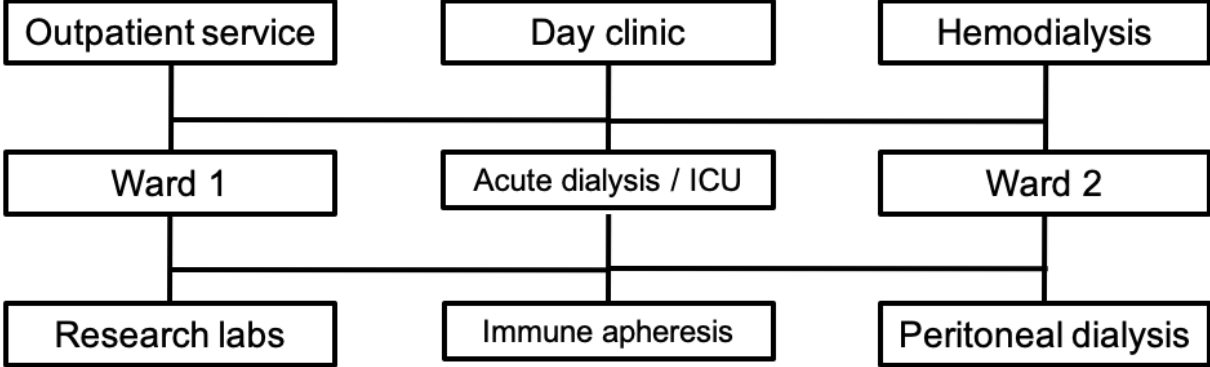
**C3:** A 44-year old female developed severe Covid-19 presenting with severe respiratory distress syndrome and requiring treatment at an intensive care unit. A serum sample, positive for SARS-CoV-2 antibodies, was taken about 8 weeks after her first positive SARS-CoV-2 RT-PCR in March 2020.

**C4:** A 60-year-old female presented with mild to moderate Covid-19, resulting in weakness, fever and respiratory symptoms, confirmed by RT-PCR, at the end of March. She recovered after 3 weeks of illness and had a positive SARS-CoV-2 antibody test at the end of 4 weeks of home isolation after start of symptoms.

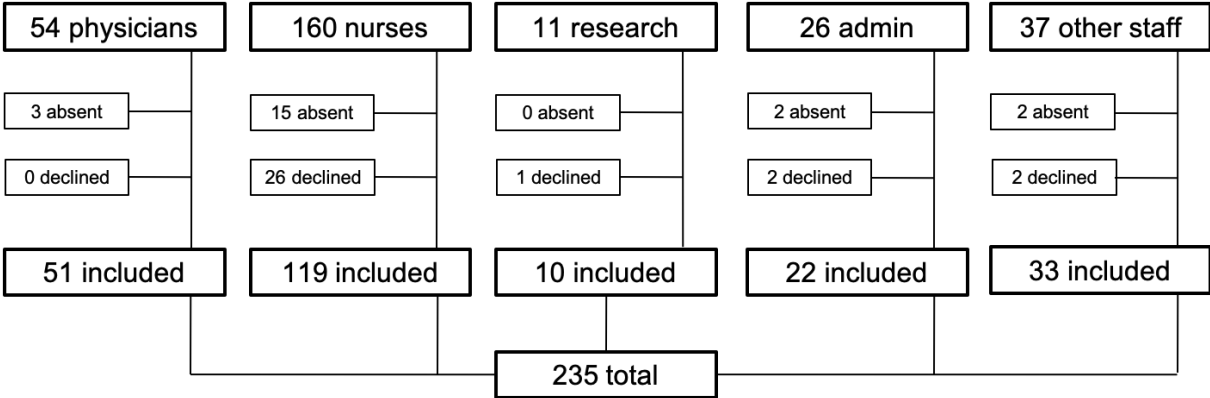
**C5:** A 61 year old male suffered from RT-PCR proven mild Covid-19 with fatigue and respiratory infection at the end of March and recovered rapidly within two weeks of home isolation. He tested positive for SARS-CoV-2 antibodies in a blood sample taken about 4 weeks after onset of symptoms.

**Supplementary Figures and Tables.**

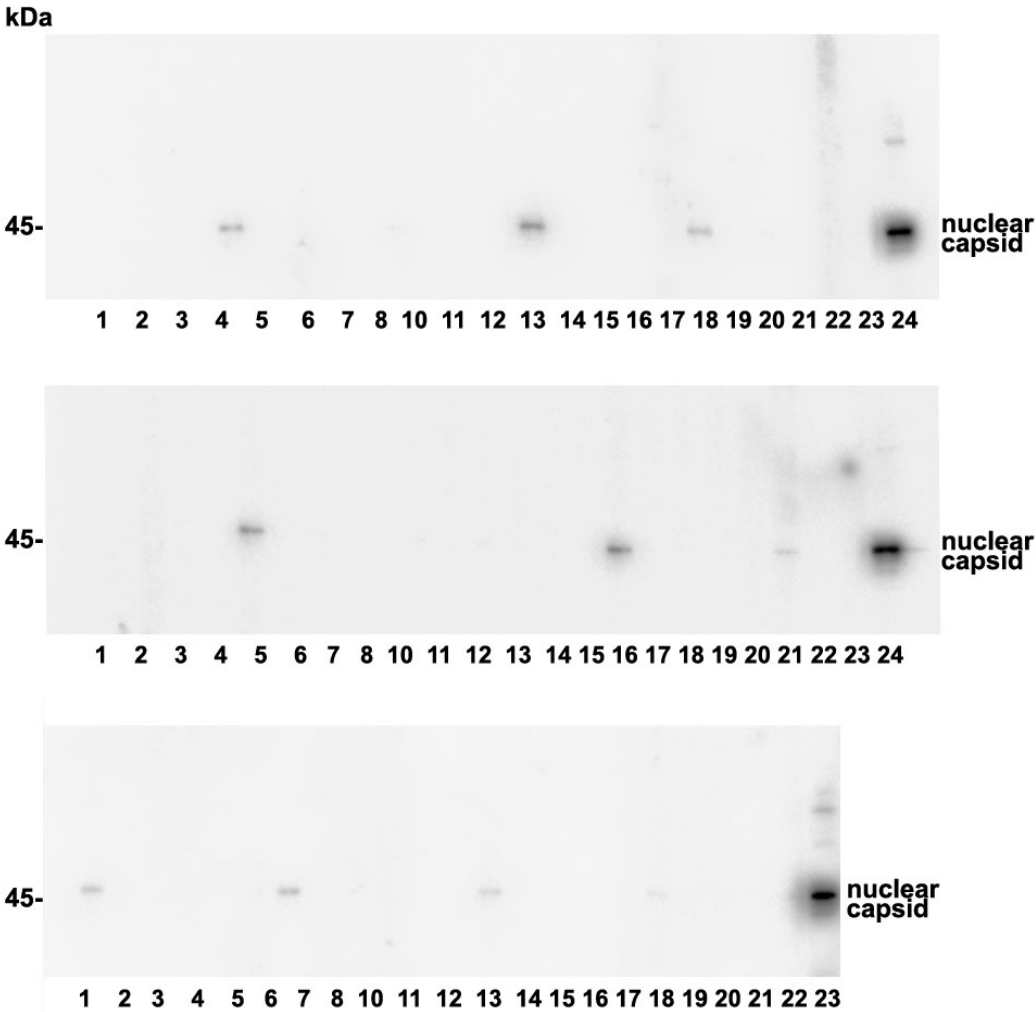
**Figure S1.** Points of care at the Division of Nephrology and Dialysis, Department of Medicine III, Medical University of Vienna, Austria.



**Figure S2.** Disposition of participants (admin denotes administrative staff).

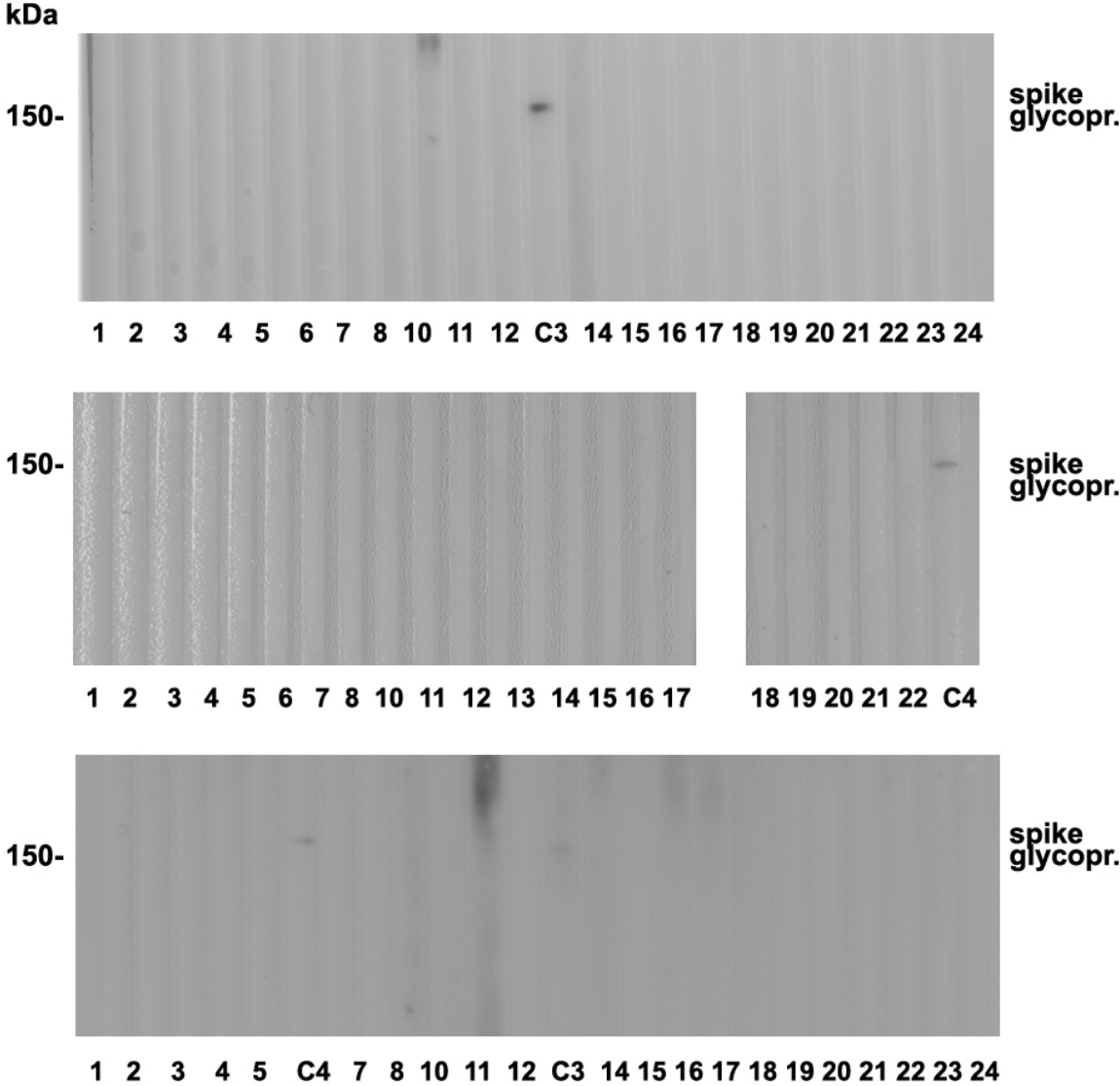


**Figure S3.** Nucleocapsid protein immunoblotting for presence of SARS-CoV-2 IgG antibodies in serum.



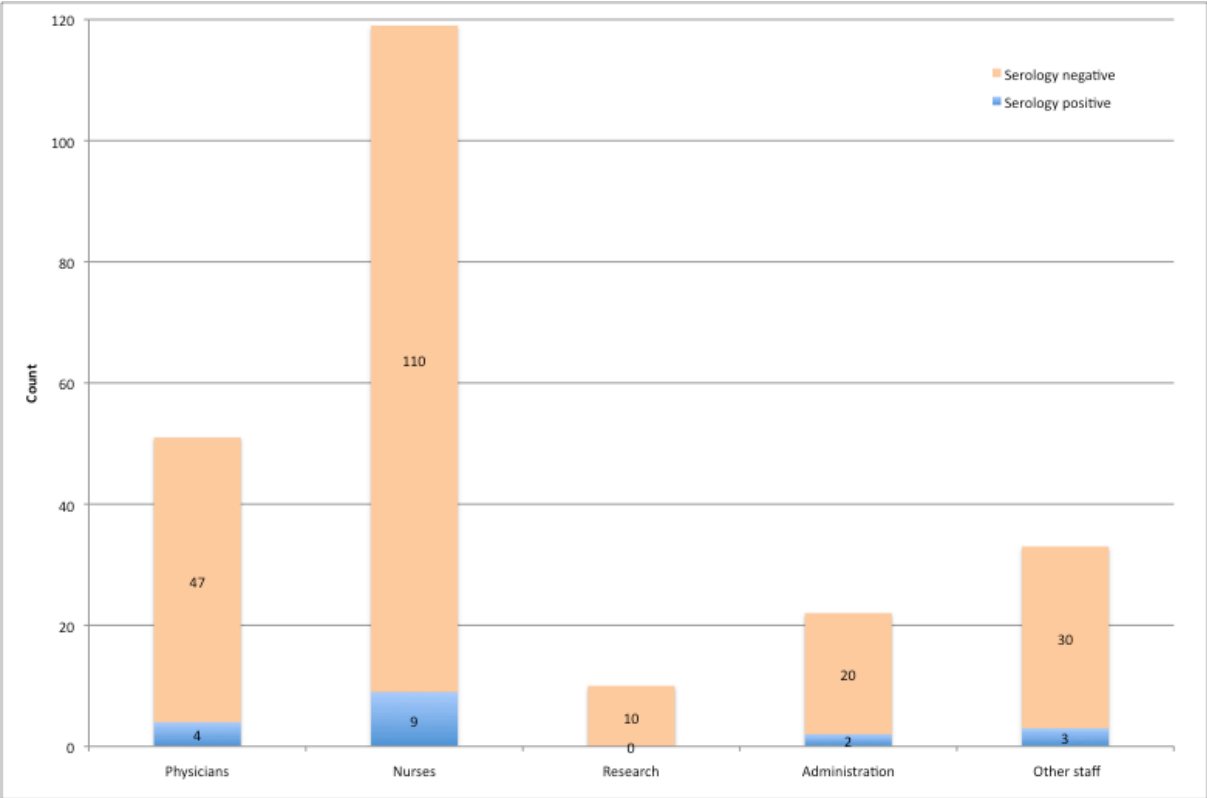
Upper panel #4, 13, 18, 24 represent # 9, 200, 222, C2 at Figure 2. Middle panel #5, 16, 21, 24 represent # 127, 133, 148, C2 at Figure 2. Lower panel #1, 13, 23 represent # 65, 67, C2 at Figure 2. Number 7 at lower panel depicts patient number 127 at Figure 2 two at baseline.

**Figure S4.** Spike glycoprotein immunoblotting for presence of SARS-CoV-2 IgG antibodies in serum.

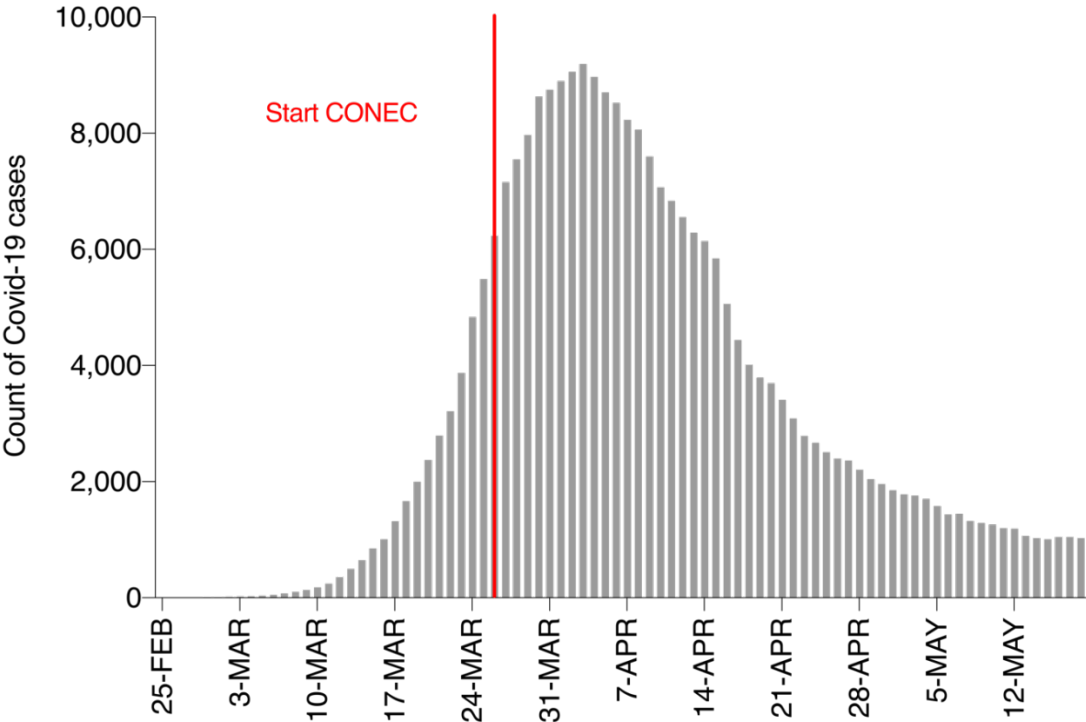


C3 and C4 refer to Western blot positive Covid-19 patients. The other three Covid-19 patients, as well as all 60 study participants, were negative (see also Figure 2).

**Figure S5.** Number of SARS-CoV-2 antibody positive subjects at follow-up by profession.



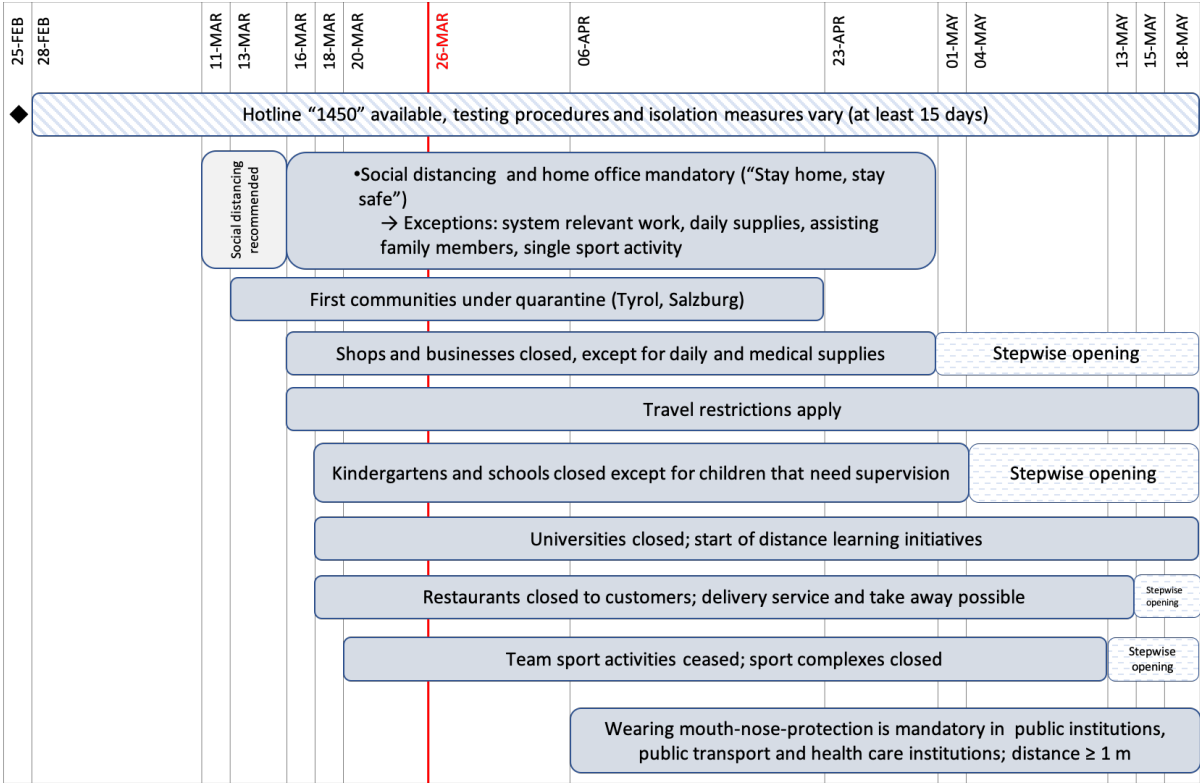
**Figure S6.** Number of Covid-19 cases in Austria.



The first two patients tested positive for SARS-CoV-2 on February 25<sup>th</sup> 2020 in Innsbruck, Tyrol, reaching a maximum of 9.193 cases on April 3<sup>rd</sup> 2020.

Data provided by the official Covid-19 dashboard of the Austrian Department of Health (“Bundesministerium für Soziales, Gesundheit, Pflege und Konsumentenschutz”), <https://info.gesundheitsministerium.at/?l=en> (accessed May 21<sup>st</sup> 2020)

**Figure S7.** Containment measures, mandated by the federal government of Austria.



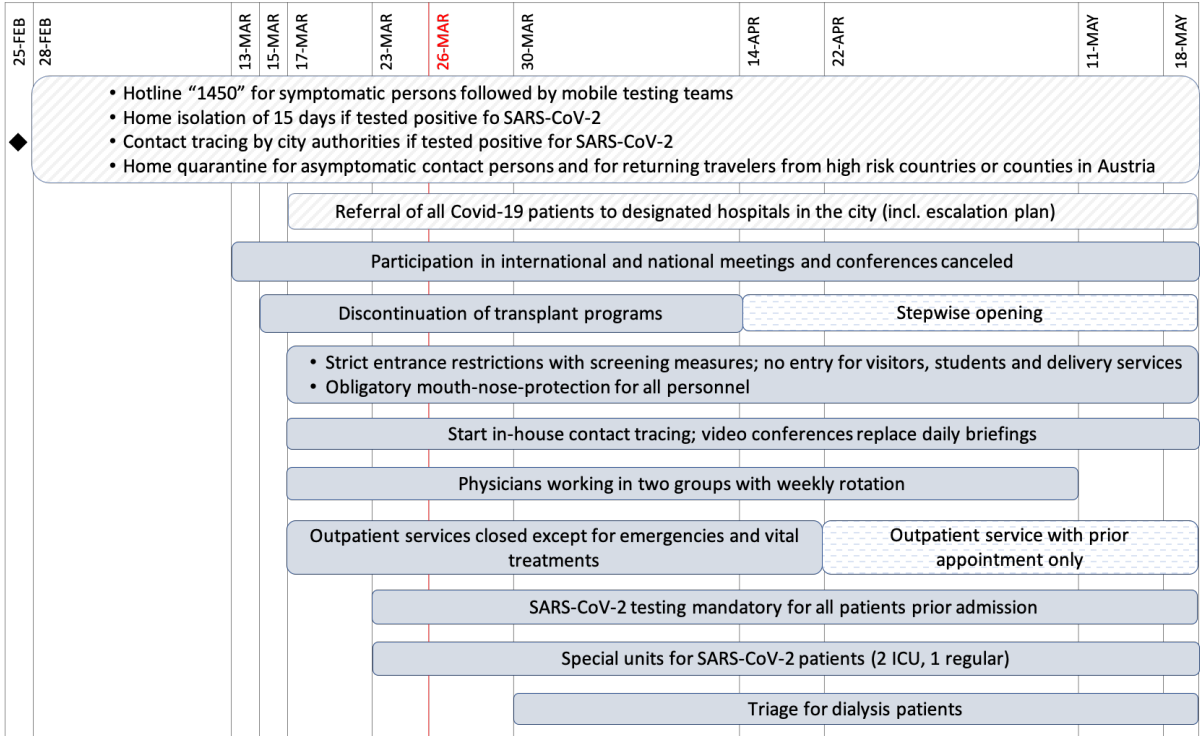
◆ First infections registered in Austria.

Beginning with recommendations for social distancing in the first days of March, measures issued by the Federal government were quickly escalated to a thorough lockdown of public life.

The red line indicates the start of the CONEC study.



**Figure S8.** Containment measures in Vienna and at the Medical University of Vienna.



◆ First infections registered in Austria.

Vienna city authorities extended measures taken by the federal government in Austria and issued an escalation plan for adequate medical care (marked striped). Designated hospitals were primarily responsible for medical care of Covid-19 patients while others were intended to be Covid-19 free.

In addition, the Medical University of Vienna took several steps to ensure the readiness of the medical staff and to designate Covid-19 patients as early as possible to specialized centers (marked in grey).

The red line indicates the start of the CONEC study.

**Table S1.** Details of commercial laboratory tests used for follow-up confirmation of all 60 participants who tested borderline positive or positive for SARS-CoV-2 antibodies at baseline.

Company	IMD	EDI	EUR	LIA	ROC	WAN	IMD	EDI	WAN	EUR
Method	ELISA	ELISA	ELISA	CLIA	ECLIA	ELISA	ELISA	ELISA	ELISA	ELISA
Antibody	IgG	IgG	IgG	IgG	TA	TA	IgM	IgM	IgM	IgA
Epitope	N	N	S <sub>1</sub>	S <sub>1</sub> & S <sub>2</sub>	N	S <sub>1</sub>	N	N	S <sub>1</sub>	S <sub>1</sub>
Material	serum / plasma	serum	serum / plasma	serum / plasma	serum / plasma	serum / plasma	serum / plasma	serum	serum / plasma	serum / plasma
Sample dilution	1:100	1:100	1:101	1:10	-	100 µl	1:100	1:10	1:10	1:101
Incubation	60 min at RT	30 min at RT	60 min at 37°C	n.a.	18 min	30 min at 37°C	60 min at RT	30 min at 37°C	30 min at 37°C	60 min at 37°C
Result interpretation	OD	OD and CO	ratio	AU/ml	COI	A/CO	OD	OD and CO	A/CO	ratio
Negative	<0.200	<neg CO	<0.8	<12	<1.0	≤0.9	<0.200	<neg CO	≤0.9	<0.8
Borderline	0.200 - <0.300	neg CO – pos CO	≥0.8 - <1.1	12 - <15	-	0.91 - <1.1	0.200 - <0.300	neg CO – pos CO	0.91 - <1.1	≥0.8 - <1.1
Positive	≥0.300	>pos CO	≥1.1	≥15	≥1.0	≥1.1	≥0.300	>pos CO	≥1.1	≥1.1
CV, intra assay	4.93% - 5.68%	<15%	3.9% - 16%	2.6% - 5.3%	-	-	4.93% - 6.77%	<15%	-	2.4% - 13.7%
CV, inter assay	5.46% - 6.75%	<20%	0% - 16.2%	0.5% - 11%	-	-	5.35% - 7.16%	<20%	-	0% - 16.1%
Specificity	93.89%	100%	98.50%	98.50%	99.81%	100%	-	97.70%	100%	92.50%
Sensitivity	93.33%	100%	33.3% - 80%	25% - 97.4%	65.5% - 100%	94.50%	-	45%	86.80%	50% - 100%

IMD, ImmunoDiagnostics, Hongkong; EDI, Epitope Diagnostics Inc., San Diego, CA; EUR, Euroimmun Medizinische Labordiagnostika AG, Lübeck, Germany; WAN, Beijing Wantai Biological Pharmacy Enterprise Co., Ltd., Beijing, China; LIA, Liaison, DiaSorin S.p.A, Saluggia, Italy; ROC, Roche Diagnostics Deutschland G.m.b.H, Mannheim, Germany

ELISA, enzyme-linked immunosorbent assay; CLIA, chemiluminescence immuno assay; ECLIA, electrochemiluminescence immunoassay

TA, total antibody; N, SARS-CoV-2 nucleocapsid protein; S<sub>1</sub>, SARS-CoV-2 spike glycoprotein S<sub>1</sub> subunit; S<sub>2</sub>, SARS-CoV-2 spike glycoprotein S<sub>2</sub> subunit

RT, room temperature; OD, optical density; AU/ml, arbitrary units/ml; COI, cutoff index; A/CO, sample extinction/cutoff; CV, coefficient of variation

EUR-IgG & -IgA: Ratio = (extinction sample/extinction calibrator), ratio < 0.8 = negative, ratio <1.1 = borderline, ratio ≥1.1 = positive

WAN-TA & -IgM: Ratio = (extinction sample/cutoff), ratio ≤ 0.9 = negative, ratio 0.91 - <1.1 = borderline, ratio ≥1.1 = positive

EDI-IgG: positive = > 1.1 x (negative control + 0.18), negative = < 0.9 x (negative control + 0.18)

EDI-IgM: positive = > 1.1 x (negative control + 0.10), negative = < 0.9 x (negative control + 0.10)

LIA-IgG: AU/ml <12 =negative, 12-<15 = borderline, ≥ 15= positive

ROC: cutoff index = (sample signal/cutoff), < 1.0 = negative, ≥ 1.0 = positive

IMD-IgG & -IgM: OD < 0.200 = negative, OD ≥ 0.300 = positive

**Table S2.** Detailed IgM and IgA antibody test results at baseline and follow-up of all 18 subjects with a positive antibody test at follow-up, and of five Covid-19 patients.

Company	IMD	IMD	IMD	IMD	EDI	EDI	WAN	WAN	EUR	EUR
Ig	IgM	IgM	IgM	IgM	IgM	IgM	IgM	IgM	IgA	IgA
Antigen*	N-1	N-2	N-1	N-2	N-1	N-2	S-1	S-2	S-1	S-2
Time	BL	BL	FU	FU	FU	FU	FU	FU	FU	FU
ID										
36	0.244	0.308	0.442	0.348	0.132	0.125	0.002		0.108	0.106
76	0.537	0.530	0.459	0.460	0.126	0.152	0.005		0.160	0.208
165	0.856	0.513	0.331	0.316	0.087	0.120	0.056		0.267	0.192
120	0.494	0.493	0.200	0.225	0.129	0.117	0.178	0.224	0.114	0.113
179	0.497	0.474	0.303	0.298	0.136	0.121	0.004		0.304	0.279
197	0.224	0.149	0.078	0.076	0.114	0.100	0.006		0.423	0.412
92	0.202	0.207	0.183	0.172	0.138	0.156	0.007		0.204	0.150
123	0.398	0.317	0.210	0.215	0.107	0.134	0.006		0.248	0.280
167	0.200	0.154	0.107	0.108	0.095	0.128	0.015		0.186	0.125
205	0.328	0.217	0.162	0.157	0.101	0.121	0.012		0.287	0.321
9	0.155	0.159	0.312	0.074	0.098	0.092	0.502	0.582	0.134	0.130
67	0.389	0.383	0.239	0.253	0.101	0.103	0.100		0.149	0.150
133	0.410	0.410	0.184	0.224	0.135	0.129	0.002		0.169	0.167
222	0.292	0.303	0.195	0.192	0.126	0.132	0.023		0.112	0.117
200	0.248	0.261	0.157	0.161	0.097	0.099	0.006		0.622	0.632
65	0.237	0.233	0.128	0.129	0.116	0.124	0.004		0.165	0.156
127	0.178	0.182	0.163	0.166	0.111	0.133	0.002		0.209	0.247
148	0.217	0.159	0.094	0.091	0.126	0.114	0.006		0.145	0.137
C1			0.298	0.294	0.135	0.149	0.678		0.720	0.735
C2			0.090	0.090	0.103	0.124	0.055		0.172	0.178
C3			0.136	0.116	0.109	0.106	3.024		OVRFLW	OVRFLW
C4			2.117	2.239	0.487	0.566	3.500		2.607	2.685
C5			1.136	1.350	0.491	0.490	1.114		0.739	0.698

IMD ImmunoDiagnostics, HongKong; EDI, Epitope Diagnostics Inc., San Diego, CA; WAN, Beijing Wantai Biological Pharmacy Enterprise Co., Ltd., Beijing, China; EUR, Euroimmun Medizinische Labordiagnostika AG, Lübeck, Germany; N, SARS-CoV-2 nucleocapsid protein; S, SARS-CoV-2 spike glycoprotein; BL, baseline; FU, follow-up; neg, negative; pos, positive; OVRFLW, overflow.

\*, numbers 1 and 2 indicate raw data of duplicates.

**Table S3.** Detailed IgG antibody and total antibody test results at baseline and at follow-up of 18 subjects with a positive antibody test at follow-up, and of five Covid-19 patients.

Company	IMD	IMD	IMD	IMD	EDI	EDI	VIR	VIR	IDV	IDV	WB	EUR	EUR	LIA	LIA	WB	ROC	ROC	WAN	WAN	PRNT
Ig	IgG	IgG	IgG	IgG	IgG	IgG	IgG	IgG	IgG	IgG	IgG	IgG	IgG	IgG	IgG	IgG	TA	TA	TA	TA	
Antigen*	N-1	N-2	N-1	N-2	N-1	N-2	NS-1	NS-2	N-1	N-2	neg	S-1	S-2	S-1	S-2	S	N-1	N-2	S-1	S-2	
Time	BL	BL	FU	FU	FU	FU	FU	FU	FU	FU	FU	FU	FU	FU	FU	FU	FU	FU	FU	FU	FU
ID																					
36	0.081	0.090	0.099	0.062	0.192	0.181					neg	0.044	0.047	6.45		neg	0.075		0.001		
76	0.073	0.066	0.063	0.071	0.193	0.220					neg	0.132	0.131	5.76		neg	0.080		0.003		
165	0.075	0.057	0.058	0.060	0.277	0.303					neg	0.069	0.060	<3,8		neg	0.085		0.003		
120	0.076	0.069	0.061	0.054	0.214	0.228					neg	0.061	0.057	<3,8		neg	0.073		0.005	0.001	
179	0.077	0.065	0.061	0.059	0.195	0.210					neg	0.128	0.126	3.85		neg	0.086		0.004		
197	0.097	0.063	0.068	0.067	0.221	0.228					neg	0.057	0.056	<3,8		neg	0.084		0.003		
92	0.088	0.058	0.053	0.053	0.973	0.707	0.179	0.181	0.063	0.076	neg	0.054	0.050	<3,8		neg	0.080		0.006		<10
123	0.224	0.158	0.183	0.195	0.205	0.243	0.205	0.217	0.048	0.052	neg	0.072	0.067	<3,8	3.86	neg	1.040	1.040	0.004		<10
167	0.091	0.059	0.059	0.062	0.150	0.164	0.182	0.190	0.060	0.058	neg	0.075	0.056	27.70	27.70	neg	0.294	0.304	0.070		<10
205	0.063	0.049	0.053	0.055	0.145	0.163	0.222	0.214	0.051	0.061	neg	0.052	0.052	79.10	79.10	neg	0.084	0.086	0.003		<10
9	0.250	0.258	0.286	0.075	0.238	0.228	0.312	0.317	0.062	0.059	pos	0.054	0.047	<3,8		neg	0.092		0.005	0.008	<10
67	0.160	0.158	0.138	0.137	0.649	0.641	0.276	0.248	0.075	0.076	pos	0.097	0.098	<3,8	4.40	neg	0.084	0.087	0.004		<10
133	0.087	0.083	0.074	0.068	0.748	0.704	1.892	1.870	1.103	1.102	pos	0.083	0.086	<3,8	<3,8	neg	0.080	0.078	0.003		<10
222	0.297	0.223	0.300	0.305	0.232	0.230	0.231	0.233	0.096	0.116	pos	0.093	0.097	5.50		neg	0.085		0.004		<10
200	0.633	0.410	0.571	0.573	0.263	0.252	0.290	0.305	0.054	0.057	pos	0.063	0.064	<3,8		neg	0.093		0.004		<10
65	0.408	0.390	0.399	0.394	0.338	0.364	0.589	0.633	0.056	0.051	pos	0.048	0.048	<3,8		neg	0.096		0.006		<10
127	0.337	0.318	0.251	0.232	0.342	0.321	0.218	0.157	0.052	0.056	pos	0.057	0.056	<3,8		neg	0.094		0.002		<10
148	0.179	0.122	0.119	0.120	0.280	0.269	0.292	0.302	0.057	0.059	pos	0.059	0.058	<3,8		neg	0.109		0.005		<10
C1	0.674	0.654	0.674	0.654	0.744	0.786	1.208	1.263	1.308	1.448	pos	0.335	0.325	12.30	12.40	neg	7.370	9.440	2.335		15
C2	0.232	0.214	0.232	0.214	0.326	0.342	0.945	0.917	0.855	0.989	pos	0.151	0.144	5.56	5.74	neg	1.460	1.840	0.096		<10
C3	0.157	0.159	0.183	0.218	0.872	0.838	3.866	>4,0	1.443	1.661	pos	1.418	1.386	73.60		pos	1.970		3.500		40
C4	3.979	OVRFLW	3.979	OVRFLW	1.728	1.607	>4,0	>4,0	3.511	3.538	pos	1.404	1.386	>400		pos	90.800		3.282		80
C5	OVRFLW	OVRFLW	OVRFLW	OVRFLW	1.307	1.275	3.173	3.154	2.981	3.021	pos	0.157	0.155	44.80		neg	25.500		3.475		60

IMD ImmunoDiagnostics, HongKong; EDI, Epitope Diagnostics Inc., San Diego, CA; VIR, Vircell, Granada, Spain; IDV, IDvet, Grabels, France; WB, Western Blot; EUR, Euroimmun Medizinische Labordiagnostik AG, Lübeck, Germany; LIA, Liaison, DiaSorin S.p.A, Saluggia, Italy; ROC, Roche Diagnostics Deutschland G.m.b.H, Mannheim, Germany; WAN, Beijing Wantai Biological Pharmacy Enterprise Co., Ltd., Beijing, China; TA, total antibody; N, SARS-CoV-2 nucleocapsid protein; S, SARS-CoV-2 spike glycoprotein; BL, baseline; FU, follow-up; neg, negative; pos, positive; OVRFLW, overflow.

\*, numbers 1 and 2 indicate raw data of duplicates.