

Supplementary Material

Behaviours and attitudes in response to the COVID-19 pandemic: Insights from a cross-national Facebook survey

Daniela Perrotta¹, André Grow¹, Francesco Rampazzo^{1,2}, Jorge Cimentada¹, Emanuele Del Fava¹, Sofia Gil-Clavel¹, and Emilio Zagheni¹

¹Max Planck Institute for Demographic Research, Germany

²Centre for Population Change, University of Southampton, United Kingdom

1 Facebook advertising campaigns

Facebook advertising campaigns consist of three layers: (i) the campaign level, at which the goals of the campaign are specified (generating impression, generating clicks, etc.); (ii) the ad set level, at which several target groups can be specified (one target group per ad set); (iii) the ad level, at which the advertising text and the images that are to be used can be specified. As indicated in the main part of the paper, we created one advertising campaign for each country, and each campaign was stratified by sex, age, and region, so that there was one ad set per stratum, each with six advertisements that differed only in the picture that was used. Figure S1 illustrates this for the United States, and Table S4 shows the mapping of the detailed regions of residence onto the macro-regions that we used in the campaigns.

We opted for this approach, because the FAM uses algorithms that optimize the return for advertisers, and this may lead to biased samples. For example, if the goal of a campaign is to generate ad clicks, the FAM will over time increasingly show a given ad to user groups who are most likely to click on it [1]. This can lead to a biased sample, if members of certain demographic groups are more likely to click on the ad than members of other groups. To avoid this problem, we followed the recommendations of Pötzschke and Braun [1] and created one ad set for each stratum of the population, thereby ensuring a more balanced delivery of the ads. The selected campaign goal was generating clicks, and we used six different ad images, to ensure that our ads appeal to a wide audience.

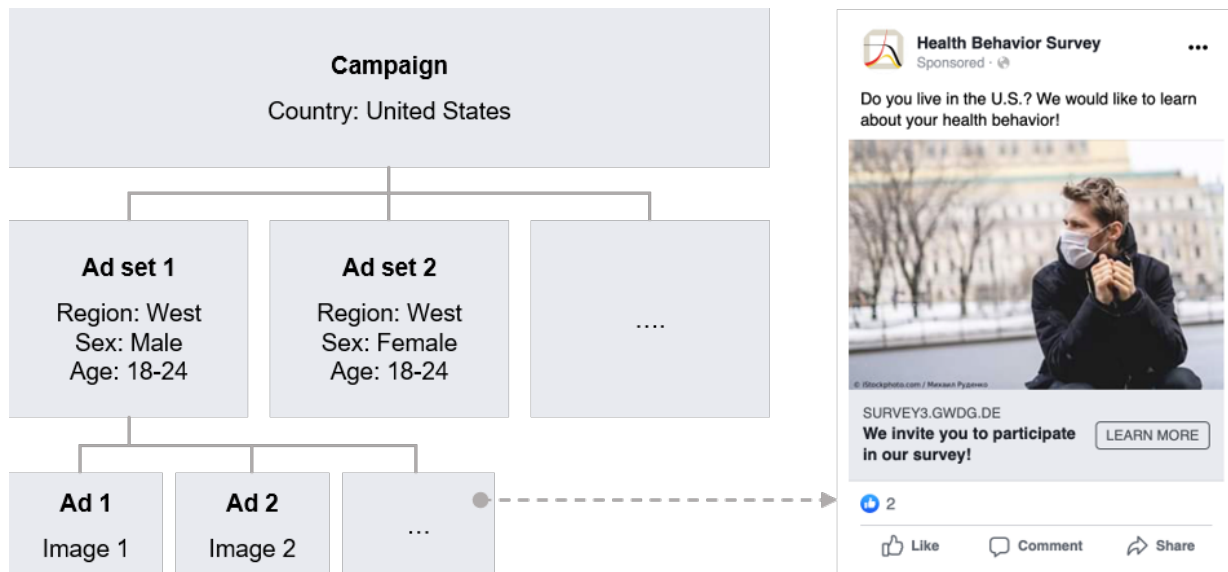


Fig. S1. Design of Facebook advertising campaigns. Illustration of the structure of the advertising campaign used in the United States (left). Adapted from Figure 2 in Pötzschke and Braun [1]. Example of an advertisement shown to Facebook users in the United States (right).

2 Response rates

In the context of online surveys, it is often difficult to calculate traditional performance measures, such as the response rate, because the number of members of the target population who have actually seen an invitation to participate in the survey cannot be determined [2]. Our use of the Facebook Ads Manager (FAM) enables us to address this issue. The FAM provides estimates of how many users have seen an advertisement at least once, and how many of them

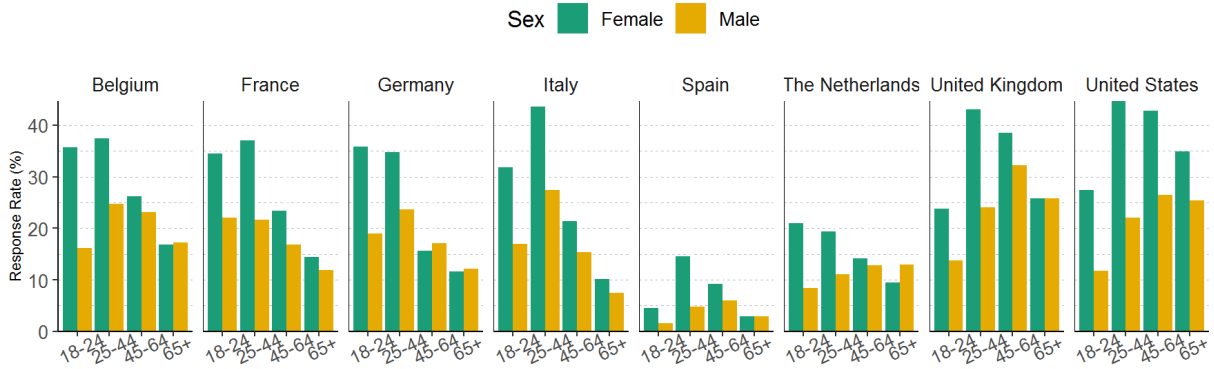


Fig. S2. Facebook response rate. Response rate by age and sex per each country in the study, in the period between March 13, 2020 and April 19, 2020.

have clicked on the advertisement at least once. In combination with information about the number of completed questionnaires, this information makes it possible to calculate approximate participation rates. Specifically, we calculated the response rate as the ratio of the number of completed questionnaires (considering only participants who were directly targeted by one of our advertisement) and the number of unique Facebook users who clicked on the advertisement, according to Facebook.

Figure S2 shows the participation rates by country, sex, and age group. The overall response rate in the period March 13 to April 19, 2020 was approximately 25% in Belgium, 22% in France, 21% in Germany, 21% in Italy, 6% in Spain, 14% in the Netherlands, 6% in Spain, 31% in the United Kingdom, and 31% in the United States. Female users were generally more likely to complete the questionnaire compared to male users. Across countries, the participation rate varies across sex and age groups; for example, in Italy it ranged from about 8% (Italy, men age 65+) to about 43% (Italy, women age 25-44). The only exception from this is Spain, where participation rates were considerably lower, ranging from about 2% (men age 18-24) to about 15% (women age 25-44).

3 Post-stratification

In this study, we use a post-stratification weighting approach to correct for potential issues with non-representativeness in the sample. This is a standard procedure in survey research, in which appropriate weights are computed based on population information from representative data sources (e.g. census data). Here, we use population data from Eurostat (2019) [3] and the US census (2018) [4].

Table S1 shows an example of the post-stratification approach for the strata in the macro-region ‘Central’ in Italy (see Table S4 for the corresponding micro-regions), presenting both the Facebook survey counts and proportions and the true population counts and proportions obtained from Eurostat. The columns ‘Region’, ‘Sex’ and ‘Age’ together define the eight selected strata. The columns Facebook \hat{N}_i and Facebook \hat{p}_i respectively show the numbers of respondents belonging to each stratum and their proportions relative to all strata (note that these proportions do not sum up to 1 because they are relative to all strata, including the ones not presented here). Conversely, the columns Eurostat N_i and Eurostat p_i show the number of people from the true population that belong to that stratum and their proportion relative to the complete population. The weights w_i are then defined as $w_i = p_i / \hat{p}_i$.

Region	Sex	Age	Facebook		Eurostat		w_i
			\hat{N}_i	\hat{p}_i	N_i	p_i	
Central	Female	18-24	199	0.027	522,730	0.010	0.363
Central	Female	25-44	384	0.053	1,453,810	0.028	0.523
Central	Female	45-64	265	0.037	1,876,591	0.036	0.979
Central	Female	65+	104	0.014	1,605,018	0.031	2.133
Central	Male	18-24	119	0.016	572,911	0.011	0.665
Central	Male	25-44	214	0.030	1,454,223	0.028	0.939
Central	Male	45-64	176	0.024	1,758,096	0.034	1.380
Central	Male	65+	78	0.011	1,221,951	0.023	2.165

Table S1. Example of post-stratification reweigh using the central region of Italy.

Since the official population counts from Eurostat (as well as the US census) are provided in five-year age groups (e.g. 15-19 years, 20-24 years, ...), whereas we required respondents to be at least 18 years old, the true population counts for the 18-24 age group is not directly comparable between our survey counts and the Eurostat/US census population counts. To address this issue, we multiply the Eurostat/US census population counts for the age group 15-24 by 7/10, reflecting that we only have seven of the ten ages in that age group. As a consequence, there is more uncertainty for the estimates in that age group.

Figure S3 shows the unweighted and weighted Facebook estimates for sex, age groups, and education, in comparison with nationally representative surveys, respectively, the European Social Survey (ESS, 2018 [5]) for Italy, Germany, Spain, France, and United Kingdom, and the American Community Survey (ACS, 2018, [6]) for the United States. For illustration, we focus here on Italy; the same interpretation applies to the remaining countries. The top row of panels show how the unweighted and weighted estimates from our survey differ from the ESS estimates for Italy. For example, in the leftmost top panel (sex for Italy) the ESS proportions estimate that there are 51% CI [49%, 53%] females and 49% CI [47%, 51%] males in Italy. In our *unweighted* sample, there are 65% females and 35% males, a bias of around 14% points. However, our *weighted* sample corresponds very closely with the ESS estimates. Females are now estimated to be 52% CI [51%, 53%] of the sample and males 48% CI [47%, 49%] of the sample. The same trend can be seen for the age groups (center plot for Italy). For example, the unweighted percentage of the age group 18-24 in our sample is 20% whereas the weighted ESS estimate is 10% CI [8%, 11%]. Nonetheless, after reweighing, the estimate of the 18-24 age group in our survey is now 11% CI [11%, 12%], very close to the benchmark of the European Social Survey. The last example comes from the education variable, where the counts are more similar between the unweighted and weighted estimates. We might expect that the educational composition of our sample is more biased than its composition in terms of age and sex variables, given that we did not stratify our advertising campaigns based on this variable. However, the distribution of educational attainment in our sample resembles the distribution from the ESS, with the exception that our unweighted sample under-counts the proportion of primary and secondary educated respondents, and over-counts the respondents with graduate education. This bias differs across countries, with France showing the largest, and Germany showing the smallest, deviations.

Taken together, our results suggest that when appropriately weighting the different strata according to reliable population counts, the initial bias in our sample can be adjusted, so that our data better reflect the general population. However, the adjustment is not perfect as can

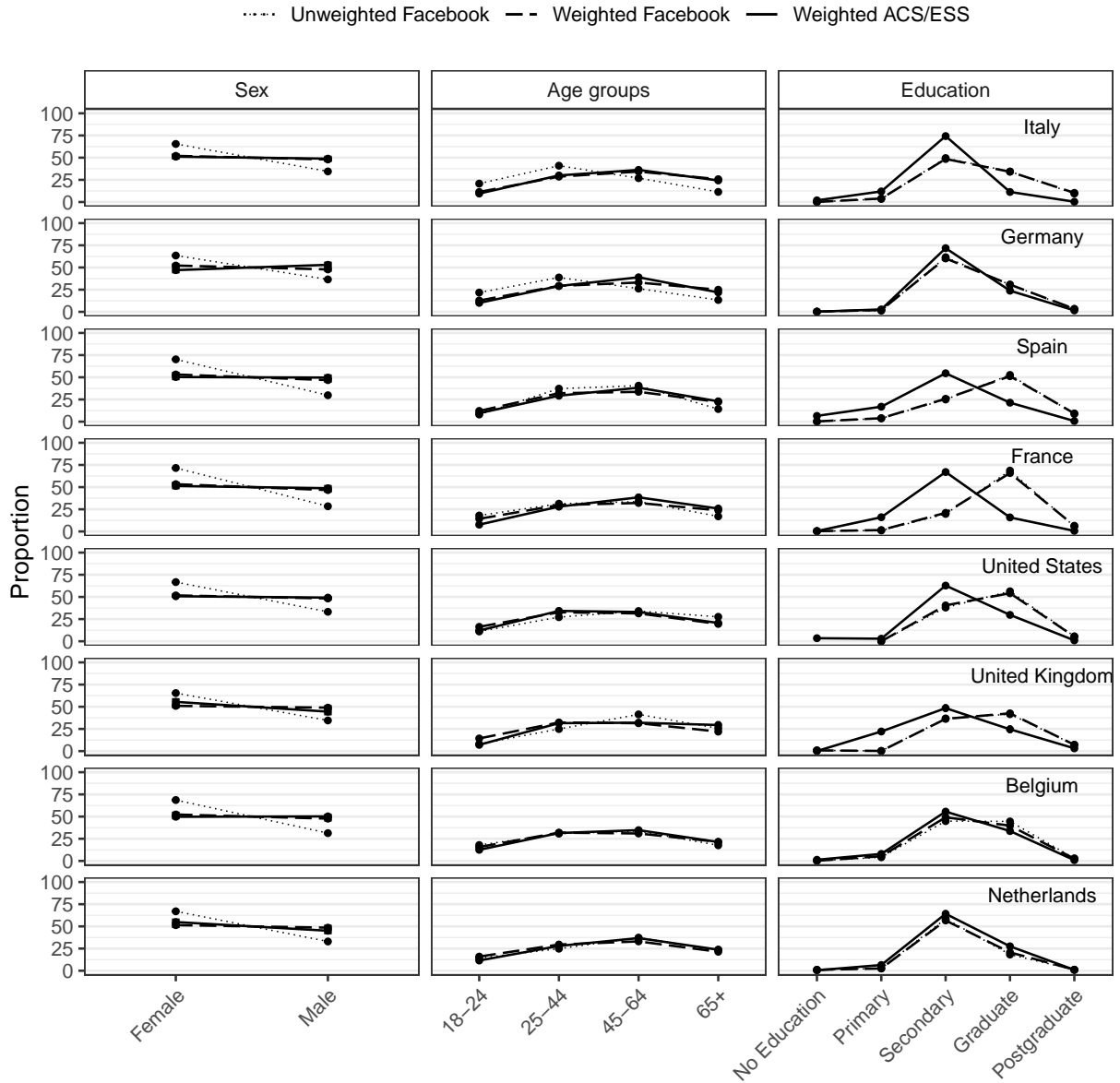


Fig. S3. Post-stratification weighting approach. Comparison of main demographic variables before and after post-stratification reweighing with estimates from the European Social Survey (ESS) and the American Community Survey (ACS) for Italy, Germany, Spain, France, United States, United Kingdom, Belgium, and Netherlands.

be seen from the distribution of the education variable and other variables, where our weighted estimate differs from the ESS estimates.

4 Respondent selection

As we describe in the main part of the paper, only respondents who indicated that they were at least somewhat aware of the coronavirus outbreak were asked questions related to it. Table S2 shows the number of respondents per answer category in the corresponding filter question by country. Those who chose “Nothing at all” or “Prefer not to answer” were excluded. Furthermore, in the analysis, we excluded respondents item-by-item. Table S3 shows the number

Awareness	BE	FR	DE	IT	NL	ES	UK	US
A great deal	5,304 (84%)	6,394 (94%)	8,835 (70%)	8,544 (87%)	3,602 (67%)	5,644 (73%)	7,414 (84%)	13,295 (89%)
A fair amount	860 (14%)	252 (4%)	3,036 (24%)	1,175 (12%)	1,644 (31%)	1,895 (25%)	1,325 (15%)	1,617 (11%)
Not very much	131 (2%)	90 (1%)	627 (5%)	45 (0.5%)	94 (2%)	114 (1%)	51 (0.6%)	67 (0.4%)
Nothing at all	15 (0.2%)	21 (0.3%)	47 (0.4%)	9 (0.1%)	9 (0.2%)	10 (0.1%)	5 (0.1%)	9 (0.1%)
Prefer not to answer	26 (0.4%)	38 (0.6%)	57 (0.5%)	20 (0.2%)	14 (0.3%)	41 (0.5%)	15 (0.2%)	16 (0.1%)

Table S2. Level of participants’ awareness of the coronavirus outbreak. Columns refer to countries, namely Belgium (BE), France (FR), Germany (DE), Italy (IT), the Netherlands (NL), Spain (ES), the United Kingdom (UK), and the United States (US). Unweighted sample.

of respondents that had be excluded for each of the questions that we considered by country.

	BE	FR	DE	IT	NL	ES	UK	US
Perceived threat								
Oneself	122 (2%)	190 (3%)	135 (1%)	150 (2%)	133 (3%)	214 (3%)	163 (2%)	207 (1%)
Family	204 (3%)	235 (4%)	296 (2%)	165 (2%)	192 (4%)	243 (3%)	243 (3%)	344 (2%)
Local Community	177 (3%)	206 (3%)	212 (2%)	92 (1%)	126 (2%)	92 (1%)	140 (2%)	160 (1%)
Country	61 (1%)	81 (1%)	134 (1%)	63 (1%)	86 (2%)	54 (1%)	65 (1%)	110 (1%)
World	95 (2%)	109 (2%)	193 (2%)	101 (1%)	115 (2%)	85 (1%)	85 (1%)	192 (1%)
Level of confidence								
Local Health System	248 (4%)	303 (5%)	740 (6%)	172 (2%)	345 (7%)	110 (2%)	326 (4%)	440 (3%)
National Health System	221 (4%)	191 (3%)	522 (4%)	95 (1%)	230 (4%)	85 (1%)	136 (2%)	269 (2%)
WHO	310 (5%)	335 (5%)	840 (7%)	279 (3%)	399 (8%)	207 (3%)	383 (4%)	674 (5%)
Local Government	454 (7%)	606 (9%)	895 (7%)	194 (2%)	540 (10%)	215 (3%)	855 (10%)	338 (2%)
National Government	222 (4%)	152 (2%)	302 (2%)	163 (2%)	248 (5%)	160 (2%)	125 (1%)	231 (2%)

Table S3. Participants who selected “Don’t know” or “Prefer not to answer” in the threat perception of COVID-19 and levels of confidence. Columns refer to countries, namely Belgium (BE), France (FR), Germany (DE), Italy (IT), the Netherlands (NL), Spain (ES), the United Kingdom (UK), and the United States (US). Unweighted sample.

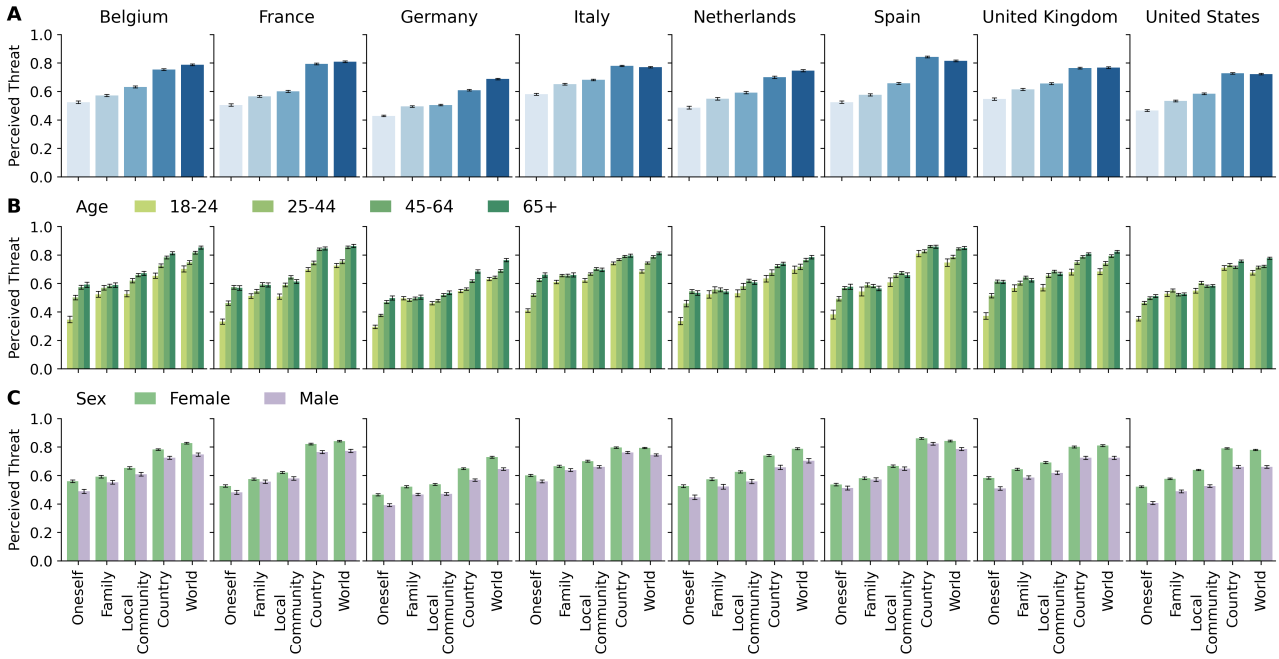


Fig. S4. Perception of threat posed by influenza. Perceived threat posed by influenza to oneself, the family, the local community, the country, and the world, broken down by country (A), age group (B), and sex (C). Bar charts show mean values as bars and bootstrapped 95%CI as errors.

5 The threat perception of influenza

Figure S4 shows the threat that respondents perceived influenza to pose for different levels of society (i.e. to oneself, the family, the local community, the country, and the world), broken down by country (panel A), age group (panel B), and sex (panel C). Overall, threat perception of influenza is highest in Italy with a median value of 0.47, followed by Spain with 0.44, the United Kingdom with 0.43, France with 0.43, Belgium with 0.41, the Netherlands with 0.41, the United States with 0.40, and lastly Germany with 0.38.

As for the threat perception of COVID-19, the threat perception of influenza increases sharply from the personal sphere (oneself and the family) to more distal contexts, i.e. the local community, the country, and, ultimately, the world. Considering specifically the perceived threat to oneself and to the world, the latter is on average 47% greater, whereas this difference ranges from 37% in Italy to 56% in the United States.

Moreover, the perceived threat posed by influenza is both age- and sex-specific. As shown in Figure S4B, the perceived threat sharply increases with age (all $p < 0.004$, except the threat to the family [$p = 0.1$]). In particular, the perceived threat to oneself is consistently lower for the younger age group (i.e. 18-24) with a mean value of 0.19 (IQR 0.18-0.21), and higher for the elderly, i.e. 65+, with a mean value of 0.42 (IQR 0.41-0.44). On the other hand, when it comes to the family, younger people perceive a higher threat, with a mean value of 0.32 (IQR 0.30-0.33), while it remains unvaried for the elderly. Furthermore, as Figure S4C shows, the perceived threat is significantly higher among female respondents than among male respondents (all $p < 0.001$).

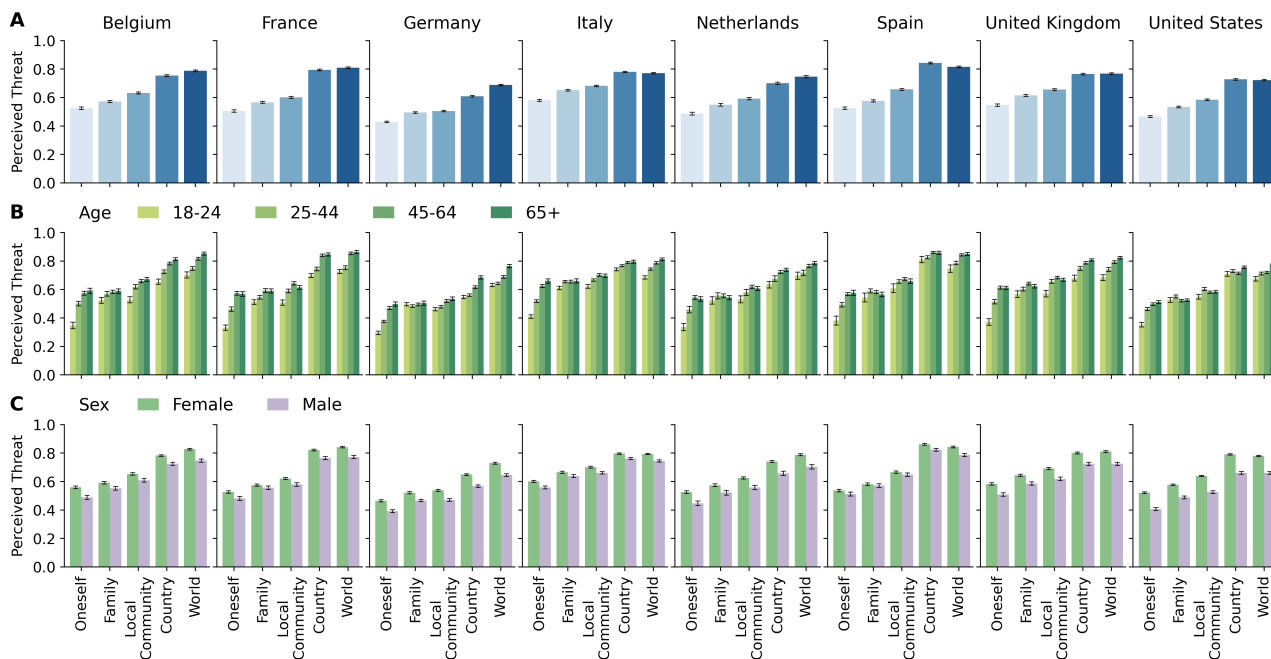


Fig. S5. Perception of threat posed by COVID-19. Perceived threat posed by COVID-19 to oneself, the family, the local community, the country, and the world, broken down by country (A), age group (B), and sex (C). Bar charts show mean values as bars and bootstrapped 95%CI as errors.

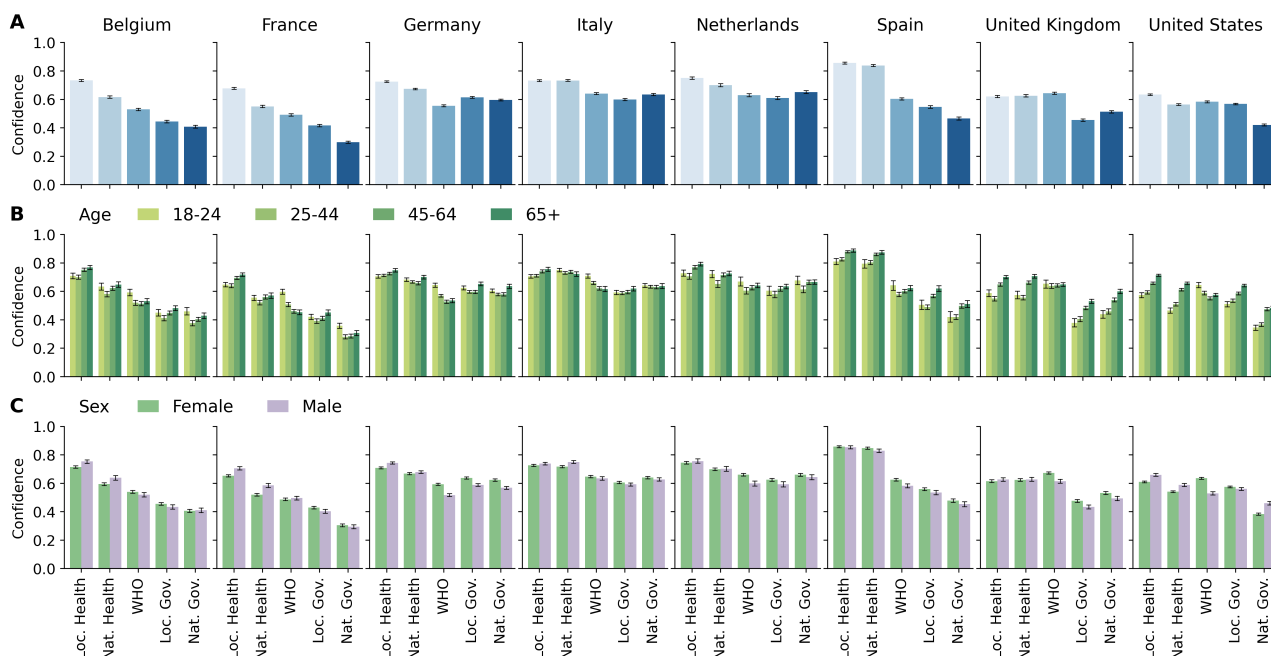



Fig. S6. Confidence in organisations to deal with the COVID-19 pandemic. Level of confidence in the local and national healthcare system, the World Health Organization (WHO), and the local and national government, broken down by country (A), age group (B), and sex (C). Bar charts show mean values as bars and bootstrapped 95%CI as errors.



figs/behaviour_all_barplot+95CI.png

Fig. S7. Adoption of preventive behaviours. Adoption rate of behaviours broken down by age (**A**), sex (**B**), and calendar week (**C**). The adoption rate is defined as the weighted proportion of individuals who adopted a specific behaviour. Bar charts show mean values as bars and bootstrapped 95%CI as errors.

Country	Macro-region	Micro-region
Belgium	Brussels	Brussels
	Flanders	Antwerpen, Limburg, Oost-Vlaanderen, Vlaams-Brabant, West-Vlaanderen
	Wallonia	Brabant Wallon, Hainaut, Liège, Luxembourg, Namur
France	Île de France	Île de France
	North East	Alsace, Bourgogne, Champagne-Ardenne, Franche-Comte, Lorraine, Nord-Pas-de-Calais, Picardie
	South West	Aquitaine - Limousin - Poitou-Charentes, Languedoc-Roussillon - Midi-Pyrénées
	South East	Auvergne - Rhône-Alpes, Corse, Provence-Alpes-Côte d'Azur
	West	Bretagne, Centre - Val de Loire, Normandie, Pays-de-la-Loire
Germany	Norddeutschland	Bremen, Hamburg, Mecklenburg-Vorpommern, Niedersachsen, Schleswig-Holstein
	Ostdeutschland	Berlin, Brandenburg, Sachsen, Sachsen-Anhalt, Thüringen
	Süddeutschland	Baden-Württemberg, Bayern
	Westdeutschland	Hessen, Nordrhein-Westfalen, Rheinland-Pfalz, Saarland
Italy	Central	Lazio, Marche, Toscana, Umbria
	Insular	Sardegna, Sicily
	Northeast	Emilia-Romagna, Friuli-Venezia Giulia, Trentino-Alto Adige, Veneto
	Northwest	Liguria, Lombardia, Piemonte, Valle d'Aosta
	South	Abruzzo, Basilicata, Calabria, Campania, Molise, Apulia
Netherlands	East	Flevoland, Gelderland, Overijssel
	North	Drenthe, Friesland, Groningen
	South	Limburg, Noord-Brabant
	West	Noord-Holland, Utrecht, Zuid-Holland, Zeeland
Spain	Center	Castilla y León, Castilla-la Mancha, Extremadura
	East	Cataluña, Comunidad Valenciana, Illes Balears
	Island	Canarias
	Madrid	Comunidad de Madrid
	Northwest	Cantabria, Galicia, Principado de Asturias
	North East	Aragón, Comunidad Foral de Navarra, La Rioja, País Vasco
	South	Andalucía, Región de Murcia
United Kingdom	England	East Midlands, East of England, North East, North West, South East, South West, West Midlands, Yorkshire and The Humber
	London	London
	Northern Ireland	Northern Ireland
	Scotland	Scotland
	Wales	Wales
United States	Midwest	Illinois, Indiana, Iowa, Kansas, Michigan, Minnesota, Missouri, Nebraska, North Dakota, Ohio, South Dakota, Wisconsin
	Northeast	Connecticut, Maine, Massachusetts, New Hampshire, New Jersey, New York, Pennsylvania, Rhode Island, Vermont
	South	Alabama, Arkansas, Delaware, Florida, Georgia, Kentucky, Louisiana, Maryland, Mississippi, North Carolina, Oklahoma, South Carolina, Tennessee, Texas, Virginia, District of Columbia, West Virginia
	West	Alaska, Arizona, California, Colorado, Hawaii, Idaho, Montana, Nevada, New Mexico, Oregon, Utah, Washington, Wyoming

Table S4. Correspondence of micro- and macro-regions for all countries included in the analysis.

References

- [1] S. Pöttschke and M. Braun, “Migrant sampling using Facebook advertisements: A case study of Polish migrants in four European countries,” *Social Science Computer Review*, vol. 35, no. 5, pp. 633–653, 2017.
- [2] D. A. Dillman, J. D. Smyth, and L. M. Christian, *Internet, Phone, Mail, and Mixed-Mode Surveys: The Tailored Design Method*. John Wiley & Sons, 2014.
- [3] European Union, “Eurostat regional yearbook, 2019.” <https://ec.europa.eu/eurostat/web/products-statistical-books/-/KS-HA-19-001>, 2019. (Accessed on March 20, 2020).
- [4] U.S. Census Bureau, Population Division, “Annual Estimates of the Resident Population by Sex, Age, Race, and Hispanic Origin for the United States and States: April 1, 2010 to July 1, 2018,” 2019.
- [5] European Social Survey, “Round 9: European Social Survey Round 9 Data (2018).” https://www.europeansocialsurvey.org/download.html?file=ESS9e01_2&y=2018. (Accessed on March 20, 2020).
- [6] U.S. Census Bureau, “American Community Survey 1-Year Estimates, 2018.” <https://data.census.gov/cedsci/>. (Accessed on March 20, 2020).

A The COVID-19 Health Behavior Survey (CHBS)

S1. Intro

Health Behaviour Survey United States

Thank you for your interest in our survey. This is an academic study led by researchers from the [Max Planck Institute for Demographic Research](#). Our goal is to understand health behaviors and help improve the health and well-being of people across countries at a time of increasing uncertainty. Your participation is crucial for our study.

The survey is directed at all people who are 18 years old or older, and it will take approximately 10-12 minutes to complete. Your participation is completely voluntary, you can stop participating at any time. In case you are not comfortable answering a particular question, you have the option to select "Prefer not to answer". Participants' data will be treated anonymously, and we will not ask for identifying information. If you wish to provide your email address, it will not be linked to your survey data. You can download our data protection policy [here](#).

If you have any questions about this research study, please contact Dr. André Grow and Dr. Daniela Perrotta at the Max Planck Institute for Demographic Research via healthsurvey@demogr.mpg.de.

Tick the box below and press 'Next' to continue.

I am willing to participate in this survey, I am at least 18 years old, and I have read the data protection policy.

S2. About you

First of all, we would like to ask you some questions about you, your background and your daily life.

Q1. How old are you?
[NUMERICAL FIELD]

Q2. What is your sex?
1. Male
2. Female
3. Prefer not to answer

Q3. What is your country of birth?
[COUNTRY LIST]

Q4. In which country do you currently live?
[COUNTRY LIST]

Q5. What is your place of residence?
[REGION LIST]

FILTER: if the country selected in Q5 coincides with the country of the survey.

Q6. What is the postcode of your place of residence?
[OPEN TEXT FIELD]

Q7. What is the postcode of the place where you spend the majority of a typical weekday (e.g. your workplace, school, or home)?
[OPEN TEXT FIELD]

Q8. Which of these descriptions applies to what you have been doing for the last 7 days?
Check all that apply.

1. In paid work (or away temporarily) (employee, self-employed, working for your family business)
2. In education (not paid for by employer) even if on vacation
3. Unemployed and actively looking for a job
4. Unemployed, wanting a job but not actively looking for a job
5. Permanently sick or disabled
6. Retired
7. In community or military service
8. Doing housework, looking after children or other persons

- 9. Other: [OPEN TEXT FIELD]
- 10. Don't know
- 11. Prefer not to answer

Q9. What is the highest educational level that you have attained?

- 1. No schooling completed
- 2. Nursery school
- 3. Kindergarten
- 4. 12th grade - NO DIPLOMA
- 5. Regular high school diploma
- 6. GED or alternative credential
- 7. Some college credit, but less than 1 year of college credit
- 8. 1 or more years of college credit, no degree
- 9. Associate's degree (for example: AA, AS)
- 10. Bachelor's degree (for example: BA, BS)
- 11. Master's degree (for example: MA, MS, MEng, MEd, MSW, MBA)
- 12. Professional degree beyond a bachelor's degree (for example: MD, DDS, DVM, LLB, JD)
- 13. Doctorate degree (for example: PhD, EdD)
- 14. Prefer not to answer

Q10. Including yourself, how many people – including children – live regularly at your home?

- 1. Number of people: [NUMERICAL FIELD]
- 2. Prefer not to answer

FILTER: if option 1 was selected in Q10.

Q11. How many people living in your house belong to each of the following age groups?

0-15 years	[NUMERICAL FIELD]
16-64 years	[NUMERICAL FIELD]
65+ years	[NUMERICAL FIELD]

S3. COVID-19: The outbreak of a novel coronavirus

Following the first reports of cases of acute respiratory syndrome in the Chinese Wuhan municipality at the end of December 2019, a novel coronavirus has been identified by the Chinese authorities as the cause of the outbreak. The virus has rapidly spread, affecting other parts of China, as well as other countries. The disease caused by this novel coronavirus has been called COVID-19.

Q12. How much, if at all, have you seen, read or heard about the coronavirus outbreak?

1. Nothing at all
2. Not very much
3. A fair amount
4. A great deal
5. Prefer not to answer

FILTER: if option 2,3,4 was selected in Q12.

S4. COVID-19 from your point of view

We value your opinion on the coronavirus outbreak that has been recently affecting people’s lives. We would like to ask you now some questions related to your behaviours in response to the epidemic.

Q13. What level of threat do you think the coronavirus poses to each of the following?

	1 - Very low threat	2 - Low threat	3 - Moderate threat	4 - High threat	5 - Very high threat	Don't know	Prefer not to answer
The world							
Your country							
Your local community							
You personally							
Your family							

Q14. Based on what you have seen, read or heard, how confident are you the following are prepared and can effectively deal with the coronavirus?

	1 – Not confident at all	2 – Little confident	3 – Somewhat confident	4 – Very confident	Don't know	Prefer not to answer
Your national government						
Your local government						
The World Health Organization						
Healthcare services in your country						
Hospitals in your local area						
Doctors & healthcare professionals in your community						

Airports in your country						
Airlines in your country						
Your friends and neighbours						

Q15. How much confidence, if any, do you have in the accuracy of these sources of information on the coronavirus?

	1 - Nothing at all	2 - Not very much	3 - A fair amount	4 - A great deal	Don't know	Prefer not to answer
Social media networks						
Friends, family and colleagues						
Government health officials						
Radio						
Magazines						
Newspapers						
Television						
The Internet						
Medical professionals such as doctors and nurses						

Notes: Item order randomized

Q16. Do you agree or disagree with the following:

	1 - Strongly disagree	2 - Somewhat disagree	3 - Somewhat agree	4 - Strongly agree	Don't know	Prefer not to answer
I am confident pharmaceutical companies will soon develop a vaccine or treatment for the coronavirus.						
The coronavirus outbreak has been contained and will soon						

6

be over.						
The media has exaggerated the extent of the coronavirus outbreak.						
The recommended preventive measures are effective to reduce population contagion						

Notes: Item order randomized

Q17. On March 9, 2020, Italy was the first European country to declare a nationwide lockdown as a control measure to curb the coronavirus epidemic in the country. Do you agree or disagree with the following?

	1 - Strongly disagree	2 - Somewhat disagree	3 - Somewhat agree	4 - Strongly agree	Don't know	Prefer not to answer
The USA is at risk of being locked down soon to contain the spread of coronavirus						
The USA is better equipped to deal with the coronavirus outbreak than Italy						

Q18. Which of the following actions, if any, have you already taken to protect yourself from the coronavirus? Check all that apply.

We do not seek to suggest that any of the above actions do, or do not, help prevent the spread of the virus or the infection. We only seek to understand which actions people actually engage in. For more information on the recommended preventive measures, please refer to the official guidance of your national health representatives.

1. Avoided purchasing products from Asia (e.g. food, goods)
2. Avoided purchasing products from Italy (e.g. food, goods)
3. Avoided purchasing products from Iran (e.g. food, goods)
4. Avoided social activities (e.g. meeting friends)
5. Avoided eating in Asian restaurants
6. Avoided eating in Italian restaurants
7. Avoided eating in Iranian restaurants

7

8. Avoided travelling by public transportation (e.g. bus, tram, subway, train)
9. Stockpiling of medicines
10. Stockpiling of food
11. Avoided crowded places (e.g. restaurant, cinema, gym, playground, stadium)
12. Avoided travelling by taxi
13. Bought a face mask
14. Worn a face mask
15. Washed hands more often
16. Used sanitizing hand gel more often
17. Avoided shaking hands
18. Avoided contacts with people of Asian origin or appearance
19. Avoided contacts with people of Italian origin or appearance
20. Avoided contacts with people of Iranian origin or appearance
21. Other: [OPEN TEXT]
22. None
23. Prefer not to answer

Notes: Items 2, 6, and 19 not asked in Italy

Q19. Have you changed or cancelled any of your scheduled trips in 2020 to protect yourself from the coronavirus?

1. Yes
2. No
3. Not applicable (no trips planned)
4. Prefer not to answer

FILTER: if option 1 was selected in question Q19.

Q20. What was the trip's destination that you have changed or cancelled?

[COUNTRY LIST]

FILTER: if option 1 was selected in question Q19.

Q21. For when was the trip that you changed or cancelled scheduled?

[MONTH LIST]

FILTER: if option 1 or 2 was selected in question Q19.

Q22. Do you have other trips planned in 2020?

1. Yes
2. No
3. Prefer not to answer

FILTER: if option 1 was selected in question Q22.

Q23. What is the destination country of your next trip this year?

[COUNTRY LIST]

FILTER: if option 1 was selected in question Q22.

Q24. For when is your next trip this year scheduled?

[MONTH LIST]

Q25. Due to the coronavirus outbreak, have you personally experienced any of the following disruptions to your daily life? Check all that apply.

1. School closure (either affecting you as a student or as a parent)
2. Workplace closure
3. Working remotely (e.g. smart working)
4. Quarantine
5. Other: [OPEN TEXT]
6. None
7. Prefer not to answer

Q26. Have you been tested for coronavirus?

1. Yes
2. No
3. Prefer not to answer

FILTER: if option 1 was selected in question Q26.

Q27. Did you test positive for coronavirus?

1. Yes
2. No
3. Don't know (test results not available yet)
4. Prefer not to answer

S5. About your health

We would like to ask you some questions related to your health and health behaviors.

Q28. Do you suffer from any chronic diseases (e.g. diabetes, cardiovascular or respiratory diseases, cancer, etc.)?

1. Yes
2. No
3. Don't know
4. Prefer not to answer

Q29. Have you received the flu vaccine in the last 6 months?

1. Yes
2. No
3. Don't know
4. Prefer not to answer

Q30. What level of threat do you think the flu poses to each of the following?

	1 - Very low threat	2 - Low threat	3 - Moderate threat	4 - High threat	5 - Very high threat	Don't know	Prefer not to answer
The world							
Your country							
Your local community							
You personally							
Your family							

FILTER: if option 2 was selected in Q2 (i.e. female).

Q31. Are you currently pregnant?

1. Yes
2. No
3. Don't know
4. Prefer not to answer

Q32. Have you experienced any of the following symptoms in the last 7 days? Check all that apply.

1. Runny or blocked nose
2. Stomach ache
3. Nausea

4. Headache
5. Tiredness
6. Cough
7. Malaise
8. Muscle/joint pain
9. Sore throat
10. Difficult breathing
11. Fever
12. Sneezing
13. Others: [OPEN TEXT]
14. No symptoms
15. Prefer not to answer

FILTER: if at least one symptom was selected in question Q32.

Q33. Because of these symptoms, have you used any of the following services? Check all that apply.

1. Emergency hotline (e.g. 112, 999, 911)
2. Internet (e.g. Google, Wikipedia)
3. General Practitioner
4. Hospital, emergency room
5. Pharmacy
6. Others: [OPEN TEXT]
7. None
8. Prefer not to answer

S6. About your social interactions

As a last request, we would like you to record the number of persons you had contact with yesterday in different locations (at home, at school/college, at work, other locations), from when you woke up to when you went to sleep.

- A contact is defined as:
 - EITHER a two-way conversation with three or more words in the physical presence of another person,
 - OR physical skin-to-skin contact (for example a handshake, hug, kiss or contact sports).
- Think about every person that you contacted during the day, regardless of whether the contact was long or short, and whether you knew the person or not.
- Contacts made exclusively by telephone or mobile phone should NOT be recorded.
- If you contacted the same person in different locations in the course of the day, only count him/her once, and assign him/her to the location where you two had the contact of longer duration.
 - Example: Anne runs a family business together with her husband Tom. Anne and Tom saw each other yesterday both at home and at work. Since they spent more time together at home than at work, Anne will count the contact with Tom as a home contact, and not a work contact.
- If you had no contacts in a given location, please enter 0.

How many persons did you have contacts with yesterday ...

Q34. ...at your home?

1. Number of people: [NUMERICAL FIELD]
2. Prefer not to answer

Q35. ... at school/college?

1. Number of people: [NUMERICAL FIELD]
2. Not applicable (e.g. you do not attend any school)
3. Prefer not to answer

Q36. ... at work? (at your workplace or throughout the course of your daily job activity, such as meeting customers or clients)

1. Number of people: [NUMERICAL FIELD]
2. Not applicable (e.g. you do not work)
3. Prefer not to answer

Q37. ... in other settings? (e.g. during transportation and commuting, social and leisure activities, religious services, shopping, or other activities)

1. Number of people: [NUMERICAL FIELD]
2. Prefer not to answer

FILTER: If a number of contacts greater than 0 was inserted in question Q34.

Q38. You indicated above that yesterday you had contacts with some people at home. Did any of them show any of the following symptoms: fever, cough, tiredness, difficult breathing, or muscle pain?

1. Yes
2. No
3. Don't know
4. Prefer not to answer

S7. Keep in touch!

To assess changes in health and health behaviours in our populations over time, we may ask you to participate in this or a similar survey again in the future. Your participation is crucial for our research! If you are willing to be contacted again, please check the box below. You can request the deletion of your email address at any time. For more information please read our data protection policy [here](#).

Q39. Do you agree to provide your email address?

1. Yes, I agree to provide my email address
2. No, I will not provide my email address

FILTER: if option 1 was selected in question Q39.

Q40. Please enter your email address below.

[OPEN TEXT FIELD]