

## SUPPLEMENTARY MATERIALS

### Modelling the impact of lockdown easing measures on cumulative COVID-19 cases and deaths in England

Ziauddeen H, PhD <sup>1,2,3</sup>, Subramaniam N, BSc <sup>1,2</sup>, Gurdasani D, PhD† <sup>4</sup>.

**Supplementary Table 1: Parameters estimated by Bayesian model**

| Variable                  | Parameter   | No. | Priors               |
|---------------------------|---|-----|----------------------|
| $c_t$ , where $t=1\dots6$ | Number of initial cases on first six days                       | 6   | exponential(1.0/tau) |
| $R_0$                     | Baseline Reproduction Number                                    | 1   | Normal(2.4,0.5)      |
| $R_t$                     | Time varying effective reproduction number                      | 9   | Normal(0.8,0.25)     |
| $\varphi$                 | variance parameter for negative binomial distribution of deaths | 1   | normal(0,5)          |
| $\tau$                    | parameter in prior of $c_t$                                     | 1   | exponential(0.03)    |

**Supplementary Table 2: Comparison of Bayesian models with different constraints on changes in  $R_t$**

| Model   | RMSE | EPLD   | SE   | diff_EPLD_model3 | diff_SE_model3 |
|---------|------|--------|------|------------------|----------------|
| model 1 | 38.0 | -505.1 | 25.0 | -1.5             | 0.5            |
| model 2 | 28.3 | -504.8 | 24.5 | -1.2             | 0.9            |
| model 3 | 28.0 | -503.6 | 24.8 | NA               | NA             |

Supp. Table 2 represents model comparisons between Models 1-3, as specified in the text. RMSE represents the Root mean squared error between estimated and observed deaths for each model. EPLD represents the expected log pointwise predictive density which approximates leave-one-out (LOO) cross-validation. Less negative scores suggest better fit. SE is the standard error of EPLD. We assess the difference in EPLD between all models and the best performing model (Model 3 in this case), comparing the difference in EPLD (diff\_EPLD\_model3) with the standard error of the difference (diff\_SE\_model3). Although all three models appear comparable in performance, Model 3 appears to show the best fit with the lowest RMSE, and the least negative EPLD.

**Supplementary Table 3: Comparison of models excluding specific change points for  $R_t$**

| <b>change points removed</b> | <b>RMSE</b> | <b>EPLD</b> | <b>SE</b> | <b>diff_EPLD</b> | <b>diff_SE</b> |
|------------------------------|-------------|-------------|-----------|------------------|----------------|
| 16th March                   | 118.1       | -576.0      | 26.1      | -70.9            | 5.3            |
| 23rd March                   | 44.6        | -506.7      | 25.2      | -1.6             | 1.0            |
| 13th May                     | 40.2        | -504.8      | 25.0      | 0.3              | 0.4            |
| 1st June                     | 38.1        | -505.2      | 25.0      | -0.1             | 0.0            |
| None (all included)          | 38.0        | -505.1      | 25.0      | NA               | NA             |

Supp. Table 3 represents model comparisons between Models that constrain  $R_t$  at each of the 4 hypothesised change points at which point social distancing or lockdown measures were introduced (16<sup>th</sup> March and 23<sup>rd</sup> March), or when lockdown measures were eased (13<sup>th</sup> May and 1<sup>st</sup> June). The first column represents the change point left out in each model, with the last model with all three change points being the comparator, as specified in the text. RMSE represents the Root mean squared error between estimated and observed deaths for each model. EPLD represents the expected log pointwise predictive density which approximates leave-one-out (LOO) cross-validation. Less negative scores suggest better fit. SE is the standard error of EPLD. We assess the difference in EPLD between all models and the model with all three change points, comparing the difference in EPLD (diff\_EPLD) with the standard error of the difference (diff\_SE). The model leaving out 16<sup>th</sup> March as a change point, i.e. constraining  $R_t$  to remain constant at this point appears to adversely impact fit the most.

**Supplementary Table 4: Cumulative cases and deaths in lockdown easing scenarios in primary model**

| Rt 1st June | Rt 15th June | Rt 4th July | Cumulative cases         | Cumulative deaths  | Cases difference from baseline | Death difference from baseline |
|-------------|--------------|-------------|--------------------------|--------------------|--------------------------------|--------------------------------|
| 0.752       | 0.752        | 0.752       | 4411594(4199223-4639250) | 48501(46170-50989) | 0(0,0)                         | 0(0,0)                         |
| 0.6         | 0.6          | 0.6         | 4364386(4162299-4580834) | 48006(45783-50386) | -44302(-84684--18600)          | -462(-884--194)                |
| 0.65        | 0.65         | 0.65        | 4374559(4170697-4593499) | 48115(45875-50523) | -33831(-64668--14204)          | -350(-669--147)                |
| 0.7         | 0.7          | 0.7         | 4391027(4183302-4610584) | 48286(46007-50696) | -19968(-38168--8384)           | -204(-389--86)                 |
| 0.75        | 0.75         | 0.75        | 4410590(4198499-4637531) | 48494(46163-50977) | -908(-1736--381)               | -9(-17--4)                     |
| 0.75        | 0.75         | 0.8         | 4415149(4201945-4645342) | 48518(46186-51016) | 3069(1285-5890)                | 19(8-37)                       |
| 0.75        | 0.8          | 0.8         | 4424153(4209052-4658126) | 48612(46255-51149) | 11497(4814-22058)              | 102(43-195)                    |
| 0.75        | 0.8          | 0.85        | 4430866(4213721-4668154) | 48654(46293-51225) | 18197(7620-34906)              | 145(61-278)                    |
| 0.8         | 0.8          | 0.8         | 4439684(4219884-4679358) | 48771(46375-51380) | 26447(11105-50549)             | 257(108-492)                   |
| 0.8         | 0.8          | 0.85        | 4447876(4225283-4692920) | 48827(46413-51458) | 34303(14397-65598)             | 308(129-589)                   |
| 0.8         | 0.85         | 0.85        | 4461240(4232489-4716984) | 48954(46492-51680) | 47523(19934-90933)             | 431(181-825)                   |
| 0.8         | 0.85         | 0.9         | 4474630(4243279-4736698) | 49036(46538-51811) | 60851(25519-116475)            | 508(213-972)                   |
| 0.85        | 0.85         | 0.85        | 4481739(4247839-4745973) | 49166(46614-52010) | 67576(28376-129149)            | 632(265-1208)                  |
| 0.85        | 0.85         | 0.9         | 4498639(4257710-4770487) | 49246(46692-52138) | 83109(34888-158891)            | 722(303-1379)                  |
| 0.85        | 0.9          | 0.9         | 4521199(4273493-4806484) | 49446(46808-52428) | 104334(43782-199536)           | 907(381-1733)                  |
| 0.85        | 0.9          | 0.95        | 4547931(4291851-4848863) | 49592(46917-52640) | 130823(54887-250256)           | 1043(438-1994)                 |
| 0.9         | 0.9          | 0.9         | 4549190(4292969-4850945) | 49730(47007-52865) | 132381(55595-252977)           | 1173(493-2240)                 |
| 0.9         | 0.9          | 0.95        | 4579138(4311424-4905124) | 49887(47120-53118) | 163082(68471-311726)           | 1330(559-2542)                 |
| 0.9         | 0.95         | 0.95        | 4613802(4328984-4965451) | 50162(47308-53602) | 197988(83107-378532)           | 1610(676-3077)                 |
| 0.9         | 0.95         | 1           | 4667450(4358502-5053567) | 50397(47439-54007) | 250499(105129-479023)          | 1848(776-3534)                 |
| 0.95        | 0.95         | 0.95        | 4655308(4352263-5032669) | 50517(47499-54226) | 239051(100411-456749)          | 1971(828-3764)                 |
| 0.95        | 0.95         | 1           | 4718132(4385399-5139609) | 50790(47648-54680) | 299596(125815-572543)          | 2246(943-4290)                 |
| 0.95        | 1            | 1           | 4779022(4412370-5246023) | 51226(47883-55381) | 358354(150465-684935)          | 2672(1122-5106)                |
| 0.95        | 1            | 1.05        | 4880364(4464544-5437916) | 51650(48103-56116) | 462002(193954-883178)          | 3087(1296-5899)                |
| 1           | 1            | 1           | 4840595(4444280-5359379) | 51743(48160-56290) | 421310(177012-804811)          | 3174(1334-6060)                |
| 1           | 1            | 1.05        | 4959206(4498273-5586656) | 52235(48368-57131) | 540234(226938-1032145)         | 3649(1533-6970)                |
| 1           | 1.05         | 1.05        | 5055758(4548961-5767421) | 52892(48712-58297) | 641220(269327-1225202)         | 4303(1808-8220)                |
| 1           | 1.05         | 1.1         | 5264669(4632979-6143068) | 53598(49059-59632) | 844596(354706-1613979)         | 5018(2108-9587)                |
| 1.05        | 1.05         | 1.05        | 5156984(4594880-5946919) | 53594(49059-59623) | 741957(311832-1416940)         | 5017(2109-9578)                |
| 1.05        | 1.05         | 1.1         | 5397044(4692140-6391841) | 54411(49421-61165) | 974252(409410-1860772)         | 5833(2452-11138)               |
| 1.05        | 1.1          | 1.1         | 5574165(4770085-6732948) | 55401(49905-63038) | 1150799(483559-2198106)        | 6843(2876-13067)               |
| 1.05        | 1.1          | 1.15        | 5969381(4946974-7481001) | 56609(50491-65190) | 1546934(649955-2954983)        | 8065(3390-15402)               |
| 1.1         | 1.1          | 1.1         | 5744209(4843263-7044331) | 56428(50400-64839) | 1317940(554129-2516086)        | 7878(3313-15037)               |
| 1.1         | 1.1          | 1.15        | 6189495(5035202-7885232) | 57860(50954-67461) | 1768512(743504-3376542)        | 9269(3898-17692)               |
| 1.1         | 1.15         | 1.15        | 6501607(5163364-8475727) | 59458(51650-70470) | 2081127(874883-3973567)        | 10834(4556-20682)              |
| 1.1         | 1.15         | 1.2         | 7272289(5484637-9955130) | 61543(52551-74465) | 2846203(1196439-5434639)       | 12908(5427-24642)              |

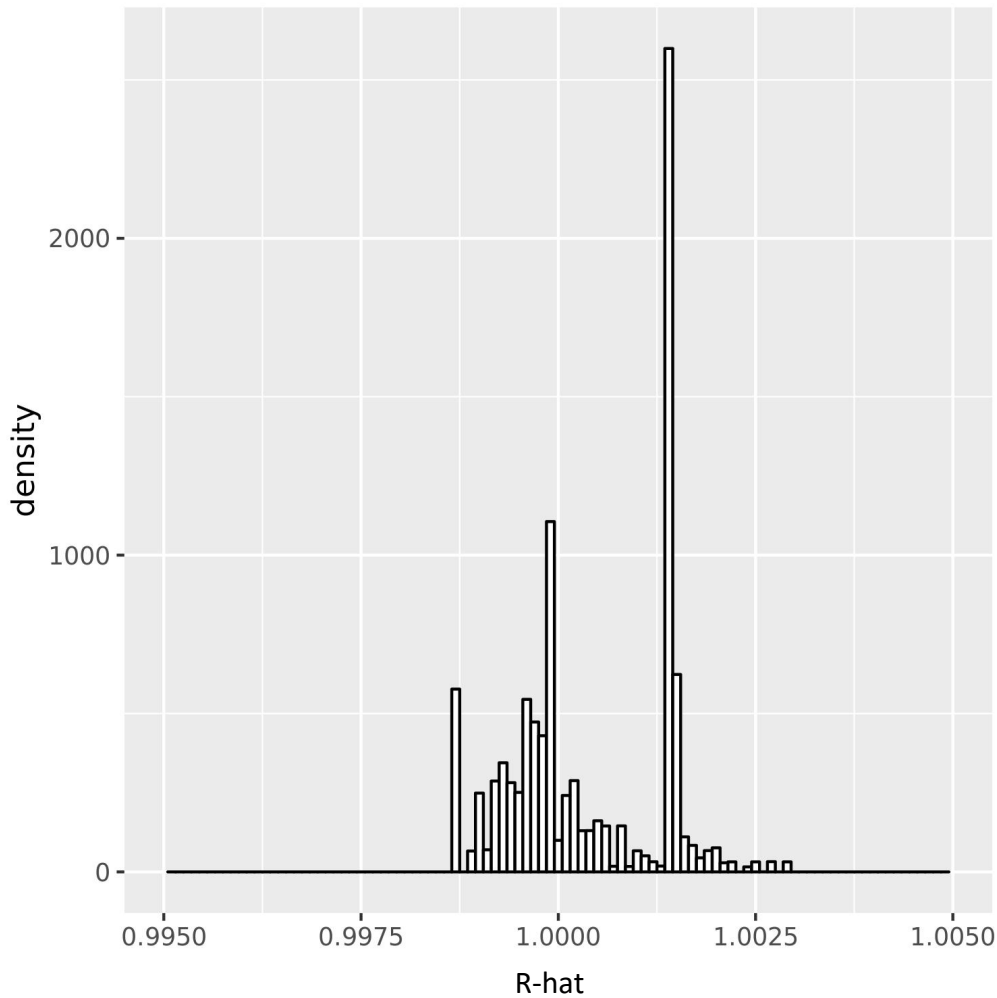
Supplementary Table 4 represents the estimated cumulative deaths, cumulative cases, and excess deaths and cases in different scenarios of changing Rt at points of easing lockdown in comparison with the baseline scenario of Rt remaining constant at 0.752.

**Supplementary Table 5: Cumulative cases and deaths in lockdown easing scenarios in model with long serial interval**

| Rt 1st June | Rt 15th June | Rt 4th July | Cumulative cases         | Cumulative deaths  | Cases difference from baseline | Death difference from baseline |
|-------------|--------------|-------------|--------------------------|--------------------|--------------------------------|--------------------------------|
| 0.691       | 0.691        | 0.691       | 4404236(4183512-4622330) | 48411(45990-50805) | 0(0-0)                         | 0(0-0)                         |
| 0.6         | 0.6          | 0.6         | 4371866(4158398-4583033) | 48078(45733-50400) | -32402(-52309--17783)          | -330(-533--181)                |
| 0.65        | 0.65         | 0.65        | 4387428(4171118-4603369) | 48241(45863-50609) | -16515(-26661--9065)           | -166(-268--91)                 |
| 0.7         | 0.7          | 0.7         | 4408635(4186726-4627236) | 48451(46022-50849) | 4158(2283-6712)                | 41(23-66)                      |
| 0.7         | 0.7          | 0.75        | 4413466(4190714-4632818) | 48487(46047-50893) | 8904(4865-14430)               | 75(41-121)                     |
| 0.7         | 0.75         | 0.75        | 4421929(4197326-4644215) | 48571(46126-50997) | 17612(9599-28584)              | 160(87-259)                    |
| 0.7         | 0.75         | 0.8         | 4428891(4202474-4652651) | 48618(46159-51054) | 24664(13432-40046)             | 206(112-334)                   |
| 0.75        | 0.75         | 0.75        | 4436254(4207602-4661170) | 48717(46226-51175) | 31769(17441-51275)             | 307(168-494)                   |
| 0.75        | 0.75         | 0.8         | 4444061(4214414-4673025) | 48768(46266-51240) | 39710(21767-64168)             | 358(197-579)                   |
| 0.75        | 0.8          | 0.8         | 4456057(4225564-4689908) | 48884(46358-51403) | 51923(28426-84007)             | 473(259-765)                   |
| 0.75        | 0.8          | 0.85        | 4468509(4233843-4705662) | 48955(46423-51508) | 63758(34875-103225)            | 544(298-881)                   |
| 0.8         | 0.8          | 0.8         | 4474042(4238163-4713852) | 49060(46515-51637) | 69645(38242-112391)            | 652(358-1051)                  |
| 0.8         | 0.8          | 0.85        | 4487239(4247137-4731986) | 49147(46570-51756) | 82925(45486-133921)            | 732(402-1180)                  |
| 0.8         | 0.85         | 0.85        | 4504368(4260726-4758965) | 49297(46674-51983) | 100288(54965-162081)           | 887(487-1433)                  |
| 0.8         | 0.85         | 0.9         | 4524968(4276399-4786847) | 49405(46756-52128) | 120111(65789-194244)           | 997(546-1610)                  |
| 0.85        | 0.85         | 0.85        | 4528097(4278796-4789875) | 49515(46843-52296) | 122997(67554-198451)           | 1107(609-1785)                 |
| 0.85        | 0.85         | 0.9         | 4550519(4295317-4824987) | 49639(46934-52475) | 145167(79670-234360)           | 1229(675-1983)                 |
| 0.85        | 0.9          | 0.9         | 4575600(4314157-4857930) | 49864(47104-52757) | 170201(93348-274900)           | 1441(791-2326)                 |
| 0.85        | 0.9          | 0.95        | 4608999(4336767-4903946) | 50032(47229-53038) | 203356(111471-328606)          | 1608(883-2597)                 |
| 0.9         | 0.9          | 0.9         | 4605943(4334310-4898052) | 50138(47312-53190) | 200055(109912-322694)          | 1716(944-2766)                 |
| 0.9         | 0.9          | 0.95        | 4643792(4360620-4952873) | 50326(47454-53431) | 237006(130136-382485)          | 1902(1046-3067)                |
| 0.9         | 0.95         | 0.95        | 4680570(4385671-5007504) | 50621(47645-53806) | 273569(150145-441642)          | 2192(1204-3535)                |
| 0.9         | 0.95         | 1           | 4735012(4422134-5091796) | 50870(47843-54169) | 328896(180416-531139)          | 2446(1343-3946)                |
| 0.95        | 0.95         | 0.95        | 4720210(4412771-5069359) | 50965(47911-54323) | 313876(172518-506126)          | 2540(1397-4093)                |
| 0.95        | 0.95         | 1           | 4781115(4451857-5160478) | 51266(48080-54750) | 375333(206196-605461)          | 2822(1552-4549)                |
| 0.95        | 1            | 1           | 4836432(4486836-5241471) | 51661(48368-55340) | 429433(235844-692907)          | 3219(1770-5191)                |
| 0.95        | 1            | 1.05        | 4928929(4549055-5385960) | 52032(48613-55941) | 521422(286255-841597)          | 3603(1980-5811)                |
| 1           | 1            | 1           | 4892268(4526735-5326989) | 52097(48655-56020) | 485265(266854-782184)          | 3667(2018-5906)                |
| 1           | 1            | 1.05        | 4995150(4589022-5491882) | 52523(48926-56643) | 587186(322775-946757)          | 4092(2252-6593)                |
| 1           | 1.05         | 1.05        | 5076092(4640904-5614490) | 53078(49274-57480) | 668188(367218-1077551)         | 4639(2552-7476)                |
| 1           | 1.05         | 1.1         | 5227156(4734604-5849954) | 53653(49678-58359) | 820638(450864-1323717)         | 5217(2869-8409)                |
| 1.05        | 1.05         | 1.05        | 5154698(4689409-5733251) | 53657(49684-58359) | 747364(411252-1204170)         | 5221(2876-8408)                |
| 1.05        | 1.05         | 1.1         | 5321327(4792479-5997797) | 54309(50099-59370) | 915842(503787-1475921)         | 5860(3227-9437)                |
| 1.05        | 1.1          | 1.1         | 5444111(4858418-6188703) | 55069(50551-60585) | 1038372(571090-1673570)        | 6615(3642-10657)               |
| 1.05        | 1.1          | 1.15        | 5698707(4995152-6588038) | 55936(51099-61889) | 1290002(709312-2079494)        | 7480(4117-12052)               |
| 1.1         | 1.1          | 1.1         | 5558967(4921706-6371716) | 55831(51060-61736) | 1153037(634971-1857036)        | 7382(4069-11884)               |
| 1.1         | 1.1          | 1.15        | 5838364(5075136-6811946) | 56779(51632-63173) | 1430388(787494-2304058)        | 8336(4593-13420)               |
| 1.1         | 1.15         | 1.15        | 6021434(5176394-7116504) | 57812(52276-64824) | 1617286(890276-2605292)        | 9384(5170-15109)               |
| 1.1         | 1.15         | 1.2         | 6430941(5404442-7783304) | 59109(53001-66839) | 2030763(1117659-3271715)       | 10673(5879-17187)              |

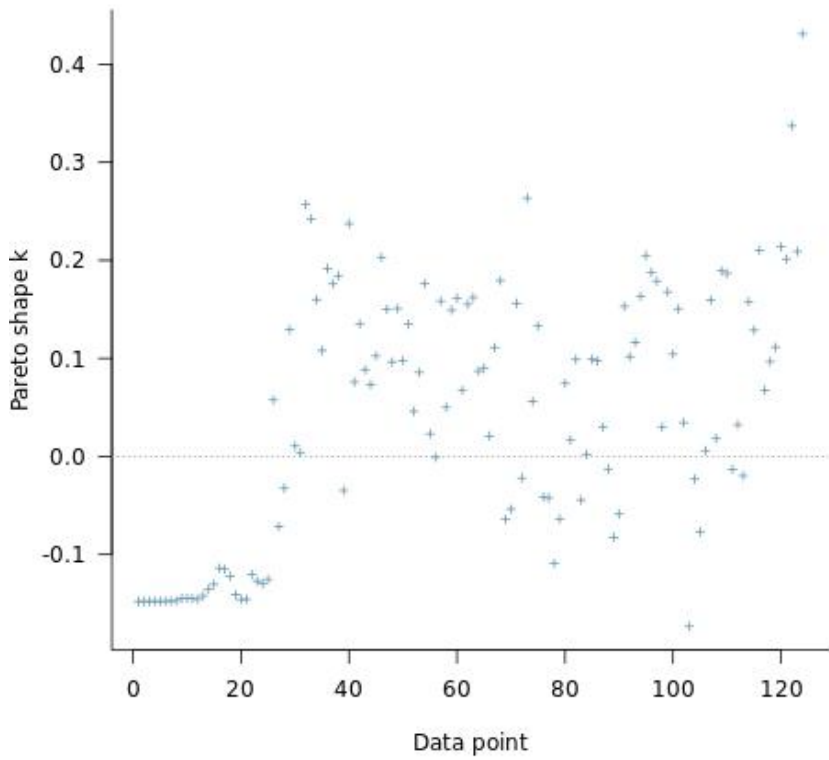
Supplementary Table 5 represents the estimated cumulative deaths, cumulative cases, and excess deaths and cases in different scenarios of changing  $R_t$  at points of easing lockdown in comparison with the baseline scenario of  $R_t$  remaining constant at 0.691.

**Supplementary Figure 1: Distribution of R-hat for parameters from final model**



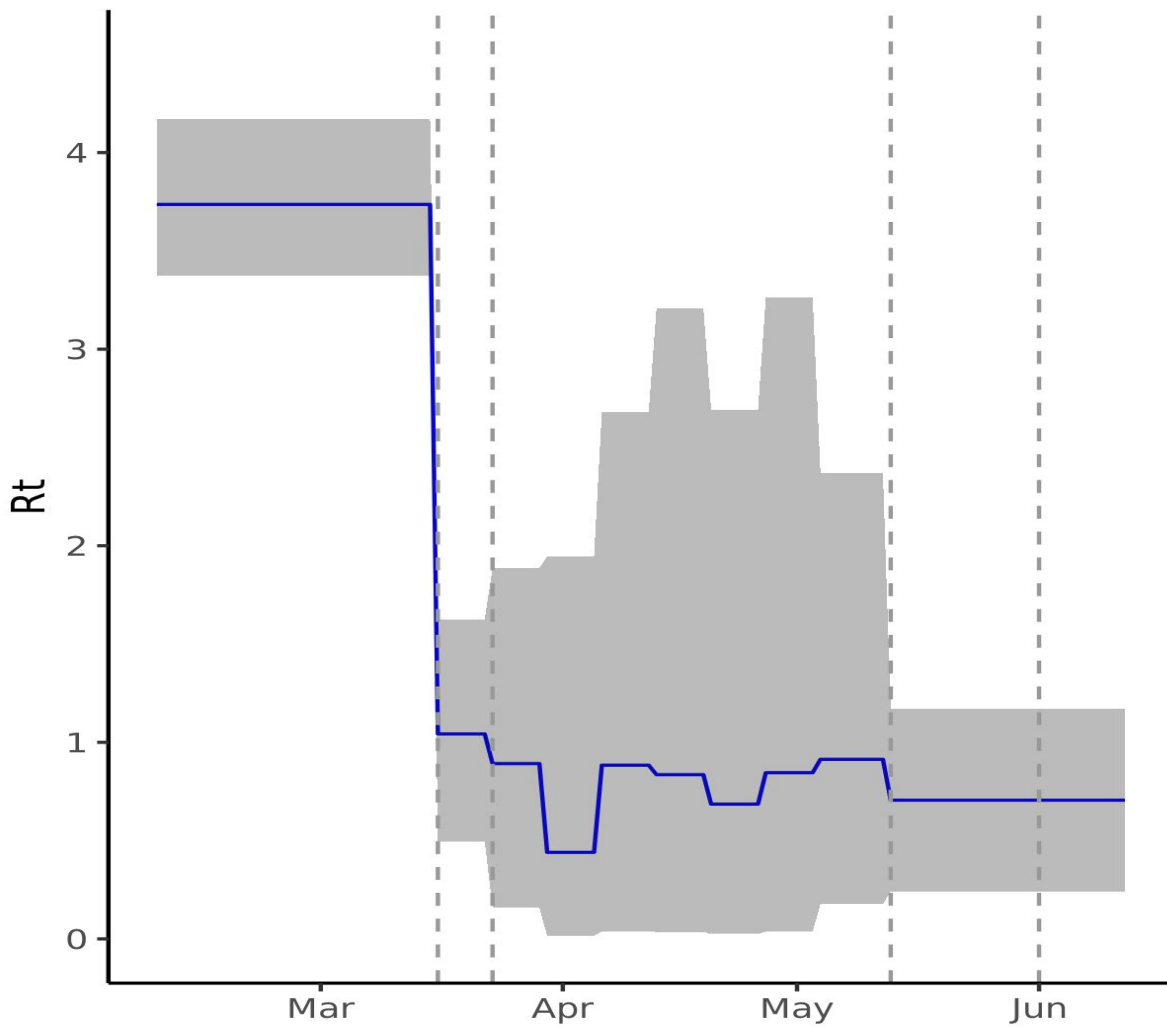
Supplementary Figure 1 represents the estimated R-hat for parameters of the final model. An R-hat near 1 suggests that between-chain variance for a given parameter is equal to the within-chain variance, suggesting convergence of the model. All values were well below 1.05.

**Supplementary Figure 2: Pareto shape parameter k distribution for final model**



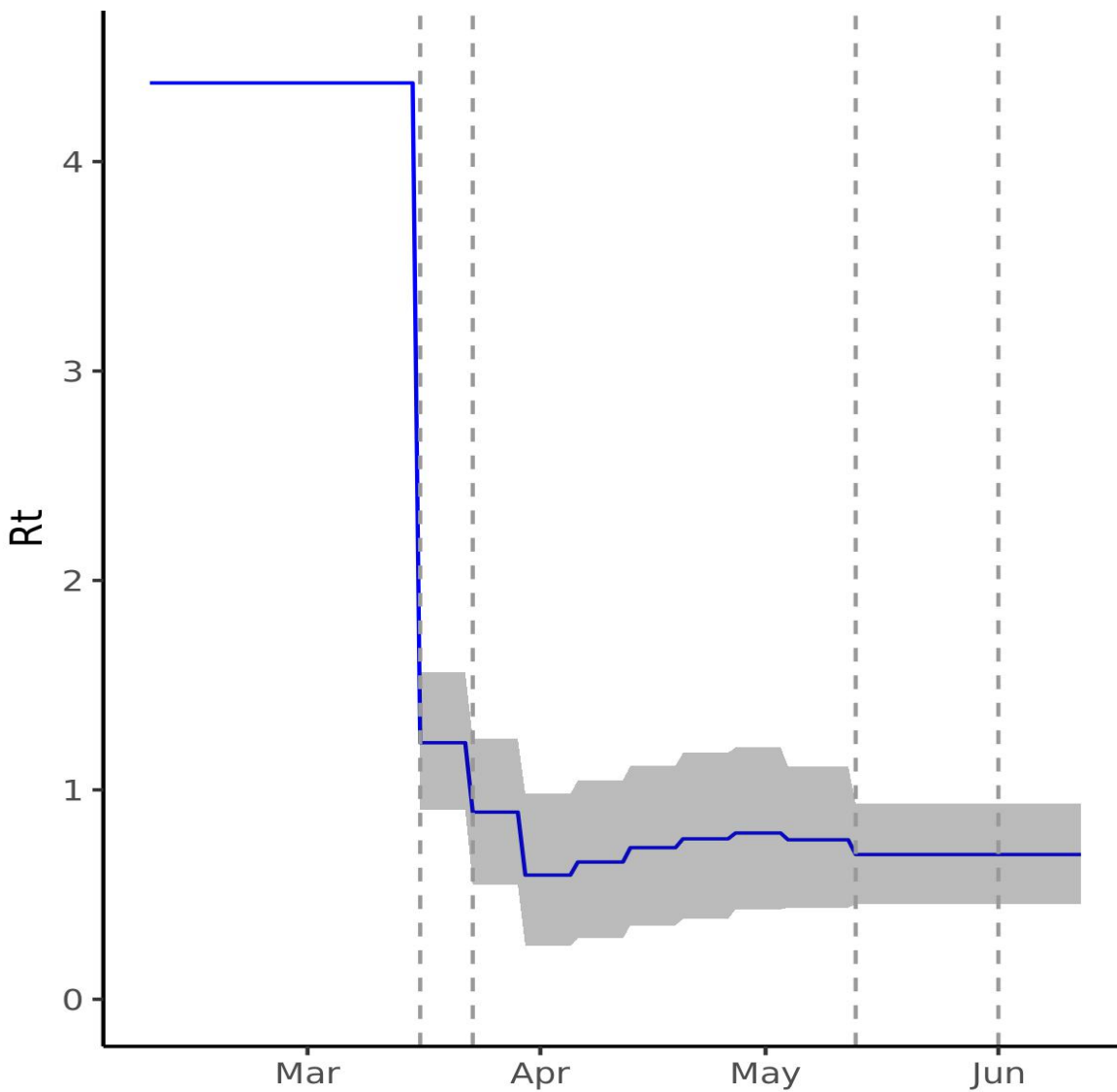
The estimated shape parameter  $k$  of the generalized Pareto distribution can be used to assess the reliability of the estimate from approximations of Leave-one-out cross-validation (LOO). The  $k$  shape values are all below 0.5, suggesting our estimates are reliable.

**Supplementary Figure 3: Rt estimates with uninformative priors**



Supplementary Figure 3. Represents estimates of  $R_t$  when uninformative priors are used for estimation. We find that although uncertainty is greater around estimates, median estimates, and patterns of changes are similar as for the original model for all time intervals, suggesting that these are not constrained by specification of the prior in the final model.

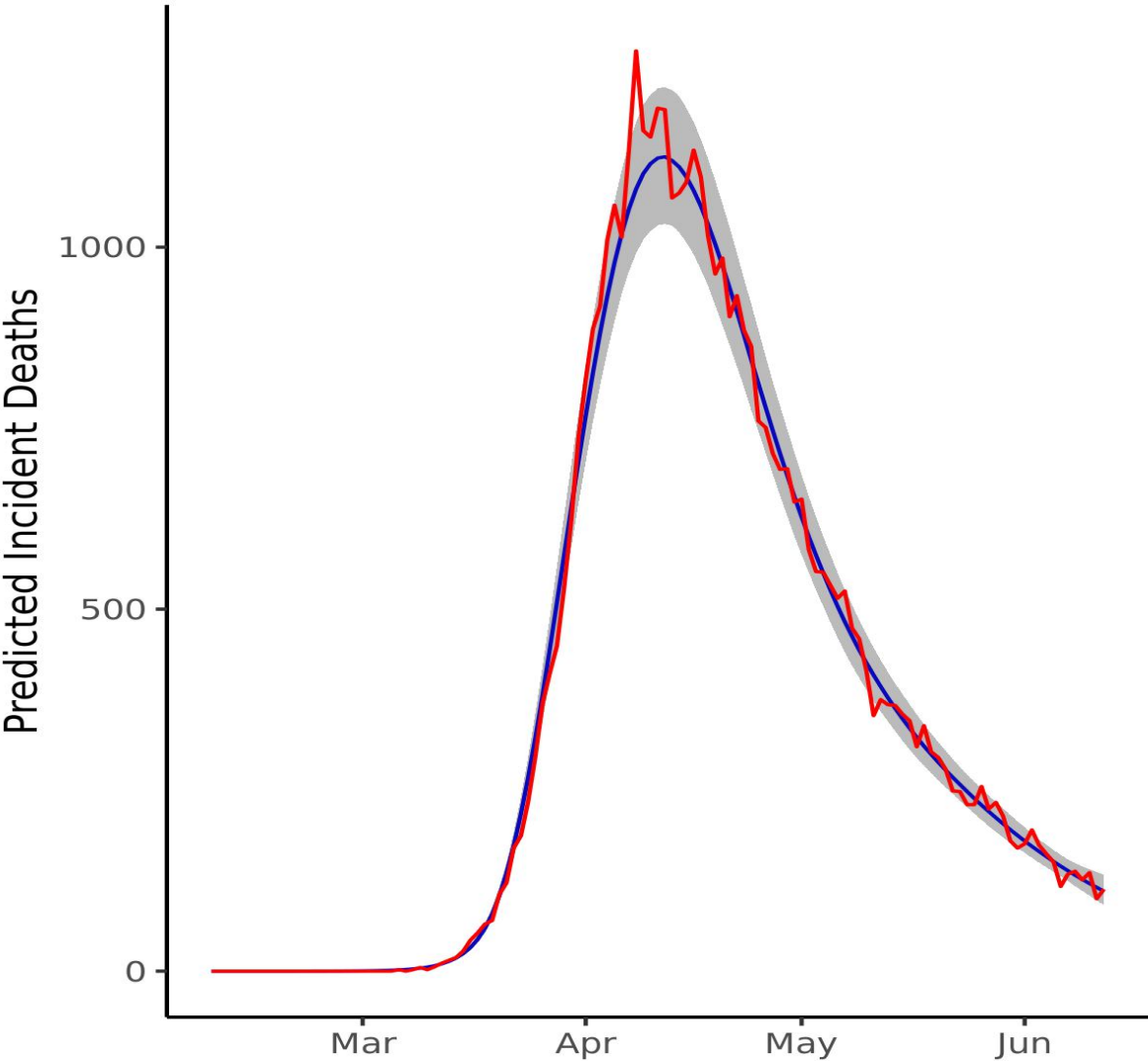
Supplementary Figure 4: Estimated reproduction number in model with longer serial interval



The figure shows the  $R_t$  estimated by a model with a serial interval of mean 6.5 and coefficient of variation of 0.72. While estimates of  $R_0$  are higher in this model, estimates during other time intervals following lockdown are very similar to our primary model. 95% credible intervals are represented by grey bands.



Supplementary Figure 5: Predicted and observed deaths in model with longer serial interval



Daily deaths predicted by a model specifying longer serial intervals (blue) with 95% credible intervals (grey) show a good fit to the observed deaths from the ONS (red)