

Supplementary Material

Recovery-associated resting-state activity and connectivity alterations in Anorexia nervosa

Leon D. Lotter^{1,2,3}, Georg von Polier^{2,3,4}, Jan Offermann¹, Kimberly Buettgen⁴, Lukas Stanetzky⁴, Simon B. Eickhoff^{2,3}, Kerstin Konrad^{1,5}, Jochen Seitz^{*4}, Juergen Dukart^{*2,3}

*contributed equally

¹Child Neuropsychology Section, Department of Child and Adolescent Psychiatry, Psychosomatics and Psychotherapy, University Hospital RWTH Aachen, Germany

²Institute of Neuroscience and Medicine, Brain & Behaviour (INM-7), Research Centre Jülich, Jülich, Germany

³Institute of Systems Neuroscience, Medical Faculty, Heinrich Heine University Düsseldorf, Düsseldorf, Germany

⁴Department of Child and Adolescent Psychiatry, Psychosomatics and Psychotherapy, University Hospital RWTH Aachen, Germany

⁵JARA-Brain Institute II, Molecular Neuroscience and Neuroimaging, Research Center Jülich, Jülich, Germany

Supplementary Methods

Inclusion and exclusion criteria

Only patients meeting the following criteria were included in the acute Anorexia nervosa (AN; T1/T2acu) group: (1) Diagnosis of AN according to DSM-V criteria (American Psychiatric Association, 2013), (2) inpatient admission to specialized eating disorder (ED) treatment at the Department of Child and Adolescent Psychiatry and Psychotherapy of the University Hospital Aachen, Germany, (3) body mass index (BMI) below the 10th age- and sex-adjusted percentile. Patients were included in the recovered patients (ANrec) group if (1) they had received a past AN diagnosis and treatment as stated above, (2) had a current BMI over 18.5 kg/m² or the 10th percentile (if underage), (3) did not fulfill criteria of any ED diagnosis according to a standardized clinical interview (Hilbert et al., 2004) at the time of testing, (4) nor were underweight in the last 12 months or (5) exhibited current amenorrhea. Only subjects with (1) a BMI over 18.5 kg/m² or the 10th percentile and (2) without any history of psychiatric or neurological disorders or psychoactive medication use were included in the control groups (HCacu/ HCrec). Additionally, all subjects had to exceed an intelligence quotient (IQ) of 80 and fulfill functional magnetic resonance imaging (fMRI) safety criteria. Anorexia nervosa patients were recruited from the Department of Child and Adolescent Psychiatry and Psychotherapy, University Hospital Aachen, Germany. Healthy controls were reached via participation in former studies, flyers and social media from the surrounding of the RWTH Aachen.

In total, we collected resting-state functional magnetic resonance imaging (rsfMRI) scans of 102 subjects. Applying the listed criteria, we excluded 15 subjects from the final analyses: $N = 4$ HCacu (2 over-threshold ED-scores, 3 BMI criteria, 1 data processing

errors), $N = 8$ T3rec (5 acute ED diagnosis, 2 BMI criteria, 1 acute suicidal tendencies), $N = 3$ HCrec (2 BMI criteria, 1 anti-depressive medication).

Sensitivity analyses

To control for motion artifacts at the group level, we averaged frame-wise displacement (FWD) parameters to two scores representing mean translation and rotation FWD. These were included as additional covariates in group-level analyses of rsfMRI data.

We furthermore recomputed all post-hoc-comparisons that showed significant group differences by (1) including verbal IQ as covariate (T1/T2acu vs. HCacu) to assess whether differing IQ values observed in cohort 1 influenced rsfMRI group differences; (2) including the time between inpatient admission and T1acu as covariate (T1acu vs. T2acu) to control for the impact of delayed scanning and (3) including BMI-standard deviation score (BMI-SDS) as covariate in all comparisons to assess the extent to which resting-state alterations in AN were mediated by starvation. For this, (repeated measures) analyses of covariances (RM-ANCOVAs) were used.

Additional correlation analyses

Counterintuitively, we observed a strong positive association between T1acu < HCacu network functional connectivity (FC) and the Eating Disorder Inventory 2 (EDI-2) total score. The EDI-2 is composed of 11 subscales that measure eating disorder specific (e.g. *Drive for thinness, Body dissatisfaction, Bulimia*) as well as unspecific, partly state-related characteristics (e.g. *Interpersonal distrust, Impulse regulation, Interoceptive awareness, Maturity fears, Perfectionism, social insecurity*) (Paul & Thiel, 2005; Kappel et al., 2012). To evaluate whether specific patterns of associations between FC and the various traits and states measured by the EDI-2 emerged, we calculated Pearson correlations between T1acu < HCacu network FC and all EDI-2 subscales. Furthermore, we evaluated how the

association developed over time (Pearson correlations in T2acu and T3rec groups) and whether it differed between patients with AN in different states of recovery (ANCOVA with EDI-2 total score as dependent variable; group x network FC interaction). Lastly, we explored if the EDI-2 was related to starvation severity in the patients with acute AN by calculating Pearson correlations between EDI-2 total score and BMI-SDS as well as plasma leptin.

Supplementary Results

Impact of potential confounders on rsfMRI results

Including possible confounding variables in group comparisons of rsfMRI results did not introduce major changes to the results. Only BMI-SDS may have a considerable impact on AN-HC-differences in acute patients.

When including FWD in Network Based Statistics (NBS) analyses (T1acu vs. HCacu), the subnetwork size increased and an additional connection between the prefrontal seed ROI and the left calcarine sulcus emerged in the post-hoc seed-to-ROI approach (table S7). When controlling for FWD in the calculation of voxel-wise rsfMRI group differences, original clusters sizes changed slightly, additional clusters of reduced Integrated Local Correlation (LC; right temporal and orbitofrontal cortices) emerged and the T1acu < HCacu x T3rec > HCrec cluster did not remain significant (table S12).

Whilst controlling for verbal IQ in post-hoc comparisons (T1/T2acu vs. HCacu), only group differences in T1acu > HCacu network FC and sensorimotor Global Correlation (GC) lost significance (table S8). Note that verbal IQ was available for only $N = 16$ patients with acute AN. Including admission-T1-time as covariate in T1acu vs. T2acu post-hoc comparisons affected significance of GC clusters and temporal LC (table S9). When including BMI-SDS as covariate in T1/T2acu vs. HCacu comparisons, only differences of prefrontal GC and LC and parietal fractional Amplitude of Low Frequency Fluctuations (fALFF) were significant. However, T1acu vs. T2acu differences, except for sensorimotor GC, remained stable (table S10).

Exploration of rsfMRI – ED symptom severity correlations

The only significant (positive) correlations emerged between T1acu < HCacu network FC and the EDI-2 scales *Interoceptive awareness* ($r = 0.55$, $p = 0.010$), *Maturity fear*, *Social*

insecurity (both $r = 0.63, p = 0.002$) and *Impulse regulation* ($r = 0.45, p = 0.041$), but not with eating disorder specific scales (figure S3). In T2acu and T3rec, the correlations with EDI-2 total score were not significant; T2acu: $r = 0.20, p = 0.440$; T3rec: $r = -0.37, p = 0.098$. However, the slope of the regression function changed significantly; $F = 5.62, p = 0.006$. EDI-2 total score was not related to BMI-SDS ($r = 0.03, p = 0.884$), nor to plasma leptin ($r = -0.07, p = 0.757$) at T1.

References

- American Psychiatric Association. (2013). *Diagnostic and statistical manual of mental disorders* (5.). American Psychiatric Publishing.
- Biezonski, D., Cha, J., Steinglass, J., & Posner, J. (2016). Evidence for Thalamocortical Circuit Abnormalities and Associated Cognitive Dysfunctions in Underweight Individuals with Anorexia Nervosa. *Neuropsychopharmacology*, 41(6), 1560–1568. <https://doi.org/10.1038/npp.2015.314>
- Boehm, I., Geisler, D., King, J. A., Ritschel, F., Seidel, M., Deza Araujo, Y., Petermann, J., Lohmeier, H., Weiss, J., Walter, M., Roessner, V., & Ehrlich, S. (2014). Increased resting state functional connectivity in the fronto-parietal and default mode network in anorexia nervosa. *Frontiers in Behavioral Neuroscience*, 8, 346. <https://doi.org/10.3389/fnbeh.2014.00346>
- Boehm, I., Geisler, D., Tam, F., King, J. A., Ritschel, F., Seidel, M., Bernardoni, F., Murr, J., Goschke, T., Calhoun, V. D., Roessner, V., & Ehrlich, S. (2016). Partially restored resting-state functional connectivity in women recovered from anorexia nervosa. *Journal of Psychiatry & Neuroscience*, 41(6), 377–385. <https://doi.org/10.1503/jpn.150259>
- Cha, J., Ide, J. S., Bowman, F. D., Simpson, H. B., Posner, J., & Steinglass, J. E. (2016). Abnormal reward circuitry in anorexia nervosa: A longitudinal, multimodal MRI study. *Human Brain Mapping*, 37(11), 3835–3846. <https://doi.org/10.1002/hbm.23279>
- Cowdrey, F. A., Filippini, N., Park, R. J., Smith, S. M., & McCabe, C. (2014). Increased resting state functional connectivity in the default mode network in recovered anorexia nervosa. *Human Brain Mapping*, 35(2), 483–491. <https://doi.org/10.1002/hbm.22202>
- Ehrlich, S., Lord, A. R., Geisler, D., Borchardt, V., Boehm, I., Seidel, M., Ritschel, F., Schulze, A., King, J. A., Weidner, K., Roessner, V., & Walter, M. (2015). Reduced functional connectivity in the thalamo-insular subnetwork in patients with acute anorexia nervosa. *Human Brain Mapping*, 36(5), 1772–1781. <https://doi.org/10.1002/hbm.22736>

- Favaro, A., Santonastaso, P., Manara, R., Bosello, R., Bommarito, G., Tenconi, E., & Di Salle, F. (2012). Disruption of Visuospatial and Somatosensory Functional Connectivity in Anorexia Nervosa. *Biological Psychiatry*, *72*(10), 864–870. <https://doi.org/10.1016/j.biopsych.2012.04.025>
- Gaudio, S., Olivo, G., Beomonte Zobel, B., & Schioth, H. B. (2018). Altered cerebellar-insular-parietal-cingular subnetwork in adolescents in the earliest stages of anorexia nervosa: A network-based statistic analysis. *Translational Psychiatry*, *8*(1), 127. <https://doi.org/10.1038/s41398-018-0173-z>
- Gaudio, S., Piervincenzi, C., Beomonte Zobel, B., Romana Montecchi, F., Riva, G., Carducci, F., & Cosimo Quattrocchi, C. (2015). Altered resting state functional connectivity of anterior cingulate cortex in drug naïve adolescents at the earliest stages of anorexia nervosa. *Scientific Reports*, *5*(1), 10818. <https://doi.org/10.1038/srep10818>
- Geisler, D., Borchardt, V., Boehm, I., King, J. A., Tam, F. I., Marxen, M., Biemann, R., Roessner, V., Walter, M., & Ehrlich, S. (2019). Altered global brain network topology as a trait marker in patients with anorexia nervosa. *Psychological Medicine*, 1–9. <https://doi.org/10.1017/s0033291718004002>
- Haynos, A. F., Hall, L. M. J., Lavender, J. M., Peterson, C. B., Crow, S. J., Klimes-Dougan, B., Cullen, K. R., Lim, K. O., & Camchong, J. (2019). Resting state functional connectivity of networks associated with reward and habit in anorexia nervosa. *Human Brain Mapping*, *40*, 652–662. <https://doi.org/10.1002/hbm.24402>
- Hilbert, A., Tuschen-Caffier, B., & Ohms, M. (2004). Eating Disorder Examination: Deutschsprachige Version des strukturierten Essstörungsinterviews. *Diagnostica*, *50*(2), 98–106. <https://doi.org/10.1026/0012-1924.50.2.98>
- Kappel, V., Thiel, A., Holzhausen-Hinze, M., Jaite, C., Schneider, N., Pfeiffer, E., Lehmkuhl, U., & Salbach-Andrae, H. (2012). Eating Disorder Inventory-2 (EDI-2) Normierung an einer Stichprobe normalgewichtiger Schüler im Alter von 10 bis 20 Jahren und an Patientinnen

mit Anorexia nervosa. *Diagnostica*, 58, 127–144. <https://doi.org/10.1026/0012-1924/a000069>

Kullmann, S., Giel, K. E., Teufel, M., Thiel, A., Zipfel, S., & Preissl, H. (2014). Aberrant network integrity of the inferior frontal cortex in women with anorexia nervosa. *NeuroImage: Clinical*, 4, 615–622. <https://doi.org/10.1016/j.nicl.2014.04.002>

Lee, S., Ran Kim, K., Ku, J., Lee, J. H., Namkoong, K., & Jung, Y. C. (2014). Resting-state synchrony between anterior cingulate cortex and precuneus relates to body shape concern in anorexia nervosa and bulimia nervosa. *Psychiatry Research*, 221(1), 43–48. <https://doi.org/10.1016/j.psychresns.2013.11.004>

Paul, T., & Thiel, A. (2005). *EDI-2. Eating Disorder Inventory-2*. Hogreve.

Phillipou, A., Abel, L. A., Castle, D. J., Hughes, M. E., Nibbs, R. G., Gurvich, C., & Rossell, S. L. (2016). Resting state functional connectivity in anorexia nervosa. *Psychiatry Research: Neuroimaging*, 251, 45–52. <https://doi.org/10.1016/j.psychresns.2016.04.008>

Rolls, E. T., Huang, C.-C., Lin, C.-P., Feng, J., & Joliot, M. (2020). Automated anatomical labelling atlas 3. *NeuroImage*, 206, 116189. <https://doi.org/10.1016/j.neuroimage.2019.116189>

Scaife, J. C., Godier, L. R., Filippini, N., Harmer, C. J., & Park, R. J. (2017). Reduced Resting-State Functional Connectivity in Current and Recovered Restrictive Anorexia Nervosa. *Frontiers in Psychiatry*, 8, 30. <https://doi.org/10.3389/fpsyt.2017.00030>

Schaefer, A., Kong, R., Gordon, E. M., Laumann, T. O., Zuo, X.-N., Holmes, A. J., Eickhoff, S. B., & Yeo, B. T. T. (2018). Local-Global Parcellation of the Human Cerebral Cortex from Intrinsic Functional Connectivity MRI. *Cerebral Cortex*, 28(9), 3095–3114. <https://doi.org/10.1093/cercor/bhx179>

Seidel, M., Borchardt, V., Geisler, D., King, J. A., Boehm, I., Pauligk, S., Bernardoni, F., Biemann, R., Roessner, V., Walter, M., & Ehrlich, S. (2019). Abnormal Spontaneous Regional Brain Activity in Young Patients With Anorexia Nervosa. *Journal of the American Academy of*

Child & Adolescent Psychiatry, 58(11), 1104–1114.

<https://doi.org/10.1016/j.jaac.2019.01.011>

Uniacke, B., Wang, Y., Biezonski, D., Sussman, T., Lee, S., Posner, J., & Steinglass, J. (2019). Resting-state connectivity within and across neural circuits in anorexia nervosa. *Brain and Behavior*, 9(1), e01205. <https://doi.org/10.1002/brb3.1205>

Supplementary Tables

| | T1acu (admission) | T2acu (discharge) | HCacu | Statistics | | | | | |
|----------------------------|-------------------------------------------------------|-------------------------------------------------------|-------------------------------------------------------|----------------------|----------|----------------------|----------|----------------------|----------|
| | <i>N</i> = 22 | <i>N</i> = 21 | <i>N</i> = 22 | T1acu vs. HCacu | | T2acu vs. HCacu | | T1acu vs. T2acu | |
| | <i>mean</i> ± <i>SD</i> (<i>min.</i> – <i>max.</i>) | <i>mean</i> ± <i>SD</i> (<i>min.</i> – <i>max.</i>) | <i>mean</i> ± <i>SD</i> (<i>min.</i> – <i>max.</i>) | <i>T</i> or <i>U</i> | <i>p</i> | <i>T</i> or <i>U</i> | <i>p</i> | <i>T</i> or <i>W</i> | <i>p</i> |
| General | | | | | | | | | |
| Age (y) | 15.3 ± 1.9 (10.2 – 18.6) | 15.5 ± 2.0 (10.5 – 18.9) | 16.0 ± 2.0 (12.8 – 19.2) | <i>T</i> = -1.23 | 0.227 | <i>T</i> = -0.83 | 0.409 | | |
| verbal IQ | 108.9 ± 17.0 (92 – 143) | <i>n.a.</i> | 98.0 ± 9.7 (82 – 124) | <i>U</i> = 106.50 | 0.041* | | | | |
| ED severity | | | | | | | | | |
| BMI (kg/m ²) | 15.7 ± 1.5 (13.1 – 18.3) | 18.2 ± 1.2 (15.0 – 20.1) | 22.3 ± 2.1 (18.7 – 26) | <i>U</i> = -12.08 | < 0.001* | <i>T</i> = -8.00 | < 0.001* | <i>T</i> = -7.6 | < 0.001* |
| BMI-SDS | -2.7 ± 1.4 (-5.5 – -1) | -1.1 ± 0.4 (-1.9 – -0.5) | 0.3 ± 0.6 (-1.1 – 1.1) | <i>U</i> = 1.00 | < 0.001* | <i>T</i> = -8.95 | < 0.001* | <i>W</i> = 1.00 | < 0.001* |
| leptine (ng/ml) | 2.0 ± 1.8 (0.9 – 6.9) | 6.0 ± 3.9 (0.9 – 14.0) | 20.0 ± 12.0 (6.6 – 48.0) | <i>U</i> = 1.50 | < 0.001* | <i>U</i> = 15.00 | < 0.001* | <i>W</i> = 6.00 | < 0.001* |
| ED history | | | | | | | | | |
| age at ED onset (y) | 13.9 ± 1.9 (9.1 – 17.9) | | | | | | | | |
| age at first admission (y) | 15.2 ± 2 (10.2 – 18.6) | | | | | | | | |
| BMI-SDS at first admission | -2.9 ± 1.2 (-5 – -1.4) | | | | | | | | |
| treatment duration (d) | | 119.2 ± 46.8 (69 – 242) | | | | | | | |
| admission-scan-delay (d) | 19.6 ± 12.3 (4 – 60) | | | | | | | | |
| Symptom scales | | | | | | | | | |
| EDE - total score | 83.2 ± 29.2 (24 – 138) | 46.6 ± 28.4 (2 – 113) | | | | | | <i>T</i> = 6.15 | < 0.001* |
| EDI-2 - total score | 271.5 ± 80.1 (109 – 436) | 252.5 ± 58.9 (106 – 335) | 187.4 ± 31.9 (115 – 240) | <i>T</i> = 4.56 | < 0.001* | <i>T</i> = 4.42 | < 0.001* | <i>T</i> = 0.88 | 0.383 |
| BDI-2 - total score | 18.4 ± 13.6 (0 – 38) | 13.5 ± 14.2 (0 – 51) | 3.1 ± 2.7 (0 – 10) | <i>U</i> = 83.50 | 0.001* | <i>U</i> = 91.00 | 0.004* | <i>W</i> = 81.50 | 0.073 |

table S1: Comparisons of demographic and clinical characteristics: cohort 1

* significant group difference, $\alpha = 0.05$, *p*-value uncorrected. Group comparisons using independent or paired *t*-tests (*T*), Mann-Whitney-*U*-tests (*U*), or Wilcoxon-tests (*W*) as appropriate.

treatment duration = time from admission to discharge; admission-scan-delay = time from admission to T1-scan; EDE = Eating Disorder Examination; EDI-2 = Eating Disorder Inventory 2; BDI-2 = Beck Depression Inventory 2.

Missing data: T1acu: verbal IQ: *N* = 6, EDE: *N* = 4, EDI-2: *N* = 1, BDI-2: *N* = 3. T2acu: leptin: *N* = 1, EDE: *N* = 4, EDI-2: *N* = 4, BDI-2: *N* = 3.

| | T3rec (recovery) | HCrec | Statistics | | | |
|----------------------------|-------------------------------------------------------|-------------------------------------------------------|----------------------|----------|--------------------|----------|
| | <i>N</i> = 21 | <i>N</i> = 22 | T3rec vs. HCrec | | T1/T2acu vs. T3rec | |
| | <i>mean</i> ± <i>SD</i> (<i>min.</i> – <i>max.</i>) | <i>mean</i> ± <i>SD</i> (<i>min.</i> – <i>max.</i>) | <i>T</i> or <i>U</i> | <i>p</i> | <i>T</i> | <i>p</i> |
| General | | | | | | |
| Age (y) | 22.3 ± 3.3 (17.7 – 31.4) | 22.5 ± 3.5 (16.6 – 31.3) | <i>T</i> = -0.20 | 0.843 | | |
| verbal IQ | 108.2 ± 9.5 (97 – 124) | 110.9 ± 12.0 (95 – 130) | <i>U</i> = 201.50 | 0.639 | | |
| ED severity | | | | | | |
| BMI (kg/m ²) | 21.8 ± 2.6 (18.6 – 26.6) | 21.9 ± 2.0 (19.1 – 25.5) | <i>T</i> = -0.08 | 0.935 | | |
| BMI-SDS | -0.3 ± 0.8 (-1.4 – 0.9) | -0.2 ± 0.7 (-1.2 – 0.9) | <i>U</i> = 217.00 | 0.808 | | |
| leptine (ng/ml) | 12.6 ± 7.2 (3.7 – 26) | 11.1 ± 6.4 (2.8 – 25.6) | <i>T</i> = 0.69 | 0.495 | | |
| ED history | | | | | | |
| age at ED onset (y) | 14.4 ± 1.6 (11.8 – 17.6) | | | | <i>T</i> = -0.75 | 0.461 |
| age at first admission (y) | 15.2 ± 1.6 (12 – 18.4) | | | | <i>T</i> = -0.03 | 0.976 |
| BMI-SDS at first admission | -2.7 ± 1.5 (-6.2 – -0.2) | | | | <i>T</i> = -0.49 | 0.625 |
| ED duration (y) | 2.1 ± 1.7 (0.1 – 7.1) | | | | | |
| recovery duration (y) | 5.3 ± 3.0 (1.5 – 13.2) | | | | | |
| Symptom scales | | | | | | |
| EDE - total score | 26.8 ± 22.1 (2 – 84) | | | | | |
| EDI-2 - total score | 259.8 ± 73.2 (175 – 399) | 194.6 ± 32.8 (151 – 263) | <i>U</i> = 91.50 | 0.002* | | |
| BDI-2 - total score | 10.7 ± 11.5 (0 – 37) | 3.9 ± 3.9 (0 – 12) | <i>U</i> = 131.50 | 0.041* | | |

table S2: Comparisons of demographic and clinical characteristics: cohort 2

* significant group difference, $\alpha = 0.05$, *p*-value uncorrected. Group comparisons using independent *t*-tests (*T*) or Mann-Whitney-*U*-tests (*U*), as appropriate.

SD = standard deviation; ED = eating disorder; IQ = intelligence quotient; BMI(-SDS) = body mass index (- standard deviation score); ED duration = time from symptom onset to last discharge (if symptom onset not available, from first admission); recovery duration = time from last inpatient discharge or last underweight state to examination; EDE = Eating Disorder Examination; EDI-2 = Eating Disorder Inventory 2; BDI-2 = Beck Depression Inventory 2.

Missing data: T3rec: age at ED onset: *N* = 12, BMI-SDS at first admission: *N* = 1. HCrec: verbal IQ: *N* = 1, EDI-2: *N* = 2, BDI-2: *N* = 1.

| | Cohort 1 | | | Cohort 2 | |
|--------------------------------------------|--------------|--------------|--------------|--------------|--------------|
| | T1acu | T2acu | HCacu | T3rec | HCrec |
| | <i>N (%)</i> | <i>N (%)</i> | <i>N (%)</i> | <i>N (%)</i> | <i>N (%)</i> |
| Number of past inpatient admissions | | | | | |
| 0 | 19 (86.4) | 0 | 0 | 0 | 0 |
| 1 | 3 (13.6) | 18 (85.7) | 0 | 12 (52.2) | 0 |
| 2 | 0 | 3 (14.3) | 0 | 6 (26.1) | 0 |
| ≥ 3 | 0 | 0 | 0 | 4 (17.4) | 0 |
| Medication | | | | | |
| antidepressants | 0 | 4 (19) | 0 | 3 (13) | 0 |
| antipsychotics | 4 (18.2) | 4 (19) | 0 | 0 | 0 |
| no medication | 18 (81.8) | 15 (71.4) | 24 (100) | 20 (87) | 0 |
| Comorbidities | | | | | |
| Major depression | 1 (4.5) | | 0 | 3 (13) | 0 |
| Minor depression | 15 (68.2) | | 0 | 0 | 0 |
| OCD | 2 (9.1) | | 0 | 0 | 0 |
| Anxiety disorders | 3 (13.6) | | 0 | 8 (35.8) | 0 |
| Adjustment disorder | 1 (4.5) | | 0 | 0 | 0 |
| No comorbidity | 3 (13.6) | | 24 (100) | 14 (60.9) | 24 (100) |
| Menstruation | | | | | |
| primary amenorrhoea | 5 (22.7) | <i>n.a.</i> | 2 (8.3) | 0 | 0 |
| secondary amenorrhoea | 17 (77.3) | <i>n.a.</i> | 0 | 0 | 0 |
| menstruation | 0 | <i>n.a.</i> | 21 (87.5) | 21 (91.3) | 24 (100) |

table S3: Additional clinical characteristic of the study sample

Missing data: T3rec: inpatient admission nr: *N* = 1, comorbidities: *N* = 3, menstruation: *N* = 2

| | T1acu vs. HCacu | | T2acu vs. HCacu | | T3rec vs. HCrec | | T1acu vs. T2acu | |
|---------------------------|------------------------|----------|------------------------|----------|------------------------|----------|------------------------|----------|
| | <i>T</i> or <i>U</i> | <i>p</i> | <i>T</i> or <i>U</i> | <i>p</i> | <i>T</i> or <i>U</i> | <i>p</i> | <i>T</i> or <i>W</i> | <i>p</i> |
| FWD | | | | | | | | |
| translation | <i>U</i> = 174.00 | 0.114 | <i>U</i> = 177.00 | 0.196 | <i>U</i> = 231.00 | 1.000 | <i>T</i> = 0.04 | 0.969 |
| rotation | <i>T</i> = 0.38 | 0.708 | <i>T</i> = 0.63 | 0.535 | <i>T</i> = -0.91 | 0.368 | <i>T</i> = -0.50 | 0.619 |
| Signal intensities | | | | | | | | |
| grey matter | <i>T</i> = -2.28 | 0.028* | <i>T</i> = -1.72 | 0.093 | <i>T</i> = 0.25 | 0.801 | <i>T</i> = -0.50 | 0.625 |
| white matter | <i>U</i> = 148.00 | 0.027* | <i>T</i> = -1.16 | 0.252 | <i>T</i> = 0.38 | 0.705 | <i>W</i> = 68.00 | 0.103 |
| cerebrospinal fluid | <i>T</i> = -0.62 | 0.537 | <i>T</i> = 0.21 | 0.832 | <i>T</i> = 0.87 | 0.388 | <i>T</i> = -1.02 | 0.320 |

table S4: Comparison of frame-wise displacement and global signal intensities

* significant group difference, $\alpha = 0.05$, p-value uncorrected. Comparisons using independent or paired t-tests (T), Mann-Whitney-U-tests (U) or Wilcoxon-tests (W), as appropriate.

Frame-wise displacement (FWD) was averaged from 3 translation and 3 rotation parameters. Maximum FWD for each group: translation: T1acu: 1.14 mm, T2acu: 1.29 mm, HCacu: 2.68 mm, T3rec: 0.65 mm, HCrec: 0.44 mm. rotation: T1acu: 0.03°, T2acu: 0.03°, HCacu: 0.17°, T3rec: 0.01°, HCrec: 0.01°. Signal intensities calculated from realigned and normalized functional images using tissue type masks thresholded at a probability of > 0.8.

| Contrast | NBS | | Seed-to-ROI | | | | |
|------------------------|------|-------|---------------------------------------|---------------|----------------------------------------|-------|---------|
| | Size | p^1 | seed ROI | degree change | distant ROIs | T | p^2 |
| T1acu vs. HCacu | 460 | 0.022 | LH_Default_PFC_4 (Frontal_Sup_2_L) | 28 | RH_DorsAttn_Post_1 (Temporal_Mid_R) | -4.08 | < 0.001 |
| | | | | | RH_Vis_6 (Calcarine_R) | -3.91 | < 0.001 |
| T1acu vs. T2acu | 596 | 0.009 | LH_SomMot_2 (Insula_L) | 29 | LH_Default_PFC_6 (Frontal_Mid_2_L) | -5.58 | < 0.001 |
| | | | | | LH_Limbic_OFC_1 (OFC_Med_L) | -4.60 | < 0.001 |
| | | | | | RH_Cont_PFC1_3 (Frontal_Mid_2_R) | -4.53 | < 0.001 |

table S5: Network Based Statistics

¹ $\alpha = 0.05$, p -value family wise error corrected ² $\alpha = 0.05/115$, p -value uncorrected.

Significant subnetworks resulting from the NBS procedure. Reported are network-sizes (number of connections) and associated p -values estimated by permutation testing. Also reported are the regions of interest (ROIs) with the strongest decrease in node degree and functional connections to other regions that differed significantly between groups. Independent comparisons included age as covariate. Regions of Interest were derived from the Schaefer et al. (2018) and the Neuromorphometrics, Inc atlases. ROIs from the Automated Anatomic Labelling atlas (Rolls et al., 2020) corresponding to the centroid coordinates of the Schaefer et al.-atlas are reported in brackets.

| Original contrast | Cluster or network name | T1acu vs. HCacu | | | T2acu vs. HCacu | | | T3* vs. HCrec | | | T1acu vs. T2acu | | |
|-----------------------------------------------------------------|------------------------------|-----------------|----------|-------------|-----------------|----------|-------------|---------------|-------|-------------|-----------------|----------|-------------|
| | | F | p | d | F | p | d | F | p | d | T | p | d |
| Network Based Statistics NBS | | | | | | | | | | | | | |
| T1acu vs. HCacu | T1acu < HCacu | ° | ° | -2,17 | 8.29 | 0.006* | -0.90 | 0.66 | 0.420 | <i>n.s.</i> | -5.19 | < 0.001* | -1.13 |
| | T1acu > HCacu | ° | ° | 1,19 | 8.44 | 0.006* | 0.89 | 1.65 | 0.207 | <i>n.s.</i> | 1.00 | 0.329 | <i>n.s.</i> |
| T1acu vs. T2acu | T1acu < T2acu | 13.00 | < 0.001* | -1.16 | 2.63 | 0.113 | <i>n.s.</i> | 0.00 | 0.949 | <i>n.s.</i> | ° | ° | -1.73 |
| | T1acu > T2acu | 0.08 | 0.783 | <i>n.s.</i> | 31.84 | < 0.001* | -1.73 | 1.48 | 0.230 | <i>n.s.</i> | ° | ° | 1.75 |
| Global Correlation GC | | | | | | | | | | | | | |
| T1acu < HCacu | prefrontal GC | ° | ° | -1,47 | 3.66 | 0.063 | <i>n.s.</i> | 0.07 | 0.795 | <i>n.s.</i> | -2,09 | 0.050 | <i>n.s.</i> |
| | sensorimotor GC ^a | ° | ° | -1,21 | 0.31 | 0.580 | <i>n.s.</i> | 1.04 | 0.313 | <i>n.s.</i> | -3.10 | 0.006* | -0,68 |
| T1acu < T2acu | sensorimotor GC ^b | 7.79 | 0.008* | -0.91 | 0.39 | 0.538 | <i>n.s.</i> | 1.00 | 0.325 | <i>n.s.</i> | ° | ° | -0.87 |
| | insular GC | 6.10 | 0.018 | <i>n.s.</i> | 1.13 | 0.294 | <i>n.s.</i> | 0.43 | 0.513 | <i>n.s.</i> | ° | ° | -0.88 |
| Integrated Local Correlation LC | | | | | | | | | | | | | |
| T1acu < HCacu | sensorimotor LC ^a | ° | ° | -1,49 | 2.32 | 0.136 | <i>n.s.</i> | 0.16 | 0.688 | <i>n.s.</i> | -3,89 | < 0.001* | -0,85 |
| | prefrontal LC | ° | ° | -1,71 | 17.7 | < 0.001* | -1.13 | 1.42 | 0.240 | <i>n.s.</i> | -2,02 | 0.057 | <i>n.s.</i> |
| | precuneal LC | ° | ° | -1,65 | 5.82 | 0.021 | <i>n.s.</i> | 0.25 | 0.618 | <i>n.s.</i> | -2,53 | 0.020 | <i>n.s.</i> |
| T1acu < T2acu | sensorimotor LC ^b | 11.70 | 0.001* | -1.06 | 0.09 | 0.770 | <i>n.s.</i> | 0.36 | 0.552 | <i>n.s.</i> | ° | ° | -1.34 |
| | temporal LC | 5.51 | 0.024 | <i>n.s.</i> | 3.83 | 0.057 | <i>n.s.</i> | 0.05 | 0.822 | <i>n.s.</i> | ° | ° | -1.54 |
| | fusiform LC | 5.70 | 0.022 | <i>n.s.</i> | 5.70 | 0.022 | <i>n.s.</i> | 0.02 | 0.890 | <i>n.s.</i> | ° | ° | -1.31 |
| T1acu x T3rec | (frontal LC) | 18.39 | < 0.001* | -1.65 | 1.80 | 0.187 | <i>n.s.</i> | 3.60 | 0.065 | <i>n.s.</i> | -4.38 | < 0.001* | -0.96 |
| fractional Amplitude of Low Frequency Fluctuations fALFF | | | | | | | | | | | | | |
| T1acu < HCacu | parietal fALFF | ° | ° | -1,99 | 8.87 | 0.005* | -0.94 | 1.29 | 0.262 | <i>n.s.</i> | -3,07 | 0.006* | -0,67 |
| | calcarine fALFF | ° | ° | -1,53 | 1.70 | 0.199 | <i>n.s.</i> | 0.76 | 0.390 | <i>n.s.</i> | -2,74 | 0.013 | <i>n.s.</i> |
| T1acu < T2acu | precuneal fALFF | 11.51 | 0.002* | -1.07 | 0.79 | 0.378 | <i>n.s.</i> | 0.39 | 0.534 | <i>n.s.</i> | ° | ° | -1.17 |
| | temporal fALFF | 8.02 | 0.007* | -0.80 | 3.58 | 0.066 | <i>n.s.</i> | 0.711 | 0.404 | <i>n.s.</i> | ° | ° | -1.57 |

table S6: Post-hoc comparisons of resting-state group differences

* significant group difference, $\alpha = 0.0125$ (Bonferroni-corrected per modality and contrast), p -value uncorrected. ° Group comparisons that would have been circular and therefore were not reported.

Results of post-hoc comparisons of primary analyses. For NBS, functional connectivity of each connection included in significant NBS-subnetworks was averaged for the whole network, separately for positive and negative connections. For voxel-wise measures, values of every voxel included in significant clusters were averaged per cluster. The networks or clusters stem from the contrasts listed on the left side; averaged values were compared between all other groups to understand temporal development of resting-state properties that were decreased in acute patients. Independent group comparisons using analyses of covariances (age was included as covariate), T1acu vs. T2acu comparisons using paired t -tests. d = Cohen's d . Superscript a and b refer to the corresponding clusters stemming from T1acu < HCacu and T1acu < T2acu contrast, respectively.

| Contrast | NBS | | Seed-to-ROI | | | | |
|------------------------|------|-------|---------------------------------------|---------------|----------------------------------------|-------|-------|
| | Size | p^1 | seed ROI | degree change | distant ROIs | T | p^2 |
| T1acu vs. HCacu | 500 | 0.020 | LH_Default_PFC_4 (Frontal_Sup_2_L) | 30 | RH_DorsAttn_Post_1 (Temporal_Mid_R) | -4.19 | 0.018 |
| | | | | | RH_Vis_6 (Calcarine_R) | -4.10 | 0.023 |
| | | | | | LH_Vis_6 (Calcarine_L) | -4.00 | 0.032 |

table S7: Network-Based Statistics controlled for frame-wise displacement

¹ $\alpha = 0.05$, p -value family wise error corrected. ² $\alpha = 0.05/115$, p -value uncorrected.

Significant subnetworks resulting from the NBS procedure while including two frame-wise displacement (FWD) covariates (averaged translation and averaged rotation) additionally to age. See table S5.

| Original contrast | Cluster or network name | T1acu vs. HCacu | | T2acu vs. HCacu | |
|-----------------------------------------------------------|-------------------------|-----------------|----------|-----------------|----------|
| | | <i>F</i> | <i>p</i> | <i>F</i> | <i>p</i> |
| Network Based Statistics NBS | | | | | |
| T1acu vs. HCacu | T1acu < HCacu | 15.20 | 0.001* | 9.23 | 0.007* |
| | T1acu > HCacu | 2.74 | 0.115 | 2.79 | 0.113 |
| Global Correlation GC | | | | | |
| T1acu < HCacu | prefrontal GC | 14.26 | 0.001* | | |
| | sensorimotor GC | 3.58 | 0.075 | | |
| Integrated Local Correlation LC | | | | | |
| T1acu < HCacu | sensorimotor LC | 6.67 | 0.019* | | |
| | prefrontal LC | 16.15 | < 0.001* | 6.49 | 0.021* |
| | precuneal LC | 13.71 | 0.002* | | |
| T1acu x T3rec | (frontal LC) | 5.60 | 0.029* | | |
| fractional Amplitude of Low Frequency Fluctuations | | | | | |
| T1acu < HCacu | parietal fALFF | 8.28 | 0.010* | 3.77 | 0.069 |
| | calcarine fALFF | 5.31 | 0.033* | | |

table S8: Post-hoc comparisons of resting-state group differences controlled for verbal IQ

* significant group difference, $\alpha = 0.05$, *p*-value uncorrected.

Results of post-hoc comparisons of resting-state results, while including verbal intelligence quotient (IQ) as covariate in addition to age. IQ was available for only 16 out of 22 patients with acute AN. See table S6.

| Original contrast | Cluster or network name | T1acu vs. T2acu | |
|----------------------------------------|------------------------------|-----------------|----------|
| | | <i>F</i> | <i>p</i> |
| Network Based Statistics NBS | | | |
| T1acu vs. T2acu | T1acu < T2acu | 15.00 | 0.001* |
| | T1acu > T2acu | 22.72 | < 0.001* |
| Global Correlation GC | | | |
| T1acu < T2acu | sensorimotor GC ^b | 4.05 | 0.059 |
| | insular GC | 3.11 | 0.094 |
| Integrated Local Correlation LC | | | |
| T1acu < T2acu | sensorimotor LC ^b | 4.56 | 0.046* |
| | temporal LC | 4.35 | 0.051 |
| | fusiform LC | 5.41 | 0.031* |
| fALFF | | | |
| T1acu < T2acu | precuneal fALFF | 7.70 | 0.012* |
| | temporal fALFF | 7.56 | 0.013* |

table S9: Post-hoc comparisons of resting-state group differences controlled for admission-scan-delay

* significant group difference, $\alpha = 0.05$, *p*-value uncorrected.

Results of post-hoc comparisons of resting-state results, while including admission-scan-delay (time between inpatient admission and actual T1 scan) as covariate in addition to age in repeated measurement analyses of covariances. See table S6.

| Original contrast | Cluster or network name | T1acu vs. HCacu | | T2acu vs. HCacu | | T1acu vs. T2acu | |
|-----------------------------------------------------------------|------------------------------|-----------------|----------|-----------------|----------|-----------------|----------|
| | | <i>F</i> | <i>p</i> | <i>F</i> | <i>p</i> | <i>F</i> | <i>p</i> |
| Network Based Statistics NBS | | | | | | | |
| T1acu vs. HCacu | T1acu < HCacu | 16.67 | < 0.001* | 7.03 | 0.012* | 7,39 | 0,014 |
| | T1acu > HCacu | 2.63 | 0.113 | 0.70 | 0.410 | | |
| T1acu vs. T2acu | T1acu < T2acu | 4.20 | 0.047* | | | 20.30 | < 0.001* |
| | T1acu > T2acu | | | 12.80 | < 0.001* | 21.81 | < 0.001* |
| Global Correlation GC | | | | | | | |
| T1acu < HCacu | prefrontal GC | 8.98 | 0.005* | | | | |
| | sensorimotor GC ^a | 2.18 | 0.147 | | | 1.12 | 0.303 |
| T1acu < T2acu | sensorimotor GC ^b | 1.16 | 0.289 | | | 2.09 | 0.165 |
| | insular GC | | | | | 6.37 | 0.021* |
| Integrated Local Correlation LC | | | | | | | |
| T1acu < HCacu | sensorimotor LC ^a | 2.64 | 0.112 | | | 5,04 | 0.037* |
| | prefrontal LC | 11.50 | 0.002* | 7.09 | 0.011* | | |
| | precuneal LC | 0.94 | 0.338 | | | | |
| T1acu < T2acu | sensorimotor LC ^b | 1.58 | 0.216 | | | 14.83 | 0.001* |
| | temporal LC | | | | | 16.24 | < 0.001* |
| | fusiform LC | | | | | 8.99 | 0.007* |
| T1acu x T3rec | (frontal LC) | 4.49 | 0.040* | | | 8.43 | 0.009* |
| fractional Amplitude of Low Frequency Fluctuations fALFF | | | | | | | |
| T1acu < HCacu | parietal fALFF | 8.59 | 0.006* | 5.13 | 0.029* | 1,52 | 0.233 |
| | calcarine fALFF | 2.41 | 0.128 | | | | |
| T1acu < T2acu | precuneal fALFF | 2.00 | 0.165 | | | 15.12 | < 0.001* |
| | temporal fALFF | 0.27 | 0.607 | | | 15.70 | < 0.001* |

table S10: Post-hoc comparisons of resting-state group differences controlled for BMI-SDS

* significant group difference, $\alpha = 0.05$, *p*-value uncorrected.

Results of post-hoc comparisons of resting-state results significantly differing between groups while including the body mass index - standard deviation score (BMI-SDS) as covariate in addition to age in (repeated measures) analyses of covariances. See table S6.

| Contrast | Cluster name | Permutation statistics | | | T statistics (peak) | | | | AAL regions | |
|-----------------------------------------------------------------|------------------------------|------------------------|------|-------|---------------------|-------------|-----|-----|----------------------|-------------------------------------------------------------------------------------------------------------------------------------------|
| | | Threshold | Size | p^1 | T | coordinates | | | peak region | regions covered over 10% |
| Global Correlation GC | | | | | | | | | | |
| T1acu < HCacu | prefrontal GC | 439 | 1610 | 0.010 | 5.46 | -21 | 66 | -3 | Frontal_Sup_2_L | Frontal_Sup_2_L, Frontal_Sup_2_R, Frontal_Sup_Medial_R, Frontal_Sup_Medial_L, ACC_pre_L, ACC_pre_R, Frontal_Med_Orb_R, Frontal_Med_Orb_L, |
| | sensorimotor GC ^a | | 871 | 0.021 | 4.37 | 12 | -12 | 72 | Supp_Motor_Area_R | Supp_Motor_Area_R, Supp_Motor_Area_L, Paracentral_Lobule_L, Cingulate_Mid_L, Cingulate_Mid_R, Parietal_Sup_R |
| T1acu < T2acu | sensorimotor GC ^b | 416 | 913 | 0.019 | 4.91 | 27 | -21 | 72 | Precentral_R | Supp_Motor_Area_L, Paracentral_Lobule_L, Paracentral_Lobule_R, Postcentral_R, Precentral_R, |
| | insular GC | | 507 | 0.039 | 4.65 | 3 | 6 | 0 | Putamen_R | Rolandic_Oper_R, Insula_R, Putamen_R, Pallidum_R |
| Integrated Local Correlation LC | | | | | | | | | | |
| T1acu < HCacu | sensorimotor LC ^a | 223 | 654 | 0.011 | 5.24 | -24 | -27 | 69 | Precentral_L | Supp_Motor_Area_L, Supp_Motor_Area_R, Paracentral_Lobule_L |
| | prefrontal LC | | 292 | 0.042 | 5.1 | 24 | 60 | 15 | Frontal_Sup_2_R | Frontal_Sup_2_R |
| | precuneal LC | | 289 | 0.043 | 4.77 | 3 | -66 | 21 | Precuneus_R | Cingulate_Post_L |
| T1acu < T2acu | sensorimotor LC ^b | 192 | 656 | 0.011 | 6.02 | -6 | -15 | 48 | Supp_Motor_Area_L | Supp_Motor_Area_L, Precentral_L, Paracentral_Lobule_L, Cingulate_Mid_L, Supp_Motor_Area_R |
| | temporal LC | | 304 | 0.029 | 6.84 | -45 | -30 | 0 | Temporal_Mid_L | Temporal_Mid_L |
| | fusiform LC | | 285 | 0.031 | 5.47 | 45 | -45 | -24 | Fusiform_R | Fusiform_R, ParaHippocampal_R |
| T1acu x T3rec | (frontal LC) | 332 | 380 | 0.046 | 3.97 | 6 | 30 | 42 | Frontal_Sup_Medial_R | Supp_Motor_Area_L, Supp_Motor_Area_R |
| fractional Amplitude of Low Frequency Fluctuations fALFF | | | | | | | | | | |
| T1acu < HCacu | parietal fALFF | 223 | 377 | 0.022 | 4.76 | -48 | -45 | 36 | Parietal_Inf_L | Parietal_Inf_L, Parietal_Sup_L, Angular_L |
| | calcarine fALFF | | 310 | 0.029 | 4.09 | -3 | -72 | 18 | Calcarine_L | Calcarine_L, Cingulate_Post_L |
| T1acu < T2acu | precuneal fALFF | 203 | 327 | 0.028 | 6.3 | -3 | -60 | 15 | Precuneus_L | Precuneus_L, Cingulate_Post_L |
| | temporal fALFF | | 210 | 0.048 | 5.63 | -48 | -33 | 0 | Temporal_Mid_L | Temporal_Mid_L |

table S11: Voxel-wise resting-state measures

¹ $\alpha = 0.05$, p -value family-wise error corrected.

The statistic was based on a combination of an uncorrected voxel-wise threshold of $p < 0.01$ and an exact permutation based (1000 permutations) cluster threshold of $p < 0.05$. Reported are cluster thresholds, sizes of the resulting clusters and associated p -values. Additionally, we listed T -value, coordinates and corresponding regions in the Automated Anatomic Labelling atlas (AAL, Rolls et al, 2020) of each cluster's peak coordinates. Independent comparisons included age as covariate.

| Contrast | Corresponding cluster name | Permutation statistics | | | T statistics (peak) | | | | AAL regions | |
|-----------------------------------------------------------------|------------------------------|------------------------|-------------|-------|---------------------|-------------|-----|-----|----------------------|--------------------------------------------------------------------------------------------------------------------------------------------------------------------------|
| | | Threshold | Size | p^1 | T | coordinates | | | peak region | regions covered over 10% |
| Global Correlation GC | | | | | | | | | | |
| T1acu < HCacu | prefrontal GC | 446 | 1806 | 0.010 | 5.85 | -21 | 66 | -3 | Frontal_Sup_2_L | Frontal_Sup_2_L, Frontal_Sup_2_R, Frontal_Sup_Medial_R, Frontal_Sup_Medial_L, ACC_pre_L, ACC_pre_R, ACC_sup_L, ACC_sub_1 Frontal_Med_Orb_R, Frontal_Med_Orb_L, OFCant_L, |
| | sensorimotor GC ^a | | 510 | 0.045 | 4.26 | -3 | -24 | 75 | Paracentral_Lobule_L | Paracentral_Lobule_L, Cingulate_Mid_L |
| Integrated Local Correlation LC | | | | | | | | | | |
| T1acu < HCacu | sensorimotor LC ^a | 212 | 415 | 0.021 | 4.22 | 0 | -18 | 48 | Supp_Motor_Area_L | Supp_Motor_Area_L, Supp_Motor_Area_R |
| | prefrontal LC | | 309 | 0.029 | 4.80 | 24 | 60 | 18 | Frontal_Sup_2_R | Frontal_Sup_2_R |
| | precuneal LC | | 299 | 0.030 | 4.41 | 3 | -66 | 21 | Precuneus_R | Cingulate_Post_L |
| | - | | 278 | 0.032 | 4.58 | 42 | 0 | -36 | Temporal_Inf_R | Temporal_Pole_Mid_R, Frontal_Inf_Orb_2_R |
| | - | | 255 | 0.037 | 5.14 | 3 | 60 | -9 | Frontal_Med_Orb_R | Frontal_Med_Orb_L, Frontal_Med_Orb_R, ACC_sub_L |
| | - | | 227 | 0.045 | 4.86 | 39 | -63 | 30 | Angular_R | (Temporal_Mid_R) |
| T1acu x T3rec | (frontal LC) | 365 | <i>n.s.</i> | | | | | | | |
| fractional Amplitude of Low Frequency Fluctuations fALFF | | | | | | | | | | |
| T1acu < HCacu | parietal fALFF | 216 | 233 | 0.044 | 4.38 | -54 | -60 | 42 | Angular_L | Parietal_Sup_L, Angular_L |
| | calcarine fALFF | | 264 | 0.039 | 4.31 | -3 | -72 | 18 | Calcarine_L | Calcarine_L, Cingulate_Post_L |

table S12: Voxel-wise resting-state measures controlled for frame-wise displacement

¹ $\alpha = 0.05$, p -value family-wise error corrected.

Two frame-wise displacement (FWD) covariates (averaged translation and averaged rotation) were, in addition to age, included in the comparisons of independent groups. See table S11.

| Modality | Cluster or network name | BMI-SDS | | leptin | | EDE | | EDI-2 | | untreated ¹ | | T1-T2-time ² | |
|-------------------------|------------------------------|----------|----------|----------|----------|----------|----------|----------|----------|------------------------|----------|-------------------------|----------|
| | | <i>r</i> | <i>p</i> | <i>r</i> | <i>p</i> | <i>r</i> | <i>p</i> | <i>r</i> | <i>p</i> | <i>r</i> | <i>p</i> | <i>r</i> | <i>p</i> |
| baseline (T1acu) | | | | | | | | | | | | | |
| NBS | T1acu < HCacu | 0.12 | 0,609 | 0.07 | 0,757 | -0.13 | 0,621 | 0.53 | 0,014* | -0.06 | 0,791 | | |
| NBS | T1acu > HCacu | -0.05 | 0,832 | -0.13 | 0,563 | 0.13 | 0,610 | 0.23 | 0,306 | 0.11 | 0,617 | | |
| GC | prefrontal GC | 0.01 | 0,978 | -0.13 | 0,578 | -0.11 | 0,666 | 0,35 | 0,117 | 0.05 | 0,826 | | |
| GC | sensorimotor GC ^a | 0.22 | 0,318 | 0.31 | 0,158 | -0.14 | 0,586 | 0,10 | 0,675 | -0.11 | 0,629 | | |
| LC | sensorimotor LC ^a | 0.24 | 0,272 | 0.15 | 0,505 | 0.03 | 0,910 | -0,01 | 0,982 | -0.01 | 0,972 | | |
| LC | prefrontal LC | 0.13 | 0,556 | -0.34 | 0,127 | 0.09 | 0,723 | 0,34 | 0,130 | 0.13 | 0,556 | | |
| LC | precuneal LC | 0.49 | 0,020* | 0.36 | 0,104 | 0.24 | 0,344 | 0,43 | 0,049* | -0.03 | 0,892 | | |
| fALFF | parietal fALFF | 0.19 | 0,395 | -0.16 | 0,490 | -0.09 | 0,732 | -0,15 | 0,509 | -0.01 | 0,956 | | |
| fALFF | calcarine fALFF | 0.18 | 0,427 | 0.12 | 0,599 | 0.05 | 0,853 | 0,16 | 0,482 | 0.07 | 0,763 | | |
| delta (T2-T1) | | | | | | | | | | | | | |
| NBS | T1acu < T2acu | 0,09 | 0,706 | 0,00 | 0,983 | 0,24 | 0,350 | -0,13 | 0,624 | | | 0,24 | 0,304 |
| NBS | T1acu > T2acu | -0,06 | 0,798 | -0,31 | 0,180 | 0,24 | 0,357 | 0,16 | 0,552 | | | 0,12 | 0,592 |
| GC | sensorimotor GC ^b | 0,30 | 0,185 | 0,05 | 0,849 | 0,15 | 0,572 | -0,31 | 0,234 | | | 0,37 | 0,094 |
| GC | insular GC | -0,03 | 0,907 | -0,22 | 0,348 | 0,13 | 0,613 | -0,13 | 0,622 | | | 0,26 | 0,261 |
| LC | sensorimotor LC ^b | -0,04 | 0,877 | -0,13 | 0,582 | 0,44 | 0,075 | -0,28 | 0,285 | | | 0,30 | 0,192 |
| LC | temporal LC | 0,07 | 0,750 | -0,02 | 0,936 | 0,39 | 0,118 | -0,18 | 0,501 | | | 0,34 | 0,129 |
| LC | fusiform LC | 0,21 | 0,365 | -0,07 | 0,754 | 0,51 | 0,037* | -0,27 | 0,292 | | | 0,44 | 0,046* |
| fALFF | precuneal fALFF | -0,17 | 0,462 | -0,12 | 0,624 | 0,33 | 0,192 | 0,06 | 0,826 | | | 0,07 | 0,779 |
| fALFF | temporal fALFF | 0,12 | 0,608 | -0,08 | 0,749 | 0,23 | 0,368 | -0,30 | 0,241 | | | 0,43 | 0,050* |

table S13: Correlations of resting-state results with clinical variables

* significant correlation, $\alpha = 0.05$, *p*-value uncorrected. ¹ Time between symptom onset and inpatient admission. ² Time between T1acu and T2acu scans. Reported are Pearson correlations (*r*) between results from resting-state analyses (network- or cluster-wise averaged) and clinical variables. The correlations were calculated for the T1acu group (baseline) and between changes in measures from T1 to T2 (delta).

BMI-SDS = body mass index (- standard deviation score); EDE = Eating Disorder Examination; EDI-2 = Eating Disorder Inventory 2; NBS = Network Based Statistics; GC = Global Correlation; LC = Integrated Local Correlation; fALFF = fractional Amplitude of Low Frequency Fluctuations. Superscript a and b refer to the corresponding clusters stemming from T1acu < HCacu and T1acu < T2acu contrast, respectively.

| Original contrast | Cluster or network name | T1acu vs. HCacu | | | T2acu vs. HCacu | | | T1acu vs. T2acu | | |
|--------------------------------------------------------------------|------------------------------|-----------------|----------|----------|-----------------|----------|-------------|-----------------|----------|----------|
| | | <i>F</i> | <i>p</i> | <i>d</i> | <i>F</i> | <i>p</i> | <i>d</i> | <i>T</i> | <i>p</i> | <i>d</i> |
| Regions included in Network Based Statistics subnetworks | | | | | | | | | | |
| T1acu vs. HCacu | T1acu < HCacu | 13.52 | < 0.001* | -1.17 | 4.23 | 0.046* | -0.66 | -6.06 | < 0.001* | -1.32 |
| | T1acu > HCacu | 18.33 | < 0.001* | -1.32 | 5.85 | 0.020* | -0.76 | | | |
| T1acu vs. T2acu | T1acu < T2acu | 13.59 | < 0.001* | -1.17 | | | | -5.99 | < 0.001* | -1.31 |
| | T1acu > T2acu | | | | 3.70 | 0.061 | <i>n.s.</i> | -5.75 | < 0.001* | -1.25 |
| Global Correlation clusters | | | | | | | | | | |
| T1acu < HCacu | prefrontal GC | 7.92 | 0.007* | -0.90 | | | | | | |
| | sensorimotor GC ^a | 7.89 | 0.008* | -0.89 | | | | -3.01 | 0.007* | -0.66 |
| T1acu < T2acu | sensorimotor GC ^b | 9.02 | 0.005* | -0.96 | | | | -4.18 | < 0.001* | -0.91 |
| | insular GC | | | | | | | -6.38 | < 0.001* | -1.39 |
| Integrated Local Correlation clusters | | | | | | | | | | |
| T1acu < HCacu | sensorimotor LC ^a | 7.35 | 0.010* | -0.87 | | | | -2.85 | 0.010* | -0.62 |
| | prefrontal LC | 8.85 | 0.005* | -0.98 | 1.93 | 0.172 | <i>n.s.</i> | | | |
| | precuneal LC | 19.12 | < 0.001* | -1.40 | | | | | | |
| T1acu < T2acu | sensorimotor LC ^b | 10.52 | 0.002* | -1.03 | | | | -3.11 | 0.006* | -0.68 |
| | temporal LC | | | | | | | -5.45 | < 0.001* | -1.19 |
| | fusiform LC | | | | | | | -4.89 | < 0.001* | -1.07 |
| T1acu x T3rec | (frontal LC) | 6.64 | 0.014* | 0.82 | | | | -2.81 | 0.011* | -0.61 |
| fractional Amplitude of Low Frequency Fluctuations clusters | | | | | | | | | | |
| T1acu < HCacu | parietal fALFF | 16.91 | < 0.001* | -1.32 | 5.90 | 0.020* | -0.78 | -3.89 | < 0.001* | -0.85 |
| | calcarine fALFF | 17.83 | < 0.001* | -1.35 | | | | | | |
| T1acu < T2acu | precuneal fALFF | 17.73 | < 0.001* | -1.35 | | | | -6.79 | < 0.001* | -1.48 |
| | temporal fALFF | 15.73 | < 0.001* | -1.21 | | | | -4.85 | < 0.001* | -1.06 |

table S14: Post-hoc comparisons of voxel-wise grey matter volumes

* significant group differences, $\alpha = 0.05$, *p*-value uncorrected.

Results of group comparisons of network- or cluster-wise grey matter volume (GMV), estimated from individual voxel-wise GMV-maps. Only comparisons of values showing significant differences in resting-state measures (see table S6) were conducted. For NBS, GMV of all regions included in the resulting subnetworks was averaged, separately for positive and negative connections. For voxel-wise measures, GMV was averaged per cluster. Independent group comparisons using analyses of covariances (age was included as covariate), T1acu vs. T2acu comparisons using paired *t*-tests.

d = Cohen's *d*; Superscript a and b refer to the corresponding clusters stemming from T1acu < HCacu and T1acu < T2acu contrast, respectively.

| Original contrast | Cluster or network name | T1acu vs. HCacu | | | T2acu vs. HCacu | | | T1acu vs. T2acu | | |
|-----------------------------------------------------------------------------|------------------------------|-----------------|----------|----------|-----------------|----------|-------------|-----------------|----------|----------|
| | | <i>F</i> | <i>p</i> | <i>d</i> | <i>F</i> | <i>p</i> | <i>d</i> | <i>F / T</i> | <i>p</i> | <i>d</i> |
| Network Based Statistics NBS¹ | | | | | | | | | | |
| T1acu vs. HCacu | T1acu < HCacu | 29.34 | < 0.001* | -1.61 | 3.77 | 0.059 | <i>n.s.</i> | -4.25 | < 0.001* | -0.93 |
| | T1acu > HCacu | 11.55 | 0.002* | 1.03 | 6.82 | 0.013* | 0.80 | | | |
| T1acu vs. T2acu | T1acu < T2acu | 7.41 | 0.009* | -0.88 | | | | -7.45 | < 0.001* | -1.62 |
| | T1acu > T2acu | | | | 30.47 | < 0.001* | -1.69 | 8.18 | < 0.001* | 1.78 |
| Global Correlation GC² | | | | | | | | | | |
| T1acu < HCacu | prefrontal GC | 17.19 | < 0.001* | -1.29 | | | | | | |
| | sensorimotor GC ^a | 11.50 | 0.002* | -1.09 | | | | -2.90 | 0.009* | -0.63 |
| T1acu < T2acu | sensorimotor GC ^b | 5.97 | 0.019* | -0.81 | | | | -3.81 | 0.001* | -0.83 |
| | insular GC | | | | | | | -3.75 | 0.001* | -0.82 |
| Integrated Local Correlation LC² | | | | | | | | | | |
| T1acu < HCacu | sensorimotor LC ^a | 14.28 | < 0.001* | -1.20 | | | | -3.18 | 0.005* | -0.69 |
| | prefrontal LC | 25.86 | < 0.001* | -1.44 | 15.07 | < 0.001* | -1.03 | | | |
| | precuneal LC | 17.39 | < 0.001* | -1.21 | | | | | | |
| T1acu < T2acu | sensorimotor LC ^b | 7.29 | 0.010* | -0.85 | | | | -5.41 | < 0.001* | -1.18 |
| | temporal LC | | | | | | | -6.52 | < 0.001* | -1.42 |
| | fusiform LC | | | | | | | -5.61 | < 0.001* | -1.22 |
| T1acu x T3rec | (frontal LC) | 9.97 | 0.003* | -1.01 | | | | -3.31 | 0.004* | -0.72 |
| fractional Amplitude of Low Frequency Fluctuations fALFF² | | | | | | | | | | |
| T1acu < HCacu | parietal fALFF | 37.13 | < 0.001* | -1.85 | 7.29 | 0.010* | -0.86 | -2.84 | 0.010* | -0.62 |
| | calcarine fALFF | 14.79 | < 0.001* | -1.17 | | | | | | |
| T1acu < T2acu | precuneal fALFF | 7.07 | 0.011* | -0.84 | | | | -4.94 | < 0.001* | -1.08 |
| | temporal fALFF | 5.23 | 0.027* | -0.63 | | | | -6.80 | < 0.001* | -1.48 |

table S15: Post-hoc comparisons of resting-state group differences controlled for (voxel-wise) grey matter volume

* significant group differences, $\alpha = 0.05$, *p*-value uncorrected.

Resting-state group differences controlled for grey matter volume (GMV). ¹ In case of NBS, averaged GMV was regressed out of the averaged network FC separately for each cohort. ² For voxel-wise resting-state measures (GC, LC, fALFF) GMV was regressed out of the beta-maps of each measure in a voxel-wise manner, values were averaged per cluster and compared between groups. Only comparisons showing significant differences in resting-state measures (see table S6) were repeated. Independent group comparisons using analyses of covariances (age was included as covariate), T1acu vs. T2acu comparisons using paired *t*-tests. Superscript a and b refer to the corresponding clusters stemming from T1acu < HCacu and T1acu < T2acu contrast, respectively.

| Modality | Cluster or network name | GMV | |
|-------------------------|------------------------------|----------|----------|
| | | <i>r</i> | <i>p</i> |
| baseline (T1acu) | | | |
| NBS | T1acu < HCacu | 0,18 | 0,417 |
| NBS | T1acu > HCacu | 0,25 | 0,257 |
| GC | prefrontal GC | 0,14 | 0,531 |
| GC | sensorimotor GC ^a | 0,06 | 0,795 |
| LC | sensorimotor LC ^a | 0,11 | 0,629 |
| LC | prefrontal LC | 0,16 | 0,474 |
| LC | precuneal LC | 0,26 | 0,246 |
| fALFF | parietal fALFF | -0,04 | 0,871 |
| fALFF | calcarine fALFF | 0,16 | 0,483 |
| delta (T2-T1) | | | |
| NBS | T1acu < T2acu | 0,07 | 0,772 |
| NBS | T1acu > T2acu | -0,07 | 0,765 |
| GC | sensorimotor GC ^b | 0,00 | 0,995 |
| GC | insular GC | -0,09 | 0,682 |
| LC | sensorimotor LC ^b | 0,01 | 0,956 |
| LC | temporal LC | 0,08 | 0,731 |
| LC | fusiform LC | 0,33 | 0,148 |
| fALFF | precuneal fALFF | 0,02 | 0,942 |
| fALFF | temporal fALFF | 0,05 | 0,827 |

table S16: Correlations of resting-state results with grey matter volumes

Correlations (Pearson's *r*) between results from resting-state analyses (network- or cluster-wise averaged) and grey matter volumes (GMV). The correlations were calculated for the T1acu group (baseline) and between changes in measures from T1 to T2 (delta).

Superscript a and b refer to the corresponding clusters stemming from T1acu < HCacu and T1acu < T2acu contrast, respectively.

| | Present study (T1acu) | Biezonski et al., 2015 | Boehm et al., 2014/ Ehrlich et al., 2015/ Geisler et al., 2016 | Favaro et al., 2012 | Gaudio et al., 2015¹ | Gaudio et al., 2018¹ |
|-----------------------------------------|----------------------------------|-----------------------------------|-------------------------------------------------------------------------------|--------------------------------|----------------------------------------|----------------------------------------|
| | <u>Seed-to-voxel</u> | <u>ICA/NBS/GT</u> | <u>ICA</u> | <u>ICA</u> | <u>NBS</u> | |
| | <i>N</i> = 22 | <i>N</i> = 28 | <i>N</i> = 35 | <i>N</i> = 29 | <i>N</i> = 16 | <i>N</i> = 15 |
| | <i>mean ± SD (min. – max.)</i> | <i>mean ± SD (min. – max.)</i> | <i>mean ± SD (min. – max.)</i> | <i>mean ± SD (min. – max.)</i> | <i>mean ± SD (min. – max.)</i> | <i>mean ± SD (min. – max.)</i> |
| age at ED onset (y) | 13.9 ± 1.9 (9.1 – 17.9) | 14.9 ± 0.4 (<i>n.a.</i>) | 13.5 ± 1.7 (<i>n.a.</i>) | 18.2 ± 4.4 (<i>n.a.</i>) | 15.4 ± 1.6 (<i>n.a.</i>) | 15.2 ± 1.6 (<i>n.a.</i>) |
| age at examination (y) | 15.3 ± 1.9 (10.2 – 18.6) | 19.4 ± 0.4 (<i>n.a.</i>) | 16.1 ± 2.6 (12 – 23) | 25.8 ± 6.9 (<i>n.a.</i>) | 15.8 ± 1.7 (13 – 18) | 15.7 ± 1.7 (13 – 18) |
| BMI at examination (kg/m ²) | 15.7 ± 1.5 (13.1 – 18.3) | 17.2 ± 0.3 (<i>n.a.</i>) | 14.8 ± 1.3 (<i>n.a.</i>) | 14.5 ± 2.3 (<i>n.a.</i>) | 16.2 ± 1.2 (<i>n.a.</i>) | 16.1 ± 1.2 (<i>n.a.</i>) |
| ED duration (y) | 1.6 ± 1.3 (0.5 – 4.8) | 4.5 ± 0.6 (<i>n.a.</i>) | 2.6* | 6.2 ± 6.9 (<i>n.a.</i>) | 0.3 ± 0.2 (<i>n.a.</i>) | 0.3 ± 0.2 (<i>n.a.</i>) |

| | Haynos et al., 2019 | Kullmann et al., 2014 | Lee et al., 2014 | Phillipou et al., 2016 | Scaife et al., 2017 | Seidel et al., 2019 |
|-----------------------------------------|----------------------------|----------------------------------|----------------------------|-----------------------------------|----------------------------|----------------------------|
| | <u>Seed-to-voxel</u> | <u>degree centrality</u> | <u>Seed-to-voxel</u> | <u>ROI-to-ROI</u> | <u>ICA</u> | <u>fALFF, ReHo</u> |
| | <i>N</i> = 19 | <i>N</i> = 12 | <i>N</i> = 18 | <i>N</i> = 26 | <i>N</i> = 12 | <i>N</i> = 74 |
| age at ED onset (y) | 14.3* | <i>n.a.</i> | 21.4* | 16.0 ± 3.4 (<i>n.a.</i>) | 20.1 ± 5.9 (<i>n.a.</i>) | 14.5* |
| age at examination (y) | 22.3 ± 3.9 (<i>n.a.</i>) | 23.3 ± 4.7 (<i>n.a.</i>) | 25.2 ± 4.2 (20 – 35) | 22.8 ± 6.7 (<i>n.a.</i>) | 29.4 ± 6.0 (<i>n.a.</i>) | 16.0 ± 2.9 (12.1 – 28.5) |
| BMI at examination (kg/m ²) | 17.0 ± 1.4 (<i>n.a.</i>) | 15.5 ± 1.5 (<i>n.a.</i>) | 16.0 ± 1.7 (<i>n.a.</i>) | 16.6 ± 1.2 (<i>n.a.</i>) | 15.4 ± 1.9 (<i>n.a.</i>) | 14.6 ± 1.3 (<i>n.a.</i>) |
| ED duration (y) | 8.0 ± 3.7 (<i>n.a.</i>) | <i>n.a.</i> | 3.8 ± 2.6 (<i>n.a.</i>) | 6.4 ± 7.4 (<i>n.a.</i>) | 10.3 ± 5.2 (<i>n.a.</i>) | 1.5 ± 1.9 (<i>n.a.</i>) |

table S17: Sample data from selected current resting-state studies in acute Anorexia nervosa

Sample data as reported by the authors. ¹ participants were drawn from the same sample. * ED duration or age of onset were not reported by the authors, but calculated from age at onset and examination, respectively age at examination and ED duration.

SD = standard deviation; ED = eating disorder; BMI = body mass index; ICA = Independent Component Analysis; NBS = Network Based Statistics; GT = graph theory; fALFF = fractional Amplitude of Low Frequency Fluctuations; ReHo = Regional Homogeneity; *n.a.* = not reported by the authors.

| | Present study (T1/T2acu) | Cha et al., 2016 | Uniacke et al., 2019 |
|-----------------------------------------|-------------------------------------|--------------------------------|--------------------------------|
| | <i>N = 22/21</i> | <i>N = 22</i> | <i>N = 25</i> |
| | <i>mean ± SD (min. – max.)</i> | <i>mean ± SD (min. – max.)</i> | <i>mean ± SD (min. – max.)</i> |
| age at ED onset (y) | 13.9 ± 1.9 (9.1 – 17.9) | <i>n.a.</i> | 15.5* |
| age at first scan (y) | 15.3 ± 1.9 (10.2 – 18.6) | 19.5 ± 2.4 (16 – 25) | 19.1 ± 3.5 (14 – 26) |
| BMI at first scan (kg/m ²) | 15.7 ± 1.5 (13.1 – 18.3) | 17.3 ± 1.2 (14.8 – 19.0) | 16.5 ± 2.0 (<i>n.a.</i>) |
| time between scans (d) | 90.8 ± 40.8 (41 – 183) | 47.6 ± 10.1 (<i>n.a.</i>) | 57.1 ± 21.2 (<i>n.a.</i>) |
| BMI at second scan (kg/m ²) | 18.2 ± 1.2 (15.0 – 20.1) | 20.0 ± 1.6 (<i>n.a.</i>) | 20.8 ± 1.1 (<i>n.a.</i>) |
| ED duration (at first scan; y) | 1.6 ± 1.3 (0.5 – 4.8) | <i>n.a.</i> | 3.6 ± 2.8 (<i>n.a.</i>) |

table S18: Sample data from current longitudinal resting-state studies in acute and short-term-recovered Anorexia nervosa

Sample data as reported by the authors. * ED onset age was not directly reported but calculated from age at first scan and ED duration.

SD = standard deviation; ED = eating disorder; BMI = body mass index; *n.a.* = not reported by the authors.

| | Present study (T3rec) | Boehm et al., 2016 | Cowdrey et al., 2014 | Favaro et al., 2012 | Scaife et al., 2017 | Geisler et al., 2019 |
|------------------------|------------------------------------------------------------|------------------------------------------------------------|------------------------------------------------------------|------------------------------------------------------------|------------------------------------------------------------|------------------------------------------------------------|
| | <u><i>N</i> = 21</u> | <u><i>N</i> = 31</u> | <u><i>N</i> = 16</u> | <u><i>N</i> = 16</u> | <u><i>N</i> = 14</u> | <u><i>N</i> = 55</u> |
| | <u><i>mean</i> ± <i>SD</i> (<i>min.</i> - <i>max.</i>)</u> | <u><i>mean</i> ± <i>SD</i> (<i>min.</i> - <i>max.</i>)</u> | <u><i>mean</i> ± <i>SD</i> (<i>min.</i> - <i>max.</i>)</u> | <u><i>mean</i> ± <i>SD</i> (<i>min.</i> - <i>max.</i>)</u> | <u><i>mean</i> ± <i>SD</i> (<i>min.</i> - <i>max.</i>)</u> | <u><i>mean</i> ± <i>SD</i> (<i>min.</i> - <i>max.</i>)</u> |
| inclusion criteria (m) | 12 | 6 | 12 | 6 | 12 | 6 |
| age at ED onset (y) | 14.4 ± 1.6 (11.8 - 17.6) | 14.4 ± 1.9 (<i>n.a.</i>) | 14.7 ± 1.7 (<i>n.a.</i>) | 17.9 ± 2.8 (<i>n.a.</i>) | 16.5 ± 2.1 (<i>n.a.</i>) | <i>n.a.</i> |
| age at examination (y) | 22.3 ± 3.3 (17.7 - 31.4) | 22.3 ± 3.1 (<i>n.a.</i>) | 23.1 ± 3.6 (<i>n.a.</i>) | 23.8 ± 4.8 (<i>n.a.</i>) | 27 ± 6.5 (<i>n.a.</i>) | 22.4 ± 3.3 (<i>n.a.</i>) |
| ED duration (y) | 2.0 ± 1.7 (0.1 - 7.1) | 3.7 ± 2.7 (<i>n.a.</i>) | 3.5 ± 2.4 (<i>n.a.</i>) | 2.3 ± 1.7 (<i>n.a.</i>) | 5.8 ± 4.2 (<i>n.a.</i>) | <i>n.a.</i> |
| recovery duration (y) | 5.3 ± 3 (1.5 - 13.2) | 4.4 ± 2.8 (0.8 - <i>n.a.</i>) | 4.9* | 2.8 ± 2.6 (0.5 - 7.5) | 4.7* | <i>n.a.</i> |

table S19: Sample data from current resting-state studies in long-term-recovered Anorexia nervosa

Sample data as reported by the authors. "Inclusion criteria" refers to the minimum recovery time allowed for Anorexia nervosa patients to be included in the studies. *Recovery durations were not directly reported, but calculated from onset age, ED duration and age at examination. All listed studies found alterations in recovered Anorexia nervosa patients compared to healthy controls. However, results were inconsistent and different approaches were used in the single studies. We did not refer to Geisler et al. (2019) in our main text, due to missing methodological overlap. SD = standard deviation; ED = eating disorder; *n.a.* = not reported by the authors.

Supplementary Figures

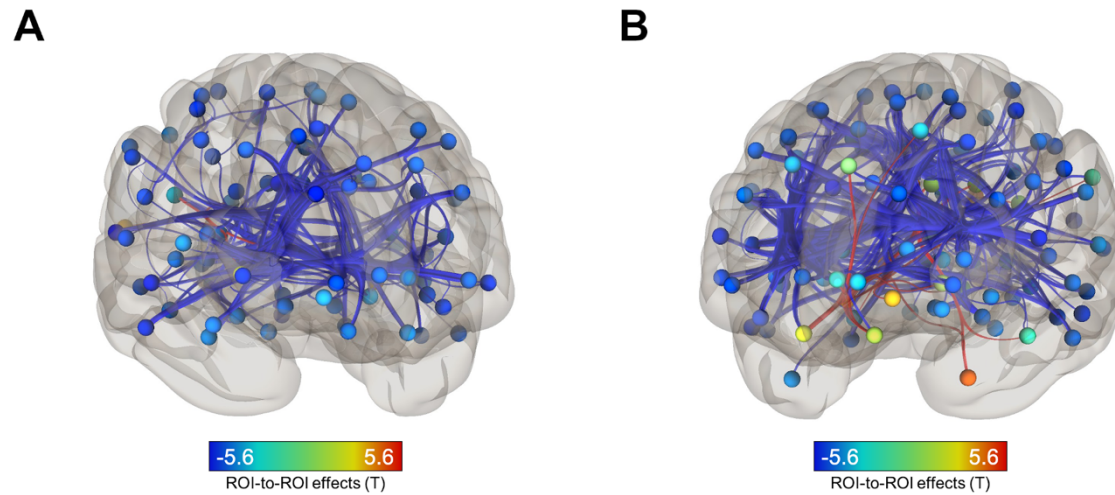


figure S1: Animated visualisation of Network Based Statistics results

A: Subnetwork resulting from T1acu vs. HCacu comparison with primarily decreased connections in patients at T1. B: Subnetwork resulting from T1acu vs. T2acu comparison with mainly decreased connections in T1acu. Animated versions of these figures in GIF file format are available separately.

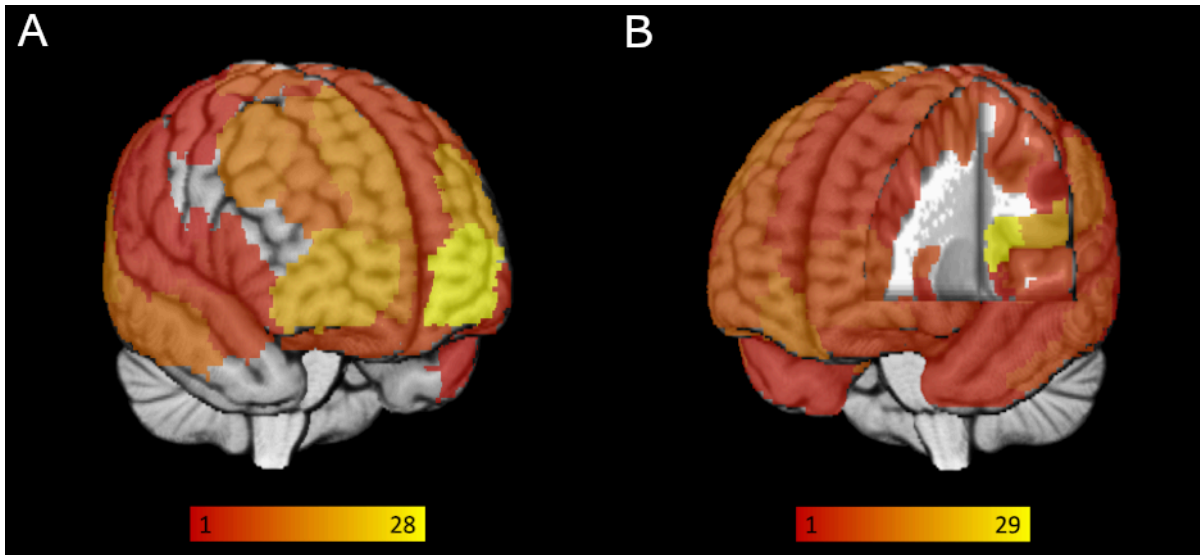


figure S2: Visualisation of node degree changes in Network Based Statistics subnetworks

Colour of brain regions reflects extent of changes (decreases) of the degree of each region (yellow = strong decrease) in AN. Node degree refers to the number of connections between a certain node and all other nodes. A: Results from T1acu vs. HCacu comparison. The strongest change was observed in prefrontal regions. B: Results from T1acu vs. T2acu comparison. The insula displayed the largest degree decrease. Animated versions of these figures in GIF file format are available separately.

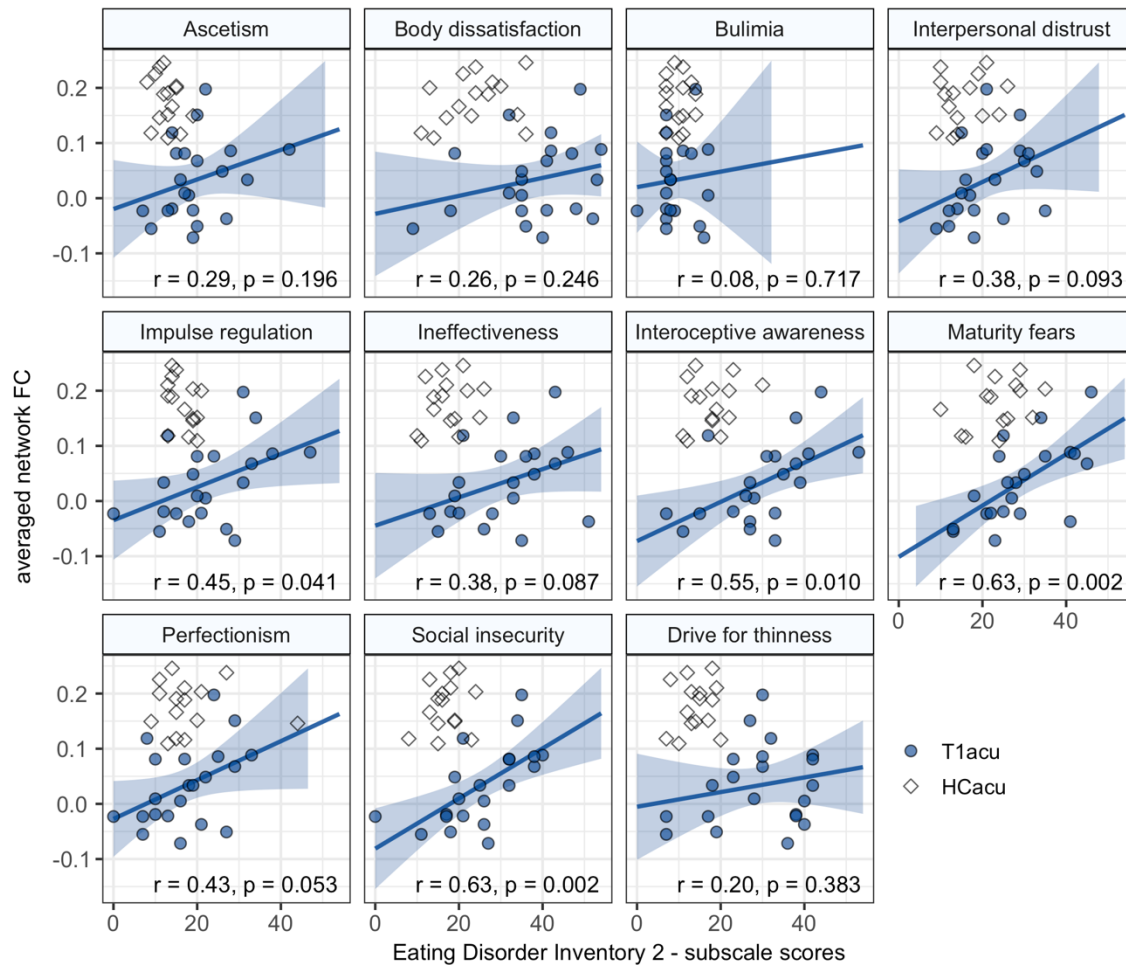


figure S3: Correlations between T1acu < HCacu network FC and EDI-2 subscales

Pearson correlations between T1acu < HCacu network functional connectivity (FC) and Eating Disorder Inventory 2 (EDI-2) subscales in acute Anorexia nervosa patients (T1acu). Blue scatter points represent patients with acute AN at T1. Blue lines display the fitted linear regression function, blue areas the corresponding 95% confidence interval. For descriptive purposes, HCacu subjects are shown as white squares, but do not influence the correlation calculation. r = Pearson's r .