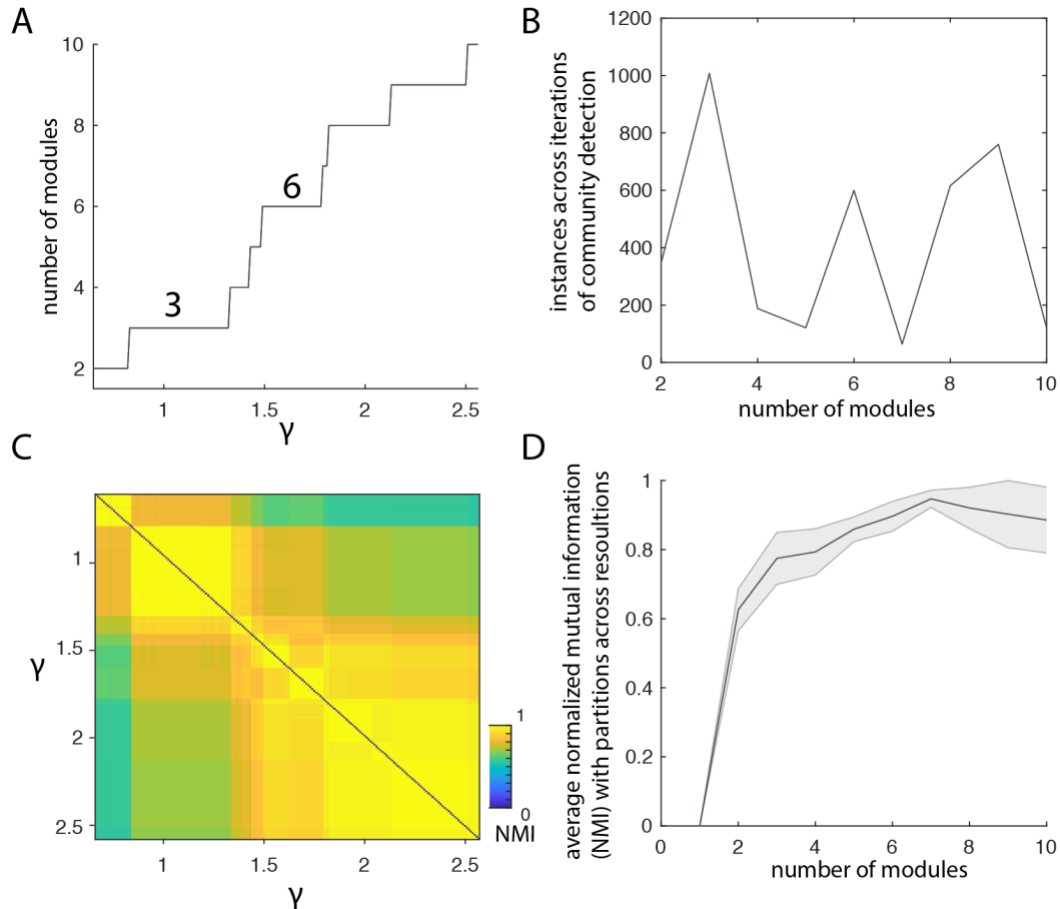
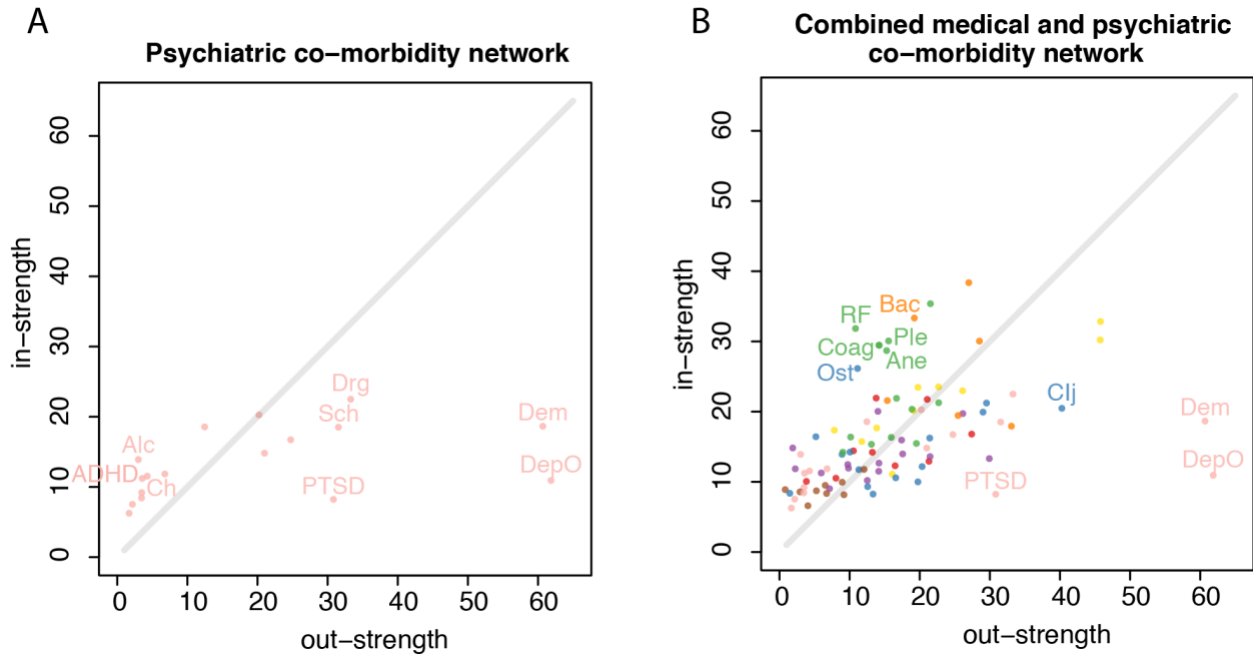


## Supplementary Figures

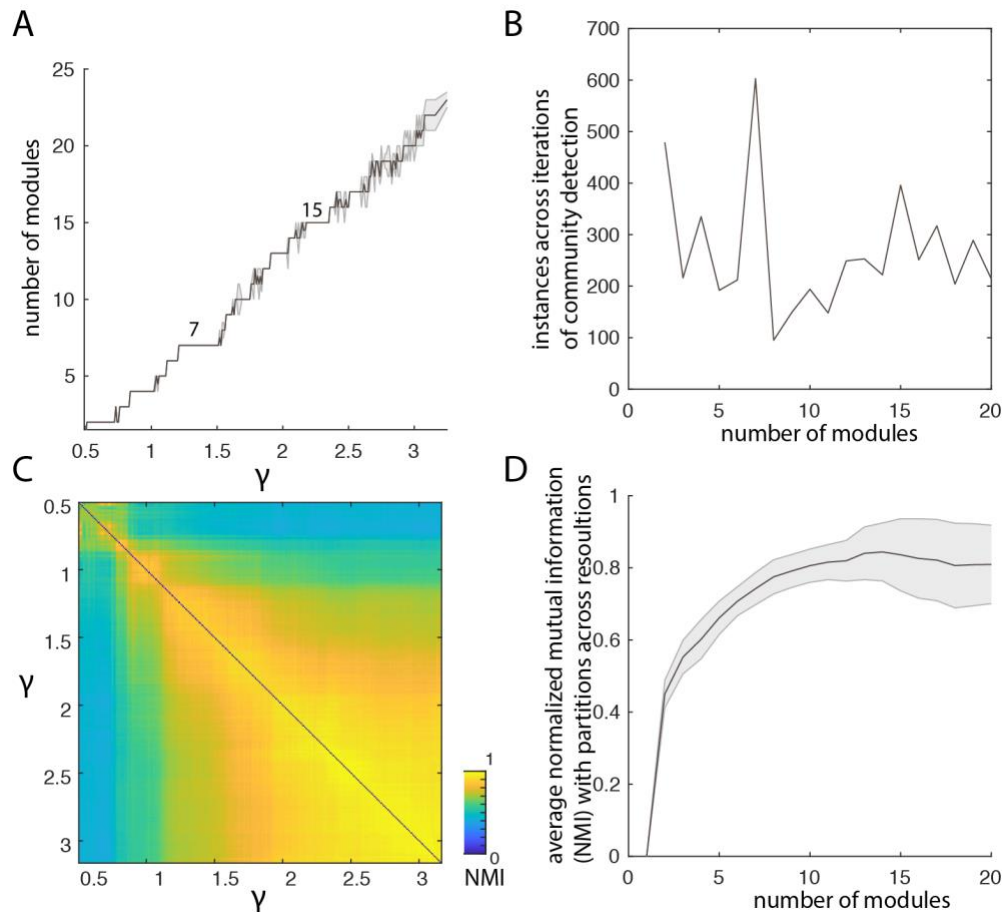
Alexander-Bloch et al, The Architecture of Co-morbidity Networks of Physical and Mental Health Conditions in Military Veterans, *Proceedings of the Royal Society A*, 2020



**Supplemental Figure 1:** Diagnostic plots showing evidence of multi-resolution structure of the psychiatric co-morbidity network as well as justification for further analyses based on a 3-module and a 6-module partition. A) The median number of modules at each value of  $\gamma$ , the resolution parameter that favors larger modules (at low values of  $\gamma$ ) or smaller modules (at high values of  $\gamma$ ). No error bars are shown because the median absolute deviation was 0 across resolutions. B) The total number of iterations of the community detection algorithm that resulted in partitions with a given number of modules, across all values of  $\gamma$ . C) The normalized mutual information (NMI) between the partitions across the  $\gamma$  range. D) The average NMI between the partitions with a given number of modules and other partitions across resolutions. Error bars show the median absolute deviation.



**Supplemental Figure 2:** The relation between out-strength and in-strength for A) the psychiatric co-morbidity network and B) the combined medical and psychiatric co-morbidity network. Gray line shows the boundary where in-strength = out-strength. Individual nodes are colored according to their community structure per Figure 3. Labels are shown for selected nodes that are outliers in terms of the difference between in-strength and out-strength.



**Supplemental Figure 3:** Diagnostic plots showing evidence of multi-resolution structure of the psychiatric co-morbidity network as well as justification for further analyses based on a 7-module and a 15-module partition. A) The median number of modules at each value of  $\gamma$ , the resolution parameter that favors larger modules (at low values of  $\gamma$ ) or smaller modules (at high values of  $\gamma$ ). Error bars shown the median absolute deviation at each resolution. B) The total number of iterations of the community detection algorithm that resulted in partitions with a given number of modules, across all values of  $\gamma$ . C) The normalized mutual information (NMI) between the partitions across the  $\gamma$  range. D) The average NMI between the partitions with a given number of modules and other partitions across resolutions. Error bars show the median absolute deviation at each resolution.