

Supplementary Material

Behaviors and attitudes in response to the COVID-19 pandemic: Insights from a cross-national Facebook survey

Daniela Perrotta¹, André Grow¹, Francesco Rampazzo^{1,2}, Jorge Cimentada¹, Emanuele Del Fava¹, Sofia Gil-Clavel¹, and Emilio Zagheni¹

¹Max Planck Institute for Demographic Research, Germany

²Centre for Population Change, University of Southampton, United Kingdom

1 Facebook advertising campaigns

Facebook advertising campaigns consist of three layers: (i) the campaign level, at which the goals of the campaign are specified (generating impression, generating clicks, etc.); (ii) the ad set level, at which several target groups can be specified (one target group per ad set); (iii) the ad level, at which the advertising text and the images that are to be used can be specified. As indicated in the main part of the paper, we created one advertising campaign for each country, and each campaign was stratified by sex, age, and region, so that there was one ad set per stratum, each with six advertisements that differed only in the picture that was used. Figure S1 illustrates this for the United States, and Table S4 shows the mapping of the detailed regions of residence onto the macro-regions that we used in the campaigns.

We opted for this approach, because the FAM uses algorithms that optimize the return for advertisers, and this may lead to biased samples. For example, if the goal of a campaign is to generate ad clicks, the FAM will over time increasingly show a given ad to user groups who are most likely to click on it [1]. This can lead to a biased sample, if members of certain demographic groups are more likely to click on the ad than members of other groups. To avoid this problem, we followed the recommendations of Pötzschke and Braun [1] and created one ad set for each stratum of the population, thereby ensuring a more balanced delivery of the ads. The selected campaign goal was generating clicks, and we used six different ad images, to ensure that our ads appeal to a wide audience.

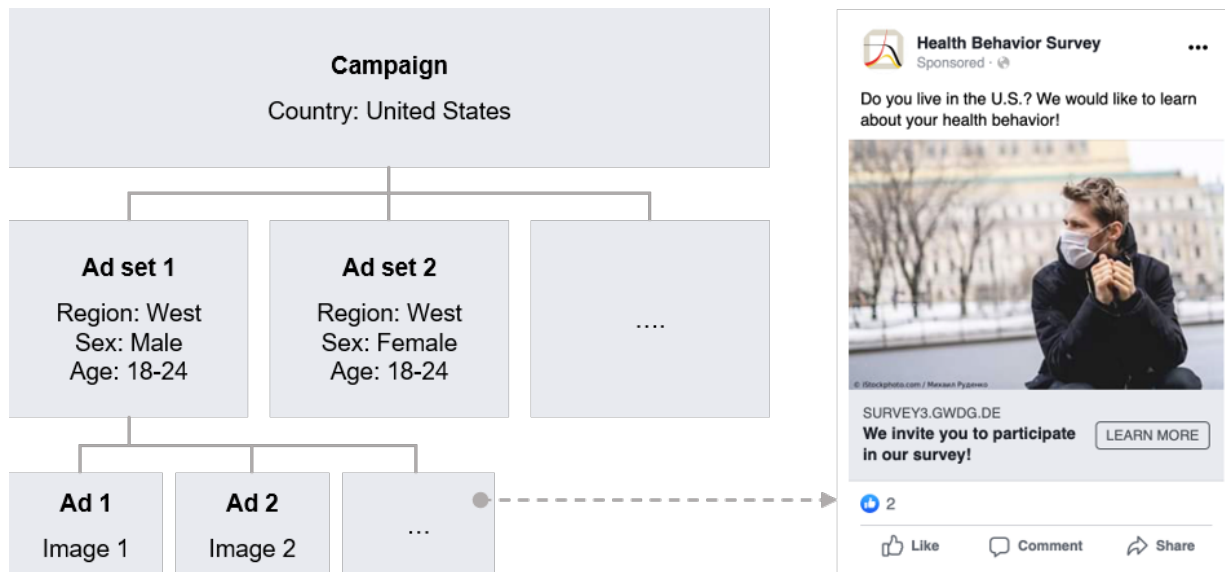


Fig. S1. Illustration of the structure of the advertising campaign used in the United States (left). Adapted from Figure 2 in Pötzschke and Braun [1]. Example of an advertisement shown to Facebook users in the United States (right).

2 Response rates

In the context of online surveys, it is often difficult to calculate traditional performance measures, such as the response rate, because the number of members of the target population who have actually seen an invitation to participate in the survey cannot be determined [2]. Our use of the Facebook Advertising Manager (FAM) enables us to address this issue. The FAM provides estimates of how many users have seen an advertisement at least once, and how many

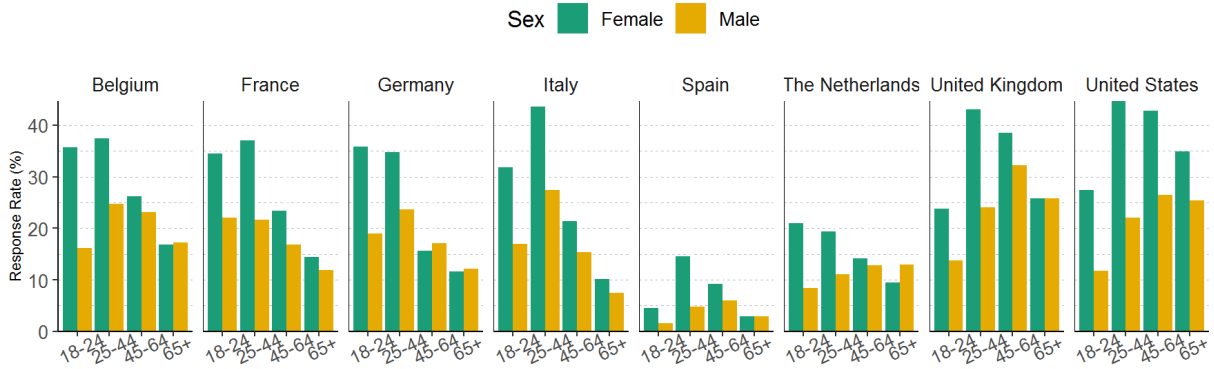


Fig. S2. Response rate by age and sex per each country in the study, in the period between March 13, 2020 and April 19, 2020.

of them have clicked on the advertisement at least once. In combination with information about the number of completed questionnaires, this information makes it possible to calculate approximate participation rates. Specifically, we calculated the response rate as the ratio of the number of completed questionnaires (considering only participants who were directly targeted by one of our advertisement) and the number of unique Facebook users who clicked on the advertisement, according to Facebook.

Figure S2 shows the participation rates by country, sex, and age group. The overall response rate in the period March 13 to April 19, 2020 was approximately 25% in Belgium, 22% in France, 21% in Germany, 21% in Italy, 6% in Spain, 14% in the Netherlands, 6% in Spain, 31% in the United Kingdom, and 31% in the United States. Female users were generally more likely to complete the questionnaire compared to male users. Across countries, the participation rate varies across sex and age groups; for example, in Italy it ranged from about 8% (Italy, men age 65+) to about 43% (Italy, women age 25-44). The only exception from this is Spain, where participation rates were considerably lower, ranging from about 2% (men age 18-24) to about 15% (women age 25-44).

3 Post-stratification

In this study, we use a post-stratification weighting approach to correct for potential issues with non-representativeness in the sample. This is a standard procedure in survey research, in which appropriate weights are computed based on population information from representative data sources (e.g. census data). Here, we use population data from Eurostat (2019) [3] and the US census (2018) [4].

Table S1 shows an example of the post-stratification approach for the strata in the macro-region ‘Central’ in Italy (see Table S4 for the corresponding micro-regions), presenting both the Facebook survey counts and proportions and the true population counts and proportions obtained from Eurostat. The columns ‘Region’, ‘Sex’ and ‘Age’ together define the eight selected strata. The columns Facebook \hat{N}_i and Facebook \hat{p}_i respectively show the numbers of respondents belonging to each stratum and their proportions relative to all strata (note that these proportions do not sum up to 1 because they are relative to all strata, including the ones not presented here). Conversely, the columns Eurostat N_i and Eurostat p_i show the number of people from the true population that belong to that stratum and their proportion relative to the complete population. The weights w_i are then defined as $w_i = p_i / \hat{p}_i$.

Region	Sex	Age	Facebook		Eurostat		w_i
			\hat{N}_i	\hat{p}_i	N_i	p_i	
Central	Female	18-24	199	0.027	522,730	0.010	0.363
Central	Female	25-44	384	0.053	1,453,810	0.028	0.523
Central	Female	45-64	265	0.037	1,876,591	0.036	0.979
Central	Female	65+	104	0.014	1,605,018	0.031	2.133
Central	Male	18-24	119	0.016	572,911	0.011	0.665
Central	Male	25-44	214	0.030	1,454,223	0.028	0.939
Central	Male	45-64	176	0.024	1,758,096	0.034	1.380
Central	Male	65+	78	0.011	1,221,951	0.023	2.165

Table S1. Example of post-stratification reweigh using the central region of Italy.

Since the official population counts from Eurostat (as well as the US census) are provided in five-year age groups (e.g. 15-19 years, 20-24 years, ...), whereas we required respondents to be at least 18 years old, the true population counts for the 18-24 age group is not comparable between our survey counts and the Eurostat/US census population counts. To address this issue, we multiply the Eurostat/US census population counts for the age group 15-24 by 7/10, reflecting that we only have seven of the ten ages in that age group. As a consequence, there is more uncertainty for the estimates in that age group.

Figure S3 shows the unweighted and weighted Facebook estimates for sex, age groups, and education, in comparison with nationally representative surveys, respectively, the European Social Survey (ESS, 2018 [5]) for Italy, Germany, Spain, France, and United Kingdom, and the American Community Survey (ACS, 2018, [6]) for the United States. For illustration, we focus here on Italy; the same interpretation applies to the remaining countries. The top row of panels show how the unweighted and weighted estimates from our survey differ from the ESS estimates for Italy. For example, in the leftmost top panel (sex for Italy) the ESS proportions estimate that there are 51% CI [49%, 53%] females and 49% CI [47%, 51%] males in Italy. In our *unweighted* sample, there are 65% females and 35% males, a bias of around 14% points. However, our *weighted* sample corresponds very closely with the ESS estimates. Females are now estimated to be 52% CI [51%, 53%] of the sample and males 48% CI [47%, 49%] of the sample. The same trend can be seen for the age groups (center plot for Italy). For example, the unweighted percentage of the age group 18-24 in our sample is 20% whereas the weighted ESS estimate is 10% CI [8%, 11%]. Nonetheless, after reweighing, the estimate of the 18-24 age group in our survey is now 11% CI [11%, 12%], very close to the benchmark of the European Social Survey. The last example comes from the education variable, where the counts are more similar between the unweighted and weighted estimates. We might expect that the educational composition of our sample is more biased than its composition in terms of age and sex variables, given that we did not stratify our advertising campaigns based on this variable. However, the distribution of educational attainment in our sample resembles the distribution from the ESS, with the exception that our unweighted sample under-counts the proportion of primary and secondary educated respondents, and over-counts the respondents with graduate education. This bias differs across countries, with France showing the largest, and Germany showing the smallest, deviations.

Taken together, our results suggest that when appropriately weighting the different strata according to reliable population counts, the initial bias in our sample can be adjusted, so that our data better reflect the general population. However, the adjustment is not perfect as can

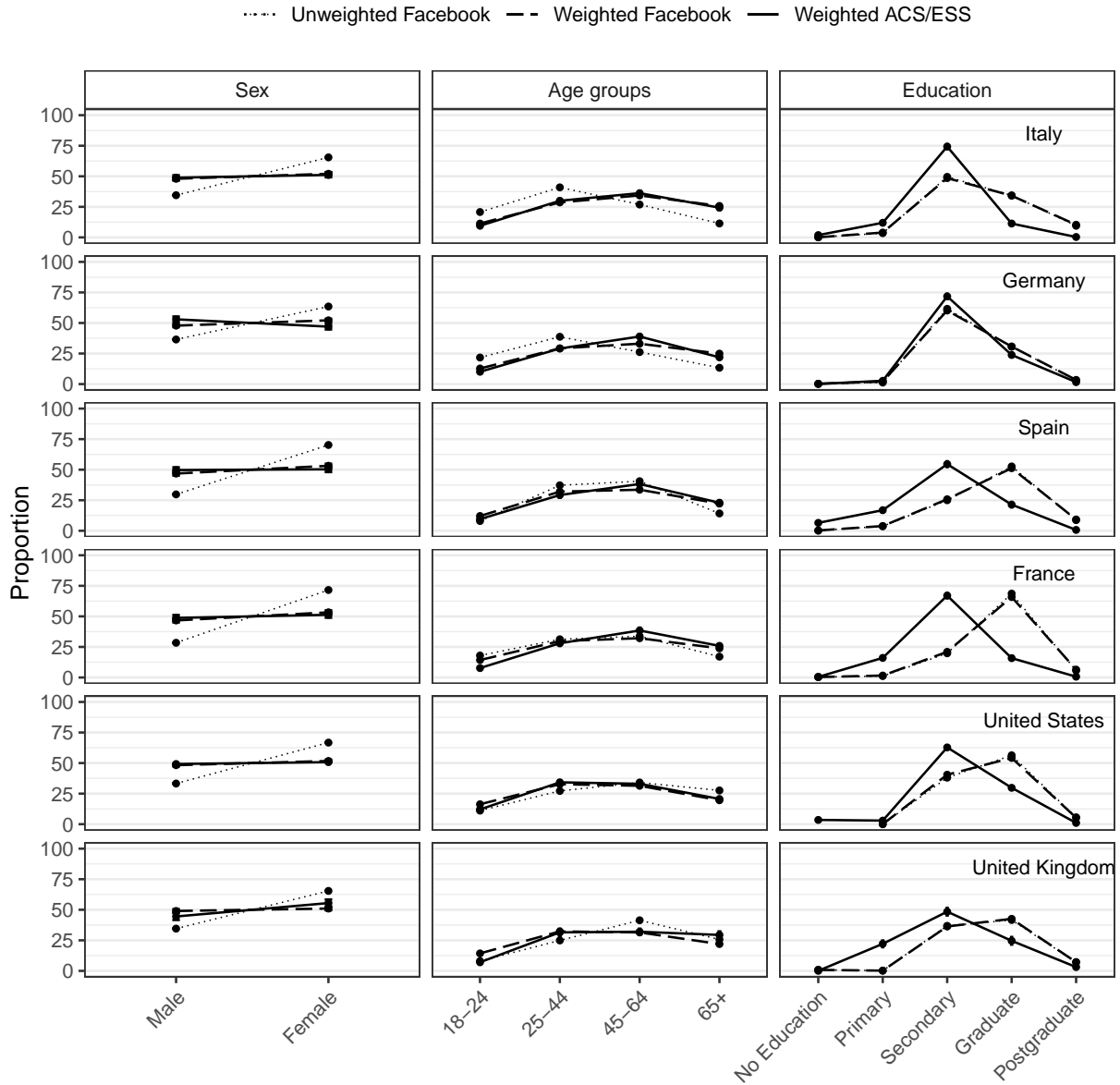


Fig. S3. Comparison of main demographic variables before and after post-stratification reweighing with estimates from the European Social Survey for Italy, Germany, Spain, France, United States, and United Kingdom.

be seen from the distribution of the education variable and other variables, where our weighted estimate differs from the ESS estimates.

4 Respondent selection

As we describe in the main part of the paper, only respondents who indicated that they were at least somewhat aware of the coronavirus outbreak were asked questions related to it. Table S2 shows the number of respondents per answer category in the corresponding filter question by country. Those who chose “Nothing at all” or “Prefer not to answer” were excluded. Furthermore, in the analysis, we excluded respondents item-by-item. Table S3 shows the number of respondents that had be excluded for each of the questions that we considered by country.

Awareness	BE	FR	DE	IT	NL	ES	UK	US
A great deal	4,699 (84%)	5,941 (94%)	7,864 (70%)	8,182 (87%)	3,222 (67%)	5,385 (73%)	12,400 (89%)	7,142 (84%)
A fair amount	741 (13%)	232 (4%)	2,660 (24%)	1,110 (12%)	1,449 (30%)	1,808 (25%)	1,485 (11%)	1,257 (15%)
Not very much	116 (2%)	87 (1%)	551 (5%)	40 (0.4%)	83 (2%)	110 (1%)	64 (0.5%)	48 (0.6%)
Nothing at all	15 (0.3%)	19 (0.3%)	42 (0.4%)	9 (0.1%)	8 (0.2%)	9 (0.1%)	7 (0.1%)	5 (0.1%)
Prefer not to answer	23 (0.4%)	38 (0.6%)	45 (0.4%)	20 (0.2%)	13 (0.3%)	41 (0.6%)	14 (0.1%)	15 (0.2%)

Table S2. Level of participants’ awareness of the coronavirus outbreak. Columns refer to countries, namely Belgium (BE), France (FR), Germany (DE), Italy (IT), the Netherlands (NL), Spain (ES), the United Kingdom (UK), and the United States (US). Unweighted sample.

	BE	FR	DE	IT	NL	ES	UK	US
Perceived threat								
Oneself	111 (2%)	176 (3%)	127 (1%)	142 (2%)	121 (3%)	208 (3%)	150 (2%)	189 (1%)
Family	179 (3%)	219 (4%)	267 (2%)	153 (2%)	171 (4%)	238 (3%)	225 (3%)	315 (2%)
Local Community	162 (3%)	187 (3%)	198 (2%)	85 (1%)	115 (2%)	90 (1%)	134 (2%)	149 (1%)
Country	55 (1%)	71 (1%)	121 (1%)	58 (1%)	80 (2%)	52 (1%)	62 (1%)	98 (1%)
World	85 (2%)	98 (2%)	174 (2%)	91 (1%)	104 (2%)	82 (1%)	83 (1%)	169 (1%)
Level of confidence								
Local Health System	218 (4%)	284 (5%)	673 (6%)	162 (2%)	307 (7%)	109 (2%)	314 (4%)	410 (3%)
National Health System	198 (4%)	176 (3%)	463 (4%)	88 (1%)	201 (4%)	82 (1%)	130 (2%)	244 (2%)
WHO	273 (5%)	310 (5%)	743 (7%)	260 (3%)	355 (8%)	203 (3%)	367 (4%)	628 (5%)
Local Government	406 (7%)	569 (9%)	801 (7%)	187 (2%)	476 (10%)	211 (3%)	823 (10%)	309 (2%)
National Government	197 (4%)	138 (2%)	267 (2%)	148 (2%)	216 (5%)	155 (2%)	123 (1%)	209 (2%)

Table S3. Participants who selected “Don’t know” or “Prefer not to answer” in the threat perception of COVID-19 and levels of confidence. Columns refer to countries, namely Belgium (BE), France (FR), Germany (DE), Italy (IT), the Netherlands (NL), Spain (ES), the United Kingdom (UK), and the United States (US). Unweighted sample.

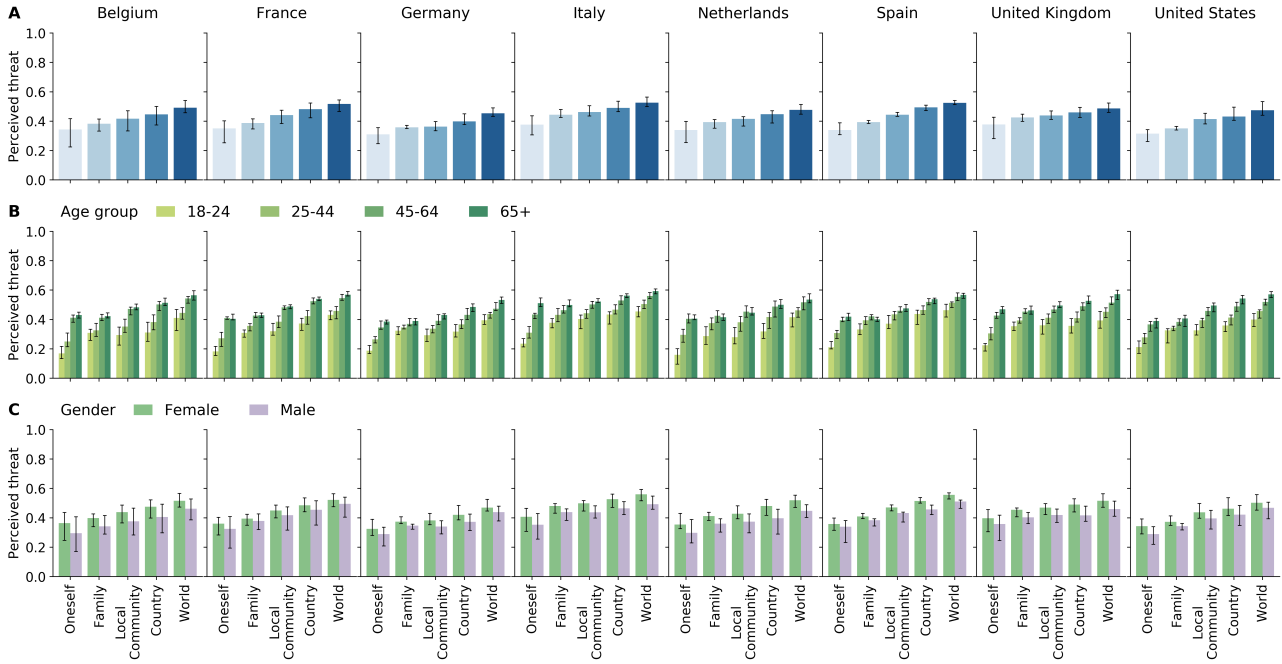


Fig. S4. Perceived threat posed by influenza to oneself, the family, the local community, the country, and the world, broken down by country (A), age group (B), and sex (C). Bar charts show median values as bars and 95%CI as errors. Weighted sample.

5 The perceived threat of influenza

Figure S4 shows the threat that respondents perceived influenza to pose for different levels of society (i.e. to oneself, the family, the local community, the country, and the world), broken down by country (panel A), age group (panel B), and sex (panel C). Overall, threat perception of influenza is highest in Italy with a median value of 0.47 (IQR 0.41-0.52), followed by Spain with 0.44 (IQR 0.38-0.50), the United Kingdom with 0.44 (IQR 0.37-0.49), Belgium with 0.42 (IQR 0.33-0.48), France with 0.42 (IQR 0.35-0.49), the Netherlands with 0.41 (IQR 0.34-0.46), the United States with 0.40 (IQR 0.34-0.46), and lastly Germany with 0.37 (IQR 0.34-0.43). Moreover, in all countries, we find significant variation in the threat perceptions across levels of society ($p < 0.001$). As for the threat perception of COVID-19, the threat perception of influenza increases sharply from the personal sphere (oneself and the family) to more distal contexts, i.e. the local community, the country, and, ultimately, the world (all $p < 0.01$, except for the perceived threat to the family and the local community in Germany [$p = 0.6$]). Considering specifically the perceived threat to oneself and to the world, the latter is on average 30% greater, whereas this difference ranges from 24% in the United Kingdom to 35% in Spain.

Apart from these variations at the country level, the threat perception posed by influenza is both age- and sex-specific. As shown in Figure S4B, the perceived threat sharply increases with age (all $p < 0.001$). In particular, the perceived threat to oneself is consistently lower for the younger age group (i.e. 18-24) with a median value of 0.34 (IQR 0.26-0.40), and higher for the elderly, i.e. 65+, with a median value of 0.49 (IQR 0.43-0.54). Furthermore, as Figure S4C shows, the perceived threat is significantly higher among female respondents than among male respondents (all $p < 0.04$).


Country	Macro-region	Micro-region
Belgium	Brussels	Brussels
	Flanders	Antwerpen, Limburg, Oost-Vlaanderen, Vlaams-Brabant, West-Vlaanderen
	Wallonia	Brabant wallon, Hainaut, Liège, Luxembourg, Namur
France	Île de France	Île de France
	North East	Bourgogne, Franche-Comte, Picardie, Nord-Pas-de-Calais, Alsace, Lorraine, Champagne-Ardenne
	West	Centre - Val de Loire, Normandie, Pays-de-la-Loire, Bretagne
	South East	Auvergne - Rhône-Alpes, Provence-Alpes-Côte d'Azur, Corse
	South West	Aquitaine - Limousin - Poitou-Charentes, Languedoc-Roussillon - Midi-Pyrénées
Germany	Norrddeutschland	Bremen, Hamburg, Mecklenburg-Vorpommern, Niedersachsen, Schleswig-Holstein
	Ostdeutschland	Berlin, Brandenburg, Sachsen, Sachsen-Anhalt, Thüringen
	Süddeutschland	Baden-Württemberg, Bayern
	Westdeutschland	Hessen, Nordrhein-Westfalen, Rheinland-Pfalz, Saarland
Italy	Central	Lazio, Marche, Toscana, Umbria
	Insular	Sardegna, Sicily
	Northeast	Emilia-Romagna, Friuli-Venezia Giulia, Trentino-Alto Adige, Veneto
	Northwest	Liguria, Lombardia, Piemonte, Valle d'Aosta
	South	Abruzzo, Basilicata, Calabria, Campania, Molise, Apulia
Netherlands	North	Groningen, Friesland, Drenthe
	East	Overijssel, Gelderland, Flevoland
	West	Utrecht, Noord-Holland, Zuid-Holland, Zeeland
	South	Noord-Brabant, Limburg
Spain	Northwest	Galicia, Principado de Asturias, Cantabria
	North East	País Vasco, Comunidad Foral de Navarra, La Rioja, Aragón
	Madrid	Comunidad de Madrid
	Center	Castilla y León, Castilla-la Mancha, Extremadura
	East	Cataluña, Comunidad Valenciana, Illes Balears
	South	Andalucía, Región de Murcia
	Island	Canarias
United Kingdom	England	North East, North West, Yorkshire and The Humber, East Midlands, West Midlands, East of England, South East, South West
	London	London
	Northern Ireland	Northern Ireland
	Scotland	Scotland
	Wales	Wales
United States	Midwest	Illinois, Indiana, Iowa, Kansas, Michigan, Minnesota, Missouri, Nebraska, North Dakota, Ohio, South Dakota, Wisconsin
	Northeast	Connecticut, Maine, Massachusetts, New Hampshire, New Jersey, New York, Pennsylvania, Rhode Island, Vermont
	South	Alabama, Arkansas, Delaware, Florida, Georgia, Kentucky, Louisiana, Maryland, Mississippi, North Carolina, Oklahoma, South Carolina, Tennessee, Texas, Virginia, District of Columbia, West Virginia
	West	Alaska, Arizona, California, Colorado, Idaho, Montana, Nevada, New Mexico, Oregon, Utah, Washington, Wyoming, Hawaii

Table S4. Correspondence of micro- and macro-regions for all countries included in the analysis.

References

- [1] S. Pöttschke and M. Braun, “Migrant sampling using Facebook advertisements: A case study of Polish migrants in four European countries,” *Social Science Computer Review*, vol. 35, no. 5, pp. 633–653, 2017.
- [2] D. A. Dillman, J. D. Smyth, and L. M. Christian, *Internet, Phone, Mail, and Mixed-Mode Surveys: The Tailored Design Method*. John Wiley & Sons, 2014.
- [3] European Union, “Eurostat regional yearbook, 2019.” <https://ec.europa.eu/eurostat/web/products-statistical-books/-/KS-HA-19-001>, 2019. (Accessed on March 20, 2020).
- [4] U.S. Census Bureau, Population Division, “Annual Estimates of the Resident Population by Sex, Age, Race, and Hispanic Origin for the United States and States: April 1, 2010 to July 1, 2018,” 2019.
- [5] European Social Survey, “Round 9: European Social Survey Round 9 Data (2018).” https://www.europeansocialsurvey.org/download.html?file=ESS9e01_2&y=2018. (Accessed on March 20, 2020).
- [6] U.S. Census Bureau, “American Community Survey 1-Year Estimates, 2018.” <https://data.census.gov/cedsci/>. (Accessed on March 20, 2020).

A The COVID-19 Health Behavior Survey (CHBS)



MAX PLANCK INSTITUTE
FOR DEMOGRAPHIC
RESEARCH

Load unfinished survey

0%

Health Behavior Survey United States

Thank you for your interest in our survey. This is an academic study led by researchers from the [Max Planck Institute for Demographic Research](#). Our goal is to understand health behaviors and help improve the health and well-being of people across countries at a time of increasing uncertainty. Your participation is crucial for our study.

The survey is directed at all people who are 18 years old or older, and it will take approximately 10-12 minutes to complete. Your participation is completely voluntary, you can stop participating at any time. In case you are not comfortable answering a particular question, you have the option to select "Prefer not to answer". Participants' data will be treated anonymously, and we will not ask for identifying information. If you wish to provide your email address, it will not be linked to your survey data. You can download our data protection policy [here](#).

If you have any questions about this research study, please contact Dr. André Grow and Dr. Daniela Perrotta at the Max Planck Institute for Demographic Research via healthsurvey@demogr.mpg.de.

Tick the box below and press 'Next' to continue.

I am willing to participate in this survey. I am at least 18 years old, and I have read the data protection policy.

Next

1




0%

About you

First of all, we would like to ask you some questions about you, your background and your daily life.

How old are you?


 Please enter your age in years.

*****What is your sex?

- Male
- Female
- Prefer not to answer


*****What is your country of birth?

Please note that the United States of America is the first option at the top of the list.

 If your country of birth is not on this list, please select 'Other' at the end of the list. If you prefer not to answer this question, select 'Prefer not to answer' at the end of the list.

*****In which country do you currently live?

Please note that the United States of America is the first option at the top of the list.

 If the country in which you currently live is not on this list, please select 'Other' at the end of the list. If you prefer not to answer this question, select 'Prefer not to answer' at the end of the list.

*What is your place of residence?

Please choose...

• If your place of residence is not on this list, please select 'Other' at the end of the list. If you prefer not to answer this question, select 'Prefer not to answer' at the end of the list.

What is the postcode of your **place of residence**?

What is the postcode of the place where you spend **the majority of a typical weekday** (e.g. your workplace, school, or home)?

*Which of these descriptions applies to what you have been doing for the last 7 days?

• Check all that apply

- In paid work (or away temporarily) (employee, self-employed, working for your family business)
- In education (not paid for by employer) even if on vacation
- Unemployed and actively looking for a job
- Unemployed, wanting a job but not actively looking for a job
- Permanently sick or disabled
- Retired
- In community or military service
- Doing housework, looking after children or other persons
- Other:
- Don't know
- Prefer not to answer

*What is the highest educational level that you have attained?

NO SCHOOL COMPLETED

No schooling completed

NURSERY OR PRESCHOOL THROUGH GRADE 12

Nursery school

Kindergarten

Grade 1 through 11 --Please specify the grade:

12th grade - **NO DIPLOMA**

HIGH SCHOOL GRADUATE

Regular high school diploma

GED or alternative credential

COLLEGE OR SOME COLLEGE

Some college credit, but less than 1 year of college credit

1 or more years of college credit, no degree

Associate's degree (for example: AA, AS)

Bachelor's degree (for example: BA, BS)

AFTER BACHELOR'S DEGREE'S DEGREE

Master's degree (for example: MA, MS, MEng, MEd, MSW, MBA)

Professional degree beyond a bachelor's degree (for example: MD, DDS, DVM, LLB, JD)

Doctorate degree (for example: PhD, EdD)

NO ANSWER

Prefer not to answer

*Including yourself, how many people – including children – live regularly at your home?

Number of people:

Prefer not to answer

How many people living in your house belong to each of the following age groups?

0-15 years

16-64 years

65+ years

Previous

Next



16%

COVID-19: The outbreak of a novel coronavirus

Following the first reports of cases of acute respiratory syndrome in the Chinese Wuhan municipality at the end of December 2019, a novel coronavirus has been identified by the Chinese authorities as the cause of the outbreak. The virus has rapidly spread, affecting other parts of China, as well as other countries. The disease caused by this novel coronavirus has been called COVID-19.

✳️ How much, if at all, have you seen, read or heard about the coronavirus outbreak?

- Nothing at all
- Not very much
- A fair amount
- A great deal
- Prefer not to answer

Previous

Next



33%

COVID-19 from your point of view

We value your opinion on the coronavirus outbreak that has been recently affecting people's lives. We would like to ask you now some questions related to your behaviors in response to the epidemic.

✳️What level of threat do you think the coronavirus poses to each of the following?

	1 - Very low threat	2 - Low threat	3 - Moderate threat	4 - High threat	5 - Very high threat	Don't know	Prefer not to answer
The world	<input type="radio"/>	<input type="radio"/>	<input type="radio"/>	<input type="radio"/>	<input type="radio"/>	<input type="radio"/>	<input type="radio"/>
Your country	<input type="radio"/>	<input type="radio"/>	<input type="radio"/>	<input type="radio"/>	<input type="radio"/>	<input type="radio"/>	<input type="radio"/>
Your local community	<input type="radio"/>	<input type="radio"/>	<input type="radio"/>	<input type="radio"/>	<input type="radio"/>	<input type="radio"/>	<input type="radio"/>
You personally	<input type="radio"/>	<input type="radio"/>	<input type="radio"/>	<input type="radio"/>	<input type="radio"/>	<input type="radio"/>	<input type="radio"/>
Your family	<input type="radio"/>	<input type="radio"/>	<input type="radio"/>	<input type="radio"/>	<input type="radio"/>	<input type="radio"/>	<input type="radio"/>

✳️Based on what you have seen, read or heard, how confident are you the following are prepared and can effectively deal with the coronavirus?

	1 - Not confident at all	2 - Little confident	3 - Somewhat confident	4 - Very confident	Don't know	Prefer not to answer
Your national government	<input type="radio"/>	<input type="radio"/>	<input type="radio"/>	<input type="radio"/>	<input type="radio"/>	<input type="radio"/>
Your local government	<input type="radio"/>	<input type="radio"/>	<input type="radio"/>	<input type="radio"/>	<input type="radio"/>	<input type="radio"/>
The World Health Organization	<input type="radio"/>	<input type="radio"/>	<input type="radio"/>	<input type="radio"/>	<input type="radio"/>	<input type="radio"/>
Healthcare services in your country	<input type="radio"/>	<input type="radio"/>	<input type="radio"/>	<input type="radio"/>	<input type="radio"/>	<input type="radio"/>
Hospitals in your local area	<input type="radio"/>	<input type="radio"/>	<input type="radio"/>	<input type="radio"/>	<input type="radio"/>	<input type="radio"/>
Doctors & healthcare professionals in your community	<input type="radio"/>	<input type="radio"/>	<input type="radio"/>	<input type="radio"/>	<input type="radio"/>	<input type="radio"/>
Airports in your country	<input type="radio"/>	<input type="radio"/>	<input type="radio"/>	<input type="radio"/>	<input type="radio"/>	<input type="radio"/>
Airlines in your country	<input type="radio"/>	<input type="radio"/>	<input type="radio"/>	<input type="radio"/>	<input type="radio"/>	<input type="radio"/>
Your friends and neighbors	<input type="radio"/>	<input type="radio"/>	<input type="radio"/>	<input type="radio"/>	<input type="radio"/>	<input type="radio"/>

✳️How much confidence, if any, do you have in the accuracy of these sources of information on the coronavirus?

	1 - Nothing at all	2 - Not very much	3 - A fair amount	4 - A great deal	Don't know	Prefer not to answer
Radio	<input type="radio"/>	<input type="radio"/>	<input type="radio"/>	<input type="radio"/>	<input type="radio"/>	<input type="radio"/>
Television	<input type="radio"/>	<input type="radio"/>	<input type="radio"/>	<input type="radio"/>	<input type="radio"/>	<input type="radio"/>
Medical professionals such as doctors and nurses	<input type="radio"/>	<input type="radio"/>	<input type="radio"/>	<input type="radio"/>	<input type="radio"/>	<input type="radio"/>
Newspapers	<input type="radio"/>	<input type="radio"/>	<input type="radio"/>	<input type="radio"/>	<input type="radio"/>	<input type="radio"/>
Friends, family and colleagues	<input type="radio"/>	<input type="radio"/>	<input type="radio"/>	<input type="radio"/>	<input type="radio"/>	<input type="radio"/>
Magazines	<input type="radio"/>	<input type="radio"/>	<input type="radio"/>	<input type="radio"/>	<input type="radio"/>	<input type="radio"/>
Government health officials	<input type="radio"/>	<input type="radio"/>	<input type="radio"/>	<input type="radio"/>	<input type="radio"/>	<input type="radio"/>
The Internet	<input type="radio"/>	<input type="radio"/>	<input type="radio"/>	<input type="radio"/>	<input type="radio"/>	<input type="radio"/>
Social media networks	<input type="radio"/>	<input type="radio"/>	<input type="radio"/>	<input type="radio"/>	<input type="radio"/>	<input type="radio"/>

✳️Do you agree or disagree with the following:

	1 - Strongly disagree	2 - Somewhat disagree	3 - Somewhat agree	4 - Strongly agree	Don't know	Prefer not to answer
I am confident pharmaceutical companies will soon develop a vaccine or treatment for the coronavirus.	<input type="radio"/>	<input type="radio"/>	<input type="radio"/>	<input type="radio"/>	<input type="radio"/>	<input type="radio"/>
The coronavirus outbreak has been contained and will soon be over.	<input type="radio"/>	<input type="radio"/>	<input type="radio"/>	<input type="radio"/>	<input type="radio"/>	<input type="radio"/>
The recommended preventive measures are effective to reduce population contagion.	<input type="radio"/>	<input type="radio"/>	<input type="radio"/>	<input type="radio"/>	<input type="radio"/>	<input type="radio"/>
The media has exaggerated the extent of the coronavirus outbreak.	<input type="radio"/>	<input type="radio"/>	<input type="radio"/>	<input type="radio"/>	<input type="radio"/>	<input type="radio"/>

✳️On March 9, 2020, Italy was the first European country to declare a nationwide lockdown as a control measure to curb the coronavirus epidemic in the country. Do you agree or disagree with the following?

	1 - Strongly disagree	2 - Somewhat disagree	3 - Somewhat agree	4 - Strongly agree	Don't know	Prefer not to answer
The USA is better equipped to deal with the coronavirus outbreak than Italy	<input type="radio"/>	<input type="radio"/>	<input type="radio"/>	<input type="radio"/>	<input type="radio"/>	<input type="radio"/>
The USA is at risk of being locked down soon to contain the spread of coronavirus	<input type="radio"/>	<input type="radio"/>	<input type="radio"/>	<input type="radio"/>	<input type="radio"/>	<input type="radio"/>

*Which of the following actions, if any, have you already taken to protect yourself from the coronavirus?

Check all that apply

- Avoided purchasing products from Asia (e.g. food, goods)
- Avoided purchasing products from Italy (e.g. food, goods)
- Avoided purchasing products from Iran (e.g. food, goods)
- Avoided social activities (e.g. meeting friends)
- Avoided eating in Asian restaurants
- Avoided eating in Italian restaurants
- Avoided eating in Iranian restaurants
- Avoided travelling by public transportation (e.g. bus, tram, subway, train)
- Stockpiling of medicines
- Stockpiling of food
- Avoided crowded places (e.g. restaurant, cinema, gym, playground, stadium)
- Avoided travelling by taxi
- Bought a face mask
- Worn a face mask
- Washed hands more often
- Used sanitizing hand gel more often
- Avoided shaking hands
- Avoided contacts with people of Asian origin or appearance
- Avoided contacts with people of Italian origin or appearance
- Avoided contacts with people of Iranian origin or appearance
- Other:
- None
- Prefer not to answer

We do not seek to suggest that any of the above actions do, or do not, help prevent the spread of the virus or the infection. We only seek to understand which actions people actually engage in. For more information on the recommended preventive measures, please refer to the official guidance of your national health representatives.

*Have you changed or cancelled any of your scheduled trips in 2020 to protect yourself from the coronavirus?

- Yes
- No
- Not applicable (no trips planned)
- Prefer not to answer

*Have you changed or cancelled any of your scheduled trips in 2020 to protect yourself from the coronavirus?

- Yes
- No
- Not applicable (no trips planned)
- Prefer not to answer

*What was the trip's destination that you have changed or cancelled?

Please choose... ▼

ⓘ If the country is not on this list, please select 'Other' at the end of the list. If you prefer not to answer this question, please select 'Prefer not to answer' at the end of the list.

For when was the trip that you changed or cancelled scheduled?

Month ▼

*Do you have other trips planned in 2020?

- Yes
- No
- Prefer not to answer

*What is the destination country of your **next** trip this year?

Please choose... ▼

ⓘ If the country is not on this list, please select 'Other' at the end of the list. If you prefer not to answer this question, please select 'Prefer not to answer' at the end of the list.

For when is your **next** trip this year scheduled?

Please choose... ▼

*Due to the coronavirus outbreak, have you personally experienced any of the following disruptions to your daily life?

• Check all that apply

- School closure (either affecting you as a student or as a parent)
- Workplace closure
- Working remotely (e.g. smart working)
- Quarantine
- Other:
- None
- Prefer not to answer

*Have you been tested for coronavirus?

- Yes
- No
- Prefer not to answer

*Did you **test positive** for coronavirus?

- Yes
- No
- Don't know (test results not available yet)
- Prefer not to answer

Previous

Next



50%

About your health

We would like to ask you some questions related to your health and health behaviors.

*Do you suffer from any chronic diseases (e.g. diabetes, cardiovascular or respiratory diseases, cancer, etc.)?

- Yes
- No
- Don't know
- Prefer not to answer

*Have you received the flu vaccine in the last 6 months?

- Yes
- No
- Don't know
- Prefer not to answer

*What level of threat do you think the **flu** poses to each of the following?

	1 - Very low threat	2 - Low threat	3 - Moderate threat	4 - High threat	5 - Very high threat	Don't know	Prefer not to answer
The world	<input type="radio"/>	<input type="radio"/>	<input type="radio"/>	<input type="radio"/>	<input type="radio"/>	<input type="radio"/>	<input type="radio"/>
Your country	<input type="radio"/>	<input type="radio"/>	<input type="radio"/>	<input type="radio"/>	<input type="radio"/>	<input type="radio"/>	<input type="radio"/>
Your local community	<input type="radio"/>	<input type="radio"/>	<input type="radio"/>	<input type="radio"/>	<input type="radio"/>	<input type="radio"/>	<input type="radio"/>
You personally	<input type="radio"/>	<input type="radio"/>	<input type="radio"/>	<input type="radio"/>	<input type="radio"/>	<input type="radio"/>	<input type="radio"/>
Your family	<input type="radio"/>	<input type="radio"/>	<input type="radio"/>	<input type="radio"/>	<input type="radio"/>	<input type="radio"/>	<input type="radio"/>

*Are you currently pregnant?

- Yes
- No
- Don't know
- Prefer not to answer

*Have you experienced any of the following symptoms in the last 7 days?

Check all that apply

- Runny or blocked nose
- Stomach ache
- Nausea
- Headache
- Tiredness
- Cough
- Malaise
- Muscle/joint pain
- Sore throat
- Difficult breathing
- Fever
- Sneezing
- Others:
- No symptoms
- Prefer not to answer

*Because of these symptoms, have you used any of the following services?

Check all that apply

Emergency hotline (e.g. 112, 999, 911)

Internet (e.g. Google, Wikipedia)

General Practitioner

Hospital, emergency room

Pharmacy

Others:

None

Prefer not to answer

Previous

Next



66%

About your social interactions

As a last request, we would like you to record the number of persons you had **contact with yesterday** in different locations (at home, at school/college, at work, other locations), from when you woke up to when you went to sleep.

- A contact is defined as:
 - EITHER a **two-way conversation** with three or more words in the physical presence of another person,
 - OR physical **skin-to-skin contact** (for example a handshake, hug, kiss or contact sports).
- Think about every person that you contacted during the day, regardless of whether the contact was long or short, and whether you knew the person or not.
- Contacts made exclusively by telephone or mobile phone should NOT be recorded.
- If you contacted the same person in different locations in the course of the day, only count him/her once, and assign him/her to the location where you two had the contact of longer duration.
 - **Example:** Anne runs a family business together with her husband Tom. Anne and Tom saw each other yesterday both at home and at work. Since they spent more time together at home than at work, Anne will count the contact with Tom as a home contact, and not a work contact.
- If you had no contacts in a given location, please enter 0.

How many persons did you have contacts with yesterday ...

*... at home?

- Number of people:
- Prefer not to answer

*... at school/college?

- Number of people:
- Not applicable (e.g. you do not attend any school)
- Prefer not to answer

*... at work?

(at your workplace or throughout the course of your daily job activity, such as meeting customers or clients)

- Number of people:
- Not applicable (e.g. you do not work)
- Prefer not to answer

*... in other settings?

(e.g. during transportation and commuting, social and leisure activities, religious services, shopping, or other activities)

- Number of people:
- Prefer not to answer

*You indicated above that yesterday you had contacts with some people **at home**. Did any of them show any of the following symptoms: fever, cough, tiredness, difficult breathing, or muscle pain?

- Yes
- No
- Don't know
- Prefer not to answer

Previous

Next



83%

Keep in touch!

To assess changes in health and health behaviours in our populations over time, we may ask you to participate in this or a similar survey again in the future. **Your participation is crucial for our research!** If you are willing to be contacted again, please check the box below. You can request the deletion of your email address at any time. For more information please read our [data protection policy](#) [here](#).

*Do you agree to provide your email address?

- Yes, I agree to provide my email address.
- No, I will not provide my email address

*Please enter your email address below.

Previous

Submit



MAX PLANCK INSTITUTE
FOR DEMOGRAPHIC
RESEARCH

Thank you very much for your participation. Your answers have been saved and you can now close this window.