

Supplementary Appendix

This appendix has been provided by the authors to give readers more information about their work.

Supplement to: **FIRST 12 PATIENTS WITH CORONAVIRUS DISEASE 2019 (COVID-19) IN THE UNITED STATES**

Table of contents

COVID-19 Investigation Team	2
Acknowledgments	5
Methods	5
SARS-CoV-2 real-time reverse-transcription polymerase chain reaction (rRT-PCR)	5
Virus culture	6
Genome sequencing and phylogenetic analysis	6
Results	6
Genome sequencing and phylogenetic analysis	6
Figure S1	8
Figure S2	10
Descriptions of hospitalized patients (n=7)	11
Figure S3	12
Figure S4	14
Figure S5	16
Figure S6	18
Figure S7	20
Figure S8	22
Figure S9	24
References	25

COVID-19 Investigation Team

All individuals meet criteria for authorship.

Stephanie A. Kujawski PhD, Centers for Disease Control and Prevention
Karen K. Wong, MD, MPH, Centers for Disease Control and Prevention
Jennifer P. Collins, MD, MSc, Centers for Disease Control and Prevention
Lauren Epstein, MD, MSc, Centers for Disease Control and Prevention
Marie E. Killerby, VetMB, MPH, Centers for Disease Control and Prevention
Claire M. Midgley, PhD, MSc, Centers for Disease Control and Prevention
Glen R. Abedi, MPH, Centers for Disease Control and Prevention
N. Seema Ahmed, MD, Metro Infectious Disease Consultants
Olivia Almendares, MSPH, Centers for Disease Control and Prevention
Francisco N. Alvarez, MD, University of California, San Francisco
Kayla N. Anderson, PhD, Centers for Disease Control and Prevention
Sharon Balter, MD, Los Angeles County Department of Public Health
Vaughn Barry, PhD, MPH, Centers for Disease Control and Prevention
Karri Bartlett, MPH, Public Health Madison Dane County
Karlyn Beer, PhD, MS, Centers for Disease Control and Prevention
Michael A. Ben-Aderet, MD, Cedars-Sinai Health System
Isaac Benowitz, MD, Centers for Disease Control and Prevention
Holly Biggs, MD, MPH, Centers for Disease Control and Prevention
Alison M. Binder, MS, Centers for Disease Control and Prevention
Stephanie R. Black, MD, MSc, Chicago Department of Public Health
Brandon Bonin, MS, Santa Clara County Public Health Department
Catherine M. Brown, DVM, MSc, MPH, Massachusetts Department of Public Health
Hollianne Bruce, MPH, Snohomish Health District
Jonathan Bryant-Genevier, PhD, Centers for Disease Control and Prevention
Alicia Budd, MPH, Centers for Disease Control and Prevention
Diane Buell BSN, RN, PHN, CIC, Hoag Memorial Hospital Presbyterian
Rachel Bystritsky, MD, University of California, San Francisco
Jordan Cates, PhD, MSPH, Centers for Disease Control and Prevention
E. Matt Charles, BS, Illinois Department of Public Health
Kevin Chatham-Stephens, MD, MPH, FAAP, Centers for Disease Control and Prevention
Nora Chea, MD, MSc, Centers for Disease Control and Prevention
Howard Chiou, MD, PhD, Los Angeles County Department of Public Health
Demian Christiansen, DSc MPH, Cook County Department of Public Health
Victoria Chu, MD, MPH, Centers for Disease Control and Prevention
Sara Cody, MD, Santa Clara County Public Health Department
Max Cohen, Centers for Disease Control and Prevention
Erin Conners, PhD, MPH, Centers for Disease Control and Prevention
Aaron Curns, MPH, Centers for Disease Control and Prevention
Vishal Dasari, Centers for Disease Control and Prevention
Patrick Dawson, PhD, MPH, Centers for Disease Control and Prevention
Traci DeSalvo, MPH, Wisconsin Department of Health Services
George Diaz, MD, Providence Regional Medical Center Everett
Matthew Donahue, MD, Centers for Disease Control and Prevention
Suzanne Donovan, MD, Olive View-UCLA Medical Center
Lindsey M. Duca, PhD, Centers for Disease Control and Prevention

Keith Erickson PA-C, Providence Regional Medical Center Everett
Mathew D. Esona, PhD, Centers for Disease Control and Prevention
Suzanne Evans, BA, RN, CIC, Hoag Memorial Hospital Presbyterian
Jeremy Falk, MD, Cedars-Sinai Health System
Leora R. Feldstein, PhD, MSc, Centers for Disease Control and Prevention
Martin Fenstersheib, MD MPH, San Benito County Public Health Services
Marc Fischer, MD, MPH Centers for Disease Control and Prevention
Rebecca Fisher, MPH, MA, Los Angeles County Department of Public Health
Chelsea Foo, MPH, CIC, Los Angeles County Department of Public Health
Marielle J. Fricchione, MD, Chicago Department of Public Health
Oren Friedman, MD, Cedars-Sinai Health System
Alicia Fry, MD, MPH, Centers for Disease Control and Prevention
Romeo R. Galang, MD, MPH, Centers for Disease Control and Prevention
Melissa M. Garcia, BSN, RN, CIC, Hoag Memorial Hospital Presbyterian
Susan I. Gerber, MD, Centers for Disease Control and Prevention
Graham Gerrard, BA, Hoag Memorial Hospital Presbyterian
Isaac Ghinai, MBBS MSc, Illinois Department of Public Health*
Prabhu Gounder, MD, MPH, Los Angeles County Department of Public Health
Jonathan Grein, MD, Cedars-Sinai Health System
Cheri Grigg, DVM, MPH, Centers for Disease Control and Prevention
Jeffrey D. Gunzenhauser, MD, MPH, Los Angeles County Department of Public Health
Gary I. Gutkin, MD, Cedars-Sinai Health System
Meredith Haddix, MPH, Los Angeles County Department of Public Health
Aron J. Hall, DVM, MSPH, Centers for Disease Control and Prevention
George Han, MD, MPH, Clara County Public Health Department
Jennifer Harcourt, PhD, Centers for Disease Control and Prevention
Kathleen Harriman, PhD, MPH, RN, California Department of Public Health
Thomas Haupt, MS, Wisconsin Department of Health Services
Amber Haynes, MPH, Centers for Disease Control and Prevention
Michelle Holshue, MPH, Washington State Department of Health*
Cora Hoover, MD, MPH, California Department of Public Health
Jennifer C. Hunter, DrPH, MPH, Centers for Disease Control and Prevention
Max W. Jacobs, Centers for Disease Control and Prevention
Claire Jarashow, PhD, MPH, Los Angeles County Department of Public Health
Michael A. Jhung, MD, MPH, Centers for Disease Control and Prevention
Kiran Joshi, MD, MPH, Cook County Department of Public Health
Talar Kamali, RN, MSN, Los Angeles County Department of Public Health
Shifaq Kamili, Centers for Disease Control and Prevention
Lindsay Kim, MD, MPH, Centers for Disease Control and Prevention
Moon Kim, MD, Los Angeles County Department of Public Health
Jan King, MD, MPH, Los Angeles County Department of Public Health
Hannah L. Kirking, MD, Centers for Disease Control and Prevention
Amanda Kita-Yarbro, MPH, Public Health Madison Dane County
Rachel Klos, DVM, MPH, Wisconsin Department of Health Services
Miwako Kobayashi, MD, MPH, Centers for Disease Control and Prevention
Anna Kocharian, MS, Wisconsin Department of Health Services
Kenneth K. Komatsu, MPH, Arizona Department of Health Services
Ram Koppaka, MD, PhD, Centers for Disease Control and Prevention
Jennifer E. Layden, MD, PhD, Chicago Department of Public Health
Yan Li, MS, Centers for Disease Control and Prevention

Scott Lindquist, MD, Washington State Department of Health
Stephen Lindstrom, PhD, Centers for Disease Control and Prevention
Ruth Link-Gelles, PhD, MPH, Centers for Disease Control and Prevention
Joana Lively, MPH, Centers for Disease Control and Prevention
Michelle Livingston, MPH, Hoag Memorial Hospital Presbyterian
Kelly Lo, MD, Cedars-Sinai Health System
Jennifer Lo, MD, Massachusetts Department of Public Health
Xiaoyan Lu, MS, Centers for Disease Control and Prevention
Brian Lynch, Centers for Disease Control and Prevention
Larry Madoff, MD, Massachusetts Department of Public Health
Lakshmi Malapati, PGDCA, Centers for Disease Control and Prevention
Gregory Marks, PharmD, Cedars-Sinai Health System
Mariel Marlow, PhD, MPH, Centers for Disease Control and Prevention
Glenn E. Mathisen, MD, Olive View-UCLA Medical Center
Nancy McClung, PhD, RN, Centers for Disease Control and Prevention
Olivia McGovern, PhD, Centers for Disease Control and Prevention
Tristan D. McPherson, MD, Chicago Department of Public Health*
Mitali Mehta, MD, Cedars-Sinai Health System
Audrey Meier MPH, Providence Regional Medical Center Everett
Lynn Mello, BSN RN PHN, San Benito County Public Health Services
Sung-sil Moon, PhD, Centers for Disease Control and Prevention
Margie Morgan, PhD, Cedars-Sinai Health System
Ruth N. Moro, MD, PhD, Centers for Disease Control and Prevention
Janna' Murray, MPH, Centers for Disease Control and Prevention
Rekha Murthy, MD, Cedars-Sinai Health System
Shannon Novosad, MD, MPH, Centers for Disease Control and Prevention
Sara E. Oliver, MD, MSPH, Centers for Disease Control and Prevention
Jennifer O'Shea MMS, PA-C, Metro Infectious Disease Consultants
Massimo Pacilli, MPH, MS, Chicago Department of Public Health
Clinton R. Paden, PhD, Centers for Disease Control and Prevention
Mark A. Pallansch, PhD, Centers for Disease Control and Prevention
Manisha Patel, MD, MS, Centers for Disease Control and Prevention
Sajan Patel, MD, University of California, San Francisco
Isabel Pedraza, MD, Cedars-Sinai Health System
Satish K. Pillai, MD, Centers for Disease Control and Prevention
Talia Pindyck, MD, MPH, Centers for Disease Control and Prevention
Ian Pray, PhD, MPH, Wisconsin Department of Health Services*
Krista Queen, PhD, Centers for Disease Control and Prevention
Nichole Quick, MD, MPH, Orange County Health Care Agency
Heather Reese, PhD, MPH, Centers for Disease Control and Prevention
Brian Rha, MD, MSPH, Centers for Disease Control and Prevention
Heather Rhodes, MPH, BSN, RN, Centers for Disease Control and Prevention
Susan Robinson, MPH, Arizona Department of Health Services
Philip Robinson, MD, Hoag Memorial Hospital Presbyterian
Melissa Rolfes, PhD, MPH, Centers for Disease Control and Prevention
Janell Routh, MD, MHS, Centers for Disease Control and Prevention
Rachel Rubin, MD, MPH, FACP, Cook County Department of Public Health
Sarah L. Rudman, MD, MPH, Santa Clara County Public Health Department
Senthilkumar K. Sakhivel, PhD, Centers for Disease Control and Prevention
Sarah Scott, MD, Maricopa County Department of Public Health*

Christopher Shepherd, MD, Cedars-Sinai Health System
Varun Shetty, MD, MBA, MS, Centers for Disease Control and Prevention
Ethan A. Smith, PharmD, BCIDP, Cedars-Sinai Health System
Shanon Smith, MPH, Santa Clara County Public Health Department
Bryan Stierman, MD, MPH, Centers for Disease Control and Prevention
William Stoecker, MD, Metro Infectious Disease Consultants
Rebecca Sunenshine, MD, Maricopa County Department of Public Health
Regina Sy-Santos, BSN, RN, PHN, CIC, Hoag Memorial Hospital Presbyterian
Azaibi Tamin, PhD, Centers for Disease Control and Prevention
Ying Tao, PhD, Centers for Disease Control and Prevention
Dawn Terashita, MD, MPH, Los Angeles County Department of Public Health
Natalie J. Thornburg, PhD, Centers for Disease Control and Prevention
Suxiang Tong, PhD, Centers for Disease Control and Prevention
Elizabeth Traub, MPH, Los Angeles County Department of Public Health
Ahmet Tural, MD, Providence Regional Medical Center Everett
Anna Uehara, PhD, MScGH, Centers for Disease Control and Prevention
Timothy M. Uyeki, MD, MPH, MPP, Centers for Disease Control and Prevention
Grace Vahey, DVM, MPH, Centers for Disease Control and Prevention
Jennifer R. Verani, MD, MPH, Centers for Disease Control and Prevention
Elsa Villarino, MD, MPH, Santa Clara County Public Health Department
Megan Wallace, DrPH, MPH, Centers for Disease Control and Prevention
Lijuan Wang, PhD, Centers for Disease Control and Prevention
John T. Watson, MD, MSc, Centers for Disease Control and Prevention
Matthew Westercamp, PhD, MS, BSN, Centers for Disease Control and Prevention
Brett Whitaker, MS, Centers for Disease Control and Prevention
Sarah Wilkerson, RN, MN, CIC, CNOR, Providence Regional Medical Center Everett
Rebecca C. Woodruff, PhD, MPH, Centers for Disease Control and Prevention
Jonathan M. Wortham, MD, Centers for Disease Control and Prevention
Tiffany Wu, MD, Cedars-Sinai Health System
Amy Xie, Centers for Disease Control and Prevention
Anna Yousaf, MD, Centers for Disease Control and Prevention
Matthew Zahn, Orange County Health Care Agency
Jing Zhang, PhD, Centers for Disease Control and Prevention

*These individuals are also affiliated with Centers for Disease Control and Prevention

Acknowledgments

Fatuma Abdirizak, Jessica Anderson, Sharad Aggarwal, Anthony Aguiar, Anita Alvarez, How-Yi Chang, Hsin Chien, Nakia Clemmons, Angela Cleveland, Mila Cohen, Rebecca Dahl, Alissa Dratch, William (Chris) Edens, Jennifer Farrar, Mark S. Freedman, Veronica Guerra, Liam Hicks, Connor Hoff, Laurel Jenkins, Nazia Kamal, Anita Kambhampati, Priscilla Lauro, Jessica Leung, Brian J. Manns, Cynthia Marttila, Claire Mattison, Patricia Mottu-Monteon, Anna Newton, Alexandra Peterson Pompa, Mila Prill, Makisha Rogan, Eric Shearer, , Sarah Smith-Jeffcoat, Jennifer Thomas, Mary White, PharmD, Florence Whitehill, Shannon York

Methods

SARS-CoV-2 real-time reverse-transcription polymerase chain reaction (rRT-PCR)

All patient specimens were tested for the presence of SARS-CoV-2 RNA by rRT-PCR targeting three nucleocapsid gene.^{6,9} rRT-PCR results were reported as positive (all targets positive), negative (all targets negative), or

inconclusive (only one or two positive targets). If an initial result was inconclusive, the specimen was re-tested; if both tests were inconclusive, the final result was reported as inconclusive. For inconclusive results, a positive detection of SARS-CoV-2 could not be definitively ruled out. If available, cycle threshold (Ct) values, which are approximately inversely related to the RNA levels in each specimen, were reported as the mean of the three reported Ct values.¹ Results from serial rRT-PCR testing were not immediately available to inform clinical management.

Virus culture

100 µl clinical specimens were diluted 2-fold across a 96-well plate in serum-free DMEM supplemented with 2X Penicillin-streptomycin and 2X Amphotericin B (Sigma). Vero CCL-81 cells were trypsinized and resuspended in DMEM + 10% FBS + 2X Penicillin-Streptomycin + 2 X amphotericin B at 2.5×10^5 cells / ml. One hundred µl cell suspension was added directly to the clinical specimen dilutions and mixed gently by pipetting. The inoculated cultures were grown in a humidified 37°C incubator with 5% CO₂ and observed for cytopathic effect (CPE) daily. When CPE was observed, presence of SARS-CoV-2 was confirmed by rRT-PCR.

Genome sequencing and phylogenetic analysis

Nucleic acid was extracted from respiratory specimens (NP, OP, or sputum) positive for SARS-CoV-2 rRT-PCR and used for whole genome sequencing on both Sanger and Oxford Nanopore MinION sequencing platforms. For Sanger sequencing, 37 sets of individual nested PCR assays spanning the entire 2019-nCoV genome were designed based on the reference sequence, GenBank accession number NC045512. PCR amplicons were sequenced in both directions using Big Dye 3.1 cycle sequencing kits (Thermo Fischer Scientific, Waltham, MA) on an ABI 3730 Automated Capillary Sequencer (Thermo Fischer Scientific, Waltham, MA) with the PCR primers and additional internal primers. The consensus sequences were generated from both sequencing directions using Sequencher 5.4.6 (Gene codes Corporation, Ann Arbor, MI). For Nanopore sequencing, individual PCR amplicons were pooled and barcoded by sample, which were used for library preparation using the Ligation Sequencing kit (Oxford Nanopore Technologies, Oxford, UK). Libraries were run on a MinION sequencer and consensus sequences were generated using minimap 2.17 and samtools 1.9.^{2,3}

Full genome sequences from the 12 confirmed cases in this report and 85 full genome sequences (as of February 11, 2020) available from GenBank and the Global Initiative on Sharing All Influenza Data (GISAID) database were aligned using MAFFT v 7.450.⁴ Sequences with obvious early stop codons were excluded. Phylogenetic trees were then inferred with the maximum likelihood (ML) method using the Hasegawa Kishino Yano nucleotide substitution model with gamma-distributed rate variation among sites (HKY+G) and 1000 bootstrap replicates implemented in Geneious Prime (Biomatters, Inc., San Diego, CA) and MEGA X.^{5,6}

Results

Genome sequencing and phylogenetic analysis

Complete genome sequences were generated using specimens from all 12 patients: NP (n=4), OP (n=6), and sputum (n=2) (GenBank accession numbers MN985325, MN988713, MN994467, MN994468, MN997409, MT027062-MT027064, MT039887, MT039888, MT044257, MT044258). The 12 sequences from this report were nearly identical with nucleotide identity >99% similarity to 85 reference sequences of SARS-CoV-2 genomes irrespective of the geographic location of sample collection. Phylogenetic tree analysis (Figure S2) of the 12 case specimens and 85 reference specimens also infers that SARS-CoV-2 sequences are highly similar to each other with formation of a few distinct subgroups, although with poor branch support (54-92%). These subgroups were not divergent from each other, indicating that the outbreak may still be in an early stage. The 12 SARS-CoV-2 genomes sequenced in this report were in different subgroups within the tree. Among the 12 cases, there were

two instances of secondary transmission. For one case and contact pair, virus sequence obtained from the case (USACA3) was identical to the contact (USACA4) and clustered together within the tree. For the other case and contact pair, while the sequences were >99% identical, the case (USAIL1) and the contact (USAIL2) did not cluster together in the tree; we observed mixed base calling in the case USAIL1 across eight locations in the genome, while the contact (USAIL2) only showed the unique base from those eight genome locations.

PREPRINT

Figure S1

SARS-CoV-2 average Ct values for patients with COVID-19, by hospitalization status and specimen type

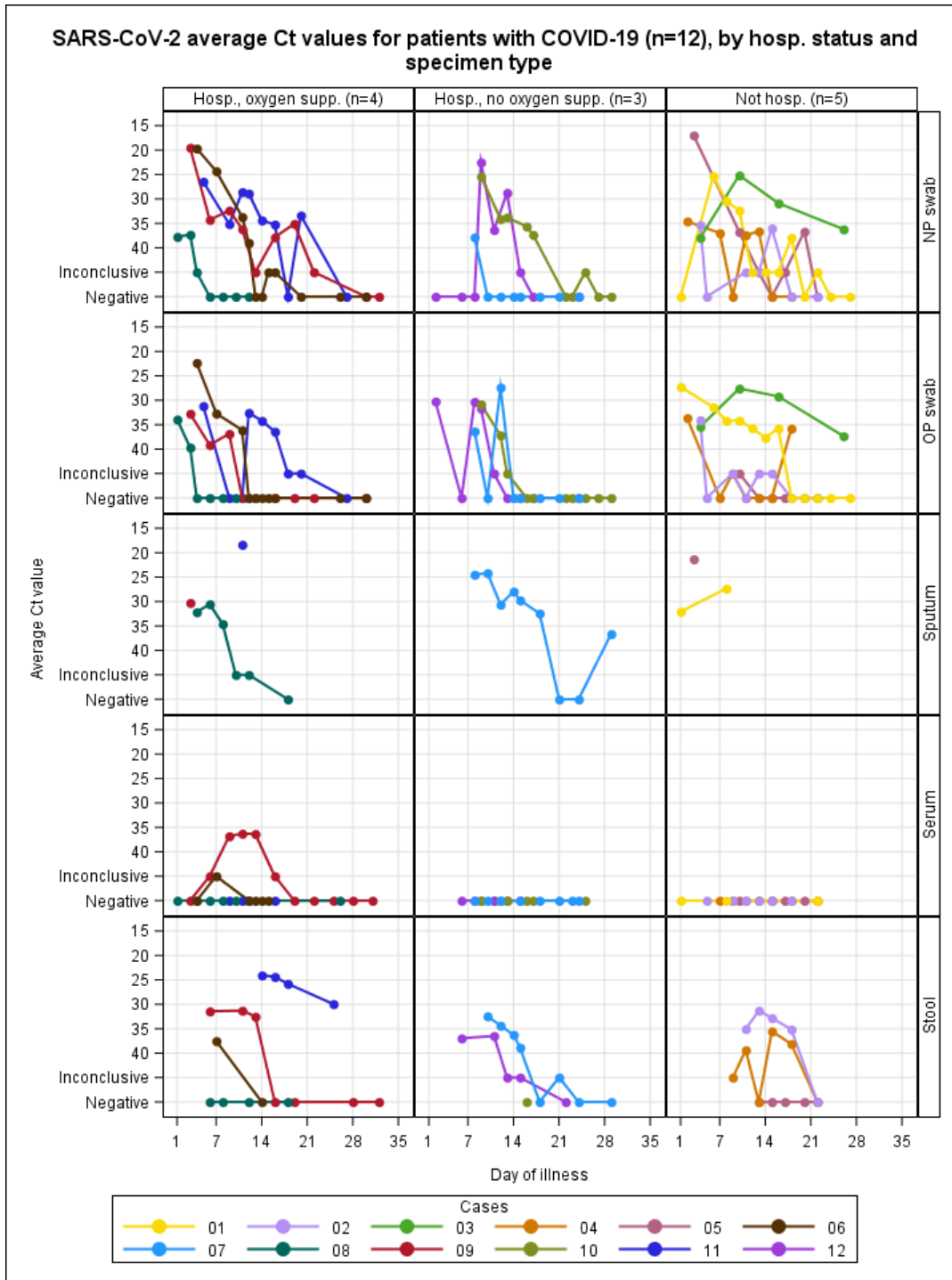


Figure S1 legend: For rRT-PCR-positive specimens, the average cycle threshold (Ct) value was calculated from the Ct values of three targets on the gene encoding the N protein. “Not detected” indicated PCR-negative specimens. Similarly, average Ct value was not calculated for inconclusive specimens. Categories for illness severity included a) not hospitalized, b) hospitalized with no supplemental oxygen, and c) hospitalized with supplemental oxygen. Specimen types depicted included nasopharyngeal (NP) swab, oropharyngeal (OP) swab,

sputum, serum, and stool. Urine was not depicted because no specimens tested positive by rRT-PCR. Day of illness was the number of days from the date of symptom onset (day 1) until the date of specimen collection. The last date of specimen collection was February 21, 2020, and the last date of testing was February 22, 2020.

PREPRINT

Figure S2
Phylogenetic tree

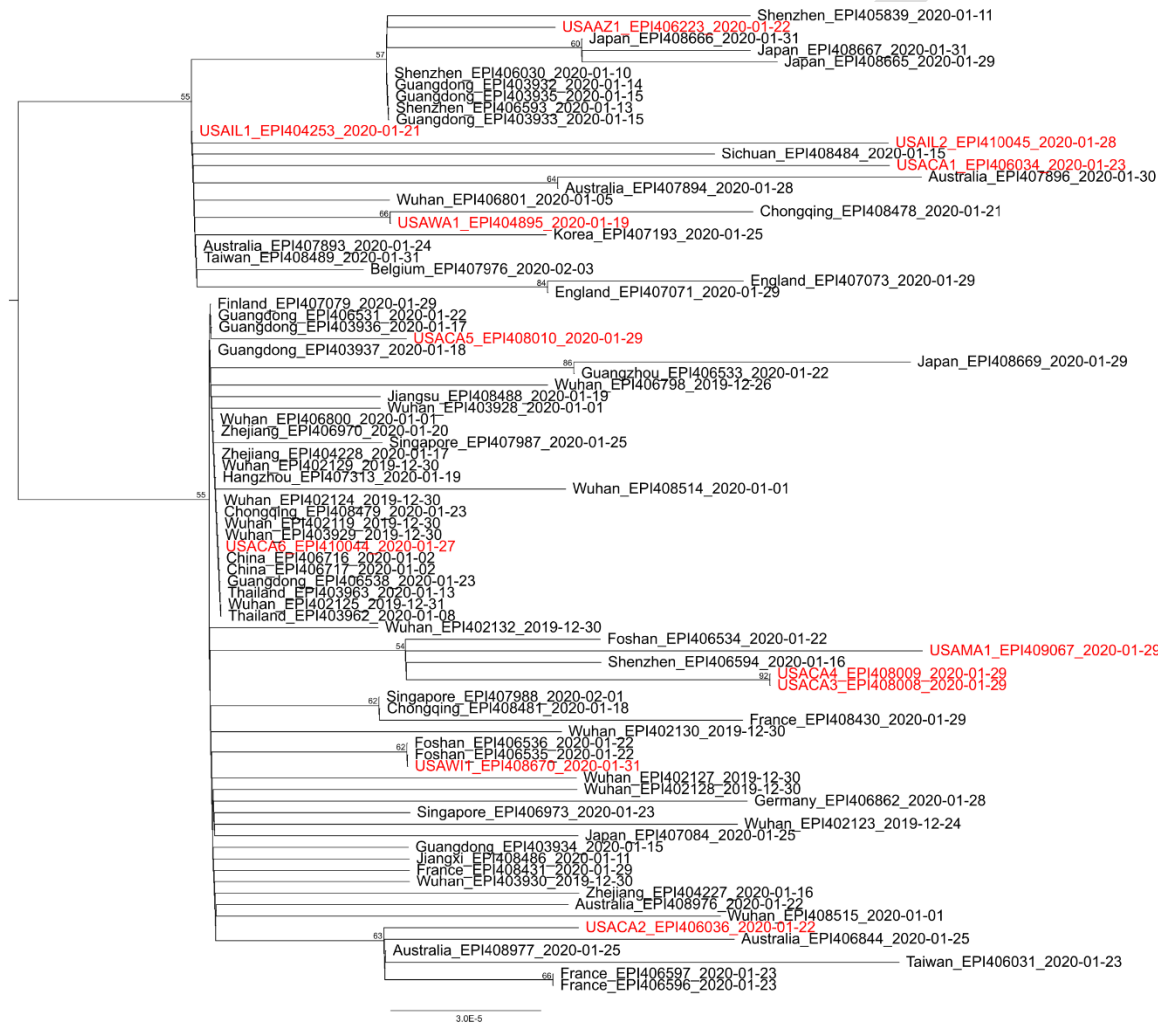


Figure S2: A maximum-likelihood tree of SARS-CoV2 using selected full genome sequences from GISAID as of February 12, 2020. Strains are denoted by country (city for China when available), GISAID accession ID, and date of collection. Tips in red denote sequences from US cases. Bootstrap values of statistical support (50%) are shown as percentage equivalents.

Descriptions of hospitalized patients (n=7)

Patient 6 is a male aged 30–39 years with hypertriglyceridemia who developed subjective fever and cough on illness day 1 after returning from Wuhan City, China. He was seen at an urgent care clinic on illness day 4 and a chest radiograph showed no abnormalities. He was tested for COVID-19 and hospitalized the following day after the test returned positive.⁷ The patient had a normal respiratory exam on the day of admission. On illness day 9, a chest radiograph showed a new left lower lobe opacity. He developed hypoxia by illness day 10, and he was started on supplemental oxygen as well as empiric vancomycin and cefepime for possible hospital-acquired pneumonia. Due to his clinical deterioration, remdesivir was initiated on hospital day 11. By illness day 12, his hypoxia had started to improve. Aminotransferase levels were elevated on hospital admission (AST 85 U/L, ALT 119 U/L) and peaked on day 13 (AST 129 U/L, ALT 219 U/L). The maximum alkaline phosphatase level was 163 U/L (illness day 14), and maximum serum total bilirubin was 1.5 mg/dL (illness day 11). On illness day 18 he reported nausea and abdominal fullness and was diagnosed with gastroparesis. On illness day 24, he was discharged to home isolation.

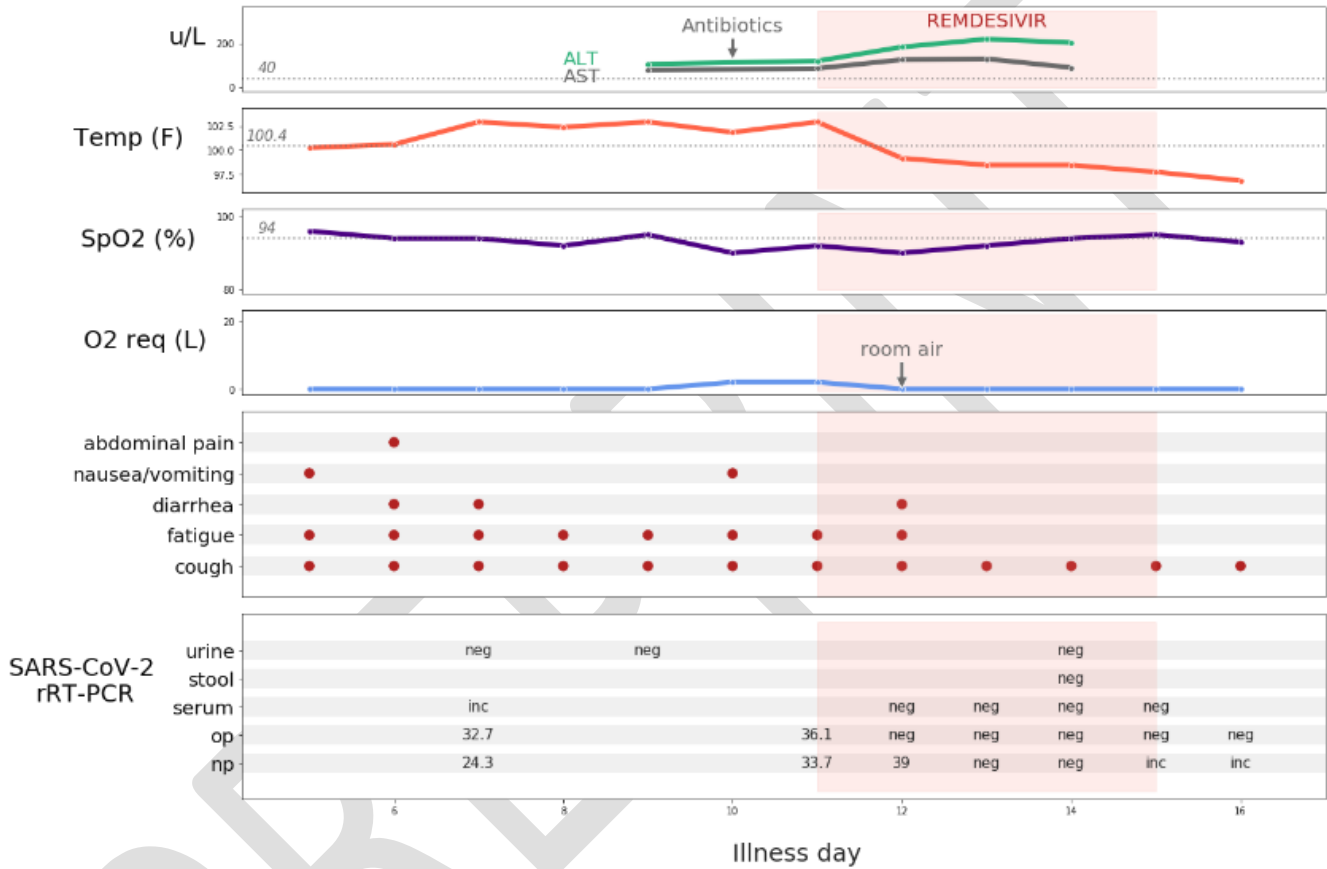
PREPRINT

Figure S3

Patient 6 laboratory and clinical values, symptoms, and SARS-CoV-2 rRT-PCR results during hospitalization

Aminotransferase levels, maximum daily body temperature, minimum daily oxygen saturation, maximum daily oxygen requirement, symptoms, and rRT-PCR results are shown for hospitalization. Pink shading indicates remdesivir administration. Cycle threshold (Ct) values are shown for positive rRT-PCR tests.

Abbreviations: AST, aspartate aminotransferase; ALT, alanine aminotransferase; SpO2, oxygen saturation; op, oropharyngeal; np, nasopharyngeal; neg, negative; inc, inconclusive



Patient 7 is a female aged 60–69 years with hyperlipidemia, well-controlled hypertension, and a pacemaker who had traveled to Wuhan City, China. She developed fatigue and subjective fever on illness day 1 and cough on illness day 4. On illness day 7, she was hospitalized; no abnormalities were identified on exam or chest radiograph, but a computed tomography (CT) scan of the chest demonstrated multifocal infiltrates with mediastinal and hilar lymphadenopathy. She was treated with levofloxacin for possible community-acquired pneumonia and given a three-day course of corticosteroids (methylprednisolone and prednisone). She did not require supplemental oxygen. Aminotransferases peaked on day 19 (AST 46 U/L) and 23 (ALT 66 U/L). Her symptoms remained mild and resolved by day 13. She was discharged to home isolation on day 24 and released from home isolation on day 31.

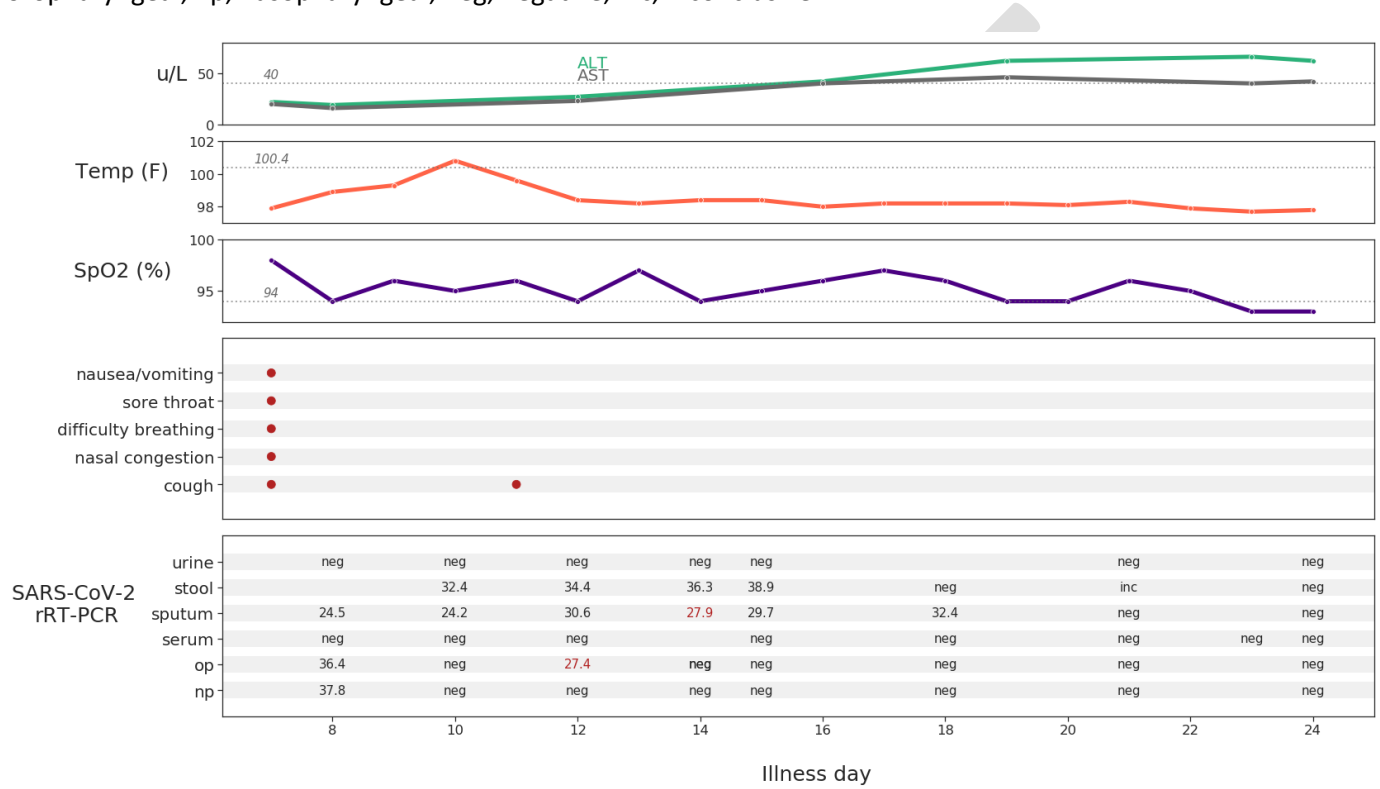
PREPRINT

Figure S4

Patient 7 laboratory and clinical values, symptoms, and SARS-CoV-2 rRT-PCR results during hospitalization

Aminotransferase levels, maximum daily body temperature, minimum daily oxygen saturation, symptoms, and rRT-PCR results are shown for hospitalization. Cycle threshold (Ct) values are shown for positive rRT-PCR tests. Red text indicates decreasing Ct values.

Abbreviations: AST, aspartate aminotransferase; ALT, alanine aminotransferase; SpO2, oxygen saturation; op, oropharyngeal; np, nasopharyngeal; neg, negative; inc, inconclusive



Patient 8 is a male aged 60–69 years with a history of tobacco use, hypertension, coronary artery disease, chronic obstructive pulmonary disease, and lung cancer status post partial right upper lobectomy. He had not traveled to China but had contact with his spouse, Patient 7, while she was symptomatic with COVID-19. On illness day 1, he developed subjective fever, with worsening of baseline dyspnea and productive cough. He subsequently developed hemoptysis and was hospitalized on illness day 4. At the time, he was hypoxic (SpO₂ 88% on room air) and wheezing, and a chest radiograph showed chronic emphysematous and interstitial changes with suspected right lower lobe infiltrate. He was treated empirically with ceftriaxone and azithromycin for possible community-acquired pneumonia and received a two-day course of corticosteroids (methylprednisolone and prednisone) for exacerbation of COPD. He required supplemental oxygen up to 4 L/min. The patient received remdesivir during illness days 7–10; he reported mild nausea and abdominal discomfort after starting the infusion. He developed elevations of aminotransferases [peak AST 47 U/L (day 11), peak ALT 75 U/L (day 12)]. He had no elevations in serum total bilirubin or alkaline phosphatase; the longest prothrombin time was 15.2 seconds (illness day 10). Supplemental oxygen was discontinued by illness day 12, by which time his cough had returned to baseline. He was discharged to home isolation on day 13.

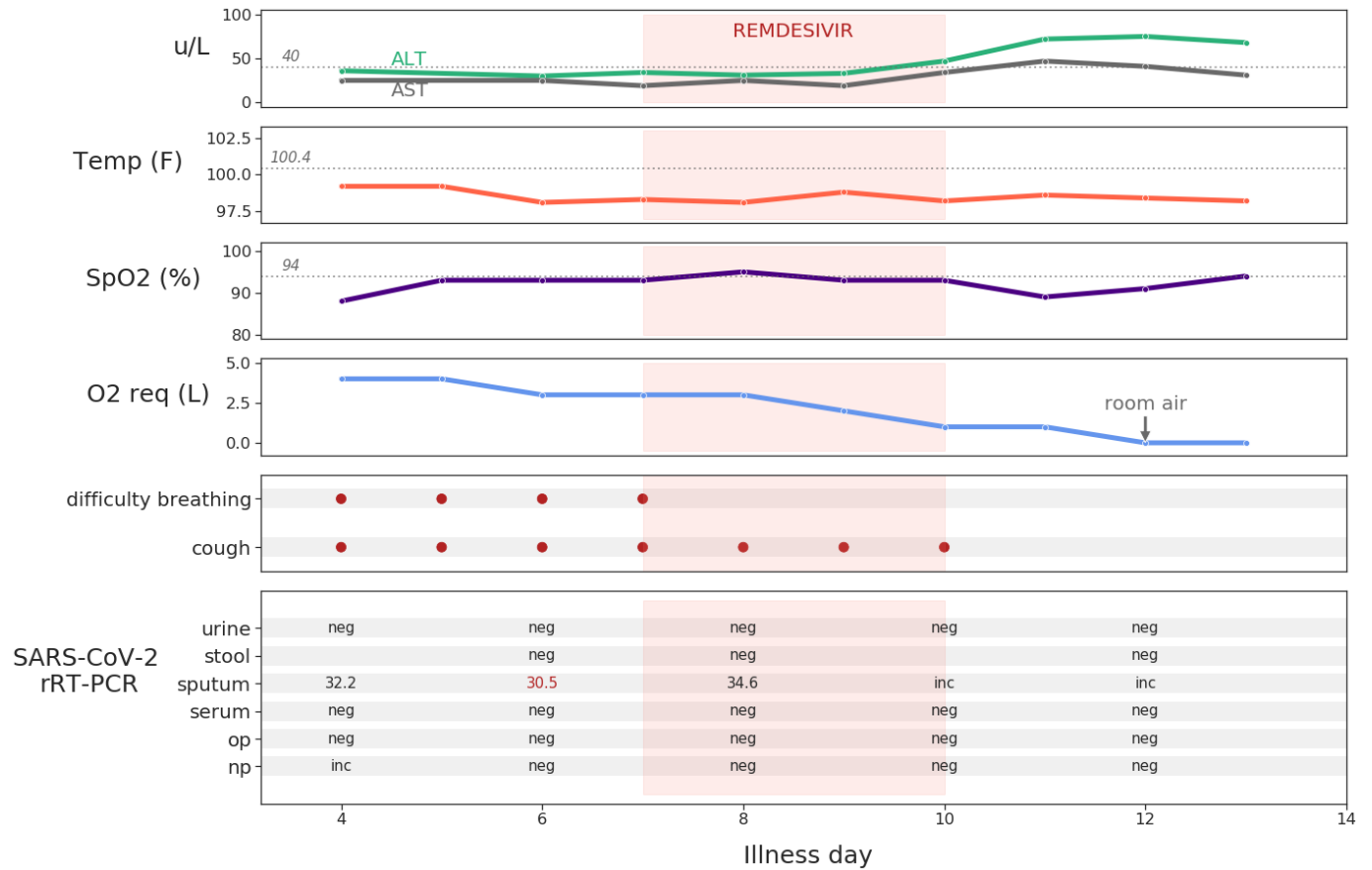
PREPRINT

Figure S5

Patient 8 laboratory and clinical values, symptoms, and SARS-CoV-2 rRT-PCR results during hospitalization

Aminotransferase levels, maximum daily body temperature, minimum daily oxygen saturation, maximum daily oxygen requirement, symptoms, and rRT-PCR results are shown for hospitalization. Pink shading indicates remdesivir administration. Cycle threshold (Ct) values are shown for positive rRT-PCR tests. Red text indicates decreasing Ct values. Patient has a chronic cough that had returned to baseline starting day 11.

Abbreviations: AST, aspartate aminotransferase; ALT, alanine aminotransferase; SpO₂, oxygen saturation; op, oropharyngeal; np, nasopharyngeal; neg, negative; inc, inconclusive



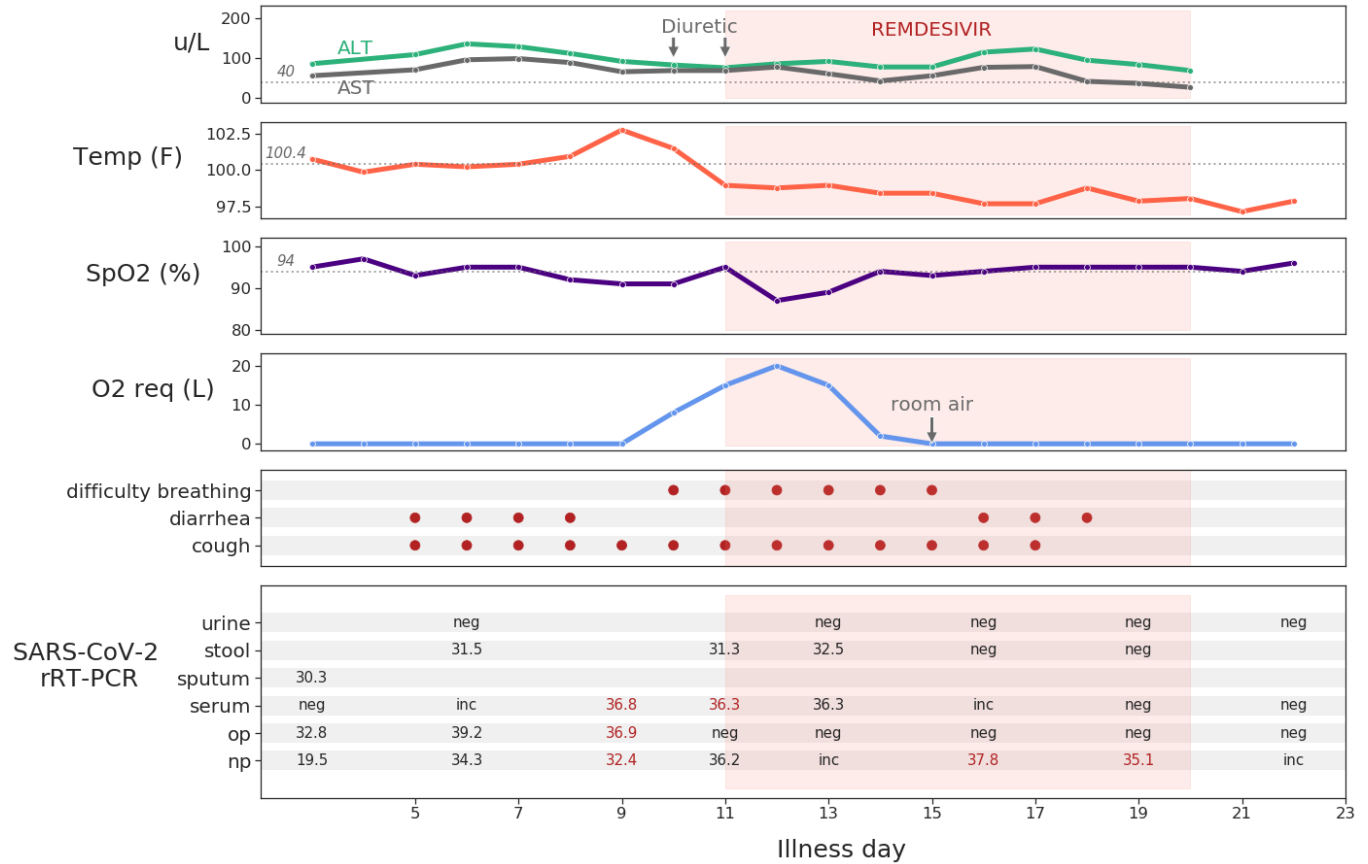
Patient 9 is a male aged 30–39 years with type 2 diabetes who had traveled in Wuhan City, China and Mexico. His first symptom was diarrhea. On illness day 2 he developed fever, cough, myalgias, headache, and sore throat, and he was hospitalized on illness day 3. On admission, his temperature was 98.2 °F, and his oxygen saturation was 99% on room air. His respiratory examination was normal, and a chest radiograph showed no abnormalities. He received empiric oseltamivir treatment for influenza on illness days 3–5 while SARS-CoV-2 testing was pending. On illness day 7, a chest radiograph demonstrated patchy and linear opacities in the bilateral mid and lower lung fields (Figure 4-B), and on illness day 9, he developed hypoxia. On illness day 10, his temperature increased to 102.8 °F, his hypoxia worsened, and he required intensive care-level monitoring. Furosemide was given because of worsening hypoxia, and he required up to 20 L/min of supplemental oxygen via high-flow nasal cannula. Remdesivir was started on day 11; a chest radiograph that day demonstrated progressive infiltrates. By day 13, the hypoxia had improved markedly; it completely resolved by day 16. The patient developed loose stools after starting remdesivir and reported a single episode of bloody stool on day 16. Aminotransferases had been elevated on admission and peaked on day 6 (ALT 136 U/L) and 7 (AST 99 U/L); after starting remdesivir, a second peak occurred on day 17 (AST 79 U/L, ALT 123 U/L). His last day of respiratory symptoms was day 17. On day 26, the patient was transferred to another hospital to continue transmission-based infection control precautions. The same day, a multi-pathogen gastrointestinal PCR panel tested positive for *Giardia lamblia* and *Clostridioides difficile*, and he was treated with metronidazole starting on day 33. The patient was discharged to home on day 36.

Figure S6

Patient 9 laboratory and clinical values, symptoms, and SARS-CoV-2 rRT-PCR results during hospitalization

Aminotransferase levels, maximum daily body temperature, minimum daily oxygen saturation, maximum daily oxygen requirement, symptoms, and rRT-PCR results are shown for hospitalization. Pink shading indicates remdesivir administration. Cycle threshold (Ct) values are shown for positive rRT-PCR tests. Red text indicates decreasing Ct values.

Abbreviations: AST, aspartate aminotransferase; ALT, alanine aminotransferase; SpO2, oxygen saturation; op, oropharyngeal; np, nasopharyngeal; neg, negative; inc, inconclusive



Patient 10 is a previously healthy male aged 50–59 years who had traveled to Wuhan City, China and developed dizziness, cough, and subjective fever on illness day 1. He was seen at a hospital in China on illness day 6 and prescribed cephalexin. His symptoms persisted during his return trip and following his arrival in the United States. On illness day 9 he was seen at an emergency department in the United States, where a chest radiograph showed no acute abnormality. He was not admitted and was discharged to home isolation. He was hospitalized on illness day 12 with fever and worsening dyspnea. His exam was notable for possible faint crackles in the left lower lobe, and a chest radiograph showed new, small, bilateral mid and lower lung consolidations suggestive of multifocal pneumonia. Aminotransferases were elevated on admission and peaked on days 13 (AST 190 U/L) and 15 (ALT 389 U/L). He did not require supplemental oxygen during his hospitalization, and symptoms resolved by day 18. He was discharged to home isolation on illness day 19.

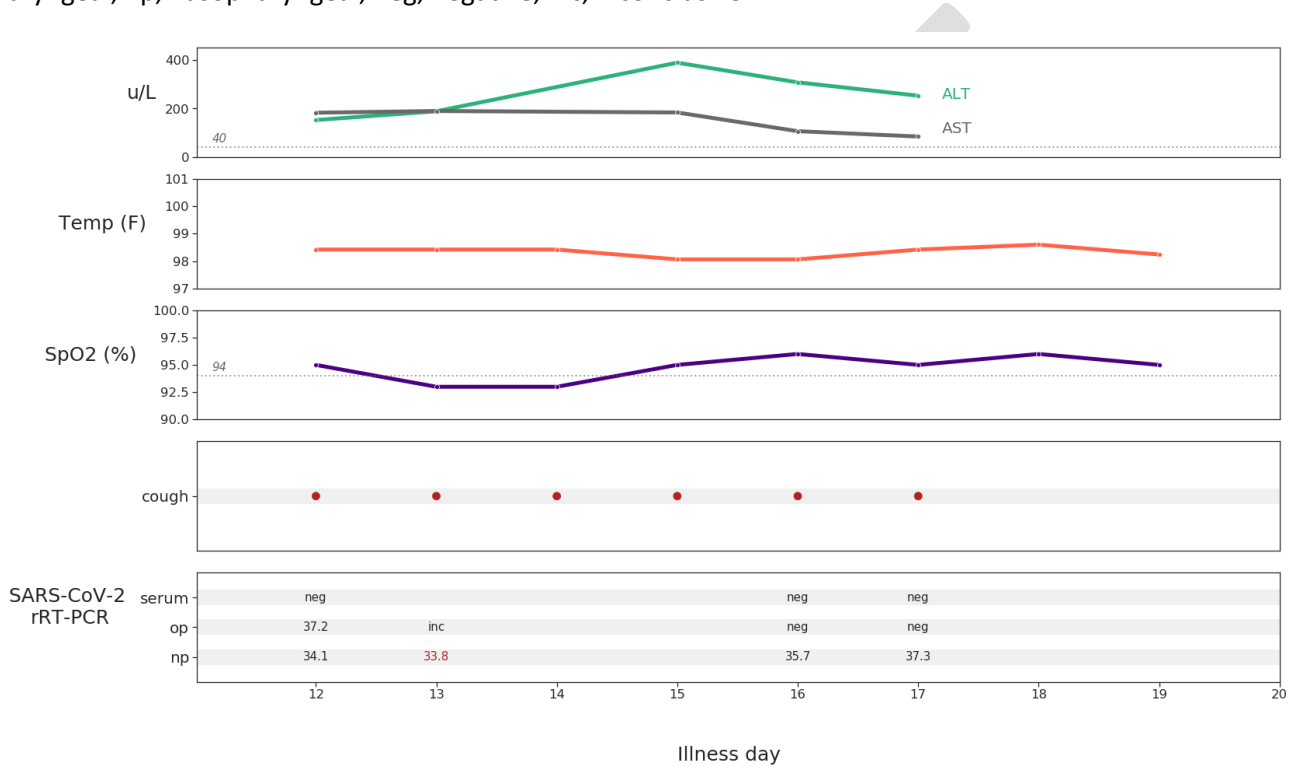
PREPRINT

Figure S7

Patient 10 laboratory and clinical values, symptoms, and SARS-CoV-2 rRT-PCR results during hospitalization

Aminotransferase levels, maximum daily body temperature, minimum daily oxygen saturation, maximum daily oxygen requirement, symptoms, and rRT-PCR results are shown for hospitalization. Cycle threshold (Ct) values are shown for positive rRT-PCR tests. Red text indicates decreasing Ct values.

Abbreviations: AST, aspartate aminotransferase; ALT, alanine aminotransferase; SpO2, oxygen saturation; op, oropharyngeal; np, nasopharyngeal; neg, negative; inc, inconclusive



PRELIMINARY

Patient 11 is a previously healthy male aged 50–59 years with prior travel to Wuhan City, China who developed fever up to 100.8 °F, fatigue, and cough on illness day 1. On illness day 9, he was evaluated in the emergency department of a community hospital and treated empirically for community-acquired pneumonia with one dose each of ceftriaxone and azithromycin, and he was directly transferred to a tertiary care hospital by illness day 10. Admission exam was notable for crackles in the left base and right lower and mid-lung, and a chest radiograph showed bilateral patchy lower lung opacities without effusion. Fever resolved by day 11. He received up to 3 L/min oxygen via nasal canula for intermittent hypoxia and was weaned to room air as of illness day 13. Aminotransferase levels peaked on day 12 (AST 167 U/L) and day 14 (ALT 248 U/L). Procalcitonin level was 0.13 ng/ml on illness days 10–11 and decreased to ≤ 0.05 ng/mL by day 14. He was discharged to home isolation on illness day 18.

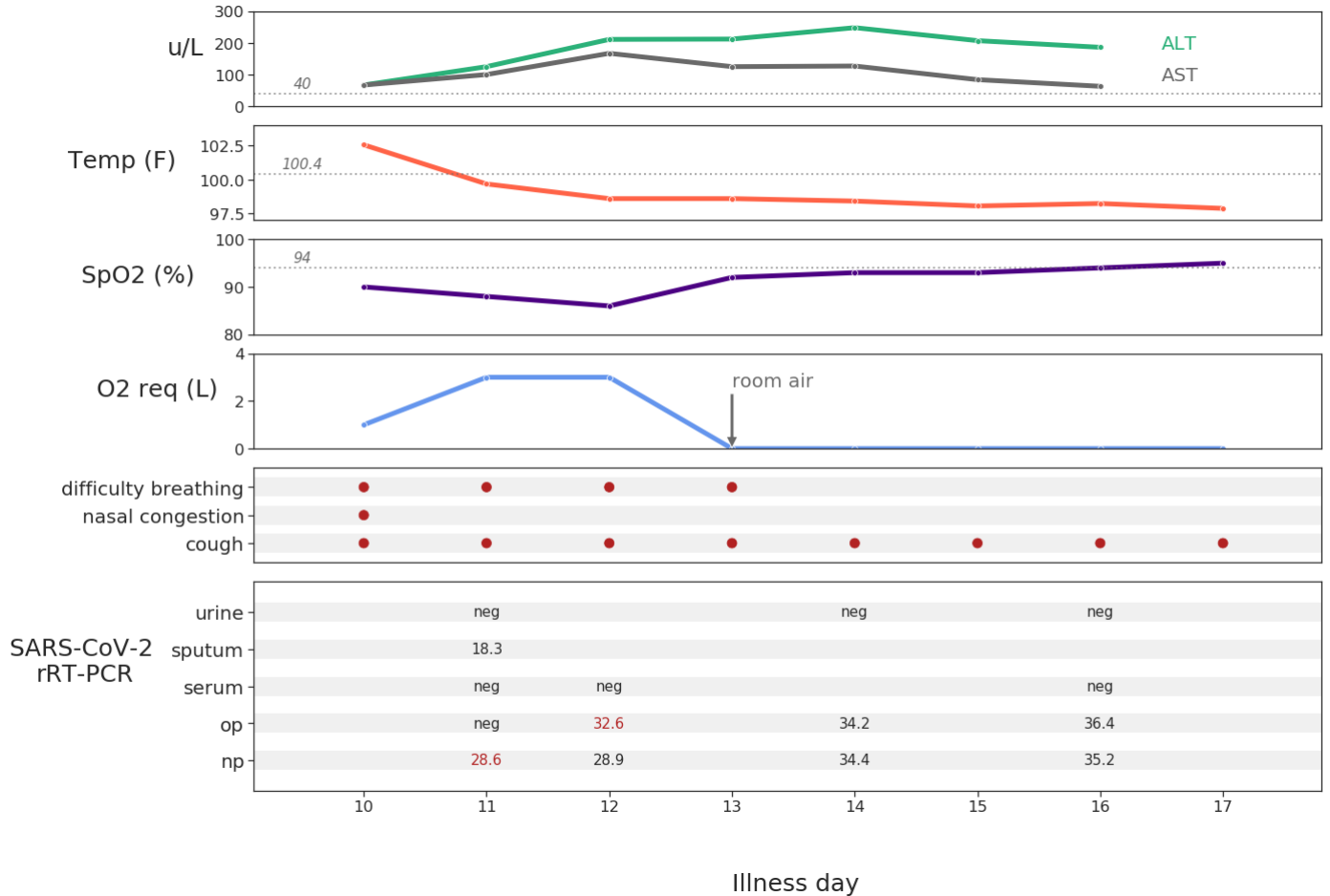
PREPRINT

Figure S8

Patient 11 laboratory and clinical values, symptoms, and SARS-CoV-2 rRT-PCR results during hospitalization

Aminotransferase levels, maximum daily body temperature, minimum daily oxygen saturation, maximum daily oxygen requirement, symptoms, and rRT-PCR results are shown for hospitalization. Cycle threshold (Ct) values are shown for positive rRT-PCR tests. Red text indicates decreasing Ct values. The patient had a positive nasopharyngeal swab on day 9 with Ct value of 35.1 (not shown).

Abbreviations: AST, aspartate aminotransferase; ALT, alanine aminotransferase; SpO2, oxygen saturation; op, oropharyngeal; np, nasopharyngeal; neg, negative; inc, inconclusive



Patient 12 is a previously healthy female aged 50–59 years who had not traveled to China but had been exposed to her spouse, Patient 11, while he was symptomatic. She developed fever and headache on illness day 1. The following day, she developed nasal congestion, cough, and shortness of breath. She was hospitalized on illness day 7. On admission, her physical exam was normal, and a chest radiograph showed opacification of the left lower lung without effusion. Fever resolved as of illness day 13. She had shortness of breath and dyspnea on exertion throughout her hospitalization, but she never developed hypoxemia and remained stable on room air. Maximum aminotransferases levels were recorded on illness day 14 (AST 163 U/L, ALT 127 U/L). Procalcitonin level was <0.07 ng/mL throughout her hospitalization. She was discharged to home isolation on illness day 15.

PREPRINT

Figure S9

Patient 12 laboratory and clinical values, symptoms, and SARS-CoV-2 rRT-PCR results during hospitalization

Aminotransferase levels, maximum daily body temperature, minimum daily oxygen saturation, maximum daily oxygen requirement, symptoms, and rRT-PCR results are shown for hospitalization. Cycle threshold (Ct) values are shown for positive rRT-PCR tests. Red text indicates decreasing Ct values.

Abbreviations: AST, aspartate aminotransferase; ALT, alanine aminotransferase; SpO2, oxygen saturation; op, oropharyngeal; np, nasopharyngeal; neg, negative; inc, inconclusive



References

1. Patrinos GP., Ansong W. Molecular Diagnostics [Internet]. 3 edition. Elsevier; 2010. Available from: <https://linkinghub.elsevier.com/retrieve/pii/C2009001736X>
2. Li H. Minimap2: pairwise alignment for nucleotide sequences. *Bioinformatics* [Internet] 2018;34(18):3094–100. Available from: <https://academic.oup.com/bioinformatics/article/34/18/3094/4994778>
3. Li H, Handsaker B, Wysoker A, et al. The Sequence Alignment/Map format and SAMtools. *Bioinformatics* [Internet] 2009;25(16):2078–9. Available from: <https://academic.oup.com/bioinformatics/article-lookup/doi/10.1093/bioinformatics/btp352>
4. Katoh K, Standley DM. MAFFT Multiple Sequence Alignment Software Version 7: Improvements in Performance and Usability. *Mol Biol Evol* [Internet] 2013;30(4):772–80. Available from: <https://academic.oup.com/mbe/article-lookup/doi/10.1093/molbev/mst010>
5. Kumar S, Stecher G, Li M, Knyaz C, Tamura K. MEGA X: Molecular Evolutionary Genetics Analysis across Computing Platforms. *Mol Biol Evol* [Internet] 2018 [cited 2020 Feb 24];35(6):1547–9. Available from: <https://academic.oup.com/mbe/article/35/6/1547/4990887>
6. Posada D. jModelTest: Phylogenetic Model Averaging. *Mol Biol Evol* [Internet] 2008 [cited 2020 Feb 24];25(7):1253–6. Available from: <http://darwin.uvigo.es>.
7. Holshue ML, DeBolt C, Lindquist S, et al. First Case of 2019 Novel Coronavirus in the United States. *N Engl J Med* [Internet] 2020;NEJMoa2001191. Available from: <http://www.nejm.org/doi/10.1056/NEJMoa2001191>