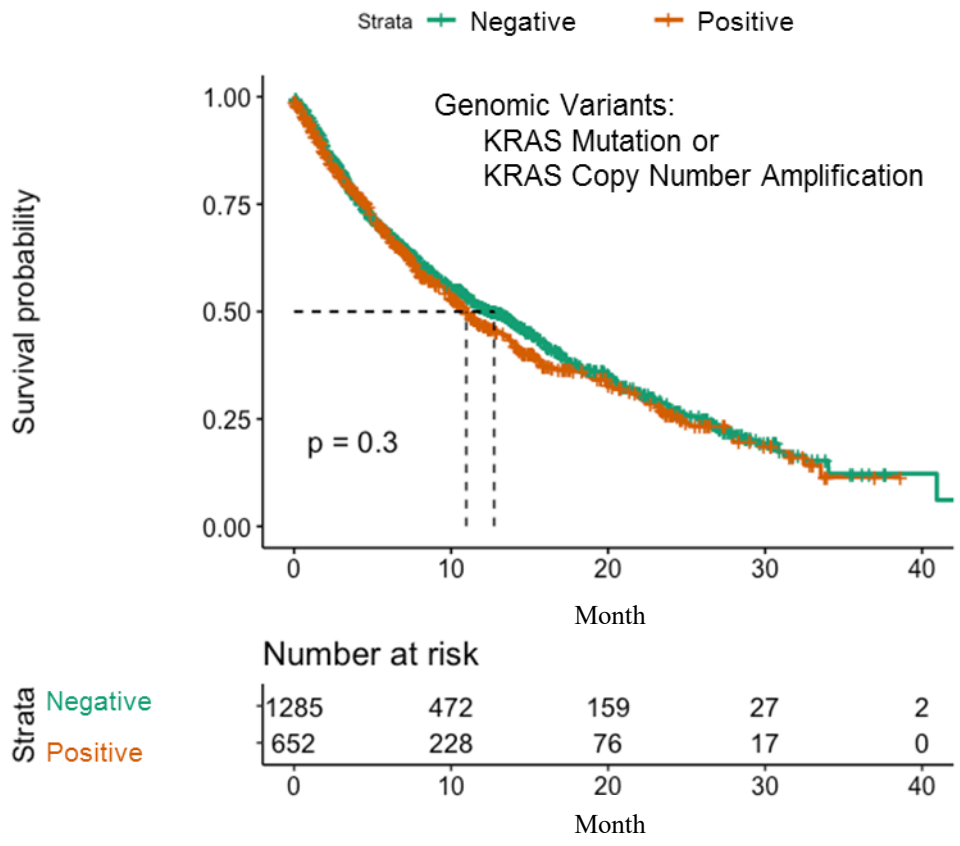


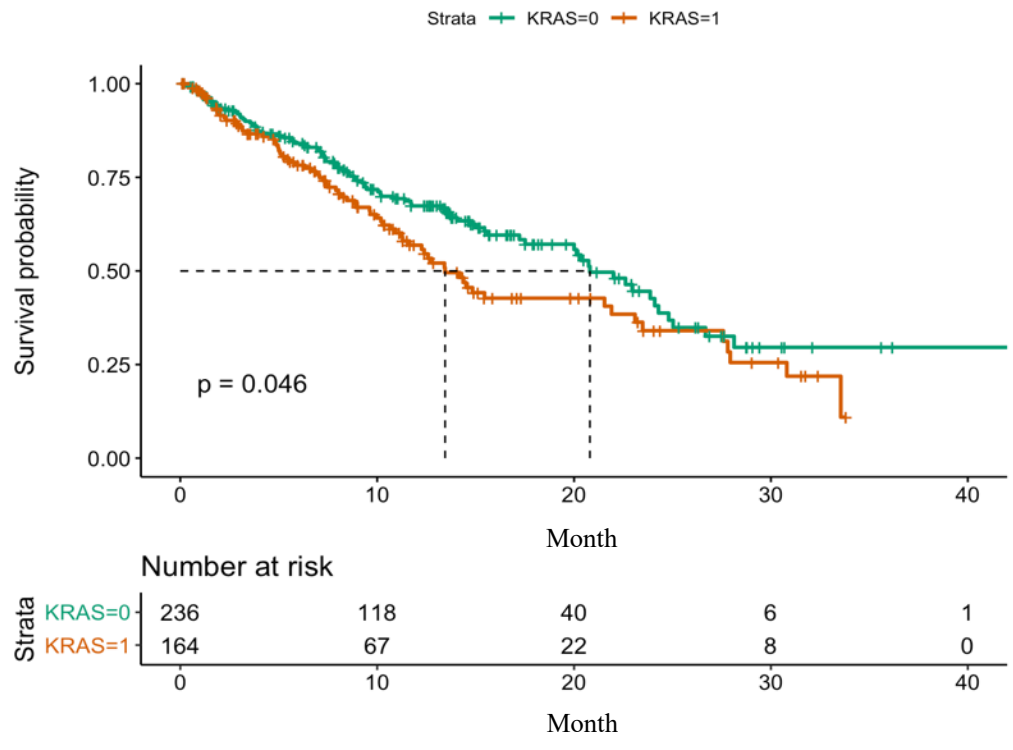
**Identification of non-small cell lung cancer subgroups with distinct
immuno-therapy outcomes from integrating genomics and electronic
health records on a graph convolutional network**

- I. Supplemental Figures
- II. Supplemental Tables
- III. Supplemental Methods

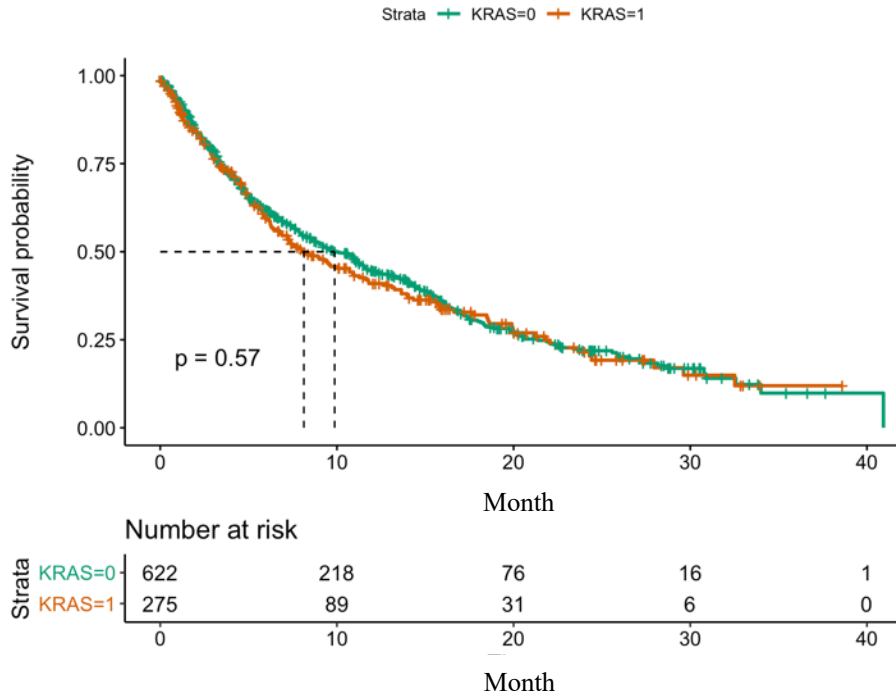
KRAS Genomic Alterations in Overall Cohort



(a)

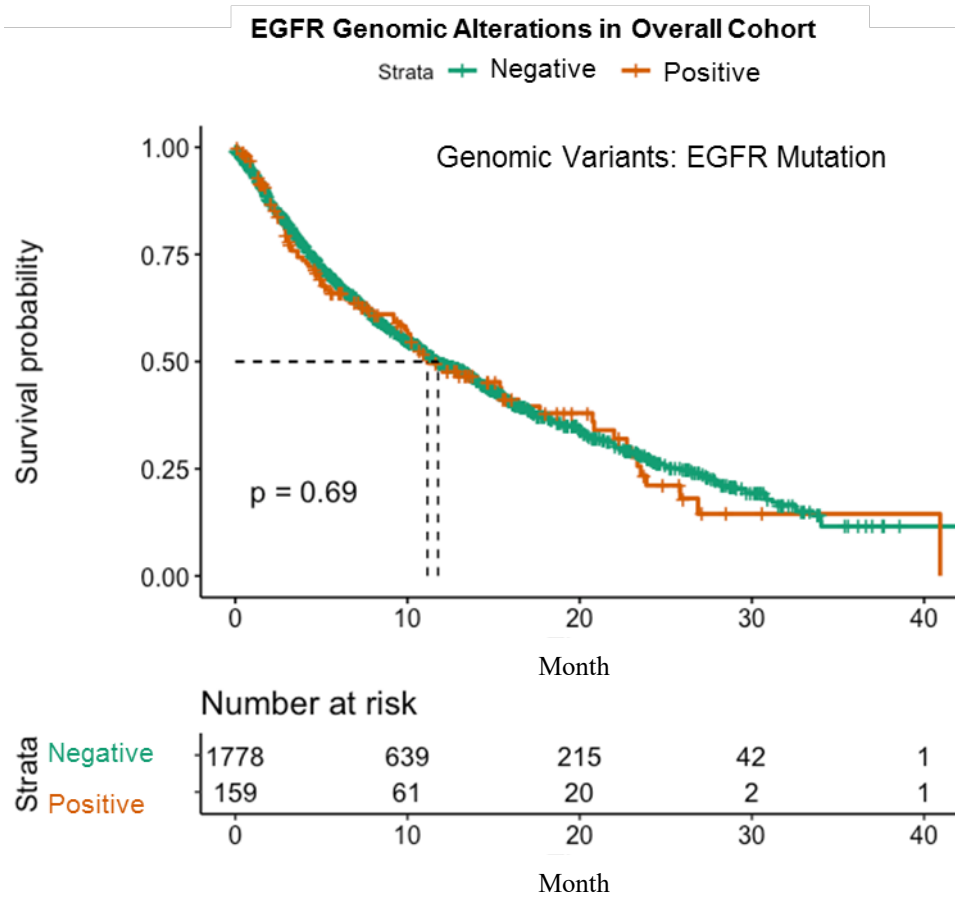


(b)



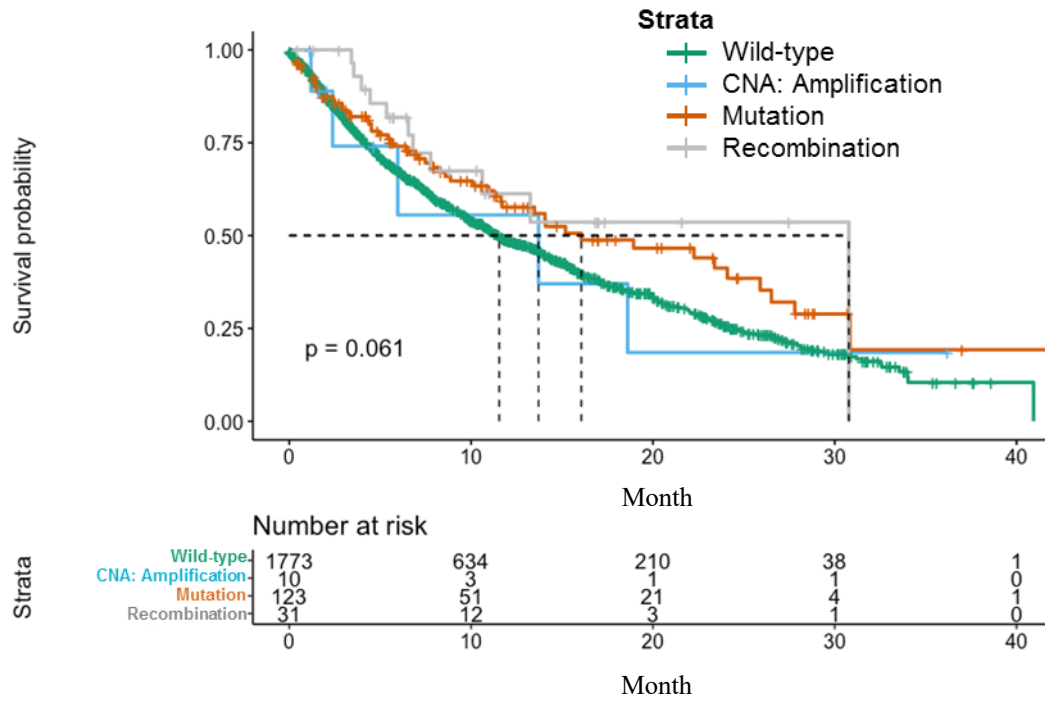
(c)

Supplemental Figure 1 a) IO cohort survival does not show any significant difference whether a patient contains KRAS gene alteration or not. b) In responsive subgroup, patients without KRAS gene alteration have better survival. c) In non-responsive subgroup, the patient survival is not significantly affected by KRAS mutation.



Supplemental Figure 2. Relation between EGFR mutation and overall survival after IO treatment in the overall IO cohort.

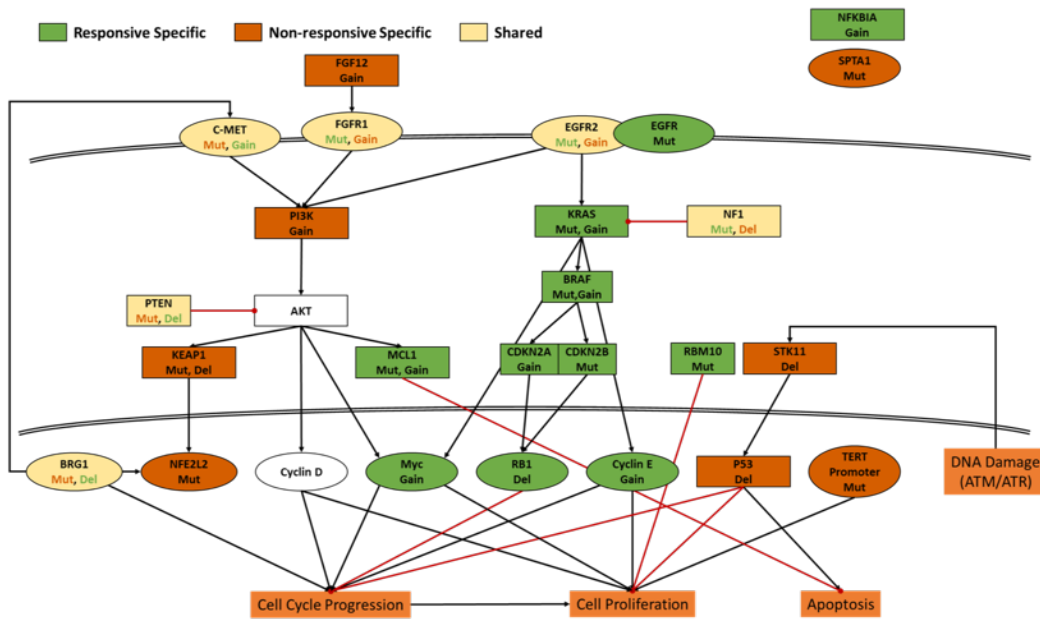
BRAF Genomic Alterations in Overall Cohort



Supplemental Figure 3. Relation between BRAF genomic alterations and overall survival after IO treatment in the overall IO cohort.

| Gene | Mutation | Amplification | Deletion |
|---------|----------|---------------|----------|
| KRAS | R | R | |
| EGFR | R | | |
| MCL1 | R | R | |
| NFKBIA | | R | |
| CCNE1 | | R | |
| CDKN2A | | R | |
| BRAF | R | R | |
| CDKN2B | R | | |
| RB1 | | | R |
| MYC | | R | |
| RBM10 | R | | |
| NF1 | R | | N |
| ERBB2 | R | N | |
| FGFR1 | R | N | |
| MET | N | R | |
| SMARCA4 | N | | R |
| PTEN | N | | R |
| STK11 | | | N |
| FGF12 | | N | |
| TP53 | | | N |
| SPTA1 | N | | |
| KEAP1 | N | | N |
| TERT | N | | |
| NFE2L2 | N | | |
| PIK3CA | | N | |

Supplemental Table 1: Enriched genomics characteristics differentiating the responsive and nonresponsive groups.



Supplemental Figure 4: The inferred underlying signaling pathways derived from the landscapes of the genetic alterations in responsive and non-responsive subgroups.