

Title

Association of current *Schistosoma mansoni*, *S. japonicum*, and *S. mekongi* infection status and intensity with periportal fibrosis: a systematic review and meta-analysis

Authors

Adanna Ewuzie‡ MSc, Lauren Wilburn‡ PhD, Dixia B. Thakrar MRCS, Nia Roberts PhD, Reem Malouf MD, Goylette F. Chami PhD*

Affiliation

Nuffield Department of Population Health, University of Oxford, Oxford, UK (A Ewuzie MSc, L Wilburn PhD, DB Thakrar MRCS, R Malouf MD GF Chami PhD)

Health Care Libraries, Bodleian Libraries, University of Oxford, Oxford, UK (N Roberts PhD)

‡ Joint first authors.

Correspondence

Dr. Goylette F. Chami*

Big Data Institute

University of Oxford

Oxford, United Kingdom OX3 7LF

goylette.chami@ndph.ox.ac.uk

+44186574359

Length (3543/3500 words)

Keywords

Periportal; Symmer's pipestem; liver; fibrosis; hepatic; hepatosplenic; Niamey; ultrasound; schistosomiasis; schistosome; Schistosoma; mansoni; japonicum; mekongi; morbidity; guideline

Summary (291/300 words)

Background: Periportal fibrosis (PPF) is a severe morbidity caused by both current and past exposure to intestinal schistosomes. We assessed the association between current/active infection status and intensity of *Schistosoma mansoni*, *S. japonicum*, or *S. mekongi* with PPF.

Methods: We systematically searched the Cochrane Central Register of Controlled Trials, Embase, Global Health, Global Index Medicus and Medline on August 24, 2022. A meta-analysis to derive pooled effect sizes for concurrently measured current schistosome infection status and intensity against author-defined PPF was conducted using inverse-variance weighted random effects. Subgroup analyses by study characteristics and risk of bias assessments using a modified National Institute of Health Risk of Bias Tool were completed. The protocol was prospectively registered on PROSPERO (CRD42022333919).

Findings: We identified 2646 records; 37 studies were included in the systematic review and 30 studies in the meta-analysis. *S. mansoni* was most studied (91.89%; 34/37). PPF was heterogeneously defined with the Niamey ultrasound protocol commonly used for diagnosis. Individuals with any current infection were 2.50 (95% CI:1.71-3.66) times more likely to have PPF compared to uninfected individuals with high heterogeneity (I^2 statistic 94.80%). Subgroup analyses showed there was no association when only ultrasound patterns or modified Niamey Protocols were used. There was no association in studies conducted in sub-Saharan Africa after 2002 when mass drug administration became widespread, or in studies with a low risk of bias. No significant association was found between schistosome infection intensity and PPF.

Interpretation: World Health Organization guidelines use current schistosome infection intensity as a proxy for schistosomiasis-related morbidity. This study supports that only current infection status was tenuously associated with PPF. Guidelines are needed to better monitor schistosomiasis-related morbidities.

Funding: NDPH Pump Priming Fund, Wellcome Trust-ISSF (204826/Z/16/Z), John Fell Fund, Robertson Foundation, and UKRI EPSRC (EP/X021793/1).

Research in Context

Evidence before this study

Periportal fibrosis (PPF) is a severe complication of intestinal schistosomiasis. We searched the Cochrane Central Register of Controlled Trials, Embase, Global Health, Global Index Medicus, and Medline from the database inception to August 24, 2022. The broad search terms were “Schistosoma”, “fibrosis” AND “periportal OR liver”. Three reviews were detected by the search string; these detailed how human genetics influence fibrosis outcomes, non-invasive methods of periportal fibrosis in schistosomiasis patients, and human host regulation of liver fibrosis during schistosome infection. Outside this search string, reviews exploring the impact of co-infections on liver morbidity (Hepatitis B/C and malaria), the use of ultrasonography for assessing morbidity, and the impact of chemotherapy on liver morbidity were identified or in progress. No review had assessed the impact of current intestinal schistosome infection status or intensity on PPF outcomes.

Added value of this study

Here we provide quantitative evidence for the influence of (or lack thereof) current *Schistosoma mansoni*, *S. japonicum*, and *S. mekongi* infection status and intensity on PPF while presenting the risk of bias in the available literature. By synthesising data ranging from 1988–2020 encompassing 17317 participants, across all age ranges, we found that individuals with current schistosome infection were 2.50 times more likely to have PPF when compared to individuals who are not currently infected. Heterogeneity was high (>90%) across studies and was not reduced when moderate or high risk of bias studies were excluded. The association of current schistosome infection status was tenuous, determined solely by unadjusted studies that ignored cofounders and were conducted prior to mass drug administration. The association was observed only in moderate to high risk of bias studies and not present in low risk of bias studies. Importantly, we found no significant association between the intensity of current schistosome infections and PPF with very few studies available on current infection intensity.

Implications of all the available evidence

Current World Health Organization (WHO) guidelines focus on reducing schistosomiasis-related morbidity as approximated by community prevalence cut-offs set based on only current schistosome infection intensity. This meta-analysis provides evidence that those currently infected with schistosomes had an increased likelihood of having PPF, but only

when infection status was considered rather than infection intensity. The high heterogeneity found among studies presented here suggests the need for standardisation of PPF diagnosis to accurately estimate the global burden of this disease in the future. Our findings suggest that in the current context of widespread, repeated mass drug administration infection proxy indicators are poor estimates of severe morbidity related to schistosomal liver fibrosis. Guidelines or recommendations are needed now from the WHO to assist endemic countries on how to directly monitor schistosomiasis-related morbidities as opposed to monitoring current infections while considering existing local resources and health system constraints.

INTRODUCTION

Periportal fibrosis (PPF) is a severe but common complication of the intestinal forms of the parasitic disease, schistosomiasis. PPF disproportionately affects the poorest communities in Africa.¹ Transmission of the causative trematode of the species *Schistosoma mansoni*, *S. japonicum*, or *S. mekongi* requires human contact with freshwater that is contaminated with parasite eggs, in addition to the presence of competent snail species as the intermediate host.² Once individuals become infected the flukes migrate to the liver then once male-female paired and matured, move to reside in mesenteric venules. Here, female flukes will produce 100-3000 eggs per day, depending on the species.³ Not all eggs are excreted and can be swept back into the liver and spleen where granulomatous inflammation ensues, which may lead to PPF. PPF is a type of fibrosis distinguished by distinct patterns around the hepatic portal tracts of the liver.^{2,4} Ongoing fibrosis causes damage and eventual blockages of the liver vasculature forcing local restructuring.⁵ Left untreated, the disease can cause portal hypertension, upper gastrointestinal bleeding, and ultimately premature death.²

Mass drug administration (MDA) of praziquantel is recommended by the World Health Organisation (WHO) to control schistosomiasis infection and morbidity.⁶ The availability of MDA has successfully led to widescale, significant reductions in *Schistosoma* infection prevalence and infection intensity.⁶ Yet, PPF and related morbidities remain in treated communities despite repeated rounds of MDA.⁷ A meta-analysis by Andrade et al. shows MDA better reduces morbidity related to urinary forms rather than intestinal forms of schistosomiasis.⁸

The current WHO guidelines recommend administering praziquantel annually to individuals over the age of two years in communities with an infection prevalence >10%.⁶ However, estimated infection prevalence is heavily skewed by school-aged children, who typically have the highest prevalence and intensity of infection but low levels of PPF.⁹ PPF is associated with chronic exposure to schistosomes, and the time taken from the initial infection to the development of severe fibrosis may range from 5-15 years.² The time lag for PPF development results in scenarios where treatment guidelines may not align with morbidity prevalence by age group.⁷ When coupled with the risk of reinfection, the contribution of chronic/historical infections, and confounders of other co-infections or alcohol use, it remains unclear how current infection status relates to PPF.² In the context of repeated MDA, individuals have varying histories of treatment, so heterogeneity may be introduced into what

is known about the relationship between current schistosome infection and PPF.¹⁰ Despite this uncertainty, WHO guidelines suggest that <1% prevalence of heavy infection intensities (<400 eggs per gram of stool) in school-aged children approximates the elimination of morbidity as a public health problem for schistosomiasis.⁶

Here, we quantify the pooled effect size for current schistosome infection status and intensity with PPF status in schistosomiasis-endemic regions.

METHODS

Search strategy and selection criteria.

In this systematic review and meta-analysis, we searched the Cochrane Central Register of Controlled Trials(Cochrane Library, Wiley)[Issue 7 of 12, July 2022], Embase(OvidSP)[1974-], Global Health(OvidSP)[1973 to 2022 Week 19], Global Index Medicus(<https://pesquisa.bvsalud.org/gim/>) and Medline(OvidSP)[1946-] from database inception to August 24, 2022. The broad search terms covered title, abstract, author keywords and subject headings for “Schistosoma”, “fibrosis” AND “periportal OR liver”. We applied methodological filters to limit to RCTs or observational studies.^{11,12} Animal studies were excluded, no date or language limits were applied, full details are in appendix 1, pp 2-4. References were exported to Covidence for screening and deduplication.¹³ The study protocol was prospectively registered on PROSPERO (CRD42022333919) on May 19, 2022, and is reported according to Preferred Reporting Items for Systematic reviews and Meta-Analyses (PRISMA) guidelines.¹⁴

We excluded non-human and non-English studies, reviews, editorials, personal opinions, and case reports. Self-reported infection status was an ineligible exposure. PECO inclusion criteria are described in detail in appendix 1, p5. Two reviewers (AE, DT) independently screened abstracts and full-text reports for eligibility. A third reviewer (RM) was consulted in the case of disagreement. AE and LW extracted the data and DT independently cross-checked 20% of the data extractions.

The outcome of periportal fibrosis was recorded as defined by the study authors. For the key exposure of current/active infection, data was extracted for *Schistosoma* species, diagnostic,

and the author-provided infection status and intensity definitions. Additional information such as study design and setting, age and sex of participants, and ultrasound protocol also were recorded (appendix 1, p6). If effect sizes were not provided by study authors, odds ratios were reconstructed where available from in-text information or as provided by authors when contacted for more information.

Data analysis

Random effects models using the generic inverse variance method were used to calculate pooled effect measures (ORs) and the 95% CI in Stata/MP v17. Overall heterogeneity was calculated using Higgin's I^2 statistic to explain between-study variation.¹⁵ Subgroup analyses were conducted when at least three or more studies were available. Subgroups considered were continent, *Schistosoma* species, study setting, before/after MDA in sub-Saharan Africa, ultrasound protocol, PPF outcomes definitions, and Niamey Deviations (appendix 1, p7). The risk of bias (ROB) was assessed using a modified National Institute of Health Risk of Bias Tool from the National Heart, Lung, and Blood Institute (appendix 1, pp8-10). Publication bias was evaluated using funnel plots and Egger's regression.^{16,17}

Role of the funding source

The study sponsor had no role in the design, collection, analysis and interpretation of the data or the writing of the report.

RESULTS

The PRISMA flow chart for the search results is presented in Figure 1. The electronic search retrieved 2646 records; and 908 duplicate records were removed at this stage. 1729 abstracts were screened and records that did not meet the inclusion criteria were removed. A total of 268 articles were screened at the full-text stage (appendix 1, pp11-25). 37 studies were eligible for the systematic review and 30 studies were included in the meta-analysis.

Study characteristics are summarised in Table 1, full details are provided in Table 2. Across 37 studies¹⁸⁻⁵⁴, there were 31295 participants. Egypt was the most frequently studied country ((Figure 2) (21·62%; 8/37))^{18,20,21,26,32,36,42,43}. Most studies included both men and women (97·29%, 36/37), and a single study included only men (2·70%, 1/37).³⁹ Age categories were inconsistently reported throughout the studies without clear minimum or maximum ages. Some studies diagnosed other infections including malaria (10·81%, 4/37),^{23,28,30,33} *S. haematobium* (5·40%, 2/37),^{25,34} HIV (5·40%, 2/37),^{33,44} soil-transmitted helminths 5·40%, 2/37),^{38,40} hepatitis B/C co-infection (8·10%, 3/37),^{20,22,30} and *Opisthorcis viverrini* (a species of liver fluke) (2·70%, 1/37).⁵⁰ However, many did not provide data on the co-infection with *Schistosoma* species (72·72%, 8/11). Most studies diagnosed schistosome infection by Kato-Katz microscopy (91·89%, 34/37)^{18-25,28-47,49-52,54} with two studies using only serology^{27,44} and three studies with both microscopy and serology.^{26,48,53} Over 43% (16/37)^{19,22,23,30-34,37,38,41,44,49,52,54} of all studies utilised the Niamey protocol and almost 30% used the Cairo protocol (11/37).^{18,20,21,25,36,42,43,45,48,51,53} Eight reports used non-WHO approved ultrasound protocols (21·62%, 8/37)^{24,26-29,35,39,46} and three studies did not report the protocol that was used (8·10%, 3/37).^{40,47,50}

Thirty studies, involving 17317 participants were eligible for inclusion in the meta-analysis. See appendix 2 for the full data extraction table. Seven studies were not included in the meta-analysis as the data presented could not be combined with at least two other studies. For example, studies presenting summary data on the mean eggs per gram without separating by intensity category. When findings were pooled, current schistosome infection status was associated with 2·50 times higher likelihood PPF when compared to no current infection ((OR 2·50, 95% CI: 1·71-3·66, p<00·1) (Figure 2)).

This pooled effect had high heterogeneity ($I^2=94.80\%$). Three studies reported over 30 times greater odds of having PPF when infected with schistosomes with even larger confidence intervals.^{24,26,47} Although these individual effect sizes were high, removing them did not reduce the overall heterogeneity (appendix 1, p26).

Current schistosome infection status and its effects on PPF were mostly extracted from unadjusted analyses without any consideration for confounders. A single study (1/30) presented adjusted effect measures for the association between current schistosome infection status and PPF, however, this could not be included in the subgroup analyses due to a lack of at least two other studies as comparators.²³ Here the unadjusted prevalence ratio was 1.60 (95% CI: 0.60-4.50) and after adjustments for sex and age, the effect size was slightly reduced to 1.50 (95% CI: 0.50-9.0). Four additional studies provided adjusted effect sizes for risk factors of PPF, including age and gender, but did not provide a breakdown of the schistosome infection status, therefore effect sizes could not be extracted.^{33,37,49,53}

Subgroup analyses are shown in Table 3. Studies conducted within Asia (OR 2.23, 95% CI: 1.51-3.30) or within Africa (OR 2.23, 95% CI:1.51-3.30) showed an association between current infection status and PPF with no significant associations in South America (OR 1.32, 95% CI:0.60-2.92). *S. japonicum* or *S. mekongi* (OR 5.35, 95% CI:1.13-25.40) species had a greater pooled effect size, but much higher variability when compared to studies with of *S. mansoni* (OR 2.27, 95% CI:1.56-3.32). Within community-based studies (OR 2.27, 95% CI:1.47-3.62) a positive association was observed but no association was present within school-based studies (OR 3.39, 95% CI:0.81-14.13) or health clinics (OR 1.86, 95% CI:0.81-4.31). Case-control studies (OR 15.80, 95% CI:5.70-43.82) presented stronger associations of current infection status with PPF when compared to cross-sectional studies (OR 1.83, 95% CI:1.34-2.49); however, with outlier effect sizes removed, there were not enough studies to meta-analyse. Importantly, in sub-Saharan Africa, before the introduction of MDA in 2003 there was a significant association between current infection status and PPF (OR 5.91, 95% CI:2.29-15.21) but this association was removed after the introduction of MDA in 2003 (OR 1.25, 95% CI:0.82-1.92). Subgroup analyses remained robust when studies showing outlier effect sizes ≥ 30 were excluded (appendix 1, p27).

Protocols for diagnosing PPF by ultrasound varied widely across studies in their use and association with current schistosome infection. No association of current infection status was observed with PPF in studies that used the Niamey protocol (OR 1.63, 95% CI:0.91-2.94). The Cairo protocol (OR 1.94, 95% CI:1.49-2.53) or alternative protocols including Homeida, Managil, Doehring-Schwerdtfeger and Abdel-Wahab (OR 4.19, 95% CI:1.33-13.23) found diagnoses of PPF that were strongly associated with current infection status. Studies were regrouped based on what ultrasound elements were used to define PPF as opposed to the overall protocol as each protocol may contain multiple elements of patterns, measurements, and features. Only measurements (OR 2.13, 95% CI:1.35-3.37) and features (OR 4.18, 95% CI:1.75-9.98) showed a significant association with current infection status. For the Niamey protocol, both patterns and measurements are recommended. Pooled effect sizes were investigated for studies that deviated from the full recommended protocol in any way where authors explicitly stated a modification to the protocol, e.g. categorised PPF grades as B-F instead of C-F or only used patterns. Only studies that strictly followed the full Niamey protocol showed an association of PPF with current infection status, which was of high magnitude with individuals with current schistosome infections over three times more likely to have PPF (95% CI:1.67-5.86).

The high heterogeneity within the pooled analyses ($I^2=94.80\%$) was partially explained by several subgroups (Table 3). Yet, heterogeneity was lowest for subgroups that showed no relationship between current infection status with PPF such as the region of South America ($I^2=57.47\%$), studies in health clinics ($I^2=60.29\%$), and diagnoses that used the Niamey protocol but deviated from the written guidance and procedures ($I^2=22.37\%$).

In total, 26.66% (8/30) of studies reported a measure of intensity of schistosome infection against PPF. However, only 16.66% (5/30) of studies provided similar measurements of current schistosome infection intensity to enable a meta-analysis. One study only reported the unadjusted values for infection intensity²³ and another study only reported the adjusted effect size.⁵² Pooled effect sizes are shown in Figure 3a-3b for unadjusted (13.33%, 4/30) and adjusted analyses (13.33%, 4/30), respectively (appendix 1, p28). All analyses showed insignificant relationships between current infection intensity with PPF and no significant differences in pooled effect sizes between infection intensity categories.

Most studies scored a moderate to high ROB (83.7%, 31/30) (appendix 1, pp 29-41). Common reasons for being categorised as moderate or high risk of bias were providing the data in an unadjusted model or only presenting descriptive statistics (93.5%, 29/31). The 30 studies included in the meta-analysis were subject to sensitivity analyses. High (7),^{22,24,26,36,46,48,50} moderate (16),^{18,20,21,25,28-30,34,38,40,42-44,51,53,54} and low (7)^{19,23,33,37,39,47,49} ROB studies were treated as individual subgroups and the pooled effect size of current infection status against PPF was reanalysed (Table 3). The low ROB studies showed no association of current schistosome infection status with PPF (2.71, 95% CI: 0.98-7.48) with a significant association in the moderate ROB subgroup (OR 1.92, 95% CI: 1.34-2.76) and the strongest association in high ROB subgroup (OR 5.53, 95% CI: 1.71-17.87). No clear indications of publication bias or small study effects were observed (appendix 1, p 42).

DISCUSSION

WHO guidelines use current infection intensity cut-offs of <5% or <1% prevalence of heavy infection intensities as proxy indicators of schistosomiasis-related morbidity to monitor control and elimination, respectively, as a public health problem.⁶ We synthesised 37 studies and completed a meta-analysis of 30 of those studies that included 17317 participants from 17 countries endemic with *S. mansoni*, *S. japonicum*, or *S. mekongi*. There was no evidence for using intensity-based guidelines to approximate PPF likelihood. Current schistosome infection status was shown to influence PPF though the relationship was dependent on the study design deployed and was lost after the widespread introduction of MDA in sub-Saharan Africa.

The irrelevance of infection intensity in our study either conveys important information on disease pathogenesis or simply shows the incompleteness of the existing literature. Current infection intensity may not be the best proxy measure of the history of exposure that reflects chronic infection, re-infection, or current cumulative fluke burden—all of which are important to the long timelines needed for PPF development.⁷ Similarly, current infection intensity does not narrow down risk groups for PPF given the greatest burden is concentrated in school-aged children⁵⁵ and not adults who are more likely to have PPF.⁷ However, only five eligible studies reported the different effect sizes between

infection intensity and PPF.^{23,24,33,37,52} Additionally, three of five of these studies defined the comparator group as low infection intensity rather than uninfected participants. Three additional studies could not be included in the meta-analysis as they used unique definitions of infection intensity. To pool effects across studies, the WHO classifications of infection intensity by schistosome species should be reported in future studies.⁶ There is yet insufficient evidence to support WHO guidelines based on using current infection intensity for schistosomiasis-morbidity monitoring with respect to PPF.

Individuals with current schistosome infection were 2-50 times as likely to have PPF compared to currently uninfected individuals. This supports current WHO guidelines for MDA implementation, which prioritise treatment to communities with a high schistosomiasis prevalence, as opposed to guidelines for morbidity monitoring.⁶ This pooled effect size was greater in magnitude than indicators of the history of exposure, such as fishing occupations. Still, it was similar in magnitude to suggested effect sizes for other co-infections or co-morbidities causing liver fibrosis, such as the history of HIV infections or hepatitis B.⁷ Yet, with only a single study²³ providing adjusted effect sizes eligible for meta-analysis, the pooled effect of 2-50 may be an overestimation of the association of current infection status with PPF. The lack of adjustment also might explain the high heterogeneity observed in the pooled effect for current infection status.

The influence of current infection status on PPF largely was dependent on context and study design. A significant positive association only was observed in African and Asian regions and when participant sampling was directly from communities as opposed to schools or health clinics. The choice of overall study design affected the magnitude of the relationship between current infection status with PPF. Case-control studies have the potential to highlight risk factors for uncommon disease outcomes, such as the latest stages of PPF. Yet, in all five studies reporting a case-control design, none exploited this aspect of case-control design, choosing instead to match on infection exposure, age, and sex as opposed to matching on disease outcomes to retrospectively ascertain the relevance of a wide range of risk factors.^{24,26,36,38,47} Hence, it is questionable whether the larger effect size in case-control designs represents a true effect size of infection status. Future studies should consider case-control designs that match the disease outcome, especially within health facilities, where patients with pre-diagnosed, severe stages of the

disease can be easily identified. Such a monitoring approach may be feasible within existing resource constraints of health systems.

Ultrasound is the primary tool to diagnose PPF with most studies in this meta-analysis and the wider literature, applying the currently WHO-recommended Niamey protocol.^{1,4} The implementation of the Niamey protocol, including the choice of which elements to use and the degree to which the protocol was followed as written affected the association of current infection status with PPF. However, we found no evidence that the Niamey protocol was better at detecting an association of current infection status with PPF as compared to other protocols, such as the Cairo protocol. The significance of the association was lost when examining studies that only used the Niamey protocol. A recent systematic review by Ockenden et al. highlights challenges with existing standardisation of the Niamey protocol including the lack of ultrasound image acquisition guidance, selective subjective usage of specific elements of the protocol, and the lack of quality control and validation.¹ Infected individuals were over three times more likely to have PPF compared to uninfected individuals when they were diagnosed by studies adhering to the full Niamey protocol. When studies deviated or did not complete the full Niamey protocol the association was removed.

Methods to classify and grade PPF have evolved over the past 40 years and varied based on features, patterns, and measurements.¹ When these elements were compared across all reported ultrasound protocols, patterns despite the most used element of the Niamey protocol, were uninformative for PPF when compared to measurements (such as portal vein diameter) or features (such as echogenic streaks).¹ Image patterns, although intuitive, are subject to personal interpretation.⁵⁶ There is a need to review and potentially update the image patterns used for diagnosing schistosomal PPF. Notably, the prevalence of PPF varies based on the protocol and PPF criteria used.⁴⁷ Although measurements showed an association with PPF, the accuracy of measurements depends on the level of clinical expertise of the sonographer. A study by Hoffman et al. showed that for measurements, a high level of clinical expertise is needed to identify the anatomy of the portal vasculature and that sub-segmented and segmented portal branches are commonly confused and, the inclusion of sub-segmental branches could potentially more than triple the percentage of PPF cases.²⁸ Improvements in ultrasound technology may

help reduce these mistakes. These two examples show that protocols need to be followed and there are clear differences in PPF ascertainment between protocols.

We found that only before the year 2003, i.e. before the widespread introduction of MDA in sub-Saharan Africa,⁵⁷ was a significant association observed between current infection status and PPF. This loss of association between current infection status and PPF after 2003 for studies conducted within sub-Saharan Africa might be attributed to the successful reduction in schistosome infection prevalence after repeated MDA yet with residual morbidities remaining after treatment with praziquantel.⁵⁷ Alternatively, MDA may have introduced heterogeneity into the known infection epidemiology in endemic populations due to systematically missing individuals across multiple rounds of MDA.¹⁰

A limitation of our review was that we excluded non-English language studies at the full test screening stage; 46 non-English reports were excluded with the majority of these published in Mandarin. Therefore, only three *S. japonicum* and *S. mekongi* reports were included. This likely underrepresents these species, studies conducted in Asia, and studies that use the China Centres for Disease Control protocol for *S. japonicum* diagnoses.¹ As we did not limit our search string to periportal fibrosis, it was unlikely that interseptal fibrosis was missed in English studies.

There were many limitations of the existing literature. Some studies used parenchymal fibrosis and periportal fibrosis interchangeably introducing heterogeneity into the PPF definitions.^{53,58} PPF likelihood changes across the lifespan of an individual; increasing in adolescents, remaining stable in adulthood, and declining above 55 years of age.⁷ However, many of the included studies either did not report age ranges or only reported one wide age range such as 1-95 years.³⁷ Exposure and PPF outcomes were not broken down by age, so no sub-group analyses by age were possible and remain an area for future study. Most studies were of high or moderate risk of bias with adjusted analyses considering common confounders of age and sex rarely reported and insufficiently shared to calculate any adjusted pooled effect sizes. More studies with adequate study designs to address the association of current schistosome infection with PPF are required.

Current infection status with intestinal schistosomes was tenuously associated with PPF, but no association was observed for current infection intensity. Further epidemiological studies, that adjust for age and gender, which capture the influence of current, chronic, and historical schistosome infection on PPF are required. At present, there is no support for approximating PPF using current schistosome infection intensity, and infection status appears irrelevant within the context of repeated MDA that is now routine in areas endemic with schistosomiasis. For these reasons, there is an urgent need to directly monitor PPF-related morbidity in areas endemic to schistosomiasis and to develop strategies to enable such monitoring within already constrained health systems.

Acknowledgements

We thank the SchistoTrack Research Group for wider support on meta-analyses and feedback during group meetings.

Declarations of interest

All authors declare no competing interests.

Author contributions

Resources and supervision: GFC. Conceptualization: GFC. Data curation: AE, LW, DT. Pre-registration protocol, data extraction tool, and risk of bias tool: AE, RM, GFC. Data validation: LW, NR, RM. Investigation and methodology: AE, LW, RM, GFC. Formal analysis and visualization: AE, LW. Writing – original draft: AE, LW, GFC. Writing – review and editing: AE, LW, DT, NR, DT, GFC. Funding acquisition: GFC.

Open access statement

This research was funded in whole, or in part, by the UKRI EPSRC [EP/X021793/1]. For the purpose of Open Access, the author has applied a CC BY public copyright licence to any Author Accepted Manuscript version arising from this submission.

REFERENCES

1. Ockenden ES, Frischer SR, Cheng H, Noble JA, Chami GF. The role of point-of-care ultrasound in the assessment of schistosomiasis-induced liver fibrosis: A systematic scoping review. *PLoS Negl Trop Dis*. 2024;18(3):e0012033.
2. Colley DG, Bustinduy AL, Secor WE, King CH. Human schistosomiasis. *Lancet*. 2014;383(9936):2253–64.
3. Mawa PA, Kincaid-Smith J, Tukahebwa EM, Webster JP, Wilson S. Schistosomiasis morbidity hotspots: roles of the human host, the parasite and their interface in the development of severe morbidity. *Front Immunol*. 2021;12:635869.
4. Richter J, Hatz C, Campagne G, Bergquist NR, Jenkins JM, Research UNWBWSPf, Training in Tropical D. Ultrasound in schistosomiasis : a practical guide to the standard use of ultrasonography for assessment of schistosomiasis-related morbidity : Second international workshop, October 22-26 1996, Niamey, Niger / editors: J. Richter ... [et al.]. Revised and updated ed. Geneva: World Health Organization; 2000.
5. Andrade ZA. Schistosomiasis and liver fibrosis. *Parasite Immunol*. 2009;31(11):656–63.
6. Organization WH. WHO Guidelines Approved by the Guidelines Review Committee. WHO guideline on control and elimination of human schistosomiasis. Geneva: World Health Organization 2022.; 2022.
7. Anjorin S, Nabatte B, Mpooya S, Tinkitina B, Opio CK, Kabatereine NB, Chami GF. The epidemiology of periportal fibrosis and relevance of current *Schistosoma mansoni* infection: a population-based, cross-sectional study. *medRxiv*. 2023:2023.09.15.23295612.
8. Andrade G, Bertsch DJ, Gazzinelli A, King CH. Decline in infection-related morbidities following drug-mediated reductions in the intensity of *Schistosoma* infection: A systematic review and meta-analysis. *PLoS Negl Trop Dis*. 2017;11(2):e0005372.
9. Faust CL, Osakunor DN, Downs JA, Kayuni S, Stothard JR, Lamberton PH, et al. Schistosomiasis control: leave no age group behind. *Trends Parasitol*. 2020;36(7):582-91.
10. Chami GF, Kontoleon AA, Bulte E, Fenwick A, Kabatereine NB, Tukahebwa EM, Dunne DW. Profiling Nonrecipients of Mass Drug Administration for Schistosomiasis and Hookworm Infections: A Comprehensive Analysis of Praziquantel and Albendazole Coverage in Community-Directed Treatment in Uganda. *Clin Infect Dis*. 2016;62(2):200-7.
11. (EPOC) CEPaOoC. How to develop a search strategy for an intervention review, 2021.
12. SIGN. Search Filters. 2021. <https://www.sign.ac.uk/what-we-do/methodology/search-filters/> (accessed 05/04 2024).

13. Covidence systematic review software. 2022;Veritas Health Innovation, Melbourne, Australia.
14. Page MJ, McKenzie JE, Bossuyt PM, Boutron I, Hoffmann TC, Mulrow CD, et al. The PRISMA 2020 statement: an updated guideline for reporting systematic reviews. *BMJ*. 2021;372:n71.
15. Higgins JPT, Thompson SG. Quantifying heterogeneity in a meta-analysis. *Stat Med*. 2002;21(11):1539–58.
16. Kirkwood BR, Sterne JAC, Kirkwood BR. *Essential medical statistics*. Second ed. Oxford: Blackwell Science; 2003.
17. Duval S, Tweedie R. Trim and Fill: A Simple Funnel-Plot–Based Method of Testing and Adjusting for Publication Bias in Meta-Analysis. *Biometrics*. 2000;56(2):455–63.
18. Abdel-Wahab MF, Esmat G, Medhat E, Narooz S, Ramzy I, El-Boraey Y, Strickland GT. The epidemiology of schistosomiasis in Egypt: Menofia Governorate. *Am J Trop Med Hyg*. 2000;62(2 (Supplement)):28–34.
19. Abebe N, Berhanu E, Girmay M, Nega B. Clinico-epidemiological study of Schistosomiasis mansoni in Waja-Timuga, District of Alamata, northern Ethiopia. *Parasit Vectors*. 2014;7(158).
20. Angelico M, Renganathan E, Gandin C, Fathy M, Profili MC, Refai W, et al. Chronic liver disease in the Alexandria governorate, Egypt: contribution of schistosomiasis and hepatitis virus infections. *J Hepatol*. 1997;26(2):236–43.
21. Barakat R, Farghaly A, El Masry AG, El-Sayed MK, Hussein MH. The epidemiology of schistosomiasis in Egypt: patterns of Schistosoma mansoni infection and morbidity in Kafer El-Sheikh. *Am J Trop Med Hyg*. 2000;62(2 Suppl):21–7.
22. Chatterjee S, Mbaye A, Alfidja AT, Weyler J, Scott JT, Damme Pv, et al. Circulating levels of the neuropeptide hormone somatostatin may determine hepatic fibrosis in Schistosoma mansoni infections. *Acta Trop*. 2004;90(2):191–203.
23. Davis SM, Wiegand RE, Mulama F, Kareko EI, Harris R, Ochola E, et al. Morbidity associated with schistosomiasis before and after treatment in young children in Rusinga Island, Western Kenya. *Am J Trop Med Hyg*. 2015;92(5):952–8.
24. Doehring-Schwerdtfeger E, Abdel-Rahim IM, Mohamed-Ali Q, Elsheikh M, Schlake J, Kardorff R, et al. Ultrasonographical investigation of periportal fibrosis in children with Schistosoma mansoni infection: evaluation of morbidity. *Am J Trop Med Hyg*. 1990;42(6):581–6.
25. Friis H, Doehring E, Vennervald BJ, Kaondera K, Christensen NO, Franke D, Ndhlovu P. Ultrasonographic Assessment of Schistosoma mansoni and S. Haematobium Morbidity in Zimbabwean Schoolchildren. *Am J Trop Med Hyg*. 1996;55(3):290–4.

26. Hassan MM, Hegab MH, Soliman SZ, Gaber OA, Shalaby MM, Kamel FM. Relationship between circulating antigen level and morbidity in *Schistosoma mansoni*-infected children evaluated by ultrasonography. *Am J Trop Med Hyg.* 1999;61(4):635-8.
27. Hirata M, Uno M, Iida H, Uno S, Tsutsumi H, Uto K. Serological evaluation of ultrasound examination for chronic schistosomiasis japonica in a previously endemic area--the Chikugo River Basin, Japan. *Ann Trop Med Parasitol.* 1988;82(5):475-80.
28. Hoffmann H, Esterre P, Ravaoalimalala VA, Ehrich JHH, Doehring E. Morbidity of schistosomiasis mansoni in the highlands of Madagascar and comparison of current sonographical classification systems. *Trans R Soc Trop Med Hyg.* 2001;95(6):623-9.
29. Homeida M, Ahmed S, Dafalla A, Suliman S, Eltom I, Nash T, Bennett JL. Morbidity associated with *Schistosoma mansoni* infection as determined by ultrasound: a study in Gezira, Sudan. *Am J Trop Med Hyg.* 1988;39(2):196-201.
30. Kamdem SD, Konhawa F, Kuemkon EM, Meyo Kamguia L, Tchanana GK, Nche F, et al. Negative Association of Interleukin-33 Plasma Levels and Schistosomiasis Infection in a Site of Polyparasitism in Rural Cameroon. *Front Immunol.* 2019;10:2827.
31. Kariuki HC, Mbugua G, Magak P, Bailey JA, Muchiri EM, Thiongo FW, et al. Prevalence and familial aggregation of schistosomal liver morbidity in Kenya: evaluation by new ultrasound criteria. *J Infect Dis.* 2001;183(6):960-6.
32. King CH, Magak P, Salam EA, Ouma JH, Kariuki HC, Blanton RE. Measuring morbidity in schistosomiasis mansoni: relationship between image pattern, portal vein diameter and portal branch thickness in large-scale surveys using new WHO coding guidelines for ultrasound in schistosomiasis. *TM & IH.* 2003;8(2):109-17.
33. Mazigo HD, Dunne DW, Morona D, Lutufyo TE, Kinung'hi SM, Kaatano G, Nuwaha F. Periportal fibrosis, liver and spleen sizes among *S. mansoni* mono or co-infected individuals with human immunodeficiency virus-1 in fishing villages along Lake Victoria shores, North-Western, Tanzania. *Parasites & Vectors.* 2015;8(1):260.
34. Meurs L, Mbow M, Vereecken K, Menten J, Mboup S, Polman K. Bladder morbidity and hepatic fibrosis in mixed *Schistosoma haematobium* and *S. mansoni* infections: a population-wide study in northern Senegal. *PLoS Negl Trop Dis.* 2012;6(9):e1829.
35. Mohamed-Ali Q, Elwali NE, Abdelhameed AA, Mergani A, Rahoud S, Elagib KE, et al. Susceptibility to periportal (Symmers) fibrosis in human schistosoma mansoni infections: evidence that intensity and duration of infection, gender, and inherited factors are critical in disease progression. *J Infect Dis.* 1999;180(4):1298-306.
36. Motawea S, Mohamed S, Hosam EN, Hala E, Doaa S, Alaa G. Why schistosomiasis mansoni is still highly prevalent in rural EZBAS in Kafr El Sheikh, Egypt? *Benha M J.* 2004;21:305-30.

37. Mueller A, Fuss A, Ziegler U, Kaatano GM, Mazigo HD. Intestinal schistosomiasis of Ijinga Island, north-western Tanzania: prevalence, intensity of infection, hepatosplenic morbidities and their associated factors. *BMC Infect Dis.* 2019;19(832).
38. Nalugwa A, Nuwaha F, Tukahebwa EM, Olsen A. Schistosoma mansoni-Associated Morbidity among Preschool-Aged Children along the Shores of Lake Victoria in Uganda. *Trop Med Infect Dis.* 2017;2(4).
39. Ndamba J, Makaza N, Kaondera KC, Munjoma M. Morbidity due to Schistosoma mansoni among sugar-cane cutters in Zimbabwe. *Int J Epidemiol.* 1991;20(3):787-95.
40. Nega B, Berihu H. Association of total levels of serum antioxidants with intensity and periportal fibrosis of Schistosoma mansoni infection in Worke Mado, Ethiopia, 2013. *Biochem Anal Biochem.* 2014;3(2):157.
41. Negrao-Correa D, Fittipaldi JF, Lambertucci JR, Teixeira MM, De Figueiredo Antunes CM, Carneiro M. Association of Schistosoma mansoni-specific IgG and IgE antibody production and clinical schistosomiasis status in a rural area of Minas Gerais, Brazil. *PLoS One.* 2014;9(2):e88042.
42. Nooman ZM, Hasan AH, Waheeb Y, Mishriky AM, Ragheb M, Abu-Saif AN, et al. The epidemiology of schistosomiasis in Egypt: Ismailia governorate. *Am J Trop Med Hyg.* 2000;62(2 Suppl):35–41.
43. Nooman ZM, Hassan AH, Mishrirky AM, Ragheb M, Abu-Saif AN, Abaza SM, et al. The Use and Limitations of Ultrasonography in the Diagnosis of Liver Morbidity Attributable to Schistosoma mansoni Infection in Community-Based Surveys. *Mem Inst Oswaldo Cruz.* 1995;90(2):147–54.
44. Ocamo P, Opio KC, Seremba E, Ajal P, Apica BS, Aginya EO. The burden, pattern and factors that contribute to periportal fibrosis in HIV-infected patients in an S. mansoni endemic rural Uganda. *Afr Health Sci.* 2017;17(2):301–7.
45. Odongo-Aginya EI, Lakwo TL, Doehring ME. Evaluation of Schistosoma mansoni morbidity one year after praziquantel treatment in Rhino Camp and Obongi in West Nile, Uganda. *Afr J Infect Dis.* 2010;4(2):43–50.
46. Oliveira LFA, Moreno EC, Gazzinelli G, Martins Filho OA, Silveira AMS, Gazzinelli A, et al. Cytokine production associated with periportal fibrosis during chronic schistosomiasis mansoni in humans. *Infect Immun.* 2006;74(2):1215–21.
47. Rouquet P, Verle P, Kongs A, Talla I, Niang M. Hepatosplenic alterations determined by ultrasonography in a population recently infected with Schistosoma mansoni Richard-Toll, Senegal. *Trans R Soc Trop Med Hyg.* 1993;87(2):190-3.
48. Ruiz R, Candia P, Garassini M, Tombazzi C, Certad G, Bruces AC, et al. Schistosomiasis mansoni in low transmission areas. Abdominal ultrasound. *Mem Inst Oswaldo Cruz.* 2002;97(Supplement 1):153–9.
49. Russell HJ, Penney JMS, Linder C, Joekes EC, Bustinduy AL, Stothard JR, et al. A cross-sectional study of periportal fibrosis and Schistosoma mansoni infection among school-aged children in a hard-to-reach area of Madagascar. *Trans R Soc Trop Med Hyg.* 2020;114(4):315–22.

50. Sayasone S, Rasphone O, Vanmany M, Vounatsou P, Utzinger J, Tanner M, et al. Severe morbidity due to *Opisthorchis viverrini* and *Schistosoma mekongi* infection in Lao People's Democratic Republic. *Clin Infect Dis*. 2012;55(6):e54–e7.
51. Silveira AMS, Bethony J, Gazzinelli A, Kloos H, Fraga LAdO, Alvares MCB, et al. High levels of IgG4 to *Schistosoma mansoni* egg antigens in individuals with periportal fibrosis. *Am J Trop Med Hyg*. 2002;66(5):542–9.
52. Wiegand RE, Secor WE, Fleming FM, French MD, King CH, Deol AK, et al. Associations between infection intensity categories and morbidity prevalence in school-age children are much stronger for *Schistosoma haematobium* than for *S. mansoni*. *PLoS Negl Trop Dis*. 2021;15(5):e0009444.
53. Carlton EJ, Hsiang M, Zhang Y, Johnson S, Hubbard A, Spear RC. The Impact of *Schistosoma japonicum* Infection and Treatment on Ultrasound-Detectable Morbidity: A Five-Year Cohort Study in Southwest China. *PLoS Negl Trop Dis*. 2010;4(5):e685.
54. Olveda DU, Inobaya M, Olveda RM, Vinluan ML, Ng SK, Weerakoon K, et al. Diagnosing schistosomiasis-induced liver morbidity: implications for global control. *Int J Infect Dis*. 2017;54:138–44.
55. Chami GF, Fenwick A, Bulte E, Kontoleon AA, Kabatereine NB, Tukahebwa EM, Dunne DW. Influence of *Schistosoma mansoni* and Hookworm Infection Intensities on Anaemia in Ugandan Villages. *PLoS Negl Trop Dis*. 2015;9(10):e0004193.
56. Carvalho Santos J, Dória Batista A, Maria Mola Vasconcelos C, Souza Lemos R, Romão de Souza Junior V, Dessen A, et al. Liver ultrasound elastography for the evaluation of periportal fibrosis in schistosomiasis mansoni: A cross-sectional study. *PLoS Negl Trop Dis*. 2018;12(11):e0006868.
57. Deol AK, Fleming FM, Calvo-Urbano B, Walker M, Bucumi V, Gnandou I, et al. Schistosomiasis - Assessing Progress toward the 2020 and 2025 Global Goals. *N Engl J Med*. 2019;381(26):2519-28.
58. Olveda DU, Inobaya MT, McManus DP, Olveda RM, Vinluan ML, Ng S-K, et al. Biennial versus annual treatment for schistosomiasis and its impact on liver morbidity. *Int J Infect Dis*. 2017;54:145–9.

Figure legends

Figure 1: PRISMA study selection.

Figure 2: Map showing locations and number of studies included in systematic review.

Figure 3: Forest plot of association of current schistosome infection on periportal fibrosis outcome.

Figure 4: Forest plot of association of current schistosome infection intensity on periportal fibrosis outcome.

Table footnotes

Table 1: Summary of study characteristics included in the systematic review.

The total number of studies included here is 38 as King et al, 2003³⁷ included two separate study populations, from different countries.

Table 2. Study Characteristics

* Number of people measured for both the exposure and the outcome

**Mixed referring to co-infection with *S. mansoni* and *S. haematobium*

*** Specific test(s): Rapid Medical Diagnostics, Pretoria, RSA

**** 54.9% of the sample was diagnosed using microscopy, 45.1% of the sample was diagnosed by serology.

Study ID: author and date of publication

ALT: Alanine transaminase

COPT: Circumoval Precipitin Test and Alkaline Phosphatase Immunoassay

ELISA: enzyme-linked immunosorbent assay.

EPG: Eggs per gram of stool

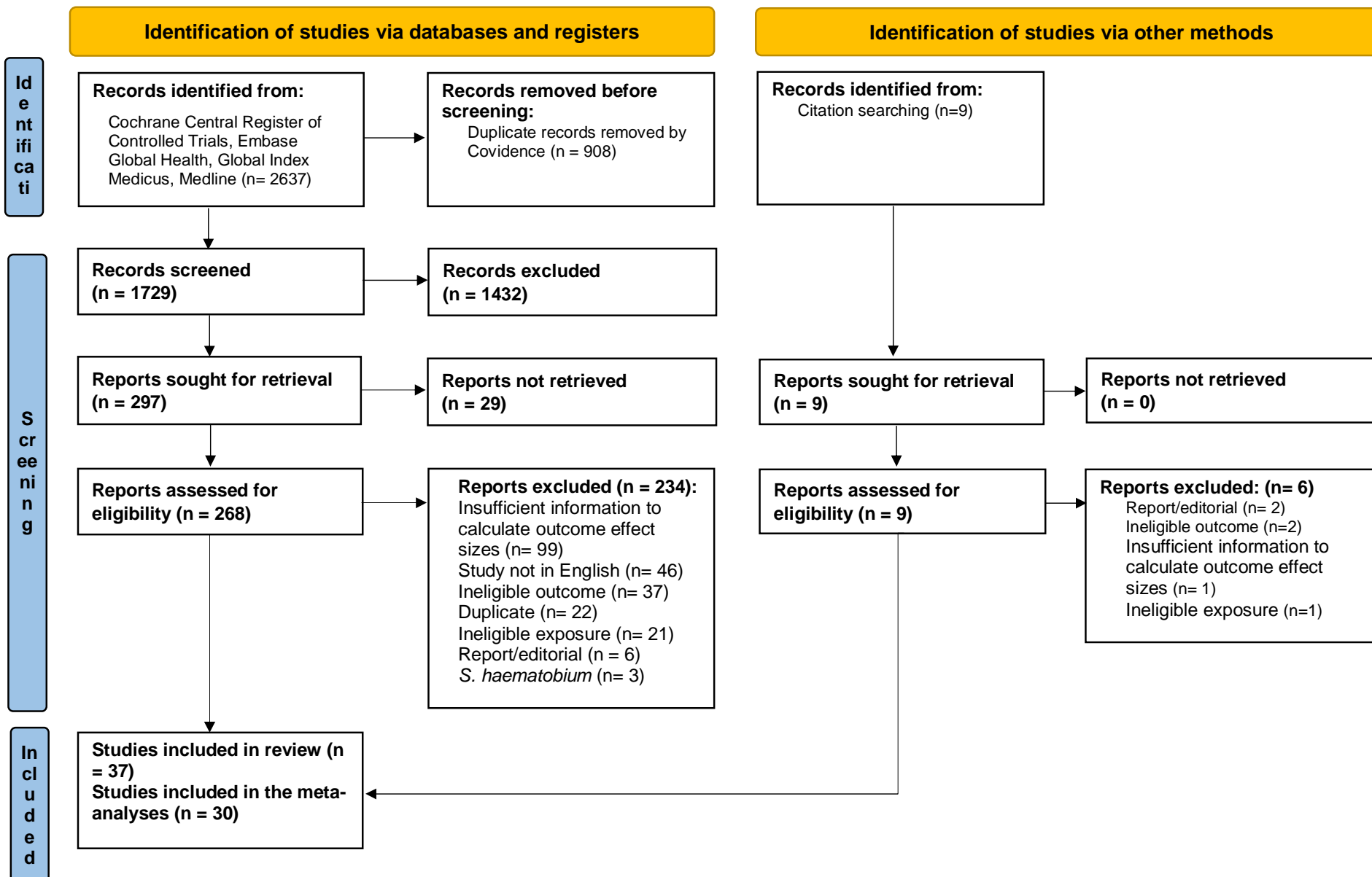
HCV: Hepatitis C

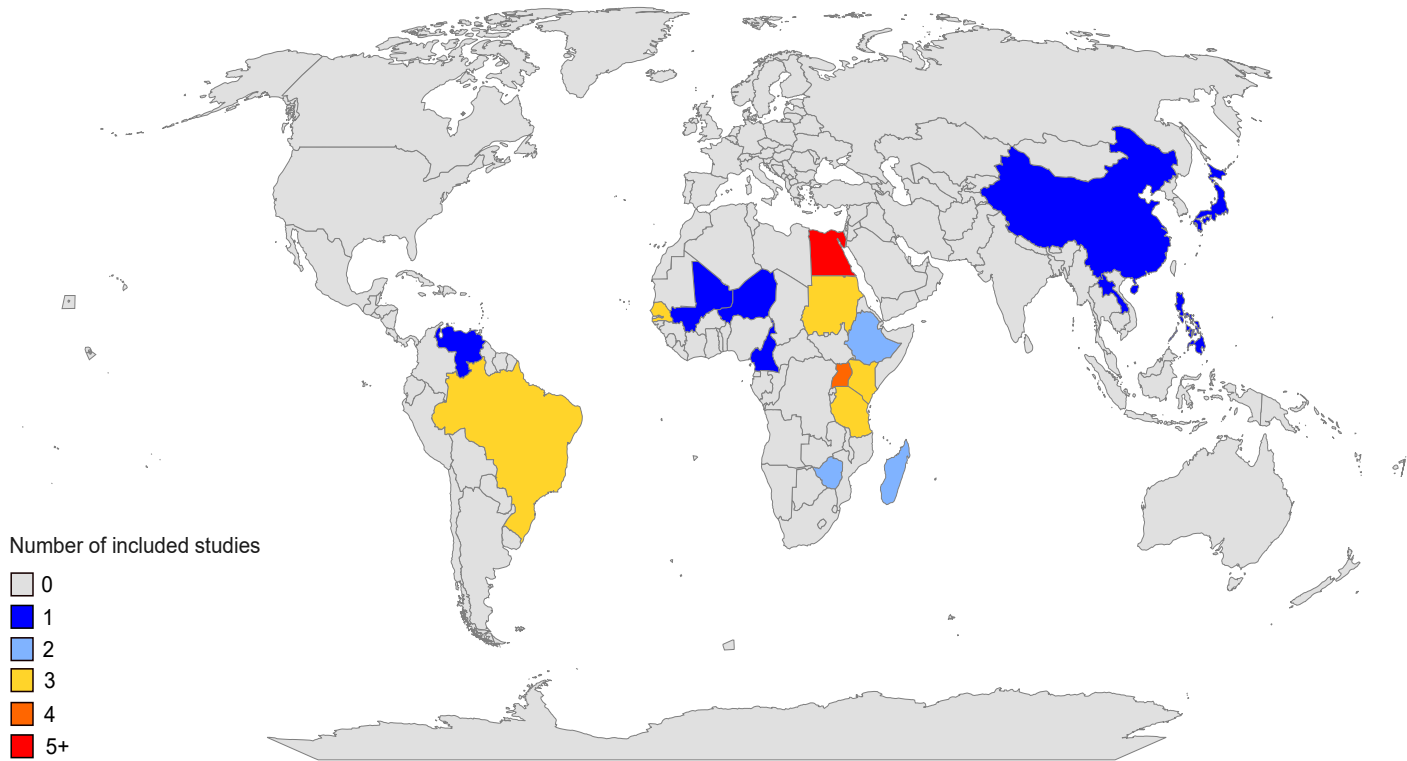
Table 3: Subgroup analyses

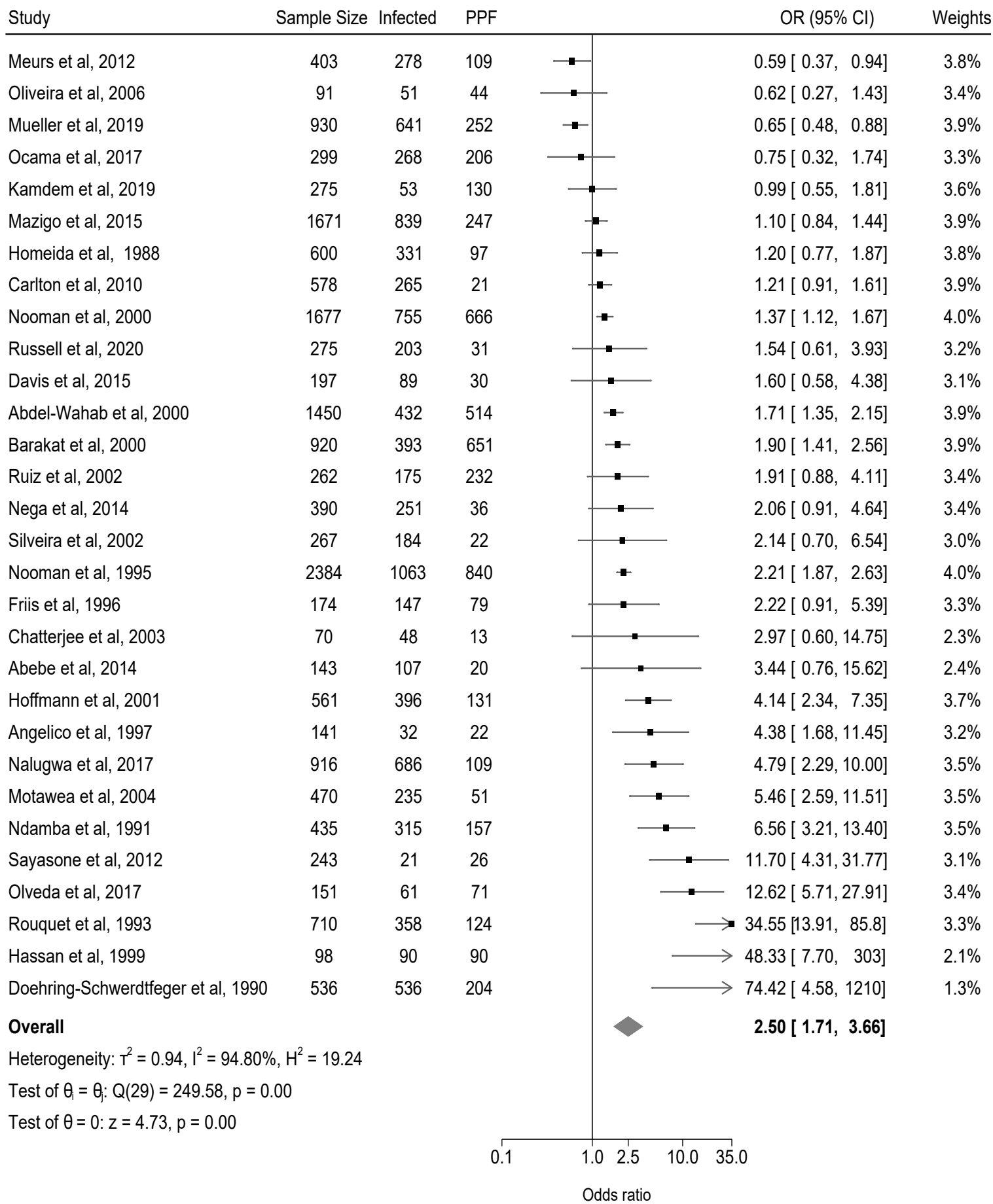
Appendices

Appendix 1: Supplementary material

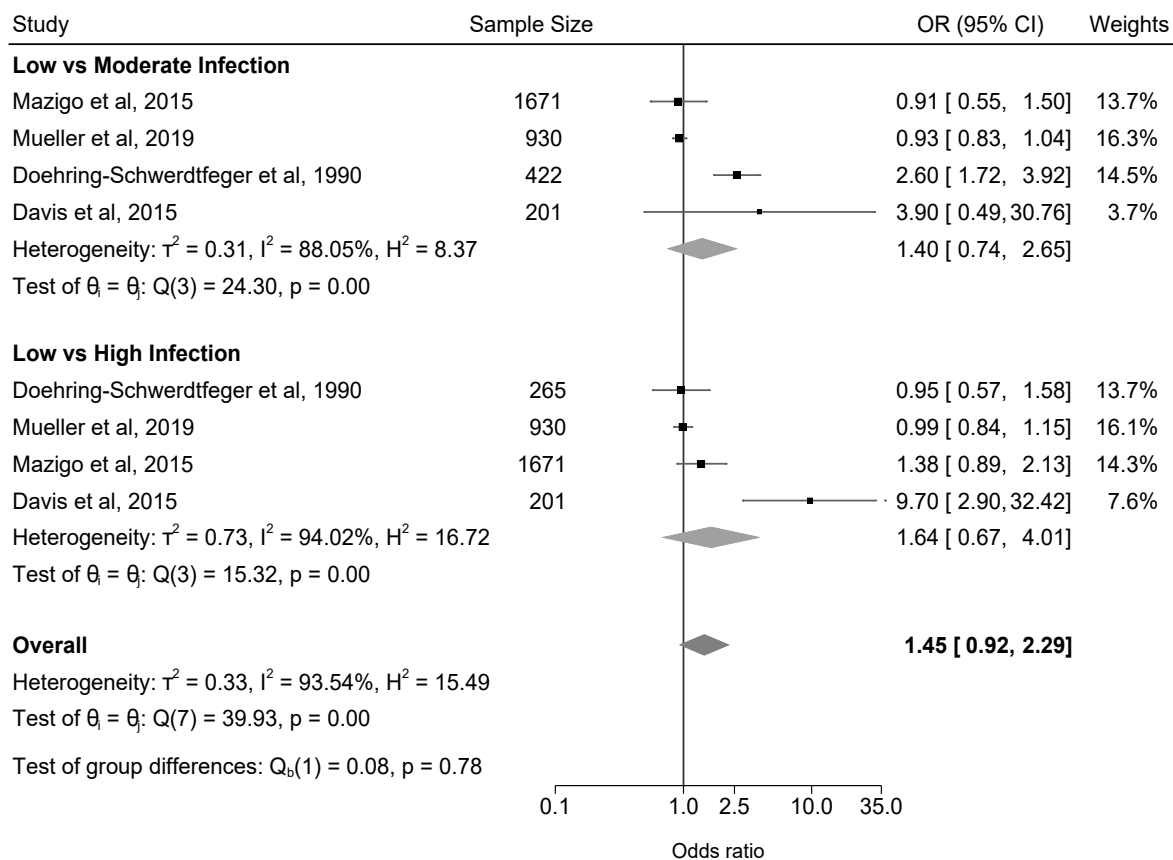
Appendix 2: Data extraction table



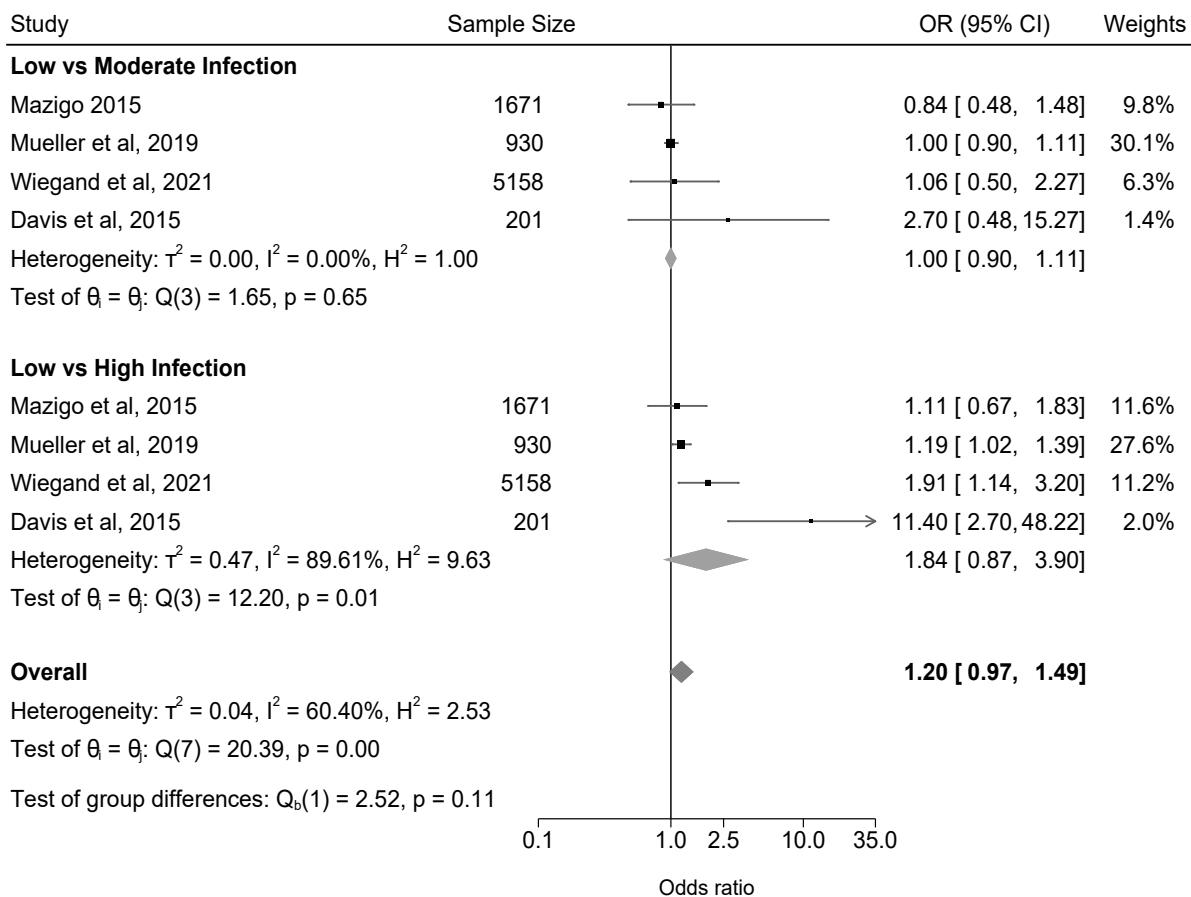




A.



B.



| Study characteristic | Type | Number of participants | Number of studies | Percentage (%) |
|------------------------------------|--|------------------------|-------------------|----------------|
| Study Aims | Prevalence of schistosome infection and/or morbidity | 9635 | 14 | 36.84 |
| | Asses the use of ultrasound in the diagnosis of fibrosis. | 9405 | 9 | 23.68 |
| | Immune/genetics of periportal fibrosis | 2915 | 6 | 15.78 |
| | Association of schistosome infection and periportal fibrosis | 941 | 3 | 7.89 |
| | Impact of praziquantel on schistosomiasis morbidity | 1838 | 2 | 5.26 |
| | Risk factors in transmission | 611 | 2 | 5.26 |
| | Disease progression | 792 | 1 | 2.63 |
| | Impacts of infection intensity | 5158 | 1 | 2.63 |
| Study region | Sub-Saharan Africa | 18110 | 19 | 50.00 |
| | North Africa/East | 10960 | 11 | 28.95 |
| | South-East Asia | 808 | 2 | 5.26 |
| | Central Asia | 700 | 2 | 5.26 |
| | South and Central America | 717 | 4 | 10.53 |
| Study design | Cross-sectional | 21885 | 29 | 76.32 |
| | Cohort | 7009 | 3 | 7.89 |
| | Case-control | 2401 | 6 | 15.79 |
| Study Setting | Community | 23070 | 26 | 68.42 |
| | School | 6714 | 5 | 13.16 |
| | Health clinic/hospital | 833 | 5 | 13.16 |
| | Workplace | 435 | 1 | 2.63 |
| | Community + Health Clinic | 243 | 1 | 2.63 |
| <i>Schistosoma</i> species | <i>S. mansoni</i> | 29787 | 34 | 89.47 |
| | <i>S. japonicum</i> | 1265 | 3 | 7.89 |
| | <i>S. mekongi</i> | 243 | 1 | 2.63 |
| <i>Schistosome</i> diagnostic tool | Kato-Katz Microscopy | 30612 | 35 | 92.11 |
| | Serology | 122 | 1 | 2.63 |
| | Antigen | 299 | 1 | 2.63 |
| | Microscopy and Serology | 262 | 1 | 2.63 |
| Ultrasound protocol | Niamey | 8557 | 16 | 42.11 |
| | Cairo | 12528 | 11 | 28.95 |
| | Abdel-Wahab | 1984 | 2 | 5.26 |
| | Uto | 2092 | 1 | 2.63 |

| | | | | |
|---|-----------------------------|-------|----|-------|
| | Homeida | 1113 | 2 | 5.26 |
| | Managil | 1671 | 1 | 2.63 |
| | Doehring-Schwerdtfeger | 600 | 1 | 2.63 |
| | Undefined | 1677 | 1 | 2.63 |
| | Not reported | 1073 | 3 | 7.89 |
| Author defined periportal fibrosis definition | Mean of three measurements | 8185 | 9 | 23.68 |
| | Image patterns C-F | 10893 | 13 | 34.21 |
| | Grade based on echogenicity | 3405 | 5 | 13.15 |
| | Not reported | 5548 | 2 | 5.26 |
| | Other | 3240 | 9 | 23.68 |

| Study ID | Country | Locale | Study Setting | Study objective | Study design | Eligibility criteria | Number of participants | Age years | Sex (M/F) | Species | Diagnostic tool (exact) | Infection status definition | Infection intensity definition | Author defined PPF definition | Ultrasound Protocol |
|---------------------------------------|----------|-----------------|---------------|--|-----------------------|--|------------------------|-----------|-----------|---------------------|--|---|---|---|---------------------|
| Abdel-Wahab et al, 2000 ¹⁸ | Egypt | Rural | Community | Assessing the prevalence of <i>Schistosoma</i> infections, infection intensity and periportal fibrosis | Cross-sectional study | Over 5 years old from a village with a population <15,000 | 1450 | 0 – >55 | M/F | <i>S. mansoni</i> | Microscopy (Kato-Katz) | Not reported | Geometric mean EPG | Mean of three measurements of the peripheral portal tracts | Cairo |
| Abebe et al, 2014 ¹⁹ | Ethiopia | Rural and Urban | Community | Assessing the association between infection status and Schistosoma-related morbidities | Cross-sectional study | All family members in the sampled households | 162 | 1 – >30 | M/F | <i>S. mansoni</i> | Microscopy (Kato-Katz) | Not reported | Categorised into light (1–99 EPG), moderate (100–400 EPG) and heavy infections (more than 400 EPG). | Image pattern score + portal branch wall thickness (PBWT) score | Niamey |
| Angelico et al, 1997 ²⁰ | Egypt | Rural | Health Clinic | Assess the risk factors, pathogenicity, and viral features of HCV and its association with schistosomiasis | Cross-sectional study | One of: Persistent elevation of serum ALT; evidence of splenomegaly; previous splenectomy; presence of ascites; history of gastrointestinal bleeding; recurrent jaundice | 141 | 31 – 55 | M/F | <i>S. mansoni</i> | Microscopy (Kato-Katz) | Presence of <i>S. mansoni</i> eggs in stool | Not reported | Periportal echogenicity with preserved liver function and normal/near-normal ALT. | Cairo |
| Barakat et al, 2000 ²¹ | Egypt | Rural | Community | Assessing the prevalence of <i>Schistosoma</i> infections | Cross-sectional study | Over 5 years old from a village with a population <15,000 | 920 | 0 – >55 | M/F | <i>S. mansoni</i> | Microscopy (Kato-Katz) | Not reported | Geometric mean EPG of stool | Mean of three measurements of the peripheral portal tracts. | Cairo |
| Carlton et al, 2010 ⁵³ | China | Rural | Community | Assessing the association between infection status and <i>Schistosoma</i> -related morbidities | Cohort study | Individuals who consented to ultrasound in 2000 and were resident in one of the villages that | 578 | 4 – 60 | M/F | <i>S. japonicum</i> | Microscopy (Kato-Katz or Miracidial hatch) | Having at least one positive test. | EPG, categorised into quartiles due to skew | Mean of three measurements of the peripheral portal tracts. Grade 0: ≤3mm, Grade 1: 3-5mm, Grade 2: ≥ 5-7mm, Grade 3: >7 mm Grades 0 and 1 combined for | Cairo |

| | | | | | | | | | | | | | | | |
|--|----------|--------------|---------------|--|-----------------------|--|-----|--------|-----|-------------------|------------------------|---|--|--|------------------------|
| | | | | | | were followed up until 2005 | | | | | | | | analysis | |
| Chatterjee et al, 2003 ²² | Senegal | Not Reported | Health Clinic | Assessing the association between developing periportal fibrosis and somatostatin | Cross-sectional study | Not reported | 70 | 2 – 75 | M/F | <i>S. mansoni</i> | Microscopy (Kato-Katz) | Egg negative | EPG | Image patterns C-F | Niamey |
| Davis et al, 2015 ²³ | Kenya | Rural | Health Clinic | Assessing the association between infection status and <i>Schistosoma</i> -related morbidities | Cross-sectional study | Children must be above 1 year, have a parent resident in the village and not acutely ill | 201 | 1 – 7 | M/F | <i>S. mansoni</i> | Microscopy (Kato-Katz) | Presence of <i>S. mansoni</i> eggs in stool | Categorised as light (1–99 EPG), moderate (100–399 EPG), or heavy (equal to or greater than 400 EPG) intensity | Image patterns C-F | Niamey |
| Doehring-Schwerdtfeger et al, 1990 ²⁴ | Sudan | Not Reported | School | Assessing morbidity due to <i>S. mansoni</i> infected schoolchildren with ultrasound. | Case-control study | Children in the school not previously treated with praziquantel in the last three years. | 536 | 6 – 18 | M/F | <i>S. mansoni</i> | Microscopy (Kato-Katz) | Presence of <i>S. mansoni</i> eggs in stool | EPG. Low (1-100), Moderate (101-400), High (>401) | Three grades of periportal fibrosis. Grade I: echogenic bands with a diameter greater than 4 mm. Grade II: echogenic bands greater than 10 mm in diameter. Grade III: streak-like fibrous bands that were not confined to portal vein lumina but extended into the periphery of the liver. | Doehring-Schwerdtfeger |
| Friis et al, 1996 ²⁵ | Zimbabwe | Rural | Community | Assessing ultrasound use in diagnosing periportal fibrosis | Cross-sectional study | Not reported | 174 | 6 – 17 | M/F | <i>S. mansoni</i> | Microscopy (Kato-Katz) | Presence of <i>S. mansoni</i> eggs in stool | Geometric mean EPG of stool Light (0-100), Moderate (100-400), Heavy (400+) | Mean of three measurements of the peripheral portal tracts. Grade 0: ≤3mm, Grade 1: 3-5mm, Grade 2: ≥ 5-7mm, Grade 3: >7 mm | Cairo |

medRxiv preprint doi: <https://doi.org/10.1101/2024.04.09.24305558>; this version posted April 12, 2024. The copyright holder for this preprint (which was not certified by peer review) is the author/funder, who has granted medRxiv a license to display the preprint in perpetuity. It is made available under a [CC-BY 4.0 International license](#).

| | | | | | | | | | | | | | | | |
|------------------------------------|------------|-------|---------------|---|-----------------------|--|-----|---------|-----|---------------------|--|---|--|---|-------------|
| Hassan et al, 1999 ²⁶ | Egypt | Rural | Community | Assessing ELISA, egg counts, ultrasonographic evaluations, and physical evaluations as indicators of clinical status of <i>S. mansoni</i> infection | Case-control Study | Not reported | 128 | 8 - 16 | M/F | <i>S. mansoni</i> | Microscopy (Kato Katz) Antigen capture ELISA | Eggs in stool | EPG of faeces. Light infection (<100 EPG) Heavy infection (>100 EPG) | Splenic vein diameter. grade 0: , 3 mm; grade 1: 3–5 mm; grade 2: 5–10 mm; and grade 3: . 10 mm | Abdel-Wahab |
| Hirata et al, 1988 ²⁷ | Japan | Rural | Health Clinic | Assessing the serological evaluation for ultrasound diagnoses of chronic <i>Schistosomiasis japonica</i> | Case-control Study | Lived within the study area with a history of <i>S. japonica</i> | 122 | 30 - 87 | M/F | <i>S. japonicum</i> | ELISA Circumoval precipitation test (COPT) | The optical density of the sera was more than two standard deviations of the mean of the negative control group | Optical density | Liver echo patterns. The Network pattern classified as least severe and the sieve pattern, mottled pattern, mixed pattern classified as more severe. | Uto |
| Hoffmann et al, 2001 ²⁸ | Madagascar | Rural | Community | Assessing the prevalence of periportal fibrosis | Cross-sectional study | All inhabitants of the study area | 561 | 0 – >20 | M/F | <i>S. mansoni</i> | Microscopy (Kato-Katz) | Not reported | Geometric mean EPG of stool | Degree I: periportal echo dense tissue surrounding the central portal vein and the lobular branches. Degree II: Degree I + segmental branches (SB), Degree III: Echo dense tissue independent of portal vein branches | Managil |
| Homeida et al, 1988 ²⁹ | Sudan | Rural | Community | Assessing the prevalence of symmers fibrosis | Cross-sectional study | All inhabitants of the study area | 600 | 5 – 60 | M/F | <i>S. mansoni</i> | Microscopy (Kato-Katz) | Not reported | Not reported | Grade 1. Minimal echogenic thickening of the portal vein walls. Grade 2. Mild echogenic thickening of the portal vein walls. Grade 3. Moderate to severe periportal thickening of most portal vein walls | Homeida |

| | | | | | | | | | | | | | | | |
|-----------------------------------|----------|-------|-----------|---|-----------------------|--|------|----------|-----|-------------------|------------------------|---|--|--------------------|--------|
| Kamdem et al, 2019 ³⁰ | Cameroon | Rural | School | Assessing the association between developing periportal fibrosis and the immune response | Cross-sectional study | Schoolchildren in public schools were included | 275 | 6 – 16 | M/F | <i>S. mansoni</i> | Microscopy (Kato-Katz) | Presence of <i>S. mansoni</i> eggs in stool | Geometric mean EPG of stool | Image patterns C-F | Niamey |
| Kariuki et al, 2001 ³¹ | Kenya | Rural | Community | Assessing the association between developing periportal fibrosis and genetic susceptibility | Cross-sectional study | All individuals aged 5 or over from the study villages that consented to provide stool samples | 2115 | 0 – ≥80 | M/F | <i>S. mansoni</i> | Microscopy (Kato-Katz) | Not reported | Geometric mean EPG of stool | Image patterns C-F | Niamey |
| King et al, 2003 ³² | Egypt | Rural | Community | Assessing ultrasound use in diagnosing periportal fibrosis | Cross-sectional study | Individuals aged over 11 years | 1862 | 10 – 70+ | M/F | <i>S. mansoni</i> | Microscopy (Kato-Katz) | Presence of <i>S. mansoni</i> eggs in stool | Number of eggs detected per gram of stool (EPG). Log transformed | Image patterns C-F | Niamey |
| King et al, 2003 ³² | Kenya | Rural | Community | Assessing ultrasound use in diagnosing periportal fibrosis | Cross-sectional study | Individuals aged over 11 years | 2092 | 10 – 70+ | M/F | <i>S. mansoni</i> | Microscopy (Kato-Katz) | Presence of <i>S. mansoni</i> eggs in stool | Number of eggs detected per gram of stool (EPG). Log transformed | Image patterns C-F | Niamey |

| | | | | | | | | | | | | | | | |
|--|----------|-------|-----------|---|-----------------------|---|------|----------|-----|-------------------|------------------------|---|--|--|-----------|
| Mazigo et al, 2015 ³³ | Tanzania | Rural | Community | Assessing ultrasound use in diagnosing periportal fibrosis | Cross-sectional study | Permanent residents of the study villages aged between 21-55 years. Participants on antiretroviral treatment or treated with praziquantel in the past six months were excluded. | 1671 | 21-55 | M/F | <i>S. mansoni</i> | Microscopy (Kato-Katz) | Presence of <i>S. mansoni</i> eggs in stool | Categorised as light (1–99 EPG), moderate (100–399 EPG), or heavy (equal to or greater than 400 EPG) intensity | Image patterns C-F | Niamey |
| Meurs et al, 2012 ³⁴ | Senegal | Rural | Community | Assessing the prevalence of periportal fibrosis in individuals with mixed** <i>Schistosoma</i> infections | Cross-sectional study | Individuals that displayed <i>S. mansoni</i> related hepatic morbidities | 403 | 0 – ≥40 | M/F | <i>S. mansoni</i> | Microscopy (Kato-Katz) | Passing eggs of <i>S. mansoni</i> eggs | Log EPG of stool | Image patterns C-F | Niamey |
| Mohammed-Ali et al, 1999 ³⁵ | Sudan | Rural | Community | Assessing disease progression of schistosomiasis infection in an endemic setting. | Cross-sectional study | Individuals in the study area that were available at the time of ultrasound evaluations. | 792 | <6 - >50 | M/F | <i>S. mansoni</i> | Microscopy (Kato-Katz) | Presence of <i>S. mansoni</i> eggs in stool | EPG | Grades of fibrosis (F1-FIII) Grade 0; normal liver with no thickening of the peripheral portal branches (PPB) wall and PPB diameters ~2–3 mm. F1; patterns of small stretches of fibrosis around secondary portal branches and PPB diameters ~4 mm. FII; patchy fibrosis with continuous fibrosis affecting most second-order | Undefined |

| | | | | | | | | | | | | | | | |
|-----------------------------------|----------|--------------|-----------|--|-----------------------|--|-----|----------|-----|-------------------|------------------------|---|--|--|--------|
| | | | | | | | | | | | | | | branches PPB diameter is ~5–6 mm. FIII; thickening of the walls of most PPBs, some branches are occluded, The long segment of the fibrosis reaches the surface of the liver. The thickness of the gallbladder wall is usually 14 mm. | |
| Motawea et al, 2004 ³⁶ | Egypt | Rural | School | Assessing <i>Schistosoma</i> transmission and risk factors | Case-control study | Individuals aged over 2 years | 470 | <5 – >45 | M/F | <i>S. mansoni</i> | Microscopy (Kato-Katz) | Not reported | Not reported | Mean of three measurements of the peripheral portal tracts. Grade 0: ≤3mm, Grade 1: 3-5mm, Grade 2: ≥ 5-7mm, Grade 3: >7 mm | Cairo |
| Mueller et al, 2019 ³⁷ | Tanzania | Rural | Community | Assessing the prevalence of <i>Schistosoma</i> infections, infection intensity and periportal fibrosis | Cross-sectional study | Over 1 years old and permanent residents of the study area | 930 | 1 – 95 | M/F | <i>S. mansoni</i> | Microscopy (Kato-Katz) | Geometric mean EPG | Categorised as 1–99 EPG (low), 100–399 EPG (moderate), ≥400 EPG(heavy) intensities | Image patterns C-F | Niamey |
| Nalugwa et al, 2017 ³⁸ | Uganda | Not Reported | Community | Assessing the prevalence of periportal fibrosis | Cross-sectional study | Individuals aged 12 to 60 months | 916 | 1 – 5 | M/F | <i>S. mansoni</i> | Microscopy (Kato-Katz) | Presence of <i>S. mansoni</i> eggs in stool | Geometric mean EPG. Categorised as 1–99 EPG (low), 100–399 EPG (moderate), ≥400 EPG (heavy) intensities. | Image patterns B-F | Niamey |

| | | | | | | | | | | | | | | | |
|---|----------|-------|-----------|---|-----------------------|---|-----|-----------|-----|-------------------|------------------------|---|--|--|--------------|
| Ndamba et al, 1991 ³⁹ | Zimbabwe | Rural | Workplace | Assessing the level of morbidity due to <i>S. mansoni</i> in the study area. | Case-control study | Male sugar cane workers in the study area with <i>S. mansoni</i> infection and a lack of anti-helminth treatment in the past three years. | 435 | 18 – 54 | M | <i>S. mansoni</i> | Microscopy (Kato-Katz) | Presence of <i>S. mansoni</i> eggs in stool | Mean intensity of infection categorised into 23-100, 101-200, 301-400, 401-500, 500+ (eggs/gram) | Grade 1. Minimal echogenic thickening of the portal vein walls. Grade 2. Mild echogenic thickening of the portal vein walls. Grade 3. Moderate to severe periportal thickening of most portal vein walls | Homeida |
| Nega et al, 2014 ⁴⁰ | Ethiopia | Rural | Community | Assessing the prevalence of <i>Schistosoma</i> infections, periportal fibrosis and total serum antioxidants | Cross-sectional study | Not reported | 390 | <14 – >55 | M/F | <i>S. mansoni</i> | Microscopy (Kato-Katz) | Not reported | Geometric mean EPG of stool. Categorised into light, moderate and heavy infections | Not reported | Not reported |
| Negrao-Correa et al, 2014 ⁴¹ | Brazil | Rural | Community | Assessing the association between developing periportal fibrosis and the immune response | Cross-sectional study | Individuals aged between 14-68 years with a positive <i>S. mansoni</i> sample and consented to provide a plasma sample | 97 | 14 – 68 | M/F | <i>S. mansoni</i> | Microscopy (Kato-Katz) | Not reported | Not reported | Abnormal measurements of portal vein diameter, portal vein thickness and gallbladder wall thickness | Niamey |

| | | | | | | | | | | | | | | | |
|---|--------|-------|---------------|--|-----------------------|---|------|---------|-----|-------------------|------------------------|---|--|--|--------|
| Nooman et al, 1995 ⁴³ | Egypt | Rural | Community | Assessing ultrasound use in diagnosing periportal fibrosis | Cross-sectional study | Over 1 years old | 2384 | 3 – 94 | M/F | <i>S. mansoni</i> | Microscopy (Kato-Katz) | Not reported | Not reported | Mean of three measurements of the peripheral portal tracts. Grade 0: ≤3mm, Grade 1: 3-5mm, Grade 2: ≥ 5-7mm, Grade 3: >7 mm | Cairo |
| Nooman et al, 2000 ⁴² | Egypt | Rural | Community | Assessing the prevalence of <i>Schistosoma</i> infections, infection intensity and periportal fibrosis | Cross-sectional study | Individuals less than 5 years were excluded | 1677 | 0 – >55 | M/F | <i>S. mansoni</i> | Microscopy (Kato-Katz) | Presence of <i>S. mansoni</i> eggs in stool | Geometric mean EPG | Mean of three measurements of the peripheral portal tracts. | Cairo |
| Ocama et al, 2017 ⁴⁴ | Uganda | Rural | Health Clinic | Assessing the prevalence of periportal fibrosis in HIV-infected individuals | Cross-sectional study | Individuals aged 18 or over | 299 | 18 – 69 | M/F | <i>S. mansoni</i> | Antigen (POC-CCA)*** | Positive CCA test | Not reported | Image patterns C-F | Niamey |
| Odongo-Aginya et al, 2010 ⁴⁵ | Uganda | Rural | Community | Assessing the prevalence of periportal fibrosis following praziquantel treatment | Cohort study | Permanent residents of the villages who have not received anti-schistosomal treatment in the past six months. Chronically ill individuals were not eligible to join | 1273 | 1 – ≥30 | M/F | <i>S. mansoni</i> | Microscopy (Kato-Katz) | Not reported | Number of EPG of stool Categorised as low (1-99EPG), medium (100-499EPG) and high (≥500 EPG) | Grade 0: No echogenicity around the portal veins. Grade I: Echogenicity, smooth irregular texture around periportal veins and gall bladder neck. Grade II: Broad echogenicity >10mm in the central and around periportal veins. Grade III: Full liver involvement of echogenic streaks | Cairo |

| | | | | | | | | | | | | | | | |
|------------------------------------|-----------------|-------|-----------|--|---|---|-----|--------------|-----|---------------------|---|---|---|---|--------------|
| Oliveira et al, 2006 ⁴⁶ | Brazil | Rural | Community | Assessing the association between developing periportal fibrosis and the immune response | Cross-sectional study | All residents of the village | 91 | 14 – 85 | M/F | <i>S. mansoni</i> | Microscopy (Kato-Katz) | Not reported | EPG | Visibility of central and peripheral echogenic periportal thickness of the liver portal system | Abdel-Wahab |
| Olveda et al, 2017 ⁵⁴ | The Philippines | Rural | Community | Assessing the prevalence of periportal fibrosis at baseline and follow up after praziquantel treatment | Cross-sectional study | Individuals aged between 5 and 65 years | 565 | 5 – 65 | M/F | <i>S. japonicum</i> | Microscopy (Kato-Katz) | Presence of <i>S. mansoni</i> eggs in stool | Geometric mean EPG. Categorised as 1–99 EPG (low), 100–399 EPG (moderate), ≥400 EPG (heavy) intensities | Image patterns C-F | Niamey |
| Rouquet et al, 1993 ⁴⁷ | Senegal | Rural | Community | Assessing ultrasound use in an <i>S. mansoni</i> infected population. | Case-control | Controls were required to have lived inside the study location in the last three years. | 710 | >1 | M/F | <i>S. mansoni</i> | Microscopy (Kato-Katz) (controls were not surveyed) | Not reported | Not reported | Ultrasonographic alterations of the portal vein tree. | Not reported |
| Ruiz et al, 2002 ⁴⁸ | Venezuela | Rural | Community | Assessing ultrasound use in diagnosing periportal fibrosis | Cross-sectional study (propensity score matching) | Not reported | 262 | Not reported | M/F | <i>S. mansoni</i> | Microscopy (Kato-Katz) and serology** | <i>S. mansoni</i> eggs in stools or positive serological test | Not reported | Mean of three measurements of the peripheral portal tracts. Grade 0: ≤3mm, Grade 1: 3-5mm, Grade 2: ≥ 5-7mm, Grade 3: >7 mm | Cairo |
| Russell et al, 2020 ⁴⁹ | Madagascar | Rural | School | Assessing the prevalence of periportal fibrosis | Cross-sectional study | School-aged children on the school registers | 275 | 5 – 14 | M/F | <i>S. mansoni</i> | Microscopy (Kato-Katz) | Presence of <i>S. mansoni</i> eggs in stool | Categorised as low, moderate, or heavy | Image patterns C-F | Niamey |

| | | | | | | | | | | | | | | | |
|------------------------------------|----------------------------------|--------------|---------------------------|---|-----------------------|--|------|----------|-----|-------------------|------------------------|---|--|--|--------------|
| Sayasone et al, 2012 ⁵⁰ | Lao People's Democratic Republic | Rural | Community + Health Clinic | Assessing the prevalence of periportal fibrosis in individuals with co-existing <i>Schistosoma</i> and <i>O. viverrini</i> infections | Cross-sectional study | Village residents or hospital patients aged 15 or over with an <i>O. viverrini</i> positive stool sample | 243 | 15 – 81 | M/F | <i>S. mekongi</i> | Microscopy (Kato-Katz) | Not reported | Not reported | Periportal fibrosis: destruction surrounding intrahepatic bile duct (ultrasound) | Not reported |
| Silveira et al, 2002 ⁵¹ | Brazil | Rural | Community | Assessing the association between developing periportal fibrosis and the immune response | Cross-sectional study | Members of the village population | 267 | 11 – >60 | M/F | <i>S. mansoni</i> | Microscopy (Kato-Katz) | Presence of <i>S. mansoni</i> eggs in stool | Mean EPG | Periportal thickness measurements. Grade 0: < 3 mm; Grade 1: 3–5 mm | Cairo |
| Wiegand et al, 2021 ⁵² | Mali, Niger, Uganda, Tanzania | Not Reported | School | Assessing the association between infection intensity and <i>Schistosoma</i> -related morbidities | Cohort study | Height >94cm and not ill | 5158 | 6 – 15 | M/F | <i>S. mansoni</i> | Microscopy (Kato-Katz) | EPG | EPG of stool. Categorized as 1–99 EPG for a light infection; 100–399 EPG as moderate infection; and ≥400 EPG for heavy infection | Not reported | Niamey |

| Subgroups | Number of studies | Number of participants | Number of participants infected with <i>Schistosomes</i> | Number of participants with PPF | OR (95% CI) | I ² | Test of group differences |
|---------------------------------------|-------------------|------------------------|--|---------------------------------|--------------------|----------------|--|
| <u>Continent</u> | | | | | | | Q _b (2) = 3.07, p = 0.21 |
| Africa | 24 | 15725 | 8546 | 4809 | 2.23 (1.51-3.30) | 94.28% | |
| Asia | 3 | 972 | 347 | 118 | 5.35 (1.13-25.40) | 93.80% | |
| South America | 3 | 620 | 410 | 298 | 1.32 (0.60-2.92) | 57.47% | |
| <u>Species</u> | | | | | | | Q _b (1) = 1.09, p = 0.30 |
| <i>S. mansoni</i> | 27 | 16345 | 8956 | 5107 | 2.27 (1.56-3.32) | 94.07% | |
| <i>S. japonicum/S. mekongi</i> | 3 | 972 | 347 | 118 | 5.35 (1.13-25.40) | 93.80% | |
| <u>Study setting</u> | | | | | | | Q _b (2) = 0.51, p = 0.78 |
| Community | 20 | 14376 | 7503 | 4355 | 2.27 (1.42-3.62) | 96.40% | |
| School | 4 | 1556 | 1027 | 416 | 3.39 (0.81-14.13) | 89.12% | |
| Health Clinic | 4 | 707 | 437 | 271 | 1.86 (0.81-4.31) | 60.29% | |
| <u>Study Design</u> | | | | | | | Q _b (1) = 15.75, p < 0.001* |
| Cross-sectional | 25 | 15068 | 7769 | 4599 | 1.83 (1.34-2.49) | 91.60% | |
| Case-control | 5 | 2249 | 1534 | 626 | 15.80 (5.70-43.82) | 76.84% | |
| <u>Sub-Saharan Africa</u> | | | | | | | Q _b (1) = 8.56, p < 0.001* |
| <u>MDA</u> | | | | | | | |
| Pre-MDA (pre-2003) | 5 | 1950 | 1264 | 504 | 5.91 (2.29-15.21) | 83.87% | |
| Post-MDA (inclusive of 2003 or after) | 10 | 5499 | 3415 | 1170 | 1.25 (0.82-1.92) | 81.41% | |
| <u>Ultrasound Protocol</u> | | | | | | | Q _b (2) = 2.05, p = 0.36 |
| Niamey | 11 | 5330 | 3273 | 1218 | 1.63 (0.91-2.94) | 90.52% | |
| Cairo | 9 | 8056 | 3497 | 3076 | 1.94 (1.49-2.53) | 81.29% | |

| | | | | | | | |
|---------------------------------|----|-------|------|------|-------------------|---------|----------------------------------|
| Alternative | 7 | 2588 | 1903 | 745 | 4.19 (1.33-13.23) | 92.46% | |
| <u>PPF Outcomes</u> | | | | | | | $Q_b(2) = 6.69, p = 0.04^*$ |
| <u>Definitions</u> | | | | | | | |
| Patterns | 10 | 5179 | 3212 | 1147 | 1.25 (0.80-1.96) | 81.35% | |
| Measurements | 9 | 7526 | 3341 | 3167 | 2.13 (1.35-3.37) | 92.87% | |
| Features | 5 | 2273 | 611 | 1610 | 4.18 (1.75-9.98) | 84.43% | |
| <u>Niamey Deviations</u> | | | | | | | $Q_b(1) = 13.90, p = 0.01^{***}$ |
| Niamey | 4 | 1326 | 930 | 172 | 3.13 (1.67-5.86) | 22.37% | |
| Deviations from Niamey | 5 | 3578 | 2229 | 845 | 0.82 (0.59-1.13) | 59.16% | |
| <u>Risk of Bias</u> | | | | | | | $Q_b(2) = 3.05, p = 0.22$ |
| Low | 7 | 4361 | 2552 | 861 | 2.71 (0.98-7.48) | 95.55% | |
| Medium | 17 | 11186 | 5595 | 3704 | 1.92 (1.34-2.76) | 92.41% | |
| High | 7 | 1770 | 1156 | 660 | 5.53 (1.71-17.87) | 87.332% | |