

1 **MONITORING OF RESPIRATORY VIRUS COINFECTION IN SOUTHERN**
2 **BRAZIL DURING COVID-19 PANDEMIC**

3

4 Dayane Azevedo Padilha^{1,3}, Fernando Hartmann Barazzetti^{2,3}, Marcos André
5 Schörner², Vilmar Benetti Filho^{1,3}, Eric Kazuo Kawagoe³, Doris Sobral Marques
6 Souza¹, Maria Luiza Bazzo², Glauber Wagner³ and Gislaine Fongaro^{1*}

7

8 ¹ Laboratório de Virologia Aplicada do Departamento de Microbiologia,
9 Imunologia e Parasitologia (MIP) do Centro de Ciências Biológicas (CCB),
10 Universidade Federal de Santa Catarina, Florianópolis, Brazil.

11 ² Laboratório de Biologia Molecular, Microbiologia e Sorologia do Centro de
12 Ciências da Saúde (CCS), Universidade Federal de Santa Catarina,
13 Florianópolis, Brazil.

14 ³ Laboratório de Bioinformática do Departamento de Microbiologia, Imunologia e
15 Parasitologia (MIP) do Centro de Ciências Biológicas (CCB), Universidade
16 Federal de Santa Catarina, Florianópolis, Brazil.

17

18 * Corresponding Author: Prof. Gislaine Fongaro

19 Departamento de Microbiologia, Imunologia e Parasitologia (MIP) do Centro de
20 Ciências Biológicas (CCB), Universidade Federal de Santa Catarina

21 Florianópolis, SC 88040-900, Brazil

22 E-mail: gislainefongaro@gmail.com

23

24 **ABSTRACT**

25 Since December 2019, the COVID-19 pandemic caused by SARS-CoV-2 has
26 reached approximately 769 million people, leading to more than 7 million deaths
27 worldwide. Faced with the possible presence of other respiratory pathogens that
28 could co-infect and modify the clinical response of patients detected for SARS-
29 CoV-2, some researchers have explored this line of investigation. The
30 relationship between these co-infections remains unclear, leading to a need to
31 deepen our knowledge about interactions among pathogens, and between
32 pathogens and the host. Thus, the present study employed RT-qPCR to assess
33 the presence of Human Adenovirus (HAdV), Influenza A (Flu A), Influenza B (Flu
34 B), Human Metapneumovirus (HMPV), Respiratory Syncytial Virus (RSV),
35 Human Rhinovirus (HRV), and Parainfluenza Virus (PIV). A total of 187
36 nasopharyngeal samples from adult patients exhibiting respiratory symptoms
37 were collected between February 2021 and November 2022 at the University
38 Hospital Polydoro Ernani de Sao Thiago in Florianopolis, SC, Brazil. Our findings
39 revealed that 25.16% of samples tested positive for non-SARS-CoV-2 respiratory
40 viruses (29.8% - HRV, 5.3% - PIV, 4.3%- RSV, and 1.1% - HMPV). From the
41 74.84% of SARS-CoV-2 positive patients, the presence of co-infection was
42 observed in 9,7% of patients, with 7.5% being HRV, 1.1% HAdV and 1.1% Flu A.
43 Since co-infections can potentially alter patient prognoses and impact local
44 epidemiological dynamics, this study highlights the significance of ongoing
45 monitoring and epidemiological assessment through genomic surveillance of
46 other clinically relevant respiratory pathogens.

47 Keywords: Co-infection; Respiratory Viruses; RT-qPCR; SARS-CoV-2.

48

49 1 INTRODUCTION

50 In August 2023, the pandemic of COVID-19, caused by SARS-CoV-2,
51 reached approximately 769 million cases and almost 7 million deaths worldwide,
52 while in Brazil, the number of cases is approaching 37 million with approximately
53 700,000 deaths. These data reinforce the clinical and epidemiological importance
54 of this pandemic that lasted more than 3 years 1.

55 Early reports from China said that co-infection of SARS-CoV-2 with other
56 respiratory viruses is rare. However, studies have shown that the presence of co-
57 infection between SARS-CoV-2 and other respiratory viruses seems to aggravate
58 lung disease in such a way as to increase the need for mechanical ventilation
59 (when co-infected with influenza, for example), in addition to impacting the
60 circulation of seasonal viral infections and patient morbidity in cases where there
61 is co-infection of SARS-CoV-2 with Respiratory Syncytial Virus (RSV), Human
62 Adenovirus (HAdV), Human Rhinovirus (HRV) and human Metapneumovirus
63 (HMPV) 2, 3.

64 The co-infection of SARS-CoV-2 and influenza is the most reported in the
65 literature. In addition, the two viruses share similarities in terms of respiratory
66 symptoms. It is believed that at the beginning of the pandemic, several cases
67 may have been misdiagnosed, as at that time there were no well-established
68 diagnostic tests for SARS-CoV-2 4.

69 During the first cases of severe acute respiratory infections, at a time in
70 which the pathological agent had not been identified, molecular biology
71 techniques for detecting pathogens through respiratory panels were decisive and
72 paved the way for the sequencing and classification of SARS-CoV-2. At the
73 beginning of the SARS-CoV-2 pandemic, the number of studies of co-infection
74 with other respiratory pathogens was very low. Even today, after the WHO
75 declared the end of the pandemic, knowledge about the influences of co-
76 infections of SARS-CoV-2 with other respiratory viruses is unclear with regards
77 to host-pathogen interactions, patterns of infection and transmissibility, and the
78 clinical outcome of patients 5.

79 Studies have demonstrated the importance of identifying pathogens that
80 cause acute pneumonia even before COVID-19, given the pulmonary

81 predominance of Influenza A (Flu A) and Influenza B (Flu B), HRV, RSV, HMPV,
82 and Parainfluenza Virus (PIV), which had their epidemiological patterns modified
83 with the insertion of SARS-CoV-2 into the population 6.

84 The present study evaluated 187 nasopharyngeal samples from patients
85 with non-serious respiratory symptoms, admitted to a screening unit for the
86 diagnosis of COVID-19, to determine co-infections by HAdV; Flu A; Flu B; HMPV;
87 RSV; HRV, and PIV. Thus, this study aims to report the profile of co-infections of
88 respiratory viruses and SARS-CoV-2 from February 2021 to November 2022 in
89 the state of Santa Catarina, Brazil.

90

91 **2 MATERIALS AND METHODS**

92 *2.1 SAMPLES PROCESSING*

93 A total of 187 nasopharyngeal samples from adults (men and women),
94 with non-serious respiratory symptoms, were randomly collected between
95 February 2021 and November 2022 – of which 88 were obtained from healthcare
96 professionals – with 93 positive and 94 negative diagnoses for SARS-CoV-2.
97 Samples were collected using a nasopharyngeal swab in an appropriate transport
98 medium, as recommended by health agencies, for the diagnosis of SARS-CoV-
99 2.

100 *2.2 RNA PURIFICATION AND PCR*

101 Samples were aliquoted and stored in cryotubes at -80°C. Viral genetic
102 material was extracted using QIAmp Viral RNA Mini Kit (Qiagen, USA). Detection
103 of SARS-CoV-2 was performed using the Allplex™ 2019-nCoV Assay Kit or
104 Allplex™ SARS-CoV-2 Assay Kit (Seegene, Korea). Negative and positive
105 samples for SARS-CoV-2 from symptomatic patients were tested in the Allplex™
106 RV Essential Assay (Seegene, Korea), multiplex qPCR that detects seven
107 viruses: HAdV; Flu A; Flu B; HMPV; RSV; HRV, and PIV. Amplification was
108 performed according to the manufacturer's instructions on the CFX96™ Real-
109 time PCR System thermal cycler (Bio-Rad®) and the results were visualized
110 using the Seegene View software.

111

112 2.3 STATISTICAL ANALYSIS

113 During this study, 187 nasopharyngeal samples from adult patients with
114 respiratory symptoms were collected between February 2021 and November
115 2022 at the Hospital Universitário Polydoro Ernani de São Thiago in Florianópolis,
116 SC, Brazil. After PCR testing for the viruses HAdV, Flu A, Flu B, HMPV, RSV,
117 HRV, and PIV, Fisher's exact test was used to examine the association between
118 SARS-CoV -2 and other viral infections.

119

120 3 RESULTS

121 From February 2021 to November 2022, 187 samples were randomly
122 selected to determine co-infection of SARS-CoV-2 with HAdV, Flu A, Flu B,
123 HMPV, RSV, HRV, and PIV. None of the 187 samples were positive for Flu B.
124 Between February 2021 and November 2022, one test was positive for HAdV,
125 one for Flu A, one for HMPV, four for RSV, 35 HRV, and five for PIV.

126 Absolute and relative frequencies for viral infections are shown in Figure
127 1. HRV was the most frequent infection for patients with negative qPCR results
128 for SARS-CoV-2 (Figure 2) and showed co-infections with PIV, HMPV, and RSV
129 (Figure 1). SARS-CoV-2-positive patients had more co-infections with HRV than
130 the other tested viruses (Figure 2). Also, Flu A and HAdV were only detected in
131 SARS-CoV-2 positive patients and this result indicates a relationship between
132 SARS-CoV-2 and other viral infections caused by Influenza A and HAdV (Fisher's
133 exact test p-value = 0.000001327).

134

135 4 DISCUSSION

136 Even after the official WHO declaration 1 on the end of the public health
137 emergency of international concern related to COVID-19, scientific data still
138 needs to be explored in search of answers that can elucidate the variations in the
139 clinical presentation among patients and in the epidemiological aspects of SARS-
140 CoV-2. One of these explorations involves the importance of co-infection with
141 other respiratory pathogens 1.

142 Respiratory viruses such as influenza (Flu A and Flu B) and RSV were
143 already known in the pre-pandemic periods for affecting the population,
144 generating epidemic outbreaks with cardiorespiratory impairment, which could
145 lead to morbidity in the infected population 7,8. Studies have shown that even
146 early in the pandemic, diagnosis of other respiratory pathogens helped identify
147 the virus that later became known as SARS-CoV-2. Some studies have reported
148 the clinical importance of patients co-infected with respiratory viruses combined
149 with SARS-CoV-2, identifying an increased need for mechanical ventilation after
150 co-infection 3,9.

151 The epidemiological data show a clear change in the detection of seasonal
152 viruses such as influenza, which seems not to have been identified between the
153 years 2020 and 2022, the period with the highest number of cases and deaths
154 caused by COVID-19 10. It is not clear if this lower detection of seasonal
155 respiratory viruses is due to the reduction in the prevalence of pathogens other
156 than SARS-CoV-2 owing to interactions and competition between pathogens, to
157 a possible underreporting resulting from the overload of health professionals
158 involved in the pandemic, or both 11.

159 Of the total of 187 samples from adult patients (men and women) with non-
160 serious respiratory symptoms, one test was positive for HAdV, one for Flu A, one
161 for HMPV, four for RSV, 35 for HRV, and five for PIV. Our data corroborates Kim
162 and collaborators who, in 2020, had already demonstrated higher report rates of
163 HRV and RSV infections in patients with respiratory symptoms but undetected
164 for SARS-CoV-2 11,12.

165 It is important to highlight that, during their study, Kim and collaborators 12
166 also evaluated the presence of enterovirus, Chlamydia pneumoniae and
167 Mycoplasma pneumoniae, unlike our study, in which such infections may have
168 been underreported, and which have clinical importance and may worsen the
169 prognosis of patients infected with SARS-CoV-2. In addition, the number of cases
170 of COVID-19 in our study was much higher 12,13.

171 Another study 14 evaluated, between November 2021 and February 2022,
172 the presence of co-infections among patients detected with SARS-CoV-2 in
173 combination with Flu A (65%), enterovirus-rhinovirus (20%), HAdV (2%), RSV
174 (2%), HMPV (2%), Human parainfluenza virus type 3 (2%), and Human

175 coronavirus (7%). Unlike our study, in which patients detected for SARS-CoV-2
176 had a higher prevalence of co-infection with HRV, Eldesouki et al. 14 had the
177 highest prevalence of co-infection between SARS-CoV-2 and Flu A. On the other
178 hand, we must consider that the studies were developed with different sample
179 sizes (41 patients versus 187), in addition to differences in population
180 characteristics 14.

181 In Brazil, since 2021, data from the Board of Epidemiological Surveillance
182 of the State of Santa Catarina - DIVE (official website for monitoring infectious
183 diseases) have presented RSV, HRV, HAdV, bocavirus, in addition to the
184 unidentified ones, as the main agents causing acute respiratory syndrome after
185 SARS-CoV-2. These data are partially different from our results, showing HRV
186 as the main agent detected both in patients detected and undetected for SARS-
187 CoV-2 15.

188 Severe Acute Respiratory Syndrome (SARS) is a more aggressive
189 infection that can lead to hospitalizations and death. In the surveillance carried
190 out in this work, the largest number of infections reported, except for SARS-CoV-
191 2, is by HRV. This discrepancy in the data can be explained in part by the
192 sampling of this work, which did not cover severe cases, but only classic flu
193 symptoms, a profile different from that monitored by public agencies.
194 Interestingly, although our results demonstrate only one sample of co-infection
195 between SARS-CoV-2 and Flu A, epidemiological data from DIVE 16,17 reported
196 72 deaths in the state of Santa Catarina due to SARS caused by Flu A. We
197 hypothesize that this difference is due to the population group of the study, which
198 were symptomatic adults without enough clinical severity to justify hospitalization
199 characteristics of SARS.

200

201 **5 CONCLUSIONS**

202 Between February 2021 and November 2022, respiratory viruses were
203 diagnosed in 187 adult patients of both sexes, with characteristic symptoms of
204 respiratory infection. During this study, HRV, PIV, RSV, and MPV were detected
205 in patients not detected for SARS-CoV-2, in addition to the detection of HAdV,
206 Flu A, and HRV co-infecting patients detected for SARS-CoV-2. These data

207 demonstrate the importance of the monitoring of contagious infectious pathogens
208 of clinical and epidemiological importance, in addition to SARS-CoV-2, aiming to
209 identify the population epidemiological pattern to improve the tools for preventing
210 transmissibility and making therapeutic approaches as individualized as possible.

211

212 ***DISCLAIMER***

213 The opinions expressed by authors contributing to this journal do not
214 necessarily reflect the opinions of the Federal University of Santa Catarina, Brazil,
215 or the institutions with which the authors are affiliated. The funders had no role in
216 the study design, data analysis, or the decision to publish.

217

218 ***FUNDING***

219 This research was funded by Santa Catarina Research and Innovation
220 Foundation (FAPESC, Santa Catarina, Brazil) (grant number
221 COV2020051000065), CAPES (Coordination for the Improvement of Higher
222 Education Personnel, Brazil), CNPq (National Council for Scientific and
223 Technological Development, Brazil) and UFSC (Federal University of Santa
224 Catarina). DAP, FHB, MAS, VBF, EKK and DSMS were recipients of FAPESC,
225 CAPES, or CNPq scholarships.

226

227 ***INSTITUTIONAL REVIEW BOARD STATEMENT***

228 The study was conducted in accordance with the Declaration of Helsinki
229 and approved by the Ethics Committee in Research Humans Beings of Federal
230 University of Santa Catarina (Assent number: 4.035.636, CAAE:
231 31521920.8.0000.0121, 19 May 2020).

232

233 ***ACKNOWLEDGMENTS***

234 This work is dedicated to all SC citizens who suffered or passed away due
235 to COVID-19. We are indebted to Hospital Universitário/HU/EBSERH at the
236 Federal University of Santa Catarina (Florianópolis, SC, Brazil) for granting
237 access to interview patients and perform sample collection.

238

239 REFERENCES

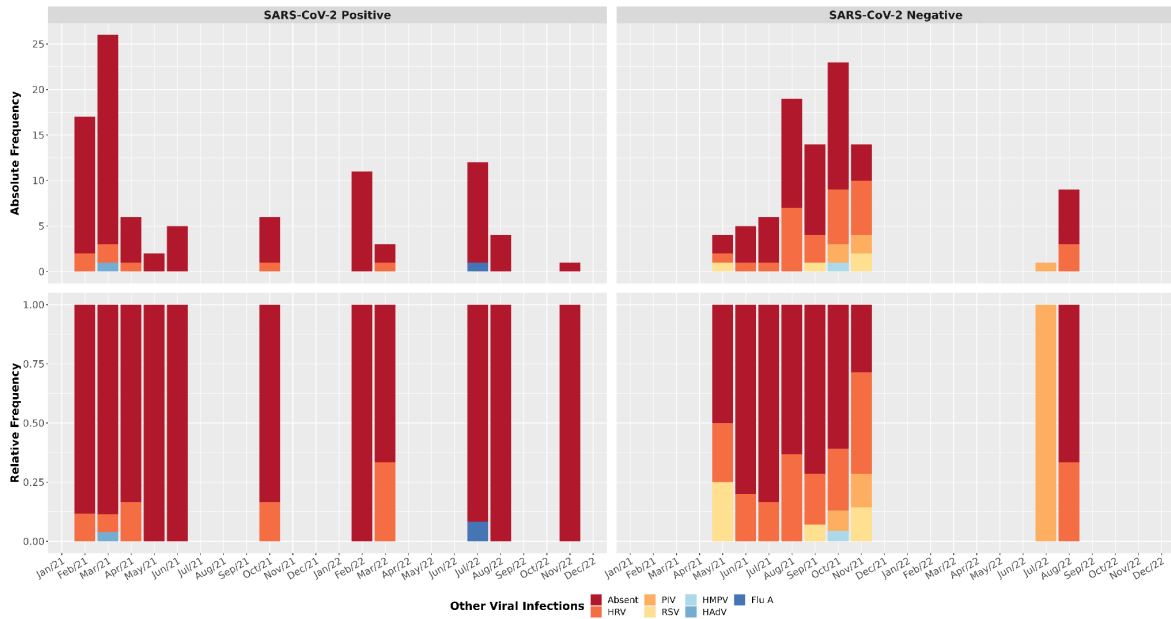
- 240 1. WHO. Corona Virus Dashboard [homepage on the internet]. Cited 2023
241 sep 19. Available from: <<https://covid19.who.int/>>.
- 242 2. Chen N, Zhou M, Dong X, et al. Epidemiological and clinical characteristics
243 of 99 cases of 2019 novel coronavirus pneumonia in Wuhan, China: a descriptive
244 study. *Lancet*. 2020; 395(10223):507-513.
- 245 3. Swets MC, Russell CD, Harrison EM, et al. SARS-CoV-2 co-infection with
246 influenza viruses, respiratory syncytial virus, or adenoviruses. *Lancet* 2022;
247 399:1463–1464.
- 248 4. Scott SJ, Pfothner B, Weiner JJ, et al. Respiratory Pathogen
249 Coinfections in SARS-CoV-2-Positive Patients in Southeastern Wisconsin: A
250 Retrospective Analysis. *Microbiol Spectr*. 2021; 31;9(2):e0083121.
- 251 5. Xing QS, Li GJ, Xing YH, et al. Precautions are needed for COVID-19
252 patients with coinfection of common respiratory pathogens. medRxiv, 2020
253 (PrePrint). doi: 10.1101/2020.02.29.20027698.
- 254 6. Burk M, El-Kersh K, Saad M, et al. Viral infection in community-acquired
255 pneumonia: a systematic review and meta-analysis. *Eur Respir Rev*.
256 2016;25(140):178–188.
- 257 7. Shi T, Denouel A, Tietjen AK, et al. Global Disease Burden Estimates of
258 Respiratory Syncytial Virus-Associated Acute Respiratory Infection in Older
259 Adults in 2015: A Systematic Review and Meta-Analysis. *J. Infect. Dis*.
260 2020;222((Suppl. 7)):S577–S583.
- 261 8. Li Y, Wang X, Blau DM, et al. Global, regional, and national disease burden
262 estimates of acute lower respiratory infections due to respiratory syncytial virus
263 in children younger than 5 years in 2019: A systematic analysis. *Lancet*.
264 2022;399:2047–2064.
- 265 9. Maltezou HC, Papanikolopoulou A, Vassiliu S, et al. COVID-19 and
266 Respiratory Virus Co-Infections: A Systematic Review of the Literature. *Viruses*.
267 2023;15(4):865.

- 268 10. PAHO - Alerta epidemiológico - Influenza, vírus sincicial respiratório e
269 SARS-CoV-2 [homepage on the internet]. Cited 2023 jun 6. Available from:
270 <[https://www.paho.org/pt/documentos/alerta-epidemiologico-influenza-virus-](https://www.paho.org/pt/documentos/alerta-epidemiologico-influenza-virus-sincicial-respiratorio-e-sars-cov-2-6-junho-2023)
271 [sincicial-respiratorio-e-sars-cov-2-6-junho-2023](https://www.paho.org/pt/documentos/alerta-epidemiologico-influenza-virus-sincicial-respiratorio-e-sars-cov-2-6-junho-2023)>.
- 272 11. Dähne T, Bauer W, Essig A, et al. The impact of the SARS-CoV-2
273 pandemic on the prevalence of respiratory tract pathogens in patients with
274 community-acquired pneumonia in Germany. *Emerg Microbes Infect.*
275 2021;10(1):1515-1518.
- 276 12. Kim D, Quinn J, Pinsky B, et al. Rates of Co-infection Between SARS-
277 CoV-2 and Other Respiratory Pathogens. *JAMA.* 2020;323(20):2085–2086.
- 278 13. Mirzaei R, Goodarzi P, Asadi M, et al. Bacterial co-infections with SARS-
279 CoV-2. *IUBMB Life,* 2020;72(10):2097-2111.
- 280 14. Eldesouki RE, Uhteg K, Mostafa HH. The circulation of Non-SARS-CoV-2
281 respiratory viruses and coinfections with SARS-CoV-2 during the surge of the
282 Omicron variant. *J Clin Virol.* 2022;153:105215.
- 283 15. DIVE [homepage on the internet]. Cited 2023 sep 20. Available from:
284 <[https://dive.sc.gov.br/phocadownload/Boletins/Boletim%20Epidemiol%C3%B3-](https://dive.sc.gov.br/phocadownload/Boletins/Boletim%20Epidemiol%C3%B3gico%20SRAG%20N%C2%BA13.pdf)
285 [gico%20SRAG%20N%C2%BA13.pdf](https://dive.sc.gov.br/phocadownload/Boletins/Boletim%20Epidemiol%C3%B3gico%20SRAG%20N%C2%BA13.pdf)>.
- 286 16. DIVE [homepage on the internet]. Cited 2023 sep 21. Available from:
287 <[https://dive.sc.gov.br/phocadownload/doencas-](https://dive.sc.gov.br/phocadownload/doencas-agravos/Gripe%20(Influenza)/Boletins/boletim-influenza-12-2022.pdf)
288 [agravos/Gripe%20\(Influenza\)/Boletins/boletim-influenza-12-2022.pdf](https://dive.sc.gov.br/phocadownload/doencas-agravos/Gripe%20(Influenza)/Boletins/boletim-influenza-12-2022.pdf)>.
- 289 17. DIVE [homepage on the internet]. Cited 2023 sep 21. Available from:
290 <[https://dive.sc.gov.br/phocadownload/doencas-](https://dive.sc.gov.br/phocadownload/doencas-agravos/Gripe%20(Influenza)/Boletins/boletim-influenza-13-2022.pdf)
291 [agravos/Gripe%20\(Influenza\)/Boletins/boletim-influenza-13-2022.pdf](https://dive.sc.gov.br/phocadownload/doencas-agravos/Gripe%20(Influenza)/Boletins/boletim-influenza-13-2022.pdf)>.

292
293
294

295 **FIGURES**

296

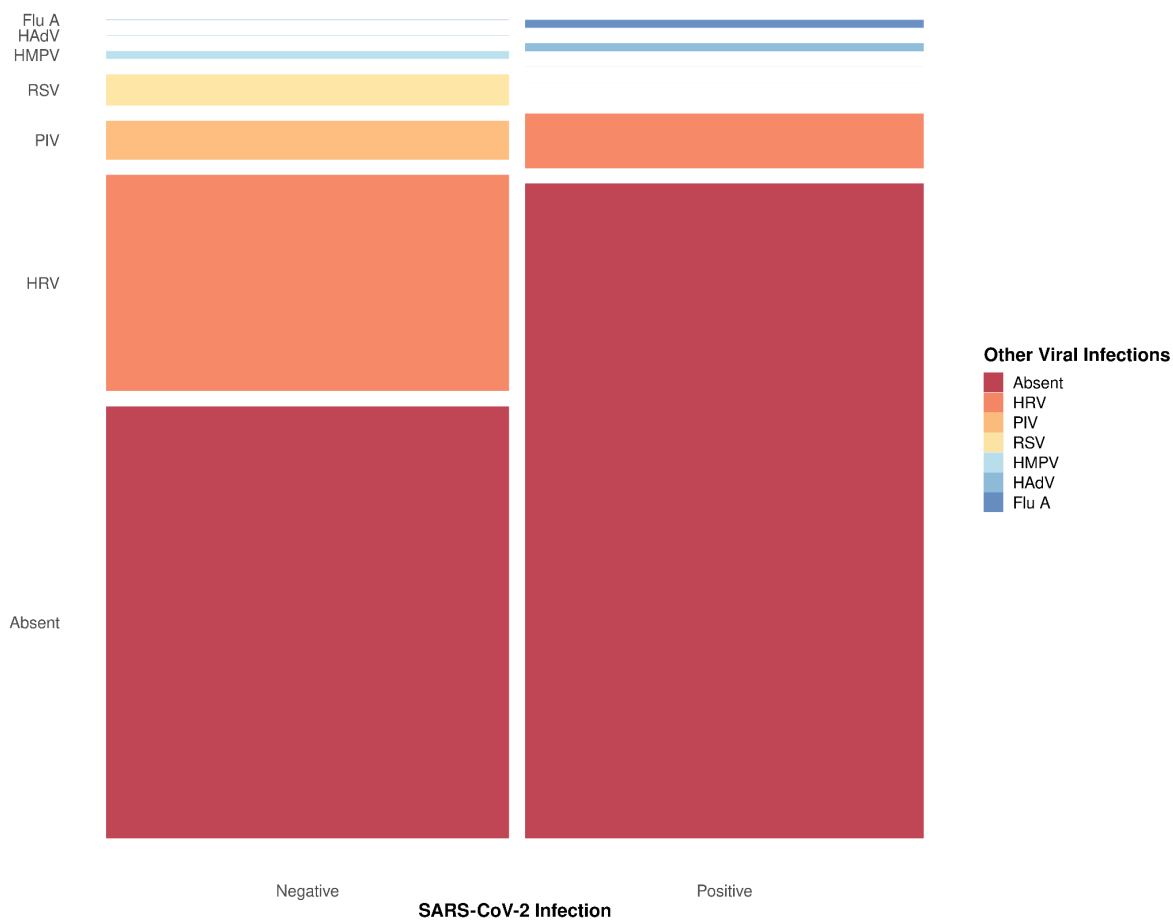


297

298 **Figure 1.** Viral profile in positive and negative SARS-CoV-2 samples. Absolute and relative
 299 frequency for respiratory viral panel tests. Human Adenovirus (HAdV); Influenza A (Flu A); Human
 300 Metapneumovirus (HMPV); Respiratory Syncytial Virus (RSV); Human Rhinovirus (HRV) and
 301 Parainfluenza Virus (PIV).

302

303



304

305 **Figure 2.** Summary of viral infection related to SARS-CoV-2 diagnostic. The respiratory viral
306 panel tests included Human Adenovirus (HAdV), Influenza A (Flu A), Human Metapneumovirus
307 (HMPV), Respiratory Syncytial Virus (RSV), Human Rhinovirus (HRV), and Parainfluenza Virus
308 (PIV). The thinnest lines represent zero counts and all viruses are ordered in the same sequence
309 in both columns.

310