

1 **Title:** Meta-analysis on safety of standard vs prolonged infusion of beta-lactams

2

3 **Running Title:** Safety of prolonged infusion beta-lactams

4

5 **Authors:** Hunter Rolain¹, Zachary Schwartz¹, Raymond Jubriail², Kevin Downes^{5,6}, Lisa Hong⁷, Alireza Fakhri
6 Ravari⁷, Nathaniel J. Rhodes,^{2,3,4} Marc H. Scheetz^{2-4*}

7

8 **Affiliations:**

9 ¹Midwestern University- Downers Grove Campus, Chicago College of Osteopathic Medicine, Downers Grove, IL,
10 USA;

11 ²Midwestern University- Downers Grove Campus, Department of Pharmacy Practice, Downers Grove, IL, USA;

12 ³Midwestern University- Downers Grove Campus, Pharmacometrics Center of Excellence, Downers Grove, IL,
13 USA;

14 ⁴Northwestern Memorial Hospital, Department of Pharmacy, Chicago, IL, USA;

15 ⁵Division of Infectious Diseases, Children's Hospital of Philadelphia, Philadelphia, PA, USA;

16 ⁶Department of Pediatrics, Perelman School of Medicine of the University of Pennsylvania, Philadelphia, PA, USA;

17 ⁷Loma Linda University School of Pharmacy, Department of Pharmacy Practice, Loma Linda, CA, USA

18

19 *** Corresponding author and reprint requests:** Marc H. Scheetz, PharmD, MSc; Professor of Pharmacy Practice
20 and Pharmacology; Midwestern University; 555 31st St., Downers Grove, IL 60515, Phone: 630-515-6116; Fax:
21 630-515-6958; Email: mschee@midwestern.edu

22

23 **Word count:** 2020 **Abstract word count:** 272

24 **Abstract:**

25 **Background:** Efficacy for prolonged infusion beta-lactam dosing schemes has been previously described, but there
26 has been less focus on the safety of standard vs prolonged infusion protocols of beta-lactams. This study explored
27 differences in adverse drug reactions (ADRs) reported for beta-lactams between each of these infusion protocols.

28 **Methods:** A systematic review of MEDLINE literature databases via PubMed was conducted and references were
29 compiled. Articles were compiled and assessed with specific inclusion/exclusion criteria. We included randomized
30 and nonrandomized, prospective, and retrospective cohort studies that reported adverse effects due to either standard
31 (30-60 mins) or prolonged (≥ 3 hours) infusions of beta-lactam infusions. Total ADRs between strategies were
32 analyzed by infusion methodology. The most consistently reported ADRs were subject to meta-analysis across
33 studies.

34 **Results:** 13 studies met inclusion/exclusion criteria with data for 4184 patients. There was insufficient data to
35 systematically analyze neurotoxicity or cytopenias. Eight studies reported on nephrotoxicity outcomes with no
36 significant difference in event rates between standard (n=440/2117, 20.8%) vs prolonged infusion (n=264/1284,
37 20.6%) of beta-lactams (OR=1.09, 95% CI [0.91, 1.30]). Six studies reported on rates of diarrhea with no significant
38 difference in event rates between standard (n=21/359, 5.8%) vs prolonged infusion (n=25/330, 7.6%) of beta-
39 lactams (OR=1.33, 95% CI [0.71,2.47]).

40 **Conclusion:** Prolonged and standard infusion schemes for beta-lactams demonstrated adverse effects at similar
41 rates for both infusion schemes. Future research should focus on improved standardization of adverse effect
42 definitions and a priori aim to study neurotoxicity and cytopenias. Consistent recording of ADRs and standardized
43 definitions of these reactions will be paramount to further study of this subject.

44 **Keywords:** standard infusion; prolonged infusion; renal failure; beta-lactams; kidney damage, neurotoxicity, kidney
45 injury, cefepime, piperacillin, ceftriaxone

46

47 **Background:**

48 Beta-lactams are among the most frequently utilized antibiotics worldwide [1,2] as they are first line
49 options for multiple infectious syndromes [1-4]. Among the high use beta-lactam antibiotics are broad-spectrum
50 cephalosporins such as cefepime, penicillin-beta-lactamase inhibitor combinations such as piperacillin-tazobactam,
51 and carbapenems such as meropenem. Most often, beta-lactams are delivered as intermittent infusions (IIs) over a
52 period of time ranging from 30 to 60 minutes (i.e., standard infusion (SI)), typically as a 30-minute infusion [5].
53 Because bacterial killing is improved when time over bacterial minimum inhibitory concentrations (MICs) is
54 optimized, beta-lactams are increasingly being utilized in prolonged infusion platforms to improve efficacy [1-4, 6-
55 17]. Prolonged infusions (PI) consist of extended infusions (EIs) that are longer than standard infusions (e.g., 3-4
56 hours) and continuous infusions (CI) that deliver constant concentrations of antibiotics without plans to stop. In this
57 study, we classified both EI and CI as PI.

58 The efficacy of prolonged infusions has been shown to be either improved or equal to standard infusions
59 [5,18-20,21]. Safety, however, has been less well explored. As with many drugs, ADRs for beta-lactams do occur,
60 albeit infrequently, and are usually mild to moderate in severity. ADRs driven by dose and exposure are of particular
61 interest to clinicians when a biologic relationship is identified, as they can be predicted and avoided. One such
62 example of dose-dependent toxicity in beta-lactams is neurotoxicity [22,23]. Nephrotoxicity, on the other hand, is
63 generally thought to be dose-independent and related to allergic-mediated mechanisms and type-II hypersensitivity
64 reactions [22]. Although dose-toxicity relationships are reasonably established, the time course in which the dose is
65 delivered has been less studied. When beta-lactams are given as standard infusions, higher serum and tissue peak
66 concentrations are obtained while troughs are lower. In contrast, when prolonged infusions are utilized, peaks are
67 lower while trough levels are higher. In both of these infusion types, for a fixed dose, the area under the curve
68 (AUC, or total exposure) is the same. It is unknown if differences in pharmacokinetic parameters (e.g., different
69 Cmax yet similar AUC) lead to differences in ADRs. Because there are few large and purpose-defined trials
70 comparing the safety of standard versus prolonged infusion methods for the assessment of safety, we performed a
71 systematic review to identify studies that documented rates of ADRs in PI and SI groups. Meta-analyses were
72 performed for the most consistently reported ADRs between the groups.

73 **Methods:**

74 Objective

75 The primary objective for this meta-analysis was to determine the difference in incidence of ADRs in
76 standard versus prolonged infusions of beta-lactams.

77 Search Strategy and Data Collection

78 To begin, all literature that was previously identified by the international consensus recommendations [24]
79 under PICO question 7, “Is use of a prolonged-infusion beta-lactam safer than standard infusion in children” was
80 considered. Then an updated literature search was completed using PubMed and included the following key search
81 terms: “standard infusion,” “extended infusion,” “renal failure,” “kidney damage,” “kidney injury,” “neurotoxicity,”
82 “beta-lactam,” “cefepime,” “piperacillin,” “ceftriaxone.” All articles were compiled after review of an
83 inclusion/exclusion criteria in order to determine eligibility.

84 Inclusion/Exclusion Criteria:

85 To be eligible, studies were required to meet the following criteria: 1) randomized trials or non-
86 randomized, prospective, or retrospective cohort studies; 2) ADRs reported; 3) beta-lactam usage either alone or in
87 combination with other antibiotics consistent across both treatment arms; and 4) only 2 treatment arms (i.e., standard
88 infusion and prolonged infusion). Studies were excluded for concomitant drug use varying amongst treatment arms,
89 mixed use of standard infusion and prolonged infusion at the individual patient level, or not meeting inclusion
90 criteria.

91 Data Extraction:

92 Pertinent data was entered into a data extraction table (Table 1). The data listed was collected for each
93 individual study: studies characteristics (authors, publication year), patient population (age, disease state), treatment
94 regimens (specific beta-lactam, infusion type), and ADRs within each group.

95 Data Analysis

96 Meta-analyses were performed for ADRs that occurred in 5 or more studies only. Statistics for the meta-
97 analysis was performed using Review Manager V. 5.4 from Cochrane Library [25]. Fixed Odd-Ratios were
98 calculated from the dichotomously reported ADR rates from each study with 95% Confidence Interval in RevMan
99 [25]. Analysis and forest plot summary of the pooled adverse events were created in RevMan [25] (Figure 2 & 3).
100 The quality of evidence and risk for bias was independently assessed by 3 study authors with majority rule for final
101 classification. Analysis of study quality was performed via Newcastle-Ottawa Scale [26] (Table 3) and Cochrane
102 Risk Bias [27] (Table 4) for retrospective and prospective studies, respectively. Publication bias was assessed
103 visually using funnel plot inspection for nephrotoxicity (Figure 4) and diarrhea (Figure 5).

104 **Results:**

105 After initial screening, a total of 26 studies were assessed for eligibility for meta-analysis based on title and
106 abstract (Figure 1). Nephrotoxicity and diarrhea were the most prevalent reported ADRs according to the inclusion
107 criteria for the meta-analysis. Out of the 26 studies, 12 were excluded because no ADRs were reported (Figure 1).
108 One study was excluded due to insufficient adverse events recording (Figure 1). After exclusion, a total of seven
109 randomized control trials and six retrospective studies met inclusion criteria with data for 4196 patients. Eight
110 studies reported nephrotoxicity from a total of 3564 patients with no significant difference in patients of standard
111 (n=436/2276, 19.8%) vs prolonged infusion (n=267/1288, 20.6%) of beta-lactams (OR=1.08, 95% Confidence
112 Interval [0.91, 1.29]) (Figure 2). Among the eight studies, five of them reported concomitant administration of
113 vancomycin, 4 reported the exact number of patients receiving it. The total number of patients receiving
114 concomitant vancomycin in these studies was 80.3%. Seven studies observed diarrhea in a total of 794 patients with
115 no significant difference in patients of standard (n=21/417, 5.0%) vs prolonged (n=25/377, 6.6%) infusion of beta-
116 lactams (OR=1.30, 95% Confidence Interval [0.71,2.37]) (Figure 3). No publication bias was detected for either
117 nephrotoxicity (Figure 4) or diarrhea (Figure 5).

118 **Discussion:**

119 Our review and meta-analysis did not identify a signal for differences in ADRs between prolonged and
120 standard infusion schemes. Lack of a safety signal is an important finding, given that prolonged infusions are being
121 increasingly used to improve efficacy. Thus, if future studies are to reach the same conclusion, the most efficacious
122 infusion protocols can be used without additional safety concerns.

123 Beta-lactams are generally regarded as safe agents, associated with minimal adverse effects. Nephrotoxicity
124 and diarrhea were the ADRs most commonly recorded by the studies in question and were thus studied via meta-
125 analysis. Other ADRs including cytopenias, neurotoxicity, electrolyte imbalance, elevated liver function tests, and
126 rash were reported inconsistently, and it was thus not possible to quantitatively analyze these ADRs. Nephrotoxicity
127 was classified broadly and as reported by the individual study (Table 2), but no difference was found between
128 infusion strategies when the studies were pooled categorically. In future work, standardizing classification schema to
129 acceptable standards (e.g., KDIGO) will result in more meaningful comparison of ADRs across studies. A single

130 standard would help increase specificity. In the present analysis, while many of the studies reported nephrotoxicity,
131 some used the Acute Kidney Injury Network (AKIN) criteria [28], others used the Risk, Injury, Failure, Loss of
132 kidney function, and End-stage kidney disease (RIFLE) criteria [28], and one relied on independent nephrologist
133 assessment. It is also important to note that kidney injury rates here of ~20% are very unlikely due to the beta-lactam
134 and are probably more representative of the severity of illness of patients for which beta-lactams are required (i.e.
135 infectious syndromes). Patients often had concomitant medications that are known nephrotoxins (e.g. vancomycin,
136 aminoglycosides). We did not quantify these concomitant medications since they were not consistently reported in a
137 manner that facilitated quantification.

138 Beta-lactam induced kidney injury can be separated into acute interstitial nephritis and direct cellular
139 toxicity (e.g. acute tubular necrosis) with the former more common via an immune-mediated, dose-independent
140 response. While the exact mechanism of drug induced acute interstitial nephritis has not entirely been elucidated, it
141 is thought that the beta-lactam triggers an immune response by acting as a hapten, causing the drug to be
142 immunogenic and subsequently upregulate immunoglobulins. These upregulated immunoglobulins result in an
143 immune response mediated by CD8+ cytotoxic T-cells [29,30]. The destruction induced by these T-cells leads to
144 tubular injury/acute kidney injury and ultimately renal failure in some cases [30]. Such a mechanism is thought to be
145 dose and exposure independent. For certain beta-lactams such as imipenem, dose/exposure mediated events can
146 occur and lead to cellular accumulation and mitochondrial stress; [31] however, in the case of imipenem, the
147 addition of cilastatin is specifically used to prevent accumulation.

148 Diarrhea associated with beta-lactam usage is thought to be linked to drug concentration intensity and total
149 time of therapy [10,12,32-36]. Diarrhea from antibiotics such as beta-lactams is multifactorial and can be caused by
150 specific superinfection or more general gut microbiota dysbiosis. *Clostridioides difficile* infection is an example of
151 superinfection, although the more common ‘antibiotic diarrhea’ is likely due to dysbiosis. We saw no difference
152 between beta-lactam infusion strategies for any diarrhea reported.

153 Beta-lactam-induced neurotoxicity is proposed to be dose and exposure mediated [22,23,37,38]. While it is
154 less clear if maximal concentrations or total exposure drives the toxicity, administration of prolonged infusion beta-
155 lactams which utilize lower or equal doses to standard intermittent infusions is hypothesized to result in less
156 neurotoxicity [39,40]. Given that none of the studies comparing PI to SI antibiotics focused on sensitive methods

157 that could monitor neurological findings (e.g. prespecified EEG testing), and that neurotoxicity is not a commonly
158 reported ADR in general, it was not surprising that neurotoxicity was infrequently documented. Other adverse
159 effects attributed to beta-lactams include rash, hepatic injury, and electrolyte imbalance. However, none of these
160 ADRs occurred with considerable frequency in either group or were not measured in some of the studies, thus there
161 was not enough data to quantitatively analyze them.

162 Limitations to this work include the frequent underestimation of ADRs in retrospective studies.
163 Additionally, studies with subjects receiving both standard and prolonged infusions have not been specifically
164 designed to detect differences in safety. As such, future studies should specifically place a focus on analyzing
165 toxicity outcomes in a standardized manner for each of these infusion methods. It is important to also note that our
166 meta-analysis utilized a definition of study-reported nephrotoxicity rather than a common unified definition. It was
167 not possible to reclassify patients because the data were not available to do so. The definitions of nephrotoxicity, as
168 presented in the studies, had considerable variation, with some studies lacking a clear and consistent
169 characterization. Additionally, some of the studies included patients receiving concomitant nephrotoxic medications
170 that may present a confounding variable. Cotner et. al, a study from which 2390 patients were included in this
171 analysis, was a large retrospective study of hospitalized patients [51]. Many patients analyzed in the study required
172 additional treatment with various nephrotoxic non-beta-lactam medications such as vancomycin (frequently
173 administered with piperacillin/tazobactam), aminoglycosides, and loop diuretics that contributed to higher
174 nephrotoxicity rates [51]. Finally, the characterization of ADRs in the majority of these studies were done in a
175 clinical manner and was often left to physician characterization. Such reporting is subjective in nature. For future
176 comparative studies between prolonged and standard infusion beta-lactams, it would be beneficial to utilize a
177 standardized criteria for the classification of ADRs. An example includes the Common Terminology Criteria for
178 Adverse Events (CTCAE) which is employed by organizations such as the National Cancer Institute and the FDA
179 for this purpose. By utilizing an accepted standard set of criteria, the collection and utilization of safety data can be
180 significantly improved. This will also result in enhanced external use of safety data for future research endeavors. In
181 the context of our study, the incorporation of standardized criteria in future studies will yield the higher quality data
182 that is required for a more comprehensive evaluation of the safety profile of these infusion protocols.

183 **Conclusion:**

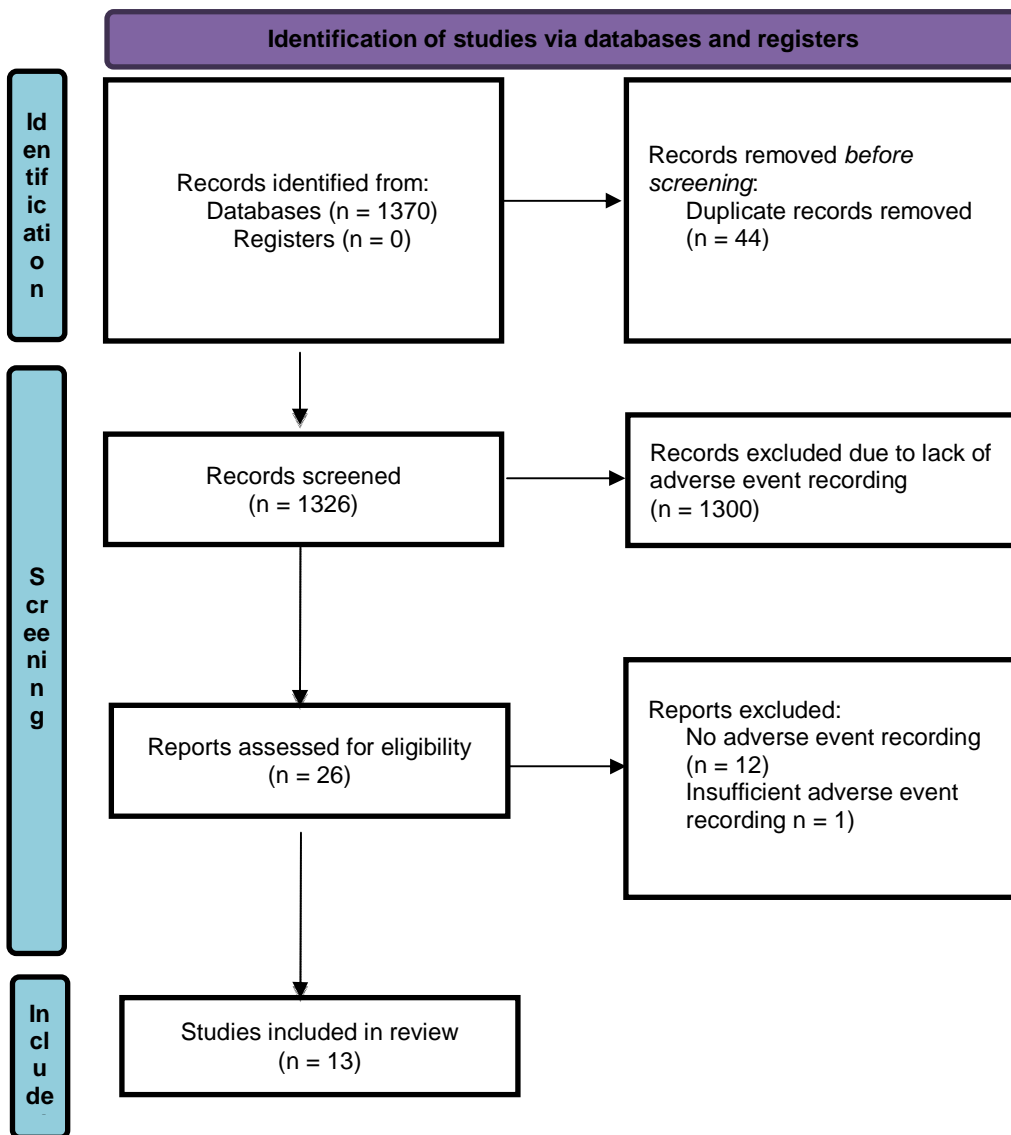
184 Based on the dosing scheme of the analyzed studies, prolonged and standard beta-lactam infusion schemes
185 displayed ADRs at similar rates. The most prevalent ADRs included nephrotoxicity and diarrhea; however, no
186 difference was seen between PI and SI infusion strategies. Other ADRs were reported, however, frequency was low
187 and reporting inconsistent. Further studies should be specifically designed to analyze toxicity outcomes from each of
188 the infusion methods.

189

190 **Figures:**

191 **Figure 1.**

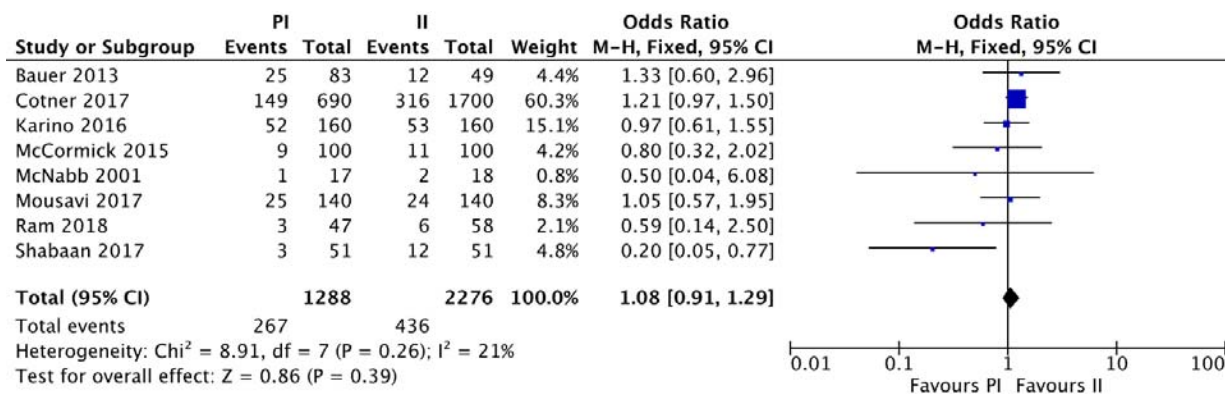
192
193
194
195
196
197
198
199
200
201
202
203
204
205
206
207
208
209
210
211
212
213
214
215
216
217
218
219
220
221
222
223
224
225
226
227
228
229
230



231 **Figure 1: PRSIMA 2020 Flow Diagram for research identification**

232
233

234 **Figure 2.**

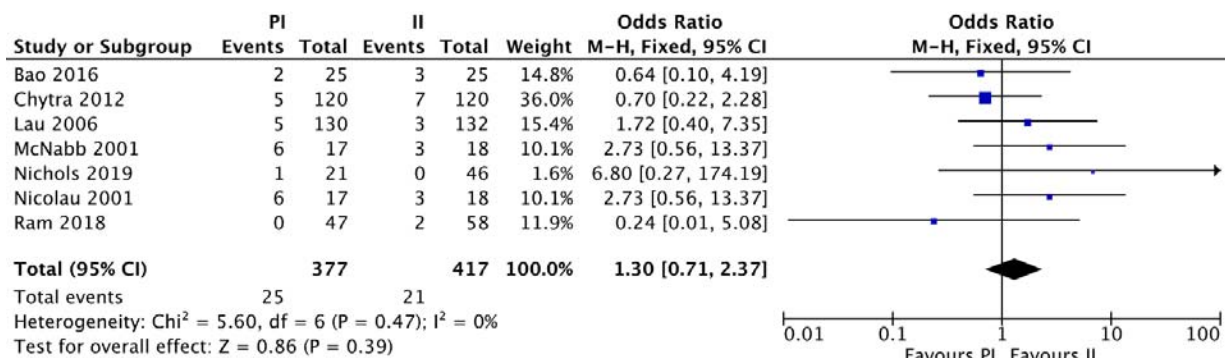


235

236 **Figure 2:** Forest plot of the adverse side reaction of nephrotoxicity from prolonged (PI) vs standard infusion (II) of
237 beta-lactams

238 **Figure 3.**

239

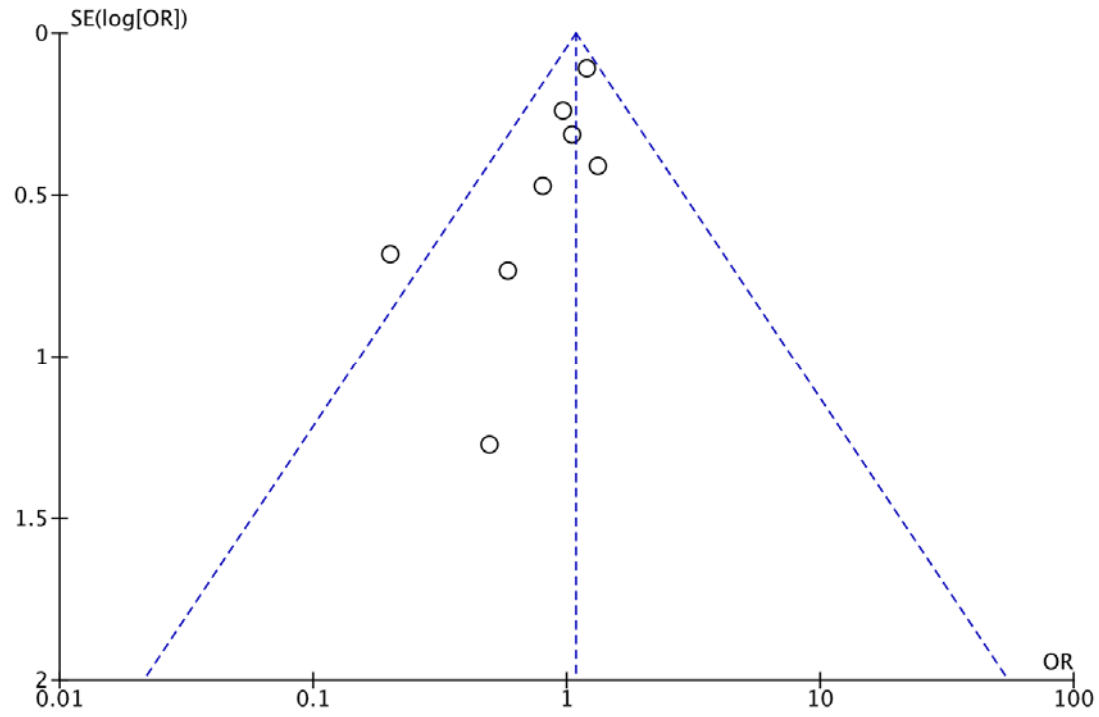


240

241 **Figure 3:** Forest plot of the adverse side reaction of diarrhea from prolonged (PI) vs standard infusion (II) of beta-
242 lactams

243

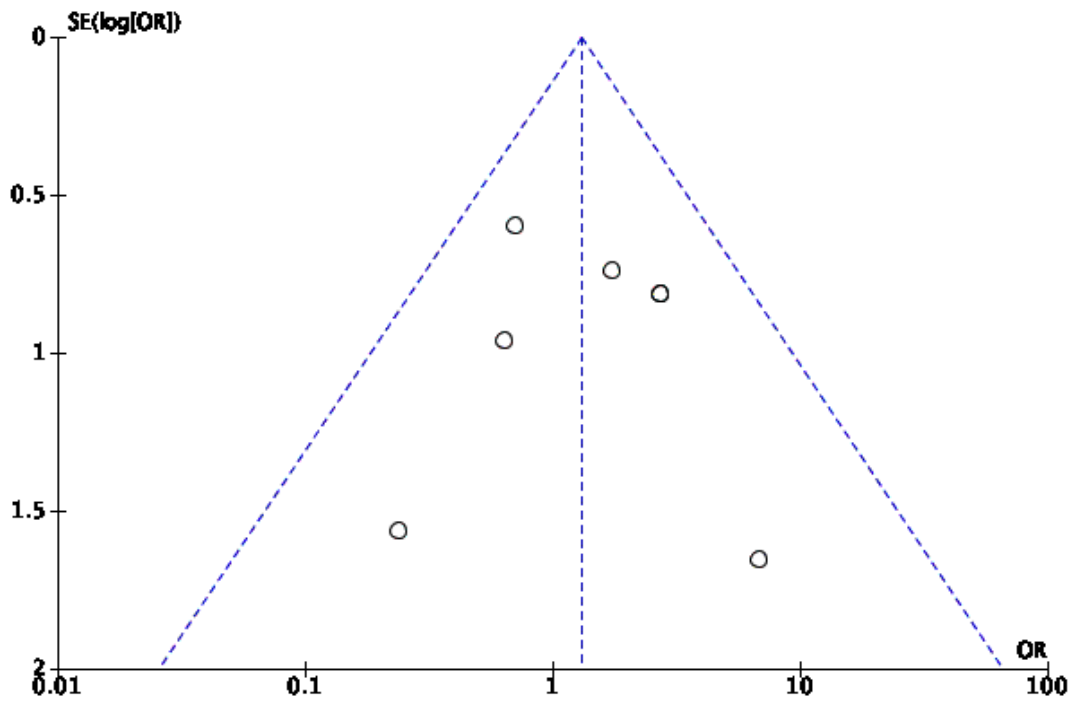
244 **Figure 4.**



245

246 **Figure 4.** Funnel plot of the adverse side reaction of nephrotoxicity from prolonged (PI) vs standard infusion (II) of
247 beta-lactams

248 **Figure 5.**



249

250 **Figure 5.** Funnel plot of the adverse side reaction of diarrhea from prolonged (PI) vs standard infusion (II) of beta-
 251 lactams

252 **Table 1.**
 253 ***Data Extraction Table***

Study	Year	Total Patients	# of Subjects of EI	# of ADRs in EI	% of ADRs in EI	# of Subjects in SI	# of ADRs in Standard Infusion	% of ADRs in SI	Study Design
Bauer ⁸	2013	132	83	25	30.1%	49	12	24.5%	Retrospective
Abdul-Aziz ⁹	2016	140	70	0	0%	70	0	0%	RCT
Chytra ¹⁰	2012	240	120	10	8.3%	120	12	10%	RCT
Grant ⁴¹	2002	98	47	0	0%	51	0	0%	RCT
Bao ³³	2017	50	25	11	44%	25	16	64%	RCT
Fan ⁴²	2017	367	182	0	0%	185	0	0%	RCT
McCormick ⁴³	2015	200	100	9	9%	100	11	11%	Retrospective
Mousavi ⁴⁴	2017	272	136	45	32.9%	136	40	29.3%	Retrospective
Dulhunty ⁴⁵	2013	60	30	0	0%	30	0	0%	RCT
Nicolau ⁴⁶	2001	35	17	11	64.7%	10	9	70%	RCT
Contrina-Luque ⁴⁷	2016	78	40	0	0%	38	0	0%	RCT
Van Zanten ¹³	2006	93	47	0	0%	46	0	0%	RCT
Shabaan ¹⁴	2017	102	51	12	23.5%	51	29	56.9%	RCT
McNabb ³⁶	2001	35	17	9	52.9%	18	13	72.2%	RCT
Karino ⁴⁸	2016	320	160	52	32.5%	160	53	33.1%	Retrospective
Winstead ⁴⁹	2016	181	86	0	0%	95	0	0%	Retrospective
Knoderer ^{15*}	2017	50	50	0	0%	0	0	0%	Retrospective
Ram ¹⁶	2018	91	47	3	6.4%	58	6	6.9%	RCT
Nichols ⁵⁰	2015	150	143	0	0%	7	0	0%	Retrospective
Cotner ⁵¹	2017	2390	690	149	21.6%	1700	316	18.6%	Retrospective
Roberts ²⁰	2006	57	28	0	0%	29	0	0%	RCT

Schmees ⁵²	2016	113	61	0	0%	52	0	0%	Retrospective
Nichols ³¹	2019	67	21	2	14.3%	46	3	6.5%	Retrospective
Lau ³⁰	2006	262	130	14	10.8%	132	16	12.1%	RCT
Padari ¹⁷	2012	19	10	0	0%	9	0	0%	RCT
Monti ²¹	2023	607	303	0	0%	304	0	0%	RCT

* Insufficient adverse events recording

254
255
256
257

Table 2.
Data Extraction Table

<u>Study</u>	<u>Nephrotoxicity Criteria Used</u>						
	Serum Creatinine x2 baseline or greater	Serum creatinine increase of 0.3 mg/dL or greater	RIFLE Criteria	AKIN Criteria	Vancomycin Consensus Guideline	Nephrologist Assessment	Not described
Bauer 2013						X	
Cotner 2017			X				
Karino 2016			X	X			
McCormick 2015	X						
McNabb 2001							X
Mousavi 2017			X	X			
Ram 2018	X						
Shabaan 2017		X					

258
259
260
261

Table 3
Cochranes Risk of bias summary, review of author's judgements about each risk of bias item for each included study

Study	Sequence Generation	Allocation concealment	Blinding	Incomplete outcome	Selective Reporting	Other bias	Intention to treat	Sample calculation
McNabb 2001	+	+	-	-	-	-	+	-
Ram 2018	+	+	-	-	-	-	+	+

Shabbaan 2017	+	+	+	-	-	-	+	+
Chytra 2012	+	+	-	-	-	-	+	+
Bao 2017	+	+	-	-	-	-	+	-
Nicolau 2001	+	+	-	-	-	-	+	-
Lau 2006	+	+	-	-	-	-	+	+

262

263

Legend:

264

+ Low Risk of Bias

265

- High Risk of Bias

266

267

Table 4

268

Risk of bias assessment using Newcastle-Ottawa Score

Study	D1	D2	D3	D4	D5	Overall
Bauer 2013	+	+	+	+	+	+
McCormick 2015	+	+	+	+	+	+
Mousavi 2017	+	+	+	+	+	+
Karino 2016	-	+	+	+	+	-
Nichols 2015	+	+	+	+	+	+
Cotner 2017	+	+	+	+	+	+

269

Domains:

270

D1: Bias arising from the randomization process

271

D2: Bias due to deviations from intended intervention

272

D3: Bias due to missing outcome data.

273

D4: Bias in measurement of the outcome.

274

D5: Bias in the selection of the reported result.

275

276

Judgment:

277

+ Low Concern

278

- Some Concern

279

x High Concern

280

281

282

References:

283

- 284 1. Magil S, O'Leary, E., Kainer, M. et al. Comparison of Results From Emerging Infections Program
285 Prevalence Surveys, 2015 and 2011. *Clin Infect Dis*. 2021;72(10):1784-1792. doi:10.1093/cid/ciaa373
- 286 2. Browne AJ, Chipeta, M.G., Haines-Woodhouse, G et al. Global antibiotic consumption and usage in
287 humans, 2000–18: a spatial modeling study. *The Lancet Planetary Health*. 2021;5(12):893-904. doi:10.1016/S2542-
288 5196(21)00280-1
- 289 3. Amoah J, Klein, E., Cosgrove, S. et al. Administration of a β -Lactam Prior to Vancomycin as the First
290 Dose of Antibiotic Therapy Improves Survival in Patients With Bloodstream Infections. *Clin Infect Dis*.
291 2022;75(1):98-104. doi:10.1093/cid/ciab865
- 292 4. Thakuria BL, K. The Beta Lactam Antibiotics as an Empirical Therapy in a Developing Country: An
293 Update on Their Current Status and Recommendations to Counter the Resistance against Them. *J Clin Diagn Res*.
294 2013;7(6):1207-1214. doi:10.7860/JCDR/2013/5239.3052
- 295 5. Moehring RS, C. *Prolonged infusions of beta-lactam antibiotics*. UpToDate; 2021.
- 296 6. Guilhaumou R, Benabound, S. and Bennis, Y. et al. Optimization of the treatment with beta-lactam
297 antibiotics in critically ill patients—guidelines from the French Society of Pharmacology and Therapeutics (Société
298 Française de Pharmacologie et Thérapeutique—SFPT) and the French Society of Anaesthesia and I. *Crit Care*.
299 2019;23(104)doi:10.1186/s13054-019-2378-9
- 300 7. Ammar M, & Abdalla, W. . Effect of extended infusion of meropenem and nebulized amikacin on Gram-
301 negative multidrug-resistant ventilator-associated pneumonia. *Saudi J Anaesth*. 2018;12(1):89-94.
302 doi:10.4103/sja.SJA_148_17
- 303 8. Bauer KA, Gentene, A.J., West, J.E. et al. n Antimicrobial Stewardship Program's Evaluation of the Safety
304 and Efficacy of Continuous Infusion of Nafcillin in the Treatment of Methicillin-Sensitive Staphylococcus aureus
305 Bacteremia. *Infectious Diseases in Clinical Practice*. 2013;21(2):111-113. doi:10.1097/IPC.0b013e318278f539
- 306 9. Abdul-Aziz M, Sulaiman, H., Mat-Nor, M., et al. Beta-Lactam Infusion in Severe Sepsis (BLISS): a
307 prospective, two-centre, open-labeled randomised controlled trial of continuous versus intermittent beta-lactam
308 infusion in critically ill patients with severe sepsis. *Intensive Care Med*. 2016;42(10):1535-1545.
309 doi:10.1007/s00134-015-4188-0
- 310 10. Chytra I, Stepan, M., Benes, J., et al. Clinical and microbiological efficacy of continuous versus
311 intermittent application of meropenem in critically ill patients: a randomized open-label controlled trial. *Critical*
312 *Care*. 2012;16(3):113. doi:10.1186/cc11405
- 313 11. Dullhunty J, Roberts, J., & Davis, J. Continuous infusion of beta-lactam antibiotics in severe sepsis: a
314 multicenter double-blind, randomized controlled trial. *Clin Infect Dis*. 2013;56(2):236-244. doi:10.1093/cid/cis856
- 315 12. Nicolau D, McNabb, J., Quintiliani, R., et al. Continuous versus intermittent administration of ceftazidime
316 in intensive care unit patients with nosocomial pneumonia. *Int J Antimicrob Agents*. 2001;17(6):497-504.
317 doi:10.1016/s0924-8579(01)00329-6
- 318 13. Van Zanten A, Oudijk, M., Nohlmans-Paulssen, M., et al. Continuous vs. intermittent cefotaxime
319 administration in patients with chronic obstructive pulmonary disease and respiratory tract infections:
320 pharmacokinetics/pharmacodynamics, bacterial susceptibility and clinical efficacy. *Br J Clin Pharmacol*.
321 2007;63(1):100-109. doi:10.1111/j.1365-2125.2006.02730.x
- 322 14. Shabaan A, Elsayed Eldegl, H., Nasef, N., et al. Conventional Versus Prolonged Infusion of Meropenem
323 in Neonates With Gram-negative Late-onset Sepsis: A Randomized Controlled Trial. *Pediatr Infect Dis J*.
324 2017;36(4):363-368. doi:10.1097/INF.0000000000001445
- 325 15. Knoderer C, Karmire, L. Andricopulos, K., et al. Extended Infusion of Piperacillin/Tazobactam in
326 Children. *J Pediatr Pharmacol Ther*. 2017;22(3):212-217. doi:10.5863/1551-6776-22.3.212nichols
- 327 16. Ram R, Halavy., Paran, Y., et al. Extended vs Bolus Infusion of Broad-Spectrum β -Lactams for Febrile
328 Neutropenia: An Unblinded, Randomized Trial. *Clin Infect Dis*. 2018;67(8):1153-1160. doi:10.1093/cid/ciy258
- 329 17. Padari H, Metsvaht, T., Kõrgvee, L., et al. Short versus long infusion of meropenem in very-low-birth-
330 weight neonate. *Antimicro Agents Chemother*. 2012;56(9):4760-4764. doi:10.1128/AAC.00655-12
- 331 18. Kondo Y, Ota, K. Imura, H., et al. Prolonged versus intermittent β -lactam antibiotics intravenous infusion
332 strategy in sepsis or septic shock patients: a systematic review with meta-analysis and trial sequential analysis of
333 launichrandomized trial. *J Intensive Care*. 2020;8(77)doi:10.1186/s40560-020-00490-z
- 334 19. Vardakas K. Prolonged versus short-term intravenous infusion of antipseudomonal β -lactams for patients
335 with sepsis: a systematic review and meta-analysis of randomised trials. *Lancet Infect Dis*. 2017;18(1):108-120.
336 doi:10.1016/S1473-3099(17)30615-1
- 337 20. Roberts JA, Abdul-Aziz, M-H., Davis, J., et al. Continuous versus Intermittent β -Lactam Infusion in Severe
338 Sepsis. A Meta-analysis of Individual Patient Data from Randomized Trials. *Am J Respir Crit Care Med*.
339 2016;194(6):681-691. doi:10.1164/rccm.201601-0024OC

- 340 21. Monti G, Bradić N, Marzaroli M, et al. Continuous vs Intermittent Meropenem Administration in Critically
341 Ill Patients With Sepsis: The MERCY Randomized Clinical Trial. *JAMA*. 2023;330(2):141–151.
342 doi:10.1001/jama.2023.10598
- 343 22. Roger, C., & Louart, B. (2021). Beta-lactams toxicity in the intensive care unit: An underestimated
344 collateral damage? *Microorganisms*, 9(7), 1505. <https://doi.org/10.3390/microorganisms9071505>
- 345 23. Barreto EF, Webb AJ, Pais GM, Rule AD, Jannetto PJ, Scheetz MH. Setting the Beta-Lactam Therapeutic
346 Range for Critically Ill Patients: Is There a Floor or Even a Ceiling? *Crit Care Explor*. 2021 Jun 11;3(6):e0446. doi:
347 10.1097/CCE.0000000000000446. PMID: 34136822; PMCID: PMC8202642.
- 348 24. Hong, L. T., Downes, K. J., FakhriRavari, A., Abdul-Mutakabbir, J. C., Kuti, J. L., Jorgensen, S., Young,
349 D. C., Alshaer, M. H., Bassetti, M., Bonomo, R. A., Gilchrist, M., Jang, S. M., Lodise, T., Roberts, J. A., Tängdén,
350 T., Zuppa, A., & Scheetz, M. H. (2023). International consensus recommendations for the use of prolonged-infusion
351 beta-lactam antibiotics: Endorsed by the American College of Clinical Pharmacy, British Society for Antimicrobial
352 Chemotherapy, Cystic Fibrosis Foundation, European Society of Clinical Microbiology and Infectious Diseases,
353 Infectious Diseases Society of America, Society of Critical Care Medicine, and Society of Infectious Diseases
354 Pharmacists. *Pharmacotherapy*, 43(8), 740–777. <https://doi.org/10.1002/phar.2842>
- 355 25. Review Manager (RevMan) [Computer program]. Version 5.4. The Cochrane Collaboration, 2020.
- 356 26. Gierisch JM, Beadles C, Shapiro A, et al. Health Disparities in Quality Indicators of Healthcare Among
357 Adults with Mental Illness [Internet]. Washington (DC): Department of Veterans Affairs (US); 2014 Oct.
358 APPENDIX B, NEWCASTLE-OTTAWA SCALE CODING MANUAL FOR COHORT STUDIES.
- 359 27. Higgins, J. P., Altman, D. G., Gøtzsche, P. C., Jüni, P., Moher, D., Oxman, A. D., Savovic, J., Schulz, K.
360 F., Weeks, L., Sterne, J. A., Cochrane Bias Methods Group, & Cochrane Statistical Methods Group (2011). The
361 Cochrane Collaboration's tool for assessing risk of bias in randomised trials. *BMJ (Clinical research ed.)*, 343,
362 d5928. <https://doi.org/10.1136/bmj.d5928>
- 363 28. Bellomo R, Ronco C, Kellum JA, et al. Palevsky P and the ADQI workgroup. Acute renal failure—
364 definition, outcome measures, animal models, fluid therapy and information technology needs: the Second
365 International Consensus Conference of the Acute Dialysis Quality Initiative (ADQI) Group. *Crit Care*.
366 2004;8:R204. doi:10.1016/S1470-2045(07)70246-2.
- 367 29. Bluementhal K, Peter, J., & Phillips E. Antibiotic Allergy. *Lancet*. 2019;393(10167):183-198.
368 doi:10.1016/S0140-6736(18)32218-9
- 369 30. Spanou Z, Keller, M., Yawalkar, N., et al. Involvement of Drug-Specific T Cells in Acute Drug-Induced
370 Interstitial Nephritis. *Clin J Am Soc Nephrol*. 2006;17(10):2919-2927. doi:10.1681/ASN.2006050418
- 371 31. Tune, B.M. Nephrotoxicity of beta-lactam antibiotics: mechanisms and strategies for prevention. *Pediatr*
372 *Nephrol* 11, 768–772 (1997). <https://doi.org/10.1007/s004670050386>
- 373 32. Barbut F, & Meynard, J. . Managing antibiotic associated diarrhoe. *BMJ*. 2002;324(7450):1345-1346.
374 doi:10.1136/bmj.324.7350
- 375 33. Bao H, Wang, D., Xue, J., et al. Clinical outcomes of extended versus intermittent administration of
376 piperacillin/tazobactam for the treatment of hospital-acquired pneumonia: a randomized controlled trial. *Eur J Clin*
377 *Microbiol Infect Dis*. 2017;36:459-466. doi:10.1007/s10096-016-2819-1
- 378 34. Lau W, Mercer, D., Itani, Kamal., et al. Randomized, Open-Label, Comparative Study of Piperacillin-
379 Tazobactam Administered by continuous Infusion versus Intermittent Infusion for Treatment of Hospitalized
380 Patients with Complicated Intra-Abdominal Infection. *Antimicro Agents Chemother*. 2006;50(11):3556-3561.
381 doi:10.1128/AAC00329-06
- 382 35. Nichols K, Beauchamp, L., & Knoderer C. Outcomes of Extended Infusion Cefepime in Pediatric Patients.
383 *Infect Dis Clin Pract*. 2019;27:283-287.
- 384 36. McNabb J, Nightingale, C., Quintillani, R., et al. Cost-effectiveness of ceftazidime by continuous infusion
385 versus intermittent infusion for nosocomial pneumonia. *Pharmacotherapy*. 2001;21(5):549-555.
386 doi:10.1592/phco.21.6.549.34539
- 387 37. Silvia E. Schliamser, Otto Cars, S. Ragnar Norrby, Neurotoxicity of β -lactam antibiotics: predisposing
388 factors and pathogenesis, *Journal of Antimicrobial Chemotherapy*, Volume 27, Issue 4, April 1991, Pages 405–425,
389 <https://doi.org/10.1093/jac/27.4.405>
- 390 38. Grill MF, Maganti RK. Neurotoxic effects associated with antibiotic use: management considerations. *Br J*
391 *Clin Pharmacol*. 2011 Sep;72(3):381-93. doi: 10.1111/j.1365-2125.2011.03991.x. PMID: 21501212; PMCID:
392 PMC3175508.
- 393 39. Payne LE, Gagnon DJ, Riker RR, et al. Cefepime-induced neurotoxicity: a systematic review. *Crit Care*.
394 2017;21(1):276. Published 2017 Nov 14. doi:10.1186/s13054-017-1856-1

- 395 40. Al-Shaer, M. H., & Peloquin, C. A. (2021). Using precision dosing to minimize cefepime-induced
396 neurotoxicity: The challenge of targets. *Journal of infection and chemotherapy : official journal of the Japan Society*
397 *of Chemotherapy*, 27(6), 929–930. <https://doi.org/10.1016/j.jiac.2021.02.020>
- 398 41. Grant EM, Kuti JL, Nicolau DP, Nightingale C, Quintiliani R. Clinical efficacy and pharmacoconomics of
399 a continuous-infusion piperacillin-tazobactam program in a large community teaching hospital. *Pharmacotherapy*
400 2002;22:471-83.
- 401 42. Fan SY, Shum HP, Cheng WY, Chan YH, Leung SM, Yan WW. Clinical Outcomes of Extended Versus
402 Intermittent Infusion of Piperacillin/Tazobactam in Critically Ill Patients: A Prospective Clinical Trial.
403 *Pharmacotherapy* 2017;37:109-19.
- 404 43. McCormick H, Tomaka N, Baggett S, et al. Comparison of acute renal injury associated with intermittent
405 and extended infusion piperacillin/tazobactam. *Am J Health Syst Pharm* 2015;72:S25-30.
- 406 44. Mousavi M, Zapolskaya T, Scipione MR, Louie E, Papadopoulos J, Dubrovskaya Y. Comparison of Rates
407 of Nephrotoxicity Associated with Vancomycin in Combination with Piperacillin-Tazobactam Administered as an
408 Extended versus Standard Infusion. *Pharmacotherapy* 2017;37:379-85.
- 409 45. Dulhunty, J. M., Roberts, J. A., Davis, J. S., Webb, S. A., Bellomo, R., Gomersall, C., Shirwadkar, C.,
410 Eastwood, G. M., Myburgh, J., Paterson, D. L., & Lipman, J. (2013). Continuous infusion of beta-lactam antibiotics
411 in severe sepsis: a multicenter double-blind, randomized controlled trial. *Clinical infectious diseases : an official*
412 *publication of the Infectious Diseases Society of America*, 56(2), 236–244. <https://doi.org/10.1093/cid/cis856>
- 413 46. Nicolau DP, McNabb J, Lacy MK, Quintiliani R, Nightingale CH. Continuous versus intermittent
414 administration of ceftazidime in intensive care unit patients with nosocomial pneumonia. *Int J Antimicrob Agents*
415 2001;17:497-504.
- 416 47. Cotrina-Luque J, Gil-Navarro MV, Acosta-Garcia H, et al. Continuous versus intermittent
417 piperacillin/tazobactam infusion in infection due to or suspected pseudomonas aeruginosa. *International Journal of*
418 *Clinical Pharmacy* 2016;38:70-9.
- 419 48. Karino S, Kaye KS, Navalkele B, et al. Epidemiology of Acute Kidney Injury among Patients Receiving
420 Concomitant Vancomycin and Piperacillin-Tazobactam: Opportunities for Antimicrobial Stewardship. *Antimicrob*
421 *Agents Chemother* 2016;60:3743-50.
- 422 49. Winstead EM, Ratliff PD, Hickson RP, Mueller JE, Judd WR. Evaluation of an alternative extended-
423 infusion piperacillin-tazobactam dosing strategy for the treatment of gram-negative infections. *Int J Clin Pharm*
424 2016;38:1087-93.
- 425 50. Nichols KR, Karmire LC, Cox EG, Kays MB, Knoderer CA. Implementing extended-infusion cefepime as
426 standard of care in a children's hospital: a prospective descriptive study. *Ann Pharmacother* 2015;49:419-26.
- 427 51. Cotner S, Rutter WC, Burgess DR, Martin C, Burgess DS. Influence of beta-lactam infusion strategy on
428 acute kidney injury. *Open Forum Infectious Diseases* 2016;3.
- 429 52. Schmees PM, Bergman SJ, Strader BD, Metzke ME, Pointer S, Valenti KM. Outcomes of an extended-
430 infusion piperacillin-tazobactam protocol implementation in a community teaching hospital adult intensive care unit.
431 *Am J Health Syst Pharm* 2016;73:S100-5.
- 432
- 433