

1 **XBB.1.5 mRNA COVID-19 Vaccination and Inpatient or Emergency Department Visits**
2 **Among Adults Infected with SARS-CoV-2 JN.1 and XBB-Lineage Variants**

3
4 Matthew E. Levy¹, Vanessa Chilunda¹, Phillip R. Heaton², Deran McKeen³, Jason D.
5 Goldman^{4,5,6}, Richard E. Davis⁷, Cynthia A. Schandl⁸, William B. Glen⁸, Lisa M.
6 McEwen¹, Elizabeth T. Cirulli¹, Dana Wyman¹, Andrew Dei Rossi¹, Hang Dai¹, Magnus
7 Isaksson¹, Nicole L. Washington¹, Tracy Basler¹, Kevin Tsan¹, Jason Nguyen¹, Jimmy
8 Ramirez¹, Efren Sandoval¹, William Lee¹, James Lu¹, Shishi Luo¹

9
10 ¹Helix, San Mateo, California, USA; ²Department of Pathology and Laboratory Medicine,
11 HealthPartners, Bloomington, Minnesota, USA; ³HealthPartners Institute, Bloomington,
12 Minnesota, USA; ⁴Providence St. Joseph Health System, Renton, Washington, USA;
13 ⁵Swedish Center for Research and Innovation, Swedish Medical Center, Seattle,
14 Washington, USA; ⁶Division of Infectious Disease, University of Washington, Seattle,
15 Washington, USA; ⁷Providence Sacred Heart Medical Center and Children's Hospital,
16 Spokane, Washington, USA; ⁸Department of Pathology and Laboratory Medicine,
17 Medical University of South Carolina, Charleston, South Carolina, USA

18
19 Corresponding author: Matthew Levy, PhD. Helix. Mail: 101 S. Ellsworth Avenue, Suite
20 350, San Mateo, CA 94401. Email: matt.levy@helix.com.

23 **ABSTRACT**

24 Within a multi-state viral genomic surveillance program, we conducted a case-control
25 analysis comparing prior receipt of XBB.1.5-adapted mRNA vaccination between
26 SARS-CoV-2-infected adults with inpatient/ED visits (proxy for severe illness) vs
27 outpatient visits. Among 6,551 patients from September 2023-January 2024, 6.1% with
28 inpatient/ED visits vs 12.0% with outpatient visits had received XBB.1.5 vaccination
29 (aOR=0.41; 95%CI:0.32-0.53). This protective association was weaker among JN.1
30 (aOR=0.62; 95%CI:0.40-0.96) vs XBB-lineage (aOR=0.28; 95%CI:0.18-0.43) variant
31 infections (interaction, $p=0.003$). XBB.1.5 vaccination was also protective specifically
32 compared to BA.4/BA.5-adapted mRNA vaccination (aOR=0.60; 95%CI:0.45-0.79).
33 XBB.1.5 vaccines protect against severe illness, but protection may be weaker against
34 JN.1 vs XBB-lineage variants.

35 INTRODUCTION

36 On 11 September 2023, the US Food and Drug Administration (FDA) approved the
37 2023-2024 BNT162b2 (Pfizer-BioNTech) and mRNA-1273 (Moderna) monovalent
38 mRNA COVID-19 vaccines for individuals aged ≥ 12 years, with emergency use
39 authorization granted for children aged 6 months to 11 years. These vaccines target the
40 spike protein of the SARS-CoV-2 Omicron variant XBB.1.5, which was predominant in
41 the US from January to May 2023 [1]. The US Centers for Disease Control's (CDC's)
42 Advisory Committee on Immunization Practices (ACIP) subsequently recommended
43 that individuals aged ≥ 6 months receive an XBB.1.5-adapted vaccine regardless of their
44 vaccination history, to enhance protection against circulating variants [2].

45 By September 2023, other XBB variants such as EG.5 and HV.1 (both sublineages of
46 XBB.1.9.2) had surpassed XBB.1.5 in prevalence. By late December 2023, another
47 novel variant, JN.1 (a sublineage of BA.2.86), had become predominant, accounting for
48 65% of SARS-CoV-2 infections nationwide by 6 January 2024 [1]. The rapid rise of
49 JN.1, which possesses more than 30 mutations in the spike protein compared to
50 XBB.1.5 (including the notable L455S mutation), could be attributed to increased
51 immune escape and infectivity [3,4]. In laboratory-based neutralization studies, JN.1 has
52 displayed increased resistance to neutralization by antibodies induced by XBB.1.5-
53 adapted mRNA vaccination [4-6]. However, immunogenicity studies suggest that
54 antibody titers are likely to remain effective [7]. Initial findings indicate short-term
55 effectiveness of XBB.1.5-adapted mRNA vaccines for protecting against symptomatic
56 SARS-CoV-2 infection and severe COVID-19 outcomes, largely during periods of XBB
57 predominance [8-14].

58 To our knowledge, no prior study has examined variant-specific estimates of XBB.1.5
59 vaccine protection against severe COVID-19 outcomes, and it remains unknown
60 whether XBB.1.5 vaccines protect against severe illness from JN.1 variant infection.
61 Here, we leverage a multi-state viral genomic surveillance program to conduct a case-
62 control analysis assessing the effect of XBB.1.5-adapted mRNA vaccination on patients'
63 likelihood of having inpatient or emergency department (ED) visits (considered severe)
64 vs outpatient visits (considered mild), among adults with medically attended SARS-CoV-
65 2 infection. Serving as an indicator of vaccine-associated protection against severe
66 illness post-infection, this association was evaluated overall and separately among JN.1
67 and XBB-lineage variant infections.

68 **METHODS**

69 **Design and Setting**

70 Within a pan-respiratory virus genomic surveillance program, residual clinical samples
71 from patients who tested positive for a respiratory virus (molecular or antigen) were
72 obtained from three health systems with facilities spanning California, Minnesota, South
73 Carolina, Washington, and Wisconsin (Supplementary Table 1). Samples were initially
74 collected from patients during medical visits and were characterized based on location
75 of collection as inpatient, ED, or outpatient. Patients' demographic characteristics and
76 COVID-19 vaccination history were extracted from electronic health records (EHRs).
77 Study protocols were approved by institutional review boards.

78 **Viral Sequencing**

79 Viral sequencing was performed by Helix using a hybridization-capture based assay
80 (Twist Biosciences) and short-read genome sequencing technology (Illumina), as
81 previously described [15]. SARS-CoV-2 was identified in samples with reads that
82 aligned to the reference genome, and lineages were assigned using pangolin version
83 4.3.1. Further details are provided in the Supplementary Methods.

84 **Study Sample**

85 This analysis included SARS-CoV-2-positive samples collected from adults aged ≥ 18
86 years between 24 September 2023 and 21 January 2024. SARS-CoV-2 infection was
87 identified from either clinical diagnostic testing (performed/ordered by the health
88 system), viral sequencing (performed by Helix), or both.

89 **Visit Type**

90 The clinical visit type associated with sample collection was a surrogate measure of the
91 severity of illness at time of testing. Inpatient and ED visits represented more severe
92 illness compared to outpatient visits. The reason for the visit and patients' specific
93 symptoms were not available for analysis.

94 **Vaccination Status**

95 COVID-19 vaccination status was assigned using the date and type of the most recent
96 dose received prior to the specimen collection date (regardless of the total number of
97 earlier doses received). Patients were considered to be: 1) vaccinated with an XBB.1.5-
98 adapted monovalent mRNA vaccine if their last dose occurred on/after September 12,
99 2023 and was BNT162b2 or mRNA-1273; 2) vaccinated with a BA.4/BA.5-adapted

100 bivalent mRNA vaccine if their last dose occurred between September 1, 2022 and
101 September 11, 2023 and was BNT162b2 or mRNA-1273; 3) vaccinated with an original
102 wild-type monovalent mRNA or viral vector vaccine if their last dose occurred before
103 September 1, 2022 and was either BNT162b2, mRNA-1273, or Ad26.COV2.S; and 4)
104 unvaccinated if they had received no prior COVID-19 vaccine doses. Patients were
105 excluded if they received any dose 0-6 days before the collection date (83) or if their
106 most recent dose was a different (20) or unknown (124) vaccine type.

107 **Statistical Analysis**

108 In this case-control analysis, the odds of prior XBB.1.5 vaccination were compared
109 between inpatient or ED patients (cases) and outpatients (controls). We also compared
110 inpatient vs outpatient (excluding ED). Adjusted odds ratios (aORs) and 95%
111 confidence intervals (CIs) for the association between vaccination status and visit type
112 were calculated using multivariable logistic regression, adjusting for age group, sex,
113 race/ethnicity, health system and state of residence, and collection date (natural cubic
114 spline). In multivariable models, effect modification by variant (JN.1 vs XBB-lineage)
115 was assessed using an interaction term with vaccination status. Receipt of an XBB.1.5
116 vaccine was compared to no receipt of an XBB.1.5 vaccine (irrespective of vaccination
117 history) and to three specific reference groups: 1) BA.4/BA.5 vaccination but no XBB.1.5
118 vaccine; 2) wild-type vaccination but no BA.4/BA.5 or XBB.1.5 vaccine; and 3)
119 unvaccinated. In a separate analysis, XBB.1.5 vaccine recipients were further
120 categorized based on duration of time since their dose (7-59 vs ≥ 60 days earlier). In
121 addition, BA.4/BA.5 and wild-type vaccine recipients were compared to unvaccinated.
122 Subgroup analyses were conducted among patients infected with JN.1, XBB-lineage

123 (any), HV.1, and EG.5 variants; among patients aged ≥ 65 years; and among patients
124 with no other respiratory virus coinfection. $P < 0.05$ was considered statistically significant
125 and analyses were performed using R version 4.2.3.

126 **RESULTS**

127 Among 6,551 adults with medically attended laboratory-confirmed SARS-CoV-2
128 infection, 1,912 (29.2%) were tested in either an inpatient (1,012; 15.4%) or ED (900;
129 13.7%) setting, while 4,639 (70.8%) were tested in an outpatient setting. Most SARS-
130 CoV-2 infections were detected through clinical diagnostic testing, with only 8 first
131 identified through viral sequencing. Patient characteristics stratified by visit type are
132 presented in Table 1. Inpatients had a higher median age (73 years; IQR:61-82)
133 compared to ED patients (55 years; IQR:35-72) and outpatients (52 years; IQR:36-68).
134 Lineages were successfully assigned to 4,480 samples (68.4%), with the most prevalent
135 variants being JN.1 (1,084; 24.2%), HV.1 (803; 17.9%), and EG.5 (746; 16.7%). During
136 the most recent 2-week period ending 20 January 2024, JN.1 accounted for 73.1% of
137 sequenced samples, while HV.1 (5.5%) and EG.5 (2.9%) were less prevalent,
138 consistent with national data [1].

139 Regarding vaccination status, 675 (10.3%) patients had received XBB.1.5 vaccination
140 (a median of 57 days earlier [IQR:39-73; range:7-122]), 1,155 (17.6%) had received
141 BA.4/BA.5 vaccination (but not XBB.1.5 vaccination) (median of 374 days since last
142 dose [IQR:330-414]), 2,879 (43.9%) had received wild-type vaccination (but not
143 BA.4/BA.5 or XBB.1.5 vaccination) (median of 712 days since last dose [IQR:625-818]),
144 and 1,842 (28.1%) were unvaccinated. Among XBB.1.5-vaccinated patients, the median

145 time since vaccination was 64 days for JN.1 infections (IQR:51-80) and 52 days for
146 XBB-lineage infections (IQR:31-64). In the most recent 14-day period, 19.4% of patients
147 overall were XBB.1.5-vaccinated.

148 Among all SARS-CoV-2 infections, 6.1% of patients with inpatient/ED visits had
149 received XBB.1.5 vaccination, compared to 12.0% of patients with outpatient visits
150 (Figure 1). In multivariable analysis, XBB.1.5 vaccination vs no XBB.1.5 vaccination was
151 associated with lower odds of having inpatient/ED visits compared to outpatient visits
152 (aOR=0.41; 95%CI:0.32-0.53). This protective association was significant among any-
153 variant infections regardless of the specific reference group used: vs BA.4/BA.5
154 vaccination (aOR=0.60; 95%CI:0.45-0.79); vs wild-type vaccination (aOR=0.48;
155 95%CI:0.37-0.63); and vs unvaccinated (aOR=0.24; 95%CI:0.19-0.32).

156 When stratifying by variant, patients with XBB.1.5 vaccination (vs. no XBB.1.5
157 vaccination) had lower odds of inpatient/ED visits among JN.1 infections (aOR=0.62;
158 95%CI:0.40-0.96) and among XBB-lineage infections (aOR=0.28; 95%CI:0.18-0.43)
159 (Figure 1), but this association was weaker among JN.1 vs XBB-lineage infections
160 (vaccination-variant interaction, $p=0.003$). This interaction between vaccination and
161 JN.1 vs XBB-lineage variant remained significant when comparing XBB.1.5-vaccinated
162 patients to BA.4/BA.5-vaccinated ($p=0.009$), wild-type-vaccinated ($p=0.003$), and
163 unvaccinated ($p=0.035$) patients. Regarding specific vaccination status reference
164 groups, protective associations for XBB.1.5 vaccination were strongest when comparing
165 XBB.1.5-vaccinated to unvaccinated patients.

166 In additional analyses, findings were similar when only including adults aged ≥ 65 years
167 (Supplementary Figure 1; interaction between XBB.1.5 vaccination and JN.1 vs XBB-
168 lineage variant, $p=0.043$), when comparing only inpatient vs outpatient visits
169 (Supplementary Figure 2; interaction, $p=0.013$), and when excluding patients with
170 respiratory virus coinfections (Supplementary Figure 3; interaction, $p=0.005$). Among
171 JN.1 and XBB-lineage infections, similar protective associations were detected for
172 patients XBB.1.5-vaccinated 7-59 days earlier and ≥ 60 days earlier (Supplementary
173 Figure 4). BA.4/BA.5 vaccination and wild-type vaccination were also associated with
174 lower odds of inpatient/ED visits compared to unvaccinated (Supplementary Figure 5).

175 **DISCUSSION**

176 In this multi-state study of adults with medically attended SARS-CoV-2 infection
177 between September 2023 and January 2024, XBB.1.5 mRNA-vaccinated individuals
178 had an overall 59% lower odds of having an inpatient/ED visit vs outpatient visit. Unlike
179 previous observational studies examining XBB.1.5 vaccination and severe COVID-19
180 outcomes [8,9,11,14], our study provides novel data on XBB.1.5 vaccine-associated
181 protection against specific contemporary circulating variants, which was made possible
182 through the linkage of viral sequencing and patient-level EHR data. While findings
183 provide evidence that XBB.1.5 vaccines protected against severe illness associated
184 with both JN.1 and XBB-lineage variants, protection against JN.1 was significantly
185 lower. Among JN.1-infected patients, XBB.1.5 vaccination was associated with 38%
186 lower odds of inpatient/ED visits, compared to the 72% lower odds observed among
187 XBB-lineage-infected patients. Given that associations among JN.1-infected individuals
188 were similar irrespective of time since XBB.1.5 vaccination, this difference by variant

189 was not attributed to waning effectiveness over the approximately 4 months of available
190 data. Similarly, a study evaluating XBB.1.5 vaccine effectiveness against symptomatic
191 infection reported lower point estimates for likely-JN.1 infections (non-confirmed) than
192 for non-JN.1 lineages [10]. This key finding emphasizes the need for COVID-19
193 vaccines to be routinely updated to align with circulating strains and for individuals to
194 stay up to date with recommended vaccines.

195 The inverse association between XBB.1.5 vaccination (administered a median of 57
196 days earlier) and inpatient/ED visit type was consistently observed regardless of the
197 specific reference group used, which included prior receipt of BA.4/BA.5 vaccination
198 without XBB.1.5 vaccination. Thus, XBB.1.5-vaccine-associated protection was
199 enhanced beyond the remaining immunity conferred by previous BA.4/BA.5 vaccination.
200 It is important to note that results were obtained within the context of widespread natural
201 immunity from prior infection, which could have resulted in attenuated associations if
202 individuals who had not received XBB.1.5 vaccination were more likely to have
203 infection-induced immunity.

204 This study has several limitations. First, although all patients had laboratory-confirmed
205 SARS-CoV-2 infection identified at a medical visit, we were unable to confirm
206 symptomatic COVID-19 and we lacked data on the reasons for medical visits. Second,
207 visit type was solely assessed at the time of sample collection for SARS-CoV-2 testing
208 and it is unknown whether outpatients subsequently had ED or inpatient visits later in
209 the course of infection, potentially contributing to misclassification. Third, we lacked data
210 on social factors (e.g., insurance type) and underlying medical conditions, which could
211 have resulted in residual confounding. Fourth, misclassification of vaccination status is

212 possible if vaccine doses documented in EHRs were not complete. Finally, because
213 vaccination status subgroups were distinct both in vaccine type received and in time
214 from last vaccination, it is not possible to discern whether the protective effect shown
215 here is attributable primarily to vaccine type or titers of neutralizing antibodies.

216 The findings from this study provide evidence of the effectiveness of the XBB.1.5-
217 adapted mRNA vaccines in protecting against severe illness requiring inpatient or ED
218 visits among adults infected with JN.1 or XBB-lineage variants. These results support
219 the current recommendation that all adults should, irrespective of their previous COVID-
220 19 vaccination history, receive the 2023-2024 COVID-19 vaccine to enhance their
221 protection. However, findings also suggest that XBB.1.5 vaccines provide comparatively
222 less protection against the currently predominant JN.1 variant than they do against
223 XBB-lineage variants. Future research is needed to confirm the degree of XBB.1.5
224 vaccine protection against severe illness associated with JN.1 variant infection and to
225 evaluate the potential for waning effectiveness over time.

226 **NOTES**

227 **Author contributions.** All authors contributed substantively to this manuscript in the
228 following ways: conceptualization (MEL, VC, SL), investigation (MEL, VC, PRH, DM,
229 JDG, RED, CAS, WBG, LMM, DW, ADR, HD, MI, NLW, TB, KT, JN, JR, ES, SL), data
230 curation (MEL, VC, LMM, DW, ADR, HD, MI, NLW, SL), formal analysis (MEL), project
231 administration (PRH, JDG, CAS, ETC, NLW, WL, JL, SL), writing - original draft (MEL),
232 and writing - review and editing (MEL, VC, PRH, DM, JDG, RED, CAS, WBG, ETC, SL).

233 **Acknowledgements.** The authors thank the Helix Clinical Informatics and
234 Bioinformatics teams for their contributions to electronic health record data and viral
235 sequencing pipelines. They also thank Catherine Clinton for her oversight and guidance
236 in ensuring research compliance. They thank the investigators and staff at
237 HealthPartners, Providence Health, and the Medical University of South Carolina who
238 contributed to the ViEW Network™.

239 **Financial support.** This work was supported by Helix.

240 **Potential conflicts of interest.** MEL, VC, LMM, ETC, DW, ADR, HD, MI, NLW, TB, KT,
241 JN, JR, ES, WL, JL, and SL are employees of Helix, Inc. MEL, MI, and SL report
242 contracted research from Pfizer. MEL, MI, WL, and SL report contracted research from
243 the Centers for Disease Control and Prevention (CDC). MEL reports contracted
244 research and travel support from Novavax. PRH reports contracted research from
245 Seegene USA and Helix, Inc. JDG reports contracted research from Helix, Gilead, Eli
246 Lilly, and Regeneron; grants from Merck (BARDA) and Gilead; speaking honoraria and
247 personal fees from Gilead Sciences, Inc, and Eli Lilly & Co; and collaborative services

248 agreements with Adaptive Biotechnologies, Monogram Biosciences, and LabCorp; and
249 serving as a speaker or advisory board member for Gilead and Eli Lilly. CAS reports
250 giving educational lectures sponsored by Eli Lilly. DM, RED, and WBG report no
251 potential conflicts.

252 REFERENCES

- 253 1. Centers for Disease Control and Prevention. COVID data tracker: variant
254 proportions. 2024. Available from: [https://covid.cdc.gov/covid-data-tracker/#variant-](https://covid.cdc.gov/covid-data-tracker/#variant-proportions)
255 [proportions](https://covid.cdc.gov/covid-data-tracker/#variant-proportions). Accessed 4 March 2024.
- 256 2. Regan JJ, Moulia DL, Link-Gelles R, et al. Use of updated COVID-19 vaccines
257 2023–2024 formula for persons aged ≥ 6 months: recommendations of the Advisory
258 Committee on Immunization Practices — United States, September 2023. *Morb*
259 *Mortal Wkly Rep* **2023**; 72:1140-6.
- 260 3. Yang S, Yu Y, Xu Y, et al. Fast evolution of SARS-CoV-2 BA.2.86 to JN.1 under
261 heavy immune pressure. *Lancet Infect Dis* **2024**; 24:e70-2.
- 262 4. Planas D, Staropoli I, Michel V, et al. Distinct evolution of SARS-CoV-2 Omicron
263 XBB and BA.2.86/JN.1 lineages combining increased fitness and antibody evasion.
264 *bioRxiv* [Preprint]. November 21, 2023 [cited 2024 Mar 4]. Available from:
265 <https://www.biorxiv.org/content/10.1101/2023.11.20.567873v1>.
- 266 5. Kaku Y, Okumura K, Padilla-Blanco M, et al. Virological characteristics of the
267 SARS-CoV-2 JN.1 variant. *Lancet Infect Dis* **2024**; 24:e82.
- 268 6. Wang Q, Guo Y, Bowen A, et al. XBB.1.5 monovalent mRNA vaccine booster
269 elicits robust neutralizing antibodies against emerging SARS-CoV-2 variants.
270 *bioRxiv* [Preprint]. December 6, 2023 [cited 2024 Mar 4]. Available from:
271 <https://www.biorxiv.org/content/10.1101/2023.11.26.568730v2>.

- 272 7. Chalkias S, McGhee N, Whatley JL, et al. Interim report of the reactogenicity and
273 immunogenicity of SARS-CoV-2 XBB-containing vaccines. *J Infect Dis* **2024**;
274 jiae067. doi: 10.1093/infdis/jiae067.
- 275 8. Hansen CH, Moustsen-Helms IR, Rasmussen M, Søborg B, Ullum H, Valentiner-
276 Branth P. Short-term effectiveness of the XBB.1.5 updated COVID-19 vaccine
277 against hospitalisation in Denmark: a national cohort study. *Lancet Infect Dis* **2024**;
278 24:e73-4.
- 279 9. Werkhoven CH van, Valk A-W, Smagge B, et al. Early COVID-19 vaccine
280 effectiveness of XBB.1.5 vaccine against hospitalisation and admission to intensive
281 care, the Netherlands, 9 October to 5 December 2023. *Euro Surveill* **2024**;
282 29:2300703.
- 283 10. Link-Gelles R, Ciesla AA, Mak J, et al. Early Estimates of updated 2023-2024
284 (monovalent XBB.1.5) COVID-19 vaccine effectiveness against symptomatic
285 SARS-CoV-2 infection attributable to co-circulating Omicron variants among
286 immunocompetent adults - Increasing Community Access to Testing Program,
287 United States, September 2023-January 2024. *Morb Mortal Wkly Rep* **2024**; 73:77-
288 83.
- 289 11. Tartof SY, Slezak JM, Frankland TB, et al. BNT162b2 XBB1.5-adapted vaccine and
290 COVID-19 hospital admissions and ambulatory visits in US adults. medRxiv
291 [Preprint]. December 28, 2023 [cited 2024 Mar 4]. Available from:
292 <https://www.medrxiv.org/content/10.1101/2023.12.24.23300512v1>.

- 293 12. Skowronski DM, Zhan Y, Kaweski SE, et al. 2023/24 mid-season influenza and
294 Omicron XBB.1.5 vaccine effectiveness estimates from the Canadian Sentinel
295 Practitioner Surveillance Network (SPSN). *Euro Surveill* **2024**; 29. doi: doi:
296 10.2807/1560-7917.ES.2024.29.7.2400076.
- 297 13. Huiberts AJ, Hoeve CE, Gier B de, et al. Effectiveness of Omicron XBB.1.5 vaccine
298 against SARS-CoV-2 Omicron XBB and JN.1 infection in a prospective cohort
299 study in the Netherlands, October 2023 to January 2024. medRxiv [preprint].
300 February 17, 2024 [cited 2024 Mar 4]. Available from:
301 <https://www.medrxiv.org/content/10.1101/2024.02.15.24302872v1>.
- 302 14. DeCuir J, Payne AB, Self WH, et al. Interim effectiveness of updated 2023–2024
303 (monovalent XBB.1.5) COVID-19 vaccines against COVID-19–associated
304 emergency department and urgent care encounters and hospitalization among
305 immunocompetent adults Aged ≥ 18 years — VISION and IVY Networks,
306 September 2023–January 2024. *Morb Mortal Wkly Rep* **2024**; 73:180-8.
- 307 15. Bolze A, Basler T, White S, et al. Evidence for SARS-CoV-2 Delta and Omicron co-
308 infections and recombination. *Med*. **2022**; 3(12):848-59.e4.

309 **Table 1. Patient Characteristics Overall and Stratified by Visit Type.**

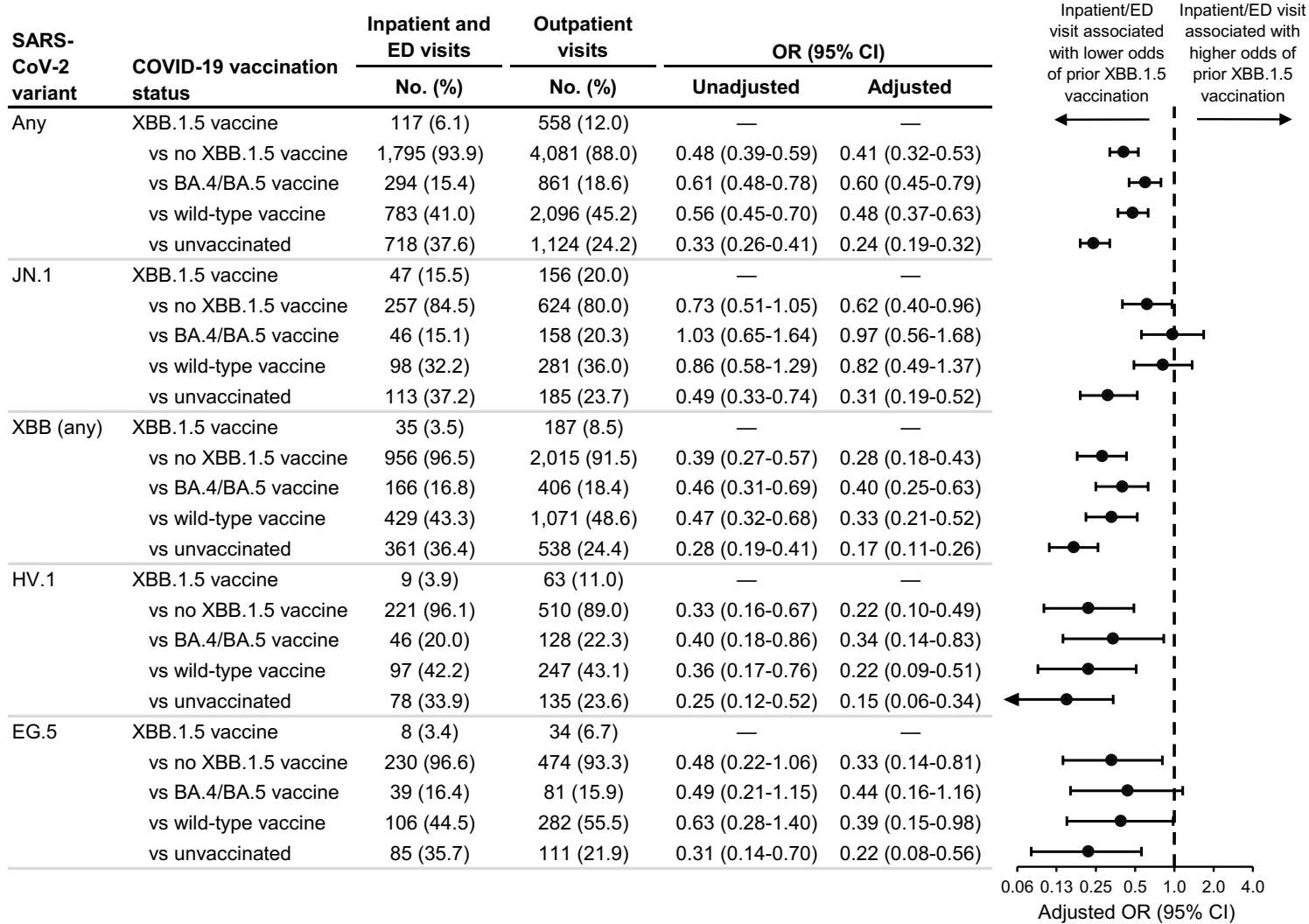
Characteristic	Visit type			
	Overall	Inpatient	ED	Outpatient
	(n=6,551), No. (%)	(n=1,012), No. (%)	(n=900), No. (%)	(n=4,639), No. (%)
Health system				
HealthPartners	5,466 (83.4)	448 (44.3)	566 (62.9)	4,452 (96.0)
Medical University of South Carolina	202 (3.1)	113 (11.2)	61 (6.8)	28 (0.6)
Providence Health and Services	883 (13.5)	451 (44.6)	273 (30.3)	159 (3.4)
Month of specimen collection				
September 2023	410 (6.3)	62 (6.1)	62 (6.9)	286 (6.2)
October 2023	1,385 (21.1)	251 (24.8)	185 (20.6)	949 (20.5)
November 2023	1,604 (24.5)	220 (21.7)	223 (24.8)	1,161 (25.0)
December 2023	2,316 (35.4)	316 (31.2)	307 (34.1)	1,693 (36.5)
January 2024	836 (12.8)	163 (16.1)	123 (13.7)	550 (11.9)
Age group				
18 to 49 y	2,684 (41.0)	138 (13.6)	387 (43.0)	2,159 (46.5)
50 to 64 y	1,428 (21.8)	163 (16.1)	176 (19.6)	1,089 (23.5)
65 to 74 y	1,106 (16.9)	246 (24.3)	137 (15.2)	723 (15.6)
75 to 84 y	904 (13.8)	270 (26.7)	135 (15.0)	499 (10.8)
≥85 y	429 (6.5)	195 (19.3)	65 (7.2)	169 (3.6)
Female	3,893 (59.4)	505 (49.9)	523 (58.1)	2,865 (61.8)
Race and ethnicity				
Asian, non-Hispanic	325 (5.0)	23 (2.3)	20 (2.2)	282 (6.1)
Black, non-Hispanic	828 (12.6)	88 (8.7)	146 (16.2)	594 (12.8)
Hispanic	256 (3.9)	18 (1.8)	41 (4.6)	197 (4.2)

White, non-Hispanic	3,851 (58.8)	432 (42.7)	413 (45.9)	3,006 (64.8)
Other or unknown	1,291 (19.7)	451 (44.6)	280 (31.1)	560 (12.1)
COVID-19 vaccination status ^a				
Unvaccinated	1,842 (28.1)	360 (35.6)	358 (39.8)	1,124 (24.2)
Vaccinated with a wild-type vaccine	2,879 (43.9)	397 (39.2)	386 (42.9)	2,096 (45.2)
Vaccinated with a BA.4/BA.5 vaccine	1,155 (17.6)	182 (18.0)	112 (12.4)	861 (18.6)
Vaccinated with an XBB.1.5 vaccine	675 (10.3)	73 (7.2)	44 (4.9)	558 (12.0)
SARS-CoV-2 variant ^b				
JN.1	1,084 (16.5)	139 (13.7)	165 (18.3)	780 (16.8)
HV.1	803 (12.3)	116 (11.5)	114 (12.7)	573 (12.4)
EG.5	746 (11.4)	119 (11.8)	119 (13.2)	508 (11.0)
XBB.1.16.1	379 (5.8)	54 (5.3)	67 (7.4)	258 (5.6)
XBB.1.5	262 (4.0)	44 (4.3)	47 (5.2)	171 (3.7)
HK.3	231 (3.5)	39 (3.9)	33 (3.7)	159 (3.4)
XBB.1.16.6	219 (3.3)	34 (3.4)	43 (4.8)	142 (3.1)
XBB.2.3	209 (3.2)	31 (3.1)	24 (2.7)	154 (3.3)
FL.1.5.1	151 (2.3)	24 (2.4)	26 (2.9)	101 (2.2)
BA.2.86	146 (2.2)	20 (2.0)	23 (2.6)	103 (2.2)
XBB.1.9.1	38 (0.6)	6 (0.6)	5 (0.6)	27 (0.6)
XBB.1.16	37 (0.6)	5 (0.5)	7 (0.8)	25 (0.5)
XBB.1.9.2	20 (0.3)	7 (0.7)	3 (0.3)	10 (0.2)
Other XBB	98 (1.5)	15 (1.5)	9 (1.0)	74 (1.6)
Other non-XBB	57 (0.9)	6 (0.6)	9 (1.0)	42 (0.9)
Insufficient sequencing data	2,071 (31.6)	353 (34.9)	206 (22.9)	1,512 (32.6)

310 Abbreviations: ED, emergency department.

311 ^a Defined by whether there was ≥ 1 COVID-19 vaccine record prior to the specimen collection date as well as by the date and type of
 312 the most recent dose received.

313 ^b SARS-CoV-2 variant lineages were assigned using pangolin version 4.3.1. Except for HV.1 and HK.3, sublineages of EG.5 are
314 aggregated with EG.5. Except for JN.1, sublineages of BA.2.86 are aggregated with BA.2.86. Except for FL.1.5.1, sublineages of
315 XBB.1.9.1 are aggregated with XBB.1.9.1. Except for XBB.1.16.1 and XBB.1.16.6, sublineages of XBB.1.16 are aggregated with
316 XBB.1.16. Except for EG.5, HV.1, and HK.3, sublineages of XBB.1.9.2 are aggregated with XBB.1.9.2. Sublineages of each other
317 named lineage are aggregated with the respective lineage. JN.1 is also known as BA.2.86.1.1; HV.1 as XBB.1.9.2.5.1.6.1; EG.5 as
318 XBB.1.9.2.5; HK.3 as XBB.1.9.2.5.1.1.3; and FL.1.5.1 as XBB.1.9.1.1.5.1.



319

320 **Figure 1. Association between inpatient or emergency department vs outpatient visit type and prior receipt of an**

321 **XBB.1.5 vaccine.** Associations were calculated among all SARS-CoV-2 infections and among JN.1, XBB (any

322 sublineage), HV.1, and EG.5 infections. Odds ratios (ORs) were calculated comparing prior receipt of an XBB.1.5 vaccine
323 to no prior receipt of an XBB.1.5 vaccine (irrespective of previous COVID-19 vaccination history) as well as to each of
324 three specific reference groups: 1) prior receipt of a BA.4/BA.5 vaccine but not an XBB.1.5 vaccine; 2) prior receipt of a
325 wild-type vaccine but not a BA.4/BA.5 or XBB.1.5 vaccine; and 3) unvaccinated.. Adjusted ORs were adjusted for age
326 group (18-49, 50-64, 65-74, 75-84, and ≥ 85 years), sex, race and ethnicity (Asian, non-Hispanic; Black, non-Hispanic;
327 Hispanic; white, non-Hispanic; and other/unknown), health system and state of residence, and collection date (natural
328 cubic spline with 4 degrees of freedom). CI indicates confidence interval; ED, emergency department.