

# Coronary Microvascular Function Following Severe Preeclampsia

## *Running Title: Microvascular Dysfunction in Preeclampsia*

Michael C. Honigberg, MD, MPP<sup>1,2</sup>; Katherine E. Economy, MD, MPH<sup>3</sup>; Maria A. Pabón, MD<sup>4</sup>; Xiaowen Wang, MD, MPH<sup>4</sup>; Claire Castro, PhD<sup>1</sup>; Jenifer M. Brown, MD<sup>4,5</sup>; Sanjay Divakaran, MD<sup>4,5</sup>; Brittany N. Weber, MD, PhD<sup>4,5</sup>; Leanne Barrett<sup>5</sup>; Anna Perillo<sup>5</sup>; Anina Y. Sun<sup>5</sup>; Tajmara Antoine<sup>1</sup>; Faranak Farrohi<sup>4</sup>; Brenda Docktor<sup>4</sup>; Emily S. Lau, MD, MPH<sup>1</sup>; Doreen DeFaria Yeh, MD<sup>1</sup>; Pradeep Natarajan, MD, MMSc<sup>1,2</sup>; Amy A. Sarma, MD<sup>1</sup>; Robert M. Weisbrod, MA<sup>6</sup>; Naomi M. Hamburg, MD, MS<sup>6</sup>; Jennifer E. Ho, MD<sup>7</sup>; Jason D. Roh, MD<sup>1</sup>; Malissa J. Wood, MD<sup>1,8</sup>; Nandita S. Scott, MD<sup>1</sup>; Marcelo F. Di Carli, MD<sup>4,5</sup>

1. Cardiology Division, Department of Medicine, Massachusetts General Hospital, Harvard Medical School, Boston, MA
2. Program in Medical and Population Genetics, Broad Institute of MIT and Harvard, Cambridge, MA
3. Division of Maternal-Fetal Medicine, Department of Obstetrics and Gynecology, Brigham and Women's Hospital, Harvard Medical School, Boston, MA
4. Division of Cardiovascular Medicine, Department of Medicine, Brigham and Women's Hospital, Harvard Medical School, Boston, MA
5. Cardiovascular Imaging Program, Departments of Radiology and Medicine, and Division of Nuclear Medicine and Molecular Imaging, Department of Radiology, Brigham and Women's Hospital, Harvard Medical School, Boston, MA
6. Whitaker Cardiovascular Institute, Boston University School of Medicine, Boston, MA
7. Division of Cardiovascular Medicine, Department of Medicine, Beth Israel Deaconess Medical Center, Harvard Medical School, Boston, MA
8. Lee Health Heart Institute, Fort Myers, FL

### **Address for Correspondence:**

Michael C. Honigberg, MD, MPP  
Massachusetts General Hospital  
185 Cambridge Street CPZN 3.187  
Boston, MA 02114  
Phone: (617) 726-1843  
Fax: (617) 726-2203  
[mhonigberg@mgh.harvard.edu](mailto:mhonigberg@mgh.harvard.edu)  
Twitter: @mchonig

**Word Count:** 4,013

40 **Abstract**

41 *Background:* Preeclampsia is a pregnancy-specific hypertensive disorder associated with an  
42 imbalance in circulating pro- and anti-angiogenic proteins. Preclinical evidence implicates  
43 microvascular dysfunction as a potential mediator of preeclampsia-associated cardiovascular  
44 risk.

45  
46 *Methods:* Women with singleton pregnancies complicated by severe antepartum-onset  
47 preeclampsia and a comparator group with normotensive deliveries underwent cardiac positron  
48 emission tomography (PET) within 4 weeks of delivery. A control group of pre-menopausal, non-  
49 postpartum women was also included. Myocardial flow reserve (MFR), myocardial blood flow  
50 (MBF), and coronary vascular resistance (CVR) were compared across groups. Soluble fms-like  
51 tyrosine kinase receptor-1 (sFlt-1) and placental growth factor (PlGF) were measured at  
52 imaging.

53  
54 *Results:* The primary cohort included 19 women with severe preeclampsia (imaged at a mean  
55 16.0 days postpartum), 5 with normotensive pregnancy (mean 14.4 days postpartum), and 13  
56 non-postpartum female controls. Preeclampsia was associated with lower MFR ( $\beta=-0.67$  [95%  
57 CI -1.21 to -0.13];  $P=0.016$ ), lower stress MBF ( $\beta=-0.68$  [95% CI, -1.07 to -0.29] mL/min/g;  
58  $P=0.001$ ), and higher stress CVR ( $\beta=+12.4$  [95% CI 6.0 to 18.7] mmHg/mL/min/g;  $P=0.001$ ) vs.  
59 non-postpartum controls. MFR and CVR after normotensive pregnancy were intermediate  
60 between preeclamptic and non-postpartum groups. Following preeclampsia, MFR was positively  
61 associated with time following delivery ( $P=0.008$ ). The sFlt-1/PlGF ratio strongly correlated with  
62 rest MBF ( $r=0.71$ ;  $P<0.001$ ), independent of hemodynamics.

63  
64 *Conclusions:* In this exploratory study, we observed reduced coronary microvascular function in  
65 the early postpartum period following severe preeclampsia, suggesting that systemic  
66 microvascular dysfunction in preeclampsia involves the coronary microcirculation. Further  
67 research is needed to establish interventions to mitigate risk of preeclampsia-associated  
68 cardiovascular disease.

69  
70 **Abstract Word Count:** 250

71  
72 **Keywords:** preeclampsia; pregnancy; women's health; cardiac positron emission tomography;  
73 coronary microvascular function

74 **Abbreviations and Acronyms**

75

76	BMI	body mass index
77	CAD	coronary artery disease
78	CVR	coronary vascular resistance
79	HFpEF	heart failure with preserved ejection fraction
80	MBF	myocardial blood flow
81	MFR	myocardial flow reserve
82	PET	positron emission tomography
83	PIGF	placental growth factor
84	PPCM	peripartum cardiomyopathy
85	sFlt-1	soluble fms-like tyrosine kinase receptor 1

## 86 Introduction

87 Preeclampsia is a pregnancy-specific disorder characterized by new-onset or worsening  
88 hypertension after 20 weeks' gestation accompanied by proteinuria or other end-organ  
89 dysfunction.<sup>1,2</sup> Up to 8% of child-bearing individuals in the U.S. experience preeclampsia in 1 or  
90 more pregnancies.<sup>3</sup> Preeclampsia represents a leading cause of maternal and infant morbidity  
91 and mortality both in the U.S. and globally, with potential maternal complications including  
92 stroke, seizure, kidney injury, pulmonary edema, and peripartum cardiomyopathy (PPCM). In  
93 addition, preeclampsia portends heightened long-term maternal risk of atherosclerotic  
94 cardiovascular disease and heart failure.<sup>4-9</sup>

95 The late-stage pathophysiology of preeclampsia is characterized by an excess of  
96 circulating anti-angiogenic factors (e.g., soluble fms-like tyrosine kinase receptor 1 [sFlt-1] and  
97 soluble endoglin) relative to pro-angiogenic factors (e.g., placental growth factor [PlGF] and  
98 vascular endothelial growth factor [VEGF]).<sup>10</sup> This angiogenic imbalance leads to systemic  
99 maternal endothelial dysfunction and vasoconstriction, which in turn causes hypertension,  
100 proteinuria, and other clinical manifestations of preeclampsia.<sup>11</sup> Women who develop  
101 preeclampsia have reduced flow-mediated dilation, a marker of peripheral endothelial function,  
102 in the antepartum setting, at the time of preeclampsia, and potentially up to several years  
103 postpartum.<sup>12</sup> In addition, severe preeclampsia has been associated with differences in cardiac  
104 structure and function in the acute setting by echocardiography, including relatively impaired  
105 diastolic function, reduced longitudinal strain, and increased left ventricular (LV) wall thickness  
106 compared with findings in normotensive pregnant individuals.<sup>13</sup> Prior work indicates that higher  
107 circulating sFlt-1 levels correlate with lower myocardial performance index (an integrated  
108 echocardiographic measure of systolic and diastolic function)<sup>14</sup> and global longitudinal strain at  
109 the time of preeclampsia diagnosis independent of blood pressure.<sup>15</sup> Furthermore,  
110 preeclampsia-associated coronary microvascular dysfunction has been postulated to contribute  
111 to later-life cardiovascular disease, including heart failure with preserved ejection fraction

112 (HFpEF).<sup>16</sup> Whether preeclampsia impacts peripartum coronary microvascular function,  
113 however, has not been tested to date.

114 Myocardial flow reserve (MFR), calculated as the ratio of hyperemic myocardial blood  
115 flow (MBF) to rest MBF, represents the integrated effects of epicardial coronary artery disease  
116 (CAD) and microvascular vasomotor function; in the absence of obstructive epicardial CAD,  
117 impairment in MFR reflects coronary microvascular dysfunction. MFR is reproducible and  
118 prognostic, stratifying risk of major adverse cardiovascular events and of HFpEF in midlife and  
119 elderly adults.<sup>17,18</sup> Cardiac positron emission tomography (PET) represents the most extensively  
120 validated non-invasive modality for assessment of coronary microvascular function.<sup>17</sup>

121 Therefore, to determine the acute effects of severe preeclampsia on coronary  
122 microvascular function, we prospectively enrolled a cohort of postpartum women and compared  
123 PET-derived indices of MFR and MBF with values from pre-menopausal, non-postpartum  
124 female controls. We hypothesized that MFR would be reduced after delivery in women with  
125 preeclampsia. In addition, we assessed clinical, echocardiographic, and angiogenic biomarker  
126 correlates of MFR and MBF among women with severe preeclampsia.

127

## 128 **Methods**

### 129 *Study Cohorts*

130 This study received human subjects approval from the Mass General Brigham  
131 Institutional Review Board, and all participants provided written informed consent. Between  
132 December 2020 and October 2022, we prospectively recruited and enrolled women aged  $\geq 18$   
133 years delivering at Brigham and Women's Hospital and Massachusetts General Hospital, two  
134 large academic medical centers in Boston, Massachusetts. Recruitment was conducted  
135 principally during admission to the antepartum or postpartum obstetrical floors; normotensive  
136 control subjects were additionally recruited from routine prenatal visits and via an online  
137 research recruitment portal. Women with severe antepartum-onset preeclampsia were identified

138 according to American College of Obstetricians and Gynecologists (ACOG) criteria as those  
139 with preeclampsia accompanied by severe hypertension (blood pressure  $\geq 160/110$  mmHg) after  
140 20 weeks' gestation accompanied by proteinuria (300 mg/24 h collection, spot urine  
141 protein/creatinine ratio  $\geq 0.3$  mg/dL, or urine dipstick with 2+ proteinuria) and/or accompanied by  
142 other qualifying severe features (thrombocytopenia, renal insufficiency, liver function  
143 abnormalities, pulmonary edema, new-onset headache, or visual symptoms).<sup>19</sup> Given potential  
144 overlap in pathophysiology between preeclampsia and preterm birth,<sup>16</sup> and in order to isolate  
145 any potential effects, if present, specifically attributable to pregnancy, the healthy postpartum  
146 comparator group included women who delivered at term ( $\geq 37$  weeks' gestation) and who  
147 lacked chronic hypertension, gestational hypertension, preeclampsia, or gestational diabetes.  
148 Exclusion criteria were body mass index  $\geq 50$  kg/m<sup>2</sup> or history of epicardial CAD or coronary  
149 artery dissection, valvular heart disease, or pre-existing cardiomyopathy prior to pregnancy.  
150 Prospectively enrolled participants underwent PET imaging, transthoracic echocardiography,  
151 and phlebotomy as part of a single study visit performed at Brigham and Women's Hospital as  
152 soon as possible following delivery and no later than one month postpartum. Given prior  
153 literature suggesting that normal cardiac remodeling and biomarker risk thresholds associated  
154 with adverse outcomes differ between singleton and twin pregnancies,<sup>20,21</sup> participants ( $n=3$ )  
155 with twin gestations were excluded from the present analysis (**Figure S1**).

156 Measures of MBF and flow reserve by PET imaging in postpartum participants were  
157 compared with those from a control group of healthy, non-diabetic, pre-menopausal, non-  
158 postpartum research participants enrolled in a prior study using identical methods for assessing  
159 myocardial perfusion with PET.<sup>22</sup> Exclusion criteria included a history of uncontrolled  
160 hypertension, diagnosed cardiac or pulmonary disease, cerebrovascular or peripheral artery  
161 disease, or laboratory evidence of kidney or hepatic dysfunction.

162

163

164 *Cardiac Positron Emission Tomography*

165 Postpartum participants underwent measurement of MBF performed on a whole-body  
166 PET-computed tomography scanner (Discovery MI, GE Healthcare, Milwaukee, WI) at rest and  
167 during vasodilator stress using  $^{13}\text{N}$ -ammonia or  $^{82}\text{Rb}$ -rubidium as the flow tracer. Prior work  
168 suggests high reproducibility across radiotracers.<sup>23</sup> The protocol was designed to ensure safety  
169 and acceptability for newly postpartum individuals. Adenosine was used as the vasodilator  
170 agent to minimize interruption of breastfeeding. Studies were performed after 4 hours of fasting  
171 and at least 12 hours following last caffeine intake. Participants were generally advised to  
172 withhold antihypertensive medications on the morning of the study visit; however, given the  
173 inclusion of women with severe preeclampsia in the early postpartum period (a high-risk period  
174 for persistent hypertension and associated complications<sup>24</sup>), we permitted participants to take  
175 antihypertensive medications if deemed medically necessary by the study team or if requested  
176 by either the participant or treating clinician and probed the potential influence of these  
177 medications on study findings in sensitivity analyses. Non-postpartum controls underwent rest  
178 and adenosine-stress myocardial perfusion PET with  $^{13}\text{N}$ -ammonia.<sup>22</sup> Absolute rest and  
179 hyperemic MBF were calculated by fitting the  $^{13}\text{N}$ -ammonia or  $^{82}\text{Rb}$  time-activity curves to a  
180 validated two-compartment tracer kinetic model.<sup>23</sup> MFR was calculated as the ratio of hyperemic  
181 to rest MBF. Coronary vascular resistance (CVR) was calculated as mean arterial pressure  
182 divided by MBF. Analysis was performed with blinding to preeclampsia status.

183

184 *Transthoracic Echocardiography*

185 Echocardiography was performed on postpartum participants using GE E95 machines  
186 by experienced, licensed sonographers. Measures of left and right ventricular structure and  
187 function, left atrial size, and diastolic function were analyzed according to contemporary  
188 echocardiography guidelines.<sup>25,26</sup> Additional details are provided in the **Supplemental Methods**.

189

190 *Angiogenic Biomarkers*

191           The ratio of sFlt-1 to PlGF reflects angiogenic balance in pregnancy, is validated among  
192 pregnant individuals with suspected preeclampsia to “rule out” short-term progression to severe  
193 preeclampsia,<sup>27</sup> and was recently approved by the U.S. Food and Drug Administration to guide  
194 obstetrical management. We assayed sFlt-1 and PlGF on venous blood serum drawn  
195 immediately prior to PET imaging using enzyme-linked immunosorbent assays (R&D Systems,  
196 Inc., Minneapolis, MN).

197

198 *Outcomes*

199           The primary study outcome was MFR as measured by cardiac PET imaging. Secondary  
200 outcomes were MBF and CVR both at rest and with vasodilator stress.

201

202 *Statistical Analysis*

203           Participant characteristics were compared across study groups using analysis of  
204 variance or the Kruskal-Wallis test for normally distributed and skewed continuous variables,  
205 respectively, and using the Fisher exact test for categorical variables. Primary models used  
206 unadjusted linear regression to calculate differences in PET indices (MFR, rest MBF, stress  
207 MBF, rest CVR, and stress CVR) among preeclamptic postpartum and normotensive  
208 postpartum participants vs. non-postpartum study participants (reference group). Given the  
209 older age of non-postpartum controls vs. postpartum participants, we additionally calculated  
210 differences in PET indices between groups with adjustment for age.

211           To probe robustness of our findings, we conducted sensitivity analyses that excluded  
212 women with pre-pregnancy chronic hypertension and gestational diabetes and further adjusted  
213 for BMI at the time of imaging. We additionally performed subgroup analyses that stratified  
214 women with preeclampsia (1) by delivery <34 weeks' vs. ≥34 weeks' gestation and (2) by  
215 whether women required antihypertensive medication on the morning of the study visit.



216 In exploratory analyses, we examined whether timing of imaging relative to delivery or  
217 clinical characteristics/routine laboratory biomarkers used in the diagnosis or monitoring of  
218 preeclampsia were associated with postpartum MFR, MBF, or CVR among individuals with  
219 preeclampsia using unadjusted linear regression. In addition, we compared echocardiographic  
220 parameters between women with preeclampsia and normotensive postpartum women  
221 (reference group) using the Student's *t*-test or Wilcoxon rank-sum test, as appropriate. Pearson  
222 correlation coefficients tested the relationship of with MFR and MBF with echocardiographic  
223 indices among women with preeclampsia. In analyses of angiogenic biomarkers (sFlt-1, PIGF,  
224 and the sFlt-1/PIGF ratio) measured at the time of PET imaging, we also used Pearson  
225 correlation coefficients to test the relationship of log-transformed biomarkers with MFR, MBF,  
226 and CVR.

227 Sample size was calculated based on prior literature of flow-mediated dilation in women  
228 with preeclampsia<sup>12</sup> and on available PET measurements in healthy female controls to provide  
229 80% power to detect a 20% difference in MFR among those with preeclampsia vs. non-  
230 postpartum controls with a two-sided alpha of 0.05.

231 Two-sided  $P < 0.05$  indicated statistical significance; findings from secondary and  
232 exploratory analyses should be considered supportive and hypothesis-generating. Analyses  
233 were performed in R version 4.3.1.

234

## 235 **Results**

236 The primary PET imaging cohort included 19 postpartum women with severe  
237 preeclampsia (mean [SD] age 32.9 [2.8] years, 15.3 [7.6] days postpartum at study  
238 assessment), 5 postpartum women following normotensive pregnancy (31.5 [3.6] years, 14.4  
239 [8.4] days postpartum at assessment; **Figure S2**), and 13 non-postpartum pre-menopausal  
240 female controls (40.1 [8.5] years at assessment; **Table 1**). Overall, 27 of 37 participants (73.0%)  
241 were White, 5 (13.5%) were Black, 2 (5.4%) were Asian, and 3 (8.1%) were Hispanic. Of the 24

242 postpartum women studied, 15 (62.5%) were primiparous (i.e., had borne a total of one  
243 offspring) at the time of the study assessment, with a similar distribution of parity between those  
244 with preeclampsia and normotensive index pregnancies (**Table 1**). No participants had chronic  
245 diabetes, and 1 participant with preeclampsia also had gestational diabetes. Among those with  
246 preeclampsia in the index pregnancy, 4 (21.1%) had chronic pre-pregnancy hypertension with  
247 superimposed preeclampsia, 6 (31.6%) had used low-dose aspirin for preeclampsia prevention,  
248 and all but 1 (94.7%) delivered via Cesarean section. Participants with severe preeclampsia  
249 were enriched for delivery before 34 weeks' gestation in the index pregnancy (14/19 [73.7%]),  
250 and gestational age at delivery was earlier in those with preeclampsia vs. normotensive  
251 pregnancy. Body mass index (BMI), SBP, DBP, and heart rate were each higher at the time of  
252 study assessments in women with preeclampsia vs. both normotensive postpartum individuals  
253 and non-postpartum controls (**Table 1**).

254

### 255 *Association of Preeclampsia with Myocardial Flow Reserve, Myocardial Blood Flow, and* 256 *Coronary Vascular Resistance*

257 The mean (SD) MFR was 2.82 (0.70) in women following delivery with preeclampsia,  
258 3.14 (0.55) following normotensive pregnancy, and 3.49 (0.84) in non-postpartum controls.  
259 Compared with values in non-postpartum individuals, preeclampsia was associated with lower  
260 MFR ( $\beta=-0.67$  [95% CI, -1.21 to -0.13];  $P=0.016$ ; **Figure 1**). The corresponding difference in  
261 individuals following normotensive pregnancy was -0.35 (95% CI, -1.14 to +0.44;  $P=0.37$ ). After  
262 adjustment for age, preeclampsia and normotensive pregnancy were associated with  
263 differences in MFR of -0.76 (95% CI, -1.39 to -0.14;  $P=0.018$ ) and -0.47 (95% CI, -1.34 to +0.41;  
264  $P=0.29$ ), respectively, vs. non-postpartum women (**Table 2**).

265 There were no significant differences in rest MBF in either the preeclampsia or  
266 normotensive postpartum groups vs. non-postpartum controls (**Table 2; Figure S3**). However,  
267 stress MBF was significantly reduced in both postpartum groups (preeclampsia:  $\beta=-0.68$  [95%

268 CI, -1.07 to -0.29] mL/min/g;  $P=0.001$ ; normotensive:  $\beta=-1.01$  [95% CI, -1.58 to -0.43] mL/min/g;  
269  $P=0.001$ ). Compared with non-postpartum individuals, women with preeclampsia had higher  
270 rest CVR ( $\beta=+23.9$  [95% CI, 1.3 to 46.5] mmHg/mL/min/g;  $P=0.04$ ) and stress CVR ( $\beta=+12.4$   
271 [95% CI, 6.0 to 18.7] mmHg/mL/min/g;  $P<0.001$ ), with values observed in normotensive  
272 postpartum individuals falling between those of the preeclamptic and non-postpartum groups  
273 (**Table 2**).

274 Differences in PET indices among women following preeclampsia vs. non-postpartum  
275 controls were highly consistent in sensitivity analyses restricted to women without pre-  
276 pregnancy chronic hypertension or women without gestational diabetes (**Table S1**). In models  
277 further adjusted for BMI at the time of imaging, estimated differences in MFR were similar but  
278 estimated differences in stress MBF, rest CVR, and stress CVR for preeclamptic participants  
279 were mildly attenuated compared with primary analyses (**Table S2**). Findings were also broadly  
280 consistent in women with preeclampsia and delivery either before or after 34 weeks' gestation,  
281 apart from a greater increase in rest CVR observed among those with delivery after 34 weeks  
282 (**Table S3**).

283 Among women with preeclampsia, MFR was positively associated with the number of  
284 days postpartum at the time of PET imaging (0.05 [95% CI, 0.02 to 0.09] per day;  $P=0.008$ ;  
285 **Figure 3A**). Rest MBF decreased with the number of days postpartum (-0.02 [95% CI, -0.04 to -  
286 0.004] per day;  $P=0.02$ ; **Figure 3B**), whereas there was no apparent temporal relationship with  
287 stress MBF in the early postpartum period (**Table S4**).

288 Eight participants with preeclampsia (42.1%) required use of 1 or more antihypertensive  
289 medications on the morning of the study visit (7 used nifedipine, 4 used labetalol, and 1 used  
290 enalapril). Those who required antihypertensive medication completed study assessments  
291 closer to delivery than those who did not (median [IQR] 14.5 [8.3, 16.0] days postpartum vs.  
292 19.0 [16.0, 20.5] days postpartum, respectively;  $P=0.10$ ). Compared with non-postpartum

293 participants, MFR was lower by 0.84 (95% CI 0.10-1.49;  $P=0.01$ ) in those who required  
294 antihypertensive medication and lower by 0.55 (95% CI -0.12 to 1.22;  $P=0.10$ ) in other  
295 participants with preeclampsia. Those who took antihypertensive medication on the morning of  
296 the study visit had attenuated differences in rest CVR compared with those who did not but had  
297 similar differences in rest MBF, stress MBF, and stress CVR (**Table S5**).

298

### 299 *Clinical Correlates of Postpartum PET Indices in Women with Severe Preeclampsia*

300 Maximum recorded antepartum SBP was nominally associated with reduced stress MBF  
301 at postpartum PET imaging ( $\beta=-0.02$  [95% CI, -0.03 to -0.001] mL/min/g per mmHg SBP;  
302  $P=0.04$ ). Maximum recorded DBP, maximum recorded proteinuria, and other laboratory  
303 biomarkers used to diagnose preeclampsia and its subtypes were each not significantly  
304 associated with postpartum MFR or other PET indices (**Table S6**). Report of headache as part  
305 of preeclampsia symptomatology vs. no reported headache was associated with reduced stress  
306 MBF ( $\beta=-0.66$  [95% CI -1.21 to -0.12] mL/min/g;  $P=0.02$ ) and increased stress CVR ( $\beta=+11.8$   
307 [95% CI 2.8 to 20.9] mmHg/mL/g/min;  $P=0.01$ ). BMI  $\geq 30$  kg/m<sup>2</sup> vs.  $<30$  kg/m<sup>2</sup> at the time of PET  
308 imaging was associated with reduced stress MBF ( $\beta=-0.72$  [95% CI  
309 -1.24 to -0.20] mL/min/g;  $P=0.01$ ), increased rest CVR ( $\beta=+48.1$  [95% CI 17.1 to 79.2]  
310 mmHg/mL/g/min;  $P=0.02$ ), and increased stress CVR ( $\beta=+14.9$  [95% CI 7.3 to 22.5]  
311 mmHg/mL/g/min;  $P<0.001$ ) (**Table S6**). Hematocrit nadir during the delivery admission (mean  
312 [SD] 28.3 [4.0]%) was not associated with any postpartum PET indices.

313

### 314 *Postpartum Echocardiographic Differences Between Groups and PET Correlates in Women* 315 *with Severe Preeclampsia*

316 Transthoracic echocardiography was performed in 17 of the 19 enrolled postpartum  
317 women with preeclampsia (mean [SD] 15.5 [7.9] days postpartum at study assessment) and in 7

318 women following normotensive pregnancy (13.7 [7.8] days postpartum at assessment; **Figure**  
319 **S1; Table S7**). Compared with normotensive postpartum women, those with preeclampsia had  
320 greater LV wall thickness (mean [SD] septal wall thickness: 8.9 [2.0] vs. 6.7 [0.4] mm;  $P<0.001$ ;  
321 posterior wall thickness: 9.1 [1.5] vs. 6.8 [1.0] mm;  $P<0.001$ ) and greater relative wall thickness  
322 (0.38 [0.07] vs. 0.30 [0.07];  $P=0.03$ ). LV ejection fraction did not differ between groups (**Table**  
323 **3**). In addition, women with preeclampsia had reduced lateral  $e'$  velocity (13.7 [2.4] vs. 16.8 [2.1]  
324 cm/s;  $P=0.008$ ) and higher  $E/e'$  (median [IQR] 7.8 [6.6, 8.0] vs. 5.7 [5.0, 7.2];  $P=0.04$ ). Mean  
325 (SD) left atrial volume was 55.7 (12.6) mL in participants with preeclampsia vs. 45.5 (10.5) mL  
326 in those with normotensive pregnancy ( $P=0.06$ ). Regional and global LV strain indices were  
327 numerically higher in women with preeclampsia vs. normotensive pregnancy, although  
328 differences did not reach statistical significance (**Table 3**).

329 In exploratory analyses, we did not observe any significant correlations between MFR  
330 and echocardiographic parameters among women with severe preeclampsia (**Table S8**).

331  
332 *Postpartum Angiogenic Factor Levels and PET Indices in Women with Severe Preeclampsia*

333 Among women with preeclampsia, the median [IQR] sFlt-1 level was 435.5 [388.6,  
334 582.4] pg/mL, the PIGF level was 6.1 [5.2, 7.3] pg/mL, and the sFlt-1/PIGF ratio was 90.8 [62.2,  
335 119.2] at the time of PET imaging. The sFlt-1/PIGF ratio declined exponentially with time  
336 postpartum (**Figure S4**). The sFlt-1/PIGF ratio was moderately inversely correlated with MFR  
337 ( $r=-0.45$ ;  $P=0.05$ ; **Figure 4A; Table S9**), driven by a stronger positive correlation with rest MBF  
338 ( $r=0.71$ ;  $P<0.001$ ; **Figure 4B**) than with stress MBF ( $r=0.22$ ;  $P=0.36$ ). These correlations were  
339 stronger after excluding participants who required antihypertensive medication on the morning  
340 of imaging assessment (MFR:  $r=-0.80$ ,  $P=0.003$ ; rest MBF:  $r=0.91$ ,  $P<0.001$ ; **Figure S5**). In a  
341 *post hoc* model mutually adjusted for both rate-pressure product and the sFlt-1/PIGF ratio, only  
342 the sFlt-1/PGF ratio was independently associated with rest MBF ( $\beta=0.21$  [95% CI, 0.05 to 0.37]  
343 mL/min/g per log-unit;  $P=0.01$ ).

## 344 Discussion

345 Coronary microvascular dysfunction has been hypothesized to underlie both acute and  
346 longer-term cardiovascular morbidity in women with preeclampsia. To our knowledge, this  
347 analysis represents the first interrogation of coronary blood flow and microvascular reactivity in  
348 the peripartum period following preeclampsia. In line with our hypothesis, we observed a  
349 reduction in the maximum adenosine-stimulated flow response and a related increase in CVR  
350 following severe preeclampsia vs. the non-postpartum state. Furthermore, MFR appeared to  
351 recover with time postpartum following preeclampsia due to normalization of rest flows; this  
352 normalization of rest flow was tightly correlated with the sFlt-1/PlGF ratio, independent of  
353 hemodynamics. Of note, normotensive postpartum participants also had significantly decreased  
354 stress MBF and intermediate findings with respect to MFR, suggesting that a portion of  
355 observed differences may reflect normal postpartum physiology that is compounded or  
356 exaggerated in the context of preeclampsia. Taken together, these findings support the notion  
357 that preeclampsia exerts adverse coronary microvascular effects and may have implications for  
358 understanding risk of short-term (e.g., PPCM) and long-term cardiovascular complications in  
359 affected women.

360 First, our findings reinforce the relevance of the microcirculation in preeclampsia. sFlt-1  
361 is believed to exert its anti-angiogenic effects by binding to and blocking the pro-angiogenic  
362 properties of PlGF and VEGF.<sup>1</sup> In preclinical models, sFlt-1 blocks angiogenesis-associated  
363 migration of endothelial cells<sup>14</sup> and provokes constriction of rat renal arterioles.<sup>11</sup> The anti-  
364 angiogenic effects of sFlt-1 may represent a “second hit” triggering PPCM in susceptible  
365 individuals and may therefore explain this condition’s peak incidence in the very early  
366 postpartum period, immediately after circulating anti-angiogenic factor levels have peaked.<sup>14,28</sup> A  
367 recent investigation further reported that mice with sFlt-1 overexpression in pregnancy  
368 demonstrated enhanced mesenteric vasoconstriction vs. wild-type mice in response to an  
369 angiotensin II challenge at two months postpartum, implying potential enduring effects on

370 sensitivity to pro-hypertensive stimuli beyond the peripartum period.<sup>29</sup> Furthermore, human  
371 studies have suggested microvascular rarefaction in the retina<sup>30</sup> and fingers<sup>31</sup> of midlife women  
372 with a history of preeclampsia, independent of blood pressure. Collectively, these findings imply  
373 potential “microvascular susceptibility” in women with preeclampsia. Although our findings  
374 suggested short-term improvement in MFR related to normalization of rest MBF with time  
375 postpartum, ongoing coronary microvascular susceptibility following preeclampsia may  
376 contribute to the excess risk of HFpEF<sup>18</sup> reported in affected women.<sup>7,9</sup> Future longitudinal  
377 studies will enable further interrogation of this hypothesis.

378         Second, placental biomarkers may provide insights regarding how preeclampsia affects  
379 myocardial blood flow. Among women with severe preeclampsia in our study, the sFlt-1/PIGF  
380 ratio correlated strongly with rest MBF. Furthermore, the correlation of sFlt-1/PIGF with rest  
381 MBF among preeclamptic women was not explained by the rate-pressure product, suggesting  
382 that preeclampsia exerts hemodynamic-independent effects on cardiomyocyte oxygen  
383 utilization. Through feedback between cardiomyocytes and the coronary microcirculation,  
384 coronary arterioles may dilate to increase MBF in the resting state to compensate for impaired  
385 tissue oxygen extraction and/or utilization. Prior work demonstrates impaired oxygen utilization  
386 in the context of severe preeclampsia.<sup>32,33</sup> The association of the sFlt-1/PIGF ratio with  
387 increased rest MBF may therefore reflect an effort by cardiomyocytes to overcome  
388 microvascular and/or cardiomyocyte dysfunction driven by circulating placental proteins.

389         Third, our findings highlight key gaps in understanding of cardiac effects in normal  
390 pregnancy and normal postpartum cardiovascular adaptation. Reduction in stress MBF in both  
391 hypertensive and normotensive postpartum groups vs. non-postpartum women was an  
392 unexpected finding of this study which requires validation. Although this study was not powered  
393 to draw definitive conclusions about the normotensive postpartum group, these participants  
394 demonstrated reduction in stress MBF and an “intermediate phenotype” between those with  
395 preeclampsia and non-postpartum controls with respect to MFR and CVR. These findings raise



396 the possibility that even uncomplicated pregnancy affects coronary microcirculatory function, a  
397 hypothesis that warrants further dedicated study.

398 Fourth, studies involving advanced cardiac imaging can be adapted to the peripartum  
399 period. Preterm preeclampsia was overrepresented in our cohort, partly reflecting greater  
400 willingness to participate in hospital-based research among women whose preterm infants were  
401 receiving care in the neonatal intensive care unit, thereby removing a key logistical barrier (need  
402 for childcare) to study participation. As sFlt-1 and the sFlt-1/PIGF ratio are generally higher at  
403 term than earlier in gestation even among those with preeclampsia,<sup>34</sup> it is theoretically possible  
404 that the resulting gestational age imbalance served to minimize apparent differences between  
405 preeclamptic and normotensive participants. This experience highlights key challenges to  
406 conducting research involving new mothers and suggests potential value of protocol  
407 modifications (e.g., use of vasodilators with a shorter half-life such as adenosine) to minimize  
408 interruption of breastfeeding and of offering childcare or other supports to facilitate research  
409 participation during a critical period when the primary focus is appropriately on caring for the  
410 newborn.

411

#### 412 *Limitations*

413 This study should be considered in the context of limitations. First, given the novel  
414 application of PET imaging to young adults in the early postpartum period, we enrolled a sample  
415 size sufficient to test differences in the primary endpoint (MFR) among those with severe  
416 preeclampsia but not those with normotensive pregnancy, whose findings we expected *a priori*  
417 to be normal. Despite the modest sample size included, significant echocardiographic  
418 differences between preeclamptic and normotensive postpartum participants were detected and  
419 were consistent with the previous literature.<sup>13</sup> Second, due to practical considerations of  
420 coordinating cardiac PET imaging in newly postpartum individuals, study visits occurred at an  
421 average of two weeks postpartum; differences among groups may have already partially



422 attenuated by the time of study assessments. Although strictly standardized timing of PET  
423 imaging is not feasible in the newly postpartum population, timing of study visits was consistent  
424 between preeclamptic and normotensive postpartum groups, and assessments across the first  
425 four postpartum weeks enabled us to examine trends over time. Third, to ensure safety of  
426 preeclamptic participants, we permitted participants to use antihypertensive medications prior to  
427 study assessments if necessary, which may have influenced results. However, prior literature  
428 suggests these medications would be expected to have favorable effects on MFR,<sup>35,36</sup> whereas  
429 those requiring antihypertensive medication in our study had evidence of greater reduction in  
430 MFR, possibly reflecting unresolved preeclampsia pathophysiology. Fourth, obstetrical history  
431 was not available in the non-postpartum control cohort, although no participants in this control  
432 cohort had chronic hypertension. Fifth, the postpartum groups were studied using a more recent  
433 generation PET camera than non-postpartum controls. However, all PET cameras used in the  
434 study were calibrated quarterly to ensure accurate activity concentration in PET images;  
435 therefore, measurements of arterial and tissue activity concentrations are expected to be  
436 consistent and reproducible across PET cameras. Finally, this study employed a cross-sectional  
437 design, and we cannot exclude the possibility that pre-conception MFR and MBF differ in those  
438 who go on to develop preeclampsia; future longitudinal studies will be required to clarify  
439 lifecourse trajectories of microvascular function.

440

## 441 **Perspectives**

442 Overall, we found evidence of reduced coronary microvascular function in the  
443 postpartum period among individuals delivering with severe preeclampsia. These observations  
444 in humans corroborate previous findings in preclinical models and lend support to the notion that  
445 systemic microvascular dysfunction in preeclampsia also involves the coronary microcirculation.  
446 These findings may be relevant to preeclampsia-associated cardiovascular risk, including  
447 increased risk of heart failure. Future research is needed to clarify lifecourse trajectories of

- 448 coronary and extracoronary microvascular function in women with preeclampsia and establish  
449 effective interventions to mitigate risk of preeclampsia-associated cardiovascular disease.

450 **Novelty and Relevance**

451

452 **What is New?**

- 453       • Among women with severe preeclampsia undergoing cardiac positron emission  
454 tomography perfusion imaging in the early postpartum period, myocardial flow reserve  
455 and stress myocardial blood flow were lower, and stress coronary vascular resistance  
456 was higher, compared with values in non-postpartum controls.
- 457       • Myocardial flow reserve appeared to recover with time following severe preeclampsia  
458 due to normalization of rest flows; this normalization of rest flow was tightly correlated  
459 with the sFlt-1/PIGF ratio and was independent of hemodynamics.

460

461 **What is Relevant?**

- 462       • Our findings support the notion that systemic microvascular dysfunction in preeclampsia  
463 also involves the coronary microcirculation.

464

465 **Clinical/Pathophysiological Implications?**

- 466       • Interventions that promote microvascular health may reduce the risk of preeclampsia-  
467 associated cardiovascular disease.
- 468       • Further research is needed to understand cardiac effects of normal pregnancy and their  
469 underlying mechanisms.

470 **Supplemental Material**

471 Supplemental Methods

472 Figures S1-S5

473 Tables S1-S9

**Sources of Funding:** This work was supported by Massachusetts General Hospital Corrigan Women's Heart Health Program and the Brigham and Women's Hospital Cardiovascular Imaging Program. Dr. Honigberg is supported by the National Heart, Lung, and Blood Institute (NHLBI, K08HL166687) and the American Heart Association (940166, 979465). Dr. Wang is supported by the NHLBI (T32HL094301) and by the Connors Center for Women's Health and Gender Biology at Brigham and Women's Hospital. Dr. Brown is supported by the NHLBI (K23HL159279) and American Heart Association (852429). Dr. Weber is supported by the NHLBI (K23HL159276) and American Heart Association (851511). Dr. Lau is supported by the NHLBI (K23HL159243) and American Heart Association (853922). Dr. Natarajan is supported by grants from the NHLBI (R01HL142711, R01HL148050, R01HL148565) and Fondation Leducq (TNE-18CVD04). Dr. Hamburg is supported by the NHLBI (R01HL160003, R01HL168889) and the American Heart Association (20SRFRN35120118). Dr. Ho is supported by the NHLBI (K24HL153669, R01HL160003). Dr. Roh is supported by the NHLBI (R01HL170048), National Institute on Aging (K76AG04328), MGH Transformative Scholars Award, and the Fred and Ines Yeatts Fund for Innovative Research. Dr. Scott receives support from the NHLBI (REBIRTH trial, NCT05180773) and from the Heart Outcomes in Pregnancy Expectations (HOPE) registry. Dr. Di Carli is supported by the NIH (R01HL162960, R01EB034586).

**Disclosures:** Dr. Honigberg reports consulting fees from CRISPR Therapeutics and Comanche Biopharma, advisory board service for Miga Health, and grant support from Genentech. Dr. Brown reports consulting fees from Bayer AG and AstraZeneca. Dr. Weber reports advisory board service for Novo Nordisk, Horizon Therapeutics, Kinsika Pharmaceuticals, and Aegpha. Dr. Lau reports previous advisory board service for Astellas Pharma. Dr. Natarajan reports research grants from Allelica, Apple, Amgen, Boston Scientific, Genentech / Roche, and Novartis, personal fees from Allelica, Apple, AstraZeneca, Blackstone Life Sciences, Foresite Labs, Genentech / Roche, GV, HeartFlow, Magnet Biomedicine, and Novartis, scientific advisory board membership of Esperion Therapeutics, Preciseli, and TenSixteen Bio, scientific co-founder of TenSixteen Bio, equity in Preciseli and TenSixteen Bio, and spousal employment at Vertex Pharmaceuticals, all unrelated to the present work. Dr. Hamburg reports consulting fees from Merck, Boston Scientific, and Novo Nordisk, all unrelated to the present work. Dr. Di Carli reports grant support from Gilead Sciences, in-kind research support from Amgen, and consulting fees from Sanofi, MedTrace Pharma, and Vale Health.

## References

1. Rana S, Lemoine E, Granger J, Karumanchi SA. Preeclampsia. *Circ Res*. 2019;124(7):1094-1112.
2. Ives CW, Sinkey R, Rajapreyar I, Tita ATN, Oparil S. Preeclampsia-Pathophysiology and Clinical Presentations: JACC State-of-the-Art Review. *J Am Coll Cardiol*. 2020;76(14):1690-1702.
3. Garovic VD, White WM, Vaughan L, et al. Incidence and Long-Term Outcomes of Hypertensive Disorders of Pregnancy. *J Am Coll Cardiol*. 2020;75(18):2323-2334.
4. O'Kelly AC, Michos ED, Shufelt CL, et al. Pregnancy and Reproductive Risk Factors for Cardiovascular Disease in Women. *Circ Res*. 2022;130(4):652-672.
5. Honigberg MC, Zekavat SM, Aragam K, et al. Long-Term Cardiovascular Risk in Women With Hypertension During Pregnancy. *J Am Coll Cardiol*. 2019;74(22):2743-2754.
6. Honigberg MC, Riise HKR, Daltveit AK, et al. Heart Failure in Women With Hypertensive Disorders of Pregnancy: Insights From the Cardiovascular Disease in Norway Project. *Hypertension*. 2020;76(5):1506-1513.
7. Hansen AL, Søndergaard MM, Hlatky MA, et al. Adverse Pregnancy Outcomes and Incident Heart Failure in the Women's Health Initiative. *JAMA Netw Open*. 2021;4(12):e2138071.
8. Behrens I, Basit S, Lykke JA, et al. Association Between Hypertensive Disorders of Pregnancy and Later Risk of Cardiomyopathy. *JAMA*. 2016;315(10):1026-33.
9. Williams D, Stout MJ, Rosenbloom JI, et al. Preeclampsia Predicts Risk of Hospitalization for Heart Failure with Preserved Ejection Fraction Hospitalization. *J Am Coll Cardiol*. 2021;78(23):2281-2290.
10. Levine RJ, Maynard SE, Qian C, et al. Circulating angiogenic factors and the risk of preeclampsia. *N Engl J Med*. 2004;350(7):672-83.
11. Maynard SE, Min JY, Merchan J, et al. Excess placental soluble fms-like tyrosine kinase 1 (sFlt1) may contribute to endothelial dysfunction, hypertension, and proteinuria in preeclampsia. *J Clin Invest*. 2003;111(5):649-58.
12. Weissgerber TL, Milic NM, Milin-Lazovic JS, Garovic VD. Impaired Flow-Mediated Dilation Before, During, and After Preeclampsia: A Systematic Review and Meta-Analysis. *Hypertension*. 2016;67(2):415-23.
13. Vaught AJ, Kovell LC, Szymanski LM, et al. Acute Cardiac Effects of Severe Preeclampsia. *J Am Coll Cardiol*. 2018;72(1):1-11.
14. Patten IS, Rana S, Shahul S, et al. Cardiac angiogenic imbalance leads to peripartum cardiomyopathy. *Nature*. 2012;485(7398):333-8.
15. Shahul S, Medvedofsky D, Wenger JB, et al. Circulating Antiangiogenic Factors and Myocardial Dysfunction in Hypertensive Disorders of Pregnancy. *Hypertension*. 2016;67(6):1273-80.
16. Lane-Cordova AD, Khan SS, Grobman WA, Greenland P, Shah SJ. Long-Term Cardiovascular Risks Associated With Adverse Pregnancy Outcomes: JACC Review Topic of the Week. *J Am Coll Cardiol*. 2019;73(16):2106-2116.
17. Taqueti VR, Di Carli MF. Coronary Microvascular Disease Pathogenic Mechanisms and Therapeutic Options: JACC State-of-the-Art Review. *J Am Coll Cardiol*. 2018;72(21):2625-2641.
18. Taqueti VR, Solomon SD, Shah AM, et al. Coronary microvascular dysfunction and future risk of heart failure with preserved ejection fraction. *Eur Heart J*. 2018;39(10):840-849.
19. ACOG Practice Bulletin No. 202: Gestational Hypertension and Preeclampsia. *Obstet Gynecol*. 2019;133(1):e1-e25.
20. Giorgione V, Melchiorre K, O'Driscoll J, Khalil A, Sharma R, Thilaganathan B. Maternal echocardiographic changes in twin pregnancies with and without pre-eclampsia. *Ultrasound Obstet Gynecol*. 2022;59(5):619-626.

21. Dröge L, Herraiz I, Zeisler H, et al. Maternal serum sFlt-1/PIGF ratio in twin pregnancies with and without pre-eclampsia in comparison with singleton pregnancies. *Ultrasound Obstet Gynecol.* 2015;45(3):286-93.
22. Di Carli MF, Afonso L, Campisi R, et al. Coronary vascular dysfunction in premenopausal women with diabetes mellitus. *Am Heart J.* 2002;144(4):711-8.
23. El Fakhri G, Kardan A, Sitek A, et al. Reproducibility and accuracy of quantitative myocardial blood flow assessment with (82)Rb PET: comparison with (13)N-ammonia PET. *J Nucl Med.* 2009;50(7):1062-71.
24. Goel A, Maski MR, Bajracharya S, et al. Epidemiology and Mechanisms of De Novo and Persistent Hypertension in the Postpartum Period. *Circulation.* 2015;132(18):1726-33.
25. Lang RM, Badano LP, Mor-Avi V, et al. Recommendations for cardiac chamber quantification by echocardiography in adults: an update from the American Society of Echocardiography and the European Association of Cardiovascular Imaging. *J Am Soc Echocardiogr.* 2015;28(1):1-39.e14.
26. Nagueh SF, Smiseth OA, Appleton CP, et al. Recommendations for the Evaluation of Left Ventricular Diastolic Function by Echocardiography: An Update from the American Society of Echocardiography and the European Association of Cardiovascular Imaging. *J Am Soc Echocardiogr.* 2016;29(4):277-314.
27. Thadhani R, Lemoine E, Rana S, et al. Circulating Angiogenic Factor Levels in Hypertensive Disorders of Pregnancy. *NEJM Evidence.* 2022;1(12).
28. Honigberg MC, Givertz MM. Peripartum cardiomyopathy. *BMJ.* 2019;364:k5287.
29. Biber LA, Lu Q, Ibarrola J, et al. Smooth Muscle Mineralocorticoid Receptor Promotes Hypertension After Preeclampsia. *Circ Res.* 2023;132(6):674-689.
30. Honigberg MC, Zekavat SM, Raghu VK, Natarajan P. Microvascular Outcomes in Women With a History of Hypertension in Pregnancy. *Circulation.* 2022;145(7):552-554.
31. Boardman H, Lamata P, Lazdam M, et al. Variations in Cardiovascular Structure, Function, and Geometry in Midlife Associated With a History of Hypertensive Pregnancy. *Hypertension.* 2020;75(6):1542-1550.
32. Guerraty MA, Rao HS, Anjan VY, et al. The role of resting myocardial blood flow and myocardial blood flow reserve as a predictor of major adverse cardiovascular outcomes. *PLoS One.* 2020;15(2):e0228931.
33. Belfort MA, Anthony J, Saade GR, et al. The oxygen consumption/oxygen delivery curve in severe preeclampsia: evidence for a fixed oxygen extraction state. *Am J Obstet Gynecol.* 1993;169(6):1448-55.
34. Stepan H, Herraiz I, Schlembach D, et al. Implementation of the sFlt-1/PIGF ratio for prediction and diagnosis of pre-eclampsia in singleton pregnancy: implications for clinical practice. *Ultrasound Obstet Gynecol.* 2015;45(3):241-6.
35. Billinger M, Seiler C, Fleisch M, Eberli FR, Meier B, Hess OM. Do beta-adrenergic blocking agents increase coronary flow reserve? *J Am Coll Cardiol.* 2001;38(7):1866-71.
36. Motz W, Strauer BE. Improvement of coronary flow reserve after long-term therapy with enalapril. *Hypertension.* 1996;27(5):1031-8.

## Figure Legends.

**Figure 1. Severe preeclampsia is associated with reduced myocardial flow reserve in the early postpartum period.** (A) Myocardial flow reserve by group. (B) Difference in myocardial flow reserve among postpartum women with severe preeclampsia and normotensive postpartum women vs. non-postpartum controls. Women with severe preeclampsia ( $n=19$ ) underwent PET imaging at a mean (SD) 15.3 (7.6) days postpartum; normotensive postpartum women ( $n=5$ ) underwent PET imaging at 14.4 (8.4) days postpartum. Non-postpartum women ( $n=13$ ) constituted the reference group. Myocardial flow reserve was significantly reduced among women following delivery with severe preeclampsia.

**Figure 2. (A) Myocardial flow reserve and (B) rest myocardial blood flow vs. time following delivery among women with preeclampsia.** Women with severe preeclampsia ( $n=19$ ) underwent PET imaging at a mean (SD) 15.3 (7.6) days postpartum (overall range: 2-30 days). Myocardial flow reserve appeared to increase, and rest myocardial blood flow appeared to decrease, with time following delivery.

**Figure 3. Correlation of (A) myocardial flow reserve and (B) rest myocardial blood flow with the sFlt-1/PlGF ratio among women with preeclampsia.** Myocardial flow reserve was moderately inversely associated, and rest myocardial blood flow strongly positive correlated, with the sFlt-1/PlGF ratio among postpartum women with preeclampsia ( $n=19$ ). sFlt-1 indicates soluble fms-like tyrosine kinase receptor-1. PlGF indicates placental growth factor.



**Table 1. Characteristics of the primary analytic cohort with cardiac positron emission tomography imaging.**

	<b>Preeclampsia, postpartum (n=19)</b>	<b>Normotensive, postpartum (n=5)</b>	<b>Non-postpartum (n=13)</b>	<b>P-value</b>
Age at study visit	32.9 (2.8)	31.5 (3.6)	40.1 (8.5)	0.004
Race/ethnicity				0.35
• Asian	1 (5.3%)	1 (20.0%)	0 (0%)	
• Black	2 (10.5%)	0 (0%)	3 (23.1%)	
• Hispanic	2 (10.5%)	1 (20.0%)	0 (0%)	
• White	14 (73.7%)	3 (60.0%)	10 (76.9%)	
Chronic hypertension	4 (21.1%)	0 (0%)	0 (0%)	0.17
Chronic diabetes mellitus	0 (0%)	0 (0%)	0 (0%)	1
Former smoking history	4 (21.1%)	0 (0%)	0 (0%)	0.17
• Within past 12 months	1 (5.3%)	0 (0%)	0 (0%)	1
History of hypertensive disorder in prior pregnancy	3 (15.8%)	0 (0%)	--	1
Parity				1
• 1	12 (63.2%)	3 (60.0%)	--	
• 2	4 (21.1%)	1 (20.0%)	--	
• 3+	3 (15.8%)	1 (20.0%)	--	
Pre-pregnancy body mass index	27.5 [22.5, 32.6]	24.0 [20.8, 25.8]	--	0.14
Gestational diabetes in index pregnancy	1 (5.3%)	0 (0%)	--	1
Use of aspirin for preeclampsia prevention in index pregnancy	6 (31.6%)	0 (0%)	--	0.28
Gestational age at delivery, weeks + days	30+5 [27+6, 34+5]	39+0.5 [37+6, 39+6]	--	0.006
Mechanism of delivery				0.002
• Spontaneous vaginal	1 (5.3%)	4 (80.0%)	--	
• Cesarean section	18 (94.7%)	1 (20.0%)	--	
Days postpartum at study visit	15.3 (7.6)	14.4 (8.4)	--	0.83
Body mass index at study visit	28.9 [25.8, 36.1]	22.7 [22.6, 30.9]	23.0 [22.0, 27.0]	0.009
Body mass index at study visit $\geq 30$ kg/m <sup>2</sup>	9 (47.4%)	2 (40.0%)	2 (15.4%)	0.20
Rest systolic blood pressure at study visit	139.2 (19.1)	104.4 (14.4)	116.0 (18.8)	<0.001
Rest diastolic blood pressure at study visit	78.4 (11.9)	62.2 (9.4)	64.9 (12.3)	0.003
Rest heart rate at study visit	73.3 (11.4)	55.6 (5.9)	70.0 (8.0)	0.004
Antihypertensive medication use on morning of study visit	8 (42.1%)	0 (0%)	0 (0%)	0.009

**Table 2. Myocardial flow reserve, myocardial blood flow, coronary vascular resistance, and differences vs. non-postpartum participants by group.**

	Preeclampsia, postpartum (n=19)					Normotensive, postpartum (n=5)					Non- postpartum (n=13)
	Mean (SD)	Unadjusted difference vs. non-postpartum		Age-adjusted difference vs. non-postpartum		Mean (SD)	Unadjusted difference vs. non-postpartum		Age-adjusted difference vs. non-postpartum		Mean (SD)
		<i>Beta</i> (95% CI)	<i>P</i> - <i>value</i>	<i>Beta</i> (95% CI)	<i>P</i> - <i>value</i>		<i>Beta</i> (95% CI)	<i>P</i> - <i>value</i>	<i>Beta</i> (95% CI)	<i>P</i> - <i>value</i>	
<b>Myocardial flow reserve</b>	2.82 (0.70)	-0.67 (-1.21 to - 0.13)	0.016	-0.76 (-1.39 to -0.14)	0.018	3.14 (0.55)	-0.35 (-1.14 to 0.44)	0.37	-0.47 (-1.34 to 0.41)	0.29	3.49 (0.84)
<b>Rest MBF, mL/min/g</b>	0.94 (0.29)	-0.02 (-0.19 to 0.16)	0.85	0.02 (-0.17 to 0.22)	0.81	0.73 (0.18)	-0.22 (-0.47 to 0.03)	0.08	-0.17 (-0.45 to 0.11)	0.21	0.96 (0.15)
<b>Stress MBF, mL/min/g</b>	2.55 (0.64)	-0.68 (-1.07 to - 0.29)	0.001	-0.61 (-1.06 to -0.16)	0.01	2.23 (0.21)	-1.01 (-1.58 to - 0.43)	0.001	-0.92 (-1.56 to -0.28)	0.006	3.24 (0.43)
<b>Rest CVR, mmHg/mL/min/g</b>	110.9 (39.7)	23.9 (1.3 to 46.5)	0.04	22.6 (-3.7 to 48.9)	0.09	94.0 (14.8)	6.9 (-26.1 to 39.9)	0.67	5.4 (-31.6 to 42.4)	0.77	87.0 (16.0)
<b>Stress CVR, mmHg/mL/min/g</b>	38.2 (10.8)	12.4 (6.0 to 18.7)	<0.001	12.1 (4.7 to 19.5)	0.002	32.2 (1.9)	6.4 (-2.9 to 15.7)	0.17	6.1 (-4.3 to 16.6)	0.24	25.8 (6.2)

MBF indicates myocardial blood flow. CVR indicates coronary vascular resistance. SD indicates standard deviation.

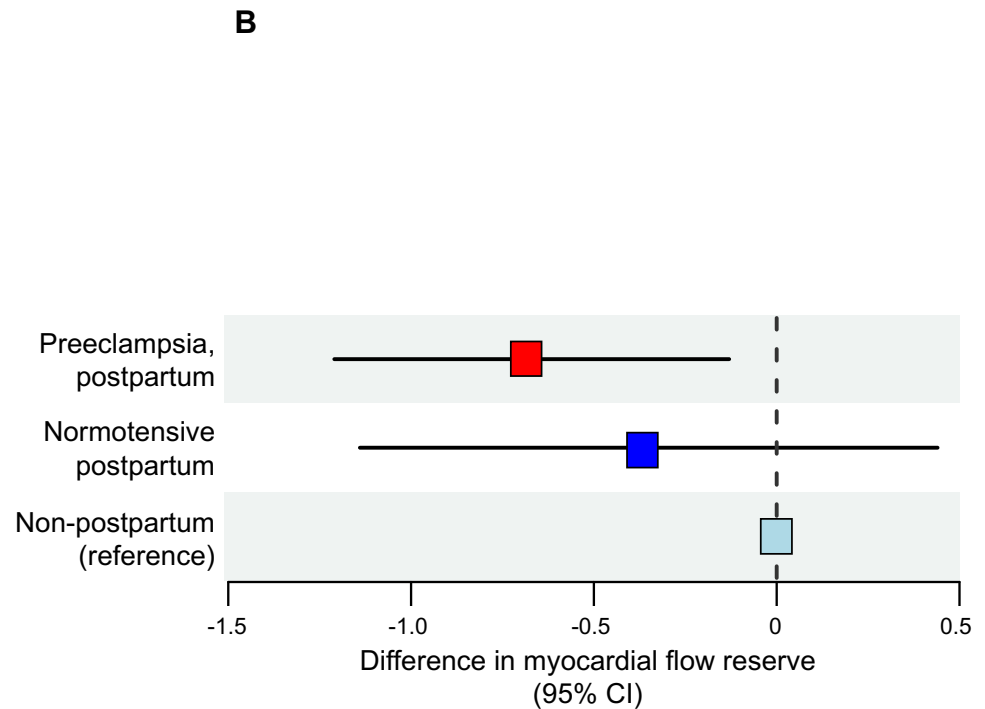
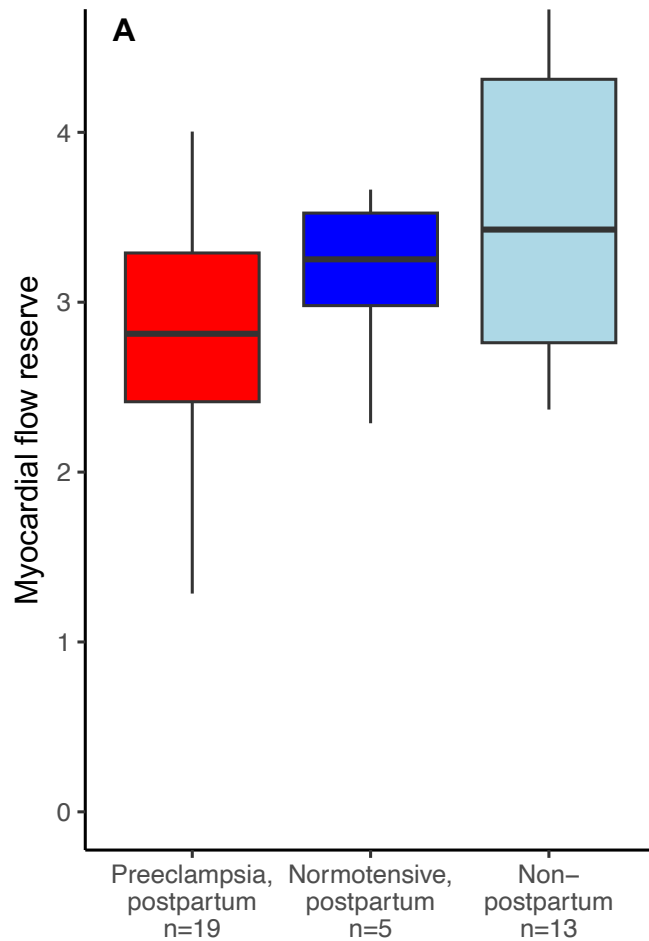
**Table 3. Echocardiographic findings in postpartum participants.**

	<b>Preeclampsia, postpartum (n=17)</b>	<b>Normotensive, postpartum (n=7)</b>	<b>P-value</b>
Septal wall, mm	8.9 (2.0)	6.7 (0.4)	<0.001
Posterior wall, mm	9.1 (1.5)	6.8 (1.0)	<0.001
Relative wall thickness	0.38 (0.07)	0.30 (0.07)	0.03
LV end-diastolic dimension, mm	47.7 (4.0)	46.0 (6.2)	0.52
LV end-systolic dimension, mm	33.9 (4.3)	31.8 (4.2)	0.29
LV ejection fraction, %	57.2 (4.1)	57.8 (3.8)	0.75
LA volume, mL	55.7 (12.6)	45.5 (10.5)	0.06
Mitral E, cm/s	84.5 (13.1)	82.6 (13.7)	0.76
Mitral A, cm/s	58.1 (10.9)	51.2 (17.9)	0.37
Mitral E/A ratio	1.4 [1.4, 1.7]	2.0 [1.3, 2.0]	0.38
Lateral e', cm/s	13.7 (2.6)	16.8 (2.1)	0.009
Septal e', cm/s	11.0 (2.7)	12.2 (2.9)	0.35
Average E/e' ratio	7.8 [6.6, 8.0]	5.7 [5.0, 7.2]	0.04
Tricuspid regurgitant velocity, cm/s	1.9 (0.4)	1.7 (0.2)	0.18
Tricuspid annular S', cm/s	12.5 (2.3)	12.7 (2.2)	0.86
Tricuspid annular plane systolic excursion, cm	23.9 (4.7)	22.5 (3.7)	0.45
RV fractional area change, %	42.3 (5.3)	40.3 (5.8)	0.45
Basal LV longitudinal strain, %	-14.2 (3.1)	-16.2 (2.3)	0.10
Mid-LV longitudinal strain, %	-14.3 (3.8)	-15.5 (1.8)	0.32
Apical LV longitudinal strain, %	-14.2 (4.8)	-17.1 (4.8)	0.21
Global LV longitudinal strain, %	-14.3 (3.5)	-16.3 (2.4)	0.12

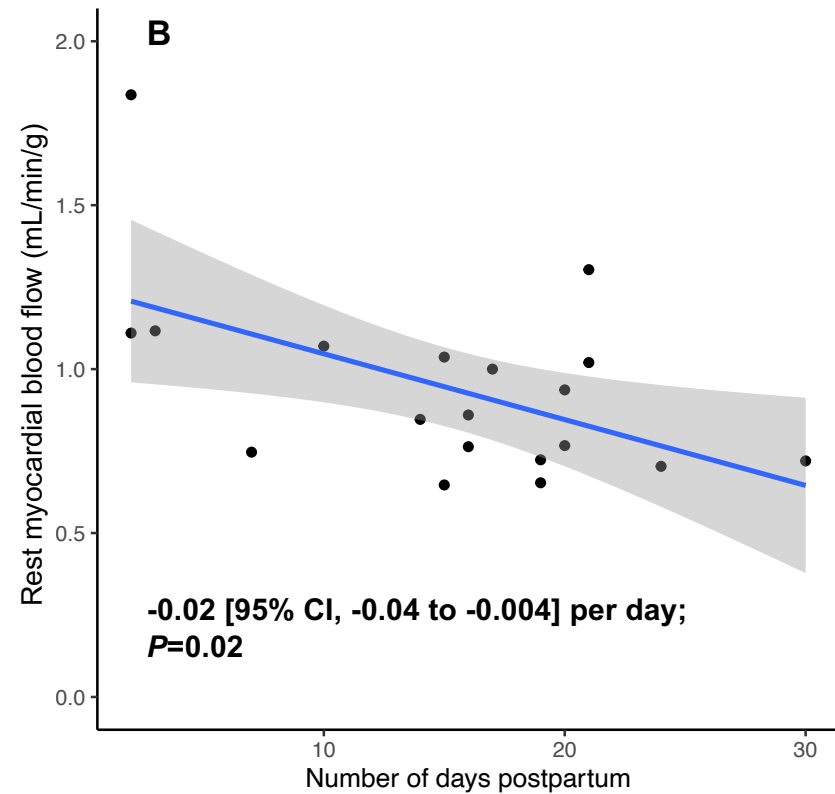
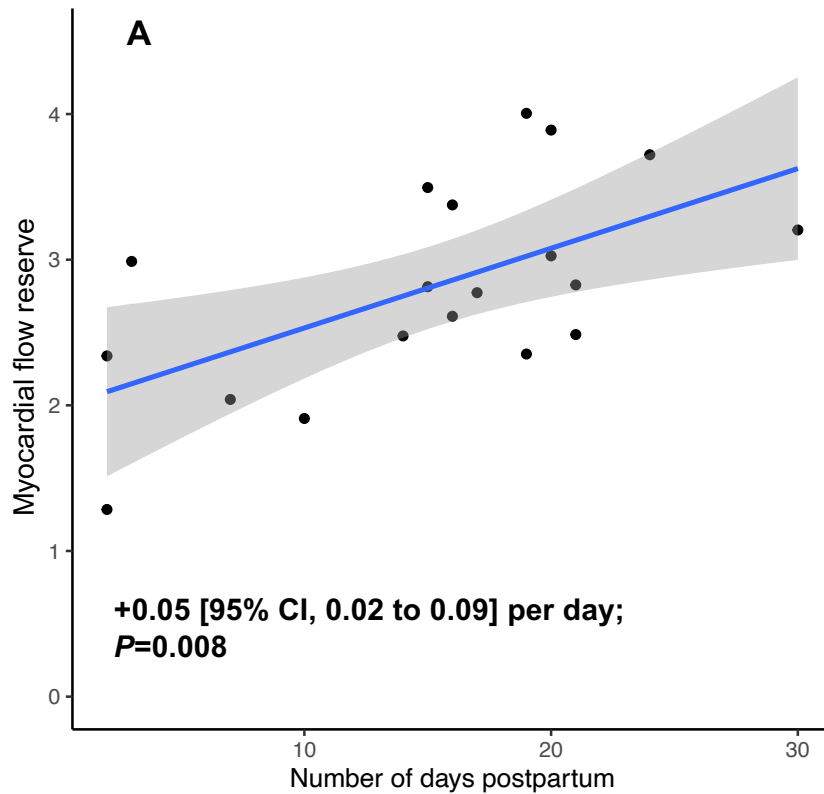
Values are displayed as mean (SD) or median [IQR] for normally distributed and skewed variables, respectively. LV indicates left ventricular. RV indicates right ventricular.

**Figure 1. Severe preeclampsia is associated with reduced myocardial flow reserve in the early postpartum period.**

(A) Myocardial flow reserve by group. (B) Difference in myocardial flow reserve among postpartum women with severe preeclampsia and normotensive postpartum women vs. non-postpartum controls. Women with severe preeclampsia ( $n=19$ ) underwent PET imaging at a mean (SD) 15.3 (7.6) days postpartum; normotensive postpartum women ( $n=5$ ) underwent PET imaging at 14.4 (8.4) days postpartum. Non-postpartum women ( $n=13$ ) constituted the reference group. Myocardial flow reserve was significantly reduced among women following delivery with severe preeclampsia.



**Figure 2. (A) Myocardial flow reserve and (B) rest myocardial blood flow vs. time following delivery among women with preeclampsia.** Women with severe preeclampsia ( $n=19$ ) underwent PET imaging at a mean (SD) 15.3 (7.6) days postpartum (overall range: 2-30 days). Myocardial flow reserve appeared to increase, and rest myocardial blood flow appeared to decrease, with time following delivery.



**Figure 3. Correlation of (A) myocardial flow reserve and (B) rest myocardial blood flow with the sFlt-1/PlGF ratio among women with preeclampsia.** Myocardial flow reserve was moderately inversely associated, and rest myocardial blood flow strongly positive correlated, with the sFlt-1/PlGF ratio among postpartum women with preeclampsia ( $n=19$ ). sFlt-1 indicates soluble fms-like tyrosine kinase receptor-1. PlGF indicates placental growth factor.

