

1 **Title**

2 How were Hospitals Affected by the Ministry's Release of Hospital Names to be Potentially

3 Reorganized?

4

5 **Author names, email and affiliations:**

6 Hiromichi Takahashi<sup>1</sup>: takahashi.hiromichi.x50@kyoto-u.jp

7 Jung-ho Shin<sup>1</sup>: shin.jungho.5h@kyoto-u.ac.jp

8 Susumu Kunisawa<sup>1</sup>: kunisawa.susumu.2v@kyoto-u.ac.jp

9 Kiyohide Fushimi<sup>2</sup>: kfushimi.hci@tmd.ac.jp

10 Yuichi Imanaka<sup>1</sup>: imanaka-y@umin.net

11

12 <sup>1</sup> Department of Healthcare Economics and Quality Management, Graduate School of

13 Medicine, Kyoto University, Kyoto, Japan

14 <sup>2</sup> Department of Health Policy and Informatics, Graduate School of Medicine, Tokyo

15 Medical and Dental University, Tokyo, Japan

16

17 **Corresponding Author:** Prof. Yuichi Imanaka, MD, MPH, PhD

18 Department of Healthcare Economics and Quality Management, Graduate School of

19 Medicine, Kyoto University, Yoshida Konoe-cho, Sakyo-ku, Kyoto 606-8501, Japan

20 Tel.: +81-75-753-4454; Fax: +81-75-753-4455

21 E-mail address: [imanaka-y@umin.net](mailto:imanaka-y@umin.net)

22

23

24

25 **Abstract**

26 **Background:** The Japanese Ministry of Health, Labour and Welfare (MHLW) released a list  
27 of public and municipal hospitals (hereinafter “the list”) that are subject to reevaluation for  
28 hospital function. First, this study describes the functional differentiation status of Japanese  
29 hospital beds. Second, it evaluates the impact of the list release on the number of admissions  
30 in the listed hospitals.

31 **Methods:** Firstly, the number of hospitals and beds by the function of listed and non-listed  
32 hospitals in 2019 and 2021 were described using the bed function report. The Controlled  
33 Interrupted Time Series (CITS) analyses were subsequently conducted using Diagnosis  
34 Procedure Combination (DPC) data. Hospitals were divided near the cutoff point of the list.  
35 The outcomes were the number of admissions for gastrointestinal cancer surgery, those  
36 admitted via ambulance, or with a femoral fracture per 1,000 admissions. The exposure point  
37 was the week when the list was released.

38 **Results:** A decrease in the total number of beds was observed in 18.9% of the listed hospitals  
39 and 10.2% of others. Changes in bed functions were observed in 19.9% of the listed hospitals  
40 and 12.5% of others. CITS analyses showed that the rate ratio of admissions for  
41 gastrointestinal cancer surgery, those admitted via ambulance, and those with a femoral  
42 fracture in the listed hospital group after the list’s release were 1.001 (95% CI: 0.998–1.004,  $p$   
43 = 0.619), 1.001 (95% CI: 0.998–1.004,  $p$  = 0.548), and 0.998 (95% CI: 0.998–1.002,  $p$  =

44 0.313), respectively.

45 **Conclusion:** More prominent trends of functional differentiation of hospital beds were  
46 observed in the listed hospitals. The release of the list did not impact the number of hospital  
47 admissions for gastrointestinal cancer surgery, those admitted via ambulance, or those with a  
48 femoral fracture per 1,000 admissions in the listed hospitals.

49

50 **Keywords:** Hospital reorganization, health policy, healthcare delivery system,  
51 community-based distribution, hospital bed function

52

## 53 **1. Introduction**

54 Japan has the most aged population in the world, and the accompanying imbalance  
55 between healthcare supply and demand is a challenge. The number of elderly people aged 75  
56 and over will likely exceed 20 million by 2025,<sup>1-3</sup> and this aging population is changing  
57 healthcare demands.<sup>4</sup> The importance of post-acute and convalescent care is increasing, as the  
58 elderly require more recovery time than younger patients. In contrast, after World War II, the  
59 Japanese healthcare delivery system focused mainly on acute care.<sup>4-6</sup> A balanced healthcare  
60 delivery system with adequate supply and demand is required in Japan.

61 To address this imbalance and achieve an optimized healthcare delivery system, the  
62 Ministry of Health, Labour and Welfare (MHLW) introduced a Community Health Care  
63 Vision (CHCV) in 2016.<sup>7</sup> The CHCV includes the necessary number of beds by healthcare  
64 function in 2025 and the actual number of beds by healthcare function chosen by each  
65 hospital for each of the 341 vision areas nationwide. Under the system of reporting on the bed  
66 functions,<sup>8</sup> each hospital must report its present and future (i.e., 2025) medical functions by  
67 choosing from the following: advanced acute care, acute care, convalescent, and chronic  
68 care.<sup>9</sup> A CHCV coordination meeting was established for each vision area,<sup>9,10</sup> composed of  
69 representatives of community medical associations, dental associations, pharmaceutical  
70 associations, nursing associations, municipalities, medical insurers, healthcare providers, and  
71 others. Currently, there is an oversupply and undersupply of acute care and convalescent beds,

72 respectively, compared to the demand for such beds. Under the CHCV, each hospital is  
73 expected to promote functional differentiation by voluntarily selecting the functions of its  
74 own beds based on stakeholder discussions within the vision area.

75         Despite introducing the CHCV, the functional differentiation of hospital beds was not  
76 promoted easily. It was pointed out that the CHCV and its coordination meeting had  
77 contributed little to the differentiation of hospital bed functions.<sup>2, 11, 12</sup> One reason for this is  
78 that the Japanese healthcare system depends greatly on the private sector — 68.2% of all  
79 hospitals were owned privately in 2016<sup>13</sup> — and healthcare providers have considerable  
80 freedom to choose hospital functions, making it difficult for the MHLW to promote reform.<sup>14</sup>  
81 Thus, the MHLW attempted to start with reforming public and municipal hospitals, which are  
82 relatively controllable. The CHCV Working Group led by the MHLW analyzed data on  
83 clinical performance related to the acute phase functions of public, municipal and some  
84 private hospitals serving public utilities in response to the Basic Policy on Economic and  
85 Fiscal Management and Reform, 2019 and 2018.<sup>15, 16</sup> As a result, MHLW designated 424 out  
86 of 1,455 public and municipality hospitals as “hospitals that need further consideration  
87 regarding the necessity of reorganization and integration” (hospitals subject to reevaluation,  
88 hereinafter, “listed hospitals”). It released a list with the names of these hospitals and their  
89 medical performance data (hereinafter, “the list”) on September 26, 2019.<sup>11</sup> According to  
90 MHLW, reorganization and integration include downsizing, functional differentiation, and

91 consolidation.<sup>17</sup> Moreover, the number of hospital beds by function was the main monitoring  
92 indicator before and after the publication of the list<sup>18</sup> and subsidies for reorganization also  
93 encourage functional differentiation and reduction of hospital beds.<sup>19</sup> As such, the publication  
94 of this list was mainly focused on functional differentiation of hospital beds. MHLW  
95 established two selection criteria regarding the designation of the listed hospitals: that they  
96 “have only a small number of medical practices” and are “similar and close to others.”  
97 MHLW set Categories A and B, including nine and six evaluation items, respectively.<sup>20</sup> If a  
98 hospital has fewer cases of all nine items in Category A than the number of cases  
99 corresponding to the 33.3 percentile among all the public and municipality hospitals, the  
100 hospital meets the former criteria (“has only a small number of medical practices”). On the  
101 other hand, if there are two or more hospitals that have a high number of cases for all six  
102 items among Category B in the same vision area,<sup>9, 10</sup> and each hospital is located less than 20  
103 minutes away by car, hospitals in this vision area meet the latter criteria (“similar and close to  
104 others”). Hospitals were designated as the listed hospitals if they met either of two criteria.  
105 The MHLW declared that the release of the list aimed to stimulate discussions at the CHCV  
106 coordination meetings based on the current and future regional visions. Despite the MHLW’s  
107 intent, the media described the list as a “hospital restructuring list” forced by the  
108 government.<sup>21</sup> Furthermore, the selection criteria, evaluation items, and analysis methods  
109 were pointed out as biased and arbitrary.<sup>22, 23</sup> The National Governors’ Association and the

110 Japan Medical Association expressed concern that the list would cause chaos in local  
111 communities.<sup>24-27</sup>

112 The policy effects of this list publication have not been adequately objectively  
113 discussed. The MHLW reported that progress in functional differentiation has been made as of  
114 2021 for the hospitals listed in 2019.<sup>18</sup> From 2019 to 2021, the total number of beds in the  
115 listed hospitals decreased by approximately 4,000, including a decrease of approximately  
116 4,100 acute care beds and an increase of approximately 1,700 convalescent beds.<sup>18</sup> However,  
117 whether this functional differentiation differs from that in non-listed hospitals is unclear, and  
118 the impact of the publication of the list on factors other than the differentiation of hospital bed  
119 functions requires study. Even if the number of beds by function did not change, progress can  
120 be thought made if it promotes discussion and role-sharing in the community, and if  
121 reputational damage becomes apparent, it should be corrected. Therefore, two objectives were  
122 set in this study. The first objective was to clarify the status of functional differentiation of  
123 hospital beds in listed hospitals compared to non-listed hospitals in Japan. The second  
124 objective was to evaluate the impact of the release of the list on the number of admission  
125 cases at the listed hospitals. The admission cases analyzed were admissions for  
126 gastrointestinal cancer surgery, admissions via ambulance, and admissions with a femoral  
127 fracture, which are included in the evaluation items in Categories A and B when the listed  
128 hospitals were selected.<sup>11</sup>



129

130

## 131 **2. Materials and Methods**

### 132 **2.1. Description of functional differentiation of hospital bed status of listed hospitals**

133 The data source used was the report on the bed functions released annually by the  
134 MHLW.<sup>8</sup> The bed function reporting system requires hospitals nationwide to report based on  
135 hospital wards starting in FY 2014. The report on the bed functions system covers only  
136 licensed general and long-term care beds defined in the Medical Service Act,<sup>8</sup> hereinafter,  
137 “Licensed beds”; this includes general and long-term care beds, but not psychiatric, infectious  
138 disease, or tuberculosis beds. The hospitals having general or long-term care beds are required  
139 to report on the number of beds by functions, number of patients, number of workforce,  
140 number of medical devices, number of surgeries, and other specific medical details, with  
141 approximately 400 items of data as of July 1 of each year.

142 Hospitals included in the report in 2017 were classified into two classes: listed and  
143 non-listed. Listed hospitals were 417 hospitals out of the 424 listed hospitals initially selected  
144 for reevaluation<sup>11</sup>, excluding the 7 later exempted from the list.<sup>28</sup> For both listed and  
145 non-listed hospitals, those that did not report on the number of beds by function in either 2019  
146 or 2021 were excluded. Listed and non-listed hospitals that reported the number of beds by  
147 function in 2019 and 2021 were classified into three classes: those that increased, decreased,  
148 or saw no change in the total number of licensed beds from 2019 to 2021. Hospitals with no  
149 change in the total number of licensed beds, were furthermore grouped into those with and

150 those without a change in the number of licensed beds by function, i.e., advanced acute care  
151 phase, acute care phase, convalescent phase, chronic care phase, and inactive. The number of  
152 hospitals in each classification is described. In addition, the total number of licensed beds in  
153 2019 and 2021, the proportion of change in the number of beds, and the change in the number  
154 of beds per hospital in the same period were described by each function.

155

## 156 **2.2. Impact of the release of the list on admissions to the listed hospitals**

### 157 **Data source and study population**

158 The Diagnosis Procedure Combination (DPC) database of a research group funded  
159 by the MHLW was used for this study. The database consists of DPC data from mainly acute  
160 care hospitals that are voluntarily participating. Approximately 1,200 hospitals are  
161 participating across Japan, comprising both public and private hospitals.<sup>29</sup> The DPC/per-diem  
162 payment system (PDPS) is a Japanese prospective payment system applied to acute care  
163 hospitals. Although not all DPC/PDPS hospitals are included in the DPC research database,  
164 individual data are available for research purposes<sup>30</sup>. As described in detail elsewhere,<sup>31</sup> the  
165 DPC data includes insurance claims, the patient's clinical characteristics, and records of  
166 clinical services. The clinical characteristics include age, gender, admission and discharge  
167 statuses and date, cause of admission, primary diagnosis, diagnosis for which most and  
168 second most of the medical resources, and other data. All diagnoses were classified according

169 to the International Classification of Diseases, 10th Revision (ICD-10) codes.

170           Among the research database, the study included public and municipal hospitals in  
171 vision areas with a population of less than 1 million and those provided with DPC data Form  
172 1 for 36 months from April 2018 to March 2021. Hospitals in vision areas with a population  
173 of 1 million or more were excluded because public and municipal hospitals in such areas were  
174 not requested to reevaluate even if they met the “similar and close to others” criterion.<sup>17</sup> The  
175 selected hospitals were divided into the listed hospital group and the controlled hospital group.  
176 The listed hospital group consisted of hospitals that met the criteria of the 417 listed hospitals  
177 in Section 2.1. The control hospital group consisted of hospitals that were not included in the  
178 listed hospitals and met eight of the nine evaluation items in Category A or five of the six  
179 evaluation items in Category B. The individual hospitals around this cutoff in both listed  
180 hospital group and controlled hospital group are almost homogeneous, considered to “have  
181 only a small number of medical practices” or “similar and close to others.” The difference  
182 between the two groups is considered to be whether or not they were selected as listed  
183 hospitals. By comparing outcomes between the two groups, it is possible to consider the  
184 observed difference to be the impact of being selected as listed hospitals.

185           The study period lasted 143 weeks, from week 14, 2018 (week beginning Monday,  
186 April 2, according to ISO 8601) to week 52, 2020 (beginning December 21). While the  
187 inclusion hospitals were those that provided 36 months of DPC data, the reason for setting the

188 study period as 143 weeks (about 33 months) was that DPC data is generated monthly after  
189 discharge from the hospital. If the study period is set up to the end of March 2021, DPC data  
190 for cases admitted by the end of March 2021 and discharged after April 2021 will not be  
191 generated, resulting in an undercount of the actual number of cases.

192 Three types of cases newly admitted to the listed and control hospital groups during  
193 the study period were extracted: those who underwent gastrointestinal cancer surgery, those  
194 arriving via ambulance, and those with a femoral fracture. These three case types were  
195 identified as the target population. The process for selecting the three types of cases had three  
196 steps. Firstly, the three types of cases were selected among evaluation items included in  
197 Categories A and B. The number of cases (for only June every year) in each evaluation item  
198 included in Categories A and B is disclosed and is considered to be likely affected by the  
199 release of the list. Secondly, among all the nine and six evaluation items in Categories A and  
200 B, respectively, the evaluation items that rely on facilities and specialized personnel, such as  
201 cardiac, pediatric, and obstetric care, were excluded because the short-term effects of the  
202 release of the list are not expected. Finally, to examine the impact of the release of the list on  
203 major types of cases, the cases that were not treated by more than 70% (calculated using the  
204 list) of the listed hospitals were excluded in this study,<sup>11</sup>. Admission cases for gastrointestinal  
205 cancer surgery were identified based on the following conditions: “Name of disease with the  
206 most resource-intensive” in DPC data was an ICD-10 code for gastrointestinal cancer, and the

207 corresponding surgery was performed (Supplemental Table 1). Admission cases via  
208 ambulance were identified as having a check of “Ambulance transport” in DPC data.  
209 Admission cases with a femoral fracture were identified as having ICD-10 code S72.x for  
210 either “Name of trigger diagnosis causing admission” or “Name of disease with the top input  
211 of medical resources” in DPC data. Admission cases missing “ambulance transport”,  
212 “scheduled/emergency admission classification”, or “discharge outcome” in Form 1 were  
213 excluded from the analysis.

214

## 215 **Statistical analysis**

216 For each of the listed hospital groups and the control hospital group, we described  
217 the establishment entity (the national government, public organizations, social insurance  
218 bodies, medical corporations, or others),<sup>32</sup> the number of beds by function (total, advanced  
219 acute care, acute care, convalescent, chronic care, and inactive), region (Hokkaido, Tohoku,  
220 Kanto, Chubu, Kinki, Chushikoku, or Kyusyu), vision area category by population size  
221 (500,000–1 million, 200,000–500,000, 100,000–200,000, or less than 100,000), whether the  
222 hospital is a special functioning hospital or a regional medical care support hospital,<sup>10, 33</sup> and  
223 the status of emergency hospital designation by MHLW (primary, secondary, or tertiary  
224 emergency), reported in the report on the bed functions 2019. For each of the three types of  
225 admission cases, age, gender, and length of stay in the hospital were described before and

226 after the release of the list for each listed hospital group and each control hospital group.

227           Controlled Interrupted Time Series<sup>34</sup> (CITS) analysis was performed to estimate the  
228 impact of the release of the list on the number of three types of admission cases in all the  
229 listed hospital group compared to the controlled hospital group. The dependent variables were  
230 the number of admissions for each of the three types of admissions divided by the number of  
231 1,000 new admissions to investigate the possibility that patients, ambulance teams, and other  
232 medical institutions may not choose the listed hospitals after the list was released, or that the  
233 listed hospital may have restructured its functions in response to the release of the list that  
234 showed the low number of cases. Poisson or quasi-Poisson distributions were assumed  
235 considering the data's overdispersion. Seasonality was considered by including harmonic  
236 terms.<sup>35</sup> The 39th week of 2019 (beginning September 23) was considered the exposure week,  
237 including September 26, 2019, the day of the list's release at the 24th working group meeting  
238 on the CHCV. Although the list was released on September 26, 2019, the MHLW officially  
239 requested each prefecture to reevaluate the listed hospitals' functions on January 17, 2020. To  
240 account for the possibility of the impact on listed hospitals by triggering the official request, a  
241 sensitivity analysis where exposure week was the 3<sup>rd</sup> week of 2020 was performed. The model  
242 used was explained in detail in Appendix. Our primary interest was the difference in the slope  
243 change between the listed hospital group and the control hospital group.

244           A two-sided p-value of 5% was considered statistically significant. CITS analysis

245 was performed using R (R Foundation for Statistical Computing, Vienna, Austria) version

246 4.2.1 and tsModel package version 0.6.1.

247 Data used in this study were anonymized and approved by the Ethics Committee,

248 Graduate School of Medicine, Kyoto University (Approval No.: R0135).

249



250 **3. Results**

251 **3.1. Description of functional differentiation of hospital bed status in listed hospitals**

252           Some 7,244 hospitals included in the report on the bed functions in FY 2017 were  
253 classified into 417 listed hospitals and 6,827 non-listed hospitals. The number of listed and  
254 non-listed hospitals that reported the number of licensed beds in both 2019 and 2021 were  
255 398 and 6,415, respectively (Supplemental Figure 1). Table 1 shows the functional  
256 differentiation classification of listed and non-listed hospitals. Differences were observed  
257 between the listed and non-listed hospitals in the decrease in the total number of licensed beds  
258 ( $\chi^2(1) = 31.92$ ,  $p < 0.01$ ) and change in the number of licensed beds by function ( $\chi^2(1) = 19.08$ ,  
259  $p < 0.01$ ). For 2019 and 2021, Table 2 shows the number of licensed beds, the proportion of  
260 change in the number of licensed beds, and the mean change in the number of beds per  
261 hospital by function for each of the listed and non-listed hospitals that reported the number of  
262 licensed beds in both 2019 and 2021.

263

264 Table 1. Description of functional differentiation status (n, (%))

|  | Listed hospitals (n = 398) |         | Non-listed hospitals (n = 6,415) |         |
|--|----------------------------|---------|----------------------------------|---------|
| Increase in the total number of beds             | 14                         | ( 3.4)  | 411                              | ( 6.0)  |
| Decrease in the total number of beds             | 79                         | ( 18.9) | 693                              | ( 10.2) |
| No change in the total number of beds            |                            |         |                                  |         |
| with change in the number of beds by function    | 83                         | ( 19.9) | 854                              | ( 12.5) |
| without change in the number of beds by function | 222                        | ( 53.2) | 4,457                            | ( 65.3) |

265 Table 2. Number in 2019 and 2021, change proportion, and change in number per hospital of beds by function

|                                  | Total  | Advanced acute care | Acute care | Convalescent | Chronic care | Inactive |        |
|----------------------------------|--|---------------------|------------|--------------|--------------|----------|--------|
| Listed hospitals (n = 398)       | Number of beds in 2019                         | 62,693              | 1,252      | 32,681       | 13,312       | 12,940   | 2,508  |
|                                  | Number of beds in 2021                         | 61,099              | 1,100      | 30,027       | 15,655       | 12,489   | 1,828  |
|                                  | Change proportion                              | -2.5%               | -12.1%     | -8.1%        | 17.6%        | -3.5%    | -27.1% |
|                                  | Mean change in the number of beds per hospital | -4.01               | -0.38      | -6.67        | 5.89         | -1.13    | -1.71  |
| Non-listed hospitals (n = 6,415) | Number of beds in 2019                         | 1,091,582           | 155,968    | 466,307      | 154,742      | 294,998  | 19,567 |
|                                  | Number of beds in 2021                         | 1,078,083           | 152,772    | 469,166      | 159,687      | 280,739  | 15,719 |
|                                  | Change proportion                              | -1.2%               | -2.0%      | 0.6%         | 3.2%         | -4.8%    | -19.7% |
|                                  | Mean change in the number of beds per hospital | -2.10               | -0.50      | 0.45         | 0.77         | -2.22    | -0.60  |

### 266 **3.2. Impact of the release of the list on the admission to the listed hospitals**

267           Among the hospitals included in the DPC research database, 90 hospitals were  
268 extracted that met the criteria described previously: public and municipal hospitals in vision  
269 areas with a population of less than 1 million and those provided with DPC data Form 1 for  
270 36 months from April 2018 to March 2021. The entire number of cases admitted to these  
271 hospitals during the 143-week study period (April 2, 2018–December 27, 2020) was  
272 1,148,442. The 90 extracted hospitals comprised 40 hospitals in the listed hospital group and  
273 56 hospitals in the control hospital group, with total admissions of 369,692 and 778,750 cases,  
274 respectively. Table 3 shows the characteristics of hospitals in each group. Table 4 shows the  
275 patients' background of each case before and after the release of the list.

276           Figure 1 shows the weekly outcomes by case in each listed and controlled hospital  
277 group with the result of the CITS analysis. The results of the CITS analysis showed that the  
278 impact of the release of the list on the outcomes in the listed hospital group was not  
279 statistically significant compared to one in the control hospital group, both in the primary and  
280 sensitivity analyses.

281

282

283

284 Table 3. Characteristics of hospitals in each group

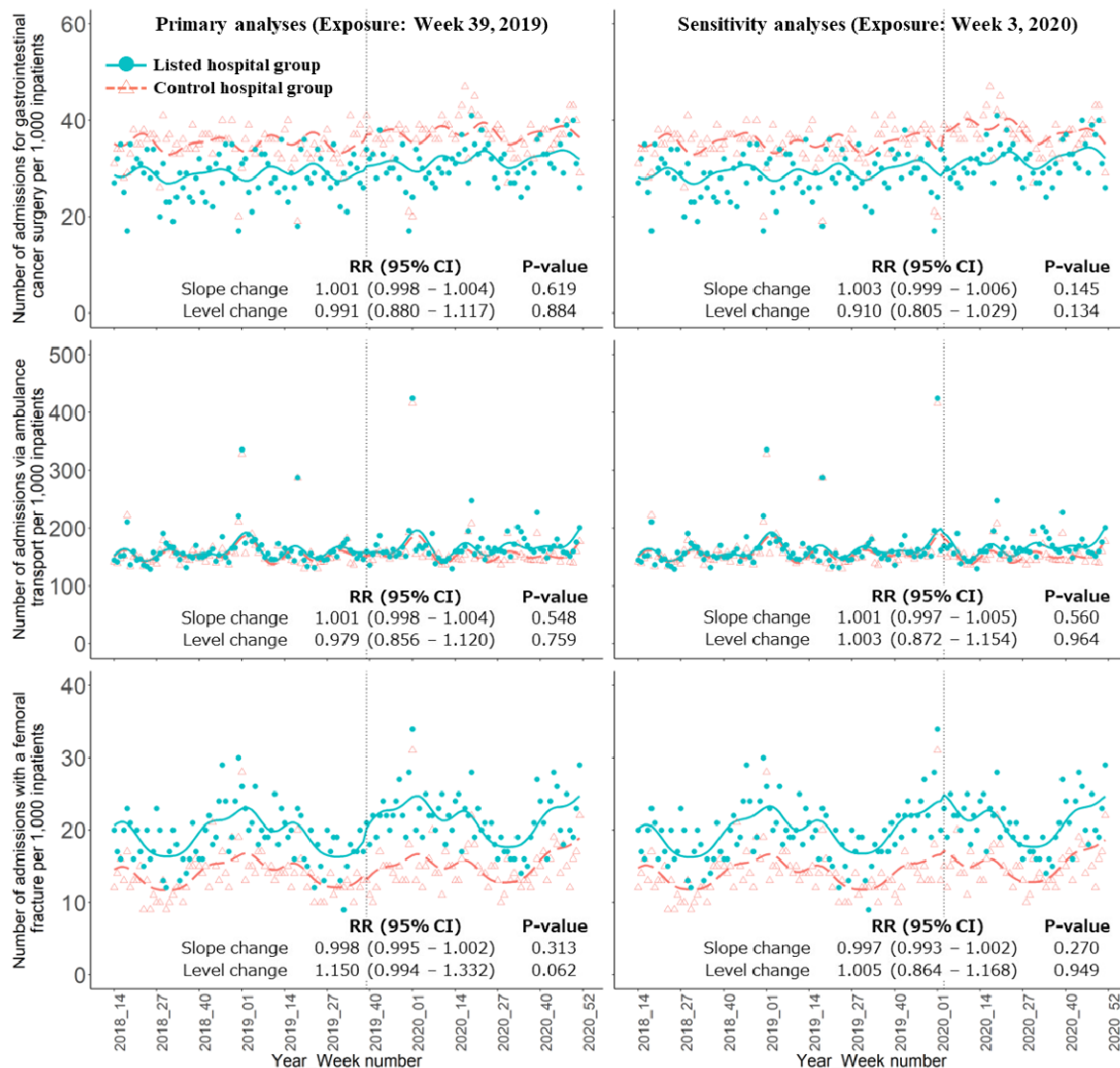
|  | Listed hospital group<br>(n = 40) |            | Control hospital<br>group (n = 56) |            |
|--|-----------------------------------|------------|------------------------------------|------------|
| <b>Region, n (%)</b>                             |                                   |            |                                    |            |
| Hokkaido   | 2                                 | (5.0)      | 1                                  | (1.8)      |
| Tohoku   | 3                                 | (7.5)      | 4                                  | (7.1)      |
| Kanto  | 7                                 | (17.5)     | 10                                 | (17.9)     |
| Chubu  | 13                                | (32.5)     | 16                                 | (28.6)     |
| Kinki  | 4                                 | (10.0)     | 6                                  | (10.7)     |
| Chushikoku                                       | 7                                 | (17.5)     | 11                                 | (19.6)     |
| Kyusyu   | 4                                 | (10.0)     | 8                                  | (14.3)     |
| <b>Vision Area category by population, n (%)</b> |                                   |            |                                    |            |
| 500,000–1 million                                | 22                                | (55.0)     | 27                                 | (48.2)     |
| 200,000–500,000                                  | 17                                | (42.5)     | 20                                 | (35.7)     |
| 100,000–200,000                                  | 1                                 | (2.5)      | 4                                  | (7.1)      |
| Less than 100,000                                | 0                                 | (0.0)      | 5                                  | (8.9)      |
| <b>Emergency hospitals, n (%)</b>                |                                   |            |                                    |            |
| Tertiary emergency facility                      | 0                                 | (0.0)      | 2                                  | (3.6)      |
| Secondary emergency facility                     | 35                                | (87.5)     | 50                                 | (89.3)     |
| Primary emergency facility                       | 37                                | (92.5)     | 52                                 | (92.9)     |
| <b>Approval status, n (%)</b>                    |                                   |            |                                    |            |
| Special functioning hospital                     | 0                                 | (0.0)      | 0                                  | (0.0)      |
| Regional medical care support hospital           | 12                                | (30.0)     | 27                                 | (48.2)     |
| <b>Establishment entity, n (%)</b>               |                                   |            |                                    |            |
| National government                              | 8                                 | (20.0)     | 23                                 | (41.1)     |
| Public organizations                             | 25                                | (62.5)     | 24                                 | (42.9)     |
| Social insurance bodies                          | 2                                 | (5.0)      | 2                                  | (3.6)      |
| Medical corporations                             | 1                                 | (2.5)      | 3                                  | (5.4)      |
| Others   | 4                                 | (10.0)     | 4                                  | (7.1)      |
| <b>Number of beds by function, median (IQR)</b>  |                                   |            |                                    |            |
| Total  | 226.5                             | (180, 308) | 291                                | (236, 369) |
| Advanced acute care                              | 0                                 | (0, 0)     | 3.5                                | (0, 12)    |
| Acute care                                       | 149                               | (120, 215) | 175                                | (118, 256) |
| Convalescent                                     | 47                                | (0, 60)    | 48                                 | (0, 75)    |
| Chronic care                                     | 0                                 | (0, 52)    | 0                                  | (0, 38)    |
| Inactive   | 0                                 | (0, 0)     | 0                                  | (0, 3)     |

285 Table 4. Patient background of each case

|  | Listed hospital group (n = 40)    |          |                                  |          | Control hospital group (n = 56)   |          |                                  |          |
|--|-----------------------------------|----------|----------------------------------|----------|-----------------------------------|----------|----------------------------------|----------|
|  | Before the release<br>of the list |          | After the release<br>of the list |          | Before the release<br>of the list |          | After the release<br>of the list |          |
| <b>Admission cases for gastrointestinal cancer surgery</b> |                                   |          |                                  |          |                                   |          |                                  |          |
| Number of cases, n   | 6,063                             |          | 5,077                            |          | 15,440                            |          | 12,724                           |          |
| Gender - male, n (%)                                       | 3,736                             | (61.6)   | 3,158                            | (62.2)   | 9,751                             | (63.2)   | 8,073                            | (63.5)   |
| Age, median (IQR)  | 74                                | (67, 81) | 74                               | (68, 81) | 72                                | (65, 79) | 72                               | (65, 79) |
| Length of stay, median (IQR)                               | 17                                | (10, 31) | 16                               | (9, 29)  | 14                                | (8, 24)  | 13                               | (8, 22)  |
| <b>Admission cases via ambulance transport</b>             |                                   |          |                                  |          |                                   |          |                                  |          |
| Number of cases, n   | 33,285                            |          | 26,919                           |          | 67,584                            |          | 53,276                           |          |
| Gender - male, n (%)                                       | 16,336                            | (49.1)   | 13,299                           | (49.4)   | 34,834                            | (51.5)   | 27,497                           | (51.6)   |
| Age, median (IQR)  | 80                                | (68, 87) | 80                               | (70, 88) | 78                                | (65, 86) | 79                               | (67, 87) |
| Length of stay, median (IQR)                               | 13                                | (5, 31)  | 14                               | (5, 32)  | 13                                | (5, 28)  | 14                               | (6, 28)  |
| <b>Admission cases with a femoral fracture</b>             |                                   |          |                                  |          |                                   |          |                                  |          |
| Number of cases, n   | 4,097                             |          | 3,552                            |          | 6,196                             |          | 5,315                            |          |
| Gender - male, n (%)                                       | 922                               | (22.5)   | 817                              | (23.0)   | 1,513                             | (24.4)   | 1,256                            | (23.6)   |
| Age, median (IQR)  | 85                                | (78, 90) | 85                               | (78, 90) | 85                                | (77, 90) | 85                               | (78, 90) |
| Length of stay, median (IQR)                               | 42                                | (24, 64) | 39                               | (23, 59) | 32                                | (20, 56) | 30                               | (20, 53) |

\* Before and after the release of the list indicate the period from April 2, 2018, to September 25, 2019, and from September 26, 2019, to December 27, 2020, respectively.

286



287

288 Figure 1. Weekly number of each admission cases per 1,000 newly admission cases with the

289 results of CITS analysis

290 The three graphs on the left and right sides show the primary and sensitivity analysis results,

291 respectively. The y-axis indicates the outcomes, and the x-axis indicates the year and week

292 numbers. Each blue dot and orange triangle indicates the observed number for the listed and

293 control hospital groups, respectively. Blue and dashed orange lines indicate the predicted

294 trend in the listed and control hospital groups, respectively, based on the model. The vertical

295 dashed line indicates the exposure. RR: Rate Ratio. CI: Confidence Interval.

296

#### 297 **4. Discussion**

298           In this study, we showed the status of functional differentiation of hospital beds of  
299 the listed hospitals from FY 2019–2021 compared to non-listed hospitals using the bed  
300 functions report. Moreover, the impact of the release of the list on the number of three types  
301 of admission cases per 1,000 admissions at listed hospitals was evaluated by CITS analysis  
302 using DPC data.

303           The results of the first analysis revealed that the functional differentiation of hospital  
304 beds of listed hospitals differs from those of non-listed hospitals. The percentage of listed  
305 hospitals that decreased the total number of licensed beds or changed the function of licensed  
306 beds was higher than that of non-listed hospitals. In addition, the number of acute care beds in  
307 listed hospitals decreased more than in non-listed hospitals, while the number of convalescent  
308 beds increased more than in non-listed hospitals. Despite the changes in the listed hospitals  
309 being the same as in the MHLW report,<sup>18</sup> this study revealed that the functional differentiation  
310 of hospital beds of the listed hospitals is more remarkable than the non-listed hospitals. In  
311 addition, although the report of MHLW reported that 44 hospitals did not intend to change  
312 their function,<sup>18</sup> our analysis showed that restructuring the healthcare delivery system is  
313 progressing. Publication of the list in 2019 could be one reason for the differences between  
314 listed and non-listed hospitals. In addition, the Hospital Bed Functional Reorganization  
315 Support Program,<sup>19, 27</sup> established in 2020, may also have encouraged hospitals to conduct



316 functional differentiation of hospital beds, with a decrease in the total number of beds  
317 between 2019 and 2021.

318           The findings of the CITS analysis were that the release of the list had no impact on  
319 the number of the three types of admission cases at the listed hospital group compared to the  
320 control hospital group. Despite reputational concerns caused by the publication of the list and  
321 its being treated as a “hospital restructured list”,<sup>21, 22, 36, 37</sup> including a hospital on the list did  
322 not affect the decisions of emergency services or patients in choosing where to transport or  
323 hospitalize. As Miyazawa indicated,<sup>21</sup> many listed hospitals provided messages to patients and  
324 stakeholders through their websites and publications after the list was published, potentially  
325 counteracting the negative impact. Neither the primary nor sensitivity analyses showed a  
326 significant impact on the number of the three types of admission cases at the listed hospital  
327 group. It was suggested that the role-sharing related to the three types of diseases evaluated in  
328 this study in the listed hospital group was not implemented compared to the control hospital  
329 group or might be implemented regardless of the timing of the release of the list or the official  
330 notification from the MHLW. Although no impacts were apparent during this study period,  
331 impacts may be apparent in longer-term studies, and further research is needed to assess  
332 impacts over a longer period.

333           The restructuring of the healthcare delivery system in Japan is urgent. It is necessary  
334 to encourage discussions among public and private hospitals more actively. Policymakers

335 must also be aware of the adverse effects of reorganization and integration. In the UK, the  
336 reduction in the number of beds has made it more difficult to adapt to fluctuations in  
337 demand.<sup>38</sup> In Canada, overcrowding in emergency services rose during reorganization,<sup>39</sup> and  
338 mortality rates increased in the group receiving intensive care after reducing the number of  
339 beds.<sup>40</sup> Public and municipal hospitals in Japan play a key role in treating COVID-19 cases,  
340 especially in areas with fewer than 100,000 people.<sup>41</sup> Implementing policies to promote  
341 reorganization and integration with the premise of continuing to protect community healthcare  
342 is desired based on an analysis of the impact of the list's release on various perspectives. In  
343 addition, it is important to implement reorganization and integration policies based on the  
344 supply and demand of the number of beds and various medical resources. In Denmark, the  
345 Ministry of Health and its advisory body, the National Board of Health, assigned specialized  
346 physicians to different regions and succeeded in centralizing hospitals.<sup>42</sup>

347         This study has several limitations. First, we have not evaluated all aspects of hospital  
348 reorganization and integration; these generally include the change in the number of beds by  
349 medical function and the change in the hospitals; strategy without changing the number of  
350 beds.<sup>43</sup> In this study, changes in the number of three types of cases were evaluated for  
351 reorganizations and consolidations that did not involve the number of beds. However, since  
352 this study selected and analyzed the three most important admission cases, for which many  
353 hospitals had already worked among Categories A and B, it is considered to have provided

354 fundamental knowledge regarding the impact of the release of the list. Second, the list's  
355 impact on smaller hospitals might have been more significant than on larger hospitals. In  
356 general, smaller hospitals tend to be more financially unstable<sup>44</sup> and experience more pressure  
357 for reorganization and integration. Further research is needed to clarify the detailed impact of  
358 the release of the list on smaller hospitals, for example, through analyses that do not rely on  
359 DPC data.

360         Despite these limitations, this study is unique due to two perspectives. The first is  
361 that few studies have clarified the status of functional differentiation of hospital beds of listed  
362 hospitals compared to non-listed hospitals or have evaluated the impact of the release of the  
363 list, providing insight into the formulation of healthcare policy. Second, the CITS analysis, in  
364 which hospitals near the cutoff were used as the control hospital group, allowed us to compare  
365 whether there was an impact depending on whether the hospitals were classified as listed  
366 hospitals, which yielded reliable results.

367

## 368 **5. Conclusions**

369         Our analysis suggested that the listed hospitals underwent more significant functional  
370 differentiation of hospital beds than the non-listed hospitals, with a decrease in the number of  
371 acute care beds and an increase in convalescent beds. It also demonstrated that the release of  
372 the list did not influence the changes in the number of admissions for gastrointestinal cancer

373 surgery, admission via ambulance, or for those with a femoral fracture per 1,000 admission

374 cases respectively, in the listed hospital groups.in listed hospitals.

375

376 **Acknowledgments**

377 We gratefully acknowledge the contributions of the staff members and all the

378 participating hospitals.

379

380 **References**

- 381 1. Prime Minister of Japan and His Cabinet. [Social Security System Reform National  
382 Conference]. Available from:  
383 <https://www.mhlw.go.jp/stf/shingi/2r98520000030swa-att/2r98520000030t1k.pdf>.  
384 Published: 25 Apr, 2013. Accessed: 1 Oct 2022
- 385 2. Suzuki T. [Current Status and Issues of Community Health Care Vision]. Hospitals.  
386 2021;80(1):16-21.
- 387 3. Matsuda S. Health Policy in Japan - Current Situation and Future Challenges. Jma j.  
388 2019;2(1):1-10.
- 389 4. Arai H, Ouchi Y, Toba K, Endo T, Shimokado K, Tsubota K, et al. Japan as the  
390 front-runner of super-aged societies: Perspectives from medicine and medical care  
391 in Japan. Geriatrics & Gerontology International. 2015;15(6):673-87.
- 392 5. Okamoto E, Miyamoto M, Hara K, Yoshida J, Muto M, Hirai A, et al. Integrated care  
393 through disease-oriented clinical care pathways: experience from Japan's regional  
394 health planning initiatives. Int J Integr Care. 2011;11(Spec 10th Anniversary Ed):e125.
- 395 6. OECD. OECD Reviews of Health Care Quality: Japan 20152015.
- 396 7. Ministry of Health, Labour and Welfare,. [Community Health Care Vision]. Available  
397 from: <https://www.mhlw.go.jp/stf/seisakunitsuite/bunya/0000080850.html>. Published:  
398 25 Jun, 2014. Accessed: 11 Nov 2022

- 399 8. Ministry of Health, Labour and Welfare,. [Report on the bed functions]. Available  
400 from: <https://www.mhlw.go.jp/stf/seisakunitsuite/bunya/0000055891.html>. Published:  
401 2022. Accessed: 15 Oct 2022
- 402 9. Ministry of Health, Labour and Welfare,. [Guidelines for Formulation of Community  
403 Health Care Vision]. Available from:  
404 <https://www.mhlw.go.jp/content/10800000/000711355.pdf>. Published: 1 Apr, 2015.  
405 Accessed: 1 Oct 2022
- 406 10. Ministry of Health, Labour and Welfare,. Medical Care Act. Available from:  
407 <https://www.japaneselawtranslation.go.jp/en/laws/view/2199>. Published: 2 May, 2008.  
408 Accessed: 2022 1 Oct
- 409 11. Ministry of Health, Labour and Welfare,. [The 24th Working Group on Community  
410 Healthcare Vision]. Available from: [https://www.mhlw.go.jp/stf/newpage\\_06944.html](https://www.mhlw.go.jp/stf/newpage_06944.html).  
411 Published: 26 Sep, 2019. Accessed: 1 Oct 2022
- 412 12. Taneda K, Kakinuma T, Nakanishi Y, Kobayashi K, Akahane M. Community Health  
413 Care Vision : Toward realizing the desired medical service system. Journal of the  
414 National Institute of Public Health. 2023;72(1):43-51.
- 415 13. Sakamoto H, Rahman M, Nomura S, Okamoto E, Koike S, Yasunaga H, et al. Japan  
416 health system review. New Delhi: World Health Organization. Regional Office for  
417 South-East Asia; 2018 2018.

- 418 14. Matsuda S, Fujimori K. Analysis of Disease Structure for the Regional Health Care  
419 Plan Based on the National Database. Asian Pacific Journal of Disease Management.  
420 2014;6(3-4):61-6.
- 421 15. Cabinet Office, Government of Japan,. Basic Policy on Economic and Fiscal  
422 Management and Reform 2019. Available from:  
423 [https://www5.cao.go.jp/keizai-shimon/kaigi/cabinet/2019/2019\\_basicpolicies\\_en.pdf](https://www5.cao.go.jp/keizai-shimon/kaigi/cabinet/2019/2019_basicpolicies_en.pdf).  
424 Published: 21 Jun, 2019. Accessed: 6 Nov 2022
- 425 16. Cabinet Office, Government of Japan,. Basic Policy on Economic and Fiscal  
426 Management and Reform 2018. Available from:  
427 [https://www5.cao.go.jp/keizai-shimon/kaigi/cabinet/2018/2018\\_basicpolicies\\_en.pdf](https://www5.cao.go.jp/keizai-shimon/kaigi/cabinet/2018/2018_basicpolicies_en.pdf).  
428 Published: 30 Jun, 2018. Accessed: 1 Oct 2022
- 429 17. Ministry of Health, Labour and Welfare,. [The 24th Working Group on Community  
430 Healthcare Vision: Request for reevaluation of concrete policies, and utilization of  
431 analysis of medical performance data]. Available from:  
432 <https://www.mhlw.go.jp/content/10800000/000551026.pdf>. Published: 26 Sep, 2019.  
433 Accessed: 2022 1 Oct
- 434 18. Ministry of Health, Labour and Welfare,. [The 2nd Working Group on Community  
435 Health Care Vision and Plan for Securing Physicians]. Available from:  
436 [https://www.mhlw.go.jp/stf/newpage\\_22425.html](https://www.mhlw.go.jp/stf/newpage_22425.html). Published: 3 Dec, 2021. Accessed:

- 437 1 Oct 2022
- 438 19. Ministry of Health, Labour and Welfare,. [New Support for Reorganization of Hospital  
439 Bed Functions]. Available from:  
440 <https://www.mhlw.go.jp/content/10800000/000683711.pdf>. Published: 9 Oct 2020.  
441 Accessed: 11 Nov 2022
- 442 20. Ministry of Health, Labour and Welfare,. [The 24th Working Group on Community  
443 Healthcare Vision: Methods of analyzing medical care performance related to requests  
444 for reevaluation of concrete policies]. Available from:  
445 <https://www.mhlw.go.jp/content/10800000/000551025.pdf>. Published: 26 Sep, 2019.  
446 Accessed: 2022 1 Oct
- 447 21. Miyazawa S. Analysis on the “Public Hospitals Requested to Reorganize”: Focusing  
448 on the Background of the Growing Criticism. The annual bulletin of the International  
449 Centre, Gakushuin University. 2021(7):35-8.
- 450 22. Shiomi T. [Overview and Issues of 'Analysis of Medical Performance Data'].  
451 Residents and Autonomy 2020(682):12-5.
- 452 23. Kyoto Federation of Medical Worker's Unions. [Overview and Issues of 'Analysis of  
453 Medical Performance' for the request for "Reevaluations" of concrete policies for  
454 public and municipal hospitals]. Available from:  
455 <http://www.labor.or.jp/iroren/11011.pdf>. Published: 15 Oct, 2019. Accessed: 1 Oct



- 456 2022
- 457 24. National Governors' Association, Japan Association of City Mayors,, National  
458 Association of Towns & Villages. [Establishment of a forum for discussion between  
459 the national and local governments regarding the securing of community health care].  
460 Available from:  
461 [https://www.nga.gr.jp/ikkrwebBrowse/material/files/group/2/20190927-03\\_comment\\_3dantai.pdf](https://www.nga.gr.jp/ikkrwebBrowse/material/files/group/2/20190927-03_comment_3dantai.pdf). Published: 27 Sep, 2019. Accessed: 1 Oct 2022
- 463 25. Japan Medical Association. [Toward the Realization of the Community Healthcare  
464 Vision - In response to the announcement of public and municipal hospitals that have  
465 been requested to reevaluate their concrete policies]. Available from:  
466 <https://www.med.or.jp/nichiionline/article/008909.html>. Published: 20 Oct, 2019.  
467 Accessed: 1 Oct 2022
- 468 26. National Governors' Association. [Opinions of Prefectures on Reevaluation of  
469 Concrete Policies for Public and municipal hospitals]. Available from:  
470 [https://www.soumu.go.jp/main\\_content/000673736.pdf](https://www.soumu.go.jp/main_content/000673736.pdf). Published: 26 Feb, 2020.  
471 Accessed: 1 Oct 2022
- 472 27. Uda J. [The Age of Reorganization and Integration: List of 424 Public and Municipal  
473 Hospitals]. Journal of Japan Institute of Healthcare Architecture. 2022(214):2-3.
- 474 28. Ministry of Health, Labour and Welfare,. [Reevaluation of concrete policies for public

- 475 and municipal hospitals]. Available from:
- 476 [https://www.mhlw.go.jp/stf/newpage\\_08964.html](https://www.mhlw.go.jp/stf/newpage_08964.html). Published: 17 Jan, 2020. Accessed:
- 477 1 Oct 2022
- 478 29. Kunisawa S, Fushimi K, Imanaka Y. Reducing Length of Hospital Stay Does Not
- 479 Increase Readmission Rates in Early-Stage Gastric, Colon, and Lung Cancer Surgical
- 480 Cases in Japanese Acute Care Hospitals. PLOS ONE. 2016;11(11):e0166269.
- 481 30. Fushimi K. [Research to date by the DPC Research Group]. Available from:
- 482 [http://dpcri.or.jp/index.php?plugin=attach&refer=SeminarPage%E2%80%8B%2F2019\\_08\\_20%E5%8C%97%E4%B9%9D%E5%B7%9E%E3%82%BB%E3%83%9F%E3%83%8A%E3%83%BC&openfile=20190820%E4%BC%8F%E8%A6%8B.pdf](http://dpcri.or.jp/index.php?plugin=attach&refer=SeminarPage%E2%80%8B%2F2019_08_20%E5%8C%97%E4%B9%9D%E5%B7%9E%E3%82%BB%E3%83%9F%E3%83%8A%E3%83%BC&openfile=20190820%E4%BC%8F%E8%A6%8B.pdf).
- 484
- 485 Published: 19 Aug, 2019. Accessed: 15 Oct 2022
- 486 31. Hayashida K, Murakami G, Matsuda S, Fushimi K. History and Profile of Diagnosis
- 487 Procedure Combination (DPC): Development of a Real Data Collection System for
- 488 Acute Inpatient Care in Japan. Journal of Epidemiology. 2021;31(1):1-11.
- 489 32. Ministry of Health, Labour and Welfare,. Survey of Medical Institutions (2020).
- 490 Available from: <https://www.mhlw.go.jp/toukei/saikin/hw/iryosd/20/>. Published: 27
- 491 Apr, 2022. Accessed: 1 Oct 2022
- 492 33. Ministry of Health, Labour and Welfare,. Annual Health, Labour and Welfare Report
- 493 2021. Available from: <https://www.mhlw.go.jp/english/wp/wp-hw14/dl/02e.pdf>.

- 494 Published: July, 2021. Accessed: 7 Nov 2022
- 495 34. Lopez Bernal J, Cummins S, Gasparrini A. The use of controls in interrupted time  
496 series studies of public health interventions. *International Journal of Epidemiology*.  
497 2018;47(6):2082-93.
- 498 35. Bhaskaran K, Gasparrini A, Hajat S, Smeeth L, Armstrong B. Time series regression  
499 studies in environmental epidemiology. *International Journal of Epidemiology*.  
500 2013;42(4):1187-95.
- 501 36. Japanese Medical and Dental Practitioners for the Improvement of Medical Care.  
502 [Request to Prevent Forcing 424 Public and Municipal Hospitals to Reevaluate their  
503 Reorganization and Integration, and to Prevent Private Hospitals from Requesting  
504 Reevaluation]. Available from:  
505 [https://hodanren.doc-net.or.jp/news/teigen/191112\\_yosei\\_424hp.pdf](https://hodanren.doc-net.or.jp/news/teigen/191112_yosei_424hp.pdf). Published: 22  
506 Nov, 2019. Accessed: 10 Oct 2022
- 507 37. m3.com. [Announcement of 424 hospitals' names, "reputational damage will occur"  
508 and "response is not wrong". ]. Available from:  
509 <https://www.m3.com/news/iryoishin/706390>. Published: 18 Oct, 2019. Accessed: 8  
510 Oct 2022
- 511 38. Hensher M, Edwards N, Stokes R. International trends in the provision and utilisation  
512 of hospital care. *Bmj*. 1999;319(7213):845-8.

- 513 39. Schull MJ, Szalai J-P, Schwartz B, Redelmeier DA. Emergency Department  
514 Overcrowding Following Systematic Hospital Restructuring Trends at Twenty  
515 Hospitals over Ten Years. *Academic Emergency Medicine*. 2001;8(11):1037-43.
- 516 40. Sheps SB, Reid RJ, Barer ML, Krueger H, McGrail KM, Green B, et al. Hospital  
517 downsizing and trends in health care use among elderly people in British Columbia.  
518 *CMAJ*. 2000;163(4):397-401.
- 519 41. Hiroya Ogata HI. [Clarification of the role of every hospital, whether public or private,  
520 is required.]. *Hospitals*. 2022;81(4):279-84.
- 521 42. Christiansen T, Vrangbæk K. Hospital centralization and performance in  
522 Denmark—Ten years on. *Health Policy*. 2018;122(4):321-8.
- 523 43. Ministry of Health, Labour and Welfare,. [Actions to be taken for the promotion of the  
524 community health care vision for the time being]. Available from:  
525 <https://www.mhlw.go.jp/content/10800000/000558822.pdf>. Published: 27 Sep, 2019.  
526 Accessed: 11 Nov 2022
- 527 44. Ministry of Health, Labour and Welfare. [Report of Research Study on Recent  
528 Hospital Mergers and Reorganizations]. Available from:  
529 [https://www.mhlw.go.jp/file/06-Seisakujouhou-10800000-Iseikyoku/houkokusho\\_h22](https://www.mhlw.go.jp/file/06-Seisakujouhou-10800000-Iseikyoku/houkokusho_h22_gappei_000.pdf)  
530 [\\_gappei\\_000.pdf](https://www.mhlw.go.jp/file/06-Seisakujouhou-10800000-Iseikyoku/houkokusho_h22_gappei_000.pdf). Published: Mar, 2011. Accessed: 5 Dec 2022  
531

532 **Appendix. The model and parameters in a controlled interrupted time series analysis,**  
 533 **regarding the release of the list**

534 The following model was used:

$$\log y = \log n + \beta_0 + \beta_1 \times \text{time} + \beta_2 \times \text{intervention} + \beta_3 \times \text{intervention} \\ \times \text{time after intervention} \\ + G(\beta_4 + \beta_5 \times \text{time} + \beta_6 \times \text{intervention} + \beta_7 \times \text{intervention} \\ \times \text{time after intervention})$$

535

536 where

|                         |  |
|-------------------------|--|
| y                       | Sum of weekly admissions for gastrointestinal cancer surgery performed, via ambulance transport, or with a femoral fracture in each hospital group |
| n                       | Sum of weekly admissions in each hospital group  |
| time                    | Number of weeks (0, 1, 2...142, from the first week of April, beginning April 2, 2018)   |
| intervention            | Dummy variable indicating the release of the list (September 26, 2019)   |
| time after intervention | Number of weeks (0, 1, 2...65, from the week that the list was released)   |
| G                       | Dummy variable indicating the listed hospital group  |

537

538 Estimated coefficients  $\beta_0$  to  $\beta_7$  are defined as below:

|           |  |
|-----------|--|
| $\beta_0$ | Intercept of the dependent variable before the release of the list   |
| $\beta_1$ | Baseline slope of the dependent variable before the release of the list  |
| $\beta_2$ | Level change in the control hospital group immediately after the release of the list   |
| $\beta_3$ | Slope change in the control hospital group after the list's release  |
| $\beta_4$ | Difference in the intercept between the listed hospital group and the control hospital group when the number of weeks is $\square 0$ |
| $\beta_5$ | Slope difference the listed hospital group and the control hospital group before the release   |

---

|           |   |
|-----------|---|
|           | of the list   |
| $\beta_6$ | Difference in level change between the listed hospital group and the control hospital group after the release of the list |
| $\beta_7$ | Difference in slope change between the listed hospital group and the control hospital group after the release of the list |

---

539

540

541

542 **Figure Legends**

543 Figure 1. Weekly number of each admission case per 1,000 newly admission cases with the

544 results of CITS analysis

545 The three graphs on the left and right sides show the primary and sensitivity analysis results,

546 respectively. The y-axis indicates the outcomes, and the x-axis indicates the year and week

547 numbers. The vertical dashed line indicates the exposure.

548

549

550 **Supporting Information**

551 Supplemental Table 1. Types of gastrointestinal cancer

552 Supplemental Figure 1. Flowchart of hospital classifications in this study

553

554 **Author contributions**

555 Conceptualization: H.T., J.S, S.K., and Y.I.

556 Methodology: H.T., J.S., and Y.I.

557 Software: H.T., J.S, and S.K.

558 Validation: J.S, S.K., and Y.I.

559 Formal Analysis: H.T., J.S, and S.K.

560 Investigation: H.T., J.S, S.K., and Y.I.

561 Resources: S.K, and Y.I.

562 Data Curation: J.S., S.K., and K.F

563 Writing – Original Draft Preparation; H.T.

564 Writing – Review & Editing: All authors

565 Visualization: H.T

566 Supervision: Y.I.

567 Funding Acquisition: Y.I.

568 Project Administration: Y.I.

569

570 **Competing Interests**

571 The authors declare no competing interests.

572



573 **Funding**

574 This study was supported by Health and Labor Sciences Research Grants from the MHLW,  
575 Japan (Grant numbers: 21IA1005 and 23H00448) to Y.I. The funders played no role in the  
576 study design, data collection and analysis, publication decision, or manuscript preparation.

577

578 **Data Availability**

579 According to the Ethical Guidelines for Medical and Health Research Involving Human  
580 Subjects of the MHLW, Japan (available from  
581 <https://www.mhlw.go.jp/file/06-Seisakujouhou-10600000-Daijinkanboukouseikagakuka/0000>  
582 080278.pdf), providing information to study subjects is one of the necessary conditions for  
583 waiving informed consent. The information includes the range of data users. Therefore, the  
584 datasets generated and/or analyzed during this study are available from the corresponding  
585 author and the other contact points on reasonable request. The other contact points are the  
586 Office of Research Promotion, General Affairs and Planning Division, Kyoto University  
587 (E-mail: [kikaku06@mail2.adm.kyoto-u.ac.jp](mailto:kikaku06@mail2.adm.kyoto-u.ac.jp); Tel: +81-75-753-9301) and the Ethics  
588 Committee, Graduate School of Medicine, Kyoto University (e-mail:  
589 [ethcom@kuhp.kyoto-u.ac.jp](mailto:ethcom@kuhp.kyoto-u.ac.jp)).

590