

Parkinson's disease psychosis associated with accelerated multi-domain cognitive decline

Sara Pisani, MSc,¹ Luca Gosse,² Dag Aarsland, MD, PhD^{3,4}, K. Ray Chaudhuri, MD, FRCP, DSc⁵, Clive Ballard, MD,⁶ Dominic ffytche, MD, PhD,³ Latha Velayudhan, MD,³ Sagnik Bhattacharyya, MD, PhD^{1*}

Author affiliations:

¹ Department of Psychosis Studies, Institute of Psychiatry, Psychology & Neuroscience, King's College London, SE5 8AF, London, United Kingdom

² Faculty of Medicine, Dentistry and Health, Medical School, University of Sheffield, Sheffield, S10 2RX, United Kingdom

³ Department of Old Age Psychiatry, Institute of Psychiatry, Psychology & Neuroscience, King's College London, SE5 8AF, London, United Kingdom

⁴ Centre for Age-Related Medicine (SESAM), Stavanger University Hospital, Stavanger, Norway

⁵ Department of Neurosciences, Institute of Psychiatry, Psychology and Neuroscience, and Parkinson's Foundation Centre of Excellence, King's College Hospital, London, United Kingdom

⁶ Medical School, Medical School Building, St Luke's Campus, Magdalen Road, University of Exeter, Exeter, UK

*Corresponding author: Prof Sagnik Bhattacharyya, Department of Psychosis Studies, Institute of Psychiatry, Psychology & Neuroscience, King's College London, 16 De Crespigny Park, SE5 8AF, London, United Kingdom, email: sagnik.2.bhattacharyya@kcl.ac.uk , Tel: 02078480955

Running title: Cognitive decline in PD psychosis

Word count (excluding tables, legends, and references): 5,017

Word count (abstract): 273

Cognitive decline in PD psychosis

Abstract

Cognitive deficits are associated with poor quality of life and increased risk of development of dementia in people with Parkinson's Disease (PD) with psychosis. However, the pattern of progression of cognitive decline within PD psychosis remains unclear. Here, we examined this using data from the Parkinson's Progression Markers Initiative study.

We obtained data on drug-naïve PD patients (n=676) and healthy controls (HC, n=187) who underwent baseline and follow-up (year 1 to 5) assessments. We classified PD patients into PD without psychosis (PDnP) and PD with psychosis (PDP) using the MDS-UPDRS part I hallucinations/psychosis item. We examined all cognitive measures assessed at each time point. We used linear mixed-effect models with restricted maximum likelihood. We examined the role of age, sex, ethnicity, education, and neuropsychiatric and PD-specific symptoms as covariates of interest.

There were no baseline differences on any cognitive measures between PD patient groups. There were differences in cognitive performance between PD and HC across the majority of the assessments. PDP patients showed a more prominent cognitive decline from baseline to year 5 compared with PDnP across most domains even after controlling for socio-demographics, depression, sleepiness, REM behaviour sleep disorder, and motor symptom severity (immediate recall, $b=-0.288$, $P=0.003$; delayed recall, $b=-0.146$, $P=0.003$; global cognition, MoCA, $b=-0.206$, $P < 0.001$; visuo-spatial, $b=-0.178$, $P=0.012$; semantic fluency, $b=-0.704$, $P=0.002$; processing speed, $b=-0.337$, $P=0.029$).

Over five years, PD psychosis patients showed worsening of performance in semantic aspects of language, processing speed, global cognition, visuo-spatial abilities, and memory sub-components, regardless of socio-demographic characteristics, neuropsychiatric and motor symptoms. Collectively, these cognitive domains, particularly semantic aspects of language may therefore play an important role in PD psychosis and warrant further investigation.

Keywords: Parkinson's disease; psychosis; cognitive trajectory; semantic fluency; language; longitudinal study

Introduction

Psychotic symptoms such as hallucinations and delusions are some of the most common and debilitating non-motor symptoms in patients with Parkinson's Disease (PD).^{1,2} People with PD psychosis (PDP) have poor quality of life and are at increased risk of hospitalisation and dementia.^{3,4} PDP is associated with cognitive deficits such as impairments in attention, global cognition, executive functions, and processing speed, which may further lead to deterioration in quality of life and increased risk of dementia.^{5,6}

It is clinically recognised that people with PD psychosis report worse cognitive performance compared with PD patients who do not have such symptoms⁷⁻⁹ consistent with two recent meta-analyses.^{10,11} Pooling data from cross-sectional comparisons, they found that functioning across all major cognitive domains, i.e., attention, global cognition, memory, perception, and executive functions, is impaired in PDP compared to PD patients without psychosis patients, with executive function and attention being the most affected domains.^{10,11} They also reported that age at testing,^{10,11} depression and PD duration¹¹ had a moderating effect on some of these deficits. Specifically, episodic memory was the most likely impaired domain in PDP as shown by a sub-group analysis conducted in the same samples of patients with a PD duration of 6-9 years. Encoding and retrieval, domains of episodic memory,¹² phonemic and semantic fluency, perception (namely dorsal and ventral stream associated visuo-spatial abilities, and low level visual apperception), construction (namely copying) were also impaired in PDP compared to PD patients without psychosis, suggesting a potential role of these domains in the symptomatology of psychosis in PDP. However, inference on the progression of cognitive functioning over time is challenging on the basis of evidence from cross-sectional studies. Among the handful of longitudinal studies in this field, the PRIAMO study¹³ showed that PD patients who developed psychosis symptoms (n=37) had worse performance in global cognition (as indexed using the Mini Mental State Examination (MMSE)) at 12 months and 24 months follow-up. Similarly, in their clinic-based retrospective sample, Muller et al.¹⁴ found that PD patients who had VH (n=18) at follow-up (mean follow-up duration: 2.8 years) had worse performance at baseline and follow-up compared with PD patients without psychosis (n=15; mean follow-up duration: 4.7 years) on the measures of processing speed and more broadly on executive functions. Goetz et al.¹⁵ also examined differences between PD patients with and without hallucinations over a period of 6 years. 37 out of 60 PD patients developed hallucinations across different sensory modalities (e.g., visual vs non-visual), however these

Cognitive decline in PD psychosis

two groups did not differ on cognition as measured with the MMSE after 6 years from baseline. Using data from the Parkinson's Progression Markers Initiative (PPMI) study¹⁶ (n=131 PD patients), a 5-year longitudinal study in patients with de-novo PD, another study found that a higher proportion of those who developed psychotic symptoms reported subjective cognitive decline compared to those who did not, without any significant group difference in cognitive task performance at follow-up.¹⁷ Using the same PPMI study, ffytche et al.¹⁸ showed that 115 PD patients who developed minor illusions (onset at 19.5 months follow-up) differed on neuropsychiatric symptoms, and olfaction at baseline compared with PD patients who never developed such symptoms. Although there was no difference in the slope of cognitive decline prior to developing psychosis symptoms between groups, those who developed more severe symptoms of psychosis (n=21, 4.9%) also showed worse performance on the Benton Judgement of Line Orientation (BJLOT) compared with PD patients, at baseline.

While it is generally accepted that there is a progressive decline in cognitive function in people with PD and that this may be greater in PD patients with psychosis,¹⁹⁻²¹ to the best of our knowledge the longitudinal course of cognition has not been systematically examined before. Therefore, to address this gap in evidence here we compare the longitudinal course of cognitive task performance across a range of measures over the 5 years of follow-up from cohort inception in people recruited into the PPMI study. Based on previous literature, we predicted that cognitive task performance will show a greater decline in PD patients compared to healthy individuals. Our main hypothesis of interest was that this decline will be even greater in PD patients who later on develop psychosis compared to those who do not develop psychosis over the follow-up period, even after controlling for potential confounders.

Materials and methods

Participants

The PPMI study enrolled newly diagnosed unmedicated patients with Parkinson's Disease and age- and gender-matched healthy controls. Details of eligibility criteria, objectives and methodology have been published elsewhere¹⁶ and can be also found on www.ppmi-info.org/study-design (ClinicalTrials.gov NCT01141023). In brief, PD patients included were drug-naïve, within 2 years of PD diagnosis, with a Hoehn & Yahr stage <3, 30 years of age or older, had either at least two PD symptoms (e.g., slowness of movement, tremor, or rigidity), or single asymmetric resting tremor or slowness of movement. Healthy controls were included

Cognitive decline in PD psychosis

if they were 30 years of age or older, with no evidence of neurological disorder or a first-degree relative with PD. PD patients were excluded if they had a diagnosis of dementia and healthy controls were excluded if they had a Montreal Cognitive Assessment (MoCA) score ≤ 26 upon study enrolment. For the purpose of this study, we excluded subjects without evidence of dopaminergic deficits (i.e., SWEDD) because of their prognostic and clinical differences from those with an idiopathic PD diagnosis.²²⁻²⁴ We also excluded individuals who transitioned to dementia within the 5 study years as we wanted to examine the hypothesised differential decline between PD psychosis and PD without psychosis patients, without it being potentially confounded by participants being in the early stages of dementia. These data were accessed and downloaded on 1st February 2023 (Figure 1). The PPMI study was approved by the institutional review boards at each study site contributing data and participants provided written informed consent.^{16,25} The data used in this analysis are openly available from the PPMI study.

PD-specific outcome measures

PD severity was assessed using the Movement Disorders Society Unified Parkinson's Disease Rating Scale (MDS-UPDRS) and Hoehn & Yahr stages.²⁶ Assessments of tremor and rigidity were also included across study visits. PD medication use was assessed by converting to a composite measure of Levodopa equivalent daily dose (LEDD). Information about LEDD was extracted from the most recently released dataset and followed the recommendation of the PPMI study group (see Supplementary Material 1 for more information, and for group differences on LEDD). Autonomic symptoms were measured with the Scale for Outcome in Parkinson's Disease – Autonomic (SCOPA-AUT).²⁷

Classification of PD psychosis patients

PD patients were classified into PD psychosis (PDP) and PD without psychosis (PDnP) based on previous work¹⁸ using the MDS-UPDRS part I hallucinations/psychosis item, which measures the presence of visual hallucinations and paranoid thoughts. On this item, patients may receive a score out of 5: 0=normal, no hallucinations or psychotic behaviour, 1=slight, illusions or non-formed hallucinations, but patient recognises them without loss of insight, 2=mild, formed hallucinations independent of environmental stimuli, no loss of insight, 3=moderate, formed hallucinations with loss of insight, 4=severe, patient has delusions or paranoia. If PD patients reported a score ≥ 1 at any of the study visits, they were considered as PDP (i.e., with psychosis). We have excluded PD patients who reported psychosis symptoms

Cognitive decline in PD psychosis

at baseline (n=33) because the purpose of this study was to examine the decline in PD patients with and without psychosis with both groups starting off on a similar level. For more information on this patient group, please refer to Supplementary Material 2. Three groups were therefore created:

- *HC*: healthy controls (no PD symptoms)
- *PDnP*: PD patients with a score of 0, i.e., without reports of psychotic symptoms throughout the study
- *PDP*: PD patients with a score ≥ 1 , i.e., with presence of psychosis symptoms which included hallucinations and delusions, at any time point throughout the study.

Cognitive and neuropsychiatric assessments

Global cognition was assessed using the MoCA.²⁸ Episodic memory was assessed with the Hopkins Verbal Learning Test – Revised (HVLT-R),²⁹ which measures memory sub-domains such as immediate and delayed recall, recognition and discrimination. The PPMI study also included other assessments such as Symbol Digit Modality (SDM)^{30,31} which measures processing speed, Letter Number Sequence (LNS)³² for working memory (i.e., manipulation) and Semantic Fluency tests (i.e., category based)³³ to assess semantic aspects of language, and Benton Judgement of Line Orientation (BJLOT)³⁴ which is a measure of visuo-spatial ability. A range of neuropsychiatric symptoms were included as covariates in analyses: depressive symptoms indexed using the Geriatric Depression Scale 15 items (GDS-15)³⁵; anxiety traits and states measured using the State-Trait Anxiety Inventory (STAI)³⁶; and sleep indexed using the Epworth Sleepiness Scale and a REM sleep behaviour disorder (RBD) questionnaire.^{37,38}

Statistical analysis

Baseline characteristics were analysed using Analysis of Variance (ANOVA) or its non-parametric equivalent (e.g., Kruskal-Wallis χ^2) as appropriate. We report baseline characteristics for all major cognitive assessments, neuropsychiatric measures, and PD-related assessments. We examined all study visits from baseline to final follow up at year 5. We examined the HVLT-R, Symbol Digit Modality (SDM), semantic fluency test, Letter Number Sequence (LNS), Benton Judgement of Line Orientation (BJLOT) and MoCA as outcome measures to assess cognitive performance over 5 years and the difference in such performance between PDP and PDnP patients. The PPMI study include age- and sex-matched healthy controls which were included in the present analysis. We employed linear mixed-effect

Cognitive decline in PD psychosis

analyses with restricted maximum likelihood (REML) using the *lmerTest* package³⁹ in R (version 4.0.3).⁴⁰ In all analyses, we entered group as a between-subject factor (i.e., HC, PDnP, and PDP) and year (i.e., treated as continuous variable, baseline as year 0 to year 5) as a within-subject factor, and patient number as a random effect variable. Significance (a two-sided alpha level of 0.05) was estimated using Satterthwaite's method. For all cognitive tasks, we first tested a simple (unadjusted) model and then included confounders of interest in a separate linear model. We included sociodemographic (i.e., age, sex, ethnicity, and years of education) as well clinical confounders that might affect or are known to affect cognitive task performance, such as neuropsychiatric symptoms (i.e., depression) as well as those clinical measures that were significantly different at baseline between PD patient groups on relevant scales (e.g., PD-related scales). We included the scores at each time point (i.e., study year) as opposed to only baseline scores for all relevant clinical covariates to ensure that reported results control for longitudinal change in these covariates that might otherwise account for cognitive performance differences. PD medications expressed in LEDD (mg/day) were not included in the model, as we did not find any difference in the amount of LEDD or in the trajectory of dopamine-replacement medications between PDnP and PDP patients (please refer to Supplementary Material 1). Treatment for psychosis in PD can include administration of antipsychotics such as clozapine, quetiapine and olanzapine,^{41,42} and antipsychotic treatment has shown to affect cognitive functions.^{43,44} 38 patients (Supplementary Material 1) were reported to take antipsychotics. We carried out analyses both including and after excluding those 38 participants. As the results did not materially differ, here we report the results of analyses including those on antipsychotics; results of analyses excluding them are available upon request. All included covariates of interest were mean-centred for analysis.

Data availability

Data used in the preparation of this article were obtained [on February 1st 2023] from the Parkinson's Progression Markers Initiative (PPMI) database (www.ppmi-info.org/access-dataspecimens/download-data), RRID:SCR 006431. For up-to-date information on the study, visit www.ppmi-info.org .

Results

Baseline sample characteristics

Cognitive decline in PD psychosis

There were no significant differences across groups on age and sex, however there was a greater prevalence of individuals identifying as “white” compared with other ethnic groups ($P = 0.008$), and PDP patients reported significantly fewer years of educations compared with HC ($P = 0.024$). There were no differences in PD duration, age of diagnosis and age of PD onset between PD groups (all $P > 0.05$) (Table 1). PDP patients reported more rigidity ($P = 0.032$), more severe symptoms on MDS-UPDRS part I ($P = 0.003$) and II ($P < 0.001$), more sleepiness ($P = 0.016$), more RBD ($p < 0.001$), more anxiety ($P = 0.032$), and more autonomic symptoms ($P < 0.001$) than PDnP at baseline. Both PD groups did not differ on any cognitive measures at baseline. As expected, PD patients had more severe motor symptoms on all PD-related assessments (MDS-UPDRS, part I, part II and part III, all $P < 0.05$), and greater tremor and rigidity (both $P < 0.001$) compared with those reported by HC. They reported more depressive symptoms compared with HC ($P < 0.001$) and reported more RBD, more anxiety, and more autonomic symptoms (all $P < 0.001$) than HC. PD patients performed significantly worse than HC in the majority of cognitive batteries (all $P < 0.05$) (see Table 1).

Cognitive decline in PD psychosis

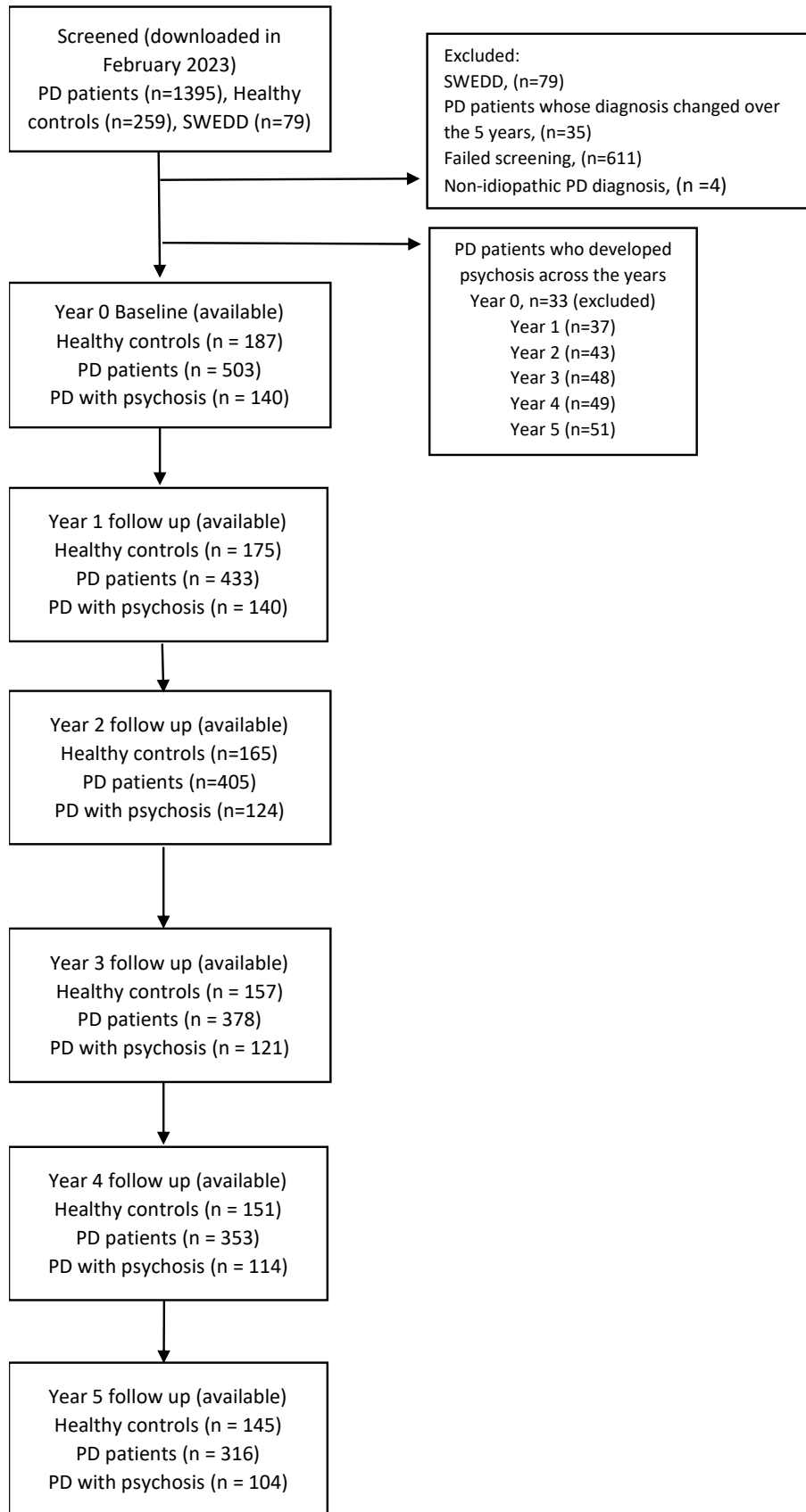


Figure 1 Participant flow chart. Chart for flow of participants enrolled in the PPMI study.

Table 1 Baseline sample characteristics. Sample characteristics at baseline of the three groups, i.e., PD patients without psychosis (PDnP), PD patients with psychosis (PDP) and healthy controls (HC). PDP psychosis group does not include PD patients who reported psychosis symptoms at baseline. Mean and SDs are reported, unless otherwise specified.

	HC (n=187)	PDnP (n=503)	PDP (n=140)	Significance test * ^a	HC vs PD	PDnP vs PDP
Age (years) (mean ± SD)	60.324 ± 11.071	61.513 ± 10.513	62.104 ± 9.449	$F(2) = 1.321, P=0.267$	-	-
Sex (male, n, %)	119 (63.6%)	292 (58.1%)	82 (58.6%)	Pearson's Chi-squared test $\chi^2(2) = 1.811, P=0.404$	-	-
Ethnicity				Pearson's Chi-squared test		-
White (n, %)	172 (91.9%)	478 (95%)	131 (93.6%)	$\chi^2(2) = 17.204, P=0.008$		
Black (n, %)	10 (5.3%)	3 (0.6%)	4 (2.9%)			
Asian (n, %)	1 (0.5%)	6 (1.2%)	2 (1.4%)			
Other (n, %)	4 (2.1%)	16 (3.2%)	3 (2.1%)			
PD onset (age in years) (mean ± SD)	.	58.771 ± 10.769	58.968 ± 9.899	$t(236.67) = -0.203, P=0.839$	-	-
PD diagnosis (age in years) (mean ± SD)	.	60.239 ± 10.540	60.579 ± 9.641	$t(239.51) = -0.362, P=0.718$	-	-
Years of education (mean ± SD)	16.059 ± 2.867	15.505 ± 3.398	15.057 ± 3.834	$F(2) = 3.682, P = 0.026$	$P=0.024$ (HC vs PDP)	-
PD duration (months) (mean ± SD)	.	17.271 ± 21.840	21.094 ± 24.424	$t(204.94) = -1.675, P=0.096$	-	-
MoCA (mean ± SD)	28.230 ± 1.120	26.801 ± 2.625	26.964 ± 2.757	$\chi^2(2) = 42.144, P < 0.001$ *	$P < 0.05$	-
	28 (26-30)	27 (13-30)	28 (16-30)			
HVLT immediate recall (mean ± SD)	26.075 ± 4.503	24.574 ± 4.915	24.036 ± 5.349	$F(2) = 8.504, P < 0.001$	$P < 0.05$	-
HVLT delayed recall (mean ± SD)	9.312 ± 2.299	8.340 ± 2.713	8.143 ± 2.799	$\chi^2(2) = 21.619, P < 0.001$ *	$P < 0.05$	-
	10 (2-12)	9 (0-12)	8 (0-12)			
HVLT discrimination (mean ± SD)	10.048 ± 2.921	9.654 ± 2.873	9.536 ± 2.563	$F(2) = 1.685, P = 0.186$	-	-
HVLT recognition (mean ± SD)	11.489 ± 0.833	11.167 ± 1.360	11.086 ± 1.427	$\chi^2(2) = 8.774, P = 0.012$ *	$P < 0.05$	-
	12 (8-12)	12 (0-12)	12 (4-12)			

Cognitive decline in PD psychosis

Letter number sequence (mean ± SD)	10.925 ± 2.563 ^c	10.447 ± 2.780	9.850 ± 2.650 ^c	$F(2) = 6.288, P = 0.002$	$P = 0.001$ (HC vs PDP)	-
Benton judgement of line orientation (BJLOT) (mean ± SD)	13.134 ± 1.983 14 (4-15)	12.431 ± 2.501 13 (0-15)	12.150 ± 2.603 13 (4-15)	$\chi^2(2) = 15.253, P < 0.001 *$	$P < 0.05$	-
Symbol digit modality (SDM) (mean ± SD)	47.199 ± 10.493	40.896 ± 9.990	39.557 ± 11.319	$F(2) = 30.16, P < 0.001,$	$P < 0.05$	-
Semantic fluency test (total) (mean ± SD)	52.280 ± 11.015	49.110 ± 11.559	49.864 ± 13.225	$F(2) = 4.917, P = 0.008$	$P = 0.005$ (HC vs PDnP)	-
Depression (GDS) (mean ± SD)	1.294 ± 2.126 1 (0-15)	2.586 ± 2.738 2 (0-14)	3.081 ± 3.082 2 (0-12)	$\chi^2(2) = 62.665, P < 0.001 *$	$P < 0.05$	-
Sleep (ESS) (mean ± SD)	5.724 ± 3.448 5 (0-19)	5.640 ± 3.636 5 (0-21)	6.771 ± 4.091 6 (0-19)	$\chi^2(2) = 7.958, P = 0.019 *$	-	$P = 0.016$
REM behaviour (mean ± SD)	2.823 ± 2.253 2 (0-11)	3.931 ± 2.765 3 (0-13)	5.071 ± 2.868 5 (0-14)	$\chi^2(2) = 55.089, P < 0.001 *$	$P < 0.05$	$P < 0.001$
Anxiety (STAI) (mean ± SD)	57.091 ± 14.216 53 (40-105)	65.873 ± 18.385 62 (25-23)	70.243 ± 20.291 67 (40-137)	$\chi^2(2) = 46.86, P < 0.001 *$	$P < 0.05$	$P = 0.032$
UPDRS part I scores (mean ± SD)	2.870 ± 2.948 2 (0-17)	3.739 ± 3.717 3 (0-24)	4.857 ± 4.216 4.5 (0-23)	$\chi^2(2) = 21.129, P < 0.001 *$	$P < 0.05$	$P = 0.003$
UPDRS part II scores (mean ± SD)	0.411 ± 0.929 0 (0-5)	5.723 ± 4.239 5 (0-22)	7.529 ± 4.691 6 (1-21)	$\chi^2(2) = 377.99, P < 0.001 *$	$P < 0.05$	$P < 0.001$
UPDRS part III scores (mean ± SD)	1.043 ± 1.899 0 (0-10)	19.813 ± 9.193 19 (0-51)	21.829 ± 9.986 20 (3-48)	$\chi^2(2) = 422.38, P < 0.001 *$	$P < 0.05$	$P = 0.054$
Rigidity (mean ± SD)	0.189 ± 0.582 5 (0-4)	3.507 ± 2.568 3 (0-11)	4.129 ± 2.945 3 (0-13)	$\chi^2(2) = 336.05, P < 0.001 *$	$P < 0.05$	$P = 0.032$
SCOPA-autonomic (mean ± SD)	5.859 ± 3.727 5 (0-20)	9.565 ± 6.545 8 (0-40)	13.457 ± 7.438 12 (0-38)	$\chi^2(2) = 116.24, P < 0.001 *$	$P < 0.05$	$P < 0.001$

Cognitive decline in PD psychosis

Tremor (mean ± SD)	0.243 ± 0.794	3.922 ± 3.301	4.037 ± 3.805	$\chi^2(2) = 244.63, P < 0.001$	$P < 0.05$	-
	0 (0-7)	4 (0-18)	3 (0-18)			

^a Where applicable, we used non-parametric test equivalent for ANOVA, e.g. Kuskal-Wallis test (χ^2)

* Where non-parametric tests were used, median and range were also reported.

BJLOT: Benton Judgement Line Orientation test; ESS: Epworth Sleep Scale; GDS: Geriatric Depression Scale; HVLTR: Hopkins Verbal Learning Test – Revised; MoCA: Montreal Cognitive Assessment; REM: rapid-eye movement; SDM: Symbol Digit Modality test; STAI: State-Trait Anxiety Inventory; SCOPA-autonomic: Scales for Outcomes in Parkinson’s Disease - Autonomic Dysfunction; UPDRS: Unified Parkinson’s Disease Rating Scale (part I-III)

Table 2 PD psychosis patients. PD patients who developed psychosis from year 1 to year 5 of the PPMI study, followed by the number (n) and percentage (%) of how many reported score 1-3 of the MDS-UPDRS part 1 item 1.2. A score of 0 = normal, 1 = minor illusions and non-formed hallucinations, 2 = formed hallucinations, 3 = formed hallucinations without insight, 4 = psychosis with delusions and hallucinations.

Study year (PD patients with psychosis, n)	Score = 1	Score = 2	Score = 3
Year 1 (n=37)	34 (91.9%)	3 (8.1%)	0 (0)
Year 2 (n=43)	35 (81.4%)	7 (16.3%)	1 (2.3%)
Year 3 (n=48)	38 (79.2%)	9 (18.8%)	1 (2.1%)
Year 4 (n=49)	44 (89.8%)	3 (6.1%)	2 (4.1%)
Year 5 (n=51)	41 (80.4%)	8 (15.7%)	2 (3.9%)

Trajectories of cognitive performance across groups

HC vs PDP and PDnP

Table 3 and Table 4 report the results from the unadjusted and adjusted analyses respectively. Figure 2 reports the predicted values of task performances for all cognitive domains. As expected, there was a significant main effect of group across all time points (i.e., year 0 to year 5) showing a worse performance of PD groups over HC across HVLТ-R tests (i.e., immediate recall, and delayed recall, both $P < 0.001$, and recognition, $P = 0.006$ (PDnP), $P = 0.007$ (PDP)). Results showed a worse performance of PD patients compared with HC on semantic fluency (PDnP vs HC, $P = 0.006$), LNS (PDP vs HC, $P = 0.015$), SDM, and MoCA (all $P < 0.001$). PD patients also reported a significantly worse trajectory of cognitive decline compared with HC across all tests, except for recognition (PDnP, $P = 0.208$; PDP, $P = 0.221$), and delayed recall (PDP, $P = 0.08$) (see Table 3). After controlling for covariates of interest, the longitudinal trajectories of task performance across the majority of cognitive measures remained significantly worse in PD patients compared to HC (Supplementary Material 3, eTable5).

PDP and PDnP

In terms of our main hypothesis of interest, unadjusted analyses showed a significant difference in the trajectory of cognitive performance between PDP and PDnP across most measures (i.e., interaction of group * time) over the 5-year follow-up period. PDP patients showed a significantly worse trajectory over time compared to PDnP patients across all cognitive tasks, except recognition ($P = 0.610$), and discrimination ($P = 0.081$). After adjusting for age, sex, ethnicity, years of education, depression, sleepiness, RBD, and severity of motor symptoms, the longitudinal trajectories remained significantly different between PDP and PDnP for most of the cognitive measures, namely HVLТ-R immediate ($b = -0.288$, 95% CI -0.452 , -0.100 , $P = 0.003$) and delayed recall ($b = -0.146$, 95% CI -0.243 , -0.049 , $P = 0.003$), BJLOT ($b = -0.178$, 95% CI -0.318 , -0.039 , $P = 0.012$), semantic fluency ($b = -0.704$, 95% CI -1.142 , -0.267 , $P = 0.002$), SDM ($b = -0.337$, 95% CI -0.639 , -0.035 , $P = 0.029$), and MoCA ($b = -0.206$, 95% CI -0.300 , -0.111 , $P < 0.001$). There was also a trend towards a difference in longitudinal trajectory of LNS between PDP and PDnP patients ($P = 0.058$).

Table 3 Results from unadjusted analysis. Unadjusted group comparison of cognitive performance trajectory between HC, PDnP, and PDP.

	HVLt-R Immediate recall			HVLt-R Delayed recall			HVLt-R Recognition			HVLt-R Discrimination		
	Estimate	95% CI	P value	Estimate	95% CI	P value	Estimate	95% CI	P value	Estimate	95% CI	P value
Main effect of group*												
PDnP vs. HC*	-1.570	-2.407, -0.733	<0.001	-0.877	-1.322, -0.433	<0.001	-0.275	-0.471, -0.078	0.006	-0.273	-0.663, 0.116	0.169
PDP vs. HC*	-2.138	-3.218, -1.058	<0.001	-0.976	-1.550, -0.403	<0.001	-0.352	-0.606, -0.097	0.007	-0.319	-0.823, 0.184	0.214
PDP vs. PDnP**	-0.568	-1.488, 0.352	0.226	-0.099	-0.587, 0.39	0.692	-0.077	-0.295, 0.141	0.489	-0.046	-0.477, 0.385	0.835
Interaction group x time (Study years)												
PDnP x Year*	-0.198	-0.348, -0.047	0.01	-0.07	-0.149, 0.008	0.08	-0.03	-0.086, 0.025	0.280	-0.189	-0.291, -0.087	<0.001
PDP x Year*	-0.455	-0.65, -0.261	<0.001	-0.221	-0.323, -0.119	<0.001	-0.045	-0.116, 0.027	0.221	-0.29	-0.421, -0.159	<0.001
PDP x Year**	-0.258	-0.429, -0.087	0.003	-0.150	-0.24, -0.061	0.001	-0.014	-0.077, 0.048	0.654	-0.101	-0.215, 0.012	0.081
BJLOT												
Semantic Fluency												
SDM												
LNS												
Main effect of group*												
PDnP vs. HC*	-0.401	-0.896, 0.094	0.113	-2.886	-4.937, -0.835	0.006	-6.532	-8.326, -4.739	<0.001	-0.408	-0.912, 0.097	0.113
PDP vs. HC*	-0.523	-1.163, 0.116	0.109	-2.296	-4.938, 0.347	0.089	-8.438	-10.743, -6.133	<0.001	-0.808	-1.46, -0.157	0.015
PDP vs. PDnP**	-0.123	-0.67, 0.425	0.660	0.59	-1.658, 2.838	0.607	-1.905	-3.855, 0.044	0.055	-0.401	-0.957, 0.156	0.158
Interaction group x time (Study years)												
PDnP x Year*	-0.357	-0.47, -0.245	<0.001	-1.189	-1.544, -0.835	<0.001	-0.391	-0.639, -0.143	0.002	-0.43	-0.532, -0.328	<0.001
PDP x Year*	-0.58	-0.725, -0.435	<0.001	-2.066	-2.524, -1.608	<0.001	-0.886	-1.207, -0.564	<0.001	-0.599	-0.73, -0.467	<0.001
PDP x Year**	-0.222	-0.350, -0.095	0.001	-0.877	-1.278, -0.476	<0.001	-0.495	-0.777, -0.213	0.001	-0.168	-0.284, -0.053	0.004
MoCA												
Main effect of group*												
PDnP vs. HC*	-1.184	-1.632, -0.737	<0.001									
PDP vs. HC*	-1.386	-1.964, -0.807	<0.001									
PDP vs. PDnP**	-0.201	-0.693, 0.29	0.422									
Interaction group x time (Study years)												
PDnP x Year*	0.085	0.01, 0.161	0.027									
PDP x Year*	-0.181	-0.28, -0.082	<0.001									
PDP x Year**	-0.266	-0.354, -0.179	<0.001									

*Main effect of time (i.e., Study years) is available from the authors upon request. It is not reported in the table for ease of presenting.

Cognitive decline in PD psychosis

*Healthy controls (HC) as reference group in the pairwise comparison from the main effect of group analysis

* PD patients without psychosis (PDnP) as reference group in the pairwise comparison from the main effect of group analysis

BJLOT: Benton Judgement of Line Orientation test; HVLT-R: Hopkins Verbal Learning Test – Revised; LNS: Letter Number Sequence; MoCA: Montreal Cognitive Assessment; SDM: Symbol Digit Modality test.

Table 4 Results from the adjusted analysis. Adjusted comparison of cognitive performance trajectories: For ease of presentation, only PDP vs PDnP comparisons reported here (for comparison between HC and PD group, please refer to the Supplementary Material 3, eTable5 A and B). Analyses were adjusted for depression, sleepiness, REM behaviour sleep disorder, and motor symptoms. Highlighted in grey, significant results pertaining to the main effect and interaction (group * time).

	HVLt-R Immediate recall			HVLt-R Delayed recall			HVLt-R Recognition			HVLt-R Discrimination		
Main effect of group*	Estimate	95% CI	P value	Estimate	95% CI	P value	Estimate	95% CI	P value	Estimate	95% CI	P value
PDP vs PDnP ‡	-0.156	-1.009, 0.690	0.721	0.069	-0.383, 0.522	0.764	0.011	-0.201, 0.222	0.922	-0.101	-0.520, 0.317	0.635
Effect of covariates												
Age	-1.523	-1.8, -1.2	<0.001	-0.799	-0.95, -0.647	<0.001	-0.265	-0.326, -0.205	<0.001	-0.394	-0.517, -0.270	<0.001
Sex	0.254	0.06, 0.449	0.010	0.189	0.087, 0.292	<0.001	0.077	0.022, 0.132	0.006	0.262	0.153, 0.370	<0.001
Ethnicity	-0.279	-0.558, 0.001	0.049	-0.157	-0.305, -0.009	0.038	-0.044	-0.102, 0.014	0.135	-0.075	-0.194, 0.045	0.220
Education (years)	1.022	0.739, 1.305	<0.001	0.539	0.389, 0.690	<0.001	0.192	0.132, 0.252	<0.001	0.156	0.035, 0.278	0.012
Depression	-0.237	-0.409, -0.065	0.007	-0.204	-0.294, -0.114	<0.001	-0.047	-0.100, 0.006	0.081	-0.126	-0.227, -0.025	0.015
RBD	-0.117	-0.311, 0.078	0.239	-0.024	-0.126, 0.078	0.647	-0.030	-0.086, 0.027	0.303	-0.070	-0.179, 0.039	0.207
ESS	-0.018	-0.204, 0.167	0.847	-0.011	-0.108, 0.087	0.830	-0.020	-0.075, 0.034	0.468	0.025	-0.081, 0.130	0.647
UPDRS part 3	-0.238	-0.452, -0.024	0.029	-0.141	-0.253, -0.029	0.014	-0.043	-0.109, 0.024	0.207	0.256	0.122, 0.367	<0.001
Interaction group x time (Study years)												
PDP x YEAR ‡	-0.288	-0.469, -0.100	0.003	-0.146	-0.243, -0.049	0.003	-0.008	-0.072, 0.056	0.804	-0.048	-0.167, 0.071	0.433
	BJLOT			Semantic Fluency			SDM			LNS		
Main effect of group*												
PDP vs PDnP ‡	-0.044	-0.588, 0.499	0.873	1.408	-0.696, 3.512	0.190	-0.922	-2.581, 0.738	0.276	-0.247	-0.769, 0.275	0.353
Effect of covariates												
Age	-0.393	-0.565, -0.221	<0.001	-2.772	-3.482, -2.062	<0.001	-4.333	-4.910, -3.757	<0.001	-0.867	-1.036, -0.699	<0.001
Sex	0.254	0.118, 0.390	<0.001	2.024	1.556, 2.492	<0.001	0.474	0.138, 0.809	0.006	0.469	0.342, 0.596	<0.001
Ethnicity	-0.086	-0.253, 0.080	0.308	-1.121	-1.815, -0.427	0.002	-0.079	-0.645, 0.487	0.784	-0.149	-0.313, 0.014	0.074
Education (years)	0.473	0.303, 0.643	<0.001	2.541	1.839, 3.243	<0.001	2.902	2.330, 3.475	<0.001	0.510	0.343, 0.677	<0.001
Depression	-0.274	-0.398, -0.150	<0.001	-0.916	-1.327, -0.505	<0.001	-0.749	-1.038, -0.460	<0.001	-0.158	-0.272, -0.043	0.007
RBD	-0.128	-0.264, 0.009	0.068	-0.439	-0.907, 0.028	0.066	-0.321	-0.655, 0.013	0.060	-0.151	-0.279, -0.022	0.020
ESS	0.079	-0.052, 0.211	0.238	0.167	-0.289, 0.612	0.5	-0.176	-0.493, 0.141	0.276	0.038	-0.084, 0.159	0.546
UPDRS part 3	0.117	-0.038, 0.273	0.140	-0.336	-0.845, 0.174	0.2	-1.014	-1.373, -0.654	<0.001	0.044	-0.099, 0.187	0.547
Interaction group x time (Study years)												
PDP x YEAR ‡	-0.178	-0.318, -0.039	0.012	-0.704	-1.142, -0.267	0.002	-0.337	-0.639, -0.035	0.029	-0.122	-0.248, 0.004	0.058
	MoCA											
Main effect of group*												

Cognitive decline in PD psychosis

PDP vs PDnP *	-0.012	-0.461, 0.437	0.958
Effect of covariates			
Age	-0.775	-0.927, -0.624	<0.001
Sex	0.192	0.092, 0.292	<0.001
Ethnicity	-0.198	-0.347, -0.049	0.009
Education (years)	0.393	0.243, 0.544	<0.001
Depression	-0.153	-0.241, -0.065	<0.001
RBD	-0.063	-0.163, 0.037	0.214
ESS	-0.131	-0.226, -0.036	0.007
UPDRS part 3	-0.228	-0.339, -0.128	<0.001
Interaction group x time (Study years)			
PDP x YEAR *	-0.206	-0.300, -0.111	<0.001

*Main effect of time is available from the authors upon request.

*PD patients without psychosis (PDnP) as reference group in the pairwise comparison from the main effect of group analysis

BJLOT: Benton Judgement of Line Orientation test; ESS: Epworth Sleep Scale; GDS-15: Geriatric Depression Scale; HVLt-R: Hopkins Verbal Learning Test – Revised; MoCA: Montreal Cognitive Assessment; REM: rapid-eye movement; SDM: Symbol Digit Modality test; STAI: State-Trait Anxiety Inventory; SCOPA-autonomic: Scales for Outcomes in Parkinson’s Disease - Autonomic Dysfunction; UPDRS: Unified Parkinson’s Disease Rating Scale (part I-III)

Cognitive decline in PD psychosis

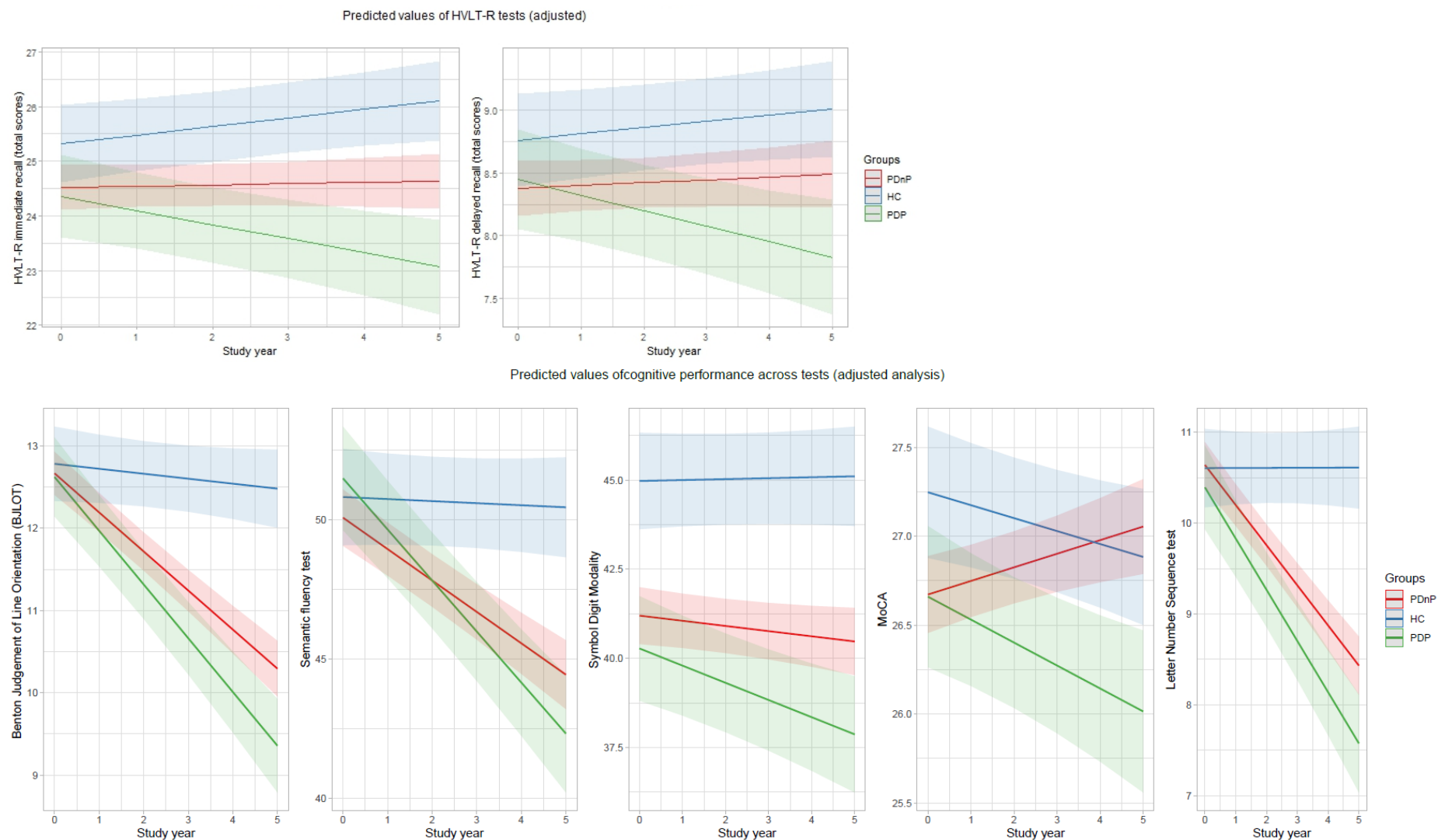


Figure 2 Predictive values from the adjusted analyses. Predicted values (with associated 95% confidence intervals) from the analysis controlled for depression, sleepiness, REM behaviour sleep disorder and motor symptom severity. Study years (from baseline, year 0 to year 5) on the x axis, and total scores of cognitive tests on the y axis.

Discussion

In this study, we investigated the trajectory of cognitive function in PD patients with and without psychosis and healthy control individuals. As expected, and in line with previous reports,^{13,14,21} both groups of PD patients showed a progressive worsening of performance across a range of cognitive domains, specifically, semantic aspects of language, processing speed, memory, visuo-spatial and general cognitive abilities, during the early years of their clinical course compared to age and sex-matched healthy individuals. These differences were evident even after controlling for sociodemographic factors (i.e., age, sex, ethnicity, years of education) as well as the longitudinal course of clinical factors that may potentially account for these different trajectories. Consistent with our main overarching hypothesis of interest, we also found that PD psychosis participants showed a progressively greater deterioration over time in memory (i.e., HVL-T-R immediate, and delayed recall), processing speed (Symbol Digit Modality), language (semantic fluency), visuo-spatial abilities (Benton Judgement of Line Orientation) and general global cognition (MoCA) compared with PD participants without psychosis. These effects were evident even after controlling for the potential confounding effects of age, sex, ethnicity and years of education as well as the longitudinal course of depression, sleepiness, RBD and severity of motor symptoms over the same period in those participants. Such a differential trajectory of worsening was not evident for cognitive domains such as recognition and discrimination components of memory, and working memory, namely manipulation (as measured with the Letter Number Sequence). Our findings are broadly in line with previous meta-analytic evidence^{10,11} from cross-sectional studies indicating impairments in global cognition, visuo-spatial, language, processing speed as well as in sub-domains such as manipulation, immediate recall, category-based fluency in PD patients with psychosis compared to those without. However, as these analyses were based on cross-sectional studies, the longitudinal course of these impairments remained unclear. To the best of our knowledge, only a small number of studies to date have investigated the longitudinal course of cognition in PD psychosis. While Morgante et al.¹³ reported lower global cognition as indexed by MMSE scores at 2-year follow up in PD patients who developed psychosis, Goetz et al.¹⁵ did not find a similar effect. However, Muller et al.¹⁴ found poorer performance in processing speed and executive function at follow up in PD patients who developed visual hallucinations (n=18) compared to those who did not (n=15). In a large prospective cohort of PD participants (n=676), here we extend these findings to show that compared to healthy volunteers (n=187), there is a progressive impairment in a number of domains of cognition in people with PD without

Cognitive decline in PD psychosis

psychosis at baseline and that this is even greater in people who go on to develop psychosis over the first 5 years following presentation to clinical services, despite both groups of PD participants being comparable in terms of cognitive task performance at the initiation of cohort. Further, this worsening trajectory of cognition could not be explained by group differences in socio-demographic factors or longitudinal course of potential clinical confounders. For the two most affected domains of semantic fluency and processing speed (Symbol Digit Modality) that we observed in this study, this translates to patients with PD psychosis scoring an additional 0.7 words and 0.337 points worse respectively than PD patients without psychosis for each additional year of illness from baseline. The association between psychosis in people with PD and development of dementia is well-recognised.⁴⁵ Although, we excluded from analysis participants who developed dementia during the 5-year follow-up period of the study, we cannot be certain that some of the group level cognitive impairments observed in PDP participants were not early indicators of the impending transition to dementia. On average, task performance in the PDP group was at least 1 standard deviation below that in the HC group in more than one cognitive domain, particularly during the latter period of follow-up of the PPMI cohort. Hence, it is possible that many of them may have met the MDS PD-mild cognitive impairment (PD-MCI) diagnostic criteria.^{45,46} Results presented here, therefore underscore the need to investigate the relationship between progressive decline in these cognitive domains in people with PDP and eventual clinical diagnosis of dementia in future studies.

Interestingly, our findings highlight the greater progressive worsening in semantic fluency, a measure of semantic aspects of language, in PD patients who develop psychosis compared to those who do not, which is consistent with previous evidence of language deficits in hallucinating PD patients.^{5,6} Semantic decline as revealed by similar tests to those used in the PPMI cohort is a core feature of fronto-temporal dementia and other neurodegenerative conditions.⁴⁷⁻⁴⁹ Consistent with our results, impaired baseline semantic fluency^{50,51} in conjunction with suboptimal performance in symbol digit modality, and recall (as measured with the HVLIT-R) tasks⁵² have been shown to predict cognitive decline in PD patients. Semantic deficits in these conditions are associated with AD neuropathology, primarily in the anterior temporal lobe. Although the underlying neuropathology differs, the same anterior temporal cortex region, particularly the amygdala, is associated with VH in the context of PD or Dementia with Lewy Bodies.^{53,54} Our findings show that PD patients who develop psychosis report a greater decline in semantic fluency compared to PD patients without psychosis. The initial changes observed in PD psychosis involve Lewy Body neuropathology within the

Cognitive decline in PD psychosis

anterior temporal lobe⁵³ suggesting that a combination of Lewy Body and AD neuropathology may be responsible for both semantic fluency decline and onset of PD psychosis. We also observed greater progressive worsening in PDP compared to PDnP in processing speed, which is consistent with the suggestion that visual hallucinations in PD may be a result of dysfunctional attentional processing due to impaired attentional networks such as the ventral and dorsal attentional networks.⁵⁵⁻⁵⁷ As we have observed declining performance across visuo-spatial abilities, overall general cognitive abilities (as measured with the MoCA) and memory (namely immediate and delayed recall), attributing the emergence of psychosis in PD solely to dysfunctions and altered connections between dorsal and ventral attention networks might oversimplify the complex brain mechanisms involved. Notwithstanding the relevance of the current model of visual hallucinations proposed by Collerton et al.⁵⁷, the present work may seem to suggest that visual hallucination, or more generally psychosis, may not solely be due to visual processing deficits and impairments in attention. Semantic fluency or semantic loss should be considered as part of this model, as a symptom in PD psychosis and included in the model for a more comprehensive understanding. In line with this, it is important to remember that we do not know yet if semantic deficits preceded visual deficits or vice versa, therefore this needs to be tested. Similarly, Collerton et al.⁵⁷ and Shine et al.^{56,58} models emphasise the involvement of dorsal and ventral networks, as well as the Default Mode Network in PD psychosis. Our results suggest including the anterior temporal lobe and semantic aspects of language in the model. Collectively, this warrants more examination to obtain insights in temporal regions potentially affected in PD psychosis.

Given the prevalence of psychosis in PD is 20-30%,⁵⁹ our findings further highlight the urgency of prioritising treatment for cognitive impairments. Hallucinations and cognitive deficits may lead to poor quality of life,⁶⁰ namely poor verbal fluency is associated with deteriorating health and increased care burden in PD.⁶¹ Preventative measures such as cholinesterase inhibitors,^{62,63} especially Rivastigmine, are commonly used in PD for psychosis and cognitive impairment⁶⁴ and have demonstrated benefits in the domains of praxis, memory and executive functioning in neurodegenerative disorders.^{65,66} Notably, our findings align with Aarsland et al.'s⁴⁵ report, indicating that the observed longitudinal changes in performance across domains in PD psychosis might be leading to more severe cognitive impairments and then dementia. Our results suggest a parallel observation proposing the inclusion of language-based tests (i.e., semantic category-based fluency), along with assessments like the intersecting pentagon (see for example⁵¹), for enhanced screening to identify dementia progression in PD,

Cognitive decline in PD psychosis

especially in PD psychosis. Lastly, we also observed a significantly worse trajectory of performance in PDnP patients compared with HC across two cognitive tasks, after adjusting for covariates of interest. Although we had predicted that this would be evident across all cognitive domains, we found that this difference was significant only for Symbol Digit Modality (processing speed) and MoCA. This is an expected result as healthy individuals generally report less severe cognitive decline compared to individuals with neurodegenerative diseases.⁶⁷

The present study benefits from the largest longitudinal sample investigating this question to date and data on a comprehensive set of cognitive tasks/domains as well as potential confounders. Further, we employed a mixed-effect analytic approach that allowed us to investigate whether the longitudinal course of performance changes differ between the participant groups, while accounting for the correlated nature of the repeated measurements in each individual. However, there are also certain limitations to note. One of the limitations of the present endeavour may relate to how we have operationalised the definition of PD psychosis. We used a classification method derived from a previous study¹⁸ but grouped people with milder symptoms such as visual illusions with those experiencing symptoms at the more severe end of the spectrum. Arguably, this approach of combining those with milder and more severe symptoms may have reduced the sensitivity of our analyses to detect any group differences. Nevertheless, we were able to detect significant differences between PDP and PDnP in the longitudinal course of cognitive task performance. We used the MDS-UPDRS part 1 “hallucination/psychosis” question to classify PD patients into PD with and without psychosis. However, this question, to some extent, lacks specificity in classifying patients into distinct psychosis symptom categories. For instance, a score of 4 indicates presence of paranoid thoughts yet it does not distinctly delineate whether patients exhibits both hallucinations and delusions, delusions alone or delusions resulting from presence of hallucinations. No other measure employed in the PPMI study can provide such information, therefore we were not able to clearly define groups based different symptoms of psychosis, and future research should consider applying different assessments such as Scale for Assessment of Positive Symptoms for PD (SAPS-PD)⁶⁸ or the Neuropsychiatric Inventory (NPI)⁶⁹ to examine cognitive trajectory in groups of PDP patients with different symptoms. It is also worth noting that we did not investigate the cognitive trajectories from baseline until immediately before the onset of psychotic symptoms. Instead, we analysed task performance scores from all those who had developed psychosis within the 5-year follow-up period even after the onset of their psychotic

Cognitive decline in PD psychosis

symptoms, as long as they did not have such symptoms at cohort initiation (or time 0). Therefore, some of the greater worsening of longitudinal course of cognition in PDP compared to PDnP that we report here may reflect the fact that some of the PDP patients were already psychotic when they performed the cognitive tasks. We employed this approach in order to ensure that we could make maximal use of the data. Including only cognitive task performance scores until before psychosis onset would have resulted in a substantially reduced sample size in the PDP group. Future studies are therefore warranted to investigate whether a similar pattern of worse longitudinal decline in PDP compared to PDnP is observed even when considering cognitive task performance until before the onset of psychotic symptoms. Another potential limitation relates to the inclusion of those on antipsychotic medications, well-known to affect cognitive performance,^{43,44} in our analysis sample. However, sensitivity analyses (available from the authors upon request) excluding those on antipsychotic medications did not change the direction or pattern of results and hence we have reported results from the complete sample. Evidence from AD studies indicates that atypical antipsychotics could contribute to greater cognitive decline (as measured with the Mini-Mental State Examination, MMSE) compared to placebo in a sample of 421 patients with AD.⁷⁰ Conversely, our results seem to suggest that the use of antipsychotics does not modulate the longitudinal changes across the 5 years of the PPMI study in cognitive performance in PD patients with psychosis. Lastly, it is worth noting the involvement of genetic influences in cognitive decline in PD, specifically glucocerebrosidase (GBA).^{71,72} GBA-related PD is associated with greater cognitive decline in visuo-spatial and executive functions and increased risk of non-motor symptoms such as depression, sleep-related disorders and autonomic dysfunctions.⁷³ Future studies should consider exploring the association between genetic influences in PD and the presence of psychosis symptoms.

In conclusion, we examined the trajectory of cognitive performance in PD patients with psychosis and compared it with that of PD patients without psychosis. PD psychosis patients showed severe deterioration across most domains, especially semantic aspects of language and processing speed, independent of socio-demographics, neuropsychiatric symptoms, and motor symptom severity. These findings indicate a potential role of semantic processing in PD psychosis, which should be further examined. Semantic and other language impairments could pave the way to a deeper understanding of psychosis in PD as well as lead to more targeted treatment.

Cognitive decline in PD psychosis

CRedit authors' contributions:

Conceptualisation: Sara Pisani, Sagnik Bhattacharyya

Methodology: Sara Pisani, Sagnik Bhattacharyya

Investigation: Sara Pisani, Latha Velayudhan, Dominic ffytche, Sagnik Bhattacharyya

Data curation: Sara Pisani, Luca Gosse

Formal analysis: Sara Pisani, Sagnik Bhattacharyya

Visualisation: Sara Pisani, Sagnik Bhattacharyya

Funding acquisition: Sagnik Bhattacharyya, Latha Velayudhan, Dominic ffytche, Dag Aarsland, Kallol Ray Chaudhuri, Clive Ballard

Writing (original draft): Sara Pisani, Sagnik Bhattacharyya, Latha Velayudhan

Writing (review & editing): All authors

Supervision: Latha Velayudhan, Dominic ffytche, Sagnik Bhattacharyya

Acknowledgement

Data used in this work were obtained from the Parkinson's Progression Markers Initiative database (<http://www.ppmi-info.org/>). PPMI – a public-private partnership – is funded by the Michael J. Fox Foundation for Parkinson's Research and funding partners, including 4D Pharma, Abbvie, AcureX, Allergan, Amathus Therapeutics, Aligning Science Across Parkinson's, AskBio, Avid Radiopharmaceuticals, BIAL, Biogen, Biohaven, BioLegend, BlueRock Therapeutics, Bristol-Myers Squibb, Calico Labs, Celgene, Cerevel Therapeutics, Coave Therapeutics, DaCapo Brainscience, Denali, Edmond J. Safra Foundation, Eli Lilly, Gain Therapeutics, GE HealthCare, Genentech, GSK, Golub Capital, Handl Therapeutics, Insitro, Janssen Neuroscience, Lundbeck, Merck, Meso Scale Discovery, Mission Therapeutics, Neurocrine Biosciences, Pfizer, Piramal, Prevail Therapeutics, Roche, Sanofi, Servier, Sun Pharma Advanced Research Company, Takeda, Teva, UCB, Vanqua Bio, Verily, Voyager Therapeutics, the Weston Family Foundation and Yumanity Therapeutics. For up-to-date information on the study, visit www.ppmi-info.org .

Funding

SB, LV, DA, DF, KRC and CB are in receipt of funding from Parkinson's UK for a clinical trial in Parkinson's disease psychosis. SP PhD studentship is funded by Parkinson's UK. The funding source had no involvement in this research. SB is supported by grants from the National Institute of Health Research (NIHR) Efficacy and Mechanism Evaluation scheme and Parkinson's UK. SB has participated in advisory boards for or received honoraria as a speaker from Reckitt Benckiser, EmpowerPharm/SanteCannabis and Britannia Pharmaceuticals. All of these honoraria were received as contributions toward research support through King's College London, and not personally. SB also has collaborated with Beckley Canopy Therapeutics/ Canopy Growth (investigator-initiated research) wherein they supplied study drug for free for charity (Parkinson's UK) and NIHR (BRC) funded research. The views expressed are those of

Cognitive decline in PD psychosis

the authors and not necessarily those of the NHS, the NIHR or the Department of Health. LV has collaborated with Beckley Canopy Therapeutics/ Canopy Growth (investigator-initiated research) wherein they supplied study drug for free for charity (Parkinson's UK) and NIHR (BRC) funded research.

Competing interests

The authors report no competing interests.

Ethical approval disclosure

The authors of this work confirm that all sites involved in the PPMI study received ethical approval from the ethical standards committees overseeing human experiments before commencing the study. Written informed consent for research was obtained from all participants in the study.

References

1. Aarsland D, Brønnick K, Ehrt U, et al. Neuropsychiatric symptoms in patients with Parkinson's disease and dementia: frequency, profile and associated care giver stress. *J Neurol Neurosurg Psychiatry*. Jan 2007;78(1):36-42. doi:10.1136/jnnp.2005.083113
2. Aarsland D, Larsen JP, Cummings JL, Laake K. Prevalence and clinical correlates of psychotic symptoms in Parkinson disease - A community-based study. Article. *Archives of Neurology*. May 1999;56(5):595-601. doi:10.1001/archneur.56.5.595
3. Weil RS, Reeves S. Hallucinations in Parkinson's disease: new insights into mechanisms and treatments. *Adv Clin Neurosci Rehabil*. Summer 2020;19(4):Onns5189. doi:10.47795/onns5189
4. Goetz CG, Stebbins GT. Risk-Factors for Nursing-Home Placement in Advanced Parkinsons-Disease. Article. *Neurology*. Nov 1993;43(11):2227-2229. doi:10.1212/WNL.43.11.2227
5. Grossi D, Trojano L, Pellecchia MT, Amboni M, Fragassi NA, Barone P. Frontal dysfunction contributes to the genesis of hallucinations in non-demented Parkinsonian patients. *International Journal of Geriatric Psychiatry: A journal of the psychiatry of late life and allied sciences*. 2005;20(7):668-673.
6. Santangelo G, Trojano L, Vitale C, et al. A neuropsychological longitudinal study in Parkinson's patients with and without hallucinations. Article. *Movement Disorders*. Dec 2007;22(16):2418-2425. doi:10.1002/mds.21746
7. Grossi D, Trojano L, Pellecchia MT, Amboni M, Fragassi NA, Barone P. Frontal dysfunction contributes to the genesis of hallucinations in non-demented Parkinsonian patients. *Int J Geriatr Psychiatry*. Jul 2005;20(7):668-73. doi:10.1002/gps.1339
8. Factor SA, Scullin MK, Sollinger AB, et al. Cognitive correlates of hallucinations and delusions in Parkinson's disease. *J Neurol Sci*. Dec 15 2014;347(1-2):316-21. doi:10.1016/j.jns.2014.10.033
9. Moustafa AA, Krishna R, Frank MJ, Eissa AM, Hewedi DH. Cognitive correlates of psychosis in patients with Parkinson's disease. *Cognitive Neuropsychiatry*. 2014/09/03 2014;19(5):381-398. doi:10.1080/13546805.2013.877385
10. Montagnese M, Vignando M, Ffytche D, Mehta MA. Cognitive and visual processing performance in Parkinson's disease patients with vs without visual hallucinations: A meta-analysis. *Cortex*. Jan 2022;146:161-172. doi:10.1016/j.cortex.2021.11.001

Cognitive decline in PD psychosis

11. Pisani S, Gosse L, Wieretilo R, Ffytche D, Velayudhan L, Bhattacharyya S. Cognitive and executive impairments in Parkinson's disease psychosis: a Bayesian meta-analysis. *Journal of Neurology, Neurosurgery & Psychiatry*. 2023;
12. Harvey PD. Domains of cognition and their assessment. *Dialogues Clin Neurosci*. Sep 2019;21(3):227-237. doi:10.31887/DCNS.2019.21.3/pharvey
13. Morgante L, Colosimo C, Antonini A, et al. Psychosis associated to Parkinson's disease in the early stages: relevance of cognitive decline and depression. *Journal of Neurology, Neurosurgery & Psychiatry*. 2012;83(1):76. doi:10.1136/jnnp-2011-300043
14. Muller AJ, O'Callaghan C, Walton CC, Shine JM, Lewis SJ. Retrospective Neuropsychological Profile of Patients With Parkinson Disease Prior to Developing Visual Hallucinations. *J Geriatr Psychiatry Neurol*. Mar 2017;30(2):90-95. doi:10.1177/0891988716686830
15. Goetz C, Wu J, Curgian L, Leurgans S. Age-related influences on the clinical characteristics of new-onset hallucinations in Parkinson's disease patients. *Movement disorders : official journal of the Movement Disorder Society*. 02/01 2006;21:267-70. doi:10.1002/mds.20701
16. Marek K, Jennings D, Lasch S, et al. The Parkinson Progression Marker Initiative (PPMI). *Progress in Neurobiology*. 2011/12/01/ 2011;95(4):629-635. doi:<https://doi.org/10.1016/j.pneurobio.2011.09.005>
17. Bejr-Kasem H, Sampedro F, Marín-Lahoz J, Martínez-Horta S, Pagonabarraga J, Kulisevsky J. Minor hallucinations reflect early gray matter loss and predict subjective cognitive decline in parkinson's disease. *Eur J Neurol*. Oct 8 2020;doi:10.1111/ene.14576
18. Ffytche DH, Pereira JB, Ballard C, Chaudhuri KR, Weintraub D, Aarsland D. Risk factors for early psychosis in PD: insights from the Parkinson's Progression Markers Initiative. *J Neurol Neurosurg Psychiatry*. Apr 2017;88(4):325-331. doi:10.1136/jnnp-2016-314832
19. Aarsland D, Creese B, Politis M, et al. Cognitive decline in Parkinson disease. *Nat Rev Neurol*. Apr 2017;13(4):217-231. doi:10.1038/nrneuro.2017.27
20. Anang JB, Gagnon J-F, Bertrand J-A, et al. Predictors of dementia in Parkinson disease: a prospective cohort study. *Neurology*. 2014;83(14):1253-1260.
21. Aarsland D, Andersen K, Larsen JP, Lolk A. Prevalence and characteristics of dementia in Parkinson disease: an 8-year prospective study. *Archives of neurology*. 2003;60(3):387-392.
22. Fahn S, Group PS. Does levodopa slow or hasten the rate of progression of Parkinson's disease? *J Neurol*. 2005;252:iv37-iv42.
23. Kim M, Park H. Structural connectivity profile of scans without evidence of dopaminergic deficit (SWEDD) patients compared to normal controls and Parkinson's disease patients. *SpringerPlus*. 2016/08/26 2016;5(1):1421. doi:10.1186/s40064-016-3110-8
24. Marek K, Seibyl J, Eberly S, et al. Longitudinal follow-up of SWEDD subjects in the PRECEPT Study. *Neurology*. 2014;82(20):1791-1797. doi:10.1212/WNL.0000000000000424
25. Marek K, Chowdhury S, Siderowf A, et al. The Parkinson's progression markers initiative (PPMI)—establishing a PD biomarker cohort. *Annals of clinical and translational neurology*. 2018;5(12):1460-1477.
26. Goetz CG, Fahn S, Martinez-Martin P, et al. Movement Disorder Society-sponsored revision of the Unified Parkinson's Disease Rating Scale (MDS-UPDRS): Process, format, and clinimetric testing plan. *Movement Disorders*. 2007;22(1):41-47. doi:<https://doi.org/10.1002/mds.21198>
27. Visser M, Marinus J, Stiggelbout AM, Van Hilten JJ. Assessment of autonomic dysfunction in Parkinson's disease: the SCOPA-AUT. *Movement disorders: official journal of the Movement Disorder Society*. 2004;19(11):1306-1312.
28. Nasreddine ZS, Phillips NA, Bédirian V, et al. The Montreal Cognitive Assessment, MoCA: a brief screening tool for mild cognitive impairment. *J Am Geriatr Soc*. 2005;53(4):695-699.
29. Benedict RH, Schretlen D, Groninger L, Brandt J. Hopkins Verbal Learning Test—Revised: Normative data and analysis of inter-form and test-retest reliability. *The Clinical Neuropsychologist*. 1998;12(1):43-55.
30. Smith A. *Symbol digit modalities test*. Western psychological services Los Angeles; 1973.

Cognitive decline in PD psychosis

31. Smith A, JHelmuth J. The symbol-digit modalities test: a neuropsychologic test of learning and other cerebral disorders. *Learning disorders. special child publications, Seattle*. 1968;83:91.
32. Wechsler D. Wechsler adult intelligence scale—Fourth Edition (WAIS—IV). *San Antonio, TX: NCS Pearson*. 2008;22(498):1.
33. Gladsjo JA, Schuman CC, Evans JD, Peavy GM, Miller SW, Heaton RK. Norms for letter and category fluency: demographic corrections for age, education, and ethnicity. *Assessment*. 1999;6(2):147-178.
34. Benton AL, Varney NR, Hamsher KD. Visuospatial judgment. A clinical test. *Arch Neurol*. Jun 1978;35(6):364-7. doi:10.1001/archneur.1978.00500300038006
35. Weintraub D, Oehlberg KA, Katz IR, Stern MB. Test characteristics of the 15-item geriatric depression scale and Hamilton depression rating scale in Parkinson disease. *The American journal of geriatric psychiatry*. 2006;14(2):169-175.
36. Knight RG, Waal-Manning HJ, Spears GF. Some norms and reliability data for the State-Trait Anxiety Inventory and the Zung Self-Rating Depression scale. *British Journal of Clinical Psychology*. 1983;22(4):245-249.
37. Ondo WG, Vuong KD, Khan H, Atassi F, Kwak C, Jankovic J. Daytime sleepiness and other sleep disorders in Parkinson's disease. *Neurology*. 2001;57(8):1392-1396.
38. Stiasny-Kolster K, Mayer G, Schäfer S, Möller JC, Heinzel-Gutenbrunner M, Oertel WH. The REM sleep behavior disorder screening questionnaire—a new diagnostic instrument. *Movement disorders*. 2007;22(16):2386-2393.
39. Kuznetsova A, Brockhoff PB, Christensen RH. lmerTest package: tests in linear mixed effects models. *Journal of statistical software*. 2017;82:1-26.
40. Team RC. R: A language and environment for statistical computing. 2013;
41. Divac N, Stojanović R, Savić Vujović K, Medić B, Damjanović A, Prostran M. The Efficacy and Safety of Antipsychotic Medications in the Treatment of Psychosis in Patients with Parkinson's Disease. *Behav Neurol*. 2016;2016:4938154. doi:10.1155/2016/4938154
42. Shotbolt P, Samuel M, David A. Quetiapine in the treatment of psychosis in Parkinson's disease. *Ther Adv Neurol Disord*. Nov 2010;3(6):339-50. doi:10.1177/1756285610389656
43. Baldez DP, Biazus TB, Rabelo-da-Ponte FD, et al. The effect of antipsychotics on the cognitive performance of individuals with psychotic disorders: Network meta-analyses of randomized controlled trials. *Neuroscience & Biobehavioral Reviews*. 2021/07/01/ 2021;126:265-275. doi:<https://doi.org/10.1016/j.neubiorev.2021.03.028>
44. MacKenzie NE, Kowalchuk C, Agarwal SM, et al. Antipsychotics, Metabolic Adverse Effects, and Cognitive Function in Schizophrenia. Review. *Frontiers in Psychiatry*. 2018;9
45. Aarsland D, Batzu L, Halliday GM, et al. Parkinson disease-associated cognitive impairment. *Nature Reviews Disease Primers*. 2021/07/01 2021;7(1):47. doi:10.1038/s41572-021-00280-3
46. Litvan I, Goldman JG, Tröster AI, et al. Diagnostic criteria for mild cognitive impairment in Parkinson's disease: Movement Disorder Society Task Force guidelines. *Mov Disord*. Mar 2012;27(3):349-56. doi:10.1002/mds.24893
47. Testa JA, Tröster AI, Fields JA, Gleason AC, Salmon DP, Beatty WW. Semantic fluency performance of patients with cortical and subcortical neurodegenerative diseases. *Neuropsychol Dev Cogn B Aging Neuropsychol Cogn*. Sep 1998;5(3):203-14. doi:10.1076/anec.5.3.203.612
48. Kertesz A, Jesso S, Harciarek M, Blair M, McMonagle P. What Is Semantic Dementia?: A Cohort Study of Diagnostic Features and Clinical Boundaries. *Archives of Neurology*. 2010;67(4):483-489. doi:10.1001/archneur.2010.55
49. Bott NT, Radke A, Stephens ML, Kramer JH. Frontotemporal dementia: diagnosis, deficits and management. *Neurodegener Dis Manag*. 2014;4(6):439-54. doi:10.2217/nmt.14.34
50. Williams-Gray CH, Evans JR, Goris A, et al. The distinct cognitive syndromes of Parkinson's disease: 5 year follow-up of the CamPaIGN cohort. *Brain*. 2009;132(11):2958-2969. doi:10.1093/brain/awp245

Cognitive decline in PD psychosis

51. Williams-Gray CH, Mason SL, Evans JR, et al. The CamPaIGN study of Parkinson's disease: 10-year outlook in an incident population-based cohort. *J Neurol Neurosurg Psychiatry*. Nov 2013;84(11):1258-64. doi:10.1136/jnnp-2013-305277
52. Wilson H, Pagano G, Yousaf T, et al. Predict cognitive decline with clinical markers in Parkinson's disease (PRECODE-1). *J Neural Transm (Vienna)*. Jan 2020;127(1):51-59. doi:10.1007/s00702-019-02125-6
53. Harding A, Broe G, Halliday G. Visual hallucinations in Lewy body disease relate to Lewy bodies in the temporal lobe. *Brain*. 2002;125(2):391-403.
54. Kakinuma K, Narita W, Baba T, Iizuka O, Nishio Y, Suzuki K. "Semantic variant primary progressive aphasia" due to comorbidity of Lewy body disease and a previous cerebral venous infarction in the left anterior temporal lobe: A case report. *Eneurologicalsci*. 2021;22:100318.
55. Shine JM, Halliday GM, Gilat M, et al. The role of dysfunctional attentional control networks in visual misperceptions in Parkinson's disease. *Human Brain Mapping*. 2014;35(5):2206-2219.
56. Shine JM, O'Callaghan C, Halliday GM, Lewis SJ. Tricks of the mind: visual hallucinations as disorders of attention. *Progress in neurobiology*. 2014;116:58-65.
57. Collerton D, Barnes J, Diederich NJ, et al. Understanding visual hallucinations: A new synthesis. *Neuroscience & Biobehavioral Reviews*. 2023/07/01/ 2023;150:105208. doi:<https://doi.org/10.1016/j.neubiorev.2023.105208>
58. Shine JM, Halliday GM, Naismith SL, Lewis SJG. Visual Misperceptions and Hallucinations in Parkinson's Disease: Dysfunction of Attentional Control Networks? Article. *Movement Disorders*. Oct 2011;26(12):2154-2159. doi:10.1002/mds.23896
59. Rabey JM. Hallucinations and psychosis in Parkinson's disease. *Parkinsonism & related disorders*. 2009;15:S105-S110.
60. Martinez-Martin P, Rodriguez-Blazquez C, Forjaz MJ, et al. Neuropsychiatric symptoms and caregiver's burden in Parkinson's disease. *Parkinsonism Relat Disord*. Jun 2015;21(6):629-34. doi:10.1016/j.parkreldis.2015.03.024
61. Rosenthal LS, Salnikova YA, Pontone GM, et al. Changes in Verbal Fluency in Parkinson's Disease. *Mov Disord Clin Pract*. Jan-Feb 2017;4(1):84-89. doi:10.1002/mdc3.12421
62. Pagano G, Rengo G, Pasqualetti G, et al. Cholinesterase inhibitors for Parkinson's disease: a systematic review and meta-analysis. *J Neurol Neurosurg Psychiatry*. Jul 2015;86(7):767-73. doi:10.1136/jnnp-2014-308764
63. Aarsland D, Mosimann UP, McKeith IG. Role of cholinesterase inhibitors in Parkinson's disease and dementia with Lewy bodies. *J Geriatr Psychiatry Neurol*. Sep 2004;17(3):164-71. doi:10.1177/0891988704267463
64. Armstrong MJ, Okun MS. Diagnosis and Treatment of Parkinson Disease: A Review. *Jama*. Feb 11 2020;323(6):548-560. doi:10.1001/jama.2019.22360
65. Shimizu S, Kanetaka H, Hirose D, Sakurai H, Hanyu H. Differential Effects of Acetylcholinesterase Inhibitors on Clinical Responses and Cerebral Blood Flow Changes in Patients with Alzheimer's Disease: A 12-Month, Randomized, and Open-Label Trial. *Dementia and Geriatric Cognitive Disorders Extra*. 2015;5(1):135-146. doi:10.1159/000375527
66. Isaacson RS, Ferris S, Velting DM, Meng X. Cognitive Efficacy (SIB) of 13.3 Versus 4.6 mg/24 h Rivastigmine Patch in Severe Alzheimer's Disease. *Am J Alzheimers Dis Other Demen*. May 2016;31(3):270-7. doi:10.1177/1533317515603687
67. Wilson RS, Capuano AW, Yu L, et al. Neurodegenerative disease and cognitive retest learning. *Neurobiology of aging*. 2018;66:122-130.
68. Voss T, Bahr D, Cummings J, Mills R, Ravina B, Williams H. Performance of a shortened Scale for Assessment of Positive Symptoms for Parkinson's disease psychosis. *Parkinsonism Relat Disord*. Mar 2013;19(3):295-9. doi:10.1016/j.parkreldis.2012.10.022
69. Cummings JL, Mega M, Gray K, Rosenberg-Thompson S, Carusi DA, Gornbein J. The Neuropsychiatric Inventory: comprehensive assessment of psychopathology in dementia. *Neurology*. 1994;44(12):2308-2308.

Cognitive decline in PD psychosis

70. Vigen CL, Mack WJ, Keefe RS, et al. Cognitive effects of atypical antipsychotic medications in patients with Alzheimer's disease: outcomes from CATIE-AD. *Am J Psychiatry*. Aug 2011;168(8):831-9. doi:10.1176/appi.ajp.2011.08121844
71. Sidransky E, Nalls MA, Aasly JO, et al. Multicenter analysis of glucocerebrosidase mutations in Parkinson's disease. *New England Journal of Medicine*. 2009;361(17):1651-1661.
72. Szvedo AA, Dalen I, Pedersen KF, et al. GBA and APOE Impact Cognitive Decline in Parkinson's Disease: A 10-Year Population-Based Study. *Mov Disord*. May 2022;37(5):1016-1027. doi:10.1002/mds.28932
73. Ren J, Zhou G, Wang Y, et al. Association of GBA genotype with motor and cognitive decline in Chinese Parkinson's disease patients. *Front Aging Neurosci*. 2023;15:1091919. doi:10.3389/fnagi.2023.1091919