

Vaporized Cannabis versus Placebo for Acute Migraine: A Randomized Controlled Trial

Nathaniel M. Schuster, MD^{1,6*}, Mark S. Wallace, MD^{1,6}, Thomas D. Marcotte, PhD^{2,6}, Dawn C. Buse, PhD⁷, Euyhyun Lee, MSc³, Lin Liu, PhD⁴, Michelle Sexton, ND^{5,6}

¹Center for Pain Medicine, Department of Anesthesiology, ²Department of Psychiatry, ³Altman Clinical and Translational Research Institute, ⁴Department of Biostatistics and Bioinformatics, Herbert Wertheim School of Public Health and Human Longevity Science, ⁵Centers for Integrative Health, Department of Family Medicine, ⁶Center for Medicinal Cannabis Research, University of California, San Diego Health System, San Diego, CA, ⁷Department of Neurology, Albert Einstein College of Medicine

Abstract

Background

Preclinical and retrospective studies suggest cannabinoids may be effective in migraine treatment. However, there have been no randomized clinical trials examining the efficacy of cannabinoids for acute migraine.

Methods

In this randomized, double-blind, placebo-controlled, crossover trial, adults with migraine treated up to 4 separate migraine attacks, 1 each with vaporized 1) 6% Δ 9-tetrahydrocannabinol (THC-dominant); 2) 11% cannabidiol (CBD-dominant); 3) 6% THC+11% CBD; and 4) placebo cannabis flower in a randomized order. Washout period between treated attack was ≥ 1 week. The primary endpoint was pain relief and secondary endpoints were pain freedom and most bothersome symptom (MBS) freedom, all assessed at 2 hours post-vaporization.

Results

Ninety-two participants were enrolled and randomized, and 247 migraine attacks were treated. THC+CBD was superior to placebo at achieving pain relief (67.2% vs 46.6%, Odds Ratio [95% Confidence Interval] 2.85 [1.22, 6.65], $p=0.016$), pain freedom (34.5% vs. 15.5%, 3.30 [1.24, 8.80], $p=0.017$) and MBS freedom (60.3% vs. 34.5%, 3.32 [1.45, 7.64], $p=0.005$) at 2 hours, as well as sustained pain freedom at 24 hours and sustained MBS freedom at 24 and 48 hours. THC-dominant was superior to placebo for pain relief (68.9% vs. 46.6%, 3.14 [1.35, 7.30], $p=0.008$) but not pain freedom or MBS freedom at 2 hours. CBD-dominant was not superior to placebo for pain relief, pain freedom or MBS freedom at 2 hours. There were no serious adverse events.

Conclusions

Acute migraine treatment with 6% THC+11% CBD was superior to placebo at 2 hours post-treatment with sustained benefits at 24 and 48 hours.

Trial Registration Number: NCT04360044

*Corresponding author:

Nathaniel M. Schuster, MD
UC San Diego Center for Pain Medicine
9400 Campus Point Drive, Suite 1-300
La Jolla, CA 92037
Tel: 858-657-7072
Fax: 858-249-1239
Email: nmschuster@health.ucsd.edu

1 Disclosures:

2 NMS has received research funding from Migraine Research Foundation, Novaremed, UCSD Academic
3 Senate, UCSD Department of Anesthesiology RAG, and NIH CTSA Grant UL1TR000100 and has
4 consulted for Eli Lilly & Co., Averitas, Syneos, Schedule 1 Therapeutics, Vectura Fertin, and ShiraTronics.
5 He serves on the editorial board of Pain Medicine (Oxford University Press). DCB has been a consultant
6 for Abbvie, Amgen, Biohaven, Lilly, Lundbeck, Teva, Theranica. She has received grant support from the
7 US Food and Drug Association and National Headache Foundation. She is an editor for Current Pain
8 and Headache Reports. MSW, TM, EL, LL and MS have no disclosures to report.

1 **Manuscript Text**

2

3 **Introduction**

4 Migraine is the second leading cause of years lived with disability worldwide. It affects over a
5 billion people worldwide, including 38 million Americans¹. Migraine treatments are classified for acute
6 and/or preventive use². Nearly everyone with migraine uses acute treatments for migraine attacks.
7 However, rates of treatment optimization with traditional acute therapies are relatively low and rates of
8 discontinuation are high^{3,4}. There is significant interest in and use of cannabinoids for acute migraine
9 treatment. Migraine is among the most common medicinal uses of cannabinoids, with 35.5% of 1,429
10 medical cannabis users reporting use for headache/migraine; inhalation was the most common route of
11 administration (81.4%)⁵.

12

13 More than 125 identified phytocannabinoids are naturally found in the cannabis plant, including
14 Δ^9 -tetrahydrocannabinol (THC) and cannabidiol (CBD). Although the US Food and Drug Administration
15 (FDA) has approved cannabinoid-based medications for specific conditions, none have been approved
16 for migraine. At the time of this writing, THC was legal for medical and/or recreational use in 38 US states
17 and the District of Columbia. Since 2018, hemp-derived CBD (<0.3% THC) is not a controlled substance
18 in the US⁶.

19

20 Patients often ask healthcare professionals about cannabinoids for migraine, but data to inform
21 medical advice is lacking⁷. Preclinical evidence suggests that cannabinoids may have effects on migraine
22 pathogenesis through mechanisms including inhibiting calcitonin gene-related peptide (CGRP) release,
23 inhibiting CGRP-induced nitric oxide release, inhibiting trigeminovascular neurons, and inhibiting cortical
24 spreading depression, and surveys and retrospective studies suggest that cannabinoids may have benefit
25 as acute and/or preventive treatments for migraine⁸⁻²⁰. However the efficacy of cannabis for acute
26 treatment of migraine has not been studied via a randomized, controlled trial (RCT)^{10,12,21}. Therefore, this
27 RCT was conducted to assess the efficacy of vaporized cannabis against placebo cannabis.

28

1 **Methods**

2 *Trial Design*

3 This randomized, double-blind, placebo-controlled, crossover trial was conducted at the University of
4 California, San Diego (UCSD). The study was approved by the UCSD Institutional Review Board (IRB
5 #181944) and the US FDA. The study was prospectively registered, and full protocol is available, at
6 ClinicalTrials.gov (NCT04360044). The authors take full responsibility for the data and the accuracy and
7 integrity of the publication. No writing assistance was provided by outside parties. The study was
8 performed in accordance with the principles of the Declaration of Helsinki. All participants provided written
9 informed consent prior to enrollment.

10

11 *Sample Size*

12 Sample size was determined based on our primary outcome of pain relief at 2 hours, assuming a
13 response of 68% for treatment and 45% for placebo as seen in an intranasal sumatriptan RCT²². This
14 effect size required 72 participants to detect a significant difference with 80%. Assuming a 20% dropout
15 rate, we planned to enroll 90 participants.

16

17 *Study Drug*

18 Cannabis flower was obtained from the National Institute on Drug Abuse (NIDA) Drug Supply Program
19 (DSP) and consisted of 4 different treatments. The most closely matched batches available from the NIDA
20 DSP at study initiation were selected. They were: 1) 5.62% THC+0.03% CBD (referred to in this study as
21 6% THC or THC-dominant); 2) 11.27% CBD+0.35% CBD (referred to as 11% CBD or CBD-dominant); 3)
22 6.16% THC + 10.77% CBD (referred to as 6% THC+11% CBD or THC+CBD); and 4) placebo flower
23 (<0.025% THC + 0.14% CBD). All treatments contained <1% minor cannabinoids and were devoid of
24 terpenes. The studied THC potency was based on previous pain studies²³⁻²⁵.

25

26 *Participants*

27 Key inclusion criteria were: ages 21-65; migraine according to International Classification of Headache
28 Disorders, 3rd edition (ICHD-3) criteria²⁶; 2-23 headache days and 2-23 migraine days per month; agree

1 not to use cannabis (outside of the study drug), opioids or barbiturates. Key exclusion criteria were:
 2 screening visit urine drug test positive for THC, barbiturates, opioids, oxycodone, or methadone;
 3 pregnant; breastfeeding; known cognitive impairment; current moderate-severe or severe depression;
 4 history of bipolar disorder, schizophrenia, or psychosis; history of substance use disorder; and active
 5 pulmonary disease or other severe medical illnesses at the discretion of the researchers. Inclusion criteria

6 initially required THC use
 7 within the prior 2 years; this
 8 was removed March 18,
 9 2021 due to slow
 10 recruitment and no serious
 11 adverse events at that time.
 12 Full criteria are available at
 13 ClinicalTrials.gov.
 14
 15 Participants agreed not to
 16 use any other acute
 17 migraine treatments prior to
 18 or within 2 hours following
 19 study drug administration.

20
 21 *Enrollment*
 22 Participants were enrolled at

Table 1: Characteristics of Patient Population

Characteristic	All Patients (n=92)
Age- median years (Quartiles 1-3)	41 (34-54)
Birth Sex- no. (%)	
Female	76 (82.6%)
Male	16 (17.4%)
Gender Identity-no. (%)	
Female sex	77 (83.7%)
Male sex	15 (16.3%)
BMI- median (Quartiles 1-3)	26.0 (22.8-32.9)
Ethnicity	
Hispanic or Latino	15 (16.3%)
Not Hispanic or Latino	77 (83.7%)
Race or ethnic group-no.(%)	
White	71 (77.2%)
Black	8 (8.9%)
Asian-American	7 (7.8%)
Mixed/Other	2 (2.2%)
Middle Eastern	1 (1.1%)
Pacific Islander	1 (1.1%)
Declined to state	2 (2.2%)
Primary language- no. (%)	
English	83 (90.2%)
Spanish	6 (6.5%)
Other	3 (3.3%)
Migraine history	
Age at onset- median years (Quartiles 1-3)	20 (14-28)
Headache Days per month- median (Quartiles 1-3)	15 (8-16)
Migraine Days per month- median (Quartiles 1-3)	6 (4-10)
Chronic Migraine*- no. (%)	25/91 (27.5%)
Most bothersome symptom, treated attack	
Photophobia	148 (63.2%)
Phonophobia	38 (16.2%)
Nausea	48 (20.5%)
Last Cannabis Use	
Never	33 (35.9%)
More than 1 year ago	19 (20.7%)
6 months-1 year ago	7 (7.6%)
1 month-6 months ago	19 (20.7%)
2 weeks-1 month ago	5 (5.4%)
Last 2 weeks	4 (4.3%)
Incomplete Data	5 (5.4%)

* Chronic Migraine: At least 15 headache days and at least 8 migraine days per month

23 UCSD November 20, 2020-November 4, 2022 with follow-up completed February 23, 2023. A headache
 24 neurologist experienced in ICHD-3 criteria (NMS) confirmed participant eligibility.

25
 26 After written informed consent, baseline characteristics were captured using REDCap²⁷. Then participants
 27 were trained in the Foltin Uniform Puff Procedure (FUPP), a validated cannabis vaporization procedure,

1 and a smartphone application was installed on participants' smartphones to guide participants through the
2 study and collect data²⁸.

3

4 *Randomization*

5 A research pharmacist randomized participants to receive the 4 different treatments using simple 1:1:1:1
6 assignment (24 possible orders) using Microsoft Excel's random number function.

7

8 *Blinding*

9 Participants, research coordinators, investigators, and statisticians were blinded until after the initial
10 statistical analysis was completed; only the research pharmacists were unblinded during the study. The
11 four treatments were prepared into identical Storz & Bickel Filling Set vaporization capsules by a research
12 pharmacist and placed into sealed bags. Labels were affixed to the sealed bags stating the order in which
13 the participant would use the four treatments ("Migraine 1" through "Migraine 4"). The key linking the
14 treatments to their identifying number was stored on a password-protected computer in the locked
15 pharmacy available only to the research pharmacists.

16

17 Participant blinding was promoted by using placebo cannabis flower from which the THC and CBD had
18 been extracted via a chemical process by the NIDA DSP and by framing, including educating patients that
19 they might experience a "placebo high" from the CBD-dominant and placebo treatments and that they
20 might not experience a "high" from the THC-dominant and THC+CBD treatments as the study potencies
21 were lower than "recreational" potencies. Each attack, after answering 2-hour efficacy and safety
22 questions, participants were asked which treatment they thought they received.

23

24 *Treatments*

25 Upon each migraine attack onset, the participant accessed the smartphone application. If ≥ 7 days had
26 elapsed since the prior cannabis administration (ensuring ≥ 7 days washout period between cannabis
27 administrations) the application asked the participant questions to establish whether the attack met
28 treatment criteria of: 1) headache < 4 hours from onset, 2) headache pain moderate or severe in intensity,

1 3) associated with photophobia and phonophobia and/or with nausea, 4) no acute treatments used since
2 attack onset. If the attack met all criteria, the application instructed the participant to vaporize study
3 cannabis at 180° Celsius and guided the participant through the timed FUPP to standardize vaporization
4 procedure across treated attacks and across participants. FUPP consists of five seconds of inhalation,
5 followed by a ten second breath hold, exhalation, and 45 second waiting period before repeating the
6 process²⁸. Each attack, participants performed the FUPP 4 times under continuous application guidance.
7 The application pushed surveys at 1, 2, 24 and 48 hours.

8

9 *Outcomes*

10 Outcomes were based on International Headache Society (IHS) guidelines²⁹. Primary outcome was pain
11 relief at 2 hours post-vaporization²⁹ based on the limited supporting evidence at study initiation¹⁸.
12 Secondary outcomes were 2-hour pain freedom and 2-hour most bothersome symptom (MBS) freedom²⁹.
13 Other outcomes included freedom from pain, photophobia, phonophobia, nausea, and vomiting, and
14 rescue medication use, with data collected at 1, 2, 24 and 48 hours²⁹. Pain at time 0 and each
15 subsequent timepoint was reported as none, mild, moderate or severe²⁹. Pain relief was defined as
16 reduction of pain from moderate or severe to mild or none²⁹. Pain freedom was defined as absence of
17 pain. Sustained pain freedom was defined as pain freedom at 2 hours without return of pain or rescue
18 medication use²⁹. MBS (selected from photophobia, phonophobia, or nausea) was identified by the
19 participant during each attack prior to vaporization; MBS freedom was defined as absence of the MBS at
20 each subsequent timepoint. Sustained MBS freedom was defined as MBS freedom at 2 hours without
21 return of the MBS or rescue medication use at each subsequent timepoint²⁹. All outcomes presented
22 here were prospectively registered (NCT04360044).

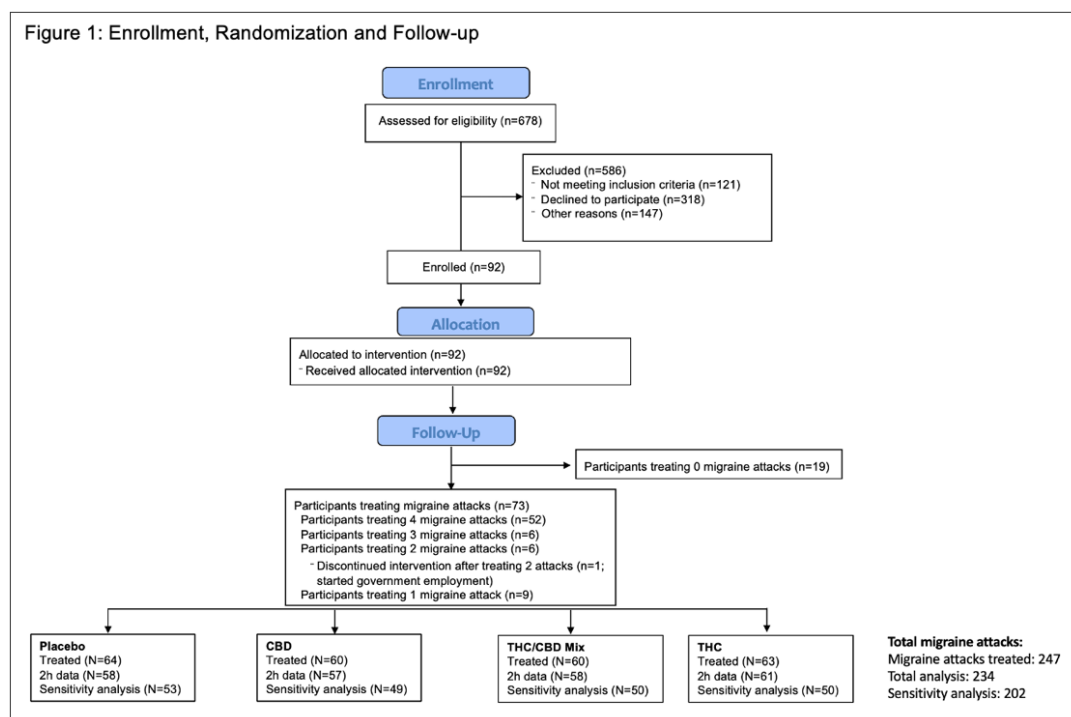
23

24 *Analyses*

25 The intention-to-treat (ITT) analysis analyzed all treated migraine attacks, counting treated attacks without
26 recorded 2-hour data as treatment failures as per IHS guidelines²⁹. The modified intention-to-treat
27 analysis (mITT) only analyzed attacks with recorded 2-hour data. During the trial, some subjects filled out
28 surveys early or late. We performed a sensitivity analysis analyzing only attacks with 2-hour data time

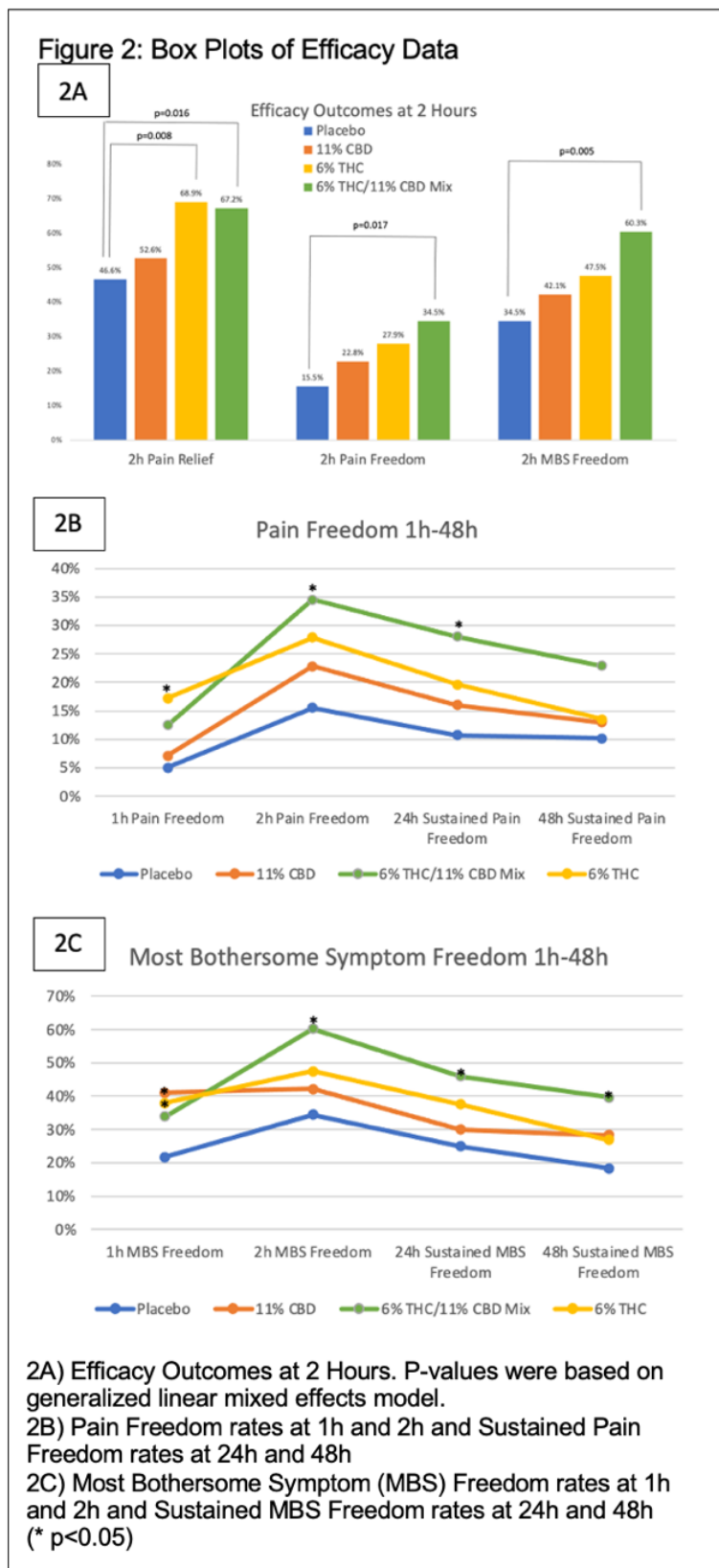
1 stamped 1.5-3 hours post-vaporization, a time window selected to retain as much data as possible
 2 without increasing possible exposure to retention bias³⁰⁻³². As per IHS guidelines, for all analyses, attacks
 3 for which the participant used rescue medication before the 2-hour assessment were counted as
 4 treatment failures²⁹. The differences in pain relief, pain freedom, and MBS freedom among the four
 5 treatments were assessed using a generalized linear mixed effects model with a logit link for binary
 6 outcomes. A random intercept structure was included to account for the cluster effect of subjects going
 7 through the same trial multiple times. Secondary and other analyses at 1, 24, and 48 hours were
 8 conducted using similar methods. Statistical analyses were performed using RStudio, version 4.1.2 (R
 9 Foundation). All tests were two-sided with $p < 0.05$ indicating statistical significance.

10
 11 **Results**
 12 678 people were
 13 screened for
 14 eligibility, of whom
 15 92 were enrolled
 16 (Figure 1).
 17 Participants had a
 18 median age of 41,
 19 and 82.6% were
 20 female (Table 1).



22 The ITT analysis included all 247 migraine attacks treated with vaporized cannabis from 73 participants.
 23 The mITT analysis included 234 attacks from 71 patients. The sensitivity analysis included 202 attacks

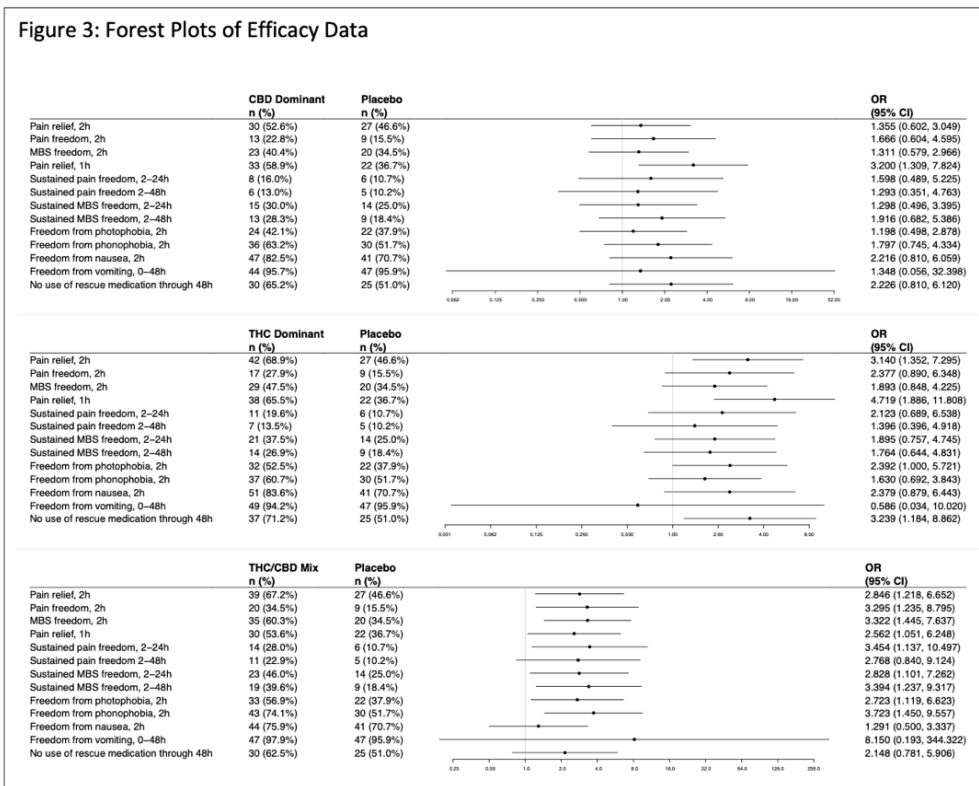
1 from 70 patients (Figure 1). The results
 2 were similar across the ITT, mITT, and
 3 sensitivity analyses for the primary
 4 endpoint of 2-hour pain relief and
 5 secondary endpoints of 2-hour pain
 6 freedom and 2-hour MBS freedom.
 7 Where not otherwise specified, mITT
 8 results are reported as they neither used
 9 imputed data (as in the ITT) nor
 10 excluded data (as in the sensitivity
 11 analysis).
 12
 13 For the primary outcome of 2-hour pain
 14 relief, THC+CBD and THC-dominant
 15 were superior to placebo but CBD-
 16 dominant was not in all 3 analyses. In
 17 the ITT analysis, 2-hour pain relief
 18 responder rates were 63.9% with
 19 THC+CBD, 67.7% with THC-dominant,
 20 50% with CBD-dominant, and 42.2%
 21 with placebo. In the mITT analysis, 2-
 22 hour pain relief was achieved by 67.2%
 23 with THC+CBD (OR [95%] 2.85 [1.22-
 24 6.65], $p=0.016$), 68.9% with THC-
 25 dominant (3.140 [1.35-7.30], $p=0.008$),
 26 52.6% with CBD-dominant ($p>0.05$), and
 27 46.6% with placebo (Figures 2 and 3). In
 28 the sensitivity analysis; 2-hour pain relief



1 responder rates were 64.0% with THC+CBD, 70.0% with THC-dominant, 53.1% with CBD-dominant, and
 2 45.3% with placebo.

3
 4 For the secondary outcomes, THC+CBD was superior to placebo in all 3 analyses for 2-hour pain
 5 freedom (mITT 34.5% vs. 15.5%, 3.30 [1.24-8.80], $p=0.017$) and 2-hour MBS freedom (mITT 60.3% vs.
 6 34.5%, 3.32 [1.45-7.64], $p=0.005$) but THC-dominant and CBD-dominant were not (Figures 2 and 3).

7 Adjusting for
 8 treatment
 9 session number
 10 did not affect the
 11 results of the
 12 primary or
 13 secondary
 14 outcomes.
 15
 16 THC+CBD was
 17 superior to
 18 placebo at 2
 19 hours with



20 regards to freedom from photophobia and phonophobia but not nausea or vomiting, while THC-dominant
 21 and CBD-dominant were not superior to placebo for any of these (Figure 3).

22
 23 At 1 hour, pain relief responder rate for THC+CBD (53.6%, 2.56 [1.05-6.25], $p=0.039$), THC-dominant
 24 (65.5%, 4.72 [1.89-11.81], $p<0.001$), and CBD-dominant (58.9%, 3.20 [1.31-7.82], $p=0.011$) were all
 25 superior to 36.7% responder rate with placebo. 1-hour pain freedom was superior only for THC-dominant
 26 vs. placebo (17.2% vs 5.0%, 4.90 [1.12-21.34], $p=0.034$), and 1-hour MBS freedom was superior for
 27 THC-dominant (37.9%, 2.68 [1.06-6.79], $p=0.038$) and CBD-dominant (41.1%, 3.10 [1.21-7.91], $p=0.018$)
 28 but not for THC+CBD (33.9% vs., 2.19 [0.85-5.64], $p=0.103$) vs. placebo (21.7%).

1
 2 Only THC+CBD had superior sustained benefit versus placebo (Figures 2 and 3). THC+CBD was
 3 superior to placebo regarding 24-hour sustained pain freedom (28.0% vs. 10.7%, 3.45 [1.14-10.50],
 4 $p=0.029$), 24-hour sustained MBS freedom (46.0% vs. 25.0%, 2.83 [1.10-7.26], $p=0.031$), and 48-hour
 5 sustained MBS freedom (39.6% vs. 18.4%, 3.39 [1.24-9.32], $p=0.018$) but the difference for 48-hour
 6 sustained pain freedom was non-significant (22.9% vs 10.2%, 2.77 [0.84-9.12], $p=0.094$). THC-dominant
 7 and CBD-dominant were not different from placebo regarding 24- or 48-hour sustained pain freedom or
 8 sustained MBS freedom.

9 Adverse events are reported in
 10 Table 2. Mean subjective
 11 highness on a 0-10 scale at 1
 12 hour was greatest with THC-
 13 dominant at 3.5 (SD 3.0),
 14 followed by 2.4 (SD 2.5) with
 15 THC+CBD, 1.5 (SD 2.0) with
 16 CBD-dominant, and 0.6 (SD
 17 1.20) with placebo. At 2 hours
 18 subjective highness was
 19 reduced to 2.4 (SD 2.8) with
 20 THC-dominant, 1.3 (SD 1.9)
 21 with THC+CBD, 0.9 (SD 1.6)
 22 with CBD-dominant, and 0.4
 23 (SD 1.0) with placebo. THC-
 24 dominant had the greatest
 25 euphoria, cognitive impairment
 26 and subjective highness,
 27 followed by THC+CBD, then

Table 2: Adverse Events

2A	Placebo	CBD	THC+CBD	THC
1 Hour (N)	N=60	N=56	N=56	N=58
Sleepiness	16 (26.7%)	21 (37.5%)	25 (44.6%)	24 (41.4%)
Euphoria	4 (7%)	5 (8.9%)	16 (28.6%)	21 (36.2%)
Cognitive Impairment	4 (7%)	8 (14.3%)	12 (21.4%)	20 (34.5%)
Highness (0-10) Mean (SD)	0.6 (1.2)	1.5 (2.0)	2.4 (2.5)	3.5 (3.0)
2 Hours (N)	N=58	N=57	N=58	N=61
Sleepiness	22 (37.9%)	29 (50.9%)	18 (31.0%)	26 (42.6%)
Euphoria	1 (1.7%)	2 (3.5%)	6 (10.3%)	17 (27.9%)
Cognitive Impairment	3 (5.2%)	4 (7.0%)	7 (12.1%)	17 (26.2%)
Highness (0-10) Mean (SD)	0.4 (1.0)	0.9 (1.6)	1.3 (1.9)	2.4 (2.8)

2B	Placebo	CBD	THC+CBD	THC
Participants reporting any adverse events	3/60 (5.0%)	11/56 (19.6%)	11/56 (19.6%)	18/58 (31.0%)
Adverse events reported at 1 hour	0	7	12	13
Sedation	0	2	3	0
Slowness	0	1	0	4
Paresthesias	0	0	1	2
Throat irritation	0	3	2	0
Increased appetite	0	2	1	1
Impaired cognition	0	0	2	1
Very high	0	0	0	1
Impaired focus	0	0	2	2
Dizziness	0	0	0	2
Dry mouth	0	2	1	0
Adverse events reported by ≥1% of participants at 2 hours	3/58 (5.2%)	4/57 (7.0%)	4/58 (6.9%)	11/61 (18.0%)
Sedation	0	3	2	2
Impaired focus	1	0	0	1
Slowness	0	0	0	3
Dizziness	0	0	2	2
Throat irritation	0	1	1	0
Dry mouth	2	0	1	0
Paresthesias	0	0	0	1
Increased appetite	0	0	0	1
Impaired cognition	0	0	1	1
Very high	0	0	0	0

Table 2A) Rates of queried adverse events
 Table 2B) Categorized free response adverse events

1 CBD-dominant, and least with placebo. Across all 4 treatments there were no serious adverse events
2 (Table 2).

3
4 Regarding blinding, correct identification of treatment at 2 hours was 29.3% (17/58) with placebo, 10.5%
5 (6/57) with CBD-dominant, 13.1% (8/61) with THC-dominant, and 20.7% (12/58) with THC+CBD.

6 Participants selected “unknown” 24% of the time; 28% of the time with placebo, 26% with CBD-dominant,
7 22% with THC+ CBD, and 21% with THC-dominant. While 50% of treatments could have contained THC
8 (THC-dominant or THC+CBD) and in this study 50.9% (119/234) treatments contained THC, participants
9 correctly identified that a treatment contained THC (selecting “THC-dominant”, “THC+CBD”, or “Either
10 THC-dominant or THC+CBD”) slightly less than expected by chance, 46.6% (27/58) of the time after
11 THC+CBD treatment and 49.2% (30/61) after THC-dominant treatment. Meanwhile, 32% of participants
12 selected a THC-containing answer after treatment with CBD-dominant and 14% after treatment with
13 placebo.

14

15 **Discussion**

16

17 In this study, the first randomized, double-blind, placebo-controlled trial testing the efficacy of
18 cannabinoids for acute migraine, 6% THC+11% CBD was superior to placebo for pain relief, pain freedom
19 and MBS at 2 hours, as well as freedom from photophobia and phonophobia at 2 hours and 24-hour
20 sustained pain freedom and sustained MBS freedom and 48-hour sustained MBS freedom.

21

22 THC potencies (6%) were lower than typical with cannabis available via American dispensaries and
23 subjective highness (2.4 out of 10 at 1 hour) with THC+CBD was roughly half of that reported by research
24 participants using cannabis ad lib³³, bolstering evidence that higher potencies and titrating to highness
25 are unnecessary for medicinal benefit. THC+CBD had less euphoria, subjective cognitive impairment, and
26 subjective highness than THC-dominant. CBD is reported to be a non-competitive, negative allosteric
27 modulator of the CB1 receptor, by which CBD may decrease the psychoactive effects of THC^{34–36}.

28

1 The blinding data, as well as THC+CBD having more acute migraine benefit with less psychoactive
2 effects as compared to THC-dominant, suggests that this study's findings are not explainable by
3 expectation effects or unmasking due to psychoactive side effects.

4
5 THC+CBD's efficacy for reducing photophobia and phonophobia but not nausea in this study may be in
6 part explainable by lower time 0 rates of nausea (59.9%) than photophobia (91.9%) and phonophobia
7 (87.0%) in this study. That THC+CBD reduced photophobia and phonophobia but not nausea or vomiting
8 in this study demonstrates that THC+CBD's effects on MBS are not explainable by THC's established
9 antiemetic effects³⁷ (Figure 3).

10
11 Strengths of the study include generalizability by enrolling patients with both episodic (72.5%) and chronic
12 (27.5%) migraine to best reflect the larger patient population; historically most acute migraine studies
13 have excluded patients with chronic migraine. Limitations of this study include that the study only
14 examined THC and CBD; minor cannabinoids and terpenes were not studied. It also only studied single
15 potencies of THC of CBD and a single THC:CBD ratio.

16
17 Typical of acute migraine RCTs, this study did not assess repeated administrations or regular, long-term
18 treatments to assess possible risks (including rates of development of medication overuse headache and
19 cannabis use disorder) or benefits (including possible migraine preventive effects)^{29,38}. A small body of
20 literature shows improvements on patient reported outcomes when using cannabis-based medicinal
21 products on a regular, longer term or preventive basis^{20,39}. More research is needed to evaluate repeated
22 administrations and regular, long-term use of cannabinoids for migraine.

23 24 **Conclusion**

25
26 In this first randomized, double-blind, placebo-controlled trial testing the efficacy of cannabinoids for the
27 acute treatment of migraine, vaporized 6% THC+11% CBD cannabis flower was superior to placebo for
28 pain relief, pain freedom, and MBS freedom at 2 hours as well as 24-hour sustained pain freedom and

1 sustained MBS freedom and 48-hour sustained MBS freedom. Future research should include
2 multicenter studies and long-term studies of benefits and risks with repeated use.

3

4 **Acknowledgements**

5 This study was sponsored by the Migraine Research Foundation, now administered by Hartford
6 HealthCare. The project described was partially supported by the UCSD Academic Senate and the
7 National Institutes of Health, Grant UL1TR001442. The content is solely the responsibility of the authors
8 and does not necessarily represent the official views of the NIH. Study drug was provided by the National
9 Institute on Drug Abuse Drug Supply Program. The authors thank the National Institute on Drug Abuse
10 Drug Supply Program and the National Center for Natural Products Research at the University of
11 Mississippi School of Pharmacy. Vaporizers were donated by Storz & Bickel GmbH & Co. KG, which did
12 not provide any financial support of this study and was not involved in the design or conduct of the study
13 or manuscript preparation. Thanks to Dr. Brooke Towne, MD, Phirum Nguyen, Gayle Dizon, Jay Patel,
14 Brett Taylor, and Megan Sweeney for assistance with conducting this study. Thank you to all the
15 participants who volunteered for this study.

16

17 **References**

- 18 1. Safiri S, Pourfathi H, Eagan A, et al. Global, regional, and national burden of migraine in 204
19 countries and territories, 1990 to 2019. *Pain*. 2022;163(2):E293-E309.
20 doi:10.1097/J.PAIN.0000000000002275
- 21 2. Ailani J, Burch RC, Matthew J, Robbins S. The American Headache Society Consensus
22 Statement: Update on integrating new migraine treatments into clinical practice. *Headache*.
23 2021;61:1021-1039. doi:10.1111/head.14153
- 24 3. Serrano D, Buse DC, Manack Adams A, Reed ML, Lipton RB. Acute treatment optimization in
25 episodic and chronic migraine: results of the American Migraine Prevalence and Prevention
26 (AMPP) Study. *Headache*. 2015;55(4):502-518. doi:10.1111/HEAD.12553
- 27 4. Holland S, Fanning KM, Serrano D, Buse DC, Reed ML, Lipton RB. Rates and reasons for
28 discontinuation of triptans and opioids in episodic migraine: Results from the American Migraine

- 1 Prevalence and Prevention (AMPP) study. *J Neurol Sci.* 2013;326(1-2):10-17.
- 2 doi:10.1016/J.JNS.2012.12.020
- 3 5. Sexton M, Cuttler C, Finnell JS, Mischley LK. A Cross-Sectional Survey of Medical Cannabis
- 4 Users: Patterns of Use and Perceived Efficacy. *Cannabis Cannabinoid Res.* 2016;1(1):131-138.
- 5 doi:10.1089/can.2016.0007
- 6 6. Gorelick DA. Cannabis-Related Disorders and Toxic Effects. Hardin CC, ed. *N Engl J Med.*
- 7 2023;389(24):2267-2275. doi:10.1056/NEJMra2212152
- 8 7. Poudel S, Quinonez J, Choudhari J, et al. Medical Cannabis, Headaches, and Migraines: A
- 9 Review of the Current Literature. *Cureus.* 2021;13(8). doi:10.7759/CUREUS.17407
- 10 8. Akerman S, Kaube H, Goadsby PJ. Anandamide is able to inhibit trigeminal neurons using an in
- 11 vivo model of trigeminovascular-mediated nociception. *J Pharmacol Exp Ther.* 2004;309(1):56-63.
- 12 doi:10.1124/jpet.103.059808
- 13 9. Akerman S, Holland PR, Goadsby PJ. Cannabinoid (CB1) receptor activation inhibits
- 14 trigeminovascular neurons. *J Pharmacol Exp Ther.* 2007;320(1):64-71.
- 15 doi:10.1124/jpet.106.106971
- 16 10. Baron EP. Comprehensive review of medicinal marijuana, cannabinoids, and therapeutic
- 17 implications in medicine and headache: What a long strange trip it's been ... *Headache.*
- 18 2015;55(6):885-916. doi:10.1111/head.12570
- 19 11. Baron EP. Medicinal Properties of Cannabinoids, Terpenes, and Flavonoids in Cannabis, and
- 20 Benefits in Migraine, Headache, and Pain: An Update on Current Evidence and Cannabis
- 21 Science. *Headache.* 2018;58(7):1139-1186. doi:10.1111/head.13345
- 22 12. McGeeney BE. Cannabinoids and hallucinogens for headache. *Headache.* 2013;53(3):447-458.
- 23 doi:10.1111/head.12025
- 24 13. Akerman S, Holland PR, Lasalandra MP, Goadsby PJ. Endocannabinoids in the Brainstem
- 25 Modulate Dural Trigeminal Nociceptive Traffic via CB1 and "Triptan" Receptors:
- 26 Implications in Migraine. *J Neurosci.* 2013;33(37):14869-14877. doi:10.1523/JNEUROSCI.0943-
- 27 13.2013
- 28 14. Kazemi H, Rahgozar M, Speckmann E-J, Gorji A. Effect of cannabinoid receptor activation on

- 1 spreading depression. *Iran J Basic Med Sci.* 2012;15(4):926-936.
- 2 <http://www.ncbi.nlm.nih.gov/pubmed/23493641><http://www.pubmedcentral.nih.gov/articlerend>
- 3 [er.fcgi?artid=PMC3586901](http://www.ncbi.nlm.nih.gov/pubmed/23493641).
- 4 15. Aviram J, Vysotski Y, Berman P, Lewitus GM, Eisenberg E, Meiri D. Migraine Frequency
- 5 Decrease Following Prolonged Medical Cannabis Treatment: A Cross-Sectional Study. *Brain Sci.*
- 6 2020;10(6):1-15. doi:10.3390/BRAINSC110060360
- 7 16. Stith S, Diviant J, Brockelman F, et al. Alleviative effects of Cannabis flower on migraine and
- 8 headache. *J Integr Med.* 2020;18(5):416-424. doi:10.1016/J.JOIM.2020.07.004
- 9 17. Baraldi C, Lo Castro F, Negro A, et al. Oral Cannabinoid Preparations for the Treatment of
- 10 Chronic Migraine: A Retrospective Study. *Pain Med.* 2022;23(2):396-402.
- 11 doi:10.1093/pm/pnab245
- 12 18. Rhyne DN, Anderson SL, Gedde M, Borgelt LM. Effects of Medical Marijuana on Migraine
- 13 Headache Frequency in an Adult Population. *Pharmacotherapy.* 2016;36(5):505-510.
- 14 doi:10.1002/phar.1673
- 15 19. Cuttler C, Spradlin A, Cleveland MJ, Craft RM. Short- and Long-Term Effects of Cannabis on
- 16 Headache and Migraine. *J pain.* 2020;21(5-6):722-730. doi:10.1016/j.jpain.2019.11.001
- 17 20. Nicholas M, Erridge S, Bapir L, et al. UK medical cannabis registry: assessment of clinical
- 18 outcomes in patients with headache disorders. *Expert Rev Neurother.* 2023;23(1):85-96.
- 19 doi:10.1080/14737175.2023.2174017
- 20 21. Lochte BC, Beletsky A, Samuel NK, Grant I. The Use of Cannabis for Headache Disorders.
- 21 *Cannabis Cannabinoid Res.* 2017;2(1):61-71. doi:10.1089/can.2016.0033
- 22 22. Cady RK, McAllister PJ, Spierings EL, et al. A Randomized, Double-Blind, Placebo-Controlled
- 23 Study of Breath Powered Nasal Delivery of Sumatriptan Powder (AVP-825) in the Treatment of
- 24 Acute Migraine (The TARGET Study). *Headache.* 2015;55(1):88-100. doi:10.1111/head.12472
- 25 23. Wallace M, Schulteis G, Atkinson JH, et al. Dose-dependent Effects of Smoked Cannabis on
- 26 Capsaicin- induced Pain and Hyperalgesia in Healthy Volunteers. *Anesthesiology.*
- 27 2007;107(5):785-796.
- 28 24. Wallace MS, Marcotte TD, Umlauf A, Gouaux B, Atkinson JH. Efficacy of Inhaled Cannabis on

- 1 Painful Diabetic Neuropathy. *J Pain*. 2015;16(7):616-627. doi:10.1016/j.jpain.2015.03.008
- 2 25. Wallace MS, Marcotte TD, Atkinson JH, Padovano HT, Bonn-Miller M. A Secondary Analysis from
3 a Randomized Trial on the Effect of Plasma Tetrahydrocannabinol Levels on Pain Reduction in
4 Painful Diabetic Peripheral Neuropathy. *J pain*. 2020;21(11-12):1175-1186.
5 doi:10.1016/j.jpain.2020.03.003
- 6 26. Headache Classification Committee of the International Headache Society. The International
7 Classification of Headache Disorders, 3rd edition. *Cephalalgia*. 2018.
8 doi:10.1177/0333102417738202
- 9 27. Obeid JS, McGraw CA, Minor BL, et al. Procurement of shared data instruments for Research
10 Electronic Data Capture (REDCap). *J Biomed Inform*. 2013;46(2):259-265.
11 doi:10.1016/J.JBI.2012.10.006
- 12 28. Foltin RW, Brady J V., Fischman MW. Behavioral analysis of marijuana effects on food intake in
13 humans. *Pharmacol Biochem Behav*. 1986;25(3):577-582. doi:10.1016/0091-3057(86)90144-9
- 14 29. Diener HC, Tassorelli C, Dodick DW, et al. Guidelines of the International Headache Society for
15 controlled trials of acute treatment of migraine attacks in adults: Fourth edition. *Cephalalgia*.
16 2019;39(6):687-710. doi:10.1177/0333102419828967
- 17 30. Ware JH, Harrington D, Hunter DJ, D'Agostino RB. Missing Data. *N Engl J Med*.
18 2012;367(14):1353-1354. doi:10.1056/NEJMs1210043
- 19 31. Thabane L, Mbuagbaw L, Zhang S, et al. A tutorial on sensitivity analyses in clinical trials: the
20 what, why, when and how. *BMC Med Res Methodol*. 2013;13:92. doi:10.1186/1471-2288-13-92
- 21 32. Cro S, Morris TP, Kenward MG, Carpenter JR. Sensitivity analysis for clinical trials with missing
22 continuous outcome data using controlled multiple imputation: A practical guide. *Stat Med*.
23 2020;39(21):2815-2842. doi:10.1002/sim.8569
- 24 33. Marcotte TD, Umlauf A, Grelotti DJ, et al. Driving Performance and Cannabis Users' Perception of
25 Safety: A Randomized Clinical Trial. *JAMA psychiatry*. 2022;79(3):201-209.
26 doi:10.1001/jamapsychiatry.2021.4037
- 27 34. Laprairie RB, Bagher AM, Kelly MEM, Denovan-Wright EM. Cannabidiol is a negative allosteric
28 modulator of the cannabinoid CB1 receptor. *Br J Pharmacol*. 2015;172(20):4790-4805.

- 1 doi:10.1111/bph.13250
- 2 35. Pertwee RG, Ross RA, Craib SJ, Thomas A. (-)-Cannabidiol antagonizes cannabinoid receptor
3 agonists and noradrenaline in the mouse vas deferens. *Eur J Pharmacol.* 2002;456(1-3):99-106.
4 doi:10.1016/s0014-2999(02)02624-9
- 5 36. Schubart CD, Sommer IEC, van Gastel WA, Goetgebuer RL, Kahn RS, Boks MPM. Cannabis with
6 high cannabidiol content is associated with fewer psychotic experiences. *Schizophr Res.*
7 2011;130(1-3):216-221. doi:10.1016/j.schres.2011.04.017
- 8 37. Sallan SE, Zinberg NE, Frei E. Antiemetic Effect of Delta-9-Tetrahydrocannabinol in Patients
9 Receiving Cancer Chemotherapy. *N Engl J Med.* 1975;293(16):795-797.
10 doi:10.1056/NEJM197510162931603
- 11 38. U.S. Department of Health and Human Services: Food and Drug Administration. *Migraine:
12 Developing Drugs for Acute Treatment- Guidance for Industry.*; 2018.
13 <https://www.fda.gov/downloads/drugs/guidances/ucm419465.pdf>.
- 14 39. Okusanya BO, Lott BE, Ehiri J, McClelland J, Rosales C. Medical Cannabis for the Treatment of
15 Migraine in Adults: A Review of the Evidence. *Front Neurol.* 2022;13:871187.
16 doi:10.3389/FNEUR.2022.871187/FULL
- 17