

1 **Serologic evidence for early SARS-CoV-2 circulation in Lima, Peru, 2020.**

2

3 Andres Moreira-Soto\*<sup>1,2</sup>, Maria Paquita García<sup>3\*</sup>, Gloria Arotinco-Garayar<sup>3</sup>, Dana  
4 Figueroa-Romero<sup>3</sup>, Nancy Merino-Sarmiento<sup>3</sup>, Adolfo Marcelo-Ñique<sup>3</sup>, Edward  
5 Málaga-Trillo<sup>4</sup>, César Cabezas Sanchez<sup>3</sup> and Jan Felix Drexler<sup>1,5#</sup>

6

7 <sup>1</sup>Charité-Universitätsmedizin Berlin, corporate member of Freie Universität Berlin,  
8 Humboldt-Universität zu Berlin, Institute of Virology, Berlin, Germany

9 <sup>2</sup>Tropical Disease Research Program, School of Veterinary Medicine, Universidad  
10 Nacional, Costa Rica, Costa Rica

11 <sup>3</sup>National Institute of Health–INS (Instituto Nacional de Salud–INS), Lima, Peru

12 <sup>4</sup>Universidad Peruana Cayetano Heredia, Facultad de Ciencias y Filosofía,  
13 Laboratorios de Investigación y Desarrollo, Lima, Perú

14 <sup>5</sup>German Centre for Infection Research (DZIF), associated partner Charité-  
15 Universitätsmedizin Berlin, Berlin, Germany

16 \*These first authors contributed equally

17 #corresponding author

18 Correspondence: Professor Dr. Jan Felix Drexler, Institute of Virology, Charitéplatz 1,  
19 10117 Berlin, Germany, Tel.: +49 30 450 625461/Fax: +49 30 450 7525907,  
20 felix.drexler@charite.de

21

22 Running Title:

23 Dissemination of SARS-CoV-2 in Peru, early 2020

24

25 Keywords:

26 SARS-CoV-2, COVID-19, Peru, pandemic, Latin America, serology, antibodies

27

28 **Abstract**

29 During early 2021, Peru had the highest COVID-19-associated per-capita mortality  
30 rate globally. Socioeconomic inequality and insufficiently prepared healthcare and  
31 surveillance systems likely contributed to high mortality, potentially coupled with early  
32 SARS-CoV-2 introduction. We tested 1,441 individuals with fever sampled during  
33 August 2019-May 2021 in Lima, Peru, for SARS-CoV-2-specific antibodies. Serologic  
34 testing included a chemiluminescence immunoassay and confirmatory surrogate  
35 virus neutralization testing. Early positive samples (n=24) from January-March 2020  
36 were further tested using a plaque-reduction neutralization and avidity tests based on  
37 SARS-CoV-2 spike and nucleoprotein antigens. None of the early samples were  
38 PRNT-confirmed, in contrast to 81.8% (18/22) of a subsample from April 2020  
39 onwards (Fischer-exact test,  $p < 0.0001$ ). SARS-CoV-2 antibody detection rate was  
40 0.9% in mid-April 2020 (1/104; 95% confidence interval (CI), 0.1-5.8%), suggesting  
41 onset of viral circulation in early-mid March 2020, consistent with the first molecular  
42 detection of SARS-CoV-2 in Peru on March 6th. Mean avidity increase of 62-77% to  
43 81-94% from all PRNT-confirmed samples during early 2020, were consistent with  
44 onset of SARS-CoV-2 circulation during late February/March 2020. Early circulation  
45 of SARS-CoV-2 was confirmed in a Susceptible, Exposed, Infected and Recovered  
46 mathematical model that projected an effective reproduction number  $> 1$ , during  
47 February-March 2020. Robust serologic testing thus confirmed that early SARS-CoV-  
48 2 introduction contributed to high COVID-19 mortality in Peru. Emphasizing the role  
49 of diagnostic confirmation, our study highlights the importance of early detection and  
50 accurate testing in managing infectious disease outbreaks.

51

52

## 53 **Importance**

54 Latin America was hard hit by the COVID-19 pandemic. Reasons include inadequate  
55 healthcare preparation and socio-economic vulnerabilities, likely exacerbated by  
56 early undetected SARS-CoV-2 circulation. Diagnostic testing for early SARS-CoV-2  
57 circulation requires exhaustive diagnostic validation due to unspecific reactivity. We  
58 used a cohort of circa 1400 febrile patients from August 2019 until May 2021, months  
59 earlier than the first seroprevalence study in Lima, Peru, using a two-step diagnostic  
60 algorithm. Early 2020 positive samples were further tested with neutralization tests  
61 and avidity testing. We confirmed SARS-CoV-2-specific antibodies from April 2020  
62 onwards, suggesting undetected viral circulation circa March 2020, consistent with  
63 the first SARS-CoV-2-detection. Early circulation was further confirmed by the  
64 significant increase in avidity in positive samples during early 2020 and the modeled  
65 peak of reproduction number of  $>1$  during February-March 2020. Using exhaustive  
66 diagnostic validation, we detected early SARS-CoV-2 circulation that likely  
67 contributed to the severe impact of COVID-19 in Peru.

68

69 The first cases of COVID-19 were detected in China in mid-December 2019, followed  
70 by detections elsewhere in Asia and North America during January 2020 and in  
71 Europe during February 2020 (1). The first COVID-19 case in Latin America was  
72 detected in Brazil on February 26th, 2020 (1) . Despite hosting only 8.5% of the  
73 world's population, Latin America accounted for 30% of COVID-19 deaths worldwide  
74 (2). Within Latin America, Peru had the highest per-capita mortality rate both  
75 regionally and globally (1, 3). Tentative explanations for the high Peruvian mortality  
76 rate have included poorly prepared healthcare systems, genetic predisposition,  
77 comorbidities, social inequality and poverty, difficulties following quarantine  
78 measures, frequent informal labour, and lack of surveillance systems leading to  
79 inaccurate mortality estimates (4). Early SARS-CoV-2 circulation might be a  
80 contributing factor to high mortality in Peru.

81 We investigated SARS-CoV-2-specific IgG antibodies in 1,441 individuals with acute  
82 febrile illness investigated between August 2019-May 2021 in the capital city of Lima  
83 (**Figure 1A**) by the Peruvian reference laboratory, allowing retrospective analyses  
84 several months prior to the first seroprevalence study available from Lima conducted  
85 April 2020 (5). The subpopulation consisted of 49.8% females and 50.1% males, with  
86 a mean age of 33.7 years and a standard deviation of 20.3 years, comparable to  
87 census data from Lima (48.6% males and 51.4% females; mean age=26)  
88 (<https://censo2017.inei.gob.pe/>).

89 Approximately 50% of Peruvian seroprevalence studies have a high risk of bias due  
90 to the use of potentially non-specific diagnostic tests affected by co-circulating  
91 pathogens such as dengue virus (DENV) and *Plasmodium* (**Figure 1B**) (5-7). For  
92 confirmation, we used a 2-step testing algorithm including a chemiluminescence  
93 immunoassay (CLIA) (SARS-CoV-2 S-RBD IgG kit; Snibe Diagnostic, China), and  
94 confirmatory SARS-CoV-2 surrogate virus neutralization test (sVNT; GenScript,  
95 USA), both based on the partial SARS-CoV-2 receptor binding domain. Only samples  
96 positive in both assays were considered for further analyses to maximize specificity.  
97 Additionally, all positive sera from the first six months of 2020, a confirmatory plaque  
98 reduction neutralization test (PRNT) based on a 50% reduction in plaque count was  
99 performed at 1/8 serum dilution to allow detection of potentially low antibody titers (6).  
100 To differentiate between recent and pre-existing SARS-CoV-2 infections, the  
101 antibody-antigen binding affinity of SARS-CoV-2 IgG antibodies was determined by

102 conducting an avidity assay using SARS-CoV-2 spike (S1)- and nucleoprotein (NCP)-  
103 based IgG ELISAs (Euroimmun, Germany) with an additional 2M urea washing step  
104 between sample incubation and detection in one of the replicates.

105 Several seropositive individuals (n=24) in both CLIA and sVNT were found as early  
106 as January-March 2020 (**Figure 1C** and **1D**). These samples showed significantly  
107 lower CLIA and sVNT reactivity in comparison to samples from April 2020 onward  
108 (CLIA t-test=-6.4,  $p<0.001$ ; sVNT t-test=-10.9,  $p<0.001$ ) (**Figure 1C** and **1D**).  
109 Additionally, these samples showed a statistically higher mean S-based avidity of  
110 126.4% and lower NCP-based avidity of 11.0% compared to samples from April 2020  
111 onward (S t-test=2.4,  $p=0.01$ ; NCP t-test=-2.9,  $p=0.007$ ; **Figure 1E** and **1F**). High  
112 avidity to the S protein is reached 1-2 months after SARS-CoV-2 infection and is  
113 maintained for approximately 6-8 months (8, 9). High S-based avidity would thus  
114 suggest very early SARS-CoV-2 infection in patients sampled during January 2020,  
115 contrasting with calculated SARS-CoV-2 phylogenetic introduction estimates and the  
116 first SARS-CoV-2 molecular detections in Latin America dating from February 2020  
117 onwards (10). Since PRNT is the serological gold-standard, we further tested all  
118 SARS-CoV-2 seropositive samples from January-July 2020 (n=46) using PRNT.  
119 None of the early samples from January-March 2020 were PRNT-confirmed, in  
120 contrast to 81.8% (18/22) samples from April onwards (Fischer-exact test,  $p<0.0001$ ).  
121 However, a study that tested thousands of convalescent plasma samples using  
122 PRNT found that nearly one-third of confirmed SARS-CoV-2 patients that resolved  
123 infection had little to no neutralizing activity (11), regardless of when the samples  
124 were taken after their COVID-19 infection. Therefore, we cannot exclude that the  
125 PRNT-negative (n=5) CLIA, sVNT and S- NCP-high avidity patients in January-March  
126 2020 might have had a past SARS-CoV-2 infection (**Figure 1G**). Of note, no sera that  
127 were CLIA positive in 2019 were sVNT positive, suggesting that a minimum 2-step  
128 testing algorithm is needed for accurate SARS-CoV-2 serological diagnostics. As a  
129 conservative approach, we decided to exclude non-PRNT confirmed samples from  
130 January-March 2020 from subsequent analyses, because unspecific reactivity in  
131 CLIA and sVNT in those samples seemed the most plausible explanation.

132 Following diagnostic validation, the SARS-CoV-2 antibody detection rate was 0.9%  
133 during April 2020 (1/104; 95% confidence interval (CI), 0.1-5.8%). SARS-CoV-2  
134 antibody detection steadily increased reaching 9.7% (9/93; 95% CI: 5.0-17.8%) in

135 May 2020, reaching a mean of 35% (148/460; 95% CI: 28.0-36.6%) from June  
136 afterwards. Given that the mean detection time of SARS-CoV-2-specific IgG  
137 antibodies post-symptom onset is 20 days (13), a projected time of infection for the  
138 first PRNT-confirmed case could have occurred in early-middle March 2020 which is  
139 consistent with the first molecular detection of SARS-CoV-2 in Peru on March 6<sup>th</sup>  
140 (12), 2020 and genomic reconstructions of SARS-CoV-2 in Latin America (10).  
141 Avidity to the SARS-CoV-2 NCP and S protein in all PRNT-confirmed CLIA- and  
142 sVNT-positive samples from April to July 2020 was high and increased from a mean  
143 77 to 94% for NCP and from 62 to 81% for the S protein by June/July 2020 (NCP t-  
144 test=-0.66; p= 0.53; S t-test=-1.12; p= 0.29; **Figure 1E** and **1F**). Those avidity results  
145 were thus consistent with onset of SARS-CoV-2 circulation during late  
146 February/March 2020.

147 Onset of SARS-CoV-2 circulation during February/March in Peru was also in  
148 concordance with the increase in reported excess mortality peaking mid-March 2020  
149 (**Figure 2A** and **2B**). Stagnation of antibody detection rate during mid-2020 in our  
150 study was likely due to the strict non-pharmaceutical interventions (NPIs) in place  
151 since March 2020 and mounted population immunity after a high infection peak  
152 (**Figure 2B**) (14). Limited transmission is supported by a gradual decline in CLIA  
153 titers due to gradual decay of SARS-CoV-2 antibodies (15) during 2020 followed by a  
154 resurgence in early 2021 (**Figure 1D**), potentially due to the emergence of antigenic  
155 variants such as gamma during early 2021 (1). Notably, resurgence of CLIA titers  
156 paralleled an increase in excess mortality and reported COVID-19 cases during early  
157 2021 (**Figure 2A**).

158 Early viral circulation, stagnation, and resurgence of SARS-CoV-2 infections during  
159 early 2021 was confirmed using a Susceptible, Exposed, Infected and Recovered  
160 Bayesian model relying on reported cases and antibody detection data from our  
161 study (16). The model suggested peak virus circulation, with an effective reproduction  
162 number ( $R_{eff}$ )  $>1$ , during February-March 2020, one to two months before the  
163 reported peak incidence and mortality which is plausible given the delay in onset of  
164 diagnostics estimated at up to 5 days even in affluent settings (16). The model also  
165 reconstructed the decrease in virus circulation after July 2020 and increase during  
166 end of 2020 (**Figure 2C** and **2D**).

167 Our data suggest undetected onset of SARS-CoV-2 circulation in Lima during  
168 February-March 2020 homologous to other hard-hit Latin American COVID-19 hot  
169 spots; e.g., Brazil and Ecuador (1, 2). Considering the intense connectivity between  
170 Europe, USA and Peru, it is likely that SARS-CoV-2 circulated before the first case  
171 was officially reported.

172 Limitations of our study include the analysis of a cohort that is not representative of  
173 the general population. However, the unique cohort allowed to retrospectively trace  
174 SARS-CoV-2 over time during the onset of the pandemic. Another limitation is  
175 analysis of sera from febrile individuals whose acute disease may affect serologic  
176 diagnostics of SARS-CoV-2, including Malaria and dengue (6, 7). However, our  
177 exhaustive serologic analyses allowed robust detection of SARS-CoV-2-specific  
178 antibodies.

179 Our study suggests that early introduction and substantial circulation likely  
180 exacerbated the high COVID-19 associated mortality observed in Peru, irrespective  
181 of other effect modifiers. Our work emphasizes the complex SARS-CoV-2 serologic  
182 diagnostic confirmation in tropical settings, crucial in understanding the pandemic's  
183 trajectory, and highlights the importance of early detection and accurate testing in  
184 managing infectious disease outbreaks.

185

## 186 **Acknowledgments**

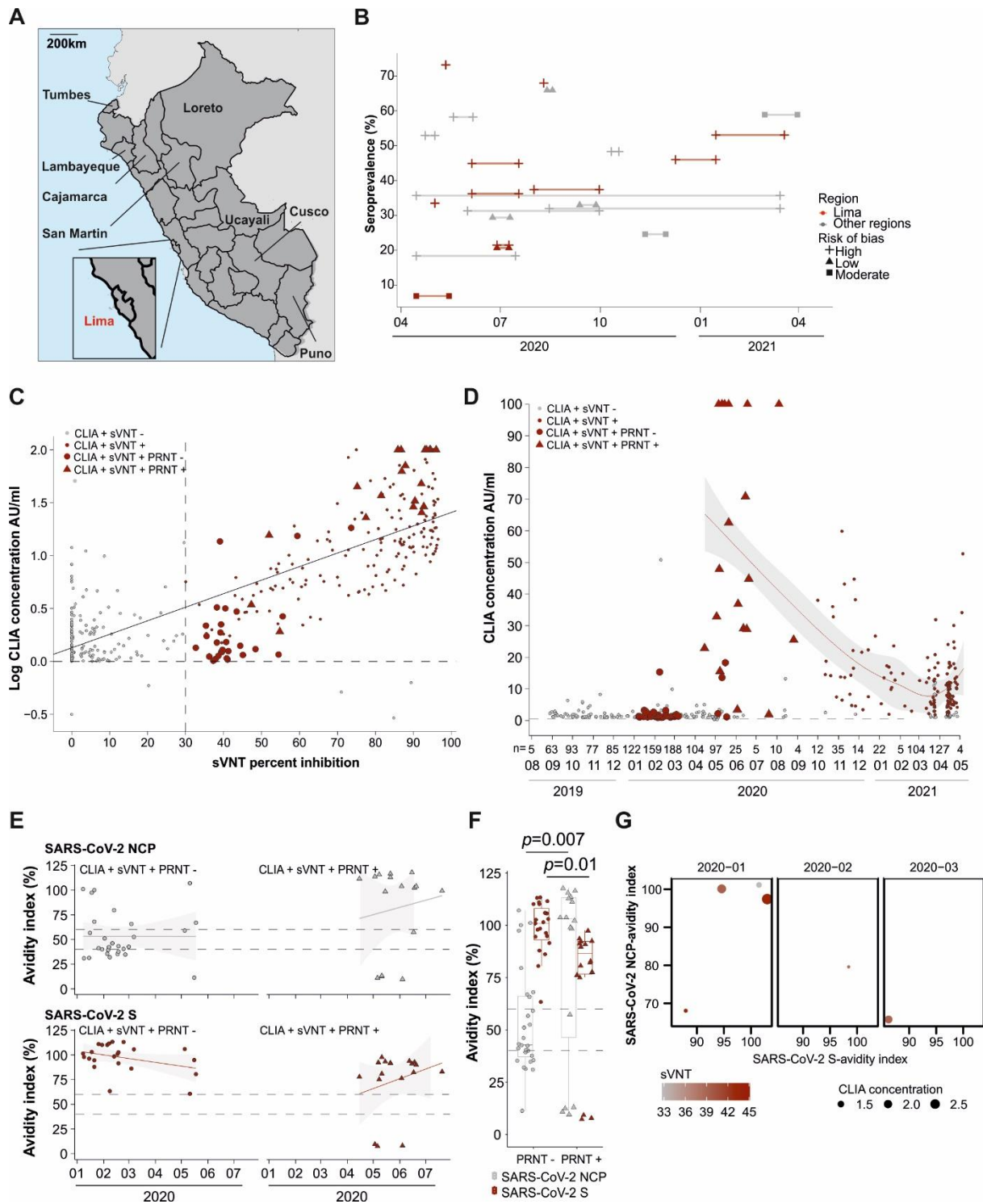
187 The code to reproduce the analyses is found in the online repository:  
188 XXXXXXXXXXXX. We thank José Encinas Marroquin, Sebastian Brünink, Arne  
189 Kühne and Antje Kamprad. This work was funded by the German federal ministry for  
190 economic cooperation and development (BMZ) via the Deutsche Gesellschaft für  
191 Internationale Zusammenarbeit (GIZ) GmbH (project number 81262528). The  
192 procedures were carried out with the approval of the institutional bioethics committee  
193 under the ethic protocol number 6528 from VIA LIBRE and EA2/031/22 from Charité-  
194 Universitaetsmedizin Berlin.

195

## 196 **References:**

- 197 1. Mathieu E, Ritchie H, Rodés-Guirao L, Appel C, Giattino C, Hasell J, et al. Coronavirus  
198 Pandemic (COVID-19). Our World in Data. 2020.
- 199 2. Burki T. COVID-19 in Latin America. *Lancet Infect Dis*. 2020 May;20(5):547-8.
- 200 3. Lima EEC, Vilela EA, Peralta A, Rocha M, Queiroz BL, Gonzaga MR, et al. Investigating regional  
201 excess mortality during 2020 COVID-19 pandemic in selected Latin American countries. *Genus*.  
202 2021;77(1):30.
- 203 4. Taylor L. Covid-19: Why Peru suffers from one of the highest excess death rates in the world.  
204 *BMJ*. 2021 Mar 9;372:n611.
- 205 5. Arora RK, Joseph A, Van Wyk J, Rocco S, Atmaja A, May E, et al. SeroTracker: a global SARS-  
206 CoV-2 seroprevalence dashboard. *Lancet Infect Dis*. 2021 Apr;21(4):e75-e6.
- 207 6. Yadouleton A, Sander AL, Moreira-Soto A, Tchibozo C, Hounkanrin G, Badou Y, et al. Limited  
208 Specificity of Serologic Tests for SARS-CoV-2 Antibody Detection, Benin. *Emerg Infect Dis*. 2021  
209 Jan;27(1):233-7.
- 210 7. Lustig Y, Keler S, Kolodny R, Ben-Tal N, Atias-Varon D, Shlush E, et al. Potential Antigenic  
211 Cross-reactivity Between Severe Acute Respiratory Syndrome Coronavirus 2 (SARS-CoV-2) and  
212 Dengue Viruses. *Clin Infect Dis*. 2021 Oct 5;73(7):e2444-e9.
- 213 8. Takahashi E, Sawabuchi T, Homma T, Fukuda Y, Sagara H, Kinjo T, et al. Clinical Utility of  
214 SARS-CoV-2 Antibody Titer Multiplied by Binding Avidity of Receptor-Binding Domain (RBD) in  
215 Monitoring Protective Immunity and Clinical Severity. *Viruses*. 2023 Jul 30;15(8).
- 216 9. Scheiblaue H, Nübling CM, Wolf T, Khodamoradi Y, Bellinghausen C, Sonntagbauer M, et al.  
217 Antibody response to SARS-CoV-2 for more than one year - kinetics and persistence of detection are  
218 predominantly determined by avidity progression and test design. *J Clin Virol*. 2022 Jan;146:105052.
- 219 10. Candido DS, Claro IM, de Jesus JG, Souza WM, Moreira FRR, Dellicour S, et al. Evolution and  
220 epidemic spread of SARS-CoV-2 in Brazil. *Science*. 2020 Sep 4;369(6508):1255-60.
- 221 11. Zhang S, Ma P, Orzechowski M, Lemmer A, Rzasz K, Bagnall J, et al. High-Throughput  
222 Neutralization and Serology Assays Reveal Correlated but Highly Variable Humoral Immune  
223 Responses in a Large Population of Individuals Infected with SARS-CoV-2 in the US between March  
224 and August 2020. *mBio*. 2023 Apr 25;14(2):e0352322.
- 225 12. Hou H, Wang T, Zhang B, Luo Y, Mao L, Wang F, et al. Detection of IgM and IgG antibodies in  
226 patients with coronavirus disease 2019. *Clin Transl Immunology*. 2020 May;9(5):e01136.
- 227 13. Munayco CV, Tariq A, Rothenberg R, Soto-Cabezas GG, Reyes MF, Valle A, et al. Early  
228 transmission dynamics of COVID-19 in a southern hemisphere setting: Lima-Peru: February 29th–  
229 March 30th, 2020. *Infectious Disease Modelling*. 2020 2020/01/01/;5:338-45.
- 230 14. Moreira-Soto A, Bruno A, de Mora D, Paez M, Garcés J, Wulf B, et al. Virological evidence of  
231 the impact of non-pharmaceutical interventions against COVID-19 in Ecuador, a resource-limited  
232 setting. *Emerg Microbes Infect*. 2023 Dec;12(2):2259001.
- 233 15. Vabret N. Antibody responses to SARS-CoV-2 short-lived. *Nat Rev Immunol*. 2020  
234 Sep;20(9):519.
- 235 16. Netto EM, Moreira-Soto A, Pedroso C, Höser C, Funk S, Kucharski AJ, et al. High Zika Virus  
236 Seroprevalence in Salvador, Northeastern Brazil Limits the Potential for Further Outbreaks. *mBio*.  
237 2017 Nov 14;8(6).
- 238 17. Harris JE. Timely epidemic monitoring in the presence of reporting delays: anticipating the  
239 COVID-19 surge in New York City, September 2020. *BMC Public Health*. 2022 2022/05/02;22(1):871.





240

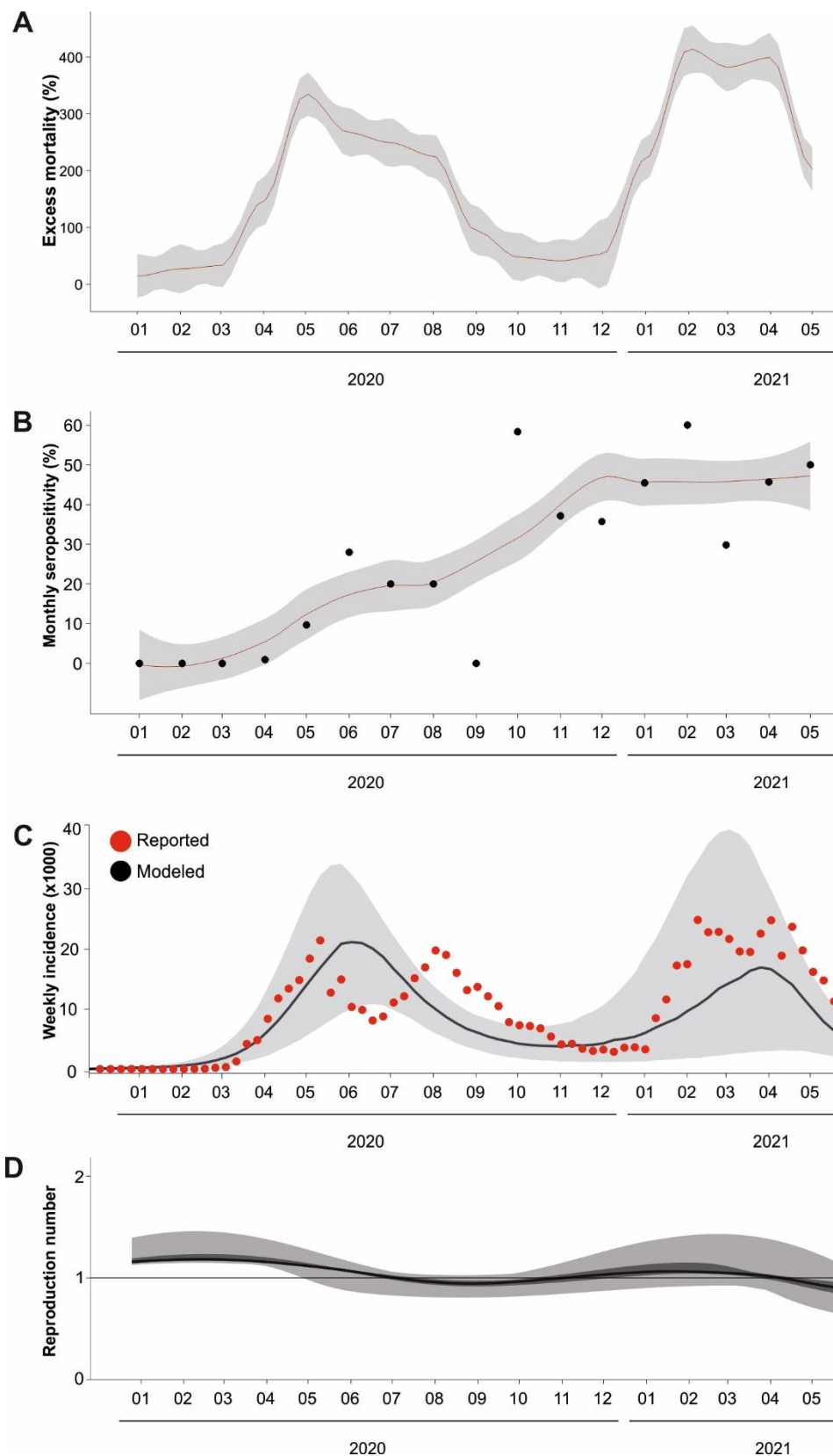
241 **Figure 1. SARS-CoV-2 seroprevalence studies in Peru and diagnostic**  
 242 **confirmation.** A) Map that shows Peruvian regions where seroprevalence studies  
 243 have been performed. Data taken from (serotracker.com). B) Seroprevalence studies  
 244 in Peru, size shows the risk of bias calculated by serotracker, lines connecting the  
 245 dots show the total study time. C) Reactivity of serum samples to SARS-CoV-2 in a  
 246 SARS-CoV-2 surrogate virus neutralization test (sVNT), shown in the x axis, and a  
 247 chemiluminescence immunoassay (CLIA), shown in the y axis. AU/ml, absorbance  
 248 unit per milliliter. Triangles show early samples that were positive in a plaque  
 249 reduction neutralization test (PRNT), Big circles show samples that were negative in

250 PRNT. D) CLIA concentration across time in the tested samples. The red line  
251 denotes the mean CLIA concentration per month. Gray lines denote the 95%  
252 confidence interval. Triangles show early samples that were positive in a plaque  
253 reduction neutralization test (PRNT). Big circles show samples that were negative in  
254 PRNT. AU/ml: absorbance units per millilitre. E) IgG antibody avidity index against  
255 SARS-CoV-2 S and NCP antibodies overtime in PRNT-positive and negative early  
256 2020 samples. Horizontal line denotes the index thresholds of >60% (positive) and  
257 <40% (negative) results between these values are considered borderline, as defined  
258 by the manufacturer (<https://www.euroimmun.com>). Gray area denotes the 95%  
259 confidence interval. F) Boxplots showing the median avidity by a bar, quartiles by  
260 boxes, and minimum and maximum by whiskers. Above, p values of a t-test. G)  
261 Reactivity of six serum samples that were SARS-CoV-2 PRNT-negative but SARS-  
262 CoV-2 sVNT and CLIA positive, defined as >30 and >1 respectively, as per  
263 manufacturer's instructions. IgG antibody avidity index against SARS-CoV-2 S and  
264 NCP antibodies overtime shown in the figure axis, index thresholds of >60% are  
265 considered positive as per manufacturer's instructions.

266

267

268



269

270 **Figure 2. Transmission dynamics of SARS-CoV-2 in Lima, Peru.** A) Reported  
271 excess mortality. The line shows the monthly reported excess mortality during the  
272 study period. Mortality data taken from:  
273 <https://www.datosabiertos.gob.pe/dataset/fallecidos-por-covid-19-ministerio-de-salud->

274 [minsa](#). B) Monthly seropositivity from Lima from this study (dots), gray area  
275 represents the 95% confidence interval. Linear regression line is shown in red. C)  
276 SEIR model showing the reported incidence data (red dots) and the modeled  
277 incidence (gray area) calculated using the reported incidence data and antibody  
278 detection rate from this study. Weekly incidence data taken from  
279 ([https://www.datosabiertos.gob.pe/dataset/casos-positivos-por-covid-19-ministerio-](https://www.datosabiertos.gob.pe/dataset/casos-positivos-por-covid-19-ministerio-de-salud-minsa)  
280 [de-salud-minsa](#)). The black line denotes the median modeled incidence, and the gray  
281 area denotes the 1<sup>st</sup> and 3<sup>rd</sup> quartiles of the modeled incidence. D) Effective  
282 reproductive number calculated using the model.

283

284