

## The Impact of Gender on Pediatric Surgical Access and Outcomes in Africa

Sacha Williams,<sup>1,2</sup> Olivia Serhan,<sup>1</sup> Jenny Wang,<sup>1</sup> Christian Guindi,<sup>1</sup> Elena Guadagno,<sup>2</sup>  
Maeve Trudeau,<sup>1,2</sup> Emmanuel Ameh,<sup>3</sup> Kokila Lakhoo,<sup>4</sup> Dan Poenaru<sup>1,2</sup>

1. Faculty of Medicine and Health Sciences, McGill University, Montreal, Quebec
2. Harvey E. Beardmore Division of Pediatric Surgery, Montreal Children's Hospital, McGill University Health Center, Montreal, Quebec
3. Department of Paediatric Surgery, National Hospital, Abuja, Nigeria
4. Nuffield Department of Surgical Sciences, Paediatric Surgery, University of Oxford, Oxford United Kingdom

**Corresponding author:** Sacha Williams MD, MS, MPH, PhD (c)

Harvey E. Beardmore Division of Pediatric Surgery, The Montreal Children's Hospital  
1001 Decarie Boulevard, Montreal, Quebec H4A 3J1

E-mail address: sachawilliams@gmail.com

ORCID # 0000-0002-5221-1913

**Category:** Systematic review and meta-analysis

This research did not receive any specific grant from funding agencies in the public, commercial, or not-for-profit sectors.

## Abstract

### The Impact of Gender on Pediatric Surgical Access and Outcomes in Africa

Sacha Williams, Olivia Serhan, Jenny Wang, Christian Guindi, Elena Guadagno, Maeve Trudeau, Emmanuel Ameh, Kokila Lakhoo, Dan Poenaru

#### Introduction

Girls, whose care is often affected by barriers steeped in gender inequity, may be at higher risk of poor surgical outcomes. This study explored the impact of gender on pediatric surgical care in Africa.

#### Methods

Differences in access to care and clinical outcomes for boys and girls were examined for pediatric surgical conditions that do not differ by physiological sex. A systematic review of African pediatric surgical studies ensued, followed by a random effects meta-analysis, and risk of bias assessment.

#### Results

Of the 12281 records retrieved, 54 were selected for review. Most studies were retrospective (57.4%), single-site (94.4%), from Egypt, Nigeria, Ghana, or Ethiopia (55.6%), focussed on gastrointestinal conditions (63.0%), published in 2010 or sooner (85.1%), had study durations of 5 years or less (68.5%), and cohorts of less than 200 children (57.4%). Sixty percent reported the outcome of mortality. Meta-analysis odds ratios revealed surgery was performed 3.6 times more often on boys (95% CI: 2.6, 4.9); and mortality was 1.6 times greater for girls (95% CI: 1.3, 2.0).

#### Conclusion

African girls appear to face gender inequities in pediatric surgical care. Findings will be further explored in a mixed-methods study.

**Keywords:** Surgical outcomes, mortality, gender disparities, LMICs

**Level of evidence:** I

#### Highlights:

- Gender disparities in global surgical care have been documented in the African adult population. However gender specific differentials in surgical access and outcomes have yet to be documented for African pediatric populations.
- This study provides first-time evidence of gender inequity in pediatric surgical care in Africa.

## Introduction

Children remain among the most vulnerable populations worldwide. As their numbers rapidly expand, the global burden of disease also increases [1-9]. In fact, estimates suggest that currently 1.7 billion children lack access to surgery that is both safe and affordable [10]. A significant proportion of these children reside in low- and middle-income countries (LMICs), that are frequently operating with limited resources and infrastructure [11,12]. In Africa, the population demographic is approximately 50% pediatric; by corollary, the surgical disease burden is critical [11,12]. However, the surgical care of children is an aspect of child health that continues to be inadequate, despite its potential for reducing or even eliminating child morbidity and/or mortality [13].

*Gender* is a social construct that may further compound the issue. It can be defined as a set of characteristics, roles, and behaviors ascribed to perceptions of masculinity and femininity [13,14], potentially mutable according to times and/or society norms and values. While gender may intersect with *sex*, they are not necessarily the same, as the latter tends to focus on biological factors like chromosomes, hormones, or reproductive organs. [14,15] Historically, gender has been implicated in hierarchical power imbalances, whereby, within the male-female dichotomy, females were deemed inferior [15]. As a result, gender norms may influence children's health and well-being. For example, in certain African societies, gender inequity has been reported to manifest as social and/or structural barriers negatively impacting females [15]. Moreover, recent reports have suggested that, in some African countries, women seek care for their surgical conditions less commonly than men, and those who do undergo surgery experience poorer surgical outcomes [16-20].

Despite the evidence of gender disparity in the adult African population, potential gender differentials in the surgical care of African children have not been documented to date. This study sought to address the knowledge gap by exploring whether there were gender disparities in access, and postoperative outcomes for African children requiring surgery.

## Methods

### *Caveats, Definitions*

Although gender and biological sex may overlap, they are not necessarily the same, as sex is centered solely upon biological factors (e.g. reproductive organs, chromosomes etc). However, since global databases, registries, and studies continue to classify cohorts according to sex instead of gender, sex was used as a proxy for gender, particularly in cases where *conditions should not have sex differences, since they manifest equally in boys and girls* (equal sex ratio). There would be no biological, physiological, nor anatomical reason for differences in incidence by sex. Any conditions specific to boys (e.g. male circumcision, testicular torsion, etc.), or girls alone (e.g. ovarian cysts, pregnancy, etc.) were excluded from the analysis in this study. Only gender neutral pediatric surgical conditions were examined. Therefore, any deviations from standard 1:1 or predicted sex ratios in the conditions studied were attributed to gender-based factors. This methodology was confirmed with leading chairs in sex and gender research, an Equity Diversity and Inclusion (EDI) Advisor, and our African collaborators.

Cis- or trans- males or females were not evaluated, as these distinctions were not reported in the included studies.

The study explored the primary outcomes of reported access to care and postoperative outcomes. Access was defined as the number of actual surgical interventions performed by sex. Surgical outcomes included the following: mortality, surgical site infection (SSI), and any other reported adverse effects or complications.

### ***Registration and Reporting Checklist***

The study protocol was registered with PROSPERO (CRD42023395021), the international registry for systematic reviews [21], and conducted in accordance with the guidelines of the Preferred Reporting Items for Systematic Reviews and Meta-Analyses (PRISMA) statement [22].

### ***Search Strategy and Information Sources***

A comprehensive electronic literature search was conducted by a senior medical librarian using the following databases from inception through December 2022 with no language restrictions: Medline (Ovid), Embase (Ovid), CINAHL (EBSCO), Cochrane (Wiley), Global Health (Ovid), Web of Science (Clarivate Analytics), Africa Wide Information (EBSCO) and Global Index Medicus (WHO). The search strategy involved text words from the title, abstract, keywords, or subject headings to retrieve papers on gender inequality, pediatric surgery, and surgical care in Africa, without language restriction. Various gender and sex terms were searched, including sex/gender characteristics or factors, gender identity, and minority groups. Conference abstracts, books and book chapters were excluded in Embase. The full search strategy is located in **Appendix A**. PRISMA and PRISMA-S extension were used and are located in **Appendix B**

### ***Inclusion and Exclusion Criteria***

Study inclusion criteria were: 1. quantitative research papers, with 2. study cohorts under 19 years of age, 3. situated in an African setting, with 4. sex/gender data, surgical access and postoperative outcomes data, 5. for surgical conditions that occur equally in boys and girls. Exclusion criteria included: qualitative research, editorials/commentaries, conference abstracts, books, book chapters, populations over 19 years of age, gender-specific surgical conditions, studies outside of Africa, without sex/gender data, surgical access and/or outcomes data.

### ***Study Selection***

Duplications of eligible studies were removed in EndNote X9 (EndNote X9 2023, Clarivate, Philadelphia, PA, USA) and uploaded into Rayyan software (Rayyan 2022, Boston, MA, USA), for literature screening by multiple independent reviewers (SW, JW, CG, OS). Titles and abstracts were first screened for meeting study eligibility. In instances of disagreement, discussion and full consensus was sought amongst reviewers. If consensus could not be found, a senior reviewer (DP) was available for adjudication. Full papers of all abstracts deemed potential for inclusion were subsequently retrieved and independently screened (SW, OS, JW) for adherence to study criteria.

## ***Data Collection***

The PRISMA flow diagram was drafted from the finalized list of relevant pediatric surgical papers. **(Figure 1)** Pertinent data variables were extracted from the studies selected for inclusion and placed in an Excel spreadsheet (Excel 2021, Microsoft, Richmond, VA, USA). Variables included: title, authors, year, journal, country, surgical subspecialty (pediatric surgery, neurosurgery, plastic surgery, ophthalmology, urology, orthopedics, burn, trauma surgery), diagnosis/condition, procedure/intervention, duration of study, population type (pediatric, mixed), total population, mean/median age, number of males/females, male/female postoperative complications, mortality).

Sex ratios (male:female) for: surgical access, postoperative complications (excluding death), mortality, and proportions of deaths by sex were calculated when not provided directly in the studies (**Appendix C**), in support of the Meta-Analysis. The rationale for the proportions of deaths by sex calculations was that the number of boys in the studies generally exceeded the number of girls. So it would enable one to see the mortality rates within each sub-cohort (e.g. male, female), in light of their vastly different total numbers.

## ***Meta-Analysis***

Given the wide array of surgical disciplines and measured indices in the included studies, a random effects meta-analysis was conducted. Statistical analyses were performed in Jamovi v.2.3 (Jamovi Project, Sydney, Australia) and STATA 18 (StataCorp, 2023, College Station, TX, USA) to ensure accuracy, and for graphical representations [23,24]. Results were calculated in Excel (Excel 2021, Microsoft, Richmond, VA, USA) to confirm accuracy. An alpha level of  $p < 0.05$  indicated statistical significance. The log odds ratio was utilized as the outcome measure. Heterogeneity ( $\text{Tau}^2$ ) was approximated via the restricted maximum-likelihood estimator [24]. The  $I^2$ ,  $H^2$  statistic, and Cochran's Q test were also calculated to assess heterogeneity. Prediction intervals for true outcomes were calculated for  $I^2 > 40\%$  and/or  $\text{tau}^2 > 0$  as applicable. Forest plots were created for variables, access and postoperative outcomes to display significance. Analysis in the form of studentized residuals and Cook's distances were performed to identify outliers and/or influential studies in the model. Those with a studentized residual greater than the  $100 \times (1 - 0.05/2k)$ th percentile of a normal distribution were considered to be potential outliers. Studies were deemed influential if they had a Cook's distance greater than the median plus six times the interquartile range of the Cook's distances. Funnel plots were created to assess publication bias. Potential funnel plot asymmetry was verified via the rank correlation, and regression tests.

## ***Quality Assessment***

The quality of the evidence of the studies (prospective, cross-sectional, case review) was analyzed using the Risk of Bias in Non-Randomized Studies – of Interventions (ROBINS-I) tool [25]. This was done to evaluate risk of bias in estimates of safety or efficacy of interventions employed in non-randomized studies. The ROBINS-I instrument evaluated domains pre- and at-intervention (bias due to confounding, in the selection of participants into the study, and in the classification of outcomes), post-intervention (bias due to deviations from intended interventions and missing data, in outcomes

measurement, and in the selection of reported results). Decisions were made on a scale ranging from: low, moderate, serious, critical risk of bias, or no information.

## Results

### *Study Selection*

The PRISMA flowchart is illustrated in **Figure 1**. The electronic literature search in the eight databases yielded 12,281 records. After duplicates were removed using EndNote, 10,579 records were available for screening. Titles/abstracts were screened in Rayyan for adherence to study criteria and resulted in 1,534 abstracts selected for potential inclusion. Two papers could not be retrieved, resulting in 1,532 eligible reports. Retrieval of full papers and subsequent review yielded 54 sex-disaggregated papers selected for inclusion. Reasons for paper exclusion ranged from: sole focus on access or outcomes (n = 460, n = 2 respectively), obstetrics and gynecology cases (n = 337), female genital mutilation (n = 265), male sexual health (n = 241), female-specific fistula (n = 83), ineligible population (n = 64), and case reports (n = 26). The finalized list of included pediatric surgical studies, involving gender neutral conditions, and their recorded variables are detailed in **Appendix D**.

### *Study Characteristics*

The included studies were predominantly single-center (n = 54; 94.4%), retrospective cohorts (n = 31; 57.4%), from either Egypt, Nigeria, Ghana, or Ethiopia (n = 30; 55.6%), focusing on pediatric surgery for gender neutral conditions (n = 34; 63.0%), published on or after 2010 (n = 46; 85.1%; range: 1980-2023), with a study duration less than 5 years (n = 37; 68.5%; range: < 1 year – 22 years), and with cohorts under 200 children (n = 31; 57.4%). Thirty-three (61.1%) of the papers reported the surgical outcome of mortality, while 21 studies (38.9%) reported other complications. (**Table 1**).

### *Sex Ratios*

The sex ratio (male:female) for surgical access, in these studies of gender neutral conditions, exceeded one in 90% of the cohorts (mean = 2.6), implying surgeries were predominantly performed on males. A third of the sex ratios for non-mortality postoperative complications also exceeded one, suggesting a lower rate of complications for males than females. Sixty percent of the mortality sex ratios were greater than 1 (mean = 1.9), suggesting a higher mortality rate for males than females. However, a more in depth analysis of the sex ratio for the proportions of death by sex, revealed that the majority of these values (60.0%) were below 1 (mean = 0.8). This suggested that there was a higher proportion of death among females than males. The proportion of girls that died was actually 1.3 times that of the proportion of boys, despite the expectation of gender neutrality.

### *Meta-Analysis*

#### *A) Access*

For the 54 studies included in the analysis, involving conditions that should have had the same values for boys and girls, males were more likely (94.0%) to have access to surgery than females (**Figure 2a**). Based on the random effects model, the average ratio was calculated, and found to be significantly different from zero (p < 0.0001), suggesting the results were not due to random chance. It revealed an



odds ratio of 3.6 (95% CI: 2.6, 4.9), suggesting that males received surgery 3.6 times more frequently than females. Further testing indicated that there was high heterogeneity among the studies ( $Tau^2 = 1.2$ ,  $I^2 = 98.7\%$ ,  $H^2 = 76.5$ ,  $Q = 1174.5$ ;  $p < 0.001$ ). As a result, a 95% prediction interval, or range was calculated (-0.9 – 3.5). According to studentized residuals, one study may be an outlier [24\*]; and in concert with another study [15\*] may be overly influential. Exploration of publication bias via funnel plot did not indicate asymmetry (**Figure 2b**). This was reinforced via Egger's regression (0.6,  $p = 0.6$ ), Spearman rank correlation (0.1,  $p = 0.5$ ), and fail-safe N testing (41154,  $p < 0.001$ ).

### *B) Adverse Postoperative Outcomes - Mortality*

For the 29 studies included in the analysis, involving conditions that should have had the same values for boys and girls, mortality was higher for females than males. (76.0%). (**Figure 3a**). Based on the random effects model, the average ratio was calculated, and found to be significantly different from zero ( $p < 0.0001$ ), suggesting the results were not due to random chance. It revealed an odds ratio of 1.6 (95% CI: 1.3, 2.0), suggesting that females died 1.6 times more frequently than males. Further testing indicated that there was moderate heterogeneity among the studies ( $Tau^2 = 0.1$ ,  $I^2 = 41.7\%$ ,  $H^2 = 1.7$ ,  $Q = 41.2$ ;  $p = 0.05$ ). As a result, a 95% prediction interval, or range was calculated (-0.1 – 1.1). According to studentized residuals, there were no outliers; while another study [15\*] may be overly influential [45\*]. Exploration of publication bias via funnel plot did not indicate asymmetry (**Figure 3b**). This was reinforced via Egger's regression (-0.2,  $p = 0.8$ ), Spearman rank correlation (0.1,  $p = 0.7$ ), and fail-safe N testing (336,  $p < 0.001$ ).

### *Risk of Bias Assessment*

Each of the 22 eligible studies for ROBINS-I assessment demonstrated a risk of bias in at least one domain (**Table 2**). Six of the 7 domains had majority judgements of low risk of bias. The domain involving bias due to confounding was the only one demonstrating critical and serious risk of biases. Across the 2 grouped domains (pre- / at-intervention, post- intervention domains), most of the bias was low to moderate (72.7-95.5% for each domain), with the former grouping (pre- / at- intervention) also containing 6 studies at serious risk of bias. One study had missing data for some domains [53\*].

## **Discussion**

Surgery is an indispensable component of healthcare, and essential to address the burden of disease worldwide [9,26]. For every child to be granted the right to safe, timely, and affordable care, access to surgery and good postoperative outcomes are crucial. The current study has for the first time explored, via systematic review, gender disparities in surgical access and outcomes for African children. This exploration was predicated on the suspicion that gender inequities may adversely affect the health and well-being of girls.

Gender disparities have been documented to affect children in many areas, including education. As a result, the United Nations established its Sustainable Development Goals (SDGs) #4 and #5 (equitable quality education, gender equality and empowerment) to promote universal access to, and completion of, primary education, thus closing the gender gap [27]. Notwithstanding, many African countries have yet to achieve educational parity by gender [28]. According to UNESCO, one in four girls are

likely to be out of school in sub-Saharan Africa [28]. In addition, these girls are more likely than their male counterparts to never enroll in school [28]. Friedman et al., in their modeling and forecast of educational inequality as it pertains to the 2030 SDG targets, reported that the education of females is predicted to lag that of males in sub-Saharan Africa through 2030 [29]. Oruko et al., in their exploration of the educational access and outcomes of Kenyan children, reported that despite the government providing free primary education, fewer girls reached secondary school level; and those that remained in school were less likely than boys to achieve a grade of C+ or better in their national exams [30]. These examples demonstrate the disadvantaged position of girls compared to boys in the educational realm.

Gender disparities in the surgical care of children have been documented tangentially in a few isolated reports. For example, Sakita et al., in their exploration of clinical profiles and outcomes of children presenting to the emergency department of a Tanzanian hospital with undifferentiated abdominal pain, reported a low proportion of girls (32.6%) in their study population [26]. Moreover, girls were associated with higher in-hospital mortality in their regression analysis [26]. Peiffer et al., in their exploration of factors associated with adverse outcomes (e.g. prolonged length of stay, readmission, and mortality) following surgery in a Ghanaian regional hospital, found that although only 10% of the cohort were girls, female gender was significantly associated with in-hospital postoperative mortality [15\*]. When looking at pediatric burn care in their investigation of potential relationships among patient demographics, thermal injury and mortality in a Malawi burn unit, Purcell et al. demonstrated that fewer females presented (44.1%), and that those who did were in more severe states (% total body surface area) [9\*]. Perhaps due in part to the severity, the authors reported higher rates of surgical intervention for these girls, and interestingly, a lack of increased odds of mortality due to female gender [9\*]. Allorto et al., while investigating factors associated with delayed children's surgery and mortality following burn injuries in a South African burn service, reported fewer females in their cohort (44.5%); yet they were less likely to undergo early surgical intervention, they had higher mortality, and lengths of stay [12\*]. Pediatric ophthalmology studies have identified a significant male predominance at presentation. For example, in reports concerning the proportions of children presenting for cataract surgery in a Nigerian ophthalmology clinic, Ugalahi et al. noted the paltry number of girls (44.4%) [31]. In their evaluation of several African child eye health tertiary facilities (CEHTFs), Adhishesha Reddy et al. found access disparities favouring boys for children receiving cataract surgery and follow up; they also noted little effective means to reduce the inequity [32]. Courtright et al., in their analysis of child recipients of cataract surgery at two Tanzanian CEHTFs found a sex ratio of 1.48 [33]. Eriksen et al. reported few girls (36.4%) in their examination of an active surgical service for children in a Tanzanian tertiary eye care referral facility [34]. They also found girls were less likely to attend follow up visits [34].

When discussing pediatric surgical disease, it must be acknowledged that there are certain diseases that affect boys more than girls, and vice versa. For example, congenital inguinal hernia is a very common pediatric condition, for which its surgical repair has been described in the literature as having a sex ratio prevalence (male:female) ranging from 2 to 18:1 [35, 36]. In Africa specifically, Igwe et al. reported a sex ratio of 5:1 in their comparison of laparoscopic versus open inguinal hernia repair, in a Nigerian university teaching hospital [37]. In addition, trauma may occur more often in males than



females, as noted by Aluisio et al. and Halawa et al. in their Rwandan and Egyptian reports [38, 39]. Nevertheless, this current study excluded conditions that affected predominantly boys or girls, as a result of unique anatomy or physiology. As indicated in the methods definitions and caveats sub-section, this study incorporated conditions with equal sex ratios, meaning they occurred equally in boys and girls.

In this systematic review and meta-analysis of sex-disaggregated studies it was demonstrated that surgical interventions were more likely to be performed on males, and that females were more likely to have poor postoperative outcomes, including death. These findings are based on an analysis of 54 papers, mostly retrospective and single-site in nature, focusing on pediatric cohorts of up to 200 children, stemming from four African countries, mostly focusing on pediatric surgery. The male predominance in surgical access, and female predominance in adverse postoperative outcomes including mortality, were highlighted in sex ratio calculations, then reinforced through forest plot odds ratios in the meta-analysis.

There are 2 types of models for a meta-analysis: a fixed and random effects model. The latter was more appropriate for this study, because it assumed that the true effect could vary by study due to the differences among them (heterogeneity) [40, 41]. For example, the included studies varied by the size of their cohorts, location, types of surgical intervention, and other demographics. This could have resulted in different effect sizes. In the meta-analysis, there was high heterogeneity when evaluating access, and moderate heterogeneity when examining postoperative mortality. As a result, a prediction interval was calculated, and the vast majority of studies' true effects were positive. The results were also supported by both the lack of statistical significance for statistical indices, and the absence of funnel plot asymmetry, both refuting publication bias.

In contrast to the Cochrane Risk of Bias tool (RoB2) [42], the recommended tool for randomized control trials, the Risk of Bias in Non-Randomized Studies – of Interventions (ROBINS-I) tool is used to evaluate the quality of the evidence for non-randomized studies [25]. In this study, only 22 of the studies were eligible for ROBINS-I assessment. These studies' risk of bias level by domain and intervention were described (risk of bias assessment results sub-section) and illustrated (Table 2). Unfortunately all of the studies assessed had a risk of bias in at least one domain, which limited the strength of the result interpretation. Within the domain for confounding, there was both critical and serious risk of bias in approximately 50% of the studies, which contributed to serious risk of bias across the pre-/at- intervention domains. As a result, the possibility of at least one domain not being appropriately measured or controlled cannot be excluded - nor can the possibility of confounding be entirely overlooked.

This study is a systematic review, providing a snapshot of the literature located in selected databases, published from specific African countries, during a discrete period of time. Although the analysis of publication bias was not significant according to the funnel plot (and associated statistical indices), the included studies represented approximately a third of all the countries in Africa. This study was a summary of what was reported. At no point did this study place judgment on African values, their family unit, their healthcare providers' intentions or capabilities. Moreover, this study should not be viewed as an indictment of Africa's treatment of its children, as similar findings have been reported in

high-income countries. For example, in their thirteen year review of the epidemiology of pediatric surgery in the US, Rabbitts et al. reported female gender among other factors associated with decreased likelihood of surgical intervention on multivariate analysis [43]. In their examination of social determinants on pediatric trauma outcomes in the US South, Dickens et al. reported that girls had lower odds of being referred for rehabilitation services, and Black girls lowest of all groups [44]. In their analysis of access to renal transplantation, through a multinational European collaboration, Hogan et al. reported girls had lower probability of receiving preemptive transplantation, for reasons only partially attributed to medical factors [45]. In essence, what cannot be overstated is that findings of gender differentials in surgical access and/or postoperative outcomes have similarly been reported in high income countries; so gender disparities are not solely specific to Africa.

Other study limitations include: generalizability, the small number of included studies, the quality of data they presented, their age, and potential confounders (e.g. geographical location of participants, lack of infrastructure, etc). Studies with potential risk of bias were not removed from the analysis, nor was the one study that may have been a highly influential outlier.

This study was conducted in constant consultation with several African collaborators, who have attained positions of considerable distinction in pediatric surgery. In terms of the next phase in this study, collaboration with these colleagues and other African stakeholders (e.g. healthcare providers, caregivers, former patients, etc), is underway to uncover the obstacles to gender equity in pediatric surgical care, and to develop a comprehensive, sustainable mitigation plan to reduce the disparities via a mixed methods approach in Africa.

## **Conclusion**

African girls are a vulnerable population who, in addition to facing the limitations of residing in many low-resource settings, may be subjected to additional barriers of gender inequity. This study's findings suggest that although surgeries are performed more often on males, females have a higher likelihood of adverse postoperative outcomes. This first-time summary of evidence of gender disparities in pediatric surgical access and outcomes in Africa is an urgent call to action, hopefully prompting not only further investigation, but above all tangible change.

## **Disclosures**

N/A

## **Author Contributions**

All authors contributed to the study conception and design. Material preparation, data collection and analysis was performed by SW, DP. The first draft of the manuscript was written by SW, and all authors edited, read, and approved the final manuscript.

## References

- [1] United Nations Development of Economic and Social Affairs: Sustainable Development. The 17 Goals. [Internet]. New York, United States of America: UN; 2023 [Cited 2023 May 20]. Available from: <https://sdgs.un.org/goals> .
- [2] United Nations Department of Economic and Social Affairs. The Sustainable Development Goals Report. [Internet]. New York, United States of America: UN; 2021 [Cited 2023 June 20]. Available from: <http://dx.doi.org/10.18356/9789210056083> .
- [3] Mock CN, Donkor P, Gawande A, Jamison DT, Kruk ME, Debas HT, et al. Essential surgery: key messages from Disease Control Priorities, 3rd edition. *Lancet*. 2015 May 30;385(9983):2209–19.
- [4] Hedges JP, Mock CN, Cherian MN. The political economy of emergency and essential surgery in global health. *World J Surg*. 2010 Sep;34(9):2003–6.
- [5] Ng-Kamstra JS, Greenberg SLM, Abdullah F, Amado V, Anderson GA, Cossa M, et al. Global Surgery 2030: a roadmap for high income country actors. *BMJ Glob Health*. 2016 Apr 6;1(1):e000011.
- [6] Niyikuri A, Smith ER, Vervoort D, Shrimme MG, Brown S, Peters AW, et al. Top 10 Resources in Global Surgery. *Glob Health Sci Pract*. 2020 Sep 30;8(3):606–11.
- [7] Grimes CE, Henry JA, Maraka J, Mkandawire NC, Cotton M. Cost-effectiveness of surgery in low- and middle-income countries: a systematic review. *World J Surg*. 2014 Jan;38(1):252–63.
- [8] Roa L, Jumbam DT, Makasa E, Meara JG. Global surgery and the sustainable development goals. *Br J Surg*. 2019 Jan;106(2):e44–52.
- [9] Meara JG, Leather AJM, Hagander L, Alkire BC, Alonso N, Ameh EA, et al. Global Surgery 2030: evidence and solutions for achieving health, welfare, and economic development. *Lancet*. 2015 Aug 8;386(9993):569–624.
- [10] Mullapudi B, Grabski D, Ameh E, Ozgediz D, Thangarajah H, Kling K, et al. Estimates of number of children and adolescents without access to surgical care. *Bull World Health Organ*. 2019 Apr 1;97(4):254–8.
- [11] Tsang VWL, Luo LH, Kisa P, Blair GK. Ten Global Surgical Care Statements for Children: examining our commitment to the future. *Pediatr Surg Int*. 2021 Jul;37(7):957–64.
- [12] Derbew M. Pediatric surgery in Eastern Africa: The unmet need. *J Pediatr Surg*. 2019 Jan;54(1):21–6.
- [13] Ozgediz D, Langer M, Kisa P, Poenaru D. Pediatric surgery as an essential component of global child health. *Semin Pediatr Surg*. 2016 Feb;25(1):3-9. doi: 10.1053/j.sempedsurg.2015.09.002. Epub 2015 Sep 15. PMID: 26831131.
- [14] World Health Organization. Gender and Health. [Internet]. Geneva, Switzerland: WHO; 2022 [Cited 2022 Feb 20]. Available from: [https://www.who.int/health-topics/gender#tab=tab\\_1](https://www.who.int/health-topics/gender#tab=tab_1).
- [15] Magar V. Gender, health and the Sustainable Development Goals. Vol. 93, *Bulletin of the World Health Organization*. 2015. p. 743–743.

- [16] Azad AD, Charles AG, Ding Q, Trickey AW, Wren SM. The gender gap and healthcare: associations between gender roles and factors affecting healthcare access in Central Malawi, June–August 2017. *Arch Public Health*. 2020 Nov 17;78(1):1–11.
- [17] Reid TD, Wren SM, Grudziak J, Maine R, Kajombo C, Charles AG. Sex Disparities in Access to Surgical Care at a Single Institution in Malawi. *World J Surg*. 2019 Jan;43(1):60–6.
- [18] Gillio AM, Li HW, Bhatia MB, Chepkemoi E, Rutto EJ, Carpenter KL, et al. Gender Differences in Insurance, Surgical Admissions and Outcomes at a Kenyan Referral Hospital. *J Surg Res*. 2021 Dec;268:199–208.
- [19] Musonda W, Freitas D, Yamba K, Harrison WJ, Munthali J. Prognostic factors for surgical site infection following intramedullary nailing of diaphyseal fractures of the femur and tibia in adult patients at a tertiary hospital in Lusaka, Zambia. *Trop Doct*. 2022 Jan;52(1):15–22.
- [20] Mulugeta GA, Awlachev S. Retrospective study on pattern and outcome of management of sigmoid volvulus at district hospital in Ethiopia. *BMC Surg*. 2019 Aug 9;19(1):107.
- [21] Williams S, Gadagno E, Trudeau M, Poenaru D. The Impact of Gender on Pediatric Surgical Care in Africa. PROSPERO: International Prospective Register of Systematic Reviews. 2023. CRD42023395021. Available from: [https://www.crd.york.ac.uk/prospero/display\\_record.php?ID=CRD42023395021](https://www.crd.york.ac.uk/prospero/display_record.php?ID=CRD42023395021).
- [22] Page MJ, McKenzie JE, Bossuyt PM, Boutron I, Hoffmann TC, Mulrow CD, et al. The PRISMA 2020 statement: an updated guideline for reporting systematic reviews. *BMJ*. 2021 Mar 29;372:n71. doi: 10.1136/bmj.n71. PMID: 33782057; PMCID: PMC8005924.
- [23] R Core Team (2021). R: A Language and environment for statistical computing. (Version 4.1) [Computer software]. 2021. [Cited 2023 July 1]. Available from: <https://cran.r-project.org>. (R packages retrieved from MRAN snapshot 2022-01-01).
- [24] Viechtbauer W. Conducting meta-analyses in R with the metafor package. *Journal of Statistical Software*. 2010; 36: 1-48. doi: 10.18637/jss.v036.i03.
- [25] Sterne JA, Hernan MA, Reeves BC, Savovic J, Berkman ND, Viswanathan M et al. ROBINS-I: a tool for assessing risk of bias in non-randomised studies of interventions. *BMJ* 2016; 355 :i4919 doi:10.1136/bmj.i4919.
- [26] Sakita FM, Sawe HR, Mwafongo V, Mfinanga JA, Runyon MS, Murray BL. The Burden and Outcomes of Abdominal Pain among Children Presenting to an Emergency Department of a Tertiary Hospital in Tanzania: A Descriptive Cohort Study. *Emerg Med Int*. 2018 May 9;2018:3982648. doi: 10.1155/2018/3982648. PMID: 29862079; PMCID: PMC5971299.
- [27] United Nations Department of Economic and Social Affairs Sustainable Development. New York, United States: UN; 2024. [Cited 2023 Dec 15]. Available from: <https://sdgs.un.org/goals>.
- [28] UNICEF. Education. [Internet]. UNICEF; June 2022. [Cited 2023 Dec 15]. Available from: <https://data.unicef.org/topic/gender/gender-disparities-in-education/>.
- [29] Friedman J, York H, Graetz N, Woyczynski L, Whisnant J, Hay SI, et al. Measuring and forecasting progress towards the education-related SDG targets. *Nature*. 2020 Apr;580(7805):636-639. doi: 10.1038/s41586-020-2198-8. Epub 2020 Apr 15. PMID: 32350468; PMCID: PMC7332421.

- [30] Oruko K, Nyothach E, Zielinski-Gutierrez E, Mason L, Alexander K, Vulule J, et al.. 'He is the one who is providing you with everything so whatever he says is what you do': A Qualitative Study on Factors Affecting Secondary Schoolgirls' Dropout in Rural Western Kenya. *PLoS One*. 2015 Dec 4;10(12):e0144321. doi: 10.1371/journal.pone.0144321. PMID: 26636771; PMCID: PMC4670214.
- [31] Ugalahi MO, Monye HI, Olusanya BA, Baiyeroju AM. Indications for surgery amongst new patients presenting to the paediatric ophthalmology unit of the University College Hospital, Ibadan. *Afr J Paediatr Surg*. 2021 Jan-Mar;18(1):1-4. doi: 10.4103/ajps.AJPS\_87\_20. PMID: 33595532; PMCID: PMC8109758.
- [32] Adhishesha Reddy P, Kishiki EA, Thapa HB, Demers L, Geneau R, Bassett K. Interventions to improve utilization of cataract surgical services by girls: Case studies from Asia and Africa. *Ophthalmic Epidemiol*. 2018 Jun;25(3):199-206. doi: 10.1080/09286586.2017.1398340. Epub 2017 Nov 10. PMID: 29125374.
- [33] Courtright P, Williams T, Gilbert C, Kishiki E, Shirima S, Bowman R, et al. Measuring cataract surgical services in children: an example from Tanzania. *Br J Ophthalmol*. 2008 Aug;92(8):1031-4. doi: 10.1136/bjo.2007.136168. PMID: 18653593.
- [34] Eriksen JR, Bronsard A, Mosha M, Carmichael D, Hall A, Courtright P. Predictors of poor follow-up in children that had cataract surgery. *Ophthalmic Epidemiol*. 2006 Aug;13(4):237-43. doi: 10.1080/09286580600672213. PMID: 16877282.
- [35] Petridou M, Karanikas M, Kaselas C. Laparoscopic vs. laparoscopically assisted pediatric inguinal hernia repair: a systematic review. *Pediatr Surg Int*. 2023 Jun 3;39(1):212. doi: 10.1007/s00383-023-05492-0. PMID: 37269352.
- [36] Wang K, Tan SS, Xiao Y, Wang Z, Peng C, Pang W, et al. Characteristics and treatments for pediatric ordinary and incarcerated inguinal hernia based on gender: 12-year experiences from a single center. *BMC Surg*. 2021 Feb 1;21(1):67. doi: 10.1186/s12893-020-01039-5. PMID: 33522917; PMCID: PMC7849117.
- [37] Igwe AO, Talabi AO, Adisa AO, Adumah CC, Ogundele IO, Sowande OA, et al. Comparative Study of Laparoscopic and Open Inguinal Herniotomy in Children in Ile Ife, Nigeria: A Prospective Randomized Trial. *J Laparoendosc Adv Surg Tech A*. 2019 Dec;29(12):1609-1615. doi: 10.1089/lap.2019.0354. Epub 2019 Oct 24. PMID: 31647350.
- [38] Aluisio AR, Umuhire OF, Mbanjumucyo G, George N, Kearney A, Karim N, et al. Epidemiologic Characteristics of Pediatric Trauma Patients Receiving Prehospital Care in Kigali, Rwanda. *Pediatr Emerg Care*. 2019 Sep;35(9):630-636. doi: 10.1097/PEC.0000000000001045. PMID: 28169980.
- [39] Halawa EF, Barakat A, Rizk HI, Moawad EM. Epidemiology of non-fatal injuries among Egyptian children: a community-based cross-sectional survey. *BMC Public Health*. 2015 Dec 17;15:1248. doi: 10.1186/s12889-015-2613-5. PMID: 26680214; PMCID: PMC4683736.
- [40] Dettori JR, Norvell DC, Chapman JR. Fixed-Effect vs Random-Effects Models for Meta-Analysis: 3 Points to Consider. *Global Spine J*. 2022 Sep;12(7):1624-1626. doi: 10.1177/21925682221110527. Epub 2022 Jun 20. PMID: 35723546; PMCID: PMC9393987.

- [41] Barili F, Parolari A, Kappetein PA, Freemantle N. Statistical Primer: heterogeneity, random- or fixed-effects model analyses? *Interact Cardiovasc Thorac Surg*. 2018 Sep 1;27(3):317-321. doi: 10.1093/icvts/ivy163. PMID: 29868857.
- [42] Cochrane. RoB2: A revised Cochrane risk-of-bias tool for randomized trials. [Internet]. London, United Kingdom: The Cochrane Collaboration; 2023 [Cited 2023 Dec 15]. Available from: <https://methods.cochrane.org/bias/resources/rob-2-revised-cochrane-risk-bias-tool-randomized-trials>.
- [43] Rabbitts JA, Groenewald CB. Epidemiology of Pediatric Surgery in the United States. *Paediatr Anaesth*. 2020 Oct;30(10):1083-1090. doi: 10.1111/pan.13993. Epub 2020 Aug 29. PMID: 32777147; PMCID: PMC7891905.
- [44] Dickens H, Rao U, Sarver D, Bruehl S, Kinney K, Karlson C, et al. Racial, Gender, and Neighborhood-Level Disparities in Pediatric Trauma Care. *J Racial Ethn Health Disparities*. 2023 Jun;10(3):1006-1017. doi: 10.1007/s40615-022-01288-5. Epub 2022 Mar 56. PMID: 35347650; PMCID: PMC9515239.
- [45] Hogan J, Couchoud C, Bonthuis M, Groothoff JW, Jager KJ, Schaefer F, et al. Gender Disparities in Access to Pediatric Renal Transplantation in Europe: Data From the ESPN/ERA-EDTA Registry. *Am J Transplant*. 2016 Jul;16(7):2097-105. doi: 10.1111/ajt.13723. Epub 2016 Apr 5. PMID: 26783738.

## Figures and Appendix



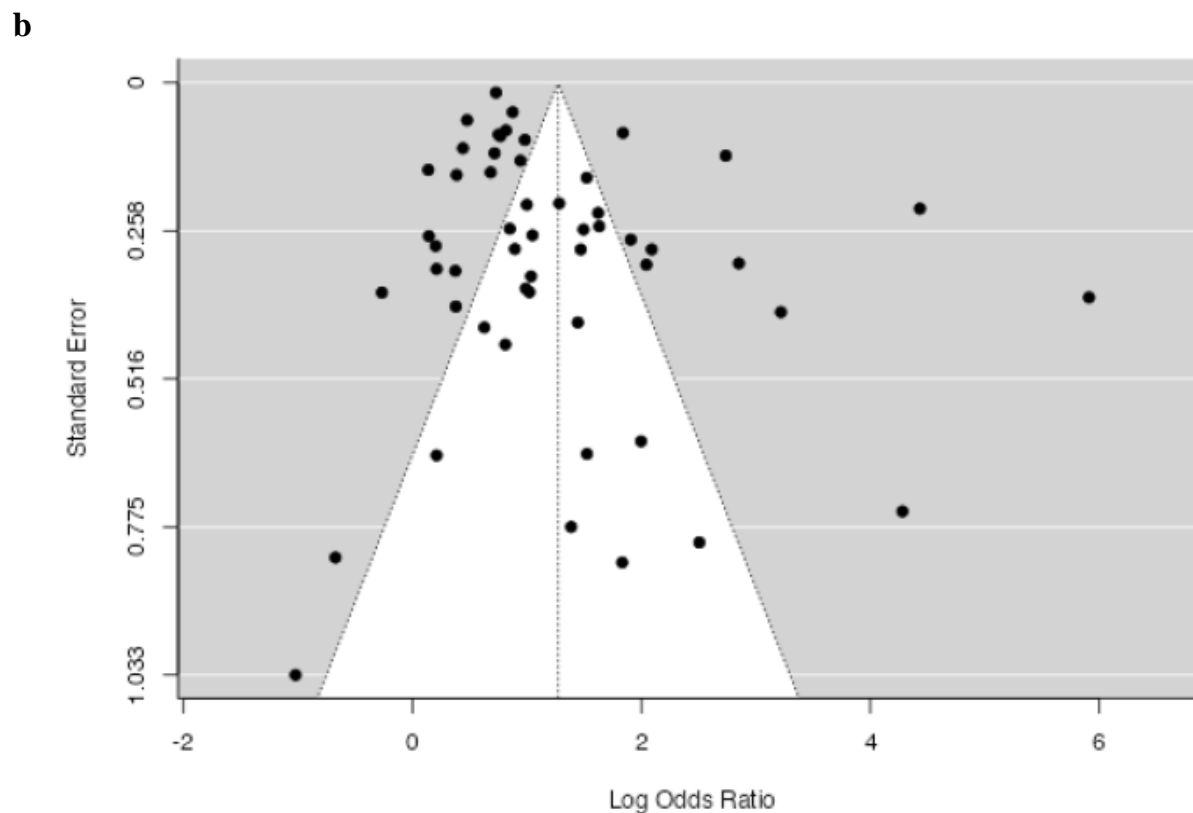
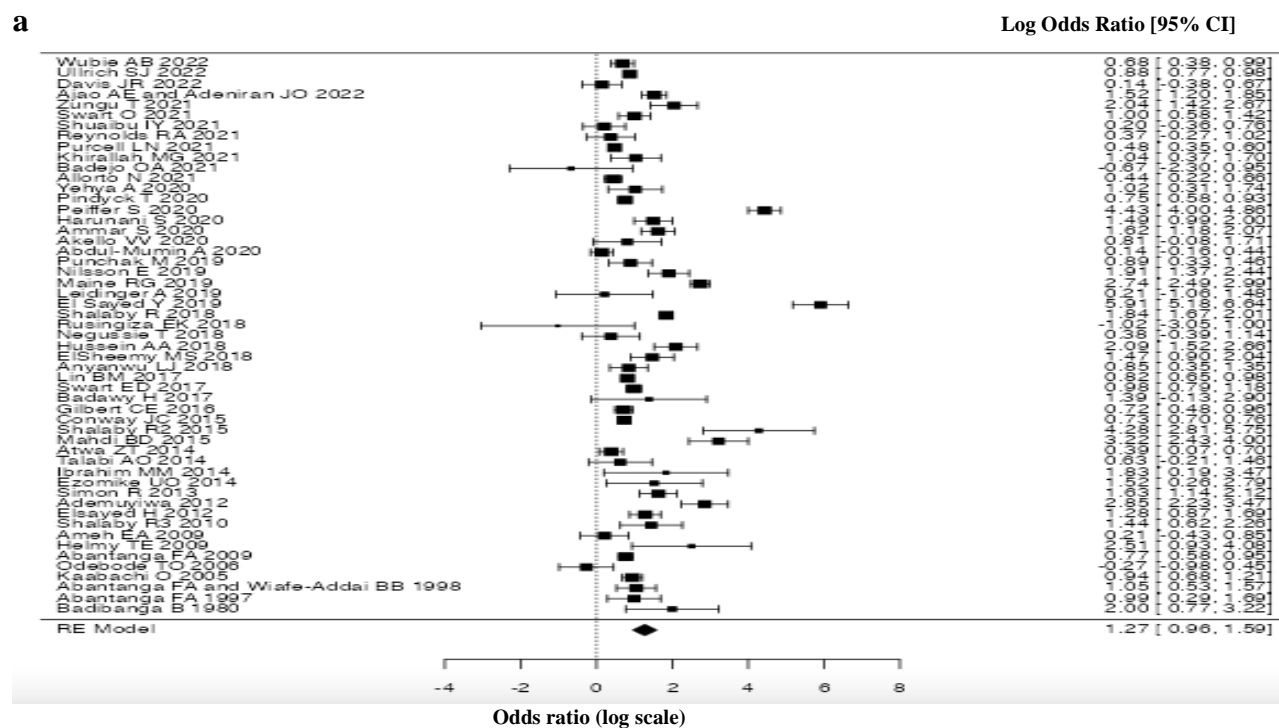
***Fig. 1 PRISMA flowchart identifying eligible studies***

*Page MJ, McKenzie JE, Bossuyt PM, Boutron I, Hoffmann TC, Mulrow CD, et al. The PRISMA 2020 statement: an updated guideline for reporting systematic reviews. BMJ 2021;372:n71. doi: 10.1136/bmj.n71*

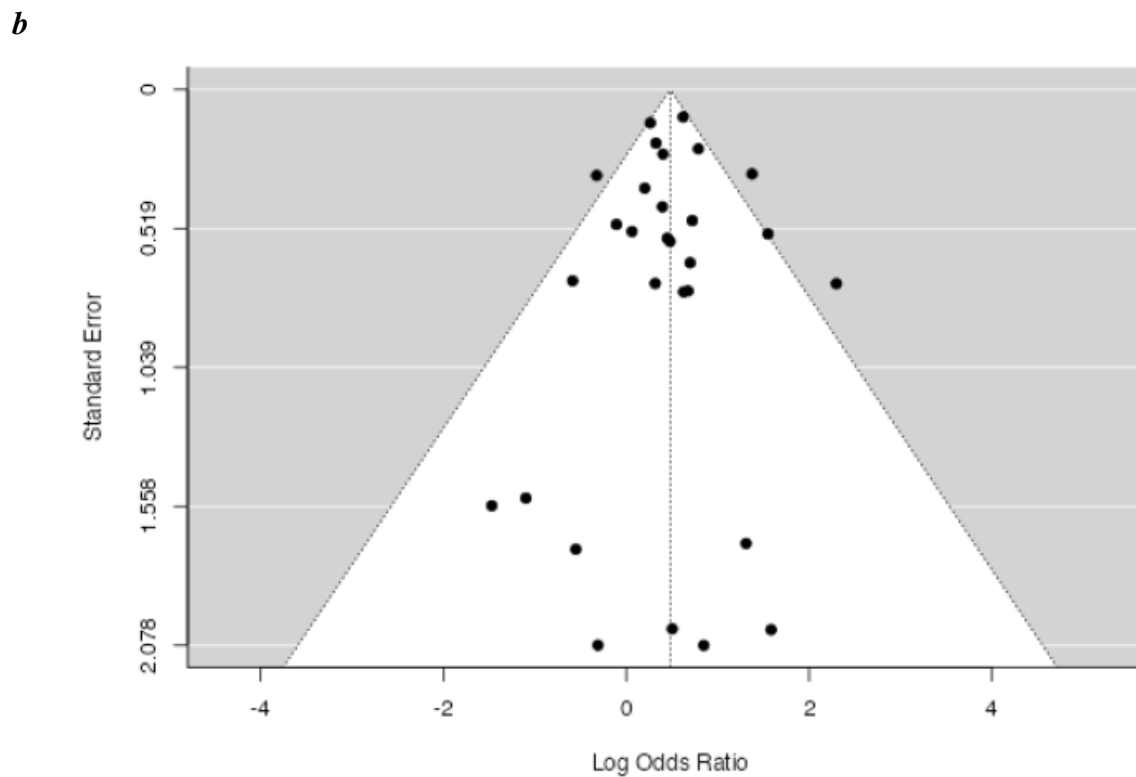
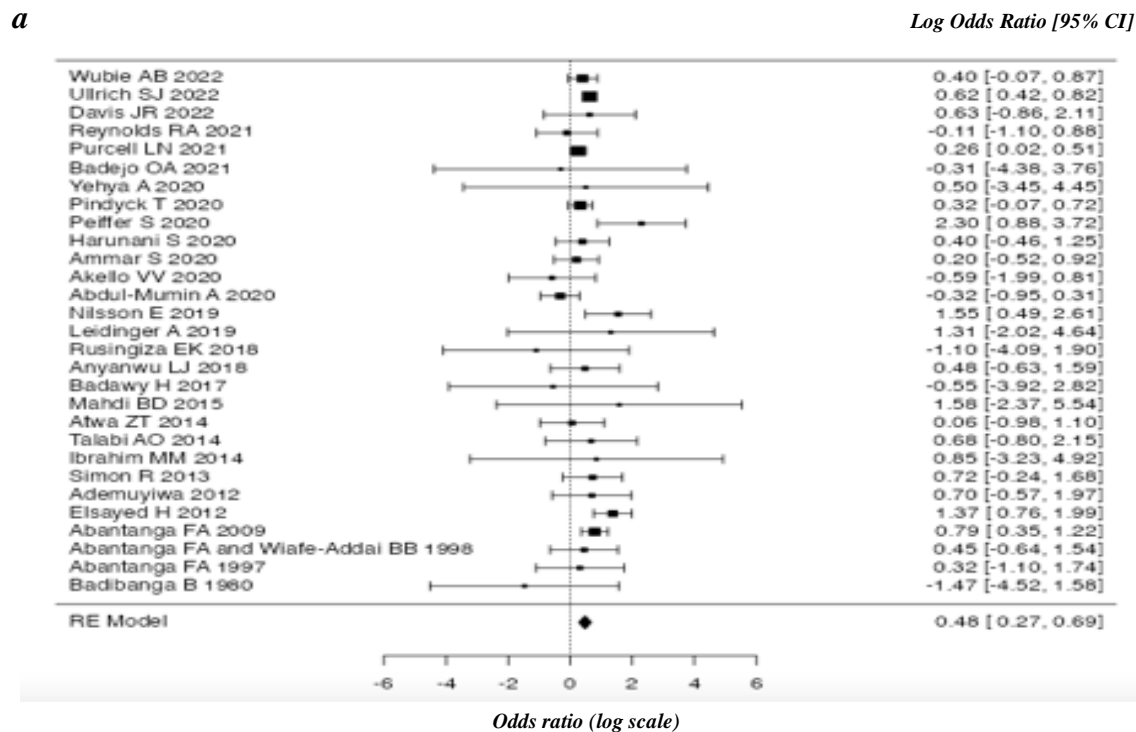
<b>STUDY DESCRIPTIVES</b>	<b>NUMBER (%)</b>
<b>Population</b>	
Pediatric	43 (79.7)
<b>Cohort Size</b>	
< 199	31 (57.4)
200-499	9 (16.7)
500-999	7 (13.0)
> 1000	10 (18.7)
<b>Study Design</b>	
Retrospective	31 (57.4)
Prospective	19 (35.2)
Cross sectional	3 (5.56)
<b>Study site</b>	
Single Centre	51 (94.4)
Multi-centre	3 (5.6)
<b>Country</b>	
Egypt	11 (20.4)
Nigeria	9 (16.7)
Ghana	6 (11.1)
Ethiopia	4 (7.4)
Multiple Sites studies (includes: 7, 20, 33 countries)	3 (5.6)
Malawi, South Africa, Tunisia, Uganda	3 (5.6) each, 12 (22.2) total
Rwanda, Democratic Republic of Congo	2 (3.7) each, 4 (7.4) total
Kenya, Sudan, Tanzania, Zaire, Zambia, Zanzibar	1 (1.6) each, 6 (11.1) total
<b>Publication Date</b>	
1980-1999	3 (5.6)
2000-2009	5 (9.3)
2010-2019	27 (50.0)
2020-present	19 (35.2)
<b>Study Duration</b>	
< 1 year	3 (5.6)
1 year	12 (22.2)
2 years	7 (13.0)
3 years	6 (11.1)
4 years	5 (9.3)
5 years	4 (7.4)
6-10 years	10 (18.5)
> 10 years	17 (31.1)
<b>Surgical Specialty</b>	
Pediatric Surgery	34 (63)
Neurosurgery	6 (11.1)
Renal Transplantation	4 (7.4)
Ophthalmology	3 (5.6)
Burn	2 (3.7)
Cardiac Surgery, Head and Neck Surgery, Liver Transplantation, Orthopedics, Trauma Surgery	1 (1.9) each, 5 (9.6) total
<b>Postoperative Outcomes</b>	
Mortality	33 (61.1)
Other adverse events	21 (38.8)

**Table 1 Characteristics of included studies (n = 54)**

Figures for access analysis. Fig. 2 (a) Forest plot of access (log scale) odds ratio (n = 54); (b) Funnel plot representing publication bias



**Figures for mortality analysis. Fig. 3(a) Forest plot of access (log scale) odds ratio ( $n = 29$ ); (b) Funnel plot representing publication bias**



	No Information	Low Risk (%)	Moderate Risk (%)	Serious Risk (%)	Critical Risk (%)
<b>Domains</b>					
<b>Pre- and At-intervention</b>					
Bias due to confounding	1 (4.6)	5 (22.7)	4 (18.2)	7 (31.8)	5 (22.7)
Bias in selection of participants into the study		21 (95.5)		1 (4.6)	
Bias in classification of outcomes	1 (4.6)	18 (81.8)	1 (4.6)	2 (9.1)	
<b>Post-intervention</b>					
Bias due to deviations from intended interventions	1 (4.6)	19 (86.36)	2 (9.1)		
Bias due to missing data	1 (4.6)	17 (77.3)		4 (18.2)	
Bias in measurement of outcomes		21 (95.5)		1 (4.6)	
Bias in selection of reported result	1 (4.55)	17 (77.3)	3 (13.6)	1 (4.6)	
Total across pre- and at-intervention domain		8 (36.4)	8 (36.4)	6 (27.3)	
Total across post-intervention domain	1 (4.55)	15 (68.2)	6 (27.3)		

*Table 2 ROBINS-I Risk of bias assessment results (n = 22)*

## Appendix A Search Strategy

### Databases Searched

#### Africa-Wide Information [EBSCO] (March 31, 2022)

S3 6	S35 AND S27	811
S3 5	S34 OR S31 OR S30 OR S29 OR S28	53,317
S3 4	S32 AND S33	841
S3 3	TI((access* or equit* or inequit* or inaccess* or barrier* or delay* or distance* or wait* or long-term or complication* or burden* or factor* or influenc* or time or location*) and (surger* or surgical* or operati* or reoperat* or bypass* or by-pass* or resect* or re-sect* or transplant* or procedure or procedures or debridement* or laparoscop* or laparotom*))	3,378
S3 2	TI(gender* or sex or female* or male* or wom?n or m?n or girl* or boy* or parent? or guardian* or child* or caregiver*) OR AB(gender* or sex or female* or male* or wom?n or m?n or girl* or boy* or parent? or guardian* or child* or caregiver*)	513,243
S3 1	TI(gender* or girl* or boy*)	25,355
S3 0	TI(LGBT* or GLBT* or LGB or LGBQ* or LGBS* or M2F or GLB or GLBQ* or GLBs* or 2LGBTQS* or heteroflexible* or heterosex* or cisgend* or GBMSM* or msm or TGNC* or YTW or gay or gays or lesbi* or bisexual* or transgender* or bicurious* or transpeople* or asexual* or transvestite or cross sex* or crosssex* or crossgender* or nonbinary or non-binary or F2M or transperson* or transsexual* or homosexual* or intersex* or queer* or two-spirit* or same-sex or male-to-female or boy-to-girl or (trans N1 (people or individual or individuals or person or persons or sexual* or male or female or youth* or population* or gender)) or ((gender* or sex or sexual) N1 (change or dysphoria or reversal or identit* or reassign* or transform* or transition* or minorit* or sexual* or binary or disaggreg*))) OR AB(LGBT* or GLBT* or LGB or LGBQ* or LGBS* or M2F or GLB or GLBQ* or GLBs* or 2LGBTQS* or heteroflexible* or heterosex* or cisgend* or GBMSM* or msm or TGNC* or YTW or gay or gays or lesbi* or bisexual* or transgender* or bicurious* or transpeople* or asexual* or transvestite or cross sex* or crosssex* or crossgender* or nonbinary or non-binary or F2M or transperson* or transsexual* or homosexual* or intersex* or queer* or two-spirit* or same-sex or male-to-female or boy-to-girl or (trans N1 (people or individual or individuals or person or persons or sexual* or male or female or youth* or population* or gender)) or ((gender* or sex or sexual) N1 (change or dysphoria or reversal or identit* or reassign* or transform* or transition* or minorit* or sexual* or binary or disaggreg*)))	24,202
S2 9	TI((health* or medic* or surg* or doctor* or clinic* or appointment*) AND (access* or equit* or inequit* or inaccess* or barrier* or burden*)) AND AB((health* or medic* or surg* or doctor* or clinic* or appointment*) N5 (access* or equit* or inequit* or inaccess* or barrier* or delay* or distance* or wait* or "long-term" or complication* or factor* or influenc*))	1,738
S2 8	TI((attitude* or bias* or perception* or antipathy or stigma* or anti-stigma* or stereotyp* or prejudice* or discriminat* or bias* or microaggression* or micro-aggression* or negative attitude*) N5 (((health* or hospital* or clinic* or medic*) N2 (professional* or personnel* or staff* or employee* or provider*)) or doctor* or physician* or surgeon* or resident* or nurse or nurses or allied health or social worker* or secretar* or admin* agent*)) OR AB((attitude* or bias* or perception* or antipathy or stigma* or anti-stigma* or stereotyp* or prejudice* or discriminat* or bias* or microaggression* or micro-aggression* or negative attitude*) N5 (((health* or hospital* or clinic* or medic*) N2 (professional* or personnel* or staff* or employee* or provider*)) or doctor* or physician* or surgeon* or resident* or nurse or nurses or allied health or social worker* or secretar* or admin* agent*))	3,331
S2 7	S26 AND S5	10,924
S2 6	S25 OR S24 OR S23 OR S22 OR S21 OR S20 OR S19 OR S18 OR S17 OR S16 OR S12 OR S11 OR S13 OR S14 OR S15 OR S10 OR S9 OR S8 OR S7 OR S6	242,028



S2 5	TI((pectus or chest) N1 (funnel or sunken or excavatum or carinatum)) OR AB((pectus or chest) N1 (funnel or sunken or excavatum or carinatum))	50
S2 4	TI(congenital* and hernia* and diaphragm*) OR AB(congenital* and hernia* and diaphragm*)	152
S2 3	TI((congenital* or neonat* or neo-nat* or newborn* or new-born* or birth* or maternal* or fetal or fetus* or fetu or feto or foet* or prenatal* or pre-natal* or antenatal* or ante-natal* or trimester* or pregnan* or uter* or preterm* or pre-term* or premature* or pre-mature* or preemie*) N2 diaphragm* N2 (hernia* or defect*)) OR AB((congenital* or neonat* or neo-nat* or newborn* or new-born* or birth* or maternal* or fetal or fetus* or fetu or feto or foet* or prenatal* or pre-natal* or antenatal* or ante-natal* or trimester* or pregnan* or uter* or preterm* or pre-term* or premature* or pre-mature* or preemie*) N2 diaphragm* N2 (hernia* or defect*))	145
S2 2	TI((congenital* or neonat* or neo-nat* or newborn* or new-born* or birth* or maternal* or fetal or fetus* or fetu or feto or foet* or prenatal* or pre-natal* or antenatal* or ante-natal* or trimester* or pregnan* or uter* or preterm* or pre-term* or premature* or pre-mature* or preemie*) N5 (posterolateral* or substernal*) N2 hernia*) OR AB((congenital* or neonat* or neo-nat* or newborn* or new-born* or birth* or maternal* or fetal or fetus* or fetu or feto or foet* or prenatal* or pre-natal* or antenatal* or ante-natal* or trimester* or pregnan* or uter* or preterm* or pre-term* or premature* or pre-mature* or preemie*) N5 (posterolateral* or substernal*) N2 hernia*)	5
S2 1	TI((bochdalek* or morgagni*) N2 (hernia* or defect*)) OR AB((bochdalek* or morgagni*) N2 (hernia* or defect*))	41
S2 0	TI(agene* N2 (hemidiaphragm* or diaphragm* or ((unilat* or hern*) N1 diaphragm*))) OR AB(agene* N2 (hemidiaphragm* or diaphragm* or ((unilat* or hern*) N1 diaphragm*)))	5
S1 9	TI(hirschsprung* or ((megacolon or colon* or rectosigmoid or intestin*) N3 (congenital* or aganglion*))) OR AB(hirschsprung* or ((megacolon or colon* or rectosigmoid or intestin*) N3 (congenital* or aganglion*)))	338
S1 8	TI((anal or anus or anorect* or rectal) N3 (artificial* or malformat* or mal-format* or anomal* or abnormal* or ectopic or stenosis or atres* or atroph* or imperforat* or inperforat* or praet* or pret* or fistula*)) OR AB((anal or anus or anorect* or rectal) N3 (artificial* or malformat* or mal-format* or anomal* or abnormal* or ectopic or stenosis or atres* or atroph* or imperforat* or inperforat* or praet* or pret* or fistula*))	521
S1 7	TI((lung or lungs or pulmon* or wedge or trauma* or postrauma* or posttrauma* or neurotrauma* or fracture*) N3 (ablat* or excis* or laparoscop* or laparotom* or operativ* or surger* or surgical* or reconstruct* or repair* or resect* or intraoperative* or perioperative* or perisurg* or postoperative* or postsurg* or preoperative* or presurg*)) OR AB((lung or lungs or pulmon* or wedge or trauma* or postrauma* or posttrauma* or neurotrauma* or fracture*) N3 (ablat* or excis* or laparoscop* or laparotom* or operativ* or surger* or surgical* or reconstruct* or repair* or resect* or intraoperative* or perioperative* or perisurg* or postoperative* or postsurg* or preoperative* or presurg*))	5,692
S1 6	TI(thoroscop* or thoracotom* or pleurectom* or pleuroscop* or pleuracotom* or pleurotom* or (pleura* N3 (endoscop* or incision*))) OR AB(thoroscop* or thoracotom* or pleurectom* or pleuroscop* or pleuracotom* or pleurotom* or (pleura* N3 (endoscop* or incision*)))	1,391
S1 5	TI((liver or hepatic or lung or lungs or pulmon* or kidney) N3 (transplant* or graft*)) OR AB((liver or hepatic or lung or lungs or pulmon* or kidney) N3 (transplant* or graft*))	3,251
S1 4	TI((hernia* or extraperitoneal or preperitoneal or peritoneal or TEP or TAPP or umbilic* or inguinal or omphalocele* or exomphalos) N3 (ablat* or excis* or laparoscop* or laparotom* or operativ* or surger* or surgical* or reconstruct* or repair* or resect* or intraoperative* or perioperative* or perisurg* or postoperative* or postsurg* or preoperative* or presurg*)) OR AB((hernia* or extraperitoneal or preperitoneal or peritoneal or TEP or TAPP or umbilic* or inguinal or omphalocele* or exomphalos) N3 (ablat* or excis* or laparoscop* or laparotom* or operativ* or surger* or surgical* or reconstruct* or repair* or resect* or intraoperative* or perioperative* or perisurg* or postoperative* or postsurg* or preoperative* or presurg*))	1,166
S1 3	TI(fundoplicat* or ((nissen* or toupet or dor) N3 (operat* or procedur* or surger* or surgical*))) OR AB(fundoplicat* or ((nissen* or toupet or dor) N3 (operat* or procedur* or surger* or surgical*)))	118
S1 2	TI((cancer or neoplas* or tumor* or tumour* or carcinom* or sarcoma*) N3 (ablat* or excis* or laparoscop* or laparotom* or operativ* or surger* or surgical* or reconstruct* or repair* or resect*	5,038

	or biopsy or biopsie* or intraoperative* or perioperative* or perisurg* or postoperative* or postsurg* or preoperative* or presurg*) OR AB((cancer or neoplas* or tumor* or tumour* or carcinom* or sarcoma*) N3 (ablat* or excis* or laparoscop* or laparotom* or operativ* or surger* or surgical* or reconstruct* or repair* or resect* or biopsy or biopsie* or intraoperative* or perioperative* or perisurg* or postoperative* or postsurg* or preoperative* or presurg*))	
S1 1	TI(escharotom* or ((skin or derm*) N2 (graft* or transplant*))) OR AB(escharotom* or ((skin or derm*) N2 (graft* or transplant*)))	689
S1 0	TI((abdomen or abdominal or intestin* or bowel* or gastrointestin*) N3 (ablat* or excis* or laparoscop* or laparotom* or operativ* or surger* or surgical* or reconstruct* or repair* or resect* or intraoperative* or perioperative* or perisurg* or postoperative* or postsurg* or preoperative* or presurg*)) OR AB((abdomen or abdominal or intestin* or bowel* or gastrointestin*) N3 (ablat* or excis* or laparoscop* or laparotom* or operativ* or surger* or surgical* or reconstruct* or repair* or resect* or intraoperative* or perioperative* or perisurg* or postoperative* or postsurg* or preoperative* or presurg*))	2,775
S9	TI((tooth or teeth or dental or abcess) N2 (extract* or drain*)) OR AB((tooth or teeth or dental or abcess) N2 (extract* or drain*))	697
S8	TI((ophthalmolog* or eye* or vision or ocular or retina* or retinopath*) N5 (operat* or procedur* or surger* or surgical*)) OR AB((ophthalmolog* or eye* or vision or ocular or retina* or retinopath*) N5 (operat* or procedur* or surger* or surgical*))	1,405
S7	TI(adenoidectom* or laryngectom* or laryngoplast* or laryngoscop* or pharygectom* or tonsillectom* or tympanoplast* or tracheostom* or tracheotom* or orchidopex* or orchiope* or orchiectom* or orchidectom* or herniorrhaph* or hernioplast* or herniaplast* or herni*-plast* or herniotom* or circumcis* or gastrostom or ileostom* or colostom* or enterostom* or portoenterostom or roux-en-y or kasai or pyloromyotom* or piloromyotom* or pyloromiotom* or piloromiotom* or diverticulectom* or diverticulotom* or cholecystectom* or cholangiopancreatograph* or cholangio-pancreatograph* or choledoduodenostom* or choledoduodenostom* or appendicectom* or appendectom* or splenectom* or pneumonectom* or amputation* or amputate* or craniotom* or craniostom* or hydrocelectom* or thoracostom* or fasciotom*) or AB(adenoidectom* or laryngectom* or laryngoplast* or laryngoscop* or pharygectom* or tonsillectom* or tympanoplast* or tracheostom* or tracheotom* or orchidopex* or orchiope* or orchiectom* or orchidectom* or herniorrhaph* or hernioplast* or herniaplast* or herni*-plast* or herniotom* or circumcis* or gastrostom or ileostom* or colostom* or enterostom* or portoenterostom or roux-en-y or kasai or pyloromyotom* or piloromyotom* or pyloromiotom* or piloromiotom* or diverticulectom* or diverticulotom* or cholecystectom* or cholangiopancreatograph* or cholangio-pancreatograph* or choledoduodenostom* or choledoduodenostom* or appendicectom* or appendectom* or splenectom* or pneumonectom* or amputation* or amputate* or craniotom* or craniostom* or hydrocelectom* or thoracostom* or fasciotom*)	12,498
S6	TI(surger* or surgic* or surgeon* or operati* or reoperat* or bypass* or by-pass* or resect* or resect* or transplant* or procedure* or debridement* or laparoscop* or laparotom* or postop*) OR AB(surger* or surgic* or surgeon* or operati* or reoperat* or bypass* or by-pass* or resect* or resect* or transplant* or procedure* or debridement* or laparoscop* or laparotom* or postop*)	233,010
S5	S3 AND S4	115,606
S4	TI(newborn* or new-born* or neonat* or neo-nat* or infan* or child* or paediatr* or pediater* or baby* or babies* or toddler* or kid or kids or boy* or girl* or adolesc* or juvenile* or teen* or youth* or pubescen* or preadolesc* or prepubesc* or preteen*) OR AB(newborn* or new-born* or neonat* or neo-nat* or infan* or child* or paediatr* or pediater* or baby* or babies* or toddler* or kid or kids or boy* or girl* or adolesc* or juvenile* or teen* or youth* or pubescen* or preadolesc* or prepubesc* or preteen*)	271,259
S3	S1 OR S2	1,641,925
S2	TI((Porto-Novo or Hogbonou or Cotonou or Kutonu or Ouagadougou or Ouaga or Bujumbura or Usumbura or Bangui or Bangi or N'Djamena or Ndjamena or Fort Lamy or Moroni or Kinshasa or Asmara or Asmera or Addis Ababa or Addis Abeba or Banjul or Bathurst or Conakry or Bissau or Port-au-Prince or Monrovia or Antananarivo or Tananarive or Tana or Lilongwe or Bamako or Maputo or Lourenco Marques or Niamey or Kigali or Freetown or Free-town or Mogadishu or Xamar or Hamar or Muqdisho or Maqadishu or Juba or Dodoma or Dar es Salaam or Lome or	101,704

	<p>Kampala or Harare or Salisbury or Thimphu or Thimbu or La Paz or Praia or Yaounde or Jaunde or Brazzaville or Yamoussoukro or Cairo or Accra or Nairobi or Frunze or Maseru or Nouakchott or Rabat or Managua or Abuja or Lagos or Port Moresby or Moresby or Khartoum or Mbabane or Embabane or Lobamba or sanada or Lusaka or Luanda)) OR AB((Porto-Novo or Hogbonou or Cotonou or Kutonu or Ouagadougou or Ouaga or Bujumbura or Usumbura or Bangui or Bangi or N'Djamena or Ndjamenia or Fort Lamy or Moroni or Kinshasa or Asmara or Asmera or Addis Ababa or Addis Abeba or Banjul or Bathurst or Conakry or Bissau or Port-au-Prince or Monrovia or Antananarivo or Tananarive or Tana or Lilongwe or Bamako or Maputo or Lourenco Marques or Niamey or Kigali or Freetown or Free-town or Mogadishu or Xamar or Hamar or Muqdisho or Maqadishu or Juba or Dodoma or Dar es Salaam or Lome or Kampala or Harare or Salisbury or Thimphu or Thimbu or La Paz or Praia or Yaounde or Jaunde or Brazzaville or Yamoussoukro or Cairo or Accra or Nairobi or Frunze or Maseru or Nouakchott or Rabat or Managua or Abuja or Lagos or Port Moresby or Moresby or Khartoum or Mbabane or Embabane or Lobamba or sanada or Lusaka or Luanda))</p>	
S1	<p>TI(Abuja or Abyssinia or Accra or Addis Ababa or Addis Abeba or Africa* or Algeria or Algiers or Angola or Antananarivo or Asmara or Asmera or Bamako or Bangi or Bangui or Banjul or Basutoland or Benin or Bissau or Bloemfontein or Botswana or Brazzaville or Bujumbura or Burundi or Burkina Faso or Burundi or Cabo Verde or Cairo or Cameroon or Cameroun or Cape Town or Cape Verde or Cap-Vert or Centrafrican or Centrafrique or Chad or Comores or Comoro or Comoros or Conakry or Congo or Cote Diivoire or Cote D'ivoire or Cotonou or Dahomey or Dakar or Dar Es Salaam or Djibouti or Dodoma or Egypt* or Embabane or Eritrea or Ethiopia or Eswatini or Freetown or Free-Town or Gabon or Gaborone or Gambia or Ghana or Gold Coast or Guinea or Harare or Ifni or Ivory Coast or Jaunde or Juba or Kampala or Katanga or Kenya or Khartoum or Kigali or Kinshasa or Kutonu or Leopoldville or Lesotho or Liberia or Libreville or Libya or Lilongwe or Lobamba or Lome or Luanda or Lusaka or Madagascar or Malabo or Malagasy or Malawi or Mali or Maputo or Maqadishu or Maseru or Mauretania or Mauritania or Mauritius or Mayotte or Mbabane or Mocambique or Mogadishu or Monrovia or Morocco or Moroni or Mozambic or Mozambique or Muqdisho or Nairobi or Namibia or Ndjamenia or N'Djamena or Niamey or Niger or Nigeria or Nouakchott or Nyasaland or Ouaga or Ouagadougou or Oyala or Port Louis or Porto-Novo or Praia or Pretoria or Rabat or Rhodesia or Ruanda or Rwanda or Sao Tome or Saharan* or Senegal* or Senegambia or Seychelles or Sierra Leone or Somali* or Subsahar* or Sudan or Swaziland or Tana or Tananarive or Tanganyika or Tanzania or Tchad or Togo or Togoland or Togolese or Tripoli or Tshad or Tunis or Tunisia or Ubangi-Shari or Uganda or "United Arab Republic" or Upper Volta or Urundi or Usumbura or Windhoek or Yamoussoukro or Yaounde or Zaire or Zambia or Zanzibar or Zimbabwe) OR AB(Abuja or Abyssinia or Accra or Addis Ababa or Addis Abeba or Africa* or Algeria or Algiers or Angola or Antananarivo or Asmara or Asmera or Bamako or Bangi or Bangui or Banjul or Basutoland or Benin or Bissau or Bloemfontein or Botswana or Brazzaville or Bujumbura or Burundi or Burkina Faso or Burundi or Cabo Verde or Cairo or Cameroon or Cameroun or Cape Town or Cape Verde or Cap-Vert or Centrafrican or Centrafrique or Chad or Comores or Comoro or Comoros or Conakry or Congo or Cote Diivoire or Cote D'ivoire or Cotonou or Dahomey or Dakar or Dar Es Salaam or Djibouti or Dodoma or Egypt* or Embabane or Eritrea or Ethiopia or Eswatini or Freetown or Free-Town or Gabon or Gaborone or Gambia or Ghana or Gold Coast or Guinea or Harare or Ifni or Ivory Coast or Jaunde or Juba or Kampala or Katanga or Kenya or Khartoum or Kigali or Kinshasa or Kutonu or Leopoldville or Lesotho or Liberia or Libreville or Libya or Lilongwe or Lobamba or Lome or Luanda or Lusaka or Madagascar or Malabo or Malagasy or Malawi or Mali or Maputo or Maqadishu or Maseru or Mauretania or Mauritania or Mauritius or Mayotte or Mbabane or Mocambique or Mogadishu or Monrovia or Morocco or Moroni or Mozambic or Mozambique or Muqdisho or Nairobi or Namibia or Ndjamenia or N'Djamena or Niamey or Niger or Nigeria or Nouakchott or Nyasaland or Ouaga or Ouagadougou or Oyala or Port Louis or Porto-Novo or Praia or Pretoria or Rabat or Rhodesia or Ruanda or Rwanda or Sao Tome or Saharan* or Senegal* or Senegambia or Seychelles or Sierra Leone or Somali* or Subsahar* or Sudan or Swaziland or Tana or Tananarive or Tanganyika or Tanzania or Tchad or Togo or Togoland or Togolese or Tripoli or Tshad or Tunis or Tunisia or Ubangi-Shari or Uganda or "United Arab Republic" or Upper Volta or Urundi or Usumbura or Windhoek or Yamoussoukro or Yaounde or Zaire or Zambia or Zanzibar or Zimbabwe)</p>	1,638,2

**CINAHL Plus [EBSCO] (March 31, 2022)**

S3 7	S35 AND S27	208
S3 6	S35 AND S27	208
S3 5	S34 OR S31 OR S30 OR S29 OR S28	128,450
S3 4	S32 AND S33	6,802
S3 3	TI((access* or equit* or inequit* or inaccess* or barrier* or delay* or distance* or wait* or long-term or complication* or burden* or factor* or influenc* or time or location*) and (surger* or surgical* or operati* or reoperat* or bypass* or by-pass* or resect* or re-sect* or transplant* or procedure or procedures or debridement* or laparoscop* or laparotom*))	29,313
S3 2	TI(gender* or sex or female* or male* or wom?n or m?n or girl* or boy* or parent? or guardian* or child* or caregiver*) OR AB(gender* or sex or female* or male* or wom?n or m?n or girl* or boy* or parent? or guardian* or child* or caregiver*)	1,620,203
S3 1	TI(gender* or girl* or boy*)	45,934
S3 0	TI(LGBT* or GLBT* or LGB or LGBQ* or LGBS* or M2F or GLB or GLBQ* or GLBs* or 2LGBTQS* or heteroflexible* or heterosex* or cisgend* or GBMSM* or msm or TGNC* or YTW or gay or gays or lesbi* or bisexual* or transgender* or bicurious* or transpeople* or asexual* or transvestite or cross sex* or crosssex* or crossgender* or nonbinary or non-binary or F2M or transperson* or transsexual* or homosexual* or intersex* or queer* or two-spirit* or same-sex or male-to-female or boy-to-girl or (trans N1 (people or individual or individuals or person or persons or sexual* or male or female or youth* or population* or gender)) or ((gender* or sex or sexual) N1 (change or dysphoria or reversal or identit* or reassign* or transform* or transition* or minorit* or sexual* or binary or disaggreg*))) OR AB(LGBT* or GLBT* or LGB or LGBQ* or LGBS* or M2F or GLB or GLBQ* or GLBs* or 2LGBTQS* or heteroflexible* or heterosex* or cisgend* or GBMSM* or msm or TGNC* or YTW or gay or gays or lesbi* or bisexual* or transgender* or bicurious* or transpeople* or asexual* or transvestite or cross sex* or crosssex* or crossgender* or nonbinary or non-binary or F2M or transperson* or transsexual* or homosexual* or intersex* or queer* or two-spirit* or same-sex or male-to-female or boy-to-girl or (trans N1 (people or individual or individuals or person or persons or sexual* or male or female or youth* or population* or gender)) or ((gender* or sex or sexual) N1 (change or dysphoria or reversal or identit* or reassign* or transform* or transition* or minorit* or sexual* or binary or disaggreg*)))	40,905
S2 9	TI((health* or medic* or surg* or doctor* or clinic* or appointment*) AND (access* or equit* or inequit* or inaccess* or barrier* or burden*)) AND AB((health* or medic* or surg* or doctor* or clinic* or appointment*) N5 (access* or equit* or inequit* or inaccess* or barrier* or delay* or distance* or wait* or "long-term" or complication* or factor* or influenc*))	9,277
S2 8	TI((attitude* or bias* or perception* or antipathy or stigma* or anti-stigma* or stereotyp* or prejudice* or discriminat* or bias* or microaggression* or micro-aggression* or negative attitude*) N5 (((health* or hospital* or clinic* or medic*) N2 (professional* or personnel* or staff* or employee* or provider*)) or doctor* or physician* or surgeon* or resident* or nurse or nurses or allied health or social worker* or secretar* or admin* agent*)) OR AB((attitude* or bias* or perception* or antipathy or stigma* or anti-stigma* or stereotyp* or prejudice* or discriminat* or bias* or microaggression* or micro-aggression* or negative attitude*) N5 (((health* or hospital* or clinic* or medic*) N2 (professional* or personnel* or staff* or employee* or provider*)) or doctor* or physician* or surgeon* or resident* or nurse or nurses or allied health or social worker* or	31,679

	secretar* or admin* agent*))	
S2 7	S26 AND S5	2,946
S2 6	S25 OR S24 OR S23 OR S22 OR S21 OR S20 OR S19 OR S18 OR S17 OR S16 OR S12 OR S11 OR S13 OR S14 OR S15 OR S10 OR S9 OR S8 OR S7 OR S6	912,226
S2 5	TI((pectus or chest) N1 (funnel or sunken or excavatum or carinatum)) OR AB((pectus or chest) N1 (funnel or sunken or excavatum or carinatum))	448
S2 4	TI(congenital* and hernia* and diaphragm*) OR AB(congenital* and hernia* and diaphragm*)	1,613
S2 3	TI((congenital* or neonat* or neo-nat* or newborn* or new-born* or birth* or maternal* or fetal or fetus* or fetu or fetu or foet* or prenatal* or pre-natal* or antenatal* or ante-natal* or trimester* or pregnan* or uter* or preterm* or pre-term* or premature* or pre-mature* or preemie*) N2 diaphragm* N2 (hernia* or defect*)) OR AB((congenital* or neonat* or neo-nat* or newborn* or new-born* or birth* or maternal* or fetal or fetus* or fetu or fetu or foet* or prenatal* or pre-natal* or antenatal* or ante-natal* or trimester* or pregnan* or uter* or preterm* or pre-term* or premature* or pre-mature* or preemie*) N2 diaphragm* N2 (hernia* or defect*))	1,576
S2 2	TI((congenital* or neonat* or neo-nat* or newborn* or new-born* or birth* or maternal* or fetal or fetus* or fetu or fetu or foet* or prenatal* or pre-natal* or antenatal* or ante-natal* or trimester* or pregnan* or uter* or preterm* or pre-term* or premature* or pre-mature* or preemie*) N5 (posterolateral* or substernal*) N2 hernia*) OR AB((congenital* or neonat* or neo-nat* or newborn* or new-born* or birth* or maternal* or fetal or fetus* or fetu or fetu or foet* or prenatal* or pre-natal* or antenatal* or ante-natal* or trimester* or pregnan* or uter* or preterm* or pre-term* or premature* or pre-mature* or preemie*) N5 (posterolateral* or substernal*) N2 hernia*)	8
S2 1	TI((bochdalek* or morgagni*) N2 (hernia* or defect*)) OR AB((bochdalek* or morgagni*) N2 (hernia* or defect*))	240
S2 0	TI(agene* N2 (hemidiaphragm* or diaphragm* or ((unilat* or hern*) N1 diaphragm*)) OR AB(agene* N2 (hemidiaphragm* or diaphragm* or ((unilat* or hern*) N1 diaphragm*))	13
S1 9	TI(hirschsprung* or ((megacolon or colon* or rectosigmoid or intestin*) N3 (congenital* or aganglion*)) OR AB(hirschsprung* or ((megacolon or colon* or rectosigmoid or intestin*) N3 (congenital* or aganglion*))	991
S1 8	TI((anal or anus or anorect* or rectal) N3 (artificial* or malformat* or mal-format* or anomal* or abnormal* or ectopic or stenosis or atres* or atroph* or imperforat* or imperforat* or praet* or pret* or fistula*)) OR AB((anal or anus or anorect* or rectal) N3 (artificial* or malformat* or mal-format* or anomal* or abnormal* or ectopic or stenosis or atres* or atroph* or imperforat* or imperforat* or praet* or pret* or fistula*))	1,517
S1 7	TI((lung or lungs or pulmon* or wedge or trauma* or postrauma* or posttrauma* or neurotrauma* or fracture*) N3 (ablat* or excis* or laparoscop* or laparotom* or operativ* or surger* or surgical* or reconstruct* or repair* or resect* or intraoperative* or perioperative* or perisurg* or postoperative* or postsurg* or preoperative* or presurg*)) OR AB((lung or lungs or pulmon* or wedge or trauma* or postrauma* or posttrauma* or neurotrauma* or fracture*) N3 (ablat* or excis* or laparoscop* or laparotom* or operativ* or surger* or surgical* or reconstruct* or repair* or resect* or intraoperative* or perioperative* or perisurg* or postoperative* or postsurg* or preoperative* or presurg*))	29,073
S1 6	TI(thoracoscop* or thoracotom* or pleurectom* or pleuroscop* or pleuracotom* or pleurotom* or (pleura* N3 (endoscop* or incision*)) OR AB(thoracoscop* or thoracotom* or pleurectom* or pleuroscop* or pleuracotom* or pleurotom* or (pleura* N3 (endoscop* or incision*))	6,216
S1 5	TI((liver or hepatic or lung or lungs or pulmon* or kidney) N3 (transplant* or graft*)) OR AB((liver or hepatic or lung or lungs or pulmon* or kidney) N3 (transplant* or graft*))	19,870
S1 4	TI((hernia* or extraperitoneal or preperitoneal or peritoneal or TEP or TAPP or umbilic* or inguinal or omphalocele* or exomphalos) N3 (ablat* or excis* or laparoscop* or laparotom* or operativ* or surger* or surgical* or reconstruct* or repair* or resect* or intraoperative* or perioperative* or perisurg* or postoperative* or postsurg* or preoperative* or presurg*)) OR AB((hernia* or extraperitoneal or preperitoneal or peritoneal or TEP or TAPP or umbilic* or inguinal or omphalocele* or exomphalos) N3 (ablat* or excis* or laparoscop* or laparotom* or operativ* or surger* or surgical* or reconstruct* or repair* or resect* or intraoperative* or perioperative* or	8,296



	perisurg* or postoperative* or postsurg* or preoperative* or presurg*))	
S1 3	TI(fundoplicat* or ((nissen* or toupet or dor) N3 (operat* or procedur* or surger* or surgical*))) OR AB(fundoplicat* or ((nissen* or toupet or dor) N3 (operat* or procedur* or surger* or surgical*)))	1,329
S1 2	TI((cancer or neoplas* or tumor* or tumour* or carcinom* or sarcoma*) N3 (ablat* or excis* or laparoscop* or laparotom* or operativ* or surger* or surgical* or reconstruct* or repair* or resect* or biopsy or biopsie* or intraoperative* or perioperative* or perisurg* or postoperative* or postsurg* or preoperative* or presurg*)) OR AB((cancer or neoplas* or tumor* or tumour* or carcinom* or sarcoma*) N3 (ablat* or excis* or laparoscop* or laparotom* or operativ* or surger* or surgical* or reconstruct* or repair* or resect* or biopsy or biopsie* or intraoperative* or perioperative* or perisurg* or postoperative* or postsurg* or preoperative* or presurg*))	45,768
S1 1	TI(escharotom* or ((skin or derm*) N2 (graft* or transplant*)) OR AB(escharotom* or ((skin or derm*) N2 (graft* or transplant*)))	3,496
S1 0	TI((abdomen or abdominal or intestin* or bowel* or gastrointestin*) N3 (ablat* or excis* or laparoscop* or laparotom* or operativ* or surger* or surgical* or reconstruct* or repair* or resect* or intraoperative* or perioperative* or perisurg* or postoperative* or postsurg* or preoperative* or presurg*)) OR AB((abdomen or abdominal or intestin* or bowel* or gastrointestin*) N3 (ablat* or excis* or laparoscop* or laparotom* or operativ* or surger* or surgical* or reconstruct* or repair* or resect* or intraoperative* or perioperative* or perisurg* or postoperative* or postsurg* or preoperative* or presurg*))	16,139
S9	TI((tooth or teeth or dental or abcess) N2 (extract* or drain*)) OR AB((tooth or teeth or dental or abcess) N2 (extract* or drain*))	3,531
S8	TI((ophthalmolog* or eye* or vision or ocular or retina* or retinopath*) N5 (operat* or procedur* or surger* or surgical*)) OR AB((ophthalmolog* or eye* or vision or ocular or retina* or retinopath*) N5 (operat* or procedur* or surger* or surgical*))	5,779
S7	TI(adenoidectom* or laryngectom* or laryngoplast* or laryngoscop* or pharygectom* or tonsillectom* or tympanoplast* or tracheostom* or tracheotom* or orchidopex* or orchiopep* or orchiectom* or orchidectom* or herniorrhaph* or hernioplast* or hernioplast* or herni*-plast* or herniotom* or circumcis* or gastrostom or ileostom* or colostom* or enterostom* or portoenterostom or roux-en-y or kasai or pyloromyotom* or piloromyotom* or pyloromiotom* or piloromiotom* or diverticulectom* or diverticulotom* or cholecystectom* or cholangiopancreatograph* or cholangio-pancreatograph* or choledoduodenostom* or choledoduodenostom* or appendicectom* or appendectom* or splenectom* or pneumonectom* or amputation* or amputate* or craniotom* or craniostom* or hydrocelectom* or thoracostom* or fasciotom*) or AB(adenoidectom* or laryngectom* or laryngoplast* or laryngoscop* or pharygectom* or tonsillectom* or tympanoplast* or tracheostom* or tracheotom* or orchidopex* or orchiopep* or orchiectom* or orchidectom* or herniorrhaph* or hernioplast* or hernioplast* or herni*-plast* or herniotom* or circumcis* or gastrostom or ileostom* or colostom* or enterostom* or portoenterostom or roux-en-y or kasai or pyloromyotom* or piloromyotom* or pyloromiotom* or piloromiotom* or diverticulectom* or diverticulotom* or cholecystectom* or cholangiopancreatograph* or cholangio-pancreatograph* or choledoduodenostom* or choledoduodenostom* or appendicectom* or appendectom* or splenectom* or pneumonectom* or amputation* or amputate* or craniotom* or craniostom* or hydrocelectom* or thoracostom* or fasciotom*)	56,060
S6	TI(surger* or surgic* or surgeon* or operati* or reoperat* or bypass* or by-pass* or resect* or resect* or transplant* or procedure* or debridement* or laparoscop* or laparotom* or postop*) OR AB(surger* or surgic* or surgeon* or operati* or reoperat* or bypass* or by-pass* or resect* or resect* or transplant* or procedure* or debridement* or laparoscop* or laparotom* or postop*)	868,462
S5	S3 AND S4	38,464
S4	TI(newborn* or new-born* or neonat* or neo-nat* or infan* or child* or paediatr* or pediater* or baby* or babies* or toddler* or kid or kids or boy* or girl* or adolesc* or juvenile* or teen* or youth* or pubescen* or preadolesc* or prepubesc* or preteen*) OR AB(newborn* or new-born* or neonat* or neo-nat* or infan* or child* or paediatr* or pediater* or baby* or babies* or toddler* or kid or kids or boy* or girl* or adolesc* or juvenile* or teen* or youth* or pubescen* or preadolesc* or prepubesc* or preteen*)	940,614
S3	S1 OR S2	136,479



S2	<p>TI((Porto-Novo or Hogbonou or Cotonou or Kutonu or Ouagadougou or Ouaga or Bujumbura or Usumbura or Bangui or Bangi or N'Djamena or Ndjamenia or Fort Lamy or Moroni or Kinshasa or Asmara or Asmera or Addis Ababa or Addis Abeba or Banjul or Bathurst or Conakry or Bissau or Port-au-Prince or Monrovia or Antananarivo or Tananarive or Tana or Lilongwe or Bamako or Maputo or Lourenco Marques or Niamey or Kigali or Freetown or Free-town or Mogadishu or Xamar or Hamar or Muqdisho or Maqadishu or Juba or Dodoma or Dar es Salaam or Lome or Kampala or Harare or Salisbury or Thimphu or Thimbu or La Paz or Praia or Yaounde or Jaunde or Brazzaville or Yamoussoukro or Cairo or Accra or Nairobi or Frunze or Maseru or Nouakchott or Rabat or Managua or Abuja or Lagos or Port Moresby or Moresby or Khartoum or Mbabane or Embabane or Lobamba or sanada or Lusaka or Luanda)) OR AB((Porto-Novo or Hogbonou or Cotonou or Kutonu or Ouagadougou or Ouaga or Bujumbura or Usumbura or Bangui or Bangi or N'Djamena or Ndjamenia or Fort Lamy or Moroni or Kinshasa or Asmara or Asmera or Addis Ababa or Addis Abeba or Banjul or Bathurst or Conakry or Bissau or Port-au-Prince or Monrovia or Antananarivo or Tananarive or Tana or Lilongwe or Bamako or Maputo or Lourenco Marques or Niamey or Kigali or Freetown or Free-town or Mogadishu or Xamar or Hamar or Muqdisho or Maqadishu or Juba or Dodoma or Dar es Salaam or Lome or Kampala or Harare or Salisbury or Thimphu or Thimbu or La Paz or Praia or Yaounde or Jaunde or Brazzaville or Yamoussoukro or Cairo or Accra or Nairobi or Frunze or Maseru or Nouakchott or Rabat or Managua or Abuja or Lagos or Port Moresby or Moresby or Khartoum or Mbabane or Embabane or Lobamba or sanada or Lusaka or Luanda))</p>	8,562
S1	<p>TI(Abuja or Abyssinia or Accra or Addis Ababa or Addis Abeba or Africa* or Algeria or Algiers or Angola or Antananarivo or Asmara or Asmera or Bamako or Bangi or Bangui or Banjul or Basutoland or Benin or Bissau or Bloemfontein or Botswana or Brazzaville or Bujumbura or Burundi or Burkina Faso or Burundi or Cabo Verde or Cairo or Cameroon or Cameroun or Cape Town or Cape Verde or Cap-Vert or Centrafrican or Centrafrique or Chad or Comores or Comoro or Comoros or Conakry or Congo or Cote Diivoire or Cote D'ivoire or Cotonou or Dahomey or Dakar or Dar Es Salaam or Djibouti or Dodoma or Egypt* or Embabane or Eritrea or Ethiopia or Eswatini or Freetown or Free-Town or Gabon or Gaborone or Gambia or Ghana or Gold Coast or Guinea or Harare or Ifni or Ivory Coast or Jaunde or Juba or Kampala or Katanga or Kenya or Khartoum or Kigali or Kinshasa or Kutonu or Leopoldville or Lesotho or Liberia or Libreville or Libya or Lilongwe or Lobamba or Lome or Luanda or Lusaka or Madagascar or Malabo or Malagasy or Malawi or Mali or Maputo or Maqadishu or Maseru or Mauretania or Mauritania or Mauritius or Mayotte or Mbabane or Mocambique or Mogadishu or Monrovia or Morocco or Moroni or Mozambic or Mozambique or Muqdisho or Nairobi or Namibia or Ndjamenia or N'Djamena or Niamey or Niger or Nigeria or Nouakchott or Nyasaland or Ouaga or Ouagadougou or Oyala or Port Louis or Porto-Novo or Praia or Pretoria or Rabat or Rhodesia or Ruanda or Rwanda or Sao Tome or Saharan* or Senegal* or Senegambia or Seychelles or Sierra Leone or Somali* or Subsahar* or Sudan or Swaziland or Tana or Tananarive or Tanganyika or Tanzania or Tchad or Togo or Togoland or Togolese or Tripoli or Tshad or Tunis or Tunisia or Ubangi-Shari or Uganda or "United Arab Republic" or Upper Volta or Urundi or Usumbura or Windhoek or Yamoussoukro or Yaounde or Zaire or Zambia or Zanzibar or Zimbabwe) OR AB(Abuja or Abyssinia or Accra or Addis Ababa or Addis Abeba or Africa* or Algeria or Algiers or Angola or Antananarivo or Asmara or Asmera or Bamako or Bangi or Bangui or Banjul or Basutoland or Benin or Bissau or Bloemfontein or Botswana or Brazzaville or Bujumbura or Burundi or Burkina Faso or Burundi or Cabo Verde or Cairo or Cameroon or Cameroun or Cape Town or Cape Verde or Cap-Vert or Centrafrican or Centrafrique or Chad or Comores or Comoro or Comoros or Conakry or Congo or Cote Diivoire or Cote D'ivoire or Cotonou or Dahomey or Dakar or Dar Es Salaam or Djibouti or Dodoma or Egypt* or Embabane or Eritrea or Ethiopia or Eswatini or Freetown or Free-Town or Gabon or Gaborone or Gambia or Ghana or Gold Coast or Guinea or Harare or Ifni or Ivory Coast or Jaunde or Juba or Kampala or Katanga or Kenya or Khartoum or Kigali or Kinshasa or Kutonu or Leopoldville or Lesotho or Liberia or Libreville or Libya or Lilongwe or Lobamba or Lome or Luanda or Lusaka or Madagascar or Malabo or Malagasy or Malawi or Mali or Maputo or Maqadishu or Maseru or Mauretania or Mauritania or Mauritius or Mayotte or Mbabane or Mocambique or Mogadishu or Monrovia or Morocco or Moroni or Mozambic or Mozambique or Muqdisho or Nairobi or Namibia or Ndjamenia or N'Djamena or Niamey or Niger or Nigeria or Nouakchott or Nyasaland or Ouaga or Ouagadougou or Oyala or Port Louis or Porto-Novo or Praia or Pretoria or Rabat or Rhodesia or Ruanda or Rwanda or Sao Tome or Saharan* or Senegal* or Senegambia or Seychelles or Sierra</p>	135,759

Leone or Somali* or Subsahar* or Sudan or Swaziland or Tana or Tananarive or Tanganyika or Tanzania or Tchad or Togo or Togoland or Togolese or Tripoli or Tshad or Tunis or Tunisia or Ubangi-Shari or Uganda or "United Arab Republic" or Upper Volta or Urundi or Usumbura or Windhoek or Yamoussoukro or Yaounde or Zaire or Zambia or Zanzibar or Zimbabwe)	
--	--

## **Cochrane [Wiley] (March 31, 2022)**

ID	Search	Hits
#1	(Abuja or Abyssinia or Accra or Addis Ababa or Addis Abeba or Africa* or Algeria or Algiers or Angola or Antananarivo or Asmara or Asmera or Bamako or Bangi or Bangui or Banjul or Basutoland or Benin or Bissau or Bloemfontein or Botswana or Brazzaville or Bujumbura or Burundi or Burkina Faso or Burundi or Cabo Verde or Cairo or Cameroon or Cameroun or Cape Town or Cape Verde or Cap-Vert or Centrafican or Centrafrique or Chad or Comores or Comoro or Comoros or Conakry or Congo or Cote Diivoire or Cote D'ivoire or Cotonou or Dahomey or Dakar or Dar Es Salaam or Djibouti or Dodoma or Egypt* or Embabane or Eritrea or Ethiopia or Eswatini or Freetown or Free-Town or Gabon or Gaborone or Gambia or Ghana or Gold Coast or Guinea or Harare or Ifni or Ivory Coast or Jaunde or Juba or Kampala or Katanga or Kenya or Khartoum or Kigali or Kinshasa or Kutonu or Leopoldville or Lesotho or Liberia or Libreville or Libya or Lilongwe or Lobamba or Lome or Luanda or Lusaka or Madagascar or Malabo or Malagasy or Malawi or Mali or Maputo or Maqadishu or Maseru or Mauretania or Mauritania or Mauritius or Mayotte or Mbabane or Mocambique or Mogadishu or Monrovia or Morocco or Moroni or Mozambic or Mozambique or Muqdisho or Nairobi or Namibia or Ndjamena or N'Djamena or Niamey or Niger or Nigeria or Nouakchott or Nyasaland or Ouaga or Ouagadougou or Oyala or Port Louis or Porto-Novo or Praia or Pretoria or Rabat or Rhodesia or Ruanda or Rwanda or Sao Tome or Saharan* or Senegal* or Senegambia or Seychelles or Sierra Leone or Somali* or Subsahar* or Sudan or Swaziland or Tana or Tananarive or Tanganyika or Tanzania or Tchad or Togo or Togoland or Togolese or Tripoli or Tshad or Tunis or Tunisia or Ubangi-Shari or Uganda or "United Arab Republic" or Upper Volta or Urundi or Usumbura or Windhoek or Yamoussoukro or Yaounde or Zaire or Zambia or Zanzibar or Zimbabwe):ti,ab,kw	34645
#2	(Porto-Novo or Hogbonou or Cotonou or Kutonu or Ouagadougou or Ouaga or Bujumbura or Usumbura or Bangui or Bangi or N'Djamena or Ndjamena or Fort Lamy or Moroni or Kinshasa or Asmara or Asmera or Addis Ababa or Addis Abeba or Banjul or Bathurst or Conakry or Bissau or Port-au-Prince or Monrovia or Antananarivo or Tananarive or Tana or Lilongwe or Bamako or Maputo or Lourenco Marques or Niamey or Kigali or Freetown or Free-town or Mogadishu or Xamar or Hamar or Muqdisho or Maqadishu or Juba or Dodoma or Dar es Salaam or Lome or Kampala or Harare or Salisbury or Thimphu or Thimbu or La Paz or Praia or Yaounde or Jaunde or Brazzaville or Yamoussoukro or Cairo or Accra or Nairobi or Frunze or Maseru or Nouakchott or Rabat or Managua or Abuja or Lagos or Port Moresby or Moresby or Khartoum or Mbabane or Embabane or Lobamba or sanada or Lusaka or Luanda):ti,ab,kw	3155
#3	#1 OR #2	34846
#4	(newborn* or new-born* or neonat* or neo-nat* or infan* or child* or paediatr* or pediater* or baby* or babies* or toddler* or kid or kids or boy* or girl* or adolesc* or juvenile* or teen* or youth* or pubescen* or preadolesc* or prepubesc* or preteen*):ti,ab,kw	320591
#5	#3 AND #4	15807
#6	(surger* or surgic* or surgeon* or operati* or reoperat* or bypass* or by-pass* or resect* or re-sect* or transplant* or procedure* or debridement* or laparoscop* or laparotom* or postop*):ti,ab,kw	531177
#7	(adenoidectom* or laryngectom* or laryngoplast* or laryngoscop* or pharygectom* or tonsillectom* or tympanoplast* or tracheostom* or tracheotom* or orchidopex* or orchiope* or orchiectom* or orchidectom* or herniorrhaph* or hernioplast* or herniaplast* or "herni-plast*" or herniotom* or circumcis* or gastrostom or ileostom* or colostom* or enterostom*	32405

	or portoenterostom or "roux-en-y" or kasai or pyloromyotom* or piloromyotom* or pyloromiotom* or piloromiotom* or diverticulectom* or diverticulotom* or cholecystectom* or cholangiopancreatograph* or cholangio-pancreatograph* or choledoduodenostom* or choledo-duodenostom* or appendicectom* or appendectom* or splenectom* or pneumonectom* or amputation* or amputate* or craniotom* or craniostom* or hydrocelectom* or thoracostom* or fasciotom*):ti,ab,kw	
#8	((ophthalmolog* or eye* or vision or ocular or retina* or retinopath*) NEAR/5 (operat* or procedur* or surger* or surgical*)):ti,ab,kw	8123
#9	((perforation* or incision* or laceration*) NEAR/3 (repair* or drain* or closure*)):ti,ab,kw	1597
#10	((tooth or teeth or dental or abcess) NEAR/2 (extract* or drain*)):ti,ab,kw	4136
#11	((abdomen or abdominal or intestin* or bowel* or gastrointestin*) NEAR/3 (ablat* or excis* or laparoscop* or laparotom* or operativ* or surger* or surgical* or reconstruct* or repair* or resect* or intraoperative* or perioperative* or perisurg* or postoperative* or postsurg* or preoperative* or presurg*)):ti,ab,kw	15431
#12	(escharotom* or ((skin or derm*) NEAR/2 (graft* or transplant*)):ti,ab,kw	1672
#13	((cancer or neoplas* or tumor* or tumour* or carcinom* or sarcoma*) NEAR/3 (ablat* or excis* or laparoscop* or laparotom* or operativ* or surger* or surgical* or reconstruct* or repair* or resect* or biopsy or biopsie* or intraoperative* or perioperative* or perisurg* or postoperative* or postsurg* or preoperative* or presurg*)):ti,ab,kw	39805
#14	(fundoplicat* or ((nissen* or toupet or dor) NEAR/3 (operat* or procedur* or surger* or surgical*)):ti,ab,kw	773
#15	((hernia* or extraperitoneal or preperitoneal or peritoneal or TEP or TAPP or umbilic* or inguinal or omphalocele* or exomphalos) NEAR/3 (ablat* or excis* or laparoscop* or laparotom* or operativ* or surger* or surgical* or reconstruct* or repair* or resect* or intraoperative* or perioperative* or perisurg* or postoperative* or postsurg* or preoperative* or presurg*)):ti,ab,kw	5865
#16	((liver or hepatic or lung or lungs or pulmon* or kidney) NEAR/3 (transplant* or graft*)):ti,ab,kw	14942
#17	(thoracoscop* or thoracotom* or pleurectom* or pleuroscop* or pleuracotom* or pleurotom* or (pleura* NEAR/3 (endoscop* or incision*)):ti,ab,kw	3865
#18	((lung or lungs or pulmon* or wedge or trauma* or postrauma* or posttrauma* or neurotrauma* or fracture*) NEAR/3 (ablat* or excis* or laparoscop* or laparotom* or operativ* or surger* or surgical* or reconstruct* or repair* or resect* or intraoperative* or perioperative* or perisurg* or postoperative* or postsurg* or preoperative* or presurg*)):ti,ab,kw	15481
#19	((esophag* or oesophag* or endoesophag* or intraesophag* or tracheoesophag*) NEAR/3 (atres* or atretic* or atroph*)):ti,ab,kw	98
#20	((anal or anus or anorect* or rectal) NEAR/3 (artificial* or malformat* or mal-format* or anomal* or abnormal* or ectopic or stenosis or atres* or atroph* or imperforat* or inperforat* or praet* or pret* or fistula*)):ti,ab,kw	891
#21	(hirschsprung* or ((megacolon or colon* or rectosigmoid or intestin*) NEAR/3 (congenital* or aganglion*)):ti,ab,kw	133
#22	(agene* AND (hemidiaphragm* or diaphragm* or ((unilat* or hern*) AND diaphragm*)):ti,ab,kw	1

#23	((bochdalek* or morgagni* ):ti,ab,kw	7
#24	((congenital* or neonat* or neo-nat* or newborn* or new-born* or birth* or maternal* or fetal or fetus* or fetu or feto or foet* or prenatal* or pre-natal* or antenatal* or ante-natal* or trimester* or pregnan* or uter* or preterm* or pre-term* or premature* or pre-mature* or preemie*) NEAR/2 hernia*):ti,ab,kw	266
#25	((congenital* or neonat* or neo-nat* or newborn* or new-born* or birth* or maternal* or fetal or fetus* or fetu or feto or foet* or prenatal* or pre-natal* or antenatal* or ante-natal* or trimester* or pregnan* or uter* or preterm* or pre-term* or premature* or pre-mature* or preemie*) NEAR/2 diaphragm* NEAR/2 (hernia* or defect*)):ti,ab,kw	214
#26	(congenital* and hernia* and diaphragm*):ti,ab,kw	223
#27	((pectus or chest) NEAR/1 (funnel or sunken or excavatum or carinatum)):ti,ab,kw	99
#28	#6 OR #7 OR #8 OR #9 OR 10 OR #11 OR #12 OR #13 OR #14 OR #15 OR #16 OR #17 OR #18 OR #19 OR #20 OR #21 OR #22 OR #23 OR #24 OR #25 OR #26 OR #27	1283988
#29	#5 AND #28	13003
#30	((attitude* or bias* or perception* or antipathy or stigma* or anti-stigma* or stereotyp* or prejudice* or discriminat* or bias* or microaggression* or micro-aggression* or negative attitude*) NEAR/5 (((health* or hospital* or clinic* or medic*) NEAR/2 (professional* or personnel* or staff* or employee* or provider*)) or doctor* or physician* or surgeon* or resident* or nurse or nurses or allied health or social worker* or secretar* or admin* agent*)):ti,ab	9878
#31	((health* or medic* or surg* or doctor* or clinic* or appointment*) NEAR/3 (access* or equit* or inequit* or inaccess* or barrier* or burden*)):ti,ab,kw or ((health* or medic* or surg* or doctor* or clinic* or appointment*) NEAR/5 (access* or equit* or inequit* or inaccess* or barrier* or delay* or distance* or wait* or "long-term" or complication* or factor* or influenc*)):ti	16888
#32	(LGBT* or GLBT* or LGB or LGBQ* or LGBS* or M2F or GLB or GLBQ* or GLBs* or 2LGBTQS* or heteroflexible* or heterosex* or cisgend* or GBMSM* or msm or TGNC* or YTW or gay or gays or lesbi* or bisexu#l* or transgender* or bicurious* or transpeople* or asexual* or transvestite or cross sex* or crosssex* or crossgender* or nonbinary or non-binary or F2M or transperson* or transsexual* or homosexual* or intersex* or queer* or two-spirit* or same-sex or male-to-female or boy-to-girl or (trans NEAR/2 (people or individual or individuals or person or persons or sexual* or male or female or youth* or population* or gender)) or ((gender* or sex or sexual) NEAR/2 (change or dysphoria or reversal or identit* or reassign* or transform* or transition* or minorit* or sexual* or binary or disaggreg*)):ti,ab	21740
#33	(gender* or girl* or boy*):ti	5047
#34	(gender* or sex or female* or male* or wom?n or m?n or girl* or boy* or parent? or guardian* or child* or caregiver*):ti,ab or (gender* or sex or female* or male* or wom?n or m?n or girl* or boy* or parent? or guardian* or child* or caregiver*):ab	600613
#35	(access* or equit* or inequit* or inaccess* or barrier* or delay* or distance* or wait* or long-term or complication* or burden* or factor* or influenc* or time or location*):ti,ab,kw and (surger* or surgical* or operati* or reoperat* or bypass* or by-pass* or resect* or re-sect* or transplant* or procedure or procedures or debridement* or laparoscop* or laparotom*):ti	81153
#36	#34 AND #35	25989
#37	#30 OR #31 OR #32 OR #33 OR #36	76041
#38	#29 AND #37	1941
#39	#29 AND #37 (4 editorials)	1937

Embase Classic+Embase 1947 to 2022 March 30

1	exp Africa/	399312
2	(Abuja or Abyssinia or Accra or Addis Ababa or Addis Abeba or africa* or Algeria or Algiers or Angola or Antananarivo or Asmara or Asmera or Bamako or Bangi or Bangui or Banjul or Basutoland or benin or Bissau or Bloemfontein or Botswana or Brazzaville or Bujumbura or Burundi or Burkina Faso or Burundi or Cabo Verde or Cairo or Cameroon or cameroun or Cape Town or Cape verde or cap-vert or centrafrican or Centrafrique or chad or comores or comoro or comoros or Conakry or congo or Cote diIvoire or cote d'ivoire or Cotonou or Dahomey or Dakar or Dar es Salaam or Djibouti or Dodoma or egypt* or Embabane or eritrea or ethiopia or eswatini or Freetown or Free-town or gabon or Gaborone or gambia or Ghana or Gold Coast or guinea or Harare or ifni or ivory coast or Jaunde or Juba or Kampala or katanga or kenya or Khartoum or Kigali or Kinshasa or Kutonu or leopoldville or lesotho or liberia or Libreville or Libya or Lilongwe or Lobamba or Lome or Luanda or Lusaka or madagascar or Malabo or malagasy or malawi or mali or Maputo or Maqadishu or Maseru or Mauretania or mauritania or mauritius or mayotte or Mbabane or Mocambique or Mogadishu or Monrovia or Morocco or Moroni or mozambic or mozambique or Muqdisho or Nairobi or namibia or Ndjamena or N'Djamena or Niamey or Niger or nigeria or Nouakchott or nyasaland or Ouaga or Ouagadougou or Oyala or Port Louis or Porto-Novo or Praia or Pretoria or Rabat or rhodesia or Ruanda or rwanda or sao tome or Saharan* or senegal* or Senegambia or seychelles or sierra leone or Somali* or SubSahar* or sudan or swaziland or Tana or Tananarive or Tanganyika or tanzania or tchad or togo or Togoland or Togolese or Tripoli or tshad or Tunis or Tunisia or ubangi-shari or Uganda or "united arab republic" or Upper Volta or Urundi or Usumbura or Windhoek or Yamoussoukro or Yaounde or zaire or zambia or Zanzibar or Zimbabwe).tw,kf,in.	1208411
3	(Porto-Novo or Hogbonou or Cotonou or Kutonu or Ouagadougou or Ouaga or Bujumbura or Usumbura or Bangui or Bangi or N'Djamena or Ndjamena or Fort Lamy or Moroni or Kinshasa or Asmara or Asmera or Addis Ababa or Addis Abeba or Banjul or Bathurst or Conakry or Bissau or Port-au-Prince or Monrovia or Antananarivo or Tananarive or Tana or Lilongwe or Bamako or Maputo or Lourenco Marques or Niamey or Kigali or Freetown or Free-town or Mogadishu or Xamar or Hamar or Muqdisho or Maqadishu or Juba or Dodoma or Dar es Salaam or Lome or Kampala or Harare or Salisbury or Thimphu or Thimbu or La Paz or Praia or Yaounde or Jaunde or Brazzaville or Yamoussoukro or Cairo or Accra or Nairobi or Frunze or Maseru or Nouakchott or Rabat or Managua or Abuja or Lagos or Port Moresby or Moresby or Khartoum or Mbabane or Embabane or Lobamba or sanada or Lusaka or Luanda).tw,kf,in.	329343
4	or/1-3	1318750
5	exp pediatrics/ or exp child/ or exp *adolescent/	3351004
6	newborn intensive care/ or neonatal intensive care unit/	42966
7	(newborn* or new-born* or neonat* or neo-nat* or infan* or child* or paediatr* or pediater* or baby* or babies* or toddler* or kid or kids or boy* or girl* or adolesc* or juvenile* or teen* or youth* or pubescen* or preadolesc* or prepubesc* or preteen*).tw,kf.	3651667
8	(pediatr* or paediatr*).jx.	809172
9	or/5-8	4713984
10	4 and 9	245918
11	exp surgery/	5811562
12	exp surgeon/	184842
13	(surger* or surgic* or surgeon* or procedure* or operation? or laparoscop* or postop*).tw,kf.	4823958
14	or/11-13	7749118
15	10 and 14	36444
16	exp newborn disease/	1870773
17	exp digestive system disease/	3754774
18	exp urogenital tract disease/	2869120

19	exp hernia/	139018
20	exp musculoskeletal system malformation/ or exp musculoskeletal disease/	2735470
21	exp neoplasm/	5416700
22	exp respiratory tract malformation/	36604
23	exp torsion/ or torticollis/	24166
24	exp ear nose throat disease/	577190
25	exp eye disease/	1129065
26	exp osteomyelitis/	50945
27	brachial plexus neuropathy/	2487
28	exp brain disease/	2417800
29	exp infectious arthritis/	25606
30	(cochlear or adenoid* or otorhinol* or pharyngeal* or laryngeal* or laryngo* or ear or ear or nose or otitis or tonsil* or epistaxis or rhinorrhea* or rhinitis or otolog* or rhinootol* or head or neck or croup* or supraglott* or glottis or glottis or subglott* or trachea* or snoring or snore* or apnea or apnoea or sleep obstruct* or mastoiditis* or sinusitis or trichiasis or cataract* or hydrocephal* or cerebral palsy or muscular dystroph* or syndactyly* or radial club or amniotic band* or septic arthritis or osteomyelitis or flexor tenosynovitis or clubfoot or clubfeet or club-foot* or club-feet* or craniofacial* or cranio-facial* or frontoethmoidal meningoenceph* or hemorrhage* or hematoma* or spina bifida* or resuscitation* or schistosomias* or trachoma* or mediastinitis or buruli ulcer* or choledochal cyst* or cyst* echinococcosis or ilopsoas or epileps* or burr hole* or burn or burns or burned or scald* or burnt or thermal injur*).tw,kf.	2280886
31	(hypospadi* or epispadi* or cloaca* or cryptorchidism* or prolapse or phymosis or paraphymosis or hydrometrocolpos or (bladder adj2 exstroph*) or (undescen* adj2 test?s) or (buried adj1 penis) or (urinary adj2 (retention or lithiasis))).tw,kf.	99933
32	(hirschsprung* or ((megacolon or colon* or rectosigmoid or intestin*) adj4 (congenital or aganglion*)) or ((anal or anus or anorect* or rectal) adj3 (artificial* or malformation or anomal* or abnormal* or ectopic or stenosis or atres* or atroph* or imperforat* or inperforat* or praet* or pret*))).tw,kf.	18972
33	((pierre-robin or apert*) adj2 (syndrome* or disease* or sequenc*).tw,kf.	3269
34	(cleft adj2 (lip* or palate*).tw,kf.	30527
35	(coarctation or (septal adj2 defect*) or (tetralogy adj2 fallot)).tw,kf.	63841
36	(brachial plexus adj2 (palsy or neuropath*).tw,kf.	1961
37	((arthriti* or rheumat*) adj2 infect*).tw,kf.	4831
38	or/16-37	15242503
39	exp *surgery/	2782376
40	su.fs.	2342611
41	(surger* or surgical* or operati* or reoperat* or bypass* or by-pass* or resect* or re-sect* or transplant* or procedure or procedures or debridement* or laparoscop* or laparotom*).tw,kf.	5885865
42	or/39-41	7450133
43	38 and 42	4462580
44	10 and 43	25029
45	(adenoidectom* or adenotonsil* or laryngectom* or laryngoplast* or laryngoscop* or pharygectom* or tonsillectom* or tympanoplast* or tracheostom* or tracheotom* or orchidopex* or orchioepex* or orchiectom* or orchidectom* or herniorrhaph* or hernioplast* or hernioplast* or herni*-plast* or herniotom* or circumcis* or gastrostom* or ileostom* or colostom* or enterostom* or portoenterostom* or roux-en-y or kasai or pyloromyotom* or piloromyotom* or pyloromiotom* or	414882



	piloromyotom* or diverticulectom* or diverticulotom* or cholecystectom* or cholangiopancreatograph* or cholangio-pancreatograph* or choledoduodenostom* or choledoduodenostom* or appendicectom* or appendectom* or splenectom* or pneumonectom* or amputation* or amputate* or craniotom* or craniostom* or hydrocelectom* or thoracostom* or fasciotom*).tw,kf.	
46	((ophthalmolog* or eye* or vision or ocular or retina* or retinopath* or cataract*) adj2 (operat* or procedur* or surger* or surgical*).tw,kf.	49110
47	((perforation* or incision* or laceration*) adj2 (repair* or drain* or closure*).tw,kf.	10444
48	((tooth or teeth or dental or abscess* or abcess*) adj2 (extract* or drain* or excision*).tw,kf.	22975
49	((abdomen or abdominal or intestin* or bowel* or gastrointestin*) adj2 (ablat* or excis* or laparoscop* or laparotom* or operativ* or surger* or surgical* or reconstruct* or repair* or resect* or intraoperative* or perioperative* or perisurg* or postoperative* or postsurg* or preoperative* or presurg*).tw,kf.	83661
50	(escharotom* or ((skin or derm*) adj2 (graft* or transplant*))).tw,kf.	34583
51	((cancer or neoplas* or tumor* or tumour* or carcinom*) adj2 (ablat* or excis* or laparoscop* or laparotom* or operativ* or surger* or surgical* or reconstruct* or repair* or resect* or biopsy or biopsie* or intraoperative* or perioperative* or perisurg* or postoperative* or postsurg* or preoperative* or presurg*).tw,kf.	204924
52	(fundoplicat* or ((nissen* or toupet or dor) adj3 (operat* or procedur* or surger* or surgical*).tw,kf.	10652
53	((hernia* or extraperitoneal or preperitoneal or peritoneal or TEP or TAPP or umbilic* or inguinal or omphalocele* or exomphalos) adj2 (ablat* or excis* or laparoscop* or laparotom* or operativ* or surger* or surgical* or reconstruct* or repair* or resect* or intraoperative* or perioperative* or perisurg* or postoperative* or postsurg* or preoperative* or presurg*).tw,kf.	34834
54	((liver or hepatic or lung or lungs or pulmon* or kidney) adj2 (transplant* or graft*).tw,kf.	242509
55	(thoracoscop* or thoracotom* or pleurectom* or pleuroscop* or pleuracotom* or pleurotom* or (pleura* adj3 (endoscop* or incision*))).tw,kf.	59508
56	((lung or lungs or pulmon* or wedge or trauma* or postrauma* or neurotrauma* or fracture*) adj2 (ablat* or excis* or laparoscop* or laparotom* or operativ* or surger* or surgical* or reconstruct* or repair* or resect* or intraoperative* or perioperative* or perisurg* or postoperative* or postsurg* or preoperative* or presurg*).tw,kf.	111554
57	or/43-56	4868272
58	10 and 57	27783
59	esophagus atresia/	6968
60	((esophag* or oesophag* or endoesophag* or intraesophag* or tracheoesophag*) adj3 (atres* or atretic* or atroph*).tw,kf.	6641
61	anus atresia/	4617
62	((anal or anus or anorect* or rectal) adj3 (artificial* or malformat* or mal-format* or anomal* or abnormal* or ectopic or stenosis or atres* or atroph* or imperforat* or inperforat* or praet* or pret* or fistula*).tw,kf.	15740
63	colorectal surgery/	16330
64	rectum disease/ or exp *rectum disease/	210784
65	Hirschsprung disease/	8590
66	(hirschsprung* or ((megacolon or colon* or rectosigmoid or intestin*) adj3 (congenital* or aganglion*))).tw,kf.	9186
67	congenital diaphragm hernia/	6745
68	(agene* adj2 (hemidiaphragm* or diaphragm* or ((unilat* or hern*) adj1 diaphragm*))).tw,kf.	125

69	((bochdalek* or morgagni*) adj2 (hernia* or defect*)).tw,kf.	1718
70	((congenital* or neonat* or neo-nat* or newborn* or new-born* or birth* or maternal* or fetal or fetus* or fetu or feto or foet* or prenatal* or pre-natal* or antenatal* or ante-natal* or trimester* or pregnan* or uter* or preterm* or pre-term* or premature* or pre-mature* or preemie*) adj5 (posterolateral* or substernal*) adj2 hernia*).tw,kf.	108
71	(congenital* and hernia* and diaphragm*).tw,kf.	8272
72	musculoskeletal system malformation/	1073
73	funnel chest/	4750
74	pigeon thorax/	1426
75	((pectus or chest) adj1 (funnel or sunken or excavatum or carinatum)).tw,kf.	4325
76	or/59-75	268669
77	10 and 76	1433
78	15 or 44 or 58 or 77	39847
79	health personnel attitude/	88109
80	exp health care personnel/	1845339
81	administrative personnel/	22314
82	social worker/	15048
83	or/79-82	1900365
84	stereotyping/	2713
85	social stigma/	11660
86	prejudice/	3676
87	social discrimination/	5104
88	or/84-87	21162
89	83 and 88	3991
90	gender inequality/	444
91	((attitude* or bias* or perception* or antipathy or stigma* or anti-stigma* or stereotyp* or prejudice* or discriminat* or bias* or microaggression* or micro-aggression* or negative attitude*) adj5 (((health* or hospital* or clinic* or medic*) adj2 (professional* or personnel* or staff* or employee* or provider*)) or doctor* or physician* or surgeon* or resident* or nurse or nurses or allied health or social worker* or secretar* or admin* agent*)).tw,kf.	50396
92	exp health care access/	83219
93	((health* or medic* or surg* or doctor* or clinic* or appointment*) adj3 (access* or equit* or inequit* or inaccess* or barrier* or burden*).tw,kf. or ((health* or medic* or surg* or doctor* or clinic* or appointment*) adj5 (access* or equit* or inequit* or inaccess* or barrier* or delay* or distance* or wait* or long-term or complication* or factor* or influenc*).ti,kf.	290083
94	sex/	43542
95	sexual characteristics/	2848
96	sex factor/	12116
97	exp "sexual and gender minority"/	30707
98	gender equity/	633
99	sexism/	3892
100	exp gender identity/	19454
101	intersex/	429









	Yamoussoukro or Yaounde or Zaire or Zambia or Zanzibar or Zimbabwe).ti,ab,id,in,gl.	
2	(Porto-Novo or Hogbonou or Cotonou or Kutonu or Ouagadougou or Ouaga or Bujumbura or Usumbura or Bangui or Bangi or N'Djamena or Ndjamena or Fort Lamy or Moroni or Kinshasa or Asmara or Asmera or Addis Ababa or Addis Abeba or Banjul or Bathurst or Conakry or Bissau or Port-au-Prince or Monrovia or Antananarivo or Tananarive or Tana or Lilongwe or Bamako or Maputo or Lourenco Marques or Niamey or Kigali or Freetown or Free-town or Mogadishu or Xamar or Hamar or Muqdisho or Maqadishu or Juba or Dodoma or Dar es Salaam or Lome or Kampala or Harare or Salisbury or Thimphu or Thimbu or La Paz or Praia or Yaounde or Jaunde or Brazzaville or Yamoussoukro or Cairo or Accra or Nairobi or Frunze or Maseru or Nouakchott or Rabat or Managua or Abuja or Lagos or Port Moresby or Moresby or Khartoum or Mbabane or Embabane or Lobamba or sanada or Lusaka or Luanda).ti,ab,id,in,gl.	96659
3	or/1-2	451842
4	pediatrics/ or exp children/ or exp infants/ or exp adolescents/	517313
5	(newborn* or new-born* or neonat* or neo-nat* or infan* or child* or paediatr* or pediater* or baby* or babies* or toddler* or kid or kids or boy* or girl* or adolesc* or juvenile* or teen* or youth* or pubescen* or preadolesc* or prepubesc* or preteen*).ti,ab,id.	650676
6	or/4-5	668223
7	3 and 6	99064
8	(surger* or surgic* or surgeon* or operati* or reoperat* or bypass* or by-pass* or resect* or re-sect* or transplant* or procedure* or debridement* or laparoscop* or laparotom* or postop*).ti,ab,id.	348973
9	(adenoidectom* or laryngectom* or laryngoplast* or laryngoscop* or pharyngectom* or tonsillectom* or tympanoplast* or tracheostom* or tracheotom* or orchidopex* or orchiopex* or orchiectom* or orchidectom* or herniorrhaph* or hernioplast* or hernioplast* or herni*-plast* or herniotom* or circumcis* or gastrostom or ileostom* or colostom* or enterostom* or portoenterostom or roux-en-y or kasai or pyloromyotom* or piloromyotom* or pyloromyotom* or pyloromyotom* or diverticulectom* or diverticulotom* or cholecystectom* or cholangiopancreatograph* or cholangio-pancreatograph* or choledoduodenostom* or choledo-duodenostom* or appendicectom* or appendectom* or splenectom* or pneumonectom* or amputation* or amputate* or craniotom* or craniostom* or hydrocelectom* or thoracostom* or fasciotom*).ti,ab,id.	20440
10	((ophthalmolog* or eye* or vision or ocular or retina* or retinopath*) adj5 (operat* or procedur* or surger* or surgical*)).ti,ab,id.	1769
11	((perforation* or incision* or laceration*) adj3 (repair* or drain* or closure*)).ti,ab,id.	891
12	((tooth or teeth or dental or abcess) adj2 (extract* or drain*)).ti,ab,id.	1146
13	((abdomen or abdominal or intestin* or bowel* or gastrointestin*) adj3 (ablat* or excis* or laparoscop* or laparotom* or operativ* or surger* or surgical* or reconstruct* or repair* or resect* or intraoperative* or perioperative* or perisurg* or postoperative* or postsurg* or preoperative* or presurg*)).ti,ab,id.	6070
14	(escharotom* or ((skin or derm*) adj2 (graft* or transplant*))).ti,ab,id.	946
15	((cancer or neoplas* or tumor* or tumour* or carcinom* or sarcoma*) adj3 (ablat* or excis* or laparoscop* or laparotom* or operativ* or surger* or surgical* or reconstruct* or repair* or resect* or biopsy or biopsie* or intraoperative* or perioperative* or perisurg* or postoperative* or postsurg* or preoperative* or presurg*)).ti,ab,id.	6682
16	(fundoplicat* or ((nissen* or toupet or dor) adj3 (operat* or procedur* or surger* or surgical*))).ti,ab,id.	141
17	((hernia* or extraperitoneal or preperitoneal or peritoneal or TEP or TAPP or umbilic* or inguinal or omphalocele* or exomphalos) adj3 (ablat* or excis* or laparoscop* or laparotom* or operativ* or surger* or surgical* or reconstruct* or repair* or resect* or intraoperative* or perioperative* or perisurg* or postoperative* or postsurg* or preoperative* or presurg*)).ti,ab,id.	1003
18	((liver or hepatic or lung or lungs or pulmon* or kidney) adj3 (transplant* or graft*)).ti,ab,id.	13170
19	(thoracoscop* or thoracotom* or pleurectom* or pleuroscop* or pleuracotom* or pleurotom* or	1347

	(pleura* adj3 (endoscop* or incision*))).ti,ab,id.	
20	((lung or lungs or pulmon* or wedge or trauma* or postrauma* or posttrauma* or neurotrauma* or fracture*) adj3 (ablat* or excis* or laparoscop* or laparotom* or operativ* or surger* or surgical* or reconstruct* or repair* or resect* or intraoperative* or perioperative* or perisurg* or postoperative* or postsurg* or preoperative* or presurg*)).ti,ab,id.	4906
21	((esophag* or oesophag* or endoesophag* or intraesophag* or tracheoesophag*) adj3 (atres* or atretic* or atroph*)).ti,ab,id.	191
22	((anal or anus or anorect* or rectal) adj3 (artificial* or malformat* or mal-format* or anomal* or abnormal* or ectopic or stenosis or atres* or atroph* or imperforat* or inperforat* or praet* or pret* or fistula*)).ti,ab,id.	714
23	(hirschsprung* or ((megacolon or colon* or rectosigmoid or intestin*) adj3 (congenital* or aganglion*))).ti,ab,id.	383
24	(agene* adj2 (hemidiaphragm* or diaphragm* or ((unilat* or hern*) adj1 diaphragm*))).ti,ab,id.	0
25	((bochdalek* or morgagni*) adj2 (hernia* or defect*)).ti,ab,id.	18
26	((congenital* or neonat* or neo-nat* or newborn* or new-born* or birth* or maternal* or fetal or fetus* or fetu or feto or foet* or prenatal* or pre-natal* or antenatal* or ante-natal* or trimester* or pregnan* or uter* or preterm* or pre-term* or premature* or pre-mature* or premie*) adj5 (posterolateral* or substernal*) adj2 hernia*).ti,ab,id.	0
27	((congenital* or neonat* or neo-nat* or newborn* or new-born* or birth* or maternal* or fetal or fetus* or fetu or feto or foet* or prenatal* or pre-natal* or antenatal* or ante-natal* or trimester* or pregnan* or uter* or preterm* or pre-term* or premature* or pre-mature* or premie*) adj2 diaphragm* adj2 (hernia* or defect*)).ti,ab,id.	150
28	(congenital* and hernia* and diaphragm*).ti,ab,id.	201
29	((pectus or chest) adj1 (funnel or sunken or excavatum or carinatum)).ti,ab,id.	51
30	or/8-29	363635
31	7 and 30	7598
32	((attitude* or bias* or perception* or antipathy or stigma* or anti-stigma* or stereotyp* or prejudice* or discriminat* or bias* or microaggression* or micro-aggression* or negative attitude*) adj5 (((health* or hospital* or clinic* or medic*) adj2 (professional* or personnel* or staff* or employee* or provider*)) or doctor* or physician* or surgeon* or resident* or nurse or nurses or allied health or social worker* or secretar* or admin* agent*).ti,ab,id.	5708
33	((health* or medic* or surg* or doctor* or clinic* or appointment*) adj3 (access* or equit* or inequit* or inaccess* or barrier* or burden*).ti,ab,id. or ((health* or medic* or surg* or doctor* or clinic* or appointment*) adj5 (access* or equit* or inequit* or inaccess* or barrier* or delay* or distance* or wait* or long-term or complication* or factor* or influenc*).ti,ab.	132510
34	(LGBT* or GLBT* or LGB or LGBQ* or LGBS* or M2F or GLB or GLBQ* or GLBs* or 2LGBTQS* or heteroflexible* or heterosex* or cisgend* or GBMSM* or msm or TGNC* or YTW or gay or gays or lesbi* or bisexu#l* or transgender* or bicurious* or transpeople* or asexual* or transvestite or cross sex* or crosssex* or crossgender* or nonbinary or non-binary or F2M or transperson* or transsexual* or homosexual* or intersex* or queer* or two-spirit* or same-sex or male-to-female or boy-to-girl (trans adj2 (people or individual or individuals or person or persons or sexual* or male or female or youth* or population* or gender)) or ((gender* or sex or sexual) adj2 (change or dysphoria or reversal or identit* or reassign* or transform* or transition* or minorit* or sexual* or binary or disaggreg*))).ti,ab,id.	102159
35	(gender* or girl* or boy*).ti,id.	19925
36	(gender* or sex or female* or male* or wom?n or m?n or girl* or boy* or parent? or guardian* or child* or caregiver*).ti,ab. or (gender* or sex or female* or male* or wom?n or m?n or girl* or boy* or parent? or guardian* or child* or caregiver*).ab. /freq=3	1413700
37	(access* or equit* or inequit* or inaccess* or barrier* or delay* or distance* or wait* or long-term or complication* or burden* or factor* or influenc* or time or location*).ti,ab,id. and (surger* or surgical*	35059



	or operati* or reoperat* or bypass* or by-pass* or resect* or re-sect* or transplant* or procedure or procedures or debridement* or laparoscop* or laparotom*).ti.id.	
38	36 and 37	10568
39	(or/32-35) or 38	255828
40	31 and 39	1500
41	remove duplicates from 40	1490

### [Global Index Medicus \[WHO\] \(March 31, 2022\)](#)

1	(tw:(Abuja or Abyssinia or Accra or Addis Ababa or Addis Abeba or Africa* or Algeria or Algiers or Angola or Antananarivo or Asmara or Asmera or Bamako or Bangi or Bangui or Banjul or Basutoland or Benin or Bissau or Bloemfontein or Botswana or Brazzaville or Bujumbura or Burundi or Burkina Faso or Burundi or Cabo Verde or Cairo or Cameroon or Cameroun or Cape Town or Cape Verde or Cap-Vert or Centrafrican or Centrafrique or Chad or Comores or Comoro or Comoros or Conakry or Congo or Cote Diivoire or Cote D'ivoire or Cotonou or Dahomey or Dakar or Dar Es Salaam or Djibouti or Dodoma or Egypt* or Embabane or Eritrea or Ethiopia or Eswatini or Freetown or Free-Town or Gabon or Gaborone or Gambia or Ghana or Gold Coast or Guinea or Harare or Ifni or Ivory Coast or Jaunde or Juba or Kampala or Katanga or Kenya or Khartoum or Kigali or Kinshasa or Kutonu or Leopoldville or Lesotho or Liberia or Libreville or Libya or Lilongwe or Lobamba or Lome or Luanda or Lusaka or Madagascar or Malabo or Malagasy or Malawi or Mali or Maputo or Maqadishu or Maseru or Mauretania or Mauritania or Mauritius or Mayotte or Mbabane or Mocambique or Mogadishu or Monrovia or Morocco or Moroni or Mozambic or Mozambique or Muqdisho or Nairobi or Namibia or Ndjamena or N'Djamena or Niamey or Niger or Nigeria or Nouakchott or Nyasaland or Ouaga or Ouagadougou or Oyala or Port Louis or Porto-Novo or Praia or Pretoria or Rabat or Rhodesia or Ruanda or Rwanda or Sao Tome or Saharan* or Senegal* or Senegambia or Seychelles or Sierra Leone or Somali* or Subsahar* or Sudan or Swaziland or Tana or Tananarive or Tanganyika or Tanzania or Tchad or Togo or Togoland or Togolese or Tripoli or Tshad or Tunis or Tunisia or Ubangi-Shari or Uganda or "United Arab Republic" or Upper Volta or Urundi or Usumbura or Windhoek or Yamoussoukro or Yaounde or Zaire or Zambia or Zanzibar or Zimbabwe or Porto-Novo or Hogbonou or Cotonou or Kutonu or Ouagadougou or Ouaga or Bujumbura or Usumbura or Bangui or Bangi or N'Djamena or Ndjamena or Fort Lamy or Moroni or Kinshasa or Asmara or Asmera or Addis Ababa or Addis Abeba or Banjul or Bathurst or Conakry or Bissau or Port-au-Prince or Monrovia or Antananarivo or Tananarive or Tana or Lilongwe or Bamako or Maputo or Lourenco Marques or Niamey or Kigali or Freetown or Free-town or Mogadishu or Xamar or Hamar or Muqdisho or Maqadishu or Juba or Dodoma or Dar es Salaam or Lome or Kampala or Harare or Salisbury or Thimphu or Thimbu or La Paz or Praia or Yaounde or Jaunde or Brazzaville or Yamoussoukro or Cairo or Accra or Nairobi or Frunze or Maseru or Nouakchott or Rabat or Managua or Abuja or Lagos or Port Moresby or Moresby or Khartoum or Mbabane or Embabane or Lobamba or sanada or Lusaka or Luanda))) AND (tw:(surger* OR surgic* OR operation? OR postop*)) AND (tw:(gender* or sex or female* or male* or wom?n or m?n or girl* or boy* )) AND (tw:(attitude* or bias* or perception* or antipathy or stigma* or anti-stigma* or stereotyp* or prejudice* or discriminat* or bias* or microaggression* or micro-aggression* or access* or equit* or inequit* or inaccess* or barrier* or delay* )) AND ( limit:("adolescent" OR "child" OR "child, preschool" OR "infant" OR "newborn"))	316
---	--	-----

### [Medline \[Ovid\] \(March 31, 2022\)](#)

Ovid MEDLINE(R) and Epub Ahead of Print, In-Process & Other Non-Indexed Citations and Daily <1946 to March 30, 2022>

1	exp Africa/	300924
2	(Abuja or Abyssinia or Accra or Addis Ababa or Addis Abeba or Africa* or Algeria or Algiers or Angola or Antananarivo or Asmara or Asmera or Bamako or Bangi or Bangui or Banjul or Basutoland or Benin or Bissau or Bloemfontein or Botswana or Brazzaville or Bujumbura or Burundi or Burkina Faso or Burundi or Cabo Verde or Cairo or Cameroon or Cameroun or Cape Town or Cape Verde or Cap-Vert or Centrafrican or Centrafrique or Chad or Comores or Comoro or Comoros or Conakry or Congo or Cote Diivoire or Cote D'ivoire or Cotonou or Dahomey or Dakar or Dar Es Salaam or Djibouti or Dodoma or Egypt* or Embabane or Eritrea or Ethiopia or Eswatini or Freetown or Free-Town or Gabon or Gaborone or Gambia or Ghana or Gold Coast or Guinea or Harare or Ifni or Ivory Coast or Jaunde or Juba or Kampala or Katanga or Kenya or Khartoum or Kigali or Kinshasa or	588882

	Kutonu or Leopoldville or Lesotho or Liberia or Libreville or Libya or Lilongwe or Lobamba or Lome or Luanda or Lusaka or Madagascar or Malabo or Malagasy or Malawi or Mali or Maputo or Maqadishu or Maseru or Mauretania or Mauritania or Mauritius or Mayotte or Mbabane or Mocambique or Mogadishu or Monrovia or Morocco or Moroni or Mozambic or Mozambique or Muqdisho or Nairobi or Namibia or Ndjamena or N'Djamena or Niamey or Niger or Nigeria or Nouakchott or Nyasaland or Ouaga or Ouagadougou or Oyala or Port Louis or Porto-Novo or Praia or Pretoria or Rabat or Rhodesia or Ruanda or Rwanda or Sao Tome or Saharan* or Senegal* or Senegambia or Seychelles or Sierra Leone or Somali* or Subsahar* or Sudan or Swaziland or Tana or Tananarive or Tanganyika or Tanzania or Tchad or Togo or Togoland or Togolese or Tripoli or Tshad or Tunis or Tunisia or Ubangi-Shari or Uganda or "United Arab Republic" or Upper Volta or Urundi or Usumbura or Windhoek or Yamoussoukro or Yaounde or Zaire or Zambia or Zanzibar or Zimbabwe).tw,kf,ia.	
3	(Porto-Novo or Hogbonou or Cotonou or Kutonu or Ouagadougou or Ouaga or Bujumbura or Usumbura or Bangui or Bangi or N'Djamena or Ndjamena or Fort Lamy or Moroni or Kinshasa or Asmara or Asmera or Addis Ababa or Addis Abeba or Banjul or Bathurst or Conakry or Bissau or Port-au-Prince or Monrovia or Antananarivo or Tananarive or Tana or Lilongwe or Bamako or Maputo or Lourenco Marques or Niamey or Kigali or Freetown or Free-town or Mogadishu or Xamar or Hamar or Muqdisho or Maqadishu or Juba or Dodoma or Dar es Salaam or Lome or Kampala or Harare or Salisbury or Thimphu or Thimbu or La Paz or Praia or Yaounde or Jaunde or Brazzaville or Yamoussoukro or Cairo or Accra or Nairobi or Frunze or Maseru or Nouakchott or Rabat or Managua or Abuja or Lagos or Port Moresby or Moresby or Khartoum or Mbabane or Embabane or Lobamba or sanada or Lusaka or Luanda).tw,kf,ia.	36496
4	or/1-3 [Africa]	651001
5	pediatrics/ or exp adolescent/ or exp child/ or exp infant/ or adolescent medicine/	3843208
6	Intensive Care Units, Neonatal/	16975
7	(newborn* or new-born* or neonat* or neo-nat* or infan* or child* or adolesc* or paediatr* or pediater* or baby* or babies* or toddler* or kid or kids or boy* or girl* or juvenile* or teen* or youth* or pubescen* or preadolesc* or prepubesc* or preteen*).tw,kf.	2720333
8	(pediatr* or paediatr*).jw.	611543
9	or/5-8	4712562
10	4 and 9 [Africa Peds]	181586
11	exp Specialties, Surgical/	212232
12	exp Surgical Procedures, Operative/	3401688
13	exp Surgeons/	13730
14	su.fs.	2150629
15	(surger* or surgic* or surgeon* or procedure* or operation? or laparoscop* or postop*).tw,kf.	3441466
16	or/11-15 [Gen Surg]	5752042
17	10 and 16 [Africa Peds Gen Surg]	21640
18	exp "Congenital, Hereditary, and Neonatal Diseases and Abnormalities"/	1314461
19	exp Digestive system diseases/	1868152
20	exp Urologic Diseases/ or exp Male urogenital diseases/ or exp Female urogenital diseases/ or exp Prolapse/	1497917
21	exp Hernia/	80680
22	exp Musculoskeletal Abnormalities/ or exp Musculoskeletal Diseases/	1160670
23	exp Neoplasms/	3651975
24	exp Respiratory System Abnormalities/	11924
25	exp Torsion Abnormality/ or Torticollis/	13585

26	exp Otorhinolaryngologic Diseases/	394603
27	exp Eye Diseases/	609143
28	exp Osteomyelitis/	23926
29	exp Brachial Plexus Neuropathies/	4077
30	exp Hemorrhage/	350014
31	exp Brain Diseases/	1331460
32	exp Arthritis, Infectious/	15317
33	(cochlear or adenoid* or otorhinol* or pharyngeal* or laryngeal* or laryngo* or ear or ear or nose or otitis or tonsil* or epistaxis or rhinorrhea* or rhinitis or otolog* or rhinootol* or head or neck or croup* or supraglott* or glottis or glottis or subglott* or trachea* or snoring or snore* or apnea or apnoea or sleep obstruct* or mastoiditis* or sinusitis or trichiasis or cataract* or hydrocephal* or cerebral palsy or muscular dystroph* or syndactyly* or radial club or amniotic band* or septic arthritis or osteomyelitis or flexor tenosynovitis or clubfoot or clubfeet or club-foot* or club-feet* or craniofacial* or craniofacial* or frontoethmoidal meningoenceph* or hemorrhage* or hematoma* or spina bifida* or resuscitation* or schistosomias* or trachoma* or mediastinitis or buruli ulcer* or choledochal cyst* or cyst* echinococcosis or ilopsoas or epileps* or burr hole* or burn or burns or burned or scald* or burnt or thermal injur*).tw,kf.	1624802
34	(hypospadias* or epispadi* or cloaca* or cryptorchidism* or prolapse or phymosis or paraphymosis or hydrometrocolpos or (bladder adj2 exstroph*) or (undescen* adj2 test?s) or (buried adj1 penis) or (urinary adj2 (retention or lithiasis))).tw,kf.	64934
35	(hirschsprung* or ((megacolon or colon* or rectosigmoid or intestin*) adj4 (congenital or aganglion*)) or ((anal or anus or anorect* or rectal) adj3 (artificial* or malformation or anomal* or abnormal* or ectopic or stenosis or atres* or atroph* or imperforat* or inperforat* or praet* or pret*))).tw,kf.	14047
36	((pierre-robin or apert*) adj2 (syndrome* or disease* or sequenc*).tw,kf.	2407
37	(cleft adj2 (lip* or palate*)).tw,kf.	24228
38	(coarctation or (septal adj2 defect*) or (tetralogy adj2 fallot)).tw,kf.	44183
39	(brachial plexus adj2 (palsy or neuropath*)).tw,kf.	1564
40	((arthriti* or rheumat*) adj2 infect*).tw,kf.	2853
41	or/18-40	9782302
42	exp Specialties, Surgical/	212232
43	exp Surgical Procedures, Operative/	3401688
44	su.fs.	2150629
45	(surger* or surgical* or operati* or reoperat* or bypass* or by-pass* or resect* or re-sect* or transplant* or procedure or procedures or debridement* or laparoscop* or laparotom*).tw,kf.	4167558
46	or/42-45	6158070
47	41 and 46	3046455
48	10 and 47 [Africa Peds Surg condition]	10564
49	(adenoidectom* or laryngectom* or laryngoplast* or laryngoscop* or pharygectom* or tonsillectom* or tympanoplast* or tracheostom* or tracheotom* or orchidopex* or orchioepex* or orchiectom* or orchidectom* or herniorrhaph* or hernioplast* or herniaplast* or herni*-plast* or herniotom* or circumcis* or gastrostom or ileostom* or colostom* or enterostom* or portoenterostom or roux-en-y or kasai or pyloromyotom* or piloromyotom* or pyloromiotom* or piloromiotom* or diverticulectom* or diverticulotom* or cholecystectom* or cholangiopancreatograph* or cholangio-pancreatograph* or choledoduodenostom* or choledo-duodenostom* or appendicectom* or appendectom* or splenectom* or pneumonectom* or amputation* or amputate* or craniotom* or craniostom* or hydrocelectom* or thoracostom* or fasciotom*).tw,kf.	273533
50	((ophthalmolog* or eye* or vision or ocular or retina* or retinopath*) adj5 (operat* or procedur* or	38688

	surger* or surgical*).tw,kf.	
51	((perforation* or incision* or laceration*) adj3 (repair* or drain* or closure*).tw,kf.	9857
52	((tooth or teeth or dental or abcess) adj2 (extract* or drain*).tw,kf.	16161
53	((abdomen or abdominal or intestin* or bowel* or gastrointestin*) adj3 (ablat* or excis* or laparoscop* or laparotom* or operativ* or surger* or surgical* or reconstruct* or repair* or resect* or intraoperative* or perioperative* or perisurg* or postoperative* or postsurg* or preoperative* or presurg*).tw,kf.	76345
54	(escharotom* or ((skin or derm*) adj2 (graft* or transplant*))).tw,kf.	26742
55	((cancer or neoplas* or tumor* or tumour* or carcinom* or sarcoma*) adj3 (ablat* or excis* or laparoscop* or laparotom* or operativ* or surger* or surgical* or reconstruct* or repair* or resect* or biopsy or biopsie* or intraoperative* or perioperative* or perisurg* or postoperative* or postsurg* or preoperative* or presurg*).tw,kf.	224854
56	(fundoplicat* or ((nissen* or toupet or dor) adj3 (operat* or procedur* or surger* or surgical*))).tw,kf.	6810
57	((hernia* or extraperitoneal or preperitoneal or peritoneal or TEP or TAPP or umbilic* or inguinal or omphalocele* or exomphalos) adj3 (ablat* or excis* or laparoscop* or laparotom* or operativ* or surger* or surgical* or reconstruct* or repair* or resect* or intraoperative* or perioperative* or perisurg* or postoperative* or postsurg* or preoperative* or presurg*).tw,kf.	31190
58	((liver or hepatic or lung or lungs or pulmon* or kidney) adj3 (transplant* or graft*).tw,kf.	147121
59	(thoroscop* or thoracotom* or pleurectom* or pleuroscop* or pleuracotom* or pleurotom* or (pleura* adj3 (endoscop* or incision*))).tw,kf.	39993
60	((lung or lungs or pulmon* or wedge or trauma* or postrauma* or posttrauma* or neurotrauma* or fracture*) adj3 (ablat* or excis* or laparoscop* or laparotom* or operativ* or surger* or surgical* or reconstruct* or repair* or resect* or intraoperative* or perioperative* or perisurg* or postoperative* or postsurg* or preoperative* or presurg*).tw,kf.	110621
61	or/49-60	916369
62	10 and 61 [Africa Peds Surg spec]	4245
63	Esophageal Atresia/	3855
64	((esophag* or oesophag* or endoesophag* or intraesophag* or tracheoesophag*) adj3 (atres* or atretic* or atroph*).tw,kf.	4852
65	anus, imperforate/	2570
66	((anal or anus or anorect* or rectal) adj3 (artificial* or malformat* or mal-format* or anomal* or abnormal* or ectopic or stenosis or atres* or atroph* or imperforat* or inperforat* or praet* or pret* or fistula*).tw,kf.	10761
67	Colorectal Surgery/	4040
68	Rectal Diseases/ or exp *Rectal Diseases/	165790
69	hirschsprung disease/	4788
70	(hirschsprung* or ((megacolon or colon* or rectosigmoid or intestin*) adj3 (congenital* or aganglion*))).tw,kf.	7050
71	Hernias, Diaphragmatic, Congenital/	5231
72	(agene* adj2 (hemidiaphragm* or diaphragm* or ((unilat* or hern*) adj1 diaphragm*))).tw,kf.	86
73	((bochdalek* or morgagni*) adj2 (hernia* or defect*).tw,kf.	1310
74	((congenital* or neonat* or neo-nat* or newborn* or new-born* or birth* or maternal* or fetal or fetus* or fetu or fetu or foet* or prenatal* or pre-natal* or antenatal* or ante-natal* or trimester* or pregnan* or uter* or preterm* or pre-term* or premature* or pre-mature* or premie*) adj5 (posterolateral* or substernal*) adj2 hernia*).tw,kf.	78
75	((congenital* or neonat* or neo-nat* or newborn* or new-born* or birth* or maternal* or fetal or	5591

	fetus* or fetu or feto or foet* or prenatal* or pre-natal* or antenatal* or ante-natal* or trimester* or pregnan* or uter* or preterm* or pre-term* or premature* or pre-mature* or premie*) adj2 diaphragm* adj2 (hernia* or defect*).tw,kf.	
76	(congenital* and hernia* and diaphragm*).tw,kf.	6135
77	musculoskeletal abnormalities/	1595
78	funnel chest/	2596
79	pectus carinatum/	133
80	((pectus or chest) adj1 (funnel or sunken or excavatum or carinatum)).tw,kf.	3263
81	or/63-80 [Specific surg cond]	200581
82	10 and 81 [Africa Peds Specific Surg]	594
83	17 or 48 or 62 or 82 [Africa Peds Surg]	23054
84	Attitude of Health Personnel/	129230
85	exp Health Personnel/	576457
86	exp Administrative Personnel/	41817
87	Social Workers/	918
88	or/84-87	653451
89	Stereotyping/	11703
90	Social Stigma/	11205
91	Prejudice/	25336
92	Social Discrimination/	1517
93	or/89-92	45347
94	88 and 93	8245
95	((attitude* or bias* or perception* or antipathy or stigma* or anti-stigma* or stereotyp* or prejudice* or discriminat* or bias* or microaggression* or micro-aggression* or negative attitude*) adj5 (((health* or hospital* or clinic* or medic*) adj2 (professional* or personnel* or staff* or employee* or provider*)) or doctor* or physician* or surgeon* or resident* or nurse or nurses or allied health or social worker* or secretar* or admin* agent*).tw,kf.	39729
96	exp Health Services Accessibility/	121610
97	((health* or medic* or surg* or doctor* or clinic* or appointment*) adj3 (access* or equit* or inequit* or inaccess* or barrier* or burden*).tw,kf. or ((health* or medic* or surg* or doctor* or clinic* or appointment*) adj5 (access* or equit* or inequit* or inaccess* or barrier* or delay* or distance* or wait* or long-term or complication* or factor* or influenc*).ti,kf.	215550
98	Sex/	7712
99	Sex Characteristics/	59268
100	"Sex Factors"/	277777
101	exp "sexual and gender minorities"/	12037
102	Gender Equity/	387
103	Sexism/	2928
104	exp Gender Identity/	22093
105	Intersex Persons/	13
106	Transgender Persons/	5188
107	(LGBT* or GLBT* or LGB or LGBQ* or LGBS* or M2F or GLB or GLBQ* or GLBs* or 2LGBTQS* or heteroflexible* or heterosex* or cisgend* or GBMSM* or msm or TGNC* or YTW or	389643

	gay or gays or lesbi* or bisexu#l* or transgender* or bicurious* or transpeople* or asexual* or transvestite or cross sex* or crosssex* or crossgender* or nonbinary or non-binary or F2M or transperson* or transsexual* or homosexual* or intersex* or queer* or two-spirit* or same-sex or male-to-female or boy-to-girl or (trans adj2 (people or individual or individuals or person or persons or sexual* or male or female or youth* or population* or gender)) or ((gender* or sex or sexual) adj2 (change or dysphoria or reversal or identit* or reassign* or transform* or transition* or minorit* or sexual* or binary or disaggreg*))).tw,kf.	
108	(gender* or girl* or boy*).ti,kf.	116060
109	(gender* or sex or female* or male* or wom?n or m?n or girl* or boy* or parent? or guardian* or child* or caregiver*).ti,kf. or (gender* or sex or female* or male* or wom?n or m?n or girl* or boy* or parent? or guardian* or child* or caregiver*).ab. /freq=3	2873690
110	(access* or equit* or inequit* or inaccess* or barrier* or delay* or distance* or wait* or long-term or complication* or burden* or factor* or influenc* or time or location*).tw,kf. and (surger* or surgical* or operati* or reoperat* or bypass* or by-pass* or resect* or re-sect* or transplant* or procedure or procedures or debridement* or laparoscop* or laparotom*).ti,kf.	626929
111	109 and 110	62369
112	(or/94-108) or 111	1151078
113	83 and 112 [Africa Peds Surg & Gender]	4877
114	remove duplicates from 113	4873

### Web of Science [Clarivate Analytics] (March 31, 2022)

Indexes=SCI-EXPANDED, SSCI, A&HCI, CPCI-S, CPCI-SSH Timespan=All years

38	#36 NOT #37	<a href="#">411</a>
37	PMID=(0* or 1* OR 2* OR 3* OR 4* OR 5* OR 6* OR 7* OR 8* OR 9*)	<a href="#">25,763,788</a>
36	#35 AND #27	<a href="#">2,270</a>
35	#34 OR #31 OR #30 OR #29 OR #28	<a href="#">1,540,147</a>
34	#33 AND #32	<a href="#">30,099</a>
33	TI=((access* or equit* or inequit* or inaccess* or barrier* or delay* or distance* or wait* or long-term or complication* or burden* or factor* or influenc* or time or location*) and (surger* or surgical* or operati* or reoperat* or bypass* or by-pass* or resect* or re-sect* or transplant* or procedure or procedures or debridement* or laparoscop* or laparotom*))	<a href="#">172,798</a>
32	TI=(gender* or sex or female* or male* or wom?n or m?n or girl* or boy* or parent? or guardian* or child* or caregiver*) or AB=(gender* or sex or female* or male* or wom?n or m?n or girl* or boy* or parent? or guardian* or child* or caregiver*) or AB=(gender* or sex or female* or male* or wom?n or m?n or girl* or boy* or parent? or guardian* or child* or caregiver*)	<a href="#">7,183,014</a>
31	TI=(gender* or girl* or boy*)	<a href="#">278,259</a>
30	TI=(LGBT* or GLBT* or LGB or LGBQ* or LGBS* or M2F or GLB or GLBQ* or GLBs* or 2LGBTQS* or heteroflexible* or heterosex* or cisgend* or GBMSM* or msm or TGNC* or YTW or gay or gays or lesbi* or bisexual* or transgender* or bicurious* or transpeople* or asexual* or transvestite or cross sex* or crosssex* or crossgender* or nonbinary or non-binary or F2M or transperson* or transsexual* or homosexual* or intersex* or queer* or two-spirit* or same-sex or male-to-female or boy-to-girl or (trans NEAR/2 (people or individual or individuals or person or persons or sexual* or male or female or youth* or population* or gender)) or ((gender* or sex or sexual) NEAR/2 (change or dysphoria or reversal or identit* or reassign* or transform* or transition* or minorit* or sexual* or binary or disaggreg*))) OR AB=(LGBT* or GLBT* or LGB or LGBQ* or LGBS* or M2F or GLB or GLBQ* or GLBs* or 2LGBTQS* or heteroflexible* or heterosex* or cisgend* or GBMSM* or msm or TGNC* or YTW or gay or gays or lesbi* or bisexual* or transgender* or bicurious* or transpeople* or asexual* or transvestite or cross sex* or crosssex* or crossgender* or nonbinary or non-binary or F2M or transperson* or transsexual* or homosexual* or intersex* or queer* or two-spirit* or same-sex or male-to-female or boy-to-girl or (trans NEAR/2 (people or individual	<a href="#">509,324</a>



	or individuals or person or persons or sexual* or male or female or youth* or population* or gender)) or ((gender* or sex or sexual) NEAR/2 (change or dysphoria or reversal or identit* or reassign* or transform* or transition* or minorit* or sexual* or binary or disaggreg*))	
29	TI=((health* or medic* or surg* or doctor* or clinic* or appointment*) NEAR/3 (access* or equit* or inequit* or inaccess* or barrier* or burden*)) or TI=((health* or medic* or surg* or doctor* or clinic* or appointment*) NEAR/3 (access* or equit* or inequit* or inaccess* or barrier* or burden*)) or AB=((health* or medic* or surg* or doctor* or clinic* or appointment*) NEAR/5 (access* or equit* or inequit* or inaccess* or barrier* or delay* or distance* or wait* or "long-term" or complication* or factor* or influenc*))	<a href="#">656.068</a>
28	TI=((attitude* or bias* or perception* or antipathy or stigma* or anti-stigma* or stereotyp* or prejudice* or discriminat* or bias* or microaggression* or micro-aggression* or negative attitude*) AND (((health* or hospital* or clinic* or medic*) NEAR/2 (professional* or personnel* or staff* or employee* or provider*)) or doctor* or physician* or surgeon* or resident* or nurse or nurses or allied health or social worker* or secretar* or admin* agent*)) OR AB=((attitude* or bias* or perception* or antipathy or stigma* or anti-stigma* or stereotyp* or prejudice* or discriminat* or bias* or microaggression* or micro-aggression* or negative attitude*) AND (((health* or hospital* or clinic* or medic*) NEAR/2 (professional* or personnel* or staff* or employee* or provider*)) or doctor* or physician* or surgeon* or resident* or nurse or nurses or allied health or social worker* or secretar* or admin* agent*))	<a href="#">159,408</a>
27	#26 AND #5	<a href="#">10.936</a>
26	#25 OR #24 OR #23 OR #22 OR #21 OR #20 OR #19 OR #18 OR #17 OR #16 OR #12 OR #11 OR #13 OR #14 OR #15 OR #10 OR #9 OR #8 OR #7 OR #6	<a href="#">6,586,371</a>
25	TI=((pectus or chest) NEAR/1 (funnel or sunken or excavatum or carinatum)) OR AB=((pectus or chest) NEAR/1 (funnel or sunken or excavatum or carinatum))	<a href="#">2,602</a>
24	TI=(congenital* and hernia* and diaphragm*) OR AB=(congenital* and hernia* and diaphragm*)	<a href="#">5,754</a>
23	TI=((congenital* or neonat* or neo-nat* or newborn* or new-born* or birth* or maternal* or fetal or fetus* or fetu or feto or foet* or prenatal* or pre-natal* or antenatal* or ante-natal* or trimester* or pregnan* or uter* or preterm* or pre-term* or premature* or pre-mature* or preemie*) NEAR/2 diaphragm* NEAR/2 (hernia* or defect*)) OR AB=((congenital* or neonat* or neo-nat* or newborn* or new-born* or birth* or maternal* or fetal or fetus* or fetu or feto or foet* or prenatal* or pre-natal* or antenatal* or ante-natal* or trimester* or pregnan* or uter* or preterm* or pre-term* or premature* or pre-mature* or preemie*) NEAR/2 diaphragm* NEAR/2 (hernia* or defect*))	<a href="#">5,598</a>
22	TI=((congenital* or neonat* or neo-nat* or newborn* or new-born* or birth* or maternal* or fetal or fetus* or fetu or feto or foet* or prenatal* or pre-natal* or antenatal* or ante-natal* or trimester* or pregnan* or uter* or preterm* or pre-term* or premature* or pre-mature* or preemie*) NEAR/5 (posterolateral* or substernal*) NEAR/2 hernia*) OR AB=((congenital* or neonat* or neo-nat* or newborn* or new-born* or birth* or maternal* or fetal or fetus* or fetu or feto or foet* or prenatal* or pre-natal* or antenatal* or ante-natal* or trimester* or pregnan* or uter* or preterm* or pre-term* or premature* or pre-mature* or preemie*) NEAR/5 (posterolateral* or substernal*) NEAR/2 hernia*)	<a href="#">64</a>
21	TI=((bochdalek* or morgagni*) NEAR/2 (hernia* or defect*)) OR AB=((bochdalek* or morgagni*) NEAR/2 (hernia* or defect*))	<a href="#">1,052</a>
20	TI=(agene* NEAR/2 (hemidiaphragm* or diaphragm* or ((unilat* or hern*) NEAR/1 diaphragm*)) OR AB=(agene* NEAR/2 (hemidiaphragm* or diaphragm* or ((unilat* or hern*) NEAR/1 diaphragm*))	<a href="#">120</a>
19	TI=(hirschsprung* or ((megacolon or colon* or rectosigmoid or intestin*) NEAR/3 (congenital* or aganglion*)) OR AB=(hirschsprung* or ((megacolon or colon* or rectosigmoid or intestin*) NEAR/3 (congenital* or aganglion*))	<a href="#">6,519</a>
18	TI=((anal or anus or anorect* or rectal) NEAR/3 (artificial* or malformat* or mal-format* or anomal* or abnormal* or ectopic or stenosis or atres* or atroph* or imperforat* or inperforat* or praet* or pret* or fistula*)) OR AB=((anal or anus or anorect* or rectal) NEAR/3 (artificial* or malformat* or mal-format* or anomal* or abnormal* or ectopic or stenosis or atres* or atroph* or imperforat* or inperforat* or praet* or pret* or fistula*))	<a href="#">9,279</a>
17	TI=((lung or lungs or pulmon* or wedge or trauma* or postrauma* or posttrauma* or	<a href="#">109,572</a>



	neurotrauma* or fracture*) NEAR/3 (ablat* or excis* or laparoscop* or laparotom* or operativ* or surger* or surgical* or reconstruct* or repair* or resect* or intraoperative* or perioperative* or perisurg* or postoperative* or postsurg* or preoperative* or presurg*) OR AB=((lung or lungs or pulmon* or wedge or trauma* or postrauma* or postrauma* or neurotrauma* or fracture*) NEAR/3 (ablat* or excis* or laparoscop* or laparotom* or operativ* or surger* or surgical* or reconstruct* or repair* or resect* or intraoperative* or perioperative* or perisurg* or postoperative* or postsurg* or preoperative* or presurg*))	
16	TI=(thoroscop* or thoracotom* or pleurectom* or pleuroscop* or pleuracotom* or pleurotom* or (pleura* NEAR/3 (endoscop* or incision*))) OR AB=(thoroscop* or thoracotom* or pleurectom* or pleuroscop* or pleuracotom* or pleurotom* or (pleura* NEAR/3 (endoscop* or incision*)))	<a href="#">31,645</a>
15	TI=((liver or hepatic or lung or lungs or pulmon* or kidney) NEAR/3 (transplant* or graft*)) OR AB=((liver or hepatic or lung or lungs or pulmon* or kidney) NEAR/3 (transplant* or graft*))	<a href="#">198,481</a>
14	TI=((hernia* or extraperitoneal or preperitoneal or peritoneal or TEP or TAPP or umbilic* or inguinal or omphalocele* or exomphalos) NEAR/3 (ablat* or excis* or laparoscop* or laparotom* or operativ* or surger* or surgical* or reconstruct* or repair* or resect* or intraoperative* or perioperative* or perisurg* or postoperative* or postsurg* or preoperative* or presurg*)) OR AB=((hernia* or extraperitoneal or preperitoneal or peritoneal or TEP or TAPP or umbilic* or inguinal or omphalocele* or exomphalos) NEAR/3 (ablat* or excis* or laparoscop* or laparotom* or operativ* or surger* or surgical* or reconstruct* or repair* or resect* or intraoperative* or perioperative* or perisurg* or postoperative* or postsurg* or preoperative* or presurg*))	<a href="#">33,115</a>
13	TI=(fundoplicat* or ((nissen* or toupet or dor) NEAR/3 (operat* or procedur* or surger* or surgical*))) OR AB=(fundoplicat* or ((nissen* or toupet or dor) NEAR/3 (operat* or procedur* or surger* or surgical*)))	<a href="#">6,796</a>
12	TI=((cancer or neoplas* or tumor* or tumour* or carcinom* or sarcoma*) NEAR/3 (ablat* or excis* or laparoscop* or laparotom* or operativ* or surger* or surgical* or reconstruct* or repair* or resect* or biopsy or biopsie* or intraoperative* or perioperative* or perisurg* or postoperative* or postsurg* or preoperative* or presurg*)) OR AB=((cancer or neoplas* or tumor* or tumour* or carcinom* or sarcoma*) NEAR/3 (ablat* or excis* or laparoscop* or laparotom* or operativ* or surger* or surgical* or reconstruct* or repair* or resect* or biopsy or biopsie* or intraoperative* or perioperative* or perisurg* or postoperative* or postsurg* or preoperative* or presurg*))	<a href="#">270,089</a>
11	TI=(escharotom* or ((skin or derm*) NEAR/2 (graft* or transplant*))) OR AB=(escharotom* or ((skin or derm*) NEAR/2 (graft* or transplant*)))	<a href="#">19,519</a>
10	TI=((abdomen or abdominal or intestin* or bowel* or gastrointestin*) NEAR/3 (ablat* or excis* or laparoscop* or laparotom* or operativ* or surger* or surgical* or reconstruct* or repair* or resect* or intraoperative* or perioperative* or perisurg* or postoperative* or postsurg* or preoperative* or presurg*)) OR AB=((abdomen or abdominal or intestin* or bowel* or gastrointestin*) NEAR/3 (ablat* or excis* or laparoscop* or laparotom* or operativ* or surger* or surgical* or reconstruct* or repair* or resect* or intraoperative* or perioperative* or perisurg* or postoperative* or postsurg* or preoperative* or presurg*))	<a href="#">77,083</a>
9	TI=((tooth or teeth or dental or abcess) NEAR/2 (extract* or drain*)) OR AB=((tooth or teeth or dental or abcess) NEAR/2 (extract* or drain*))	<a href="#">14,121</a>
8	TI=((ophthalmolog* or eye* or vision or ocular or retina* or retinopath*) NEAR/5 (operat* or procedur* or surger* or surgical*)) OR AB=((ophthalmolog* or eye* or vision or ocular or retina* or retinopath*) NEAR/5 (operat* or procedur* or surger* or surgical*))	<a href="#">39,064</a>
7	TI=(adenoidectom* or laryngectom* or laryngoplast* or laryngoscop* or pharygectom* or tonsillectom* or tympanoplast* or tracheostom* or tracheotom* or orchidopex* or orchioepex* or orchiectom* or orchidectom* or herniorrhaph* or hernioplast* or hernioplast* or herni*-plast* or herniotom* or circumcis* or gastrostom or ileostom* or colostom* or enterostom* or portoenterostom or roux-en-y or kasai or pyloromyotom* or piloromyotom* or pyloromiotom* or piloromiotom* or diverticulectom* or diverticulotom* or cholecystectom* or cholangiopancreatograph* or cholangio-pancreatograph* or choledoduodenostom* or choledo-duodenostom* or appendicectom* or appendectom* or splenectom* or pneumonectom* or amputation* or amputate* or craniotom* or craniostom*)	<a href="#">224,503</a>

	or hydrocelectom* or thoracostom* or fasciotom*) or AB=(adenoidectom* or laryngectom* or laryngoplast* or laryngoscop* or pharygectom* or tonsillectom* or tympanoplast* or tracheostom* or tracheotom* or orchidopex* or orchiopex* or orchiectom* or orchidectom* or herniorrhaph* or hernioplast* or hernioplast* or herni*-plast* or herniotom* or circumcis* or gastrostom or ileostom* or colostom* or enterostom* or portoenterostom or roux-en-y or kasai or pyloromyotom* or piloromyotom* or pyloromiotom* or piloromiotom* or diverticulectom* or diverticulotom* or cholecystectom* or cholangiopancreatograph* or cholangio-pancreatograph* or choledoduodenostom* or choledo-duodenostom* or appendicectom* or appendectom* or splenectom* or pneumonectom* or amputation* or amputate* or craniotom* or craniostom* or hydrocelectom* or thoracostom* or fasciotom*)	
6	TI=(surger* or surgic* or surgeon* or operati* or reoperat* or bypass* or by-pass* or resect* or re-sect* or transplant* or procedure* or debridement* or laparoscop* or laparotom* or postop*) OR AB=(surger* or surgic* or surgeon* or operati* or reoperat* or bypass* or by-pass* or resect* or re-sect* or transplant* or procedure* or debridement* or laparoscop* or laparotom* or postop*)	<a href="#">6,388,614</a>
5	#3 AND #4	<a href="#">160,663</a>
4	TS=(newborn* or new-born* or neonat* or neo-nat* or infan* or child* or paediatr* or pediater* or baby* or babies* or toddler* or kid or kids or boy* or girl* or adolesc* or juvenile* or teen* or youth* or pubescen* or preadolesc* or prepubesc* or preteen*)	<a href="#">3,732,184</a>
3	#1 OR #2	<a href="#">1,376,193</a>
2	TS=((Porto-Novo or Hogbonou or Cotonou or Kutonu or Ouagadougou or Ouaga or Bujumbura or Usumbura or Bangui or Bangi or N'Djamena or Ndjamenia or Fort Lamy or Moroni or Kinshasa or Asmara or Asmera or Addis Ababa or Addis Abeba or Banjul or Bathurst or Conakry or Bissau or Port-au-Prince or Monrovia or Antananarivo or Tananarive or Tana or Lilongwe or Bamako or Maputo or Lourenco Marques or Niamey or Kigali or Freetown or Free-town or Mogadishu or Xamar or Hamar or Muqdisho or Maqadishu or Juba or Dodoma or Dar es Salaam or Lome or Kampala or Harare or Salisbury or Thimphu or Thimbu or La Paz or Praia or Yaounde or Jaunde or Brazzaville or Yamoussoukro or Cairo or Accra or Nairobi or Frunze or Maseru or Nouakchott or Rabat or Managua or Abuja or Lagos or Port Moresby or Moresby or Khartoum or Mbabane or Embabane or Lobamba or sanada or Lusaka or Luanda))	<a href="#">64,720</a>
1	TS=(Abuja or Abyssinia or Accra or Addis Ababa or Addis Abeba or Africa* or Algeria or Algiers or Angola or Antananarivo or Asmara or Asmera or Bamako or Bangi or Bangui or Banjul or Basutoland or Benin or Bissau or Bloemfontein or Botswana or Brazzaville or Bujumbura or Burundi or Burkina Faso or Burundi or Cabo Verde or Cairo or Cameroon or Cameroun or Cape Town or Cape Verde or Cap-Vert or Centrafican or Centrafrique or Chad or Comores or Comoro or Comoros or Conakry or Congo or Cote Diivoire or Cote D'ivoire or Cotonou or Dahomey or Dakar or Dar Es Salaam or Djibouti or Dodoma or Egypt* or Embabane or Eritrea or Ethiopia or Eswatini or Freetown or Free-Town or Gabon or Gaborone or Gambia or Ghana or Gold Coast or Guinea or Harare or Ifni or Ivory Coast or Jaunde or Juba or Kampala or Katanga or Kenya or Khartoum or Kigali or Kinshasa or Kutonu or Leopoldville or Lesotho or Liberia or Libreville or Libya or Lilongwe or Lobamba or Lome or Luanda or Lusaka or Madagascar or Malabo or Malagasy or Malawi or Mali or Maputo or Maqadishu or Maseru or Mauretania or Mauritania or Mauritius or Mayotte or Mbabane or Mocambique or Mogadishu or Monrovia or Morocco or Moroni or Mozambic or Mozambique or Muqdisho or Nairobi or Namibia or Ndjamenia or N'Djamena or Niamey or Niger or Nigeria or Nouakchott or Nyasaland or Ouaga or Ouagadougou or Oyala or Port Louis or Porto-Novo or Praia or Pretoria or Rabat or Rhodesia or Ruanda or Rwanda or Sao Tome or Saharan* or Senegal* or Senegambia or Seychelles or Sierra Leone or Somali* or Subsahar* or Sudan or Swaziland or Tana or Tananarive or Tanganyika or Tanzania or Tchad or Togo or Togoland or Togolese or Tripoli or Tshad or Tunis or Tunisia or Ubangi-Shari or Uganda or "United Arab Republic" or Upper Volta or Urundi or Usumbura or Windhoek or Yamoussoukro or Yaounde or Zaire or Zambia or Zanzibar or Zimbabwe)	<a href="#">1,368,940</a>

*Appendix B PRISMA Checklist*

Section / Topic	Item No.	Checklist item	Reported on Page No.
-----------------	----------	----------------	----------------------

TITLE			
Title	1	Identify the report as a systematic review, meta-analysis, or both.	2
ABSTRACT			
Structured Summary	2	Provide a structured summary including, as applicable: background; objectives; data sources; study eligibility criteria, participants, and interventions; study appraisal and synthesis methods; results; limitations; conclusions and implications of key findings; systematic review registration number.	
			2-8
INTRODUCTION			
Rationale	3	Describe the rationale for the review in the context of what is already known.	2,3
Objectives	4	Provide an explicit statement of questions being addressed with reference to participants, interventions, comparisons, outcomes, and study design (PICOS).	
			2,3
METHODS			
Protocol and registration	5	Indicate if a review protocol exists, if and where it can be accessed (e.g., Web address), and, if available, provide registration information including registration number.	
			4
Eligibility criteria	6	Specify study characteristics (e.g., PICOS, length of follow-up) and report characteristics (e.g., years considered, language, publication status) used as criteria for eligibility, giving rationale.	
			3-5
Information sources	7	Describe all information sources (e.g., databases with dates of coverage, contact with study authors to identify additional studies) in the search and date last searched.	
			4
Search	8	Present full electronic search strategy for at least one database, including any	

		limits used, such that it could be repeated.	4, Appendix A
Study selection	9	State the process for selecting studies (i.e., screening, eligibility, included in systematic review, and, if applicable, included in the meta-analysis).	4,5
Data collection process	10	Describe method of data extraction from reports (e.g., piloted forms, independently, in duplicate) and any processes for obtaining and confirming data from investigators.	4,5
Data items	11	List and define all variables for which data were sought (e.g., PICOS, funding sources) and any assumptions and simplifications made.	3-5
Risk of bias in individual studies	12	Describe methods used for assessing risk of bias of individual studies (including specification of whether this was done at the study or outcome level), and how this information is to be used in any data synthesis.	5,7

Section / Topic	Item No.	Checklist item	Reported on Page No.
Summary Measures	1 3	State the principal summary measures (e.g., risk ratio, difference in means).	5-7
Synthesis of results	1 4	Describe the methods of handling data and combining results of studies, if done, including measures of consistency (e.g., $I^2$ ) for each meta-analysis.	5-7

Risk of bias across studies	1	Specify any assessment of risk of bias that may affect the cumulative evidence (e.g., publication bias, selective reporting within studies).	
	5		7
Additional Analyses	1	Describe methods of additional analyses (e.g., sensitivity or subgroup analyses, meta-regression), if done, indicating which were pre-specified.	
	6		6,7
<b>RESULTS</b>			
Study selection	1	Give numbers of studies screened, assessed for eligibility, and included in the review, with reasons for exclusions at each stage, ideally with a flow diagram.	
	7		5,6,12
Study Characteristics	1	For each study, present characteristics for which data were extracted (e.g., study size, PICOS, follow-up period) and provide the citations.	
	8		6, 13
Risk of bias within studies	1	Present data on risk of bias of each study and, if available, any outcome level assessment (see item 12).	
	9		7, 18
Results of individual studies	2	For all outcomes considered (benefits or harms), present, for each study: (a) simple summary data for each intervention group  (b) effect estimates and confidence intervals, ideally with a forest plot.	
	0		6,7,16,17
Synthesis of results	2	Present results of each meta-analysis done, including confidence intervals and measures of consistency.	
	1		6,7,16,17



Risk of bias across studies	2	Present results of any assessment of risk of bias across studies (see Item 15).	
	2		7, 18
Additional analysis	2	Give results of additional analyses, if done (e.g., sensitivity or subgroup analyses, meta-regression [see Item 16]).	
	3		7
DISCUSSION			
Summary of evidence	2	Summarize the main findings including the strength of evidence for each main outcome; consider their relevance to key groups (e.g., healthcare providers, users, and policy makers).	
	4		7,8
Limitations	2	Discuss limitations at study and outcome level (e.g., risk of bias), and at review-level (e.g., incomplete retrieval of identified research, reporting bias).	
	5		7
Conclusions	2	Provide a general interpretation of the results in the context of other evidence, and implications for future research.	
	6		7,8
FUNDING			

Section/Topic	Item No.	Checklist item	Reported on Page No.
Funding	27	Describe sources of funding for the systematic	

		review and other support (e.g., supply of data); role of funders for the systematic review.	8

*From: Moher D, Liberati A, Tetzlaff J, Altman DG, The PRISMA Group (2009). Preferred Reporting Items for Systematic Reviews and Meta-Analyses: The PRISMA Statement. PLoS Med 6(6): e1000097. doi:10.1371/journal.pmed1000097*

## PRISMA-S Checklist

Section/topic	#	Checklist item	Location(s) Reported
<b>INFORMATION SOURCES AND METHODS</b>			
Database name	1	Name each individual database searched, stating the platform for each.	p. 4 & Included in Supplementary Material
Multi-database searching	2	If databases were searched simultaneously on a single platform, state the name of the platform, listing all of the databases searched.	p. 4 & Included in Supplementary Material
Study registries	3	List any study registries searched.	N/A
Online resources and browsing	4	Describe any online or print source purposefully searched or browsed (e.g., tables of contents, print conference proceedings, web sites), and how this was done[1] .	N/A

Citation searching	5	Indicate whether cited references or citing references were examined, and describe any methods used for locating cited/citing references (e.g., browsing reference lists, using a citation index, setting up email alerts for references citing included studies).	References of included articles were verified.[2]
Contacts	6	Indicate whether additional studies or data were sought by contacting authors, experts, manufacturers, or others.	N/A
Other methods	7	Describe any additional information sources or search methods used.	N/A[3]
<b>SEARCH STRATEGIES</b>			
Full search strategies	8	Include the search strategies for each database and information source, copied and pasted exactly as run.	Included in Supplementary Material
Limits and restrictions	9	Specify that no limits were used, or describe any limits or restrictions applied to a search (e.g., date or time period, language, study design) and provide justification for their use.	p. 4 Included in methods
Search filters	10	Indicate whether published search filters were used (as originally designed or modified), and if so, cite the filter(s) used.	MUHC Pediatric filter used
Prior work	11	Indicate when search strategies from other literature reviews were adapted or reused for a substantive part or all of the search, citing the previous review(s).	N/A
Updates	12	Report the methods used to update the search(es) (e.g., rerunning searches, email alerts).	N/A
Dates of searches	13	For each search strategy, provide the date when the last search occurred.	p. 2-4
<b>PEER REVIEW</b>			

Peer review	14	Describe any search peer review process.	Used PRESS (McGowan J, Sampson M, Salzwedel DM, Cogo E, Foerster V, Lefebvre C. PRESS Peer Review of Electronic Search Strategies: 2015 Guideline Statement. J Clin Epidemiol. 2016 Jul;75:40-6. doi: 10.1016/j.jclinepi.2016.01.021).  Reviewed by Lindsay Hales of the McConnell Resource Centre of the MUHC.
<b>MANAGING RECORDS</b>			
Total Records	15	Document the total number of records identified from each database and other information sources.	Included in Supplementary Material
Deduplication	16	Describe the processes and any software used to deduplicate records from multiple database searches and other information sources.	Initial deduplication done via Endnote X9.3.3 using modified version of Bramer WM, Giustini D, de Jonge GB, Holland L, Bekhuis T. De-duplication of database search results for systematic reviews in EndNote. Journal of the Medical Library Association : JMLA. 2016;104(3):240-243. doi: <a href="https://doi.org/10.3163/1536-5050.104.3.014">10.3163/1536-5050.104.3.014</a> (see <a href="#">McGill</a> <a href="#">KS guide</a> ). Further deduplication manually performed in EndNote then in Rayyan online software.

PRISMA-S: An Extension to the PRISMA Statement for Reporting Literature Searches in Systematic Reviews  
 Rethlefsen ML, Kirtley S, Waffenschmidt S, Ayala AP, Moher D, Page MJ, Koffel JB, PRISMA-S Group.  
 Last updated February 27, 2020.

**Appendix C Access, adverse postoperative outcomes, and mortality calculations**

<b>Terms</b>	<b>Calculations</b>
Proportion of deaths by same sex	Proportion of deaths / total number of same sex cohort
Proportion of deaths by total deaths	Proportion of deaths / total number of deaths
Mortality Rate	Proportion of deaths / total number in cohort
Sex ratio for surgical access	Number of males in cohort / number of females in cohort
Sex ratio of mortality	Male mortality / female mortality
Sex ratio of the proportion of deaths by sex	[(Proportion of male deaths / total number of males in cohort) / (proportion of female deaths / total number of females in cohort)]
Sex ratio of complications excluding death	Male complications / female complications

**Appendix D Finalized list of studies for meta-analysis (n = 54)**

<b>Study No</b>	<b>Authors</b>	<b>Year</b>	<b>Country</b>	<b>Study Design</b>	<b>Cohort Size</b>	<b>Males</b>	<b>Females</b>	<b>Surgical Specialty</b>
1	Wubie AB et al. [1*]	2022	Ethiopia	Retrospective	337	197	140	Neurosurgery
2	Ullrich SJ et al. [2*]	2022	Uganda	Prospective	3194	1941	1253	Pediatric surgery
3	Davis JR et al. [3]	2022	Rwanda	Retrospective	112	58	54	Pediatric surgery
4	Ajao AE and Adeniran JO [4*]	2022	Nigeria	Cross-sectional	336	229	107	Pediatric surgery
5	Zungu T et al. [5*]	2021	Malawi	Prospective	102	75	27	Ophthalmology
6	Swart O et al. [6*]	2021	South Africa	Prospective	188	117	71	Pediatric surgery
7	Shuaibu IY et al. [7*]	2021	Nigeria	Retrospective	99	52	47	Head and Neck surgery
8	Reynolds RA et al. [8*]	2021	Zambia	Retrospective	75	41	34	Neurosurgery
9	Purcell LN et al. [9*]	2021	Malawi	Retrospective	1904	1065	839	Burn

10	Khirallah MG et al. [10*]	2021	Egypt	Prospective	75	47	28	Pediatric surgery
11	Badejo OA et al. [11*]	2021	Nigeria	Retrospective	12	5	7	Neurosurgery
12	Allorto N et al. [12*]	2021	South Africa	Retrospective	620	344	276	Burn
13	Yehya A et al. [13*]	2020	Egypt	Prospective	64	40	24	Pediatric surgery
14	Pindyck T et al. [14*]	2020	Sub-Saharan Africa	Prospective	1017	603	414	Pediatric surgery
15	Peiffer S et al. [15*]	2020	Ghana	Retrospective	468	422	46	Pediatric surgery
16	Harunani S et al. [16*]	2020	Kenya	Prospective	140	95	45	Pediatric surgery
17	Ammer S et al. [17*]	2020	Tunisia	Retrospective	182	126	56	Pediatric surgery
18	Akello W et al. [18*]	2020	Uganda	Prospective	40	24	16	Pediatric surgery
19	Abdul-Mumin A et al. [19*]	2020	Ghana	Retrospective	347	177	165	Pediatric surgery
20	Punchak et al. [20*]	2019	Uganda	Retrospective	100	61	39	Neurosurgery
21	Nilsson E et al. [21*]	2019	Ghana	Retrospective	133	96	37	Pediatric surgery
22	Maine RG et al. [22*]	2019	Malawi	Prospective	764	609	155	Pediatric surgery
23	Leidinger A et al. [23*]	2019	Zanzibar	Prospective	19	10	9	Neurosurgery
24	El Sayed Y et al. [24*]	2019	Egypt	Retrospective	303	288	15	Ophthalmology
25	Shalaby R et al. [25*]	2018	Egypt	Retrospective	1284	918	366	Pediatric surgery
26	Rusingiza et al. [26*]	2018	Rwanda	Retrospective	8	3	5	Cardiac Surgery
27	Negussie T et al. [27*]	2018	Ethiopia	Retrospective	53	29	24	Pediatric surgery
28	Hussein AA et al. [28*]	2018	Egypt	Retrospective	123	91	32	Renal transplant
29	ElSheemy MS et al. [29*]	2018	Egypt	Retrospective	108	73	35	Renal Transplant
30	Anyanwu LJ et al. [30*]	2018	Nigeria	Retrospective	129	78	51	Pediatric surgery
31	Lin BM et al. [31*]	2017	Democratic Republic of the Congo	Prospective	1207	725	482	Pediatric surgery
32	Accorsi S et al. [32*]	2017	Ethiopia	Retrospective	105025	40031	64994	Pediatric surgery



33	Swart ED et al. [33*]	2017	South Africa	Retrospective	856	531	325	Pediatric surgery
34	Badawy H et al. [34*]	2017	Egypt	Prospective	15	10	5	Pediatric surgery
35	Gilbert CE et al. [35*]	2016	Multiple	Retrospective	547	322	225	Ophthalmology
36	Conway JC et al. [36*]	2015	Multiple	Retrospective	27880	16454	11426	Liver transplant
37	Shalaby R et al. [37*]	2015	Egypt	Retrospective	38	34	4	Pediatric surgery
38	Mahdi BD et al. [38*]	2015	Tunisia	Prospective	90	75	15	Pediatric surgery
39	Atwa ZT et al. [39*]	2014	Egypt	Cross-sectional	312	171	141	Cardiac surgery
40	Talabi AO et al. [40*]	2014	Nigeria	Retrospective	45	26	19	Pediatric surgery
41	Ibrahim MM et al. [41*]	2014	Egypt	Prospective	14	10	4	Pediatric surgery
42	Ezomike UO et al. [42*]	2014	Nigeria	Retrospective	22	15	7	Pediatric surgery
43	Simon R et al. [43*]	2013	Tanzania	Cross-sectional	150	104	46	Trauma
44	Ademuyiwa AO et al. [44*]	2012	Nigeria	Retrospective	129	104	25	Pediatric surgery
45	Elsayed H et al. [45*]	2012	Egypt	Prospective	200	131	69	Renal Transplant
46	Shalaby R et al. [46*]	2010	Egypt	Retrospective	52	35	17	Pediatric surgery
47	Ameh EA et al. [47*]	2009	Nigeria	Prospective	76	40	36	Pediatric surgery
48	Helmy TE et al. [48*]	2009	Egypt	Retrospective	18	14	4	Pediatric surgery
49	Abantanga FA et al. [49*]	2009	Ghana	Prospective	955	568	387	Pediatric surgery
50	Odebode TO et al. [50*]	2006	Nigeria	Retrospective	60	28	32	Neurosurgery
51	Kaabachi O et al. [51*]	2005	Tunisia	Retrospective	458	282	176	Orthopedics
52	Abantanga FA and Wiafe-Addai [52*]	1998	Ghana	Prospective	121	76	45	Pediatric surgery
53	Abantanga FA [53*]	1997	Ghana	Prospective	66	41	25	Pediatric surgery
54	Badibanga B et al. [54*]	1980	Zaire	Case review	26	19	7	Pediatric surgery

