

1  
2 **Spatial and Temporal Patterns of SARS-CoV-2 transmission in uMgungundlovu, Kwa-**  
3 **Zulu Natal, South Africa**

4 Radiya Gangat<sup>1,2</sup>, Veranyuy Ngah<sup>1</sup>, Rushambwa Tawonga<sup>3</sup>, Justine I. Blanford<sup>4</sup>, Jabulani Ronnie  
5 Ncayiyana<sup>5</sup>, Peter Suwirakwenda Nyasulu<sup>1, 6\*</sup>

6 <sup>1</sup>Division of Epidemiology and Biostatistics, Department of Global Health, Faculty of Medicine  
7 and Health Sciences, Stellenbosch University, Cape Town, Western Cape, South Africa

8 <sup>2</sup>Department of Health, uMgungundlovu Health District Office, Pietermaritzburg, Kwa-Zulu  
9 Natal, South Africa

10 <sup>3</sup>School of Development Studies, University of Kwa-Zulu Natal, Durban, Kwa-Zulu Natal, South  
11 Africa

12 <sup>4</sup>Department of Earth Observation Science (EOS), Faculty of Geo-Information Science and Earth  
13 Observation (ITC), University of Twente, Enschede, Netherlands

14 <sup>5</sup>Division of Public Health Medicine, University of Kwa-Zulu Natal, Durban, Kwa-Zulu Natal,  
15 South Africa

16 <sup>6</sup>Division of Epidemiology and Biostatistics, School of Public Health, Faculty of Health  
17 Sciences, University of the Witwatersrand, Johannesburg, South Africa

18 \*Corresponding Author

19 Email: [pnyasulu@sun.ac.za](mailto:pnyasulu@sun.ac.za) (PSN)

20

21

## 22 **Abstract**

23 **Background.** Investigating the spatial distribution of SARS-CoV-2 at a local level and describing  
24 the pattern of disease occurrence can be used as the basis for efficient prevention and control  
25 measures. This research project aims to utilize geospatial analysis to understand the distribution  
26 patterns of SARS-CoV-2 and its relationship with certain co-existing factors.

27 **Methods.** Spatial characteristics of SARS-CoV-2 were investigated over the first four waves of  
28 transmission using ESRI ArcGISPro v2.0, including Local Indicators of Spatial Association  
29 (LISA) with Moran's "I" as the measure of spatial autocorrelation; and Kernel Density Estimation  
30 (KDE). In implementing temporal analysis, time series analysis using the Python Seaborn library  
31 was used, with separate modelling carried out for each wave.

32 **Results.** Statistically significant SARS-CoV-2 incidences were noted across age groups with p-  
33 values consistently  $< 0.001$ . The central region of the district experienced a higher level of clusters  
34 indicated by the LISA (Moran's I: wave 1 – 0.22, wave 2 – 0.2, wave 3 – 0.11, wave 4 – 0.13) and  
35 the KDE (Highest density of cases: wave 1: 25.1-50, wave 2: 101-150, wave 3: 101-150, wave 4:  
36 50.1-100). Temporal analysis showed more fluctuation at the beginning of each wave with less  
37 fluctuation in identified cases within the middle to end of each wave.

38 **Conclusion.** A Geospatial approach of analysing infectious disease transmission is proposed to  
39 guide control efforts (e.g., testing/tracing and vaccine rollout) for populations at higher  
40 vulnerability. Additionally, the nature and configuration of the social and built environment may  
41 be associated with increased transmission. However, locally specific empirical research is required  
42 to assess other relevant factors associated with increased transmission.

43 **Key words:** SARS-CoV2, Geospatial, Temporal analysis, uMgungundlovu, Kwa-Zulu Natal

## 44 Introduction

45 The SARS-CoV-2 pandemic causing coronavirus disease 2019 (COVID-19) has reached 770, 875  
46 433 confirmed cases worldwide as of 27 September 2023 [4]. Although spatial distribution of  
47 infection has been widespread, a distinct asymmetry has been observed in terms of incidence and  
48 distribution of cases according to geographical location [3]. With emerging pathogenic outbreaks,  
49 it is critical to understand the dynamics of infection transmission. This is of particular importance  
50 when analysing the contagion over time and projecting the future epidemiological situation. In this  
51 study, Geographic information systems (GIS) were used to analyse the spatial distribution patterns  
52 of SARS-CoV-2 in uMgungundlovu district, Kwa-Zulu Natal Province, South Africa, and to  
53 highlight the hotspot areas of high transmission.

## 54 Materials and methods

### 55 Study design and participants

56 A Cross-sectional study design was employed for this study. All laboratory confirmed SARS-  
57 CoV-2 positive individuals residing within uMgungundlovu District during each of the four waves  
58 experienced to date, formed part of the study population.

### 59 Study setting

60 The district of uMgungundlovu lies in the interior of Kwa-Zulu Natal (KZN) Province. The district  
61 provides health care services to 10% of the KZN population estimated at 1 017 763 [1].  
62 uMgungundlovu covers an area of 9189 square kilometres and is comprised of 7 sub-districts;  
63 these include uMsunduzi, Impendle, Richmond, uMngeni, uMkhambathini, uMshwathi and  
64 Mpofana (Fig 1). Pietermaritzburg serves as the provincial and legislative capital of the district.

**Fig 1. uMgungundlovu sub-district distribution.**

## 65 **Data collection**

66 During the SARS-CoV-2 pandemic, either nasopharyngeal or oropharyngeal specimens were  
67 collected by clinicians throughout the district and sent to laboratories where they were analysed  
68 using Polymerase chain reaction (PCR); additionally, rapid antigen testing was conducted at the  
69 point of collection. This occurred in the private and public sectors. Data of SARS-COV-2 positive  
70 cases are collated daily by the National Institute for Communicable Diseases (NICD) and  
71 channelled to the district health office. Data of laboratory-confirmed SARS-CoV-2 cases,  
72 including demographic data i.e., age, gender, specimen collection date and ward number were  
73 obtained from the NICD daily line lists.

## 74 **Data Analysis**

75 Descriptive analysis was conducted separately for each of the four waves. Data were stratified by  
76 sex and missing values denoted as NaN. The mean for each independent variable was assessed  
77 according to whether the observed differences were statistically significant at the 5% level using  
78 the Fisher's Exact Test, reporting the associated p-value. Statistical analyses were conducted using  
79 the R statistical software for data analysis and programming.

80 In implementing temporal analysis, time series analysis using the Python Seaborn library was used,  
81 with separate modelling carried out for each wave. Specimen collection date was used to complete  
82 temporal analysis.

83 Spatial distribution patterns of SARS-CoV-2 were analysed at ward and municipal levels. Base  
84 layers for the district used to complete the analysis were obtained from the municipal demarcation  
85 board which is an open data source (Table 1). At local municipality level, incidence proportions  
86 were analysed using choropleth maps while at ward level, choropleth maps were created using  
87 incidence data.

88 **Table 1. Base layer data sources.**

<i>Data</i>	<i>Description</i>	<i>Source</i>	<i>Date accessed</i>	<i>URL</i>
<i>District boundaries</i>	Arcgis boundary layer	Municipal demarcation board	23/06/2022	<a href="https://dataportal-mdb-sa.opendata.arcgis.com/maps/97cb14748cef423a94f7b7154387b2dc">https://dataportal-mdb-sa.opendata.arcgis.com/maps/97cb14748cef423a94f7b7154387b2dc</a>
<i>Ward and municipal boundaries</i>	Arcgis boundary layer	Municipal demarcation board	23/06/2022	<a href="https://dataportal-mdb-sa.opendata.arcgis.com/maps/97cb14748cef423a94f7b7154387b2dc">https://dataportal-mdb-sa.opendata.arcgis.com/maps/97cb14748cef423a94f7b7154387b2dc</a>

89

90 The total number of positive cases were summarized for each ward. The centroid of each ward was  
91 obtained and used as input for the KDE analysis.

92 Moran's I and LISA (local indicators of spatial association) analyses were used to determine if  
93 cases were clustered and if so, to identify where infection clusters or hotspots were located. Cluster  
94 analyses were conducted using the Anselin Local Moran's I statistic to identify potential SARS-  
95 CoV-2 hotspots [30]. Positive spatial autocorrelation was found where values at neighbouring  
96 locations were similar and referred to respectively as high-high (HH) and low-low (LL). High-  
97 high clusters refer to areas of high SARS-CoV-2 incidence occurring near areas of high incidence,  
98 and cold spots or low-low clusters occur where areas of low SARS-CoV-2 incidence occur near  
99 areas of low incidence. In contrast, negative spatial autocorrelation or spatial outliers occur where  
100 dissimilar values occur at neighbouring locations. These are referred to as high-low (HL) and low-  
101 high (LH) spatial outliers respectively and occur when areas of high incidence are surrounded by  
102 areas of low incidence and vice-versa [5].

103 A positive value for Moran's I indicates that a feature has neighbouring features with similarly  
104 high or low attribute values (positive spatial autocorrelation) while a negative Moran's I value

105 indicates that a feature has neighbouring features with dissimilar values; this feature is an outlier.  
106 In either instance, the p-value for the feature must be small enough for the cluster or outlier to be  
107 considered statistically significant. Statistical significance was set at the 95% confidence level [5].  
108 All analyses were performed using ESRI ArcGISPro v2.0.

## 109 **Ethical considerations**

110 Ethics approval was obtained from application [Project ID: 26303, HREC reference number:  
111 S22/08/017\_COVID-19] submitted to Health Research Ethics Committee (HREC) and was  
112 approved via expedited review procedures on 16/09/2022; annual approval was received for  
113 15/09/2023.

114 Additionally, approval was obtained from the uMgungundlovu District director as well as the  
115 Kwa-Zulu Natal provincial department of health.

116 SARS-CoV-2 incidence data was retrospectively accessed on the 17/09/2022. One author, Radiya  
117 Gangat had access to case names in the initial datasets. All case names were replaced with case ID  
118 numbers which were in numerical order with no reference to specific individuals before any  
119 analysis was completed. Individual case confidentiality was maintained by converting all physical  
120 addresses into local municipality names and ward numbers.

## 121 **Results**

### 122 **Description of SARS-CoV-2 transmission**

123 Table 2 shows the number of positive specimens obtained from NICD of SARS-CoV-2 per wave.  
124 The highest number of positive specimens were obtained during wave 3.

125 **Table 2: Dates and number of positive specimens per wave**

<i>Wave</i>	<i>Dates</i>	<i>Number of SARS-CoV-2 confirmed specimens</i>
<i>Total</i>	-	58,797
<i>1</i>	23/6/2020 to 30/08/2020	10,304
<i>2</i>	07/12/2020 to 06/03/2021	17,159
<i>3</i>	09/06/2021 to 25/09/2021	20,765
<i>4</i>	30/11/2021 to 23/01/2022	10,569

126

127 During wave 1, 10,304 incident cases were reported as shown in Table 3, 61.7% were females and  
128 38.3% were males. The mean age for males was 40.1 years, with the average slightly higher among  
129 females at 40.5 years ( $p = 0.58$ ). The highest incidence was reported within the age groups 30 to  
130 39 (25%), and the lowest incidence was recorded among patients 80 years and older (1.8%) years  
131 ( $p < 0.001$ ).

132 **Table 3. Descriptive analysis of SARS-CoV-2 cases, wave 1**

Grouping Statistics by Gender	N	Overall, <sup>1</sup> N=10 304	Female, <sup>1</sup> N=6 360	Male, <sup>1</sup> N=3 944	P – value <sup>2</sup>	Incidence Proportion (per 10 000 population)
Age	10 287	40.34 (17.07) <sup>3</sup>	40.51 (16.95) <sup>3</sup>	40.06 (17.24) <sup>3</sup>	0.58	
Age Group	10 286				<0.001	
0-9 years		353/10286 (3.4%)	181/6350 (2.9%)	172/3936 (4.4%)		15.1
10-19 years		708/10286 (6.9%)	424/6350 (6.7%)	284/3936 (7.2%)		35.7
20-29 years		1587/10286 (15.0%)	1002/6350 (16.0%)	585/3936 (15.0%)		76.6
30-39 years		2582/10286 (25.0%)	1641/6350 (26.0%)	941/3936 (24.0%)		165.9
40-49 years		2131/10286 (21.0%)	1315/6350 (21.0%)	816/3936 (21.0%)		203.0
50-59 years		1543/10286 (15.0%)	947/6350 (15.0%)	596/3936 (15.0%)		214.1
60-69 years		835/10286 (8.1%)	484/6350 (7.6%)	351/3936 (8.9%)		175.2
70-79 years		366/10286 (3.6%)	229/6350 (3.6%)	137/3936 (3.5%)		202.3
80+ years		181/10286 (1.8%)	127/6350 (2.0%)	54/3936 (1.4%)		282.7
Municipality	10 304				0.96	
Impendle		96/10304 (0.9%)	63/6360 (1.0%)	33/3944 (0.8%)		
Mkhambathini		138/10304 (1.3%)	87/6360 (1.4%)	51/3944 (1.3%)		
Mpofana		204/10304 (2.0%)	121/6360 (1.9%)	83/3944 (2.1%)		
Richmond		369/10304 (3.6%)	227/6360 (3.6%)	142/3944 (3.6%)		
Msunduzi		8501/10304 (83.0%)	5242/6360 (82.0%)	3259/3944 (83%)		
uMngeni		733/10304 (7.1%)	454/6360 (7.1%)	279/3944 (7.1%)		
uMshwathi		263/10304 (2.6%)	166/6360 (2.6%)	97/3944 (2.5%)		

<sup>1</sup>Incidence (%)

<sup>2</sup>Fisher's Exact Test

<sup>3</sup>Mean (SD)

133

134 There were 17,159 cases in wave 2 (Table 4) of which 59.7% were females and 37.7% were males,  
 135 a further 437 cases had missing data on sex and were coded as missing values (NaN). The average  
 136 age of patients in wave 2 was 41.55 years for females and 40.89 years for males (p=0.28).

137 Msunduzi local municipality had the highest number of cases, 74.0% (p<0.001).

138

139 **Table 4. Descriptive analysis of SARS-CoV-2 cases, wave 2.**



Grouping Statistics by Gender	N	Overall, <sup>1</sup> N=17 159	Female, <sup>1</sup> N=10 253	Male, <sup>1</sup> N=6 469	NaN, N=437	P – value <sup>2</sup>	Incidence proportion (Per 10 000 population)
Age	16 926	41.31 (18.76) <sup>3</sup>	41.55 (18.61) <sup>3</sup>	40.89 (18.82) <sup>3</sup>	42.20 (21.25) <sup>3</sup>	0.28	
Age Group	17 159					<0.001	
0-9 years		2084/17159 (12.0%)	1181/10253 (12.0%)	847/6469 (13.0%)	56/437 (13.0%)		27.6
10-19 years		1395/17159 (8.1%)	821/10253 (8.0%)	539/6469 (8.3%)	35/437 (8.0%)		62.5
20-29 years		2691/17159 (16.0%)	1677/10253 (16.0%)	955/6469 (15.0%)	59/437 (14.0%)		122.1
30-39 years		3357/17159 (20.0%)	2051/10253 (20.0%)	1241/6469 (19.0%)	65/437 (15.0%)		204.4
40-49 years		3081/17159 (18.0%)	1812/10253 (18.0%)	1213/6469 (19.0%)	56/437 (13.0%)		279.3
50-59 years		2245/17159 (13.0%)	1327/10253 (13.0%)	861/6469 (13.0%)	57/437 (13.0%)		345.5
60-69 years		1401/17159 (8.2%)	821/10253 (8.0%)	520/6469 (8.0%)	60/437 (14.0%)		359.7
70-79 years		672/17159 (3.9%)	435/10253 (4.2%)	221/6469 (3.4%)	16/437 (3.7%)		446.4
80+ years		233/17159 (1.4%)	128/10253 (1.2%)	72/6469 (1.1%)	33/437 (7.6%)		487.2
Municipality	17 159					<0.001	
Impendle		534/17159 (3.1%)	333/10253 (3.2%)	147/6469 (2.3%)	54/437 (12.0%)		
Mkhambathini		339/17159 (2.0%)	206/10253 (2.0%)	123/6469 (1.9%)	10/437 (2.3%)		
Mpofana		522/17159 (3.0%)	319/10253 (3.1%)	180/6469 (2.8%)	23/437 (5.3%)		
Richmond		1194/17159 (7.0%)	767/10253 (7.5%)	397/6469 (6.1%)	30/437 (6.9%)		
Msunduzi		12764/17159 (74%)	7554/10253 (74.0%)	4915/6469 (76.0%)	295/437 (68.0%)		
uMngeni		1042/17159 (6.1%)	585/10253 (5.7%)	446/6469 (6.9%)	11/437 (2.5%)		
uMshwathi		764/17159 (4.5%)	489/10253 (4.8%)	261/6469 (4.0%)	14/437 (3.2%)		

<sup>1</sup>Incidence (%)

<sup>2</sup>Fisher's Exact Test

<sup>3</sup>Mean (SD)

141 In wave 3 (Table 5), the aggregate number of cases was 20765, 56.5% were females, 42.8% were  
 142 males, and 130 cases had missing data on sex and coded as missing values (NaN). Total cases in  
 143 the age group 0-9 years increased to 14% of total cases compared to 12% in wave 2 and 3.4% in  
 144 wave 1. For children in the age range 10-19 years, the total number of cases increased to 19% of  
 145 total recorded cases compared to 8.1% in wave 2 and 6.9% in wave 1. Msunduzi local municipality  
 146 contained the bulk of cases at 72%. Gendered differentiation across age and municipal differences  
 147 were found to be statistically significant ( $p < 0.001$ ).

148

149 **Table 5. Descriptive analysis of SARS-CoV-2 cases, wave 3.**

Grouping Statistics by Gender	N	Overall, <sup>1</sup> N=20 765	Female, <sup>1</sup> N=11 738	Male, <sup>1</sup> N=8 897	NaN, N=130	P-value <sup>2</sup>	Incidence proportion (Per 10 000 population)
Age	20 641	34.69 (18.71) <sup>3</sup>	35.53 (18.71) <sup>3</sup>	33.66 (18.64) <sup>3</sup>	28.71 (19.58) <sup>3</sup>	<0.001	
Age Group	20 765					<0.001	
0-9 years		2945/20765 (14.0%)	1588/11738 (14.0%)	1336/8897 (15.0%)	21/130 (16.0%)		58.7
10-19 years		3970/20765 (19.0%)	2130/11738 (18.0%)	1803/8897 (20.0%)	37/130 (28.0%)		184.8
20-29 years		3284/20765 (16.0%)	1891/11738 (16.0%)	1375/8897 (15.0%)	18/130 (14.0%)		153.2
30-39 years		3865/20765 (19.0%)	2220/11738 (19.0%)	1626/8897 (18.0%)	19/130 (15.0%)		240.7
40-49 years		3404/20765 (16.0%)	1948/11738 (17.0%)	1440/8897 (16.0%)	16/130 (12.0%)		315.7
50-59 years		1853/20765 (8.9%)	1070/11738 (9.1%)	774/8897 (8.7%)	9/130 (6.9%)		366.8
60-69 years		799/20765 (3.8%)	488/11738 (4.2%)	303/8897 (3.4%)	8/130 (6.2%)		215.4
70-79 years		521/20765 (2.5%)	333/11738 (2.8%)	187/8897 (2.1%)	1/130 (0.8%)		312.9
80+ years		124/20765 (0.6%)	70/11738 (0.6%)	53/8897 (0.6%)	1/130 (0.8%)		400.2
Municipality	20 765					<0.001	
Impendle		385/20765 (1.9%)	234/11738 (2.0%)	145/8897 (1.6%)	6/130 (4.6%)		

Mkhambathini	452/20765 (2.2%)	255/11738 (2.2%)	191/8897 (2.1%)	6/130 (4.6%)
Mpofana	1064/20765 (5.1%)	586/11738 (5.0%)	470/8897 (5.3%)	8/130 (6.2%)
Richmond	1016/20765 (4.9%)	571/11738 (4.9%)	433/8897 (4.9%)	12/130 (9.2%)
Msunduzi	15031/20765 (72.0%)	8556/11738 (73.0%)	6390/8897 (72.0%)	85/130 (65.0%)
uMngeni	2223/20765 (11.0%)	1158/11738 (9.9%)	1055/8897 (12.0%)	10/130 (7.7%)
uMshwathi	594/20765 (2.9%)	378/11738 (3.2%)	213/8897 (2.4%)	3/130 (2.3%)

<sup>1</sup>Incidence (%)

<sup>2</sup>Fisher's Exact Test

<sup>3</sup>Mean (SD)

150

151 In wave 4, the total number of cases were 10569 as shown in Table 6. Of these reported cases,  
 152 57.9% were females, 39.9% were males, and 239 cases with missing gender data were coded NaN.  
 153 Gendered differences in age were marginally statistically significant at the 5% level with a p-value  
 154 of 0.058.

155 **Table 6. Descriptive analysis of SARS-CoV-2 cases, wave 4.**

Grouping Statistics by Gender	N	Overall, <sup>1</sup> N=10 569	Female, <sup>1</sup> N=6 115	Male, <sup>1</sup> N=4 215	NaN, N=239	P-value <sup>2</sup>	Incidence proportion (Per 10 000 population)
Age	10 501	39.17 (18.54) <sup>3</sup>	39.48 (18.13) <sup>3</sup>	38.82 (19.07) <sup>3</sup>	37.26 (19.42) <sup>3</sup>	0.058	
Age Group	10 569					<0.001	
0-9 years		1223/10569 (12.0%)	674/6115 (11.0%)	516/4215 (12.0%)	33/239 (14.0%)		20.4
10-19 years		948/10569 (9.0%)	535/6115 (8.7%)	394/4215 (9.2%)	19/239 (7.9%)		45.2
20-29 years		1949/10569 (18.0%)	1118/6115 (18.0%)	783/4215 (19.0%)	48/239 (20.0%)		91.8
30-39 years		2329/10569 (22.0%)	1406/6115 (23.0%)	878/4215 (21.0%)	45/239 (19.0%)		147.2
40-49 years		1863/10569 (18.0%)	1102/6115 (18.0%)	726/4215 (17.0%)	35/239 (15.0%)		175.2
50-59 years		1082/10569 (10.0%)	619/6115 (10.0%)	439/4215 (10.0%)	24/239 (10.0%)		186.4
60-69 years		695/10569 (6.6%)	376/6115 (6.1%)	306/4215 (7.3%)	13/239 (5.4%)		167.8

70-79 years	412/10569 (3.9%)	246/6115 (4.0%)	156/4215 (3.7%)	8/239 (3.3%)	292.0
80+ years	68/10569 (0.6%)	39/6115 (0.6%)	15/4215 (0.4%)	14/239 (5.9%)	272.6
Municipality	10 569				<0.001
Impendle	104/10569 (1.0%)	68/6115 (1.1%)	32/4215 (0.8%)	4/239 (1.7%)	
Mkhambathini	187/10569 (1.8%)	107/6115 (1.7%)	74/4215 (1.8%)	6/239 (2.5%)	
Mpofana	347/10569 (3.3%)	192/6115 (3.1%)	120/4215 (2.8%)	35/239 (15.0%)	
Richmond	375/10569 (3.5%)	219/6115 (3.6%)	151/4215 (3.6%)	5/239 (2.1%)	
Msunduzi	7621/10569 (72.0%)	4438/6115 (73.0%)	3027/4215 (72.0%)	156/239 (65.0%)	
uMngeni	1630/10569 (15.0%)	896/6115 (15.0%)	712/4215 (17.0%)	22/239 (9.2%)	
uMshwathi	305/10569 (2.9%)	195/6115 (3.2%)	99/4215 (2.3%)	11/239 (4.6%)	

<sup>1</sup>Incidence (%)

<sup>2</sup>Fisher's Exact Test

<sup>3</sup>Mean (SD)

## 156 Temporal analysis per wave of SARS-CoV-2 transmission

157 In wave 1 (Fig. 2), the time series plot shows incidence based on tests conducted from June 23,  
 158 2020, to August 30, 2020. Cases are seen to increase to a peak with a slightly more gradual  
 159 reduction in cases towards the end of the period. From late June 2020, the number of positive cases  
 160 were low, but a significant increase in positive cases was noted with the onset of July, which  
 161 decreased towards the end of July. The largest positive cases were recorded during July, with large  
 162 daily fluctuations observed. In South Africa, during the first wave, the predominant variant (>90%  
 163 of viral sequences) was the ancestral strain with an Asp614Gly mutation (June to August 2020).

164 In wave 2 (Fig. 2), the time series plot shows incidence based on tests conducted from December  
 165 07, 2020, to March 06, 2021. During this wave, positive cases increase rapidly to a peak with a  
 166 more gradual reduction towards the end of the period. Incidence can be observed to have fluctuated  
 167 in the months between December 2020 and February 2021. A drop in the incidence is observed in

168 mid-February, with fluctuations in trend decreasing as the wave transitions towards March 2021.

169 Very high positive tests of up to 600 cases per day were recorded for the period between January

170 2021 and February 01, 2021. The predominant variant was the Beta variant.

171 In wave 3 (Fig. 2), the trend shows incidence for the period June 09, 2021, to September 25, 2021.

172 There was a gradual increase in cases to a peak with a more rapid decline in cases towards the end

173 of the period. Higher daily incidence is noted towards the middle of the period with daily

174 fluctuation, within the beginning of the period, cases fluctuate at lower incidence. The end of the

175 period shows less fluctuation with decreasing cases. In South Africa, during the third wave, the

176 predominant variant was the Delta variant.

177 In wave 4 (Fig. 2), the trend shows incidence for the period November 30, 2021, to January 23,

178 2022. The wave is seen to peak early with large daily fluctuations and a more gradual decline in

179 cases, fluctuations decrease towards the end of the period. The fourth wave is seen to be much

180 shorter than the previous waves. In South Africa, during the fourth wave, Omicron was the

181 predominant variant.

182 **Fig 2. Time series plot of SARS-CoV-2 incidence, wave 1, uMgungundlovu District.**

### 183 **Spatial analysis of SARS-CoV-2 transmission**

184 Fig 3 illustrates the burden of transmission per sub-district relative to population size. Generally,

185 the central portion of the district is affected by a higher incidence proportion, however, in wave 3

186 Mpofana district experienced a noticeable spike in cases.

187 **Fig 3. Choropleth map of SARS-CoV-2 incidence proportion per sub-district, per wave,**

188 **uMgungundlovu district.**

189 Fig 4 illustrates the burden of SARS-CoV-2 cases per ward. Within each sub-district, the wards  
190 that experienced higher transmission were the wards with higher economic activity. These  
191 included: Impendle ward 4; Richmond wards 1 and 2; uMngeni wards 2 and 6; Mkhambathini  
192 wards 1,3,4,5; Mpofana ward 1; Msunduzi wards 24, 25, 26, 27, 28, 29, 30, 31, 32, 33, 34, 35, 36  
193 and uMshwathi wards 7 and 10.

194 **Fig 4. Choropleth map of SARS-CoV-2 incidence per ward, per wave, uMgungundlovu  
district.**

#### 195 **Kernel Density Estimation (KDE)**

196 Areas of higher density per wave are nearly identical (Fig 5). Northern Msunduzi with the highest  
197 density of cases, followed by southern uMngeni, central Richmond, central Mpofana, southwestern  
198 Impendle, northern Mkhambathini and southern uMshwathi. The town areas of higher economic  
199 activity per sub-district are the areas with higher densities.

200 **Fig 5. SARS-CoV-2 density maps per wave, uMgungundlovu district.**

#### 201 **Local indicators of spatial association (LISA)**

202 During wave 1 (Fig 6) HH clusters were concentrated in the central wards of the district affecting  
203 northern Msunduzi and southern uMngeni. LL Clusters were found on the outskirts of the district  
204 affecting mostly uMshwathi, southern Richmond and Mkhambathini and a single ward in  
205 Impendle. In wave 2 HH clusters were concentrated in the central regions of the district affecting  
206 northern Msunduzi, northern Richmond and southern uMngeni. LL clusters were found on the  
207 outskirts of the district affecting most of uMshwathi, southern Richmond and Mkhambathini and  
208 a single ward in northern uMngeni. In wave 3 HH clusters were concentrated in the central regions  
209 of the district affecting northern Msunduzi, and southern uMngeni. LL clusters were found on the  
210 outskirts of the district affecting uMshwathi and Msunduzi. In wave 4 HH clusters were

211 concentrated in the central regions of the district affecting northern Msunduzi, and southern  
212 uMngeni. LL clusters were found on the outskirts of the district affecting uMshwathi and  
213 Msunduzi, Richmond and Impendle.

214 Positive spatial autocorrelation was found to occur during all waves (Moran's I Wave 1=0.22;  
215 Wave 2=0.2; Wave 3=0.11; Wave 4=0.13).

### 216 **Fig 6. LISA analysis of SARS-CoV-2 incidence, uMgungundlovu district.**

217 In all waves, the data is skewed to the right, with more local municipalities having a lower  
218 frequency of cases and with fewer local municipalities having a high frequency of cases (wave 1:  
219 median=45.5; wave 2: median=141.5; wave 3: median=123; wave 4: median=55.5).

## 220 **Discussion**

221 Across all four waves, females had the highest incidence of SARS-CoV-2. This could be due to  
222 higher health-seeking behaviour, work and relying on public transportation. Populations between  
223 the ages 20 and 50 experience the highest incidence, likely due to mobility for work, studies, and  
224 leisure. There is a clear spatial pattern of the spread of the virus within the district. The highest  
225 density of confirmed cases of COVID-19 occurred in the central town areas of each local  
226 municipality with a marked increase in the town areas of Msunduzi local municipality. In terms of  
227 spatial epidemiology, the built environment of higher economic activity and higher population  
228 density is highlighted as a strong contributor to increased transmission and a higher likelihood of  
229 contracting the virus. These are important indicators of priority areas and population groups to  
230 target when conducting public health interventions; similar findings were reflected in the literature.

231

232

## 233 **Demographic distribution of SARS-CoV-2 transmission**

234 In the first wave, comparing incidence over age groups, it can be observed that the highest  
235 incidence was reported among the adult population within the age groups 20 to 29 years, 30 to 39  
236 years, 40 to 49 years, and 50 to 59 years. These age groups are generally the most mobile due to  
237 work, school, and leisure. It may be reasonable to hypothesize that this could be a reason for  
238 increased transmission in these groups. It is also important to note that the population in question  
239 is a young population which may account for increased transmission in younger age groups, these  
240 findings are mirrored in a study conducted by de Souza et. al. (2021) on Brazilian populations with  
241 characteristics similar to the study population. Incidence proportion can be observed to increase  
242 associatively with age, which is attributed to the relatively young age cohort under analysis.

243 In the second wave, incidence among age groups changed remarkably, with the overall number of  
244 cases among children between 0-9 years rising to 12% compared to 3.4% in wave 1. In the third  
245 wave, the total cases among young children between the ages of 0-9 years rose to 14% of total  
246 cases from 12% in wave 2. For children in the age range 10-19 years, the total number of cases  
247 rose to 19% of total recorded cases in the third wave from 8.1% in wave 2. In wave 4 incidence  
248 continued to be higher in younger age categories than in wave 1. Before the 3<sup>rd</sup> wave, vaccination  
249 efforts commenced within the district, however, the initial rollout of vaccines prioritised healthcare  
250 workers and high-risk population groups (the elderly and those living with underlying medical  
251 conditions) [14]. The increasing proportion of new infections in younger people has been equated  
252 to higher vaccination coverage in older population groups [15]. At the beginning of the pandemic,  
253 older and younger people engaged in similar preventive personal behaviours when controlling for  
254 other influences; however, as the pandemic progressed, older people adopted mitigating personal



255 behavioural changes more than younger people [16]. Additionally, the variant of concern per wave  
256 could have contributed to the increase in paediatric cases.

257 This study documented a greater incidence of SARS-COV-2 infection among females compared  
258 to males. These findings, though contrary to earlier literature findings [23], are consistent with  
259 more recent research. Greater health-seeking behaviour associated with females when compared  
260 to males could account for these differences [7] and as such more women could have presented for  
261 testing than men resulting in a greater proportion of women testing positive. Within  
262 uMgungundlovu all symptomatic individuals presenting at public health facilities were tested, this  
263 could further explain the gender differences. Additionally, more women work in the informal  
264 sector and as essential workers, this may indicate that women occupy a higher percentage of  
265 occupations that may have put them at greater risk of contracting the virus [9].

## 266 **Spatial and Temporal Analysis**

267 These findings add to a growing body of work examining population-level SARS-CoV-2  
268 transmission, as well as differences in transmission across regions. The results of the first four  
269 waves observed have clearly illustrated that the central region of the district has been the most  
270 severely affected by SARS-CoV-2 transmission, this area is surrounded by local municipalities  
271 with significantly lower incidence for all waves except wave 3 during which Mpofana local  
272 municipality had a significant increase in SARS-CoV-2 incidence. This is interesting since  
273 according to the available research, regions adjacent to areas of high transmission will  
274 subsequently experience high transmission due to ‘spatial spillover’ [19]. Mkhambathini local  
275 municipality which borders eThekweni, a district which had the highest incidence of SARS-CoV-  
276 2 in the province, experienced relatively low incidence. Further research is required on possible  
277 explanatory or intervening factors beyond regional proximity.

278 Within uMgungundlovu District the first wave saw strict community level, household contact  
279 tracing and PCR testing of all close contacts, coupled with lockdown measures and fear of the  
280 unknown, most residents were willingly compliant. South Africa also experienced the first wave  
281 two months later than other countries thus benefitting from learning from other countries'  
282 experiences [26]. These are likely contributing factors to the relatively less severe situation in the  
283 country and the district during the first wave compared to the global situation at the time [25].  
284 During wave 1, high transmission was observed in Msunduzi local municipality, an economic hub  
285 of uMgungundlovu district known to be densely populated.

286 In the second wave of the pandemic, the infection rate was higher leading to an increase in the  
287 incidence of COVID-19 during that period [25]. The second wave spiralled when the National  
288 Corona Virus Command Centre shifted the lockdown to alert level 3 [31]. This allowed some  
289 degree of mobility in the country and among communities, and that interaction created a positive  
290 environment for rapid transmission of the virus in the district [26]. EThekweni district, adjacent to  
291 uMgungundlovu experienced the highest incidence of COVID-19 due to an increase in social  
292 activities that brought a multitude of people together. This increase in contact among community  
293 members spiraled the transmission of the virus. Additionally, incidence in the district of Harry  
294 Gwala which borders both Richmond and Impendle local municipalities is noted to increase  
295 approximately 2 weeks before incidence in Richmond and Impendle, this could be evidence of  
296 'spatial spill-over' [20].

297 Transmission of SARS-CoV-2 and the resulting case load was seen to be much higher in the 3rd  
298 wave. This among others, could have been due to the social unrest that occurred in the district due  
299 to the continued lockdown. The widespread unrest that led to massive damage to property and  
300 infrastructure was catalytic to the widespread transmission of the virus in the area [28]. It is

301 believed that this social upheaval that undermined public health preventive measures was a result  
302 of lockdown fatigue, poor social distancing, and slow vaccine rollouts. [27]. Mpofana sub-district  
303 experienced the highest incidence proportion. This may be due to a relaxation of restrictions  
304 involving international trade and an increase in congregate setting cases.

305 During wave 4, transmission of the Corona Virus looked different from the first three waves, in  
306 that the wave was shorter, and the cases spiked quicker reaching a peak within a much shorter time  
307 as opposed to what was observed with the initial 3 waves. This could have been due to other  
308 reasons such as vaccination, which was extensively underway during this time.

309 The LISA analysis undertaken showed that the distribution of incidence of SARS-CoV-2 in  
310 uMgungundlovu was clustered. An increase in SARS-CoV-2 infection was significantly higher in  
311 the HH wards which were areas of higher economic activity, population density and the built  
312 environment. Wards with statistically significant LL clustering remained on the outskirts of the  
313 district, in rural areas.

314 The Kernel density estimation showed that areas with the highest density of confirmed SARS-  
315 CoV-2 cases occurred in the central town areas of Msunduzi sub-district and, to a lesser extent, in  
316 the central town areas of the rest of the local municipalities. Clearly, lower densities were noted in  
317 rural areas. This might have been an indication of increased contact within areas of higher  
318 economic activity as well as population density hence contributing to increased transmission. This  
319 may also be an indication of reduced access to testing facilities in rural areas hence an  
320 underestimation of the actual burden of the COVID-19 pandemic.

321

322

## 323 **Conclusion**

324 Our study appears to be the only one to-date to document the spatial distribution of SARS-CoV-2  
325 in uMgungundlovu District, KwaZulu Natal, South Africa. The findings emanating from this study  
326 consolidate the epidemiological understanding of the main key drives of SARS-COV-2 infection  
327 in this diverse population. The observed higher concentration of case distributions observed in the  
328 northern regions of Msunduzi, might show a clear relationship of infection transmission and  
329 increased economic activity, population density and urban development. The data from this study  
330 shows that transmission rates across the district were not uniform and were driven by increased  
331 community mixing in urban areas. Further research could help expose further, the dynamics of  
332 urban living and infection disease epidemics and explore feasible and easy to implement public  
333 health interventions that could curtail a rising epidemic with existing health system structures.

## 334 **Acknowledgements**

335 Radiya Gangat, a postgraduate student in Epidemiology was financially supported by the  
336 Stellenbosch University. The fellowship facilitated completion of the research project from which  
337 this manuscript was derived. We thank the National Institute for Communicable Diseases and the  
338 uMgungundlovu Health District Office for their support of this project.

339

## 340 References

- 341 1. KZNHealth. uMgungundlovu Health District. 2022; Available at:  
342 <https://kznhealth.gov.za/umgungundlovu.htm>. Accessed 27 May 2022.
- 343 2. Municipalities of South Africa. uMgungundlovu District Municipality (DC22). 2022;  
344 Available at: <https://municipalities.co.za/map/120/umgungundlovu-district-municipality>.  
345 Accessed 27 May 2022.
- 346 3. Fronza R, Lusic M, Schmidt M, Lucic B. Spatial-Temporal Variations in Atmospheric  
347 Factors Contribute to SARS-CoV-2 Outbreak. *Viruses* 2020; 12(6): 588.
- 348 4. WHO Coronavirus (COVID-19) Dashboard. Available at: <https://covid19.who.int>.  
349 Accessed: 12 December 2022.
- 350 5. How Cluster and Outlier Analysis (Anselin Local Moran's I) works. Available at:  
351 [https://pro.arcgis.com/en/pro-app/latest/tool-reference/spatial-statistics/h-how-cluster-](https://pro.arcgis.com/en/pro-app/latest/tool-reference/spatial-statistics/h-how-cluster-and-outlier-analysis-anselin-local-m.htm)  
352 [and-outlier-analysis-anselin-local-m.htm](https://pro.arcgis.com/en/pro-app/latest/tool-reference/spatial-statistics/h-how-cluster-and-outlier-analysis-anselin-local-m.htm). Accessed: 12 December 2022.
- 353 6. How Kernel density works. Available at:[https://pro.arcgis.com/en/pro-app/latest/tool-](https://pro.arcgis.com/en/pro-app/latest/tool-reference/spatial-analyst/how-kernel-density-works.htm)  
354 [reference/spatial-analyst/how-kernel-density-works.htm](https://pro.arcgis.com/en/pro-app/latest/tool-reference/spatial-analyst/how-kernel-density-works.htm). Accessed: 23 December 2022.
- 355 7. Thompson AE, Anisimowicz Y, Miedema B, Hogg W, Wodchis WP, Aubrey-Bassler K.  
356 The influence of gender and other patient characteristics on health care-seeking behaviour:  
357 a QUALICOPC study. *BMC Family Practice* 2016; 17 (38).
- 358 8. Conti P, Younes A. Coronavirus COV-19/SARS-CoV-2 affects women less than men:  
359 clinical response to viral infection. *J Biol Regul Homeost Agent* 2020; 34(2):339-343.
- 360 9. Saloshni N, Nithiseelan NR. Vulnerability of South African women workers in the  
361 COVID-19 pandemic. *Front. Public Health* 2020.

- 362 10. Tanga PT, Tangwa MN. Perceived Impact of the Global Financial Crisis on Social Grant  
363 Recipients in the Eastern Cape, South Africa. *Mediterranean Journal of Social Sciences*  
364 2014; 5(2).
- 365 11. Stats SA. Available at: <https://www.statssa.gov.za/?p=15047>. Accessed: 28 December  
366 2022.
- 367 12. Power K. The COVID-19 pandemic has increased the care burden of women and families.  
368 *Sustainability: Science, Practice and Policy* 2020; 16(1), 67-73.
- 369 13. de Souza FSH, Hojo-Souza NS, da Silva CM, Guidoni DL. Second wave of COVID-19 in  
370 Brazil: younger at higher risk. *European Journal of Epidemiology* 2021; 36: 441–443.
- 371 14. Zuo C, Meng Z, Zhu F, Zheng Y, Ling Y. Assessing Vaccination Prioritization Strategies  
372 for COVID-19 in South Africa Based on Age-Specific Compartment Model. *Front Public*  
373 *Health* 2022.
- 374 15. Mallapaty S. Will covid become a disease of the young? *Nature* 2021; 595: 343-344.
- 375 16. Kim JK, Crimmins EM. How does age affect personal and social reactions to COVID-19:  
376 Results from the national Understanding America Study. *PLOS ONE* 2021; 15(11):  
377 e0241950.
- 378 17. Rubin D, Huang J, Fisher BT, Gasparrini A, Tam V, Song L, Wang X, Kaufman J,  
379 Fitzpatrick K, Jain A, Griffis H, Crammer K, Morris J, Tasian G. Association of Social  
380 Distancing, Population Density, and Temperature with the Instantaneous Reproduction  
381 Number of SARS-CoV-2 in Counties Across the United States. *JAMA Netw Open* 2020;  
382 3(7): e2016099.
- 383 18. Adegboye OA, Adekunle AI, Gayawan E. Early Transmission Dynamics of Novel  
384 Coronavirus (COVID-19) in Nigeria. *Int J Environ Res* 2020; 17(9), 3054.

- 385 19. Ulimwengu J, Kibonge A. Spatial spillover and COVID-19 spread in the U.S. BMC Public  
386 Health 2021; 21: 1765.
- 387 20. COVID-19 weekly epidemiology brief. Available at: [https://www.nicd.ac.za/wp-](https://www.nicd.ac.za/wp-content/uploads/2021/08/COVID-19-Weekly-Epidemiology-Brief-week-30-2021.pdf)  
388 [content/uploads/2021/08/COVID-19-Weekly-Epidemiology-Brief-week-30-2021.pdf](https://www.nicd.ac.za/wp-content/uploads/2021/08/COVID-19-Weekly-Epidemiology-Brief-week-30-2021.pdf).  
389 Accessed: 29 December 2022.
- 390 21. Rex FE, Borges CADS, Käfer PS. Spatial analysis of the COVID-19 distribution pattern  
391 in São Paulo State, Brazil. *Ciência & Saúde Coletiva* 2020; 25: 3377-3384.
- 392 22. Casale D, Shepherd D. The gendered effects of the COVID-19 crisis and ongoing  
393 lockdown in South Africa: Evidence from NIDS-CRAM Waves 1-3. National Income  
394 Dynamics Study Coronavirus Rapid Mobile Survey (NIDS-CRAM) Working Paper. 2021  
395 Jul.
- 396 23. Bamidele JO, Daniel OJ. Epidemiology of coronavirus disease (COVID-19) in Nigeria.  
397 *Annals of Health Research* 2020; 17;6(2):125-32.
- 398 24. Jassat W, Abdool Karim SS, Mudara C, Welch R, Ozougwu L, Groome MJ, Govender N,  
399 von Gottberg A, Wolter N, Wolmarans M, Rousseau P, Blumberg L, Cohen C. Clinical  
400 severity of COVID-19 in patients admitted to hospital during the omicron wave in South  
401 Africa: a retrospective observational study. *The Lancet* 2020; 10: e961-e969.
- 402 25. Salyer SJ, Maeda J, Sembuche S, Kebede Y, Tshangela A, Moussif M, Ihekweazu C,  
403 Mayet N, Abate E, Ouma AO, Nkengasong J. The first and second waves of the COVID-  
404 19 pandemic in Africa: a cross-sectional study. *The Lancet* 2021; 397(10281):1265-75.
- 405 26. Jassat W, Mudara C, Ozougwu L, Tempia S, Blumberg L, Davies MA, Pillay Y, Carter T,  
406 Morewane R, Wolmarans M, von Gottberg A. Increased mortality among individuals  
407 hospitalised with COVID-19 during the second wave in South Africa. *MedRxiv* 2021.

- 408 27. Hemmeda L, Shabani MM, Kolawole BO, Muhammad SA, Fatima K, Siddiqui A,  
409 Rackimuthu S, Yaqoob S, Elechi KW, Mohammed YI. Third wave of COVID-19  
410 pandemic in Africa: Challenges and recommendations. *Annals of Medicine and Surgery*  
411 2022; 104314.
- 412 28. Makoni M. Social unrest disrupts South African health care. *The Lancet* 2021;  
413 398(10297):287.
- 414 29. Policy Brief: The Impact of COVID-19 on Women. United Nations. 2020.
- 415 30. Anselin, L. Local Indicators of Spatial Association—LISA. *Geographical Analysis*  
416 1995; 27(2), 93–115.
- 417 31. Disaster Management Act: Regulations: Alert level 3 during Coronavirus COVID-19  
418 lockdown. Available at: [https://www.gov.za/covid-19/alert-level-3-coronavirus-covid-19-](https://www.gov.za/covid-19/alert-level-3-coronavirus-covid-19-lockdown)  
419 [lockdown](https://www.gov.za/covid-19/alert-level-3-coronavirus-covid-19-lockdown)
-



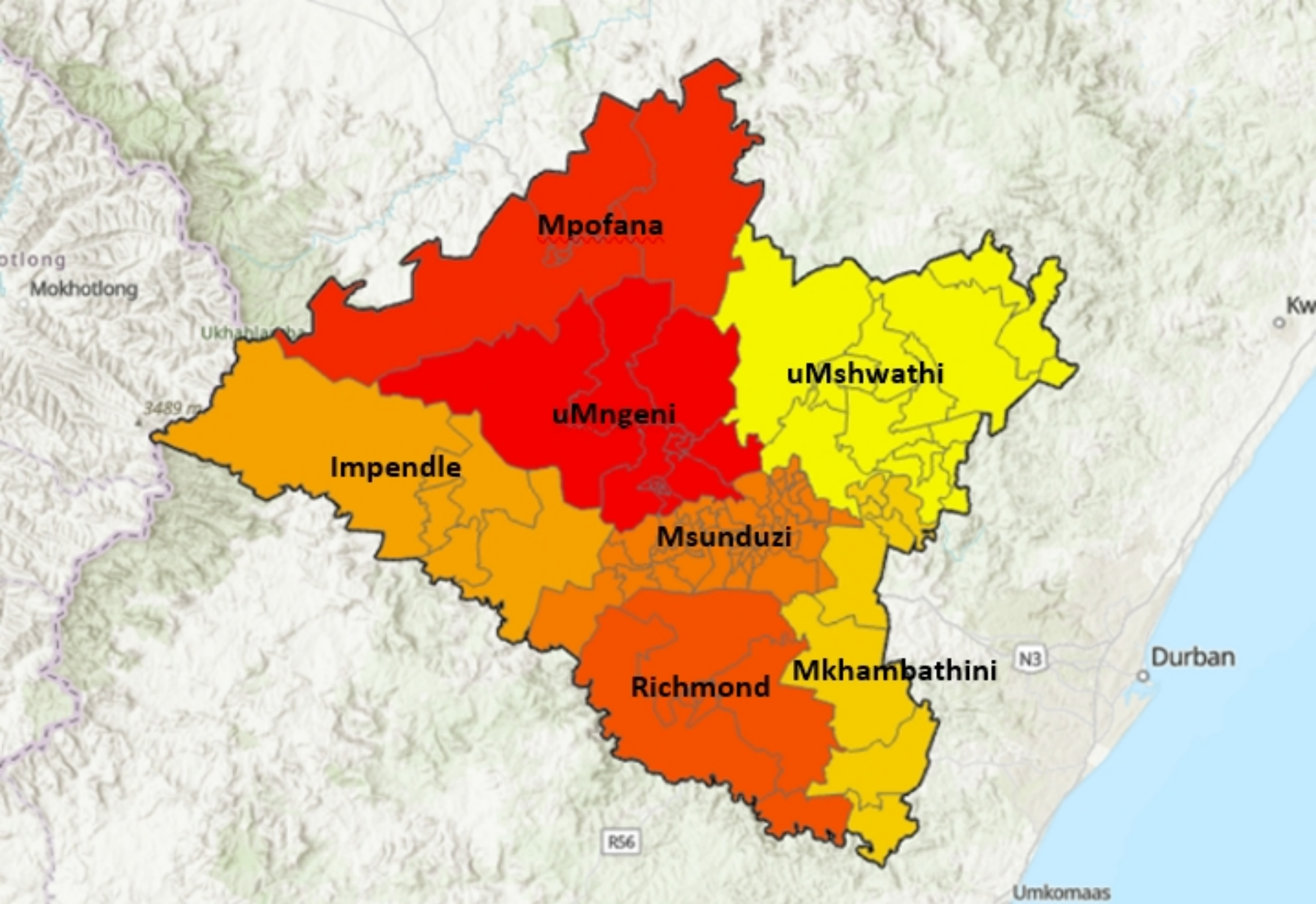


Figure 1

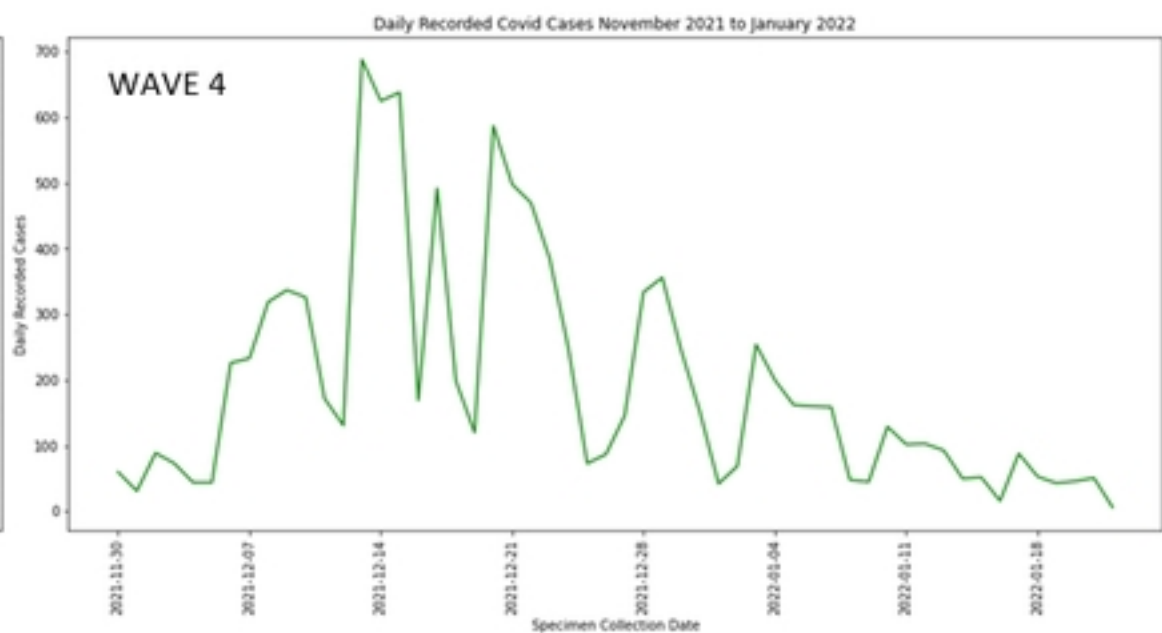
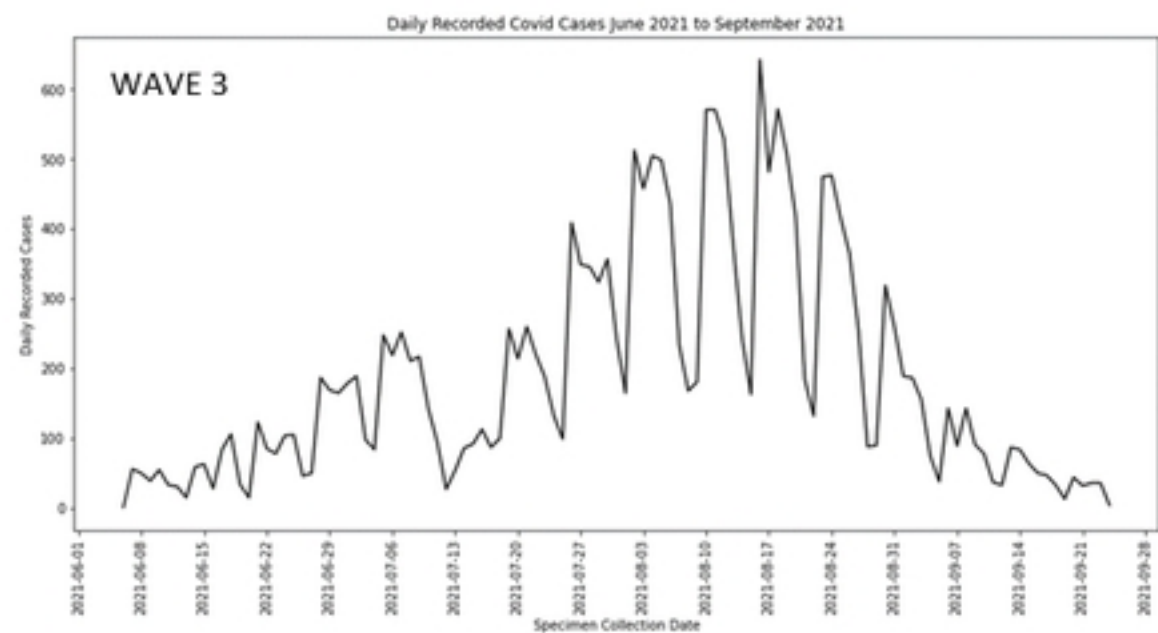
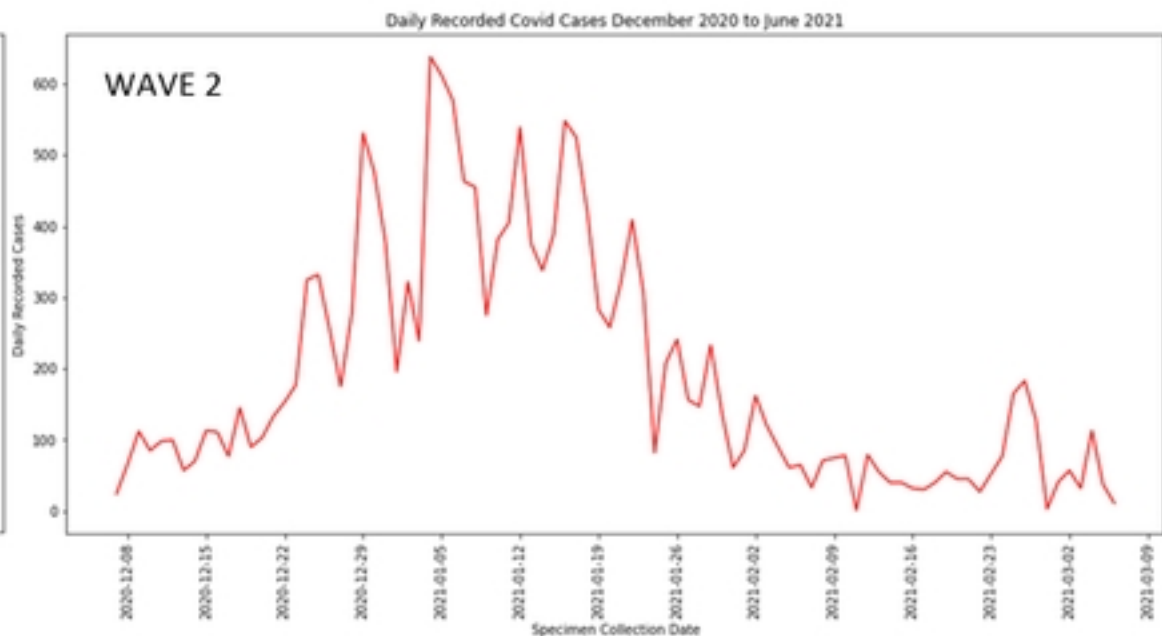
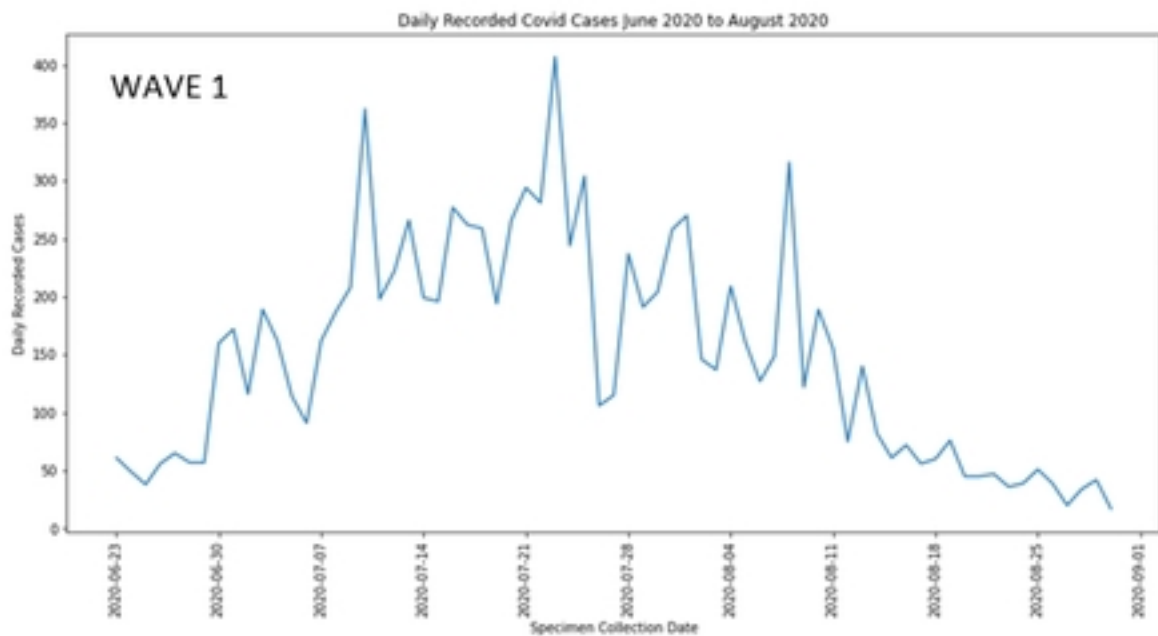


Figure 2



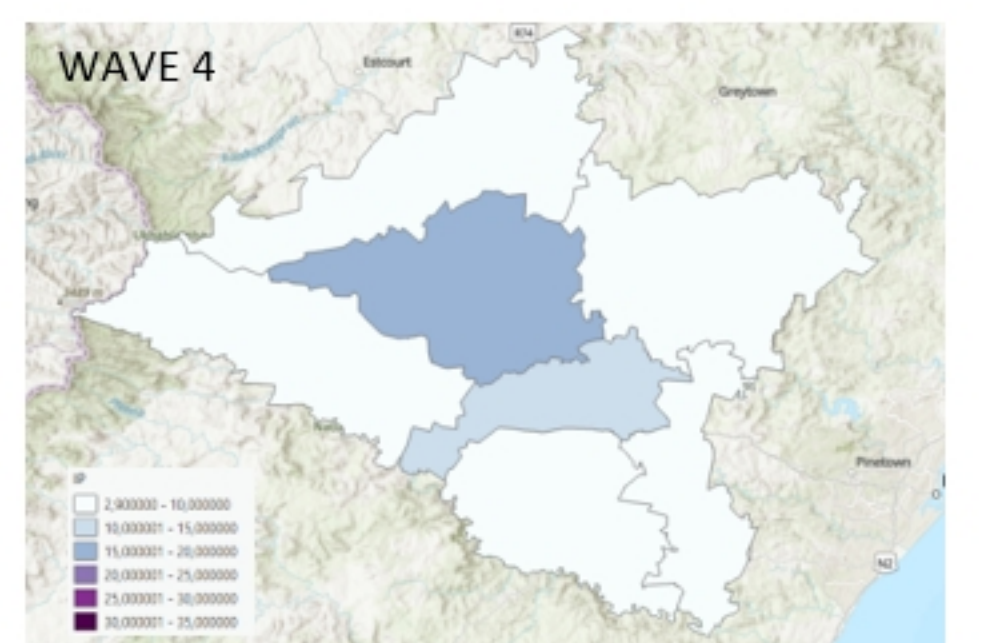
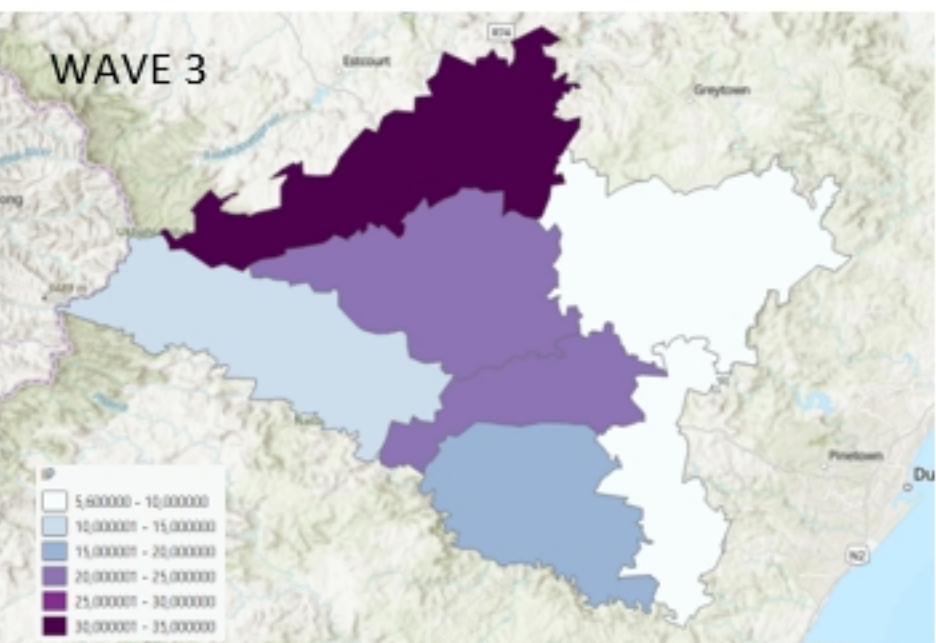
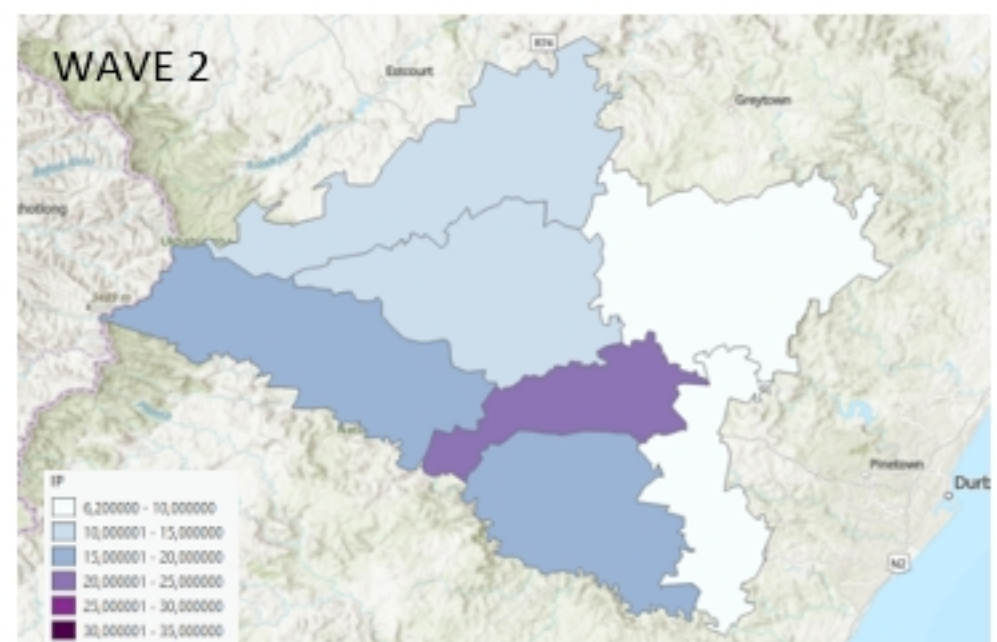
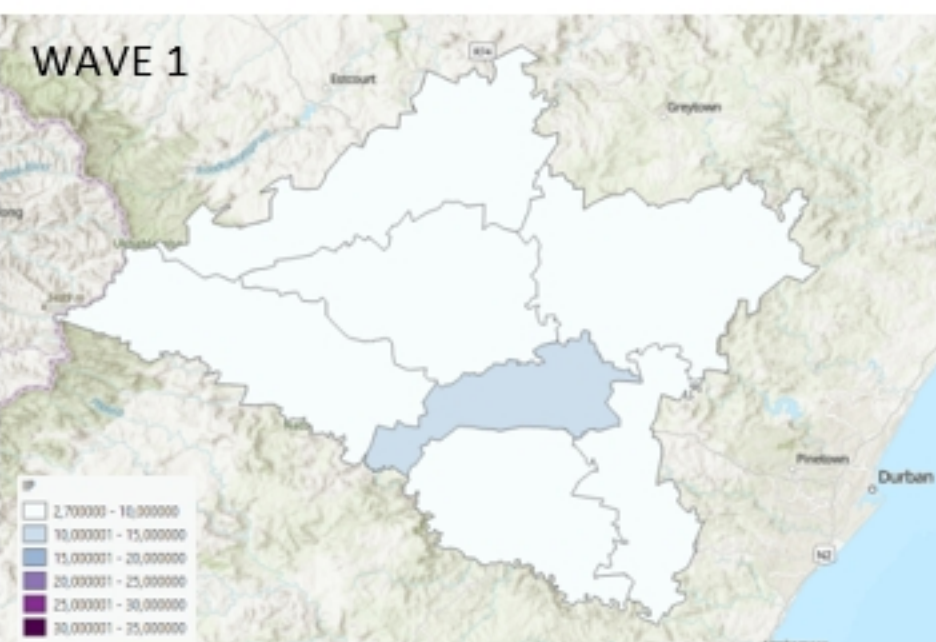


Figure 3



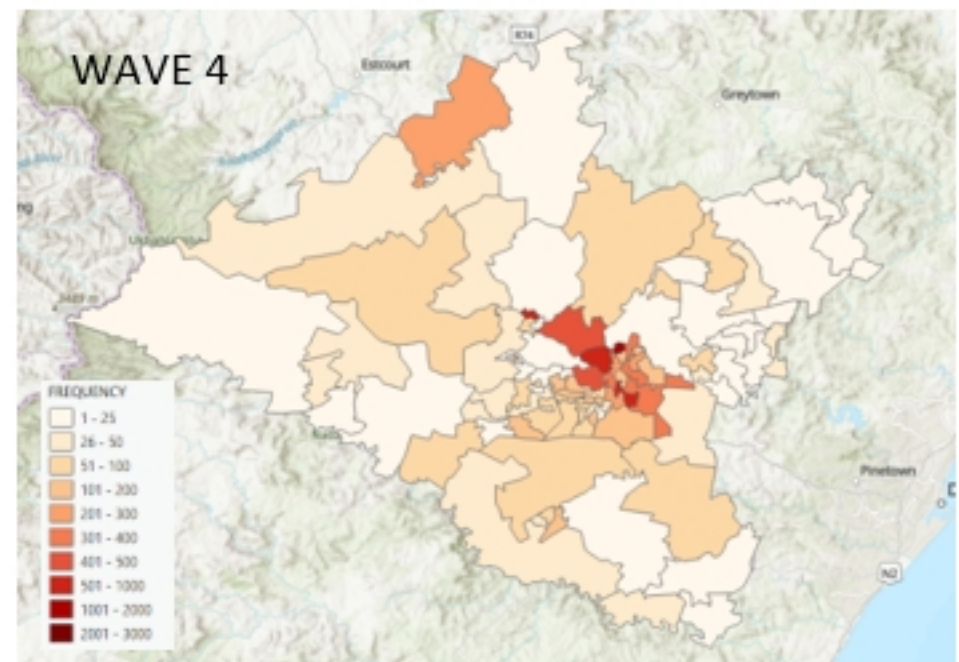
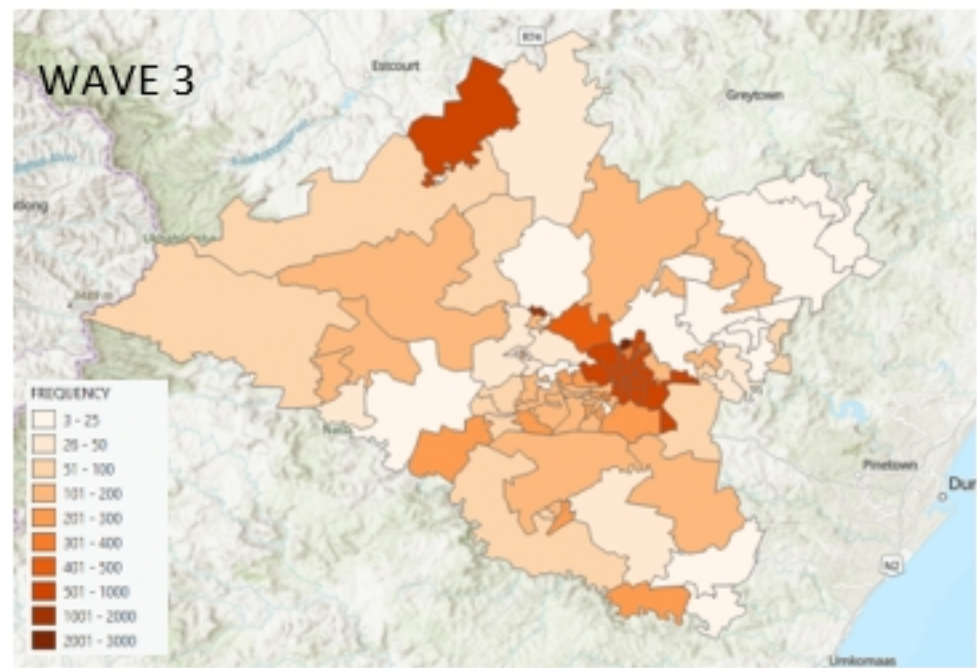
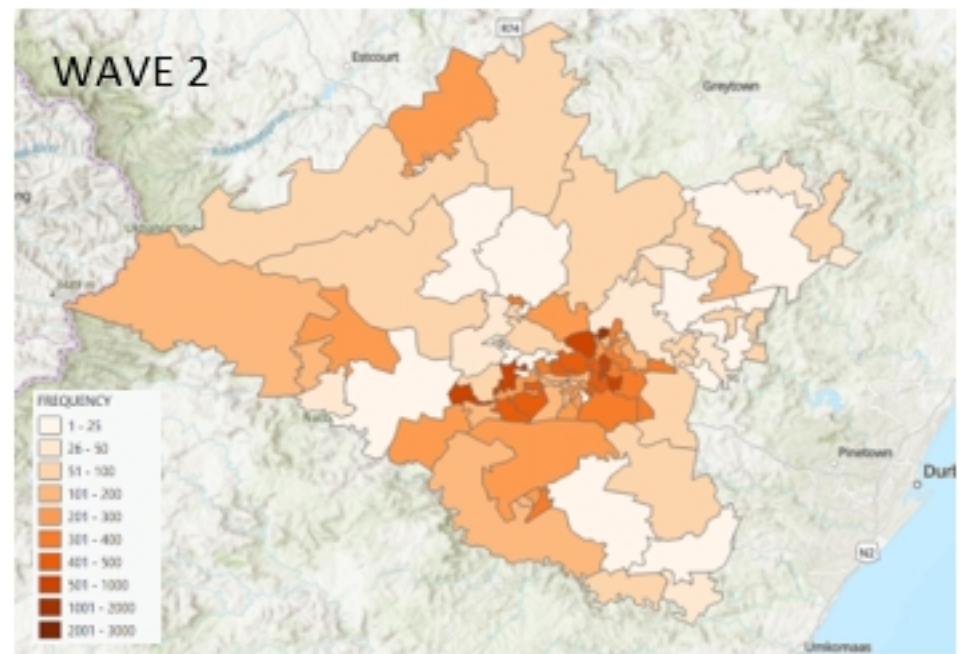
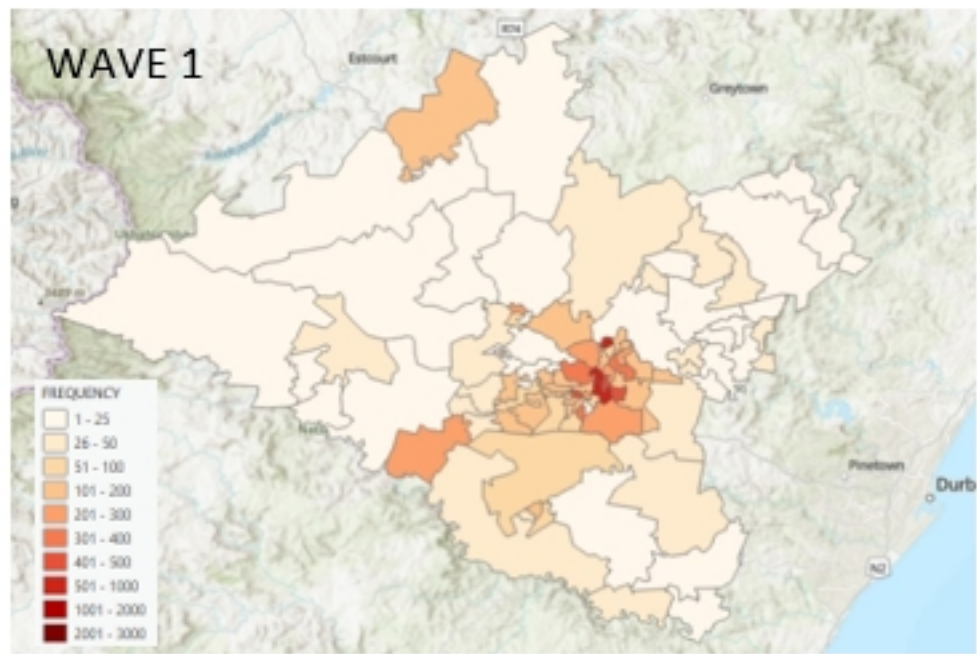


Figure 4

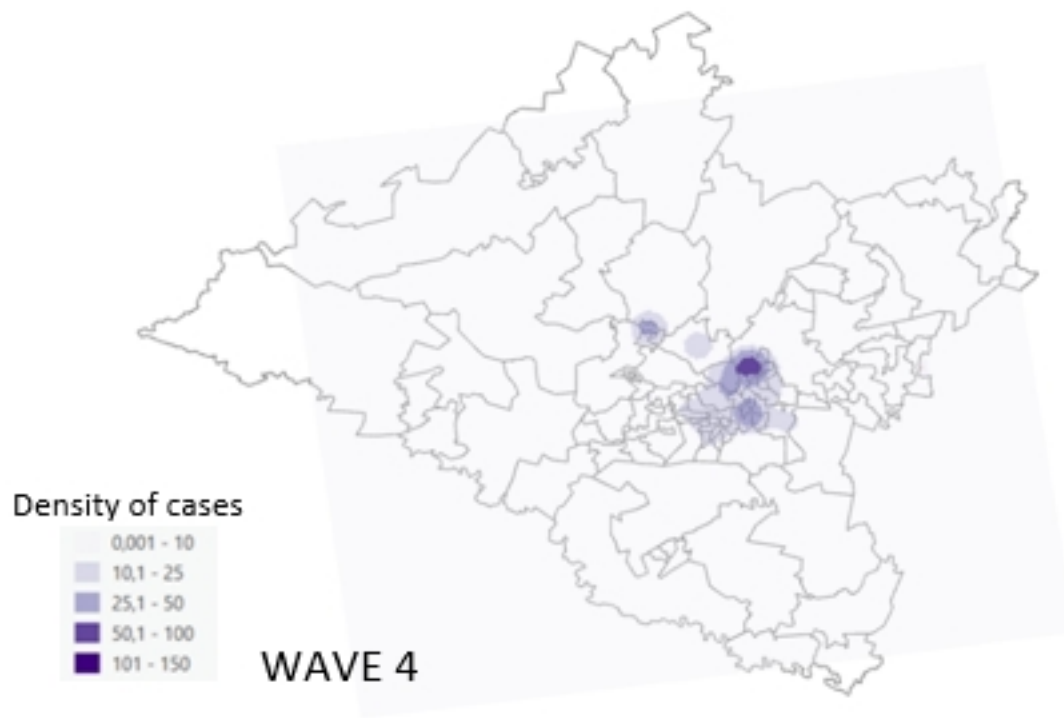
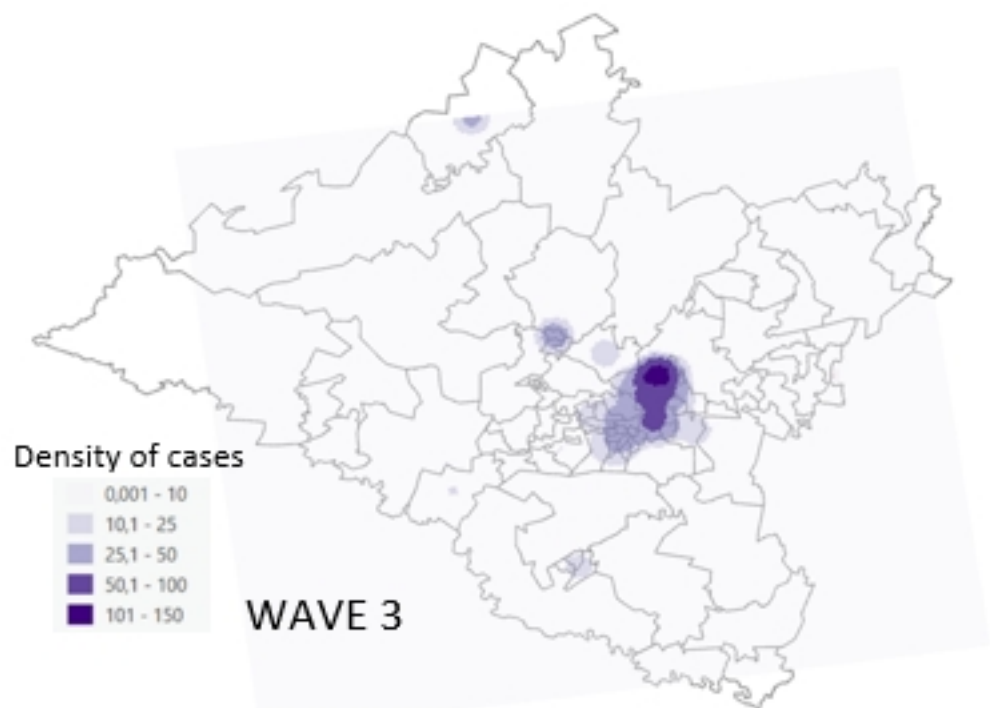
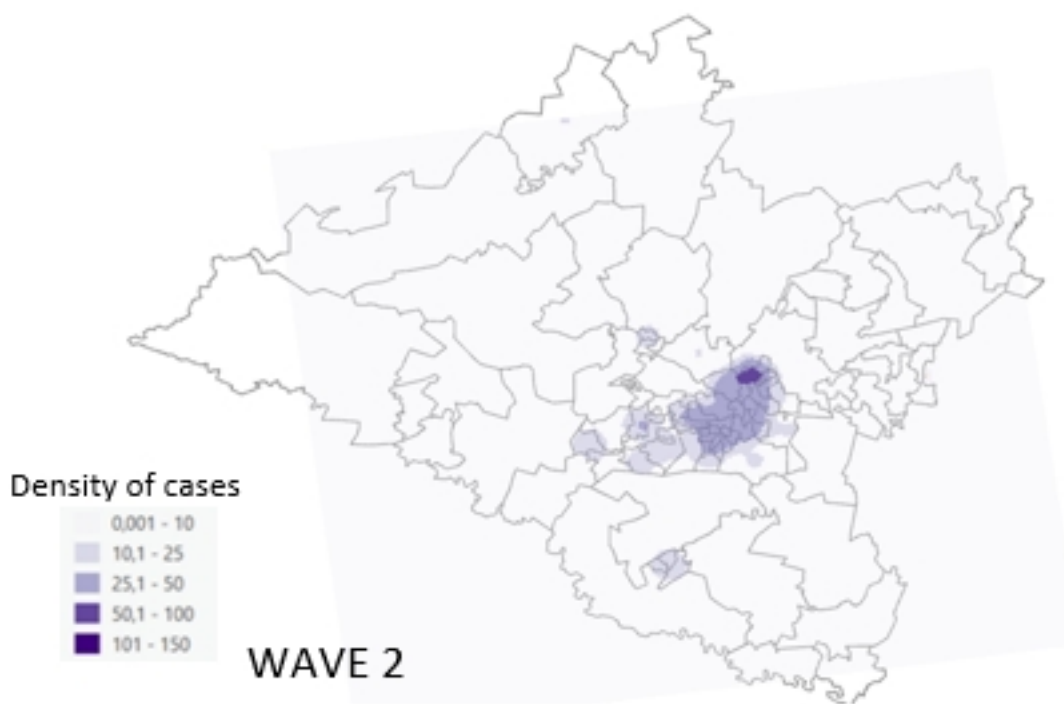
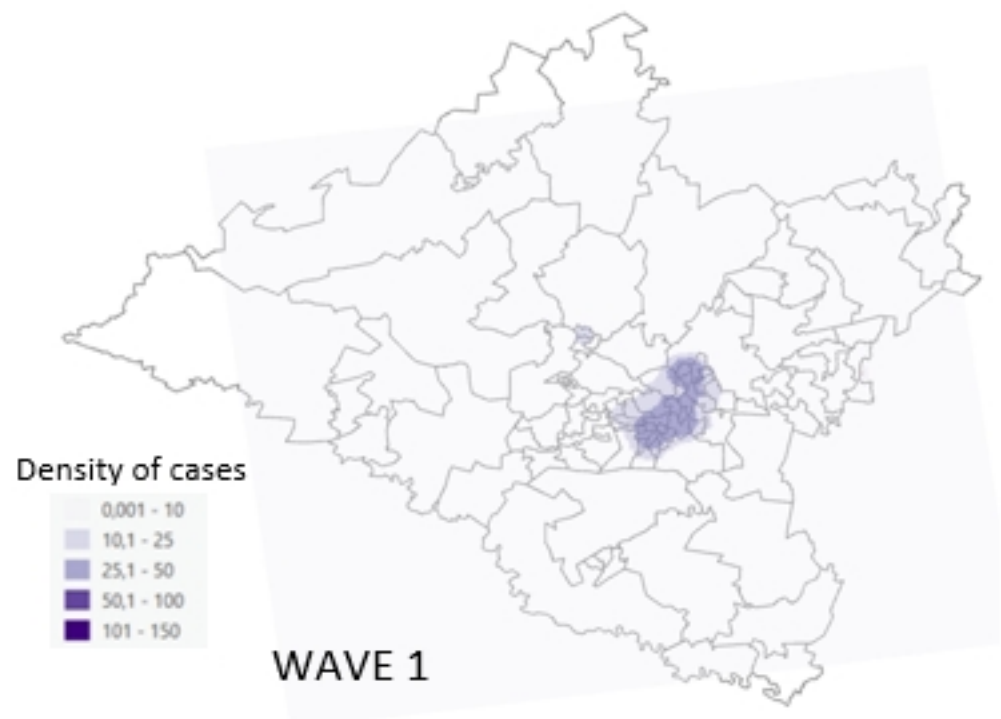
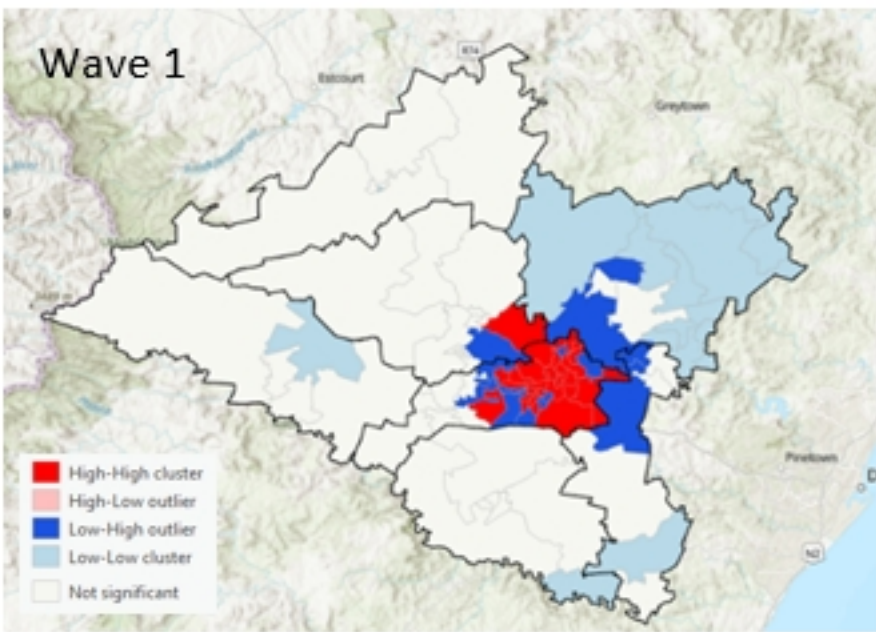


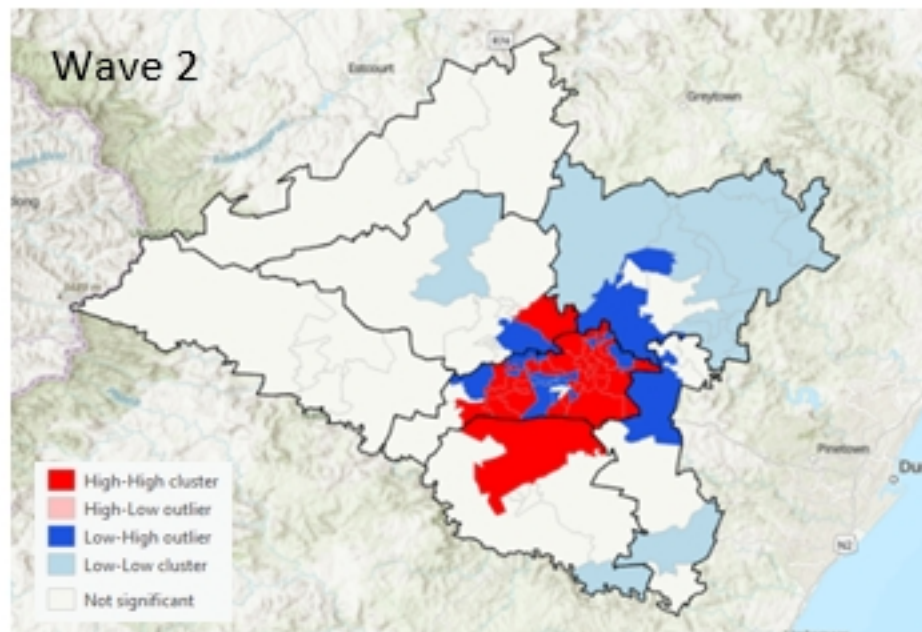
Figure 5



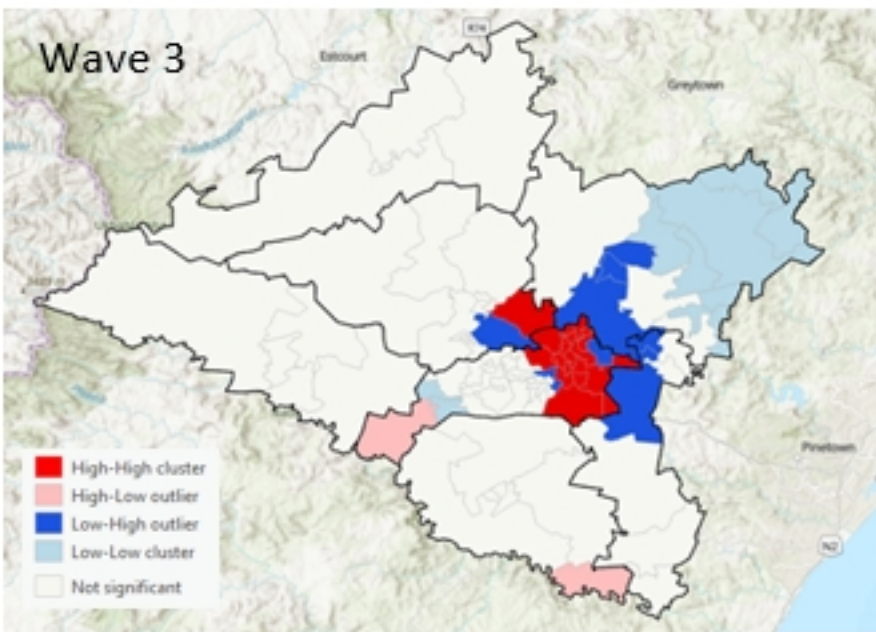
Wave 1



Wave 2



Wave 3



Wave 4

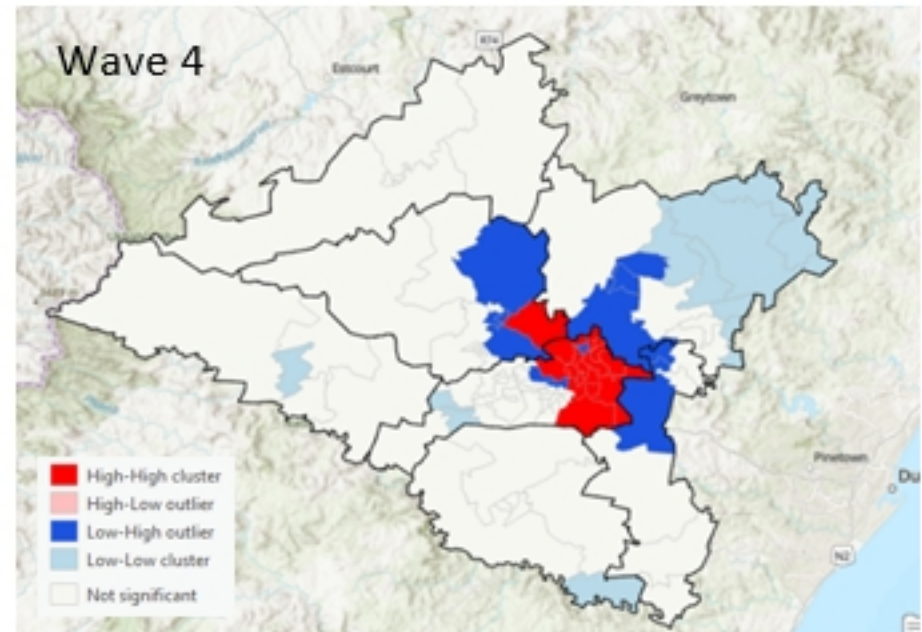


Figure 6