

1 **Placental transfer dynamics and durability of maternal COVID-19 vaccine-induced**
2 **antibodies in infants**

3
4 **Authors:** Paola A. Lopez^{a*}, Nadège Nziza^{b*}, Tina Chen^b, Lydia L. Shook^{c,d,e}, Madeleine D.
5 Burns^f, Stepan Demidkin^d, Olyvia Jasset^d, Babatunde Akinwunmi^g, Lael M. Yonker^{e,f}, Kathryn J.
6 Gray^{c,g}, Michal A. Elovitz^h, Douglas A. Lauffenburger^{a**}, Boris D. Julg^{b,c**}, Andrea G.
7 Edlow^{c,d,e**}
8

9 **Affiliations:**

10 ^aDepartment of Biological Engineering, Massachusetts Institute of Technology, Cambridge, MA,
11 USA

12 ^bRagon Institute of MGH, MIT, and Harvard, Cambridge, MA, USA

13 ^cMassachusetts General Hospital, Department of Obstetrics and Gynecology, Division of
14 Maternal-Fetal Medicine, Boston, MA, USA

15 ^dMassachusetts General Hospital, Vincent Center for Reproductive Biology, Boston, MA, USA

16 ^eHarvard Medical School, Boston, MA, USA

17 ^fMassachusetts General Hospital for Children, Department of Pediatric, Boston, MA, USA

18 ^gBrigham and Women's Hospital, Department of Obstetrics and Gynecology, Division of
19 Maternal-Fetal Medicine, Boston, MA, USA

20 ^hWomen's Biomedical Research Institute, Icahn School of Medicine at Mount Sinai

21 * Contributed equally as co-first authors

22 ** Contributed equally as co-last authors
23

24 Correspondence/Lead Contact:

25 Andrea G. Edlow

26 Vincent Center for Reproductive Biology

27 Massachusetts General Hospital

28 55 Fruit Street, Thier Research Building, 9th floor

29 Boston, MA 02114

30 Email: aedlow@mgh.harvard.edu
31

32 **Keywords:** COVID-19, pregnancy, placental transfer, antibody transfer, infant, vaccines, fetal sex,
33 Fc-receptor, immunoglobins
34
35
36

37
38
39
40

41
42
43
44
45
46
47
48
49
50
51
52
53
54
55
56
57
58
59

SUMMARY

Completion of a COVID-19 vaccination series during pregnancy effectively reduces COVID-19 hospitalization among infants less than 6 months of age. Elucidating the dynamics of transplacental transfer of maternal vaccine-induced antibodies, and their persistence in infants at 2, 6, 9 and 12 months, has implications for new vaccine development and timing of vaccine administration in pregnancy to optimize protection of the mother-infant dyad. We evaluated anti-COVID antibody IgG subclass, Fc-receptor binding profile, and activity against wild-type Spike and RBD, and five variants of concern (VOCs) in 153 serum samples from 100 unique infants. Maternal IgG1 and IgG3 responses persisted in 2- and 6-month infants to a greater extent than the other IgG subclasses, with highest persistence of antibodies that bind placental neonatal Fc-receptor as well as Fc γ R3A. Timing of maternal vaccination and fetal sex were drivers of antibody persistence in infants. Lowest persistence at 2 and 6 months was observed against the Omicron RBD-specific region. Maternal vaccine timing, placental Fc-receptor binding capabilities, antibody subclass, fetal sex, and VOC all impact the persistence of maternal vaccine-induced antibodies in infants up to 12 months.

60 INTRODUCTION

61 The U.S. Centers for Disease Control and Prevention (CDC) recommends that everyone over the
62 age of 6 months receive both doses of the mRNA COVID-19 vaccine (BNT162b2 and mRNA-
63 1273)^{1,2}. Large population-based studies have shown that a two-dose series of the mRNA COVID
64 vaccine provides moderate protection against symptomatic infection in children³, as well as in the
65 development of severe COVID-19-associated outcomes⁴. However, there is a lack of knowledge
66 regarding how maternal vaccine timing, placental Fc-receptor binding and fetal characteristics
67 drive transplacental antibody transfer and persistence of antibodies in infants over the first year of
68 life.

69
70 While infants under the age of 6 months remain ineligible to receive the COVID-19 vaccine, they
71 are one of the populations at highest risk for severe COVID-19 in the setting of SARS-CoV-2
72 infection. Infants younger than 6 months not only have higher COVID-19 hospitalization rates
73 compared to other pediatric groups, but also are at higher risk for acquiring life-threatening
74 complications from COVID-19, including acute respiratory failure^{5,6}. Maternal immunization is
75 a key strategy to protect infants younger than 6 months from infectious diseases through passive
76 transplacental antibody transfer⁷. Additionally, maternal immunization shapes infant immune
77 development by priming the cellular immune response⁸. Although the level of antibody necessary
78 to achieve infant protection against severe COVID-19 remains unknown, one study showed that
79 the completion of the COVID-19 vaccination during pregnancy is correlated with reduced
80 COVID-19 hospitalization rates in infants younger than 6 months of age, with greater protection
81 for infants conferred when the mother received the COVID-19 mRNA vaccine after 20 weeks
82 gestational age⁹⁻¹¹. More granular information on how timing of maternal vaccination influences
83 infant antibody levels over the first year of life was previously not available.

84
85 Recent studies examining COVID-19 vaccination during pregnancy have demonstrated the
86 transplacental antibody transfer of anti-Spike immunoglobulin (Ig) G antibodies¹²⁻¹⁶. While there
87 are limited data on the persistence of maternal anti-Spike IgG antibodies in infants^{16,17}, no study
88 has performed comprehensive profiling of maternal COVID-19 vaccine-induced antibodies that
89 persist in infants through 12 months of age, including all IgG subclasses, Fc receptor (FcR) binding
90 profiles, and against both SARS-CoV-2 wild-type and variants of concern (VOCs) including
91 B.1.1.7 (Alpha), B.1.351 (Beta), B.1.617.2 (Delta), P.1 (Gamma), and B.1.1.529 (Omicron)
92 variants. FcR binding is a critical consideration, as the Fc region of the antibodies plays an
93 important role in protection against infection and the resolution of SARS-CoV-2 infection^{18,19} by
94 inducing the antiviral activity of the innate immune system^{20,21}. The Fc region of antibodies also
95 plays a critical role in the transfer of antibodies across the placenta^{22,23}, and a more granular
96 understanding of antibodies that persist in infants after maternal COVID vaccination may have
97 broader implications for understanding optimal vaccine timing and features of vaccine-induced
98 antibodies that maximize neonatal and infant protection. Such an understanding may be relevant
99 to new vaccines with specific indications for pregnant individuals, including the RSV vaccine and

100 others still in development. In this study, we performed unbiased systems serology to evaluate the
101 levels and FcR binding profile of SARS-CoV-2-specific antibodies transferred from mother to
102 infants, as well as their persistence in infants up to 12 months of age. Our analyses reveal
103 differences in antibody profiles of infants whose mothers were vaccinated at different stages of
104 gestation. This work further highlights the importance of understanding the timing of vaccination
105 in pregnancy to provide optimal protection to susceptible infants during their first critical months
106 of life.

107

108 **RESULTS**

109 **Maternal COVID-19 vaccine-induced antibodies are detected in infants up to 12 months of** 110 **age**

111 To comprehensively profile COVID-19 vaccine-induced antibodies in infants up to 6 months of
112 age, we evaluated 153 plasma/serum samples from a prospectively-collected cohort of 100
113 unique infants, including $N=55$ infants at two months, $N=80$ infants at 6 months, $N=14$ infants at
114 9 months, and $N=4$ infants at 12 months. Maternal ($N=84$) and cord ($N=76$) blood was available
115 for a subset of the infants. During the course of the study, none of the included infants tested
116 positive for COVID-19 (see Methods and Supplemental Figure 1). The mothers in this study all
117 received both doses of the first generation (2020-2021) mRNA vaccinations (mRNA-1273 or
118 BTN162b) or one dose of the Ad26.CoV2.S vaccine during pregnancy, and were not infected
119 with SARS-CoV-2 prior to vaccination or during pregnancy. Table 1 details relevant clinical
120 characteristics of mothers and infants in the study.

121

122 We first plotted the Spike- and RBD-specific wild-type (WT) IgG antibody titer of mother-cord
123 dyads, and 2-month-old and 6-month-old infants (Figure 1A). Expanding upon previous reports
124 examining primarily total IgG against Spike^{14,24-26}, our results show cord samples are similar to
125 maternal with respect to anti-Spike and anti-RBD IgG subclasses and IgG FcR binding responses.
126 We observed that anti-Spike WT IgG1 was the most persistent antibody at 6 months of age, with
127 70% (56/80) of 6-month-old infants having detectable anti-Spike WT IgG1, while only 11% (9/80)
128 had detectable IgG3 antibody levels, 2/80 with detectable anti-Spike IgG2, and no infants showing
129 detectable levels of IgG4.

130

131 We also observed similar persistence trends between Spike- and RBD-specific antibodies. 73%
132 (58/80) of 6-month-old infants had detectable anti-RBD WT IgG1, 23% (18/80) had detectable
133 IgG3, 9% (7/80) had detectable IgG2, and 3/80 infants had detectable anti-RBD WT IgG4. These
134 findings are overall consistent with previous reports of a transfer hierarchy of subclass-specific
135 IgG transfer through the placenta from the mother to cord, with $IgG1 > IgG3 > IgG4 > IgG2$ ²⁷⁻²⁹.

136

137 Furthermore, we observed detectable Spike-specific and RBD-specific FcR-binding IgG levels in
138 infants through 6 months of age (Figure 1B). Interestingly, 47/55 2-month infants demonstrated
139 detectable antibody binding profiles against Spike-specific and 55/55 against RBD-specific

140 neonatal Fc receptor (FcRn), with similarly high detection of antibodies binding canonical Fc-
141 receptors FcγR2A and FcγR3B at 2 months of age (Figure 1B). However, greater differences in
142 the persistence of the FcR-binding against Spike versus RBD in infants begin to emerge at 6
143 months of age. We observed only 29% (23/80) of infants had detectable antibodies binding Spike-
144 specific FcRn, 9% (7/80) binding FcγR2A, 10% (8/80) binding FcγR2B, 53% (42/80) binding
145 FcγR3A, and 18% (14/80) binding to FcγR3B. RBD-specific Fc-receptor binding was more
146 persistent than that against Spike, with 88% (70/80) of infants having detectable RBD-specific
147 antibodies binding FcRn, 74% (59/80) binding FcγR2A, 24% (19/80) binding FcγR2B, 69%
148 (55/80) binding to FcγR3A, and 33% (26/80) binding to FcγR3B. Combined, these data
149 demonstrate higher persistence of WT RBD-specific Fc-receptor binding IgGs compared to WT
150 Spike at 6 months, with highest persistence of antibodies binding FcRn.

151
152 We also analyzed the levels of the same Spike- and RBD-specific WT antibodies in infants 9
153 months ($N=12$) and 12 months ($N=4$) of age (Supplemental Figure 2). We observed 10/12 infants
154 at 9 months, and 2/4 infants at 12 months had detectable Spike-specific IgG1 levels. Similar
155 persistence was observed for IgG1 against RBD (8/14 at 9 months, 1/4 at 12 months of age). There
156 was negligible persistence of other IgG subclasses at 9 and 12 months of age. We also observed
157 detectable FcR binding levels of RBD-specific antibodies only, with 13/14 9-month infants
158 demonstrating detectable binding to FcRn, and 2/14 and 3/14 demonstrating detectable RBD-
159 specific binding to FcγR3AV and FcγR2AR, respectively.

160
161 Of note, 12 infants whose mothers received the Ad26.CoV2.S vaccine were enrolled in the study
162 and systems serology was performed on their samples, including 8 at 2 months, 3 at 6 months and
163 1 at 9 months. Of these 12, 75% (9/12) mothers were vaccinated at > 20 weeks' gestation. These
164 infants were included in all analyses except those pertaining to maternal timing of vaccine dose 1
165 and dose 2, which is only relevant to the mRNA vaccines (Supplemental Figures 3-5 Figures 3-4).
166 Understanding antibody persistence in infants whose mothers received Ad26.CoV2.S may be
167 relevant for future adenovirus-based vaccine engineering or viral-based therapeutics; we therefore
168 report here that 6 / 9 infants had detectable IgG Spike-WT antibodies at 2 months, 1/3 infants at 6
169 months, and none at 9 months of age.

171 **Persistence of maternal COVID-19 vaccine-induced antibodies at 6 months of age differs** 172 **by Variants of Concern**

173
174 Next, we examined the cross-reactivity of the maternal COVID-19 vaccine induced antibodies and
175 antibody FcR binding profile against wild-type SARS-CoV-2 Spike and RBD, as well as Spike
176 and RBD VOCs in cord and infant samples (Figure 2A). Of note, the vaccines were administered
177 to mothers between 12/18/20 and 6/22/21, and thus represent the first generation BNT162b2 and
178 mRNA-1273 vaccines. To evaluate the persistence of the maternal vaccine-induced antibodies in
179 infants against the VOCs, we compared the percent of infants in each group with detectable IgG

180 subclasses and FcR binding profiles against Spike-specific and RBD-specific regions of the VOCs
181 (Figure 2A).

182
183 The first-generation COVID-19 mRNA vaccines generated antibodies cross-specific against most
184 VOCs that persisted to 6 months, with highest persistence of antibodies cross-binding to Delta and
185 to Gamma and lowest to Omicron. For all IgG subclasses and Fc receptor profiles apart from IgG2
186 and IgG4, we observed detectable levels of antibodies and FcR binding against either the RBD- or
187 Spike-specific antigen of all VOCs except Omicron in infants up to 6 months of age (Figure 2A).
188 These findings are consistent with previous work from our group, demonstrating that the Spike-
189 specific vaccine-induced antibodies were able to robustly bind to other VOCs, with lower affinity
190 observed for the RBD-specific region of the VOCs³⁰. As seen for WT Spike and RBD (Figure 1A),
191 IgG2 and IgG4 subclasses overall had low persistence, including against the different VOCs.
192 While there was relatively high persistence of IgG1 at 6 months against Spike-specific Omicron
193 (70% of infants showing detectable IgG1 antibodies), very few (N=9/80) 6-month infants had
194 detectable IgG3 against Spike-specific Omicron, and only 14/80 6-month infants had detectable
195 Spike-specific Omicron antibodies with Fc-receptor binding capabilities, with highest persistence
196 of antibodies binding FcγR3A (8/80). While IgG1 against Omicron RBD persisted at 6 months in
197 54 % (43/80) of infants, a sharp decrease in the persistence of IgG3 against RBD-specific Omicron
198 was observed, with only 5/55 infants demonstrating detectable levels of this antibody even at 2
199 months (Figure 2B). We also saw strikingly low persistence of RBD-specific Omicron FcR
200 binding in 2- and 6-month infants, with only FcRn-binding antibodies persisting to any significant
201 extent. The reduced ability of vaccine-generated antibodies to bind the highly-mutated³¹ RBD
202 region of the Omicron Spike protein relative to other VOCs has been demonstrated previously³².
203 The data presented here suggest that RBD-specific anti-Omicron antibodies also may engage non-
204 canonical placental Fc-receptors to a lesser extent than antibodies against other VOCs, given their
205 significantly reduced persistence in 2- and 6-month-old infants.

206 207 **The timing of maternal vaccination influences antibody levels in 2-month-old infants**

208 Previous studies have demonstrated that timing of initiation of COVID-19 vaccination in
209 pregnancy influenced the levels of maternal vaccine-induced antibodies at delivery and
210 transplacental transfer to the umbilical cord^{14,16,24,33,34}. Knowledge is lacking, however, regarding
211 how the timing of not only the first, but also the second dose of the mRNA vaccine in pregnancy,
212 impacts maternal antibody levels and persistence of antibody in infants. Thus, we wanted to
213 examine specifically how the timing of both first and second mRNA vaccine dose impacted the
214 profile of passively transferred maternal antibodies in infants. The 2-month cohort was selected
215 for this subanalysis, given the higher and more uniformly persistent levels of all antibody features
216 in this group, relative to the 6-month-old infant cohort.

217
218 First, we grouped the 2-month infant cohort into five groups, based on when the pregnant
219 individual received dose 1 and dose 2 of the primary mRNA COVID-19 vaccination series (Figure

220 3A). For this analysis, we excluded infants whose mother received the Ad26.CoV.2 vaccine, as
221 only a single dose of this vaccine was administered ($N=8$ 2-month infants). Timepoints of < 20
222 weeks, 20-28 weeks and > 28 weeks were chosen as cut points for analysis, given previous work
223 from the CDC demonstrating that maternal vaccination after 20 weeks' gestation was more
224 effective in preventing COVID-19-associated infant hospitalizations in the first 6 months of life,
225 relative to when maternal vaccination was completed prior to 20 weeks^{9,10}. The 20-28 week and
226 >28 week window were selected to gain increased trimester-specific granularity on optimal timing
227 of maternal vaccine administration.

228
229 Levels of Spike-specific IgG subclasses and Fc-receptor binding antibodies in 2-month-old infants
230 by maternal vaccine timing are plotted in Figure 3B. These analyses demonstrated that for most
231 subclasses and Fc receptor binding features, infants whose mother received at least one dose of
232 mRNA vaccine after 28 weeks (Groups 4 and 5, maroon and rose groups) had the highest levels
233 of maternal COVID-19 vaccine-induced antibodies. Interestingly, the lowest level of IgG1 and
234 IgG2 subclasses and Fc receptor binding features was seen in infants whose mothers received both
235 doses of the mRNA vaccine in the 20-28 week window. Given the prior data demonstrating
236 enhanced protection against COVID-19-associated hospitalization when the vaccine series was
237 completed after 20 weeks' gestation^{9,10}, we hypothesized we would observe the lowest antibody
238 titers in infants whose mothers started and/or completed the entire vaccine series prior to 20 weeks.
239 Instead, we observed that receiving both doses of the mRNA vaccine in the mid-to-late second
240 trimester (Group 3, yellow) was associated with the lowest levels of anti-spike IgG1 and IgG2 in
241 infants, which was consistent with prior work in a separate cohort, suggesting less robust maternal
242 antibody responses in second trimester vaccination relative to first and third¹⁴. These less robust
243 20-28 week responses were hypothesized to be secondary to the known relative maternal immune
244 quiescence of the second trimester, which occurs at least in part to facilitate rapid fetal growth³⁵.

245
246 However, the finding that the lowest antibody levels were seen in infants whose mothers started
247 and finished the vaccine in the 20-28 week window should be interpreted with an important caveat:
248 Group 3 included 9 males and only 1 female infant, whereas other groups in this analysis were
249 comprised by nearly equal numbers of males and females. Univariate analyses revealed that male
250 infant sex was associated with significantly reduced levels of Spike-specific IgG2 antibodies at 2
251 months of age relative to female infants (Supplemental Figure 3A). We also observed reduced
252 levels of Spike-Specific IgG1 antibodies in male infants compared to female infants, although this
253 finding did not achieve statistical significance (Supplemental Figure 3A). Uniform Manifold
254 Approximation and Projection Analysis (UMAP) also revealed antibody and Fc-receptor variation
255 by timing of maternal vaccination and infant sex (Group 3, Supplemental Figure 3B). It is therefore
256 possible that the lower titers noted in infants after late second trimester maternal vaccination are a
257 function of either maternal vaccine timing, male infant sex, or both.

258

259 Finally, we observed that infants whose mother received at least one dose of mRNA vaccine prior
260 to 20 weeks' gestation had the highest levels of IgG4. Previous work demonstrated that IgG4
261 antibodies after COVID-19 vaccination were less inflammatory and had more muted effector
262 functions (antibody-dependent phagocytosis and complement deposition) than other subclasses,
263 and IgG4 levels rose with longer interval from 2nd mRNA vaccination³⁶. Thus, the elevated IgG4
264 levels in infants whose mothers were vaccinated at < 20 weeks may be present due to increased
265 passage of time and increased opportunity for antibody class switching in the mother, and these
266 antibodies may have more muted effector functions and therefore may be less desirable to pass to
267 infants than other subclasses of IgG. Consistent with this concept, we observed the highest levels
268 of IgG3, the subclass most associated with an effective early anti-viral response³⁷ in infants whose
269 mothers received the first vaccine dose after 20 weeks' gestation.

270
271 Given the observed differences in infant antibody levels by timing of maternal vaccination, we
272 next sought out to determine the combination of features that best separated infants based on timing
273 of vaccination using partial least squares discriminant analysis (PLSDA), followed by least
274 absolute shrinkage and selection operator (LASSO) feature regularization to prevent overfitting
275 (Figure 3C). The LASSO-selected features that are important (based on Variable Importance in
276 Projection (VIP) analyses) in building a model to distinguish groups based on maternal vaccine
277 timing are highlighted in Figure 3C, and include not only the Spike-specific WT antibody levels
278 and FcR binding profiles, but also some RBD-specific and VOC-specific features. Other features
279 used in building the PLSDA model, as well as the model validation results, are depicted in
280 Supplemental Figure 4A and 4B. Among the top features that distinguish the groups, three (anti-
281 RBD Beta IgG3, anti-Spike gamma IgG3, and anti-Spike WT IgG2) were enriched in either Group
282 4 or Group 5 (at least one vaccine dose administered > 28 weeks), and 2 features (anti-Spike beta
283 IgG4 and anti-RBD delta IgG4) were enriched in Group 1 or 2 (at least one vaccine dose
284 administered < 20 weeks, Figure 3C and Supplemental Figure 4A). Similar to levels of IgG
285 subclasses, numerous FcR binding features were enriched in Group 4 or Groups 4 and 5, primarily
286 relative to Group 3 (fully vaccinated 20-28 week window).

287
288 Given that LASSO selects a minimal set of features to prevent overfitting of the data, we generated
289 a correlation heatmap to determine additional features that correlate with the top features used in
290 the PLSDA model (Supplemental Figure 4C). IgG3 and IgG4 features, regardless of antigen target,
291 were correlated with other IgG3 and IgG4 antibodies, respectively (Spearman correlation $\rho >$
292 0.75). Spike- and RBD-specific IgG3 and Spike-specific IgG2 both were positively correlated with
293 FcR binding levels. Overall, these analyses demonstrated that the timing of not only the 1st but
294 also the 2nd dose of maternal COVID-19 vaccination influence antibody subclass levels in 2-
295 month-old infants.

296
297 To evaluate the impact of maternal vaccine timing on antibody features in 6-month infants, we
298 sought to determine a set of features that best separate 6-month infants based on maternal

299 vaccination timing, as was done with the 2-month infant cohort, using LASSO feature
300 regularization in conjunction with PLS-DA classification (Supplemental Figures 5A-C). Similar to
301 the results in 2-month infants, the LASSO-selected features show an enrichment of antibody levels
302 in 6-month infants whose mother was vaccinated > 28 weeks (Supplemental Figures 5B and 5C).
303 Although the univariate plots of these features did not demonstrate statistically significant
304 differences, these plots demonstrate that infants whose mothers received the vaccine > 28 weeks
305 had elevated antibody and Fc-receptor binding levels compared to those vaccinated <20 or 20-28
306 weeks (Supplemental Figure 5D).

307

308 **Evaluating the persistence of maternal-vaccine-induced antibodies in 6-month infants by** 309 **timing of the maternal COVID-19 vaccine series in early versus later 3rd trimester:** 310 **implications for RSV vaccination in pregnancy**

311

312 Recently, the CDC's Advisory Committee on Immunization Practices recommended the bivalent
313 recombinant respiratory syncytial virus prefusion F protein (RSV preF) vaccine for seasonal use
314 in pregnant individuals at 32-36 weeks' gestation, to prevent RSV lower respiratory tract disease
315 in infants³⁸. In a large randomized controlled trial of over 7300 pregnant individuals, RSV
316 vaccination from 24-36 weeks was associated with protection efficacy of 69.4% against severe
317 lower respiratory tract disease in infants at 6 months of age³⁹. However, RSVpreF vaccination was
318 ultimately approved in pregnant individuals in the narrower window of 32-36 weeks' gestation.
319 As this narrower and later window was not explicitly studied in the trial, and given our findings
320 that timing of maternal vaccination administration had significant impact on antibody persistence
321 in infants, we sought to examine antibody persistence in infants at 6 months with maternal
322 administration of the COVID-19 vaccines at 28-32 weeks versus 32-36 weeks' gestation in our
323 sample. While this is a different vaccine platform with a two-dose rather than one dose regimen,
324 given the lack of data on antibody persistence in infants when maternal vaccines are administered
325 at 32+ weeks of gestation, these data can add significantly to existing knowledge.

326

327 First we evaluated antibody features in 6-month-old infants as a function of timing of maternal
328 vaccination in pregnancy using polar plots (Figure 4A). Because of their low persistence in the 6-
329 month infant cohort (Figure 1A), we excluded IgG2 and IgG4 from these analyses (overall more
330 than 70% of the samples for IgG2 and IgG4 fell below the limit of detection threshold). Comparing
331 the mean percentile ranks of antibody subclasses and Fc-receptor binding features persistent in 6-
332 month-old infants by maternal vaccine timing in pregnancy, it was clear that maternal vaccination
333 at > 28 weeks was associated with the most robust persistence of antibodies in 6-month-old infants
334 (relative to < 20 weeks or 20-28 weeks). These results were thus consistent with the prior results
335 for 2-month-old infants (Figure 3).

336

337 To parse more specifically how timing of maternal vaccination **within** the 3rd trimester influenced
338 persistence of infant antibody titers at 6 months, we then evaluated levels of IgG subclasses and

339 Fc-receptor binding antibody levels in 6-month infants as a function of maternal vaccination from
340 28-32 weeks (Figure 4B), versus maternal vaccination from 32-36 weeks (Figure 4C). We found
341 that the majority of antibody features, including IgG subclasses and Fc-receptor binding, were
342 significantly positively correlated with gestational age at maternal vaccine administration across
343 the 28-32 weeks' gestation period, particularly IgG1 against RBD and Spike WT and VOCs, as
344 well as Fc γ R2AR-, Fc γ R3AV- and Fc γ R3B-binding antibodies (Figures 4B, 4D). In contrast, many
345 of the same features decreased steadily as a function of time across the vaccine window when
346 maternal vaccination was initiated from 32-36 weeks (Figures 4C, 4D). In summary, these
347 analyses demonstrate a significant positive correlation between infant antibody levels at 6 months
348 and gestational age at vaccination across the 28-32 week gestational age window. However, this
349 relationship reverses across the 32–36 week window, with a significant negative correlation
350 between 6-month infant antibody levels and gestational age at maternal vaccination. These limited
351 data suggest that the efficiency of transplacental transfer of maternal antibodies and durability in
352 infants through 6 months of age may be reduced across the 32-36 week gestational age window.

353

354 **DISCUSSION**

355 Maternal vaccination against COVID-19 has been shown to effectively reduce COVID-19 related
356 hospitalization rates in infants younger than 6 months^{9,10}, through the transplacental transfer of
357 maternal COVID-19 vaccine induced antibodies^{16,17}. Here, using systems serology, we profiled
358 maternal antibodies in 100 infants up to 12 months of age in unprecedented detail. These
359 experiments quantified not only total IgG level, but IgG subclass and FcR binding profile of
360 antibodies against wild type Spike and RBD epitopes of SARS-CoV-2, as well as a wide range of
361 variants of concern including Omicron. Although the COVID-19 pandemic is ongoing and
362 protecting both mothers and vulnerable infants under 6 months of age who cannot yet be
363 vaccinated against COVID-19 remains critical, our findings have relevance far beyond COVID-
364 19. Our findings that antigen specificity (e.g., Spike versus RBD), IgG subclass (e.g. IgG1 and
365 IgG3), and canonical (FcRn) versus non-canonical (Fc γ) placental receptor binding work in
366 concert to drive persistence of antibodies in infants through 6 months of age may have implications
367 for both future vaccine development and timing of administration in pregnancy. Our findings that
368 both timing of maternal vaccination and fetal sex were significantly associated with persistence of
369 maternally-transferred antibody in infants may be used to guide both pregnancy vaccination
370 strategies, and our understanding of infant protection. Finally, our granular examination of the
371 impact of maternal vaccine timing within the mid to late 3rd trimester demonstrates enhanced
372 antibody persistence in 6-month infants when vaccine occurs across the 28-32 week window, yet
373 reduced persistence across the 32-36 week window, with potential immediate relevance for
374 maternal RSV vaccination strategies. Thus, the detailed antibody map presented here provides the
375 basis for a more mechanistic understanding of maternal antibody generation, transplacental
376 transfer, and persistence of antibodies across the mother-infant dyad.

377

378 While limited data are available regarding the persistence of maternal COVID-19 vaccine-induced
379 antibodies in infants^{16,17} this represents the largest study examining infant antibody persistence,
380 with comprehensive infant follow up at 2, 6, 9 and even 12 months of age, albeit with more limited
381 numbers profiled after 6 months. In addition, these represent the only available data regarding the
382 persistence of IgG subclasses and FcR binding profiles in infants through 12 months of age. Our
383 observation of IgG1 and IgG3 having the highest persistence in 6 month infants is consistent with
384 the known transfer hierarchy of subclass-specific IgG transfer through the placenta from the
385 mother to cord, with IgG1 > IgG3 > IgG4 > IgG2²⁷⁻²⁹. Subclass-specific IgG transfer hierarchy is
386 mediated not only by the relative abundance of each subclass, but also FcR expression levels and
387 Fc-FcR interaction affinity²⁸. As an example, IgG3, one of the most persistent antibodies in 6-
388 month infants, has high binding affinity to placental FcγR3A⁴⁰. In addition to facilitating IgG3
389 transfer across the placenta, the finding that the most persistent FcR binding profiles at 6 months
390 were for antibodies binding FcγR3A suggests preferential transfer of natural killer (NK) cell-
391 activating antibodies^{23,41} to arm neonates with the most effective immunity from birth, as NK cells
392 play a crucial role in neonatal first-line innate immune defenses⁴².

393
394 With respect to timing of maternal vaccination in pregnancy, prior epidemiologic studies
395 demonstrated that maternal COVID-19 vaccination after 20 weeks' gestation conferred the greatest
396 infant protection against COVID-19-associated hospitalizations in the first 6 months of life^{9,10}.
397 These studies did not examine antibody levels in infants, nor did they examine the impact of
398 vaccination timing within the second half of pregnancy on infant protection. While there are
399 limited data available on antibody levels in infants after maternal COVID-19 vaccination^{16,17}, these
400 studies have not examined how timing of vaccination across a range of trimesters or within
401 trimester impacts infant antibody levels. There are also no data on relative persistence of different
402 IgG subclasses, nor on FcR binding, or activity against VOCs in infants within the first year of
403 life. Our finding of the highest levels of IgG1-3 and FcR binding in infants whose mother was
404 vaccinated with at least one dose of the mRNA vaccine after 28 weeks of gestation, and
405 significantly lower IgG levels and FcR binding in infants born to mothers fully vaccinated in the
406 20-28 week window, builds upon our prior work demonstrating enhanced IgG levels, FcR binding
407 and functions when mothers are vaccinated in 3rd relative to 2nd trimester^{14,43}. The finding that
408 IgG4 was highest in infants born to mothers vaccinated prior to 20 weeks likely can be at least
409 partially explained by antibody class switching and a time effect, with < 20 week vaccinees having
410 more time for class-switching to IgG4 and transfer of Ig4 across the placenta. IgG4 may be a less
411 advantageous antibody subclass for newborns and early infants with immature immune systems,
412 given that IgG4 responses are T-cell dependent^{14,43} and have reduced effector functions (e.g.,
413 antibody-dependent cellular phagocytosis and complement deposition)^{44,45}.

414
415 Also relevant to considerations of timing of maternal vaccination is our focused subanalysis
416 examining durability of placentally-transferred antibodies in 6-month-old infants after maternal
417 vaccination in mid- to late-third trimester. This question is timely given the recent recommendation

418 by the FDA and CDC/ACIP to restrict maternal RSV vaccination to the 32-36 week window of
419 pregnancy⁴⁶⁻⁴⁸. Our data suggest that most effective transfer occurs in the context of maternal
420 vaccination in the early third trimester (28-32 weeks), with progressively less efficacious placental
421 transfer (reflected in lower levels of IgG and Fc-receptor binding) as vaccination occurs from 32-
422 36 weeks. These limited data point to maternal RSV vaccination in the earlier part of the 32-36
423 week window potentially being more optimal to maximize infant protection through 6 months of
424 age. These data should be interpreted with caution as the RSV vaccine is a different platform
425 (recombinant protein) and a one- rather than two-shot regimen, with likely different transfer
426 kinetics. However, given the current dearth of evidence to guide vaccine timing within the
427 recommended window, we offer these analyses while we await further prospective data from
428 pregnant RSV vaccine recipients and their infants.

429
430 With respect to the impact of infant sex on infant antibody persistence at 2 and 6 months of age
431 after maternal vaccination, our finding that male infants had reduced persistence of antibodies at
432 2 and 6 months relative to females resonates with prior published data. Prior work by our group
433 found that pregnant individuals carrying male infants had lower maternal levels of COVID-
434 specific antibodies and reduced FcR binding antibody levels, compared to individuals carrying
435 female infants after natural COVID infection⁴⁹. Sex-specific anti-COVID antibody glycan profiles
436 and sex-specific patterns of placental Fc-receptor expression that may be less favorable for
437 transplacental antibody transfer to male infants were also previously reported⁴⁹. Maternal immune
438 response, specific antibody properties such as glycan profiles, and placental FcR expression all are
439 influenced by fetal sex, making this a critical area for further research.

440
441 Lastly, we examined whether maternal vaccination with the first-generation COVID-19 vaccines
442 induced antibodies against other VOCs, persistent in 2 and 6 month old infants, finding the most
443 consistent cross-immunity was induced for the gamma and delta variants, but with persistent levels
444 of antibodies and Fc receptor engagement against all VOCs in infants up to 6 months of age with
445 the exception of Omicron. Persistence of Omicron RBD-specific IgG3 was negligible, with nearly
446 no detectable levels of this antibody in even 2-month infants. Similarly, there was strikingly low
447 Omicron RBD-specific Fc γ -receptor binding in 2- and 6-month infants in comparison to other
448 VOCs or even to Omicron Spike-specific Fc γ -receptor binding. This could be due to the
449 disproportionately high mutation burden in the RBD region of the Omicron Spike protein³¹. The
450 extent to which these potential deficits in activity against Omicron could be overcome by infant or
451 childhood vaccination with updated Omicron-specific COVID-19 vaccines is an important
452 question. Additionally, it is likely that maternal vaccination with an updated COVID-19 booster
453 against Omicron could augment transfer of Omicron Spike- and RBD-specific antibodies to
454 infants, and this is a critical area of ongoing investigation⁵⁰. Finally, these data highlight the
455 importance of comprehensive antibody profiling to better understand the complexity of immunity
456 transferred to the infant by maternal vaccination; such data clearly have implications for vaccine
457 design and/or implementation strategies, particularly against pathogens with high mutation rates.

458
459 These results demonstrate that COVID-19 vaccination during pregnancy provides not only a robust
460 antibody response in the mother, but antibodies detectable in infants through > 6 months of age.
461 A fine-grained understanding of antibody subclasses and Fc-receptor binding profiles that persist
462 in infants through 1 year of life is critical not only for understanding protection afforded infants
463 by maternal COVID-19 vaccination, but for the development of rational vaccines and data-driven
464 maternal vaccination strategies. Our findings related to the critical impact of vaccine timing across
465 gestation and of infant sex on antibody durability at 2 and 6 months of age demonstrate the
466 importance of ongoing investigations of these unique aspects of maternal-fetal immunity that
467 should inform vaccine development, and can drive strategies to optimize maternal and neonatal
468 immunity against a wide array of pathogens.

469
470 **ACKNOWLEDGEMENTS**
471 Funding sources: Merck Sharp & Dohme Corp Investigator-Initiated Studies grant (MISP 61299,
472 to A.G.E.); NIH/NIAID 1U19AI167899-01 to D.A.L., A.G.E., M.A.E., B.D.J.; NIH/NHLBI
473 5K08HL143183 to L.M.Y.

474
475 **AUTHOR CONTRIBUTIONS**
476 A.G.E., P.A.L., B.D.J., N.N., D.A.L developed the concept, designed the experiments, and
477 analyzed and interpreted the data. A.G.E., D.A.L., M.A.E., and B.D.J. obtained funding. N.N,
478 and T.C. performed experiments. P.A.L and D.A.L performed the statistical modeling. P.A.L.
479 and A.G.E. wrote the main paper. S.B., R.M.D., S.D., M.K.K., and C.D.P. collected and
480 prepared samples. L.L.S., M.D.B., O.J., B.A., L.M.Y., K.J.G., A.G.E. recruited and enrolled
481 participants. O.J., M.D.B., B.A., K.J.G., L.M.Y., and A.G.E. assisted with clinical data
482 collection. M.A.E. gave conceptual advice and edited the manuscript. All authors approved of
483 the final manuscript.

484
485 **DECLARATION OF INTERESTS**
486 This work was supported in part by a research grant from the Investigator-Initiated Studies
487 Program of Merck Sharp & Dohme Corp (MISP 61299). The opinions expressed in this paper are
488 those of the authors and do not necessarily represent those of Merck Sharp & Dohme Corp. K.J.G.
489 has consulted for Illumina, BillionToOne, and Aetion outside the scope of the submitted work.
490 A.G.E. and M.A.E. serve as medical advisors for Mirvie. M.A.E has equity in Mirvie outside the
491 submitted work. B.D.J.'s immediate family member, Galit Alter, is co-founder of Seromyx
492 Systems, Inc., and has a patent on Systems Serology Platform pending.

493
494

495 **TABLE 1**

496

	Overall unique infant (N= 100)	2 month- old infants (N = 55)	6 month- old infants (N = 80)	9 month- old infants (N = 14)	12 month- old infants (N = 4)
Vaccine Platform, N (%)					
mRNA-1274	31 (31)	17 (31)	28 (35)	8 (57)	1 (25)
BNT162b.2	59 (59)	30 (55)	48 (60)	5 (36)	3 (75)
Ad.26.COVS.2.S	10 (10)	8 (15)	4 (5)	1 (7)	0 (0)
Infant Sex, N (%)					
Female	49 (49)	24 (44)	41 (51)	6 (43)	3 (75)
Gestational age at 1st mRNA vaccine in maternal series, N (%)					
< 20 weeks	26 (29)	23 (49)	20 (26)	1 (7)	0 (0)
20 – 28 weeks	29 (32)	16 (34)	26 (34)	7 (54)	0 (0)
> 28 weeks	35 (39)	8 (17)	30 (40)	5 (36)	4 (100)
Gestational age at 2nd mRNA vaccine in maternal series, N (%)					
< 20 weeks	15 (17)	12 (25)	13 (17)	0 (0)	0 (0)
20 – 28 weeks	27 (30)	21 (45)	22 (29)	3 (23)	0 (0)
> 28 weeks	48 (53)	14 (30)	41 (54)	10 (77)	4 (100)
Gestational age at Ad26.COVS.2.S Vaccine, N (%)					
< 20 weeks	3 (30)	3 (37.5)	0 (0)	0 (0)	0 (0)
20 – 28 weeks	2 (20)	2 (25)	1 (25)	0 (0)	0 (0)
> 28 weeks	5 (50)	3 (37.5)	3 (75)	1 (100)	0 (0)

497

498 **Table 1: Clinical characteristics of included infants**

499 All included infants (N_p = 100) reflect the first maternal COVID-19 vaccination series. Some
500 infants' samples were collected at multiple time points, thus there are a total of 153 infant samples
501 from 100 unique infants. All infants were born to mothers who were fully vaccinated in pregnancy
502 as defined at the time (received both doses of the original COVID-19 mRNA vaccine series, or a
503 single dose of the Ad26.COVS.2.S vaccine). None of the included infants had symptoms of COVID-
504 19 nor did they ever test positive for SARS-CoV-2.

505

506 **STAR Methods**

507

508 **RESOURCE AVAILABILITY**

509

510 **Lead Contact**

511 Requests for information should be directed to the lead contact, Andrea G. Edlow
512 (aedlow@mgh.harvard.edu)

513

514 **Material Availability**

515 This study did not generate new unique reagents.

516

517 **Data and Code Availability**

518 The dataset generated during this study is available upon reasonable request. Code used for the
519 analyses can be found at Mendeley Data: <http://dx.doi.org/10.17632/35zy6p92f6.1>

520

521 **EXPERIMENTAL MODEL AND STUDY PARTICIPANT DETAILS**

522

523 **Study Population**

524 The study included $N=108$ unique infants born to mothers who received their initial COVID-19
525 vaccine series in pregnancy (dates of maternal vaccination Dec 18, 2020-June 22, 2021).
526 Mothers enrolled their infants in this study conducted from July 23, 2021 to July 1, 2022.
527 Ultimately samples collected from pregnant individuals infected with SARS-CoV-2 before
528 vaccination or babies known to be infected with SARS-CoV-2 prior to sample collection were
529 excluded (Supplemental Figure 1). Matched maternal and umbilical cord serum samples were
530 collected at birth for a subset of mothers co-enrolled in a complementary pregnancy cohort
531 (MGB IRB # 2020P003538). Infant capillary serum samples were collected via microneedle
532 device (TAP[®] II blood collection device, YourBio Health, Medford, MA) at 2 months, 6 months,
533 9 months and 12 months after birth for infants of vaccinated mothers. All infants were singletons
534 except for 2 pairs of twins. All included pregnant participants signed informed consent for
535 sample collection, and birthing parents signed consent for their infants (MGB IRB #s
536 2020P003538 and 2020P000955).

537

538 **METHOD DETAILS**

539

540 **Antigens**

541 Spike and RBD proteins of SARS-CoV-2 D614G or variants of concern, along with S1 and S2 were
542 obtained from Sino Biological. These antigens were expressed in mammalian HEK293 cells. To
543 biotinylate these antigens, NHS-Sulfo-LC-LC kits were used following the manufacturer's
544 instructions (ThermoFisher Scientific).

545

546 **Multiplexed Luminex assay**

547 Antigen-specific antibody levels and Fc γ receptor binding were measured using a custom
548 multiplexed Luminex assay, as previously described⁵¹. To couple the antigens to magnetic
549 carboxylated fluorescent Luminex beads (Luminex Corporation), carbodiimide-NHS ester
550 coupling was performed, with one bead region assigned to each antigen. The beads were first
551 activated in an activation buffer, which consisted of 100 mM monobasic sodium phosphate (pH
552 6.2), 50 mg/ml N-hydroxysulfosuccinimide (Sulfo-NHS; Pierce) resuspended in H₂O, and 1-ethyl-
553 3-[3-dimethylaminopropyl]carbodiimide-HCl (EDC; Pierce) resuspended in the activation buffer.
554 Following a 30-minute incubation at room temperature (RT), the activated beads were washed in
555 coupling buffer (50 mM morpholineethanesulfonic acid, MES; pH 5.0) and then incubated with
556 antigens for 2 hours at RT. Subsequently, the beads were blocked during a 30-minute incubation
557 at RT in phosphate-buffered saline (PBS)-TBN (containing 0.1% bovine serum albumin [BSA],
558 0.02% Tween 20, and 0.05% azide [pH 7.4]). Lastly, PBS-Tween (0.05% Tween 20) was used to
559 wash the beads coupled with the proteins, then the beads were stored in PBS with 0.05% sodium
560 azide at 4°C.

561

562 **Antigen-specific immunoglobulin quantification**

563 Antigen-coupled beads were incubated with different sera dilutions (between 1:50 and 1:100,
564 depending on the secondary reagent) at 4°C for 18 hours of shaking. After the incubation, the
565 beads were washed three times with PBS-Tween (0.05% Tween 20) and mixed to phycoerythrin
566 (PE)-conjugated mouse anti-human antibodies (IgG, IgG1, IgG2, IgG3, IgG4, IgA1, IgA2, or IgM)
567 from Southern Biotech at a concentration of 1.3 μ g/ml. Following an additional 1-hour incubation
568 at RT with shaking, the beads underwent another three washes with PBS-Tween (0.05% Tween
569 20) and were then resuspended in sheath fluid (Luminex Corporation). To ensure accuracy, each
570 serum sample was tested in duplicate. The levels of PE median fluorescence intensity (MFI) were
571 measured using the iQue screener plus (Intellicyt) analyzer.

572

573 **Antigen-specific Fc γ -receptor binding**

574 To investigate the relative binding levels of antibodies to individual Fc γ -receptors (Fc γ Rs), Avi-
575 tagged Fc γ R2AR (used to measure Fc γ R2A), Fc γ R2B (used to measure Fc γ R2B), Fc γ R3AV
576 (used to measure Fc γ R3B), and Fc γ R3B were obtained from Duke Human Vaccine Institute⁵¹.
577 Biotinylation of these receptors was carried out using a BirA biotin-protein ligase (BirA500;
578 Avidity), and any excess biotin was removed using Zeba spin desalting columns (7K MWCO;
579 Thermo Fisher Scientific). Serum samples were diluted at a ratio of 1:500 and mixed with
580 antigen-coupled beads to form immune complexes. Following an 18-hour incubation at 4°C, the
581 beads were washed three times with PBS-Tween (0.05% Tween 20). Streptavidin-R-
582 phycoerythrin (ProZyme) was then added to each biotinylated Fc γ R at a 4:1 molar ratio and
583 allowed to incubate for 20 minutes at RT. Fluorescent labeled Fc γ Rs (at a concentration of 1
584 μ g/ml in 0.1% BSA-PBS) were subsequently added to the immune complexes, followed by an
585 incubation of 1 hour at RT. Lastly, three washes with PBS-Tween (0.05% Tween 20) were done,
586 then beads were resuspended in sheath fluid (Luminex Corporation) for analysis. The median PE

587 intensity was measured using the iQue screener plus (Intellicyt) system, and all samples were
588 tested in duplicate.

589

590 **QUANTIFICATION AND STATISTICAL ANALYSIS**

591 Analyses were divided between mothers vaccinated at < 20 weeks' gestation, versus 20-28 weeks
592 (window fully in the 2nd trimester) versus 28 weeks to delivery (3rd trimester) to reflect the known
593 increased protection against severe infant COVID-19 disease conferred by maternal vaccination
594 after 20 weeks' gestation (e.g. < 20 weeks, > 20 weeks)^{9,10}, and to further subset vaccination after
595 20 weeks' gestation into biological windows that coincide with the trimesters of pregnancy. All
596 statistical analyses and figure generation were performed using R (version 4.1.0). For Luminex
597 samples, all features were subtracted by phosphate-buffered saline (PBS) control values and were
598 log₁₀-transformed. As in previous studies¹⁷, detectable Luminex-derived features were defined as
599 any value greater than the sum of the mean of the SARS-CoV-2 unvaccinated negative control
600 adult samples (collected before the pandemic) and one standard deviation of those samples.

601

602 For univariate analyses of differences between maternal, cord, and infant samples, and as well as
603 2-month-old infant groups that vary between vaccination timing, significance was determined by
604 Kruskal-Wallis followed by posthoc Benjamini-Hochberg adjustment. For analysis of the transfer
605 between maternal and cord dyads, significance was calculated by a Wilcoxon signed-rank test
606 followed by Benjamini-Hochberg.

607

608 Multivariate analyses of the systems serology data were performed in R (version 4.2.1). All log₁₀
609 data were then centered and scaled. Luminex-derived features for which 70% of values fell below
610 one standard deviation above the mean of SARS-CoV-2 unvaccinated negative control samples
611 were pruned. Uniform Manifold Approximation and Projection (UMAP), unsupervised
612 dimensionality reduction technique⁵², was performed to evaluate the effect of maternal vaccination
613 timing and fetal sex. Prior to UMAP analysis, the first 20 principal components (PCs) that explain
614 95% of the data were determined using principal component analysis (PCA)⁵³. These PCs were
615 then mapped used to reduce the high-dimensional serological data into a two-dimensional space
616 with fine tuned parameters (n.neighbor = 30, min.dist = 0.2). UMAP was performed using the R
617 package 'Seurat'.

618

619 For Partial Least Squares Discriminant Analysis (PLSDA) classification models, Least absolute
620 shrinkage and selection operator (LASSO) feature selection⁵⁴ was performed to extract the most
621 significant features in distinguishing our groups. LASSO feature selection was implemented in
622 the function select_lasso in the systemserology package (version 1.0) and was performed 100
623 times, and only features that were chosen repeatedly were further analyzed in downstream
624 analyses. PLSDA was performed using the LASSO-selected features. To evaluate model
625 robustness, the permuted control models were first built by randomly shuffling the labels 100
626 times. These control models were then cross-validated 10 times to determine the accuracy of our

627 model. Robustness was then calculated as the effect size of the actual and control distributions
628 and defined as the exact p-values of the tail probabilities of the actual distributions within the
629 control distributions.
630

631 **REFERENCES**

632

633 1. CDC (2022). CDC recommends COVID-19 vaccines for young children (US Department of
634 Health and Human Services, CDC).

635 2. CDC (2023). Interim Clinical Considerations for Use of COVID-19 Vaccines in the United
636 States (US Department of Health and Human Services, CDC).

637 3. Powell, A.A., Kirsebom, F., Stowe, J., McOwat, K., Saliba, V., Ramsay, M.E., Lopez-Bernal,
638 J., Andrews, N., and Ladhani, S.N. (2022). Effectiveness of BNT162b2 against COVID-19
639 in adolescents. *Lancet Infect. Dis.* 22, 581–583. 10.1016/S1473-3099(22)00177-3.

640 4. Klein, N.P., Stockwell, M.S., Demarco, M., Gaglani, M., Kharbanda, A.B., Irving, S.A., Rao,
641 S., Grannis, S.J., Dascomb, K., Murthy, K., et al. (2022). Effectiveness of COVID-19 Pfizer-
642 BioNTech BNT162b2 mRNA Vaccination in Preventing COVID-19–Associated Emergency
643 Department and Urgent Care Encounters and Hospitalizations Among
644 Nonimmunocompromised Children and Adolescents Aged 5–17 Years — VISION Network,
645 10 States, April 2021–January 2022. *MMWR Morb. Mortal. Wkly. Rep.* 71, 352–358.
646 10.15585/mmwr.mm7109e3.

647 5. Hamid, S., Woodworth, K., Pham, H., Milucky, J., Chai, S.J., Kawasaki, B., Yousey-Hindes,
648 K., Anderson, E.J., Henderson, J., Lynfield, R., et al. (2022). COVID-19–Associated
649 Hospitalizations Among U.S. Infants Aged <6 Months — COVID-NET, 13 States, June
650 2021–August 2022. *MMWR Morb. Mortal. Wkly. Rep.* 71, 1442–1448.
651 10.15585/mmwr.mm7145a3.

652 6. Hobbs, C.V., Woodworth, K., Young, C.C., Jackson, A.M., Newhams, M.M., Dapul, H.,
653 Maamari, M., Hall, M.W., Maddux, A.B., Singh, A.R., et al. (2022). Frequency,
654 Characteristics and Complications of COVID-19 in Hospitalized Infants. *Pediatr. Infect. Dis.*
655 *J.* 41, e81–e86. 10.1097/INF.0000000000003435.

656 7. Marchant, A., Sadarangani, M., Garand, M., Dauby, N., Verhasselt, V., Pereira, L., Bjornson,
657 G., Jones, C.E., Halperin, S.A., Edwards, K.M., et al. (2017). Maternal immunisation:
658 collaborating with mother nature. *Lancet Infect. Dis.* 17, e197–e208. 10.1016/S1473-
659 3099(17)30229-3.

660 8. Marchant, A., and Kollmann, T.R. (2015). Understanding the Ontogeny of the Immune
661 System to Promote Immune-Mediated Health for Life. *Front. Immunol.* 6.
662 10.3389/fimmu.2015.00077.

663 9. Halasa, N.B., Olson, S.M., Staat, M.A., Newhams, M.M., Price, A.M., Boom, J.A., Sahni,
664 L.C., Cameron, M.A., Pannaraj, P.S., Bline, K.E., et al. (2022). Effectiveness of Maternal
665 Vaccination with mRNA COVID-19 Vaccine During Pregnancy Against COVID-19–
666 Associated Hospitalization in Infants Aged <6 Months — 17 States, July 2021–January
667 2022. *MMWR Morb. Mortal. Wkly. Rep.* 71, 264–270. 10.15585/mmwr.mm7107e3.

668 10. Halasa, N.B., Olson, S.M., Staat, M.A., Newhams, M.M., Price, A.M., Pannaraj, P.S., Boom,
669 J.A., Sahni, L.C., Chiotos, K., Cameron, M.A., et al. (2022). Maternal Vaccination and Risk

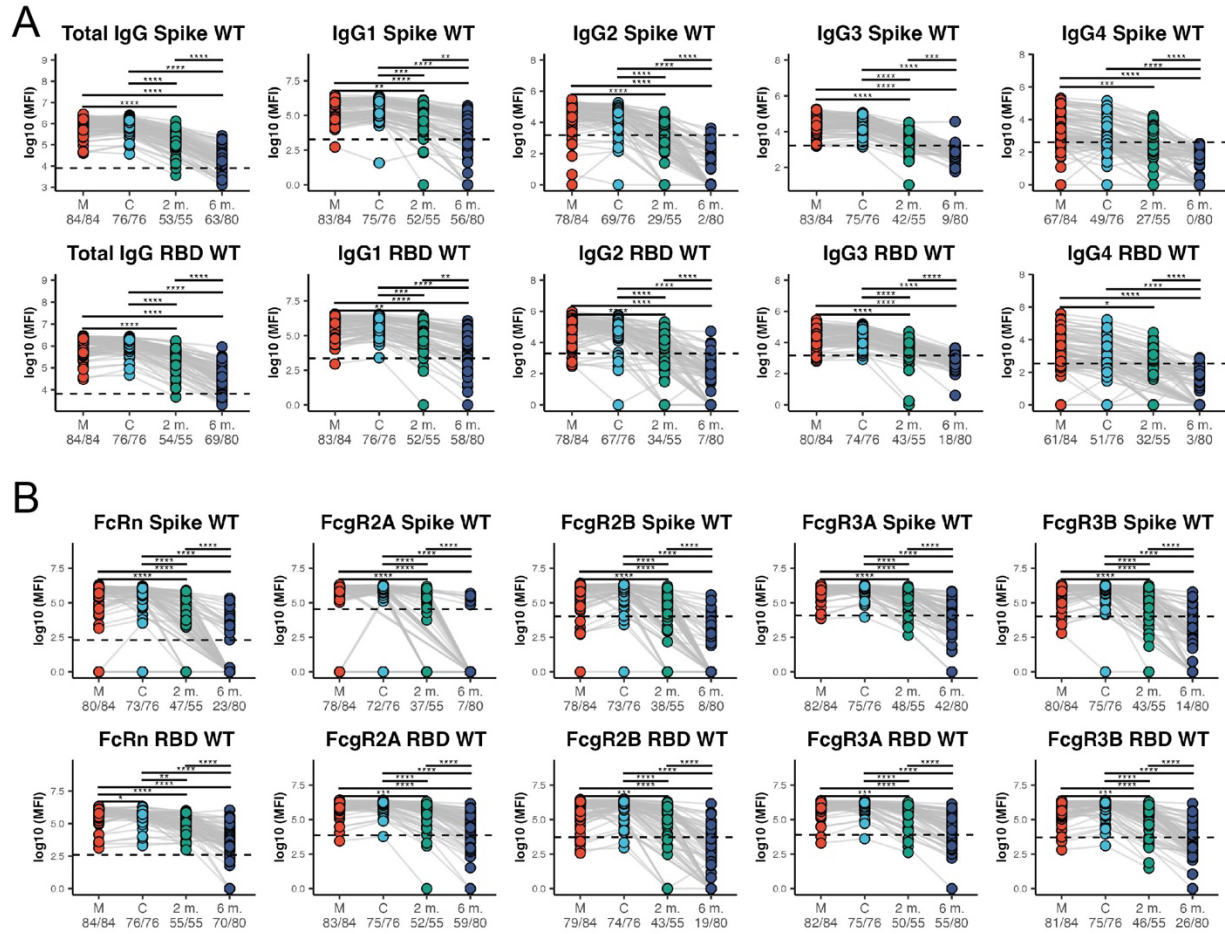
- 670 of Hospitalization for Covid-19 among Infants. *N. Engl. J. Med.* 387, 109–119.
671 10.1056/NEJMoa2204399.
- 672 11. Zerbo, O., Ray, G.T., Fireman, B., Layefsky, E., Goddard, K., Lewis, E., Ross, P., Omer, S.,
673 Greenberg, M., and Klein, N.P. (2023). Maternal SARS-CoV-2 vaccination and infant
674 protection against SARS-CoV-2 during the first six months of life. *Nat. Commun.* 14, 894.
675 10.1038/s41467-023-36547-4.
- 676 12. Trostle, M.E., Agüero-Rosenfeld, M.E., Roman, A.S., and Lighter, J.L. (2021). High
677 antibody levels in cord blood from pregnant women vaccinated against COVID-19. *Am. J.*
678 *Obstet. Gynecol. MFM* 3, 100481. 10.1016/j.ajogmf.2021.100481.
- 679 13. Nir, O., Schwartz, A., Toussia-Cohen, S., Leibovitch, L., Strauss, T., Asraf, K., Doolman, R.,
680 Sharabi, S., Cohen, C., Lustig, Y., et al. (2022). Maternal-neonatal transfer of SARS-CoV-2
681 immunoglobulin G antibodies among parturient women treated with BNT162b2 messenger
682 RNA vaccine during pregnancy. *Am. J. Obstet. Gynecol. MFM* 4, 100492.
683 10.1016/j.ajogmf.2021.100492.
- 684 14. Atyeo, C.G., Shook, L.L., Brigida, S., De Guzman, R.M., Demidkin, S., Muir, C.,
685 Akinwunmi, B., Baez, A.M., Sheehan, M.L., McSweeney, E., et al. (2022). Maternal
686 immune response and placental antibody transfer after COVID-19 vaccination across
687 trimester and platforms. *Nat. Commun.* 13, 3571. 10.1038/s41467-022-31169-8.
- 688 15. Atyeo, C., DeRiso, E.A., Davis, C., Bordt, E.A., De Guzman, R.M., Shook, L.L., Yonker,
689 L.M., Fasano, A., Akinwunmi, B., Lauffenburger, D.A., et al. (2021). COVID-19 mRNA
690 vaccines drive differential antibody Fc-functional profiles in pregnant, lactating, and
691 nonpregnant women. *Sci. Transl. Med.* 13, eabi8631. 10.1126/scitranslmed.abi8631.
- 692 16. Cassidy, A.G., Li, L., Golan, Y., Gay, C., Lin, C.Y., Jigmeddagva, U., Chidboy, M.A., Ilala,
693 M., Buarpong, S., Gonzalez, V.J., et al. (2023). Assessment of Adverse Reactions, Antibody
694 Patterns, and 12-month Outcomes in the Mother-Infant Dyad After COVID-19 mRNA
695 Vaccination in Pregnancy. *JAMA Netw. Open* 6, e2323405.
696 10.1001/jamanetworkopen.2023.23405.
- 697 17. Shook, L.L., Atyeo, C.G., Yonker, L.M., Fasano, A., Gray, K.J., Alter, G., and Edlow, A.G.
698 (2022). Durability of Anti-Spike Antibodies in Infants After Maternal COVID-19
699 Vaccination or Natural Infection. *JAMA* 327, 1087. 10.1001/jama.2022.1206.
- 700 18. Zohar, T., Loos, C., Fischinger, S., Atyeo, C., Wang, C., Slein, M.D., Burke, J., Yu, J.,
701 Feldman, J., Hauser, B.M., et al. (2020). Compromised Humoral Functional Evolution
702 Tracks with SARS-CoV-2 Mortality. *Cell* 183, 1508-1519.e12. 10.1016/j.cell.2020.10.052.
- 703 19. Wang, C., Li, Y., Kaplonek, P., Gentili, M., Fischinger, S., Bowman, K.A., Sade-Feldman,
704 M., Kays, K.R., Regan, J., Flynn, J.P., et al. (2022). The Kinetics of SARS-CoV-2 Antibody
705 Development Is Associated with Clearance of RNAemia. *mBio* 13, e01577-22.
706 10.1128/mbio.01577-22.

- 707 20. Mackin, S.R., Desai, P., Whitener, B.M., Karl, C.E., Liu, M., Baric, R.S., Edwards, D.K.,
708 Chicz, T.M., McNamara, R.P., Alter, G., et al. (2023). Fc- γ R-dependent antibody effector
709 functions are required for vaccine-mediated protection against antigen-shifted variants of
710 SARS-CoV-2. *Nat. Microbiol.* 8, 569–580. 10.1038/s41564-023-01359-1.
- 711 21. Bruhns, P., and Jönsson, F. (2015). Mouse and human FcR effector functions. *Immunol.*
712 *Rev.* 268, 25–51. 10.1111/imr.12350.
- 713 22. Atyeo, C., Pullen, K.M., Bordt, E.A., Fischinger, S., Burke, J., Michell, A., Slein, M.D.,
714 Loos, C., Shook, L.L., Boatman, A.A., et al. (2021). Compromised SARS-CoV-2-specific
715 placental antibody transfer. *Cell* 184, 628-642.e10. 10.1016/j.cell.2020.12.027.
- 716 23. Jennewein, M.F., Goldfarb, I., Dolatshahi, S., Cosgrove, C., Noelette, F.J., Krykbaeva, M.,
717 Das, J., Sarkar, A., Gorman, M.J., Fischinger, S., et al. (2019). Fc Glycan-Mediated
718 Regulation of Placental Antibody Transfer. *Cell* 178, 202-215.e14.
719 10.1016/j.cell.2019.05.044.
- 720 24. Mithal, L.B., Otero, S., Shanes, E.D., Goldstein, J.A., and Miller, E.S. (2021). Cord blood
721 antibodies following maternal coronavirus disease 2019 vaccination during pregnancy. *Am.*
722 *J. Obstet. Gynecol.* 225, 192–194. 10.1016/j.ajog.2021.03.035.
- 723 25. Murphy, E.A., Guzman-Cardozo, C., Sukhu, A.C., Parks, D.J., Prabhu, M., Mohammed, I.,
724 Jurkiewicz, M., Ketas, T.J., Singh, S., Canis, M., et al. (2023). SARS-CoV-2 vaccination,
725 booster, and infection in pregnant population enhances passive immunity in neonates. *Nat.*
726 *Commun.* 14, 4598. 10.1038/s41467-023-39989-y.
- 727 26. Prabhu, M., Murphy, E.A., Sukhu, A.C., Yee, J., Singh, S., Eng, D., Zhao, Z., Riley, L.E.,
728 and Yang, Y.J. (2021). Antibody Response to Coronavirus Disease 2019 (COVID-19)
729 Messenger RNA Vaccination in Pregnant Women and Transplacental Passage Into Cord
730 Blood. *Obstet. Gynecol.* 138, 278–280. 10.1097/AOG.0000000000004438.
- 731 27. Malek, A., Sager, R., Kuhn, P., Nicolaidis, K.H., and Schneider, H. (1996). Evolution of
732 Maternofetal Transport of Immunoglobulins During Human Pregnancy. *Am. J. Reprod.*
733 *Immunol.* 36, 248–255. 10.1111/j.1600-0897.1996.tb00172.x.
- 734 28. Palmeira, P., Quinello, C., Silveira-Lessa, A.L., Zago, C.A., and Carneiro-Sampaio, M.
735 (2012). IgG Placental Transfer in Healthy and Pathological Pregnancies. *Clin. Dev.*
736 *Immunol.* 2012, 1–13. 10.1155/2012/985646.
- 737 29. Clements, T., Rice, T.F., Vamvakas, G., Barnett, S., Barnes, M., Donaldson, B., Jones, C.E.,
738 Kampmann, B., and Holder, B. (2020). Update on Transplacental Transfer of IgG
739 Subclasses: Impact of Maternal and Fetal Factors. *Front. Immunol.* 11, 1920.
740 10.3389/fimmu.2020.01920.
- 741 30. Bartsch, Y.C. (2022). Preserved recognition of Omicron spike following COVID-19
742 messenger RNA vaccination in pregnancy. *Am. J. Obstet. Gynecol.* 227, 493.e1-493.e7.

- 743 31. Ou, J., Lan, W., Wu, X., Zhao, T., Duan, B., Yang, P., Ren, Y., Quan, L., Zhao, W., Seto, D.,
744 et al. (2022). Tracking SARS-CoV-2 Omicron diverse spike gene mutations identifies
745 multiple inter-variant recombination events. *Signal Transduct. Target. Ther.* 7, 138.
746 10.1038/s41392-022-00992-2.
- 747 32. Bartsch, Y.C., St. Denis, K.J., Kaplonek, P., Kang, J., Lam, E.C., Burns, M.D., Farkas, E.J.,
748 Davis, J.P., Boribong, B.P., Edlow, A.G., et al. (2022). SARS-CoV-2 mRNA vaccination
749 elicits robust antibody responses in children. *Sci. Transl. Med.* 14, eabn9237.
750 10.1126/scitranslmed.abn9237.
- 751 33. Yang, Y.J., Murphy, E.A., Singh, S., Sukhu, A.C., Wolfe, I., Adurty, S., Eng, D., Yee, J.,
752 Mohammed, I., Zhao, Z., et al. (2022). Association of Gestational Age at Coronavirus
753 Disease 2019 (COVID-19) Vaccination, History of Severe Acute Respiratory Syndrome
754 Coronavirus 2 (SARS-CoV-2) Infection, and a Vaccine Booster Dose With Maternal and
755 Umbilical Cord Antibody Levels at Delivery. *Obstet. Gynecol.* 139.
- 756 34. Gray, K.J., Bordt, E.A., Atyeo, C., Deriso, E., Akinwunmi, B., Young, N., Baez, A.M.,
757 Shook, L.L., Cvrk, D., James, K., et al. (2021). Coronavirus disease 2019 vaccine response
758 in pregnant and lactating women: a cohort study. *Am. J. Obstet. Gynecol.* 225, 303.e1-
759 303.e17. 10.1016/j.ajog.2021.03.023.
- 760 35. Mor, G., and Cardenas, I. (2010). The Immune System in Pregnancy: A Unique Complexity.
761 *Am. J. Reprod. Immunol.* 63, 425–433. 10.1111/j.1600-0897.2010.00836.x.
- 762 36. Irrgang, P., Gerling, J., Kocher, K., Lapuente, D., Steininger, P., Habenicht, K., Wytopil, M.,
763 Beileke, S., Schäfer, S., Zhong, J., et al. (2023). Class switch toward noninflammatory,
764 spike-specific IgG4 antibodies after repeated SARS-CoV-2 mRNA vaccination. *Sci.*
765 *Immunol.* 8, eade2798. 10.1126/sciimmunol.ade2798.
- 766 37. Korobova, Z.R., Zueva, E.V., Arsentieva, N.A., Batsunov, O.K., Liubimova, N.E.,
767 Khamitova, I.V., Kuznetsova, R.N., Rubinstein, A.A., Savin, T.V., Stanevich, O.V., et al.
768 (2022). Changes in Anti-SARS-CoV-2 IgG Subclasses over Time and in Association with
769 Disease Severity. *Viruses* 14, 941. 10.3390/v14050941.
- 770 38. SMFM (2023). RSV Vaccination in Pregnancy (Society for Maternal Fetal Medicine).
- 771 39. Kampmann, B., Madhi, S.A., Munjal, I., Simões, E.A.F., Pahud, B.A., Llapur, C., Baker, J.,
772 Pérez Marc, G., Radley, D., Shittu, E., et al. (2023). Bivalent Prefusion F Vaccine in
773 Pregnancy to Prevent RSV Illness in Infants. *N. Engl. J. Med.* 388, 1451–1464.
774 10.1056/NEJMoa2216480.
- 775 40. Castro-Dopico, T., and Clatworthy, M.R. (2019). IgG and Fcγ Receptors in Intestinal
776 Immunity and Inflammation. *Front. Immunol.* 10, 805. 10.3389/fimmu.2019.00805.
- 777 41. Bournazos, S., Gupta, A., and Ravetch, J.V. (2020). The role of IgG Fc receptors in
778 antibody-dependent enhancement. *Nat. Rev. Immunol.* 20, 633–643. 10.1038/s41577-020-
779 00410-0.

- 780 42. Lee, Y.-C., and Lin, S.-J. (2013). Neonatal Natural Killer Cell Function: Relevance to
781 Antiviral Immune Defense. *Clin. Dev. Immunol.* 2013, 1–6. 10.1155/2013/427696.
- 782 43. Atyeo, C., Shook, L.L., Nziza, N., Deriso, E.A., Muir, C., Baez, A.M., Lima, R.S.,
783 Demidkin, S., Brigida, S., De Guzman, R.M., et al. (2023). COVID-19 booster dose induces
784 robust antibody response in pregnant, lactating, and nonpregnant women. *Am. J. Obstet.*
785 *Gynecol.* 228, 68.e1-68.e12. 10.1016/j.ajog.2022.07.014.
- 786 44. Pillai, S. (2023). Is it bad, is it good, or is IgG4 just misunderstood? *Sci. Immunol.* 8,
787 eadg7327. 10.1126/sciimmunol.adg7327.
- 788 45. Uversky, V.N., Redwan, E.M., Makis, W., and Rubio-Casillas, A. (2023). IgG4 Antibodies
789 Induced by Repeated Vaccination May Generate Immune Tolerance to the SARS-CoV-2
790 Spike Protein. *Vaccines* 11, 991. 10.3390/vaccines11050991.
- 791 46. FDA (2023). FDA Approves First Vaccine for Pregnant Individuals to Prevent RSV in
792 Infants (Food and Drug Administration).
- 793 47. CDC (2023). CDC recommends new vaccine to help protect babies against severe respiratory
794 syncytial virus (RSV) illness after birth (US Department of Health and Human Services,
795 CDC).
- 796 48. ACOG (2023). ACOG Unequivocally Supports ACIP’s Recommendation Approving Use of
797 Maternal RSV Vaccine in Pregnancy (American College of Obstetricians and
798 Gynecologists).
- 799 49. Bordt, E.A., Shook, L.L., Atyeo, C., Pullen, K.M., De Guzman, R.M., Meinsohn, M.-C.,
800 Chauvin, M., Fischinger, S., Yockey, L.J., James, K., et al. (2021). Maternal SARS-CoV-2
801 infection elicits sexually dimorphic placental immune responses. *Sci. Transl. Med.* 13,
802 eabi7428. 10.1126/scitranslmed.abi7428.
- 803 50. Lipschuetz, M., Guedalia, J., Cohen, S.M., Sompolinsky, Y., Shefer, G., Melul, E., Ergaz-
804 Shaltiel, Z., Goldman-Wohl, D., Yagel, S., Calderon-Margalit, R., et al. (2023). Maternal
805 third dose of BNT162b2 mRNA vaccine and risk of infant COVID-19 hospitalization. *Nat.*
806 *Med.* 29, 1155–1163. 10.1038/s41591-023-02270-2.
- 807 51. Brown, E.P., Licht, A.F., Dugast, A.-S., Choi, I., Bailey-Kellogg, C., Alter, G., and
808 Ackerman, M.E. (2012). High-throughput, multiplexed IgG subclassing of antigen-specific
809 antibodies from clinical samples. *J. Immunol. Methods* 386, 117–123.
810 10.1016/j.jim.2012.09.007.
- 811 52. McInnes, L., Healy, J., and Melville, J. (2020). UMAP: Uniform Manifold Approximation
812 and Projection for Dimension Reduction. Preprint at arXiv.
- 813 53. Wold, S., Esbensen, K., and Geladi, P. Principal Component Analysis.
- 814 54. Tibshirani, R. (1996). Regression Shrinkage and Selection Via the Lasso. *J. R. Stat. Soc. Ser.*
815 *B Methodol.* 58, 267–288. 10.1111/j.2517-6161.1996.tb02080.x.

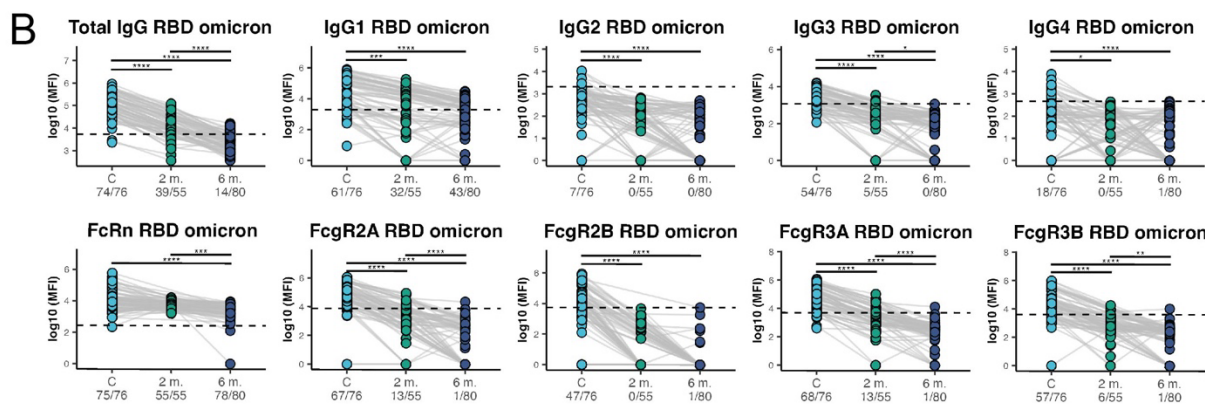
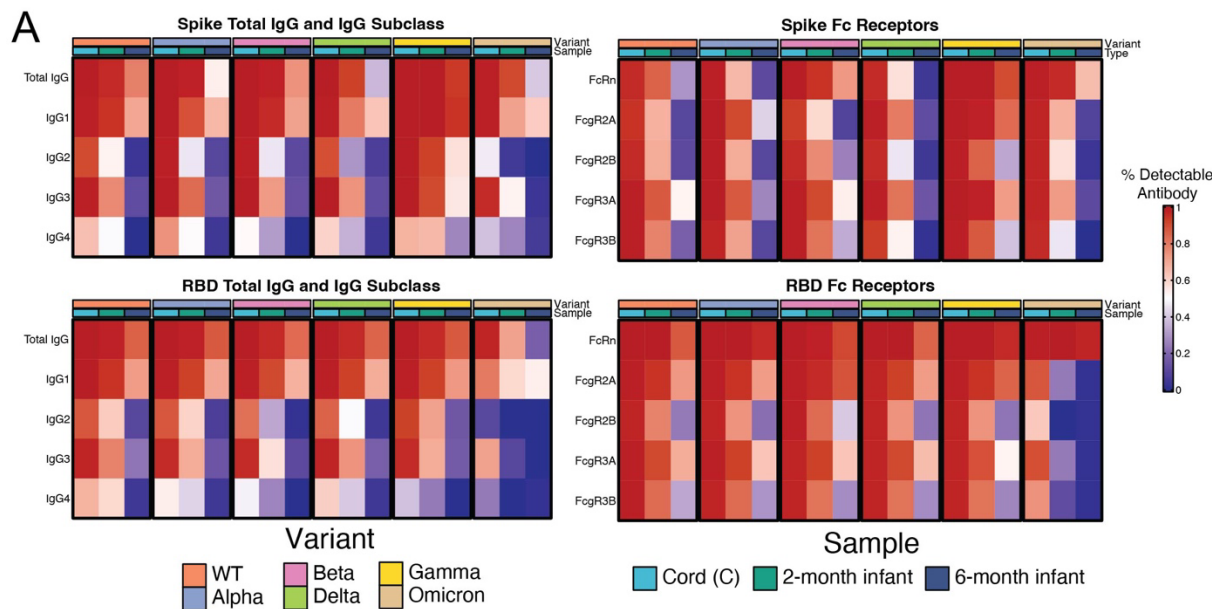
816 **FIGURES AND LEGENDS**



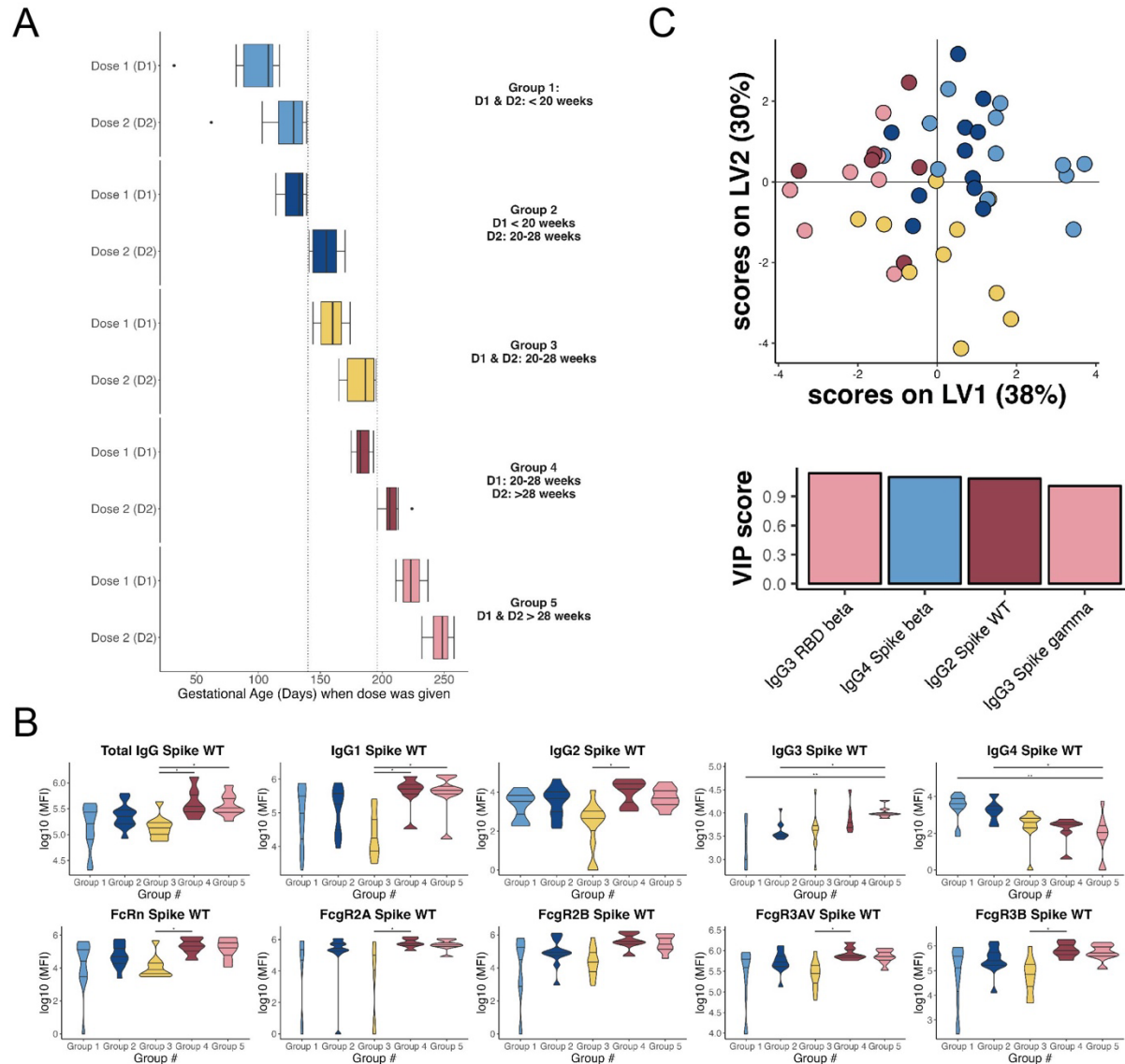
817
818
819
820
821
822
823
824
825
826
827
828
829

Figure 1: Maternal vaccine-induced SARS-CoV-2 antibodies persist in 2-month-old and 6-month-old infants

Dot plots showing (A) Spike-specific WT (top) and RBD-specific WT antibody levels and (B) FcR profiles of maternal (M), cord (C), 2-month-old infants (2 m), and 6-month-old infants (6 m). Significance was determined by a Kruskal-Wallis test followed by Benjamini-Hochberg procedure for multiple hypotheses correction. If statistically significant, a two-sided Mann-Whitney U test was performed. (* $p < 0.05$, ** $p < 0.01$, *** $p < 0.001$, **** $p < 0.0001$). The dashed line represents the level of detection for each feature, defined as one standard deviation above the mean value for assay negative biological controls (SARS-CoV-2 negative, unvaccinated samples).



830
831
832 **Figure 2: IgG subclasses and Fc-receptor binding capacity of antibodies against SARS-CoV-**
833 **2 variants of concern in umbilical cord blood, 2-month-old, and 6-month-old infants**
834 (A) The heatmap shows the ratio of infants with detectable antibody titer or FcR binding levels
835 N=76 for cord (C), N=55 for 2-month-old infants (2 M), and N=80 for 6-month-old infants (6 M)
836 against the Spike or RBD region of wild-type (WT) strain and Variants of Concern (VOCs)
837 including Alpha, Beta, Delta, Gamma, and Omicron.
838 (B) Univariate plots showing RBD-specific Omicron antibody IgG levels (top) and FcR binding
839 profiles in cord (C), 2-month-old infants (2 m), and 6-month-old infants (6 m).
840 Significance was determined by a Kruskal-Wallis test followed by Benjamini-Hochberg
841 procedure for multiple hypotheses correction. If statistically significant, a two-sided Mann-
842 Whitney U test was performed. (*p<0.05, **p<0.01, ***p<0.001, ****p<0.0001). The dashed
843 line represents the level of detection for each feature, defined as one standard deviation above the
844 mean value for assay negative biological controls (SARS-CoV-2 negative, unvaccinated
845 samples).



846

847

848

Figure 3: Maternal vaccine timing drives IgG levels and Fc-receptor binding profiles in 2-month-old infants.

849

Infants whose mothers were vaccinated in the late second and early third trimester (received at least one dose of mRNA vaccine after 28 weeks) had the highest levels of antibodies at 2 months. (A) Diagram showing the grouping strategy for 2-month-old infants based on the Dose 1 (D1) and Dose 2 (D2) COVID-19 vaccination. Group 1: $N = 12$, Group 2: $N = 11$, Group 3: $N = 10$, Group 4: $N = 6$, Group 5: $N = 8$.

854

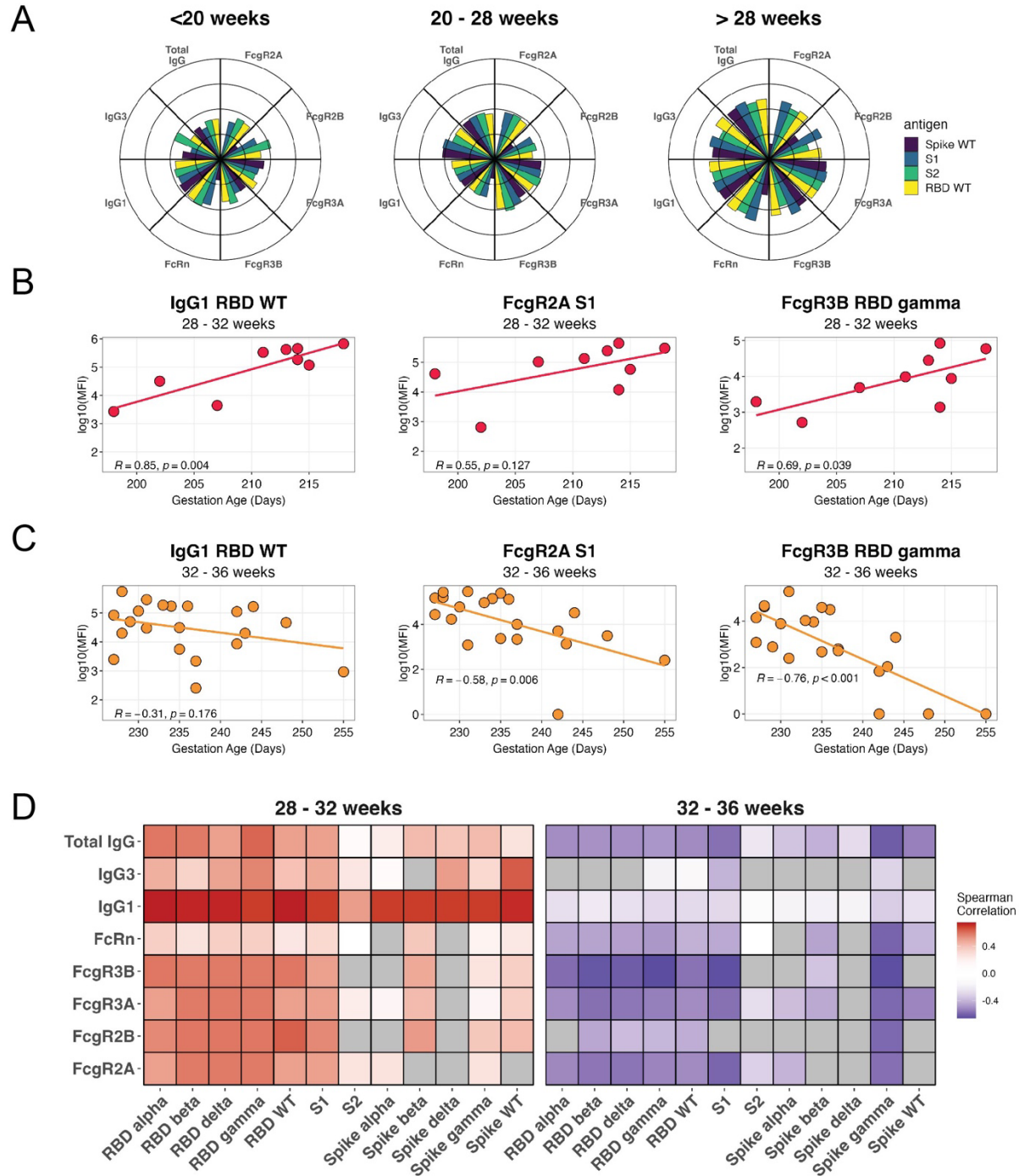
(B) Univariate plots showing Spike-specific WT antibody and Fc receptor (FcR) levels of each 2-month-old infant group (as shown in in Figure 3A) Significance was determined by a Kruskal-Wallis test followed by Benjamini-Hochberg procedure for multiple hypotheses correction. If statistically significant, a two-sided Mann-Whitney U test was performed. ($*p < 0.05$, $****p < 0.0001$). The middle line represents the median, whereas the other lines represent the first and third quartiles.

860

(C) (Top) A partial-least squares discriminant model (PLSDA) was built using LASSO feature regularization and variable selection of the infant cohort group, resulting a reduced set

861

862 features that were consistently in at least 80 of the 100 LASSO models. (Bottom) Variable
863 importance in projection (VIP) score of the selected features. The magnitude indicates the
864 importance of the features in driving the separation in the model. The color of the feature
865 corresponds to the group to which the feature was enriched.
866



867
 868 **Figure 4: Maternal vaccine administration at > 32 weeks is associated with reduced**
 869 **antibody persistence in 6-month-old infants**
 870 (A) The polar plots depict the mean percentile ranks of the antibody features within 6 month
 871 infants whose moms were vaccinated with the first dose of the mRNA COVID-19 vaccine <20
 872 weeks ($N=20$), 20 – 28 weeks ($N=26$), and > 28 weeks ($N=30$). Each wedge represents an
 873 antibody feature, and the size of the wedge depicts the mean percentile ranging from 0-1.

874 **(B)** Linear regression models fits the relationship between gestation age of dose 1 (days) (those
875 vaccinated between 28 – 32 weeks) and anti-RBD WT IgG1, anti-S1 FcγR2AR, and anti-RBD
876 gamma FcγR3B. The rho and p-values are reported in the plot
877 **(C)** Linear regression models fits the relationship between gestation age of dose 1 (days) (those
878 vaccinated between 32 - 36 weeks) and anti-RBD WT IgG1, anti-S1 FcγR2AR, and anti-RBD
879 gamma FcγR3B. The rho and p-values are reported in the plot.
880 **(D)** The heatmap shows the Spearman correlation score for each feature against gestational age
881 (days) within infant samples whose mothers received the first dose of the mRNA COVID-19
882 vaccine between 28 – 32 weeks or 32 – 36 weeks. The red boxes indicate samples with a positive
883 Spearman correlation, blue boxes indicate samples with a negative Spearman correlation. Within
884 each group, gray boxes are features which were excluded from the analysis (if >70% of values
885 fell below the threshold of detection, defined as less than one standard deviation above the mean
886 of SARS-CoV-2 negative, unvaccinated control samples).
887