

## MANUSCRIPT TITLE

Impact of COVID-19 on mental illness in vaccinated and unvaccinated people: a population-based cohort study in OpenSAFELY

## AUTHORS

Venexia M Walker [1,2,3]\*, Praveetha Patalay [4,5]\*, Jose Ignacio Cuitun Coronado [1]\*, Rachel Denholm [1,6,7], Harriet Forbes [8], Jean Stafford [4], Bettina Moltrecht [5], Tom Palmer [1,2], Alex Walker [9], Ellen J. Thompson [10,11], Kurt Taylor [1], Genevieve Cezard [12,13], Elsie M F Horne [1,4], Yinghui Wei [14], Marwa Al Arab [1], Rochelle Knight [1,3,6,15], Louis Fisher [9], Jon Massey [9], Simon Davy [9], Amir Mehrkar [9], Seb Bacon [9], Ben Goldacre [9], Angela Wood [12,13,16,17,18,19], Nishi Chaturvedi [4]†, John Macleod [15]†, Ann John [20]†, Jonathan A C Sterne [1,6,7]†

On behalf of the Longitudinal Health and Wellbeing COVID-19 National Core Study

\* authors contributed equally

† authors contributed equally

- [1] Population Health Sciences, University of Bristol, Bristol, UK
- [2] MRC Integrative Epidemiology Unit, University of Bristol, Bristol, UK
- [3] Department of Surgery, University of Pennsylvania Perelman School of Medicine, Philadelphia, Pennsylvania, USA
- [4] MRC Unit for Lifelong Health and Ageing, University College London, London, UK
- [5] Centre for Longitudinal Studies, University College London, London, UK
- [6] NIHR Bristol Biomedical Research Centre, Bristol, UK
- [7] Health Data Research UK South-West, Bristol, UK
- [8] Faculty of Epidemiology and Population Health, London School of Hygiene & Tropical Medicine, London, UK
- [9] The Bennett Institute for Applied Data Science, Nuffield Department of Primary Care Health Sciences, University of Oxford, Oxford, UK
- [10] Department of Twin Research and Genetic Epidemiology, School of Life Course & Population Sciences, Faculty of Life Sciences & Medicine, King's College London, London, UK
- [11] School of Psychology, University of Sussex, Falmer, UK
- [12] British Heart Foundation Cardiovascular Epidemiology Unit, Department of Public Health and Primary Care, University of Cambridge, Cambridge, UK
- [13] Victor Phillip Dahdaleh Heart and Lung Research Institute, University of Cambridge, Cambridge UK
- [14] Centre for Mathematical Sciences, School of Engineering, Computing and Mathematics, University of Plymouth, Plymouth, UK
- [15] The National Institute for Health and Care Research Applied Research Collaboration West (NIHR ARC West) at University Hospitals Bristol and Weston, UK

- [16] British Heart Foundation Centre of Research Excellence, University of Cambridge, Cambridge, UK
- [17] National Institute for Health and Care Research Blood and Transplant Research Unit in Donor Health and Behaviour, University of Cambridge, Cambridge, UK
- [18] Health Data Research UK Cambridge, Wellcome Genome Campus and University of Cambridge, Cambridge, UK
- [19] Cambridge Centre of Artificial Intelligence in Medicine
- [20] University of Swansea, Swansea, UK

## **CORRESPONDING AUTHOR**

Jonathan Sterne; [jonathan.sterne@bristol.ac.uk](mailto:jonathan.sterne@bristol.ac.uk)

## **ABSTRACT**

**Background:** COVID-19 is associated with subsequent mental illness in both hospital- and population-based studies. Evidence regarding effects of COVID-19 vaccination on mental health consequences of COVID-19 is limited.

**Methods:** With the approval of NHS England, we used linked electronic health records (OpenSAFELY-TPP) to conduct analyses in a 'pre-vaccination' cohort (17,619,987 people) followed during the wild-type/Alpha variant eras (January 2020-June 2021), and 'vaccinated' and 'unvaccinated' cohorts (13,716,225 and 3,130,581 people respectively) during the Delta variant era (June-December 2021). We estimated adjusted hazard ratios (aHRs) comparing the incidence of mental illness after diagnosis of COVID-19 with the incidence before or without COVID-19.

**Outcomes:** We considered eight outcomes: depression, serious mental illness, general anxiety, post-traumatic stress disorder, eating disorders, addiction, self-harm, and suicide. Incidence of most outcomes was elevated during weeks 1-4 after COVID-19 diagnosis, compared with before or without COVID-19, in each cohort. Vaccination mitigated the adverse effects of COVID-19 on mental health: aHRs (95% CIs) for depression and for serious mental illness during weeks 1-4 after COVID-19 were 1.93 (1.88-1.98) and 1.42 (1.24-1.61) respectively in the pre-vaccination cohort and 1.79 (1.68-1.91) and 2.21 (1.99-2.45) respectively in the unvaccinated cohort, compared with 1.16 (1.12-1.20) and 0.91 (0.84-0.98) respectively in the vaccinated cohort. Elevation in incidence was higher, and persisted for longer, after hospitalised than non-hospitalised COVID-19.

**Interpretation:** Incidence of mental illness is elevated for up to a year following severe COVID-19 in unvaccinated people. Vaccination mitigates the adverse effect of COVID-19 on mental health.

**Funding:** Medical Research Council (MC\_PC\_20059) and NIHR (COV-LT-0009).

## INTRODUCTION

SARS-CoV-2 infection, and consequent COVID-19, are associated with subsequent mental illness in both hospital and population-based studies<sup>1,2</sup>; for both common mental health difficulties, such as anxiety and depressive symptoms<sup>3</sup>, and serious mental illness, including psychotic disorders<sup>4</sup>. Potential mechanisms for these adverse effects of COVID-19 include physiological pathways, such as inflammation and microvascular changes, and psychosocial effects, such as anxiety about the consequences of COVID-19 including long COVID. Previous studies identified associations of COVID-19 with mental illness in both hospitalised patients<sup>5,6</sup> and the general population<sup>1,7,8</sup>. Differentiating between hospitalised and non-hospitalised groups can provide insights into the role of COVID-19 severity.<sup>9</sup>

Rapid rollout of COVID-19 vaccination within a year of the start of the pandemic was a crucial component of the public health response. Although the impacts of vaccination in preventing and reducing the severity of COVID-19 are well-established<sup>10,11</sup>, there is limited evidence regarding the implications of vaccination for other adverse health consequences of COVID-19, including mental illness. Several studies reported short-term improvements in population mental health following vaccination rollout.<sup>12,13</sup> However, we did not identify any studies investigating differences in mental illness outcomes following COVID-19 by vaccination status.

Rates of SARS-CoV-2 infection, vaccination, and disease severity were patterned by socio-demographic and health factors including age, sex, ethnicity, income and prior mental illness.<sup>14–18</sup> Mental health consequences of COVID-19 may also vary between subgroups. For example, older people are at higher risk of more severe COVID-19, and hence may have experienced higher levels of psychological distress.

Using linked primary and secondary care data from over 17 million people, we examined associations of COVID-19 with subsequent mental illness in the pre-vaccination period of the pandemic and for unvaccinated and vaccinated people after vaccination became available. We compared rates of common and severe mental illness after a diagnosis of COVID-19 with rates before or without COVID-19. We also investigated variation in these associations between subgroups defined by COVID-19 severity, age, sex, ethnicity, prior mental illness, and prior SARS-COV-2 infection. Follow-up of those diagnosed with COVID-19 during the first year of the pandemic was for up to two years post-diagnosis.

## METHODS

### Study design and data sources

Our study used OpenSAFELY-TPP, which provides secure, privacy-protecting access to linked data from 24 million people registered with English general practices (GPs) using TPP SystemOne software. These data include primary care data linked via pseudonymised NHS number to Secondary Uses Service (SUS) secondary care data, Office of National Statistics (ONS) Death Registry, Second Generation Surveillance System (SGSS) COVID-19 testing data and the Index of Multiple Deprivation (IMD). COVID-19 vaccination records (National Immunisation Management System) are available within TPP primary care data.

Outcomes were defined using the earliest of: a relevant SNOMED CT code indicating a diagnosis in primary care; start of a secondary care episode with an ICD-10 code indicating a confirmed diagnosis in any position; or death with an ICD-10 code indicating the diagnosis as either a primary or underlying cause. From the range of mental illnesses examined, we present main findings for depression and serious mental illness (composite of schizophrenia, schizo-affective disorder, bipolar disorder, and psychotic depression). We also examined general anxiety disorders, post-traumatic stress disorder (PTSD), eating disorders, addiction, self-harm and suicide, which are presented in supplementary material. Code lists are available online:

<https://github.com/opensafely/post-covid-mentalhealth/tree/main/codelists>.

The date of COVID-19 was defined as the first of: confirmed COVID-19 diagnosis recorded in primary care; positive SARS-COV-2 PCR or antigen test recorded in SGSS; start of an episode with a confirmed diagnosis in any position in SUS; or death with SARS-COV-2 infection listed in any position on the ONS death registry. People with a hospital admission record in SUS that included a confirmed diagnosis in the primary position within 28 days of first COVID-19 were defined as having had 'hospitalised COVID-19'. All other COVID-19 diagnoses were defined as 'non-hospitalised'. Covariates identified as potential confounders included age, sex, ethnicity, area socioeconomic deprivation, smoking status, care home residence, health care work, number of GP-patient interactions in 2019, and binary indicators for history of comorbidities (**Supplementary Table 1**).

### **Study population**

Three cohorts were defined (**Supplementary Table 2; Supplementary Figure 1**). The 'pre-vaccination' cohort was followed from January 1<sup>st</sup> 2020 (baseline) until the earliest of December 14<sup>th</sup> 2021<sup>19</sup>, outcome event date and date of death. Exposure was defined as recorded COVID-19 between baseline and the earliest date of eligibility for COVID-19 vaccination, date of first vaccination and June 18<sup>th</sup> 2021 (when all adults became eligible for vaccination). Follow-up in the 'vaccinated' cohort started at the later of baseline and two weeks after a second COVID-19 vaccination and ended at the earliest of December 14<sup>th</sup> 2021, outcome event date and date of death. The 'unvaccinated' cohort had not received a COVID-19 vaccine by 12 weeks after they became eligible for vaccination. Follow-up started at the later of baseline and 12 weeks after vaccination eligibility and ended at the earliest of December 14<sup>th</sup> 2021, outcome event date, date of death and date of first vaccination.

People eligible for each cohort were registered with an English GP for at least six months before baseline and were alive with a known age between 18 and 110 years, sex, deprivation, and region at baseline. People were excluded from each cohort if they had any record of SARS-CoV-2 infection before baseline. In the vaccinated cohort, people were excluded if they received a vaccination before the start of the vaccine rollout on December 8<sup>th</sup> 2020 (indicating an error or participation in a randomized trial); their second dose was dated before their first dose vaccination (contradictory vaccine record); their second dose was less than three weeks after their first dose; or they received mixed vaccine brands before this was permitted on May 7<sup>th</sup> 2021. In the unvaccinated cohort, people were excluded if they had any record of a COVID-19 vaccination before June 1<sup>st</sup> 2021. Vaccine eligibility was defined using the Joint Committee on Vaccination and Immunisation (JCVI) groupings. People who could not be assigned to a JCVI group were excluded.

## Statistical analyses

For each cohort, baseline characteristics were described, and numbers of outcome events, person-years of follow-up and incidence rates (per 100,000 person-years) before and after all, hospitalised and non-hospitalised COVID-19 were tabulated. Time to first event was analysed for each outcome. Cox models were fitted with calendar time scale using the cohort-specific baseline as the origin. Hazard ratios (HRs) for follow-up after, versus before or without COVID-19, were estimated, splitting follow-up into the day of COVID-19 diagnosis ('day 0'), the remainder of 1-4 weeks, and 5-28 weeks after COVID-19 for all cohorts and additionally 29-52 and 53-102 weeks after COVID-19 for the pre-vaccination cohort. For computational efficiency, we used sampling for analyses containing >4,000,000 people: we included all people with the outcome event, all people with the exposure, and a 10% (for general anxiety, depression, serious mental illness) or 20% (for all other outcomes) random sample of non-case-non-exposed people. We used inverse probability weights to adjust for the sampling and derived confidence intervals using robust standard errors when sampling had occurred. For each outcome and cohort, we estimated: (i) age and sex adjusted; and (ii) maximally adjusted HRs including all covariates listed above. Restricted cubic splines were used to account for age unless otherwise specified. All models were stratified by region so that risk sets were constructed within region, hence accounting for between-region variation in the baseline hazard.

Subgroup analyses according to prior history of the outcome event, age group, sex, ethnicity, and COVID-19 history were conducted for depression and serious mental illness. We calculated absolute excess risk 28 weeks after COVID-19, including outcome events recorded on the day of COVID-19 diagnosis ('day 0') and weighted by the proportion of people in age and sex strata in the pre-vaccination cohort. Further details of the statistical methods are in the supplement.

Data management and analyses were conducted in Python version 3.8.10, R version 4.0.2 and Stata/MP version 16.1 according to a pre-specified protocol. The protocol, analysis code and code lists are available online: <https://github.com/opensafely/post-covid-mentalhealth>.

## RESULTS

The pre-vaccination cohort included 17,619,987 people of whom 975,429 received a COVID-19 diagnosis (**Table 1, Supplementary Figure 2**). The median (interquartile range (IQR)) age was 49 (34-64) years. The cohort was 50.2% female and 79.3%, 6.3%, and 2.1% were recorded as of White, South Asian, and Black ethnicities respectively. The vaccinated and unvaccinated cohorts included 13,716,225 and 3,130,581 people respectively, of whom 850,023 and 147,315 received a COVID-19 diagnosis. Differences in demographic characteristics between the vaccinated and unvaccinated cohorts reflect predictors of COVID-19 vaccine uptake.<sup>20</sup> **Supplementary Table 3** summarises participants' medical history by cohort.

In each cohort, the incidence of mental illness was higher after diagnosis of COVID-19 than before or without COVID-19 (**Table 2**). The highest incidence rates were after hospitalised COVID-19. Depression was the most common outcome with a total of 1,278,363, 343,371, and 56,403 diagnoses in the pre-vaccination, vaccinated

and unvaccinated cohorts respectively. There were 379,275, 84,981, and 18,039 diagnoses of serious mental illness in the pre-vaccination, vaccinated and unvaccinated cohorts respectively.

### **Comparisons of event rates after diagnosis of COVID-19 versus before or without COVID-19**

Maximally adjusted HRs (aHRs) comparing the incidence of each outcome after diagnosis of COVID-19 with the incidence before or without COVID-19 did not differ substantially from the age- and sex-adjusted HRs in all cohorts (**Supplementary Figure 3**). The incidence of all outcomes was extremely high on day zero (**Table 3**). The incidence of most outcomes was elevated during the remainder of 1-4 weeks after COVID-19, compared with before or without COVID-19, in each cohort.

#### *Depression*

The incidence of depression was elevated during weeks 1-4 after COVID-19, compared with before or without COVID-19, in the pre-vaccination and unvaccinated cohorts (1.93 (95% CI 1.88-1.98) and 1.79 (1.68-1.91) respectively) and, to a lesser extent, in the vaccinated cohort (1.16 (1.12-1.20)) (**Figure 1, Table 3**). The incidence of depression remained elevated during weeks 5-28 in the vaccinated and unvaccinated cohorts (aHRs 1.11 (1.08-1.14) and 1.28 (1.22-1.36) respectively) and up to weeks 53-102 in the pre-vaccination cohort (aHR 1.17 (1.13-1.20)). aHRs during weeks 1-4 were considerably higher after hospitalised COVID-19 (pre-vaccination: 16.5 (15.8-17.3); vaccinated: 13.0 (12.0-14.0); unvaccinated: 15.6 (14.1-17.2)) than after non-hospitalised COVID-19 (pre-vaccination: 1.22 (1.17-1.26); vaccinated: 0.92 (0.88-0.95); unvaccinated: 1.11 (1.02-1.20)) (**Figure 1, Supplementary Tables 4-5**). In the pre-vaccination cohort, aHRs remained higher after hospitalised than non-hospitalised COVID-19 throughout follow-up.

#### *Serious mental illness*

The incidence of serious mental illness was elevated during weeks 1-4 after COVID-19, compared with before or without COVID-19, in the pre-vaccinated and unvaccinated cohorts (1.48 (95% CI 1.40-1.56) and 1.42 (1.24-1.61) respectively) (**Figure 1, Table 3**). However, the incidence of serious mental illness was lower during weeks 1-4 in the vaccinated cohort (0.91 (0.84-0.98)). Incidence remained slightly elevated during weeks 5-28 in the vaccinated and unvaccinated cohorts (1.07 (1.01-1.1) and 1.14 (1.02-1.27)) and up to weeks 53-102 in the pre-vaccination cohort (1.13 (1.06-1.19)). The incidence of serious mental illness during weeks 1-4 was considerably higher after hospitalised COVID-19 (pre-vaccination: 9.65 (8.71-10.7); vaccinated: 6.38 (5.21-7.80); unvaccinated: 8.76 (7.02-10.9)) than after non-hospitalised COVID-19: (pre-vaccination: 1.04 (0.97-1.11); vaccinated: 0.79 (0.73-0.86); unvaccinated: 0.98 (0.83-1.15)) (**Figure 1, Supplementary Tables 4-5**).

#### *Subgroup analyses*

aHRs for depression were highest during weeks 1-4 after COVID-19, versus before or without COVID-19, for people with prior history of the condition that was recorded more than six months ago (**Figure 2, Supplementary Tables 6-8**). For example, in the pre-vaccination cohort, aHRs were 2.16 (2.08-2.23) for prior history more than six months ago, 1.66 (1.52-1.80) for prior history within six months, and 1.58 (1.50-1.67) for no prior history. aHRs for serious mental illness were also highest during weeks 1-4 after COVID-19 for people with prior history of the condition that was recorded more than six months ago in the unvaccinated cohort (1.56 (1.30-1.88)). However, aHRs for serious mental illness were highest during weeks 1-4 after COVID-19 for

people with prior history within six months for the pre-vaccination (1.88 (1.57-2.26)) and vaccinated cohorts (1.07 (0.87-1.33)). Beyond 5 weeks, incidence attenuated for those with prior history both within six months and more than six months ago. For the vaccinated cohort, incidence of serious mental illness during weeks 5-28 after COVID-19 was consistent with before or without COVID-19 (prior history more than six months ago: 1.00 (0.93-1.08); prior history within six months: 1.07 (0.87-1.33)).

In the vaccinated cohort, aHRs for depression and serious mental illness after COVID-19, versus before or without COVID-19 were similar in people with and without a with prior history of COVID-19 (**Supplementary Figure 4, Supplementary Table 9**). aHRs for depression during weeks 1-4 and 5-12 were greater in the 60-79 and 80-110 age groups than the 18-39 and 40-59 age groups: those serious mental illness were greater in the 60-79 and 80-110 age groups than the 18-39 and 40-59 age groups across all time periods (**Supplementary Figure 5, Supplementary Tables 10-13**). aHRs for depression and serious mental illness were marginally higher for men than women during weeks 1-4 after COVID-19 (**Supplementary Figure 6, Supplementary Tables 14-15**). aHRs for depression after COVID-19, versus before or without COVID-19, were generally comparable between ethnic groups (**Supplementary Figure 7, Supplementary Tables 16-20**), except that in the vaccinated cohort aHRs for depression were higher for the Black ethnic group than other ethnic groups. aHRs for serious mental illness after COVID-19 were broadly comparable by ethnic group for the pre-vaccination cohort. aHRs for serious mental illness could only be estimated for the White and South Asian ethnic groups in the vaccinated cohort, and for the White ethnic group in the unvaccinated cohort, due to low event counts.

#### *Other mental illnesses*

aHRs for other mental illnesses were broadly similar to those for depression and serious mental illness, both overall (**Figure 3, Table 3**) and for hospitalised and non-hospitalised COVID-19 (**Supplementary Tables 4-5**). An exception was that aHRs for post-traumatic stress disorder after hospitalised COVID-19, versus before or without COVID-19, were higher during weeks 1-4 in the vaccinated cohort than the other two cohorts (pre-vaccination: 19.9 (15.6-25.5); vaccinated: 26.3 (19.3-35.8); unvaccinated: 14.0 (8.40-23.4)). This pattern was not present for non-hospitalised COVID-19 or overall.

#### **Absolute excess risk**

Estimated excess risks of depression 28 weeks after COVID-19, standardised to the age and sex distribution of the pre-vaccination cohort, were 1020, 449, and 1009 per 100,000 people in the pre-vaccination, vaccinated and unvaccinated cohorts respectively (**Figure 4, Supplementary Table 21**). Up to 32% of the estimated excess events occurred on the day of COVID-19 diagnosis ('day 0'). Estimated excess risks of serious mental illness 28 weeks post-COVID-19, standardised to the age and sex distribution of the pre-vaccination cohort, were 227, 60, and 199 per 100,000 people in the pre-vaccination, vaccinated and unvaccinated cohorts respectively. Up to 43% of the estimated excess events occurred on the day of COVID-19 diagnosis ('day 0').

## DISCUSSION

In a study of more than 17 million people followed for up to two years of the pandemic, rates of most mental illnesses were markedly elevated during the first four weeks after diagnosis of COVID-19. This elevation was less marked in people who were vaccinated before diagnosis of COVID-19. In people diagnosed with COVID-19 before vaccination was available, incidence of mental illness remained elevated more than four weeks after diagnosis, particularly in people who were hospitalised with COVID-19. In subgroup analyses according to prior history of depression and serious mental illness, associations 1-4 weeks after COVID-19 were greater in those with than without prior history of each outcome, but more than 4 weeks after COVID-19 associations were greater in people with no prior history of the outcome. Subgroup analyses also suggested stronger associations in older age groups and in men. The effect of COVID-19 on mental illness did not differ markedly between ethnic groups.

The attenuation of adverse effects of COVID-19 on mental illness in those who were vaccinated, compared to those unvaccinated, may be explained by reduced disease severity due to vaccination.<sup>21</sup> This might be due to lower levels of systemic inflammation, as well as psychological benefits of vaccination such as reduced worry about the consequences of COVID-19, increased social engagement, and resuming previous activities.<sup>22</sup> A previous cross-cohort study found that associations varied by COVID-19 severity, with poorer mental illness outcomes only found among those who were bedridden with COVID-19, as a marker of more severe illness.<sup>3</sup> Those hospitalised due to COVID-19, especially people in intensive care and requiring ventilator support, may have been at greater risk of developing post-traumatic stress disorder<sup>23</sup>; though this could not be examined in the present study.

Elevation in rates of mental illness outcomes declined with increasing time since diagnosis of COVID-19, although for those diagnosed in the pre-vaccination era incidence remained elevated up to a year after hospitalised COVID-19. Previous findings regarding long-term effects have been mixed, with a review reporting no clear long-term associations between COVID-19 and mental illness<sup>24</sup>, whereas a recent multi-cohort study found an association between COVID-19 and mental illness with little evidence of attenuation over time<sup>1</sup>. Persisting effects of COVID-19 on mental illness could partly reflect ongoing impacts of long COVID<sup>25,26</sup>.

In line with previous research<sup>1</sup>, we found stronger associations between COVID-19 and mental illness among older age groups. This is likely to reflect the increased risk of severe COVID-19 among older people and resulting increased anxiety about the consequences of infection. The association between COVID-19 and mental illness was slightly stronger among men, who have been found to be at greater risk of severe mental illness outcomes than women<sup>27</sup>. These patterns contrast with the wider impacts of the pandemic on mental health. For instance, overall mental health impacts of the pandemic were found to be greatest in adults aged 25-44 years, women, and those with higher degrees<sup>28</sup>; indicating that the mechanisms linking COVID-19 disease and mental health may differ from those underpinning wider effects of the pandemic.

Our findings highlight the wider public health benefits of the vaccination programme. Prior mental illness may influence vaccine uptake, which highlights the importance of actively encouraging vaccine uptake in people



with mental health difficulties.<sup>20,29,30</sup> Our analyses suggested that the adverse effects of COVID-19 on mental illness were greater during the first year of the pandemic, prior to the availability of vaccination. This may reflect greater uncertainty and public concern around consequences of COVID-19 and treatment effectiveness at the beginning of the pandemic.

Strengths of this study include the very large sample size, availability of detailed linked electronic health record data, relatively long duration of follow-up, and the opportunity to examine the role of vaccination in the relationship between COVID-19 and mental illness. We also note several limitations. First, those who were unvaccinated may have been less likely to contact health services and to test for SARS-CoV-2, which might have led to underestimated effects in unvaccinated people not hospitalised with COVID-19. Those with recorded COVID-19, particularly those who were hospitalised, may have been more likely to have their mental illness recorded due to greater contact with health services. This may have underpinned the particularly high HRs observed initially following diagnosis, especially in those hospitalised, and the rapid fall thereafter as service contact is likely to be highest in the early post-diagnosis period. However, this is unlikely to fully explain the adverse effect of COVID-19 on mental illness, given the persistent elevation of incidence of mental illness following hospitalised COVID-19 and the variation in associations with different mental illnesses. Also, those with prior recorded mental health diagnoses may not have had additional diagnostic codes added to their record at every visit, even if their mental health had deteriorated due to COVID-19. Additionally, data on mental health in primary and secondary care is generally incomplete, as it does not include access to mental health services data or NHS Talking Therapies (formerly 'Improving Access to Psychological Therapies (IAPT)'), which patients can self-refer to. A further limitation is that we could only assess COVID-19 severity according to whether patients were hospitalised and did not consider the potential role of repeated infections. We cannot exclude the possibility of unmeasured confounding, although we controlled for a wide range of demographic characteristics and prior morbidities. A previous study found that the mental health impacts of COVID-19 were less apparent when using a negative control group, suggesting that observed associations may have been, at least in part, due to residual confounding<sup>2</sup>. Finally, other viruses may have consequences for mental illness. Our findings may therefore reflect a phenomenon that occurs after many viruses rather than being specific to SARS-CoV-2.

Our findings add to a growing body of evidence highlighting the increased risk of mental illness following COVID-19 diagnosis, with stronger associations found in relation to non-vaccination and more severe COVID-19 disease, and longer-term associations relating mainly to new-onset mental illness. This has important implications for public health and mental health service provision, as serious mental illnesses in particular are associated with more intensive healthcare needs and longer-term health and other adverse effects. Our results highlight the importance of accessing vaccination among those with mental illness, who may be at higher risk of both SARS-CoV-2 infection and adverse health outcomes following COVID-19. They also emphasise the widespread public health benefits of COVID-19 vaccination in the general population.

## REFERENCES

- 1 Thompson EJ, Stafford J, Moltrecht B, *et al.* Psychological distress, depression, anxiety, and life satisfaction following COVID-19 infection: evidence from 11 UK longitudinal population studies. *The Lancet Psychiatry* 2022; **9**: 894–906.
- 2 Abel KM, Carr MJ, Ashcroft DM, *et al.* Association of SARS-CoV-2 Infection With Psychological Distress, Psychotropic Prescribing, Fatigue, and Sleep Problems Among UK Primary Care Patients. *JAMA Netw Open* 2021; **4**: e2134803.
- 3 Magnúsdóttir I, Lovik A, Unnarsdóttir AB, *et al.* Acute COVID-19 severity and mental health morbidity trajectories in patient populations of six nations: an observational study. *The Lancet Public Health* 2022; **7**: e406–16.
- 4 Taquet M, Geddes JR, Husain M, Luciano S, Harrison PJ. 6-month neurological and psychiatric outcomes in 236 379 survivors of COVID-19: a retrospective cohort study using electronic health records. *The Lancet Psychiatry* 2021; **8**: 416–27.
- 5 Taquet M, Dercon Q, Luciano S, Geddes JR, Husain M, Harrison PJ. Incidence, co-occurrence, and evolution of long-COVID features: A 6-month retrospective cohort study of 273,618 survivors of COVID-19. *PLoS Med* 2021; **18**: e1003773.
- 6 Oh TK, Park HY, Song I. Risk of psychological sequelae among coronavirus disease-2019 survivors: A nationwide cohort study in South Korea. *Depression and Anxiety* 2021; **38**: 247–54.
- 7 Klaser K, Thompson EJ, Nguyen LH, *et al.* Anxiety and depression symptoms after COVID-19 infection: results from the COVID Symptom Study app. *J Neurol Neurosurg Psychiatry* 2021; **92**: 1254–8.
- 8 Niedzwiedz CL, Benzeval M, Hainey K, Leyland AH, Katikireddi SV. Psychological distress among people with probable COVID-19 infection: analysis of the UK Household Longitudinal Study. *BJPsych open* 2021; **7**: e104.
- 9 Nersesjan V, Christensen RHB, Kondziella D, Benros ME. COVID-19 and Risk for Mental Disorders Among Adults in Denmark. *JAMA Psychiatry* 2023; **80**: 778.
- 10 Mascellino MT, Di Timoteo F, De Angelis M, Oliva A. Overview of the Main Anti-SARS-CoV-2 Vaccines: Mechanism of Action, Efficacy and Safety. *IDR* 2021; **Volume 14**: 3459–76.
- 11 Suthar AB, Wang J, Seffren V, Wiegand RE, Griffing S, Zell E. Public health impact of covid-19 vaccines in the US: observational study. *BMJ* 2022; : e069317.
- 12 Perez-Arce F, Angrisani M, Bennett D, Darling J, Kapteyn A, Thomas K. COVID-19 vaccines and mental distress. *PLoS ONE* 2021; **16**: e0256406.
- 13 Koltai J, Raifman J, Bor J, McKee M, Stuckler D. COVID-19 Vaccination and Mental Health: A Difference-In-Difference Analysis of the Understanding America Study. *American Journal of Preventive Medicine* 2022; **62**: 679–87.
- 14 Watkinson RE, Williams R, Gillibrand S, Sanders C, Sutton M. Ethnic inequalities in COVID-19 vaccine uptake and comparison to seasonal influenza vaccine uptake in Greater Manchester, UK: A cohort study. *PLoS Med* 2022; **19**: e1003932.

- 15 Nafilyan V, Dolby T, Razieh C, *et al.* Sociodemographic inequality in COVID-19 vaccination coverage among elderly adults in England: a national linked data study. *BMJ Open* 2021; **11**: e053402.
- 16 Gomez JMD, Du-Fay-de-Lavallaz JM, Fugar S, *et al.* Sex Differences in COVID-19 Hospitalization and Mortality. *Journal of Women's Health* 2021; **30**: 646–53.
- 17 Agyemang C, Richters A, Jolani S, *et al.* Ethnic minority status as social determinant for COVID-19 infection, hospitalisation, severity, ICU admission and deaths in the early phase of the pandemic: a meta-analysis. *BMJ Glob Health* 2021; **6**: e007433.
- 18 Lo C-H, Nguyen LH, Drew DA, *et al.* Race, ethnicity, community-level socioeconomic factors, and risk of COVID-19 in the United States and the United Kingdom. *eClinicalMedicine* 2021; **38**: 101029.
- 19 UKHSA. Omicron daily overview: 17 December 2021.  
[https://assets.publishing.service.gov.uk/government/uploads/system/uploads/attachment\\_data/file/1042100/20211217\\_OS\\_Daily\\_Omicron\\_Overview.pdf](https://assets.publishing.service.gov.uk/government/uploads/system/uploads/attachment_data/file/1042100/20211217_OS_Daily_Omicron_Overview.pdf).
- 20 Curtis HJ, Inglesby P, Morton CE, *et al.* Trends and clinical characteristics of COVID-19 vaccine recipients: a federated analysis of 57.9 million patients' primary care records *in situ* using OpenSAFELY. *Br J Gen Pract* 2022; **72**: e51–62.
- 21 Tenforde MW, Self WH, Adams K, *et al.* Association Between mRNA Vaccination and COVID-19 Hospitalization and Disease Severity. *JAMA* 2021; **326**: 2043.
- 22 Nguyen M. The Psychological Benefits of COVID-19 Vaccination. *Advances in Public Health* 2021; **2021**: e1718800.
- 23 Nagarajan R, Krishnamoorthy Y, Basavarachar V, Dakshinamoorthy R. Prevalence of post-traumatic stress disorder among survivors of severe COVID-19 infections: A systematic review and meta-analysis. *Journal of Affective Disorders* 2022; **299**: 52–9.
- 24 Bourmistrova NW, Solomon T, Braude P, Strawbridge R, Carter B. Long-term effects of COVID-19 on mental health: A systematic review. *J Affect Disord* 2022; **299**: 118–25.
- 25 Zawilska JB, Kuczyńska K. Psychiatric and neurological complications of long COVID. *Journal of Psychiatric Research* 2022; **156**: 349–60.
- 26 Kirchberger I, Meisinger C, Warm TD, Hyhlik-Dürr A, Linseisen J, Goßlau Y. Longitudinal course and predictors of health-related quality of life, mental health, and fatigue, in non-hospitalized individuals with or without post COVID-19 syndrome. In Review, 2023 DOI:10.21203/rs.3.rs-3221088/v1.
- 27 Pijls BG, Jolani S, Atherley A, *et al.* Demographic risk factors for COVID-19 infection, severity, ICU admission and death: a meta-analysis of 59 studies. *BMJ Open* 2021; **11**: e044640.
- 28 Patel K, Robertson E, Kwong ASF, *et al.* Psychological Distress Before and During the COVID-19 Pandemic Among Adults in the United Kingdom Based on Coordinated Analyses of 11 Longitudinal Studies. *JAMA Netw Open* 2022; **5**: e227629.
- 29 Hassan L, Sawyer C, Peek N, *et al.* COVID-19 vaccination uptake in people with severe mental illness: a UK-based cohort study. *World Psychiatry* 2022; **21**: 153–4.

30 Hassan L, Peek N, Lovell K, *et al.* Disparities in COVID-19 infection, hospitalisation and death in people with schizophrenia, bipolar disorder, and major depressive disorder: a cohort study of the UK Biobank. *Mol Psychiatry* 2022; **27**: 1248–55.

## **ACKNOWLEDGEMENTS**

We are very grateful for all the support received from the TPP Technical Operations team throughout this work, and for generous assistance from the information governance and database teams at NHS England and the NHS England Transformation Directorate. We thank the CONVALESCENCE Study Long COVID PPIE group for their input and for sharing their experiences and expertise throughout the duration of the project.

## **CONFLICTS OF INTEREST**

NC is remunerated for participation in Data Safety and Monitoring Boards for AstraZeneca. AM was paid for three days of consultancy for <https://inductionhealthcare.com/> in February 2022. No other conflicts of interest to be disclosed.

## **FUNDING**

This work was supported by the COVID-19 Longitudinal Health and Wellbeing National Core Study, which is funded by the Medical Research Council (MC\_PC\_20059) and NIHR (COV-LT-0009). VW is also supported by the Medical Research Council Integrative Epidemiology Unit at the University of Bristol [MC\_UU\_00032/03]. YW was supported by an UKRI MRC Fellowship awarded to YW (MC/W021358/1) and received funding from UKRI EPSRC Impact Acceleration Account (EP/X525789/1). AM received funding from the Bennett Foundation, Wellcome Trust, NIHR Oxford Biomedical Research Centre, NIHR Applied Research Collaboration Oxford and Thames Valley, Mohn-Westlake Foundation. The OpenSAFELY Platform is supported by grants from the Wellcome Trust (222097/Z/20/Z) and MRC (MR/V015737/1, MC\_PC\_20059, MR/W016729/1). In addition, development of OpenSAFELY has been funded by the Longitudinal Health and Wellbeing strand of the National Core Studies programme (MC\_PC\_20030: MC\_PC\_20059), the NIHR funded CONVALESCENCE programme (COV-LT-0009), NIHR (NIHR135559, COV-LT2-0073), and the Data and Connectivity National Core Study funded by UK Research and Innovation (MC\_PC\_20058) and Health Data Research UK (HDRUK2021.000).

## **DATA AVAILABILITY STATEMENT**

All data were linked, stored and analysed securely within the OpenSAFELY platform: <https://www.opensafely.org/>. Data include pseudonymised data such as coded diagnoses, medications and physiological parameters. No free text data are included. All code and code lists are shared openly for review and re-use under an MIT open license (<https://github.com/opensafely/post-covid-mentalhealth>). Detailed pseudonymised patient data is potentially re-identifiable and therefore not shared.

## **ETHICAL APPROVAL AND INFORMATION GOVERNANCE**

This study was approved by the Health Research Authority [REC reference 22/PR/0095] and by the University of Bristol's Faculty of Health Sciences Ethics Committee [reference 117269]. Authors involved in data management/analysis successfully passed information governance training and obtained ONS safe researcher accreditation. NHS England is the data controller of OpenSAFELY-TPP. All outputs underwent disclosure checks and were approved by NHS England. Further details of OpenSAFELY information governance are provided in supplemental methods.

## **AUTHOR CONTRIBUTIONS**

VW, PP, RD, AWo, NC, JMac, AJ, JACS contributed to Conceptualization. VW, RD, JACS contributed to Methodology. VW, JICC, TP, AWa, LF, JMas, SD, AM, SB, BG contributed to Software. VW, JICC, RD, HF, JS, BM, ET, KT, GC, EH, YW, MAA, RK, JMac, AJ contributed to Validation. VW, JICC contributed to Formal analysis. VW, JICC contributed to Investigation. TP, AWa, LF, JMas, SD, AM, SB, BG contributed to Resources. VW, JICC, HF contributed to Data Curation. VW, PP, JACS contributed to Writing - Original Draft. All authors contributed to Writing - Review & Editing. VW, JICC contributed to Visualization. VW, RD, BG, AWo, NC, JMac, AJ, JACS contributed to Supervision. VW, PP, RD, BG, AWo, NC, JMac, AJ, JACS contributed to Project administration. NC, JACS contributed to Funding acquisition.

Table 1: Patient characteristics in the pre-vaccination, vaccinated and unvaccinated cohorts.

Characteristic		Pre-vaccination cohort		Vaccinated cohort		Unvaccinated cohort	
		N (%)	COVID-19 diagnoses	N (%)	COVID-19 diagnoses	N (%)	COVID-19 diagnoses
All		17619987	975429	13716225	850023	3130581	147315
Sex	Female	8847327 (50.2%)	524127	7140045 (52.1%)	472455	1313967 (42%)	77943
	Male	8772657 (49.8%)	451299	6576177 (47.9%)	377571	1816611 (58%)	69375
Age, years	18-29	2968245 (16.8%)	230823	1695351 (12.4%)	92115	948093 (30.3%)	39417
	30-39	3018537 (17.1%)	197505	1914075 (14%)	146811	939573 (30%)	49947
	40-49	2921427 (16.6%)	185643	2162535 (15.8%)	232005	593535 (19%)	32889
	50-59	3135621 (17.8%)	180213	2663187 (19.4%)	200301	361947 (11.6%)	16545
	60-69	2452011 (13.9%)	90525	2270565 (16.6%)	103599	175419 (5.6%)	5535
	70-79	1990863 (11.3%)	49467	1940685 (14.1%)	53013	76089 (2.4%)	1899
	80-89	940581 (5.3%)	29667	889707 (6.5%)	17853	28389 (0.9%)	879
	90+	192699 (1.1%)	11583	180123 (1.3%)	4323	7527 (0.2%)	219
Ethnicity	White	13965363 (79%)	737295	11361897 (83%)	726897	1946799 (62%)	112497
	S. Asian	1109529 (6.3%)	114231	769293 (5.6%)	40809	311121 (9.9%)	9381
	Black	368835 (2.1%)	25845	212187 (1.5%)	9405	166593 (5.3%)	7443
	Other	371805 (2.1%)	19137	228615 (1.7%)	10377	180609 (5.8%)	3951
	Mixed	197745 (1.1%)	13467	124425 (0.9%)	7383	77583 (2.5%)	3789
	Missing	1606707 (9.1%)	65451	1019811 (7.4%)	55149	447873 (14.3%)	10257
IMD quintile (lower: more deprived)	1	3395079 (19.3%)	239709	2229885 (16.3%)	133593	933093 (29.8%)	45183
	2	3478545 (19.7%)	211725	2563539 (18.7%)	156321	750447 (24%)	34959
	3	3801099 (21.6%)	194859	3032523 (22.1%)	183045	627477 (20%)	29079
	4	3606213 (20.5%)	176199	2999331 (21.9%)	188019	479739 (15.3%)	22113
	5	3339045 (19%)	152931	2890947 (21.1%)	189039	339819 (10.9%)	15981
Smoking	Never	682269 (3.9%)	38217	412623 (3%)	15945	356319 (11.4%)	8247
	Former	8051205 (45.7%)	485781	6381579 (46.5%)	414003	1295349 (41.4%)	58611
	Current	5870427 (33.3%)	318777	5000223 (36.5%)	327639	625515 (20%)	43167
	Missing	3016083 (17.1%)	132645	1921797 (14%)	92433	853395 (27.3%)	37287
Region	East	4088403 (23.2%)	221181	3209673 (23.4%)	180231	704565 (22.5%)	33441
	E.Midlands	3121905 (17.7%)	185739	2431149 (17.7%)	158091	513993 (16.4%)	28311
	London	1116735 (6.3%)	64383	715353 (5.2%)	37059	446763 (14.3%)	10929
	North East	852093 (4.8%)	58887	652491 (4.8%)	48537	132987 (4.2%)	7185
	North West	1568139 (8.9%)	104913	1233741 (9%)	85629	211239 (6.7%)	11697
	South East	1159293 (6.6%)	47829	943521 (6.9%)	55689	188109 (6%)	8757
	South West	2490369 (14.1%)	76029	2136165 (15.6%)	129291	313809 (10%)	17235
	W.Midlands	693339 (3.9%)	52617	481725 (3.5%)	29205	172029 (5.5%)	7941
Yorkshire	2529699 (14.4%)	163839	1912395 (13.9%)	126285	447087 (14.3%)	21819	
Care home resident	82575 (0.5%)	14391	56451 (0.4%)	2775	2889 (0.1%)	105	
Healthcare worker	552441 (3.1%)	63351	480825 (3.5%)	38709	20157 (0.6%)	1947	

IMD: Index of Multiple Deprivation

Table 2: Mental illness events following diagnosis of COVID-19 in the pre-vaccination, vaccinated and unvaccinated cohorts, overall and by COVID-19 severity.

Outcome	COVID-19 severity	Pre-vaccination cohort N=17,619,987		Vaccinated cohort N=13,716,225		Unvaccinated cohort N=3,130,581	
		Event/person-years	Incidence rate	Event/person-years	Incidence rate	Event/person-years	Incidence rate
Depression	No COVID-19	1229103/31815936	3863	332523/6177768	5383	53547/1178058	4545
	Hospitalised COVID-19	6123/40514	15113	1359/2379	57128	831/1614	51475
	Non-hospitalised COVID-19	43137/875165	4929	9489/153403	6186	2025/24665	8210
Serious mental illness	No COVID-19	364809/32692824	1116	82479/6242112	1321	17325/1185912	1461
	Hospitalised COVID-19	1581/46044	3434	207/2651	7809	165/1771	9319
	Non-hospitalised COVID-19	12885/921950	1398	2295/156141	1470	549/25091	2188
General anxiety disorders	No COVID-19	898383/32181914	2792	221499/6207309	3568	39285/1181444	3325
	Hospitalised COVID-19	4695/42625	11015	1017/2481	40994	873/1615	54045
	Non-hospitalised COVID-19	34569/891502	3878	6795/154561	4396	1689/24774	6818
Post-traumatic stress disorder	No COVID-19	35325/33027918	107	8061/6260421	129	2733/1189246	230
	Hospitalised COVID-19	303/47761	634	57/2695	2115	57/1798	3170
	Non-hospitalised COVID-19	1281/939590	136	225/156887	143	93/25218	369
Eating disorders	No COVID-19	18273/33044280	55	4539/6261356	72	903/1189653	76
	Hospitalised COVID-19	63/48018	131	Sep-07	333	15/1808	830
	Non-hospitalised COVID-19	765/940251	81	129/156909	82	33/25239	131
Addiction	No COVID-19	36615/33023855	111	5481/6261035	88	4131/1188788	347
	Hospitalised COVID-19	165/47887	345	21/2704	777	51/1799	2835
	Non-hospitalised COVID-19	879/939847	94	105/156925	67	87/25220	345
Self-harm	No COVID-19	85761/32977385	260	15027/6258886	240	4977/1188790	419
	Hospitalised COVID-19	237/47754	496	27/2703	999	15/1808	830
	Non-hospitalised COVID-19	2955/936599	316	507/156793	323	141/25205	559
Suicide	No COVID-19	39951/33023812	121	6135/6260977	98	1935/1189437	163
	Hospitalised COVID-19	159/47888	332	15/2706	554	9/1810	497
	Non-hospitalised COVID-19	1359/939065	145	219/156893	140	57/25232	226

Table 3: Maximally adjusted hazard ratios and 95% CIs for mental illness events following diagnosis of COVID-19 in the pre-vaccination, vaccinated and unvaccinated cohorts.

Outcome	Time since COVID-19	Pre-vaccination cohort	Vaccinated cohort	Unvaccinated cohort
Depression	Day 0	32.9 (31.8-34.0)	8.52 (8.05-9.03)	19.1 (17.5-20.8)
	1-4 weeks	1.93 (1.88-1.98)	1.16 (1.12-1.20)	1.79 (1.68-1.91)
	5-28 weeks	1.25 (1.23-1.26)	1.11 (1.08-1.14)	1.28 (1.22-1.36)
	29-52 weeks	1.16 (1.14-1.18)	-	-
	53-102 weeks	1.17 (1.13-1.20)	-	-
Serious mental illness	Day 0	29.4 (27.6-31.3)	7.61 (6.74-8.59)	19.1 (16.2-22.5)
	1-4 weeks	1.48 (1.40-1.56)	0.91 (0.84-0.98)	1.42 (1.24-1.61)
	5-28 weeks	1.20 (1.17-1.23)	1.07 (1.01-1.12)	1.14 (1.02-1.27)
	29-52 weeks	1.15 (1.12-1.18)	-	-
	53-102 weeks	1.13 (1.06-1.19)	-	-
General anxiety	Day 0	33.7 (32.4-34.9)	8.55 (7.98-9.17)	25.3 (23.3-27.5)
	1-4 weeks	2.19 (2.13-2.26)	1.26 (1.21-1.31)	2.29 (2.15-2.44)
	5-28 weeks	1.26 (1.24-1.28)	1.12 (1.09-1.16)	1.36 (1.28-1.45)
	29-52 weeks	1.14 (1.12-1.16)	-	-
	53-102 weeks	1.15 (1.11-1.19)	-	-
Post-traumatic stress disorder	Day 0	43.3 (36.8-51.0)	12.3 (9.13-16.4)	30.0 (22.1-40.5)
	1-4 weeks	1.84 (1.56-2.16)	1.01 (0.81-1.26)	1.42 (1.06-1.92)
	5-28 weeks	1.13 (1.04-1.23)	1.01 (0.86-1.18)	1.05 (0.81-1.36)
	29-52 weeks	1.06 (0.97-1.16)	-	-
	53-102 weeks	1.17 (0.99-1.38)	-	-
Eating disorders	Day 0	29.2 (22.7-37.6)	5.59 (3.26-9.59)	20.9 (11.8-37.0)
	1-4 weeks	1.96 (1.61-2.39)	0.88 (0.64-1.21)	1.56 (0.97-2.52)
	5-28 weeks	1.26 (1.13-1.41)	0.91 (0.71-1.16)	1.14 (0.73-1.77)
	29-52 weeks	1.09 (0.96-1.24)	-	-
	53-102 weeks	1.24 (0.98-1.57)	-	-
Addiction	Day 0	66.2 (56.9-77.1)	17.0 (12.0-24.1)	44.8 (34.9-57.5)
	1-4 weeks	1.45 (1.19-1.78)	0.98 (0.72-1.33)	1.04 (0.73-1.47)
	5-28 weeks	0.95 (0.86-1.05)	0.69 (0.53-0.91)	0.77 (0.57-1.05)
	29-52 weeks	1.00 (0.89-1.12)	-	-
	53-102 weeks	1.00 (0.79-1.26)	-	-
Self-harm	Day 0	22.3 (19.2-26.0)	10.9 (8.61-13.9)	12.1 (8.28-17.6)
	1-4 weeks	1.21 (1.06-1.37)	1.02 (0.86-1.20)	1.09 (0.83-1.44)
	5-28 weeks	1.15 (1.09-1.22)	1.17 (1.04-1.31)	0.92 (0.73-1.15)
	29-52 weeks	1.17 (1.10-1.25)	-	-
	53-102 weeks	1.14 (1.01-1.29)	-	-
Suicide	Day 0	850 (742-975)	†	†
	1-4 weeks	4.18 (2.94-5.94)	†	†
	5-28 weeks	0.85 (0.60-1.19)	†	†
	29-52 weeks	0.83 (0.57-1.20)	-	-
	53-102 weeks	0.86 (0.45-1.65)	-	-

† Insufficient events for estimation



Figure 1: Maximally adjusted hazard ratios and 95% CIs for depression and serious mental illness following diagnosis of COVID-19 in the pre-vaccination, vaccinated and unvaccinated cohorts, overall and by COVID-19 severity. Events on the day of COVID-19 diagnosis (day 0) were excluded.

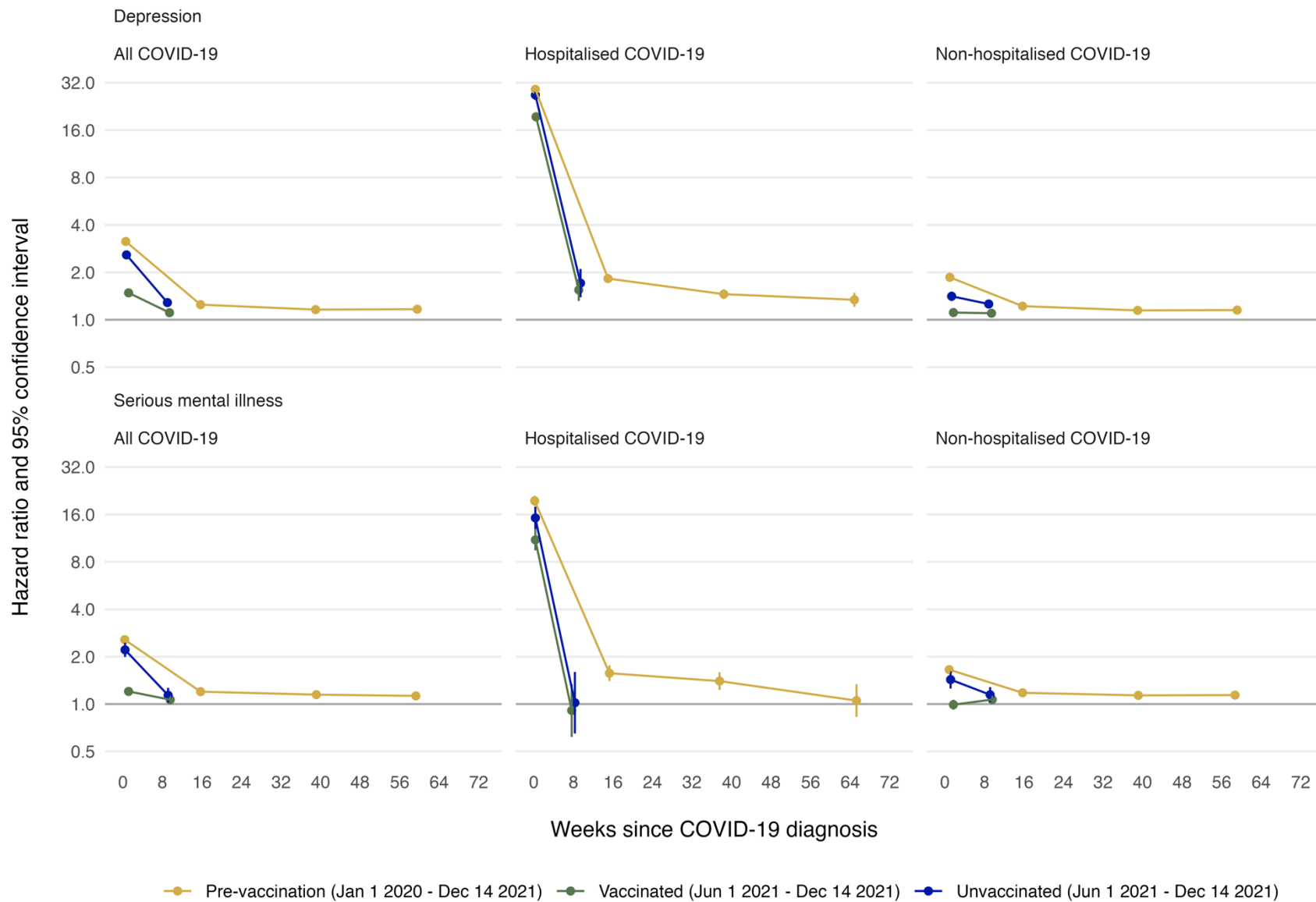


Figure 2: Maximally adjusted hazard ratios and 95% CIs for depression and serious mental illness following diagnosis of COVID-19 in the pre-vaccination, vaccinated and unvaccinated cohorts, by prior history of the outcome. Events on the day of COVID-19 diagnosis (day 0) were excluded.

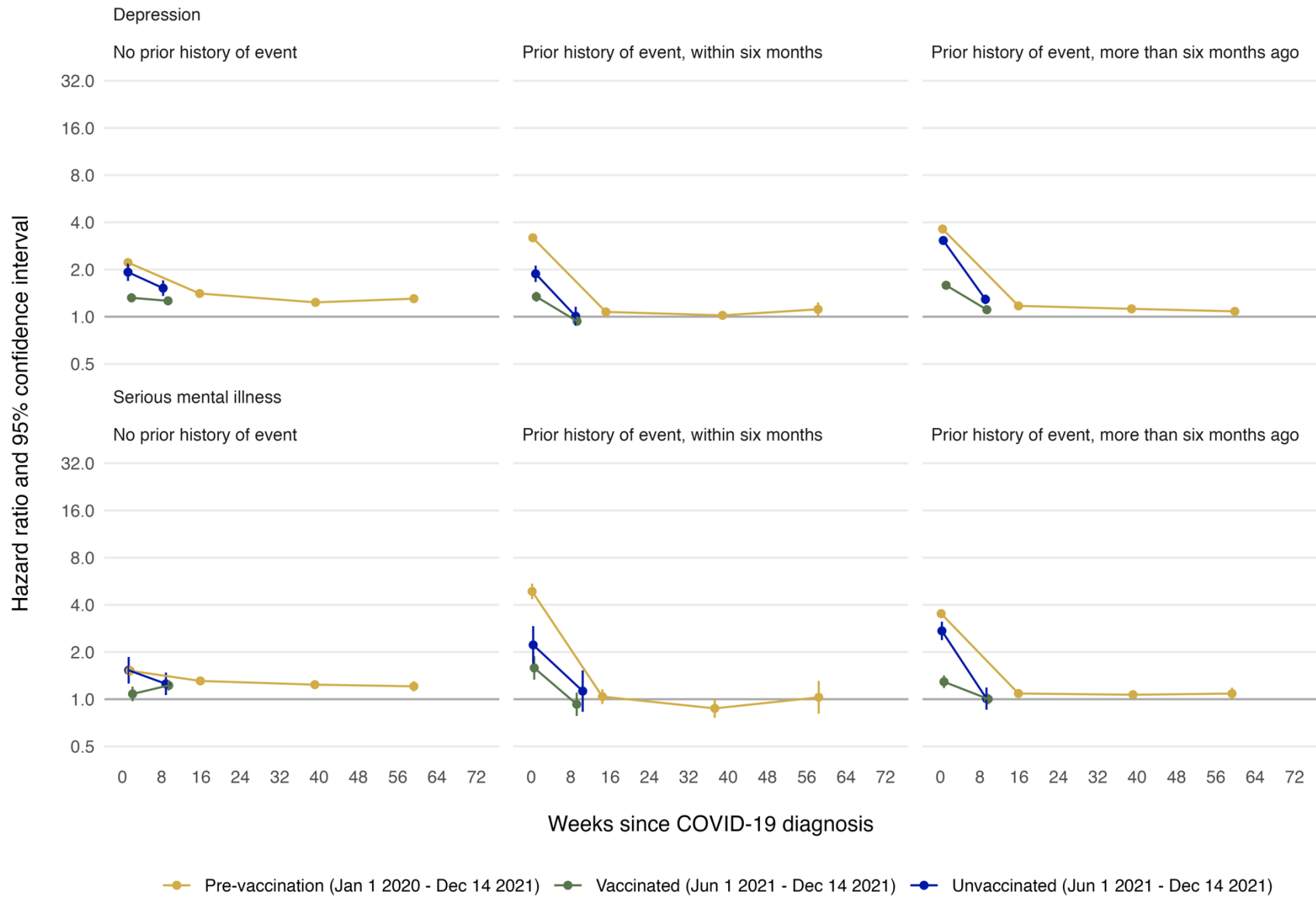


Figure 3: Maximally adjusted hazard ratios and 95% confidence intervals for other mental illness events following diagnosis of COVID-19 in the pre-vaccination, vaccinated and unvaccinated cohorts. Events on the day of COVID-19 diagnosis (day 0) were excluded.

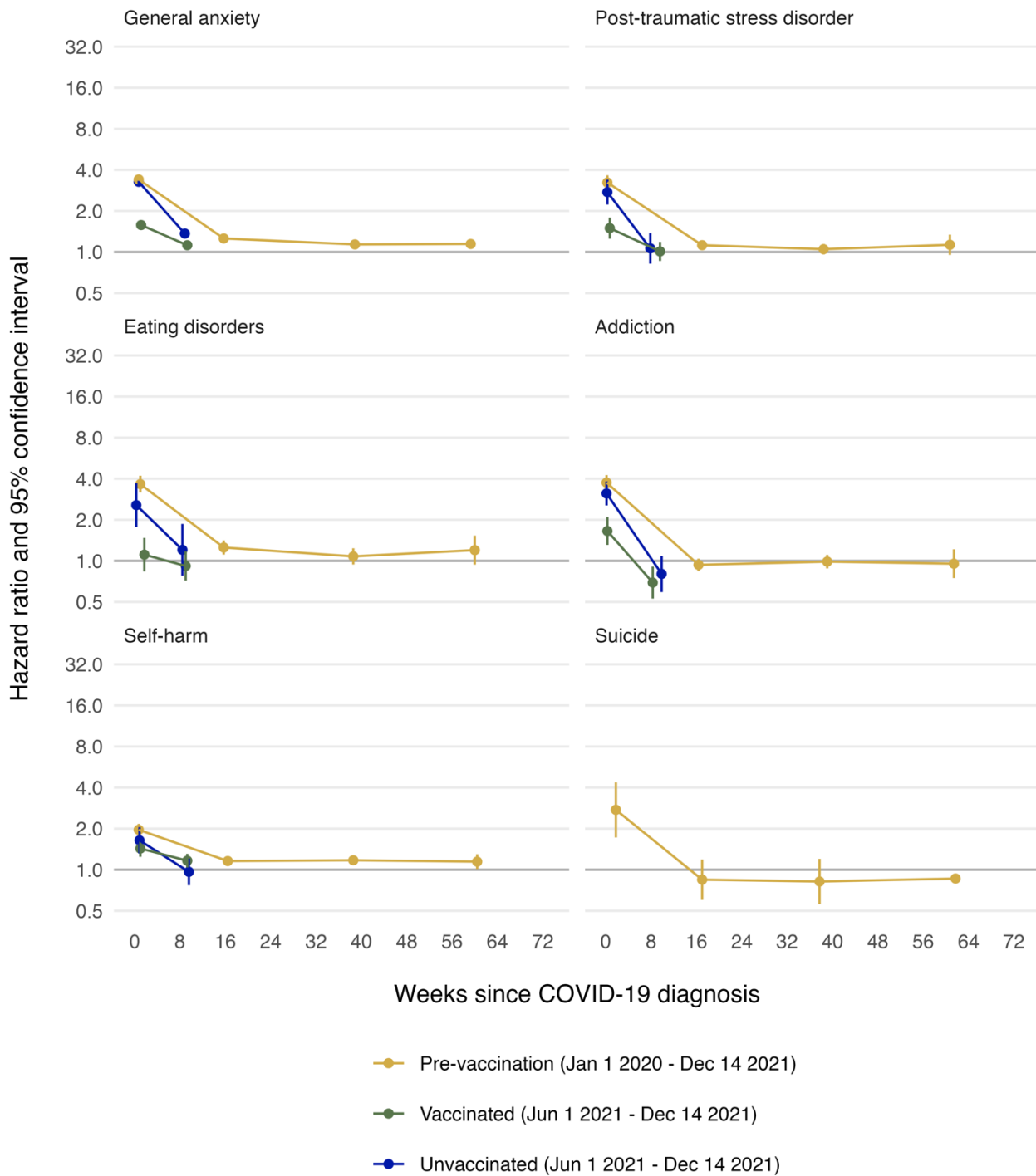


Figure 4: Absolute excess risk up to 28 weeks for depression and serious mental illness following diagnosis of COVID-19 in the pre-vaccination, vaccinated and unvaccinated cohorts.

