

1 Full title: Hospital segregation, critical care strain, and inpatient mortality during the COVID-19
2 pandemic in New York City

3 Short title: Hospital segregation, critical care strain, and inpatient mortality

4

5 Authors: Anna Zhilkova, MA, Laila Alsabahi, MS, Donald Olson, MPH, Duncan Maru, MD, PhD, Tsu-
6 Yu Tsao, PhD, Michelle Morse, MD, MPH. (All authors are affiliated with the Center for Health Equity
7 and Community Wellness at the New York City Department of Health and Mental Hygiene, 42-09 28th
8 Street, Long Island City, NY 11101. Dr. Morse and Dr. Tsao contributed equally as co-senior authors.)

9

10 Corresponding author:

11 Tsu-Yu Tsao, PhD

12 Bureau of Equitable Health Systems

13 Center for Health Equity and Community Wellness

14 New York City Department of Health and Mental Hygiene

15 42-09 28th Street

16 Long Island City, New York 11101

17 Tel: (347)396-4857

18 Email: ttsao@health.nyc.gov

19

20

21

22

23

24

25 Abstract

26 Background: Hospital segregation by race, ethnicity, and health insurance coverage is prevalent, with
27 some hospitals providing a disproportionate share of undercompensated care. We assessed whether New
28 York City (NYC) hospitals serving a higher proportion of Medicaid and uninsured patients pre-pandemic
29 experienced greater critical care strain during the first wave of the COVID-19 pandemic, and whether this
30 greater strain was associated with higher rates of in-hospital mortality.

31
32 Methods: In a retrospective analysis of all-payer NYC hospital discharge data, we examined changes in
33 admissions, stratified by use of intensive care unit (ICU), from the baseline period in early 2020 to the
34 first COVID-19 wave across hospital quartiles (265,329 admissions), and crude and age-adjusted
35 inpatient mortality rates, also stratified by ICU use, in the first COVID wave across hospital quartiles
36 (23,032 inpatient deaths), based on the proportion of Medicaid or uninsured admissions from 2017-2019
37 (quartile 1 lowest to 4 highest). Logistic regressions were used to assess the cross-sectional association
38 between ICU strain, defined as ICU volume in excess of the baseline average, and patient-level
39 mortality.

40
41 Results: ICU admissions in the first COVID-19 wave were 84%, 97%, 108%, and 123% of the baseline
42 levels by hospital quartile 1-4, respectively. The risk-adjusted mortality rates for ICU admissions were
43 36.4 (CI=34.7,38.2), 43.6 (CI=41.5,45.8), 45.9 (CI=43.8,48.1), and 45.7 (CI=43.6,48.0) per 100
44 admissions, and those for non-ICU admissions were 8.6 (CI=8.3,9.0), 10.9 (CI=10.6,11.3), 12.6
45 (CI=12.1,13.0), and 12.1 (CI=11.6,12.7) per 100 admissions by hospital quartile 1-4, respectively.
46 Compared with the reference group of 100% or less of the baseline weekly average, ICU admissions on a
47 day for which the ICU volume was 101-150%, 151-200%, and > 200% of the baseline weekly average
48 had odds ratios of 1.17 (95% CI=1.10, 1.26), 2.63 (95% CI=2.31, 3.00), and 3.26 (95% CI=2.82, 3.78) for
49 inpatient mortality, and non-ICU admissions on a day for which the ICU volume was 101-150%, 151-

50 200%, and > 200% of the baseline weekly average had odds ratios of 1.28 (95% CI=1.22, 1.34), 2.60
51 (95% CI=2.40, 2.82), and 3.44 (95% CI=3.11, 3.63) for inpatient mortality.

52

53 Conclusions: Our findings are consistent with hospital segregation as a potential driver of COVID-related
54 mortality inequities and highlight the need to desegregate health care to address structural racism,
55 advance health equity, and improve pandemic resiliency.

56

57

58

59

60

61

62

63

64

65

66

67

68

69

70

71 Introduction

72 The COVID-19 pandemic has amplified long-standing health inequities in the US.¹⁻³ In New York City
73 (NYC), the epicenter in the early phase of the pandemic, the inequitable impact of COVID-19 was
74 particularly salient, as persons and communities who historically bear the greatest harms of structural
75 racism and those suffering higher rates of poverty experienced disproportionate rates of COVID-19
76 infection, hospitalization, and mortality.⁴⁻⁶

77 Numerous studies have examined factors related to the inequitable impact of COVID-19.⁷⁻¹¹ One
78 potential, and under-studied, phenomenon is de facto hospital segregation (henceforth “hospital
79 segregation”), referring to persistence of segregation by health insurance coverage, race, ethnicity,
80 language, and immigration status not sanctioned by law. Hospital segregation has been well documented
81 in NYC and has, among other consequences, contributed to wide inequities in resources for “safety net
82 hospitals”, typically referring to hospitals that provide significant proportions of care for underinsured and
83 other vulnerable patients.¹²⁻¹⁵ For examples, studies have found that public and other safety-net hospitals
84 provided for a disproportionate share of Medicaid and uninsured care while private academic medical
85 centers (AMCs),¹⁵ generally acknowledged as the most well-resourced hospitals in NYC, were much less
86 likely to admit Black and uninsured patients.^{13,15}

87 With people of color and Medicaid-insured and uninsured individuals disproportionately served by the
88 safety-net system, a greater likelihood of exposure to and development of severe illness from COVID-19
89 infections among these populations may have led to a surge in the volume of patients needing critical care
90 and straining of the intensive care unit (ICU) capacity among safety-net hospitals.¹⁶⁻²⁰ While some safety-
91 net hospitals were able to increase ICU-capable beds as a response to surges in ICU demand, it was
92 considerably more challenging to provide and train sufficient staff for ICU care.²⁰ Moreover, hospitals,
93 especially those that were not part of a larger system, faced additional constraints in their ability to load
94 balance to other hospitals, leaving patients to receive care in overloaded ICUs or experience delays in

95 admission.^{16,21} With safety-net providers being chronically underresourced,^{22,23} this additional strain on
96 their already stretched-thin capacity may have resulted in higher in-hospital mortality.¹⁷

97 Studies of hospital outcomes in NYC during the COVID-19 pandemic are mostly based on data or reports
98 from individual hospitals or networks.^{16-21,24} Here, we used all-payer NYC hospital discharge data to
99 provide a population-level analysis across all hospitals to gain a full picture of the crisis citywide and to
100 assess disparities in outcomes in a segregated system of care. Specifically, we examined whether hospitals
101 serving a higher proportion of Medicaid and uninsured patients pre-COVID pandemic experienced larger
102 increases in inpatient use and greater rates of in-hospital mortality, stratified by ICU use, during the first
103 wave of the COVID-19 pandemic than hospitals serving a lower proportion of Medicaid and uninsured
104 patients pre-COVID pandemic. Additionally, we developed measures of ICU strain and formally assessed
105 whether any excess in-hospital mortality risk was associated with strained ICUs.^{25, 26} Due to care
106 segregation and a greater likelihood of COVID-19 infection and hospitalization among Medicaid-insured
107 and uninsured individuals, we hypothesized that (1) hospitals serving a higher proportion of Medicaid and
108 uninsured patients pre-COVID experienced a greater surge of patients requiring critical care and higher
109 mortality rates during the first COVID-19 wave, and (2) the greater surge in critical care patients was
110 positively associated with patient mortality.

111

112 Methods

113 This retrospective study was approved by the NYC Department of Health and Mental Hygiene (DOHMH)
114 institutional review board as non-human subject research. There was no funding source for this study.

115 Data and Sample

116 Data on hospital outcomes in NYC were obtained from the Statewide Planning and Research Cooperative
117 System (SPARCS), a comprehensive all-payer data reporting system that collects information on
118 discharges from all Article 28 hospitals in New York State (federal, psychiatric, and long-term care

119 hospitals are excluded). Each discharge record in SPARCS includes information on patient demographics,
120 diagnoses, procedures, sources of payment, charges, and provider and hospital characteristics. Inpatient
121 records from NYC hospitals among individuals aged 18 and older were extracted for all of 2017-2019
122 (N=2,435,063) and for January 5-May 9 in 2020 (N=265,329). Geocoded 2020 SPARCS records were
123 linked to publicly available NYC nursing home addresses using the building identification number to
124 determine if a discharge was attributable to a nursing home resident.

125 The dates for accessing data used in this analysis spanned from November 2022 to June 2023. The
126 authors had access to information in SPARCS that could identify individual records.

127 Measures

128 *Hospital segregation*

129 We used 2017-2019 SPARCS data to characterize the extent of pre-existing hospital segregation by health
130 insurance coverage, which correlates highly with race/ethnicity. We ranked hospitals by the proportion of
131 all-cause adult hospitalizations for which the primary payer was Medicaid or self-pay in 2017-2019 and
132 grouped these hospitals into quartiles, with quartile 1 (Q1) including hospitals with the lowest proportions
133 of Medicaid or self-pay admissions, and quartile 4 (Q4) hospitals with the highest proportions of
134 Medicaid or self-pay admissions. Along with Medicaid insured admissions, we focused on self-pay
135 admissions since self-pay patients as a group had the highest concentration of care received from public
136 and private independent hospitals (> 65% in 2017-2019 SPARCS, data not shown), suggesting limited
137 access to well-resourced facilities among this population. Hospitals with a high proportion of Medicaid or
138 self-pay admissions may be referred to as safety nets in the study.²⁷

139 *Hospitalizations*

140 We assessed three sets of hospitalizations: all-cause hospitalizations, ICU hospitalizations, and non-ICU
141 hospitalizations. All-cause hospitalizations included all admissions to NYC hospitals among adults ages
142 18 and older. ICU admissions were identified based on a validated measure using revenue center codes

143 (RCCs).²⁸ Non-ICU admissions were defined as admissions without the RCCs for ICU use and may
144 include admissions with intermediate ICU use.

145 *Inpatient mortality*

146 We also assessed three sets of in-hospital deaths: deaths among all-cause hospitalizations, deaths among
147 ICU hospitalizations, and deaths among non-ICU hospitalizations. We identified in-hospital death as
148 disposition on discharge status of expired or discharged to hospice. Both crude and risk-adjusted rates of
149 mortality were calculated for hospitals as a group in each quartile. Patient-level characteristics, including
150 sex, age, race/ethnicity, primary payer, comorbidity, admission from nursing home, emergency
151 admission, severity of illness, and principal diagnosis, were used in non-hierarchical logistic regression
152 models to derive predicted probabilities of in-patient death, which were incorporated in the risk-adjusted
153 mortality rate calculations. The clustered sandwich estimator was used to account for potentially
154 correlated outcomes among admissions to the same hospital. After accounting for patient-level factors,
155 any differences in (risk-adjusted) mortality rates across hospitals may be attributable to hospital-level and
156 other factors.²⁹

157 *Hospital strain*

158 The primary measure of critical care strain on a given day was the total number of ICU admissions to the
159 hospital in the week leading up to that day as a percentage of the hospital's pre-pandemic baseline
160 (defined below) weekly average ICU admissions. This percentage was expressed as one of the following
161 categories: 0-100%, 101-150%, 151-200%, and > 200%.

162 Statistical analysis

163 We performed the following to test the hypothesis that hospitals serving a higher proportion of Medicaid
164 and uninsured patients pre-COVID experienced a greater surge of patients during the first COVID-19
165 wave. First, we calculated the ratio of hospitalizations for each quartile of hospitals between the two
166 periods in 2020: (1) the pre-pandemic baseline period spanning the dates of January 5-March 7 (CDC

167 weeks 2-10 of 2020), and (2) COVID-19 Wave 1 spanning the dates of March 8-May 9 (CDC weeks 11-
168 19 of 2020), with the ratio = the number of hospitalizations in Wave 1/the number of hospitalization in
169 the baseline. We focused on the first COVID-19 wave and a preceding period of similar length since
170 reports and studies suggest that hospital capacity in NYC was particularly strained in the first wave of the
171 pandemic due to a surge of critically ill patients.¹⁶⁻¹⁸ The standard errors and confidence intervals for the
172 ratios of hospitalizations between the two periods were approximated using Fieller's Theorem.³⁰ Second,
173 we used t-tests to assess whether the ratios of hospitalizations from higher hospital quartiles were larger
174 than the ratios from lower hospital quartiles ($p < 0.05$).

175 To test the hypothesis that hospitals serving a larger proportion of Medicaid and uninsured patients pre-
176 COVID experienced higher mortality rates during the first COVID-19 wave, we used t-tests to assess
177 whether crude and risk-adjusted mortality rates for higher quartile hospitals were larger than those for
178 lower quartile hospitals during the first COVID-19 wave ($p < 0.05$). Between these two measures of
179 mortality, risk-adjusted rates may be of greater relevance since it is necessary to account for differences in
180 patient characteristics across hospitals in assessing the possibility of heightened mortality rates resulting
181 from hospital-level factors such as constrained capacity.

182 In addition to performing statistical testing of differences across hospital quartiles for the entire first wave
183 of COVID-19 and the preceding baseline, we calculated weekly admissions and weekly in-hospital deaths
184 as percentages of baseline weekly averages and illustrated them graphically to discern the weeks in which
185 there may be particularly large disparities in outcomes. We also provided information on the
186 characteristics of admissions and deaths from the baseline and Wave 1 for all hospital quartiles to better
187 understand distributions of COVID-19 related burdens among various demographic groups.

188 We used both the hierarchical logistic regression model with hospital random intercept and non-
189 hierarchical logistic regression model with hospital fixed effects to assess the association between
190 hospital strain and patient-level mortality in the ICU setting, in the non-ICU setting, and for all adult
191 admissions. In addition to ICU strain, the following patient-, neighborhood-, and hospital-level covariates

192 were included in the model: sex (female), age (18-39, 40-64, 65-79, 80 or older), race/ethnicity (Asian or
193 Pacific Islander, Black, Hispanic, White, and Other non-Hispanic), primary payer (Medicaid, Medicare,
194 private/commercial, self-pay, and other), weighted Elixhauser comorbidity index, admission from nursing
195 home, measures of patient acuity, including emergency admission and severity of illness (SOI) (SOI
196 present on admission is based on All Patient Refined Diagnosis Related Groups (APR-DRG)
197 classification and coded as 1=minor, 2=moderate, 3=major, and 4=extreme), and principal diagnosis
198 based on Clinical Classification Software Refined (CCSR) version 2021.1 (including COVID-19
199 identification based on ICD-10 code U.071 in effect April 1, 2020), neighborhood of residence (defined
200 as Neighborhood Tabulation Area), and hospital type (private AMC and affiliates, private other, and
201 public).

202 Several alternative proxies for hospital strain were used to assess sensitivity of regression estimates to
203 hospital strain measures, including (1) daily average adult admissions with ICU use over a 7-day period
204 leading to the date of admission as a percentage of certified ICU beds, (2) adult COVID-19 positive
205 admissions with ICU use over a 7-day period leading to the date of admission as a percentage of adult
206 admissions with ICU use, and (3) adult sepsis admissions over a 7-day period leading to the date of
207 admission in any setting as a percentage of pre-pandemic weekly average adult sepsis admissions.

208 Data preparation and analyses were performed in R version 4.2.3 and Stata version 16, respectively.

209

210 Results

211 Pre-existing segregation of care (2017-2019)

212 Table 1 shows the characteristics of admissions and hospitals across the four quartiles of hospitals in
213 2017-2019. After excluding specialty hospitals and hospitals without ICUs, a total of 47 hospitals in three
214 categories – private AMC and affiliates, private other, and public – were included for the study. Q1
215 hospitals, almost all of which were AMCs or AMC affiliates, accounted for the highest proportion of all
216 admissions in NYC at 33% (802,657/2,437,334). The proportion of admissions provided by each quartile

217 steadily declined to 19% (464,936/2,437,334) among Q4 hospitals, all of which were public or private
218 independent. Almost all public hospitals in NYC are part of the H+H system, which is run by the city and
219 a primary provider of care for Medicaid and uninsured patients. The proportion of admissions for which
220 the primary payer was Medicaid or self-pay varied substantially, from 22% in Q1 to 61% in Q4,
221 confirming a high degree of hospital segregation by insurance coverage in NYC. Provision of care for
222 Medicaid or self-pay admissions disproportionately fell on public and non-AMC affiliated private
223 hospitals (hospitals in Q3 and Q4). In addition to substantially higher proportions of Medicaid or self-pay
224 admissions, hospitals in the higher quartiles tended to have admissions through emergency department
225 (ED) visits and admissions associated with younger patients, Black or Hispanic patients, patients from
226 higher poverty neighborhoods, and patients who were NYC residents.

227 Admissions and in-hospital mortality (2020)

228 Table 2 shows the numbers of admissions in the pre-pandemic baseline period and during COVID-19
229 Wave 1 and the ratios of admissions between these two periods across the four quartiles of hospitals.
230 Compared with the baseline, the number of all-cause admissions citywide declined by 17% in Wave 1.
231 All-cause admissions by Q1-Q4 hospitals were 73%, 84%, 87%, and 97% of their baseline levels,
232 respectively (all four ratios are statistically different from one another). The citywide number of ICU
233 admissions remained virtually unchanged in Wave 1, but there was significant variation among hospitals
234 across quartiles, with ICU admissions in Q1-Q4 hospitals being 84%, 97%, 108%, and 123% of the
235 baseline levels, respectively (all four ratios are statistically different), consistent with the hypothesis that
236 hospitals serving a higher proportion of Medicaid and uninsured patients pre-COVID experienced a
237 greater surge of patients requiring critical care during the first COVID-19 wave.

238 Table 3 shows crude and risk-adjusted mortality rates in each period across the four hospital quartiles.
239 The citywide number of in-hospital deaths among all admissions rose dramatically from 4,885 to 18,147,
240 resulting in an increased crude mortality rate from 3.4 to 15.1 per 100 admissions. While both the crude
241 and risk-adjusted mortality rates for all admissions were similar across quartiles pre-pandemic, there were

242 large disparities in these rates in Wave 1. The crude mortality rates for all admissions in Wave 1 were
243 11.5 (95% confidence level (CI)=11.1, 11.8), 16.4 (CI=16.0,16.9), 18.9 (CI=18.4,19.4), and 14.7
244 (CI=14.2,15.1) per 100 admissions among Q1-Q4 hospitals, respective. After accounting for differences
245 in patient-level characteristics, the risk-adjusted rates for all admissions were higher among Q3 and Q4
246 hospitals, 17.1 (CI=16.6,17.6) and 16.8 (CI=16.3,17.3) per 100 admissions, respectively, than Q1 and Q2
247 hospitals, 12.4 (CI=12.0,12.8) and 14.9 (CI=14.5,15.3) per 100 admissions, respectively, consistent with
248 the hypothesis that hospitals serving a higher proportion of Medicaid and uninsured patients pre-COVID
249 experienced higher mortality rates during the first COVID-19 wave.

250 The city-wide crude rate of mortality for ICU admissions increased from 14 to 42.5 deaths per 100
251 admissions. Q1 hospitals had significantly lower crude and risk-adjusted mortality rates than hospitals in
252 the other quartiles. Specifically, the risk-adjusted mortality rate for Q1 hospitals was 36.4 (CI=34.7,38.2)
253 per 100 ICU admissions vs. 43.6 (CI=41.5,45.8), 45.9 (CI=43.8,48.1), and 45.7 (CI=43.6,48.0) per 100
254 ICU admissions for Q2-Q4 hospitals, respectively. As non-ICU admissions made up close to 90% of all
255 admissions in both periods, crude and risk-adjusted rates for non-ICU admissions had similar patterns as
256 the rates for all admissions.

257 As shown in Tables S1-6, Hispanic and NH Black patients accounted for most of the increases in ICU
258 demand and all three sets of deaths in the higher quartile hospitals.

259 Figures 1 shows that weekly ICU admissions to Q4 hospitals in late March were more than 175% of the
260 baseline weekly average, substantially larger than the increase in ICU admissions experienced by Q1
261 hospitals. Figure 2 shows that both weekly ICU and non-ICU mortality reached their peaks in early April,
262 approximately 800% and 2,500% of the baseline weekly averages among Q4 hospitals.

263 Regression estimates

264 The full hierarchical logistic regression estimates for the three sets of inpatient deaths are presented in
265 Table S7. The regression estimates show that being male and being older were risk factors for in-hospital

266 mortality. Compared with NH Whites, Other race/ethnicity had a higher likelihood of ICU mortality while
267 NH Blacks had a lower likelihood of non-ICU mortality. Compared with private insurance, the primary
268 payers of Medicaid, Medicare, and Other were associated with a higher likelihood of mortality for both
269 ICU and non-ICU admissions. ICU admissions from nursing homes were associated with a lower
270 likelihood of mortality, but non-ICU admissions from nursing homes were associated with a higher
271 likelihood of mortality. Having a higher Elixhauser comorbidity score and a major or extreme SOI were
272 risk factors for both ICU and non-ICU mortality. Finally, compared with admissions to private AMCs and
273 affiliates, those to non-AMC affiliated private hospitals (most of which are independent) were associated
274 with a higher likelihood of ICU and non-ICU mortality.

275 Table 4 shows that critical care strain, the primary variable of interest, was associated with a higher
276 likelihood of both ICU and non-ICU mortality. Compared with the reference group of 100% or less of the
277 baseline weekly average, ICU admissions on a day for which the ICU volume was 101-150%, 151-200%,
278 and > 200% of the baseline weekly average had odds ratios of 1.17 (CI=1.10,1.26), 2.63 (CI=2.31,3.00),
279 and 3.26 (CI=2.82,3.78) for inpatient mortality, and non-ICU admissions on a day for which the ICU
280 volume was 101-150%, 151-200%, and > 200% of the baseline weekly average had odds ratios of 1.28
281 (CI=1.22,1.34), 2.60 (CI=2.40,2.82), and 3.44 (CI=3.11,3.63) for inpatient mortality.

282 As shown in Tables S8-10, the regression estimates for hospital strain were similar with alternative strain
283 measures. Additionally, as reported in Table S11, the non-hierarchical logistic regression with hospital
284 fixed effects produced similar estimates for the hospital strain and other variables.

285

286 Discussion

287 The COVID-19 pandemic had a devastating and inequitable impact on NYC.³¹ With three quarters of
288 COVID-19 related deaths in NYC taking place in hospitals, which have been found to be highly
289 segregated, this study examined the possible relationship between hospital segregation and the high rates
290 of in-hospital mortality in NYC using all-payer hospital discharge data. We found that hospitals serving a

291 high proportion of Medicaid or uninsured patients pre-COVID-19 pandemic experienced a greater strain
292 in ICU capacity and larger crude and risk-adjusted mortality rates for both ICU and non-ICU admissions
293 during the first wave of the pandemic. Additionally, we found that strained ICU capacity was
294 independently associated with a greater likelihood of in-hospital death. Together, these findings suggest
295 that a greater surge of patients needing critical care in segregated, under-resourced hospitals may have
296 contributed to excess mortality rates, with Hispanic and NH Black patients accounting for most of the
297 mortality increases.

298 Our study complements the existing literature in several ways. First, while strained critical care capacity
299 has been linked to greater in-hospital mortality in both the pandemic and non-pandemic settings,^{18,25,26,32}
300 relatively few studies have assessed differences in critical care strain and outcomes across a census of
301 hospitals within the same jurisdiction. Second, with few exceptions,^{25,26} current studies on critical care
302 strain have generally not examined the impact of critical care strain on non-ICU patients. Consistent with
303 an analysis conducted by Kadri et al.,²⁶ we found that strained ICU capacity may be associated with worse
304 outcomes among non-ICU patients, suggesting the importance of including both ICU and non-ICU
305 outcomes in assessing the impact of critical care strain. Third, a recent study found that load imbalance
306 was widespread in the US during the COVID-19 pandemic.³³ Additionally, the study found that hospitals
307 serving high proportions of Medicaid patients and Black Medicare patients tended to be over capacity in
308 regions experiencing load imbalance. Focusing on NYC, our study not only found similar results but
309 further demonstrated the potential adverse impact of load imbalance and critical care strain on health
310 outcomes. Finally, our study added to the accumulating body of evidence that segregation of care may
311 lead to health disparities.^{14,34}

312 Structural racism in historical and modern health care policy has contributed to people of color being
313 disproportionately uninsured or covered by public insurance programs that offer lower reimbursement
314 rates, a key driver of health care segregation.³⁵ Other racist policies, such as redlining, a federal program
315 designed to residentially segregate Black and immigrant communities, also contributed to care

316 segregation.^{36,37} While a comprehensive discussion of potential policy solutions for care segregation is
317 beyond the scope of this paper, we offer the following recommendations. First, in order to incentivize
318 providers to serve uninsured and Medicaid-insured patients, it is essential to institute payment reforms,
319 such as raising Medicaid reimbursement rates and implementing hospital price regulation, and to expand
320 health insurance coverage.³⁸⁻⁴¹ Second, it is important to enforce tax-exempt status for non-profit hospitals
321 and ensure that benefits they provide for marginalized communities are commensurate to tax breaks and
322 other government benefits received.⁴² Finally, measures that advance anti-racism in clinical practice and
323 care and policies that address broader social exclusion and residential segregation and promote
324 reinvestment in historically redlined neighborhoods and minority service institutions are needed.^{35,43,44}

325 Our study findings may also inform preparedness and response in future pandemics and other health care
326 emergencies. As all disease outbreaks are likely to have a disproportionate impact on marginalized
327 populations,⁴⁵ persistence of care segregation would lead to overburdened safety-net hospitals and worse
328 outcomes in these facilities. Hence, it is crucial to strengthen support for the safety-net system and ensure
329 its ability to meet unexpected increases in demand for ICU and other services, including addressing
330 shortages of specialized health care providers.²⁰ Development of coordinated regional plans for load
331 balancing is also necessary to promote equitable and timely access to critical care and prevent
332 catastrophic outcomes among overburdened safety-net facilities during times of crisis, with an emphasis
333 on supporting independent safety-net hospitals that may face additional hurdles in coordinating load
334 balancing.⁴⁶

335 Limitations

336 This study has several limitations. First, the discharge records included in SPARCS were provided by
337 individual facilities, which may have inconsistent coding and reporting practices, resulting in issues such
338 as misclassification of race/ethnicity that has been found to be more likely for Hispanic and Asian or
339 Pacific Islander patients, potentially understating the impact of the pandemic on these groups in the
340 analysis.⁴⁷ Second, our measures of hospital strain were imperfect proxies, as we did not have full

341 information on each hospital's capacity to provide critical care and the demand for their critical care
342 services. Third, the COVID-19 diagnosis code was not implemented until April 1, 2020; as a result, we
343 could not identify many of the patients infected with COVID if they were discharged before that date.
344 Nonetheless, as shown in Table S12, we obtained similar estimates for hospital strain if only admissions
345 on or after April 1 were included in the model. Fourth, patients who died in a hospital before they could
346 be admitted were not included in the mortality analysis. Fifth, using the winter months of 2020, during
347 which there may already be a high number of respiratory-related hospitalizations, as the baseline period
348 could have underestimated the overall impact of COVID-19. Finally, while we accounted for many key
349 variables, the estimates for hospital strain may still be biased by unobserved factors.

350

351 Conclusions

352 Similar to many large cities in the US, NYC has a highly segregated healthcare system, with safety-net
353 hospitals providing a disproportionate share of care for low-income and racial/ethnic minority patients.
354 This population-level analysis of hospitalizations in NYC found that the greater strain in ICU capacity
355 among safety-net hospitals was associated with higher likelihood of inpatient mortality during the first
356 wave of the COVID-19 pandemic. Our findings are consistent with the hypothesis that health care
357 segregation may have a substantial impact on health inequities and highlight the essential role of
358 desegregating health care, strengthening support for the safety-net system, and reinvesting in redlined
359 neighborhood during a pandemic and beyond in the promotion of health equity.

360

361

362

363

364

365 Acknowledgements:

366 We would like to acknowledge valuable feedback provided by participants in the Healthcare Segregation
367 Workgroup at the New York City Department of Health and Mental Hygiene. This study was produced
368 from raw data provided by the New York State Department of Health (NYSDOH). However, the
369 calculations, metrics, conclusions derived, and views expressed herein are those of the author(s) and do
370 not reflect the conclusions or views of NYSDOH. NYSDOH, its employees, officers, and agents make no
371 representation, warranty, or guarantee as to the accuracy, completeness, currency, or suitability of the
372 information provided here.

373

374

375

376

377

378

379

380

381

382

383

384

385

386 References:

- 387 1. Bambra C, Riordan R, Ford J, *et al.* The COVID-19 pandemic and health inequalities. *J Epidemiol*
388 *Community Health* 2020;74:964-968.
- 389 2. Dorn AV, Cooney RE, Sabin ML. COVID-19 exacerbating inequalities in the US. *Lancet*
390 2020;395(10232):1243-1244. doi:[10.1016/S0140-6736\(20\)30893-X](https://doi.org/10.1016/S0140-6736(20)30893-X)
- 391 3. Lopez L III, Hart LH III, Katz MH. Racial and ethnic health disparities related to COVID-19. *JAMA*.
392 2021;325(8):719-720. doi:[10.1001/jama.2020.26443](https://doi.org/10.1001/jama.2020.26443)
- 393 4. Alroy KA, Crossa A, Dominianni C, *et al.* Population-based estimates of Coronavirus Disease 2019
394 (COVID-19)–like illness, COVID-19 illness, and rates of case ascertainment, hospitalizations, and
395 deaths—non-institutionalized New York City residents, March–April 2020. *Clin Infect Dis*.
396 2021;73(9):1707–1710. <https://doi.org/10.1093/cid/ciab038>
- 397 5. NYC Health Coronavirus data. 2020. <https://github.com/nychealth/coronavirus-data>.
- 398 6. Wadhwa RK, Wadhwa P, Gaba P, *et al.* Variation in COVID-19 hospitalizations and deaths across
399 New York City boroughs. *JAMA*. 2020;323(21):2192-2195. doi:[10.1001/jama.2020.7197](https://doi.org/10.1001/jama.2020.7197)
- 400 7. Gouse I, Walters S, Miller-Archie S, Singh T, Lim S. The role of housing characteristics in racial and
401 ethnic disparities in SARS-CoV-2 antibody seropositivity among New York City adults: A population
402 representative study. *Preventive Medicine*. 2022; 164:107287.
403 <https://doi.org/10.1016/j.ypmed.2022.107287>.
- 404 8. Gupta S, Hayek SS, Wang W, *et al.* Factors Associated With Death in Critically Ill Patients With
405 Coronavirus Disease 2019 in the US. *JAMA Intern Med*. 2020;180(11):1436–1447.
406 doi:[10.1001/jamainternmed.2020.3596](https://doi.org/10.1001/jamainternmed.2020.3596)
- 407 9. Magesh S, John D, Li WT, *et al.* Disparities in COVID-19 Outcomes by Race, Ethnicity, and
408 Socioeconomic Status: A Systematic Review and Meta-analysis. *JAMA Network Open*. 2021;4(11):
409 e2134147. doi:[10.1001/jamanetworkopen.2021.34147](https://doi.org/10.1001/jamanetworkopen.2021.34147)

- 410 10. Parolin Z, Lee EK. The role of poverty and racial discrimination in exacerbating the health
411 consequences of COVID-19. *Lancet Reg Health Am.* 2022; 7:100178.
412 doi:[10.1016/j.lana.2021.100178](https://doi.org/10.1016/j.lana.2021.100178)
- 413 11. Sy KTL, Martinez ME, Rader B, White LF. Socioeconomic disparities in subway use and COVID-19
414 outcomes in New York City. *Am J Epidemiol.* 2021; 190(7):1234-1242. doi:[10.1093/aje/kwaa277](https://doi.org/10.1093/aje/kwaa277)
- 415 12. Agarwal N. Using Civil Rights Law to Undermine Profitability of Ongoing Racial Segregation in
416 Health Care. *AMA J Ethics.* 2023;25(1): E48-54. doi:10.1001/amajethics.2023.48
- 417 13. Calman NS, Golub M, Ruddock C, Le L, Hauser D. Separate and unequal care in New York City. *J*
418 *Health Care Law Policy.* 2006; 9: 105–120.
- 419 14. Howell EA, Egorova N, Balbierz A, Zeitlin J, Hebert PL. Black-white differences in severe maternal
420 morbidity and site of care. *Am J Obstet Gynecol.* 2016;214(1):122.e121–122.e127.
- 421 15. Tikkanen RS, Woolhandler S, Himmelstein DU, et al. Hospital payer and racial/ethnic mix at private
422 academic medical centers in Boston and New York City. *Int J Health Serv.* 2017;47(3):460-476.
423 doi:[10.1177/0020731416689549](https://doi.org/10.1177/0020731416689549)
- 424 16. Kelly C, Parker WF, Pollack HA. Low-income COVID-19 patients die needlessly because they are
425 stuck in the wrong hospitals — while the right hospitals too often shut them out. *Health Affairs*
426 *Blog.* April 2, 2021. <https://www.healthaffairs.org/doi/10.1377/hblog20210401.95800/full/>.
- 427 17. Rosenthal BM, Goldstein J, Otterman S, Fink. 2020 Why Surviving the Virus Might Come Down to
428 Which Hospital Admits You. *New York Times*, published July 1, 2020, updated Sept. 22, 2021.
429 <https://www.nytimes.com/2020/07/01/nyregion/Coronavirus-hospitals.html>.
- 430 18. Toth AT, Tatem KS, Hosseinipour N, Wong T, Newton-Dame R, Cohen GM, George A, Sessa T,
431 Postelnicu R, Uppal A, et al. Surge and Mortality in ICUs in New York City’s Public Healthcare
432 System. *Crit. Care Med.* 2021; 49(9): 1439-1450.
- 433 19. Uppal A, Silvestri DM, Siegler M, et al. Critical care and emergency department response at the
434 epicenter of the Covid-19 pandemic. *Health Aff (Millwood).* 2020;39:1443-1449.
435 <https://www.healthaffairs.org/doi/10.1377/hlthaff.2020.00901>.

- 436 20. Wei EK, Long T, Katz MH. Nine Lessons Learned From the COVID-19 Pandemic for Improving
437 Hospital Care and Health Care Delivery. *JAMA Intern Med.* 2021;181(9):1161–1163.
438 doi:10.1001/jamainternmed.2021.4237
- 439 21. Powell T, Chuang E. COVID in NYC: what we could do better. *Am J Bioeth.* 2020;20(7):62-66.
440 doi:[10.1080/15265161.2020.1764146](https://doi.org/10.1080/15265161.2020.1764146)
- 441 22. Bachrach D, Braslow L, Karl A. *Toward a High Performance Health Care System for Vulnerable*
442 *Populations: Funding for Safety-Net Hospitals.* New York, NY: Commonwealth Fund; March 2012.
- 443 23. Himmelstein G, Himmelstein KEW. Inequality Set in Concrete: Physical Resources Available for
444 Care at Hospitals Serving People of Color and Other U.S. Hospitals. *Int J Health Serv.* 2020
445 Oct;50(4):363-370. doi: 10.1177/0020731420937632.
- 446 24. Ogedegbe G, Ravenell J, Adhikari S, et al. Assessment of Racial/Ethnic Disparities in Hospitalization
447 and Mortality in Patients With COVID-19 in New York City. *JAMA Netw*
448 *Open.* 2020;3(12):e2026881. doi:10.1001/jamanetworkopen.2020.26881
- 449 25. Bravata DM, Perkins AJ, Myers LJ, et al. Association of Intensive Care Unit Patient Load and
450 Demand with Mortality Rates in US Department of Veterans Affairs Hospitals During the COVID-19
451 Pandemic. *JAMA Netw Open.* 2021;4(1):e2034266. doi:10.1001/jamanetworkopen.2020.34266
- 452 26. Kadri SS, Sun J, Lawandi A, et al. Association Between Caseload Surge and COVID-19 Survival in
453 558 U.S. Hospitals, March to August 2020. *Ann Intern Med.* Sep 2021;174(9):1240-1251.
454 doi:10.7326/M21-1213
- 455 27. Popescu I, Fingar KR, Cutler E, Guo J, Jiang HJ. Comparison of 3 Safety-Net Hospital Definitions
456 and Association with Hospital Characteristics. *JAMA Netw Open.* 2019;2(8):e198577.
457 doi:10.1001/jamanetworkopen.2019.8577
- 458 28. Weissman GE, Hubbard RA, Kohn R, et al. Validation of an administrative definition of ICU
459 admission using revenue center codes. *Crit Care Med.* 2017;45(8):e758-e762.
460 doi:[10.1097/CCM.0000000000002374](https://doi.org/10.1097/CCM.0000000000002374)

- 461 29. Lenzi J, Pildava S. Tips for calculating and displaying risk-standardized hospital outcomes in
462 Stata. *Stata J.* 2019;19(2):477–496. doi:10.1177/1536867X19854021.
- 463 30. Dunlap WP, Silver NC. Confidence intervals and standard errors for ratios of normal
464 variables. *Behav. Res. Methods Instrum. Comput.* 1986;18:469–471.
- 465 31. Li W, Onyebeke C, Castro A, Gurung S, Maduro G, Sun Y, Van Wye G. Summary of Vital Statistics,
466 2020. New York, NY: Bureau of Vital Statistics, New York City Department of Health and Mental
467 Hygiene. <https://www.nyc.gov/assets/doh/downloads/pdf/vs/2020sum.pdf>
- 468 32. Eriksson CO, Stoner RC, Eden KB, Newgard CD, Guise JM. The association between hospital
469 capacity strain and inpatient outcomes in highly developed countries: a systematic review. *J Gen
470 Intern Med.* 2017;32(6):686-696. doi:[10.1007/s11606-016-3936-3](https://doi.org/10.1007/s11606-016-3936-3)
- 471 33. Vohra AS, Khullar D, Kaushal R, Schpero WL. Many intensive care units were overloaded while
472 nearby hospitals had excess capacity during the COVID-19 pandemic. *Health Aff (Millwood).*
473 2023;42(7):937-945. doi:[10.1377/hlthaff.2022.01657](https://doi.org/10.1377/hlthaff.2022.01657)
- 474 34. Sarrazin MV, Campbell M, Rosenthal GE. Racial differences in hospital use after acute myocardial
475 infarction: does residential segregation play a role? *Health Aff (Millwood).* 2009;28(2):w368-w378.
476 doi:[10.1377/hlthaff.28.2.w368](https://doi.org/10.1377/hlthaff.28.2.w368)
- 477 35. Yearby R, Clark B, Figueroa JF. Structural racism in historical and modern US health care
478 policy. *Health Aff (Millwood).* 2022;41(2):187-194. doi:[10.1377/hlthaff.2021.01466](https://doi.org/10.1377/hlthaff.2021.01466)
- 479 36. Arcaya MC, Schnake-Mahl A. Health in the segregated city. New York (NY): Furman Center for
480 Real Estate and Urban Policy. Oct, 2017. Available from:
481 <https://furmancenter.org/research/iri/essay/health-in-the-segregated-city>. Accessed June 5, 2023.
- 482 37. Rothstein, R. 2017. The Color of Law: A forgotten history of how our government segregated
483 America. New York: Liveright Publishing Corporation.
- 484 38. Alexander D, Schnell M. The impacts of physician payments on patient access, use, and health.
485 *National Bureau of Economic Research Working Paper Series.* July 2019. doi:[10.3386/w26095](https://doi.org/10.3386/w26095)

- 486 39. Dunker A, Ryden Benjamin E. How structural inequalities in New York's health care system
487 exacerbate health disparities during the COVID-19 pandemic: a call for equitable reform. Community
488 Service Society. 2020. Available from: [https://www.cssny.org/news/entry/structural-inequalities-in-](https://www.cssny.org/news/entry/structural-inequalities-in-new-yorks-health-care-system)
489 [new-yorks-health-care-system](https://www.cssny.org/news/entry/structural-inequalities-in-new-yorks-health-care-system).
- 490 40. Garber J. How hospital segregation contributes to racial health disparities. Lown Institute. August 6
491 2020. Available from: [https://lowninstitute.org/how-hospital-segregation-contributes-to-racial-health-](https://lowninstitute.org/how-hospital-segregation-contributes-to-racial-health-disparities/)
492 [disparities/](https://lowninstitute.org/how-hospital-segregation-contributes-to-racial-health-disparities/) Accessed June 5, 2023.
- 493 41. Berenson RA, Murray RB. How Price Regulation Is Needed To Advance Market Competition: Study
494 examines the need for price regulation in US health care. *Health Aff (Millwood)*. 2022;41(1):26-34.
- 495 42. Bai G, Zare H, Eisenberg MD, Polsky D, Anderson GF. Analysis suggests government and nonprofit
496 hospitals' charity care is not aligned with their favorable tax treatment. *Health Aff (Millwood)*.
497 2021;40(4):629-636.
- 498 43. Krieger N, Van Wye G, Huynh M, Waterman PD, Maduro G, Li W, et al. Structural racism, historical
499 redlining, and risk of preterm birth in New York City, 2013–2017. *Am J Public Health*
500 2020;110:1046–53. doi:10.2105/AJPH.2020.305656
- 501 44. Monroe ADH, Sturgis LC, Adashi EY. Antiracism Training in Medicine. *JAMA Health*
502 *Forum*. 2020;1(12):e201477. doi:10.1001/jamahealthforum.2020.1477
- 503 45. Farmer, P. *Infections and Inequalities: The Modern Plagues*. Berkeley: University of California Press;
504 1999.
- 505 46. Mitchell SH, Rigler J, Baum K. Regional Transfer Coordination and Hospital Load Balancing During
506 COVID-19 Surges. *JAMA Health Forum*. 2022;3(2):e215048.
507 doi:10.1001/jamahealthforum.2021.5048
- 508 47. Howland RE, Tsao TY. Evaluating race and ethnicity reported in hospital discharge data and its
509 impact on the assessment of health disparities. *Med Care* 2020;58:280–284.

510

511 Figures (attached as separate files):

512 Figure 1: Weekly hospital admissions among adults (18+) in New York City by hospital quartile, 2020

513 Figure 2: Weekly inpatient mortality among adults (18+) in New York City by hospital quartile, 2020

514

515

516

517

518

519

520

521

522

523

524

525

526

527

528

529

530

531 Supplemental Tables (attached as a separate file):

532 Table S1: Patient and admission characteristics of overall hospitalizations among adults (18+) in NYC by
533 hospital quartile, January 5-May 9, 2020

534 Table S2: Patient and admission characteristics of ICU hospitalizations among adults (18+) in NYC by
535 hospital quartile, January 5-May 9, 2020

536 Table S3: Patient and admission characteristics of non-ICU hospitalizations among adults (18+) in NYC
537 by hospital quartile, January 5-May 9, 2020

538 Table S4: Patient and admission characteristics of overall mortality among adults (18+) in NYC by
539 hospital quartile, January 5-May 9, 2020

540 Table S5: Patient and admission characteristics of ICU mortality among adults (18+) in NYC by hospital
541 quartile, January 5-May 9, 2020

542 Table S6: Patient and admission characteristics of non-ICU mortality among adults (18+) in NYC by
543 hospital quartile, January 5-May 9, 2020

544 Table S7: Hierarchical logistic regression estimates for inpatient mortality among adults (18+) in New
545 York City, January 11- May 9, 2020

546 Table S8: Hierarchical logistic regression estimates (with alternative measure 1 of hospital strain) for
547 inpatient mortality among adults in NYC, January 11- May 9, 2020

548 Table S9: Hierarchical logistic regression estimates (with alternative measure 2 of hospital strain) for
549 inpatient mortality among adults in NYC, January 11- May 9, 2020

550 Table S10: Hierarchical logistic regression estimates (with alternative measure 3 of hospital strain) for
551 inpatient mortality among adults in NYC, January 11- May 9, 2020

- 552 Table S11: Non-hierarchical logistic regression estimates for inpatient mortality among adults (18+) in
553 NYC, January 11- May 9, 2020
- 554 Table S12: Hierarchical logistic regression estimates for inpatient mortality among adults (18+) in NYC,
555 April 1- May 9, 2020

Table 1: Characteristics of hospitalization admissions among adults ages 18+ in NYC by hospital quartile, 2017-2019^a

Characteristic, No. (%)	Overall	Quartile 1	Quartile 2	Quartile 3	Quartile 4
Hospital Type ^b	(N=47)	(N=11)	(N=12)	(N=12)	(N=12)
Private AMC	22	10	9	3	0
Private other (non-AMC)	13	1	2	8	2
Public	12	0	1	1	10
All admissions	2,437,334 (100%)	802,657 (100%)	655,001 (100%)	514,740 (100%)	464,936 (100%)
Admissions through emergency department	1,646,166 (68%)	465,637 (58%)	439,671 (67%)	378,413 (74%)	362,445 (78%)
Gender					
Female	1,384,740 (57%)	477,796 (60%)	384,248 (59%)	288,076 (56%)	234,620 (50%)
Male	1,052,536 (43%)	324,853 (40%)	270,738 (41%)	226,651 (44%)	230,294 (50%)
Age group					
Age (median)	57	59	61	56	51
Age 18-39	681,563 (28%)	220,988 (28%)	155,927 (24%)	152,526 (30%)	152,112 (33%)
Age 40-64	833,922 (34%)	249,867 (31%)	217,679 (33%)	172,550 (34%)	193,826 (42%)
Age 65-79	560,271 (23%)	203,326 (25%)	167,785 (26%)	108,051 (21%)	81,109 (17%)
Age 80+	357,707 (15%)	127,179 (16%)	112,398 (17%)	80,624 (16%)	37,506 (8.1%)
Race/ethnicity					
NH Asian or Pacific Islander	200,814 (8.2%)	49,562 (6.2%)	84,037 (13%)	47,755 (9.3%)	19,460 (4.2%)
NH Black	618,876 (25%)	142,739 (18%)	164,967 (25%)	130,655 (25%)	180,515 (39%)
Hispanic	539,405 (22%)	121,707 (15%)	154,824 (24%)	105,772 (21%)	157,102 (34%)
NH White	723,216 (30%)	369,061 (46%)	171,911 (26%)	146,354 (28%)	35,890 (7.7%)
Other	355,023 (15%)	119,588 (15%)	79,262 (12%)	84,204 (16%)	71,969 (15%)
Insurance					
Medicaid	853,173 (35%)	167,707 (21%)	200,253 (31%)	224,589 (44%)	260,624 (56%)
Medicare	1,012,871 (42%)	360,525 (45%)	307,057 (47%)	212,348 (41%)	132,941 (29%)
Private	501,370 (21%)	254,335 (32%)	137,517 (21%)	65,679 (13%)	43,539 (9.4%)
Self-pay	45,586 (1.9%)	9,074 (1.1%)	6,649 (1.0%)	7,901 (1.5%)	21,962 (4.7%)
Other	24,334 (1%)	11,016 (1.4%)	3,525 (0.5%)	3,923 (0.8%)	5,870 (1.3%)
Neighborhood poverty ^c					
0 to <10%	394,154 (16%)	184,361 (23%)	130,829 (20%)	43,202 (8.4%)	35,762 (7.7%)
10 to <20%	930,296 (38%)	270,931 (34%)	268,531 (41%)	231,309 (45%)	159,525 (34%)
20 to <30%	498,747 (20%)	145,737 (18%)	107,272 (16%)	148,191 (29%)	97,547 (21%)
30% or higher	391,179 (16%)	71,619 (8.9%)	82,767 (13%)	76,428 (15%)	160,365 (34%)
Borough					
Bronx	493,240 (20%)	56,305 (7.0%)	200,668 (31%)	57,497 (11%)	178,770 (38%)
Brooklyn	667,904 (27%)	225,457 (28%)	59,527 (9.1%)	274,190 (53%)	108,730 (23%)
Manhattan	379,641 (16%)	231,607 (29%)	40,042 (6.1%)	42,357 (8.2%)	65,635 (14%)

Queens	506,025 (21%)	71,840 (9%)	226,683 (35%)	109,277 (21%)	98,225(21%)
Staten Island	150,531 (6.2%)	85,730 (11%)	57,258 (8.7%)	6,166 (1.2%)	1,377 (0.3%)
NYC Residency					
NYC residents	2,197,341 (90%)	670,939 (84%)	584,178 (89%)	489,487 (95%)	452,737(97%)
Non-NYC residents	239,993 (10%)	131,718 (16%)	70,823 (11%)	25,253 (4.9%)	12,189 (2.6%)

Notes:

Abbreviations: NYC = New York City; NH = non-Hispanic; AMC = academic medical center (including affiliates).

^a Hospital quartiles are defined based on a hospital's percentage of adult hospitalizations where the primary payer was Medicaid or self-pay. Hierarchical algorithm based on common payment logic was used to identify primary payer.

^b Excludes specialty hospitals and hospitals without intensive care units (N = 6).

^c Poverty estimates may not be available for all NYC neighborhoods.

Source: New York State Department of Health, Statewide Planning and Research Cooperative System (SPARCS) 2017-2019 inpatient data, 2022 release.

Table 2: Admissions and ratios of admissions among adults ages 18+ in NYC by hospital quartile, January 5-May 9, 2020^a

<u>Admission type</u>	NYC (N=47 hospitals) ^b		Quartile 1 (lowest % of Medicaid or Self-pay patients) (N=11 hospitals)		Quartile 2 (N=12 hospitals)		Quartile 3 (N=12 hospitals)		Quartile 4 (highest % of Medicaid or Self-pay patients) (N=12 hospitals)	
	Pre-pandemic^c	Wave 1^d	Pre-pandemic	Wave 1	Pre-pandemic	Wave 1	Pre-pandemic	Wave 1	Pre-pandemic	Wave 1
<u>All admissions</u>	145,054 (100%)	120,275 (100%)	49,977 (100%)	36,257 (100%)	38,360 (100%)	32,062 (100%)	29,846 (100%)	26,020 (100%)	26,871 (100%)	25,936 (100%)
<u>ICU admissions^e</u>	16,108 (11%)	15,948 (13%)	5,986 (12%)	5,015 (14%)	3,799 (10%)	3,680 (11%)	3,484 (12%)	3,770 (14%)	2,839 (11%)	3,483 (13%)
<u>Non-ICU admissions^f</u>	128,946 (89%)	104,327 (87%)	43,991 (88%)	31,242 (86%)	34,561 (90%)	28,382 (89%)	26,362 (88%)	22,250 (86%)	24,032 (89%)	22,453 (87%)
<u>Ratio of admissions between periods (wave 1 / baseline)^g</u>	Ratio	CI of ratio	Ratio^h	CI of ratio	Ratio	CI of ratio	Ratio	CI of ratio	Ratio	CI of ratio
<u>All admissions</u>	0.83	0.82,0.84	0.73	0.72,0.74	0.84	0.82,0.85	0.87	0.86,0.89	0.97	0.95,0.98
<u>ICU admissions</u>	0.99	0.97,1.01	0.84	0.81,0.87	0.97	0.92,1.01	1.08	1.03,1.13	1.23	1.17,1.29
<u>Non-ICU admissions</u>	0.81	0.80,0.82	0.71	0.70,0.72	0.82	0.81,0.83	0.84	0.83,0.86	0.93	0.92,0.95

Notes:

Abbreviation: NYC = New York City; CI = 95% confidence interval; ICU = intensive care unit

^a Hospital quartiles are defined based on a hospital's 2017-2019 percentage of adult hospitalizations where the primary payer was Medicaid or self-pay.

Hierarchical algorithm based on common payment logic was used to identify primary payer.

^b Excludes specialty hospitals and hospitals without ICUs (N=6).

^c Pre-pandemic period is defined as CDC weeks 2-10 of 2020, corresponding to January 5-March 7, 2020 (based on date of admission).

^d Wave 1 of COVID-19 is defined as CDC weeks 11-19 of 2020, corresponding to March 8-May 9, 2020 (based on date of admission).

^e ICU use is defined based on revenue codes 200, 201, 202, 203,204, 207, 208, 209, 210, 211, 212, 213 and 219 (Weissman et al. 2017).

^f Non-ICU use is defined as any admissions without revenue codes for ICU use but may include intermediate ICU use.

^g The ratio of admissions in each quartile is statistically different from the ratios of admissions in all other quartiles at $p < 0.05$.

Source: New York State Department of Health, Statewide Planning and Research Cooperative System (SPARCS) 2020 inpatient data, 2022 release.

Table 3: Crude and risk-adjusted mortality rates among adults ages 18+ in NYC by hospital quartile, January 5-May 9, 2020^a

	NYC (N=47 hospitals) ^b		Quartile 1 (lowest % of Medicaid or self-pay patients) (N=11 hospitals)		Quartile 2 (N=12 hospitals)		Quartile 3 (N=12 hospitals)		Quartile 4 (highest % of Medicaid or self-pay patients) (N=12 hospitals)	
	Pre-pandemic ^c	Wave 1 ^d	Pre-pandemic	Wave 1	Pre-pandemic	Wave 1	Pre-pandemic	Wave 1	Pre-pandemic	Wave 1
All in-hospital deaths	4,885	18,147	1,602	4,167	1,506	5,263	1,173	4,917	604	3,800
Crude mortality rate per 100 [CI]	3.4 [3.3-3.5]	15.1 [14.9-15.3]	3.2 [3.0-3.4]	11.5 [11.1-11.8]	3.9 [3.7-4.1]	16.4 [16.0-16.9]	3.9 [3.7-4.2]	18.9 [18.4-19.4]	2.2 [2.1-2.4]	14.7 [14.2-15.1]
Risk-adjusted mortality rate per 100 [CI] ^e	3.4 [3.3-3.5]	15.1 [14.9-15.3]	3.2 [3.0-3.4]	12.4 [12.0-12.8]	3.5 [3.3-3.7]	14.9 [14.5-15.3]	3.7 [3.5-4.0]	17.1 [16.6-17.6]	3.3 [3.0-3.6]	16.8 [16.3-17.3]
ICU deaths^e	2,261	6,778	743	1,729	560	1,628	565	1,740	393	1,681
Crude mortality rate per 100 [CI]	14 [13.5-14.6]	42.5 [41.5-43.5]	12.4 [11.5-13.3]	34.5 [32.9-36.1]	14.7 [13.5-16.0]	44.2 [42.1-46.4]	16.2 [14.9-17.6]	46.2 [44.0-48.3]	13.8 [12.5-15.2]	48.3 [46.0-50.6]
Risk-adjusted mortality rate per 100 [CI]	14.2 [13.6-14.9]	42.5 [41.5-43.5]	14 [13-15.1]	36.4 [34.7-38.2]	14 [12.8-15.3]	43.6 [41.5-45.8]	15 [13.7-16.3]	45.9 [43.8-48.1]	13.8 [12.4-15.4]	45.7 [43.6-48.0]
Non-ICU deaths^f	2,624	11,369	859	2,438	946	3,635	608	3,177	211	2,119
Crude mortality rate per 100 [CI]	2.0 [2.0-2.1]	10.9 [10.7-11.1]	2.0 [1.8-2.1]	7.8 [7.5-8.1]	2.7 [2.6-2.9]	12.8 [12.4-13.2]	2.3 [2.1-2.5]	14.3 [13.8-14.8]	0.9 [0.8-1.0]	9.4 [9.0-9.8]
Risk-adjusted mortality rate per 100 [CI]	2.1 [2.0-2.2]	10.9 [10.7-11.1]	1.9 [1.7-2.0]	8.6 [8.3-9.0]	2.3 [2.1-2.4]	10.9 [10.6-11.3]	2.3 [2.1-2.5]	12.6 [12.1-13.0]	1.7 [1.5-2.0]	12.1 [11.6-12.7]

Notes:

Bolded number indicates that the mortality rate for a quartile is statistically different from the rates for all other quartiles in Wave 1 ($p < 0.05$).

Abbreviation: NYC = New York City; CI = 95% confidence interval; ICU = intensive care unit

^a Hospital quartiles are defined based on a hospital's 2017-2019 percentage of adult hospitalizations where the primary payer was Medicaid or self-pay.

Hierarchical algorithm based on common payment logic was used to identify primary payer.

^b Excludes specialty hospitals and hospitals without ICUs (N=6).

^c Pre-pandemic period is defined as CDC weeks 2-10 of 2020, corresponding to January 5-March 7, 2020 (based on date of admission).

^d Wave 1 of COVID-19 is defined as CDC weeks 11-19 of 2020, corresponding to March 8-May 9, 2020 (based on date of admission).

^e The following patient-level characteristics were used for risk adjustment: sex, age, race/ethnicity, primary payer, weighted Elixhauser comorbidity index, admission from nursing home, emergency admission, severity of illness, and principal diagnosis.

^f ICU use is defined based on revenue codes 200, 201, 202, 203,204, 207, 208, 209, 210, 211, 212, 213 and 219 (Weissman et al. 2017).

^g Non-ICU use is defined as any admissions without revenue codes for ICU use but may include intermediate ICU use.

Source: New York State Department of Health, Statewide Planning and Research Cooperative System (SPARCS) 2020 inpatient data, 2022 release.

Table 4: Independent association between hospital strain and inpatient mortality among adults (18+) in New York City, January 11- May 9, 2020^{a,b}

<i>Outcome</i>	ICU death^c (N=30,326 hospitalizations.)		Non-ICU death^d (N=219,729 hospitalizations.)		Overall inpatient death (N=250,101 hospitalizations.)	
	Odds Ratio	95% CI	Odds Ratio	95% CI	Odds Ratio	95% CI
Hospital strain (ICU volume as % prepandemic baseline)^e						
0% to 100% [Reference]	1	(1.00,1.00)	1	(1.00,1.00)	1	(1.00,1.00)
101% to 150%	1.17***	(1.10,1.26)	1.28***	(1.22,1.34)	1.28***	(1.24,1.34)
151% to 200%	2.63***	(2.31,3.00)	2.60***	(2.40,2.82)	2.62***	(2.45,2.80)
> 200%	3.26***	(2.82,3.78)	3.44***	(3.13,3.78)	3.36***	(3.11,3.63)

Notes:

* p<0.05, ** p<0.01, *** p<0.001

Abbreviations: ICU = intensive care unit

^a < 100 observations were excluded due to missing data.

^b Estimates were generated from hierarchical logistical regressions, controlling for patient sex, age, race/ethnicity, primary payer, weighted Elixhauser comorbidity index, admission from nursing home, emergency admission, severity of illness (SOI), principal diagnosis, neighborhood of residence, and hospital type.

^c ICU use is identified based on revenue codes 200, 201, 202, 203,204, 207, 208, 209, 210, 211, 212, 213 and 219 (Weissman et al. 2017).

^d Non-ICU use is defined as any admissions without revenue codes for ICU use but may include intermediate ICU use.

^e Hospital strain is defined as the total number of adult ICU admissions to the hospital in the week prior to and including the patient admission date as a percentage of the hospital's pre-pandemic baseline weekly average ICU admissions.

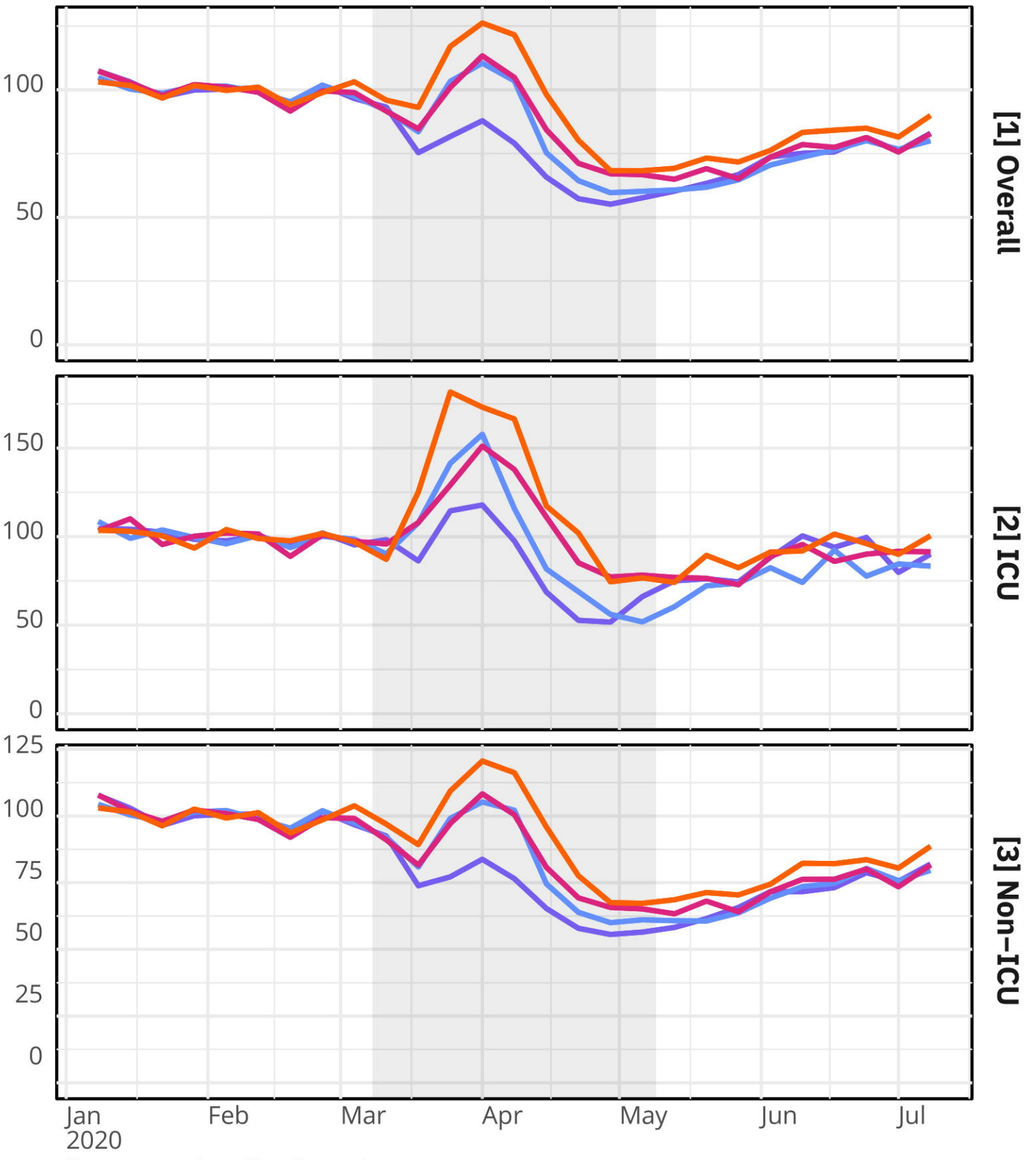
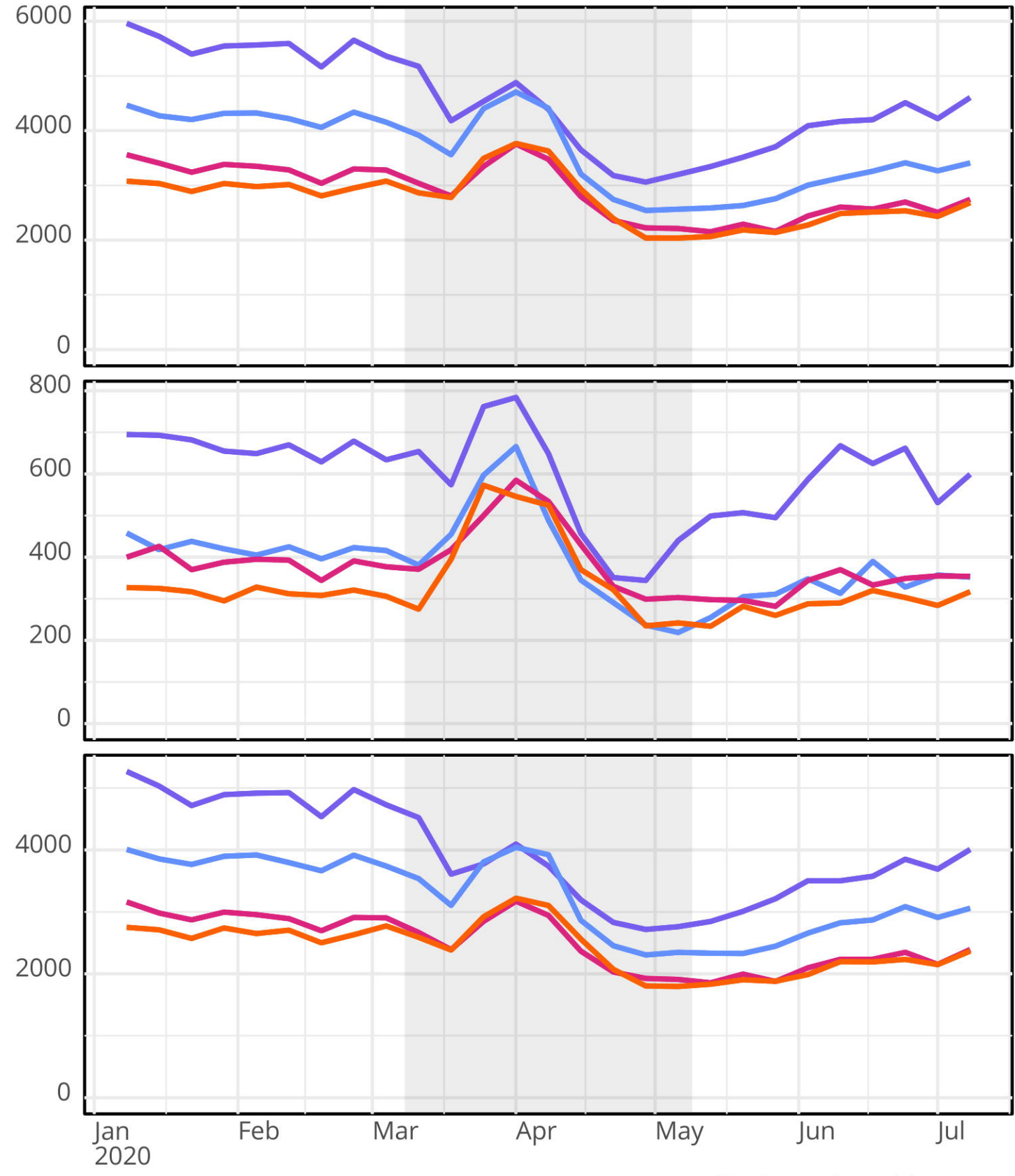
Source: New York State Department of Health, Statewide Planning and Research Cooperative System (SPARCS) 2020 inpatient data, 2022 release.

Figure 1: Weekly hospital admissions among adults (18+) in New York City by hospital quartile, 2020

medRxiv preprint doi: <https://doi.org/10.1101/2023.12.04.23299393>; this version posted March 12, 2024. The copyright holder for this preprint (which was not certified by peer review) is the author/funder, who has granted medRxiv a license to display the preprint in perpetuity. It is made available under a [CC-BY-NC-ND 4.0 International license](https://creativecommons.org/licenses/by-nc-nd/4.0/).

[A] Admissions (N)

[B] Admissions (% of pre-pandemic average)



CDC week (with corresponding months displayed)

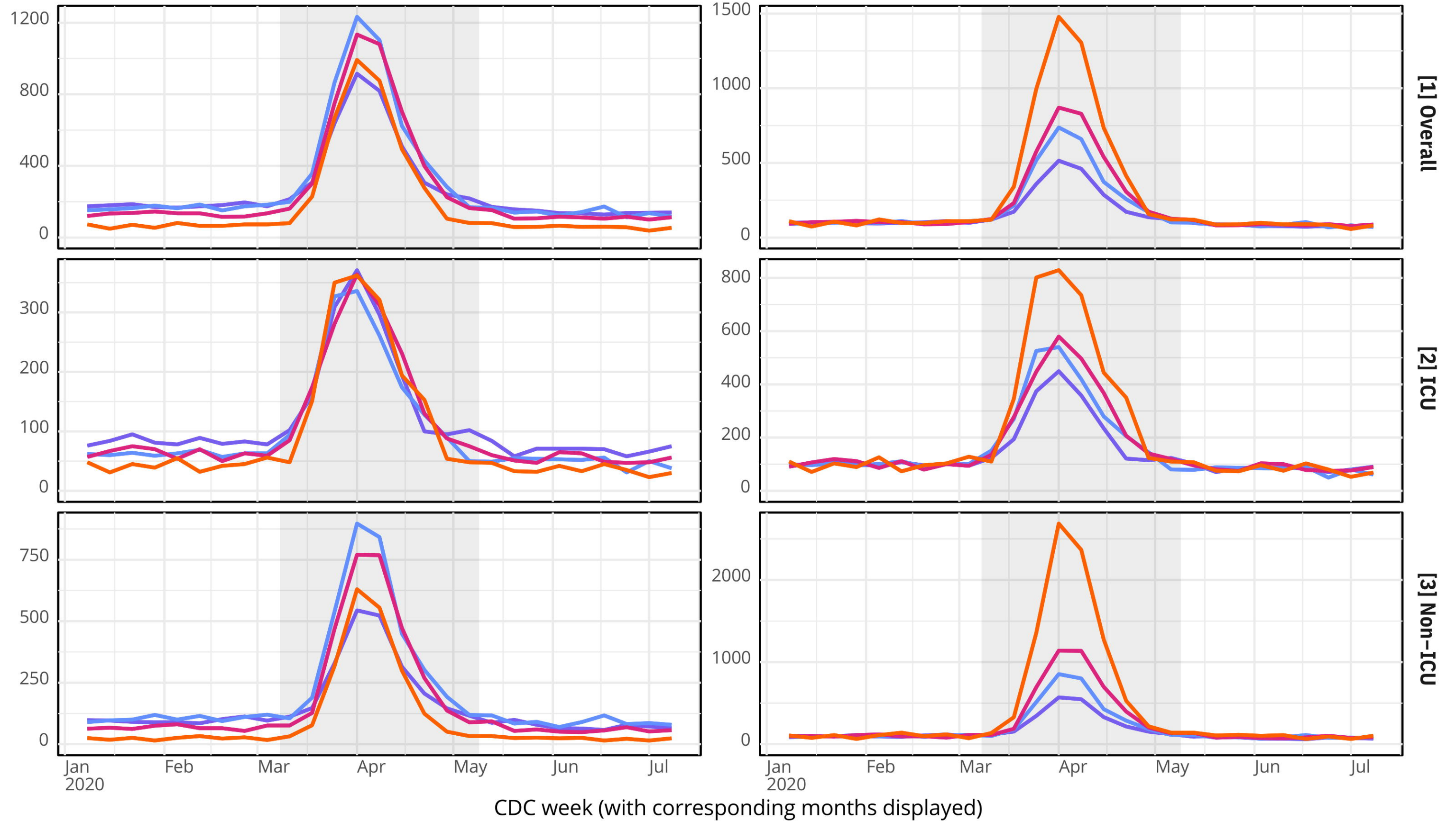


Figure 2: Weekly inpatient mortality among adults (18+) in New York City by hospital quartile, 2020

medRxiv preprint doi: <https://doi.org/10.1101/2023.12.04.23299393>; this version posted March 12, 2024. The copyright holder for this preprint (which was not certified by peer review) is the author/funder, who has granted medRxiv a license to display the preprint in perpetuity. It is made available under a [CC-BY-NC-ND 4.0 International license](https://creativecommons.org/licenses/by-nc-nd/4.0/).

[A] Admissions resulting in hospital death (N)

[B] Admissions resulting in hospital death (% of pre-pandemic average)



— Quartile 1 (lowest % Medicaid or self-pay) — Quartile 2 — Quartile 3 — Quartile 4 (highest % Medicaid or self-pay)