

New plasma LC-MS/MS assays for the quantitation of beta-amyloid peptides and identification of apolipoprotein E proteoforms for Alzheimer's disease risk assessment.

Short title: LC-MS/MS method for plasma A β 40 and A β 42, and ApoE isoforms

Darren M. Weber,^{1*} Jueun C. Kim,¹ Scott M. Goldman,¹ Nigel J. Clarke,¹ Michael K. Racke¹

¹ Quest Diagnostics Nichols Institute, San Juan Capistrano, CA, USA

Corresponding Author:

Darren Weber

darren.m.weber@questdiagnostics.com

1-949-728-4668

Quest Diagnostics Nichols Institute

33608 Ortega Hwy, B207

San Juan Capistrano, CA 92675 USA

Word count: 3325

Table count: 5

Figure count: 2

Contains supplementary material

Abstract

Objectives: Early detection of Alzheimer’s disease (AD) represents an unmet clinical need.

Beta-amyloid (A β) plays an important role in AD pathology, and the A β 42/40 peptide ratio is a good indicator for amyloid deposition. In addition, variants of the *APOE* gene are associated with variable AD risk. Here we describe the development and validation of high-throughput liquid chromatography-tandem mass spectrometry (LC-MS/MS) assays for plasma A β 40 and A β 42 quantitation, as well as apolipoprotein E (ApoE) phenotype determination as a surrogate for *APOE* genotype.

Methods: A β 40 and A β 42 were simultaneously immunoprecipitated (IP) from plasma, proteolytically digested, and quantitated by LC-MS/MS. ApoE proteoform status was qualitatively assessed by targeting tryptic peptides from the ApoE2, ApoE3, and ApoE4 proteoforms. Both assays were validated according to CLIA guidelines.

Results: Within-run precision was 1.8 to 4.2% (A β 40), 1.9 to 7.2% (A β 42), and 2.6 to 8.3% (A β 42/40 ratio). Between-run precision was 3.5 to 5.9% (A β 40), 3.8 to 8.0% (A β 42), and 3.3 to 8.7% (A β 42/40 ratio). Both A β 40 and A β 42 were linear from 10 to 2,500 pg/mL. Identified ApoE proteoforms had 100% concordance with *APOE* genotypes.

Conclusion: We have developed a precise, accurate, and sensitive high-throughput LC-MS/MS assay for plasma A β 40, A β 42, and proteoforms of ApoE.

Keywords: Alzheimer’s disease; A β 40; A β 42; A β 42/40; apolipoprotein E; liquid chromatography-tandem mass spectrometry (LC-MS/MS)

Abbreviations: A β , beta-amyloid; *APOE*, apolipoprotein E; TAE, total allowable error; MRM, multiple reaction monitoring; DOC, sodium deoxycholate; IS, internal standard

Introduction

Early detection of Alzheimer's disease (AD) has become critically important with the United States Food and Drug Administration's recent approval of the first disease-modifying treatments for AD using monoclonal antibodies targeting removal of various aggregates of A β from the brain [1]. Positron emission tomography (PET) and measurement of cerebrospinal fluid (CSF) beta-amyloid 42 (A β 42) [2, 3] are methods that have been used as entry criteria for clinical trials and/or as outcome measures for -disease-modifying AD treatments, but are costly and invasive [4].

Blood-based biomarkers have shown promise as a low-cost, noninvasive means of detecting amyloid pathology, and several studies in plasma have demonstrated that the ratio of A β 42 to A β 40 beta-amyloid peptides (A β 42/40) is inversely correlated with amyloid burden [5-9]. In addition, polymorphisms in the apolipoprotein E gene (*APOE*) have been shown to be a major genetic risk factor for late-onset AD, with individuals with the *APOE4* allele having a 3- to 15-fold increase in their odds of developing AD compared with more common *APOE3* allele [10]. In addition, recent studies have shown that the combination of the plasma A β 42/40 with age and *APOE4* status, determined by identifying apolipoprotein E proteoforms (ApoE), can identify amyloid pathology with higher accuracy than A β 42/40 alone [11].

Mass spectrometry (MS)-based methods have demonstrated higher accuracy in identifying amyloid deposition compared to immunoassays [5], most likely due to better analytical specificity and less susceptibility to matrix effects. However, MS-based platforms are considered complex and costly, and not as accessible as automated immunoassays. Most employ sample preparation workflows involving peptide enrichment using immunoprecipitation (IP) coupled with detection of peptides using costly high-resolution MS instruments [12, 13]. An antibody-free, low

resolution MS method was recently reported, but relies on ion mobility for background suppression and microfluidics, making it difficult to assess robustness and throughput [14].

Given the superiority of MS-based methods for AD biomarker detection and quantitation, and the need for better accessibility in AD testing, Quest Diagnostics has developed 2 liquid chromatography-tandem mass spectrometry assays (LC-MS/MS assays). Full automation and multiplexing enable assay robustness and high throughput, and costs are minimized by using a high-sensitivity but low-resolution triple quadrupole MS. The first assay simultaneously quantitates plasma levels of A β 40 and A β 42 (Quest AD-Detect™, Beta-Amyloid 42/40 Ratio). The second assay identifies ApoE proteoforms/phenotype as a surrogate for *APOE* genotype (Quest AD-Detect™, Apolipoprotein E Isoform). Herein, we describe their development and validation.

Materials and methods

Specimen collection

Blood specimens were collected by venipuncture into 10 mL tubes containing EDTA as anticoagulant, kept on ice (<1 hour) until centrifugation at 1200 rcf for 12 minutes at room temperature. Aliquots of plasma (0.5 mL) were transferred into polypropylene tubes and stored at -80°C until analysis.

Preparation of plasma A β calibrators, internal standards, and quality control samples

Full-length A β 40 and A β 42, were purchased from rPeptide (Watkinsville, GA USA). Quantitative amino acid analysis (AAA) was used to confirm purity and check stated peptide content of the A β 40 and A β 42 peptides, which was adjusted accordingly as previously described [15].

A β 40 and A β 42 calibrators were prepared by dissolving each peptide in 6 M urea containing 10% (v/v) stripped plasma (Golden West, Temecula, CA) in 10 mM PBS to a final concentration of 1 mg/mL. Both peptides were combined and subsequently diluted to a final concentration of 50 ng/mL in 6 M urea containing 10% stripped plasma. Calibrators were frozen at -80°C in 200 μ L aliquots in 2.0 mL Protein LoBind[®] Eppendorf tubes (Eppendorf, Hamburg, Germany) that had pre-treated to prevent non-specific analyte loss as previously described [16].

Quality control (QC) samples were prepared as described above using a separate lot A β 40 and A β 42 peptides. A total of 4 QC samples were used for the assay. The low QC consisted of a neat plasma pool, and the high QC consisted of the same plasma pool spiked with A β 40 and A β 42. Two additional QC samples were prepared by spiking A β 40 and A β 42 into stripped plasma to mimic a probable AD specimen (A β 42/40 ~ 0.120; AD-QC) and a probable non-AD specimen (A β 42/40 ~0.300; nonAD-QC). All QC samples were aliquoted into Protein LoBind Eppendorf tubes and stored at -80°C until needed.

Isotopically-labeled A β 40 (uniformly-labeled ¹³C, ¹⁵N) and A β 42 (uniformly-labeled ¹⁵N) internal standard (IS) were purchased from rPeptide (Watkinsville, GA USA). The IS mix was prepared as described above to a final concentration of 10 ng/mL, and 200 μ L were aliquoted in 2.0 mL Protein LoBind[®] Eppendorf tubes and stored at -80°C until needed.

Plasma A β 40 and A β 42 sample preparation

On the day of the assay, frozen calibrators, QC samples, IS, and patient plasma specimens were thawed. Once thawed, samples were processed using a fully automated method on Hamilton Star MicroLab liquid handler (Hamilton, Reno, NV, USA), configured to process two 96 deep-well plates per batch. First, 100 μ L of 1% Tween-20/CHAPS (v/v) was added to each 96 deep-well polypropylene plate, followed by addition of 500 μ L of calibrators, QC samples, and

patient plasma specimens, and 500 μ L of 10 mM PBS. Next, IS was added to all samples to a final concentration of 500 pg/mL for both A β 40 and A β 42. Samples were then mixed for 20 minutes at room temperature at 1,100 rpm. Finally, A β 40 and A β 42 were enriched from plasma by immunoprecipitation (IP) using 5 μ g of biotinylated monoclonal anti-A β 17-24 antibody (clone 4G8, Biolegend, San Diego, CA) conjugated to Dynabeads™ MyOne™ Streptavidin T1 magnetic beads (Invitrogen, Waltham, MA). After a 2-hour IP binding step, the beads were washed twice with 1 mL of 0.01% Tween-20 in 10 mM PBS followed by 2 washes with 1 mL of 0.12 M ammonium bicarbonate (AMBIC). Next, 250 μ L of 6 M urea was added to each sample and mixed for 10 minutes at 1,400 rpm at room temperature. To each sample was added 250 μ L of 0.12 M AMBIC, followed by 2 μ g of endoproteinase Lys-C (Santa Cruz Biotechnology, Dallas, TX), which yielded A β 29-40 (amino acid sequence GAIIGLMVGGVV) and A β 29-42 (amino acid sequence GAIIGLMVGGVVIA). Protein digestion proceeded at 40°C with mixing at 1,200 rpm. After a 70-minute incubation, the digestion reaction was quenched by adding 100 μ L of 10% ammonium hydroxide, and samples were concentrated and desalted using a micro-elution mixed-mode anion exchange solid phase extraction (SPE) plate (Waters, Milford, MA). Samples were loaded onto the SPE plate, washed with 10% acetonitrile, and eluted with 120 μ L of 60% acetonitrile with 5% formic acid. Samples were further diluted with 120 μ L of water prior to LC-MS/MS analysis.

Quantification of plasma A β 40 and A β 42 by LC-MS/MS

The 96-well sample plate containing digested A β 40 and A β 42 was placed into an LC-autosampler set to a temperature of 4°C, and 70 μ L was injected onto a XBridge Protein BEH 300 Å C4 column (Waters, Milford, MA) heated to 55°C. Analytical separation was achieved using a Transcend Vanquish TLX-4 TurboFlow UPLC (Thermo Fisher Scientific, Waltham, MA, USA) in a staggered 4-column configuration to facilitate high throughput. Both peptides were resolved using a 16-minute gradient at a flow rate of 0.6 mL/min of solvent A (water with 0.15%

formic acid) and solvent B (acetonitrile with 0.15% formic acid) with a 2-minute acquisition window. Detection was achieved using a Thermo Scientific TSQ Altis Plus Triple Quadrupole MS (Thermo Fisher Scientific, Waltham, MA, USA) operated in multiple reaction monitoring (MRM) mode. Optimized collision energies and RF voltage values were determined by direct infusion of the digested peptides. Three unique transitions for both A β 40 and A β 42, as well as their respective IS, were monitored. Parent/production ion masses, collision energies, and RF lens voltages are summarized in **Table 1**. Ion source and MRM scan parameters are summarized in **Supplemental material, Table 2**.

Each 96-well plate consisted of an 8-point calibration curve spanning the linear range (10 to 2,500 pg/mL) for both A β 40 and A β 42, a set of front QCs, a maximum of 79 plasma specimens, and a set of back QCs dispersed throughout the plate so to bracket patient specimens. The ratio of the peak area of the analyte to the internal standard was used to calculate the concentrations from the standard curve using TraceFinder Clinical Research v5.1 software (Thermo Fisher Scientific, Waltham, MA, USA). A weighted quadratic model (1/x) was used for generation of the standard curves while ignoring the origin. The ratio of A β 42 to A β 40 (A β 42/40) was determined by taking the back-calculated value for A β 42 and dividing it by the back-calculated value for A β 40. The total allowable error (TAE) for A β 40 and A β 42 was 30%. An example chromatogram from a patient plasma specimen is shown in **Supplemental material, Figure S1**.

Qualitative determination of ApoE proteoforms by LC-MS/MS

On the day of the assay, frozen QC samples, IS, and patient plasma specimens were thawed. Once thawed, samples were processed using a fully automated method on Hamilton Star MicroLab liquid handler configured to process two 96 deep-well plates per batch. Samples (25 μ L) were diluted in 125 μ L of 0.12 M AMBIC containing 15 mM dithiothreitol, 0.5% sodium deoxycholate (DOC), and 1 μ g of winged internal standard (Biosynth, Gardner, GA, USA) and

incubated for 20 min at 45°C. Next, iodoacetamide was added to a final concentration of 20 mM. After a 10 min incubation at 45°C, 3 µg of trypsin was added and the samples were proteolytically digested for 2 hours at 55°C. Post digestion, samples were acidified with formic acid, centrifuged for 10 minutes at 2,250 rcf to pellet the DOC, and desalted and concentrated using an Agilent BondElut® C18 SPE plate (Agilent, Santa Clara, CA, USA). ApoE plasma digests were loaded onto the SPE plate, washed with 0.1% formic acid, and eluted with 500 µL of 80% acetonitrile with 0.1% formic acid. Samples were evaporated under heated nitrogen and resuspended in 200 µL of 5 % acetonitrile with 0.1% formic acid prior to LC-MS/MS analysis.

Unique tryptic peptides to the ApoE2 (CLAVYQAGAR) and ApoE4 (LGADMEDVVR) proteoforms, as well as shared peptides between the ApoE2 and ApoE3 proteoforms (LGADMEDVCGR), and the ApoE3 and ApoE4 proteoforms (LAVYQAGAR), were targeted for identification.

Analytical separation was achieved using a Transcend Vanquish TLX-4 TurboFlow UPLC (Thermo Fisher Scientific, Waltham, MA, USA) using a 4-column setup. Peptides were chromatographically resolved using an Agilent Poroshell 120 EC-C18 column. All peptides were resolved using a 6-minute gradient and a flow rate of 0.6 mL/min of solvent A (water with 0.15% formic acid) and solvent B (acetonitrile with 0.15% formic acid) with a 1-minute acquisition window. Detection was achieved using a Thermo TSQ Altis Triple Quadrupole MS operated in MRM mode (**Supplemental material, Table S2**). Optimized collision energies and RF voltage values were determined by direct infusion of the digested peptides. Two unique transitions for each peptide and IS were monitored. Parent/production ion masses, collision energies, and RF lens voltages are summarized in **Table 2**. ApoE phenotypes were determined by the presence or absence of the unique and the shared peptides, as summarized in **Table 3**. An example chromatogram from a patient plasma specimen with an ApoE2/ApoE4 phenotype, showing the presence of all 4 monitored ApoE proteoform-specific peptides, is shown in **Supplemental material, Figure S2**. Peak area intensity thresholds and the relationship between analyte and

IS retention times were used to identify ApoE phenotype peptides using TraceFinder Clinical Research v5.1 software (Thermo Fisher Scientific, Waltham, MA, USA).

Validation

Assay precision (within-run and between-run), analytical measurement range (AMR), analytical sensitivity (limit-of-blank [LOB], limit-of-detection [LOD], and limit-of-quantification [LOQ]), interference testing, carryover, and stability were conducted according to CLSI guidelines [17-19]. A detailed description of each validation study is described in the Supplemental material.

Results

Plasma A β 40 and A β 42

Precision

Within-run and between-run assay precision results for A β 40, A β 42, and the A β 42/40 ratio are presented in **Table 4**. Within-run imprecision ranged from 1.8 to 4.2% for A β 40, 1.9 to 7.2% for A β 42, and 2.6 to 8.3% for the A β 42/40 ratio. Total imprecision (between-run) ranged from 3.5 to 5.9% for A β 40 (average imprecision of 4.3%), 3.8 to 8.0% for A β 42 (average imprecision of 5.6%), and 3.3 to 8.7% for the A β 42/40 ratio (average imprecision of 5.5%).

Analytical sensitivity

For A β 40, the LOB was 1.9 pg/mL and the LOD was 3.5 pg/mL. For A β 42, the LOB was 1.6 pg/mL and the LOD was 2.8 pg/mL. The LOQ for both A β 40 and A β 42 was 10 pg/mL.

Analytical measurement range

A β 40 was linear from 25 to 1,000 pg/mL and A β 42 was linear from 10 to 500 pg/mL, with a coefficient of determination of ≥ 0.99 for both peptides (**Figure 1**). For A β 40, the CVs across the 6 dilution levels ranged from 1.2 to 4.1%, and the difference between the expected and

observed values ranged from -7.2 to 4.7%. For A β 42, the CVs across the 6 dilution levels ranged from 1.2 to 7.1%, and the difference between the expected and observed values ranged from -2.2 to 6.2%.

Accuracy and recovery

Recoveries for spiked patient plasma specimens ranged from 93.2 to 98.9% for A β 40, and 94.0 to 97.5% for A β 42. Recoveries for low and high patient plasma mixes were from 98.1 to 101.5% for A β 40, and from 97.2 to 103.0% for A β 42.

Interference

No interference was observed for lipemia and icterus at the tested concentrations for both A β 40 and A β 42 (**Supplemental material, Table 1**). Low (40 mg/dL) and moderate (80 mg/dL) amounts of hemolysis were acceptable for both A β 40 and A β 42. However, high levels of hemolysis (\geq 800 mg/dL) showed a 29% decrease in the recovery of A β 40 and a 31% decrease in the recovery of A β 42. Despite this, the effects of gross hemolysis were mitigated by the A β 42/40 ratio, which showed an average recovery of 96.4% compared to baseline values. The method showed no evidence of ion suppression for A β 40 and A β 42.

Specimen stability

Stability at room temperature was 8 hours for A β 40, 4 hours for A β 42, and 4 hours for the A β 42/40 ratio (**Figure 2A**). After 24 hours of storage at room temperature, the average recovery for A β 42 declined by nearly half (56%), whereas A β 40 showed an average recovery of 78%. A β 40, A β 42, and the A β 42/40 ratio were stable up to 5 days refrigerated (**Figure 2B**), at least 32 days when stored frozen (**Figure 2C**), and at least 5 months at ultralow temperature (**Figure 2D**). A β 40, A β 42, and the A β 42/40 ratio were stable for up to 5 freeze/thaw cycles, with average

recoveries ranging from 93.6 to 101.9% for A β ₄₀, 86.2 to 101.4% for A β ₄₀, and 89.2 to 105.0% for the A β _{42/40} ratio.

Post-digested and extracted samples showed stability up to 2 days when stored at 4°C in the instrument's autosampler.

Carryover

The assay showed no evidence of carryover for A β ₄₀ and A β ₄₂.

Plasma ApoE proteoform

Repeatability and accuracy

Repeatability was 100% for all 6 tested ApoE phenotype samples analyzed over 5 separate days, with 5 replicates of each sample tested. Accuracy studies showed 100% concordance with the PCR genotype results (**Table 5**).

Interference, stability, and carryover

The accurate determination of the 6 ApoE phenotypes was not affected by the presence of hemolysis, lipemia, or icterus at the concentrations tested. All 6 ApoE phenotypes were shown to be stable for at least 14 days at room temperature and refrigerated, at least 3 months frozen (-30°C to -10°C), and for least 3 months frozen at ultralow temperature (-90°C to -70°C). All 6 phenotypes were also shown to be stable for at least 5 freeze/thaw cycles. Digest and extracted samples were shown to be stable for at least 5 days when stored at 4°C. The assay showed no evidence of carryover for the 6 tested ApoE phenotypes.

Discussion

We report the validation of a fully automated, multiplexed method for the simultaneous quantification of A β 40 and A β 42 by IP-LC-MS/MS and the qualitative determination of ApoE proteoforms by LC-MS/MS. Both assays showed excellent analytical characteristics. Linearity studies and precision studies for A β 40, A β 42, and the A β 42/40 ratio showed good reproducibility, with average overall analytical variability being <6% and detection limits well below peptide levels observed in plasma. The ApoE proteoform assay demonstrated 100% concordance with PCR genotyping. In addition, both assays utilize a high-throughput multiplexed HPLC system coupled to a triple quadrupole MS, a low-resolution instrument found in most clinical diagnostic laboratories. This contrasts with similar approaches that rely on specialized high-resolution MS instrumentation and/or single-plex HPLC systems [12, 14]. With this method, 158 plasma A β 40 and A β 42 samples and 176 plasma ApoE samples can be processed per batch.

Blood-based biomarkers for AD have several advantages over CSF, most notably specimen accessibility. However, several challenges exist in developing sensitive, specific, and robust assays for blood biomarkers for AD. While CSF is in continuous contact with the brain, resulting in higher levels of certain protein biomarkers, the fraction of these biomarkers that enter the bloodstream is much lower [20]. In fact, we found that concentrations of A β 40 and A β 42 were roughly 100-fold lower in plasma than in CSF [16]. To overcome these challenges, we employed a protein IP step in order to enrich for both A β peptides and decrease matrix complexity. This fully automated protein IP step exhibited high reproducibility and allowed for detection of A β 40 and A β 42 concentrations well below expected plasma values. Employing protein IP also eliminated any adverse effects due to endogenous interferents.

Additionally, blood-based biomarkers present several preanalytical factors that must be considered. The time periods between blood collection and centrifugation and storage, as well

as post-centrifugation plasma storage conditions, are important [21, 22] and were evaluated as part of our assay validation study. Although using the ratio of A β 42 to A β 40 can mitigate some preanalytical effects compared with using A β 42 alone [23], rates of loss of the A β 40 and A β 42 peptides can differ. We observed a noticeable reduction in the levels of A β 42 after 4 hours at room temperature relative to A β 40, similar to findings in other studies [24]. Average recoveries for A β 42 decreased roughly twice as fast as A β 40 (-20% vs. <-10%, **Figure 2**) when stored at room temperature, suggesting that A β 42 is more susceptible to proteolytic cleavage, aggregation, or absorptive loss under these conditions. However, when stored at 4°C, stability for both A β peptides increased to 5 and 7 days for A β 42 and A β 40, respectively. Unlike at room temperature, the average recoveries of A β 40 and A β 42 changed proportionally at 4°C, resulting in the A β 42/40 ratio being stable for at least 7 days.

An additional challenge for the clinical application A β 42/A β 40 ratio is the lack of certified reference materials for either analyte. We, and others, have used quantitative AAA to adjust for variable peptide content in supplier-provided powders [12]. Although vendors may produce peptides with similar levels of purity, variable peptide content can result in lot-to-lot discrepancies in calibrator ratios. In contrast to many laboratories, we routinely perform these measurements independent of the supplier [15].

Apolipoprotein E is the most abundant apolipoprotein in the central nervous system, and individuals with the *APOE4* allele have elevated A β deposition in the brain compared to individuals with the most common *APOE3* allele [10] and are at a higher risk of developing amyloid-related imaging abnormalities (ARIA) when treated with anti-amyloid monoclonal antibody therapeutics [25, 26]. Given the clinical significance of ApoE in AD pathology and therapy, methods that can accurately identify ApoE proteoforms are needed. In keeping with

previous studies [12], our qualitative LC-MS/MS assay demonstrated 100% a concordance with PCR genotyping. Importantly, the low-volume specimen requirements of each assay (500 μ L for A β and 25 μ L for ApoE) permit the use of both AD-Detect assays on the same patient specimens. This provides an opportunity to combine assessment of A β status and AD and ARIA risks using a single plasma specimen from each patient.

Conclusion

We have described the development and validation of LC-MS/MS assays that accurately quantify plasma-derived A β 40, A β 42, and A β 42/40 ratio, and accurately identify ApoE proteoforms. In contrast to previous studies, the assays do not rely on specialized high-resolution MS instrumentation, thus reducing assays costs, and/or single-plex HPLC systems, thus enhancing assay throughput and robustness. Clinical studies that evaluate the diagnostic performance of each assay have been completed, including assessment of the association of the number of *APOE4* alleles with the A β 42/40 ratio, and will be presented elsewhere.

Acknowledgements

The authors thank Thomas Lynn and Nicolas Valdivia for programming and assistance with the automation. We also thank the University of Florida for providing genotyping specimens and results and Jiyeon Ahn and Chris McKernan for their assistance with the analytical validation, and Dr. Steven Taylor for his review and comments of the manuscript.

Funding

This research did not receive any specific grant from funding agencies in the public, commercial, or not-for-profit sectors.

References

1. Cummings J, Apostolova L, Rabinovici GD, Atri A, Aisen P, Greenberg S, et al. Lecanemab: appropriate use recommendations. *J Prev Alzheimers Dis* 2023;10(3):362-77.
2. Johnson KA, Minoshima S, Bohnen NI, Donohoe KJ, Foster NL, Herscovitch P, et al. Appropriate use criteria for amyloid PET: a report of the Amyloid Imaging Task Force, the Society of Nuclear Medicine and Molecular Imaging, and the Alzheimer's Association. *J Nucl Med* 2013;54(3):476-90.
3. Shaw LM, Arias J, Blennow K, Galasko D, Molinuevo JL, Salloway S, et al. Appropriate use criteria for lumbar puncture and cerebrospinal fluid testing in the diagnosis of Alzheimer's disease. *Alzheimers Dement* 2018;14(11):1505-21.
4. Cummings J, Lee G, Zhong K, Fonseca J, Taghva K. Alzheimer's disease drug development pipeline: 2021. *Alzheimers Dement (N Y)*. 2021;7(1):e12179.
5. Janelidze S, Teunissen CE, Zetterberg H, Allue JA, Sarasa L, Eichenlaub U, et al. Head-to-head comparison of 8 plasma amyloid-beta 42/40 assays in Alzheimer disease. *JAMA Neurol* 2021;78(11):1375-82.
6. Korecka M, Shaw LM. Mass spectrometry-based methods for robust measurement of Alzheimer's disease biomarkers in biological fluids. *J Neurochem* 2021;159(2):211-33.
7. Nakamura A, Kaneko N, Villemagne VL, Kato T, Doecke J, Dore V, et al. High performance plasma amyloid-beta biomarkers for Alzheimer's disease. *Nature* 2018;554(7691):249-54.
8. West T, Kirmess KM, Meyer MR, Holubasch MS, Knapik SS, Hu Y, et al. A blood-based diagnostic test incorporating plasma Abeta42/40 ratio, ApoE proteotype, and age accurately identifies brain amyloid status: findings from a multi cohort validity analysis. *Mol Neurodegener* 2021;16(1):30.

9. Li Y, Schindler SE, Bollinger JG, Ovod V, Mawuenyega KG, Weiner MW, et al. Validation of plasma amyloid-beta 42/40 for detecting Alzheimer disease amyloid plaques. *Neurology* 2022;98(7):e688-99.
10. Yamazaki Y, Zhao N, Caulfield TR, Liu CC, Bu G. Apolipoprotein E and Alzheimer disease: pathobiology and targeting strategies. *Nat Rev Neurol* 2019;15(9):501-18.
11. Hu Y, Kirmess KM, Meyer MR, Rabinovici GD, Gatsonis C, Siegel BA, et al. Assessment of a plasma amyloid probability score to estimate amyloid positron emission tomography findings among adults with cognitive impairment. *JAMA Netw Open* 2022;5(4):e228392.
12. Kirmess KM, Meyer MR, Holubasch MS, Knapik SS, Hu Y, Jackson EN, et al. The PrecivityAD test: accurate and reliable LC-MS/MS assays for quantifying plasma amyloid beta 40 and 42 and apolipoprotein E proteotype for the assessment of brain amyloidosis. *Clin Chim Acta* 2021;519:267-75.
13. West T, Kirmess KM, Meyer MR, Holubasch MS, Knapik SS, Hu Y, et al. A blood-based diagnostic test incorporating plasma A β 42/40 ratio, ApoE proteotype, and age accurately identifies brain amyloid status: findings from a multi cohort validity analysis. *Mol Neurodegener* 2021;16(1):30.
14. Pascual-Lucas M, Allue JA, Sarasa L, Fandos N, Castillo S, Terencio J, et al. Clinical performance of an antibody-free assay for plasma Abeta42/Abeta40 to detect early alterations of Alzheimer's disease in individuals with subjective cognitive decline. *Alzheimers Res Ther* 2023;15(1):2.
15. Taylor SW, Clarke NJ, McPhaul MJ. Quantitative amino acid analysis in insulin and C-peptide assays. *Clin Chem* 2016;62(8):1152-3.
16. Weber DM, Tran D, Goldman SM, Taylor SW, Ginns EI, Lagier RJ, et al. High-throughput mass spectrometry assay for quantifying beta-amyloid 40 and 42 in cerebrospinal fluid. *Clin Chem* 2019;65(12):1572-80.

17. CLSI. Evaluation of precision of quantitative measurement procedures; approved guideline—third edition. CLSI document EP05-A3. Wayne, PA: Clinical and Laboratory Standards Institute. 2014.
18. CLSI. Evaluation of stability of in vitro diagnostic reagents; approved guideline. CLSI document EP25-A. Wayne, PA: Clinical and Laboratory Standards Institute. 2009.
19. CLSI. User verification of linearity implementation guide. 1st ed. CLSI implementation guide EP06-Ed2-IG. Clinical and Laboratory Standards Institute. 2022.
20. Bateman RJ, Blennow K, Doody R, Hendrix S, Lovestone S, Salloway S, et al. Plasma biomarkers of AD emerging as essential tools for drug development: an EU/US CTAD Task Force Report. *J Prev Alzheimers Dis* 2019;6(3):169-73.
21. O'Bryant SE, Gupta V, Henriksen K, Edwards M, Jeromin A, Lista S, et al. Guidelines for the standardization of preanalytic variables for blood-based biomarker studies in Alzheimer's disease research. *Alzheimers Dement* 2015;11(5):549-60.
22. Verberk IMW, Misdorp EO, Koelewijn J, Ball AJ, Blennow K, Dage JL, et al. Characterization of pre-analytical sample handling effects on a panel of Alzheimer's disease-related blood-based biomarkers: results from the Standardization of Alzheimer's Blood Biomarkers (SABB) working group. *Alzheimers Dement* 2022;18(8):1484-97.
23. Rozga M, Bittner T, Batrla R, Karl J. Preanalytical sample handling recommendations for Alzheimer's disease plasma biomarkers. *Alzheimers Dement (Amst)* 2019;11:291-300.
24. Walter M, Wiltfang J, Vogelgsang J. Pre-analytical sampling and storage conditions of amyloid-beta peptides in venous and capillary blood. *J Alzheimers Dis* 2020;78(2):529-35.
25. Salloway S, Chalkias S, Barkhof F, Burkett P, Barakos J, Purcell D, et al. Amyloid-related imaging abnormalities in 2 phase 3 studies evaluating aducanumab in patients with early Alzheimer disease. *JAMA Neurol* 2022;79(1):13-21.

26. Honig LS, Barakos J, Dhadda S, Kanekiyo M, Reyderman L, Irizarry M, et al. ARIA in patients treated with lecanemab (BAN2401) in a phase 2 study in early Alzheimer's disease. *Alzheimers Dement (N Y)* 2023;9(1):e12377.

Figure Captions

Figure 1: Linearity for (A) A β 40 and (B) A β 42. [Place near the section titled “Analytical Measurement Range” under “Plasma A β 40 and A β 42” in the Results section]

Figure 2: Average percent recovery for A β 40, A β 42, and the A β 42/40 ratio under various storage conditions: (A) room temperature (18°C to 25°C); (B) refrigerated (4°C to 10°C); (C) frozen (-30°C to -10°C); and (D) ultra-low frozen (-90°C to -60°C). [Place near the section titled “Specimen Stability” under “Plasma A β 40 and A β 42” in the Results section]

Table 1: Precursor/product ion masses, collision energies, and RF lens values for A β 40, A β 42, and their respective internal standards. [Place near the section titled “Quantification of plasma A β 40 and A β 42 by LC-MS/MS” in the Methods section]

Analyte and Peptide Sequence	Precursor Ion (m/z)	Product Ion (m/z)	Collision Energy (V)	RF Lens (V)
A β 40: GAIIGLMVGGVV	1085.6 ⁽⁺¹⁾	812.4 (b9)	32	155
		869.4 (b10)	33	155
		968.5 (b11)	28	155
A β 40 IS: GAIIGLMVGGVV ^a	1146.7 ⁽⁺¹⁾	858.6 (b9)	32	155
		918.6 (b10)	33	155
		1023.7 (b11)	28	155
A β 42: GAIIGLMVGGVVIA	1269.8 ⁽⁺¹⁾	968.5 (b11)	35	194
		1067.6 (b12)	35	194
		1180.6 (b13)	32	194
A β 42 IS: GAIIGLMVGGVVIA ^b	1294.8 ⁽⁺¹⁾	987.6 (b11)	35	194
		1092.7 (b12)	35	194
		1205.8 (b13)	32	194

^a uniformly-labeled 13C/15N; ^b uniformly-labeled 15N

Table 2: Precursor/product ion masses, collision energies, and RF lens values for ApoE peptides and their respective internal standards. [Place near the section titled “Qualitative determination of ApoE proteoforms by LC-MS/MS” in the Methods section]

Analyte and Peptide Sequence	Precursor Ion (m/z)	Product Ion (m/z)	Collision Energy (V)	RF Lens (V)
E2: CLAVYQAGAR	554.8 ⁽⁺²⁾	665.3	18	54
		835.4	19	54
E2 IS: CLAVYQAGA ^{aR} ^a	561.8 ⁽⁺²⁾	679.4	18	54
		849.5	19	54
Shared E2/E3: LGADMEDVCGR	611.8 ⁽⁺²⁾	866.4	22	89
		981.4	22	89
Shared E2/E3 IS: LGADMEDV ^a CGR ^a	619.8 ⁽⁺²⁾	882.4	22	89
		997.4	22	89
Shared E3/E4: LAVYQAGAR	474.8 ⁽⁺²⁾	502.2	21	55
		665.3	21	55
Shared E3/E4 IS: LAVYQAGA ^{aR} ^a	481.8 ⁽⁺²⁾	516.3	21	55
		679.4	21	55
E4: LGADMEDVR	503.2 ⁽⁺²⁾	649.3	20	56
		892.4	20	56
E4 IS: LGADMEDV ^{aR} ^a	511.3 ⁽⁺²⁾	665.3	20	55
		908.4	20	55

^a 13C/15N labeled

Table 3: ApoE peptide signatures for proteoform determination. [Place near the section titled “Qualitative determination of ApoE proteoforms by LC-MS/MS” in the Methods section]

ApoE Phenotype	ApoE2 Peptide: CLAVYQAGAR	Shared ApoE2/ApoE3 Peptide: LGADMEDVCGR	Shared ApoE3/ApoE4 Peptide: LAVYQAGAR	ApoE4 Peptide: LGADMEDVR
E2/E2	Present	Present	-	-
E2/E3	Present	Present	Present	-
E2/E4	Present	Present	Present	Present
E3/E3	-	Present	Present	-
E3/E4	-	Present	Present	Present
E4/E4	-	-	Present	Present

Table 4: Precision results for plasma A β 40, A β 42, and the A β 42/40 ratio. [Place near the section titled “Precision” under “Plasma A β 40 and A β 42” in the Results section]

A β 40	N	Mean (pg/mL)	Within Run (Intra-assay)		Between Run (Inter-assay)	
			SD	CV	SD	CV
S1	25	163.3	4.0	2.4%	6.9	4.2%
S2	25	520.1	12.8	2.5%	18.2	3.5%
S3	25	619.2	20.6	3.3%	23.1	3.7%
S4	25	1091.9	20.0	1.8%	46.7	4.3%
S5	25	177.3	7.4	4.2%	10.5	5.9%

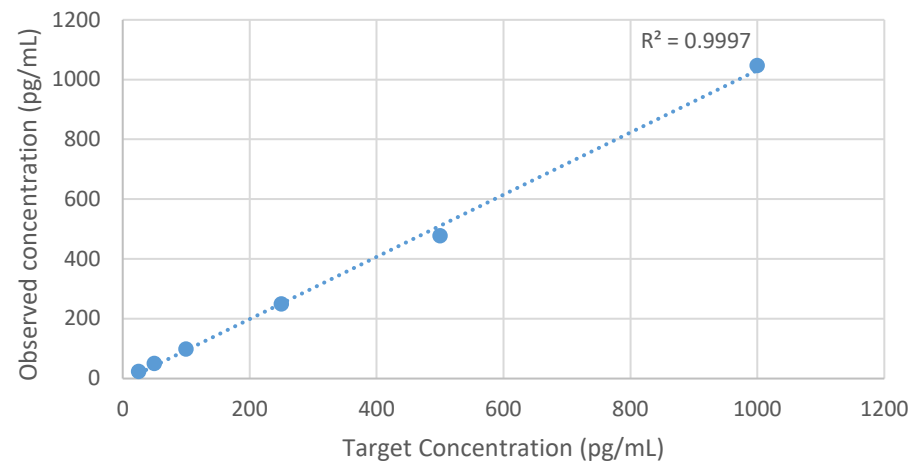
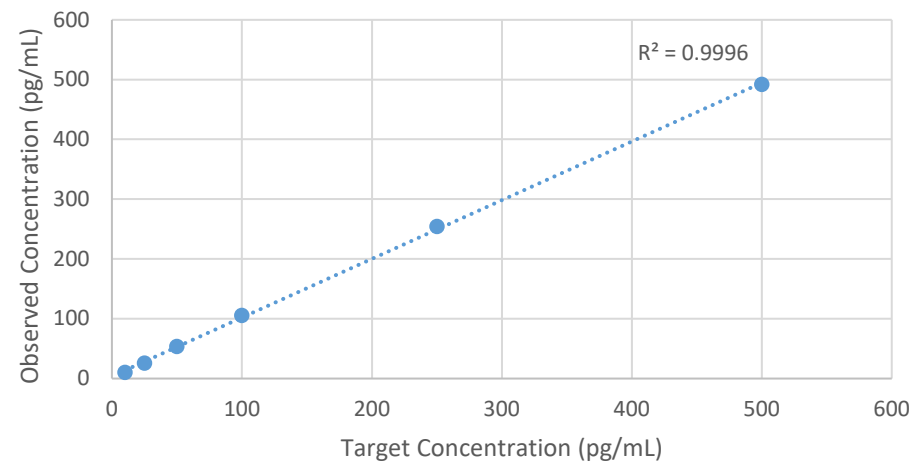
A β 42	N	Mean (pg/mL)	Within Run (Intra-assay)		Between Run (Inter-assay)	
			SD	CV	SD	CV
S1	25	40.0	2.9	7.2%	3.2	8.0%
S2	25	64.4	2.5	3.8%	2.5	3.8%
S3	25	188.1	7.3	3.9%	9.7	5.1%
S4	25	902.5	17.3	1.9%	39.9	4.3%
S5	25	36.9	2.1	5.7%	2.6	7.0%

A β 42/40	N	Mean	Within Run (Intra-assay)		Between Run (Inter-assay)	
			SD	CV	SD	CV
S1	25	0.245	0.020	8.3%	0.021	8.7%
S2	25	0.124	0.005	4.0%	0.006	4.7%
S3	25	0.304	0.014	4.6%	0.018	5.8%
S4	25	0.827	0.022	2.6%	0.027	3.3%
S5	25	0.207	0.009	4.5%	0.011	5.2%

Table 5: Accuracy of ApoE proteoforms with APOE genotypes. [Place near the section titled “Repeatability and accuracy” under “Plasma ApoE Proteoforms” in the Results section]

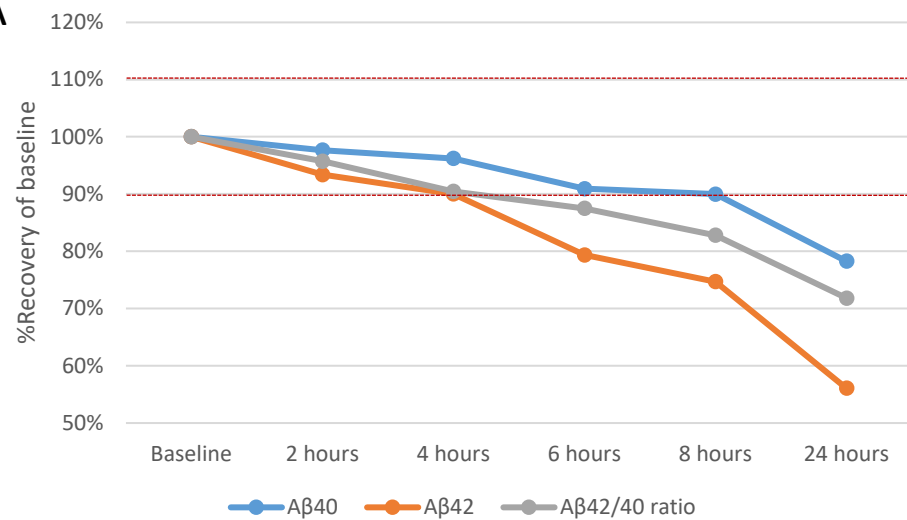
Genotype	Expected # of Samples	Actual # of Samples	PPA (%)
<i>APOE 2/2</i>	1	1	100%
<i>APOE 2/3</i>	20	20	100%
<i>APOE 2/4</i>	3	3	100%
<i>APOE 3/3</i>	141	141	100%
<i>APOE 3/4</i>	72	72	100%
<i>APOE 4/4</i>	13	13	100%

PPA, positive percent agreement

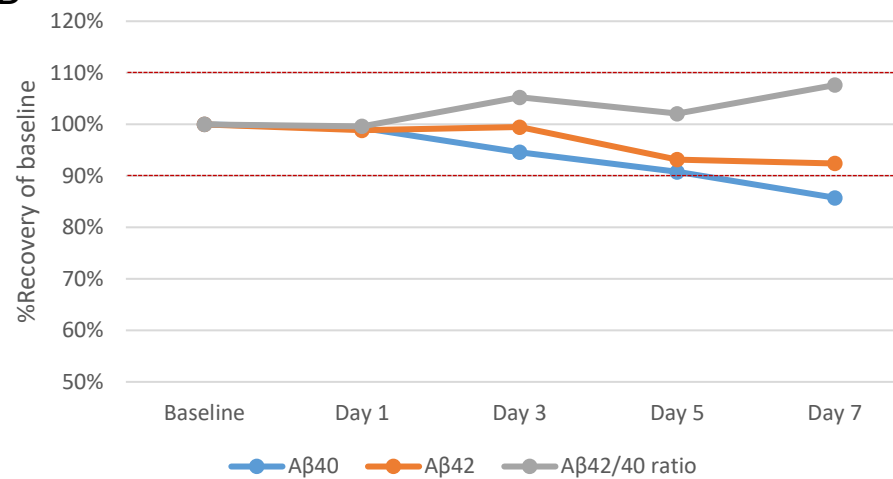
A**A β 40 Linearity****B****A β 42 Linearity**

A

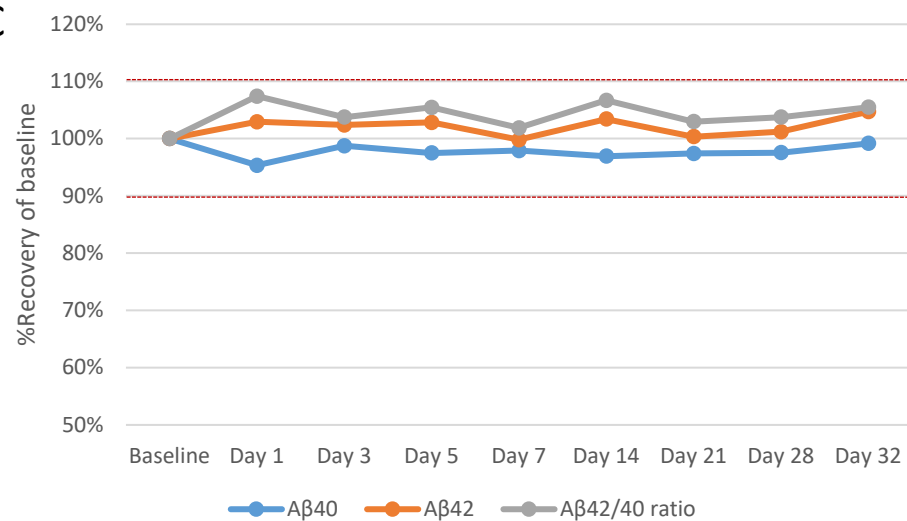
Room Temperature (18°C to 25°C) Stability

**B**

Refrigerated (4°C to 8°C) Stability

**C**

Frozen (-30°C to -10°C) Stability

**D**

Ultralow Frozen (-90°C to -60°C) Stability

