

1 **Cellular and Transcriptional Signature of the Nasal Mucosa is Associated with Susceptibility to**
2 **Pneumococcal Carriage in Older Adults**

3
4 Britta C. Urban^{1,2,3*}, André N. A. Gonçalves^{1,2,3*}, Dessi Loukov², Fernando M. Passos², Jesús Reiné^{1,2,3},
5 Patrícia Gonzalez-Dias^{1,2,3}, Carla Solórzano-Gonzalez^{1,2,3}, Elena Mitsi^{1,2,3}, Elissavet Nikolaou^{2,4,5}, Daniel
6 O'Connor^{1,3}, Andrea M. Collins², Hugh Adler², Jamie Rylance², Stephen B. Gordon^{2,6}, Simon P. Jochems⁷,
7 Helder I. Nakaya^{8,9}, Daniela M. Ferreira^{1,2,3}

8
9 **Affiliations:**

10 ¹ Oxford Vaccine Group, University of Oxford, Oxford, United Kingdom.

11 ² Clinical Sciences, Liverpool School of Tropical Medicine, Liverpool, United Kingdom.

12 ³ NIHR Oxford Biomedical Research Centre, Oxford, UK

13 ⁴Infection, Immunity and Global Health, Murdoch Children's Research Institute, Parkville, Victoria,
14 Australia

15 ⁵Department of Microbiology and Immunology at the Peter Doherty Institute for Infection and
16 Immunity, The University of Melbourne, Parkville, Victoria, Australia

17 ⁶Malawi-Liverpool-Wellcome Clinical Research Programme, Blantyre, Malawi

18 ⁷Department of Parasitology, Leiden University Centre for Infectious Diseases, Leiden University
19 Medical Centre, Leiden, the Netherlands.

20 ⁸Hospital Israelita Albert Einstein, São Paulo, Brazil.

21 ⁹Department of Clinical and Toxicological Analyses, School of Pharmaceutical Sciences, University of
22 São Paulo, São Paulo, Brazil

23
24 * These authors contributed equally

25
26 **Corresponding authors:**

27 Britta Urban, Britta.urban@paediatrics.ox.ac.uk

28 Daniela Ferreira, Daniela.ferreira@paediatrics.ox.ac.uk

29
30 **Word Count:** 4172

31 **NOTE:** This preprint reports new research that has not been certified by peer review and should not be used to guide clinical practice.

32 **Contributions:**

33 **Obtained funding:** SBG, DMF

34 **Study design:** HA, DMF, JRy

35 **Obtained ethical approval:** HA, JRy

36 **Data collection:** HA, AC, JR, SJ, CS, EM, EN

37 **Data analyses:** DL, FMP, BU, ANAG, PGD

38 **Manuscript preparation:** BU, ANAG, DO, DMF, HN, SJ

39

40 All authors contributed to the manuscript and approved the final version submitted for publication.

41

42

43 **Abstract**

44 *Streptococcus pneumoniae* colonization in the upper respiratory tract is linked to pneumococcal
45 disease development, predominantly affecting the very young and older adults. As the global
46 population ages and comorbidities increase, there is a heightened concern about this infection. We
47 investigated the immunological responses of older adults to pneumococcal controlled human
48 infection by analysing the cellular composition and gene expression in the nasal mucosa. Our
49 comparative analysis with younger adults revealed distinct gene expression patterns in older
50 individuals susceptible to colonization, highlighted by neutrophil activation and elevated levels of
51 CXCL9 and CXCL10. Unlike younger adults challenged with pneumococcus, older adults did not show
52 recruitment of monocytes into the nasal mucosa following nasal colonization. These findings suggest
53 age-associated cellular changes, in particular enhanced mucosal inflammation, that may predispose
54 older adults to pneumococcal colonization. If similar changes are observed in the lung of susceptible
55 older adults, these may explain the increased risk of pneumococcal disease in vulnerable populations.

56

57 **Introduction**

58 *Streptococcus pneumoniae* is the primary cause of bacterial pneumonia and can reside in the upper
59 respiratory tract without causing symptoms. Colonization with pneumococcus is a prerequisite of
60 pneumococcal disease, with higher colonization levels increasing the risk of bacteria entering the
61 lung¹. Invasive pneumococcal disease and community-acquired pneumonia are a leading cause of
62 death worldwide. Community-acquired pneumonia affects young children (below five years) and older
63 adults disproportionately²⁻⁶. With an aging population and rising prevalence of comorbidities such as
64 COPD, obesity, diabetes, and asthma, the incidence of pneumonia is predicted to grow.

65 Our pneumococcal controlled human infection model is an ideal model to investigate molecular and
66 cellular mechanisms that contribute to protection or susceptibility to colonization by pneumococci⁷.
67 Using this model in young adults, we have shown that both innate and adaptive immune responses at
68 the mucosa were associated with protection from colonization. We have also shown that colonization
69 is typically established within a day after nasal exposure, ultimately prompting a local immune
70 response that clears the pneumococci⁸. This response included the activation of neutrophils and a
71 likely CCL2-mediated influx of monocytes, resulting in bacterial clearance through processes like
72 phagocytosis and the release of reactive oxygen species⁹. Younger individuals resistant to colonization
73 have more mucosal-associated invariant T cells (MAIT) in their nasal mucosa and in the peripheral
74 circulation exhibit elevated TNF α and IFN γ levels when exposed to Spn6B¹⁰. In addition, young study
75 participants protected from colonization showed a higher frequency of pre-existent peripheral blood
76 memory B cells specific to the polysaccharide of the inoculated strain¹¹. Moreover, colonization itself

77 is an immunising event that results in increased antigen-specific B cells in circulation and higher levels
78 of serum antibodies^{10,11}. Although the impact of the SARS-CoV-2 pandemic increased the number of
79 studies investigating mucosal immune, they remain rare in older adults. As a consequence, whether
80 similar mechanisms are involved in protection and susceptibility of older adults from pneumococcus
81 infection is not known.

82 Older adults face a higher risk of severe pneumococcal disease than younger adults. While other
83 factors such as co-morbidities, increased lung microaspiration and viral co-infections may contribute
84 to this increased risk¹², altered immune responses due to aging also play an important role¹³⁻¹⁵. In our
85 study, when we exposed healthy older adults (over 50 years) to pneumococcus, their colonization
86 rates and densities mirrored that of younger adults¹⁶. However, their immune response differed –
87 those who became colonized did not exhibit the expected boost in specific IgG against the inoculated
88 strain capsular polysaccharide (CPS), as seen in younger adults¹⁶. In addition, in those participants who
89 were challenged and did not become colonized, IgG levels to the CPS decreased a month after
90 challenge. Re-challenging them with homologous pneumococcus 6B up to a year later did not protect
91 older adults from colonization, unlike in younger adults where re-challenge conferred protection^{7,16}.
92 Together, these findings suggest a diminished immunizing effect of colonization in older adults,
93 potentially increasing their vulnerability to severe pneumococcal disease even with lower colonization
94 rates¹⁷.

95 To gain a better understanding of mechanisms underlying the lack of protection, we investigated here
96 the changes in cellular composition, inflammatory status and gene expression patterns of nasal cells
97 from older adults before and during experimental human pneumococcal colonization. We then
98 compared these changes with those from younger adults^{9,18}. Older but not younger adults susceptible
99 to colonization displayed a distinct pattern of activated gene pathways associated with neutrophil
100 degranulation and increased concentrations of CXCL9 and CXCL10 in the nasal mucosa at baseline. Our
101 results open the possibility of predicting susceptibility to pneumococcal colonization and greater risk
102 of pneumococcal disease in older adults which would facilitate better prevention and treatment.

103

104 **Results**

105 ***Distinct gene expression patterns in the nasal mucosa of older adults linked to carriage susceptibility***

106 We previously conducted an experimental human pneumococcal challenge trial in healthy, older
107 adults¹⁶ during which we collected nasal lining fluid and nasal microbiopsies to determine soluble
108 immune mediators, nasal cell phenotype and transcriptome from a subset of study participants. An
109 overview of the sample schedule relative to inoculation with serotype 6B (Spn6B) for older adults is

110 provided in Supplementary Fig. 1. No demographic differences were seen between study participants
111 susceptible (n=17) or protected (n=24) from colonization (Supplementary Table 1).

112 We first investigated which immune response pathways were enriched in protected and susceptible
113 older adults before (day -5) and after (day 2 and day 9) pneumococcal challenge using gene set
114 variation analysis (GSVA) (Fig. 1a, Supplementary Table 2). Based on Euclidean distance clustering,
115 gene sets fell into three groups with different enrichment patterns over time and carriage status.
116 Group I gene sets were associated with innate immune responses and cytokine signalling including
117 pathways associated with “Antimicrobial peptides”, “Neutrophil degranulation”, “DAP12 interactions”
118 and “Toll-like receptor cascades”. They remained higher across all time points in susceptible older
119 adults but were not induced in protected older adults. By contrast, group II gene sets were largely
120 associated with antibody-mediated processes such as “Complement Cascade” and “Fc gamma
121 receptor dependent phagocytosis”. These pathways were predominantly enriched at baseline (day -
122 5) in protected older adults and induced in susceptible older adults by day 9. Group III gene sets
123 associated with antigen presentation and T cell activation and were induced in susceptible study
124 participants on day 9.

125 We then asked whether similar gene pathway patterns were evident in younger adults before
126 pneumococcal challenge using a control group from our previously published studies (protected n=6,
127 susceptible n=8, age < 50 years)^{9,18}. In younger adults, GSVA of the nasal cell transcriptome showed
128 no difference in the regulation of group I gene or group II gene sets at baseline, between protected
129 and susceptible study participants. However, gene pathways in both groups were rapidly induced after
130 pneumococcal challenge in susceptible younger adults indicating activation of innate and antibody-
131 mediated immune responses (Fig 1b, Supplementary Table 3). By contrast, activation of gene sets in
132 group III associated with “TCR signalling”, “Costimulation by the CD28 family” and MHC class I and
133 class II antigen processing were enriched in susceptible younger adults at baseline. In summary, gene
134 expression patterns in the nasal mucosa were fundamentally different between susceptible younger
135 and older adults, with susceptible older adults exhibiting a unique gene set signature associated with
136 an activated innate immune response profile before pneumococcal challenge.

137

138 **Co-expression analysis of genes reveals upregulation of neutrophil degranulation pathways in the** 139 **nasal mucosa of susceptible older adults**

140 Co-expression analysis allows identification of genes which are co-regulated during cellular processes
141 or different functional states and which are shared within a sample group. We therefore investigated
142 which genes were co-expressed in susceptible and protected older adults using CEMiTool¹⁹ across all
143 three timepoints. Co-expression analysis identified three modules (M1-M3, Fig. 2a) with module M1

144 genes co-expressed in protected and M2 genes co-expressed in susceptible older adults at baseline.
145 Notably, genes within the M2 module were enriched for the Reactome pathways “Neutrophil
146 Degranulation”, “Immunoregulatory interactions between a Lymphoid and a Non-lymphoid Cell” and
147 “Signalling by Interleukins” (Supplementary Fig. 2) which were also among upregulated gene sets in
148 susceptible older adults identified by GSVA.

149 We then identified genes in the M2 module linked to carriage susceptibility by examining which ones
150 were differentially expressed between susceptible and protected older adults. Module M2 identified
151 270 co-expressed genes (Supplementary Fig. 2) of which 216 were differentially expressed at at least
152 one timepoint (Supplementary Table 4). Network analysis of genes overexpressed in susceptible study
153 participants before challenge (Fig. 2b) revealed a more granular picture of interlinked immune
154 response pathways. Genes overexpressed within the neutrophil degranulation pathway at baseline in
155 susceptible study participants included *SIGLEC14* (2.42-fold, $p=0.037$), encoding a sialic acid binding
156 protein and *PLAUR* (2.13-fold, $p=0.012$), encoding the Plasminogen Activator Urokinase receptor.
157 Notably, the expression of PLAUR is upregulated by immune activation and the soluble form has been
158 proposed as a marker for chronic inflammation²⁰. Both, *SIGLEC14* and *TREM1* (4-fold, $p=0.0028$) which
159 is induced two days after challenge signal through the DAP12 (*TYROBP*, 2.3-fold, $p=0.027$) complex
160 resulting in enhanced survival of immune cells and increased production of pro-inflammatory
161 cytokines^{21,22}. In a mouse model of pneumococcal pneumonia, TREM1 is critical for migration of
162 neutrophils to the lung and enhanced early response of alveolar macrophages²³. Of the Fc receptors,
163 *FCAR* encoding the Fc α R was 3.13-fold overexpressed at baseline ($p=0.0078$) whereas genes encoding
164 Fc γ receptors were induced on days 2 and 9 after pneumococcal challenge (Fig. 2c). Of the M2 cytokine
165 and chemokine genes, *IL1B* (2.6-fold, $p=0.016$) and *CXCL8* (3.4-fold, $p=0.0031$) showed higher
166 expression in nasal cells of susceptible compared with protected older adults at baseline.

167

168 ***Increased baseline expression of CXCL9 and CXCL10 in the nasal mucosa of susceptible older adults***

169 Given the increased expression of genes associated with innate immune and cytokine responses in
170 susceptible older adults, we asked whether transcriptional changes are at least in part reflected at the
171 protein level in the nasal mucosa (Fig. 3 and Supplementary Fig. 3). The median concentration of the
172 chemokine CXCL10 (IP10) was 2.27-fold higher before (day -5) and 3.4-fold higher on day 2 in nasal
173 lining fluid after challenge in susceptible compared with protected study participants. Likewise, the
174 concentration of the related chemokine CXCL9 was 1.16-fold increased at baseline (day -5) in
175 susceptible older adults (Fig. 3a). Expression of the genes encoding these two chemokines were also
176 increased in susceptible compared with protected older adults at baseline only (Fig. 3b, *CXCL9* 2.1-
177 fold, $p=0.021$); *CXCL10* 2.6-fold, $p=0.003$). These data are reminiscent of younger adults with an

178 asymptomatic viral infection or receiving Live Attenuated Influenza Vaccine (LAIV), who showed high
179 baseline levels of CXCL10 and increased susceptibility to pneumococcal colonization upon challenge⁹.
180 As with younger adults, there were no differences between CCL2 concentrations between susceptible
181 and protected older adults. Unlike in younger adults, we did not observe an association between CCL2
182 concentration and the frequency of monocytes in the nasal mucosa (Supplementary Fig. 4). However,
183 *CCL2* gene expression was 4 times higher in susceptible compared to protected older adults at day 9
184 after challenge suggesting that monocyte recruitment might be delayed. In addition, the
185 concentration of IL-15, a cytokine which regulates T cell proliferation and activation, gradually
186 increased in protected study participants after challenge and was 1.3-fold higher at day 9 compared
187 to susceptible study participants. There were no statistically significant differences between protected
188 and susceptible study participants before and after pneumococcal challenge for all other cytokines
189 analysed (Supplementary Fig. 3a).

190 When considering induction of cytokines within each group of susceptible or protected study
191 participants (log₂ fold change for day 2, 7 and 9 against baseline), we observed responses to
192 pneumococcal challenge in the nasal mucosa of protected but not susceptible study participants (Fig.
193 3c and Supplementary Table S5). EGF significantly increased from baseline in protected study
194 participants on days 2 and 9 and VEGF and G-CSF increased on day 2. In protected study participants,
195 the concentration of the monocyte chemoattractant MIP1 α and MIP1 β , as well as CXCL9 and IL12
196 increased from baseline to day 2. The pro-inflammatory cytokines IL1 β and IL6 were also induced. This
197 is in contrast to observations in protected younger adults^{8,9} who showed rapid induction of nasal
198 cytokines which peaked within 24 hours after challenge but were undetectable by 48h (day 2)
199 indicating that protected older adults may show a slight delay in nasal cytokine responses to
200 pneumococcal challenge. Cytokine levels at baseline did not correlate with age in study participants
201 (Supplementary Fig. 3b).

202

203 **Lack of monocyte recruitment in susceptible older adults after pneumococcal challenge**

204 The nasal cell gene expression profiles suggested that older adults susceptible to pneumococcal
205 colonization had higher levels of innate immune cell activation compared to protected older adults.
206 Granulocytes are abundant in the nasal mucosa while monocytes are sparse with the later rapidly
207 recruited after challenge in younger adults^{9,24}.

208 We analysed the cellular composition of nasal cells by flow cytometry from nasal microbiopsies which
209 were obtained in parallel to those used for transcriptome analysis. The overall number of leukocytes,
210 granulocytes and monocytes as a ratio to epithelial cells^{9,25} were comparable between younger and
211 older adults before pneumococcal challenge (Fig. 4a). After challenge, there were no differences in

212 the proportion of leukocytes or granulocytes over the following 29 days between susceptible and
213 protected study participants in either younger or older adults (Fig. 4b, c). In contrast to younger
214 adults⁹, monocytes were not recruited into the nasal mucosa of susceptible older adults in response
215 to pneumococcal challenge (Fig. 4d). These results are in line with the limited and variable induction
216 of CCL2 (MCP1) in susceptible older adults (Fig. 3a).

217 To gain a better understanding of granulocyte and monocyte subsets beyond the limited number of
218 surface markers used during flow cytometry, we applied deconvolution analysis of mixed cell
219 populations obtained in our bulk transcriptome data. Based on this analysis, mature neutrophils were
220 the most abundant granulocyte population in the nasal mucosa independent of carriage status and
221 timepoint (Fig. 4e, Supplementary Table S6). Myeloid cells were more heterogenous with CD141+
222 cDC1 the most abundant population in both susceptible and protected study participants.
223 Intermediate monocytes appeared more abundant in susceptible participants at baseline.
224 Intermediate monocytes display an activated phenotype and are generally associated with more
225 inflammatory conditions. Notably, they were enriched in the nasal mucosa of older adults but not
226 younger adults infected with Influenza A virus and correlated with age²⁴.

227

228 **Activation of neutrophils is associated with susceptibility to carriage in older adults**

229 Since susceptible older adults showed enrichment of gene pathways associated with neutrophil
230 degranulation before challenge (Fig 1 and Fig. 2), we investigated the activation of granulocytes and
231 monocytes before (day -5) and after (days 2, 7, 9, 29) pneumococcal challenge. The expression level
232 of CD16 - but not CD66b or HLA DR - was consistently lower on granulocytes of older adults susceptible
233 to pneumococcal colonization with significant lower levels observed at baseline and day 7 after
234 challenge (Fig. 5a). Although FcγRIIIB can be stored in intracellular vesicle before rapid deployment
235 onto the cell membrane in response to activation^{26,27}, higher expression of CD16 on granulocytes
236 positively correlated with gene expression levels for *FCGR3B* in protected but not susceptible older
237 adults at baseline (Fig. 5b). CD16 is rapidly cleaved from the surface following activation of
238 granulocytes indicating that these cells may have been already activated before challenge in older
239 adults susceptible to pneumococcal carriage.

240 Opsonisation, degranulation and radical oxygen species production are important defence
241 mechanisms against colonization with pneumococcus²⁸. To determine whether neutrophil
242 degranulation increased after challenge with pneumococcus as we reported for younger adults⁹, we
243 measured the concentration of myeloperoxidase (MPO), a soluble marker for degranulation of
244 azurophil neutrophil granules, in nasal lining fluids. Before challenge, the concentration of MPO in the
245 nasal lining fluid was 2-fold higher in older adults compared to younger adults (Fig. 5c). Unlike carriage-

246 positive younger adults, levels of MPO in the nasal lining fluid did not increase after challenge in
247 susceptible older adults (Fig 5d).

248 Next, we asked whether expression levels of 66 genes associated with the neutrophil degranulation
249 pathway within the M2 module correlated with the MPO concentration in nasal lining fluid (Fig. 5e).
250 MPO levels positively correlated with expression levels of neutrophil degranulation M2 module genes
251 in susceptible older adults before but not after challenge suggesting that granulocytes were refractory
252 to further activation. By contrast, in older adults protected from carriage, neutrophil degranulation
253 genes within the M2 module correlated with MPO levels after but not before challenge implying that
254 granulocytes became activated and contributed to clearance of pneumococci from the nose as we
255 reported previously⁸. Together these data indicate that neutrophils in susceptible older adults are in
256 a state of activation before challenge with limited responses to pneumococci after challenge.

257

258 **Activation of monocytes is associated with susceptibility to carriage in older adults**

259 Given the lack of monocyte recruitment, we analysed expression levels of CD14, CD16 and HLA-DR on
260 monocytes. Expression levels of CD14 but not HLA-DR or CD16 were significantly lower on monocytes
261 before challenge (day -5) in susceptible compared to protected study participants (Fig. 6) indicating a
262 dominance of intermediate monocytes in the nasal mucosa of susceptible older adults in agreement
263 with deconvolution analysis of nasal transcriptome data (Fig. 4e). In protected older adults, the
264 expression levels of CD16 increased on Day2 after challenge (Fig. 6).

265

266 **Discussion**

267 Exposure to respiratory pathogens occurs in the upper respiratory tract and immunological responses
268 here are critical for either the establishment or clearance of infection. Failure to clear infection
269 increases the risk of microaspiration of pathogens into the lung and development of pneumonia. Older
270 adults are at an increased risk of pneumococcal disease although rates, duration and densities of *S.*
271 *pneumoniae* colonization in the upper respiratory tract are comparable or lower than those observed
272 in younger adults^{16,29}. Age has been associated with cellular senescence which in turn drives
273 “inflammaging” akin to chronic inflammation with the release of proinflammatory cytokines and
274 increased vascular permeability¹⁴. Aging alters the innate immune response with changes in
275 neutrophil recruitment into tissue, reduces phagocytosis and NETosis and reduced phagocytosis and
276 antigen presentation by macrophages and dendritic cells (reviewed in ³⁰). An alternative and not
277 necessarily contradictory view is that changes in cellular composition and response to recall antigens
278 during aging are appropriate adaption to life-long exposure to pathogens with “inflammaging” as an
279 early sign of underlying disease independent of age ³¹. Here we investigated the immune response in

280 nasal tissue before and after pneumococcal controlled human infection in healthy older adults and
281 compared results with existing data of younger adults⁹. Remarkably, we observed that older adults
282 who became colonized presented with a susceptibility profile both at the transcriptional and cellular
283 level before pneumococcal challenge.

284 Analysis of the nasal transcriptome revealed overexpression of genes associated with the reactome
285 pathway “neutrophil degranulation” in older susceptible adults compared to those protected from
286 pneumococcal colonization. Granulocytes, the majority of which are neutrophils, are abundant in the
287 nasal mucosa and the first line of defence against bacterial infection through mechanisms such as
288 antibody-mediated phagocytosis, production of radical oxygen species, degranulation and NETosis.
289 While the frequency of granulocytes remained unchanged before and after pneumococcal challenge
290 in older study participants, expression levels of genes associated with the reactome pathway
291 “neutrophil degranulation” positively correlated with MPO concentration in nasal lining fluid and
292 negatively correlated with CD16 expression levels on granulocytes, both of which indicate higher
293 activation of neutrophils in the nasal mucosa of susceptible adults before pneumococcal challenge.

294 Although older adults had higher levels of MPO compared to younger adults before pneumococcal
295 challenge, there were no differences between susceptible and protected older adults and were
296 maintained at comparable level after challenge. It has been reported that with age, the microbiome
297 of the nasal and oral cavity is no longer distinct³² but whether this contributes to increases risk of
298 disease is unknown. Although the exact driver of increased activation of neutrophils in susceptible
299 older adults we report here require further investigation, it may result in local tissue damage which in
300 turn may increase adhesion and micro-invasion of pneumococcus in the nasal mucosa³³.

301 It is also noteworthy that the *FCAR* gene encoding the Fc α R was 3-fold overexpressed in susceptible
302 adults before pneumococcal challenge. Although anti-pneumococcal secretory IgA is cleaved by the *S.*
303 *pneumoniae* IgA1 protease (ZmpA), it is an important opsonin for other viral and bacterial pathogens.
304 Gene expression levels of *FCRG3A* and *FCGR3B*, encoding Fc γ RIIIA expressed on NK cells and
305 monocytes and Fc γ RIIIB expressed on neutrophils, increased two days after pneumococcal challenge
306 in susceptible study participants, although increased expression of CD16 (Fc γ RIII) was not evident at
307 the cellular level. It has been reported in other studies^{34,35} that CD16 expression is reduced on
308 neutrophils from older adults and associated with reduced phagocytosis of pneumococcus. We
309 observed that CD16 expression was generally lower in susceptible study participants only both before
310 and after pneumococcal challenge. CD16 is a GPI-anchored protein and rapidly shed from the surface
311 of granulocytes upon activation or apoptosis which may explain the discrepancy between
312 transcriptional and cellular data. CD16-mediated signalling upon crosslinking with immune complexes
313 depends on association of CD16 with CD32 (Fc γ RII). Shedding of CD16 may result in better accessibility

314 of FcγRIIA (CD32) on the surface of neutrophils enhancing subsequent Fc-mediated phagocytosis or
315 extracellular killing of bacteria³⁶. Although the role of FcR-mediated phagocytosis by neutrophils in the
316 nasal mucosa has to be confirmed at the functional level, we speculate that increased expression of
317 Fc-receptors on nasal neutrophils of susceptible older adults after colonization onset may contribute
318 to the clearance of pneumococci.

319 In our study, the concentration of both CXCL10 and the related cytokine CXCL9 were increased at the
320 protein level and transcriptional level in older susceptible adults compared to protected older adults
321 before pneumococcal challenge. CXCL10 and the closely related CXCL9 are largely induced by IFN γ and
322 chemoattractants for NK- and T cells, important for the clearance of viral infections. Increased
323 concentrations of CXCL10 have been reported in nasal lining fluid before challenge with RSV in those
324 who developed cold symptoms³⁷ and younger study participants receiving the nasal live attenuated
325 influenza vaccine (LAIV) or with asymptomatic viral infection before pneumococcal challenge were
326 associated with increased pneumococcal load⁹. In a recent study evaluating the use of high levels of
327 CXCL10 in nasal lining fluids as a marker for undiagnosed viral infections, the authors detected a
328 distinct profile of high levels of CXCL10 together with neutrophilic inflammation in bacterial and viral
329 co-infections³⁸. However, it is unlikely that the increased CXCL10 concentration in our study was due
330 to viral infection because individuals with an asymptomatic viral infection were excluded from our
331 analysis. The role of CXCL10 in bacterial infections is less clear. Increased CXCL10 concentrations were
332 also associated with pneumonia in animal models of pneumococcal disease and it is also a promising
333 marker which distinguished between CAP caused by *Staphylococcus aureus* or *S. pneumoniae* with
334 higher levels detected in pneumococcal CAP³⁹. Furthermore, CXCL10 can be produced by tissue-
335 infiltrating neutrophils which express its receptor CXCR3 and acts on these neutrophils in an autocrine
336 fashion followed by degranulation, ROS production and chemotaxis thus contributing to airway
337 inflammation⁴⁰.

338 High serum concentrations of CXCL9 are a strong predictor of cellular aging and cardio-vascular health
339 even in healthy adults⁴¹. It is produced by endothelial cells, macrophages and neutrophils⁴². Whether
340 CXCL9 is indicative of neutrophilic inflammation or produced by endothelial cells in the nasal mucosa
341 in our study remains unclear but given its role in biological aging, its association with increased
342 susceptibility to colonization with *S. pneumoniae* requires further investigation and if confirmed may
343 offer an opportunity to identify older adults at greater risk of pneumococcal infection.

344 Another important observation was the lack of recruitment of monocytes into the nasal mucosa after
345 pneumococcal challenge unlike younger adults⁹. It is not known whether CCL2 is not induced or
346 expression of the CCL2 receptors CCR2 and CCR4 is impaired. However, both CCL2 and CCR2
347 expression on monocytes are crucial for additional recruitment of and clearance of pneumococcus by

348 monocytes⁴³. A recent study in a mouse model pneumococcal pneumonia suggested that age is
349 associated with higher expression of CCR2 on monocytes but reduced phagocytosis of *S.*
350 *pneumoniae*⁴⁴. Therefore, it will be important to analyse the phenotype and function of monocytes
351 over the course of colonization in an experimental infection model in more detail, together with the
352 frequency and function of dendritic cells, both in healthy younger and older adults since both
353 populations play a role in the activation of adaptive immune responses both in the nasal mucosa and
354 systemically.

355 Given that in our study population, older adults cleared pneumococcal infection from the nasal
356 mucosa without showing higher bacterial densities or any discernible delay in colonization duration,
357 the question arises how the above changes in the nasal mucosa at the cellular and transcriptional level
358 reflect the increased risk of older adults to develop pneumococcal disease.

359 Although the upper and lower respiratory tract differ in composition in both type and frequency of
360 specialised epithelial cells and immune cells, there is sufficient overlap between compartments as
361 assessed at the single cell level scRNAseq⁴⁵⁻⁴⁷. One possible explanation is that older adults have
362 physiological changes such as reduced mucociliary clearance and increased expression of host
363 receptors binding *S. pneumoniae* that leads to increased micro-aspiration into their lungs⁴⁸⁻⁵¹. Micro-
364 aspiration of pneumococcus into the lung may result in more pronounced inflammation with
365 increased tissue damage if neutrophils are recruited or activated in a similar manner to those observed
366 in the nasopharynx. Neutrophils in the lung are found in increased frequency in the lung and
367 contribute to inflammation during bacterial and viral infections⁵²⁻⁵⁴. In addition, adults at risk of
368 pneumonia have a delay in lung efferocytosis - the phagocytic clearance of apoptotic cells - following
369 community acquired pneumonia⁵⁵. In a mouse model of pneumococcal and viral co-infection, older
370 mice showed rapid activation of neutrophils in the lung in the absence of increased bacterial burden
371 suggesting that dysregulation of immune responses are a major factor contributing to pneumonia⁵⁶.
372 Understanding the role of individual pathogenic bacteria such as pneumococcus and its relationship
373 with activation (or lack of) of immunological pathways that could result in increased susceptibility to
374 pneumococcal disease are a prerequisite for future studies analysing in detail the interaction between
375 bacterial and viral infection in clinically vulnerable populations, and thus improving diagnosis and
376 treatment.

377

378 **Online Methods:**

379 ***Study Design & Demographics***

380 Healthy adults aged 50-84 were inoculated with an estimated 80,000 CFU per nostril of *Streptococcus*
381 *pneumoniae* serotype 6B (strain BHN418 (29), GenBank accession number ASHP00000000.1) as

382 previously described^{7,57}. Key eligibility criteria included capacity to give informed consent, no
383 immunocompromised state or contact with susceptible individuals or children, no pneumococcal or
384 influenza vaccine or infection in the last 2 years and not having taken part in EHPC studies in the past
385 3 years. All volunteers gave written informed consent, and research was conducted in compliance with
386 all relevant ethical regulations. Participants who carried non-experimental pneumococcal strains at
387 baseline (day -5) or had a viral infection were excluded from all analyses.

388 Ethical approval was provided by the East Liverpool National Health Service Research and Ethics
389 Committee (reference numbers 15/NW/0146 and 14/NW/1460) and Human Tissue Authority licensing
390 number 12548.

391 Detailed demographic data of older adults >50yrs can be found in Adler 2021¹⁶. For comparison, data
392 from younger adults who were part of a control group of an Influenza co-infection study were re-
393 analysed^{9,18}. Some data on baseline (day -5) nasal cell populations before inoculation with Spn6B were
394 presented in a pre-print⁵⁸ but the analysis of baseline nasal cell data presented here is sufficiently
395 different and substantially extends the data presented in the preprint.

396

397 ***Determination of carriage***

398 Nasal washes were performed at day -5 and on days 2, 7, 9, 14, 22 and 29 post-challenge and
399 colonization determined by the presence of pneumococcus in nasal wash samples at any time point
400 post-challenge up to and including day 29, detected using classical microbiology^{7,57}.

401

402 ***Nasal curettage***

403 Nasal cells were collected on days -5, 2, 7, 9 and 29 by scraping the inferior turbinate from participants
404 consecutively using four curettes (Rhino-pro®, Arlington Scientific), as described previously²⁵. Two
405 curette samples were collected into PBS + 5mM EDTA and 0.5% heat inactivated FBS for
406 immunophenotyping and an additional two curette samples were collected into RLT (Qiagen) and
407 stored at -80°C for transcriptome analysis.

408

409 ***Nasal Cell Immunophenotyping***

410 Cells were dislodged from curettes and processed immediately. Briefly, the nasal cells were stained
411 for 15 minutes with LIVE/DEAD® Fixable Violet Dead Cell Stain (ThermoFisher) before the addition of
412 a cocktail of monoclonal antibodies for 20 minutes at 4°C protected from light (Supplementary Table
413 S7) Following incubation, cells were washed (440g for 5 min) with 3mL PBS, filtered through a 70µm
414 mesh filter (ThermoFisher) and resuspended in 200µL Cell FIX™ (BD Biosciences). Samples were
415 acquired on a LSR II cytometer (BD Biosciences) and analysed using Flowjo software version 10

416 (Treestar). Compensation matrices were set using compensation beads (BD Biosciences and
417 ThermoFisher). Samples with less than 500 CD45+ leukocytes or 250 EpCam+ epithelial cells were
418 excluded from analysis. To adjust for the variability of cells collected within and between study
419 participants, absolute cell counts of the target populations were normalized with the absolute number
420 of epithelial cells. The gating strategy is shown in Supplementary Fig. 5.

421

422 ***Anti-6B capsular polysaccharide IgG***

423 Anti-6B CPS IgG titres were measured using a modification of the WHO enzyme-linked immunosorbent
424 assay (ELISA) protocol. Nasal wash (NW) samples and reference serum 89SF (US Food and Drug
425 Administration (FDA)) were depleted of cell wall polysaccharide (CWPS) antibodies by pre-absorption
426 with 10µg/mL solution of CWPS (Statens Serum Institut, Copenhagen, Denmark) in phosphate-
427 buffered saline (PBS) blocked with heat-inactivated foetal bovine serum (ThermoFisher, Basingstoke
428 UK) for 30 minutes. 96-well plates (Maxisorp microtiter, Nunc, Roskilde, Denmark) were coated with
429 5µg/mL purified pneumococcal 6B capsular polysaccharide (Statens Serum Institut) overnight at 4°C,
430 washed and blocked with 1% BSA. Reference serum 89SF was serially diluted as a standard curve.
431 Samples and standards were transferred to plates and incubated for two hours at room temperature,
432 followed by three washes with PBS/0.05% Tween (PBS-T), before incubation with the secondary
433 antibody diluted 1:4000 (A9544; Sigma-Aldrich Corporation, Dorset, UK) for 90 minutes. Wells were
434 washed as before and developed by incubation with p-nitrophenylphosphate (Sigma-Aldrich
435 Corporation) for 15-20 minutes at room temperature. Optical densities were measured at 405nm
436 using a FLUOstar Omega plate reader (BMG Labtech GmbH, Ortenberg, Germany). Samples were
437 analyzed in duplicate, and samples with a coefficient of variation (CV) of > 25% were excluded.

438

439 ***Nasal Fluid Multiplex Cytokine Measurement***

440 Nasal lining fluid was collected using nasosorption filters (Nasosorption, Hunt Developments) and
441 stored at -80°C. For detection of cytokines in the nasal lining fluid, nasosorption samples were eluted
442 in 100µl assay buffer (Thermo Fisher Scientific) by centrifugation at 2800g for 10 minutes. The eluate
443 was cleared by further centrifugation at 16,000g for 10 min. Samples were analysed on an LX200 using
444 a 30-plex magnetic human Luminex cytokine kit (LHC6003M; Thermo Fisher Scientific) and analysed
445 with xPonent3.1 software following the manufacturer's instructions. Samples were analysed in
446 duplicate, and samples with a coefficient of variation (CV) of > 25% were excluded.

447

448 ***Myeloperoxidase ELISA***

449 Levels of myeloperoxidase in the nasal wash were determined using the Human Myeloperoxidase
450 DuoSet ELISA Kit (R&D Systems, Abingdon, UK) following manufacturer's instructions. Briefly, 96-well
451 plates (Maxisorp microtiter, Nunc, Roskilde, Denmark) were coated with 4µg/mL capture antibody
452 overnight and blocked with 1% BSA in PBS for 1 hour at room temperature. Samples and standards
453 were incubated in assay plates for 2 hours at room temperature. Detection antibody (50ng/ml) was
454 added to the wells for 2 hours at room temperature, followed by 20 minutes incubation with
455 Streptavidin-HRP (1:200; Fisher Scientific) at room temperature. The plates were developed using
456 TMB-Turbo Substrate (Fisher Scientific) for 20 minutes and the reaction stopped by adding 2N H₂SO₄
457 in a 1:1 ratio. Optical density was measured at 450nm and corrected for optical imperfection (540nm).
458 All samples were run in duplicate with a CV <25%.

459

460 ***Nasal Cell RNA Sequencing and Bioinformatic Analysis***

461 *RNA sequencing:* Nasal cells were collected in RLT (QIAGEN) and stored at -80°C until extraction. RNA
462 extraction (RNeasy; QIAGEN), sample integrity assessment (Bioanalyzer; Agilent 2100), library
463 preparation and RNA sequencing (BGISEQ-500RS) were performed at the Beijing Genome Institute.
464 Quality control of raw sequencing data was done using FastQC tool. Mapping to a human reference
465 genome assembly (GRCh38) was done using STAR 2.5.0a⁵⁹. Read counts from the resulting binary
466 alignment map (BAM) files were obtained with featureCounts⁶⁰ using a general transfer format (GTF)
467 gene annotation from the Ensembl database⁶¹The R/Bioconductor package DESeq2 (version 1.34.0)
468 was used to identify differentially expressed genes among the samples after removing absent features
469 (zero counts in more than 75% of samples)⁶². Genes with a p-value of < 0.05 and an absolute fold-
470 change of > 2.0 were identified as differentially expressed. The complete set of raw sequences were
471 deposited at the NCBI through BioProject (PRJNAXX).

472 *Functional analysis:* We performed two functional analysis approaches regarding the biological
473 pathways related to ageing or carriage status. Gene Set Variation Analysis (GSVA) was used to identify
474 pathways independent of comparison between groups of samples using R package gsva (version
475 1.42.0) and log₂ count per million (CPM) matrix count, and the parameters kcdf="Gaussian",
476 min.sz=15, and max.sz=500. Gene Set Enrichment Analysis (GSEA) was used to identify which
477 pathways were represented in the ranked transcriptome (log₂ fold-change), independently of the DE
478 cut-off⁶³ using R package fgsea (version 1.20.0). The criteria used for statistical enrichment for GSEA
479 were a p value < 0.05 and enrichment of at least five genes for each pathway. The database used for
480 functional analysis was Reactome, release 79 and Pathway Browser version 3.7⁵⁰.

481 *Co-expression analysis:* For co-expression analysis, counts were normalized using log₂ counts per
482 million (CPM), and the log₂ fold-change was calculated for each time point in a subject-wise manner.

483 The co-expression analysis was performed separately for each group (older and younger, using
484 baseline, day 2, and day 9 after pneumococcal challenge and susceptible and protected samples) using
485 the R /Bioconductor package CEMiTool (version 1.18.1)¹⁹. This package unifies the discovery and the
486 analysis of co-expression gene modules, evaluating whether modules contain genes that are over-
487 represented by specific pathways or altered in a specific sample group. A p-value = 0.05 was applied
488 for filtering genes with low expression levels.

489 *M2 CEMiTool module protein-protein interaction network*: To identify the relationship between genes
490 (protein-protein interaction) from M2 CEMiTool modules, we filtered which genes were differentially
491 expressed at least one comparison (susceptible vs protected at baseline, day 2 or day 9 after
492 challenge), and we used the networkanalyst.ca web-based tool (version 3.0). We used the “Gene List
493 Input” option, a list of M2 DE gene symbols and StringDB⁶⁴ to find the genes interaction evidence
494 under parameters, confidence score cutoff = 900, not required experimental evidence and zero-order
495 network to use just genes from the input list.

496 *Deconvolution analysis*: Cell type estimation was performed using the CIBERSORTx web-based tool⁶⁵,
497 with log₂ count per million (CPM) gene expression and single-cell atlas data from sorted monocytes
498 cells⁶⁶ and bone marrow and mature neutrophils bulk sequencing⁶⁷ from healthy human donors. Both
499 studies were used as a reference to predict cell type proportion.

500

501 **Statistical Analysis**

502 To identify the correlation between a pair of features, we first imputed the missing data using the R
503 package missForest (version 1.5) and then calculated the Spearman rho coefficient and p values using
504 the R base function cor.test.

505 Two-tailed statistical tests were used throughout the study. For comparison between study groups,
506 Mann Whitney test was used. For comparison of study participants within a group over time,
507 Friedmann test with Dunn Hochberg correction was used. P values were considered significant at
508 <0.05 unless stated otherwise. Data were analysed using GraphPad prism (version 9) or R studio
509 (2021.09.2 Build 382) and R (version 4.1.2).

510

511 **Acknowledgements**

512 We thank all study participants for their contribution and generous donation of time and tissue
513 samples. We acknowledge the invaluable contribution of the clinical and laboratory team collecting
514 and processing samples. This study was funded by the Melinda Gates Foundation (grant OPP1117728);
515 the UK Medical Research Council (grant MR/M011569/1).

516

517

518 **References**

519

520 1. Mitsi, E. *et al.* Nasal Pneumococcal Density Is Associated with Microaspiration and Heightened
521 Human Alveolar Macrophage Responsiveness to Bacterial Pathogens. *Am J Respir Crit Care Med* **201**,
522 335–347 (2020).

523 2. Wall, E. C., Chan, J. M., Gil, E. & Heyderman, R. S. Acute bacterial meningitis. *Curr Opin Neurol* **34**,
524 386–395 (2021).

525 3. Welte, T., Torres, A. & Nathwani, D. Clinical and economic burden of community-acquired
526 pneumonia among adults in Europe. *Thorax* **67**, 71 (2012).

527 4. Jain, S. *et al.* Community-Acquired Pneumonia Requiring Hospitalization among U.S. Adults. *New*
528 *Engl J Medicine* **373**, 415–427 (2015).

529 5. Bijlsma, M. W. *et al.* Community-acquired bacterial meningitis in adults in the Netherlands, 2006–
530 14: a prospective cohort study. *Lancet Infect Dis* **16**, 339–347 (2016).

531 6. Torres, A. *et al.* Burden of pneumococcal community-acquired pneumonia in adults across Europe:
532 A literature review. *Resp Med* **137**, 6–13 (2018).

533 7. Ferreira, D. M. *et al.* Controlled human infection and rechallenge with *Streptococcus pneumoniae*
534 reveals the protective efficacy of carriage in healthy adults. *Am J Respir Crit Care Med* **187**, 855–864
535 (2013).

536 8. Nikolaou, E. *et al.* Experimental Human Challenge Defines Distinct Pneumococcal Kinetic Profiles
537 and Mucosal Responses between Colonized and Non-Colonized Adults. *mBio* **12**, (2021).

538 9. Jochems, S. P. *et al.* Inflammation induced by influenza virus impairs human innate immune
539 control of pneumococcus. *Nat Immunol* **388**, 1–14 (2018).

540 10. Jochems, S. P. *et al.* Innate and adaptive nasal mucosal immune responses following
541 experimental human pneumococcal colonization. *J Clin Invest* **130**, 4523–4538 (2019).

542 11. Pennington, S. H. *et al.* Polysaccharide-Specific Memory B Cells Predict Protection against
543 Experimental Human Pneumococcal Carriage. *Am J Respir Crit Care Med* **194**, 1523–1531 (2016).

544 12. Wunderink, R. G. & Waterer, G. Advances in the causes and management of community acquired
545 pneumonia in adults. *BMJ* **358**, j2471 (2017).

546 13. Franceschi, C. & Campisi, J. Chronic Inflammation (Inflammaging) and Its Potential Contribution
547 to Age-Associated Diseases. *J. Gerontol.: Ser. A* **69**, S4–S9 (2014).

548 14. Fulop, T. *et al.* Immunosenescence and Inflamm-Aging As Two Sides of the Same Coin: Friends or
549 Foes? *Front. Immunol.* **8**, 1960 (2018).

550 15. Brooks, L. R. K. & Mias, G. I. *Streptococcus pneumoniae*'s Virulence and Host Immunity: Aging,
551 Diagnostics, and Prevention. *Front Immunol* **9**, 1366 (2018).

- 552 16. Adler, H. *et al.* Experimental Human Pneumococcal Colonization in Older Adults Is Feasible and
553 Safe, Not Immunogenic. *Am J Respir Crit Care Med* **203**, 604–613 (2021).
- 554 17. Smith, E. L. *et al.* Upper airways colonisation of *Streptococcus pneumoniae* in adults aged 60
555 years and older: A systematic review of prevalence and individual participant data meta-analysis of
556 risk factors. *J Infect* **81**, 540–548 (2020).
- 557 18. Carniel, B. F. *et al.* Pneumococcal colonization impairs mucosal immune responses to live
558 attenuated influenza vaccine. *Jci Insight* **6**, e141088 (2021).
- 559 19. Russo, P. S. T. *et al.* CEMiTool: a Bioconductor package for performing comprehensive modular
560 co-expression analyses. *BMC Bioinformatics* **19**, 56 (2018).
- 561 20. Rasmussen, L. J. H., Petersen, J. E. V. & Eugen-Olsen, J. Soluble Urokinase Plasminogen Activator
562 Receptor (suPAR) as a Biomarker of Systemic Chronic Inflammation. *Front. Immunol.* **12**, 780641
563 (2021).
- 564 21. Angata, T. Lectin in Host Defense Against Microbial Infections. *Adv. Exp. Med. Biol.* **1204**, 215–
565 230 (2020).
- 566 22. Brckalo, T. *et al.* Functional analysis of the CD300e receptor in human monocytes and myeloid
567 dendritic cells. *Eur. J. Immunol.* **40**, 722–732 (2010).
- 568 23. Hommes, T. J. *et al.* Triggering receptor expressed on myeloid cells-1 (TREM-1) improves host
569 defence in pneumococcal pneumonia. *J. Pathol.* **233**, 357–367 (2014).
- 570 24. Vangeti, S. *et al.* Human influenza virus infection elicits distinct patterns of monocyte and
571 dendritic cell mobilization in blood and the nasopharynx. *Elife* **12**, e77345 (2023).
- 572 25. Jochems, S. P. *et al.* Novel Analysis of Immune Cells from Nasal Microbiopsy Demonstrates
573 Reliable, Reproducible Data for Immune Populations, and Superior Cytokine Detection Compared to
574 Nasal Wash. *PLoS ONE* **12**, e0169805 (2017).
- 575 26. Tosi, M. F. & Zakem, H. Surface expression of Fc gamma receptor III (CD16) on chemoattractant-
576 stimulated neutrophils is determined by both surface shedding and translocation from intracellular
577 storage compartments. *J. Clin. Investig.* **90**, 462–470 (1992).
- 578 27. Jost, C. *et al.* Intracellular localization and de novo synthesis of FcRIII in human neutrophil
579 granulocytes. *Blood* **75**, 144–151 (1990).
- 580 28. Simmons, S. R., Bhalla, M., Herring, S. E., Tchalla, E. Y. I. & Ghanem, E. N. B. Older but Not Wiser:
581 the Age-Driven Changes in Neutrophil Responses during Pulmonary Infections. *Infect. Immun.* **89**,
582 (2021).
- 583 29. Almeida, S. T. *et al.* Low Prevalence of Pneumococcal Carriage and High Serotype and Genotype
584 Diversity among Adults over 60 Years of Age Living in Portugal. *PLoS ONE* **9**, e90974 (2014).
- 585 30. Bleve, A. *et al.* Immunosenescence, Inflammaging, and Frailty: Role of Myeloid Cells in Age-
586 Related Diseases. *Clin Rev Allerg Immu* **64**, 123–144 (2023).

- 587 31. Pawelec, G. *et al.* The conundrum of human immune system “senescence.” *Mech Ageing Dev*
588 **192**, 111357–111357 (2020).
- 589 32. Whelan, F. J. *et al.* The Loss of Topography in the Microbial Communities of the Upper
590 Respiratory Tract in the Elderly. *Ann. Am. Thorac. Soc.* **11**, 513–521 (2014).
- 591 33. Weight, C. M. *et al.* Microinvasion by *Streptococcus pneumoniae* induces epithelial innate
592 immunity during colonisation at the human mucosal surface. *Nat Comms* **10**, 3060 (2019).
- 593 34. Simell, B. *et al.* Aging reduces the functionality of anti-pneumococcal antibodies and the killing of
594 *Streptococcus pneumoniae* by neutrophil phagocytosis. *Vaccine* **29**, 1929–1934 (2011).
- 595 35. Butcher, S. *et al.* Senescence in innate immune responses: reduced neutrophil phagocytic
596 capacity and CD16 expression in elderly humans. *J Leukoc Biol* **6**, 881–886 (2001).
- 597 36. Wang, Y. & Jönsson, F. Expression, Role, and Regulation of Neutrophil Fcγ Receptors. *Front*
598 *Immunol* **10**, 1958 (2019).
- 599 37. Habibi, M. S. *et al.* Neutrophilic inflammation in the respiratory mucosa predisposes to RSV
600 infection. *Science* **370**, (2020).
- 601 38. Cheemarla, N. R. *et al.* Nasal host response-based screening for undiagnosed respiratory viruses:
602 a pathogen surveillance and detection study. *Lancet Microbe* **4**, e38–e46 (2023).
- 603 39. Strehlitz, A., Goldmann, O., Pils, M. C., Pessler, F. & Medina, E. An Interferon Signature
604 Discriminates Pneumococcal From Staphylococcal Pneumonia. *Front. Immunol.* **9**, 1424 (2018).
- 605 40. Ichikawa, A. *et al.* CXCL10-CXCR3 Enhances the Development of Neutrophil-mediated Fulminant
606 Lung Injury of Viral and Nonviral Origin. *Am. J. Respir. Crit. Care Med.* **187**, 65–77 (2013).
- 607 41. Sayed, N. *et al.* An inflammatory aging clock (iAge) based on deep learning tracks multimorbidity,
608 immunosenescence, frailty and cardiovascular aging. *Nat Aging* **1**, 598–615 (2021).
- 609 42. Tecchio, C. & Cassatella, M. A. Neutrophil-derived chemokines on the road to immunity. *Semin.*
610 *Immunol.* **28**, 119–128 (2016).
- 611 43. Davis, K. M., Nakamura, S. & Weiser, J. N. Nod2 sensing of lysozyme-digested peptidoglycan
612 promotes macrophage recruitment and clearance of *S. pneumoniae* colonization in mice. *J. Clin.*
613 *Investig.* **121**, 3666–3676 (2011).
- 614 44. Puchta, A. *et al.* TNF Drives Monocyte Dysfunction with Age and Results in Impaired Anti-
615 pneumococcal Immunity. *Plos Pathog* **12**, e1005368 (2016).
- 616 45. Poole, A. *et al.* Dissecting childhood asthma with nasal transcriptomics distinguishes
617 subphenotypes of disease. *J Allergy Clin Immunol* **133**, 670-678.e12 (2014).
- 618 46. Lopez-Guisa, J. M. *et al.* Airway epithelial cells from asthmatic children differentially express
619 proremodeling factors. *J. Allergy Clin. Immunol.* **129**, 990-997.e6 (2012).
- 620 47. Mihaylova, V. T. *et al.* Regional Differences in Airway Epithelial Cells Reveal Tradeoff between
621 Defense against Oxidative Stress and Defense against Rhinovirus. *Cell Rep.* **24**, 3000-3007.e3 (2018).

- 622 48. Svartengren, M., Falk, R. & Philipson, K. Long-term clearance from small airways decreases with
623 age. *Eur. Respir. J.* **26**, 609–615 (2005).
- 624 49. Oliveira-Maul, J. P. de *et al.* Aging, Diabetes, and Hypertension Are Associated With Decreased
625 Nasal Mucociliary Clearance. *Chest* **143**, 1091–1097 (2013).
- 626 50. Schneider, J. L. *et al.* The aging lung: Physiology, disease, and immunity. *Cell* **184**, 1990–2019
627 (2021).
- 628 51. Shivshankar, P., Boyd, A. R., Saux, C. J. L., Yeh, I. & Orihuela, C. J. Cellular senescence increases
629 expression of bacterial ligands in the lungs and is positively correlated with increased susceptibility
630 to pneumococcal pneumonia. *Aging Cell* **10**, 798–806 (2011).
- 631 52. Meyer, K. C., Rosenthal, N. S., Soergel, P. & Peterson, K. Neutrophils and low-grade inflammation
632 in the seemingly normal aging human lung. *Mech. Ageing Dev.* **104**, 169–181 (1998).
- 633 53. Kulkarni, U. *et al.* Excessive neutrophil levels in the lung underlie the age-associated increase in
634 influenza mortality. *Mucosal Immunol.* **12**, 545–554 (2019).
- 635 54. Ouwendijk, W. J. D. *et al.* Neutrophils set extracellular traps to injure lungs in COVID-19. *J. Infect.*
636 *Dis.* **223**, jia050- (2021).
- 637 55. Zheng, D. J., Taka, M. A. & Heit, B. Role of Apoptotic Cell Clearance in Pneumonia and
638 Inflammatory Lung Disease. *Pathogens* **10**, 134 (2021).
- 639 56. Joma, B. H. *et al.* A Murine Model for Enhancement of Streptococcus pneumoniae Pathogenicity
640 upon Viral Infection and Advanced Age. *Infect. Immun.* **89**, e00471-20 (2021).
- 641 57. Gritzfeld, J. F. *et al.* Density and duration of experimental human pneumococcal carriage. *Clin.*
642 *Microbiol. Infect.* **20**, O1145-51 (2014).
- 643 58. Reine, J. *et al.* Dynamic changes in innate immune and T cell function and composition at the
644 nasal mucosa across the human lifespan. **2**, 141–29 (2019).
- 645 59. Dobin, A. *et al.* STAR: ultrafast universal RNA-seq aligner. *Bioinformatics* **29**, 15–21 (2013).
- 646 60. Liao, Y., Smyth, G. K. & Shi, W. featureCounts: an efficient general purpose program for assigning
647 sequence reads to genomic features. *Bioinformatics* **30**, 923–930 (2014).
- 648 61. Yates, A. *et al.* Ensembl 2016. *Nucleic Acids Res* **44**, D710–D716 (2016).
- 649 62. Love, M. I., Huber, W. & Anders, S. Moderated estimation of fold change and dispersion for RNA-
650 seq data with DESeq2. *Genome Biol* **15**, 550 (2014).
- 651 63. Subramanian, A. *et al.* Gene set enrichment analysis: A knowledge-based approach for
652 interpreting genome-wide expression profiles. *Proc National Acad Sci* **102**, 15545–15550 (2005).
- 653 64. Szklarczyk, D. *et al.* The STRING database in 2023: protein–protein association networks and
654 functional enrichment analyses for any sequenced genome of interest. *Nucleic Acids Res.* **51**, D638–
655 D646 (2022).

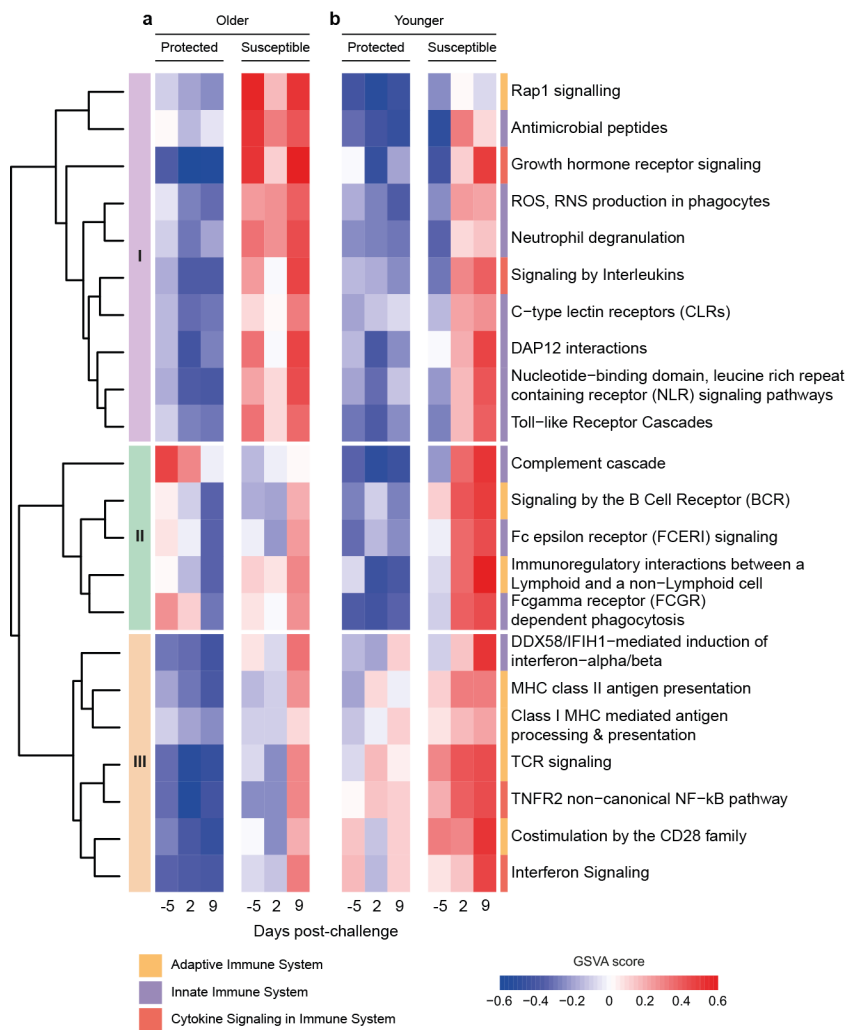
656 65. Newman, A. M. *et al.* Determining cell type abundance and expression from bulk tissues with
657 digital cytometry. *Nat. Biotechnol.* **37**, 773–782 (2019).

658 66. Villani, A.-C. *et al.* Single-cell RNA-seq reveals new types of human blood dendritic cells,
659 monocytes, and progenitors. *Science* **356**, eaah4573 (2017).

660 67. Grassi, L. *et al.* Dynamics of Transcription Regulation in Human Bone Marrow Myeloid
661 Differentiation to Mature Blood Neutrophils. *Cell Rep.* **24**, 2784–2794 (2018).

662

663



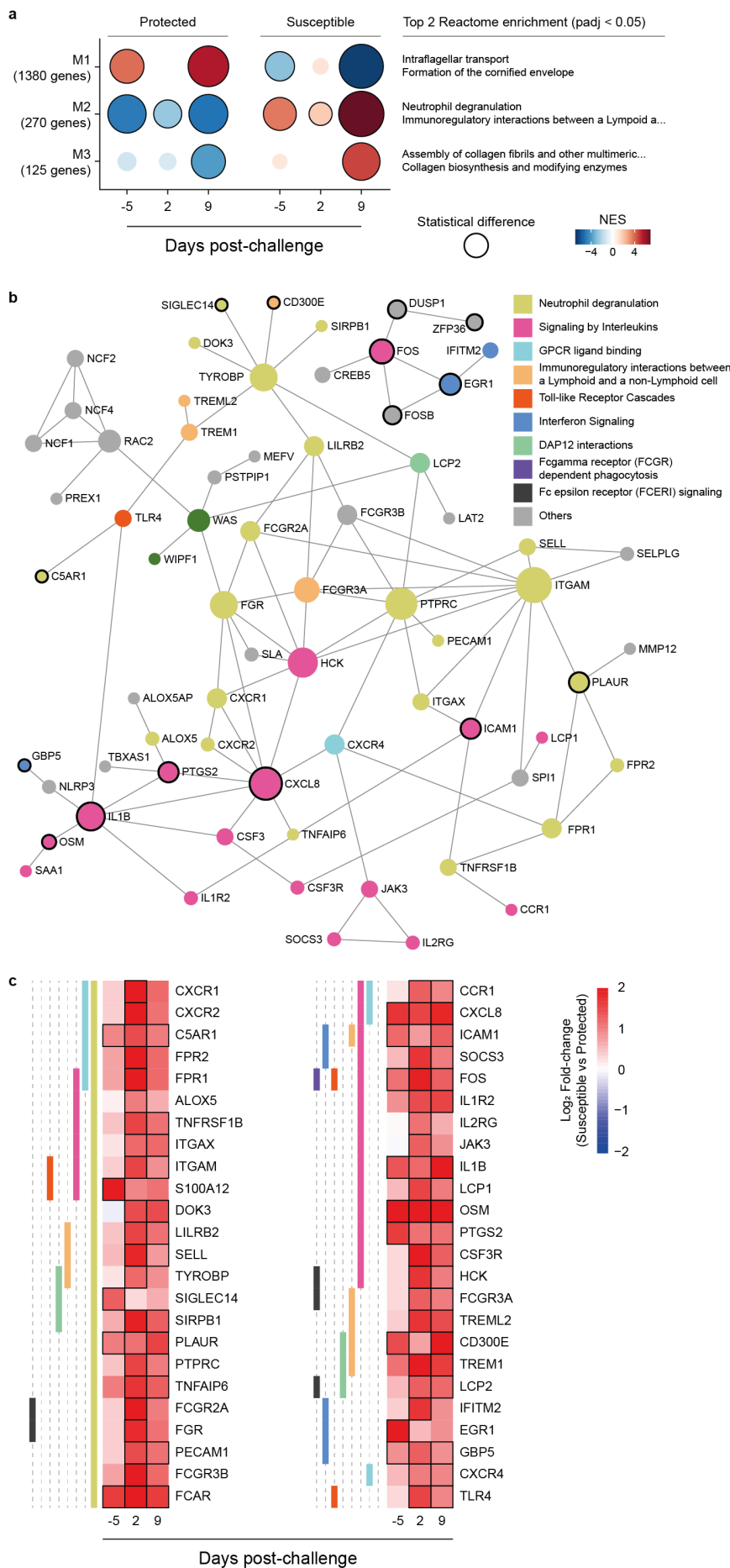
664

665

666 **Fig. 1. Gene expression analysis of nasal cells showed distinct patterns in older**
 667 **adults susceptible to carriage before pneumococcal challenge. a,** Gene set
 668 variance analysis (GSEA) of immune response pathways of nasal cells collected
 669 before (day -5) and after (day 2, day 9) pneumococcal challenge of older and **b,**
 670 younger study participants who were protected (carriage-negative) or susceptible
 671 (carriage-positive). Based on Euclidean distance calculation, we identified three
 672 groups: group I contains gene sets associated predominantly with innate immune
 673 responses, group II and III are enriched for gene

674

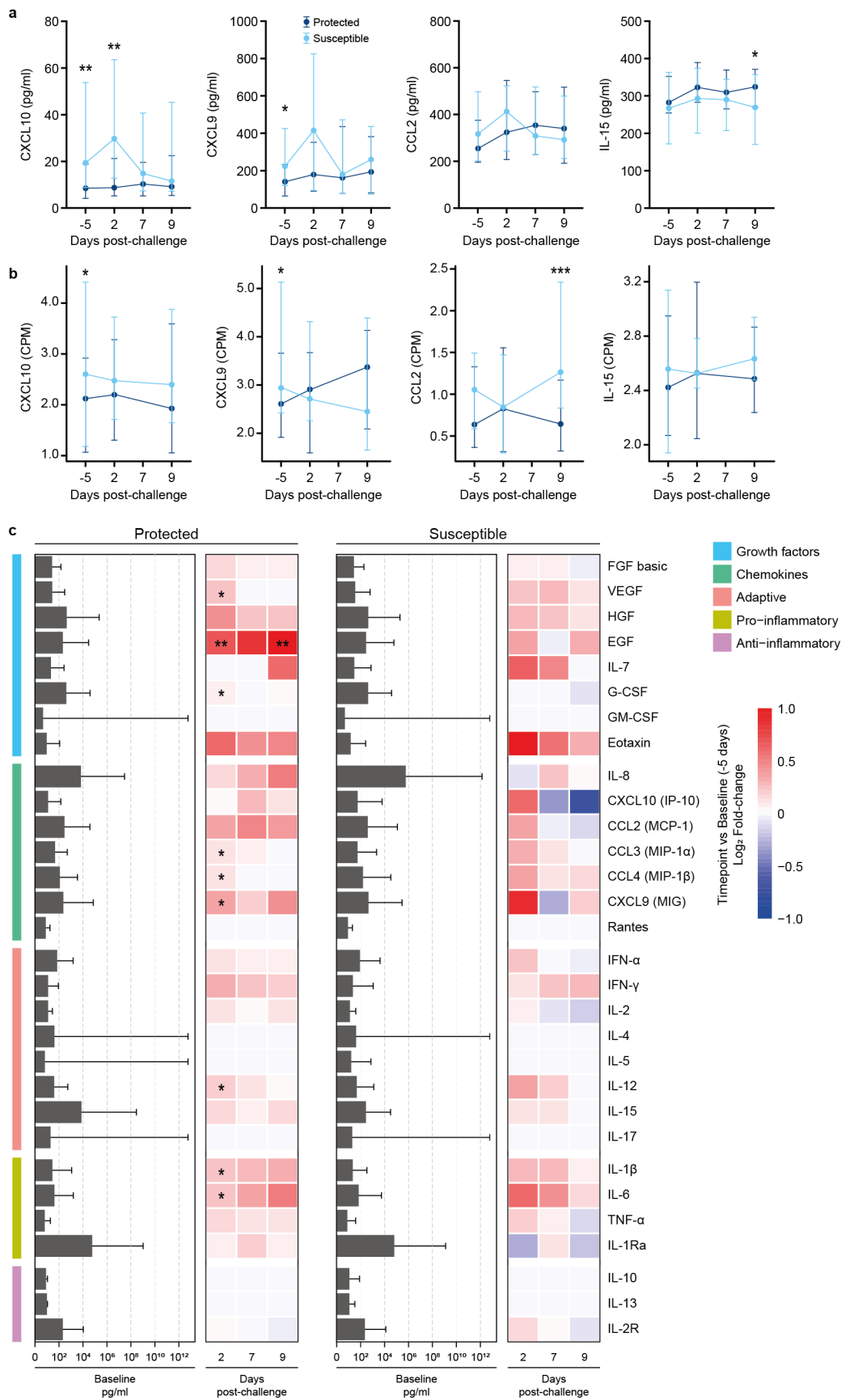
675



677 **Fig. 2. Co-expression analysis of nasal cell transcripts using protection-status and**
678 **timepoints samples for study participants. a,** Co-expressed genes were determined by
679 CEMiTool (Co-Expression Module identification Tool), assessing normalised gene expression
680 profile using samples of protection-status (susceptible and protected), and across the
681 timepoints (baseline (day -5), day 2, and day 9 post-challenge) and Over-Representation
682 Analysis (enrichr function from R package clusterProfiler) to determine the biological function
683 of each module genes using Reactome database (level 3 gene sets). Gene Set Enrichment
684 Analysis (GSEA) tool and z-score values for each gene across all timepoints were used to
685 determine whether module genes were positively (positive NES values) or negatively
686 (negative NES values) enriched. **b,** Protein-protein interaction network using 216 M2 modules
687 and differentially expressed genes (susceptible vs protected samples) at at least one
688 timepoint. Genes are colour coded by Reactome pathway and those which were
689 overexpressed at baseline are indicated by a black border. StringDB was used to determine
690 protein-protein interactions using default parameters, a confidence score cut-off of 900 and
691 not required experimental evidence (NetworkAnalysit.ca webtool). **c,** Heatmap showing log₂
692 fold-change of overexpressed genes within each pathway before and after pneumococcal
693 challenge (susceptible vs protected samples). Criteria of differentially expressed genes were
694 absolute log₂ fold-change > 1 and non-adjusted p value < 0.05.

695

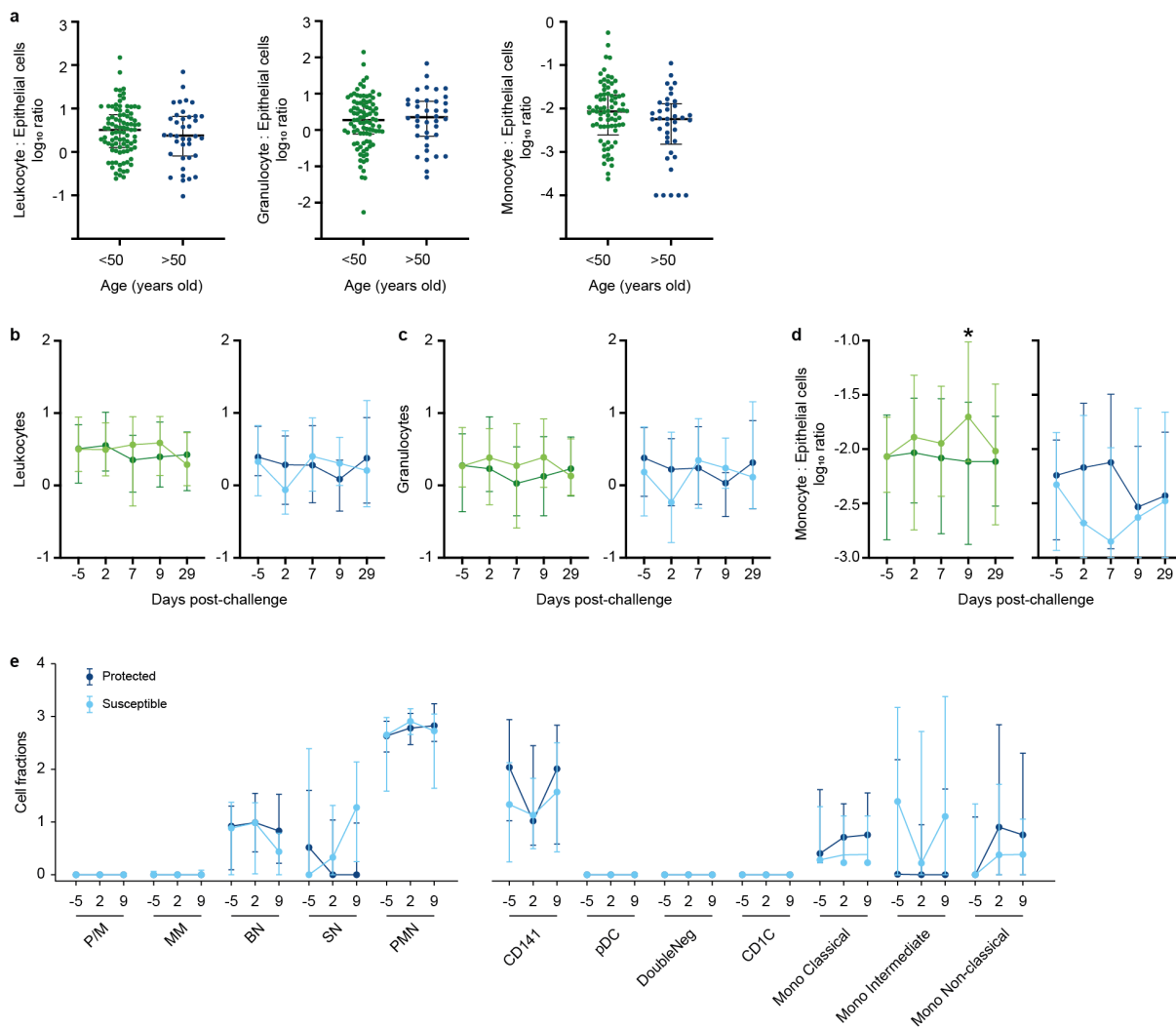
696



697

698 **Fig. 3. Changes in cytokine concentration in the nasal lining fluid of older adults**
699 **experimentally challenged with *S. pneumoniae* 6B.** **a,** Line graphs showing the median
700 and interquartile range of cytokine concentrations in the nasal lining fluid in older study
701 participants before (day -5) and after (day 2, day 7 and day 9) pneumococcal challenge in
702 susceptible (light blue line, n=22) and protected (dark blue line, n=35) study participants. In
703 protected study participants, the concentration of IL-15 was higher at day 9 (Mann-Whitney U
704 test, * p=0.0344), and in susceptible study participants concentration of CXCL10 (IP-10) was
705 higher at day -5 and day 2 (Mann-Whitney U test, * p=0.00116, ** p=0.0044) and the
706 concentration of CXCL9 (MIG) was higher at day -5 (Mann-Whitney U test, * p=0.0419). No
707 differences were observed for CCL2 (MCP-1). **b,** Line graphs showing the median and
708 interquartile range of cytokine normalised gene expression (CPM= counts per million) in older
709 study participants before (day -5) and after (day 2, and day 9) pneumococcal challenge in
710 susceptible (light blue line, n=18) and protected (dark blue line, n=24) study participants. In
711 susceptible study participants normalised gene expression of CXCL10 (IP-10) and CXCL9
712 (MIG) was higher at day -5 (DESeq2 Wald test, * p=0.00303, * p=0.0210, respectively), and
713 CCL2 was higher at day 9 (DESeq2 Wald test, *** p=0.000218). No differences were observed
714 for IL-15. **c,** Bar graph showing the level of cytokines at baseline and heatmap depicting log2
715 fold-change at day 2, 7, and 9 relatives to baseline (day -5) samples. The cytokines were
716 grouped based on activity, adaptive, anti-inflammatory, chemokines, growth factors, and pro-
717 inflammatory responses. The statistical test performed was the non-parametric Wilcoxon test.
718 One asterisk (*) indicates p-value < 0.05, and two asterisk (**) for p-value < 0.01.

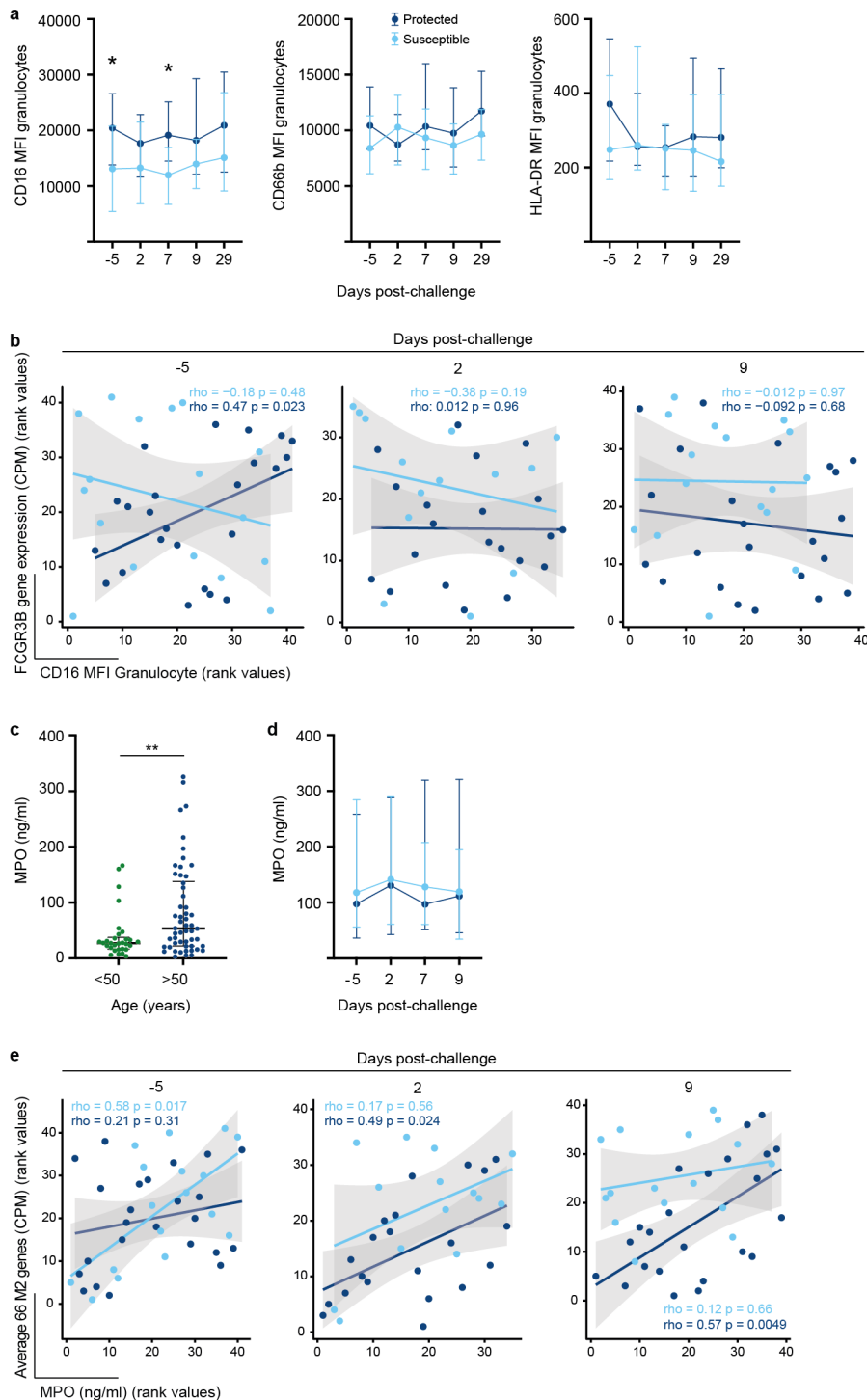
719



720

721 **Fig. 4. Recruitment of monocytes into the nasal mucosa of susceptible older adults is**
 722 **impaired. a**, In nasal micro-biopsies, the number of leukocytes, granulocytes and monocytes
 723 was comparable between younger (green, n=91) and older adults (blue, n=38) before
 724 pneumococcal challenge (day -5). Cell numbers of each leukocyte subset were normalised to
 725 epithelial cells as a ratio to account for differences in the total number of cells obtained for
 726 each biopsy. **b-d**, Line graphs showing median and interquartile range of leukocytes, (b),
 727 granulocytes (c), and monocytes (d) in younger and older study participants before (day -5)
 728 and after (day 2, day 7, day 9 and day 29) pneumococcal challenge in susceptible (young:
 729 light green n= 28; old: light blue line, n=22) and protected (young: dark green, n=39; old:
 730 dark blue line, n=35) study participants. The proportion of monocytes increased at day 9 after
 731 challenge in susceptible compared to protected younger adults (Mann Whitney U test, *
 732 p=0.0122). This recruitment of monocytes into the nasal mucosa was not observed in
 733 susceptible older adults (n=15). **e**, Deconvolution analysis of granulocytes and myeloid cells
 734 using CIBERSORTx. Using normalised gene expression (log₂ CPM (Counts Per Million)) and
 735 granulocytes and monocytes databases to determine the estimated cell population proportion.
 736 P/M (promyelocytes/myelocytes); MM (metamyelocytes); BN (band neutrophils); SN
 737 (segmented neutrophils) and PMN (polymorphonuclear). CD141 (CD141+ dendritic cells),
 738 pDC (plasmacytoid dendritic cells), double negative (CD1c-CD141- dendritic cells), CD1C
 739 (CD1c+ dendritic cells), mono (monocytes).

740



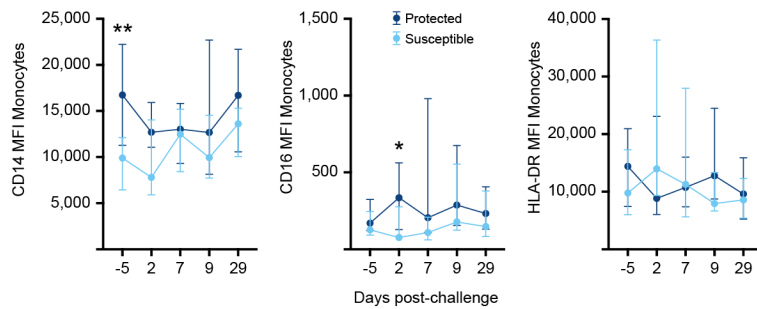
741

742

743 **Fig. 5. Granulocytes are activated in older adults susceptible to pneumococcal**
 744 **colonisation** **a**, Line graph (median and interquartile range) of expression levels of CD16,
 745 CD66b and HLA-DR on granulocytes before (day -5) and after challenge (day 2, day 7, day 9
 746 and day 29) in protected (dark blue, n=34) and susceptible (light blue, n=22) older adults. The
 747 expression level of CD16 was significantly lower on nasal granulocytes at baseline and day 7
 748 (Mann Whitney U test, baseline: p=0.034, day 7: p=0.014). **b**, Correlation between expression
 749 levels of FCGR3B gene and CD16 Granulocyte levels in nasal lining fluid at baseline (day -5),
 750 day 2 and day 9 in protected and susceptible study participants. **c**, At baseline (day -5), the
 751 concentration of MPO (Myeloperoxidase) in nasal lining fluid in older adults (n=54) was higher

752 than in younger adults (n=30). Shown are dot plots with median and interquartile range, Mann
753 Whitney U test ** p=0.0085. **d**, The concentration of MPO did not change before or after
754 pneumococcal challenge in older study participants who became susceptible (light blue, n=22)
755 or remained protected (dark blue, n=33). Line graph showing median and interquartile range
756 of MPO concentration before and after inoculation with pneumococcus. **e**, Correlation between
757 expression levels of 66 M2 module genes associated with the Reactome pathway “neutrophil
758 degranulation” and MPO concentration in nasal lining fluid at baseline (day -5), day 2 and day
759 9 in protected and susceptible study participants.

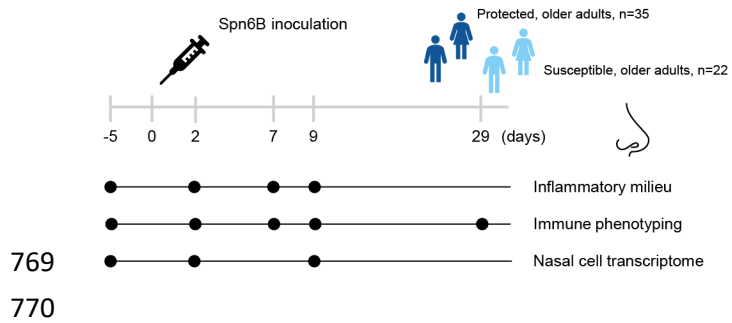
760



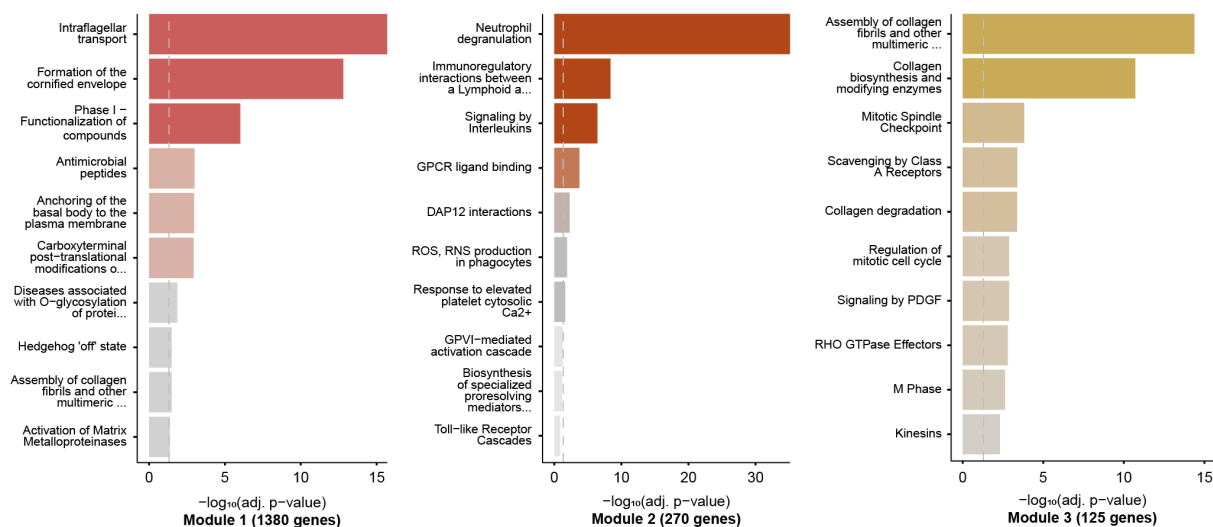
761

762 **Fig. 6. Monocytes are not recruited into the nasal mucosa after pneumococcal**
763 **challenge. a,** Line graph (median and interquartile range) of expression levels of CD14, CD16,
764 and HLA-DR on monocytes before (day -5) and after challenge (day 2, day 7, day 9 and day
765 29) in protected (dark blue, n=25) and susceptible (light blue, n=14) older adults. The
766 expression level of CD14 was significantly lower on nasal monocytes at baseline (Mann
767 Whitney U test, baseline: p=0.0019).

768



769
770
771 **Fig. S1: Study design.** Study design showing inoculation of study participants with
772 Spn6B at day 0 and sample collection before (day -5) and after inoculation with Spn6B
773 (day 2, day 7, day 9, and day 29). Samples collected were nasal lining fluid
774 (nasosorption samples) for determination of the nasal inflammatory milieu and nasal
775 cells (nasal curettage) for immune phenotyping and analysis of the nasal
776 transcriptome. Study participants who remained protected (n=35) are depicted in dark
777

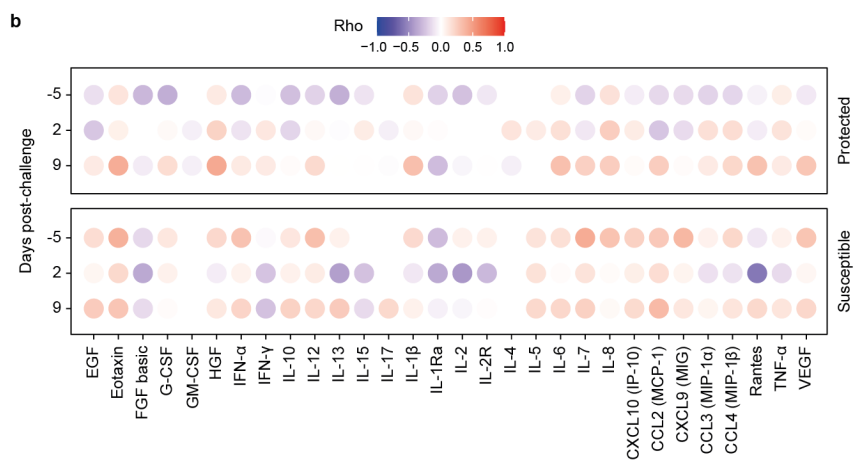
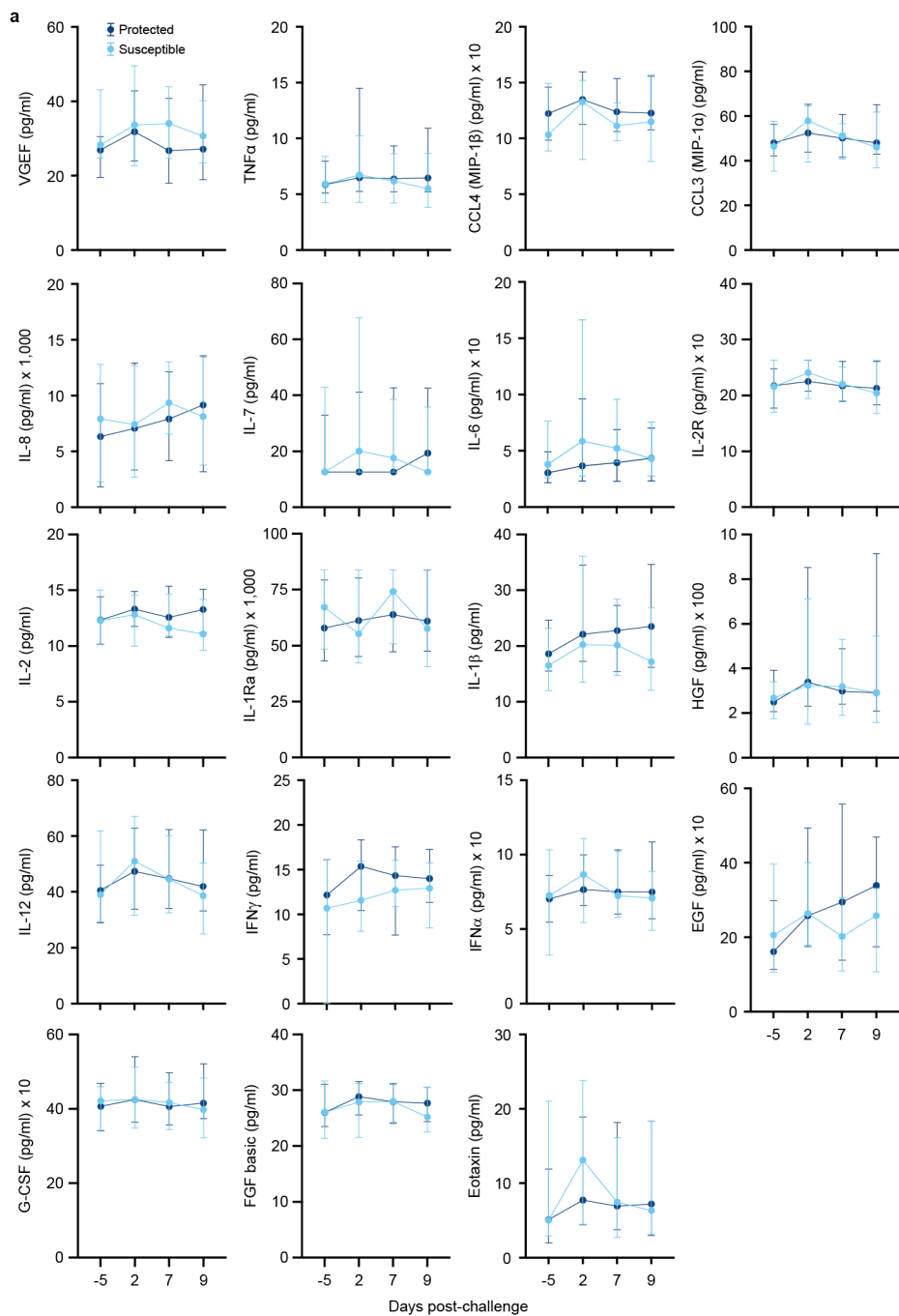


778

779

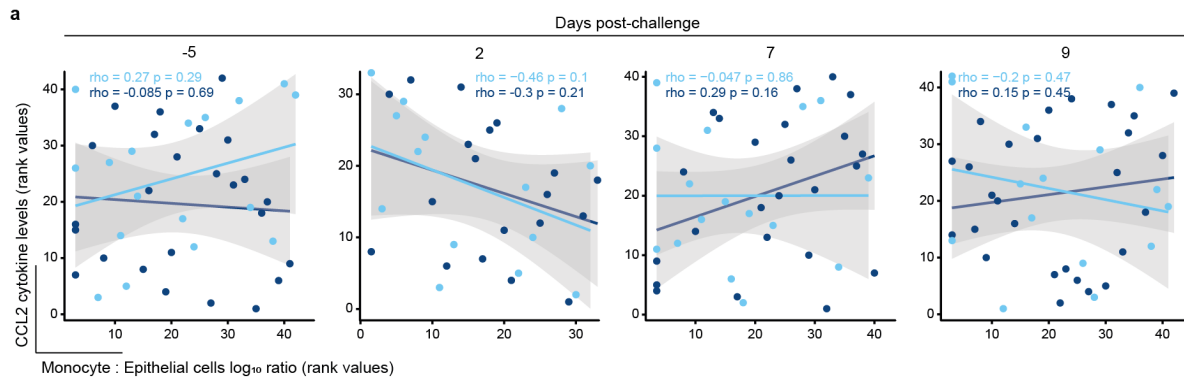
780 **Fig. S2. Modules of co-expressed gene sets functional analysis.** Over-Representation
 781 Analysis (ORA) was used to determine biological pathways (using Reactome level 3 gene
 782 sets) of co-expressed genes across all modules identified by CEMiTool.

783



785 **Fig. S3. Cytokine concentration in the nasal lining fluid of older adults experimentally**
786 **challenged with *S. pneumoniae* 6B.** **a**, Line graphs showing the median and interquartile
787 range of cytokine concentrations in the nasal lining fluid in older study participants before (day
788 -5) and after (day 2, day 7 and day 9) pneumococcal challenge in susceptible (light blue line,
789 n=22) and protected (dark blue line, n=35) study participants. **b**, Correlation plot of association
790 between age of protected and susceptible study participants with cytokine concentration
791 before (day -5) and after (day2 and day9) pneumococcal challenge. Correlation was tested
792 using Spearman rho with Benjamin Hochberg adjustment for multiple comparison.

793

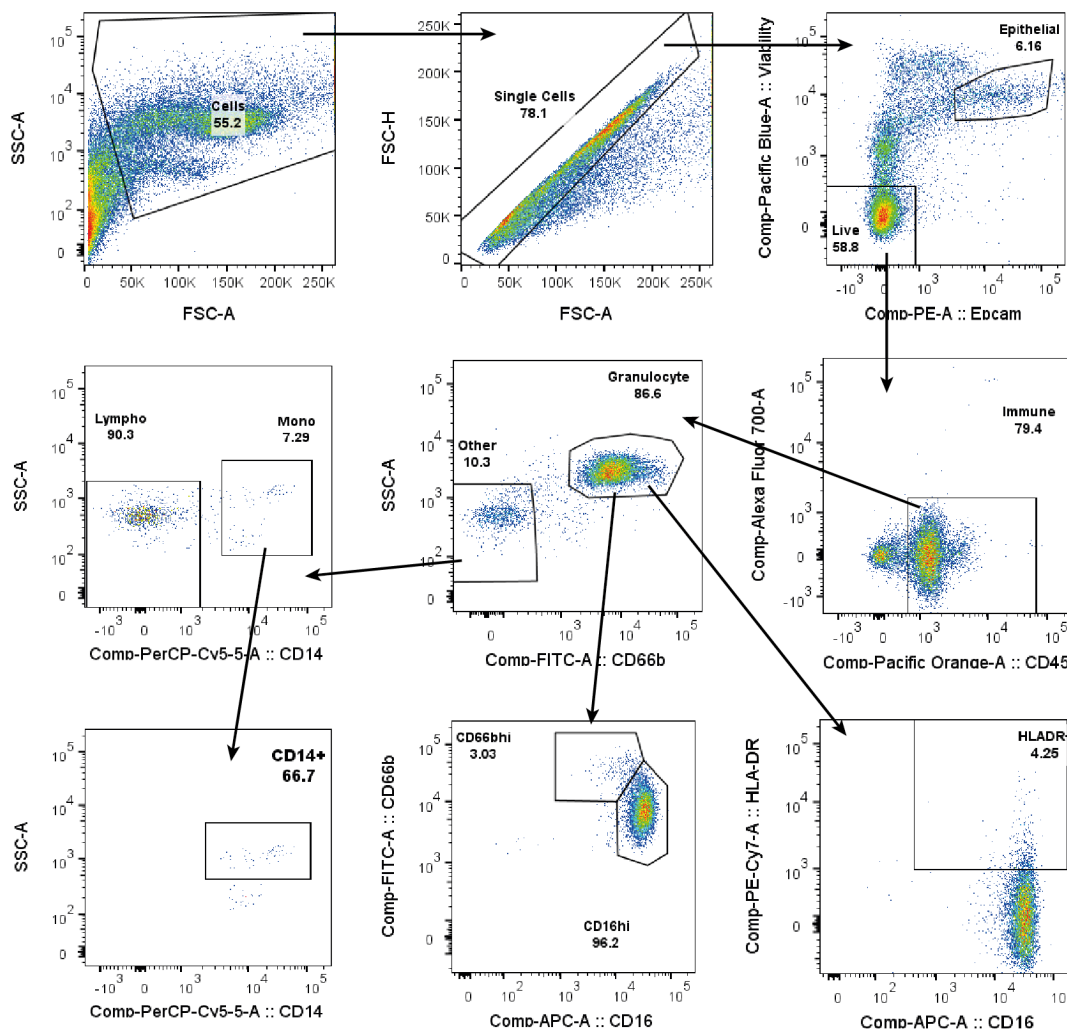


794

795

796 **Fig. S4. Monocytes are not correlated with CCL2 levels into the nasal mucosa before**
797 **and after pneumococcal challenge.** Scatter plot of the CCL2 level (pg/ml) and monocyte:
798 epithelial cells ratio before (day -5) and after challenge (day 2, day 7, and day 9), which
799 showed no correlation in susceptible (light blue dots) and protected (dark blue dots) study
800 participants.

801



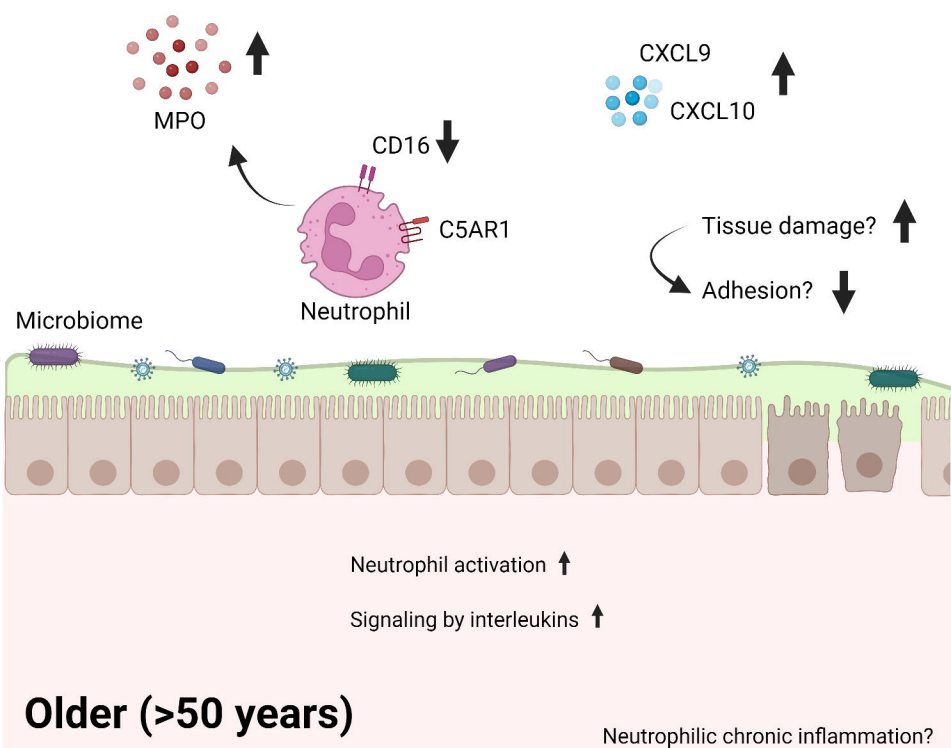
802

803

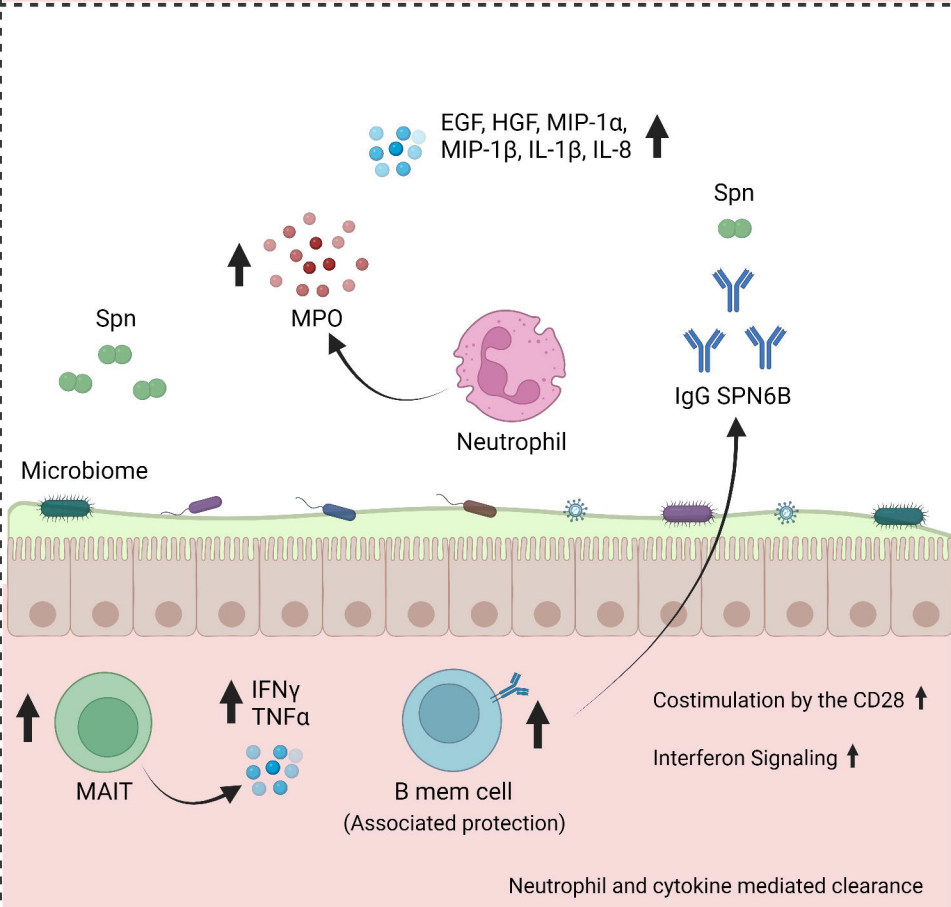
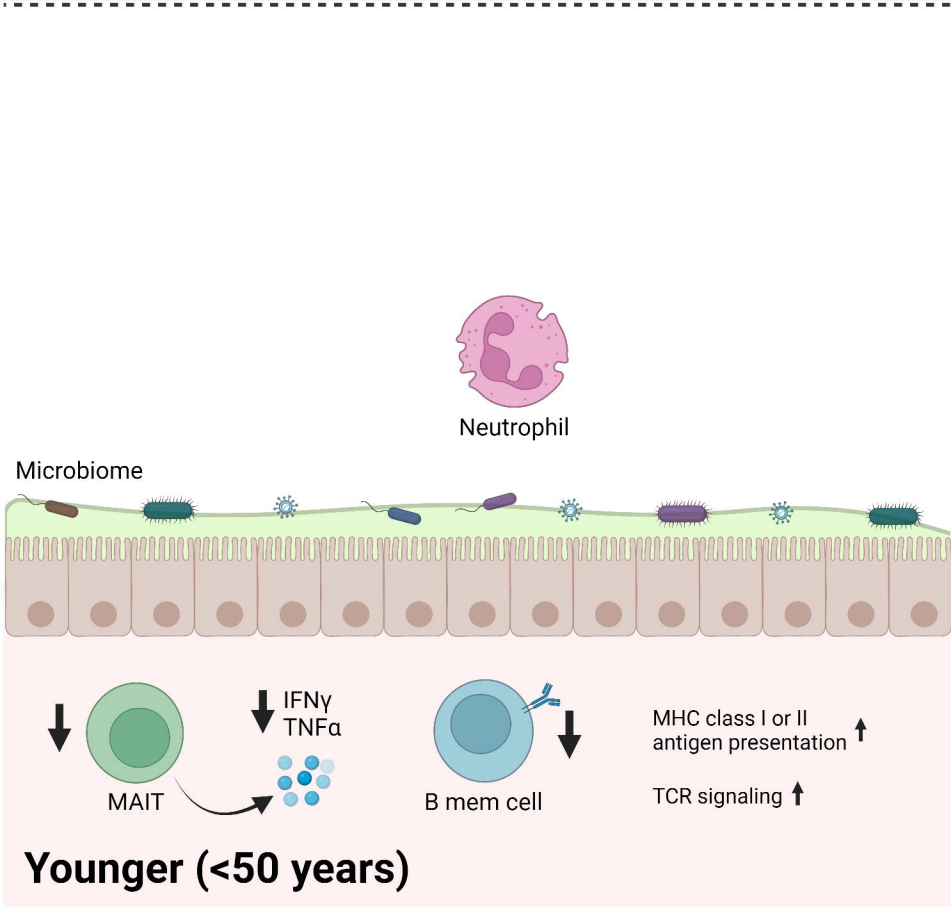
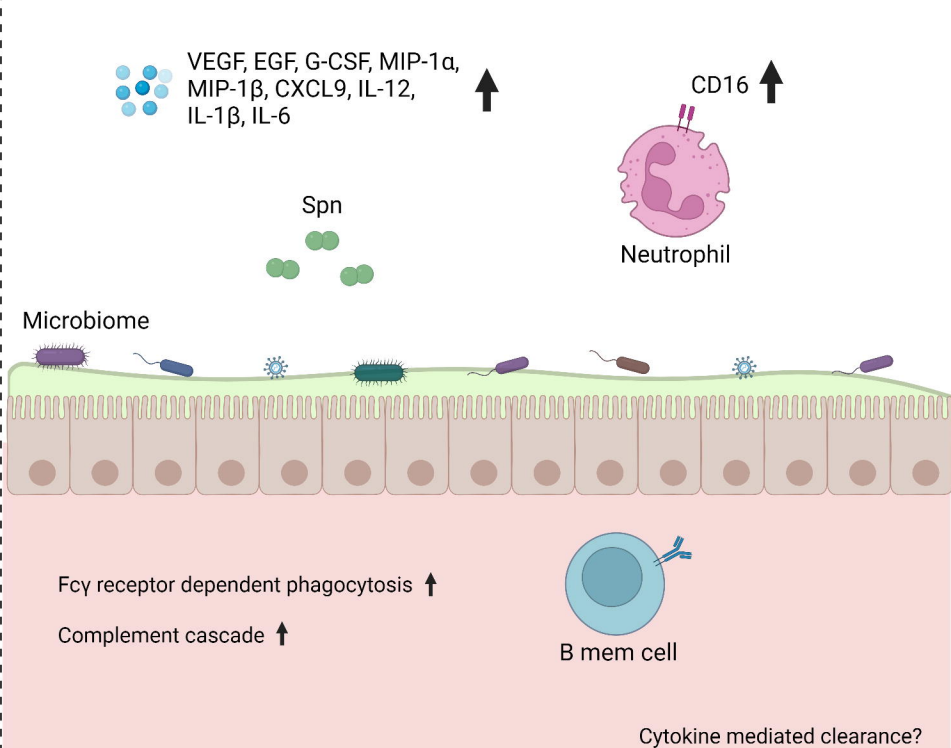
804 **Fig. S5. Gating strategy for nasal cells of one representative study participant.**

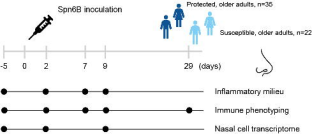
805

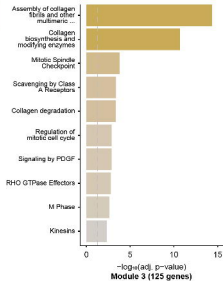
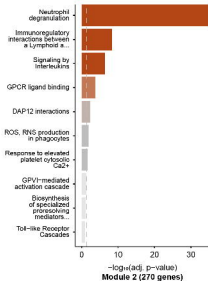
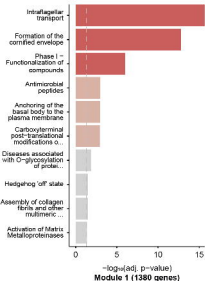
Susceptible before exposure

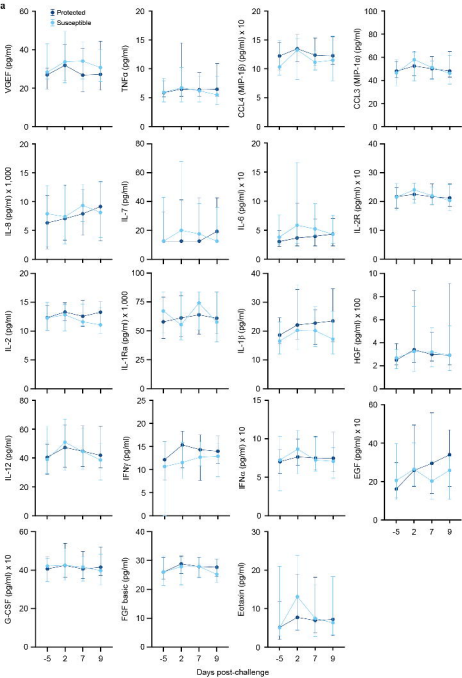


Protected response to exposure

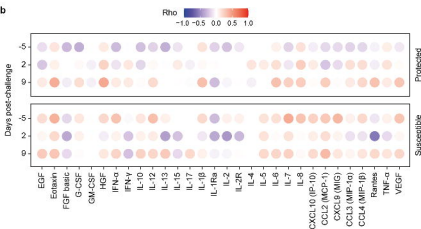








b



B

Days post-challenge

