

## **DIFFERENT COMBINATIONS OF THE METABOLIC SYNDROME CRITERIA AND CARDIOVASCULAR DISEASE**

Lars Lind

Department of Medical Sciences, Uppsala University, Sweden

Short title: Metabolic syndrome and CVD

Correspondence:

Lars Lind M.D., PhD

Dept of Medical Sciences, Uppsala University Hospital

751 85 Uppsala, Sweden

E-mail: [lars.lind@medsci.uu.se](mailto:lars.lind@medsci.uu.se)

Tel: +46 73 050 2878; Fax: +46 18 510133

Total word count: 4435

1 **ABSTRACT**

2

3 **Background:** The metabolic syndrome (MetS) has previously been linked to incident  
4 cardiovascular disease (CVD). It is however not known if certain combinations of MetS  
5 criteria show a higher risk than others.

6

7 **Methods:** We used data from UK biobank in which 388,800 individuals had data on MetS  
8 using the five harmonized NCEP criteria. The cohort was followed for a median of 12.6 years.  
9 A composite CVD outcome was used (myocardial infarction, ischemic stroke or heart failure).

10

11 **Results:** The risk of incident CVD (n= 22,572) increased in a fairly linear fashion with  
12 increasing number of MetS criteria. In the groups showing three MetS criteria, thus fulfilling  
13 the definition of MetS, the highest risk was seen in those with the combination of the glucose  
14 + waist circumference + HDL criteria (HR 3.90, 95%CI 3.17-4.80). In the group with four  
15 criteria, the highest HRs were seen in the groups not including triglyceride or the blood  
16 pressure criteria (HR 3.96, 95%CI 3.57-4.59 and HR 3.79, 95%CI 3.13-4.59, respectively).  
17 The risk of CVD in those with all five criteria was in the same order (HR 3.65, 95%CI 3.33-  
18 4.01). Mendelian randomization indicated a causal role of MetS for coronary heart disease  
19 (CHD) and heart failure, but not ischemic stroke, while use of polygenic risk scores for  
20 CHD and ischemic stroke were related to MetS criteria in a similar fashion as observational  
21 data.

22

23 **Conclusion:** Certain combinations of risk factors in individuals with the metabolic syndrome  
24 criteria showed a higher risk of future CVD than others.

25

26

27

28 **Keywords:** Metabolic syndrome, epidemiology, cardiovascular disease

29

30 **ABBREVIATIONS**

31	BP	Blood pressure
32	CHD	Coronary heart disease
33	CVD	Cardiovascular disease
34	GLU	Glucose
35	GWAS	Genome-wide association studies
36	HF	Heart failure
37	IVW	Inverse-variance weighted meta-analysis
38	MetS	Metabolic syndrome
39	MI	Myocardial infarction
40	MR	Mendelian randomization
41	TG	Triglycerides
42	WC	Waist circumference

43

## 44 INTRODUCTION

45  
46 The metabolic syndrome (MetS) was in modern times described in 1988<sup>1,2</sup>. Although it is  
47 widely used in the clinic to denote the abdominal obese subject with cardio-metabolic  
48 disturbances, it has been questioned as a pathophysiological entity<sup>3</sup>, since MetS does not  
49 show any increased risk of cardiovascular disease (CVD) as compared with the sum of its  
50 components<sup>4</sup>. Another critique is that given its 5 different criteria, a subject with MetS could  
51 have 15 different combinations of these criteria and it is likely that certain combinations are  
52 more deleterious than others.

53  
54 Many previous studies have shown MetS, and the number of MetS components, to be related  
55 to future CVD and/or mortality<sup>3,5-17</sup>. It has also been shown that the impact of MetS as a risk  
56 factor declines by ageing, although it is still a significant risk factor at the age of 82 years<sup>18</sup>.  
57 However, since most studies lack the power to investigate if different combinations of the  
58 MetS criteria have different impact on CVD risk, this is a matter that needs to be evaluated.

59  
60 The present study was therefore undertaken with the primary aim to investigate if different  
61 combinations of the MetS criteria show a higher risk than others in terms of future CVD. For  
62 this purpose, we used the UK biobank, a study with a large sample size and a long follow-up  
63 period that has sufficient power to be used for this aim. A secondary aim was to evaluate if  
64 different combinations of the MetS criteria are more deleterious than others regarding the risk  
65 of future specific major CVDs, like myocardial infarction, stroke, or heart failure. A third aim  
66 was to perform a two-sample Mendelian randomization study to evaluate if the relationships  
67 between MetS and the three major CVDs were causal. For this aim, we also used derived  
68 polygenetic risk scores (PRS)<sup>19</sup>. The primary hypothesis tested was that different  
69 combinations of MetS criteria show a higher risk than others regarding incident CVD.

## 70 71 MATERIAL AND METHODS

### 72 73 *Sample*

74 UK Biobank is a large, multi-center, prospective cohort study conducted across the UK  
75 (<https://www.ukbiobank.ac.uk>). In 2006–10, over 500,000 individuals aged 40–69 years  
76 underwent physical measurements, and blood samples were biobanked for later analysis of  
77 genes and biomarkers. After excluding individuals with missing data on variables needed to  
78 define MetS, 388,800 remained eligible for analysis.

79  
80 The study was approved by the UK North West Multi-Centre Research Ethics Committee and  
81 the Swedish Ethical Review Authority. All participants provided written informed consent.

### 82 83 *Clinical and biochemical data*

84 Serum glucose, HDL-cholesterol, and triglycerides were measured by a Beckman coulter  
85 AU5800, by standard methods. Since samples were taken with different times of fasting,  
86 glucose levels were adjusted down by 1.5 mmol/l if reported fasting time was 0h, - 3.0 mmol/l  
87 if fasting was 1h, -1.0 mmol/l if fasting was 2h, -0.3 mmol/l if fasting was 3h and no

88 correction if fasting time was >3h. For triglycerides, the levels were adjusted down by 0.1  
89 mmol/l if reported fasting time was 1h, and the reductions were -0.2, -0.4, -0.6, -0.65, -0.4 and  
90 -0.1 mmol/l for times 2 to 7h, respectively. These adjustments are based on a literature search,  
91 as well as own experience of the response to a mixed meal. Blood pressure was measured  
92 twice in the sitting position with the automated Omron device.

93

#### 94 *Confounders*

95 Ethnicity was categorized into four groups; White, Black, Asian, and other. Townsend social  
96 deprivation index and income were used as markers of socioeconomic status. Use of statins  
97 was regarded as a marker of high LDL-cholesterol (not being a criterion of MetS).

#### 98 *The metabolic syndrome*

99 The harmonized National Cholesterol Education Program (NCEP)-criteria for MetS was used  
100 to define the 5 components of the syndrome and prevalent MetS (binary) <sup>20</sup>. Three of the  
101 following five criteria should be fulfilled: Blood pressure  $\geq$  130/85 mmHg or antihypertensive  
102 treatment, serum glucose  $\geq$  6.1 mmol/l or antidiabetic treatment, serum triglycerides  $\geq$  1.7  
103 mmol/l, waist circumference > 102 cm in men and > 88 cm in women, HDL-cholesterol < 1.0  
104 mmol/l in men and < 1.3 in women.

#### 105 *Outcomes*

106 First fatal or non-fatal myocardial infarction (ICD-10 code I21), ischemic stroke (I63), or  
107 heart failure (I50) were recorded from death certificates and hospital records.

108

#### 109 *Statistics*

110 Cox proportional hazard analysis was used to evaluate if MetS, number of MetS criteria, or  
111 MetS criteria combinations were related to incident CVD (combined endpoint of myocardial  
112 infarction, ischemic stroke, or heart failure) in the primary analysis. Confounders were age,  
113 sex, ethnicity, Townsend deprivation index, smoking (never, previous, current), and statin  
114 use.

115 Prevalent CVD at baseline was deleted before analyses.

116 The proportional hazard assumption was checked by visual inspection of Kaplan-Maier  
117 curves.

118

119 As secondary outcomes, we evaluated in a similar fashion the three CVDs myocardial  
120 infarction, ischemic stroke, or heart failure one by one.

121

122 Two-sample Mendelian randomization studies were performed using already published  
123 genome-wide association studies (GWAS) for the three major CVDs  
124 (CARDIOGRAMplusC4D for coronary heart disease <sup>21</sup>, HERMES for heart failure <sup>22</sup>,  
125 METASTROKE for ischemic stroke <sup>11</sup>, and a GWAS of MetS performed in the UK biobank  
126 (the exposure) <sup>23</sup>. As instruments for the exposure, only independent genetic loci with  $p < 5 \times$   
127  $10^{-8}$  were used. Independency of the SNPs was evaluated by the clump command in the  
128 MRbase package in R. Thereafter, the causal estimate was calculated by both inverse-variance  
129 weighted meta-analysis (IVW) and MR Egger, as well as the weighted-median method. We

130 regarded a significant IVW estimate to be causal if also the weighted-median estimate was  
131 significant, and the MR Egger estimate to be in the same order as the other two.

132  
133 Weale and co-workers have constructed polygenetic risk scores (PRS) for a number of traits,  
134 including coronary heart disease (CHD) and ischemic stroke, for the participants in UK  
135 biobank <sup>19</sup>. The PRSs for these two CVD outcomes were calculated using published GWAS  
136 (called standard PRS).

137 The PRSs were calculated using meta-analyses using a Bayesian approach to estimate non-  
138 zero weights in ~6M SNPs spread throughout the genome (see more information in  
139 Supplementary Tables 1-4 in the publication). The individual PRS values were calculated as  
140 the sum of the effect size multiplied by allele dosage. Thereafter, the PRSs were centered and  
141 standardized in order to achieve PRS values that were comparable between traits.

142 When the different groups with MetS combinations were related to the PRSs for CHD and  
143 ischemic stroke, linear regression models were used with the same confounders as used above  
144 when evaluating incident outcomes.

145

146

147

148 STATA16.1 was used for the analyses (Stata inc, College Station, TX, USA).

149

## 150 **RESULTS**

151

152 Basic characteristics in the sample are shown in Table 1.

153

### 154 *Incidence rate for CVD*

155 During a median follow-up of 12.6 years (max 14.9), 22,572 individuals experienced a first  
156 CVD event, resulting in an incidence rate of 4.8 per 1000 person years at risk (PYAR). The  
157 corresponding number of incident events for myocardial infarction, heart failure, and ischemic  
158 stroke were 9,315, 6,425, and 12,385, respectively.

159

### 160 *MetS and CVD*

161 20.6% of the sample showed MetS. The incidence of the combined endpoint CVD was  
162 roughly twice in individuals with MetS compared to those without (Table 2). Following  
163 adjustment for age, sex, and other confounders the HR was 1.59 (95% 1.55-1.64, Table 3).  
164 When investigating the three CVD diseases separately, the HRs for MI and HF were similar  
165 (1.64 and 1.63, respectively), while the HR for ischemic stroke was lower (1.45, see Table 3  
166 for details).

167

### 168 *Number of MetS criteria and CVD*

169 The proportion of incident CVD cases increased by a factor of 7.5 when the group with no  
170 MetS criterion was compared with those with all five criteria. As could be seen in Figure 1  
171 and Table 3, the HR risk of CVD increased in a fairly linear fashion with the number of MetS  
172 criteria. Following adjustment for age, sex, and other confounders the HR was 3.65 (95%  
173 3.33-4.01, Table 3) in the group with all five criteria compared to the group with no criterion.  
174 When investigating the three CVD diseases separately, HR in the group with 5 criteria was  
175 4.12 regarding MI, but not as high for the outcomes stroke and heart failure (3.26 and 3.48)  
176 when compared to the group with no criterion.

177

### 178 *Combinations of MetS criteria and CVD*

179 As could be seen in Figure 2, the 30 possible different combinations of criteria were  
180 compared to subjects without any MetS criteria. It was found that the spread in HRs between  
181 the 30 groups of MetS criteria combinations were large, also within groups with a similar  
182 number of criteria. Amongst subjects with one criterion, the group with the blood pressure  
183 (BP) criterion showed the highest HR when compared to the group without any criterion, and  
184 the group with the triglyceride (TG) criterion showed the lowest HR. All these 5 groups did  
185 however show an increased risk of incident CVD (see Figure 3 and Suppl Table 1). In  
186 general, the groups with 2 criteria showed higher HRs than those with one criterion only.  
187 Within this category, the highest HR was seen for the combination of glucose (GLU) + waist  
188 circumference (WC) (2.71) and the lowest HR in those with WC+TG (1.51). In the groups  
189 showing 3 MetS criteria, thus fulfilling the definition of MetS, the highest HR was seen in  
190 those with GLU+WC+HDL (HR 3.90), while the lowest HRs were seen for three  
191 combinations all including TG (HRs 2.11 to 2.21). In the group with 4 components, the  
192 highest HR was seen in the groups not including TG or BP (3.96 and 3.79, respectively),  
193 while the lowest HR was seen in the group not including WC. It is also of interest to see that

194 the HR for those with all 5 criteria was in the same order as in those with 4 criteria not  
195 including TG or BP, as well as the group with GLU+WC+HDL, all with overlapping  
196 confidence intervals.

197  
198 When the pattern of HRs for the 30 MetS combination groups was compared between the  
199 three different CVDs, the pattern for MI was the CVD most similar with the pattern for the  
200 combined endpoint CVD with high HRs for those with all 5 criteria, those with 4 criteria not  
201 including TG or BP and in the group with GLU+WC+HDL. Those 3 groups were also found  
202 to have the highest HRs for the endpoint MI, but in that case also those with 4 criteria not  
203 including WC showed a similar HR. Regarding ischemic stroke, the groups with all 5 criteria  
204 and those with 4 criteria not including TG showed the highest HRs, while the  
205 GLU+WC+HDL group was not as prominent as for MI and HF.

206  
207 *Mendelian randomization (MR)*  
208 76 independent SNPs from the GWAS of MetS were used as instrumental variables for the  
209 exposure in the MR (see reference 22 for details on these SNPs). As could be seen in Table 4,  
210 all three tests showed a causal effect of MetS on coronary heart disease (IVW estimate 1.25,  
211 95%CI 1.20-1.29,  $p=1.0*10^{-10}$ ) and heart failure (IVW estimate 1.13, 95%CI 1.10-1.17,  
212  $p=8.9*10^{-17}$ ), but were not significant regarding ischemic stroke.

213  
214 *Polygenic risk scores*  
215 As could be seen in figure 4, the PRS for CHD was increased in all groups of combinations of  
216 MetS components, except for the group with the combination of the GLU and TG criteria.  
217 Generally, the PRS for CHD increased with increasing number of MetS criteria, but the group  
218 with all 5 criteria did not show higher PRS for CHD when compared with three of the groups  
219 with four components (not including TG or BP or WC), while it was higher compared with  
220 two of the groups with four components (not including GLU or HDL). The group with the  
221 combination of GLU+WC+HDL showed the same estimate for the PRS for CHD as the group  
222 with all 5 components.

223  
224 A rather similar pattern was seen groups of combinations of MetS components were related to  
225 the PRS for ischemic stroke. All groups showed an increased RPS compared to the groups  
226 without any MetS components. For this outcome, the group with all 5 components showed a  
227 higher PRS for stroke than three of the groups with four components (not including GLU or  
228 HDL or WC) and a higher estimated (although not significant) compared to the group with the  
229 combination of GLU+WC+HDL.

230  
231

## 232 DISCUSSION

233

234 The present study first confirmed previous knowledge on an increased risk of future CVD in  
235 individuals with MetS, and an increasing risk with increasing number of MetS criteria. Novel  
236 findings were derived from the fact that the UK biobank both provide a large sample size and  
237 a sufficiently long follow-up period to collect incident CVD data, which permits division into  
238 MetS criteria combinations with a good power. It was then found that certain MetS criteria  
239 combinations were associated with a higher risk than others, and that some combinations with  
240 three or four criteria showed a similar increased risk as seen in individuals with all five  
241 criteria. We could also show with both observational data and Mendelian randomization that  
242 MetS was linked to MI and HF, but less so to ischemic stroke. Using derived PRS it could be  
243 shown that almost all combinations of MetS criteria were related to an increased genetic risk  
244 for CHD and ischemic stroke, with a pattern being similar to the observational data.

245

246 It has been shown multiple times that MetS, and the number of MetS components, is related  
247 to future CVD and/or mortality<sup>3, 5-17</sup>, so this part of the study was mainly used to validate that  
248 the sample of the UK biobank behaved in the expected way, and that the use of non-fasting  
249 values for glucose and triglycerides (with some slight corrections for fasting time) were  
250 appropriate to use.

251

252 The primary aim of this study was however to evaluate if certain combinations of MetS  
253 criteria were associated with a higher risk of CVD than others. Figure 3 clearly shows this  
254 was the case. Within the groups with combinations of three MetS criteria, the GLU+TG+HDL  
255 criteria group showed the highest risk with the lowest 95%CI limit not overlapping with five  
256 of the other groups with combinations of three MetS criteria. Since the HR for this group is as  
257 high as the HR seen in the group with all five criteria, this particular combination seems to  
258 also capture the risk associated with abdominal obesity and a high blood pressure. This group  
259 also showed pronounced relationships vs the PRS for CHD and ischemic stroke suggesting  
260 causal relationships. Thus, the present study confirms the previous critique that MetS does not  
261 take into account different combinations of the criteria, since it is obvious that some  
262 combinations of MetS criteria were associated with a higher risk of CVD than others.

263

264 An interesting finding in the present study was that the patterns of risk estimates for the  
265 different combinations of MetS criteria were rather similar for MI and HF, but for ischemic  
266 stroke the associations were generally less strong and other patterns were seen. It is well  
267 known from observational studies that blood pressure is by far the most powerful risk factor  
268 for stroke, while many risk factors contribute to the risk of myocardial infarction and heart  
269 failure. A recent multi-variate MR study with multiple risk factors showed a similar view<sup>24</sup>.  
270 Thus, it cannot be expected that MetS would be as strongly related to ischemic stroke as  
271 compared to the other two investigated CVDs. This assumption is confirmed in the present  
272 study, in which MR was used to evaluate a possible causal role of MetS regarding the three  
273 CVDs of interest.

274



275 The major strength of the present study is the large sample size and great number of incident  
276 cases of CVDs that made it possible to perform the division in the many groups with  
277 combinations of MetS components with still a decent power.  
278 For the MR part we did use a GWAS of MetS conducted in the UK biobank <sup>23</sup> and therefore  
279 we did not use the most recent GWAS studies of the three CVDs including a large number of  
280 UK biobank cases in order to avoid overfitting problems. In the HERMES consortium of heart  
281 failure, about 15% of the cases were derived from UK biobank, but this would likely not  
282 induce any major overestimation of the causal relationship.  
283  
284 In conclusion, certain combinations of risk factors in individuals with the metabolic syndrome  
285 criteria showed a higher risk of future CVD than others. A combination of high glucose, low  
286 HDL, and high triglycerides seems to capture the highest risk of CVD.  
287

## 288 **SOURCES OF FUNDING**

289 The study was funded by the Swedish Heart Lung Foundation.

## 291 **DISCLOSURES**

292 None.

## 294 **SUPPLEMENTAL MATERIAL**

295 Suppl Table 1

## REFERENCES

1. Lind L, Jakobsson S, Lithell H, Wengle B, Ljunghall S. Relation of serum calcium concentration to metabolic risk factors for cardiovascular disease. *BMJ*. 1988;297:960-963.
2. Reaven GM. Banting lecture 1988. Role of insulin resistance in human disease. *Diabetes*. 1988;37:1595-1607.
3. Kahn R, Buse J, Ferrannini E, Stern M, American Diabetes Association, European Association for the Study of Diabetes. The metabolic syndrome: time for a critical appraisal: joint statement from the American Diabetes Association and the European Association for the Study of Diabetes. *Diabetes Care*. 2005;28:2289-2304.
4. Sundström J, Vallhagen E, Risérus U, Byberg L, Zethelius B, Berne C, Lind L, Ingelsson E. Risk associated with the metabolic syndrome versus the sum of its individual components. *Diabetes Care*. 2006;29:1673-1674.
5. Ford ES. The metabolic syndrome and mortality from cardiovascular disease and all-causes: findings from the National Health and Nutrition Examination Survey II Mortality Study. *Atherosclerosis*. 2004;173:309-314.
6. Forti P, Pirazzoli GL, Maltoni B, Bianchi G, Magalotti D, Muscari A, Mariani E, Ravaglia G, Zoli M. Metabolic syndrome and all-cause mortality in older men and women. *Eur J Clin Invest*. 2012;42:1000-1009.
7. Hu G, Qiao Q, Tuomilehto J, Balkau B, Borch-Johnsen K, Pyorala K, Group DS. Prevalence of the metabolic syndrome and its relation to all-cause and cardiovascular mortality in nondiabetic European men and women. *Arch Intern Med*. 2004;164:1066-1076.
8. Hunt KJ, Resendez RG, Williams K, Haffner SM, Stern MP, San Antonio Heart S. National Cholesterol Education Program versus World Health Organization metabolic syndrome in relation to all-cause and cardiovascular mortality in the San Antonio Heart Study. *Circulation*. 2004;110:1251-1257.
9. Katzmarzyk PT, Church TS, Blair SN. Cardiorespiratory fitness attenuates the effects of the metabolic syndrome on all-cause and cardiovascular disease mortality in men. *Arch Intern Med*. 2004;164:1092-1097.
10. Lakka HM, Laaksonen DE, Lakka TA, Niskanen LK, Kumpusalo E, Tuomilehto J, Salonen JT. The metabolic syndrome and total and cardiovascular disease mortality in middle-aged men. *JAMA*. 2002;288:2709-2716.
11. Malik R, Chauhan G, Traylor M, Sargurupremraj M, Okada Y, Mishra A, Rutten-Jacobs L, Giese AK, van der Laan SW, Gretarsdottir S, et al. Multiancestry genome-wide association study of 520,000 subjects identifies 32 loci associated with stroke and stroke subtypes. *Nat Genet*. 2018;50:524-537.
12. Ridker PM, Buring JE, Cook NR, Rifai N. C-reactive protein, the metabolic syndrome, and risk of incident cardiovascular events: an 8-year follow-up of 14 719 initially healthy American women. *Circulation*. 2003;107:391-397.
13. Rutter MK, Meigs JB, Sullivan LM, D'Agostino RB, Sr., Wilson PW. C-reactive protein, the metabolic syndrome, and prediction of cardiovascular events in the Framingham Offspring Study. *Circulation*. 2004;110:380-385.
14. Sattar N, Gaw A, Scherbakova O, Ford I, O'Reilly DS, Haffner SM, Isles C, Macfarlane PW, Packard CJ, Cobbe SM, et al. Metabolic syndrome with and without C-reactive protein as a predictor of coronary heart disease and diabetes in the West of Scotland Coronary Prevention Study. *Circulation*. 2003;108:414-419.
15. Sundström J, Risérus U, Byberg L, Zethelius B, Lithell H, Lind L. Clinical value of the metabolic syndrome for long term prediction of total and cardiovascular mortality: prospective, population based cohort study. *BMJ*. 2006;332:878-882.

16. van Herpt TT, Dehghan A, van Hoek M, Ikram MA, Hofman A, Sijbrands EJ, Franco OH. The clinical value of metabolic syndrome and risks of cardiometabolic events and mortality in the elderly: the Rotterdam study. *Cardiovasc Diabetol*. 2016;15:69.
17. Wang J, Ruotsalainen S, Moilanen L, Lepistö P, Laakso M, Kuusisto J. The metabolic syndrome predicts cardiovascular mortality: a 13-year follow-up study in elderly non-diabetic Finns. *Eur Heart J*. 2007;28:857-864.
18. Lind L, Sundström J, Ärnlöv J, Risérus U, Lampa E. A longitudinal study over 40 years to study the metabolic syndrome as a risk factor for cardiovascular diseases. *Sci Rep*. 2021;11:2978.
19. Thompson DJ, Wells D, Selzam S, Peneva I, Moore R, Sharp K, Tarran WA, Beard EJ, Riveros-Mckay F, Giner-Delgado C, et al. UK Biobank release and systematic evaluation of optimised polygenic risk scores for 53 diseases and quantitative traits. *medRxiv*. 2022:2022.2006.2016.22276246.
20. Alberti KG, Eckel RH, Grundy SM, Zimmet PZ, Cleeman JI, Donato KA, Fruchart JC, James WP, Loria CM, Smith SC, Jr., et al. Harmonizing the metabolic syndrome: a joint interim statement of the International Diabetes Federation Task Force on Epidemiology and Prevention; National Heart, Lung, and Blood Institute; American Heart Association; World Heart Federation; International Atherosclerosis Society; and International Association for the Study of Obesity. *Circulation*. 2009;120:1640-1645.
21. CARDIoGRAMplusC4D Consortium, Deloukas P, Kanoni S, Willenborg C, Farrall M, Assimes TL, Thompson JR, Ingelsson E, Saleheen D, Erdmann J, et al. Large-scale association analysis identifies new risk loci for coronary artery disease. *Nat Genet*. 2013;45:25-33.
22. Shah S, Henry A, Roselli C, Lin H, Sveinbjörnsson G, Fatemifar G, Hedman ÅK, Wilk JB, Morley MP, Chaffin MD, et al. Genome-wide association and Mendelian randomisation analysis provide insights into the pathogenesis of heart failure. *Nat Commun*. 2020;11:163.
23. Lind L. Genome-Wide Association Study of the Metabolic Syndrome in UK Biobank. *Metab Syndr Relat Disord*. 2019;17:505-511.
24. Lind L, Ingelsson M, Sundström J, Ärnlöv J. Impact of risk factors for major cardiovascular diseases: a comparison of life-time observational and Mendelian randomisation findings. *Open Heart*. 2021;8:e001735.

**Table 1.** Basic characteristics in the sample with complete data on metabolic syndrome components and after exclusion of individuals with prevalent cardiovascular diseases at the baseline investigation (n=388,801). Means and SD are given or proportions.

<b>Variable</b>	<b>UK Biobank (n=388,800)</b>
Age	56.9 (8.0)
Proportion of females (%)	55
Prevalent diabetes (%)	4.8
Glucose (mmol/l)	4.6 (1.3)
Systolic BP (mmHg)	139.83 (19.64)
Diastolic BP (mmHg)	82.3 (10.6)
Antihypertensive medication (%)	10.2
Waist circumference (cm)	90.1 (13.3)
HDL-cholesterol (mmol/l)	1.4 (0.3)
Triglycerides (mmol/l)	1.3 (1.0)
Townsend index	-1.3 (3.0)
Smoking (%)	
Never	55.4
Former	34.2
Current	10.4
Statin use (%)	15.6
Ethnicity (%)	
White	94.5
Black	1.9
Asian	2.5
Other	1.1

**Table 2.** Number of individuals, number (and %) of incident CVD events (composite endpoint) during the follow-up period when the sample was divided into those with or without the metabolic syndrome (MetS), or the number of MetS criteria, or when the sample was subdivided into the different combinations of the five criteria of MetS. GLU=glucose criteria, BP=blood pressure criteria, TG=triglyceride criteria, HDL= HDL-cholesterol criteria, WC= waist circumference criteria.

	<b>No. of individuals</b>	<b>No. of incident CVD</b>	<b>% with incident CVD</b>
<b>MetS (binary)</b>			
0	308,889	15,021	4.86%
1	79,912	7,552	9.45%
<b>No. of MetS criteria</b>			
0	64,570	1,317	2.04%
1	147,018	7,059	4.80%
2	97,301	6,645	6.83%
3	53,791	4,509	8.38%
4	22,087	2,417	10.94%
5	4,034	626	15.52%
<b>MetS criteria combinations</b>			
No criterion	63,198	1,284	2.03%
Only GLU	2,378	91	3.83%
Only BP	113,027	5,708	5.05%
Only TG	7,947	274	3.45%
Only HDL	2,356	120	5.09%
Only WC	8,921	337	3.78%
GLU+BP	10,797	797	7.38%
GLU+TG	517	45	8.70%
GLU+HDL	648	44	6.79%
GLU+WC	992	92	9.27%
BP+WC	36,249	2,584	7.13%
BP+HDL	12,089	809	6.69%
BP+TG	26,898	1,767	6.57%
WC+TG	2,782	119	4.28%
WC+HD	3,698	150	4.06%
TG+HDL	7,466	372	4.98%
GLU+BP+WC	6,547	803	12.27%
GLU+BP+TG	3,162	297	9.39%
GLU+BP+HDL	1,691	189	11.18%
GLU+WC+TG	424	45	10.61%
GLU+WC+HDL	748	96	12.83%

GLU+TG+HDL	445	43	9.66%
BP+WC+TG	16,937	1,330	7.85%
BP+WC+HDL	11,154	842	7.55%
BP+TG+HDL	11,587	887	7.66%
Not GLU	13,960	1,244	8.91%
Not HDL	3,632	467	12.86%
Not TG	3,479	516	14.83%
Not BP	884	116	13.12%
Not WC	1,853	213	11.49%
All five criteria	5,108	721	14.12%

---

**Table 3.** Relationships between having the metabolic syndrome (MetS), or having a certain number of MetS criteria, and of incident CVD events (composite endpoint, primary analysis) during the follow-up period. Those with MetS were compared to those without, while the different number of MetS criteria were all compared to individuals without any criteria. Also other endpoints are given in the same fashion.

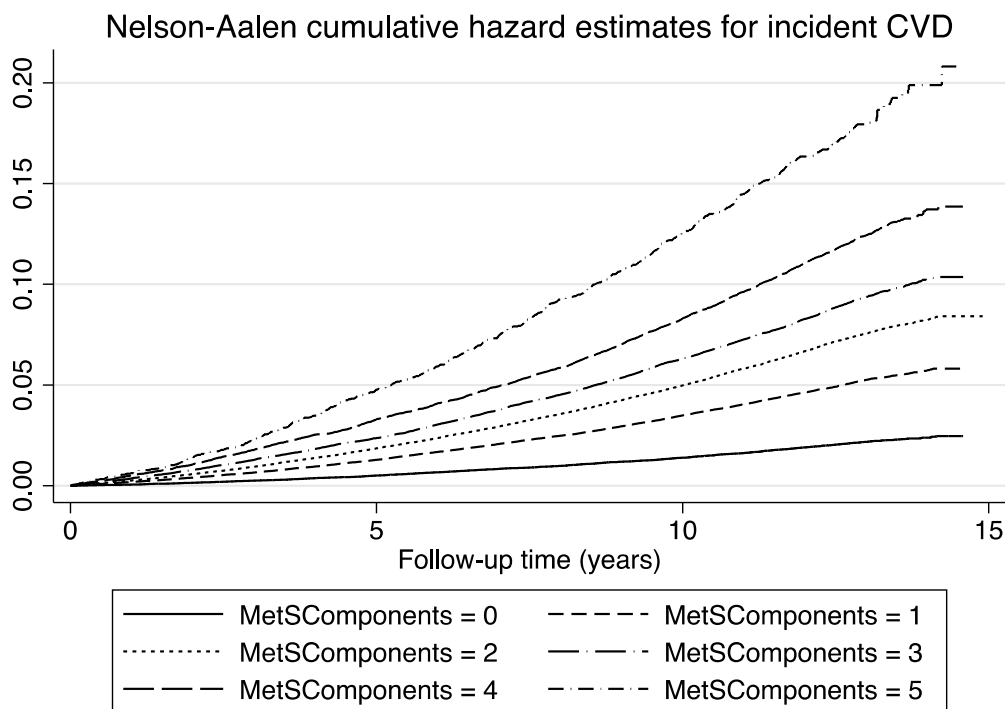
		<b>HR</b>	<b>95%CI</b>	<b>SE</b>	<b>Wald.</b>	<b>P-value</b>
<b>CVD (composite endpoint)</b>						
<b>MetS binary</b>		<b>1.59</b>	<b>1.55-1.64</b>	<b>0.02</b>	<b>32.17</b>	<b>&lt;0.0001</b>
MetS no. of criteria	1	1.60	1.50-1.69	0.05	15.43	<0.0001
	2	2.06	1.94-2.18	0.06	23.61	<0.0001
	3	2.44	2.29-2.59	0.08	28.00	<0.0001
	4	3.12	2.91-3.34	0.11	32.64	<0.0001
	5	3.65	3.33-4.01	0.19	27.04	<0.0001
<b>Myocardial infarction</b>						
<b>MetS binary</b>		<b>1.65</b>	<b>1.58-1.72</b>	<b>0.04</b>	<b>22.25</b>	<b>&lt;0.0001</b>
MetS no. of criteria	1	1.82	1.65-2.00	0.09	12.27	<0.0001
	2	2.31	2.10-2.55	0.11	17.08	<0.0001
	3	2.84	2.57-3.14	0.14	20.53	<0.0001
	4	3.56	3.20-3.97	0.20	22.86	<0.0001
	5	4.12	3.56-4.77	0.34	18.86	<0.0001
<b>Heart failure</b>						
<b>MetS binary</b>		<b>1.63</b>	<b>1.57-1.69</b>	<b>0.03</b>	<b>25.59</b>	<b>&lt;0.0001</b>
MetS no. of criteria	1	1.35	1.24-1.46	0.06	7.18	<0.0001
	2	1.78	1.64-1.93	0.07	13.81	<0.0001
	3	2.13	1.96-2.32	0.09	17.57	<0.0001
	4	2.81	2.57-3.08	0.13	22.31	<0.0001
	5	3.48	3.10-3.91	0.22	20.63	<0.0001
<b>Ischemic stroke</b>						
<b>MetS binary</b>		<b>1.45</b>	<b>1.38-1.53</b>	<b>0.04</b>	<b>13.68</b>	<b>&lt;0.0001</b>
MetS no. of criteria	1	1.48	1.33-1.65	0.08	7.23	<0.0001
	2	1.72	1.54-1.91	0.09	9.82	<0.0001
	3	1.97	1.76-2.20	0.11	11.69	<0.0001
	4	2.50	2.20-2.83	0.16	14.36	<0.0001
	5	3.26	2.76-3.85	0.30	13.95	<0.0001

**Table 4.** Mendelian randomization (MR) study on the causal link between the metabolic syndrome (MetS) and the three major CVD; coronary heart disease (CHD), heart failure, and ischemic stroke. IVW=Inverse-variance weighted.

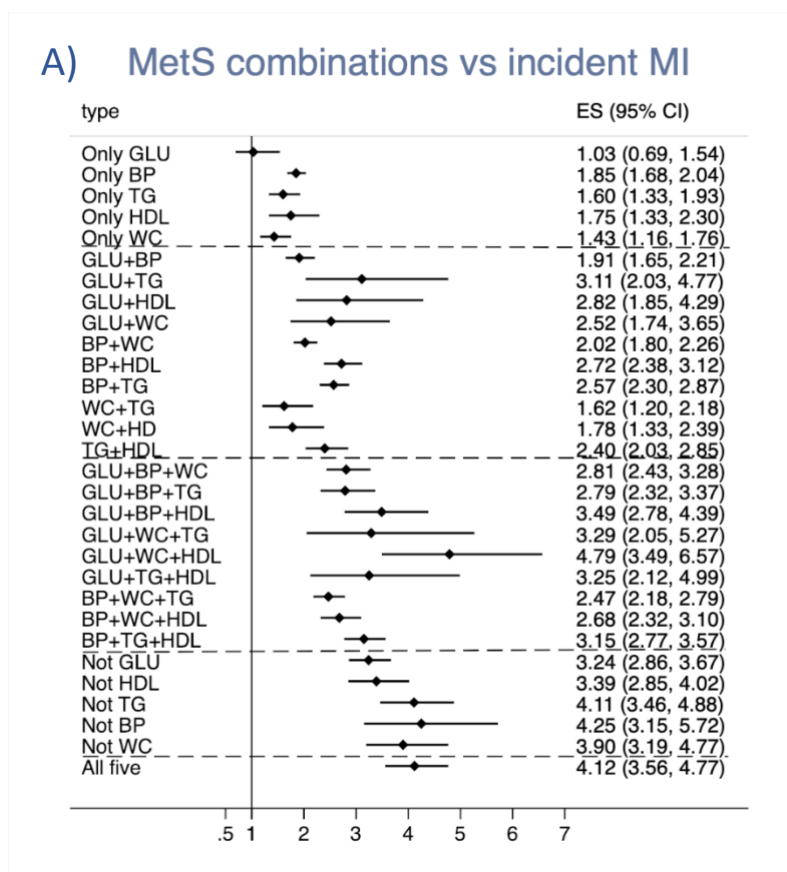
<b>Test</b>	<b>RR</b>	<b>95%CI</b>	<b>P-value</b>
<b>CHD</b>			
MR Egger	1.21	1.09-1.35	0.00026
IVW	1.25	1.20-1.29	1.04e-10
Weighted median	1.22	1.15-1.31	4.76e-11
<b>Heart Failure</b>			
MR Egger	1.11	1.01-1.21	0.031
IVW	1.13	1.10-1.17	8.88e-17
Weighted median	1.15	1.09-1.21	1.01e-07
<b>Ischemic Stroke</b>			
MR Egger	1.00	0.91-1.09	0.94
IVW	1.04	1.00-1.08	0.049
Weighted median	1.04	0.98-1.11	0.21



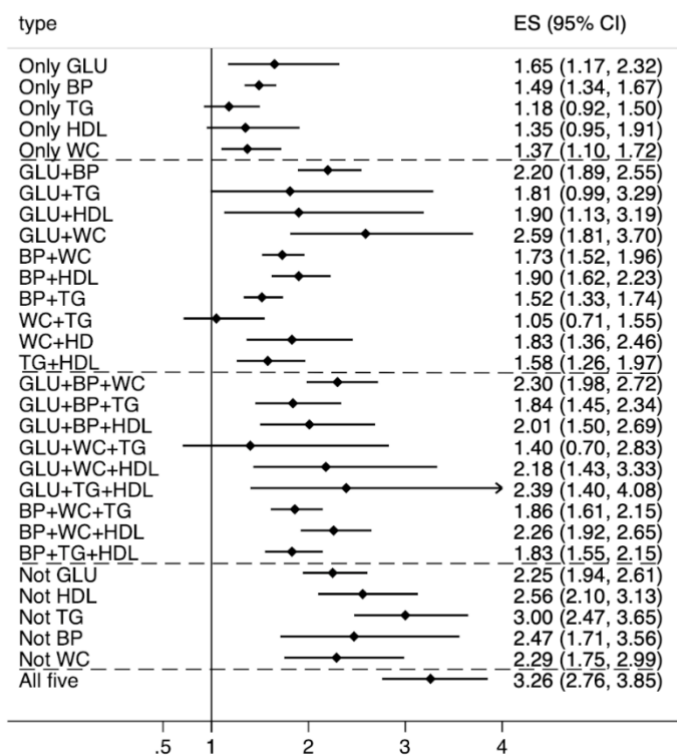
**Figure 1.** Cumulative hazard estimates for groups with different number of metabolic syndrome criteria (components) regarding the composite CVD endpoint during the follow-up period.  $P < 0.0001$  for overall difference between groups.



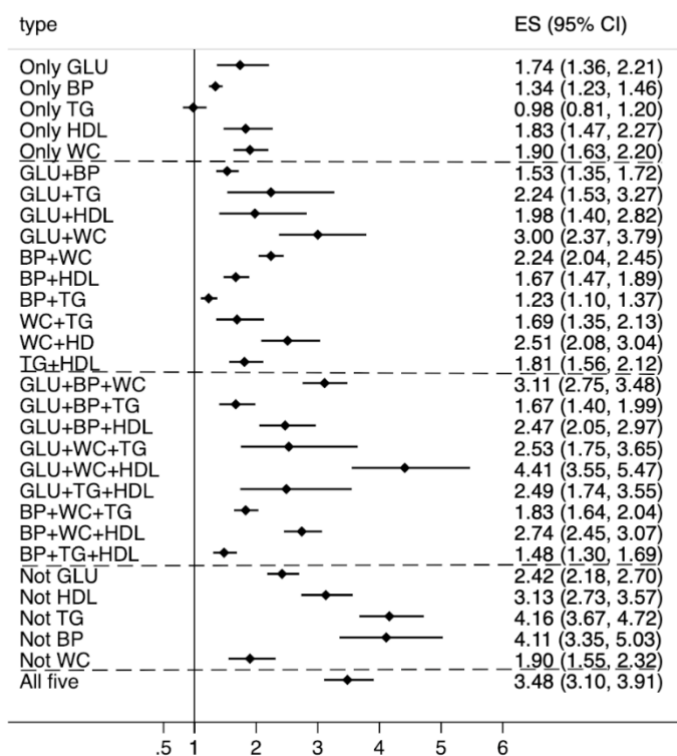
**Figure 2.** Relationships between different combinations of the five metabolic syndrome (MetS) criteria and (A) incident myocardial infarction, (B) ischemic stroke, and (C) heart failure. The estimate (ES) is the hazard ratio for comparison vs the group of individuals without any MetS component. GLU=glucose criteria, BP=blood pressure criteria, TG=triglyceride criteria, HDL= HDL-cholesterol criteria, WC= waist circumference criteria. The dashed lines denote the divisions between 1, 2, 3, 4, and 5 criteria.



## B) MetS combinations vs incident ischemic stroke



## C) MetS combinations vs incident HF



**Figure 3.** Relationships between different combinations of the five metabolic syndrome (MetS) criteria and incident cardiovascular disease (CVD) (combined endpoint): The estimate (ES) is the hazard ratio for comparison vs the group of individuals without any MetS component. GLU=glucose criteria, BP=blood pressure criteria, TG=triglyceride criteria, HDL= HDL-cholesterol criteria, WC= waist circumference criteria. The dashed lines denote the division between 1, 2, 3, 4, and 5 criteria.

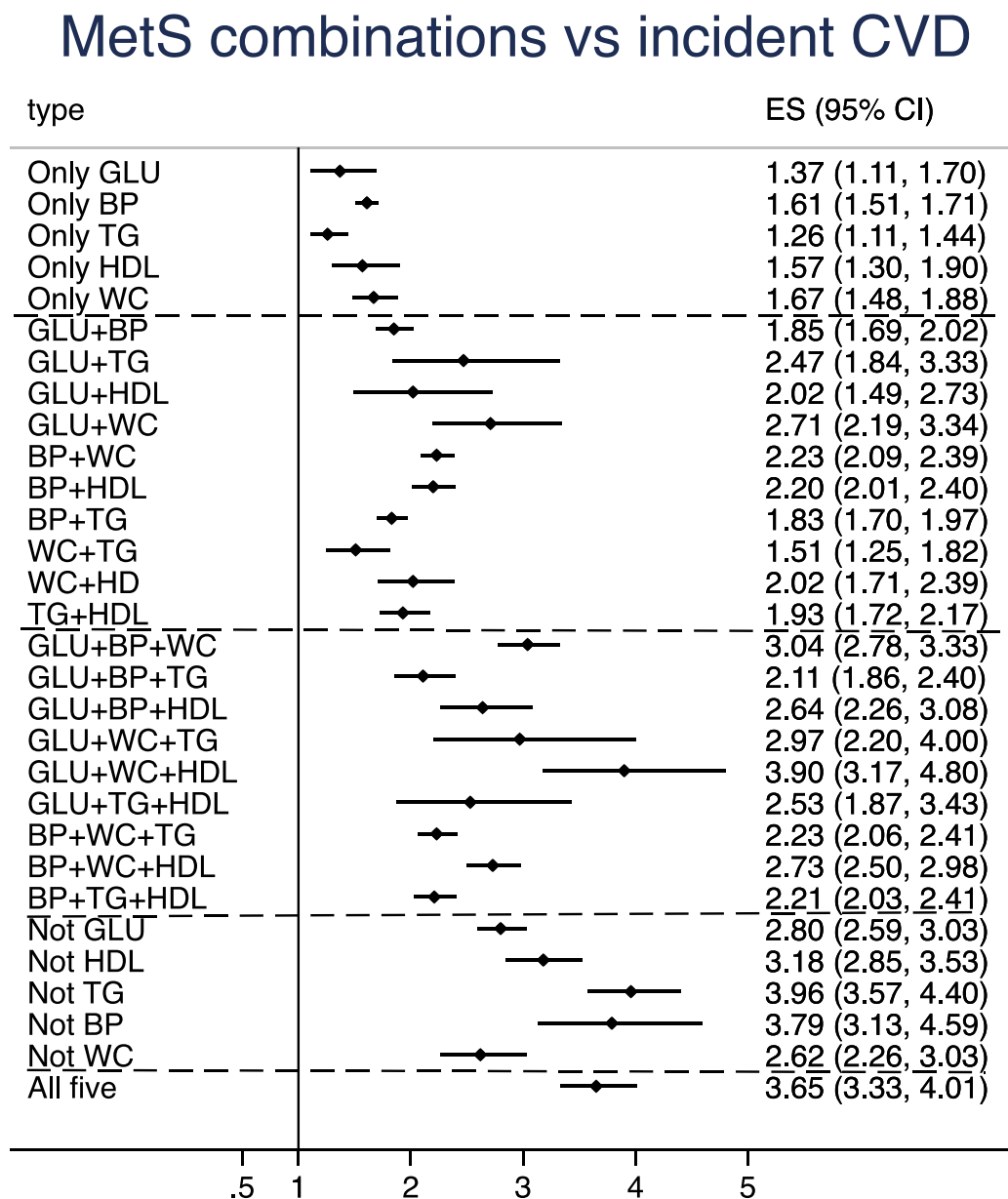
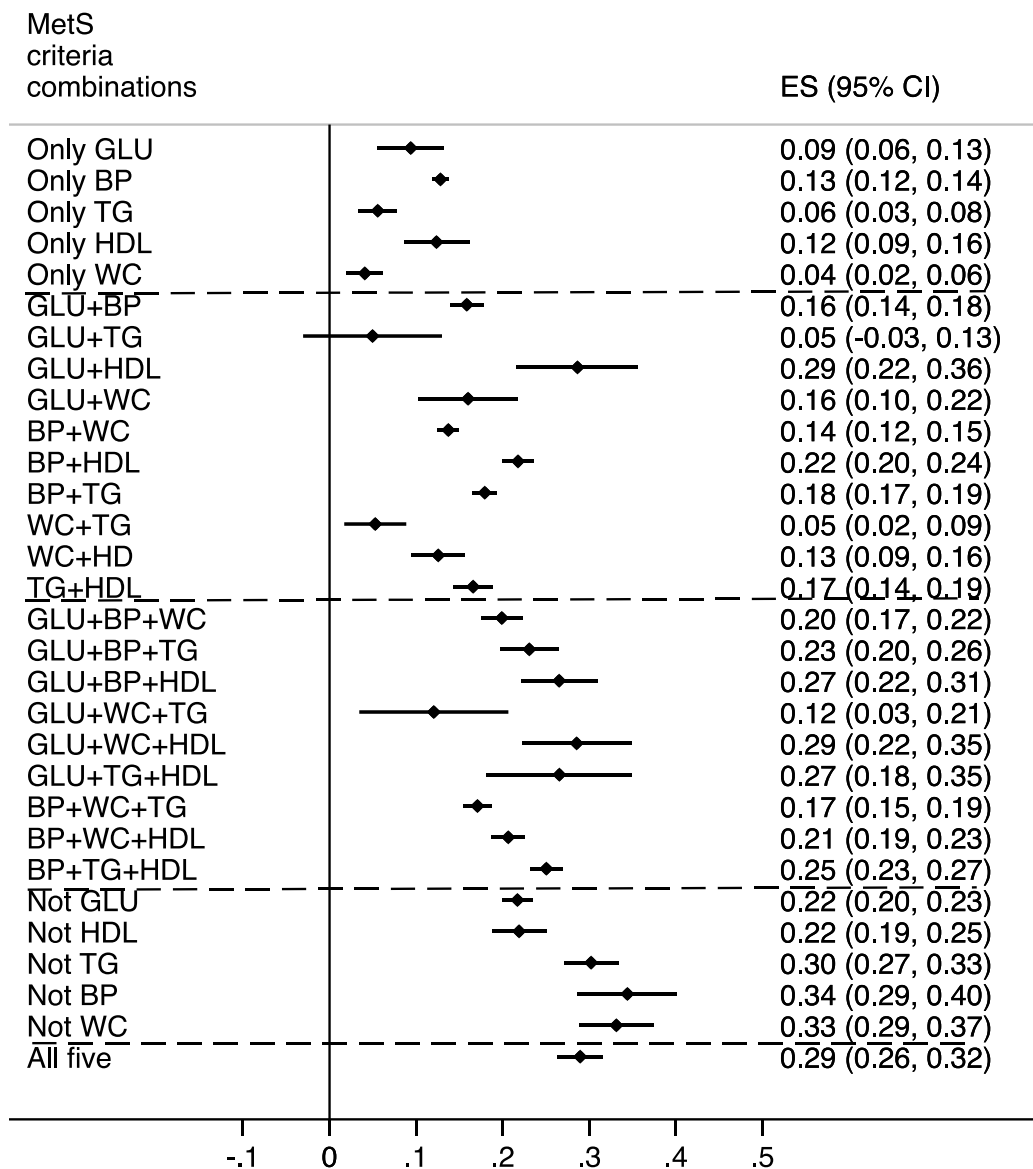


Figure 4. Relationships between different combinations of metabolic syndrome (MetS) components and a polygenetic risk score (PRS) for coronary heart disease (CHD, upper panel) and a PRS for ischemic stroke (lower panel). Betas and 95%CI are given. The group without any MetS components was use as the reference group.

## MetS combinations vs PRS for CHD



## MetS combinations vs PRS for Stroke

