

1 **Heterogeneity of the Effect of Telemedicine Hypertension Management Approach**
2 **on Blood Pressure: A Systematic Review and Meta-analysis of US-based Clinical**
3 **Trials**

4
5 Sameer Acharya,¹ MD; Gagan Neupane,² MD; Austin Seals,³ MS; Madhav KC⁴, PhD,
6 MPH; Dean Giustini,⁵ MLS, MEd; Sharan Sharma,⁶ MD; Yhenneko J. Taylor,⁷ PhD;
7 Deepak Palakshappa,⁸ MD, MSHP; Jeff D. Williamson,⁹ MD, MHS; Justin B. Moore,¹⁰
8 PhD, MS; Hayden B. Bosworth,¹¹ PhD; Yashashwi Pokharel,³ MD, MSCR.

9
10 ¹Department of Internal Medicine, Cayuga Medical Center, Ithaca, New York, USA.

11 ²Department of Internal Medicine, Florida Atlantic University, Boca Raton, Florida, USA.

12 ³Section of Cardiovascular Medicine, Department of Internal Medicine, Atrium Health
13 Wake Forest Baptist, Winston-Salem, North Carolina, USA.

14 ⁴Cancer Outcomes, Public Policy and Effectiveness Research (COPPER) Center, Yale
15 School of Medicine, New Haven, Connecticut, USA.

16 ⁵University of British Columbia, Vancouver, British Columbia, Canada

17 ⁶SCL Heart and Vascular Institute, Brighton, Colorado, USA.

18 ⁷Center for Outcomes Research and Evaluation, Atrium Health, Charlotte, North
19 Carolina, USA.

20 ⁸Department of Internal Medicine, Atrium Health Wake Forest Baptist, Winston-Salem,
21 North Carolina, USA.

22 ⁹Section of Gerontology and Geriatric Medicine, Department of Internal Medicine,
23 Atrium Health Wake Forest Baptist, Winston-Salem, North Carolina, USA.

24 ¹⁰Department of Implementation Science, Wake Forest University School of Medicine,
25 Winston-Salem, North Carolina, USA.

26 ¹¹Department of Population Health Sciences, Duke University, Durham, North Carolina,
27 USA.

28

29 **Subtitle**

30 Informing TM-HTN Implementation in the US

31

32 **Corresponding Author:**

33 Yashashwi Pokharel, MD, MSCR

34 Section of Cardiovascular Medicine, Department of Internal Medicine

35 Atrium Health Wake Forest Baptist, Wake Forest University School of Medicine

36 Medical Center Boulevard, Winston Salem, NC 27157

37 Email: ypokhare@wakehealth.edu

38 Phone: 336-713-7085, Fax: 336-716-9188

39

40 **Abstract word count: 348/350**

41 **Manuscript word count: 4212/5000**

42

43 **Abstract**

44 **Background:** Telemedicine management of hypertension (TM-HTN) uses home blood
45 pressure (BP) to guide pharmacotherapy and telemedicine-based self-management
46 support (SMS). Optimal approach to implementing TM-HTN in the US is unknown.

47 **Methods**

48 We conducted a systematic review and a meta-analysis to examine the effect of TM-
49 HTN vs. usual clinic-based care on BP and assessed heterogeneity by patient- and
50 clinician-related factors. We searched US-based randomized clinical trials among adults
51 from Medline, Embase, CENTRAL, CINAHL, PsycInfo, and Compendex, Web of
52 Science Core Collection, Scopus, and two trial registries to 7/7/2023. Two authors
53 extracted, and a third author confirmed data. We used trial-level differences in systolic
54 BP (SBP), diastolic BP (DBP) and BP control rate at ≥ 6 months using random-effects
55 models. We examined heterogeneity of effect in univariable meta-regression and in pre-
56 specified subgroups [clinicians leading pharmacotherapy (physician vs. non-physician),
57 SMS (pharmacist vs. nurse), White vs. non-White patient predominant trials ($>50\%$
58 patients/trial), diabetes predominant trials ($\geq 25\%$ patients/trial) and in trials that have

59 majority of both non-White patients and patients with diabetes vs. White patient
60 predominant but not diabetes predominant trials.

61 **Results** : Thirteen, 11 and 7 trials were eligible for SBP, DBP and BP control,
62 respectively. Differences in SBP, DBP and BP control rate were -7.3 mmHg (95% CI: -
63 9.4, -5.2), -2.7 mmHg (-4.0, -1.5) and 10.1% (0.4%, 19.9%), respectively, favoring TM-
64 HTN. More BP reduction occurred in trials with non-physician vs. physician led
65 pharmacotherapy (9.3/4.0 mmHg vs. 4.9/1.1 mmHg, $P<0.01$ for both SBP/DBP),
66 pharmacist vs. nurses provided SMS (9.3/4.1 mmHg vs. 5.6/1.0 mmHg, $P=0.01$ for
67 SBP, $P<0.01$ for DBP), and White vs. non-White patient predominant trials (9.3/4.0
68 mmHg vs. 4.4/1.1 mmHg, $P<0.01$ for both SBP/DBP), with no difference by diabetes
69 predominant trials. Lower BP reduction occurred in both diabetes and non-White patient
70 predominant trials vs. White patient predominant but not diabetes predominant trials
71 (4.5/0.9 mmHg vs. 9.5/4.2 mmHg, $P<0.01$ for both SBP/DBP).

72

73 **Conclusions**

74 TM-HTN is more effective than clinic-based care in the US, particularly when non-
75 physician led pharmacotherapy and pharmacist provided SMS. Non-White patient
76 predominant trials seemed to achieve lesser BP reduction. Equity conscious, locally
77 informed adaptation of TM-HTN is needed before wider implementation.

78

79

80 **Clinical Perspective**

81 **What Is New?**

- 82 • In this systematic review and meta-analysis of US-based clinical trials, we found
83 that telemedicine management of hypertension (TM-HTN) was more effective in
84 reducing and controlling blood pressure (BP) compared with clinic based
85 hypertension (HTN) care.
- 86 • The BP reduction was more evident when pharmacotherapy was led by non-
87 physician compared with physicians and HTN self-management support was
88 provided by clinical pharmacists compared with nurses,
- 89 • Non-White patient predominant trials achieved lesser BP reductions than White
90 patient predominant trials.

91 **What Are the Clinical Implications?**

- 92 • Before wider implementation of TM-HTN intervention in the US, locally informed
93 adaptation, such as optimizing the team-based HTN care approach, can provide
94 more effective BP control.
- 95 • Without equity focused tailoring, TM-HTN intervention implemented as such can
96 exacerbate inequities in BP control among non-White patients in the US.

97

98

99

100 **Introduction**

101 Approximately 47% of American adults have hypertension (HTN) but only a quarter of
102 them achieve blood pressure (BP) control, with worse control among non-Hispanic
103 Black or Hispanic adults than White Americans.¹ Managing HTN using traditional clinic-
104 based model has several challenges.² Assessment of BP during brief visits are often
105 inaccurate.³ To confidently assess accurate BP control in clinic, it may require up to 5-6
106 BP measurements,⁴ which is not realistic in routine practice. Self-measurement of BP by
107 patients offers more BP data and improves clinicians' confidence about accuracy in BP
108 control.^{5,6} Furthermore, enhancing patients' HTN self-care skills is important,⁷ which is
109 often difficult within the scope of a typical clinic visit. Telemedicine management of
110 hypertension (TM-HTN) employs a focused team-based approach, where
111 pharmacotherapy is based on self-measured BP (SMBP). Ideally, SMBP is transmitted
112 using a telemonitoring platform, and self-management support (SMS) is offered via
113 telemedicine.² While TM-HTN has the promise to overcome the challenges of clinic-
114 based HTN care, understanding how patient and clinician-related factors influence TM-
115 HTN's effect on BP is important.

116 Prior meta-analyses including data outside the US have shown that SMBP with
117 additional support can improve BP.⁸⁻¹⁰ The additional support included heterogeneous
118 levels of SMS with or without SMBP-guided pharmacotherapy. SMBP-guided
119 pharmacotherapy is the essential core of TM-HTN. To our knowledge, we are not aware
120 of any meta-analysis limited to SMBP-guided pharmacotherapy. Accordingly, we
121 conducted a systematic review and meta-analysis of US-based trials that used SMBP-

122 guided pharmacotherapy. Local US-based data is particularly relevant to inform TM-
123 HTN implementation because of the global differences in health care systems and
124 practices. Little is known whether patient and clinician-related factors in the US
125 influence TM-HTN's effect on BP. Generally, BP control is better when medication
126 prescription for HTN is led by non-physicians than by physicians,^{11,12} but it is unknown
127 whether such heterogeneity exists with TM-HTN. Previous meta-analyses have
128 examined the effect of various implementation strategies on BP, with team-based
129 approach having the highest impact. This approach involves task shifting or sharing
130 responsibilities to non-physicians like pharmacists and nurses.¹¹⁻¹³ As a team-based
131 approach in TM-HTN, either physicians or non-physicians could deliver SMBP-guided
132 pharmacotherapy.² It is unknown whether BP achieved in a TM-HTN program varies
133 when the pharmacotherapy is led by physicians vs. non-physicians, or when SMS is
134 provided by different clinicians. Similarly, whether TM-HTN's effect varies by patient
135 characteristics is unknown. For example, although Black and non-Black patients derive
136 similar benefits from BP control,¹⁴ there is a persistent disparity in BP control in Black
137 compared with White patients.¹ Therefore, implementing TM-HTN without purposeful
138 equity-conscious delivery plan has the risk of exacerbating inequities in BP control.
139 Accordingly, using a systematic review and meta-analysis of US-based clinical trials of
140 TM-HTN, we examined the effect of TM-HTN vs. usual care on difference in systolic BP
141 (SBP), diastolic BP (DBP) and BP control rate and the heterogeneity of TM-HTN's effect
142 by various patient and clinician characteristics.

143

144

145 **Methods**

146 We registered our study protocol on PROSPERO (CRD42022324076) and Open
147 Science Framework.¹⁵

148 **Data Sources and Searches**

149 Together with an academic health sciences librarian, we developed and used a search
150 strategy in six bibliographic databases till July 7, 2023 [Medline (Ovid), Embase (Ovid),
151 CENTRAL (Ovid), CINAHL (Ebsco), PsycInfo (Ebsco), and Compendex]; two citation
152 indexes (Web of Science Core Collection and Scopus) and trial registries
153 (ClinicalTrials.Gov and International Clinical Trials Registry Platform). Several
154 definitions of telemedicine informed our searches.^{2,16,17} We examined broader
155 telemedicine and telehealth terminologies, without limits or exclusions, used in the
156 remote monitoring of HTN and BP (Supplement Table 1). We created a list of search
157 terms using exploratory searches and key seed papers, to fit the review's scope:¹⁸
158 telemedicine and telehealth strategies (e.g., mobile health, telehealth, telemonitoring,
159 telemedicine, mHealth, eHealth, videoconferencing, smartphones, virtual care, remote
160 monitoring, health information technology) combined with home BP monitoring (SMBP,
161 home BP measurement, ambulatory BP) and United States-related geographic filter.¹⁹
162 We limited our searches to randomized controlled trials. We obtained a peer review of
163 the Medline search strategy from an information specialist from Cochrane HTN.

164 **Trial Selection**

165 The essential trial selection required that the clinical trial be US-based, intervention
166 used SMBP-guided pharmacotherapy, and SMS was optional. Trials that used SMBP

167 without SMBP-guided pharmacotherapy were excluded. Usual care group used clinic-
168 based HTN management without a telemedicine program where pharmacotherapy was
169 not guided by SMBP. Other eligibility criteria are available in the study protocol.

170 **Data Extraction and Quality Assessment**

171 We saved search results in EndNote, removed duplicate references and transferred the
172 citations into Covidence. Two reviewers (S.A and G.N) independently performed title,
173 abstract, and full-text screening and data abstraction. A third reviewer (Y.P) resolved
174 any disagreements and confirmed trials eligibility and data.

175 When there were more than one comparison arms present in a trial, we used the
176 data from the arm with the most intense intervention as appropriate to our research
177 question. For example, with three arms, 1) usual care, 2) SMBP, and 3) SMBP plus
178 SMS we presented the results for the comparison between 1) usual care, and 3) SMBP
179 plus SMS.

180 We collected trial level data on patient's mean age, sex, race, education,
181 baseline SBP and DBP, clinicians leading pharmacotherapy and SMS, trial publication
182 year and TM-HTN intervention duration. We found that the clinicians leading
183 pharmacotherapy were either physicians, pharmacists or nurses. Similarly, the clinicians
184 providing SMS were either pharmacists or nurses. We further defined clinicians leading
185 pharmacotherapy (physicians vs. non-physicians) and SMS (pharmacists vs. nurses). If
186 a non-physician (e.g., pharmacist) prescribed anti-hypertensive medications without
187 routine and direct approval by physician, then we considered the pharmacotherapy to
188 be led by the pharmacist.¹² Conversely, if the pharmacist prescribed the medications but

189 required routine and direct approval by physician, we considered the pharmacotherapy
190 to be led by physician. We defined White vs. non-White patient predominant trials
191 (>50% White or non-White patients per trial) and diabetes predominant trials ($\geq 25\%$ vs.
192 <25% of participants with diabetes per trial).

193 Two authors (M.K. and Y.P.) independently assessed the quality of included trials
194 using the Cochrane risk of bias (RoB) tool version 6.3 and resolved any differences by
195 consensus.²⁰ Two authors (M.K. and Y.P.) independently assessed the strength of
196 evidence using the AHRQ criteria and resolved any differences by consensus.²¹

197 Supplement Table 2 shows PRISMA checklist.

198 **Data Synthesis and Statistical Analysis**

199 Our outcomes of interest were difference in SBP, DBP and trial defined BP control rate
200 between TM-HTN and usual clinic-based care at ≥ 6 months of the intervention.¹⁴ If
201 multiple BP data were reported within a trial, we used the data for which the sample size
202 was powered for. For example, if the trial provided BP data at 6, 12 and 18 months, but
203 the trial was powered for 12-month BP data, we considered 12-month data for our
204 analysis. We used random effects models, with Hartung-Knapp adjustment for between
205 study heterogeneity, to examine the difference in BP outcomes between intervention
206 and usual care. Throughout the study design, we ensured randomized comparisons
207 between TM-HTN and usual care as conducted in individual trials. We calculated
208 standard errors for each trial's effect size from the reported confidence intervals or P-
209 value. We conducted analyses in R (4.0.2) using the packages "meta", "metafor" and
210 "dmetar". We considered two-sided P value <0.05 to be statistically significant and did

211 not adjust for multiple comparisons. We quantified between-study heterogeneity using I^2
212 statistic. We used a comparison-adjusted funnel plot with Egger's test to assess for
213 publication bias. We performed leave one out analysis to estimate the influence of each
214 trial on the pooled effect.

215 We first examined the association of several patient and clinician-related
216 variables with SBP and DBP difference in univariable meta-regression. These variables
217 include patients' mean age, sex (percentage of women/trial), race (White vs. non-White
218 patient predominant trials), education (percentage of participants/trial with \leq high school
219 education), baseline SBP or DBP, diabetes (diabetes patient predominant trials),
220 clinicians leading pharmacotherapy (physicians vs. non-physicians) and SMS
221 (pharmacists vs. nurses) and TM-HTN intervention duration. If there was a significant
222 association for any of these variables, we considered sub-group analysis. As defined
223 priori, we also performed sub-group analyses based on the clinician leading
224 pharmacotherapy and SMS, White vs. non-White patient predominant trials, diabetes
225 predominant vs. non-dominant trials and in trials that have majority of both non-White
226 patients and patients with diabetes vs. White patient predominant but not diabetes
227 predominant trials.

228 We identified trials with well-developed SMS focused on enhancing patient's self-
229 care skills. Such trials required that SMS was tailored for individual patients plus had a
230 considerable emphasis on SMS assessed by frequency, content, and duration of
231 contact.²² We further noted home BP data was transferred to clinics or investigators
232 either by mail or telemonitoring device. To provide insights into using contemporary TM-

233 HTN programs, in sensitivity analysis, we repeated analysis limiting to trials that used
234 telemonitoring for SMBP.

235

236 **Results**

237 **Trial Characteristics**

238 We identified 13 eligible trials for SBP, 11 trials for DBP, and 7 trials for BP control,
239 published between 1992-2019 in the US, with 5,330, 4,243 and 3766 participants,
240 respectively (Figure 1).²³⁻³⁵ Two trials had cluster randomized design^{23,28} and others
241 randomized individual participants (Table 1). TM-HTN intervention was leveraged via
242 community in two trials, where patients' physicians used SMBP to guide
243 pharmacotherapy.^{23,30} Usual care in all trials comprised clinic-based HTN management
244 with options for 1-2 pharmacist visits in one trial,²⁸ and text-messaging encouraging
245 lifestyle change in another trial.³⁴ Supplement Tables 3-4 provide additional information
246 about trials' eligibility, intervention, procedures, and outcomes. Across all trials, mean
247 (SD) age was 60.2 (5.4) years, 47.5% (21.9) were women, 38.2% (23.5) had \leq high
248 school education, baseline SBP and DBP were 147.4 (8.6) mmHg and 86.6 (3.5)
249 mmHg, respectively. The proportion of non-White patients ranged from 4-100% per trial.
250 Seven were non-White patient predominant trials (four had >50% and other two trials
251 had 39-48% Black participants/trial; one trial was exclusively in Hispanic adults).
252 Similarly, the proportion of patients with diabetes per trial ranged from 14-100%, and
253 eight were diabetes patient predominant trials (five were both non-White and diabetes
254 patient predominant trials; three were both White and diabetes patient predominant
255 trials). None of the non-White patient predominant trials had pharmacotherapy led by

256 non-physicians or SMS provided by pharmacists. Seven trials had well-developed SMS
257 and nine trials used telemonitoring of SMBP (four trials asked patients to mail home BP
258 log) (Table 1 and Supplement Table 4). Well-developed SMS was present in two White
259 and five non-White patient predominant trials, respectively.

260 Three trials (published between 1992-2007) had “some concerns” in RoB
261 assessment from lack of pre-specified protocols.^{29,30,33} One trial had high RoB from
262 large missing outcome data (31.2%).²³ Others had low RoB (Supplement Figure 1). We
263 did not find publication bias (Egger test $P=0.83$ and 0.26 for SBP and DBP, respectively,
264 Supplement Figure 2). The I^2 statistic was 53% ($P=0.01$) and 70% ($P<0.01$) for SBP and
265 DBP, respectively, suggesting some heterogeneity among trials.³⁶ Magid et al, 2013,
266 Soghikian et al, and Artinian et al contributed the most to the heterogeneity in BP
267 difference (Supplement Figure 3). We found high strength of evidence for both SBP and
268 DBP difference (Supplement Table 5).

269

270 **BP Outcomes**

271 The pooled SBP difference was -7.3 mmHg (95% CI: -9.4 , -5.2), favoring TM-HTN
272 intervention (Figure 2). In univariable meta-regression, the only variables significantly
273 associated with SBP difference were clinicians leading pharmacotherapy and race. SBP
274 reduction was 4.4 mmHg more when pharmacotherapy was led by non-physicians vs.
275 physicians ($P<0.01$). For every 10% more non-White patients per trial, SBP difference
276 achieved was 0.6 mmHg lower ($P=0.03$) or 5.0 mmHg lower SBP reduction in non-
277 White vs. White patient predominant trials ($P<0.01$). In subgroup analyses, SBP
278 reductions were -9.3 mmHg (95% CI: -11.9 , -6.6) vs. -4.9 mmHg (95% CI: -7.3 , -2.5)

279 when pharmacotherapy was led by non-physician vs. physician ($P<0.01$), and -5.6
280 mmHg (95% CI: -7.8, -3.3) vs. -9.3 mmHg (95% CI: -13.1, -5.6) when SMS was
281 provided by nurses vs. pharmacists ($P=0.01$), respectively, all favoring TM-HTN
282 (Figures 3-4). Similarly, SBP reductions were -4.4 mmHg (95% CI: -6.6, -2.2) vs. -9.3
283 mmHg (95% CI: -11.4, -7.2) in non-White vs. White patient predominant trials ($P<0.01$),
284 respectively, favoring TM-HTN (Figure 5). There were no significant subgroup
285 differences by diabetes predominant trials ($P=0.14$). Both diabetes and non-White
286 patient predominant trials achieved -4.5 mmHg (95% CI: -5.9, -3.1) SBP reduction vs. -
287 9.6 mmHg (95% CI: -12.7, -6.4) in White patient predominant but not diabetes
288 predominant trials ($P<0.01$), favoring TM-HTN.

289 The pooled DBP difference was -2.7 mmHg (95% CI: -4.0, -1.5), favoring TM-
290 HTN intervention (Figure 2). In univariable meta-regression, the only variables
291 significantly associated with DBP difference were clinicians leading pharmacotherapy
292 and SMS, and race. DBP reduction was 2.8 mmHg more when pharmacotherapy was
293 led by non-physicians vs. physicians ($P<0.01$). Similarly, DBP reduction was 3.1 mmHg
294 more when SMS was provided by pharmacists vs. nurses ($P=0.01$). For every 10%
295 more non-White patients per trial, DBP reduction was 0.3 mmHg lower ($P=0.04$) or 2.7
296 mmHg lower DBP reduction in non-White vs. White patient predominant trials ($P<0.01$).
297 In subgroup analyses, DBP reductions were -4.0 mmHg (95% CI: -5.7, -2.3) vs. -1.1
298 (95% CI: -2.3, -0.04) when pharmacotherapy was led by non-physician vs. physician
299 ($P<0.01$), and -1.0 mmHg (95% CI: -2.1, 0.03) vs. -4.1 mmHg (95% CI: -6.4, -1.8) when
300 SMS was provided by nurses vs. pharmacists ($P<0.01$), respectively, all favoring TM-
301 HTN (Figures 3-4). Similarly, DBP reductions were -1.1 mmHg (95% CI: -2.3, -0.04) vs.

302 -4.0 mmHg (95% CI: -5.7, -2.3) in non-White vs. White patient predominant trials
303 (P<0.01), respectively, favoring TM-HTN (Figure 5). There were no significant subgroup
304 differences by diabetes predominant trials (P=0.20). Both diabetes and non-White
305 patient predominant trials achieved -0.9 mmHg (95% CI: -1.8, 0.06) DBP reduction vs. -
306 4.2 mmHg (95% CI: -6.8, -1.6) in White patient predominant but not diabetes
307 predominant trials (P<0.01), favoring TM-HTN.

308 The mean pooled difference in BP control rate between TM-HTN intervention and
309 usual care was 10.1% (95% CI: 0.4, 19.9), favoring TM-HTN intervention (Figure 2). We
310 did not consider meta-regression and sub-group analysis for BP control due to only
311 seven eligible trials.

312 To explore the differential effect of SMS on BP, in post-hoc analysis, we
313 conducted sub-group analysis according to whether SMS was well-developed or not.
314 We did not find any significant difference for both SBP [-7.1 mmHg (95% CI: -10.4, -3.9)
315 vs. -8.5 mmHg (95% CI: -12.5, -4.5), (P=0.49)] and DBP [-2.0 mmHg (95% CI: -4.3, 0.4)
316 vs. -3.9 mmHg (95% CI: -5.9, -1.8), (P=0.10)] in trials with and without well-developed
317 SMS, respectively.

318 To further understand the differences seen by race, in post-hoc analysis, we
319 examined interaction of race with clinicians leading pharmacotherapy, SMS and
320 whether the SMS was well developed or not. We found that the only group achieving
321 lower BP reduction was non-White patient predominant trials (Supplement Table 6). Any
322 group with White patient predominant trials achieved higher BP reduction.

323 When limiting the analyses to the nine trials that used telemonitoring of SMBP,
324 the pooled SBP and DBP differences were -7.8 mmHg (95% CI: -10.6, -5.0) and -3.0

325 mmHg (95% CI: -4.7, -1.2), respectively, favoring TM-HTN intervention (Figure 6), which
326 were not significantly different than the four trials without telemonitoring, SBP [-5.3
327 mmHg (95% CI: -9.6, -0.9), P=0.16] and DBP [-1.9 mmHg (95% CI: -3.9, 0.04), P=0.24],
328 respectively. TM-HTN trials using telemonitoring of SMBP were 13.9% (95% CI: 2.3,
329 25.5) more likely to control BP than usual care (Figure 6). In univariable meta-
330 regression, the only variable significantly associated with SBP difference was race and
331 for DBP difference was SMS (data not shown). Results from sub-group analyses were
332 similar to the main analyses (data not shown).

333

334 **Discussion**

335 To inform translation of TM-HTN in clinical practice in the US, we conducted a
336 systematic review and meta-analysis of US-based randomized trials. We found high
337 strength of evidence for TM-HTN trials lowering BP by 7.3/2.7 mmHg compared with
338 usual clinic-based care, based on direct evidence, with mostly low study limitations and
339 without reporting bias (Supplement Table 5). Pharmacotherapy was more effective if
340 delivered by non-physicians (9.3/4.0 mmHg) than by physicians (4.9/1.1 mmHg), and
341 SMS was more effective when delivered by pharmacists (9.3/4.1 mmHg) than by nurses
342 (5.6/1.0 mmHg). Similarly, TM-HTN was more effective in reducing BP in trials primarily
343 enrolling White patients (9.3/4.0 mmHg) than non-White patients (4.4/1.1 mmHg). There
344 were no subgroup differences by diabetes patient predominant trials. Both diabetes and
345 non-White patient predominant trials achieved lower BP reduction (4.5/0.9 mmHg) than
346 in White patient predominant but not diabetes predominant trials (9.5/4.2 mmHg).
347 Results were similar when limiting the analysis to trials using telemonitoring of SMBP.

348 Taken together, our study provides important insights for effective and equity-conscious
349 TM-HTN implementation in the US (Figure 7).

350 Telemedicine is particularly appropriate for HTN management.² Obtaining
351 accurate and reliable BP is a basic requirement in HTN management. Yet accurate
352 clinic BP evaluation is challenging with limited assessment during sporadic and brief
353 clinic visits,⁴ which undermines clinicians confidence to escalate anti-hypertensive
354 medications.^{5,6} TM-HTN program integrates multiple home BP data, which enhances
355 clinicians' confidence to assess and manage HTN, and helps overcome clinical inertia.²
356 Enhancing patients' self-management skills is an important aspect of HTN care.⁷ Self-
357 management comprises patients' knowledge about HTN, skills in medication
358 adherence, lifestyle modifications, and chronic disease management.⁷ Effective SMS is
359 time consuming requiring ongoing and organized support.⁷ Brief and infrequent clinic
360 visit does not allow effective SMS. TM-HTN is an ongoing, team-based, HTN focused
361 management approach allowing effective SMS.² Taken together, TM-HTN addresses
362 several shortcomings of the clinic-based HTN care.

363 Multilevel, multicomponent strategies, such as team-based care with medication
364 titration by non-physicians in clinic-based HTN management models are the most
365 effective approaches for BP control.¹¹⁻¹³ We found similar theme in the telemedicine
366 approach where non-physicians led pharmacotherapy was more effective than when
367 directly led by physicians. It is known that allowing non-physicians to offer
368 pharmacotherapy without needing routine approval from physicians will streamline
369 workflow, offer patient-centered collaborative care, and a focused algorithmic care by
370 non-physicians encourages guideline concordant care while allowing physicians to

371 focus on complex cases.³⁷ In practice, non-physicians providing pharmacotherapy in a
372 telemedicine program for a single condition is a matter of scalability, economy and
373 efficiency. We found similar theme for SMS by pharmacists vs. nurses. Future studies
374 should explore reasons for such difference. Adopting effective TM-HTN programs
375 requires considering these practical considerations and conducting local formative
376 assessment.

377 Our race pertinent analysis should be cautiously interpreted as the results could
378 be explained by other confounders. For example, we found more diabetes predominant
379 trials and well-developed SMS programs in non-White than White patient predominant
380 trials. Generally, a well-developed SMS intervention is focused on enhancing patient's
381 self-care skills. Conversely, an intervention without well-developed SMS program may
382 have other focus (e.g., pharmacotherapy). Despite not noting significant BP differences
383 based on well-developed SMS intervention, confounding is still possible. We found no
384 single non-White patient predominant trial that had non-physician leading
385 pharmacotherapy or pharmacists delivering SMS, which were both associated with the
386 highest improvement in BP. Nevertheless, racial differences were notable throughout
387 our analyses. It's possible that TM-HTN program implemented as such can exacerbate
388 inequities in HTN care in non-White patients. The attenuated BP difference in non-White
389 patient predominant trials (most of whom were Black patients) is likely because the
390 current TM-HTN programs were not designed and tailored to meet these patients'
391 needs.²³ For example, Black patients have reported several factors contributing to poor
392 BP control, including limited HTN knowledge, cultural factors, racism-related stress,
393 limited access to community resources and social determinants of health.³⁸⁻⁴⁰ Structural

394 factors contributing to racial disparities in telemedicine use for diabetes care has been
395 described previously.⁴¹ Accordingly, non-White patients will need proper support for
396 effective TM-HTN use.⁴² A barber shop-based, pharmacist managed HTN care
397 intervention was highly effective, supporting the importance of a contextually
398 appropriate intervention.⁴³ To improve equity in HTN care, TM-HTN programs for non-
399 White patients can adapt the intervention considering patient, clinician, and system-level
400 barriers.⁴² We found that both non-White patient and diabetes predominant trials
401 achieved smaller BP reduction than White patient predominant but not diabetes
402 predominant trials. The additional complexity to address diabetes in non-White
403 population perhaps add to the support needed for optimal use of SMBP. We did not find
404 variation in TM-HTN's effectiveness by patient's age, sex, education, diabetes status,
405 baseline BP, and TM-HTN intervention duration.

406 To our knowledge, this is the first meta-analysis limited to trials using SMBP-
407 guided pharmacotherapy. There are several meta-analyses of trials conducted both in
408 and outside the US using SMBP with or without additional support.⁸⁻¹⁰ The additional
409 support was heterogeneous comprising either SMS only or SMBP-guided
410 pharmacotherapy only or both. SMBP alone can lead to some reductions in SBP (3-5
411 mmHg) and DBP (2-3 mmHg) at 6 months without difference at 12 months.^{8-10,44,45}
412 When SMBP is accompanied by co-interventions, like SMS, there can be moderate
413 reductions in BP and improved BP control at 12 months.⁹ The SBP difference of 7.3
414 mmHg seen in our study is comparable to 6.1 mmHg reduction seen in a meta-analysis
415 including trials from outside the US when SMBP was combined with intensive support.⁹

416 Similarly, a prior meta-analysis found little heterogeneity of the benefit of SMBP across
417 most HTN-related co-morbidities.²²

418 Although our study provides important insights into TM-HTN implementation,
419 there are other potential patient, clinician, and system level challenges in optimal use of
420 TM-HTN. For example, uptake of telemedicine intervention was 98% in an efficacy trial
421 of TM-HTN,²⁸ but in subsequent pragmatic trial with similar intervention, telemedicine
422 uptake was only 27%,⁴⁶ highlighting the practical challenges in TM-HTN
423 implementation.⁴⁷ Some patient related barriers in using TM-HTN intervention include
424 digital literacy, internet and smart phone access and sociocultural factors.^{42,44} A 2021
425 survey of nationally representative Americans 50-80 years of age showed that ~77% of
426 adults with HTN have home BP device with an arm cuff but only ~25% share their home
427 BP readings with clinicians.⁴⁸ For effective use, patients should receive proper training
428 on SMBP and this training process should be integrated into the overall system of care.²
429 Another survey of primary care clinics showed that only 27.6% of clinics had written
430 policy to train patients in using SBMP and 48.8% designated a team member to provide
431 training to patients.⁴⁹ A pragmatic trial showed that only 38% of patients were able to
432 bring home BP diaries to clinicians, highlighting real-world challenges in using SMBP.⁵⁰
433 Therefore, understanding and addressing barriers to SMBP and seamlessly transferring
434 home BP values to clinics are important for the success of TM-HTN implementation.^{44,50}
435 In this context, the results seen in our analysis limiting to trials that used telemonitoring
436 of SMBP, which was similar to the main results, should encourage adoption of
437 telemonitoring of SMBP in contemporary TM-HTN programs. Telemonitoring facilitates
438 efficient SMBP communication with clinicians and can expedite clinical decisions.¹⁰

439 Clinicians and system related relevant factors include availability of trained personnel to
440 provide SMS, acceptability and readiness among patients and clinicians in adopting a
441 new model of care and having a technical infrastructure to integrate home BP data into
442 electronic medical records. These factors should be explored in future studies.

443 We caution interpretation of our results considering the following potential limitations.

444 Despite our effort to reduce and address heterogeneity between trials during trials
445 selection and data analysis, some heterogeneity exists. Nevertheless, the confidence
446 interval of each individual trial's effect size overlapped the point estimate or the
447 confidence interval of the pooled effect, suggesting the plausibility of the variation in
448 effect size among trials.²¹ Our results, particularly the subgroup findings, imply
449 associations and not causations as limited number of eligible trials restricted
450 multivariable meta-regression modeling to address trial-level heterogeneity. One trial
451 had high risk of bias from missing data. Three additional trials had "some concern" for
452 RoB from lack of pre-specified protocols as they were published when reporting
453 protocols were not routine. Although there was heterogeneity in the definition of BP
454 control across trials, the definition mostly reflected contemporary practice guidelines
455 suggesting appropriate practice standards in both intervention and control arms. There
456 were also minor differences in usual care across trials. Finally, non-White patient
457 predominant trials comprised of multiple races with Black race being majority. The
458 attenuated BP effect noted could be related to the differences in the sociocultural
459 factors relevant for multiple races and ethnicities, which is important to consider when
460 implementing TM-HTN intervention.

461

462 **Conclusions**

463 TM-HTN is more effective than clinic-based care for BP management in the US. The
464 benefit appears to be pronounced if pharmacotherapy is led by non-physician than
465 physicians and SMS is provided by clinical pharmacists than nurses, although the
466 reason for the latter should be first clarified in future studies. Trials enrolling majority
467 non-White patients seemed to achieve lower BP reduction than trials enrolling majority
468 White patients. As health systems plan to use TM-HTN programs in the US, locally
469 informed, patient-centered adaptation of TM-HTN is needed to provide equitable HTN
470 care.

471

472

473 **Source of Funding**

474 There was no funding associated with this study.

475

476 **Abbreviations**

477 BP: blood pressure

478 DBP: diastolic blood pressure

479 HTN: hypertension

480 RoB: risk of bias

481 SBP: systolic blood pressure

482 SMBP: self-measured blood pressure

483 SMS: self-management support

484 TM-HTN: telemedicine management of hypertension

485

486

487 **Conflict of Interest Disclosures**

488 Dr. Palakshappa's work on this project was supported by the National Heart, Lung, and
489 Blood Institute (NHLBI) of the National Institutes of Health under Award Number
490 K23HL146902. The funding organizations had no role in the design and conduct of the
491 study; collection, management, analysis, and interpretation of the data; preparation,
492 review, or approval of the manuscript; and decision to submit the manuscript for
493 publication. The content is solely the responsibility of the authors and does not
494 necessarily represent the official views of the National Institutes of Health.

495 Hayden Bosworth reports research funding through his institution from BeBetter
496 Therapeutics, Boehringer Ingelheim, Esperion, Improved Patient Outcomes, Merck,
497 NHLBI, Novo Nordisk, Otsuka, Sanofi, VA. Elton John Foundation, Hilton foundation,
498 Pfizer. He also provides consulting services for Abbott, Esperion, Imatar, Novartis,
499 Sanofi, Vidya, Walmart, Webmed. He was also on the board of directors of Preventric
500 Diagnostics.

501 Justin Moore provides consulting services for Medtronic.

502 All other authors had nothing substantial to disclose.

503 **REFERENCES**

- 504 1. Centers for Disease Control and Prevention. Facts About Hypertension. Centers for
505 Disease Control and Prevention. Accessed January 20, 2023. 2023. Available from
506 <https://www.cdc.gov/bloodpressure/facts.htm>
- 507 2. Omboni S, McManus RJ, Bosworth HB, [Chappell](#) LC, [Green](#) BB, [Kario](#) K, [Logan](#) AG,
508 [Magid](#) DJ, [Mckinstry](#) B, [Margolis](#) KL et al. Evidence and Recommendations on the Use
509 of Telemedicine for the Management of Arterial Hypertension. Hypertension.
510 2020;76(5):1368-1383. doi:10.1161/HYPERTENSIONAHA.120.15873
- 511 3. Ashman JJ, Rui P, Schappert SM, Strashny A. Characteristics of Visits to Primary
512 Care Physicians by Adults Diagnosed With Hypertension. Natl Health Stat Report. Sep
513 2017;(106):1-14. PMID: 29155688.
- 514 4. Powers BJ, Olsen MK , Smith VA, [Woolson](#) RF, [Bosworth](#) HB, [Oddone](#) EZ.
515 Measuring Blood Pressure for Decision Making and Quality Reporting: Where and How
516 Many Measures? Annals of Internal Medicine. 2011;154(12):781-788.
517 doi:10.7326/0003-4819-154-12-201106210-00005 %m 21690592
- 518 5. Crowley MJ, Smith VA, Olsen MK, [Danus](#) S, [Oddone](#) EZ, [Bosworth](#) HB, [Powers](#) BJ.
519 Treatment intensification in a hypertension telemanagement trial: clinical inertia or good
520 clinical judgment? Hypertension. Oct 2011;58(4):552-8.
521 doi:10.1161/hypertensionaha.111.174367
- 522 6. Patil SJ, Wareg NK, Hodges KL, [Smith](#) JB, [Kaiser](#) MS, [LeFevre](#) ML. Home Blood
523 Pressure Monitoring in Cases of Clinical Uncertainty to Differentiate Appropriate

524 Inaction From Therapeutic Inertia. *Ann Fam Med*. 2020;18(1):50-58.

525 doi:10.1370/afm.2491

526 7. Centers for Disease Control and Prevention. Best Practices for Heart Disease and
527 Stroke: A Guide to Effective Approaches and Strategies. Centers for Disease Control
528 and Prevention. Accessed January 21, 2023. 2023. Available from
529 <https://www.cdc.gov/dhdsp/pubs/guides/best-practices/index.htm>

530 8. Uhlig K, Patel K, Ip S, Kitsios GD, Balk EM. Self-measured blood pressure monitoring
531 in the management of hypertension: a systematic review and meta-analysis. *Ann Intern*
532 *Med*. Aug 6 2013;159(3):185-94. doi:10.7326/0003-4819-159-3-201308060-00008

533 9. Tucker KL, Sheppard JP, Stevens R, Bosworth HB, Bove A, Bray EP, Earle K,
534 George J, Godwin M, Green BB et al. Self-monitoring of blood pressure in hypertension:
535 A systematic review and individual patient data meta-analysis. *PLoS Med*. Sep
536 2017;14(9):e1002389. doi:10.1371/journal.pmed.1002389

537 10. Agarwal R, Bills JE, Hecht TJW, Light RP. Role of Home Blood Pressure Monitoring
538 in Overcoming Therapeutic Inertia and Improving Hypertension Control. *Hypertension*.
539 2011;57(1):29-38. doi:10.1161/HYPERTENSIONAHA.110.160911

540 11. Walsh JME, McDonald KM, Shojania KG, Sundaram V, Nayak S, Lewis R, Owens
541 DK, Goldstein MK. Quality Improvement Strategies for Hypertension Management: A
542 Systematic Review. *Medical Care*. 2006;44(7):646-657.
543 doi:10.1097/01.mlr.0000220260.30768.32

- 544 12. Mills KT, Obst KM, Shen W, Molina S, Zhang HJ, He H, Cooper LA, He J.
545 Comparative Effectiveness of Implementation Strategies for Blood Pressure Control in
546 Hypertensive Patients: A Systematic Review and Meta-analysis. *Ann Intern Med.* Jan
547 16 2018;168(2):110-120. doi:10.7326/m17-1805
- 548 13. Proia KK, Thota AB, Njie GJ, Finnie RKC, Hopkins DP, Mukhtar Q, Pronk NP,
549 Zeigler D, Kottke TE, Rask KJ et al. Team-based care and improved blood pressure
550 control: a community guide systematic review. *American journal of preventive medicine.*
551 Jul 2014;47(1):86-99. doi:10.1016/j.amepre.2014.03.004
- 552 14. The SPRINT Research Group. Final Report of a Trial of Intensive versus Standard
553 Blood-Pressure Control. *New England Journal of Medicine.* 2021;384(20):1921-1930.
554 doi:10.1056/NEJMoa1901281.
- 555 15. Giustini D, Acharya S, Neupane G, Pokharel Y. Assessing Heterogeneity of
556 Hypertension Treatment Using Telemedicine and Home Blood Pressure Monitoring by
557 Provider Types: A Systematic Review and Meta-Analysis of US Clinical Trials [Internet].
558 Accessed July 23, 2023, 2023. DOI: 10.17605/OSF.IO/NHMB4
- 559 16. Catalyst NEJM. What Is Telehealth? Catalyst Carryover. 2018;4(1). doi:10.1056/CA
560 T.18.0268
- 561 17. Centers for Disease Control and Prevention. Telehealth and Telemedicine: A
562 Research Anthology of Law and Policy Resources. Centers for Disease Control and
563 Prevention. Accessed June 26, 2023. 2023. Available from: [https://](https://www.cdc.gov/php/publications/topic/anthologies/anthologies-telehealth.html)
564 www.cdc.gov/php/publications/topic/anthologies/anthologies-telehealth.html.

- 565 18. Glanville J, Kotas E, Featherstone R, Dooley G. Which are the most sensitive
566 search filters to identify randomized controlled trials in MEDLINE? J Med Libr Assoc.
567 Oct 1 2020;108(4):556-563. doi:10.5195/jmla.2020.912
- 568 19. Cheung A, Popoff E, Szabo SM. Application of text mining to the development and
569 validation of a geographic search filter to facilitate evidence retrieval in Ovid MEDLINE:
570 An example from the United States. Health Info Libr J. Dec 21 2022;
571 doi:10.1111/hir.12471
- 572 20. Higgins JPT, Savović J, Page MJ, Elbers RG, Sterne JAC. Chapter 8: Assessing risk
573 of bias in a randomized trial. In: Higgins JPT, Thomas J, Chandler J, Cumpston M, Li T,
574 Page MJ, Welch VA (editors). Cochrane Handbook for Systematic Reviews of
575 Interventions version 6.3 (updated February 2022). Cochrane 2022. Accessed January
576 1, 2023. 2022. Available from <https://training.cochrane.org/handbook/current/chapter-08>
- 577 21. Berkman ND, Lohr KN, Ansari M, [Balk](#) EM, [Kane](#) R, [McDonagh](#) M, [Morton](#)
578 [SC](#), [Viswanathan](#) M, [Bass](#) EB, [Butler](#) M et al. Grading the strength of a body of
579 evidence when assessing health care interventions: an EPC update. J Clin Epidemiol.
580 2015 Nov;68(11):1312-24. doi: 10.1016/j.jclinepi.2014.11.023. Epub 2014 Dec 20.
581 PMID: 25721570.
- 582 22. Sheppard JP, Tucker KL, Davison WJ, [Stevens](#) R, [Aekplakorn](#) W, [Bosworth](#)
583 [HB](#), [Bove](#) A, [Earle](#) K, [Godwin](#) M, [Green](#) BB et al. Self-monitoring of Blood Pressure in
584 Patients With Hypertension-Related Multi-morbidity: Systematic Review and Individual
585 Patient Data Meta-analysis. Am J Hypertens. Mar 13 2020;33(3):243-251.
586 doi:10.1093/ajh/hpz182

- 587 23. Feldman PH, McDonald MV, Barrón Y, Gerber LM, Peng TR. Home-based
588 interventions for black patients with uncontrolled hypertension: a cluster randomized
589 controlled trial. *Journal of comparative effectiveness research*. Mar 2016;5(2):155-68.
590 doi:10.2217/cer.15.60
- 591 24. Bosworth HB, Powers BJ, Olsen MK, [McCant F](#), [Grubber J](#), [Smith V](#), [Gentry](#)
592 [PW](#), [Rose C](#), [Houtven CV](#), [Wang V](#) et al. Home Blood Pressure Management and
593 Improved Blood Pressure Control: Results From a Randomized Controlled Trial.
594 *Archives of Internal Medicine*. 2011;171(13):1173-1180.
595 doi:10.1001/archinternmed.2011.276
- 596 25. Hebert PL, Sisk JE, Tuzzio L, Casabianca JM, Pogue VA, Wang JJ, Chen Y,
597 Cowles C, McLaughlin MA. Nurse-led disease management for hypertension control in
598 a diverse urban community: a randomized trial. *Journal of general internal medicine*.
599 Jun 2012;27(6):630-9. doi:10.1007/s11606-011-1924-1
- 600 26. Green BB, Cook AJ, Ralston JD, Fishman PA, Catz SL, Carlson J, Carrell D, Tyll L,
601 Larson EB, Thompson RS. Effectiveness of Home Blood Pressure Monitoring, Web
602 Communication, and Pharmacist Care on Hypertension Control: A Randomized
603 Controlled Trial. *JAMA*. 2008;299(24):2857-2867. doi:10.1001/jama.299.24.2857
- 604 27. Wakefield BJ, Holman JE, Ray A, [Scherubel M](#), [Adams MR](#), [Hillis SL](#), [Rosenthal](#)
605 [GE](#). Effectiveness of home telehealth in comorbid diabetes and hypertension: a
606 randomized, controlled trial. *Telemed J E Health*. May 2011;17(4):254-61.
607 doi:10.1089/tmj.2010.0176

- 608 28. Margolis KL, Asche SE, Bergdall AR, [Dehmer](#) SP, [Groen](#) SE, [Kadmas](#) HM, [Kerby](#)
609 TJ, [Klotzle](#) KJ, [Maciosek](#) MV, [Michels](#) RD et al. Effect of home blood pressure
610 telemonitoring and pharmacist management on blood pressure control: a cluster
611 randomized clinical trial. *Jama*. Jul 3 2013;310(1):46-56. doi:10.1001/jama.2013.6549
- 612 29. Rudd P, Miller NH, Kaufman J, [Kraemer](#) HC, [Bandura](#) A, [Greenwald](#) G, [Debusk](#) RF.
613 Nurse management for hypertension. A systems approach. *Am J Hypertens*. Oct
614 2004;17(10):921-7. doi:10.1016/j.amjhyper.2004.06.006
- 615 30. Artinian NT, Flack JM, Nordstrom CK, [Hockman](#) EM, [Washington](#) OGM, [Jen](#)
616 KLC, [Fathy](#) M. Effects of Nurse-Managed Telemonitoring on Blood Pressure at 12-
617 Month Follow-Up Among Urban African Americans. *Nursing Research*. 2007;56(5):312-
618 322. doi:10.1097/01.NNR.0000289501.45284.6e
- 619 31. Magid DJ, Olson KL, Billups SJ, [Wagner](#) NM, [Lyons](#) EE, [Kroner](#) BA. A pharmacist-
620 led, American Heart Association Heart360 Web-enabled home blood pressure
621 monitoring program. *Circ Cardiovasc Qual Outcomes*. Mar 1 2013;6(2):157-63.
622 doi:10.1161/circoutcomes.112.968172
- 623 32. Magid DJ, Ho PM, Olson KL, [Brand](#) DW, [Welch](#) LK, [Snow](#) KE, [Lambert-Kerzner](#)
624 AC, [Plomondon](#) ME, [Havranek](#) EP. A multimodal blood pressure control intervention in
625 3 healthcare systems. *The American journal of managed care*. Apr 2011;17(4):e96-103.
626 PMID: 21774100
- 627 33. Soghikian K, Casper SM, Fireman BH, [Hunkeler](#) EM, [Hurley](#) LB, [Tekawa](#) IS, [Voigt](#)
628 TM. Home Blood Pressure Monitoring: Effect on Use of Medical Services and Medical
629 Care Costs. *Medical Care*. 1992;30(9):855–865. PMID: 1518317

- 630 34. Chandler J, Sox L, Kellam K, Feder L, Nemeth L, Treiber F. Impact of a Culturally
631 Tailored mHealth Medication Regimen Self-Management Program upon Blood Pressure
632 among Hypertensive Hispanic Adults. *Int J Environ Res Public Health*. 2019;16(7).
633 doi: [10.3390/ijerph16071226](https://doi.org/10.3390/ijerph16071226)
- 634 35. Bove AA, Homko CJ, Santamore WP, Kashem M, Kerper M, Elliott DJ. Managing
635 hypertension in urban underserved subjects using telemedicine—A clinical trial.
636 *American Heart Journal*. 2013;165(4):615-21. Available from
637 <https://doi.org/10.1016/j.ahj.2013.01.004>
- 638 36. Deeks JJ Higgins JPT, Altman DG (editors). Chapter 10: Analysing data and
639 undertaking meta-analyses. In: Higgins JPT, Thomas J, Chandler J, Cumpston M, Li T,
640 Page MJ, Welch VA (editors). *Cochrane Handbook for Systematic Reviews of*
641 *Interventions* version 6.3 (updated February 2022). Cochrane, 2022. Accessed January
642 1, 2022. Available from <https://training.cochrane.org/handbook/current/chapter-10>
- 643 37. Carter BL, Rogers M, Daly J, Zheng S, James PA. The potency of team-based care
644 interventions for hypertension: a meta-analysis. *Arch Intern Med*. Oct 26
645 2009;169(19):1748-55. doi:10.1001/archinternmed.2009.316
- 646 38. Flynn SJ, Ameling JM, Hill-Briggs F, [Wolff JL](#), [Bone LR](#), [Levine DM](#), [Roter](#)
647 [DL](#), [Lewis-Boyer L](#), [Fisher AR](#), [Purnell L](#) et al. Facilitators and barriers to hypertension
648 self-management in urban African Americans: perspectives of patients and family
649 members. *Patient Prefer Adherence*. 2013;7:741-9. doi:10.2147/ppa.S46517
- 650 39. Milani RV, Price-Haywood EG, Burton JH, Wilt J, Entwisle J, Lavie CJ. Racial
651 Differences and Social Determinants of Health in Achieving Hypertension Control. *Mayo*

- 652 Clinic Proceedings. 2022/08/01/ 2022;97(8):1462-1471. doi:
653 <https://doi.org/10.1016/j.mayocp.2022.01.035>
- 654 40. Woods SB, Hiefner AR, Udezi V, Slaughter G, Moore R, Arnold EM. 'They should
655 walk with you': the perspectives of African Americans living with hypertension and their
656 family members on disease self-management. *Ethn Health*. Feb 28 2022:1-26.
657 doi:10.1080/13557858.2022.2040958
- 658 41. Trief PM, Izquierdo R, Eimicke JP, [Teresi JA](#), [Goland R](#), [Palmas W](#), [Shea](#)
659 [S](#), [Weinstock RS](#). Adherence to diabetes self care for white, African-American and
660 Hispanic American telemedicine participants: 5 year results from the IDEATel project.
661 *Ethnicity & Health*. 2013/02/01 2013;18(1):83-96. doi:10.1080/13557858.2012.700915
- 662 42. Bailey JE, Gurgol C, Pan E, Njie S, Emmett S, Gatwood J, Gauthier L, Rosas LG,
663 Kearney SM, Robler SK et al. Early Patient-Centered Outcomes Research Experience
664 With the Use of Telehealth to Address Disparities: Scoping Review. *J Med Internet Res*.
665 2021/12/7 2021;23(12):e28503. doi:10.2196/28503
- 666 43. Victor RG, Lynch K, Li N, Blyler C, Muhammad E, Handler J, Brettler J, Rashid M,
667 Hsu B, Foxx-Drew D et al. A Cluster-Randomized Trial of Blood-Pressure Reduction in
668 Black Barbershops. *New England Journal of Medicine*. 2018;378(14):1291-1301.
669 doi:10.1056/NEJMoa1717250
- 670 44. Shimbo D, Artinian NT, Basile JN, Krakoff LR, Margolis KL, Rakotz MK, Wozniak G,
671 American Heart Association and American Medical Association. Self-Measured Blood
672 Pressure Monitoring at Home: A Joint Policy Statement From the American Heart

673 Association and American Medical Association. *Circulation*. Jul 28 2020;142(4):e42-
674 e63. doi:10.1161/cir.0000000000000803

675 45. Reboussin DM, Allen NB, Griswold ME, [Guallar E](#), [Hong Y](#), [Lackland DT](#), [Miller III](#)
676 ER

677 [Polonsky T](#), [Thompson-Paul AM](#), [Vupputuri S](#) et al. Systematic Review for the 2017
678 ACC/AHA/AAPA/ABC/ACPM/AGS/APhA/ASH/ASPC/NMA/PCNA Guideline for the
679 Prevention, Detection, Evaluation, and Management of High Blood Pressure in Adults:
680 A Report of the American College of Cardiology/American Heart Association Task Force
681 on Clinical Practice Guidelines. *Circulation*. 2018;138(17):e595-e616.
682 doi:10.1161/CIR.0000000000000601

683 46. Margolis KL, Bergdall AR, Crain AL, [JaKa MM](#), [Anderson JP](#), [Solberg LI](#), [Sperl-](#)
684 [Hillen J](#), [Beran M](#), [Green BB](#), [Haugen P](#) et al. Comparing Pharmacist-Led Telehealth
685 Care and Clinic-Based Care for Uncontrolled High Blood Pressure: The Hyperlink 3
686 Pragmatic Cluster-Randomized Trial. *Hypertension*. 2022;79(12):2708-2720.
687 doi:10.1161/HYPERTENSIONAHA.122.19816

688 47. Margolis KL, Crain AL, Green BB, [O'Connor PJ](#), [Solberg LI](#), [Beran M](#), [Bergdall](#)
689 [AR](#), [Pawloski PA](#), [Ziegenfuss JY](#), [JaKa MM](#) et al. Comparison of explanatory and
690 pragmatic design choices in a cluster-randomized hypertension trial: effects on
691 enrollment, participant characteristics, and adherence. *BMC*. 2022; doi:
692 [10.1186/s13063-022-06611-3](https://doi.org/10.1186/s13063-022-06611-3)

693 48. Springer MV, Malani P, Solway E, Kirch M, Singer DC, Kullgren JT, Levine DA.
694 Prevalence and Frequency of Self-measured Blood Pressure Monitoring in US Adults

695 Aged 50-80 Years. JAMA Network Open. 2022;5(9):e2231772-e2231772.

696 doi:10.1001/jamanetworkopen.2022.31772

697 49. Woolsey S, Brown B, Ralls B, Friedrichs M, Stults B. Diagnosing Hypertension in

698 Primary Care Clinics According to Current Guidelines. The Journal of the American

699 Board of Family Medicine. 2017;30(2):170-177. doi:10.3122/jabfm.2017.02.160111

700 50. Ogedegbe G, Tobin JN, Fernandez S, [Cassells A](#), [Diaz-Gloster M](#), [Khalida](#)

701 C, [Pickering T](#), [Schwartz JE](#). Counseling African Americans to Control Hypertension:

702 cluster-randomized clinical trial main effects. Circulation. May 20 2014;129(20):2044-51.

703 doi:10.1161/circulationaha.113.006650

704

705

706

707

708

709

710

711

712

713

714 **List of table**

715 **Table 1. Key features of included trials**

Study, publication year	Mean age (years)	Women (%)	Majority White	Majority DM	≤High school Education (%)	Baseline SBP/DBP (mmHg)	Pharmacotherapy/SMS provider	Well-developed SMS	TM-HTN duration (months)	BP Control definition (mmHg)	Primary Outcome	Region
Chandler et al, 2019	46.5	66.3	No	Missing	71.5	151.5/85.7	Physician/Automated app-based	Yes	6	<140/90	ΔSBP at 6 months	Charleston, SC
Magid et al, 2013	59.6	39.6	Yes	Yes	NA	147.1/88.8	Pharmacist/pharmacist	No	6	<140/90 or <130/80 (with DM)	BP control at 6 months	Denver, CO
Wakefield et al, 2011	68	2	Yes	Yes	47	136/missing	Physician/nurse	Yes	6	Missing	ΔSBP and HbA1C at 6 months	Iowa City, IA
Margolis et al, 2013	61.1	45	Yes	No	17	148/85	Pharmacist/pharmacist	No	12	<140/90 or <130/80 (with DM or CKD)	BP control at 12 months	St. Paul, MN
Green et al, 2008	59.1	52.2	Yes	Missing	8	151.9/89.1	Pharmacist/pharmacist	Yes	12	<140/90	ΔBP and BP control at 12 months	WA and ID
Rudd et al, 2004	59.5	53	Yes	No	23	Missing	Nurse/nurse	No	6	Missing	ΔSBP and DBP at 6 months	Stanford, Mountain view, CA
Hebert et al, 2011	60.8	70.9	No	Yes	81.2	153/86	Physician/nurse	Yes	9	<140/90 or <130/80 (with DM or renal disease)	ΔSBP at 9 months	New York, NY
Magid et al, 2011	65.9	35.3	Yes	Yes	22.9	147.1/87.3	Pharmacist/pharmacist	No	6	<140/90 or <130/80 (with DM or CKD)	ΔSBP and DBP at 6 months	Denver, CO
Bosworth et al, 2011	64	8	No	Yes	13	129/77	Physician/nurse	Yes	18	<140/90 or <130/80 (with DM)	BP control at 18 months	Durham, NC
Bove et al 2013	59.6	65.1	No	Yes	46.9	155.2/88.3	Physician/Nurse	No	6	<140/90	SBP control at 6 months	Philadelphia, PA and Wilmington, DE
Artinian et al, 2007	59.6	64.3	No	Yes	59.2	156.3/88.9	Physician/nurse	Yes	12	<135/85	ΔSBP and DBP at 12 months	Detroit, MI
Soghikian et al, 1992	54.2	50.2	No	NA	28.1	138.8/86.2	Physician/NA	NA	12	<140/90	Cost for ΔSBP and DBP at 12 months	San Francisco, CA
Feldman et al,	64.3	66	No	Yes	40	156/87	Physician/nurse	Yes	12	BP <140/90 or <130/80	BP control	New York, NY

2016										(with DM or CKD)	at 12 months	
------	--	--	--	--	--	--	--	--	--	---------------------	-----------------	--

716

717 Abbreviations: BP = blood pressure; CKD = chronic kidney disease; DBP = diastolic
718 blood pressure; DM = diabetes mellitus; HbA1c: glycated hemoglobin; NA = not
719 applicable; SBP = systolic blood pressure; SMS = self-management support; TM-HTN =
720 telemedicine management of hypertension; Δ means difference.

721

722 White patient predominant trials enrolled >50% patients/trial, and diabetes predominant
723 trials enrolled \geq 25% patients with diabetes/trial.

724 Magid et al, 2013 and Magid et al, 2011 studies reported DM or CKD together, which
725 we considered as the presence of DM for our analyses.

726 Usual care in all trials comprised clinic based HTN management without a telemedicine
727 program so that pharmacotherapy was not guided by home BP values. Margolis et al,
728 study additionally referred usual care participants to a medication therapy management
729 pharmacist for consultation (1-2 visits without telephone follow-up or prolonged
730 monitoring). Chandler et al, study provided text messages of healthy lifestyle support to
731 usual care patients.

732 Feldman et al, Hebert et al, Chandler et al and Artinian et al included 100% non-White
733 patients.

734 The intervention was leveraged via community and not via clinic in Feldman et al and
735 Artinian et al. Patients' physician received BP data to guide pharmacotherapy.

736 Margolis et al, and Feldman et al were cluster randomized trials and the rest
737 randomized individual participants. Margolis et al used clinic as a cluster and Feldman
738 et al study used home care nurse as a cluster.
739 BP assessment for the outcome used research BP measured in clinic for all studies
740 except for Feldman et al (home BP measured by nurse) and Artinian et al (research
741 staff measured BP at community centers).

742

743

744

745

746

747

748

749

750

751

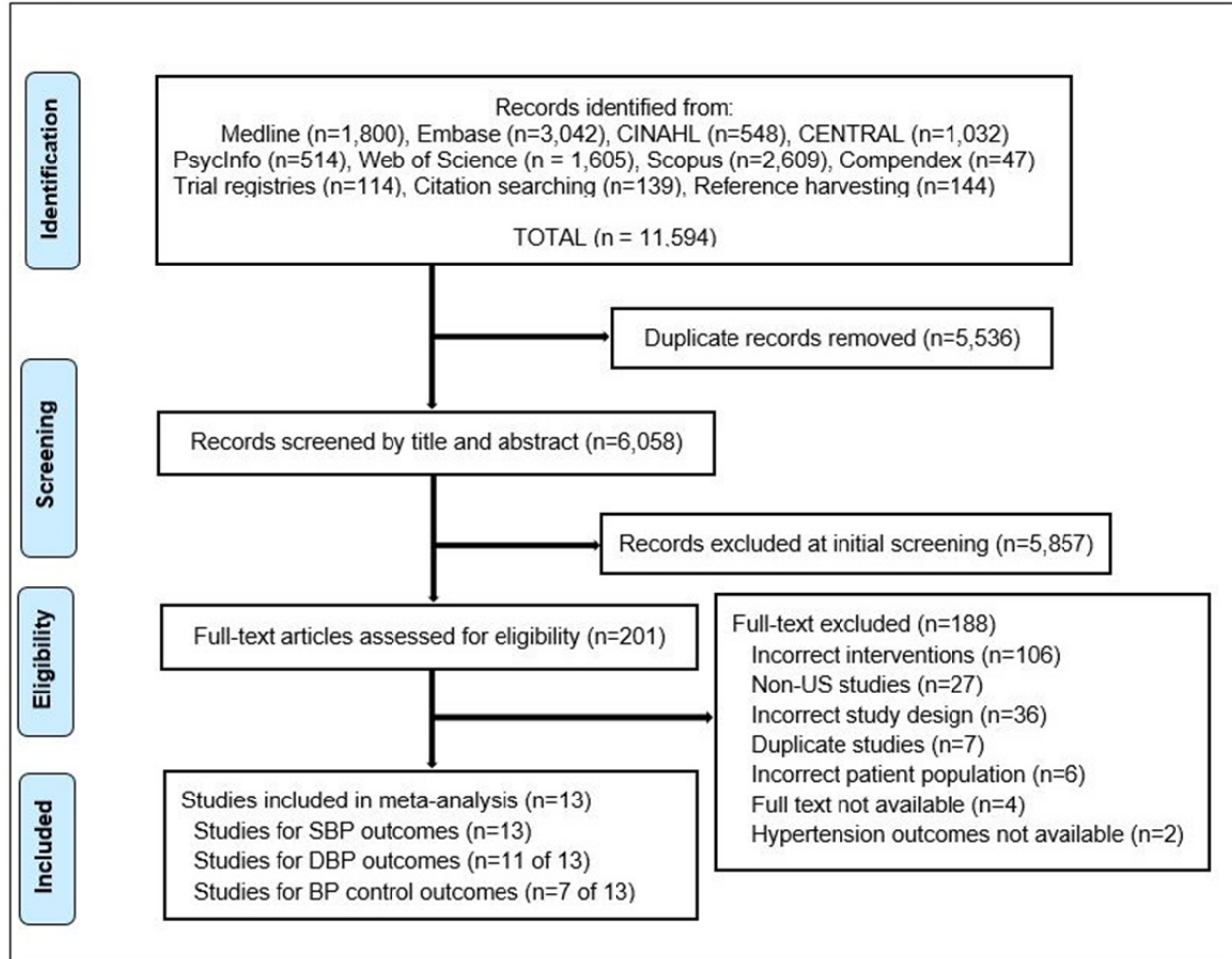
752

753

754

755 **List of Figures**

756 **Figure 1. PRISMA flow diagram of search results and eligible articles**



757

758 Abbreviations: BP = blood pressure; DBP = diastolic blood pressure; HTN =

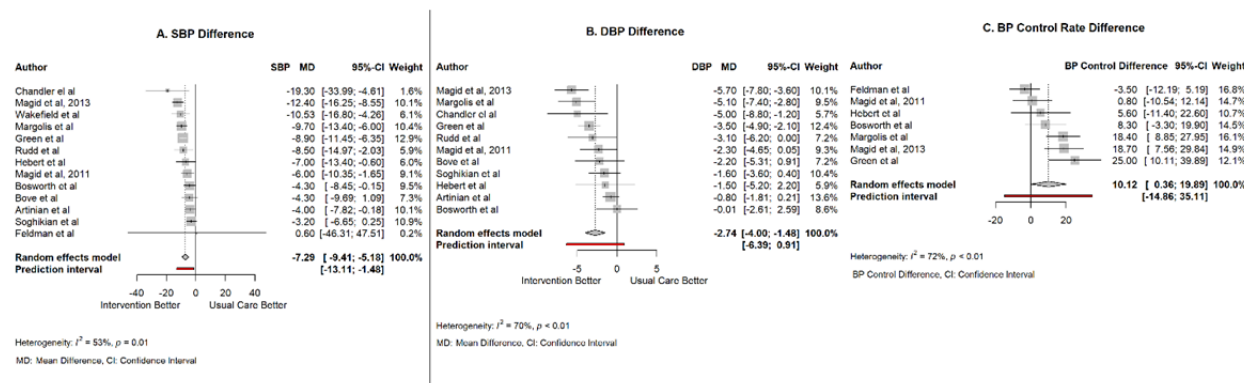
759 hypertension; SBP = systolic blood pressure; US = United States

760

761

762

763 **Figure 2: Mean overall pooled difference in SBP, DBP and BP control rate**



764

765 Abbreviations: BP = blood pressure; DBP = diastolic blood pressure; SBP = systolic

766 blood pressure.

767 $I^2 > 60%$ ($P < 0.05$) is considered significantly heterogeneous according to the Cochrane

768 Handbook for Systematic Reviews.

769

770

771

772

773

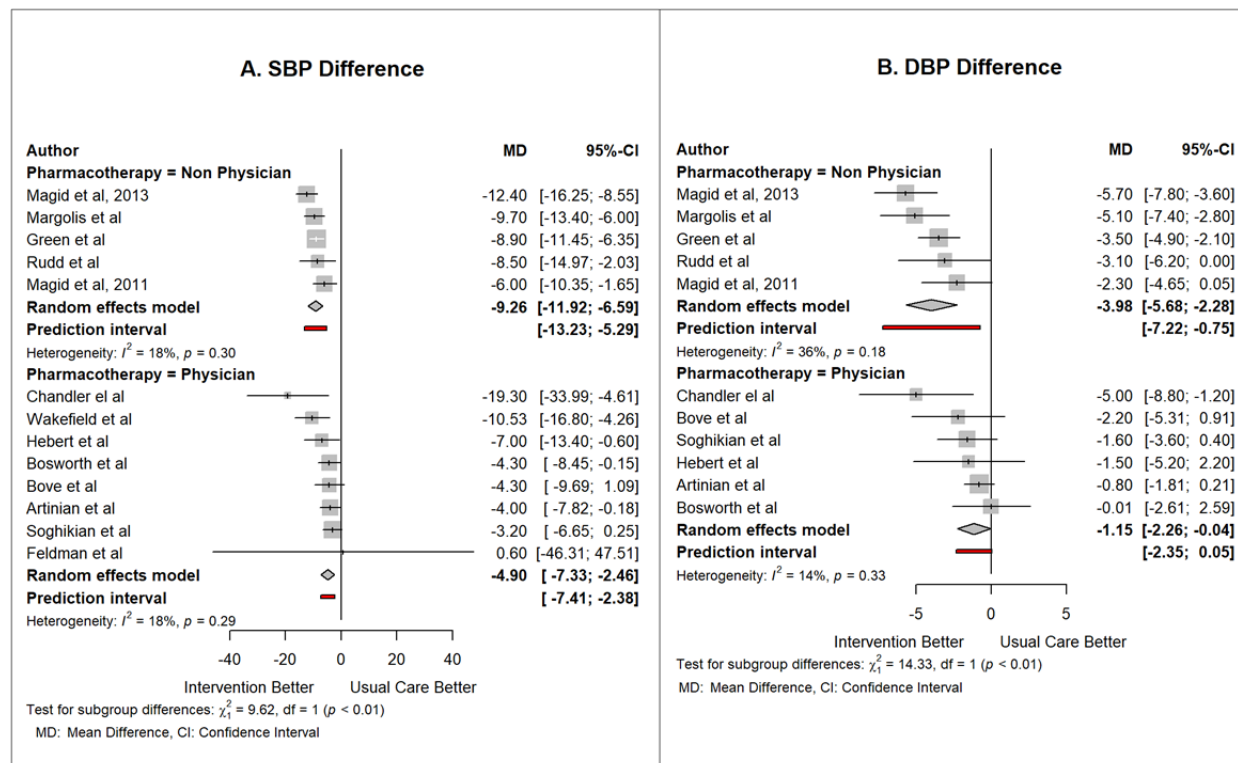
774

775

776

777

778 **Figure 3: Mean BP difference according to clinicians leading pharmacotherapy**



779

780 Abbreviations: BP = blood pressure; DBP = diastolic blood pressure; SBP = systolic
 781 blood pressure.

782

783

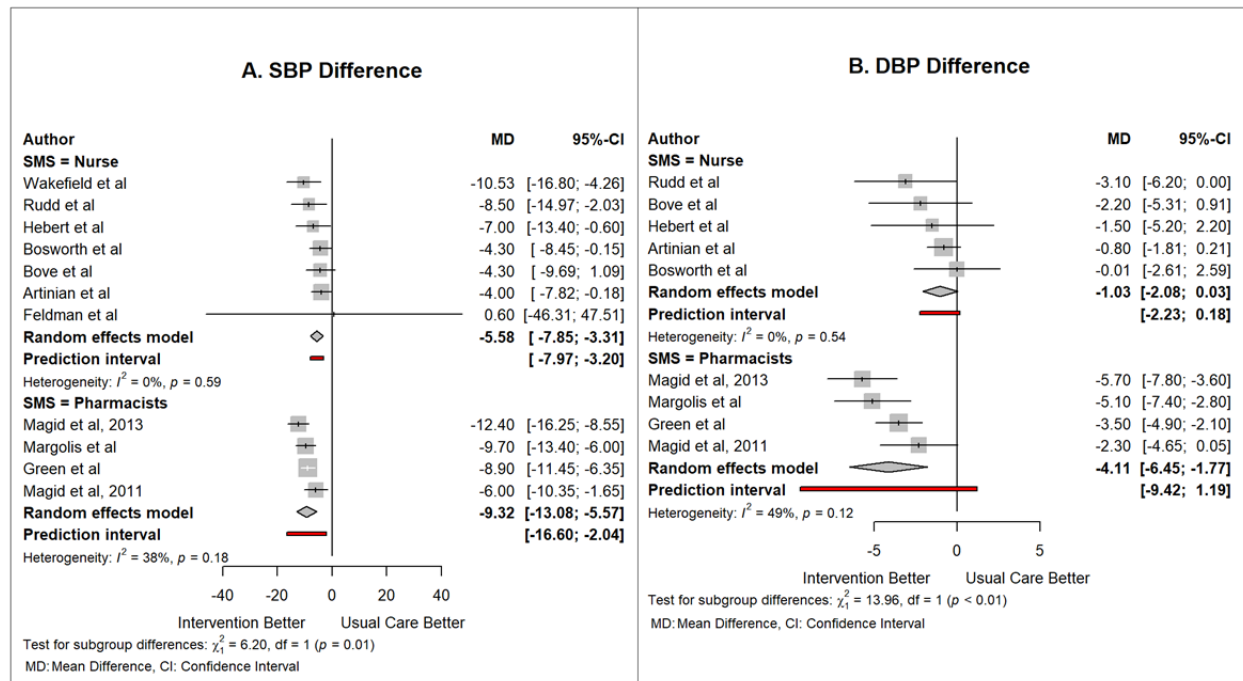
784

785

786

787

788 **Figure 4: Mean BP difference according to clinicians providing SMS**



789

790 Abbreviations: BP = blood pressure; DBP = diastolic blood pressure; SBP = systolic
 791 blood pressure; SMS = self-management support.

792

793

794

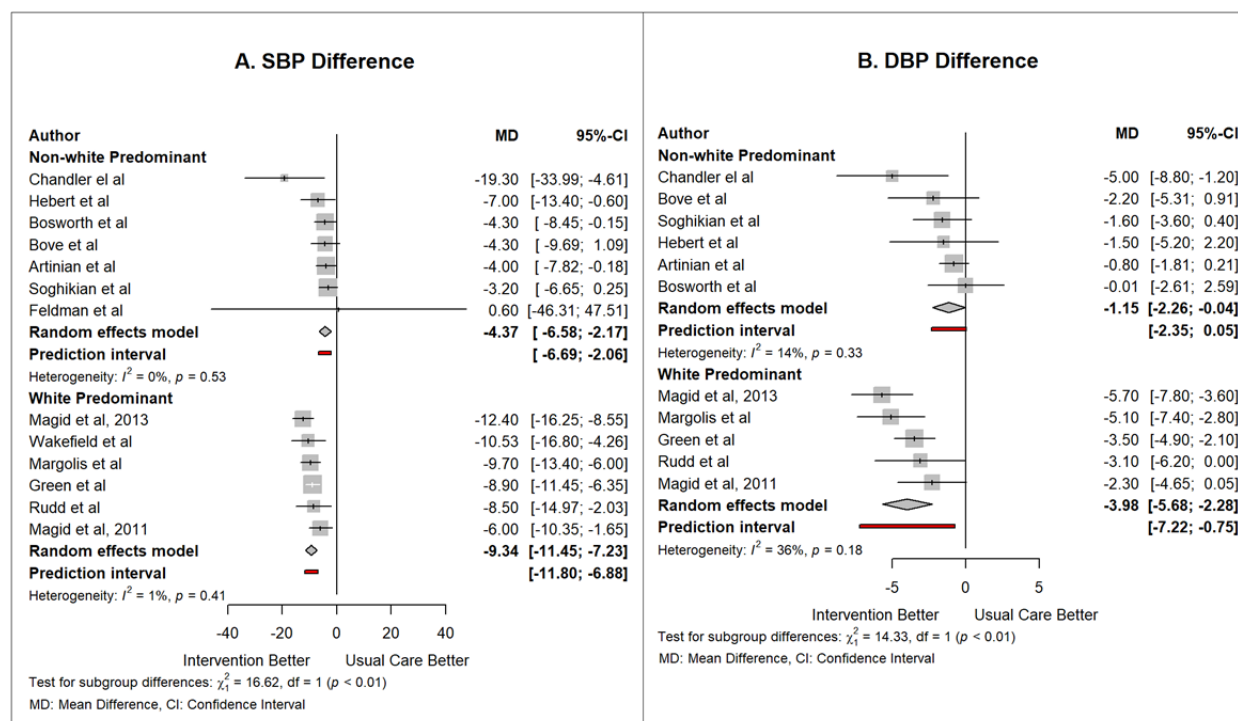
795

796

797

798

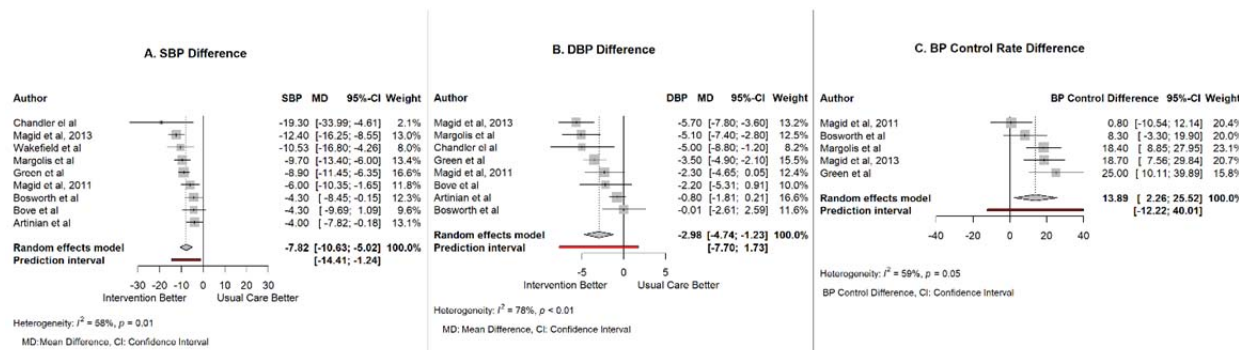
799 **Figure 5: Mean BP difference between majority Non-White vs. White patient**
 800 **predominant trials**



801
 802 Abbreviations: BP = blood pressure; DBP = diastolic blood pressure; SBP = systolic
 803 blood pressure.

804
 805
 806
 807
 808
 809
 810

811 **Figure 6: Overall BP outcomes in studies using tele monitoring of SMBP**



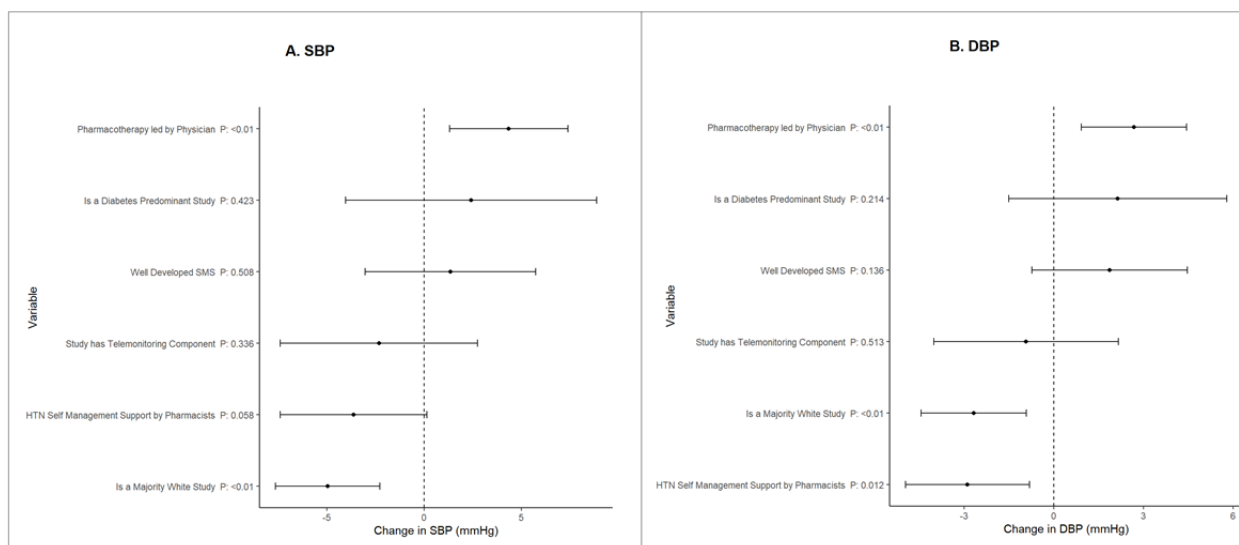
812

813 Abbreviations: BP = blood pressure; DBP = diastolic blood pressure; SBP = systolic

814 blood pressure; SMBP = self-measured blood pressure.

815

816 **Figure 7. Univariable regression forest plot**



817

818 Abbreviations: DBP = diastolic blood pressure; HTN = hypertension; mmHg = millimeter

819 of mercury; SBP = systolic blood pressure; SMS = self-management support; TM-HTN

820 = telemedicine management of hypertension.

821 More negative BP values reflect greater BP reduction with TM-HTN compared with
822 usual care.

823

824

825

826

827

828

829