

1 **Effectiveness of SGLT2 inhibitor therapy in treatment of Heart failure: A Meta-Analysis**

2

3 Sarvinoz Albalushi*¹, Azmaeen Zarif*^{†,2,3}, Suheyla Karaduman⁴, Khoa Tran⁵, Alesia Talpeka^{6,7}

4

5 ¹ University of Debrecan, Debrecen, Egyetem tér 1, 4032 Hungary

6 ² University of Cambridge School of Clinical Medicine, Addenbrooke's Hospital, Hills Road, Cambridge,
7 Cambridgeshire, CB2 0SP, United Kingdom

8 ³ Gonville & Caius College, University of Cambridge, Trinity Street, Cambridge, Cambridgeshire, CB2 1TA,
9 United Kingdom

10 ⁴ Uludag University Medical School, Özlüce, Uludağ Üniv., 16285 Nilüfer/Bursa, Türkiye

11 ⁵ Pham Ngoc Thach University of Medicine, 2 Đ. Dương Quang Trung, Phường 12, Quận 10, Thành phố Hồ
12 Chí Minh, Vietnam

13 ⁶ Belarusian State Medical University, Prospekt Dzerzhinskogo 83, Minsk 220116, Belarus

14 ⁷ Minsk City Clinical Oncology Center, 1st City Clinical Hospital, Nezavisimosti Svenue, 64, Minsk 220040

15

16 † Corresponding author:

17 Azmaeen Zarif

18 Gonville & Caius College

19 University of Cambridge

20 Trinity Street

21 Cambridge

22 Cambridgeshire

23 CB2 1TA

24 United Kingdom

25 Email: az397@cam.ac.uk

26

27

NOTE: This preprint reports new research that has not been certified by peer review and should not be used to guide clinical practice.

28 **Abstract**

29 Aim: We conducted a meta-analysis on the effectiveness of sodium-glucose co-transporter 2 (SGLT2)
30 inhibitors in heart failure (HF) patients with preserved (HFpEF) and reduced (HFrEF) ejection fraction.

31 Methods: A comprehensive search of several databases for placebo-controlled randomised controlled trials of
32 SGLT2 inhibitors from inception to September 30 2022, limited to English language and excluding animal
33 studies, was conducted. The databases included Medline, Scopus, Cochrane Central, and ClinicalTrials.gov.
34 Randomised controlled studies were chosen if they included HF patients and reported at least one of the
35 predetermined outcomes. Hazard ratios (HRs) or risk ratios were pooled together with the appropriate 95%
36 confidence intervals using a random-effect model. Fourteen trials met the inclusion criteria, with 42 409 HF
37 patients participating (N = 21 678 in the SGLT2 inhibitor arms and N = 20 731 in the placebo arms).

38 Results: SGLT2 inhibitors significantly reduced the composite of HF hospitalisation or cardiovascular death
39 [HR: 0.75 (0.71–0.79); $P < 0.001$; $I^2 = 0\%$], total hospitalisations for heart failure [HR: 0.70 (0.66–
40 0.75); $P < 0.001$; $I^2 = 0\%$], and reduced the occurrence of cardiovascular death [HR: 0.86 (0.81–0.92); $P <$
41 0.001 ; $I^2 = 43\%$]. Sub-group analysis was conducted based on HF status at baseline, EF, diabetes status at
42 baseline, and sex. SGLT2 inhibitors significantly reduced the composite heart failure hospitalisation and
43 cardiovascular death for all the subgroups except for patients with HFpEF at baseline [HR: 0.87 (0.74–
44 1.03); $P = 0.11$; $I^2 = 60\%$] and no diabetes status at baseline [HR: 0.92 (0.73–1.16); $P = 0.50$; $I^2 = 78\%$].

45 Conclusions: In patients with HF, SGLT2 inhibitors may significantly improve clinical outcomes, including
46 all-cause and cardiovascular mortality. In this meta-analysis, SGLT2 inhibitors did not show a reduction in
47 composite heart failure in patients with heart failure with preserved ejection fraction at baseline.

48

49 **Keywords:** sodium-glucose co-transporter 2 inhibitors, heart failure with preserved ejection fraction,
50 heart failure with reduced ejection fraction, hospitalization, mortality

51

52

53

54

55

56

57

58

59

60

61 **Effectiveness of SGLT2 inhibitor therapy in treatment of Heart failure: A Meta-Analysis**

62

63 **Introduction**

64 Sodium-glucose co-transporter inhibitor (SGLT2i) has emerged to be effective in the treatment of heart failure
65 with preserved (HFpEF) and reduced ejection fraction (HFrEF). Recently, The American Heart Association
66 (AHA), The American College of Cardiology (ACC), and Heart Failure Society of America (HSFA) published
67 guidelines for the management of heart failure in which SGLT2i was introduced as a novel therapeutic drug
68 class (1,2). Careful evaluation of new evidence and comprehensive literature research encompassing clinical
69 trials, research studies, and review papers revealed its efficacy and benefit in treating HFrEF to reduce
70 hospitalisation. Since an earlier meta-analysis (3), covering seven major trials, was published in 2020, there
71 have been seven more major trials that have been conducted (4-10). Therefore, we conducted this meta-analysis
72 to provide a revised estimation of the efficacy of SGLT2i in heart failure patients.

73

74 **Method**

75

76 *Data sources and search strategy*

77 Cochrane and PRISMA (Preferred Reporting Items for Systematic review and Meta-Analyses) guidelines were
78 utilised (11,12). A comprehensive search of several databases for placebo-controlled randomised controlled
79 trials of SGLT2 inhibitors from inception to September 30 2022, limited to English language and excluding
80 animal studies, was conducted. The databases included: Medline, Scopus, Cochrane Central, and
81 ClinicalTrials.gov. In order to find relevant results, the following keywords and their MeSH terms were used:
82 (Sodium Glucose Transporter 2 Inhibitors OR sodium-glucose co-transporter inhibitor OR SGLT-2 Inhibitors
83 OR SGLT 2 Inhibitors OR SGLT2 Inhibitors OR Gliflozins OR tofogliflozin OR sotagliflozin OR
84 empagliflozin OR canagliflozin OR dapagliflozin OR ertugliflozin OR luseugliflozin OR ipragliflozin OR
85 remogliflozin OR sergliflozin AND Cardiac Failure OR Myocardial Failure OR Congestive Heart Failure OR
86 heart failure OR Heart Decompensation). See Table S1 for the specific search strategies utilised for the
87 respective databases. For the purpose of finding any pertinent studies that may have been missed during the
88 search, reference lists of the included trials were carefully checked.

89

90

91 *Selection criteria for the study and eligibility*

92 Articles were chosen for inclusion if they complied with all of the following eligibility requirements: HF
93 patients were included, the studies (i) compared SGLT2 inhibitors to placebo, (ii) randomised control trial
94 (RCT) or post hoc assessments of RCTs, and (iii) contained at least one of the specified outcomes of interest.

95

96 *Data extraction, outcomes of interest, and quality evaluation*

97 The composite of cardiovascular death or HF hospitalisation was the major outcome of interest. Other results
98 of interest were: (i) composite of total HF hospitalisation and cardiovascular death; (ii) cardiovascular death;
99 (iii) death with HF at baseline; (iv) all-cause death; (v) renal composite outcome among all patients; and (vi)
100 renal composite outcome based on HF status at baseline. A sub-group analysis based on baseline HF status,
101 ejection fraction, baseline diabetes status, and baseline sex was also conducted.

102

103 *Statistical analysis*

104 All statistical analyses were performed using RevMan (Review Manager Version 5.4), Copenhagen: The
105 Nordic Cochrane Centre, (The Cochrane Collaboration, 2014). For four time-to-event clinical outcomes,
106 including Composite of total HF hospitalisation or cardiovascular death, hospitalisation for heart failure,
107 cardiovascular death, all-cause mortality, and composite renal outcome, hazard ratios and accompanying 95%
108 confidence intervals were retrieved. Hazard ratios were log transformed and pooled using either fixed effect
109 or random effect model. Using the DerSimonian-Liard random-effect model, we accounted for the expected
110 heterogeneity in the study design, difference in the intervention drug and its usage, and variance in
111 operationalisation of outcome. Where heterogeneity was less than 50%, a fixed-effect model was used instead.
112 We applied an inverse variance method to assign the respective weighting of included studies. In a random-
113 effect model, the weight of a study is equal to the inverse of the variance of the study effect and allows the
114 study outcomes to vary according to a normal distribution. However, in a fixed-effect model, the weight given
115 to each study in the analysis varies according to the sample size.

116 A subgroup analysis was conducted based on sex, diabetes status at baseline, heart failure at baseline (this
117 cohort included all patients with HFrEF, HFpEF, and patients with unknown type of heart failure), and for
118 patients with HFrEF, and HFpEF.

119 Subgroup differences were analysed using χ^2 test while statistical heterogeneity was measured via I^2 statistical
120 testing. We used post-hoc analysis statistics of trials for subgroup analysis. Publication bias was analysed using
121 funnel plot. Statistical significance was defined as a P-value ≤ 0.05 .

122

123 **Result**

124 *Study Characteristics*

125 The procedure for searching and choosing studies is summarised in the PRISMA flow chart (Supplementary
 126 Materials, Figure S1). Data were gathered from 14 RCTs that assessed SGLT2 inhibitors. 42 409 HF patients
 127 participated in the total trial population for this meta-analysis (N = 21 678 in the SGLT2 inhibitor arms and N
 128 = 20 731 in the placebo arms). Of those, 18 838 participants made up the HFrEF subgroup (N = 9475 in the
 129 SGLT2 arms and N = 9363 in the placebo arms). There were 8542 participants in the HFpEF subgroup (N =
 130 4441 in the SGLT2 arm and N = 4101 in the placebo arm). The HF type for the remaining individuals were
 131 not indicated in their respective studies.

132

133 **Table 1.** Characteristics of selected studies.

Bibliometric properties		Sample Characteristics				
Author	Study design	N	Age	Gender	Sample	NYHA functional classification, %
Anker et al.(2021)	double-blind, placebo-controlled trial	N=3730 patients Diabetes Intervention: 927 Control: 929 No Diabetes Intervention: 936 Control: 938	N=3730 patients Diabetes Intervention: 66.8±10.0 Control: 66.6±10.3 No Diabetes Intervention: 67.6±11.6 Control: 66.3±12.0	N=3730 patients Diabetes Intervention (F): 210 (22.7) Control: 218 (23.5) No Diabetes Intervention (F): 227 (24.3) Control: 238 (25.4)	Class II-IV heart failure and a left ventricular ejection fraction ≤40%	Diabetes Intervention/Control II: 657 (70.9)/668 (71.9) III: 265 (28.6)/253 (27.2) IV: 5 (0.5)/8 (0.9) No Diabetes Intervention/Control I: 742 (79.3)/ 733 (78.1) II: 190 (20.3)/202 (21.5) III: 4 (0.4)/3 (0.3)
Packer et al.(2021)	double-blind randomized trial	N= 3,730	N=3730 patients Patients without recent volume overload Intervention: 66.7 ± 10.8 Control: 66.4 ± 11.2 Patients with recent volume overload Intervention: 67.9 ± 10.8 Control: 66.6 ± 11.3 median age was 71 years (interquartile range, 61–78 years) Intervention: 71 (62–78) Control: 70 (59–78)	N=3730 patients Patients without recent volume overload Intervention (F): 282 (24.8) Control: 280 (25.2) Patients with recent volume overload Intervention (F): 155 (21.4) Control: 174 (23.1)	New York Heart Association (NYHA) functional class II to IV heart failure and an ejection fraction ≤40%	N=3730 patients Patients without recent volume overload Intervention: 243 (21.3) Control: 221 (19.9) Patients with recent volume overload Intervention: 221 (30.6) Control: 244 (32.4)
Voors et al. (2022)	multinational randomized trial	N=530 Placebo: 265 Intervention: 265	Intervention: 71 (62–78) Control: 70 (59–78)	44% were women Intervention (F): 86 (32.5) Control (F): 93 (35.1)	primary diagnosis of acute de novo or decompensated chronic heart failure regardless of left ventricular ejection fraction	Intervention/Control I: 8 (3.0)/6 (2.3) II: 95 (35.8)/91 (34.3) III: 124 (50.6)/145 (54.7) IV: 26 (9.8)/23 (8.7)
Saraju et al.(2021)	multicenter, double-blind, randomized trial	4401 participants Participants with HF Intervention: 329 Control: 323 Participants without HF Intervention: 1873 Control: 1876	4401 participants Participants with HF Intervention: 64.8 (8.1) Control: 65.5 (8.1) Participants without HF Intervention: 62.5 (9.3) Control: 62.8	4401 participants Participants with HF Intervention (F): 124 (37.7%) Control: 133 (41.2%) Participants without HF Intervention(F): 638 (34.1%) Control: 599 (31.9%)	participants with hemoglobin A1c between 6.5% to 12.0%, an estimated glomerular filtration rate of 30 to <90 mL per minute per 1.73 m ² of body surface area, and elevated albuminuria (urinary albumin:creatinine ratio, >300-5000 mg/g)	
Szarek et al.(2021)	Randomized controlled trial	1222 Intervention: 608 Control: 614	Intervention: 69 (63–76) Control: 70 (64–76)	Intervention (F): 198 (32.6) Control (F): 214 (34.9)	Patients With Type 2 Diabetes Post Worsening Heart Failure	
Anker et al.(2021)	Randomized controlled trial	N=5899 Intervention: 2997 Placebo: 2991	Intervention: 71.8± 9.3 Control: 71.9± 9.6	Intervention (F): 1338(44.6) Control (F): 1338(44.7)		Intervention/Control I: 30.1/11<0.1 II: 2432(81.1)/ 2451(81.9) III: 552(18.4/ 531(17.8) IV: 100.3/ 8(0.3)
Packer et al.(2021)	Double blind randomized controlled trial	N=5988			class II through IV heart failure with an ejection fraction of >40%	
Packer et al.(2020)	Double blind randomized controlled trial	Intervention: 1863 Control: 1867	Intervention: 67.2 (10.8) Control: 66.5 (11.2)	Intervention (F): 437 (23.5) Control: 456 (24.4)	Patients with class II, III, or IV heart failure and an ejection fraction of 40% or less	Intervention/Control II: 75.1/75.0 III: 24.4/24.4 IV: 0.5/0.6
McMurray et al. (2019)	placebo-controlled trial	N=4744 Intervention: 2373 Control:2371	Intervention: 66.2 (11.0) Control: 66.5 (10.8)	Intervention (F): 564 (23.8%) Control: 545 (23.0%)	patients with New York Heart Association class II, III, or IV heart failure and an ejection fraction of 40% or less	Intervention/Control I: 1606 (67.7%)/1597 (67.4%) II: 747 (31.5%)/751 (31.7%) IV: 20 (0.8%)/23 (1.0%)
Radhom et al. (2018)	Randomized controlled trial	N=10142 Intervention: 803 Control: 658	Intervention: 64.1 (8.3) Control: 63.4 (8.3)	Intervention (F): 346 (43.1) Control: 302 (45.9)	participants with type 2 diabetes mellitus and high cardiovascular risk	
Radhom et al. (2018)	Randomized controlled trial	N=10142 Intervention: 803 Control: 658	Intervention: 64.1 (8.3) Control: 63.4 (8.3)	Intervention (F): 346 (43.1) Control: 302 (45.9)	participants with type 2 diabetes mellitus and high cardiovascular risk	
Bhatt et al (2020)	multicenter, double-blind trial	N=1222 Intervention: 608 Control: 614	Intervention: 69 (63–76) Control: 70 (64–76)	Intervention (F): 198 (32.6) Control: 214 (34.9)	patients with type 2 diabetes mellitus who were recently hospitalized for worsening heart failure	
Cosentino et al (2020)	double-blind, placebo-controlled trial	Intervention: 1286 Control: 672	Intervention: 64.2 (7.9) Control: 64.7 (7.8)	Intervention (F): 395 (30.7) Control: 229 (34.1)	patients with type 2 diabetes mellitus and atherosclerotic cardiovascular (CV) disease	Intervention/Control II: 62.0/67.1 III: 5.5/3.8 IV: 0.0/0.0
Fitchett et al (2016)	double-blind, placebo-controlled trial	Patients with heart failure Intervention: 462 Control: 244 Patients without heart failure Intervention: 4225 Control: 2089	Patients with heart failure Intervention: 64.5 (8.8) Control: 64.5 (8.9) Patients without heart failure Intervention: 63.0 (8.5) Control: 63.1 (8.8)	Patients with heart failure Intervention (M): 320 (69.3) Control: 175 (71.7) Patients without heart failure Intervention (M): 3016 (71.4) Control: 1505 (72.0)	patients with type 2 diabetes and high cardiovascular risk	
Wiviott (2018)	randomized, double-blind, multinational, placebo-controlled trial	Intervention: 8582 Control: 8578	Intervention: 63.9±6.8 Control: 64.0±6.8	Intervention (F): 63.9±6.8 Control: 3251 (37.9)	type 2 diabetes who had or were at risk for atherosclerotic cardiovascular disease	

134

135

136

137

138

139 **Table 2.** Baseline patient characteristics in selected studies.

140

Author	Intervention	Control	Baseline characteristics		Diabetes	Hospitalization for heart failure	Composit hospitalization and cardiac death
			HFpEF	HFrEF			
Anker et al.(2021)	empagliflozin 10 mg daily	placebo in addition to recommended therapy			1856 (50%) and 1268 (34%) had prediabetes	N=3730 patients Diabetes Intervention: 316 (34.1) Control: 314 (33.8) No Diabetes Intervention: 261 (27.9) Control: 260 (27.7)	Intervention: 361/1863 (19.4) Control: 462/1867 (24.7) HR: 0.75 (0.65, 0.86)
Packer et al.(2021)	empagliflozin 10 mg daily	placebo in addition to recommended therapy				N=3730 patients Patients without recent volume overload Intervention: 293 (25.7) Control: 282 (25.4) Patients with recent volume overload Intervention: 2283 (39.1) Control: 291 (38.6)	
Voors et al. (2022)	empagliflozin 10 mg daily	placebo			Intervention: 124 (46.8) Control: 116 (43.8)		Intervention: 34/265 Control: 49/265 HR: 0.69 (0.45-1.08)
Saraju et al.(2021)	canagliflozin 100 mg	Placebo			4401 participants Participants with HF Intervention (F): 14.8 (8.6) Control: 15.1 (8.5) Participants without HF Intervention(F): 15.7 (8.7) Control: 16.2 (8.6)		HR: 0.70 (0.59, 0.82) Overall events: 585/4401 Intervention: 43.2/1000 Control: 61.2/1000
Szarek et al.(2021)	200 mg of sotagliflozin	Placebo			Intervention: 198 (32.6) Control: 214 (34.9)		
Anker et al.(2021)	empagliflozin 10 mg daily	Placebo			Intervention (F): 1466(48.9) Control(F): 1472(49.2)	Intervention(F): 699 (23.3) Control (F): 670 (22.4)	Intervention: 415(13.8)/2997 Control: 511(17.1)/2991
Packer et al.(2021)	empagliflozin (10 mg once daily)	Placebo					Empagliflozin reduced the combined risk of cardiovascular death, hospitalization for heart failure, or an emergency or urgent heart failure visit requiring intravenous treatment (432/2997 versus 546/2991 patients [empagliflozin versus placebo, respectively]; hazard ratio, 0.77 [95% CI, 0.67-0.87]; P<0.0001).
Packer et al.(2020)	empagliflozin (10 mg once daily)	Placebo			Intervention: 927 (49.8) Control: 929 (49.8)	Intervention: 577 (31.0) Control: 574 (30.7)	Intervention: 361 (19.4)/1863 (30.9%) Control: 462 (24.7)/1867 (40.3%) HR: 0.75 (0.65 to 0.86)
McMurray et al. (2019)	dapagliflozin (at a dose of 10 mg once daily)	Placebo			Intervention: 1075 (45.3%) Control: 1064 (44.9%)	Intervention: 1124 (47.4%) Control: 1127 (47.5%)	Intervention: 567/2373(23.9%) Control: 724/2371 (31.3%) HR: 0.75 (0.65-0.88)
Radhom et al. (2018)	canagliflozin 300 mg, canagliflozin 100 mg	Control					Intervention: 35.4/1000 Control: 56.8/1000 HR: 0.61 (0.46-0.80)
Radhom et al. (2018)	canagliflozin 300 mg, canagliflozin 100 mg	Control					Intervention: 35.4/1000 Control: 56.8/1000 HR: 0.61 (0.46-0.80)
Bhatt et al (2020)	200 mg of sotagliflozin once daily	Placebo	Intervention: 127 (20.9) Control: 129 (21.0)	Intervention: 481 (79.1) Control: 85 (79.0)			Intervention: 245 (51.0) Control: 355 (76.3) HR: 0.67 (0.52 to 0.85)
Cosentino et al (2020)	once-daily ertugliflozin 5 mg, 15 mg	Placebo	Intervention: 680 (52.9) Control: 327 (48.6)	Intervention: 319 (24.8) Control: 159 (23.7)			All patients Intervention: 139/5499 Control: 99/2747 HR: 0.70 (0.54-0.90)
Fitchett et al (2016)	empagliflozin 10 mg, empagliflozin 25 mg	Placebo					All patients: Intervention: 265/4687 patients (5.7%) Control: 198/2333 patients (8.5%) HR: 0.66 (95% confidence interval, 95% CI: 0.55-0.79)
Wiviott (2018)	10 mg of dapagliflozin daily	Placebo					Intervention: 417 (4.9)/8582 Control: 496 (5.8)/8578 HR: 0.83 (0.73-0.95)

141

142

143

144

145

146

147

148

149 **Table 3.** Summary clinical outcomes reported from selected studies.

150

Author	Outcome			
	Hospitalization for heart failure	Cardiac death	All cause death	Renal composite
Anker et al.(2021)	Intervention: 388/1863 Control: 553/1867 HR: 0.70 (0.58, 0.85)	Intervention: 187/1863 (10.0) Control: 202/1867 (10.8) HR: 0.92 (0.75, 1.12)		Intervention: 30/1863 (1.6) Control: 58/1867 (3.1) HR: 0.50 (0.32, 0.77) HR: 0.50 (0.32, 0.77)
Packer et al.(2021)				
Voors et al.(2022)	Intervention (14 (5.3)/265) Control (12 (4.5)/265) HR: 1.179 (0.534–2.601)	Intervention: 11 (4.2)/265 Control: 22 (8.3)/265		
Sarraju et al.(2021)	Overall events: 230/4401 Intervention: 15.7/1000 Control: 25.3/1000 HR: 0.61 (0.47, 0.80)	Overall events: 486/4401 Intervention: 38.7/1000 Control: 48.7/1000 HR: 0.80 (0.67, 0.95)	Overall events: 369/4401 Intervention: 29.0/1000 Control: 35.0/1000 HR: 0.83 (0.68, 1.02)	Overall events: 377/4401 Intervention: 27.0/1000 Control: 40.0/1000 HR: 0.66 (0.53, 0.81)
Szarek et al.(2021)	HR: 0.76 (0.63–0.93) Intervention: 97.6 (83.4–111.8)/608 Control: 126.6 (107.6–145.6)/614			
Anker et al.(2021)	Intervention:259(8.6)/ 2997 control: 352(11.8)/ 2991	intervention : 219(7.3)/ 2997 Control: 244(8.2)/ 2991	Intervention: 422(14.1)/ 2997 Control: 427(14.3)/2991	Intervention: 108(3.6)/ 2997 control: 112(3.7)/ 2991
Packer et al.(2021)	Empagliflozin reduced the total number of heart failure hospitalizations that required intensive care (hazard ratio, 0.71 [95% CI, 0.52–0.96]; P=0.028) [(86/2997 versus 117/2991 patients [empagliflozin versus placebo, respectively]			Compared with patients in the placebo group, fewer patients in the empagliflozin group reported outpatient intensification of diuretics (482/2997 versus 610/2991; hazard ratio, 0.76 [95% CI, 0.67–0.86]; P<0.0001),
Packer et al.(2020)	Intervention:388/1863 Control: 553/1867 HR: 0.70 (0.58 to 0.85)	Intervention: 187/1863 (10.0%) Control: 202/1867 (10.8%) HR: 0.92 (0.77-1.12)	Intervention: 249/1863 (13.4%) Control: 266/1867 (14.2%) HR: 0.92 (0.77-1.10)	Intervention:30 (1.6)/1863 Control: 58 (3.1)/1867 HR: 0.50 (0.32 to 0.77)
McMurray et al. (2019)	Intervention: 231/2373(9.7%) Control: 318/2371 (13.4%) HR: 0.70 (0.59-0.83)	Intervention: 227/2373(9.6%) Control: 273/2371 (11.5%) HR: 0.82 (0.69-0.98)	Intervention: 276/2373 (11.6%) Control: 329/2371 (13.9%) HR: 0.83 (0.71-0.97)	Intervention: 28/2373(1.2%) Control: 39/2371 (1.6%) HR: 0.71 (0.44-1.16)
Radhom et al. (2018)	Intervention: 14.1/1000 Control: 28.1/1000 HR: 0.51 (0.33-0.78)	Intervention: 24.3/1000 Control: 31.6/1000 HR: 0.72 (0.51-1.02)	Intervention: 29.2/1000 Control: 38.7/1000 HR: 0.70 (0.51-0.96)	Intervention: 6.8/1000 Control: 11.0/1000 HR: 0.67 (0.30-1.51)
Radhom et al. (2018)	Intervention: 14.1/1000 Control: 28.1/1000 HR: 0.51 (0.33-0.78)	Intervention: 24.3/1000 Control: 31.6/1000 HR: 0.72 (0.51-1.02)	Intervention: 29.2/1000 Control: 38.7/1000 HR: 0.70 (0.51-0.96)	Intervention: 6.8/1000 Control: 11.0/1000 HR: 0.67 (0.30-1.51)
Bhatt et al (2020)	Intervention: 194 (40.4) Control: 297 (63.9) HR: 0.64 (0.49 to 0.83)	Intervention: 51 (10.6) Control: 58 (12.5) HR: 0.84 (0.58 to 1.22)	Intervention: 65 (13.5) Control: 76 (16.3) HR: 0.82 (0.59 to 1.14)	
Cosentino et al (2020)				
Fitchett et al (2016)	All patients: Intervention: 126/4687 patients (2.7%) Control: 95/2333 patients (4.1%) HR: 0.65 (95% CI: 0.50–0.85)	All patients: Intervention: 172/4687 patients Control: 137/2333 patients HR: 0.62 (95% CI: 0.49–0.77)	All patients: Intervention: 269/4687 patients Control: 194/2333 patients HR: 0.68 (95% CI: 0.57–0.82)	
Wiviott (2018)	Intervention: 212 (2.5)/8582 Control: 286 (3.3)/8578 HR: 0.73 (0.61–0.88)	Intervention: 245 (2.9)/8582 Control: 249 (2.9)/8578 HR: 0.93 (0.82–1.04)	Intervention: 529 (6.2)/8582 Control: 570 (6.6)/8578 HR: 0.98 (0.82–1.17)	

151

152

153

154

155

156

157

158

159 **Table 4.** Sub-group analysis clinical outcomes. ARB: angiotensin receptor blocker; ARNI: angiotensin
 160 receptor/neprilysin inhibitor; ACE: angiotensin-converting enzyme; CRT-P: cardiac resynchronisation therapy
 161 pacemaker; eGFR: estimated glomerular filtration rate; ICD: implantable cardiac defibrillator; LVEF: left
 162 ventricular ejection fraction; NT-proBNP: N-terminal pro-B type natriuretic peptide; NYHA: New York Heart
 163 Association; SD: standard deviation; HFpEF: heart failure with preserved ejection fraction; HFrEF: heart failure
 164 with reduced ejection fraction. Information is presented as n (%), mean (SD), or median (interquartile range).
 165

166

Author	Composit hospitalization and cardiac death	Hospitalization for heart failure	Cardiac death	All cause death	Renal composite
Anker et al.(2021)	Diabetes Intervention:200/927 (21.6) Control: 205/929 (28.5) HR: 0.72 (0.60, 0.87) No Diabetes Intervention: 161/936 (17.2) Control: 197/938 (21.0) HR: 0.78 (0.64, 0.97)	Diabetes Intervention: 221/927 Control: 337/929 HR: 0.65 (0.50, 0.85) No Diabetes Intervention: 167/936 Control: 216/938 HR: 0.76 (0.57, 1.01)	Diabetes Intervention: 104/927 (11.2) Control: 113/929 (12.2) HR:0.92 (0.71, 1.20) No Diabetes Intervention: 83/936 (8.9) Control: 89/938 (9.5) HR: 0.92 (0.68, 1.24)		Diabetes Intervention: 22/927 (2.4) Control: 39/929 (4.2) HR:0.53 (0.31, 0.90) No Diabetes Intervention: 8/936 (0.9) Control: 19/938 (2.0) HR: 0.42 (0.19, 0.97)
Packer et al.(2021)	Patients without recent volume overload Intervention: 182 (16.0) Control: 246 (22.2) HR: 0.71 (0.58-0.86), p = 0.0004 Patients with recent volume overload Intervention: 179 (24.8) Control: 214 (28.4) HR: 0.81 (0.66-0.99), p = 0.035	Patients without recent volume overload Intervention: 181 Control: 275 HR: 0.60 (0.47-0.78), p = 0.0002 Patients with recent volume overload Intervention: 207 Control: 274 HR: 0.84 (0.63-1.12), p = 0.24	Patients without recent volume overload Intervention: 93 (8.2) Control: 104 (9.4) HR: 0.89 (0.67-1.17), p = 0.40 Patients with recent volume overload Intervention: 94 (13.0) Control: 98 (13.0) HR: 0.96 (0.72-1.27), p = 0.76		Patients without recent volume overload Intervention: 15 (1.3) Control: 28 (2.5) HR: 0.51 (0.27-0.95), p = 0.034 Patients with recent volume overload Intervention: 15 (2.1) Control: 30 (4.0) HR: 0.49 (0.26-0.92), p = 0.025
Voors et al. (2022)	Gender: Male Intervention: 179 Control: 172 WR: 1.39 (1.06-1.92) Female: Intervention: 86 Control: 93 WR: 1.27 (0.88-1.83) Diabetes Intervention: 124 Control: 116 Win ratio: 1.47 (1.07-2.02) No Diabetes Intervention: 141 Control: 149 HR: 1.30 (0.97-1.73) Reduced ejection fraction Intervention: 182 Control: 172 HR: 1.35 (1.04-1.75) Preserved ejection fraction Intervention: 76 Control: 93 HR: 1.39 (0.95-2.03)				
Saraju et al.(2021)	HF Intervention: 62.4/1000 Control: 65.5/1000 HR: 0.89 (0.61, 1.31) No HF Intervention: 39.9/1000 Control: 60.5/1000 HR: 0.66 (0.55-0.79)	HF Intervention: 67.5/1000 Control: 7805/1000 HR: 0.81 (0.57, 1.17) No HF Intervention: 11.7/1000 Control: 2.5/1000 HR: 0.54 (0.39-0.75)	HF Intervention: 62.1/1000 Control: 65.1/1000 HR: 0.91 (0.62, 1.34) No HF Intervention: 34.7/1000 Control: 45.9/1000 HR: 0.76 (0.62-0.93)	HF Intervention: 51.9/1000 Control: 54.1/1000 HR: 0.93 (0.61, 1.41) No HF Intervention: 25.1/1000 Control: 3.8/1000 HR: 0.79 (0.63-1.00)	HF Intervention: 25.2/1000 Control: 33.4/1000 HR: 0.69 (0.39, 1.21) No HF Intervention: 27.3/1000 Control: 41.6/1000 HR: 0.65 (0.52-0.81)
Szack et al.(2021)					
Anker et al.(2021)	Gender: Male Intervention: 253/1659 Control: 297/1653 HR: 0.81 (0.69-0.96) Female: Intervention: 162/1338 Control: 214/1338 HR: 0.75 (0.61-0.92) Diabetes Intervention: 239/1466 Control: 291/1472 HR: 0.79 (0.67-0.94) No Diabetes Intervention: 1176/1531 Control: 220/1519 HR: 0.78 (0.64-0.95) Reduced ejection fraction Intervention: 145/995 Control: 193/988 HR: 0.71 (0.57-0.88) Preserved ejection fraction Intervention: 132/974 Control: 145/973 HR: 0.87 (0.69-1.10)				
Packer et al.(2021)					
Packer et al.(2020)	Gender: Male Intervention: 294/1426 Control: 353/1411 HR: 0.80 (0.68-0.93) Female: Intervention: 307/1809 Control: 406/1826 HR: 0.73 (0.63-0.85) Diabetes Intervention: 215/1075 Control: 271/1064 HR: 0.72 (0.60-0.87) No Diabetes Intervention: 161/936 Control: 197/938 HR: 0.75 (0.63-0.90) Reduced ejection fraction Intervention: 80/699 Control: 115/724 HR: 0.70 (0.53-0.93) Preserved ejection fraction Intervention: 108/526 Control: 97/475 HR: 0.99 (0.76-1.31)				

McMurray et al. (2019)	<p>Gender: Male Intervention: 294/1426 Control: 353/1411 HR: 0.80 (0.68-0.93)</p> <p>Female: Intervention: 67/437 Control: 109/456 HR: 0.59 (0.44-0.80)</p> <p>Diabetes Intervention: 200/927 Control: 265/929 HR: 0.72 (0.60-0.87)</p> <p>No Diabetes Intervention: 171/1298 Control: 231/1307 HR: 0.73 (0.60-0.88)</p> <p>Reduced ejection fraction Intervention: 100/1193 Control: 155/1179 HR: 0.63 (0.49-0.80)</p> <p>Preserved ejection fraction Intervention: 286/1179 Control: 347/1191 HR: 0.79 (0.68-0.92)</p>				
Radhom et al. (2018)					
Radhom et al. (2018)					
Bhatt et al (2020)	<p>Gender: Male Intervention: 55.7/100 Control: 89.3/100 HR: 0.52 (0.47-0.82)</p> <p>Female: Intervention: 41.9/100 Control: 52.0 HR: 0.80 (0.51-1.25)</p> <p>Reduced ejection fraction Intervention: 56.9/100 Control: 79.9/100 HR: 0.72 (0.56-0.94)</p> <p>Preserved ejection fraction Intervention: 30.6/100 Control: 64.0/100 HR: 0.48 (0.27-0.86)</p>				
Cosentino et al (2020)		<p>HF Intervention: 69/1286 Control: 55/671 HR: 0.63 (0.44-0.90)</p> <p>No HF Intervention: 70/4213 Control: 44/2075 HR: 0.79 (0.54, 1.15)</p> <p>Reduced Ejection Fraction Intervention: 37/638 Control: 37/321 HR: 0.48 (0.30, 0.76)</p> <p>Preserved ejection fraction Intervention: 66/2724 Control: 37/1323 HR: 0.86 (0.58, 1.29)</p>			
Fitchett et al (2016)	<p>Patients with Heart Failure Intervention: 75/462 Control: 49/244 HR: 0.72 (0.50-1.04)</p> <p>Patients without heart failure Intervention: 190/4225 Control: 149/2089 HR: 0.63 (0.51-0.78)</p>	<p>Patients with Heart Failure Intervention: 48/462 Control: 30/244 HR: 0.75 (0.48-1.19)</p> <p>Patients without heart failure Intervention: 78/4225 Control: 65/2089 HR: 0.59 (0.43-0.82)</p>	<p>Patients with Heart Failure Intervention: 38/462 Control: 27/244 HR: 0.71 (0.43-1.16)</p> <p>Patients without heart failure Intervention: 134/4225 Control: 110/2089 HR: 0.60 (0.47-0.77)</p>	<p>Patients with Heart Failure Intervention: 56/462 Control: 35/244 HR: 0.79 (0.52-1.20)</p> <p>Patients without heart failure Intervention: 213/4225 Control: 159/2089 HR: 0.66 (0.51-0.81)</p>	
Wiviott (2018)	<p>Patients with Heart Failure Intervention: 142/852 Control: 172/872 HR: 0.79 (0.63-0.99)</p> <p>Patients without heart failure Intervention: 275/7730 Control: 324/7706 HR: 0.84 (0.72-0.99)</p>				

173

174

175

176

177

178

179

180

181

182

183

184

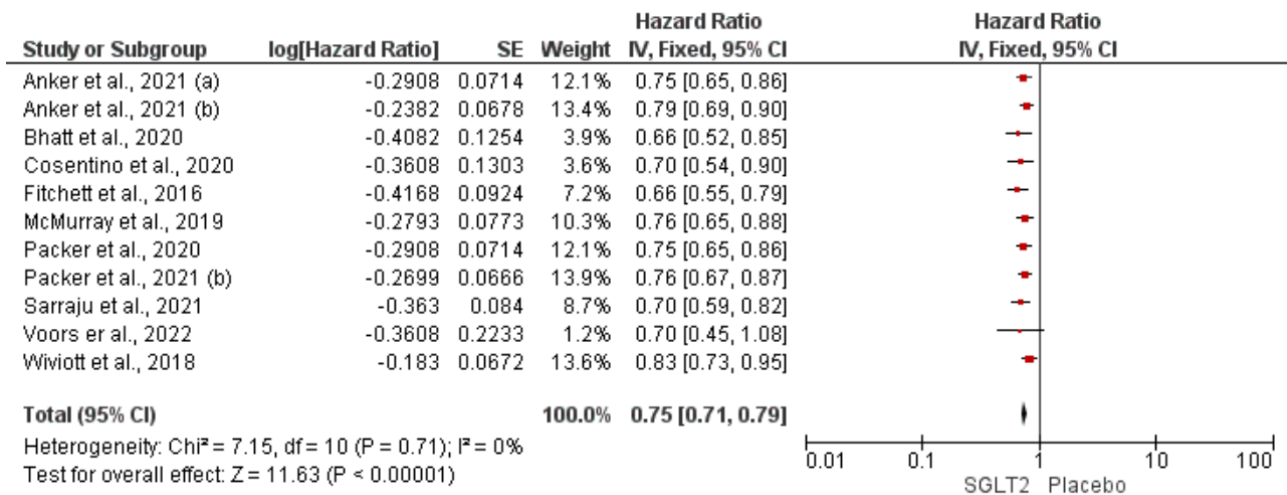
185

186 **Results**

187 *Composite of HF hospitalization or cardiac death*

188 Results of meta-analysis indicated that SGLT2 inhibitors significantly reduced the composite of HF hospitalisation
 189 or cardiovascular death [HR: 0.75 (0.71–0.79); $P < 0.001$; $I^2 = 0\%$] (Figure 1). Sub-group analysis was conducted
 190 to based on HF status at baseline, ejection fraction, diabetes status at baseline, and gender. SGLT2 inhibitors
 191 significantly reduced the composite heart failure hospitalisation and cardiac death for all the subgroups except for
 192 patients with HFpEF at baseline [HR: 0.87 (0.74–1.03); $P = 0.11$; $I^2 = 60\%$] and no diabetes status at baseline [HR:
 193 0.92 (0.73–1.16); $P = 0.50$; $I^2 = 78\%$]. Moreover, there was significant difference between patients with and
 194 without heart failure at baseline [$\chi^2 = 0.06$, $df = 1$; $P = 0.81$], $I^2 = 0\%$], patients with reduced and preserved ejection
 195 fraction [$\chi^2 = 0.08$, $df = 1$; $P = 0.37$], $I^2 = 0\%$], patients with and without diabetes status at baseline [$\chi^2 = 0.62$, $df =$
 196 1; $P = 0.43$], $I^2 = 0\%$], and men and women [$\chi^2 = 0.34$, $df = 1$; $P = 0.56$], $I^2 = 0\%$]. Sub-group analyses are presented
 197 in Figure 2.

198

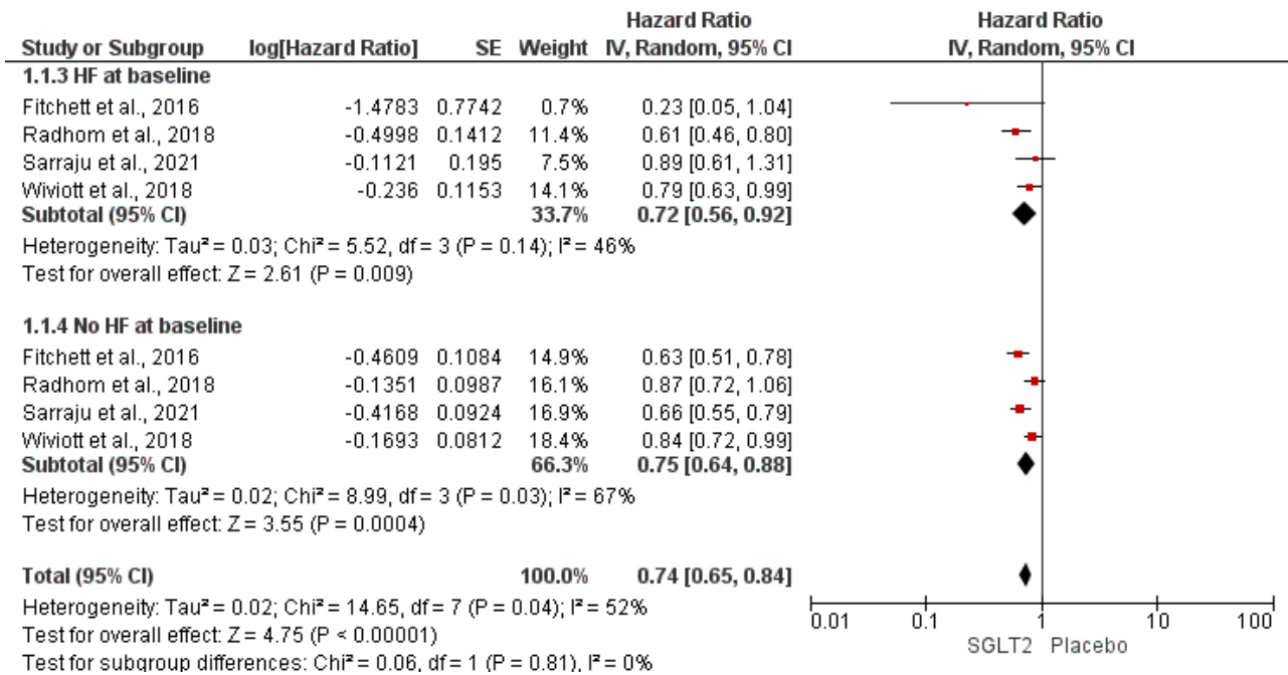


199 **Figure 1.** Forest plot displaying effect size for composite score of HF hospitalisation or cardiac death among all
 200 patients

201

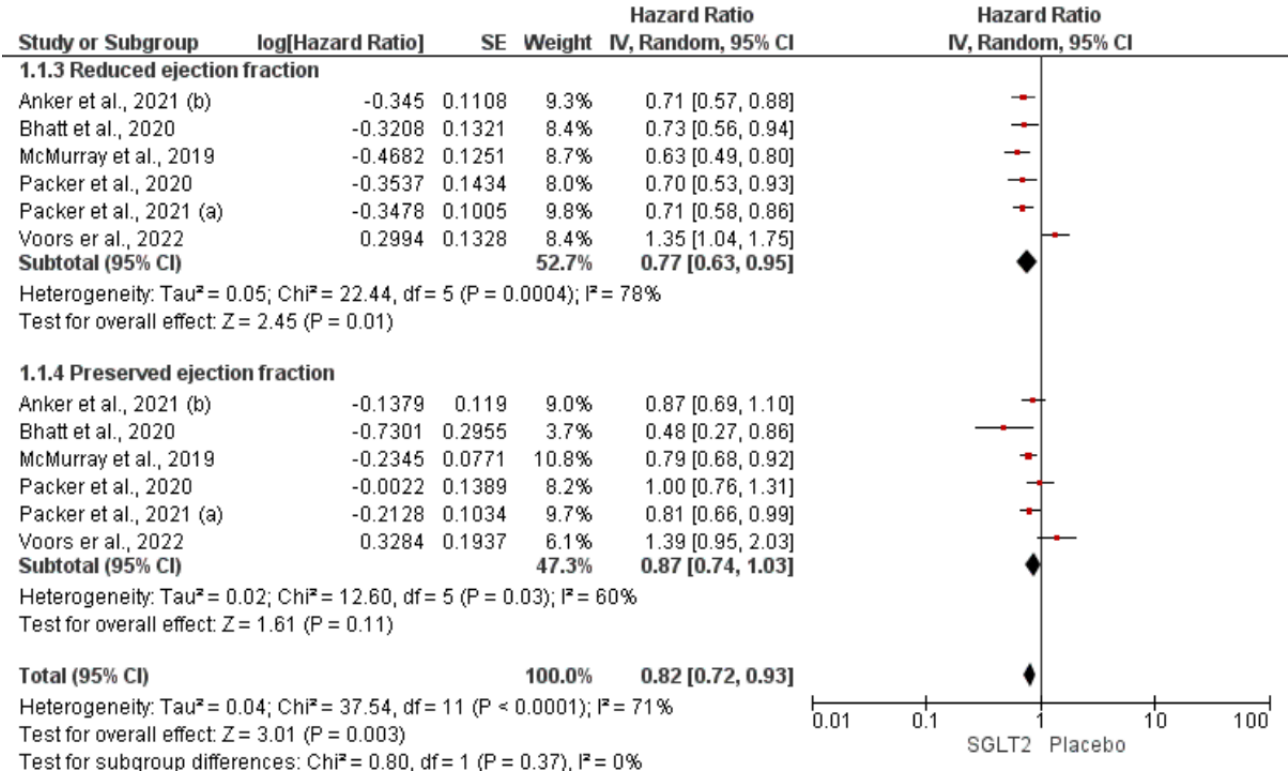
202

203 A



204

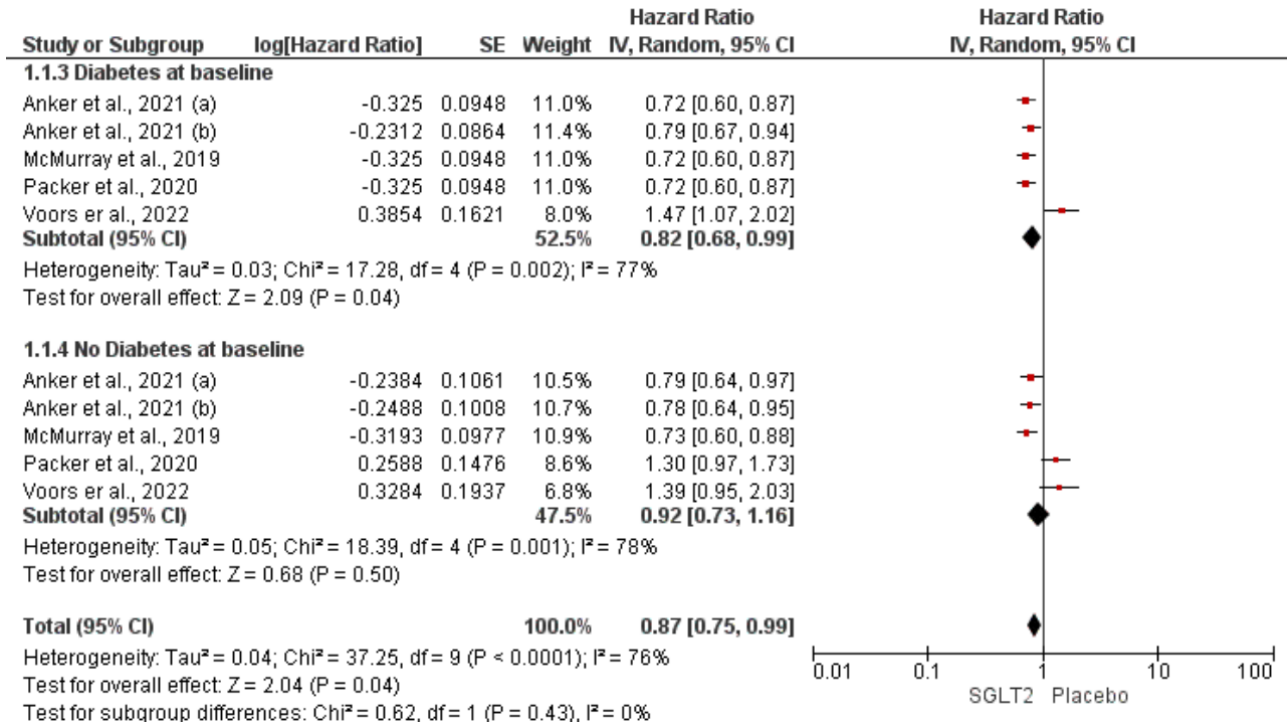
205 B



206

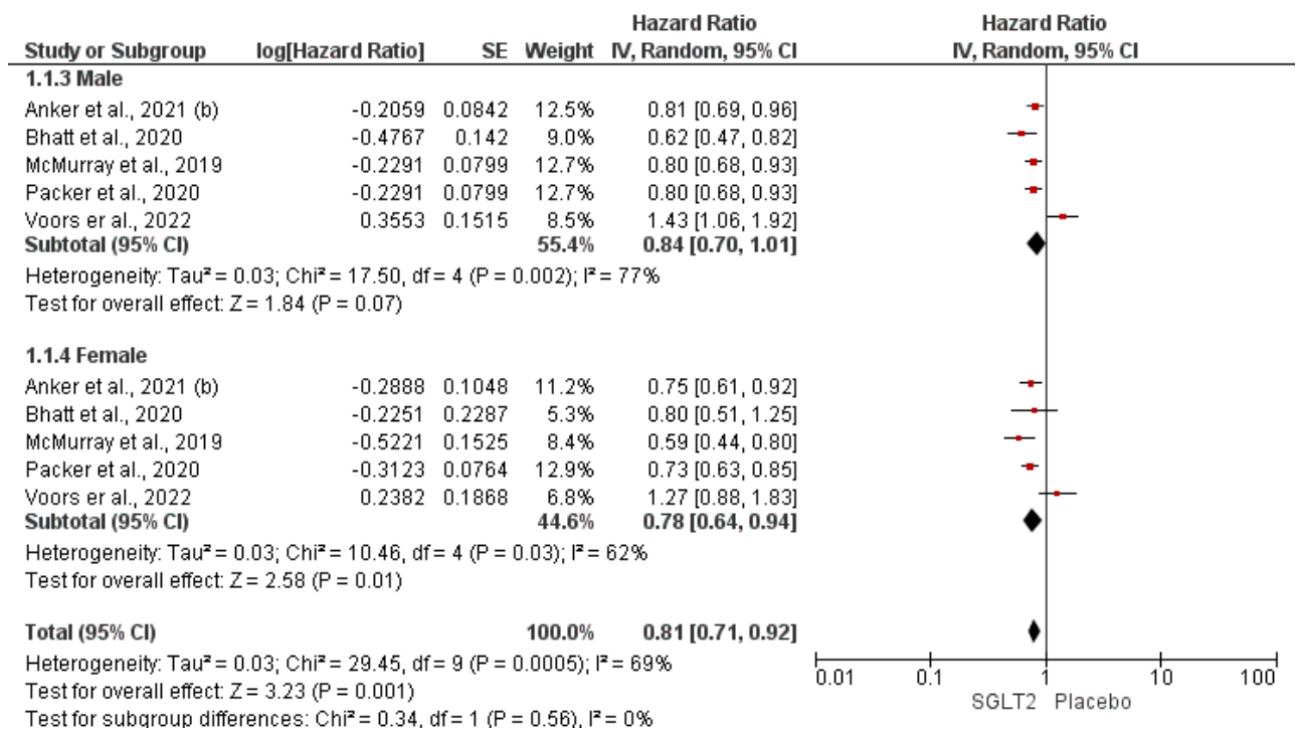
207

208 C



209

210 D



211

212 **Figure 2.** Sub-group analysis for composite score of HF hospitalisation or cardiac death based on HF status at
213 baseline (A), HFrEF & HFpEF (B), diabetes status at baseline (C), and gender (D).

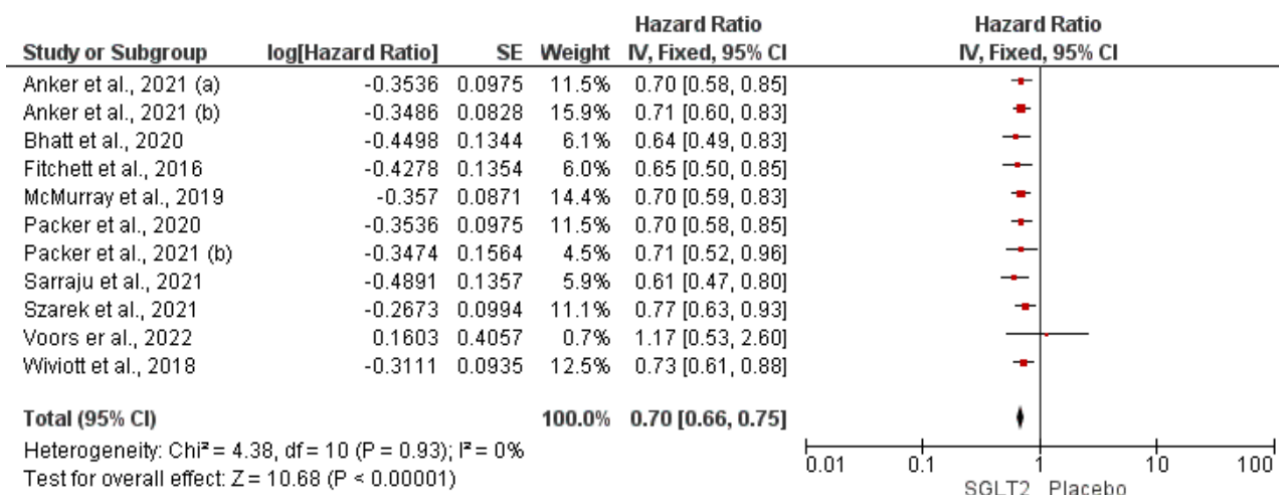
214

215 *Hospitalization for heart failure (HHF)*

216 SGLT2 inhibitors resulted in a significant reduction in total hospitalisations for heart failure [HR: 0.70 (0.66–
217 0.75); $P < 0.001$; $I^2 = 0\%$] (Figure 3). Sub-group analysis was conducted for patients with and without heart failure
218 at baseline and results indicated that SGLT2 inhibitors reduced hospitalisation for heart failure among both group
219 with no significant difference between them [$\chi^2 = 0.02$, $df = 1$; $P = 0.89$], $I^2 = 0\%$] (Figure 4).

220

221



222 **Figure 3.** Forest plot displaying effect size for HHF.

223

224

225

226

227

228

229

230

231

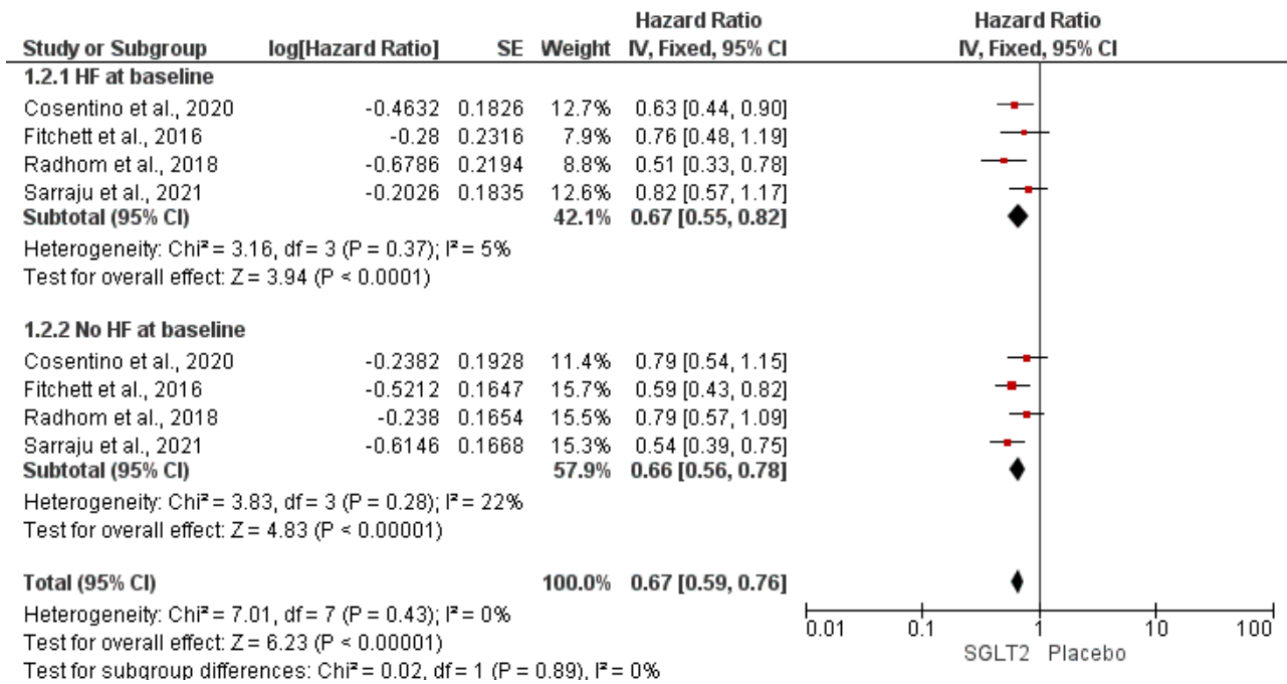
232

233

234

235

236



237

238 **Figure 4.** Sub-group analysis for HHF based on HF status at baseline.

239

240 *Cardiac Death*

241 SGLT2 inhibitors significantly reduced the occurrence of cardiovascular death among participants [HR: 0.86 (0.81–
242 0.92); P < 0.001; I² = 43%] (Figure 5). The findings were consistent in patients with and without heart failure at
243 baseline [χ^2 = 0.01, df = 1; P = 0.97), I² = 0%] depicted in sub-group analysis Figure 6.

244

245

246

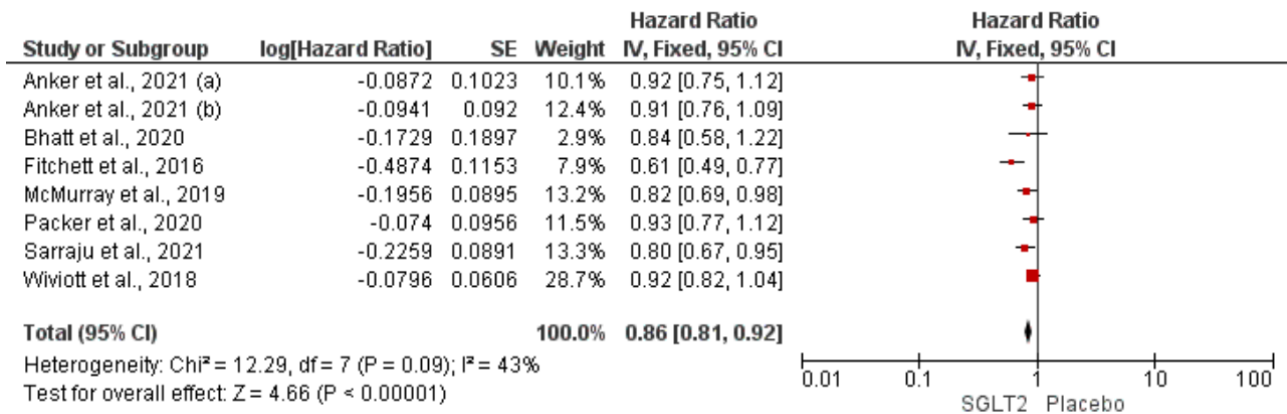
247

248

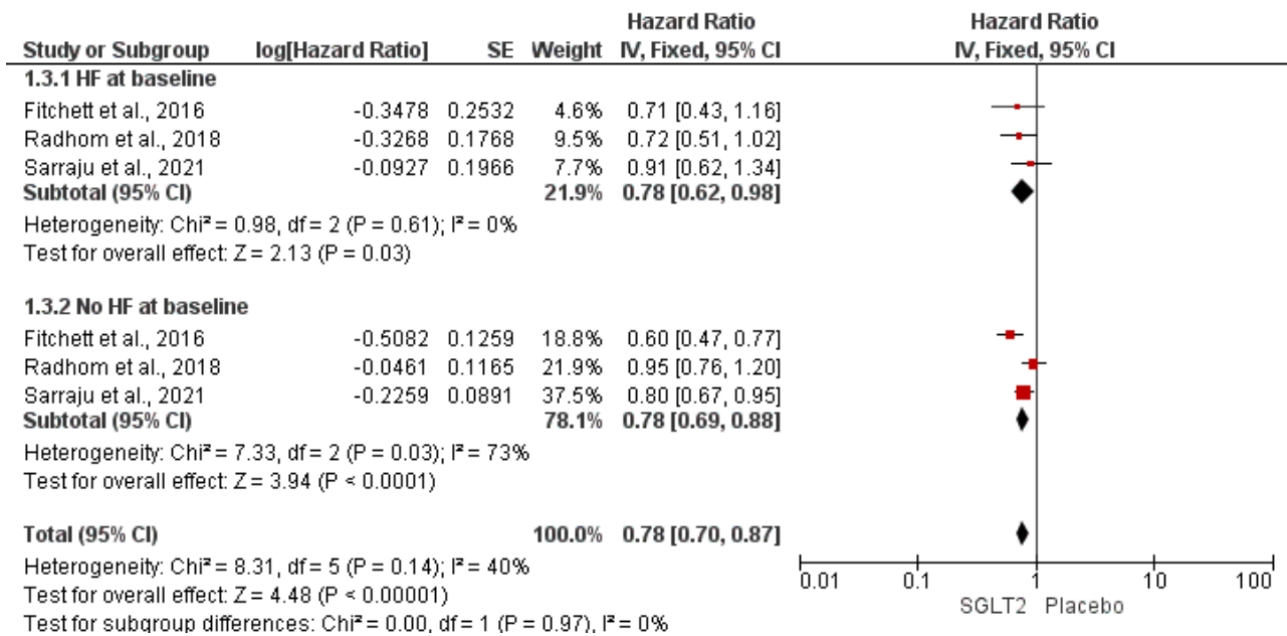
249

250

251



252 **Figure 5.** Forest plot displaying effect size for cardiac death among all patients.



253 **Figure 6.** Sub-group analysis for cardiac death based on HF status at baseline.

254

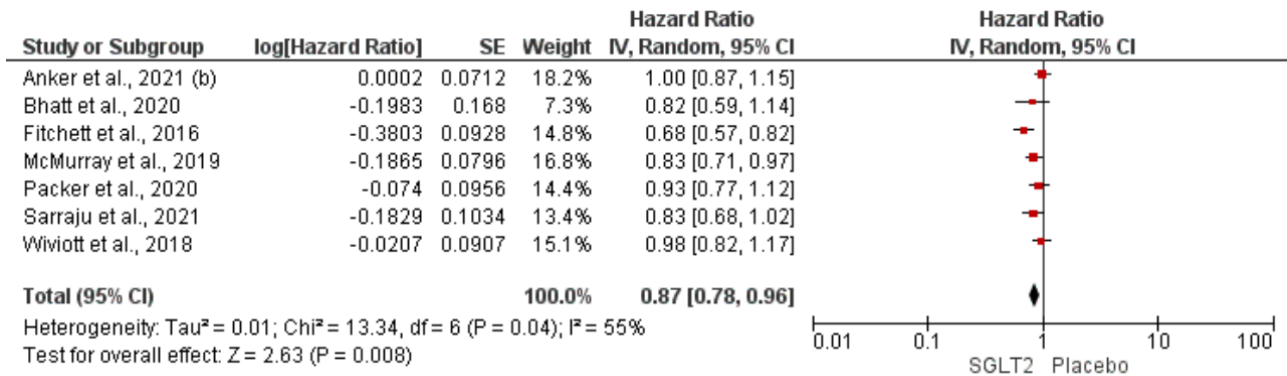
255

256

257 All-cause mortality

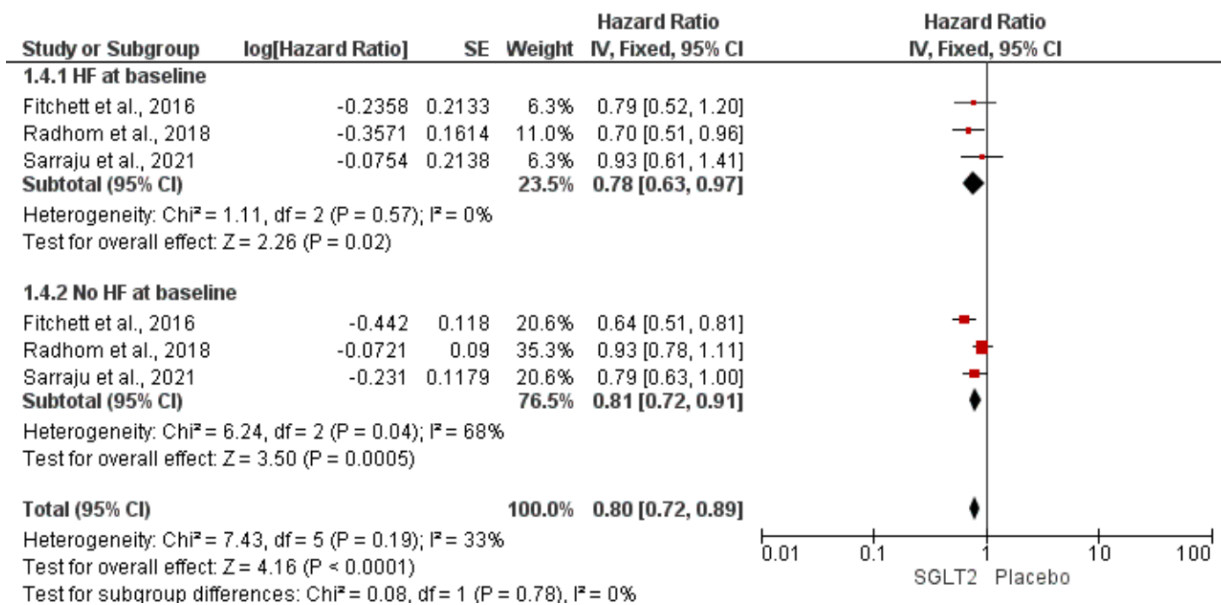
258 SGLT2 inhibitors significantly reduced all-cause mortality among participants [HR: 0.87 (0.78–0.96); P =
259 0.04; I² = 55%] (Figure 7). The findings were consistent in patients with and without heart failure at baseline [χ^2 =
260 0.08, df = 1; P = 0.78), I² = 0%] as demonstrated by sub-group analysis (Figure 8).

261



262 **Figure 7.** Forest plot displaying effect size for all-cause mortality among all patients.

263



264

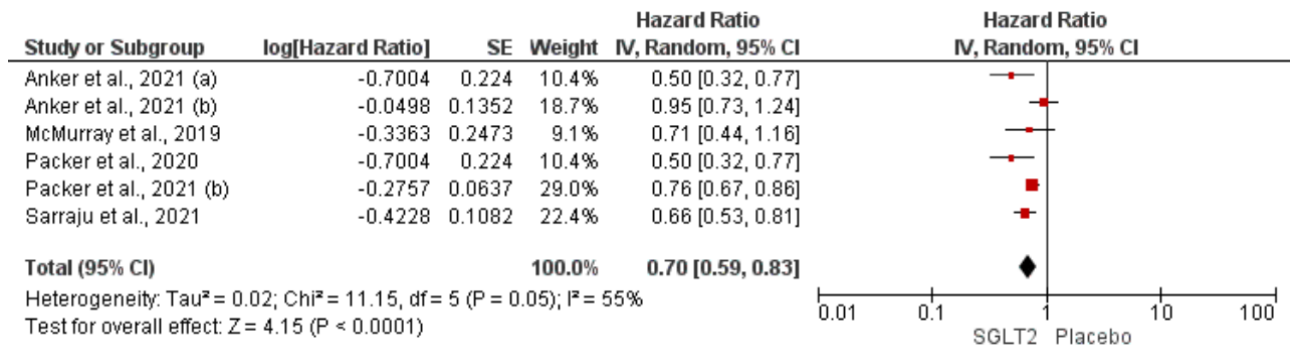
265 **Figure 8.** Sub-group analysis for all-cause mortality based on HF status at baseline.

266

267

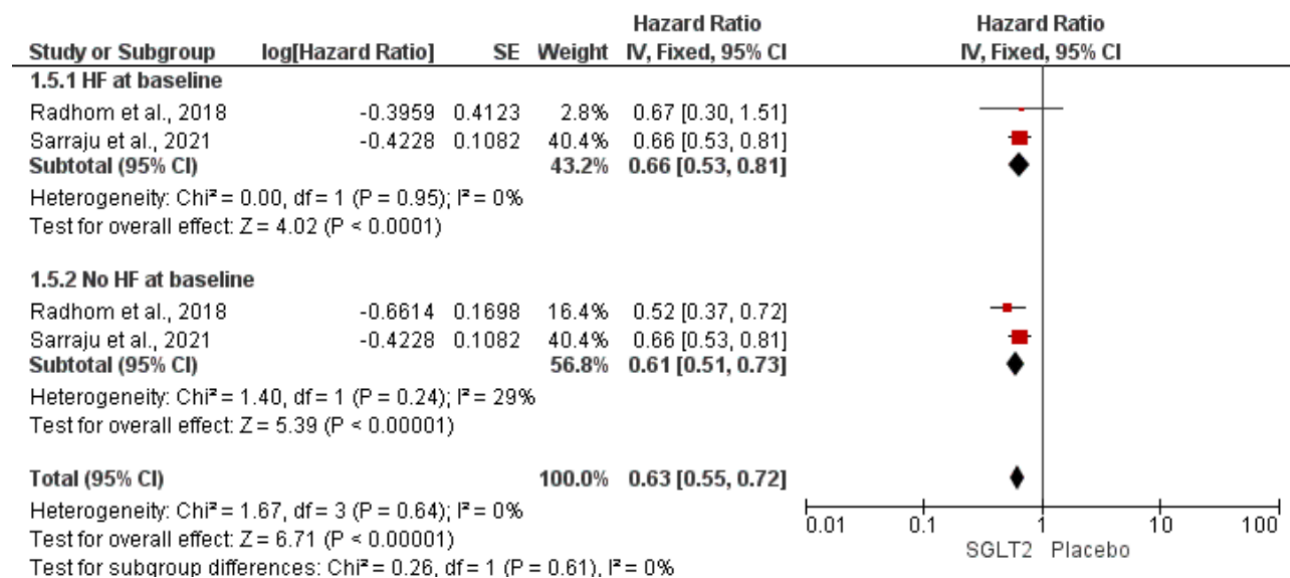
268 *Renal composite outcome*

269 SGLT2 inhibitor reduced the occurrence of the composite renal endpoint [HR: 0.67 (0.53–0.83); $P < 0.001$; $I^2 = 55\%$] (Figure 9). This finding was consistent in both post-hoc analyses for patients with and
270 without heart failure [$\chi^2 = 0.26$, $df = 1$; $P = 0.61$], $I^2 = 0\%$] (Figure 10).



272 **Figure 9.** Forest plot displaying effect size for renal composite outcome among all patients.

273



274 **Figure 10.** Sub-group analysis for renal composite outcome based on HF status at baseline.

275

276

277

278

279

280

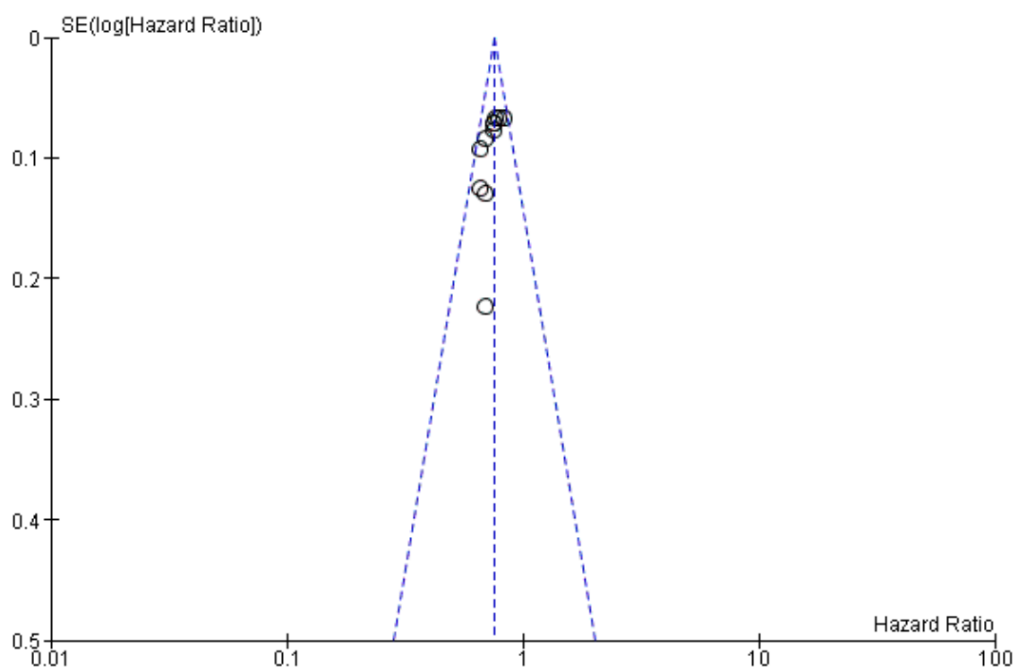
281

282 *Assessing publication bias*

283 In the funnel plot (Figure 11), the data points represent the RCTs included in the study. They all lie within the 95%
284 CI. The data points are predominantly located in the apex of the 95% CI with some predominantly located on the
285 left. The depicted asymmetry indicates there might have been some bias in the study that might overestimate the
286 intervention's effect and this should be kept in mind when used by clinicians as a reference.

287

288



289 **Figure 11.** Funnel plot to assess publication bias.

290

291

292

293

294

295

296

297

298

299

300

301 **Discussion**

302

303 SGLT2 inhibitors significantly decreased the risk of cardiovascular mortality, HF hospitalisation, all-cause
304 mortality, and renal outcomes in this extensive investigation involving over 42 000 HF patients. These results
305 were true when the HFrEF population was examined alone and when the patients were divided into groups
306 based on their diabetes status. However, this tendency was not observed in the HFpEF subgroup. Due to the
307 limited and inconsistent availability of data, this discovery should be viewed as exploratory rather than
308 conclusive. SGLT2 inhibitors were not shown to increase the probability of major adverse events or
309 discontinuation owing to adverse events compared to placebo.

310 All HF-specific studies revealed statistically significant decreases in the composite of cardiovascular death or
311 total HF hospitalisation. These trials' meta-analysis shows a substantial decrease in cardiovascular and all-
312 cause mortality. The reduction in mortality in HF patients was further supported by findings from post-hoc
313 analyses of cardiovascular outcome studies. We report that the reduction in mortality advantage is true
314 independent of DM status.

315 The funnel plot was used to assess publication bias, where all the selected RCT lie within the 95% confidence
316 interval but predominantly towards the left side which might indicate presence of bias to some extent. Finally,
317 despite the fact that methodological heterogeneity was accounted for using a random-effects model, some
318 variations between studies may make interpretation more difficult. This includes the use of various SGLT2
319 inhibitor subtypes, varying sex ratios, variations in background therapies, baseline risk severity of patients
320 included, and variances in safety and renal endpoint definitions among studies.

321 The results of this meta-analysis demonstrate that SGLT2 inhibitors significantly lower mortality, renal
322 outcomes, and HF hospitalisations. These results were true for individuals with HFrEF as well as for diabetics
323 and non-diabetics. In patients with HFpEF, there was no upward trend toward improvement. Our results
324 confirm that all HF patients, regardless of diabetes status, may benefit from SGLT2 inhibitors; however, the
325 benefits for patients with preserved ejection fraction are still debatable; we require more RCT to study it more
326 precisely. The results of this study can be useful for clinicians in making decision whether to incorporate
327 SGLT2 inhibitors in their treatment plan.

328

329

330

331

332

333

334 **Declarations**

335

336 *Competing interests*

337 The authors declare that they have no competing interests.

338

339 *Funding*

340 None.

341

342 *Authors' contributions*

343 SA conceptualised the meta-analysis and prepared the initial draft of the manuscript. AZ supported
344 writing of the draft and oversaw its critical review and editing. *Both SA and AZ contributed equally
345 to this work as co-first-authors. SK, KT, and AT undertook the literature search and helped prepare
346 the manuscript draft. All authors read and approved the final manuscript.

347

348 *Acknowledgements*

349 We would like to express our gratitude to Ms Qurat ul Ain for her support with the statistical analysis.

350

351

352

353

354

355

356

357

358

359

360

361 **References**

- 362 [1] Kunzmann, K., 2022. New ACC, AHA, HFSA guidelines recommend SGLT-2 inhibitors for symptomatic
363 heart failure. *HCPLive*. Available at: [https://www.hcplive.com/view/acc-aha-hfsa-guidelines-sglt-2-](https://www.hcplive.com/view/acc-aha-hfsa-guidelines-sglt-2-inhibitors-symptomatic-heart-failure)
364 [inhibitors-symptomatic-heart-failure](https://www.hcplive.com/view/acc-aha-hfsa-guidelines-sglt-2-inhibitors-symptomatic-heart-failure) [Accessed August 21, 2022].
- 365 [2] Heidenreich P, Bozkurt B, Aguilar D, et al. 2022 AHA/ACC/HFSA Guideline for the Management of Heart
366 Failure. *J Am Coll Cardiol*. 2022 May, 79 (17) e263–e421. <https://doi.org/10.1016/j.jacc.2021.12.012>
- 367 [3] Butler, J., Usman, M. S., Khan, M. S., Greene, S. J., Friede, T., Vaduganathan, M., Filippatos,
368 G., Coats, A. J. S., and Anker, S. D. (2020) Efficacy and safety of SGLT2 inhibitors in heart failure:
369 systematic review and meta-analysis. *ESC Heart*
370 *Failure*, 7: 3298– 3309. <https://doi.org/10.1002/ehf2.13169>.
- 371 [4] Anker, S. D., Butler, J., Filippatos, G., Khan, M. S., Marx, N., Lam, C. S., ... & EMPEROR-Reduced Trial
372 Committees and Investigators. (2021). Effect of empagliflozin on cardiovascular and renal outcomes in
373 patients with heart failure by baseline diabetes status: results from the EMPEROR-reduced
374 trial. *Circulation*, 143(4), 337-349.
- 375
- 376 [5] Packer, M., Anker, S. D., Butler, J., Filippatos, G., Ferreira, J. P., Pocock, S. J., ... & EMPEROR-Reduced
377 Trial Committees and Investigators. (2021). Empagliflozin in patients with heart failure, reduced ejection
378 fraction, and volume overload: EMPEROR-reduced trial. *Journal of the American College of*
379 *Cardiology*, 77(11), 1381-1392.
- 380
- 381 [6] Voors, A. A., Angermann, C. E., Teerlink, J. R., Collins, S. P., Kosiborod, M., Biegus, J., ... & Ponikowski,
382 P. (2022). The SGLT2 inhibitor empagliflozin in patients hospitalized for acute heart failure: a multinational
383 randomized trial. *Nature medicine*, 28(3), 568-574.
- 384
- 385 [7] Sarraju, A., Li, J., Cannon, C. P., Chang, T. I., Agarwal, R., Bakris, G., ... & Mahaffey, K. W. (2021).
386 Effects of canagliflozin on cardiovascular, renal, and safety outcomes in participants with type 2 diabetes and
387 chronic kidney disease according to history of heart failure: results from the CREDENCE trial. *American*
388 *Heart Journal*, 233, 141-148.
- 389
- 390 [8] Szarek, M., Bhatt, D. L., Steg, P. G., Cannon, C. P., Leiter, L. A., McGuire, D. K., ... & SOLOIST-WHF
391 committees and investigators. (2021). Effect of sotagliflozin on total hospitalizations in patients with type 2
392 diabetes and worsening heart failure: a randomized trial. *Annals of internal medicine*, 174(8), 1065-1072.

393 [9] Anker, S. D., Butler, J., Filippatos, G., Ferreira, J. P., Bocchi, E., Böhm, M., ... & Packer, M. (2021).
394 Empagliflozin in heart failure with a preserved ejection fraction. *New England Journal of Medicine*, 385(16),
395 1451-1461.

396
397 [10] Packer, M., Butler, J., Zannad, F., Filippatos, G., Ferreira, J. P., Pocock, S. J., ... & EMPEROR-Preserved
398 Trial Study Group. (2021). Effect of empagliflozin on worsening heart failure events in patients with heart
399 failure and preserved ejection fraction: EMPEROR-Preserved trial. *Circulation*, 144(16), 1284-1294.

400
401 [11] Liberati A, Altman DG, Tetzlaff J, Mulrow C, Gøtzsche PC, Ioannidis JP, Clarke M, Devereaux PJ,
402 Kleijnen J, Moher D. The PRISMA statement for reporting systematic reviews and meta-analyses of studies
403 that evaluate healthcare interventions: explanation and elaboration. *BMJ* 2009; 339: b2700.

404
405 [12] Higgins JPTGS. Cochrane handbook for systematic reviews of interventions version 5.1.0. The Cochrane
406 Collaboration. 2011.

407 [13] Higgins JPT, Altman DG, Gøtzsche PC, Jüni P, Moher D, Oxman AD, Savović J, Schulz KF, Weeks
408 L, Sterne JAC. The Cochrane Collaboration's tool for assessing risk of bias in randomised
409 trials. *BMJ* 2011; 343: d5928.

410
411 [14] Arnott C, Li Q, Kang A, Neuen BL, Bompoin S, Lam CSP, Rodgers A, Mahaffey KW, Cannon
412 CP, Perkovic V, Jardine MJ, Neal B. Sodium-glucose cotransporter 2 inhibition for the prevention of
413 cardiovascular events in patients with type 2 diabetes mellitus: a systematic review and meta-analysis. *J Am*
414 *Heart Assoc* 2020; 9: e014908.

415

416

417

418

419

420

421

422

423