

1 **Impact of the COVID-19 Pandemic on Same-day Discharge Adoption Following Percutaneous**
2 **Coronary Intervention for Stable CAD: A National Time Series Analysis**

3 Manoj Thangam MD¹, Michael Grzeskowiak, MD¹, Frederick A Masoudi MD, MSPH², Matthew C
4 Bunte, MD, MS³, Edward Fry MD⁴, Mark Pirwitz MD¹, Allison Ottenbacher PhD⁵, Ana Cristina
5 Perez MD Phd⁵, Collin Miller MS⁵, Sarah Benedict MBA¹, Amit Amin MD MSc⁶, Sahil A. Parikh
6 MD⁷, Peter Monteleone MD¹.

7

8 **Author Affiliations:**

9 ¹Ascension Texas Cardiovascular, University of Texas at Austin Dell School of Medicine, Austin,
10 TX. ²Chief Science Officer, VP of Research and Analytics, Ascension Health, Saint Louis, Missouri.
11 ³ University of Missouri-Kansas City, Department of Medicine, Kansas City, MO; Saint Luke's Mid
12 America Heart Institute, Kansas City, MO. ⁴Ascension Indiana St. Vincent, Indianapolis, Indiana.
13 ⁵Ascension Data Science Institute, Ascension Health, Saint Louis, Missouri. ⁶ Rush University
14 Medical Center, Chicago, IL ⁷ New York Presbyterian Columbia University Irving Medical Center,
15 New York, NY.

16

17 **Short Title**

18 Same-day Discharge Post Coronary Intervention

19

20 **Corresponding Author:**

21 Manoj Thangam MD, Ascension Texas Cardiovascular, The University of Texas at Austin Dell

22 School of Medicine, 1301 West 38th Street, Suite 400, Austin, Texas 78701

23 Phone: 405-388-4941

24 Email: Manoj.Thangam@ascension.org

25 **Word Count:** 3059

26

27

28

29 **Abstract**

30

31 **Background:**

32 Elective percutaneous coronary intervention (PCI) historically required hospitalization post
33 procedure. Same day discharge (SDD) has emerged as a safe and cost efficient option, although
34 the impact of the coronavirus disease of 2019 (COVID-19) pandemic on rates of SDD and
35 associated care episode costs remains uncertain.

36

37 **Methods:**

38 A national sample of consecutive patients undergoing elective PCI at 42 hospitals (Ascension,
39 St.Louis, MO) between May 2019 to April 2021 were identified using internal registry data and
40 administrative claims data. Rates of SDD before and after the COVID-19 pandemic (March 2020)
41 were compared using multivariable logistic regression adjusted for patient and procedural
42 characteristics. Additionally, an interrupted time series model was used to determine the effect
43 of the pandemic and policy on SDD rates before and after pandemic declaration. Lastly, we
44 estimated total costs per PCI episode in pre and post pandemic periods.

45

46 **Results:**

47 In total, 12,740 interventions were performed within 42 Ascension facilities that met study
48 eligibility criteria (5955 PCI prior to the pandemic and 6785 after). Demographic data were
49 similar between both populations although higher rates of dyslipidemia, prior myocardial
50 infarction, and heart failure history were noted in the post pandemic group. Pandemic

51 declaration was associated with a higher likelihood of SDD (OR 2.09, CI 1.93-2.25, $p < 0.001$).
52 From pre-pandemic to post-pandemic, mean SDD rose from 34% to 45% ($p < 0.001$) with an
53 accelerated monthly SDD adoption rate after the pandemic (0.1% per month vs 1.0% per
54 month, $p=0.02$). Total costs per episode were \$679.52 (95% CI \$476.12 – \$882.92, $p < 0.001$)
55 higher in the post-pandemic period, driven by increased material costs. SDD was associated
56 with a \$2137.05 (95% CI \$1925.03 - \$2349.07, $p < 0.001$) reduction in costs relative to non-SDD
57 episodes throughout the study period.

58

59 Conclusion:

60 Among a large national risk-adjusted sample of consecutive patients, the COVID-19 pandemic
61 accelerated adoption of SDD. As a care strategy, SDD was associated with reduced episode
62 costs during elective PCI in the post-pandemic period .

63

64 Introduction

65 Percutaneous coronary intervention (PCI) remains a commonly used therapy to treat
66 symptomatic obstructive coronary artery disease (CAD) with about 600,000 interventions
67 performed annually in the US.^{1,2,3} With the evolution of PCI, procedural efficacy and safety
68 have improved considerably.^{4,5} During the early period of coronary intervention, patients were
69 often observed in the hospital for days due to concern for acute stent thrombosis, coronary
70 dissection, procedural failure, antithrombotic regimens, and access site complications.⁵
71 Substantial improvements in procedural techniques, technology, and operator experience have
72 facilitated safe same day discharge (SDD) among selected populations undergoing elective
73 PCI.^{4,5,6} Several studies have demonstrated the safety of SDD following elective PCI for stable
74 CAD within regional centers and national registries,⁷⁻¹² with no difference in 30-day all-cause
75 mortality or rehospitalizations.¹¹ Furthermore, SDD is associated with no difference in access
76 site complications or acute kidney injury.^{13,14} The evidence base supporting SDD utilization has
77 resulted in guideline recommendations encouraging adoption of SDD in suitable patient
78 populations undergoing elective PCI.^{14,15}

79

80 The increasing costs of cardiovascular care highlights the importance of judicious resource
81 allocation and the need to tailor healthcare policies to improve costs concurrent with quality of
82 care.¹⁶ Policy measures including the Affordable Care Act and ensuing bundled payment
83 programs have incentivized the delivery of higher value care by enhancing quality, reducing
84 cost, or both.¹⁷ In the United States, SDD has been estimated to save about \$5000 per
85 procedure with a potential national cost savings approaching \$577 million through widespread

86 adoption with savings driven primarily by reduced supply utilization along with room and board
87 expenditures.⁷ In addition to the cost savings inherent to reducing length of stay, the value of
88 bed availability is more pertinent than ever before considering the COVID-19 global pandemic.
89 This pandemic placed a spotlight on the importance of reducing hospital admissions and
90 improving cost within our strained health system. Ascension organized a collaborative system
91 wide effort focusing on SDD rates to meet these demands. The potential for improving cost,
92 efficiency, and bed availability using SDD without compromising patient outcomes during the
93 COVID-19 pandemic prompted the development and implementation of our SDD directive at
94 Ascension, a large US health system.

95

96 Accordingly, the objectives of this analysis were to describe characteristics among those
97 allocated to SDD after elective PCI for stable CAD, effectiveness of an institutional SDD
98 implementation, as well as describe trends relative to the onset of the COVID-19 pandemic in
99 SDD utilization and the impact of SDD on total care costs. These results may expose
100 opportunities to improve appropriate adoption of SDD and thereby enhance effectiveness and
101 efficiency of PCI for stable CAD.

102

103 Methods

104 Study Design and Participants

105

106 This was a retrospective observational analysis from a large non-profit hospital network
107 (Ascension, St. Louis, MO) of 151 hospitals in 21 states and the District of Columbia evaluating

108 the impact of the COVID-19 pandemic and a national quality improvement program on SDD
109 utilization using a time series design. Patients were identified by evaluation of the Ascension
110 internal National Cardiovascular Data Registry (NCDR) CathPCI registry. Consecutive adults aged
111 > 18 years undergoing elective PCI with survival to hospital discharge treated between May
112 2019 and April 2021 were eligible for inclusion. The study was reviewed and approved by the
113 central institutional review board with informed consent waived as a quality improvement
114 initiative.

115

116 Variables

117

118 The primary outcome was SDD rate, which was compared before and after declaration of the
119 COVID-19 pandemic (March 2020). Secondary endpoints included the SDD rate after
120 implementation of a national SDD program (May 2020) and total episode costs to evaluate the
121 impact of SDD utilization. Total episode costs were normalized across the study period and
122 estimated using institutional accounting software that provided nationalized average cost for
123 PCI encounter within the Ascension Health System. Subjects that were ineligible for SDD were
124 also excluded from the analysis and included those with the following concurrent conditions:
125 cardiogenic shock, major procedural complications including perforation and dissection,
126 bleeding or vascular complication, PCI indication of acute coronary syndrome (ST elevation
127 myocardial infarction, non-ST elevation myocardial infarction, and unstable angina), use of
128 mechanical circulatory support (intra-aortic balloon pump, implantable intracardiac pump, or
129 extracorporeal membrane oxygenation), cardiac arrest during or prior to admission, post

130 procedural heart failure, cardiac tamponade, or any post procedure stroke. The definitions for
131 exclusion criteria (cardiogenic shock, procedural complications, acute coronary syndrome,
132 mechanical circulatory support, cardiac arrest, heart failure, cardiac tamponade, and stroke)
133 are aligned with those established by the NCDR Cath PCI Registry.

134

135 Data

136

137 Clinical data were collected and aggregated from internal system wide NCDR Cath-PCI registry
138 entries using proprietary quality data abstraction software and merged with internal billing
139 data. In addition to conforming to the requirements of the ACC-NCDR data quality program¹⁸,
140 including periodic external audits, Ascension performs weekly data quality audits to ensure the
141 consistency and accuracy of data abstraction. Patients identified from this registry were linked
142 to cost accounting data for our analysis. Each encounter is divided into cost categories and the
143 aggregate sum of all categories for admission encompasses the total encounter cost. To
144 account for variability in cost over the study periods and across markets, costs were normalized
145 by deriving an average cost per item to facilitate standardization despite time and location of
146 hospital encounter.

147

148 Same Day Discharge Policy

149

150 Prior to the COVID-19 pandemic, SDD occurred within individual Ascension hospitals and
151 operators without specific system-wide clinical guidance. With the operational impact of the

152 pandemic, clinicians were confronted with the need to reduce patient and staff infection
153 exposure risk, costs associated with overnight admission, and optimize PCI efficiencies. In
154 response to these needs, a committee of interventional cardiologists (Ascension Interventional
155 Cardiology Affinity Group) representing several of its PCI programs developed a SDD protocol
156 that was approved and implemented in May 2020 (see Supplemental Figure 1).

157

158 The SDD policy implementation that began in May 2020 was unique in several key aspects.
159 First, individual hospitals were offered organizational support in the form of shared policy
160 templates, educational resources, and clinical guidance. However, each was allowed to develop
161 and execute individualized hospital policies to increase SDD. Second, each site was informed
162 that their SDD rates would be tracked with a minimum goal of increasing SDD among elective
163 PCIs to $\geq 15\%$ of total PCIs performed (the ACC NCDR Cath PCI average in March 2020).
164 Additionally, individual center SDD rates would be assessed in the context of rates nationally
165 and among Ascension sites. Lastly, minimal financial expenditures were required in the
166 development, initiation, and monitoring of this policy since each individual center was
167 responsible for policy development and SDD monitoring was integrated into established quality
168 metrics that are evaluated on an ongoing basis.

169 The COVID-19 pandemic affected elective PCI volumes, delivery, and availability of hospital
170 beds. Therefore, evaluating the impact of the SDD initiative separate from the pandemic effect
171 was not plausible. To best represent the data, we evaluated SDD among the elective PCI
172 population prior and post declaration of the pandemic (March 2020). Notably, the
173 implementation of the Ascension SDD policy did not occur until May 2020 following the

174 national pandemic declaration. Therefore, the study focused on SDD rates pre and post
175 pandemic understanding that the SDD policy also effected SDD adoption throughout our
176 medical system.

177

178 Statistics

179

180 Demographic characteristics are presented as mean \pm SD for continuous variables and
181 proportions for categorical variables. Demographics between those treated prior to the
182 pandemic were compared to those treated post using either the Pearsons chi squared test or
183 Student's T-test as appropriate. We evaluated the likelihood of SDD using a logistic regression
184 model adjusting for significant confounders between the pre-pandemic and post- pandemic
185 population. Confounders included age, sex, Black race, treatment period with reference to the
186 pandemic, heart failure, and radial access. We performed a segmented regression with a
187 monthly interrupted time series to better quantify the expected number of SDD before and
188 after the pandemic. A linear relationship between time and average monthly SDD was
189 assumed, and we used New-West standard errors for coefficients estimated by ordinary least-
190 squares regression. Lastly, we evaluated the cost associated with elective PCI with a general
191 linear regression model adjusting for the pandemic timeframe (before and after declaration
192 March 2020), SDD, and additional covariates. All covariates for the different models were
193 identified by univariate significance or were historically known significant variables. All
194 statistical analyses were performed using R statistical software version 4.0.2 (R Project for

195 Statistical Computing) and Stata version 17 (Stata Corp, College Station, Texas). A 2-sided p
196 value of ≤ 0.05 was considered statistically significant.

197

198 Results

199

200 Between May 2019 to April 2021, 12,740 patients undergoing PCI for stable CAD were
201 analyzed, including those receiving SDD (n=5588) and non-SDD (n=7152). Patients discharged
202 the same day tended to be younger (67.0 vs 68.9, $p<0.001$), less frequently female (27.2% vs
203 32.5%, $p<0.001$) and Black (5.9% vs 8.0%, $p<0.001$) (see Supplemental Table 1). Those receiving
204 SDD were less likely to have comorbidities including peripheral artery disease (15.6% vs 17.9%,
205 $p<0.001$), diabetes mellitus (43.6% vs 46.2%, $p<0.001$), receive dialysis (1.5% vs 2.5%, $p<0.001$),
206 and have heart failure (22.6% vs 29.2%, $p<0.001$). Access site for PCI was also significantly
207 different among discharge cohorts (ANOVA $p<0.001$), with radial access being utilized more
208 frequently in the SDD cohort (68.9% vs 41.7%, $p < 0.001$).

209

210 Among those receiving SDD, age, sex, the proportion of Black and Hispanic patients and other
211 clinical characteristics were similar between pre and post pandemic groups (see Table 1).

212 However, those receiving elective PCI after the pandemic had a higher percentage of
213 dyslipidemia ($p<0.001$), prior myocardial infarction ($p<0.001$), and history of heart failure
214 ($p<0.001$). Access site for PCI did not differ between SDD groups before and after onset of the
215 pandemic.

216

217 Nationally, the rate of SDD increased significantly after the onset of the pandemic (34% vs 45%,
218 $p < 0.001$) (see Figure 1). In segmented monthly interrupted time series analysis, the mean
219 month-over-month rate of SDD adoption increased by 0.1% and 1.0% in pre-pandemic and
220 post-pandemic periods, respectively ($p = 0.02$) (see Figure 2). The odds of SDD were higher
221 among men (1.23, 1.13-1.33, $p < 0.001$), non-Black patients (1.39, 1.20-1.62, $p < 0.001$), those
222 treated in the post-pandemic period (OR 2.09, CI 1.93-2.25, $p < 0.001$), and among those
223 receiving radial access (OR 3.05, 2.83-3.29, $p < 0.001$) (see Table 2). The odds of SDD were lower
224 with increasing age (OR 0.99, 0.98-0.99, $p < 0.001$) and among those with heart failure (0.77,
225 0.71-0.84, $p < 0.001$).

226

227 By episode of care, SDD was associated with significant total cost savings of \$2137.05 (95% CI
228 \$1925.02 to \$2349.07 less than pre-pandemic, $p < 0.001$) per PCI hospital encounter after
229 accounting for inter year cost variation of pre and post pandemic and other relevant covariates.
230 The cost variability pre and post pandemic was noted to be an average increase in material cost
231 of \$679.52 (95% CI \$476.12 to \$882.92; p value < 0.001) in the post pandemic period.

232

233 Several variables were associated with increased total episode costs (see Table 3). The greatest
234 drivers of increased costs included heart failure (\$1167.15 per episode, 95% CI, \$936.93-
235 \$1398.08; $p < 0.001$) and peripheral artery disease (\$713.91 per episode, 95% CI, \$443.14-
236 \$984.68). The factors associated with the largest reductions in episodic care costs following
237 PCI for stable CAD included SDD (-\$2731.05 per episode, 95% CI, -\$2349.08- -\$1925.03;
238 $p < 0.001$) and non-Black race (-\$910.77 per episode, 95% CI, -\$1302.68 - -\$518.87; $p < 0.001$).

239

240 Discussion

241

242 In this large, national, consecutive experience of SDD before and after the COVID-19 pandemic
243 we found SDD rates increased over the study period. The increase in SDD rates persisted along
244 with a trend in monthly growth of SDD rates at 1 year after onset of the pandemic. The
245 adoption of SDD was associated with reduced total episode costs despite a relative increase in
246 overall costs of elective PCI in the post pandemic period.

247

248 The SDD protocol emerged from ongoing quality improvement efforts as well as in response to
249 the COVID -19 pandemic within the Ascension Interventional Cardiology Affinity Group. Before
250 the pandemic and implementation of the SDD protocol, wide variation of SDD was noted
251 among individual centers, with individual institutional rates below the national registry average
252 for many. Initiation of this protocol established SDD rates as a quality metric actively tracked by
253 our health system with the intention to hold individual centers and operators accountable. The
254 post pandemic period along with the SDD protocol facilitated in improvement in SDD rates
255 throughout Ascension Healthcare. Although aggregate trends across the system showed an
256 increase in SDD, there was variability among individual centers with a minority showing no
257 change or a decrease in SDD. These were primarily small centers with low PCI volumes and
258 likely represents variability inherent to low volume centers.

259

260 The use of radial access has been previously reported to be associated with reduced
261 periprocedural bleeding and reduced length of stay.^{6,7,19,20} This analysis found that radial access
262 had the strongest influence on a SDD strategy, though rates of radial access use were not
263 significantly different before and after the onset of the pandemic. Therefore, the adoption of
264 radial access for PCI of stable CAD may contribute to the success of a SDD strategy and facilitate
265 the other tangible benefits of reduced healthcare utilization also observed in this analysis.

266

267 Our study showed that SDD facilitated cost savings during the post pandemic period within our
268 health system. The increase in cost after onset of the pandemic is attributed to the increase in
269 supplies and facilities due to inflation over the study period. Despite this increase in cost of
270 elective PCI after the pandemic declaration, there was significant reduction in total episodic
271 costs. This highlights the potential for SDD to facilitate improved healthcare efficiency even
272 with increasing equipment and facility costs currently experienced by systems throughout the
273 country.

274

275 Another important aspect of the SDD policy implementation was its potential to improve
276 hospital bed availability. The COVID-19 pandemic impacted health care systems throughout the
277 world. With the CDC declaration of the pandemic in March 2020, the SDD policy seemed more
278 relevant than ever before to facilitate needed procedures in a world where hospital occupancy
279 was pushed to the brink.^{21,22} Our SDD policy was developed over a 6-month period prior to
280 enactment in May of 2020; however, the COVID-19 pandemic effected the implementation and
281 adoption of the policy. It is likely that the policy improvement of SDD was impacted by the lack

282 of available beds during the pandemic and the desire to reduce hospital stays as much as
283 possible. However, the improvement in SDD has been persistent in our national system at
284 follow up extending to 12 months after pandemic declaration supporting some persistent
285 impact from the SDD policy.

286

287 Study Limitations

288 Several limitations are inherent to this retrospective observational analysis and deserve
289 mention. First, the effect of the COVID-19 pandemic on SDD policy adoption cannot be
290 attributed based on the nature of this evaluation being non-randomized and which may be
291 confounded by contemporaneous institutional efforts to promote SDD. The effect of COVID on
292 the SDD policy likely increased SDD rates and policy adoption. Yet, the persistent increase in
293 SDD supports the continued effect of the policy on improving SDD among patients undergoing
294 PCI for stable CAD. Second, although Ascension is a large nationally represented health system
295 the generalizability of these results are uncertain and require additional confirmation.

296 Furthermore, female patients, non-White, and non-Hispanic patients were underrepresented
297 relative to estimates within the national population. Third, unidentified confounders, including
298 characteristics of the medical history and prior treatment, as well as circumstances of the
299 population, including health-related social needs, were not measured. Future research should
300 explore the utility of SDD among the underserved community to confirm consistent benefits.

301 We included a consecutive population to limit selection bias among those undergoing PCI for
302 stable CAD. Lastly, the SDD policy developed by individual centers had minor variability due to
303 the discretion of individual centers. Therefore, despite a national policy mandate, individual

304 policies and its implementation varied between Ascension sites. This study did not evaluate
305 post-discharge outcomes, including rates of major adverse cardiovascular events or rates of
306 readmission, to assess safety of the SDD strategy since post discharge data were unavailable for
307 evaluation. Furthermore, prior studies have shown SDD to be safe in selected PCI
308 populations.^{4,5,6}

309

310 Conclusion

311

312 From a large consecutive national sample, rates of SDD increased following the onset of the
313 COVID-19 pandemic and were subsequently associated with concurrent reductions in episode
314 care costs. Initiatives that promote SDD and radial access may facilitate expansion of SDD
315 adoption and thereby extend the clinical benefits and efficiencies provided by both care
316 strategies.

317

318

319

320

321 **Acknowledgements:** None

322

323 **Sources of Funding:** None

324

325 **Disclosures:**

326 Dr. Bunte has received institutional research funding from Inari Medical and Janssen

327 Pharmaceuticals. Dr. Bunte is a consultant to Inari Medical, Shockwave Medical, Abbott, and

328 Viz.ai. Dr. Amin has research grants from GE healthcare, Boston Scientific, and Chiesi. Dr.

329 Parikh has institutional research funding from Abbott, Boston Scientific, Shockwave, TriReme,

330 Reflow, Acotec, Concept Medical, Veryan Medical. He is on the advisory board of Abbott,

331 Boston Scientific, Cordis, Medtronic, Philips. He also consults for BD, Pneumbra, Terumo, and

332 Inari. Dr Monteleone is on the scientific advisory boards and is a consultant for Abbott, Boston

333 Scientific, and Medtronic. He also receives institutional grant support from Abbott and

334 Biotronik.

335

336

337

338

339 **References**

3401. Inohara T, Kohsaka S, Spertus JA, Masoudi FA, Rumsfeld JS, Kennedy KF, Wang TY, Yamaji K,
341 Amano T, Nakamura M. Comparative Trends in Percutaneous Coronary Intervention in Japan
342 and the United States, 2013 to 2017. *J Am Coll Cardiol*. 2020 Sep 15;76(11):1328-1340. doi:
343 10.1016/j.jacc.2020.07.037. PMID: 32912447.
3442. Writing Group Members, Mozaffarian D, Benjamin EJ, et al. Heart Disease and Stroke Statistics-
345 2016 Update: A Report From the American Heart Association. *Circulation*. 2016;133(4):e38-360.
346 doi:10.1161/CIR.0000000000000350
3473. Seto AH, Shroff A, Abu-Fadel M, et al. Length of stay following percutaneous coronary
348 intervention: An expert consensus document update from the society for cardiovascular
349 angiography and interventions. *Catheter Cardiovasc Interv*. 2018;92(4):717-731.
350 doi:10.1002/ccd.27637
3514. Venkitachalam L, Kip KE, Selzer F, Wilensky RL, Slater J, Mulukutla SR, Marroquin OC, Block PC,
352 Williams DO, Kelsey SF; Investigators of NHLBI-Sponsored 1985-1986 PTCA and 1997-2006
353 Dynamic Registries. Twenty-year evolution of percutaneous coronary intervention and its
354 impact on clinical outcomes: a report from the National Heart, Lung, and Blood Institute-
355 sponsored, multicenter 1985-1986 PTCA and 1997-2006 Dynamic Registries. *Circ Cardiovasc*
356 *Interv*. 2009 Feb;2(1):6-13. doi: 10.1161/CIRCINTERVENTIONS.108.825323. Epub 2008 Dec 15.
357 PMID: 20031687; PMCID: PMC3024012.

3585. Serruys PW, Rutherford JD. The Birth, and Evolution, of Percutaneous Coronary Interventions: A
359 Conversation With Patrick Serruys, MD, PhD. *Circulation*. 2016 Jul 12;134(2):97-100. doi:
360 10.1161/CIRCULATIONAHA.116.023681. PMID: 27400895.
3616. Bradley SM, Kaltenbach LA, Xiang K, Amin AP, Hess PL, Maddox TM, Poulouse A, Brilakis ES,
362 Sorajja P, Ho PM, Rao SV. Trends in Use and Outcomes of Same-Day Discharge Following
363 Elective Percutaneous Coronary Intervention. *JACC Cardiovasc Interv*. 2021 Aug 9;14(15):1655-
364 1666. doi: 10.1016/j.jcin.2021.05.043. PMID: 34353597.
3657. Amin AP, Pinto D, House JA, et al. Association of Same-Day Discharge After Elective
366 Percutaneous Coronary Intervention in the United States With Costs and Outcomes. *JAMA*
367 *Cardiol*. 2018;3(11):1041-1049. doi:10.1001/jamacardio.2018.3029
3688. Brayton KM, Patel VG, Stave C, de Lemos JA, Kumbhani DJ. Same-day discharge after
369 percutaneous coronary intervention: a meta-analysis. *J Am Coll Cardiol*. 2013;62(4):275-285.
370 doi:10.1016/j.jacc.2013.03.051
3719. Bundhun PK, Soogund MZS, Huang WQ. Same Day Discharge versus Overnight Stay in the
372 Hospital following Percutaneous Coronary Intervention in Patients with Stable Coronary Artery
373 Disease: A Systematic Review and Meta-Analysis of Randomized Controlled Trials. *PLOS ONE*.
374 2017;12(1):e0169807. doi:10.1371/journal.pone.0169807
37510. Kim M, Muntner P, Sharma S, et al. Assessing patient-reported outcomes and preferences for
376 same-day discharge after percutaneous coronary intervention: results from a pilot randomized,
377 controlled trial. *Circ Cardiovasc Qual Outcomes*. 2013;6(2):186-192.
378 doi:10.1161/circoutcomes.111.000069

37911. Madan M, Bagai A, Overgaard CB, et al. Same-Day Discharge After Elective Percutaneous
380 Coronary Interventions in Ontario, Canada. *J Am Heart Assoc.* 2019;8(13):e012131.
381 doi:10.1161/JAHA.119.012131
38212. Taxiarchi P, Kontopantelis E, Martin GP, et al. Same-Day Discharge After Elective Percutaneous
383 Coronary Intervention. *Insights Br Cardiovasc Interv Soc.* 2019;12(15):1479-1494.
384 doi:10.1016/j.jcin.2019.03.030
38513. Heyde GS, Koch KT, de Winter RJ, et al. Randomized Trial Comparing Same-Day Discharge With
386 Overnight Hospital Stay After Percutaneous Coronary Intervention. *Circulation.*
387 2007;115(17):2299-2306. doi:10.1161/CIRCULATIONAHA.105.591495
38814. Chambers CE, Dehmer GJ, Cox DA, et al. Defining the length of stay following percutaneous
389 coronary intervention: an expert consensus document from the Society for Cardiovascular
390 Angiography and Interventions. Endorsed by the American College of Cardiology Foundation.
391 *Catheter Cardiovasc Interv.* 2009;73(7):847-858. doi:10.1002/ccd.22100
39215. Rao, SV, Vidovich MI, Gilchrist IC, Gulati R, Gutierrez JA, Hess CN, Kaul P, Martinez S, Rymer J.
393 2021 ACC Expert Consensus Decision Pathway on Same-Day Discharge After Percutaneous
394 Coronary Intervention: A Report of the American College of Cardiology Solution Set Oversight
395 Committee. *J Am Coll Cardiol.* 2021 Feb, 77 (6) 811–825
39616. Birger M, Kaldjian AS, Roth GA, Moran AE, Dieleman JL, Bellows BK. Spending on Cardiovascular
397 Disease and Cardiovascular Risk Factors in the United States: 1996 to 2016. *Circulation.* 2021 Jul
398 27;144(4):271-282.

39917. Collins CR, Wick E. Center for Medicare and Medicaid Services Bundled Payment for Care
400 Improvement- Advanced for Major Bowel Surgery: Do We Have the Tools We Need to Succeed?
401 J Am Coll Surg. 2019;229(4):S53. doi:10.1016/j.jamcollsurg.2019.08.129

40218. Malenka DJ, Bhatt DL, Bradley SM, Shahian DM, Draoui J, Segawa CA, Koutras C, Abbott
403 JD, Blankenship JC, Vincent R, Windle J, Tsai TT, Curtis J, Roe M, Masoudi FA. The
404 National Cardiovascular Data Registry Data Quality Program 2020: JACC State-of-the-
405 Art Review. J Am Coll Cardiol. 2022 May 3;79(17):1704-1712. doi:
406 10.1016/j.jacc.2022.02.034. PMID: 35483759.

40719. Amin AP, Rao SV, Seto AH, Thangam M, Bach RG, Pancholy S, Gilchrist IC, Kaul P, Shah B, Cohen
408 MG, Gluckman TJ, Bortnick A, DeVries JT, Kulkarni H, Masoudi FA. Transradial Access for High-
409 Risk Percutaneous Coronary Intervention: Implications of the Risk-Treatment Paradox. Circ
410 Cardiovasc Interv. 2021 Jul;14(7):e009328. doi: 10.1161/CIRCINTERVENTIONS.120.009328.
411 Epub 2021 Jul 13. PMID: 34253050; PMCID: PMC8895384.

41220. Lindner SM, McNeely CA, Amin AP. The Value of Transradial: Impact on Patient Satisfaction and
413 Health Care Economics. Interv Cardiol Clin. 2020 Jan;9(1):107-115. doi:
414 10.1016/j.iccl.2019.08.004. PMID: 31733737; PMCID: PMC7772820.

41521. Kirkpatrick JN, Hull SC, Fedson S, Mullen B, Goodlin SJ. Scarce-Resource Allocation and Patient
416 Triage During the COVID-19 Pandemic: JACC Review Topic of the Week. J Am Coll Cardiol. 2020
417 Jul 7;76(1):85-92. doi: 10.1016/j.jacc.2020.05.006. Epub 2020 May 11. PMID: 32407772; PMCID:
418 PMC7213960.

41922. French G, Hulse M, Nguyen D, Sobotka K, Webster K, Corman J, Aboagye-Nyame B, Dion M,
420 Johnson M, Zalinger B, Ewing M. Impact of Hospital Strain on Excess Deaths During the COVID-

421 19 Pandemic - United States, July 2020-July 2021. MMWR Morb Mortal Wkly Rep. 2021 Nov
422 19;70(46):1613-1616. doi: 10.15585/mmwr.mm7046a5. PMID: 34793414; PMCID:
423 PMC8601411.
424

425 Tables and Figures

426

427 Table 1: Baseline characteristics among those undergoing SDD after elective PCI, according to

428 period of treatment before or following onset of the COVID-19 pandemic.

Baseline characteristic	SDD Before Pandemic (May 2019 – April 2020) N= 5955	SDD After Pandemic (March 2020 – April 2021) N= 6785	P value
Age, mean (SD)	68.1 (10.5)	68.0 (10.4)	0.69
Female	1819 (30.5%)	2024 (29.8%)	0.38
Black\ African American	418 (7.0%)	481 (7.1%)	0.88
Hispanic	177 (3.0%)	169 (2.5%)	0.10
Hypertension	5584 (93.8%)	6357 (93.7%)	0.86
Dyslipidemia	5451 (91.5%)	6390 (94.2%)	<0.001
Prior MI	1929 (32.4%)	2362 (34.8%)	<0.001
PAD	985 (16.5%)	1167 (17.2%)	0.33
Prior PCI	3232 (54.3%)	3703 (54.6%)	0.73
DM	2680 (45.0%)	3065 (45.2%)	0.85
Currently on Dialysis	131 (2.2%)	136 (2.0%)	0.44
HF	1457 (24.5%)	1892 (27.9%)	<0.001
Tobacco Use			

Current	1056 (17.7%)	1230 (18.1%)	0.33
Former	2510 (42.1%)	2837 (41.8%)	
Never	2264 (38.0%)	2604 (38.4%)	
Unknown	125 (2.1%)	114 (1.7%)	
Access site			0.47
Femoral	2772 (46.5%)	3085 (45.5%)	
Radial	3158 (53.0%)	3670 (54.1%)	
Other	25 (0.4%)	30 (0.4%)	

429

430 IQR: interquartile range, SD: standard deviation, MI: myocardial infarction, PAD: peripheral

431 artery disease, PCI: percutaneous coronary intervention, DM: diabetes mellitus, HF: heart

432 failure, SDD: same day discharge.

433

434 Table 2: Predictors of SDD during PCI for stable CAD.

435

Baseline characteristic	Odds Ratio	95% CI	P-value
Age	0.99	0.98 to 0.99	<0.001
Male	1.23	1.13 to 1.33	<0.001
After Pandemic	2.09	1.94 to 2.26	<0.001
Non-African American	1.39	1.20 to 1.62	<0.001
Heart Failure	0.77	0.71 to 0.84	<0.001
Radial Access	3.05	2.83 to 3.29	<0.001

436

437 CI: confidence interval, Age was evaluated with 1 year increase regarding coefficients and odds

438 ratio. PCI: percutaneous coronary intervention, HF: heart failure.

439 Table 3: : Risk-adjusted contributors to total episodic care costs (USD) during PCI for stable CAD.

Baseline characteristic	Coefficient	95% CI	P value
Age*	\$24.60	\$14.45 to \$34.74	<0.001
Male	\$379.91	\$11.96 to \$598.12	0.001
After Pandemic	\$679.5	\$476.12 to \$882.92	<0.001
Same day Discharge	-\$2731.05	-\$2349.07 to - \$1925.03	<0.001
Non-African American	-\$910.77	-\$1302.68 to -\$518.87	<0.001
Peripheral artery disease	\$713.91	\$443.14 to \$ 984.68	<0.001
HF	\$1167.15	\$936.93 to \$1398.08	<0.001
Prior PCI	-\$828.90	-\$1034.06 to -\$623.74	<0.001
Dyslipidemia	-\$541.48	-\$937.93 to -\$145.02	<0.01
Diabetes	\$285.53	\$81.99 to \$489.06	<0.001
Current Smoker	\$427.89	\$153.99 to \$701.80	<0.01
Radial access	-\$484.34	-\$694.38 to -\$274.29	<0.001

440 * Per one year increase in age, CI: confidence interval, PCI: percutaneous coronary intervention,

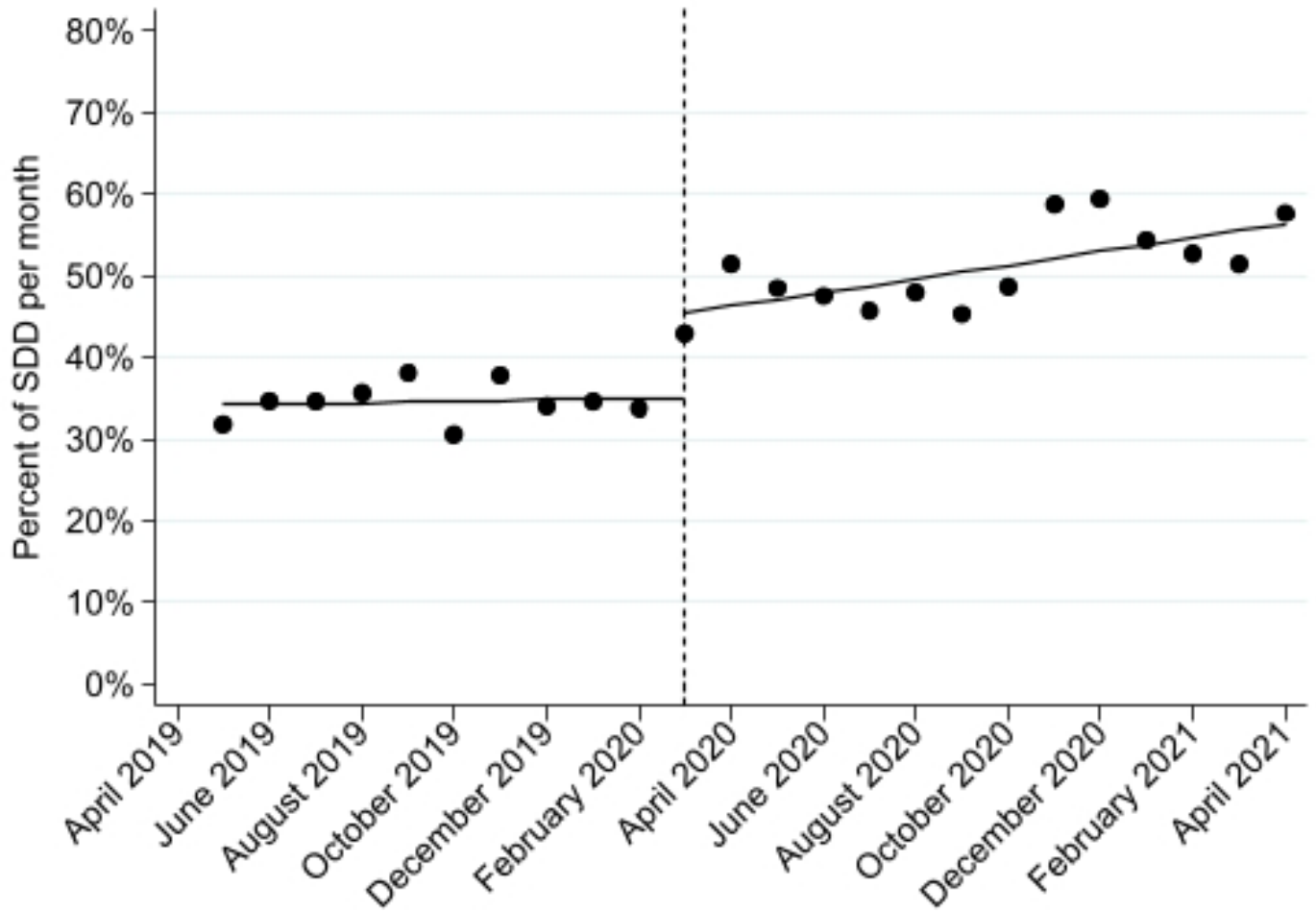
441 HF: heart failure.

442

443

444 Figure 1: Segmented Regression with Interrupted Time Series Analysis Displaying Pre Policy and
445 Post Policy Same Day Discharge Percentages.

446



447

448

449

450 Supplemental Appendix

451 Table 1: Baseline characteristics of patients undergoing elective PCI, according to same-day
 452 discharge status.

453

Baseline characteristic	Non-SDD N=7152	SDD N=5588	P value
Age, mean (SD)	68.9 (10.4)	67.0 (10.3)	<0.001
Female	2323 (32.5%)	1520 (27.2%)	<0.001
Black\ African American	572 (8.0%)	327 (5.9%)	<0.001
Hispanic	197 (2.8%)	149 (2.7%)	0.80
Hypertension	6706 (93.8%)	5235 (93.7%)	0.85
Dyslipidemia	6621 (92.6%)	5220 (93.4%)	0.07
Prior MI	2393 (33.5%)	1898 (34.0%)	0.55
PAD (Peripheral Artery Disease)	1279 (17.9%)	873 (15.6%)	<0.001
Prior PCI	3840 (53.7%)	3095 (55.4%)	0.06
DM	3307 (46.2%)	2438 (43.6%)	<0.01
Currently on Dialysis	181 (2.5%)	86 (1.5%)	<0.001
HF	2088 (29.2%)	1261 (22.6%)	<0.001
Tobacco Use			

Current	1207 (16.9%)	1079 (19.3%)	
Former	3092 (43.2%)	2255 (40.4%)	
Never	2715 (38.0%)	2153 (38.5%)	
Unknown	138 (1.9%)	101 (1.8%)	<0.001
Access site			
Femoral	4141 (57.9%)	1716 (30.7%)	
Radial	2979 (41.7%)	3849 (68.9%)	
Other	32 (0.4%)	23 (0.4%)	<0.001
Pandemic			
Before	3865 (54.0%)	2090 (37.4%)	
After	3287 (46.0%)	3498 (62.6%)	<0.001

454

455 IQR: interquartile range, SD: standard deviation, MI: myocardial infarction, PAD: peripheral

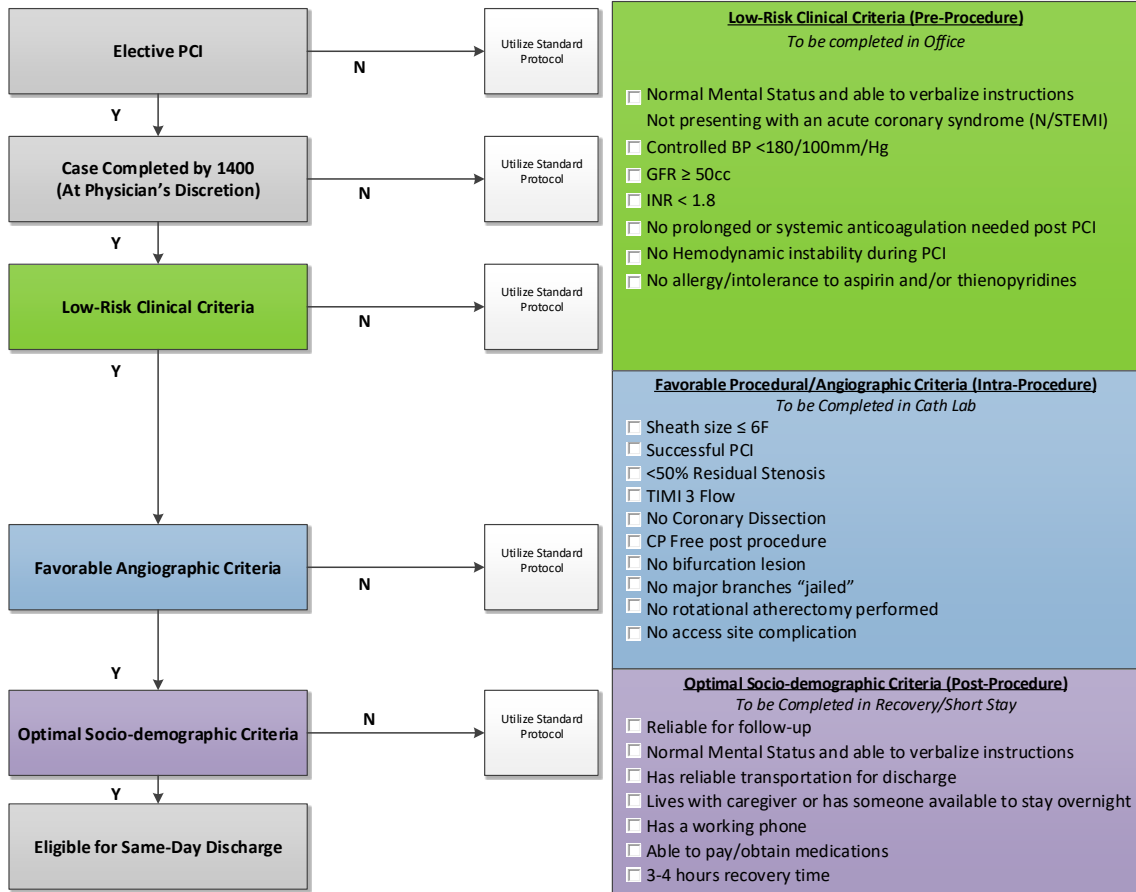
456 artery disease, PCI: percutaneous coronary intervention, DM: diabetes mellitus, HF: heart

457 failure, SDD: same day discharge.

458

459 Figure 1: Same Day Discharge Protocol Diagram.

460



461