

1 **Addressing tuberculosis in artisanal and small-scale mining activities in sub-Saharan**  
2 **Africa: meta-analysis and a call for actions**

3

4 Daniel Garhalangwanamuntu Mayeri<sup>1,2</sup>, Richard Mbusa Kambale<sup>3,4</sup>, Patrick Musole  
5 Bugeme<sup>3</sup>, Gaylor Amani Ngaboyeka<sup>2,8</sup>, Charles Mushagalusa<sup>2</sup>, Franck Mugisho Zahinda<sup>5,6</sup>,  
6 Jacques L. Tamuzi<sup>6</sup>, Patrick DMC Katoto<sup>3,5,6,7</sup>

7 1. Department of Pathology, Hopital Provincial Général de Référence de Bukavu,  
8 Faculty of Medicine, Catholic University of Bukavu, Democratic Republic of Congo

9 2. Regional School of Public of Public Health, Faculty of Medicine, Catholic University  
10 of Bukavu, Democratic Republic of Congo

11 3. Centre for Tropical Diseases and Global Health, Catholic University of Bukavu,  
12 Democratic Republic of Congo;

13 4. Pediatric Department, Hôpital Provincial Général de Référence de Bukavu, Bukavu,  
14 Democratic Republic of the Congo

15 5. Expertise Centre on Mining Governance, Catholic University of Bukavu, Democratic  
16 Republic of Congo

17 6. Department of Global Health, Faculty of Medicine and Health Sciences, Stellenbosch  
18 University, Stellenbosch, South Africa

19 7. Cochrane South Africa, South Africa Medical Research Council

20 8. Institut Supérieur de technique médicale Kanyamulande, Walungu, Democratic  
21 Republic of Congo

22

23

24

25

26

27

28

29

30

31

32

33

34

35 **Abstract:**

36 **Background:** Tuberculosis (TB) is a significant health issue in sub-Saharan African (SSA)  
37 countries, and artisanal mining (AM) may be a contributing factor. However, no systematic  
38 review has investigated the association between AM and TB in SSA. Therefore, this study  
39 aims to assess the burden of TB among artisanal miners in SSA.

40 **Methods:** We conducted a comprehensive search of PubMed, Medline-OVID, EMBASE, and  
41 Scopus databases for studies on AM and TB published up to January 25, 2022. We presented  
42 the findings of seven studies that met our inclusion criteria narratively and through figure  
43 synthesis, and used inverse-variance weighted random-effects models to combine effect  
44 estimates for meta-analysis.

45 **Results:** The overall prevalence of TB among artisanal workers was estimated to be 15%  
46 (95%CI: 8, 23), with higher rates in high TB burden countries (19%, 95%CI: 11, 28)  
47 compared to upper-moderate burden countries (8%, 95%CI: 3, 19. Further, exposure to silica  
48 dust, a common byproduct of AM, significantly increased the incidence of TB, with a pooled  
49 relative risk of 2.19 (95% CI: 1.77, 2.71). Additionally, we found that a higher number of  
50 artisanal miners in Ghana was associated with a reduction in TB incidence.

51 **Conclusion:** Our findings suggest that exposure to silica dust in AM is a neglected but a  
52 significant risk factor for TB in SSA. More studies and efforts are needed to address this  
53 threat to TB control.

54 **Keywords:** Risk factor, Tuberculosis, Artisanal mining, Review, Sub-Saharan Africa

55

56 **Corresponding Author:**

57 **Daniel Garhalangwanamuntu MAYERI**

58 Department of Pathology and Regional School of Public Health

59 Catholic University of Bukavu, 02 Bukavu, Democratic Republic of Congo

60 Email: danielgamu04@gmail.com

61

62

63 **Introduction**

64 Millions of deaths related to air pollution in artisanal mines and pulmonary tuberculosis  
65 (PTB) occur annually in low-income countries [1,2]. This underreported epidemic contributes  
66 heavily to the global burden of disease each year and is one of the top five causes of death in  
67 most Sub-Saharan countries (SSA). According to the World Health Organization (WHO)  
68 Global Health Observatory, living or working in an unhealthy environment was associated  
69 with 13.7 million deaths in 2016 representing 24.3% of all yearly deaths [3]. The Lancet  
70 Commission on Pollution and Health 2017 stressed the fact that people from low- and middle-  
71 income countries (LMICs), disproportionately experience the burden of adverse effects due to  
72 air pollution [3].

73

74 The prevalence of tuberculosis (TB) has not been effectively controlled in most countries due  
75 to challenges posed by civil war, weak health systems, and national TB programs focusing  
76 only on diagnosis and treatment [11,12]. Several countries in Africa and beyond frequently  
77 report cases of TB, particularly those with active small and large-scale mining operations,  
78 such as South Africa, India, and China. These countries are recognized as having a high  
79 burden of TB. [6][7, 8][9]. In addition, in the past decade, the Democratic Republic of Congo  
80 (DRC), a country with a high burden of TB, HIV, and ASM, has seen an increase in TB-  
81 related deaths among HIV-negative individuals, from 57% to 61%[10]. This shift in TB  
82 control in DRC is unexpected and indicates the need to investigate other potential risk factors,  
83 including environmental factors.

84

85 Based on our understanding of the impact of tobacco smoking, diesel exhaust particles, and  
86 fine particulate matter with a diameter less than 2.5  $\mu\text{m}$ , there is substantial evidence  
87 indicating a significant association between exposure to these pollutants and adverse health  
88 effects, particularly the development of tuberculosis (TB). Pollutants and *Mycobacterium*  
89 *tuberculosis* have been found to generate oxidative stress and heightened systemic  
90 inflammation, exacerbating their negative health impacts[4]. Similarly, exposure to silica dust  
91 has been associated with an elevated risk of TB. Silica, which accounts for more than 90% of  
92 the Earth's crust ( $\text{SiO}_2$ ), is the second most common silicate mineral. Individuals residing in  
93 mining zones, as well as those employed in construction, pottery, and other industries, may

94 have increased environmental or occupational exposure to silica or silicates. However, the risk  
95 of developing active TB is more than three times higher in individuals with silicosis (known  
96 as silico-TB), with HIV-positive silicosis patients having a higher incidence of TB compared  
97 to other HIV-positive patients [5].

98

99 Unfortunately, outside of industrial mining exploitation, there is limited knowledge about the  
100 relationship between exposure to pollution from the growing ASM in SSA and its impact on  
101 TB control, primarily due to a lack of personal ground-level exposure measurements and  
102 regulations in this industry. Therefore, the purpose of this review is to systematically  
103 summarize the literature on the burden of tuberculosis in the SSA artisanal mining setting to  
104 strengthen ASM sector regulations and design protective interventions to reduce the burden of  
105 TB among ASM workers and their communities.

106

107

## 108 **Materials and Methods**

### 109 *Search strategy and selection criteria*

110 We searched PubMed and Medline-OVID, EMBASE, and Scopus databases using a  
111 combination of terms and derived keywords, and including variations of the following terms:  
112 “artisanal”, “artisanal mining”, “health”, “and health effects”, “tuberculosis”, “prevalence”,  
113 “risk factor”(See Table 6 for full search strategy). In the MEDLINE search, the names of each  
114 Sub-Saharan African country (“United Nations - Sub-Saharan Africa,” n.d.) as well as regions  
115 (e.g., East-Africa) were included to increase search sensitivity. We also searched for eligible  
116 studies in the WHO database, national agencies, African Index Medicus, abstracts at scientific  
117 conferences (e.g., Pan African Thoracic Society), and other relevant grey literature. No  
118 language restriction was applied; the timeframe of the search included all records from the  
119 electronic database inception to January 24, 2022.

120 We included all the studies from one of the SSA and that evaluated TB in the context of  
121 artisanal mining. Thus, we used the PECO framework for inclusion criteria [14] as follows:

- 122 - **Population:** Adults and the elderly who were exposed to dust in artisanal mining and  
123 developed TB.
- 124 - **Exposure:** studies of individuals with respiratory exposure to dust in artisanal mines  
125 inferred from occupation.
- 126 - **Comparators:** studies reporting comparative effect estimates, specifically case-  
127 control or cohort studies reporting risk, rate, or odds across groups exposed to dust in  
128 mines (including binary comparisons of exposed/unexposed).
- 129 - **Outcome:** studies reporting incident active pulmonary TB, with or without extra  
130 pulmonary tuberculosis. TB diagnosis was made on histological or microbiological  
131 grounds, or an explicit combination of clinical assessment, radiology and/or response  
132 to treatment. Furthermore, TB was diagnosed after mining activities.

133

134 Two reviewers (DGM and PBM) evaluated the eligibility of studies. In cases of discrepancy, a  
135 third reviewer (PK) provided resolution of disagreements. For exposure, we extracted the  
136 following information: reference, country/city/town, period, context, design (analytic  
137 method), type of mining and other relevant considerations (comparison with international  
138 standards, etc.). Data included first author, publication year, study country, study date, study  
139 design (effect measure), study population and data sources for comparison group, sample size,

140 TB diagnosis methods, Exposure assessment and summary of main conclusions [estimates of  
141 associations (95% confidence intervals).

142

### 143 ***Risk of bias assessment***

144 For quality and risk of bias assessment, we used the Newcastle-Ottawa Scale (NOS) (“Ottawa  
145 Hospital Research Institute,” n.d.), as recommended by the Cochrane Non-Randomized  
146 Studies Methods Working Group (“Cochrane Handbook for Systematic Reviews of  
147 Interventions,” n.d.). The NOS uses an eight-item rating system to evaluate the method of  
148 selecting participants, exposure/outcome assessment, and comparability among study groups.  
149 It has specific formats for cohort and case-control studies. We used the modified form for  
150 cross-sectional studies and case-control studies.

151

152 Two reviewers (DGM and PBM) independently performed the quality assessment and a third  
153 reviewer (PK) resolved disagreements.

### 154 ***Data analysis***

155 We performed a meta-analysis using RevMan 5.4 and Stata 16 software. If studies were  
156 homogenous, we used a random-effects model to synthesize all data regardless of  
157 heterogeneity between the pooled studies. Adjusted analysis using the effect estimate reported  
158 in the study was reported. If only crude data were available, the rate ratio and 95% CIs  
159 dichotomous data were computed and pooled with the adjusted estimates. Statistical  
160 heterogeneity was evaluated with the Chi2 test with significance set at P value < 0.1. We  
161 measured the degree of heterogeneity among the studies by the I2 statistic. Subgroup analyses  
162 were performed to assess the influence of study period and study design on the main outcome.  
163 Furthermore, we built a meta-regression model including the number of ASM and TB burden  
164 in countries where studies were conducted. Egger's and Begg's rank correlation tests were  
165 used to explore publication bias. Sensitivity analysis was not performed due to the small  
166 number of studies in each subgroup.

167 ArcGIS software was used to generate maps of SSA, which were colored on one side for  
168 countries with a high burden of TB and high levels of artisanal mining activities, and on the  
169 other side for countries with a high TB burden and artisanal mining activities. Studies  
170 investigating the association between artisanal mining and TB were also reported. [15,16].  
171 This systematic review was reported according to the Preferred Reporting Items for  
172 Systematic Reviews and Meta-analyses (PRISMA) guideline [17,18].

173

### 174 **3. Results**

175

#### 176 **3.1 Study selection**

177 The electronic research identified a total of 1,597 papers, of which 442 were screened  
178 according to the inclusion criteria. Four hundred and seventeen of them were excluded and  
179 only 25 full texts were assessed for eligibility. Finally, 7 were eligible for data extraction and  
180 analysis and consequently included in this review (Figure 1).

#### 181 **3.2 Overall Study characteristics**

182 Among the seven studies, two were cohort studies [19,20] , one was a case-control study [5]  
183 and four others were cross-sectional [21–24]. (Table 1 and Figure 2). Only 3 countries (South  
184 Africa, Ghana and Malawi) out of the 46 that constitutes SSA region provided data on TB and  
185 artisanal mining activities. One from the Western part of Africa, and two from the Southern  
186 Africa. South Africa for itself is represented by more 57% of the available studies [5, 19–21].  
187 All the 3 countries (South Africa, Ghana, and Malawi) where the studies have been conducted  
188 have a high burden of TB in SSA. The publication year ranged from 1994 to 2021. All the  
189 cases were either working in artisanal mines or have had a history of artisanal mining. One of  
190 the studies [24] reported rifampicin resistance associated to mining activities.

#### 191 **3.3 Overall situation of ASM miners, Incidence of TB and ASM-TB studies**

192 Figure 2a depicts a map of SSA countries based on the number of ASM miners and TB  
193 incidence (new and relapse cases per 100,000 population per year). Out of the 22 SSA  
194 countries with over 100,000 ASM miners, five countries (DRC, Central African Republic,  
195 Angola, Mozambique, and Liberia) are among the thirteen highly to severely TB endemic  
196 SSA countries. However, none of these five countries have conducted a study on the  
197 association between ASM dust exposure and TB incidence, as demonstrated in Figure 2b  
198 which shows a map of SSA countries by number of ASM miners and ASM-TB studies.

#### 199 **3.4 Risk of bias assessment**

200 Supplementary Tables 4a, 4b, and 4c (S3Tab4a,S3Tab4b and S3Tab4c)provided a  
201 summary of the risk of bias for the seven studies included in our analysis. With the exception  
202 of the comparability of study groups regarding additional factors beyond age (interpreted here  
203 as controlling for relevant additional factors), all studies were rated as having a low risk of

204 bias. We also conducted tests to evaluate publication bias and found that it was less likely for  
205 TB prevalence among artisanal miners. Egger's regression analysis showed no evidence of  
206 publication bias ( $z = 1.87$ ,  $P = 0.061$ ). However, Begg's rank correlation analysis yielded a z-  
207 test of 0.38 ( $p = 0.707$ ) (S2Fig2 ).

208

### 209 ***3.5 Exposure measurement and TB diagnosis***

210

211 Four out of the seven studies [5, 19–21] used X-ray diffraction to measure silica dust exposure  
212 by Quartz fractions. They calculated the cumulative respirable dust and quartz exposures for  
213 each miner and used radiographs to diagnose Silicosis using the International Labor  
214 Organization (ILO). All included studies utilized standard methods for TB diagnosis except  
215 for one [21] which relied on clinical symptoms and Positive Chest X-Ray (CXR) for TB  
216 diagnosis. For instance, two out of the seven studies diagnosed TB based on positive sputum  
217 culture, positive CXR, and GeneXpert [23,24]. Other studies used either histopathology only  
218 [22] or CXR combined with positive sputum culture [5, 19]. Only one study combined CXR,  
219 positive sputum culture, and histopathology [20] (refer to Table 1).

220

### 221 ***3.6 Incidence of TB and silica dust exposure in artisanal/small scale mining***

222

223 Seven studies were included in the analysis and all of them reported TB incidence in artisanal  
224 and small-scale mining (ASM). In South Africa, the incidence ranged from 5% to 35%.  
225 However, in Ghana and Malawi, the incidence was respectively 2.5% and 14%. A pooled  
226 analysis of data from these studies revealed that silica dust in ASM significantly increased the  
227 risk of TB incidence [RR 2.65 (95% CI: 1.84, 3.82)], with high heterogeneity among studies  
228 ( $P < 0.1$ ,  $I^2 = 82\%$ ) (Figure 4). The overall prevalence of TB among artisanal miners was  
229 estimated to be 15% (95% CI: 8.0, 23.0), with a pooled prevalence of 19% (95% CI: 11.0,  
230 28.0) in high TB burden countries and 8% (95% CI: 3.0, 19.0) in upper-moderate TB burden  
231 countries. The test of group difference between countries with high and upper-moderate TB  
232 burdens was not statistically significant ( $P = 0.11$ ) (Figure 8). Additionally, the meta-  
233 regression showed that a higher number of artisanal miners in Ghana was associated with a  
234 1.64% reduction in TB incidence ( $P = 0.014$ ) (S4Table 5).

235

### 236 ***3.7 silica dust exposure in ASM and risk of TB***



237 All studies included in the analysis consistently found that exposure to silica dust is the main  
238 risk factor for TB among artisanal miners. The cohort studies reported a relative risk (95% CI)  
239 ranging from 2.8 (1.9, 4.1) to 4.18 (2.75, 6.36), with a p value < 0.005. Case-control studies  
240 yielded an odds ratio of 4.90 (2.32, 10.58), while cross-sectional studies showed an odds ratio  
241 ranging from 1.50 (95% CI: 1.10, 2.05, P=0.01) to 35.2% (95%CI: 31.1, 39.3). A pooled  
242 analysis of the 7 studies confirmed that silica dust exposure was a significant risk factor for  
243 TB in ASM, with an estimate odds ratio of 2.19 (95% CI: 1.77, 2.71; I2 = 89%) (Figure 4).  
244 Furthermore, a subgroup analysis of the studies by design revealed a significant increased TB  
245 risk among those exposed to silica dust in ASM, with an estimate odds ratio of 2.24 (95%CI:  
246 1.81, 2.78; I2 = 90%). Cohort studies showed a higher pooled odds ratio of 3.29 (95%CI:  
247 2.31, 6.9, I2 = 90%), while cross-sectional studies had a pooled odds ratio of 1.80 (95%CI:  
248 1.46, 2.22; I2 = 90%) (Figure 6).

249

### 250 ***3.8 Influence of the study year, the study design and the risk of TB in ASM***

251

252 The combined findings indicate that the risk of TB in ASM is influenced by the year in which  
253 the study was conducted, with an overall summary estimate of 2.19 (95%CI: 1.77, 2.71)  
254 (Figure 5). However, subgroup analyses revealed a higher risk of TB among studies  
255 conducted before 2000 than those conducted after 2000, with summary relative risks (RRs) of  
256 3.49 (95%CI: 2.57, 4.74) and 1.8 (95%CI: 1.46, 2.22), respectively. The level of  
257 heterogeneity among studies conducted before 2000 was minimal (P = 0.3, I2 = 15%),  
258 whereas among studies conducted after 2000, the heterogeneity was substantial (P < 0.1, I2 =  
259 90%).

260

### 261 **3.9. Influence of high vs upper-moderate TB burden countries on TB disease among artisanal** 262 **miners**

263

264 The pooled prevalence of TB among artisanal miners was 19% [11%-28%] in high TB burden  
265 countries versus 8% [3%-19%] in upper-moderate TB burden countries. The overall prevalence of TB  
266 in artisanal workers was estimated to be 15% [8%-23%] (Figure 8). This is significant because the test  
267 of group difference was not statistically significant between countries with high and upper-moderate  
268 TB burdens (P = 0.11) (Figure 7).

269

270

271 **Discussion**

272

273 **Summary of main evidence**

274 This systematic review examines the association between silica dust exposure in ASM and the  
275 incidence of tuberculosis in Sub-Saharan Africa (SSA). Seven studies were identified and  
276 analyzed, covering only 3 countries out of the 46 in SSA, all with a high burden of  
277 tuberculosis. The review found a significant increase in TB incidence among those exposed to  
278 silica dust in ASM. The overall prevalence of TB in artisanal workers was estimated to be  
279 15%, with a higher prevalence in countries with a high TB burden.

280

281 We also found that there was a significant increased risk of TB for exposed persons to silica  
282 dust in ASM no matter what the study design is (cohort or cross-sectional studies).  
283 Furthermore, this review revealed the influence of the study year on the risk of TB in ASM. In  
284 fact, this risk was higher in studies conducted before 2000 than in those conducted after 2000.  
285 This could be probably explained by the fact that most of the included studies were South  
286 African. Around the year 2000, voluntary industry milestones were established in South  
287 Africa to reduce 95% of all respirable crystalline silica dust measurements to below the  
288 occupational exposure limit (OEL) of 0.1 mg/m<sup>3</sup> and to ensure no new cases of silicosis in  
289 novice miners entering the industry after 2008 [26]. These aim to reduce TB incidence to the  
290 national rate or below, and improve access to HIV counselling and testing assessment to  
291 antiretroviral therapy (ART), and also enhance health education and communication [27].

292

293 **Agreements and disagreements with other studies and reviews**

294

295 The use of cumulative exposure measurement to silica dust and radiological silica exposure by  
296 ILO system agree with other findings elsewhere [32]. In California (USA), Checkoway et al.  
297 [35] has also the same methods to measure silica dust exposure. This method was also used by  
298 Taguchiet al. [36] to assess the relationship of mixed dust fibrosis and TB. With regards to the  
299 prevalence of TB, the high prevalence is consistent with findings in India by Chakraborty et al  
300 [37] who reported the TB prevalence rate in mining at 5.5%. The difference observed in  
301 different included studies may be explained by the diversity of TB diagnostic methods used in  
302 each study. For example, Waternaude et al used clinical symptoms and Positive Chest X-  
303 Ray, Rambiki et al., and Ohene et al. used positive sputum culture, positive CXR and  
304 GeneXpert; Ndlovu et al. histopathology only; Cowie et al. and Corbett et al [5, 19] combined

305 CXR and Positive sputum culture. Furthermore, the fact that some miners used to be  
306 underground and other on the surface may explain this difference as well.

307

308 This review found the existing association artisanal mining dust exposure and the risk of  
309 developing TB findings. This is consistent with other data from the literature. In fact,  
310 Stuckler et al. [31] has also found that mining production was associated with higher TB  
311 incidence rates in the population (adjusted  $b=0.093$ ; 95%CI:0.067, 0.120); with an increased  
312 mining production of 1 SD corresponding to about 33% higher TB incidence or 760000 more  
313 incident cases), after adjustment for economic and population controls. This is also consistent  
314 with findings of Ehrlich et al. 2021, who investigated silico tuberculosis and dust exposure  
315 risk factors. He also concluded that occupational inhalation of silica dust increases the risk of  
316 pulmonary TB in co-exposed populations. In the same way, other studies, at the beginning of  
317 the 20<sup>th</sup> Century, performed animal experiments on silica exposure and trabecle bacilli [38–  
318 40], and Mavrogordato . These studies concluded that silica dust exposition increases a great  
319 proliferation of bacilli and accelerates TB development .

320

321 Higher number of artisanal mines in Ghana was associated with 1.64% reduction of TB  
322 among artisanal miners. This can be explained by the improved policy of supervision of  
323 artisanal miners in Ghana [41]. Furthermore, the reduction in artisanal sites in favor of  
324 industrial exploitation would explain the reduction in TB cases compared to other countries in  
325 SSA. Recently, other findings in histological changes have reinforced this evidence. In his  
326 study, Pasula et al. [42] has demonstrated that silica pre-exposure for 30 days or more  
327 converts mycobacterial-resistant C57BL/6 mice into mice that are highly susceptible to  
328 both *M. avium* and *M. tuberculosis* infection. One of the included studies has reported the  
329 association of rifampicin and dust silica exposure in Ghana [24] and the resistance rate was  
330 5.3%. These findings are in agreement with data from the National Surveillance data in Ghana  
331 [43] which reported drug resistance in artisanal miners. However, these findings are in  
332 disagreement with data provided by [44] Churchyard et al. who did not find association with  
333 mining activities and drug-resistance TB . Although there is the existence of some  
334 disagreements, that drug-resistance found in this review draws our attention to the fact that  
335 exposure to dust silica in mining is not only a factor associated with TB but could also impact  
336 on its treatment. It would then increase the burden of death.

337

338

339 This review has highlighted the scarcity of data in SSA on TB and artisanal or small-scale  
340 mines. In fact, studies on mining have been conducted in other SSA high, more specifically  
341 in middle burden of TB countries such as Tanzania [28, 29], DRC [12, 19], Nigeria [28] and  
342 in Ghana [30]. However, none of studies focused on TB as a health outcome among artisanal  
343 miners. Furthermore, a review [31] summarized literature on mining, a but did not include  
344 TB occurrence in artisanal miners. Our findings are however in the line with a review  
345 conducted by Ehrlich et al. [32] who addressed the risk factors of silicosis and TB in mining  
346 in the world. This review also mentioned scarcity of studies in high burden TB countries. In  
347 light of these findings, it has been noted that, to the best of our knowledge, no other studies  
348 have been found in countries such as the DRC, Ethiopia, and Burkina Faso, which are known  
349 to have the highest level of artisanal mining activities in the world, trailing only India, China,  
350 and Indonesia [33]. Furthermore, many other countries, including some of the previously  
351 mentioned are among the top 30 of countries in the world with a high TB burden [34]. This is  
352 the case of Angola (top one), Congo-Brazzaville, DRC, Ethiopia, Lesotho, Liberia,  
353 Mozambique, Namibia, Nigeria, Sierra Leone, Zambia and Zimbabwe. Although these listed  
354 countries have a high or intermediate level of artisanal or small-scale mining activities and are  
355 known to have a high or intermediate burden of TB, we know next to nothing about these big  
356 issues. Thus, studies assessing the risk factor of TB in artisanal mining areas should be  
357 conducted in countries such as DRC where we found numerous artisanal mining throughout  
358 the country and where no study for that concern has been conducted yet. Since this shortage of  
359 studies is established, data from these countries are needed in order to influence protective  
360 policies with different stakeholders.

361

### 362 ***Potential biases in the review process***

363 To control potential biases in the review process, we used a structured and transparent  
364 approach. Inclusion criteria were set and grouped according to the PECO framework [14].  
365 Structured searches of PUBMED, EMBASE and Scopus were undertaken using a  
366 combination of keywords. A structured tool for assessment of risk of bias was applied  
367 independently by two subject experts and agreed by consensus (NOS). We conducted  
368 publication bias tests to quantify publication bias. We found that publication bias was less  
369 likely for TB prevalence among artisanal miners when we ran statistical tests, and there was  
370 no evidence of publication bias in Egger's regression analysis with  $z = 1.87$  ( $P = 0.061$ ). In  
371 contrast, Begg's rank correlation analysis yielded a z-test of 0.38 ( $p = 0.707$ ).

372

### 373 **Strengths and Limitations**

374 Our study is the first systematic review conducted in Sub-Saharan Africa (SSA) that focuses  
375 exclusively on Artisanal and Small-scale Mining (ASM), which adds to the existing  
376 knowledge on this topic. However, despite our efforts, there are some limitations to our study  
377 that should be considered. Firstly, our review included observational studies, which are  
378 subject to selection bias. This means that the studies may not accurately represent the true  
379 prevalence of tuberculosis (TB) among artisanal miners in SSA, as they may not have  
380 included a representative sample of this population. Secondly, our review was limited by the  
381 number of studies available in the region. Due to a lack of studies, we were forced to exclude  
382 many countries from our analysis, which may have affected the generalizability of our  
383 findings. Additionally, some studies may have been missed due to language restrictions,  
384 which may have further limited the scope of our review. Despite these limitations, our review  
385 minimized publication bias, as we included studies from a variety of sources, including grey  
386 literature. Our findings are consistent with those conducted in other parts of the world,  
387 suggesting that the health risks associated with ASM are universal and require urgent  
388 attention. Finally, our study provides important evidence that can serve as a foundation for  
389 future health research on ASM and for advocacy to develop and implement health and  
390 environmental measures that can help to reduce the risks associated with ASM, and move  
391 towards a TB-free world in a mining environment.

392

393

### 394 **Conclusion**

395 The prevalence of TB in artisanal mining activities is significant, posing a major risk not only  
396 to the miners but also to the wider community. This burden is expected to be twofold,  
397 impacting both the miners themselves and the communities in which they reside. Despite this,  
398 studies investigating this issue are scarce, particularly in regions of high and intermediate TB  
399 burden in SSA. Further, well-designed studies are needed to enhance our understanding of  
400 this issue. It is crucial that individual and governmental policies are implemented, including  
401 through national TB prevention and control programs, to improve working conditions and  
402 promote healthier societies.

403

### 404 **Box 1.**

405

406

407 ***Evidence before this study***

408 Exposure to silica data is known to be associated with high risk of developing tuberculosis.  
409 Most evidence comes from industrial mining activities. However, evidence in ASM including  
410 studies from SSA is lacking.

411

412 ***Added value of this study***

413 This systematic review presents the available evidence on the association between artisanal  
414 mining and tuberculosis in SSA. As far as we are aware, this is the first systematic review on  
415 this topic in the region. The review confirms that artisanal mining is a significant risk factor  
416 for TB and remains a major public health challenge in SSA. The review also highlights that  
417 TB rates are high in artisanal mining and the emergence of drug-resistant TB is possible.  
418 However, the limited number of studies in this field reveals that there is a significant gap in  
419 knowledge on this topic, especially in many SSA countries such as the DRC where artisanal  
420 miners are likely to have some of the highest TB rates in Africa. Urgent research is required to  
421 address this issue and inform policies and interventions to improve the health and working  
422 conditions of artisanal miners in the region.

423

424 ***Implication of the study and recommendations***

425

426 Based on the findings of this review, it can be concluded that artisanal mining activities have  
427 a significant impact on the burden of TB in SSA, leading to negative social and economic  
428 consequences. Therefore, urgent action is needed, ranging from personal protective measures  
429 to government policies aimed at creating healthy working environments. For instance,  
430 reducing poor working conditions, providing better living quarters, and limiting exposure to  
431 silica dust are essential measures that should be implemented [30]. Emphasis should be placed  
432 on countries with a high TB burden, particularly South Africa, where artisanal miners are at  
433 increased risk of TB infection. This highlights the need for strict TB preventive therapy (TPT)  
434 for this specific group and the establishment of clear policies on occupational medicine  
435 follow-up among artisanal miners. Additionally, it is essential to conduct studies to assess the  
436 risk factors of TB in artisanal mining areas in countries such as DR Congo, where numerous  
437 artisanal mining activities are present, and no studies have been conducted on this issue yet.

438

439

440

441

442

### 443 **Acknowledgments**

444 The authors are thankful to Josué MATABARO, Agricultural Engineer for the first design of  
445 the maps.

### 446 **Conflict of interest**

447 The authors declare that they have no competing interests

### 448 **Funding**

449 We received no funds for this review

### 450 **Human Participant Protection**

451 No protocol approval was needed for this study.

### 452 **Availability of data and materials**

453 The datasets used and/or analyzed during the current study are available from the  
454 corresponding author on reasonable request.

### 455 **Author's contributions**

456 Conceptualization: DGM, PK; Data curation: DGM, PMB, PK; Statistical analysis: RMK and  
457 JLT; Methodology: DGM, PK; Software DGM; map generation: FMZ; Supervision: PK;  
458 Writing—original draft, DGM ; Writing—review & editing: DGM, PK, RMK, JLT, PMB,  
459 GAN,CM.

### 460 **Abbreviations**

461

462 CI: confidence interval; OR: odds ratio; RR: relative risk, rate ratio or risk ratio; SIR:  
463 standardized incidence ratio; AM: Artisanal Mining  
464 CXR: chest x-ray

465

466

467

468

469

470

471

472

473

474

### 475 **REFERENCES**

476

- 477 1. Respiratory risks from household air pollution in low and middle income countries  
478 [Internet]. [cité 5 mars 2022]. Disponible sur:  
479 <https://www.ncbi.nlm.nih.gov/pmc/articles/PMC5068561/>



- 480 2. Global tuberculosis report 2020. Geneva: World Health Organization; p. 208. Report  
481 No.: 2020 - Google Search [Internet]. [cité 5 mars 2022]. Disponible sur:  
482 <https://www.google.com/search?q=Global+tuberculosis+report+2020.+Geneva%3A+W>  
483 [world+Health+Organization%3B+p.](https://www.google.com/search?q=Global+tuberculosis+report+2020.+Geneva%3A+W)
- 484 3. The Lancet Commission on pollution and health - PubMed [Internet]. [cité 5 mars 2022].  
485 Disponible sur: <https://pubmed.ncbi.nlm.nih.gov/29056410/>
- 486 4. Oztürk AB, Kiliçaslan Z, İşsever H. Effect of smoking and indoor air pollution on the  
487 risk of tuberculosis: smoking, indoor air pollution and tuberculosis. *Tuberk Toraks*.  
488 2014;62(1):1–6.
- 489 5. Corbett EL, Churchyard GJ, Clayton T, Herselman P, Williams B, Hayes R, et al. Risk  
490 factors for pulmonary mycobacterial disease in south African gold miners: a case-control  
491 study. *Am J Respir Crit Care Med*. 1999;159(2):94–9. - Google Search [Internet]. [cited  
492 on 5 march 2022]. Available at:  
493 <https://www.google.com/search?q=Corbett+EL%2C+Churchyard+GJ%2C+Clayton+>
- 494 6. Murray J, Davies T, Rees D. Occupational lung disease in the South African mining  
495 industry: research and policy implementation. *J Public Health Policy*. 2011;32 Suppl  
496 1:S65-79.
- 497 7. Sharma N, Kundu D, Dhaked S, Das A. Silicosis and silicotuberculosis in India. *Bull*  
498 *World Health Organ*. 1 oct 2016;94(10):777–8.
- 499 8. Tiwari RR, Sharma YK, Saiyed HN. Tuberculosis among workers exposed to free silica  
500 dust. *Indian J Occup Environ Med*. mai 2007;11(2):61–4.
- 501 9. Xia Y, Liu J, Shi T, Xiang H, Bi Y. Prevalence of Pneumoconiosis in Hubei, China from  
502 2008 to 2013. *International Journal of Environmental Research and Public Health*. sept  
503 2014;11(9):8612–21.
- 504 10. Democratic Republic of the Congo statistics summary (2002 - present) [Internet].  
505 Geneva: World Health Organization; [cited 2021 Mar 8]. (Global Health Observatory  
506 country views). Available from: [https://apps.who.int/gho/data/node.country.country-](https://apps.who.int/gho/data/node.country.country-COD)  
507 [COD - Google Search \[Internet\]. \[cited on 5 march 2022\]. Available at:](https://apps.who.int/gho/data/node.country.country-COD)  
508 [https://www.google.com/search?q=Democratic+Republic+of+the+Congo+statistics+sum](https://www.google.com/search?q=Democratic+Republic+of+the+Congo+statistics+summary)  
509 [mary](https://www.google.com/search?q=Democratic+Republic+of+the+Congo+statistics+summary)
- 510 11. Bulabula ANH, Nelson JA, Musafiri EM, Machezano R, Sam-Agudu NA, Diacon AH,  
511 et al. Prevalence, Predictors, and Successful Treatment Outcomes of Xpert MTB/RIF–  
512 identified Rifampicin-resistant Tuberculosis in Post-conflict Eastern Democratic  
513 Republic of the Congo, 2012–2017: A Retrospective Province-Wide Cohort Study.  
514 *Clinical Infectious Diseases*. 2019 Sep 27; 69(8):1278–87. - Google Search [Internet].  
515 [cited on 5 mars 2022]. Available at: <https://www.google.com/search>
- 516 12. Katoto PDMC, Musole P, Maheshe G, Bamuleke B, Murhula A, Balungwe P, et al. A  
517 miner with No left lung: Extensive pulmonary destruction in delayed effective Multi-  
518 Drug-Resistant Tuberculosis treatment. *Respir Med Case Rep*. 28 sept 2020;31:101234.
- 519 13. Banza Lubaba Nkulu C, Casas L, Haufroid V, De Putter T, Saenen ND, Kayembe-  
520 Kitenge T, et al. Sustainability of artisanal mining of cobalt in DR Congo. *Nature*



- 521 Sustainability. 2018 Sep;1(9):495– - Google Search [Internet]. [cited on 5 mars 2022].  
522 Available at : <https://www.google.com/search>
- 523 14. Morgan RL, Whaley P, Thayer KA, Schünemann HJ. Identifying the PECO: A  
524 framework for formulating good questions to explore the association of environmental  
525 and other exposures with health outcomes. *Environ Int.* déc 2018;121(Pt 1):1027–31.
- 526 15. ASM Inventory [Internet]. [cited on 19 feb2022]. Available at:  
527 <http://artisanalmining.org/Inventory>
- 528 16. Delve | 2020 State of the Artisanal and Small Scale Mining Sector [Internet]. Delve.  
529 [cited on 8 oct 2022]. Available at : [https://delvedatabase.org/resources/2020-state-of-](https://delvedatabase.org/resources/2020-state-of-the-artisanal-and-small-scale-mining-sector)  
530 [the-artisanal-and-small-scale-mining-sector](https://delvedatabase.org/resources/2020-state-of-the-artisanal-and-small-scale-mining-sector)
- 531 17. Liberati A, Altman DG, Tetzlaff J, Mulrow C, Gøtzsche PC, Ioannidis JPA, et al. The  
532 PRISMA statement for reporting systematic reviews and meta-analyses of studies that  
533 evaluate healthcare interventions: explanation and elaboration. *BMJ.* 21 juill  
534 2009;339:b2700.
- 535 18. Katoto PDMC, Byamungu L, Brand AS, Mokaya J, Strijdom H, Goswami N, et al.  
536 Ambient air pollution and health in Sub-Saharan Africa: Current evidence, perspectives  
537 and a call to action. *Environ Res.* juin 2019;173:174–88.
- 538 19. Cowie RL. The epidemiology of tuberculosis in gold miners with silicosis. *Am J Respir  
539 Crit Care Med.* 1994;150(1):1460–2. <https://doi.org/10.1164/ajrccm.150.5.7952577> -  
540 Google Search [Internet]. [cited on 5 mars 2022]. Available at:  
541 <https://www.google.com/search>
- 542 20. Hnizdo E, Murray J. Risk of pulmonary tuberculosis relative to silicosis and exposure to  
543 silica dust in South African gold miners. *Occup Environ Med.* juill 1998;55(7):496–502.
- 544 21. WaterNaude JM, Ehrlich RI, Churchyard GJ, Pemba L, Dekker K, Vermeis M, et al.  
545 Tuberculosis and silica exposure in South African gold miners. *Occupational and  
546 Environmental Medicine.* 1 mars 2006;63(3):187–92.
- 547 22. Ndlovu N, Musenge E, Park SK, Girdler-Brown B, Richards G, Murray J. Four decades  
548 of pulmonary tuberculosis in deceased South African miners: trends and determinants.  
549 *Occup Environ Med.* 1 nov 2018;75(11):767–75.
- 550 23. Rambiki E, Dimba A, Banda P, Ng'ambi W, Banda K, Girma B, et al. The prevalence of  
551 pulmonary tuberculosis among miners from the Karonga, Rumphi, Kasungu and  
552 Lilongwe Districts of Malawi in 2019. *Malawi Med J.* déc 2020;32(4):184–91.
- 553 24. Ohene SA, Bonsu F, Adusi-Poku Y, Dzata F, Bakker M. Case finding of tuberculosis  
554 among mining communities in Ghana. *PLOS ONE.* 18 mars 2021;16(3):e0248718.
- 555 25. Department of Labour, South Africa. National Programme for the Elimination of  
556 Silicosis. [http://www.labour.gov.za/DOL/downloads/documents/useful-  
557 documents/  
558 occupational- health- and- safety/ Useful% 20Document% 20-% 20OHS% 20-%  
559 20National% 20Programme% 20for% 20the% 20Elimination% 20of% 20Silicosis -  
560 Google Search \[Internet\]. \[cited on 19 march 2022\]. Available at:  
<https://www.google.com/search>](http://www.labour.gov.za/DOL/downloads/documents/useful_documents/occupational-health-and-safety/Useful%20Document%20-%20OHS%20-%20National%20Programme%20for%20the%20Elimination%20of%20Silicosis)

- 561 26. Department of Health, South Africa. National Strategic Plan on HIV, STI's and TB,  
562 2017-2022. 2017. [https://www.gov.za/sites/default/files/nsp%20hiv%20tb%20sti\\_](https://www.gov.za/sites/default/files/nsp%20hiv%20tb%20sti_a.pdf)  
563 a.pdf - Google Search [Internet]. [cited on 19 march 2022]. Available at:  
564 <https://www.google.com/search>
- 565 27. Msiza D. The road to sero harm: New milestones: Department of Mineral Resources,  
566 2014 [http://www.mhsc.org.za/sites/default/files/Mr%20Msiza%202014%](http://www.mhsc.org.za/sites/default/files/Mr%20Msiza%202014%20Milestones_0.pdf)  
567 20Milestones\_0.pdf - Google Search [Internet]. [cité 19 March 2022]. Available at:  
568 <https://www.google.com/search>
- 569 28. Gottesfeld P, Meltzer G, Costello S, et al. Occup Environ Med Epub ahead of print:  
570 [please include Day Month Year]. doi:10.1136/oemed-2019-105830 - Google Search  
571 [Internet]. [cited on 5 march 2022]. Available at: <https://www.google.com/search>
- 572 29. Ajith, M. and Ghosh, A. and Jansz, J. 2020. Risk factor for the number of sustained  
573 injuries in artisanal and small-Scale Mining operation. Safety and Health at work.1  
574 (1):pp. 50-60 - Google Search [Internet]. [cited on 5 march 2022]. Available at:  
575 <https://www.google.com/search>
- 576 30. Basu S, Stuckler D, Gonsalves G, Lurie M. The production of consumption: addressing  
577 the impact of mineral mining on tuberculosis in southern Africa. Globalization and  
578 health. 1 sept 2009;5:11.
- 579 31. Stuckler D, Basu S, McKee M, Lurie M. Mining and risk of tuberculosis in sub-Saharan  
580 Africa. Am J Public Health. mars 2011;101(3):524-30.
- 581 32. Ehrlich R, Akugizibwe P, Siegfried N, Rees D. The association between silica exposure,  
582 silicosis and tuberculosis: a systematic review and meta-analysis. BMC Public Health.  
583 20 mai 2021;21(1):953.
- 584 33. Infographic: Where Small Scale Mining Is Most Prevalent [Internet]. Statista  
585 Infographics. [cited on 5 march 2022]. Disponible sur:  
586 [https://www.statista.com/chart/26741/countries-with-the-highest-estimated-number-of-](https://www.statista.com/chart/26741/countries-with-the-highest-estimated-number-of-people-working-in-artisanal-and-small-scale-mining/)  
587 [people-working-in-artisanal-and-small-scale-mining/](https://www.statista.com/chart/26741/countries-with-the-highest-estimated-number-of-people-working-in-artisanal-and-small-scale-mining/)
- 588 34. World Health Organization. Global tuberculosis report 2019 [Internet]. World Health  
589 Organization; 2019 [cited on 5 march 2022]. xi, 283 p. Disponible sur:  
590 <https://apps.who.int/iris/handle/10665/329368>
- 591 35. Checkoway H, Hughes JM, Weill H, Seixas NS, Demers PA. Crystalline silica exposure,  
592 radiological silicosis, and lung cancer mortality in diatomaceous earth industry workers.  
593 Thorax. 1999 Jan;54(1):56-9. doi: 10.1136/thx.54.1.56. PMID: 10343633; PMCID:  
594 PMC1745344. - Google Search [Internet]. [cited 5 march 2022]. Available at:  
595 <https://www.google.com/search>
- 596 36. Taguchi O, Saitoh Y, Saitoh K, Fuyuki T, Shida H, Mishina M, et al. Mixed dust fibrosis  
597 and tuberculosis in comparison with silicosis and macular pneumoconiosis. Am J Ind  
598 Med. mars 2000;37(3):260-4.
- 599 37. Chakraborty AK. Epidemiology of tuberculosis: current status in India. Indian J Med  
600 Res. 2004 Oct;120(4):248-76. PMID: 15520481. - Google Search [Internet]. [cited on 5  
601 march 2022]. Available at : <https://www.google.com/search>

- 602 38. Key To Current Medical Literature. *The British Medical Journal*. 1938;2(4061):137-44.
- 603 39. Gye WE, Kettle EH. Silicosis and Miners' Phthisis. *Br J Exp Pathol*. oct  
604 1922;3(5):241-51.
- 605 40. Allison AC, Hart PD. Potentiation by silica of the growth of *Mycobacterium tuberculosis*  
606 in macrophage cultures. *Br J Exp Pathol*. oct 1968;49(5):465-76.
- 607 41. occupational health policy in Ghana - Google Search [Internet]. [cité 2 janv 2023].  
608 Disponible sur:  
609 <https://www.google.com/search?q=occupational+health+policy+in+Ghana&oq=occupational+health+policy+in+Ghana+&aqs=chrome..69i57j0i22i30l2j0i390l3.1262j0j15&sourceid=chrome&ie=UTF-8>  
611
- 612 42. Pasula R, Britigan BE, Turner J, Martin WJ. Airway Delivery of Silica Increases  
613 Susceptibility to Mycobacterial Infection in Mice: Potential Role of Repopulating  
614 Macrophages. *J Immunol*. 1 juin 2009;182(11):7102-9.
- 615 43. Calver AD, Falmer AA, Murray M, Strauss OJ, Streicher EM, Hanekom M, et al.  
616 Emergence of increased resistance and extensively drug-resistant tuberculosis despite  
617 treatment adherence, South Africa. *Emerg Infect Dis* 2010 Feb; 16:264  
618 <https://doi.org/10.3201/eid1602.090968> PMID: 20113557 - Google Search [Internet].  
619 [cited on 5 march 2022]. Available on: <https://www.google.com/search>
- 620 44. Churchyard GJ, Corbett EL, Kleinschmidt I, Mulder D, De Cock KM. Drug-resistant  
621 tuberculosis in South African gold miners: incidence and associated factors. *Int J Tuberc  
622 Lung Dis*. 2000 May;4(5):433-40. PMID: 10815737. - Google Search [Internet]. [cited  
623 on 5 march 2022]. Available on : <https://www.google.com/search>

624  
625  
626  
627  
628  
629  
630  
631  
632  
633  
634

635

636

637 **List of tables and figures**

638 **Table 1:** Artisanal mining and Tuberculosis: characteristics, sample size, and definition of  
639 exposure and outcome

640 **S1Table 2:** Tuberculosis Risk or Odd by Artisanal Mining Exposure

641 **S2Table 3:** TB cases in exposed persons to silica dust versus non-exposed

642 **S3Table 4a:** Newcastle-Ottawa Scale of each included cohort studies for risk of bias  
643 assessment

644 **S3Table 4b:** Newcastle-Ottawa Scale of each included case-control studies for risk of bias  
645 assessment

646

647 **S3Table 4 c.** Detailed Newcastle-Ottawa Scale of each included cross-sectional studies for  
648 risk of bias assessment

649 **S4Table 5. Meta-regression**

650 **S5Table 6. Surch strategy according to PICO Question**

651

652 **Fig. 1** PRISMA flow diagram for selection of studies. SSA: Sub-Saharan Africa

653

654 **Fig.2a:** Map of SSA Countries by number of ASM miners and TB incidence (new and  
655 relapse cases per 100,000 population per year)

656

657 **Fig.2b:** Map of SSA Countries by number of ASM miners and Tuberculosis-ASM studies

658

659 **Fig. 3:** Meta-analysis results for mine dust exposure and incidence of tuberculosis.

660

661 **Fig. 4:** Estimate ratio (RR or OR) of tuberculosis in all the seven studies

662

663 **Figure 5:** Estimate ratio of tuberculosis by study year

664 **Figure 6:** Estimate ratio of tuberculosis by study design

665 Fig.7: Influence of high vs upper-moderate TB burden countries on TB disease among artisanal  
666 miners

667

668

669 **S1Fig.1** Countries with the highest estimated number of people working in artisanal and small  
670 scale mining ( <https://www.statista.com> )

671 **S2fig.2 Publication bias**

672

673

674

675

676

677

678

679

**Table 1: Artisanal mining and Tuberculosis: characteristics, sample size, and definition of exposure and outcome**

First author, publication year, country, study date	Study design (effect measure), study population and data sources for comparison group	Sample size	Tuberculosis diagnosis	Exposition (working in artisanal Mining) /Exposure assessment	Summary of main conclusions [estimates of associations (95% confidence intervals)]
Cowie 1994 . South Africa, 1984–1991.	<ul style="list-style-type: none"> <li>• Retrospective cohort (annual incidence rate; risk ratio)</li> <li>• Medical surveillance database of 90,000 black male gold miners from 24 mines In the Orange Free State Province.</li> <li>• Silicosis and controls ascertained Prospectively.</li> <li>• TB identified from a central TB registry</li> </ul>	818 silicosis, 335 no silicosis, matched for day of CXR and age	Positive sputum cultures in all Pulmonary TB subjects. 30 cases of extrapulmonary TB (24 intrathoracic)	<ul style="list-style-type: none"> <li>• (1) Silicosis vs no silicosis; (2) increasing ILO profusion of radiologic silicosis: 0, 1, 2, 3.</li> <li>• Silicosis read on full size CXR using ILO Classification</li> </ul>	One hundred seventy-eight of the men developed tuberculosis, RR for tuberculosis was 2.8 (95% CI, 1.9 to 4.1) for men with silicosis compared with that in the men without silicosis. Confirmation of the high risk of pulmonary and of extra-pulmonary tuberculosis in men with silicosis

<p>Hnizdo 1998 . South Africa, 1968/71– 1995.</p>	<ul style="list-style-type: none"> <li>• Prospective cohort (rate ratio, relative risk) c</li> <li>• White male gold miners aged 45–54 years with ≥10 yr underground experience who attended state examination bureau for compulsory medical surveillance 1968–1971</li> <li>• Silicosis identified from ongoing Surveillance CXRs and/or at autopsy in Decedents. TB identified from medical and/or autopsy records through 1995.</li> </ul>	<p>2255 miners: 321 radiological silicosis, 719 Autopsy silicosis (of whom 546 autopsy silicosis only).</p>	<p>Positive sputum test (76), positive histology (36), and positive CXR (5)</p>	<ul style="list-style-type: none"> <li>• Silicosis vs no silicosis; (2) Quartiles of Cumulative dust exposure (mg-yr/m<sup>3</sup>); (3) Degree of silicosis at autopsy.</li> <li>• Radiological silicosis ILO &gt; 1/1, 1990</li> <li>-</li> <li>Re-reading of all previous CXRs.</li> <li>• Autopsy silicosis on microscopy by pathologist: none, negligible, slight, moderate/marked</li> </ul>	<p>factors associated with increased risk of PTB were cumulative exposure to dust (mg/m<sup>3</sup>.) (the adjusted rate ratio (RR)1.07; (95% confidence interval (95% CI) 1.04 to 1.10)), silicosis diagnosed radiologically (3.96 (2.59 to 6.06)), and tobacco pack-years (1.02 (1.01 to 1.03))</p>
---	---	---	---	--	---

680

681

682

683

684

**Table 1: Artisanal mining and Tuberculosis: characteristics, sample size, and definition of exposure and outcome(continued)**

First author,publication year,country,study date	Study design(effect measure), study population and data sources for comparison group	Sample size	Tuberculosis diagnosis	Exposition(working in artisanal Mining)/Exposure assessment	Summary of main conclusions [estimates of associations (95% Confidence intervals)]
Corbett 1999 [ ]. South Africa, 1993–1996	Case-control (odds ratio) <ul style="list-style-type: none"> <li>• Silicosis cases and controls (trauma, surgical) from medical and personnel records of gold miners attending a company hospital, the sole source of tertiary care for this population.</li> <li>• TB cases: random sample of central database.</li> </ul>	381 TB cases; 180 non-TB controls	First episode of culture positive TB	<ul style="list-style-type: none"> <li>• (1) Silicosis graded (none, “possible” = ILO 0/1, “probable =1/0, “early” =1/1, “high grade” = 1/1); (2) years of gold mining: &lt; 10; 10–14; 15–19: ≥ 20; (3) dusty job at diagnosis.</li> <li>• Silicosis consensus by 2 readers on mini-CXRs in 93.4% of subjects, standard size films in the rest.</li> </ul>	silicosis (OR 4.9 for TB patients) was significantly more common in TB patients than in control patients
WaterNaude 2005 [ ]. South Africa, 2000-2001	-cross sectional study, 520 gold miners over 37 years of age at they return from annual leave in 2000–01	520 gold miners over 37 years of age	history of PTB, smoking habits, and past chest illnesses <ul style="list-style-type: none"> <li>- Positive Chest X Ray (chest radiographs were read independently and separately by two NIOSH “B” trained readers)</li> </ul>	<ul style="list-style-type: none"> <li>-Quartz fractions measured by x ray diffraction.</li> <li>-Cumulative respirable dust and quartz exposures calculated for each miner using length of service and the hygiene data.</li> <li>-(2) increasing ILO profusion of radiologic silicosis: 0, 1, 2, 3.</li> <li>• Silicosis read on full size CXR</li> </ul>	<ul style="list-style-type: none"> <li>- PTB prevalence was 19.4% (95% CI 16.0 to 22.8) on history alone, and 35.2% (95% CI 31.1 to 39.3) on history or on chest radiograph</li> <li>- associated with dust and silica exposure, even in the absence of silicosis</li> </ul>



				using ILO Classification	
Ndlovu 2018 [J]. South Africa, 1975-2014	-cross sectional , -male black and white miners whose cardiorespiratory organs were examined at the NIOH from 1975 to 2014	- 53 248 black miners - 30 724 white miners	Presence of microscopic epithelioid granulomas associated with caseous necrosis in the lungs or regional glands, after exclusion of other causes after autopsy	-Autopsy silicosis on microscopy by pathologist: none, negligible, slight, moderate/marked	- prev TB: 11,88 % -Silicosis and duration of employment were important determinants of PTB -PTB was five times higher in black compared with white miners

685

686

**Table 1: Artisanal mining and Tuberculosis: characteristics, sample size, and definition of exposure and outcome(continued)**

687

<b>First author,publication year,country,study date</b>	<b>Study design(effect measure), study population and data sources for comparison group</b>	<b>Sample size</b>	<b>Tuberculosis diagnosis</b>	<b>Exposition(working in artisanal Mining)/Exposure assessment</b>	<b>Summary of main conclusions [estimates of associations (95% confidence intervals)]</b>
Rambiki 2020, Malawi, 2019	-cross-sectional study - informal mining workers in the Karonga, Rumphi, Kasungu and Lilongwe districts of Malawi	2013 informal mining workers	-Positive sputum cultures in all Pulmonary TB subjects -Positive chest X-Ray - Positive GeneXpert	Informal mining vs formal mining	Miners performing informal mining were 50% more likely to develop PTB compared with those in formal mining (adjusted odds ratio [AOR]=1.50, 95%

					CI: 1.10–2.05, $P=0.01$ ).
Ohene 2021, Ghana, 2017-2018	-Cross sectional study,, - volunteer community members of 78 communities of Ashanti, Bron, Ahafo and Western regions aged of 15 years andabove - routine NTP program data collected from TB case finding activities	10,441 people from 78 communities in 24 districts	- TB symptom screening - Positive chest X-Ray - Positive digital X-ray for pregnant or probable pregnant women - Positive GeneXpert for M. tuberculosis	-Occupation of the respondent: Agriculture, Professional, Miner, Sales and Services, Manual labour, Unemployed,	Being an artisanal miner is associated to TB (OR [aOR] 2.70, 95% CI 1.47–4.96, $P=0.001$ ). Confirmation of the high risk of TB in artisanal miners

688

689

690

691

692

693

694

695

696

697

698

699

700

**Fig. 1** PRISMA flow diagram for selection of studies. SSA: Sub-Saharan Africa

701

702

70

70

70

70

70

70

70

70

71

71

71

71

71

71

71

71

71

71

71

71

71

71

72

72

72

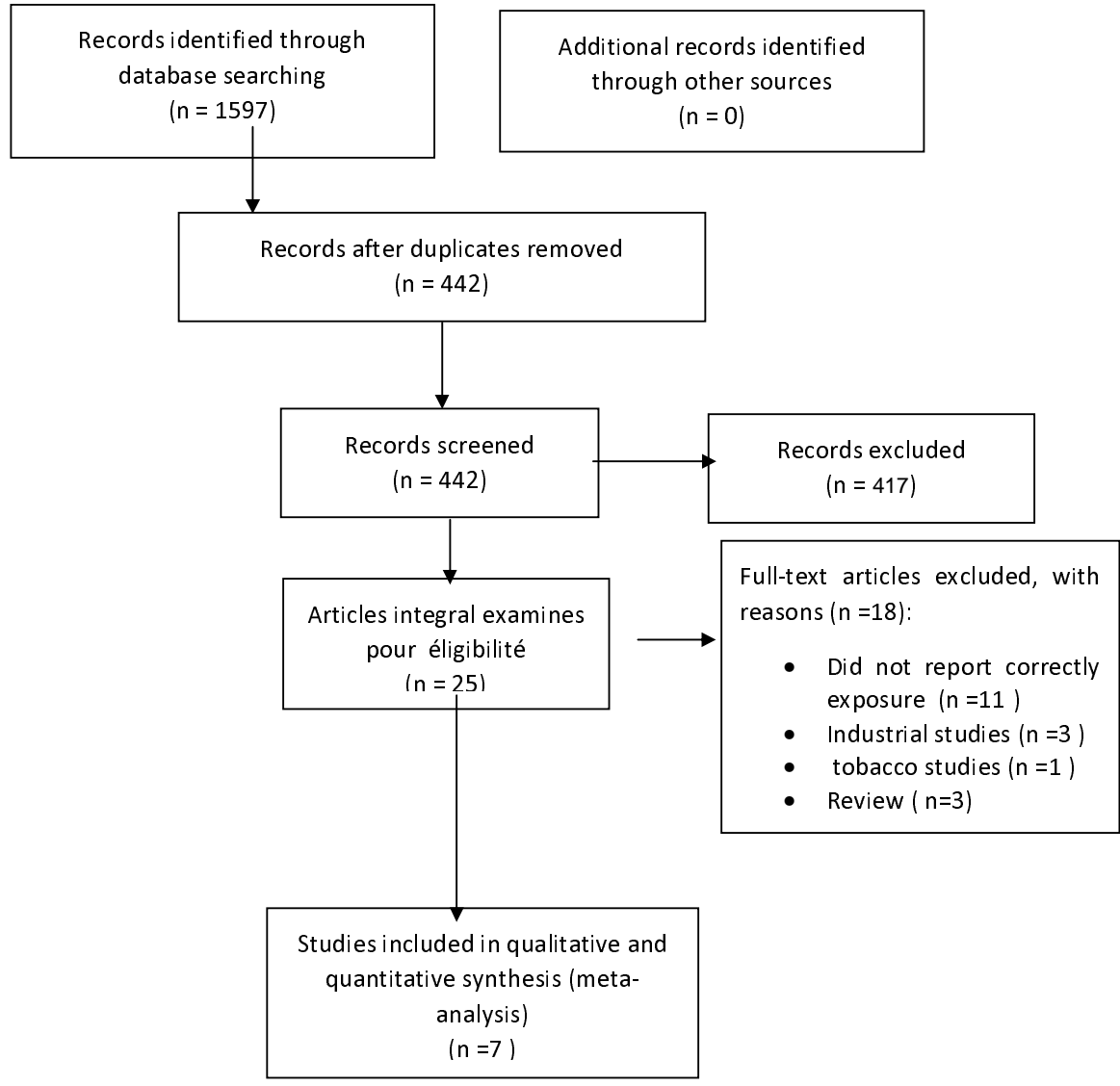
72

Identification

Screening

Eligibility

Included



723

724

725

726

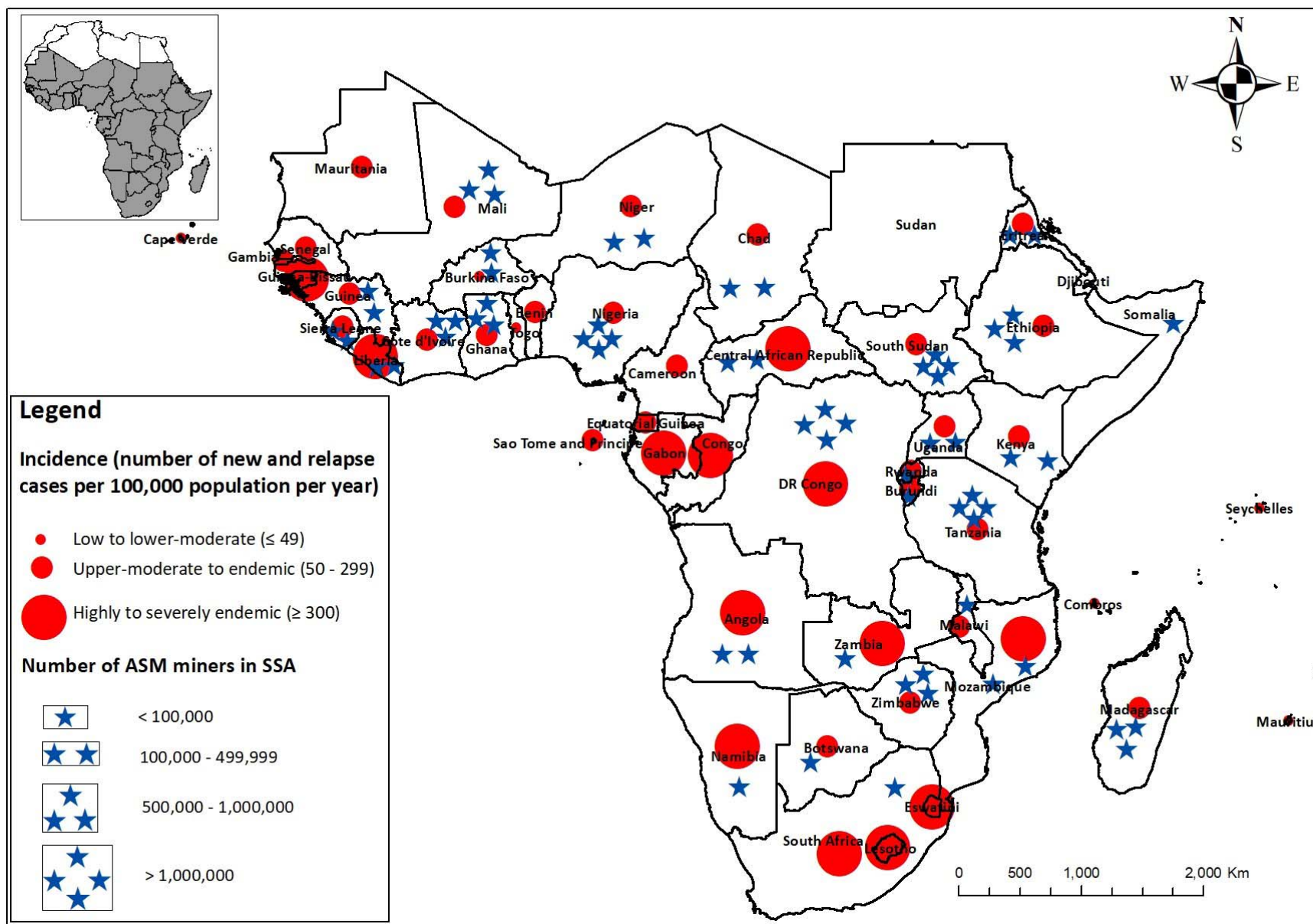
727

728

729

730

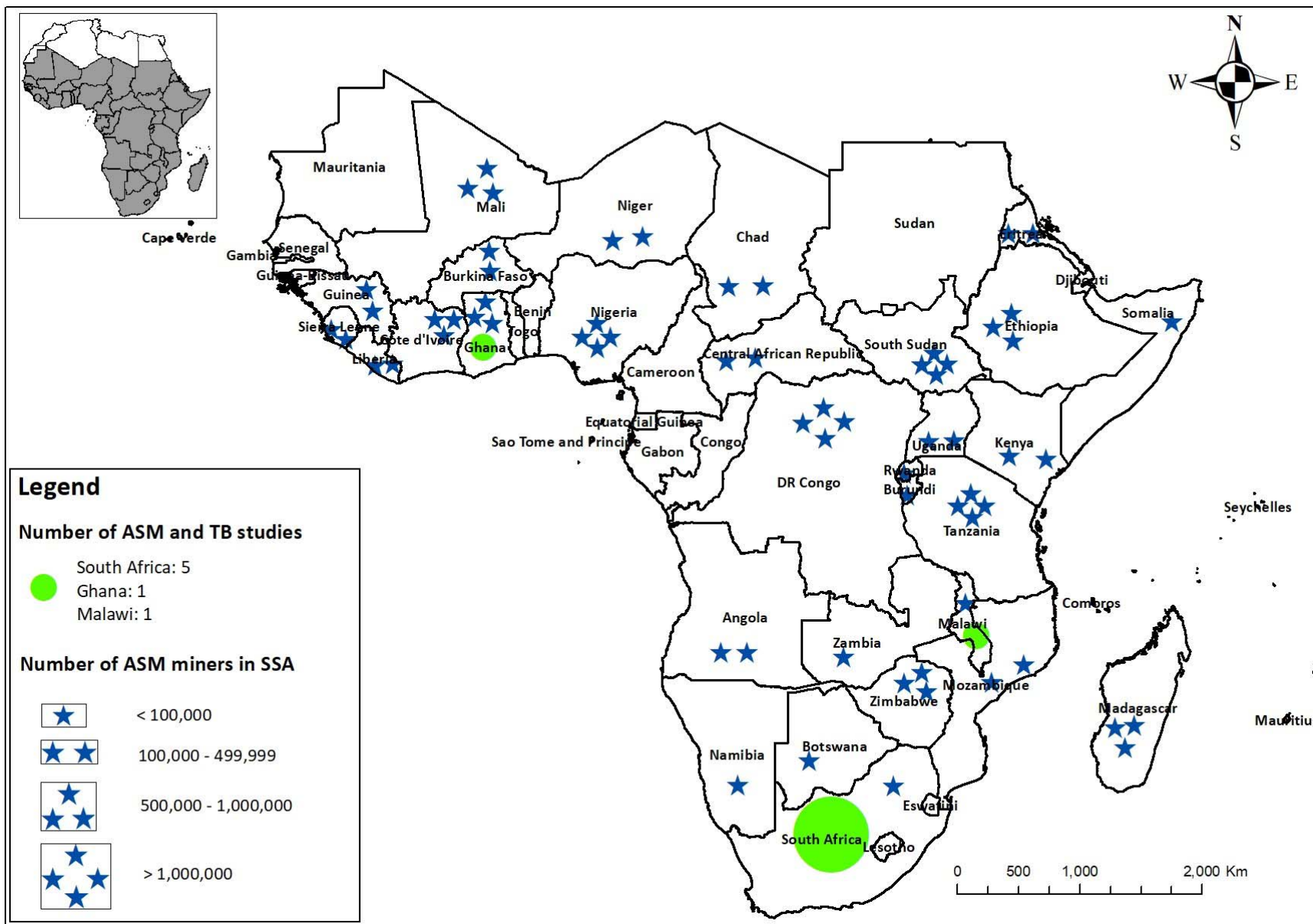
731 Figure 2a: Map of SSA Countries by number of ASM miners and TB incidence



733  
734  
735  
736  
737  
738  
739  
740  
741  
742  
743  
744  
745  
746  
747  
748  
749  
750  
751  
752  
753  
754  
755  
756  
757  
758  
759  
760  
761  
762  
763  
764

**Figure 2b:** Map of SSA Countries by number of ASM miners and Tuberculosis-ASM studies

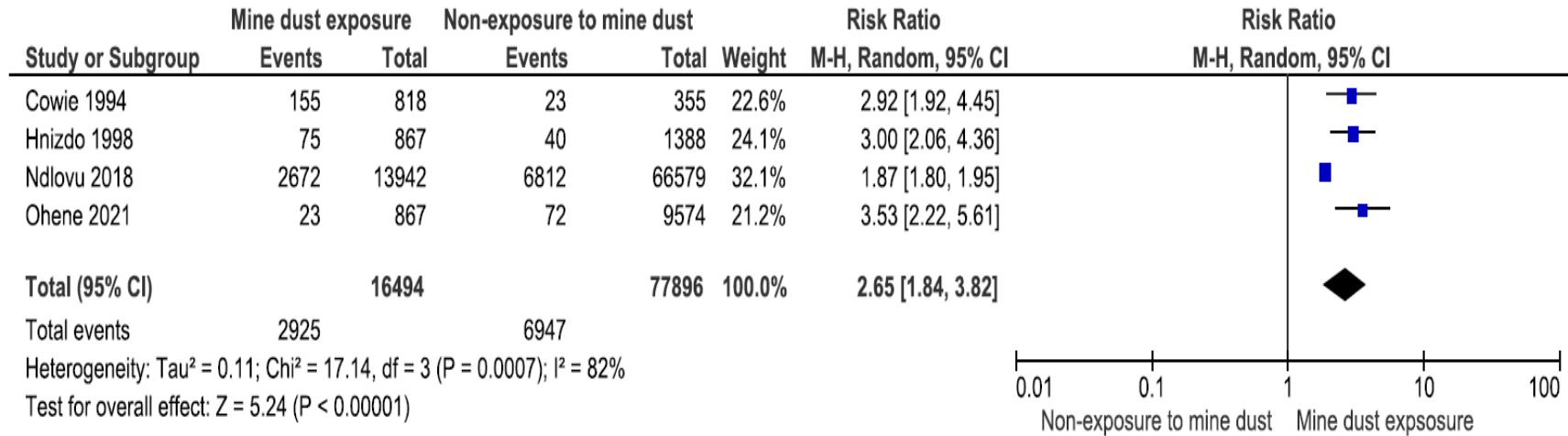






767

768 \*-



769

770

771 **Figure 3:** Meta-analysis results for mine dust exposure and incidence of tuberculosis.

772

773

774

775

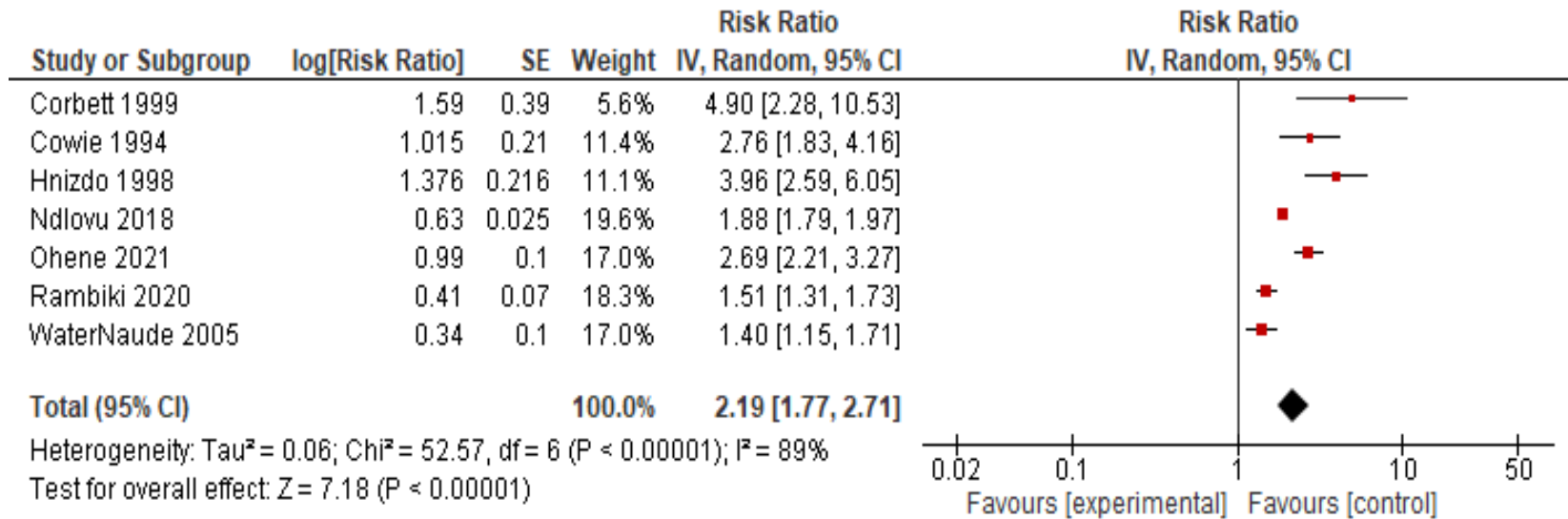
776

777

778

779

780



781 **Figure 4:** Estimate ratio (RR or OR) of tuberculosis in all the seven studies

782

783

784

785

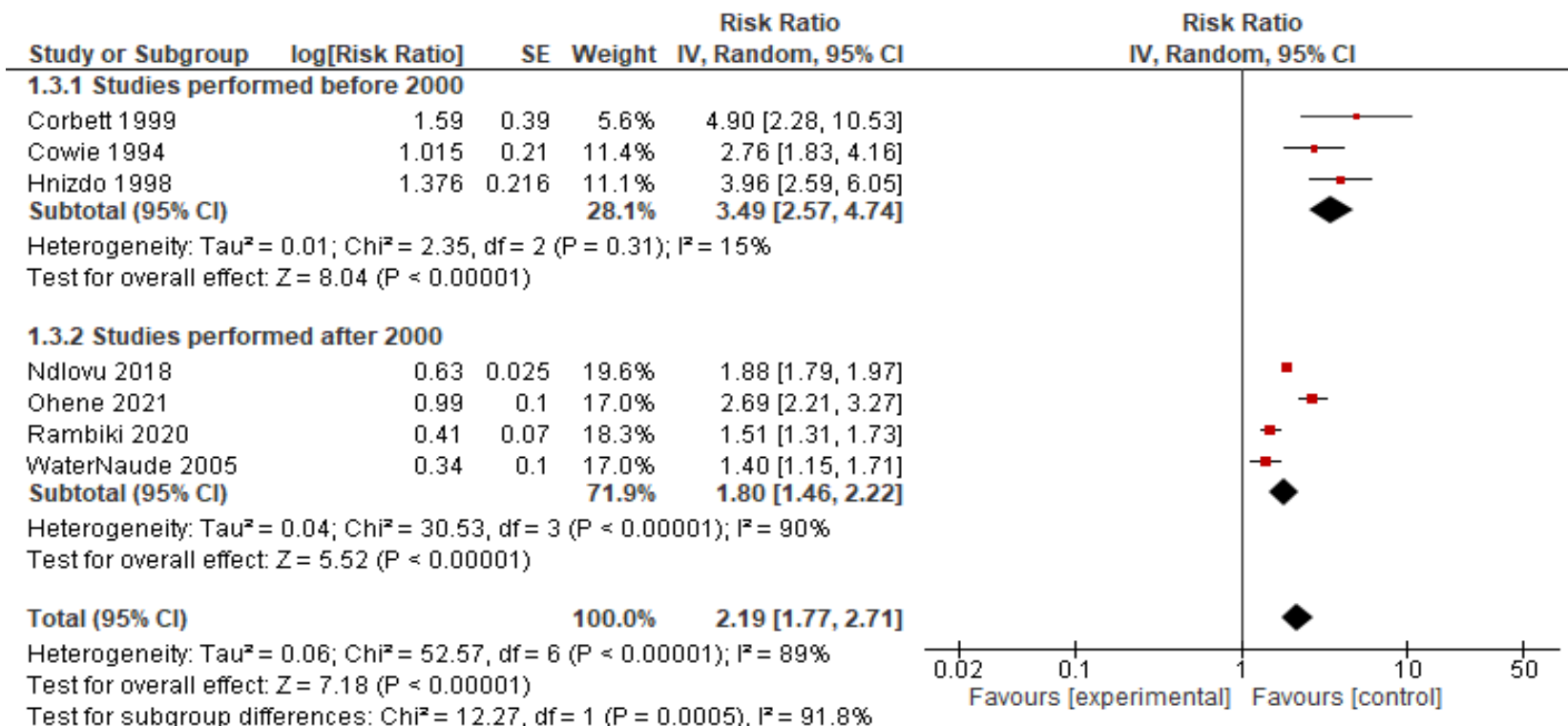
786

787

788

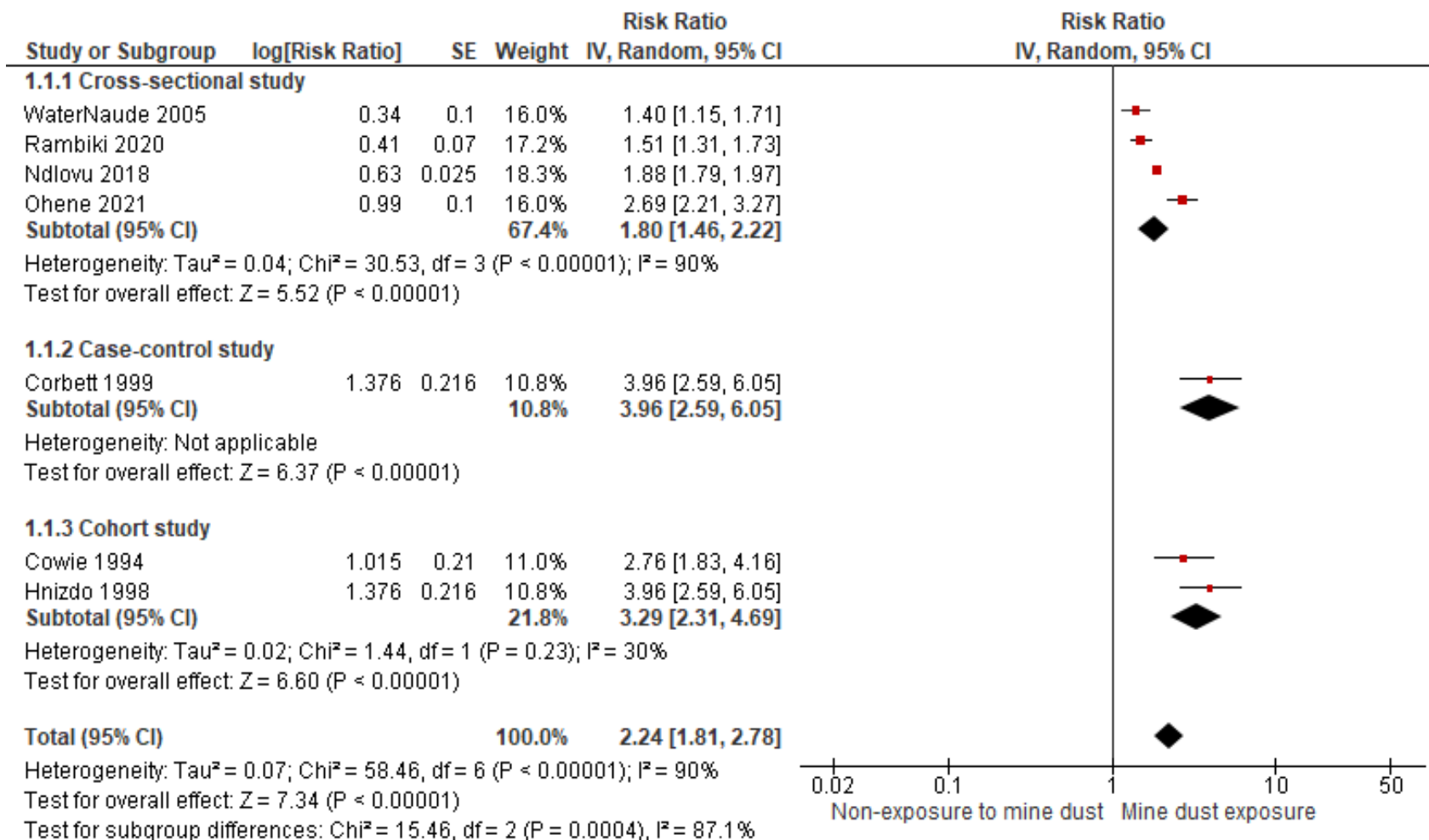
789

790



**Figure 5:** Estimate risk of tuberculosis by study year

791  
792  
793  
794  
795  
796

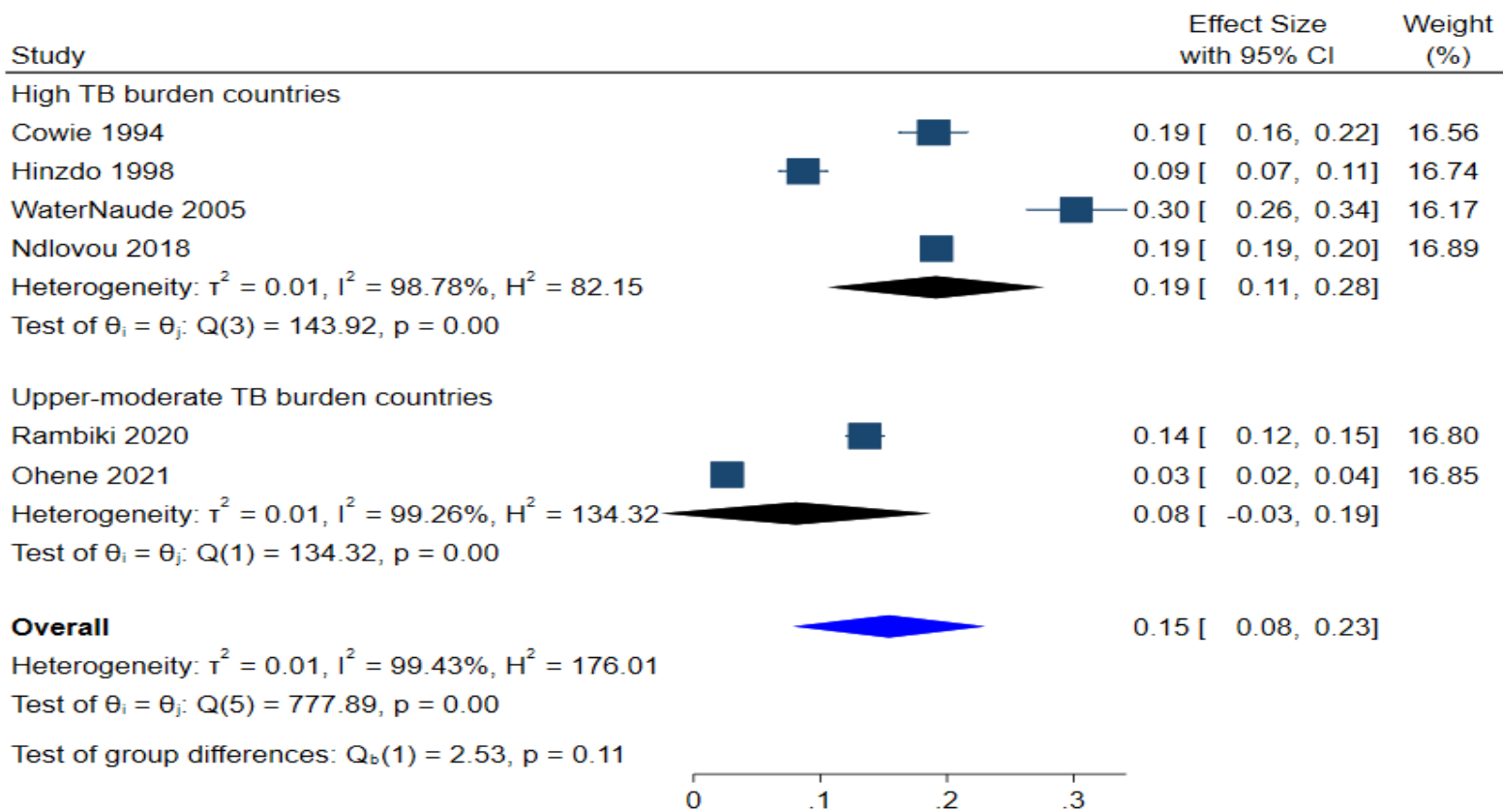


797

798

799

**Fig. 6 Estimate risk (RR or OR) of tuberculosis by study design**



800 s Random-effects REML model

801 **Fig.7: Influence of high vs upper-moderate TB burden countries on TB disease among artisanal miners**

802

803

804

805

806

807 Supplementary files808 **S1Table 2: Prevalence of TB and Tuberculosis Risk or Odd by Artisanal Mining Exposure**

809

<b>First author, Year of publication</b>	<b>Study design</b>	<b>Study /control population(s)</b>	<b>N</b>	<b>Controlling for</b>	<b>Estimate (95% CI) (Exposed to AM activities vs Not exposed)</b>
Cowie 1994	Cohort study	Gold miners	1153	Age, date of CXR	RR 2.8 (1.9, 4.1)
Hnizdo 1998	Cohort study	Gold miners	2255	Age, smoking, cumulative dust exposure	RR 4.18 (2.75, 6.36)
Corbett 1999	Case control	Gold miners	561	Age, HIV, duration, employed, dusty job	OR 4.90 (2.32, 10.58)
WaterNaude 2005	Cross-sectional	Old Miners	250	Length of service, cumulative dust exposure	OR 35.2 (95% CI 31.1 to 39.3)
Ndlovu 2018	Cohort study	Miners	83972	Age, HIV, employed, dusty job	AOR=3.08, 95% CI 2.65 to 3.57
Ohene 2021	Cross-sectional	Miners	10 44 1	Age, dusty job	aOR 2.70, 95% CI 1.47– 4.96, P = 0.001)

Rambiki 2020	Cross-sectional	Miners	2013	Age, year of mining, mining activity	OR 1.50, 95% CI: 1.10–2.05, $P=0.01$ ).

810

811

812 **S2Table 3:** TB cases in exposed persons to silica dust vs non-exposed

Study ID	Exposed persons to the dust mines		Non-exposed persons to the dust mines		RR ou OR (95% CI)
	Number of TB Cases	Total population	Number of TB Cases	Total population	
Cowie 1994	155	818	23	335	RR 2.8 (1.9, 4.1)
Hinzdo 1998	75	867	40	1388	RR 4.18 (2.75, 6.36)
Corbett 1999		381		181	OR 4.90 (2.32, 10.58)
WaterNaude 2005	157	520			OR 35.2 (95% CI 31.1, 39.3)
Ndlovou 2018	2672	13942	6812	66579	AOR 3.08, 95% CI 2.65 to 3.57
Rambiki 2020	272	2013			aOR 2.70, 95% CI 1.47–

					4.96)
Ohene 2021	23	867	72	9574	OR 1.50, 95% CI: 1.10–2.05)

813

814 **S3Table 4a. Detailed Newcastle-Ottawa Scale of each included cohort studies for risk of bias assessment.**

815

Study	Selection				Comparability		Outcome			Total quality score	Risk of bias
	Representativeness of exposed cohort	Selection of non-exposed cohort	Ascertainment of exposure	Demonstration that outcome of interest was present at start of study	Adjust for the most important risk factors	Adjust for other risk factors	Assessment of outcome	Follow-up length	Loss to follow-up length		
Cowie 1994	1	1	1	1	1	?	1	1	1	9	Low
Hnizdo 1998	1	1	1	1	1	?	1	1	1	9	Low

816

817 **S3Table 4b. Detailed Newcastle-Ottawa Scale of each included case-control studies for risk of bias assessment.**

818



Study	Case definition adequate CC	Case representative CC	Selection of controls CC	Definition of controls	Case control comparability on age	Case control comparability on others factors	Ascertainment of exposure/blinding CC	Same method ascertainment CC	Non-responses, Equals? CC	Decision Risk bias
Corbett 1999	1	1	1	1	1	?	1	1	1	Low risk

819

820

821

822

823

824

825

826

827

828 **S3Table 4c. Detailed Newcastle-Ottawa Scale of each included cross-sectional studies for risk of bias assessment.**

829

Study				Comparability	Outcome				
	Representativeness	Sample size	Non-	Ascertainment	Comparability of	Assessment	Statistical	Total	Decision

	of the sample		respondent	of the exposure (risk factor)	subjects in different outcome groups on the basis of design or analysis. Confounding factors controlled	of outcome	tests	score	Risk bias
WaterNaude 2005	1	0	0	2	2	2	1	8	Low risk
Ndlovu 2018	1	0	?	2	0	2	1	6	Intermediate
Rambiki 2020	1	1	0	2	2	2	1	8	Low risk
Ohene 2021	1	0	?	2	0	2	1	6	Intermediate

830

831 **S4Table 5: Meta-regression**

832

Number of Miners	Studies	Coefficients	Lower limit	Upper limit	Standard error	P-value
37000	4	-	-	-	-	-
40000	1	-0.055	-0.186	0.076	0.067	0.410
800000	1	-0.164	-0.294	-0.033	0.067	0.014
Intercept	-	0.190	0.131	0.249	0.030	<0.0001

833

834 The meta-regression revealed that higher number of artisanal in Ghana was associated with 1.64% reduction of TB among artisanal miners (P = 0.014).

835 Note: Meta-regression result may help to look at occupational health policy in Ghana to clarify this findings.

836  
837  
838  
839  
840  
841  
842  
843  
844  
845  
846  
847  
848  
849  
850  
851  
852  
853  
854  
855  
856

**1. Risk of bias assessment**

**S3Table 4a:** Detailed Newcastle-Ottawa Scale of each included cohort studies for risk of bias assessment

The quality of included studies was assessed by the Newcastle Ottawa scale. A study can be awarded a maximum of one star for each numbered item within the Selection and Outcome categories and a maximum of two stars for Comparability.

Selection:

- 1) Representativeness of exposed cohort: 1, study population truly or somewhat representative of a community/ population-based study; 0, study population was sampled from a special population, that is, population from a company, hospital patients, data from the health insurance company or health examination organization, nurses.
- 2) Selection of non-exposed cohort: 1, drawn from the same community as the exposed cohort.
- 3) Ascertainment of exposure: 1, Validation of pets use with secure record; 0, no specific pets use validation method.
- 4) *Demonstration that outcome was not present at start of study: 1, Comparability: 1) 1, whether a study adjusted for the most important factors deliberately; 1, whether a study adjusted for other important risk factors.*

Outcome:

- 1) Assessment of outcome: 1, tuberculosis were confirmed by medical records or record linkage; 0, self-reported.
- 2) Was follow-up long enough for outcomes to occur: 1, duration of follow-up  $\geq 5$  year; 0, if duration of follow-up  $< 5$  year.
- 3) Loss to follow-up rate: 1, complete follow-up or loss to follow up rate  $\leq 20$  %; 0, follow-up rate  $< 80$ % or no description of those lost.

857 **S3Table 4b:** Detailed Newcastle-Ottawa Scale of each included case-control studies for risk of bias assessment

858 **Selection**

859 1) Is the case definition adequate?

860 a) Yes, with independent validation

861 b) Yes, e.g., record linkage or based on self-reports

862 c) No description

863 2) Representativeness of the cases

864 a) Consecutive or obviously representative series of cases

865 b) Potential for selection biases or not stated

866 3) Selection of Controls

867 a) Community controls

868 b) Hospital controls

869 c) No description

870 4) Definition of Controls

871 a) No history of disease (endpoint)

872 b) No description of source

873 **Comparability**

874 1) Comparability of cases and controls on the basis of the design or analysis

875 a) Study controls for age

876 b) Study controls for any additional factor

877 **Exposure**

- 878 1) Ascertainment of exposure  
879 a) Secure record (e.g., pharmacy records)  
880 b) structured interview where blind to case/control status  
881 c) Interview not blinded to case/control status  
882 d) Written self-report or medical record only  
883 e) No description  
884 2) Same method of ascertainment for cases and controls  
885 a) Yes  
886 b) No  
887 3) Non-Response rate  
888 a) Same rate for both groups  
889 b) Non respondents described  
890 c) Rate different and no designation

891

892 **S3Table 4 c.** Detailed Newcastle-Ottawa Scale of each included cross-sectional studies for risk of bias assessment

893 We used this adapted from the Newcastle-Ottawa Quality Assessment Scale for cohort studies to perform a quality assessment of cross-sectional  
894 studies

895

896 **Selection:** (Maximum 5 stars)

897 1) Representativeness of the sample:

898 a) Truly representative of the average in the target population. \* (all subjects or random sampling)

- 899 b) Somewhat representative of the average in the target population. \* (non-random sampling)
- 900 c) Selected group of users.
- 901 d) No description of the sampling strategy.
- 902 2) Sample size:
- 903 a) Justified and satisfactory. \*
- 904 b) Not justified.
- 905 3) Non-respondents:
- 906 a) Comparability between respondents and non-respondents characteristics is established, and the response rate is satisfactory. \*
- 907 b) The response rate is unsatisfactory, or the comparability between respondents and non-respondents is unsatisfactory.
- 908 c) No description of the response rate or the characteristics of the responders and the non-responders.
- 909 4) Ascertainment of the exposure (risk factor):
- 910 a) Validated measurement tool. \*\*
- 911 b) Non-validated measurement tool, but the tool is available or described.\*
- 912 c) No description of the measurement tool.
- 913
- 914
- 915 **Comparability:** (Maximum 2 stars)
- 916 1) The subjects in different outcome groups are comparable, based on the study design or analysis. Confounding factors are controlled.
- 917 a) The study controls for the most important factor (select one). \*
- 918 b) The study control for any additional factor. \*
- 919
- 920 **Outcome:** (Maximum 3 stars)

921 1) Assessment of the outcome:

922 a) Independent blind assessment. \*\*

923 b) Record linkage. \*\*

924 c) Self report. \*

925 d) No description.

926 2) Statistical test:

927 a) The statistical test used to analyze the data is clearly described and appropriate, and the measurement of the association is presented, including  
928 confidence intervals and the probability level (p value). \*

929 b) The statistical test is not appropriate, not described, or incomplete.

930 Comments: For quality and risk of bias assessment, we used the Newcastle-Ottawa Scale (NOS) (“Ottawa Hospital Research Institute,” n.d.), as  
931 recommended by the Cochrane Non-Randomized Studies Methods Working Group (“Cochrane Handbook for Systematic Reviews of  
932 Interventions,” n.d.). The NOS uses an eight-item rating system to evaluate the method of selecting participants, exposure/outcome assessment,  
933 and comparability among study groups. It has specific formats for cohort and case-control studies. We used the modified form for cross-sectional  
934 studies and case-control studies.

935

936 For cohort studies, a study could be assigned a maximum of one star for each numbered item within the selection and outcome categories and a  
937 maximum of two stars for comparability. The assessment was conducted as follows:

938

939 In the selection section, we assessed the representativeness of the exposed cohort, the selection of the non-exposed cohort, the ascertainment of  
940 exposure, the demonstration that outcome was not present at the start of study and assigned a score of 1 or 0 case by case.

941 1) Representativeness of the exposed cohort: 1, study population truly or somewhat representative of a community/ population-based study; 0,  
942 study population was sampled from a special population, that is, population from a company, hospital patients, data from the health insurance  
943 company or health examination organization, nurses.

944 2) Selection of the non-exposed cohort: 1, drawn from the same community as the exposed cohort.

945 3) Ascertainment of exposure: 1, Validation of pets use with secure record; 0, no specific pets use validation method.

946 4) Demonstration that the outcome was not present at start of study: 1, Comparability: 1) 1, whether a study adjusted for the most important  
947 factors deliberately; 1, whether a study adjusted for other important risk factors.

948 In the outcome section, we assessed whether TB was confirmed by one of the recommended methods or self-reported and assigned a score of 1 or  
949 0 accordingly. Then we assessed the follow-up length for the outcome to occur and assigned a score of 1 if the duration of follow-up  $\geq 5$  year or  
950 0 if the duration of follow-up  $< 5$  year. Finally, we assessed the loss to follow-up rate and assigned 1 for complete follow-up or loss to follow up  
951 rate  $\leq 20\%$  and 0 for follow-up rate  $< 80\%$  or no description of those lost.

952

953 For cross-sectional studies, we used an adapted format from the Newcastle-Ottawa Quality Assessment Scale for cohort studies to perform a  
954 quality assessment of cross-sectional studies (see additional files table 4c). In the Selection section (Maximum 5), we assessed the  
955 representativeness of the sample, the sample size, non-respondents, and ascertainment of the exposure (risk factor). In this point, we awarded for  
956 the sample representativeness 1 if the sample was truly representative of the average in the target population (all subjects or random sampling) or  
957 if it was somewhat representative of the average in the target population (non-random sampling) and 0 if the sample was from selected group of  
958 users or if there was no description of the sampling strategy. For the sample size, we scored 1 if it was justified and satisfactory and 0 if not  
959 justified. About non-respondents, we assigned 1 if the comparability between respondents and non-respondents characteristics is established, and  
960 the response rate is satisfactory and 0 if the response rate is unsatisfactory, or the comparability between respondents and non-respondents is  
961 unsatisfactory and if there was no description of the response rate or the characteristics of the responders and the non-responders.



962 For the ascertainment of the exposure (risk factor), we scored 2 if the study used a validated measurement tool, 1 if it used a non-validated  
963 measurement tool, but the tool was available or described, and 0 if there was no description of the measurement tool.

964

965 In the comparability section (maximum 2 scoring), we assessed whether the subjects in different outcome groups are comparable, based on the  
966 study design or analysis. If confounding factors are controlled or not. Then, we awarded 1 if there were study controls for the most important  
967 factor (select one) or if there was a study control for any additional factor and 0 if not.

968

969 In the outcome section (maximum 3), we awarded a score of 2 independent blind assessment of the outcome and the record linkage; a score of 1  
970 for self-report; and 0 if no description was provided. In the same section, we assessed statistical test and assigned 1 if the statistical test used to  
971 analyze the data was clearly described and appropriate, and the measurement of the association was presented, including confidence intervals and  
972 the probability level (p value). In case that the statistical test was not appropriate, not described, or incomplete; we assigned a score of 0.

973

974

975

976

977

978

979

980

981

982

983

984

985

986

987 **S6Table 6. Surch strategy according to PICO Question**

988

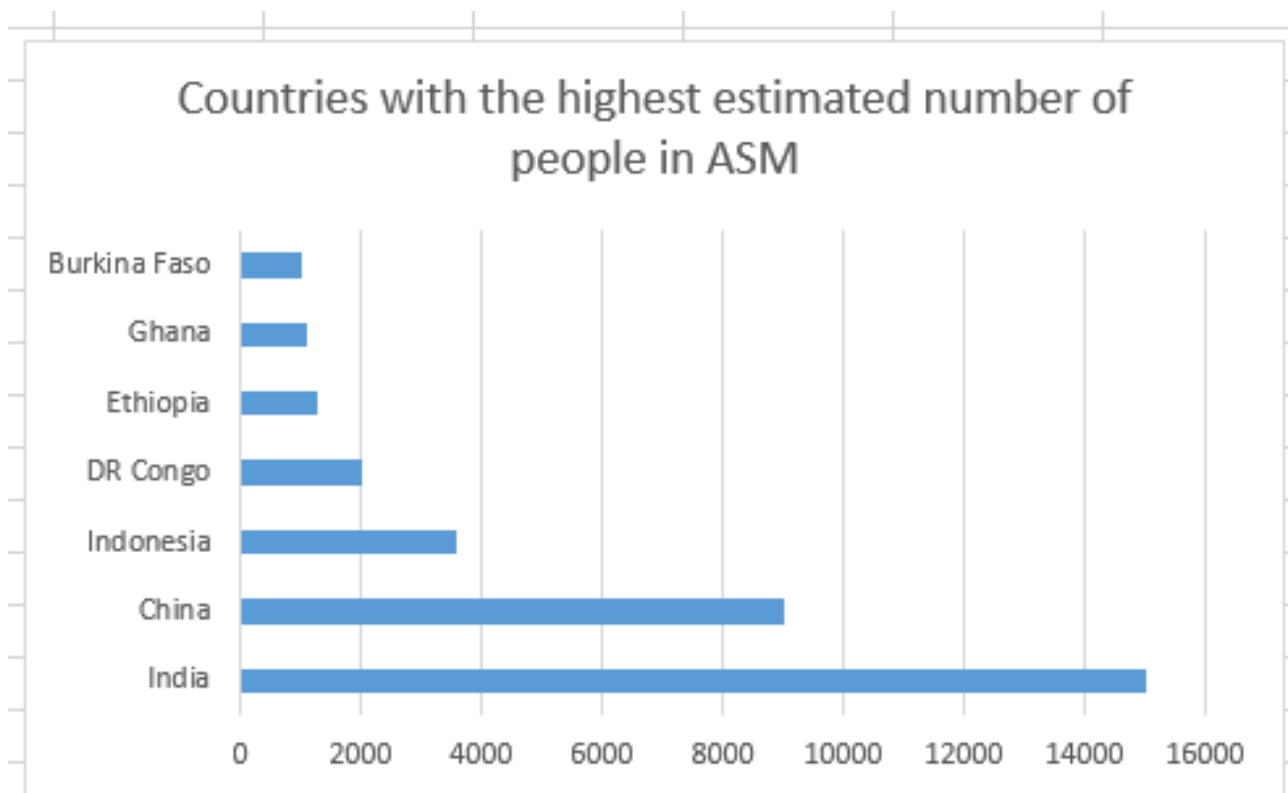
<b>What is the Prevalence and factors associated with TB in ASM in SSA?</b>						
((Tuberculosis) OR (Pulmonary Tuberculosis) OR (Silicotuberculosis) OR (Pulmonary infection due to M.tuberculosis)	AND	((Dust exposure in ASM) OR(silicosis in ASM) OR (Artisanal mines) OR Small scale-mines	AND	((Epidemiology) OR (prevalence) OR (incidence) OR (burden) OR (Factors associated) OR (risk factor)	AND	((DR Congo) OR(Tanzania) OR(Sudan) OR(Nigeria) OR(Zimbabwe) OR(Madagascar) OR(Ethiopia) OR(Mali) OR(Ghana) OR (Cote d'Ivoire) OR(Sierra Leone) OR(Guinea) OR(Liberia) OR(Burkina Faso) OR(Chad) OR(Niger) OR(Central Africa) OR(Eritrea) OR(Uganda) OR(Kenya) OR(Mozambique) OR(Angola) OR(Burundi) OR(Rwanda)

						OR(Zambia) OR(Malawi) OR(Somalia) OR(Namibia) OR(Botswana) OR(South Africa) OR(Congo Brazaville) OR(South Sudan)
--	--	--	--	--	--	--

989

990

991



total of 44,500 people

992 S1Figure 1. Countries with the highest estimated number of people working in artisanal and small scale mining (<https://www.statista.com> )

993  
994  
995  
996  
997  
998

999

## S2Fig 2: Publication bias

Regression-based Egger test for small-study effects  
Random-effects model  
Method: REML

H0: beta1 = 0; no small-study effects

beta1 = 10.73  
SE of beta1 = 5.726  
z = 1.87  
Prob > |z| = 0.0610

. meta bias, begg

Effect-size label: Effect Size  
Effect size: es  
Std. Err.: se

Begg's test for small-study effects

Kendall's score = 3.00  
SE of score = 5.323  
z = 0.38  
Prob > |z| = 0.7071

1000

1001

1002

1003

1004

1005

1006

1007

1008

1009

1010

1011

1012

1013

1014

1015

1016

1017

1018

1019

1020

1021

1022

1023

1024

1025