

1 **Full title:** Clinical and laboratory features of COVID-19 illness and outcomes in
2 immunocompromised individuals during the first pandemic wave in Sydney, Australia
3
4 **Short title:** COVID-19 illness and outcomes in immunocompromised individuals in Sydney,
5 Australia
6
7 Nila J. Dharan^{1*}, Sarah C. Sasson^{1,2,3*}, Golo Ahlenstiel^{4,5}, Christopher R. Andersen^{6,7}, Mark
8 Bloch^{1,8}, Griselda Buckland¹, Nada Hamad^{9,10,11}, Win Min Han¹, Anthony D. Kelleher^{1,9},
9 Georgina V. Long^{6,12,13}, Gail V. Matthews^{1,9}, Michael M. Mina¹⁴, Emmanuelle Papot¹, Kathy
10 Petoumenos¹, Sanjay Swaminathan^{3,4,5}, Barbara Withers⁹, James Yun^{11,15} and Mark N.
11 Polizzotto^{1,9,16}, on behalf of the CORIA Study Group#
12
13 ¹Kirby Institute, UNSW Sydney, Sydney, New South Wales, Australia
14 ²NSW Health Pathology, New South Wales, Australia
15 ³Westmead Hospital, Westmead, New South Wales, Australia
16 ⁴Blacktown Hospital, Blacktown, New South Wales, Australia
17 ⁵Western Sydney University, Penrith, New South Wales, Australia
18 ⁶Royal North Shore Hospital, St Leonards, New South Wales, Australia
19 ⁷The George Institute for Global Health, Newtown, New South Wales, Australia
20 ⁸Holdsworth House Medical Practice, Darlinghurst, New South Wales, Australia
21 ⁹St Vincent's Hospital, Darlinghurst, New South Wales, Australia
22 ¹⁰School of Clinical Medicine, Faculty of Medicine and Health, University of New South
23 Wales Sydney, Sydney, New South Wales, Australia
24 ¹¹School of Medicine, Sydney, University of Notre Dame, Chippendale, New South Wales,
25 Australia

26 ¹²Melanoma Institute Australia, Wollstonecraft, New South Wales, Australia

27 ¹³The Faculty of Medicine and Health, The University of Sydney, Sydney, New South Wales,

28 Australia

29 ¹⁴Northern Beaches Hospital, Frenchs Forest, New South Wales, Australia

30 ¹⁵Nepean Hospital, Kingswood, New South Wales, Australia

31 ¹⁶Australian National University, Canberra, Australian Capital Territory, Australia

32

33 *NJD and SCS contributed equally

34 #CORIA Study Group: see Acknowledgements

35

36 **Corresponding authors:**

37 Dr Nila J. Dharan

38 Kirby Institute

39 Level 6, Wallace Wurth Building

40 UNSW SYDNEY 2052

41 E: ndharan@kirby.unsw.edu.au

42 T: 02 9385 0967

43

44 Dr Sarah C. Sasson

45 Kirby Institute

46 Level 6, Wallace Wurth Building

47 UNSW SYDNEY 2052

48 E: ssasson@kirby.unsw.edu.au

49 T: 02 9385 0967

50

51 **Keywords:** SARS-CoV-2; COVID-19; Immunocompromised

52 **Abstract:**

53 People with immunocompromising conditions are at increased risk of SARS-CoV-2 infection
54 and mortality, however early in the pandemic it was challenging to collate data on this
55 heterogenous population. We conducted a registry study of immunocompromised individuals
56 with polymerase chain reaction (PCR)-confirmed SARS-CoV-2 infection from March –
57 October 2020 in Sydney, Australia to understand clinical and laboratory outcomes in this
58 population prior to the emergence of the Delta variant. 27 participants were enrolled into the
59 study including people with a haematologic oncologic conditions (n=12), secondary
60 immunosuppression (N=8) and those with primary or acquired immunodeficiency (i.e. HIV;
61 N=7). All participants had symptomatic COVID-19 with the most common features being
62 cough (64%), fever (52%) and headache (40%). Five patients demonstrated delayed SARS-
63 CoV-2 clearance lasting three weeks to three months. The mortality rate in this study was
64 7% compared to 1.3% in the state of New South Wales Australia during the same period.
65 This study provides data from the first eight months of the pandemic on COVID-19 outcomes
66 in at-risk patient groups.

67 **Introduction:**

68 Early in the COVID-19 pandemic, male sex, advanced age and certain comorbidities were
69 identified as risk factors for death following SARS-CoV-2 infection [1-4]. Large international
70 studies with data on immunocompromising conditions identified that patients with
71 haematological malignancies, connective tissue disease, solid organ transplantation and those
72 on immunosuppressive therapies for other indications were also at increased risk of death [4].
73 A study of 310 immunocompromised individuals with SARS-CoV-2 infection in the United
74 Kingdom reported that, compared with the general population, mortality among hospitalised
75 immunocompromised individuals was greater (38% vs. 26%) and immunocompromised
76 individuals were younger at time of death [5]. In Australia, chronic immunosuppression was
77 also identified to be associated with increased risk of death in patients in intensive care units
78 early in the pandemic [6].

79

80 The Coronavirus Outcomes Registries in Immunocompromised Individuals Australia
81 (CORIA) was a clinical registry study of adults with immunocompromising conditions and
82 SARS-CoV-2 infection acquired between March – October 2020, prior to COVID-19
83 vaccines, specific therapies and the emergence of variants of concern (VOCs). The aim of
84 this study was to determine the clinical and laboratory COVID-19 outcomes of adult patients
85 with immunocompromising conditions.

86

87 **Methods:**

88 The study included individuals with specified immunocompromising conditions aged 18
89 years or older with polymerase chain reaction (PCR)-confirmed SARS-CoV-2 infection
90 between March 1, 2020 – October 31, 2020. Participants had been tested after developing
91 symptoms consistent with COVID-19 and/or being identified as a close contact of a

92 confirmed case. Participants were enrolled from nine clinical sites in Sydney, Australia:
93 seven major teaching hospitals with high caseloads of immunocompromised individuals; one
94 primary care centre with a high caseload of people with HIV; and one specialist melanoma
95 centre. Eligible immunocompromising conditions included: primary immunodeficiency,
96 defined as a predisposition to infection associated with a genetic or inherited deficit of
97 immune function; current receipt of immunosuppressive therapy (excluding inhaled
98 corticosteroids); HIV infection; undergoing active management for cancer diagnosed within
99 36 months of enrolment (excluding superficial basal cell and squamous cell carcinomas;
100 including treatment with immune checkpoint inhibitors); and solid organ transplantation. All
101 eligible cases from the nine enrolling sites were included.

102

103 All data were sourced from the participants' medical record. At enrolment, the following data
104 were collected: demographic and clinical characteristics; epidemiologic risk factors for
105 infection; medical history; presenting clinical symptoms; clinical status; COVID-19
106 treatments; and clinical test results including SARS-CoV-2 and respiratory pathogen PCR
107 testing, haematology, hepatic and renal chemistry, and inflammatory biomarkers. Follow-up
108 data on clinical symptoms, clinical status, laboratory results and treatment history were
109 collected on Days 3, 7, 14, 21, 28 and 3 months.

110

111 Three main groups of immunocompromising conditions were categorised as: 1) haematologic
112 and oncologic conditions; 2) primary or acquired immunodeficiency (i.e. HIV); and 3)
113 secondary immunosuppression (including immunosuppressive therapy and solid organ
114 transplantation). The time to end of clinical isolation was defined as the time from initial
115 SARS-CoV-2 positive PCR to either a negative SARS-CoV-2 PCR or resolution of all
116 symptoms after a certain timepoint according to local guidance at the time [7]. Descriptive

117 statistics were used to calculate the proportions of participants with various clinical and
118 laboratory characteristics at presentation and follow up, overall and across
119 immunocompromising conditions group.

120

121 The study was reviewed by the St Vincent's Hospital Human Research Ethics Committee and
122 granted a waiver of the need for individual consent for data collection as per the National
123 Statement on Ethical Conduct in Human Research. The study was registered at
124 Clinicaltrials.gov (NCT04354818).

125

126 **Results:**

127 Of the 27 participants enrolled, 58% were male and the median age was 66 years. Twelve
128 (44%) of the participants had haematologic (n=7) or oncologic conditions (n=5), 8 (30%) had
129 secondary immunosuppression and 7 (26%) had primary or acquired immunodeficiency (i.e.
130 HIV), as shown in Table 1 (further detail in Supplemental Table 1). Of the total cohort with
131 available data, 41% had a history of hypertension, 26% had diabetes and 19% had
132 cardiovascular disease. Among the 25 participants with clinical symptom data, all had
133 symptomatic disease with the most common presenting symptoms being cough (64%), fever
134 (52%) and headache (40%) (Table 1). Two patients, both in the haematology/oncology group,
135 received treatments for COVID-19 as part of clinical trials (remdesivir n=1;
136 hydroxychloroquine n=1).

137 **Table 1.** Demographic characteristics, medical history, clinical symptoms and laboratory results at time of presentation, by primary
 138 immunocompromising diagnostic category

Baseline characteristics	Primary diagnostic category			Total N=27
	Haematologic/oncologic conditions ¹ N=12 n (%)	Secondary immunosuppression ² N=8 n (%)	Primary and acquired immunodeficiency ³ N=7 n (%)	
Demographics				
Age, median (range)	74 (62-75)	63 (42-75)	55 (39-55)	66 (54-74)
Gender				
Female	5 (42%)	4 (50%)	2 (29%)	11 (41%)
Male	7 (58%)	4 (50%)	5 (71%)	16 (58%)
Ethnicity				
Caucasian	9 (75%)	6 (75%)	7 (100%)	22 (81%)
Asian	0 (0%)	1 (13%)	0 (0%)	1 (4%)
Other	3 (25%)	1 (13%)	0 (0%)	4 (15%)

BMI, available data	9 (75%)	6 (75%)	5 (71%)	20 (74%)
Median (range)	28 (25-32)	32 (31-35)	36 (28-36)	31 (25-35)
BMI group				
<30	6 (50%)	1 (13%)	2 (29%)	9 (33%)
≥30	3 (25%)	5 (63%)	3 (43%)	11 (41%)
Missing	3 (25%)	2 (25%)	2 (29%)	7 (26%)
Medical History				
Smoking status				
Never	7 (58%)	6 (75%)	3 (43%)	16 (59%)
Past (>12 months)	3 (25%)	1 (13%)	1 (14%)	5 (19%)
Recent (within 12 months, but not now)	0 (0%)	0 (0%)	1 (14%)	1 (4%)
Current	0 (0%)	0 (0%)	1 (14%)	1 (4%)
Unknown	2 (17%)	1 (13%)	1 (14%)	4 (15%)
Chronic disease				

history				
Diabetes mellitus ⁴	3 (25%)	2 (25%)	2 (29%)	7 (26%)
Unknown	2 (17%)	1 (13%)	0 (0%)	3 (11%)
Hypertension	3 (25%)	4 (50%)	4 (57%)	11 (41%)
Unknown	2 (17%)	1 (13%)	0 (0%)	3 (11%)
Cardiovascular disease ⁵	4 (33%)	1 (13%)	0 (0%)	5 (19%)
Unknown	2 (17%)	1 (13%)	0 (0%)	3 (11%)
Respiratory disease ⁶	3 (25%)	1 (13%)	5 (71%)	9 (33%)
Unknown	2 (17%)	1 (13%)	0 (0%)	3 (11%)
Presenting clinical symptoms				
Available data, n (%)	11 (92%)	7 (88%)	7 (100%)	25 (93%)
Any symptoms	11 (100%)	7 (100%)	7 (100%)	25 (100%)
Any symptoms (fever, cough, headache and	10 (91%)	6 (86%)	7 (100%)	23 (92%)

shortness of breath)				
Fever	7 (64%)	3 (43%)	3 (43%)	13 (52%)
Cough	8 (73%)	5 (72%)	3 (43%)	16 (64%)
Sore throat	1 (9%)	3 (43%)	4 (57%)	8 (32%)
Myalgia	1 (9%)	4 (57%)	0 (0%)	5 (20%)
Rhinorrhoea	2 (18%)	2 (29%)	0 (0%)	4 (16%)
Fatigue	1 (9%)	3 (43%)	1 (14%)	5 (20%)
Shortness of breath	0 (0%)	2 (29%)	3 (43%)	5 (20%)
Headache	2 (18%)	4 (57%)	4 (57%)	10 (40%)
Diarrhoea	3 (27%)	1 (14%)	2 (29%)	6 (24%)
Alteration of sense of smell	0 (0%)	1 (14%)	0 (0%)	1 (4%)
Alteration of sense of taste	0 (0%)	1 (14%)	0 (0%)	1 (4%)
Oxygen saturation (pulse oximetry), median (range)	93% (n=1)	N/A	N/A	93% (n=1)

Requiring supplemental	1 (9%)	0 (0%)	0 (0%)	1 (4%)
O2				
Vital signs, median (range)				
Available data, n (%)	5 (42%)	3 (38%)	5 (71%)	13 (48%)
Pulse	97 (79-108)	85 (85-85)	118 (81-122)	85 (81-108)
Systolic Blood Pressure	125 (117-147)	141 (128-170)	128 (121-161)	128 (121-150)
Diastolic Blood Pressure	79 (79-81)	73 (63-104)	86 (81-90)	81 (73-90)
Haematology				
Available data, n (%)	3 (25%)	3 (38%)	3 (43%)	9 (33%)
White blood cell count	5.4 (3.0-10.1)	4.4 (3.8-10.9)	10.8 (6.8-10.8)	6.8 (4.4-10.8)
%Neutrophils	3.3 (1.5-7.2)	3.3 (3.1-7.3)	5.7 (6.7-6.7)	5.7 (3.3-6.7)
%Lymphocytes	1.1 (0.9-1.4)	0.7 (0.4-2.2)	2.9 (1.7-2.9)	1.4 (0.9-2.2)
Haemoglobin	124 (121-145)	137 (123-140)	164 (142-164)	140 (124-145)
Platelets	235 (183-266)	144 (108-180)	192 (192-202)	192 (181-218)

	C-reactive protein	3.7 (n=1)	213, 14, 12.6 (n=3)	4, 4 (n=2)	8.3 (4-14) (n=6)
139	BMI=body mass index				
140	¹ Haematologic and oncologic conditions (n=12); melanoma on immune checkpoint inhibitors (N=4), ovary, breast, immunoproliferative disease				
141	(HSCT), unspecified lymphoid or haematopoietic tissue malignancy, lymphoma, leukemia (N=2), oesophagus.				
142	² Immunosuppressive therapy (n=7), solid organ transplant recipients (n=1)				
143	³ Primary immunodeficiency (n=3) and HIV (n=4; three had available data on most recent CD4 lymphocyte count; all > 500 cells/mm ³)				
144	⁴ Diabetes treatment: lifestyle modifications (n=1) and oral medication (n=2) in the Haematologic/oncologic conditions group; oral medications (n=2) in the				
145	Secondary Immunosuppression group; and lifestyle modifications + oral medication (n=1) and oral medication + insulin (n=1) in the Primary and Acquired				
146	Immunodeficiency group				
147	⁵ Cardiovascular disease history: arrhythmia (n=2), pulmonary embolism (n=1) and missing data (n=1) in the Haematologic/oncologic conditions group; and				
148	coronary artery disease requiring coronary artery bypass grafting (n=1) in the Secondary Immunosuppression group				
149	⁶ Respiratory disease history: chronic obstructive pulmonary disease (n=1), productive cough (n=1) and obstructive sleep apnoea (n=1) in the				
150	Haematologic/oncologic Conditions group; Obstructive sleep apnoea (n=1) in the Secondary Immunosuppression group; and Asthma (n=5) in the Secondary				
151	Immunosuppression group				

152 At Days 7 and 28, 47% and 22% of participants, respectively, were still reporting symptoms
153 (Figure 1). The median (interquartile range [IQR]) time to release from isolation for the total
154 cohort was 16 (15-27) days: 15 (11-29) days for the haematologic/oncologic group, 26 (17-
155 27) days for the secondary immunosuppression group, and 14 (14-14) days for the
156 primary/acquired immunodeficiency group. Nine (33%) of participants were tested for
157 SARS-CoV-2 by PCR after their entry date test (“Day 0”; see Supplemental Table 2). Of
158 these nine participants, three (33%) tested positive at Day three, one (11%) at Day seven, two
159 (22%) at Day 21, one (11%) at Day 28 and two (22%) at three months. Of the two
160 participants that tested positive at three months, one had melanoma and one had an
161 autoinflammatory condition.

162

163 **Figure legend.** Proportion of participants reporting symptoms of SARS-CoV-2 infection
164 over time, by primary immunocompromising diagnostic category. Panel A. Fever; Panel B.
165 Cough; Panel C. Headache; Panel D. Shortness of breath. E. Any symptom

166

167 Where available, laboratory results were recorded over three months (Supplemental Figure
168 1). The platelet count peaked at Day 14, while the neutrophil and lymphocyte counts were
169 highest at baseline and the C-reactive protein was highest at Day three.

170

171 Clinical illness outcomes are shown in Supplemental Table 3. Among the total cohort, nine
172 (33%; n=3 from each group) required hospitalisation with the median time from enrolment to
173 hospital admission of three days. Three (11%) participants (two in the secondary
174 immunosuppression group and one in the hematological/oncological group) required
175 mechanical ventilation with the median time from enrolment to initiation of mechanical
176 ventilation of three days. Overall, two (7%) participants died; one was a female in her 60s in

177 the hematological/oncological group and the other was a female in her 80s in the secondary
178 immunosuppression group. The time from SARS-CoV-2 diagnosis to death for both
179 participants was 90 days; both died primarily from their underlying disease, rather than
180 severe COVID-19.

181

182 **Discussion**

183 We report demographic and clinical characteristics of individuals with conditions associated
184 with immune compromise who were diagnosed with COVID-19 from March – October 2020
185 prior to the introduction of SARS-CoV-2 vaccination, COVID-19 treatments, and the
186 emergence of VOCs. During this time, there were few data available on the clinical outcomes
187 of patients with COVID-19, particularly in rare and orphan disease groups, and there was
188 considerable concern that, similar to other respiratory viruses [8-13], immunosuppressed
189 individuals may be at risk for increased risk of mortality associated with SARS-CoV-2
190 infection and slower viral clearance. All patients in our study had symptomatic illness as well
191 as evidence of prolonged durations of viral shedding.

192

193 The most common clinical presenting symptoms among all participants were cough, and
194 fever, which were of similar prevalence to that reported in another cohort of 55 patients (9%
195 were immunocompromised) studied during a similar period in Melbourne, Australia [14]
196 (cough 64% in our cohort vs. 66%; fever 52% in our cohort versus 47%). Other symptoms
197 were also similar including sore throat (32% in our cohort vs. 29%) and diarrhoea (24% in
198 our cohort vs. 29%), although headache was more common among our cohort (40% in our
199 cohort vs. 0.05%).

200

201 There is documented evidence of prolonged SARS-CoV-2 shedding in immunocompromised
202 people, which can increase the risk of outgrowth of novel viral variants. The median time to
203 de-isolation was 16 days in our cohort which is comparable to data published in the general
204 population during the pre-Delta phase of the pandemic (median 12-16 days [15, 16]. In our
205 study, the secondary immunosuppression group numerically had the longest median time to
206 viral clearance (26 days) and there was delayed viral clearance in five patients ranging from
207 three weeks to three months, in line with similar previous reports in immunocompromised
208 individuals [17, 18]. A recent case series of SARS-CoV-2 Delta strain infection in
209 immunocompromised individuals has demonstrated that immunocompromised patients can
210 shed infectious (culture-positive) virus for up to 33 days accompanied by low levels of
211 neutralising antibody [17]. These findings have implications for the risk of emergence of new
212 variants with resistance to SARS-CoV-2 therapeutics, as well as for infection control.
213 Additionally, for patients requiring allogeneic hematopoietic stem cell transplantation,
214 chimeric antigen T cell therapies or even chemotherapy, this delayed clearance can delay
215 therapy and potentially negatively a patient's cancer survival outcomes.

216

217 Our findings suggest that patients in the secondary immunosuppression group may be
218 functionally more immunocompromised than the haematological/oncology and
219 primary/acquired immunodeficiency groups. This may reflect the fact that four of the 12
220 patients in the haematological/oncology group were on immunostimulatory checkpoint
221 inhibitor therapies, which have been associated with similar mortality rates to patients with
222 cancer [19]. In addition, three of the seven participants in the primary/acquired
223 immunodeficiency group were people with HIV on antiretroviral therapy with CD4
224 lymphocyte counts >500 cells/mm³.

225

226 In this cohort of immunocompromised individuals, 33% required hospitalisation, 11%
227 required mechanical ventilation, and 7% died. At the end of October 2020 in New South
228 Wales (the end of our study period), among the total 4,237 reported COVID-19 cases, 55
229 (1.3%) had died [20].

230

231 **Conclusions:**

232 Our data provide insights into COVID-19 illness and outcomes in immunocompromised
233 individuals in a resource-rich setting prior to COVID-19 vaccines and specific therapies, and
234 at a time when community transmission and healthcare strain was relatively low. These data
235 provide a benchmark for future work evaluating vulnerable populations including those with
236 heterogenous conditions affecting immune system function. We acknowledge several
237 limitations including the small sample size, which reflects the small and short peak of
238 COVID-19 in New South Wales in 2020, and limited data collection such as serial SARS
239 CoV-2 PCR results. Further understanding around which specific subgroups of
240 immunocompromised individuals are at greatest risk of SARS-CoV-2 infection, severe
241 COVID-19 illness outcomes and prolonged SARS-CoV-2 shedding, particularly in the post-
242 vaccination era and with the emergence of new variants, remains an important area of
243 research.

244 **Acknowledgements**

245 #CORIA Study Group: Nila J. Dharan, Sarah C. Sasson, Golo Ahlenstiel, Christopher R.

246 Andersen, Mark Bloch, Griselda Buckland, Nada Hamad, Win Min Han, Anthony D.

247 Kelleher, Georgina V. Long, Gail Matthews, Michael M. Mina, Emmanuella Papot, Kathy

248 Petoumenos, Tri Phan, Sanjay Swaminathan, Barbara Withers, James Yun, Mark N.

249 Polizzotto, David A. Brown, Rowena A. Bull, Matthew S. Carlino, Jennifer Curnow, Sarah

250 Davidson, Dominic E. Dwyer, Prudence N. Gatt, Yuvaraj Ghodke, Sally Hough, Peter

251 MacDonald, Susan Maddocks, Marianne Martinello, Deborah Marriott, Alexander M.

252 Menzies, Tania Sorrell.

253

254 **Supplemental Figure Legend.** Markers of infection and inflammation over time among the

255 total cohort (N=27)

256 **References**

- 257 1. Shi H, Han X, Jiang N, Cao Y, Alwalid O, Gu J, et al. Radiological findings from 81
258 patients with COVID-19 pneumonia in Wuhan, China: a descriptive study. *Lancet Infect Dis.*
259 2020;20(4):425-34. Epub 2020/02/28. doi: 10.1016/S1473-3099(20)30086-4. PubMed
260 PMID: 32105637; PubMed Central PMCID: PMC7159053.
- 261 2. Chen N, Zhou M, Dong X, Qu J, Gong F, Han Y, et al. Epidemiological and clinical
262 characteristics of 99 cases of 2019 novel coronavirus pneumonia in Wuhan, China: a
263 descriptive study. *Lancet.* 2020;395(10223):507-13. Epub 2020/02/03. doi: 10.1016/s0140-
264 6736(20)30211-7. PubMed PMID: 32007143.
- 265 3. Huang C, Wang Y, Li X, Ren L, Zhao J, Hu Y, et al. Clinical features of patients
266 infected with 2019 novel coronavirus in Wuhan, China. *Lancet (London, England).*
267 2020;395(10223):497-506. Epub 2020/01/28. doi: 10.1016/s0140-6736(20)30183-5. PubMed
268 PMID: 31986264.
- 269 4. Williamson EJ, Walker AJ, Bhaskaran K, Bacon S, Bates C, Morton CE, et al. Factors
270 associated with COVID-19-related death using OpenSAFELY. *Nature.* 2020;584(7821):430-
271 6. doi: 10.1038/s41586-020-2521-4. PubMed PMID: 32640463; PubMed Central PMCID:
272 PMC7611074.
- 273 5. Shields AM, Anantharachagan A, Arumugakani G, Baker K, Bahal S, Baxendale H,
274 et al. Outcomes following SARS-CoV-2 infection in patients with primary and secondary
275 immunodeficiency in the UK. *Clin Exp Immunol.* 2022;209(3):247-58. Epub 2022/06/01.
276 doi: 10.1093/cei/uxac008. PubMed PMID: 35641155; PubMed Central PMCID:
277 PMC78807296.
- 278 6. Burrell AJ, Pellegrini B, Salimi F, Begum H, Broadley T, Campbell LT, et al.
279 Outcomes for patients with COVID-19 admitted to Australian intensive care units during the

- 280 first four months of the pandemic. *Med J Aust.* 2021;214(1):23-30. Epub 2020/12/17. doi:
281 10.5694/mja2.50883. PubMed PMID: 33325070.
- 282 7. Australian Government Department of Health and Aged Care. Coronavirus (COVID-
283 19) – CDNA National Guidelines for Public Health Units. Available at:
284 [https://www.health.gov.au/resources/publications/coronavirus-covid-19-cdna-national-](https://www.health.gov.au/resources/publications/coronavirus-covid-19-cdna-national-guidelines-for-public-health-units)
285 [guidelines-for-public-health-units](https://www.health.gov.au/resources/publications/coronavirus-covid-19-cdna-national-guidelines-for-public-health-units). Access date July 22, 2023.
- 286 8. Kim YJ, Lee ES, Lee YS. High mortality from viral pneumonia in patients with
287 cancer. *Infect Dis (Lond).* 2019;51(7):502-9. Epub 2019/05/14. doi:
288 10.1080/23744235.2019.1592217. PubMed PMID: 31081422.
- 289 9. Manuel O, Estabrook M, American Society of Transplantation Infectious Diseases
290 Community of P. RNA respiratory viral infections in solid organ transplant recipients:
291 Guidelines from the American Society of Transplantation Infectious Diseases Community of
292 Practice. *Clin Transplant.* 2019;33(9):e13511. doi: 10.1111/ctr.13511. PubMed PMID:
293 30817023.
- 294 10. Gooskens J, Jonges M, Claas EC, Meijer A, Kroes AC. Prolonged influenza virus
295 infection during lymphocytopenia and frequent detection of drug-resistant viruses. *The*
296 *Journal of infectious diseases.* 2009;199(10):1435-41. Epub 2009/04/28. doi:
297 10.1086/598684. PubMed PMID: 19392620.
- 298 11. Hill-Cawthorne GA, Schelenz S, Lawes M, Dervisevic S. Oseltamivir-resistant
299 pandemic (H1N1) 2009 in patient with impaired immune system. *Emerging infectious*
300 *diseases.* 2010;16(7):1185-6. Epub 2010/07/01. doi: 10.3201/eid1607.091579. PubMed
301 PMID: 20587208; PubMed Central PMCID: PMCPMC3321897.
- 302 12. Shalhoub S, AlZahrani A, Simhairi R, Mushtaq A. Successful recovery of MERS
303 CoV pneumonia in a patient with acquired immunodeficiency syndrome: a case report.
304 *Journal of clinical virology : the official publication of the Pan American Society for Clinical*

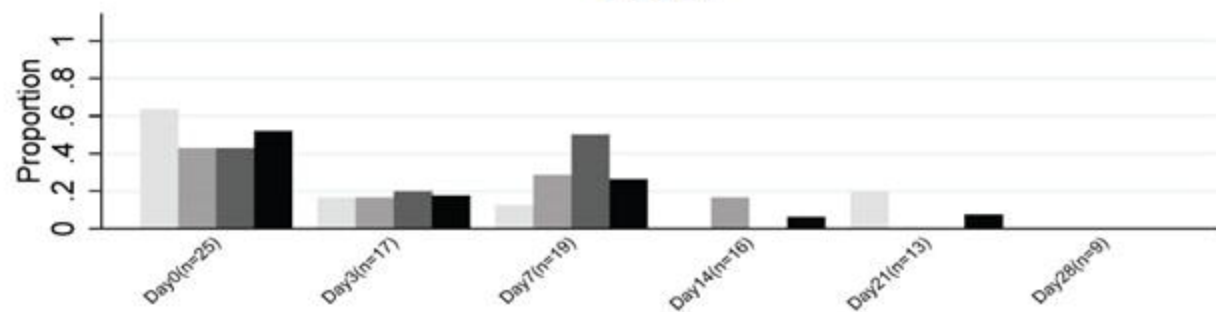
- 305 Virology. 2015;62:69-71. Epub 2014/12/30. doi: 10.1016/j.jcv.2014.11.030. PubMed PMID:
306 25542475.
- 307 13. Weinstock DM, Gubareva LV, Zuccotti G. Prolonged shedding of multidrug-resistant
308 influenza A virus in an immunocompromised patient. N Engl J Med. 2003;348(9):867-8.
309 Epub 2003/02/28. doi: 10.1056/nejm200302273480923. PubMed PMID: 12606750.
- 310 14. Copaesu A, James F, Mouhtouris E, Vogrin S, Smibert OC, Gordon CL, et al. The
311 Role of Immunological and Clinical Biomarkers to Predict Clinical COVID-19 Severity and
312 Response to Therapy-A Prospective Longitudinal Study. Front Immunol. 2021;12:646095.
313 doi: 10.3389/fimmu.2021.646095. PubMed PMID: 33815405; PubMed Central PMCID:
314 PMCPMC8009986.
- 315 15. Mallett S, Allen AJ, Graziadio S, Taylor SA, Sakai NS, Green K, et al. At what times
316 during infection is SARS-CoV-2 detectable and no longer detectable using RT-PCR-based
317 tests? A systematic review of individual participant data. BMC Med. 2020;18(1):346. doi:
318 10.1186/s12916-020-01810-8. PubMed PMID: 33143712; PubMed Central PMCID:
319 PMCPMC7609379.
- 320 16. Cevik M, Tate M, Lloyd O, Maraolo AE, Schafers J, Ho A. SARS-CoV-2, SARS-
321 CoV, and MERS-CoV viral load dynamics, duration of viral shedding, and infectiousness: a
322 systematic review and meta-analysis. Lancet Microbe. 2021;2(1):e13-e22. doi:
323 10.1016/S2666-5247(20)30172-5. PubMed PMID: 33521734; PubMed Central PMCID:
324 PMCPMC7837230.
- 325 17. Kim KW, Wang X, Adhikari A, Yeang M, Jenkins F, Naing Z, et al. Persistent high-
326 level shedding of cultivable SARS-CoV-2 Delta virus 33 days after onset of COVID-19 in a
327 hospitalized patient with pneumonia. J Med Virol. 2022;94(9):4043-6. doi:
328 10.1002/jmv.27832. PubMed PMID: 35509147.

- 329 18. Zhu L, Gong N, Liu B, Lu X, Chen D, Chen S, et al. Coronavirus Disease 2019
330 Pneumonia in Immunosuppressed Renal Transplant Recipients: A Summary of 10 Confirmed
331 Cases in Wuhan, China. *Eur Urol.* 2020;77(6):748-54. doi: 10.1016/j.eururo.2020.03.039.
332 PubMed PMID: 32317180; PubMed Central PMCID: PMC7166037.
- 333 19. Rogiers A, Pires da Silva I, Tentori C, Tondini CA, Grimes JM, Trager MH, et al.
334 Clinical impact of COVID-19 on patients with cancer treated with immune checkpoint
335 inhibition. *J Immunother Cancer.* 2021;9(1). Epub 2021/01/21. doi: 10.1136/jitc-2020-
336 001931. PubMed PMID: 33468556; PubMed Central PMCID: PMC7817383.
- 337 20. New South Wales Government. COVID-19 weekly surveillance in NSW
338 epidemiological week 44, ending 31 October 2020. Available at:
339 [https://www.health.nsw.gov.au/Infectious/covid-19/Documents/covid-19-surveillance-report-](https://www.health.nsw.gov.au/Infectious/covid-19/Documents/covid-19-surveillance-report-20211111.pdf)
340 [20211111.pdf](https://www.health.nsw.gov.au/Infectious/covid-19/Documents/covid-19-surveillance-report-20211111.pdf). Access date July 22, 2023.
- 341

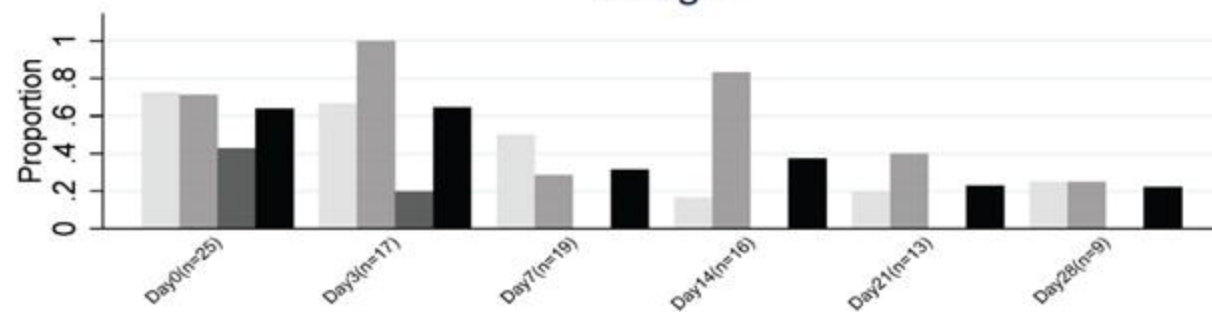
Disclaimer

This publication was funded by the Australian Government Department of Health. The views expressed in this publication do not necessarily represent the position of the Australian Government.

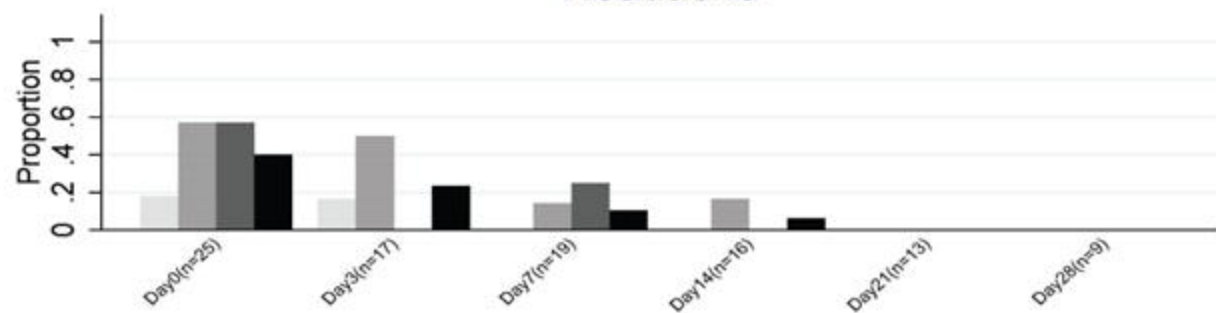
Fever



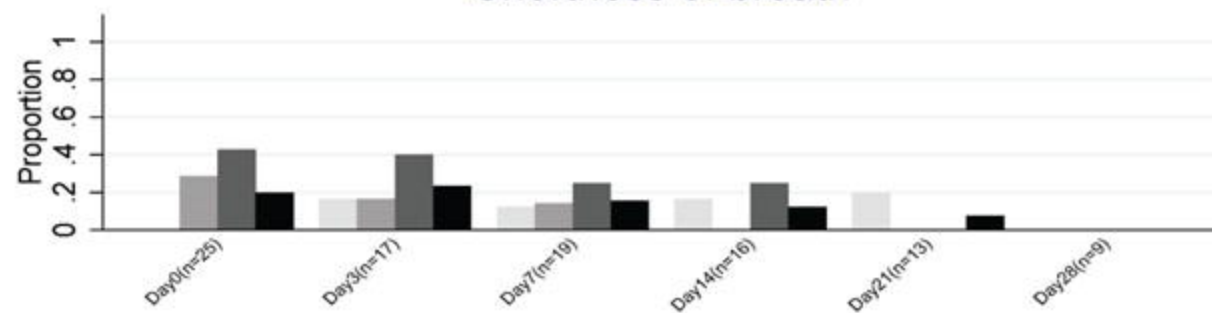
Cough



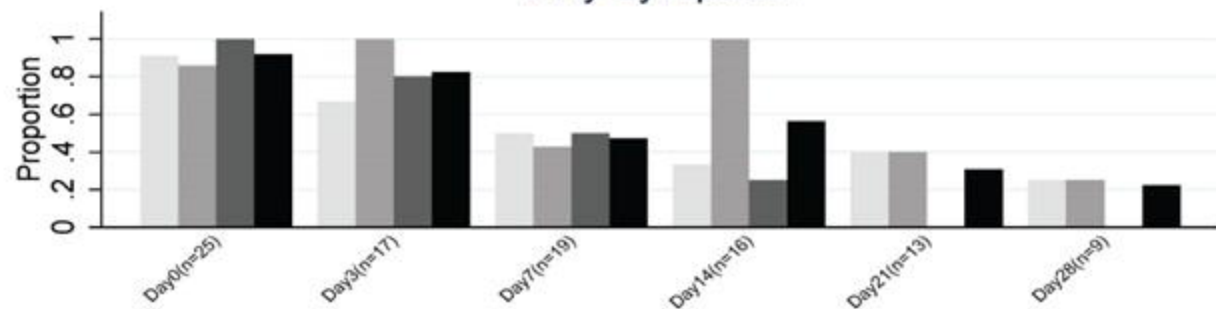
Headache



Shortness of breath



Any symptom



Haematologic/oncologic conditions
Primary/Acquired Immunodeficiency

Secondary Immunosuppression
Total

Supplemental Table 1. Medication list (data available for 19 participants)

Participant	Primary diagnostic criteria	Underlying immunosuppressive condition	Medications
1	Haematologic/oncologic conditions	Cutaneous melanoma	Anti-PD-1, Anti-PDL1
2	Haematologic/oncologic conditions	Cutaneous melanoma	Anti-PD-1, Anti-CTLA-4
3	Haematologic/oncologic conditions	Cutaneous melanoma	Anti-PD-1, Anti-CTLA-4
4	Haematologic/oncologic conditions	Follicular lymphoma	Rituximab, Intravenous immunoglobulin (IvIg)
5	Haematologic/oncologic conditions	Refractory myeloma	Methylprednisolone
6	Haematologic/oncologic conditions	Malignant neoplasm of other connective and soft tissue	Anti-PD-1
7	Haematologic/oncologic conditions	Malignant immunoproliferative diseases	Ruxolitinib

8	Haematologic/oncologic conditions	Chronic transfusion dependent myelofibrosis	Ruxolitinib
9	Haematologic/oncologic conditions	Malignant neoplasm of oesophagus	Trastuzumab (Herceptin), Capecitabine
10	Primary/acquired immunodeficiency	HIV infection	Elvitegravir/cobicistat/emtricitabine/tenofovir alafenamide
11	Primary/acquired immunodeficiency	HIV infection	Dolutegravir+darunivir/cobicistat
12	Primary/acquired immunodeficiency	HIV infection	Dolutegravir+darunivir/cobicistat
13	Primary/acquired immunodeficiency	HIV infection	Not on HIV treatment
14	Primary/acquired immunodeficiency	Unknown	Mycophenolate Mofetil, Prednisone
15	Primary/acquired immunodeficiency	Autoinflammatory Disorders	Methotrexate
16	Primary/acquired immunodeficiency	Autoinflammatory Disorders	Etanercept, Prednisone
17	Secondary immunosuppression	Psoriasis	Secukinumab

18	Secondary immunosuppression	Multiple sclerosis	Fingolimod
19	Secondary immunosuppression	Rheumatoid arthritis	Methotrexate, Sulfasalazine
20	Secondary immunosuppression	MOG Antibody Demyelinating Syndrome	Tecifidera, Ocrelizumab

Supplemental Table 2. Number of participants with positive COVID-19 PCR positive results over time, by primary immunocompromising diagnostic category*

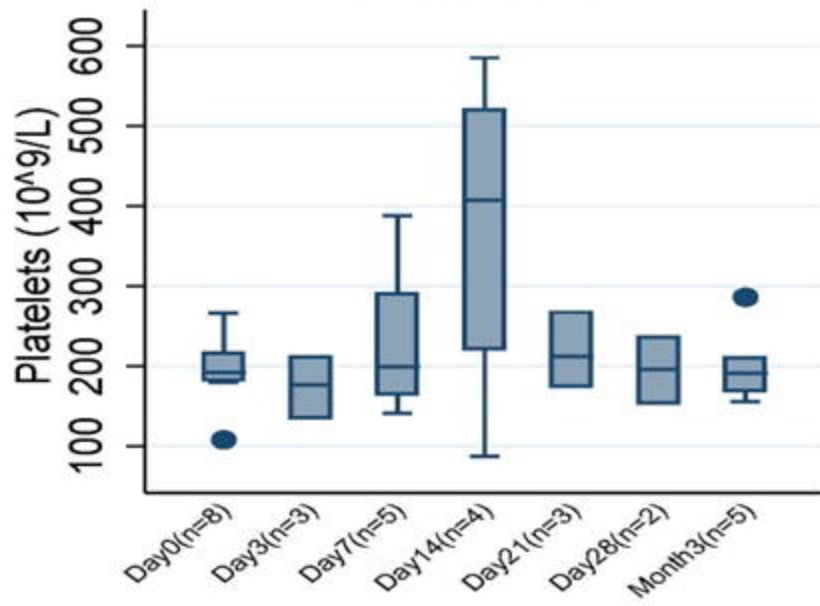
	Primary diagnostic category			Total N=9
	Haematologic/oncologic conditions N=5	Secondary Immunosuppressive/immunomodulatory treatment N=3	Primary/Acquired Immunodeficiency N=1	
Last time point with positive PCR test				
Day 3	1	2	-	3
Day 7	1	-	-	1
Day 14	-	-	-	-
Day 21	1	1	-	2
Day 28	1	-	-	1
Month 3	1	-	1	2

*Only positive PCR results are reported.

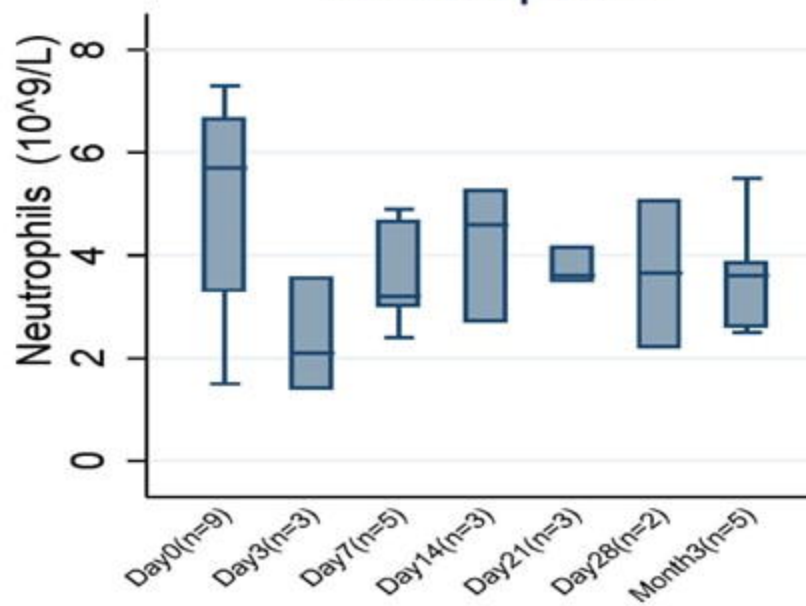
Supplemental Table 3. Clinical outcomes of participants at three months after enrolment.

	Hospitalisation		Invasive mechanical ventilation		Death	
	Month 3 n (%)	Time from enrollment to outcome (median, IQR), days	Month 3 n (%)	Time from enrollment to outcome (median, IQR), days	Month 3 n (%)	Time from enrollment to outcome (median, IQR), days
Haematologic/oncologic conditions	3 (25%)	3 (1-7)	1 (8%)	14	1 (8%)	90
Secondary Immunosuppression	3 (38%)	7 (1-28)	2 (25%)	3 (3-3)	1 (13%)	90
Primary/acquired immunosuppression	3 (43%)	3 (3-3)	0 (0%)	NA	0 (0%)	NA
Total	9 (33%)	3 (1-5)	3 (11%)	3 (3-14)	2 (4%)	90 (90-90)

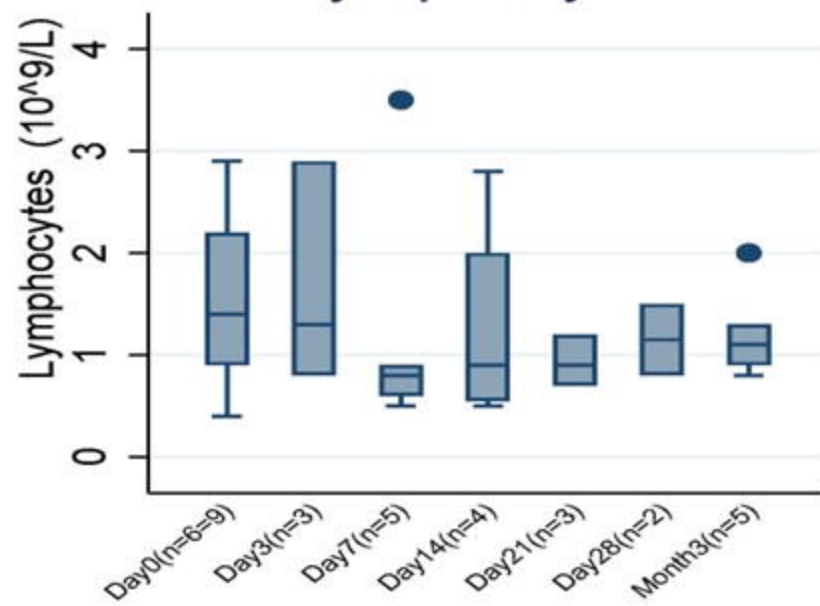
Platelets



Neutrophils



Lymphocytes



CRP

