

Diagnostic accuracy of the plasma ALZpath pTau217 immunoassay to identify Alzheimer's disease pathology

Nicholas J. Ashton^{1,2,3,4†}, Wagner S. Brum^{1,5†}, Guglielmo Di Molfetta¹, Andrea L. Benedet¹, Burak Arslan¹, Erin Jonatis^{6,7,8}, Rebecca E. Langhough^{6,7,8}, Karly Cody⁷, Rachael Wilson^{7,8}, Cynthia M. Carlsson^{6,7,8,9}, Eugene Vanmechelen¹⁰, Laia Montoliu-Gaya¹, Juan Lantero-Rodriguez¹, Nesrine Rahmouni^{11,12}, Cecile Tissot^{11,12}, Jenna Stevenson^{11,12}, Stijn Servaes^{11,12}, Joseph Therriault^{11,12}, Tharick Pascoal^{13,14}, Alberto Lleó^{15,16}, Daniel Alcolea^{15, 16}, Juan Fortea^{15, 16}, Pedro Rosa-Neto^{11,12}, Sterling Johnson^{6,7}, Andreas Jeromin¹⁷, Kaj Blennow^{1,18}, Henrik Zetterberg^{1,7,18,19,20,21}

Affiliations

¹ Department of Psychiatry and Neurochemistry, Institute of Neuroscience & Physiology, the Sahlgrenska Academy at the University of Gothenburg, Mölndal, Sweden; ² King's College London, Institute of Psychiatry, Psychology and Neuroscience Maurice Wohl Institute Clinical Neuroscience Institute London UK; ³ NIHR Biomedical Research Centre for Mental Health and Biomedical Research Unit for Dementia at South London and Maudsley NHS Foundation London UK; ⁴ Centre for Age-Related Medicine, Stavanger University Hospital, Stavanger, Norway; ⁵ Graduate Program in Biological Sciences: Biochemistry, Universidade Federal do Rio Grande do Sul (UFRGS), Porto Alegre, Brazil; ⁶ Wisconsin Alzheimer's Institute, School of Medicine and Public Health, University of Wisconsin-Madison, Madison, WI 53726, USA; ⁷ Wisconsin Alzheimer's Disease Research Center, School of Medicine and Public Health, University of Wisconsin-Madison, Madison, WI 53792, USA; ⁸ Department of Medicine, Division of Geriatrics and Gerontology, School of Medicine and Public Health, University of Wisconsin-Madison, Madison, WI 53792, USA; ⁹ Geriatric Research Education and Clinical Center of the Wm. S. Middleton Memorial Veterans Hospital, Madison, WI 53705, USA; ¹⁰ ADx NeuroSciences, Technologiepark 94, Ghent, Belgium; ¹¹ Translational Neuroimaging Laboratory, McGill University Research Centre for Studies in Aging, Alzheimer's Disease Research Unit, Douglas Research Institute, Le Centre intégré universitaire de santé et de services sociaux (CIUSSS) de l'Ouest-de-l'Île-de-Montréal; ¹² Department of Neurology and Neurosurgery, Psychiatry and Pharmacology and Therapeutics, McGill University, Montreal, Quebec, Canada; ¹³ Department of Psychiatry, University of Pittsburgh, Pittsburgh, Pennsylvania, USA; ¹⁴ Department of Neurology, University of Pittsburgh, Pittsburgh, Pennsylvania, USA.; ¹⁵ Department of Neurology, Institut d'Investigacions Biomèdiques Sant Pau - Hospital de Sant Pau, Universitat Autònoma de Barcelona, Hospital de la Santa Creu i Sant Pau, Barcelona, Catalunya; ¹⁶ Centro de Investigación Biomédica en Red en Enfermedades Neurodegenerativas, CIBERNED, Madrid, Spain; ¹⁷ ALZpath. Inc, Carlsbad, CA 92008, USA; ¹⁸ Clinical Neurochemistry Laboratory, Sahlgrenska University Hospital, Mölndal, Sweden; ¹⁹ Department of Neurodegenerative Disease, UCL Institute of Neurology, London, UK; ²⁰

UK Dementia Research Institute at UCL, London, UK; ²¹ Hong Kong Center for Neurodegenerative Diseases, Clear Water Bay, Hong Kong, China.

† Nicholas J. Ashton and Wagner S. Brum contribute equally as 1st authors

Corresponding author

Dr. Nicholas J. Ashton, Ph.D.

Institute of neuroscience and physiology

Dept. Psychiatry and Neurochemistry

Sahlgrenska Academy at Gothenburg University

Mölndal Hospital, Hus V3, 43180 Mölndal, Sweden

E-mail: nicholas.ashton@gu.se

Tel: +46 73-801-1987

Word count: 3475

Key Points

Question: What are the capabilities of the ALZpath plasma pTau217 Single molecule array (Simoa) to identify Alzheimer's disease (AD) pathophysiology?

Findings: ALZpath pTau217 showed similar accuracies to cerebrospinal fluid biomarkers in identifying abnormal A β and tau pathologies. Calculated reference ranges for detecting abnormal A β were consistent across three cohorts. Over 8 years, the largest change of pTau217 was in individuals positive for both A β and tau.

Meaning: These results demonstrate the high-performance of the ALZpath plasma pTau217 Simoa in identifying AD-type pathophysiology. The wider availability of high-performing assays will expedite the use of blood biomarkers in clinical settings and benefit the research community.

Abstract

Importance: Phosphorylated tau (pTau) is a specific blood biomarker for Alzheimer's disease (AD) pathology, with pTau217 considered to have the most utility. However, availability of pTau217 tests for research and clinical use has been limited. Expanding access to this highly accurate AD biomarker is crucial for wider evaluation and implementation of AD blood tests.

Objective: To determine the utility of a novel and commercially available Single molecule array (Simoa) for plasma pTau217 (ALZpath) to detect AD pathology. To evaluate reference ranges for abnormal A β across three selected cohorts.

Design, Setting, Participants: Three single-centre observational cohorts were involved in the study: Translational Biomarkers in Aging and Dementia (TRIAD), Wisconsin Registry for Alzheimer's Prevention (WRAP), and Sant Pau Initiative on Neurodegeneration (SPIN). MRI, A β -PET, and tau-PET data were available for TRIAD and WRAP, while CSF biomarkers were additionally measured in a subset of TRIAD and SPIN. Plasma measurements of pTau181, pTau217 (ALZpath), pTau231, A β 42/40, GFAP, and NfL, were available for all cohorts. Longitudinal blood biomarker data spanning 3 years for TRIAD and 8 years for WRAP were included.

Exposures: MRI, A β -PET, tau-PET, CSF biomarkers (A β 42/40 and pTau immunoassays) and plasma pTau217 (ALZpath Simoa).

Main Outcomes and Measures: The accuracy of plasma pTau217 for detecting abnormal amyloid and tau pathology. Longitudinal pTau217 change according to baseline pathology status.

Results: The study included 786 participants (mean [SD] age, 66.3 [9.7] years; 504 females [64.1%]) were included in the study. High accuracy was observed in identifying elevated A β (AUC, 0.92-0.96; 95%CI 0.89-0.99) and tau pathology (AUC, 0.93-0.97; 95%CI 0.84-0.99) across all cohorts. These accuracies were significantly higher than other plasma biomarker combinations and comparable to CSF biomarkers. The detection of abnormal A β pathology using binary or three-range references yielded reproducible results. Longitudinally, plasma pTau217 showed an annual increase only in A β -positive individuals, with the highest increase observed in those with tau-positivity.

Conclusions and Relevance: The ALZpath plasma pTau217 Simoa assay accurately identifies biological AD, comparable to CSF biomarkers, with reproducible cut-offs across cohorts. It detects longitudinal changes, including at the preclinical stage, and is the first widely available, accessible, and scalable blood test for pTau217 detection.

Introduction

In Alzheimer's disease (AD), blood biomarkers have emerged as scalable tools for clinical evaluation, trial recruitment, and disease monitoring¹. The anticipated implementation of such tests would substantially reduce the reliance on confirmatory evaluations with cerebrospinal fluid (CSF) or positron emission tomography (PET) scans in specialized centers². An accurate and robust blood-based biomarker for AD pathology would enable a more comprehensive biological assessment of cognitive impairment in settings where advanced testing is limited *e.g.*, primary care. Therefore, the aim of a blood biomarker is to enhance an early and precise AD diagnosis, leading to improved patient management and timely access to disease-modifying therapies.

Phosphorylated tau (pTau) is the leading candidate among novel AD blood tests, demonstrating superior diagnostic accuracy and disease specificity compared to other proposed blood biomarkers^{3, 4}. The A β 42/40 ratio, validated for use in CSF⁵, has limitations in blood due to its small fold-change between amyloid PET-positive and amyloid PET-negative individuals^{6, 7}. Consequently, plasma A β 42/40 lacks the clinical robustness required for routine clinical testing^{8, 9}. In contrast, high-performing pTau blood tests exhibit a 100-400% increase in AD patients¹⁰, with increases occurring concurrently with extracellular A β plaque pathology, an AD hallmark feature. This relationship is observed across the AD continuum, including pre-symptomatic changes in sporadic and familial AD¹¹, as well as in individuals with Down syndrome who have a genetically determined form of AD¹²⁻¹⁴. Furthermore, certain pTau species are associated with neurofibrillary tangle pathology, the secondary AD pathological hallmark, as indexed by tau-PET imaging and neuropathological examination¹⁵⁻¹⁷. Thus, pTau is regarded as the primary blood biomarker for AD pathology throughout all stages of the disease.

Among proposed blood pTau biomarkers¹⁸⁻²¹, phosphorylated tau at Threonine 217 (pTau217) has consistently shown high-performance in differentiating AD from other neurodegenerative disorders^{10, 22} and in detecting AD pathology in MCI patients²². Notably, pTau217 exhibits larger fold-changes compared to pTau181 and pTau231¹⁰, often achieving high discrimination, with areas under the curve (AUC) exceeding 90%^{19, 23}. Additionally, pTau217 demonstrates a unique longitudinal trajectory in amyloid-positive individuals, showing increases over time significantly associated with worsening cortical atrophy and declining cognitive performance^{24, 25}.

With the impending implementation of anti-A β therapies in dementia management, validated blood biomarkers are urgently needed to guide timely treatment decisions. These biomarkers should be accessible and compatible with analytical platforms used in diagnostic laboratories of all sizes and locations. While pTau217 has shown promise as a diagnostic tool for AD, its widespread evaluation has been hindered by limited availability of commercially available assays. This study aims to address this gap by assessing the diagnostic utility of ALZpath pTau217, a commercially available single molecule array (Simoa), and evaluating reference ranges for AD pathology.

Methods

Participants & ethics

This study included participants from three observational cohorts: the Translational Biomarkers in Aging and Dementia (TRIAD), Wisconsin Registry for Alzheimer's Prevention (WRAP), and the Sant Pau Initiative on Neurodegeneration (SPIN). Informed consent was obtained from all participants, and the studies were approved by the relevant ethics boards (**Supplementary Methods**). TRIAD included 268 participants categorized as cognitively unimpaired (CU; n [%]: 134[50%]), mild cognitive impairment (MCI; 63[23.5%]), AD dementia (46[17.2%]) and non-AD dementia (24[9.0%]). The WRAP study²⁶ included data on 323 participants, predominantly CU at the first plasma sample collection (CU: 309[95.6%]; MCI: 12[3.7%]; AD dementia: 2[0.6%]). The SPIN cohort²⁷ included 195 participants consisting of CU controls (82[42.1%]), MCI due to AD (72[36.7%]), and AD dementia (41[21.0%]). Diagnosis was based on internationally recognized clinical criteria, and control participants had normal cognitive scores on standard neuropsychological evaluations.

A subset of patients with longitudinal follow-up consisted of 392 participants from TRIAD and WRAP (**Supplementary Table 1**). These included participants classified into three groups: amyloid- and tau-negative (A-T-; n=297), amyloid-positive and tau-negative (A+T-; n=66), and amyloid-positive and tau-positive (A+T+; n=29). In WRAP, the median number of samples collected per patient was three, over a mean (SD) of 5.22 (1.41) years. In TRIAD, median samples per patient was two, collected over a mean of 1.90 (0.61) years.

Imaging

Detailed imaging methods for TRIAD, WRAP and SPIN are found in the **Supplementary Methods**. In TRIAD, A β - and tau-PET were determined by [¹⁸F]-AZD4694²⁸ and [¹⁸F]-MK6240²⁹, respectively. In WRAP, PET measures were determined by [¹¹C]-PiB³⁰ and [¹⁸F]-MK6240^{31, 32}. In SPIN, A β -PET was determined by [¹⁸F]-florbetapir or [¹⁸F]-flutemetamol in a subset of participants. A β -PET-positivity was standardised across cohorts as a Centiloid value of >24 (SUVR>1.55 for [¹⁸F]-AZD4694 or DVR>1.2 for [¹¹C]-PiB). Tau-positivity with [¹⁸F]-MK6240 was defined as meta-temporal SUVR>1.24 for TRIAD³³ and as entorhinal SUVR>1.3 in WRAP. In WRAP, the mean time differences between first plasma sample and scan were 0.94 years for A β -PET and 2.27 years for tau-PET; in TRIAD, this was 0.44 years for A β -PET and 0.42 years for tau-PET.

Cerebrospinal fluid biomarkers

CSF sample collection procedures were similar across cohorts. Samples were collected with needle drip technique into polypropylene tubes followed by 2200g centrifugation for 10 minutes. Samples were then distributed into 0.25–1 mL aliquots in polypropylene vials (Fisher Scientific Inc. Catalog #3741-WP1D-BR or Sarstedt 2mL #72.694.007) and stored at -80 °C until biochemical analyses. In TRIAD and SPIN, LUMIPULSE G1200 or G600II were used to quantify CSF A β 42, A β 40 and pTau181^{34, 35}. Additionally, CSF pTau217 was quantified by an *in-house* single molecule array (Simoa) developed at the University of Gothenburg³⁶. A novel Simoa for CSF pTau205 was measured in TRIAD only. For WRAP, CSF A β 42, A β 40, pTau181 were measured using the Roche NeuroToolKit³⁷.

Plasma biomarkers

Plasma samples from TRIAD, WRAP and SPIN were analyzed at the Department of Psychiatry and Neurochemistry, University of Gothenburg. Plasma A β 42/40, GFAP and NfL were quantified using the commercial Neurology 4-plex E kit (#103670, Quanterix). Plasma pTau231 and pTau181 were analysed using *in-house* Simoa assays developed at the University of Gothenburg^{18 38}, except in WRAP where plasma pTau181 was quantified by the commercial Advantage V2.1 kit (#104111, Quanterix)²⁴.

ALZpath pTau217 assay

ALZpath has developed a novel commercial plasma-based Simoa assay for pTau217, utilizing a proprietary monoclonal pTau217 specific capture antibody, an N-terminal detector antibody and a peptide calibrator. It has been validated as a *fit-for-purpose* assay, with a limit of detection of 0.0052–0.0074 pg/mL, a functional lower limit of quantification of 0.06 pg/mL (based on precision profile with CV_%<20), a dynamic range of 0.007–30 pg/mL (minimal required dilution of 3). The spike recovery of for the endogenous analyte was 80%, and intra- and inter-run precision was 0.5–13% and 9.2–15.7%, respectively. Here, the assay demonstrated good repeatability (TRIAD, 4–5.4%; WRAP, 6.6–8.7%; SPIN, 4.1–5.3%) and intermediate precision (TRIAD, 7.1–8.1%; WRAP, 3.5–10.7%; SPIN, 7.1–8.1%) using three internal plasma quality controls samples from the University of Gothenburg and two quality controls provided via the ALZpath assay. Summary of precision results can be found in **Supplementary Table 2**.

Statistical analysis

Between-group comparisons of plasma pTau217 levels were conducted using linear models, adjusting for age and sex. Discriminative ability of plasma pTau217 for A β - and tau-PET-positivity, and other outcomes, was assessed using receiver operating characteristics area under the curve (AUC) and was compared to that of other established biomarkers with the DeLong test, when applicable. Correlations were always evaluated using Spearman's rho. Two reference range strategies were evaluated for interpreting plasma pTau217 results. As conventionally done, a binary reference-point for A β -PET-positivity was derived based on the Youden index. Alternatively, a strategy comprising a lower reference-point to rule out AD (95% sensitivity) and a higher reference-point to rule in AD (95% specificity). In both strategies, we evaluated the concordance of a negative pTau217 result with A β -PET negativity (negative percent agreement; NPA), and the concordance of a positive plasma p-tau217 with A β -PET-positivity (positive percent agreement; PPA), as well as the overall percent agreement (OPA). In the latter strategy, individuals with pTau217 levels between the reference-point were classified as intermediate-risk and would constitute the population referred to confirmatory testing³⁸. In the two cohorts with serial pTau217 data, we evaluated the longitudinal trajectories of plasma pTau217 in CU and MCI participants according to their PET-defined amyloid and tau status. We used linear mixed effects models with plasma pTau217 as the response variable, including as predictors time (since first plasma collection), AT status, age at first plasma collection, years of education, sex, and cognitive status at first visit, as well as an interaction between AT status and time. The model contained random intercepts and random slopes for each participant, and time was modelled as a continuous variable. Post-hoc pairwise contrasts were conducted to compare the slopes for group-by-time interactions. All analyses were performed using R version 4.2.2 (<https://www.r-project.org/>), with a two-sided alpha of 0.05. Reported results include 95% confidence intervals when applicable.

Results

Participant characteristics

A total of 786 participants (mean [SD] age, 66.3 [9.7] years; *n* [%] 504 females [64.1%]) were included in the study. The TRIAD subsample included 268 participants (69.4 [7.8] years; 167 [62.3%] females). The WRAP cohort included 323 participants (65.3 [6.9] years; 217 [67.2%] females), predominantly CU. The SPIN cohort included 195 participants (63.5 [13.8] years; 120 [61.5%] females). All included participants had confirmatory amyloid status (TRIAD and WRAP: A β -PET; SPIN: CSF A β 42/A β 40), and the vast majority (716 [91.1%]) also had information on tau status (TRIAD and WRAP: tau-PET; SPIN: CSF p-tau181), as described in **Table 1** alongside

demographic and clinical information for all cross-sectional analyses. **Supplementary Table 1** describes the TRIAD (n=132) and WRAP (n=260) longitudinal subsets.

Levels of ALZpath pTau217 by amyloid “A” and tau “T” status

When stratified by amyloid (“A”) and tau (“T”) status, regardless of clinical diagnosis, plasma pTau217 significantly increased in a stepwise manner in all cohorts (**Figure 1**), with highest levels in the A+T+ group. Mean pTau217 concentrations (pg/mL) for A-T- (mean [SD] TRIAD, 0.26 [0.13]; WRAP, 0.35 [0.15]; SPIN, 0.32 [0.11]), A+T- (TRIAD, 0.75 [0.63]; WRAP, 0.72 [0.30]; SPIN, 0.91 [0.47]), and A+T+ (TRIAD, 1.48 [0.65]; WRAP, 1.41 [0.70]; SPIN, 1.50 [0.70]), were remarkably similar across all three cohorts. This was also observed when stratifying by amyloid status alone (A-, TRIAD, 0.28 [0.21], WRAP, 0.35 [0.14]; SPIN, 0.38 [0.29]); A+, TRIAD, 1.08 [0.72], WRAP, 0.94 [0.54], SPIN, 1.43 [0.70] (**Supplementary Figure 1**).

ALZpath pTau217 discriminates abnormal A β and tau pathologies with high accuracy

ALZpath plasma pTau217 demonstrated high accuracy in predicting abnormal A β -PET signal (**Figure 2A**) in TRIAD (AUC, 0.92; 95%CI, 0.92-0.96) and WRAP (AUC, 0.93; 95%CI, 0.90-0.97). In SPIN, ALZpath pTau217 also had high accuracy in predicting abnormal CSF A β 42/40 (AUC, 0.96; 95%CI, 0.92-0.99; **Figure 2A**). There was equally high accuracy when A β -PET status was determined by visual read (**Supplementary Figure 2**), and cases classified as “intermediate” or “discordant” by visual read had also intermediate median pTau217 levels (**Supplementary Figure 2**).

ALZpath pTau217 also exhibited high accuracy for predicting abnormal tau (**Figure 2B**) in TRIAD (AUC, 0.95; 95%CI, 0.92-0.97) and WRAP (AUC, 0.93; 95%CI, 0.84-0.98). In SPIN, ALZpath pTau217 had high accuracy for abnormal CSF pTau181 (AUC, 0.97; 95%CI, 0.94-0.99). Promisingly, ALZpath pTau217 could identify abnormal tau among amyloid-positive (A+T- vs A+T+) participants in TRIAD (AUC, 0.87; 95%CI, 0.81-0.93) and WRAP (AUC, 0.90; 95%CI, 0.85-0.95) (**Figure 2C**). Moreover, we observed a gradual increase of plasma pTau217 across tau-PET-defined Braak stages in TRIAD (**Supplementary Figure 3**). The highest levels of pTau217 were observed in Braak V-VI (mean [SD], 1.55 [0.70]) which was significantly higher than Braak III-IV (0.92 [0.46]; $P<0.001$), Braak I-II (0.49 [0.35]; $P<0.001$) and Braak 0 (0.30 [0.41]; $P<0.001$).

ALZpath pTau217 is comparable to imaging and CSF biomarkers in identifying AD pathology.

Next, we compared the performance of ALZpath plasma pTau217 against other CSF and imaging modalities for predicting abnormal A β -PET (**Figure 3A–C**) and tau-PET (**Figure 3D–E**). This analysis included the maximum number participants within each biomarker modality.

In WRAP, in determining abnormal A β -PET, plasma pTau217 outperformed hippocampal atrophy (AUC, 0.52; 95%CI, 0.44-0.60; $P<0.001$), tau-PET (AUC, 0.72; 95%CI, 0.64-0.80; $P<0.001$) and CSF pTau181 (AUC, 0.75; 95%CI, 0.66-0.84; $P<0.01$), but did not differ significantly from CSF A β 42/40 or CSF pTau181/A β 42 (all $p>0.05$, **Figure 3A**). Similar findings were observed in TRIAD, where plasma pTau217 outperformed hippocampal atrophy (AUC, 0.70; 95%CI, 0.63-0.76; $P<0.0001$) and tau-PET (AUC, 0.86; 95%CI, 0.82-0.91; $P=0.05$) for detecting abnormal A β pathology but did not significantly differ from various CSF biomarkers (all $p>0.05$, **Figure 3B**). In SPIN, plasma pTau217 outperformed hippocampal volume (AUC, 0.89; 95%CI, 0.83-0.95; $P=0.04$) and was comparable to CSF biomarkers (all $p>0.05$, **Figure 3C**).

In predicting abnormal tau-PET burden (**Figure 3D–E**), plasma ALZpath pTau217 significantly outperformed hippocampal volume (AUC^{WRAP}, 0.65; 95%CI, 0.50-0.81, $P=0.01$; AUC^{TRIAD}, 0.83; 95%CI, 0.76-0.89; $P=0.01$; AUC^{SPIN}, 0.91; 95%CI, 0.86-0.96, $P=0.049$). Plasma pTau217 significantly outperform CSF pTau181 in WRAP (AUC, 0.69; 95%CI, 0.66-0.84; $P=0.02$) but not in TRIAD. Plasma pTau217 outperformed A β -PET in TRIAD (AUC, 0.90; 95%CI, 0.86-0.95; $P=0.04$), while in WRAP they were comparable (AUC, 0.96; 95%CI, 0.93-0.99; $P=0.35$). Plasma pTau217 showed comparable performance to other measures, except for CSF pTau217 in SPIN, which was superior ($P=0.04$).

Additionally, we conducted comparisons in subsets only including participants with all modalities (WRAP: $n=131$; TRIAD: $n=106$; SPIN: $n=41$), finding no marked differences (**Supplementary Figure 4**). Plasma pTau217 also discriminated A+T+ from A+T- individuals comparably to CSF and imaging biomarkers (**Supplementary Figure 5**).

ALZpath pTau217 outperformed other plasma biomarkers, alone or in combination, to identify AD pathology.

Plasma pTau217 alone or pTau217 plus demographic variables (age, sex and APOE status) outperformed all other plasma biomarkers (pTau181, pTau231, A β 42/40, GFAP and NfL), and their optimal combinations, for predicting both amyloid and tau status in all cohorts (**Supplementary Table 4; Supplementary Table 5; Supplementary Figure 6**). A minimal improvement in model metrics of goodness-of-fit (Akaike information criterion) was observed in pTau217 plus demographics but not in discriminatory performance.

Correlations of ALZpath plasma pTau217 with A β -PET, tau-PET, and CSF biomarkers

Plasma pTau217 correlated strongly with A β -PET in WRAP ($Rho=0.75$, $P<0.0001$; **Supplementary Figure 7A**) and TRIAD ($Rho=0.72$, $P<0.0001$; **Supplementary Figure 7B**). In the subset of SPIN participants with A β -PET a similar association was found ($Rho = 0.56$, $P<0.0001$; **Supplementary Figure 7C**). Further, strong associations were found for tau-PET in WRAP ($Rho=0.73$, $P<0.0001$; **Supplementary Figure 7D**) and TRIAD ($Rho=0.78$, $P<0.0001$; **Supplementary Figure 7E**). Plasma pTau217 was also shown to be highly correlated with CSF pTau217 in TRIAD ($Rho = 0.78$, $P<0.0001$ **Supplementary Figure 8A**) and SPIN ($Rho=0.88$, $P<0.0001$ **Supplementary Figure 7B**).

Reference ranges for abnormal A β and tau pathologies based on ALZpath plasma pTau217

We first derived a binary reference-point for A β -positivity using the Youden index, derived in WRAP (>0.42 pg/mL, **Figure 4A, Supplementary Table 6**). This reference-point was cross-validated in TRIAD (A β -positivity based on PET) and SPIN (A β -positivity based on CSF A β 42/40). Acknowledging the existence of an overlap in pTau217 levels, as observed with all high-performing blood assays, lower (95% sensitivity, <0.4 pg/mL) and upper (95% specificity, >0.63 pg/mL) reference-points were derived in WRAP (**Figure 4B, Supplementary Table 7**). This approach improved the PPA (TRIAD: 97.7%; SPIN: 95.3%) while maintaining a similar NPA. The pair of reference-points created an "intermediate" zone (pTau217 levels between 0.4-0.63 pg/mL), which could in practice be referred to confirmatory testing with CSF or PET. The intermediate zone was largest in WRAP (22.9%), as expected due to lower A β -positivity prevalence, and smaller in TRIAD (15.8%) and SPIN (13.0%). A binary reference-point for tau-positivity is demonstrated in **Supplementary Table 8**.

Longitudinal change of ALZpath plasma pTau217

In up to 8 years of longitudinal sampling in WRAP (mean [SD] of 5.22 (1.41) years), the A+T+ group demonstrated a significantly higher annual increase rate in plasma pTau217 levels compared to the A-T- group (β -estimate: 0.12, 95%CI 0.10-0.13, $P<0.0001$). The A+T- group also demonstrated a significantly higher annual rate of change in plasma pTau217 compared to A-T- (β -estimate: 0.04, 95%CI 0.02-0.05, $P<0.0001$). Slope comparisons showed the A+T+ group to have a significantly higher rate compared to the A+T- group (β -estimate: 0.08; $P<0.0001$, **Figure 5A**). In TRIAD, similar results were observed, even with a shorter follow-up (1.90 [0.61] years). In comparison to the A-T- group, both A+T- (β -estimate: 0.07, 95%CI 0.03-0.11, $P<0.001$) and A+T+ (β -estimate: 0.13, 95%CI 0.07-0.19, $P<0.0001$) groups demonstrated significantly higher rates of change in plasma pTau217 levels. However, in contrast to WRAP, pairwise slope comparisons did not

show significant differences between pTau217 rates of change between the A+T+ and A+T- groups (β -estimate: 0.06; $P=0.20$, **Figure 5B**).

Discussion

In three independent cohorts, this study presents the clinical performance of the first widely available plasma pTau217 assay. Our findings demonstrate high accuracy in identifying abnormal A β and tau pathologies, comparable to CSF measures and superior to brain atrophy assessments. Notably, ALZpath pTau217 significantly outperforms other putative plasma biomarkers and their optimal combinations. Moreover, we found pTau217 cut-points for A β -positivity to be translatable across cohorts, being particularly effective in excluding the presence of A β pathology. A three-range approach demonstrated excellent negative and positive concordance with A β status, with approximately 20% of individuals falling into an "intermediate zone" that would require confirmatory testing via CSF or PET, as previously proposed³⁹. Longitudinally, ALZpath pTau217 exhibited increases solely in individuals with A β pathology at baseline, and those with both A β and tau pathologies demonstrated a greater rate of increase.

Plasma biomarkers have emerged as crucial tools for AD evaluation. Their specificity to underlying pathology offers great potential for rapid screening, reducing the dependence on A β -PET scans or lumbar punctures in initial assessments. A clinical AD diagnosis often lacks sensitivity and specificity, resulting in many individuals with MCI (40–60%) or dementia (20–30%) exhibiting typical AD symptoms lacking brain A β pathology¹. In primary care, where most patients with cognitive symptoms are initially managed, it is estimated that >50% of cognitive impaired patients remain undiagnosed or incorrectly diagnosed due to the lack of accessible and cost-effective tools¹. Thus, blood biomarkers are set to revolutionise clinical care providing objective biomarker-based diagnostic information. This is especially important as anti-A β trials move toward targeting the preclinical population with lower prevalence of A β abnormalities⁴⁰, in which a cost-effective screening strategy is paramount. In most previous studies, targeting pTau217 in blood has yielded the best results. Plasma pTau217 exhibits larger fold-changes in individuals with AD pathology, reducing uncertainty in three-range cut-off strategies, as explored here. Furthermore, pTau217 reflects both A β and tau pathologies and its longitudinal trajectory associates with cognitive decline and atrophy A β -positive individuals²⁴.

A significant limitation of pTau217 has been the limited availability of immunoassays for broader evaluation. However, this study introduces a widely available plasma pTau217 assay exhibiting similar advantageous features to those observed in previous pTau217 studies. Consistent with Palmqvist et al¹⁹, ALZpath plasma pTau217 outperformed MRI features in identifying AD pathology, and showed comparable performance to CSF biomarkers in detecting A β -PET-positivity and tau-PET-positivity⁴¹. Impressively, it showed significant superiority to other validated plasma

biomarkers and their optimal combinations. When combined with *APOE* status and age, the assay exhibited only modest improvements in diagnostic accuracy, whereas other biomarkers relied more heavily on these variables for their performance. Notably, the assay demonstrated high accuracy in identifying tau pathology within a larger group of A β -positive individuals. This is particularly important as anti-amyloid therapies may be less effective in patients with advanced tau pathology⁴², an inclusion strategy for the TRAILBLAZER trial in early AD, where A β -positive participants had to meet specific ranges of tau-PET burden⁴³. Our findings suggest that pTau217 has the potential to identify elevated tau-PET uptake, making it a promising screening tool for early AD trials, and warranting further studies applying pTau217 to the "intermediate tau" designs such as that of the TRAILBLAZER trial.

Integrating blood biomarkers into diagnostic workflows remains challenging despite their excellent performance in identifying A β -positive patients. Therefore, this study also aimed to establish reference-points for ALZpath pTau217 based on abnormal A β pathology. The study evaluated a three-range approach, as recommended by Alzheimer's Association guidelines⁴⁴ and recently proposed by Brum et al using a non-commercial pTau217 immunoassay³⁹, which suggests confirmatory testing (e.g., CSF or PET imaging) for patients with uncertain plasma results. Evaluating this approach using the ALZpath immunoassay showed high negative and positive predictive accuracy at screening, indicating only 12-23% would require further testing, depending on the clinical stage. However, we acknowledge that the cohorts utilized in this study may not fully represent real-world clinical settings. Importantly, the reported negative and positive predictive accuracy of these reference ranges can vary based on the prevalence of the outcome in the target population. Lower PPA's are expected in settings with lower prevalence⁴⁵, as observed in the preclinical WRAP cohort compared to the higher prevalence seen in TRIAD and SPIN cohorts. Therefore, future studies should prospectively evaluate plasma pTau217 reference-points in memory clinic populations with wider diversity to ensure optimized implementation, accounting for higher rates of important comorbidities⁴⁶.

In conclusion, this study highlights the effectiveness of the commercially available plasma pTau217 assay in accurately identifying AD pathology. Our findings indicate that this immunoassay can significantly reduce the need for confirmatory testing for A β -positivity by approximately 80%, depending on their stage in the AD continuum. These results emphasize the crucial role of plasma pTau217 as an initial screening tool in the near future of AD management, and in the initiation and monitoring of anti-amyloid immunotherapies.

Acknowledgements

KB is supported by the Swedish Research Council (#2017-00915 and #2022-00732), the Swedish Alzheimer Foundation (#AF-930351, #AF-939721 and #AF-968270), Hjärnfonden, Sweden (#FO2017-0243 and #ALZ2022-0006), the Swedish state under the agreement between the Swedish government and the County Councils, the ALF-agreement (#ALFGBG-715986 and #ALFGBG-965240), the European Union Joint Program for Neurodegenerative Disorders (JPND2019-466-236), the Alzheimer's Association 2021 Zenith Award (ZEN-21-848495), and the Alzheimer's Association 2022-2025 Grant (SG-23-1038904 QC). HZ is a Wallenberg Scholar supported by grants from the Swedish Research Council (#2022-01018 and #2019-02397), the European Union's Horizon Europe research and innovation programme under grant agreement No 101053962, Swedish State Support for Clinical Research (#ALFGBG-71320), the Alzheimer Drug Discovery Foundation (ADDF), USA (#201809-2016862), the AD Strategic Fund and the Alzheimer's Association (#ADSF-21-831376-C, #ADSF-21-831381-C, and #ADSF-21-831377-C), the Bluefield Project, the Olav Thon Foundation, the Erling-Persson Family Foundation, Stiftelsen för Gamla Tjänarinnor, Hjärnfonden, Sweden (#FO2022-0270), the European Union's Horizon 2020 research and innovation programme under the Marie Skłodowska-Curie grant agreement No 860197 (MIRIADE), the European Union Joint Programme – Neurodegenerative Disease Research (JPND2021-00694), the National Institute for Health and Care Research University College London Hospitals Biomedical Research Centre, and the UK Dementia Research Institute at UCL (UKDRI-1003). The Wisconsin Registry for Alzheimer's Prevention is supported by NIH grants AG027161 and AG021155. JF, DA and AL were supported by the Fondo de Investigaciones Sanitario, Carlos III Health Institute (PI20/01473 to JF., PI18/00435 and INT19/00016 to DA, PI20/01330 to AL) and the Centro de Investigación Biomédica en Red sobre Enfermedades Neurodegenerativas (CIBERNED) Program 1. This work was also supported by the National Institutes of Health grants (1R01AG056850-01A1; R21AG056974 and R01AG061566 to JF) the Department de Salut de la Generalitat de Catalunya, Pla Estratègic de Recerca i Innovació en Salut (SLT006/17/00119 to JF; SLT002/16/00408 to AL; SLT006/17/125 to DA). It was also supported by Horizon 2020–Research and Innovation Framework Programme from the European Union (H2020-SC1-BHC-2018-2020 to JF). We thank Jeroen Vanbrabant and Erik Stoops from ADx Neuroscience, now Fujirebio, and the accelerator lab at Quanterix, for the initial prototyping of the ALZpath pTau217 assay.

Conflicts of interest

NJA has given lectures, produced educational materials, and participated in educational programs for Eli-Lily, BioArtic, Quanterix. DA reported receiving personal fees for advisory board services and/or speaker honoraria from Fujirebio-Europe, Roche, Nutricia, Krka Farmacéutica,

Grifols S.A., Lilly, Zambon S.A.U. and Esteve, outside the submitted work. AL has served as a consultant or on advisory boards for Fujirebio-Europe, Roche, Biogen and Nutricia, outside the submitted work. JF reported receiving personal fees for service on the advisory boards, adjudication committees or speaker honoraria from AC Immune, Lilly, Lundbeck, Roche, Fujirebio and Biogen, outside the submitted work. DA, AL and JF report holding a patent for markers of synaptopathy in neurodegenerative disease (licensed to ADx, EPI8382175.0). SCJ has served at scientific advisory boards for Roche Diagnostics, ALZPath, Prothena and Merck in the last three years and has received research funding from Cerveau Technologies. KB has served as a consultant and at advisory boards for Acumen, ALZPath, BioArctic, Biogen, Eisai, Lilly, Moleac Pte. Ltd, Novartis, Ono Pharma, Prothena, Roche Diagnostics, and Siemens Healthineers; has served at data monitoring committees for Julius Clinical and Novartis; has given lectures, produced educational materials and participated in educational programs for AC Immune, Biogen, Celdara Medical, Eisai and Roche Diagnostics; and is a co-founder of Brain Biomarker Solutions in Gothenburg AB (BBS), which is a part of the GU Ventures Incubator Program, outside the work presented in this paper. HZ has served at scientific advisory boards and/or as a consultant for Abbvie, Acumen, Alector, Alzinova, ALZPath, Annexon, Apellis, Artery Therapeutics, AZTherapies, CogRx, Denali, Eisai, Nervgen, Novo Nordisk, Optoceutics, Passage Bio, Pinteon Therapeutics, Prothena, Red Abbey Labs, reMYND, Roche, Samumed, Siemens Healthineers, Triplet Therapeutics, and Wave, has given lectures in symposia sponsored by Cellectricon, Fujirebio, Alzecure, Biogen, and Roche, and is a co-founder of Brain Biomarker Solutions in Gothenburg AB (BBS), which is a part of the GU Ventures Incubator Program (outside submitted work).

Tables

Table 1. Cross-sectional demographics of WRAP, TRIAD, and SPIN cohorts.

	WRAP (n=323)	TRIAD (n=268)	SPIN (n=195)
Age, years, mean (SD)	65.3 (6.91)	69.4 (7.90)	63.5 (13.8)
Female, n (%)	217 (67.2%)	167 (62.3%)	120 (61.5%)
<i>APOE</i> ε4 carriers, n (%)	121 (37.5%)	96 (35.8%)	81 (41.5%)
MMSE score, mean (SD)	29.2 (1.23)	27.0 (4.72)	26.4 (4.19)
Baseline clinical diagnosis, n (%)			
CU	309 (95.7%)	134 (50.0%)	82 (42.1%)
CI	14 (4.3%)	134 (50.0%)	113 (57.9%)
Years of education, mean (SD)	16.1 (2.62)	15.0 (3.57)	13.4 (5.12)
AT status, n (%)			
A-T-	209 (78.9%)	146 (55.3%)	75 (41.2%)
A+T-	38 (14.3%)	65 (24.6%)	6 (3.3%)
A+T+	18 (6.8%)	53 (20.1%)	101 (55.5%)
A-T+	1 (0.3%)	2 (0.7%)	2 (1.0%)
Missing	57 (17.6%)	2 (0.7%)	11 (5.6%)
Plasma pTau217, pg/mL, mean (SD)	0.466 (0.362)	0.636 (0.648)	0.977 (0.766)

Data are mean (SD) or n (%). In WRAP and TRIAD, AT status was defined with amyloid and tau-PET. In TRIAD, all participants had available Aβ-PET data (100%), while tau-PET was not available for 57 (17.6%) participants. In WRAP all participants had available Aβ-PET data (100%), and tau-PET was not available for 2 (0.7%) participants. In SPIN, all participants had data for amyloid status, which was determined with CSF Aβ42/Aβ40 in 159 (71.5%) participants or with Aβ-PET in 36 (18.5%) participants. In SPIN, tau status was defined with CSF p-tau181 and was not available for 11 participants (5.6%). Abbreviations: SD, standard deviation; TRIAD, Translational Biomarkers in Aging and Dementia; WRAP, Wisconsin Registry for Alzheimer's Prevention; SPIN, Sant Pau Initiative on Neurodegeneration; MMSE, mini-mental state examination; CU, cognitively unimpaired; CI, cognitively impaired; A-T-, amyloid-negative and tau-negative; A-T+, amyloid-positive and tau-negative; A-T+, amyloid-positive and tau-positive.

Figure titles and legends

Figure 1. Plasma ALZpath pTau217 levels according to amyloid and tau profiles.

Boxplots show the distribution of ALZpath pTau217 concentrations by AT profile for the WRAP, TRIAD, and SPIN cohorts. For WRAP and TRIAD, A β (“A”) and tau (“T”) were indexed by PET. In SPIN, “A” was indexed by CSF A β 42/40 and “T” by pTau181. All comparison p-values, obtained from pairwise contrasts from linear models adjusted for age and sex were <0.0001 (****), whereas in the SPIN cohort two comparisons showed $p<0.05$ ($p<0.05 = *$; A-T- vs A+T-; $p=0.018$; A+T- vs A+T+; $p=0.032$).

Figure 2. Accuracy of ALZpath pTau217 for detecting A β -positivity, tau-positivity and discriminating A+T- from A+T+ individuals.

Receiver operating characteristics (ROC) curves for ALZpath pTau217 to detecting A β -positivity (A), tau-positivity (B) and to differentiate A β -positive and tau-positive individuals (A+T+) from A β -positive and tau-negative (A+T-) (C). Solid lines vary in color according to each cohort, as depicted in the legend. For each ROC curve, the area under the curve (AUC) is reported alongside 95% confidence intervals (CI).

Figure 3. Plasma ALZpath pTau217 demonstrates similar or superior diagnostic accuracy for A β and tau pathologies compared to established CSF and PET biomarkers.

Receiver operating characteristics curves for detecting A β (A-C) and tau-positivity (D-F) for ALZpath pTau217, CSF and imaging biomarkers. Each panel corresponds to accuracies for the same outcome at each cohort (WRAP: A, D; TRIAD: B, E; SPIN: C, F). Solid lines represent the ROC curves for each biomarker, with colors corresponding to a specific biomarker across cohorts, as indicated in the figure legend at each panel. The legend indicates the area under the curve (AUC) for each biomarker, alongside 95% confidence intervals (CI). The maximum number of observations with complete data for each biomarker and outcome were used, and the specific number for each biomarker is also detailed in the figure legend. This approach, in which no data is excluded, yielded similar results to AUC comparisons within a reduced subset including the same subjects with complete data for all biomarkers, reported in the Supplement.

Figure 4. Binary and three-range ALZpath pTau217 reference ranges for A β -positivity.

Boxplots show the distribution of plasma ALZpath pTau217 according to A β status (A β -negative: blue; A β -positive: red) for each of the three cohorts alongside reference ranges. (A) The dashed line represents a binary cut-off (>0.42 pg/mL) for A β -positivity derived based on the conventionally used Youden index. (B) The upper dashed line represents an upper cut-point (>0.63 pg/mL) for considering a pTau217 reading as positive, derived with 95% specificity for A β -positivity. The lower dashed line

represents a lower cut-point (<0.40 pg/mL), below which plasma pTau217 would be considered negative, derived with 95% sensitivity for A β -positivity.

Figure 5. Longitudinal trajectories of plasma ALZpath pTau217 according to amyloid and tau PET status.

Trajectory plots indicate the mean longitudinal trajectories (solid line) of plasma ALZpath pTau217 and associated 95% confidence intervals (ribbon), estimated with linear mixed-effects models. The left panel shows trajectories for the WRAP cohort (A) and the right panel for the TRIAD cohort (B). Trajectories are stratified based on PET-defined amyloid and tau (A-T-, A+T-, A+T+) groups, modeled with an interaction term between AT status and time. Models included random slopes and intercepts for each participant and were adjusted for years of education, sex, and cognitive status at first visit. P-values represent post-hoc pairwise comparing the slopes for group-by-time interactions. P <0.0001 : ****; P <0.001 : ***; P >0.05 : not significant (ns).

References

1. Hansson O. Biomarkers for neurodegenerative diseases. *Nat Med*. Jun 2021;27(6):954-963. doi:10.1038/s41591-021-01382-x
2. Hansson O, Blennow K, Zetterberg H, Dage J. Blood biomarkers for Alzheimer's disease in clinical practice and trials. *Nat Aging*. May 2023;3(5):506-519. doi:10.1038/s43587-023-00403-3
3. Ashton NJ, Janelidze S, Al Khleifat A, et al. A multicentre validation study of the diagnostic value of plasma neurofilament light. *Nat Commun*. Jun 7 2021;12(1):3400. doi:10.1038/s41467-021-23620-z
4. Benedet AL, Mila-Aloma M, Vrillon A, et al. Differences Between Plasma and Cerebrospinal Fluid Glial Fibrillary Acidic Protein Levels Across the Alzheimer Disease Continuum. *JAMA Neurol*. Dec 1 2021;78(12):1471-1483. doi:10.1001/jamaneurol.2021.3671
5. Hampel H, Hardy J, Blennow K, et al. The Amyloid-beta Pathway in Alzheimer's Disease. *Mol Psychiatry*. Oct 2021;26(10):5481-5503. doi:10.1038/s41380-021-01249-0
6. Schindler SE, Bollinger JG, Ovod V, et al. High-precision plasma beta-amyloid 42/40 predicts current and future brain amyloidosis. *Neurology*. Oct 22 2019;93(17):e1647-e1659. doi:10.1212/WNL.0000000000008081
7. Karikari TK, Ashton NJ, Brinkmalm G, et al. Blood phospho-tau in Alzheimer disease: analysis, interpretation, and clinical utility. *Nat Rev Neurol*. May 18 2022;doi:10.1038/s41582-022-00665-2
8. Benedet AL, Brum WS, Hansson O, et al. The accuracy and robustness of plasma biomarker models for amyloid PET positivity. *Alzheimers Res Ther*. Feb 7 2022;14(1):26. doi:10.1186/s13195-021-00942-0
9. Cullen NC, Janelidze S, Mattsson-Carlgrén N, et al. Test-retest variability of plasma biomarkers in Alzheimer's disease and its effects on clinical prediction models. *Alzheimers Dement*. Jun 14 2022;doi:10.1002/alz.12706
10. Ashton NJ, Puig-Pijoan A, Mila-Aloma M, et al. Plasma and CSF biomarkers in a memory clinic: Head-to-head comparison of phosphorylated tau immunoassays. *Alzheimers Dement*. Nov 12 2022;doi:10.1002/alz.12841
11. O'Connor A, Karikari TK, Poole T, et al. Plasma phospho-tau181 in presymptomatic and symptomatic familial Alzheimer's disease: a longitudinal cohort study. *Mol Psychiatry*. Jul 14 2020;doi:10.1038/s41380-020-0838-x
12. Lleo A, Zetterberg H, Pegueroles J, et al. Phosphorylated tau181 in plasma as a potential biomarker for Alzheimer's disease in adults with Down syndrome. *Nat Commun*. Jul 14 2021;12(1):4304. doi:10.1038/s41467-021-24319-x
13. Janelidze S, Christian BT, Price J, et al. Detection of Brain Tau Pathology in Down Syndrome Using Plasma Biomarkers. *JAMA Neurol*. Aug 1 2022;79(8):797-807. doi:10.1001/jamaneurol.2022.1740
14. Fortea J, Zaman SH, Hartley S, Rafii MS, Head E, Carmona-Iragui M. Alzheimer's disease associated with Down syndrome: a genetic form of dementia. *Lancet Neurol*. Nov 2021;20(11):930-942. doi:10.1016/S1474-4422(21)00245-3
15. Mattsson-Carlgrén N, Janelidze S, Bateman RJ, et al. Soluble P-tau217 reflects amyloid and tau pathology and mediates the association of amyloid with tau. *EMBO Mol Med*. Jun 7 2021;13(6):e14022. doi:10.15252/emmm.202114022
16. Salvado G, Ossenkoppele R, Ashton NJ, et al. Specific associations between plasma biomarkers and postmortem amyloid plaque and tau tangle loads. *EMBO Mol Med*. Mar 13 2023:e2463. doi:10.15252/emmm.202217123

17. Lantero Rodriguez J, Karikari TK, Suarez-Calvet M, et al. Plasma p-tau181 accurately predicts Alzheimer's disease pathology at least 8 years prior to post-mortem and improves the clinical characterisation of cognitive decline. *Acta Neuropathol.* Sep 2020;140(3):267-278. doi:10.1007/s00401-020-02195-x
18. Ashton NJ, Pascoal TA, Karikari TK, et al. Plasma p-tau231: a new biomarker for incipient Alzheimer's disease pathology. *Acta Neuropathol.* May 2021;141(5):709-724. doi:10.1007/s00401-021-02275-6
19. Palmqvist S, Janelidze S, Quiroz YT, et al. Discriminative Accuracy of Plasma Phospho-tau217 for Alzheimer Disease vs Other Neurodegenerative Disorders. *JAMA.* Aug 25 2020;324(8):772-781. doi:10.1001/jama.2020.12134
20. Janelidze S, Mattsson N, Palmqvist S, et al. Plasma P-tau181 in Alzheimer's disease: relationship to other biomarkers, differential diagnosis, neuropathology and longitudinal progression to Alzheimer's dementia. *Nat Med.* Mar 2020;26(3):379-386. doi:10.1038/s41591-020-0755-1
21. Montoliu-Gaya L, Benedet AL, Tissot C, et al. Mass spectrometric simultaneous quantification of tau species in plasma shows differential associations with amyloid and tau pathologies. *Nat Aging.* Apr 27 2023;doi:10.1038/s43587-023-00405-1
22. Janelidze S, Bali D, Ashton NJ, et al. Head-to-head comparison of 10 plasma phospho-tau assays in prodromal Alzheimer's disease. *Brain.* Sep 10 2022;doi:10.1093/brain/awac333
23. Thijsen EH, La Joie R, Strom A, et al. Plasma phosphorylated tau 217 and phosphorylated tau 181 as biomarkers in Alzheimer's disease and frontotemporal lobar degeneration: a retrospective diagnostic performance study. *Lancet Neurol.* Sep 2021;20(9):739-752. doi:10.1016/S1474-4422(21)00214-3
24. Ashton NJ, Janelidze S, Mattsson-Carlsson N, et al. Differential roles of Aβ42/40, p-tau231 and p-tau217 for Alzheimer's trial selection and disease monitoring. *Nat Med.* Dec 2022;28(12):2555-2562. doi:10.1038/s41591-022-02074-w
25. Jonaitis EM, Janelidze S, Cody KA, et al. Plasma phosphorylated tau 217 in preclinical Alzheimer's disease. *Brain Commun.* 2023;5(2):fcad057. doi:10.1093/braincomms/fcad057
26. Johnson SC, Kosciak RL, Jonaitis EM, et al. The Wisconsin Registry for Alzheimer's Prevention: A review of findings and current directions. *Alzheimers Dement (Amst).* 2018;10:130-142. doi:10.1016/j.dadm.2017.11.007
27. Alcolea D, Clarimon J, Carmona-Iragui M, et al. The Sant Pau Initiative on Neurodegeneration (SPIN) cohort: A data set for biomarker discovery and validation in neurodegenerative disorders. *Alzheimers Dement (N Y).* 2019;5:597-609. doi:10.1016/j.trci.2019.09.005
28. Cselenyi Z, Jonhagen ME, Forsberg A, et al. Clinical validation of 18F-AZD4694, an amyloid-beta-specific PET radioligand. *J Nucl Med.* Mar 2012;53(3):415-24. doi:10.2967/jnumed.111.094029
29. Pascoal TA, Shin M, Kang MS, et al. In vivo quantification of neurofibrillary tangles with [(18)F]MK-6240. *Alzheimers Res Ther.* Jul 31 2018;10(1):74. doi:10.1186/s13195-018-0402-y
30. Johnson SC, Christian BT, Okonkwo OC, et al. Amyloid burden and neural function in people at risk for Alzheimer's Disease. *Neurobiol Aging.* Mar 2014;35(3):576-84. doi:10.1016/j.neurobiolaging.2013.09.028
31. Betthausen TJ, Kosciak RL, Jonaitis EM, et al. Amyloid and tau imaging biomarkers explain cognitive decline from late middle-age. *Brain.* Jan 1 2020;143(1):320-335. doi:10.1093/brain/awz378

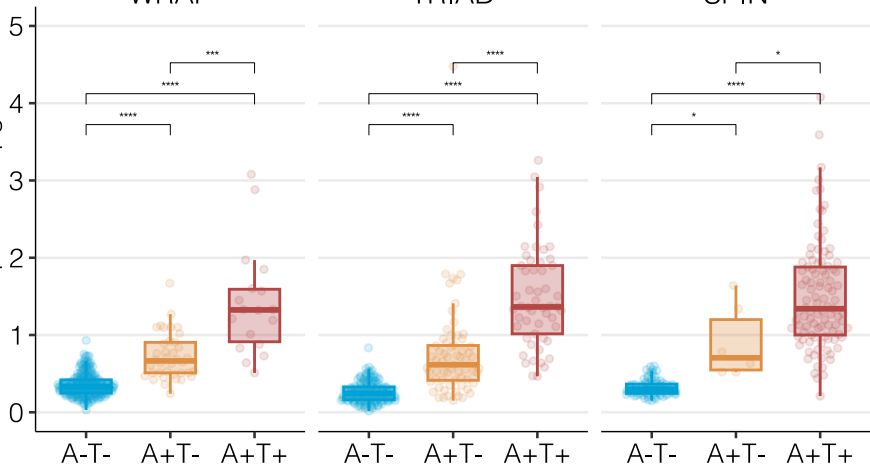
32. Bethausser TJ, Cody KA, Zammit MD, et al. In Vivo Characterization and Quantification of Neurofibrillary Tau PET Radioligand (18)F-MK-6240 in Humans from Alzheimer Disease Dementia to Young Controls. *J Nucl Med*. Jan 2019;60(1):93-99. doi:10.2967/jnumed.118.209650
33. Therriault J, Pascoal TA, Benedet AL, et al. Frequency of Biologically Defined Alzheimer Disease in Relation to Age, Sex, APOE epsilon4, and Cognitive Impairment. *Neurology*. Feb 16 2021;96(7):e975-e985. doi:10.1212/WNL.00000000000011416
34. Therriault J, Benedet AL, Pascoal TA, et al. Determining Amyloid-beta Positivity Using (18)F-AZD4694 PET Imaging. *J Nucl Med*. Feb 2021;62(2):247-252. doi:10.2967/jnumed.120.245209
35. Alcolea D, Pegueroles J, Munoz L, et al. Agreement of amyloid PET and CSF biomarkers for Alzheimer's disease on Lumipulse. *Ann Clin Transl Neurol*. Sep 2019;6(9):1815-1824. doi:10.1002/acn3.50873
36. Ashton NJ, Benedet AL, Pascoal TA, et al. Cerebrospinal fluid p-tau231 as an early indicator of emerging pathology in Alzheimer's disease. *EBioMedicine*. Feb 11 2022;76:103836. doi:10.1016/j.ebiom.2022.103836
37. Van Hulle C, Jonaitis EM, Bethausser TJ, et al. An examination of a novel multipanel of CSF biomarkers in the Alzheimer's disease clinical and pathological continuum. *Alzheimers Dement*. Mar 2021;17(3):431-445. doi:10.1002/alz.12204
38. Hansson O, Edelmayer RM, Boxer AL, et al. The Alzheimer's Association appropriate use recommendations for blood biomarkers in Alzheimer's disease. *Alzheimers Dement*. Jul 31 2022;doi:10.1002/alz.12756
39. Brum WS. A two-step workflow based on plasma p-tau217 to screen for A β -positivity with further confirmatory testing only in uncertain cases. *Nat Ageing*. . 2023;In Press
40. Jansen WJ, Janssen O, Tijms BM, et al. Prevalence Estimates of Amyloid Abnormality Across the Alzheimer Disease Clinical Spectrum. *JAMA Neurol*. Mar 1 2022;79(3):228-243. doi:10.1001/jamaneurol.2021.5216
41. Barthelemy NR, Saef B, Li Y, et al. CSF tau phosphorylation occupancies at T217 and T205 represent improved biomarkers of amyloid and tau pathology in Alzheimer's disease. *Nat Aging*. Apr 2023;3(4):391-401. doi:10.1038/s43587-023-00380-7
42. Lilly's Donanemab Significantly Slowed Cognitive and Functional Decline in Phase 3 Study of Early Alzheimer's Disease. Accessed June 18, 2023. <https://investor.lilly.com/news-releases/news-release-details/lillys-donanemab-significantly-slowed-cognitive-and-functional>
43. Mintun MA, Wessels AM, Sims JR. Donanemab in Early Alzheimer's Disease. Reply. *N Engl J Med*. Aug 12 2021;385(7):667. doi:10.1056/NEJMc2109455
44. Hansson O, Edelmayer RM, Boxer AL, et al. The Alzheimer's Association appropriate use recommendations for blood biomarkers in Alzheimer's disease. *Alzheimers Dement*. Dec 2022;18(12):2669-2686. doi:10.1002/alz.12756
45. Vecchio TJ. Predictive value of a single diagnostic test in unselected populations. *N Engl J Med*. May 26 1966;274(21):1171-3. doi:10.1056/NEJM196605262742104
46. Mielke MM, Dage JL, Frank RD, et al. Performance of plasma phosphorylated tau 181 and 217 in the community. *Nat Med*. Jul 2022;28(7):1398-1405. doi:10.1038/s41591-022-01822-2

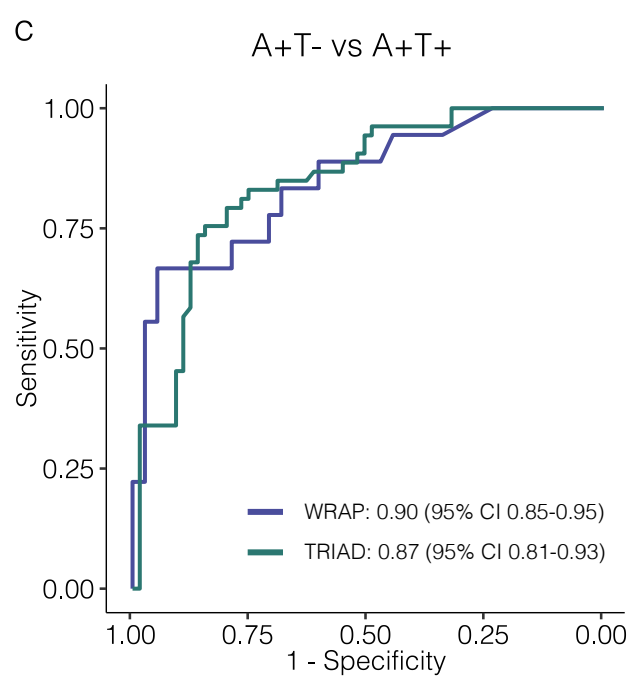
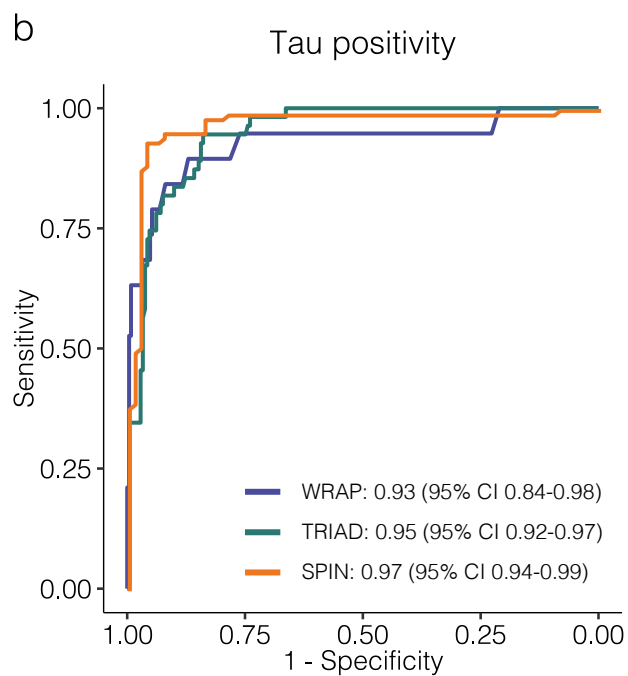
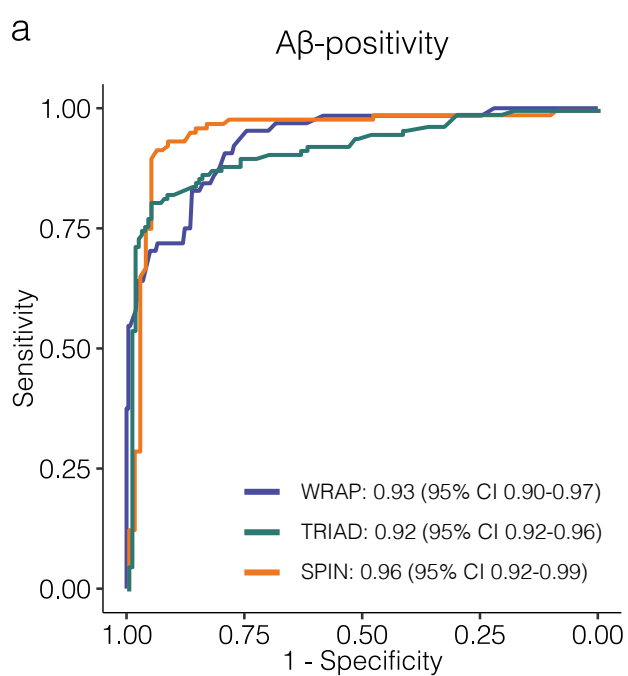
Plasma pTau217, pg/mL

WRAP

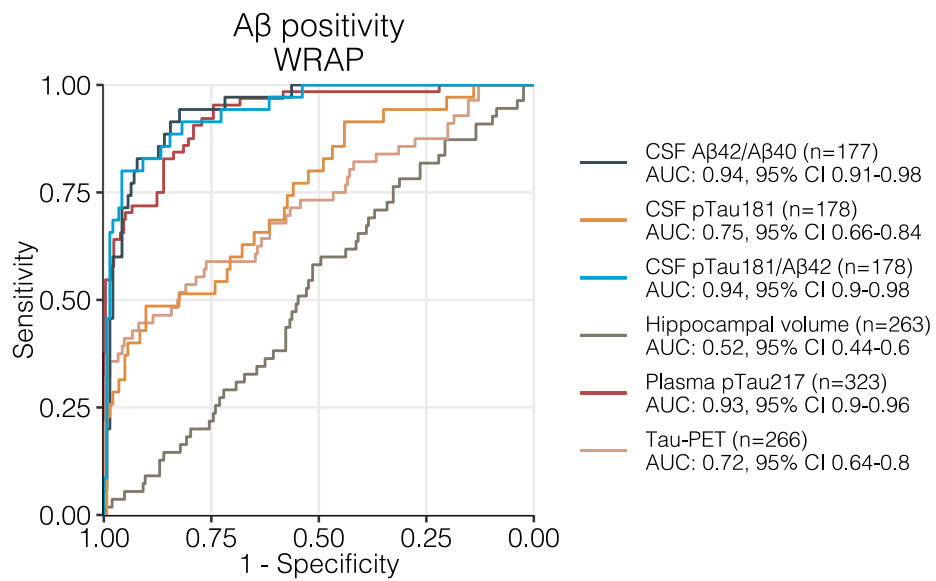
TRIAD

SPIN

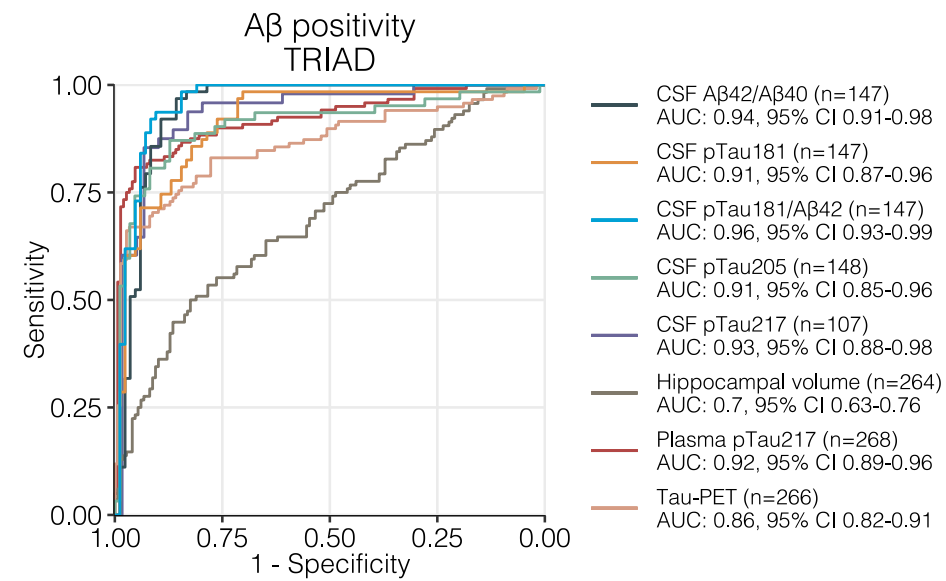




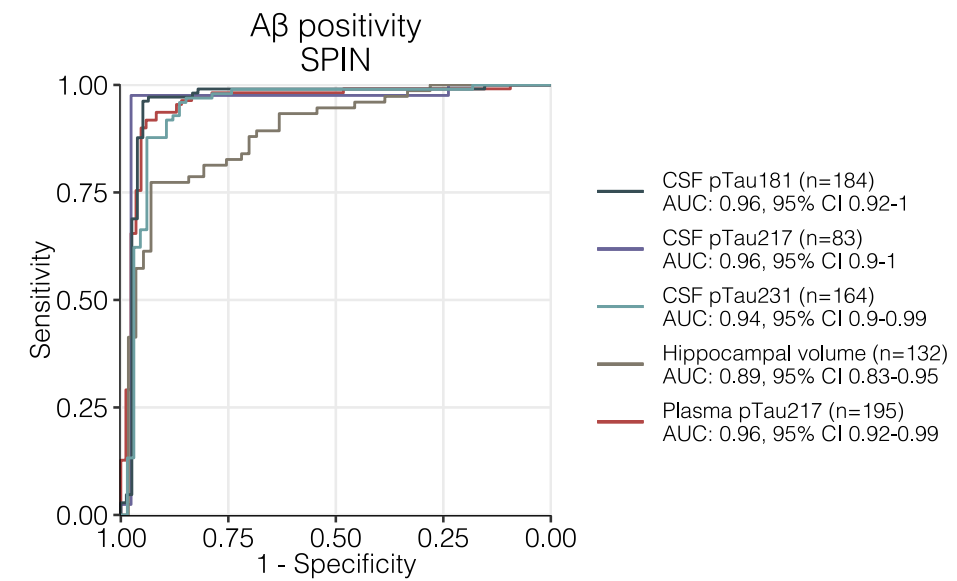
a



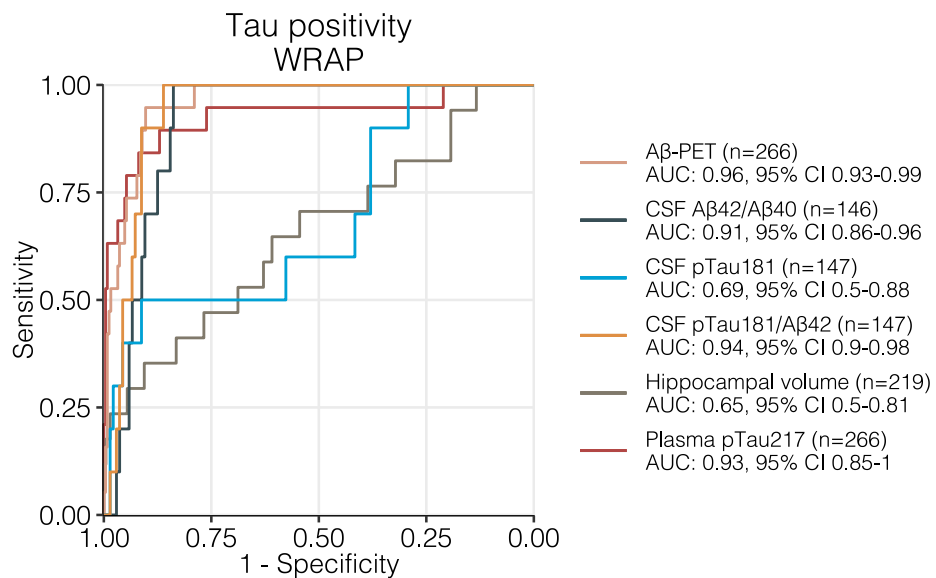
b



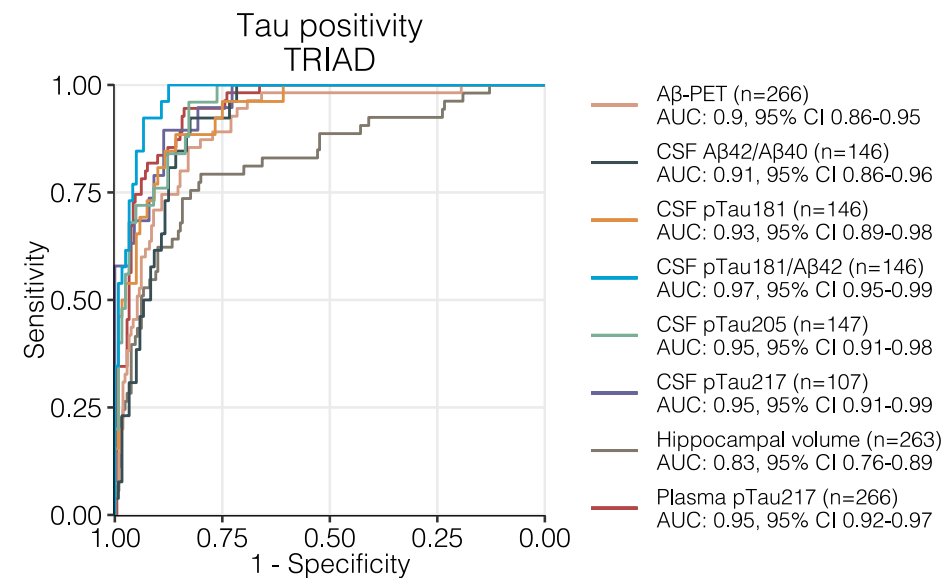
c



d



e



f

