

## Effect of Tai Chi on Pain and Cognitive Function in Elderly Patients with Chronic Neck Pain: A Protocol for Systematic Review and Meta-analysis

Yichen Wang<sup>1</sup>, Xing Tang<sup>2</sup>, Hongjuan Fu<sup>3</sup>, Wenjiao Hu<sup>4</sup>, Feng Zhang<sup>5\*</sup>

<sup>1</sup>Orthopedics Hospital of Sichuan Province, Chengdu, China. <sup>2</sup>Sichuan Traditional Chinese Medicine Translational Medicine Center, Chengdu, China. <sup>3</sup>Sichuan Provincial Bayi Rehabilitation Center (Sichuan Provincial Rehabilitation Hospital), Chengdu, China. <sup>4</sup>Chengdu University of Traditional Chinese Medicine, Chengdu, China. <sup>5</sup>Beijing University of Chinese Medicine, Beijing, China.

\* **Correspondence:** Feng Zhang, Northeast corner of intersection of South Sunshine Street and East Baiyang Road, Fangshan District, Beijing 102400, China (e-mail: zhangfengtcm@163.com).

**Background:** The incidence of chronic neck pain (CNP) in the elderly is increasing. CNP in the elderly not only affects the physical function of patients, the quality of life, and work but also increases the direct medical cost and indirect social costs. The recent treatment trends of CNP, such as home self-exercise, focused specific training, and research into the underlying neural mechanisms of pain and cognitive improvement in patients with CNP, suggest that Tai Chi may be beneficial for pain and cognitive function in elderly patients with CNP.

**Method and Methods:** We will search 8 databases, including PubMed, Embase, Cochrane Library, Web of Science, China National Knowledge Infrastructure (CNKI), China Biomedical Literature Database (CBM), VIP database, and Wanfang database. Randomized controlled trials (RCTs) of Tai Chi in the treatment of elderly CNP will be included. The search time is from the establishment of the database to May 31, 2023. In this study, data extraction and methodological quality evaluation will be carried out for the included literature, and statistical analysis will be performed using RevMan 5.4 software. The quality of evidence will be assessed using the Grading of Recommendations Assessment, Development and Evaluation system approach (GRADE).

**Discussion:** This review will search and collect RCTs related to Tai Chi for the prevention and treatment of elderly CNP, and aims to systematically evaluate the evidence of the effects of Tai Chi on pain and cognitive function in elderly patients with CNP. The results of this review are expected to provide more accurate and effective guidance for the prevention and treatment of elderly patients with CNP, and also provide evidence-based medicine references for the formulation of exercise prescriptions.

**Systematic Review Registration:** OSF registration number [DOI 10.17605/OSF.IO/YTZPX].

### KEYWORDS:

CNP, elderly, Tai Chi, pain, cognitive function, systematic review

## Introduction

Chronic neck pain (CNP) in the elderly is a clinical syndrome mainly manifested as neck pain, stiffness, discomfort, and limited movement, accompanied by fatigue and discomfort, shoulder pain, head lethargy, and other symptoms, with a course of more than 12 weeks [1]. In 2010, among the global studies on life lost due to diseases, the number of years of life lost due to disability caused by neck pain ranked fourth [2].

Epidemiological research on CNP found that the incidence of CNP in the general population ranged from 0.055/1000 to 213/1000, with a high incidence of CNP between 40 and 60 years old, and the prevalence of CNP in older people over 70 years old could reach 90% [3]. A large-scale study on the prevalence and risk factors of CNP in the elderly in South Korea showed that the lifetime prevalence of CNP in the elderly in South Korea was up to 20.8%, and the prevalence was higher in females [4]. At present, the incidence of CNP in the elderly population remains high and increases year by year, which has become a social and medical problem in various countries.

There are many causes of CNP in the elderly, among which an important predictor is injury [5]. Common neck injuries from car accidents or falls from height. According to the literature, 20%-40% of whiplash neck injuries will gradually develop into CNP [6]. In addition, abnormal nerve control in the neck, muscle fatigue, skeletal muscle diseases caused by neck imbalance, improper posture, obesity, and mental stress are high-risk factors for CNP in the elderly [7]. Elderly people with CNP usually suffer from memory decline, attention loss, reaction ability slowed down and other normal physiological function decline, seriously affecting the patient's physical function, life, and work quality [8].

Although oral medications, physical therapy, acupuncture, and manipulation can alleviate the symptoms of CNP in the elderly to varying degrees and improve the function of the cervical spine, it is difficult to fundamentally curb the development of CNP, and patients often need repeated treatment or even lifelong treatment. Data show that the prevalence rate of neck pain in people's lifetime is about 40%-70% [9, 10]. 33% to 65% of patients recover from neck pain within one year of onset, but recurrence is common [11]. Elderly patients with CNP often suffer from severe adverse emotions and psychological reactions due to recurrent and persistent neck pain [12], and gradually develop into emotional disorders with anxiety as the prominent manifestation, which will also affect patients' confidence and efficacy in treatment [13]. It is of great social, economic, and medical significance to explore effective methods to treat and prevent CNP in the elderly.

There have been some recent advances in the treatment of CNP in the elderly. Lauche et al. [14, 15] reported a randomized controlled trial (RCT) of Tai Chi in treating chronic non-specific neck pain, and the results showed that compared with the waiting treatment group, the Tai Chi training group could reduce the degree of neck pain and improve the dysfunction index. Two expert opinion literature [16, 17] also stated that tai chi exercise can not only reduce the neck pain of patients, improve the function of patients, but also reduce the depression and

anxiety caused by pain, which is very beneficial to the prevention and treatment of CNP. At present, Tai Chi has been applied in the treatment of various chronic diseases, and has been proven to have positive therapeutic effects [18].

There is growing evidence showing that tai chi also helps cognitive function in elderly patients with CNP, which may be partly attributable to remodeling central nervous system activity [19]. The elderly aged 60-70 years old were divided into a swimming group, Tai Chi group, square dancing group, and control group, and the results showed that Tai Chi had the most significant effect on the cognitive function of the elderly [20]. Long-term Tai Chi practitioners score higher on the cognitive scale, and longer exercise time can improve the cognitive function of the elderly [21,22].

Recent advances have also been made in understanding the pathophysiology of CNP in the elderly. Imaging studies have shown that the relationship between different types of chronic pain and brain regions corresponds to a complex correspondence. Patients with chronic pain have abnormal activation of multiple brain regions and functional connectivity changes [23,24]. Persistent chronic pain can significantly activate not only pain-inducing centers but also cognitive and emotional brain regions [25]. For example, studies on CNP found that connections in brain regions such as anterior cingulate gyrus, posterior cingulate gyrus, precuneus, parietal gyrus, inferior parietal gyrus, thalamus, bilateral insula, and frontal lobe were enhanced compared with healthy volunteers [26]. In addition, one study showed that the left precuneus cortex was thinner in traumatic CNP compared to non-traumatic patients, and patients with non-traumatic CNP performed poorly compared to healthy volunteer controls after a measure of cognitive performance [27].

At present, Tai Chi has been applied in the treatment of various chronic diseases, and has been proven to have positive therapeutic effects [28]. To date, there have been no systematic reviews focusing only on the effectiveness of Tai Chi for CNP in the elderly. Elderly CNP has the characteristics of high incidence, complex symptoms, lingering disease, and easy relapse. Exploring the effective treatment and prevention of CNP in the elderly has obvious social, economic, and medical significance, and tai chi on the elderly CNP is worth studying. The purpose of this systematic review will be to identify and evaluate the evidence on the effects of Tai Chi on pain and cognitive function in elderly patients with CNP.

## Methods

### Study registration

This systematic review protocol was registered on the OSF (<https://doi.org/10.17605/OSF.IO/YTZPX>). The systematic review is designed to be by the Preferred Reporting Items for Systematic Reviews and Meta-Analyses (PRISMA) guidelines [29].

### Inclusion criteria

All RCTs on CNP in the elderly will be included that have tai chi alone or as a component of an intervention and have a comparison group, such as no treatment, regular activity, aerobic exercise, western medicine treatment, and other treatments. All participants in such studies will be included regardless of sex, nationality, or whether they are inpatients or outpatients. All types of Tai Chi and lengths of intervention will be included (Table 1).

### Outcome measures

As per recent trends to have patient-oriented outcomes, we have identified the preferred primary outcome as pain and cognition, such as Visual Analogue Score (VAS), Northwick Park Questionnaire (NPQ), McGill Pain Questionnaire (MPQ), Mini-Mental State Examination (MMSE). Secondary outcomes are neck function and any adverse events.

TABLE 1 Inclusion criteria.

<b>Participants</b> <ul style="list-style-type: none"><li>• Elderly patients with a definite diagnosis of CNP, aged <math>\geq 60</math> years old, regardless of gender, race, nationality, and duration of disease.</li></ul>
<b>Intervention</b> <ul style="list-style-type: none"><li>• Interventions in the treatment group will include different types of frequency and duration of Tai Chi therapy.</li></ul>
<b>Comparators:</b> <ul style="list-style-type: none"><li>• Ordinary exercise unrelated to Tai Chi or blank control, etc.</li></ul>
<b>Outcome measures :</b> <ul style="list-style-type: none"><li>• Primary outcomes: VAS, NPQ, MPQ, MMSE;</li><li>• Secondary outcomes : Neck Disability Index (NDI) , the incidence of adverse events.</li></ul>
<b>Design</b> <ul style="list-style-type: none"><li>• Randomized clinical trials</li></ul>

### Search strategy

We will search RCTs on the effects of Tai Chi on pain symptoms or cognitive function in elderly patients with CNP in PubMed, Web of Science, The Cochrane Library, Embase, CNKI, CBM, Wanfang, and VIP databases. The time limit is to build the database until May 31, 2023.

The combination of subject words and free words is adopted. Detailed search strategies are shown in [Table 2](#).

**TABLE 2 Search strategy in PubMed database.**

Search items	
1	Tai Ji. Mesh.
2	Tai Chi. ti. ab.
3	Chi, Tai. ti. ab.
4	Tai Ji Quan. ti. ab.
5	Ji Quan, Tai. ti. ab.
6	Quan, Tai Ji. ti. ab.
7	Taiji. ti. ab.
8	tai chi. ti. ab.
9	Tai Chi Chuan. ti. ab.
10	1 or 2–9
11	Aged. Mesh.
12	Elderly. ti. ab.
13	11 or 12
14	Neck Pains. Mesh.
15	Pain, Neck. ti. ab.
16	Pains, Neck. ti. ab.
17	Neck Ache. ti. ab.
18	Ache, Neck. ti. ab.
19	Aches, Neck. ti. ab.
20	Neck Aches. ti. ab.
21	Cervicalgia. ti. ab.
22	Cervicalgias. ti. ab.
23	Cervicodynia. ti. ab.
24	Cervicodynias. ti. ab.
25	Neckache. ti. ab.
26	Neckaches. ti. ab.
27	Cervical Pain. ti. ab.
28	Cervical Pains. ti. ab.
29	Pain, Cervical. ti. ab.
30	Pains, Cervical. ti. ab.
31	14 or 15–30
32	Randomized controlled trial. Mesh.
33	Controlled clinical trial. ti. ab.
34	Randomized. ti. ab.
35	Randomly. ti. ab.
36	Trial. ti. ab.
37	32 or 33–35
38	10 and 13 and 31 and 37

## Data collection and analysis

The literature retrieved from each database will be imported and downloaded into Endnote to automatically eliminate duplicate literature. The two researchers (YW and XT) will independently screen references. By reading the full text, the literature that do not meet the inclusion criteria was removed. For the literature with multiple drafts of the same experimental data, the initial experimental data or the updated experimental data will be retained, and other literature will be excluded; For incomplete or unextractable experimental data in the included literature, contact the original author by E-mail or telephone to obtain complete data. If the original author cannot be contacted or the original author cannot provide the required information and data, the literature will be excluded. If no agreement can be reached, it shall be settled through discussion and negotiation. If no agreement can be reached, it shall be settled by a third reviewer (FZ). The process of literature screening is shown in Figure 1.

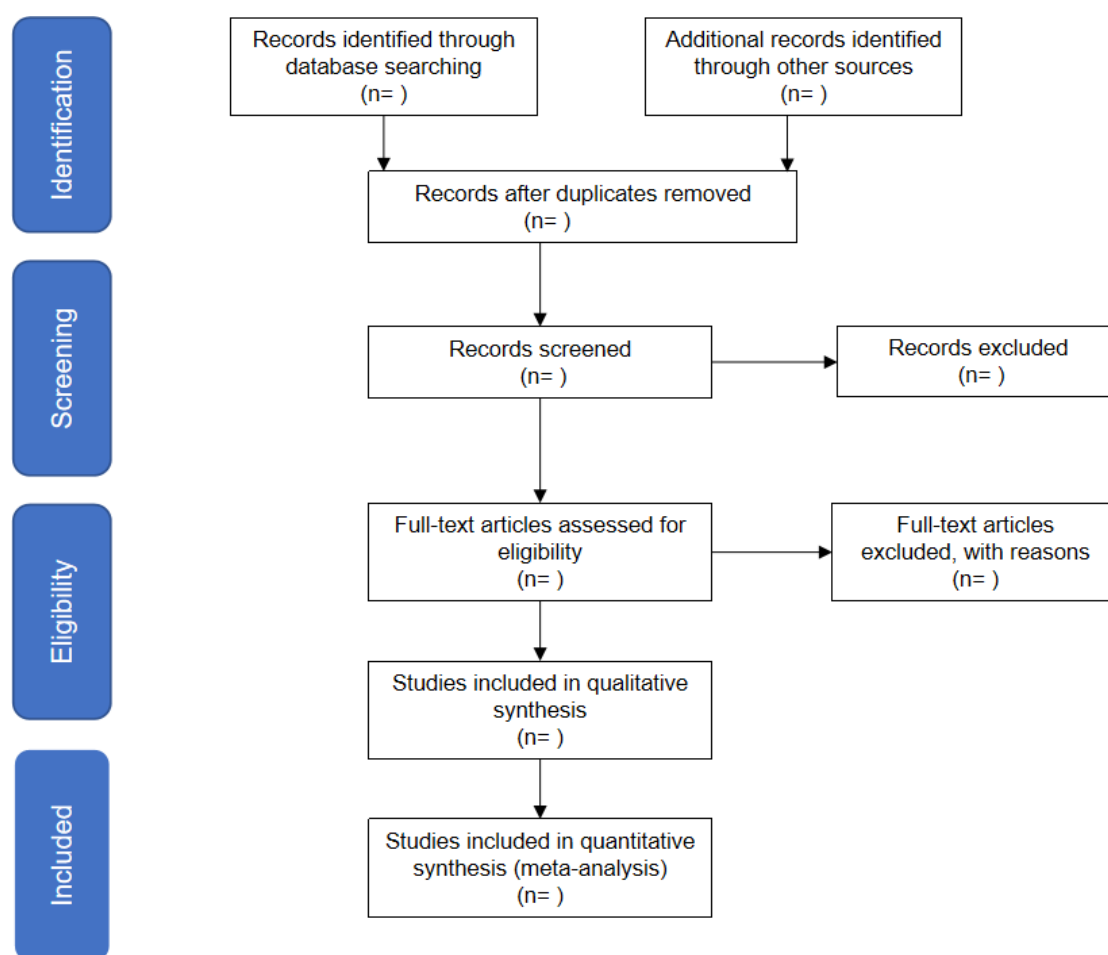


Figure 1 Flow diagram of the study selection process.

## Data extraction

Data will be extracted and cross-checked independently by two researchers (HF and WH) according to pre-established criteria. In case of disagreement, discuss or consult a third party (FZ). The content of data extraction included: (1) Basic information included in the study,

namely the study title, the first author, the source of the literature, the publication time, and the intervention measures of the trial group and the control group ; (2) Baseline characteristics of the subjects (sample size, age, etc.) ; (3) Key elements of quality evaluation ; (4) Outcome indicators concerned and analysis results of each outcome indicator.

#### **Assessment of risk of bias**

Two reviewers (YW and XT) will use the Cochrane risk bias assessment tool to evaluate the methodological quality of the included literature in six domains, such as selection bias, implementation bias, follow-up bias, measurement bias, reporting bias, and other biases. For each indicator, "low bias risk", "bias uncertainty" and "high bias risk" were used to determine. The research quality was divided into three levels: Level A: Low risk met 4 or more items, that is, low risk; Level B: Meet 2 or 3 items of low risk; Level C: Meet 1 item or no entry low risk, deviation may occur. Any objection will be submitted to arbitration by the third reviewer (FZ).

#### **Assessment of heterogeneity**

Data from the included literature will be analyzed using Revman5.4 statistical software available on the Cochrane Collaboration network. If the data are dichotomous variables, relative risk (RR) and 95%CI will be used as combined effect size analysis. If the data are classified as continuous variables, the mean difference (MD) or standard mean difference (SMD) and its 95%CI analysis were used. The chi-square test will be used to test the heterogeneity of the literature. When the heterogeneity of the included literature ( $I^2 \leq 50\%$ ) was determined, the fixed-effect model will be used to analyze the heterogeneity of the literature. When the heterogeneity of the included references will be greater than 50% ( $I^2 > 50\%$ ), the random effects model will be used for analysis; if there are incomplete data, the descriptive analysis will be used.

#### **Assessment of reporting biases**

According to the requirements of the Cochrane Systematic Review manual [30], funnel plots of Revman 5.4 software will be used to evaluate publication bias if  $\geq 10$  kinds of literature are included. If fewer than 10 articles are included, publication bias analysis will be not performed.

#### **Subgroup analysis and investigation of heterogeneity**

We will use subgroup analysis to assess the heterogeneity of the results. Subgroup analysis will be performed by study design (such as intervention type, intervention duration, and intervention period), study location, and other factors to further reveal the impact of these factors on the study results or effect size.

#### **Sensitivity analysis**

Sensitivity analysis will be used to evaluate the robustness of the meta-analysis conclusions. Each study will be excluded one by one to observe the changes in the results of the meta-analysis, and the results of other studies will be combined again with the effect size and

compared with the previous total effect size to explore the robustness and influencing factors of the excluded studies on the results of the combined effect size. If there is no essential change in the meta-analysis results before and after the sensitivity analysis, it indicates that the meta-analysis results are more credible. If there is a large difference between the results before and after the sensitivity analysis, it indicates that the stability of the conclusions is poor, and the results and conclusions of the meta-analysis should be interpreted with caution.

## Discussion

To our knowledge, this will be the first systematic review of Tai Chi in the treatment of CNP in the elderly. In addition to the symptoms of neck pain, stiffness and discomfort, limited activity, and other symptoms, CNP in the elderly usually suffer from the decline of normal physiological functions such as memory decline, attention loss, slow reaction ability, and the incidence of the disease is high, the symptoms are complex, the disease is lingering and easy to relapse. At present, a drug intervention is often used for elderly patients with CNP in the clinic. However, the side effects of drug treatment are easy to damage the body's organs. It has become an urgent need to seek a safe, economical, and green treatment method without side effects. Tai Chi is a traditional Chinese exercise, which has positive effects on pain symptoms and overall cognitive function of elderly patients with CNP, but its improvement effect is affected by age, gender, project characteristics, exercise cycle, exercise frequency, and exercise duration. In terms of the mechanism of action affecting the cognitive function of the elderly, although the research results are becoming more and more perfect and the influence mechanisms of different sports are similar, the influence of Tai Chi on the brain mechanism changes of pain and cognitive function still needs to be further studied.

In clinical randomized controlled trials, Tai Chi included different types of frequency and duration. The effects of different types of tai chi have not been synthesized [31]. Although a previous paper entitled "Tai Chi for Chronic Pain: A Systematic Review and Meta-analysis of Randomized Controlled Trials" was published [32], the disease was limited to chronic pain caused by osteoarthritis, rheumatoid arthritis, lumbago, fibromyalgia, and osteoporosis, and there has been no systematic review of Tai Chi for CNP in the elderly. In this systematic review, four English and four Chinese databases were searched, the risk of bias was assessed using the Cochrane bias risk tool, and GRADE was used to evaluate the evidence on the efficacy of Tai Chi in the treatment of CNP in the elderly. To provide relatively convincing evidence for the effectiveness and safety of Tai Chi in the treatment of CNP in the elderly. It can assist elderly patients with CNP and clinicians.

## Ethics and dissemination

There is no ethical conflict with the relevant content. The results of the meta-analysis will be published in a peer-reviewed journal.



### Author contributions

YW, XT and FZ conceived the review protocol. YW drafted the manuscript. YW and XT revised the study design. YW and XT will perform the study search and study selection. HF and WH will carry out the data collection. YW and XT will assess the quality of included randomised controlled trials. HF and WH will conduct the data analysis. FZ will monitor each procedure of the review and are responsible for the quality control. All authors have read and approved the publication of the protocol.

### Conflict of interest

All authors agree that the article is free from conflict of interest.

**Funding** The authors received no financial support for the research, authorship and/or publication of this article.

**ORCID iD** Feng Zhang <http://orcid.org/0000-0002-5557-0129>

### References

- [1]Alagingi NK. (2022). Chronic neck pain and postural rehabilitation: A literature review. *J Bodyw Mov Ther.* 32:201-206. doi: 10.1016/j.jbmt.2022.04.017.
- [2]Saltychev M, Widbom-Kolhanen SS., and Perna KI. (2023). The importance of factors determining disability caused by neck pain may vary by gender and age. *Int J Rehabil Res.* 46(1):103-107. doi: 10.1097/MRR.0000000000000559.
- [3]Tsang RCC, Lee EWC, Lau JSY, Kwong SSF, So EML, Wong TFY., et al. (2019). Development of a short form of the Hong Kong Chinese Orebro musculoskeletal pain screening questionnaire. *Hong Kong Physiother J.* 39(1):57-66. doi 10.1142/S1013702519500057.
- [4]Son KM, Cho NH, Lim SH., and Kim HA. (2013). Prevalence and risk factor of neck pain in elderly Korean community residents. *J Korean Med Sci.* 28(5):680-6. doi 10.3346/jkms.2013.28.5.680.
- [5]Kim R, Wiest C, Clark K, Cook C., and Horn M. (2018). Identifying risk factors for first-episode neck pain: A systematic review. *Musculoskelet Sci Pract.* 33:77-83. doi: 10.1016/j.msksp.2017.11.007.
- [6]Carette S. (1994). Whiplash injury and chronic neck pain. *N Engl J Med.* 330(15):1083-4. doi: 10.1056/NEJM199404143301512.
- [7]Sarig Bahat H, Hadar D., and Treleaven J.(2020). Predictors for Positive Response to Home Kinematic Training in Chronic Neck Pain. *J Manipulative Physiol Ther.* 43(8):779-790. doi: 10.1016/j.jmpt.2019.12.008.
- [8] Gao SH., and Tian Y. (2023). A review on the influence and mechanism of Taijiquan and fitness Qigong on cognition of the aged. *Journal of contemporary sports science and Technology.* 13(05):128-131. doi:10.16655/j.cnki.2095-2813.2210-1579-7379.

- [9]Kazeminasab S, Nejadghaderi SA, Amiri P, Pourfathi H, Araj-Khodaei M, Sullman MJM., et al. (2022). Neck pain: global epidemiology, trends, and risk factors. *BMC Musculoskelet Disord.* 23(1):26. doi 10.1186/s12891-021-04957-4.
- [10]Hoy D, March L, Woolf A, Blyth F, Brooks P, Smith E., et al. (2014). The global burden of neck pain: estimates from the global burden of disease 2010 study. *Ann Rheum Dis.* 73(7):1309-15. doi: 10.1136/annrheumdis-2013-204431.
- [11]Safiri S, Kolahi AA, Hoy D., and Buchbinder R. (2017). Global, regional, and national burden of neck pain in the general population, 1990-2017: systematic analysis of the Global Burden of Disease Study 2017. *BMJ.* 368:m791. doi: 10.1136/bmj.m791.
- [12]Lopez-Lopez A, Alonso Perez JL., and González Gutierrez JL. (2015). Mobilization versus manipulations versus sustain apophyseal natural glide techniques and interaction with psychological factors for patients with chronic neck pain: randomized controlled trial. *Eur J Phys Rehabil Med.* 51(2):121-32.
- [13] Shao ZQ. (2019). Effect of medical cooperative health education on anxiety of patients with cervical spondylosis. *Chinese Medical Review.* 6(27):24-25.
- [14]Lauche R, Stumpe C, Fehr J, Cramer H, Cheng YW, Wayne PM., et al. (2016). The Effects of Tai Chi and Neck Exercises in the Treatment of Chronic Nonspecific Neck Pain: A Randomized Controlled Trial. *J Pain.* 17(9):1013-27. doi: 10.1016/j.jpain.2016.06.004.
- [15]Lauche R, Wayne PM, Fehr J, Stumpe C, Dobos G., and Cramer H. (2017). Does Postural Awareness Contribute to Exercise-Induced Improvements in Neck Pain Intensity? A Secondary Analysis of a Randomized Controlled Trial Evaluating Tai Chi and Neck Exercises. *Spine (Phila Pa 1976).* 42(16):1195-1200. doi 10.1097/BRS.0000000000002078.
- [16]Zhang F. (2014). Tai chi as a potentially effective treatment for neck pain. *J Formos Med Assoc.* 113(4):199-200. doi: 10.1016/j.jfma.2012.11.005.
- [17]Plastaras CT, Schran S, Kim N, Sorosky S, Darr D, Chen MS., et al. (2011). Complementary and alternative treatment for neck pain: chiropractic, acupuncture, TENS, massage, yoga, Tai Chi, and Feldenkrais. *Phys Med Rehabil Clin N Am.* 22(3):521-37, ix. doi: 10.1016/j.pmr.2011.02.011.
- [18]Mansky P, Sannes T, Wallerstedt D, Ge A, Ryan M, Johnson LL., et al.(2006). Tai chi chuan: mind-body practice or exercise intervention? Studying the benefit for cancer survivors. *Integr Cancer Ther.* 5(3):192-201. doi 10.1177/1534735406291590.
- [19]Liu TY, Yin T., and Zeng F. (2023). A systematic review on the mechanism of Tai Chi in improving the cognitive function center of elderly people based on neuroimaging technology. *World Science and Technology-Modernization of Traditional Chinese Medicine.* 25(01):17-27.
- [20] Zhang X, Ni X., and Chen P. (2014). Study About the Effects of Different Fitness Sports on Cognitive Function and Emotion of the Aged. *Cell Biochemistry and Biophysics.* 70(3):1591-1596.

- [21]Jung MS, Kim H, Lee Y, Kim M., and Chung E. (2017). Different Effects of Cognitive and Non-exercise Physical Leisure Activities on Cognitive Function by Age in Elderly Korean Individuals. *Osong Public Health Res Perspect.* 8(5):308-317. doi: 10.24171/j.phrp.2017.8.5.04.
- [22]Port AP, Santaella DF, Lacerda SS, Speciali DS, Balardin JB, Lopes PB., et al. (2018). Cognition and brain function in elderly Tai Chi practitioners: A case-control study. *Explore (NY).* 14(5):352-356. doi: 10.1016/j.explore.2018.04.007.
- [23]Palermo S, Benedetti F, Costa T., and Amanzio M. (2015). Pain anticipation: an activation likelihood estimation meta-analysis of brain imaging studies. *Hum Brain Mapp.* 36(5):1648-61. doi 10.1002/hbm.22727.
- [24]Ceko M, Bushnell MC, Fitzcharles MA., and Schweinhardt P. (2013). Fibromyalgia interacts with age to change the brain. *Neuroimage Clin.* 3:249-60. doi 10.1016/j.nicl.2013.08.015.
- [25]Barroso J, Branco P., and Apkarian AV. (2021). Brain mechanisms of chronic pain: critical role of translational approach. *Transl Res.* 238:76-89. doi: 10.1016/j.trsl.2021.06.004.
- [26]Zhang H, Wang H, Li DD, Jia BL, Tan ZJ., and Chen H. (2015). Study on default network of chronic pain patients with cervical spondylosis. *Chinese Journal of Rehabilitation Theory & Practice.* 21(01):69-73.
- [27]Coppieters I, De Pauw R, Caeyenberghs K, Lenoir D, DeBlaere K, Genbrugge E., et al. (2018). Differences in white matter structure and cortical thickness between patients with traumatic and idiopathic chronic neck pain: Associations with cognition and pain modulation? *Hum Brain Mapp.* 39(4):1721-1742. doi 10.1002/hbm.23947.
- [28]Huston P., and McFarlane B. (2016). Health benefits of tai chi: What is the evidence? *Can Fam Physician.* 62(11):881-890.
- [29]Page MJ, McKenzie JE, Bossuyt PM, Boutron I, Hoffmann TC, Mulrow CD., et al. (2021). The PRISMA 2020 statement: an updated guideline for reporting systematic reviews. *BMJ.* 372:n71. doi: 10.1136/bmj.n71.
- [30]Cumpston M, Li T, Page MJ, Chandler J, Welch VA, Higgins JP., et al. (2019). Updated guidance for trusted systematic reviews: a new edition of the Cochrane Handbook for Systematic Reviews of Interventions. *Cochrane Database Syst Rev.* 10:ED000142. doi: 10.1002/14651858.
- [31]Laskosky NA, Huston P, Lam WC, Anderson C, Zheng Y., and Zhong LLD. (2023). Are tai chi and qigong effective in the treatment of TBI? A systematic review protocol. *Front Aging Neurosci.* 15:1121064. doi: 10.3389/fnagi.2023.1121064.
- [32]Kong LJ, Lauche R, Klose P, Bu JH, Yang XC, Guo CQ., et al.. (2016). Tai Chi for Chronic Pain Conditions: A Systematic Review and Meta-analysis of Randomized Controlled Trials. *Sci Rep.* 29;6:25325. doi 10.1038/srep25325.