

Type 2 diabetes and fracture risk: deciphering the complex relationship with both genetic and observational evidence

Pianpian Zhao^{1,2,3,4#}, Zhifeng Sheng^{5#}, Lin Xu^{6#}, Peng Li⁷, Wenjin Xiao⁸, Chengda Yuan⁹,
Zhanwei Xu¹⁰, Mengyuan Yang^{2,3,4}, Yu Qian^{2,3,4}, Jiadong Zhong^{2,3,4}, Jiaxuan Gu^{2,3,4}, David
Karasik¹¹, Hou-Feng Zheng^{1,2,3,4*}

¹The affiliated Hangzhou first people's hospital, School of Medicine, Westlake University, Hangzhou, Zhejiang, China

²Westlake Laboratory of Life Sciences and Biomedicine, 18 Shilongshan Road, Xihu District, Hangzhou, Zhejiang, China

³Diseases & Population (DaP) Geninfo Lab, School of Life Sciences, Westlake University, 600 Dunyu Road, Xihu District, Hangzhou, Zhejiang, China

⁴Institute of Basic Medical Sciences, Westlake Institute for Advanced Study, Hangzhou, Zhejiang, China

⁵Health Management Center, The Second Xiangya Hospital of Central South University, Changsha, Hunan, China.

⁶Department of Orthopedics, Yantai Affiliated Hospital of Binzhou Medical University, Yantai, Shandong, China.

⁷Department of Geratology, The Third People's Hospital of Hangzhou, Hangzhou, China.

⁸Department of Endocrinology, Second Affiliated Hospital of Soochow University, Suzhou, China.

⁹Department of Dermatology, Hangzhou Hospital of Traditional Chinese Medicine, Hangzhou, Zhejiang, China

¹⁰Central Health Center of Mashenqiao Town, Jizhou District, Tianjin. China

¹¹Azrieli Faculty of Medicine, Bar-Ilan University, Safed, Israel

*Corresponding author. Dr. Hou-Feng Zheng, M.D., Ph.D., Westlake Laboratory of Life Sciences and Biomedicine, 18 Shilongshan Road, Hangzhou, Zhejiang, China, E-mail: zhenghoufeng@westlake.edu.cn

#These authors contributed equally to this work.

37 **Abstract**

38 The “diabetic bone paradox” suggested that type 2 diabetes (T2D) patients would have higher
39 areal bone mineral density (BMD) but higher fracture risk than individuals without T2D. In this
40 study, we found that the genetically predicted T2D was associated with higher BMD and lower
41 risk of fracture in both wGRS and two-sample MR analyses. We also identified ten genomic loci
42 shared between T2D and fracture, with the top signal at SNP rs4580892 in the intron of gene
43 *RSPO3*. And the higher expression in adipose subcutaneous and higher protein level in plasma of
44 *RSPO3* were associated with increased risk of T2D, but decreased risk of fracture. In the
45 prospective study, T2D was observed to be associated with higher risk of fracture, but BMI
46 mediated 30.2% of the protective effect. However, when stratified by the risk factors secondary
47 to the disease, we observed that the effect of T2D on the risk of fracture decreased when the
48 number of risk factors secondary to T2D decreased, and the association became non-significant
49 if the T2D patients carried none of the risk factors. In conclusion, the genetically determined
50 T2D might not be associated with higher risk of fracture. And the shared genetic architecture
51 between T2D and fracture suggested a top signal around *RSPO3* gene. The observed effect size
52 of T2D on fracture risk decreased if the risk factors secondary to T2D could be eliminated.
53 Therefore, it is important to manage the complications of T2D to prevent the risk of fracture.

54

55

56

57

58

59 **Introduction**

60 Type 2 diabetes (T2D), a chronic metabolic disorder characterized by elevated blood glucose
61 levels and increased risk of numerous serious and life-threatening complications, constitutes one
62 of the biggest health problems in the world (Diamond, 2003). According to Global Burden of
63 Disease (GBD) data, the age-standardized global prevalence of type 2 diabetes was
64 approximately 6.0% in men and 5.0% in women in 2019 (Tinajero and Malik, 2021). It accounts
65 for more than 100 billion dollars of healthcare costs annually in the United States (Diamond,
66 2003). The chronic comorbidities of T2D could develop gradually, and could lead to serious
67 damage to heart, blood vessel, kidney, eye and foot(Teck, 2022). Other organ systems such as
68 skeletal health could also be influenced by T2D(Lei and Kindler, 2022).

69
70 Osteoporosis is a common chronic disease characterized by low bone mass and disruption of
71 bone microarchitecture. Fragility fracture is the ultimate outcome of poor bone health. Our
72 previous studies have suggested that bone mass and fracture could be influenced by many
73 modifiable or non-modifiable factors(Zhu and Zheng, 2021), such as body weight(Zhu et al.,
74 2022), sleep behavior(Qian et al., 2021), inflammatory disease(Xia et al., 2020), birth weight(Xia
75 et al., 2022) and genetic factors(Zhu et al., 2021). T2D is also considered to be a major factor
76 that could affect bone health, it seems that T2D patients would have higher bone mineral density
77 (BMD) and higher fracture risk than individuals without T2D(Khosla et al., 2021). This is the so
78 called “diabetic bone paradox”(Botella Martinez et al., 2016; Romero-Diaz et al., 2021). For
79 example, in an Italian nationwide study of 59,950 women of whom 5.2% had diabetes
80 (predominantly type 2 diabetes), it noted an association between diabetes and any fracture (OR
81 1.3, 95% CI 1.1–1.4, and OR 1.3, 95% CI 1.2–1.5, for vertebral or hip fractures and non-

82 vertebral, non-hip fractures, respectively) (Adami et al., 2020). Interestingly, the prevalence of
83 vertebral or hip fracture was higher in participants with diabetes but without obesity (OR 1.9,
84 95% CI 1.7–2.1) than in patients with obesity and diabetes (OR 1.5, 95% CI 1.3–1.8), suggesting
85 that obesity might be partially protective against vertebral or hip fractures in type 2 diabetes
86 (Adami et al., 2020).

87
88 However, a recent comparative cohort analysis using routinely collected UK primary care
89 records data from the Health Improvement Network (including 174,244 individuals with incident
90 type 2 diabetes and 747,290 without diabetes) found no evidence to suggest a higher risk of
91 fracture in type 2 diabetes patients, specifically, the risk of having at least one fracture was
92 estimated to be 6% lower for females and 3% lower for males in the type 2 diabetes cohort than
93 for females and males without diabetes (Davie et al., 2021). Lower fracture risk was also
94 observed in the type 2 diabetes patients compared to those without the disease in the age group
95 great than 85 years (Davie et al., 2021). Another large-scale cohort study showed that type 2
96 diabetes could only explain less than 0.1% of the fracture risk (Axelsson et al., 2023), and if the
97 T2D patients with risk factors (such as low BMI, long diabetes duration, insulin treatment, and
98 low physical activity) were excluded, T2D patients would have lower fracture risk than their
99 matched controls (Axelsson et al., 2023). In a prospective study to examine the relationship
100 between BMD and fracture in older adults with type 2 diabetes, it was reported that femoral neck
101 BMD T score and FRAX score were both associated with fracture risk in individuals with type 2
102 diabetes, suggesting that BMD is still a useful clinical predictor for the evaluation of fracture risk
103 in type 2 diabetes patients (Schwartz et al., 2011).

104

105 As the pathophysiology of fracture is more complicated than the BMD trait, and while there were
106 some explanations for the “diabetic bone paradox”(Osorio, 2011), the integrated analyses with
107 genetic data for the diseases could provide an alternative approach to alleviate the bias of the
108 unknown confounding factors(Davey Smith and Hemani, 2014). Therefore, in this study, we
109 firstly performed weighted genetic risk score (wGRS) regression analysis to assess relationship
110 between the genetically predicted T2D and fracture with genetic summary data and individual
111 genotype data in UK biobank. The two-sample mendelian randomization (MR) approach was
112 used as an independent validation analysis. We applied the MiXeR method and
113 conditional/conjunctive false discovery rate (ccFDR) approach to identify the shared genetic
114 components between the traits. Finally, within the UK biobank dataset, the stratified cox
115 regression analyses were applied to explore the association between T2D and fracture risk by
116 including different number of the risk factors secondary to T2D. As complement, the relationship
117 between T2D and BMD was also investigated.

118

119 **Results**

120 **The genetically predicted type 2 diabetes and fracture**

121 The overall study design was presented in Supplementary Fig. 1. We first assessed the
122 relationship of genetically predicted T2D and fracture in UK biobank dataset with the weighted
123 genetic risk score (wGRS) analysis. Within the 294,571 UK biobank samples (Supplementary
124 Fig. 1), we constructed the weighted genetic risk score (wGRS) for the individuals in the UK
125 Biobank with the 404 SNPs, which were independently associated with type 2 diabetes
126 (Supplementary Table 1). The wGRS of the 404 SNPs were strongly associated with type 2
127 diabetes in UK Biobank data (OR=1.6, $P < 2.0 \times 10^{-16}$), suggesting that the instruments were

128 powerful for the MR analysis. When we regressed the observed fracture on the wGRS, we found
129 that the genetically determined type 2 diabetes was associated with lower risk of fracture
130 (OR=0.982, 95%CI=0.975-0.989, P=0.006) (adjusting for reference age, sex, BMI, physical
131 activity, fall history, HbA1c and medication treatments) (Fig. 1A). When we classified the
132 fracture sites into weight-bearing bones (neck, vertebrae, pelvic, femur, tibia) and other bones, it
133 indicated that there was trend of protective association between T2D wGRS and weight-bearing
134 bones fracture (OR=0.9772, 95%CI=0.9552-0.9997, P=0.04737, N of fracture=8,992, N of non-
135 fracture=265,262), and other bones fracture (OR=0.9838, 95%CI=0.9688-0.9991, P=0.0386, N
136 of fracture=20,317, N of non-fracture=265,262) (Fig.1A). We further estimated the effect of sex
137 interaction on fracture risk with T2D $wGRS \times sex$ interaction term in regression model, and no
138 significant interactions were identified for fracture risk (P=0.5576). Moreover, we conducted the
139 stratified analysis by sex and identified similar trends of association (Supplementary Fig.2A).
140 Meanwhile, the genetically determined type 2 diabetes was associated with higher BMD in
141 pooled samples (Fig. 1B) and in both male and female (Supplementary Fig.2B).

142
143 We also performed the two-sample MR analyses with fracture GWAS summary data (Trajanoska
144 et al., 2018) which is independent of UK Biobank samples. The inverse variance weighting
145 (IVW) method showed a causal effect of genetically predicted type 2 diabetes on low fracture
146 risk (OR=0.965, 95%CI=0.943-0.988, P=0.003) (Fig. 1A, Supplementary Table 2) using 298
147 SNPs as the instruments (Supplementary Table 3). This causal relationship was also significant
148 in simple median test (OR=0.967, 95%CI=0.936-0.997, P=0.033) (Fig. 1A). There was
149 heterogeneity in IVW results ($Q' p < 0.05$), when we excluded pleiotropic variants using
150 restrictive MR pleiotropy residual sum and outlier test (MR-PRESSO) method, the causal

151 association was still detected between type 2 diabetes and fracture (OR=0.967, 95%CI=0.945-
152 0.989, P=0.004) (Fig. 1A). Moreover, the MR-egger regression also suggested an inverse
153 association between type 2 diabetes and fracture (OR=0.9666, 95%CI=0.9497-0.9828,
154 P=0.0002) (Fig. 1C). The individual effect of the SNPs for type 2 diabetes on fracture was
155 corrected by the false discovery rate (<0.05)(Benjamini and Hochberg, 1995), two of 298 lead
156 SNPs (including rs4580892 near *RSPO3*) of type 2 diabetes remained as potential regions which
157 would also have effect on fracture (Fig. 1C and Supplementary Table 3). We also performed
158 multivariable MR analysis to test the effect of T2D on fracture risk adjusted for confounding
159 factors. We found that T2D had a direct effect on decreased fracture risk adjusted for BMI
160 (OR=0.974, 95%CI=0.953-0.995, P=0.017), and BMI mediated 9.03% of the protective effect
161 (Supplementary Table 2). Similarly, with BMD GWAS summary data(Morris et al., 2019), IVW
162 ($\beta=0.041$, 95%CI=0.027-0.054, $P=8.14\times 10^{-9}$), simple median ($\beta=0.028$, 95%CI=0.020-0.036,
163 $P=6.59\times 10^{-13}$) and MR-PRESSO ($\beta=0.029$, 95%CI=0.022-0.036, $P=1.14\times 10^{-14}$) all showed a
164 causal association between type 2 diabetes and BMD (Fig. 1B, Supplementary Table 2 and
165 Supplementary Table 4). The multivariable MR analysis suggested that T2D also showed direct
166 effect on increased BMD after adjusting for BMI ($\beta=0.042$, 95%CI=0.026-0.057, $P=1.92\times 10^{-7}$)
167 (Supplementary Table 2).

168

169 **The distinct signal shared by type 2 diabetes and fracture**

170 Leveraging the genetic summary datasets, we first evaluated the genetic correlation among the
171 traits and diseases by using LDSC(Bulik-Sullivan et al., 2015). It is found that the genetic
172 correlation between type 2 diabetes and fracture was not significant, but with inverse direction
173 ($r_g=-0.0114$) (Supplementary Table 5). Instead, we used MiXeR(Frei et al., 2019) to evaluate the

174 polygenic overlap irrespective of genetic correlation between T2D and fracture. As represented
175 in Venn diagrams of shared and unique polygenic components (Fig. 2a), the MiXeR analysis
176 suggested that type 2 diabetes and fracture exhibited polygenic overlap, sharing 428 causal
177 variants, in other words, 18% of variants (428 of 2370) associated with type 2 diabetes might
178 contribute to the risk of fracture (Dice coefficient $\square=25.25\%$), and genetic correlation was
179 observed ($r_g=\square-0.086$) (Fig. 2A and Supplementary Table 6). Only 39% of shared variants
180 between type 2 diabetes and fracture showed concordant direction of association, and the
181 correlation of effect sizes within the shared polygenic component was negative ($\rho_{\beta}=-0.336$)
182 (Supplementary Table 6).

183
184 We used the conditional/conjunctive false discovery rate (ccFDR) approach (Andreassen et al.,
185 2013) to identify specific shared loci between type 2 diabetes and fracture from the GWAS
186 summary statistics. The stratified conditional QQ plot was utilized to visualize the enrichment of
187 association with fracture across varying significance thresholds for type 2 diabetes. We observed
188 leftward deflected from the expected null line in QQ plot, which suggested the existence of
189 polygenic overlap between type 2 diabetes and fracture (Fig. 2B). The conjunctive false
190 discovery rate (conjFDR) analysis identified 10 genomic loci shared between type 2 diabetes and
191 fracture (Fig. 2C and Supplementary Table 7), with the top SNP rs4580892 in the intron of gene
192 *RSPO3* (conjFDR=1.45E-05). The shared loci showed mixed directions of allelic associations,
193 with 7 of 10 shared loci had inverse direction of effect between type 2 diabetes and fracture
194 (Supplementary Table 7). We found that the locus approximately 250kb upstream and
195 downstream of the gene *RSPO3* (hg19, chr6: 127189749-127689749) possessed many significant
196 SNPs associated with type 2 diabetes and fracture (Fig. 3A and 3B), with the nearest gene

197 *RSPO3*. The top SNP rs4580892 had inverse direction of effect between type 2 diabetes and
198 fracture, where rs4580892_T allele was associated with increased type 2 diabetes risk
199 (OR=1.041227, $P=8.46\times 10^{-9}$) (Fig. 3a) and decreased fracture risk (OR=0.944, $P=3.68\times 10^{-10}$)
200 (Fig. 3B).

201
202 Further, after merging the eQTL summary data of *RSPO3* in adipose subcutaneous with the
203 summary data of type 2 diabetes and fracture, rs72959041 and rs1936806 were the top cis-eQTL
204 for type 2 diabetes and fracture in GTEx database, respectively. By applying the SMR
205 method(Zhu et al., 2016), we found that the higher expression of *RSPO3* (ENSG00000146374)
206 in adipose subcutaneous would be associated with increased the risk of type 2 diabetes
207 (OR=1.102, 95%CI=1.031-1.179, $P=0.004$), but decreased the risk of fracture (OR=0.695,
208 95%CI=0.566-0.854, $P=0.0005$) (Fig. 3C and Supplementary Table 8). Interestingly, in adipose
209 subcutaneous, higher expression of *RSPO3* was associated with higher waist circumference
210 ($\beta=0.090$, 95%CI= 0.029-0.151, $P=0.004$) and higher waist-hip ratio ($\beta=0.204$, 95%CI=0.095-
211 0.313, $P=0.0002$) (Fig. 3D and Supplementary Table 8). Meanwhile, higher expression of
212 *RSPO3* was associated with higher MRI-derived visceral adipose ($\beta=0.199$, 95%CI=0.103-0.294,
213 $P=4.36\times 10^{-5}$) (Fig. 3D and Supplementary Table 8). The association between the expression of
214 *RSPO3* and BMI was not significant, but the direction is the same as the waist circumference
215 (Fig. 3D and Supplementary Table 8). Moreover, to estimate the impact of RSPO3 protein level
216 on type 2 diabetes and fracture risk, we used the top SNP at rs4580892, a cis-pQTL for
217 circulating RSPO3 ($P=2.34\times 10^{-11}$) identified by Sun et al in an independent dataset(Sun et
218 al., 2018), to instrument the circulating protein level of RSPO3. The MR analyses indicated that
219 increased circulating RSPO3 was strongly associated with increased risk of type 2 diabetes

220 (OR=1.24, 95%CI=1.16-1.34, $P=7.86 \times 10^{-9}$), but reduced fracture risk (OR=0.73,
221 95%CI=0.66-0.81, $P=4.1 \times 10^{-10}$) (Fig. 3E).

222
223 Not surprisingly, type 2 diabetes showed significant positive genetic correlation with BMD
224 ($r_g=0.0923$, $P=2.50 \times 10^{-6}$) (Supplementary Table 5). The MiXeR analysis suggested that 29% of
225 variants (691 of 2370) associated with type 2 diabetes might contribute to BMD (Dice
226 coefficient=33.67%) (Fig. 2D and Supplementary Table 6). The leftward deflected from the
227 expected null line in QQ plot suggested the existence of polygenic overlap between type 2
228 diabetes and BMD (Fig. 2E). and the conjFDR analysis identified 661 genomic loci shared
229 between type 2 diabetes and BMD, and 449 of 661 loci (68%) had concordant associations
230 between type 2 diabetes and BMD (Fig. 2F and Supplementary Table 9).

231

232 **Observed relationship between type 2 diabetes and fracture**

233 Within the 352,879 UK Biobank participants (Supplementary Fig. 1), 13,817 (3.92%) developed
234 type 2 diabetes during 2006 and 2015, with the mean duration of type 2 diabetes 8.34 years
235 (Supplementary Table 10). Compared to those without diabetes, the participants with type 2
236 diabetes were older (63.20 vs. 60.55, $P < 2.2 \times 10^{-16}$), and more likely to be men and smokers, and
237 had a higher BMI (32.07 vs. 27.08, $P < 2.2 \times 10^{-16}$) (Supplementary Table 10). We identified
238 16,147 (4.6%) participants with fracture within the 352,879 UK Biobank participants
239 (Supplementary Table 10).

240

241 Although we found that genetically predicted type 2 diabetes might not be associated with risk of
242 fracture, we observed a higher risk of fracture in the type 2 diabetes patients in the cox

243 proportional hazards regression after adjusted for the reference age, sex, BMI, physical activity,
244 HbA1c, medication treatments and fall history (Model 0) (HR=1.527, 95%CI 1.385-1.685,
245 $P < 2 \times 10^{-16}$) (Fig. 4A and Supplementary Table 11). And the average causal mediation effect
246 (ACME) by BMI was protective with 30.2% of the intermediary effect, respectively (BMI:
247 indirect effect=-0.003, $P < 2 \times 10^{-16}$) (Supplementary Table 12). Similar findings were observed
248 for both male and female (HR=1.587, 95%CI 1.379-1.828, $P = 1.26 \times 10^{-10}$ in male, HR=1.530,
249 95%CI 1.334-1.756, $P = 1.27 \times 10^{-9}$ in female) (Supplementary Fig.3). When we additionally
250 controlled for BMD, we still observed increased risk of fracture in type 2 diabetes (HR=1.574,
251 95%CI 1.425-1.739, $P < 2 \times 10^{-16}$) (Model 1) (Fig. 4A and Supplementary Table 11). We also
252 classified the fracture into weight-bearing bones fracture (neck, vertebrae, pelvic, femur, tibia)
253 and other bones fracture. Similar trends of association were observed in model 0 (weight-bearing
254 bones: HR=1.792, 95%CI 1.555-2.065, $P = 8.25 \times 10^{-16}$; other bones: HR=1.337, 95%CI 1.167-
255 1.531, $P = 2.85 \times 10^{-5}$) and model 1 (weight-bearing bones: HR=1.850, 95%CI 1.602-2.136,
256 $P < 2 \times 10^{-16}$; other bones: HR=1.377, 95%CI 1.199-1.580, $P = 5.54 \times 10^{-6}$) (Fig. 4A).

257
258 Inspired by the MR analyses that genetically determined type 2 diabetes might not be a risk
259 factor for fracture, we conducted stratified analyses based on the five risk factors secondary to
260 the diseases, such as $BMI \leq 25 \text{ kg/m}^2$, no physical activity, falls in the last year,
261 $HbA1c \geq 47.5 \text{ mmol/mol}$ and antidiabetic medication treatments. Within the 13,817 individuals
262 with type 2 diabetes, 2,303 patients carried none of the above risk factors, 4,128 patients
263 accompanied with one of the risk factors, and 4,252 patients carried at least two risk factors
264 (Supplementary Table 13). We performed stratified cox regression analysis and found that type 2
265 diabetes with at least two risk factors were associated with an increase of fracture risk (HR=1.39,

266 95% CI 1.269-1.514, $P=1.32\times 10^{-7}$) (Fig. 4B). It is interesting to note that including only one risk
267 factor would attenuate the effect size of type 2 diabetes on fracture risk (HR=1.20,
268 95% CI=1.060-1.338, $P=0.010$). Furthermore, the association between type 2 diabetes and
269 fracture was not significant ($P=0.452$) when analyzing the type 2 diabetes without risk factors
270 (HR=1.08, 95% CI 0.880-1.280, N=2,303) (Fig. 4B). Similar trends of association were observed
271 in both male and female (Supplementary Fig.4A). These results suggested that the risk factors
272 secondary to type 2 diabetes might contribute to the risk of fracture instead of the disease itself.

273
274 We also observed that participants with diabetes, despite they were older, had a significantly
275 higher BMD than subjects without diabetes (0.57 vs. 0.54, $P<2.2\times 10^{-16}$) (Supplementary Table
276 10). In the multivariable linear regression analysis, the type 2 diabetes was found to be
277 associated with increased BMD in same model adjusted for age, sex, BMI, physical activity, fall
278 history, HbA1c and medication treatments ($\beta=0.00957$, $P=1.35\times 10^{-10}$) (Fig 4C, Supplementary
279 Table 11). We examined the relationship between type 2 diabetes and BMD in subgroups with
280 varying numbers of risk factors. We observed that the effect size of type 2 diabetes on BMD
281 decreased when the number of risk factors for type 2 diabetes increased (no risk factors: in
282 pooled $\beta=0.023$, $P<2\times 10^{-16}$, in male $\beta=0.018$, $P=2.09\times 10^{-6}$, in female $\beta=0.028$, $P=2.97\times 10^{-11}$;
283 one risk factor: in pooled $\beta=0.020$, $P<2\times 10^{-16}$, in male $\beta=0.015$, $P=1.91\times 10^{-7}$, in female
284 $\beta=0.0245$, $P=2.46\times 10^{-16}$; at least two risk factors: $\beta=0.017$, $P<2\times 10^{-16}$, in male $\beta=0.0098$,
285 $P=7.74\times 10^{-4}$, in female $\beta=0.0250$, $P<2\times 10^{-16}$) (Fig. 4C, Supplementary Fig.4B).

286

287 **Discussion**

288 By leveraging the genetic datasets, we found that the genetically predicted type 2 diabetes was
289 associated with higher BMD and lower risk of fracture in both one-sample MR (with 404 IVs)
290 and two-sample MR (with 298 IVs). We also identified ten genomic loci shared between fracture
291 and type 2 diabetes, with the top signal at SNP rs4580892 in the intron of gene *RSPO3*. And the
292 higher expression of *RSPO3* in adipose subcutaneous was associated with increased the risk of
293 type 2 diabetes, but decreased the risk of fracture. Similarly, the increased circulating *RSPO3*
294 was strongly associated with increased risk of type 2 diabetes, but reduced fracture risk. In the
295 prospective study, type 2 diabetes was observed to be associated with higher risk of fracture, but
296 BMI mediated 30.2% of the protective effect. However, when stratified by the risk factors
297 secondary to the disease, we observed that the effect size of type 2 diabetes on the risk of
298 fracture decreased when the number of risk factors secondary to type 2 diabetes decreased, and
299 the association became not significant if the type 2 diabetes patients carried none of the risk
300 factors.

301
302 The “diabetic bone paradox” suggested that T2D patients would have higher areal bone mineral
303 density (BMD) but higher fracture risk than individuals without T2D (Botella Martinez et al.,
304 2016; Romero-Diaz et al., 2021). Other measurements, such as trabecular bone score (Fazullina
305 et al., 2022; Ho-Pham and Nguyen, 2019) and chest CT texture analysis(Kim et al., 2023), could
306 provide additional valuable information in the evaluation of fracture risk, especially in type 2
307 diabetes patients. As reviewed previously, heterogeneity could exist from study to study, and
308 conflicting observational findings were reported (Khosla et al., 2021). Mendelian randomization
309 (MR) could be an alternative approach to infer the relationship between exposure and outcome,
310 as this method exploits the idea that genotypes are distributed randomly at conception,

311 facilitating their use as instrumental variables (IV) to alleviate the bias of the unknown
312 confounding factors(Davey Smith and Hemani, 2014; Zhao et al., 2019). Trajanoska K et al
313 (Trajanoska et al., 2018) assessed the effect of 15 selected clinical risk factors on the risk of
314 fracture by using two-sample MR analysis, and reported non-significant relationship between
315 type 2 diabetes and fracture risk, but the direction of effect was negative (OR=0.99). However,
316 only 38 SNPs were extracted as instruments from a GWAS published in 2012 (Morris et al.,
317 2012). In the present study, we extracted 298 T2D-associated independent SNPs from Mahajan
318 A et al (Mahajan et al., 2022), which is the largest-scale GWAS meta-analysis to date published
319 in 2022, as the IVs in two-sample MR analysis. We reported that genetically determined type 2
320 diabetes was associated with lower risk of fracture, even in multivariable MR analysis adjusted
321 for BMI. In addition, we also calculated the wGRS with 404 T2D-associated independent SNPs
322 in the UK Biobank dataset, and performed regression analysis of wGRS of type 2 diabetes on the
323 fracture risk (one-sample MR). Again, we found that the genetically predicted type 2 diabetes
324 was associated with lower risk of fracture in one-sample MR analysis. To be note, two-sample
325 MR results could be served as an independent replication to the one-sample MR results, because
326 the effects of the outcome (fracture risk) for two-sample MR were derived Trajanoska K et al
327 (Trajanoska et al., 2018), while the one-sample MR used the UK Biobank dataset, the study
328 samples had no overlap. Further, consistent with previous studies (Ahmad et al., 2017; Mitchell
329 et al., 2021), the MR analysis in the present study suggested that the genetically predicted type 2
330 diabetes was associated with higher BMD. That is to say, by alleviating the bias of the unknown
331 confounding factors through MR analysis, the genetically predicted type 2 diabetes did not show
332 this bone paradox.

333

334 The genetic correlation between type 2 diabetes and fracture estimated by LDSC(Bulik-Sullivan
335 et al., 2015) was not significant. It is hard for LDSC to identify the genetic pleiotropy with
336 mixed-effect directions, which is what usually happens between two complex traits. Therefore,
337 in this study, we employed the MiXeR method(Frei et al., 2019), which could identify the unique
338 and shared polygenic SNPs between two traits regardless of genetic correlation. The MiXeR
339 analysis suggested that type 2 diabetes and fracture exhibited polygenic overlap, and 61% of
340 shared variants between type 2 diabetes and fracture showed discordant direction of association,
341 and the correlation of effect sizes within the shared polygenic component was negative,
342 suggesting an inverse genetic relationship between type 2 diabetes and fracture. Additionally, the
343 conditional/conjunctive false discovery rate analysis(Andreassen et al., 2013) suggested a top
344 locus at 6q22 (SNP rs4580892) jointly associated with type 2 diabetes and fracture. This SNP is
345 an intronic variant in gene *RSPO3* (ENSG00000146374). We found that higher expression of
346 *RSPO3* in adipose subcutaneous would be associated with increased risk of type 2 diabetes, but
347 decreased risk of fracture. *RSPO3* is a known WNT-signaling modulator(Baron and Kneissel,
348 2013; Lerner and Ohlsson, 2015), which could bind to LRP5/6 to enhance the activity of
349 osteoblast(Richards et al., 2012). Karin et al demonstrated that *RSPO3* is expressed in
350 osteoprogenitor cells and osteoblasts, and that osteoblast-derived *RSPO3* is the principal source
351 of *RSPO3* in bone and is an important regulator of vertebral trabecular bone mass and bone
352 strength in adult mice(Nilsson et al., 2021). Interestingly, we also found that higher expression of
353 *RSPO3* was associated with higher waist circumference and higher waist-hip ratio. It was
354 reported that *RSPO3* could impact body fat distribution(Loh et al., 2020), and fat distribution is
355 an independent predictor of type 2 diabetes(Manolopoulos et al., 2010). Therefore, we speculated
356 that the different role of the shared genetic components between bone metabolism and type 2

357 diabetes might provide one possible explanation to the inverse association pattern, and obese
358 tendency might mediate this pattern. In fact, in UK Biobank, the participants with type 2 diabetes
359 had a higher BMI compared to those without diabetes (31.74 vs. 27.05, $P < 2.2 \times 10^{-16}$), and BMI
360 mediated 30.2% of the intermediary effect between type 2 diabetes and fracture in our study.

361
362 On the contrary, in observational study, we found that type 2 diabetes was associated with higher
363 risk of fracture patients even adjusted for a bunch of confounding factors such as the age, sex,
364 BMI, physical activity, HbA1c, medication treatments and fall history. When fractures were
365 categorized into different sites (weight-bearing bones and other bones), the association between
366 type 2 diabetes and fracture remained evident. Inspired by the MR analyses that genetically
367 determined type 2 diabetes might not be a risk factor for fracture, we started to perform the
368 stratified analyses based on the risk factors secondary to the diseases. There are many secondary
369 factors associated with type 2 diabetes might contribute to fracture risk. Our previous study
370 suggested that keeping moderate-high BMI (overweight) might be of benefit to old people in
371 terms of fracture risk(Zhu et al., 2022), and an intensive lifestyle intervention, such as weight
372 loss, in T2D patients might increase fracture risk(Johnson et al., 2017). The hyperglycemia could
373 cause osteocyte senescence and premature programmed cell death, leading to decreased ability to
374 sense and respond to mechanical stimuli such as oscillatory shear stress, ultimately contributing
375 to skeletal fragility(Eckhardt et al., 2020). Another major and complicated factor that might
376 influence the risk of fracture in T2D patients is the use of diabetes mellitus medications. For
377 example, the use of insulin(Napoli et al., 2014) or thiazolidinediones(Zhu et al., 2014) was
378 reported to be associated with an increased risk of fracture. In addition, the risk of falls, which
379 might be triggered by some diabetic complications such as visual impairment and peripheral

380 neuropathy, was suggested to increase in the patients with T2D(Schwartz et al., 2002). Besides,
381 low physical activity was identified as one of the most important independent diabetes-related
382 risk factors for fracture through Gradient Boosting Machines(Axelsson et al., 2023). Therefore,
383 in this study, we stratified the T2D patients with five secondary risk factors (BMI \leq 25kg/m², no
384 physical activity, falls in the last year, HbA1c \geq 47.5mmol/mol and antidiabetic medication
385 treatment), and found that the effect size of type 2 diabetes on the risk of fracture decreased
386 when the risk factors secondary to type 2 diabetes decreased, and the association became not
387 significant if the type 2 diabetes patients carried none of the risk factors. That is to say, the
388 diabetic bone paradox might not exist if the secondary risk factors of type 2 diabetes were
389 eliminated. In a recent large-scale cohort study, four factors (duration of T2D, low physical
390 activity, BMI, and insulin treatment) were identified as the important risk factors for fracture
391 among the T2D patients, and the patients without the risk factors had lower fracture risk than
392 their matched controls(Axelsson et al., 2023). One previous study using the UK primary care
393 data found no evidence to suggest a higher risk of fracture in type 2 diabetes patients(Davie et
394 al., 2021) and reported that significantly lower fracture risk was observed for overweight
395 individuals (BMI 25-30kg/m²) in type 2 diabetes than their counterparts without type 2
396 diabetes(Davie et al., 2021).

397
398 In summary, we found that the genetically determined type 2 diabetes might not be associated
399 with higher risk of fracture. And the shared genetic architecture between type 2 diabetes and
400 fracture suggested a top signal near *RSPO3* gene. In addition, the stratified prospective
401 regression analysis suggested that the effect size of type 2 diabetes on the risk of fracture
402 decreased if risk factors secondary to type 2 diabetes could be eliminated. These genetic and

403 observational evidences prevailed us to hypothesize that the risk factors secondary to type 2
404 diabetes might contribute more to the risk of fracture than the disease per se. And it is important
405 to manage the complications of type 2 diabetes to prevent the risk of fracture.

406

407 **Methods**

408 **Study participants and weighted genetic risk score (wGRS) analysis**

409 The UK Biobank data, the application 41376 as we used before(Bai et al., 2020), was applied in
410 this study under a prospective design. We identified the individuals with T2D and fracture using
411 the ICD codes and self-report status. The detail information on the field ID and codes for data
412 extraction from UK Biobank was listed in Supplementary Table 14. We excluded participants if
413 they were identified as follows: 1) ethnically identified as non-European (n =30,481); 2)
414 diagnosed as type 1 diabetes (n=4,455); 3) diagnosed with diseases associated with bone loss
415 (n=21,560); 4) diagnosed as fracture with known primary diseases (n=7,222) (Supplementary
416 Table 15). For the remaining 439,982 samples, we further excluded 145,411 participants with
417 relatedness (kinship) with others in the wGRS analysis (294,571 participants left)
418 (Supplementary Fig. 1). In addition, we classified the fracture into weight-bearing bones (neck,
419 vertebrae, pelvic, femur, tibia) (N of fracture=8,992, N of non-fracture=285,579) and other bones
420 (skull and facial, ribs, sternum, forearm, wrist and hand, foot and other unspecified body regions)
421 (N of fracture=20,317, N of non-fracture=274,254) using the ICD codes and self-report status
422 (Supplementary Table 16).

423

424 The summary-statistic data for the type 2 diabetes were obtained from a very recent GWAS
425 consisting of 80,154 individuals with type 2 diabetes and 853,816 controls in European

426 population (with 10,454,875 SNPs)(Mahajan et al., 2022). We drew a set of independent genetic
427 variants with genome-wide significance ($P < 5 \times 10^{-8}$) from the type 2 diabetes summary-statistic
428 data by LD clumping based on $r^2 < 0.1$ in 500 kb window to serve as instrumental variables
429 (N=404) (Supplementary Table 1). We constructed the weighted genetic risk score (wGRS) for
430 the individuals in the UK biobank (294,571 samples with genotypes) as a linear combination of
431 the selected SNPs weighted by their β coefficients on type 2 diabetes: $wGRS = \beta_1 \times SNP_1 + \beta_2$
432 $\times SNP_2 + \dots + \beta_n \times SNP_n$. n is the number of instrumental variables (here N=404 after LD
433 clumping based on $r^2 < 0.1$ in 500 kb window). Next, cox proportional hazards regression and
434 linear regression analyses were performed to analyze the association between the wGRS and
435 fracture/BMD adjusted age, sex, BMI, physical activity, fall history, HbA1c and medication
436 treatments. Besides, regression modeling was used to estimate the effect of gene-environment
437 interaction (T2D $wGRS \times sex$) on fracture risk and BMD. In addition to the T2D $wGRS \times sex$
438 interaction term, the model was adjusted for covariates: age, sex, BMI, physical activity, fall
439 history, HbA1c and medication treatments.

440

441 **Two-sample Mendelian Randomization (MR) analyses**

442 To validate the wGRS results, we also performed the two-sample MR analyses that is
443 independent of UK Biobank samples. The summary-statistic data for fracture (a discovery set of
444 37,857 fracture cases and 227,116 controls with 2,539,800 SNPs) (Trajanoska et al., 2018) and
445 BMD (426,824 samples and 13,753,401 SNPs) (Morris et al., 2019) were extracted from the
446 GEFOS consortium (<http://www.gefos.org/>), while the summary data for type 2
447 diabetes(Mahajan et al., 2022) is the same as used in wGRS analysis.

448

449 We used the inverse variance weighting (IVW)(Burgess et al., 2013), simple median and MR-
450 PRESSO(Verbanck et al., 2018) approaches in two-sample MR analyses. For the outcome of
451 fracture, we merged the two summary datasets for T2D and fracture (Mahajan et al., 2022;
452 Trajanoska et al., 2018) and got 2,479,475 overlapping SNPs, of which 6,946 SNPs were
453 genome-wide significant for type 2 diabetes. After LD clumping based on $r^2 < 0.1$ in 500 kb
454 window, 298 independent genetic variants were left (Supplementary Table 2). Similarly, we got
455 9,204,694 overlapping SNPs for type 2 diabetes and BMD, and 389 independent genetic variants
456 were left after LD clumping (Supplementary Table 3). After harmonizing the effects so that they
457 reflect the same allele, 289 (for fracture) and 380 (for BMD) SNPs were finally used in the IVW
458 and simple median MR analysis. Because the presence of horizontal pleiotropy could bias the
459 MR estimates, we additionally used the MR-PRESSO. The two-sample MR analyses were
460 conducted in R version 4.0.2 using TwoSampleMR(Hemani et al., 2018),
461 MendelianRandomization(Yavorska and Burgess, 2017) and MR-PRESSO(Verbanck et al.,
462 2018) packages. Moreover, we regressed the effects of these 298 SNPs of both traits to highlight
463 the overall effect of T2D on fracture with ‘grs.summary’ function in the R package ‘gtx’
464 (<http://www2.uaem.mx/r-mirror/web/packages/gtx/gtx.pdf>).

465

466 **Multivariable Mendelian Randomization (MVMR) analysis**

467 Next, we conducted multivariable MR analysis (Sanderson et al., 2019; Sanderson et al., 2021)
468 to examine the direct effect of T2D on fracture and BMD adjusted for BMI with ‘MVMR’ R
469 package (<https://github.com/WSpiller/MVMR>). After adjusting for confounders, the effect of
470 exposure on the outcome was considered to be a direct effect. Specifically, we first extracted the
471 overlapping SNPs from the summary data for T2D (Mahajan et al., 2022), BMI (Locke et al.,

472 2015) and fracture (Trajanoska et al., 2018). Then the independent significant SNPs ($P < 5 \times 10^{-8}$
473 and $R^2 < 0.1$) for either T2D or BMI were pooled as instruments. Additionally, we performed SNP
474 harmonization to correct the orientation of alleles. The final IVs used in MVMR were presented
475 in Supplementary Table 17.

476

477 **Infer the shared genetics**

478 With the summary-statistic GWAS data of type 2 diabetes (Mahajan et al., 2022), BMD (Morris
479 et al., 2019) and fracture (Trajanoska et al., 2018), we performed genome-wide genetic
480 correlation analysis between type 2 diabetes and fracture/BMD by using linkage disequilibrium
481 score regression (LDSC) (Bulik-Sullivan et al., 2015; Bulik-Sullivan et al., 2015) which
482 estimates the degree of shared genetic factors between two traits, We used MiXeR
483 (<https://github.com/precimed/mixer>, version 1.2.0) to quantify polygenic overlap (e.g. how many
484 unique and shared polygenic SNPs for type 2 diabetes and fracture) irrespective of genetic
485 correlation (Frei et al., 2019). MiXeR models additive genetic effects as a mixture of four
486 components, representing null SNPs in both traits (π_0); SNPs with a specific effect on the first
487 and on the second trait (π_1 and π_2 , respectively); and SNPs with non-zero effect on both traits
488 (π_{12}). The dice coefficient of two traits was estimated as $\frac{2\pi_{12}}{\pi_1 + \pi_2 + 2\pi_{12}}$ (Frei et al., 2019). We

489 constructed conditional quantile-quantile (QQ) plots which reveals the distribution of P values
490 for fracture/BMD conditioning on the significance of association with type 2 diabetes at the level
491 of $P < 0.1$, $P < 0.01$ and $P < 0.001$ to visualize polygenic enrichment (Schwartzman and
492 Lin, 2011). We used the conditional/conjunctive false discovery rate (ccFDR) approach
493 (<https://github.com/precimed/pleiofdr>) to identify the specific shared loci (Andreassen et al.,
494 2013). We used the conditional false discovery rate (condFDR) to detect SNPs associated with

495 fracture given associations with type 2 diabetes. We denoted condFDR for fracture given
496 associations with type 2 diabetes as $\text{condFDR}(\text{fracture}|\text{T2D})$ and *vice versa*, and considered the
497 significance cutoff < 0.01 . We used conjunctive FDR (conjFDR) to identify SNPs jointly
498 associated with type 2 diabetes and fracture. After repeating the condFDR procedure for both
499 traits, the conjFDR analysis reported the loci that exceed a condFDR significance threshold for
500 two traits simultaneously (the maximum between the condFDRs for both traits), $\text{conjFDR} < 0.05$
501 was set as the significance.

502
503 We employed the Summary-data-based Mendelian Randomization (SMR) method developed by
504 colleagues (Zhu et al., 2016) to test the association of the expression level of gene *RSPO3* with
505 BMI (Locke et al., 2015), waist circumference, waist-hip ratio (Shungin et al., 2015) and MRI-
506 derived visceral adipose (Agrawal et al., 2022), type 2 diabetes and fracture using summary-level
507 data from GWAS and expression quantitative trait loci (eQTL) data of the subcutaneous adipose
508 tissue (9,962,255 SNPs included) from the GTEx database (release v8)
509 (<https://www.gtexportal.org/home/>) (Consortium et al., 2017). In the SMR analysis, the top cis-
510 eQTL genetic variants were used as the instrumental variables (IVs) for gene expression.
511 Additionally, we downloaded the cis-pQTL summary data for the circulating *RSPO3* reported in
512 the study by Sun et al (Sun et al., 2018), and performed MR analyses to determine the association
513 of circulating *RSPO3* with type 2 diabetes and fracture risk using the inverse variance-weighted
514 (IVW) MR approach.

515

516 **Observational analyses**

517 For the 439,982 UK biobank samples (see foregoing description of study participants), we only
518 focused the participants diagnosed with T2D within the 10-year period from 1 January 2006 to
519 31 December 2015, leaving 425,772 participants (with 14,860 type 2 diabetes patients)
520 (Supplementary Fig. 1). Here, each type 2 diabetes patient had a diagnosis date, taking this date
521 as the reference date, we first calculated the onset age, then among the participants who were
522 free of T2D, we selected up to 27 participants (whenever possible) whose age at the reference
523 date (± 3 years) could be matching to the onset age as referents (Supplementary Fig. 5). In total,
524 363,884 non-T2D referents were individually matched with 6-year age band at the reference
525 date. We prospectively followed these type 2 diabetes patients and referents from the reference
526 date until diagnosis of fracture, death, emigration, 19 April 2021 (diagnose a fracture of the last
527 person in the cohort), whichever came first. Survival time was calculated based on whether the
528 patient had a fracture. If individuals had a fracture, the survival time is calculated as the time of
529 the first diagnosis of fracture minus the reference date. If individuals did not have a fracture, it
530 was defined as the minimum time of the reference date to diagnose a fracture of the last person in
531 the cohort (19 April 2021), death, or emigration date. We excluded 25,865 participants with
532 fracture diagnosis date, or death or emigration date before the reference date, leaving 352,879
533 participants included in the final analysis (13,817 type 2 diabetes patients and 339,062 referents)
534 (Supplementary Fig 1 and Supplementary Table 10). Cox proportional hazards regression, as a
535 statistical method to analyze the effect of risk factor on the time it takes for a specific event to
536 happen, was used to test the relationship between T2D and fracture. Meanwhile, multiple linear
537 regression analyses were performed to test the association between T2D and BMD. Here, the
538 BMD was estimated from quantitative ultrasound measurement at heel. Use of the device
539 generates two variables, including speed of sound (SOS) and BUA (the slope between the

540 attenuation of the sound signal and its frequency as it travels through the bone and soft tissue).

541 Heel BMD was calculated by the following formula: $BMD = 0.002592 \times (BUA + SOS) - 3.687$.

542

543 First, we adjusted for clinical risk factors including reference age, sex, BMI, physical activity,

544 fall history, HbA1c and medication treatments to examine the relationship between T2D and

545 fracture/BMD (Model 0). To examine the intermediary effect of risk factors on the relationship

546 between T2D and fracture, the mediation analysis was performed using the R packages of

547 “mediation”. Individuals treated with any glucose-lowering medication including insulin

548 product, metformin, troglitazone, pioglitazone, rosiglitazone, tolbutamide, glibenclamide,

549 gliclazide, glipizide, gliquidone, glimepiride, chlorpropamide, tolbutamide, repaglinide and

550 nateglinide were recorded as having received medical treatment. We also included BMD as an

551 additional confounding factor for fracture analysis as complement to the basic model (Model 1).

552 In addition, we classified the fracture into weight-bearing bones (neck, vertebrae, pelvic, femur,

553 tibia) (N of fracture=8,992, N of non-fracture=285,579) and other bones (skull and facial, ribs,

554 sternum, forearm, wrist and hand, foot and other unspecified body regions) (N of

555 fracture=20,317, N of non-fracture=274,254) using the ICD codes and self-report status

556 (Supplementary Table 16). As we did in wGRS analysis, we classified the fracture into weight-

557 bearing bones and other bones fracture. Briefly, 6,582 (1.92%) participants were identified as

558 weight-bearing bones and 9,586 (2.77%) participants were identified as other bones. Second, we

559 carried out stratified analyses between type 2 diabetes, fracture and BMD based on the risk

560 factors secondary to the disease. We took 5 clinical factors to classify the individuals at risk, for

561 example, if an individual had $BMI \leq 25 \text{ kg/m}^2$, no physical activity, falls in the last year,

562 $HbA1c \geq 47.5 \text{ mmol/mol}$ and antidiabetic medication treatment, this individual was identified to

563 have 5 risk factors, and so forth. Based on the number of risk factors, we grouped 13,817
564 individuals with T2D into subgroup for analysis. This analysis was adjusted for reference age,
565 sex. For the BMD analysis, the age when attended assessment center was included in the analysis
566 instead of reference age.

567

568 **References**

- 569 Adami G, Gatti D, Rossini M et al. Risk of fragility fractures in obesity and diabetes: A retrospective analysis on a
570 nation-wide cohort. *Osteoporos Int.* 2020, 31: 2113-22.
- 571 Agrawal S, Wang M, Klarqvist MDR et al. Inherited basis of visceral, abdominal subcutaneous and gluteofemoral
572 fat depots. *Nat Commun.* 2022, 13: 3771.
- 573 Ahmad OS, Leong A, Miller JA et al. A mendelian randomization study of the effect of type-2 diabetes and
574 glycemic traits on bone mineral density. *J Bone Miner Res.* 2017, 32: 1072-81.
- 575 Andreassen OA, Thompson WK, Schork AJ et al. Improved detection of common variants associated with
576 schizophrenia and bipolar disorder using pleiotropy-informed conditional false discovery rate. *PLoS Genet.* 2013, 9:
577 e1003455.
- 578 Axelsson KF, Litsne H, Kousoula K, Franzen S, Eliasson B, Lorentzon M. Risk of fracture in adults with type 2
579 diabetes in sweden: A national cohort study. *PLoS Med.* 2023, 20: e1004172.
- 580 Bai WY, Wang L, Ying ZM et al. Identification of piezol1 polymorphisms for human bone mineral density. *Bone.*
581 2020, 133: 115247.
- 582 Baron R, Kneissel M. Wnt signaling in bone homeostasis and disease: From human mutations to treatments. *Nat*
583 *Med.* 2013, 19: 179-92.
- 584 Benjamini Y, Hochberg Y. Controlling the false discovery rate - a practical and powerful approach to multiple
585 testing. *J R Stat Soc B.* 1995, 57: 289-300.
- 586 Botella Martinez S, Varo Cenarruzabeitia N, Escalada San Martin J, Calleja Canelas A. The diabetic paradox: Bone
587 mineral density and fracture in type 2 diabetes. *Endocrinol Nutr.* 2016, 63: 495-501.
- 588 Bulik-Sullivan B, Finucane HK, Anttila V et al. An atlas of genetic correlations across human diseases and traits.
589 *Nat Genet.* 2015, 47: 1236-41.
- 590 Bulik-Sullivan BK, Loh PR, Finucane HK et al. Ld score regression distinguishes confounding from polygenicity in
591 genome-wide association studies. *Nat Genet.* 2015, 47: 291-5.
- 592 Burgess S, Butterworth A, Thompson SG. Mendelian randomization analysis with multiple genetic variants using
593 summarized data. *Genetic epidemiology.* 2013, 37: 658-65.
- 594 Consortium GT, Laboratory DA, Coordinating Center -Analysis Working G et al. Genetic effects on gene
595 expression across human tissues. *Nature.* 2017, 550: 204-13.
- 596 Davey Smith G, Hemani G. Mendelian randomization: Genetic anchors for causal inference in epidemiological
597 studies. *Hum Mol Genet.* 2014, 23: R89-98.
- 598 Davie GS, Pal K, Orton E, Tyrrell EG, Petersen I. Incident type 2 diabetes and risk of fracture: A comparative
599 cohort analysis using u.K. Primary care records. *Diabetes Care.* 2021, 44: 58-66.
- 600 Diamond J. The double puzzle of diabetes. *Nature.* 2003, 423: 599-602.
- 601 Eckhardt BA, Rowsey JL, Thicke BS et al. Accelerated osteocyte senescence and skeletal fragility in mice with type
602 2 diabetes. *JCI Insight.* 2020, 5.
- 603 Fazullina ON, Korbut AI, Klimontov VV. Factors associated with trabecular bone score in postmenopausal women
604 with type 2 diabetes and normal bone mineral density. *World J Diabetes.* 2022, 13: 553-65.
- 605 Frei O, Holland D, Smeland OB et al. Bivariate causal mixture model quantifies polygenic overlap between complex
606 traits beyond genetic correlation. *Nat Commun.* 2019, 10: 2417.
- 607 Hemani G, Zheng J, Elsworth B et al. The mr-base platform supports systematic causal inference across the human
608 phenome. *Elife.* 2018, 7.

609 Ho-Pham LT, Nguyen TV. Association between trabecular bone score and type 2 diabetes: A quantitative update of
610 evidence. *Osteoporos Int*. 2019, 30: 2079-85.

611 Johnson KC, Bray GA, Cheskin LJ et al. The effect of intentional weight loss on fracture risk in persons with
612 diabetes: Results from the look ahead randomized clinical trial. *J Bone Miner Res*. 2017, 32: 2278-87.

613 Khosla S, Samakkarnthai P, Monroe DG, Farr JN. Update on the pathogenesis and treatment of skeletal fragility in
614 type 2 diabetes mellitus. *Nat Rev Endocrinol*. 2021, 17: 685-97.

615 Kim MW, Huh JW, Noh YM, Seo HE, Lee DH. Exploring the paradox of bone mineral density in type 2 diabetes: A
616 comparative study using opportunistic chest ct texture analysis and dxa. *Diagnostics*. 2023, 13.

617 Lei WS, Kindler JM. Insulin resistance and skeletal health. *Curr Opin Endocrinol Diabetes Obes*. 2022, 29: 343-9.

618 Lerner UH, Ohlsson C. The wnt system: Background and its role in bone. *J Intern Med*. 2015, 277: 630-49.

619 Locke AE, Kahali B, Berndt SI et al. Genetic studies of body mass index yield new insights for obesity biology.
620 *Nature*. 2015, 518: 197-206.

621 Loh NY, Minchin JEN, Pinnick KE et al. Rspo3 impacts body fat distribution and regulates adipose cell biology in
622 vitro. *Nat Commun*. 2020, 11: 2797.

623 Mahajan A, Spracklen CN, Zhang W et al. Multi-ancestry genetic study of type 2 diabetes highlights the power of
624 diverse populations for discovery and translation. *Nat Genet*. 2022, 54: 560-72.

625 Manolopoulos KN, Karpe F, Frayn KN. Gluteofemoral body fat as a determinant of metabolic health. *Int J Obes*
626 (Lond). 2010, 34: 949-59.

627 Mitchell A, Larsson SC, Fall T, Melhus H, Michaelsson K, Byberg L. Fasting glucose, bone area and bone mineral
628 density: A mendelian randomisation study. *Diabetologia*. 2021, 64: 1348-57.

629 Morris AP, Voight BF, Teslovich TM et al. Large-scale association analysis provides insights into the genetic
630 architecture and pathophysiology of type 2 diabetes. *Nat Genet*. 2012, 44: 981-90.

631 Morris JA, Kemp JP, Youlten SE et al. An atlas of genetic influences on osteoporosis in humans and mice. *Nat*
632 *Genet*. 2019, 51: 258-66.

633 Napoli N, Strotmeyer ES, Ensrud KE et al. Fracture risk in diabetic elderly men: The mros study. *Diabetologia*.
634 2014, 57: 2057-65.

635 Nilsson KH, Henning P, El Shahawy M et al. Rspo3 is important for trabecular bone and fracture risk in mice and
636 humans. *Nat Commun*. 2021, 12: 4923.

637 Osorio J. Bmd and fracture risk in t2dm-clarifying a paradox. *Nat Rev Endocrinol*. 2011, 7: 376.

638 Qian Y, Xia J, Liu KQ et al. Observational and genetic evidence highlight the association of human sleep behaviors
639 with the incidence of fracture. *Commun Biol*. 2021, 4: 1339.

640 Richards JB, Zheng HF, Spector TD. Genetics of osteoporosis from genome-wide association studies: Advances and
641 challenges. *Nat Rev Genet*. 2012, 13: 576-88.

642 Romero-Diaz C, Duarte-Montero D, Gutierrez-Romero SA, Mendivil CO. Diabetes and bone fragility. *Diabetes*
643 *Ther*. 2021, 12: 71-86.

644 Sanderson E, Davey Smith G, Windmeijer F, Bowden J. An examination of multivariable mendelian randomization
645 in the single-sample and two-sample summary data settings. *Int J Epidemiol*. 2019, 48: 713-27.

646 Sanderson E, Spiller W, Bowden J. Testing and correcting for weak and pleiotropic instruments in two-sample
647 multivariable mendelian randomization. *Stat Med*. 2021, 40: 5434-52.

648 Schwartz AV, Hillier TA, Sellmeyer DE et al. Older women with diabetes have a higher risk of falls: A prospective
649 study. *Diabetes Care*. 2002, 25: 1749-54.

650 Schwartz AV, Vittinghoff E, Bauer DC et al. Association of bmd and frax score with risk of fracture in older adults
651 with type 2 diabetes. *JAMA*. 2011, 305: 2184-92.

652 Schwartzman A, Lin X. The effect of correlation in false discovery rate estimation. *Biometrika*. 2011, 98: 199-214.

653 Shungin D, Winkler TW, Croteau-Chonka DC et al. New genetic loci link adipose and insulin biology to body fat
654 distribution. *Nature*. 2015, 518: 187-96.

655 Sun BB, Maranville JC, Peters JE et al. Genomic atlas of the human plasma proteome. *Nature*. 2018, 558: 73-9.

656 Teck J. Diabetes-associated comorbidities. *Prim Care*. 2022, 49: 275-86.

657 Tinajero MG, Malik VS. An update on the epidemiology of type 2 diabetes: A global perspective. *Endocrinol Metab*
658 *Clin North Am*. 2021, 50: 337-55.

659 Trajanoska K, Morris JA, Oei L et al. Assessment of the genetic and clinical determinants of fracture risk: Genome
660 wide association and mendelian randomisation study. *BMJ*. 2018, 362: k3225.

661 Verbanck M, Chen CY, Neale B, Do R. Detection of widespread horizontal pleiotropy in causal relationships
662 inferred from mendelian randomization between complex traits and diseases. *Nat Genet*. 2018, 50: 693-8.

663 Xia J, Xie SY, Liu KQ et al. Systemic evaluation of the relationship between psoriasis, psoriatic arthritis and
664 osteoporosis: Observational and mendelian randomisation study. *Ann Rheum Dis*. 2020, 79: 1460-7.

665 Xia JW, Zhang L, Li J et al. Both indirect maternal and direct fetal genetic effects reflect the observational
666 relationship between higher birth weight and lower adult bone mass. *BMC Med.* 2022, 20: 361.
667 Yavorska OO, Burgess S. Mendelianrandomization: An r package for performing mendelian randomization analyses
668 using summarized data. *Int J Epidemiol.* 2017, 46: 1734-9.
669 Zhao PP, Xu LW, Sun T et al. Relationship between alcohol use, blood pressure and hypertension: An association
670 study and a mendelian randomisation study. *J Epidemiol Community Health.* 2019, 73: 796-801.
671 Zhu X, Bai W, Zheng H. Twelve years of gwas discoveries for osteoporosis and related traits: Advances, challenges
672 and applications. *Bone Res.* 2021, 9: 23.
673 Zhu X, Zheng H. Factors influencing peak bone mass gain. *Front Med.* 2021, 15: 53-69.
674 Zhu XW, Liu KQ, Yuan CD et al. General and abdominal obesity operate differently as influencing factors of
675 fracture risk in old adults. *iScience.* 2022, 25: 104466.
676 Zhu Z, Zhang F, Hu H et al. Integration of summary data from gwas and eqtl studies predicts complex trait gene
677 targets. *Nat Genet.* 2016, 48: 481-7.
678 Zhu ZN, Jiang YF, Ding T. Risk of fracture with thiazolidinediones: An updated meta-analysis of randomized
679 clinical trials. *Bone.* 2014, 68: 115-23.
680

681 **Article and author information**

682 **Authors'contributions**

683 H-F.Z. conceptualized and designed the study. P-P.Z. conducted the analyses and drafted the
684 paper. Z-F.S., and L.X., helped in clinical interpretation of the results and drafted the manuscript.
685 P.L., W-J.X., C-D.Y., Z-W.X., M-Y.Y., Y.Q., J-D.Z., J-X.G., and D.K. helped in the data
686 acquisition, result interpretation and manuscript editing. The authors read and approved the final
687 manuscript.

688

689 **Competing interests**

690 The authors declare that they have no competing interests.

691

692 **Funds**

693 This work was supported by the "Pioneer" and "Leading Goose" R&D Program of Zhejiang
694 (#2023C03164), the National Natural Science Foundation of China (#82370887), the Chinese
695 National Key Technology R&D Program, Ministry of Science and Technology

696 (#2021YFC2501702), and the funds from the Westlake Laboratory of Life Sciences and
697 Biomedicine (#202208014).

698

699 **Acknowledgments**

700 We thankfully acknowledge the High-performance Computing Center at Westlake.

701

702 **Ethics**

703 All individuals provided written informed consent. The North West Multi-Centre Research
704 Ethics Committee approved the UK Biobank ethical application (reference number:
705 16/NW/0274).

706

707 **Figure Legends**

708 **Fig. 1** The association of genetically predicted type 2 diabetes with fracture and BMD by using
709 different MR methods. (A) the genetically predicted type 2 diabetes and fracture. (B) the
710 genetically predicted type 2 diabetes and BMD. (C) visualized the association of lead SNPs for
711 type 2 diabetes with the risk of fracture. Abbreviations: wGRS, weighted genetic risk score; MR-
712 PRESSO, MR pleiotropy residual sum and outlier.

713

714 **Fig. 2** The venn diagrams, conditional Q-Q plots and genetic variants jointly associated with type
715 2 diabetes and fracture/BMD at conjunctive false discovery rate (conjFDR) < 0.05. (A) the
716 shared number of variants between type 2 diabetes and fracture. (B) the conditional Q-Q plot of
717 fracture given association with type 2 diabetes at the level of $p \leq 0.1$, $p \leq 0.01$, $p \leq 0.001$. (C) the

718 shared genetic loci between type 2 diabetes and fracture. (D) the shared number of variants
719 between type 2 diabetes and BMD. (E) the conditional Q-Q plot of BMD given association with
720 type 2 diabetes at the level of $p \leq 0.1$, $p \leq 0.01$, $p \leq 0.001$. (F) the shared genetic loci between
721 type 2 diabetes and BMD.

722

723 **Fig. 3** The distinct signal (*RSPO3*) shared by type 2 diabetes and fracture. (A) the regional plot
724 of the association of type 2 diabetes and *RSPO3* gene expression (adipose subcutaneous) within
725 hg19: chr6:127189749-127689749 (*RSPO3* gene region \pm 250kb window). (B) the regional plot
726 of the association of fracture and *RSPO3* gene expression (adipose subcutaneous) in the same
727 region. (C) the association of genetically predicted *RSPO3* gene expression with type 2 diabetes
728 and fracture risk. (D) the association of genetically predicted *RSPO3* gene expression with BMI,
729 waist circumference, waist-hip ratio and MRI-derived visceral adipose. (F) the association of
730 genetically predicted circulating *RSPO3* with type 2 diabetes and fracture risk.

731

732 **Fig. 4** The regression between type 2 diabetes and fracture/BMD in observational study. (A) the
733 relationship between type 2 diabetes and fracture in different sites including all fracture, weight-
734 bearing bones and other bones. Model 0 adjusted for reference age, sex, BMI, physical activity,
735 fall history, HbA1c and medication treatments; Model 1 adjusted for a+ BMD. (B) the stratified
736 analyses between type 2 diabetes, and fracture based on the five risk factors secondary to the
737 diseases adjusted for the age and sex. (C) the relationship between type 2 diabetes and BMD and
738 the stratified analyses based on the five risk factors secondary to the diseases adjusted for the age
739 and sex. The 5 risk factors were: (1) $BMI \leq 25 \text{kg/m}^2$; (2) no physical activity; (3) falls in the last
740 year; (4) $HbA1c \geq 47.5 \text{mmol/mol}$; (5) antidiabetic medication treatments.

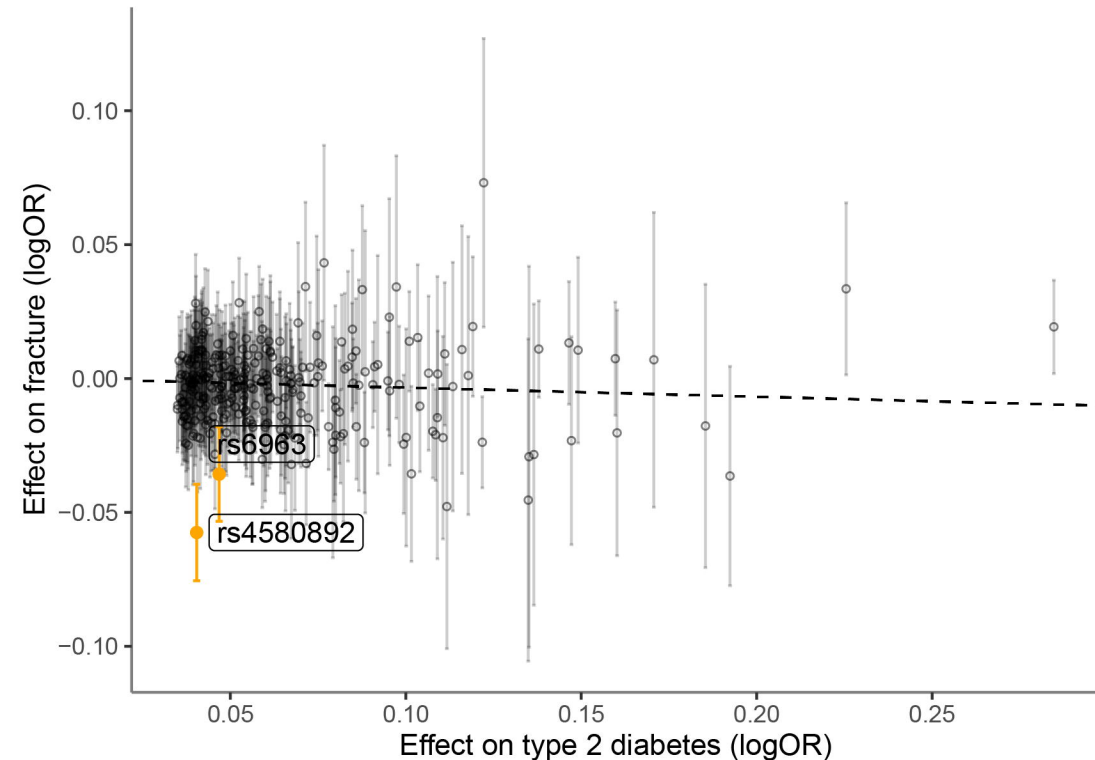
A Type 2 diabetes-fracture

Method	Nsnp	fracture/non-fracture	OR	95%CI	P value
wGRS (all fracture)	404	29,290/265,281	0.982	(0.975,0.989)	0.006
wGRS (weight-bearing bones fracture)	404	8,992/265,262	0.977	(0.9552-0.9997)	0.047
wGRS (other bones fracture)	404	20,317/265,262	0.984	(0.969-0.999)	0.039
Inverse variance weighted	289	/	0.965	(0.943,0.988)	0.003
Simple median	289	/	0.967	(0.936,0.997)	0.033
MR-PRESSO	288	/	0.967	(0.945,0.989)	0.004

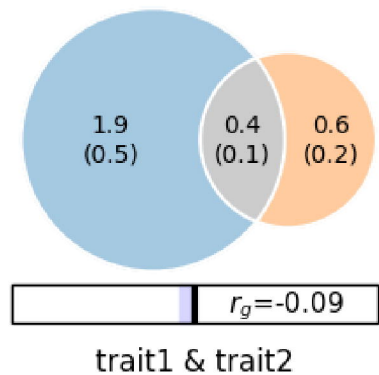
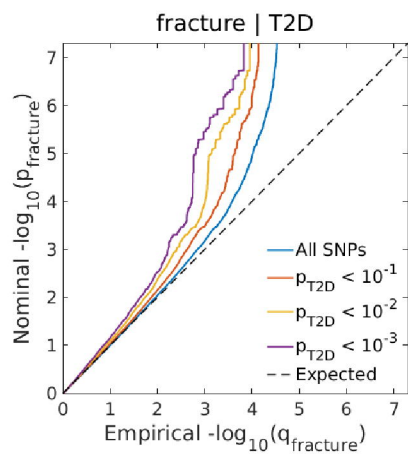
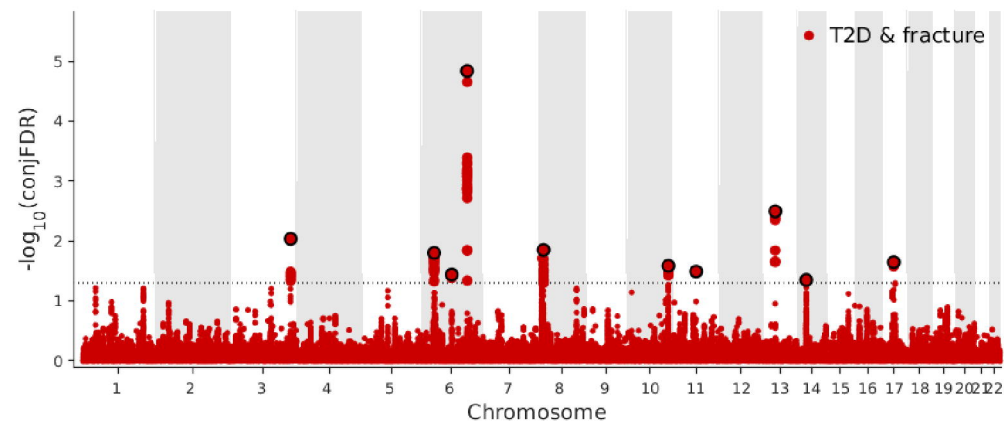
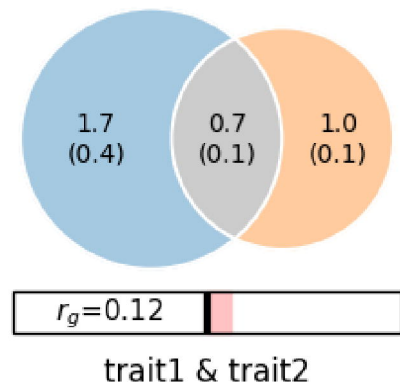
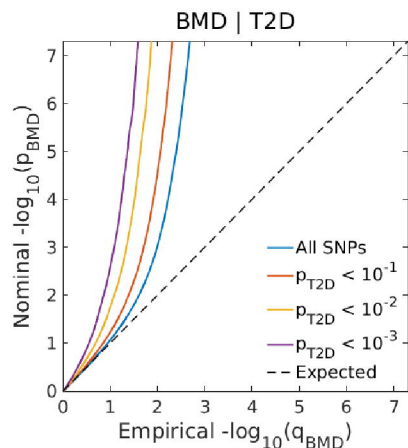
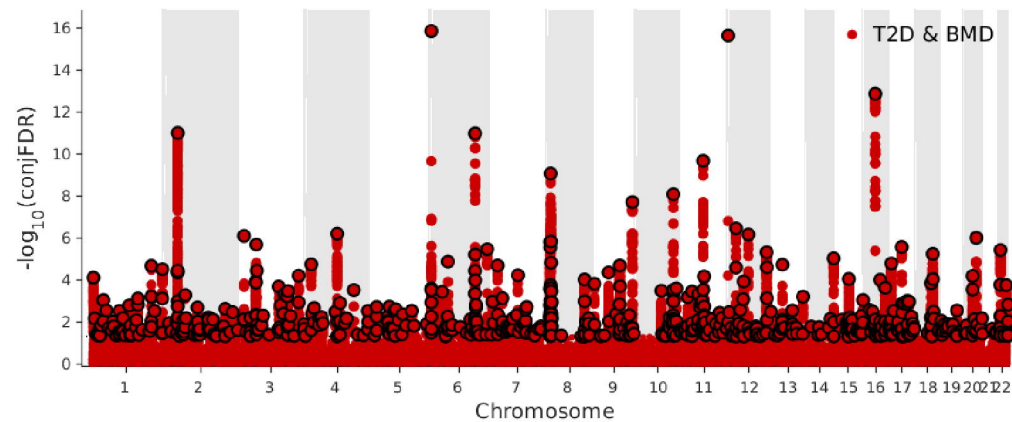
B Type 2 diabetes-BMD

Method	Nsnp	Estimate	95%CI	P value
wGRS	404	0.022	(0.018,0.026)	< 2e-16
Inverse variance weighted	380	0.041	(0.027,0.054)	8.14E-09
Simple median	380	0.028	(0.020,0.036)	6.59E-13
MR-PRESSO	313	0.029	(0.022,0.036)	1.14E-14

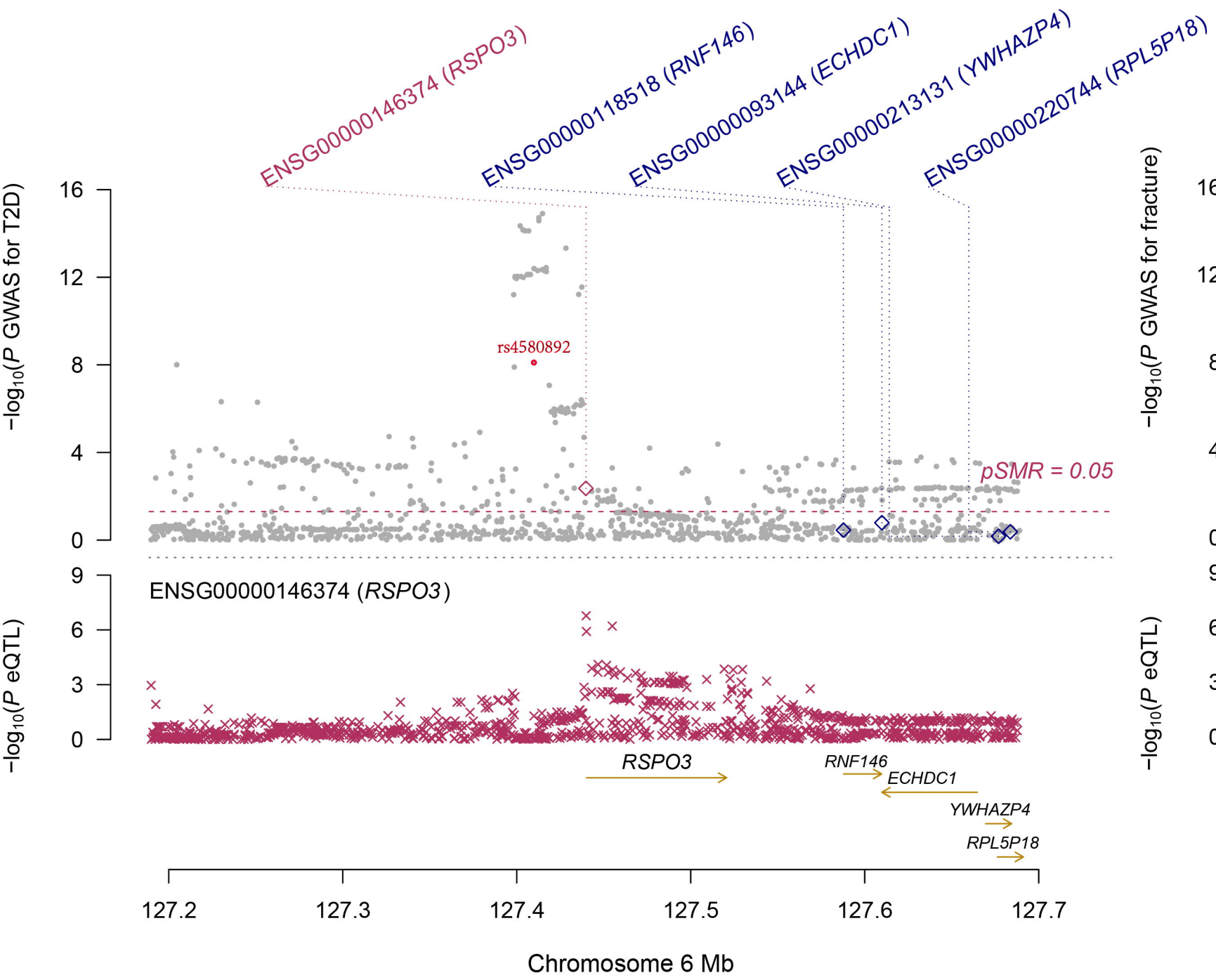
C



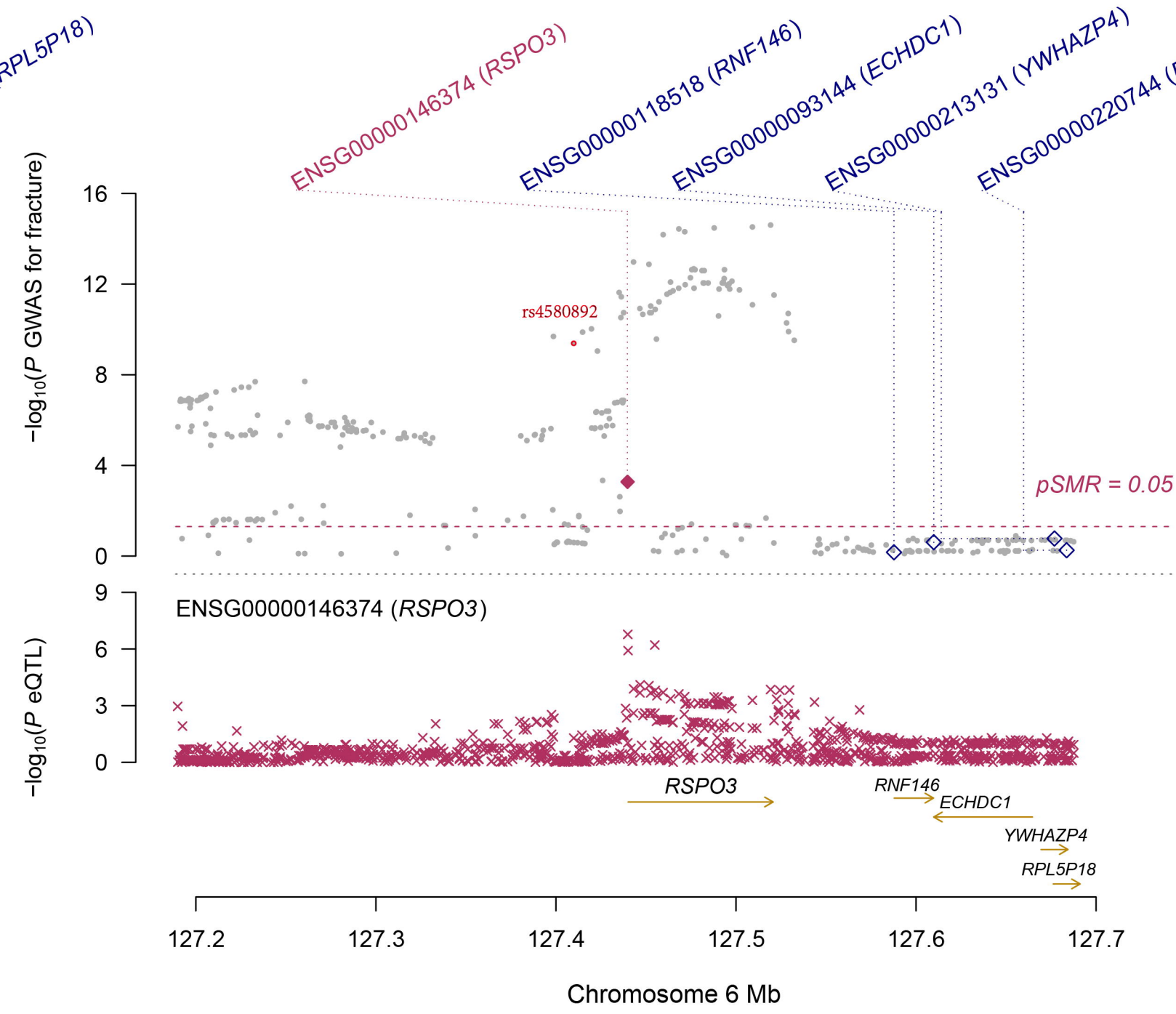
N of SNPs	Beta/SE	OR/95%CI	P value
298	-0.034/0.009	0.9666/(0.9497-0.9828)	0.000221

A**B****C****D****E****F**

A



B



C

Exposure	Outcome	eQTL	OR	95%CI	P value
Increasing RSPO3 in adipose subcutaneous	T2D	rs72959041	1.102	(1.03–1.18)	0.0044
Increasing RSPO3 in adipose subcutaneous	Fracture	rs1936806	0.695	(0.57,0.85)	0.0005

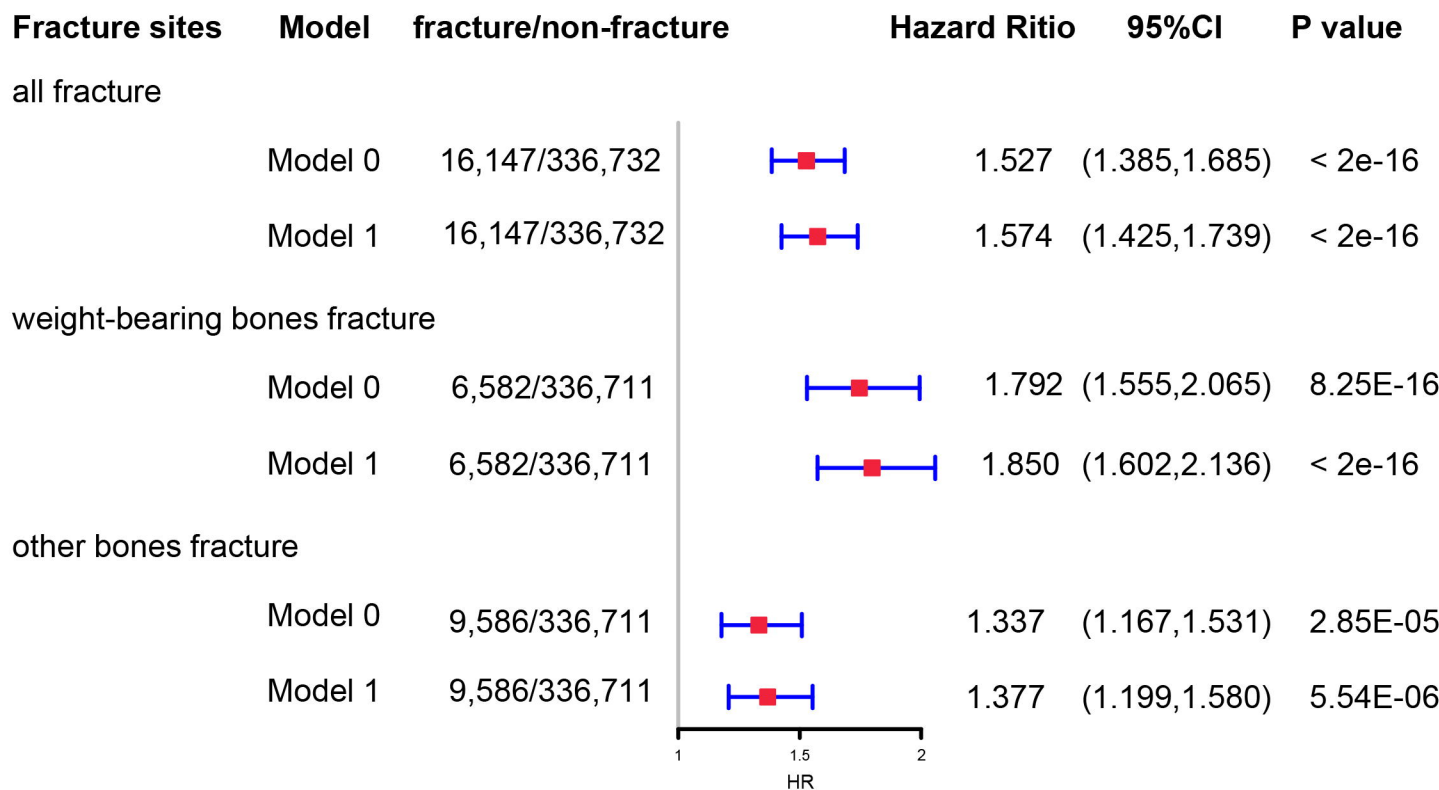
D

Exposure	Outcome	eQTL	BETA	95%CI	P value
Increasing RSPO3 in adipose subcutaneous	BMI	rs1936806	0.014	(-0.02,0.05)	0.4475
Increasing RSPO3 in adipose subcutaneous	WC	rs1936806	0.09	(0.03,0.15)	0.0038
Increasing RSPO3 in adipose subcutaneous	WHR	rs1936806	0.204	(0.10,0.31)	0.0002
Increasing RSPO3 in adipose subcutaneous	MRI-derived visceral adipose	rs141783576	0.199	(0.10,0.29)	4.36E-05

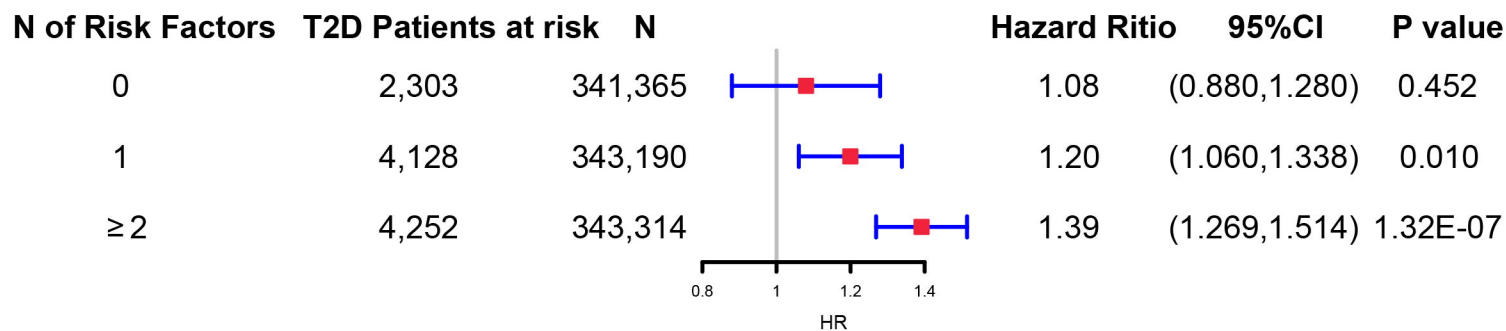
E

Exposure	Outcome	cis-pQTL	OR	95%CI	P value
Increasing circulating RSPO3	T2D	rs4580892	1.243	(1.16–1.34)	7.86E-09
Increasing circulating RSPO3	Fracture	rs4580892	0.733	(0.66–0.81)	4.10E-10

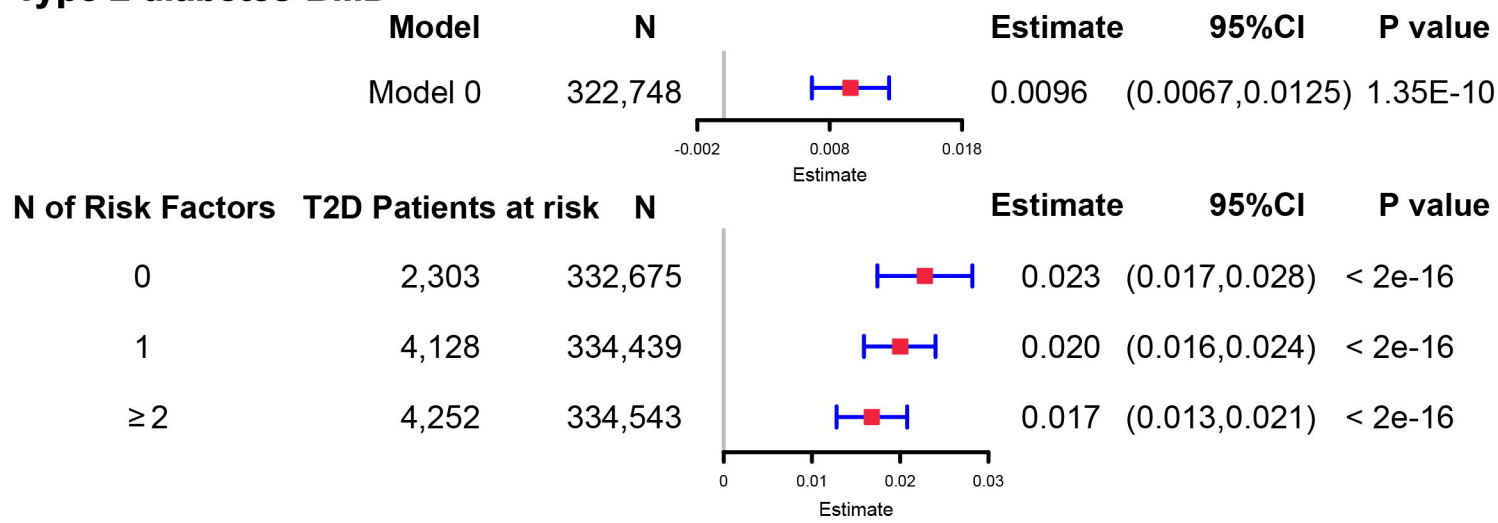
A Type 2 diabetes-fracture



B



C Type 2 diabetes-BMD



Supplementary Figures

Supplementary Fig. 1 Flow chart of the overall study design.

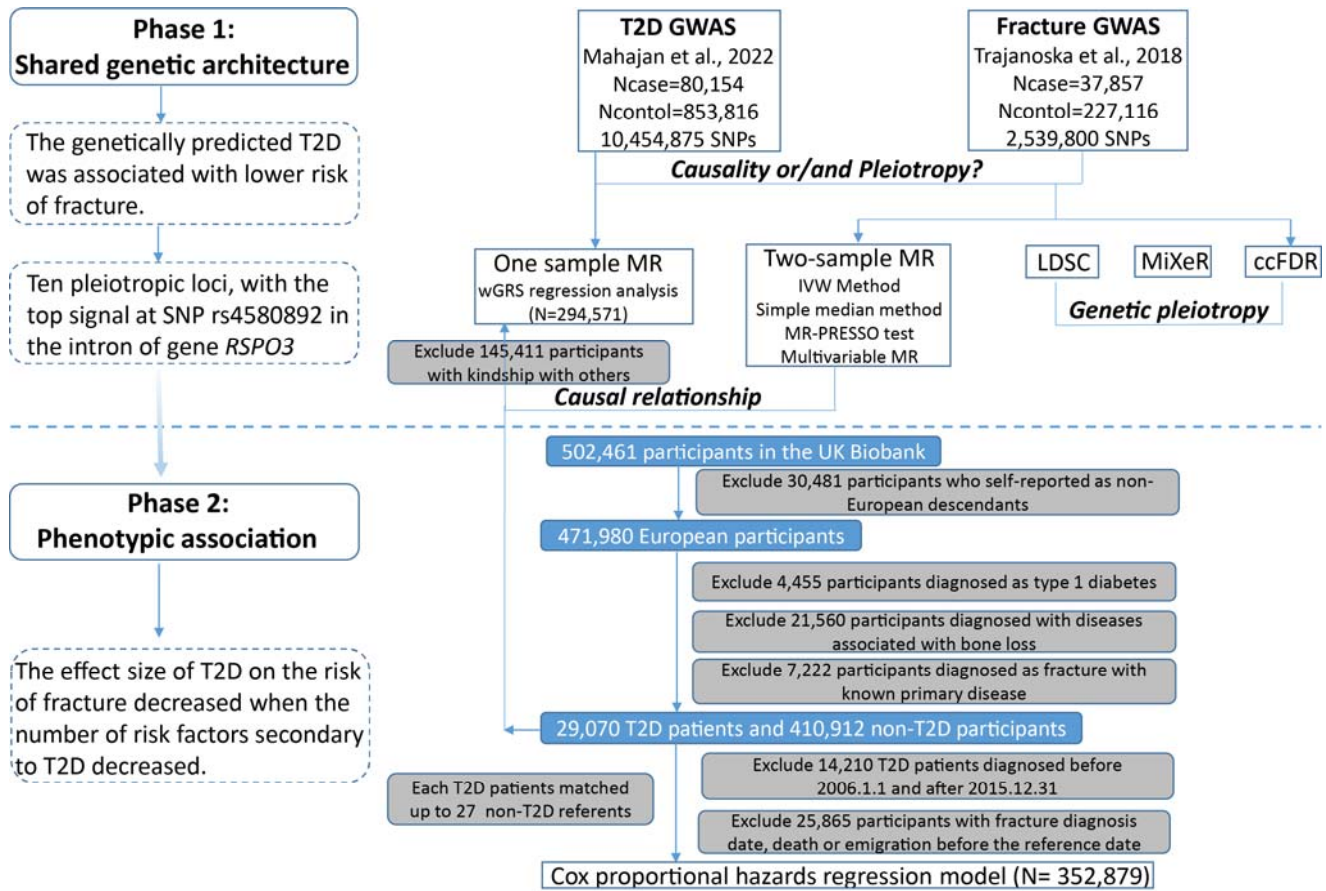
Supplementary Fig. 2 The regression between type 2 diabetes GRS and fracture risk/BMD in male and female. Models were adjusted for reference age, sex, BMI, physical activity, fall history, HbA1c and medication treatments.

Supplementary Fig. 3 The regression between type 2 diabetes and fracture risk/BMD in male and female in observational study. Model 0 adjusted for reference age, sex, BMI, physical activity, fall history, HbA1c and medication treatments; Model 1 adjusted for a+ BMD.

Supplementary Fig. 4 The stratified analyses between type 2 diabetes and fracture/BMD based on the five risk factors ($BMI \leq 25 \text{ kg/m}^2$, no physical activity, falls in the last year, $HbA1c \geq 47.5 \text{ mmol/mol}$ and antidiabetic medication treatments) in male and female. Models were adjusted for the age and sex.

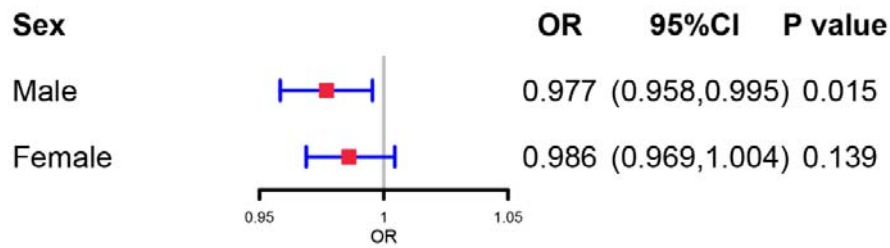
Supplementary Fig. 5 The matching information of 14,860 patients with fracture.

Supplementary Fig. 1 Flow chart of the overall study design.

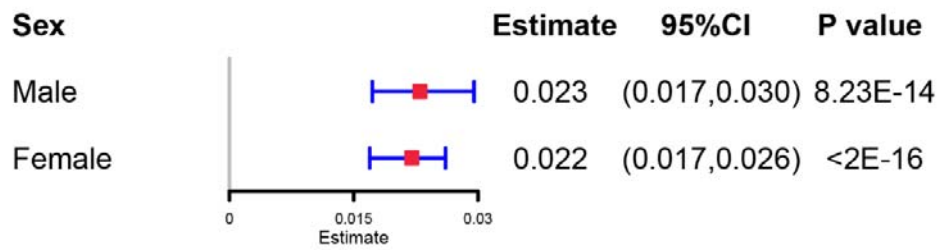


Supplementary Fig. 2 The regression between type 2 diabetes GRS and fracture risk/BMD in male and female.

A Type 2 diabetes-fracture

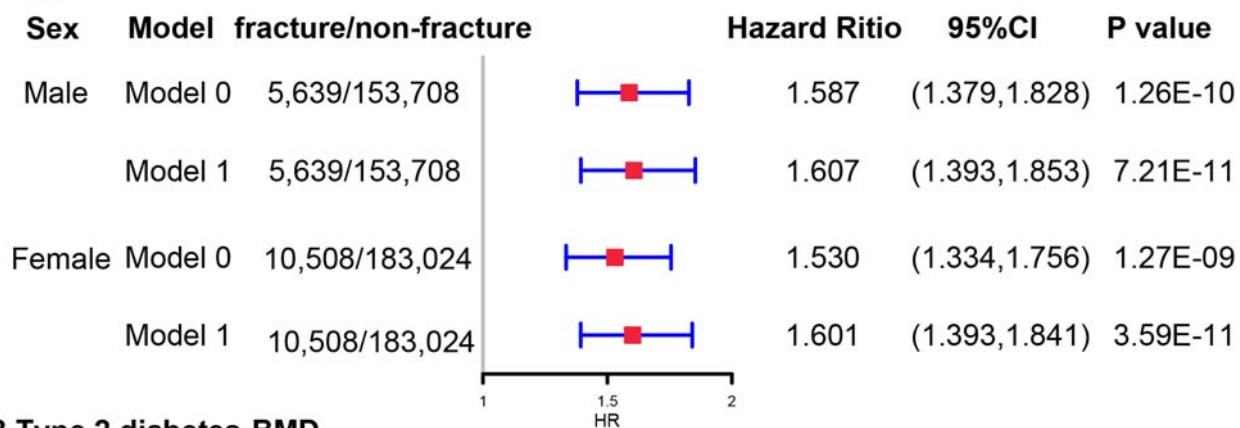


B Type 2 diabetes-BMD

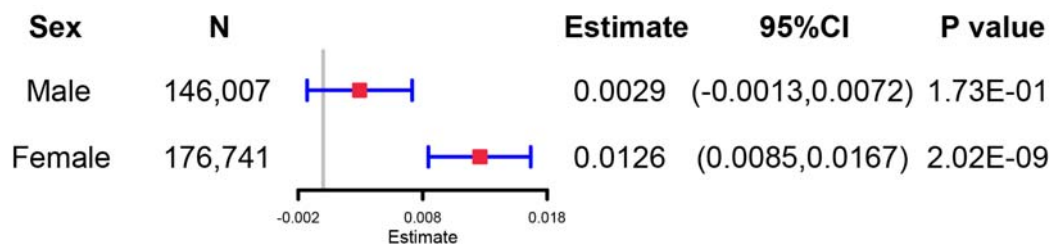


Supplementary Fig. 3 The regression between type 2 diabetes and fracture risk/BMD in male and female in observational study.

A Type 2 diabetes-fracture

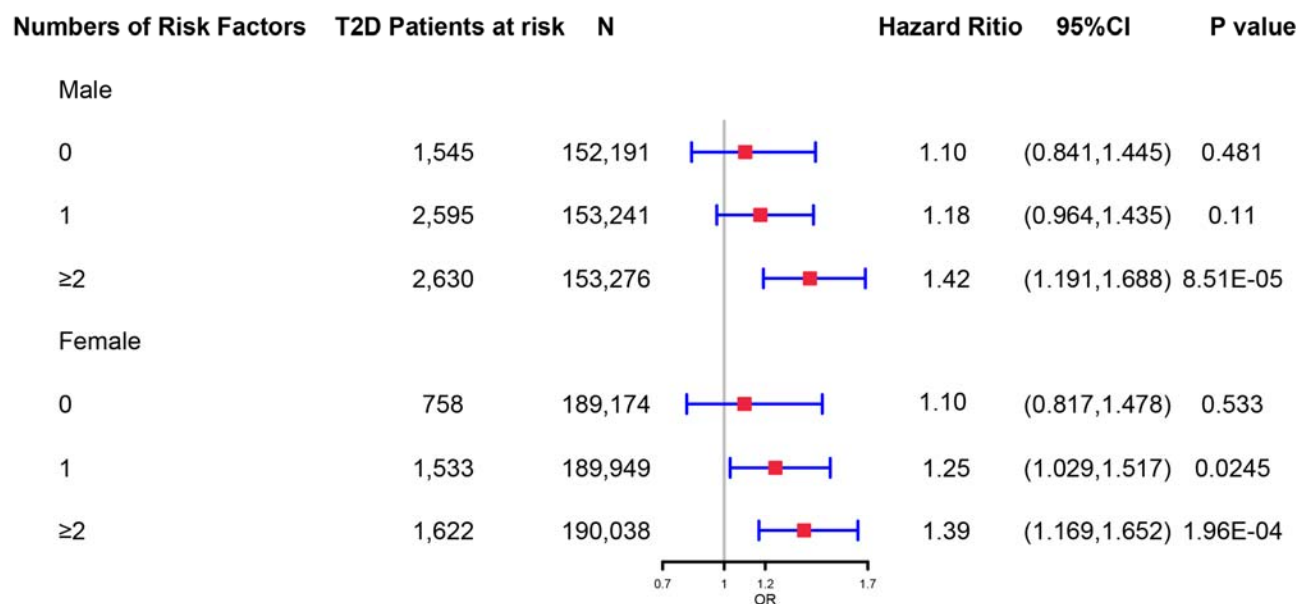


B Type 2 diabetes-BMD

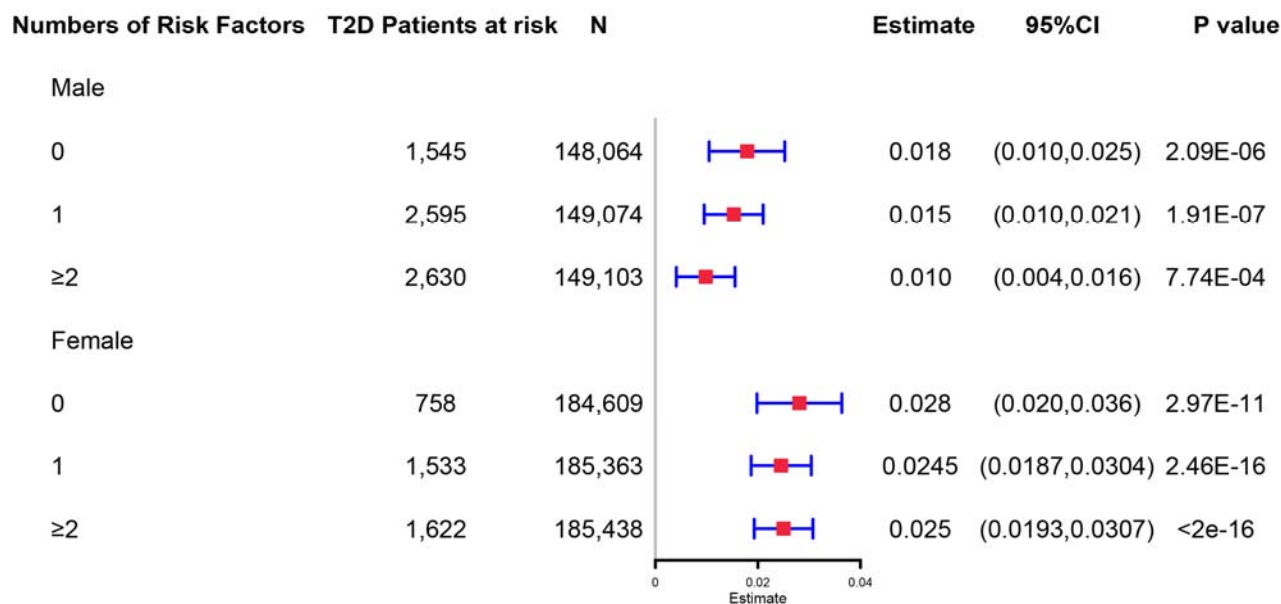


Supplementary Fig. 4 The stratified analyses between type 2 diabetes and fracture/BMD based on the five risk factors (BMI \leq 25kg/m², no physical activity, falls in the last year, HbA1c \geq 47.5mmol/mol and antidiabetic medication treatments) in male and female.

A Type 2 diabetes-fracture



B Type 2 diabetes-BMD



Supplementary Fig. 5 The matching information of 14,860 patients with fracture.

