

## Individual Differences in the Effects of Neighborhood Socioeconomic Deprivation on Economic Decision Making and Psychotic Risk in Children

Junghoon Park<sup>1</sup>, Minje Cho<sup>2</sup>, Eunji Lee<sup>3</sup>, Bo-Gyeom Kim<sup>3</sup>, Gakyung Kim<sup>4</sup>, Yoonjung Yoonie Joo<sup>3,5,6</sup>, Jiook Cha\*<sup>3,4,7</sup>

1. Interdisciplinary Program in Artificial Intelligence, College of Engineering, Seoul National University, Seoul, South Korea
2. Department of Economics, Korea University, Seoul, South Korea
3. Department of Psychology, College of Social Sciences, Seoul National University, Seoul, South Korea
4. Department of Brain and Cognitive Sciences, College of Natural Sciences, Seoul National University, Seoul, South Korea
5. Department of Digital Health, Samsung Advanced Institute for Health Sciences & Technology (SAIHST), Sungkyunkwan University, Seoul, South Korea
6. Samsung Medical Center, Seoul, South Korea
7. Graduate School of Data Science, Seoul National University, South Korea

\*Corresponding Author: Jiook Cha, PhD

Gwanak-ro 1, Building 16, Suite M512, Gwanakgu, Seoul, 08826, South Korea

**Email:** [connectome@snu.ac.kr](mailto:connectome@snu.ac.kr)

**Author Contributions:** J.P. and J.C. designed research; J.P. and M.C. performed research; J.P., M.C., E.L., B.-G.K., G.K., Y.Y.J. analyzed data; and J.P., M.C., and J.C. wrote the paper.

**Competing Interest Statement:** Authors have no competing interests.

**Keywords:** Intertemporal reward valuation, Psychotic-like experiences, Causal machine learning, Childhood socioeconomic environment, Heterogeneous treatment effects

## Abstract

Understanding how a child's social and economic surroundings influence their mental development and potential for psychological disorders is essential for unpacking the origins of mental health issues. This study, using up-to-date machine learning-based causal inference methods, tested the relationships between neighborhood socioeconomic deprivation, delay discounting, and psychotic-like experiences (PLEs) in 2,135 children considering the wide range of covariates. We found that a greater neighborhood deprivation led to steeper future reward discounting and a higher psychosis risk, evident over 1-year and 2-year follow-ups. We also discovered, across children, significant individual differences in the effect of neighborhood adversity on childhood PLEs, particularly hallucinational symptoms. Children particularly vulnerable to PLEs in adverse neighborhoods exhibited steeper future reward discounting, higher cognitive performance polygenic scores, notable neuroanatomical alterations, including reduced volume, surface area, and white matter in limbic regions. Furthermore, these children displayed increased BOLD reactivity within the prefrontal-limbic system during Monetary Incentive Delay tasks across various reward/loss versus neutral conditions. These findings underscore the intricate interaction between the brain's reward processing mechanisms and external socioeconomic elements in shaping the risk of psychosis in children.

## Introduction

In *Critique of Practical Reason*, Immanuel Kant champions the inherent power of human reason, suggesting that it is an *a priori* capacity independent of external factors, enabling individuals to engage in responsible actions<sup>1</sup>. Nevertheless, a wealth of scientific studies in recent decades stands in opposition to the Enlightenment philosopher's claims, highlighting the significant impact of environmental factors on the development of personal identity and behavior.

Adverse childhood environments, such as low family income, malnutrition, physical or sexual abuse, and unsafe neighborhoods, are linked to an heightened risk of various mental or physical health issues, including psychosis<sup>2-4</sup>, impoverished cognitive ability<sup>5-7</sup>, anxiety, bipolar disorder, self-harm, depression<sup>3,4,8</sup>, substance abuse, and obesity<sup>9,10</sup>. Furthermore, these environments are associated with negative social outcomes, such as poor academic performance<sup>11,12</sup>, low income, unemployment<sup>13-18</sup>, higher rates of imprisonment, and increased likelihood of teen pregnancy<sup>19</sup>. Additionally, exposure to these adverse conditions in childhood is associated with a propensity for engaging in risky behaviors, including criminal activity<sup>20</sup>, excessive consumption of calorie-dense foods<sup>21</sup>, substance use<sup>22,23</sup>, deficient self-control<sup>24</sup>, and disrupted reward processing<sup>25</sup>.

The intricate relationship between challenging childhood environments, irresponsible behavior, and adverse social and health outcomes raises important questions. We hypothesized that childhood adversity causes impairment in one's valuation system, leading to negative life outcomes. Children who experienced social adversities such as poverty show steeper discounting of future rewards in adulthood and have greater risk of psychosis<sup>2,3,26-28</sup>.

Lower socioeconomic status positively correlates with functional brain activity concordance and grey matter volume within reward-related areas (i.e., ventral striatum, putamen, caudate nucleus, orbital frontal cortex) and negatively with executive-related areas (i.e., frontal, medial frontal cortex)<sup>29</sup>. A recent study reported that neuroanatomical features including total cortical volume, surface area, and thickness mediates the association of environmental risk factors and psychotic-like experiences (PLEs) in children<sup>3</sup>.

In addition, individuals with steeper discounting of future rewards (i.e., value present rewards much higher than future rewards) were inclined to save less, invest less in education, more likely to engage in criminal behavior, exhibit lower academic performance, and have less economic wealth<sup>30-33</sup>. This impairment in the intertemporal valuation system is associated with psychiatric disorders, including psychosis, attention deficit/hyperactivity disorder (ADHD), and addiction<sup>34,35</sup>. Psychosis, in particular, has been consistently linked to steep delay discounting<sup>36-38</sup>. Individuals with psychosis may manifest as a skewed neural response to non-relevant rewards, possibly due to increased tonic dopamine<sup>34,39-41</sup>. Blunted dopaminergic projections from the ventral tegmental area to the mesocorticolimbic regions disrupt reward anticipation and perception<sup>39,40</sup>, potentially causing delusions or hallucinations.

In the present study, our primary objective was to investigate the impact of neighborhood socioeconomic deprivation on adolescents' delay discounting and PLEs. Delay discounting, which is evidenced by the extent to which individuals' discount future rewards, pertains to their intertemporal decision-making and impulsive behavior. Exposure to adversities at the neighborhood level during childhood has been shown to negatively influence neurocognitive development<sup>7,42,43</sup>, subsequently resulting in psychiatric disorders<sup>2,3,28</sup> and unfavorable social outcomes, such as decreased income, reduced probability of college attendance, and limited

employment opportunities<sup>17</sup>. This phenomenon is particularly pronounced in societies where discrimination based on family income or race/ethnicity restricts underprivileged families from selecting neighborhoods that present greater opportunities for upward social mobility, as observed in the United States<sup>17</sup>.

It is crucial to note that PLEs, frequently reported in children, are considered as a clinically significant risk indicator for psychosis and general psychopathology<sup>44,45</sup>. Around 17% of 9-12 years old children report PLEs<sup>46</sup>, and individuals with PLEs at age 11 had greater risk of developing psychotic disorders in adulthood<sup>47,48</sup>. Prior studies revealed that PLEs are correlated to heightened vulnerability to other psychopathologies including suicidal behavior<sup>2</sup>, mood, anxiety, and substance disorders<sup>44,46</sup>, and exhibit the strongest association with environmental risk factors in comparison to other internalizing/externalizing symptoms during early adolescence<sup>3</sup>. The present study endeavors to explore the potential causal mechanisms underlying these associations.

Our second aim was to test whether the causal effects of neighborhood deprivation on children's PLEs are heterogeneous based on individual's delay discounting and its genetic, neural correlates. The heterogeneous nature of psychopathology has long posed significant challenges for clinical diagnosis and treatment<sup>49,50</sup>. Given that the genetic and neural correlates of delay discounting substantially overlap with those of psychosis<sup>40,41,51,52</sup>, the shared biological foundations between reward valuation and psychosis may result in heterogeneous effects of environmental exposure on an individual's PLEs. By investigating these potential variations, this study seeks to enhance the understanding of the complex interplay between environmental factors and individual predispositions in the development of psychopathology.

Identifying individual differences of treatment/exposure is crucial for the development of personalized health care. Delivering optimal health care for each patient necessitates the recognition of genetic markers, neurodevelopmental characteristics, and sociodemographic features associated with individual variations in treatment effects<sup>53,54</sup>. However, previous studies employing traditional methods of testing the individual differences in treatment effects have often been unsuccessful in discerning the intricate interplay between genetic and environmental factors<sup>55,56</sup>. Linear models with interaction terms of features selected a priori by the researcher may not fully reflect the complex and elusive gene-environment interplay, particularly in genetic and neuroscience research where the input features are usually high dimensional.

Using an up-to-date causal machine learning approach<sup>57,58</sup>, we assessed the effects of neighborhood socioeconomic adversity on delay discounting and PLEs, and the potential individual differences within those effects. We leveraged multimodal magnetic resonance imaging (MRI) data from 11,876 preadolescent children aged 9 to 12 years old (the Adolescent Brain Cognitive Development (ABCD) Study). Integration of innovative analytical techniques and a large sample with diverse genetic and environmental backgrounds permits us to test the complex interactions between genetic and environmental factors, ultimately contributing to the development of more effective personalized health care strategies.

## Results

The demographic characteristics of the final sample (N=2,135) are presented in **Table 1**. Within the sample, 46.14% were female, 76.63% of participants had married parents, the mean family income was \$70,245, and 65.57% identified their race/ethnicity as white. To ensure the representativeness of the final sample, a supplementary table comparing the sample's demographic characteristics with those of the general United States population is provided in the **Supplementary Information (Supplementary Table 1)**. This comparison serves to reinforce the validity and generalizability of the study's findings.

In this non-randomized observational study, we addressed potential confounding factors, such as genetic, environmental variables, and their unobserved common causes, which can lead to biased estimations in studies like the ABCD study<sup>59</sup>. We used instrumental variable (IV) random forests (henceforth IV Forest)<sup>57,58</sup>—a random forest-based IV regression<sup>60</sup>—to adjust for unobserved confounding bias in identifying the causal effects of neighborhood socioeconomic adversity (measured with *Area Deprivation Index*, henceforth ADI) on delay discounting and PLEs. The IV Forest method enabled us to derive nonparametric, doubly robust estimates of the average (group-level) and heterogeneous (individual-level) treatment effects of ADI on these outcomes. Notably, this method is particularly useful for analyzing the complex, nonlinear interactions between genetic and environmental factors and their effects on neurocognitive development and psychosis risk, even within the confines of observational data<sup>57</sup>.

**Fig. 1** presents the analytical framework of our study, examining the effects of neighborhood socioeconomic adversity on children's decision-making and mental health. ADI,

recorded in the baseline year, serves as an indicator of this socioeconomic adversity. We assessed the impact of ADI on children's intertemporal decision-making through delay discounting at a 1-year follow-up. PLEs, encompassing distress, delusional, and hallucinational symptoms, were evaluated at both 1-year and 2-year follow-ups. Our analysis spans multiple follow-up periods and PLE indicators to investigate the sustained influence of ADI over time and to explore differential effects on various PLE symptoms, particularly delusional versus hallucinational.

### **Average Treatment Effects of Neighborhood Socioeconomic Adversity on Delay Discounting and PLEs**

IV Forest analyses revealed that a higher ADI has significant (causal) associations with a lower delay discounting ( $\beta = -1.73$ , p-FDR= 0.048) and a higher PLEs (distress score 1-year follow-up:  $\beta = 1.872$ , p-FDR= 0.048; distress score 2-year follow-up:  $\beta = 1.504$ , p-FDR= 0.039; delusional score 1-year follow-up:  $\beta = 5.97$ , p-FDR= 0.048; delusional score 2-year follow-up:  $\beta = 4.022$ , p-FDR=0.048; hallucinational score 1-year follow-up:  $\beta = 3.761$ , p-FDR= 0.048; hallucinational score 2-year follow-up:  $\beta = 4.786$ , p-FDR=0.039) (**Table 2**).

Supplementary analyses were conducted using a conventional linear IV regression<sup>60</sup> and an alternative causal machine learning method (i.e., *Double ML*<sup>61,62</sup>) to validate the results. The conventional IV regression also showed that ADI has negative influence on childhood delay discounting ( $\beta = -0.468$ , p-FDR= 0.03) and positive PLEs (distress score 1-year follow-up:  $\beta = 0.609$ , p-FDR= 0.011; distress score 2-year follow-up:  $\beta = 0.78$ , p-FDR= 0.003; delusional score 1-year follow-up:  $\beta = 0.486$ , p-FDR= 0.028; delusional score 2-year follow-up:  $\beta =$



0.578, p-FDR= 0.013; hallucinational score 1-year follow-up:  $\beta = 0.604$ , p-FDR= 0.011; hallucinational score 2-year follow-up:  $\beta = 0.827$ , p-FDR= 0.003). The partial-linear IV model of the Double ML algorithm showed significant effects of ADI on children's delay discounting ( $\beta = -0.429$ , p-FDR= 0.044), distress score PLEs (1-year follow-up:  $\beta = 0.495$ , p-FDR= 0.023; 2-year follow-up:  $\beta = 0.609$ , p-FDR= 0.005), hallucinational score PLEs (1-year follow-up:  $\beta = 0.498$ , p-FDR= 0.018; 2-year follow-up:  $\beta = 0.683$ , p-FDR= 0.002), and 2-year follow-up delusional score PLEs ( $\beta = 0.417$ , p-FDR= 0.044). The negative effects of ADI on 1-year follow-up delusional score PLEs were marginally significant ( $\beta = 0.393$ , p-FDR= 0.051). These results of the conventional linear IV regression and Double ML partial-linear IV regression confirm the findings obtained from the IV Forest (**Supplementary Table 3**), further supporting the primary analyses and conclusions drawn from the study.

### **Heterogeneous Treatment Effects of Neighborhood Socioeconomic Adversity on PLEs, conditioned on the Genetic and Neural Correlates of Delay Discounting**

Next, we tested whether the impact of ADI was heterogeneous across children, and, if so, whether the heterogeneity is linked to individual's neurodevelopmental characteristics and the relevant genetic factors—assessed with genome-wide polygenic scores (GPS) and structural MRI and monetary incentive delay (MID) task fMRI data—correlated to intertemporal valuation. To identify the best subset of genetic and neural correlates of delay discounting, we first selected GPS and MRI brain regions of interest (ROIs) specifically related to delay discounting. To analyze the nonparametric correlations of multiple input variables, we used a

random forest-based feature selection *Boruta* algorithm<sup>63</sup>. Its robustness and effectiveness in selecting relevant features in high dimensional, intercorrelated biomedical data (e.g., MRI) has been validated<sup>63</sup> and consistently applied in genetics and neuroscience research<sup>64-66</sup>. The variables significantly correlated with delay discounting (p-Bonferroni<0.05) were GPS of cognitive performance, IQ, and education attainment; morphometric features (e.g., surface area, volume) in the limbic system (temporal pole, parahippocampal gyrus, caudate nucleus, rostral anterior cingulate, isthmus cingulate), inferior frontal gyrus (pars opercularis), and fusiform gyrus; mean beta activations of rewards/losses versus neutral feedback in the subcortical areas (thalamus proper, ventral diencephalon), precentral gyrus, supramarginal gyrus, temporal lobe (transverse temporal gyrus, superior temporal gyrus), and insula (**Supplementary Table 4**).

We then assessed the heterogeneous treatment effects of ADI on PLEs using three distinct IV Forest models: (1) the Delay Discounting model, incorporating sociodemographic features and delay discounting; (2) the Gene-Brain model, which included sociodemographic features and genetic and neural correlates of delay discounting (i.e., GPS and brain ROIs identified using the *Boruta* algorithm); and (3) the Integrated model which combined all the variables from the previous two models. All three models satisfied the overlap assumption (i.e., the estimated propensity scores are not close to one or zero), which is crucial for the validity of the estimated heterogeneous treatment effects (**Supplementary Fig. 1**). In line with prior studies<sup>67,68</sup>, we obtained conditional average treatment effects, divided subjects into deciles (Q1: most vulnerable; Q10: most resilient) based on the conditional average treatment effects, and conducted three hypothesis tests<sup>69</sup> on each model to determine the most effective model for capturing the individual differences (heterogeneity) in the effects of ADI

on PLEs: monotonicity, alternative hypothesis, and ANOVA.

Among the three models, only the Integrated model successfully demonstrated significant individual differences in the ADI effects on PLEs. This was evident in the impact of ADI on 1-year follow-up distress score PLEs (monotonicity test:  $p\text{-FDR}=0.011$ ; alternative hypothesis test:  $p=0.002$ ; ANOVA test:  $p<0.001$ ) and 1-year follow-up hallucinational score PLEs (monotonicity test:  $p\text{-FDR}=0.038$ ; alternative hypothesis test:  $p=0.004$ ; ANOVA test:  $p<0.001$ ), as presented in **Fig. 2 and Table 3**. In contrast, the Delay Discounting model and Gene-Brain model failed to pass the heterogeneity tests (monotonicity test:  $p\text{-FDR}\geq 0.05$ ; alternative hypothesis and ANOVA test:  $p\geq 0.05$ ).

To elucidate the role of specific genetic and neural correlates within the heterogeneous effects of ADI on PLEs, we obtained Shapley additive explanation (SHAP) scores<sup>70</sup>. SHAP scores provide insights into how each variable contributes positively or negatively to the differential causal effects of ADI on 1-year follow-up observations of distress score and hallucinational score PLEs. These scores help differentiate the roles of these factors across subgroups, ranging from low to high conditional average treatment effects, thereby providing a nuanced understanding of how ADI influences PLEs through various genetic and neural pathways.

In both distress score and hallucinational score PLEs, children who showed higher levels of ADI's adverse effects on PLEs exhibited distinct neuroanatomical and functional brain patterns, particularly in the limbic system. These patterns included reduced neuroanatomical features such as smaller white matter and surface area in the right temporal pole, reduced area and volume in the right parahippocampal region, decreased left white surface area, smaller

area in the right isthmus cingulate, reduced intracranial volume, smaller caudate nucleus volume, and lower total grey matter volume. Functionally, greater activation during MID tasks was observed in several areas including the posterior cingulate, right ventral diencephalon, right insula, left thalamus proper, and left precentral gyrus. Additionally, children more adversely affected by ADI, as indicated by higher conditional average treatment effects on PLEs, exhibited larger right fusiform volume, decreased activation in the left superior temporal gyrus, younger parental age, and lower BMI (**Fig. 3**).

The analysis also revealed that higher conditional average treatment effects on distress score PLEs was associated with higher cognitive performance GPS and a lower likelihood of being Hispanic. In contrast, for hallucinational score PLEs, greater importance was attributed to increased activation in the left supramarginal gyrus during MID tasks and more pronounced discounting of future rewards. These nuanced associations are depicted in **Fig. 3**.

Lastly, we conducted a supplementary analysis to test whether the effects of delay discounting between the causal impact of ADI on PLEs are captured with a conventional linear mediation model<sup>71</sup>. This linear IV mediation model showed no significant mediation effects of delay discounting ( $\beta = -6.929E-6$  [95% CI, -0.012~0.026] ~  $4.582E-6$  [95% CI, -0.009~0.03]) (**Supplementary Table 5**).

## Discussion

In this study, we examined how neighborhood socioeconomic deprivation impacts children's intertemporal choice behavior (delay discounting) and psychotic risk, considering the multifaceted effects of neighborhood adversity and its underlying biological, environmental, and behavioral drivers. Our findings can be distilled into two main points. Firstly, there was a notable link of living in socioeconomically disadvantaged neighborhoods to the propensity for children to prefer immediate rewards over larger, delayed ones—a behavior known as steep delay discounting (indicative of lower impulse control) and to a higher rate of PLEs. This association was significant even after adjusting for a range of confounding factors, both observed (e.g., familial socioeconomic status) and unobserved. Secondly, the influence of disadvantaged neighborhood environments on PLEs was found to be heterogeneous. This individual variability is influenced not just by delay discounting, but also by a confluence of factors including genetic predisposition for cognitive intelligence, and brain morphometry and functioning (task activation). Causal machine learning models utilized in our study have identified a spectrum of conditions that either exacerbate vulnerability or contribute to resilience, accounting for the diverse effects of neighborhood environments on children's risk of developing psychosis.

Our findings hold implications for social science. Using causal machine learning models, such as IV Forest and Double ML, we provide consistent and clear results that residential adversity during childhood leads to steeper discounting of future rewards. This finding challenges the longstanding economic theory that an individual's rate of discounting future rewards (time preference) is an exogenous parameter of intertemporal choice, established a

priori, and impervious to external influences<sup>32</sup>. Since the introduction of the discounted utility model<sup>72</sup> by Paul Samuelson in 1937, there has been limited exploration into whether environmental factors affect the development of an individual's parameter<sup>32,73</sup>. Although recent studies have hinted at the impact of socioeconomic status<sup>33,74-77</sup> and cultural norms<sup>73,78</sup> on one's intertemporal decision making, however, the causal mechanisms have remained elusive. Our study builds on these inquiries, offering concrete evidence that the development of an individual's time preference is subject to environmental influences, and thereby opening new avenues for understanding the dynamics of intertemporal decision-making.

We address this knowledge gap by identifying the potential causal influence of neighborhood environment on intertemporal choice, leveraging longitudinal observations of preadolescent children aged 9-12 years, a critical period for neurocognitive development. Given that an individual's intertemporal valuation of rewards contributes to economic and health disparities between individuals<sup>30,34,52</sup>, early socioeconomic deprivation may result in a behavioral poverty trap<sup>33</sup>. In such scenarios, individuals raised in impoverished environments are prone to shortsighted behavior, exacerbating the challenge of escaping poverty. A plausible mechanism for this phenomenon is the effects of glucocorticoid on brain's reward system. Prior studies indicate that adverse social environments induce chronic stress to children, elevating glucocorticoid hormones like cortisol<sup>79-83</sup>. In particular, neighborhood socioeconomic deprivation has a more pronounced association with cortisol increases in children compared to any other social environmental factors<sup>84</sup>. Long-term chronic stress from growing up in disadvantaged neighborhoods could result in epigenetic modifications affecting the mesocorticolimbic dopaminergic system, thereby altering the reward system<sup>82,83</sup>. This alteration may lead to a heightened preference for immediate rewards and impulsive

behaviors, such as unhealthy eating and substance abuse<sup>81-83,85-89</sup>, further entrenching the cycle of socioeconomic disadvantage.

Our second findings extend this understanding by linking the heterogeneous effects of ADI on children's PLEs with the intricate relationship between childhood social adversity and the reward system. Our findings suggest that these differential effects of neighborhood socioeconomic adversity are modulated by genetic predispositions and neurodevelopmental traits associated with delay discounting. Children who experience residential deprivation and are at a higher psychotic risk demonstrate several distinct characteristics, including lower BMI, younger parental age, and altered brain structures and functions associated with delay discounting. Notably, these children showed reduced volume or white matter in specific brain regions (right temporal pole, right parahippocampal gyrus, right caudate nucleus, right isthmus cingulate), along with a smaller intracranial and total grey matter volume. Functionally, these children showed greater activation during MID tasks in regions including the right posterior cingulate, right ventral diencephalon, right insula, left precentral gyrus, left thalamus proper, and left superior temporal. This is particularly pronounced in children with a greater propensity for hallucinatory symptoms, who also show increased activity in the left supramarginal gyrus.

It appears that variations in structural and functional aspects of the limbic system (the posterior cingulate, ventral diencephalon, insula, temporal pole, parahippocampal gyrus, and isthmus cingulate) play a crucial role in how socioeconomic hardship affects PLEs. This individual variability may be linked to individual differences in the glucocorticoid and reward system. The interaction between our genes and neurons, in response to chronic stress from poor socioeconomic conditions, may determine the differing impacts of such adversity on

PLEs.

Although direct testing of this association within the ABCD Study samples was not feasible due to lack of relevant data, extensive animal and human corroborate our hypotheses. These studies suggest that maladaptive valuation of intertemporal rewards, namely the excessive discounting of future rewards, is linked to dysfunction of the prefrontal-limbic system, associated with psychopathologies such as psychosis in adolescents and adults<sup>34,35,38-41,90</sup>. Animal models have demonstrated that adverse social environments trigger chronic dysregulation of glucocorticoid signaling in the hypothalamic-pituitary-adrenal axis and the dopaminergic mesocortical circuit<sup>83</sup>, through epigenetic control<sup>82,83</sup>. This dysregulation disrupts the adolescent reward circuit. In humans, childhood exposure to social adversity leads to changes in the hypothalamic-pituitary-adrenal axis and contributes to psychosis through abnormal neurodevelopment of the limbic regions, the temporal pole, cingulate cortices, parahippocampal gyrus, and caudate nucleus<sup>91-94</sup>. Young adults with a history of childhood social deprivation often show impaired reward processing, particularly in the cingulate and mesostriatal dopaminergic system<sup>25,94-96</sup>.

The age of our study's participants, 9-12 years old, is a critical period for development of the prefrontal-limbic system<sup>94,97,98</sup>. Children with psychotic disorders often exhibit greater reductions in grey matter and lower synaptic density compared to their healthy peers<sup>99,100</sup>. These neurodevelopmental alterations are associated with increased neuronal excitation, reduced inhibitory neural activities, and the resultant impulsive behaviors<sup>101</sup>. In line with our findings, previous research has shown a correlation between higher psychotic risk and neuroanatomical alterations in the right temporal fusiform, right temporal pole, and right parahippocampal gyrus<sup>93</sup>, as well as greater neural activations in limbic regions such as the



insula and cingulate cortices during reward outcomes in MID task<sup>102</sup>. Overall, our findings on the heterogeneous effects of neighborhood deprivation contribute to the growing body of literature showing the role of glucocorticoid and reward systems in modulating the adverse effects of environmental deprivation on psychosis<sup>92,94,96,103,104</sup>.

In our study, we discovered that children, when exposed to deprived neighborhoods and already facing the challenges of residential disadvantage, were more likely to experience PLEs. Surprisingly, these children also showed a higher GPS for cognitive performance. At first glance, this finding seems to contradict prior research, which has consistently identified a negative relationship between PLEs and cognitive performance<sup>28,105</sup>.

To understand this complex relationship, we turned to the bioecological model and the Scarr-Rowe hypothesis on gene-environment interactions<sup>106-108</sup>. This theory proposes that the impact of genetic factors is lessened in unfavorable environments. An easy way to visualize this is by comparing it to plant growth: in poor soil, a plant can't get the nutrients it needs, which limits its growth despite its genetic potential to grow tall<sup>109</sup>. But, when these children face residential disadvantages, this protective gene-psychosis link weakens. Their genetic resilience decreases, making them more vulnerable to the negative impacts of such disadvantages on PLEs. Essentially, those with higher cognitive ability GPS lose more of their potential genetic protection, making them more susceptible to the adverse effects of their environment on PLEs.

Consistent with our findings, recent large-scale studies have demonstrated that the impact of genetics on brain structure, cognitive functions, and mental health disorders becomes less significant in harmful environments (e.g., abuse)<sup>110,111</sup>. Conversely, in more

supportive and enriched settings, like those associated with higher socioeconomic status, genetic influences are more noticeable (e.g., high socioeconomic status)<sup>107,112,113</sup>. Together with these findings, our study contributes to a deeper understanding of how genetic and environmental factors interact to influence the development of psychopathology in children.

In this study, we utilized innovative causal machine learning techniques to test the negative impacts of neighborhood deprivation on childhood psychopathology. Specifically, we employed the IV Forest method that allows us to discern how residential deprivation influences children's risk of psychosis in a manner dependent on a variety of genetic risk factors (e.g., GPS of cognitive performance, educational attainment, and IQ<sup>105,114,115</sup>) and environmental risk factors (e.g., family income<sup>3,116</sup>), as identified in existing literature. Our findings were adjusted to account for potential biases from both observed and unobserved variables.

The machine learning algorithm we used was adept at modelling the complex interplay gene-environment interactions. Among the three IV Forest models we tested (i.e., Delay Discounting, Gene-Brain, Integrated), only the Integrated model—which included delay discounting, sociodemographic characteristics, and genetic and neural correlates of delay discounting—identified the significant heterogeneous effects of ADI on children's PLEs. This suggests that the intricate interactions among environmental, genetic, neural factors, and delay discounting play a crucial role in how socioeconomic adversity impacts psychotic risk.

In contrast, traditional linear mediation analysis, which relies on predefined interaction terms in a deductive statistical framework, failed to identify any significant mediation effect of delay discounting between neighborhood deprivation and PLEs. This underscores the

effectiveness of our advanced causal machine learning approach over conventional methods in detecting the subtle effects of various interacting factors on childhood psychopathology.

The IV Forest model, unlike traditional methods, allows for data-driven feature selection and stratification of heterogeneous treatment effects<sup>57,58</sup>. It inductively identifies nonlinear and complex patterns of these effects, which are not predetermined by researchers, offering a more nuanced understanding of the data. Prior studies relying on the deductive approach often suffer from low statistical power and bias<sup>59,117</sup>, inadequately reflecting the complexity of gene-environment interactions<sup>55,56</sup>. Consequently, we believe that causal modeling approaches that assess heterogeneous treatment effects hold significant potential as powerful tools for advancing precision science in psychology and medicine. These approaches provide a more dynamic and accurate framework for understanding the multifaceted influences on psychopathology, demonstrating significant promise for future research in these fields.

Several limitations of this study warrant consideration. Firstly, interpretations of our findings as true causality should be approached with caution. Our research is based on the ABCD Study, a non-randomized, observational study, making it prudent to be cautious in interpreting these findings as definitively causal. Secondly, since the majority of participants identified their race/ethnicity as white (63.76%, similar to the US population), the generalizability of our findings to other minor race/ethnicity might remain to be tested. Nonetheless, recent research suggests that temporal discounting measures are consistent across diverse populations worldwide (61 countries, n=13,629)<sup>78</sup>, which may mitigate concerns regarding the representativeness of our findings. Thirdly, the short follow-up periods in our study (1-year and 2-year follow-up) may not adequately capture the long-term neurodevelopmental processes underlying intertemporal valuation and related

psychopathology. As the ABCD Study continues to collect more longitudinal observations, longer follow-up periods in future studies could yield deeper insights. Fourthly, despite efforts to ensure representativeness by recruiting from diverse school systems across 21 research sites in the United States, our sample does not fully mirror the entire US population<sup>118</sup>. To address this, we provide a supplementary table (**Supplementary Table 1**) comparing the demographic characteristics of our final sample with the general United States population enhancing the relevance and generalizability of our results. Lastly, future research should examine the heterogeneous effects of additional environmental risk factors, such as parenting behavior<sup>28</sup> and early life stress<sup>111</sup>, to provide a more comprehensive understanding of the environmental influences on psychopathology.

This study highlights the differential effects of neighborhood disadvantage on intertemporal economic decisions and psychotic risk during early childhood. It underscores the importance of identifying diverse treatment effects by integrating genetic and environmental factors to guide personalized healthcare approaches. Furthermore, we propose that enhancing the childhood environment could contribute to the reduction of economic and health inequality gaps. Economic policies promoting positive intertemporal choice (e.g., increased savings, healthy diet) have predominantly focused on paternalistic welfare policies in adulthood. These policies often assume that an individual's tendency to discount future rewards is fixed ("exogenous")<sup>32</sup>. However, our findings suggest that policies or interventions aimed at enhancing the socioeconomic environment during childhood may foster improved intertemporal choice behavior, thereby reducing economic<sup>33</sup> and health inequality<sup>23,119</sup>. By addressing the root of the problem, this indirect approach may assist individuals in developing the capacity to make more informed choices, ultimately promoting better

outcomes.

The insights gleaned from our novel analytical methods revive longstanding philosophical inquiries: do humans possess reason or free will independent of their environment? If our ability to act responsibly is indeed shaped by external circumstances, this challenges the traditional rationale for penalizing criminal and morally objectionable behavior based on the assumption of free will. This inquiry underscores the need for further interdisciplinary research, bridging insights from psychology, sociology, neuroscience, ethics, and law, to explore the nuanced relationship between individual agency and environmental influences. Such research is crucial for understanding how external factors impact decision-making and behavior, thereby informing more nuanced approaches to ethical and legal accountability. It invites a reevaluation of responsibility and justice, suggesting that effective interventions and policies must consider the complex interplay of individual predispositions and environmental conditions in shaping behavior.

## **Methods**

### **Study Participants**

The ABCD Study recruited participants from 21 research sites across the nation, utilizing a stratified, probability sampling method to capture the sociodemographic variation of the US population<sup>120</sup>. We used the baseline, first year, and second year follow-up datasets included in ABCD Release 4.0, downloaded on February 10, 2022.

Of the initial 11,876 ABCD samples, we removed participants without genotype data, MRI data, NIH Toolbox Cognitive Battery, delay discounting, residential address, ADI, PLEs. As recommended by the ABCD team<sup>121</sup>, Johnson & Bickel's two-part validity criterion<sup>122</sup> was used to exclude subjects with inconsistent responses (i.e., indifferent point for a given delay larger than that of an indifference point for a longer delay). Missing values of covariates were imputed using k-nearest neighbors. The final samples included 2,135 multiethnic children.

## **Data**

### **Neighborhood Disadvantage**

Neighborhood disadvantage was measured with Residential History Derived Scores based on the Census tracts of each respondent's primary addresses by the ABCD team. Consistent with prior research<sup>3,42</sup>, we chose national percentile scores of the Area Deprivation Index, calculated from the 2011~2015 American Community Survey 5-year summary. It has 17 sub-scores regarding various socioeconomic factors such as median household income,

income disparity, percentage of population aged more than 25 years or more with at least a high school diploma, and percentage of single-parent households with children aged less than 18 years, etc. Higher values of the Area Deprivation Index and poverty and fewer years of residence indicate greater residential disadvantage.

### **Delay Discounting**

Delay discounting was measured by the adjusting delay discounting task in the 1-year follow-up ABCD data<sup>121,123</sup>. Each child was asked to make choices between a small immediate hypothetical reward or a larger hypothetical \$100 delayed reward at multiple future time points (6h, one day, one week, one month, three months, one year, and five years). By increasing or decreasing the smaller immediate reward depending on the child's response, the task records the indifference point (i.e., the small immediate amount deemed to have the same subjective value as the \$100 delayed reward) at each of the seven delay intervals. Test-retest reliability of this delay discounting measure has been validated<sup>124,125</sup>. Studies show that preadolescent children are capable of comprehending the delay discounting task and show similar patterns of discounting as adults<sup>126</sup>.

To avoid methodological problems regarding mathematical discounting models (hyperbolic vs. exponential) and positively skewed parameters of discounting functions<sup>125,127</sup>, we used the area under the curve, a model-free measure of delay discounting<sup>127</sup>. The area under the curve measure of delay discounting rates (henceforth *discount rates*) ranges from 0 to 1, with lower values indicating steeper discounting and higher impulsivity.

## Psychotic-Like Experiences

First and second-year follow-up observations of psychotic-like experiences (PLEs) were measured using the Prodromal Questionnaire-Brief Child Version (PQ-BC; child-reported). PQ-BC has a 21-item scale validated for use with a non-clinical population of children aged 9-10 years<sup>128,129</sup>. In line with the previous research<sup>3,114,128,129</sup>, we computed *Total Score* and *Distress Score*, each indicating the number of psychotic-like symptoms and levels of total distress. Total Score is the summary score of 21 questions ranging from 0 to 21, and Distress Score is the weighted sum of responses with the levels of distress, ranging from 0 to 126. Additionally, to test whether the heterogeneous treatment effects of neighborhood adversity differ among psychotic symptoms, Distress Score was divided into two separate scores: *Delusional Score* and *Hallucinational Score*<sup>2,130</sup>. A higher value indicates greater severity of PLEs.

## Genome-wide Polygenic Scores

Children's genetic predispositions were assessed with genome-wide polygenic scores (GPS). Summary statistics from genome-wide association studies were used to generate GPS of cognitive intelligence (cognitive performance<sup>131</sup>, education attainment<sup>131</sup>, IQ<sup>132</sup>), psychiatric disorders (major depressive disorder<sup>133</sup>, post-traumatic stress disorder<sup>134</sup>, attention-deficit/hyperactivity disorder<sup>135</sup>, obsessive-compulsive disorder<sup>136</sup>, anxiety<sup>137</sup>, depression<sup>138</sup>, bipolar disorder<sup>139</sup>, autism spectrum disorder<sup>140</sup>, schizophrenia<sup>141</sup>, cross disorder<sup>142</sup>), and health and behavioral traits (BMI<sup>143</sup>, neuroticism<sup>144</sup>, worrying<sup>144</sup>, risk tolerance<sup>145</sup>, automobile speeding propensity<sup>145</sup>, eating disorder<sup>146</sup>, drinking<sup>145</sup>, smoking<sup>145</sup>,



cannabis use<sup>147</sup>, general happiness<sup>148</sup>, snoring<sup>149</sup>, insomnia<sup>149</sup>, alcohol dependence<sup>150</sup>). PRS-CSx, a high-dimensional Bayesian regression framework that places continuous shrinkage prior on single nucleotide polymorphisms effect sizes<sup>151</sup>, was applied to enhance cross-population prediction. This method has consistently shown superior performance compared to other methods across a wide range of genetic architectures in simulation and real data analyses<sup>151</sup>. Hyperparameter optimization for the GPSs was conducted using a held-out validation set of 1,579 unrelated participants. Adjustments for population stratification were performed based on the first ten ancestrally informative principal components to account for potential confounding effects.

### **Anatomical Brain Imaging: T1/T2, Freesurfer 6**

Baseline year T1-weighted (T1w) 3D structural MRI acquired in the ABCD study were processed following established protocols<sup>152,153</sup>: To maximize geometric accuracy and image intensity reproducibility, gradient nonlinearity distortion was corrected<sup>154</sup>. After correcting intensity nonuniformity using tissue segmentation and spatial smoothing, images were resampled to 1 mm isotropic voxels. We used Freesurfer v6.0 (<https://surfer.nmr.mgh.harvard.edu>) for the following procedures: cortical surface followed by skull-stripping<sup>155</sup>, white matter segmentation, and mesh creation<sup>156</sup>, correction of topological defects, surface optimization<sup>157</sup>, and nonlinear registration to a spherical surface-based atlas<sup>158,159</sup>. Using Desikan–Killiany atlas<sup>160</sup>, a standard atlas for Freesurfer and ABCD study, we extracted 399 brain ROI measures, including volumes, surface area, thickness, mean curvature, sulcal depth, and gyrification.

### **Functional MRI (fMRI): Monetary Incentive Delay (MID) task**

The MID task was used to measure the neural activation during anticipation and receipt of monetary gains and losses. In each trial, participants were shown a graphical cue of the 5 possible incentive types: large reward (\$5), small reward (\$0.20), large loss (-\$5), small loss (-\$0.20), or neutral (\$0). The incentive cue is presented for 2,000 ms, followed by a jittered anticipatory delay (1,500–4,000 ms). Subsequently, a target to which participants respond to gain or avoid losing money was shown (150–500 ms), and feedback of their performance was provided (2,000 ms). A total of 40 reward, 40 loss, and 20 neutral trials were presented in pseudo-random order across the two task runs. Task parameters were dynamically manipulated for each subject to maintain 60% success rate<sup>152</sup>. We used baseline year observations of average beta weights of the MID task fMRI with Desikan-Killiany parcellations<sup>160</sup>.

### **Covariates**

To adjust for the potential confounding effects, sociodemographic covariates were included. Consistent with existing research on psychiatric disorders in ABCD samples<sup>3,114,128,161</sup>, we controlled for the child's sex, age, race/ethnicity, caregiver's relationship to a child, BMI, parental education, marital status of the caregiver, household income, parent's age, and family history of psychiatric disorders. The family history of psychiatric disorders, measured as the proportion of first-degree relatives who experienced psychosis, depression, mania, suicidality, previous hospitalization, or professional help for mental health issues<sup>3</sup> was included as a covariate. Given that delay discounting and PLEs are

associated with an individual's neurocognitive capabilities<sup>162-164</sup>, NIH Toolbox total intelligence was used as a covariate. All covariates were from baseline year observations.

## **Statistical Analyses**

### **Instrumental Variable Regression**

The IV method controls unobserved confounding bias by identifying an instrumental variable  $Z$  which causally affects the independent variable of interest  $X$  but has no direct effect on the dependent variable  $Y$ <sup>60</sup>. Our instrument variable for ADI was a variable indicating whether the state in each subject resides at baseline year has legislation prohibiting discrimination by the source of income (SOI laws) in the housing market. According to a report by the US Department of Housing and Urban Development, landlords accept housing vouchers 20.2%~59.3% higher in local areas with SOI laws<sup>165</sup>. Research shows significant reductions in neighborhood poverty rates in locations with SOI laws<sup>166</sup>, and those who receive the benefits of housing vouchers in childhood show lower hospitalization rates, less impulsive consumption<sup>167</sup>, and substantially better mental health<sup>168</sup>. Taken together, we hypothesized that living in states with SOI laws would lead to more moderate discounting of future rewards and fewer PLEs, only through a positive influence on the neighborhood socioeconomic conditions of the subjects.

F-statistic above ten is considered a strong instruments<sup>169</sup>. The F-statistic for each model was  $F=34.031$  ( $p<0.0001$ ), suggesting that our IV model is not likely to suffer from weak instrument bias. Also, testing endogeneity of ADI (i.e., whether ADI as a treatment variable or predictor correlates with the error term), we found that the model was significantly biased

by unobserved confounding (all Hausman test<sup>170</sup> for differences,  $p \leq 0.0158$ ). This justifies the need for the IV regression approach to control for the significant confounding effects and to test the causal relationship of neighborhood disadvantage with delay discounting and psychopathology. All continuous variables were standardized (z-scaled), and analyses were run using *ivreg*<sup>171</sup> in R version 4.1.2. For all analyses, threshold for statistical significance was set at  $p < 0.05$ , with multiple comparison correction based on false discovery rate.

### **Causal Machine Learning for Treatment Effects**

IV Forest (*grf* R package version 2.2.1)<sup>57,58</sup> is a novel causal machine learning approach extends from the conventional random forest framework<sup>172</sup> with recursive partitioning, subsampling, and random splitting to identify the average treatment effects and its individual differences. We obtained augmented inverse propensity weighted estimates of average treatment effects, a doubly-robust estimator which can capture complex patterns of individual differences and do not rely on a priori model assumptions<sup>57</sup> such as linearity. This is particularly advantageous when the relationship between environmental variables and neurocognitive development is likely nonlinear<sup>7,173,174</sup>. To measure the average outcome between treated versus untreated subjects, ADI was binarized (i.e., mean split).

In line with prior studies<sup>67,68</sup>, we evaluated heterogeneous treatment effects by testing whether the average treatment effects are significantly different among subgroups defined by their relative resilience/vulnerability<sup>69</sup>. These subgroups were defined across a decile spectrum, with Q1 representing the most vulnerable and Q10 the most resilient. We considered a model to have significant heterogeneous treatment effects only if it satisfied all

three of the following criteria:

- (i) The monotonicity test evaluates the existence of at least one inequality in the average treatment effects across the deciles. This is achieved by whether to accept or reject the null hypothesis ( $\mathcal{H}_0$ ), which states that treatment effects are equal across all deciles. Essentially, the test determines whether there is a consistent, ordered relationship in the treatment effects from one decile to the next, indicating a monotonic trend.
- (ii) The alternative hypothesis test evaluates whether the average treatment effect in the highest decile exceeds the combined average treatment effects in the remaining deciles Q2 through Q10.
- (iii) The ANOVA test determines whether the average treatment effects are statistically different across deciles. In this context, the group mean in the ANOVA corresponds to the average treatment effect of each decile.

To ensure that the IV Forest estimations are robust across different random seeds, we developed 100-seed ensemble IV Forest model. Specifically, we used the following procedures:

- 1) For each iteration, randomly split the data in half (i.e., train vs test sets) to build a forest model with the first half and perform estimation with the other half. We repeated this process 100 times using different seeds in each iteration to build 100 forest models.
- 2) Combine the 100 forest models into one big IV Forest model and then rank the observations into deciles according to their estimated conditional average treatment

effects.

- 3) Obtain augmented inverse propensity weighted average treatment effects for each decile and perform monotonicity, alternative hypothesis, and ANOVA tests.

## Acknowledgements

This work was supported by the National Research Foundation of Korea (NRF) grant funded by the Korea government (MSIT) (No. 2021R1C1C1006503, 2021K1A3A1A2103751212, 2021M3E5D2A01022515, RS-2023-00266787, RS-2023-00265406), by Creative-Pioneering Researchers Program through Seoul National University (No. 200-20230058), by Semi-Supervised Learning Research Grant by SAMSUNG (No.A0426-20220118), by Identify the network of brain preparation steps for concentration Research Grant by LooxidLabs (No.339-20230001), and by Institute of Information & Communications Technology Planning & Evaluation (IITP) grant funded by the Korea government (MSIT) [NO.2021-0-01343, Artificial Intelligence Graduate School Program (Seoul National University)]

## References

- 1 Kant, I. *Critique of Practical Reason*. (Hackett Publishing, 2002).
- 2 Karcher, N. R., Niendam, T. A. & Barch, D. M. Adverse childhood experiences and psychotic-like experiences are associated above and beyond shared correlates: Findings from the adolescent brain cognitive development study. *Schizophrenia Research* **222**, 235-242 (2020). <https://doi.org/10.1016/j.schres.2020.05.045>
- 3 Karcher, N. R., Schiffman, J. & Barch, D. M. Environmental Risk Factors and Psychotic-like Experiences in Children Aged 9–10. *Journal of the American Academy of Child & Adolescent Psychiatry* **60**, 490-500 (2021). <https://doi.org/10.1016/j.jaac.2020.07.003>
- 4 Gur, R. E. *et al.* Burden of Environmental Adversity Associated With Psychopathology, Maturation, and Brain Behavior Parameters in Youths. *JAMA Psychiatry* **76**, 966 (2019). <https://doi.org/10.1001/jamapsychiatry.2019.0943>
- 5 Tomasi, D. & Volkow, N. D. Associations of family income with cognition and brain structure in USA children: prevention implications. *Molecular Psychiatry* (2021). <https://doi.org/10.1038/s41380-021-01130-0>
- 6 Vargas, T., Damme, K. S. F. & Mittal, V. A. Neighborhood deprivation, prefrontal morphology and neurocognition in late childhood to early adolescence. *NeuroImage* **220**, 117086 (2020). <https://doi.org/10.1016/j.neuroimage.2020.117086>
- 7 Hackman, D. A. *et al.* Association of Local Variation in Neighborhood Disadvantage in Metropolitan Areas With Youth Neurocognition and Brain Structure. *JAMA Pediatrics* **175**, e210426 (2021). <https://doi.org/10.1001/jamapediatrics.2021.0426>
- 8 Ye, J. *et al.* Socioeconomic Deprivation Index Is Associated With Psychiatric Disorders: An Observational and Genome-wide Gene-by-Environment Interaction Analysis in the UK Biobank Cohort. *Biol Psychiatry* **89**, 888-895 (2021). <https://doi.org/10.1016/j.biopsych.2020.11.019>
- 9 Bor, J., Cohen, G. H. & Galea, S. Population health in an era of rising income inequality: USA, 1980–2015. *The Lancet* **389**, 1475-1490 (2017). [https://doi.org/10.1016/s0140-6736\(17\)30571-8](https://doi.org/10.1016/s0140-6736(17)30571-8)
- 10 Dennis, E., Manza, P. & Volkow, N. D. Socioeconomic status, BMI, and brain development in children. *Transl Psychiatry* **12** (2022). <https://doi.org/10.1038/s41398-022-01779-3>
- 11 Leventhal, T. & Brooks-Gunn, J. The neighborhoods they live in: The effects of neighborhood residence on child and adolescent outcomes. *Psychological Bulletin* **126**, 309-337 (2000). <https://doi.org/10.1037/0033-2909.126.2.309>
- 12 Leventhal, T. & Brooks-Gunn, J. A Randomized Study of Neighborhood Effects on Low Income Children's Educational Outcomes. *Developmental Psychology* **40**, 488-507 (2004). <https://doi.org/10.1037/0012-1649.40.4.488>
- 13 Oreopoulos, P. The Long-Run Consequences of Living in a Poor Neighborhood\*. *The Quarterly Journal of Economics* **118**, 1533-1575 (2003). <https://doi.org/10.1162/003355303322552865>
- 14 Campbell, F. *et al.* Early Childhood Investments Substantially Boost Adult Health. *Science* **343**, 1478-1485 (2014). <https://doi.org/10.1126/science.1248429>
- 15 Heckman, J. J., Stixrud, J. & Urzua, S. The effects of cognitive and noncognitive abilities on labor market outcomes and social behavior. *Journal of Labor Economics* **24**, 411-482 (2006). <https://doi.org/10.1086/504455>
- 16 Knudsen, E. I., Heckman, J. J., Cameron, J. L. & Shonkoff, J. P. Economic, neurobiological, and behavioral perspectives on building America's future workforce. *Proceedings of the National Academy of Sciences* **103**, 10155-10162 (2006).
- 17 Chetty, R. & Hendren, N. The Impacts of Neighborhoods on Intergenerational Mobility I: Childhood Exposure Effects\*. *The Quarterly Journal of Economics* **133**, 1107-1162 (2018). <https://doi.org/10.1093/qje/qjv007>
- 18 Chetty, R., Hendren, N. & Katz, L. F. The Effects of Exposure to Better Neighborhoods on Children: New Evidence from the Moving to Opportunity Experiment. *Am Econ Rev* **106**, 855-902 (2016). <https://doi.org/10.1257/aer.20150572>
- 19 Fryer, R. G. & Katz, L. F. Achieving Escape Velocity: Neighborhood and School Interventions to

- 20 Reduce Persistent Inequality. *Am Econ Rev* **103**, 232-237 (2013). <https://doi.org/10.1257/aer.103.3.232>
- 21 Heckman, J. J. Skill Formation and the Economics of Investing in Disadvantaged Children. *Science* **312**, 1900-1902 (2006). <https://doi.org/10.1126/science.1128898>
- 22 Lowe, C. J., Morton, J. B. & Reichelt, A. C. Adolescent Obesity and Dietary Decision Making—a Brain-Health Perspective. *The Lancet Child & Adolescent Health* **4**, 388-396 (2020). [https://doi.org/10.1016/S2352-4642\(19\)30404-3](https://doi.org/10.1016/S2352-4642(19)30404-3)
- 23 Shonkoff, J. P. Leveraging the biology of adversity to address the roots of disparities in health and development. *Proceedings of the National Academy of Sciences* **109**, 17302-17307 (2012). <https://doi.org/10.1073/pnas.1121259109>
- 24 Shonkoff, J. P. Capitalizing on Advances in Science to Reduce the Health Consequences of Early Childhood Adversity. *JAMA Pediatrics* **170**, 1003 (2016). <https://doi.org/10.1001/jamapediatrics.2016.1559>
- 25 Zhang, H., Lee, Z. X., White, T. & Qiu, A. Parental and social factors in relation to child psychopathology, behavior, and cognitive function. *Transl Psychiatry* **10** (2020). <https://doi.org/10.1038/s41398-020-0761-6>
- 26 Pechtel, P. & Pizzagalli, D. A. Disrupted Reinforcement Learning and Maladaptive Behavior in Women With a History of Childhood Sexual Abuse. *JAMA Psychiatry* **70**, 499 (2013). <https://doi.org/10.1001/jamapsychiatry.2013.728>
- 27 Oshri, A. *et al.* Socioeconomic hardship and delayed reward discounting: Associations with working memory and emotional reactivity. *Developmental Cognitive Neuroscience* **37**, 100642 (2019). <https://doi.org/10.1016/j.dcn.2019.100642>
- 28 Kim-Spoon, J. *et al.* Longitudinal pathways linking family risk, neural risk processing, delay discounting, and adolescent substance use. *Journal of Child Psychology and Psychiatry* **60**, 655-664 (2019). <https://doi.org/10.1111/jcpp.13015>
- 29 Park, J. *et al.* Gene-Environment Pathways to Cognitive Intelligence and Psychotic-Like Experiences in Children. *eLife* (2023). <https://doi.org/10.7554/elife.88117.3>
- 30 Yaple, Z. A. & Yu, R. Functional and Structural Brain Correlates of Socioeconomic Status. *Cerebral Cortex* **30**, 181-196 (2020). <https://doi.org/10.1093/cercor/bhz080>
- 31 Epper, T. *et al.* Time Discounting and Wealth Inequality. *Am Econ Rev* **110**, 1177-1205 (2020). <https://doi.org/10.1257/aer.20181096>
- 32 Epper, T. *et al.* Preferences predict who commits crime among young men. *Proceedings of the National Academy of Sciences* **119**, e2112645119 (2022). <https://doi.org/10.1073/pnas.2112645119>
- 33 Ericson, K. M. & Laibson, D. in *Handbook of Behavioral Economics: Applications and Foundations I* Vol. 2 (eds B. Douglas Bernheim, Stefano DellaVigna, & David Laibson) Ch. Chapter 1, 1-67 (North-Holland, 2019).
- 34 Laajaj, R. Endogenous time horizon and behavioral poverty trap: Theory and evidence from Mozambique. *Journal of Development Economics* **127**, 187-208 (2017). <https://doi.org/10.1016/j.jdeveco.2017.01.006>
- 35 Maia, T. V. & Frank, M. J. From reinforcement learning models to psychiatric and neurological disorders. *Nature Neuroscience* **14**, 154-162 (2011). <https://doi.org/10.1038/nn.2723>
- 36 Juechems, K. & Summerfield, C. Where Does Value Come From? *Trends in Cognitive Sciences* **23**, 836-850 (2019). <https://doi.org/10.1016/j.tics.2019.07.012>
- 37 Ahn, W.-Y. *et al.* Temporal discounting of rewards in patients with bipolar disorder and schizophrenia. *Journal of Abnormal Psychology* **120**, 911-921 (2011). <https://doi.org/10.1037/a0023333>
- 38 Ermakova, A. O. *et al.* Abnormal reward prediction-error signalling in antipsychotic naive individuals with first-episode psychosis or clinical risk for psychosis. *Neuropsychopharmacology* **43**, 1691-1699 (2018). <https://doi.org/10.1038/s41386-018-0056-2>
- 39 Amlung, M. *et al.* Delay Discounting as a Transdiagnostic Process in Psychiatric Disorders. *JAMA Psychiatry* **76**, 1176 (2019). <https://doi.org/10.1001/jamapsychiatry.2019.2102>
- 40 Maia, T. V. & Frank, M. J. An Integrative Perspective on the Role of Dopamine in Schizophrenia. *Biol Psychiatry* **81**, 52-66 (2017). <https://doi.org/10.1016/j.biopsych.2016.05.021>
- 41 Millard, S. J., Bearden, C. E., Karlsgodt, K. H. & Sharpe, M. J. The prediction-error hypothesis of schizophrenia: new data point to circuit-specific changes in dopamine activity. *Neuropsychopharmacology* **47**, 628-640 (2022). <https://doi.org/10.1038/s41386-021-01188-y>
- Zald, D. H. & Treadway, M. T. Reward Processing, Neuroeconomics, and Psychopathology. *Annu Rev*



- 42 *Clin Psychol* **13**, 471-495 (2017). <https://doi.org/10.1146/annurev-clinpsy-032816-044957>
- Rakesh, D., Seguin, C., Zalesky, A., Cropley, V. & Whittle, S. Associations between neighborhood disadvantage, resting-state functional connectivity, and behavior in the Adolescent Brain Cognitive Development (ABCD) Study®: Moderating role of positive family and school environments. *Biological Psychiatry: Cognitive Neuroscience and Neuroimaging* (2021). <https://doi.org/10.1016/j.bpsc.2021.03.008>
- 43 Taylor, R. L., Cooper, S. R., Jackson, J. J. & Barch, D. M. Assessment of Neighborhood Poverty, Cognitive Function, and Prefrontal and Hippocampal Volumes in Children. *JAMA Network Open* **3**, e2023774 (2020). <https://doi.org/10.1001/jamanetworkopen.2020.23774>
- 44 van der Steen, Y. *et al.* 'False-positive' self-reported psychotic experiences in the general population: an investigation of outcome, predictive factors and clinical relevance. *Epidemiology and Psychiatric Sciences* **28**, 532-543 (2019). <https://doi.org/10.1017/s2045796018000197>
- 45 Van Os, J. & Reininghaus, U. Psychosis as a transdiagnostic and extended phenotype in the general population. *World Psychiatry* **15**, 118-124 (2016). <https://doi.org/10.1002/wps.20310>
- 46 Cannon, M. *et al.* Prevalence of psychotic symptoms in childhood and adolescence: a systematic review and meta-analysis of population-based studies. *Psychological Medicine* **42**, 1857-1863 (2012). <https://doi.org/10.1017/S0033291711002960>
- 47 Kelleher, I. & Cannon, M. Psychotic-like experiences in the general population: characterizing a high-risk group for psychosis. *Psychological Medicine* **41**, 1-6 (2011). <https://doi.org/10.1017/s0033291710001005>
- 48 Poulton, R. *et al.* Children's Self-Reported Psychotic Symptoms and Adult Schizophreniform Disorder. *Archives of General Psychiatry* **57**, 1053 (2000). <https://doi.org/10.1001/archpsyc.57.11.1053>
- 49 Derks, E. M., Thorp, J. G. & Gerring, Z. F. Ten challenges for clinical translation in psychiatric genetics. *Nature Genetics* **54**, 1457-1465 (2022). <https://doi.org/10.1038/s41588-022-01174-0>
- 50 Kapur, S., Phillips, A. G. & Insel, T. R. Why has it taken so long for biological psychiatry to develop clinical tests and what to do about it? *Molecular Psychiatry* **17**, 1174-1179 (2012). <https://doi.org/10.1038/mp.2012.105>
- 51 Lancaster, T. M. *et al.* Polygenic Risk of Psychosis and Ventral Striatal Activation During Reward Processing in Healthy Adolescents. *JAMA Psychiatry* **73**, 852-861 (2016). <https://doi.org/10.1001/jamapsychiatry.2016.1135>
- 52 Owens, M. M. *et al.* Functional and structural neuroimaging studies of delayed reward discounting in addiction: A systematic review. *Psychological Bulletin* **145**, 141-164 (2019). <https://doi.org/10.1037/bul0000181>
- 53 Hamburg, M. A. & Collins, F. S. The Path to Personalized Medicine. *New England Journal of Medicine* **363**, 301-304 (2010). <https://doi.org/10.1056/nejmp1006304>
- 54 Kent, D. M. *et al.* The Predictive Approaches to Treatment effect Heterogeneity (PATH) Statement. *Annals of Internal Medicine* **172**, 35-45 (2019). <https://doi.org/10.7326/M18-3667>
- 55 Border, R. *et al.* No Support for Historical Candidate Gene or Candidate Gene-by-Interaction Hypotheses for Major Depression Across Multiple Large Samples. *American Journal of Psychiatry* **176**, 376-387 (2019). <https://doi.org/10.1176/appi.ajp.2018.18070881>
- 56 Figlio, D. N., Freese, J., Karbownik, K. & Roth, J. Socioeconomic status and genetic influences on cognitive development. *Proceedings of the National Academy of Sciences* **114**, 13441-13446 (2017). <https://doi.org/10.1073/pnas.1708491114>
- 57 Athey, S., Tibshirani, J. & Wager, S. Generalized random forests. *The Annals of Statistics* **47**, 1148-1178 (2019). <https://doi.org/10.1214/18-AOS1709>
- 58 Wager, S. & Athey, S. Estimation and Inference of Heterogeneous Treatment Effects using Random Forests. *Journal of the American Statistical Association* **113**, 1228-1242 (2018). <https://doi.org/10.1080/01621459.2017.1319839>
- 59 Akimova, E. T., Breen, R., Brazel, D. M. & Mills, M. C. Gene-environment dependencies lead to collider bias in models with polygenic scores. *Scientific Reports* **11** (2021). <https://doi.org/10.1038/s41598-021-89020-x>
- 60 Angrist, J. D., Imbens, G. W. & Rubin, D. B. Identification of Causal Effects Using Instrumental Variables. *Journal of the American Statistical Association* **91**, 444-455 (1996). <https://doi.org/10.1080/01621459.1996.10476902>
- 61 Bach, P., Chernozhukov, V., Kurz, M. S. & Spindler, M. DoubleML-An Object-Oriented

- Implementation of Double Machine Learning in Python. *Journal of Machine Learning Research* **23**, 1-6 (2022).
- 62 Chernozhukov, V. *et al.* Double/debiased machine learning for treatment and structural parameters. *The Econometrics Journal* **21**, C1-C68 (2018). <https://doi.org/10.1111/ectj.12097>
- 63 Kursa, M. B. & Rudnicki, W. R. Feature Selection with the Boruta Package. *Journal of Statistical Software* **36**, 1 - 13 (2010). <https://doi.org/10.18637/jss.v036.i11>
- 64 Sveinbjornsson, G. *et al.* Multiomics study of nonalcoholic fatty liver disease. *Nature Genetics* **54**, 1652-1663 (2022). <https://doi.org/10.1038/s41588-022-01199-5>
- 65 Wang, Z., Zhou, X., Gui, Y., Liu, M. & Lu, H. Multiple measurement analysis of resting-state fMRI for ADHD classification in adolescent brain from the ABCD study. *Transl Psychiatry* **13**, 45 (2023). <https://doi.org/10.1038/s41398-023-02309-5>
- 66 Ball, G. *et al.* Machine-learning to characterise neonatal functional connectivity in the preterm brain. *NeuroImage* **124**, 267-275 (2016). <https://doi.org/10.1016/j.neuroimage.2015.08.055>
- 67 Goligher, E. C. *et al.* Heterogeneous Treatment Effects of Therapeutic-Dose Heparin in Patients Hospitalized for COVID-19. *JAMA* (2023). <https://doi.org/10.1001/jama.2023.3651>
- 68 Athey, S. & Wager, S. Estimating Treatment Effects with Causal Forests: An Application. *Observational Studies* **5**, 37-51 (2019). <https://doi.org/10.1353/obs.2019.0001>
- 69 Chernozhukov, V., Demirer, M., Duflo, E. & Fernández-Val, I. Generic Machine Learning Inference on Heterogeneous Treatment Effects in Randomized Experiments, with an Application to Immunization in India. *National Bureau of Economic Research Working Paper Series No. 24678* (2018). <https://doi.org/10.3386/w24678>
- 70 Lundberg, S. M. *et al.* From local explanations to global understanding with explainable AI for trees. *Nature Machine Intelligence* **2**, 56-67 (2020). <https://doi.org/10.1038/s42256-019-0138-9>
- 71 Tingley, D., Yamamoto, T., Hirose, K., Keele, L. & Imai, K. mediation: R package for causal mediation analysis. *Journal of Statistical Software* **59** (2014).
- 72 Samuelson, P. A. A Note on Measurement of Utility. *The Review of Economic Studies* **4**, 155-161 (1937). <https://doi.org/10.2307/2967612>
- 73 Becker, G. S. & Mulligan, C. B. The Endogenous Determination of Time Preference. *The Quarterly Journal of Economics* **112**, 729-758 (1997). <https://doi.org/10.1162/003355397555334>
- 74 Shah, A. K., Shafir, E. & Mullainathan, S. Scarcity Frames Value. *Psychol Sci* **26**, 402-412 (2015). <https://doi.org/10.1177/0956797614563958>
- 75 Haushofer, J. & Fehr, E. On the psychology of poverty. *Science* **344**, 862-867 (2014). <https://doi.org/10.1126/science.1232491>
- 76 Jachimowicz, J. M., Chafik, S., Munrat, S., Prabhu, J. C. & Weber, E. U. Community trust reduces myopic decisions of low-income individuals. *Proceedings of the National Academy of Sciences* **114**, 5401-5406 (2017). <https://doi.org/10.1073/pnas.1617395114>
- 77 Duflo, E. in *Understanding Poverty* Vol. 24 (eds Abhijit Banerjee, Roland Bénabou, & Dilip Mookherjee) 367-378 (Oxford University Press, 2006).
- 78 Ruggeri, K. *et al.* The globalizability of temporal discounting. *Nature Human Behaviour* (2022). <https://doi.org/10.1038/s41562-022-01392-w>
- 79 Johnson, L. E. *et al.* Patterns of poverty across adolescence predict salivary cortisol stress responses in Mexican-origin youths. *Psychoneuroendocrinology* **132**, 105340 (2021). <https://doi.org/10.1016/j.psyneuen.2021.105340>
- 80 Fernald, L. C. H. & Gunnar, M. R. Poverty-alleviation program participation and salivary cortisol in very low-income children. *Social Science & Medicine* **68**, 2180-2189 (2009). <https://doi.org/10.1016/j.socscimed.2009.03.032>
- 81 Anselme, P. & Güntürkün, O. How foraging works: Uncertainty magnifies food-seeking motivation. *Behavioral and Brain Sciences* **42**, e35 (2019). <https://doi.org/10.1017/S0140525X18000948>
- 82 Barik, J. *et al.* Chronic Stress Triggers Social Aversion via Glucocorticoid Receptor in Dopaminergic Neurons. *Science* **339**, 332-335 (2013). <https://doi.org/10.1126/science.1226767>
- 83 Niwa, M. *et al.* Adolescent Stress-Induced Epigenetic Control of Dopaminergic Neurons via Glucocorticoids. *Science* **339**, 335-339 (2013). <https://doi.org/10.1126/science.1226931>
- 84 Malanchini, M. *et al.* Weak and uneven associations of home, neighborhood, and school environments with stress hormone output across multiple timescales. *Molecular Psychiatry* **26**, 4823-4838 (2021). <https://doi.org/10.1038/s41380-020-0747-z>

- 85 Cabib, S. & Puglisi-Allegra, S. The mesoaccumbens dopamine in coping with stress. *Neuroscience & Biobehavioral Reviews* **36**, 79-89 (2012). <https://doi.org/10.1016/j.neubiorev.2011.04.012>
- 86 Oswald, L. M. *et al.* Relationships Among Ventral Striatal Dopamine Release, Cortisol Secretion, and Subjective Responses to Amphetamine. *Neuropsychopharmacology* **30**, 821-832 (2005). <https://doi.org/10.1038/sj.npp.1300667>
- 87 Douma, E. H. & de Kloet, E. R. Stress-induced plasticity and functioning of ventral tegmental dopamine neurons. *Neuroscience & Biobehavioral Reviews* **108**, 48-77 (2020). <https://doi.org/10.1016/j.neubiorev.2019.10.015>
- 88 Mizoguchi, A. *et al.* Glucocorticoid receptor signaling in ventral tegmental area neurons increases the rewarding value of a high-fat diet in mice. *Scientific Reports* **11**, 12873 (2021). <https://doi.org/10.1038/s41598-021-92386-7>
- 89 Barrot, M. *et al.* The dopaminergic hyper-responsiveness of the shell of the nucleus accumbens is hormone-dependent. *European Journal of Neuroscience* **12**, 973-979 (2000). <https://doi.org/10.1046/j.1460-9568.2000.00996.x>
- 90 Vosberg, D. E., Leyton, M. & Flores, C. The Netrin-1/DCC guidance system: dopamine pathway maturation and psychiatric disorders emerging in adolescence. *Molecular Psychiatry* **25**, 297-307 (2020). <https://doi.org/10.1038/s41380-019-0561-7>
- 91 DeRosse, P. & Barber, A. D. Overlapping Neurobiological Substrates for Early-Life Stress and Resilience to Psychosis. *Biological Psychiatry: Cognitive Neuroscience and Neuroimaging* **6**, 144-153 (2021). <https://doi.org/10.1016/j.bpsc.2020.09.003>
- 92 Howes, O. D., McCutcheon, R., Owen, M. J. & Murray, R. M. The Role of Genes, Stress, and Dopamine in the Development of Schizophrenia. *Biol Psychiatry* **81**, 9-20 (2017). <https://doi.org/10.1016/j.biopsych.2016.07.014>
- 93 Tognin, S. *et al.* Using Structural Neuroimaging to Make Quantitative Predictions of Symptom Progression in Individuals at Ultra-High Risk for Psychosis. *Frontiers in Psychiatry* **4** (2014). <https://doi.org/10.3389/fpsy.2013.00187>
- 94 Howes, O. D. & Shatalina, E. Integrating the Neurodevelopmental and Dopamine Hypotheses of Schizophrenia and the Role of Cortical Excitation-Inhibition Balance. *Biol Psychiatry* **92**, 501-513 (2022). <https://doi.org/10.1016/j.biopsych.2022.06.017>
- 95 Birn, R. M., Roeber, B. J. & Pollak, S. D. Early childhood stress exposure, reward pathways, and adult decision making. *Proceedings of the National Academy of Sciences* **114**, 13549-13554 (2017). <https://doi.org/10.1073/pnas.1708791114>
- 96 Murray, R. M., Bhavsar, V., Tripoli, G. & Howes, O. 30 Years on: How the Neurodevelopmental Hypothesis of Schizophrenia Morphed Into the Developmental Risk Factor Model of Psychosis. *Schizophrenia Bulletin* **43**, 1190-1196 (2017). <https://doi.org/10.1093/schbul/sbx121>
- 97 Shaw, P. *et al.* Neurodevelopmental Trajectories of the Human Cerebral Cortex. *The Journal of Neuroscience* **28**, 3586 (2008). <https://doi.org/10.1523/JNEUROSCI.5309-07.2008>
- 98 Reynolds, L. M. & Flores, C. Mesocorticolimbic Dopamine Pathways Across Adolescence: Diversity in Development. *Frontiers in Neural Circuits* **15** (2021). <https://doi.org/10.3389/fncir.2021.735625>
- 99 Cannon, T. D. *et al.* Progressive Reduction in Cortical Thickness as Psychosis Develops: A Multisite Longitudinal Neuroimaging Study of Youth at Elevated Clinical Risk. *Biol Psychiatry* **77**, 147-157 (2015). <https://doi.org/10.1016/j.biopsych.2014.05.023>
- 100 Douaud, G. *et al.* Schizophrenia delays and alters maturation of the brain in adolescence. *Brain* **132**, 2437-2448 (2009). <https://doi.org/10.1093/brain/awp126>
- 101 Hensch, T. K. & Fagiolini, M. in *Progress in Brain Research* Vol. 147 115-124 (Elsevier, 2005).
- 102 Zeng, J. *et al.* Neural substrates of reward anticipation and outcome in schizophrenia: a meta-analysis of fMRI findings in the monetary incentive delay task. *Transl Psychiatry* **12**, 448 (2022). <https://doi.org/10.1038/s41398-022-02201-8>
- 103 Howes, O. D. & Kapur, S. The Dopamine Hypothesis of Schizophrenia: Version III—The Final Common Pathway. *Schizophrenia Bulletin* **35**, 549-562 (2009). <https://doi.org/10.1093/schbul/sbp006>
- 104 Howes, O. D. & Murray, R. M. Schizophrenia: an integrated sociodevelopmental-cognitive model. *The Lancet* **383**, 1677-1687 (2014). [https://doi.org/10.1016/S0140-6736\(13\)62036-X](https://doi.org/10.1016/S0140-6736(13)62036-X)
- 105 Hubbard, L. *et al.* Evidence of Common Genetic Overlap Between Schizophrenia and Cognition. *Schizophrenia Bulletin* **42**, 832-842 (2016). <https://doi.org/10.1093/schbul/sbv168>

- 106 Bronfenbrenner, U. & Ceci, S. J. Nature-nuture reconceptualized in developmental perspective: A bioecological model. *Psychological Review* **101**, 568-586 (1994). <https://doi.org/10.1037/0033-295X.101.4.568>
- 107 Gottschling, J. *et al.* Socioeconomic status amplifies genetic effects in middle childhood in a large German twin sample. *Intelligence* **72**, 20-27 (2019). <https://doi.org/10.1016/j.intell.2018.11.006>
- 108 Turkheimer, E., Haley, A., Waldron, M., D'Onofrio, B. & Gottesman, I. I. Socioeconomic Status Modifies Heritability of IQ in Young Children. *Psychol Sci* **14**, 623-628 (2003). <https://doi.org/10.1046/j.0956-7976.2003.psci.1475.x>
- 109 Lewontin, R. *Human Diversity*. (Scientific American Library, 1995).
- 110 Taylor, M. J., Freeman, D., Lundström, S., Larsson, H. & Ronald, A. Heritability of Psychotic Experiences in Adolescents and Interaction With Environmental Risk. *JAMA Psychiatry* **79**, 889 (2022). <https://doi.org/10.1001/jamapsychiatry.2022.1947>
- 111 Wang, H.-H. *et al.* Early life stress modulates the genetic influence on brain structure and cognitive function in children. *Heliyon* **10**, e23345 (2024). <https://doi.org/10.1016/j.heliyon.2023.e23345>
- 112 South, S. C. & Krueger, R. F. Genetic and environmental influences on internalizing psychopathology vary as a function of economic status. *Psychological Medicine* **41**, 107-117 (2011). <https://doi.org/10.1017/s0033291710000279>
- 113 Bates, T. C., Lewis, G. J. & Weiss, A. Childhood Socioeconomic Status Amplifies Genetic Effects on Adult Intelligence. *Psychol Sci* **24**, 2111-2116 (2013). <https://doi.org/10.1177/0956797613488394>
- 114 Karcher, N. R. *et al.* Psychotic-like Experiences and Polygenic Liability in the Adolescent Brain Cognitive Development Study. *Biological Psychiatry: Cognitive Neuroscience and Neuroimaging* (2021). <https://doi.org/10.1016/j.bpsc.2021.06.012>
- 115 Sanchez-Roige, S. *et al.* Genome-wide association study of delay discounting in 23,217 adult research participants of European ancestry. *Nature Neuroscience* **21**, 16-18 (2018). <https://doi.org/10.1038/s41593-017-0032-x>
- 116 Newbury, J. *et al.* Cumulative Effects of Neighborhood Social Adversity and Personal Crime Victimization on Adolescent Psychotic Experiences. *Schizophrenia Bulletin* **44**, 348-358 (2018). <https://doi.org/10.1093/schbul/sbx060>
- 117 Kent, D. M., Steyerberg, E. & van Klaveren, D. Personalized evidence based medicine: predictive approaches to heterogeneous treatment effects. *BMJ* **363**, k4245 (2018). <https://doi.org/10.1136/bmj.k4245>
- 118 Compton, W. M., Dowling, G. J. & Garavan, H. Ensuring the Best Use of Data: The Adolescent Brain Cognitive Development Study. *JAMA Pediatrics* **173**, 809-810 (2019). <https://doi.org/10.1001/jamapediatrics.2019.2081>
- 119 Cunha, F. & Heckman, J. J. The Economics and Psychology of Inequality and Human Development. *Journal of the European Economic Association* **7**, 320-364 (2009). <https://doi.org/10.1162/jeea.2009.7.2-3.320>
- 120 Karcher, N. R. & Barch, D. M. The ABCD study: understanding the development of risk for mental and physical health outcomes. *Neuropsychopharmacology* **46**, 131-142 (2021). <https://doi.org/10.1038/s41386-020-0736-6>
- 121 Luciana, M. *et al.* Adolescent neurocognitive development and impacts of substance use: Overview of the adolescent brain cognitive development (ABCD) baseline neurocognition battery. *Developmental Cognitive Neuroscience* **32**, 67-79 (2018). <https://doi.org/10.1016/j.dcn.2018.02.006>
- 122 Johnson, M. W. & Bickel, W. K. An algorithm for identifying nonsystematic delay-discounting data. *Experimental and Clinical Psychopharmacology* **16**, 264-274 (2008). <https://doi.org/10.1037/1064-1297.16.3.264>
- 123 Koffarnus, M. N. & Bickel, W. K. A 5-trial adjusting delay discounting task: Accurate discount rates in less than one minute. *Experimental and Clinical Psychopharmacology* **22**, 222-228 (2014). <https://doi.org/10.1037/a0035973>
- 124 Matusiewicz, A. K., Carter, A. E., Landes, R. D. & Yi, R. Statistical equivalence and test-retest reliability of delay and probability discounting using real and hypothetical rewards. *Behavioural Processes* **100**, 116-122 (2013). <https://doi.org/10.1016/j.beproc.2013.07.019>
- 125 Owens, M. M. *et al.* One-year predictions of delayed reward discounting in the adolescent brain

- cognitive development study. *Experimental and Clinical Psychopharmacology* (2021). <https://doi.org/10.1037/pha0000532>
- 126 Burns, P. *et al.* Examining children's ability to delay reward: Is the delay discounting task a suitable measure? *Journal of Behavioral Decision Making* **33**, 208-219 (2020). <https://doi.org/10.1002/bdm.2154>
- 127 Myerson, J., Green, L. & Warusawitharana, M. AREA UNDER THE CURVE AS A MEASURE OF DISCOUNTING. *Journal of the Experimental Analysis of Behavior* **76**, 235-243 (2001). <https://doi.org/10.1901/jeab.2001.76-235>
- 128 Karcher, N. R. *et al.* Assessment of the Prodromal Questionnaire–Brief Child Version for Measurement of Self-reported Psychotic-like Experiences in Childhood. *JAMA Psychiatry* **75**, 853 (2018). <https://doi.org/10.1001/jamapsychiatry.2018.1334>
- 129 Karcher, N. R., Perino, M. T. & Barch, D. M. An item response theory analysis of the Prodromal Questionnaire–Brief Child Version: Developing a screening form that informs understanding of self-reported psychotic-like experiences in childhood. *Journal of Abnormal Psychology* **129**, 293-304 (2020). <https://doi.org/10.1037/abn0000502>
- 130 Karcher, N. R., O'Brien, K. J., Kandala, S. & Barch, D. M. Resting-State Functional Connectivity and Psychotic-like Experiences in Childhood: Results From the Adolescent Brain Cognitive Development Study. *Biol Psychiatry* **86**, 7-15 (2019). <https://doi.org/10.1016/j.biopsych.2019.01.013>
- 131 Lee, J. J. *et al.* Gene discovery and polygenic prediction from a genome-wide association study of educational attainment in 1.1 million individuals. *Nature Genetics* **50**, 1112-1121 (2018). <https://doi.org/10.1038/s41588-018-0147-3>
- 132 Savage, J. E. *et al.* Genome-wide association meta-analysis in 269,867 individuals identifies new genetic and functional links to intelligence. *Nature Genetics* **50**, 912-919 (2018). <https://doi.org/10.1038/s41588-018-0152-6>
- 133 Wray, N. R. *et al.* Genome-wide association analyses identify 44 risk variants and refine the genetic architecture of major depression. *Nature Genetics* **50**, 668-681 (2018). <https://doi.org/10.1038/s41588-018-0090-3>
- 134 Nievergelt, C. M. *et al.* International meta-analysis of PTSD genome-wide association studies identifies sex- and ancestry-specific genetic risk loci. *Nature Communications* **10**, 4558 (2019). <https://doi.org/10.1038/s41467-019-12576-w>
- 135 Demontis, D. *et al.* Discovery of the first genome-wide significant risk loci for attention deficit/hyperactivity disorder. *Nature Genetics* **51**, 63-75 (2019). <https://doi.org/10.1038/s41588-018-0269-7>
- 136 Arnold, P. D. *et al.* Revealing the complex genetic architecture of obsessive–compulsive disorder using meta-analysis. *Molecular Psychiatry* **23**, 1181-1188 (2018). <https://doi.org/10.1038/mp.2017.154>
- 137 Otowa, T. *et al.* Meta-analysis of genome-wide association studies of anxiety disorders. *Molecular Psychiatry* **21**, 1391-1399 (2016). <https://doi.org/10.1038/mp.2015.197>
- 138 Howard, D. M. *et al.* Genome-wide meta-analysis of depression identifies 102 independent variants and highlights the importance of the prefrontal brain regions. *Nature Neuroscience* **22**, 343-352 (2019). <https://doi.org/10.1038/s41593-018-0326-7>
- 139 Stahl, E. A. *et al.* Genome-wide association study identifies 30 loci associated with bipolar disorder. *Nature Genetics* **51**, 793-803 (2019). <https://doi.org/10.1038/s41588-019-0397-8>
- 140 Grove, J. *et al.* Identification of common genetic risk variants for autism spectrum disorder. *Nature Genetics* **51**, 431-444 (2019). <https://doi.org/10.1038/s41588-019-0344-8>
- 141 Ruderfer, D. M. *et al.* Genomic Dissection of Bipolar Disorder and Schizophrenia, Including 28 Subphenotypes. *Cell* **173**, 1705-1715.e1716 (2018). <https://doi.org/10.1016/j.cell.2018.05.046>
- 142 Cross-Disorder Group of the Psychiatric Genomics Consortium. Identification of risk loci with shared effects on five major psychiatric disorders: a genome-wide analysis. *The Lancet* **381**, 1371-1379 (2013). [https://doi.org/10.1016/s0140-6736\(12\)62129-1](https://doi.org/10.1016/s0140-6736(12)62129-1)
- 143 Locke, A. E. *et al.* Genetic studies of body mass index yield new insights for obesity biology. *Nature* **518**, 197-206 (2015). <https://doi.org/10.1038/nature14177>
- 144 Nagel, M. *et al.* Meta-analysis of genome-wide association studies for neuroticism in 449,484 individuals identifies novel genetic loci and pathways. *Nature Genetics* **50**, 920-927 (2018). <https://doi.org/10.1038/s41588-018-0151-7>

- 145 Karlsson Linnér, R. *et al.* Genome-wide association analyses of risk tolerance and risky behaviors in over 1 million individuals identify hundreds of loci and shared genetic influences. *Nature Genetics* **51**, 245-257 (2019). <https://doi.org/10.1038/s41588-018-0309-3>
- 146 Watson, H. J. *et al.* Genome-wide association study identifies eight risk loci and implicates metabolic-psychiatric origins for anorexia nervosa. *Nature Genetics* **51**, 1207-1214 (2019). <https://doi.org/10.1038/s41588-019-0439-2>
- 147 Pasman, J. A. *et al.* GWAS of lifetime cannabis use reveals new risk loci, genetic overlap with psychiatric traits, and a causal effect of schizophrenia liability. *Nature Neuroscience* **21**, 1161-1170 (2018). <https://doi.org/10.1038/s41593-018-0206-1>
- 148 Okbay, A. *et al.* Genetic variants associated with subjective well-being, depressive symptoms, and neuroticism identified through genome-wide analyses. *Nature Genetics* **48**, 624-633 (2016). <https://doi.org/10.1038/ng.3552>
- 149 Jansen, P. R. *et al.* Genome-wide analysis of insomnia in 1,331,010 individuals identifies new risk loci and functional pathways. *Nature Genetics* **51**, 394-403 (2019). <https://doi.org/10.1038/s41588-018-0333-3>
- 150 Walters, R. K. *et al.* Transancestral GWAS of alcohol dependence reveals common genetic underpinnings with psychiatric disorders. *Nature Neuroscience* **21**, 1656-1669 (2018). <https://doi.org/10.1038/s41593-018-0275-1>
- 151 Ge, T., Chen, C.-Y., Ni, Y., Feng, Y.-C. A. & Smoller, J. W. Polygenic prediction via Bayesian regression and continuous shrinkage priors. *Nature Communications* **10** (2019). <https://doi.org/10.1038/s41467-019-09718-5>
- 152 Casey, B. J. *et al.* The Adolescent Brain Cognitive Development (ABCD) study: Imaging acquisition across 21 sites. *Developmental Cognitive Neuroscience* **32**, 43-54 (2018). [https://doi.org:https://doi.org/10.1016/j.dcn.2018.03.001](https://doi.org/https://doi.org/10.1016/j.dcn.2018.03.001)
- 153 Garavan, H. *et al.* Recruiting the ABCD sample: Design considerations and procedures. *Developmental Cognitive Neuroscience* **32**, 16-22 (2018). <https://doi.org:https://doi.org/10.1016/j.dcn.2018.04.004>
- 154 Jovicich, J. *et al.* Reliability in multi-site structural MRI studies: Effects of gradient non-linearity correction on phantom and human data. *NeuroImage* **30**, 436-443 (2006). <https://doi.org:https://doi.org/10.1016/j.neuroimage.2005.09.046>
- 155 Ségonne, F. *et al.* A hybrid approach to the skull stripping problem in MRI. *NeuroImage* **22**, 1060-1075 (2004). <https://doi.org:https://doi.org/10.1016/j.neuroimage.2004.03.032>
- 156 Dale, A. M., Fischl, B. & Sereno, M. I. Cortical Surface-Based Analysis: I. Segmentation and Surface Reconstruction. *NeuroImage* **9**, 179-194 (1999). <https://doi.org:https://doi.org/10.1006/nimg.1998.0395>
- 157 Fischl, B., Liu, A. & Dale, A. M. Automated manifold surgery: constructing geometrically accurate and topologically correct models of the human cerebral cortex. *IEEE Transactions on Medical Imaging* **20**, 70-80 (2001). <https://doi.org/10.1109/42.906426>
- 158 Fischl, B., Sereno, M. I., Tootell, R. B. H. & Dale, A. M. High-resolution intersubject averaging and a coordinate system for the cortical surface. *Human Brain Mapping* **8**, 272-284 (1999). [https://doi.org:https://doi.org/10.1002/\(SICI\)1097-0193\(1999\)8:4<272::AID-HBM10>3.0.CO;2-4](https://doi.org:https://doi.org/10.1002/(SICI)1097-0193(1999)8:4<272::AID-HBM10>3.0.CO;2-4)
- 159 Ségonne, F., Pacheco, J. & Fischl, B. Geometrically Accurate Topology-Correction of Cortical Surfaces Using Nonseparating Loops. *IEEE Transactions on Medical Imaging* **26**, 518-529 (2007). <https://doi.org/10.1109/TMI.2006.887364>
- 160 Desikan, R. S. *et al.* An automated labeling system for subdividing the human cerebral cortex on MRI scans into gyral based regions of interest. *NeuroImage* **31**, 968-980 (2006). <https://doi.org:https://doi.org/10.1016/j.neuroimage.2006.01.021>
- 161 van Dijk, M. T., Murphy, E., Posner, J. E., Talati, A. & Weissman, M. M. Association of Multigenerational Family History of Depression With Lifetime Depressive and Other Psychiatric Disorders in Children. *JAMA Psychiatry* (2021). <https://doi.org/10.1001/jamapsychiatry.2021.0350>
- 162 Anokhin, A. P., Grant, J. D., Mulligan, R. C. & Heath, A. C. The Genetics of Impulsivity: Evidence for the Heritability of Delay Discounting. *Biol Psychiatry* **77**, 887-894 (2015). <https://doi.org/10.1016/j.biopsych.2014.10.022>
- 163 Shamosh, N. A. & Gray, J. R. Delay discounting and intelligence: A meta-analysis. *Intelligence* **36**, 289-305 (2008). <https://doi.org/https://doi.org/10.1016/j.intell.2007.09.004>
- 164 Keidel, K., Rramani, Q., Weber, B., Murawski, C. & Ettinger, U. Individual Differences in Intertemporal Choice. *Frontiers in Psychology* **12** (2021). <https://doi.org/10.3389/fpsyg.2021.643670>

- 165 Cunningham, M. *et al.* A Pilot Study of Landlord Acceptance of Housing Choice Vouchers. (US Department of Housing and Urban Development, Office of Policy Development and Research, Washington, DC, 2018).
- 166 Freeman, L. & Li, Y. Do Source of Income Anti-discrimination Laws Facilitate Access to Less Disadvantaged Neighborhoods? *Housing Studies* **29**, 88-107 (2014). [https://doi.org:10.1080/02673037.2013.824559](https://doi.org/10.1080/02673037.2013.824559)
- 167 Pollack, C. E. *et al.* Association of Receipt of a Housing Voucher With Subsequent Hospital Utilization and Spending. *JAMA* **322**, 2115-2124 (2019). [https://doi.org:10.1001/jama.2019.17432](https://doi.org/10.1001/jama.2019.17432)
- 168 Kling, J. R., Liebman, J. B. & Katz, L. F. Experimental Analysis of Neighborhood Effects. *Econometrica* **75**, 83-119 (2007). [https://doi.org:10.1111/j.1468-0262.2007.00733.x](https://doi.org/10.1111/j.1468-0262.2007.00733.x)
- 169 Staiger, D. & Stock, J. H. Instrumental Variables Regression with Weak Instruments. *Econometrica* **65**, 557 (1997). [https://doi.org:10.2307/2171753](https://doi.org/10.2307/2171753)
- 170 Hausman, J. A. Specification Tests in Econometrics. *Econometrica* **46**, 1251 (1978). [https://doi.org:10.2307/1913827](https://doi.org/10.2307/1913827)
- 171 ivreg: Instrumental-Variables Regression by '2SLS', '2SM', or '2SMM', with Diagnostics v. 0.6-1 (2021).
- 172 Breiman, L. Random Forests. *Machine Learning* **45**, 5-32 (2001). [https://doi.org:10.1023/a:1010933404324](https://doi.org/10.1023/a:1010933404324)
- 173 Berman, M. G., Stier, A. J. & Akcelik, G. N. Environmental neuroscience. *Am Psychol* **74**, 1039-1052 (2019). [https://doi.org:10.1037/amp0000583](https://doi.org/10.1037/amp0000583)
- 174 Tooley, U. A., Bassett, D. S. & Mackey, A. P. Environmental influences on the pace of brain development. *Nature Reviews Neuroscience* **22**, 372-384 (2021). [https://doi.org:10.1038/s41583-021-00457-5](https://doi.org/10.1038/s41583-021-00457-5)

## Tables and Figures

**Table 1. Socioeconomic/demographic characteristics of the participants.** *Age* is rounded to chronological month. *Race/Ethnicity* denote child's self-reported racial / ethnic identity. *Household Income* is assessed as the total combined family income for the past 12 months. *Parental Education* is measured as the highest grade or level of school completed or highest degree received. *Family History of Psychiatric Disorders* represents the proportion of first-degree relatives who experienced mental illness.

Demographic Characteristics		N	Ratio (%)	Mean (SD)
Age		2,135		120.1541 (7.4658)
Sex	Male	1,517	53.86%	
	Female	985	46.14%	
Marital Status of the first caregiver	Married	1,636	76.63%	
	Widowed	12	0.56%	
	Divorced	193	9.04%	
	Separated	62	2.9%	
	Never Married	142	6.65%	
	Living with Partner	90	4.22%	
Race/Ethnicity	White	1,400	65.57%	
	Black	136	6.37%	
	Hispanic	373	17.47%	



	Asian	7	0.33%	
	Other	219	10.26%	
<b>Parent's Identity</b>	Biological Mother	1,848	86.56%	
	Biological Father	215	10.07%	
	Adoptive Parent	39	1.83%	
	Custodial Parent	12	0.56%	
	Other	21	0.98%	
<b>Household Income</b>		2,135		\$70,245 (1.937)
<b>Parental Education</b>		2,135		17.2838 (2.3046)
<b>BMI</b>		2,135		18.4298 (3.8572)
<b>Parental Age</b>		2,135		40.8775 (6.3825)
<b>Family History of Psychiatric Disorders</b>		2,135		0.0958 (0.1125)

**Table 2. Causal effects of neighborhood socioeconomic adversity on intertemporal valuation and psychotic risk.** Average treatment effects of ADI on delay discounting and PLEs in the IV Forest models are shown. All p-values were corrected for multiple comparison using false discovery rate.

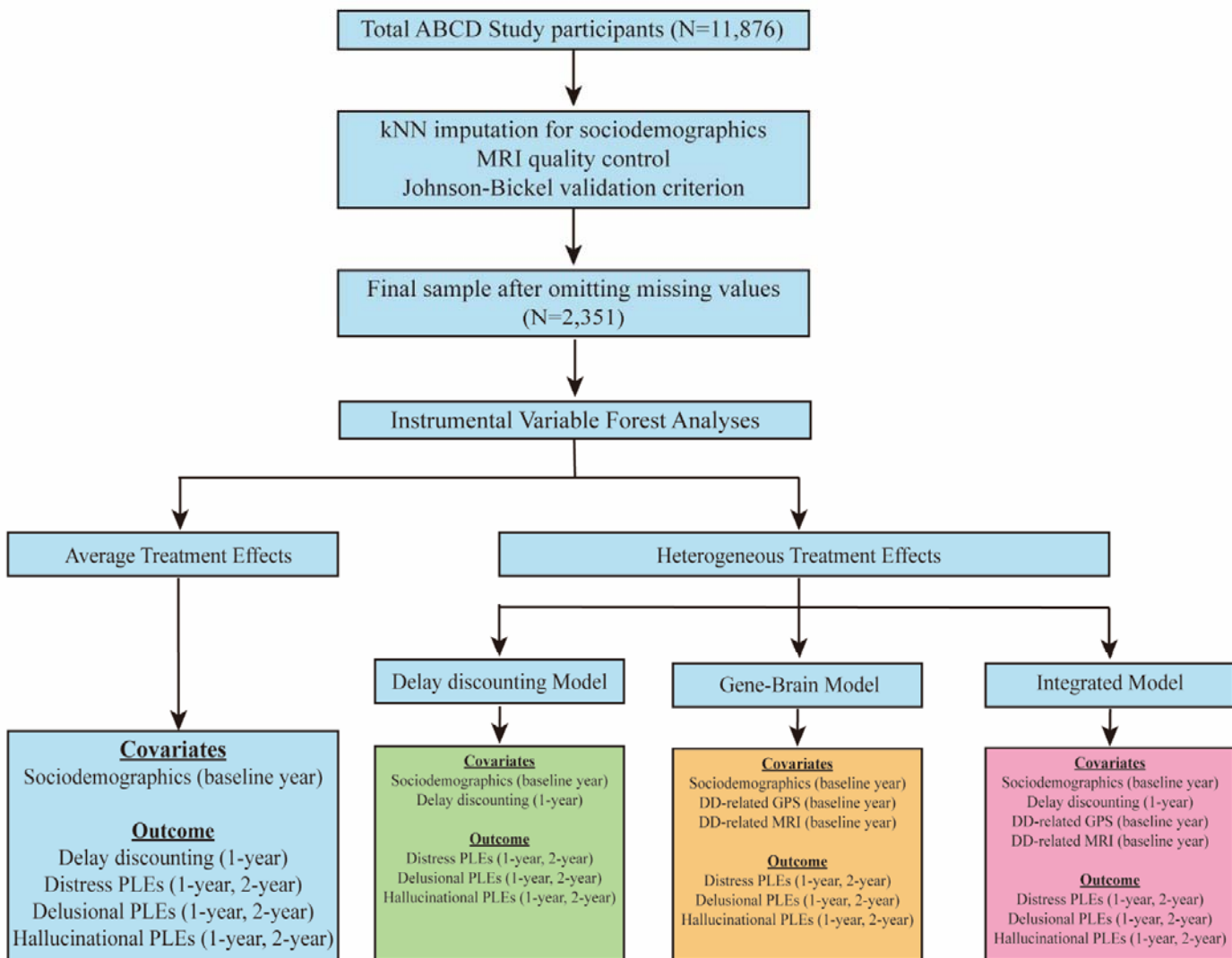
	IV Forests: Average Treatment Effects				
	Estimates	Std. Error	95% Lower CI	95% Upper CI	P-FDR
Delay Discounting (1-year follow-up)	-1.730	0.748	-3.195	-0.265	0.048
Distress Score PLEs (1-year follow-up)	1.872	0.612	0.673	3.071	0.048
Distress Score PLEs (2-year follow-up)	1.504	0.592	0.345	2.664	0.039
Delusional Score PLEs (1-year follow-up)	5.970	2.911	0.264	11.676	0.048
Delusional Score PLEs (2-year follow-up)	4.022	1.987	0.127	7.917	0.048
Hallucinational Score PLEs (1-year follow-up)	3.761	1.902	0.033	7.489	0.048
Hallucinational Score PLEs (2-year follow-up)	4.786	1.861	1.139	8.433	0.039

**Table 3. Evaluation of individual differences in the causal effects of neighborhood socioeconomic adversity on children’s psychotic risk.** We employed three distinct tests to evaluate the heterogeneous treatment effects of ADI on PLEs: monotonicity test, alternative hypothesis test, and ANOVA test. These tests were applied to three developed IV Forest models: Delay Discounting model, Gene-Brain model, and Integrated model. All p-values were corrected for multiple comparison using false discovery rate. A star (\*) denotes overall significance, indicating that a model passed all three heterogeneity tests.

		Monotonicity	Alternative Hypothesis				ANOVA		Overall Significance
		p-FDR	Estimate	Std. Error	t-value	p-FDR	F-value	p-FDR	
<b>Delay Discounting Model</b>	Distress Score PLEs (1-year follow-up)	0.037	-22.261	40.164	-0.554	0.799	1.114	0.48	
	Distress Score PLEs (2-year follow-up)	0.094	-54.769	142.528	-0.384	0.799	1.081	0.48	
	Delusional Score PLEs (1-year follow-up)	0.019	55.047	188.400	0.292	0.799	0.965	0.495	
	Delusional Score PLEs (2-year follow-up)	0.303	23.289	91.550	0.254	0.799	0.852	0.568	
	Hallucinational Score PLEs (1-year follow-up)	0.362	-86.756	241.597	-0.359	0.799	0.995	0.495	
	Hallucinational Score PLEs (2-year follow-up)	0.098	-119.595	341.060	-0.351	0.799	1.010	0.495	

<b>Gene-Brain Model</b>	Distress Score PLEs (1-year follow-up)	0.058	-9.522	4.244	-2.244	0.05625	2.289	0.027	
	Distress Score PLEs (2-year follow-up)	0.099	-9.202	7.016	-1.312	0.285	1.608	0.161	
	Delusional Score PLEs (1-year follow-up)	0.086	-7.463	3.262	-2.288	0.05625	2.631	0.01	
	Delusional Score PLEs (2-year follow-up)	0.043	-9.512	4.886	-1.947	0.0936	3.493	0.001	
	Hallucinational Score PLEs (1-year follow-up)	0.022	-8.917	4.123	-2.163	0.062	1.878	0.083	
	Hallucinational Score PLEs (2-year follow-up)	0.146	-9.382	5.681	-1.651	0.162	2.695	0.009	
<b>Integrated Model</b>	Distress Score PLEs (1-year follow-up)	0.011	-8.922	2.922	-3.053	0.0252	8.388	<0.001	*
	Distress Score PLEs (2-year follow-up)	0.074	-9.343	3.469	-2.693	0.0252	7.361	<0.001	
	Delusional Score PLEs (1-year follow-up)	0.172	-6.946	2.460	-2.824	0.0252	6.816	<0.001	
	Delusional Score PLEs (2-year follow-up)	0.136	-6.854	2.617	-2.619	0.027	7.525	<0.001	
	Hallucinational Score PLEs (1-year follow-up)	0.038	-8.246	2.834	-2.910	0.0252	7.182	<0.001	*
	Hallucinational Score PLEs (2-year follow-up)	0.089	-8.355	3.070	-2.721	0.0252	9.484	<0.001	

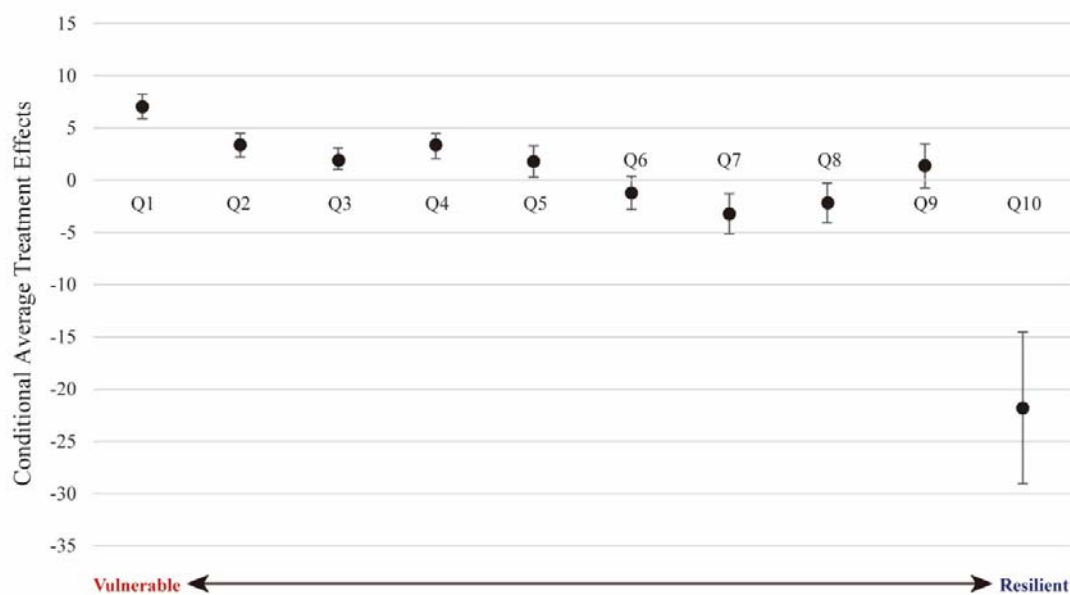
**Fig. 1. Study flow diagram.** This figure illustrates the participant selection and data processing in our study. We initially included 11,876 participants aged 9-12 years from the Adolescent Brain Cognitive Development (ABCD) Study, utilizing the release 4.0 dataset which encompasses baseline, 1-year follow-up, and 2-year follow-up observations. Sociodemographic features underwent kNN imputation. Subsequently, we excluded observations not meeting the ABCD Study's MRI quality control standards and those failing the Johnson-Bickel validation criterion for delay discounting. This resulted in a final sample size of N=2,351. Using this cohort, our study first investigated the average treatment effects of neighborhood socioeconomic deprivation on children's intertemporal valuation of rewards and psychotic risks. We then explored the individual differences of these effects in relation to children's delay discounting behaviors and associated genetic and neural factors.



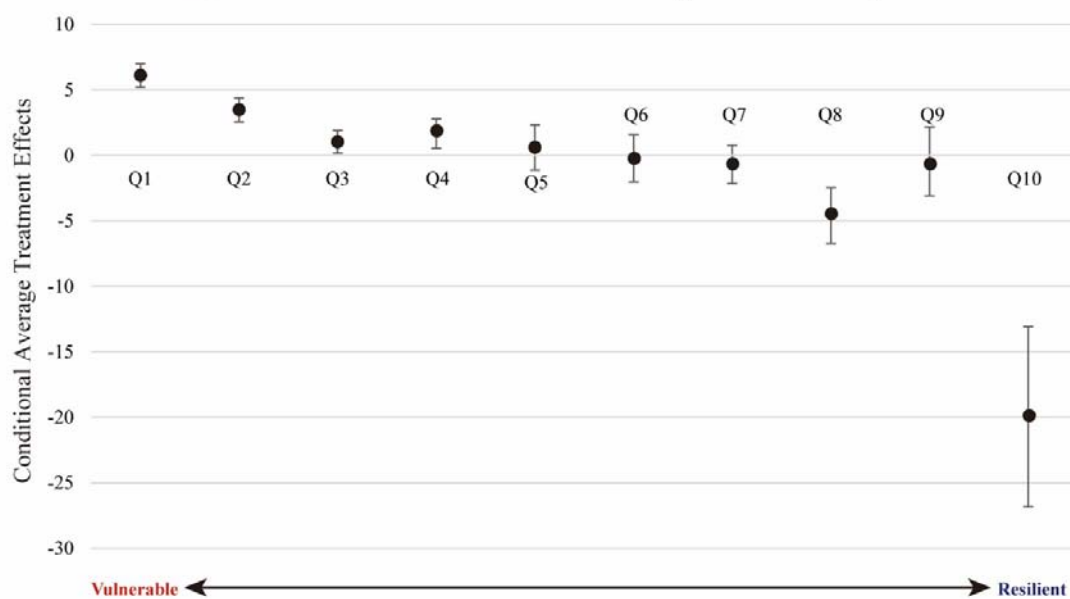
**Fig. 2. Delineation of heterogeneous treatment effects by vulnerable/resilient subgroups.**

Heterogeneity in the average treatment effects of the ADI on PLEs are shown as a bar plot, specifically focusing on 1-year follow-up distress score PLEs (**A**) and hallucinational score PLEs (**B**). These effects are plotted across ten deciles, which are organized based on the relative vulnerability or resilience of the participants, with Q1 denoting the most vulnerable and Q10 indicating the most resilient. Point estimates of the conditional average treatment effect of each decile were derived via a doubly-robust estimation method within the IV Forest algorithm. 95% confidence intervals are depicted using error bars.

### A. Distress Score PLEs 1-year follow-up

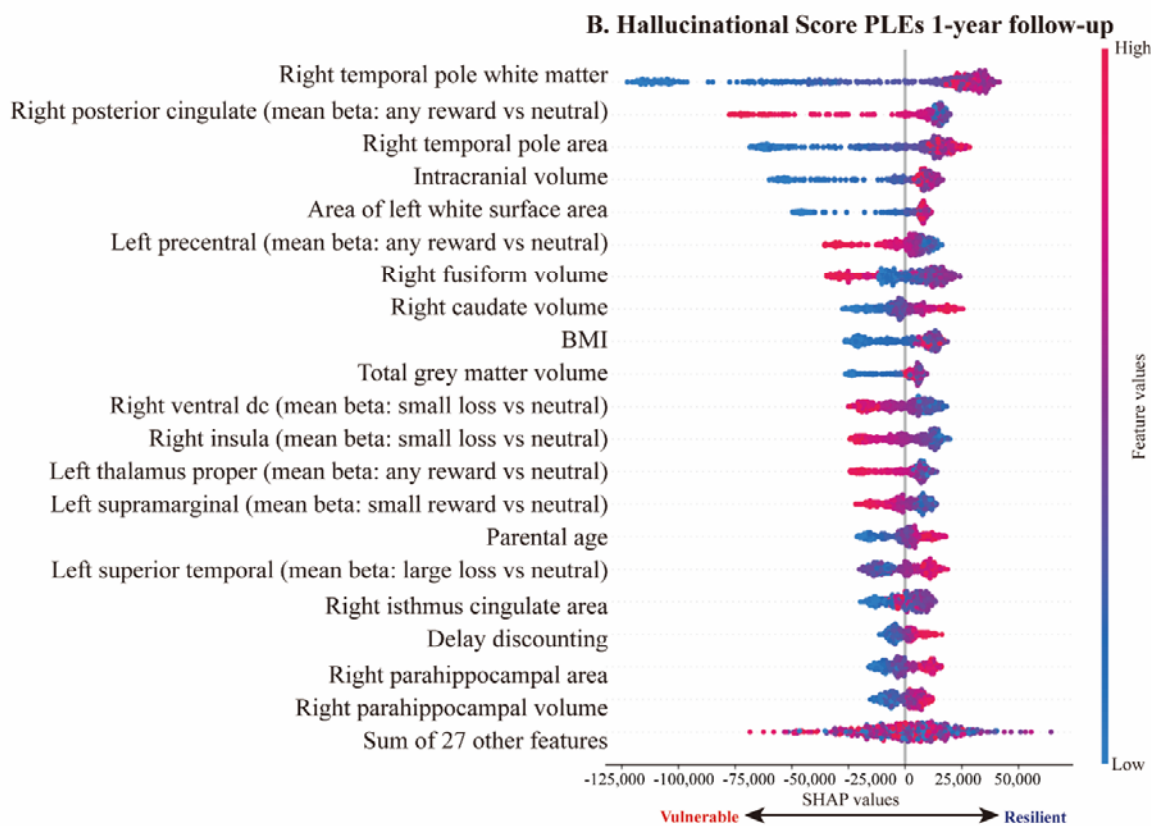
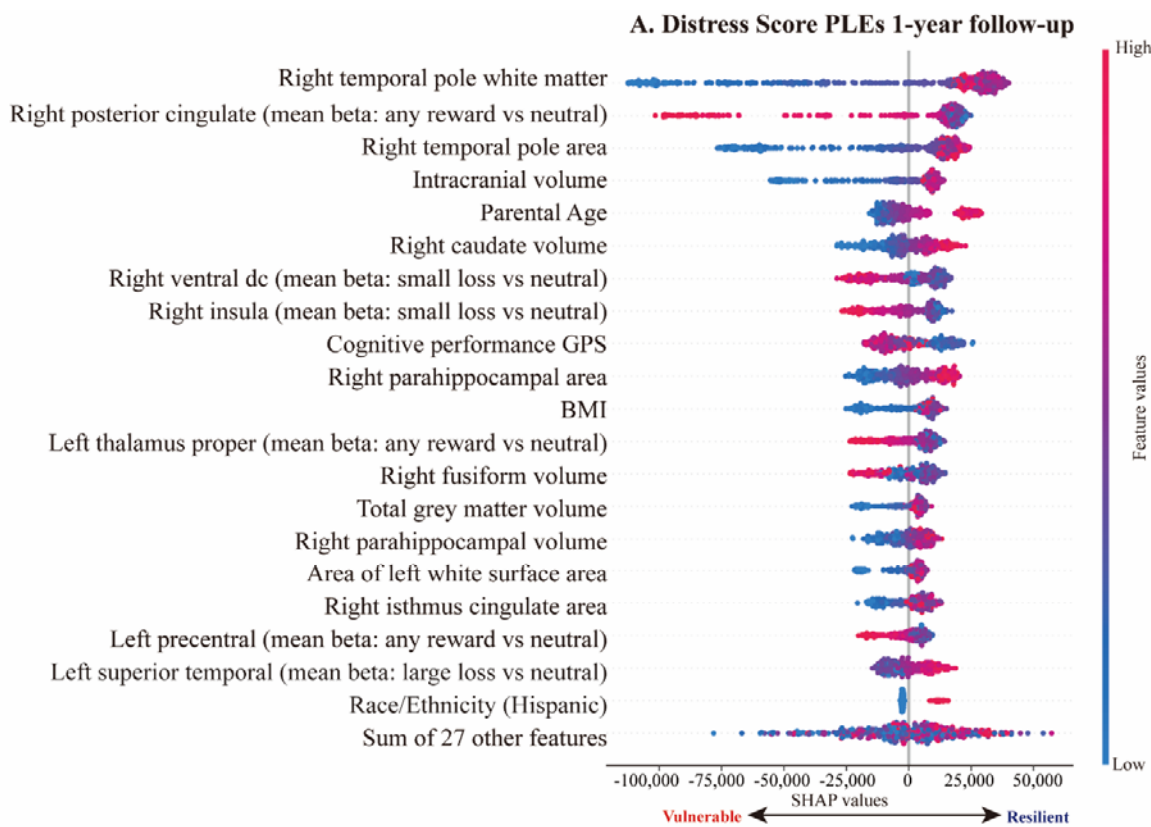


### B. Hallucinational Score PLEs 1-year follow-up





**Fig. 3. Beeswarm summary plots of Shapley additive explanation (SHAP) values for Integrated model.** Contributions of the top 20 variables of highest importance in the Integrated model for the heterogeneous treatment effects of neighborhood socioeconomic deprivation on 1-year follow-up distress score PLEs (**A**) and 1-year follow-up hallucinational PLEs (**B**) are shown. Variables are ordered by their relative importance in the model. Negative SHAP values indicate greater vulnerability (lower resilience) to the effects of ADI on PLEs; Positive values indicate lower vulnerability (greater resilience). Contrasts of average beta activations of the given brain ROIs during MID tasks are shown in parenthesis. GPS: genome-wide polygenic scores; Ventral dc: ventral diencephalon.



## **Supplementary Information for**

# **Individual Differences in the Effects of Neighborhood Deprivation on Economic Decision Making and Mental Health in Children**

Junghoon Park, Minje Cho, Eunji Lee, Bo-Gyeom Kim, Gakyung Kim, Yoonjung Yoonie Joo, Jiook Cha\*

\*Corresponding Author: Jiook Cha, PhD

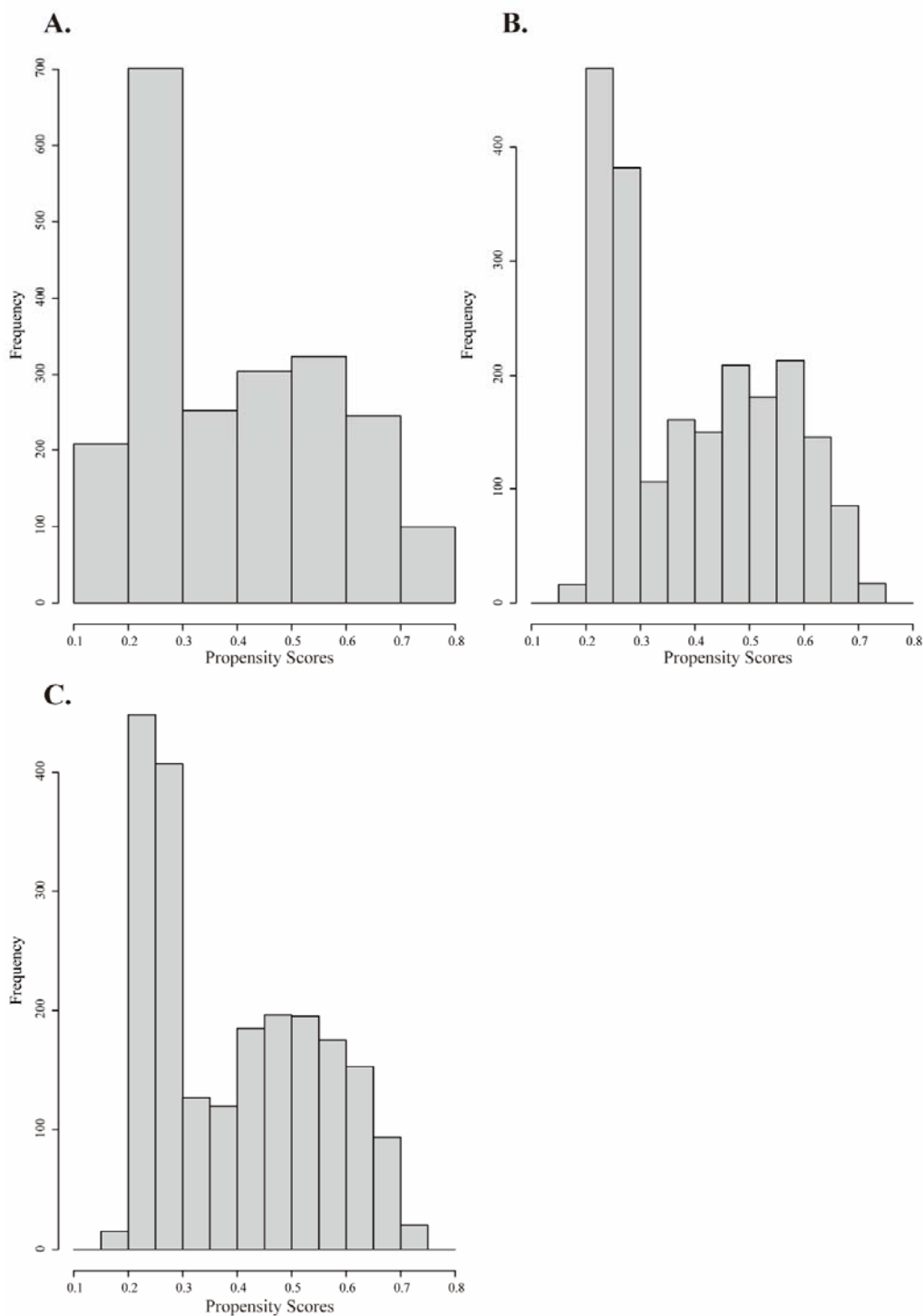
**Email:** [connectome@snu.ac.kr](mailto:connectome@snu.ac.kr)

## **Table of Contents**

- Supplementary Figure 1
- Supplementary Tables 1
- Supplementary Table 2
- Double ML models
- Supplementary Table 3
- Random Forest-based Feature Selection using Boruta algorithm
- Supplementary Table 4
- Mediation Analysis
- Supplementary Table 5
- Supplementary References

## Supplementary Information

**Supplementary Fig. 1. Assessment of the overlap assumption.** Histograms of propensity scores for the three distinct IV Forest models: Delay Discounting model (**A**), Gene-Brain model (**B**), and Integrated model (**C**). The IV Forest algorithm relies on the overlap assumption, which posits that there should be sufficient overlap in the covariate distributions between the treated and control groups. In other words, this means that the treatment status of an individual should not be deterministically predictable based on their covariates. The validity of the overlap assumption is evaluated using the histograms of propensity scores<sup>1,2</sup>. The fact that none of the estimated propensity scores are extremely close to either one or zero indicates that the overlap assumption holds, suggesting an appropriate level of randomness in treatment assignment relative to the covariates.



**Supplementary Table 1. Comparison of the sample and national demographics.** Since Household income for subjects in the study is presented as deciles, it is transformed into a monetary value by considering the income limits for each decile. The data for the US national demographics is available at [Data is available at https://www.census.gov/en.html](https://www.census.gov/en.html).

		Mean or Ratio (%)	
		Subjects in our study	US National Demographics
<b>Family Income</b>		\$70,245	\$60,336
<b>Sex</b>	<b>Male</b>	53.86%	51.16%
<b>Ethnicity/Race</b>	<b>White</b>	65.57%	57.8%
	<b>Black</b>	6.37%	12.1%
	<b>Hispanic</b>	17.47%	18.7%
	<b>Asian</b>	0.33%	6.1%
	<b>Other</b>	10.26%	12.4%

**Supplementary Table 2. Results of linear IV regression.** Conventional linear IV regression was conducted to confirm the average treatment effects of neighborhood socioeconomic adversity on children’s delay discounting and psychotic risk. All p-values were corrected for multiple comparison using false discovery rate.

		Conventional Linear IV Regression				
		Estimates	Std. Error	95% Lower CI	95% Upper CI	P-FDR
<b>Delay Discounting</b>		-0.468	0.216	-0.891	-0.045	0.03
<b>PLEs</b>	Distress Score PLE (1-year follow-up)	0.609	0.224	0.170	1.047	0.011
	Distress Score PLE (2-year follow-up)	0.780	0.234	0.320	1.239	0.003
	Delusional Score PLEs (1-year follow-up)	0.486	0.215	0.066	0.906	0.028
	Delusional Score PLEs (2-year follow-up)	0.578	0.223	0.141	1.015	0.013
	Hallucinational Score PLEs (1-year follow-up)	0.604	0.221	0.172	1.036	0.011
	Hallucinational Score PLEs (2-year follow-up)	0.827	0.241	0.354	1.299	0.003

## Double ML models

To confirm robustness of the IV Forest results, we used double machine learning (Double ML). This up-to-date causal machine learning method can utilize any state-of-the-art machine learning models to obtain consistent, unbiased estimates of average treatment effects by partialling out the confounding effects of covariates<sup>3</sup>. It is particularly effective when the covariates are high-dimensional and have complex interactions.

We used partial linear model instrumental variable model. In the partial linear model, we only assume linearity of the treatment variable ADI while the relationships between the outcome variable Y and covariates X and between instrument variable SOI and covariates X remain as an unknown function. Below shows the simple mathematical representation of the model:

$$Y = \mu ADI + g(X) + \varepsilon, \quad SOI = m(X) + v \quad (1)$$

Here, Y denote for outcome variable (in our study, delay discounting and psychotic-like experiences), ADI the treatment variable, X multidimensional covariates, SOI the instrument variable.  $g()$ ,  $m()$  are unknown functions and  $\varepsilon, v$  are random errors. In the partial linear model (Equation 1), we assume that the treatment variable (i.e., ADI) have linear relationship with the outcome variable Y. There are no model assumptions specifying the relationship between multidimensional covariates X, outcome Y, and the instrumental variable SOI.

We built an ensemble machine learning pipeline consisting of elastic net, random forest, XGBoost, and support vector machine with parameters tuned



via 10-fold cross validation. In general, ensemble methods can improve model performance with lower error and higher accuracy by combining several base models<sup>4</sup>. For each analysis, all continuous variables were standardized (z-scaled) beforehand to obtain standardized estimates, and analyses were run using *DoubleML* packages<sup>5</sup> in R version 4.1.2.

**Supplementary Table 3. Results of Double ML models.** All p-values were corrected for multiple comparison using false discovery rate.

	Double ML Partial Linear IV Regression				
	Estimates	Std. Error	95% Lower CI	95% Upper CI	P-FDR
Delay Discounting (1-year follow-up)	-0.429	0.206	-0.834	-0.025	0.044
Distress Score PLE (1-year follow-up)	0.495	0.199	0.105	0.884	0.023
Distress Score PLE (2-year follow-up)	0.609	0.193	0.232	0.987	0.005
Delusional Score PLEs (1-year follow-up)	0.393	0.201	-0.001	0.788	0.051
Delusional Score PLEs (2-year follow-up)	0.417	0.196	0.032	0.801	0.044
Hallucinational Score PLEs (1-year follow-up)	0.498	0.187	0.131	0.864	0.018
Hallucinational Score PLEs (2-year follow-up)	0.683	0.188	0.316	1.051	0.002

### Random Forest-based Feature Selection using Boruta algorithm

We used Boruta<sup>6</sup> to select GPS and brain ROIs of structural MRI and MID task fMRI significantly associated with delay discounting. Boruta first generates shadow attributes, which is irrelevant to the outcome, by shuffling all input features. It then confirms features that have significantly higher importance in predicting the outcome than the shadow attributes with 95% confidence level, Bonferroni-corrected two-tailed tests<sup>6</sup>. The selected features were included as covariates in the IV Forest models for assessing heterogeneous treatment effects of ADI.

**Supplementary Table 4. Genetic and neural correlates of delay discounting selected using random forest-based algorithm.** Using the Boruta algorithm, we selected polygenic scores, neuroanatomical, and MID task functional activations related to delay discounting. meanImp, medianImp, minImp, and maxImp denote mean, median, maximal, and minimal importance, respectively. normHits indicate the number of hits normalized to number of importance source runs performed. *Decision* indicates the final decision of whether or not to select each feature.

	Boruta Feature Selection					
	meanImp	medianImp	minImp	maxImp	normHits	Decision

<b>GPS</b>	Cognitive performance GPS	9.219	9.344	1.540	14.803	0.989	Confirmed
	Educational attainment GPS	3.941	3.862	0.426	7.543	0.868	Confirmed
	IQ GPS (2-year follow-up)	6.798	6.806	1.975	9.841	0.995	Confirmed
<b>Structural MRI</b>	Left rostral anterior cingulate area	6.414	6.475	-0.035	9.673	0.986	Confirmed
	Area of the left white surface area	4.947	4.993	-0.651	8.320	0.966	Confirmed
	Right isthmus cingulate area	3.047	3.018	-1.526	6.367	0.748	Confirmed
	Right parahippocampal area	3.540	3.596	-0.736	7.584	0.848	Confirmed
	Right pars opercularis area	2.536	2.551	-2.733	5.521	0.597	Confirmed
	Right temporal pole area	3.646	3.642	-1.886	6.744	0.857	Confirmed
	Right fusiform volume	4.830	4.821	-0.220	8.109	0.960	Confirmed
	Right parahippocampal volume	2.619	2.596	-1.650	6.457	0.644	Confirmed
	Right pars opercularis volume	4.904	4.939	-2.184	8.229	0.969	Confirmed
	Right caudate volume	2.941	2.911	-1.467	6.777	0.703	Confirmed
	Total grey matter volume	5.226	5.237	-0.895	8.808	0.977	Confirmed
	Right Temporal pole white matter	6.748	6.804	0.408	9.862	0.987	Confirmed
<b>MID task fMRI</b>	Left precentral (mean beta: any reward vs neutral)	8.542	8.546	-0.835	12.054	0.997	Confirmed
	Left supramarginal (mean beta: any reward vs neutral)	8.795	8.818	-0.407	13.136	0.997	Confirmed
	Right posterior cingulate (mean	10.082	10.104	-0.002	13.946	0.997	Confirmed

	beta: any reward vs neutral)						
	Left transverse temporal (mean beta: large reward vs neutral)	4.030	4.046	-1.268	7.737	0.901	Confirmed
	Left supramarginal (mean beta: small reward vs neutral)	7.297	7.319	0.857	11.480	0.997	Confirmed
	Left superior temporal (mean beta: large loss vs neutral)	2.781	2.782	-1.255	6.827	0.683	Confirmed
	Right insula (mean beta: small loss vs neutral)	3.419	3.437	-1.186	7.658	0.826	Confirmed
	Left thalamus proper (mean beta: any reward vs neutral)	7.081	7.078	-0.079	11.137	0.997	Confirmed
	Right ventral diencephalon (mean beta: small loss vs neutral)	4.407	4.397	-1.777	9.689	0.939	Confirmed

## Mediation Analysis

To test the role of delay discounting as a mediator between ADI and PLEs, we also used a linear mediation analysis. By utilizing *mediation* package<sup>7</sup> in R, we conducted causal mediation analysis by decomposing local average treatment effect (LATE) into local average causal mediation effect (LACME) and

local average natural direct effect (LANDE). In order to control unobserved confounding bias, *ivmediate* function was utilized to incorporate the instrument variable in the causal mediation analysis. In this analysis, ADI and delay discounting were transformed as a binary variable (i.e., above or below mean).

**Supplementary Table 5. Results of conventional linear IV mediation.** LACME represents the average hypothetical change in the outcome among compliers when the mediator is changed from the value under the treatment status to the control status while the treatment variable is fixed. LANDE represents the average hypothetical change in the outcome among compliers when the treatment variable is changed from the treatment status to the control status while the mediator is fixed.

		Estimate	95% Lower CI	95% Upper CI
<b>Distress Score PLE (1-year follow-up)</b>	LACME (control)	-6.929E-06	-0.012	0.026
	LACME (treated)	4.582E-06	-0.009	0.030
	LANDE (control)	0.965	0.154	2.007
	LANDE (treated)	0.965	0.153	2.006
	LATE	0.965	0.154	2.011
<b>Distress Score PLE (2-year follow-up)</b>	LACME (control)	-2.23093E-06	-0.019	0.039
	LACME (treated)	2.79379E-06	-0.008	0.032
	LANDE (control)	1.291	0.534	2.389
	LANDE (treated)	1.291	0.534	2.398
	LATE	1.291	0.535	2.398
<b>Delusional Score PLE</b>	LACME (control)	-6.244E-06	-0.014	0.021

<b>(1-year follow-up)</b>	<b>LACME (treated)</b>	4.578E-06	-0.012	0.028
	<b>LANDE (control)</b>	0.677	-0.176	1.679
	<b>LANDE (treated)</b>	0.677	-0.178	1.681
	<b>LATE</b>	0.677	-0.179	1.687
<b>Delusional Score PLE (2-year follow-up)</b>	<b>LACME (control)</b>	-6.040E-06	-0.011	0.024
	<b>LACME (treated)</b>	4.161E-06	-0.009	0.029
	<b>LANDE (control)</b>	0.947	0.212	1.939
	<b>LANDE (treated)</b>	0.947	0.211	1.942
	<b>LATE</b>	0.947	0.213	1.962
<b>Hallucinational Score PLE (1-year follow-up)</b>	<b>LACME (control)</b>	-2.372E-06	-0.015	0.030
	<b>LACME (treated)</b>	2.347E-06	-0.007	0.027
	<b>LANDE (control)</b>	0.875	0.069	1.886
	<b>LANDE (treated)</b>	0.875	0.063	1.888
	<b>LATE</b>	0.875	0.066	1.889
<b>Hallucinational Score PLE (2-year follow-up)</b>	<b>LACME (control)</b>	-2.631E-06	-0.023	0.043
	<b>LACME (treated)</b>	2.867E-06	-0.007	0.036
	<b>LANDE (control)</b>	1.482	0.723	2.630
	<b>LANDE (treated)</b>	1.482	0.726	2.609
	<b>LATE</b>	1.482	0.726	2.621

## SI References

1. Wager, S. & Athey, S. Estimation and Inference of Heterogeneous Treatment Effects using Random Forests. *Journal of the American Statistical Association* **113**, 1228-1242 (2018). DOI:10.1080/01621459.2017.1319839
2. Athey, S., Tibshirani, J. & Wager, S. Generalized random forests. *The Annals of Statistics* **47**, 1148-1178 (2019). DOI:10.1214/18-AOS1709
3. Chernozhukov, V. *et al.* Double/debiased machine learning for treatment and structural parameters. *The Econometrics Journal* **21**, C1-C68 (2018). DOI:10.1111/ectj.12097
4. Zhang, C. & Ma, Y. *Ensemble Machine Learning: Methods and Applications*. (Springer, 2012).
5. Bach, P., Chernozhukov, V., Kurz, M. S. & Spindler, M. DoubleML-An Object-Oriented Implementation of Double Machine Learning in Python. *Journal of Machine Learning Research* **23**, 1-6 (2022).
6. Kursa, M. B. & Rudnicki, W. R. Feature Selection with the Boruta Package. *Journal of Statistical Software* **36**, 1 - 13 (2010). DOI:10.18637/jss.v036.i11
7. Tingley, D., Yamamoto, T., Hirose, K., Keele, L. & Imai, K. mediation: R package for causal mediation analysis. *Journal of Statistical Software* **59** (2014).