

1 **Trends of Developmental Milestone Attainment in Israeli Children Between 2016-2020: A National**
2 **Report**

3 Irena Girshovitz¹, Guy Amit¹, Inbal Goldshtein¹, Deena R. Zimmerman², Ravit Baruch², Pinchas Akiva¹,
4 Meytal Avgil Tsadok³, Yair Sadaka^{1,4,5}

5 ¹KI Research Institute, Kfar Malal, Israel

6 ²Department of Maternal and Child Health, Public Health Division, Ministry of Health, Jerusalem, Israel

7 ³TIMNA Initiative, Big Data Platform, Israel Ministry of Health, Jerusalem, Israel

8 ⁴Neuro-Developmental Research Center, Mental Health Institute, Be'er-Sheva, Israel

9 ⁵Faculty of Health Sciences, Ben-Gurion University of the Negev, Be'er-Sheva, Israel

10 Corresponding author: Yair Sadaka, yair.sadaka@gmail.com, Neuro-Developmental Research Center,
11 Mental Health Institute, Be'er-Sheva, Israel

12

13

14 **Abstract**

15 **Background:** The early years of children's lives are critical for their healthy development. Although
16 children's growth and development rates may vary, a significant delay during early childhood could
17 indicate a medical or a developmental disorder. Developmental surveillance is used worldwide by
18 healthcare providers in routine encounters, as well as by educators and parents, to elicit concerns
19 about child development. In this work, we used a national dataset of developmental assessments to
20 describe temporal trends of milestone attainment rates and associations between milestone
21 attainment and various sociodemographic factors.

22 **Methods:** The study included 1,002,700 children ages birth until 6 years with 4,441,689
23 developmental visits between the years 2016 and 2020. We used the Israeli developmental scale to
NOTE: This preprint reports new research that has not been certified by peer review and should not be used to guide clinical practice.

24 assess the annual rates of failure to attain language, social and motoric milestones by the entire
25 population, as well as by subgroups stratified by sociodemographic factors. We used multivariable
26 logistic regression to analyze the impact of different sociodemographic factors on the odds of failure
27 to attain milestones, while controlling for confounding.

28 **Results:** Milestone failure rates progressively increased over the examined years in all developmental
29 domains, and most prominently in the language domain. Conversely, the rates of parental concern for
30 developmental delay remained constant. In multivariable analysis, higher risk of milestone attainment
31 failure was observed in children whose mothers were divorced, unemployed, immigrant, had lower
32 education, of Bedouin origin or were over 40 years old when giving birth.

33 **Conclusions:** This report describes national trends of child development in the gross motor, fine
34 motor, language, and social domains. An annual report of these trends may assist policy makers to
35 objectively evaluate subgroups in need for intervention, and to assess the effectiveness of
36 intervention programs in attempt to maximize the developmental potential of children in Israel.

37

38 **Keywords:** Child development, Developmental surveillance, Trends, Israel, Milestone attainment

39

40 **Background**

41 Early childhood is considered an important period in the process of child development. According to
42 recent studies, there has been a substantial increase in risk for growth and developmental delay over
43 the last decade [1–3]. Although children’s growth and development rate may vary, a significant delay
44 could indicate a medical or a developmental disorder. Early intervention has been proven to be critical
45 in promoting language, cognitive, motor, socioemotional development, and educational success,
46 alongside prevention of additional future developmental delays [4–11].

47 Developmental surveillance, based on milestone attainment, is used worldwide by pediatricians and
48 healthcare providers during routine encounters, as well as by parents and educators to raise concern
49 about child development.

50 The importance of developmental surveillance tools was recently stressed by the Centers for Disease
51 Control and Prevention (CDC). In partnership with the American Academy of Pediatrics (AAP) they
52 convened a panel of subject matter experts to identify a set of evidence-informed milestones for
53 revision of the Learn the Signs and Act Early materials. These materials are commonly used for the
54 practice of developmental surveillance [12].

55 Maternal child health clinics (MCHCs) are known in Israel as “Tipat Halav” (“drop of milk”)[13]. These
56 free-of-charge clinics provide preventative care for children from aged from birth until 6 years. Parents
57 are advised to visit the MCHC about a week after hospital discharge, and then at the age of 2, 4, 6, 9,
58 12, 18, 24, 36, 48 and 60 months [14]. In each MCHC visit, the child undergoes routine growth, physical
59 and developmental evaluation by trained public health nurses, along with immunization according to
60 the national immunization schedule.

61 Sociodemographic factors have been previously associated with developmental delay. Socioeconomic
62 status [15–17], maternal age at time of child’s birth [15,16], sex of child [17], maternal marital status
63 [16,18], cognitive stimulation of child [18,19] and number of child in the family [16] have been
64 reported as being risk factors for developmental delay.

65 In this work, we use a national dataset to examine temporal trends and associations between different
66 sociodemographic factors and milestone attainment rates.

67 Objective evaluation of the temporal trends in milestone attainment failure rates and its relations to
68 sociodemographic factors may contribute to the understanding of social patterns in children's
69 healthcare. Furthermore, it may provide data-driven insights to stakeholders, assisting them to focus
70 their efforts on specific subpopulations in need. If updated annually, this analysis may also be used to
71 evaluate the effects of intervention programs.

72

73 **Methods**

74 Study population

75 The study population consists of all children visiting MCHCs between January 1st, 2016 and December
76 31st, 2020, including preterm children.

77

78 Maternal child health clinics

79 All MCHCs are conducted according to Ministry of Health (MOH) national protocols [14]. The dataset
80 used in this study contained an anonymized version of all data collected between 2016 and 2020
81 during visits to approximately 1000 MCHCs. These clinics are operated by the MOH, two municipalities
82 (Jerusalem and Tel Aviv) and one health maintenance organization (Leumit), all of which use a
83 designated electronic medical record (EMR) system named "Machshava Briah" ("Healthy Thought")
84 [14]. The database covers approximately 70% of the children from infancy to the age of 6 years, living
85 in Israel [20]. It was previously utilized to construct population norms, referred as the Tipat Halav Israel
86 Developmental Surveillance (THIS) Scale, based on over 3.7 million assessments of over 640 thousand
87 children [20].

88

89 Measured developmental outcomes

90 Threshold ages for each milestone were defined in accordance with THIS developmental scale [20].
91 For each developmental domain we calculated the percentage of children who failed to attain at least
92 one milestone in a given year, where “Failure” was defined as inability to attain a milestone at an age
93 equal to or greater than the THIS 95% threshold age.

94 In addition, we computed the proportion of children whose parents expressed concern regarding their
95 development during the developmental evaluation in the MCHC, and the proportion of children whose
96 developmental status was reported by the MCHC nurse as “inadequate for age”.

97 The following maternal factors were extracted: education, ethnic group, birth country, employment
98 status, marital status and age at delivery (Table 1). In addition, we used the child’s age at milestone
99 evaluation and the child's sex. In some variables values were grouped, due to small numbers.

100

101 Statistical analysis

102 We report the annual percentage of children with the outcome overall, and stratified by
103 sociodemographic factors, along with 95% confidence intervals for proportions. This data is presented
104 nationally as well as in geographical sub-division.

105 Descriptive statistics on baseline population characteristics were generated with percentage.
106 Comparisons between sociodemographic sub-groups were analyzed with χ^2 tests adjusted for
107 multiple comparisons via Bonferroni correction. The statistical significance of the trends in failure
108 incidence rates was calculated using the Cochran–Armitage trend test.

109 We used multivariable logistic regression to estimate the impact of each explanatory variable on the
110 odds ratio (OR) of failure to attain developmental milestones, while controlling for confounding
111 variables. We repeated this analysis using failure in each of the developmental domains as the
112 response variable. We used variance inflation factor (VIF) to assess potential multicollinearity between

113 the explanatory variables. The analysis was performed using Python programming language version
114 3.6 (Python Software Foundation).

115

116 **Results**

117 1,002,700 children with 4,441,689 developmental visits were included. Out of these visits, 535 were
118 excluded due to lack of developmental data, missing age or duplicate records.

119 The cohort's main characteristics are presented in Table 1(a,b,c). This cohort included approximately
120 70% of the children born in Israel within the study period, and is mostly representative of the entire
121 national population, with a slight overrepresentation of the Arab sector (76%-80% of the Israeli-Arab
122 children are included vs. 59%-68% of the Israeli-Jewish children) [20].

123

124 **General trends**

125 Over the years 2016-2019, there was an increase in the rate of failure to attain milestones in all four
126 developmental domains ($p < 0.001$), as shown in Figure 1. The milestone attainment failure rate was
127 ranging from 3.1% [2.92, 3.02] in 2016 to 3.8% [3.74, 3.86] in 2019 in the gross motor domain, from
128 3.3% [3.27, 3.38] in 2016 to 3.9% [3.88, 3.99] in 2019 in the fine motor domain, and from 2% [1.97,
129 2.05] in 2016 to 3% [2.93, 3.03] in 2019 in the social domain. The highest failure rate was observed in
130 language milestones, with a rate of 3.9% [3.8, 3.92] in 2016 and 5.4% [5.34, 5.47] in 2019. In 2020
131 there was a slight decrease in failure rates, however, this may be a consequence of changes in the
132 surveillance policy and availability between March and October 2020 due to constraints of the COVID-
133 19 pandemic. Parental concern progressively decreased over the years, from 3.9% [3.89, 4.01] in 2016
134 to 3.3% [3.23, 3.34] in 2020.

135

136 Table 1.a. Study population characteristics by year

137 Table 1.b. Study population by reports of parental and nurse's concern regarding child development

138 Table 1.c. Study population characteristics by developmental domain attainment failure in four
139 developmental domains: social, language, gross motor, and fine motor.

140

141 **Sociodemographic correlates of child development**

142 Maternal education

143 Figure 2 shows the temporal trends of developmental outcomes stratified by the mother's level of
144 education. It is apparent that the failure rate in all developmental domains is lower as the mother's
145 level of education is higher. This trend is more prominent in the language domain (Figure 2(d)) than in
146 the gross motor domain (Figure 2(e)). The same trend was observed in the nurse's report of
147 developmental concern (Figure 2(b)). In the language, social and fine motor domains, the rate of
148 failure to attain milestones is increasing more rapidly for children with lower maternal education,
149 widening the gap between the groups (Figure 2(c,d,f)). The language milestone attainment failure rate
150 in children whose mothers had elementary education increased from 5.5% in 2016 to 7.7% and 7.6%
151 in 2019 and 2020, respectively. In children whose mothers had academic education, the milestone
152 attainment failure rate increased from 3% in 2016 to 4% and 3.7% in 2019 and 2020, respectively
153 ($p < 0.001$). In milestones in the fine motor and social domains the attainment failure rates in 2016
154 were 3.2% and 4.5%, respectively, in children whose mothers had elementary education, and 1.8%
155 and 2.9% respectively, in children whose mothers had academic education ($p < 0.001$). In 2019 and
156 2020 the attainment failure rates for children whose mothers had elementary education were 4.4%
157 and 3.8% respectively, in the social domain, and 5.9% and 5%, respectively, in the fine motor domain.
158 The attainment failure rates for children whose mothers had academic education in 2019 and 2020
159 were 2.3% and 2.1%, respectively, in the social domain, and 3.2% and 3%, respectively, in the fine
160 motor domain ($p < 0.001$).

161

162 Ethnic group

163 Figure 3 shows the trend of developmental outcomes stratified by the different ethnic and religious
164 groups, including Jews, Muslim Arabs, Christian Arabs, Druze, and Bedouin. The Bedouin children had
165 higher failure rates in the social (3.9%, $p<0.001$), language (5.6%, $p<0.001$), and fine motor (5.9%,
166 $p<0.001$) domains (Figure 3(c,d,f)). In contrast, the level of concern among this group, by both the
167 parents and the attending nurse was the lowest (Figure 3(b)), reflecting higher unawareness to
168 potential developmental delays. Interestingly, the highest rates of milestone attainment in these
169 domains were observed in another minority group, the Druze, while the rate of concern by the nurses
170 was highest for this group.

171

172 Maternal birth country

173 Figure 4 shows the trend of developmental outcomes stratified by maternal birth country. Failure
174 rates in attaining social and language milestones were higher for children whose mothers immigrated
175 to Israel (mostly from the Former Soviet Union (FSU) or Ethiopia), while the failure rate in attaining
176 fine motor milestones was higher for children of Ethiopia-born mothers (5.2% in 2020, $p<0.001$).
177 Parental concern regarding their child's development slightly increased over the years among mothers
178 born in the FSU ($p<0.001$), and their rate was higher compared to mothers born in Israel or other
179 countries (5% vs. 3%-3.6%, respectively, $p<0.001$). In nurse's report of developmental concern, the
180 rates of children to FSU- or Ethiopia-born mothers were substantially higher compared to children of
181 Israel-born mothers (7%-7.2% vs. 4.0%, respectively. $p<0.001$).

182

183 Maternal employment status

184 Figure 5 describes the association between maternal employment status and the developmental
185 outcomes. In all four domains, failure to attain milestones was more prevalent in children to

186 unemployed mothers, compared with children to employed or student mothers. This difference was
187 most prominent in the language milestones, where the failure rates were 6.9% and 6.5% ($P<0.001$) in
188 2019 and 2020, respectively, for children to unemployed mothers, compared to children to employed
189 mothers with failure rates of 5% in 2019 and 4.8% in 2020 ($p<0.001$). Similarly, unemployed mothers
190 reported concern regarding their child's development more frequently than employed mothers or
191 students.

192

193 Maternal marital status

194 Figure 6 describes the association between maternal marital status and developmental outcomes.
195 Married women were less likely to have concerns regarding their child's development (3.2%, $p<0.001$
196 in 2020), compared to unmarried (4.5%, $p<0.001$ in 2020) or divorced (5.6%, $p<0.001$ in 2020) women
197 (Figure 6 (a)). Similar associations were observed in nurse's report regarding developmental concern
198 (Figure 6(b)) and in objective failure in developmental milestones across all four domains according to
199 THIS scale (Figure 6(c)-(f)).

200

201 Sex of child

202 Failure rates were higher for males, compared to females, in all the developmental domains
203 (Supplementary Figure 1). The gap between sex groups was largest in the language domain (for
204 example, in 2020, 4.2% of assessed females failed in attaining language milestones, compared to 6%
205 of assessed males, $P<0.001$).

206

207 Maternal age

208 Reports of concern and failure rates in various developmental domains stratified by maternal age
209 between 2016-2020 are provided in supplementary Figure 2. Women who gave birth over the age of

210 40 report more concern regarding their child's development, compared to women who gave birth
211 between 20 and 40 years or those who gave birth before the age of 20 ($p < 0.001$). Nurses report
212 greater developmental concern in children whose mothers gave birth over the age of 40
213 (Supplementary Figure 2(b)). Similar associations were observed in objective failure in developmental
214 milestones across all four domains (Supplementary Figure 2(c)-(f)).

215

216 Additional sub-analysis by geographical districts is available online (in Hebrew) [21].

217

218 **Contribution of sociodemographic variables to developmental milestone attainment**

219 Mutually adjusted odds ratios for failure in any milestone, and for domain-specific failure are
220 presented in Figure 7 and supplementary figures 3-6, respectively.

221 Higher risk was observed in children to mothers who are divorced (OR=1.24 [1.2, 1.28], $P < 0.001$), or
222 unmarried (OR=1.19 [1.17, 1.21], $P < 0.001$), unemployed (OR=1.22 [1.21, 1.24], $P < 0.001$), immigrant
223 from the FSU (OR=1.17 [1.14, 1.19], $P < 0.001$) or Ethiopia (OR=1.21 [1.18, 1.25], $P < 0.001$), have
224 elementary (OR=1.56 [1.52, 1.6], $P < 0.001$) or high school (OR=1.39 [1.38, 1.41], $P < 0.001$) education or
225 are over 40 years old at time of child's birth (OR=1.25 [1.23, 1.28], $P < 0.001$). The increased risk was
226 mostly evident in the language, social and fine motor domains.

227

228 **Discussion**

229 Attainment of age-dependent milestones is the cornerstone of developmental surveillance tools used
230 for monitoring children worldwide. Here we use a national dataset to describe trends in
231 developmental milestone attainment rates between the years 2016 and 2020, and to evaluate the
232 associations between various sociodemographic factors and these trends.

233 When evaluating overall rate of failure in attaining any of the milestones, we observed a gradual
234 elevation over the examined years in all developmental domains. This elevation was most prominent
235 in the language domain. These results are consistent with the reported elevation in developmental
236 disorders prevalence over the last decade [2,22].

237 Parental concern may be a good predictor of developmental delay [23,24]. However, in this study we
238 observed a trend of decline in parental concern for developmental delay, while the rates of failures in
239 milestone attainment increased. These observations should be noted since parental awareness to
240 their child's difficulties, may encourage suitable interventions. In addition, there is a need to
241 accompany developmental surveillance tools with appropriate parental education regarding the
242 expected attainment of age-dependent milestones by their child.

243 Multivariable regression analysis enabled to quantify the contribution of the different
244 sociodemographic variables to the risk of failure in attaining milestones. Higher risk was observed in
245 children to mothers who are divorced, unemployed, immigrant, have lower education, are of Bedouin
246 origin or are over 40 years old at time of child's birth after adjustment for other sociodemographic
247 factors. The increased risk is mostly evident in the language, social and fine motor domains.

248 Associations between sociodemographic variables and suspected developmental delay were
249 previously reported. These include lower level of maternal education [15,16,19], maternal
250 employment status [17], maternal marital status [16,18] and maternal age [15,16]. Our results are
251 consistent with these reports.

252 This study has few notable limitations. First, MCHCs that belong to other health maintenance
253 organizations (~30%) were not included in this study. However, this subset is nationally representative
254 of child's sex and maternal age, with a minor overrepresentation of the Arab children population [20].
255 Second, although the MCHCs used a uniform surveillance protocol, its practical implementation may
256 have varied across geographical locations and cultural subgroups. Third, the surveillance visits to the
257 MCHCs in 2020 were irregular due to COVID-19 pandemic, which may have caused specific changes

258 during this period. Another limitation is that while 95% of the children routinely visit the MCHCs until
259 the age of 24 months, these numbers drop significantly at older ages. However, when comparing
260 characteristics of the children who continued visiting MCHCs at older ages to those who visited only
261 at younger children, no significant differences were found [20]. Finally, in this work we used existing
262 demographic factors collected by MCHCs during routine visits. Hopefully in future reports we will be
263 able to include additional variables, such as socioeconomic status, which might help us better describe
264 child development trends.

265 We hope that this report may support decision makers in allocating resources and choosing
266 appropriate interventions in subpopulations at risk of developmental delays. An annual update of the
267 measured variables will enable objective evaluation of such interventions, in order to maximize their
268 effectiveness.

269

270 **Conclusions**

271 This report describes national trends of child development in the gross motor, fine motor, language,
272 and social domains. These trends are important for stakeholders and policy makers, allowing data
273 driven decision making and resource allocation.

274 We assessed the socioeconomic variables contributing to the risk of failing to attain developmental
275 milestones and identified subpopulations with increased risk.

276 An annual report, such as the one presented in this work, will allow an objective evaluation of the
277 effectiveness of intervention programs and a continuous calibration of these programs in attempt to
278 maximize the developmental potential of children in Israel and worldwide.

279

280 **List of abbreviations**

281 AAP: American Academy of Pediatrics
282 CDC: Centers for Disease Control and prevention
283 EMR: Electronic Medical Record
284 FSU: Former Soviet Union
285 MCHC: Maternal child health clinic
286 MOH: Ministry of Health
287 OR: Odds Ratio
288 THIS: Tipat Halav Israel Screening
289 VIF: Variance Inflation Factor

290

291 **Declarations**

292 Ethics approval and consent to participate: All methods were performed in accordance with the
293 ethical standards as laid down in the Declaration of Helsinki and its later amendments or comparable
294 ethical standards. The study protocol was approved by the Soroka Medical Center institutional review
295 board, approval number MHC-0006-18. An exemption of informed consent was granted by this ethics
296 committee because the data were anonymous.

297 Consent for publication: Not applicable.

298 Availability of data and materials: The de-identified patient-level data used for this study contains
299 sensitive information and therefore is not available outside the secured research environment of the
300 Israel Ministry of Health. Summary aggregate level data and analysis code for this study can be made
301 available upon reasonable request to the corresponding author.

302 Competing interests: The authors declare that they have no competing interests.

303 Funding: Not applicable.

304 Authors' contributions: IGi, GA, DRZ, RB, PA, MAT and YS conceptualized and designed the study. IGi,
305 GA, IGo, DRZ, PA, MAT and YS contributed to data acquisition, analysis, or interpretation. IGi, GA and

306 YS drafted the manuscript. IGI, GA, IGo, DRZ, RB, PA, MAT and YS revised the manuscript. IGI and IGo
307 performed statistical analysis. DRZ, RB and MAT supplied technical or administrative support for the
308 study. All authors read and approved the final manuscript.

309 Acknowledgements: This study was conducted with the help of TIMNA – a national research platform
310 established by the Israel government to enable big-data studies combining de-identified health data
311 from multiple organizations.

312

313 **References**

314 1. U.S. Department of Health & Human Services. Birth To 5: Watch Me Thrive! A Compendium of
315 Screening Measures for Young Children | ECLKC [Internet]. 2018 [cited 2022 Nov 13]. Available from:
316 [https://eclkc.ohs.acf.hhs.gov/publication/birth-5-watch-me-thrive-compendium-screening-](https://eclkc.ohs.acf.hhs.gov/publication/birth-5-watch-me-thrive-compendium-screening-measures-young-children)
317 [measures-young-children](https://eclkc.ohs.acf.hhs.gov/publication/birth-5-watch-me-thrive-compendium-screening-measures-young-children)

318 2. Zablotsky B, Black LI, Maenner MJ, Schieve LA, Danielson ML, Bitsko RH, et al. Prevalence and
319 Trends of Developmental Disabilities among Children in the United States: 2009–2017. *Pediatrics*.
320 2019;144:e20190811.

321 3. Rah SS, Hong S-B, Yoon JY. Prevalence and Incidence of Developmental Disorders in Korea: A
322 Nationwide Population-Based Study. *J Autism Dev Disord*. 2020;50:4504–11.

323 4. Reichow B, Hume K, Barton EE, Boyd BA. Early intensive behavioral intervention (EIBI) for young
324 children with autism spectrum disorders (ASD). *Cochrane Database Syst Rev*. 2018;5:CD009260.

325 5. Scharf RJ, Scharf GJ, Stroustrup A. Developmental Milestones. *Pediatrics In Review*. 2016;37:25–
326 38.

327 6. Law J, Garrett Z, Nye C. Speech and language therapy interventions for children with primary
328 speech and language delay or disorder. *Cochrane Database Syst Rev*. 2003;CD004110.

329 7. Majnemer A. Benefits of early intervention for children with developmental disabilities. *Seminars*
330 *in Pediatric Neurology*. 1998;5:62–9.

331 8. Gombay DS, Larner MB, Stevenson CS, Lewit EM, Behrman RE. Long-term outcomes of early
332 childhood programs: analysis and recommendations. *Future Child*. 1995;5:6–24.

333 9. Ct R, SI R. Which children benefit the most from early intervention? *Pediatrics* [Internet].
334 *Pediatrics*; 1994 [cited 2022 Jun 19];94. Available from: <https://pubmed.ncbi.nlm.nih.gov/7526330/>

335 10. Scherzer AL, Mike V, Ilson J. Physical therapy as a determinant of change in the cerebral palsied
336 infant. *Pediatrics*. 1976;58:47–52.

- 337 11. Sharkey MA, Palitz ME, Reece LF, Rutherford BL, Akers JP, Alvin BL, et al. The effect of early
338 referral and intervention on the developmentally disabled infant: evaluation at 18 months of age. *J*
339 *Am Board Fam Pract.* 1990;3:163–70.
- 340 12. Zubler JM, Wiggins LD, Macias MM, Whitaker TM, Shaw JS, Squires JK, et al. Evidence-Informed
341 Milestones for Developmental Surveillance Tools. *Pediatrics.* 2022;e2021052138.
- 342 13. Drotar D, Stancin T, Dworkin PH, Sices L, Wood S. Selecting developmental surveillance and
343 screening tools. *Pediatr Rev.* 2008;29:e52-58.
- 344 14. Zimmerman DR, Verbov G, Edelstein N, Stein-Zamir C. Preventive health services for young
345 children in Israel: historical development and current challenges. *Isr J Health Policy Res.* 2019;8:23.
- 346 15. Ozkan M, Senel S, Arslan EA, Karacan CD. The socioeconomic and biological risk factors for
347 developmental delay in early childhood. *Eur J Pediatr.* 2012;171:1815–21.
- 348 16. Delgado CEF, Vagi SJ, Scott KG. Identification of Early Risk Factors for Developmental Delay.
349 *Exceptionality.* Routledge; 2007;15:119–36.
- 350 17. Paiva GS de, Lima ACVM de S, Lima M de C, Eickmann SH. The effect of poverty on
351 developmental screening scores among infants. *Sao Paulo Med J.* 2010;128:276–83.
- 352 18. Cheng S, Maeda T, Tomiwa K, Yamakawa N, Koeda T, Kawai M, et al. Contribution of Parenting
353 Factors to the Developmental Attainment of 9-Month-Old Infants: Results From the Japan Children’s
354 Study. *Journal of Epidemiology.* 2009;19:319–27.
- 355 19. Barros AJ, Matijasevich A, Santos IS, Halpern R. Child development in a birth cohort: effect of
356 child stimulation is stronger in less educated mothers. *International Journal of Epidemiology.*
357 2010;39:285–94.
- 358 20. Sudry T, Zimmerman DR, Yardeni H, Joseph A, Baruch R, Grotto I, et al. Standardization of a
359 Developmental Milestone Scale Using Data From Children in Israel. *JAMA Network Open.*
360 2022;5:e222184.
- 361 21. Israeli child development report [Internet]. KI Institute. [cited 2023 Feb 2]. Available from:
362 https://kinstitute.org.il/publication_files/israeli-child-development-report/
- 363 22. CDC. Data and Statistics on Autism Spectrum Disorder | CDC [Internet]. Centers for Disease
364 Control and Prevention. 2023 [cited 2023 Jan 29]. Available from:
365 <https://www.cdc.gov/ncbddd/autism/data.html>
- 366 23. Chung C-Y, Liu W-Y, Chang C-J, Chen C-L, Tang SF-T, Wong AM-K. The Relationship Between
367 Parental Concerns and Final Diagnosis in Children With Developmental Delay. *J Child Neurol.* SAGE
368 Publications Inc; 2011;26:413–9.
- 369 24. Glascoe FP. Parents’ Concerns About Children’s Development: Prescreening Technique or
370 Screening Test? *Pediatrics.* American Academy of Pediatrics; 1997;99:522–8.

Table 1.a. Study population characteristics by year. In the religion variable, mothers whose origin was reported “Circassian”, “Other Muslim”, “Other Christian”, “Unknown” or “Other” were all sub-grouped as “Other”. In the maternal education level “Other” includes “Missing”, “No education” and “Studies in Yeshiva”. In the birth country variable, “Other” includes children whose mothers were reported as born in Europe, Other, Unknown, North America, Africa, Asia, South and Central America, Australia, and Oceania. In marital status, ‘Missing’, ‘widower’ and ‘other’ were reported as ‘Other’.

		Total number of Children				
		2016	2017	2018	2019	2020
n		422534	439369	456681	455942	394236
Maternal education, n (%)	Elementary	9530	9715	9784	9842	8107
	High School	117661	121669	125123	122749	104013
	Tertiary Education	35500	38634	42597	45359	42425
	Academic	124969	133136	140590	142639	123922
	Missing	134874	136215	138587	135353	115769
Ethnic group, n (%)	Christian Arab	6241	6391	6545	6375	5374
	Druze	8621	9012	9180	9129	7547
	Jewish	248900	257901	266650	269929	237924
	Muslim Arab	94202	99691	102199	99663	84921
	Muslim Bedouin	1177	1917	3735	6202	7996
	Other	9437	9730	10170	10318	8912
	Missing	53956	54727	58202	54326	41562
Sex of child, n (%)	Female	205548	213675	222102	221234	191276
	Male	216986	225694	234579	234708	202960
Maternal birth country, n (%)	Ethiopia	6039	6323	6913	7069	6266
	FSU	13867	15095	16488	16763	14079
	Israel	344601	361705	373029	370504	319928
	Other	25293	25239	25326	25883	23835
Maternal employment status, n (%)	Employed	165974	178179	195345	205890	189838
	Unemployed	93411	95953	97224	94809	79416
	Student	15608	17519	19318	20128	18225
	Other	147541	147718	144794	135115	106757
Maternal marital status, n (%)	Married	370702	387562	400797	397968	342344
	Unmarried	12132	13181	14371	15259	13847
	Divorced	5286	5244	5278	4860	3773
	Other	34414	33382	36235	37855	34272
Maternal age, n (%)	<=20	18631	18821	18464	17512	14206
	20-40	391600	406961	421384	418611	360138
	>40	11831	12865	13929	14506	12984
Child’s age at time of estimation, n (%)	0-1	187783	192493	197007	197809	185019
	1-2	169254	173707	181267	181784	166682
	2-3	106652	109820	114959	115508	104789
	3-4	45226	50475	54075	52957	23917
	4-5	9602	10850	12000	11760	9968
	5+	15888	18666	22194	21439	9337

Table 1.b. Study population by reports of parental and nurse's concern regarding child development

		parental report of developmental concern					Nurse's report of developmental concern				
		2016	2017	2018	2019	2020	2016	2017	2018	2019	2020
n		16683	16062	16236	16304	12940	16120	17619	19437	21085	16324
Maternal education, n (%)	Elementary	399 (4.2)*	389 (4.0)*	367 (3.8)*	359 (3.6)*	287 (3.5)*	513 (5.4)*	530 (5.5)*	587 (6.0)*	613 (6.2)*	488 (6.0)*
	High School	5315 (4.5)*	5229 (4.3)*	5250 (4.2)*	5210 (4.2)*	4203 (4.0)*	5568 (4.7)*	6189 (5.1)*	6763 (5.4)*	7391 (6.0)*	5690 (5.5)*
	Tertiary Education	1391 (3.9)*	1312 (3.4)*	1433 (3.4)*	1507 (3.3)*	1339 (3.2)*	1299 (3.7)*	1398 (3.6)*	1700 (4.0)*	1892 (4.2)*	1649 (3.9)*
	Academic	4436 (3.5)*	4236 (3.2)*	4318 (3.1)*	4280 (3.0)*	3428 (2.8)*	4113 (3.3)*	4564 (3.4)*	5026 (3.6)*	5450 (3.8)*	4177 (3.4)*
	Missing	5142 (3.8)*	4896 (3.6)*	4868 (3.5)*	4948 (3.7)*	3683 (3.2)*	4627 (3.4)*	4938 (3.6)*	5361 (3.9)*	5739 (4.2)*	4320 (3.7)*
Ethnic group, n (%)	Christian Arab	160 (2.6)*	150 (2.3)*	141 (2.2)*	174 (2.7)*	130 (2.4)*	240 (3.8)*	239 (3.7)*	281 (4.3)*	335 (5.3)*	202 (3.8)*
	Druze	401 (4.7)*	348 (3.9)*	312 (3.4)*	273 (3.0)*	195 (2.6)*	417 (4.8)*	514 (5.7)*	603 (6.6)*	594 (6.5)*	389 (5.2)*
	Jewish	9957 (4.0)*	9403 (3.6)*	9412 (3.5)*	9477 (3.5)*	7549 (3.2)*	8691 (3.5)*	9462 (3.7)*	10164 (3.8)*	11228 (4.2)*	8938 (3.8)*
	Muslim Arab	3662 (3.9)*	3851 (3.9)*	3780 (3.7)*	3869 (3.9)*	3112 (3.7)*	4330 (4.6)*	4804 (4.8)*	5323 (5.2)*	5663 (5.7)*	4334 (5.1)*
	Muslim Bedouin	14 (1.2)*	19 (1.0)*	40 (1.1)*	83 (1.3)*	142 (1.8)*	25 (2.1)*	50 (2.6)*	114 (3.1)*	217 (3.5)*	278 (3.5)*
	Other	417 (4.4)*	425 (4.4)*	559 (5.5)*	529 (5.1)*	468 (5.3)*	489 (5.2)*	550 (5.7)*	723 (7.1)*	810 (7.9)*	660 (7.4)*
	Missing	2072 (3.8)*	1866 (3.4)*	1992 (3.4)*	1899 (3.5)*	1344 (3.2)*	1928 (3.6)*	2000 (3.7)*	2229 (3.8)*	2238 (4.1)*	1523 (3.7)*
Sex of child, n (%)	Female	6286 (3.1)*	6062 (2.8)*	6010 (2.7)*	5963 (2.7)*	4733 (2.5)*	6350 (3.1)*	6985 (3.3)*	7528 (3.4)*	8178 (3.7)*	6236 (3.3)*
	Male	10397 (4.8)*	10000 (4.4)*	10226 (4.4)*	10341 (4.4)*	8207 (4.0)*	9770 (4.5)*	10634 (4.7)*	11909 (5.1)*	12907 (5.5)*	10088 (5.0)*
Maternal birth country, n (%)	Ethiopia	213 (3.5)*	223 (3.5)*	246 (3.6)*	275 (3.9)*	228 (3.6)*	315 (5.2)*	378 (6.0)*	409 (5.9)*	549 (7.8)*	453 (7.2)*
	FSU	641 (4.6)*	648 (4.3)*	780 (4.7)*	825 (4.9)*	710 (5.0)*	677 (4.9)*	821 (5.4)*	1037 (6.3)*	1154 (6.9)*	985 (7.0)*
	Israel	13244 (3.8)*	13093 (3.6)*	12963 (3.5)*	12967 (3.5)*	10193 (3.2)*	12876 (3.7)*	14172 (3.9)*	15383 (4.1)*	16558 (4.5)*	12649 (4.0)*
	Other	1161 (4.6)*	993 (3.9)*	1040 (4.1)*	913 (3.5)*	797 (3.3)*	1020 (4.0)*	1064 (4.2)*	1184 (4.7)*	1258 (4.9)*	1063 (4.5)*
Maternal employment status, n (%)	Employed	6353 (3.8)*	6186 (3.5)*	6549 (3.4)*	6789 (3.3)*	5778 (3.0)*	6018 (3.6)*	6611 (3.7)*	7619 (3.9)*	8745 (4.2)*	7311 (3.9)*
	Unemployed	4126 (4.4)*	3992 (4.2)*	3972 (4.1)*	4036 (4.3)*	3209 (4.0)*	4517 (4.8)*	4996 (5.2)*	5509 (5.7)*	5847 (6.2)*	4511 (5.7)*
	Student	530 (3.4)*	574 (3.3)*	591 (3.1)*	611 (3.0)*	547 (3.0)*	490 (3.1)*	521 (3.0)*	710 (3.7)*	799 (4.0)*	635 (3.5)*
	Other	5674 (3.8)*	5310 (3.6)*	5124 (3.5)*	4868 (3.6)*	3406 (3.2)*	5095 (3.5)*	5491 (3.7)*	5599 (3.9)*	5694 (4.2)*	3867 (3.6)*
Maternal marital status, n (%)	Married	14432 (3.9)*	14077 (3.6)*	14057 (3.5)*	14030 (3.5)*	10979 (3.2)*	13945 (3.8)*	15347 (4.0)*	16768 (4.2)*	18106 (4.5)*	13984 (4.1)*
	Unmarried	560 (4.6)*	542 (4.1)*	660 (4.6)*	687 (4.5)*	629 (4.5)*	625 (5.2)*	703 (5.3)*	834 (5.8)*	1014 (6.6)*	818 (5.9)*
	Divorced	283 (5.4)*	277 (5.3)*	297 (5.6)*	298 (6.1)*	213 (5.6)*	264 (5.0)*	315 (6.0)*	399 (7.6)*	359 (7.4)*	272 (7.2)*
	Other	1408 (4.1)*	1166 (3.5)*	1222 (3.4)*	1289 (3.4)*	1119 (3.3)*	1286 (3.7)*	1254 (3.8)*	1436 (4.0)*	1606 (4.2)*	1250 (3.6)*
Maternal age, n (%)	<=20	608 (3.3)*	613 (3.3)	574 (3.1) [‡]	579 (3.3)	445 (3.1)*	669 (3.6)*	770 (4.1)*	762 (4.1)*	891 (5.1)*	603 (4.2)*
	20-40	15518 (4.0)*	14878 (3.7)	15041 (3.6) [‡]	14985 (3.6)	11763 (3.3)*	14895 (3.8)*	16181 (4.0)*	17921 (4.3)*	19222 (4.6)*	14894 (4.1)*
	>40	540 (4.6)*	553 (4.3)	556 (4.0) [‡]	607 (4.2)	572 (4.4)*	543 (4.6)*	649 (5.0)*	684 (4.9)*	844 (5.8)*	668 (5.1)*
Child's age at time of estimation, n (%)	0-1	4536 (2.4)*	4226 (2.2)*	3976 (2.0)*	3885 (2.0)*	2730 (1.5)*	5234 (2.8)*	5682 (3.0)*	5871 (3.0)*	6239 (3.2)*	4416 (2.4)*
	1-2	5031 (3.0)*	4664 (2.7)*	4592 (2.5)*	4747 (2.6)*	4132 (2.5)*	4909 (2.9)*	5233 (3.0)*	5790 (3.2)*	6483 (3.6)*	5352 (3.2)*
	2-3	5315 (5.0)*	4996 (4.5)*	5197 (4.5)*	5179 (4.5)*	4842 (4.6)*	4601 (4.3)*	4828 (4.4)*	5595 (4.9)*	6149 (5.3)*	5445 (5.2)*
	3-4	1950 (4.3)*	2205 (4.4)*	2315 (4.3)*	2350 (4.4)*	1216 (5.1)*	1508 (3.3)*	1941 (3.8)*	2139 (4.0)*	2357 (4.5)*	1262 (5.3)*
	4-5	495 (5.2)*	532 (4.9)*	619 (5.2)*	617 (5.2)*	476 (4.8)*	341 (3.6)*	445 (4.1)*	542 (4.5)*	495 (4.2)*	418 (4.2)*
	5+	445 (2.8)*	512 (2.7)*	640 (2.9)*	561 (2.6)*	269 (2.9)*	373 (2.3)*	530 (2.8)*	687 (3.1)*	698 (3.3)*	323 (3.5)*

* $P < 0.001$, [‡] $P < 0.005$ (Bonferroni adjusted p-value)

Table 1.c. Study population characteristics by developmental domain attainment failure in four developmental domains: social, language, gross motor and fine motor

		Failures in social domain					Failures in language domain				
		2016	2017	2018	2019	2020	2016	2017	2018	2019	2020
n		8495	10018	12002	13602	11004	16309	18130	21290	24639	20199
Maternal education, n (%)	Elementary	305 (3.2)*	317 (3.3)*	400 (4.1)*	432 (4.4)*	305 (3.8)*	521 (5.5)*	563 (5.8)*	679 (6.9)*	762 (7.7)*	613 (7.6)*
	High School	2723 (2.3)*	3314 (2.7)*	3829 (3.1)*	4226 (3.4)*	3493 (3.4)*	5532 (4.7)*	6266 (5.2)*	7098 (5.7)*	8135 (6.6)*	6743 (6.5)*
	Tertiary Education	638 (1.8)*	877 (2.3)*	1216 (2.9)*	1408 (3.1)*	1225 (2.9)*	1337 (3.8)*	1626 (4.2)*	2054 (4.8)*	2549 (5.6)*	2312 (5.4)*
	Academic	2201 (1.8)*	2391 (1.8)*	2927 (2.1)*	3351 (2.3)*	2635 (2.1)*	3696 (3.0)*	4175 (3.1)*	4888 (3.5)*	5679 (4.0)*	4612 (3.7)*
	Missing	2628 (1.9)*	3119 (2.3)*	3630 (2.6)*	4185 (3.1)*	3346 (2.9)*	5223 (3.9)*	5500 (4.0)*	6571 (4.7)*	7514 (5.6)*	5919 (5.1)*
Ethnic group, n (%)	Christian Arab	119 (1.9)*	126 (2.0)*	150 (2.3)*	164 (2.6)*	119 (2.2)*	212 (3.4)*	224 (3.5)*	275 (4.2)*	299 (4.7)*	212 (3.9)*
	Druze	166 (1.9)*	196 (2.2)*	184 (2.0)*	199 (2.2)*	133 (1.8)*	256 (3.0)*	331 (3.7)*	341 (3.7)*	366 (4.0)*	268 (3.6)*
	Jewish	4763 (1.9)*	5550 (2.2)*	6614 (2.5)*	7962 (2.9)*	6953 (2.9)*	9353 (3.8)*	10275 (4.0)*	11826 (4.4)*	14370 (5.3)*	12442 (5.2)*
	Muslim Arab	2219 (2.4)*	2605 (2.6)*	2887 (2.8)*	2993 (3.0)*	2164 (2.5)*	3932 (4.2)*	4502 (4.5)*	5132 (5.0)*	5545 (5.6)*	4253 (5.0)*
	Muslim Bedouin	18 (1.5)*	54 (2.8)*	196 (5.2)*	365 (5.9)*	309 (3.9)*	31 (2.6)*	89 (4.6)*	243 (6.5)*	429 (6.9)*	448 (5.6)*
	Other	229 (2.4)*	279 (2.9)*	387 (3.8)*	449 (4.4)*	352 (3.9)*	513 (5.4)*	567 (5.8)*	731 (7.2)*	909 (8.8)*	723 (8.1)*
	Missing	981 (1.8)*	1208 (2.2)*	1584 (2.7)*	1470 (2.7)*	974 (2.3)*	2012 (3.7)*	2142 (3.9)*	2742 (4.7)*	2721 (5.0)*	1853 (4.5)*
Sex of child, n (%)	Female	3479 (1.7)*	4098 (1.9)*	4972 (2.2)*	5491 (2.5)*	4516 (2.4)*	6371 (3.1)*	7130 (3.3)*	8376 (3.8)*	9824 (4.4)*	7975 (4.2)*
	Male	5016 (2.3)*	5920 (2.6)*	7030 (3.0)*	8111 (3.5)*	6488 (3.2)*	9938 (4.6)*	11000 (4.9)*	12914 (5.5)*	14815 (6.3)*	12224 (6.0)*
Maternal birth country, n (%)	Ethiopia	185 (3.1)*	232 (3.7)*	240 (3.5)*	340 (4.8)*	311 (5.0)*	386 (6.4)*	427 (6.8)*	498 (7.2)*	690 (9.8)*	620 (9.9)*
	FSU	327 (2.4)*	505 (3.3)*	620 (3.8)*	678 (4.0)*	517 (3.7)*	723 (5.2)*	904 (6.0)*	1121 (6.8)*	1327 (7.9)*	1140 (8.1)*
	Israel	7005 (2.0)*	8113 (2.2)*	9432 (2.5)*	10676 (2.9)*	8677 (2.7)*	12898 (3.7)*	14439 (4.0)*	16740 (4.5)*	19208 (5.2)*	15616 (4.9)*
	Other	480 (1.9)*	561 (2.2)*	716 (2.8)*	850 (3.3)*	794 (3.3)*	1133 (4.5)*	1163 (4.6)*	1298 (5.1)*	1556 (6.0)*	1406 (5.9)*
Maternal employment status, n (%)	Employed	3054 (1.8)*	3693 (2.1)*	4969 (2.5)*	5764 (2.8)*	5141 (2.7)*	5938 (3.6)*	6850 (3.8)*	8215 (4.2)*	10215 (5.0)*	9141 (4.8)*
	Unemployed	2374 (2.5)*	2855 (3.0)*	3203 (3.3)*	3506 (3.7)*	2643 (3.3)*	4570 (4.9)*	5105 (5.3)*	5888 (6.1)*	6553 (6.9)*	5166 (6.5)*
	Student	267 (1.7)*	347 (2.0)*	444 (2.3)*	533 (2.6)*	440 (2.4)*	481 (3.1)*	579 (3.3)*	759 (3.9)*	904 (4.5)*	780 (4.3)*
	Other	2800 (1.9)*	3123 (2.1)*	3386 (2.3)*	3799 (2.8)*	2780 (2.6)*	5320 (3.6)*	5596 (3.8)*	6428 (4.4)*	6967 (5.2)*	5112 (4.8)*
Maternal marital status, n (%)	Married	7442 (2.0)*	8766 (2.3)*	10336 (2.6)*	11658 (2.9)*	9388 (2.7)*	14132 (3.8)*	15776 (4.1)*	18303 (4.6)*	21211 (5.3)*	17268 (5.0)*
	Unmarried	354 (2.9)*	409 (3.1)*	505 (3.5)*	651 (4.3)*	563 (4.1)*	638 (5.3)*	765 (5.8)*	892 (6.2)*	1136 (7.4)*	1028 (7.4)*
	Divorced	127 (2.4)*	170 (3.2)*	184 (3.5)*	189 (3.9)*	147 (3.9)*	287 (5.4)*	337 (6.4)*	388 (7.4)*	395 (8.1)*	324 (8.6)*
	Other	572 (1.7)*	673 (2.0)*	977 (2.7)*	1104 (2.9)*	906 (2.6)*	1252 (3.6)*	1252 (3.8)*	1707 (4.7)*	1897 (5.0)*	1579 (4.6)*
Maternal age, n (%)	<=20	358 (1.9)*	435 (2.3)*	501 (2.7)*	566 (3.2)*	411 (2.9)*	662 (3.6)*	804 (4.3) [‡]	794 (4.3)*	942 (5.4)*	764 (5.4)
	20-40	7775 (2.0)*	9183 (2.3)*	10952 (2.6)*	12400 (3.0)*	10041 (2.8)*	15011 (3.8)*	16608 (4.1) [‡]	19571 (4.6)*	22582 (5.4)*	18426 (5.1)
	>40	354 (3.0)*	382 (3.0)*	511 (3.7)*	549 (3.8)*	471 (3.6)*	622 (5.3)*	693 (5.4) [‡]	862 (6.2)*	983 (6.8)*	868 (6.7)
Child's age at time of estimation, n (%)	0-1	6042 (3.2)*	6881 (3.6)*	8198 (4.2)*	9323 (4.7)*	7359 (4.0)*	5815 (3.1)*	6624 (3.4)*	7813 (4.0)*	9001 (4.6)*	7450 (4.0)*
	1-2	1081 (0.6)*	1264 (0.7)*	1602 (0.9)*	1931 (1.1)*	1868 (1.1)*	5389 (3.2)*	5637 (3.2)*	6832 (3.8)*	8366 (4.6)*	7014 (4.2)*
	2-3	1193 (1.1)*	1473 (1.3)*	1763 (1.5)*	1970 (1.7)*	1562 (1.5)*	3976 (3.7)*	4138 (3.8)*	4733 (4.1)*	5257 (4.6)*	4711 (4.5)*
	3-4	334 (0.7)*	540 (1.1)*	650 (1.2)*	642 (1.2)*	396 (1.7)*	831 (1.8)*	1509 (3.0)*	1703 (3.1)*	1950 (3.7)*	1080 (4.5)*
	4-5	121 (1.3)*	187 (1.7)*	224 (1.9)*	236 (2.0)*	158 (1.6)*	315 (3.3)*	393 (3.6)*	501 (4.2)*	532 (4.5)*	421 (4.2)*
	5+	52 (0.3)*	68 (0.4)*	79 (0.4)*	92 (0.4)*	52 (0.6)*	679 (4.3)*	552 (3.0)*	691 (3.1)*	712 (3.3)*	344 (3.7)*

* $p < 0.001$; ‡ $p < 0.05$ (Bonferroni adjusted p -value)

Table 1.c. Study population characteristics by developmental domain attainment failure in four developmental domains: social, language, gross motor and fine motor (continued)

		Failures in gross motor domain					Failures in fine motor domain				
		2016	2017	2018	2019	2020	2016	2017	2018	2019	2020
n		12561	13786	15723	17324	12957	14048	15180	16760	17940	14532
Maternal education, n (%)	Elementary	315 (3.3)*	358 (3.7)*	390 (4.0)*	427 (4.3)*	311 (3.8)*	431 (4.5)*	468 (4.8)*	490 (5.0)*	579 (5.9)*	409 (5.0)*
	High School	3946 (3.4)*	4385 (3.6)*	4748 (3.8)*	5262 (4.3)*	3825 (3.7)*	4493 (3.8)*	4819 (4.0)*	5208 (4.2)*	5530 (4.5)*	4430 (4.3)*
	Tertiary Education	1087 (3.1)*	1181 (3.1)*	1484 (3.5)*	1735 (3.8)*	1465 (3.5)*	1258 (3.5)*	1404 (3.6)*	1754 (4.1)*	1902 (4.2)*	1709 (4.0)*
	Academic	3382 (2.7)*	3633 (2.7)*	4234 (3.0)*	4720 (3.3)*	3525 (2.8)*	3643 (2.9)*	3868 (2.9)*	4288 (3.1)*	4613 (3.2)*	3707 (3.0)*
	Missing	3831 (2.8)*	4229 (3.1)*	4867 (3.5)*	5180 (3.8)*	3831 (3.3)*	4223 (3.1)*	4621 (3.4)*	5020 (3.6)*	5316 (3.9)*	4277 (3.7)*
Ethnic group, n (%)	Christian Arab	184 (2.9)*	203 (3.2)*	197 (3.0) [‡]	208 (3.3)	130 (2.4)*	186 (3.0)*	229 (3.6)*	227 (3.5)*	214 (3.4)*	169 (3.1)*
	Druze	262 (3.0)*	304 (3.4)*	322 (3.5) [‡]	294 (3.2)	207 (2.7)*	290 (3.4)*	273 (3.0)*	298 (3.2)*	270 (3.0)*	205 (2.7)*
	Jewish	7635 (3.1)*	8286 (3.2)*	9534 (3.6) [‡]	10491 (3.9)	8310 (3.5)*	8155 (3.3)*	8557 (3.3)*	9475 (3.6)*	10681 (4.0)*	8899 (3.7)*
	Muslim Arab	2750 (2.9)*	3115 (3.1)*	3345 (3.3) [‡]	3611 (3.6)	2498 (2.9)*	3486 (3.7)*	3826 (3.8)*	3921 (3.8)*	4065 (4.1)*	3164 (3.7)*
	Muslim Bedouin	18 (1.5)*	29 (1.5)*	88 (2.4) [‡]	207 (3.3)	210 (2.6)*	38 (3.2)*	91 (4.7)*	278 (7.4)*	435 (7.0)*	474 (5.9)*
	Other	229 (2.4)*	249 (2.6)*	326 (3.2) [‡]	363 (3.5)	278 (3.1)*	321 (3.4)*	334 (3.4)*	350 (3.4)*	463 (4.5)*	380 (4.3)*
	Missing	1483 (2.7)*	1600 (2.9)*	1911 (3.3) [‡]	2150 (4.0)	1324 (3.2)*	1572 (2.9)*	1870 (3.4)*	2211 (3.8)*	1812 (3.3)*	1241 (3.0)*
Sex of child, n (%)	Female	5636 (2.7)*	6234 (2.9)*	7031 (3.2)*	7730 (3.5)*	5838 (3.1)*	6121 (3.0)*	6643 (3.1)*	7238 (3.3)*	7802 (3.5)*	6514 (3.4)*
	Male	6925 (3.2)*	7552 (3.3)*	8692 (3.7)*	9594 (4.1)*	7119 (3.5)*	7927 (3.7)*	8537 (3.8)*	9522 (4.1)*	10138 (4.3)*	8018 (4.0)*
Maternal birth country, n (%)	Ethiopia	165 (2.7)	195 (3.1)*	241 (3.5)	278 (3.9)	223 (3.6)	242 (4.0)*	314 (5.0)*	304 (4.4)*	355 (5.0)*	325 (5.2)*
	FSU	369 (2.7)	432 (2.9)*	522 (3.2)	617 (3.7)	486 (3.5)	501 (3.6)*	576 (3.8)*	683 (4.1)*	741 (4.4)*	553 (3.9)*
	Israel	10345 (3.0)	11566 (3.2)*	12984 (3.5)	14101 (3.8)	10511 (3.3)	11646 (3.4)*	12379 (3.4)*	13478 (3.6)*	14404 (3.9)*	11776 (3.7)*
	Other	769 (3.0)	733 (2.9)*	886 (3.5)	1019 (3.9)	758 (3.2)	780 (3.1)*	851 (3.4)*	901 (3.6)*	1024 (4.0)*	972 (4.1)*
Maternal employment status, n (%)	Employed	4842 (2.9)*	5252 (2.9)*	6352 (3.3)*	7592 (3.7)*	6096 (3.2)*	5299 (3.2)*	5772 (3.2)*	7204 (3.7)*	7968 (3.9)*	6833 (3.6)*
	Unemployed	3234 (3.5)*	3499 (3.6)*	3736 (3.8)*	4051 (4.3)*	2880 (3.6)*	3721 (4.0)*	4015 (4.2)*	4194 (4.3)*	4389 (4.6)*	3426 (4.3)*
	Student	396 (2.5)*	496 (2.8)*	579 (3.0)*	685 (3.4)*	545 (3.0)*	480 (3.1)*	573 (3.3)*	672 (3.5)*	748 (3.7)*	618 (3.4)*
	Other	4089 (2.8)*	4539 (3.1)*	5056 (3.5)*	4996 (3.7)*	3436 (3.2)*	4548 (3.1)*	4820 (3.3)*	4690 (3.2)*	4835 (3.6)*	3655 (3.4)*
Maternal marital status, n (%)	Married	11025 (3.0)*	12125 (3.1)*	13748 (3.4)*	15051 (3.8)*	11221 (3.3)*	12365 (3.3)*	13184 (3.4)*	14438 (3.6)*	15563 (3.9)*	12496 (3.7)*
	Unmarried	457 (3.8)*	508 (3.9)*	574 (4.0)*	666 (4.4)*	529 (3.8)*	523 (4.3)*	582 (4.4)*	689 (4.8)*	695 (4.6)*	690 (5.0)*
	Divorced	173 (3.3)*	206 (3.9)*	260 (4.9)*	237 (4.9)*	184 (4.9)*	215 (4.1)*	222 (4.2)*	241 (4.6)*	210 (4.3)*	183 (4.9)*
	Other	906 (2.6)*	947 (2.8)*	1141 (3.1)*	1370 (3.6)*	1023 (3.0)*	945 (2.7)*	1192 (3.6)*	1392 (3.8)*	1472 (3.9)*	1163 (3.4)*
Maternal age, n (%)	<=20	502 (2.7)	549 (2.9)	590 (3.2)	627 (3.6) [‡]	441 (3.1)*	586 (3.1)*	699 (3.7)*	679 (3.7)*	686 (3.9)*	560 (3.9)*
	20-40	11611 (3.0)	12746 (3.1)	14516 (3.4)	15903 (3.8) [‡]	11848 (3.3)*	12921 (3.3)*	13895 (3.4)*	15313 (3.6)*	16397 (3.9)*	13243 (3.7)*
	>40	433 (3.7)	475 (3.7)	589 (4.2)	684 (4.7) [‡]	514 (4.0)*	525 (4.4)*	564 (4.4)*	680 (4.9)*	738 (5.1)*	627 (4.8)*
Child's age at time of estimation, n (%)	0-1	2716 (1.4)*	2979 (1.5)*	3155 (1.6)*	3479 (1.8)*	2179 (1.2)*	11497 (6.1)*	12274 (6.4)*	13400 (6.8)*	14225 (7.2)*	11810 (6.4)*
	1-2	5407 (3.2)*	5959 (3.4)*	6902 (3.8)*	7713 (4.2)*	6334 (3.8)*	1146 (0.7)*	1266 (0.7)*	1491 (0.8)*	1594 (0.9)*	1474 (0.9)*
	2-3	3068 (2.9)*	3114 (2.8)*	3696 (3.2)*	3998 (3.5)*	3556 (3.4)*	520 (0.5)*	498 (0.5)*	554 (0.5)*	644 (0.6)*	637 (0.6)*
	3-4	1510 (3.3)*	1789 (3.5)*	2015 (3.7)*	2222 (4.2)*	1154 (4.8)*	587 (1.3)*	709 (1.4)*	805 (1.5)*	882 (1.7)*	433 (1.8)*
	4-5	105 (1.1)*	159 (1.5)*	177 (1.5)*	171 (1.5)*	148 (1.5)*	94 (1.0)*	119 (1.1)*	160 (1.3)*	195 (1.7)*	129 (1.3)*
	5+	551 (3.5)*	664 (3.6)*	787 (3.5)*	908 (4.2)*	383 (4.1)*	518 (3.3)*	679 (3.6)*	783 (3.5)*	849 (4.0)*	381 (4.1)*

*p<0.001, [‡]p<0.005 (Bonferroni adjusted p-value)

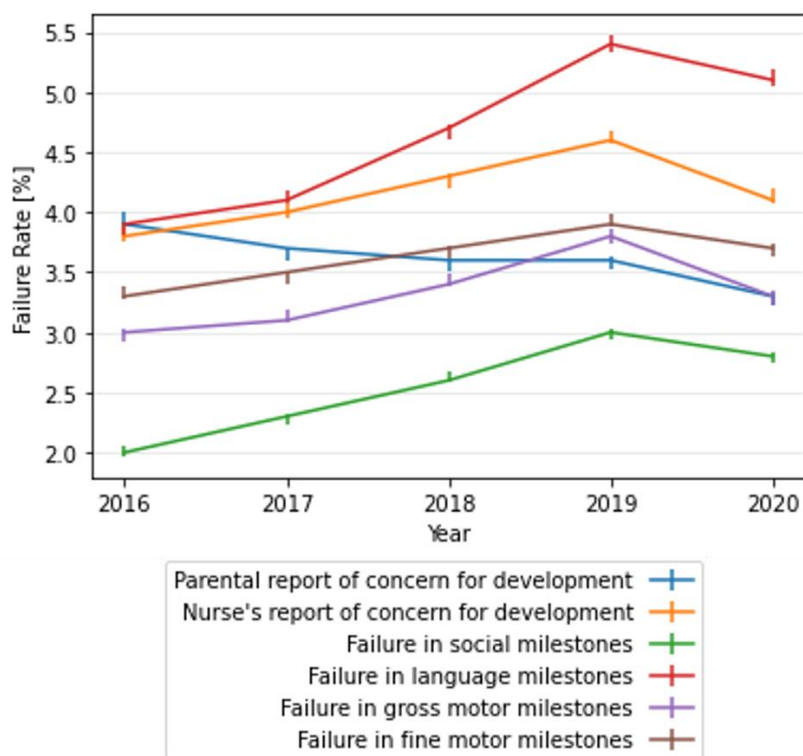


Figure 1. Temporal trends in child development domains and in parental and nurse's report of concern for child development

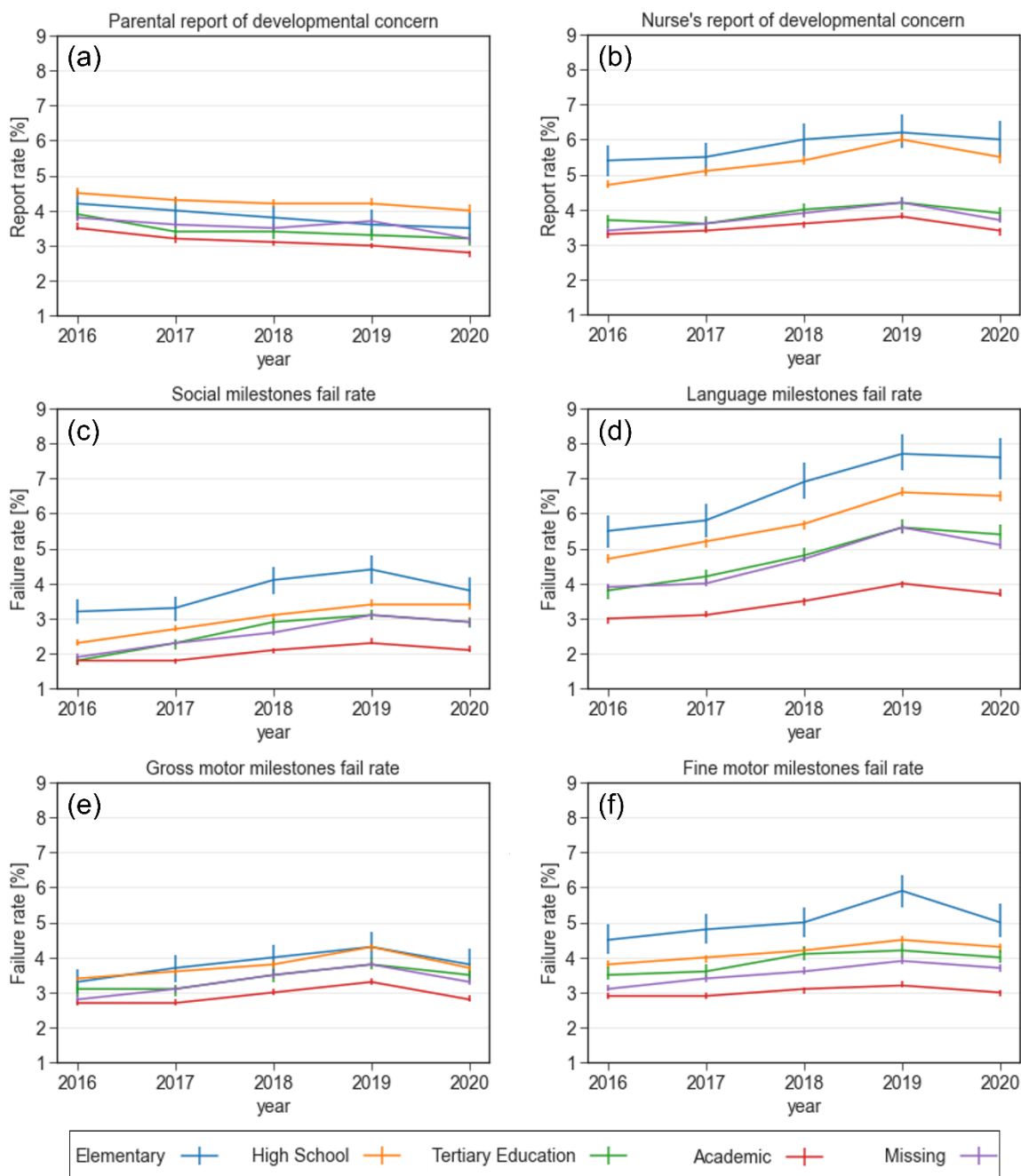


Figure 2. Reports of concern and failure rates in various developmental domains stratified by maternal education level between 2016-2020. (a) Parental report of developmental concern (b) Nurse's report of developmental concern (c) Failure rate in the social domain (d) Failure rate in the language domain (e) Failure rate in the gross motor domain (f) Failure rate in the fine motor domain

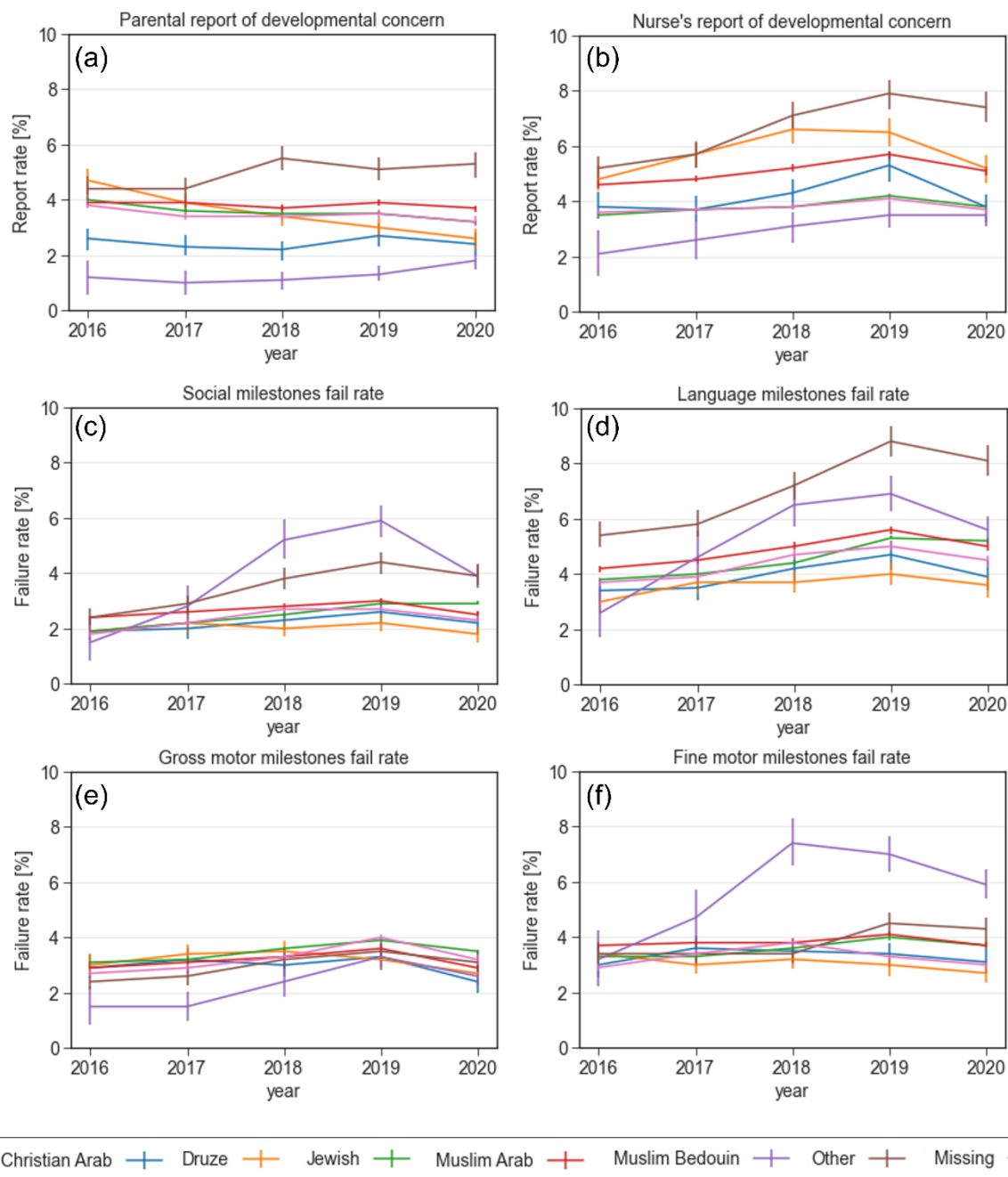


Figure 3. Reports of concern and failure rates in various developmental domains stratified by ethnic and religious groups between 2016-2020. (a) Parental report of developmental concern (b) Nurse's report of developmental concern (c) Failure rate in the social domain (d) Failure rate in the language domain (e) Failure rate in the gross motor domain (f) Failure rate in the fine motor domain

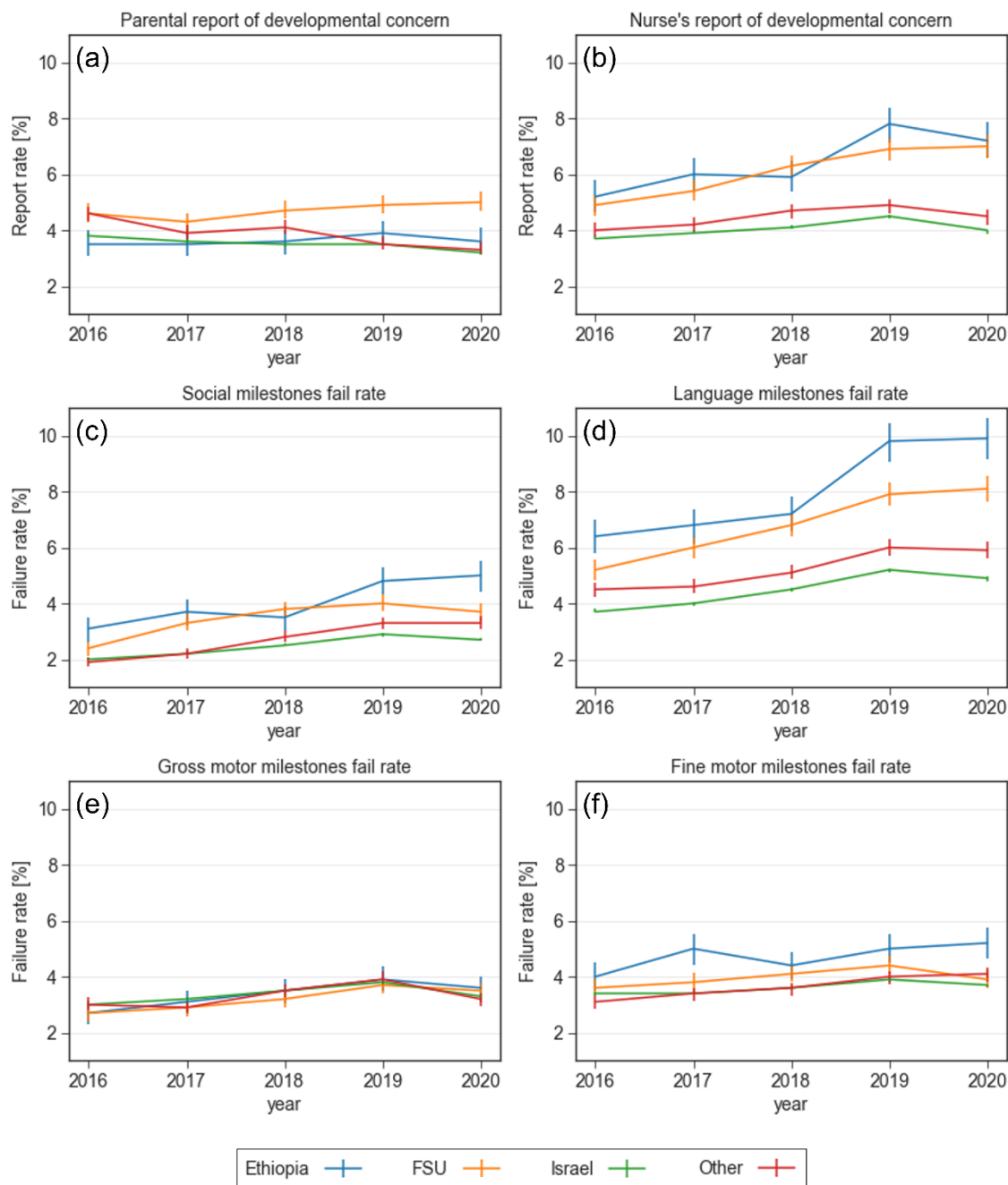


Figure 4. Reports of concern and failure rates in various developmental domains stratified by maternal country of birth between 2016-2020. (a) Parental report of developmental concern (b) Nurse's report of developmental concern (c) Failure rate in the social domain (d) Failure rate in the language domain (e) Failure rate in the gross motor domain (f) Failure rate in the fine motor domain

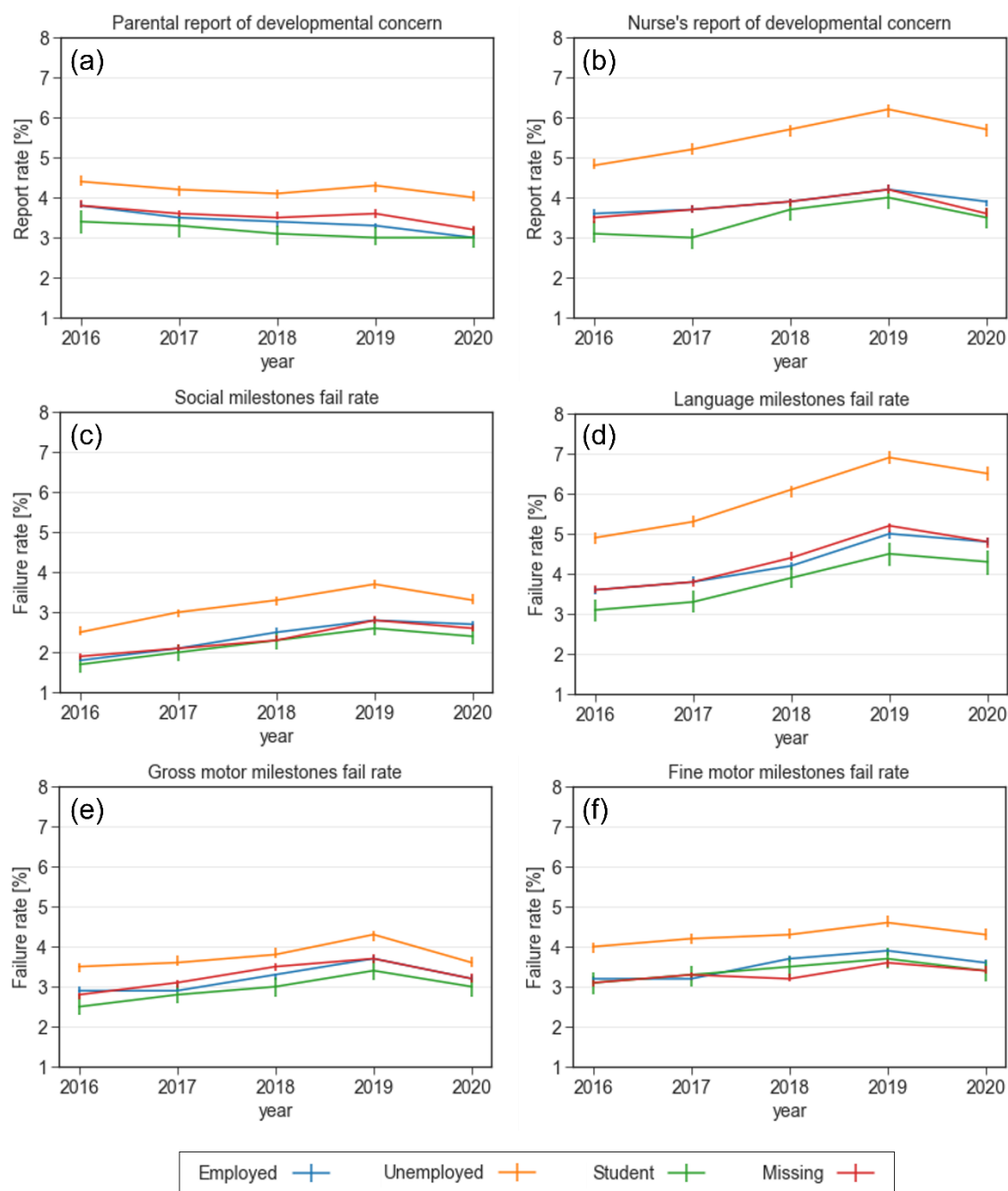


Figure 5. Reports of concern and failure rates in various developmental domains stratified by maternal employment status between 2016-2020. (a) Parental report of developmental concern (b) Nurse's report of developmental concern (c) Failure rate in the social domain (d) Failure rate in the language domain (e) Failure rate in the gross motor domain (f) Failure rate in the fine motor domain

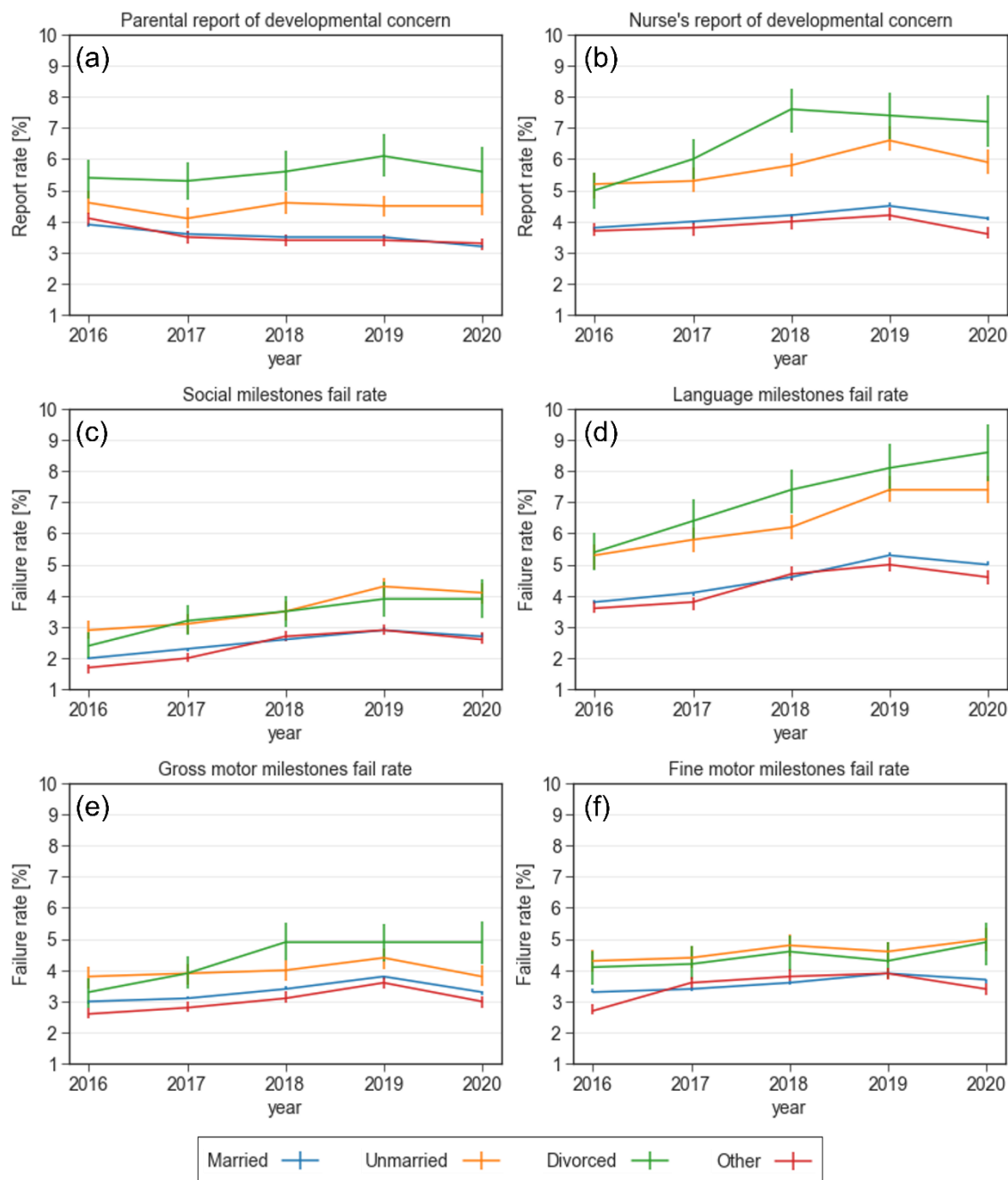


Figure 6. Reports of concern and failure rates in various developmental domains stratified by maternal marital status between 2016-2020. (a) Parental report of developmental concern (b) Nurse's report of developmental concern (c) Failure rate in the social domain (d) Failure rate in the language domain (e) Failure rate in the gross motor domain (f) Failure rate in the fine motor domain

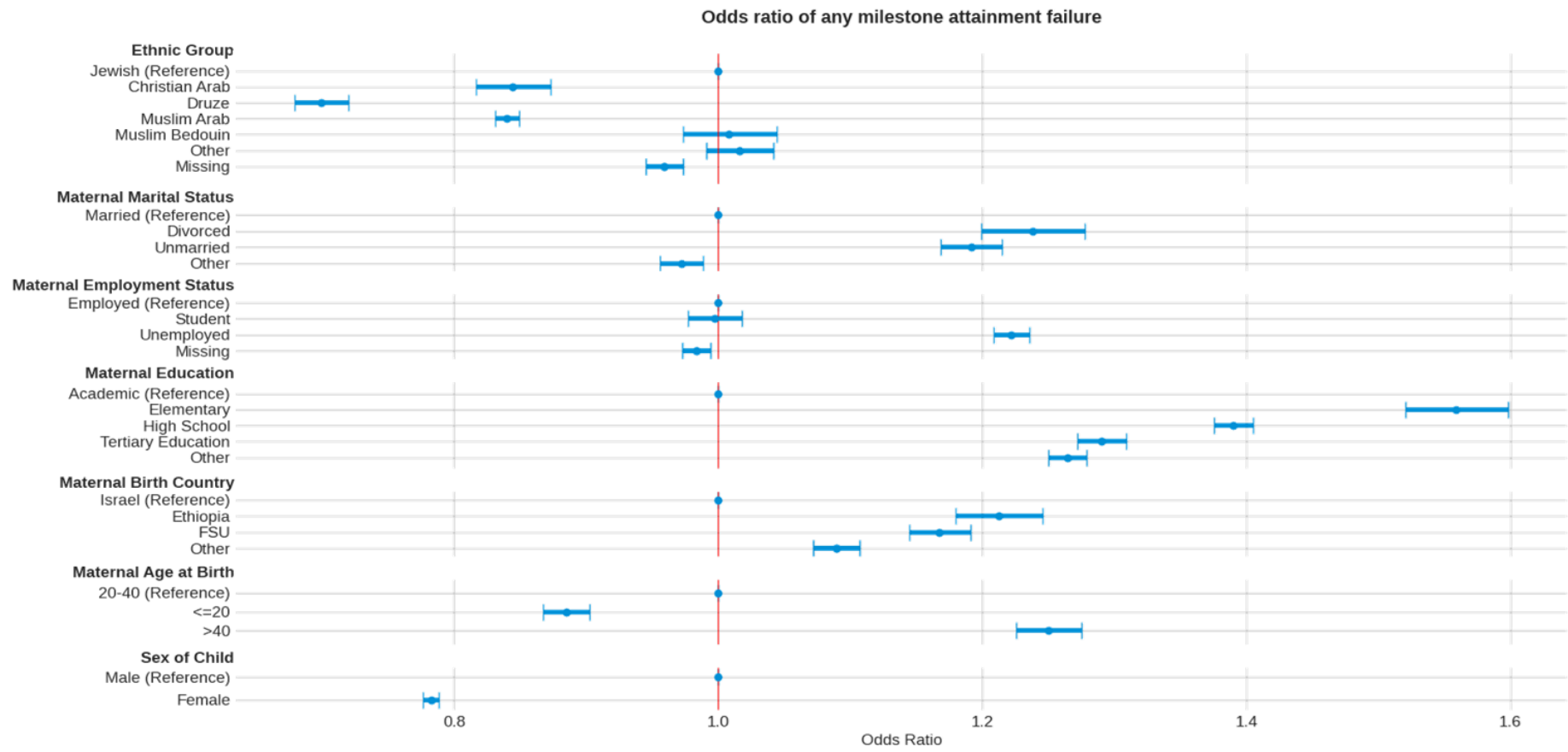
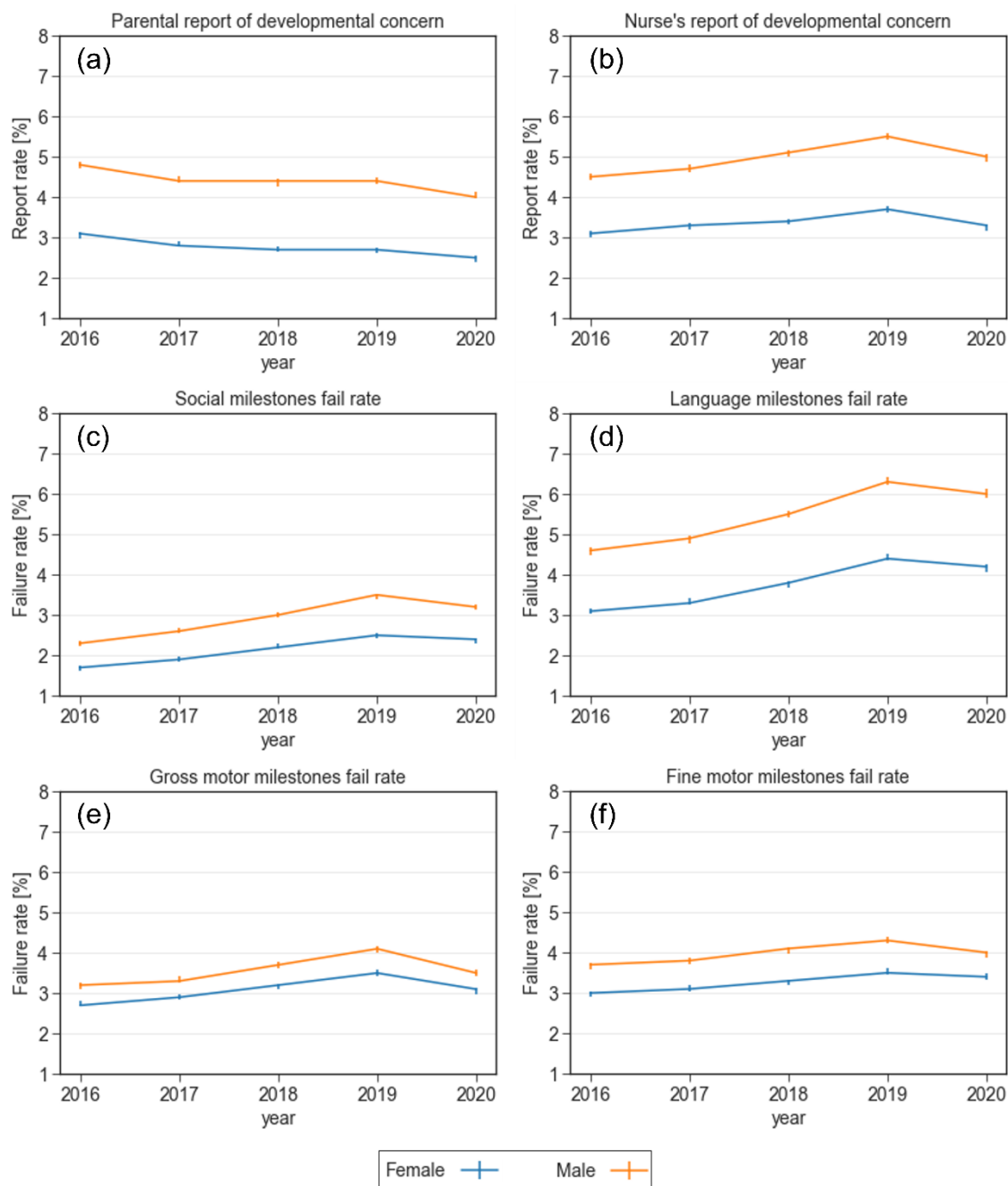
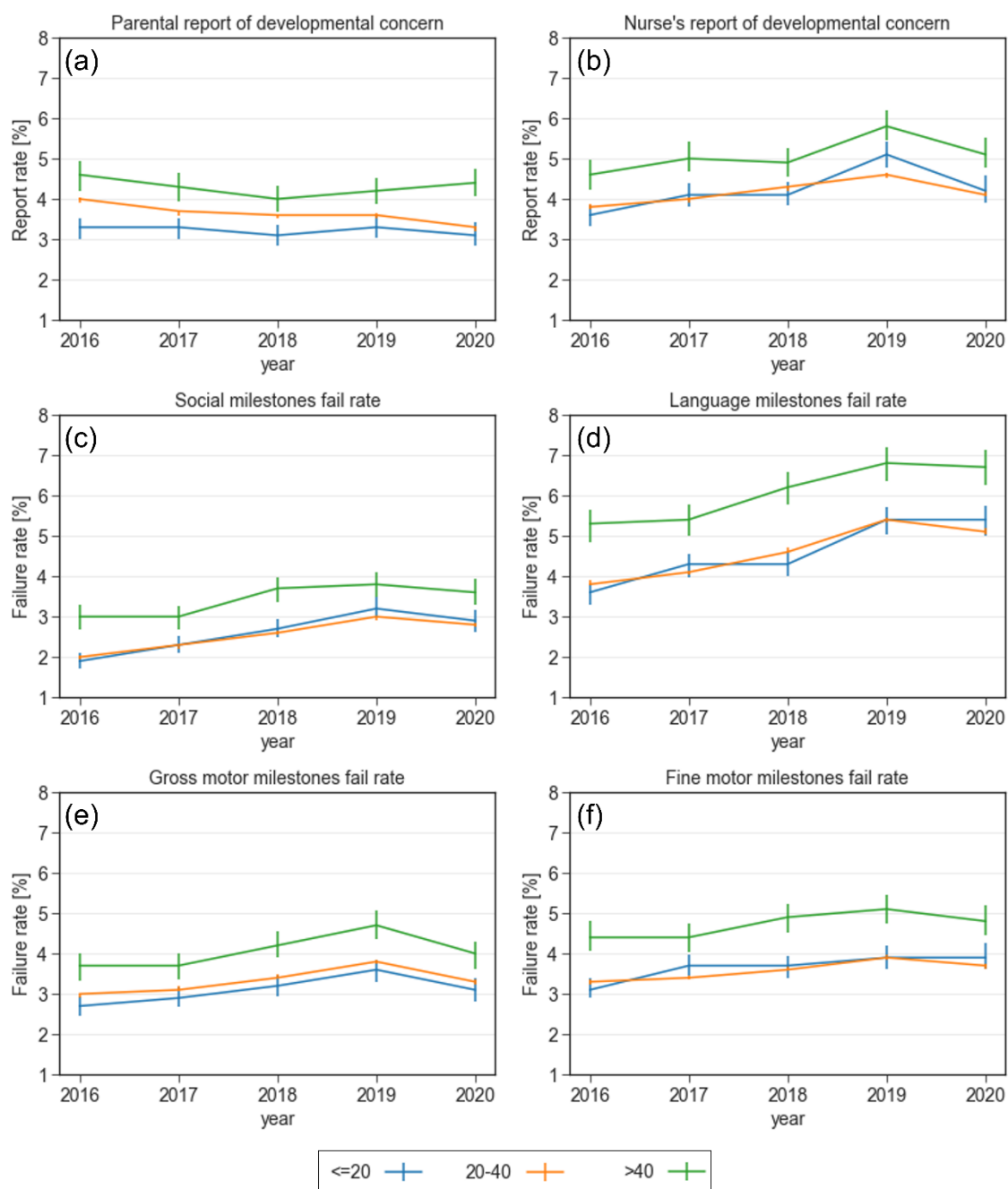


Figure 7. Mutually adjusted odds ratios of any milestone attainment failure, by demographic factors

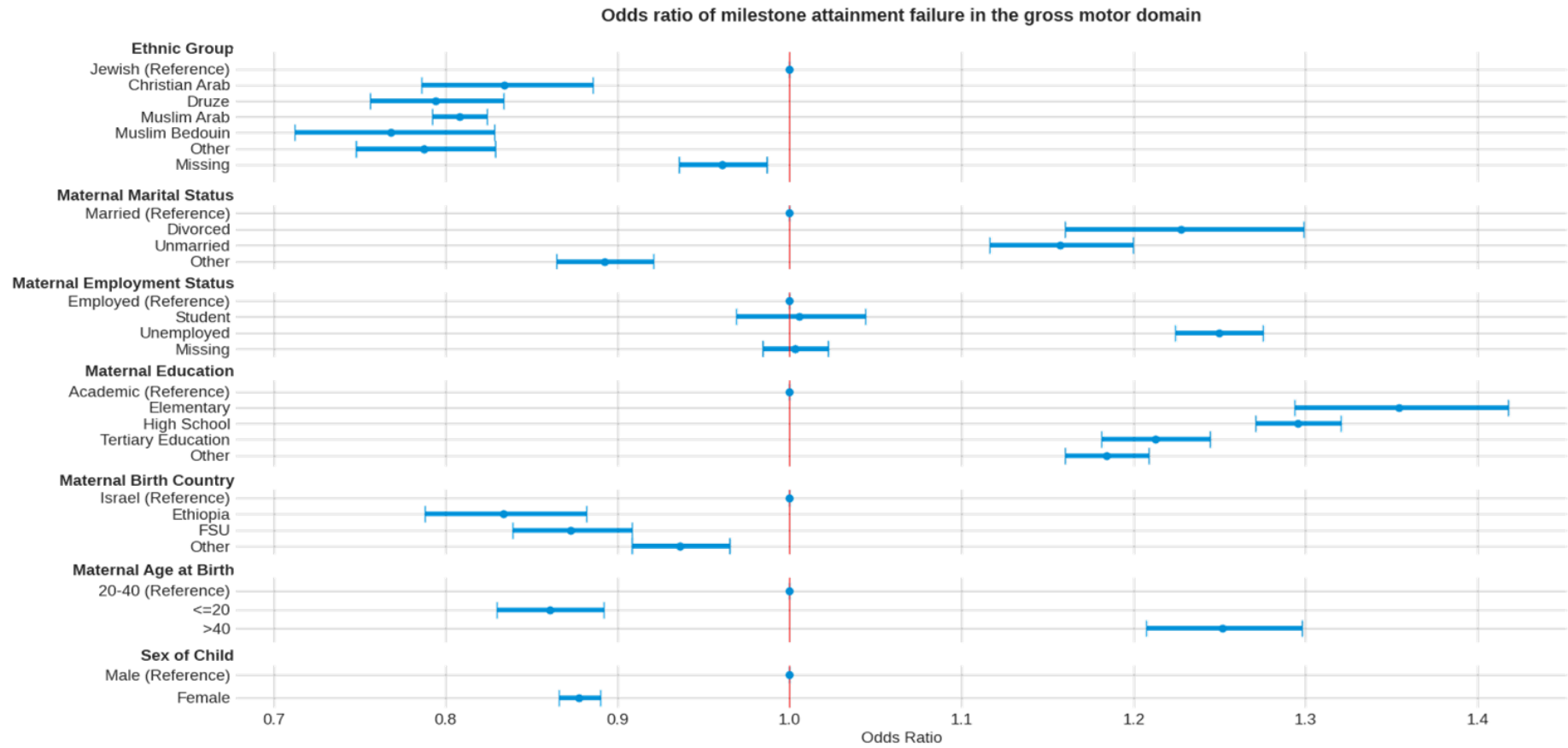
Supplementary figures



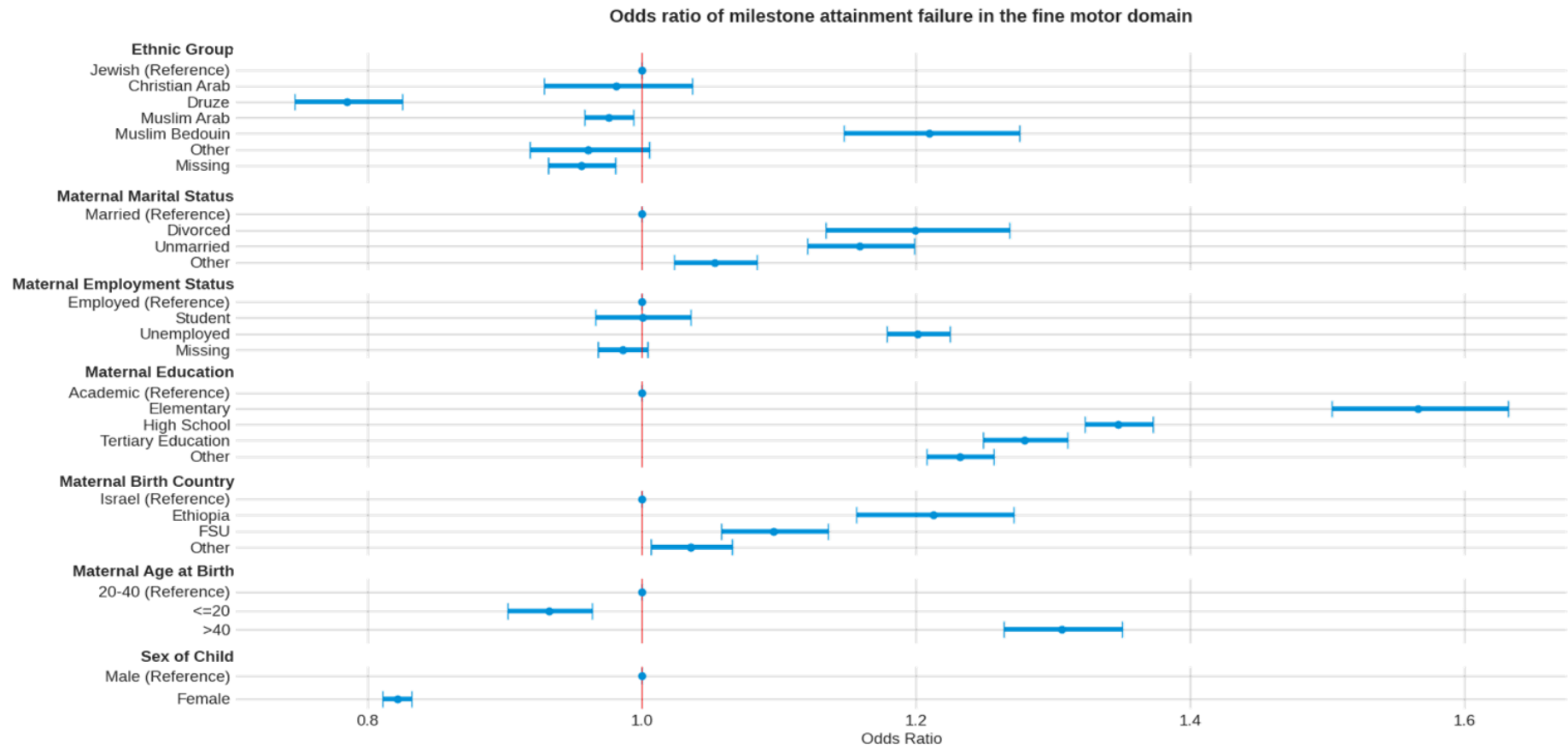
Supplementary Figure 1. Reports of concern and failure rates in various developmental domains stratified by child's sex between 2016-2020. (a) Parental report of developmental concern (b) Nurse's report of developmental concern (c) Failure rate in the social domain (d) Failure rate in the language domain (e) Failure rate in the gross motor domain (f) Failure rate in the fine motor domain



Supplementary Figure 2. Reports of concern and failure rates in various developmental domains stratified by maternal age between 2016-2020. (a) Parental report of developmental concern (b) Nurse's report of developmental concern (c) Failure rate in the social domain (d) Failure rate in the language domain (e) Failure rate in the gross motor domain (f) Failure rate in the fine motor domain

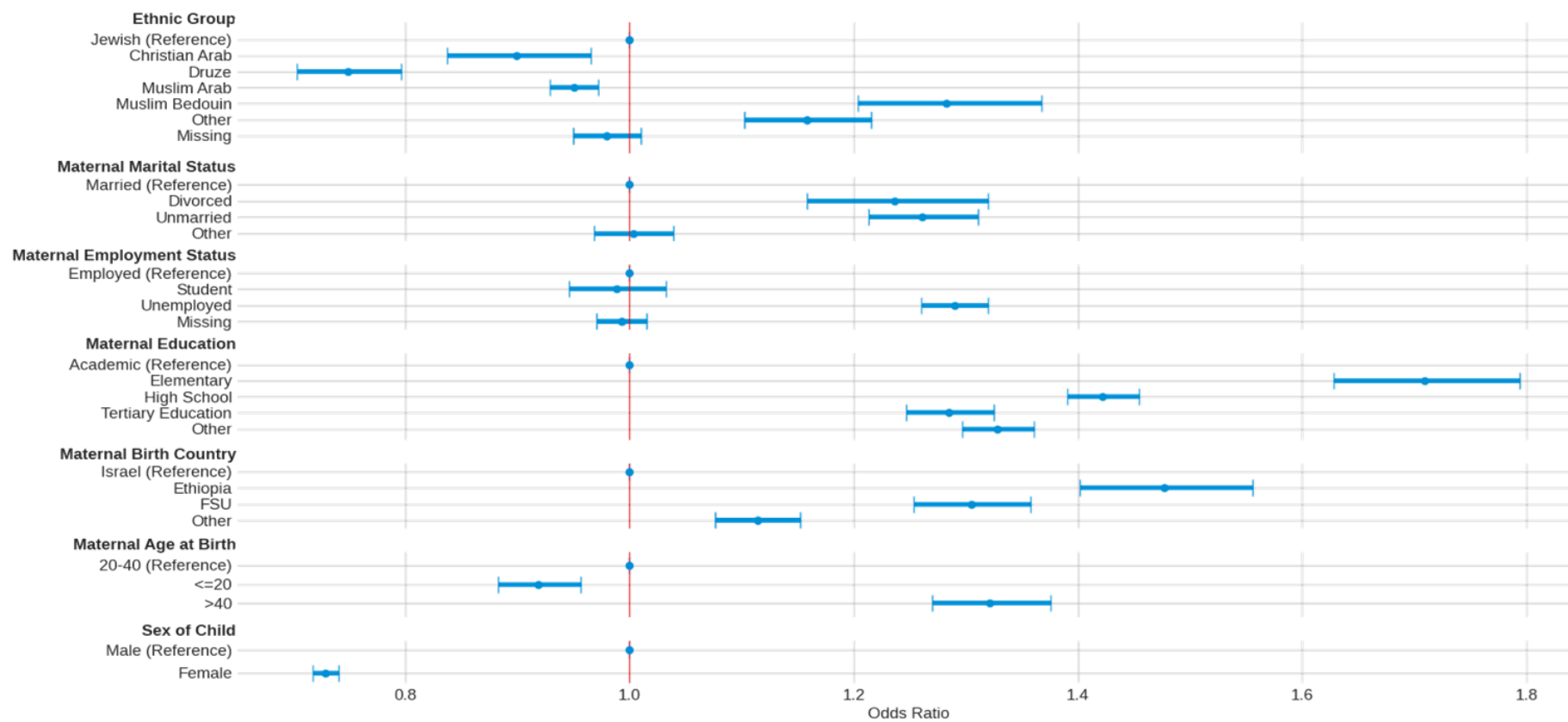


Supplementary Figure 3. Mutually adjusted odds ratios of milestone attainment failure in the gross motor domain, by demographic factors

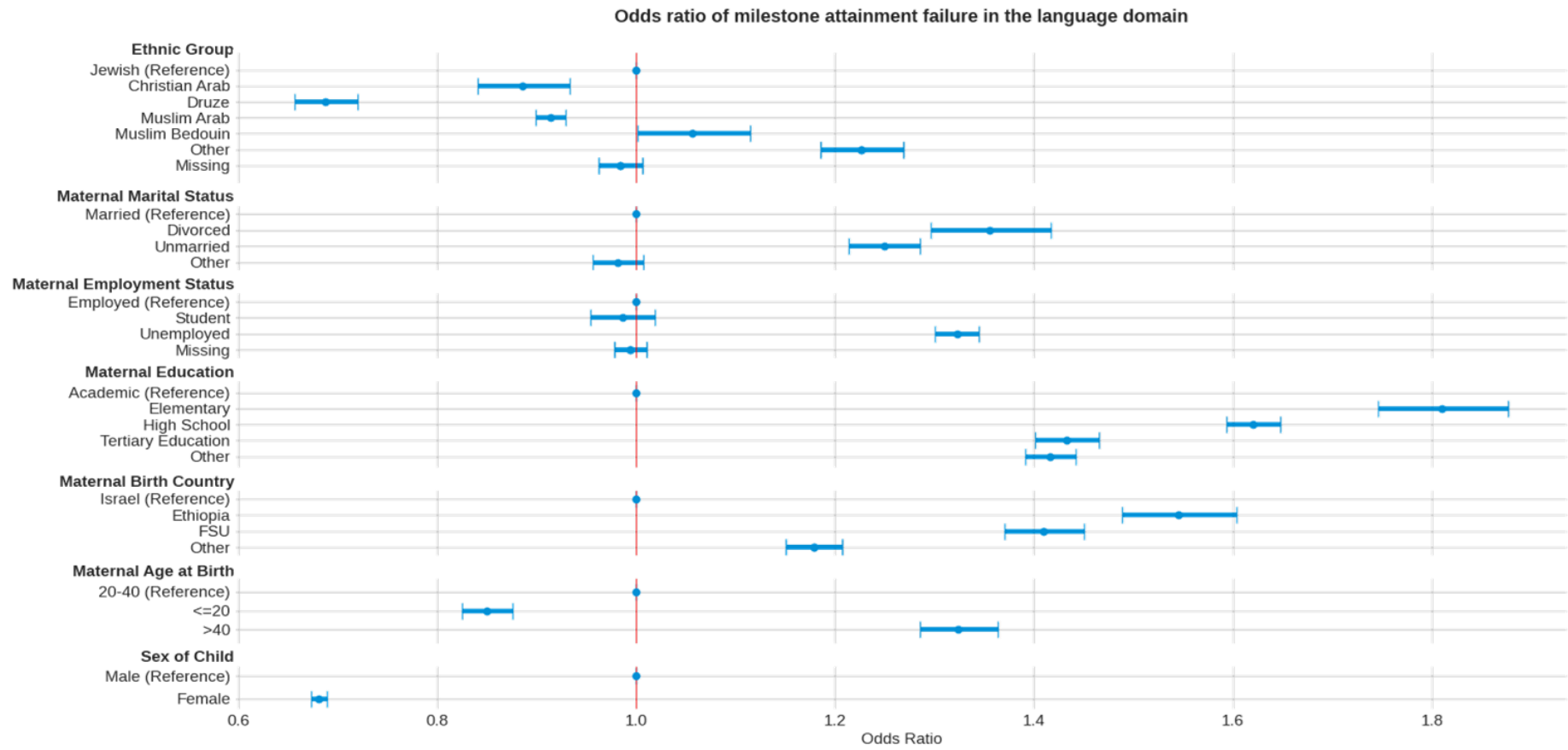


Supplementary Figure 4. Mutually adjusted odds ratios of milestone attainment failure in the fine motor domain, by demographic factors

Odds ratio of milestone attainment failure in the social domain



Supplementary Figure 5. Mutually adjusted odds ratios of milestone attainment failure in the social domain, by demographic factors



Supplementary Figure 6. Mutually adjusted odds ratios of milestone attainment failure in the language domain, by demographic factors