

1 **Global variation in tests of cognitive and physical function: analysis of six**
2 **international randomized controlled trials**

3

4 Aristeidis H. Katsanos, MD, PhD^{*1,2}; Shun Fu Lee, PhD^{*1}; Tali Cukierman-Yaffe,
5 MD, MSc^{3,4}; Laura Sherlock, MSc⁵; Graciela Muniz-Terrera, PhD⁶; Michele
6 Canavan, MD^{7,8}; Raed Joundi, MD, PhD^{1,2}; Mukul Sharma, MD, MSc^{1,2}; Ashkan
7 Shoamanesh, MD^{1,2}; Andrea Derix, PhD⁹; Hertzal C. Gerstein, MD^{1,10}; Salim Yusuf,
8 MD, PhD^{1,11}; Martin J. O'Donnell, MD^{7,8}; Jackie Bosch, PhD^{*1,12}; William N.
9 Whiteley, MD^{*1,5,13}

10

11 *equal author contribution

12

13 Affiliations

14 ¹*Population Health Research Institute, Hamilton, ON, Canada*

15 ²*Department of Medicine (Neurology), McMaster University, Hamilton, ON, Canada*

16 ³*Department of Epidemiology and Preventive Medicine, Sackler Faculty of Medicine,*
17 *School of Public Health, Tel Aviv University, Herczeg Institute on Aging, Tel Aviv,*
18 *Israel*

19 ⁴*Division of Endocrinology & Metabolism, Sheba Medical Centre, Tel Hashomer,*
20 *Ramat Gan, Israel*

21 ⁵*Centre for Clinical Brain Sciences, University of Edinburgh, Edinburgh, UK*

22 ⁶*Edinburgh Dementia Prevention, Centre for Clinical Brain Sciences, University of*
23 *Edinburgh, Edinburgh, UK*

24 ⁷*HRB-Clinical Research Facility, National University of Ireland, Galway, Ireland*

25 ⁸*Department of Geriatric and Stroke Medicine, Galway University Hospital,*
26 *Newcastle Road, Ireland*

27 ⁹*Global Program Head Thrombosis, Bayer Pharmaceuticals, Germany*

28 ¹⁰*Hamilton Health Sciences, Hamilton, ON, Canada*

29 ¹¹*Department of Medicine (Cardiology), McMaster University, Hamilton, ON,*

30 *Canada*

31 ¹²*School of Rehabilitation Science, McMaster University, Hamilton, ON, Canada*

32 ¹³*Nuffield Department of Population Health, University of Oxford*

33

34 Corresponding author:

35 Dr. Aristeidis H. Katsanos, MD, PhD

36 Division of Neurology, McMaster University & Population Health Research Institute,

37 Hamilton, ON, Canada

38 E-mail: ar.katsanos@gmail.com

39 Tel: +1-365-888-1441; Fax: +1-905-296-5806

40

41 *Number of tables: 0*

42 *Number of supplemental tables: 5*

43 *Number of figures: 4*

44 *Number of color figures: 4*

45 *Number of supplemental figures: 1*

46 *Number of references: 38*

47 *Word count of abstract: 250*

48 *Total word count of text: 2705*

49 *Keywords: cognition; dementia; function; country; cardiovascular*

50 **Impact statement**

51 We certify that this work is novel. After analysing data from a large cohort of
52 participants with a history of cardiovascular disease or cardiovascular risk factors,
53 who were recruited in six international randomised controlled trials (RCTs) we found
54 that accounting for country-level factors reduced large differences between world
55 regions in estimates of cognitive impairment, while measures of functional
56 impairment were less variable across world regions.

57

58 **Key Points**

- 59 • Cognitive and functional test scores in randomized controlled clinical trial
60 cohorts vary widely across world regions.
- 61 • The difference in cognitive test performance was large in comparison to
62 difference in measures of activities of daily living (ADLs). Accounting for
63 country-level factors reduced the differences between world regions in
64 estimates of cognitive impairment.
- 65 • Cognitive test measures were less variable and could be used to better estimate
66 dementia incidence in international studies.

67

68 **Why this study matters?**

69 We found that cognitive and functional test scores in RCT cohorts varied widely
70 across world regions. The difference in cognitive test performance was large in
71 comparison to difference in measures of activities of daily living. The impact of
72 differences on the performance of cognitive tests, which were developed in high-

73 income countries, creates challenges for harmonized studies of cognitive decline
74 prevention in different world regions. Future studies using the same test around the
75 world could standardise cognitive score by country, and consider using in addition
76 measures of instrumental and basic activities of daily living, where there is less
77 variation across world regions.

78

79 **Acknowledgments section**

80

81 **Conflict of Interest**

82 Authors report no conflicts of interest relevant to this particular manuscript

83

84 **Author Contributions**

85 AHK, SFL, JB, WNW constructed the study design and prepared the first draft of the
86 manuscript. SFL performed the statistical analyses and prepared the figures. All other
87 authors revised the first manuscript draft for important intellectual content.

88

89 **Sponsor's Role**

90 The sponsor had no involvement in the study design, manuscript preparation or
91 decision for publication.

92

93

94

95

96

97

98

99

100

101 **Abstract**

102 Background: Better understanding of global variation in simple tests of cognition and
103 function would aid the delivery and interpretation of multi-national studies of the
104 prevention of dementia and functional decline.

105 Methods: We aim to describe the variation in simple measures of cognition and
106 function by world region, study, recruitment centre or individual level factors. In six
107 RCTs that measured cognition with the mini-mental state examination (MMSE),
108 Montreal cognitive assessment (MoCA), and instrumental activities of daily living
109 (IADL) with the Standardised Assessment of Everyday Global Activities (SAGEA),
110 we estimated average scores by global region with multilevel mixed-effects models.
111 We estimated the proportion of participants with cognitive or functional impairment
112 with previously defined thresholds ($MMSE \leq 24$ or $MoCA \leq 25$, $SAGEA \geq 7$), and with a
113 country-standardised z-score threshold of cognitive or functional score of ≤ -1 .

114 Results: In 91,396 participants (mean age 66.6 ± 7.8 years, 31% females) from seven
115 world regions, all global regions differed significantly in estimated cognitive function
116 (z-score differences 0.11–0.45, $p < 0.001$) after accounting for individual-level factors,
117 centre and study. In different regions, the proportion of trial participants with
118 $MMSE \leq 24$ or $MoCA \leq 25$ ranged from 23–36%; the proportion below a country-
119 standardised z-score threshold of ≤ 1 ranged from 10–14%. The differences in
120 prevalence of impaired IADL ($SAGEA \geq 7$) ranged from 2–6% and by country-
121 standardised thresholds from 3–6%.

122 Conclusions: Accounting for country-level factors reduced large differences between
123 world regions in estimates of cognitive impairment. Measures of IADL were less
124 variable across world regions, and could be used to better estimate dementia incidence
125 in large studies.

126 **Introduction**

127 Although international studies of cardiovascular disease prevention usually
128 measure the incidence of major adverse cardiovascular events, they rarely measure
129 functional impairments, such as cognition or the ability to perform everyday
130 activities.^{1, 2} Although they are important to people, these measures of function are
131 hard to measure and standardize internationally. International standardization of
132 measures of function would be needed for drug approval in each country,³ although
133 there are no generally agreed measures.

134 Culturally appropriate assessments designed to measure cognition or function
135 in individual countries or regions could have internal consistency,⁴ but they are
136 difficult to use at scale or to aggregate between regions. Therefore, using the same
137 assessment tools in all countries is preferable, but requires researchers to recognize
138 and address sources of variation in measuring test performance such as educational
139 attainment, familiarity with testing instruments and the applicability of the functional
140 activities assessed to different regions.^{5, 6} A better understanding of global variation in
141 similar tests of cognition and function, and the sources of variation, would improve
142 measurement, analysis, and interpretation of the results of multi-national studies of
143 cognitive and functional impairment.

144 We used data from a large cohort of participants with a history of
145 cardiovascular disease or cardiovascular risk factors, in six international randomised
146 controlled trials (RCTs) that assessed antihypertensive, antidiabetic and

147 antithrombotic medications, to describe the variation in simple measures of cognition
148 and function (activities of daily living) by world region. We then sought to determine
149 if variation in the results of cognitive and functional tests between world regions
150 could be explained by study, recruitment centre or individual level factors. We
151 calculated the prevalence of significant cognitive or functional impairment in different
152 world regions, using widely accepted thresholds for cognitive or functional tests, and
153 explored whether country-standardization changed the differences in these estimates
154 between world regions.

155

156 **Methods**

157 *Population*

158 We included participants from six large international cardiovascular
159 prevention RCTs.⁷⁻¹² Ongoing Telmisartan Alone and in Combination with Ramipril
160 Global Endpoint Trial (ONTARGET) randomly allocated 25,620 participants with
161 coronary artery disease, peripheral artery disease, cerebrovascular disease, or diabetes
162 mellitus with end-organ damage to ramipril (10 mg once daily), telmisartan (80 mg
163 once daily), or a combination of both.⁷ Telmisartan Randomised AssessmeNt Study in
164 ACE iNtolerant subjects with cardiovascular Disease (TRANSCEND) randomly
165 allocated 5,926 participants meeting the ONTARGET inclusion criteria but intolerant
166 to ACE inhibitors to either telmisartan (80 mg once daily) or placebo.⁸ Outcome
167 Reduction with an Initial Glargine Intervention (ORIGIN) randomly allocated 12,537
168 participants over the age of 50 with cardiovascular risk factors plus impaired fasting
169 glucose, impaired glucose tolerance, or type 2 diabetes to receive insulin glargine
170 (with a target fasting blood glucose level of 95 mg or less per deciliter [5.3 mmol per
171 liter]) or standard care and to receive n-3 fatty acids or placebo using a 2-by-2

172 factorial design.⁹ The Cardiovascular Outcomes for People Using Anticoagulation
173 Strategies (COMPASS) trial randomly allocated 27,395 participants with stable
174 atherosclerotic vascular disease to receive rivaroxaban (2.5 mg twice daily) plus
175 aspirin (100 mg once daily), rivaroxaban (5 mg twice daily) monotherapy, or aspirin
176 monotherapy (100 mg once daily).¹⁰ New Approach Rivaroxaban Inhibition of Factor
177 Xa in a Global Trial versus ASA to Prevent Embolism in Embolic Stroke of
178 Undetermined Source (NAVIGATE ESUS) randomly allocated 7,213 participants
179 with a recent embolic stroke of presumed cardioembolic source to either rivaroxaban
180 (15 mg once daily) or aspirin (100 mg once daily).¹¹ The Heart Outcomes Prevention
181 Evaluation (HOPE)-3 trial randomly allocated 12,705 participants with intermediate
182 cardiovascular disease risk to receive rosuvastatin (10 mg once daily) or placebo and
183 to receive a combination of candesartan/ hydrochlorothiazide (16/12.5 mg once daily)
184 or placebo, using a 2-by-2 factorial design.¹² In HOPE-3 cognitive assessments were
185 obtained only for those 70 years and older.¹²

186 *Exposures*

187 We grouped countries into seven world regions: North America, Oceania and
188 Western Europe; South America; Eastern Europe and Russia; East Asia; South Asia;
189 Africa; and West Asia (Supplementary Table 1).¹³

190 Individual participant covariates, measured as continuous variables at either
191 the run-in or randomization visit, were: age in years, body mass index (BMI), waist
192 circumference; systolic and diastolic blood pressure; fasting glucose; and hemoglobin
193 A1c % measured in Diabetes Control and Complications Trial (DCCT) units. We
194 included the following binary variables (yes versus no, excluding missing or
195 unknown) assessed at either the run-in or randomization visit: sex; regular alcohol use
196 (drinking alcohol once or more per week); employment; history of coronary or

197 cerebrovascular disease (transient ischemic attack, stroke, myocardial infarction,
198 angina, heart failure), atrial fibrillation, peripheral arterial disease, hyperlipidemia,
199 hypertension, diabetes mellitus, other non-vascular co-morbidities (cancer, renal
200 dysfunction, liver disease, depression) and history of fall or fracture. Education was
201 categorized as: none or less than primary, primary or secondary, or trade
202 school/college/university. We used the components of the EQ-5D assessment in each
203 trial to derive information on depression and disability.¹⁴

204 *Outcomes*

205 For different world regions we presented the results of a cognitive assessment at
206 either the run-in or randomization visit, which was performed using two cognitive
207 tests: the Mini-Mental State Examination (MMSE), a 30-point assessment that
208 addresses seven different cognitive domains (range 0-30, with higher scores meaning
209 better cognition)¹⁵ and the Montreal Cognitive Assessment (MoCA), a 30-point
210 assessment that addresses seven different cognitive domains (range 0-30, with higher
211 scores meaning better cognition). For the MoCA test an additional point is granted to
212 individuals with 12 or fewer years of education. The MMSE was performed in the
213 ORIGIN, TRANSCEND and ONTARGET trials,⁷⁻⁹ while MoCA was performed in
214 HOPE-3, COMPASS and NAVIGATE ESUS.¹⁰⁻¹² The short version of the MoCA
215 test (maximum score of 12) was completed in HOPE-3, and in our analyses was
216 normalized it to a 30-point scale to allow comparison with other studies.^{16, 17} In a
217 subset of trials, we measured the Standardised Assessment of Everyday Global
218 Activities (SAGEA), a 15-item patient-reported outcome measure developed to
219 measure functional status (basic, instrumental, and cognitive activities of daily living)
220 in patients with vascular disease (range 0-45, with higher scores denoting worse

221 function).¹⁸ The individual items and scoring for the SAGEA is outlined in the
222 Appendix. All tests were administered in the language of participants.

223 *Statistical analysis*

224 Participants with cognitive or functional assessment available either at run-in
225 or randomization visits were included in the analyses. To account for differences in
226 the study populations we standardised cognitive and functional test scores to the
227 population of each study (study-standardised) or the country's population (country-
228 standardised). Each participant's raw score was subtracted from the study's or
229 country's specific mean score, and the difference was then divided by the study's or
230 country's specific baseline standard deviation (SD), respectively. Given the
231 comparability in z-scores by age between MMSE and MoCA (Supplementary Figure
232 1),¹⁹ we pooled the standardised z-scores of these two tests.

233 We then constructed multilevel mixed-effects models using the study-
234 standardised or country-standardised test scores as the dependent variable, the
235 baseline participant covariates as fixed-effects modifiers and the recruiting centre as a
236 random-effects modifier (allowing testing of between centre heterogeneity). In the
237 unadjusted model we provide the crude estimates; in the age-sex-adjusted model we
238 adjust only for the individual's age and sex and in the maximally-adjusted model we
239 adjust for the individual's age, sex, education, BMI, history of cardiovascular disease,
240 history of cardiovascular risk factors, history of non-cardiovascular diseases and
241 baseline blood pressure. We used the North America, Oceania and Western Europe
242 group as reference, since cognitive and functional tests were developed in countries
243 from these geographical regions, and present the unadjusted and adjusted mean
244 differences and corresponding 95% confidence intervals (95%CI) for other world
245 regions.

246 We estimated the prevalence of cognitive impairment in different world
247 regions with absolute score thresholds for the MMSE (≤ 24 points) or MoCA (≤ 25
248 points),^{20, 21} and with a threshold for the study- and country-standardised scores that
249 corresponds to the thresholds of MMSE (24 points or less) or MoCA (25 points or
250 less) in the North America, Oceania and Western Europe group ($z \leq 1.0$).²² We then
251 applied this z-score threshold to the other world regions. The same approach was used
252 to estimate the prevalence of functional impairment in different world regions with
253 the absolute threshold of 7 or more points in the SAGEA score,¹⁸ and then applied the
254 respective z-score threshold for a score of 7 to study- or country-standardised
255 distributions from the other world regions. We calculated the intraclass correlation
256 coefficient (ICC), the proportion of variation within clusters (world regions) over the
257 total variation, for each analysis to estimate the variation of cognitive or functional
258 impairment between the different world regions. The chi-square test was used to test
259 the homogeneity of intraclass correlations.

260 *Standard Protocol Approvals, Registrations, and Patient Consents*

261 The present work is a post-hoc analysis of previously published randomized
262 controlled clinical trials coordinated by the Population Health Research Institute and
263 was exempt from ethics review board approval. For the collection of data in original
264 studies, informed consent was obtained by primary investigators.

265 **Results**

266 We analyzed data from 91,396 participants in six RCTs from 55 countries
267 recruited between 2001 and 2017 in seven world regions (Supplementary Table 1):
268 North America, Oceania, and Western Europe (39,668); South America (17,923);
269 Eastern Europe and Russia (13,433); East Asia (11,667); South Asia (5,146); Africa
270 (2,273) and West Asia (1,286). Participants had a mean age of 66.6 years (SD 7.8),

271 and 31% were females. Few participants were smokers (17%) or regularly used
272 alcohol (25%). Most participants were educated to primary or secondary level (54%),
273 39% to higher technical level and 3% had no or less than primary education. Almost a
274 third of participants were employed at study enrolment, 18% had self-reported
275 depression and 9% had self-reported disability based on the EQ-5D questionnaire
276 assessment. More than 90% of the participants had at least one cardiovascular risk
277 factor and 69% had a history of one or more cardiovascular diseases (Supplementary
278 Table 2). Additional participant and country characteristics are provided in
279 Supplementary Table 3.

280 Participants' baseline characteristics demonstrating the greatest variability
281 included alcohol consumption (ranging from 12% in South Asia to 30% in North
282 America, Oceania and Western Europe), self-reported depression (ranging from 12%
283 in Africa to 24% in South America) and self-reported disability (ranging from 3% in
284 East Asia to 18% in South Asia). The prevalence of cardiovascular disease
285 comorbidity at baseline study assessment also varied between the different world
286 regions (Supplementary Table 2).

287 Study-standardised cognitive test scores were lower in people who were older
288 in all world regions except Africa, with large differences between regions (Figure
289 1A). However, when cognitive scores were standardised to country, older people had
290 consistently lower cognitive scores in all regions, and the variation in z-scores
291 between regions was attenuated (Figure 1B).

292 Cognitive test z-scores standardised for study (adjusted for individual
293 characteristics and centre from which they were recruited), were significantly lower in
294 world regions ($p < 0.001$ for all regions) compared with North America, Oceania and
295 Western Europe (greatest difference for South America z-score mean difference -0.45

296 [95% CI: -0.51 to -0.40)]. Standardizing the cognitive test scores for country
297 (adjusting for individual characteristics and centre) reduced variation between world
298 regions. South America, Eastern Europe and Russia, East Asia, Africa and West Asia
299 had modest differences (all z-score mean difference >-0.1 , $p>0.05$) from North
300 America, Oceania and Western Europe, although the difference was slightly greater
301 for South Asia (z-score mean difference: -0.12, 95%CI: -0.22 to -0.02; Figure 2,
302 Supplementary Table 4).

303 Widely used absolute thresholds for MMSE (≤ 24 points) or MOCA (≤ 25
304 points) classified 27% of the overall population with cognitive impairment, with
305 proportions ranging from 23% in North America, Oceania and Western Europe to
306 36% in South America and West Asia ($ICC=0.032$, $\chi^2=1787$). Using the
307 corresponding absolute values z-score threshold of -1.0 (Supplementary Table 5) in
308 study-standardised (not shown) and country standardized cognitive scores led to a
309 lower proportion of participants in each region classified with cognitive impairment
310 (Figure 3).

311 The study-standardized functional SAGEA scores (adjusted for individual
312 characteristics and centre) were lower in Africa (z-score mean difference: -0.32,
313 95%CI: -0.59 to -0.05) and West Asia (-0.41, 95%CI: -0.63 to -0.19), and higher in
314 East Asia (+0.23, 95%CI: 0.15 to 0.32) compared with North America, Oceania and
315 Western Europe. However, after country standardization (and adjusting for individual
316 characteristics and centre), there were no large or significant differences in SAGEA
317 scores between world regions (all z-score mean differences ≤ 0.18 , $p>0.05$; Figure 2 &
318 Supplementary Table 4).

319 With a threshold ≥ 7 points in SAGEA score, 4% of the population was
320 classified with functional impairment, with prevalence rates between regions from 2

321 to 7% (ICC=0.028, $\chi^2 = 89$). A z-score of -1.0 in study-standardised distributions and
322 country-standardised distributions resulted in 3% (range 2-6%, ICC=0.024, $\chi^2 = 191$)
323 and 4% (range 2-4%, ICC=0.0007, $\chi^2 = 41$) prevalence rates of functional impairment,
324 respectively (Figure 4).

325 **Discussion**

326 We found that cognitive and functional test scores in RCT cohorts varied
327 widely across world regions. The difference in cognitive test performance was large
328 in comparison to difference in measures of activities of daily living.

329 These differences in cognitive test scores attenuated modestly after adjusting
330 for individual level factors, or randomisation centre, a surrogate for the socio-
331 economic status of the area. However, when standardising for country, the differences
332 attenuated substantially, suggesting that unmeasured country-level factors accounted
333 for much of the difference in test performance. Better measurement of educational
334 experience and literacy could further reduce differences in cognitive test performance.
335 Our results are in accordance with previous literature suggesting that there is
336 substantial variation in cognitive test performance between different world regions.^{4, 6,}

337 ¹³ The variability in cognitive test performance between different world regions has
338 previously been associated with modifiable and non-modifiable individual-level
339 factors,²³⁻²⁷ and the socio-economic status of the area of residence for an individual.²⁸⁻

340 ³¹

341 The prevalence of cognitive impairment using widely accepted absolute
342 cognitive score thresholds was very large, suggesting factors related to test
343 performance rather than cognitive impairment were responsible for these differences
344 and questioning the suitability of these thresholds for population-based studies. This
345 problem has been identified previously in population-based studies.³² In Sweden, a

346 MoCA threshold of 25 points or less classified 37.3% of the population as cognitively
347 impaired.³³ A systematic review and meta-analysis of the cross-cultural applicability
348 of MoCA screening for mild cognitive impairment found a wide range of suggested
349 cut-offs both across countries and within regions.³⁴ For example, the cut-off scores of
350 the MoCA were different for five Chinese versions, ranging between 23 and 25 for
351 mild cognitive impairment and between 19 and 24 for dementia.³⁵

352 In our study, functional measurement showed less variation by region and
353 demonstrate that the use of measures of activities of daily living along with cognitive
354 scores could be used to support a diagnosis of significant cognitive impairment in
355 international studies. Functional measures showed much less regional variation in
356 scores than measures of cognition even before taking into account individual, centres
357 or country-level factors. Tests that use functional measures to measure impairment,
358 although less sensitive might be more consistent between world regions.

359 Our study had a number of limitations. We analyzed cognitive and functional
360 assessment scores from participants recruited in international large-scale RCTs of
361 cardiovascular interventions. Although these trials were performed in multiple
362 countries and centres around the world, resulting in a multi-ethnic and culturally
363 diverse population, these participants were not representative of their country
364 populations, and our findings are only relevant for trials population. Individuals who
365 agree to participate in RCTs can be very different from the general population on
366 factors beyond the overt inclusion/exclusion criteria. There were substantial
367 differences in the total number of individuals from each of the world regions, leading
368 to increased uncertainty and less precise fit of statistical models for the regions with
369 fewest participants (i.e. West Asia, Africa). Additionally, the number of countries
370 included in each world region differed, e.g. only one country was included for Africa

371 group and 20 countries were included for North America, Oceania and Western
372 Europe group (Supplementary Table 1). Finally, there was no clinical diagnosis of
373 dementia or mild cognitive impairment, although all patients were able to consent,
374 and none had recorded dementia at baseline.³⁶

375 The impact of differences on the performance of cognitive tests, which were
376 developed in high-income countries, creates challenges for harmonized studies of
377 cognitive decline prevention in different world regions.³⁷ Universal cut-offs for
378 cognitive decline may lead to erroneous conclusions about an individual's cognitive
379 ability and pose barriers in the interpretation and collation of the results from these
380 tests in international studies.³⁸ New tests could be developed for each country,
381 although this increases study cost and complexity. Future studies using the same test
382 around the world could standardise cognitive score by country, and consider using in
383 addition measures of instrumental and basic activities of daily living, where there is
384 less variation across world regions.

385

386 **References**

- 387 1. Iadecola C, Yaffe K, Biller J, et al; American Heart Association Council on
388 Hypertension; Council on Clinical Cardiology; Council on Cardiovascular Disease in
389 the Young; Council on Cardiovascular and Stroke Nursing; Council on Quality of
390 Care and Outcomes Research; and Stroke Council. Impact of hypertension on
391 cognitive function: a scientific statement from the American Heart Association.
392 Hypertension. 2016;68:e67-e94.
- 393 2. Collins R, Reith C, Emberson J, et al. Interpretation of the evidence for the
394 efficacy and safety of statin therapy. Lancet. 2016;388:2532-2561.
- 395 3. Katz R. FDA: evidentiary standards for drug development and approval. NeuroRx.
396 2004;1:307-16.
- 397 4. Prince M, Acosta D, Chiu H, Sczufca M, Varghese M; 10/66 Dementia Research
398 Group. Dementia diagnosis in developing countries: a cross-cultural validation study.
399 Lancet. 2003;361:909-17.
- 400 5. Max Roser and Esteban Ortiz-Ospina (2016) - "Literacy". Published online at
401 OurWorldInData.org. Retrieved from: '<https://ourworldindata.org/literacy>' [Online
402 Resource]
- 403 6. Ng KP, Chiew HJ, Lim L, Rosa-Neto P, Kandiah N, Gauthier S. The influence of
404 language and culture on cognitive assessment tools in the diagnosis of early cognitive
405 impairment and dementia. Expert Rev Neurother. 2018;18:859-869.
- 406 7. ONTARGET Investigators, Yusuf S, Teo KK, Pogue J, et al. Telmisartan, ramipril,
407 or both in patients at high risk for vascular events. N Engl J Med. 2008;358:1547-59.
- 408 8. Telmisartan Randomised AssessmeNt Study in ACE iNtolerant subjects with
409 cardiovascular Disease (TRANSCEND) Investigators, Yusuf S, Teo K, Anderson C,
410 et al. Effects of the angiotensin-receptor blocker telmisartan on cardiovascular events

- 411 in high-risk patients intolerant to angiotensin-converting enzyme inhibitors: a
412 randomised controlled trial. *Lancet*. 2008;372:1174-83.
- 413 9. ORIGIN Trial Investigators, Gerstein HC, Bosch J, Dagenais GR, et al. Basal
414 insulin and cardiovascular and other outcomes in dysglycemia. Basal insulin and
415 cardiovascular and other outcomes in dysglycemia. *N Engl J Med*. 2012;367:319-328.
- 416 10. Eikelboom JW, Connolly SJ, Bosch J, et al. Rivaroxaban with or without aspirin
417 in stable cardiovascular disease. *N Engl J Med*. 2017;377:1319-1330.
- 418 11. Hart RG, Sharma M, Mundl H, et al. Rivaroxaban for Stroke Prevention after
419 Embolic Stroke of Undetermined Source. *N Engl J Med*. 2018;378:2191-2201.
- 420 12. Yusuf S, Lonn E, Pais P, et al. Blood-Pressure and Cholesterol Lowering in
421 Persons without Cardiovascular Disease. *N Engl J Med*. 2016;374:2032-2043.
- 422 13. Kalaria RN, Maestre GE, Arizaga R, et al. Alzheimer's disease and vascular
423 dementia in developing countries: prevalence, management, and risk factors. *Lancet*
424 *Neurol*. 2008;7:812-26.
- 425 14. EuroQol Group. EuroQol--a new facility for the measurement of health-related
426 quality of life. *Health Policy*. 1990;16:199-208.
- 427 15. Folstein MF, Folstein SE, McHugh PR. "Mini-mental state". A practical method
428 for grading the cognitive state of patients for the clinician. *J Psychiatr Res*.
429 1975;12:189-98.
- 430 16. Nasreddine ZS, Phillips NA, Bédirian V, et al. The Montreal Cognitive
431 Assessment, MoCA: a brief screening tool for mild cognitive impairment. *J Am*
432 *Geriatr Soc*. 2005;53:695-9.
- 433 17. Dong Y, Koay WI, Yeo LL, Chen CL, Xu J, Seet RC, Lim EC. Rapid Screening
434 for Cognitive Impairment in Parkinson's Disease: A Pilot Study. *Parkinsons Dis*.
435 2015;2015:348063.

- 436 18. Spence J, Bosch J, Chongsi E, et al. Standardized Assessment of Global activities
437 in the Elderly scale in adult cardiac surgery patients. *Br J Anaesth*. 2021;127:539-546.
- 438 19. Yang H, Yim D, Park MH. Converting from the Montreal Cognitive Assessment
439 to the Mini-Mental State Examination-2. *PLoS One*. 2021;16:e0254055.
- 440 20. Creavin ST, Wisniewski S, Noel-Storr AH, et al. Mini-Mental State Examination
441 (MMSE) for the detection of dementia in clinically unevaluated people aged 65 and
442 over in community and primary care populations. *Cochrane Database Syst Rev*.
443 2016:CD011145.
- 444 21. Davis DH, Creavin ST, Yip JL, Noel-Storr AH, Brayne C, Cullum S. Montreal
445 Cognitive Assessment for the detection of dementia. *Cochrane Database Syst Rev*.
446 2021;7:CD010775.
- 447 22. Perkins NJ, Schisterman EF. The inconsistency of "optimal" cutpoints obtained
448 using two criteria based on the receiver operating characteristic curve. *Am J*
449 *Epidemiol*. 2006;163:670-5.
- 450 23. Livingston G, Huntley J, Sommerlad A, et al. Dementia prevention, intervention,
451 and care: 2020 report of the Lancet Commission. *Lancet*. 2020;396:413-446.
- 452 24. Daviglus ML, Bell CC, Berrettini W, et al. National Institutes of Health State-of-
453 the-Science Conference statement: preventing alzheimer disease and cognitive
454 decline. *Ann Intern Med*. 2010;153:176-81.
- 455 25. Kivimäki M, Singh-Manoux A, Pentti J, et al. Physical inactivity, cardiometabolic
456 disease, and risk of dementia: an individual-participant meta-analysis. *BMJ*.
457 2019;365:11495.
- 458 26. Albanese E, Lombardo FL, Prince MJ, Stewart R. Dementia and lower blood
459 pressure in Latin America, India, and China: a 10/66 cross-cohort study. *Neurology*.
460 2013;81:228-35.

- 461 27. Ott A, Breteler MM, van Harskamp F, et al. Prevalence of Alzheimer's disease
462 and vascular dementia: association with education. The Rotterdam study. *BMJ*.
463 1995;310:970-3.
- 464 28. Selvamani Y, Arokiasamy P. Association of life course socioeconomic status and
465 adult height with cognitive functioning of older adults in India and China. *BMC*
466 *Geriatr*. 2021;21:354.
- 467 29. Yu X, Zhang W, Kobayashi LC. Duration of Poverty and Subsequent Cognitive
468 Function and Decline Among Older Adults in China, 2005-2018. *Neurology*.
469 2021;97:e739-e746.
- 470 30. Paradela RS, Ferreira NV, Nucci MP, et al. Relation of a Socioeconomic Index
471 with Cognitive Function and Neuroimaging in Hypertensive Individuals. *J Alzheimers*
472 *Dis*. 2021;82:815-826.
- 473 31. Okamoto S. Socioeconomic factors and the risk of cognitive decline among the
474 elderly population in Japan. *Int J Geriatr Psychiatry*. 2019;34:265-271
- 475 32. Borland E, Nägga K, Nilsson PM, Minthon L, Nilsson ED, Palmqvist S. The
476 Montreal Cognitive Assessment: Normative Data from a Large Swedish Population-
477 Based Cohort. *J Alzheimers Dis*. 2017;59:893-901.
- 478 33. Chandra V, Ganguli M, Ratcliff G, et al. Studies of the epidemiology of dementia:
479 comparisons between developed and developing countries. *Aging Milano* 1994; 6:
480 307–21.
- 481 34. O'Driscoll C, Shaikh M. Cross-Cultural Applicability of the Montreal Cognitive
482 Assessment (MoCA): A Systematic Review. *J Alzheimers Dis*. 2017;58:789-801.
- 483 35. Tan JP, Li N, Gao J, et al. Optimal cutoff scores for dementia and mild cognitive
484 impairment of the Montreal Cognitive Assessment among elderly and oldest-old
485 Chinese population. *J Alzheimers Dis*. 2015;43:1403-12.

486 36. Llibre Rodriguez JJ, Ferri CP, Acosta D, et al. Prevalence of dementia in Latin
487 America, India, and China: a population-based cross-sectional survey. *Lancet*.
488 2008;372:464-474.

489 37. Magklara E, Stephan BCM, Robinson L. Current approaches to dementia
490 screening and case finding in low- and middle-income countries: Research update and
491 recommendations. *Int J Geriatr Psychiatry*. 2019;34:3-7.

492 38. Whiteley WN, Anand S, Bangdiwala SI, et al. Are large simple trials for dementia
493 prevention possible? *Age Ageing*. 2020;49:154-160.

494

495

496

497

Figure 1. Fitting splines on the association between individual's age and (A) study-standardised or (B) country-standardised cognitive scores by different world regions. Box plot illustrate the median, interquartile range and range of scores in the whole study population.

(STD: standardised; NA: North America; SA: South America; EE: Eastern Europe; EAsia: East Asia; SAsia: South Asia; W.Asia: West Asia)

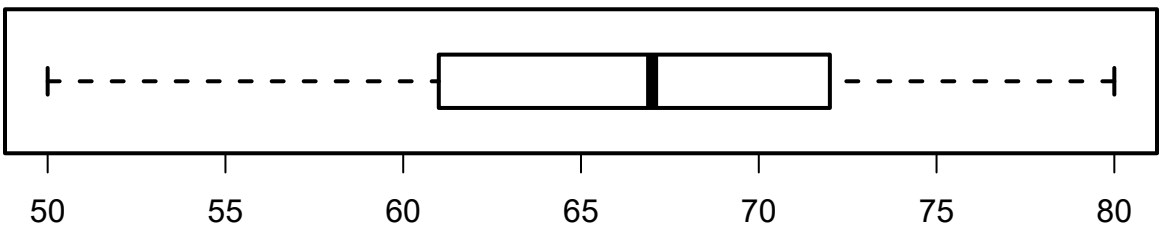
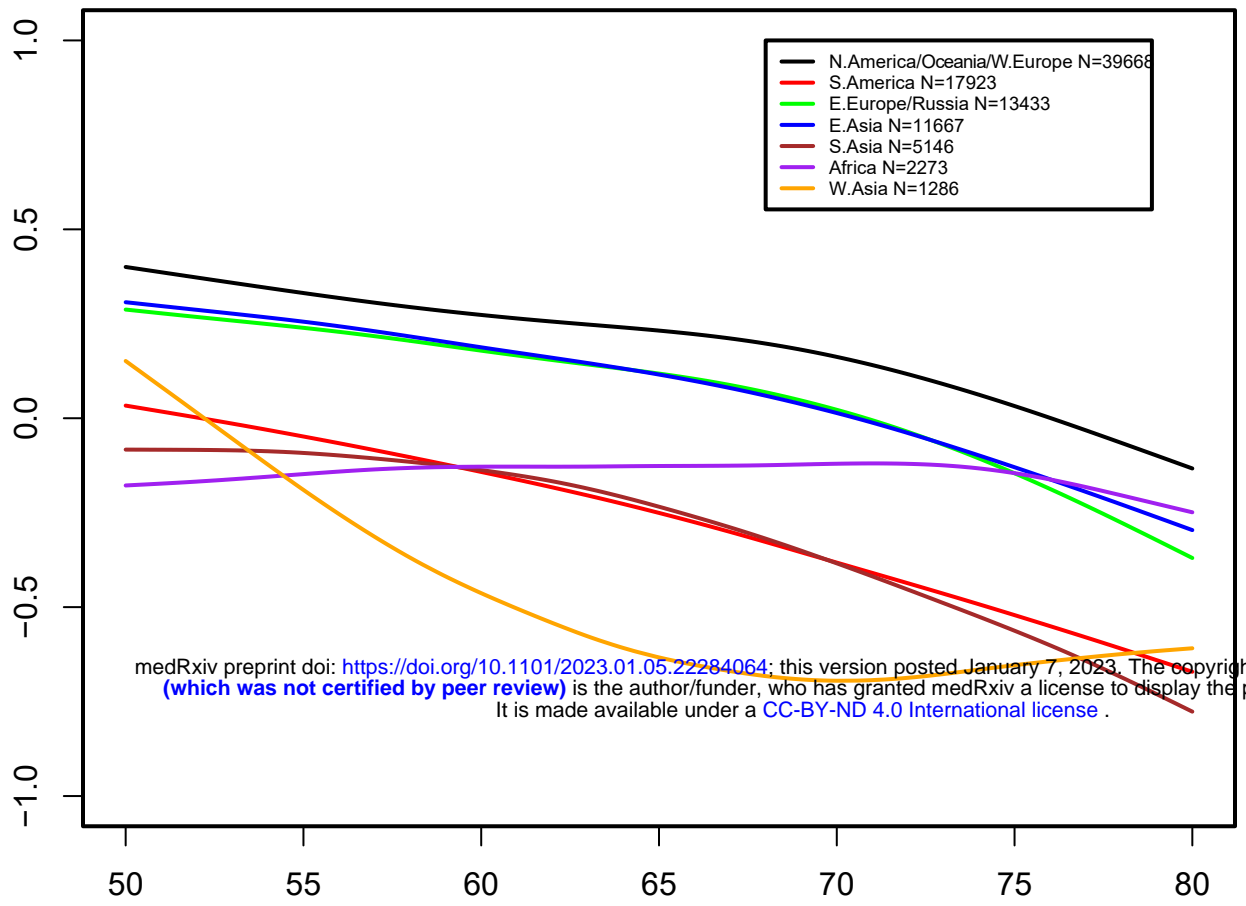
Figure 2. Mean differences in study-standardised or country-standardised baseline cognitive and functional test scores between the North America, Oceania and Western Europe group and other world regions, adjusted for individual participant characteristics and centre of recruitment.

(SAGEA: Standardised Assessment of Global activities in the Elderly; NA: North America; SA: South America; EE: Eastern Europe; EAsia: East Asia; SAsia: South Asia; W.Asia: West Asia)

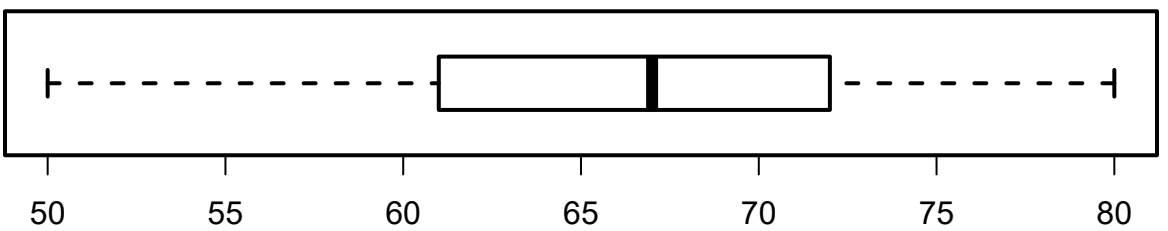
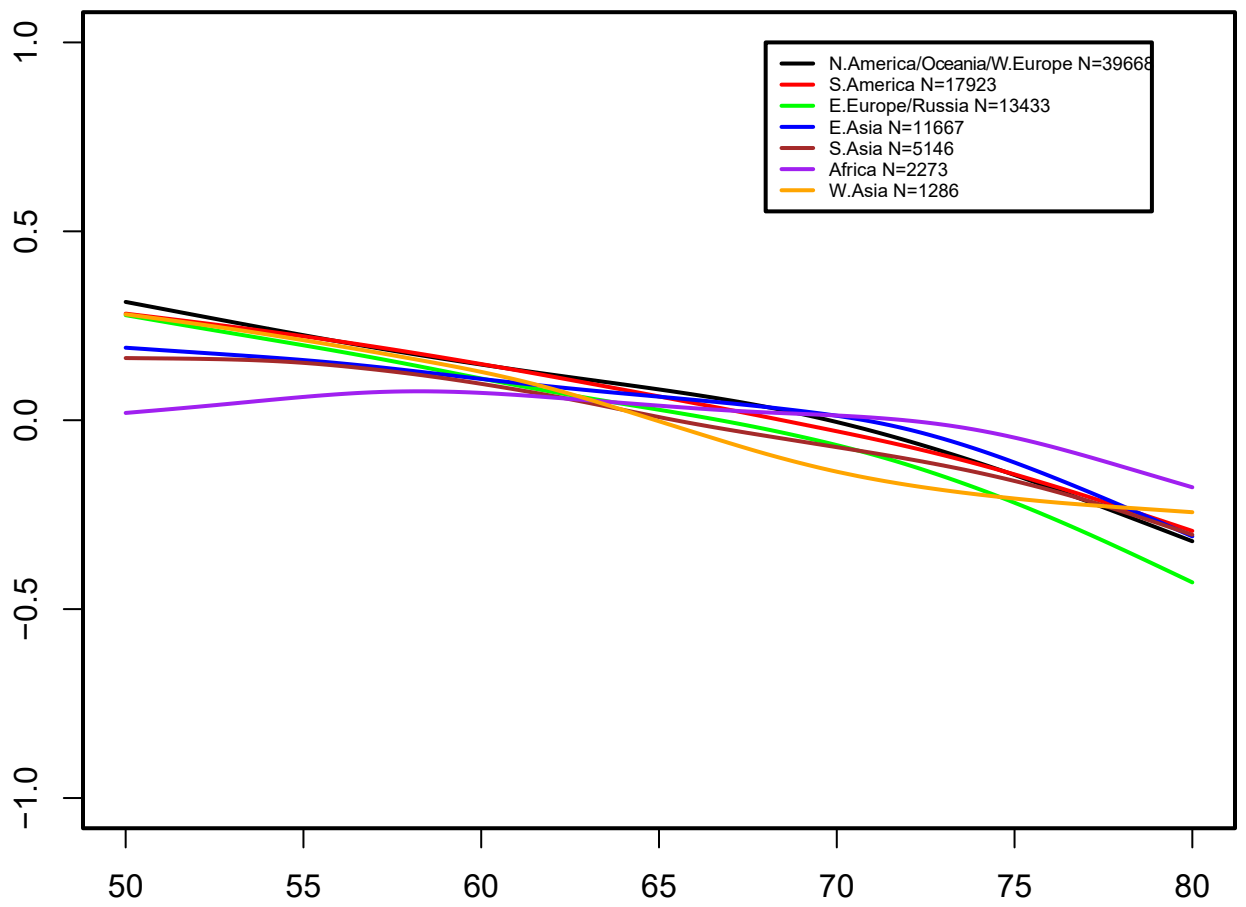
Figure 3. Estimated prevalence of cognitive impairment in different world regions using absolute (MMSE ≤ 24) or MOCA ≤ 25) or relative thresholds (z-score ≤ -1.0) based on the study-standardised or country-standardised mean cognitive test scores. Intraclass correlation coefficient (ICC) is the proportion variance within clusters over the total variance. (NA: North America; SA: South America; EE: Eastern Europe; EAsia: East Asia; SAsia: South Asia; W.Asia: West Asia)

Figure 4. Estimated prevalence of functional impairment in different world regions using absolute (SAGE ≥ 7) or relative thresholds (z-score ≤ -1.0) based on the study-standardised or country-standardised mean functional test scores. Intraclass correlation coefficient (ICC) is the proportion variance within clusters over the total variance. (NA: North America; SA: South America; EE: Eastern Europe; EAsia: East Asia; SAsia: South Asia; W.Asia: West Asia)

A



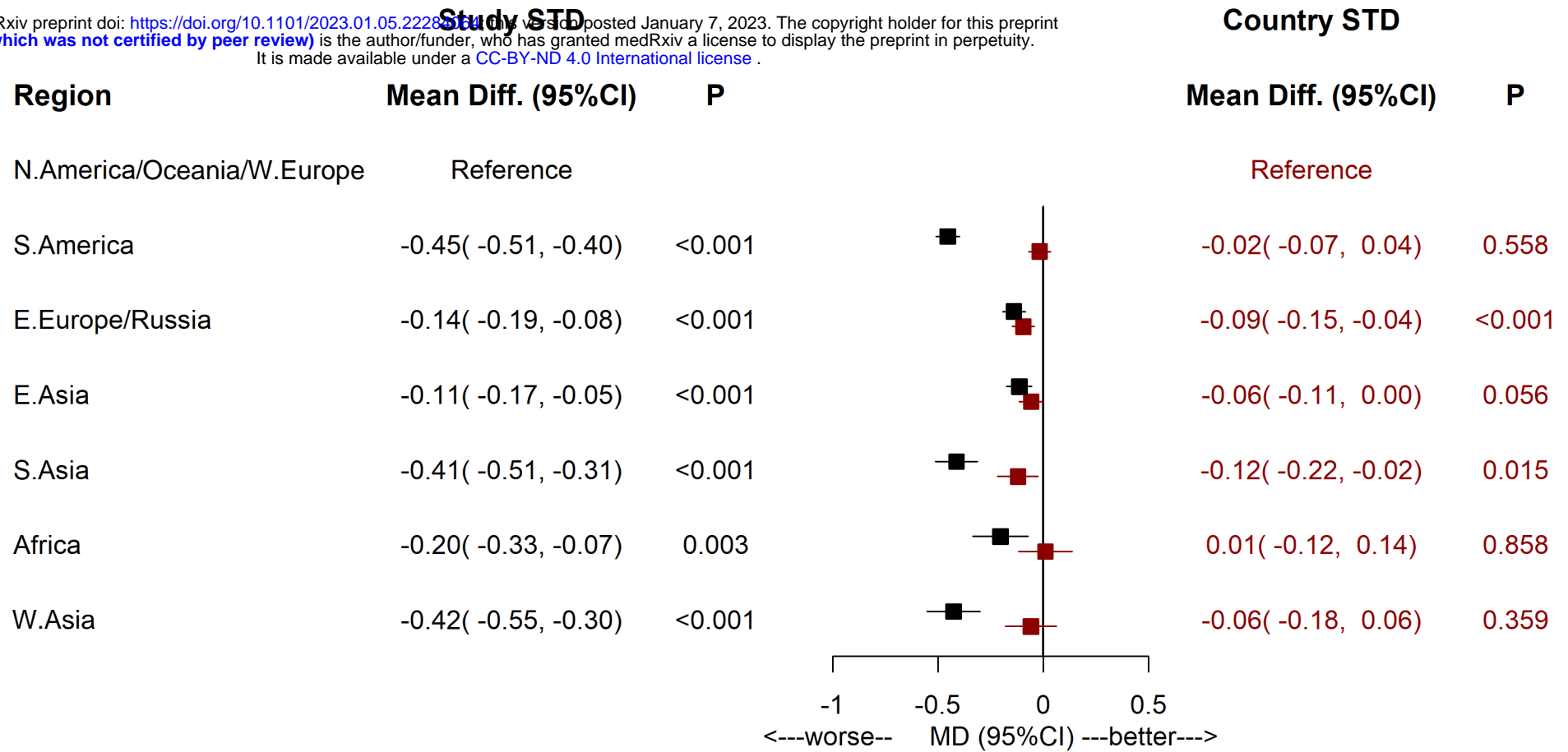
B



Baseline Cognitive Score

■ Study standardized ■ Country standardized

medRxiv preprint doi: <https://doi.org/10.1101/2023.01.05.22285661>; this version posted January 7, 2023. The copyright holder for this preprint (which was not certified by peer review) is the author/funder, who has granted medRxiv a license to display the preprint in perpetuity. It is made available under a [CC-BY-ND 4.0 International license](https://creativecommons.org/licenses/by-nd/4.0/).



Baseline SAGEA Score

