

1 **Joint modeling HIV and HPV using a new hybrid agent-based network and compartmental**
2 **simulation technique**

3 Xinmeng Zhao¹, *Chaitra Gopalappa¹

4

5 ¹Department of Mechanical and Industrial Engineering, University of Massachusetts Amherst,
6 MA, USA

7

8 *Corresponding author:

9 e-mail: chaitrag@umass.edu

10

11 **Acknowledgments**

12 This work was funded by the National Science Foundation under grant #1915481. The funding
13 agreement ensured the authors' independence in designing the study, interpreting the data,
14 writing, and publishing the report.

15

16 **Authors' contributions**

17 Xinmeng Zhao: methodology, data curation, output analysis and review, validation and
18 visualization, manuscript preparation and review. Chaitra Gopalappa: conceptualization, output
19 analysis and review, manuscript preparation and review. The authors read and approved the final
20 manuscript.

21

22

23 **Abstract**

24 **Introduction:** Persons living with HIV have a disproportionately higher burden of HPV-related
25 cancers. Causal factors include both behavioral and biological. While pharmaceutical and care
26 support interventions help address biological risk of coinfection, as social conditions are
27 common drivers of behaviors, structural interventions are key part of behavioral interventions.
28 Joint modeling sexually transmitted diseases (STD) can help evaluate optimal intervention
29 combinations for overall disease prevention. While compartmental modeling is sufficient for
30 faster spreading HPV, network modeling is suitable for slower spreading HIV. However, using
31 network modeling for jointly modeling HIV and HPV can generate computational complexities
32 given their vastly varying disease epidemiology and disease burden across sub-population
33 groups.

34 **Methods:** We applied a recently developed mixed agent-based compartmental (MAC)
35 simulation technique, which simulates persons with at least one slower spreading disease and
36 their immediate contacts as agents in a network, and all other persons including those with faster
37 spreading diseases in a compartmental model, with an evolving contact network algorithm
38 maintaining the dynamics between the two models. We simulated HIV and HPV in the U.S.
39 among heterosexual female, heterosexual male, and men who have sex with men (men only and
40 men and women) (MSM), sub-populations that mix but have varying HIV burden, and cervical
41 cancer among women. We conducted numerical analyses to evaluate the contribution of
42 behavioral and biological factors to risk of cervical cancer among women with HIV.

43 **Results:** The model outputs for HIV, HPV, and cervical cancer compared well with surveillance
44 estimates. Behavioral factors significantly contributed to risk of HIV-HPV co-infection, and
45 biological factors further exacerbated cancer burden among persons with HIV, with the fraction
46 attributed to each factor sensitive to disease burden.

47 **Conclusions:** This work serves as proof-of-concept of the MAC simulation technique for joint
48 modeling related diseases with varying epidemiology in sub-populations with varying disease
49 burden. Future work can expand the model to simulate sexual and care behaviors as functions of

50 social conditions, and further, jointly evaluate behavioral, structural, and pharmaceutical
51 interventions for overall STD prevention.

52 **Keywords:** Agent-based simulation; hybrid-simulation model; multi-disease model; infectious
53 disease model.

54

55 **Introduction**

56 Human papillomavirus virus (HPV) is one of the most common sexually transmitted diseases
57 (STDs) in the United States, about 80% of sexually active persons are estimated to have acquired
58 HPV at least once during a lifetime [1,2]. Although most HPV infections resolve on their own
59 within 2 years, persistent infection with certain types of HPV (high-risk or oncogenic HPV) are a
60 causal factor for most cases of cervical cancer [3–5] and anal cancers [6–8], and a likely cause of
61 substantial proportions of other genital neoplasms and oral squamous cell carcinomas [4,9]. On
62 average, each year in the United States, about 12,000 women are estimated to be diagnosed with
63 cervical cancer, and an additional 11,000 women and 16,000 men are annually diagnosed with
64 other HPV-associated cancers [10]. Persons with impaired cell-mediated immunity, such as
65 persons with human immunodeficiency virus (HIV) infection, particularly suffer from increased
66 risk of HPV infection and subsequent genital tract neoplasias and cancers [11–13]. For example,
67 the risk of HPV infection and cervical cancer incidence among women with HIV compared to
68 women without HIV were estimated to be about ~2-6 times [14–16] and ~2-7 times higher,
69 respectively [17–19].

70 Causal factors for higher risk of HPV infection among persons with HIV could be attributed to
71 behavioral factors, i.e., individual sexual behaviors, partnership networks, and care behaviors,
72 and biological factors, i.e., a compromised immune system from HIV can biologically increase
73 the risk of other diseases [20,21]. Studies in the literature have investigated the attribution to
74 biological factors by using observational data and statistically accounting for the confounding
75 factors of sexual behavior. These include estimating associations between HIV exposure and
76 HPV acquisition [22–25], rate of HPV clearance [26–28], and risk of HIV on disease progression
77 and cervical cancer pathology [29–35]. The primary focus of these studies is on biological
78 factors, and most studies are based on statistical methods such as multivariate regression
79 analyses. However, they do not consider the dynamics of behavioral factors, such as changes in
80 individual behaviors, partnership networks, and system-level changes in care.

81 Quantitative estimations of the risk of HIV-HPV coinfection, attributable to each type of factor,
82 behavioral and biological, could help inform the type of intervention needs. Specifically, social
83 conditions, such as poverty, unemployment, stigma, and discrimination, are key drivers of

84 behaviors that increase risk of STIs, e.g., higher number of partners, higher condomless sex,
85 lower care uptake among persons experiencing homelessness than among those with stable
86 housing [36–39]. Consequently, though the prevalence of HIV in the U.S. is low, it is
87 concentrated among the most vulnerable populations. Among persons living with diagnosed HIV
88 infection, an estimated 44% had a disability (including physical, mental, and emotional
89 disabilities), 41% were unemployed, 43% had household incomes at or below the federal poverty
90 threshold, and 10% were experiencing homelessness [40,41]. Thus, structural interventions, such
91 as health care coverage, subsidized housing and food programs, and access to mental healthcare
92 are key part of behavioral interventions for prevention of STIs [42–45]. On the other hand,
93 biological risk of coinfection would additionally require pharmaceutical and care support
94 programs for disease management.

95 A dynamic model of sexual transmission networks that jointly simulates HIV and HPV will
96 serve as a suitable decision-analytic tool for analyses of structural and disease-specific
97 interventions. Several models in the literature have jointly simulated HIV and HPV for economic
98 analyses of interventions such as antiretroviral therapy treatment and pre-exposure prophylaxis
99 for HIV and HPV vaccinations and cervical cancer screening for women [46–50]. Most models
100 are deterministic compartmental models [46,47,50], and the models that are individual based do
101 not include a transmission model [48] or do not explicitly simulate partnership networks [49],
102 which limit the capacity to fully account for the behavioral interactions between HIV and HPV
103 infections.

104
105 We built a joint HIV-HPV simulation model using a mixed agent-based network and
106 compartmental (MAC) simulation framework and conducted numerical analyses to evaluate the
107 risk of coinfection attributable to behavioral and biological factors. These numerical findings
108 will help inform intervention needs and, in future work, help conduct model evaluations of both
109 structural interventions and disease-specific interventions. While observational studies can help
110 estimate the costs, the behavioral interactions in the model can help evaluate the impact of
111 structural interventions on overall STI prevention.

112

113 **Methods**

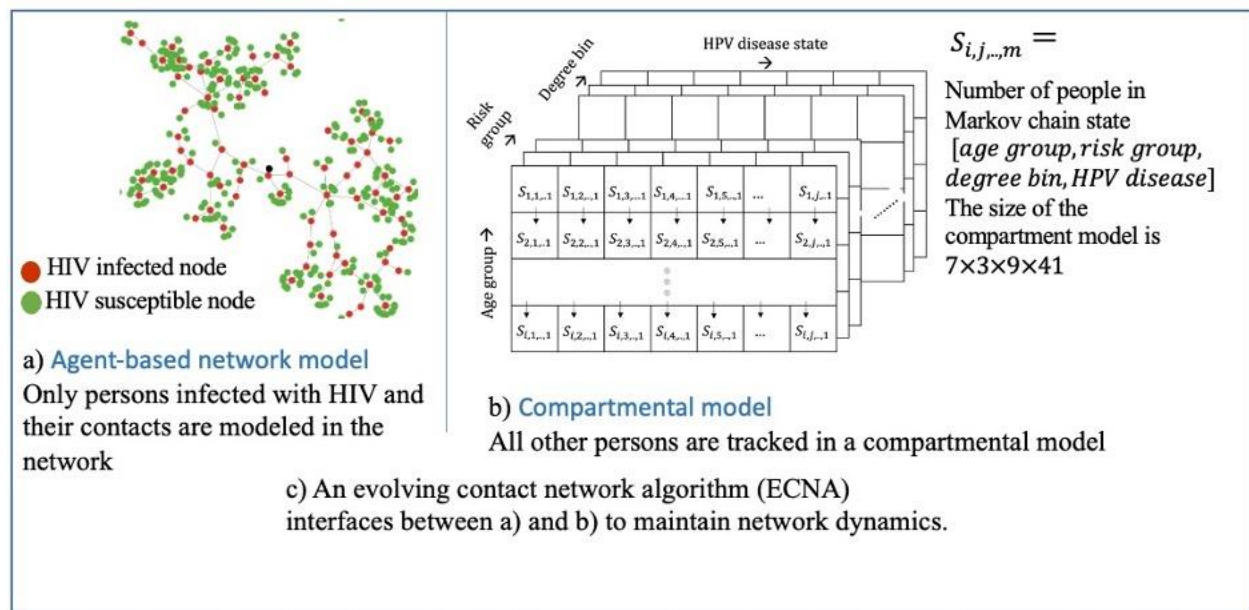
114 MAC is a recently developed simulation framework for joint modeling diseases of varying
115 epidemiology [51]. While compartmental modeling is sufficient for higher prevalence diseases
116 such as HPV, Chlamydia, and Gonorrhea, agent-based network modeling is preferred for slower
117 spreading diseases such as HIV and Hepatitis C, as the network structures have a larger influence
118 on disease spread [52]. However, agent-based modeling alone will be computationally
119 challenging for national joint disease modeling. For example, in the U.S., HIV prevalence is
120 about 0.4% and 25% of HIV infected persons are women [53] and cervical cancer prevalence
121 among HIV infected women is 0.3% [54]. Thus, simulating 100,000 persons representative of
122 the U.S. population will generate 100 women with HIV, and no cases of cervical cancer.
123 Increasing the number of samples will exponentially increase the challenges with computational
124 tractability. Similar challenges are faced when modeling sub-populations with disproportionately
125 varying disease burden. For example, in the U.S., about 64% of HIV cases are among men who
126 have sex with men [53], who constitute about 2% of the U.S. population [55]. Most HIV network
127 models in the literature simulate sub-populations separately, which overlooks the mixing
128 associated between sub-groups, e.g., about half of new HIV cases among women were linked to
129 transmissions from MSM [56,57]. The MAC framework overcomes the computational
130 challenges by simulating persons with at least one lower prevalence disease and their immediate
131 contacts in an agent-based network model, and all other persons including those with only higher
132 prevalence diseases in a compartmental model, using an agent-based evolving network algorithm
133 (ABENM) to maintain the network dynamics between persons in the two models [58,59]. The
134 MAC simulation framework has been described elsewhere [51], and ABENM for simulating
135 sexual transmission networks in the U.S. has been applied to the ‘Progression and Transmission
136 of HIV’ (PATH 4.0) model in the U.S. [59], and extensively validated against multiple epidemic
137 and network metrics from the U.S. National HIV Surveillance Systems.

138 In this work, we used MAC to build a two-disease model, calibrating to lower prevalence HIV
139 and higher prevalence HPV, and validating against data in the U.S., to serve as proof-of-concept
140 of the MAC framework. We provide a brief overview of MAC below and the HIV-HPV model
141 development and calibration.

142

143 **Overview of MAC**

144 We present an overview of the MAC simulation framework for HIV-HPV modeling in Fig 1. All
 145 persons in the population are either in the network or in the compartmental model. Persons
 146 infected with the lower prevalence HIV (they may also be infected with HPV), and their
 147 immediate contacts are tracked in the network and all other persons, including those with only
 148 higher prevalence HPV and those uninfected with either disease are tracked in a compartmental
 149 model. We newly calibrated an HPV model for the U.S. population and adopted the HIV model
 150 from the previously validated PATH 4.0 model [59]. Details of MAC are presented in [51], we
 151 present below an overview of the computational structure of MAC, an overview of the
 152 calibration of HIV and HPV, and numerical analyses. We simulated HIV and HPV among three
 153 transmission risk groups: heterosexual women (HETF), heterosexual men (HETM), and men
 154 who have sex with men (MSM) (men only and women). We present in the Appendix more
 155 details of the computational structure of MAC in Appendix S1, including HIV and HPV modules
 156 in Appendix S1.3, and details of the HPV model calibration in Appendix S2.
 157



158
 159 **Fig 1. Computational structure of MAC simulation framework for multi-disease modeling:**
 160 **a) HIV, HPV, and b) associated cancer.**
 161

162 Computational structure of MAC

163 The model tracks HIV-infected persons and immediate contacts using a dynamic graph
164 $G_t(\mathcal{N}, \mathcal{E})$, with the number of nodes in the graph $Q_t = |\mathcal{N}(G_t)|$ and the number of edges $|\mathcal{E}(G_t)|$
165 dynamically changing over time t as persons become newly infected with HIV and their
166 immediate contacts are added to the network. Each person in the network has attributes such as
167 age, transmission-group, degree (number of lifetime partnerships), geographic jurisdiction, HIV-
168 related disease and care continuum stages, and HPV related disease and care stages.

169
170 The model tracks all other persons in a compartment model, using an array S_t of size
171 $A \times R \times D \times \mathcal{G} \times H$, where, A is the number of age-groups, R is the number of transmission-
172 groups, D is the number of degree-bins (degree is the number of lifetime partners per person,
173 degrees are grouped into bins analogous to age grouped into age-groups), \mathcal{G} is the number of
174 geographic jurisdictions (in our numerical analyses we assumed $\mathcal{G} = 1$, corresponding to a
175 national jurisdiction), and H is the number of health states related to HPV including disease-free
176 state. Each element of the array ($S_t[\bar{a}, r, \bar{d}, g, h]$) is the number of people in that specific
177 category. We use a dash for age-group and degree-bin notations to indicate that they are grouped
178 intervals in the compartmental model, unlike in the network where each node has a discrete
179 value. A summary list of notations is presented in Appendix Table S1.

180
181 Thus, $Q_t + \sum_{i \in [\bar{a}, r, \bar{d}, g, h]} S_{t,i}$, would be the total number of people in the population at time t . As
182 all HIV infected persons and exposed partners are in the network, HIV transmissions and disease
183 stage progressions are modeled at the individual level (as typically done in agent-based
184 modeling). HPV transmissions and progression are modeled using differential equations (as
185 typically done in compartmental modeling technique) but with the consideration that people in
186 both the network $G_t(\mathcal{N}, \mathcal{E})$ and compartmental array S_t can be infected with HPV.

187
188 The model adopts the concepts from a previously developed ABENM simulation technique
189 [58,59] to maintain the dynamics between the network $G_t(\mathcal{N}, \mathcal{E})$ and compartmental array S_t ,
190 including transitioning people from S_t to $G_t(\mathcal{N}, \mathcal{E})$ when they become newly infected with HIV.
191 As HIV infection is chronic once persons enter the network $G_t(\mathcal{N}, \mathcal{E})$ they do not transition back
192 to S_t . More details of the MAC computational structure are provided in Appendix S1.1 and S1.2.

193

194 The overall epidemiological, demographical, and network dynamics are maintained through
195 simulation of four main modules that are run at every time-step (monthly) of the simulation:
196 compartmental module for HPV transmissions and progression, network transmission module for
197 HIV transmissions, ECNA network generation module for maintaining partnership dynamics and
198 network dynamics between the compartmental model and the network, and network disease
199 progression module for HIV progression. We discuss each module in Appendix S1.3 and provide
200 an overview of each below.

201
202 The compartmental module updates the demographic features (births, aging, and deaths) among
203 persons tracked through the array S_t . It also models transmission and progression features of
204 high-prevalence diseases (HPV here) among persons tracked through the array S_t and in the
205 network $G_t(\mathcal{N}, \mathcal{E})$. Specifically, as in typical compartment modeling, it uses difference equations
206 to calculate the rate of transitioning between compartments that represent HPV disease stages. It
207 also uses those rates to determine the number of people in the network to transition between
208 states corresponding to those compartments. A key feature here is approximating network
209 structures within the compartmental model by using degree-bins as part of the model framework
210 (a dimension in array S_t) and using a degree-mixing matrix to simulate partnerships that can
211 occur with people in different degree-bins. Degree, in addition to age and transmission-group,
212 between partners are correlated [60] and thus this feature helps better capture the network
213 dynamics even in the compartmental model. While the distributions for partnership mixing by
214 age-group, transmission-group, and degree-bin are applied at the individual level in the network
215 they are applied at the aggregated level in the compartmental model. The general MAC
216 computational structure of the compartmental module is presented in Appendix S1.3.1 and its
217 application specific to HPV is presented in Appendix S2.

218
219 The network transmission module uses an individual-level Bernoulli transmission equation to
220 determine if nodes in the network $G_t(\mathcal{N}, \mathcal{E})$ exposed to a lower prevalence disease (HIV here)
221 become infected. Transmissions are determined at the individual level using the network
222 structure and individual-level sexual behaviors and transmission risk factors. We present an
223 overview of the HIV Bernoulli transmission equation in Appendix 1.3.2. Note that, as persons in
224 the compartmental model are not partners of any person infected with the lower prevalence

225 diseases (HIV here), their chance of infection is zero. Further note that persons can move from
226 the compartmental model to the network (Fig 1) upon becoming partners of an HIV-infected
227 person, modeled using the ECNA module (discussed below), which would then expose them to
228 the infection. We adopted the HIV transmission module from PATH 4.0 [59].

229
230 The ECNA module controls the overall network dynamics of partnerships between persons in the
231 compartmental model and the network. Specifically, for every node newly infected with HIV in
232 the network, it determines the number of new partnerships to generate and the features of each of
233 those new partners, including their number of lifetime partners, their transmission-group, and
234 their current age-group. The module then randomly selects susceptible persons who meet these
235 criteria and moves them from the compartmental model to the network. As all life-time
236 partnerships of an HIV-infected person are in the network, contacts need to be activated and
237 deactivated as per when the partnership initiates and terminates. The ECNA module determines
238 these partnership details, such as the age of both partners and simulation times at partnership
239 initiation and termination. It does so by using multiple sub-algorithms developed using concepts
240 from machine learning, stochastic processes, and optimization, which are presented in [58,59]
241 and are summarized in Appendix S1.3.3.

242
243 Finally, the network disease progression module updates the individual-level demographic and
244 disease dynamics for every person infected with HIV (and other lower prevalence diseases in its
245 general application) in the network. We adopted the HIV progression module from [56,59].

246 .

247

248 **Model calibration and validation**

249 HIV: We adopted the validated HIV model from PATH 4.0 as lower prevalence Disease 1 [59].
250 PATH 4.0 was validated to match well against data from the National HIV Surveillance System
251 (NHSS) for both epidemic features and network features. Details of the ABENM, PATH 4.0, and
252 its validation are presented in [59]; we give a brief description below. PATH 4.0 simulates
253 sexual transmission of HIV in the U.S. in three transmission risk groups: HETF, HETM and
254 MSM. The model is first initialized to be representative of people living with HIV (PWH) in the
255 U.S. in 2006, using data from several studies. These include demographical, sexual behavioral,

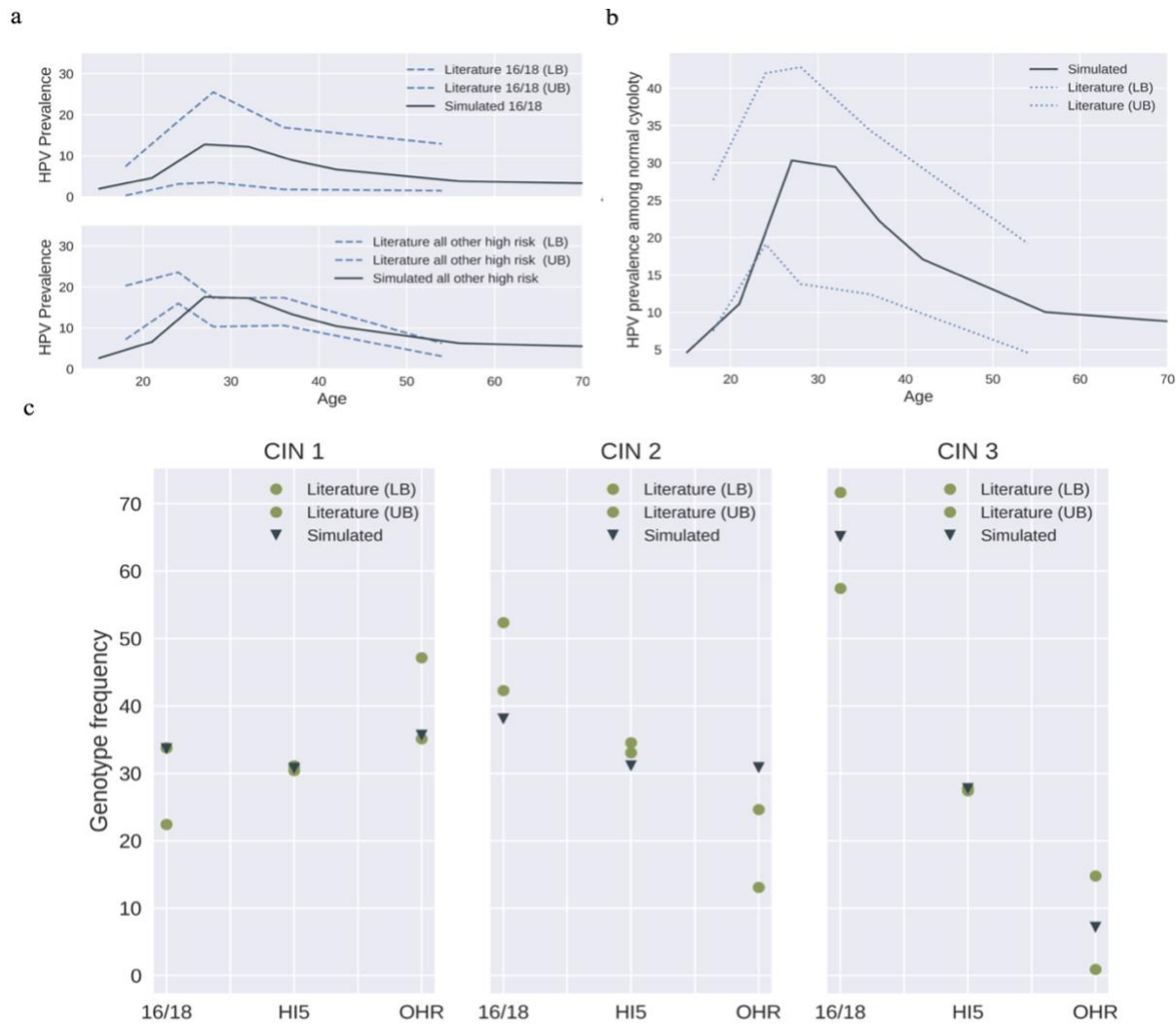
256 clinical, and HIV care and treatment behavioral studies that originated from multiple large
257 national surveillance and survey systems in the U.S., along with other small studies. The
258 surveillance and survey systems include the NHSS, the Medical Monitoring Project (MMP), the
259 HIV Outpatient Study (HOPS), the National HIV Behavioral Surveillance (NHBS), the National
260 Survey for Family Growth (NSFG), and the National Survey for Sexual Health and Behavior
261 (NSSHB) [61–66]. After initialization to 2006, the model then simulates HIV from 2006 to 2017
262 in monthly-time steps, using data for annual changes in care continuum from NHSS [59].

263 HPV: We constructed a new HPV and cervical cancer model as higher prevalence Disease 2.
264 Detailed description of model development, data assumptions, calibration, and validation are
265 presented in Appendix 2, and summarized below. The compartmental model array S_t was of size
266 $7 \times 3 \times 9 \times 1 \times 41$, corresponding to size of age-group, transmission risk group, degree-bin,
267 geographical jurisdiction, and HPV health state. Here we simulated an overall national
268 population, thus, there was only 1 jurisdiction.

269 Note that, as in the HIV model, there were three transmission-groups, HETF, HETM, and MSM.
270 For HETF, we simulated HPV and cervical cancer. For HETM, we simulated only HPV as the
271 risk of sequelae among HETM is low. For MSM, anal HPV can lead to cancers such as anal
272 cancer, which has a similar epidemiology as cervical cancer [67]. We did not specifically model
273 anal cancer. However, as HIV prevalence and sexual networks among MSM are significantly
274 different than among heterosexuals, to understand the mathematical sensitivity of these network
275 dynamics on metrics of interest (see numerical analyses below), we used the disease progression
276 data for HPV and cervical cancer to model HPV and anal cancer among MSM. Thus, we
277 validated this model for only HPV and cervical cancer among women.

278 Sexual behavioral data, such as the number of sex acts, condom use, and partnership mixing
279 across age-groups and transmission groups, were kept consistent between the compartmental and
280 network models (as they collectively represent the U.S population). That is, data specific to age-
281 group, transmission risk group, and degree-bin from PATH 4.0 were also used in the estimation
282 of HPV infection rates, i.e., the rate of transitioning from susceptible to first stage of infection.
283 Data for the state-transitions related to natural HPV progression and regression were gathered
284 from literature studies [47,68–70]. We calibrated the per-act probability of transmission specific

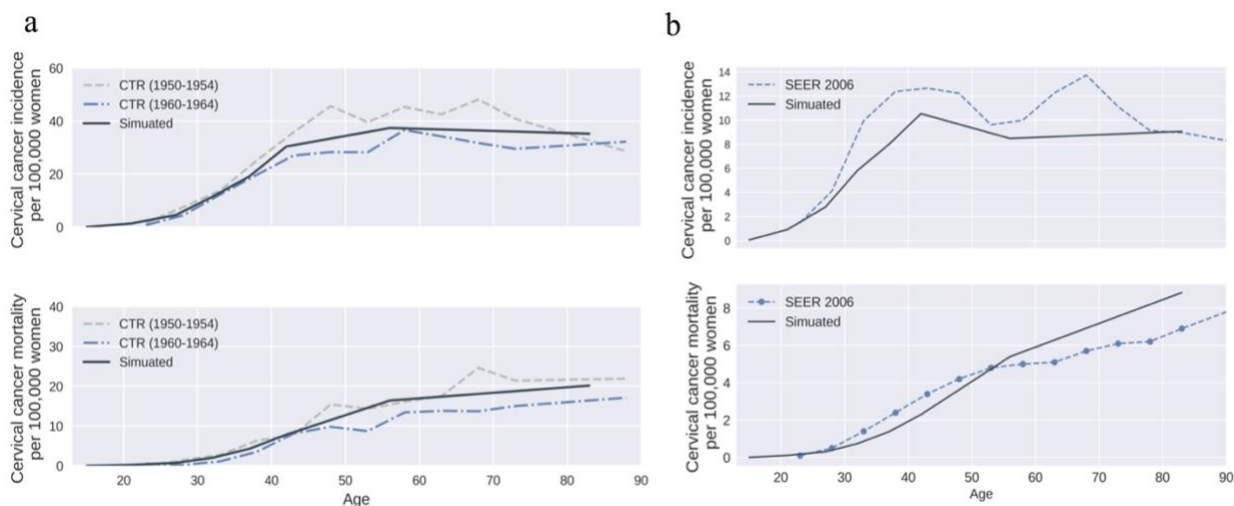
285 to HPV-genotype by fitting the natural history model to common calibration targets e.g., high-
286 risk HPV genotype frequency among cervical intraepithelial neoplasia (CIN) 1, 2, 3, and normal
287 cytology and age-and genotype-specific high-risk HPV prevalence among normal cytology [71]
288 as typically done in other models in the literature [72]. Results show a good fit to most metrics
289 (Fig 2). To assess the validity of the model, we compared pre-screening cervical cancer
290 incidence and mortality from our model with the data obtained from the Connecticut Tumor
291 Registry (Fig 3a) [73].



292
293 **Fig 2. HPV and cervical cancer natural history model calibration results.**
294 a) Age-and genotype-specific high-risk HPV prevalence among normal cytology; b) Age-
295 specific HPV prevalence among normal cytology; c) High-risk HPV genotype frequency among
296 cervical intraepithelial neoplasia (CIN) 1, 2 and 3. (Data source: [71]).
297

298 16/18 represent HPV-16/18 pooled, HI5 represents HPV-31/33/45/52/58 pooled, while OHR represents other high-
 299 risk genotypes except HPV-16/18/31/33/45/52/58.
 300

301 We used the calibrated model to simulate and validate HPV in the U.S under cervical cancer
 302 screening, using data corresponding to 2006. These data include screening rates, cytology
 303 screening sensitivity, proportions receiving follow-up colposcopy/biopsy and proportion
 304 receiving precancer treatment for those in pre-cancer stages, and additionally cancer-screening
 305 sensitivity for those in cancer stages [74,75]. Cervical cancer incidence and mortality in 2006
 306 with screening [76] compare well with surveillance estimates (Fig 3b). More details on
 307 calibration and validation are provided in Appendix 2.5.



308 **Fig 3. HPV and cervical cancer natural history model validation results.**
 309 a) Age-specific cervical cancer incidence and mortality per 100,000 women (without screening);
 310 b) Age-specific cervical cancer incidence and mortality per 100,000 women (with screening).
 311 (Data source: a) [73]; b) SEER 2006 [76]).
 312
 313

314 Numerical analyses

315 We focused the numerical analyses on estimating the differences in HPV disease burden among
 316 people with HIV compared to people without HIV. In this regard, we define the following
 317 relative risk metrics, relative prevalence of HPV (RP_{HPV}) and relative incidence of cancer
 318 (RI_{cancer}).

319
$$RP_{HPV} = \frac{HPV \text{ prevalence among people with HIV in 2017}}{HPV \text{ prevalence among people without HIV in 2017}}$$

$$RI_{cancer} = \frac{\text{Cumulative cancer incidence between 2008 and 2017 among people with HIV}}{\text{Cumulative cancer incidence between 2008 and 2017 among people without HIV}}$$

Prevalence is the proportion of people living with the disease, calculated at the end of 2017, and includes both diagnosed and undiagnosed cases. Cancer incidence is the number of newly diagnosed cases in a year. We used prevalence for RP_{HPV} but cumulative incidence for RI_{cancer} because persons in an HPV infection state can transition back to a susceptible state, while persons transitioning to a cancer state remain in that state until mortality.

Scenarios modeled

To determine the attribution of biological and behavioral factors to the higher HPV burden among women with HIV, we estimated RP_{HPV} and RI_{cancer} under four assumptions of biological risk (discussed below). Further, to evaluate the sensitivity of RP_{HPV} and RI_{cancer} to changes in HPV burden over time, caused by changes in interventions, we evaluated the metrics under three HPV intervention assumptions (discussed below). Thus, we evaluated a combination of twelve scenarios. We discuss each of the four biological risk assumptions and three HPV intervention assumptions below. As HIV care has significantly increased over the past decade, to test the sensitivity of the relative risk metric to HIV burden, for each scenario, we evaluated RP_{HPV} at two-time points years 2010 and 2017.

Biological risk assumptions:

- *No biological risk*: Assumes incidence and progression rates for HPV and related cancers would be the same for persons with HIV and without HIV (note: incidence and progression rates do change by other factors such as age-group, sexual behavior, etc.). The values for these were taken from data in the literature and are discussed in Appendix S2.4.1. We assume these to be the basecase rates.
- *Increased risk of disease progression*: Assumes higher rates of HPV progression and lower rates of HPV regression for persons with HIV infection compared to persons without (through use of a factor multiplied to basecase rates). Further, the value of the multiplier varied by HIV-disease stage. Data for these multipliers were based on studies

350 in the literature (Appendix Table S2) [47,77,78]. Though these data were specific to
351 cervical cancer, due to lack of data we assumed same multipliers when modeling anal
352 cancer among MSM, as studies suggest higher biological risk for anal cancer [11–13].
353 - *Increased risk of HPV acquisition*: Assumes a higher rate of HPV acquisition for persons
354 with HIV compared to persons without HIV by using a multiplier to the basecase
355 infection rates. Data for these multipliers were based on studies in the literature
356 (Appendix Table S2) [47]. Though these data were specific to cervical cancer, due to
357 lack of data we assumed same multipliers when modeling anal cancer among MSM, as
358 studies also suggest higher biological risk for anal cancer [11–13].
359 - *All increased risk*: Combines the above two scenarios by assuming higher rates of HPV
360 acquisition, higher rates of HPV progression, and lower rates of HPV regression for
361 persons with HIV infection compared to persons without.

362 Intervention assumptions:

- 363 • *Pre-screening*: Assumes symptom-based diagnosis for HPV and cervical cancer.
- 364 • *Screening-only*: Assumes screening rates as per year 2006 in the U.S. and keeps it
365 constant over the period 2006 to 2017.
- 366 • *Status-quo* intervention: Assumes screening rates as per year 2006 in the U.S. and keeps
367 it constant over the period 2006 to 2017. Additionally, it models HPV vaccinations. It
368 assumes vaccinations initiated in 2007 for females and 2010 for males aged 13-17 years,
369 assumes a quadrivalent vaccine type for the period before 2015 and nonavalent vaccine
370 for 2015 and after, and models' vaccination rates to vary per year as per data in the U.S.
371 [79–81]. This scenario is the closest representation for screening practice and HPV
372 vaccination coverage in the U.S. for recent years.

373

374 **Metrics gathered**

375 We simulated each of the 12 scenarios 10 times (simulating over the period from 2006 to 2017).
376 We present the mean and range of RP_{HPV} and RI_{cancer} across the 10 runs. Values of greater than
377 1 indicate higher burden among persons with HIV compared to persons without. We also
378 estimated the fraction of increased risk attributed to biological factors as $[(RP_{HPV}$ in 'all
379 increased risk' minus RP_{HPV} in 'no biological risk') divided by (RP_{HPV} in 'no biological risk'
380 minus 1)]. To better interpret observed values of RP_{HPV} and RI_{cancer} , we also extracted results

381 for the following metrics related to network and epidemic dynamics. Average degree (number of
382 lifetime partners) among HIV+ (d_{HIV+}), average degree among HPV+ (d_{HPV+}), average degree
383 among overall population (Overall) ($d_{overall}$), HPV prevalence among HIV+, HPV prevalence
384 among HIV-, cancer incidence among HIV+, and cancer incidence among HIV-. We extracted
385 these metrics specific to each transmission risk group, HETF, HETM, and MSM.

386

387

388 **Results**

389 As expected, in all scenarios, HIV prevalence was highest among MSM (~8%), moderate among
390 HETF (~0.12%), and lowest among HETM (~0.06%), which matches with estimates from the
391 U.S. National HIV Surveillance System [82]. Considering the lower prevalence of HIV among
392 HETF, the overall HPV prevalence and cervical cancer incidence among women did not
393 significantly vary across the biological risk assumptions (though values varied among HIV+
394 women as discussed later). Overall rates of HPV prevalence were 19%, 25%, and 29% among
395 HETF, HETM, and MSM, respectively. Annual rates of cervical cancer incidence (and
396 mortality), among HETF, in pre-screening, screening-only, and status-quo scenarios were 23
397 (10), 7 (3), and 7 (3) per 100,000 persons, respectively. There were no differences between
398 screening-only and status-quo given the low vaccination uptakes and short timeline from vaccine
399 introduction. These results match with surveillance data, which report an incidence of 7.6 per
400 100,000 persons and mortality rate of 2.4 per 100,000 persons in 2006, the year prior to
401 introduction of vaccines, and an incidence of 6.7 per 100,000 persons and mortality rate of 2.2
402 per 100,000 persons by the end of 2017 [76].

403

404 In the ‘status-quo, no biological risk’ scenario, RP_{HPV} was significantly greater than 1 in all three
405 transmission-groups, however, it was highest among HETF (1.41(1.36-1.44)) (Table 1c)
406 followed by MSM (1.36(1.34-1.38)) (Table 3c), and closer to 1 for HETM (1.13(1.01-1.16))
407 (Table 2c). To recollect, overall HPV prevalence was highest among MSM and HETM, and
408 overall HIV prevalence was high among MSM, moderate among HETF, and low among HETM.
409 Thus, there was no consistent pattern when comparing differences in RP_{HPV} across transmission
410 risk-group with HIV prevalence or HPV prevalence alone.

411

412 **Table 1a: Numerical analyses of HIV and HPV disease burden and relevant network**
 413 **metrics under “prescreening” assumption (HETF)**

	Prescreening			
	No biological risk	All increased risk	Increased risk of progression	Increased risk of HPV acquisition
Average degree for HIV+	23.08(21.24-24.13)	23.29(22-24.42)	23.25(22.05-24.41)	23.25(21.6-24.61)
Average degree for overall population	13.39(13.38-13.39)	13.39(13.39-13.39)	13.39(13.39-13.39)	13.39(13.38-13.39)
Average degree for HPV+	19.13(19.12-19.13)	19.13(19.12-19.14)	19.13(19.12-19.14)	19.13(19.12-19.14)
Average degree or HIV+ and HPV+	29.03(27.19-32.52)	29.57(26.27-31.99)	30.03(27.31-32.3)	29.13(26.28-31.13)
HPV prevalence among total population (2010)	0.21(0.21-0.21)	0.21(0.21-0.21)	0.21(0.21-0.21)	0.21(0.21-0.21)
HPV prevalence among total population (2017)	0.2(0.2-0.2)	0.2(0.2-0.2)	0.2(0.2-0.2)	0.2(0.2-0.2)
Relative risk (HPV prevalence, 2010)	1.29(1.26-1.33)	1.4(1.32-1.48)	1.32(1.27-1.36)	1.36(1.29-1.39)
Relative risk (HPV prevalence, 2017)	1.35(1.27-1.45) *^	1.58(1.51-1.64) *+^	1.44(1.35-1.55) *+^	1.48(1.43-1.51) *+^
Cumulative new cancer incidence among HIV+ over year 2008-2017 (per 100, 000 persons)	359.07(138.64-567.37)	1374.64(979.54-1806.82)	1420.04(877.43-1852.22)	475.71(257.81-766.67)
Cumulative new cancer incidence among HIV- over year 2008-2017 (per 100, 000 persons)	287.63(287.59-287.67)	287.65(287.59-287.69)	287.64(287.59-287.68)	287.64(287.59-287.67)
Relative risk (cumulative cancer incidence over year 2008-2017)	1.25(0.48-1.97)	4.78(3.41-6.28) *+	4.94(3.05-6.44) *+	1.65(0.9-2.67)

414 * indicates significant compared to relative risk = 1
 415 + indicates significant compared to “no biological risk” within same intervention assumption
 416 ^ indicates significant compared to 2010 estimates where HIV burden was lower
 417 † indicates significant compared to “prescreening”
 418 The criterion for significance is $p < 0.05$.
 419

420 **Table 1b: Numerical analyses of HIV and HPV disease burden and relevant network**
 421 **metrics under “screening only” assumption (HETF)**

	Screening only			
	No biological risk	All increased risk	Increased risk of progression	Increased risk of HPV acquisition

Average degree for HIV+	23.02(21.92-24.16)	23.28(22.39-24.32)	23.06(21.42-23.98)	23.25(21.86-25.17)
Average degree for overall population	13.39(13.39-13.39)	13.39(13.39-13.39)	13.39(13.39-13.39)	13.39(13.39-13.39)
Average degree for HPV+	19.16(19.16-19.17)	19.17(19.16-19.17)	19.16(19.16-19.17)	19.16(19.16-19.17)
Average degree or HIV+ and HPV+	29.49(27.13-31.29)	29.92(26.58-32.06)	29.06(26.78-31.14)	29.06(27.39-31.02)
HPV prevalence among total population (2010)	0.2(0.2-0.2)	0.2(0.2-0.2)	0.2(0.2-0.2)	0.2(0.2-0.2)
HPV prevalence among total population (2017)	0.2(0.2-0.2)	0.2(0.2-0.2)	0.2(0.2-0.2)	0.2(0.2-0.2)
Relative risk (HPV prevalence, 2010)	1.28(1.22-1.32)	1.42(1.34-1.49)	1.32(1.22-1.41)	1.36(1.31-1.39)
Relative risk (HPV prevalence, 2017)	1.38(1.31-1.43) * [^]	1.62(1.55-1.69) * ^{+^†}	1.45(1.36-1.53) * ^{+^}	1.48(1.41-1.58) * ^{+^}
Cumulative new cancer incidence among HIV+ over year 2008-2017 (per 100, 000 persons)	117.21(48.83-250.26)	541.78(349.69-769.7)	423.25(154.6-630.9)	131.9(46.51-315.89)
Cumulative new cancer incidence among HIV- over year 2008-2017 (per 100, 000 persons)	81.95(81.92-81.97)	81.94(81.93-81.96)	81.95(81.93-81.96)	81.95(81.93-81.96)
Relative risk (cumulative cancer incidence over year 2008-2017)	1.43(0.6-3.05)	6.61(4.27-9.39) * ^{+†}	5.17(1.89-7.7) * ^{+^}	1.61(0.57-3.86)

422 * indicates significant compared to relative risk = 1
 423 + indicates significant compared to “no biological risk” within same intervention assumption
 424 ^ indicates significant compared to 2010 estimates where HIV burden was lower
 425 † indicates significant compared to “prescreening”
 426 The criterion for significance is $p < 0.05$.
 427

428 **Table 1c: Numerical analyses of HIV and HPV disease burden and relevant network**
 429 **metrics under “status quo” assumption (HETF)**

	Status quo			
	No biological risk	All increased risk	Increased risk of progression	Increased risk of HPV acquisition
Average degree for HIV+	23.45(22.75-23.59)	23.56(22.89-23.85)	23.14(22.6-24.71)	23.2(22.17-24.14)
Average degree for overall population	13.39(13.39-13.39)	13.39(13.39-13.39)	13.39(13.39-13.39)	13.39(13.39-13.39)
Average degree for HPV+	19.22(19.21-19.23)	19.22(19.22-19.23)	19.22(19.21-19.23)	19.22(19.21-19.22)
Average degree or HIV+ and HPV+	28.9(27.72-32.4)	29.1(28.2-31.15)	29.48(27.36-31.29)	28.63(26.02-30.69)
HPV prevalence among total population (2010)	0.2(0.2-0.2)	0.2(0.2-0.2)	0.2(0.2-0.2)	0.2(0.2-0.2)
HPV prevalence among total population (2017)	0.19(0.19-0.19)	0.19(0.19-0.19)	0.19(0.19-0.19)	0.19(0.19-0.19)

Relative risk (HPV prevalence, 2010)	1.34(1.29-1.38)	1.44(1.4-1.5)	1.33(1.22-1.45)	1.36(1.33-1.42)
Relative risk (HPV prevalence, 2017)	1.41(1.36-1.44) ^{*^}	1.67(1.64-1.71) ^{*+^†}	1.48(1.39-1.58) ^{*+^}	1.5(1.43-1.55) ^{*+^}
Cumulative new cancer incidence among HIV+ over year 2008-2017 (per 100, 000 persons)	119.97(102.02-263)	450.62(322.09-554.08)	534.86(254.8-942.14)	126.94(0-415.54)
Cumulative new cancer incidence among HIV- over year 2008-2017 (per 100, 000 persons)	81.91(81.91-81.92)	81.9(81.89-81.91)	81.91(81.89-81.92)	81.91(81.89-81.93)
Relative risk (cumulative cancer incidence over year 2008-2017)	1.46(1.25-3.21) [*]	5.5(3.93-6.77) ^{*+†}	6.53(3.11-11.5) ^{*+}	1.55(0-5.07)

430 * indicates significant compared to relative risk = 1

431 + indicates significant compared to “no biological risk” within same intervention assumption

432 ^ indicates significant compared to 2010 estimates where HIV burden was lower

433 † indicates significant compared to “prescreening”

434 The criterion for significance is $p < 0.05$.

435

436

437 **Table 2a: Numerical analyses of HIV and HPV disease burden and relevant network**

438 **metrics under “prescreening” assumption (HETM)**

439

	Prescreening			
	No biological risk	All increased risk	Increased risk of progression	Increased risk of HPV acquisition
Average degree for HIV+	13.58(12.47-14.66)	13.37(12.05-15.37)	13.33(11.66-14.92)	13.14(11.69-13.71)
Average degree for overall population	17.25(17.25-17.25)	17.25(17.25-17.25)	17.25(17.25-17.25)	17.25(17.25-17.25)
Average degree for HPV+	25.4(25.4-25.4)	25.4(25.39-25.4)	25.4(25.39-25.4)	25.4(25.39-25.4)
Average degree or HIV+ and HPV+	17.89(15.3-21.43)	17.33(16.12-19.59)	18.17(14.77-21.3)	16.4(14.81-18.59)
HPV prevalence among total population (2010)	0.27(0.27-0.27)	0.27(0.27-0.27)	0.27(0.27-0.27)	0.27(0.27-0.27)
HPV prevalence among total population (2017)	0.26(0.26-0.26)	0.26(0.26-0.26)	0.26(0.26-0.26)	0.26(0.26-0.26)
Relative risk (HPV prevalence, 2010)	1.16(1.1-1.2)	1.29(1.24-1.34)	1.22(1.15-1.27)	1.23(1.17-1.31)
Relative risk (HPV prevalence, 2017)	1.11(1.05-1.23) ^{*^}	1.41(1.32-1.49) ^{*+^}	1.24(1.16-1.33) ^{*+}	1.25(1.17-1.33) ^{*+}
Cumulative new cancer incidence among HIV+ over year 2008-2017 (per 100, 000 persons)	NA(-)	NA(-)	NA(-)	NA(-)

Cumulative new cancer incidence among HIV- over year 2008-2017 (per 100, 000 persons)	NA(-)	NA(-)	NA(-)	NA(-)
Relative risk (cumulative cancer incidence over year 2008-2017)	NA(-)	NA(-)	NA(-)	NA(-)

440 NA: we did not model cancers in HETM
 441 * indicates significant compared to relative risk = 1
 442 + indicates significant compared to “no biological risk” within same intervention assumption
 443 ^ indicates significant compared to 2010 estimates where HIV burden was lower
 444 † indicates significant compared to “prescreening”
 445 The criterion for significance is $p < 0.05$.

446
 447 **Table 2b: Numerical analyses of HIV and HPV disease burden and relevant network**
 448 **metrics under “screening only” assumption (HETM)**

	Screening only			
	No biological risk	All increased risk	Increased risk of progression	Increased risk of HPV acquisition
Average degree for HIV+	13.21(11.58-14.99)	13.44(12.05-14.16)	13.28(12.16-14.15)	13.43(12.09-14.37)
Average degree for overall population	17.25(17.25-17.25)	17.25(17.25-17.25)	17.25(17.25-17.25)	17.25(17.25-17.25)
Average degree for HPV+	25.41(25.41-25.41)	25.41(25.4-25.41)	25.41(25.41-25.41)	25.41(25.4-25.41)
Average degree or HIV+ and HPV+	17.23(14.25-19.05)	17.4(13.36-19.82)	17.16(15.37-18.79)	17.23(14.56-19.01)
HPV prevalence among total population (2010)	0.27(0.27-0.27)	0.27(0.27-0.27)	0.27(0.27-0.27)	0.27(0.27-0.27)
HPV prevalence among total population (2017)	0.26(0.26-0.26)	0.26(0.26-0.26)	0.26(0.26-0.26)	0.26(0.26-0.26)
Relative risk (HPV prevalence, 2010)	1.15(1.09-1.21)	1.31(1.25-1.36)	1.21(1.16-1.29)	1.27(1.18-1.38)
Relative risk (HPV prevalence, 2017)	1.13(0.99-1.25) *	1.45(1.4-1.48) *+^	1.25(1.2-1.32) *+^	1.27(1.15-1.42) *+^
Cumulative new cancer incidence among HIV+ over year 2008-2017 (per 100, 000 persons)	NA(-)	NA(-)	NA(-)	NA(-)
Cumulative new cancer incidence among HIV- over year 2008-2017 (per 100, 000 persons)	NA(-)	NA(-)	NA(-)	NA(-)
Relative risk (cumulative cancer incidence over year 2008-2017)	NA(-)	NA(-)	NA(-)	NA(-)

450 NA: we did not model cancers in HETM

451 * indicates significant compared to relative risk = 1
 452 + indicates significant compared to “no biological risk” within same intervention assumption
 453 ^ indicates significant compared to 2010 estimates where HIV burden was lower
 454 † indicates significant compared to “prescreening”
 455 The criterion for significance is $p < 0.05$.
 456

457 **Table 2c: Numerical analyses of HIV and HPV disease burden and relevant network**
 458 **metrics under “status quo” assumption (HETM)**

	Status quo			
	No biological risk	All increased risk	Increased risk of progression	Increased risk of HPV acquisition
Average degree for HIV+	13.03(12.62-14.59)	12.85(11.93-14.81)	13.4(11.33-15.1)	13.48(12.35-15.17)
Average degree for overall population	17.25(17.25-17.25)	17.25(17.25-17.25)	17.25(17.25-17.25)	17.25(17.25-17.25)
Average degree for HPV+	25.46(25.46-25.46)	25.45(25.45-25.46)	25.46(25.45-25.46)	25.46(25.45-25.46)
Average degree or HIV+ and HPV+	17.53(15.75-21.03)	16.66(14.7-20.28)	17.67(13.36-20.53)	17.47(15.41-19.72)
HPV prevalence among total population (2010)	0.27(0.27-0.27)	0.27(0.27-0.27)	0.27(0.27-0.27)	0.27(0.27-0.27)
HPV prevalence among total population (2017)	0.26(0.26-0.26)	0.26(0.26-0.26)	0.26(0.26-0.26)	0.26(0.26-0.26)
Relative risk (HPV prevalence, 2010)	1.17(1.14-1.21)	1.36(1.32-1.38)	1.22(1.19-1.28)	1.26(1.2-1.31)
Relative risk (HPV prevalence, 2017)	1.13(1.01-1.16) *^	1.46(1.41-1.54) *+^	1.25(1.13-1.34) *+	1.32(1.22-1.39) *+^†
Cumulative new cancer incidence among HIV+ over year 2008-2017 (per 100, 000 persons)	NA(-)	NA(-)	NA(-)	NA(-)
Cumulative new cancer incidence among HIV- over year 2008-2017 (per 100, 000 persons)	NA(-)	NA(-)	NA(-)	NA(-)
Relative risk (cumulative cancer incidence over year 2008-2017)	NA(-)	NA(-)	NA(-)	NA(-)

459 NA: we did not model cancers in HETM
 460 * indicates significant compared to relative risk = 1
 461 + indicates significant compared to “no biological risk” within same intervention assumption
 462 ^ indicates significant compared to 2010 estimates where HIV burden was lower
 463 † indicates significant compared to “prescreening”
 464 The criterion for significance is $p < 0.05$.
 465

466 **Table 3a: Numerical analyses of HIV and HPV disease burden and relevant network**
 467 **metrics under “prescreening” assumption (MSM)**

468

	Prescreening			
	No biological risk	All increased risk	Increased risk of progression	Increased risk of HPV acquisition
Average degree for HIV+	25.57(24.93-26.38)	25.61(24.81-26.54)	25.61(25.03-26.24)	25.56(24.57-26.29)
Average degree for overall population	19.7(19.63-19.82)	19.71(19.6-19.84)	19.7(19.64-19.79)	19.71(19.65-19.81)
Average degree for HPV+	28.67(28.54-28.8)	28.84(28.64-29.08)	28.86(28.58-29.11)	28.65(28.44-28.85)
Average degree or HIV+ and HPV+	34.67(33.2-35.35)	34.88(33.11-35.59)	35.63(33.77-37.22)	33.88(32.65-34.94)
HPV prevalence among total population (2010)	0.28(0.28-0.28)	0.29(0.29-0.29)	0.28(0.28-0.28)	0.28(0.28-0.28)
HPV prevalence among total population (2017)	0.27(0.27-0.27)	0.29(0.28-0.29)	0.27(0.27-0.27)	0.28(0.28-0.28)
Relative risk (HPV prevalence, 2010)	1.25(1.23-1.29)	1.43(1.41-1.44)	1.28(1.26-1.32)	1.36(1.33-1.38)
Relative risk (HPV prevalence, 2017)	1.33(1.31-1.37) * [^]	1.62(1.58-1.66) * ^{+^}	1.41(1.39-1.44) * ^{+^}	1.51(1.47-1.54) * ^{+^}
Cumulative new cancer incidence among HIV+ over year 2008-2017 (per 100,000 persons)	750.74(605.91-906.12)	2086.12(1833.14-2418.83)	2166.61(1755.57-2342.04)	829.67(618.48-948.46)
Cumulative new cancer incidence among HIV- over year 2008-2017 (per 100,000 persons)	530.04(528.17-531.6)	529.72(528.25-531.62)	530.49(528.08-532.14)	530.21(528.64-531.88)
Relative risk (cumulative cancer incidence over year 2008-2017)	1.42(1.14-1.72) *	3.94(3.47-4.57) * ⁺	4.08(3.31-4.41) * ⁺	1.56(1.16-1.79) *

469 * indicates significant compared to relative risk = 1
 470 + indicates significant compared to “no biological risk” within same intervention assumption
 471 ^ indicates significant compared to 2010 estimates where HIV burden was lower
 472 † indicates significant compared to “prescreening”
 473 The criterion for significance is $p < 0.05$.

474
 475 **Table 3b: Numerical analyses of HIV and HPV disease burden and relevant network**
 476 **metrics under “screening only” assumption (MSM)**

	Screening only			
	No biological risk	All increased risk	Increased risk of progression	Increased risk of HPV acquisition
Average degree for HIV+	25.6(24.74-26.4)	25.52(24.66-26.33)	25.44(24.75-26.07)	25.77(25.22-26.22)

Average degree for overall population	19.7(19.63-19.8)	19.72(19.63-19.81)	19.71(19.64-19.79)	19.72(19.65-19.86)
Average degree for HPV+	28.82(28.67-29.04)	28.93(28.77-29.08)	29.04(28.88-29.19)	28.72(28.47-28.9)
Average degree or HIV+ and HPV+	35.17(33.73-36.31)	34.52(33.11-35.24)	35.67(34.46-36.31)	33.97(32.84-34.94)
HPV prevalence among total population (2010)	0.27(0.27-0.27)	0.28(0.28-0.28)	0.27(0.27-0.27)	0.27(0.27-0.27)
HPV prevalence among total population (2017)	0.26(0.26-0.26)	0.28(0.28-0.28)	0.26(0.26-0.27)	0.27(0.27-0.27)
Relative risk (HPV prevalence, 2010)	1.26(1.23-1.28)	1.47(1.43-1.5)	1.3(1.27-1.35)	1.39(1.35-1.42)
Relative risk (HPV prevalence, 2017)	1.33(1.3-1.37) ^{**}	1.7(1.67-1.75) ^{**+†}	1.46(1.43-1.49) ^{**+†}	1.53(1.49-1.56) ^{**+^}
Cumulative new cancer incidence among HIV+ over year 2008-2017 (per 100, 000 persons)	227.32(163.79-284.84)	799.15(624.49-977.45)	753.07(592.56-980.78)	232.1(149.53-332.22)
Cumulative new cancer incidence among HIV- over year 2008-2017 (per 100, 000 persons)	167.37(166.45-168.31)	167.12(166.5-167.79)	166.96(166.17-168.31)	166.98(165.74-167.78)
Relative risk (cumulative cancer incidence over year 2008-2017)	1.36(0.97-1.7) [*]	4.78(3.74-5.86) ^{**+†}	4.51(3.56-5.9) ^{**+}	1.39(0.9-1.98)

477 * indicates significant compared to relative risk = 1
 478 + indicates significant compared to “no biological risk” within same intervention assumption
 479 ^ indicates significant compared to 2010 estimates where HIV burden was lower
 480 † indicates significant compared to “prescreening”
 481 The criterion for significance is $p < 0.05$.
 482

483 **Table 3c: Numerical analyses of HIV and HPV disease burden and relevant network**
 484 **metrics under “status quo” assumption (MSM)**

	Status quo			
	No biological risk	All increased risk	Increased risk of progression	Increased risk of HPV acquisition
Average degree for HIV+	25.99(25.48-26.47)	25.7(25.28-26.11)	25.8(25.03-26.56)	25.65(25.07-26.25)
Average degree for overall population	19.76(19.68-19.83)	19.76(19.68-19.8)	19.72(19.62-19.82)	19.71(19.63-19.79)
Average degree for HPV+	29.01(28.9-29.28)	29.02(28.82-29.09)	29.06(28.83-29.29)	28.76(28.47-28.96)
Average degree or HIV+ and HPV+	35.98(35.51-37.67)	34.64(33.53-35.34)	35.86(34.25-37.02)	34.07(32.7-34.82)
HPV prevalence among total population (2010)	0.27(0.27-0.27)	0.28(0.28-0.28)	0.27(0.27-0.27)	0.27(0.27-0.27)
HPV prevalence among total population (2017)	0.26(0.26-0.26)	0.28(0.27-0.28)	0.26(0.26-0.26)	0.27(0.27-0.27)
Relative risk (HPV prevalence, 2010)	1.27(1.26-1.29)	1.48(1.45-1.52)	1.31(1.29-1.34)	1.38(1.36-1.42)

Relative risk (HPV prevalence, 2017)	1.36(1.34-1.38) * [^]	1.74(1.68-1.75) * ^{+^†}	1.47(1.42-1.52) * ^{+^†}	1.53(1.48-1.56) * ^{+^}
Cumulative new cancer incidence among HIV+ over year 2008-2017 (per 100, 000 persons)	224.31(160.82-294.46)	871.64(856.1-880.56)	752.94(530.12-845.96)	207.36(119.82-278.32)
Cumulative new cancer incidence among HIV- over year 2008-2017 (per 100, 000 persons)	167.5(166.54-167.99)	167.31(166.78-167.8)	166.92(165.79-167.72)	166.99(166.27-168.03)
Relative risk (cumulative cancer incidence over year 2008-2017)	1.34(0.95-1.75)	5.21(5.12-5.25) * ^{+†}	4.51(3.18-5.06) * ^{+†}	1.24(0.72-1.66)

485 * indicates significant compared to relative risk = 1

486 + indicates significant compared to “no biological risk” within same intervention assumption

487 ^ indicates significant compared to 2010 estimates where HIV burden was lower

488 † indicates significant compared to “prescreening”

489 The criterion for significance is $p < 0.05$.

490

491 The differences in RP_{HPV} could be explained through differences in the average degree in
 492 persons with HIV (d_{HIV+}), average degree in persons with HPV (d_{HPV+}), and average degree in
 493 the total population ($d_{overall}$) (Table 1c, 2c, 3c). For HETF and MSM, d_{HIV+} (HETF: 23, MSM:
 494 25) and d_{HPV+} (HETF: 19, MSM: 29) were significantly higher than $d_{overall}$ (HETF: 13, MSM:
 495 20). However, for HETM, d_{HPV+} (25) was higher than $d_{overall}$ (17) but d_{HIV+} (13) was lower
 496 than $d_{overall}$ (17). These results, as expected, suggest that if both HIV and HPV infections are
 497 concentrated in higher degree networks, then the RP_{HPV} is greater than 1. For HETM, although
 498 HPV was concentrated in higher degree networks, as the prevalence of HIV is very low, it was
 499 more randomly spread in the network, thus the RP_{HPV} was closer to 1. For HETF, compared to
 500 MSM, as HIV prevalence was moderately low, infections were focused on higher degree
 501 networks, $d_{HIV+}/d_{overall}$ was 1.77 for HETF compared to 1.25 for MSM. These results point to
 502 the sensitivity of RR_{HPV} to disease burden of both diseases and the role of network dynamics.

503

504 For all three transmission-groups and across all intervention scenarios, compared to ‘no
 505 biological risk’, RP_{HPV} was significantly higher in each of the three biological risk assumptions,
 506 lowest in ‘increased risk of HPV acquisition’ scenario, and highest increase in ‘all increased risk’
 507 (increased risk of progression and HPV acquisition) scenario. For example, for ‘status quo’
 508 intervention, the RP_{HPV} in ‘all increased risk’ was 1.67 (1.64-1.71) for HETF, 1.46 (1.41-1.54)
 509 for HETM, and 1.74 (1.68-1.75) for MSM (Table 1c, 2c and 3c, respectively). Whereas, for the
 510 same ‘status quo’ intervention, the RP_{HPV} in ‘no biological risk’ was 1.41(1.36-1.44) for HETF,

511 1.13(1.01-1.16) for HETM, and 1.36(1.34-1.38) for MSM. While the values under ‘no biological
512 risk’ are attributable to behavioral factors, the differences between ‘all increased risk’ and ‘no
513 biological risk’ are attributable to biological factors of coinfection.

514
515 The values of RP_{HPV} were sensitive to HIV prevalence, as seen by higher values in year 2017
516 compared to year 2010 for both ‘no biological risk’ and ‘all increased risk’. To note here that
517 though HIV prevalence increased over this period, HIV care also increased (e.g., proportion on
518 treatment with viral suppression increased from 39% in 2010 to 56% in 2017), and thus, new
519 HIV cases were further concentrated in higher degree networks. Thus, the values of RR_{HPV} in
520 2017 were higher than in 2010. Further, while the fraction of increased HPV prevalence
521 attributed to biological factors were 22%, 52%, and 43% for HETF, HETM, and MSM,
522 respectively, in 2010, they increased to 38%, 71%, and 51% in 2017. This is as expected because
523 the dynamics of network can amplify the overall disease risk. Thus, we can expect the fraction
524 attributed to biological risk to also be sensitive to the network dynamics.

525
526 Relative incidence of cervical cancer (RI_{cancer}) in ‘status-quo’ intervention scenario was greater
527 than 1, and it was significantly higher in ‘all increased risk’ (3.6(1.31-6.17)) compared to ‘no
528 biological risk’ (1.51(0.72-2.81)) (Table 1c). That is, under the assumptions used in this study,
529 observed cases of cervical cancer incidence among women with HIV would be about 3.6 times
530 higher than among women without HIV, about 80% of the burden attributed to biological factors
531 and the remaining attributable to behavioral factors. Under the ‘all increased risk’ scenario,
532 values of RI_{cancer} were slightly higher under ‘status-quo’ (3.6(1.31-6.17)) (Table 1c) compared
533 to ‘prescreening’ (2.86(1.77-4.8)) (Table 1a), suggesting that, if screening were kept similar
534 between women with and without HIV, the cervical cancer burden gap between them would
535 widen. To note here, due to lack of data, we assumed screening and vaccine uptakes to be similar
536 among persons with HIV and without HIV, although this may not be the case.

537
538 Similar results were observed for cancers among MSM (Table 3a - 3c). RI_{cancer} in ‘all increased
539 risk’ was significantly greater than 1 in each of the three intervention scenarios, 2.83(2.33-3.51)
540 in ‘prescreening’, 3.89(2.91-4.89) in ‘screening only’, and 4.03(3.49-4.31) in ‘status-quo’.
541 RI_{cancer} in ‘all increased risk’ were also significantly greater than ‘no biological risk’ within

542 each of the three intervention scenarios. To recollect that to model anal cancer among MSM, we
543 utilized the same disease progression model as cervical cancer, for purposes of sensitivity
544 analyses on relative risk metrics. Under this context, collectively, our results suggest higher risk
545 of cancer among persons with HIV compared to persons without HIV, most attributed to
546 biological risk [11–13], and a smaller but significant fraction attributed to behavioral factors.

547

548 **Discussion and Conclusions**

549 We demonstrate the feasibility of application of a new MAC framework for jointly simulating
550 diseases of varying prevalence but with common modes of transmission. Using the same network
551 and sexual behavior, modeled at the individual-level for HIV and aggregated-level for HPV, the
552 model was able to replicate both HIV and HPV in the U.S. population, and thus serves as proof-
553 of-concept of the MAC simulation technique.

554

555 Estimates of RP_{HPV} in the literature are sparse, and not available for the U.S. population in recent
556 times. RP_{HPV} estimates from our model, of 1.67 (1.64-1.71) among women in ‘all increased risk,
557 status quo’ scenario, is similar to that in an observational study in the literature on an Italian
558 population (1.71) [16], and lower than that in an observational study on a South African
559 population (1.9) [14]. To note here that HPV prevalence and HIV prevalence are higher in South
560 Africa than in the U.S. and European populations. A national study of HIV infection among
561 adolescent girls in the U.S. conducted in 1996-97 [15], reported a RP_{HPV} of 3.3 (1.6-6.7). RP_{HPV}
562 estimates from our model among adolescent girls (13-18 yrs) in the ‘all increased risk,
563 prescreening’ scenario is 2.89 (1.41-6.1), and thus compares well with the national study.

564

565 Our model estimates for RI_{cancer} in ‘all increased risk, status quo’ scenario (3.6(1.31-6.17)), is
566 similar to that in large population-based observational studies conducted on the U.S. population,
567 3.80 (3.48-4.15) in [19] and 4.1(2.3-6.6) in [29]. A recent global systematic review of cervical
568 cancer reported a higher value of 5.34 (3.80-7.51) among high-income countries [18], suggesting
569 likely differences across populations and study settings. Similarity in our model results with
570 observational studies provides general model validity. To note here that the results are influenced
571 by the assumptions used for modeling biological risk (Appendix Table S2), that were based on
572 estimates in the literature [47,77,78]. Above results suggest that the literature estimates are a

573 good fit, however, considering the sensitivity of the relative risk metrics and the fractions
574 attributed to biological risk to disease burdens, closer calibrations specific to the population and
575 timeline of interest can be conducted during implementation of the model for decision analyses.

576

577 Relative prevalence of HPV was greater than 1 in ‘no biological risk’ and ‘all increased risk’,
578 values in ‘all increased risk’ being higher than ‘no biological risk’. Further, in ‘all increased risk,
579 status-quo’ scenario, relative incidence of cervical cancer was much higher than HPV. Similar
580 patterns were observed for cancers and HPV among MSM. These results suggest that behavioral
581 factors contribute to increased risk of HIV-HPV coinfection and are further exacerbated by
582 biological factors, especially for cancer cases. These results suggest the need for both behavioral
583 interventions to reduce the risk for infection, and care interventions for early detection and
584 treatment of HPV to reduce the risk of cancers. Social factors are among key drivers of increased
585 risky behavior e.g., higher number of partners and higher condomless sex, or lower adherence to
586 treatment that prevents transmission by suppressing viral load [36–39]. Thus, structural
587 interventions such as healthcare coverage, subsidized housing and food programs, and access to
588 mental healthcare [42–45,83], are key part of behavioral interventions.

589

590 Model estimates of relative prevalence and fraction attributable to each factor (biological and
591 behavioral) varied with HIV burden and care, suggesting influence of network dynamics, as
592 verified by the average degree estimates. Model estimates of relative incidence of cervical cancer
593 was higher in the HPV/ cancer screening scenario compared to the pre-screening scenario,
594 suggesting sensitivity to HPV burden and care. Thus, jointly modeling diseases in a dynamic
595 network model can help more accurately measure the impact of interventions. Above results also
596 support the need for more focused screening among persons with HIV (Note here that, to
597 evaluate the sensitivity to changes in interventions, our model assumed same levels of screening
598 among persons with and without HIV).

599

600 Our work is subject to limitations. We only focused on a general model-fit for HPV among
601 women and did not conduct detailed sensitivity analyses for the robustness of the calibration
602 method. Though the overall HPV model provided a good fit in most metrics in the pre-screening
603 results (Fig 2 and Fig 3a), the results under the screening scenario (Fig 3b) were not always same

604 as surveillance estimates. As post-screening model fits are largely influenced by assumptions for
605 age-specific compliance to screening, and not disease epidemiology, considering the scope of our
606 analyses we did not attempt to calibrate screening rates. Further, due to unavailability of more
607 recent data on screening rates, we kept it constant at the 2006 data assumptions for years 2006 to
608 2017. These assumptions are acceptable because, as noted earlier, per surveillance data, there
609 were minor changes in cervical cancer incidence and mortality over the period 2006 to 2017. We
610 did not attempt to calibrate biological risk multipliers but used estimates from the literature.
611 Though the model outcomes of relative risk were in the range of that reported from observational
612 studies, considering its sensitivity to disease burden and care changes over time, during
613 implementation of model to inform decisions it should be specifically calibrated to the
614 population under study. For MSM, we did not specifically model anal cancer (the sequelae of
615 most concern) but assumed similar epidemiology to cervical cancer. As observations here justify
616 the need for jointly modeling diseases, as opposed to independent disease models, adding anal
617 cancer in future work would be a suitable extension. We only evaluated the increased risk of
618 HPV among persons with HIV and did not evaluate vice-versa.

619
620 We believe the overall validation of HIV and HPV serves as proof-of-concept of the MAC
621 framework for joint modeling related diseases with widely varying prevalence but spread on a
622 common network. The model can be expanded to include other STIs. As numerical analyses
623 suggest, disease interactions are attributed to both behavioral factors and biological factors.
624 Structural interventions that address social determinants are a key part of behavioral
625 interventions. The MAC framework is suitable for modeling behaviors as a function of social
626 determinants, and further, measuring the impact of structural interventions on prevention of
627 overall STI burden. The network features of the MAC framework are suitable for network-based
628 analyses of interventions such as cluster detection and response, that has been successful in
629 identifying populations with high HIV transmission [59,84]. Expanding HIV cluster-based
630 network detection to joint-disease framework could help identify populations most vulnerable to
631 diseases, their intervention needs, and collectively evaluate the impact of intervention on overall
632 disease prevention.

633 Our model is also suitable for joint modeling of sub-populations with widely varying disease
634 burden, but who interact with each other, such as HETF, HETM, and MSM in this case study.
635 Recent studies highlight the high burden of HPV-related clinical conditions among HIV infected
636 MSM [2,85,86], but there are only few models in this area [87]. Further, they model MSM in
637 isolation. The computational tractability of the MAC simulation technique makes joint modeling
638 sub-populations with widely vary prevalence feasible. HIV burden is disproportionately higher
639 among MSM in the U.S. [82], and there are significant associations of HIV infections among
640 HETF from mixing with MSM [56,57], which is also relevant in the context of higher burden of
641 cervical cancer among women with HIV. Thus, simulation of interactions between sub-
642 populations and between diseases can more accurately represent the dynamics of infection
643 spread. Behaviors leading to transmission across these sub-groups are driven by social stressors
644 and socio-economic vulnerability and are typically exacerbated in neighborhoods of high poverty
645 [88,89]. Therefore, the model developed here would be suitable for jointly evaluating
646 combinations of structural and disease-specific interventions, across sub-population groups, and
647 across multiple diseases. Simulating these in a national context could help inform broader public
648 health policies.

649

650
651
652
653
654
655
656
657
658
659
660
661
662
663
664
665
666
667
668
669
670
671
672
673
674
675
676
677
678
679
680
681
682
683
684
685
686
687
688
689
690
691
692
693
694

References

- [1] Braaten KP, Laufer MR. Human Papillomavirus (HPV), HPV-Related Disease, and the HPV Vaccine. *Rev Obstet Gynecol*. 2008;1:2–10.
- [2] Ye Y, Burkholder GA, Wiener HW, et al. Comorbidities associated with HPV infection among people living with HIV-1 in the southeastern US: a retrospective clinical cohort study. *BMC Infect Dis*. 2020;20:144.
- [3] Franco EL, Duarte-Franco E, Ferenczy A. Cervical cancer: epidemiology, prevention and the role of human papillomavirus infection. *CMAJ*. 2001;164:1017–1025.
- [4] Bosch FX, Lorincz A, Munoz N, et al. The causal relation between human papillomavirus and cervical cancer. *J Clin Pathol*. 2002;55:244–265.
- [5] Bosch FX, Manos MM, Munoz N, et al. Prevalence of Human Papillomavirus in Cervical Cancer: a Worldwide Perspective. *JNCI Journal of the National Cancer Institute*. 1995;87:796–802.
- [6] de Martel C, Georges D, Bray F, et al. Global burden of cancer attributable to infections in 2018: a worldwide incidence analysis. *Lancet Glob Health*. 2020;8:e180–e190.
- [7] Grulich AE, Jin F, Conway EL, et al. Cancers attributable to human papillomavirus infection. *Sex Health*. 2010;7:244.
- [8] Chaturvedi AK. Beyond Cervical Cancer: Burden of Other HPV-Related Cancers Among Men and Women. *Journal of Adolescent Health*. 2010;46:S20–S26.
- [9] Chaturvedi AK, Engels EA, Pfeiffer RM, et al. Human Papillomavirus and Rising Oropharyngeal Cancer Incidence in the United States. *Journal of Clinical Oncology*. 2011;29:4294–4301.
- [10] Viens LJ, Henley SJ, Watson M, et al. Human Papillomavirus–Associated Cancers — United States, 2008–2012. 2016.
- [11] Ferenczy A, Coultée F, Franco E, et al. Human papillomavirus and HIV coinfection and the risk of neoplasias of the lower genital tract: a review of recent developments. *CMAJ*. 2003;169:431–434.
- [12] Medford RJ, Salit IE. Anal cancer and intraepithelial neoplasia: epidemiology, screening and prevention of a sexually transmitted disease. *Can Med Assoc J*. 2015;187:111–115.
- [13] Robbins HA, Pfeiffer RM, Shiels MS, et al. Excess Cancers Among HIV-Infected People in the United States. *JNCI: Journal of the National Cancer Institute*. 2015;107.
- [14] Taku O, Businge CB, Mdaka ML, et al. Human papillomavirus prevalence and risk factors among HIV-negative and HIV-positive women residing in rural Eastern Cape, South Africa. *International Journal of Infectious Diseases*. 2020;95:176–182.
- [15] Moscicki A-B, Ellenberg JH, Vermund SH, et al. Prevalence of and Risks for Cervical Human Papillomavirus Infection and Squamous Intraepithelial Lesions in Adolescent Girls. *Arch Pediatr Adolesc Med*. 2000;154:127.
- [16] Tartaglia E, Falasca K, Vecchiet J, et al. Prevalence of HPV infection among HIV-positive and HIV-negative women in Central/Eastern Italy: Strategies of prevention. *Oncol Lett*. 2017;14:7629–7635.
- [17] Abraham AG, D’Souza G, Jing Y, et al. Invasive Cervical Cancer Risk Among HIV-Infected Women. *JAIDS Journal of Acquired Immune Deficiency Syndromes*. 2013;62:405–413.

- 695 [18] Stelzle D, Tanaka LF, Lee KK, et al. Estimates of the global burden of cervical
696 cancer associated with HIV. *Lancet Glob Health*. 2021;9:e161–e169.
- 697 [19] Stier EA, Engels E, Horner M-J, et al. Cervical cancer incidence stratified by age in
698 women with HIV compared with the general population in the United States, 2002–
699 2016. *AIDS*. 2021;35:1851–1856.
- 700 [20] Bower M, Mazhar D, Stebbing J. Should Cervical Cancer Be an Acquired
701 Immunodeficiency Syndrome–Defining Cancer? *Journal of Clinical Oncology*.
702 2006;24:2417–2419.
- 703 [21] Stanley MA, Sterling JC. Host Responses to Infection with Human Papillomavirus.
704 2014. p. 58–74.
- 705 [22] Ahdieh L, Klein RS, Burk R, et al. Prevalence, Incidence, and Type-Specific
706 Persistence of Human Papillomavirus in Human Immunodeficiency Virus (HIV)–
707 Positive and HIV-Negative Women. *J Infect Dis*. 2001;184:682–690.
- 708 [23] Phelan DF, Gange SJ, Ahdieh-Grant L, et al. Determinants of Newly Detected
709 Human Papillomavirus Infection in HIV-Infected and HIV-Uninfected Injection
710 Drug Using Women. *Sex Transm Dis*. 2009;36:149–156.
- 711 [24] Xie X, Strickler HD, Xue X. Additive Hazard Regression Models: An Application to
712 the Natural History of Human Papillomavirus. *Comput Math Methods Med*.
713 2013;2013:1–7.
- 714 [25] Dev D, Lo Y, Ho GYF, et al. Incidence of and Risk Factors for Genital Human
715 Papillomavirus Infection in Women Drug Users. *JAIDS Journal of Acquired Immune
716 Deficiency Syndromes*. 2006;41:527–529.
- 717 [26] Ahdieh L, Munoz A, Vlahov D, et al. Cervical Neoplasia and Repeated Positivity of
718 Human Papillomavirus Infection In Human Immunodeficiency Virus-seropositive
719 and -seronegative Women. *Am J Epidemiol*. 2000;151:1148–1157.
- 720 [27] Rowhani-Rahbar A, Hawes SE, Sow PS, et al. The Impact of HIV Status and Type
721 on the Clearance of Human Papillomavirus Infection among Senegalese Women. *J
722 Infect Dis*. 2007;196:887–894.
- 723 [28] Safaeian M, Kiddugavu M, Gravitt PE, et al. Determinants of incidence and
724 clearance of high-risk human papillomavirus infections in rural Rakai, Uganda.
725 *Cancer Epidemiol Biomarkers Prev*. 2008;17:1300–1307.
- 726 [29] Abraham AG, D’Souza G, Jing Y, et al. Invasive cervical cancer risk among HIV-
727 infected women: a North American multicohort collaboration prospective study. *J
728 Acquir Immune Defic Syndr*. 2013;62:405–413.
- 729 [30] Adler DH, Kakinami L, Modisenyane T, et al. Increased regression and decreased
730 incidence of human papillomavirus-related cervical lesions among HIV-infected
731 women on HAART. *AIDS*. 2012;26:1645–1652.
- 732 [31] Clifford GM, Franceschi S, Keiser O, et al. Immunodeficiency and the risk of
733 cervical intraepithelial neoplasia 2/3 and cervical cancer: A nested case-control study
734 in the Swiss HIV cohort study. *Int J Cancer*. 2016;138:1732–1740.
- 735 [32] Massad LS, Ahdieh L, Benning L, et al. Evolution of cervical abnormalities among
736 women with HIV-1: evidence from surveillance cytology in the women’s interagency
737 HIV study. *J Acquir Immune Defic Syndr*. 2001;27:432–442.
- 738 [33] Six C, Heard I, Bergeron C, et al. Comparative prevalence, incidence and short-term
739 prognosis of cervical squamous intraepithelial lesions amongst HIV-positive and
740 HIV-negative women. *AIDS*. 1998;12:1047–1056.

- 741 [34] Whitham HK, Hawes SE, Chu H, et al. A Comparison of the Natural History of HPV
742 Infection and Cervical Abnormalities among HIV-Positive and HIV-Negative
743 Women in Senegal, Africa. *Cancer Epidemiol Biomarkers Prev.* 2017;26:886–894.
- 744 [35] Zeier MD, Botha MH, van der Merwe FH, et al. Progression and persistence of low-
745 grade cervical squamous intraepithelial lesions in women living with human
746 immunodeficiency virus. *J Low Genit Tract Dis.* 2012;16:243–250.
- 747 [36] Craddock JB, Barman-Adhikari A, Combs KM, et al. Individual and Social Network
748 Correlates of Sexual Health Communication Among Youth Experiencing
749 Homelessness. *AIDS Behav.* 2020;24:222–232.
- 750 [37] Henwood BF, Rhoades H, Redline B, et al. Risk behaviour and access to HIV/AIDS
751 prevention services among formerly homeless young adults living in housing
752 programmes. *AIDS Care.* 2020;32:1457–1461.
- 753 [38] Santa Maria D, Daundasekara SS, Hernandez DC, et al. Sexual risk classes among
754 youth experiencing homelessness: Relation to childhood adversities, current mental
755 symptoms, substance use, and HIV testing. *PLoS One.* 2020;15:e0227331.
- 756 [39] Edidin JP, Ganim Z, Hunter SJ, et al. The Mental and Physical Health of Homeless
757 Youth: A Literature Review. *Child Psychiatry Hum Dev.* 2012;43:354–375.
- 758 [40] Huang Y-LA, Frazier EL, Sansom SL, et al. Nearly Half Of US Adults Living With
759 HIV Received Federal Disability Benefits In 2009. *Health Aff.* 2015;34:1657–1665.
- 760 [41] Centers for Disease Control and Prevention. Behavioral and Clinical Characteristics
761 of Persons Living with Diagnosed HIV Infection—Medical Monitoring Project,
762 United States, 2018 Cycle (June 2018-May 2019). HIV Surveillance Special Report
763 [Internet]. 2018 [cited 2022 Dec 20];25. Available from:
764 <http://www.cdc.gov/hiv/library/reports/hiv-surveillance.html>.
- 765 [42] Adimora AA, Auerbach JD. Structural interventions for HIV prevention in the
766 United States. *J Acquir Immune Defic Syndr.* 2010;55 Suppl 2:S132-5.
- 767 [43] Blankenship KM, Friedman SR, Dworkin S, et al. Structural Interventions: Concepts,
768 Challenges and Opportunities for Research. *Journal of Urban Health.* 2006;83:59–72.
- 769 [44] Blankenship KM, Bray SJ, Merson MH. Structural interventions in public health.
770 *AIDS.* 2000;14:S11–S21.
- 771 [45] Sipe TA, Barham TL, Johnson WD, et al. Structural Interventions in HIV Prevention:
772 A Taxonomy and Descriptive Systematic Review. *AIDS Behav.* 2017;21:3366–3430.
- 773 [46] Hall MT, Smith MA, Simms KT, et al. The past, present and future impact of HIV
774 prevention and control on HPV and cervical disease in Tanzania: A modelling study.
775 *PLoS One.* 2020;15:e0231388.
- 776 [47] Tan N, Sharma M, Winer R, et al. Model-estimated effectiveness of single dose 9-
777 valent HPV vaccination for HIV-positive and HIV-negative females in South Africa.
778 *Vaccine.* 2018;36:4830–4836.
- 779 [48] Campos NG, Mvundura M, Jeronimo J, et al. Cost-effectiveness of HPV-based
780 cervical cancer screening in the public health system in Nicaragua. *BMJ Open.*
781 2017;7.
- 782 [49] Perez-Guzman PN, Chung MH, de Vuyst H, et al. The impact of scaling up cervical
783 cancer screening and treatment services among women living with HIV in Kenya: a
784 modelling study. *BMJ Glob Health.* 2020;5:e001886.
- 785 [50] Liu G, Mugo NR, Bayer C, et al. Impact of catch-up human papillomavirus
786 vaccination on cervical cancer incidence in Kenya: A mathematical modeling

- 787 evaluation of HPV vaccination strategies in the context of moderate HIV prevalence.
788 *EClinicalMedicine*. 2022;45:101306.
- 789 [51] Gopalappa C., Balasubramanian H., J. Haas P. A new mixed agent-based network
790 and compartmental simulation framework for joint modeling of related infectious
791 diseases- Application to sexually transmitted infections. *Infectious Disease Modeling*
792 (in-press).
- 793 [52] Smieszek T, Fiebig L, Scholz RW. Models of epidemics: when contact repetition and
794 clustering should be included. *Theor Biol Med Model*. 2009;6:11.
- 795 [53] Centers for Disease Control and Prevention. Estimated HIV incidence and prevalence
796 in the United States, 2015–2019. *HIV Surveillance Supplemental Report 2021*
797 [Internet]. 2021 [cited 2022 Dec 20];26. Available from:
798 <http://www.cdc.gov/hiv/library/reports/hiv-surveillance.html>.
- 799 [54] Stelzle D, Tanaka LF, Lee KK, et al. Estimates of the global burden of cervical
800 cancer associated with HIV. *Lancet Glob Health*. 2021;9:e161–e169.
- 801 [55] Grey JA, Bernstein KT, Sullivan PS, et al. Estimating the Population Sizes of Men
802 Who Have Sex With Men in US States and Counties Using Data From the American
803 Community Survey. *JMIR Public Health Surveill*. 2016;2:e14.
- 804 [56] Gopalappa C, Farnham PG, Chen YH, et al. Progression and Transmission of
805 HIV/AIDS (PATH 2.0): A New, Agent-based Model to Estimate HIV Transmissions
806 in the United States. *Medical Decision Making*. 2016;37:224–233.
- 807 [57] Oster AM, Wertheim JO, Hernandez AL, et al. Using Molecular HIV Surveillance
808 Data to Understand Transmission Between Subpopulations in the United States.
809 *JAIDS Journal of Acquired Immune Deficiency Syndromes*. 2015;70:444–451.
- 810 [58] Eden M, Castonguay R, Munkhbat B, et al. Agent-based evolving network modeling:
811 a new simulation method for modeling low prevalence infectious diseases. *Health*
812 *Care Manag Sci*. 2021;24:623–639.
- 813 [59] Singh S, France AM, Chen Y-H, et al. Progression and transmission of HIV (PATH
814 4.0)-A new agent-based evolving network simulation for modeling HIV transmission
815 clusters. *Mathematical Biosciences and Engineering*. 2021;18:2150–2181.
- 816 [60] Liljeros F, Edling CR, Amaral LAN, et al. The web of human sexual contacts.
817 *Nature*. 2001;411:907–908.
- 818 [61] Cohen SM, Gray KM, Ocfemia MCB, et al. The status of the National HIV
819 Surveillance System, United States, 2013. *Public Health Rep*. 129:335–341.
- 820 [62] Grey JA, Bernstein KT, Sullivan PS, et al. Estimating the Population Sizes of Men
821 Who Have Sex With Men in US States and Counties Using Data From the American
822 Community Survey. *JMIR Public Health Surveill*. 2:e14.
- 823 [63] Reece M, Herbenick D, Schick V, et al. Background and Considerations on the
824 National Survey of Sexual Health and Behavior (NSSHB) from the Investigators. *J*
825 *Sex Med*. 2010;7:243–245.
- 826 [64] Chandra A, Mosher WD, Copen C, et al. Sexual behavior, sexual attraction, and
827 sexual identity in the united states: Data from the 2006-2008 national survey of
828 family growth. *Sexual Statistics: Select Reports from the National Center for Health*
829 *Statistics*. 2013;19:1–74.
- 830 [65] Buchacz K, Armon C, Palella FJ, et al. CD4 Cell Counts at HIV Diagnosis among
831 HIV Outpatient Study Participants, 2000–2009. *AIDS Res Treat*. 2012;2012:1–7.

- 832 [66] Centers for Disease Control and Prevention. Behavioral and Clinical Characteristics
833 of Persons Living with Diagnosed HIV Infection—Medical Monitoring Project,
834 United States, 2016 Cycle (June 2016- May 2017). HIV Surveillance Special Report
835 [Internet]. 2016 [cited 2022 Dec 20];21. Available from:
836 <http://www.cdc.gov/hiv/library/reports/hiv-surveillance.html>.
- 837 [67] Darragh TM, Winkler B. Anal cancer and cervical cancer screening: Key differences.
838 *Cancer Cytopathol.* 2011;119:5–19.
- 839 [68] Brisson MJ-FLMDNV de V and M-CBoily. Technical appendix HPV-ADVISE
840 CDC. 2019.
- 841 [69] Gopalappa C, Guo J, Meckoni P, et al. A Two-Step Markov Processes Approach for
842 Parameterization of Cancer State-Transition Models for Low- and Middle-Income
843 Countries. *Medical Decision Making.* 2018;38:520–530.
- 844 [70] Johnson HC, Elfström KM, Edmunds WJ. Inference of Type-Specific HPV
845 Transmissibility, Progression and Clearance Rates: A Mathematical Modelling
846 Approach. *PLoS One.* 2012;7:e49614.
- 847 [71] Joste NE, Ronnett BM, Hunt WC, et al. Human Papillomavirus Genotype-Specific
848 Prevalence across the Continuum of Cervical Neoplasia and Cancer. *Cancer*
849 *Epidemiology, Biomarkers & Prevention.* 2015;24:230–240.
- 850 [72] Burger EA, de Kok IMCM, Groene E, et al. Estimating the Natural History of
851 Cervical Carcinogenesis Using Simulation Models: A CISNET Comparative
852 Analysis. *JNCI: Journal of the National Cancer Institute.* 2020;112:955–963.
- 853 [73] Laskey PW, Meigs JW, Flannery JT. Uterine Cervical Carcinoma in Connecticut,
854 1935–1973: Evidence for Two Classes of Invasive Disease2. *JNCI: Journal of the*
855 *National Cancer Institute.* 1976;57:1037–1043.
- 856 [74] Kim JJ, Campos NG, Sy S, et al. Inefficiencies and High-Value Improvements in
857 U.S. Cervical Cancer Screening Practice. *Ann Intern Med.* 2015;163:589–597.
- 858 [75] Burger EA, Smith MA, Killen J, et al. Projected time to elimination of cervical
859 cancer in the USA: a comparative modelling study. *Lancet Public Health.*
860 2020;5:e213–e222.
- 861 [76] National Cancer Institute. Surveillance, Epidemiology, End Results (SEER) Cancer
862 Statistics Review, 1975-2013. [Internet]. [cited 2022 Dec 20]. Available from:
863 https://seer.cancer.gov/archive/csr/1975_2013/.
- 864 [77] Schuman P, Ohmit SE, Klein RS, et al. Longitudinal Study of Cervical Squamous
865 Intraepithelial Lesions in Human Immunodeficiency Virus (HIV)–Seropositive and
866 At-Risk HIV-Seronegative Women. *J Infect Dis.* 2003;188:128–136.
- 867 [78] Liu G, Sharma M, Tan N, et al. HIV-positive women have higher risk of human
868 papilloma virus infection, precancerous lesions, and cervical cancer. *AIDS.*
869 2018;32:795–808.
- 870 [79] Walker TY, Elam-Evans LD, Singleton JA, et al. National, Regional, State, and
871 Selected Local Area Vaccination Coverage Among Adolescents Aged 13–17 Years
872 — United States, 2016. *MMWR Morb Mortal Wkly Rep.* 2017;66:874–882.
- 873 [80] Reagan-Steiner S, Yankey D, Jeyarajah J, et al. National, Regional, State, and
874 Selected Local Area Vaccination Coverage Among Adolescents Aged 13–17 Years
875 — United States, 2014. *MMWR Morb Mortal Wkly Rep.* 2015;64:784–792.

- 876 [81] Centers for Disease Control and Prevention. Use of Selected Clinical Preventive
877 Services to Improve the Health of Infants, Children, and Adolescents — United
878 States, 1999–2011. *MMWR* . 2014;63.
- 879 [82] Centers for Disease Control and Prevention. HIV Surveillance Report, 2020. 2020
880 [cited 2022 Dec 20];33. Available from: [http://www.cdc.gov/hiv/library/reports/hiv-](http://www.cdc.gov/hiv/library/reports/hiv-surveillance.html)
881 [surveillance.html](http://www.cdc.gov/hiv/library/reports/hiv-surveillance.html).
- 882 [83] Frieden TR. A framework for public health action: the health impact pyramid. *Am J*
883 *Public Health*. 2010;100:590–595.
- 884 [84] Oster AM, France AM, Panneer N, et al. Identifying Clusters of Recent and Rapid
885 HIV Transmission Through Analysis of Molecular Surveillance Data. *J Acquir*
886 *Immune Defic Syndr*. 2018;79:543–550.
- 887 [85] Marra E, Lin C, Clifford GM. Type-Specific Anal Human Papillomavirus Prevalence
888 Among Men, According to Sexual Preference and HIV Status: A Systematic
889 Literature Review and Meta-Analysis. *J Infect Dis*. 2019;219:590–598.
- 890 [86] Liu X, Lin H, Chen X, et al. Prevalence and genotypes of anal human papillomavirus
891 infection among HIV-positive vs . HIV-negative men in Taizhou, China. *Epidemiol*
892 *Infect*. 2019;147:e117.
- 893 [87] Burger EA, Dyer MA, Sy S, et al. Development and Calibration of a Mathematical
894 Model of Anal Carcinogenesis for High-Risk HIV-Infected Men. *J Acquir Immune*
895 *Defic Syndr*. 2018;79:10–19.
- 896 [88] McCree DH, Oster AM, Jeffries WL, et al. HIV acquisition and transmission among
897 men who have sex with men and women: What we know and how to prevent it. *Prev*
898 *Med (Baltim)*. 2017;100:132–134.
- 899 [89] Raymond HF, Al-Tayyib A, Neaigus A, et al. HIV Among MSM and Heterosexual
900 Women in the United States: An Ecologic Analysis. *JAIDS Journal of Acquired*
901 *Immune Deficiency Syndromes*. 2017;75:S276–S280.
902