

***Genetic Predisposition to High Blood Pressure and Out-of-Office Hypertension:  
Insights from a Population Sample in Liechtenstein***

Dr. Sukrit Narula MD<sup>1,2,3</sup>, Dr. Pedrum Mohammadi-Shemirani PhD<sup>3,4,5</sup>, Dr. Stefanie Aeschbacher PhD<sup>6,7</sup>, Dr. Michael R. Chong PhD<sup>3,4</sup>, Ms. Ann Le BSc<sup>3,4</sup>, Dr. Sébastien Thériault MD MS<sup>8</sup>, Ms. Kirsten Grossman MSc<sup>9,10</sup>, Dr. Guillaume Paré MD MSc<sup>2,3,4,11,12</sup>, Dr. Lorenz Risch MD PhD<sup>13,14,15</sup>, Dr. Martin Risch MD<sup>14,15,16</sup>, Dr. David Conen MD MPH<sup>2,3</sup>

<sup>1</sup>Department of Internal Medicine, Yale University, New Haven, Connecticut, 06510, USA

<sup>2</sup>Department of Health Research Methods, Evidence, and Impact, McMaster University, Hamilton, Ontario, L8S 4K1, Canada

<sup>3</sup>Population Health Research Institute, Hamilton, Ontario, L8L 2X2, Canada

<sup>4</sup>Thrombosis and Atherosclerosis Research Institute, David Braley Cardiac, Vascular and Stroke Research Institute, Hamilton, Ontario, L8L 2X2, Canada

<sup>5</sup>Department of Medical Sciences, McMaster University, Hamilton, Ontario, L8S 4K1, Canada

<sup>6</sup>Department of Medicine, Division of Cardiology, University Hospital Basel, Basel, Switzerland

<sup>7</sup>Cardiovascular Research Institute Basel, University Hospital Basel, Basel, Switzerland

<sup>8</sup>Department of Molecular Biology, Medical Biochemistry and Pathology, Faculty of Medicine, Université Laval, Québec City, Québec, G1V 0A6, Canada

<sup>9</sup>Faculty of Medical Sciences, Private University Triesen, Liechtenstein

<sup>10</sup>Dr Risch Medical Laboratory, Vaduz, Liechtenstein

<sup>11</sup>Department of Pathology and Molecular Medicine, McMaster University, Hamilton, Ontario, L8S 4K1, Canada

<sup>12</sup>Population Health Research Institute, Hamilton, Ontario, L8L 2X2, Canada

<sup>13</sup>Center of Laboratory Medicine, University Institute of Clinical Chemistry, University of Bern, Bern, Switzerland

<sup>14</sup>Dr Risch Medical Laboratory, Vaduz, Liechtenstein

<sup>15</sup>Dr Risch Medical Laboratory, Buchs, Switzerland

<sup>16</sup>Central Laboratory, Kantonsspital Graubünden, Chur, Switzerland

**Short Title:** Genetic Risk in Ambulatory Hypertension Prediction

**Please address correspondence to:**

Dr. David Conen

Population Health Research Institute

237 Barton St East

Hamilton, ON Canada L8L 2X2

Phone: 905-527-4322 ext 40690

Email: [conend@mcmaster.ca](mailto:conend@mcmaster.ca)

**Figures and Tables:** 4

## Abstract

Genetic predisposition is a risk factor for office hypertension. We tested whether genetic background could identify individuals with ambulatory daytime hypertension in a sample of white Europeans from Liechtenstein. We evaluated two measures of predisposition to hypertension: family history and polygenic risk scores (PRS). Our analytic sample contained 1444 participants aged 25 to 41. Of the participants, 12% had office hypertension, while 37% had out-of-office hypertension. The correlation between blood pressure PRS and family history of hypertension was low ( $R^2 = 4.96 \times 10^{-3}$ ), but both were strongly associated with ambulatory blood pressure (2.2 mmHg per 1 SD increase [95% CI: 1.6, 2.7] & 2.4 mmHg increase with positive family history [95% CI: 1.3, 3.4], respectively). The PRS provides incremental improvement in predicting ambulatory systolic blood pressure beyond a validated blood pressure prediction score ( $\Delta AIC = -33$ ), whereas family history does not ( $\Delta AIC = 1$ ). However, the difference in performance between a baseline prediction algorithm for identifying ambulatory systolic daytime hypertension (positive likelihood ratio of 6.87 [95% CI: 5.56, 8.49]; negative likelihood ratio of 0.45 [95% CI: 0.39, 0.51]) and the same model with PRS integrated (positive likelihood ratio of 7.69 [95% CI: 6.18, 9.57]; negative likelihood ratio of 0.43 [95% CI: 0.37, 0.49]) was modest. In conclusion, in a white European sample from Liechtenstein, PRS and family history are distinct constructs that are associated with increased clinical and ambulatory blood pressure. Unlike family history, polygenic risk scores provide incremental information in the identification of individuals with ambulatory hypertension. However, these gains are modest and warrant further development to improve predictive utility at the point-of-care.

**Keywords:** Family Medical History, Ambulatory Blood Pressure Monitoring, Human Genetics, Cardiovascular Disease, Risk Factors

### **Non-standard Abbreviations and Acronyms**

AIC - Akaike information criterion

BP - blood pressure

FHx - family history

GAPP - Genetic and Phenotypic Determinants of Blood Pressure and Other

Cardiovascular Risk Factors

GWAS - genome wide association study

PROOF-BP - PRedicting Out of Office Blood Pressure

PRS - polygenic risk score

RMSE - root mean square error

## Introduction

Organ damage and clinical events resulting from arterial hypertension can be delayed with preemptive intervention, however hypertension remains underdiagnosed especially in young and apparently health populations.<sup>1-4</sup> Appropriate identification of those with hypertension requires clinicians to be able to identify those who likely are hypertensive outside of the office regardless of in-office hypertensive status. Indeed blood pressure (BP) derived from ambulatory measurements has a stronger association with mortality, long term-clinical events, and prognostic surrogate endpoints than BP derived from clinic visits.<sup>5-7</sup> Better identifying these patients would help providers prioritize who needs closer blood pressure follow-up and more intense risk factor modification.

Given that barriers still persist for more widespread use of out-of-office BP measurement, ambulatory BP prediction models (such as the PROOF-BP algorithm) have been developed and validated, particularly in middle-aged and older populations with cardiovascular comorbidities.<sup>8,9</sup> In younger and healthier adults, some of the risk factors used in models such as PROOF-BP have yet to manifest and it is plausible that other risk factors (such as genetic predisposition) may further augment these prediction models to identify those with ambulatory hypertension.

Two methods to ascertain genetic predisposition to elevated BP build off of the heritability of BP: polygenic risk scores (PRS) and family history of hypertension (FHx). PRS is a single number that captures the predisposition of an individual to a trait attributable to genetic variants and instances of its use have been widely studied in

chronic disease.<sup>10</sup> Familial inheritance is a classic risk factor assumed to be a surrogate measure of genetic predisposition to chronic disease despite the fact that those with family history of disease may also be exposed to *environments* that increase susceptibility. A direct comparative analysis of FHx and PRS has yet to be conducted in the context of identifying those with both in-office and out-of-office hypertension. In this study, we sought to characterize two facets of genetic predisposition to elevated BP (BP PRS and self-reported FHx of hypertension) as predictors of office-based and ambulatory blood pressure. We hypothesize that incorporation of these tools can improve detection of those with ambulatory hypertension.

## **Methods**

### Participants

We performed our analysis on the baseline samples of the genetic and phenotypic determinants of BP and other cardiovascular risk factors (GAPP) study. In short, GAPP is a population-based cohort consisting of residents of the Principality of Liechtenstein with data collection ongoing. The sample is composed of healthy individuals between the ages of 25 and 41 at baseline with no history of major illness, including cardiovascular disease or treated diabetes mellitus. Full description of inclusion and exclusion criteria as well as other methodological details surrounding study recruitment and variable collection can be found in the previously published protocol.<sup>11</sup> Written informed consent was obtained from each participant and the study was conducted in accordance with a protocol approved by the local ethics committee. A total of 2170 individuals were recruited for the GAPP study between years 2010 and 2013 and 1444

participants were analyzed for this study after removing participants who failed genomic quality control (n=649 [29%] excluded; see quality control procedures below) or had missing covariate traits (n=76 [3.5%]; complete case analysis).

## Procedures

### *BP Ascertainment*

Conventional office BP was measured in all participants by a trained study nurse using the Microlife BP3AG1 device with appropriate cuff size after at least 5 minutes of rest for each participant in a quiet setting. Three measurements were obtained in a seated position on the non-dominant arm.

Twenty-four hour ambulatory BP was measured with a validated Schiller BR-102 automated device fitted to the participant's non-dominant arm.<sup>12</sup> Over the designated 24-hour period, BP was measured every 15 minutes during daytime (between the hours of 0730 and 2200) and every 30 minutes during nighttime (between the hours of 2200 and 0730). All participants were instructed to engage in their usual activities during the measurement period, but to keep their arm still during recordings. Ambulatory BP recordings were repeated if <80% of possible recordings were available. Daytime and nighttime measurements were additionally ascertained through a patient diary kept by each participant during the recording period. Individuals were classified according to their out-of-office hypertension status (daytime ambulatory BP  $\geq$  135/85 mmHg) and in-office-hypertension status (office BP  $\geq$ 140/90 as determined by the average of the last two office measurements).

### *Sample Collection and Genotyping Pipeline*

Venous blood sample collection was performed by a trained study nurse and samples were centrifuged and immediately stored in a specialized freezer (-80° C). Genotyping was done using the HumanCoreExome BeadChip designed by Illumina Inc. (San Diego, CA). Standard genotyping quality control procedures were undertaken. Analysis was limited to unrelated participants with European ancestry (as determined by self-reported ethnicity and genotype-based principal components analysis). Additional individual level checks were performed for sex inconsistencies and outlier heterozygosity rates. Genetic markers with increased missing call rate (>5%), Hardy Weinberg equilibrium departures ( $p\text{-value} < 1 \times 10^{-6}$ ), and low minor allele frequency (minor allele frequency < 1%) were excluded.

### *Genetic Predisposition Ascertainment*

We evaluated two traits of genetic predisposition to elevated BP: the polygenic risk score using external weights from publicly available GWAS and self-reported FHx of hypertension.

The BP polygenic risk score (PRS) is a function of the GWAS SNP-phenotype effect estimate as well as the genotype of a given individual at that particular locus. These two pieces of information are combined to yield a single scalar value in each participant. This value can be considered representative of the genetic risk captured by genetic variants common in the population (minor allele frequency >0.01). We used PRS from weights available from the large GWAS meta-analysis ( $n = 757,601$ ) of the UK Biobank



study and the International Consortium of Blood Pressure conducted by Evangelou et al available through the PGS catalog (PGS ID: PGS002257 and PGS002257).<sup>13</sup> We note that these weights/effect parameters were derived from the relationship of each SNP with *office* derived average systolic BP (in the case of the systolic BP PRS) and diastolic BP (in the case of the diastolic BP PRS). After harmonization, our systolic BP PRS used 867 SNPs and our diastolic BP PRS used 868 SNPs.

FHx of hypertension was classified based on participant self-report. A participant was denoted as having a positive FHx if they reported at least one first-degree family member having hypertension.

### Statistical Analysis

Baseline characteristics were presented with median and interquartile range for continuous variables and numbers with proportions for categorical variables. For each analysis involving PRS, we utilized the concordant BP PRS i.e. the PRS derived from the *diastolic* BP GWAS summary statistics when evaluating the ambulatory diastolic BP outcome and a PRS derived from *systolic* BP GWAS summary statistics when evaluating the ambulatory systolic BP outcome.

### *Assessing the Relationship Between PRS/FHx and BP Traits*

We examined the relationship of FHx and PRS with BP traits in two models: 1) a minimally adjusted model (age with a cube root transform, sex); 2) a risk factor adjusted model (age with a cube root transform, sex, hemoglobin A1c, low density lipoprotein

cholesterol, high density lipoprotein cholesterol, triglycerides, body mass index, smoking status) with mutual adjustment for PRS and FHx. Effect measures for PRS were reported per 1 standard deviation (sample) increase.

### *Assessing PRS and FHx as an Incremental Predictor of Ambulatory Hypertension*

We calculated the positive and negative predictive value of both PRS and FHx as it relates to identifying out-of-office systolic and diastolic hypertension. To do this, we evaluated the predictive value of FHx and PRS relative to the PROOF-BP algorithm, a validated clinical model for out-of-office BP that uses as features: demographics, clinical risk factors, and three office BP readings.<sup>8,14,15</sup> In other words, we compared the three models: 1) PROOF-BP, 2) PROOF-BP + PRS, and 3) PROOF-BP + FHx using the Akaike Information Criteria (AIC) and root mean square error (RMSE) as metrics of model performance. We also calculated positive (sensitivity/[1-specificity]) and negative ([1-sensitivity]/specificity) likelihood ratios for ambulatory systolic and diastolic hypertension classification using the model outputs.

Analyses were performed using the statistical software R version 4.0.2 (Vienna, Austria).

## **Results**

Participant characteristics are presented in Table 1. The median age in our study was 37 years (IQR: 31, 40). 588 participants (41%) self-reported a FHx of hypertension in a first degree relative, 177 showed either office systolic or diastolic hypertension (12%),

and 530 showed either ambulatory systolic or diastolic hypertension (37%). FHx and systolic BP PRS were uncorrelated ( $R^2 = 4.96 \times 10^{-3}$ ). We observed a similar pattern with FHx and diastolic BP PRS ( $R^2 = 5.74 \times 10^{-3}$ ).

The relationships between genetic predisposition traits and BP are listed in Table 2. PRS was associated with an increased office-based systolic BP (1.8 mmHg per 1 SD increase; 95% CI: 1.3, 2.4) and diastolic BP (1.5 mmHg per 1 SD increase; 95% CI: 1.1, 1.9). PRS was also associated with a higher ambulatory daytime systolic BP (2.2 mmHg per 1 SD increase; 95% CI: 1.6-2.7) and diastolic BP (1.6 mmHg per 1 SD increase; 95% CI: 1.2-2.0). Positive FHx was associated with a 3.5 mmHg higher office systolic BP (95% CI: 2.4-4.7), a 2.6 mmHg higher office diastolic BP (95% CI: 1.8-3.5), a 2.4 mmHg higher ambulatory daytime systolic BP (95% CI: 1.3-3.4), and a 1.8 mmHg higher ambulatory diastolic pressure (95% CI: 1.0-2.7). We found consistent effects after mutual adjustment for FHx status and PRS in addition to adjustment for other risk factors (Supplementary Table 2). Compared to family history, we found that PRS explains more variation in each BP trait than FHx (Supplementary Table 3).

In our cohort, we found that the uncalibrated PROOF-BP algorithm performs comparably to a naïve model consisting only of average office BP measurements in predicting ambulatory systolic BP, and markedly worse in predicting ambulatory diastolic BP (Table 3). As a result, we refit the PROOF-BP equation using the GAPP participants and assessed the incremental value of genetic predisposition compared to a model with these GAPP-recalibrated coefficients. Compared to the recalibrated

PROOF-BP model, the model incorporating the genetic score for systolic BP had an improved fit for prediction of ambulatory daytime systolic BP (change in AIC = -32; see Table 3). Relative to the recalibrated PROOF-BP score, a FHx of hypertension provided no incremental value in predicting ambulatory systolic BP. Compared to the recalibrated PROOF-BP model, the model incorporating the genetic score for diastolic BP had an improved fit for prediction of ambulatory daytime diastolic BP (change in AIC = -22; see Table 3). Likewise, a FHx of hypertension did not improve model fit relative to the recalibrated PROOF-BP for diastolic BP prediction. These findings were also consistent when using average blood pressure as a baseline model rather than the GAPP-recalibrated PROOF-BP model (see Supplementary Table 4). Diagnostic test characteristics for predicting ambulatory hypertension traits are presented in table 4. The recalibrated PROOF BP model had a positive likelihood ratio of 6.87 (95% CI: 5.56, 8.49) and negative likelihood ratio of 0.45 (95% CI: 0.39, 0.51) for identifying individuals with ambulatory systolic hypertension (i.e. >135 mmHg) and a positive likelihood ratio of 4.65 (95% CI: 3.89, 5.56) and negative likelihood ratio of 0.46 (95% CI: 0.41, 0.52) for identifying individuals with ambulatory diastolic hypertension (i.e. >85 mmHg). The PROOF-BP model with PRS integrated had a positive likelihood ratio of 7.69 (95% CI: 6.18, 9.57) and negative likelihood ratio of 0.43 (95% CI: 0.37, 0.49) for identifying individuals with ambulatory systolic hypertension and a positive likelihood ratio of 4.72 (95% CI: 3.94, 5.66) and negative likelihood ratio of 0.46 (95% CI: 0.41, 0.52) for identifying individuals with ambulatory diastolic hypertension.

## **Discussion**

In this study, we conducted a thorough evaluation of the relationship between predisposition to elevated BP with both in-office and ambulatory BP traits in a sample with a high burden of ambulatory and masked hypertension. We found a significant relationship between FHx and PRS with elevated BP in both the office and ambulatory setting. We also found that PRS explained more variation in BP phenotypes (both ambulatory and in-office) than FHx. However, for identifying individuals with ambulatory hypertension, PRS provided only modest improvement in prediction, while FHx provided no incremental information. Importantly, FHx had little correlation with PRS suggesting that although both traits are used to capture predisposition to a given trait, they likely provide clinicians with orthogonal information.

An extensive corpus describing the heritable nature of hypertension serves as the basis for understanding the relevance of genetic predisposition in patient assessment.<sup>13,16</sup> For example, an intergenerational analysis of the Framingham cohort shows that early onset hypertension in antecedent generations is predictive of hypertension in subsequent generations.<sup>17</sup> Expert statements posit FHx as a risk factor for masked hypertension, along with male sex, diabetes status, and cardiovascular risk factor burden.<sup>18</sup> However, our findings show that FHx provides no incremental information in the identification of individuals with ambulatory hypertension and are inferior to PRS for identifying those with ambulatory hypertension. Moreover, PRS-based methods have shown promise in the realm of hypertension. An analysis of two Swedish cohorts found that a blood pressure PRS was associated with an increased *incidence* of hypertension with an effect size comparable to that of body-mass index.<sup>19</sup> Another analysis of the

UKBiobank showed that a PRS for office BP was associated with incident cardiovascular disease independent of measured office BP, suggesting that it may provide additional information on cardiovascular risk.<sup>20</sup> Despite the strong association with blood pressure elevation and its robustness relative to FHx, PRS does not provide enough incremental information, as currently constructed, to improve identification of those with ambulatory hypertensive phenotypes.

Strengths of this study include the large sample size of well-characterized apparently healthy young adults with high participant compliance. This is an otherwise understudied demographic in hypertension cohorts. Previous models developed for ambulatory blood pressure prediction have focused on relatively older patients with higher comorbidity burdens. Most interestingly, we note that the high prevalence of ambulatory hypertension (in particular masked hypertension) in our cohort allowed us to document the informativeness of these 'predisposition' traits in those for whom we would otherwise have little clinical suspicion for hypertension. This group would presumably have the largest incremental yield from genetic susceptibility testing. The integration of ambulatory BP monitoring to parse out distinct patterns between office-based and ambulatory measures provides us with unique insights into the relationship between the genetics of BP that have not been described in previous literature. On the other hand, there are limitations that must be pointed out for our work. First, our BP PRS construction is limited to SNPs associated with office BP measurements. GWAS requires large sample sizes for precise estimation of SNP-phenotype relationships, but large sample sizes mean that higher quality phenotypes (like ambulatory BP) are

swapped out with noisier phenotypes like office BP. Conduct of large genome wide meta-analyses with higher quality phenotypes like ambulatory BP may improve future gene discovery efforts and the predictiveness of the resulting secondary tools such as PRS. Second, our measure of family history relied on participant self-report. This may be less reliable than previous studies which rely on confirmed inter-generational ascertainment of hypertension status. Despite this, self-report of family history is generally the only information available at the bedside and thus may be more relevant as an operationalization of family history than those with family history observed and verified by study teams. Third, our analysis was limited to PRS constructed from European only source GWAS and applied to a sample of residents from the Principality of Liechtenstein. The consequence of this is that our reported estimates of PRS performance is likely to be optimistic compared to a similar analysis that would be conducted in a more diverse population. Finally, a PRS is not a static entity. In other words, PRS performance for blood pressure can continue to improve with larger GWAS studies, improved phenotyping (as described above), and improved methodology for fitting scores.

## **Perspectives**

Genetic predisposition traits are strongly associated with BP in both the office and ambulatory setting. PRS provides modest incremental information in ascertaining out-of-office hypertension status in young and healthy individuals, but likely not at a level that sufficiently informs clinical management. FHx, on the other hand, serves as a poor surrogate of genetic predisposition in this setting and does not yield incremental information in identifying those with out-of-office hypertension. This contrasts with

recommendations from expert statements suggesting that FHx can be used as a factor in identifying those with masked hypertension. Our investigation suggests PRS may require further progress before it can be used as a tool for identifying ambulatory daytime hypertension. As such, we cannot exclude the possibility of PRS having clinical utility in future applications as methodology improves or GWAS become larger with improved phenotyping.

## **Novelty and Significance**

### What is New?

Family history of hypertension (FHx) and polygenic risk score (PRS) for office-based BP were evaluated as predictors for ambulatory daytime BP in a Liechtenstein-based cohort with low burden for hypertension risk factors.

### What is Relevant?

FHx and PRS are distinct entities with no statistical correlation. Although both traits are associated with increased office and ambulatory daytime BP, PRS is a more robust predictor than FHx. While PRS provided modest incremental value in predicting ambulatory BP, FHx did not improve prediction of ambulatory hypertension status.

### Summary

PRS is a more informative measure of predisposition to hypertension than family history. The improvement in performance with PRS, however, is modest and warrants further work to increase the utility of PRS at the point-of-care.

## **Sources of Funding**



The GAPP study was supported by the Liechtenstein Government, the Swiss National Science Foundation, the Swiss Heart Foundation, the Swiss Society of Hypertension, the University of Basel, the University Hospital Basel, the Hanel Foundation, Schiller AG, and Novartis.

### **Disclosures**

DC received consulting fees from Roche Diagnostics and Trimedics, and speaker fees from Servier and BMS/Pfizer, all outside of the current work. LR and MR are key shareholders of the Dr Risch Medical Laboratory. During the course of the project, PMS became a full time employee at Deep Genomics, however his role was limited to before he began employment and the results/project are not related to the work he conducts at Deep Genomics. ST holds a junior scholar award from the FRQS (Fonds de recherche du Québec–Santé). GP holds the Canada Research Chair in Genetic and Molecular Epidemiology and Cisco Systems Professorship in Integrated Health Biosystems. SN, MRC, KG, AL, SA have nothing to disclose.

### **Acknowledgements**

We thank those who enrolled in the GAPP study. We also thank the government of the Principality of Liechtenstein, the health ministers, and the Liechtenstein Office of Public Health for their support. Finally, our thanks are especially due to the Princely House of Liechtenstein, which gave decisive support that enabled the initiation of this project.

### **Independent data access**

The corresponding author and co-authors had full access to the all the data in the study and had final responsibility for the decision to submit for publication

## References

1. Siu AL, U.S. Preventive Services Task Force. Screening for high blood pressure in adults: U.S. Preventive Services Task Force recommendation statement. *Ann Intern Med*. 2015;163:778–786.
2. Johnson HM, Thorpe CT, Bartels CM, Schumacher JR, Palta M, Pandhi N, Sheehy AM, Smith MA. Undiagnosed hypertension among young adults with regular primary care use. *J Hypertens*. 2014;32:65–74.
3. Whelton Paul K., Carey Robert M., Aronow Wilbert S., Casey Donald E., Collins Karen J., Dennison Himmelfarb Cheryl, DePalma Sondra M., Gidding Samuel, Jamerson Kenneth A., Jones Daniel W., MacLaughlin Eric J., Muntner Paul, Ovbiagele Bruce, Smith Sidney C., Spencer Crystal C., Stafford Randall S., Taler Sandra J., Thomas Randal J., Williams Kim A., Williamson Jeff D., Wright Jackson T. 2017 ACC/AHA/AAPA/ABC/ACPM/AGS/APhA/ASH/ASPC/NMA/PCNA Guideline for the Prevention, Detection, Evaluation, and Management of High Blood Pressure in Adults. *J Am Coll Cardiol*. 2018;71:e127–e248.
4. Williams B, Mancia G, Spiering W, Agabiti Rosei E, Azizi M, Burnier M, Clement DL, Coca A, de Simone G, Dominiczak A, Kahan T, Mahfoud F, Redon J, Ruilope L, Zanchetti A, Kerins M, Kjeldsen SE, Kreutz R, Laurent S, Lip GYH, McManus R, Narkiewicz K, Ruschitzka F, Schmieder RE, Shlyakhto E, Tsioufis C, Aboyans V, Desormais I, ESC Scientific Document Group, De Backer G, Heagerty AM, Agewall S, Bochud M, Borghi C, Boutouyrie P, Brguljan J, Bueno H, Caiani EG, Carlberg B, Chapman N, Cifková R, Cleland JGF, Collet J-P, Coman IM, de Leeuw PW, Delgado V, Dendale P, Diener H-C, Dorobantu M, Fagard R, Farsang C, Ferrini M, Graham IM, Grassi G, Haller H, Hobbs FDR, Jelakovic B, Jennings C, Katus HA, Kroon AA, Leclercq C, Lovic D, Lurbe E, Manolis AJ, McDonagh TA, Messerli F, Muiesan ML, Nixdorff U, Olsen MH, Parati G, Perk J, Piepoli MF, Polonia J, Ponikowski P, Richter DJ, Rimoldi SF, Roffi M, Sattar N, Seferovic PM, Simpson IA, Sousa-Uva M, Stanton AV, van de Borne P, Vardas P, Volpe M, Wassmann S, Windecker S, Zamorano JL, Barbato E, Dean V, Fitzsimons D, Gaemperli O, Hindricks G, Iung B, Jüni P, Knuuti J, Lancellotti P, Rosei EA, et al. 2018 ESC/ESH Guidelines for the management of arterial hypertension: The Task Force for the management of arterial hypertension of the European Society of Cardiology (ESC) and the European Society of Hypertension (ESH). *Eur Heart J*. 2018;39:3021–3104.
5. Sega Roberto, Facchetti Rita, Bombelli Michele, Cesana Giancarlo, Corrao Giovanni, Grassi Guido, Mancia Giuseppe. Prognostic Value of Ambulatory and Home Blood Pressures Compared With Office Blood Pressure in the General Population. *Circulation*. 2005;111:1777–1783.
6. Mancia G, Facchetti R, Bombelli M, Grassi G, Sega R. Long-term risk of mortality associated with selective and combined elevation in office, home, and ambulatory blood pressure. *Hypertension*. 2006;47:846–853.
7. Schwartz JE, Muntner P, Kronish IM, Burg MM, Pickering TG, Bigger JT, Shimbo D. Reliability of Office, Home, and Ambulatory Blood Pressure Measurements and Correlation With Left Ventricular Mass. *J Am Coll Cardiol*. 2020;76:2911–2922.
8. Sheppard JP, Martin U, Gill P, Stevens R, Hobbs FR, Mant J, Godwin M, Hanley J, McKinstry B, Myers M, Nunan D, McManus RJ, PROOF-BP investigators. Prospective

- external validation of the Predicting Out-of-Office Blood Pressure (PROOF-BP) strategy for triaging ambulatory monitoring in the diagnosis and management of hypertension: observational cohort study. *BMJ*. 2018;361:k2478.
9. Kronish IM, Kent S, Moise N, Shimbo D, Safford MM, Kynerd RE, O'Beirne R, Sullivan A, Muntner P. Barriers to conducting ambulatory and home blood pressure monitoring during hypertension screening in the United States. *J Am Soc Hypertens*. 2017;11:573–580.
  10. Torkamani A, Wineinger NE, Topol EJ. The personal and clinical utility of polygenic risk scores. *Nat Rev Genet*. 2018;19:581–590.
  11. Conen D, Schön T, Aeschbacher S, Paré G, Frehner W, Risch M, Risch L. Genetic and phenotypic determinants of blood pressure and other cardiovascular risk factors (GAPP). *Swiss Med Wkly*. 2013;143:w13728.
  12. Denchev SV, Simova II, Matveev MG. Evaluation of the SCHILLER BR-102 plus noninvasive ambulatory blood pressure monitor according to the International Protocol introduced by the Working Group on Blood Pressure Monitoring of the European Society of Hypertension [Internet]. *Blood Pressure Monitoring*. 2007;12:329–333. Available from: <http://dx.doi.org/10.1097/mbp.0b013e32813fa39e>
  13. Evangelou E, Warren HR, Mosen-Ansorena D, Mifsud B, Pazoki R, Gao H, Ntritsos G, Dimou N, Cabrera CP, Karaman I, Ng FL, Evangelou M, Witkowska K, Tzani E, Hellwege JN, Giri A, Velez Edwards DR, Sun YV, Cho K, Gaziano JM, Wilson PWF, Tsao PS, Kovesdy CP, Esko T, Mägi R, Milani L, Almgren P, Boutin T, Debette S, Ding J, Giulianini F, Holliday EG, Jackson AU, Li-Gao R, Lin W-Y, Luan J 'an, Mangino M, Oldmeadow C, Prins BP, Qian Y, Sargurupremraj M, Shah N, Surendran P, Thériault S, Verweij N, Willems SM, Zhao J-H, Amouyel P, Connell J, de Mutsert R, Doney ASF, Farrall M, Menni C, Morris AD, Noordam R, Paré G, Poulter NR, Shields DC, Stanton A, Thom S, Abecasis G, Amin N, Arking DE, Ayers KL, Barbieri CM, Batini C, Bis JC, Blake T, Bochud M, Boehnke M, Boerwinkle E, Boomsma DI, Bottinger EP, Braund PS, Brumat M, Campbell A, Campbell H, Chakravarti A, Chambers JC, Chauhan G, Ciullo M, Cocca M, Collins F, Cordell HJ, Davies G, de Borst MH, de Geus EJ, Deary IJ, Deelen J, Del Greco M F, Demirkale CY, Dörr M, Ehret GB, Elosua R, Enroth S, Erzurumluoglu AM, Ferreira T, Frånberg M, et al. Genetic analysis of over 1 million people identifies 535 new loci associated with blood pressure traits. *Nat Genet*. 2018;50:1412–1425.
  14. Monahan M, Jowett S, Lovibond K, Gill P, Godwin M, Greenfield S, Hanley J, Hobbs FDR, Martin U, Mant J, McKinstry B, Williams B, Sheppard JP, McManus RJ, PROOF-BP investigators. Predicting Out-of-Office Blood Pressure in the Clinic for the Diagnosis of Hypertension in Primary Care: An Economic Evaluation. *Hypertension*. 2018;71:250–261.
  15. Sheppard James P., Stevens Richard, Gill Paramjit, Martin Una, Godwin Marshall, Hanley Janet, Heneghan Carl, Hobbs F.D. Richard, Mant Jonathan, McKinstry Brian, Myers Martin, Nunan David, Ward Alison, Williams Bryan, McManus Richard J. Predicting Out-of-Office Blood Pressure in the Clinic (PROOF-BP). *Hypertension*. 2016;67:941–950.
  16. Warren HR, Evangelou E, Cabrera CP, Gao H, Ren M, Mifsud B, Ntalla I, Surendran P, Liu C, Cook JP, Kraja AT, Drenos F, Loh M, Verweij N, Marten J, Karaman I, Lepe MPS, O'Reilly PF, Knight J, Snieder H, Kato N, He J, Tai ES, Said MA, Porteous D, Alver M, Poulter N, Farrall M, Gansevoort RT, Padmanabhan S, Mägi R, Stanton A, Connell J, Bakker SJL, Metspalu A, Shields DC, Thom S, Brown M, Sever P, Esko T, Hayward C, van

- der Harst P, Saleheen D, Chowdhury R, Chambers JC, Chasman DI, Chakravarti A, Newton-Cheh C, Lindgren CM, Levy D, Kooner JS, Keavney B, Tomaszewski M, Samani NJ, Howson JMM, Tobin MD, Munroe PB, Ehret GB, Wain LV, International Consortium of Blood Pressure (ICBP) 1000G Analyses, BIOS Consortium, Lifelines Cohort Study, Understanding Society Scientific group, CHD Exome+ Consortium, ExomeBP Consortium, T2D-GENES Consortium, GoT2DGenes Consortium, Cohorts for Heart and Ageing Research in Genome Epidemiology (CHARGE) BP Exome Consortium, International Genomics of Blood Pressure (iGEN-BP) Consortium, UK Biobank CardioMetabolic Consortium BP working group. Genome-wide association analysis identifies novel blood pressure loci and offers biological insights into cardiovascular risk. *Nat Genet.* 2017;49:403–415.
17. Niiranen TJ, McCabe EL, Larson MG, Henglin M, Lakdawala NK, Vasani RS, Cheng S. Heritability and risks associated with early onset hypertension: multigenerational, prospective analysis in the Framingham Heart Study. *BMJ.* 2017;357:j1949.
  18. O'Brien E, Parati G, Stergiou G, Asmar R, Beilin L, Bilo G, Clement D, de la Sierra A, de Leeuw P, Dolan E, Fagard R, Graves J, Head GA, Imai Y, Kario K, Lurbe E, Mallion J-M, Mancia G, Mengden T, Myers M, Ogedegbe G, Ohkubo T, Omboni S, Palatini P, Redon J, Ruilope LM, Shennan A, Staessen JA, vanMontfrans G, Verdecchia P, Waeber B, Wang J, Zanchetti A, Zhang Y, European Society of Hypertension Working Group on Blood Pressure Monitoring. European Society of Hypertension position paper on ambulatory blood pressure monitoring. *J Hypertens.* 2013;31:1731–1768.
  19. Giontella A, Sjögren M, Lotta LA, Overton JD, Baras A, Regeneron Genetics Center, Minuz P, Fava C, Melander O. Clinical Evaluation of the Polygenetic Background of Blood Pressure in the Population-Based Setting. *Hypertension.* 2021;77:169–177.
  20. Cho SMJ, Koyama S, Ruan Y, Lannery K, Wong M, Ajufo E, Lee H, Khera AV, Honigberg MC, Natarajan P. Measured Blood Pressure, Genetically Predicted Blood Pressure, and Cardiovascular Disease Risk in the UK Biobank. *JAMA Cardiol* [Internet]. 2022; Available from: <http://dx.doi.org/10.1001/jamacardio.2022.3191>

**Table 1: Participant Characteristics**

Characteristic	N = 1,444
<b>Sex</b>	
Male	662 (46%)
Female	782 (54%)
<b>Age, years</b>	37 (31, 40)
<b>Office BP Systolic, mmHg</b>	121 (112, 129)
<b>Office BP Diastolic, mmHg</b>	78 (72, 84)
<b>Office Hypertension</b>	177 (12%)
<b>Daytime Ambulatory BP Systolic, mmHg</b>	126 (118, 134)
<b>Daytime Ambulatory BP Diastolic, mmHg</b>	81 (76, 87)
<b>Daytime Ambulatory Hypertension</b>	530 (37%)
<b>HbA1c, %</b>	5.40 (5.20, 5.60)
<b>HDL, mmol/L</b>	1.50 (1.24, 1.79)
<b>LDL, mmol/L</b>	2.88 (2.36, 3.47)
<b>Triglycerides, mmol/L</b>	0.84 (0.59, 1.18)
<b>Body Mass Index, kg/m<sup>2</sup></b>	24.0 (21.7, 26.8)
<b>Family History Hypertension</b>	588 (41%)
<b>Family History Coronary Disease</b>	229 (16%)
<b>Smoking</b>	
Never Smoker	785 (54%)

Ever Smoker

659 (45%)

---

**Table 2:** Association Between Genetic Predisposition to Elevated Blood Pressure and Blood Pressure Traits

Exposure	Outcome	Systolic Blood Pressure			Diastolic Blood Pressure		
		Beta	95% CI <sup>†</sup>	p-value	Beta	95% CI <sup>†</sup>	p-value
<b>PRS*</b>	Average Office Blood Pressure Reading	1.8	1.3, 2.4	<0.001	1.5	1.1, 1.9	<0.001
<b>PRS*</b>	Ambulatory Daytime Blood Pressure Reading	2.2	1.6, 2.7	<0.001	1.6	1.2, 2.0	<0.001

Exposure	Outcome	Systolic Blood Pressure			Diastolic Blood Pressure		
		Beta	95% CI <sup>†</sup>	p-value	Beta	95% CI <sup>†</sup>	p-value
<b>Family History</b>	Average Office Blood Pressure Reading	3.5	2.4, 4.7	<0.001	2.6	1.8, 3.5	<0.001
<b>Family History</b>	Ambulatory Daytime Blood Pressure Reading	2.4	1.3, 3.4	<0.001	1.8	1.0, 2.7	<0.001

\*Polygenic Risk Score = PRS. Beta represents per 1 standard deviation increase. Systolic specific PRS effects represented for systolic blood pressure outcome. Diastolic specific PRS effects represented for diastolic blood pressure outcome.

<sup>†</sup>CI = Confidence Interval; All family history and polygenic risk score models presented above adjusted for cube root of age, sex.

**Table 3:** Model Performance with Recalibration and Extension of Proof BP Algorithm

Model	Ambulatory Systolic Blood Pressure			Ambulatory Diastolic Blood Pressure		
	Adj R2	AIC	RMSE	Adj R2	AIC	RMSE
Average Office BP	53.1%	10161	8.14	42.1%	9480	6.43
PROOF BP Original	53.3%	10153	8.12	33.8%	9673	6.88
PROOF BP Recalibrated	57.4%	10021	7.76	46.6%	9362	6.18
PROOF BP Recalibrated + Fam Hx	57.4%	10022	7.76	46.6%	9362	6.17
PROOF BP Recalibrated + PRS	58.4%	9989	7.67	47.5%	9340	6.12
PROOF BP Recalibrated + PRS + Fam Hx	58.4%	9990	7.67	47.5%	9341	6.12

Average Office BP = average of last two blood pressure readings; Proof BP RC = Proof BP recalibrated; Fam Hx = Family History; PRS = Polygenic risk score with each score fit to its corresponding phenotype i.e. diastolic blood pressure gene score fit with ambulatory diastolic blood pressure phenotype and systolic blood pressure gene score fit with ambulatory systolic blood pressure phenotype; RMSE = Root Mean Squared Error; AIC: Akaike information criterion; Adj R2 = Adjusted R-squared



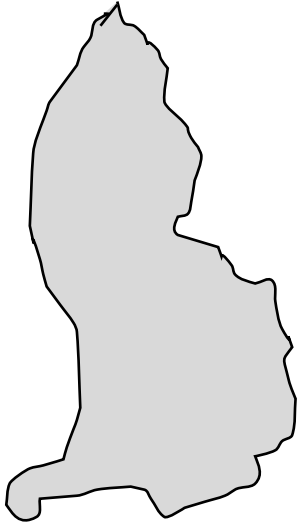
**Table 4:** Diagnostic Test Characteristics of Ambulatory Hypertension Recalibrated PROOF-BP and Extensions of PROOF-BP Algorithm

Model	Ambulatory Systolic Hypertension				Ambulatory Diastolic Hypertension			
	Sen	Spec	Positive LR	Negative LR	Sen	Spec	Positive LR	Negative LR
PROOF BP Recalibrated	0.59 (0.54, 0.64)	0.91 (0.90, 0.93)	6.87 (5.56, 8.49)	0.45 (0.39, 0.51)	0.60 (0.55, 0.64)	0.87 (0.85, 0.89)	4.65 (3.89, 5.56)	0.46 (0.41, 0.52)
PROOF BP Recalibrated + Fam Hx	0.59 (0.53, 0.64)	0.91 (0.89, 0.93)	6.76 (5.48, 8.35)	0.45 (0.40, 0.51)	0.59 (0.54, 0.64)	0.88 (0.85, 0.90)	4.76 (3.97, 5.72)	0.47 (0.42, 0.52)
PROOF BP Recalibrated + PRS	0.61 (0.55, 0.66)	0.92 (0.90, 0.94)	7.69 (6.18, 9.57)	0.43 (0.37, 0.49)	0.60 (0.55, 0.64)	0.87 (0.85, 0.89)	4.72 (3.94, 5.66)	0.46 (0.41, 0.52)

Proof BP RC = Proof BP recalibrated; Fam Hx = Family History; PRS = Polygenic risk score with each score fit to its corresponding phenotype i.e. diastolic blood pressure gene score fit with ambulatory diastolic blood pressure phenotype and systolic blood pressure gene score fit with ambulatory systolic blood pressure phenotype. Ambulatory systolic hypertension is defined as average daytime ambulatory SBP > 135. Ambulatory diastolic hypertension is defined as average daytime ambulatory DBP > 85.

# Visual Summary

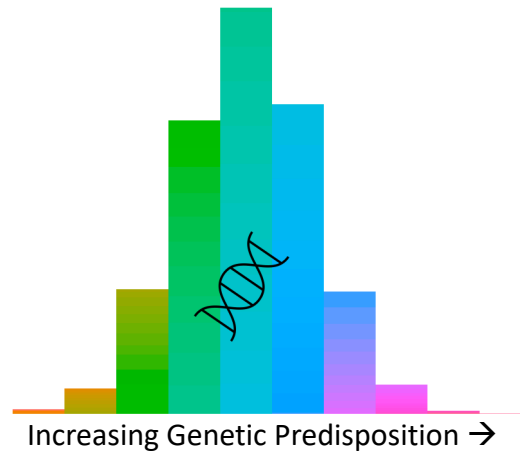
## GAPP Study



Large cohort of young individuals (ages 25-41) with low risk factor burden for hypertension onset recruited from Principality of Liechtenstein.

## Genetic Predisposition to Elevated Blood Pressure Measured

Blood Pressure Polygenic Risk Score (PRS)



versus

Family History of Hypertension



## Relationship Between Office and Ambulatory Blood Pressure Traits Assessed

- ❖ Polygenic risk score and family history of hypertension are statistically unrelated
- ❖ Higher polygenic risk score and family history of hypertension are associated with increased office and ambulatory blood pressure.
- ❖ Unlike family history, polygenic risk score provides incremental information for identifying ambulatory hypertension.
- ❖ Further performance improvements are warranted before integration of PRS into practice