

1 **Brain connectivity changes underlying**
2 **depression and fatigue in relapsing-remitting**
3 **multiple sclerosis: a systematic review**

4

5 **Authors:**

6

7 Agniete Kampaite^{1,2†}, Rebecka Gustafsson^{1†}, Elizabeth N. York^{1,2,3}, Peter Foley^{1,3}, Niall J. J.
8 MacDougall^{3,4}, Mark E. Bastin^{1,2}, Siddharthan Chandran^{1,3,5}, Adam D. Waldman^{1,2&*},
9 Rozanna Meijboom^{1,2&*}

10

11 ¹ Centre for Clinical Brain Sciences, University of Edinburgh, Edinburgh, United Kingdom

12 ² Edinburgh Imaging, University of Edinburgh, Edinburgh Imaging Facility, Edinburgh, United Kingdom

13 ³ Anne Rowling Regenerative Neurology Clinic, University of Edinburgh, Edinburgh, United Kingdom

14 ⁴ Department of Neurology, Institute of Neurological Sciences, Queen Elizabeth University Hospital, Glasgow,
15 United Kingdom

16 ⁵ UK Dementia Research Institute, University of Edinburgh, Edinburgh, United Kingdom

17

18

19 *Corresponding authors

20 E-mail: rozanna.meijboom@ed.ac.uk (RM)

21 E-mail: Adam.Waldman@ed.ac.uk (AW)

22

23

24 [†]These authors contributed equally to this work.

25 [&]These authors also contributed equally to this work.

26 **Abstract**

27

28 Multiple Sclerosis (MS) is an autoimmune disease affecting the central nervous system,
29 characterised by neuroinflammation and neurodegeneration. Fatigue and depression are
30 common, debilitating, and intertwined symptoms in people with relapsing-remitting MS
31 (pwRRMS). An increased understanding of brain changes and mechanisms underlying
32 fatigue and depression in RRMS could lead to more effective interventions and
33 enhancement of quality of life. To elucidate the relationship between depression and fatigue
34 and brain connectivity in pwRRMS we conducted a systematic review.

35 Searched databases were PubMed, Web-of-Science and Scopus. Inclusion criteria were:
36 studied participants with RRMS and differentiated between MS subtypes; published between
37 2001-01-01 and 2023-01-18; used fatigue and depression assessments validated for MS;
38 included brain structural, functional magnetic resonance imaging (fMRI) or diffusion MRI
39 (dMRI). Sixty studies met the criteria: 18 dMRI (15 fatigue, 5 depression) and 22 fMRI (20
40 fatigue, 5 depression) studies.

41 The literature was heterogeneous; half of studies reported no correlation between brain
42 connectivity measures and fatigue or depression. Positive findings showed that abnormal
43 cortico-limbic structural and functional connectivity was associated with depression. Fatigue
44 was linked to connectivity measures in cortico-thalamic-basal-ganglial networks. Additionally,
45 both depression and fatigue were related to altered cingulum structural connectivity, and
46 functional connectivity involving thalamus, cerebellum, frontal lobe, ventral tegmental area,
47 striatum, default mode and attention networks, and supramarginal, precentral, and
48 postcentral gyri.

49 Qualitative analysis suggests neuropathological effects, possibly due to axonal and/or myelin
50 damage, in the cortico-thalamic-basal-ganglial and cortico-limbic network may underlie

51 fatigue and depression in pwRRMS, respectively, but the overall results were inconclusive.
52 This highlights the need for studies including advanced MRI to detect more subtle brain
53 changes in association with depression and fatigue as functional and microstructural studies
54 more consistently show correlations. Further studies using optimised imaging protocols and
55 validated depression and fatigue measures are required to clarify the substrate underlying
56 these symptoms in pwRRMS.

57 **1 Introduction**

58

59 **1.1 Multiple sclerosis**

60 Multiple sclerosis (MS) is a chronic neuroinflammatory and neurodegenerative disease, with
61 2.3 million people diagnosed worldwide [1]. Central nervous system (CNS) damage in MS is
62 typically characterised by white matter lesions (WMLs) in the brain and/or spinal cord, which
63 are visible on magnetic resonance imaging (MRI), although atrophy is also recognised as an
64 important feature [2]. Relapsing-remitting MS (RRMS) is the most common subtype (around
65 85% of cases) and is characterised by alternating periods of neurological dysfunction
66 (relapses) and relative clinical stability (remissions) [3, 4]. RRMS presents with a wide range
67 of features, including motor, visual, balance and sensory impairment [3]. Importantly, in
68 addition to the more obvious physical manifestations of MS, ‘hidden disability’ such as
69 fatigue and depression, affects most patients, is debilitating, and challenging to treat [5-7].

70

71 **1.2 Depression and fatigue in MS**

72 Higher prevalence of depression in MS than in the general population has been previously
73 reported [8], and fatigue may affect 60-80% of people with newly diagnosed MS [9]. Both
74 fatigue and depression are associated with decreased quality of life in people with MS [10]
75 and are considered major debilitating symptoms [11], together affecting more than 50% of
76 people with MS [10]. The relationship between depression and fatigue is complex; although
77 considered distinct entities, there is a high degree of comorbidity and their phenotypes
78 overlap (e.g., anhedonia, sleep disturbance) [12, 13]. Fatigue is considered both a symptom
79 and a consequence of depression, and conversely, people with fatigue are more likely to
80 report depressive symptoms [13, 14]. Associations of fatigue and depression and other MS
81 symptoms, such as pain, cognition, and anxiety have also been found [15-21]. In view of the
82 strong overlap of fatigue and depression, however, this review will focus on establishing a

83 better understanding of the substrate for fatigue and depression, and their relationship to
84 known MS pathobiology.

85

86 Depression is one of the most common psychiatric disorders, defined by depressed mood
87 and/or loss of interest or pleasure [22]. Other symptoms are significant weight and appetite
88 changes; reduction of physical movement; fatigue or loss of energy; negative self-image;
89 reduced concentration; and suicidal thoughts [22]. There are various potential causes of
90 depression, ranging from predisposing temperament and personality traits, exposure to
91 traumatic and stressful life events, to genetic susceptibility [23, 24]. Multiple assessment
92 tools are available for reliably measuring depression, some of which have been specifically
93 validated for use in MS [25]. Depression is considered a co-morbidity of MS [7] and may be
94 caused by reduced quality of life [26], including changes in mental wellbeing due to living
95 with MS, side effects of medications, individual situations, and social circumstances [27].
96 Some studies, however, suggest that MS-specific pathophysiology, i.e., atrophy and
97 inflammation of the CNS, contribute to high prevalence of depression in MS patients [28, 29].
98 This is supported by the observation that depression may be more prevalent in MS than in
99 other neurodegenerative/inflammatory disorders [30-34]. There is, however, no correlation
100 between depression and level of disability or disease duration in RRMS [35].

101

102 Fatigue is a complex and ambiguous symptom. Not only is it considered both a symptom
103 and a consequence of depression [14], but it is also associated with numerous other
104 physical and psychiatric diagnoses, due to its broad physical, cognitive, and emotional
105 components [13]. Fatigue is difficult to define, but it has been described as “reversible motor
106 and cognitive impairment, with reduced motivation and desire to rest” [36] or “a subjective
107 lack of physical and/or mental energy that is perceived by the individual or caregiver to
108 interfere with usual or desired activity” [37]. Fatigue can appear spontaneously, or be
109 brought on by a combination of internal or external factors, such as mental or physical
110 activity, humidity, acute infection, and food ingestion [7]. A distinction is made between

111 performance fatigue and subjective (or perceived) fatigue, where performance fatigability
112 occurs through repeated activities and can be measured through assessments capturing
113 functional decline [38, 39]. Subjective fatigue, on the other hand, is internally (and
114 subjectively) perceived or experienced by an individual [38]. As subjective fatigue is a core
115 symptom in people with MS [37], we will focus on this type of fatigue in the current review.

116

117 Measurement of subjective fatigue can prove difficult. A variety of fatigue scales are
118 available - some of which are validated in MS [40, 41] - although a 'gold standard' has not
119 been established [9]. Some of these measures consider subjective fatigue as one concept
120 (e.g., fatigue severity scale [FSS] [42]), where others (e.g., fatigue scale for motor and
121 cognitive functions [FSMC] [43]) differentiate between cognitive fatigue (e.g., concentration,
122 memory, decision making) and motor fatigue (stamina, muscle strength, physical energy). In
123 MS, fatigue is categorised as primary (caused by neurological abnormalities) and secondary
124 (resulting from MS symptomatology) [9, 44]. The pathophysiology underlying primary MS
125 fatigue is not yet clear [45], although previous studies have suggested overlapping brain
126 abnormalities between fatigue and depression in MS [46, 47], which is unsurprising given
127 their strong association [48].

128

129 Treatments for depression and fatigue in MS are limited, and there is some controversy
130 regarding their efficacy [9, 49, 50]. Currently, few treatments (i.e., Amantadine, Modafinil,
131 and SSRIs) are available in the UK for fatigue-specific management in MS [50]. However, a
132 randomised, placebo-controlled, crossover, double-blind trial suggests that Amantadine and
133 Modafinil are not better than placebo in improving MS fatigue and have more side effects
134 [51]. Additionally, antidepressants and cognitive behavioural therapy have had some
135 success in reducing both depression and fatigue symptomatology in MS [6]. Given the
136 limited treatment success, underlying CNS changes of fatigue and depression in MS need to
137 be elucidated, which may aid development of more effective targeted treatments for both
138 symptoms in MS.

139

140 **1.3 Magnetic resonance imaging in MS**

141 MRI allows for non-invasive, *in vivo*, detection of underlying CNS damage in MS. MRI is
142 sensitive to MS brain pathology, as shown by previous research [52]. Conventional
143 ('structural') MRI has been widely used to study brain abnormalities in people with RRMS
144 (pwRRMS) and provides information on location and severity of structural tissue damage
145 such as WML burden and atrophy [53, 54], through qualitative reads or volumetric analyses.
146 However, the ability of conventional MRI to explain clinical symptomatology is limited [55],
147 and evidence for a relationship between fatigue or depression and conventional MRI
148 measures in mixed subtype MS is inconsistent [56, 57]. Advanced techniques, such as
149 diffusion MRI (dMRI) and functional MRI (fMRI), can be used to investigate the role of more
150 subtle brain abnormalities in the development of clinical symptoms in MS.

151

152 **1.3.1 Brain connectivity measures**

153 Diffusion MRI and fMRI can be used to study how different regions of the brain are
154 connected, in terms of structure and function respectively, and form brain networks [58, 59].
155 In MS, damage to tissue microstructure (e.g., myelin and axons) is a core pathology even in
156 early disease [60, 61]. Both intact myelin and axons are essential for signal transfer in the
157 brain and thus successful functioning of brain networks [62]. Damage to brain microstructure
158 directly impacts structural connectivity and may also change functional connectivity [63].
159 Brain connectivity abnormalities likely result in clinical symptomatology and may be
160 underlying of MS symptoms such as fatigue and depression [64, 65].

161

162 **1.3.2 Diffusion MRI**

163 Diffusion MRI is sensitive to occult tissue damage at a microstructural level, which cannot be
164 detected by conventional MRI [66], and allows for studying structural brain connectivity. A
165 widely used dMRI model is diffusion tensor imaging (DTI) [67]. DTI uses brain water

166 molecule displacement to estimate the organisation of white matter (WM) tracts and tissues
167 at the microstructural level [68]. DTI metrics, such as fractional anisotropy (FA) and mean
168 diffusivity (MD), are sensitive to changes in this microstructure, and are thought to reflect
169 myelin and axonal damage [66, 68]. Decreases in FA and increases in MD in several WM
170 tracts have been linked to clinical disability as well as fatigue and depression scores in
171 people with MS [57, 69]. More recently, a DTI marker called ‘peak width of skeletonized
172 mean diffusivity (PSMD) [70] was proposed to reconstruct microstructural WM damage
173 across the brain and provide a global measure of structural connectivity [71, 72]. A newer
174 dMRI model is neurite orientation dispersion and density imaging (NODDI), which allows for
175 more specific characterisation of WM microstructure than DTI, i.e., neurite (axon and
176 dendrite) density, and dispersion of neurite orientation [73]. Previous studies using NODDI
177 have shown that neurite density is affected in MS [61, 74, 75].

178

179 **1.3.3 Functional MRI**

180 Functional MRI provides an indirect measure of brain activity and functional connectivity,
181 using the blood oxygenated level-dependent (BOLD) technique, which reflects changes in
182 blood oxygenation, volume, and flow [76]. Task-based fMRI can be used to identify brain
183 activation in regions simultaneously involved in task performance, whereas resting-state
184 fMRI (rs-fMRI) is used to explore intrinsic functional connectivity between areas of the brain,
185 known as resting-state networks (i.e., default mode network, salient network, basal ganglia
186 network), based on coherence of spontaneous fluctuations in BOLD signal [77-79]. Previous
187 literature has shown brain activity and functional connectivity changes in the frontal lobe,
188 limbic system and basal ganglia linked to high cognitive fatigue [76, 80] and depression [81]
189 in individuals with MS. Additionally, functional connectivity changes in the default mode
190 network (DMN), comprising mainly the medial prefrontal cortex, precuneus, posterior
191 cingulate gyrus and inferior parietal gyrus [82, 83], have been associated with cognitive
192 impairment and depression in people with MS [84, 85]. The sensorimotor network (SMN),

193 including postcentral and precentral gyri and the supplementary motor area (SMA), has also
194 been suggested to show changes in functional connectivity associated with fatigue in MS
195 [86, 87].

196

197 **1.4 Purpose**

198 Previous systematic reviews concluded that abnormalities of the cortico-striato-thalamo-
199 cortical loop underlie fatigue symptomatology in MS of varying subtypes [57, 88, 89].
200 Moreover, depression severity in MS is associated with structural and fMRI changes in
201 several brain regions, of which frontal and temporal lobes are the most common finding [5,
202 90]. Brain connectivity changes underlying depression, fatigue, or both, specific to pwRRMS
203 have not, however, been reviewed. The dominant pathophysiological processes and
204 relapsing-remitting clinical features in RRMS differ from progressive MS subtypes, and it is
205 therefore important to study underlying brain changes related to fatigue and depression,
206 specifically in this group. Moreover, to our knowledge, potential overlap of brain connectivity
207 changes underlying depression and fatigue in pwRRMS have not previously been reviewed
208 systematically.

209

210 The aim of this study is to systematically review the literature to elucidate the relationship
211 between structural and brain connectivity MRI measures and depression or fatigue in
212 pwRRMS. This may provide new insights into brain changes in RRMS related to depression
213 and fatigue.

214

215 **2 Methods**

216

217 Ethics committee approval was not required for the current review.

218

219 The work was focussed on topics that have previously been identified as major priorities for
220 pwMS [91, 92].

221

222 **2.1 Inclusion and exclusion criteria**

223 A systematic review of published primary research articles on brain abnormalities measured
224 with structural, diffusion or functional MRI and their associations with fatigue or depression in
225 pwRRMS was conducted. Preferred Reporting Items for Systematic Reviews and Meta-
226 Analyses (PRISMA) guidelines [93] were followed where possible (see S9 and S10 Tables
227 for the PRISMA checklist). Studies were included if they met the following inclusion criteria:
228 (1) structural, diffusion or functional MRI was used to study brain changes, (2) included a
229 minimum sample size of 20 participants, (3) assessed either RRMS alone or distinguished
230 between MS subtypes, and (4) used depression or fatigue assessments validated for use in
231 MS, based on three previous reviews of MS-related depression and fatigue [5, 57, 90]
232 (Depression assessment tools: Beck Depression Index (BDI) [82], Beck Depression Index-II
233 (BDI-II) [83], Diagnostic and Statistical Manual V semi-structured interview (DSM-V) [84],
234 Centre for Epidemiological Studies – Depression (CES-D) [84], Chicago Multiscale
235 Depression Inventory (CMDI) [84], Patient Health Questionnaire-9 (PHQ-9) [84], Hospital
236 Anxiety and Depression Scale (HADS) [87], Hamilton Depression Rating Scale (HDRS) [88];
237 Fatigue assessment tools: Fatigue Severity Scale (FSS) [29], Modified Fatigue Impact Scale
238 (MFIS) [29], Fatigue Impact Scale (FIS) [85], Fatigue Scale for Motor and Cognitive functions
239 (FSMC) [31], Checklist of Individual Strength (CIS-20r) [86]. Short descriptions for each
240 measure can be found in Gümüş [85] or Cheung [89]). Studies were excluded if: (1) they did
241 not distinguish between subjects with RRMS and other MS subtypes in their results and data

242 analysis, (2) if the participants were under the age of 18, or (3) if they assessed the effects of
243 disease modifying therapies (DMTs) on MRI or clinical measures (unless they controlled for
244 DMT usage).

245

246 **2.2 Search strategy and selection process**

247 The literature search was conducted by two independent reviewers using three online
248 databases: PubMed, Web-of-Science and Scopus, and considered publications up to 18-01-
249 2023. The databases were searched using a title, abstract and keyword search, for
250 publications written in English and published in the past 22 years (2001-2023). The following
251 search terms were used: '*fatigue*' or '*depression*' or '*depressive symptoms*', in combination
252 with '*relapsing-remitting multiple sclerosis*' or '*relapsing remitting multiple sclerosis*', in
253 combination with '*magnetic resonance imaging*' or '*MRI*' or '*neuroimaging*' or '*brain atrophy*'
254 or '*diffusion tensor imaging*' or '*diffusion MRI*' or '*dMRI*' or '*NODDI*' or '*neurite orientation*
255 *dispersion and density imaging*' or '*functional MRI*' or '*fMRI*' or '*resting state*'. After duplicates
256 were excluded, publication titles and abstracts were read by two independent reviewers and
257 any studies clearly not meeting inclusion criteria were excluded. In case the abstract lacked
258 sufficient information, a brief read of the paper was performed. The remaining studies were
259 then read in full, and further articles were excluded using the criteria described in section 2.1
260 (Fig 1). Final selections were compared to reach consensus. In case of a disagreement, the
261 reviewers re-read the paper and either amended their decision or made further arguments
262 for their initial choice. Persisting discrepancies were discussed together with a third reviewer
263 and final decisions were made by consensus. The data was extracted by one reviewer into a
264 standardised table designed for this review (S2 and S7 Tables).

265 **Fig 1. Flowchart of literature search.** Performed in January 2023. Based on PRISMA 2020 flow diagram for
266 new systematic reviews which included searches of databases and registers only [93]. D: Depression, DTI:
267 Diffusion tensor imaging, F: Fatigue, (f)MRI: (functional) magnetic resonance imaging, (RR)MS: (relapsing-
268 remitting) multiple sclerosis.

269 **2.3 Analysis approach**

270 Outcome measures comprised pre-specified structural, diffusion and functional MRI
271 measures. Structural measures included regional and global brain, WM, and grey matter
272 (GM) volume, WML volume, global and regional lesion count, and brain parenchymal
273 fraction (BPF). Diffusion measures included DTI-derived whole-brain, regional and tract-
274 specific FA, MD, axial diffusivity (AD), and radial diffusivity (RD); as well as regional and
275 tract-specific NODDI, and PSMD metrics. For fMRI, both task-based and resting-state fMRI
276 measures were included.

277

278 A qualitative approach was used to summarise the observations in the identified studies, due
279 to heterogeneity in outcome measures, population, and experimental approach. The number
280 of comparable experimental designs was too small to perform meaningful quantitative meta-
281 analysis. For transparency, all details about included studies and statistically significant
282 results are summarised in S7 Table and Table 1, respectively. Findings of no significant
283 association between the examined clinical and MRI imaging variables are summarised in S8
284 Table.

285

286 **2.4 Quality assessment**

287 Institute of Health Economics (IHE) Quality Appraisal of Case Series Studies Checklist was
288 used to assess the quality of the longitudinal studies included [94] and the 'Appraisal tool for
289 cross sectional studies' (AXIS) was used to assess quality of cross-sectional studies [95].
290 Two reviewers conducted the quality assessment independently. See the full overview of the
291 quality assessment process in the Supporting Information.

292

293 **3. Results**

294 **3.1 Literature search and study characteristics**

295 The initial database search (Fig 1) identified 604 candidate publications of which 60 studies
296 met the inclusion criteria (Table 1). Eleven out of these 60 studies investigated the
297 associations between depression and MRI measures [29, 47, 96-102], 41/60 assessed
298 fatigue in association with MRI outcomes [35, 66, 103-131], and 8/50 investigated both
299 depression and fatigue in association with MRI measures [132-135]. Substantially fewer
300 papers examining associations between CNS abnormalities and depression met the
301 inclusion criteria, with five studies using DTI and five using fMRI measures. Of note, we
302 found very few studies that used NODDI or PSMD and none of them met the inclusion
303 criteria. See S1 Table for an overview of all studies reviewed and their selection process.

304 Table 1. Overview of study characteristics and findings for included publications (N=60) in the current systematic review.

Authors	Fatigue assessment	Depression assessment	MRI sequence	Structural	Diffusion	Functional	Major findings
				MRI	MRI	MRI	
Benesova et al. [96]	N/A	HDRS ≥ 18 ; 3 patients had severe, 2 moderate, 5 light D	T1W, T2W	Whole brain Lesion area	N/A	N/A	Bigger lesion area in frontal lobe in patients with D compared to nD.
Nygaard et al. [47]	FSS: mean(SD) 4.1(1.7); Min-max 1–7; 49.2% patients had FSS > 4	BDI: mean(SD) RRMS: 8.4(5.9); HC: 3.9(4.0); Min-max: RRMS: 0–24; HC: 0–16; % BDI >12 - RRMS: 27.1; HC: 6.9; excluded BDI > 16	T1W, FLAIR	cortical surface area, thickness, and volume	N/A	N/A	D was associated with smaller cortical surface area of frontal pole, pars orbitalis, and orbital frontal region; the rostral and caudal middle frontal and the pre- and post-central regions; L-middle temporal, L-fusiform and L-parahippocampal regions. D was associated with volumes of orbital frontal and pars orbitalis, the superior frontal, rostral and caudal middle frontal, pre- and post-central regions; R-supramarginal and R-superior temporal regions; L-fusiform and L-inferior temporal region. Higher fatigue scores were associated with smaller cortical volumes in the rostral and caudal middle frontal, and in parts of the pre- and post-central regions, of the right hemisphere.
Rojas et al. [29]	FIS: nD 12 \pm 5; D 14.7 \pm 4	BDI-II, DSM-V	T1W, T2W, FLAIR, DTI	Total brain, GM and WM volumes, neocortical GM and T2 lesion volumes	Mean FA in cortico-spinal tract	N/A	Negative correlation between BDI-II scores and total brain volume and neocortical GM volume. Positive correlation with T2 lesion volume. No differences in global FA and in WM volume.
Yaldizli et al. [101]	FSMC cognition: All MS patients 27.3(10.4); RRMS 25.9(10.8); SPMS 31.2(8.6); PPMS 26.9(10.8). FSMC physical: All MS patients 30.9(11.1); RRMS 28.5(11.5); SPMS 37.5(6.9); PPMS 31.7(8.6)	CES-D All MS patients 12.8(10.5) RRMS 11.6(10.1) SPMS 15.7(11.2) PPMS 16.4(10.1)	T1W, PD/T1W	Olfactory bulb volume, total WM lesion load, BPF	N/A	N/A	No significant correlations
Gold et al. [97]	NA	BDI-II ≥ 13 HC: 1.6+.5; RRMS: 9.5+1.6.	T1W, T2W, FLAIR	Hippocampus Volume	N/A	NA	Reduced volume of CA23DG region in patients with D compared to nD.
Štecková et al. [100]	N/A	BDI-II mean \pm SD (range): CIS: 9.8 \pm 13.2 (0–54); MS5:14.0 \pm 11.5 (2–47);	T1W	Thalamus volume	N/A	N/A	High BDI scores correlated with reduced volume of thalamus five years after diagnosis and increased volume ten years after diagnosis.

Depression

			MS10:11.3±8.8 (1–24); 17/43 patients were taking SSRI.				
Nigro et al. [98]	FSS: range: nD 2.7 ± 1.4(1–5.6); D 5.3 ± 1.4(1.4–7.6)	DSM-V, BDI-II	T1W, FLAIR, DTI	GM, WM volumes, lesion load	Tractography WM connectivity	N/A	No structural correlates to BDI scores. Increased shortest path length between R-hippocampus and R-amygdala; dorsomedial and ventrolateral PFC and the occipitofrontal cortex
Carotenuto et al. [102]	N/A	HDRS: mean±SD RRMS 6.39±4.21; HC 0.56±0.96	T1W, T2W, FLAIR, rs-fMRI	Whole brain lesion volume	N/A	rs-fMRI ROI: serotonergic, noradrenergic, cholinergic, and dopaminergic networks	No structural correlates to HDRS scores. Reduction in serotonergic and noradrenergic activity as well as increased cholinergic activity was positively correlated with high HDRS scores.
Riccelli et al. [99]	FSS: [range] RRMS 3.62 (1.83) [1–7];	DSM-V; BDI [range]: HC 7.35 (5.08) [0–16] RRMS 11.10 (9.92) [0–45]; BDI-Fast Screen [range]: HC 1.94 (1.52) [0–5] RRMS 3.12 (3.55) [0–16]; BDI-Somatic Subscale [range]: HC 5.16 (3.38) [0–10] RRMS 7.64 (6.15) [0–27]	T1W, FLAIR, fMRI: categorise emotions of grey-scale photographs of faces	Total lesion load	N/A	fMRI ROI: Prefrontal cortex, orbitofrontal cortex, amygdala, hippocampus	Decreased activation of R-subgenual cingulate cortex in participants with high BDI scores. Negative correlation between BDI scores and functional connectivity between L-hippocampus with L-orbitofrontal cortex, R/L-DLPFC and R-amygdala.
Hassan et al. [136]	N/A	DSM-V; BDI: 9-29	T1W, T2W, FLAIR, DTI	N/A	FA in Limbic system	N/A	D patients showed decreased FA values in the cingulum, UF, and the fornix; no differences in the mean FA of the anterior thalamic radiations; compared to HC, significant reduction in the mean FA of the cingulum, UF and the fornix; D had reduced FA of the cingulum, uncinate fasciculus and the fornix. No significant difference was found between the FA values of the anterior thalamic radiations in both groups. No conventional MRI reported.
Kopchak and Odintsova [137]	NA	BDI, no data	No data	brain volume; bifrontal, caudal, ventricular indexes; width of lateral ventricle in coronal parasagittal planes, diameter of 3rd and	NA	NA	Combined lesions of frontal lobe and corpus callosum, fronto-temporal region were associated with depression.

					4th ventricles in coronal plane, subarachnoid spaces (cranio-cortical width, sino-cortical, interhemispheric width), GM (cortical) thickness			
F and D	Hildebrandt et al. [133]	FSS 23 patients had ≥ 4.5 (51% of the total group)	BDI: 24% of the patients with some symptoms of a depression ($BDS \geq 16$) and 7% with a definite depression ($BDS \geq 20$).	T1W	BPF, ventricular brain fraction	N/A	N/A	Ventricular brain fraction or BPF did not correlate with either BDI or FSS scores.
	Hildebrandt and Eling [132]	FSS F: FSS >5 , nF:FSS ≤ 5 Change in F (Mean SD): No increase: 5.4 [1.5]; Increase: 3.1 [1.6]; Change in depressive mood (Mean SD): No increase: 35.8 [13.9]; Increase: 38.5 [19.4]	BDI >12 considered depressed. Excluded the items on tiredness and sleep disorders. No data reported	T1W	BPF	N/A	N/A	No significant correlations
	Lazarotto et al. [135]	F: FSS ≥ 5 mild-moderate (2 – 5) and severe (≥ 5); D n=16 (2.44-6.55) mean 4.43 SD 1.28; nD n=45 (1-5.56) mean 2.64 SD 1.38	D: BDI-II ≥ 14 only stats data reported	T1W, FLAIR, DIR	Cerebellum and brainstem Volume	N/A	N/A	BDI correlated with lower volume of R-vermis crus I and FSS with cerebellar lobule right V atrophy.
	Jaeger et al. [134]	FSS: fatigued if they had at least a score of FSS=4.	BDI-II #/ 20 excluded BDI-II Median (IQR): F: 11 (7);	T1W, FLAIR, rs-fMRI	Volumes	N/A	rs-fMRI. ROI: caudate nucleus,	No correlation between macrostructural volumes and fatigue. Negative correlation between rs-FC and BDI-II scores: L-ventral striatum and L-postcentral

	<p>FSS Median (IQR): F: 5.2 (1.3); nF: 3.5 (5.5); HC: 2 (4)</p> <p>nF: 2.6 (1.9);</p> <p>HC: 1.9 (1.3)</p>			putamen		gyrus/R-precentral gyrus. BDI scores did not correlate with functional connectivity for other striatum subregions, the whole caudate and putamen and the DLPFC.	
						Negative correlation between rs-FC and FSS scores: L-ventral striatum and R-precentral gyrus; R-ventral striatum and R-postcentral gyrus, superior ventral striatum and VTA, inferior temporal gyrus, SMA, attention and reward networks, parietal lobule, middle frontal gyrus, caudate and SMA. Positive correlations with FSS scores: L-DLPFC and L-parietal operculum; R-DLPFC and L-anterior supramarginal gyrus; R-parietal operculum, L-pre/postcentral gyrus and R-anterior supramarginal gyrus.	
Golde et al. [138]	<p>FSMC total: RRMS 50.00 ± 21.84; HC 27.57 ± 6.76; FSMC cognitive RRMS 25.20 ± 11.50; HC 13.83 ± 3.90; FSMC motor: RRMS 24.80 ± 10.92; HC 13.73 ± 3.25</p>	<p>HADS-D depression: RRMS 2.43 ± 2.90; HC 1.60 ± 2.31</p>	<p>BOLD, MP-RAGE, DTI</p>	<p>whole and regional (hippocampus, amygdala, fusiform gyrus) brain and GM volumes</p>	<p>DTI</p>	<p>rs-fMRI</p>	<p>No correlation with whole-brain volume or structural connectivity measures. F scores correlated positively with FFG based FC to the MPFC and negatively with FFG-based FC to right lateral PFC; F scores were not significantly correlated with hippocampus-based FC across the brain. Fusiform gyrus-based FC correlated with fatigue.</p>
Beaudoin et al. [139]	<p>FIS(mean): 83.96 ± 30.08.</p> <p>50% patients - low level F,</p> <p>29% - moderate level F,</p> <p>21% - high level F</p>	<p>BDI-II(mean): 11.13 ± 10.85.</p> <p>67% patients - normal score,</p> <p>21% mild D,</p> <p>3 cases (12%) - severe D</p>	<p>T1W, T2W, HARDI</p>	<p>NA</p>	<p>Total apparent fiber density (AFDtot) and number of fiber orientation (NuFO), WM bundles</p>	<p>NA</p>	<p>BDI-II was associated with diffusion abnormalities in the R superior longitudinal fasciculus. A decrease in FA, an increase in RDt and MDt were associated with a higher level of depressive symptoms. Free water fraction and HARDI derived measures (AFDtot, NuFO) were not associated with the clinical results. Furthermore, no correlation was found between the neurocognitive testing results and the global brain lesion load. When the WM bundles were studied individually, their respective proportion of lesioned tissue was also not associated with the clinical data.</p>
Kever et al. [140]	FSS, MFIS no data	BDI-II no data	T1W, FLAIR, T2W	<p>Network structure, total brain, GM, WM volumes, T2LV, subcortical GM structures (bilateral amygdala, caudate, nucleus</p>	NA	NA	No relationships of network structure to depression or fatigue were found.

				accumbens, putamen, pallidus, hippocampus, and thalamus)				
	Romanello et al. [141]	FSS(mean ± SD): (MS EDSS ≤ 1) - 0.63 ± 0.68; (MS EDSS ≥ 2) 0.58 ± 0.87;	BDI-II(mean ± SD): (MS EDSS ≤ 1)- 0.37 ± 0.75; (MS EDSS ≥ 2) 0.32 ± 1.06	T2W, rs-fMRI	total brain atrophy and lesion load	NA	FC	D severity was positively related to functional dynamics as measured by state-specific global connectivity and DMN connectivity with attention networks, while F was related to reduced frontoparietal network connectivity with the basal ganglia.
Fatigue	Cavallari et al. [107]	MFIS median (range) all 23 (0-67) C 37 (5-67) non-C 13 (0-42); MFIS cognitive, median (range): All patients 11 (0-31); Converters 13 (1-31); non-converters 6 (0-20) (n=33)	CES-D score ≥16 is considered in the depressed range	T1W	BPF, total T2 lesion volume	N/A	N/A	No significant correlations
	Tomasevic et al. [116]	F: MFIS ≥ 16 nF: MFIS < 15 FSS: mean (sd) 3.6 (1.8); MFIS tot: mean (sd) 26.6 (13.8);	BDI-II > 13 excluded mean (sd) 7.2 (3.9)	T1W GD+, T2W, T1W, FLAIR	Whole brain, Thalamus volume, cortical thickness	N/A	N/A	No significant correlations
	Morgante et al. [128]	F: FSS > 4 nF: <4 mean FSS: nF 2.2 ± 0.9; F 4.9 ± 0.8	HDRS (mean+?): nF 6.1 ± 4.6; F 6.4 ± 4.8	T1W GD+, T1W, transcranial magnetic stimulation	Lesion load	N/A	N/A	No significant correlations between lesion volume and fatigue
	Télez et al. [130]	F: FSS ≥ 5 and/or MFIS > 38; nF: FSS <4.0. means (SD) FSS: RRMS 4.8 (1.5); HC 3.2 (1.2); means (SD) MFIS: RRMS 35.2 (22.9) HC 18.3 (11.9); means (SD) FSS: F 5.9 (0.7); nF 3.6 (1.15); means (SD) MFIS: F 48.0 (20.6); nF 18.7 (12.4);	BDI BDI (means (SD)): RRMS 9.8 (9.1) HC 5.2 (3.4); F 12.2 (8.9); nF 5.6 (6.4)	T2W, proton magnetic resonance	Frontal WM, lentiform nucleus, lesion load	N/A	N/A	No significant correlations between lesion volume and fatigue.

Yarraguntla et al. [131]	<p>LF: FSS \leq 3</p> <p>MF: FSS 3.1-5</p> <p>HF: FSS \geq 5.1</p> <p>Mean(SEM) FSS: baseline: HF 6(0.12), MF 4(0.14), LF 1.89(0.2); Total 4.35(0.26),</p> <p>FSS range: HF (5.1–7), MF (3.1–5), LF (1–3), Total (1–7);</p> <p>Mean FSS at year 1: HF 5.8(0.26), MF 3.81(0.42), LF 2.6(0.46), Total 4.19(1.3);</p> <p>FSS range: HF (3.7–7), MF (1.1–6.7), LF (1–6); Total (1–7)</p>	<p>Excluded participants with diagnosed clinical depression</p>	<p>T2W, FLAIR, MR spectroscopy</p> <p>T2 lesion load, normal appearing WM</p>	N/A	N/A	<p>No significant correlations between T2 lesion volume and fatigue.</p>
Altermatt et al. [103]	<p>F: FSS \geq 4</p> <p>MFIS Median (range) 23 (0–63)</p>	NA	<p>T1W, T2W, FLAIR</p> <p>Whole brain Lesion load</p>	N/A	N/A	<p>High FSS and MFIS correlated with increased lesion load in posterior corona radiata.</p>
Damasceno et al. [109]	<p>FSS</p> <p>F: FSS score \geq 4; FSS mean/SD</p> <p>RRMS 3.54 \pm 1.65, HC 2.65 \pm 0.88</p>	Used our non-approved test	<p>FLAIR, T1W, T1W</p> <p>WM cortical lesions</p>	N/A	N/A	<p>Cerebellar cortical lesion volume was the only independent predictor of fatigue. Participants with F had higher GM lesion and GM volumes in cerebellum compared to nF. High FSS scores correlated with increased volume of thalamus, decreased volume of caudate and nucleus accumbens. No correlation to brain lesion volume nor to cortical and subcortical GM volumes.</p>
Calabrese et al. [106]	<p>MFIS, FSS</p> <p>F: FSS \geq 4 in all three examinations (baseline, 3 and 6 months);</p> <p>FSS mean: F 5.1(0.75) (range 4.00–6.67)</p> <p>nF: 2.2 (1.0) (range 0–3.88)</p>	D: BDI \geq 18	<p>FLAIR, T1W</p> <p>Thalamic and basal ganglia volume, regional cortical thickness</p>	N/A	N/A	<p>Lower volume of putamen, caudate nucleus, thalamus, superior frontal gyrus and inferior parietal gyrus in participants with F compared to nF.</p>
Yaldizli et al. [118]	<p>FSS (mean and 95% CI) Total 3.37 \pm 1.88 (2.92; 3.82) FSS<4: 2.1 \pm 1.04 (1.78; 2.43) FSS\geq4: 5.27 \pm 1.09 (4.85; 5.69)</p>	BDI \geq 15 excluded	<p>T1W GD+, T1W, T2W, FLAIR</p> <p>Corpus callosum Volume</p>	N/A	N/A	<p>FSS correlated with the reduction in corpus callosum volume over 5-years compared to nF.</p>
Saberi et al. [127]	<p>MFIS</p> <p>No scores</p>	Excluded BDI-FS \geq 10	<p>T1W</p> <p>Thalamus sub-region</p>	N/A	N/A	<p>Atrophy of left superior, anterior, and medial anterior thalamus was positively correlated with cognitive fatigue.</p>

volume							
Niepel et al. [112]	MFIS, FSS F: FSS ≥ 5.0, nF: FSS ≤ 4.	N/A	3D FLASH, T2W	Thalamus, putamen, caudate nucleus T2 lesion load	N/A	N/A	No structural differences between groups.
Zellini et al. [120]	F: FSS ≥ 5 nF: FSS ≤ 4	N/A	T1W, T2W	T2 lesion load	N/A	N/A	No structural differences between groups.
Biscecco et al. [105]	F: FSS III 4 Mean FSS (range): HC 2 (1–3.9); RRMS 3.6 (1–6.8); nF 2 (1–3.6); F 5.2 (4.2–6.8);	Excluded people with clinical depression Used our non-approved test	T1W, T2W, DTI	Whole brain volume (lesion, GM, WM)	FA, MD, RD	N/A	No structural- or diffusion differences between groups.
Codella et al. [108]	F: FSS ≥ 4 Mean FSS (SD) nF 19.7 (5.2) F 38.9 (7.3)	N/A	DE TSE, 2D GE, pulsed gradient spin-echo echo- planar	magnetisation transfer ratio	MD	N/A	No structural- or diffusion differences between groups.
Andreasen et al. [104]	F: FSS ≥ 4; (median (range)): F: 6.3 (5–7); nF: 2.8 (1–4); HC: 2.7 (2–4);	Major Depression Inventory score ≥ 26 (not included in the study)	T1W, T2W, FLAIR, DTI, MRS proton spectroscopy	BPF, lesion load	FA, MD	N/A	High FSS negatively correlated with volume of: R-superior frontal, R-anterior cingulate, L-anterior frontal, R-middle temporal, R-superior temporal gyrus, L-anterior insula, R-superior parietal, R-inferior parietal, L-inferior parietal gyrus, and R-caudate nucleus. No diffusion correlates to FSS scores.
Pardini et al. [113]	F: MFIS ≥ 37 (mean ± SD): MFIS 27.6 ± 17.3	NA	T1W, PD/T2W, DTI	Whole brain volume	FA	N/A	Significant association between structural damage and fatigue levels in two discrete white matter clusters in the left cingulate bundle. The damage in these clusters was associated with loss of structural connectivity in the anterior and medial cingulate cortices, dorsolateral prefrontal areas and in the left caudate. MFIS was associated with WM diffusion measures nearby to the anterior and medial cingulate cortices, respectively.
Willing et al. [117]	F: FSMC > 27 nF: FSMC < 22 FSMC (range) nF 33 (20–58) F 68 (51–97)	HADS > 10 excluded	T1W, FLAIR, DTI	GM, WM, and CSF fractions; BPF and lesion volume	MD, FA	N/A	Motor fatigue was weakly positively correlated with lesion volume and thalamic lesion load. Lesion volume was not correlated with cognitive fatigue. Higher MD and lower FA in the thalamus and basal ganglia (including the caudate nucleus, globus pallidus and putamen) in participants with cognitive F.
Pardini et al. [114]	MFIS mean(SEM)	BDI ≥ 18 excluded	T1W, T2W, DTI	Cortical and deep	DTI	N/A	No structural measures associated with MFIS scores.

	<p>HF: MFIS > 38 LF: MFIS < 38 RRMS 31.1(18) HF 20.2(10) LF 51.4(9.9)</p>		WM ROI volumes				<p>High MFIS scores negatively correlated with structural connectivity of: internal capsule, forceps minor, anterior thalamic radiation, and cingulate bundle and inferior fronto-occipital fasciculus. MFIS scores negatively correlated with FA values in the deep left frontal WM.</p>
Pokryszko-Dragan et al. [66]	FSS (Mean/SD): 4.4/1.7	N/A	T1W, T2W, FLAIR, DWI, DTI, 3D-FSPGR GD+	Volume ROI: corpus callosum, thalamus, cerebellar peduncles	MD, FA	N/A	No structural- or diffusion correlates with fatigue severity.
Yarraguntla et al. [119]	<p>HF: FSS > 5 MF: FSS 3-5 LF: FSS 0-3 FSS mean(SEM) 4.35 ± .26 range (1-7) Mean FSS at year 1 4.19 ± .3 range (1-7); Mean FSS at baseline: mean(SEM) (Range): HF: 6 ± .12(5.1-7); MF: 4 ± .14(3.1-5); LF: 1.89 ± .2(1-3); Total: 4.35 ± .26(1-7); Mean FSS at year 1: mean+SEM(Range): HF: 5.8 ± .26 (3.7—7); MF: 3.81 ± .42 (1.1 — 6.7); LF: 2.6 ± .46(1—6); Total: 4.19 ± .3 (1-7).</p>	<p>Excluded people with clinical depression</p>	T1W, DTI	<p>Thalamus, pallidum, MD, FA R-temporal cortex ROI, lesion load</p>		N/A	<p>High FSS negatively correlated with pallidum volume. Lower FA in R-temporal cortex in participants with HF compared to LF.</p>
Zhou et al. [121]	<p>MFIS-5 scores RRMS 11.15 (6–17) HC 0.25 (0.0–1.0)</p>	N/A	T1W, T2W, DTI, rs-fMRI, FLAIR	<p>Thalamic volume, total WM lesion load, BPF</p>	MD, RD, structural connectivity	rs-fMRI: FC	Higher MD, RD, and AD in thalamocortical prefrontal WM tracts of individuals with high MFIS scores. No correlation between rs-fMRI and fatigue scores.
Finke et al. [110]	<p>FSS Mean ±SEM(Range): RRMS: 3.94 ± 0.26(1.00-7.00); HC: 2.16 ± 0.19(2.16-4.67)</p>	BDI ≥ 17 excluded	T1W, DTI, FLAIR, rs-fMRI	<p>Whole brain Volume</p>	FA, MD, parallel diffusivity and RD	rs-fMRI	<p>No correlation between FSS or BDI scores and any structural or DTI measures. Negative correlations with FSS in rs-fMRI: R-pallidum and L/R-MPFC, L-precuneus and R-precuneus; L-putamen and L/R-MPFC, L-middle frontal gyrus and R/L-precuneus; L-MPFC and R-MPFC; R-caudate and L/R-MPFC. Positive correlations with FSS: caudate and precentral gyrus.</p>

Filippi et al. [122]	F: FSS \geq 25 nF: FSS <25 mean (SD) F: 39.5 (7.1); NF: 19.3 (5.2).	Montgomery and Asberg Depression Rating Scale > 16 excluded	T1W, fMRI, DE TSE	Lesion load, brain volume	N/A	fMRI: repetitive flexion and extension of fingers	No structural differences between groups. High FSS scores correlated with decreased FC between intraparietal sulcus, ipsilateral rolandic operculum and thalamus. F patients had a more significant relative activation of the contralateral cingulate motor area, and reduced activation of cerebellum, precuneus and fregions of the frontal lobe.
Huang et al. [111]	MFIS 17.0 \pm 10.9 - not clear what stats but probably mean	N/A	T1W, T2W, FLAIR, rs-fMRI	BPF, total WM lesion load	N/A	rs-fMRI	High MFIS correlated with disrupted connectivity in the R-superior temporal gyrus, and hypoactivity of DAN and DMN, increased connectivity in R-superior temporal gyrus and R-parahippocampal gyrus.
Rocca et al. [35]	F: MFIS \geq 38, nF: MFIS <38 Mean MFIS global (range) nF 22.5 (4–35) F 50.4 (38–71) Mean pMFIS (range) – 12.4 (2–30) 24.8 (14–33) Mean cMFIS (range) – 8.3 (0–18) 21.0 (9–34) Mean psMFIS (range) – 1.8 (0–4) 4.6 (2–8)	MADRS >9 excluded	T1W, T2W, fMRI	Lesion volume, normalised brain, WM, GM volumes	N/A	fMRI - finger- tapping test (using the average number of taps per 30s) and 9-hole peg test.	No difference in structural measures was found between F-MS and nF-MS patients. Increased middle frontal gyrus activity was related to MFIS scores. F-MS patients had reduced activations of the bilateral middle temporal gyrus, L-pre-SMA, L-SMA, bilateral superior frontal gyrus, L-postcentral gyrus, L-putamen, and bilateral caudate nucleus. F-MS patients experienced an increased recruitment of the bilateral putamen during the task.
Rocca et al. [129]	F: FSS \geq 25 nF: mean [SD] 15.6 [4.8]; F: mean [SD] FSS = 37.7 [7.7]	MADRS: Excluded individuals with clinical D	T1W, T2W, fMRI	Whole brain	N/A	fMRI: kinematic coordinated hand/foot movements	No correlation between fatigue and lesion volume. RRMS with F had a higher activation of L-SII, R-precuneus, cerebellum and decreased activation of R-thalamus, R-basal ganglia, L-inferior frontal gyrus, and cingulate motor area compared to nF during movement.
Specogna et al. [124]	FSS F: FSS >5 nF: <4	BDI > 16 excluded	T1W, T2W, T1W GD+, FLAIR, fMRI.	Lesion volume	N/A	fMRI: finger tapping against thumb	No significant difference in lesion burden. F patients had greater activation of the premotor area ipsilateral to the movement at the level of the right putamen and of the middle frontal gyrus on the right DLPFC. F group showed bilateral activation of the SMA and cerebellum.
Svolgaard et al. [115]	FSMC - Mean/Range/SD - RRMS 59.3 (20–92) 21.3 HC 28.0 (20–46) 8.2 FSMC MOTOR RRMS 28.8 (10–45) 10.6; HC 12.9 (10–23) 3.2 FSMC COGNITIVE RRMS 30.5 (10–48) 11.9; HC 15.0 (10–28) 5.6	BDI > 16 excluded BDI-II: RRMS Mean/Range/SD 7.2 (0–22) 6.0; HC 1.6 (0–11) 2.8	T1W, T2W, FLAIR, fMRI	WM lesion load	N/A	fMRI: finger against thumb tapping	Participants with F had lower total intracranial volume compared to nF. Participants with F had lower recruitment of L-dorsal pre-motor cortex and L-dorsomedial PFC compared to nF.

Pravatà et al. [126]	F: FSMC cognitive (SD) HC 14.4 (±4.1); nF 14.3 (±3.8); F 33.6 (±4.8)	BDI ≥ 10 excluded	T1W, T2W, rs-fMRI	T2 lesion maps, Normalised brain, GM, and WM volumes	N/A	rs-fMRI: assessed right before, right after and 30 min after PASAT	No significant differences in structural measures between F and nF. Higher connectivity of the L/R-middle temporal gyrus and R-middle occipital gyrus with FSMC scores. Fronto-temporal-occipital hyperconnectivity centred on the L- superior frontal gyrus in F-group.
Wu et al. [125]	MFIS Mean MFIS-5 (range): RRMS 11.2 (6–17); HC 0.7 (0–4)	N/A	T1W, T2W, rs-fMRI	Total WM lesion load	N/A	rs-fMRI	No significant structural correlations between F and nF RRMS patients. A high MFIS score was associated with increased FC between R-caudate and R-DLPFC.
Wu et al. [142]	Mean MFIS (range): acute RRMS 11.2 (6–16); relapsing RRMS 9.0 (2–15)	N/A	T2*W, T2W, T1W, rs-fMRI	N/A	N/A	rs-fMRI	No significant correlations.
Zhou et al. [143]	Mean MFIS-5 (range): 11.29 (6–17) 0.29 (0–1)	N/A	T2W, T1W, DTI, rs-fMRI	Total WM lesion load, GM, WM, and CSF volumes, BPF	DTI	rs-fMRI	Increased MD and RD of the tract linking the medial PFC and the L- inferior parietal lobule positively correlated with MFIS. No correlation between fatigue and conventional MRI or functional connectivity measures were reported.
Cruz Gomez et al. [144]	FSS mean (SD) nF: 2.21 (0.96); F 5.6 (0.85)	Used our non-approved test	T1W, T2*W	ICV, GM, WM volumes	N/A	rs-fMRI	F patients showed extended GM and WM atrophy focused on areas related to the SMN. High FSS scores were associated with decreased rs-FC between the SMA and associative somatosensory cortex. Lower rs-FC in the premotor cortex in F patients. F patients exhibited GM atrophy in the paracentral gyrus (SMA), precentral gyrus (PMC), occipital lobe, precuneus, and posterior cingulate gyrus; F had reduced GM volume in the L-cerebellum; F patients showed WM alterations that extended into a larger number of brain regions in the frontal (including the motor areas and insula), temporal, occipital, and parietal lobes. F patients also showed WM atrophy around the thalamus, corpus callosum, and WM of cingulate gyrus (anterior, middle, and posterior parts); F patients showed WM atrophy in L-frontal areas that included the L-medial frontal gyrus of the SMA, L-superior frontal gyrus L-precuneus, brainstem, L-cerebellum. Higher FSS scores were associated with lower rs-FC between the SMA and PMC; Compared to F patients, nF also showed increased rs-FC in the L-precentral gyrus, in this case associated with the premotor cortex.
Bauer et al. [145]	FSMC total: Mean(Range)[SD] RRMS: 59.9(20–92)[21.5]; HC: 28(19–46)[8.2]; FSMC motor: Mean(Range)[SD] RRMS: 29(10–25)[10.4]; HC: 12.9(10–23)[3.2];	BDI – II Mean(Range)[SD] RRMS: 7.7(0–22)[6.4] HC: 1.5(0–11)[2.8]	T1W, T2W, FLAIR, DTI	Whole brain, GM, and WM volume; WML volume and number	DTI: anatomical connectivity mapping (ACM), FA, MD	N/A	F showed higher mean ACM values in the L relative to the R corticospinal tract-NAWM; MS showed a significant positive correlation between the left-right asymmetry of anatomical connectivity in the corticospinal tract and motor fatigue, but not cognitive fatigue. Left-right asymmetry in anatomical connectivity outside the corticospinal tract did not scale with individual motor fatigue.

	FSMC cognition: Mean(Range)[SD] RRMS: 30.9(10–48)[12.2]; HC: 15(9–28)[5.6]						
Iancheva et al. [123]	F: MFIS \geq 38 Mean(SD) CI: 12.43(12.1), CP: 12.17(15.91)	nD: BDI-II < 10 BDI (mean \pm SD): CI 4.30 \pm 4.94; CP 2.67 \pm 4.29	T1W, fMRI	N/A	N/A	fMRI: numeric arithmetic task	High MFIS scores correlated with increased FC in supramarginal gyrus and premotor cortex, and decreased activation in posterior cingulate cortex.
Gilio et al. [146]	MFIS(median[IQR]): 24 [6.75–34]	BDI-II(median[IQR]): 7 [2.25–11.75]	T1W, FLAIR, PD, FLAIR, Gd+ T1W and T2 lesion load	cortical thickness	NA	NA	T2 lesion load showed a positive correlation with MFIS scores.
Khedr et al. [147]	FSS: no data F n = 31; non-F n = 12; 31 patients (72.1%) had fatigue	HDRS: no data	PD, FLAIR, T1W, T2W, Gd+T1W Total brain, cerebral and cerebellar GM and WM volume; hippocampus, thalamus, caudate, putamen volumes.	Total brain, cerebral NA	NA	NA	Total brain, cerebral grey matter and thalamic volumes all had negative correlations with F. Thalamic and brainstem atrophy accounted for 50.7% variance in F scores.
Ruiz-Rizzo et al. [148]	MFIS(mean(SD)): 35.8 (20.5)	HADS-D(mean(SD)): 11.1(7.6)	T1W, T2*W, FLAIR, BOLD fMRI	Total WL volume	NA	Brain networks: 2 sensorimotor (lateral and central); network. Associations between F and the sensorimotor network's global FC. 1 basal-ganglia; 2 default-mode (anterior and posterior); and 2 lateralized fronto-parietal (L and R)	Higher F was associated with lower FC of the precentral gyrus in the sensorimotor network, the precuneus in the posterior DMN and the superior frontal gyrus in the left fronto-parietal (lateral and central); network. Associations between F and the sensorimotor network's global FC.
Svolgaard et al. [149]	FSMC(mean(range)SD): RRMS: 59.3 (20–92) 21.3 HC 28.0 (20–46) 8.2; FSMCmotor: RRMS: 28.8 (10–45) 10.6; HC: 12.9 (10–23) 3.2; FSMCcognitive: RRMS: 30.5 (10–48) 11.9; HC: 15.0 (10–28) 5.6	BDI-II(mean(range)SD): RRMS: 7.2 (0–22) 6.0; HC: 1.6 (0–11) 2.8	T1W, T2W, FLAIR, fMRI	lesion load and overall brain atrophy	NA	whole-brain fMRI	The more patients increased task-related activity in left dorsal premotor cortex after the fatiguing task, the less they experienced motor fatigue during daily life.

Alshehri et al. [150]	<i>MFIS(mean±SEM): HC: 12±2.5; RRMS: 36±3.03; Physical F: HC: 5±0.93; RRMS: 18±1.50; Cognitive F: HC: 7±1.7; RRMS: 18±1.65</i>	NA	T1W, FLAIR, DTI	Total brain WM and WML volumes	FA, MD, RD and AD	NA	No correlation between the fatigue domains and DTI metrics in total brain WM and WML volumes was observed
<i>Tijhuis et al. [151]</i>	<i>Checklist of Individual Strength (CIS-20r)</i> <i>Baseline RRMS: 74.36 (29.33); HC: 46.72 (17.06); Follow-up RRMS: 69.91 (27.01)a HC: 45.11 (19.84)</i>	<i>HADS-D(median(range)):</i> <i>Baseline:</i> <i>RRMS: 3(0–14); HC: 1(0–6); Follow up: RRMS: 3(0–9); HC: 1(0–12)</i>	<i>T1W, FLAIR, fMRI</i>	<i>WML, WM and GM volumes, subcortical segmentation</i>	NA	<i>Global static FC (sFC) and dynamic FC; regional connectivity basal ganglia and DMN (medial prefrontal, posterior cingulate and precuneal cortices)</i>	<i>Less dynamic connectivity between the basal ganglia and the cortex is associated with greater F.</i>

AD: Axial Diffusivity, BDI: Beck Depression Index, BOLD: Blood-Oxygen Level Dependent, BPF: Brain Parenchymal Fraction, CES-D: Centre for Epidemiological Studies – Depression, CI: cognitively impaired, CIS: Clinically isolated syndrome, CNS: Central Nervous System, CP: cognitively preserved, DLPFC: dorsolateral prefrontal cortex, DMN: default mode network, D/nD: [not]depression/depressed, DSM-V: Diagnostic and Statistical Manual V semi-structured interview, DTI: Diffusion Tensor Imaging, EDSS: Expanded Disability Status Scale, F/nF: [not]fatigue/fatigued, FA: Fractional Anisotropy, FFG: fusiform gyrus, FIS: Fatigue Impact Scale, FLAIR: Fluid-attenuated Inversion Recovery, fMRI: functional Magnetic Resonance Imaging, FSMC: Fatigue Scale for Motor and Cognitive Functions, FSPGR: fast spoiled gradient echo, FSS: Fatigue Severity Scale, GD+: Gadolinium Enhancing, GM: Grey Matter, HARDI: high angular resolution diffusion imaging, HC: healthy controls, HDRS: Hamilton Depression Rating Scale, ICV: intracranial volume, L: left, LF/MF/HF: low/medium/high fatigue, MADRS: Montgomery-Asberg Depression Rating Scale, MD: Mean Diffusivity, MFIS: Modified Fatigue Impact Scale, N/A: not available, NAWM: normal appearing white matter, PASAT: Paced Auditory Serial Addition Test, (DL/M)PFC: (dorsolateral/medial) prefrontal cortex, PMC: premotor cortex, PPMS: Primary progressive MS, R: right, RD: Radial Diffusivity, ROI: region of interest, RRMS: Relapsing-remitting multiple sclerosis, rs-fMRI: Resting-state Functional Magnetic Resonance Imaging, SII: secondary sensorimotor cortex, SD: Standard Deviation, SEM: standard error of the measurements, SMA: supplementary motor area, SPMS: Secondary progressive MS, SSRI: Selective serotonin reuptake inhibitors, T2LV: T2 lesion volume, UF: uncinate fasciculus, WM: White matter.
 Studies with positive findings are shown in italics.

306 **3.2 Quality Assessment**

307 For quality assessment of cross-sectional studies, 28/52 studies fulfilled all criteria except for
308 sample size justification and 46/52 studies fulfilled more than 80% of the criteria (S3 and S5
309 Tables). It should be noted that none of the assessed studies justified their sample sizes by
310 *ad hoc* statistical power (Selection bias), therefore, not a single study was awarded full
311 points. Out of 8 longitudinal studies, 7 fulfilled 70% or more criteria of the IHE checklist, and
312 the lowest score was 50% (S4 and S6 Tables). The difference in average scores between
313 cross-sectional and longitudinal studies should be attributed to different scales used.

314 **3.3 Depression**

315 **3.3.1 Conventional MRI measures**

316 Seventeen studies were identified that investigated associations between structural brain
317 measures and depression (Table 1) [29, 47, 96-102, 132-135, 137, 138, 140, 141]. 10/17
318 studies did not find any associations (Table 1) [98, 99, 102, 118, 132-134, 138, 140, 141]
319 and 7/17 reported significant associations (Tables 1 and 2) between structural measures and
320 depression severity [29, 47, 96, 97, 100, 135, 137]. Of note, seven of these 17 studies
321 investigated WML measures [29, 96, 98, 99, 101, 102, 141], but only three observed
322 associations between depression and lesion load [29, 96, 137]. Kopchak and Odintsova
323 observed that combined lesions in frontal lobe and corpus callosum were related to
324 depressive scores [137].

325 Decreased volume of limbic structures was associated with high depression scores in 3/17
326 studies [47, 97, 100] (Fig 2). Additionally, changes in the frontal lobe were significantly
327 associated with depression in 3/17 studies (Fig 2 and Table 2), specifically showing
328 increased lesion load and reduced tissue volume in RRMS patients with high depression
329 scores [47, 96, 137]. An association between lower volume of the cerebellar right Vermis
330 Crus I and depression score was also observed [135], as well as an overall increase in T2

331 lesion burden in depressed pwRRMS [29].

332 **Fig 2. Sagittal (A), axial (B), and coronal (C) view of brain regions suggested to be involved in depression**
333 **(magenta), fatigue (blue) or both* (yellow) in >1 study, using conventional MRI, structural and functional**
334 **connectivity.** Brain regions were extracted from brain atlases available in FSL [152] and superimposed on a
335 template T1w image, available in MRIcron [153]. Results from included publications were compiled and
336 summarised in this figure by the authors of this study, using MRIcron [153]. *AG: angular gyrus (as a region of*
337 *default mode network), Am: amygdala, CC: corpus callosum, Cing: cingulum, CN: caudate nucleus, DLPFC:*
338 *dorsolateral prefrontal cortex, FEF: frontal eye field (as a region of dorsal attention network), FL: frontal lobe,*
339 *Hpp: hippocampus, IFG: inferior frontal area, IPS: intraparietal sulcus (as a region of dorsal attention network),*
340 *MPFC: medial prefrontal cortex (as a region of default mode network), MTG: middle temporal gyrus, P: putamen,*
341 *PCG: precentral gyrus, PoCG: postcentral gyrus, Prc: precuneus (as a region of default mode network), SFG:*
342 *superior frontal gyrus, SG: supramarginal gyrus, SMA: supplementary motor area, STG: superior temporal gyrus,*
343 *Str: superior ventral striatum, VTA: ventral tegmental area. *Overlapping brain regions between symptoms, in at*
344 *least 1 study for each symptom..*

345 **3.3.2 Structural connectivity**

346 Five studies were identified that assessed associations between structural connectivity
347 measures and depression in pwRRMS, four of which used DTI [29, 98, 136, 138] and one
348 used HARDI [139] (Tables 1 and 3), but only three found statistically significant relationships
349 between structural connectivity and depression in pwRRMS [29, 136, 139].

350

351 An increased local path length between the right hippocampus and right amygdala, as well
352 as 'shortest distance' (i.e., shortest distance between couples of brain nodes) - suggestive of
353 reduced structural connectivity - between both the right hippocampus and the right amygdala
354 and several regions, including the dorsolateral- and ventrolateral prefrontal cortex (DLPFC,
355 VLPFC), and the orbitofrontal cortex correlated with high BDI scores [98] (Tables 1 and 3).

356 The remaining studies observed a correlation between depression scores and decreased FA
357 in the cingulum, uncinate fasciculus, and fornix [136], with decreased FA, and increased RD
358 and MD in the right superior longitudinal fasciculus. In contrast, Rojas et al. did not detect
359 any differences in global FA among pwRRMS with and without depression [29] and Golde et
360 al. did not observe any correlation between DTI and depression measures [138].

361

362 **3.3.3 Functional connectivity**

363 Depression severity in relation to fMRI was examined in five studies (Tables 1 and 4) [99,
364 102, 134, 138, 141], of which four used rs-fMRI [102, 134, 138, 141] and one used task-
365 based (emotional processing) fMRI [99]. Four studies reported significant findings [99, 102,
366 134, 141].

367

368 Firstly, Carotenuto et al. in their rs-fMRI study, reported altered functional connectivity
369 between a wide number of brain regions: brainstem and hypothalamus; amygdala and
370 cortical regions (including postcentral gyrus, supramarginal gyrus, cerebellum); cerebellum
371 and amygdala, hippocampus, hypothalamus, locus coeruleus, nucleus accumbens, thalamus,

372 ventral tegmental area in RRMS patients with high HDRS scores [102] (Table 1). Secondly,
373 Riccelli et al. reported negative correlations between BDI and functional connectivity of the
374 hippocampus with orbitofrontal cortex and DLPFC; the amygdala and DLPFC; and an
375 association between reduced activity of the subgenual cingulate cortex and depression
376 severity, in a task-based fMRI study [99] (Table 1). Furthermore, Jaeger et al. observed
377 associations between altered functional connectivity in regions of the sensory motor cortex
378 (precentral, postcentral gyri) and the superior ventral striatum and high BDI scores [134].
379 Lastly, Romanello et al. related depression severity to functional connectivity of the ventral
380 attention network with the dorsal attention network and DMN [141].

381

382 **3.4 Fatigue**

383 **3.4.1 Conventional MRI measures**

384 Forty-eight studies were identified that investigated associations between structural brain
385 abnormalities and fatigue in pwRRMS (Table 1) [35, 47, 66, 103-122, 124-135, 138-141,
386 143-151]. 33/48 studies did not observe any associations (Table 1) [35, 66, 105, 107, 108,
387 110-112, 114, 116, 120-122, 124-126, 128-134, 138-141, 143, 145, 148-151] and 15/48
388 reported significant associations (Tables 1 and 2) between fatigue and structural brain
389 changes. Of note, 28/48 studies investigated WMLs, but only three studies found significant
390 associations between fatigue and WMLs [103, 109, 146], and one observed a link between
391 motor fatigue and cortical lesions [117].

392

393 Five studies out of 48 linked fatigue in pwRRMS to thalamic atrophy [106, 109, 127, 144,
394 147] and one to lesion load in the thalamus [117]. Moreover, 4/48 studies associated fatigue
395 with cerebellar atrophy [109, 135, 144, 147] and 4/48 with decreased volume of caudate
396 nucleus [104, 106, 109, 147]. Additionally, fatigue was associated with the atrophy in basal
397 ganglia structures [104, 106, 109], inferior parietal gyrus [104, 106] and corpus callosum

398 [118, 144] (Fig 2 and Table 2). Furthermore, the remaining studies observed correlations
399 between fatigue scores and several regions in the parietal, frontal, insular and temporal
400 lobes, as well as the cingulate gyrus [104]; the occipital lobe, brainstem, and cingulate gyrus
401 [144] and a weak correlation was detected between motor fatigue and WML volumes [117].
402 In contrast however, four studies reported an absence of associations between thalamic
403 atrophy and fatigue scores [112, 116, 120, 125]. Similarly, the absence of association was
404 reported between fatigue and basal ganglia volume [108], the limbic system [112], and
405 amygdala volume [140].

406 **Table 2. Brain regions suggested to be involved in depression and/or fatigue symptomatology in pwRRMS, assessed using conventional MRI, in 17/56 publications**
 407 **with positive findings.**
 408

Brain region	Depression	Overlap	Fatigue
Brainstem	-	-	WM atrophy (Cruz Gomez et al. [144]); atrophy (Khedr et al. [147])
Caudate nucleus	-	-	atrophy (Andreassen et al. [104]); GM and WM atrophy (Calabrese et al. [106]); atrophy (Damasceno et al. [109]); atrophy (Khedr et al. [147])
Cerebellum	Vermis Crus I atrophy (Lazarotto et al. [135])	Vermis Crus I atrophy (depression)/ lobule right V atrophy (fatigue) (Lazarotto et al. [135]); cortical lesion volume (Damasceno et al. [109]); WM atrophy (Cruz Gomez et al. [144])	lobule right V atrophy (Lazarotto et al. [135]); cortical lesion volume (Damasceno et al. [109]); WM atrophy (Cruz Gomez et al. [144])

L-cingulum cingulate bundle	-	-	structural damage (Pardini et al. [113])
Cingulate gyrus	-	-	WM atrophy (Cruz Gomez et al. [144]); atrophy (Andreasen et al. [104])
Corona radiata	-	-	lesion location (Altermatt et al. [103])
Corpus callosum	lesions (Kopchak and Odintsova [137])	lesions (Kopchak and Odintsova [137]); atrophy (Yaldizli et al. [118]); WM atrophy (Cruz Gomez et al. [144])	atrophy (Yaldizli et al. [118]); WM atrophy (Cruz Gomez et al. [144])
Neocortical gray matter	atrophy (Rojas et al. [29])	-	-
L- superior frontal gyrus	-	-	atrophy (Andreasen et al. [104])
L- medial frontal gyrus	-	-	WM atrophy (Cruz Gomez et al. [144])
R-middle frontal region	-	-	reduced cortical volume (Nygaard et al. [47])
Superior frontal gyrus	-	-	atrophy (Andreasen et al. [104]); WM atrophy (Calabrese et al. [106])
Frontal lobe	area and number of brain lesions (Benesova et al. [96]);	-	-

	cortical surface area and volume (Nygaard et al. [47]); lesions (Kopchak and Odintsova [137])		
Frontal pole	cortical surface area and volume (Nygaard et al. [47])	-	-
Fronto-temporal region	lesions (Kopchak and Odintsova [137])	-	-
Middle temporal fusiform gyrus	atrophy (Nygaard et al. [47])	-	-
Hippocampus	atrophy (Gold et al. [97])	-	-
L-anterior insula	-	-	atrophy (Andreassen et al. [104])
Nucleus accumbens	-	-	atrophy (Damasceno et al. [109])
Occipital lobe	-	-	WM and GM atrophy (Cruz Gomez et al. [144])
Pallidum	-	-	atrophy (Yarraguntla et al. [119])
Paracentral gyrus	-	-	GM atrophy (Cruz Gomez et al. [144])
Parahippocampal gyrus	reduced cortical surface area (Nygaard et al. [47])	-	-

Inferior parietal gyrus	-	-	atrophy (Andreasen et al. [104]); cortical atrophy (Calabrese et al. [106])
L-inferior parietal lobe	reduced cortical surface area and atrophy (Nygaard et al. [47])	-	-
R-superior parietal lobe	-	-	atrophy (Andreasen et al. [104])
Pars Orbitalis	reduced cortical surface area and atrophy (Nygaard et al. [47])	-	-
Postcentral gyrus	reduced cortical surface area and atrophy (Nygaard et al. [47])	reduced cortical surface area and atrophy (D)/reduced cortical volume (F) (Nygaard et al. [47])	Reduced cortical volume (Nygaard et al. [47])
Precentral gyrus	reduced cortical surface area and atrophy (Nygaard et al. [47])	reduced cortical surface area and atrophy (D)/reduced cortical volume (F) (Nygaard et al. [47]); GM atrophy (Cruz Gomez et al. [144])	GM atrophy (Cruz Gomez et al. [144]); reduced cortical volume (Nygaard et al. [47])
L-precuneus	-	-	WM and GM atrophy (Cruz Gomez et al. [144])
Putamen	-	-	atrophy (Calabrese et al. [106])

R-middle temporal gyrus	-	-	atrophy (Andreasen et al. [104])
R-superior temporal gyrus	atrophy (Nygaard et al. [47])	atrophy (Nygaard et al. [47]) atrophy (Andreasen et al. [104])	atrophy (Andreasen et al. [104])
L-interior temporal lobe	atrophy (Nygaard et al. [47])	-	-
Thalamus	atrophy (Štecková et al. [100])	atrophy (Calabrese et al. [106]); increased volume (Damasceno et al. [109]); lesion load (Wilting et al. [117]); atrophy (Štecková et al. [100]); atrophy (Saber et al. [127]); WM atrophy (Cruz Gomez et al. [144]); atrophy (Khedr et al. [147])	atrophy (Calabrese et al. [106]); increased volume (Damasceno et al. [109]); lesion load (Wilting et al. [117]); atrophy (Saber et al. [127]); WM atrophy (Cruz Gomez et al. [144]); atrophy (Khedr et al. [147])
pwRRMS=patients with relapsing-remitting multiple sclerosis, MRI=magnetic resonance imaging, WM=white matter, GM=gray matter, L=left, R=right, D=depression, F=fatigue			

409 **3.4.2 Structural connectivity**

410 Fifteen studies were identified that evaluated the relationship between fatigue and dMRI
411 measures, all of which used DTI and one used HARDI [139]. Seven out of fifteen studies did
412 not report any significant findings (Table 1) [66, 105, 108, 110, 138, 139, 150] and 8/15
413 found significant associations (Tables 1 and 3).

414

415 Two studies out of fifteen observed negative correlations between cingulum FA and fatigue
416 scores in pwRRMS (Fig 2 and Table 3) [113, 114]. In addition, the remaining studies
417 reported a correlation of fatigue in RRMS patients with lower FA in the inferior occipitofrontal
418 fasciculus, internal capsule, anterior thalamic radiation, and forceps minor [114]; a lower
419 number of connectivity streamlines in the corticospinal tract [145], and reduced FA and
420 increased MD values of the thalamus and basal ganglia [117]. Moreover, fatigue correlated
421 with lower FA in the right temporal cortex, and higher MD, RD, and AD in the thalamocortical
422 tracts [119]; and increased MD and RD of the WM tract connecting two DMN regions (i.e.,
423 medial prefrontal cortex and inferior parietal gyrus – the WM tract was not further specified)
424 [143]; and increased ‘shortest distance’ between both the right hippocampus and right
425 amygdala and a series of regions including the dorsolateral and ventrolateral prefrontal
426 cortex, orbitofrontal cortex, sensory-motor cortices and SMA [98].

427 **Table 3. Brain regions suggested to be involved in depression and/or fatigue symptomatology in pwRRMS structural connectivity measures, in 10/18 publications**
 428 **with positive findings.**
 429

Brain region/network	Depression	Overlap	Fatigue
R-amygdala and orbitofrontal cortex (e.g., rectus gyrus)	increased shortest distance (Nigro et al. [98])	-	-
R-amygdala and DLPFC	increased shortest distance (Nigro et al. [98])	-	-
R-amygdala and ventrolateral PFC (i.e., inferior frontal gyrus)	increased shortest distance (Nigro et al. [98])	-	-
Anterior thalamic radiation	-	-	reduced FA (Pardini et al. [114])
Basal Ganglia (Caudate Nucleus, Pallidus, Putamen)	-	-	reduced FA and increased MD (Wilting et al. [117])
Cingulum	reduced FA (Hassan et al. [136])	reduced FA (Hassan et al. [136]); reduced FA (Pardini et al. [113]); reduced FA (Pardini et al. [114])	reduced FA (Pardini et al. [113]); reduced FA (Pardini et al. [114])
Anterior/medial cingulate cortices	-	-	reduced FA (Pardini et al. [113])
Corticospinal tract	-	-	higher connectivity in the L vs R hemisphere (Bauer et al. [145])
Forceps minor	-	-	reduced FA (Pardini et al. [114])

Fornix	reduced FA (Hassan et al. [136])	-	-
R-hippocampus and rectus gyrus	increased shortest distance (Nigro et al. [98])	-	-
R-hippocampus and DLPFC	increased shortest distance (Nigro et al. [98])	-	-
R-hippocampus and ventrolateral PFC (i.e., inferior frontal gyrus)	increased shortest distance (Nigro et al. [98])	-	-
Inferior fronto-occipital fasciculus	-	-	reduced FA (Pardini et al. [114])
L-internal capsule	-	-	reduced FA (Pardini et al. [114])
Medial PFC and L-inferior parietal lobule	-	-	increased MD and RD (Zhou et al. [143])
R-temporal lobe	-	-	reduced FA (Yarraguntla et al. [119])
Thalamocortical tracts	-	-	increased MD, RD, and AD (Zhou et al. [121])
Thalamus	-	-	reduced FA and increased MD (Wilting et al. [117])
Uncinate fasciculus	reduced FA (Hassan et al. [136])	-	-
R-superior longitudinal fasciculus	reduced FA, increased RD and MD (Beaudoin et al. [139])	-	-
pwRRMS= patients with relapsing-remitting multiple sclerosis, R=right, L=left, (DL)PFC=(dorsolateral)prefrontal cortex, FA=fractional anisotropy, MD=mean diffusivity, RD=			

radial diffusivity

430

431 **3.4.3 Functional connectivity**

432 Seven out of twenty studies looking at fatigue and fMRI used a task-based approach [35,
433 115, 122-124, 129, 149], and 13/20 used rs-fMRI [110, 111, 121, 125, 126, 134, 138, 141-
434 144, 148, 151] (Table 1). Only 3/20 studies [121, 142, 143] did not observe functional
435 changes in fatigued RRMS patients, while seventeen out of twenty studies reported
436 associations with fatigue for one or more regions (Fig 2 and Table 4).

437

438 Most DMN regions displayed altered resting-state connectivity in association with high
439 fatigue scores [111, 151], with the precuneus [110, 122, 129, 134, 148], medial prefrontal
440 cortex [110, 138], posterior cingulate cortex [110, 123, 148] observed in more than one study
441 (Table 2). Moreover, fatigue was linked with altered dynamic, resting-state functional
442 connectivity and activation of the basal ganglia [110, 124, 129, 141, 151], including putamen
443 [35, 110, 124], pallidum [110], superior ventral striatum [134]. Additionally, altered functional
444 connectivity in the regions of the frontal [110, 134] (middle [35, 110, 122, 124, 134] and
445 superior [35, 126, 134, 148], L-inferior [122, 129] gyri, dorsolateral prefrontal cortex [115,
446 124, 125, 134], L-dorsal premotor cortex [149]), occipito-temporal [138] (middle temporal
447 gyrus [35, 129], R-superior temporal gyrus and R-parahippocampal gyrus [111], and inferior
448 temporal gyrus [134], and middle occipital gyri [126]), and parietal [134] (postcentral gyrus
449 [35, 129, 134], supramarginal gyrus [123, 134], associative somatosensory cortex [144],
450 parietal operculum [134]) lobes were associated with fatigue in pwRRMS. Furthermore,
451 changes in functional connectivity and of the motor area, including precentral gyrus [110,
452 129, 134, 144, 148], supplementary motor area [35, 134, 144], premotor area [123, 124],
453 cingulate motor area [122, 129], motor cortex [110], primary motor cortex [144], L-pre-
454 supplementary motor area [35], L-primary and L-secondary sensorimotor cortex [129] were
455 associated with fatigue. Additionally, associations between functional changes of the
456 caudate nucleus and fatigue were observed in four rs-fMRI studies [110, 125, 126, 134] and
457 one task-based fMRI study assessing motor processing through finger-tapping and the nine-

458 hole peg test [35] (Table 2). Moreover, changes in cerebellum activation [115, 122, 124,
459 129] was associated with fatigue in four task-based fMRI studies. Lastly, decreased
460 activation and rs-FC in the thalamus [122, 126, 129] and attention networks [111, 134] were
461 linked to fatigue scores in more than one study per symptom.
462

463 **Table 4. Brain regions suggested to be involved in depression and/or fatigue in pwRRMS using functional connectivity measures, in 19/22 publications with**
 464 **positive findings.**

465

Brain region/network	Depression	Overlap	Fatigue
Amygdala	increased rs-FC with L-supramarginal gyrus, L-postcentral gyrus, cerebellum (Carotenuto et al. [102]); reduced task-based FC with L-DLPFC (Riccelli et al. [99])	-	-
Associative somatosensory cortex	-	-	reduced rs-FC with supplementary motor area (Cruz Gomez et al. [144])
Attention networks	-	-	reduced rs-FC with superior ventral striatum (Jaeger et al. [134])
Dorsal attention network	increased rs-FC with ventral attention network (Romanello et al. [141])	increased rs-FC (Romanello et al. [141]); reduced activity (Huang et al. [111])	reduced activity (Huang et al. [111])
Ventral attention network	increased rs-FC with dorsal attention network, default mode network (Romanello et al. [141])	-	-
Basal ganglia	-	-	reduced dynamic FC with default mode

			<p>network (Tijhuis et al. [151]);</p> <p>reduced rs-FC with medial PFC, posterior cingulate cortex, precuneus (Finke et al. [110]);</p> <p>increased activation (Specogna et al. [124]);</p> <p>reduced activation (Rocca et al. [129]);</p> <p>reduced rs-FC with frontoparietal network (Romanello et al. [141])</p>
Brainstem	reduced rs-FC with L-hypothalamus (Carotenuto et al. [102])	-	-
Caudate nucleus	-	-	<p>reduced rs-FC with motor cortex, precentral gyrus (Finke et al. [110]);</p> <p>reduced activation (Rocca et al. [35]);</p> <p>increased rs-FC with R-DLPFC (Wu et al. [125]);</p> <p>reduced rs-FC with sensorimotor cortex (supplementary motor area, precentral, postcentral gyrus), middle frontal gyrus, parietal lobule, precuneus, superior</p>

			frontal cortex, L-superior ventral striatum (Jaeger et al. [134]); increased rs-FC with superior frontal gyrus (Pravatà et al. [126])
Cerebellum	reduced rs-FC with L-hippocampus, L-nucleus accumbens, locus coeruleus, R-hypothalamus, increased rs-FC with R-amygdala, R-thalamus, ventral tegmental area (Carotenuto et al. [102])	reduced/increased rs-FC (Carotenuto et al. [102]); increased activation (Rocca et al. [129]); reduced activation (Specogna et al. [124]); reduced activation (Filippi et al. [122]); increased task-related activity (Svolgaard et al. [115])	increased activation task-related activation of posterior lobe (Rocca et al. [129]); reduced activation (Specogna et al. [124]); reduced activation (Filippi et al. [122]); increased task-related activity of R-upper cerebellar lobule VI (Svolgaard et al. [115])
Posterior cingulate cortex	-	-	reduced global FC (Ruiz-Rizzo et al. [148]); reduced activation (Iancheva et al. [123]); reduced rs-FC basal ganglia, pallidum, putamen (Finke et al. [110])
R-subgenual cingulate gyrus	reduced activity (Riccelli et al. [99])	-	-
Cingulate motor area	-	-	reduced activation (Rocca et al. [129]);

			increased activation (Filippi et al. [122])
Default mode network	increased rs-FC with ventral attention network (Romanello et al. [141])	increased rs-FC (Romanello et al. [141]; reduced activity (Huang et al. [111]); reduced dynamic FC (Tijhuis et al. [151])	reduced activity (Huang et al. [111]); reduced dynamic FC with basal ganglia (Tijhuis et al. [151])
L- Inferior frontal gyrus	-	-	reduced task-based activation (Rocca et al. [129]); reduced activation (Filippi et al. [122])
Middle frontal gyrus	-	-	increased activation (Specogna et al. [124]); increased activity (Rocca et al. [35]); reduced rs-FC (Finke et al. [110]); reduced activation (Filippi et al. [122]); reduced rs-FC with superior ventral striatum, caudate nucleus (Jaeger et al. [134])
Superior frontal gyrus	-	-	reduced activation (Rocca et al. [35]); increased rs-FC with middle occipital gyri, temporal area, frontal area, L-caudate nucleus, reduced connectivity with L-anterior thalamus (Pravatà et al. [126]);

			reduced global FC (Ruiz-Rizzo et al.[148]); reduced rs-FC with caudate nucleus (Jaeger et al. [134])
Frontoparietal network	-	-	reduced rs-FC with basal ganglia (Romanello et al. [141])
Fusiform gyrus	-	-	increased rs-FC with medial prefrontal cortex, reduced rs-FC with R-lateral prefrontal cortex (Golde et al. [154])
Hippocampus	reduced task-based FC with L-DLPFC, orbitofrontal cortex (Riccelli et al. [99]); reduced rs-FC with cerebellum (Carotenuto et al. [102])	-	-
Hypothalamus	reduced rs-FC with brainstem, cerebellum (Carotenuto et al. [102])	-	-
Locus coeruleus	reduced rs-FC with cerebellum (Carotenuto et al. [102])	-	-
Motor cortex	-	-	reduced rs-FC with caudate nucleus (Finke et al. [110])
Primary motor cortex	-	-	reduced rs-FC with precentral gyrus,

			supplementary motor area (Cruz Gomez et al. [144])
Nucleus accumbens	reduced rs-FC with cerebellum (Carotenuto et al. [102])	-	-
Nucleus basalis (Ch4)	increased rs-FC with R-angular gyrus (Carotenuto et al. [102])	-	-
Middle occipital gyri	-	-	increased rs-FC with superior frontal gyrus (Pravatà et al. [126])
orbitofrontal cortex	reduced task-based FC with hippocampus (Riccelli et al. [99])	-	-
Pallidum	-	-	reduced rs-FC with precuneus, posterior cingulate cortex, dorsal and ventral medial prefrontal cortex (Finke et al. [110])
R-parahippocampal gyrus	-	-	increased rs-FC (Huang et al. [111])
Parietal lobule	-	-	reduced rs-FC with caudate nucleus (Jaeger et al. [134])
Parietal operculum	-	-	increased rs-FC with dorsolateral prefrontal cortex, superior ventral striatum (Jaeger et al. [134])

<p>Postcentral gyrus</p>	<p>increased rs-FC with amygdala (Carotenuto et al. [102]); reduced rs-FC with superior ventral striatum (Jaeger et al. [134])</p>	<p>increased rs-FC (Carotenuto et al. [102]); reduced rs-FC [depression], increased rs-FC [fatigue] (Jaeger et al. [134]); reduced activation of L- (Rocca et al. [35]); reduced task-based activation of L- (Rocca et al. [129])</p>	<p>reduced activation of L- (Rocca et al. [35]); reduced task-based activation of L- (Rocca et al. [129]); increased rs-FC with dorsolateral prefrontal cortex, reduced rs-FC with superior ventral striatum, caudate nucleus (Jaeger et al. [134])</p>
<p>Precentral gyrus</p>	<p>reduced rs-FC with superior ventral striatum (Jaeger et al. [134])</p>	<p>reduced rs-FC (Jaeger et al. [134]); reduced rs-FC (Cruz Gomez et al. [144]); reduced global FC (Ruiz-Rizzo et al. [148]); reduced task-based activation (Rocca et al. 2009 [129]); reduced rs-FC (Finke et al. [110])</p>	<p>reduced rs-FC with primary motor cortex (Cruz Gomez et al. [144]); reduced global FC (Ruiz-Rizzo et al. [148]); reduced task-based activation (Rocca et al. 2009 [129]); reduced rs-FC with caudate nucleus (Finke et al. [110]); reduced rs-FC with caudate nucleus, superior ventral striatum, increased rs-FC with dorsolateral prefrontal cortex (Jaeger et al. [134])</p>

Precuneus	-	-	<p>increased activation (Rocca et al. [129]);</p> <p>reduced global FC (Ruiz-Rizzo et al. [148]);</p> <p>reduced activation (Filippi et al. [122]);</p> <p>reduced rs-FC with basal ganglia, pallidum, putamen (Finke et al. [110]);</p> <p>reduced rs-FC with caudate nucleus (Jaeger et al. [134])</p>
Dorsolateral prefrontal cortex	reduced task-based FC with amygdala, hippocampus (Riccelli et al. [99])	<p>reduced task-based FC (Riccelli et al. [99]);</p> <p>increased activation (Specogna et al. [124]);</p> <p>increased rs-FC (Jaeger et al. [134]); lack of increased task-based activation (Svolgaard et al. [115]);</p> <p>increased rs-FC (Wu et al. [125])</p>	<p>increased activation (Specogna et al. [124]);</p> <p>increased rs-FC with parietal operculum, supramarginal gyrus, postcentral gyrus, precentral gyrus (Jaeger et al. [134]);</p> <p>lack of increased task-based activation (Svolgaard et al. [115]);</p> <p>increased rs-FC with caudate nucleus (Wu et al. [125])</p>
R-lateral prefrontal cortex	-	-	reduced rs-FC with fusiform gyrus (Golde et al. [154])
Medial prefrontal cortex	-	-	reduced rs-FC with basal ganglia,

			pallidum, putamen (Finke et al. [110]); increased rs-FC with fusiform gyrus (Golde et al. [154])
Premotor area	-	-	increased activation (Specogna et al. [124]); increased activation (Iancheva et al. [123])
L-dorsal premotor cortex	-	-	reduced task-related activation (Svolgaard et al. [149])
L-pre-supplementary motor area	-	-	reduced activation (Rocca et al. [35])
L-primary sensorimotor cortex	-	-	increased task-related activity (Rocca et al. [129])
Putamen	-	-	reduced rs-FC with dorsal/ventral medial prefrontal cortex, posterior cingulate cortex, precuneus (Finke et al. [110]); reduced activation (Rocca et al. [35]); increased activation (Specogna et al. [124])
Reward networks	-	-	reduced rs-FC with superior ventral

			striatum (Jaeger et al. [134])
Rolandic operculum	-	-	reduced activation (Filippi et al. [122])
L-secondary sensorimotor cortex	-	-	increased task-based activation (Rocca et al. [129])
Superior ventral striatum	reduced rs-FC with precentral, postcentral gyrus (Jaeger et al. [134])	reduced rs-FC (Jaeger et al. [134])	reduced rs-FC with attention networks, reward networks, sensorimotor cortex (supplementary motor area, precentral, postcentral gyrus), parietal lobule, middle frontal gyrus, inferior temporal gyrus (Jaeger et al. [134])
Supplementary motor area	-	-	reduced activation (Rocca et al. [35]); reduced rs-FC with associative somatosensory cortex, primary motor cortex (Cruz Gomez et al. [144]); reduced rs-FC with caudate nucleus, superior ventral striatum (Jaeger et al. [134])
Supramarginal gyrus	increased rs-FC with amygdala (Carotenuto et al. [102])	increased rs-FC (Carotenuto et al. [102]); increased activation (Iancheva et al. [123]);	increased activation (Iancheva et al. [123]); increased rs-FC with dorsolateral

		increased rs-FC (Jaeger et al. [134])	prefrontal cortex (Jaeger et al. [134])
Inferior temporal gyrus	-	-	reduced rs-FC with superior ventral striatum (Jaeger et al. [134])
Middle temporal gyrus	-	-	increased activity in the R-, reduced activity in the L- (Rocca et al. [35]); increased activation (Rocca et al. [129])
R-superior temporal gyrus	-	-	increased connectivity coefficient (Huang et al. [111])
Thalamus	increased rs-FC with cerebellum (Carotenuto et al. [102])	increased rs-FC (Carotenuto et al. [102]); reduced activation (Filippi et al. [122]); reduced activation (Rocca et al. [129]); reduced FC (Pravatà et al. [126])	reduced activation (Filippi et al. [122]); reduced activation (Rocca et al. [129]); reduced rs-FC with superior frontal gyrus (Pravatà et al. [126])
Ventral tegmental area	increased rs-FC with cerebellum (Carotenuto et al. [102])	increased rs-FC (Carotenuto et al. [102]); reduced rs-FC (Jaeger et al. [134])	reduced rs-FC with superior ventral striatum (Jaeger et al. [134])
pwRRMS= patients with relapsing-remitting multiple sclerosis, (rs-)FC=resting state functional connectivity, DLPFC=dorsolateral prefrontal cortex, L=left, , R=right			

466 **3.5 Fatigue and depression: overlap**

467

468 **3.5.1 Studies investigating both depression and fatigue together**

469 Eight studies assessed both fatigue and depression [132-135, 138-141]. All but one [139]
470 examined the associations between depression or fatigue and structural MR measures, but
471 only one paper observed overlapping changes. Specifically, Lazzarotto et al. reported
472 significant correlations between BDI scores and lower volume of the right cerebellar vermis
473 crus I, and between FSS score and reduced volume of cerebellar lobule right V, but other
474 than cerebellum involvement for both, no other overlapping brain areas were found [135].
475 The six remaining studies found no significant correlations between conventional MRI and
476 depression or fatigue scores [132-134, 138, 140, 141]. Likewise, two studies that used DTI
477 reported no association between diffusion measures and fatigue or depression [138, 139].
478 Out of two studies studying functional connectivity, only Jaeger et al. reported two
479 overlapping brain areas using rs-fMRI [134]. Specifically, they observed negative
480 correlations of both BDI and FSS scores with functional connectivity of the ventral striatum
481 and post-central gyrus [134]. Golde et al., on the other hand, found no overlap between the
482 two symptoms and rs-fMRI measures [138].

483

484 Given the small number of studies studying depression and fatigue together, and the lack of
485 overlap, the five studies were included in the total counts/summaries of studies investigating
486 depression and fatigue separately.

487

488 **3.5.2 Studies focusing on either depression or fatigue alone**

489 Six out of eleven publications studying *only* depression in relation to MRI measures did not
490 include fatigue assessments [96, 97, 100, 102, 136, 137], and no studies excluded
491 individuals with high fatigue scores. The remaining 5/11 studies either controlled for fatigue

492 status [29, 47, 101] or included fatigue as a covariate or a clinical symptom of no interest
493 [98, 99]. Of the 41 publications reporting results of MRI measures in relation to fatigue *only*,
494 29/41 included depression assessments [35, 104-107, 109, 110, 114-119, 122-124, 126-
495 131, 146-151], with 14/29 excluding participants with high depression scores [35, 104, 105,
496 110, 114, 117-119, 122, 124, 126, 127, 129, 131] and 10/29 controlling for depression status
497 [106, 107, 109, 123, 128, 130, 145, 146, 150, 151], or both (5/29) [115, 116, 147-149].

498

499 **3.5.3 Overlapping brain regions**

500 For conventional MRI, several brain structures suggested to be associated with depression
501 severity were also observed to be involved in fatigue in pwRRMS. Specifically, thalamic
502 [100, 106, 109, 117, 127, 144, 147], cerebellar [109, 135, 144], corpus callosum [118, 137,
503 144], right superior temporal region [47, 104] and precentral gyrus [47, 144] volumes were
504 negatively correlated with depression and fatigue scores in at least one study per symptom
505 (Fig 2 and Table 2). For structural connectivity, overlap between associations reported for
506 dMRI measures and fatigue or depression was observed in the cingulum (Fig 2 and Table
507 3). Meanwhile, functional connectivity changes of the thalamus [102, 122, 126, 129],
508 cerebellum [102, 115, 122, 124, 129], and DLPFC [99, 115, 124, 125, 134] were observed in
509 association with fatigue or depression in at least one study per symptom (Fig 2 and Table 4).
510 Additionally, the postcentral- [35, 102, 129, 134] and precentral gyrus [110, 129, 134, 144,
511 148] of the SMN, supramarginal gyrus [102, 123, 134], DMN [111, 141, 151], dorsal
512 attention network [111, 141], ventral tegmental area [102, 134] and superior ventral striatum
513 [134] showed altered functional connectivity associated with depression and fatigue scores
514 in at least one study per symptom (Table 1).

515

516 **4. Discussion**

517

518 This study systematically examined the literature for conventional MRI, structural and
519 functional brain connectivity features associated with fatigue and depression in individuals
520 with RRMS. Brain connectivity changes underlying fatigue have been observed in the
521 cortico-thalamic-basal ganglial networks, while abnormal connectivity in the cortico-limbic
522 networks was associated with depression. Some overlapping changes in depression and
523 fatigue were observed for structural connectivity of the cingulum, and functional connectivity
524 of the cerebellum, thalamus, frontal lobe, supramarginal gyrus, ventral tegmental area,
525 superior ventral striatum, DMN, attention networks, and pre/post-central gyri. Overall, the
526 literature reported mixed results, with half of the studies observing no significant associations
527 and a limited number of studies investigating brain connectivity changes underlying
528 depression in pwRRMS.

529 **4.1 Brain connectivity changes underlying depression in** 530 **pwRRMS**

531 **4.1.1 Cortico-limbic network**

532 Depression in pwRRMS was associated with areas of the limbic system, especially the
533 hippocampus and amygdala in five included studies. Nigro reported structural connectivity
534 changes between the hippocampus, amygdala, and frontal areas in RRMS patients with
535 depression [98]. Functional connectivity changes of the amygdala and hippocampus were
536 also observed [99, 102] as was hippocampal atrophy [97, 100]. Their involvement in
537 depression is perhaps unsurprising as both regions are associated with emotion-related
538 functions [155]. The limbic system in general is thought to be responsible for emotional
539 responses, long-term memory, fear conditioning, sleep, motivation, and social cognition
540 [156], many of which are involved in depression. The hippocampus specifically is a part of

541 the cholinergic system - involved in arousal, attention, cognition, and memory - and relates
542 to emotion-regulating brain regions [157]. The amygdala is linked to emotion regulation and
543 memory, as well as fear conditioning [158]. Previous literature supports the role of
544 hippocampal and amygdala involvement in major depression disorder (MDD). The
545 hippocampus, in particular, plays a key role in depression [158], with ample studies
546 observing hippocampal atrophy and functional changes in MDD [159-163]. It has also been
547 previously suggested that neuroinflammation in the hippocampus contributes to
548 development of depression in mixed subtype MS [164]. Studies have also shown altered
549 amygdala functional connectivity in depression in MS of various types [165, 166] as well as
550 abnormal functional connectivity between the amygdala and other brain regions in people
551 with MDD [167].

552

553 **4.1.1.1 Fronto-limbic network: PFC**

554 Disrupted connectivity between limbic structures and the frontal lobe may be underlying
555 depressive symptomatology in pwRRMS, according to five included studies. RRMS patients
556 with high depression scores showed structural connectivity changes in several regions of the
557 fronto-limbic network, i.e., between the hippocampus or amygdala and the PFC, which are
558 all involved in emotional behaviour, cognition, and motor control [98, 102]. This is in line with
559 previous research showing that abnormal structural connectivity of the fronto-limbic network
560 may be evident in MDD [168, 169]. Furthermore, functional connectivity between the DLPFC
561 and limbic structures was also linked to depression in pwRRMS [99]. The DLPFC controls
562 working memory, goal-directed action, abstract reasoning and attention, and impairments of
563 these functions may contribute to depression [170].

564

565 **4.1.1.2 Orbitofrontal cortex and cingulate cortex**

566 Additionally, functional connectivity changes between the orbitofrontal cortex and
567 hippocampus [99], as well as orbital frontal atrophy [47], were also related to depression in

568 pwRRMS. As the orbitofrontal cortex has a key role in emotion and decision-making, as well
569 as reward circuits [171], its association with MDD is not surprising [172]. Moreover,
570 functional connectivity changes of the subgenual anterior cingulate cortex (ACC) [99], as
571 well as the cholinergic network (e.g., nucleus basalis, angular gyrus, amygdala and
572 postcentral and supramarginal gyri) [102], was associated with depression in pwRRMS. The
573 ACC is involved in regulating emotion, and its atrophy has been linked to anhedonia and
574 MDD [173, 174]. Changes in choline levels within the AAC and frontal lobe have been
575 observed in MDD and might be a potential marker for treatment outcomes in depressed
576 patients [102, 175, 176].

577

578 **4.1.1.3 Fronto-limbic network: cingulum, fornix and uncinate fasciculus**

579 Hassan et al. observed structural connectivity changes in RRMS patients with depression in
580 the WM pathways within the fronto-limbic network, i.e., the cingulum, fornix and uncinate
581 fasciculus [136]. The uncinate fasciculus connects the temporal lobe (containing the
582 hippocampus and amygdala) and PFC [177]. It is involved in cognitive functioning, especially
583 spatial and episodic verbal memory [177]. The fornix is the major pathway of the
584 hippocampus and is associated with verbal memory [178]. The cingulum is associated with
585 attention and executive functioning, and connects frontal, parietal and temporal lobes.
586 Indeed, microstructural changes in the cingulum and uncinate fasciculus were correlated
587 with depressive symptoms in MDD [179].

588

589 **4.1.1.4 Monoamine networks**

590 In addition, Carotenuto et al. observed altered serotonergic-noradrenergic networks (e.g.,
591 between cerebellum and nucleus accumbens, hypothalamus, amygdala, thalamus, locus
592 coeruleus, ventral tegmental area; brainstem and hypothalamus) in RRMS patients with
593 depression [102]. These networks were linked to functional connectivity pathways between
594 the cerebellum and hypothalamus, amygdala, and thalamus in depressed pwRRMS [102].

595 Indeed, the monoaminergic hypothesis suggests that imbalances within serotonergic-
596 noradrenergic systems contribute to depression [180]. The serotonin network connects to
597 cortical, limbic and brainstem regions, and is linked to the sensory, motor, or limbic systems
598 [102, 181]. Additionally, serotonin modulates fronto-limbic circuitry in depression [182].
599 Meanwhile, adrenergic pathways terminate in the frontal cortex, the amygdala and the
600 ventral striatum, and noradrenaline system controls executive functioning, cognition, and
601 motivation [183, 184]. Loss of dopamine and noradrenaline network connectivity in the limbic
602 system has been linked to depression in Parkinson's disease [183].

603

604 **4.1.2 Summary**

605 Depression in RRMS patients was mostly associated with connectivity and structural
606 changes in cortico-limbic network, especially parts involved in fronto-limbic system:
607 hippocampus, amygdala and PFC. This is consistent with abnormal cortical-limbic
608 connectivity in MDD [185]. It is, however, difficult to draw firm conclusions from our study, as
609 limited studies investigated brain connectivity underlying depression in pwRRMS. Overall,
610 these findings suggest that clinical manifestations of depression in people with pwRRMS and
611 MDD may have a shared biological basis, i.e., neurodegeneration in terms of myelin and
612 axonal loss, and atrophy, of similar brain regions [90]. It would be of interest to compare
613 brain changes in MDD with depression in pwRRMS, which may improve understanding of
614 disease mechanisms in both conditions and could potentially lead to better treatments.
615 Given depression is a highly common and debilitating symptom in pwRRMS [5], there is a
616 great need for studies assessing depression in relation to MRI outcomes, particularly studies
617 with a longitudinal design assessing brain changes underlying depression throughout the
618 disease course.

619 **4.2 Brain connectivity underlying fatigue in pwRRMS**

620 **4.2.1 Cortico-limbic system**

621 **4.2.1.1 Thalamus**

622 Both functional [122, 126, 129] and structural connectivity [117] changes of the thalamus are
623 associated with fatigue in pwRRMS, according to four included studies. Moreover, fatigue in
624 pwRRMS was associated with thalamic atrophy in five studies [106, 109, 127, 144, 147],
625 while a study by Wilting et al. found a correlation between thalamic WML volume and fatigue
626 measures in pwRRMS [117]. This is supported by findings from Arm et al. reporting similar
627 results for all MS subtypes [57]. Indeed, many previous studies have found the thalamus to
628 be implicated in fatigue mixed subtype MS [186]. The thalamus controls many functions,
629 ranging from relaying sensory and motor signals [187], as well as regulation of
630 consciousness and alertness [188], and is also involved in cognitive functioning [189] and in
631 regulating the sleep-wake cycle [190]. Fatigue has been previously linked to structural
632 damage of the thalamus in post-stroke patients [191], as well as prefrontal cortex and
633 thalamus atrophy in chronic fatigue syndrome (CFS) [192].

634

635 Structural connectivity of the anterior thalamic radiation, connecting the thalamus with the
636 PFC and cingulate gyrus, was also found to be associated with fatigue in pwRRMS in one
637 study [114]. This is in line with observed structural connectivity changes in thalamic
638 radiation, which have been associated with fatigue in individuals with traumatic brain injury.
639 These findings suggest that impaired communication between cortical and thalamic areas
640 may contribute to the development of fatigue [193, 194].

641

642 **4.2.1.2 Frontal lobe**

643 The PFC showed altered functional activity and connectivity, as well as atrophy, in RRMS
644 patients with fatigue in eleven included studies [35, 110, 115, 124-126, 129, 134, 138, 143,
645 148]. Part of the PFC, the DLPFC, may play a key role in fatigue in MS (not specific to
646 RRMS). Specifically, it is part of the 'cortico-thalamo-striato-cortical loop', which has been
647 suggested to underlie fatigue in generic MS [89, 195]. In line with these findings, previous
648 research has found links between fatigue and DLPFC activity in healthy subjects and has

649 also suggested the DLPFC as one of the central ‘nodes’ of the fatigue network in healthy
650 individuals [196, 197]. Moreover, studies found that transcranial direct current stimulation of
651 the DLPFC improved fatigue in (RR)MS [195, 198].

652

653 The superior (SFG), middle (MFG) and inferior (IFG) frontal gyri showed changes in
654 functional connectivity [110, 126, 134, 148] and activation [35, 122, 124, 129] in relation to
655 fatigue in pwRRMS, according to eight included studies. This is supported by observed SFG
656 and MFG atrophy, as well as cortical thickness changes in the MFG [104, 106, 144]. The
657 SFG and MFG both control working memory, but the SFG is thought to contribute to higher
658 cognitive functions, while MFG is related to attention, especially reorienting to unexpected
659 stimuli [199, 200]. Previously, Sepulcre et al. reported that fatigue correlated with atrophy in
660 both the SFG and MFG in mixed subtype MS [201]. Additionally, IFG is implicated in
661 processes associated with attention and task-switching functions [202] and has been linked
662 to CFS [203].

663

664 Functional connectivity changes were also observed in brain motor areas in ten included
665 studies [35, 110, 122-124, 129, 134, 144, 148, 149]. The premotor cortex plays a role in
666 motor fatigue specifically, in healthy individuals [204], and is involved in planning and
667 organizing movements and actions [205]. Furthermore, SMA contributes to the simple motor
668 control and pre-SMA is involved in complex cognitive and motor control [206, 207]. Both
669 SMA and pre-SMA showed changes in activation due to fatigue, with the former being more
670 activated in motor fatigue especially [207]. Additionally, fatigue in pwRRMS was also found
671 to be associated with functional changes in the pre- and postcentral gyrus of the SMN,
672 controlling voluntary motor movement and proprioception, respectively [208]. This is
673 supported by previously observed decreased functional activity of the precentral cortex [209,
674 210] in CFS [192]. Similarly, functional connectivity of the postcentral gyrus was also
675 affected in CFS [210].

676

677 **4.2.1.3 Parietal and temporal lobes**

678 Functional connectivity changes of the supramarginal gyrus and precuneus were both
679 associated with fatigue in pwRRMS in six included studies [110, 122, 123, 129, 134, 148]. In
680 line with this, reduced functional connectivity of the supramarginal gyrus and postcentral
681 gyrus was associated with fatigue in CFS [210], and FC in supramarginal gyrus was
682 associated with fatigue in traumatic brain injury [211]. The supramarginal gyrus is a part of
683 the frontoparietal network, and plays a role in attention, verbal working memory and
684 emotional responses [211-213]. The precuneus, on the other hand, is involved in higher-
685 order neurocognitive processes, including motor coordination, mental rotation, and episodic
686 memory retrieval [214]. Indeed, Chen et al. previously reported that cognitive fatigue in
687 generic MS was correlated with reduced functional connectivity of the precuneus [215].

688

689 Fatigue scores were associated with altered functional connectivity of temporal gyri in four
690 studies [35, 111, 129, 134], and reduced FA in the R-temporal lobe [119]. Moreover, atrophy
691 and lesion studies have shown temporal lobe atrophy and white matter lesions in fatigue
692 pwMS [104, 216]. The role of the temporal lobes in fatigue is further supported by previous
693 literature showing temporal lobe involvement in fatigue in Parkinson's disease [217, 218].

694

695 **4.2.1.4 Cingulum and cingulate gyrus**

696 Fatigue in pwRRMS was associated with structural [113] and functional connectivity changes
697 [110, 122, 129, 148], as well as atrophy, in the cingulate cortex [104, 144] in seven included
698 studies. It is a key component of the limbic system [219], and is involved in processing
699 emotions and behaviour regulation [220]. Indeed, previous research associated abnormal
700 functional connectivity change of the cingulate with fatigue in CFS [221]. The cingulate gyrus
701 is closely connected to the cingulum, which links it with subcortical nuclei [222]. Both
702 structural and functional connectivity changes of the cingulum were associated with fatigue
703 [113, 114, 129]. The cingulum is a prominent WM tract required for motivational processes,
704 mood modulation, and emotion recognition [114]. Previously, a link between lesions in the

705 cingulum and fatigue has been observed in mixed subtype MS [201]. Additionally, fatigue in
706 Parkinson's disease was correlated with altered functional connectivity in the cingulum [223].

707

708 **4.2.2 Basal ganglia**

709 Basal ganglia regions also play a role in fatigue symptomatology in pwRRMS, as both
710 structural [117] and functional connectivity [35, 106, 110, 119, 124-126, 129, 134, 141, 151]
711 changes, and atrophy [35, 104, 106, 109, 110, 124], were observed in RRMS patients with
712 fatigue. The basal ganglia nuclei are primarily responsible for motor control, motor learning,
713 executive functions, and behaviours, as well as emotions [224]. Previous research by
714 Nakagawa et al. suggested that abnormal function of the motor and dopaminergic system in
715 the basal ganglia, which are associated with motivation and reward, are underlying fatigue in
716 CFS [225]. This is further supported by basal ganglia changes in association with fatigue in
717 Parkinson's disease and in healthy subjects [226].

718

719 Abnormal activation of basal ganglia has also been observed in fatigued RRMS patients
720 [124, 129] by two included studies. This is in line with healthy ageing research showing that
721 cortico-striatal networks play a role in fatigue [227]. The striatum (a basal ganglia nuclei) is
722 associated with cognitive control and motivation [228], both functions related to fatigue [229].
723 A key WM tract in the fronto-striatal network is the inferior fronto-occipital fasciculus, which
724 has shown structural connectivity abnormalities in fatigue in pwRRMS [114]. In support of
725 this, inferior fronto-occipital fasciculus atrophy has been observed in people with CFS [230].
726 Interestingly, previous research has suggested the dopamine imbalance hypothesis, which
727 supposes that fatigue arises due to a dopamine imbalance within the fronto-striatal network
728 in pwRRMS [231]. Furthermore, it has also been suggested that connectivity changes in this
729 tract may negatively affect the integration of sensory information and inhibition control over
730 impulses and emotion [232], leading to fatigue.

731

732 Another WM tract important for basal ganglia functioning is the internal capsule. It connects
733 the basal ganglia with the limbic network [103, 233] and contributes to physical movement
734 and perception of sensory information [234]. Here, we observed that structural connectivity
735 of the internal capsule was associated with fatigue scores in pwRRMS [114]. This is
736 supported by previous findings showing reduced white matter microstructural integrity of the
737 internal capsule in fatigue in traumatic brain injury [234].

738

739 **4.2.3 Cerebellum**

740 Functional connectivity of the cerebellum was associated with fatigue scores in pwRRMS in
741 two included studies [124, 129]. This is supported by two other studies associating fatigue
742 and cerebellar atrophy [135, 144]. In line with this, cerebellar lesion volume was identified as
743 an independent predictor of fatigue in pwRRMS [109]. Similarly, cerebellar volume has
744 previously been found to predict fatigue severity changes in early MS [235]. The cerebellum
745 plays a critical role in sensorimotor behaviour, automation [236] and cognitive tasks [135].
746 Indeed, increased activation in cerebellum in mixed subtype MS was linked to cognitive
747 fatigue during a task-switching task [237] and changes in cerebellar activity in healthy
748 volunteers were associated with a motor fatigue in fMRI study [207].

749

750 **4.2.4 Default mode network**

751 Reduced activity [111] and dynamic functional connectivity [151] in the DMN was associated
752 with fatigue. This was supported by structural connectivity changes and atrophy in regions of
753 the DMN observed in fatigued pwRRMS [143, 144]. The DMN is involved in emotional
754 processing, memory and task performance [238, 239], and the observed link between
755 altered DMN connectivity and fatigue in pwMS may potentially be due to microstructural
756 damage, or rearrangement of networks to compensate for DMN dysfunction [87, 240]. The
757 role of the DMN changes underlying fatigue is further supported by reported associations of

758 fatigue and increased activation of the DMN in CFS patients [241] and DMN
759 hyperconnectivity in breast cancer survivors [240].

760

761 **4.2.5 Summary**

762 The existing literature indicate that structural and functional changes in regions of the
763 cortico-thalamocortical and cortical-subcortical circuits are associated with fatigue. There
764 seems to be an overlap of different MRI measures relating to fatigue in thalamus, basal
765 ganglia, cingulum, cerebellum, cingulate cortices, motor areas, and regions in the frontal,
766 temporal, and parietal lobes in patients with RRMS. Most of these regions are thought to be
767 involved in motor and cognitive functions as well as reward seeking behaviour which fatigue
768 has been previously shown to affect [242-244]. Overall, these results suggest a link between
769 fatigue and neurodegenerative processes in specific areas of the brain. The similarities
770 between brain changes associated with fatigue in pwRRMS and other disorders suggest that
771 damage to distinct structures could lead to development of fatigue. It may also indicate a
772 possibility for shared treatments such as cognitive behavioural therapy and balance and/or
773 multicomponent exercise, both of which show promising results in CFS [245, 246]. However,
774 about half of the literature in this review reported negative findings, and the positive findings
775 were highly variable.

776

777 **4.3 Overlapping brain connectivity changes associated** 778 **with Depression and fatigue in pwRRMS**

779 Depression and fatigue are interlinked and overlap in symptomatology [9, 48], making it
780 difficult to differentiate between them in pwRRMS. This is further complicated by the
781 multidimensional nature of fatigue and the influence of factors such as sleep disturbance and
782 neuropathic pain on both depression and fatigue in people with mixed subtype MS [247].

783 Previous literature investigating associations between depression and fatigue in people with
784 any subtype of MS have given disparate results, but with consensus that there is some
785 association between them [248, 249]. The current review indeed suggests that there may be
786 overlap in brain changes underlying fatigue and depression in pwRRMS. Specifically,
787 structural connectivity in cingulum and functional connectivity in cerebellum, thalamus, PFC,
788 supramarginal gyrus, ventral tegmental area, superior ventral striatum, DMN, attention
789 networks, and pre/post-central gyri. There is ample evidence of these regions' involvement
790 in both depression and fatigue [57, 113, 114, 135, 188, 215, 222, 231, 240, 250-258].
791 However, FC changes included in this study displayed heterogeneity, likely due to
792 differences in study design, methodology, and disease stage. Both depression and fatigue
793 were associated with connectivity changes in the cortico-limbic network, and especially the
794 fronto-limbic network. However, especially due to limited studies investigating depression in
795 pwRRMS, more research is needed to pinpoint the underlying mechanisms driving these
796 comorbidities.

797

798 **4.4 Limitations of studies included in the systematic review**

799 First, studies included in the review were heterogeneous in methodology, particularly around
800 study design, fatigue, and depression assessments (e.g., inclusion/exclusion criteria),
801 imaging protocols (including different MRI systems and strengths), sample size, and
802 reporting of results. Furthermore, studies used different data processing protocols and
803 statistical analysis approaches. Lack of standardisation in acquisition and imaging
804 processing methods significantly reduces the ability of researchers to combine data
805 meaningfully from different studies. Such differences make it difficult to formally compare
806 studies and replication studies are needed.

807

808 Secondly, the innate and complex interaction and overlap between fatigue and depression
809 limits interpretation of the findings. We tried to limit the variation by only including depression

810 and fatigue assessments validated in MS and by focusing on the most ‘popular’ imaging
811 techniques. As depression and fatigue are multifaceted disorders, with variable symptoms
812 and manifestations, separating the symptoms by their function (as was done for
813 motor/cognitive fatigue) could help to clarify the issue in the future. Moreover, many studies
814 assessing the link between MRI outcomes and fatigue did not consider depression status -
815 and vice versa. This makes it challenging to attribute findings to one symptom alone,
816 especially as depression and fatigue are so intertwined.

817

818 Moreover, some studies were focusing on regions previously associated with depression
819 and fatigue in RRMS, thus, potentially overlooking other significant parts of the brain.

820

821 Similarly, very few studies investigated both symptoms together, preventing any firm
822 conclusions to be drawn on shared disease mechanisms in the brain between fatigue and
823 depression in pwRRMS. Therefore, overlapping results are based on comparing study
824 outcomes for fatigue and depression separately. This illustrates the lack of research on the
825 link between depression and fatigue in pwRRMS and indicates future research should focus
826 on further elucidation of underlying disease mechanisms for both symptoms combined,
827 particularly using advanced imaging methods that allow for detection of more subtle brain
828 changes.

829

830 **4.5 Limitations of this study**

831 The scope of our review was limited, resulting from database screenings done without
832 citation mapping. We expect, however, that as three databases were explored, most relevant
833 literature has been covered. Only publications in English were considered, which may mean
834 some findings have been missed. Additionally, studies assessing the effects of drug
835 treatments were excluded and hence relevant information potentially unrelated to the
836 therapy may have been missed. Furthermore, in order to reduce possibly incorrect

837 conclusions based on samples with low numbers of participants, we chose a cut-off value of
838 ≥ 20 . Although we realise this is an arbitrary threshold, we had to balance between excluding
839 too few or too many papers. We also only focused on brain connectivity using dMRI and
840 fMRI and did not consider other microstructural or physiological imaging methods (e.g.,
841 magnetisation transfer imaging, MR spectroscopy, or positron emission tomography).
842 Moreover, there were very few studies using NODDI or PSMD, and none met our inclusion
843 criteria. Future reviews should include such measures to further elucidate common
844 mechanisms for fatigue and depression in pwRRMS.
845 Additionally, we did not include spinal cord imaging studies given the relative lack of studies
846 investigating spinal cord connectivity, likely due to technical limitations [259]. Furthermore,
847 we did not formally assess publication bias, however, aimed to provide a complete overview
848 of positive and negative outcomes. Lastly, qualitative approach prevents accurately
849 assessing the strength of interactions. The studies included in this review used standard
850 statistical significance cut-off values, and where correlations were statistically significant,
851 they tended to be weak. In the future, a rigorous quantitative analysis could elucidate the
852 heterogeneity of the current results.

853 **4.6 Conclusion**

854 Overall, the results presented were highly variable; half of those reviewed found no
855 significant associations between brain connectivity measures and depression or fatigue.
856 Studies reporting positive findings showed that a) brain connectivity and macrostructural
857 changes in the cortico-thalamic-basal ganglial network were associated with fatigue in
858 pwRRMS, b) cortico-limbic networks were associated with depression in pwRRMS, and c)
859 structural connectivity in the cingulum and functional connectivity in the cerebellum,
860 thalamus, frontal lobe, supramarginal gyrus, ventral tegmental area, superior ventral
861 striatum, DMN, attention networks, and pre/post-central gyri was affected in both fatigue and
862 depression in pwRRMS. This may suggest that disease processes within these regions are
863 responsible for depression and fatigue in pwRRMS, albeit not consistent findings across the

864 literature. These mixed findings are most likely due to heterogeneous methodology across
865 the studies. Only a small number of studies investigated brain connectivity in depression, or
866 in both depression and fatigue combined. Moreover, the complex relationship and overlap
867 between these two phenomena complicates interpretation of findings. Further adequately
868 powered studies using optimised structural, microstructural, and functional imaging
869 measures in well-characterised RRMS cohorts with validated indices of fatigue and
870 depression are required to determine jointly affected brain areas in depression and fatigue,
871 and further elucidate disease mechanisms underlying these symptoms. Moreover, studies
872 employing additional imaging modalities such as positron emission tomography (PET) could
873 be reviewed to further investigate the relationship between brain changes and
874 fatigue/depression in pwRRMS.

875

876 **Acknowledgements**

877

878 For open access, the author has applied a Creative Commons Attribution (CC BY) licence to
879 any Author Accepted Manuscript version arising from this submission.

880

881 **Funding**

882

883 Funding for authors came from the MS Society Edinburgh Centre for MS Research (grant
884 reference 133;AK, RM), Chief Scientist Office – SPRINT MND/MS program (grant reference
885 MMPP/01; ENY), the Anne Rowling Regenerative Neurology Clinic (ENY), and the UK
886 Dementia Research Institute which receives its funding from UK DRI Ltd, funded by the UK
887 Medical Research Council, Alzheimer’s Society and Alzheimer’s Research UK (SC).

888

889 **Competing interests**

890

891 The authors declare no conflicts of interest relevant to this paper.

892

893

894

895 **References**

- 896 1. Yamout BI, Alroughani R. Multiple Sclerosis. *Semin Neurol*. 2018;38(2):212-25. Epub
897 2018/05/24. doi: 10.1055/s-0038-1649502. PubMed PMID: 29791948.
- 898 2. Joy JE, Johnston RB. Multiple sclerosis current status and strategies for the future / Janet E.
899 Joy and Richard B. Johnston, Jr., editors ; Committee on Multiple Sclerosis: Current Status and
900 Strategies for the Future, Board on Neuroscience and Behavioral Health, Institute of Medicine.
901 Washington, D.C: National Academy Press; 2001.
- 902 3. Klineova S, Lublin FD. Clinical Course of Multiple Sclerosis. *Cold Spring Harb Perspect Med*.
903 2018;8(9):a028928. doi: 10.1101/cshperspect.a028928. PubMed PMID: 29358317.
- 904 4. Thompson AJ, Banwell BL, Barkhof F, Carroll WM, Coetzee T, Comi G, et al. Diagnosis of
905 multiple sclerosis: 2017 revisions of the McDonald criteria. *The Lancet Neurology*. 2018;17(2):162-
906 73. doi: [https://doi.org/10.1016/S1474-4422\(17\)30470-2](https://doi.org/10.1016/S1474-4422(17)30470-2).
- 907 5. Solaro C, Gamberini G, Masuccio FG. Depression in Multiple Sclerosis: Epidemiology,
908 Aetiology, Diagnosis and Treatment. *CNS Drugs*. 2018;32(2):117-33. doi: 10.1007/s40263-018-0489-
909 5.
- 910 6. Mohr DC, Hart SL, Goldberg A. Effects of treatment for depression on fatigue in multiple
911 sclerosis. *Psychosom Med*. 2003;65(4):542-7. Epub 2003/07/29. doi:
912 10.1097/01.psy.0000074757.11682.96. PubMed PMID: 12883103.
- 913 7. Brenner P, Piehl F. Fatigue and depression in multiple sclerosis: pharmacological and non-
914 pharmacological interventions. *Acta Neurologica Scandinavica*. 2016;134(S200):47-54. doi:
915 <https://doi.org/10.1111/ane.12648>.
- 916 8. Boeschoten RE, Braamse AMJ, Beekman ATF, Cuijpers P, van Oppen P, Dekker J, et al.
917 Prevalence of depression and anxiety in Multiple Sclerosis: A systematic review and meta-analysis. *J*
918 *Neurol Sci*. 2017;372:331-41. Epub 2016/12/27. doi: 10.1016/j.jns.2016.11.067. PubMed PMID:
919 28017241.
- 920 9. Braley TJ, Chervin RD. Fatigue in multiple sclerosis: mechanisms, evaluation, and treatment.
921 *Sleep*. 2010;33(8):1061-7. Epub 2010/09/08. doi: 10.1093/sleep/33.8.1061. PubMed PMID:
922 20815187; PubMed Central PMCID: PMC2910465.
- 923 10. Heiser K. Depression and Fatigue Are Primary Factors that Influence Overall Quality of Life in
924 People with Multiple Sclerosis [M.S.]. United States -- New York: State University of New York at
925 Buffalo; 2023.
- 926 11. Ziemssen T. Multiple sclerosis beyond EDSS: depression and fatigue. *Journal of the*
927 *Neurological Sciences*. 2009;277:S37-S41. doi: [https://doi.org/10.1016/S0022-510X\(09\)70011-5](https://doi.org/10.1016/S0022-510X(09)70011-5).
- 928 12. Kroencke DC, Lynch SG, Denney DR. Fatigue in multiple sclerosis: relationship to depression,
929 disability, and disease pattern. *Mult Scler*. 2000;6(2):131-6. doi: 10.1177/135245850000600213.
930 PubMed PMID: 10773860.

- 931 13. Corfield EC, Martin NG, Nyholt DR. Co-occurrence and symptomatology of fatigue and
932 depression. *Comprehensive Psychiatry*. 2016;71:1-10. doi:
933 <https://doi.org/10.1016/j.comppsy.2016.08.004>.
- 934 14. Greeke EE, Chua AS, Healy BC, Rintell DJ, Chitnis T, Glanz BI. Depression and fatigue in
935 patients with multiple sclerosis. *Journal of the Neurological Sciences*. 2017;380:236-41. doi:
936 10.1016/j.jns.2017.07.047.
- 937 15. Valentine TR, Alschuler KN, Ehde DM, Kratz AL. Prevalence, co-occurrence, and trajectories
938 of pain, fatigue, depression, and anxiety in the year following multiple sclerosis diagnosis. *Multiple*
939 *Sclerosis Journal*. 2022;28(4):620-31. doi: 10.1177/13524585211023352. PubMed PMID: 34132141.
- 940 16. Kratz AL, Murphy SL, Braley TJ. Pain, Fatigue, and Cognitive Symptoms Are Temporally
941 Associated Within but Not Across Days in Multiple Sclerosis. *Archives of Physical Medicine and*
942 *Rehabilitation*. 2017;98(11):2151-9. doi: <https://doi.org/10.1016/j.apmr.2017.07.003>.
- 943 17. Wood B, van der Mei IA, Ponsonby AL, Pittas F, Quinn S, Dwyer T, et al. Prevalence and
944 concurrence of anxiety, depression and fatigue over time in multiple sclerosis. *Mult Scler*.
945 2013;19(2):217-24. Epub 20120622. doi: 10.1177/1352458512450351. PubMed PMID: 22729988.
- 946 18. Chitnis T, Vandercappellen J, King M, Bricchetto G. Symptom Interconnectivity in Multiple
947 Sclerosis: A Narrative Review of Potential Underlying Biological Disease Processes. *Neurology and*
948 *Therapy*. 2022;11(3):1043-70. doi: 10.1007/s40120-022-00368-2.
- 949 19. Langdon DW. Cognition in multiple sclerosis. *Current Opinion in Neurology*. 2011;24(3).
- 950 20. Patrick E, Christodoulou C, Krupp L. Longitudinal correlates of fatigue in multiple sclerosis.
951 *Multiple Sclerosis Journal*. 2009;15(2):258-61. doi: 10.1177/1352458508097466. PubMed PMID:
952 19181775.
- 953 21. Alschuler KN, Ehde DM, Jensen MP. The co-occurrence of pain and depression in adults with
954 multiple sclerosis. *Rehabil Psychol*. 2013;58(2):217-21. doi: 10.1037/a0032008. PubMed PMID:
955 23713732; PubMed Central PMCID: PMC4467568.
- 956 22. American Psychiatric Association. *Diagnostic and statistical manual of mental disorders :*
957 *DSM-5. Fifth edition.* ed. Arlington, VA: American Psychiatric Association; 2013.
- 958 23. Dean J, Keshavan M. The neurobiology of depression: An integrated view. *Asian Journal of*
959 *Psychiatry*. 2017;27:101-11. doi: <https://doi.org/10.1016/j.ajp.2017.01.025>.
- 960 24. Duval F, Lebowitz BD, Macher J-P. Treatments in depression. *Dialogues in Clinical*
961 *Neuroscience*. 2006;8(2):191-206. doi: 10.31887/DCNS.2006.8.2/fduval.
- 962 25. Patten SB, Burton JM, Fiest KM, Wiebe S, Bulloch AGM, Koch M, et al. Validity of four
963 screening scales for major depression in MS. *Multiple Sclerosis Journal*. 2015;21(8):1064-71. doi:
964 10.1177/1352458514559297.
- 965 26. Beal CC, Stuijbergen AK, Brown A. Depression in Multiple Sclerosis: A Longitudinal Analysis.
966 *Archives of Psychiatric Nursing*. 2007;21(4):181-91. doi: <https://doi.org/10.1016/j.apnu.2007.02.008>.
- 967 27. Sá MJ. Psychological aspects of multiple sclerosis. *Clinical Neurology and Neurosurgery*.
968 2008;110(9):868-77. doi: <https://doi.org/10.1016/j.clineuro.2007.10.001>.
- 969 28. Pucak ML, Carroll KAL, Kerr DA, Kaplin AL. Neuropsychiatric manifestations of depression in
970 multiple sclerosis: neuroinflammatory, neuroendocrine, and neurotrophic mechanisms in the
971 pathogenesis of immune-mediated depression. *Dialogues in Clinical Neuroscience*. 2007;9(2):125-39.
972 doi: 10.31887/DCNS.2007.9.2/mpucak.
- 973 29. Rojas JJ, Sanchez F, Patrucco L, Miguez J, Besada C, Cristiano E. Brain structural changes in
974 patients in the early stages of multiple sclerosis with depression. *Neurol Res*. 2017;39(7):596-600.
975 Epub 20170301. doi: 10.1080/01616412.2017.1298279. PubMed PMID: 28245725.
- 976 30. Lobentanz IS, Asenbaum S, Vass K, Sauter C, Klösch G, Kollegger H, et al. Factors influencing
977 quality of life in multiple sclerosis patients: disability, depressive mood, fatigue and sleep quality.
978 *Acta Neurol Scand*. 2004;110(1):6-13. doi: 10.1111/j.1600-0404.2004.00257.x. PubMed PMID:
979 15180801.

- 980 31. Tauil CB, Grippe TC, Dias RM, Dias-Carneiro RPC, Carneiro NM, Aguiar ACR, et al. Suicidal
981 ideation, anxiety, and depression in patients with multiple sclerosis. *Arq Neuropsiquiatr.*
982 2018;76(5):296-301. doi: 10.1590/0004-282x20180036. PubMed PMID: 29898075.
- 983 32. Schiffer RB, Babigian HM. Behavioral disorders in multiple sclerosis, temporal lobe epilepsy,
984 and amyotrophic lateral sclerosis. An epidemiologic study. *Arch Neurol.* 1984;41(10):1067-9. doi:
985 10.1001/archneur.1984.04050210065016. PubMed PMID: 6477214.
- 986 33. Minden SL, Orav J, Reich P. Depression in multiple sclerosis. *General Hospital Psychiatry.*
987 1987;9(6):426-34. doi: [https://doi.org/10.1016/0163-8343\(87\)90052-1](https://doi.org/10.1016/0163-8343(87)90052-1).
- 988 34. Taylor L, Wicks P, Leigh PN, Goldstein LH. Prevalence of depression in amyotrophic lateral
989 sclerosis and other motor disorders. *Eur J Neurol.* 2010;17(8):1047-53. Epub 20100211. doi:
990 10.1111/j.1468-1331.2010.02960.x. PubMed PMID: 20158515.
- 991 35. Rocca MA, Meani A, Riccitelli GC, Colombo B, Rodegher M, Falini A, et al. Abnormal
992 adaptation over time of motor network recruitment in multiple sclerosis patients with fatigue. *Mult*
993 *Scler.* 2016;22(9):1144-53. Epub 20151022. doi: 10.1177/1352458515614407. PubMed PMID:
994 26493126.
- 995 36. Mills RJ, Young CA. A medical definition of fatigue in multiple sclerosis. *QJM: An*
996 *International Journal of Medicine.* 2008;101(1):49-60. doi: 10.1093/qjmed/hcm122.
- 997 37. Guidelines MSCP. Fatigue and multiple sclerosis: evidence based management strategies for
998 fatigue in multiple sclerosis. Washington D.C.: Paralyzed Veterans of America; 1998.
- 999 38. Marrelli K, Cheng AJ, Brophy JD, Power GA. Perceived Versus Performance Fatigability in
1000 Patients With Rheumatoid Arthritis. *Frontiers in Physiology.* 2018;9. doi: 10.3389/fphys.2018.01395.
- 1001 39. Kluger BM, Krupp LB, Enoka RM. Fatigue and fatigability in neurologic illnesses. *Neurology.*
1002 2013;80(4):409. doi: 10.1212/WNL.0b013e31827f07be.
- 1003 40. Jason LA, Evans M, Brown M, Porter N, Brown A, Hunnell J, et al. Fatigue Scales and Chronic
1004 Fatigue Syndrome: Issues of Sensitivity and Specificity. *Disabil Stud Q.* 2011;31(1):1375. PubMed
1005 PMID: 21966179.
- 1006 41. Learmonth YC, Dlugonski D, Pilutti LA, Sandroff BM, Klaren R, Motl RW. Psychometric
1007 properties of the Fatigue Severity Scale and the Modified Fatigue Impact Scale. *J Neurol Sci.*
1008 2013;331(1-2):102-7. Epub 2013/06/25. doi: 10.1016/j.jns.2013.05.023. PubMed PMID: 23791482.
- 1009 42. Krupp LB, LaRocca NG, Muir-Nash J, Steinberg AD. The fatigue severity scale. Application to
1010 patients with multiple sclerosis and systemic lupus erythematosus. *Arch Neurol.* 1989;46(10):1121-3.
1011 doi: 10.1001/archneur.1989.00520460115022. PubMed PMID: 2803071.
- 1012 43. Penner IK, Raselli C, Stöcklin M, Opwis K, Kappos L, Calabrese P. The Fatigue Scale for Motor
1013 and Cognitive Functions (FSMC): validation of a new instrument to assess multiple sclerosis-related
1014 fatigue. *Mult Scler.* 2009;15(12):1509-17. Epub 2009/12/10. doi: 10.1177/1352458509348519.
1015 PubMed PMID: 19995840.
- 1016 44. Rottoli M, La Gioia S, Frigeni B, Barcella V. Pathophysiology, assessment and management of
1017 multiple sclerosis fatigue: an update. *Expert Rev Neurother.* 2017;17(4):373-9. Epub 20161021. doi:
1018 10.1080/14737175.2017.1247695. PubMed PMID: 27728987.
- 1019 45. Håkansson I, Johansson L, Dahle C, Vrethem M, Ernerudh J. Fatigue scores correlate with
1020 other self-assessment data, but not with clinical and biomarker parameters, in CIS and RRMS. *Mult*
1021 *Scler Relat Disord.* 2019;36:101424. Epub 20191001. doi: 10.1016/j.msard.2019.101424. PubMed
1022 PMID: 31586802.
- 1023 46. Gobbi C, Rocca MA, Pagani E, Riccitelli GC, Pravata E, Radaelli M, et al. Forceps minor
1024 damage and co-occurrence of depression and fatigue in multiple sclerosis. *Mult Scler.*
1025 2014;20(12):1633-40. Epub 20140416. doi: 10.1177/1352458514530022. PubMed PMID: 24740370.
- 1026 47. Nygaard GO, Walhovd KB, Sowa P, Chepkoech JL, Bjørnerud A, Due-Tønnessen P, et al.
1027 Cortical thickness and surface area relate to specific symptoms in early relapsing-remitting multiple
1028 sclerosis. *Mult Scler.* 2015;21(4):402-14. Epub 20140819. doi: 10.1177/1352458514543811. PubMed
1029 PMID: 25139946.

- 1030 48. Chang Y-T, Kearns PKA, Carson A, Gillespie DC, Meijboom R, Kampaite A, et al. Network
1031 analysis characterizes key associations between subjective fatigue and specific depressive symptoms
1032 in early relapsing-remitting multiple sclerosis. *Multiple Sclerosis and Related Disorders*.
1033 2022;104429. doi: <https://doi.org/10.1016/j.msard.2022.104429>.
- 1034 49. Siegert RJ, Abernethy DA. Depression in multiple sclerosis: a review. *Journal of Neurology,*
1035 *Neurosurgery & Psychiatry*. 2005;76(4):469-75. doi: 10.1136/jnnp.2004.054635.
- 1036 50. NICE. Multiple sclerosis in adults: management. NICE guideline [NG220]. In: NICE, editor.
1037 2022.
- 1038 51. Nourbakhsh B, Revirajan N, Morris B, Cordano C, Creasman J, Manguinao M, et al. Safety
1039 and efficacy of amantadine, modafinil, and methylphenidate for fatigue in multiple sclerosis: a
1040 randomised, placebo-controlled, crossover, double-blind trial. *The Lancet Neurology*. 2021;20(1):38-
1041 48. doi: [https://doi.org/10.1016/S1474-4422\(20\)30354-9](https://doi.org/10.1016/S1474-4422(20)30354-9).
- 1042 52. Filippi, Brück W, Chard D, Fazekas F, Geurts JGG, Enzinger C, et al. Association between
1043 pathological and MRI findings in multiple sclerosis. *The Lancet Neurology*. 2019;18(2):198-210. doi:
1044 [https://doi.org/10.1016/S1474-4422\(18\)30451-4](https://doi.org/10.1016/S1474-4422(18)30451-4).
- 1045 53. Symms M, Jäger HR, Schmierer K, Yousry TA. A review of structural magnetic resonance
1046 neuroimaging. *Journal of Neurology, Neurosurgery & Psychiatry*. 2004;75(9):1235-44. doi:
1047 10.1136/jnnp.2003.032714.
- 1048 54. Rovaris M, Rocca MA, Filippi M. Magnetic resonance-based techniques for the study and
1049 management of multiple sclerosis. *Br Med Bull*. 2003;65:133-44. Epub 2003/04/17. doi:
1050 10.1093/bmb/65.1.133. PubMed PMID: 12697621.
- 1051 55. Mollison D, Sellar R, Bastin M, Mollison D, Chandran S, Wardlaw J, et al. The clinico-
1052 radiological paradox of cognitive function and MRI burden of white matter lesions in people with
1053 multiple sclerosis: A systematic review and meta-analysis. *PLOS ONE*. 2017;12(5):e0177727. doi:
1054 10.1371/journal.pone.0177727.
- 1055 56. Barkhof F. The clinico-radiological paradox in multiple sclerosis revisited. *Curr Opin Neurol*.
1056 2002;15(3):239-45. Epub 2002/06/05. doi: 10.1097/00019052-200206000-00003. PubMed PMID:
1057 12045719.
- 1058 57. Arm J, Ribbons K, Lechner-Scott J, Ramadan S. Evaluation of MS related central fatigue using
1059 MR neuroimaging methods: Scoping review. *J Neurol Sci*. 2019;400:52-71. Epub 2019/03/25. doi:
1060 10.1016/j.jns.2019.03.007. PubMed PMID: 30903860.
- 1061 58. Grier MD, Zimmermann J, Heilbronner SR. Estimating Brain Connectivity With Diffusion-
1062 Weighted Magnetic Resonance Imaging: Promise and Peril. *Biological Psychiatry: Cognitive*
1063 *Neuroscience and Neuroimaging*. 2020;5(9):846-54. doi:
1064 <https://doi.org/10.1016/j.bpsc.2020.04.009>.
- 1065 59. Ugurbil K. What is feasible with imaging human brain function and connectivity using
1066 functional magnetic resonance imaging. *Philosophical Transactions of the Royal Society B: Biological*
1067 *Sciences*. 2016;371(1705):20150361. doi: doi:10.1098/rstb.2015.0361.
- 1068 60. Lassmann H. Pathogenic Mechanisms Associated With Different Clinical Courses of Multiple
1069 Sclerosis. *Front Immunol*. 2018;9:3116. Epub 20190110. doi: 10.3389/fimmu.2018.03116. PubMed
1070 PMID: 30687321; PubMed Central PMCID: PMC6335289.
- 1071 61. York EN, Meijboom R, Thrippleton MJ, Bastin ME, Kampaite A, White N, et al. Longitudinal
1072 microstructural MRI markers of demyelination and neurodegeneration in early relapsing-remitting
1073 multiple sclerosis: Magnetisation transfer, water diffusion and g-ratio. *NeuroImage: Clinical*.
1074 2022;36:103228. doi: <https://doi.org/10.1016/j.nicl.2022.103228>.
- 1075 62. Chorghay Z, Káradóttir RT, Ruthazer ES. White Matter Plasticity Keeps the Brain in Tune:
1076 Axons Conduct While Glia Wrap. *Front Cell Neurosci*. 2018;12:428. Epub 20181116. doi:
1077 10.3389/fncel.2018.00428. PubMed PMID: 30519159; PubMed Central PMCID: PMC6251003.
- 1078 63. Sharp DJ, Beckmann CF, Greenwood R, Kinnunen KM, Bonnelle V, De Boissezon X, et al.
1079 Default mode network functional and structural connectivity after traumatic brain injury. *Brain*.
1080 2011;134(8):2233-47. doi: 10.1093/brain/awr175.

- 1081 64. Qi P, Ru H, Gao L, Zhang X, Zhou T, Tian Y, et al. Neural Mechanisms of Mental Fatigue
1082 Revisited: New Insights from the Brain Connectome. *Engineering*. 2019;5(2):276-86. doi:
1083 <https://doi.org/10.1016/j.eng.2018.11.025>.
- 1084 65. Passamonti L, Cerasa A, Liguori M, Gioia MC, Valentino P, Nisticò R, et al. Neurobiological
1085 mechanisms underlying emotional processing in relapsing-remitting multiple sclerosis. *Brain*.
1086 2009;132(12):3380-91. doi: 10.1093/brain/awp095.
- 1087 66. Pokryszko-Dragan A, Banaszek A, Nowakowska-Kotas M, Jeżowska-Jurczyk K, Dziadkowiak E,
1088 Gruszka E, et al. Diffusion tensor imaging findings in the multiple sclerosis patients and their
1089 relationships to various aspects of disability. *J Neurol Sci*. 2018;391:127-33. Epub 20180613. doi:
1090 10.1016/j.jns.2018.06.007. PubMed PMID: 30103962.
- 1091 67. Skudlarski P, Jagannathan K, Calhoun VD, Hampson M, Skudlarska BA, Pearlson G. Measuring
1092 brain connectivity: diffusion tensor imaging validates resting state temporal correlations.
1093 *Neuroimage*. 2008;43(3):554-61. Epub 20080815. doi: 10.1016/j.neuroimage.2008.07.063. PubMed
1094 PMID: 18771736; PubMed Central PMCID: PMC4361080.
- 1095 68. Soares J, Marques P, Alves V, Sousa N. A hitchhiker's guide to diffusion tensor imaging.
1096 *Frontiers in Neuroscience*. 2013;7(31). doi: 10.3389/fnins.2013.00031.
- 1097 69. Sbardella E, Tona F, Petsas N, Pantano P. DTI Measurements in Multiple Sclerosis: Evaluation
1098 of Brain Damage and Clinical Implications. *Multiple Sclerosis International*. 2013;2013:671730. doi:
1099 10.1155/2013/671730.
- 1100 70. Baykara E, Gesierich B, Adam R, Tuladhar AM, Biesbroek JM, Koek HL, et al. A Novel Imaging
1101 Marker for Small Vessel Disease Based on Skeletonization of White Matter Tracts and Diffusion
1102 Histograms. *Annals of Neurology*. 2016;80(4):581-92. doi: <https://doi.org/10.1002/ana.24758>.
- 1103 71. Petersen M, Frey BM, Schlemm E, Mayer C, Hanning U, Engelke K, et al. Network Localisation
1104 of White Matter Damage in Cerebral Small Vessel Disease. *Scientific Reports*. 2020;10(1):9210. doi:
1105 10.1038/s41598-020-66013-w.
- 1106 72. Vinciguerra C, Giorgio A, Zhang J, Nardone V, Brocci RT, Pastò L, et al. Peak width of
1107 skeletonized mean diffusivity (PSMD) and cognitive functions in relapsing-remitting multiple
1108 sclerosis. *Brain Imaging and Behavior*. 2021;15(4):2228-33. doi: 10.1007/s11682-020-00394-4.
- 1109 73. Zhang H, Schneider T, Wheeler-Kingshott CA, Alexander DC. NODDI: practical in vivo neurite
1110 orientation dispersion and density imaging of the human brain. *Neuroimage*. 2012;61(4):1000-16.
1111 Epub 20120330. doi: 10.1016/j.neuroimage.2012.03.072. PubMed PMID: 22484410.
- 1112 74. Collorone S, Cawley N, Grussu F, Prados F, Tona F, Calvi A, et al. Reduced neurite density in
1113 the brain and cervical spinal cord in relapsing-remitting multiple sclerosis: A NODDI study. *Multiple
1114 Sclerosis Journal*. 2020;26(13):1647-57. doi: 10.1177/1352458519885107. PubMed PMID: 31682198.
- 1115 75. Evangelou N, Esiri MM, Smith S, Palace J, Matthews PM. Quantitative pathological evidence
1116 for axonal loss in normal appearing white matter in multiple sclerosis. *Annals of Neurology*.
1117 2000;47(3):391-5. doi: [https://doi.org/10.1002/1531-8249\(200003\)47:3<391::AID-ANA20>3.0.CO;2-
1118 J](https://doi.org/10.1002/1531-8249(200003)47:3<391::AID-ANA20>3.0.CO;2-J).
- 1119 76. Soares JM, Magalhães R, Moreira PS, Sousa A, Ganz E, Sampaio A, et al. A Hitchhiker's Guide
1120 to Functional Magnetic Resonance Imaging. *Frontiers in Neuroscience*. 2016;10(515). doi:
1121 10.3389/fnins.2016.00515.
- 1122 77. Rocca MA, Filippi M. Functional MRI in multiple sclerosis. *J Neuroimaging*. 2007;17 Suppl
1123 1:36s-41s. Epub 2007/04/12. doi: 10.1111/j.1552-6569.2007.00135.x. PubMed PMID: 17425733.
- 1124 78. Lv H, Wang Z, Tong E, Williams LM, Zaharchuk G, Zeineh M, et al. Resting-State Functional
1125 MRI: Everything That Nonexperts Have Always Wanted to Know. *American Journal of
1126 Neuroradiology*. 2018;39(8):1390-9. doi: 10.3174/ajnr.A5527.
- 1127 79. Smitha K, Akhil Raja K, Arun K, Rajesh P, Thomas B, Kapilamoorthy T, et al. Resting state
1128 fMRI: A review on methods in resting state connectivity analysis and resting state networks. *The
1129 Neuroradiology Journal*. 2017;30(4):305-17. doi: 10.1177/1971400917697342. PubMed PMID:
1130 28353416.

- 1131 80. DeLuca J, Genova HM, Hillary FG, Wylie G. Neural correlates of cognitive fatigue in multiple
1132 sclerosis using functional MRI. *Journal of the Neurological Sciences*. 2008;270(1):28-39. doi:
1133 <https://doi.org/10.1016/j.jns.2008.01.018>.
- 1134 81. Martino M, Magioncalda P, El Mendili MM, Droby A, Paduri S, Schiavi S, et al. Depression is
1135 associated with disconnection of neurotransmitter-related nuclei in multiple sclerosis. *Multiple*
1136 *Sclerosis Journal*. 2020;27(7):1102-11. doi: 10.1177/1352458520948214.
- 1137 82. Hafkemeijer A, van der Grond J, Rombouts SA. Imaging the default mode network in aging
1138 and dementia. *Biochim Biophys Acta*. 2012;1822(3):431-41. Epub 2011/08/03. doi:
1139 10.1016/j.bbdis.2011.07.008. PubMed PMID: 21807094.
- 1140 83. Buckner RL, Andrews-Hanna JR, Schacter DL. The brain's default network: anatomy, function,
1141 and relevance to disease. *Ann N Y Acad Sci*. 2008;1124:1-38. Epub 2008/04/11. doi:
1142 10.1196/annals.1440.011. PubMed PMID: 18400922.
- 1143 84. Sbardella E, Petsas N, Tona F, Pantano P. Resting-State fMRI in MS: General Concepts and
1144 Brief Overview of Its Application. *Biomed Res Int*. 2015;2015:212693. Epub 2015/09/29. doi:
1145 10.1155/2015/212693. PubMed PMID: 26413509; PubMed Central PMCID: PMC4564590.
- 1146 85. Rocca MA, Pravatà E, Valsasina P, Radaelli M, Colombo B, Vacchi L, et al. Hippocampal-DMN
1147 disconnectivity in MS is related to WM lesions and depression. *Hum Brain Mapp*. 2015;36(12):5051-
1148 63. Epub 20150914. doi: 10.1002/hbm.22992. PubMed PMID: 26366641; PubMed Central PMCID:
1149 PMC46869286.
- 1150 86. Cao Y, Diao W, Tian F, Zhang F, He L, Long X, et al. Correction to: Gray Matter Atrophy in the
1151 Cortico-Striatal-Thalamic Network and Sensorimotor Network in Relapsing-Remitting and Primary
1152 Progressive Multiple Sclerosis. *Neuropsychology Review*. 2021;31(4):721-. doi: 10.1007/s11065-021-
1153 09503-6.
- 1154 87. Biseco A, Nardo FD, Docimo R, Caiazzo G, d'Ambrosio A, Bonavita S, et al. Fatigue in
1155 multiple sclerosis: The contribution of resting-state functional connectivity reorganization. *Multiple*
1156 *Sclerosis Journal*. 2017;24(13):1696-705. doi: 10.1177/1352458517730932.
- 1157 88. Montaser IA, Rashad MH, Abd El-Aziz MA, Mashaal AG. Cortical Lesions in a Sample of
1158 Egyptian Multiple Sclerosis Patients. *The Egyptian Journal of Hospital Medicine*. 2018;72(11):5604-8.
1159 doi: 10.21608/ejhm.2018.11518.
- 1160 89. Chalah MA, Riachi N, Ahdab R, Créange A, Lefaucheur J-P, Ayache SS. Fatigue in Multiple
1161 Sclerosis: Neural Correlates and the Role of Non-Invasive Brain Stimulation. *Frontiers in Cellular*
1162 *Neuroscience*. 2015;9. doi: 10.3389/fncel.2015.00460.
- 1163 90. Masuccio FG, Gamberini G, Calabrese M, Solaro C. Imaging and depression in multiple
1164 sclerosis: a historical perspective. *Neurol Sci*. 2021;42(3):835-45. Epub 2021/01/08. doi:
1165 10.1007/s10072-020-04951-z. PubMed PMID: 33411192.
- 1166 91. Society TJLARwkpots. Finding the top 10 research priorities. *Research Matters*. 2014;
1167 January/February 2014.
- 1168 92. Williams AE, Vietri JT, Isherwood G, Flor A. Symptoms and Association with Health Outcomes
1169 in Relapsing-Remitting Multiple Sclerosis: Results of a US Patient Survey. *Multiple Sclerosis*
1170 *International*. 2014;2014:203183. doi: 10.1155/2014/203183.
- 1171 93. Page MJ, McKenzie JE, Bossuyt PM, Boutron I, Hoffmann TC, Mulrow CD, et al. The PRISMA
1172 2020 statement: an updated guideline for reporting systematic reviews. *Systematic Reviews*.
1173 2021;10(1):89. doi: 10.1186/s13643-021-01626-4.
- 1174 94. (IHE) IoHE. Institute of Health Economics (IHE). Quality Appraisal of Case Series Studies
1175 Checklist. : Edmonton (AB); 2014 [cited 2023 06-03-2023]. Available from:
1176 <http://www.ihe.ca/research-programs/rmd/cssqac/cssqac-about>.
- 1177 95. Downes MJ, Brennan ML, Williams HC, Dean RS. Development of a critical appraisal tool to
1178 assess the quality of cross-sectional studies (AXIS). *BMJ open*. 2016;6(12):e011458.
- 1179 96. Benesova Y, Niedermayerova I, Mechl M, Havlikova P. The relation between brain MRI
1180 lesions and depressive symptoms in multiple sclerosis. *Bratisl Lek Listy*. 2003;104(4-5):174-6.
1181 PubMed PMID: 14604264.

- 1182 97. Gold SM, Kern KC, O'Connor MF, Montag MJ, Kim A, Yoo YS, et al. Smaller cornu ammonis 2-
1183 3/dentate gyrus volumes and elevated cortisol in multiple sclerosis patients with depressive
1184 symptoms. *Biol Psychiatry*. 2010;68(6):553-9. Epub 20100619. doi: 10.1016/j.biopsych.2010.04.025.
1185 PubMed PMID: 20646680; PubMed Central PMCID: PMC3122328.
- 1186 98. Nigro S, Passamonti L, Riccelli R, Toschi N, Rocca F, Valentino P, et al. Structural
1187 'connectomic' alterations in the limbic system of multiple sclerosis patients with major depression.
1188 *Mult Scler*. 2015;21(8):1003-12. Epub 20141222. doi: 10.1177/1352458514558474. PubMed PMID:
1189 25533294.
- 1190 99. Riccelli R, Passamonti L, Cerasa A, Nigro S, Cavalli SM, Chiriaco C, et al. Individual differences
1191 in depression are associated with abnormal function of the limbic system in multiple sclerosis
1192 patients. *Mult Scler*. 2016;22(8):1094-105. Epub 20151009. doi: 10.1177/1352458515606987.
1193 PubMed PMID: 26453680.
- 1194 100. Štecková T, Hlušík P, Sládková V, Odstrčil F, Mareš J, Kaňovský P. Thalamic atrophy and
1195 cognitive impairment in clinically isolated syndrome and multiple sclerosis. *J Neurol Sci*. 2014;342(1-
1196 2):62-8. Epub 20140430. doi: 10.1016/j.jns.2014.04.026. PubMed PMID: 24819917.
- 1197 101. Yaldizli Ö, Penner IK, Yonekawa T, Naegelin Y, Kuhle J, Pardini M, et al. The association
1198 between olfactory bulb volume, cognitive dysfunction, physical disability and depression in multiple
1199 sclerosis. *Eur J Neurol*. 2016;23(3):510-9. Epub 20151119. doi: 10.1111/ene.12891. PubMed PMID:
1200 26699999.
- 1201 102. Carotenuto A, Wilson H, Giordano B, Caminiti SP, Chappell Z, Williams SCR, et al. Impaired
1202 connectivity within neuromodulatory networks in multiple sclerosis and clinical implications. *J*
1203 *Neurol*. 2020;267(7):2042-53. Epub 20200326. doi: 10.1007/s00415-020-09806-3. PubMed PMID:
1204 32219555; PubMed Central PMCID: PMC7320961.
- 1205 103. Altermatt A, Gaetano L, Magon S, Häring DA, Tomic D, Wuerfel J, et al. Clinical Correlations
1206 of Brain Lesion Location in Multiple Sclerosis: Voxel-Based Analysis of a Large Clinical Trial Dataset.
1207 *Brain Topogr*. 2018;31(5):886-94. Epub 20180529. doi: 10.1007/s10548-018-0652-9. PubMed PMID:
1208 29845492.
- 1209 104. Andreasen AK, Jakobsen J, Soerensen L, Andersen H, Petersen T, Bjarkam CR, et al. Regional
1210 brain atrophy in primary fatigued patients with multiple sclerosis. *Neuroimage*. 2010;50(2):608-15.
1211 Epub 20100106. doi: 10.1016/j.neuroimage.2009.12.118. PubMed PMID: 20060048.
- 1212 105. Bisecco A, Caiazzo G, d'Ambrosio A, Sacco R, Bonavita S, Docimo R, et al. Fatigue in multiple
1213 sclerosis: The contribution of occult white matter damage. *Mult Scler*. 2016;22(13):1676-84. Epub
1214 20160204. doi: 10.1177/1352458516628331. PubMed PMID: 26846989.
- 1215 106. Calabrese M, Rinaldi F, Grossi P, Mattisi I, Bernardi V, Favaretto A, et al. Basal ganglia and
1216 frontal/parietal cortical atrophy is associated with fatigue in relapsing-remitting multiple sclerosis.
1217 *Mult Scler*. 2010;16(10):1220-8. Epub 20100729. doi: 10.1177/1352458510376405. PubMed PMID:
1218 20670981.
- 1219 107. Cavallari M, Palotai M, Glanz BI, Egorova S, Prieto JC, Healy BC, et al. Fatigue predicts disease
1220 worsening in relapsing-remitting multiple sclerosis patients. *Multiple Sclerosis Journal*.
1221 2016;22(14):1841-9. doi: 10.1177/1352458516635874. PubMed PMID: WOS:000390576600013.
- 1222 108. Codella M, Rocca MA, Colombo B, Martinelli-Boneschi F, Comi G, Filippi M. Cerebral grey
1223 matter pathology and fatigue in patients with multiple sclerosis: a preliminary study. *J Neurol Sci*.
1224 2002;194(1):71-4. doi: 10.1016/s0022-510x(01)00682-7. PubMed PMID: 11809169.
- 1225 109. Damasceno A, Damasceno BP, Cendes F. Atrophy of reward-related striatal structures in
1226 fatigued MS patients is independent of physical disability. *Mult Scler*. 2016;22(6):822-9. Epub
1227 20150803. doi: 10.1177/1352458515599451. PubMed PMID: 26238465.
- 1228 110. Finke C, Schlichting J, Papazoglou S, Scheel M, Freing A, Soemmer C, et al. Altered basal
1229 ganglia functional connectivity in multiple sclerosis patients with fatigue. *Mult Scler*. 2015;21(7):925-
1230 34. Epub 20141112. doi: 10.1177/1352458514555784. PubMed PMID: 25392321.
- 1231 111. Huang M, Zhou F, Wu L, Wang B, Wan H, Li F, et al. Synchronization within, and interactions
1232 between, the default mode and dorsal attention networks in relapsing-remitting multiple sclerosis.

- 1233 Neuropsychiatr Dis Treat. 2018;14:1241-52. Epub 20180514. doi: 10.2147/ndt.S155478. PubMed
1234 PMID: 29795982; PubMed Central PMCID: PMC5957478.
- 1235 112. Niepel G, Tench Ch R, Morgan PS, Evangelou N, Auer DP, Constantinescu CS. Deep gray
1236 matter and fatigue in MS: a T1 relaxation time study. J Neurol. 2006;253(7):896-902. Epub
1237 20060313. doi: 10.1007/s00415-006-0128-9. PubMed PMID: 16525881.
- 1238 113. Pardini M, Bonzano L, Bergamino M, Bommarito G, Feraco P, Murugavel A, et al. Cingulum
1239 bundle alterations underlie subjective fatigue in multiple sclerosis. Mult Scler. 2015;21(4):442-7.
1240 Epub 20140821. doi: 10.1177/1352458514546791. PubMed PMID: 25145692.
- 1241 114. Pardini M, Bonzano L, Mancardi GL, Roccatagliata L. Frontal networks play a role in fatigue
1242 perception in multiple sclerosis. Behav Neurosci. 2010;124(3):329-36. doi: 10.1037/a0019585.
1243 PubMed PMID: 20528076.
- 1244 115. Svolgaard O, Andersen KW, Bauer C, Madsen KH, Blinkenberg M, Selleberg F, et al.
1245 Cerebellar and premotor activity during a non-fatiguing grip task reflects motor fatigue in relapsing-
1246 remitting multiple sclerosis. PLoS One. 2018;13(10):e0201162. Epub 20181024. doi:
1247 10.1371/journal.pone.0201162. PubMed PMID: 30356315; PubMed Central PMCID:
1248 PMC6200185.
- 1249 116. Tomasevic L, Zito G, Pasqualetti P, Filippi M, Landi D, Ghazaryan A, et al. Cortico-muscular
1250 coherence as an index of fatigue in multiple sclerosis. Mult Scler. 2013;19(3):334-43. Epub
1251 20120703. doi: 10.1177/1352458512452921. PubMed PMID: 22760098.
- 1252 117. Wilting J, Rolfsnes HO, Zimmermann H, Behrens M, Fleischer V, Zipp F, et al. Structural
1253 correlates for fatigue in early relapsing remitting multiple sclerosis. Eur Radiol. 2016;26(2):515-23.
1254 Epub 20150531. doi: 10.1007/s00330-015-3857-2. PubMed PMID: 26026721.
- 1255 118. Yaldizli Ö, Glassl S, Sturm D, Papadopoulou A, Gass A, Tettenborn B, et al. Fatigue and
1256 progression of corpus callosum atrophy in multiple sclerosis. J Neurol. 2011;258(12):2199-205. Epub
1257 20110519. doi: 10.1007/s00415-011-6091-0. PubMed PMID: 21594686.
- 1258 119. Yarraguntla K, Seraji-Bozorgzad N, Lichtman-Mikol S, Razmjou S, Bao F, Sriwastava S, et al.
1259 Multiple Sclerosis Fatigue: A Longitudinal Structural MRI and Diffusion Tensor Imaging Study. J
1260 Neuroimaging. 2018;28(6):650-5. Epub 20180723. doi: 10.1111/jon.12548. PubMed PMID:
1261 30039613.
- 1262 120. Zellini F, Niepel G, Tench CR, Constantinescu CS. Hypothalamic involvement assessed by T1
1263 relaxation time in patients with relapsing-remitting multiple sclerosis. Mult Scler. 2009;15(12):1442-
1264 9. Epub 20091207. doi: 10.1177/1352458509350306. PubMed PMID: 19995847.
- 1265 121. Zhou F, Gong H, Chen Q, Wang B, Peng Y, Zhuang Y, et al. Intrinsic Functional Plasticity of the
1266 Thalamocortical System in Minimally Disabled Patients with Relapsing-Remitting Multiple Sclerosis.
1267 Front Hum Neurosci. 2016;10:2. Epub 20160125. doi: 10.3389/fnhum.2016.00002. PubMed PMID:
1268 26834600; PubMed Central PMCID: PMC4725198.
- 1269 122. Filippi M, Rocca MA, Colombo B, Falini A, Codella M, Scotti G, et al. Functional magnetic
1270 resonance imaging correlates of fatigue in multiple sclerosis. Neuroimage. 2002;15(3):559-67. doi:
1271 10.1006/nimg.2001.1011. PubMed PMID: 11848698.
- 1272 123. Iancheva D, Trenova A, Mantarova S, Terziyski K. Functional Magnetic Resonance Imaging
1273 Correlations Between Fatigue and Cognitive Performance in Patients With Relapsing Remitting
1274 Multiple Sclerosis. Frontiers in Psychiatry. 2019;10. doi: 10.3389/fpsy.2019.00754. PubMed PMID:
1275 WOS:000496145700001.
- 1276 124. Specogna I, Casagrande F, Lorusso A, Catalan M, Gorian A, Zugna L, et al. Functional MRI
1277 during the execution of a motor task in patients with multiple sclerosis and fatigue. Radiol Med.
1278 2012;117(8):1398-407. Epub 20120622. doi: 10.1007/s11547-012-0845-3. PubMed PMID: 22729506.
- 1279 125. Wu L, Zhang Y, Zhou FQ, Gao L, He LC, Zeng XJ, et al. Altered intra- and interregional
1280 synchronization in relapsing-remitting multiple sclerosis: a resting-state fMRI study.
1281 Neuropsychiatric Disease and Treatment. 2016;12:853-62. doi: 10.2147/ndt.S98962. PubMed PMID:
1282 WOS:000374146300001.

- 1283 126. Pravata E, Zecca C, Sestieri C, Caulo M, Riccitelli GC, Rocca MA, et al. Hyperconnectivity of
1284 the dorsolateral prefrontal cortex following mental effort in multiple sclerosis patients with cognitive
1285 fatigue. *Mult Scler*. 2016;22(13):1665-75. Epub 20160204. doi: 10.1177/1352458515625806.
1286 PubMed PMID: 26846988.
- 1287 127. Saberi A, Abdolalizadeh A, Mohammadi E, Nahayati MA, Bagheri H, Shekarchi B, et al.
1288 Thalamic shape abnormalities in patients with multiple sclerosis-related fatigue. *Neuroreport*.
1289 2021;32(6):438-42. doi: 10.1097/wnr.0000000000001616. PubMed PMID: 33788816.
- 1290 128. Morgante F, Dattola V, Crupi D, Russo M, Rizzo V, Ghilardi MF, et al. Is central fatigue in
1291 multiple sclerosis a disorder of movement preparation? *J Neurol*. 2011;258(2):263-72. Epub
1292 20100922. doi: 10.1007/s00415-010-5742-x. PubMed PMID: 20859746.
- 1293 129. Rocca MA, Gatti R, Agosta F, Brogna P, Rossi P, Riboldi E, et al. Influence of task complexity
1294 during coordinated hand and foot movements in MS patients with and without fatigue. A kinematic
1295 and functional MRI study. *J Neurol*. 2009;256(3):470-82. Epub 20090306. doi: 10.1007/s00415-009-
1296 0116-y. PubMed PMID: 19271107.
- 1297 130. Téllez N, Alonso J, Río J, Tintoré M, Nos C, Montalban X, et al. The basal ganglia: a substrate
1298 for fatigue in multiple sclerosis. *Neuroradiology*. 2008;50(1):17-23. Epub 20071023. doi:
1299 10.1007/s00234-007-0304-3. PubMed PMID: 17955232.
- 1300 131. Yarraguntla K, Bao F, Lichtman-Mikol S, Razmjou S, Santiago-Martinez C, Seraji-Bozorgzad N,
1301 et al. Characterizing Fatigue-Related White Matter Changes in MS: A Proton Magnetic Resonance
1302 Spectroscopy Study. *Brain Sci*. 2019;9(5). Epub 20190527. doi: 10.3390/brainsci9050122. PubMed
1303 PMID: 31137831; PubMed Central PMCID: PMC6562940.
- 1304 132. Hildebrandt H, Eling P. A longitudinal study on fatigue, depression, and their relation to
1305 neurocognition in multiple sclerosis. *J Clin Exp Neuropsychol*. 2014;36(4):410-7. Epub 20140407. doi:
1306 10.1080/13803395.2014.903900. PubMed PMID: 24702275.
- 1307 133. Hildebrandt H, Hahn HK, Kraus JA, Schulte-Herbrüggen A, Schwarze B, Schwendemann G.
1308 Memory performance in multiple sclerosis patients correlates with central brain atrophy. *Mult Scler*.
1309 2006;12(4):428-36. doi: 10.1191/1352458506ms1286oa. PubMed PMID: 16900756.
- 1310 134. Jaeger S, Paul F, Scheel M, Brandt A, Heine J, Pach D, et al. Multiple sclerosis-related fatigue:
1311 Altered resting-state functional connectivity of the ventral striatum and dorsolateral prefrontal
1312 cortex. *Mult Scler*. 2019;25(4):554-64. Epub 20180221. doi: 10.1177/1352458518758911. PubMed
1313 PMID: 29464981.
- 1314 135. Lazzarotto A, Margoni M, Franciotta S, Zywicki S, Riccardi A, Poggiali D, et al. Selective
1315 Cerebellar Atrophy Associates with Depression and Fatigue in the Early Phases of Relapse-Onset
1316 Multiple Sclerosis. *Cerebellum*. 2020;19(2):192-200. doi: 10.1007/s12311-019-01096-4. PubMed
1317 PMID: 31898280.
- 1318 136. Hassan TA, Elkholy SF, Mahmoud BE, ElSherbiny M. Multiple sclerosis and depressive
1319 manifestations: can diffusion tensor MR imaging help in the detection of microstructural white
1320 matter changes? *Egyptian Journal of Radiology and Nuclear Medicine*. 2019;50(1). doi:
1321 10.1186/s43055-019-0033-8. PubMed PMID: WOS:000486165900001.
- 1322 137. Kopchak OO, Odintsova TA. Cognitive impairment and depression in patients with relapsing-
1323 remitting multiple sclerosis depending on age and neuroimaging findings. *Egypt J Neurol Psychiatr*
1324 *Neurosurg*. 2021;57(1):119. Epub 20210908. doi: 10.1186/s41983-021-00376-3. PubMed PMID:
1325 34511865; PubMed Central PMCID: PMC8424158.
- 1326 138. Golde S, Heine J, Pöttgen J, Mantwill M, Lau S, Wingenfeld K, et al. Distinct Functional
1327 Connectivity Signatures of Impaired Social Cognition in Multiple Sclerosis. *Frontiers in Neurology*.
1328 2020;11. doi: 10.3389/fneur.2020.00507.
- 1329 139. Beaudoin AM, Rheault F, Theaud G, Laberge F, Whittingstall K, Lamontagne A, et al. Modern
1330 Technology in Multi-Shell Diffusion MRI Reveals Diffuse White Matter Changes in Young Adults With
1331 Relapsing-Remitting Multiple Sclerosis. *Frontiers in Neuroscience*. 2021;15:13. doi:
1332 10.3389/fnins.2021.665017. PubMed PMID: WOS:000687832800001.

- 1333 140. Kever A, Buyukturkoglu K, Levin SN, Riley CS, De Jager P, Leavitt VM. Associations of social
1334 network structure with cognition and amygdala volume in multiple sclerosis: An exploratory
1335 investigation. *Multiple Sclerosis Journal*. 2022;28(2):228-36. doi: 10.1177/13524585211018349.
1336 PubMed PMID: WOS:000656009600001.
- 1337 141. Romanello A, Krohn S, von Schwanenflug N, Chien C, Bellmann-Strobl J, Ruprecht K, et al.
1338 Functional connectivity dynamics reflect disability and multi-domain clinical impairment in patients
1339 with relapsing-remitting multiple sclerosis. *Neuroimage Clin*. 2022;36:103203. Epub 20220916. doi:
1340 10.1016/j.nicl.2022.103203. PubMed PMID: 36179389; PubMed Central PMCID: PMC9668632.
- 1341 142. Wu L, Huang M, Zhou F, Zeng X, Gong H. Distributed causality in resting-state network
1342 connectivity in the acute and remitting phases of RRMS. *BMC Neuroscience*. 2020;21(1). doi:
1343 10.1186/s12868-020-00590-4.
- 1344 143. Zhou F, Zhuang Y, Gong H, Wang B, Wang X, Chen Q, et al. Altered inter-subregion
1345 connectivity of the default mode network in relapsing remitting multiple sclerosis: A functional and
1346 structural connectivity study. *PLoS ONE*. 2014;9(7). doi: 10.1371/journal.pone.0101198.
- 1347 144. Cruz Gomez AJ, Campos NV, Belenguer A, Avila C, Forn C. Regional Brain Atrophy and
1348 Functional Connectivity Changes Related to Fatigue in Multiple Sclerosis. *Plos One*. 2013;8(10). doi:
1349 10.1371/journal.pone.0077914. PubMed PMID: WOS:000326034500049.
- 1350 145. Bauer C, Dyrby TB, Sellebjerg F, Madsen KS, Svolgaard O, Blinkenberg M, et al. Motor fatigue
1351 is associated with asymmetric connectivity properties of the corticospinal tract in multiple sclerosis.
1352 *Neuroimage-Clinical*. 2020;28. doi: 10.1016/j.nicl.2020.102393. PubMed PMID:
1353 WOS:000600619100036.
- 1354 146. Gilio L, Buttari F, Pavone L, Iezzi E, Galifi G, Dolcetti E, et al. Fatigue in Multiple Sclerosis Is
1355 Associated with Reduced Expression of Interleukin-10 and Worse Prospective Disease Activity.
1356 *Biomedicines*. 2022;10(9):13. doi: 10.3390/biomedicines10092058. PubMed PMID:
1357 WOS:000858486900001.
- 1358 147. Khedr EM, Desoky T, Gamea A, Ezzeldin MY, Zaki AF. Fatigue and brain atrophy in Egyptian
1359 patients with relapsing remitting multiple sclerosis. *Multiple Sclerosis and Related Disorders*.
1360 2022;63:6. doi: 10.1016/j.msard.2022.103841. PubMed PMID: WOS:000832865100007.
- 1361 148. Ruiz-Rizzo AL, Bublak P, Kluckow S, Finke K, Gaser C, Schwab M, et al. Neural distinctiveness
1362 of fatigue and low sleep quality in multiple sclerosis. *European Journal of Neurology*.
1363 2022;29(10):3017-27. doi: 10.1111/ene.15445.
- 1364 149. Svolgaard O, Andersen KW, Bauer C, Madsen KH, Blinkenberg M, Sellebjerg F, et al. Mapping
1365 grip-force related brain activity after a fatiguing motor task in multiple sclerosis. *Neuroimage-
1366 Clinical*. 2022;36:11. doi: 10.1016/j.nicl.2022.103147. PubMed PMID: WOS:000889292900001.
- 1367 150. Alshehri A, Al-iedani O, Arm J, Gholizadeh N, Billiet T, Lea R, et al. Neural diffusion tensor
1368 imaging metrics correlate with clinical measures in people with relapsing-remitting MS.
1369 *Neuroradiology Journal*. 2022;35(5):592-9. doi: 10.1177/19714009211067400.
- 1370 151. Tjhuis FB, Broeders TAA, Santos FAN, Schoonheim MM, Killestein J, Leurs CE, et al. Dynamic
1371 functional connectivity as a neural correlate of fatigue in multiple sclerosis. *Neuroimage-Clinical*.
1372 2021;29:9. doi: 10.1016/j.nicl.2020.102556. PubMed PMID: WOS:000620121700041.
- 1373 152. Created by the Analysis Group F, Oxford, UK. FSL main. FMRIB Software Library v6.0].
1374 Available from: <https://fsl.fmrib.ox.ac.uk/fsl/fslwiki>.
- 1375 153. NITRC. MRICron 2019. Available from: https://www.nitrc.org/frs/?group_id=152.
- 1376 154. Golde S, Heine J, Pöttgen J, Mantwill M, Lau S, Wingenfeld K, et al. Distinct Functional
1377 Connectivity Signatures of Impaired Social Cognition in Multiple Sclerosis. *Frontiers in Neurology*.
1378 2020;11. doi: 10.3389/fneur.2020.00507.
- 1379 155. Namburi P, Al-Hasani R, Calhoon GG, Bruchas MR, Tye KM. Architectural Representation of
1380 Valence in the Limbic System. *Neuropsychopharmacology*. 2016;41(7):1697-715. doi:
1381 10.1038/npp.2015.358.
- 1382 156. Rajmohan V, Mohandas E. The limbic system. *Indian J Psychiatry*. 2007;49(2):132-9. doi:
1383 10.4103/0019-5545.33264. PubMed PMID: 20711399; PubMed Central PMCID: PMC9668632.

- 1384 157. Dagtè G, Den Boer JA, Trentani A. The cholinergic system and depression. *Behavioural Brain*
1385 *Research*. 2011;221(2):574-82. doi: <https://doi.org/10.1016/j.bbr.2010.02.023>.
- 1386 158. Liu W, Ge T, Leng Y, Pan Z, Fan J, Yang W, et al. The Role of Neural Plasticity in Depression:
1387 From Hippocampus to Prefrontal Cortex. *Neural Plasticity*. 2017;2017:6871089. doi:
1388 10.1155/2017/6871089.
- 1389 159. MacQueen G, Frodl T. The hippocampus in major depression: evidence for the convergence
1390 of the bench and bedside in psychiatric research? *Molecular Psychiatry*. 2011;16(3):252-64. doi:
1391 10.1038/mp.2010.80.
- 1392 160. Hao ZY, Zhong Y, Ma ZJ, Xu HZ, Kong JY, Wu Z, et al. Abnormal resting-state functional
1393 connectivity of hippocampal subfields in patients with major depressive disorder. *BMC Psychiatry*.
1394 2020;20(1):71. doi: 10.1186/s12888-020-02490-7.
- 1395 161. Cao X, Liu Z, Xu C, Li J, Gao Q, Sun N, et al. Disrupted resting-state functional connectivity of
1396 the hippocampus in medication-naïve patients with major depressive disorder. *Journal of Affective*
1397 *Disorders*. 2012;141(2):194-203. doi: <https://doi.org/10.1016/j.jad.2012.03.002>.
- 1398 162. Krug S, Müller T, Kayali Ö, Leichter E, Peschel SKV, Jahn N, et al. Altered functional
1399 connectivity in common resting-state networks in patients with major depressive disorder: A resting-
1400 state functional connectivity study. *Journal of Psychiatric Research*. 2022;155:33-41. doi:
1401 <https://doi.org/10.1016/j.jpsychires.2022.07.040>.
- 1402 163. Xiao H, Yuan M, Li H, Li S, Du Y, Wang M, et al. Functional connectivity of the hippocampus in
1403 predicting early antidepressant efficacy in patients with major depressive disorder. *Journal of*
1404 *Affective Disorders*. 2021;291:315-21. doi: <https://doi.org/10.1016/j.jad.2021.05.013>.
- 1405 164. Colasanti A, Guo Q, Giannetti P, Wall MB, Newbould RD, Bishop C, et al. Hippocampal
1406 Neuroinflammation, Functional Connectivity, and Depressive Symptoms in Multiple Sclerosis.
1407 *Biological Psychiatry*. 2016;80(1):62-72. doi: <https://doi.org/10.1016/j.biopsych.2015.11.022>.
- 1408 165. van Geest Q, Boeschoten RE, Keijzer MJ, Steenwijk MD, Pouwels PJW, Twisk JWR, et al.
1409 Fronto-limbic disconnection in patients with multiple sclerosis and depression. *Multiple Sclerosis*
1410 *Journal*. 2018;25(5):715-26. doi: 10.1177/1352458518767051.
- 1411 166. Meyer-Arndt L, Kuchling J, Brasanac J, Hermann A, Asseyer S, Bellmann-Strobl J, et al.
1412 Prefrontal-amygdala emotion regulation and depression in multiple sclerosis. *Brain Communications*.
1413 2022;4(3). doi: 10.1093/braincomms/fcac152.
- 1414 167. Fischer AS, Keller CJ, Etkin A. The Clinical Applicability of Functional Connectivity in
1415 Depression: Pathways Toward More Targeted Intervention. *Biological Psychiatry: Cognitive*
1416 *Neuroscience and Neuroimaging*. 2016;1(3):262-70. doi:
1417 <https://doi.org/10.1016/j.bpsc.2016.02.004>.
- 1418 168. Bennett MR. The prefrontal–limbic network in depression: Modulation by hypothalamus,
1419 basal ganglia and midbrain. *Progress in Neurobiology*. 2011;93(4):468-87. doi:
1420 <https://doi.org/10.1016/j.pneurobio.2011.01.006>.
- 1421 169. Arnold JF, Zwiers MP, Fitzgerald DA, van Eijndhoven P, Becker ES, Rinck M, et al. Fronto-
1422 limbic microstructure and structural connectivity in remission from major depression. *Psychiatry*
1423 *Research: Neuroimaging*. 2012;204(1):40-8. doi: <https://doi.org/10.1016/j.psychresns.2012.07.010>.
- 1424 170. Koenigs M, Grafman J. The functional neuroanatomy of depression: Distinct roles for
1425 ventromedial and dorsolateral prefrontal cortex. *Behavioural Brain Research*. 2009;201(2):239-43.
1426 doi: <https://doi.org/10.1016/j.bbr.2009.03.004>.
- 1427 171. Rolls ET, Cheng W, Feng J. The orbitofrontal cortex: reward, emotion and depression. *Brain*
1428 *Communications*. 2020;2(2). doi: 10.1093/braincomms/fcaa196.
- 1429 172. Rolls ET. The orbitofrontal cortex and emotion in health and disease, including depression.
1430 *Neuropsychologia*. 2019;128:14-43. doi: <https://doi.org/10.1016/j.neuropsychologia.2017.09.021>.
- 1431 173. Rudebeck PH, Putnam PT, Daniels TE, Yang T, Mitz AR, Rhodes SEV, et al. A role for primate
1432 subgenual cingulate cortex in sustaining autonomic arousal. *Proceedings of the National Academy of*
1433 *Sciences*. 2014;111(14):5391-6. doi: 10.1073/pnas.1317695111.

- 1434 174. Greicius MD, Flores BH, Menon V, Glover GH, Solvason HB, Kenna H, et al. Resting-State
1435 Functional Connectivity in Major Depression: Abnormally Increased Contributions from Subgenual
1436 Cingulate Cortex and Thalamus. *Biological Psychiatry*. 2007;62(5):429-37. doi:
1437 <https://doi.org/10.1016/j.biopsych.2006.09.020>.
- 1438 175. Riley CA, Renshaw PF. Brain choline in major depression: A review of the literature.
1439 *Psychiatry Research: Neuroimaging*. 2018;271:142-53. doi:
1440 <https://doi.org/10.1016/j.psychresns.2017.11.009>.
- 1441 176. Shi X-F, Forrest LN, Kuykendall MD, Prescott AP, Sung Y-H, Huber RS, et al. Anterior cingulate
1442 cortex choline levels in female adolescents with unipolar versus bipolar depression: A potential new
1443 tool for diagnosis. *Journal of Affective Disorders*. 2014;167:25-9. doi:
1444 <https://doi.org/10.1016/j.jad.2014.05.051>.
- 1445 177. Von Der Heide RJ, Skipper LM, Klobusicky E, Olson IR. Dissecting the uncinate fasciculus:
1446 disorders, controversies and a hypothesis. *Brain*. 2013;136(Pt 6):1692-707. Epub 20130506. doi:
1447 10.1093/brain/awt094. PubMed PMID: 23649697; PubMed Central PMCID: PMC3673595.
- 1448 178. Raslau FD, Augustinack JC, Klein AP, Ulmer JL, Mathews VP, Mark LP. Memory Part 3: The
1449 Role of the Fornix and Clinical Cases. *AJNR Am J Neuroradiol*. 2015;36(9):1604-8. Epub 20150604.
1450 doi: 10.3174/ajnr.A4371. PubMed PMID: 26045575; PubMed Central PMCID: PMC3673595.
- 1451 179. Bracht T, Linden D, Keedwell P. A review of white matter microstructure alterations of
1452 pathways of the reward circuit in depression. *Journal of Affective Disorders*. 2015;187:45-53. doi:
1453 <https://doi.org/10.1016/j.jad.2015.06.041>.
- 1454 180. Perez-Caballero L, Torres-Sanchez S, Romero-López-Alberca C, González-Saiz F, Mico JA,
1455 Berrocoso E. Monoaminergic system and depression. *Cell and Tissue Research*. 2019;377(1):107-13.
1456 doi: 10.1007/s00441-018-2978-8.
- 1457 181. Hornung J-P. CHAPTER 1.3 - The Neuroanatomy of the Serotonergic System. In: Müller CP,
1458 Jacobs BL, editors. *Handbook of Behavioral Neuroscience*. 21: Elsevier; 2010. p. 51-64.
- 1459 182. Vai B, Bulgarelli C, Godlewska BR, Cowen PJ, Benedetti F, Harmer CJ. Fronto-limbic effective
1460 connectivity as possible predictor of antidepressant response to SSRI administration. *European*
1461 *Neuropsychopharmacology*. 2016;26(12):2000-10. doi:
1462 <https://doi.org/10.1016/j.euroneuro.2016.09.640>.
- 1463 183. Remy P, Doder M, Lees A, Turjanski N, Brooks D. Depression in Parkinson's disease: loss of
1464 dopamine and noradrenaline innervation in the limbic system. *Brain*. 2005;128(6):1314-22. doi:
1465 10.1093/brain/awh445.
- 1466 184. Moret C, Briley M. The importance of norepinephrine in depression. *Neuropsychiatr Dis*
1467 *Treat*. 2011;7(Suppl 1):9-13. Epub 20110531. doi: 10.2147/ndt.S19619. PubMed PMID: 21750623;
1468 PubMed Central PMCID: PMC3131098.
- 1469 185. Rupprechter S, Romaniuk L, Series P, Hirose Y, Hawkins E, Sandu A-L, et al. Blunted medial
1470 prefrontal cortico-limbic reward-related effective connectivity and depression. *Brain*.
1471 2020;143(6):1946-56. doi: 10.1093/brain/awaa106.
- 1472 186. Capone F, Collorone S, Cortese R, Di Lazzaro V, Moccia M. Fatigue in multiple sclerosis: The
1473 role of thalamus. *Multiple Sclerosis Journal*. 2020;26(1):6-16. doi: 10.1177/1352458519851247.
1474 PubMed PMID: 31138052.
- 1475 187. Halassa MM, Sherman SM. Thalamocortical Circuit Motifs: A General Framework. *Neuron*.
1476 2019;103(5):762-70. Epub 2019/09/06. doi: 10.1016/j.neuron.2019.06.005. PubMed PMID:
1477 31487527; PubMed Central PMCID: PMC6886702.
- 1478 188. Torrico TJ, Munakomi S. Neuroanatomy, Thalamus. Treasure Island (FL): StatPearls
1479 Publishing; 2022 [updated 2022 Jul 25; cited 2022]. Available from:
1480 <https://www.ncbi.nlm.nih.gov/books/NBK542184/?report=classic>.
- 1481 189. Redinbaugh MJ, Phillips JM, Kambi NA, Mohanta S, Andryk S, Dooley GL, et al. Thalamus
1482 Modulates Consciousness via Layer-Specific Control of Cortex. *Neuron*. 2020;106(1):66-75.e12. Epub
1483 2020/02/14. doi: 10.1016/j.neuron.2020.01.005. PubMed PMID: 32053769; PubMed Central PMCID:
1484 PMC7243351.

- 1485 190. Gent TC, Bassetti C, Adamantidis AR. Sleep-wake control and the thalamus. *Curr Opin*
1486 *Neurobiol.* 2018;52:188-97. Epub 2018/08/26. doi: 10.1016/j.conb.2018.08.002. PubMed PMID:
1487 30144746.
- 1488 191. Staub F, Bogousslavsky J. Fatigue after stroke: a major but neglected issue. *Cerebrovasc Dis.*
1489 2001;12(2):75-81. Epub 2001/08/08. doi: 10.1159/000047685. PubMed PMID: 11490100.
- 1490 192. Okada T, Tanaka M, Kuratsune H, Watanabe Y, Sadato N. Mechanisms underlying fatigue: a
1491 voxel-based morphometric study of chronic fatigue syndrome. *BMC Neurol.* 2004;4(1):14. Epub
1492 2004/10/06. doi: 10.1186/1471-2377-4-14. PubMed PMID: 15461817; PubMed Central PMCID:
1493 PMC524491.
- 1494 193. Zeineh MM, Kang J, Atlas SW, Raman MM, Reiss AL, Norris JL, et al. Right arcuate fasciculus
1495 abnormality in chronic fatigue syndrome. *Radiology.* 2015;274(2):517-26. Epub 2014/10/30. doi:
1496 10.1148/radiol.14141079. PubMed PMID: 25353054.
- 1497 194. Grossman EJ, Inglese M. The Role of Thalamic Damage in Mild Traumatic Brain Injury. *J*
1498 *Neurotrauma.* 2016;33(2):163-7. Epub 2015/06/10. doi: 10.1089/neu.2015.3965. PubMed PMID:
1499 26054745; PubMed Central PMCID: PMC4722574.
- 1500 195. Chalah MA, Riachi N, Ahdab R, Mhalla A, Abdellaoui M, Créange A, et al. Effects of left DLPFC
1501 versus right PPC tDCS on multiple sclerosis fatigue. *Journal of the Neurological Sciences.*
1502 2017;372:131-7. doi: <https://doi.org/10.1016/j.jns.2016.11.015>.
- 1503 196. Vila-Villar A, Naya-Fernández M, Madrid A, Madinabeitia-Mancebo E, Robles-García V,
1504 Cudeiro J, et al. Exploring the role of the left DLPFC in fatigue during unresisted rhythmic
1505 movements. *Psychophysiology.* 2022;59(10):e14078. Epub 20220416. doi: 10.1111/psyp.14078.
1506 PubMed PMID: 35428988.
- 1507 197. Wylie GR, Yao B, Genova HM, Chen MH, DeLuca J. Using functional connectivity changes
1508 associated with cognitive fatigue to delineate a fatigue network. *Scientific Reports.*
1509 2020;10(1):21927. doi: 10.1038/s41598-020-78768-3.
- 1510 198. Mortezaejad M, Ehsani F, Masoudian N, Zoghi M, Jaberzadeh S. Comparing the effects of
1511 multi-session anodal trans-cranial direct current stimulation of primary motor and dorsolateral
1512 prefrontal cortices on fatigue and quality of life in patients with multiple sclerosis: a double-blind,
1513 randomized, sham-controlled trial. *Clinical Rehabilitation.* 2020;34(8):1103-11. doi:
1514 10.1177/0269215520921506. PubMed PMID: 32397748.
- 1515 199. Japee S, Holiday K, Satyshur MD, Mukai I, Ungerleider LG. A role of right middle frontal gyrus
1516 in reorienting of attention: a case study. *Frontiers in Systems Neuroscience.* 2015;9. doi:
1517 10.3389/fnsys.2015.00023.
- 1518 200. Briggs RG, Lin Y-H, Dadario NB, Kim SJ, Young IM, Bai MY, et al. Anatomy and White Matter
1519 Connections of the Middle Frontal Gyrus. *World Neurosurgery.* 2021;150:e520-e9. doi:
1520 <https://doi.org/10.1016/j.wneu.2021.03.045>.
- 1521 201. Sepulcre J, Masdeu JC, Goñi J, Arrondo G, Vélez de Mendizábal N, Bejarano B, et al. Fatigue
1522 in multiple sclerosis is associated with the disruption of frontal and parietal pathways. *Multiple*
1523 *Sclerosis Journal.* 2009;15(3):337-44. doi: 10.1177/1352458508098373.
- 1524 202. Aron AR, Robbins TW, Poldrack RA. Inhibition and the right inferior frontal cortex: one
1525 decade on. *Trends in Cognitive Sciences.* 2014;18(4):177-85. doi:
1526 <https://doi.org/10.1016/j.tics.2013.12.003>.
- 1527 203. Cook DB, Light AR, Light KC, Broderick G, Shields MR, Dougherty RJ, et al. Neural
1528 consequences of post-exertion malaise in Myalgic Encephalomyelitis/Chronic Fatigue Syndrome.
1529 *Brain, Behavior, and Immunity.* 2017;62:87-99. doi: <https://doi.org/10.1016/j.bbi.2017.02.009>.
- 1530 204. Takahashi R, Fujita K, Kobayashi Y, Ogawa T, Teranishi M, Kawamura M. Effect of muscle
1531 fatigue on brain activity in healthy individuals. *Brain Research.* 2021;1764:147469. doi:
1532 <https://doi.org/10.1016/j.brainres.2021.147469>.
- 1533 205. Daroff RB, Aminoff MJ. *Encyclopedia of the neurological sciences*: Academic press; 2014.
- 1534 206. Kim JH, Lee JM, Jo HJ, Kim SH, Lee JH, Kim ST, et al. Defining functional SMA and pre-SMA
1535 subregions in human MFC using resting state fMRI: functional connectivity-based parcellation

- 1536 method. *Neuroimage*. 2010;49(3):2375-86. Epub 20091023. doi: 10.1016/j.neuroimage.2009.10.016.
1537 PubMed PMID: 19837176; PubMed Central PMCID: PMCPMC2819173.
- 1538 207. van Duinen H, Renken R, Maurits N, Zijdwind I. Effects of motor fatigue on human brain
1539 activity, an fMRI study. *NeuroImage*. 2007;35(4):1438-49. doi:
1540 <https://doi.org/10.1016/j.neuroimage.2007.02.008>.
- 1541 208. Banker L, Tadi P. *Neuroanatomy, Precentral Gyrus*: StatPearls Publishing, Treasure Island
1542 (FL); 2021 2021.
- 1543 209. Goñi M, Basu N, Murray AD, Waiter GD. Neural Indicators of Fatigue in Chronic Diseases: A
1544 Systematic Review of MRI Studies. *Diagnostics (Basel)*. 2018;8(3). Epub 2018/06/24. doi:
1545 10.3390/diagnostics8030042. PubMed PMID: 29933643; PubMed Central PMCID: PMCPMC6163988.
- 1546 210. Boissoneault J, Letzen J, Lai S, O'Shea A, Craggs J, Robinson ME, et al. Abnormal resting state
1547 functional connectivity in patients with chronic fatigue syndrome: an arterial spin-labeling fMRI
1548 study. *Magn Reson Imaging*. 2016;34(4):603-8. Epub 2015/12/29. doi: 10.1016/j.mri.2015.12.008.
1549 PubMed PMID: 26708036; PubMed Central PMCID: PMCPMC4801728.
- 1550 211. Ramage AE, Ray KL, Franz HM, Tate DF, Lewis JD, Robin DA. Cingulo-Opercular and
1551 Frontoparietal Network Control of Effort and Fatigue in Mild Traumatic Brain Injury. *Frontiers in*
1552 *Human Neuroscience*. 2022;15. doi: 10.3389/fnhum.2021.788091.
- 1553 212. Deschamps I, Baum SR, Gracco VL. On the role of the supramarginal gyrus in phonological
1554 processing and verbal working memory: evidence from rTMS studies. *Neuropsychologia*. 2014;53:39-
1555 46. Epub 20131101. doi: 10.1016/j.neuropsychologia.2013.10.015. PubMed PMID: 24184438.
- 1556 213. Lin F, Zivadinov R, Hagemeyer J, Weinstock-Guttman B, Vaughn C, Gandhi S, et al. Altered
1557 nuclei-specific thalamic functional connectivity patterns in multiple sclerosis and their associations
1558 with fatigue and cognition. *Multiple Sclerosis Journal*. 2018;25(9):1243-54. doi:
1559 10.1177/1352458518788218.
- 1560 214. Cavanna AE, Trimble MR. The precuneus: a review of its functional anatomy and behavioural
1561 correlates. *Brain*. 2006;129(3):564-83. doi: 10.1093/brain/awl004.
- 1562 215. Chen MH, DeLuca J, Genova HM, Yao B, Wylie GR. Cognitive Fatigue Is Associated with
1563 Altered Functional Connectivity in Interoceptive and Reward Pathways in Multiple Sclerosis.
1564 *Diagnostics (Basel)*. 2020;10(11). Epub 20201110. doi: 10.3390/diagnostics10110930. PubMed PMID:
1565 33182742; PubMed Central PMCID: PMCPMC7696273.
- 1566 216. Patejdl R, Penner IK, Noack TK, Zetl UK. Multiple sclerosis and fatigue: A review on the
1567 contribution of inflammation and immune-mediated neurodegeneration. *Autoimmunity Reviews*.
1568 2016;15(3):210-20. doi: <https://doi.org/10.1016/j.autrev.2015.11.005>.
- 1569 217. Zhang L, Li T, Yuan Y, Tong Q, Jiang S, Wang M, et al. Brain metabolic correlates of fatigue in
1570 Parkinson's disease: a PET study. *International Journal of Neuroscience*. 2018;128(4):330-6. doi:
1571 10.1080/00207454.2017.1381093.
- 1572 218. Prell T. Structural and Functional Brain Patterns of Non-Motor Syndromes in Parkinson's
1573 Disease. *Frontiers in Neurology*. 2018;9. doi: 10.3389/fneur.2018.00138.
- 1574 219. Rolls ET. The cingulate cortex and limbic systems for emotion, action, and memory. *Brain*
1575 *Structure and Function*. 2019;224(9):3001-18. doi: 10.1007/s00429-019-01945-2.
- 1576 220. Vogt BA. Submodalities of emotion in the context of cingulate subregions. *Cortex*.
1577 2014;59:197-202. doi: <https://doi.org/10.1016/j.cortex.2014.04.002>.
- 1578 221. Kim B-H, Namkoong K, Kim J-J, Lee S, Yoon KJ, Choi M, et al. Altered resting-state functional
1579 connectivity in women with chronic fatigue syndrome. *Psychiatry Research: Neuroimaging*.
1580 2015;234(3):292-7. doi: <https://doi.org/10.1016/j.psychresns.2015.10.014>.
- 1581 222. Bubb EJ, Metzler-Baddeley C, Aggleton JP. The cingulum bundle: Anatomy, function, and
1582 dysfunction. *Neuroscience & Biobehavioral Reviews*. 2018;92:104-27. doi:
1583 <https://doi.org/10.1016/j.neubiorev.2018.05.008>.
- 1584 223. Tessitore A, Giordano A, De Micco R, Caiazzo G, Russo A, Cirillo M, et al. Functional
1585 connectivity underpinnings of fatigue in "Drug-Naïve" patients with Parkinson's disease. *Movement*
1586 *Disorders*. 2016;31(10):1497-505. doi: <https://doi.org/10.1002/mds.26650>.

- 1587 224. Lanciego JL, Luquin N, Obeso JA. Functional neuroanatomy of the basal ganglia. *Cold Spring*
1588 *Harb Perspect Med.* 2012;2(12):a009621. Epub 20121201. doi: 10.1101/cshperspect.a009621.
1589 PubMed PMID: 23071379; PubMed Central PMCID: PMC3543080.
- 1590 225. Nakagawa S, Takeuchi H, Taki Y, Nouchi R, Kotozaki Y, Shinada T, et al. Basal ganglia
1591 correlates of fatigue in young adults. *Scientific Reports.* 2016;6(1):21386. doi: 10.1038/srep21386.
- 1592 226. Miller AH, Jones JF, Drake DF, Tian H, Unger ER, Pagnoni G. Decreased basal ganglia
1593 activation in subjects with chronic fatigue syndrome: association with symptoms of fatigue. *PLoS*
1594 *One.* 2014;9(5):e98156. Epub 20140523. doi: 10.1371/journal.pone.0098156. PubMed PMID:
1595 24858857; PubMed Central PMCID: PMC4032274.
- 1596 227. Ren P, Anderson AJ, McDermott K, Baran TM, Lin F. Cognitive fatigue and cortical-striatal
1597 network in old age. *Aging (Albany NY).* 2019;11(8):2312-26. doi: 10.18632/aging.101915. PubMed
1598 PMID: 30995207; PubMed Central PMCID: PMC6519999.
- 1599 228. Westbrook A, Frank MJ, Cools R. A mosaic of cost-benefit control over cortico-striatal
1600 circuitry. *Trends in Cognitive Sciences.* 2021;25(8):710-21. doi:
1601 <https://doi.org/10.1016/j.tics.2021.04.007>.
- 1602 229. Kok A. Cognitive control, motivation and fatigue: A cognitive neuroscience perspective. *Brain*
1603 *and Cognition.* 2022;160:105880. doi: <https://doi.org/10.1016/j.bandc.2022.105880>.
- 1604 230. Shan ZY, Kwiatek R, Burnet R, Del Fante P, Staines DR, Marshall-Gradisnik SM, et al.
1605 Progressive brain changes in patients with chronic fatigue syndrome: A longitudinal MRI study.
1606 *Journal of Magnetic Resonance Imaging.* 2016;44(5):1301-11. doi:
1607 <https://doi.org/10.1002/jmri.25283>.
- 1608 231. Dobryakova E, Genova HM, DeLuca J, Wylie GR. The Dopamine Imbalance Hypothesis of
1609 Fatigue in Multiple Sclerosis and Other Neurological Disorders. *Frontiers in Neurology.* 2015;6. doi:
1610 10.3389/fneur.2015.00052.
- 1611 232. Thames AD, Castellon SA, Singer EJ, Nagarajan R, Sarma MK, Smith J, et al. Neuroimaging
1612 abnormalities, neurocognitive function, and fatigue in patients with hepatitis C. *Neurology -*
1613 *Neuroimmunology Neuroinflammation.* 2015;2(1):e59. doi: 10.1212/nxi.0000000000000059.
- 1614 233. Mithani K, Davison B, Meng Y, Lipsman N. The anterior limb of the internal capsule:
1615 Anatomy, function, and dysfunction. *Behavioural Brain Research.* 2020;387:112588. doi:
1616 <https://doi.org/10.1016/j.bbr.2020.112588>.
- 1617 234. Clark AL, Delano-Wood L, Sorg SF, Werhane ML, Hanson KL, Schiehser DM. Cognitive fatigue
1618 is associated with reduced anterior internal capsule integrity in veterans with history of mild to
1619 moderate traumatic brain injury. *Brain Imaging and Behavior.* 2017;11(5):1548-54. doi:
1620 10.1007/s11682-016-9594-6.
- 1621 235. Nourbakhsh B, Azevedo C, Nunan-Saah J, Maghzi AH, Spain R, Pelletier D, et al. Longitudinal
1622 associations between brain structural changes and fatigue in early MS. *Mult Scler Relat Disord.*
1623 2016;5:29-33. Epub 20151021. doi: 10.1016/j.msard.2015.10.006. PubMed PMID: 26856940.
- 1624 236. Koziol LF, Budding DE, Chidekel D. From Movement to Thought: Executive Function,
1625 Embodied Cognition, and the Cerebellum. *The Cerebellum.* 2012;11(2):505-25. doi: 10.1007/s12311-
1626 011-0321-y.
- 1627 237. Genova HM, Rajagopalan V, DeLuca J, Das A, Binder A, Arjunan A, et al. Examination of
1628 Cognitive Fatigue in Multiple Sclerosis using Functional Magnetic Resonance Imaging and Diffusion
1629 Tensor Imaging. *PLOS ONE.* 2013;8(11):e78811. doi: 10.1371/journal.pone.0078811.
- 1630 238. Raichle ME. The Brain's Default Mode Network. *Annual Review of Neuroscience.*
1631 2015;38(1):433-47. doi: 10.1146/annurev-neuro-071013-014030. PubMed PMID: 25938726.
- 1632 239. Vatansever D, Menon DK, Manktelow AE, Sahakian BJ, Stamatakis EA. Default mode network
1633 connectivity during task execution. *NeuroImage.* 2015;122:96-104. doi:
1634 <https://doi.org/10.1016/j.neuroimage.2015.07.053>.
- 1635 240. Høgestøl EA, Nygaard GO, Alnæs D, Beyer MK, Westlye LT, Harbo HF. Symptoms of fatigue
1636 and depression is reflected in altered default mode network connectivity in multiple sclerosis. *PLOS*
1637 *ONE.* 2019;14(4):e0210375. doi: 10.1371/journal.pone.0210375.

- 1638 241. Rayhan RU, Baraniuk JN. Submaximal Exercise Provokes Increased Activation of the Anterior
1639 Default Mode Network During the Resting State as a Biomarker of Postexertional Malaise in Myalgic
1640 Encephalomyelitis/Chronic Fatigue Syndrome. *Frontiers in Neuroscience*. 2021;15. doi:
1641 10.3389/fnins.2021.748426.
- 1642 242. Smith KS, Tindell AJ, Aldridge JW, Berridge KC. Ventral pallidum roles in reward and
1643 motivation. *Behav Brain Res*. 2009;196(2):155-67. Epub 2008/10/29. doi: 10.1016/j.bbr.2008.09.038.
1644 PubMed PMID: 18955088; PubMed Central PMCID: PMCPMC2606924.
- 1645 243. Ghandili M, Munakomi S. *Neuroanatomy, Putamen*. StatPearls. Treasure Island (FL):
1646 StatPearls Publishing
- 1647 Copyright © 2021, StatPearls Publishing LLC.; 2021.
- 1648 244. Buckner RL. The cerebellum and cognitive function: 25 years of insight from anatomy and
1649 neuroimaging. *Neuron*. 2013;80(3):807-15. Epub 2013/11/05. doi: 10.1016/j.neuron.2013.10.044.
1650 PubMed PMID: 24183029.
- 1651 245. Gotaas ME, Stiles TC, Bjørngaard JH, Borchgrevink PC, Fors EA. Cognitive Behavioral Therapy
1652 Improves Physical Function and Fatigue in Mild and Moderate Chronic Fatigue Syndrome: A
1653 Consecutive Randomized Controlled Trial of Standard and Short Interventions. *Frontiers in*
1654 *Psychiatry*. 2021;12. doi: 10.3389/fpsy.2021.580924.
- 1655 246. Goudsmit EM, Ho-Yen DO, Dancey CP. Learning to cope with chronic illness. Efficacy of a
1656 multi-component treatment for people with chronic fatigue syndrome. *Patient Education and*
1657 *Counseling*. 2009;77(2):231-6. doi: <https://doi.org/10.1016/j.pec.2009.05.015>.
- 1658 247. Heitmann H, Andlauer TFM, Korn T, Mühlau M, Henningsen P, Hemmer B, et al. Fatigue,
1659 depression, and pain in multiple sclerosis: How neuroinflammation translates into dysfunctional
1660 reward processing and anhedonic symptoms. *Multiple Sclerosis Journal*. 2022;28(7):1020-7. doi:
1661 10.1177/1352458520972279. PubMed PMID: 33179588.
- 1662 248. Ford H, Trigwell P, Johnson M. The nature of fatigue in multiple sclerosis. *Journal of*
1663 *Psychosomatic Research*. 1998;45(1):33-8. doi: [https://doi.org/10.1016/S0022-3999\(98\)00004-X](https://doi.org/10.1016/S0022-3999(98)00004-X).
- 1664 249. Schwartz CE, Coulthard-Morris L, Zeng Q. Psychosocial correlates of fatigue in multiple
1665 sclerosis. *Arch Phys Med Rehabil*. 1996;77(2):165-70. Epub 1996/02/01. doi: 10.1016/s0003-
1666 9993(96)90162-8. PubMed PMID: 8607741.
- 1667 250. Mertse N, Denier N, Walther S, Breit S, Grosskurth E, Federspiel A, et al. Associations
1668 between anterior cingulate thickness, cingulum bundle microstructure, melancholia and depression
1669 severity in unipolar depression. *Journal of Affective Disorders*. 2022;301:437-44. doi:
1670 <https://doi.org/10.1016/j.jad.2022.01.035>.
- 1671 251. Stern LZ, Bernick C. The Motor System and Gait. In: Walker HK, Hall WD, Hurst JW, editors.
1672 *Clinical Methods: The History, Physical, and Laboratory Examinations*. Boston: Butterworths
1673 Copyright © 1990, Butterworth Publishers, a division of Reed Publishing.; 1990.
- 1674 252. Zhao W, Zhu D, Zhang Y, Zhang C, Zhang B, Yang Y, et al. Relationship between illness
1675 duration, corpus callosum changes, and sustained attention dysfunction in major depressive
1676 disorder. *Quant Imaging Med Surg*. 2021;11(7):2980-93. doi: 10.21037/qims-20-970. PubMed PMID:
1677 34249628; PubMed Central PMCID: PMCPMC8250000.
- 1678 253. Zhu X, Yuan F, Zhou G, Nie J, Wang D, Hu P, et al. Cross-network interaction for diagnosis of
1679 major depressive disorder based on resting state functional connectivity. *Brain Imaging and*
1680 *Behavior*. 2021;15(3):1279-89. doi: 10.1007/s11682-020-00326-2.
- 1681 254. Provenzano D, Washington SD, Baraniuk JN. A Machine Learning Approach to the
1682 Differentiation of Functional Magnetic Resonance Imaging Data of Chronic Fatigue Syndrome (CFS)
1683 From a Sedentary Control. *Frontiers in Computational Neuroscience*. 2020;14. doi:
1684 10.3389/fncom.2020.00002.
- 1685 255. Quevedo K, Ng R, Scott H, Kodavaganti S, Smyda G, Diwadkar V, et al. Ventral Striatum
1686 Functional Connectivity during Rewards and Losses and Symptomatology in Depressed Patients. *Biol*
1687 *Psychol*. 2017;123:62-73. Epub 20161119. doi: 10.1016/j.biopsycho.2016.11.004. PubMed PMID:
1688 27876651; PubMed Central PMCID: PMCPMC5737904.

- 1689 256. Chou T, Deckersbach T, Dougherty DD, Hooley JM. The default mode network
1690 and rumination in individuals at risk for depression. *Soc Cogn Affect Neurosci*. 2023;18(1). doi:
1691 10.1093/scan/nsad032. PubMed PMID: 37261927.
- 1692 257. Gay C, O'Shea A, Robinson M, Craggs J, Staud R. (315) Default mode network connectivity in
1693 chronic fatigue syndrome patients. *The Journal of Pain*. 2015;16(4, Supplement):S54. doi:
1694 <https://doi.org/10.1016/j.jpain.2015.01.233>.
- 1695 258. Kaiser RH, Andrews-Hanna JR, Wager TD, Pizzagalli DA. Large-Scale Network Dysfunction in
1696 Major Depressive Disorder: A Meta-analysis of Resting-State Functional Connectivity. *JAMA*
1697 *Psychiatry*. 2015;72(6):603-11. doi: 10.1001/jamapsychiatry.2015.0071. PubMed PMID: 25785575;
1698 PubMed Central PMCID: PMC4456260.
- 1699 259. Rutman AM, Peterson DJ, Cohen WA, Mossa-Basha M. Diffusion Tensor Imaging of the Spinal
1700 Cord: Clinical Value, Investigational Applications, and Technical Limitations. *Current Problems in*
1701 *Diagnostic Radiology*. 2018;47(4):257-69. doi: <https://doi.org/10.1067/j.cpradiol.2017.07.005>.
- 1702

1703 **Supporting information**

1704 **S1 text. Supplement Methods and Supplement Results.**

1705 **S1 Table. An overview of all studies read in full and final decision.**

1706 **S2 Table. Data extraction table.**

1707 **S3 Table. Quality assessment of cross-sectional studies using the ‘Appraisal tool of cross-sectional
1708 studies’ (AXIS).**

1709 **S4 Table. Quality assessment of longitudinal studies using the Institute of Health Economics (IHE)
1710 ‘Quality Appraisal of Case Series Studies Checklist’.**

1711 **S5 Table. Full breakdown of AXIS scores.**

1712 **S6 Table. Full breakdown of Institute of Health Economics (IHE) checklist scores.**

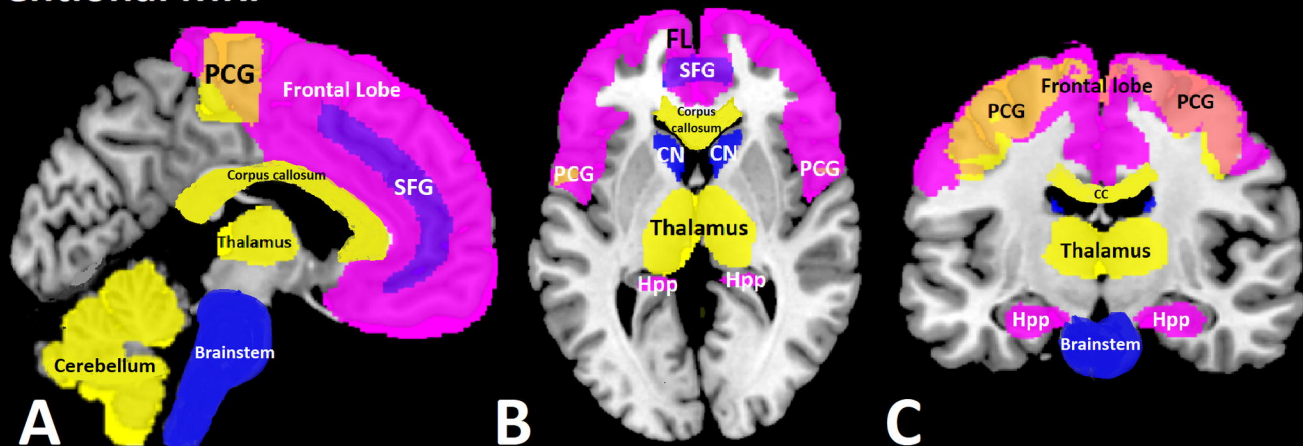
1713 **S7 Table. Overview of study details for publications included (N=60) in the current systematic
1714 review.**

1715 **S8 Table. Negative findings explicitly reported in the included studies of this systematic review.**

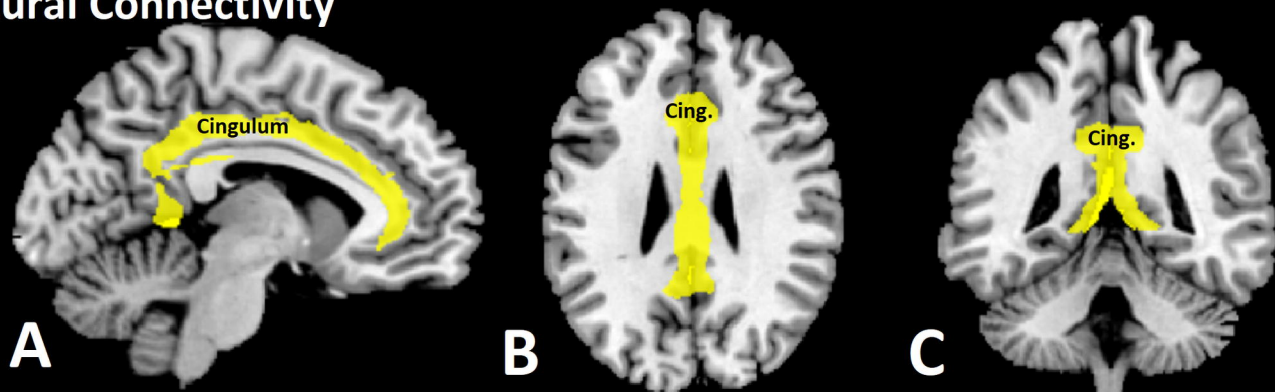
1716 **S9 Table. The PRISMA 2020 Main Checklist filled in for the current systematic review.**

1717 **S10 Table. The PRIMSA Abstract Checklist filled in for the current systematic review.**

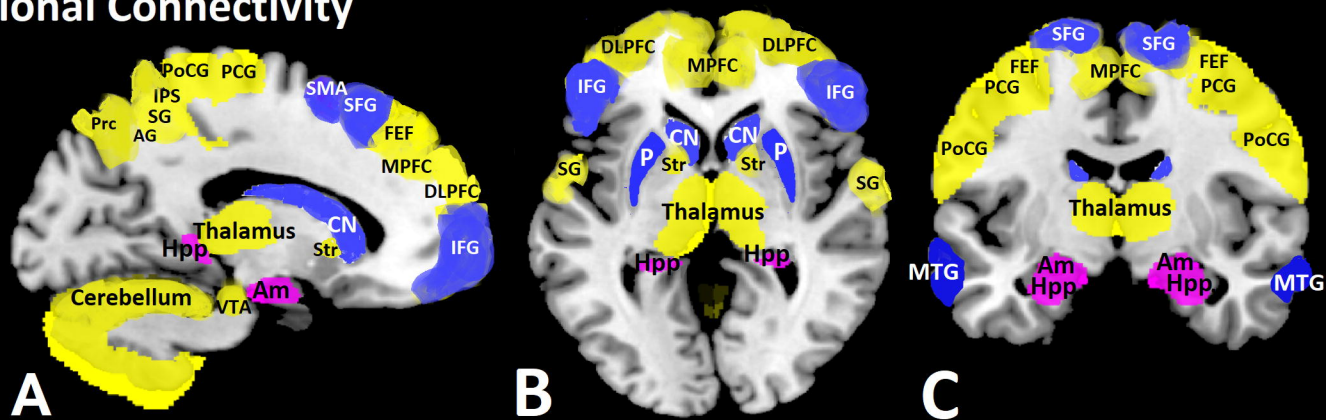
Conventional MRI



Structural Connectivity



Functional Connectivity



Identification of studies via databases and registers

Identification

Records identified from databases:
PubMed (n = 266)
Scopus (n = 352)
Web of Science (n = 241)

Records removed *before screening*:
Duplicate records removed
(n = 434)

Records screened
(n = 425)

Records excluded based on title,
publication date, abstract or
language:
(n = 251)

Full-text articles sought for
retrieval:
(n = 174)

Full-text articles not found:
(n = 2)

Full-text articles assessed for
eligibility:
(n = 172)

Studies excluded (n = 112):
Did not relate D/F to MRI measure
(n = 42)
Did not assess D/F
(n = 22)
Did not use structural MRI, DTI or
fMRI
(n = 13)
Heterogeneous MS group (do not
distinguish RRMS results)
(n = 10)
Small sample size (< 20)
(n = 8)
Assessed effects of drug/treatment
(n = 7)
Non-validated D/F self-assessment
scale
(n = 5)
Examined spinal cord and not brain
(n = 2)
Study protocols
(n = 2)
Case study
(n = 1)

Studies included in review:
(n = 60)

Included