

Title:

Diabetic control and compliance using HbA1C testing guidelines in public healthcare facilities of Gauteng province, South Africa.

Short title: Audit of HbA1 testing in the Gauteng province of South Africa.

Authors:

Kone Ngalulawa^{1,2}, Cassim Naseem^{2,3}, Maposa Innocent⁴, George Jaya Anna^{1,2}

Author details:

Kone N (FCPath(Chem)) <https://orcid.org/0000-0001-9314-9792>

Cassim N (PhD) <https://orcid.org/0000-0003-4389-2849>

Maposa I (PhD) <https://orcid.org/0000-0002-3448-4096>

George JA (PhD) <https://orcid.org/0000-0001-8769-3505>

Affiliations:

¹Department of Chemical Pathology, Faculty of Health Sciences, University of Witwatersrand, Johannesburg, South Africa.

²National Health Laboratory Service (NHLS), Johannesburg, South Africa

³Department of Molecular Medicine and Haematology, Faculty of Health Sciences, University of Witwatersrand, Johannesburg, South Africa.

⁴Division of Epidemiology and Biostatistics, School of Public Health, Faculty of Health Sciences, University of Witwatersrand, Johannesburg, South Africa.

Corresponding author: Ngalulawa Kone (ngalula.kone@nhls.ac.za) +27828092156

NOTE: This preprint reports new research that has not been certified by peer review and should not be used to guide clinical practice.

Key words: Type 2 Diabetes, Hemoglobin A1C (HbA1C), guideline Adherence, Glycemic control, Glycemic monitoring

ABSTRACT

Objective: This study aimed at evaluating diabetic control and compliance with testing guidelines, across healthcare facilities of Gauteng Province, South Africa as well as factors associated with time to achieve control. South Africa's estimated total unmet need for care for patients with type 2 diabetes mellitus is 80%.

Research design, methods and findings: The data of 511781 patients were longitudinally evaluated. Results were reported by year, age category, race, sex, facility and test types. HbA1c of ≤ 7 was reported as normal, $>7 - \leq 9$ as poor control and $>9\%$ as very poor control. The chi-squared test was used to assess the association between a first-ever HbA1c status and variables listed above. The Kaplan Meier analysis was used to assess probability of attaining control among those who started with out-of-control HbA1C. The extended Cox regression model assessed the association between time to attaining HbA1C control from date of treatment initiation and several covariates. We reported hazard ratios, 95% confidence intervals and p-values.

Data is reported for 511781 patients with 705 597 laboratory results. Poorly controlled patients constituted 51.5%, with 29.6% classified as very poor control. Most poorly controlled patients had only one test over the entire study period. Amongst those who started with poor control status and had at least two follow-up measurements, the likelihood of achieving good control was higher in males (aHR=1.16; 95% CI:1.12-1.20; $p<0.001$) and in those attending care at hospitals (aHR=1.99; 95% CI:1.92-2.06; $p<0.001$).

Conclusion: This study highlights poor adherence to guidelines for diabetes monitoring.

Author(s) summary

- Worldwide, diabetes mellitus is an escalating public health crisis and, the second among the top ten leading natural causes of death in South Africa.
- With most patients exhibiting poor control using HbA1C testing, this study undertook an audit to check the percentage of patients who follow testing guidelines for monitoring diabetes in the public healthcare facilities of Gauteng province, South Africa.
- Overall, the guidelines for monitoring diabetes are not followed.
- The study highlights the need to find innovative ways to improve monitoring of diabetic patients in an effort to curb complications of the disease.

INTRODUCTION

Diabetes mellitus is an escalating public health crisis and is among the top ten leading causes of death worldwide [1]. A systematic review published in 2021, estimated that the pooled prevalence of Type II diabetes mellitus (T2DM) in South Africans aged 25 years and older was 15.25% (95% CI: 11.07–19.95%) [2]. In South Africa, T2DM is currently ranked second among the top ten leading natural causes of death [3].

Responding to the increasing global burden of diabetes, the World Health Organization (WHO) has launched the Global Diabetes Compact (GDC) [4]. For the first time ever, WHO member states have supported the creation of global targets for diabetes, as part of recommendations to strengthen and monitor diabetes responses within national non-communicable disease (NCD) programmes. Two of the targets are to ensure 80% of people living with diabetes are diagnosed, and that 80% of those diagnosed have good glycaemic control [4]. Targets for South Africa set in 2013, called for a 30% increase in testing patients with controlled diabetes by 2020, using HbA1c [5, 6].

HbA1c should be tested at a patient's first visit, and then regularly as part of continuing care, to aid in therapeutic decisions. The Society for Endocrinology Metabolism and Diabetes of South Africa (SEMDSA) recommends that HbA1c be measured six monthly in stable controlled diabetic patients, and every three months in those who are not reaching their target goals or who have had therapy changed [6]. Similar guidelines have been produced by the American Diabetes Association (ADA) [7]. While there is some evidence to support the use of HbA1c for the diagnosis of diabetes, this has not been validated in African populations [8].

The aim of this study was to assess diabetic control and compliance with local testing guidelines over a four-year period (January 2015- December 2018), across primary healthcare facilities and hospitals in the Gauteng province, South Africa. Factors associated with time to HbA1c control among patients who were poorly controlled when they started in care, were also explored.

RESEARCH DESIGN, MATERIALS AND METHODS

Study Design

The longitudinal study design was used to describe HbA1C results extracted from the central data warehouse (CDW) of the National Laboratory Health Services, for all patients tested between January 2015 and December 2018, in the public sector of Gauteng healthcare facilities. The CDW houses all laboratory results for public sector patients in South Africa.

Study Site & Population.

After obtaining ethics approval, all HbA1c data for the province was retrieved. The study included all male and female patients, aged ≥ 18 years, tested in healthcare facilities (clinics) and hospitals in Gauteng, over the study period.

Inclusion criteria

The inclusion criteria were: (i) reviewed data within the study period, (ii) results for CDW unique patient identifier of -1 (unmatched) or -2 (study participants), (iii) an age of ≥ 18 years and (iv) an HbA1c of ≥ 3.5 and ≤ 20 .

Exclusion criteria

Patients <18 years (children), those with missing unique identifiers, and with HbA1C levels <3.5 and >20% (out of equipment analytical reference range), were excluded from the study (reference package insert).

Definitions

We defined tests as either “too soon” for those with an interval between requests of <6 months in patients with an initial HbA1c value of <7.0% and < 3 months in patients with an initial HbA1c of > 7.0%, or “too late” for those requested >12 months after the previous test in patients with an initial HbA1c value of <7.0% and > 6months later in patients with an initial HbA1c of > 7.0%. The previous HbA1c value was used to define the appropriate testing frequency for the next request. An HbA1c >7-9% was categorised as poor control, and > 9% as very poor control [9].

Data extract

The data extract included the following variables: (i) episode number, (ii) unique patient identifier, (iii) date reviewed, (iv) age (in years) (v) race group, (iv) sex, (v) facility description, (vi) clinical diagnosis, (vii) test (laboratory/point of care (POC)), (viii) HbA1c result (text and numeric) and (ix) tested date. We used the unique patient identifier that is generated by a probabilistic matching algorithm developed by the CDW that includes fuzzy logic matching. This algorithm uses a set of demographic variables to de-duplicate patients. Bassett *et al* have shown that using the CDW unique patient identifier, they were able to identify a cohort of HIV patients transferred from a hospital to PHC facilities with 90% accuracy [10].

Data preparation

The data was prepared using Microsoft Excel (Redmond, CA, USA) and analysed using SAS (Version 9.4, Cary, NC, USA) and Stata SE (Version 17, College Station, TX, USA). Due to the paucity of race group data, we used the hot-deck imputation method described in a local study which is administered by the National Cancer Registry. We used the age in years to categorise data as follows: (i) 18-30, (ii) 31-50, (iii) >50 and (iv) Unknown for missing values. The HbA1c values were captured as string and numerical values. String values were converted to numbers using a lookup table, e.g., '<3.6' and '>18.5' converted to 3.5 and 18.6, respectively. In this way all HbA1c results were converted to numerical values and categorised as follows: (i) ≤ 7 , (ii) $>7 - \leq 9$ and (iii) $>9\%$. We used the facility description to assign the facility type as follows: (i) hospital, (ii) primary health care (PHC) facility and (iii) Other. For example, the facility description 'BERTHA GXOWA HOSPITAL' was assigned the "hospital" facility type. The unique patient identifier has been described locally to generate a sequence number for chronologically sorted patient data [11]. We determined the

difference between consecutive results for a unique patient using the DATEDIF function (calculated in months). In addition, the cumulative date difference between consecutive results was added up (last result reported the total date difference from the first result). The clinical diagnosis captured on the request form was coded using a lookup table, e.g., '? DIABETES MELLITUS/HPT' was assigned as confirmed diabetes mellitus.

Statistical analysis

We reported the number of samples by year, age category, race, sex, facility type and test type. The number of samples with an HbA1c category of ≤ 7 , $>7 - \leq 9$ and $>9\%$ were also reported. This analysis was repeated for first-ever HbA1c, with a sequence number of one, i.e., index HbA1c defined as the first test during the four-year study period. The chi-squared test was used to assess the association between a first-ever HbA1c category and year, age category, race group, sex, facility type and test type. Based on each HbA1c result, we determined whether the next test was too soon, too early or in compliance with local guidelines [6]. An HbA1c of ≤ 7 and >7 should receive a follow up test at 6 and 3 months, respectively [6]. We used the difference between consecutive results for the same patients to assign compliance with guidelines from the second result onwards. We assessed what percentage of the overall testing was compliant with guidelines. This was repeated by sex, age category and facility type. A descriptive analysis of testing by sequence number was conducted (1 to 11 and categorised the remaining as ≥ 12). We reported the number of samples, median HbA1c with interquartile ranges, HbA1c categories and median follow-up period (in months). We compared guidelines compliance between the first and second HbA1c, with the categories reported for the second result. We reported the number of samples and median follow-up period. To determine factors associated with time to control, the

extended Cox regression model was used to assess association between time to attaining HbA1C control with demographic factors. We reported adjusted hazard ratios, 95% confidence intervals and p-values. We also conducted a Kaplan Meier analysis for age category, race group, sex and facility type to determine the cumulative likelihood of attaining HbA1c control given the months from treatment initiation with a first-ever out of control HbA1c.

RESULTS

We extracted 717 360 test results, after which 11 763 samples were excluded (1.6%). This was largely made up of those with an age <18 years (n=9 751). Data is reported for 705 597 results and 511 781 patients following de-duplication (Fig 1).

Figure 1: Flow chart depicting the application of the inclusion criteria on the data extract. The exclusion criteria included an age ≥ 18 , a valid unique patient identifier and an HbA1c ≥ 3.5 and ≤ 20 .

Descriptive analysis

Overall, there were 348 962 (49.5%), 147 741 (20.9%) and 208 894 (29.6%) results with an HA1c <7%, >7- \leq 9% and >9% respectively (Table 1). Test samples increased from 131 529 in 2015 to 213 257 in 2018 (Table 1).

The majority of testing was performed for those aged >50 years and in Black African people (60.0% and 72, 2% respectively). More females were tested compared to males (60.7% vs 36.1%). Most tests were performed on patients attending hospitals (59.5%) in contrast to 40.3% for PHC facilities. Only 3.8% of testing was performed on POC instruments (Table 1).

Overall, 356 635 (51.5%) of test results were >7%, with 29.6% classified as very poor control (HbA1c >9%). The proportion of patients with very poor control was not very

different across age groups. Total proportions of those with HbA1c >7% increased from 38% of those between the ages of 18 to 30 years to 52.5% of patients over the age of 50. Proportionately, results from those attending hospitals showed better control (56.0%) compared to those attending PHC facilities (39.8%). There were proportionately more POC tests done on poorly controlled patients (Table 1).

Table 1: Descriptive analysis of HbA1c testing between 2015 and December 2018 in the Gauteng province, South Africa.

Category	Overall n= (% Total)	HbA1c category n= (%)			
		Normal Control ≤7%	>7 - ≤9%	Poor Control >9%	Total >7%
Overall	705 597 (100.0)	348 962 (49.5)	147 741 (20.9)	208 894 (29.6)	356 635 (51.5)
Year					
2015	131 529 (18.6)	60 394 (45.9)	28 591 (21.7)	42 544 (32.3)	71 135 (54.1)
2016	170 936 (24.2)	85 729 (50.2)	35 555 (20.8)	49 652 (29.0)	85 207 (49.8)
2017	189 875 (26.9)	96 094 (50.6)	39 205 (20.6)	54 576 (28.7)	93 781 (49.4)
2018	213 257 (30.2)	106 745 (50.1)	44 390 (20.8)	62 122 (29.1)	106 512 (49.9)
Age category	705 597 (100.0)	348 962 (49.5)	147 741 (20.9)	208 894 (29.6)	356 635 (51.5)
18-30	41 870 (5.9)	25 977 (62.0)	3 936 (9.4)	11 957 (28.6)	15 893 (38.0)
31-50	183 872 (26.1)	95 223 (51.8)	30 001 (16.3)	58 648 (31.9)	88 649 (48.2)
>50	423 085 (60.0)	201 150 (47.5)	102 094 (24.1)	119 841 (28.3)	221 935 (52.5)
Unknown	56 770 (8.0)	26 612 (46.9)	11 710 (20.6)	18 448 (32.5)	30 158 (53.1)
Race group	705 597 (100.0)	348 962 (49.5)	147 741 (20.9)	208 894 (29.6)	356 635 (50.5)
Indian/Asian	21 896 (3.1)	10 686 (48.8)	5 738 (26.2)	5 472 (25.0)	11 210 (51.2)
Black African	509 232 (72.2)	242 887 (47.7)	106 732 (21.0)	159 613 (31.3)	266 345 (52.3)
Coloured	33 941 (4.8)	17 858 (52.6)	7 379 (21.7)	8 704 (25.6)	16 083 (47.4)
White	74 234 (10.5)	43 970 (59.2)	14 656 (19.7)	15 608 (21.0)	30 264 (40.8)
Unknown	66 294 (9.4)	33 561 (50.6)	13 236 (20.0)	19 497 (29.4)	32 733 (49.4)
Sex	705 597 (100.0)	348 962 (49.5)	147 741 (20.9)	208 894 (29.6)	356 635 (50.5)
Female	428 276 (60.7)	211 214 (49.3)	91 432 (21.3)	125 630 (29.3)	217 062 (50.7)
Male	254 966 (36.1)	129 922 (51.0)	50 568 (19.8)	74 476 (29.2)	125 044 (49.0)
Unknown	22 355 (3.2)	7 826 (35.0)	5 741 (25.7)	8 788 (39.3)	14 529 (65.0)
Facility Type	705 597 (100.0)	348 962 (49.5)	147 741 (20.9)	208 894 (29.6)	356 635 (50.5)
PHC Facility	284 428 (40.3)	113 218 (39.8)	73 025 (25.7)	98 185 (34.5)	171 210 (60.2)
Hospital	419 664 (59.5)	234 914 (56.0)	74 374 (17.7)	110 376 (26.3)	184 750 (44.0)
Other	1 505 (0.2)	830 (55.1)	342 (22.7)	333 (22.1)	675 (44.9)
Test Type	705 597 (100.0)	348 962 (49.5)	147 741 (20.9)	208 894 (29.6)	356 635 (50.5)
Laboratory	678 513 (96.2)	342 036 (50.4)	138 953 (20.5)	197 524 (29.1)	336 477 (49.6)
Point of Care	27 084 (3.8)	6 926 (25.6)	8 788 (32.4)	11 370 (42.0)	20 158 (74.4)

Data is reported for samples submitted to the National Health Laboratory Service (NHLS) site. The overall number of samples is reported as well as for the following HbA1c categories: (i) ≤7, (ii) >7 - ≤9 and (iii) >9%. Poor control was defined as a HbA1c >7%.

PHC: Primary Health Care

There was a steady increase in numbers of patients with a first-ever HbA1c, increasing from 115 372 in 2015 to 140 718 in 2018, which is an 81% increase (Table 2). Most of this testing was done on those over 50 years (58%), in females (61.0%) and for Black African people (72.9%). The majority of first-ever HbA1c testing was laboratory-based (98.7%) within only 1.3% patients accessing POC.

Table 2: Descriptive analysis of the first-ever HbA1c testing between 2015 and December 2018 in the Gauteng province, South Africa.

Category	Overall n= (% Total)	First-ever HbA1c category n= (%)				p-value
		Normal Control		Poor Control		
		≤7%	>7 - ≤9%	>9%	Total >7 %	
Overall	511 781 (100.0)	274 159 (53.6)	94 248 (18.4)	143 374 (28.0)	237 622 (46.4)	
Year						
2015	115 372 (22.5)	54 750 (47.5)	23 880 (20.7)	36 742 (31.8)	60 622 (52.5)	
2016	126 202 (24.7)	68 713 (54.4)	22 946 (18.2)	34 543 (27.4)	57 489 (45.6)	
2017	129 489 (25.3)	72 346 (55.9)	22 711 (17.5)	34 432 (26.6)	57 143 (44.1)	
2018	140 718 (27.5)	78 350 (55.7)	24 711 (17.6)	37 657 (26.8)	62 368 (44.3)	<.0001
Age category	511 781 (100.0)	274 159 (53.6)	94 248 (18.4)	143 374 (28.0)	237 622 (46.4)	
18-30	33 403 (6.5)	22 936 (68.7)	2 450 (7.3)	8 017 (24.0)	10 467 (31.3)	
31-50	140 897 (27.5)	78 790 (55.9)	20 088 (14.3)	42 019 (29.8)	62 107 (44.1)	
>50	297 046 (58.0)	150 582 (50.7)	64 719 (21.8)	81 745 (27.5)	146 464 (49.3)	
Unknown	40 435 (7.9)	21 851 (54.0)	6 991 (17.3)	11 593 (28.7)	18 584 (46.0)	<.0001
Race group	511 781 (100.0)	274 159 (53.6)	94 248 (18.4)	143 374 (28.0)	237 622 (46.4)	
Indian/Asian	13 342 (2.6)	7 157 (53.6)	3 019 (22.6)	3 166 (23.7)	6 185 (46.4)	
Black African	372 942 (72.9)	193 457 (51.9)	69 154 (18.5)	110 331 (29.6)	179 485 (48.1)	
Coloured	21 948 (4.3)	12 897 (58.8)	3 959 (18.0)	5 092 (23.2)	9 051 (41.2)	
White	48 694 (9.5)	31 661 (65.0)	7 969 (16.4)	9 064 (18.6)	17 033 (35.0)	
Unknown	54 855 (10.7)	28 987 (52.8)	10 147 (18.5)	15 721 (28.7)	25 868 (47.2)	
Sex	511 781 (100.0)	274 159 (53.6)	94 248 (18.4)	143 374 (28.0)	237 622 (46.4)	
Female	312 254 (61.0)	166 091 (53.2)	59 274 (19.0)	86 889 (27.8)	146 163 (46.8)	
Male	188 290 (36.8)	102 723 (54.6)	32 653 (17.3)	52 914 (28.1)	85 567 (45.4)	
Unknown	11 237 (2.2)	5 345 (47.6)	2 321 (20.7)	3 571 (31.8)	5 892 (52.4)	<.0001
Facility Type	511 781 (100.0)	274 159 (53.6)	94 248 (18.4)	143 374 (28.0)	237 622 (46.4)	
PHC Facility	214 118 (41.8)	91 094 (42.5)	51 453 (24.0)	71 571 (33.4)	123 024 (57.5)	
Hospital	296 499 (57.9)	182 379 (61.5)	42 561 (14.4)	71 559 (24.1)	114 120 (38.5)	
Other	1 164 (0.2)	686 (58.9)	234 (20.1)	244 (21.0)	478 (41.1)	<.0001
Test Type	511 781 (100.0)	274 159 (53.6)	94 248 (18.4)	143 374 (28.0)	237 622 (46.4)	

Laboratory	505 012 (98.7)	272 296 (53.9)	92 095 (18.2)	140 621 (27.8)	232 716 (46.1)	
Point of Care	6 769 (1.3)	1 863 (27.5)	2 153 (31.8)	2 753 (40.7)	4 906 (72.5)	<.0001

Data is reported for samples submitted to a National Health Laboratory Service (NHLS) site. The overall number of patients with a first-ever HbA1c is categorised as follows: (i) ≤ 7 , (ii) $>7 - \leq 9$ and (iii) $>9\%$. The chi-squared test was used to assess whether an association between HbA1c categories and year, age category, race group, sex, facility type and test type. Poor control was defined as a HbA1c $>7\%$.

PHC: Primary Health Care

Forty-six percent of all those who had a first test had an HbA1c were $>7\%$, and overall, 28% were $>9\%$. By age category, those between 18-30 years had the highest proportion of HbA1c tests $\leq 7\%$ (68.7%). An HbA1c $>7\%$ was reported for 44.1% and 49.3% for the 31-50 and >50 age categories respectively. White patients, those tested in hospitals and those who had a laboratory test as compared to POC test had higher proportions of HbA1c of $\leq 7\%$ (65%, 61.5% and 53.9% respectively). Black African patients displayed the highest percentage of poor control (48.1%). By sex, males and females showed almost equal proportions of poor control (45.4% vs 46.8%).

Sequence number analysis

Most patients had only one test over the study period (511 781 (73.53%)), and of these patients, 94 248 (18.4%) were poorly controlled, and even more patients, (143 374 (28%)), very poorly controlled (Table 3). The median HbA1c ranged from 6.8% (5.8-9.5) in those who had one test, to 9.0% (7.4-10.9) in those with ≥ 12 tests. Follow up testing did not change with level of control (Table 3).

Table 3: Descriptive analysis of the sequence number for HbA1c testing between 2015 and December 2018 in the Gauteng province, South Africa. A sequence of number of ≥ 12 has been grouped.

Seq	Number of samples n= (%)	Median HbA1c (IQR)	HbA1c category n= (%)			Median follow-up period		
			$\leq 7\%$	Poor Control >7 - $\leq 9\%$	>9%	$\leq 7\%$	Poor Control >7-9%	>9%
1	511 781 (73.53)	6.8 (5.8-9.5)	274 159	94 248	143 374 (28.0)			
2	103 331 (14.64)	7.5 (6.2-9.8)	44 702 (43.3)	26 134	32 495 (31.4)	10.0	11.0	11.0
3	41 566 (5.89)	7.8 (6.4-9.9)	15 651 (37.7)	11 791	14 124 (34.0)	8.0	8.0	8.0
4	19 542 (2.77)	8.0 (6.6-10)	6 628 (33.9)	5 897 (30.2)	7 017 (35.9)	6.0	6.0	7.0
5	10 648 (1.51)	8.2 (6.8-10.2)	3 274 (30.7)	3 322 (31.2)	4 052 (38.1)	6.0	6.0	6.0
6	6 659 (0.94)	8.4 (6.9-10.2)	1 816 (27.3)	2 204 (33.1)	2 639 (39.6)	6.0	6.0	5.0
7	4 552 (0.65)	8.5 (7.1-10.3)	1 132 (24.9)	1 556 (34.2)	1 864 (40.9)	5.0	5.0	5.0
8	3 086 (0.44)	8.6 (7.2-10.4)	709 (23.0)	1 058 (34.3)	1 319 (42.7)	5.0	5.0	5.0
9	1 968 (0.28)	8.6 (7.3-10.4)	404 (20.5)	725 (36.8)	839 (42.6)	5.0	5.0	4.0
10	1 131 (0.16)	8.9 (7.4-10.8)	224 (19.8)	367 (32.4)	540 (47.7)	4.0	4.0	4.0
11	617 (0.09)	8.8 (7.2-10.6)	132 (21.4)	203 (32.9)	282 (45.7)	4.0	4.0	4.0
≥ 12	716 (0.10)	9.0 (7.4-10.9)	131 (18.3)	236 (33.0)	349 (33.0)	3.0	3.5	3.0
Total	705 597 (100)		348 962	147 741	208 894 (29.6)			

IQR: Inter Quartile Ratio. Seq: Sequence number

Guidelines compliance analysis

Table 4 shows the proportions of patients that met testing guidelines according to the level of HbA1c. A median test interval of 11 months was observed over the study period with those with HbA1c >7-≤9% and >9% (82.9 % and 82.1% respectively).

Table 4: HbA1c levels and compliance with guidelines: proportion of patients that met testing interval guidelines according to the level of HbA1c (for first and second results).

Category	n= (%)	2 nd HbA1c Category		
		≤7%	>7 - ≤9%	Poor Control >9%
Testing Interval Does Not Comply with Guidelines	79 806 (77.2)	31 467 (70.4)	216 71 (82.9)	26 668 (82.1)
Testing Interval Complies with Guidelines	23 525 (22.8)	13 235 (29.6)	4 463 (17.1)	5 827 (17.9)
Guidelines follow-up criteria (Months)	3-6	6	3	3
Second HbA1c Follow-Up Median (IQR)	11 (5-16)	10 (5-16)	11 (6-16)	11 (5-17)

Compliance is determined from first ever HbA1C test: if HbA1C <7%: follow-up in 6 months and if HbA1C>7%, follow up in 3 months

Fig 2 illustrates the compliance to guidelines classification with only 5% of patients overall meeting the SEMDSA testing interval guidelines (Fig 2A). Sixty-two percent had their testing performed too late, and this was seen for both males and females (Fig 2B). By age category, there were proportionately more people between the ages of 31- 50 years who had testing late, compared to those aged > 50 years (66.0% vs. 62.5% respectively). By facility type, more people attending clinics had testing performed later, compared to those attending hospital (69.3 vs 58.7% respectively).

Fig 2: Compliance to guidelines classification.

Fig 3 shows the rates for achieving control among patients who entered into care with out-of-control HbA1c. Patients over 50 years (Fig 3A), white patients (Fig 3B), males (Fig 3C), as well as those who were attending hospitals (Fig 3D) had a higher rate of achieving HbA1c control over time.

Fig 3: Rates for achieving control among patients who entered into care with out-of-control HbA1c.

Amongst those who started with poor control and had at least two follow-up measurements, the likelihood of achieving good control was higher in males (aHR=1.16; 95% CI:1.12-1.20; $p < 0.001$) and in those attending care at hospitals (aHR=1.99; 95% CI:1.92-2.06; ($p < 0.001$)). For the 18-30 years, HbA1c improved within the first year of follow up and then was lower in longer follow-up periods compared to those over 50 years. Age group was not statistically associated with time to HbA1c control among the patients who started with out-of-control HbA1c based on the adjusted extended multivariable Cox regression model results (Table 5).

Table 5: Multivariable Extended Cox regression model for factors associated with time to attaining HbA1C control.

Characteristics	Adjusted Hazard Ratio (95% CI)	p-value
Sex		
Female	1	
Male	1.16 (1.12-1.20)	<0.001
Race Group (people)		
Black African	1	
Indian/Asian	0.81 (0.73-0.88)	<0.001
Coloured	0.89 (0.82-0.96)	0.003
White	0.99 (0.94-1.05)	0.689
Unknown	1.06 (0.99-1.14)	0.095
Facility Type		
PHC Facility	1	
Hospital	1.99 (1.92-2.06)	<0.001
Age Category		
18-30	1	
31-50	1.03 (0.94-1.14)	0.470
>50	1.08 (0.97-1.21)	0.177
Unknown	0.92 (0.78-1.09)	0.355

Analysis was conducted for sex, race group, facility type and age category. The adjusted hazard ratios, 95% confidence intervals and p-values are reported.
PHC: Primary Health Care

DISCUSSION

This audit of HbA1c testing allowed us to assess diabetic control and compliance with published guidelines at both PHC facilities and hospitals in Gauteng, South Africa. The large amount of longitudinal data held in our clinical laboratory information systems provides a unique opportunity to relate patterns of testing to guidelines as well as assess disease control or progression over time. Previous work from the South African National Health and Nutrition Examination Survey (SANHANES-1 (2011±2012)), which looked at the diabetes care cascade has shown that there is significant loss to care. Our study has shown that the majority of patients, even with poor control, did not have a single follow up test over four years.

The South African Diabetes guidelines as set by SEMDSA, and subsequently adopted by the Department of Health, clearly stipulate the minimum frequency of blood tests and physical examinations [6]. Forty-six percent of poorly controlled patients in this study, had a single HbA1c test for the study period, reflecting missed diagnostic opportunities for instituting changes to care such as treatment and lifestyle education, which are crucial for optimal diabetes control. It is, therefore, important to include these in the care cascade. It has been reported that reduced frequency of HbA1c testing is associated with poor control [12, 13]. For example, a United Kingdom (UK) study in diabetic patients, showed that three monthly testing was associated with a 3.8% reduction in HbA1c compared to a 1.5% increase seen with annual testing [12].

South Africa is implementing universal health coverage through a National Insurance scheme and chronic diseases should be managed at the primary level. It was concerning to note that more testing occurred in hospital settings as opposed to PHCs and, while glycaemic control at both PHC and hospitals was poor, it was slightly worse

in those attending PHCs. These results are similar to data reported from other urban local centres in Tshwane and Cape Town [14, 15]. This may be due to the volume of work at PHCs which have to deal with the high burden of HIV and TB as well. Task shifting to lay health workers could be an important measure to manage increasing patient demand in PHC facilities [16].

We were not able to assess diabetic control according to level of education and did not have data from private facilities which cater to those with medical insurance. The Global Discover Study conducted over three-years on diabetics initiating second line therapy, showed that patients from low- and middle-income countries, with no education or only primary education as well as those attending public facilities were more likely to have poor diabetic control [17]. Patients under 50 years and Black African people are vulnerable groups that were identified in this study. Additional innovative efforts that target these groups are required such as the use of mobile clinics and screening at points where the community regularly gathers such as queues for receiving social or pension grants. In Sweden, it was shown that people born in Africa and Asia were better reached through community-based screening than through facility-based screening [18].

In South Africa, a number of initiatives have been introduced to support the management of people with diabetes. One such intervention is the Central Chronic Medicine Dispensing and Distribution (CCMDD) programme, which provides access to medication for diabetes and other conditions, closer to home (19). The integration of HbA1c testing into this program may be beneficial. However, it is important to note that review of the program showed that very few patients achieved targets for glycaemic control, possibly because of reduced interaction with health care workers

[19]. The use of smartphone technology which has been used for HIV and TB management can be extended to diabetes care in South Africa [20, 21]. In Guatemala, the use of community healthcare workers and smartphone technology was associated with a decline in poorly controlled diabetics over 3, 6 and 9 months [18, 22]. Other strategies could include individual provider and departmental outcome reports, patient outreach programs, patient awareness campaigns, improving electronic data systems and health care worker education. These resulted in significant improvements in both care process and clinical outcome goals in a United States of America study [23].

Contrary to our findings, several studies from other parts of the world have shown that POC testing results in improved compliance to testing guidelines, better glycaemic control, and improved patient satisfaction. Rosa et al have reported that POC HbA1c in a primary care settings are a cost-effective alternative for monitoring diabetes. This study found that POC monitoring reduced the costs of diabetes-related outcomes when compared with laboratory testing [24]. Schnell et al also reported that a range of studies have demonstrated the benefits of POC HbA1c testing for improved diabetes management and glycaemic control [25]. The reasons for poor control in our setting should be determined and addressed if diabetes is to be effectively managed at primary health care centres.

Finally, the provision of national guidelines does not necessarily result in improved testing frequency as we have shown, and this is confirmed by Driskell et al [12]. There is a need for local guidance or targeted protocols based on national stakeholder involvement for development and implementation.

CONCLUSION

Our study is important as it confirms the findings of several other local studies that show that the majority of diabetic patients are poorly controlled, and that assessment of diabetic control does not meet current guidelines [14, 26, 27]. It also highlights the need to investigate the reasons for poor adherence, and to find innovative ways to improve the monitoring of diabetic patients. The broader implication of this study is that it illustrates the power of using existing laboratory data to answer important clinical questions and because a similar strategy can be used to monitor other chronic conditions. Adherence to testing guidelines in diabetic populations is important to prevent disease complications.

While this study shows inadequate overall testing frequency in a single province in South Africa, there are a number of limitations. We were not able to distinguish between type I and type II diabetes, as well as identify pregnant women who may have undergone more frequent HbA1c testing. We were also unable to determine any treatment interventions following testing and follow up on outcomes of patients with regards to complications of diabetes. Our findings are limited to a single province and those seeking care at public facilities. A great number of individuals had only one HbA1C testing over the four-year period selected (2015-2018), and we cannot confirm if these were previously known diabetics (with good or poor control), or true first-time tested subjects.

ACKNOWLEDGEMENTS

The authors would like to thank all the laboratory staff for performing HbA1c testing, and the CDW for extracting the laboratory data.

JAG supervised the study. JAG & NC developed the methodology. NC & IM analysed the data. NK prepared the first draft of the manuscript. JAG provided editorial comments and technical input. All authors contributed to the manuscript.

The authors declare that they have no financial or personal relationships that may have inappropriately influenced them in writing this article. The authors received no financial support for the research, authorship, and/or publication of this article.

Ethical clearance was obtained from the Human Research Ethics Committee (HREC)(Medical), at the University of the Witwatersrand (M1911163).

References

1. World Health Organisation (WHO). WHO The Top 10 Causes of Death. 2020 [Available from: <http://0-www-who-int.innopac.wits.ac.za/mediacentre/factsheets/fs310/en/>].
2. Pfeiffer C, Pillay-van Wyk V, Turawa E, Levitt N, Kengne AP, Bradshaw D. Prevalence of Type 2 Diabetes in South Africa: A Systematic Review and Meta-Analysis. *Int J Environ Res Public Health*. 2021;18.
3. House I, Street K. Mortality and causes of death in South Africa, 2015: Findings from death notification. 2017.
4. World Health Organisation (WHO). The WHO Global Diabetes Compact 2020 [Available from: <https://www.who.int/docs/default-source/world-diabetes-day/global-diabetes-compact-final.pdf>].
5. National Department of Health (NDOH). Strategic Plan for the Prevention and Control of Non-Communicable Diseases 2013–17 Pretoria2013 [Available from: https://extranet.who.int/ncdccs/Data/ZAF_B3_NCDs_STRAT_PLAN_1_29_1_3%5B2%5D.pdf].
6. Society For Endocrinology MaDoSA. Diagnosis of diabetes mellitus and other disorders of glycaemia, and screening for diabetes mellitus. *JEMDSA*. 2012;17:S7-S9.
7. American Diabetes Association (ADA). American diabetes association position statement - Standards of Medical Care in Diabetes. *Diabetes Care*. 2012;35.
8. International Expert Committee. International Expert Committee report on the role of the A1C assay in the diagnosis of diabetes. *Diabetes Care*. 2009;32:1327-34.
9. Oglesby AK, Secnik K, Barron J, Al-Zakwani I, Lage MJ. The association between diabetes related medical costs and glycemic control: a retrospective analysis. *Cost Effectiveness and Resource Allocation*. 2006;4:1-8.
10. Bassett IV, Huang M, Cloete C, Candy S, Giddy J, Frank SC, et al. Using national laboratory data to assess cumulative frequency of linkage after transfer to community-based HIV clinics in South Africa. *J Int AIDS Soc*. 2019;22:e25326-e.
11. Cassim N, Ahmad A, Wadee R, Rebbeck TR, Glencross DK, George JA. Prostate cancer age-standardised incidence increase between 2006 and 2016 in Gauteng Province, South Africa: A laboratory data-based analysis. *S Afr Med J*. 2020;111:26-32.
12. Driskell OJ, Holland D, Waldron JL, Ford C, Scargill JJ, Heald A, et al. Reduced testing frequency for glycated hemoglobin, HbA1c, is associated with deteriorating diabetes control. *Diabetes Care*. 2014;37:2731-7.
13. Driskell OJ, Holland D, Hanna FW, Jones PW, Pemberton RJ, Tran M, et al. Inappropriate requesting of glycated hemoglobin (Hb A1c) is widespread: assessment of prevalence, impact of national guidance, and practice-to-practice variability. *Clinical chemistry*. 2012;58:906-15.
14. Webb EM, Rheeder P, Van Zyl DG. Diabetes care and complications in primary care in the Tshwane district of South Africa. *Prim Care Diabetes*. 2015;9:147-54.
15. Levitt NS, Bradshaw D, Zwarenstein MF, Bawa AA, Maphumolo S. Audit of public sector primary diabetes care in Cape Town, South Africa: high prevalence of complications, uncontrolled hyperglycaemia, and hypertension. *Diabet Med*. 1997;14:1073-7.
16. Limbani F, Thorogood M, Gómez-Olivé FX, Kabudula C, Goudge J. Task shifting to improve the provision of integrated chronic care: realist evaluation of a lay health worker intervention in rural South Africa. *BMJ Glob Health*. 2019;4:e001084.
17. Khunti K, Chen H, Cid-Ruzafa J, Fenici P, Gomes MB, Hammar N, et al. Glycaemic control in patients with type 2 diabetes initiating second-line therapy: results from the global DISCOVER study programme. *Diabetes, Obesity and Metabolism*. 2020;22:66-78.
18. Timm L, Harcke K, Karlsson I, Sidney Annerstedt K, Alvensson HM, Stattin NS, et al. Early detection of type 2 diabetes in socioeconomically disadvantaged areas in Stockholm - comparing reach of community and facility-based screening. *Glob Health Action*. 2020;13:1795439.
19. Ngassa Piotie P, Webb EM, Rheeder P. Suboptimal control for patients with type 2 diabetes in the Central Chronic Medicine Dispensing programme in South Africa. *Afr J Prim Health Care Fam Med*. 2021;13:e1-e7.

20. Venter WDF, Fischer A, Lalla-Edward ST, Coleman J, Lau Chan V, Shubber Z, et al. Improving Linkage to and Retention in Care in Newly Diagnosed HIV-Positive Patients Using Smartphones in South Africa: Randomized Controlled Trial. *JMIR Mhealth Uhealth*. 2019;7:e12652.
21. Farley JE, McKenzie-White J, Bollinger R, Hong H, Lowensen K, Chang LW, et al. Evaluation of miLINC to shorten time to treatment for rifampicin-resistant Mycobacterium tuberculosis. *The International Journal of Tuberculosis and Lung Disease*. 2019;23:980-8.
22. Duffy S, Norton D, Kelly M, Chavez A, Tun R, Ramírez MNG, et al. Using Community Health Workers and a Smartphone Application to Improve Diabetes Control in Rural Guatemala. *Glob Health Sci Pract*. 2020;8:699-720.
23. Furman RE, Harlan TS, LeBlanc L, Furman EC, Liptak G, Fonseca VA. Diabetes INSIDE: Improving Population HbA1c Testing and Targets in Primary Care With a Quality Initiative. *Diabetes Care*. 2019;43:329-36.
24. Rosa LdS, Mistro S, Oliveira MG, Kochergin CN, Cortes ML, Medeiros DSd, et al. Cost-effectiveness of point-of-care A1C tests in a primary care setting. *Frontiers in Pharmacology*. 2021;11:588309.
25. Schnell O, Crocker JB, Weng J. Impact of HbA1c Testing at Point of Care on Diabetes Management. *J Diabetes Sci Technol*. 2017;11:611-7.
26. Stokes A, Berry KM, McHiza Z, Parker WA, Labadarios D, Chola L, et al. Prevalence and unmet need for diabetes care across the care continuum in a national sample of South African adults: Evidence from the SANHANES-1, 2011-2012. *PLoS One*. 2017;12:e0184264.
27. Boake M, Mash R. Diabetes in the Western Cape, South Africa: A secondary analysis of the diabetes cascade database 2015 - 2020. *Prim Care Diabetes*. 2022;16:555-61.

Fig 1: Flow chart depicting the application of the inclusion criteria on the data extract. The exclusion criteria included an age ≥ 18 , a valid unique patient identifier and an HbA1c ≥ 3.5 and ≤ 20 .

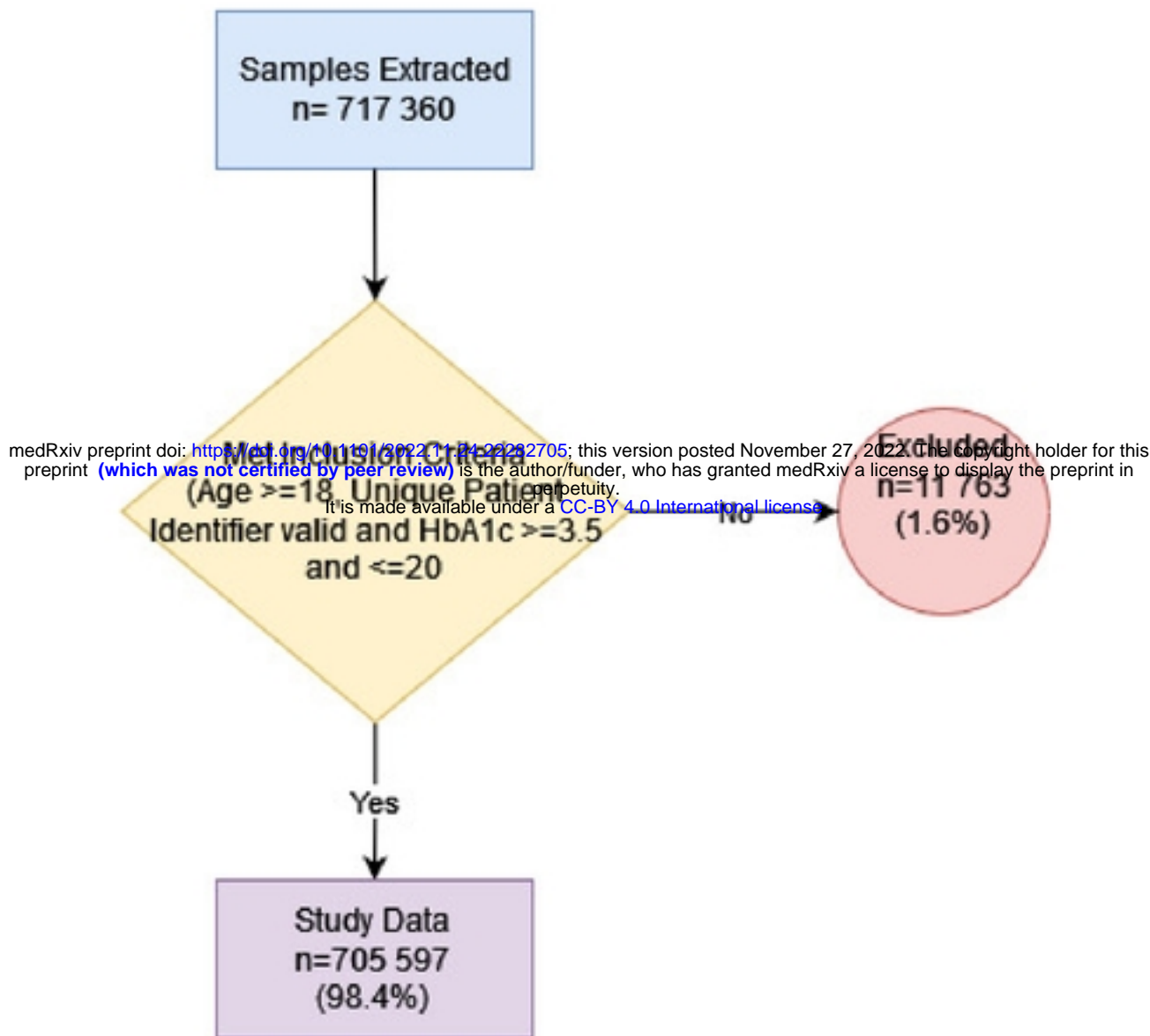
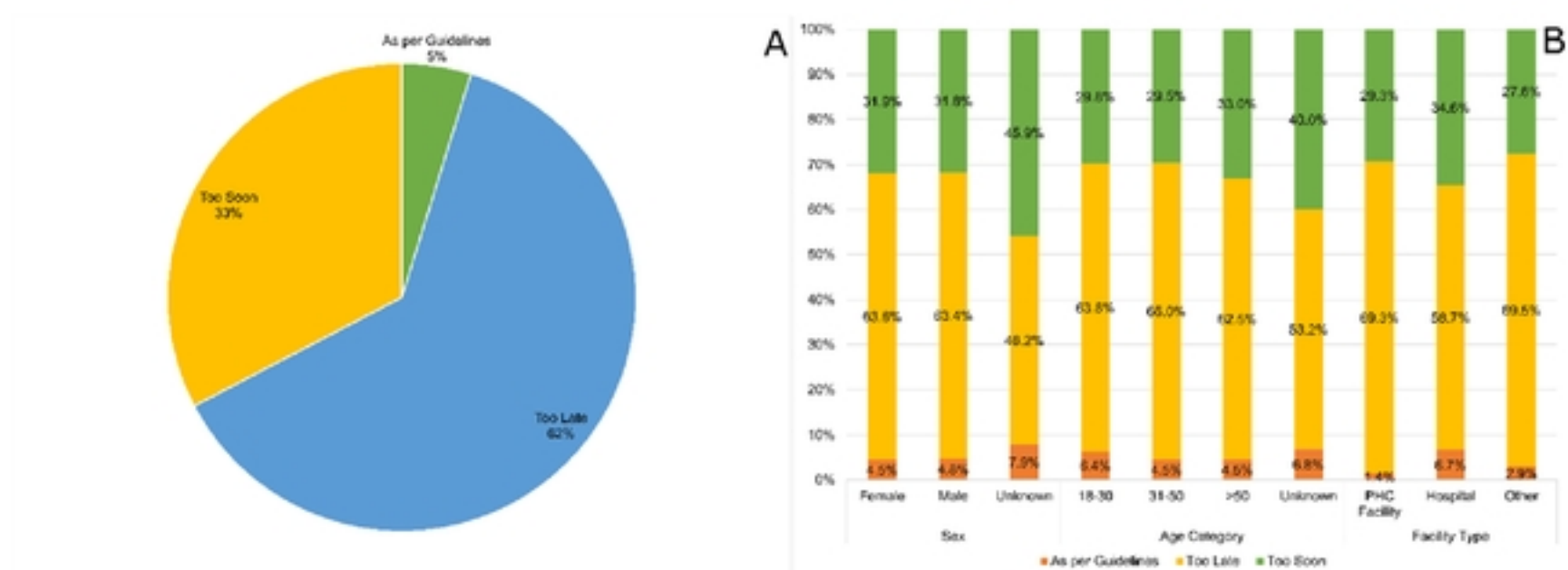
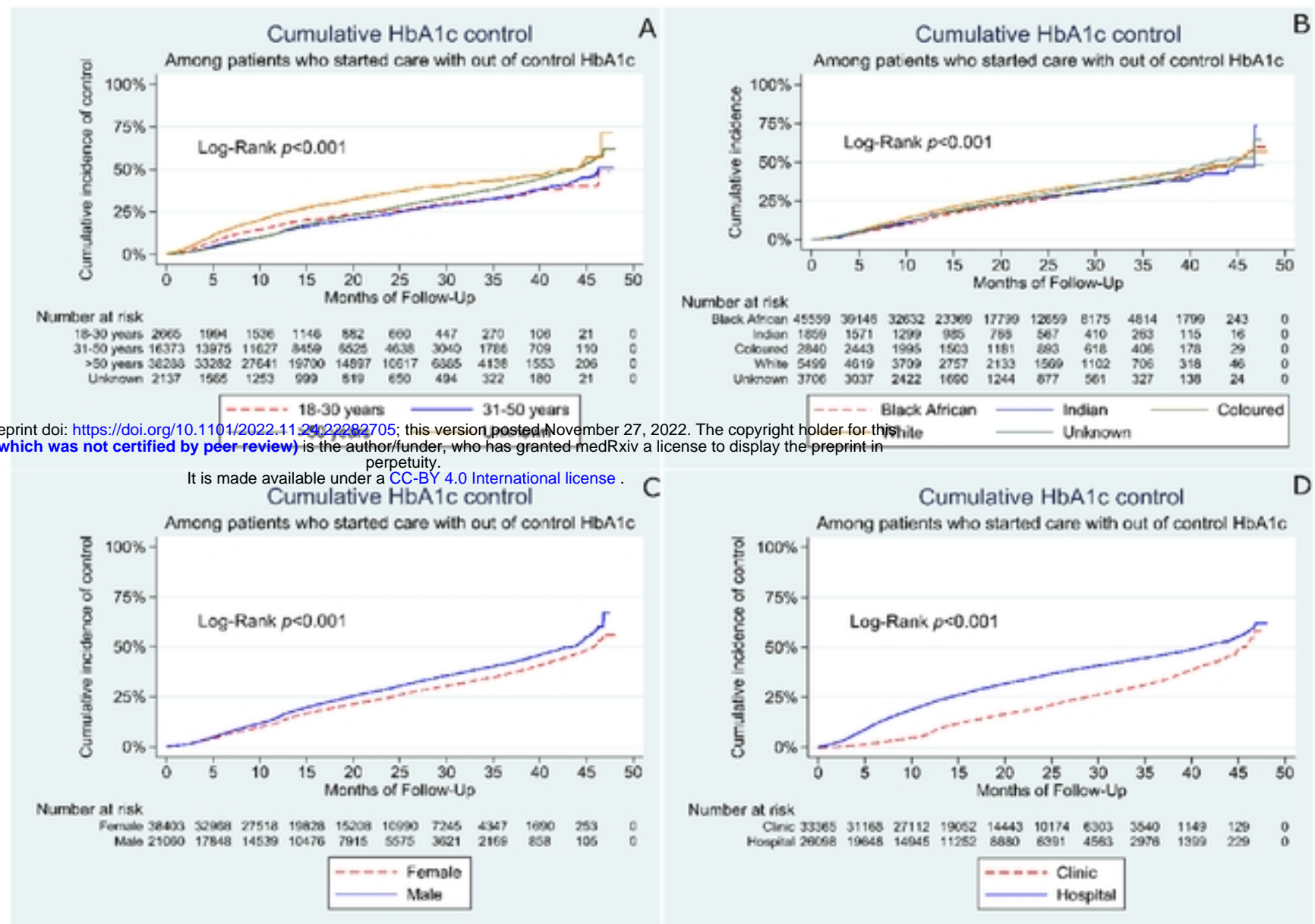


Fig 2: Compliance to guidelines classification.



Patients classification according to HbA1C testing guidelines compliance (Fig 2A) and Correlation between testing guidelines with sex, age, and facility type (Fig 2B). The Y axis indicates the percentage of samples reported.

Fig 3: Rates for achieving control among patients who entered into care with out-of-control HbA1c.



medRxiv preprint doi: <https://doi.org/10.1101/2022.11.29.22282705>; this version posted November 27, 2022. The copyright holder for this preprint (which was not certified by peer review) is the author/funder, who has granted medRxiv a license to display the preprint in perpetuity. It is made available under a [CC-BY 4.0 International license](https://creativecommons.org/licenses/by/4.0/).

Kaplan Meier curves showing the rate of achieving control over the period of follow-up in months by age category (A), race group (B), sex (C), and facility type (D).