

1 **Original Article**

2 **Title: Prescription of anti-influenza drugs in Japan, 2014-2020: a retrospective study**
3 **using open data from the national claims database**

4
5 **Authors:** Akahito Sako MD, MPH ¹, Yoshiaki Gu MD, MPH, PhD ², Yoshinori Masui MD
6 ¹, Kensuke Yoshimura MD, MPH, PhD ³, Hidekatsu Yanai MD, PhD ¹, Norio Ohmagari
7 MD, MSc, PhD ⁴

8
9 ¹Department of Internal Medicine, Kohnodai Hospital, National Center for Global Health
10 and Medicine, 1-7-1 Kohnodai, Ichikawa, Chiba, Japan

11 ² Department of Infectious Diseases, Tokyo Medical and Dental University Graduate
12 School of Medical and Dental Sciences, 1-5-45 Yushima, Bunkyo-ku, Tokyo, Japan

13 ³ Center for Next Generation of Community Health, Chiba University Hospital, 1-8-1
14 Inohana, Chuo-ku, Chiba, Japan

15 ⁴ Disease Control and Prevention Center, Center Hospital, National Center for Global
16 Health and Medicine, 1-21-1 Toyama, Shinjuku-ku, Tokyo, Japan

17
18 **Corresponding author:** Akahito Sako, Department of Internal Medicine, Kohnodai
19 Hospital, National Center for Global Health and Medicine, 1-7-1 Kohnodai, Ichikawa,
20 Chiba 272-8516, Japan

21 Tel: +81-47-372-3501; Fax: +81-47-372-1858; E-mail: dsako@hospk.ncgm.go.jp

22 [ORCID ID: 0000-0002-2555-1293](#)

1

2 **Keywords:** anti-viral, neuraminidase inhibitor, rapid antigen test, new-drugs, drug cost,

3 real-world data

4

5 **Word counts:** Main text: 3982 words, Abstract: 250 words

6 **Tables 0, Figures 11**

7

1 ABSTRACT

2 **Background:** Both physicians and patients are proactive towards managing seasonal
3 influenza in Japan and six drugs are approved. We aimed to clarify the status of
4 anti-influenza drug use by analyzing real-world data.

5 **Methods:** This retrospective study analyzed open data from the National Database of
6 Health Insurance Claims and Specific Health Checkups, which covers most claims data
7 from national health insurance. We estimated the annual number of patients prescribed
8 anti-influenza drugs, their age and sex distribution, drug costs, and regional disparities for
9 the period 2014-2020.

10 **Results:** For 2014-2019, an estimated 6.7-13.4 million patients per year were prescribed
11 anti-influenza drugs, with an annual cost of 22.3-48.0 billion JPY (Japanese Yen). In
12 addition, 21.1-32.0 million rapid antigen tests were performed at a cost of 30.1-47.1 billion
13 JPY. In 2017, laninamivir was the most frequently prescribed anti-influenza drug (48%),
14 followed by oseltamivir (36%), while in 2018, the newly introduced baloxavir accounted
15 for 40.8% of prescriptions. After the emergence of COVID-19, the number of patients
16 prescribed anti-influenza drugs in 2020 dropped to just 14,000. In 2018, 37.6% of
17 prescriptions were for patients aged < 20 years compared with 12.2% for those aged ≥ 65
18 years. Prescriptions for inpatients accounted for 1.1%, and the proportion of prescriptions
19 for inpatients increased with age. Male were more likely than female to be prescribed
20 anti-influenza drugs for inpatient.

21 **Conclusions:** Based on our clarification of how influenza is clinically managed in Japan,
22 future work should evaluate the clinical and economic aspects of proactively prescribing

1 anti-influenza drugs.

2

1 BACKGROUND

2 Seasonal influenza is a common viral infection prevailing in winter. Although the
3 incidence and significance of seasonal influenza has decreased since the emergence of
4 coronavirus disease 2019 (COVID-19) (1, 2), its clinical, social, and economic impacts
5 remain profound (3-5). In Japan, anti-influenza drugs are commonly prescribed, and both
6 physicians and patients are proactive toward using anti-influenza drugs, even non-elderly
7 patients without underlying disease (5-7). It has been reported that Japan consumes more
8 anti-influenza drugs than any other country (8-11). Currently, six kinds of drugs are
9 approved and available for seasonal influenza in Japan—amantadine, oseltamivir,
10 zanamivir, laninamivir, peramivir, and baloxavir—even though with the exception of
11 oseltamivir and zanamivir, there is insufficient evidence of their effectiveness. Favipiravir
12 is also approved but limited for novel or re-emerging influenza virus infections.

13 The National Institute of Infectious Diseases reports data on influenza surveillance,
14 including annual estimates of influenza cases, deaths by influenza, seasonal trends, and
15 distribution by region and age (2). However, there is a paucity of nationwide
16 epidemiological and economic data on the prescription of anti-influenza drugs.

17 In this study, we investigated the clinical epidemiology of seasonal influenza treated with
18 anti-influenza drugs in Japan by analyzing a large open dataset from the national health
19 insurance claims database.

20

21 METHODS

22 National Database Open Data (NDB Open Data)

1 This is a retrospective cohort study using open data from Japan's National Database of
2 Health Insurance Claims Information and Specified Medical Checkups (NDB). Japan has a
3 population of 126 million and a universal health care system. The Ministry of Health,
4 Labour and Welfare has used the NDB to collect almost all national health insurance claims
5 for both inpatients and outpatients since 2009. The NDB contains information such as
6 patient sex, age, diagnosis, procedures and surgeries, and the dates and doses of
7 prescriptions issued. NDB Open Data does not provide individual data but rather aggregate
8 data, including annual numbers of surgeries, medical services, tests, and prescriptions in
9 Japan, stratified by sex, 5-year age intervals, inpatient/outpatient status, and geographic
10 location of clinics or hospitals (47 prefectures) through the website (12). As of September
11 2022, data are available from FY2014 to FY2020. We analyzed data for this entire period
12 with a focus on FY2018 in order to describe clinical practice before the emergence of
13 COVID-19 and the impact of the then newly approved baloxavir. As a denominator, we
14 used the population of Japan stratified by age, sex, and prefecture, as reported by the
15 Statistics Bureau of Japan (13).

16 Several studies have examined data from the NDB (14-16) and NDB Open Data (17, 18).
17 The need for informed consent was waived because the data published by NDB Open Data
18 are anonymized and publicly available. The institutional review board of the National
19 Center for Global Health and Medicine reviewed and approved the study protocol.

20

21 **Anti-influenza drugs and tests for influenza**

22 We investigated the annual prescription of five anti-influenza drugs for seasonal influenza:

1 oseltamivir, zanamivir, laninamivir, peramivir, and baloxavir. We did not include
2 amantadine because we consider almost all prescriptions of amantadine to be for
3 Parkinson's disease rather than influenza. For pediatric patients, we used the mean body
4 weight reported for each age by the 2017 School Health Statistics and the 2010 National
5 Growth Survey on Preschool Children. We assumed a mean body weight of 12.0 kg and
6 24.4 kg for boys aged 0-4 years and 5-9 years, respectively, and corresponding values of
7 11.5 kg and 23.9 kg for girls. Data are available on the annual prescriptions of the top 100
8 anti-viral drugs, including generic equivalents and dosage forms; in 2014, data are available
9 for only the top 30 anti-viral drugs. Zanamivir has been available in Japan since 2000,
10 oseltamivir since 2001, laninamivir and peramivir since 2010, and baloxavir since 2018.
11 Between 2007 and 2018, oseltamivir was contraindicated for patients aged 10-19 years in
12 Japan because some cases of neuropsychiatric adverse effects and falls were reported (7).
13 Data on prophylactic use of anti-influenza drugs is not included in NDB Open Data because
14 such usage is not covered by national health insurance.

15 We considered the following prescriptions to indicate 1 influenza patient: oseltamivir, 750
16 mg (capsules or dry syrup) as 1 influenza patient aged > 9 years and oseltamivir 20 mg/kg
17 as 1 influenza patient aged \leq 9 years; zanamivir, 20 inhalations; laninamivir, one inhalation
18 as 1 influenza patient aged 0-9 years and two inhalations as 1 influenza patient aged > 9
19 years or 1 bottle of inhalation suspension; peramivir, one infusion of 300 mg or 150 mg;
20 and baloxavir, 10 mg as 1 patient aged 0-4 years, 20 mg as 1 patient aged 5-9 years, 30 mg
21 as 1 patient aged 10-14 years, and 40 mg as 1 patient aged >14 years.

22 Because NDB Open Data protects personal privacy through anonymization, there are

1 some missing values in the data. For example, data are made available in the form of an
2 Excel spreadsheet on the total annual prescriptions of oseltamivir 75 mg capsules and
3 distribution by sex, 5-year age interval, and prefecture, but if the number of prescriptions in
4 a specific cell is low, the data are masked. The cut-off values for masking are 1,000 tablets,
5 capsules, blister packs, kits, or bottles and 1,000 g for dry syrup. For infusion bags or vials,
6 the cut-off value was 1,000 in 2015 and has been 400 since 2016. For example, if only 450
7 oseltamivir capsules were prescribed for boys aged 0-4 years in 2019, this information
8 would be masked. Moreover, even if only one cell contained a value below the cut-off, until
9 2017 the entire row was masked, and thereafter the cells with the two lowest values are
10 masked. When we calculated the total number of patients prescribed anti-influenza drugs,
11 we assumed that the prescriptions with unknown age group were adult doses.

12 Age distribution by sex is available, but the age distribution within each prefecture is not.
13 When we calculated the total number of patients prescribed anti-influenza drugs in each
14 prefecture, we extrapolated the age distribution based on that of prescriptions nationwide.

15 In Japan, rapid antigen tests, serologic tests, and nucleic acid amplification tests are
16 available. These tests are performed only when ordered by a physician. Self-tests and
17 over-the-counter retail tests are not approved in Japan. However, we calculated only rapid
18 antigen tests, because only 14,759 serologic tests and 84 nucleic acid amplification tests
19 were performed in 2019.

20 In terms of the costs associated with anti-influenza drugs and rapid antigen tests, we used
21 only the reimbursement fees for drugs and tests and did not include the fees for physicians
22 and pharmacists or for hospitalization. For our calculations, we assume 1 USD is equivalent

1 110 JPY during the study period. Accordingly, costs were calculated as follows: rapid
2 antigen test, 1,430 JPY; one treatment course of zanamivir for adults, 34,700 JPY in 2014
3 and 29,420 JPY in 2019; one treatment course of oseltamivir sold under a brand name,
4 31,790 JPY in 2014 and 27,200 JPY in 2019, and as a generic drug, 13,600 JPY in 2019;
5 one treatment course of laninamivir, 42,800 JPY ; single infusion of peramivir 300 mg
6 62,160 JPY ; and one treatment course of baloxavir, 47,890 JPY .

7

8 **RESULTS**

9 **Annual number of patients and cost of anti-influenza drugs and rapid antigen tests**

10 The annual number of patients prescribed anti-influenza drugs in 2014-2019 ranged from
11 6.7 to 13.4 million (Fig. 1). The annual number of rapid antigen tests performed in the same
12 period was 21.3, 21.5, 24.6, 32.0, 24.8, and 21.1 million times, respectively. In 2017, the
13 most prescribed anti-influenza drug was laninamivir (48.1%), followed by oseltamivir
14 (36.2%), zanamivir (11.4%), and peramivir (4.4%). In 2018, the newly introduced
15 baloxavir accounted for 40.8% of prescriptions, followed by oseltamivir (28.7%),
16 laninamivir (22.9%), zanamivir (4.7%), and peramivir (2.8%). In 2019, baloxavir dropped
17 to account for just 15.9%. After the emergence of COVID-19, the number of patients
18 prescribed anti-influenza drugs was only 14,000 in 2020 and 1.7 million rapid antigen tests
19 were performed.

20 The annual cost of anti-influenza drugs in 2014-2019 ranged from 22.3 to 48.0 billion JPY
21 and that of rapid antigen tests in the same period was 31.7, 32.0, 36.1, 47.1, 35.5, and 30.1
22 billion JPY, respectively (Fig. 2). Until 2017, the most expensive drug was laninamivir

1 (54.3% of the total expenditure on anti-influenza drugs in 2017), followed by oseltamivir
2 (28.9%), zanamivir (9.7%), and peramivir (7.2%). In 2018, baloxavir accounted for 49.5%,
3 followed by laninamivir (25.6%), oseltamivir (16.6%), peramivir (4.5%), and zanamivir
4 (3.9%). The only generic form of an anti-influenza drug available in Japan is oseltamivir,
5 which became available in 2018. The proportion of prescriptions for the generic forms of
6 oseltamivir capsule and dry syrup was 36.6% and 30.0% in 2018 and 53.0% and 42.1% in
7 2019, respectively.

8

9 **Age and sex distribution**

10 In 2018, the sex distribution of patients prescribed anti-influenza drugs was nearly even,
11 with female patients accounting for 50.5% of the total (Fig. 3). Males were predominant
12 among patients aged < 20 years, and females were predominant among patients aged \geq 25
13 years. Among both sexes, most patients were aged 5-9, followed by those aged 10-14 and
14 0-4, with a second peak seen in those aged 35-49. Patients aged < 20 accounted for 37.6%
15 of the total, while patients aged \geq 65 accounted for 12.2%.

16 With the general population as the denominator, we found the highest annual incidence of
17 anti-influenza drug prescriptions in aged 5-9, at 259 per 1,000 population for males and 245
18 for females (Fig. 4). The incidence was higher for males aged 0-19 and for females aged
19 20-69.

20 In 2018, the most frequently prescribed drug for patients aged < 10 was oseltamivir (Fig.
21 5) and that for patients aged 10-94 was baloxavir. Laninamivir was the second most
22 frequently prescribed drug for patients aged 10-59. Zanamivir was relatively frequently

1 prescribed for patients aged 5-19, and peramivir was frequently prescribed for patients aged
2 ≥ 75 .

3

4 **Geographical differences by prefecture**

5 In 2018, the number of patients prescribed anti-influenza drugs per 1,000 population was
6 highest in Kumamoto (97.9), followed by Gifu (96.8) and Aichi (96.4) and was lowest in
7 Okinawa (65.3), Shimane (66.4), and Aomori (66.9) (Fig. 6).

8 Choice of prescription varied among the 47 prefectures (Fig. 7). Baloxavir was the most
9 frequently prescribed drug in 39 prefectures, the second most in 6 prefectures, and the third
10 most in 2 prefectures. Baloxavir accounted for the highest proportion in Aichi (50.7%) and
11 the lowest in Okinawa (26.1%). Oseltamivir was the most frequently prescribed drug in 6
12 prefectures, the second most in 38 prefectures, and the third most in 3 prefectures.
13 Oseltamivir accounted for the highest proportion in Okinawa (40.4%) and the lowest in
14 Gifu (22.1%). Laninamivir was the most frequently prescribed drug in 2 prefectures, the
15 second most in 3 prefectures, and the third most in 42 prefectures. Laninamivir accounted
16 for the highest proportion in Shimane (35.1%) and the lowest in Mie (15.2%). Zanamivir
17 was the least frequently prescribed drug in 9 prefectures and accounted for the highest
18 proportion in Yamanashi (8.7%) and the lowest in Shiga (2.1%). Peramivir was the least
19 frequently prescribed drug in 38 prefectures and accounted for the highest proportion in
20 Iwate (6.5%) and the lowest in Saga (0.7%).

21

22 **Inpatient and outpatient prescriptions**

1 Prescriptions for inpatients accounted for 1.1% of the total (Fig. 8). The proportion of
2 prescriptions for inpatients increased with age. Male were more likely to be prescribed
3 anti-influenza drugs for inpatient, regardless of age. The most frequently prescribed drug
4 for inpatients was peramivir (61.8%), followed by oseltamivir (28.2%), baloxavir (7.1%),
5 and laninamivir (3.0%). Peramivir was the most frequently prescribed drug among male
6 inpatients aged < 15 and ≥ 65 years; data for 15-29 year olds were not available due to the
7 small number of inpatients (Fig. 9). Peramivir was the most frequently prescribed drug
8 among female inpatients aged < 10 and ≥ 65 years; data for 10-24 year olds were not
9 available due to the small number of inpatients (Fig. 10). Peramivir for inpatients accounted
10 for 25.1% of all peramivir prescriptions.

11 The proportion of inpatient prescriptions varied among prefectures. Hokkaido had the
12 highest proportion (2.1%), followed by Iwate (1.6%) and Toyama (1.5%). Yamanashi and
13 Wakayama had the lowest proportion (0.2% each). In Shimane and Tottori, inpatient
14 prescription data were not available due to the small number of inpatients. Peramivir was
15 the most frequently prescribed anti-influenza drug for inpatients in Gifu (81.6%) and the
16 least frequently prescribed in Okinawa (47.9%) (Fig. 11).

17

18 **DISCUSSION**

19 This nationwide retrospective study investigated annual trends in anti-influenza drug use in
20 Japan over the six-year period of 2014-2020. The estimated annual number of patients
21 prescribed these drugs ranged from 6.7 to 13.4 million, while the costs ranged from JPY
22 30.1 to 47.1 billion. Patients aged < 20 years accounted for 46.1% of the anti-influenza

1 prescriptions. The most frequently prescribed drug until 2017 was laninamivir, which was
2 overtaken by the newly approved baloxavir in 2018, before prescriptions for baloxavir
3 decreased dramatically the following year.

4 In Japan, the National Epidemiological Surveillance for Infectious Diseases (NESID)
5 program is implemented nationwide (10, 19). NESID is based on reports from about 5,000
6 sentinel hospitals and clinics, accounting for about one-tenth of the pediatric and internal
7 medicine facilities nationwide. The number of influenza patients estimated by NESID from
8 the 2014-15 flu season to the 2019-20 flu season was 9.4, 9.8, 10.3, 14.4, 11.7, and 7.3
9 million, respectively, dropping to just 14,000 in the 2020–21 flu season. Starting with the
10 2018-19 flu season, the estimation method was changed because the previous method
11 resulted in overestimation (about 1.54 times) and the data prior to the 2017-18 season were
12 corrected retrospectively. Our estimation of the annual number of patients prescribed
13 anti-influenza drugs is similar to the number of influenza patients reported by NESID. This
14 indicates that most influenza patients in Japan received an anti-influenza prescription. In
15 addition to our study, several other studies have investigated influenza by examining
16 administrative claims databases, such as the Diagnosis Procedure Combination database
17 (20, 21), the Japan Medical Data Center database (22-24), and the NDB (25). These
18 databases are useful because they complement public health surveillance data, which
19 sometimes lack clinical information such as prescriptions. Secondary analyses of claims
20 databases are less susceptible to underestimations and require less effort and cost compared
21 with hospital- and physician-based surveillance.

22 It has been said that the management of influenza in Japan is unique, but analysis of large

1 datasets has been lacking. Among studies conducted in Japan to date, an online survey of
2 200 households in Japan conducted in 2019 showed that 76% of participants with
3 influenza-like illness visited a healthcare facility, 89% underwent a rapid influenza
4 diagnostic test, and 95% who tested positive were treated with antivirals (5). A study at a
5 university hospital in France investigated 755 confirmed cases of influenza between 2018
6 and 2019, a quarter of which required hospitalization (26). Oseltamivir was prescribed in
7 59.9% of cases, a rate the authors considered low and in need of improvement. A
8 single-center study in Japan reported that prescription of anti-influenza drugs was
9 associated with a positive influenza rapid antigen test, physician experience, and high
10 regional influenza activity, whereas patient age and comorbidities were not associated (9).
11 The authors suggested the need for educational intervention because the evidence-based
12 prescription of anti-influenza drugs was often neglected in clinical practice in Japan. Our
13 nationwide data support the findings and concerns raised by these previous Japanese
14 studies.

15 Evidence for oseltamivir and zanamivir related to hard endpoints such as hospitalization
16 and death had been questioned because systematic reviews showed the efficacy of only soft
17 endpoints such as time to alleviation (27-29). However, in 2015, a systematic review of
18 oseltamivir prescribed for patients with documented influenza infection showed that
19 oseltamivir was efficacious for reducing lower respiratory tract infections and hospital
20 admissions (30). Recent US guidelines (31) are more proactive than before (32) in terms of
21 prescribing anti-influenza drugs, not only for elderly and high-risk patients but also for
22 otherwise healthy patients. In Japan, physicians seem to have routinely and proactively

1 prescribed anti-influenza drugs regardless of the accumulation of evidence and updates to
2 guidelines. Oseltamivir and zanamivir are the main anti-influenza drugs prescribed in the
3 US and Europe (11, 31). Our analysis showed that laninamivir has been frequently
4 prescribed in Japan, but evidence of its effectiveness is limited. Phase II trials in 12
5 countries failed to show that it was more efficacious compared with placebo (33). A
6 randomized controlled trial in Japan showed non-inferiority to oseltamivir in terms of time
7 to illness alleviation, and laninamivir has been approved only in Japan (34, 35). The
8 emergence of variants with less susceptibility to baloxavir was reported in the first
9 randomized controlled trial (36). The Japan Pediatric Society did not recommend baloxavir
10 for patients aged < 12 years because of concern about the lack of evidence for children as
11 well as the emergence of variants in 2018. The Japanese Association for Infectious Diseases
12 (37) described the characteristics of baloxavir but did not issue a position statement in 2018
13 (38). Despite these concerns, baloxavir was the most prescribed anti-influenza drug in the
14 2018-19 flu season, just after it was released. In 2019, the Japanese Association for
15 Infectious Diseases announced that they could not make a recommendation for adults
16 because of a lack of evidence. In the 2019-20 flu season, prescriptions of baloxavir dropped
17 sharply. Although we could not determine why laninamivir and baloxavir are prescribed so
18 frequently, Japanese physicians and patients might prefer the simplicity of single
19 administration. It also seems that physicians prefer new drugs to conventional drugs and
20 that prescriptions were not driven by evidence or guidelines but rather by the promotion of
21 new drugs by pharmaceutical companies (39, 40). Therefore, future studies should
22 investigate how Japanese physicians decide which drugs to prescribe for influenza.

1 Our data showed a higher incidence of influenza in children. A quarter of the general
2 population of children aged 5-9 years are prescribed anti-influenza drugs each year. There
3 is a second peak in people in their 30s and 40s, with a higher incidence in women. This
4 second peak may reflect the fact that some of these patients are childcare workers or the
5 parents of children with influenza. In Japan, mothers spend much more time engaged in
6 household and childcare work than fathers, according to a national survey on time use and
7 leisure activities, and most nursery school and kindergarten teachers in Japan are women. A
8 previous study that analyzed data from city-wide primary school seasonal influenza
9 surveillance and a household survey showed that estimated contact intensity was higher in
10 mother-child pairs than in father-child pairs (41). It also showed that older patients,
11 especially older males, were more likely to be hospitalized for influenza or to be infected
12 with influenza during hospitalization. The in-hospital prescription rate for females in their
13 70s, 80s, and 90s was 3.6%, 11.4%, and 16.8%, respectively, and while it was higher for
14 their male counterparts at 6.7%, 16.0%, and 22.3%. Boys were more likely to be prescribed
15 anti-influenza drugs and their in-hospital prescription rate was higher than that for girls. It
16 has been reported that males are more vulnerable to influenza in terms of risk of
17 hospitalization and mortality compared with females (42). In Hong Kong, male patients,
18 especially those aged < 18 years, tended to have a higher excess hospitalization rate
19 compared with female patients (33). A retrospective single-center study in Canada that
20 investigated the risk of hospitalization due to influenza in childhood showed that male sex
21 was associated with a higher risk of hospitalization (adjusted odds ratio: 1.9; 95%
22 confidence interval: 1.0-3.7)(43). Our data are compatible with those of these previous

1 studies, suggesting the need to take the patient's sex into consideration in the management
2 of influenza.

3 Differences in the incidence of influenza by prefecture have been reported previously by
4 NESID (19). The present study is the first to show a geographical disparity in the choice of
5 anti-influenza drugs prescribed. Previous studies of data from NDB Open Data have shown
6 regional disparities in clinical practice in terms of surgery for nephrectomy and
7 nephroureterectomy (44) as well as prescriptions for chronic kidney disease (45). In
8 addition to variance in the aging population and disease prevalence, the maldistribution of
9 specialists might explain these disparities. However, influenza is a very common disease
10 and most patients were treated by a pediatrician, internist, or general practitioner rather than
11 an infectious disease or respiratory disease specialist. Establishment and dissemination of
12 clinical guidelines is one of the most important factors in reducing disparities and
13 standardizing clinical practice (46, 47). The Japan Pediatric Society has published clinical
14 guidelines and recommendations about the choice of anti-influenza drugs, but there are no
15 comprehensive clinical guidelines for seasonal influenza in adult patients, such as those
16 published by the Infectious Diseases Society of America (31), and the Japanese Association
17 for Infectious Diseases does not determine the grade of recommendation based on clinical
18 evidence (37). It is therefore necessary to investigate how aware physicians are about the
19 current guidelines and evidence for the effectiveness of anti-influenza drugs.

20 After the emergence of COVID-19, prescriptions for anti-influenza drugs decreased in
21 2019 and then dropped dramatically to just 14,000 in 2020. Although the significance of
22 influenza was decreased, influenza is expected to re-emerge after restrictions to limit the

1 spread of COVID-19 are lifted. Diagnosing COVID-19 depends largely on rapid antigen or
2 polymerase chain reaction tests of nasopharyngeal swabs or saliva samples. Oral
3 medications for COVID-19 such as molnupiravir and nirmatrelvir-ritonavir have recently
4 become available. The impact of COVID-19 has decreased because of widespread
5 vaccination, the emergence of less severe strains such as the Omicron variant, and the
6 development of pharmacotherapies. Based on the similarity between influenza and
7 COVID-19, we need to learn from both the strengths and shortcomings of influenza
8 management in Japan in terms of clinical practice, logistics, and health policy.

9 This study has several limitations. First, NDB Open Data does not contain individual data
10 but rather is aggregate data. The number of patients prescribed anti-influenza drugs can
11 only be estimated, and the actual doses for pediatric patients and multiple prescriptions for
12 individuals are not known. Second, patient characteristics other than age, sex, prefecture,
13 inpatient/outpatient status, and outcome data are not available. Even if a patient's condition
14 worsens and they are hospitalized the day after being prescribed anti-influenza drugs at an
15 outpatient clinic, NDB Open Data only records that they were prescribed anti-influenza
16 drugs as an outpatient. Third, as mentioned in the Methods section, the dataset contained
17 missing values. However, these missing values accounted for only 0.2% of prescriptions,
18 and the reason for the masked data is because of the small number of prescriptions in
19 specific age categories and prefectures. Therefore, the influence of missing values is
20 considered to be small. Fourth, there is a delay in data availability. NDB Open Data
21 published the data for FY2020 in September 2022. Although these data are useful for public
22 health surveillance, the delay in their publication makes it impossible to utilize them for

1 timely management of seasonal influenza. Fifth, under the national health insurance scheme
2 in Japan, reimbursements are made for anti-influenza drugs only when prescribed for
3 treatment, not for prevention, and thus NDB contains only data on prescriptions for
4 treatment. However, it cannot be ruled out that some prescriptions for prevention were
5 included in the dataset and this may have resulted in overestimation of the number of
6 patients.

7 Despite these limitations, our study clarifies the clinical epidemiology of seasonal
8 influenza treated with anti-influenza drugs in Japan, where both physicians and patients are
9 proactive toward management with anti-influenza drugs and rapid antigen tests. These
10 findings from nationwide real-world data can be utilized for public health management,
11 health policy, and clinical practice not only in relation to influenza but also to COVID-19
12 and other emerging infectious diseases. Access to physicians, rapid antigen tests, and
13 anti-influenza drugs are strengths of the Japanese health care system, but the choice of
14 which anti-influenza drug to prescribe remains unclear based on the clinical evidence
15 currently available. Further research is needed to elucidate how physicians choose which
16 anti-influenza drugs to prescribe.

17

1 **Abbreviations**

2 NDB: National Database of Health Insurance Claims and Specific Health Checkups

3 COVID-19: Coronavirus disease 2019

4 NESID: National Epidemiological Surveillance for Infectious Diseases

5 JPY: Japanese Yen

6

7 **Declarations**

8 **Ethics approval and consent to participate:** The requirement for informed consent was
9 waived because this was a retrospective study of publicly available, anonymized
10 administrative data. The study was approved by the Institutional Review Board of the
11 National Center for Global Health and Medicine (NCGM-S-003424).

12

13 **Consent for publication:** Not applicable.

14

15 **Availability of data and materials:** The datasets used and/or analyzed in this study are
16 publicly available.

17

18 **Competing interests:** The authors have no conflicts of interest to disclose.

19

20 **Funding:** This work was supported by a grant from the National Center for Global Health
21 and Medicine (Grant Numbers: 19A1026 and 20A3001). The funding institutions had no
22 role in the design and conduct of the study, collection, management, analysis, and

1 interpretation of the data, preparation, review, or approval of the manuscript, or decision to
2 submit the manuscript for publication.

3

4 **Authors' contributions:** AS is the guarantor of this work, had full access to all data in the
5 study, and takes responsibility for the integrity of the data and the accuracy of the data
6 analysis. All authors approved the final version of the manuscript.

7 Study concept and design: AS

8 Acquisition, analysis, or interpretation of data: AS, YG, NO

9 Drafting of the manuscript: AS

10 Critical revision of the manuscript for important intellectual content: AS, YM, KY, HY, YG,

11 NO

12 Administrative, technical, or material support: HY

13 Study supervision: HY, YG, NO

14

15 **Acknowledgements:** Not applicable

16

1 REFERENCES

- 2 1. Sawakami T, Karako K, Song P. Behavioral changes adopted to constrain
3 COVID-19 in Japan: What are the implications for seasonal influenza prevention and
4 control? *Glob Health Med.* 2021;3(3):125-8.
- 5 2. Hibiya K, Iwata H, Kinjo T, Shinzato A, Tateyama M, Ueda S, et al. Incidence of
6 common infectious diseases in Japan during the COVID-19 pandemic. *PLoS One.*
7 2022;17(1):e0261332.
- 8 3. Paget J, Spreuwenberg P, Charu V, Taylor RJ, Iuliano AD, Bresee J, et al. Global
9 mortality associated with seasonal influenza epidemics: New burden estimates and
10 predictors from the GLaMOR Project. *J Glob Health.* 2019;9(2):020421.
- 11 4. Taniguchi K, Ikeda S, Hagiwara Y, Tsuzuki D, Klai M, Sakai Y, et al.
12 Epidemiology and burden of illness of seasonal influenza among the elderly in Japan: A
13 systematic literature review and vaccine effectiveness meta-analysis. *Influenza Other*
14 *Respir Viruses.* 2021;15(2):293-314.
- 15 5. Tsuzuki S, Yoshihara K. The characteristics of influenza-like illness management
16 in Japan. *BMC Public Health.* 2020;20(1):568.
- 17 6. WHO public health research agenda for influenza: 2017 update. *World Health*

- 1 Organization. 2017.
- 2 7. Sugaya N. Widespread use of neuraminidase inhibitors in Japan. *J Infect*
- 3 *Chemother.* 2011;17(5):595-601.
- 4 8. Chong Y, Matsumoto S, Kang D, Ikematsu H. Consecutive influenza surveillance
- 5 of neuraminidase mutations and neuraminidase inhibitor resistance in Japan. *Influenza*
- 6 *Other Respir Viruses.* 2019;13(2):115-22.
- 7 9. Nakajima K, Akebo H, Tsugihashi Y, Ishimaru H, Sada R. Association of physician
- 8 experience with a higher prescription rate of anti-influenza agents in low-risk patients.
- 9 *Intern Emerg Med.* 2021;16(5):1215-21.
- 10 10. Zaraket H, Saito R. Japanese Surveillance Systems and Treatment for Influenza.
- 11 *Curr Treat Options Infect Dis.* 2016;8(4):311-28.
- 12 11. Expert opinion on neuraminidase
- 13 inhibitors for the prevention and treatment of influenza – review of recent systematic
- 14 reviews and meta-analyses
- 15 European Centre for Disease Prevention and Control. 2017.
- 16 12. Ministry of Health LaW. NDB OpenData 2022 [Available from:
- 17 <https://www.mhlw.go.jp/stf/seisakunitsuite/bunya/0000177182.html>.

- 1 13. Japan SBo. Portal Site of Official Statistics of Japan 2022 [Available from:
2 <https://www.e-stat.go.jp/>.
- 3 14. Okumura Y, Usami M, Okada T, Saito T, Negoro H, Tsujii N, et al. Glucose and
4 Prolactin Monitoring in Children and Adolescents Initiating Antipsychotic Therapy. *J Child*
5 *Adolesc Psychopharmacol.* 2018;28(7):454-62.
- 6 15. Sugiyama T, Imai K, Ihana-Sugiyama N, Tanaka H, Yanagisawa-Sugita A, Sasako
7 T, et al. Variation in process quality measures of diabetes care by region and institution in
8 Japan during 2015-2016: An observational study of nationwide claims data. *Diabetes Res*
9 *Clin Pract.* 2019;155:107750.
- 10 16. Hirose N, Ishimaru M, Morita K, Yasunaga H. A review of studies using the
11 Japanese National Database of Health Insurance Claims and Specific Health Checkups.
12 *Annals of Clinical Epidemiology.* 2020;2(1):13-26.
- 13 17. Nakanishi T, Inose R, Kusama Y, Ishikane M, Kajihara T, Yahara K, et al. The Use
14 of Topical Antibiotics Based on the National Database of Health Insurance Claims and
15 Specific Health Checkups of Japan (NDB) Open Data in 2017. *Jpn J Infect Dis.*
16 2022;75(2):177-82.
- 17 18. Yoshimura K, Hashimoto T, Sato Y, Sato A, Takeuchi T, Watanabe H, et al. Survey

- 1 of Anticonvulsant Drugs and Lithium Prescription in Women of Childbearing age in Japan
2 Using a Public National Insurance Claims Database. *Clinical Neuropsychopharmacology*
3 and Therapeutics. 2018;9:20-8.
- 4 19. Ohkusa Y, Sugawara T, Takahashi K, Kamei M. Comparative study of preciseness
5 in the regional variation of influenza in Japan among the National Official Sentinel
6 Surveillance of Infectious Diseases and the National Database of Electronic Medical
7 Claims. *Biosci Trends*. 2018;12(6):636-40.
- 8 20. Uda K, Okubo Y, Shoji K, Miyairi I, Morisaki N, Michihata N, et al. Trends of
9 neuraminidase inhibitors use in children with influenza related respiratory infections.
10 *Pediatr Pulmonol*. 2018;53(6):802-8.
- 11 21. Takeuchi M, Yasunaga H, Horiguchi H, Matsuda S. Clinical Features of Infants
12 Hospitalized for 2009 Pandemic Influenza A (H1N1) in Japan: Analysis Using a National
13 Hospital Discharge Database. *Pediatr Infect Dis J*. 2012;31(4):368-72.
- 14 22. Takeuchi M, Kawakami K. Association of baloxavir marboxil prescription with
15 subsequent medical resource utilization among school-aged children with influenza.
16 *Pharmacoepidemiol Drug Saf*. 2021;30(6):779-86.
- 17 23. Yamana H, Ono S, Michihata N, Jo T, Yasunaga H. Association between Maoto

- 1 Use and Hospitalization for Seasonal Influenza in a Nonelderly Cohort in Japan. Intern
2 Med. 2021;60(21):3401-8.
- 3 24. Ono S, Ono Y, Matsui H, Yasunaga H. Factors associated with hospitalization for
4 seasonal influenza in a Japanese nonelderly cohort. BMC Public Health. 2016;16:922.
- 5 25. Nakamura Y, Sugawara T, Kawanohara H, Ohkusa Y, Kamei M, Oishi K.
6 Evaluation of estimated number of influenza patients from national sentinel surveillance
7 using the national database of electronic medical claims. Jpn J Infect Dis. 2015;68(1):27-9.
- 8 26. Cizeron A, Saunier F, Gagneux-Brunon A, Pillet S, Cantais A, Botelho-Nevers E.
9 Low rate of oseltamivir prescription among adults and children with confirmed influenza
10 illness in France during the 2018-19 influenza season. J Antimicrob Chemother.
11 2021;76(4):1057-62.
- 12 27. Jefferson T, Jones MA, Doshi P, Del Mar CB, Hama R, Thompson MJ, et al.
13 Neuraminidase inhibitors for preventing and treating influenza in adults and children.
14 Cochrane Database Syst Rev. 2014;2014(4):Cd008965.
- 15 28. Jefferson T, Jones M, Doshi P, Spencer EA, Onakpoya I, Heneghan CJ.
16 Oseltamivir for influenza in adults and children: systematic review of clinical study reports
17 and summary of regulatory comments. BMJ. 2014;348:g2545.

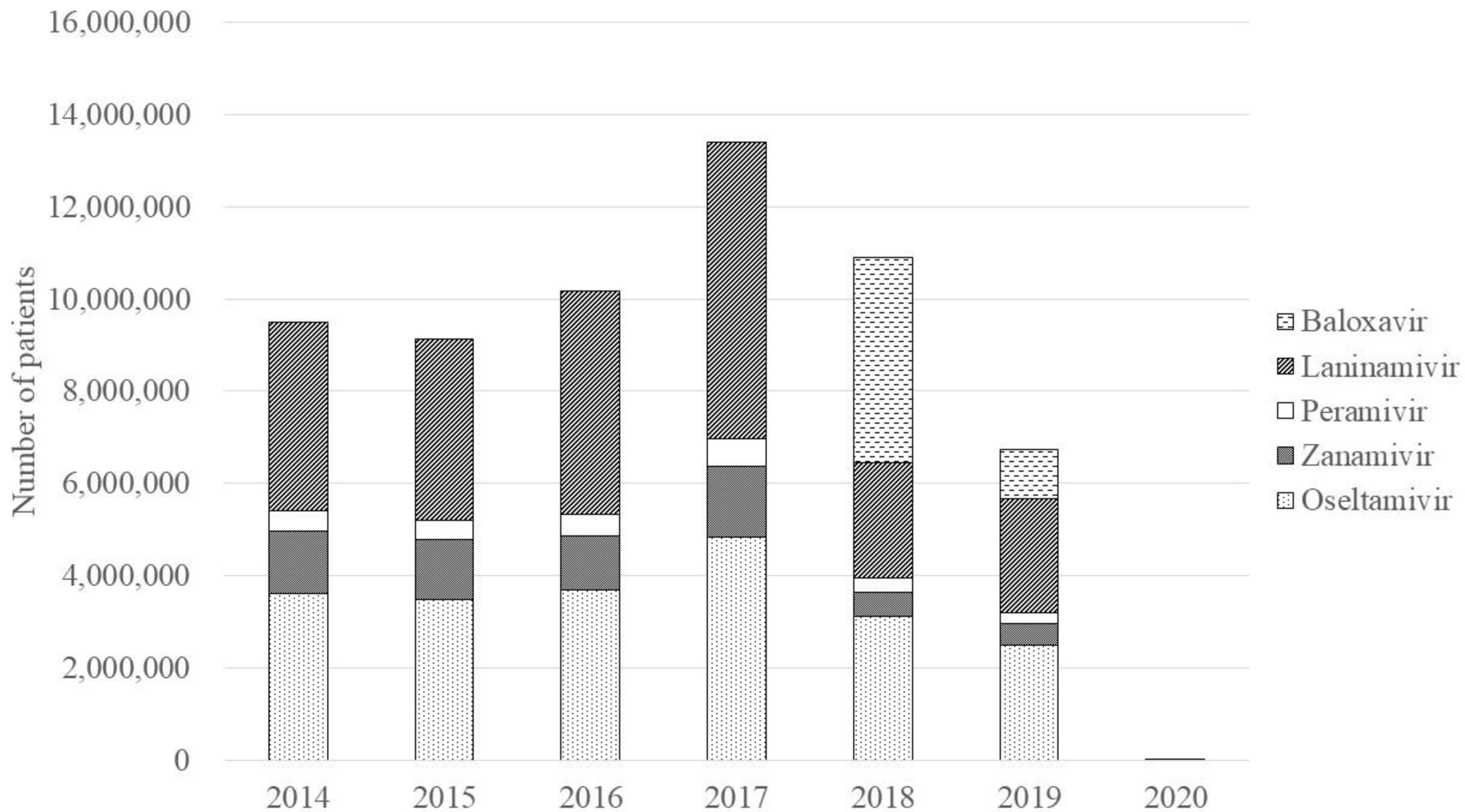
- 1 29. Heneghan CJ, Onakpoya I, Thompson M, Spencer EA, Jones M, Jefferson T.
2 Zanamivir for influenza in adults and children: systematic review of clinical study reports
3 and summary of regulatory comments. *BMJ*. 2014;348:g2547.
- 4 30. Dobson J, Whitley RJ, Pocock S, Monto AS. Oseltamivir treatment for influenza in
5 adults: a meta-analysis of randomised controlled trials. *Lancet*. 2015;385(9979):1729-37.
- 6 31. Uyeki TM, Bernstein HH, Bradley JS, Englund JA, File TM, Fry AM, et al.
7 Clinical Practice Guidelines by the Infectious Diseases Society of America: 2018 Update on
8 Diagnosis, Treatment, Chemoprophylaxis, and Institutional Outbreak Management of
9 Seasonal Influenza. *Clin Infect Dis*. 2019;68(6):e1-e47.
- 10 32. Harper SA, Bradley JS, Englund JA, File TM, Gravenstein S, Hayden FG, et al.
11 Seasonal influenza in adults and children--diagnosis, treatment, chemoprophylaxis, and
12 institutional outbreak management: clinical practice guidelines of the Infectious Diseases
13 Society of America. *Clin Infect Dis*. 2009;48(8):1003-32.
- 14 33. Wang XL, Yang L, Chan KH, Chan KP, Cao PH, Lau EH, et al. Age and Sex
15 Differences in Rates of Influenza-Associated Hospitalizations in Hong Kong. *Am J*
16 *Epidemiol*. 2015;182(4):335-44.
- 17 34. Watanabe A. A randomized double-blind controlled study of laninamivir compared

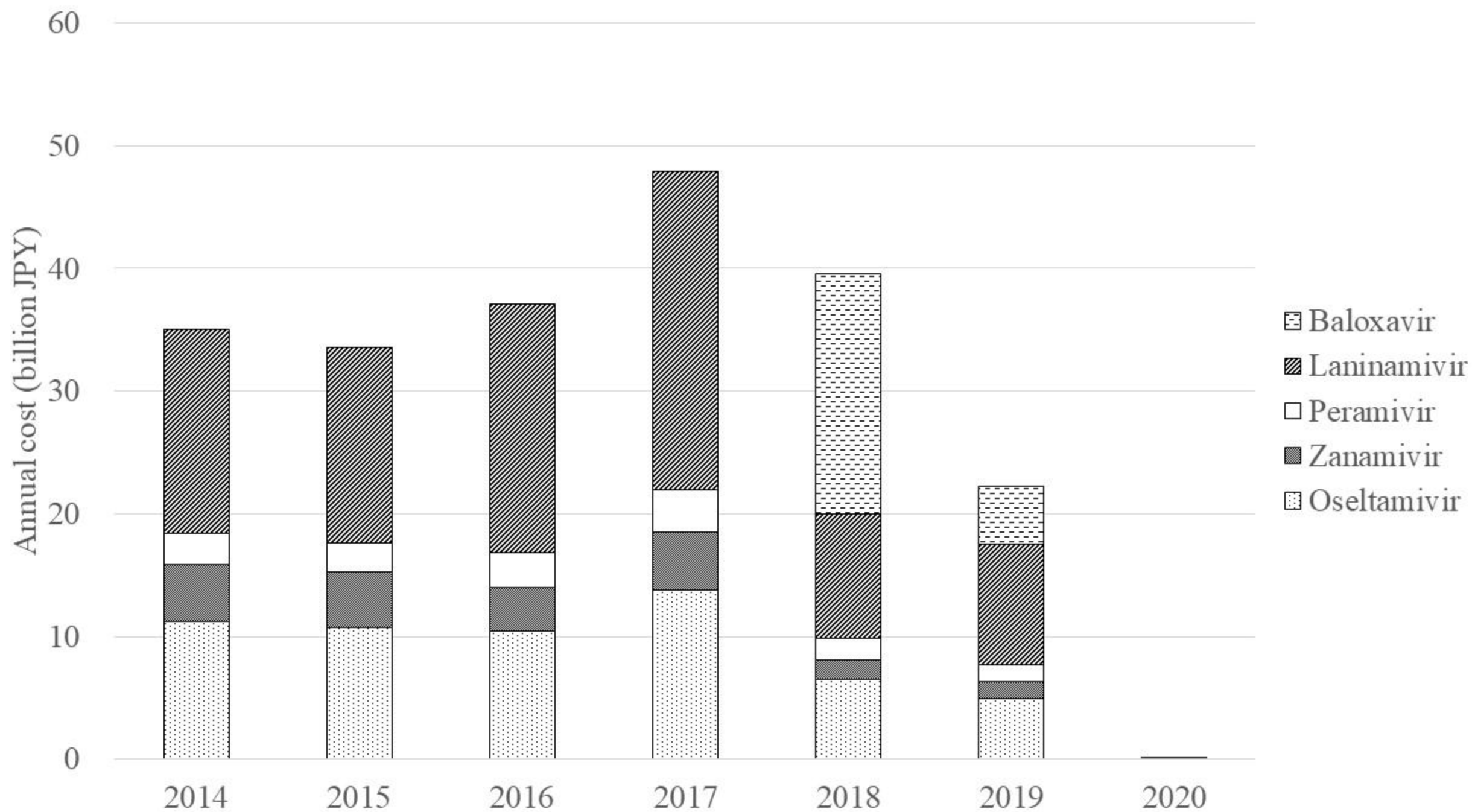
- 1 with oseltamivir for the treatment of influenza in patients with chronic respiratory diseases.
2 J Infect Chemother. 2013;19(1):89-97.
- 3 35. Watanabe A, Chang SC, Kim MJ, Chu DW, Ohashi Y, Group MS. Long-acting
4 neuraminidase inhibitor laninamivir octanoate versus oseltamivir for treatment of influenza:
5 A double-blind, randomized, noninferiority clinical trial. Clin Infect Dis.
6 2010;51(10):1167-75.
- 7 36. Hayden FG, Sugaya N, Hirotsu N, Lee N, de Jong MD, Hurt AC, et al. Baloxavir
8 Marboxil for Uncomplicated Influenza in Adults and Adolescents. N Engl J Med.
9 2018;379(10):913-23.
- 10 37. Mikasa K, Aoki N, Aoki Y, Abe S, Iwata S, Ouchi K, et al. JAID/JSC Guidelines
11 for the Treatment of Respiratory Infectious Diseases: The Japanese Association for
12 Infectious Diseases/Japanese Society of Chemotherapy - The JAID/JSC Guide to Clinical
13 Management of Infectious Disease/Guideline-preparing Committee Respiratory Infectious
14 Disease WG. J Infect Chemother. 2016;22(7 Suppl):S1-S65.
- 15 38. Cap-dependent endonuclease inhibitor Baloxavir marboxil (Xofluza®)|The
16 Japanese Association for Infectious Diseases 2022 [Available from:
17 https://www.kansensho.or.jp/modules/en/index.php?content_id=2.

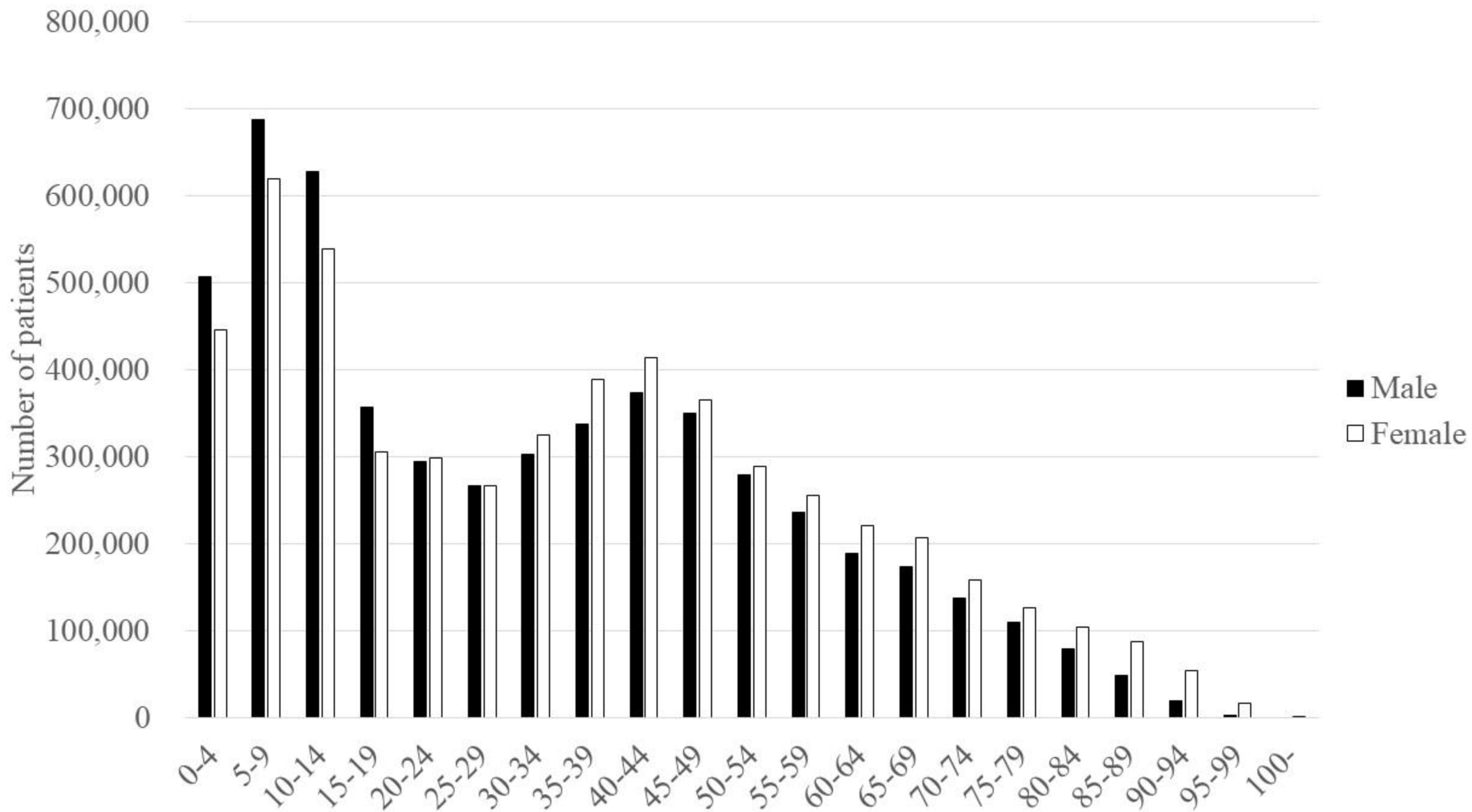
- 1 39. Saito S, Mukohara K, Bito S. Japanese practicing physicians' relationships with
2 pharmaceutical representatives: a national survey. *PLoS One*. 2010;5(8):e12193.
- 3 40. Pegler S, Underhill J. Evaluating the safety and effectiveness of new drugs. *Am*
4 *Fam Physician*. 2010;82(1):53-7.
- 5 41. Endo A, Uchida M, Kucharski AJ, Funk S. Fine-scale family structure shapes
6 influenza transmission risk in households: Insights from primary schools in Matsumoto city,
7 2014/15. *PLoS Comput Biol*. 2019;15(12):e1007589.
- 8 42. Sue K. The science behind "man flu". *BMJ*. 2017;359:j5560.
- 9 43. Quach C, Piche-Walker L, Platt R, Moore D. Risk factors associated with severe
10 influenza infections in childhood: implication for vaccine strategy. *Pediatrics*. 2003;112(3
11 Pt 1):e197-201.
- 12 44. Sugihara T, Yasunaga H, Matsui H, Kamei J, Fujimura T, Kume H. Regional
13 clinical practice variation in urology: Usage example of the Open Data of the National
14 Database of Health Insurance Claims and Specific Health Checkups of Japan. *Int J Urol*.
15 2019;26(2):303-5.
- 16 45. Inoue R, Nishi H, Tanaka T, Nangaku M. Regional variance in patterns of
17 prescriptions for chronic kidney disease in Japan. *Clin Exp Nephrol*. 2019;23(6):859-64.

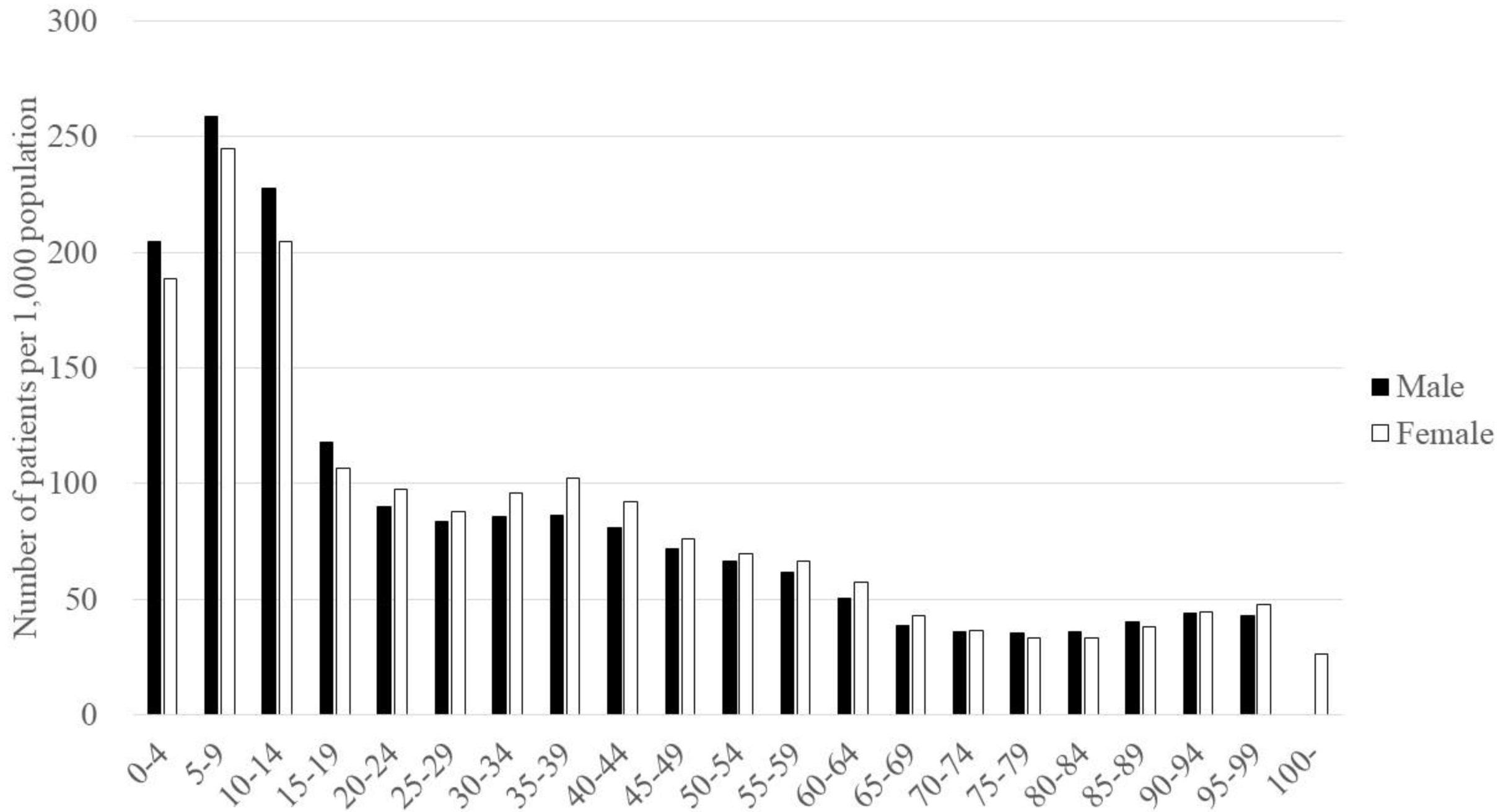
- 1 46. Watanabe T, Muro K, Ajioka Y, Hashiguchi Y, Ito Y, Saito Y, et al. Japanese
2 Society for Cancer of the Colon and Rectum (JSCCR) guidelines 2016 for the treatment of
3 colorectal cancer. *Int J Clin Oncol*. 2018;23(1):1-34.
- 4 47. Nobel TB, Lavery JA, Barbetta A, Gennarelli RL, Lidor AO, Jones DR, et al.
5 National guidelines may reduce socioeconomic disparities in treatment selection for
6 esophageal cancer. *Dis Esophagus*. 2019;32(5).
- 7

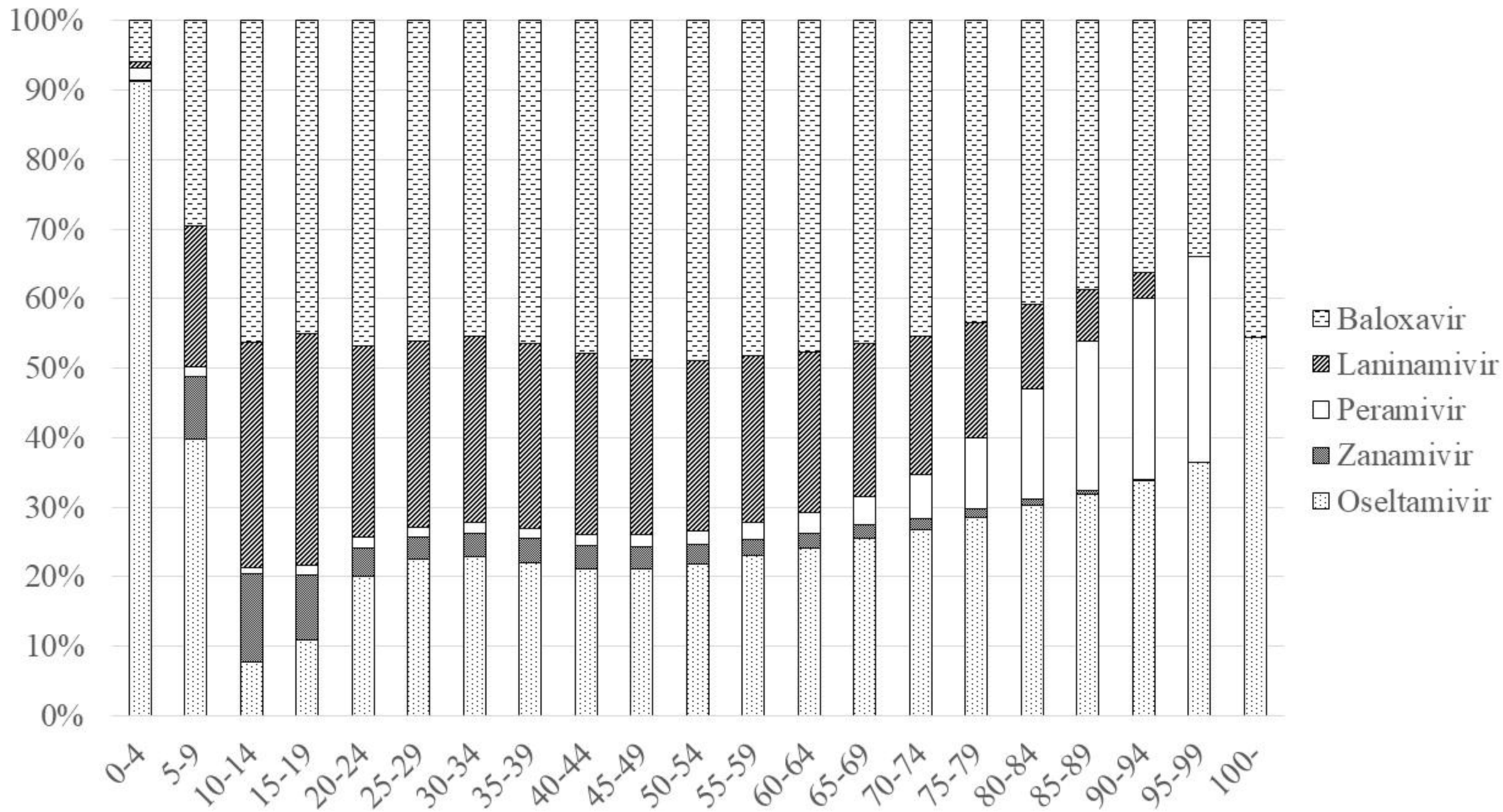
- 1 Figure Legends
- 2 Figure 1: Annual number of patients prescribed anti-influenza drugs in Japan (2014-2020)
- 3 Figure 2: Annual cost of anti-influenza drugs in Japan (2014-2020)
- 4 Figure 3: Age and sex distribution of patients prescribed anti-influenza drugs in 2018
- 5 Figure 4: Age and sex distribution of patients prescribed anti-influenza drugs per 1,000
- 6 population in 2018
- 7 Figure 5: Age and anti-influenza drugs in 2018
- 8 Figure 6: Geographical differences by prefecture in patients prescribed anti-influenza drugs
- 9 per 1,000 population in 2018
- 10 Figure 7: Geographical differences by prefecture in prescriptions in 2018
- 11 Figure 8: Proportion of inpatients by age and sex in 2018
- 12 Figure 9: Inpatient prescriptions for males in 2018
- 13 Figure 10: Inpatient prescriptions for females in 2018
- 14 Figure 11: Regional differences in inpatient prescriptions in 2018

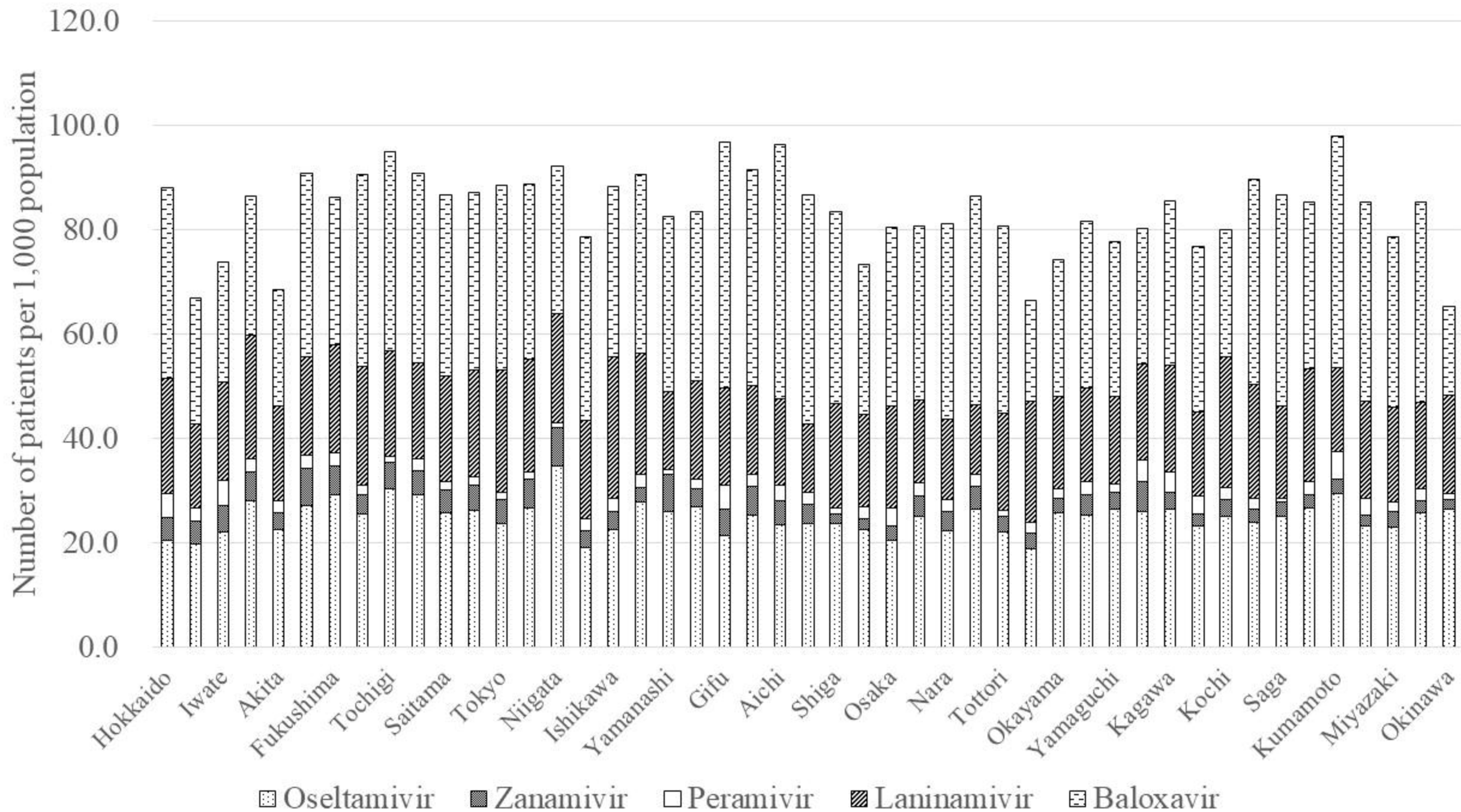


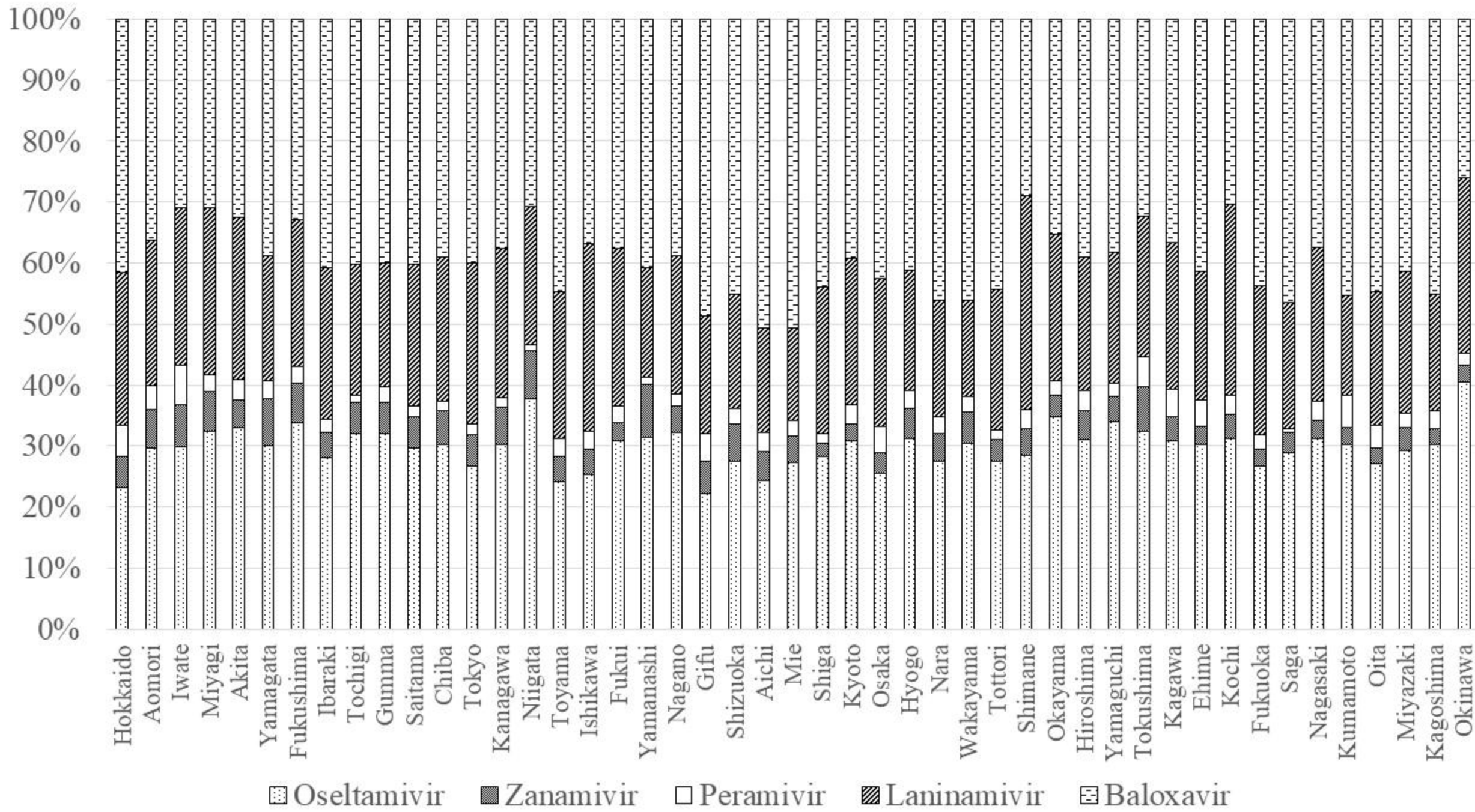


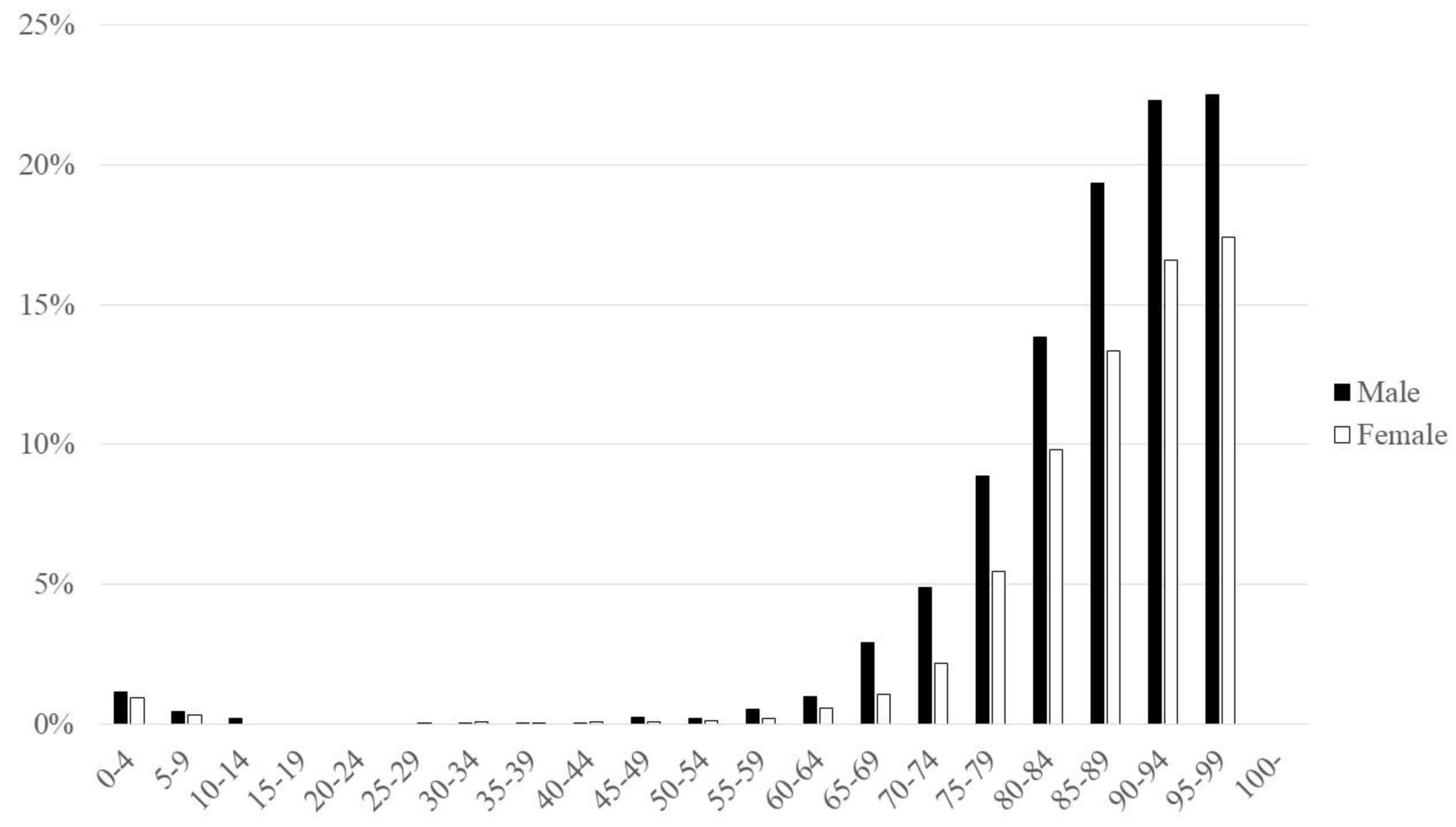


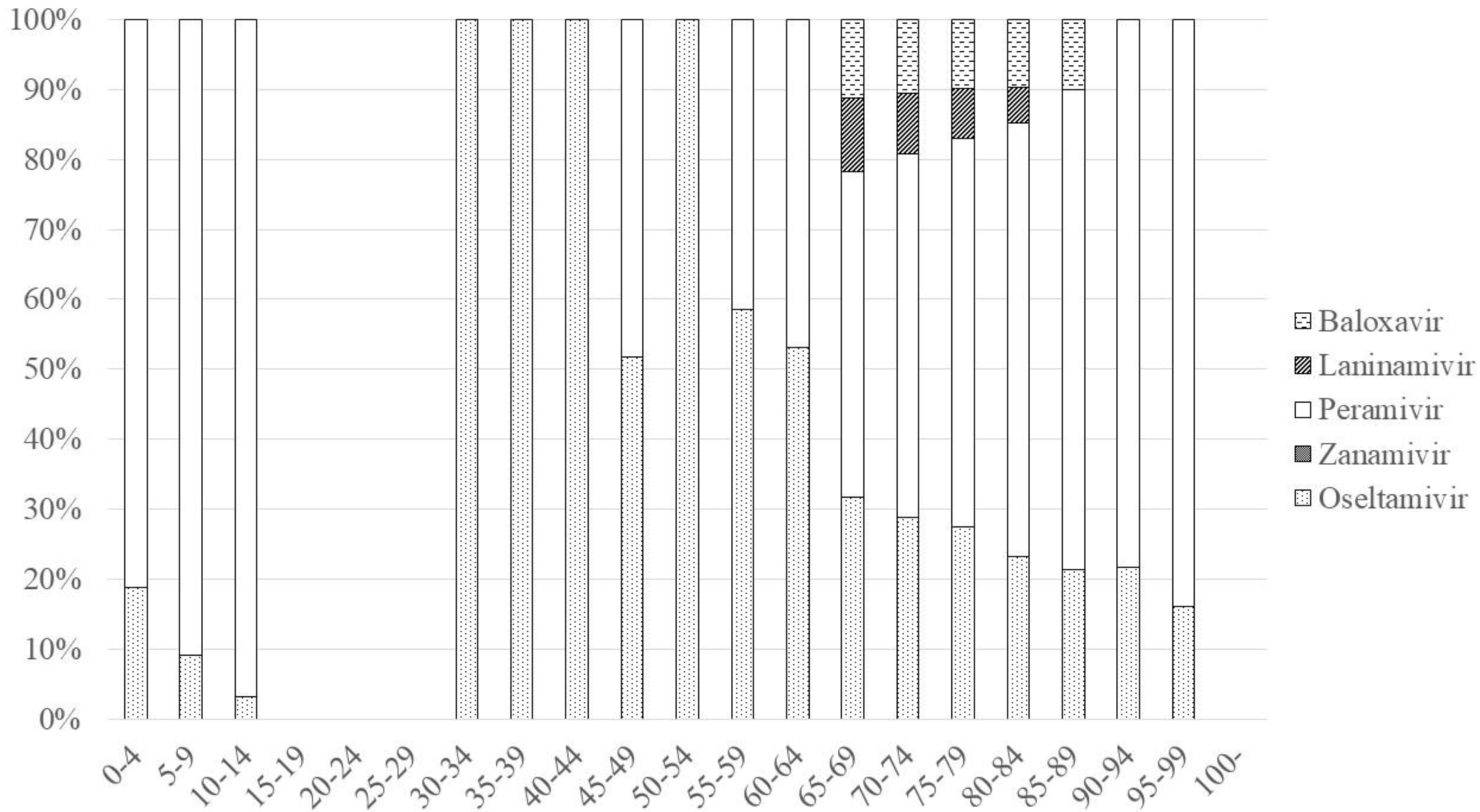


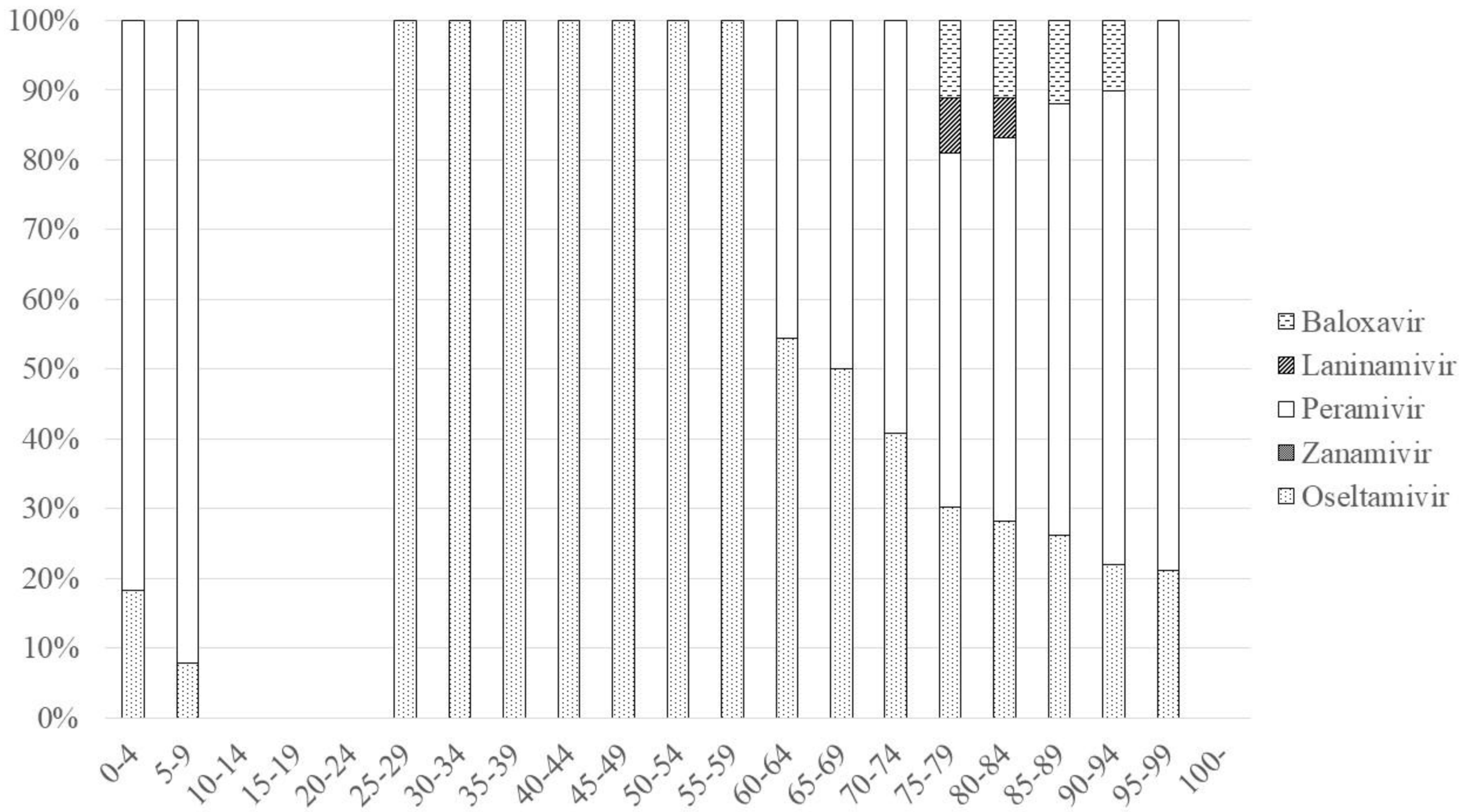


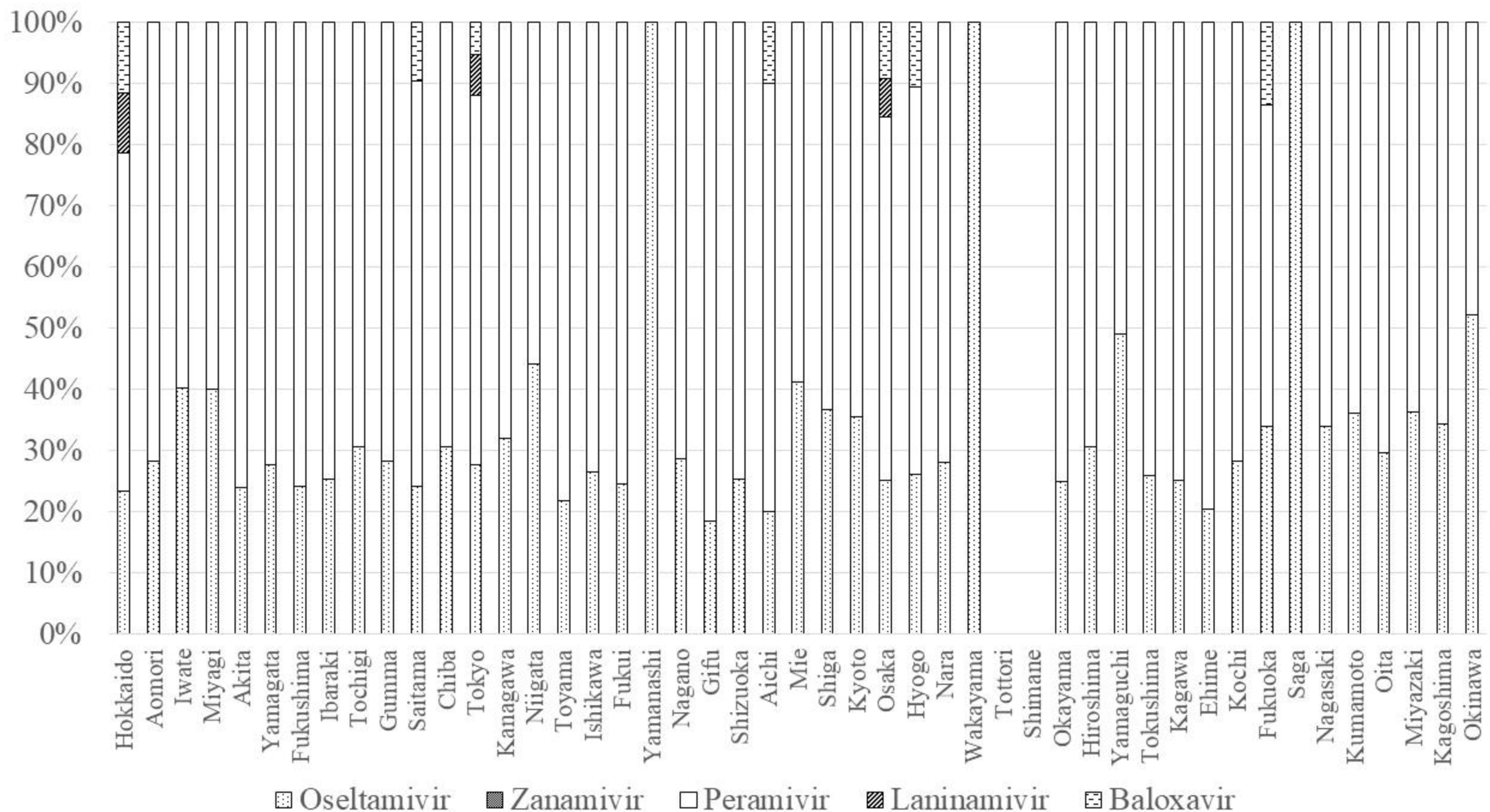












Oseltamivir
 Zanamivir
 Peramivir
 Laninamivir
 Baloxavir